

The Spearman Reporter

VOLUME 66, NO. 39

THE SPEARMAN REPORTER, SPEARMAN, TEXAS 79081

THURSDAY, AUGUST 14, 1975

Registration Next Week As Students Return To School



END O' THE LINE

The days of summer fun and freedom are just about over for students in Hansford County. The fall term for Spearman, Morse, and Gruver will begin Monday, August 25. Classes will begin at 8:20 a.m.

All new students in the Spearman Independent School District should register any time this week or next.

Elementary students, kindergarten through fourth grades will register Friday, August 22 from 9 to 10:30.

Junior high students will register Monday, August 25.

All Spearman High School students are encouraged to check their schedules at the Principal's office. The office will be open as follows:

Wednesday, Aug. 13 -- 8:00 a.m. - 4:00 p.m. & 7:30 p.m. - 8:30 p.m.

Thursday, Aug. 14 -- 8:00 a.m. - 12:00 Noon

Monday, Aug. 18 -- 8:00 a.m. - 4:00 p.m. & 7:30 p.m. - 8:30 p.m.

Tuesday, Aug. 19 -- 8:00 a.m. - 4:00 p.m.

New students are encouraged to register on Aug. 13 or 14.

Orientation sessions for all high school students are scheduled for Friday, August 22. Students are to report to the auditorium at the following times:

Freshmen-----9:30 a.m.
Seniors-----10:30 a.m.
Sophomores--1:00 p.m.
Juniors-----2:00 p.m.

The cafeteria will be open August 25 and buses will run. School will turn out at 2:30 p.m. Monday.

Changes in the staff have occurred this term, Eddy Clemmons is the new high school principal and G. W. Robinson is the new principal of junior high, as well as other new teachers. Aileen Alford is the principal of the elementary school.

A list of all teachers in Spearman schools as well as cafeteria workers, custodians, etc. will be published in next week's paper.

All new students in the school system, especially those in the elementary grades, are required to have had several immunizations including polio, diphtheria, lock jaw (tetanus), whooping cough, measles and rubella.

Regular City Council

School Board Approves Budget

The Spearman School Board met in regular session Monday evening at the school.

Bills were presented and approved for payment.

The budget for the 1975-76 school year was approved. It is \$1,587,480.00 as compared to \$1,368,243.00 last year. Of this amount \$1,587,480.00, \$1,014,000.00 goes for teachers salaries.

The board will meet Monday night, August 18 to set the tax rate for the coming year.

Season Tickets On Sale

Season tickets for the Lynx football games will go on sale Monday, August 11 at 8 a.m., at the school business office only to those people who held season tickets last year. These people have thru Friday, August 22 to pick up their tickets. The business office is open from 8 a.m. to 5 p.m. Monday thru Friday.

Beginning Monday, August 25, season tickets will go on sale to anyone wishing them and will be on sale through Sept. 5.

The reserve tickets will be \$8.00 for the four home games. They are approximately 480 seats in the reserve section of the new Lynx Stadium.

The first game will be September 5 here against Stratford.

Roll up your sleeves, reserve a time to give your blood on August 14 at the Sacred Heart Parish Hall.

Scouts & Scoutmasters Receive Awards

In a rather lengthy meeting held Monday, August 11 at City Hall several items of business were discussed.

Mrs. J. R. Colhard and her lawyer, and Golden Circle Development and their lawyer were present concerning the paving of the Golden Circle area. Mrs. Colhard and Mr. Herget did not want to do anything at the present time and the paving was tabled for the present.

Approval was given for paving of Linn and Blodgett drive.

The council approved paying 1/3 of the court settlement to the Don Hendricks. The insurance companies will pay the other 2/3 of the cost.

Also approved was the extension of the contract with George Brain as professional consultant for one year.

Fire Marshall Charles Littlejohn reported on the need for an additional civil defense siren in the city. It is believed that Civil Defense will pay half of the cost of the siren and the city the other half.

T. V. Cable line heights of 15'6" from the ground up in alley, streets, etc. was approved.

A report on the gas system was given by City Manager Thompson.

Bills were presented and approved for payment.

In regard to damage from crop spraying in the city area, city manager stated that he has received excellent co-operation from crop spraying firms and one is making arrangements for a new disposal facility for insecticides.

The council also approved new officers for the Fire Department, Jim Brown is the new fire chief.

Discussion was held in executive session on the ruling by the railroad commission concerning the rate Spearman should pay for natural gas. A meeting will be called at a later date to determine if the City will object to the increase. The city has thirty days to file objection, if councilmen decide to do so.

Saturday, August 9, Spearman Assistant Scoutmaster, Bob Fair received his brotherhood in the Order of Arrow at ceremonies held at Camp M. K. Brown near Wheeler.

In a separate ceremony, Scoutmaster Harry Stumpf, and 1st class Scouts Troy Thompson, Jimmy Nicholson and Roger Kennard received their ordeal in the Order of Arrow.

EMS Budget Submitted

A first-year budget of \$436,607 for the Panhandle Emergency Medical Service System has been submitted to the U. S. Department of Health, Education and Welfare by the Panhandle Regional Planning Commission.

All except \$64,513 of the money will be used to purchase communications equipment and emergency vehicles for members of the system.

Twenty four counties of the Panhandle will be served by EMS which will eventually provide prompt medical service to victims of illness and accidents throughout the area via a region-wide radio communications network, efficient emergency transportation, in the presence of trained emergency medical technicians.

Equipment to be purchased includes: 10 van-type ambulances; 55 UHF, 12 channel mobile radios; 40 two-channel remote control units; and additional equipment for existing emergency vehicles. Spearman will receive

Museum Plans Pie Eating Contest

There will be workdays at the Stationmaster's House Museum every Saturday afternoon starting with this weekend. Painting the interior is the main activity at present. All who wish to help are to bring their paint brushes. The museum is located at 30 South Townsend in Spearman.

On Saturday, September 27, the Hansford County Historical Survey Committee, a non-profit organization, will sponsor a Pie-Eating contest to benefit the county museum. There will be four age categories and prizes for the eaters of the most pies and for the raisers of the most funds.

NOTICE: The Lions Club will meet at Plains Restaurant next Tuesday noon.

Two Local Women To Receive LVN Degree

Graduation exercises for the second class of Licensed Vocational Nursing students in the Division of Occupational Education and Technology of Frank Phillips College in Borger will be Friday in the FPC Fine Arts Auditorium.

Dr. Maurice Dyer, former dean of the Texas Tech Medical School Branch in Amarillo, will speak at the ceremony which will begin at 7 p.m.

Dr. William E. Raab, college president, will present diplomas to 25 students from six Texas Panhandle and Oklahoma cities. Mrs. Ella M. Weeter, R. N., director of the LVN program will present pins.

The licensed vocational nursing programs formerly conducted by hospitals in Pampa, Spearman and Borger were merged in the summer of 1973 when state agencies named Frank Phillips College to direct the LVN program in the northern Panhandle. The hospitals continue to be affiliated with the program and provide clinical facilities for the 12-month course.

The college already has accepted 35 applicants for the 1975-76 class whose studies will begin this month.

Members of the class which will be graduated Friday night include Betty Jo Clark and Carol English of Spearman.

Bloodmobile 150 Pints - Is Goal

The Bloodmobile will be in Spearman August 14 at the Sacred Heart Parish Hall from 10 a.m. to 3:15 p.m.

The Bloodmobile will be coming to Spearman through the Wichita Regional Blood Center which supplies over 65,000 units of blood yearly for patients in the 141 hospitals in its district. Hansford Hospital is one of these.

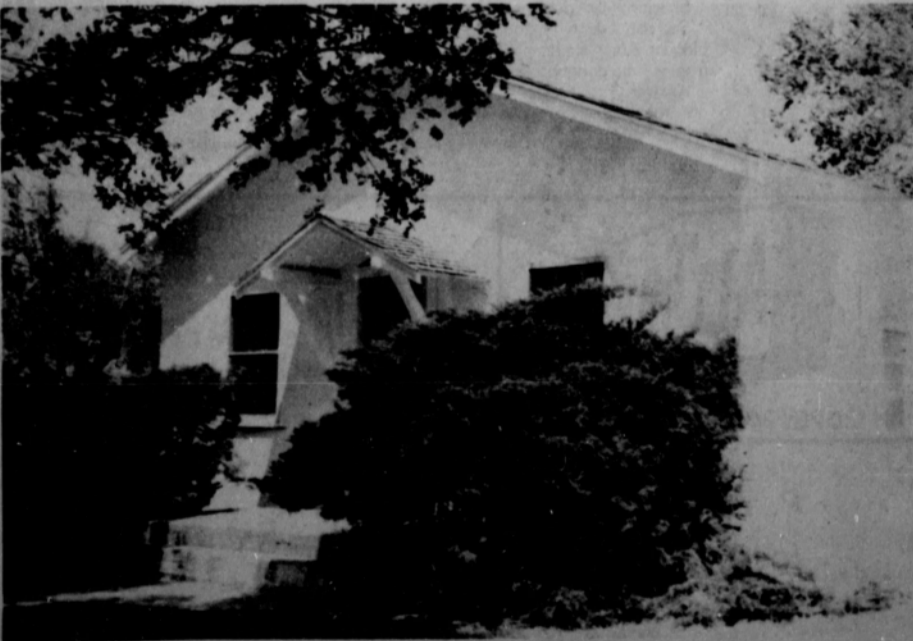
The goal for this year's drive is 150 pints. Last year, the first year that Hansford County has ever reached its goal, the total pints collected were 190.

Members of the Hansford Hospital Auxiliary are in charge of details for the Bloodmobile visit.

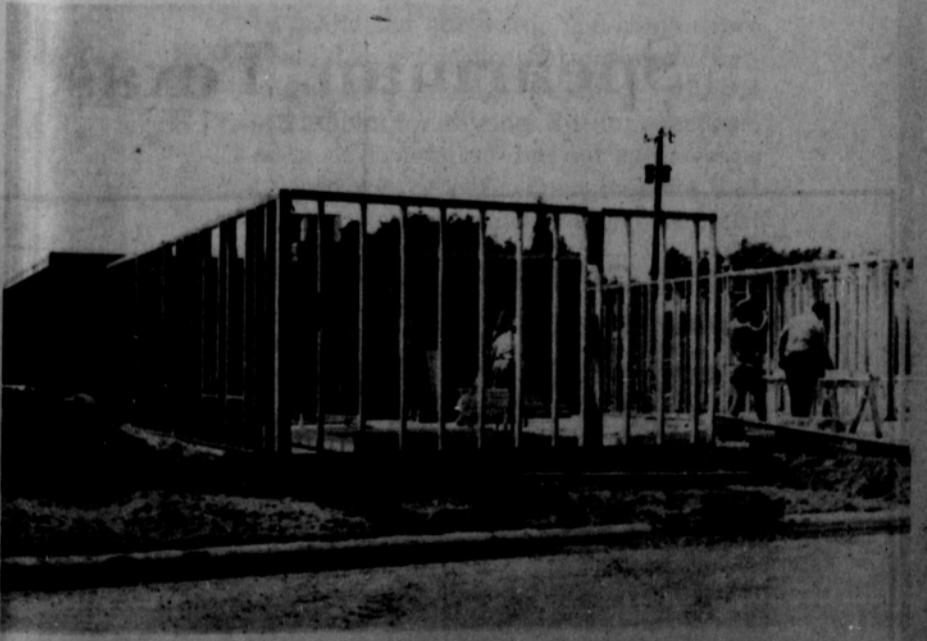
Donors are asked to call for appointments, to either Joy McCormack, 2271; Jane Kenda 3243 or Alva Garner 3216. You are asked to call by August 11 since cards will have to be prepared before the arrival of the Bloodmobile on Aug. 14. It is estimated that the time required will be 15 minutes.

Any healthy person between the ages of 18 and 66 may give blood.

Patients who receive blood in any hospital served by the regional Red Cross blood programs are not required to replace the blood. However, patients may help by asking relatives and friends to donate blood for the next patient.



This house is a part of the property that the hospital board recently acquired for future expansion of the Hansford Hospital. Nurses will be housed in the house. This house and three lots North of Dr. Thomas' office was purchased for a total of \$13,000.00.



A new doctor is expected to arrive in Spearman in October, and he will occupy this new addition to Dr. Thomas' office, located behind the Hansford Hospital. The new addition is being constructed at a cost of \$25,000.00 and will be paid for by the Doctors who use the facility.

WANT ADS

Boxwell Bros.
Funeral Home and Flower Shop

Day-Night Phone 659-2212
Spearman, Texas

Listen To
Harvest Time

9:00A.M.
SUNDAY
KBMF

United Pentecostal Church
Sponsor

YOUR LOCAL USED COW
DEALER: Spearman Bi-
Products. Seven days a
week dead stock removal.
Please call as soon as
possible. 659-3544.
8-rtm

Hansford Lodge
1040
A.F.&A.M.
2nd and 4th Mondays
8:00 P. M.
Visitors Welcome
Dan Faries W. M.,
Cecil Batton, Secy.

SERVICES

Hansford County
Planned Parenthood
26 S. Hancey
659-2483
Spearman
Mon.-Fri.
8:00 A.M. to 12 Noon
305-rtm

Custom fertilizing and
Any type of farming
W. B. Barnes
659-3638

KIRBY SALES & SERVICE
of Spearman, 912 S.
Bernice. 659-2797.
30-rtm

Alcoholics Anonymous
Meeting every Tuesday,
8:00 p.m., at the Girl
Scout Little House, 22 S.
Endicott. Call 3394 or
2762 for information.
45-rtm

MARY KAY COSMETICS
Call 659-2119. Malolah
FullBright.
32S-rtm

BUILDING, REMODELING,
ROOFING, Call 659-2118.
31-22tp

GRADER: Dozier and Drag
Line work, call: Lee Roy
Mitchell, Gruver 733-2384.
28-rtm

RAWLEIGH PRODUCTS
Call Janie Kuntzman,
659-2631.
34S-18tc

PIANO TUNER: Certified,
August 11-15, \$25. Call
659-2264 for appointment.
37-4tp

Your domestic well go
dry? Have casing pulling
equipment. Drill new
gravel pack wells, Plastic
and steel pipe. Call eve-
nings, W. V. Block,
935-4088, Dumas, 115
Cherry St.
35-rtm

PORTABLE DISC ROLLING,
BALLARD'S, 935-5229,
Dumas, Texas.
39-16tc

Miscellaneous
For Sale

FOR SALE: Full Bedroom
Suite, Phone 3446.
39-rtm

FOR SALE: 74 Norton 850
Commando. Equity and
assume payments or \$2,000.
Call 659-3304 or see at
213 Bernice.
38-4tp

Yamaha 250 MX, Honda
350 SL. 659-3248.
35S-5tp

FOR SALE: Frigidaire
Refrigerator, in good
shape. \$50.00. Call
2243.
38S-2tp

FOR SALE: 3 Bedroom
House, central heat, air
conditioning, fully carpet-
ed, kitchen remodeled,
fenced backyard and car-
port. 659-2089.
39-4tc

FOR SALE: Economical
college car. 1971 Ford
Pinto, 31,000. 659-3000
after 5.
38S-4tc

FOR SALE: Registered
Dachshund Puppies.
659-3059.
39-2tc

GARAGE SALE: 909 S.
Bernice, Friday afternoon
& Saturday, Aug. 15-16.
39-1tp

HELP WANTED

NORTHERN NATURAL GAS
COMPANY will take applica-
tions for a Plant Technician
on August 14th between 8:00
A.M. and 4:00 P.M.
Apply at office located
nine (9) miles south and
seven (7) miles east of
Spearman, Texas on High-
way 281.
Must be experienced in
testing, calibrating, re-
pairing of electrical, pneu-
matic, electronic, and
hydraulic facilities associa-
ted with natural gas pro-
cessing.
We offer an exceptional
employee benefit program
and a challenging future.
We are an EQUAL OPPOR-
TUNITY EMPLOYER and
welcome applications from
men and women of any
race who can pass a physical.
39-rtm

HELP WANTED: For inside
workers and machinist.
Apply in person at Roger's
Sales and Service, Waka,
Texas.
16-rtm

NEEDED: Tractor drivers
to pack ensilage. Also 2
Front-End Loader Operators.
Call 659-3042.
39-rtm

HELP WANTED: Need
reliable man to run Big A
Fertilizer spreader and
sprayer. Good pay. Please
call 435-5314 after 6 p.m.
39-2tc

GROUNDMAN
To work in line crew in
Perryton, Texas.
ELECTRIC SERVICEMAN
Qualified Electric Service-
man needed for job in
Spearman, Texas. Elec-
tric distribution experience
in maintenance and restora-
tion of service, meter
reading and troubleshooting
necessary.
CONTACT J. W. Jordan
in Perryton, Texas for in-
terview. 806-435-4077.
COMMUNITY PUBLIC
SERVICE COMPANY, An
Equal Opportunity Employer.
39-2tc

REAL ESTATE FOR SALE

FOR SALE: Three Bedroom
house; Two baths and den.
Call 659-2196.
38-4tc

FOR SALE OR RENT: Four
Bedroom house in Morse,
Texas, on Main Street.
Call 870-3045 Stinnett.
39-4tc

FOR SALE: 3 Bedroom,
2 Bath, corner lot, SW
Spearman. Call 733-2005.
37S-rtm

FOR SALE: 825x100 Front
foot lots. All Utilities,
South Front, Glover Terrace.
37-rtm

FOR SALE: 3 Bedroom 1 1/2
baths, central heat, stove,
dishwasher, single garage,
utility room, 710 Steele Drive.
Call Mayfield Real Estate
Perryton 435-6528 or call
Ruby Lair 659-2188.
37-rtm

FOR RENT

LBL Trailer Spaces, \$40
monthly. 50' x 10' lots.
Call manager after 5.
659-2257.
34S-rtm

FOR RENT: Furnished
apartment, 303 Davis.
Phone 659-3792.
37-rtm

FOR RENT: Semi-private
trailer space, \$30.00, Call
659-2404.
37S-rtm

FOR RENT: Trailer Space
Phone 659-3000 after 5 p.m.
39-rtm

FOR RENT: 2 Bedroom
furnished apartment. Call
2652.
39-2tc

FOR RENT: Small two
bedroom house. Stove and
Refrigerator. Call 659-
3436.
39-rtm

MOBILE HOMES For Sale

New 2 & 3 bedroom
mobile homes priced
at \$10,000, com-
pletely furnished.
No down payment, set
on lot in Spearman.
We have lots for
sale or rent. Call
Russell Beckwith,
274-4795, Borger, Tx.
37-rtm

FOR SALE: 71 Model 14x73
Patriot Mobile Home.
\$7,500 call after 8:00 P.M.
659-3508.
39-rtm

WANTED

Want to buy good house to
be moved. Phone 878-2932.
37-8tp

WANTED TO BUY: Good
used girl's bicycle - size
24". Call Mrs. Pope Gib-
ner, 659-3204.
39-1tp

WANT TO BUY: 105
John Deere Combine;
Larry Johnson, Phone
915-655-1752.
38S-rtm

NEW IN THIS AREA
HUFF PIANO
SERVICE
(Wayne & Julianna)
PIANO TUNING
Let us advise you on
repair of your present
piano or Purchase of
a new or used piano
10th & Polk
Amarillo Texas 79100
Ph. 372-2274

IS ALCOHOL A PROBLEM
IN YOUR FAMILY?
AL-ANON
FOR FAMILIES OF PROBLEM
DRINKERS
In this Fellowship
you can:
.. Meet others who
share your problem
.. Learn about alco-
holism as an illness
.. Encourage the al-
coholic to seek help
.. Replace despair with
hope
.. Improve the family
atmosphere
.. Rebuild your self-
confidence
For Further Information
Write to:
Spearman AL-ANON
22 So. Endicott
Or Call:
659-3394, 2762, 3181
Every Tuesday & Sat-
urday - 8:00 p.m.

TO GIVE AWAY

TO GIVE AWAY: Two fe-
male cats, front paws de-
clawed, litter trained. Call
659-3038 after 5:00 P.M.

You Name It!

I attended the annual
Martin reunion at Las Animas,
Colorado, over the week-
end. Those from Spearman
who attended were Mr. and
Mrs. Homer (Chip) Martin,
and Eddie Gale; the Elvin
Martins; the Ray Robertsons;
the Billy Millers; the Ira
Tindells; Mrs. R. E. Martin
and grandson Todd, and
Don McCammond from
Morse, Texas. Andy
Snowden of Poolville,
Texas, and one of his
daughters was also present
at the reunion.

These family reunions
flat amaze me. Our fam-
ily is just about run out of
Millers, and there just
ain't many of us left. In
fact, I only have 2 cousins,
and have never seen one of
them. Anyway, as I said
before, I fairly enjoyed
this family reunion. One
of the most fascinating
parts of the reunion was
the big family dance that
we had Saturday night.
All of the young Martin
cowboys had participated
in the big Bent County
rodeo that night, and
after the rodeo they all
came to the dance. I be-
lieve those Colorado cow-
boys can dance better than
any kids I ever saw. We
all had a wonderful time,
and the clan is planning
to have their reunion in
Spearman, again next
year.

I stopped by two Buttes
Dam on the way back from
Los Animas. This dam is
located just out of Spring-
field, Colorado, and accor-
ding to the local fisher-
men, has a bunch of pike
in the lake. I didn't ask
the fishermen whether
they were Northern or
Walleye pike, but it is
only about 150 miles to
Springfield (if that far)
and I think I will reserve
Orville Latham's boat
for the week-end, and
head for Two Buttes Lake.
If any of you fishermen
know anything about the
lake at Two Buttes give
me a call.

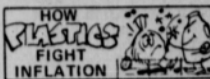
There is so much going
on at school this year, I
don't know whether we
will ever be able to get
all of the news about
school in the paper this
next two or three issues.
First, a new Jr. high re-
modeling job, will be
terrific, and of course the
new football complex is

just about done, and will
be ready for the opening
game against the Stratford
Elks! I sure hope the
Elks don't beat us as bad
this year as they did last
year. But, if the Lynx
continue to get some of
their kids injured, they
might be in a jam for the
opening game! Hargis
has already injured his
hand, and I understand
that Davis, who is a po-
tential all-state guard
will not play this year
because of an injury! If
this keeps up, it will
make a difference down
the line!

Have you seen the movie
"JAWS"? You must see
this! It is quite a suspense
film. And once again I
must compliment Mr.
Hale on the fine movies
he has been having in

Spearman. I sure did en-
joy the Waldo Pepper
show!

Unofficially we have had
near 80 boys turn out for
football this year! Most
of us remember when there
wasn't 80 boys in the
school.



By the year 2000 the plas-
tics industry is expected to
employ 1.6 million people—
about 1.3 percent of the
labor force—and that's a lot
of jobs for a lot of people.
But many people believe that,
in order to realize this figure,
government action is neces-
sary to allocate sufficient
petrochemical feedstocks to
the plastics industry and to
derive power from other
sources such as nuclear, solar
or geothermal.

TEXAS PRESS
MEMBER 1975 ASSOCIATION

Spearman REPORTER

213 Main Street
Spearman, Texas 79081
Box 458 659-3434

Published Weekly at 213 Main Street
Spearman, Texas 79081

Owner-Publisher William M. Miller
Second Class Postage Paid at Spearman, Tex.

Any erroneous reflection upon the character of any
persons or firm appearing in these columns will be
gladly and promptly corrected upon being brought
to the attention of the management.

SUBSCRIPTION RATE -- Hansford, adjoining
counties, combination with the Spearman Reporter,
\$9.95 Tax included.
Other points \$13.95 Tax included.



FAREWELL
A sound which makes us linger.

HELP WANTED

COOK - 20 or older, experience help-
ful; various hours and days.
WAITRESS - 16 or older, mostly
evenings.
Apply IN PERSON ONLY at
CHICKEN EXPRESS

THANK YOU, EVERYBODY!

You took us at our word. You came to see
if we would keep our pleasant promise of per-
formance. The promise we made without
limitation. Not for anyone. But for everyone!

You must have found that our bank was as
good as our word. Because now it seems that
everyone's here for something. So we must
express our appreciation.

Without you. And without your business.
We couldn't be. We wouldn't be. Everybody's
Bank.

EVERYBODY'S BANK
IN A GREAT BIG WAY

FIRST STATE BANK

SPEARMAN, TEXAS 79081

FDIC

SM-© 1974 Leon Shaffer Gelnick Adv. Inc.

ROGERS
STEAM
WAY

CARPET CLEANING
PHONE 405 338 7926
618 North Cumley
GUYMON, OKLAHOMA 73942

- * SMOKE DAMAGE
- * WATER DAMAGE
- * CARPET GUARD
- * DEODORIZING
- * ANTI STATIC

SERVING THE
TEXAS PANHANDLE
FOR 5 YEARS
M. L. ROGERS
OWNER-OPERATOR

AMY
PORTABLE DISC
ROLLING
659-3782
After 5:00 P.M.
DAVID MCINTYRE
118 1/2 N. James
Spearman, Texas

editor's letters

Dear Editor:
 The Wheat Producer Board of Texas wishes to express their appreciation for your support.
 Did you know? *that 80% of Texas Wheat finds its home overseas. *that most of the funds raised by your contribution goes to aid in increasing the exportation of wheat. *that contributions from Texas wheat

farmers and 11 other wheat States supports wheat offices in Europe, Asia, South America, and Africa; all working to encourage our friends to buy U. S. Wheat. *that, for the first time in history the U. S. has exported one billion bushels of wheat or more for three years in a row; 1972, 1973, 1974, and we must beat that 1 billion bushels if

we expect to get prices up again in 1975-1976. *that all twelve Wheat Boards objected as strongly as they could to the imposition of the monitoring system--and continued our opposition until they were removed in March. WE FEEL WE LOST AT LEAST 100 MILLION BUSHELS IN EXPORTS WHILE THE MONITORING SYSTEM WAS IN EFFECT, AND WHEAT PRICES DROPPED \$1.50

PER BUSHEL. *that when President Ford vetoed the farm bill--the only alternatives we had was to export more wheat or reduce acres, and we cannot reduce acres until next September. SO HELP US GET THOSE EXPORTS HIGHER. *THAT 1/2 CENT PER BUSHEL YOU ARE CONTRIBUTING--even at \$3.00 wheat equals only 1/6 of 1% of the value of your wheat, and at \$4.00 the percentage is 1/8 of 1%. *We hope you will continue to ask your elevator man to make this 1/2 cent deduction.

IF WE ALL GIVE A LITTLE WE HAVE A CHANCE TO INCREASE WHEAT PRICES.
 Sincerely yours,
 Troy Sloan, Member,
 Texas Wheat Producer Board
 P.S. 18 years ago we exported 250,000,000 bu. wheat in 1975--we expect to export 1 billion-2 billion (1,200,000,000).

MANAGING YOUR FAMILY'S FINANCES

By Dr. Carl F. Hawver

Q. We've been married three months, and like most of our friends we've made a few purchases on credit. We sure don't want to bite off more than we can chew, but how can we tell? Credit seems so easy! Are there any signal flags that will let us know if we're getting close to the danger line?
 A. There sure are! The first danger signal is when you have to defer payment of a bill because there just isn't enough money to pay them all. Another signal is when you make a part payment on a credit account, to try to give all creditors a little something on account. Another danger signal is when you have to defer the purchase of current necessities to pay old credit obligations. Do you sometimes depend on overtime or other uncertain income to pay normal monthly expenditures? Well, if you do, its another danger signal. And finally, if you have an open-end debt that has no maturity date, but allows you to pay just enough to keep you under a "perpetual debt" ceiling balance (revolving credit), this is a danger signal, too.

Every credit obligation ought to have a definite termination point, established at the time the credit contract is signed.
 Dr. Carl F. Hawver, Executive Vice President of the National Consumer Finance Association, is a widely recognized counseling expert in family money and credit management.



Electric Cooperatives Honor Earl Waide

Earle Waide has spent most of his 71 years on the High Plains of Texas, and most of that time was spent meeting the growing electric needs of the six counties served by North Plains Electric Cooperative of Perryton.
 And for his 30 years as manager of the Cooperative, Waide was recognized by fellow rural electric leaders August 6 in Amarillo during the 35th annual meeting of the association of Texas Electric Cooperatives.
 A native of Slidell and a graduate of Canadian High School, Waide has seen his Cooperative reach out to rural areas that needed electricity. Even before joining the Cooperative staff he saw the need, as a farmer himself, for establishing a solid, growing electric cooperative in his area.
 Waide and his wife Rosie Pearl are parents of three sons: Earl Eugene Waide, R. E. Waide, and Ronnie Lee Waide. Waide is a long-time lover of photography and stamp collecting. He's a member of several civic organizations.

FOUR WHEEL CENTER OF THE PANHANDLE

1 - Model 850 Versatile with 20.8 x 38 Duals
 3 - Model 800 Versatile with 20.8 x 38 Duals
 1 - Model 700 Versatile with 30.5 x 32 Duals
 2 - Used Model 700 Versatile with New 18.4 x 38 Duals
 599 hrs. on one, 620 hrs. on the other

For Draw Bar H.P. We Have the Best Buy Anywhere
CALL FOR DEMONSTRATION
Sperry New Holland
 PERRYTON, TEXAS 435-5473



THE ARMY RESERVE. PART OF WHAT YOU EARN IS PRIDE.

FOR THE ULTIMATE IN
STORM DOORS
 CUSTOM BUILT, DESIGNED, AND IN COLORS TO FIT YOUR HOME. . . .
 CONTACT -
HOWARD MOYER at
ONLY ALUMINUM INDUSTRIES
 405 338-6966 or 338-6170
 P. O. BOX 471
 GUYMON, OKLA. 73942

It's Up To All Of Us - Lets Stop The Blood Scandal In Hansford County

August 14

Catholic Church Spearman, Texas

Let this sink in:
 These days a blood transfusion that's given to save a life can cause a death.
 Because. Though there are many reputable commercial blood banks, blood from commercial sources is, unhappily, ten times more likely to be the cause of hepatitis than is blood from The American Red Cross and other community blood banks that depend upon volunteer blood donors.
 Shocking? Of course.
 So, you ask, why doesn't all blood in American hospitals come from volunteer donors?
 Answer:
 A mere three percent of all Americans are donating one hundred percent of all the blood that's freely given in America. It's not enough.
 So, you see, if you're healthy, fit our easy criteria for donors, and yet don't give blood regularly--well, you're part of the blood scandal in America.
 By default.
 One more thing: if you think the Red Cross "gets money" for the blood you donate, you're wrong. The only charge that's ever made is to help meet the cost of processing the blood.
 So call the Red Cross--then roll up your sleeves. Please.
 To keep people you know alive and well.

People like you, helping people like you. +

Ellsworth Oil Co. 	White House Lumber Co. of Spearman	 OPEN 24 HOURS A DAY	Daco Lease And Well Service Spearman, Texas
 Spearman, Gruver, & Stratford	Speartex Grain Co Spearman Texas	P. A. Lyon Insurance	Equity Elevators Spearman, Texas

Sunray Schedules Funday

Saturday, August 16th, the town of Sunray will be holding their third annual Funday celebration. The annual affair, sponsored by the Sunray Lion's Club in co-operation with other community groups, will start with a parade through main street at 10 a. m. and will be high-lighted with a noon barbecue between 11:30 a. m. and 1:30 p. m.

The luncheon will be followed by "funday" events such as water polo contests, sponsored by the Sunray volunteer firemen, an air show starting at 3 p. m. which will feature the stunt flying of Bobbie Speed and Swift Ingram, and will include a flour bombing contests. On hand for the annual ev-

ent will be members of the Panhandle chapter of the Experimental Aircraft Association.

Other attractions will include a dunking board, a basketball throw, turtle races, plus numerous other events.

This year visitors will be able to enjoy a rodeo at the Sunray 4-H Club arena starting at 2 p. m. The Sunray High School Rodeo Club are holding their first annual rodeo, sanctioned by the Tri-State High School Rodeo Association. The Rodeo is being held Thursday, Friday and Saturday, starting time 8 p. m. Thursday and Friday and at 2:00 p. m. Saturday.

Over 163 entries from performers had been re-

ceived by club officials by Monday of this week, the performers signing up for a total of 250 events.

KVII Channel-Seven's farm editor, Bedford Forrest, will be on hand to announce for the three performances. He will be assisted by Mrs. Lee James.

Bill Thorpe, rodeo clown of Dumas, will provide comedy during the rodeo performances. Rodeo bucking and roping stock is being provided by Bill Hext of Canadian. J. M. Bradley of Dumas is arena director. Rodeo queen is Miss Tanya Taylor Sunray High School student.



A cat dreams all night long of a sheep's tail.

Wheat Producers Honor Gus Renner

"Outstanding service to Texas Agriculture as a founding member of the Texas Wheat Producers Board, 1971-1975" is the sentiments inscribed on the brass plate affixed to a wooden replica of the State of Texas presented to N. F. "Gus" Renner, Spearman by the other members of the Board, meeting in Amarillo in regular quarterly session Wednesday. Renner is retiring from the board after four years continuous service since its initiation in 1971 by more than a two-thirds majority vote of producers voting in a referendum to establish the "self-help" program of research, market development and service designed to

strengthen producer income.

In responding to the eulogy of his contemporaries Renner said, "A person can obtain a lot of unpaying jobs along the way, but I consider the pay from this four-year stint on the Wheat Board very good from increased income from wheat sales brought about by activities implemented by the Board, but more particularly from the satisfaction of seeing many of the goals attained we set out to accomplish for the producer-members--increased exports, to a point where some are calling for export controls--increased prices, about three-fold from the \$1.27 per bushel on the

day the Board was initiated-- and major periodic gains made in such skirmishes as potential loss of gas for irrigation, harvest stoppages from lack of fuel and variety and insect improvements from cooperative demonstration projects." Renner will be replaced on the nine-man Board by Troy Sloan, also of Spearman, elected from a state-wide mail-ballot election by producers in May.

Library To Close At Noon

Librarian Celestine Thompson, of Hansford Library, announced Friday that the library will be closed from 12 to 1 beginning Monday, August 11.

This noon closing will remain in effect until further notice.

Our joy will be more complete if you can share in the marriage of our daughter

Debra Kaye

to Mr. Jim Oren Jenkins

on Saturday, the twenty-third of August

at eight o'clock in the evening

at the First Christian Church

Spearman, Texas

We invite you to worship with us and witness their vows. If you are unable to attend, we ask your presence in thought and prayer.

Mr. and Mrs. Paul Reimer
Mr. and Mrs. H. E. Jenkins

Win UP TO \$1000 Cash

PICK UP YOUR FREE TICKETS TODAY AT IDEAL FOODS!

ODDS CHART

PROG	NO. OF HORSES	2000000	1000000	500000	250000	125000	62500	31250	15625	7812	3906	1953	976	488	244	122	61	30	15	7	3	1
1	1	1	1	1	1	1	1	1	1	1	1	1	1	1	1	1	1	1	1	1	1	1
2	1	1	1	1	1	1	1	1	1	1	1	1	1	1	1	1	1	1	1	1	1	1
3	1	1	1	1	1	1	1	1	1	1	1	1	1	1	1	1	1	1	1	1	1	1
4	1	1	1	1	1	1	1	1	1	1	1	1	1	1	1	1	1	1	1	1	1	1
5	1	1	1	1	1	1	1	1	1	1	1	1	1	1	1	1	1	1	1	1	1	1
6	1	1	1	1	1	1	1	1	1	1	1	1	1	1	1	1	1	1	1	1	1	1
7	1	1	1	1	1	1	1	1	1	1	1	1	1	1	1	1	1	1	1	1	1	1
8	1	1	1	1	1	1	1	1	1	1	1	1	1	1	1	1	1	1	1	1	1	1
9	1	1	1	1	1	1	1	1	1	1	1	1	1	1	1	1	1	1	1	1	1	1
10	1	1	1	1	1	1	1	1	1	1	1	1	1	1	1	1	1	1	1	1	1	1
11	1	1	1	1	1	1	1	1	1	1	1	1	1	1	1	1	1	1	1	1	1	1
12	1	1	1	1	1	1	1	1	1	1	1	1	1	1	1	1	1	1	1	1	1	1
13	1	1	1	1	1	1	1	1	1	1	1	1	1	1	1	1	1	1	1	1	1	1
14	1	1	1	1	1	1	1	1	1	1	1	1	1	1	1	1	1	1	1	1	1	1
15	1	1	1	1	1	1	1	1	1	1	1	1	1	1	1	1	1	1	1	1	1	1
16	1	1	1	1	1	1	1	1	1	1	1	1	1	1	1	1	1	1	1	1	1	1
17	1	1	1	1	1	1	1	1	1	1	1	1	1	1	1	1	1	1	1	1	1	1
18	1	1	1	1	1	1	1	1	1	1	1	1	1	1	1	1	1	1	1	1	1	1
19	1	1	1	1	1	1	1	1	1	1	1	1	1	1	1	1	1	1	1	1	1	1
20	1	1	1	1	1	1	1	1	1	1	1	1	1	1	1	1	1	1	1	1	1	1

Our Heritage of Faith

notes from Faith Lutheran Church

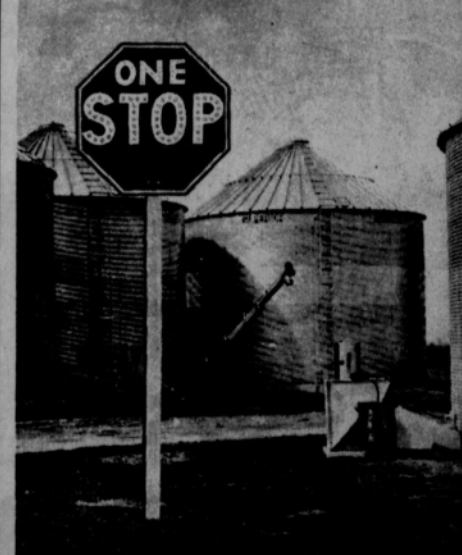
An Adult Information Class has been started at Faith. They met for the first time last Sunday evening at Ken Schneider's with a fine group in attendance. We will continue this group this Sunday at 7 pm., meeting in the home of Phil Sanders. If you would like to learn about the Lutheran Church, we invite you to come and be a part of this special discussion group.

The members of Faith have been busy getting the new parsonage home ready for the coming of the intern the last of August. The home is at 205 Lomita Drive. The interior has been thoroughly cleaned and painted and the exterior has also been worked on. Furnishings have been provided by members of both Faith and Oslo so that the home is ready for occupancy. Our intern couple is Mr. and Mrs. Bruce Loewen (Linda) and they come to us from Racine, Wisconsin. Mr. Loewen is a student at Wartburg Seminary, Dubuque, Iowa.

Our congratulations to Cindy DeArmond and Ken Schneider who were joined in marriage by Pastor Andersen at the home of Mr. and Mrs. Loyal Turner. They are making their new home at 715 Steele Drive.

If you have no church home in Spearman or would like to know more of the Lutheran Church, we invite you to worship with us. Morning Worship is at 9:30 each Sunday with Sunday School following at 10:30.

Some people believe that eating a dragon's heart will bestow upon one considerable courage. Of course it takes considerable courage to eat a dragon's heart in the first place!



Superior one stop service for all your grain storage needs.

Whatever you need in grain storage equipment, we've got it... plus guaranteed service to back it up.

Our bins, fans, heaters, augers, aerators are made by one trusted source under one roof. Superior. And we know the systems, inside and out. After all, we only had to go to one training school.

Superior. They didn't get their name by accident.

SIMS METAL BUILDING CO.
209 1/2 S. Main - Perryton, Tx.
435-2625

SUPERIOR
AUTHORIZED DEALER

CORN KING FULLY COOKED

Boneless Hams

WHOLE... 11 TO 13-LB. AVG.

\$1.39
LB.

CORN KING FULLY COOKED HALVES... \$1.49

WILSON'S FULLY COOKED

Canmed Hams

5-LB. CAN

\$8.49

BAR-S

Skinless Franks

12-OZ. PKG.

79c

FARMLAND U.S.D.A. GRADE A

Turkey Roast

HINDQUARTERS... 3 TO 4-LB. AVG.

39c
LB.

Hudson's GRADE A

Cut-Up Fryers

1-LB. PKG.

77c

MEADOWDALE... 2-LB. PKG. \$2.17

Sliced Bacon

1-LB. PKG.

\$1.59

OSCAR MAYER MEAT OR BEEF

Skinless Franks

1-LB. PKG.

\$1.39

FRESH WATER

Catfish Steaks

4 TO 6-OZ. EACH

89c
LB.

TASTE-OF-SEA

Pollock Fillets

1-LB.

79c

MONEYWORTH BREADED

Fish Sticks

4 8-OZ. PKGS.

\$1

BLUE MORROW COOKED BEEF OR BULK PACK

Pork Fritters

1-LB. PKG.

99c

CONGRATULATIONS TO THESE RECENT \$1,000 GAMERAMA WINNERS:

- C. K. Follis**
624 HAZEL
PAMPA, TEXAS
- Joel C. Curtis**
1707 ELM ST.
LIBERAL, KANSAS
- Jackie Doyle**
106 S. MAIN
HUGOTON, KANS.
- J. Shackelford**
405 CRISTY
PAMPA, TEXAS

OUR NEWEST \$100 WINNERS:

- RANDY KELLEY**, 918 Scott Ave., Dalhart, Texas
- JOSEPHINE ORITZ**, 613 North 8th, Garden City, Kans.
- LOUEVA HORTON**, 521 Point Rock, Elkhart, Kans.

LAST WEEK'S \$20 WINNERS:

THOMAS R. WOLF, Liberal, Kans. — ANNIE LINDEMAN, Plainview, Tex. — GLADYS BENTON, Amarillo, Tex. — RUBY CARLISLE, Hugoton, Kans. — CAMILLA WALDROP, Pampa, Tex. — SANDRA PASSMORE, Hugoton, Kans. — ELVA COBB, Shattuck, Okla. — MELVIN INGRAM, Enid, Okla. — JEFF SAEGER, Liberal, Kans. — PATRICIA NEAL, Hugoton, Kans. — AUDREY WHEATLEY, Darrrouzett, Tex. — CHARLIE RAY, Dumas, Tex. — LANORA REYNOLDS, Perryton, Tex.

SAVE UP TO

70c

BY CLIPPING AND REDEEMING THESE WILSON'S COUPONS

GOOD FOR 30c OFF

ON 12-OZ. PKG. WILSON'S CERTIFIED

VARIETY PACK

ASSORTED LUNCH MEATS
LIMIT 1 WITH THIS COUPON

EXP. 8-16-75

GOOD FOR 20c OFF

ON 12-OZ. PKG. WILSON'S MEAT OR

BEEF FRANKS

YOUR CHOICE...
LIMIT 1 WITH THIS COUPON

EXP. 8-16-75

GOOD FOR 20c OFF

ON PURCHASE OF ANY TWO 8-OZ. PKGS. WILSON'S CERTIFIED

LUNCHEON MEATS

LIMIT 1 WITH THIS COUPON
EXPIRES 8-16-75

WILSON'S CANNED MEATS

WILSON'S

Vienna Sausage

3 5-OZ. CANS

\$1

THRIFT PRICED

Wilson Tamales

12-OZ. JAR

79c

WILSON

Plain Chili

24-OZ. CAN

\$1.15

CANNED LUNCHEON MEAT

Wilson's Bif

12-OZ. CAN

84c

THRIFT PRICED

Hoinz Ketchup

26-OZ. BTL.

68c

THRIFT PRICED

Ritz Crackers

1-LB. BOX

79c

KRAFT MINIATURE

Marshmallows

2 16-OZ. PKGS.

99c

KNOCK-KNOCK RIDDLES

Dixie Cups

PKG. OF 100

92c

FRISKIES FISH OR LIVER

6-LB. BOX

\$1.95

Dry Cat Food

Thrif-T Paper Goods

DEISEY ASSORTED

Bath Tissue

2-ROLL PKG.

44c

KLEENEX WHITE OR ASSORTED

Facial Tissues

BOX OF 200

44c

KLEENEX BOUTIQUE

Paper Towels

JUMBO ROLL

48c

Thrif-T Soaps & Cleaners

WASHDAY DETERGENT

CHEER

8-OZ. BOX

\$1.14

DISHWASHING LIQUID

JOY

12-OZ. BTL.

64c

FRESHNESS AND HIGH QUALITY, TOGETHER WITH LOW THRIFT PRICES, ARE YOURS WHEN YOU SHOP ALONG

GREEN MARKET STREET!

FRESH, SWEET

GOLDEN CORN

6 FULL EARS

49c

U.S. NO.1 COLORADO

Russet Potatoes

10 1-LB. BAG

\$1.19

SWEET, JUICY

California Peaches

1-LB.

39c

CALIFORNIA

Seedless Grapes

1-LB.

59c

GREAT FOR SALADS

California Avocados

5 FOR

\$1.00

TROPICANA

Orange Juice

1/4-GAL. JUG

99c

BITS OF THIS AND THAT

Courtesy Honors Bride-Elect

Miss Debbie Reimer, bride-elect of Jim Jenkins, was honored with a bridal shower Thursday, August 7th from 6:30 till 8:00 P.M. in the Fellowship Hall of the First Christian Church.

Guests were registered at a table accented with a gold bud vase of roses and the Bride's Book.

The serving table was laid with an off-white lace cloth with a pink underlay and was accented with an arrangement of pink carnations and pink sweetheart roses with baby breath and leather leaf fern in a milk glass bowl. The table was set with crystal and silver appointments. Cake, decorated with pink rose buds and punch were served to those attending.

Miss Reimer was assisted with her gifts by her sisters, Karen and Elaine.

Miss Reimer was presented a corsage of pink sweetheart roses and pink lily-of-the-valley by hostesses, Mesdames: Irvin Davis;

I. V. Pierce, Ray Martin, Orville Brummett, Kenneth Evans, Tom Sutton, Jerry Morris, Eleanor Reed, Garland Head, Earl Novak, Jimmy Vernon and J. L. Brock.

Special guests present were Mrs. H. E. Jenkins, mother of the groom and Mrs. Carl Reimer, mother of the bride.

Out of town guest was Mrs. Wesley Jenkins of Amarillo.

Mrs. Blodgett Is Club Hostess

The Dahlia Flower Club met Monday, August 11th in the home of Mrs. D. Blodgett.

President, Mrs. F. J. Hoskins presided over the meeting. Minutes of the previous meeting were read and approved.

Mrs. J. W. Walker presented the club with the United States Flag and stand, then led the club in the Pledge of Allegiance.

Mrs. Frank Davis presented Mrs. Celestine Thompson, who gave a very interesting program on the library and her work as librarian for Hansford Library. Some of the facts about our library are that a number of our club women have been associated with it since it was started, and that it has 13,189 volumes and is of course for all of Hansford County.

The club was happy to welcome a new member, Mrs. Nelle Evans, into the club.

Mrs. A. F. Lofrin and Mrs. J. L. Denman tied for first place with their arrangement.

Mrs. Mable Edwards won first with her specimen. Mrs. Blodgett served delicious refreshments to guest, Mrs. Thompson, to new member, Mrs. Evans and to Mesdames: Olin Sheets, Mable Edwards, Barl Riley, A. F. Loftin, J. W. Walker, Guy Remy, H. M. Shedeck, John Bishop, C. W. Smith, F. J. Hoskins, Frank Davis, Virgil Floyd, J. L. Denman, Ceril Ratton and Garrett Allen.

Next meeting will be August 25th at 3:00 P.M. at Martin's Steak Garden.

Mr. and Mrs. Kenneth E. Shufeldt, Jr. and Michael of Seville, Spain, wish to announce a new addition to their family, Matthew John Shufeldt born August 7, 1975. Matthew weighs 9 lbs & 9 oz. at birth.

The proud grandparents are Kenneth E. Shufeldt, Sr. of Spearman, Harriett Shufeldt of Spearman, Rev. and Mrs. Ben Atkins of Clayton, New Mexico, Great Grandparents are Mr. and Mrs. C. M. Shufeldt of Tulsa, Illinois.

The "Shufeldts" address is U. S. Navycomsta-Spain Box 337-871-FPO New York 09540.

Australia is the only continent lying entirely south of the Equator.

Martin Family Reunion Held

Descendants of the families of Robert Eli Martin and Sophi Snowden Martin met in Los Animas, Colorado last week-end for the second reunion since 1949.

Approximately 85 people, five generations enjoyed two days of visiting, dining and entertainment.

Various mementos belonging to Sophi and Bob Martin, along with dozens of family pictures were on display, Sylvia Robertson rec'd the family history.

Robert Eli Martin and Sophi Snowden were married April 4, 1888 and lived in Joplin, Texas until October 1898 when they moved with their family to Oklahoma. There were ten covered wagons on the trip which included the Snowdens and Martin families. They all took a squatter's claim on land at Hammon, Okla. Later the families moved to what is now Elk City, Okla. There was no town there then. Mr. Martin helped build the first building in that city. The house he built for his

family to live in cost 2 1/2 cents--which was paid for the hinges on the door. It was built out of logs with a brush and sod roof. Windows were crooked places in the logs.

In February of 1902 the family moved to Ochiltree county, Texas where Mr. Martin purchased 4 sections of land for \$300.00. Then the plains of Ochiltree county were strewn with buffalo hides and bones everywhere.

To help improve his homestead in Ochiltree County, Bob Martin gave Tom Brown one section of land to drill a water well on his place. To purchase more livestock to go with the ones he herded up from Oklahoma, he gave another section of land for cows and calves. When he planted his crops: corn, maize, cane and all kinds of vegetables, his harvests were abundant. The land was very good.

The Martin children attended school at the Black school house, walking 5 miles each day.

Later Mr. Martin purchased land at Old Hansford and in 1906 they moved there. He put in a livery stable and bought buggies.

Men from the northern states would come to Guyman by train and from there to Hansford on the mail hack. Martin would rent them a buggy and team and they would have John Collard go with them to show places for sale. This is the way the country was settled. John Collard sold a lot of land in Hansford and adjoining counties.

Bob Martin was elected Sheriff of Hansford County in 1909. Mrs. Martin cooked food for the prisoners. The "Jail" was holes dug in the wall of the basement of the court house at Old Hansford. Martin refused to put prisoners in these holes, so he slept with them chained to him.

Mr. Martin served the county as Sheriff only 2 years before he lost his life. He is the only law enforcement officer in this county to lose his life in the line of duty. He had gone to arrest P. P. Fifer concerning the boundary line between Fifer's place and the Norton place.

It would take 53 years for an airplane, traveling 200 miles per hour, to go from the earth to the sun.

Arts & Crafts Guild News

The Arts and Crafts Guild met Friday, August 8th in the home of Mrs. Pope Gibber.

Delicious refreshments were served by Mrs. Gibber to members, Mesdames: W. L. Russell, Guy Fuller, F. J. Daily, Ned Turner, Deta B odgett, Nolan Holt, F. J. Hoskins and P. A. Lyons.

Next meeting will be August 15th in the home of Mrs. Joe Taylor.

Pearl Giddens has just returned home from Walters, Okla. She spent 10 days there helping her daughter care for the grandchildren that belonging to the other daughter. The other daughter & husband came and visited two days. So she had a nice time with all.

You are cordially invited to a wedding shower honoring Mrs. Roy Pipkin nee Frances Pool on Saturday, August 16, 1975 from 3 to 5 p.m. in the Friendship Room B & B Farm Industries 38S-2tc

Mrs. Jo Anna Morris and children Tamr, Ronnie, Mari Anna, Robert, Russell and Michael from Santa Ana, California have been visiting in the home of her Aunt, Mr. and Mrs. Joe T. Edwards. They left Friday to pick up her husband at Love Field in Dallas for more relative visiting and vacationing.

Mr. and Mrs. Don Schmehr and Donna returned August 4th from a three week vacation at Lake Meredith.

Play Gameraama at Ideal \$68.750 IN CASH PRIZES IN THIS GAME...

the home of THRIFT-Prices

IDEAL FOOD STORES

PRICES EFFECTIVE THRU SATURDAY, AUG. 16, 1975. NONE SOLD TO DEALERS. LIMIT RIGHTS RESERVED.

MON. - SAT. 8:00 A.M. - 10:00 P.M. SUN. 9:00 A.M. - 8:00 P.M.

CAMELOT, ALL GRINDS

COFFEE

LIMIT 1 CAN WITH \$7.50 OR MORE PURCHASE

1-LB. CAN **89¢**

KRAFT SALAD DRESSING

Miracle Whip

QUART JAR

LIMIT 1 WITH \$5 OR MORE PURCHASE

99¢

WILSON'S SHORTENING

Bake-Rite

LIMIT 1 CAN WITH \$5 OR MORE PURCHASE

3-LB. CAN **\$1.28**

FOOD STAMP CUSTOMERS SHOP IDEAL FOR SUPERLATIVE SAVINGS 7 DAYS A WEEK!

WE GLADLY ACCEPT U.S.A. FOOD STAMPS

Thrift-T Health & Beauty

ANTI-PERSPIRANT OR DRY POWDER

Right Guard **\$1.28**

ANTISEPTIC MOUTHWASH

LISTERINE **88¢**

FAMILY SHAMPOO

Proil Liquid **97¢**

BUTCHER BLOCK BEEF

Boneless Roast

BEEF CHUCK

\$1.09

LB. HEAVY MATURE BEEF

BUTCHER BLOCK BEEF CHUCK

Boneless Chuck Steak..... **\$1.19**

BUTCHER BLOCK BEEF

Boneless Steak

BOTTOM ROUND

\$1.59

LB. HEAVY MATURE BEEF

BUTCHER BLOCK BEEF

Eye of Round Steak..... **\$1.99**

FRESH, 100 PERCENT PURE

Ground Beef

3-LB. PKGS. OR MORE

79¢

3-LB. PKG. OR MORE EXTRA LEAN **\$1.09**

DEL MONTE CUT

Green Beans

LIMIT 4 PLEASE

16-OZ. CANS **4 \$1**

DEL MONTE WHOLE OR CREAM

Golden Corn

LIMIT THREE

16-OZ. CANS **3 \$1**

DEL MONTE

MANDARIN ORANGES

3 11-OZ. CANS **\$1**

DEL MONTE

FRUIT COCKTAIL

16-OZ. CAN **38¢**

DEL MONTE LIGHT

Chunk Tuna..... **2 1/2-OZ. CANS \$1.00**

DEL MONTE

Tomato Wedges..... **16-OZ. CAN 38¢**

WILDERNESS

CHERRY PIE MIX

LIMIT 4 CANS WITH \$5.00 OR MORE PURCHASE

22-OZ. CAN **59¢**

ALL FLAVORS

CAMELOT POP

THRIFT-T PRICED SPECIAL FOR HOT SUMMER SAVINGS

HALF GALLON **58¢**

DEL MONTE

Pineapple Juice..... **4-OZ. CAN 66¢**

DEL MONTE

Sweet Peas..... **3 16-OZ. CANS \$1**

DEL MONTE

Garden Spinach..... **4 16-OZ. CANS \$1**

DEL MONTE

Sauerkraut..... **16-OZ. CAN 37¢**

Thrift-T Dairy Foods

IDEAL LARGE OR SMALL CURD

COTTAGE CHEESE

24-OZ. CTN. **78¢**

COUNTRYSIDE OR BUTTERMILK

PILLSBURY BISCUITS

7 8-OZ. CANS **\$1.00**

Thrift-T Frozen Foods

FAIRMONT COUNTRYSIDE

VANILLA ICE CREAM

1-GAL. CTN. **\$1.62**

FAIRMONT ICE CREAM

Sandwich Bars..... **PKG. OF 12 99¢**

SALUSAGE, HAMBURGER, PEPPERONI OR CANADIAN BACON

Tony's Pizza

11-OZ. SIZE **\$1.18**

CAMELOT GRADE A

Medium Eggs..... **1-DOZ. CTN. 57¢**

CAMELOT GRADE A

Large Eggs..... **DOZ. 69¢**

IDEAL

Half and Half..... **3 PINTS \$1.00**

PLAIN OR JALAPENO

Kraft Velveeta..... **1-LB. CTN. 78¢**

IDEAL

Buttermilk..... **1/2-GAL. CTN. 68¢**

BIRDS

Just one of the hundreds of topics in

VOLUME 3

BRITANNICA JUNIOR ENCYCLOPAEDIA

on sale this week

\$2.99

Volume One Still Available at Only 49¢

REAMES

Frozen Noodles..... **8-OZ. PKG. 47¢**

WELCH'S CONCENTRATE

Grape Juice..... **3 1/2-OZ. CANS \$1.00**

MEADOWDALE FLORIDA

Orange Juice..... **4 8-OZ. CANS \$1**

FLAVORLAND HALVED

Strawberries..... **3 16-OZ. PKGS. \$1**

KRAFT MIRACLE

Soft Margarine..... **1-LB. BOWL 64¢**

KRAFT SLICED HALF MOON

Longhorn Cheese..... **16-OZ. PKG. 89¢**

By Nita Stewart Frankie Durzee, along with daughter Sue, and Steve Snow spent Saturday at Lake Meredith where they enjoyed water skiing, boating and such. Frankie is sure enjoying her daughter and son-in-laws visit while Steve is on leave. Nice seeing you again, Steve.

Ruth Dodd (the former Mrs. Clint Dodd) of Gruver has been living in Spearman for sometime. Ruth really likes Spearman. We enjoy her visits. Ruth doesn't know too many people in Spearman. The one's she knows she cares about. Ruth's a real fine person and we're glad to be labeled her friend.

Come back soon, Ruth, Coffee Pots always on.

Have a "Happy Day" to all of you in Law Enforcement. You are all just great.

Clint Dodd, former Gruver Deputy Sheriff, visited in Spearman and Gruver last week. Sheriff Dodd is now working in Canadian.

Visiting in the home of Harold and Francis Loftin Saturday, was their nephew George Taylor of Arkansas.

Mr. and Mrs. Lawton Guthrie took a short vacation to Red River along with their son Chad. Brad Guthrie their other son has been away at Church Camp. Deloris Guthrie works for Doctor Thomas and Hansford Hospital. While Lawton works at Super Service. Hope you all enjoyed yourselves.

Rex Cook just returned to Spearman from a vacation to South Texas where he visited his Grandparents he had not seen in about five years. Mr. and Mrs. Cook, Rex's parents, went also.

Mr. and Mrs. Gary McGee have moved from Spearman to live in Denver, Colorado. Gary will be going to the aircraft mechanics school in Stapleton, Colorado for fourteen months.

We wish the McGees the best of luck. Gary said he'd call Ray and Alice for us. Many thanks, Gary.

Hector and Connie Trevino and children left Saturday evening to spend sometime at Lake Schultze in Oklahoma.

Hector works for Tri-State Pipeline. Connie used to work at Hansford Hospital.

Hello to you all.

Don and Faye Wirsdorfer along with their children Donnie, Dona, Nicky and Jamie left last Sunday afternoon for a short vacation to Las Animas, Colorado then to Colorado Springs and Denver.

Donnie works for Hergert Pontiac, Buick and G.M.C. His father is minister of the First Christian Church of Spearman. Faye works for Horizon.

Hope you all have fun.

Darl and Judy Hergert and son Tyce spent Sunday afternoon at Lake Meredith. Young Tyce is really growing.

Mrytle Burgess is still looking for a driver, a boner and a skinner at Bi-Products plant on the Gruver Hwyway.

The Jerry Morris family spent Sunday afternoon boating at Lake Meredith Terry Morris is now working at United Foods store in Perryton.

Mike Tucker spent Sunday afternoon swimming at Lake Meredith.

Tex Davis went to Amarillo Tuesday to see his Grandson, Glen Ray Davis of Perryton, who is in the hospital. Young Dave's lost his leg in a accident in Perryton Monday.

Let's all pray for this young boy in his time of need.

A very Happy Birthday today, August 14th, to Mona Schell, Jerry Hayes, Cheryl Coleman and Earlene Gee. May you all have a nice day.

Wright's Diner is looking for a waitress. You can contact Robert at 9888 or stop by the Diner on highway 807 So.

Mr. Hanson is looking for several follow's or aids to help paint fences at Campbell's feed lot.

OUT
Goes everything

UP TO 50% DISCOUNT ON ENTIRE STOCK

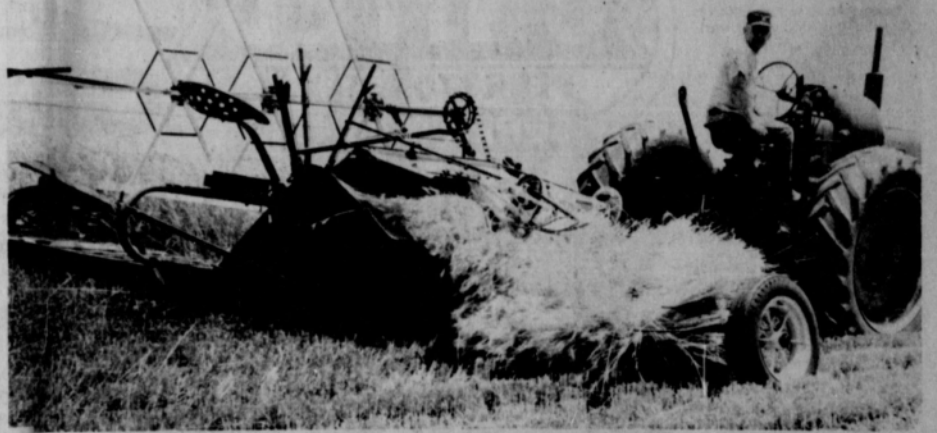
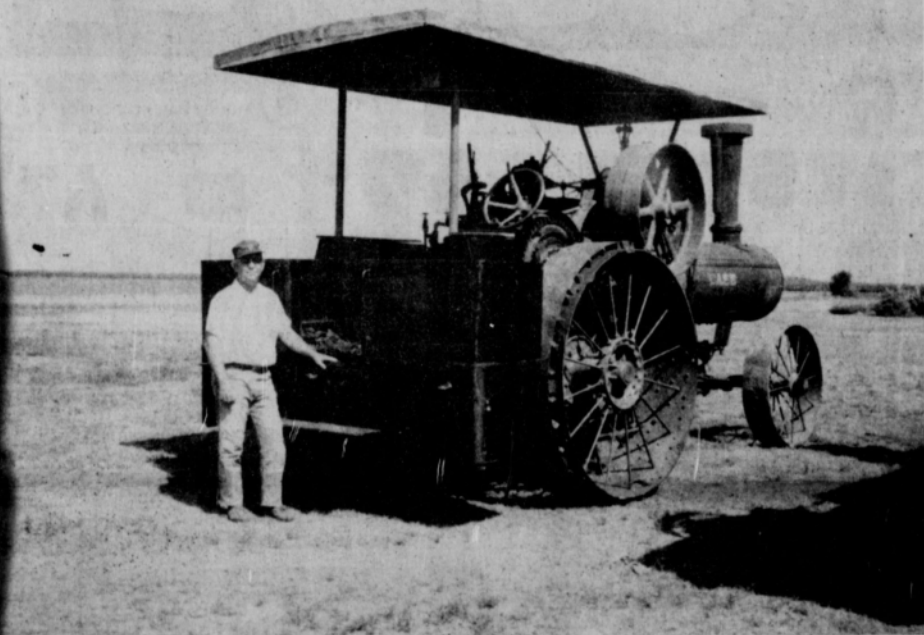
WE ARE QUITTING BUSINESS EVERYTHING AT LEAST 30% OFF

FALL MERCHANDISE INCLUDED EVERYTHING CASH ONLY

ALL SALES FINAL!

Westertields
733-2466 Gruver

Threshing Bee At Wilbanks Farm, Sunday August 17



J. D. WILBANKS BINDING WHEAT which will be threshed at the Threshing Bee planned for August 17 at the Wilbanks farm east of Spearman. Everyone is invited.

THIS CASE STEAM ENGINE will be the power used at the Threshing Bee August 17 at the J. D. Wilbanks farm east of Spearman. J. D. has restored the steam engine and several other tractors over the past ten years.

Hansford County residents will be in for a real big treat, when J. D. Wilbanks brings his annual threshing bee to Hansford County, Sunday August 17th. The Bee will be held at the Wilbanks farm, located 4 miles East of the courthouse in Spearman. The wheat for the threshing has already been put up in the barn, and the old time threshers are serviced and ready to go! Highlight of the day, will be the Case steam engine, and the Oil pull Rumley. These machines will be hooked to the threshers, and will pull the "fan under load" for viewers.

Something will be going on all day, Sunday August 17 at the Wilbanks farm, and it is all free to the public! Home-made rope will be made on the spot for everyone to see!

Make plans to attend this Hansford County threshing Bee, Sunday August 17th, 4 miles east of the county courthouse, Spearman, Texas!

Frank Phillips College Fall Registration Set

Registration for the 1975-76 fall semester at Frank Phillips College in Borger has been set for Wednesday, August 27, and Thursday, August 28. Classes will begin Tuesday, September 3.

Having experienced a 40% increase in 1974, the college adopted the slogan "Attend FPC, the Fastest Growing College in West Texas". The slogan was not unfounded. During the 1974-75 year, the total number of different students served increased an astounding 111%. "Individualized instruction in small classes, new programs, and course offerings have moved the college toward becoming a

comprehensive junior college offering area citizens quality education in most any field of endeavor," states college president Dr. Bill Raab.

Academic college transfer programs offer over 50 major fields of study including pre-medicine, pre-law, engineering, agriculture, art, speech, and psychology. Vocational-Technical programs of one or two year certification or associate degree status include animal health technology, welding, cosmetology, and engineering technology, as well as secretarial sciences and a host of others.

Veterans benefits are approved and all financial aid inquiries are welcomed. Work-study programs, scholarships, and loans are available to aid the student plus two student-designed dormitories.

The Office of Admissions And Student Services stands ready to offer the student a fully complemented service in career counseling, financial aids, and college health, athletic, and recreational activities.

Persons interested in further information or college literature may contact the Director of Admissions, Frank Phillips College, P. O. Box 111, Borger, Texas 79007 or call 1-274-5311.

The first oil well in the U. S. was built in Titusville, Pa., in 1859.

\$1500.00 CASH REBATE

During August and September, 1975, we'll give you a cash rebate for purchasing a 360 Pivotal Sprinkler. We'll pay you \$150.00 per tower or up to \$1500.00.

You can use the rebate as a down payment on a finance or lease plan. Or take your rebate in cash.



We'll send you a check as soon as we receive payment for the sprinkler.

Don't wait too long, your order must be placed and released for delivery no later than September 30, 1975.

If you're interested in a center pivot system, Gifford-Hill's 360 will never be a better bargain.



(Address set here in 10Pt. type)

Gifford-Hill's 360.

Greetings To All Cattlemen

Thursday, August 7, was the regular day for the Cattle Auction with "ACTION" in Texhoma. The selling began at 10 AM (CDT) and was completed at 6:35 PM. 2695 Cattle and Calves were sold through the Arena for 97 various consignors from several states.

We are now taking consignments for every Thursday in August and Sept. Advise us of your plans as far in advance as possible. We are advertising each week over five different Radio Stations and in sixteen Weekly and Daily Newspapers. We need all the information possible well in advance.

The Cattle Market fluctuates from week to week, so it is impossible to predict the future--we'll try to do our part.

THE CATTLE AUCTION WITH "ACTION" AUCTIONEERS

AL BANKS, LIMON, COLO. - DON DEMAREE, AMARILLO, TEXAS
WALTER HALL, AMISTAD, NEW MEX. - SMOKEY SEIGLER, GARDEN CITY, KAN.
CATTLE DEPT.

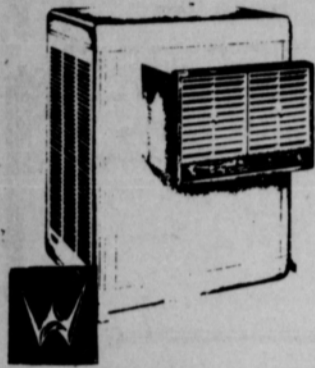
CLIF, AUGUSTINE - RAYMOND CHOATE - WAYNE ROBERTS

Texhoma Livestock Commission Co., Inc.

Lions Enjoy Program On Alibates Flint!



SUMMER CLOSE OUT SALE! BEAT THE HEAT! BEAT THE COST!



**WRIGHT 4200 CFM
2 SPEED-
4 WAY GRILLE
AIR CONDITIONER
NOW \$179⁹⁵
ONLY**

More cooling for your money! That's what Wright Air Coolers can give you. They can cool the average home for about a penny an hour! Insist upon the Wright brand... the cooler that gives you cooler maintenance, longer cooler life and greater operating savings.

 POWER THRUST BLOWERS Extra wide deep-ribbed blades reach up more air per revolution. Rigid balanced construction provides smooth, quiet operation and superior performance.	 CORROSION-TREATED COOLING PANEL Aluminum coils are treated with patented Corbaco, an amazing chemical discovery that prevents growth of acid-causing bacteria... renders acids near-neutral and mild-grease.
 DOUBLE PROTECTED BOTTOM PAN Water pan is one piece stainless steel... acid steel and is coated inside with a heavy layer of asphalt sealant to protect against rust, deodorizing.	 BLADE-A-MATIC PAD FRAMES Frames lock firmly in place at both top and bottom. Large handle, springs make frames easy to remove for seasonal maintenance and inspection. Simply slide frames up, just out at bottom and frame drops out!

B. & B. Sales Co.

202 S. Main

Spearman

The Spearman Lions Club was entertained by Bill Dyer, Supt. of Alibates and Lake Meredith, and Ed Day, Archeologist at Alibates, at their regular Tuesday noon meeting.

Ed Day explained how important the Alibates were to the Indians some 12,000 years ago. That is the first Alibates users were the Folsom people, and they date back to 12,000 years ago. Those people hunted large woolly mammals, with 14 foot tusks, and actually killed the beasts with Alibates Flint spear points. Dyer went ahead to say that some 1200 years A. D., a type of woodland Indians migrated from East, and these were called the Plains Indians. They planted corn, beans and squash, and did a lot of trading with Indians from all over the American continent, and South America.

Several irrigation farmers near the Spearman area, as well as the Gruver area report finding knives, spear points and arrow heads, plus scrapers almost in the city limits of these two towns.

Of course the purpose of the two men visiting the Spearman Lions Club, was to promote the Alibates Quarry, which we in the Panhandle must preserve for our future generations.

Most signs of North America's earliest people have disappeared forever. The simple questions about the foods they ate, the homes they lived in, and the languages they spoke are still unanswered. In most cases their own remains have vanished, too. Often the only traces of human existence thousands of years ago are

the tools and weapons these early people fashioned from stone.

Of all the different kinds of stone used in making tools, one of the most distinctive is Alibates flint. Normally flint has one characteristic shade, but Alibates flint has a multitude of bright colors in endless variations and patterns. Archeologists find tools made of Alibates flint in many places in the Great Plains and the Southwest. The stone comes from a relatively small section of the Texas Panhandle, 26 square kilometers (10 square miles) around Lake Meredith on the Canadian River. The flint, in a layer up to 1.8 meters (6 feet) thick, usually lies just below the surface at ridge level.

To get unweathered flint out of the ground, man had to dig by hand or with sticks. Around these shallow quarry pits you can see chunks and pieces of flint, the waste materials or tailings of the quarrying operations.

Alibates flint is a hard rock that holds a sharp edge when shaped properly. Early toolmakers were able to chip and flake it into an astonishing variety of everyday tools of survival. Archeologists have found knives, hammers, chisels, drills, axes, awls, fishhooks, buttons, hoes, scrapers and graters, as well as dart points or arrowheads--all made out of Alibates flint.

Most evidence of the 12,000 years of almost continuous use of Alibates flint comes not from these quarry pits, but from archeological excavations elsewhere.

From 10,000 B. C. to possibly as late as the 1870's, Alibates flint was distributed widely over the High Plains. Most people who used it were nomads--hunters who followed game trails and never built permanent homes.

For a relatively short period, from about A. D. 1200 to 1450, however, some people settled permanently, near the quarries. They were farmers, but they also quarried flint and bartered it for such items as pottery, seashells, pipestone, and obsidian. These people are referred to by archeologists as the Panhandle Pueblo Culture because they were Plains Village Indians whose houses show the influence of pueblo style houses in the Southwest.

OFFICE
While an American politician runs for his office, an English politician merely stands for his.

Insurance-Tips

BY JOHN R. COLLARD JR.



It's A Purty Paintin', Ye Oter Gilt 'er Insured With

John R. Collard Jr.
Don't think of Insurance By Accident
PHONE 659-2501
405 Davis St.



FOUR GENERATIONS were present at the Kizziar family reunion held in Amarillo Sunday. Shown here from left to right are Mrs. H. C. Sillivent holding twin granddaughter Dana and Mrs. Alma Kizziar holding her twin great-granddaughter, Christie, and Mrs. Faye Massey of Columbia, S. C., holding her 2 year old daughter, Kimberly. The twins are four months old.

Kizziar Reunion Held

The Kizziar family held a reunion Sunday, August 10 at Amarillo in the home of Mr. and Mrs. H. C. Sillivent. Mrs. Sillivent is a daughter of Mrs. Alma Kizziar of Spearman.

Others attending including Mr. and Mrs. Odie Kizziar of Gruver, Mr. and Mrs. Carl Kizziar, Jr., of Spearman, Mrs. Connie Rook and her daughter-in-law,

Mrs. Rick Smith and children, Mr. and Mrs. Ivy Prater of Dalhart and most all of the grandchildren of Mrs. Kizziar.

Ronnie Schmehr and Gene Byrd returned July 30th from a two week vacation to Fog Brook, California, where they visited in the home of Ronnie's brother, Mr. and Mrs. Denny Schmehr.

The Texas couple was in Florence, Italy doing the Uffizi Gallery tour.

"What time is it?" the wife asked.

"What's the name of that painting?" the husband answered.

The woman walked up and examined the picture's title. "The Birth of Venus by Sandro Botticelli," she replied. Her husband scanned his itinerary.

"Then it's a quarter past two if we're on time," he told her.



FREE AIR CONDITIONER

(\$1000 retail value installed in tractor)

with your purchase of a new

CASE 970, 1070, 1175

1270 or 1370 Agri King Tractor

OFFER GOOD JULY 10 THROUGH AUG 31, 1975



the Tractor Specialist

659-2343

Spearman

R. L. McClellan & Sons

"Your Farm Equipment Dealer"



It wouldn't be the same...

Cooking a meal for your family on a modern electric range is a far cry from the "good old days". By flipping a switch or pushing a button on an electric range, you can cook a delicious meal in not much more time than it took yesterday's cook to shovel in messy coal or build a fire with wood in her stove. And she had to cope with the inaccuracy of the heat which often caused baking failures... plus... the discomforts of an overheated kitchen. Clean, dependable, modern electricity helps make your kitchen chores easier, faster and more enjoyable. Since so many homes, industries and educational facilities depend upon electricity, more of it is used than ever before. We're doing our best to continue providing you with all the electric service needed so that electricity will be there when you flip that switch, plug in that appliance... or bake that favorite family dessert.

COMMUNITY PUBLIC SERVICE COMPANY
Your Electric Light & Power Company



JUDY BATENHORST

Judy Batenhorst Has Recording Out

Major Label Records of Hollywood, California announces the release of the new album, The Hits of Today. Mrs. Larry Batenhorst of Gruver composed the lead song on the album, The Restless Winds. The album is on sale at Cutrate Thriftway in Plains Shopping Center.

The Batenhorst family moved from Spearman to the Gruver area last year.

Nelle's News
By HD Agent
Nelle Evans

Salads are popular summer fare. For variety a dash of sour cream perks up

summer salads--whether it's blended into the dressing or added to the salad. Sour cream gives extra value because it adds the nutrients of milk, too. Many people don't realize sour cream is just as delicious with fruits as with vegetables. Keep it on hand to try in new and tempting ways. Some of the year's most luscious fruit is in season

now--all of it appropriate for salads.

Take this opportunity to feast on fresh peaches, pears, prunes, grapes or strawberries combined with crisp lettuce and cottage cheese, then topped with a creamy sour cream dressing.

Head lettuce will be delicious as a salad with sour cream thousand island dressing, so easy to make. SOUR CREAM THOUSAND ISLAND DRESSING: 1 cup dairy sour cream, 2 T. chopped pimento, 3 T. chili sauce, 2 T. chopped sweet pickle, 2 T. chopped green pepper, dash of salt. Mix well and chill thoroughly before serving over head lettuce.

While we're discussing the use of dairy products let's mention to economize in buying milk and dairy

products.

Consumers are concerned with rising costs of milk and those who use a lot are saving considerably by buying gallons rather than quarts. Another idea for serving milk as a beverage is to mix together equal amounts of REGULAR whole milk and RECONSTITUTED NONFAT DRY MILK. If you continually use a good deal of milk, buy nonfat dry milk in BULK rather than individual envelopes. Keep it tightly covered and use it within several months.

The half and half mixture is OK for recipes in place of regular whole milk.

But even more economical for cooking is plain reconstituted nonfat dry milk or canned EVAPORATED milk. By the way, another

budget-minded tip... this time for cheese, is to buy CHUNK cheese and slice or shred it yourself, at home. And if you have small left over, dried out bits of cheese save it. Grate it and use on casseroles, etc.

Any food that is wasted is literally money thrown away.



TERESA'S DANCE STUDIO

Fall Classes Now Enrolling
Ballet - Tap - Jazz - Acrobatics
Age 3 & up
Please Enroll at the Dance Studio at 412 Davis
Enrollment days & times:
Friday August 8 1:00 - 5:00
Friday August 15 1:00 - 5:00
Monday August 18 - Friday August 22 9:00 - 5:00

For more information call:
Teresa Hargis (659-2665)

PRICES Plus

DOUBLE S&H GREEN STAMPS SATURDAY WITH \$2.50 OR MORE PURCHASE

"UNITED'S PROTEIN MATURE BEEF"

STEAK ROUND FULL CUT	LB.	\$1.39
STEAK SIRLOIN	LB.	\$1.39
STEAK RIB	LB.	\$1.39
ROAST BONELESS SHOULDER WASTE FREE	LB.	\$1.39
STEAK RANCH 7-BONE CENTER CUT CHUCK	LB.	\$1.29
GROUND BEEF FRESH 100% ALL BEEF	LB.	79¢

GLOVER'S BACON

THICK SLAB SLICED

\$1.59 LB.

FRESH BABY BEEF LIVER	LB.	49¢
PORK CHOPS FAMILY PACK	LB.	\$1.39
CENTER CUT RIB CHOPS	LB.	\$1.69
T-BONE LOIN CUTS	LB.	\$1.79

CHUCK STEAK

TENDER LEAN BLADE CUT

LB. 89¢

"FINE FARE DOLLAR BUYS"

CORN FINE FARE WHOLE KERNEL OR CREAM STYLE	17 OZ.	3 FOR \$1
PEAS FINE FARE GARDEN SWEET	17 OZ.	
PEAS & CARROTS	16 OZ.	
TOMATO CATSUP FINE FARE	14 OZ. BOTTLE	

KEEBLER GOLDEN VANILLA WAFERS

12 OZ. BOX 59¢

NEXT DOOR TO GIBSON DISCOUNT CENTER FOR DOUBLE SAVINGS

U PRICES GOOD THRU' AUGUST 16th

ORCHARD HILL FRUIT PIES BLUEBERRY • APPLE • CHERRY	8 OZ. PIES	3 FOR \$1
GORTON'S FISH STICKS	15 OZ. PKG.	98¢
CUT CORN BIRDSEYE	16 OZ. BAG	49¢
MIXED VEGETABLES BIRDSEYE	16 OZ.	
GREEN PEAS BIRDSEYE BAG EYE	16 OZ.	

UNITED

PERRYTON, TEXAS

SUPER MARKETS

WE GIVE S&H GREEN STAMPS

Hamilton To Chair Wheat Board

Dwight Hamilton was elected Chairman of the Texas Wheat Producers Board today during the regular quarterly meeting of the Board in Amarillo. Hamilton, a Young County wheat producer from Olney replaced Ken Kendrick of Stratford, founding chairman who had served in that capacity since 1971. C. L. Edwards, Panhandle, was elevated from Secretary-Treasurer to Vice Chairman and Delbert Timmons, Perryton, was elected Secretary-Treasurer of the nine-man farmer elected Board.

Troy Sloan, Spearman, elected to the Board by a mail ballot of producers in May was confirmed as a member of the Board by Commissioner of Agriculture John C. White and seated at this meeting replacing retiring member N. F. "Gus" Reiner also of Spearman. Sloan will serve a six-year term.

Other members of the Board in addition to Hamilton, Kendrick, Edwards, Timmons and Sloan are: Leo Witkowski, Hereford; Otis Harman, Tulia; W. R. Moore, Jr., Munday, and Winston Wilson, Quanah.

TWPB is supported by wheat producers throughout the commercial wheat producing area of Texas by a one-half cent per bushel self-assessment of their production for Research, Market Development and Service programs aimed at strengthening farmer income.

Japanese Have Yen For American Food

According to a recent article in the "North Plains Water News", the number of specialty food outlets is predicted to reach more than 2,500 by the end of this year in Japan. By contrast, the foreign fast food enterprises operating in Japan at the end of 1972 has only 170 outlets. By the end of 1973, 500 outlets were serving hamburgers, fried chicken, pizza, stews, doughnuts, and ice cream.

For Japan "McDonalds", sales more than doubled from 1972 to 1973 and volume amounted to \$13.5 million. Mister Donut disclosed sales reached \$14 million in 1973, a 260 per cent gain over the previous year. Japan currently imports about \$3 billion worth of U. S. food and agriculture products a year--that takes a lot of yen in more than ways one.

When we teach you a skill in the Army Reserve, you work for your money. But you'll have a job you can be proud of. And a person you can be proud of. Yourself.

FARM AND RANCH NEWS

By Joe Van Zandt

The hot, dry summer weather we expected in July has arrived during August. Corn and Sorghum crops are using a lot of water these days. The corn crop has passed the stage of peak water-use which occurs from pre-tassel through early grain filling, which reaches about four-tenths of an inch per day. Now that most corn has passed the early grain filling stage, the daily water use has dropped to about three-tenths of an inch per day.

Most sorghum fields are in their peak water use period, the boot to bloom stage, where sorghum needs 3 inches of water every 10 days. After sorghum passes the bloom stage, water use declines to about 2 inches every 10 days until the soft dough stage is reached.

As farmers are getting their irrigated wheat land ready for fertilization, they need to get a soil sample for a soil test to determine the amount of fertilizer needed. A soil test is a small investment that can pay big dividends on helping you make wise use of your fertilizer dollar. Come by the County Extension office for necessary boxes, forms and mailing cartons.

I continue to see more fields showing up with Maize Dwarf Mosaic Virus (MDMV).

If you need information about this disease, feel free to call on me. There isn't much you can do this year, but we can discuss things to do for next year.

It has been a long time since we have had a confirmed screwworm case in this area. However, they are moving northward this summer and there have been confirmed screwworm cases in Kent and Wichita Counties. As cattlemen begin to import some of these "Southern Soilers" from areas south of here, we need to be on the lookout for screwworms. It would be possible for one to hitch a ride here on a load of cattle. If you suspect screwworms, get a sample of the larvae and we can assist you in sending them to Mission to be positively identified. You should protect any wounds on livestock with an approved larvicide.

More government regulations. This time the Texas Air Control Board has proposed changes to its regulations on outdoor burning of all vegetation and waste materials. This includes burning of crop residues and land clearance wastes. The basic change is that outdoor burning will henceforth be allowed only when there is no practical alternative to burning.

This proposed regulation will be considered at a public hearing on August 25 at the Texas Air Control Board, Austin, Texas. If you desire additional information give me a call.

Fertilizer supplies are up sharply over last year at this time, but high prices are contributing to low usage.

Supplies of fertilizer in the United States are up about 10 percent compared to 1974 tonnage. Nitrogen supplies have increased more than 8 percent, phosphate supplies are up 13 percent, and potash tonnage is up 11 percent.

Fertilizer usage dropped last fall as well as this spring due to high prices for the nutrients while low crop prices were in prospect. Usage was up in the fall of 1973 due to anticipated shortages, price increases and availability of funds to purchase fertilizer.

This, along with increased production has led to increased inventories in both the U. S. and in many foreign countries. Ammonia production has increased almost a million tons during the past year and is expected to reach 13.8 million tons by January 1, 1976, up two million tons from 1974. An additional eight million tons are expected to be added to the production line by 1979.

Reduced demand for fertilizer in many countries has had a dampening effect on U. S. exports. Exports are expected to drop 9 percent during 1975, with nitrogen shipments down 21 percent and potash shipments reduced 16 percent. The U. S. continues to be a major supplier of phosphate rock for other countries.

Despite increased fertilizer production in the U. S., imports are expected to be up about 10 percent above 1974. Nitrogen imports should be up 14 percent and potash imports should increase 17 percent, but phosphate imports are expected to decrease 17 percent.

Although the supply-demand situation for fertilizer was

fairly stable during the past two years, supplies are again rising more rapidly than demand. Expanding agricultural production both here and abroad will absorb some of this excess, and usage should also increase if farm prices remain compatible with fertilizer costs.

Proctor Attends SCS Meet

Warren Proctor, District Conservationist for the Spearman Field Office, Soil Conservation Service attended the annual meeting of the Soil Conservation Society of America in San Antonio on Aug. 10-13. This is the 30th annual meeting of the Society.

More than a thousand professional conservationists from the United States, Canada, and Mexico attended the four day meeting

which began on Sunday, August 10, with registration and a reception. The Society is a nonprofit scientific and educational organization dedicated to advancing the science and art of good land use. It has about 14,000 members throughout the world.

Official hosts for the San Antonio meeting are the members of the Society's Texas Council of Chapters.



DATE	HI	LO
AUGUST 8	94	64
AUGUST 9	95	64
AUGUST 10	94	64
AUGUST 11	94	58

FARM
A parcel of land ripe for subdivision.

Women's Aglow Fellowship

The Spearman Women's Aglow Fellowship will meet Thursday, August 14, in the Garden Room of Martin's Steak Garden, Hwy 15, Spearman. The meeting will be held 11:00 A.M. - 1:00 P.M.

The guest speaker will be Mrs. George Clifton (Doris) of Amarillo. Doris is the mother of three children, Stuart 15, Cydee 12, and Malca 7. Doris and family attend Christ on The Plains Church and she is the President of the Amarillo W.A.F. Chapter. Doris will be sharing in song and testimony of what God has done and is doing in her life, during the lunch hour. Those who work are also encouraged to join us during this time. Men are welcome to attend

W.A.F.
Come Worship and Praise God with us.

If nursery facilities are needed please call Graver 733-2845, Spearman 650-3606.

Individual meal orders will be taken at the door for those who wish to eat.

HOSPITAL NEWS

Patients in Hansford Hospital are Clarence Pettitt, Victor Rook, Delores Martinez, Asbury Coolston, Kay Loomis and son, Dorothy Evans, May Rupprecht, G. A. Rupprecht, Bessie Jackson, Shirlene Dennis, James Burch, Elaine Reimer, Elsie Byrd and Lola Napier. Dismissed were Clara Jackson, Kathy Floyd transferred, James Pritchett, Richard Bomer, Sara Villa, Linda Rindonour and daughter, Lela Campbell, Gladys Dunaway, Opal Barnes, and Earl Spencer.

Sorghum Board To Meet

The Texas Grain Sorghum Producers Board will hold its regular bimonthly meeting, Tuesday, August 19, at 10:00 a.m. in Dumas, Texas, at K-Bob's Restaurant. The group will break for lunch at noon and resume the meeting at 1:00 p.m.

The main topic of the meeting will be a discussion of the 1975 assessment collections. Special guest, Dr. Patrick Odell from Texas University at Dallas, will discuss his recent work in making paper from sorghum stubble and extracting furfural from sorghum stubble for commercial use.

Congressman Figures Farmer's Pay

Missouri Congressman Jerry Litton recently arrived at an eight-cent per person per day figure as the pay farmers get for producing food for American tables.

His method of arriving at such a figure involves dividing the average net farm income in the last four years by the United States population and then dividing that by 365 days and the answer--8 cents per person per day--is how much American would save on food purchases if farmers of this nation made no profit, no return on investments, and no return on labor, according to Litton.

He admonishes those looking for a "gouging" or a "rip-off" to look elsewhere for better prospects. Litton is at present crusading to help the American public better understand the economics of food production.

Paul Hulseley To Speak

The Full Gospel Business Men's Fellowship will meet August 18 at 7 P.M. at Martin's Steak Garden. Supper will be served at 7 P.M. for those who wish to eat and the meeting will begin at 8 P.M. The speaker for the evening will be Paul Hulseley of Amarillo.

PRICES GOOD THRU AUGUST 16th

UNITED

PERRYTON, TEXAS SUPER MARKETS

GLADIOLA FLOUR 5 LB. BAG **69¢**

UNITED MELLORINE Half Gallon **59¢**

ALL PURPOSE POTATOES 10 LB. BAG **99¢**

QUANTITY RIGHTS RESERVED

DISCOUNT

CHEER PICKLES LIPTON INSTANT TEA 3 OZ. JAR **\$1.29**

TOWELS HI-DRI JUMBO ROLL **39¢**

Ranch Style **BEANS** 15 oz. Cans **3 For 89¢**

MAKE-A-BETTER LIPTON PKG. **BURGER** HICKORY MILD CHILI ONION **43¢**

MERICO TEXAS STYLE **BISCUITS** BUTTERMILK OR SWEET MILK 12 oz cans **\$1.49**

ARMOUR VIENNA **SAUSAGE** 3 5 OZ CANS **\$1.49**

SWANS DOWN CAKE **MIX** WHITE SWAN EVAP. MILK TALL CAN 16 OZ. **28¢** AURORA BATH TISSUE ASST. 2 2 ROLL PACKS **89¢** NESTLE CANDY BARS ASSORTED GIANT SIZE **59¢** **ROOT BEER** Sugar Free 6 Pack **\$1.09**

RED LARODA **PLUMS** 3 LBS. **\$1.49** CALIF. ELBERTA **PEACHES** EXTRA LARGE SIZE 3 LBS. **\$1.49** Salad Perfect **TOMATOES** 4 LBS. **\$1.49**

THOMPSON SEEDLESS **GRAPES** LB. **59¢** Golden Ripe **BANANAS** Lb. **15¢**

MONEY SAVING COUPON GOOD ON 9 OZ. PKG

Lays 67¢

WORTH 12¢

WITH THIS COUPON **79¢** WITHOUT COUPON

LIMIT ONE COUPON PER PURCHASE COUPON GOOD FROM 8-14 TO 8-21

UNITED SUPER MKTS.

LAY'S is a trademark of Frito-Lay, Inc.

TG & Y[®]

SEW FOR

FABRIC SHOPS



PRICES GOOD FRIDAY & SATURDAY ONLY

100% Polyester



DOUBLE KNIT

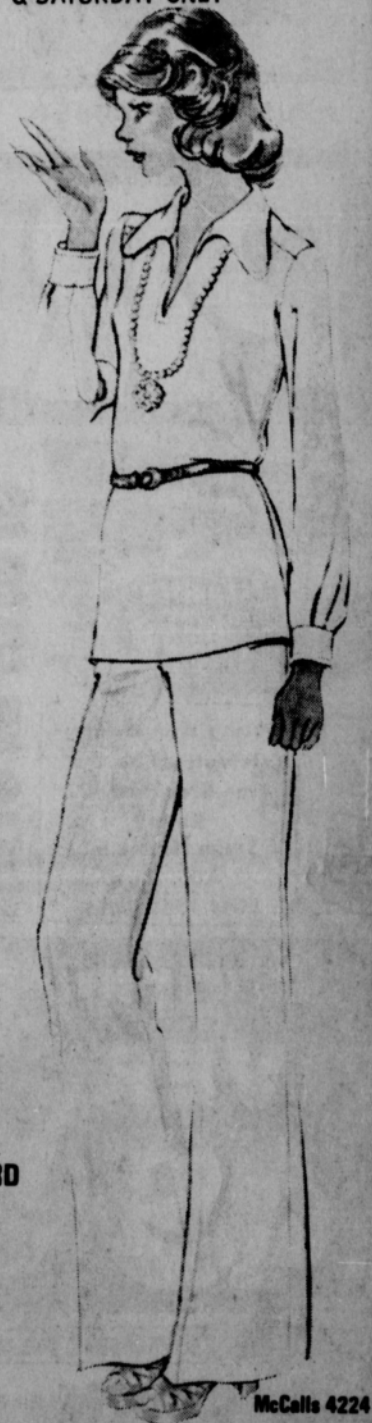
58/60 Inches Wide

100% Polyester double knit. Choose from a large variety of colors and weaves. This is the Ideal Fabric for every look. Machine wash and Tumble Dry.

99^C YARD

Reg. \$1⁹⁷

WHILE QUANTITIES LAST



McCall's 4224

100% Polyester

DOUBLE KNIT

58" x 60" Wide

100% Polyester. Choose from a number of full bolts. Ideal for new Fall fashions. Easy care, machine wash, tumble dry.

Reg. \$2⁹⁷

Color Coordinated

100% Polyester

THREAD

Ass't. Colors

6 For \$1⁰⁰

Open Mon-Sat 9-9

521 s. Hwy. 207
Spearman
Plains Shopping Center