

Cable TV System Upgraded

by Jean Ann Behney

Mission Cable is presently adding seven stations to its television line-up in Spearman as part of its recent franchise agreement with the city.

"The franchise contract with Spearman specifies that Mission Cable will go to a 22-channel capacity within six months of operation," explained local Mission Cable Manager Terry Porter. "We had 15 channels before this week, 12 basic and three pay stations. Now there will be 17 basic and 5 pay stations."

New cable television stations for Spearman will include the basic stations of The Family Channel (FAM), Turner Network Television (TNT), The Weather Channel, The Nashville Network (TNN), and Discovery. Basic networks are offered for \$16.95 per month to subscribers and will now include 17 stations. One basic channel, Channel 6, will be changed from a weather and public service station to PEG (Public, Education and Government), which the Spearman Independent School District will operate from Administrator Larry Butler's office at Spearman High School. The two new pay on "premium" stations will be HSE (Home Sports Entertainment) and HBO (Home Box Office). More details about each station's programming are provided later in this story.

"Right now these new stations can be picked up by cable subscribers, but by November 1st they will be scrambled so that only paying customers can receive the pay channels," Porter said. This scrambling is done "on the pole outside the home," he added.

In another change, Mission Cable will no longer have to "descramble" pay television stations in viewers' homes as was

done previously. A viewer who was not subscribing to pay cable stations who decides to get them can get reception when Mission "descrambles" those channels from the pole outside their homes.

Mission Cable is offering converters for those subscribers who do not own cable-ready televisions. A cable-ready television set has a special switch which enables the viewer to get channels past 2 through 13 with an attached cable. A non-cable-ready tv needs the converter installed before channels past 13 are obtainable. The converter sits atop the television and has a channel-locator knob on it. The viewer simply sets his own television's channel selector on Channel 3 and then uses the converter channel knob to tune into the various stations.

"We are offering the converter free of charge and with free installation for the first tv in a home," said Porter. "For each additional tv in the home needing a converter, there is a \$2 a month fee (per tv) for the device."

An installation crew working for Mission Cable will be in this area next week canvassing neighborhoods to hand out converters, according to Porter. He reminds cable subscribers, "If you are paying to get cable stations 2 through 13 now and have a non-cable ready television, you won't get the new basic channels (14, 15, 17, 18, and 21) without a converter, yet you'll still be paying the same basic price as other subscribers." Any subscribers with questions can telephone the Mission Cable office at 659-3363 or drop by the office, Monday through Friday from 8 a.m. to noon or 1 p.m. to 5 p.m., at Main Street.

The new subscription rate of \$16.95 per month for basic programming goes into effect

November 1, 1989. The pay or "premium" stations will cost \$9 for one channel, \$8 additional for a second channel, \$7 more for a third channel, \$7 more for a fourth channel and if all five channels are taken, the fifth one will cost \$1.95 more. If HSE (Home Sports Entertainment) is subscribed to, it will cost only \$1.95 in combination with any of the other four pay channels.

"All new subscriptions need to be in before November 1st so you won't miss any days that you're paying for in that month," Porter commented.

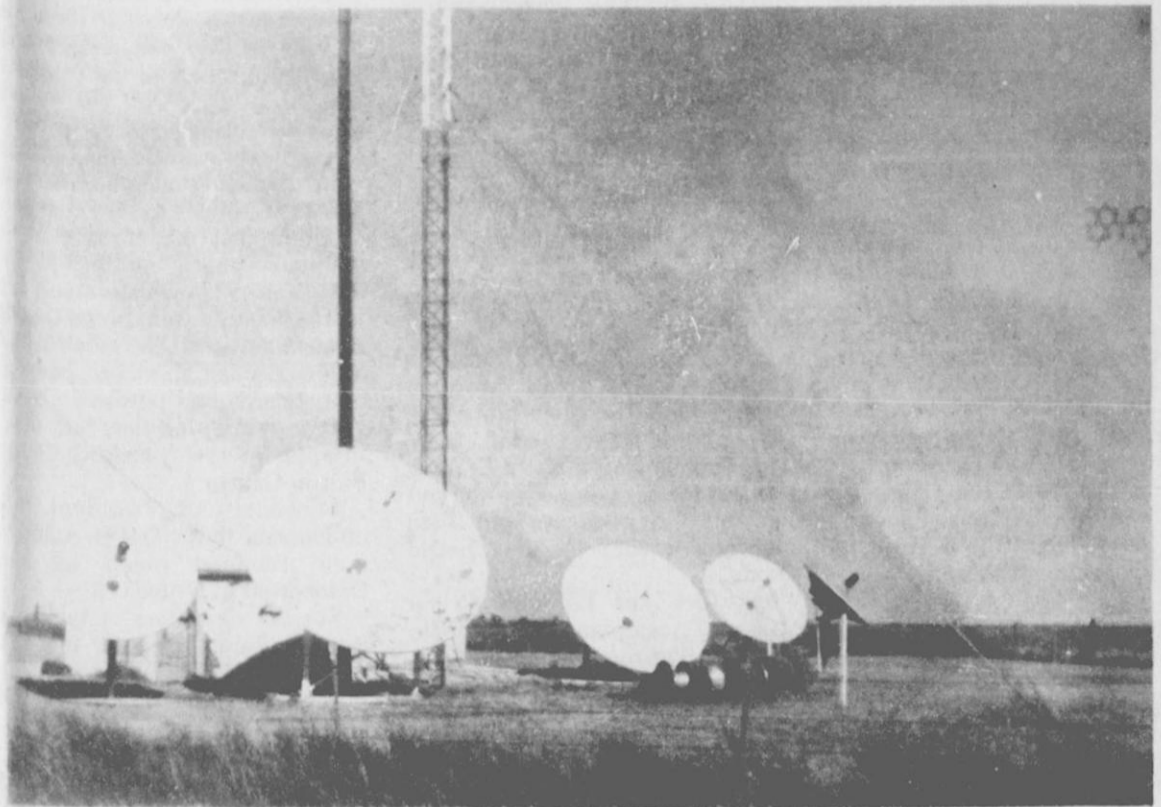
The following is a brief run-down of the 22 channels cable subscribers now have available for their television viewing.

FAM [The Family Channel] Channel 2-is a new basic channel which was previously named Christian Broadcasting Network, or CBN. The network features family-style entertainment; from cartoons for children to syndicated tv series.

CNN [Cable Network News]-Channel 3-is a 24-hour news service owned by cable mogul Ted Turner.

KAMR--CHANNEL 4-is the

See Cable Page 6



In order to increase the number of channels the Cable Company installed new Satellite Dishes and new equipment at its S. Roland receiving site.

The Spearman

Reporter

25¢
Per Copy

8 Pages

Volume 81, No. 51

YOUR HOMETOWN NEWSPAPER

Thursday, October 19, 1989

SHS Band To Attend UIL Contest

The 40-member Spearman Lynx Band, under the direction of Jerry Sparks and led by drum major Maria Gomez, will travel to Borger Oct. 21 to compete in UIL marching contest for the first time in several years. The band is scheduled to perform at 3:18 p.m.

The band will offer three performance pieces, entitled "Apache," "Lean On Me" and "Sweet Georgia Brown." A special treat will be a featured performance from the percussion section during the rendition of "Lean On Me."

The percussion section consists of Captain April Graham, Justin Boyd, Brad Delozier, Anna Pacheco, Clint Sasser and Eugene Munoz.

All of the high school bands in the Texas Panhandle area are making final preparations for the annual UIL Marching Contest to

be held in the Borger Stadium Saturday, Oct. 21 from 9:00 a.m. to 9:00 p.m. A charge of \$1.00 each will be charged to defray the contest expense.

This is the only UIL competition for marching bands at the District level. Two bands from each class will be selected to compete on the Area level, scheduled for Wichita Falls Stadium, Nov. 4. At the area level, the three districts represented will then select two bands from each class to compete at the State Contest in Austin, Nov. 13.

The presentation in Borger is one of the most exciting displays of high school marching bands in the fall semester. Each will be at its best for the judges, and consequently for the audience.

Judges for the competition were selected from a list of qualified professionals by the District directors. They are Phil Anthony,

Coronado High School, Lubbock; Dan Norris, Frenship High School, Lubbock; and O.T. Ryan, Plainview High School. The Twirling Contest will be held during the day also. Chris Jones of Lubbock will judge the twirling entries.

The public is invited to see the best band kids on earth do their marching routines. It will be the greatest show in the area on October 21.

WEATHER				
Day	High	Low	Precip.	
Fri.	93	46	0	
Sat.	92	61	0	
Sun.	92	53	0	
Mon.	46	42	0	
Tue.	52	37	0	
Wed.		26	0	

SVFD Winds Up Week Saturday



One of the highlights of last Saturday's Fire Prevention Week activities at Plains Shopping Center was this lesson in the correct use of a fire extinguisher. Volunteer Fire Fighter Dean Coates supervises another "volunteer" Loren Queener.

by Jean Ann Behney

The Spearman Volunteer Fire Department wound up its week-long educational promotions for Fire Prevention Week with a two-hour display, demonstration and information center at the Plains Shopping Center on Saturday, October 14.

Fire safety demonstrations began at 2 p.m. in Kountry Doughnuts with a lesson in extinguishing skillet fires. Using an actual skillet fire, Spearman fire fighters first used water to try to put out the blaze, then followed this unsuccessful attempt with flour and a fire extinguisher. Water had little effect on the fire and the flour thrown on it only made it worse. The pressure released from the fire extinguisher caused

the blaze to scatter. Finally, a cookie sheet was placed on top of the skillet, completely putting out the fire in very little time. "This is the best method for dealing with a skillet fire," Assistant Fire Chief Dale Moyer reemphasized after the demonstration.

The correct use of fire extinguishers for other kinds of blazes was demonstrated outside in the mall parking lot for a crowd of over one hundred people. Young children had the opportunity to explore the insides of two city pumper fire trucks, the rescue unit and an ambulance. (EMTs were on hand to show their unit and administer free blood pressure checks as part of the emergency awareness and educa-

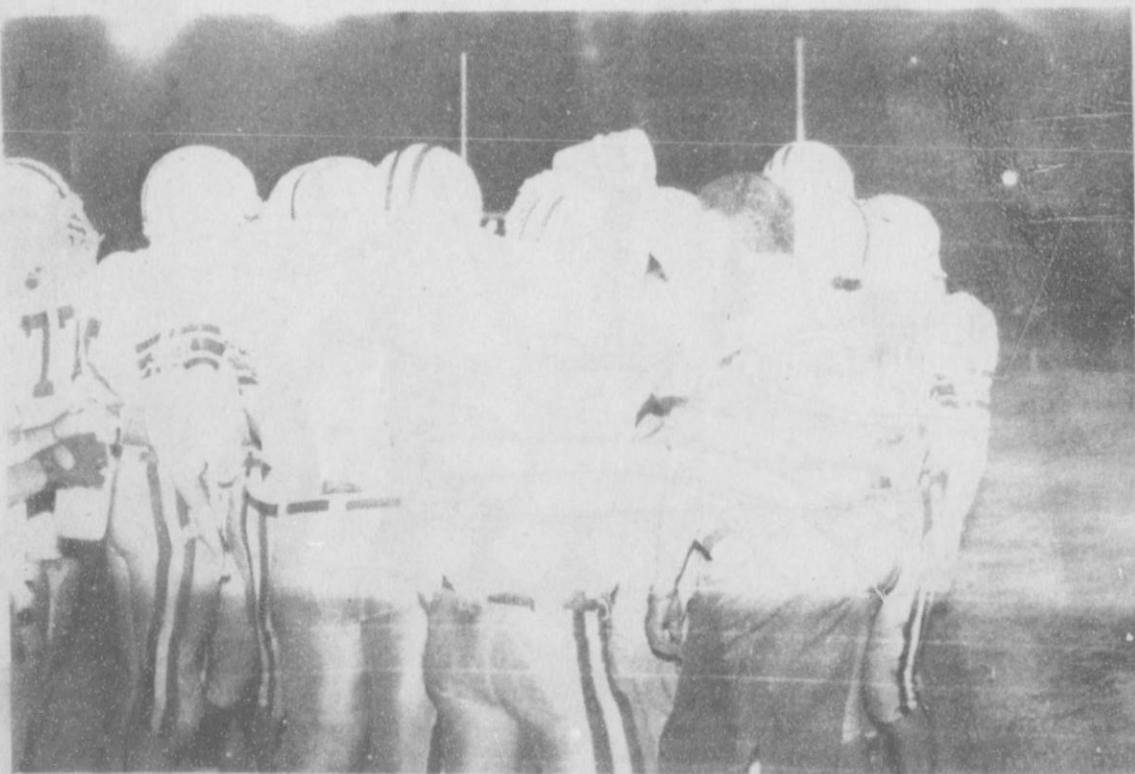
tional program.)

The middle of the program featured drawings for various prizes donated by Spearman businesses which ranged from tools and toys to meals at local restaurants.

At the end of the afternoon, adults watched a special fire safety film inside Kountry Doughnut and children participated in "water polo" at the far south edge of the parking lot. Using water hoses, each water polo team moved a ball strung above them back and forth using streams of water.

Summing up the afternoon, Moyer commented, "We used to See Fire Page 5

Lynx Unable To Stop Stratford



Coach McMullin calls the Lynx team together during time out at Friday night's Stratford game.

The Lynx ran into a fired up Stratford team last Friday night. It was the first district game, and it was homecoming for the Stratford Elks.

The Elks used these motivators to slow down the Lynx offense and to run over the Lynx defense. They held the Lynx to just 12 points, while scoring 35 points.

The Elks got on the scoreboard

early, with a 13 yard run for a touchdown early in the first quarter. The Lynx bounced back later in the same quarter with a touchdown pass of 27 yards. Ed Mayfield connected with Chris Williams for the touchdown. This brought the score to 6 - 7 in favor of the Elks.

The Lynx' celebration did not last long, as before the end of the

quarter the Elks scored a second touchdown and kicked a PAT. These scores put the Elks ahead 6 - 14.

In the second quarter the Lynx offense was unable to score. The Elk offense posted another seven points. They drove down to the three yard line and then ran the See Lynx Page 5

Burglary At Golden Spread

Someone broke into the Golden Spread Sales Co. sometime Saturday night or early Sunday morning. The office was ransacked, and an estimated \$500 in cash and equipment was taken.

According to Police Chief Joe Raper, Kevin Bynum reported the break-in on Sunday morning. A window on the southwest end of the building was broken out, and the office was in disarray. "They (the intruders) went through everything they could get open,"

said Chief Raper.

The intruders managed to get open a safe in the office. They took \$450 in cash from the safe. The other items stolen were a clock and two rolls of stamps.

This is the fourth in a series of similar break-ins and burglaries in the area. Over the weekend of September 3 and 4 two break-ins occurred. Irvin Davis's barn, located one-quarter mile northeast of town, was robbed of \$400 worth of tools. On the same weekend the

Hansford Implement building was broken into and robbed of new tools, some new knives and some cash. The intruders attempted to take a pickup truck, but only managed to wreck it into a fence.

Hansford Implement was the victim of the third break-in between October 7 and 9. In this one, the intruders made off with portable computers, miniature tractors and \$600 in cash. All but

See Burglary Page 5

Among The Neighbors

by Helen Fisher
Joyce and Carroll Harper treated their grandsons, Brant and Bray Arnes of Gruver to a weekend that will always be a part of their boyhood memories. They took them to Albuquerque for the weekend where the balloon races were being held. The Harpers have attended these the last two years and note that each year, the number of balloons increase and get more elaborate.

In addition to the unbelievable panorama of the balloons, the boys were thrilled by the sky diving of the Army Sky Divers.

They also rode the well-known tram to the top of Sandia Peak and enjoyed lunch at the restaurant there. A trip to the zoo was included during the weekend.

Carla Harper, the Harper's daughter flew in from Phoenix, and joined them. She is with the police department there.

Penny and Jim Davis entertained a VIP recently in the person of their grandson - 18 month old Andrew Brown. Penny went to Whiteface and brought him back for a week.

The many friends of Brandon Rex are relieved to know that he was able to come home last Saturday. He had been in St. Anthony's hospital in Amarillo for two weeks, following one week in the hospital at Shattuck.

Brandon suffered a broken leg in a football game a month ago, and complications developed which necessitated his being hospitalized.

His mother, Jody Rex, and grandmother, Mona Beth Windom, have been with him the entire three weeks.

He is the son of George Rex also.

Until he can return to school, Brandon is being tutored at home in order to make up his lost studies.

Willie Fay and Jamie Cramer of Harrah, Oklahoma spent the weekend here as guests of Karen and Richard Hampton.

Willie Faye, formerly Seitz, was transacting business here.

Sympathy is extended to Ila Mae and J.B. Buchanan on the

death of her sister, Faye Schweitzer, on Sunday. The Buchanans left immediately for Redondo Beach, California, where services were held.

Mrs. Schweitzer visited in Spearman many times and often attended the Buchanan family reunion.

One football game last Sunday sure was horsey -- Colts vs the Broncos.

T.D. Sansing, like the ant in the fable, is well-stocked for the winter. His daughter, Tynelle Jordan, spent from Monday through Saturday with him. It is remembered that several years ago, Tynelle won a Betty Crocker Contest for her baking, so she put her ability to good use and filled his freezer with luscious baked goods.

He took her to Amarillo on Saturday to emplane for her home in Katy. She recently spent three weeks in Bangkok, Thailand visiting her son. He has been traveling extensively in the Orient, and is planning to go to Mt. Everest in Tibet where he will climb the mountain to one of the station levels.

Virginia Trindle and Jan Holt drove to Grandbury and spent several days in the home of the Trindle's daughter, Connie Stegar and family.

They were elated with the constant, though slow, improvement in Connie's health and mobility after her long siege of illness. She can walk, now, with the aid of a walker and participates in some household activities.

After their return, Mrs. Merril Trosper, sister of John Trindle was a guest in the Trindle home. She is from Higgins.

Kevin Fisher of Memphis and Stephenville, was in Spearman during the weekend on business, and to visit his grandmother. He managed to up-date her education regarding the mores of the younger generation.

Time is running out for anyone See Neighbor Page 5

Club News

SPEARMAN 4-H

by Kevin Williams - Reporter

On Monday, October 9 the Spearman 4-H club held its second meeting of the year. Leah Mackie led the members in the pledge of allegiance. Tara Butt led them in the 4-H motto.

The next business was for those who had participated in 4-H events to tell where they had gone and how they did. Several of the members had gone to the Tri-State Fair to show their steers and lambs. Several went to the District Bake Show, while most either entered a lamb, steer, plant or crop they had grown, baked goods, or clothing they had made to enter at the Hansford County Fair in Gruver.

Michelle Cook, President, then announced that the 4-H Achievement Banquet would be held October 30 in Gruver.

For the next item of business, Randie Renner stated that the Spearman club would be selling turkeys for the Thanksgiving and Christmas holidays at a price of \$16.00 a turkey.

Burt Williams, county agent, then congratulated the members on how well they had done with their steers and lambs at the Tri-State Fair in Amarillo and the Hansford County Fair. Burt also announced that carcass steers need to be on feed by October 10, and that if you want him to buy a pig or lamb for you, you need to contact him as soon as possible.

Leslie Latta led the group in a recreational activity. The meeting was then adjourned.

Anyone interested in joining or helping with the local 4-H organization, may call or come by the office of Karen Babitzke or Burt Williams. Their telephone numbers are 659-2030 and 659-2136.

RAINBOWS & RANGLERS

Rainbows & Ranglers Square Dance Club held its monthly Plus Dance recently. Four squares danced to the calls of Murry Beasley. "The Oklahoma Cow-

boy," from Texhoma, Okla.

Visitors were Harry and Mary Reynolds and Bob and Lural Enns from Dalhart; Ray and Wilma Pershall and Joe and Kathy Irwen from Dumas; Lester and Peggy Miller from Goodwell, Okla.; Don and Carol Gillaspie from Liberal, Kan.; Don and Doris Keeler from Borger; C.A. and Wilda Brown and Morris and Ada Creel from Fritch; Cecil and Maudie Stewart from Elkhart, Kan.; Clyde and Dorothy Liesman from Waco; and Howard and Nancy Barkley from Perryton.

Members present were Joe and Wanda Archer; Benny and Joyce Byers; Danny and Debbie Herington; Sonny and Marlane Nollner; Delbert and Louise Timmons; and Johnny and Virginia White.

The next dance will be a Mainstream Dance on Saturday, Oct. 28 in the county barn with Murry Beasley calling.

TEAMS Test Oct. 25 & 26

State law was mandated that students must pass both the mathematics and English language arts sections of the Texas Assessment of Minimum Skills (TEAMS) test by the end of their 12th grade year to receive their diplomas.

Students will have the opportunity to take TEAMS in both the 11th grade and 12th grade. If they pass both the English language arts and mathematics sections the first time they are tested, they will not be tested again. The TEAMS test will evaluate their knowledge of the mathematics, reading and writing skills they have been learning throughout their school years.

The TEAMS test will be given to all 11th grade students on Tuesday, Oct. 25 for Mathematics and on Wednesday, Oct. 26 for English language arts.

The test will be given at the auditorium of Spearman High School at 8:30 a.m.

The Spearman Reporter

Your Hometown Newspaper
USPS 509660 Spearman, Tx. 79081

213 Main, Box 458, 659-3434

Published Weekly at 213 Main, Spearman, Texas

Owned and Operated by: Texas Independent Newspapers, Inc. 19906 Encino Grove, San Antonio, Tx 78259

Second class postage paid at Spearman, Texas 79081. Any erroneous reflection upon the character of any person or firm appearing in these pages will be gladly and promptly corrected upon being brought to the attention of the management.

PUBLISHER - Robert M. Hulett

Subscription Rate: Hansford, adjoining counties, combination with the Hansford Plainsman - \$19.95; non-adjoining counties, \$24.95 annually.

Postmaster: Send address changes to Spearman Reporter, Box 458, Spearman, Tx. 79081.

The publisher reserves the right to revise or reject at its option any advertisement which it deems objectionable, either in subject or phraseology, or which it may deem detrimental to its business.

Hometown News

ARMY AND AIR FORCE HOMETOWN NEWS--J.T. Garnett has been officially accepted into the U.S. Air Force Academy's Cadet Wing as a member of the Class of 1993.

The acceptance followed six weeks of rigorous basic training at the academy in Colorado Springs, Colo. Cadets learned and practiced military customs and courtesies, drill and physical conditioning, tactical exercises, and the firing of weapons.

He married Mary Ella Ford in 1923 at Antlers. She preceded him in death in 1988.

In 1956 Mr. Moran moved to Plainview and worked for the railroad until his retirement in 1968. He was a member of the Assembly of God Church in Antlers.

Survivors include two daughters, Lou Ella McGowan of Olton and Sarah Lee Van Buskirk of Spearman; a son, Milton L. Moran of Eugene, Ore.; 15 grandchildren; and 35 great-grandchildren.

Graveside services were held Tuesday in Plainview Memorial Park with the Rev. A.C. Hamilton, pastor of Finney Baptist Church, officiating. Funeral arrangements were by Lemons Funeral Home.

He is a 1989 graduate of Spearman High School.

Engaged

The engagement and approaching marriage of Kimberly Anne Hulseley and Chad Wayne Guthrie has been announced.

The bride-elect is the daughter of Bob and Patsy Hulseley of Amarillo. The prospective groom is the son of Deloris Sloan and Lawton Guthrie of Spearman.

The couple plans a December 1 wedding, scheduled for 7:00 p.m. at 900 Alta Vista in Amarillo.

Adkins, Croy United

Tanya Adkins, formerly of Gruver, and Larry Croy of Amarillo were united in marriage on Sept. 29 at St. Stephen United Methodist Church in Amarillo.

Rev. Jim Smith, senior minister, officiated. Matron of honor was Janis Maupin of Gruver, and bestman was Steve Marshall of Amarillo.

Buffy and Chandra Adkins, daughters of the bride, registered the guests. John Croy, son of the groom, recorded the ceremony.

Special music was provided by David O. Lynch of Overland Park, Kan., who sang "The Lord's Prayer," and "Bless This House." LuAnn Lane of Amarillo accompanied Mr. Lynch.

A reception was held at the couple's home following the ceremony. A honeymoon trip is planned to the Lake of the Ozarks in Missouri.

The bride is a nursing student at Amarillo College. The groom is the Paramedicine Technology Instructor/Coordinator for Amarillo College.

Out of town guests included Mary Rae Lamb, mother of the bride, of Gruver; Mr. and Mrs.

Carl LeBlanc, parents of the groom, from Trenton, Missouri; and Lois Hann, aunt of the groom, also of Trenton.

Also present were Mr. and Mrs. Max Gunn and family of Darrouzett; Craig Armstrong, Blue Springs, MO.; Rande McCrary, Trenton, MO.; Ken Oliver, Oak Grove, MO.; Beth Tripp, Midwest City, Okla.; Mr. and Mrs. Chip Eckhardt and family of Spearman; Mr. and Mrs. Danny Bass and family of Felt, Okla.; Nell Thorson, Gruver.

The Croys will reside at 4202 Mollie in Amarillo.

\$1⁰⁰ Senior Citizens Hearing Test
Thursday, Oct. 19
9 a.m. to 11 a.m.
Corner Drug
122 South Main Perryton
West Texas Miracle-Ear Center
435-3637

NEED REVIVING?
Is your faith in need of a little first aid?
A little CPR (Christian Perspective Renewed)?



Then join First United Methodist Church in welcoming **Keith Wiseman**, pastor of St. Paul United Methodist - Amarillo for **"REVIVE US AGAIN!"**

First aid/CPR begins:

SUNDAY, 10/22 11 a.m. Morning Worship service
7 p.m. Evening service
MONDAY, 10/23 7 a.m. Breakfast service
7 p.m. Evening service
TUESDAY, 10/24 7 a.m. Breakfast service
7 p.m. Concluding service

Nursery will be provided

First United Methodist Church
321 S. Baylor, Perryton, TX (806) 435-6571

COUNTRY BASKET®!



\$1.99* FOUR-FINGERS SALE PRICE OCTOBER 16-29, 1989

ON SALE IN **DQ COUNTRY**

Delicious steak fingers, golden fries, Texas toast, and DAIRY QUEEN's own special gravy.
Six finger basket: SALE PRICE \$2.99.

*Reg. TM Tex. D.Q. Op. Coun. *Reg. TM Am. D.Q. Corp. ©1989 Tex. D.Q. Op. Coun. *At participating Dairy Queen stores

Spiritually Speaking

Repentance
by John Scott
Church of Christ

The first message of Jesus was the same as that of John the Baptist before him, "Repent, for the Kingdom of heaven is near." (Matthew 3:1; 4:17). It was a simple one word command, "repent". But what is repentance? "In the New Testament the subject chiefly has reference to repentance from sin and this change of mind involves both a turning from sin and a turning to God." ("Expository Dictionary of New Testament Words", vol. 3, p. 281). Repentance is an inward change that results in outward changes. It is turning from sin to God.

Although it is a command, the Bible also speaks of repentance as a gift from God to mankind. Peter once said to a hostile Jewish high court, "The God of our fathers raised Jesus from the dead whom you had killed by hanging him on a tree. God exalted him... that he might give repentance and forgiveness of sins to Israel." (Acts 5:30,31) Later in the book of Acts, the Jewish Christians in Jerusalem realized this gift was for all men. "So then, God has granted even the Gentiles repentance unto life." (Acts 11:18)

Repentance is a unique privilege granted by a gracious God. Generally speaking, the world won't let you repent. If you blow it, most people will write you off

or, at best, put you on a kind of probation and never trust you again. You probably know how it feels to be told, "You made your bed, now lie in it." If you're a student, can you imagine this scene in the classroom?

"I'm so sorry I flunked the test. I just goofed off instead of studying. I promise I won't let it happen again."

Then the teacher says, "Oh, well, if you feel that way about it, just hand your paper back to me. I'll just change that F into an A."

Or how about this scene beside the road? "Officer, I just wasn't being careful I was in a hurry and didn't realize I was doing 75 in a 55. I promise not to speed any more."

"OK, let me have that ticket. I'll just tear it up this time." God gives us the gift of repentance. One day, though, God will keep his promise of sending his Son back to this earth and then the privilege of repentance will no longer be available. The Bible says, "The Lord is not slow in keeping his promise... he is patient with you, not wanting anyone to perish, but everyone to come to repentance." (2 Peter 3:9)

God lets us change and helps us through the lifetime process. You can learn more about God's gifts to us at our gospel meeting, November 12-16 at the Spearman Church of Christ.

Canadian Hosts Annual Fall Foliage Festival

Canadian's annual Fall Foliage Festival has been set for October 21 and 22, with a full weekend of activities planned, including the ever-popular drive to Lake Marvin through the colorful cottonwoods and other foliage.

The weekend begins with a two-day car show at the Hemphill County Exhibition Center at 10:00 a.m. on Saturday. The show, which features antique, classic and late model cars, will last until 8:00 p.m. and will continue on Sunday at noon until 5:00 p.m. Admission to the show is \$2.00 per person.

Also featured as a two-day event is the first annual Fall Festival Trail Ride. The ride will cover 25 miles on Saturday and 25 miles on Sunday, and is sanctioned by the Oklahoma Equestrian Trail Rider Association. Riders must bring their own horses for registration on Saturday from 8 - 9:30 a.m. at the Lazy H RV Park. The event is sponsored by the Palo Duro Arabian Horse Club and the Canadian Chamber of Commerce, and registration fees are \$15.00 for an individual and \$25.00 for a family for the two day ride, and \$10.00 per person for the one day ride.

State Representative Dick Waterfield will be honored on Saturday with a reception and luncheon and special exhibit at the River Valley Pioneer Museum, starting at 11:45 that morning. Sunday's activities include the

annual Tour of Homes, the Hobby Show, the Women's Service League's Kountry Kitchen. The Hobby Show will feature a wide variety of handcrafted goods for sale by the exhibitors, beginning at 11:00 a.m. at the Canadian Elementary School until 5:00 p.m. Also at the elementary school, the Women's Service League will offer hot brisket sandwiches and desserts for sale starting at 11:00 a.m.

The Tour of Homes will feature three of Canadian's finest homes for touring. "The Citadel," home of Dr. and Malouf Abraham, and the homes of Mrs. Claudette Hand and Mr. David Walker may be

toured by visitors at a price of \$5.00 per person, children under 12 admitted free when accompanied by an adult. Tickets for the tour may be purchased at the elementary school from 1:00 - 4:00 p.m. on Sunday.

The River City Players, a community theatre group sponsored by the River Valley Pioneer Museum, will present three performances of "A Solid Gold Cadillac" during the Foliage Festival Weekend. The play will be presented on Thursday, Oct. 19 at 7:30 p.m., Saturday at 7:30 p.m., and Sunday at 4:00 p.m. at the Middle School Auditorium. Ticket prices are \$6.00 for adults and

\$4.00 for children.

Autumn foliage is expected to be at its peak during the weekend, and visitors may take an unescorted drive to Lake Marvin to view cottonwoods, sumac and other native plants. The Canadian Chamber of Commerce, working with the USDA Forest Service in a Challenge Cost Share Agreement, has constructed a new trail to the historic "Big Tree," and a new, permanent interpretive nature trail marks 15 of the plant species found around the lake.

For further information on any of the events, contact the Chamber of Commerce office at 806-323-6234.

Autumn Colors, Good Home Cooking and Small Town Hospitality...



Canadian's Annual FALL FOLIAGE FESTIVAL

Saturday & Sunday, October 21-22

SATURDAY SUNDAY

- | | |
|----------------------------------|------------------------------|
| Dick Waterfield Appreciation Day | Hobby Show & Kountry Kitchen |
| Nature Trail/Foliage Tour | Nature Trail/Foliage Tour |
| Fall Festival Car Show | Fall Festival Car Show |
| Fall Festival Trail Ride | Tour of Homes |
| "A Solid Gold Cadillac" | "A Solid Gold Cadillac" |

CANADIAN, TX.

For more information on all events, please contact: CANADIAN CHAMBER OF COMMERCE OFFICE • (806)323-6234

1988 Rural Population At 65 Million

About 64,798,000 people, or 25 percent of the U.S. population, lived in rural areas in 1988 while about 4,951,000 rural residents, 2 percent of the nation's total, lived on farms, according to a report released today by the U.S. Commerce Department's Census Bureau and the U.S. Department of Agriculture's Economic Research Service.

Rural areas include the open countryside and places with under 2,500 residents that are not in the suburbs of large cities, as defined in 1980. The farm population consists of people living on farms in rural areas; it does not include the relatively few farms in urban areas. Farms are places that sold at least \$1,000 in agricultural products during the preceding year.

The population has grown faster in rural areas than in urban areas since 1986. However, some of this growth will appear as urban growth in 1990 as increased population will cause some rural areas to be reclassified as urban in the 1990 Census.

The 1988 farm population estimate does not differ much from the 1987 estimate. This lack of change may reflect a leveling off in the long-term decline in farm residents. But, more than one year of stability would be needed to confirm this as a pattern.

The largest share of the rural population (44 percent) lives in the South. Although the regional distribution of the rural population changed only slightly in the last 40 years, the regional concentration of the farm population shifted markedly. In 1950, a third of all farm residents lived in the Midwest, while slightly more than half lived in the South. A rapid decline in the southern farm population, rather than growth in the Midwest's farm population, reversed the regional rankings. Half of the total farm population now lives in the Midwest, and less than a third lives in the South.

The farm population is older than the rest of the population as a

whole. Farm residents' median age of 38 years in 1988 compares with 33.1 years for the total rural population and 32.1 years for the urban population.

About 3.3 million people held farm occupations in 1988. About 40 percent of these workers were farm operators and managers; the

rest were farmworkers and in related occupations. About 90 percent of the farm operators and managers lived in rural areas; 69 percent lived on farms. About half of farmworkers and workers in related occupations lived in rural areas; about 17 percent lived on farms.

OCTOBER CALENDER OF EVENTS

To put dates on this calendar, please call the Spearman Reporter Phone 659-3434.

SUNDAY	MONDAY	TUESDAY	WEDNESDAY	THURSDAY	FRIDAY	SATURDAY
1 *Hansford County Fair Roping 2 p.m. Gruver Arena	2	3	4	5 *7th, 8th grades, JV meet Boys Ranch There 5 p.m.	6 *Lynx meet Sanford Fritch Here 8 p.m.	7 *Stationmaster's House Antique Show & Sale 9 a.m. - 6 p.m. County Barn *Lynxette Cross Country 10 a.m. Hansford County Country club
8 * Attend the Church of your choice *Stationmaster's House Antique Show & Sale 11 a.m. - 5 p.m. County Barn	9 *Columbus Day *Ritualistic Crime Program Gruver High School Auditorium 7:00 p.m. * Rotary Meeting	10 *Lions Club *Community Theater Auditions 6 - 10 p.m.	11 *Women's Division Exec. Board Chamber Office noon	12 *C of C Board JJ's Rest. Noon *7th, 8th grades, JV meet Stratford Here 5 p.m. *Social Security Rep. at courthouse 10 - 11:30 a.m.	13 *Lynx meet Stratford There 7:30 p.m.	14 *Fire Prevention Display Plains Shopping Center 2 p.m. *Lynxette Cross Country 10 a.m. Dumas
15 * Attend the Church of your choice	16 *Rotary Meeting	17 *Lion's Club *Community Theater Rehearsal	18 *Women's Division JJ's Rest. Noon	19 *7th, 8th grades, JV meet Panhandle There 5 p.m. *Community Theater Rehearsal	20 *Lynx meet Panhandle Here 7:30 p.m.	21 *PTA Carnival County Barn *Spearman Study Club Antique Show & Sale 10 a.m. - 6 p.m. SHS Cafeteria *Lynxette Cross Country 10 a.m. Dalhart
22 *Attend the Church of your choice	23 *Rotary Meeting	24 *Lions Club *Community Theater Rehearsal *Lynxette Cross Country District Meet	25	26 *7th, 8th grades, JV meet Highland Park Here 5 p.m. *Community Theater Rehearsal	27 *Lynx meet Highland Park There 7:30 p.m.	28
29 *Attend the Church of your choice	30 *Rotary Meeting	31 *Halloween *Lions Club *Community Theater Rehearsal				

CARD OF THANKS

The Family of Pauline Johnson deeply appreciate the many cards, visits, prayers, food and other expressions of sympathy in the loss of our loved one.

We would like to thank all the employees of Hansford Manor for their excellent care and for the Memorial Service in her memory.

We thank Dr. Sangalang for his excellent care of Mother and his devoted support and concern for us during the time of our loss.

May God Bless you always,
Joanne & Albert Graves
Rebecca & Gary Walker
Deborah & C.B. Jones

THIS COMMUNITY CALENDER OF EVENTS IS BROUGHT TO YOU AS A PUBLIC SERVICE BY:

Good for You



"Your Full Service Bank"
Member FDIC

729 W. 7th

659-5544

Physicians Encourage Drug Prevention

"Join Me-I'm Drug Free" is the theme of the Texas Medical Association (TMA) and Auxiliary (TMAA) efforts to encourage teens to choose a drug-free lifestyle during Drug Free America Week in Texas, October 22-29.

Sponsored in conjunction with the national Drug Free America Week and National Red Ribbon Campaign, TMA and TMAA will feature locally-based educational and awareness events across the state.

Activities include working with local schools, youth groups, hospitals, businesses, and others to promote a healthy, drug-free lifestyle. "Physicians see the terrible physical and mental effects of drug abuse. Doctors and others in the community can set a drug-free example for our children to encourage them to choose a healthy lifestyle, particularly during the difficult teen years," declared TMA president Dr. Max C. Butler, a family doctor from Houston.

"It is vitally important that teens understand that they can lead a happier, more fulfilling life when they are drug-free," said TMA Auxiliary president, Betty Haisten of Beaumont.

Red ribbons will be worn by the medical community during Drug Free America Week signifying the commitment to a drug free Texas. The Red Ribbon Campaign originated when Federal Agent Enrique Camarena was murdered by drug traffickers in 1985. The campaign started in California and last year was expanded nationwide.

President George Bush and Mrs. Barbara Bush are national

honorary chairmen, and Gov. Bill Clements and Mrs. Rita Clements are the state honorary chairmen.

TMA is a professional organization of more than 29,000 physician and medical student members. It is based in Austin and has 116 component county medical societies around the state. The Association

represents 80 percent of the state's physicians, and its goal is to improve the health of Texans through the professional and personal development of its members. TMAA is a group of more than 8,500 TMA member spouses dedicated to public service health and medical projects.

Scramble Results Given

Results of the four-man scramble golf tournament have been announced. The tournament was held Oct. 15 at Hansford Country Club.

First place in the Championship Flight was the Spearman team of Dale Hendricks, Bob Hardy, Russ McClure and Eddy Clemmons, with a score of 56. Second place was awarded to the Stratford team of Don Gurly, Matt Vincent, Dario Garza and D. Brooks, with a score of 57.

In the A Flight, first place went to the Spearman team of Mark

Schoenhals, Danny Womble, Gary Cates and E.N. Pack, with a score of 62. Second place was taken by a team from Beaver, Okla., consisting of Bill Cassingham, Donna Cassingham, Troy Bowles and Bowles Jr., also with a 62.

A team from Stratford won first place in the B Flight with a 65 score. That team was made up of Jeff Dettie, Naugle, Albert and Wright. A Gruver team took second place with a score of 66. That team was made up of David Flowers, Francis Haefner, Tucker and Parker.

Rodeo Results Announced

Mark Eakin and Clint DeArmond of Spearman and Marty McCloy and Kelly McCloy of Gruver, all were top finishers in the recent River Road Tri-State Rodeo.

In Calf Roping Mark Eakin placed third with a time of 12.161 seconds. Right behind him was Marty McCloy, who placed fourth with a time of 12.265 seconds. Eakin also took third in Ribbon

Roping with his time of 10.460 seconds.

Clint DeArmond, with his teammate Jake Monroe of Dumas, ended up in third place in Team Roping competition with a time of 8.665 seconds.

In girls Barrel Racing, Kelly McCloy finished in third place with a total time of 18.026 seconds.

Hansford County ACS Chapter Meets

The Hansford County chapter of the American Cancer Society met on Oct. 5 at the B & B Hospitality Room in Spearman.

The noon luncheon and business meeting was hosted by the Gruver members.

After prayer by Mary TeBeest, the members enjoyed the meal of casserole, salad, hot rolls and dessert while visiting and getting acquainted with newer members.

The business meeting was called to order by president Mozelle McClellan. Clementine Renner read the minutes from the previous meeting, held on March 23, 1989. They were approved as read. Arbetta Nobles, treasurer, gave a financial report covering monies received after Cancer Crusade during the month of April and "Send a Mouse to College."

Jolene Thompson gave a report on those who had received services from the local chapter of the A.C.S. The group reviewed ser-

vices, provided for cancer patients. They are: **Volunteer transportation** - for local patients to treatment centers. **Rehabilitation** - "Reach to Recovery" for mastectomy patients; **Equipment for Loan** - Hospital beds, side rails, mattresses with covers, wheelchairs, walkers, crutches and bedside commodes; **Dressing and Comfort Items** - unsterile dressings, ostomy supplies, blue pads, wigs.

Call your American Cancer Society for information concerning other service and rehabilitation programs. The ACS is unable to pay for treatment, medication, or ambulance services, but will provide referral service to other community agencies.

Contact locally in Gruver Jolene Thompson at 733-2583 or call Mozelle McClellan. In Spearman call Clementine Renner at 659-2335.

For the first time in the history

of ACS, Texas received the Golden Award Trophy which will be kept on display in Austin. In order to qualify for this award, every county in Texas made its quota. Certificates of Appreciation were given to the Hansford County members, and it was noted that these members volunteer their time and labor to help make the ACS successful.

Mrs. McClellan made the announcement that she will be serving as Communication chairman for District 15-E. After briefly discussing the Great American Smokeout on Nov. 18, Mrs. McClellan adjourned the meeting.

Those members attending were Rosalie Cator, Pat Morley, Jolene Thompson, Mary TeBeest, Joy Henderson and Mozelle McClellan from Gruver. Attending from Spearman were Arbetta Nobles, Betty Davis, and Clementine Renner.



A warm friend to have around the house

Insulation can be your home's friend in the winter - and in the summer.

With insulation, your heater doesn't have to work as hard to keep your home warm, so you save energy. In the summer, your air conditioner works more efficiently. Because of this, insulation can be one of the best investments you make in a home.

For more information on insulation and energy management, call or visit your local TNP office today.



10c/89

Congratulations

"ALL A" HONOR ROLL

6th GRADE

Carol Alvarado
Regan Boxwell
Tiffany Bruning
Nicole Burgess
Carrie Burton
Brent Collins
Michael Covington
Haley Farber
Clayton Hergert
Mark Parker
Phillip Sanders
Kelly Shieldknight
Kara Townsen

7th GRADE

Molly Blackman
Kortney Henton
Josh Howard
Amy McCubbin
Mika Pipkin
Kristina Poole
Heather Reimer
Sandi Rich
Joel Stark
Heather Vinson
Josh Winegarner

8th GRADE

Matt Archer
Melissa Baker
Regina Biggers
Kelli Butts
Chad Gardiner
Alisha LaRochele
Cass Lasater
Tommi Latta
Alma Martinez
Carrie Pearson
Trixie Pearson
Elizabeth Pipkin
Jami Ralston
Clint Schnell
Jason Swink
Rainey Whittington

9th GRADE

Cody Pipkin
Brad Butler
Laura Pearson
Donette Cates
Mary Cook
Randie Renner
Jennifer Covington
Robert Needham
Clint Townsen
Chris Hornsby
Alicia Zabin
Mike Hager
Shea Crawford

10th GRADE

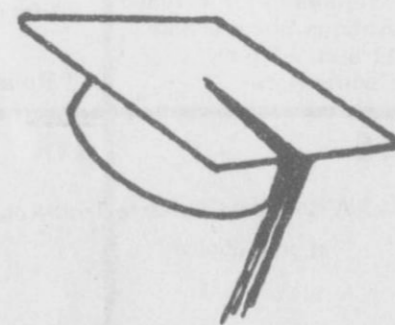
Alfonso Martinez
Joy Gafford
Darian Hawkins
Josie Holt
Karia Kunselman
Lori Lieb
Mendy Lasater
Monica Blackman
Melodie Schumann
Suzanne Sanders
Dezi Pearson
Maria Munoz
Chad Riggins
Tricia Sangalang
Leslie Latta
Mark Eakin

11th GRADE

Cam Butts
Kyla Nelson
Jarret Swan
Haley Shieldknight
Sally Donahue
Beverly Burton
Ginger Sasser

12th GRADE

Daryl Hawkins
Laura Dyess
Bonnie Jarvis
Cacy McGill



"A AVERAGE" HONOR ROLL

6th GRADE

Lucas Biggs
Courtney Dooley
Kim Healey
Katherine Pipkin
Bill Pittman
Misty Vigil
Jason Villines

7th GRADE

Haley Eaton
Traci Martin
Trey Porter
Ronda Renner
Stuart Riggins

8th GRADE

Christina Fain
Kara Faries
John Holt
Toni Snow
Nikki Strawn
Leslie Swan
Toby Thompson

9th GRADE

Wesley Dyess
Amber Cates
Holly Jarvis
Kimbire Townsen
Michelle Garnett
Tracy Tigrett
Sylvia Rosales
Jill Lusby
Gwen Benson
Jarrett Jones
Sonya Tindell
Jeri Evans
Ofilia Zamora
Landon Swan
Sophia Salgado
Adrian Blackburn
Myrna Lopez
Mona Sandoval
Michael Cummings
Sammy Graham

10th GRADE

Carla Greene
Tim Dooley
Jessica Woolley
Araceli Puentes
Shannon Holton
Brian Beck
Olivia Salgado
Karen England
Rosa Ortiz
Cyndi Jenkins
Chris Strawn
Jeremy Willingham

11th GRADE

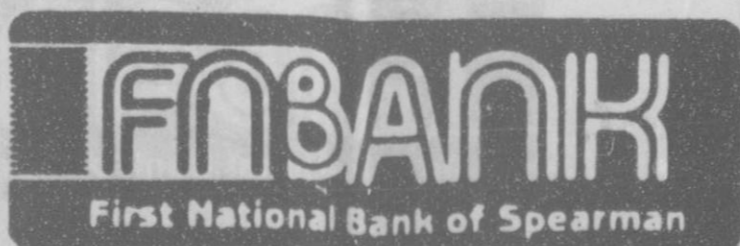
Cecely Porter
April Wilkerson
Ronald Whittington
Joel Shields
Marci Womble
Ross Jarvis
Brandi Schneider
Alan Howell
Bonnie Thompson
Misty Savage
Matthew Stark
Shanda Graham
Jeff Hutchison

12th GRADE

Laci Lasater
Michelle Cook
Maria Gomez
Nancy Ivey
Nora Garcia
Rebeca Rosales
Jeff Spencer

659-5544

MEMBER
FDIC



Hours: Mon. - Fri.

7:30 - 3:00

Open Thurs.

4p.m. - 6 p.m.

Burglary From Page 1

the money was recovered from this break-in.

All of these break-ins have the common factors of the type of businesses, that are broken into, the means of entry, and days the break-ins occur.

Lynx From Page 1

ball into the end zone from there. The half ended with the Elks leading the Lynx 21 - 6.

During the second half the Lynx managed to put six more points on the score board. Tim Dooley scored on a 27 yard run in the third quarter.

Despite their best efforts the Lynx defense was unable to contain the Elks' offense as they erupted for 14 more points in the fourth quarter. This brought the scoring to its conclusion - the Lynx 12, and Elks 35.

This Friday, October 20, the Lynx will host Panhandle. Panhandle will bring with them a pair of small but quick running backs. They lost their district opener last week to West Texas, and will be looking to improve their district record, as will the Lynx.

Fire From Page 1

have this at the fire station, but we thought the turnout would be better up here at the shopping center, and I certainly believe it has been." He expressed gratitude on the part of all the volunteer firefighters for the drawing prizes donated by Spearman merchants and the publicity given this event by radio station KRDF and the Spearman Reporter.

Members of the Spearman Volunteer Fire Department include: Chief Johnny Ring, Assistant Chief Dale Moyer, Captain Eldon Myrick, Captain James Noble, Ron Antalek, John Antalek, Willis Boyd, Dean Coates, Bruce Duncan, Rod Fulce, Harley McCubbin, Billy Snider, Tommy Fletcher, Mack Davis, Buddy Hopper, and Ken Bullard.

Volunteer firemen wear a pager 24 hours a day and each member of the team is called to respond to reported fires.

MMAP Helps Local Church

Union Full Gospel Church of Spearman is receiving help from Mobile Missionary Assistance Program (MMAP) in building construction and remodeling.

An addition to the building was constructed between 1985 and 1987, during the pastorate of Steve Rodgers.

The new addition was built over the old church building. This newest phase of construction and remodeling will expand the auditorium seating to 250 persons, according to Bill A. Miller, current pastor. The old church interior is being removed and the chapel area is being extended to the new exterior wall.

A lot of work goes into a project such as this, and that's where MMAP comes in. MMAP, headquartered in Pasadena, Calif., is an interdenominational organization made up of volunteers, mostly retired couples. They travel across the country living in travel trailers and performing work such as construction and remodeling of churches, youth camps, etc.

Volunteers who come from all across the United States, are given their choice of three locations in which to work. They work up to 10 months out of the year, with a minimum of four months time donated. Work is performed three weeks out of every month, with seven-hour days worked on a four-day-per-week basis.

The crew in Spearman at this time consists of six couples from distances as far as California and Wisconsin. They have been here a week, and will be here two more weeks. They are under the direction of Jim Rust, coordinator from Bay Field, Colo.

Another crew is expected the first part of November. Pastor Miller estimates MMAP is saving the Union Church up to \$10,000 in labor costs through their efforts.

Local input has been given from Robert Graves, on site building coordinator, along with members of the congregation working as time allows, said Pastor Miller, who also pitches in.

MMAP crew members include Clyde and Dorothy Liesman of

Waco, Texas. They joined MMAP in 1984 and list this as their 21st project. They spent three months working on a Salvation Army building in Alaska in 1986.

Jean and Chuck Powell of Hidden Valley, Calif., joined MMAP in 1988. They have worked on six projects, including projects in Washington, California, Arizona and Texas.

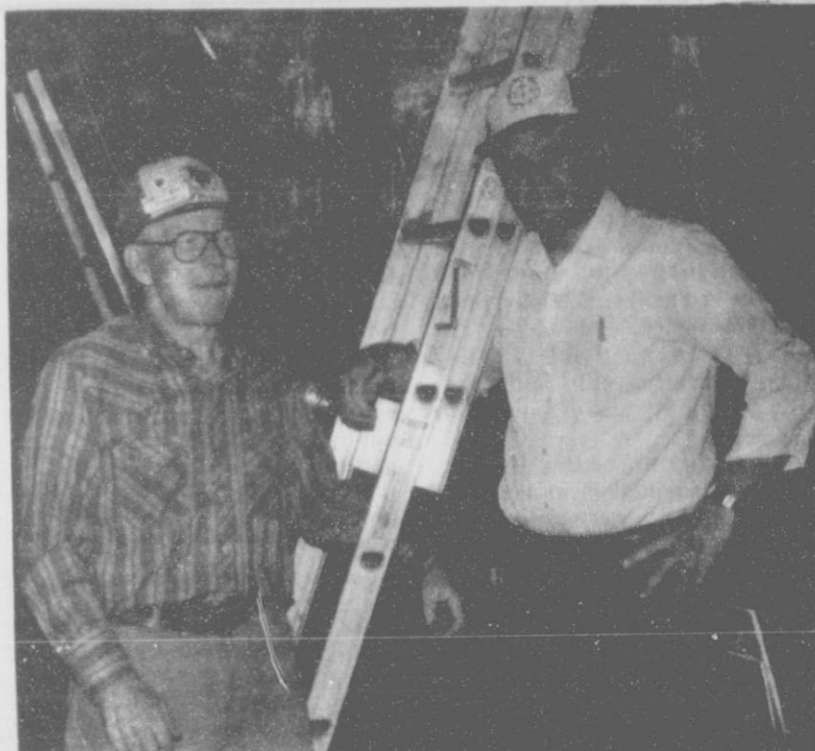
Cecil and Lois Binford of Idaho joined in 1979. They have been in on 25 projects in such states as California, Idaho, Hawaii, Washington, Montana, Colorado and Texas, in addition to working on

projects in Canada and Mexico.

Glenn and Barbara Ross joined MMAP in 1983 and say they have helped on 40 projects in the past seven years. They have served in Michigan, Ohio, Tennessee, Alabama, Indiana, Texas, Missouri, Florida, New York and Oklahoma.

Neal and Ivy Hager of Green Bay, Wisc. joined in 1987 and have worked on nine projects, including three in Baja, Calif.

James and Nila Rust of Durango, Colo. have been part of 18 projects and list this as their fifth year with MMAP.



Jim Rust (left) and Bill A. Miller, pastor of Union Full Gospel Church (right) take a break from construction and remodeling of the church building. Rust is coordinator of a group of workers representing Mobile Missionary Assistance Program, which is helping in the church's building effort.

Spearman PTA Sponsors Festival

A Fall Festival will be sponsored by the Spearman PTA on Saturday, Oct. 21 from 7:00 p.m. to 10:00 p.m. at the Hansford County Barn. The festival will provide food and fun for everyone and will help the PTA fund its activities.

Food booths will include Town & Country Extension Homemakers' Cake Walk; the Lion's Club will have hamburgers and Frito pie for sale; ice cream will be sold by the Booster Club; the PTA will have a Coke booth; Rho Rho sorority will have popcorn balls for sale at its booth; Servitors will offer caramel apples at their booth; and Xi Zeta will have nachos for sale.

The PTA will have a dunking booth, a face painting booth and a nail hammering booth available for fun and frolic. There will also be a booth where Leeann Gilliespie will have balloons for sale. The Chamber of Commerce Women's Division will have a basketball booth, and Hansford Hospital is sponsoring a "Milk the Cow" booth. A fishing booth will be sponsored by Rho Rho, and United Methodist Youth will have a "Wheel of Fortune" booth.

Accuracy and skill can be measured at Rotary Club's ping pong toss booth. Xi Zeta will have a sand dig booth, and the Spearman High School Choir will have a candle shoot booth. In addition, the choir will offer Lynx car visors for sale. A picture booth will be manned by Gamma Gamma, and

Catholic Youth Organization will sponsor a sponge throw booth.

It should be pointed out that most booths will charge 25 cents a game.

Money from this festival will be used for PTA's many projects, which include a Special Needs Fund to benefit any child needing clothing, glasses, special testing expenses, etc. Anyone wishing to contribute to the PTA's Special Needs Fund can contact the school nurse, Linda Winegarner.

The PTA also makes contributions to the District 8 Scholarship Fund, to which SHS students can apply - students from Spearman have gained scholarships from this fund in the past.

Some money from the festival will be used for the District 8 Travel Fund, for the District 8 president.

The fall festival also helps to pay for PTA Officer Education, by paying expenses to a Summer Seminar in Austin, and the State PTA Convention held each November.

Fall festival funds are also used within the Spearman PTA to help with Teacher Appreciation Week in May, and with membership expenses such as the pizza party for the class having the most parents as PTA members. The Spearman PTA also holds Coke parties for classes having the most parents at the meetings.

Money is also used to obtain quality speakers and programs for PTA meetings.

Lynxettes CC Stumble At Dumas

The Spearman Lynxette varsity cross country team earned sixth place at the recent Dumas Invitational Cross Country Meet, while the junior varsity Lynxettes finished in fifth place.

Lynxette varsity runners, their placement and finishing times included Haley Shieldknight, 14th, 13:49.0; Michelle Cook, 20th, 13:54.2; Jill Lusby, 36th, 14:15.1; Joy Gafford, 41st, 14:23.1; and Kyla Nelson, 50th, 14:32.8.

Others included Sonya Nitsch-

ke, 51st, 14:33; Nancy Ivey, 53rd, 14:35; Kimbre Townsen, 62nd, 15:02; Gwen Benson, 65th, 15:07; Denise Arnold, 73rd, 15:16; Suzanne Sanders, 77th, 15:20; and Laci Lasater, 78th, 15:29.

For the junior varsity, runners' placement and finishing times included Ashley Shieldknight, 15th, 14:54.1; Mary Cook, 19th, 15:15.1; Amanda Nobles, 40th, 16:13.6; Michelle Garnett, 46th, 16:26.6; Shea Crawford, 48th, 16:29.5; and Holly Jarvis, 50th, 16:34.8.

Club News

SPEARMAN STUDY CLUB

Spearman Study Club's ninth annual Arts and Crafts Show will be Saturday, Oct. 21 from 10:00 a.m. to 6:00 p.m. in the Spearman High School cafeteria.

The show will feature crafts and articles of fine quality workmanship, according to Study Club members. Offerings will include wooden country articles, Christmas decorations, ceramics, T-shirts, baked goods, wreaths, jewelry and much more.

Jack Conner of Guymon will

have his saw going all day to cut out names for those attending the show. Food will be served by the club members, and desserts will be sold by Spearman Lynx Basketball Mothers.

Proceeds from this show will be used by the Spearman Study Club to help with the club's scholarship fund, GirlsTown and Christmas Stocking Fund, among other club projects.

Club members said, "We appreciate your support for the past eight years, and hope to see you again this year."

Neighbor From Page 2

who has not had the pleasure of patronizing the Outdoor Patio of the El Vaquero in Gruver. The colorful fall flowers will soon be gone. Those who have not eaten there have missed a delightful treat. The lawn, flowers, white tables, umbrellas, twinkling little lights, bubbling fountain in a sheltered area have given great pleasure to diners all summer. Not to be ignored is the great food, and the congenial hostess, Phyllis

Atwood.

Don Maize returned late Thursday from Ft. Lauderdale, Florida where he had attended a training session for the Enron Company.

He was gone several days and to hear Don report, it would seem from sun-up to sun-down he was involved in study and training.

Don always did approve of the Two Party system -- but both in one night???

Perryton Church Sets Revival

First United Methodist-Perryton is pleased to announce their fall revival October 22-24. The featured speaker will be Keith Wiseman, pastor of St. Paul Methodist Church of Amarillo. The theme for the revival is "Revive Us Again."

The schedule for the revival is: 11 a.m. Sunday, Oct. 22, Morning Worship Service 7 p.m. Sunday, Oct. 22, Evening Service 7 a.m. Monday, Oct. 23, Breakfast Service 7 p.m. Monday, Oct. 23, Evening Service 7 a.m. Tuesday, Oct. 24, Breakfast Service 7 p.m. Tuesday, Oct. 24, Concluding Service.

Music will be provided by the Adult Choir of First United

Methodist under the direction of Barbara Richardson.

Dr. Wiseman graduated from Dumas High School in 1953. He received a B.A. degree from McMurry College in 1957. Wiseman was ordained in May, 1958. He continued his education at Perkins School of Theology, Southern Methodist University, graduating in 1960 with a Master of Theology degree. He received his Doctorate of Divinity degree from McMurry College in 1988.

Dr. Wiseman is presently pastor at St. Paul Methodist Church in Amarillo. His prior experience includes seven other churches including Perryton, Lubbock, Levelland, Panhandle, Andrews, Big Spring, and Pleasant Valley United Methodist in Amarillo.

We're open for new faces.



Free.

Call today for your free makeup lesson.

Come see how easy and how beautiful it is when a caring Beauty Advisor teaches you how to make the best of your best and the least of the rest. Come find the loveliest new face of your life, today. Free.

La Ray's

MERLE NORMAN COSMETICS

"Try Before You Buy"

LINDA ANDREW

300 Main Spearman, TX 79081 806-659-5219

The Country Peddler

659 - 3999

216 Main

"Unique, Country Gifts"

Grand Opening Celebration

Fri.&Sat.-Oct.20&21

Register for 3 Gift Baskets

Hours: 10 - 5:30 Mon. - Fri. 10 - 5 Sat.

AMARILLO LIVESTOCK AUCTION

Special Fall Calf Sale

Every Tuesday at 1:00 p.m.

Will Be In New Facility

Sales Every Tuesday

Terry Jones, Manager Home phone 806-379-7522

For More Information Call

Charley Alford, Assistant Manager Home phone 806-499-3403

Business phone 806-373-7464

NBC affiliate in Amarillo.

ESPN [Entertainment Sports Network]-Channel 5- features sporting events internationally.

PEG [Public, Education and Government]-Channel 6- is a local public service station which will be operated by the Spearman schools. School Administrator Larry Butler said the station will be used to make school-related announcements, such as bus delays in bad weather, and to replay taped sporting events and other programs at the Spearman schools.

Butler and Mayor Bob Pearson were instrumental in making the idea of a school station into reality. Butler had familiarized himself with a school cable station when he investigated the one run by the Stratford school system, and Pearson presented the idea to the City Council at the time that franchise negotiations were going on with Mission Cable. As a result, part of the franchise contract specified that Channel 6 would be operated by the schools

here.

"This will not be a profit-making venture, but simply a public service and information channel," commented Butler. He said the equipment for PEG will be installed in his office in the near future and that he will be in charge of the station "until the ball gets rolling."

Butler sees all kinds of future potential for the uses of PEG. "As we get into it with today's technology, with microwave and satellite systems, it'll branch out our capabilities in the classroom and the school system as a whole. I believe the opportunities are limitless."

According to Butler, the elementary, junior high and senior high schools all have videotaping systems and will be able to tape events and programs for later air time on Channel 6. He added that important school announcements will continue to air on the local radio station and to be published in the local newspapers.

KVII-Channel 7- is the Ama-

rillo affiliate of ABC.

QVC [Quality, Value and Convenience]-Channel 8- is a 24-hour shopping network owned by Sears.

WGN-Channel 9- is an independent Chicago network featuring everything from that city's news and sports to major network programming.

KFDA-CHANNEL 10- is the Amarillo affiliate of CBS.

WTBS-Channel 11- is a Ted Turner-owned independent station broadcasting from Atlanta, Georgia and featuring that city's sports and news as well as a variety of other programs.

OETA [Oklahoma Education Television Authority]-Channel 12- is a Public Broadcast System station with the call letters KWET which features educational programming without commercial advertisements. Sesame Street, Masterpiece Theatre and National Geographic specials are among its regularly-offered programs.

TBN [Trinity Broadcast Network]-Channel 13- is a 24-hour

Christian Programming station. Mission Cable Manager Terry Porter noted that TBN will have better reception in Spearman now that it is received from the satellite instead of from UHF Channel 53 in Guymon. "The result is that it won't be 'snowy' anymore. You'll get a clear picture," Porter said.

KCIT-Channel 14- is the independent Fox Network out of Amarillo, which features everything from old movies to series in syndication.

TNT [Turner Network Television]-Channel 15- is another one of Ted Turner's stations. It features a variety of programs, including its own series, and has a reputation of offering innovative, "different" programs.

HSE [Home Sports Entertainment]-Channel 16- is a Texas-based network which features all kinds of sports, mostly those taking place in this state. Even high school ball games are broadcast on this pay station.

The Weather Channel-Channel

17- is a 24-hour a day weather station featuring weather news all across the United States.

The Disney Channel-Channel 18- is a pay channel featuring mostly Walt Disney productions and other G-rated films and shorter programs for the entire family.

TNN [The Nashville Network]-Channel 19- is a new basic cable offering by Mission Cable that features country music and some sporting events.

Showtime-Channel 20- is a pay movie station. Showtime was fashioned after the popular HBO, which was the original home movie network, and features movies and occasionally other specials.

The Discovery Channel-Channel 21- is a new basic station featuring nature and geography specials.

The Movie Channel-Channel 22- is a 24-hour pay station featuring movies only.

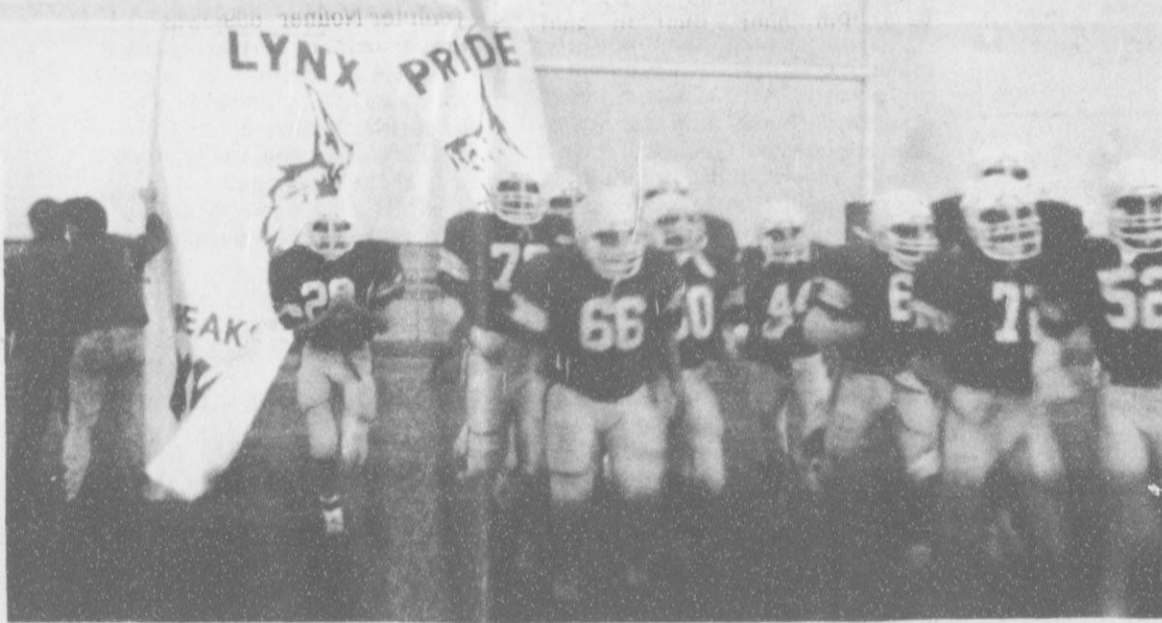
HBO [Home Box Office]-Channel 23- is a pay movie station

featuring recent movies and, in Porter's words, "very elaborate productions of HBO's own." He mentioned the \$1 million dollar 30-second commercial HBO produced a few years ago to advertise its own network!

In addition to adding the seven new stations to its system, Mission Cable has recently constructed an entire new "head" on its tower, located just south of 13th and Roland Streets, and installed all new receiving equipment. Three satellite dishes were added to the system as well as part of the upgrading of the cable system.

Mission Cable's Spearman office oversees its billing operations for Spearman, Booker, Darrouzett, Follett and Higgins. The office staff includes Manager Terry Porter, Office Manager Linda Thompson, Installer/Technician Ray Ortega and Customer Service Representative Patty Pacheco.

Go Lynx - Run Through The Panthers!



*Proud Supporters Of The Pride Of Hansford County -
The SPEARMAN LYNX*

**HANSFORD COUNTY
FARM BUREAU**

307 West Davis
Spearman
659-3133

GORDON'S DRUG

314 Main Street
Spearman
659-2141

CHAROLETTE FORD TRUNKS

313 Main Street
Spearman
659-3027

THRIFTWAY

505 Plains Shopping Center
Spearman
659-2522

FIRST STATE BANK

INE Court
Spearman

MEMBER FDIC

HANSFORD IMPLEMENT

Highway 207 South
Spearman
659-2568

CATES MEN & BOYS WEAR

221 Main
Spearman
659-3426

SACKS THIRD AVENUE

203 Main
Spearman
659-3350

WANT ADS Work Wonders!

For Sale

FOR SALE: Round Bales of Hay Grazer \$50/ton. Call Roy Garcia at 659-2245 in Spearman. S48-1tc RTN

HAY FOR SALE Red Top Cane and Hegari. \$2.00/Bale in field, \$2.50 stacked, \$3.00 delivered. Mike Skinner, (806) 659-1706.

S49s-8tc
FOR SALE: Seed Wheat, Tam 101, Tam 105, Tam 108, Tam 200 and Russian Beardless. Call: V.B. Morris 806-733-2203 S38-RTN

FOR SALE: 3 bedroom, 2 bath home. Sunken living room, parquet floors, fireplace, covered patio, 2 car garage, sprinkler system, 2193 sq. ft. living space, excellent location. Call 659-5022. S33-RTN

FOR SALE 3 bedroom, 2 bath home. Fireplace, large living area, drapes, mini-blinds, completely remodeled and large deck patio. Nice neighborhood. 1110 S. Barkley. Call 659-3800 S36-rtn

PIANO FOR SALE
Wanted: Responsible party to assume small monthly payments on piano. See locally. Call credit manager 1-800-447-4266. S48-7tp

FOR SALE: 1 Metal Building and Property 35' x 50' - 1 Large Cinder Block Building and Property 3000 sq ft. Contact: First State Bank, Box 247, Spearman 659-5565. S29-RTN

USED AUTO PARTS FOR SALE: Located 4 miles west of Hooker, Ok. on highway 54. **Muss Cat Auto Salvage.** (405) 652-2400. S10-rtn

FOR SALE Pre-owned Small Baldwin Piano - Pecan Finish - Like New - Low Monthly Payments Available - ph. 316-624-8422 - Brier & Hale Music - Liberal, Ks. S50S-2tc

FOR SALE: 1976 Shasta Travel Trailer 21 Ft.
1969 Monitor Travel Trailer 21 Ft.
1969 International 2 1/2 ton Winch Truck Call: (806)733-2922 in Gruver. S50S-2tp

FOR SALE: Two AKC registered female Shelties. Three months old. \$100 each Call: 733-2554 S50S-4tc

FOR SALE: 81' Camero, Real Reasonable. Call 1-435-3760. Great for a 2nd car. S51-2tc

FOR SALE: 1984 Arab glass inboard-outboard boat. Call 659-3725 after 5 p.m. S51-2tc

FOR SALE OR RENT: 2 lots on narrow block, paving on 3 sides, hookups and concrete piers for mobile home. Call Claude Sheets 659-2085. S51-4tp

For Rent

FOR RENT: 1 Bedroom Furnished Apartment. Call 659-3491. S48 1tc RTN (THURS only)

HOUSE FOR RENT in Spearman. 3 Bedroom / 2 Bath. Fenced backyard. Central Heat and Air. (Call 878-2909). S48-RTN

HOUSE FOR RENT: 307 12th. Brick, 3 bedroom, 1 bath. Call 659-3809. S44-1tc RTN

TRAILER SPACE FOR RENT: in Spearman, \$50 a month Call: 435-5080 S43S-RTN

FOR RENT: Furnished Efficiency Apartment. Call 659-2764. S50S-1tc RTN

HOUSE FOR RENT: 3 BD. 1 bath home fenced yard. Carpet. Applications being taken Call: Allen Alfred at 659-3034. Rent Reduced - \$290.00. S43S-1tc RTN

Work Wanted

Will do **Babysitting** in my home. (Close to a park!) Mon.-Fri. Will also pick kids up from school. For more information call Marsha after 5 p.m. or anytime on weekends. 659-2780. S51-2tc

WANTED: Corn Harvesting. Can harvest 30 in or 40 in rows. Call V.B. Morris 733-2203. S48-1tc RTN

Services

INSULATE NOW! Save on Heating and Cooling Bills. Walls, Attics, New or Old Homes, Metal Buildings and Shops. Call **Forest** 806-659-2111 for appointment and FREE Estimate. Factory Trained Installer. S46-27tp

Notice

The Holiday season is just around the corner. Let us build or re-do that bathroom, kitchen or family room. Or you may just need a face-lift in a much loved room (how about the new southwest look)? We do Painting, Winterizing your windows and storm doors, or new storm windows. We also, do small home repairs, set a water heater and change out a faucet.

"Thirty-two years in the Business"

"Still going Strong"

Craig Hutchison Phone: 659-3089 S50S-2tp

Help Wanted

The Hansford County ASCS Office will be hiring 2 employees. All interested applicants must file an application by Oct. 28, 1989. Applications can be obtained from the ASCS Office at 711 West 7th, Spearman, Texas. The ASCS Office hires without regard to race, color, religion, sex, national origin or marital status. S50S-4tc

STAR SEARCH 2000!

Children, teens and adults needed for commercials. Extras needed with or without experience. Call ICC S48-9tc

SALES PERSON WANTED

HANSFORD PLAINSMAN, AND GRUVER STATESMAN NEED A SALES PERSON. FOR MORE INFORMATION CONTACT THE REPORTER AT 659-3434.

Legal Notices

Notice by Publication State of Texas

To: Natividad Carvajal, Respondent

Greetings:

YOU ARE HEREBY COMMANDED to appear and answer before the Honorable 84th Judicial District Court, Hansford County, Texas, at the courthouse of said county in Spearman, Texas, at or before 10 o'clock a.m. of the Monday next after the expiration of 20 days from the date of service of this citation, then and there to answer the petition of Aurora Vela, Petitioner, filed in said Court on September 29, 1989, against Natividad Carvajal, Respondent, and said suit being number 3667 on the docket of said Court, and entitled "In the Interest of Maria Luisa Vela, a Child", the nature of which suit is a request to terminate the parent-child relationship/adopt the child. Said child, was born on May 22, 1982 in Spearman, Texas.

The Court has authority in this suit to enter any judgment or decree in the child's interest which will be binding upon you, including, but not necessarily limited to, the termination of the parent-child relationship, the determination of paternity, and the appointment of a conservator with authority to consent to the child's adoption.

Issued and given under my hand and seal of said Court at Spearman, Texas this 9th day of October, 1989.

Amelia C. Johnson
Clerk of the District Court of Hansford County, Texas

BOB HARDY REALTY

803 Wilmeth Dr.
659-3440
NEW LISTINGS

713 Steele Dr. - 3 BR, 2 Bath
Nice, Reasonable.
Colorado Property For sale.
Robert Hardy-broker

Offered by
EMMETT R. SANDERS
REALTOR

Owner's 2 bedroom home plus 3 rental units. Good investment package.

EMMETT R. SANDERS
REALTOR
659-2516, nights 659-2601

OSGOOD MONUMENT CO.

Amarillo, Texas
Dealers of Rock of Ages Granite, as well as all colored granites, marble and bronze memorials.

represented by
BOXWELL BROS.
FUNERAL HOME

519 S. Evans
659-3802

James F. Hayes & Co.

AGRICULTURAL REAL ESTATE
CLARENDON, TEXAS 79226
(806) 874-3546

SHERMAN COUNTY - 320 acres farm-land, 1 irrigation wells.

HANSFORD COUNTY - 436 acres irrigated farmland, good soils, good water.

Call: David Davidson
Mon-Fri 8 to 5 at 874-3546

Real Estate Sampler

Allen Alford-Broker-659-3034
Hester Crawford - 659-2074
Dennis Nelson-Sales-659-3608
Larry Trosper-Sales-659-3491
THREE BEDROOM HOMES
902 Dressen
727 Wilbanks- Office, 1 1/2 B.
1010 Dressen
708 Steele- Fireplace
1116 Townsend- Dbl. Garage
727 Cotter- 1 1/4 Baths
729 Wilbanks- 1 1/4 Baths
729 Cotter- 1 1/4 B, Dbl. Gar.
623 Bernice- Corner lot
1016 Townsend- Priced to sell
1021 Townsend
1108 Archer - 2 B., Dbl. Gar.
412 Townsend- Affordable!
805 Archer- Close to School
1012 Haney- Affordable!

TWO BEDROOM HOMES
811 Townsend- Dbl. Garage
COUNTRY HOMES
3 BR - 1 1/2 Baths - 2 1/2 A.
4BR - 2 Baths - 17 A.

ACREAGE
15 Acres - Crawford Addition
INVESTMENT PROPERTY
Have Several Rental Units

Check for other listings.
WE WANT TO BE YOUR REALTOR

Oil & Gas Report

NEW LOCATION, COMPLETION & PLUGGING REPORT

Intentions to Drill

LIPSCOMB (COTTON Upper Morrow) Arco Oil & Gas Co., #5 Sim Paine (640 ac) 660' from North & West line, Sec. 943, 43, H&TC, 7 mi SE from Booker, PD 8950' (Box 1610, Midland, TX 79702)

Amended Intentions to Drill

SHERMAN (WILDCAT & COLDWATER RANCH Marnaton) Phillips Petroleum Co., #1 Parmele 'C' (40 ac) 650' from South & 1980' from East line, Sec. 90, 1-C, GH&H, 17 mi E-Se from Stratford, PD 5750' (Box 358, Borger, TX 79008) Amended to update Permit (filed 9-17-86)

Oil Well Completions

CARSON (PANHANDLE) XET Oil & Gas, Inc., #2 J.C. McConnell, Sec. 65, 4, I&GN, elev. 3238 gl, spud 7-24-89, drlg. compl 8-2-89, tested 9-29-89, pumped 20.75 bbl. of 44 grav. oil + 10.5 bbls. water, GOR 6313, perforated 2990-3350, TD 3400', PBTD 3396'

HARTLEY (LATHAM Canyon Granite Wash) Exxon Corp., #1 Powell Trust Unit, Sec. 108, 48, H&TC, elev. 3924 df, spud 7-2-89, drlg. compl 7-15-89, tested 8-25-89, pumped 40 bbl. of 43 grav. oil + no water, GOR--perforated 6357-6361, TD 6500', PBTD 6444'

LIPSCOMB (BRADFORD Tonkawa) Unit Petroleum Co., #6 Booth, Sec. 639, 43, H&TC, elev. 2475 gr, spud 8-15-89, drlg. compl 8-24-89, tested 10-2-89, pumped 54 bbl. of 41.2 grav. oil + 135 bbls. water, GOR 704, perforated 6504-6536, TD 6670', PBTD 6620'

WHEELER (FRYE RANCH Granite Wash 'A') Gifford Operating Co., #1-49 Stanley, Sec. 49, A-3, H&GN, elev. 2416 kb, spud 6-4-89, drlg. compl 7-1-89, tested 10-3-89, flowed 39 bbl. of 54 grav. oil + no water thru 12/64" choke on 24 hour test, csg. pressure 1700#, tbg. pressure 1100#, GOR 8744, perforated 12246-12276, TD 12400', PBTD 12327'

Gas Well Completions

LIPSCOMB (WILDCAT) Zinke & Trumbo, Inc., #1-1137 Harrelson, Sec. 1137, 43, H&TC, elev. 2582 kb, spud 3-25-89, drlg. compl 6-3-89, tested 8-14-89, potential 2629 MCF, rock pressure 2636, pay 9003-9184, TD 9550', PBTD 9140'

MOORE (WEST PANHANDLE Red Cave) KW Operating Partners, Inc., #1 Thompson, Sec. 23, 26, EL&RR, elev. 3500 gr, spud 4-3-89, drlg. compl 5-1-89, tested

5-23-89, potential 444 MCF, rock pressure 399.9, pay 1725-1956, TD 3435', PBTD 1965'

OCHILTREE (HANSFORD Lower Morrow) Hamilton Bros. Oil Co., #5-L Garnett, Sec. 135, 4-T, T&NO, elev. 3083 rkb, spud 5-7-89, drlg. compl 5-24-89, tested 8-2-89, potential 950 MCF, rock pressure 1258, pay 8148-8158, TD 8290', PBTD 8180'--Dual Completion with #5-U Garnett in (Hansford Upper Morrow)

OCHILTREE (HANSFORD Upper Morrow) Hamilton Bros. Oil Co., #5-U Garnett, Sec. 135, 4-T, T&NO, elev. 3083 rkb, spud 5-7-89, drlg. compl 5-24-89, tested 7-31-89, potential 2750 MCF, rock pressure 1354, pay 7563-7621, TD 8290', PBTD 8180'

Plugged Wells

CARSON (PANHANDLE) Car-Tex, Inc., #1-44 Burnett 'G', Sec. 44, 5, I&GN, spud 3-31-75, plugged 9-22-89, TD 3500' (oil) -- Form 1 filed in Blair Oil Co.

HANSFORD (WILDCAT) Rio Petroleum, Inc., #1-107 Bivins, Sec. 107, 2, GH&H, spud 4-12-89, plugged 7-21-89, TD 7200' (dry)

HUTCHINSON (PANHANDLE) Pony Oil Co., #7 Whittenburg 'C', Sec. 28, 47, H&GN, spud in 1952, plugged 7-14-89, TD 2938' (oil) -- Form 1 filed in Spool Oil Co.

LIPSCOMB (KING Upper Morrow) APC Operating Partnership, #1 Miles Unit, Sec. 552, 43, H&TC, spud 10-30-67, plugged 9-1-89, TD 10280' (gas) -- Form 1 filed in Apache Corp.

LIPSCOMB (KIOWA CREEK Douglas) Apache Corp., #1 Parker 'B', Sec. 994, 43, H&TC, spud 12-11-72, plugged 9-7-89, TD 5980' (gas)

OLDHAM (LAMBERT 2 Cisco) Baker & Taylor Drlg. Co., #2 Mansfield 'A', spud 8-30-79, plugged 8-10-89, TD 6796' (oil)

OLDHAM (LAMBERT-TWELL Missouriian) Baker & Taylor Drlg. Co., #2 Who's Mistake, Lge. 314, H-3, SCL, spud 5-30-83, plugged 8-16-89, TD 7350' (oil)

OLDHAM (SUNDANCE Upper Granite Wash) Baker & Taylor Drlg. Co., #3 Parker Creek, Lge. 307, SCL, spud 10-13-81, plugged 8-24-89, TD 7505' (oil)

Count on the
Classifieds
to Do the Job

Oil & Gas Reporting Service

Box 2052 Pampa, TX 79065

Providing the Oil & Gas Report
for Hansford County Readers

Doris Harrison

Phone 665-5800

ATTENTION!

Before Excavating

Please Call

HIGH PLAINS NATURAL GAS COMPANY

at (806) 323-6464

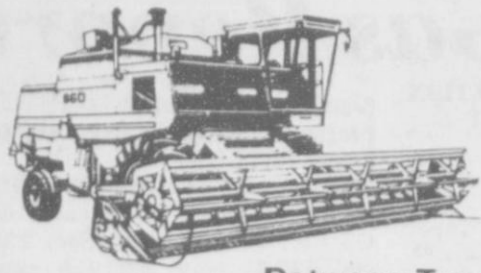
WARNING

GAS PIPELINE

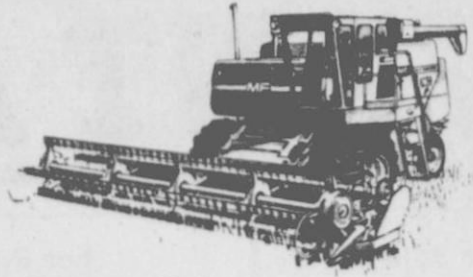
IN EMERGENCY, CALL COLLECT

(806) 323-6464

HIGH PLAINS NATURAL GAS CO.



Harvest of Values



Between Two Dealerships We Have Traded For Some Of The Cleanest Used Cars & Trucks In The Panhandle!
We Have Over 70 Vehicles At Both Dealerships For Sale, And We Are Cutting Deals Like You Have Never Seen!

DON HERGERT MOTORS

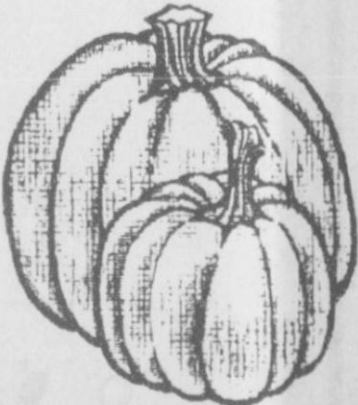
- 1989 Cadillac Fleetwood Brougham (rear wheel drive) - White**
Cloth 60/40 power seats & recliner, windows, locks, tilt, cruise, am/fm cassette, vinyl roof & wire wheels
10,000 miles & immaculate!Cash Price \$21,500.00
- 1988 Chevy 1/2 ton Silverado - Brandywine/Silver**
350 V8 EFI, automatic, air, tilt, cruise, am/fm cassette, power windows & locks 23,000 milesCash Price \$11,500.00
- 1988 Chevy 1/2 ton Silverado - Red/White**
350 V8 EFI, automatic, air, tilt, cruise, am/fm cassette, power windows & locks 34,000 milesCash Price \$10,250.00
- 1987 Cadillac Fleetwood Brougham (rear wheel drive) - White**
Cloth 60/40 power seats & recliner, windows, locks, tilt, cruise, am/fm cassette, vinyl roof and wire wheels 57,000 milesCash Price \$16,500.00
- 1987 Pontiac Grand Am LE 2 door - Metallic Red / Charcoal**
4 cylinder EFI, automatic, air, tilt, cruise, am/fm cassette and luggage rack 42,000 milesCash Price \$7,500.00
- 1986 Buick Riviera 2 door - Jade/Stone Flamingo**
V-6 EFI, wire wheels, cloth bucket seats, power seats & recliner, windows, locks, tilt, cruise, am/fm cassette 34,000 milesCash Price \$10,900.00
- 1986 Buick Park Avenue 4 door - Light Metallic Blue / Dark Blue**
V8 EFI, new steel radials, wire wheels, tilt, cruise, am/fm cassette 74,000 milesCash Price \$8,900.00
- 1986 GMC 1/2 ton 4 X 4 Suburban - Red / Black**
350 V8, Sierra Classic, bench seats, front & rear air, tilt, cruise, windows, locks, rally wheels and running board 50,000 milesCash Price \$13,900.00
- 1986 GMC 1/2 ton 4 X 4 Sierra Classic - Almond Tan**
6.2 Diesel, automatic, air, tilt, cruise, am/fm cassette, new steel radials, rally wheels 55,000 milesCash Price \$8,900.00
- 1986 GMC 1/2 ton 4 X 4 Suburban - Charcoal / Red**
350 V8 Sierra Classic, bench seats, front & rear air, tilt, cruise, windows & locks 90,000 milesCash Price \$10,900.00
- 1985 Chrysler 5th Avenue 4 door - Silver**
V8, Turbo Chrysler mags, cloth 60/40 power seats, windows, locks, tilt, cruise, am/fm stereo 64,000 milesCash Price \$6,900.00
- 1985 Chevy 1/2 ton Silverado - Black**
V6, automatic, air, tilt, cruise, am/fm stereo, rally wheels 70,000 milesCash Price \$6,500.00
- 1985 Ford 3/4 Ton Conversion Van - Red / Burgundy**
351 V8, chrome mags, running boards & rack, front & rear air, tilt, cruise, am/fm cassette
Nice Conversion & only 54,000 milesCash Price \$11,500.00
- 1985 GMC 1/2 ton Sierra Classic - Red / Tan**
6.2 Diesel, Automatic, air, tilt, cruise, windows & locks, am/fm cassette 78,000 milesCash Price \$5,500.00
- 1985 GMC 1/2 ton Caballero (El Camino) - White**
305 V8, brand new steel radials tilt, cruise, am/fm stereo, 64,000 milesCash Price \$5,500.00
- 1985 Jeep 1/2 Ton 4 wheel drive - Almond Tan**
V8, automatic, air, tilt, am/fm cassette Good work pickupCash Price \$3,900.00
- 1984 Cadillac Seville 4 door - Silver**
V8 EFI, wire wheels, Michelin, blue leather, power seats & recliner, tilt, cruise, am/fm cassette
High mileage but looks & runs great!Cash Price \$6,500.00
- 1984 Mercury Grand Marquis 4 door - Silver**
V8, vinyl roof, wire wheels, power seats, tilt, cruise, am/fm cassette 58,000 milesCash Price \$ 5,900.00



- 1984 Olds 98 Regency Brougham 4 door - 3 to pick from**
1 Burgundy, 1 White, 1 Light Metallic Brown - 70,000 to 84,000 miles. All loaded with vinyl roofs, wire wheels, power seats, windows, locks, tilt & cruise. All 3 have hail damageYour Choice \$5,500.00
- 1984 Ford 3/4 Ton Bronco Conversion Van - Metallic Blue/Silver**
351 V8, automatic, front & rear air, tilt, cruise, am/fm cassette, running boards & rack 34,000 milesCash Price \$9,900.00
- 1984 GMC 1/2 Ton 4 X 4 Suburban - Dark Blue / White**
350 V8, Sierra Classic, automatic, front & rear air, tilt, cruise, am/fm cassette High mileage but looks & runs great!Cash Price \$6,500.00
- 1984 GMC 1 Ton Cab / Chassis - 84" on - White**
454, Automatic, air, tilt, cruise, am/fm, dual tanks, 6 brand new steel radials, Sierra Classic Cab High mileage but looks and runs great!Cash Price \$7,000.00
- 1983 Buick LeSabre Limited 2 door - Dark Metallic Blue/White**
V8, automatic, air, power seats, tilt, cruise, am/fm cassette
High mileage but mechanically sound!Cash Price \$3,900.00
- 1983 Chevy 1/2 Ton Silverado - Black / Charcoal**
305 V8 (overhauled), mags, tilt, cruise, windows, locks am/fm cassette, chrome rails & bumper. A real eye catcher!Cash Price \$4,900.00
- 1982 Buick Park Avenue 4 door - Silver / Dark Blue**
V8 Buick mags, power seats, tilt, cruise, am/fm cassette
75,000 milesCash Price \$3,900.00
- 1982 Chevy 1/2 Ton Silverado - Red / Silver**
6.2 Diesel, automatic, air, tilt, cruise, am/fm cassette, windows & locks 76,000 milesCash Price \$4,500.00
- 1981 Cadillac Fleetwood Brougham 2 door - Dark Metallic Blue**
Power seats, windows, locks, tilt, cruise, am/fm 8 track, High mileage but great mechanicallyCash Price \$3,500.00
- 1981 Buick Park Avenue 4 door - Light Metallic Brown / Tan**
V8, Automatic, air, tilt, cruise, am/fm, power seats, vinyl roof, wire wheelsCash Price \$3,500.00
- 1980 Mazda GLC 2 door - White**
4 cylinder, 4 speed good economical carCash Price \$1,500.00
- 1980 Pontiac Catalina 4 door - Metallic Red**
V8, wire wheels, new steel radials, am/fm, air, cruiseCash Price \$1,900.00
- 1979 Mercury Cougar 2 door - Creme Belos**
V8, automatic, air, cruise, windows, locks, am/fm cassette
Good school car!Cash Price \$2,500.00
- 1979 Lincoln Continental Town Car 4 door - Turquoise**
85,000 miles, 400 V8, Lincoln mags, leather power seats, am/fm, CB. Good road car!Cash Price \$3,000.00
- 1979 Cadillac Fleetwood Brougham 4 door - Pastel Yellow**
V8, Power seats, wire wheels, windows, locks, tilt, cruise, am/fm, vinyl topCash Price \$3,000.00
- 1979 Chevy 1/2 Ton 4 x 4 Suburban - White / Red**
400 V8, automatic, front & rear air, tilt & cruise, chrome wheels, trailer package, Silverado cabCash Price \$5,000.00
- 1978 Chevy 1/2 Ton Suburban - Bronze / White**
454 V8 (We overhauled), automatic, front & rear air, tilt & cruise, am/fm cassette, running boards, trailer package, Silverado cabCash Price \$4,000.00
- 1975 Chevy Monza 2 door - Burgundy**
V8, automatic, air, steel radials, wire wheels. Good starter car!Cash Price \$750.00

HERGERT FORD

- 1989 Lincoln Town Car - Light Crystal Blue**
Blue leather interior, air / cruise, tilt, am/fm cassette, power driver seat 13,000 milesCash Price \$18,900.00
- 1989 Lincoln Town Car - Silver**
grey leather interior, air, cruise, tilt, am/fm cassette, power driver seat 12,000 milesCash Price \$18,900.00
- 1989 Lincoln Town Car - Metallic Red**
Red leather seats, air, cruise, tilt, am/fm cassette, dual power seats 13,000 milesCash Price \$18,900.00
- 1989 Mercury Sable - Light Crystal Blue**
Bluecloth interior, air, cruise, tilt, am/fm cassette
Only 10,000 milesCash Price \$11,500.00
- 1988 Lincoln Continental - Brown**
Brown cloth seats, cruise, tilt, am/fm cassette, windows & locks Only 18,000 milesCash Price \$ 18,900.00
- 1986 Cadillac Seville 4 door - Rosewood**
Leather interior, loaded with all the options
Only 29,000 milesCash Price \$14,900.00
- 1985 Cadillac Seville D-Elegance two tone Brown/ Creme**
Leather interior, some hail damage LoadedCash Price \$6,500.00
- 1985 Mercury Grand Marquis 2 door - White/Metallic Red**
Red vinyl top, like new with all the extra!Cash Price \$7,900.00
- 1989 Ford F-150 1/2 Ton 4 X 4 Supercab XLT Lariat - Red / White**
windows, lock, cruise, tilt, air and 302 EFI
Automatic transmission w/ overdrive 27,000 milesCash Price \$14,900.00
- 1988 GMC 1/2 Ton Sierra Classic - Brandywine**
All the options 58,000 milesCash Price \$9,800.00
- 1986 Ford Bronco XLT Lariat - Red/White**
4 wheel drive with all the toysCash Price \$10,900.00



- 1986 Ford F-350 4 X 4 with utility boxes - Red**
Red exterior, 460 engine and automatic transmissionCash Price \$7,900.00
- 1984 Ford F-150 Supercab 2-tone Blue**
302 with automatic OD and new tiresCash Price \$6,200.00
- 1984 Ford Customized Van - White / Blue**
One owner and in excellent conditionCash Price \$8,500.00
- 1985 Dodge Ram 1/2 Ton - Silver**
4 cylinder and manual transmission,
Good economical transportationCash Price \$2,950.00
- 1983 Jeep Grand Waggoner Limited 4 door - Gold/woodgrain**
Local owner and loaded 74,000 milesCash Price \$6,500.00
- 1983 F-150 4 X4 White with Blue Interior**
Truck in excellent condition, 351 engineCash Price \$ 5,500.00
- 1983 F-150 4 X 4 - Red/White with Red Interior**
351 engine, automatic transmissionCash Price \$6,200.00
- 1983 Olds Cutlass Cruiser Station Wagon - Metallic Brown**
3.8 V6 and well keptCash Price \$3,450.00
- 1983 Olds 98 Regency Brougham 4 door - White**
red leather power seats and loadedCash Price \$3,950.00
- 1982 Buick Park Avenue 2 door - Charcoal Grey**
Power cloth seats and loadedCash Price \$3,250.00
- 1980 Buick Century 4 door - Cream/Tan vinyl top**
Only 38,000 miles. Must see this one!Cash Price \$2,950.00
- 1979 Pontiac Catalina Stationwagon 4 door - Light Metallic Blue**
High mileage but runs great!Cash Price \$1,750.00

Many Of These Vehicles Have Factory Warranty That Is Transferable Too!
We'll Make The Drive Worth Your While! We Appreciate Your Business!

Darl Hergert
Kip Lofland
420 S. Main



Donnie Hergert
Clifford Baileys
435-3686

Don Hergert
Steve Clumsky
Leo Myers



2322 S. Main
435-7676

