

Joint Effort Results In Two Arrests For Burglary

A joint effort between the Hansford County Sheriff's Dept. and the Spearman Police Dept. has led to the arrest of two men believed responsible for recent burglaries in the area.

Sheriff R.L. McFarlin reported that \$16,000 worth of stolen cash and merchandise were recovered at the time of the arrests. The two men were arraigned on four counts of burglary, with bond set at \$25,000.

"It's one of those deals where you get the last piece of a puzzle," said Sheriff McFarlin. This last piece of the puzzle led to an old wooden granary about three miles south of Spearman. Hidden in the granary was most of the stolen merchandise from burglaries in this area and one burglary of the Waka school system. Officers also recovered \$1,200 in cash.

The five burglaries in this area that were cleared up with this arrest started the middle of August. The first was the break-in at the Mission Cable office on August 18 or 19. This was followed by a break-in at Hansford Implement and the city sewer plant the first of September.

The Hansford Implement office was broken into once again in October. The last break-in was at the Golden Spread Sales Company office a week ago.

Lynx Band Marches At Borger UIL Contest

The Lynx Marching Band received a score of two for its performance at the UIL contest held in Borger. The Saturday afternoon performance was the first UIL Contest performance in four years for the Lynx Band. The score of a two means the judges thought the Lynx performance was excellent. By comparison the Gruver and Perryton Bands each scored the next level down, a three.

This is the only UIL competition for marching bands at the District level. Two bands from each class will be selected to compete on the Area level, scheduled for Wichita Falls Stadium, Nov. 4. At the area level, the three districts represented will then select two bands from each class to compete at the State Contest in Austin, Nov. 13.

Judges for the competition were selected from a list of qualified professionals by the District I directors. They are Phil Anthony, Coronado High School, Lubbock; Dan Norris, Frenship High School, Lubbock; and O.T. Ryan, Plainview High School.



The Lynx Marching Band earned a rating of II, or Excellent, at the UIL Marching Contest held Saturday at Borger. The contest was the first in four years for the band.

WEATHER

Day	High	Low	Precip.
Fri.	80	32	0
Sat.	80	44	0
Sun.	82	42	0
Mon.	81	46	0
Tue.	84	47	0
Wed.	56	0	0



The Spearman

Reporter

25¢
Per Copy

6 Pages

Volume 81, No. 52

YOUR HOMETOWN NEWSPAPER

Thursday, October 26, 1989

SHS Student Council Sponsors Blood Drive

Coffee Memorial Blood Center of Amarillo is asking Spearman residents to donate blood Monday, Oct. 30 from 9:00 a.m. to 3:00 p.m. in the Spearman High School library. The blood drive is being sponsored by the SHS Student Council.

Some Spearman residents may wonder about requirements for donating blood, so the Blood Center has provided a list of donor requirements.

Age- You must be at least 17 with parents consent and any adult in good health is eligible to donate.

Weight- donor must weigh more than 110 pounds.

Pregnant- you are not allowed to donate if you are pregnant, you must wait 6 weeks after pregnancy.

Antibiotics- you are able to donate when taking antibiotics as long as there is no infection.

Aspirin- you may donate when taking aspirin just be sure and let the nurse know.

Surgery- you need to wait 6 months and be released by your doctor before you donate/also needs to be evaluated by the screener.

Tattoos- you must wait 6 months before donating.

Ears pierced- need to be evaluated by screener.

Cold- if you have a cold, please do not donate at this time.

Blood pressure medicine- you may donate as long as it does not involve the heart.

Cancer - Skin cancer only - ALL OTHER TYPES MUST BE PERMANENTLY DEFERRED.

Birth Control Pill- OK

Jaundice- (yellowing of the skin after 2 weeks of birth) please do not donate.

Asthma- no symptoms

Heart problems- please do not donate.

Tuberculosis- you may donate if you are not on medication and you have a negative chest x-ray every year.

Malaria- Cannot donate if diagnosed with malaria. OK to donate if you have taken malaria medications but have not left the country. Can donate if treated over 3 years ago and no recurrence.

Hepatitis B- Cannot donate if you have had a reactive test to the hepatitis vaccine or anyone in your immediate family currently has hepatitis.

AIDS-Please Do Not donate if you have been exposed to anyone who has been diagnosed with AIDS or consider yourself to be in the high risk group.

You may donate every 56 days if you wish.

According to the Spearman Chamber of Commerce, little ghosts and goblins should be making their "trick-or-treat" rounds on Halloween night, Tuesday, Oct. 31. Spearman residents are urged to use caution when driving that evening, and parents are urged to explain trick-or-treating safety rules to their children.

Hospital Notes

Admissions

Friday, Oct. 20 - Faye Schmehr, Annie Allen, Clifford Hornsby.

Saturday, Oct. 21 - Gene Leath-erman, Ester Stewart.

Sunday, Oct. 22 - None

Monday, Oct. 23 - Ellen Mayberry, Ramon Cantu, Frank Mas-sad, Thelma Wright, Katherine Farris.

Tuesday, Oct. 24 - Henry Babitzke, Audene Beck.

Sarpalius To Speak At NGSPA Meeting

Rep. Bill Sarpalius (D-TX) will be the featured speaker during the National Grain Sorghum Producers Association (NGSPA) meeting at the Amarillo Farm and Ranch Show, November 28. The meeting will be held in the meeting room at the Amarillo, Texas Civic Center from 1 p.m. to 3 p.m. The Texas congressman will update producers on current farm legislation, the 1990 farm bill and GATT treaty status. He will also be available for a discussion with producers following his presentation. NGSPA will include a segment on association activities concerning legislation and promotion efforts.

The meeting is held in con-

junction with the Fifth Annual Amarillo Farm and Ranch Show, which runs from November 28 through November 30. The show hours are 10 a.m. to 6 p.m. daily. Agri-business companies from throughout the U.S. and Canada will have their products and services on display for farmers and ranchers attending the show.

"We would like this meeting to focus on producer concerns and give producers a chance to speak one-on-one with Congressman Sarpalius about those issues," stated NGSPA President, Billy Bob Brown. As such, NGSPA extends an invitation to all parties who are interested in attending the meeting.

Lynxette CC Teams Run

The Lynxette Cross Country varsity team posted a win at last Saturday's Dalhart meet, with the JV team placing fourth in its division. A total of 10 teams competed at Dalhart.

Lynxette varsity runners, their final placement and times include Michelle Cook, 3rd, 13:01; Joy Gafford, 16th, 13:29; Haley Shieldknight, 17th, 13:30; Sonya Nitschke, 19th, 13:32; Jill Lusby,

20th, 13:32; Nancy Ivey, 23rd, 13:36; Kyla Nelson, 29th, 13:49; Shannon Holton, 33rd, 13:56; Kimbre Townsen, 41st, 14:06; and Suzanne Sanders, 46th, 14:16.

JV runners, placement and times include Ashley Shieldknight, 11th, 14:22; Mary Cook, 13th, 14:25; Amanda Nobles, 15th, 14:27; Melody Schumann, 22nd, 14:58; Michelle Garnett, 25th, 15:10; and Shea Crawford, 27th, 15:12.

Lynx Lose To Panthers

It was the quickness of the Panhandle varsity football team that allowed them to beat the Lynx varsity football team 33 - 0.

It was the quickness of the Panthers' offensive line as it fired off the snap of the ball. It was the quick feet of the Panthers' running backs that broke through the holes their line opened in the Lynx defense. Those same quick feet side-stepped and broke tackles to gain extra yards.

It was that quickness that allowed the Panthers to score three touchdowns in the first quarter, while holding the Lynx offense to less than 40 yards of total defense.

One of the bright spots for the Lynx team during the first quarter was a 15 yard pass completion at the end of the quarter. Edward Mayfield hit Scott Wilkerson for the 15 yard gain and the Lynx's first first down.

In the second quarter the Panth-

er offense slowed down a little, scoring only one touchdown. The Lynx offense improved some. They made two first downs. One first down was a 20 yard pass completion to Tim Kizziar.

The second half began with the Panthers scoring their last touchdown. From this point on, the Lynx kept the Panthers out of the end zone. This half, Lynx highlights featured a 12 yard pass reception by Kizziar and a 10 yard run by Tim Dooly.

This Friday the Lynx will travel to Highland Park to play the Hornets. The Hornets are having a similar season to the Lynx. they are 1 - 6 this year. They were humiliated by West Texas last week, 69 - 0.

Despite their record, the Hornets have a good passing game so the Lynx secondary will have to be ready. The Lynx offensive line will need to put on a good rush to pressure the Hornets' quarter-back.

Well Completions Down In September

Texas oil and gas operators reported 177 gas and 387 oil completions in September, according to Railroad Commission Chairman Kent Hance. In August total was 266 gas and 523 oil completions. September 1988's total was 192 gas and 509 oil completions.

Gas completions in September included nine in the San Antonio area (District 1), 21 in the Refugio area (District 2), 28 in Southeast Texas (District 3), 42 in deep South Texas (District 4), five in East Central Texas (District 5), 18 in East Texas (District 6), 15 in West Central Texas (District 7B), nine in the San Angelo area (District 7C), seven in Midland area (district 8), one in the Lubbock area (District 8A), seven in North Texas (District 9), and 15 in the Panhandle (District 10), according to Hance.

Oil completions included 49 in the San Antonio area (District 1), 14 in the Refugio area (District 2,

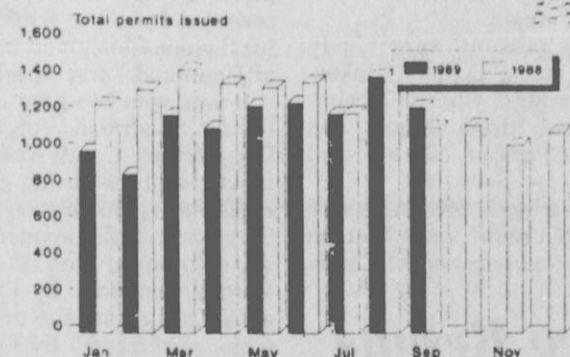
35 in Southeast Texas (District 3), 10 in deep South Texas (District 4), eight in East Central Texas (District 5), 12 in East Texas (District 6), 60 in West Central Texas (District 7B), 28 in the San Angelo area (District 7C), 70 in the Midland area (District 8), 34 in the Lubbock area (District 8A), 57 in North Texas (District 9), and 10 in the Panhandle (District 10).

Total completions reported in September included 387 oil, 177 gas, and 41 service completions. In August, operators filed 523 oil, 266 gas, and 64 service completion reports.

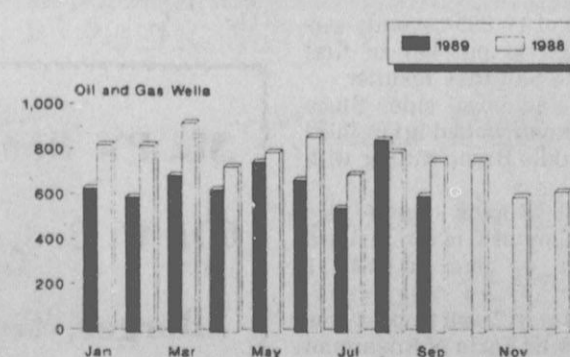
In the first nine months of 1989 the Commission has recorded a total of 6,206 well completions, a 20.6 percent decrease from the 7,824 well completions recorded during the same period of 1988.

Hance said operators reported 849 holes plugged in September, compared to 907 in August. A total of 178 dry holes were reported in September, compared to 250 in August.

Texas Permits to Drill
Monthly Totals, 1988-1989



Texas Well Completions
Monthly, 1988-1989



Corrections

The entertaining commercials in the SHS Chorale's show were presented by the theater arts class. The skits, comedy routines, and one-liners were all done by high school chorale members.

A tea will be held Monday, Oct. 30 from 6:00 to 7:00 p.m. at Perry Memorial Library in Perryton to honor Dorothy Haner, the Library's October Artist of the Month.

Sunday's Hansford Plainsman incorrectly reported the tea would be held at the Hansford County Library. We regret any inconvenience this may have caused.

Among The Neighbors

by Helen Fisher

With word of the passing of Florence Holton Davidson, the years roll back and memories of the pretty and gracious Florence flood in.

Richard and Elizabeth Holton were notified of her passing early Monday morning. They had returned last week from several days visiting with her at Carthage, Missouri. Her death at age 69 resulted from a two year illness.

Services were held Wednesday and interment was at Carthage. Other than her brother Richard, she is survived by her husband Dale, daughter Debbie, of Carthage, son Gary of Neosho and two grandchildren.

Florence was the daughter of Mr. and Mrs. R.H. Holton and came to Spearman as a small child. She attended school here, graduating in 1937. After spending several years in California, she returned to Spearman during the war years and later married Dale Davidson.

They, with her father, moved to Carthage in 1952 and she has lived there since.

Sympathy is extended to the family.

October will be remembered as a most eventful month for Dora Womble. On Oct. 2, she became a great-grandmother - creating this new experience was Chelsie L'nae West. She was born in the Dumas Memorial Hospital to Roger and Kris West of Stratford.

Grandparents are Jeanne and Hal Bennett of Stratford, Tommy West of Albuquerque, Harvey and Connie O'Quin, Stratford; the other great-grandparents are Mr. and Mrs. George O'Quin of Dallas.

On Oct. 11, Dora became a great-grandmother for the second time. Sherry and Kyle Corley of Arlington announced the arrival of Shanna Marie.

Her grandparents are Jerry and Jackie Womble of Morse, and Mr. and Mrs. Bob Corley of Sherman.

In contrast to the joy of the new arrivals was the serious accident in which Jerry Womble was hospitalized. He is now in the Bivins Rehab Center in Amarillo and they are encouraged by his progress. He has regained partial use of some of his limbs, but they are aware that there is a long road ahead to complete recovery. He will remain in the center and is optimistic but would welcome cards and calls.

The friends of Penny Thomas needn't be concerned--she hasn't changed her name or marital status. Last week this column mentioned that she had been entertaining their grandson, but her name came out Penny Davis. Sorry, Penny.

Newell and Dickie Allen returned Saturday night from a four week California sojourn. First they drove to Pismo Beach and met his sisters, Norma Jo Peargin of Visalia and Maxine and Dick Vernon of Springville. After

several days of sea, sun and sand, they spent some time in Springville.

They went on to Las Vegas and met Marcus and Jo Larson for a week. They were there when the earthquake struck.

There were reports that it was felt in Vegas, but Newell and Marcus attributed the tremors to their earthshaking activities at the tables!!!

Inez Holland is still savoring the enjoyment of a week in Dallas with her son Jerry and Kathy. They met her at the airport and took her to their home on Cedar Creek Lake. During the week she attended the wedding of their daughter, Leslie. The weather was perfect for the entire week.

Major and Ruth Lackey were pleased to have weekend guests from Lubbock. Their daughter, Bobbie Jean and son Todd Wilson, Mike Lackey and friend Vickie Buchanan kept busy helping them to get ready for winter.

Frances Stump is about ready to resume her usual activities after a stay in a couple of hospitals. First she was at Ochiltree General in Perryton, then transferred to St. Anthony's in Amarillo. Fortunately surgery was avoided, at least for now, and she has been recuperating at home with a capable staff to care for her. Grandson Mike Ladd is the chef in charge of the cooking and J.R. is doing the nursing, so Frances has no choice but to recover, and quickly.

Frances is very appreciative of the expressions of concern and attention of her friends.

Mr. and Mrs. Bobby Close, daughter Judy Fields and her three sons spent the weekend here with Bobby's sister, Idella and Willis Randall. While they were here, their Spearman cousins and Aunt Hollie and Earl Riley called to renew ties.

Mr. and Mrs. Billy Close of Sunday came over one day also. It has been 24 years since Bobby lived in Spearman. He now lives at Ft. Gibson, Okla. where he is employed by a sand and gravel company.

Mozelle Sparks drove to Lubbock Friday and spent the weekend with son Teddy. On the return trip she stopped in Amarillo for a Sunday night stay in the home of Mr. and Mrs. Gene Sparks.

Mr. and Mrs. Owen Pendergraft drove to Tyrone on Friday and spent the night with an old friend, Mrs. Lillian Ottaway. On Saturday they all drove to Garden City for the steak luncheon given annually by Dr. Fry. This is for all his cataract patients and was a thoroughly enjoyable occasion with an interesting program. Incredible for Owen and Olive was the fact that the doctor even paid mileage for all his guests.

Mechelle Graham Receives Scholarship



Mechelle Graham

Mechelle Graham, freshman, was the recipient of a Monroe E. and Merle Ansley Bains Endowed Student Aid Scholarship from Hardin-Simmons University.

Graham is the daughter of Mr. and Mrs. Preston Graham of Spearman.

The fund for this scholarship was established in 1984 with a bequest from the estate of Merle Ansley Bains of Winters. The proceeds are used for scholarships or loans for worthy students. The Student Aid Committee determines the recipients of proceeds from this endowment.

Retired Ministers' Day Observed Sunday



Rev. and Mrs. Frank Oglesby

First United Methodist Church will observe Retired Ministers' Day Sunday, Oct. 29 in its 11:00 a.m. worship service. Preaching at the morning service will be retired minister and former pastor at First United Methodist Church, Frank Oglesby, who served in

Spearman from 1977 - 1980.

The church extends an invitation to anyone in the community who would like to come to the special event. There will be a covered dish luncheon following the morning service.

LCU Chorus To Sing At Church Of Christ

The A Cappella Chorus of Lubbock Christian University will present a program of sacred music at the Spearman Church of Christ Wednesday, Nov. 8 at 7:30 p.m.

The LCU A Cappella Chorus is widely acclaimed for its standard of choral excellence, as well as for its outstanding group spirit and loyalty. The Chorus has performed in states from California to Florida, plus Hawaii, Alaska, and seven European nations since its origin in 1957. In addition to concert tours, the LCU A Cappella Chorus releases about one recording each year. Both concert and hymn albums by the chorus have received very fine acceptance.

According to Dr. Wayne Hinds, director of the A Cappella Chorus and chairman of the Music Department at LCU, the repertoire for the Spearman performance will include hymns, concert religious numbers, and American spirituals. Two ensembles will be featured during the program: a men's quartet and women's octet.

The Department of Music at Lubbock Christian University has five major organizations -- the A Cappella Chorus, the Meister-singer Chorus, a jazz band, Forte,

and Chamber Ensembles. Approximately 20 percent of the LCU student body participates in one of these organizations. The Music Department presently offers a Bachelor of Arts degree in Music.

Of particular interest to Spearman residents are two of the choir's members. Deana Turner, daughter of Philip and Molly Turner; and Jennifer Turner, daughter of Loyall and Ginger Turner, both sing with the A Cappella Chorus.

BBB Offers Arbitration

Your Better Business Bureau has a free program that settles disputes between consumers and companies.

Volunteers are needed to help administer this program. A free training session is scheduled for early November.

Call the Better Business Bureau at 358-9235 for more information.

The Spearman Reporter
Your Hometown Newspaper
USPS 509660 Spearman, Tx. 79081
213 Main, Box 458, 659-3434
Published Weekly at 213 Main, Spearman, Texas
Owned and Operated by: Texas Independent Newspapers, Inc. 19906 Encino Grove, San Antonio, Tx 78259
Second class postage paid at Spearman, Texas 79081.
Any erroneous reflection upon the character of any person or firm appearing in these pages will be gladly and promptly corrected upon being brought to the attention of the management.
PUBLISHER - Robert M. Hulet
Subscription Rate: Hansford, adjoining counties, combination with the Hansford Plainsman \$19.95; non-adjointing counties, \$24.95 annually.
Postmaster: Send address changes to Spearman Reporter, Box 458, Spearman, Tx. 79081.
The publisher reserves the right to revise or reject at its option any advertisement which it deems objectionable, either in subject or phraseology, or which it may deem detrimental to its business.

Obituaries

Derl Dean Spoonemore

Derl Dean "Spoonie" Spoonemore, 57, of Pampa died Oct. 22 in Amarillo.

Born in Hobbs, N.M., he moved to Pampa in 1944 from Shamrock. He married Susie Huff in 1957 at Lefors. A 36-year employee of IRI International, he was a member of Pampa Masonic Lodge No. 966 AF&AM and First United Methodist Church. Mr. Spoonemore served in the U.S. Navy during the Korean conflict.

Survivors include his wife; a son, Randel D. "Roody" Spoonemore of Rockwall; his mother, Nina Spoonemore of Pampa; two brothers, W.A. Spoonemore Jr. of Spearman and Don Spoonemore of Hobbs, N.M.; and three sisters, Maxine Adkisson of Amarillo, Bernice Tew of Tyler and Juanita Covington of Corpus Christi.

Funeral services were Tuesday in First United Methodist Church of Pampa with the Rev. Hugh Daniel, pastor of Lamesa First United Methodist Church, and Dr. Max Browning, pastor, officiating. Burial was in Memory Gardens Cemetery by Carmichael-Whitley Funeral Directors.

The family requests memorials be to St. Anthony's Hospice and Life Enrichment Center or Pampa City Parks and Recreation Department, in care of John Horst, P.O. BOX 2499, Pampa, Texas 79065.

Ophelia McLaury Swink

Ophelia McLaury Swink, 76, of Aspermont, died Oct. 22 at Lubbock. Funeral services were scheduled for Tuesday, Oct. 24 from the First Baptist Church of Aspermont with Rev. Howard Jones officiating. Burial was in Aspermont Cemetery under the direc-

tion of McCoy Funeral Home. Mrs. McLaury was born Jan. 8, 1913 in Stonewall County and was a lifelong Stonewall County resident. She was a homemaker and retired farmer and rancher. She was a member of the Baptist Church and was formerly active in 4-H and FFA.

She was married to Welon Burr Swink April 5, 1933 at Frederick, Oklahoma.

Survivors include her husband, of the home; two daughters, Mrs. Henry (Lytea) Dickerson of Aspermont and Mrs. Marvin (Yvonne) Shipp of Bernett, Texas; seven sons, Travis Swink of Spearman, Ivy Swink and Troy Swink, both of Aspermont, Wayne Swink of Waco, Bill Swink of Stanton, Donnie Swink of Crosbyton and Jerry Swink of Breckenridge; three sisters, Eula Mae Clark of Aspermont, Grace Wickware of Long Beach, Calif. and Lillie Mae Graville of Hobbs, N.M.; one brother, Homer McLaury of Sudan, Texas; 20 grandchildren; and 15 great-grandchildren.

She was preceded in death by a son, H.W. Swink; a grandson, Royce Wayne Swink; and a brother, Herman McLaury.

Memorials may be made to West Texas Rehabilitation Center.

THANK YOU

Words of appreciation cannot express thanks for the friends, visits, cards and prayers while in hospitals.

Love You, Frances Stump

Club News

SERVITORS

Servitors held their October 19 meeting at City Hall and enjoyed an Oriental meal. Members present were Cindy Avila, Eva Baca, Darlene Baker, Linda Cummings, Cheryl Gibson, Hope Moore, Maria Ochoa, Lee Schubert, Charlotte Sheets and Kim Vera. New members present were Donna McCubbin and Marsha Olivas. The registration of Cindy

Rodeo Results

Kelly McCloy of Gruver took first place in Barrels at the recent Wellington Tri-State High School Rodeo. Her time of 17.835 seconds was good enough to put her in first place in late Saturday results. Over on the boys' side, Stacy Nolan of Gruver wound up in third place in Saddle Bronc Riding with 38 points. The Calf Roping event saw Marty McCloy of Gruver in third place with a time of 14.111 seconds. Third place in Team Roping was taken by Mark Eakin of Spearman and Clay Bearden of Dumas, with a time of 7.388 seconds.

Clyburn was accepted. A thank-you note from the Stationmaster's House Museum was read for the donation that was given. Also, a thank-you note was received from the Gruver Library for the donation given in the name of Dean and Jerry Sparks. It was voted to give a donation to the Spearman Volunteer Fire Department. Candy Delozier, cub master of the scouting group, was a guest speaker and asked if Servitors would sponsor a shirt to be used for Cub Scout shirts. Motion was made by Linda Cummings to sponsor the drive, and it was seconded by Charlotte Sheets. It was voted not to have Secret Sisters this year. Servitors held the Sliced Carmel Apple booth at the PTA Fall Festival on October 21.

Ms. P's Boutique
601 W. 3rd
Borger, Texas

MAKE THE SMART MOVE. Weight Watchers.

IT'S SMARTER... because you can fit Weight Watchers into your everyday life. You'll be able to enjoy your favorite foods and not feel hungry...and still lose weight.

IT'S FASTER... because with our amazing Quick Success® Program you can lose weight faster than ever.

IT'S EASIER... because, right now, you can join Weight Watchers for only \$10. It's the easiest way in the world to lose weight fast and save money too!

JOIN NOW FOR ONLY... **\$10**
Registration Fee... \$17.00
First Meeting Fee... \$ 8.00
Regular Price... \$25.00
YOU SAVE \$15.00
Offer ends November 11, 1989

Come to the Weight Watchers meeting nearest you.

SPEARMAN
Home Extension Club
309 N. Bernice
Mon. 6:00 pm

PERRYTON
First Christian Church
901 South Jefferson
Thur. 5:30 p.m.

Nothing works like Weight Watchers!
CALL 1-800-359-3131
TOLL FREE

The Gift Of Autumn.

Free Gift With Any \$13.50 Merle Norman Cosmetic Purchase.

In the Gallery Gift you'll receive: Rosewine Semi Transparent Lipstick, Soft Lavender and Spirited Plum Eyeshadows, Luxiva Liquid Creme Foundation in Soft Beige and moisture rich Luxiva Eye Creme. We have one gift per customer while supplies last.

La Ray's
MERLE NORMAN COSMETICS
"Try Before You Buy"

300 Main
Spearman, TX 79081
806-659-5219

LINDA ANDREW

Panhandle Events

ALT

Theatre-goers who enjoy a quick-fire procession of super-quality thrills, surprises, shudders and sensations cannot afford to miss seeing the mystery vampire play *Dracula*, opening next Friday, October 27 at The Amarillo Little Theatre. Other thrillers are said to be bedtime stories compared to this narrative of the supernatural. Audiences will find the two hours of horror, surprises and thrills, not only to be blood-curdling but most entertaining as well-it will be the jolliest kind of blood-curdler imaginable.

Make your reservations early by calling 355-9991 between 9-4 p.m. Productions dates will be October 27 (7:30), 28, 31, and November 3 and 4. A special midnight show will be held on Saturday the 28th, and other times will be 8:00 p.m.

Muppet Babies

This year more than two million people will see Jim Henson's Muppet Babies live on stage in an all-new production called "WHERE'S ANIMAL?". The show began touring in September and ends 20,000 miles and 40 cities later in May. When "WHERE'S ANIMAL?" makes its Amarillo stop, the Muppet Babies will be entertaining audiences at the Amarillo Civic Center Coliseum Friday, October 27 through Sunday, October 29 for five performances.

Tickets are available at the Civic Center Coliseum Box Office or by calling (806) 378-3096.

Nell Tucker of Kenton is the artist whose work is being shown in the Gallery of No Man's Land Historical Museum in Goodwell, Oklahoma, during the month of October. A lifelong resident of Oklahoma, Mrs. Tucker describes her paintings as: "Landscapes of the Mind -- not traditional, not abstract, not impressionistic, not especially modern -- just Nell Tucker." From early experiences in Oklahoma City where in 1939 she established the city's third day nursery, through forty-seven years on a picturesque ranch near Kenton in the Oklahoma Panhandle, Nell's painting have developed.

Museum hours for October are : 9-5 Tuesday through Friday, 1-5 Saturday and Sunday. Closed all Mondays.

Pipeline Operations 23rd Annual Institute

Almost four decades ago and still growing strong, is the partnership between the Petroleum Industry Education Committee and the University of Kansas, as they embark on the 23rd Annual Pipeline Institute, November 7th and 8th, 1989, in Liberal, Kansas, at the Seward County Exhibition Hall.

FHA ARTS & CRAFTS FESTIVAL HOOKER, OKLA.

The Hooker High School FHA chapter will sponsor its 12th annual Arts and Crafts Festival Saturday, Nov. 11 at the Hooker Grade School All-Purpose Room.

Hours are 9:00 a.m. to 5:00 p.m. on Saturday. Set-up time will be from 7:00 a.m. to 9:00 a.m. on Saturday morning. The festival will be open to all artists and craftsmen with no restrictions as to amateur or professional standing.

For further information on the show, contact Anita Witt at (405) 652-2836 or 652-2754.

Nov. 11 — Indian Day, Canyon. A hands-on learning experience for children ages 3-12, this "know-how pow wow" of five tribes of the Southern Plains Indian relates directly with school curriculum. Activities include demonstrations of symbol art, sign language, face and sand paintings followed by performances. Indian story-telling, dance performances and a visit to a teepee are included in the day-long experience. Children must be accompanied by an adult. For more information, contact P.O. Box 967, WT Station, Canyon 79016 (806/656-2244).

Free Texas Travel Information

For more information about Texas attractions and destinations, call toll-free, 800/888-88-TEX. You'll receive a free copy of the colorful, 248-page *Texas State Travel Guide* as well as a Texas road map.

Spiritually Speaking

by Russ Gibbs
First Baptist Church

Have you ever noticed how some people never think about God until they are in trouble? I remember a story about a family that had been very active in their local congregation, but lost all interest in the church. The pastor and their fellow church members pleaded with them to get involved again, but nothing they did seemed to work.

One day the father and his sons were out in the fields working. A big rattlesnake bit one of the boys, and he became very ill. The doctor did everything he could for the boy and then told the family, "All we can do now is pray." Immediately the father sent for the pastor of the church. This is the prayer the preacher is reported to have prayed:

"O wise and righteous Father, we pray for this boy's full recovery. But we also thank you

for sending this rattlesnake. This family hasn't been in church for years, and we pray that this serpent will be used to bring them all to a spirit of genuine repentance. Already this snake has done more to turn them around than all the pleas of their fellow Christians. On second thought, Lord, maybe what our entire church needs are bigger and better rattlesnakes."

The Bible says, "Though I walk in the midst of trouble, You will revive me;" (Psalm 138:7) and "Will You not revive us again, that Your people may rejoice in You? Show us Your mercy, O Lord, and grant us Your salvation." (Psalm 85:6,7)

Salvation and spiritual revival are yours for the asking. Don't wait for disaster to strike before you realize how desperately you need the Lord in your life. Come to our church Sunday. We will help you find what you need.

Hance Urges Gas Industry To Beef Up Storage Capacity

Texas Railroad Commission Chairman Kent Hance recently urged the state's natural gas industry to increase the amount of natural gas in storage as a precaution against harsh winter weather.

Such prudent action, Hance said, will further enhance consumer confidence in natural gas as one of the nation's most cost-efficient and dependable energy sources.

Natural gas is stored in salt domes and abandoned or depleted gas reservoirs in order to ensure sufficient supplies during peak demand periods.

Failure to adequately boost reserves, Hance warned, could spark sporadic gas disruptions during peak demand periods brought on by sustained periods of

bitter winter weather.

"Although Texas has a bountiful and dependable supply of natural gas, the industry would be wise to prepare for the worst possible weather imaginable," Hance said. "Beefing up the state's reserve natural gas supplies will ensure that consumer confidence in this fuel source isn't shattered by harsh winter temperatures that could trigger record natural gas use."

Hance noted the bitter cold snap that enveloped the state last February spawned near-record levels of natural gas demand and led to sporadic disruptions in service that forced several schools, businesses and industries to suspend operations.



A person traveling the 93 million miles to the sun would take 21 years if flying at 500 miles per hour.

Join Our HALLOWEEN Costume Party!

We'll Be In Costume.

All Our Customers In Costume Will Receive A 25% Discount Off Meal Prices.

All Day Saturday, October 28th
5 a.m. to 10 p.m.

Kay's Cafe
210 Main

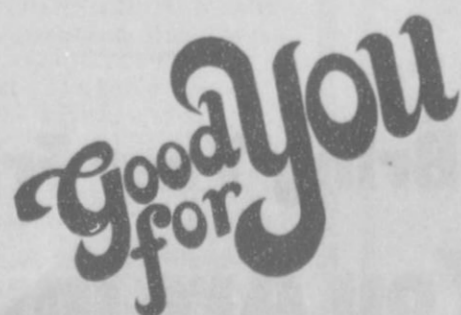


NOVEMBER CALENDER OF EVENTS

To put dates on this calendar, please call the Spearman Reporter Phone 659-3434.

SUNDAY	MONDAY	TUESDAY	WEDNESDAY	THURSDAY	FRIDAY	SATURDAY
			1 *Retail Merchants Chamber office 8:00 a.m	2 *Community Theater Rehearsal	3 *Lynx Football West Texas Here	4 *Lynette Cross Country Regionals Lubbock *4-H Food Show Workshop
5 * Attend the Church of your choice	6 * Rotary Meeting	7 *Lions Club *Community Theater Rehearsal	8 *Women's Division Exec. Board Chamber Office noon *4-H Food Show	9 *Community Theater Rehearsal *Veteran's Day Assembly 10 a.m. Jr. High Varsity Gym *C of C Board Chamber office Noon	10 *Lynx Football Boys Ranch There	11 *Veterans Day *Lynette Cross Country State Meet At Georgetown
12 * Attend the Church of your choice	13 *Rotary Meeting *Jr. High Basketball Vs. Perryton Boys Here Girls There *Community Theater Run Through	14 *Lion's Club *Community Theater Rehearsal	15 *SHS Basketball Perryton There JV & VARSITY Girls & Boys *Women's Division JJ's Rest. Noon	16 *Community Theater Dress Rehearsal	17 *SHS Basketball Sanford-Fritch There JV & Varsity Girls & Boys	18 *C of C Women's Div. Style Show Noon Methodist Church *Centennial Pageant
19 *Attend the Church of your choice *Community Church Service 7:00 p.m. High School	20 *Rotary Meeting *Jr. High Basketball Girls vs. Gruver Here Boys vs. Boys Ranch There	21 *Lions Club *SHS Basketball Channing Here JV Girls, Varsity Girls & Boys	22	23 *Thanksgiving Day	24 *SHS Basketball Turkey Classic Frenship There	25
26 *Attend the Church of your choice	27 *Rotary Meeting *Jr. High Basketball vs. Stratford Boys Here Girls There	28 *Lions Club *SHS Basketball Dalhart There JV & Varsity Girls & Boys	29	30 *SHS Basketball Canyon Tournament		

THIS COMMUNITY CALENDER OF EVENTS IS BROUGHT TO YOU AS A PUBLIC SERVICE BY:



"Your Full Service Bank"
Member FDIC

729 W. 7th

659-5544

COUNTRY BASKET®!

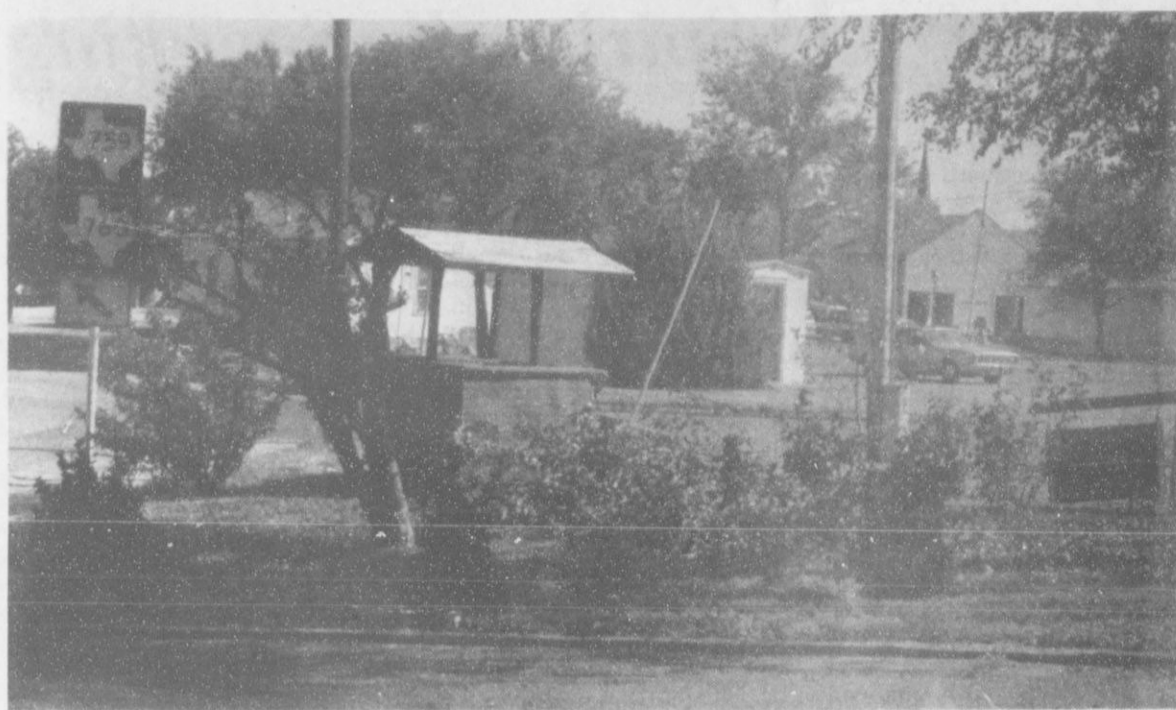


\$1.99* FOUR-FINGERS
SALE PRICE
OCTOBER 16-29, 1989

Delicious steak fingers, golden fries, Texas toast, and DAIRY QUEEN'S own special gravy.
Six-finger basket: SALE PRICE \$2.99.

*Reg. TM Tex. D.Q. Op. Coun. *Reg. TM Am. D.Q. Corp. 1989 Tex. D.Q. Op. Coun. *At participating Dairy Queen stores

ON SALE IN



The trees and shrubs on the northeast corner of the County Courthouse got an unexpected trimming over the weekend. Two cars were driven across the corner yard of the Court House. The vehicles knocked off branches of the small tree and plowed over several small shrubs.

Church To Hold Revival

First Baptist Church of Spearman extends an invitation to everyone to attend its Revival, set for Sunday, Oct. 29 through Wednesday, Nov. 1.

Worship services are scheduled for 11:00 a.m. and 7:00 p.m. on Sunday. There will be a noon luncheon and devotional each weekday, and evening services will be held at 7:30 p.m.

Featured speaker at worship services will be Tommy Phelps, evangelist, of Amarillo. Phelps, a former professional wrestler, became a minister in November 1962. He attended Southwestern Baptist Seminary from 1963 until his graduation in January 1966, when he received his diploma of Theology.

He pastored Inspiration Point

Baptist Church in Ft. Worth for two years, while attending Seminary. For 13½ months he was pastor of Temple Baptist Church in Hereford. He entered evangelistic work in January 1967.

Prior to entering the ministry, Phelps was known as "Nature Boy". He wrestled professionally for 17½ years in almost every major U.S. city and several foreign countries wearing fancy robes and capes, along with long, bleached-blond hair.

Special events during the Revival will include a mini-concert each night featuring guest musicians. Special concert artists scheduled to appear are Rex Forsyth on Sunday, Melody Grace on Monday, Greg Sills on Tuesday and Myra Vaughn on Wednesday.

In addition, Tuesday night is

being called "Treat Night." Beginning at 7:00 p.m. ice cream, sundaes and candy bags will be available for all children from Kindergarten through high school age.

Russ Gibbs, pastor of First Baptist Church, commented, "These four days will be an exciting experience for our church. We have combined 'old time' revival preaching with the best in Christian music. Our services will be different and fresh every night. I am looking forward to a unique blessing from the Lord."

Parents of small children will be interested in knowing the church will provide a nursery during every service. First Baptist Church is located at 123 Bernice in Spearman.

REPORT OF CONDITION

Consolidating domestic subsidiaries of the

FIRST NATIONAL BANK of SPEARMAN City

in the state of Texas at the close of business on September 30, 1989
published in response to call made by Comptroller of the Currency, under title 12, United States Code, Section 161.
Charter Number 18609 Comptroller of the Currency Southeastern District

Statement of Resources and Liabilities

ASSETS

	Thousands of dollars
Cash and balances due from depository institutions:	
Noninterest-bearing balances and currency and coin	1,555
Interest-bearing balances	7,132
Securities	18,072
Federal funds sold	0
Securities purchased under agreements to resell	0
Loans and lease financing receivables:	
Loans and leases, net of unearned income	13,069
LESS: Allowance for loan and lease losses	171
LESS: Allocated transfer risk reserve	0
Loans and leases, net of unearned income, allowance, and reserve	12,898
Assets held in trading accounts	0
Premises and fixed assets (including capitalized leases)	481
Other real estate owned	0
Investments in unconsolidated subsidiaries and associated companies	0
Customers' liability to this bank on acceptances outstanding	0
Intangible assets	0
Other assets	746
Total assets	40,884
Losses deferred pursuant to 12 U.S.C. 1823(j)	N/A
Total assets and losses deferred pursuant to 12 U.S.C. 1823(j)	40,884

LIABILITIES

Deposits:	
In domestic offices:	
Noninterest-bearing	2,573
Interest-bearing	35,205
Federal funds purchased	0
Securities sold under agreements to repurchase	0
Demand notes issued to the U.S. Treasury	0
Other borrowed money	0
Mortgage indebtedness and obligations under capitalized leases	0
Bank's liability on acceptances executed and outstanding	0
Notes and debentures subordinated to deposits	0
Other liabilities	401
Total liabilities	38,179
Limited-life preferred stock	0

EQUITY CAPITAL

Perpetual preferred stock	0
Common stock	1,000
Surplus	999
Undivided profits and capital reserves	706
LESS: Net unrealized loss on marketable equity securities	0
Total equity capital	2,705
Losses deferred pursuant to 12 U.S.C. 1823(j)	N/A
Total equity capital and losses deferred pursuant to 12 U.S.C. 1823(j)	2,705
Total liabilities, limited-life preferred stock, equity capital and losses deferred pursuant to 12 U.S.C. 1823(j)	40,884

We, the undersigned directors, attest to the correctness of this statement of resources and liabilities. We declare that it has been examined by us, and to the best of our knowledge and belief has been prepared in conformance with the instructions and is true and correct.

I, LYNNE MAIZE Name
VICE PRESIDENT AND CASHIER Title

of the above-named bank do hereby declare that this Report of Condition is true and correct to the best of my knowledge and belief.

Directors

Signature

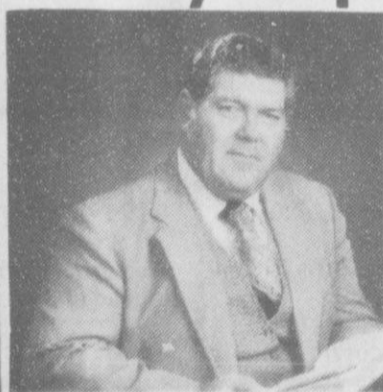
October 23, 1989
Date

REVIVAL

First Baptist Church

123 Bernice, Spearman

Evangelist
Tommy Phelps



Former Professional Wrestler
"Hear This Man's
Dynamic Testimony!"

Sunday, Oct. 29 - Wed., Nov. 1

Sunday - 11:00 a.m.
7:00 p.m.

Mon.-Wed. - Noon Luncheon & Devotional
7:30 p.m. Evening Service

Special Events

Mini-Concert Each Night Featuring Guest Musicians

Tuesday "Treat Night" - 7:00 p.m.

Ice Cream Sundaes & Candy Bags For All Children K - H.S.

Nursery Provided Every Service

Bring Your Friends!
You Are Invited!

CLASSIFIEDS

Oil & Gas Report

For Sale

FOR SALE: Two AKC registered female Shelties. Three months old. \$100 each Call: 733-2554 S50S-4tc

FOR SALE: Round Bales of Hay Grazer \$40/ton. Call Roy Garcia at 659-2245 in Spearman. S48-1tc RTN

HAY FOR SALE Red Top Cane and Hegari. \$2.00/Bale in field, \$2.50 stacked, \$3.00 delivered. Mike Skinner, (806) 659-1706.

S49s-8tc

FOR SALE: 3 bedroom, 2 bath home. Sunken living room, parquet floors, fireplace, covered patio, 2 car garage, sprinkler system, 2193 sq. ft. living space, excellent location. Call 659-3587 or 659-5022. S33-RTN

FOR SALE 3 bedroom, 2 bath home fireplace, large living area, drapes, mini-blinds, completely remodeled and large deck patio. Nice neighborhood. 1110 S. Barkley. Call 659-3800 S36rtn

FOR SALE: 1 Metal Building and Property 35' x 50' - 1 Large Cinder Block Building and Property 3000 sq ft. Contact: First State Bank, Box 247, Spearman 659-5565. S29-RTN

USED AUTO PARTS FOR SALE: Located 4 miles west of Hooker, Ok. on highway 54. **Muss Cat Auto Salvage.** (405) 652-2400. S10-rtn

FOR SALE Classic 78 Ford Ranchero New 289 high performance motor. Approximately 25,000 miles. Call: (806) 659-3990 \$1,000 Firm. S51S-2tc

FOR SALE: Good, hardly used furniture. One sofa and two contrasting, matching chairs. Three years old. Call: 659-5216 or 659-3489. S51S-10tc

FOR SALE OR RENT: 2 lots on narrow block, paving on 3 sides, hookups and concrete piers for mobile home. Call Claude Sheets 659-2085. S51-4tp

Legal Notices

MISSION CABLE will begin charging \$16.95 a month for basic level of service beginning November 1, 1989 in Spearman. Prices for other levels of service are changing. MISSION CABLE COMPANY S52-1t

CLASSIFIED ADS PAY OFF!



GOLDEN SPREAD REALTY
Janye Helton Pointer, Broker
Owner, 435-5444
Sales Associate

Jennifer Nollner 659-5243
815 S. Bernice-4/1 1/4, extra large lot & close to school!
712 Cottler-CONTRACT sell \$2 UNDER CONTRACT
20 S. James-2/1 Well maintained!
611 S. Evans - 3/1 1/4 Affordable!
704 Steele - No down contract to qualify in Home appraiser.
322 Barkley-3/1 Corner lot adds to the appeal!
118 Townsend - 4/2, Apartment included!
1102 Haney - 3/1 - New listing! Owner says sell quickly!
220 S. UNDER CONTRACT offer!
522 S. Haney Priced to sell quickly!
315 1/2 N. Bernice - Lot for sale!
315 Townsend - 2/1 Small price tag!

For Rent

FOR RENT: 1 Bedroom Furnished Apartment. Call 659-3491. S48 1tc RTN (THURS only)

HOUSE FOR RENT in Spearman. 3 Bedroom / 2 Bath. Fenced backyard. Central Heat and Air. (Call 878-2909). S48-RTN

HOUSE FOR RENT: 307 12th. Brick, 3 bedroom, 1 bath. Call 659-3809. S44-1tc RTN

FOR RENT: Furnished Efficiency Apartment. Call 659-2764. S50S-1tc RTN

TRAILER SPACE FOR RENT: in Spearman, \$50 a month! Call: 435-5080 S43S-RTN

HOUSE FOR RENT: 3 BD 1 bath home. Fenced Yard. Carpet. Applications being taken Call: Allen Alford at 659-3034. Rent Reduced - \$290.00 S43S-1tcRTN

Business Opportunities

CAREER OPPORTUNITY! Do you like working with people? Get the facts about becoming a professional hair stylist. Financial Aid is available! I bet you think you're not eligible for financial aid for cosmetology school. Maybe you're wrong! Check with us for the facts.

NEXT CLASSES START:

November 7, 1989

January 9, 1990

LIBERAL ACADEMY OF HAIR DESIGN

530 South Kansas

Liberal, Kansas 67901

(316) 624-3271

S47S-11tc

Work Wanted

WANTED: Milo Harvesting. Can harvest 30 in or 40 in rows. Call V.B. Morris 733-2203. S48-1tc RTN

MILO HARVESTING WANTED: I have two John Deere 8820 Combines and 25 years of experience. Call Adam Nusz (806) 935-6414. S51S-2tp

Count on the Classifieds to Do the Job

BOB HARDY REALTY
803 Wilcox Dr
659-3440
NEW LISTINGS

713 Steele Dr. - 3 BR, 2 Bath
Nice, Reasonable.
Colorado Property For sale.
Robert Hardy-broker



Allen Alford-Broker-659-3034
Hester Crawford - 659-2074
Dennis Nelson-Sales-659-3608
Larry Trospen-Sales-659-3491
THREE BEDROOM HOMES
 902 Dressen
 727 Wilbanks- Office. 1 1/2 B.
 1010 Dressen
 708 Steele- Fireplace
 1116 Townsend- Dbl. Garage
 727 Cotter- 1 1/4 Baths
 729 Wilbanks- 1 1/4 Baths
 729 Cotter- 1 1/4 B, Dbl. Gar.
 623 Bernice- Corner lot
 1016 Townsend- Priced to sell
 1021 Townsend
 1108 Archer - 2 B., Dbl. Gar.
 412 Townsend- Affordable!
 805 Archer- Close to School
 1012 Haney- Affordable!
TWO BEDROOM HOMES
 811 Townsend- Dbl. Garage
COUNTRY HOMES
 3 BR - 1 1/2 Baths - 2 1/2 A.
 4BR - 2 Baths - 17 A.
ACREAGE
 15 Acres - Crawford Addition
INVESTMENT PROPERTY
 Have Several Rental Units
 Check for other listings.
WE WANT TO BE YOUR REALTOR

Help Wanted

The Hansford County ASCS Office will be hiring 2 employees. All interested applicants must file an application by Oct. 28, 1989. Applications can be obtained from the ASCS Office at 711 West 7th, Spearman, Texas. The ASCS Office hires without regard to race, color, religion, sex, national origin or marital status. S50S-4tc

HELP WANTED: Full time mechanic helper-trainee. Mark Sheets Trucking & Auto. NO PHONE CALLS. S52-2tc

ATTENTION: EXCELLENT INCOME FOR HOME ASSEMBLY WORK. INFO. CALL 504-646-1700 Dept. P6392

SALES PERSON WANTED THE SPEARMAN REPORTER, HANSFORD PLAINSMAN, AND GRUVER STATESMAN NEED A SALES PERSON. FOR MORE INFORMATION CONTACT THE REPORTER AT 659-3434.

Services

INSULATE NOW! Save on Heating and Cooling Bills. Walls, Attics, New or Old Homes, Metal Buildings and Shops. Call Forest 806-659-2111 for appointment and FREE Estimate. Factory Trained Installer. S46-27tp

NOTICE

NOTICE
I WILL NO LONGER BE LIABLE FOR ANY DEBTS OTHER THAN MY OWN.
RONNIE SCHMEHR 10-17-89
S51S-3tp

Garage Sales

GARAGE SALE: 403 Endicott on Saturday, October 28 from 8 a.m. until 1 p.m. Waterbeds, furniture, exercise equipment, clothes, dishes, etc. S52-1tc

Offered by **EMMETT R. SANDERS REALTOR**

Owner's 2 bedroom home plus 3 rental units. Good investment package.

EMMETT R. SANDERS REALTOR
659-2516, nights 659-2601

NOTICE
Wallace Monument Co. Monuments, Curbings, Grave Covers, Local Representative **LEONARD J. AMESON** Spearman, Texas 359-rtn

OSGOOD MONUMENT CO.
Amarillo, Texas
Dealers of Rock of Ages Granite, as well as all colored granites, marble and bronze memorials.
represented by **BOXWELL BROS. FUNERAL HOME**
519 S. Evans
659-3802

Intentions to Drill

CARSON (PANHANDLE) Dawkins Energies, Inc., #8 Dawkins (160 ac) 2310' from North & 990' from East line, Sec. 65, 4, I&GN, 7 mi NE from White Deer, PD 3600' (Box 700, Pampa, TX 79066)

CASTRO (WILDCAT) Gypsy Production Co., #1 Brooks (164 ac) scaled 2250' from South & 1500' from East line, Sec. 28, 0-7, EL&RR, 1 mi south from Hart, PD 6000' (12900 Preston Rd. Suite 1117, Dallas TX 75230)

GRAY (PANHANDLE) Harken Exploration Co., #1 Brown (640 ac) 330' from South & West line, Sec. 172, B-2, H&GN, 13.5 mi S-SW from Pampa, PD 3500' (Box 612007, Dallas, TX 75261)

HANSFORD (WILDCAT & CLEMENTINE) Upper Morrow Maxus Exploration Co., #4 Edith B. Steele 'B' (640 ac) 990' from North & East line, Sec. 50, 45, H&TC, 10 mi north from Spearman, PD 7100' (Box 400, Amarillo, TX 79188)

HANSFORD (WILDCAT & NORTH HANSFORD) Douglas Questa Energy Corp., #1-18 Greene (652 ac) 1650' from north & 2640' from West line, Sec. 18, 2, WCRR, 6 mi northerly from Spearman, PD 5250' (Box 19297, Amarillo, TX 79114)

HARTLEY (PANHANDLE) Red Cave Comstock Oil & Gas, Inc., #2-5H Bivins (54260 ac) 660' from North & 400' from West line, Sec. 5, 21, State Capitol Lands, 4 mi east from Channing, PD 3000' (6500 Greenville Ave., Suite 220, Dallas, TX 75206)

LIPSCOMB (WILDCAT) Coastal Oil & Gas Corp., #1 Howard (640 ac) 1760' from North & 2173' from East line, Sec. 151, 10, SPRR, 5.5 mi easterly from Booker, PD 9400' (211 North Robinson, Suite 1700, Okla. City, OK 73102)

LIPSCOMB (WILDCAT & BRADFORD) Cleveland Samson Gas Producing Co., #1 Sim (647 ac) 660' from South & East line, Sec. 944, 43, H&TC, 7 mi SE from Booker, PD 7700', has been approved (Two West Second, Tulsa, OK 74103)

OCHILTREE (WILDCAT Council Grove) Jones Energy, #1 Paul Fagg (323 ac) 660' from South & 1900' from East line, Sec. 146, 10, SPRR, 14 mi east from Perryton, PD 4300' (2300 First Okla. Tower, 210 W. Park Ave., Okla. City, OK 73102)

OCHILTREE (WILDCAT & NORTH FARNSWORTH) Chester Natural Gas Anadarko Co., #1-6 Hawk 'A' (542 ac) 1650' from South & 2400' from West line, Tract 6---, Anthony McGee Survey, 15 mi NW from Perryton, PD 8000' (Box 809, Perryton, TX 79070)

OCHILTREE (NORTHTRUP Douglas) Taylor Energy Corp., #2 Nelson 'E' (650 ac) 1250' from South & 1500' from East line, Sec. 740, 43, H&TC, 9 mi SE from Perryton, PD 7342' (Box 7587, Amarillo, TX 79114)

ROBERTS (CREE FLOWERS) Wolfcamp Wallace Oil & Gas, Inc., #1 Kim Flowers (654 ac) 750' from South & 3450' from West line, Sec. 94, C, G&M, 12 mi NW from Miami, PD 4300' (50 Penn Place, Suite 850, Okla. City, OK 73118)

SHERMAN (TEXAS HUGO-TON) Wallace Oil & Gas, Inc., #2R Eden (640 ac) 2640' from South & 660' from East line, Sec. 101, 1-T, T&NO, 6 mi NE from Stratford, PD 2900', has been approved.

approved.

WHEELER (WILDCAT & WEST BRITT RANCH) Granite Wash A) Haber Oil Co., Inc., #106 Rathjen (704 ac) 1320' from South & West line, Sec. 6, A-3, H&GN, 9 mi east from Wheeler, PD 13000' (5555 San Felipe, Suite 780, Houston, TX 77056)

79114)

ROBERTS (QUINDUNO Lower Albany Dolomite) Chevron U.S.A., Inc., #33 John Haggard (4879 ac) 1980' from North & West line, Sec. 200, M-2, BS&F, 8 mi NW from Miami, PD 6360' (Box 36366, Houston, TX 77236)

Application to Deepen

ROBERTS (LARD RANCH Granite Wash 'C') American Exploration Co., #24 Maulsby (640 ac) 1320' from South & West line, Sec. 4, B, H&GN, 30 mi north from Pampa, PD 10600', has been approved (2100 Republic Bank Center, Houston, TX 77002)

Applications to Plug-Back

OCHILTREE (DUDE WILSON Novi Lime) H & L Operating Co., #3 Pshigoda (664 ac) 1650' from North & 660' from West line, Sec. 752, 43, H&TC, 6 mi SE from Perryton, PD 8316', has been approved (Box 7506, Amarillo, TX

HELP AS MUCH AS YOU CAN SEND MONEY

A disaster isn't over when the emergency teams leave for the night. Families struck by disaster need food, clothing, and shelter. Tomorrow they'll start rebuilding their lives. And that takes months.

The good news is that the Red Cross will help these families every step of the way. No matter how long it takes. If you ever need the Red Cross, you can bet we'll be there.

Please send a check and the attached coupon to your local Red Cross Disaster Relief Fund. Do it today.

American Red Cross:

Yes, count on me to help. I've enclosed my emergency disaster relief gift of

\$5 _____ \$10 _____ \$25 _____ \$35 _____

\$50 _____ \$100 _____

Name _____

Address _____

City _____ State _____ Zip Code _____

This ad was donated as a public service to help the American Red Cross.

Send your contribution to your local Red Cross chapter.

221 Main
Spearman, Tx.
79081

American Red Cross

Oil & Gas Reporting Service
Box 2052 Pampa, TX 79065
Providing the Oil & Gas Report for Hansford County Readers.
Doris Harrison Phone 665-5800

AMARILLO LIVESTOCK AUCTION

Special Fall Calf Sale
Every Tuesday at 1:00 p.m.
Will Be In New Facility
Sales Every Tuesday

For More Information Call

Business phone 806-373-7464

Terry Jones, Manager

Home phone 806-379-7522

Charley Alford, Assistant Manager

Home phone 806-499-3403

Science News: Help for the Ozone Layer

One of the biggest environmental concerns of the decade is depletion of the earth's protective ozone layer, which shields us from harmful ultraviolet radiation. In fact, an international treaty will go into effect this year that cuts the use of chlorofluorocarbons (CFCs), the chemicals suspected of depleting ozone layer.

HEALTH HINTS

Parkinson's disease is a disorder of the nervous system that leads to reduction of muscular control. The disease starts slowly, with trembling in an arm, a hand or a leg. The muscles then stiffen and weaken.

Highway Patrol Reports

Sgt. Robert Gribble of Borger stated, "In Hansford County, our troopers investigated 0 fatal accidents, 1 personal injury accident, and 0 property damage accidents in the month of September. 0 persons were killed and 1 person was injured in these accidents."



Attending a ribbon cutting ceremony Wednesday for the new LaKay's Merle Norman Studio were Bill Pittman, Robert Queener, Russ Gibbs, Kim Brock, Larry Butler, Bob Pearson, Don Townsen, Sharron

Swan, Lynanne Maize, Judy Nelson, Joyce Woolley, Melissa Andrew, owner of LaKays Linda Kay Andrew, John R. Collard, Jr. and Mike Cudd.

A dangerous duo

Indoors and out, water and electricity are a dangerous combination.

Protect your family by reminding them that they should never use electric appliances near water.

Be cautious, too, of electric cords that become wet, and never turn on a switch or appliance if your hands are wet or you're standing in water.

For more information on electrical safety, call or visit your local TNP office today.

Texas-New Mexico Power Company.
Neighborhood Professionals Offering You The Best Choice

10d/89

Go Lynx - Swat The Hornets!



SHS Cheerleaders



Front Row - Haley Shieldknight, Mendy Lasater, Sophie Salgado & Suzanne Sanders
Back Row - Cacy McGill, Kyla Nelson, Mary Cook & Laci Lasater



Proud Supporters Of The Pride Of Hansford County - The SPEARMAN LYNX

HANSFORD COUNTY FARM BUREAU

307 West Davis
Spearman
659-3133

GORDON'S DRUG

314 Main Street
Spearman
659-2141

CHAROLETTE FORD TRUNKS

313 Main Street
Spearman
659-3027

THRIFTWAY

505 Plains Shopping Center
Spearman
659-2522

FIRST STATE BANK

1NE Court
Spearman
659-5565
MEMBER FDIC

HANSFORD IMPLEMENT

Highway 207 South
Spearman
659-2568

CATES MEN & BOYS WEAR

221 Main
Spearman
659-3426

SACKS THIRD AVENUE

203 Main
Spearman
659-3350