

# Lynx Roll Over Highland Park

Hansford County Library  
120 Main  
Spearman, Tx 79081

## Varsity

The Lynx scored two touchdowns in the first quarter and a touchdown in the other three quarters to beat Highland Park 31 - 6. The Lynx scored four touchdowns before Highland Park could score one. The Lynx scored five touchdowns, but could not manage a successful PAT till the final one.

The first Lynx touchdown was a product of the defense not the offense. Danny Lopez recovered a Highland Park fumble in the end zone to put the first six points on the board. The second touchdown came from the offense as Edgar Nova caught an Edward Mayfield pass for a 40 yard touchdown.

The next three scores came as the result of offensive running plays. Chris Williamson carried the ball 40 yards into the end zone to make the score 18 - 0. Tim Dooley rolled in from the 6 yard line for the Lynx fourth touchdown. The Lynx last touchdown came on a four yard run by Scott Wilkerson. PAT kick after this touchdown was good, to bring the score to 31 - 6.

The Lynx amassed 483 yards in total offense, 338 of it in rushing and 145 yards passing. Highland Park was only able to

amass 140 yards of total offense.

The leading rusher for the Lynx offense was Dooley. He had 28 carries for 179 yards, the next rusher behind him was Wilkerson who had half the carries and less than half the yards at 14 for 62 yards. The next three rushers are Mayfield 7 for 36 yards, Williamson 4 for 59 yards, and Tino Garcia 2 for 2 yards.

The leading receiver for the Lynx was Tim Kizziar. He caught three passes for 75 yards. He was followed by Nova who caught one pass for 40 yards. The third receiver was Dooley. He caught one pass for 30 yards.

Defensively the Lynx were led by four players. Chad Riggins, Chris Williamson, and Tracy Thompson each had 15 tackles. John Hughes followed with 10 tackles.

This Friday night the Lynx team will face their toughest opponents. They will host West Texas. West Texas brings a quick offense headed by a quarterback who Coach Mullins thinks is the best the Lynx will face. Their defense is big and fast. They have held almost every team they have faced this year scoreless.

## 8th Grade

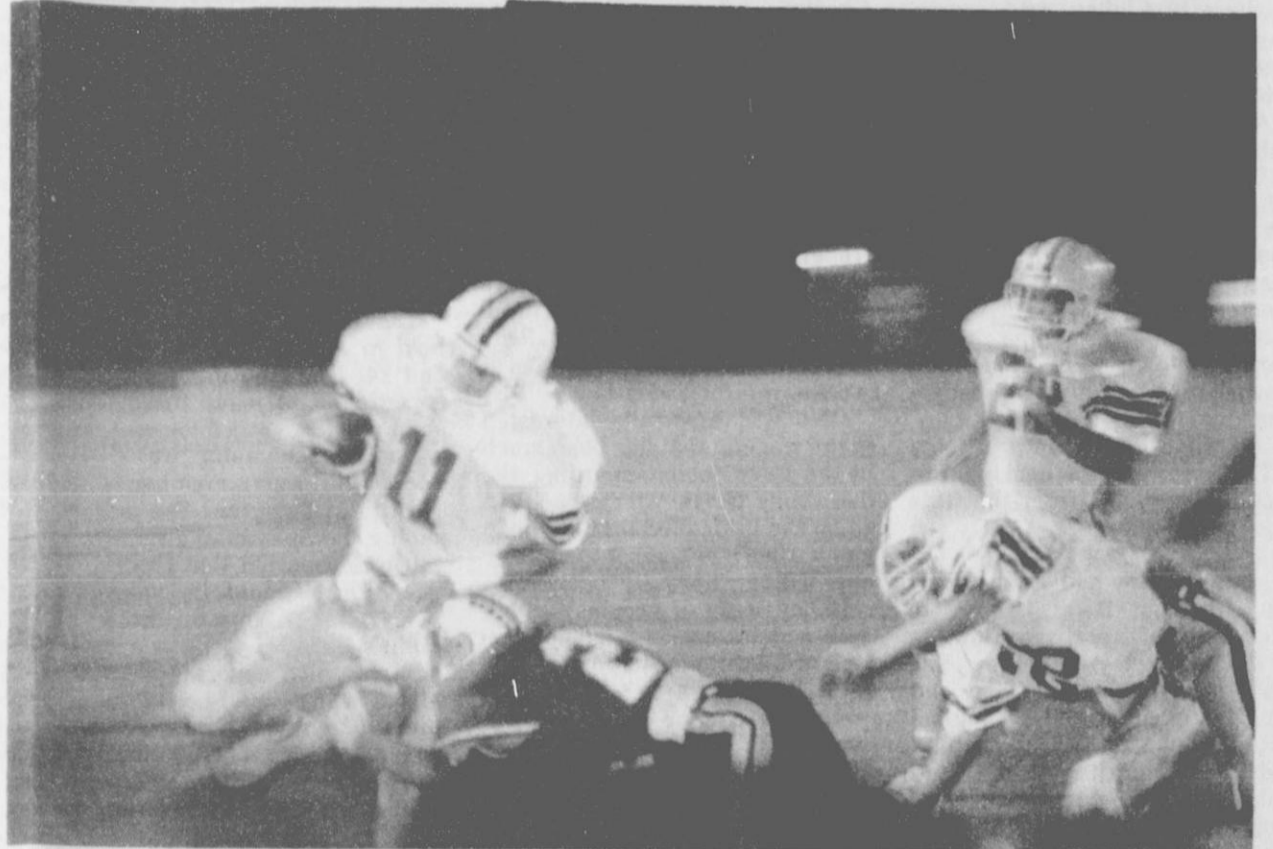
Lynx 8th Grade Score Early and Often Against High Land Park

The Lynx 8th grade scored three touchdowns and three 2-point conversions in the first quarter on their way to a 48 - 12 win over Highland Park. All three touchdowns were scored by Brandon Vanderburg. The three 2-point conversions were scored by Victor Lopez. The 24-point first quarter was only the springboard for more Lynx scoring during the next three quarters.

In the second quarter Victor scored a touchdown of his own. The Lynx again went for a 2-point conversion. Jason Varnon carried the ball for the successful conversion.

In the third quarter Vanderburg scored another touchdown and Lopez another 2-point conversion. During this quarter Highland Park scored their first of two touchdowns but failed on the PAT.

In the final quarter the Lynx scored a final eight points. Six of the eight points came on a touchdown by Vanderburg and the other two were scored by Cass Lasater on a successful 2-point PAT. Highland Park scored a second touchdown during this



Edward Mayfield runs around a Highland Park Landrum [25] and Scott Wilkerson [22] come to tackler in an attempt to gain more yards. Newly Mayfield's aid.

See Lynx Page 6



Tracy Tigrett and Seth Clemmons work together during a Play School held by the Comprehensive Class to study child development.

## Comprehensive Class Studies Child Development

Child Development was the subject of a short unit just completed by Spearman High School's Comprehensive Class.

The class, taught by Claudine Clark, covers eight areas of home economics including Child Development, Food and Nutrition, Personal Development, Family Health, Housing, Clothing, Management and Consumer Education.

This particular unit of study involved conducting a playschool

to observe development of children ages 3 to 5 years. The first period class observed 16 children, while the sixth period had eight children to study.

Activities during the playschool included making "Play-Dough," serving nutritious snacks and participating in a bean toss game.

Purpose of the child development units was to observe developmental tasks in the children, including balance, movement and attention span.



Shea Crawford assists Timber Barkley with an activity during part of the Comprehensive Class's Child Development unit of study.

## The Spearman Reporter

Volume 82, No. 1

YOUR HOMETOWN NEWSPAPER

**25¢**  
Per Copy

6 Pages

Thursday, November 2, 1989

## TNP Rate Increase

The Public Utility Commission (PUC) staff filed testimony on Oct. 17, 1989 in the rate increase request (Docket No. 8928) of Texas-New Mexico Power Company (TNP). TNP has proposed a \$14.1 million (4.8%) increase over current base rates, mainly for the purpose of recognizing increased operating costs.

The PUC staff has recommended that the base rate increase be held to \$4.7 million (1.7%). Although the PUC staff analysis has found some of TNP's requested increases in costs of providing service to be reasonable, a significant difference between the Staff and the utility exists in the area of purchased

power costs. TNP, which currently purchases all of its power, based its request on the wholesale tariff filed by Houston Lighting and Power Company (HL&P) in its current rate case (Docket No. 8425). The PUC staff based its calculation of this expense on HL&P's current wholesale tariff, since HL&P's proposed wholesale rates are still pending before the Commission.

The PUC staff also has recommended a lower rate of return on the utility's investment than the 12.22% TNP requested. The PUC staff recommended a 10.89% overall rate of return. This includes the Staff recommended

See TNP Page 6

## CC Goes To Regional

by Jean Ann Behney  
Spearman High School Girls' Cross Country Coach Richard North has selected seven runners and two alternates to compete for the team at the regional meet Nov. 4 in Lubbock.

"I used a point system all season and that decided who would run at the Regional meet," North said. These competitors will include Michelle Cook, senior; Nancy Ivey, senior; Haley Shieldknight, junior; Kyla Nelson, junior; Joy Gafford, sophomore; Sonya Nitschke, sophomore; and Jill Lusby, freshman. Alternates will be Shannon Holton, sophomore; and Kimbre Townsen, freshman.

The Lynxettes won District last weekend and fully expect to win the upcoming Regional as well, according to North. "We take competing very seriously. . . more seriously than many of the other cross country teams," the coach said.

North said his strategy for competing at Regional will involve concentrating on the team running close together in a pack in order to win with depth, which has been a successful approach all season. Cross Country teams are scored by adding together the finishing places of the top five individuals on a team.

"I think for us to be real successful our fifth and sixth place finishers should be running 13:40 and our top runners 13:10," North remarked. He added that last year's score at State was 29. "That's a good score," he said.

Winning Regional and going on to win at State is North's main goal for his cross country team this year. "Obviously, we want to

repeat last year's win at State," he said, "and I believe we have a good chance of doing this!"

The Lynxettes will compete against 20 other teams at Regional this Saturday. The top three finishing teams will go on to compete at State. North predicts that Spearman's main competitors at Regional will be Wall, which is the number two-ranked team in the state. Abernathy, ranked fourth in the state, and Seymour, ranked tenth in the state. The Lynxettes are ranked first in the state.

North said the most challenging aspect of the Regional Meet for his team will be the fact that there have been some injuries this season. "Sonya Nitschke recently injured a knee and Kyla Nelson has been fighting an ankle injury all season," he reported. "Shannon Holton, who was our fastest runner at State last year, has had some back problems this season."

Three of North's team members who will compete at the Regional also ran at the State meet last year. They are Michelle Cook, Haley Shieldknight, and Nancy Ivey. Alternate Shannon Holton also competed successfully in the team's win at State a year ago.

### WEATHER

Day	High	Low	Precip.
Fri.	73	37	0
Sat.	79	51	0
Sun.	63	40	0
Mon.	53	27	0
Tue.	67	29	0
Wed.		33	0

## Unemployment Down

Hansford County's unemployment rate was lower in September than in August, according to figures released by the Texas Employment Commission. TEC figures show the jobless rate for Hansford County in August stood at 2.8 percent, but was down to 2.2 percent in September.

Unemployment in Hansford County also compared well with jobless rates in neighboring counties. Hutchinson County reported 4.8 percent unemployment in September. The jobless rate in Ochiltree County stood at 2.8 percent in September, and unemployment in Moore County was reported at 3.5 percent.

TEC labor force estimates for the month of September reflect that Hansford County had a total labor force of 3,538 persons, of which 3,461 were employed and 77 were jobless.

Statewide, "The jobless rate in Texas finally took the drop we have been waiting for," Commissioner Mary Scott Nabers said as the state's unemployment rate for September was posted at 6.3 percent by the Texas Employment Commission. "That rate looks good when compared to last month's 7.2 percent and even better when we remember that in 1988 the September jobless rate was 7.1 percent. These are definitely positive signs," Commissioner Nabers said.

Approximately 7,744,600 Texans were employed in mid-Sept. Unfortunately, that still leaves about 521,000 men and women seeking work but that is over 100,000 fewer than in August.

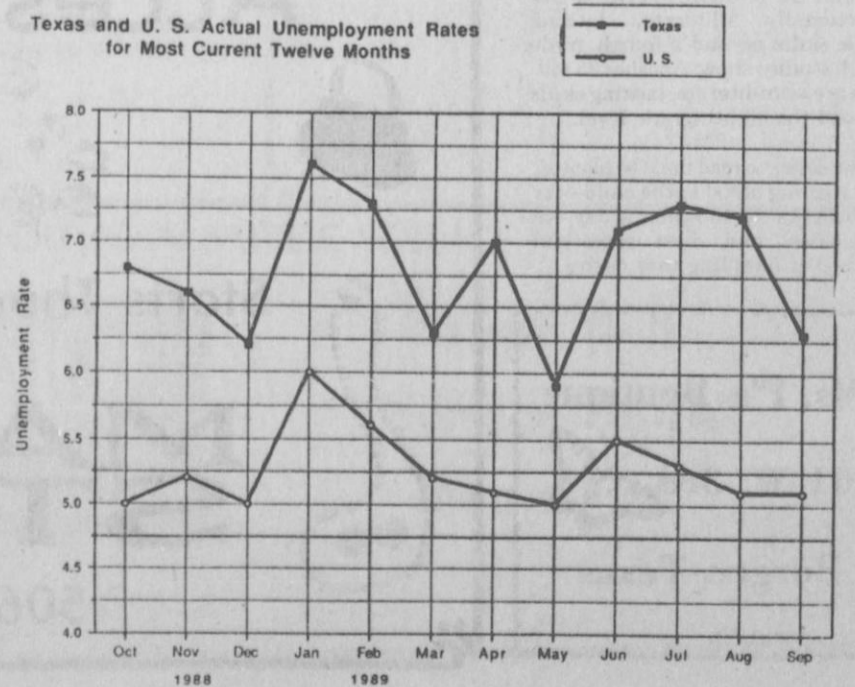
Every one of the state's major metropolitan areas had declining unemployment and most had current rates well below their year-ago rates.

Some of the positive signs are a result of the fact that many students and unsuccessful summer jobseekers withdrew from the labor force in September and there were thousands of jobs added as schools and colleges began fall semesters. However, over 30,000 nonfarm salaried jobs were added.

"The bleakest part of this entire picture is the fact that the state saw losses in trade, manufacturing, mining, construction and transportation and public utilities over the month," Commissioner Nabers said. "These losses are significant and somewhat ominous because trade and manufacturing have been leading our economic turnaround." Commissioner Nabers said. "We will watch these areas very closely."

The areas with the lowest unemployment rates in September were Bryan-College Station, with a 3.8 percent rate; Lubbock, at 4.5 percent; Austin and Dallas, each with rates of 5.2 percent; Waco at 5.3 percent; and Fort Worth Arlington with a 5.4 percent rate.

Highest rates were recorded in McAllen-Eldinburg-Mission, where the September rate was 17.1 percent; Brownsville-Harlingen, at 11.3 percent; Laredo, with a 10.4 percent rate; El Paso, with a 9.7 percent rate; and Beaumont-Port Arthur and Longview-Marshall, each at a rate of 7.9 percent in September.





# Among The Neighbors

by Helen Fisher

Frank Massad and Vina Hawpe joined others for a pleasant afternoon and felt honored that their October birthdays were observed. Barbara McClellan read an unusual Halloween story and Grace Bennett played the piano for their pleasure.

Acting as hostesses and providing refreshments were Auxiliary members Barbara McClellan, Beth Phelps, Beuna Lyon, Lorene Kunselman, Verna Gail Keim. The Prairie Garden Florist furnished corsages and bou-tonnieres.

New residents of the Manor during October were Vina Cator Hawpe, Sunray, Ruby Milledge, Perryton, L.L. (Jigger) Finley, Gruver, and Beuna Hays.

The residents are looking forward to the visits from the little Trick or Treaters.

Mary Ooley and Adalyn Barnes drove to Baird, Texas to attend the funeral of Barbara Bureson, 59, last Thursday. She was a niece of Hershal Ooley and daughter of Helen Ooley Langley, who died in 1984. Barbara attended school here as a child, and many remember that her son, Burr Akridge, died about 4 years ago.

Hershal, who is still nursing a broken foot, was unable to attend the services.

Johnny and Lorene Clark of Winston, Oregon are spending a couple of weeks here with his sister, Ivan, and Delbert Allen. The Clarks are going on to Quartzsite, Arizona where they will winter.

Marilyn Groves of Grandbury was in Spearman last Friday visiting relatives and friends. She had been in Amarillo for a few days with her aunt, Nova Schubert Bair, who had undergone open heart surgery.

Marilyn tells friends that she and Fred are both employed and Brenda is in school. All feel that they are well settled in their new residence.

A family member reports that Freeland Barz is recovering from knee surgery. It was performed last week at St. Anthony's hospital and he is expected to remain in the hospital for another week or so.

Steve and Jerry Holton accompanied their parents, Mr. and Mrs. Richard Holton, to Carthage, Missouri last Wednesday for the funeral of Florence Davidson. Mr. and Mrs. Ralph Blodgett also attended.

Corporal Chester R. Neely has been visiting his grandparents, Sara and Lawrence Dossett for several days. Chester lives in

Lubbock and works for the city of Lubbock.

He has just returned from his National Guard duty at Fort Chaffee, Arkansas. He successfully completed the Reserve Component Non-commissioned Officers Primary Leadership Course. The training consisted of 15 days of non-stop duties conducted by the Fifth U.S. Consolidated activity.

Tommy Taylor came from Heber Springs, Arkansas last Tuesday and spent a few days with his mother, Cleo, and Lowell Denman. His wife, Dolores, who has been with Cleo a couple of weeks, returned with him.

Cleo was especially interested in the tragedy that has been much in the news lately regarding the five young people who were killed when the bridge fell into the deep gulch. Cleo had been at the bridge near Heber Springs, but didn't cross on it as a swaying bridge over a deep chasm was not her idea of a fun thing to do.

Blanche Greene again has the pleasure of cuddling a little one with the arrival of a great-niece. Lindy Jo Weldon was born in High Plains Baptist hospital in Amarillo on Thursday, Oct. 26, weighing 7 pounds 6 ounces.

Her parents are Teresa and Tim Weldon of Perryton. Her grandparents are Mary and Jack Weldon and Rita Jo and Dean Cluck of Gruver. Lindy Jo has two brothers, Taos, age 6, and Colby, 4.

Mrs. Velma Williamson is in High Plains Baptist Hospital for treatment of a recurrence of a serious ailment. It is undetermined at this time how long she will be hospitalized. She is in room 837, and of course is grateful for expressions of concern.

Guests of J.B. and Ila Mae Buchanan last weekend were her sister, Marian Gray and grandson Paul and Melanie Reber. Mrs. Gray is from Chickasha and the Rebers from Oklahoma City.

Mrs. Gray will remain here for a longer time. She lived in Spearman a number of years ago and will be remembered as Marian Gung.

Wilma Lackey is proud to announce that she now has a grandson—a Halloween Eve treat. Andrew Michael arrived at 8:20 p.m. on October 30. He weighed 7 pounds 11 ounces, and has three sisters to see that he has the proper training—Abby, Alicia and Amanda.

His parents are Ann and Mike Russell of Austin, and his other grandparents are D. Rudolph and Joy Russell of Lewisville, Texas.

Mrs. Lackey plans to meet the young man this week-end.

# Club News

## RHO RHO

Rho Rho Sorority held its 566th meeting October 24 in the home of Francis Cudd. President Pat Cudd called the meeting to order. After reciting the opening ritual, roll call was taken and the minutes of the previous meeting were read and approved. The treasurer's report was not available.

It was noted that a Beta Sigma Phi cookbook is available for \$5.95. Anyone interested in a cookbook should contact Pat Cudd.

The State Convention will be held in Amarillo on June 22, 23 and 24. Rho Rho members were encouraged to leave these dates open.

Denise Schumann was introduced. She was a member of the sorority in Perryton. She will be joining the Spearman group.

It was reported that the Halloween Party would be Saturday, Oct. 28 at 7:30 p.m. at Jodie Hight's Barn.

It was also reported that the next meeting would be the formal initiation, November 9. It was decided to have this meeting be a couples meeting. The ladies will meet at Pat Cudd's house at 6:30 p.m. for the formal initiation. The men can gather at Ivey's for a social hour. After the formal initiation the ladies will meet the men at Ivey's for dinner. The meal will be \$5.00 per couple.

Sacks contacted the group with information about a gift register setup for Secret Sisters, family or friends.

Leann Gillaspie, Donna Murray and Barbara Townsen presented a tape of the "intelligent executive board of Rho Rho." They wanted to make sure Rho Rho was left in good hands. After interviewing each of the board members they were assured that any of them would make excellent pledge trainers!

Refreshments were then served.

Everyone then enjoyed revealing secret sisters and exchanging gifts. There were many surprises. Members then drew for new secret sisters. A limit of \$15.00 for birthday gifts was announced, and a limit of \$25.00 was placed on Christmas gifts.

After reciting the closing ritual the meeting was adjourned.

Guests present were Jodie Hight, Tiki Farrar, Shelley Edendorough, Ann McClure, Jennifer Cherry, Kim Reger, Jan Howard, Debbie Reed, Robin Snider and Michele Goodheart.

Honorary members present were Peggy Archer, Alta Fisher, Mary Lou Wysong and Francis Cudd.

Members present were Pat Cudd, Stephanie Crossland, Patti Schnell, Jan Williamson, Brenda Pierson, Elaine Morris, Leslie Cazares, Laura Dear, Kristi Ramon, Lori Scroggs, Tina Wilmeth, Melanie Elliott, Samme Goehring, Leann Gillaspie, Donna Murray and Barbara Townsen.

## Gladiola Flower Club

The Gladiola Flower Club met Thursday morning in the home of Mrs. Charlsie Baker. President Myra Berner called the meeting to order and roll call was answered with a "Holiday Tradition."

A letter of thanks was read from the Yucca Girl Scout Council for the donation given by the club.

Plans for a spring home tour were discussed and a committee set up to work on it. Those

assigned to the committee were Dickie Allen, Virginia Trindle, June Jackson and Jo Larson.

New officers are President, Lorene Kunselman; Vice President, Estelle Jackson; Secretary, Wanda Brown; Treasurer, Virginia Head; Historian, Ann Flowers; Project chairman, Dickie Allen; and Flower Chairman, Gwen Smith.

Gwen Smith won with a borrowed arrangement of white miniature mums with dried pink larkspur and spring rye. Borrowed arrangements are flowers or a flower added with the person doing the arrangement. Charlsie Baker won with a large ivy in a terra cotta turtle planter. Virginia Head won the specimen with a yellow chrysanthemum stalk.

Mrs. Linn Ann Riley of the Brass Register in Perryton presented the program on the Pan-asonic bread baker. Several different breads were sampled by the members.

Refreshments were served by the hostesses to the following members and guest: Dickie Allen, Myra Berner, Wanda Brown, Dorothy Buzzard, Rose Cummings, Margaret Evans, Ann Flowers, Dorothy Haner, Virginia Head, Estelle Jackson, June Jackson, Lorene Kunselman, Joe Larson and Virginia Trindle.

The members were reminded that the Thanksgiving Supper for spouses will be Thursday, November 9 at the First Christian Church. They were advised to come prepared to eat at 6:30 p.m.

# First Baptist Church To Send Three To State Convention At Lubbock

Three members of the First Baptist Church will attend the 104th annual meeting of the Baptist General Convention of Texas, November 7 - 8 at the Lubbock Memorial Civic Center. They are called Messengers to the Convention. The Messengers from First Baptist are Pastor Russ Gibbs and Glenn and June Day. "I am hoping the spirit of the Convention is good and we can continue to cooperate with each other," said Pastor Gibbs.

Two of the important issues the messengers from all over the state will have to cooperate on is the election of new leadership for Texas Southern Baptists, and consideration of a \$68.75 million budget.

With "Mission Texas...Now!" as their theme and their rallying cry, more than 6,000 people from Southern Baptist churches throughout Texas are expected to gather for the annual meeting of the 2.4 million-member denomination. Mission Texas is a five-year Texas Baptist emphasis on missions, evangelism and discipleship that was launched in 1985.

Elected messengers to the convention will choose new officers, consider resolutions on major moral and social issues, hear reports from 23 educational and human welfare institutions and vote on a proposed \$68.75 million Cooperative program budget.

Throughout the Cooperative Program, Texas Baptists help support 7,500 missionaries, six seminaries, the Southern Baptist Radio and Television Commission and other worldwide causes, as

The Spearman

# Reporter

Your Hometown Newspaper

USPS 509660

Spearman, Tx. 79081

213 Main, Box 458, 659-3434

Published Weekly at  
213 Main, Spearman, Texas

Owned and Operated by:

Texas Independent Newspapers, Inc.

19906 Encino Grove, San Antonio, Tx 78259

Second class postage paid at Spearman, Texas 79081.

Any erroneous reflection upon the character of any person or firm appearing in these pages will be gladly and promptly corrected upon being brought to the attention of the management.

PUBLISHER - Robert M. Hulett

Subscription Rate: Hansford, adjoining counties, combination with the Hansford Plainsman \$19.95; non-adjoining counties, \$24.95 annually.

Postmaster: Send address changes to Spearman Reporter, Box 458, Spearman, Tx. 79081.

The publisher reserves the right to revise or reject at its option any advertisement which it deems objectionable, either in subject or phraseology, or which it may deem detrimental to its business.



# Obituary

## Florence Davidson

CARTHAGE, Mo. - Florence Davidson, 69, died at her home Oct. 23 after a lengthy illness.

Mrs. Davidson was born June 14, 1920 in Carthage. She was a lifelong resident of the Carthage area. She was a homemaker, a member of First Baptist Church of Carthage and a member of Order

of the Easter Star of Spearman. She married Dale Davidson on Aug. 15, 1953 in Carthage.

Survivors include her husband; a son, Gary Davidson, Noosho; a daughter, Debbie Smallwood, Carthage; a brother, Richard Holton, Spearman; and two grandchildren.

Funeral services were held Oct. 25 in the First Baptist Church of Carthage with the Rev. Bob Lyttle officiating. Burial was in Park Cemetery at Carthage.

Memorials may be made to the hospice program at St. John's Regional Medical Center at Joplin, Mo.

# Hometown News

Matt Tucker and Lance Swan, both Spearman residents attending South Plains College at Levelland, participated in a track meet Oct. 26 at the college.

Tucker placed first with a throw of 49 feet, 4 1/2 inches in the shot. Swan was the fifth place finisher in that event, with a throw of 43 feet, 9 1/2 inches.

In the discus, Swan took second place with a throw of 138 feet, 6 1/2 inches and Tucker was third with 137 feet.

Their next meet will be in San Angelo Dec. 2.

# CARD OF THANKS

Our appreciation to all our many friends for the phone calls, visits, flowers, cards and prayers.

Thank You,  
Brandon Rex & Family

# FACTS & FIGURES

Numbers Show Importance of Reading Aloud to Children

Read all about it: Surveys show more than half the children in America can't read, won't read or hate to read.



Some 23 million Americans are functionally illiterate, lacking basic skills beyond a fourth grade level, studies show. Another 35 million are semi-literate, lacking skills beyond the eighth grade level.

The desire to read must be planted, and reading aloud to the child—for as little as 15 minutes a day—is the oldest and most successful method of instilling that desire.

# Hospital Notes

## Hansford Hospital

Admissions:

Friday, Oct. 27: Louise Miesner

Saturday, Oct. 28: None

Sunday, Oct. 29: Dortha Whitefield

Monday, Oct. 30: Otho Gammill, Roscoe Nelson, Phil Jenkins, Wilma Mestas

Tuesday, Oct. 31: Robert Dennis, Leon Russell, Ann Searcy, Artie Mae King, Ben Harris, Richard Smith

# 1/2 Price Accessories Sale!



Starts Thursday, November 2nd

# MAIN STREET

506 Main, Gruver

Ms. P's Boutique  
601 W. 3rd  
Borger, Texas

## MAKE THE SMART MOVE. Weight Watchers.

**JOIN NOW FOR ONLY... \$10**

Registration Fee .... \$17.00  
First Meeting Fee ... \$ 8.00  
Regular Price ..... \$25.00

**YOU SAVE \$15.00**  
Offer ends November 11, 1989

**IT'S SMARTER...**  
because you can fit Weight Watchers into your everyday life. You'll be able to enjoy your favorite foods and not feel hungry...and still lose weight.

**IT'S FASTER...**  
because with our amazing Quick Success® Program you can lose weight faster than ever.

**IT'S EASIER...**  
because, right now, you can join Weight Watchers for only \$10. It's the easiest way in the world to lose weight fast and save money too!

Joyce Nimetz,  
Area Director

Come to the Weight Watchers meeting nearest you.

**SPEARMAN**  
Home Extension Club  
309 N. Bernice  
Mon: 6:00 pm

**PERRYTON**  
First Christian Church  
901 South Jefferson  
Thur: 5:30 p.m.

**NOTHING WORKS LIKE WEIGHT WATCHERS!**  
CALL TOLL FREE 1-800-359-3131



**Panhandle Events**

**Pipeline Operations  
23rd Annual Institute**

Almost four decades ago and still growing strong, is the partnership between the Petroleum Industry Education Committee and the University of Kansas, as they embark on the 23rd Annual Pipeline Institute, November 7th and 8th, 1989, in Liberal, Kansas, at the Seward County Exhibition Hall.

**Area Artist Shows Work  
In Amarillo**

Area artist, Marilyn Laubhan Yanke, of Sunray is a participant in ART LXXXIX, The Rotary Club of Amarillo Art Exhibition and Sale which opened October 14 with seminars, a gala opening, reception, and sale at the Panhandle Plains Historical Museum at Canyon, Texas. The nationally juried show features the works of sixty-seven artists. The exhibit may be viewed during regular museum hours through November 12.

**Festival of Arts & Crafts**

Wesley United Methodist Church will be hosting its 9th Annual Festival of Arts and Crafts, December 2, 1989 from 9:00 a.m. to 5:00 p.m. at the Hereford Community Center.

Only a limited number of booths are available, with applications being screened. Booth fee is \$10.00. Applications may be obtained by writing Marilyn Bell, 121 Ironwood, Hereford, Texas 79045, or call 806-364-0181 after 6:00 p.m. You may also write to Ellen Collins, 801 Miles, Hereford, Texas 79045 or call 806-364-0774.

**FHA ARTS & CRAFTS FESTIVAL  
HOOKER, OKLA.**

The Hooker High School FHA chapter will sponsor its 12th annual Arts and Crafts Festival Saturday, Nov. 11 at the Hooker Grade School All-Purpose Room.

Hours are 9:00 a.m. to 5:00 p.m. on Saturday. Set-up time will be from 7:00 a.m. to 9:00 a.m. on Saturday morning. The festival will be open to all artists and craftsmen with no restrictions as to amateur or professional standing.

For further information on the show, contact Anita Witt at (405) 652-2836 or 652-2754.

Nov. 11 — Indian Day, Canyon. A hands-on learning experience for children ages 3-12. This "know-how pow wow" of five tribes of the Southern Plains Indian relates directly with school curriculum. Activities include demonstrations of symbol art, sign language, face and sand paintings followed by performances. Indian story-telling, dance performances and a visit to a teepee are included in the day-long experience. Children must be accompanied by an adult. For more information, contact P.O. Box 967, WT Station, Canyon 79016 (806/656-2244).

**WTSU - CANYON**

An exhibit capturing the imagination and intensity of Judy Kracke will be open to the public from Oct. 30 through Nov. 10 in the Formal Gallery of Mary Moody Northern Hall on the WTSU campus. The display, titled "Gallery Installation," features found materials from the environment that represent the destruction that is taking place during our lifetime.

The gallery is open from 8 a.m. - 5 p.m. weekdays. Kracke is a local artist and a part-time art instructor at West Texas State University.

**WTSU - CANYON**

Tina Carpenter, bassoon instructor at West Texas State University and principal chair in the Amarillo Symphony Orchestra, may be heard in concert Sunday, Nov. 5 in Northern Recital Hall on the WTSU campus. The 3 p.m. recital is free and open to the public.

Carpenter will perform "Saraband et Cortège" by Dutilleul, "Sonata" by Eiler, "Sonata for Clarinet and Bassoon" by Poulenc, "Nocturne for Bassoon and

Harp" by Blank and "Suite" by Tansman.

She will be joined on stage by Denise Parr-Scanlin, piano; Douglas Storey, clarinet; and Wallace Ford, harp.

**WTSU - CANYON**

Marilyn Ales Johnson, a senior music business major from Amarillo, will present a piano recital beginning at 3 p.m. Saturday, Nov. 11 in Northern Recital Hall on the WTSU campus.

Concert selections include "Fugue in G minor" by Bach and Sciolti, "Sonata Pathétique, Op. 13" by Beethoven, "Waltzes, Op. 39" by Brahms, "Arabesque" by Schumann, "Children's Corner Suite" by Debussy and "Jamaican Rhumba" by Benjamin.

The recital is free and open to the public.

**WTSU - CANYON**

Faculty and students in the division of nursing are selling 1990 calendars in an effort to raise money for student scholarships and the nursing activities fund. Calendars are \$8 each. For more information or to purchase a calendar, call the WTSU division of nursing at 656-2630.

**Free Texas Travel Information**

For more information about Texas attractions and destinations, call toll-free, 800/888-8-TEX. You'll receive a free copy of the colorful, 248-page Texas State Travel Guide as well as a Texas road map.



**Letter To The Editor**

Dear Editor:

I feel the new lake being constructed on the Palo Duro should be named "Lee Lake."

Had it not been for Johnnie Lee, I don't believe we would be in the process of construction of the lake.

When Johnnie was County Judge for so many years, he made many trips to Austin. During those trips he cultivated friends and connections. These friends and connections helped during the red tape of getting the dam.

Johnnie has worked long and hard with much pride for this dam. He deserves this recognition.

Thank you,  
Sally Desimone

Dear Fellow Publisher,

I am a third generation volunteer fireman and newspaper publisher. Please help us in urging the passage of Proposition 17 this November 7 by running the attached editorial and news release in your newspaper.

**EDITORIAL**

Fires cost Texas 322 lives and almost \$5 hundred million in property damage in 1987 and although no firm numbers are available, everyone associated with the fire service agrees that both numbers could be substantially reduced if a combination of more training and better equipment was available to the 53,000 plus firefighters across the state.

Texas voters have a chance November 7 to take a giant step in solving the problem when they vote on Proposition No. 17. Approval of the Constitutional amendment will create a board which will oversee a special emergency fund created by the 71st Legislature to train and equip fire departments. The bill approved by the House of Representatives, Senate and signed by the Governor was the first positive step in several decades addressing a growing

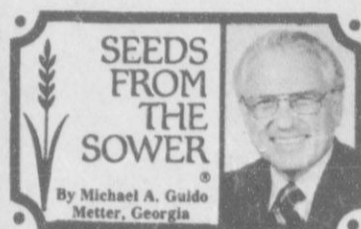
problem.

The legislation was passed and funding approved without any increase in taxes or fees. Now, it's up to the voters of Texas to decide the importance of the issue.

Too often as we go to the polls to vote on referendums or constitutional amendments, if we don't completely understand, we vote against the particular item. Often times that is a correct decision since the proposal may serve only a special interest group. In the case of Proposition No. 17 every man, woman and child in Texas will be served by a group of over 53,000 men and women, both paid and volunteer, from fire departments large and small whose only special interest is saving lives and property, often times at the risk of their own lives.

Certainly we owe them our vote of support in their attempts to protect us.

Vote FOR Proposition No. 17.  
Sincerely,  
Don Comedy



Two men were discussing a neighbor. "He's a nice fellow," said one, "but have you noticed how he always lets his friends pick up the dinner bill?"

"Yes," replied the other, "he has an awful impediment in his reach!"

That's true of many people not only in a cafe, but especially in the church.

They won't give of their time, or their talents, or their treasures to God. They let the others pray and pay, sing and seek, teach and toil.

But if you cut God short, you cut yourself off.

So give to God. He gave to you.

**Spiritually Speaking**

**OUR CLOUD OF WITNESSES**

by Sam Steele  
First Presbyterian Church

On the Christian calendar Wednesday, November 1st is All Saints' Day--better known in our present culture as Halloween. Much of the celebration today centers around the evening before with Halloween carnivals and the streets and neighborhoods full of trick or treaters.

Now, don't get me wrong; I am not against Halloween. I am one who believes in the Nativity and Santa Claus--the Resurrection and the Easter bunny. And I believe in Halloween and the Great Cloud of Witnesses. I simply want us to remember the Christian emphasis at this time of Halloween. In Hebrews 12:1-2 we see the special significance of All Saints' Day to the Church. For you see, in the death, resurrection, and ascension of Jesus Christ, we have a special power to draw upon. Though Jesus Christ is not physically with us today, the power of His ministry is still a strong source of spiritual nourishment.

Let me ask a question. Where do we receive our strength and energy? Physically, we receive strength and energy from the food we eat, from the rest we need, and from the work and exercise we participate in. Mentally, we receive strength and energy from learning--the gaining of new information, from questions raised by

others or by ourselves, and from encouragement. And spiritually, we receive strength and energy from God's Holy Word in Scripture, from prayer, from God who is revealed to us as Father, Son, and Holy Spirit, and from saints.

And, I am one who feels that Saints is one of the strongest source of strength and energy for all human beings. We all have those special people in our lives who have shaped and formed us into what we are today--those sources of nourishment. Those persons may be a parent, a sibling, a relative, a teacher, a neighbor, a friend, or whatever. Yet, they have been a positive influence on our lives. And All Saints' Day says that though they are not with us physically, because of death, we can still receive strength and energy from them. They are a part of our Great Cloud of Witnesses; in which I believe we have "earthly" and "heavenly" Great Clouds of Witnesses.

Christian living is free living, it's holy living, and it is loving living; that is influenced and informed by God's Holy Spirit in the lives of those individuals who have touched our lives in a positive, unbuilding way. Which means that we do not do as we like or wish, but we act in love through the power of the Holy Spirit. Thank God for those who have touched and are touching our lives through God. Happy Halloween.

**Oil & Gas Reporting Service**

Box 2052 Pampa, TX 79065

Providing the Oil & Gas Report  
for Hansford County Readers.

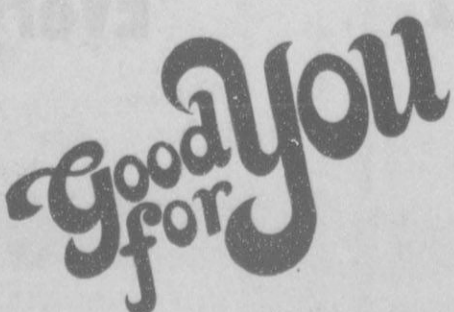
Doris Harrison Phone 665-5800

**NOVEMBER CALENDER OF EVENTS**

To put dates on this calendar, please call the Spearman Reporter Phone 659-3434.

SUNDAY	MONDAY	TUESDAY	WEDNESDAY	THURSDAY	FRIDAY	SATURDAY
			1 *Retail Merchants Chamber office 8:00 a.m	2 *Community Theater Rehearsal	3 *Lynx Football West Texas Here	4 *Lynxette Cross Country Regionals Lubbock *4-H Food Show Workshop
5 * Attend the Church of your choice	6 * Rotary Meeting	7 *Lions Club *Community Theater Rehearsal	8 *Women's Division Exec. Board Chamber Office noon *4-H Food Show	9 *Community Theater Rehearsal *Veteran's Day Assembly 10 a.m. Jr. High Varsity Gym *C of C Board Chamber office Noon	10 *Lynx Football Boys Ranch There	11 *Veterans Day *Lynxette Cross Country State Meet At Georgetown
12 * Attend the Church of your choice	13 *Rotary Meeting *Jr. High Basketball Vs. Perryton Boys Here Girls There *Community Theater Run Through	14 *Lion's Club *Community Theater Rehearsal	15 *SHS Basketball Perryton There JV & VARSITY Girls & Boys *Women's Division JJ's Rest. Noon	16 *Community Theater Dress Rehearsal	17 *SHS Basketball Sanford-Fritch There JV & Varsity Girls & Boys	18 *C of C Women's Div. Style Show Noon Methodist Church *Centennial Pageant
19 *Attend the Church of your choice *Community Church Service 7:00 p.m. High School	20 *Rotary Meeting *Jr. High Basketball Girls vs. Gruver Here Boys vs. Boys Ranch There	21 *Lions Club *SHS Basketball Channing Here JV Girls, Varsity Girls & Boys	22	23 *Thanksgiving Day	24	25 *SHS Basketball Turkey Classic Frenship There
26 *Attend the Church of your choice	27 *Rotary Meeting *Jr. High Basketball vs. Stratford Boys Here Girls There	28 *Lions Club *SHS Basketball Dalhart There JV & Varsity Girls & Boys	29	30 *SHS Basketball Canyon Tournament		

THIS COMMUNITY CALENDER OF EVENTS IS BROUGHT TO YOU AS A PUBLIC SERVICE BY:



"Your Full Service Bank"  
Member FDIC

729 W. 7th

659-5544

Complete Nursery & Landscaping Service  
**PERRYTON NURSERY**  
610 S.E. 1st Ave.  
Perryton, Texas  
435-2313



# 4-H Holds Achievement Banquet

by Karen Babitzke

October has been a busy month, but we finished it up with a bang. The 4-H Achievement Banquet was for the kids and was presented by the kids. The 4-H Council chose the theme "Branding 4-H into the Future". I truly believe that we will have a permanent figure into several of these 4-H'ers futures.

The council members, along

with several older 4-H'ers lead the entire banquet. Michelle Cook and Ashley Wagner were mistresses of ceremonies for the evening. The program began with a catered meal, that the kids earned money for during the year through their fund raising projects. Karla Kunselman presented the invocation that started our meal. Then Kevin Williams and Kim Boone led the 4-H motto and pledge and pledge

of allegiance. Guests of the evening were recognized by Leslie Latta, while Holly Venneman welcomed everyone on behalf of all the 4-H'ers.

Next the 4-H'ers were acknowledged with their year pins and project achievements. Randie Renner and Kevin Spivey awarded first year pins, while Mary Cook and Wynn Maupin did second year. Third year pins were given

by Joy Gafford and Jeryme Hunter, then fourth, fifth and sixth years were recognized by Barry Beck and Dawn McCullough. Tommi Latta finished with the seventh, eighth, ninth and tenth year pins.

The Adult Leaders were recognized by Dallas Trosper, Shane Harnish, Mark Eakin, Beverly Burton and Chris Brooks. These leaders help the kids on their projects. 4-H is a family affair and we can use all the help that is volunteered to us.

The Special Awards were presented to the 4-H'ers who completed a record book this past year. Bonnie Jarvis received the Santa Fe award while Michelle Cook was presented an award on achievement by Traci Scribner. Shane Harnish acknowledged Ashley Brown, Kevin Williams and Cinda Turner with the Beef Award. The Bread award was given to Beverly Burton by Rex Ralston. Karla Kunselman was honored with a Colthing pin by Stacy Gardiner. Sharlet Slough presented the Sheep award to Leah Jo Mackie.

The highlight of the evening was the Gold Star Award that was presented to two outstanding 4-H'ers. The 4-H'ers work hard for this award and it is the highest honor that can be received in the county. This year's winners were Beverly Burton and Michelle Cook, their awards were given by Ashley Wagner and Cinda Turner. Michelle made her closing remarks and dismissed the group. Overall, the experience was great for the kids and they did an outstanding job conducting the banquet.

Karla Kunselman, Clothing Award. Also receiving an award but not present is Bonnie Jarvis, Santa Fe Award. In addition, Beverly Burton and Michelle Cook were named Gold Star Winners for Hansford County.

Receiving awards for their record books at the recent 4-H Achievement Banquet were [front row] Ashley Brown, Beef Award; Leah Mackie, Sheep Award; [back row] Kevin Williams, Beef Award; Beverly Burton, Bread Award; Cinda Turner, Beef Award; Michelle Cook, Achievement Award; and



## Karen's Kozy Korner

by Karen Babitzke

### Touch of the Southwest

A holiday program entitled "Touch of the Southwest" will be presented by Texas-New Mexico Power Company's Home Economist, Pat Lucas on Tuesday, Nov. 7 at 7:00 p.m. at the Extension Homemakers Building, 309 North Bernice. Holiday foods and craft ideas with southwest flavor and flair will be presented. Energy-saving and safety hints will also be presented. A recipe book will be distributed to those attending. Everyone is welcome to come, and we look forward to seeing you there.

I am trying to get my Food & Nutrition project off the ground. Details will follow later.

### Gold Star Banquet

Burt and I will be travelling to Amarillo this weekend to attend the District I Gold Star Banquet. Michelle Cook and Beverly Burton will be presented their awards and given a framed Gold Star Certificate. Their parents will also be honored at the banquet. The Rural Electric Coop presents this banquet as a special honor to the Gold Star recipients.

### Potassium-Rich Foods Important in Diet

While many people are aware that too much sodium can intensify high blood pressure, few may know much about its counterpart, potassium.

While sodium can increase blood pressure in some people, and indirectly contribute to heart disease or stroke, potassium can help control blood pressure and regulate heart rhythm.

Many experts agree that just as there are good reasons to avoid too much sodium, an ingredient of salt and other food additives, there are good reasons to eat foods that contain plenty of potas-

sium.

According to a recent Tufts University "Diet and Nutrition Letter," there is evidence suggesting that if a diet is rich in potassium, the likelihood of falling victim to high blood pressure or hypertension lessens.

An article in the New England Journal of Medicine also said one extra serving per day of potassium-rich food can cut the risk of death from strokes as much as 40 percent.

You're more likely to have a healthier diet by eating potassium-rich foods because usually these foods contain other nutrients.



Facts From The U.S. Dept. of Labor

Check Your Pension Plan, First!

When planning a job change, there are certain factors you should be aware of that can seriously affect your retirement plans.

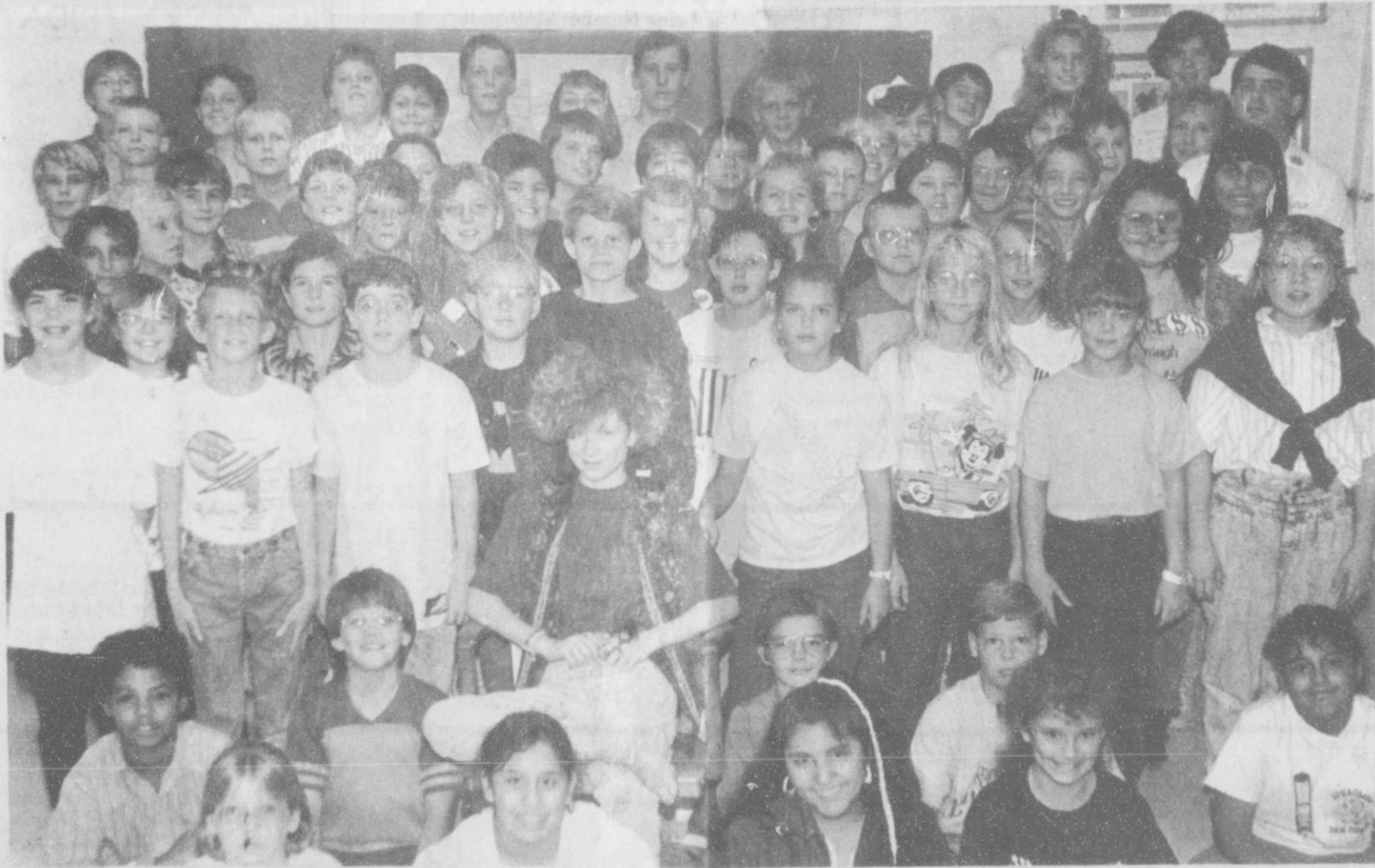
Private-sector employers who provide retirement benefits for employees must conform to certain standards established by federal law. However, even with protections, you can still lose some or all of your benefits.

**A Taste it Lose it & Luv it**

Opportunity Meeting  
Monday 7:00 p.m.

1006 S. Bernice  
Ph 659-3871

# Working Together Makes It Happen!



Congratulations To The Sixth Grade Social Science Class For Raising \$1,757 for the Red Cross Relief Effort in California!

**Blood Pressure Clinic**

**Friday, November 3**

**10:00 a.m. until 3:00 p.m.**

**FSB**  
First State Bank  
Spearman, TX 79081

One NE Court  
659-5565

MEMBER  
FDIC

**Pop In For Some**

**FREE POPCORN!**

**Every Friday**



# CLASSIFIEDS

# Oil & Gas Report

### For Sale

**FOR SALE:** Sofa with Matching Chair or loveseat. Call 659-2045 before 9:00 a.m. or after 5:00 p.m. S53-1tp

**FOR SALE:** Round Bales of Hay Grazer \$40/ton. Call Roy Garcia at 659-2245 in Spearman. S48-1tc RTN

**HAY FOR SALE** Red Top Cane and Hegari. \$2.00/Bale in field, \$2.50 stacked, \$3.00 delivered. Mike Skinner, (806) 659-1706.

S49s-8tc

**FOR SALE:** Good, hardly used furniture. One sofa and two contrasting, matching chairs. Three years old. Call: 659-5216 or 659-3489. S51S-10tc

**FOR SALE:** 3 bedroom, 2 bath home. Sunken living room, parquet floors, fireplace, covered patio, 2 car garage, sprinkler system, 2193 sq. ft. living space, excellent location. Call 659-3587 or 659-5022. S33-RTN

**FOR SALE** 3 bedroom, 2 bath home fireplace, large living area, drapes, mini-blinds, completely remodeled and large deck patio. Nice neighborhood. 1110 S. Barkley. Call 659-3800 S36rtn

**FOR SALE:** 1 Metal Building and Property 35' x 50' - 1 Large Cinder Block Building and Property 3000 sq ft. Contact: First State Bank, Box 247, Spearman 659-5565. S29-RTN

**USED AUTO PARTS FOR SALE:** Located 4 miles west of Hooker. Ok. on highway 54. **Muss Cat Auto Salvage.** (405) 652-2400. S10-rtn

**FOR SALE OR RENT:** 3 Bedroom House in Farnsworth, Texas. Call 435-4594. S52S-3tc

### For Rent

**FOR RENT:** Clean small 2 bedroom mobile home in park; ideal for couple or couple with 1 child - good location - 6 ft. wood privacy fence - 2 car off-street parking - 9 x 10 cement patio - easy to heat - very reasonable rent. Call 659-3519 and leave name and phone number. S53 - RTN

**FOR RENT:** 1 Bedroom Furnished Apartment. Call 659-3491. S48 1tc RTN (THURS only)

**HOUSE FOR RENT** in Spearman. 3 Bedroom / 2 Bath. Fenced backyard. Central Heat and Air. (Call 878-2909). S48-RTN

**HOUSE FOR RENT:** 3 BD 1 bath home. Fenced Yard. Carpet. Applications being taken Call: Allen Alford at 659-3034. Rent Reduced - \$290.00 S43S-1tcRTN

**TRAILER SPACE FOR RENT:** in Spearman, \$50 a month Call. 435-5080 S43S-RTN

**FOR RENT:** Furnished Efficiency Apartment. Call 659-2764. S50S-1tc RTN

**HOUSE FOR RENT:** 307 12th. Brick, 3 bedroom, 1 bath. Call 659-3809. S44-1tc RTN

### Miscellaneous

**FOR RENT:** 3 Bedroom trailer for \$225 per month. **FOR SALE:** an auto tow bar, Class III, 5000 lbs. gross load. 905 King, Gruver; Call: 733-5130. S52S-2tp

### Work Wanted

**WANTED:** Milo Harvesting. Can harvest 30 in or 40 in rows. Call V.B. Morris 733-2203. S48-1tc RTN

### Services

**INSULATE NOW!** Save on Heating and Cooling Bills. Walls, Attics, New or Old Homes, Metal Buildings and Shops. Call Forest 806-659-2111 for appointment and FREE Estimate. Factory Trained Installer. S46-27tp

### NOTICE

Wallace Monument Co. Monuments, Curbing, Grave Covers Local Representative LEONARD JAMESON Spearman, Texas 35s-rtn

### Help Wanted

#### HELP WANTED

Experienced Hot Oil Truck Operator and experienced transport Driver. Apply in person 22 N. Industrial Perryton, Texas. Bergstein Oil Field Service. S52S - 4tc

#### POSITION OPEN

Fanhandle Community Services is seeking a part-time driver for their Transportation Division. Must be over twenty-five years of age, have high school diploma or GED, clear driving record, able to pass DOT physical and willing to work irregular hours. Experience working with elderly and handicapped a plus, starting salary \$3.35 per hour. Applications may be picked up at the Golden Spread Senior Center, 14 South Haney Street, in Spearman. Applications will be accepted by the same office through 11-10-89. EEO/Affirmative Action Agency. S01-2tc

#### ATTENTION:

**EXCELLENT INCOME FOR HOME ASSEMBLY WORK.**

INFO. CALL 504-646-1700 Dept. P6392

**WANTED:** Experienced Oil Field Tandem driver and Road Truck driver. Contact Kelly Belt, Hodges Trucking Co., Perryton, TX. 435-6538. S52S-2tp

**NEED EXPERIENCED** Irrigated Farm and Ranch Employee; Send Resume to HCR 1, Box 38, Spearman, TX. 79081. Include Age, Marital Status, Experience and names and addresses of last 3 employers. S53-2tc

**CRUISE SHIPS** Now hiring all positions. Both skilled and unskilled. For information Call (615) 779-5507 Ext. H-1236. S53-2tp (Thursday ONLY!)

#### SALES PERSON WANTED

**THE SPEARMAN REPORTER HANSFORD PLAINSMAN, AND GRUVER STATESMAN NEED A SALES PERSON. FOR MORE INFORMATION CONTACT THE REPORTER AT 659-3434.**

**BOB HARDY REALTY** 803 Wilmeth Dr. 659-3440 NEW LISTINGS

713 Steele Dr. - 3 BR, 2 Bath Nice, Reasonable. Colorado Property For sale. Robert Hardy-broker

#### Real Estate Sampler

Allen Alford-Broker-659-3034 Hester Crawford - 659-2074 Dennis Nelson-Sales-659-3608 Larry Trosper-Sales-659-3491 **THREE BEDROOM HOMES** 902 Dressen 727 Wilbanks- Office, 1 1/2 B. 1010 Dressen 708 Steele- Fireplace 1116 Townsend- Dbl. Garage 727 Cotter- 1 1/4 Baths 729 Wilbanks- 1 1/4 Baths 729 Cotter- 1 1/4 B, Dbl. Gar. 623 Bernice- Corner lot 1016 Townsend- Priced to sell 1021 Townsend 1108 Archer - 2 B., Dbl. Gar. 412 Townsend- Affordable! 805 Archer- Close to School 1012 Haney- Affordable! **TWO BEDROOM HOMES** 811 Townsend- Dbl. Garage **COUNTRY HOMES** 3 BR - 1 1/2 Baths - 2 1/2 A. 4BR - 2 Baths - 17 A. **ACREAGE** 15 Acres - Crawford Addition **INVESTMENT PROPERTY** Have Several Rental Units **Check for other listings. WE WANT TO BE YOUR REALTOR**

### Legal Notices

#### NOTICE TO ALL PERSONS HAVING CLAIMS AGAINST THE ESTATE OF PAULINE J. JOHNSON

Notice is hereby given that original Letters Testamentary for the Estate of PAULINE J. JOHNSON were issued on October 30, 1989, in Cause No. 1941, pending in the County Court of Hansford County, Texas; to ALICE JOANNE GRAVES as Executor. The residence of such Executor is Hansford County, Texas. The post office address is P.O. Box 83, Spearman, Texas 79081.

All persons having claims against this Estate which is currently being administered are required to present them within the time and in the manner prescribed by law.

DATED the 30th day of October, 1989.

CECIL R. BIGGERS Attorney for Estate of PAULINE J. JOHNSON, Deceased

#### LEGAL NOTICE

#### CITATION BY PUBLICATION

TO: ANTONIO SANCHEZ, Respondent

#### GREETINGS:

YOU ARE HEREBY COMMANDED to appear and answer before the Honorable 84th Judicial District Court, Hansford County, Texas, at the courthouse of said county in Spearman, Texas, at or before 10 o'clock a.m. of the Monday next after the expiration of 20 days from the date of service of this citation, then and there to answer the petition of Catherine Sanchez, Petitioner, filed in said Court on September 12, 1989, against Antonio Sanchez, Respondent, and said suit being Number 3660 on the docket of said Court, and entitled "In The Matter of the Marriage of Catherine Sanchez and Antonio Sanchez", the nature of which suit is an action for divorce. The Court has authority in this suit to enter any judgment or decree dissolving the marriage.

Issued and given under my hand and seal of said Court at Spearman, Texas the 30th day of October, 1989.

Amelia C. Johnson Clerk of the District Court of Hansford County, Texas BY: Kim V. Vera, Deputy

#### Intentions to Drill

HEMPHILL (HEMPHILL Granite Wash) Meridian Oil, Inc., #4 Hobart Ranch (640 ac) 1867' from South & East line, Sec. 50, A-2, H&GN, 13 mi southerly from Canadian, PD 15887' (400 North Belt East, Suite 1200, Houston, TX 77060)

WHEELER (FRYE RANCH Granite Wash 'A') Gifford Operating Co., #1 Frye 'C' (324 ac) 930' from North & 1710' from East line, Sec. 2.5, B&B, 6.4 mi NE from Wheeler, PD 12500' (4625 Greenville Ave., Suite 202, Dallas Tx 75206)

Application to Plug-Back WHEELER (NORTH RED DEER Granwash) Union Texas Petroleum Corp., #1-28 Puryear (640 ac) 1320' from North & West line, Sec. 28, A-3, H&GN, 8 mi NE from Wheeler, PD 20250' (Box 2120, Houston, TX 77252)

ROBERTS (QUINDUNO Lower Albany Dolomite) Chevron U.S.A., Inc., #1 G. McCuiston 'A' (320 ac) 660' from South & 1980' from West line, Sec. 193, M-2, BS&F, 7.5 mi west from Miami, PD 6325' (Box 36366, Houston, TX 77236)

Amended Intention to Drill HARTLEY (WILDCAT) Harken Exploration Co., #1 Proctor (47613 ac) 952' from North & 2297' from

West line, Sec. 66,22, Capitol Syndicate, 17 mi west from Channing, PD 6500' (Box 10626, Midland, TX 79702) Amended to change Operator from McKinney Operating Co. & change depth.

Oil Well Completions Moore (Panhandle) Enron Oil & Gas Co., #1 Sneed I-28, Sec. 28, 1, J. Poitevent, elev. 3295 gr, spud 1-15-85, drlg. compl 1-25-85, tested 7-24-85, pumped 2.50 bbl. of 35 grav. oil + 6 bbls. water, COR 23600 perforated 2698-3246, TD 4088', PBTD' 4015'-- Form 1 filed in HNG Oil Co.

MOORE (PANHANDLE) Myriad Resources Corp., #1-R Sneed 'F', J.T. Sneed Survey, elev. 3372 gr, spud 8-21-89, drlg. compl 8-26-89, tested 10-17-89, pumped 20.5 bbl. of 34 grav. oil + 9 bbls. water, COR 390, perforated 3236-3336, TD 3375', PBTD 3344'

OCHILTREE (LONE BUTTE Cleveland) Mewbourne Oil Co., #1 Flowers, Sec. 143.13, T&NO, elev. 2970 kb, spud 8-5-89, drlg. compl 9-1-89, tested 10-6-89, pumped 20 bbl. of 41 grav oil + 6 bbls. water, COR 1000, perforated 7336-7370, TD 10040', PBTD 8729'

ROBERTS (R.D.MILLS Atoka) Quinoco Petroleum, Inc., #2 R.D.

See Oil Page 6

## SMS 300TSD SMR Mobile Telephone



SMR MOBILE TELEPHONES ARE AN INEXPENSIVE ALTERNATIVE TO CELLULAR PHONES. NOW YOU CAN PLACE OR RECEIVE PHONE CALLS SIMILAR IN QUALITY TO THOSE OF A CELLULAR TELEPHONE. As low as: **\$80<sup>00</sup>** Per Month Includes Private Phone and Unlimited Airtime

System operational in Amarillo, Dumas, Hereford, Spearman, Perryton, Gruver, Morse, Dalhart, Dimmitt, Friona and Many Other Areas **EARL'S TV & APPLIANCE** 106 E. Kenneth Spearman

Count on the Classifieds to Do the Job



Offered by **EMMETT R. SANDERS REALTOR** Owner's 2 bedroom home plus 3 rental units. Good investment package. **EMMETT R. SANDERS REALTOR** 659-2516, nights 659-2601

**OSGOOD MONUMENT CO.** Amarillo, Texas Dealers of Rock of Ages Granite, as well as all colored granites, marble and bronze memorials. represented by **BOXWELL BROS. FUNERAL HOME** 519 S. Evans 659-3802

**Century 21 GOLDEN SPREAD REALTY** Janye Helton Pointer, Broker Owner, 435-5444 Sales Associate Jenniter Nollner 659-5243 **515 S. Bernice-4/1 1/4**, extra large lot & close to school! **712 Cottier- \$2 UNDER CONTRACT re!!** **20 S. James-2/1** Well maintained! **611 S. Evans - 3/1 1/4**, Affordable! **704 Steele- No de... CONTRACT... nt to que... in Home applicat...** **322 Barkley-3/1** Corner lot adds to the appeal! **118 Townsend - 4/2**, Apartment included! **1102 Haney - 3/1 - New listing!** Owner says sell quickly! **220 S... UNDER CONTRACT... r!** **522 S. Haney** Priced to sell quickly! **315 1/2 N. Bernice - Lot for sale!** **315 Townsend - 2/1** Small price tag!

## DQ COUNTRY F I E S T A

**3 TACOS! \$1.49**

**TACO SALAD! \$1.99**

**CHEESE NACHOS! 99c**

ON SALE IN **DQ COUNTRY**

Not all products available in all stores. Good only at participating Dairy Queen stores.

SALE PRICE **OCTOBER 30 thru NOVEMBER 19, 1989**



**Lynx From Page 1**

quarter to bring the score to a final 48 - 12 in favor of the Lynx.

**7th Grade**

by **Cindy Blackman**

The Spearman seventh grade defeated the Amarillo Highland Park Hornets 18 - 6 on Thursday, Oct. 26. Radar Garcia scored all three of the Lynx touch downs.

The Lynx seventh grade defeated the Hornets the first game of the season 22 - 16. They played West Texas next and won 20 - 6. The third game they traveled to Boys Ranch and played in a downpour of rain and lost to the Roughriders 12 - 0.

Stratford was the next home game and the Lynx seventh grade was "out - sized." The Lynx lost 18 - 0.

On October 19, the Lynx traveled to Panhandle and lost a good game to the Panthers.

The Lynx seventh grade team shows lots of spirit and drive. With just two more games left, the team wants to go out winning. Way to go seventh grade Lynx!

**TNP From Page 1**

12.6% return on equity, which is significantly lower than the 14.6% requested by TNP.

In addition, the Commission staff has challenged TNP's conservation efforts, rate base calculation, treatment of excess deferred taxes, and other purchased power costs.

Although the PUC staff testimony does not constitute a final decision by the Commission, their recommendations often are important because the Staff is charged with representing the broad public interest of Texas. The PUC staff, as well as advocates for individual and group interests in the rate case, began presenting their cases before PUC hearings examiners at 10 a.m. Oct. 24 at the Commission offices in Austin.

After the hearing concludes, the examiners assigned to the case will issue a written report and proposal for a decision which will then be considered by the three-member Commission in an open meeting.

**Oil From Page 5**

Mills, Clay County School Land, Tract 2-A, elev. 2585 df, spud 8-26-89, drlg. compl 9-9-89, tested 10-2-89, pumped 22 bbl. of 42.9 grav. oil + 12 bbls. water, GOR 454, perforated 9070-9168, TD 9750', PBTD 9380' -- Plug-Back

SHERMAN (CARLANDER Marmaton) Phillips Petroleum Co., #5 Carlander, Sec. 199, 1-T, T&NO, elev. 3689 rkb, spud 8-8-89, drlg. compl 8-16-89, tested 10-17-89, pumped 291.1 bbl. of 44 grav. oil + no water, GOR 299, perforated 4888-4908, TD 5432', PBTD 5355'

**Gas Well Completions**

HANSFORD (WEST LIPS Cleveland) BHP Petroleum Co., Inc., #2 Etter, Sec. 25, R. B&B, elev 3110 kb, spud 3-22-89, drlg. Compl 6-26-89, tested 10-16-89, potential 7000 MCF, rock pressure 1682, pay 6574-6596, TD 9496', PBTD 6765'

HEMPHILL (N.W. CANADIAN Douglas) TXO Production Corp., #1 Nix 'C', Sec. 74, 42, H&TC, elev. 2504 gr, spud 3-15-89, drlg. compl 3-29-89, tested 4-28-89,

potential 4190 MCF, rock pressure 1225, pay 6702-6768, ED 6850', PBTD 6700'

HEMPHILL (TWISTER Douglas) Samson Resources Co., #3 Urschel, Sec. 51, 1, G&M, elev. 2528 rkb, spud 4-24-89, drlg. compl 5-14-89, tested 7-6-89, potential 23800 MCF, rock pressure 1879, pay 6958-6987, TD

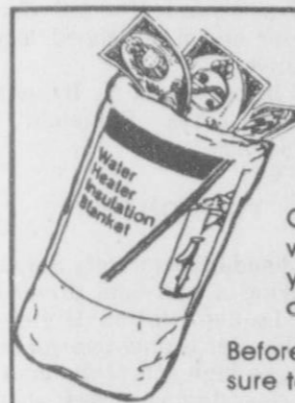
7198', PBTD 7130'

OCHILTREE (WEST LIPS Cleveland) BHP Petroleum Co., Inc., #2 Blodgett, Sec. 24, R. B&B, elev. 3107 kb, spud 3-1-89, drlg. compl 5-17-89, tested 10-16-89, potential 5000 MCF, rock pressure 1861, pay 6622-6639, TD 9200', PBTD 6718'

**Plugged Wells**

GRAY (PANHANDLE) McSpadden Oil Co., #1-D Chapman '49', Sec. 49, A-9, H&GN, spud 9-24-63, plugged 9-18-89, TD 3130' (disposal)

GRAY (PANHANDLE) Oilwell Operators, Inc., #1 Brad, Sec. 122, B-2, H&GN, spud 6-2-66, plugged 10-4-89, TD 3043' (oil)--Form 1 filed in Bill M. Roots & Sloan Oil & Gas



### Wrap up energy savings with a water heater insulation blanket

LOW-COST  
NO-COST

One of the simplest ways to save electricity used to heat water in your home is to install an insulation blanket around your water heater. These blankets are usually easy to install and can cut energy used to heat water by up to 40 percent.

Before installing an insulation blanket on your water heater, be sure to read all of the manufacturer's literature.

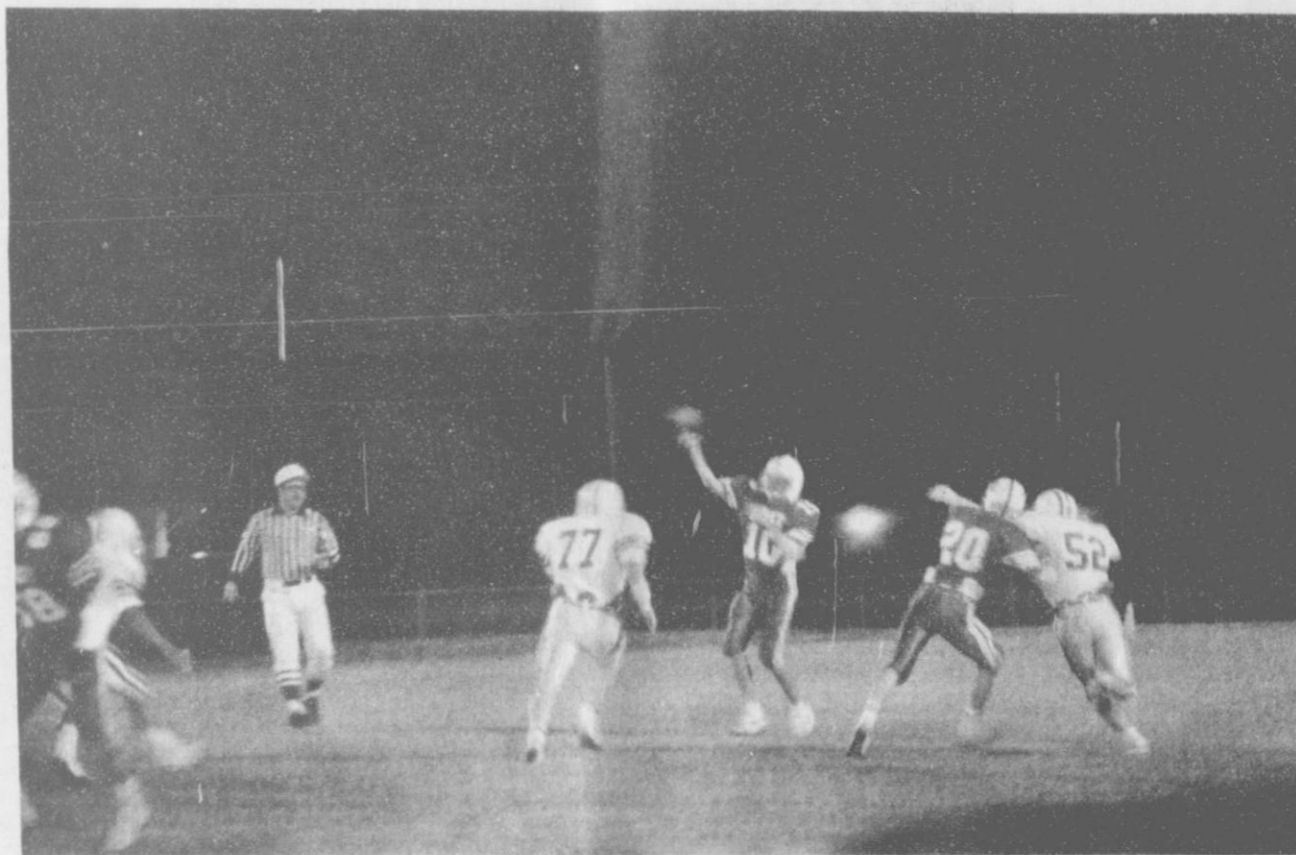


Texas-New Mexico  
Power Company.

11a89  
Neighborhood Professionals  
Offering You The Best Choice

For more ways to save energy, call or visit your local TNP office today.

# Go Lynx - Scalp The Comanches!



Brian Kidder (77) and Tracy Thompson (52) go for the quarterback sack.



## Proud Supporters Of The Pride Of Hansford County - The SPEARMAN LYNX

### HANSFORD COUNTY FARM BUREAU

307 West Davis  
Spearman  
659-3133

### GORDON'S DRUG

314 Main Street  
Spearman  
659-2141

### CHAROLETTE FORD TRUNKS

313 Main Street  
Spearman  
659-3027

### THRIFTWAY

505 Plains Shopping Center  
Spearman  
659-2522

### FIRST STATE BANK

INE Court  
Spearman  
659-5565  
MEMBER FDIC

### HANSFORD IMPLEMENT

Highway 207 South  
Spearman  
659-2568

### CATES MEN & BOYS WEAR

221 Main  
Spearman  
659-3426

### SACKS THIRD AVENUE

203 Main  
Spearman  
659-3350