

HANSFORD CO. LIBRARY  
120 MAIN  
SPEARMAN, TEXAS 79081

# MERRY CHRISTMAS

24 hr. prayer  
service 659-2911

Best  
of  
Press

## The Spearman Reporter



VOLUME 78, NUMBER 8

The Spearman Reporter, Spearman, Texas 79081

THURSDAY, DECEMBER 26, 1985



Charlene Bryan, on the left is outgoing president of the Women's Division of the C. of C. Sheri Benton is the new president.



Hansford Manor was visited by a group of Elementary students on Wednesday, Dec. 18th. The Group of students were from the 1st grade rooms of Mrs. Smith, and Mrs. Tucker. The Program which was presented was "TWAS THE NIGHT BEFORE CHRISTMAS". Then Christmas Carols were sung.

Brown-Graham and Co. entertained with a Christmas party the past week!



### Don Mullins accepts job!

## New Coach for Lynx

December 5, 1985

Mr. Larry Butler  
403 E. 11th  
Spearman, Texas 79081

Dear Mr. Butler:  
I am very interested in the coaching position you have open. Attached is a list of my coaching and teaching experiences, and a brief resume of my references, education and career.

I participated in all athletics at Haskell High School and graduated from there in 1956. From 1956 until 1958, I played football and ran track at Tarleton State College. In 1958, I entered the Army and participated and later coached football, track, boxing, and basketball for the 101st Airborne Division until my release in 1961.

I graduated from North Texas State University in 1963, and my first public school coaching job was at R. W. Matthews Junior High in Lubbock from 1963 to 1967. The next three years I spent in Haskell as defensive secondary coach and head track coach.

We had very successful teams there from 1967-69, reaching Regional in 1969. In 1970, I accepted a job with Sul Ross State University in the Physical Education Department and coached the freshmen and did the scouting for the varsity. I helped coach the first Lone Star Conference Track Championship that Sul Ross had won. The fall of 1971, I coached at Bel Aire High School in El Paso before coming to Knox City in the spring of 1972. Knox City had had some problems the year before and the head coach had resigned at mid-term, giving me a chance to reorganize the athletic program. My first season there we were 7-3 in football and lost the district by one point. Our basketball team went to Regional and the track team won District. The next year we were 5-5 in football and won District in track. My third year we won the District (1974) in all three major sports. In football we were undefeated in regular season play and lost to Jim Hed in Bi-District. This was the first District Championship Knox City had won since coming into Class A.

In 1975, I accepted the Head Coach and Athletic Director position in Rotan. We were District Champs in football, Rotan's first since 1966, and was runner-up in basketball. In 1979, we won the District in football and lost to Haskell in Bi-District. In 1980, we lost to Pilot Point in the Semi-Final game 14-0.

In the spring 1981, I assumed the Head Coach and Athletic Directorship here at Hale Center. We had a good year, advancing to the Semi-Finals against Pilot Point. In 1982, we again made it to the Semi-Finals losing to Eastland 16-12. In 1983, we again went to the play-offs and lost in the first round to Hamlin 15-14. Last year we advanced to the play-offs again and tied Lockney 6-6 (lost on penetrations 2-1). This past season, we won our Bi-District game against Lockney. We played them earlier and tied 0-0. In the Bi-District game we beat them 16-12.

I like to see a well-rounded athletic program, both boys and girls. I have the ability to communicate with athletes of all ages, assistant coaches and administration, and I believe any references will verify this.

Again, I am very interested in the coaching position you have open.

Sincerely,

*Don Mullins*

Don Mullins  
Box 805  
Hale Center, Texas 79041  
806 839-3146

NAME - Franky Don Mullins

MARRIED - Wynnette (Elementary Certified) presently teaching sixth and seventh - Hale Center

CHILDREN - Donny - Married - Farming in Rotan  
Terrie - Married - Living in Rotan  
Kiech - Married - Coaching in Hale Center

CHURCH - Baptist

EDUCATION - High School - Haskell, Texas 1956  
Tarleton State University  
North Texas State University - B.S. 1963  
Texas Tech - Graduate Studies  
Texas A&M - Graduate Studies  
T.C.U. - Graduate Studies  
Sul Ross State University - Master of Education - 1971

COACHING AND TEACHING EXPERIENCE

1958 - 61 - Coached in Army - Football, Basketball, Boxing  
Track, Swimming

1963 - 67 - Lubbock - R.W. Matthews Junior High - Head 8th  
Football - Head Track 9th - Science 8th

1967 - 69 - Haskell - Defensive and offensive backfield  
Head Track Coach - Science 8th

1970 - 71 - Sul Ross University - Teacher in Physical Education  
Department - Coached receivers and scouted

1971 - Bel Air High School - El Paso - J.V. Coach - 9th  
Science

1971 - 74 - Knox City - Head Football Coach - 6th Science  
Jr. High Principal  
District Winners 1974

1975 - 80 - Rotan - Head Football Coach and Athletic Director  
Health and P.E. - District Champs 1975, 1979, 1980  
Quarter-final Champs 1980

1981 - 85 - Hale Center - Head Football Coach and Athletic  
Director - P.E., District Champs 1981  
Quarter-final Champs 1981  
District Champs 1983  
Bi-district - Lockney 1984  
Bi-district Champs 1985

# Alternates to the all-area choir



Two Fridays ago, six members of the Lynx Chorale traveled to Canyon to take part in the third of four auditions on the way to the all-state choir and to participate in

the all-district choir which they auditioned for and made a month prior. These kids worked hard and fast towards this audition and there were three students who were chosen as alternates to the

all-area choir. These students are: First Tenor - First Alternate - Clint Patterson  
Second Tenor - Second Alternate - Shane Swenn

First Alto - First Alternate - Kellie McWhirter

These students will continue to work their music and travel down

to Lubbock this January to be prepared to audition in place of a no-show. Congratulations go to these fine singers for their work and dedication.

Along with the auditions Friday night, there was a choir concert held Saturday for all the students in our region who made the all-district choir. This took great

work and dedication also to be chosen as a member of this elite group. Congratulations to all or you who participated in this very

noble and honorable event and good luck to our three students at the all-state auditions in Lubbock this coming January 11th.

## Spearman Reporter

PUBLICATIONS (USPS 5096-6000)  
SPEARMAN, TEXAS 79081  
213 Main Box 458 659-3434  
Published Weekly at 213 Main Street  
Spearman, Texas 79081

Owner-Publisher.....William M. Miller  
Editor .....Faye Lynch  
Second Class postage paid at Spearman, Texas  
79081

Any erroneous reflection upon the character of any person or firm appearing in these columns will be gladly and promptly corrected upon being brought to the attention of the management.

POSTMASTER: Send address changes to Spearman Reporter, Box 458, Spearman, Tx. 79081.

SUBSCRIPTION RATE: Hansford, adjoining counties, combination with the Hansford Plainsman \$26.28  
Other points, \$31.54

MEMBER  
TEXAS PRESS ASSOCIATION

## SPS settled upon a rate-restructuring plan

Southwestern Public Service Company (SPS) and the Steering Committee representing SPS-served Texas communities have settled upon a rate-restructuring plan that leaves electricity prices for most retail customers stable.

The settlement recommends SPS-served communities in Texas allow the electric utility a base rate increase will be more than offset by decreased fuel charges. SPS has decreased its boiler-fuel costs primarily by building coal-fueled power plants.

Sam Hunter, SPS vice president of Rates and Economic Research, said the utility now is "designing" rates to fit the settlement the Steering Committee is recommending to Southwestern's Texas retail customers.

Residential rates, he said, are not expected to change noticeably under the proposed settlement. Rate for most other customer classifications also will continue stable, or decrease somewhat, Hunter said.

SPS last sought, and was granted a retail rate increase in Texas in 1982.

Each of the 65 Texas communities in which SPS has filed for rate restructuring must

approve the proposed settlement before it can become effective in that community. Additionally, SPS is asking the Public Utility Commission of Texas (PUCT) to approve the settlement so that the rates will apply to SPS retail customers both inside and outside boundaries of the SPS-served communities.

The PUCT already has agreed on an interim basis to let SPS lower its fuel charges to customers by \$40,933,368. Final PUCT action on decreasing fuel changes and on the proposed base rate settlement is expected this week.

The new rates, if approved by the SPS-served communities and the PUCT, are expected to become effective Jan. 1, 1986.

Hunter said SPS settled for the \$28 million base rate increase, rather than insisting on \$40.8 million originally requested, for several reasons. "It is extremely important to us to begin as soon as possible to make a return on our shareholders' new investments, including Tolk Station Unit No. 2 and the Oklaunion transmission line," he said.

"Both of those facilities have been in service since June, but neither has been reflected in our Texas rates."

The new 565,000-kilowatt Tolk Station unit cost SPS \$288 million. The Oklaunion transmission line cost the company \$25 million. Hunter noted that the Tolk unit was completed for less than one-half the national average cost of comparable coal-fueled power plants.

"Additionally, the cost of capital is lower now than it was at the time we prepared our rate request," Hunter said. "We had requested a rate of return of 11.95%. We settled for 11.7%."

He said the utility also agreed to lower its request for depreciation expenses, and to "black out" of the request about \$2 million originally sought for research and development of a carbon dioxide-coal slurry pipeline.

Southwestern Public Service primarily provides electric service to a population of about one million in a 52,000-square-mile area of eastern and southeastern New Mexico, the south Plains and Panhandle of Texas, the Panhandle of Oklahoma, and southwestern Kansas.

## In Fashion

Use a bit of imagination--bring a little warmth and color to brighten dreary winter days.

Bright yellow and hot pink coupled with vivid blue or white gives one a warm feeling in the midst of winter's doldrums.

Ronald Reagan, President, on balanced budget legislation:

"While this proposal is welcome, I am concerned that in the extreme it could have adverse effects on maintaining adequate levels of defense spending."

## BIBLE VERSE

For unto you is born this day in the city of David a Savior, which is Christ the Lord.

1. Who is the author of the above verse?
2. Where may a similar verse be found in the Old Testament?
3. Who made this proclamation?
4. Where may this verse be found?

It's getting late to begin your Christmas shopping.

Life has its disappointments but there is no reason to be one of them.

## TO ALL THE CITIZENS OF HANSFORD COUNTY;

Dr. & Mrs. Romeo B. Sangalang and family, wish to thank all of you for the support and encouragement in starting his practice of Medicine and Surgery. My family is looking forward to move to Spearman early Spring of 1986.

We would like to take this opportunity to wish all of you A Very Merry Christmas and A Prosperous New Year.

R.B. Sangalang, M.D.

## Hay shortages overcome

Horse owners facing shortages of quality hay should consider feeding a pelleted complete feed; one which combines roughage with all the essential nutrients a horse needs.

Kenneth Slough of Double 'D' Fertilizer & Feed in Gruver says, "Not only is this an excellent way to alleviate hay shortages, it's also a convenient feeding method which assures a properly balanced diet."

A horse's digestive system is sensitive, and it's important that a balanced feeding program be followed daily, Slough explains. "If there is a sudden change in quantity or quality of hay fed, a horse's digestive system may be upset. By feeding pelleted complete rations horse owners don't have to worry about their hay supply."

Pelleted feeds are formulated, Slough points out, to provide the right balance of all the nutrients a horse needs. "Pelleted complete feeds can help horse owners get through a temporary hay crisis, even if owners don't want to adopt a complete feed program permanently," the feed dealer says. Based on ration proportions, for example, horses can be fed a small amount of pelleted complete feed to replace roughage along with a reduced amount of normal grain mix feed.

Since complete feeds require no roughage when used as the sole feed component, owners who travel to competitions or other events need not carry cumbersome hay bales, or hope to find quality hay enroute. "Performance horses, whether polo ponies, barrel racers, endurance horses or show jumpers can perform at their best only when feeding programs meet all the demands of their

hard-working lifestyle. One thing a horse owner doesn't need is a horse going 'off feed' at a competitive event," says the dealer.

Even when choosing a complete feed, however, horse owners still must select a formulation which meets the needs of their horse, depending on what the horse is used for, he points out.

"I help my customers choose a feed type by evaluating the factors important to them -- convenience, the horse's lifestyle, and how reliable their roughage supply is," the feed dealer explains. "Then we select a feed program that is most suitable. The Purina Lifestyle Feeding System is a good, reliable way to choose products that meet a horse's needs. Horse Chow 200, for example, is just right for performance and breeding horses whose owners want a complete feed."

Pelleted complete feeds take up less storage space in the barn and streamline feed ordering, pickup and unloading. An added advantage is simplification, which is important if feeding must be done by someone other than the owner.

"When feeding a mix of grain and hay, barn workers need to know the amounts of both, and often the amount of various supplements as well," the dealer says. "With a pelleted complete feed, though, everything is encapsulated in the pellet. The barn manager just lists how many quarts each horse receives. No supplements are needed."

### Answers to Bible Verse

1. Luke 2:11.
2. Luke 2:11.
3. The angel of the Lord to the shepherds in the field.
4. Luke 2:11.

Lady Fair Kids' Stuff  
719 W. 7th  
Spearman, Texas

Fall & Winter Clearance Sale  
**30% to 50% OFF**

all fall and winter merchandise  
Sale Starts  
Friday, December 27th at 9:00 a.m.  
(Both stores closed Thursday, December 26th to prepare for sale)

Proudly Announces

**Agco of Spearman**  
Box 566 (806) 659-2417  
Spearman, Texas 79081

Has been appointed New Northrup King Seed Dealer handling  
More From Every Acre Through Creative Seed Research.

**NK** NORTHROP KING CO.  
1000 JACKSON STREET N.E. MINNEAPOLIS, MN 55412

Why are members of TNP's Speaker's Bureau giving talks on electrical safety?



TNP is concerned about its customers' safety. That is why its Speaker's Bureau is delivering the talk, "How to Prevent the Shock of Your Life," to organizations in the TNP service area.

The TNP neighborhood professionals caution you to avoid all contact with power lines. They also warn you not to use electrical appliances around water such as in your sink, basin or bathtub. For more information about electrical safety, or other topics available, contact your local TNP office. Speakers are available for your organization.

Neighborhood Professionals  
Offering You the Best Choice

**Texas-New Mexico Power Company.**

# Chamber installs new officers here

The Spearman Chamber of Commerce held their annual installation banquet in Spearman, on Tuesday night. Mike Cudd was installed as the new President, and Bob Pearson was the outgoing president. Officers and directors for the coming year are pictured below. Our special thanks to C. of C. manager Cora Queener who is doing such a swell job!



Chunky Blackburn shakes the hand of incoming Chamber President Mike Cudd.



Seated at the head table were from L to R: Outgoing President, Bob Pearson and wife, Jackie Pearson, Zetha Blackburn and installing officer, Mike and his wife Pat Cudd.



The New 1986 Officers installed at the Chamber of Commerce Installation Banquet are L to R.; Scott Beedy - Secretary, Bill Pittman - 1st Vice-President, Lynanne Maize - 2nd Vice-President, Cora Queener - Chamber Executive, and Mike Cudd - New President.



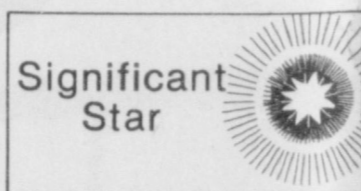
The New 1986 Officers and Directors of the Spearman Chamber of Commerce are L to R; - Dr. Stan Cobb Scott Beedy, and Lynanne Maize.



This year are you having a problem trying to think of low-priced gifts? How about automotive gifts?

Any car owner would appreciate a full wash-and-wax outfit which can include a large plastic bucket, a large sponge, car wash detergent, terry cloth towels, polishing or rubbing compound for restoring worn paint, touch-up paint, a can of paste wax, etc. (It's a good idea to buy the best wax you can afford since it lasts the longest and the waxer gets the most reward for his hard work.)

You might like to give a fancy leather or wooden shift knob, a car-name key fob, a leather steering wheel cover, fog lights, car vacuum cleaner, or a hand-held spotlight.



The Star of Bethlehem that appeared with breathtaking splendor as the angels hovered over Christ's birth place and guided the Magi to their destination still holds a special place in our Christmas decorations of today. It has bedecked the top of Christmas trees since early Victorian times.

In many parts of Europe bands of modern "star-carolers" still roam the streets carrying long poles which are tipped with star-shaped lanterns.

The star will always be an important part of Christmas. This Christmas may the Star of the Christmas Story guide us to peace and joy as we contemplate His unselfish life!



### Angels Down The Centuries

It was the angel Gabriel who told Mary she was especially chosen to be the mother of Jesus. On the Eve of Christ's birth it was a multitude of angels who brought the glad news.

Angels were painted without wings or halos in the early Renaissance but later artists portrayed them with both.

Over the centuries one element of the angelic throng at Christmastime has never changed - their exquisite and melodic song. We see angels in woodcuts, statues, and paintings playing various instruments - their mouths rounded in song. Composers in every century have tried to capture the beautiful spiritual meaning of the angels' melodies.



### Silver Nut Cups

1. Using a small saucer as a pattern, cut 2 circles approximately 5"-7" in diameter from aluminum foil. Put the 2 circles together as one piece, shiny side out.

2. Place the circle over an inverted small glass and mold the foil to its shape.

3. Fringe the edges by cutting 1/4" cuts around the edge.

4. Tie curling ribbon around the cup's middle, securing it to the cup with tape. Curl the ribbon's ends.

5. Remove the glass and fill with candy or nuts. The cups can be used individually or together as a wreath centerpiece for the table or coffee table.

### The 12 Days of Christmas

During the Middle Ages the yuletide celebration was England's favorite holiday - from princes on down to beggars. There was a sumptuous feast, and elaborate pageants with musicians and jesters joining in a grand combination of noise. Into such a background came "The 12 Days of Christmas." It was a song, a dance, and a forfeit game. At anyone's first slip or hesitation a forfeit had to be paid. A knight might have to hop around the chamber on one foot or an embarrassed youth commanded to sing a bawdy ballad.

It is suggested by some that during this season young people of the court had a rare chance to mingle and perhaps hence came the "true love" gifts. The future bridegroom might do a bit of boasting about the dowry his bride-to-be would bring.

France has other versions of this song-game sometimes featuring parrots, hinds, and even baboons.

### Christmas & Juggler John

How did the juggler get into the European Bethlehem scene? It seems Saint Francis introduced his living-animal manger scene in a village near Assisi. Soon, during the long and hard winters, workers started carving the manger scene. Along with the devotional figures there soon appeared ordinary folk, among them a juggler. Later, in Anatole France's short story, "Our Lady's Juggler," the juggler appeared as the central figure.

According to an old French legend, the poverty-stricken juggler, John, spins his golden balls for the crowds. As so often happens with the poor, he became the butt of mockery and cruel jokes. In order to flee his tormentors John becomes a monk. But his desire to please the Virgin frustrates him as he still feels so inferior.

One day John puts on his old costume and juggles some oranges in front of the Virgin statue. The friars rush in to stop his sacrilege but the story goes that they suddenly stop as they see the statue smile. The moral of the legend: No matter how humble the gift -- it's always acceptable when given with a pure heart.

### Christmas Tree Reflections

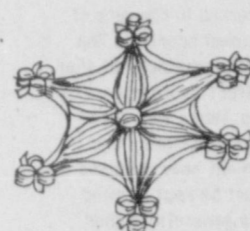
It is difficult to trace the origin of the Christmas tree. One of the favorite stories, whether fact or fancy, recounts Martin Luther walking through the forest one cold Christmas Eve and marveling at the star-studded sky. The story goes that he carried home a small tree, then trimmed it with candles to illustrate to his children the divine power that had gloriously brightened the Nativity Eve.

As we quietly marvel at the Christmas tree splendor we can reflect upon the Perfect Gift given so long ago in our behalf that hung on a tree in sacrifice for us but ever lives like the evergreen tree.

### Evergreen See-Through Tree

Slit a toy hoop around the outside diameter. Paint the hoop green. Force a string of tree lights into the slit. Cut a notch between each light to

keep string (or yarn) from slipping. Form the smaller, inner tree by using alternate notches with shorter pieces of yarn which will be gathered together at its top and attached to one long string to be hung from the ceiling. Construct the taller, outer tree by using the remaining notches. Hang ornaments separately. If using string, spray paint green.



### Snowflake Ornaments

Cut strips of paper crossgrain. Shape into curls and glue the ends together. Glue the curls into a snowflake form. Fill with cellophane.



### Yummy Tree Ornaments

Cut 11" squares of plastic wrap. Place 1/4 cup "M & M's" Plain Chocolate candies and 1/4 cup of "M & M's" Peanut Chocolate candies in the center of each square. Gather the corners together and twist the wrap tightly to form a ball. Tie with a 30" length of ribbon that you can curl. Form a loop at the top for hanging. Tie a 12" length of the same ribbon at the loop's base. Curl all four ribbon ends.

### Hark! The Herald Angels Sing!

It seems neither the words nor the music of "Hark! The Herald Angels Sing" originally had anything to do with angels.

According to some there was a far different connotation. It seems Charles Wesley (author of 6,000 poems -- younger brother of John Wesley, founder of the Methodist denomina-

tion) was listening to the echoing bells as he wound his way to church one Christmas morn. The lovely pealing tones impressed him to originally write: "Hark! how all the welkin rings, Glory to the King of Kings!"

Welkin means dome of heaven or sky; later writers may have felt Charles Wesley alluded to angels' voices and changed this verse to so read.

Mendelssohn's music was adapted for this song but Mendelssohn never felt it was suited to the sacredness of the words. In spite of the writer's and composer's intent, this hymn continues to bring joy to each Christmas generation.

### Merry Christmas To Each In His Own Way

Do you hear that many young people today have little use for established institutions and outmoded forms? Well, how does this theory seem to hold up at your house during the Christmas season? Have you ever tried to replace the broken-winged angel with a glimmering, revolving Christmas star? Bet your children put up howls of protest, "But that angel has always been there!" And so it stays.

Sooner or later you may have the urge to say everybody's getting too grown up to hang the stockings by the fireplace this year -- it, too, no doubt will receive a loud protest.

How about having hamburgers instead of your regular Christmas entree! And pound cake instead of fruit cake! Isn't it rather comforting that some of the old rituals of home mean more to our children than we had imagined! Merry Christmas to each home in its own way!

### Santa's Partying Words

Santa while giving a party for his helpers: "Let's all be thinking how we can cut costs in our doll division, step up toy car production and eliminate wastes in all our departments."



*a Joyous* **CHRISTMAS**

Cheer-filled Yuletide greetings and gratitude for the loyalty you have shown us. Have a Merry Christmas.

## Smiley DeWitt Roofing

J.W. DeWitt

Ph. 806-323-6843

Perryton, Texas

Canadian, Texas

# Poverty still with us in Hansford County and area

Changes in circumstances and conditions of poverty in the United States and in Hansford County have been substantial and real over the past twenty-five years. At the same time, national statistics make it apparent that, with the exception of the elderly, only limited progress has resulted from efforts to reduce poverty since 1969. In fact, the national poverty level of 14.4% in 1984 was greater than the national poverty level of 12.1% in 1969 and the estimated 18.2% poverty level in Hansford County during 1984 was greater than the local poverty rate of 12.7% in 1969. Most Americans are disturbed by the persistence of poverty at its current levels. And most Americans appear genuinely puzzled at the persistence of poverty in spite of the massive efforts made by government to reduce poverty.

One of the major reasons for the increases that occurred in the rate of poverty from 1979 through 1983 was the troubled national economy. The nation's most recent recession included higher rates of unemployment than the United States has suffered at any time since the Great Depression. While various benefits are available to the unemployed, those who are unemployed for any extended period of time will almost inevitably find themselves among the poor. Falling rates of unemployment have resulted in a declining rate of poverty since 1983. However, it must be kept in mind that the current level of unemployment continues to be generally higher than it was from 1959 through 1979. Additionally, most economists consider it probable that unemployment rates will remain higher than those of the 1960's and the 1970's for the rest of this decade.

There appear to be still other factors that have contributed to the persistence of poverty. One of these is particularly noteworthy. The rate of poverty among households headed by women with no husband present continues to be higher than the rate of poverty among any other demographic groups. Not only has the proportion of the poor made up by female headed households without husbands increased sharply, but the proportion of these households in terms of the total of American households has increased sharply.

In 1959, persons living in households headed by females without husbands made up 26.3% of the nation's poor. 50.2% of all persons living in such households were classified as poor at that time. By 1984, persons living in households headed by single females made up 48.8% of the poor in America. Although the rate of poverty among persons living in households headed by females with no husband present had declined to 34.0% by 1984, this is nevertheless an extremely high figure.

Additionally, the number of persons living in households headed by females with no husband present has increased tremendously over the period. The number of persons living in such households has increased from 20.7 million in 1959 to 48.4 million in 1984 or by 133.6%. During this same period the national population increased by only 35.7%. Persons living in households headed by single females accounted for 11.9% of the national population in 1959. In 1984, they accounted for 20.4% of the national population.

Local information provided by the Census Bureau regarding households headed by single females is not as comprehensive as national information. However, sufficient information is available to determine that the increase in the number and proportion of persons living in such households in Hansford County has been much less than the national increase. 8.4% of children under the age of 18 in Hansford County lived in single parent households in 1960. By 1980, 11.0% of all children under 18 lived in single parent households. The number of families headed by single females in Hansford County increased from 81 or 4.7% of all families in the county in 1970 to 98 or 5.5% of all families in Hansford County in 1980. The poverty level among families headed by single females in Hansford County increased from 14.8% in 1969 to 23.5% by 1979. The number of families headed by single females in Hansford County has increased, but this trend has been less pronounced locally than nationally.

As noted, changes in the demographic makeup of the poor since 1959 have been substantial. The most noteworthy of these appear to be the declining number of elderly among the poor and the increase of single women with children among the poor. These trends were also partially apparent in Hansford County, if to a less marked extent.

Poverty in America declined sharply from 1959 through 1969. Since that time, efforts to reduce poverty have been much less successful. The American economy has changed significantly since 1959 as has the demographic makeup of poverty. However, policies implemented by the government in its efforts to reduce or eliminate poverty have changed only marginally. The Reagan Administration's critics may deplore the philosophy behind the Administration's approach to poverty while its supporters may applaud this same philosophy. However, in terms of dollars spent and programs utilized, the Reagan Administration's poverty policies have differed very little from those of its last three predecessors.

It appears certain that the government policy regarding the poor will continue to be a major political issue. Whether or not there will be either changes in government policies designed to deal with poverty or appreciable changes in the national level of poverty is much less certain. However, continued declines in the poverty rate in Hansford County are more likely than declines in the national poverty rate because overall local income levels are likely to continue to increase in comparison with overall national income levels.

special to Gruver Statesman



COMFORTING A LITTLE ONE--This toddler, apparently orphaned by Colombia's killer mudslide Nov. 13, cried for his mother as Southern Baptist missionary Mary Nell Giles entered his hospital room in Ibague. Offered a toy poodle, the child continued to cry until the missionary took him in her arms. In the hospital, he was identified only as "NN" (no name). PHOTO By Joanna Pinneo

## BAPTISTS GIVE VOLCANO VICTIMS MEDICINE, SUPPLIES, COMPASSION

A Gruver native, Mary Nell Giles, has been among the relief workers in Colombia where volcano Nevado del Ruiz has killed more than 25,000 people.

She has visited among such victims as Edison Ortiz, 5 years old, a new amputee and possibly an orphan. No family members have visited him in the state hospital here.

Edison, who lost his left foot after gangrene set in, was one of 3,000 to 4,000 hospitalized throughout Colombia following the eruption of Nevado del Ruiz. He's among 50,000 left homeless, people who somehow survived a wall of hot mud and debris, as deep as 60 feet in places, that buried the town of Armero, 22,000 surrounding acres and 20,000 to 40,000 people.

About 15 Colombian Baptists, Southern Baptist missionaries and Foreign Mission Board staff members have assisted Colombian Red Cross workers, government officials and medical personnel in disaster relief.

There are "hundreds, if not thousands" of people in grief, many of them farm workers or operators of small home businesses, Mrs. Giles said. Most victims' faces still show an expressionless sort of shock at their sudden, immense losses.

Nearly every relief worker has battled weariness. After several days on the scene, Mrs. Giles recounted, "I didn't know if I could go anymore." But the next day, "seeing people who are hurting and in such need, you just forget about yourself and keep going."

"The Baptists have done a work that is incomparable," said Ramiro Lozano, a gynecologist who heads the Red Cross chapter in Ibague, headquarters for relief efforts, about 70 miles south of Armero.

Helping alleviate acute shortages in medicines and medical supplies is but one of numerous ways missionaries have used Southern Baptist relief donations of aid Red Cross workers here.

"Don't abandon us now, because the work has just begun," Lozano said to James Giles, disaster relief coordinator for the Southern Baptist mission in Colombia. Reuniting family members in various hospitals and shelters across Colombia will be a formidable challenge, Lozano said.

"How are these (survivors) ever going to adjust to life after this?" asked Giles' wife, Mary Nell, after several days of visiting victims. "There's no way to even describe it ... horrible, sad, de-

vastating, heart-breaking, shocking."

The Gileses and Ellis Leangas, mission chairman, took a two-burner stove, pots and pans, dishes and clothing to one apartment where 25 relatives had taken refuge. Included in the group of two women, who have lost husbands. One also lost three of her four children; the other, all three of hers.

Missionaries are investigating the possibility of opening a good-will center in Ibague to help amputees and others and debilitating injuries and teach new skills to those left jobless. Government officials have not decided the long-term help religious organizations will be asked to provide.

"These people now need somebody to listen to them," added Giles, who spent a half-hour with a Presbyterian pastor from Armero, Rafael Charry, whose wife and two children are presumed dead. Tears dripped to the pastor's cheeks as they closed their meeting with prayer.

"If God rescued me from this tragedy, then he must have purpose for my life," the pastor told Giles. "Everybody ended up without anything, but we have God and we have faith."

"I have had pain with the people," said Adriana Robledo, chief nurse at the emergency room of the Baptist Clinic in Barranquilla, who came to Ibague with missionary physician Robert Edwards. "I have listened to them so they could unload their hurts, tensions and pains," said Robledo, a member of Barranquilla's Genezaret Baptist Church.

Missionaries have listened to a young father tell of the loss of his 25-day-old son. He believes his wife is alive but doesn't know where she is. A mother with a fractured pelvis is hospitalized beside her 10-year-old son whose leg was amputated. She lost her husband and three younger children.

Another woman, just a week away from giving birth, lost her husband and mother. A toddler with "NN" (no name) above his bed and a gash atop his head held out his arms and cried for "Mommy." He ate only when someone could be found to breast-feed him.

Leangas and his wife, Judy, since 1979 the only Southern Baptist missionaries in Ibague, a city of a half million people, feel "a personal loss. I sink my roots wherever I am," Leangas said. There's "an intense regional loyalty" in the state of Tolima, where Ibague and Armero are located. Leangas also knew the director of a Presbyterian-related secondary school in Armero, Vicente Rodriguez, who still is missing.

## with 12-4-85 story entitled Baptists Give Volcano Victims Medicine, Supplies, Compassion

Leangas gave "high, high marks" to Colombians in their response to the crisis. "They haven't sat back and waited for the rest of the world to respond, They've been working tirelessly themselves."

Joining Robledo and Edwards in assisting at the state hospital in Ibague were Guillermo Chaparro, a general practitioner and member of Bogota's Northside Baptist Church, and Don Pearson, an orthopedic surgeon and member of College Park Baptist Church, Orlando, Fla. Maria del Carmen de Alvarez, a neighborhood nurse and member of bogota's Central Baptist Church, worked invarious relief locations.

Survivors of the mudslide "look like they've been pulled over broken bricks for a couple miles," Dewards said. In the flowing mud, Charry recounted, "I felt like I was being ground up like a mill grinds wheat."

Both Edwards and Pearson lost count of the operations they performed, each estimating the number at 25 or more. Edwards cleaned wounds of mud and infection, working on one patient, for example, with a bladder full of mud that had been pressed through the man's mouth, nose and ears. Pearson handled gangrene-caused amputations and cleaned wounds.

## Flickering Christmas Candles

Flickering candles have a quiet, relaxing effect. At Christmastime we see the sparkle they put in a small child's eyes and watch their flames reflected as the tinsel and baubles sparkle. Staring in the candle's glow we contemplate the birth of Christ and the shepherds in the dark night suddenly lit up by a group of bright, singing angels bringing glad tidings that would in turn light up the whole world! We think of the three wise men on their camels padding across the desert sands of the East, always led by the bright star that hovered over the cradle of Baby Jesus in Bethlehem.

It is said that the lighting of candles in windows came from an old custom -- an idea that the Christ Child might be guided through the darkness to their house. In Medieval times a stranger guided by the candles to a house was never turned away -- for they thought, "Who knows, it might be Christ Himself."

This Christmas the candles in our windows might also signify the warmth that's in our hearts to give welcome to another "stranger" that's in our midst, and light up his holidays as well.

## Pretty Polish Decorations

In Poland the Christmas tree (Choinka) is a symbol of peace and friendship. Its ornaments are all handmade. The paper cutouts are never pre-drawn; instead, the paper is folded, then cut freehand. The national colors of red and white are popular in the intricate designs. The paper was originally cut with sheep-shearing scissors!



## Outdoor Christmas Baubles

Inflate a weather balloon to 4-feet in diameter (or whatever size you wish).

Dip 2-inch newspaper strips into white glue (6 parts water to one part glue), removing excess by pulling paper through your fingers. Smooth these strips crisscross-fashion over the balloon until you have several coats.

Let dry thoroughly then spray all the surface with spray paint or varnish to waterproof the paper.

Coat the ball with instant papier-mache except where the opening will be.

Draw a circle with a felt-tip pen on the side where your scene will go. Cut out the opening with a keyhole saw.

Fasten a hanging wire loop to the top of the ball, dabbing papier-mache around the wire. Wire a strand of large Christmas lights which you will tape or staple to the inside of the ball near the opening.

Pull the light wire through a hole you have made at the top of the ball.

Paint the outside of the ball and add glitter. Add outdoor velvet ribbon. Staple crinkled aluminum foil to the interior. Fill bottom of ball with artificial snow. You might like to place deer in one ball, a sleigh in another or just a winter scene with sprigs of snow-capped evergreens, a mirror for a pond, etc.



## A Merry Welcome

Easily construct a beautiful Christmas tree for either side of your front door:

Place a long piece of dowel (slightly taller than your front door) in a large pot of earth. Wrap evergreen around the dowel. Make a circle of wire, wrap evergreen around it and fasten with wires at the base of your dowel. Form a wire Christmas tree shape, cover with evergreen and fasten to the top of the dowel. Fasten a large red bow at the top of the tree. Decorate with strand of Christmas lights.

## "Little Christmas"

For the Finns, the last Sunday afternoon in November is called "Little Christmas".

## Cider-Citrus Punch

This delicious blend of fruit juices will make a hit with all ages. Add a festive flare by inserting cocktail picks through fresh cranberries and a strip of lemon peel.

- 1 6-oz. can frozen orange juice concentrate
- 1 6-oz. can frozen lemonade concentrate
- 1 gallon (16 cups) apple cider or apple juice
- 1/2 cup packed brown sugar
- 1 tbsp. whole allspice
- 1 tbsp. whole cloves

Combine all the juices (undiluted) and the brown sugar in a large kettle. Stir until the sugar dissolves and the concentrates thaw.

Tie the allspice and cloves in a cheesecloth bag and add to the juices. Cover and simmer 20 minutes stirring occasionally. Remove the spice bags and throw away. Serve while hot. Makes approximately 18 cups.



## Mexican-Old English Christmas Lanterns

Use a rectangular can (cocoa, cooking oil, etc.) for the base and a round can for the top.

Cut windows out (on both sides) of the rectangular cans. Leave tin flaps on top one window opening pushed up so the glass inset can slide in and out. Bend the other flaps around the glass.

Punch holes in the round can to let the smoke and heat escape.

Solder wire on for trim. The strong handles are made of baling wire.

The finished lantern should be painted gold. Let dry, then antique with black paint.

A roofing nail will steady the candles at the base. The lanterns can be placed against an evergreen background for Christmas. They may be used in other settings year-round.



# A Merry Christmas to All

We wish all of you and your loved ones the most wonderful Christmas ever and in this coming year of 1986, it is our hope that you may have

Enough happiness to keep you sweet  
 Enough trials to keep you strong  
 Enough sorrow to keep you human  
 Enough failure to keep you humble  
 Enough hope to keep you happy  
 Enough Success to keep you eager  
 Enough friends to give you comfort  
 Enough wealth to meet your needs  
 Enough enthusiasm to look forward  
 Enough faith to banish depression  
 Enough determination to make each day a better day than yesterday.



\*\*\*

Page 2

'ea

look over as, "ving felt te a

lost per-the ards in-ent, ll of sed lose ing-and

\*\*\*\*\*



GIVING THANKS, PRAYING FOR HOPE--Southern Baptist missionary Mary Nell Giles of Gruver, Texas, prays with a Presbyterian woman who survived the mudslide that destroyed Armero, Colombia. The woman, only a week away from giving birth, lost her husband, mother and several brothers in the disaster. But her father and 2-year-old son were found safe. PHOTO By Joanna Pinneo

WHY

The questions are inevitable when 25,000 to 40,000 people are killed after a volcano erupts: "Why us? Why, God?"

In countries where Roman Catholicism is prevalent, "people recognize the hand of God in things," said Southern Baptist missionary Dan Rupp.

Colombia's Catholic bishops urged the nation to return to God after the Nov. 13 eruption and deadly mudslide that left a death toll roughly equal to the thousands of injured and homeless.

The bishops also cited the 28-hour shootout at the Palace of Justice in Bogota, Nov. 6-7. About 100 people were killed as the army and national police regained control of the building seized by leftist guerrillas.

"What sin are we paying for?" a newscaster asked over a Bogota TV station.

In the rural village of Guayabal, not far from Armero, an elderly Pentecostal pastor told of "the judgment of God for the sins of the people" as he visited with Southern Baptist missionaries Larry Booth and Howard Atkinson.

Adriana Robledo, a nurse from the Baptist Clinic in Barranquilla who traveled to Ibague to work with survivors of the mudslide, recounted, "They have asked so much, 'Why did something like this have to happen?'"

"I told them, 'Many times, we do not understand why these things happen. There's a God who can give us strength and power. We can hold on to him and he will hold on to us and help us.'" said Robledo, a member of Barranquilla's Genezaret Baptist Church.

Christians cope better than non-Christians in tragic times, said Rupp, of Bogota. "They realize how God can work through the tragedies."

"Certainly history shows that people respond in a quest for faith, a desire to know God, in the wake of disasters," said Booth, also in Bogota.

Jose Zabala, pastor of First Baptist Church, Ibague, the closest Baptist congregation to Armero, has told his members, "Life has two sides. There is the good side, happiness and satisfaction. There's the other side, sadness, pain, tragedy."

The Armero crisis has stirred Zabala to do more teaching on "spiritual resources" so that First Baptist members "won't be caught so off guard that they won't know what to do as believers ... in whatever kinds of circumstances come to them."

For Southern Baptist missionaries, the crisis has underscored the importance of disaster relief preparedness.

Southern Baptist relief funds allow Baptists to respond quickly and effectively to crises, while missionaries with many other groups have no such resources,

said James Giles, the Colombia mission's disaster relief coordinator. For example, missionaries spent \$25,000 to help the Colombian Red Cross fill acute shortages in medicine, medical supplies, portable power generators and powdered milk.

Disaster relief "opens doors that would never be opened in any other way," said Giles, who also is president of the International Baptist Theological Seminary in Cali. To the injured and homeless and to Colombian government officials and relief workers, Baptist disaster response gives "depth to what being a Baptist means," Giles said. It shows that Baptists are "willing to respond to physical suffering as well as spiritual needs."

It demonstrates that Baptists are "a caring group and one that can help," said Robert Edwards, director of the clinic in Barranquilla who traveled to Ibague's state hospital to help treat injured survivors. He added, "It gives us direct contact with people in need, to whom we can give a word of hope, a direct witness of God's mercy in spite of such terrible conditions."

"There's absolutely no way that we can call ourselves Christians and not respond," said Giles' wife, Mary Nell. "The Bible says that Jesus went about doing good, good."

"Ours is the type of help that changes people," she noted. "That's why we're spending so much time and resources to help."

"You may not be able to go back and count numbers of conversions," said Don Pearson, an orthopedic surgeon from Orlando, Fla., who also worked at Ibague's state hospital, "but it's a long-term statement" of "love and concern ... because of Christ."

Among the 85 Baptist churches in Colombia, a number collected food and clothing. The Colombian Baptist Convention donated about \$700 from its limited budget and a 20-member mission in the city of Tunj took \$150 out of its budget. Few individuals in the churches make as much as \$100 a month.

Christmas Candy Canes

The presents given back at the time of Christ's birth were often very practical. The gift might be a sack of cherries, a gourd flask, bells, a spoon, a cape and hood, or even a shepherd's rod.

The story is told that one shepherd couldn't bring himself to part with his crook and that our modern candy canes may have been derived from this story of the reluctant shepherd.

Fake Santas?

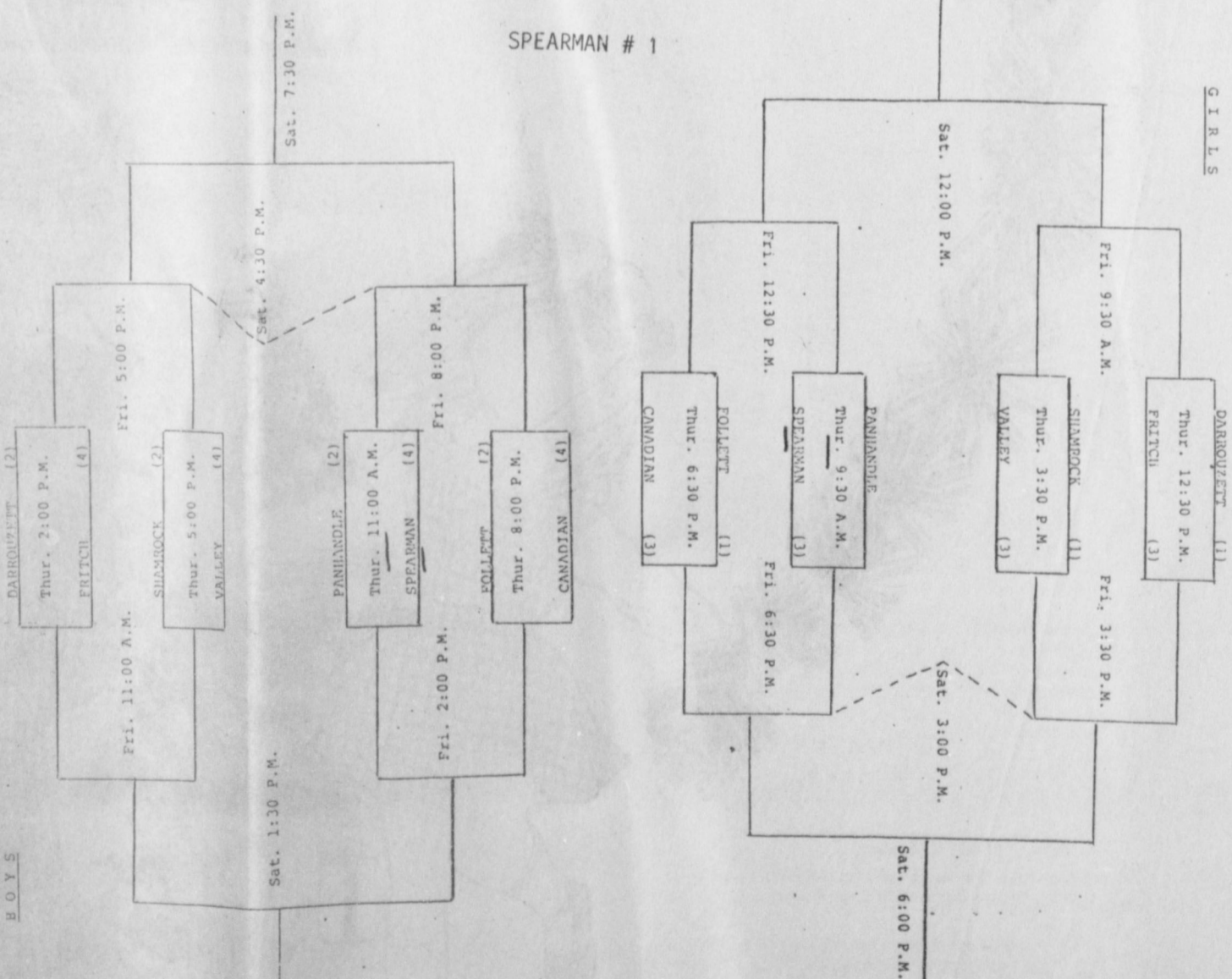
Do you suppose it's hard for your kids to believe in a Santa with a nylon beard? In the "good old days" Santa's whiskers were made of good, believable cotton!

Lynx play at Canadian

The Spearman Lynx and the Perryton Rangers boys and girls, put on a real sports show at Lynx gym Tuesday night, in their annual Pancake basketball game. The Lynxettes blasted the fine Perryton girls by some 15 points and although the Lynx lost 51-59, the game was much better than the score indicated as coach Jones and his young Lynx really gave the big Rangers a good game.

The Lynx and Lynxettes will play in the Canadian Tournament January 2-3-4, as the two Spearman teams open the tourney at 9:30 a. m. against the Panhandle Panther teams---See you at Canadian---

57th Wildcat Canadian Tournament



Tutti-Fruitcake

- 1 6-oz. can frozen orange juice concentrate, thawed
1/2 cup light molasses
3 cups raisins

Combine. Cook to boiling, reduce heat and simmer 5 minutes. Stir into the first mixture and set aside.

- 2 cups mixed candied fruits and peels.
1/2 cup margarine or butter
3/4 cup sugar
Cream sugar and butter.
3 eggs

Beat in one at a time.

- 1 1/4 cups all-purpose flour, sifted
1/4 tsp. baking soda
1/4 tsp. allspice
1/4 tsp. cloves
1/4 tsp. cloves
1/2 tsp. nutmeg
1 tsp. cinnamon

Sift together and stir into creamed mixture. Add 1/2 cup chopped walnuts and fruit mixture. Turn into greased and floured 8 1/2" fluted tube pan. Bake 275° for 2 1/2 hrs. Cool 30 min. Remove from pan. Wrap and refrigerate. Glaze with strained apricot preserves.



Cholesterol,

don't be afraid of it

Some people fear cholesterol because they don't know what it is--they've only heard that it's harmful. Cholesterol, in fact, has an important function in the human body. It is essential in the creation of hormones and nerve cells, and as a component to vitamin D.

Cholesterol has a bad reputation because too much of it in the bloodstream is dangerous. The amount of cholesterol in your blood is influenced by the amount and kinds of fats you consume. Specifically, diets rich in so-called saturated fats (animal fats, coconut and palm oils) tend to raise the level of blood cholesterol, whereas polyunsaturated fats (fish oil and most vegetable fats) help to lower it.

A build-up of cholesterol in the blood vessels makes them smaller, and requires more pressure, heart attack and stroke.

Dr. Clift Price, associate Commissioner for Personal Health Services at the Texas Department of Health, said overconsumption of animal fats is similar to being irresponsible about what one pours down the kitchen sink.

"For instance," he said, "if you continually pour bacon drippings down the drain, the congealed fat will eventually interfere with the flow of water out of the sink. Other impurities may help the fat to solidify--then you have to call someone to fix or replace your pipes. Unfortunately, the human body cannot be as easily repaired."

Dr. Price said, "Everyone should carefully select which foods they eat, limit their intake of animal fats, participate in regular and appropriate exercise, and get routine medical check-ups."

Cholesterol-rich foods to be limited in the diet include eggs, dairy products (such as whole milk, cream and most cheeses), fatty red meats (such as corned beef and ribs), bacon, sausage, lard, luncheon meats and organ meats (such as liver and gizzards).

"When some people read the list of foods high in cholesterol," Dr. Price said, "they sometimes wonder what is left to eat. They frequently don't realize that by cutting down on high-fat foods, they can allow themselves more low-fat dairy products, fruits, vegetables and whole grain products which are lower in fat, high in fiber, and are among the most nutritious things we need in our diets. Fish, chicken, turkey, and lean red meats are still choice items - if properly cooked."

The people who should be most concerned are those whose family histories include heart disease or stroke, who eat a lot of fatty foods, or who fail to exercise properly at least 30 minutes, three times each week.

By proper exercise, physicians mean walking, running, swimming, bike-riding or other activity that makes one breathe harder and increases the heart rate. These activities are usually called "aerobic."

A simple blood test can detect whether one's blood cholesterol is too high. Changing your eating habits to reduce your overall fat intake, especially foods high in cholesterol and saturated fat, can give you a new lease on life.

57th Wildcat Canadian Tournament

Vertical text on the right edge of the page, including 'Rin rent 24 ho', 'Hay Call: 5214, 279-rt', 'APPL Noble', 'PANF 101 S 79070 Help dome sault. ter, diffic hours 19-rt', and 'Guy open t Wedne Friday have Friday 46e-rt'.

# BUY, SELL, TRADE OR RENT THROUGH THE CLASSIFIED ADS

## Call 659-3434

### SERVICES

New to area? Give us a try Call your local USED COW DEALER As soon as Possible 659-3544 659-3545 1-800-692-4043 17s-rtu

**NOTICE**  
Wallace Monument Co.  
Monuments, Curbing, Grave Covers  
Local Representative  
LEONARD J. AMESON  
Spearman, Texas  
35s-rtu

**OSGOOD MONUMENT CO.**  
Amarillo, Texas  
Dealers of Rock of Ages Granite as well as all colored granites, marble and bronze memorials.  
**represented by**  
**BOXWELL BROS. FUNERAL HOME**  
519 S. EVANS  
659-3802

**Tree Trimming, Handy Man.**  
Phone 659-3115.  
**Bill Hopper**

**MONUMENTS**  
Save Agents and Undertakers Profits  
If it is inconvenient for you to visit our large display please phone collect (405) 327-0626 or write and we will call on you.  
**ALVA MONUMENT WORKS, INC.**  
Alva, OK 73717

Hansford County Planned Parenthood  
412 Davis  
659-2483  
Spearman, Texas  
Monday-Friday  
8:30 - 12:30

**STEAM RINSE & VAC**  
Rinse and Vac Shampooer for rent at Gordons Drug. \$10.95 up to 24 hours.

Hay Swathing & Baling done.  
Call 733-2517 or Dennis at 733-5214.  
27s-rtu nc

**APPLIANCE REPAIR:** Call Jim Nobles, 659-3528.

**PANHANDLE CRISIS CENTER**  
101 S. W Fourth, Perryton, Texas 79070, 806-435-5008, 806-435-5013.  
Help is available at no charge for domestic violence and sexual assault. Call Panhandle Crisis Center, receive support during a difficult time. Counselors on call 24 hours a day. Call for help.  
19-rtu-nc

Guyton Elks Supper Club is open to the public. Our hours are Wednesday - Thursday 6 - 10 p.m. Friday - Saturday 6 - 10:30 p.m. We have a Prime Rib Special every Friday.  
46s-rtu

### SERVICES

**Russell McClure**  
Building and Remodeling  
118 Main  
806-733-5102  
Gruver, Texas 79040

**WEIGHT WATCHERS** meets each Monday at 8:00 p.m. at the Home Demonstration Building, Spearman, Texas.

Place your orders early for Santa Claus or Christmas Cakes. Contact Joy Henderson at 733-2517 in Gruver.  
4-rtu-nc

For information and supplies for Tri Chem Liquid Embroidery, Contact Joy Henderson at 733-2517 in Gruver.  
4-rtu-nc

### HELP WANTED

**HELP WANTED: EASY ASSEMBLY WORK!** \$600.00 per 100. Guaranteed Payment. No Experience/No sales. Details send self-addressed stamped envelope: **ELAN VITAL - 5901 3418 Enterprise Rd, Ft. Pierce, FL 33482 3-24tp.**

**HELP WANTED:** Excellent income for part time assembly work. For info. call 312-741-8400 Ext. 547. 8-26-9-23pd.

**TEXAS REFINERY CORP.** needs mature person now in Spearman area. Regardless of experience, write A.D. Hopkins, Box 711, Fort Worth, Tx. 76101. 8-1tc

### MISCELLANEOUS

#### FOR SALE

**FOR SALE:** Good Cabover Camper Call 806-659-2325.  
1-rtu-nc

**FIREWOOD FOR SALE,** \$110 cord, \$55 rick, 9-3248 or 9-3800

#### WANTED

**WANT TO BUY** good long, side topper. 659-2325.  
32-rtu-nc

#### FOR RENT

**FOR RENT:** a nice 3 bedroom house. Good location. Call 9-5297.  
49-rtnc

**FOR RENT - One bedroom** for rent. Call 659-5243.  
52s-rtu

320 to 960 acres of good grass land for sale south of Gruver call 733-2612 evening.  
7s-2tc

**FOR RENT:** 3 bedroom trailer in Gruver. Call 353-6875 after 5:30 p.m.  
8-4tc

### REAL ESTATE

**HOUSE FOR SALE OR RENT - 2** bedroom, 1 bath, cellar and storage shed. 103 Coble or call at Home 659-2327 work 659-2506 or 405-338-1950 or 338-3316 at work.  
47o-rtu

**FOR SALE** 2 bdrm. brick house furnished, storm cellar. Call after 659-5291, after 6 o'clock.  
6-rtu

**FOR SALE IN GRUVER - Brick** home, 3 bdrm., 2 bath, double car garage, large fenced back yard, 1 blk. from school. Mid \$50's. Call 733-2964  
49-rtu

### PUBLIC NOTICE

The 1984 and U.S. Bureau of Census Survey of local government finances has been completed by the City of Spearman. How Revenue Sharing funds were spent are covered by this use report. The reports are now available for public inspection at City Hall located at 30 S.W. Court between the hours of 8:00 a.m. and 5:00 p.m. Monday thru Friday.  
7s-1tc

### BUSINESS OPPORTUNITIES

**OWN YOUR OWN LADIES, APPAREL, CHILDRENS, LARGE SIZE, COMBINATION STORE, PETITES, MATERNITY, ACCESSORIES. JORDACHE, CHIC, LEE, LEV, EZ STREET, IZOD, ESPRIT, TOMBOY, CALVIN KLEIN, SERGIO VALENTE, EVAN PICONE, LIZ CLABORNE, MEMBERS ONLY, GASOLINE, HEALTHTEX, OVER 1000 OTHERS. \$18,300 to \$24,900 INVENTORY, TRAINING, FIXTURES, GRAND OPENING ETC. CAN OPEN 15 DAYS. MR. LOUGHLIN (612) 88-6555.**

### CARD OF THANKS

Guillermo Vela and family would like to Thank the Methodist Church for their donation. May God Bless them and give them more.



### WHO KNOWS

1. Who was Neptune?
2. Define "Cum Laude."
3. Name the discoverer of the Theory of Relativity.
4. Who is credited with saying, "There never was a good war or a bad peace"?
5. What does the Hebrew phrase "Shalom Aleichem" mean?

#### Answers to Who Knows

1. Roman god of the sea.
2. Latin phrase meaning "with praise."
3. Albert Einstein, in 1905.
4. Benjamin Franklin, in 1783.
5. Peace be with you.



It is the season to buckle up... wherever you travel.

### LEATHER TRIM

COATS - SWEATERS  
PROFESSIONALLY CLEANED & RE - FINISHED AT

**Perryton Cleaners & Laundry**  
702 Main - 419 Main

**SPEARMAN**  
MON. - WED. - FRI.  
CALL

**435-4211**

- \* SUEDE LEATHERS
- \* SMOOTH LEATHERS
- \* VESTS

*These letters have been forwarded to Santa before Christmas we were a little late getting them printed*

Dear Santa,  
Mark wants a watch for Christmas. Do you have any watch's. Mark says he wants a black watch like the one I hauled off.  
But Santa Mark has already asked for a tank.  
So you do what ever you want to about this request.  
Also Daddy has been good and he has no watch.  
Your truly  
Mark & Daddy

P.S. Mark says he has been good too.

Dear Santa,  
Bed Bugs  
Big Foot  
He Man  
Real Basketball  
Real Hoop  
Cowboy Cabin  
Rodney Barbie House

Barbie Car Colors  
Operation  
Watch Checker Board  
We will be at Grampa and Gramma Harris' at Brownsville again this year so take our presents there.  
Love J.B and Cortny Harris

Call 659-3841  
**VIRGINIA WHITE**  
Realtor  
Your Business is Appreciated  
Looking for your money's worth? Then take a look at this 3 bdrm. home with 2 baths & large kitchen. Much more! Call!  
Building for sale. 30' x 40'. Zoned for residence or business. Call!

Offered by  
**EMMETT R. SANDERS**  
REALTOR  
\*\*\*\*\*  
**PRICE REDUCED TO \$39,500**  
Large 3 bedroom home with central heat and air, carpets and drapes, fireplace, nice kitchen with double breakfast bar, den or gameroom, fenced yard with bearing fruit trees; shown by appointment only.  
\*\*\*\*\*  
3 bedroom brick home, large living area, 1-3/4 baths, detached garage, choice location near elementary school. Estate settlement.  
\*\*\*\*\*  
3 bedroom home, attached garage.  
\*\*\*\*\*  
Elegant 3 bedroom, 3 bath home w/ large landscape lot.  
\*\*\*\*\*  
3 Bedroom brick home on Steele Drive, large living area, central heat and air, carpeted.  
\*\*\*\*\*  
**EMMETT R. SANDERS**  
REALTOR  
659-2516, nights 659-2801  
45-rtuT-only

**Priorite II**  
REAL ESTATE  
806/659-3440  
**LOXOLX**  
WE HAVE buyers for 3 and 4 bedroom homes. But we need your listings in order to sell your home.  
WE HAVE some new homes that are unlisted - Call for information - These are to be shown by appointment only.  
Country - 3 bedroom with acreage. Fenced-Barns-Correls. Well-City Utilities. Asking \$72,000-will consider serious offers.  
Leo K. Meyer      Bob Hardy  
Broker                      Sales

**Gifts for the Home**  
Aprons, strawberry potholders, tablemats, GREAT GIFT IDEAS FOR CHRISTMAS. Come and check 'em out at 421 S. Dessen or call 659-5270.

Nice 3 bedroom brick venner house with 2 car garage on pavement.  
Extra nice - 3 bedroom home on 9 or 20 acres - 40X80 ft. Belan building - extra good water system - all steel cattle working pens - 4 miles N.W. of Gruver on good roads.  
**DELANO REALTY**  
733-5000

**Century 21**  
**GOLD KEY REALTY**  
Borger, Texas  
Bobbie Corbet  
Broker  
Hester Sue Crawford-9-2074  
Sales  
Debbie Hawkins-9-2288  
Sales  
© 1985 & Century 21 Real Estate Corporation. Equal Housing Opportunity. INDEPENDENTLY OWNED AND OPERATED.

**Century 21**  
**GOLDEN SPREAD REALTY**  
Janye Helton, Broker, Owner 435-5444  
Allen Alford 659-3034  
Larry Trosper 659-3491  
T.O. Lealy 659-2028

**COMMERCIAL**  
**15 N. HAZELWOOD-LARGE BUILDING** and small building, enclosed with fence. Present owner would lease back part of building. Priced Reduced!!  
**514 HAZELWOOD-LARGE HOME WITH APARTMENT** to help with payments. This 4 bedroom, 2 bath home has a double car garage plus a large storage building.  
**HWY. 15 WEST**-One of the best! This is a large building with offices and restroom facilities. It has central heat and air. The A-1 Building.  
**AVAILABLE NOW!** Choice lot on Highway 207 and country road.  
**13 W. KENNETH**, executive base, SUITABLE FOR 6 offices, Reception, lounge and library areas.  
**307 MAIN PRICE IS RIGHT** on this Main street location. Call today!  
**717 W. 7th. PRIME LOCATION** for most businesses. Ample paved parking.  
**123 KENNETH - OWN YOUR OWN BUSINESS** - Over 10,000 sq. ft. of building with lots of parking space.  
**AIRPORT PROPERTY**-Hangar and storage building with extra lots across the road.  
**ACREAGE AND LOTS**  
**10 ACRES IN CRAWFORD ADDITION.** Will divide into 2 lots. Excellent location, hwy. frontage.  
**CORNER LOT 504 E. 3rd.**-This lot has 2 garages and a storm cellar.  
**4 LOTS-SOUTH EDGE OF SPEARMAN**-Corner lot 80 x 100; 3 others 64' x 100'. Not zoned for trailers. Buy 1 or all 4.  
**LOTS-415-ENDCOTT** Owner will clean!!  
**SOUTHEAST OF SPEARMAN-400 ACRES IN OCHILTREE COUNTY**-approximately 300 acres of irrigated farmland plus 100 acres of grassland. A large 3 bedroom, 2 1/2 bath home, a 3 car garage and a 40 x 80 barn are included in this sale.  
**NEW LISTING-210 Prime Acres** in Ochiltree County. 200 cultivated acres, 10 acres grass. Close to Hwy. 15.  
**NEW LISTING-715 STEELE DR.**, 3 bdrm., single car garage, central heat, bath, excellent condition, fenced in backyard with patio. Priced to sell.  
**802 WILBANKS-LOTS OF HOUSE FOR THE MONEY!** 3 bedrooms, 1 1/2 baths, fireplace, and an extra large garage.  
**MUST SEE-406 S. BARKLEY.** Four bedroom, 2 1/2 baths. Double detached garage, with rent house. Call today for it is affordable.  
**615 W. KENNETH-ROOM TO ROAM** in this spacious 3 bedroom, 2 bath home. It is on a 2 acre plot and has a 2 or 4 car garage.  
**416 HANEY-FOUR BEDROOMS** 2 baths and a good location. Fruit trees galore.  
**223 BRANDT-LOTS OF HOUSE FOR THE MONEY!** This 2 story home has 4 bedrooms and 2 baths. Call today!!

### To God A Note of Thanks

by Alma Greever

"Gods Promises Are Sure."

Friends as you walk are you trusting  
 Jesus  
 Do you know you are uncondemmed  
 today  
 If you are he will still the tempest  
 A quietness and peace give to thee  
 Don't sin and come short of Gods  
 glory  
 Ever abide in his presence I pray  
 Where no plague can come night thy  
 dwelling  
 And no evil befall on life's way.

If you walk in my statutes keeping  
 my commandments  
 I'll allow no disease to come upon  
 thee  
 Jesus said, I come to fulfill things  
 recorded  
 In the law and prophets concerning  
 me  
 Lean not to your own understanding  
 Pray neither make flesh your arm  
 But look to the dear loving Saviour  
 Who will protect your life from harm.

Put not your trust in man nor in  
 princes  
 Be strong in the power of Gods  
 might  
 Looking to Jesus the author and  
 finisher of faith  
 When he comes t'will be a glorious  
 sight  
 Give yes even pour out your life for  
 others  
 All your need will be supplied by  
 him  
 For the earth and the fulness belong  
 to God  
 And you are only a steward for him.

He speaks and brings wonderful  
 deliverance  
 Prospers and gives health and  
 strength as the day  
 As your life is fully surrendered  
 and willingly Gods will you obey

### Hospital News

Patients in Hansford Hospital  
 are Aubie Sparks, Mary Latham,  
 Theresa Hartman, Salvador  
 Luciano and Ina Mae Ferrell.  
 Dismissed were Laura  
 Umphress, June Jackson, David  
 Ochoa, Harvey Whitefield, Ronnie  
 Campbell, Larry Roff, Ashley  
 Lopez, Jose Favela and Bill Hen-  
 derson.

### Police Report

On December 9, 1985 the Spear-  
 man police Department investiga-  
 ted one (1) Criminal Mischief.

On December 12, 1985 the Spear-  
 man Police Department investiga-  
 ted one (1) accident with no  
 reported injuries.

On December 13, 1985 the Spear-  
 man Police Department investiga-  
 ted one (1) shoplifting and arres-  
 ted one (1) subject.

On December 14, 1985 the Spear-  
 man Police Department investiga-  
 ted one (1) Unauthorized Use of a  
 Motor Vehicle.

On December 15, 1985 the Spear-  
 man Police Department investiga-  
 ted two (2) Thefts, one (1) Aggra-  
 vated Assault, and arrested one  
 (1) subject.

On December 18, 1985 the Spear-  
 man Police Department investiga-  
 ted one (1) Theft.

On December 19, 1985 the Spear-  
 man Police Department one (1)  
 accident with no reported injuries.

The Spearman Police Department  
 received 98 calls for assistance.

D.J. Alberts  
 Chief of Police

### WEATHER

DATE	HI	LOW
16	51	24
17	53	24
18	45	22
19	54	24
20	56	23
21	66	27
22	60	33

There wasn't any pres. during  
 this time.

### Markets

WHEAT	\$2.94
MILO	\$4.10
CORN	\$2.70

### Dean's Honor Roll

Frank Phillips College students  
 on the Dean's Honor Roll for the  
 Fall 1985 semester.

In order for a student to be  
 placed on the Dean's Honor Roll  
 he/she must complete at least 12  
 semester hours and achieve a  
 grade point average of 3.00

Peggy S. Close Spearman  
 Mary A. Gurley Waka  
 Cindy A. Hendrick Spearman  
 Ornlia Macias Spearman

#### Something For Nothing

Scotty (hoping for free  
 advice): "Doctor, what  
 should I do for a sprained  
 ankle?"

Doctor: "Limp!"

#### Comfortable

Money may not buy happi-  
 ness, but with it you can be  
 unhappy in comfort.

-Journal, Washto, Ia.

#### Changes

When a man changes his  
 mind as much as a woman,  
 chances are he's married to her.

-News, Jacksonville.

### RESOLUTION

WHEREAS A.N.R. Pipeline has proposed to obtain a permit from the Environmental Protection Agency to place PCB (Foly Chlorinated Biphenyls) contaminated soil in a disposal facility within Hansford County, and believing the presence of such a facility would be detrimental to the common-  
 weal.

BE IT RESOLVED that the Hansford County Commissioner Court express by this resolution its opposition to the construction of this facility for the purpose of depositing any material transported by any means from outside the boundaries of Hansford County in the afore mentioned disposal facility.

BE IT FURTHER RESOLVED that A.N.R. Pipeline Co. be requested to withdraw its application to the Environmental Protection Agency for the establishment of this disposal facility in Hansford County for any waste produced at any site other than that produced at its "E. G. Hill" plant in Hansford County.

BELIEVING THIS COURSE OF ACTION the most advantageous for the common good of Hansford County Citizens and direct this resolution to the attention of the officers of A.N.R. Pipeline Co, the Governor and the Attorney General of the State of Texas, the Texas Railroad Commission, the Texas Water Commission, the Texas Water Quality Board, U.S. Senators Bentsen and Gramm, Repr. Beau Boulter, the Environmental Protection Agency Washington, D.C. and Dallas, Texas, and any other regulatory body that may have an interest in this matter, we, hereby affix our signatures this 20th day of December, 1985.

*Ray L. McClellan*  
 Roy L. McClellan, Chairman

*Garland Head*  
 Garland Head

*Joe T. Venneman*  
 Joe T. Venneman

*B. J. Henner*  
 B. J. Henner

*Val Winger*  
 Val Winger

### Golden Gleams

Come, all ye faithful, joyful and  
 triumphant;  
 Come ye, come ye to Bethlehem;  
 -St. Bonaventure.

It came upon the midnight clear,  
 That glorious song of old,  
 -E.H. Sears.

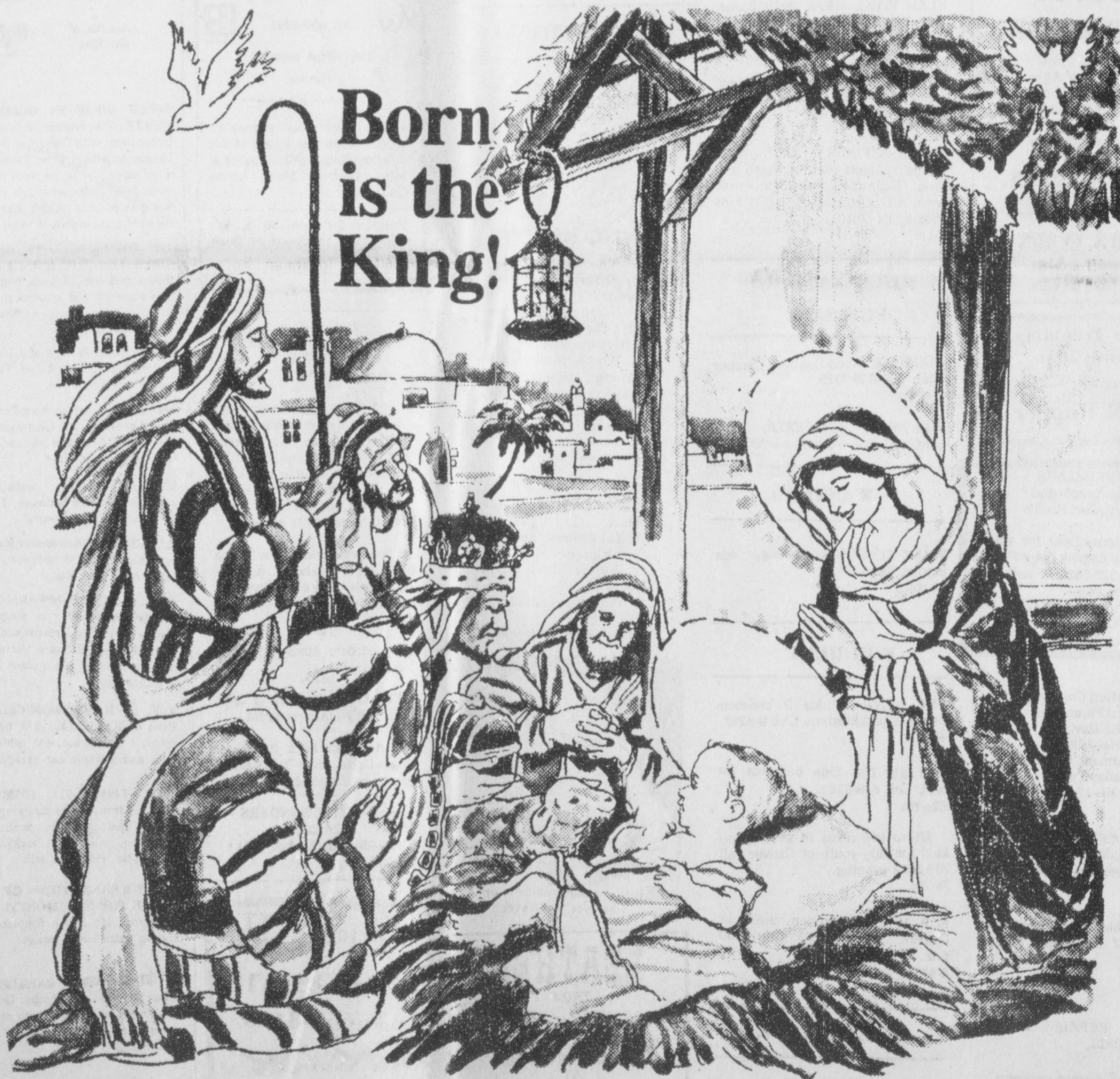
For Christ is born of Mary,  
 And gathered all above,  
 While mortals, the angels keep  
 Their watch of wond'ring love.  
 -Phillips Brooks.

'Twas the night before Christmas  
 when all through the house  
 Not a creature was stirring, not  
 even a mouse.  
 -C.C. Moore.

The Lord from Heaven,  
 Born of a village girl, carpenter's  
 son,  
 Wonderful, Prince of Peace, the  
 mighty God.  
 -Alfred Tennyson.

\*\*\*\*  
 Never postpone until  
 tomorrow that you can  
 postpone until the day  
 after tomorrow.  
 \*\*\*\*

A happy spirit is the  
 greatest possession that  
 comes to man, regard-  
 less of ones wealth or  
 lack of it.



We wish you the joys and pleasures of this Holiday celebrating the  
 birth of the Holy Child. Many thanks for your kindness.

**1st** First National Bank  
 Perryton, Texas  
 806/435-3676  
 Member FDIC



## Among The Neighbors

Mr. and Mrs. Lowell Denman spent Thursday night in Amarillo with her daughter and family-the Lees. The occasion was to attend the graduation exercises at West Texas State University at Canyon and witness the graduation of grandson, Kyle. He received a degree in Business Administration.

received his Bachelor of Music Degree at West Texas State University. Mr. and Mrs. Pierce accompanied by their daughter Darlita and her son Daniel Ellis of

Midland as well as Mrs. Jaunit Hadley and Jessica of Texico, New Mexico attended the ceremony.

James will leave January 8th for Boston where he will enter the Conservatory of Music to work on his Master's Degree.

Miss Altha Groves enjoyed an early Christmas in the home of her cousins, Mr. and Mrs. Leroy Judd of Stratford. She spent Friday and Saturday with them.

Mr. and Mrs. John Allen's family gathered on Saturday for their Christmas observance in Spearman. Some members remained thru Sunday. All the family were able to be present. They were the families of: David Wilson-Waka; Don Rapp-Guymon; Greg Wilson-Lubbock; Lyndel Schiffner-Liberal; Harold

Introducing their new daughter, Lee, Mr. and Mrs. John Buchanan of Houston were in Spearman Monday. John's boyhood was spent in Spearman. Accompanying them were Abby Ward of Houston and Mr. and Mrs. Wilson Buchanan of Dumas.

A fun time was had by all at Tanya Morse's 11th birthday party.

The children enjoyed watching a movie; then made their own pizza.

After the cake was served, it was decorated as Holly Hobbie, which was the theme of the party.

Gifts were then presented. Everyone then relaxed and enjoyed another movie.

Ridgeway-Perryton; Dick Funchum-Meade; Todd Kohart-Meade; Willis Frieson-Perryton and Ms. Micah Longmore and son, Kyle-Dodge City.

Neighbors are anticipating a career in his chosen field for James Pierce, son of Mr. and Mrs. I.V. Pierce. Thursday night at Canyon, he



Santa will be sure to meet his list.

Photos compliments of First National Bank, Spearman, Texas



These three little ones must have a real list for Santa.

William H. Hudnut, Indianapolis Governor:

"There's an apparent lack of understanding in Washington of the problems cities are facing--a lack of sensitivity or sympathy."

## Winners

December 18, 1985 Winners  
Burt Williams - \$25.00 Gift Cert. to be redeemed at Earls TV  
Virginia Young - \$25.00 Gift Cert. to be redeemed at Earls TV  
Carolyn McCloud - \$25.00 Gift Cert. to be redeemed at Gordon's Drug  
Debbie Harrington - \$25.00 - Gift Cert. to be redeemed at Gordon's Drug  
Brenda Wall - \$25.00 Gift Cert. to be redeemed at Jenny Lynn's  
Mrs. Jesse Davis - \$25.00 Gift Cert. to be redeemed at Jenny Lynn's  
Maria Macias - \$25.00 Gift Cert. to be redeemed at Anthony Electric

December 20, 1985 Winners

Eddie Gage-\$50.00 Gift Cert. to be redeemed at Kid's Stuff  
Eugene Yarbrough-\$25.00 Gift Cert. to be redeemed at Spearman Auto Supply.  
JoAnn Lee-\$25.00 Gift Cert. to be redeemed at Spearman Auto Supply  
Wanda Redwine-\$50.00 Gift Cert. to be redeemed at T G & Y  
Sonya Sutterfield-\$50.00 Gift Cert. provided by Speartex to be redeemed at Prairie Chalet  
Dr. Dave Muthall-\$25.00 Gift Cert. provided by Speartex to be redeemed anywhere in Spearman  
Helen Sandival-\$25.00 Gift Cert. provided by Speartex to be redeemed anywhere in Spearman

December 19, 1985 Winners

Lorene Kunselman - \$25.00 Gift Cert. to be redeemed at Hotel Royal  
Sandy Brewer - \$25.00 Gift Cert. to be redeemed at Hotel Royal  
Charlene Laxton - \$25.00 Gift Cert. to be redeemed at Hickerson's  
Mrs. Hugh Bell - \$25.00 Gift Cert. to be redeemed at Hickerson's  
Kurt Bynum - \$50.00 Gift Cert. to be redeemed at Beedy Furniture  
Kelly Oakley - \$25.00 Gift Cert. to be redeemed at Penny's Photos  
Kate Farris - \$50.00 Gift Cert. to be redeemed at Cates.

## SMILES

Wrong Guess  
"How come you left your girl's house so early last night?"

"Well, we're sitting on the sofa, side by side, talking of this and that, when all of a sudden she reaches over and turns off the lights. Well I guess I can take a hint."

Did you ever take time to realize how good the average person is, and how anxious most of them are to be helpful?

Higher Pay  
Teachers in some lower grades feel that they are at least entitled to as much pay as other wild animal trainers.

Spell?  
Secretary of office manager: "I've taken all the criticism of my work that I'm going to take! How do you spell 'quit'?"

-Record, Columbia, S.C.

HAVE A BIG TIME IN TEXAS.



Thomas P. O'Neill, House Speaker, on tax reform bill: "As a supporter of tax reform, I hope that the president can find the votes."

## Operation Christmas Greeting

We wish everyone a joyous holiday season. Instead of sending Christmas cards this year, we have donated to the Hansford Hospital Auxiliary for use in their work in the hospital and the Manor.

- Pearl Pierce,
- Freeman Barkley
- Gertrude B. Archer
- Del & Barbara Cluck
- Marvin & Ruth Ann Jones
- Dale & Mae Wofford
- Joel & Joyce Lackey
- Rue & Anne Sanders
- Rosa Lee Butt
- Garland & Virginia Head
- Leonard & Mabel Jameson
- Woody & Lois Gibner
- Jimmy & Lois Shieldknight
- Irvin & Betty Davis
- E.E. & Mildred Martin
- Juanita Logan
- Merrel & Grace Johnson
- W.E. & Loydell Sparks
- Mrs. Glen Hiller
- J.D. & Rubyjo Wilbanks
- Knox Pipkin
- Preston & Edith Smith
- Pope & Margaret Gibner
- Lawrence & Anita Anthony
- Eva M. Adkinson
- Mrs. T.M. Allen
- Perren & Buena Lyon
- Raymond & Grace Kirk
- Tom & Helen Etter
- Margaret Shedeck
- Ed & Dorothy Haner
- Maylynn Schubert
- Don & Lorene Kunselman
- Harry & Hazel Stumpf
- Ray & Beth Phelps
- Willard & Jettie Davis
- Marcus & Jo Larson
- Jack & Dolly McWhirter
- Bob & Ruth Crawford
- Adalyn Barnes
- John & Virginia Trindle
- Members of Gladiola Flower Club
- Bill & Estelle Jackson
- Ab & Beulah Abston
- Bobby, Teresa Brown & children
- John & Wanda Brown
- Faye Lynch
- Dave & Helen Hand
- Dave Hand, Jr.
- Nanalee Brown
- Sandy & Tommy Russell
- Kevin Russell
- Kayla, Johnny & Lani Pletcher
- Rose M. Isenhower
- Mrs. Pearl M. Dixon
- Elva Gene Dixon
- Herbert Kirk
- Raymond & Virginia Sparks
- John & Frances Vennenman
- Rhoda Overton
- Mr. Mrs Jack Oakes
- Bruce & Freda Sheets
- Ray & Helen Gibson
- Walter & Patty Spoonemore
- Roy Jones
- Floyd & Allene Close
- Robert & Margaret Novak
- Glen & Myrt Bohanan
- Jane S. Meek
- Lane, Tamra & Chris Boyd
- Dwight & Georgianne Hutchison
- Dr. Earl Novak, Bobbie & Cinda
- The Dennis Nelson Family
- Emmett R. Sanders
- Martha Nitschke
- Gene & Frances Cudd
- Irwin & Susan Delk
- Aline Henderson
- Mr. & Mrs. Ben Harris
- Verna Gail Keim
- Ray & Sylvia Robertson
- Elaine & Don Floyd
- Phil & Marguerite Jenkins
- Virginia Cates
- Roy & Ann Flowers
- Byron, Barbara Kenny & children
- Deacon & Willie Clement
- B&B Farm Industries, Inc.
- Ralph & Johanne Blodgett
- Deta Blodgett
- Mary Fern Terry
- Gus & Clementine Renner
- Sammy Don & Edrie Jones
- Bernice V. Brown
- Billy, Joan Ashley & Travis Brown
- Frances Kilgore
- Pat & Georgia Holt
- Mrs. Fred J. Hoskins
- John & Sammie Bishop
- J.W. Jenkins

If you would like to join in donating to the work the Auxiliary will be doing in 1986, please send your contributions to "Operation Christmas Greeting" Helen Etter, Box 1045, Spearman, Texas, 79081 and list the way you would like your name to appear on the Christmas list.

 <b>DECKER GOLD BOLOGNA</b> 12 OZ. PKG. <b>89¢</b>	 <b>DECKER BACON</b> 1 LB. PKG. <b>\$1.59</b>
 <b>BORDEN'S EGG NOG</b> QT. CTN. <b>99¢</b>	 <b>BORDEN'S HALF &amp; HALF</b> PINT CTN. <b>59¢</b>
 <b>BORDEN'S ICE CREAM</b> 1/2 GAL. RND. CTN. <b>\$1.79</b>	 <b>ALLSUP'S MUGS</b> EACH <b>99¢</b> REFILLED FOR ONLY 25¢
 <b>ALLSUP'S BEEF &amp; SALSA BURRITOS</b> EACH <b>\$1.49</b>	 <b>FILLED WITH HOT COFFEE ALLSUP'S COFFEE MUGS</b> EACH <b>99¢</b> REFILLED FOR ONLY 25¢
 <b>ALL GRINDS COFFEE FOLGER'S</b> 1 LB. CAN <b>\$2.19</b>	 <b>LAUNDRY DETERGENT BOLD-3</b> 42 OZ. BOX <b>\$1.99</b>
 <b>GREAT WITH HOLIDAY DIPS RUFFLES POTATO CHIPS</b> REGULARLY \$1.39 <b>\$1.19</b>	

# Happy New Year!

PRICES EFFECTIVE DEC. 26-28, 1985 WHILE SUPPLIES LAST

## ALLSUP'S

CONVENIENCE STORES

OPEN NEW YEARS DAY FOR YOUR LAST MINUTE PARTY NEEDS

AT ALLSUP'S WE'RE CONSTANTLY STRIVING TO DO A BETTER JOB OF PROVIDING THE BEST SERVICE & QUALITY PRODUCTS. WE VALUE & APPRECIATE YOUR BUSINESS & WE'RE WORKING HARD TO EARN YOUR TRUST. THANK YOU FROM ALL YOUR FRIENDS AT ALLSUP'S & HAVE A PROSPEROUS & HAPPY NEW YEAR!

MOVIE & VCR RENTALS  
The Very Best in Home Video Entertainment!  
ALL YOU NEED IS YOUR TV!

CAFFEINE FREE CHERRY, CLASSIC, DIET, NEW COKE AND TAB  
  
**\$1.79**  
12 oz. cans 6 pak



You know Santa is going to be good to these happy girls.



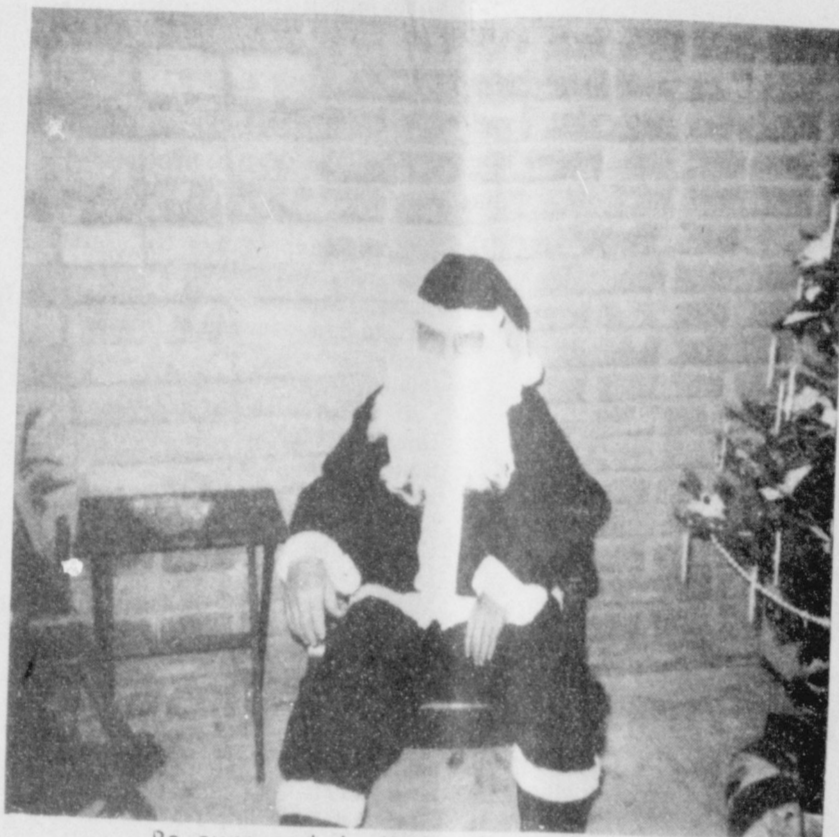
Joselyn Edwards looks like she's been good this year.



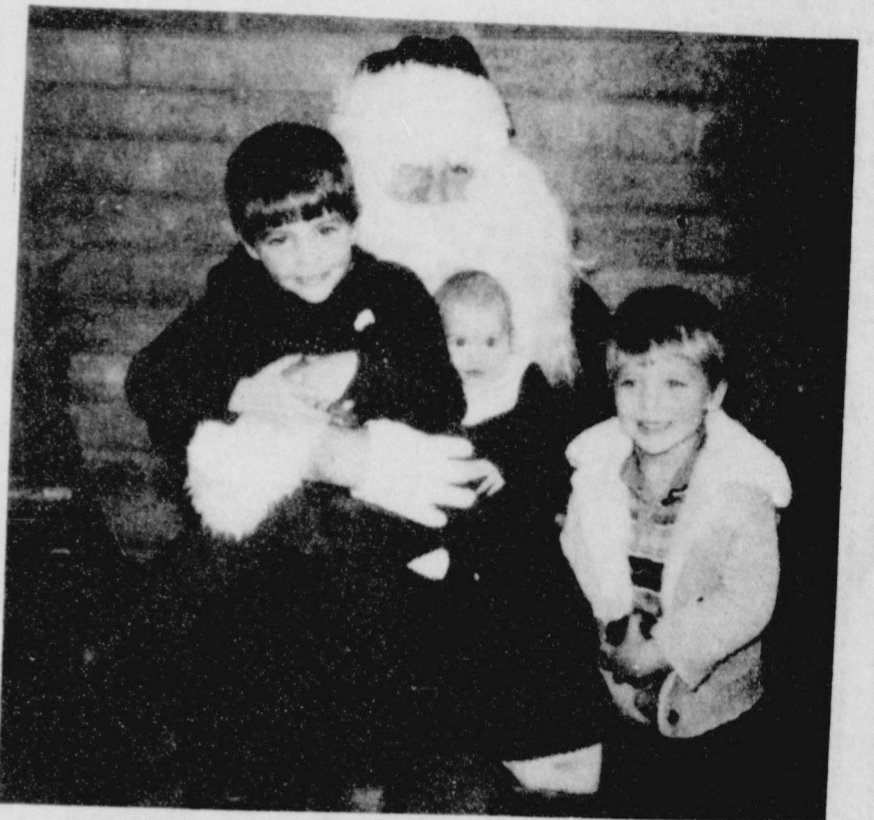
Santa, hope your bag is filled to the rim for Tamrik, Kimbre, Clint, Kara, and Jamie Townsen.



her list doesn't seem so long.



Be sure and don't let Santa be lonely, he dosen't have much time left.



Eric, Evan & Chris giving Santa ideas.

# Lady Fair



# Kids' Stuff



719 W. 7th  
Spearman, Texas

## Fall & Winter Clearance Sale

# 30% to 50% OFF

all fall and winter merchandise  
Sale Starts

Friday, December 27th at 9:00 a.m.

(Both stores closed Thursday, December 26th to prepare for sale)

