

Hansford Co. Library
420 Main
Spearman, Tx 79081



With perfect 12-0 1-AA record . . .

Lynxettes capture district crown

The Spearman Lynxettes proved preseason prognosticators correct Friday evening as they dumped Panhandle, 43-36, to claim the district 1-AA crown and advance into post-season play as the winners of the North Texas Panhandle conference.

The win kept the Spearman girls quintet with a perfect 12-0 conference mark and set their season record at 26-2 as they advance in the playoffs.

The Lynxettes are scheduled to meet the Canadian Lady Wildcats tonight (Thursday) at 7:30 p.m. in Perryton.

Last Friday evening, the Spearman girls combined for one of their best team efforts to date enroute to

their title-clinching win over the Lady Panthers.

Panhandle was determined and kept the score close throughout the night as Spearman fought to build a comfortable lead.

But whenever the Lynxettes managed to get ahead by 10 or more points, the Panhandle girls would whittle that lead back down and the scrappy Spearman quintet would have to stave off the Lady Panther rally.

Spearman held a 4-point advantage at the end of the opening period of play with a 16-12 score. They doubled that advantage by halftime, owning the long end of a 26-18 count at intermission.

Panhandle refused to roll over and play dead and the Lynxettes

found their tenacious district 1-AA opponents ready to match them point-for-point in the third quarter. Spearman held a 36-29 score going into the final stanza.

Once there, neither team was able to balk the other as the two squads hit point-for-point to put the final at 43-36, Spearman.

Spearman scoring leaders Londee Bradley and Krista Kirkland combined for 37 points between them to pace the Lynxette effort.

Bradley finished with 19 points on the evening while Kirkland had 18 points for the Lynxettes.

Girls junior varsity action saw the Spearman Lynxettes fall to their Panhandle counterparts by a 27-39 count.

Michelle Cook had eight points and Brandi Schneider had seven to lead the Spearman girls there.

VARSITY

Panhandle: 12 18 29 36
Spearman: 16 26 36 43

S -- Krista Kirkland, 8-0-2-18; Laci Lasater, 1-0-0-2; Heather Murrell, 1-0-0-2; Ginger Pearson, 1-0-0-2; Londee Bradley, 8-0-3-19; Team, 19-0-5-43.

JUNIOR VARSITY

Panhandle: 12 21 27 39
Spearman: 9 13 19 27

S -- Cindy Elliott, 2; Kyla Nelson, 4; Bonnie Thompson, 2; Michelle Cook, 8; Brandi Schneider, 7; April Wilkerson, 4.

The Spearman Reporter

Volume 80, No. 16 YOUR HOMETOWN NEWSPAPER Thursday, February 18, 1988

25¢

Per Copy

8 Pages

MAPPING OUT STRATEGY . . . Spearman head girls basketball coach Jim Kirkland has a skull session with his Lynxette charges during a time out in their match against the Panhandle Lady Panthers. Spearman is the number one seed in class AA bi-district pairings while Panhandle finished the season in the number two spot.

Playoff games on tap for Lynxettes, Lynx

Post season playoffs get into full swing this week with the Spearman Lynxettes taking on the Canadian Lady Wildcats in Perryton for the opening rounds of girls bi-district competition.

That game will be played at 7:30 p.m. in the Perryton high school gym. Spearman is the home team with fans to sit in the north bleachers.

Friday evening, the Spearman Lynx will meet the winner of Thursday's Amarillo Highland Park-Stratford game to decide the number one seed in district 1-AA.

If Thursday night's winner loses, Spearman will become the district crown holder.

If the Lynx lose that contest, they they will turn around and play the loser of Thursday's contest to determine the number two seed in district 1-AA.

All games are scheduled for a 7:30 p.m. tip off in the large gym at Dumas high school, located at West Third and Klein streets in Dumas.

Ironically, the pairings pit Stratford against Highland Park Thursday evening and the Elks beat the Hornets in both district meetings this year.

Meanwhile, Highland Park beat Spearman in both of their district encounters and the Lynx took both 1-AA contests from the Elks.

Other bi-district playoffs in girls competition has wellington meeting Panhandle Friday evening at Clarendon.

Abernathy and Shallowater will play at Lubbock Coronado this Friday and Morton will take on Olton in the second game of a Friday evening class AA girls doubleheader, also at Lubbock Coronado.

With win over Panhandle Friday evening . . .

Lynx in 3-way district 1-AA cage tie

The Spearman Lynx took destiny in their own hands and -- with an added boost courtesy of the Gruver Greyhounds -- finished the 1987-88 district title chase in a 3-way tie with Amarillo Highland Park and Stratford.

The Lynx drummed Panhandle, 69-53, Friday night to up their 1-AA record to 8-4, then cheered when Gruver edged out the Hornets, 57-56, to send the district title chase into a 3-way tie.

Spearman drew the opening round bye and will meet the winner of the Stratford Elk-Amarillo Highland Park Hornet contest this Friday evening at Dumas.

The Elk-Hornet game will be played Thursday evening, also in Dumas. Game time both nights is 7:30 p.m. in the big gym at Dumas high school, West Third and Klein Streets in Dumas.

Spearman improved their district record to 8-4 with the win over Panhandle while Stratford finished out their season over a week ago with the same 8-4 district mark. Amarillo Highland Park fell to 8-4 with the loss to Gruver.

Against Panhandle Friday evening, the game was never in

question as Spearman jumped out to double the Panther's scoring production in the first quarter, taking a 17-8 edge there.

The pace slowed somewhat in the second stanza, but never to the point where the outcome wasn't evident. The Lynx controlled a 35-20 halftime score.

A 21-point third quarter effort erased whatever doubts may have been circulating as Spearman stretched their advantage to 20 points going into the final period of play. The score stood at 56-36 at that point.

In the fourth quarter, Spearman cager coach H.M. Garrett pulled all starters and gained solid playing experience for his back up players as they finished out the contest

See "LYNX", p-2

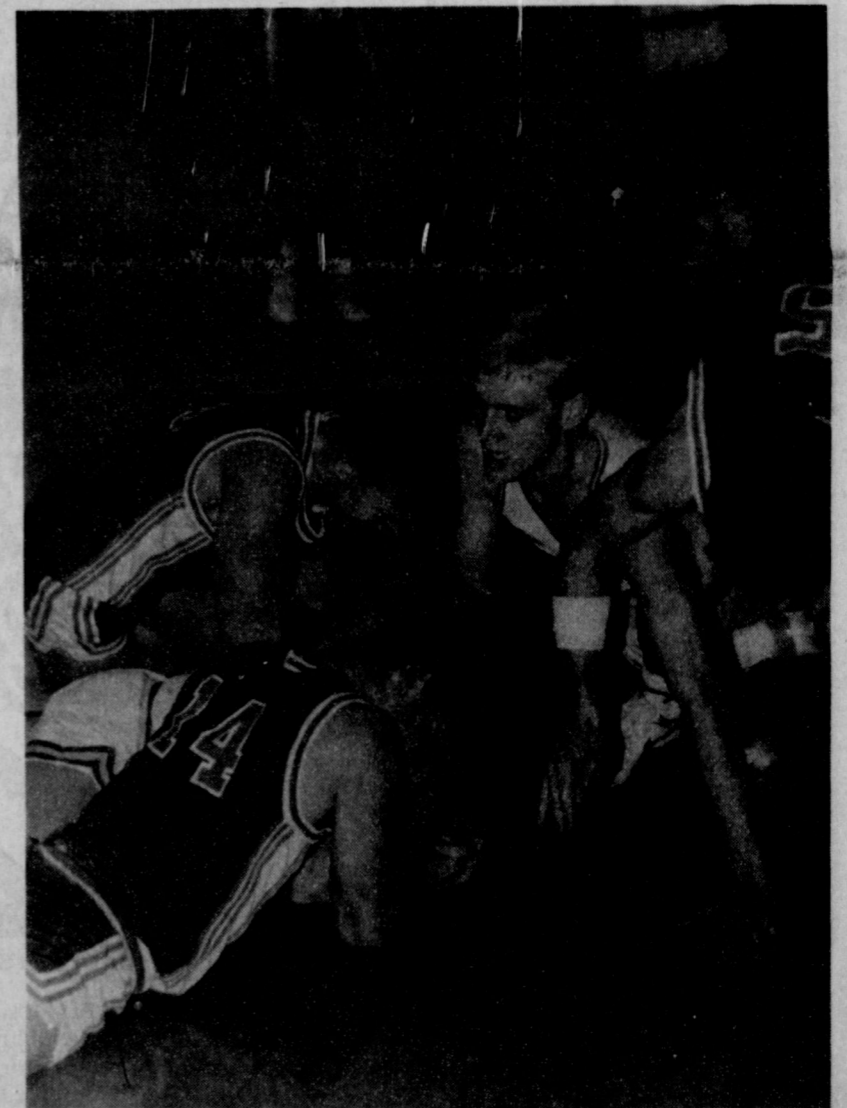
PDRA issues bid notice

The Palo Duro River Authority issued invitations to bid on construction of an earthen dam across the Palo Duro Draw in Hansford county this week, with bid notices being run in all publications which are members of the Spearman-based water authority.

The PDRA completed the necessary purchases of land for both the dam site and the spillway portions of the lake last Friday.

Last Friday's purchase was of the land where the dam proper will be constructed.

Bids will be let in a special meeting of the water authority March 16 at 10 a.m. in the Spearman high school auditorium.



IT WASN'T A WRESTLING MATCH . . . but sometimes basketball has that aspect and the Spearman Lynx aren't opposed to mixing it up with anybody, as displayed here in the Spearman-Panhandle contest held last Friday evening in the Spearman varsity gym.

Awards to highlight program . . .

Chamber dinner Saturday

The two most prestigious awards of the year will be handed out this Saturday evening with the naming of the 1987 Citizen of the Year and the 1987 Citizen Over the Years at the annual Spearman Chamber of Commerce Banquet.

The banquet will be held in the Spearman high school cafeteria beginning at 7 p.m. Tickets are \$12.50 for members and \$15 for non-members.

In addition to the two main awards, the women's division of the Spearman Chamber group will present their 1987 Member of the Year and the Spearman Rotary Club will honor the 1987 Employee of the Year.

Featured speaker for the Spearman chamber event is Perryton author and humorist, John Erickson.

Erickson's series of books concerning "Hank, the Cowdog" has won him national acclaim with more than 100,000 books in print since 1983.

The Perryton author has 21 published books, nine of those in the "Hank" series.

Entertainment for the event will be provided by Kellie McWhirter and Travis Francis. Miss McWhirter is the reigning Miss Hansford County.

The banquet meal will consist of steaks prepared by the Spearman Jaycees. Tickets are available from any chamber director or at the

chamber office, 211 Main.

Winners of the five divisions of the Miss Hansford County Scholarship Pageant will also be recognized at Saturday's banquet.

They include Miss McWhirter as

Miss Hansford County, Rae Lynn Scribner as Miss Hansford Teen, Laura Pearson as Miss Hansford Pre-Teen, Kaysha Cluck as Junior Miss Hansford, and Catrina Brooks as Little Miss Hansford.



EMPLOYEES AND FRIENDS of Spearman grocer Pete Fisher honored the veteran businessman Tuesday afternoon in recognition of 40 years of business in Spearman and Hansford county. The four decades

of service by Fisher was begun in 1948 when he opened Cut Rate Grocery. Now a franchised Thriftway store, it still carries the name Cut Rate Thriftway.

City sales tax figures show 16.68 percent rise

City sales tax checks were received this week in Gruver and Spearman for the first month of sales. Year to date figures -- which include sales tax figures from December, 1987, which were received in January, shows Hansford county with a 16.68% overall gain over the same period a year before.

Spearman shows an overall 18.96 percent gain through the early part of the year while Gruver has an overall gain of 8.58 percent.

This month's sales tax returned to the city of Gruver was for \$5,844.88 -- some \$282.50 off last year's January performance, or 4.6 percent decrease.

Spearman, for January, had a sale tax total of \$24,169.58, up from last year's \$20,311.43, or a 19 percent increase.

"This increase in consumer spending is a statewide vote of confidence in our economy," state comptroller Bob Bullock declared

when local sales tax figures increased by 3.4 percent over the

See "TAXES" p-2

Absentee vote opens

Absentee balloting for the March 8 Super Tuesday Republican and Democratic presidential preference primaries opened Wednesday in Hansford county and across Texas.

Balloting will continue through March 4 for in-person balloting in the county clerk's office at the courthouse in Spearman.

Mail balloting applications must be received by March 1 in the county clerk's office and the marked ballot must then be received no

See "VOTE", p-2

Manor group to be honored at reception

Hansford Manor Nursing Home volunteers will be honored in a special public awards presentation this Sunday afternoon, announces Carol Hergert, administrator of the nursing home facility.

The special awards presentation will take place at a reception in honor of the volunteers which will run from 2 to 4 p.m. that day.

The awards presentation will be made to all Hansford Manor volunteers who have served at the facility from 1983 through 1987, notes the administrator.

The reception and presentation will be held in the dining room of the nursing home which is located at 707 S. Roland in Spearman.

"We are extremely proud of all the volunteers who work here at the Manor," notes Hergert. "The nursing home industry simply couldn't function without its volunteers and our residents recognize the volunteers as friends and that's important."

continued from p-1

VOTE

later than election day to count in the primary vote.

This is the first year for Texas voters to participate in the March 8 ballot. Traditionally, voters in the Lone Star state have held primary elections the first Saturday in May.

But the Texas legislature moved the primary election to coincide with what has become known across the national as "Super Tuesday".

Free Attic Insulation

With Siding or Overhang Trim-Out Job.

Reid Construction
435-2772
February Only

Lynxettes, Lynx head up final district listing

The Spearman Lynxettes wound up clear cut victors in their quest for the district 1-AA girls basketball crown following regular season play, but the decision hasn't been made in boys action with three of the seven teams there in a tie for the two post-season playoff spots.

Spearman and Panhandle are the number one and two seeds, respectively, coming out of 1-AA girls action.

Meanwhile, on the boys side of the ledger, a pair of playoff games -- with a third in the offing, if necessary -- between Spearman, Highland Park and Stratford.

Highland Park meets Stratford Thursday evening with the winner of that game advancing to Friday's contest against Spearman. Should Spearman lose Friday, then a

Saturday game between the Lynx and the Thursday evening loser would determine the number two seed in 1-AA.

The final district 1-AA ranking follows.

GIRLS	
Spearman	12-0
Panhandle	10-2
Stratford	7-5
Gruver	6-6
Highland Park	4-8
West Texas High	3-9
White Deer	0-12
BOYS	
Highland Park	8-4
Spearman	8-4
Stratford	8-4
Gruver	7-5
White Deer	7-5
West Texas High	3-9
Panhandle	1-11

continued from p-1

LYNX

with the Lynx claiming the win, 69-53.

Brett Davis continued to find his mark from the 3-point line as he hit for four goals from that point. His 19-point effort paced Spearman scorers.

Carl Urban hit for 12 points and Kevin Nelson turned in a 10-point scoring effort to gain double figures as well.

The Spearman Lynx JV squad finished their season on a winning note as well, downing Panhandle by a 55-40 score.

Neither the line score nor individual point leaders were available. Panhandle: 8 20 36 53 Spearman: 17 35 56 69 S -- Brett Davis, 3-4-1-19; Keith Benson, 2-0-0-4; Carl Urban, 3-2-0-12; Tim Woolley, 3-0-1-7; Kevin Nelson, 4-0-2-10; Pat Shields, 1-0-2-4; Carson Womble, 3-0-0-6; Shawn Cook, 0-0-2-2; J Garnett, 1-0-1-3; Team, 19-6-9-69.

continued from p-1

TAXES

same period last year statewide. Year to date figures show Gruver's 8.58 percent increase of \$8,980.36 over the prior year's \$8,270.90.

For Spearman, year to date figures are \$34,983.21 as compared to \$29,407.19 for the same period a year ago.

Sales taxes for this year include an expansion of items subject to tax treatment, but Bullock notes that increases of more than two to three percent reflect increased spending as well as the expanded base.

Wednesday Free Package

Stay 4 days Pay for 3

(includes lodging and skiing) Avoid crowds by skiing midweek

Sun. - Thur. Mar. 5th

Riverside Lodge
1-800-432-9999
P.O. Box 248
Red River NM 87558

Don't face the new tax laws alone.

Henry M. Block

The tax laws have changed dramatically. And the forms have changed, too. Our experienced preparers know the new laws and how to use the new forms. We'll find you the biggest refund you have coming.

H&R BLOCK IF THERE'S EVER A TIME FOR H&R BLOCK, IT'S NOW.

307 W. Davis Spearman 659-2310
Mon. Wed. Fri. 9 a.m. to 5 p.m.
Late Appointments Available

Correction

A cutline on a front page picture in Sunday's Hansford Plainsman incorrectly identified the winner of an El Paso junior livestock show and sale.

The young man's name should have been Brandon Vanderburg. The newspaper regrets the error.

HOMESTYLE
"Full Meal Deal"
only — **\$2.59**
Sunday, Feb. 14 thru Sunday, Mar. 13

The sweetest deal in town is the Dairy Queen Full Meal Deal. With a juicy quarter-pound Homestyle Hungr-buster. Golden french fries. Your favorite ice-cold soft drink. And a creamy 5-ounce Dairy Queen sundae with your choice of topping. The \$2.59 Full Meal Deal. It's a steal.

Dairy Queen

...new corn hybrids
...new pricing programs.

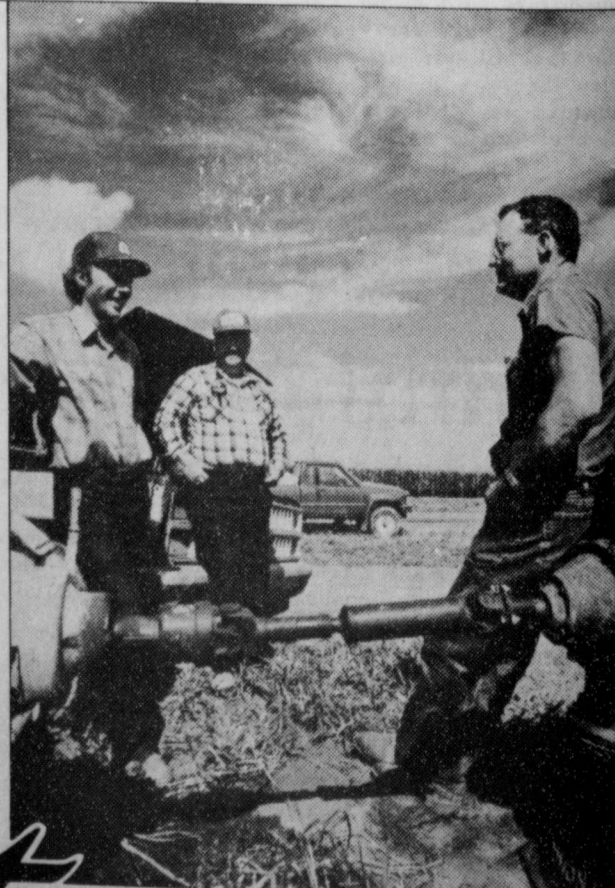
When it comes to seed corn, no one has better hybrids or better pricing options than your neighborhood Pioneer representative.

For the High Plains
3168 • 3124



Get Together
with...

Billy Logsdon 733-2803 Joe Paul 435-2501 Andy Watley 659-3970



Clyde Damron Jr., Pioneer Sales Representative (l), with his dad, Clyde Damron, Sr., and customer Jim Collins (r), near Dimmitt, Texas.

Evans places second in dance competition

Margie Evans captured second place in the Senior Solo Competition of the Dance American contest in Dallas recently with a tap dance number to the tune, "It Don't Mean A Thing".

Cacy McGill and Haley Lair also placed second in senior duo-trio competition with a jazz dance to "Jump Start".

The three girls are students of Carla Beezley and both dances were choreographed by the adult teacher.

Engagement announced

Mr. and Mrs. Jimmie R. Vernon announce the engagement of their daughter, Sharilyn Kay, to Mr. Alan Lynn Jones, son of Mr. and Mrs. Gary L. Jones of Stinnett. A June wedding is planned.

Both are students at Texas Tech University in Lubbock. The prospective bride is a freshman majoring in marketing. Jones is a sophomore majoring in Electrical Engineering.



Cork comes from the bark of the cork tree. It takes the cork tree ten years to produce one layer of cork.

Beneficial Corp. offers scholarship program

Beneficial Corporation will offer its Community Service Scholarship Program to Texas high school seniors for the third consecutive year this spring. The scholarships, totaling \$125,000, will be awarded solely on the basis of volunteer service and may be applied to accredited post-secondary education programs of the winners' choice.

Initiated in 1986, the scholarship program was recognized last year by the state of Texas and the Governor's Office of Community Leadership and Volunteer Services, who presented Beneficial with a certificate of appreciation for its contributions to the young people of Texas.

The \$125,000 will be awarded for the 1987-88 academic year as two 4-year scholarships of \$20,000, six 4-year scholarships of \$10,000 and 25 single grants of \$1,000.

The scholarships are eligible to high school seniors in Texas who receive a 12th grade degree during the 1987-88 academic year and plan to attend, full-time, an accredited post-secondary education institution in the fall of 1988. Students must be current residents of Texas, attending either a public or private high school in Texas.

Students who have volunteered with two or more community, civic or charitable agencies or organizations for at least two years, with a minimum of 50 volunteer hours, are eligible. Beneficial Corporation employees and their children

are not eligible.

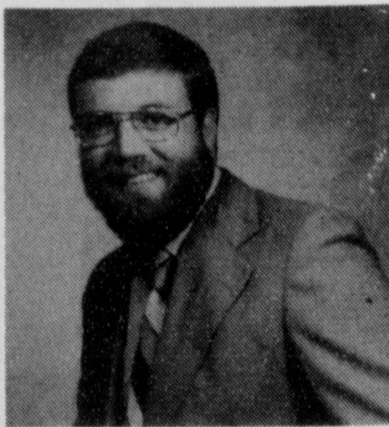
Applications must be received by April 1, and must include documented evidence of community service achievements. Applications can be obtained by calling, toll-free, 1-800-524-2816 between 7:30 a.m. and 3:30 p.m. weekdays.

An objective selection committee, with no direct or indirect relationship to Beneficial Corporation, will select scholarship winners.

Hospital Report

Patients dismissed from the hospital are Ethel Roberson, Deta Blodgett, Kelly Burch, Elma Ward and Nita Bynum.

Patients in the hospital are Andrew Bort, O.V. Walker Jr., Nova Lee Walker, Johnnie Lee and Glenn Crawford.



REV. SAM STEELE
... First Presbyterian Minister

City church announces new minister

The Rev. Sam Steele has assumed pastoral duties at the First Presbyterian Church in Spearman, effective Feb. 1.

The new Spearman pastor has held similar positions in DeQueen, Ark., and Broken Bow, Ok., prior to accepting duties as minister at the Spearman church.

He has also served as director of Christian Education at a church in Kilgore and a youth director of an Athens Presbyterian church.

Outside of the ministry, Rev. Steele was an art teacher in both middle school and high schools in Clarksville, Kilgore and Sherman.

He has a Master of Divinity degree from the Austin Presbyterian Theological Seminary with a MA in education from Austin College. He carries a bachelor's degree in both art and speech, also from Austin College.

He and his wife, Sara, have two daughters; Shannon and Stephanie.

"In my work as pastor, director of Christian education, youth director and school teacher, I have grown in the skills of leadership, learning and sharing," notes the Rev. Steele. "I am excited about the Spearman and Hansford county area and am looking forward to working with the congregation of my church and the people in our community."

Services held for Lola M. Melton

Funeral services for Lola M. Melton, 74, were held Tuesday afternoon in the Spearman First United Methodist Church with the Rev. Lane Boyd of Sweetwater, and the Rev. Todd Dyess, pastor, officiating.

Burial was in Hansford Cemetery by Boxwell Brothers Funeral Home. Mrs. Melton died Saturday.

Mrs. Melton, born at Lakeview, moved to Spearman in 1957. She was married to Jeff Melton in 1935 at Matador. He died in 1984. She was a member of First United Methodist Church.

Survivors include two sons, Rich Melton of Spearman and Mike Melton of Rawlins, Wyo; four daughters, Jody Robertson, Sue Bowling and Dixie Pool, all of Spearman, and Paulette Fryrear of Panhandle; three sisters, Lela Payne of Lakeview, and Lila Fortenberry and Daisy Jones, both of Amarillo; three brothers, A.J. Watson of Skellytown, Earl Watson of Amarillo and Leon Watson of Escalon, Calif.; 18 grandchildren; and 17 great-grandchildren.

Family requests memorials be to First United Methodist Church Memorial Fund or Don and Sybil Harrington Cancer Center.



ENGAGEMENT ANNOUNCED... The engagement and approaching marriage of Sherry Lynn Moyer to Kenneth Wayne Bullard is announced this week by the prospective bride's parents, Mr. and Mrs. Dale Moyer of Spearman. Bullard is the son of Mr. and Mrs. Ronnie Bullard, also of Spearman. The couple plan a March 18 wedding in the Union Church of Spearman.

Parent-Youth revival to be held in Gruver

A weekend Parent-Youth Revival will be held at the Gruver First Baptist Church beginning this Friday evening and running through Sunday worship services, announces pastor Steve Ellis.

The Revival will be led by evangelist Barry Wood and singer David Dale, and will open Friday morning with school assemblies in both Gruver and Spearman.

At 10 a.m. Friday, the two men will address the Gruver school assembly, then will go to Spearman for a 12:27 assembly at the High school and a 2 p.m. assembly at the junior high.

Friday evening at 6 p.m., there will be a pizza bash for all junior high and high school youth at the church, followed by the rally service at 7 o'clock.

Services will be held nightly at 7 p.m. all three days along with numerous events scheduled through the 3-day period.

"All churches, parents and youth and those needing a spiritual lift or boost are invited to attend," notes the Gruver pastor.

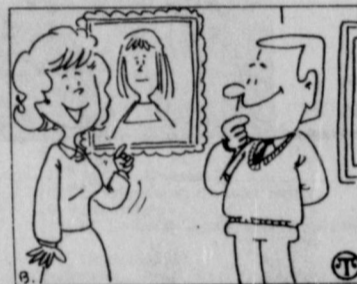
Saturday's events include a 1 p.m. youth council meeting with Barry Wood, followed by a 4 p.m. parent only session with the evangelist.

Then, at 6 p.m., there will be a barbecue sandwich dinner for all junior high and high school youth. Rally services begin at 7 p.m.

Sunday's schedule calls for the junior high and high school youth to meet with Wood at 9:45 a.m., then morning services begin at 10:40 with Wood and Dale leading

the worship.

At 6 o'clock that evening, the junior high and high school youth will meet with Wood again. The Revival will conclude Sunday evening with the 7 p.m. worship service.



Travel may be a learning experience, but if it's done solely for its educational value, the cost is no longer deductible.

Markets

WHEAT	\$2.70
MILO	\$3.00
CORN	\$2.08

You are Invited
to a baby shower
honoring
Cathy Brown
Sat. Feb. 20
from 2 to 4 p.m.
at First State Bank

Attention Cattlemen and Wheat Pasture Operators

We are currently contracting cattle off of winter wheat for current and spring delivery. For more information call:

Bill McCoy, Mgr.
Texas Beef Producers
Dumas
948-4163

Craig Clyburn, Mgr.
Palo Duro Feedyard
Gruver
733-2416

Chris Comstock
Texas Beef Cattle Company
A Division of TBP Group
Amarillo
Res: 383-2940 Office: 372-3877



Texas Beef Producers Group

Stephen F. "Steve" Cross WANTS TO BE YOUR District Attorney



Steve Cross and Family
Steve, Sue, Mark, and Michelle

- ★ Steve has the most EXPERIENCE
- ★ Steve is DEDICATED and HARDWORKING
- ★ Steve is CONCERNED about our young people
- ★ Steve is a HANSFORD COUNTY property owner and tax payer.

Stephen F. "Steve" Cross
Cares About Hansford County

Your Vote For Stephen F. "Steve" Cross - 84th District Attorney in the March 8 Republican Primary Will Be Appreciated.

Pol advt. pd for by Stephen F. Cross,
1603 Primrose, Borger, Tx. 79007.

Our Reputation is Building

February 18, 19 & 20, 1988
Come see the 1988 Design Highlights and take advantage of the special savings



Find out what's new at Morton Buildings!

With every building purchased during this mid-winter promotion we are including a GE Super Walllighter with photo cell. Also available to qualifying buildings will be a free U.S. flag and flagpole. This is a good time for you to discuss your building needs. Bring in your plans and ideas and receive a complimentary cap. There will be fresh donuts, hot coffee and as always we will be there to help.

Hwy. 287
(North Dumas Avenue)
Dumas, Texas
935-6881
MORTON BUILDINGS, INC.
Excellence - Since 1903

Without weatherstripping, money may be slipping out the door

If you don't have weatherstripping, you're probably losing heated and cooled air through the cracks around your windows and doors.

Since you paid for that heated and cooled air, you're losing money - by paying for more electricity than you need.

Weatherstripping is fairly inexpensive, and you can weatherstrip your home in a weekend.

For a step-by-step brochure on weatherstripping, visit or call your local Texas-New Mexico Power Company office today.



Texas-New Mexico Power Company

Neighborhood Professionals Offering You The Best Choice

Chili dinner sponsored by youth group

An all-you-can-eat Chili Dinner will be sponsored by the Sacred Heart Catholic Youth Group this Sunday in the parish hall of the Spearman church.

The special dinner will be held from 12:15 p.m. to 2 p.m. Price is \$3.50 per person with children six and under free.

The chili featured at the special dinner is being prepared by "Hansford County Chili Champion", Jim Brown.

Services held for Nadine Atchley

Funeral services for Nadine Atchley, 62, were held Wednesday afternoon at the First Christian Church in Spearman with Dr. Mike Wolfe, pastor, officiating.

Burial was in Hansford Cemetery under the direction of Boxwell Brothers Funeral Home.

Mrs. Atchley, born in Mountain View, Okla., moved to Spearman three years ago. She was married to Nelson Atchley in 1946 at Dalhart.

Survivors include her husband; a son, Tom Atchley of Perryton; a daughter, Penny Thomas of Spearman; a brother, Clyde Foutch of Beaver, Okla.; and six grandchildren.



Area children and elementary education students at Panhandle State University recently worked together on fingerpainting projects in the "Public School Art" course. Pictured [l to r] are Kari Jo Couch, Goodwell;

Kristi Ramon and Nicole Ramon, Spearman; Ramonda Raymond, Sunray; and Jennifer Lark, Goodwell.

P.S.U. announces money available in scholarships

Panhandle State University has

announced several changes in the academic scholarship program for resident and non-resident students for the 1988-89 academic year. In all instances, the dollar value of the scholarships have been increased.

There are four levels of scholarships for Oklahoma residents and five levels for non-residents. The non-resident scholarship changes have been precipitated by Oklahoma House Bill 1110 which allows an Oklahoma College to waive non-resident tuition in an amount not to exceed institutionally funded scholarships.

Academically eligible resident students have available Academic Achievement Scholarships, Departmental Scholarships, Out-

standing Student Scholarships and President's Scholarships, each with different qualifications standards and values. These scholarships are renewable with specified progress through eight semesters and have a four year value of up to \$5,200. Qualification standards include ACT/SAT scores and/or class rank.

Qualified non-resident students have similar qualification criteria through the five levels and can receive up to \$8,000 in scholarship assistance and out of state tuition fee waivers over an eight semester period.

For more information concerning any of these scholarships, write the Office of Admissions at Panhandle State University, P.O. Box 430, Goodwell, OK 73939 or call (405) 349-2611 EXT 274.

Services held for Benny Otis George

Tuesday services were held for Benny Otis George, 46, son of Mrs. and Mrs. Dennis George of Spearman and brother of Jerry George, also of Spearman.

Mr. George died Sunday at Lubbock. Services were held in the First Baptist Church in Post with the Rev. Steve McMeans, pastor, and the Rev. Joe Stansell, pastor of Milano Baptist Church, officiating.

Burial was in Terrace Cemetery in Post by Justice-Mason Funeral Home.

Mr. George, born at Newcastle, graduated from Spearman High School and attended West Texas State University, where he played football. He was married to Jane Francis at Post. He worked at ICX Motor Freight Co., prior to moving to Post to farm. He taught the Fellowship Sunday school class at First Baptist Church, where he was a member.

Survivors include his wife; a son, Rodney George of Post; a daughter, Donna Craig of Arlington; his parents, Mr. and Mrs. Dennis George of Spearman; a brother, Jerry George of Spearman; and a sister, Patsy Isham of Littleton, Colo.

Family requests memorials be to Youth Fund of Post area churches.

CARD OF THANKS

The family of Lola Melton wishes to express deep appreciation for all the prayers, thoughts and concern during the loss of our loved one.

Our thanks to Rosa Lee Butt, The Methodist Church, friends and neighbors for all the food and flowers.

Thanks to Mary Hanson and Judy Irlbeck for babysitting.

Special "Thank You" to Bob Boxwell, R.L. McFarlin-The Spearman Police Dept.

We will always have a special place in our hearts for Lane Boyd, Todd Dyess, Betty Womble, the Methodist Choir, Sheryl Meek and Eddie Gail Martin for directing the beautiful Praise Service for our mother.

The families of
Rick Melton
Reg Robertson
Mike Melton
Jenny Bowling
Donnie Pool
Cecil Fryrear

Texas Kids of America Pageant to be in Dumas

The National headquarters for Kids of America has announced the date of Saturday, March 12th for the upcoming Dumas, Texas Kids of America competition to be held at Dumas high school, west third and Klein.

Babies, ages 0-35 months may compete in four different areas of competition.

The baby division is divided into three age categories: 0-11 mos, 24-35 mos and there is one winner per competition in each age division.

Talent is another phase of com-

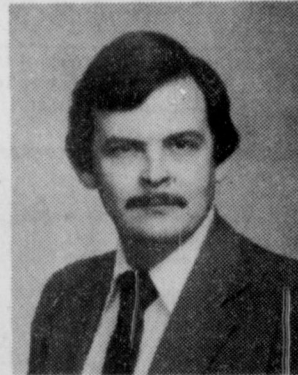
petition that is open to boys and girls between the ages of 3-17 years. Each talent presentation may not be more than 3 minutes.

A beauty competition will be offered for girls only. Beauty is judged on interview (group), casual wear and party wear (short dress 3-12 years, evening gown 13-17 years). A top five finalist will be selected from each age category

For more information call 435-4145 or the national headquarters in Dallas at (214) 328-KIDS.

I'm Tired of Having My Hansford County Tax Dollars Support A District Attorney Who Stays in Borger. Aren't You?

On March 8, Vote For Representation for OUR Tax Dollars . . .

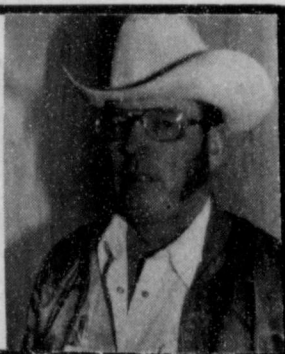


VOTE FOR VANCE JONES

84th District Attorney Democratic Primary
Pol. Advt. Pd for by Vance Jones, Box 862, Spearman, Tx. 79081

VOTE FOR DON EVANS HANSFORD COUNTY COMMISSIONER OF PRECINCT 3

Pol. Advt pd for by Don Evans, Box 543, Gruver, Tx 79040



Feel Bivins for Senate

Dutch Treat Luncheon by reservation only at Cattleman's Friday, February 19th, 1988 12:00 to 1:00 p.m. 1:00 to 1:30 p.m. Speaker

HOSTED BY:

Roy Bells
The James Schnells

The J.P. Davises
Phil Sanders

WEIGHT WATCHERS NEW 1988 QUICK SUCCESS PROGRAM

LOSE WEIGHT 20% FASTER

Lighten up with the fastest, easiest approach to weight loss ever!

Not only will you lose weight 20% faster in the first few weeks than on any previous Weight Watchers program, you can actually customize a plan that will fit your personal needs and lifestyle.



Sheila Falk, Area Director

Join now for only **\$12**

Registration Fee \$17.00
First Meeting Fee \$ 8.00
Regular Price \$25.00
YOU SAVE . . . \$13.00
Offer Ends March 13, 1988.

Come to the Weight Watchers meeting nearest you. PLEASE ARRIVE AT TIMES LISTED.

SPEARMAN
Home Extension Club
309 N. Bernice
Mon: 8:00 pm

NOTHING WORKS LIKE WEIGHT WATCHERS!
TEXAS TOLL FREE
1-800-692-4329

**Local Happening?
Special Event?
Club Meeting?**
If it's important to you, it's important to us.

Let us know about your event and we'll do our best to get you the publicity it deserves both before and after.

Call 659-3434 Today!

- The Spearman Reporter
- The Gruver Statesman
- The Hansford Plainsman

THAT'S ENTERTAINMENT

A Full Week of Programming.....

★ LEGEND ★

Channel	Station
[1]	ESPN
[2]	OETA
[4]	KAMR
[5]	TMC
[7]	KVII
[8]	TBN Today
[9]	WGN
[10]	KFDA
[11]	TBS
[12]	CNN
[13]	SHOW

MORNING

- 6:00 [4] Jimmy Swaggart
- [5] (FR) MOVIE: Clue
- [5] (MO) MOVIE: The Old Man and the Sea
- [7] (TU) MOVIE: Enemy Mine
- [7] (WE) MOVIE: Don't Make Waves
- [7] ABC World News This Morning
- [8] SuperBook Club
- [9] Muppets
- [10] 10 Morning Az Report
- [12] Daybreak
- [SHOW] (TH) The Incredible Time Travels of Henry Osmond
- [SHOW] (MO) MOVIE: Teacher, Teacher
- [SHOW] (TU) The Almost Royal Family
- 6:30 [2] Nation's Business Today
- [3] CNN
- [4] NBC News at Sunrise
- [5] (TH) MOVIE: Once Bitten
- [7] [10] 10 News
- [9] Spiral Zone
- [12] Business Day
- [13] (TH) The Hawaiians
- [13] (FR) Could You Not Tarry?
- [13] (TU) Betty Jean Robinson
- [13] (WE) Diane Biah
- [SHOW] (WE) The Secret Life of T.K. Dearing
- 7:00 [3] Sunup/Weather
- [4] Today
- [7] Good Morning America
- [8] Gospel Bill
- [9] Bozo
- [10] CBS This Morning
- [12] Daybreak
- [13] (TH) Roger McDuff
- [13] (TU) Dean and Mary
- [13] (WE) Roy Blizard
- [SHOW] (TH) MOVIE: Like Normal People
- [SHOW] (FR) MOVIE: Kojak: The Belarus File
- [SHOW] (TU) MOVIE: Six Weeks
- 7:05 [11] 17 Bewitched
- 8:00 [2] (TU,TH,FR) College Basketball
- [2] (MO) Senior PGA Tour
- [2] (WE) 1988 Major League Women's Volleyball
- [3] Sesame Street
- [5] (FR) MOVIE: Period of Adjustment
- [5] (TU) MOVIE: The Best of Times
- [5] (WE) MOVIE: The Fringe Dwellers
- [8] Father Knows Best
- [9] Smurfs
- [12] Daywatch
- 8:05 [11] 17 Little House on the Prairie
- 8:30 [5] (TH) MOVIE: The Last of Sheila
- [8] Hazel
- [9] Teddy Ruxpin
- [13] Joy
- 9:00 [3] Captain Kangaroo
- [4] Sale of the Century
- [5] (MO) MOVIE: Anything Goes
- [7] Hour Magazine
- [8] 700 Club
- [9] Leave It To Beaver
- [10] 10 Blackout
- [SHOW] (TH) MOVIE: A New Kind of Love
- [SHOW] (FR) MOVIE: Speedway
- [SHOW] (MO) MOVIE: Green Fire
- [SHOW] (TU) MOVIE: The Barretts of Wimpole Street
- [SHOW] (WE) MOVIE: Malaya
- 9:05 [11] 17 (TH,FR) MOVIE: CHIPS
- [11] 17 (MO) MOVIE: Winter Kill
- [11] 17 (TU) MOVIE: Deadly Game
- [11] 17 (WE) MOVIE: The Moonshine War
- 9:30 [2] (WE) Tom Mann Outdoors
- [3] (TH) Fast Forward
- [3] (WE,FR) Instructional Television
- [3] (MO) Blue Skies Below My Feet
- [3] (TU) What on Earth?
- [4] Classic Concentration
- [9] Andy Griffith
- [10] 10 Dating Game
- [13] (TH) Christian Lifestyle Magazine
- [13] (FR) Up On Melody Mountain
- [13] (MO,TU,WE) Marilyn Hickey
- 10:00 [2] Getting Fit with Denise Austin
- [3] (MO,TU,TH) Instructional Television
- [5] Wheel of Fortune
- [5] (FR) MOVIE: Invaders from Mars
- [5] (TU) MOVIE: That Was Then... This is Now
- [5] (WE) MOVIE: Once Bitten
- [7] Wil Shriner
- [9] Waltons
- [10] 10 Price Is Right
- [13] (TH) Candi Staton-Sussexwell
- [13] (FR) Dottie Rambo
- [13] (MO) Randy Shankle
- [13] (TU) Maker's Match
- [13] (WE) Heritage Singers
- 10:30 [2] Basic Training Workout
- [4] Win, Lose or Draw
- [5] (TH) MOVIE: The Fringe Dwellers
- [5] (TU,TH) TBA
- [8] (MO,FR) American Baby
- [8] (WE) Bill Cosby
- [13] (TH) Dino Show
- [13] (FR) Life of Christ
- [13] (MO) Westbrook Hospital
- [13] (TU) Don Wellman
- [13] (WE) Nancy Harmon
- 11:00 [2] Bodies in Motion
- [4] Super Password
- [5] (MO) MOVIE: (WE) MOVIE: Assassination
- [7] All My Children
- [9] Second Moonbeam
- [9] Geraldo
- [10] 10 Young and the Restless
- [12] Sonya Live in L.A.
- [13] Get in Shape
- [SHOW] (TH) MOVIE: Clue
- [SHOW] (FR) MOVIE: Ernest Goes to Camp
- [SHOW] (MO) MOVIE: Like Normal People
- [SHOW] (TU) The Incredible Time Travels of Henry Osmond
- 11:05 [11] 17 Perry Mason
- 11:30 [2] (TH) 1987 Boston Marathon Highlights
- [2] (FR) Big League Dreams Sports Magazine
- [2] (MO,TU,WE) Best of American Music Magazine
- [4] Newsday
- [4] Doris Day
- [13] (TH) Ron Cottle
- [13] (FR) Harold Sala
- [13] (MO) Bob Hoskins
- [13] (TU) Why Wait?
- [13] (WE) Art Linkletter

AFTERNOON

- [5] (FR) MOVIE: Adventure of the Action Hunters
- [5] (TU) MOVIE: Clue
- [5] (WE) MOVIE: Ernest Goes to Camp
- [7] [9] 9 [10] 10 News
- [8] Dobie Gillis
- [13] TBN Today
- [SHOW] (TU) MOVIE: A Hard Day's Night
- 12:05 [11] 17 (MO,TU,TH,FR) Centennial
- [11] 17 (WE) MOVIE: The Roaring Twenties
- 12:30 [3] (MO,WE,TH,FR) Instructional Television
- [3] (TU) Visions
- [5] (TH) MOVIE: Assassination
- [5] (MO) MOVIE: Still of the Night
- [7] High Rollers
- [8] Bachelor Father
- [10] 10 Bold and the Beautiful
- [13] Jimmy Swaggart
- [SHOW] (WE) MOVIE: Mannequin
- 1:00 [2] (TH) Track & Field
- [2] (FR) PGA Golf
- [2] (MO) College Baseball
- [2] (TU) 1984 College Cheerleading Championships
- [2] (WE) NHL Hockey
- [3] (TU) Instructional Television
- [4] Another World
- [7] One Life to Live
- [8] Green Acres
- [9] Dick Van Dyke
- [10] As the World Turns
- [12] Newsday
- [13] James Robison
- [SHOW] (TH) MOVIE: Six Weeks
- [SHOW] (FR) MOVIE: A Hard Day's Night
- [SHOW] (MO) MOVIE: The Impossible Years
- 1:30 [3] (WE) Reading Rainbow
- [3] (FR) Short Film Showcase
- [6] Flying Nun
- [9] Andy Griffith
- [13] (TH) Maureen Salaman
- [13] (FR) Dean and Mary
- [13] (MO) Donald Whitaker
- [13] (TU) This is Life
- [13] (WE) Reginaid Cherry
- [SHOW] (TU) MOVIE: Ernest Goes to Camp
- 2:00 [2] (TU) Fishin' Hole
- [3] (FR) Feed to Record
- [3] (MO) Survival Spanish
- [3] (TU) Fast Forward II
- [3] (WE) Instructional Television
- [4] Santa Barbara
- [5] (TH) MOVIE: The Best of Times
- [5] (FR) MOVIE: Water
- [5] (MO) MOVIE: The Red Tent
- [5] (TU) MOVIE: The Carey Treatment
- [5] (WE) MOVIE: Don't Make Waves
- [7] General Hospital
- [8] Father Knows Best
- [9] Leave It To Beaver
- [10] 10 Guiding Light
- [12] International Hour
- [13] 700 Club
- [SHOW] (WE) The Secret Life of T.K. Dearing
- 2:05 [11] 17 Tom and Jerry
- 2:30 [3] (TH) Equal Justice Under Law
- [3] (MO) Storybook International
- [3] (TU) Front Runners
- [8] Hazel
- [9] Ghostbusters
- 2:35 [11] 17 Flintstones
- 3:00 [2] (MO,TU,WE,TH) A.W.A.: Championship Wrestling
- [2] (FR) CBA Basketball
- [3] Sesame Street
- [4] Oprah Winfrey
- [7] Donahue
- [8] Straight Talk
- [8] SaveStar
- [10] 10 Little House on the Prairie
- [12] Newsday
- [13] Another Life
- [SHOW] (TH) MOVIE: GoBots: Battle of the Rock Lords
- [SHOW] (FR) MOVIE: Except for Thee and Me
- [SHOW] (MO) Elmhurst Forest
- [SHOW] (TU) The Almost Royal Family
- [SHOW] (WE) House at 12 Rose Street
- 3:05 [11] 17 Flintstones
- 3:30 [9] Transformers
- [13] Marilyn Hickey
- 3:35 [11] 17 Brady Bunch
- 4:00 [2] (MO,TU,WE,TH) All-American Pulling Series
- [4] Mister Rogers' Neighborhood
- [4] A Magnum, P.I.
- [5] (TH) MOVIE: The Bedroom Window
- [5] (FR) MOVIE: Clue
- [5] (MO) MOVIE: Brazil
- [5] (TU) MOVIE: Enemy Mine
- [5] (WE) MOVIE: Water
- [7] Newlywed Game
- [8] Big Valley
- [9] G. Joe
- [10] 10 (TU,WE,TH,FR) Divorce Court
- [10] 10 (MO) Divorce Court
- [12] Newswatch
- [13] Praise the Lord
- [SHOW] (TU) Do Me a Favor...Don't Vote for My Mom
- [SHOW] (WE) MOVIE: Ape and Super Ape
- 4:05 [11] 17 Munsters
- 4:30 [2] (TH) Lighter Side of Sports
- [2] (MO) Surfing
- [2] (TU) U.S. Men's Pro Ski Tour
- [2] (WE) Thoroughbred Sports Digest
- [3] Square One TV
- [7] Win, Lose or Draw
- [9] 9 Jem
- [10] 10 Superior Court
- [12] Larry King Live!
- [13] Dwigth Thompson
- 4:35 [11] 17 Laverne and Shirley
- 5:00 [2] SportsCenter
- [3] MacNeill's Lehrer NewsHour
- [4] Hollywood Squares
- [7] Jeopardy!
- [8] Crazy Like a Fox
- [9] 9 Facts of Life
- [10] 10 People's Court
- [12] ShowBiz Today
- [SHOW] (TH) MOVIE: Like Normal People
- [SHOW] (FR) MOVIE: Kojak: The Belarus File
- [SHOW] (TU) MOVIE: Six Weeks
- 5:05 [11] 17 Alice
- 5:30 [2] (TH,FR) Boardwalk & Baseball's Super Bowl of Sports Trivia
- [2] (MO) Best of Bill Dance
- [2] (TU) Inside the PGA Tour
- [2] (WE) NBA Today
- [4] ABC Nightly News
- [7] ABC News
- [9] WKRP in Cincinnati
- [10] 10 CBS News
- [12] Inside Politics '88
- [SHOW] (WE) MOVIE: Help!
- 5:35 [11] 17 (TU,WE,TH,FR) Carol Burnett
- [11] 17 (MO) Leave It to Beaver

THURSDAY February 18

EVENING

- 6:00 [2] College Basketball Kansas at Kansas State (L)
- [3] Nightly Business Report
- [4] [7] [10] 10 News
- [5] MOVIE: The Last of Sheila (1973) Man invites friends on his yacht to find who caused his wife's death. Richard Benjamin, James Coburn. PG. 2.00
- [8] Remington Steele A Steals at Any Price
- [9] Cheers Abnormal Psychology
- [12] Moneyline
- [13] Jerry Barnard
- 6:05 [11] 17 Andy Griffith Barney's Uniform
- 6:30 [3] Oklahoma News
- [4] M*A*S*H
- [7] Wheel of Fortune
- [9] Barney Miller Vacation
- [10] 10 Love Connection

- [12] Crosstire
- 6:35 [11] 17 Sanford and Son The Piano Movers
- 7:00 [3] This Old House Random with Southern yellow pine flooring is laid in the new kitchen.
- [4] The Cosby Show Rudy writes a fairy tale, in which every one plays a character.
- [7] 7 XV Olympic Winter Games Skating, Alpine skiing, hockey (L)
- [8] Hell Town The Ratman Cometh
- [9] 9 College Basketball Notre Dame vs Dayton (L)
- [10] 10 Tour of Duty Percell, Taylor and Ruiz undergo culture shock while in Hawaii on R&R.
- [12] PrimeNews
- [13] TBN Today
- [SHOW] MOVIE: Raging Bull (1980) World middleweight champion of 1948 battles his way through life. Robert DeNiro, Cathy Moriarty. R. 2.08
- 7:05 [11] 17 MOVIE: Clash of the Titans (1981) Perseus, son of Zeus, faces awesome challenges in his adventures. Laurence Olivier, Harry Hamlin. PG. 1.58
- 7:30 [3] Wild America (1987) Marty Stouffer tracks the South's largest animal, the black bear.
- [4] A Different World Denise and Whitney share the stage in Maggie's play.
- [13] Dale Evans
- 8:00 [2] College Basketball N.C. State at Clemson (L)
- [3] Wonders (1985) A brother and sister are sent Anne by the orphanage to do farm chores. 1.00
- [10] 10 People's Court
- [12] ShowBiz Today
- [SHOW] (TH) MOVIE: Like Normal People
- [SHOW] (FR) MOVIE: Kojak: The Belarus File
- [SHOW] (TU) MOVIE: Six Weeks
- 8:05 [11] 17 Alice
- 8:30 [4] 4 Night Court The court staff must try 207 cases by midnight to save an orphanage.
- [9] 9 News
- [10] 10 Texas Debates (1988)
- [4] L.A. Law Becker goes too far, a luming McKenzie may ask for his resignation.
- [8] Straight Talk
- [9] 9 News
- [10] 10 Knots Landing Abby is pressured by Charles to elope; Mack confronts Frank Williams.
- [13] Praise the Lord Live
- 9:00 [8] Great American Outdoors 0:30
- [SHOW] MOVIE: Clue (1985) Characters from the popular board game find murder and mischief. Tim Curry, Madeline Kahn. PG. 1.37
- 9:35 [11] 17 MOVIE: Electra Glide in Blue (1973) A motorcycle cop investigates the death of an elderly recluse. Robert Blake, Billy Green Bush. R. 1.46
- 9:35 [11] 17 PrimeNews
- [13] TBN Today
- [SHOW] MOVIE: Ernest Goes to Camp (1987) Ernest finds himself promoted to counselor when delinquents arrive. Jim Varney, Victoria Racimo. PG. 1.33
- 7:05 [11] 17 NBA Basketball Lakers at Hawks (L)
- 7:30 [3] Wall Street Week 0:30
- [13] Diane Biah
- 8:00 [2] Top Rank Boxing From Las Vegas, NV
- [3] World at War
- [4] 4 Miami Vice Double murder puts Crockett and Tubbs on trail of Chilean policeman.
- [5] MOVIE: Crocodile Dundee (1986) G Day. American A bloke from down under takes New York by storm. Paul Hogan, Linda Kozlowski. NR. 1.38
- [8] 700 Club
- [10] 10 Dallas Miss Ellie retreats into a drunken rage over Clayton and Laurel.
- [12] Larry King Live!
- [13] Fred Price
- 8:45 [SHOW] Comedy Club Network (1987) A unique, short form showcase spotlighting new comedians. NR. 0:15
- 9:00 [3] MOVIE: Never So Few (1959) Dareddevil captain leads 600 Kachins in infiltrating Japanese lines. Frank Sinatra, Gina Lollobrigida. NR. 2.04
- [4] 4 Sonny Spoon Sonny attempts to return stolen jewels to protect the thief.
- [8] Straight Talk
- [9] 9 News
- [10] 10 Falcon Crest Melissa rejects her long-lost Uncle Frank, who seeks Angela's help.
- [12] Evening News
- [13] Praise the Lord Live
- [SHOW] It's Garry Shandling's Show Crazy comic deals with life's daily problems. Garry Shandling. NR. 0:30
- 9:20 [11] 17 Between Games
- 9:30 [8] Last Frontier To Save a Whale
- [11] 17 NBA Basketball Celtics at Trail Blazers (L)
- [SHOW] Brothers Two macho types attempt to deal with their brother's homosexuality. Robert Walden, Brandon

Hansford County's

Wheel Alignment Headquarters

COMPUTERIZED

Hunter Wheel Alignment System

-Accuracy to within 1/100th of an inch

Front End Alignment \$28.50

All 4 Wheels Aligned - \$49.95

All prices exclude shims

Computerized Wheel Balance with Free rotation

- ☐ Improve Handling
- ☐ Extend Tire Life
- ☐ Enjoy Smoother Ride

\$5.50 per tire

most cars and 1/2 ton pickups.
¾ and 1-ton slightly higher.



Mr. Goodwrench

GILLASPIE

CHEVROLET-OLDSMOBILE

Hwy. 207 South 659-2541 SPEARMAN

- [3] Kvels on Lovewreck
- [4] 4 Crook and Chase (1986) Daily magazine with informative interviews and entertainment. 0:30
- [12] Newsweek: Saturday
- [13] Maker's Match
- 1:00 [2] College Basketball Maryland at North Carolina (L)
- [3] Living With Animals
- [4] College Basketball Houston at SMU
- [8] Alias Smith and Jones The Great Shell Fame
- [10] 10 College Basketball Doubleheader Regional Broadcast (L)
- [11] 17 MOVIE: The Love God? (1969) A meek birdwatcher mistakenly becomes a national sex symbol. Don Knotts, Anne Francis. NR. 1.41
- [12] News Update
- [13] Dale Evans
- 1:10 [12] Healthweek
- 1:30 [3] Newton's Apple Take a look at bee society when fifteen thousand bees visit the set.
- [12] Style with Elsa Klensch
- [13] Don Spradling
- 2:00 [3] Wonders (1987) A group of inner city kids form a chess team with help from a teacher. Paul Winfield, Rosalind Cash. NR. 0:30
- [5] MOVIE: The Aviator (1985) Pilot and girl struggle in the 1920s wilderness after a plane crash. Christopher Reeve, Rosanna Arquette. PG. 1.38
- [8] Big Valley Brother Love
- [9] MOVIE: The Front Page (1974) Newspapermen compete in the coverage of a murderer's execution. Jack Lemmon, Walter Matthau. PG. 1:45
- [12] Your Money
- [13] Deal World
- [SHOW] Tail Tales & Legends: Ponce de Leon (1986) Ponce de Leon searches for the fountain of youth. Michael York, Paul Rodriguez. NR. 1:00
- 2:30 [12] International Correspondents
- [13] Ray Brubaker
- 3:00 [2] Speedway USAC Sprints, from Hinsdale, IL (R)
- [3] Nova
- [4] New Gadget
- [4] Laredo Taste of Money
- [10] 10 College Basketball Duke at Kansas (L)
- [11] 17 Andy Griffith
- [12] News Update
- [13] Trumpets in the Morning
- [SHOW] MOVIE: The Apprenticeship of Duddy Kravitz (1974) Adventures of a Canadian Jew in the mid 1940s. Richard Dreyfuss, Michelle Lanctot. PG. 2.01
- 3:10 [12] Sports Closeup
- 3:30 [4] Shearson-Lehman Brothers/Andy Williams Open Golf (L)
- [11] 17 Beverly Hillsbillies
- [12] Big Story
- [13] TBN Today
- 4:00 [2] Fishin' Hole
- [3] Nature (1988) Examine evolution of a Hawaiian island, from volcano to coral atoll.
- [5] MOVIE: Big Trouble in Little China (1986) A truck driver is swept into the mysterious world under Chinatown. Kurt Russell, Kim Cattrall. PG13. 1:39
- [8] Wagon Train Cassie Vance Story
- [9] 9 Puttin' on the Hits
- [11] 17 Fishing with Roland Martin
- [12] Newswatch
- [13] Why Wait?
- 4:30 [2] Professional Boxing Pryor vs Arguello (1982) (R)
- [9] 9 T and T
- [11] 17 Fishin' with Orlando Wilson
- [12] Newsmaker Saturday
- [13] Christian Lifestyle Magazine
- 5:00 [3] Wild America (1987) Marty Stouffer tracks the South's largest animal, the black bear.
- [4] News
- [7] ABC World News Saturday
- [9] 9 Buster! Loose
- [10] 10 Barney Miller
- [11] 17 World Class Championship Wrestling
- [12] Newswatch
- [13] 100 Huntley Street
- [SHOW] MOVIE: Uncle Tom's Cabin (1987) New version of Harriet Beecher Stowe's epic anti-slavery tale. Avery Brooks, Phyllis Rashad. NR. 1:48
- 5:30 [2] SportsCenter (L)
- [3] Capitol Press Report
- [4] NBC News
- [7] News
- [9] Monroes Wild Dog of the Teton
- [9] 9 Charles in Charge Poppa the Sailor
- [10] CBS News
- [12] Pinnacle

EVENING

- 6:00 [2] College Basketball Mississippi at Mississippi St. (L)
- [3] Degrassi Junior High Themes: Alcoholism, peer pressure, smoking and confronting problems.
- [4] 4 Star Trek: The Next Generation NR. 1.0
- [5] Short Film Showcase Hollywood's legendary actors and actresses are showcased. NR. 0:30
- [7] 7 XV Olympic Winter Games Figure & speed skating, ski jump (L)
- [9] 9 It's a Living
- [10] 10 Star Search 1:00
- [12] Crosstire Saturday
- [13] Benny Hill
- 6:30 [3] Outdoor Oklahoma
- [5] MOVIE: Mannequin (1987) An artist falls in love with a mannequin that comes to life. Andrew McCarthy, Kim Cattrall. R. 1:31
- [8] Campbells When the Bough Breaks
- [9] 9 Mama's Family
- [12] Sports Saturday
- 7:00 [3] Lawrence Walk Small Town U.S.A.
- [4] 4 Facts of Life Blair's personality changes when her face is scarred in a car wreck.
- [8] MOVIE: It Takes All Kinds (1969) Blackmailer frames sailor into believing he's committed murder. Vera Miles, Robert Lansing. 1:38
- [9] 9 Kung Fu
- [10] 10 High Mountain Rangers Jesse's friend must locate Indian burial ground before it's destroyed.
- [12] PrimeNews
- [13] Phil Arms
- [SHOW] MOVIE: Assassination (1987) A plot to kill the First Lady has a secret agent on the run. Charles Bronson, Jill Ireland. PG13. 1:28
- 7:05 [11] 17 MOVIE: They Were Expendable (1945) Story of the PT boats used in fighting the Japanese in W.W.II. Robert Montgomery, John Wayne. NR. 2:15
- 7:30 [4] 4 227 When the Gonzales family moves in, Alfonso becomes the building super.
- [13] Zola Levitt
- 8:00 [2] College Basketball Georgia Tech at N.C. State (L)
- [3] Rodgers and Hammerstein: Sound of American Music (1985) Mary hosts this fun and tuneful profile of Rodgers and Hammerstein. 1:44
- [4] 4 Golden Girls Dorothy and her boyfriend are tired of Sophia tagging along on dates.
- [5] MOVIE: Ernest Goes to Camp (1987) Ernest finds himself promoted to counselor when delinquents arrive. Jim Varney, Victoria Racimo. PG. 1:33
- [9] 9 College Basketball DePaul at St. John's (Tentative)
- [10] 10 Houston Knights Highly radioactive and deadly material causes alarm in Houston.
- [12] ShowBiz Week
- [13] Robert Schuller
- 8:30 [4] 4 Amen After nearly freezing to death, Deacon Frye is saved by Amelia.
- [12] This Week in Japan
- [SHOW] MOVIE: Enemy Mine (1985) An earthing and an alien are stranded together on a deadly planet. Dennis Quaid, Louis Gossett Jr. PG13. 1:48

AFTERNOON

- 12:00 [3] Oklahoma Gardening
- [4] 4 Wild Kingdom
- [5] MOVIE: The Odd Couple (1968) Two men set up housekeeping together in a New York City apartment. Jack Lemmon, Walter Matthau. G. 1:45
- [9] Iron Horse Dealer's Choice
- [9] 9 MOVIE: Superbug: Super Agent (1976) Superbug is out to bug the bad guys. Robert Mack, Heidi Hansen. G. 1:32
- [10] 10 Lifeways of the Rich and Famous
- [12] Newsday
- [13] Inside Track
- [SHOW] MOVIE: Enemy Mine (1985) An earthing and an alien are stranded together on a deadly planet. Dennis Quaid, Louis Gossett Jr. PG13. 1:48

THAT'S ENTERTAINMENT PROGRAMMING

9:00 [3] Austin City Limits (1988) John Prine performs "The Oldest Baby in the World" and "Dear Abby."
 [4] J.J. Starbuck Starbuck investigates a decade-old murder case.
 [8] Paper Chase Outline Fever
 [10] 10 West 57th: CBS News primetime magazine. John Ferrugia, Meredith Vieira.
 [12] Evening News
 [13] R.W. Schambach

SUNDAY February 21 MORNING

6:00 [2] SportsCenter (L)
 [5] MOVIE: Nobody's Fool (1986) A passing theatrical troupe changes the life of a small town girl. Rosanna Arquette, Eric Roberts. PG13. 1:47
 [8] Jimmy Swaggart
 [9] Dr. D. James Kennedy
 [11] 17 Tom and Jerry
 [12] Daybreak
 [13] Jerry Bernard

6:30 [2] World Sport Special (R)
 [4] New Zoo Revue
 [7] Christopher Closeup
 [9] Three Score
 [11] Big Story

6:35 [SHOW] The Secret Life of T.K. Dearing (1975) Girl learns that being old has as many problems as being young. Jodie Foster, Edward Franz. NR. 0:45

6:45 [9] 9 What's Nu?
 7:00 [2] NBA Today (R)
 [4] James Robison
 [11] Spiderman
 [8] Dr. D. James Kennedy
 [9] 9 [10] 10 Robert Schuller
 [11] 11 Flintstones
 [12] Daybreak
 [13] John Hagee

7:30 [2] Inside the PGA Tour (R)
 [3] American Adventure The Republic in a Hostile World
 [4] Amazing Grace Bible Class
 [7] Volttron
 [9] Heritage of Faith
 [11] 17 Tom and Jerry
 [12] Crossfire
 [SHOW] MOVIE: My American Cousin (1985) Story of a British girl and her infatuation with her American cousin. Margaret Langrick, John Wildman. PG. 1:35

8:00 [2] Motorweek Illustrated (R)
 [3] American Adventure The Rural Republic
 [4] Day of Discovery
 [5] MOVIE: The Last of Sheila (1973) Man invites friends on his yacht to find who caused his wife's death. Richard Benjamin, James Coburn. PG. 2:00
 [7] Young Universe
 [8] Our Sunday Best
 [9] Mass for Shut Ins
 [10] 10 Second Baptist Church
 [11] 11 Flintstones
 [12] Daywatch
 [13] Earl Paulk

8:30 [2] Surfer Magazine (R)
 [3] Outdoor Oklahoma
 [4] Larry Jones
 [7] Father Murphy
 [9] Popeye
 [10] 10 First Baptist Church
 [11] 11 Andy Griffith
 [12] Your Money

9:00 [2] Magic Years in Sports 1947 - Jackie Robinson (R)
 [3] Nature (1988) Examine evolution of a Hawaiian island, from volcano to coral atoll.
 [4] World Tomorrow
 [8] Lloyd Ogilvie
 [9] Visionaries
 [11] 11 Good News
 [12] News Update
 [13] James Robison
 [SHOW] MOVIE: Mannequin (1987) An artist falls in love with a mannequin that comes to life. Andrew McCarthy, Kim Cattrail. PG. 1:31

9:10 [12] On the Menu
 9:30 [2] This Week in Sports (1)
 [3] [8] On the Menu
 [7] Texas Country Reporter
 [9] Captain Power
 [10] 10 CBS Sunday Morning
 [11] 11 MOVIE: The Sons of Katie Elder (1965) Four brothers, home for their mother's funeral, avenge her death. John Wayne, Dean Martin. NR. 1:52
 [12] Newsmaker Sunday
 [13] Richard DeHaan

10:00 [2] Nature of Things Examine the impact of cars on our lives. 1:00
 [4] 4 San Jacinto Baptist Church
 [5] MOVIE: Black Widow (1986) Federal agent hunts a woman she suspects of marrying and murdering. Debra Winger, Theresa Russell. R. 1:43
 [7] 7 XV Olympic Winter Games Ice hockey, skating, bobsled. (L)
 [8] SuperBook Club
 [9] MOVIE: The Unforgiven (1960) Two pioneer families come into conflict with a warlike Indian tribe. Audrey Hepburn, Burt Lancaster. NR. 2:05
 [12] News Update
 [13] Dr. D. James Kennedy

10:10 [12] Travel Guide
 10:30 [2] SportsCenter NFL Gameday
 [12] NBA Preview
 [SHOW] MOVIE: Crocodile Dundee (1986) G day, America! A bloke from down under takes New York by storm. Paul Hogan, Linda Kozlowski. PG13. 1:38

11:00 [2] Track & Field Indoor Games- Los Angeles, CA (R)
 [3] Nova
 [4] Jimmy Swaggart
 [8] Young People's Special A child's eye view of the nation's two largest cities is shown. NR.
 [10] 10 Vegas
 [12] Newsday
 [13] Dwight Thompson

11:30 [8] Kidsworld
 [12] International Correspondents

AFTERNOON

12:00 [3] D.C. Week Rvw.
 [4] 4 College Basketball Temple at N. Carolina (L)
 [5] MOVIE: The Bedroom Window (1987) A man can't prove his innocence without revealing his secret affair. Steve Guttenberg, Elizabeth McGovern. R. 1:53
 [7] Butterfly Island It's Never Too Late
 [10] 10 TBA
 [11] 11 Richmond 400
 [12] Newsday
 [13] John Bertolucci

12:30 [2] PGA Golf Suncoast Sr. Classic, Final Rd. (L)
 [3] Wall Street Week 0:30
 [4] Campbell's When the Bough Breaks
 [5] Lone Ranger Reid's Sacrifice
 [10] 10 College Basketball Indiana at Purdue (L)
 [12] Moneyweek
 [13] Kenny Foreman
 [SHOW] MOVIE: The Prisoner of Zenda (1952) An Englishman masquerades as a kidnapped foreign king. Stewart Granger, Deborah Kerr. NR. 1:41

1:00 [3] Adam Smith's Money World 0:30
 [5] MOVIE: The Plunderers (1948) A Sioux uprising saves an Army officer from arresting a young outlaw. Rod Cameron, Iona Massey. NR. 1:27
 [8] 8 MOVIE: On the Waterfront (1954) A young hood makes a hard decision in revenge for his brother's death. Marlon Brando, Eva Marie Saint. NR. 1:48
 [12] Week in Review
 [13] Chuck Smith

1:30 [3] Firing Line NR.
 [13] John Hinkle

2:00 [4] 4 NBC Sportsworld Boxing: Van Horn vs Munduga (L)
 [5] MOVIE: The Gambler (1974) A hip young college professor has an insatiable desire to gamble. James Caan, Paul Sorvino. R. 1:51

[12] Larry King Weekend (R)
 [13] News Jordan
 2:30 [2] Women's Tennis Virginia Sims of San Francisco (L)
 [3] Candidates '88 with Marvin Kalb Kalb interviews Republican and Democratic presidential candidates.
 [10] 10 NBA Basketball Pistons at Lakers (L)
 [13] TBN Today
 [SHOW] MOVIE: Amadeus (1984) Court composer Salieri hated and envied Mozart for his genius. Tom Hulce, F. Murray Abraham. PG. 2:38

3:00 [4] 4 Shearson-Lehman Brothers/Andy Williams Open Golf (L)
 [8] Gunsmoke Old York
 [9] MOVIE: The Crimson Pirate (1952) A pirate captain captures a ship laden with ammunition. Burt Lancaster, Nick Cravat. NR. 1:44
 [12] News Update
 [13] In Touch

3:10 [12] Science Technology Week
 3:30 [3] French Chef
 [11] 11 Olympic Track Meet
 [12] Evans and Nowak
 4:00 [3] This Old House
 [5] MOVIE: Howard the Duck (1986) An alien duck finds himself tossed across the universe to Cleveland. Lea Thompson, Jeffrey Jones. PG. 1:51
 [8] Empire Tall Shadow
 [12] Newswatch
 [13] Jerry Savelle

4:30 [2] World Cup Skiing Freestyle, from Lake Placid, NY (1)
 [3] Oklahoma Gardening
 [11] 11 World Class Championship Wrestling
 [12] Newsmaker Sunday
 [13] Jimmy Swaggart

5:00 [3] Tony Brown's Journal
 [4] 4 News
 [7] 7 ABC World News Sunday
 [8] Big Valley Caesar's Wife
 [9] MOVIE: Mutiny on the Bounty (1962) Saga of the crew's mutiny on His Majesty's Ship Bounty in 1789. Marlon Brando, Trevor Howard. NR. 2:59
 [10] 10 CBS News
 [12] Newswatch

5:30 [2] SportsCenter (L)
 [3] Candid Campus
 [4] 4 NBC News
 [7] 7 News
 [10] 10 Barney Miller
 [11] 11 Leave It To Beaver
 [12] Inside Business
 [13] Fulton Buntain
 [SHOW] MOVIE: The Longshot (1986) Four unlucky guys borrow money from the mob to invest in a racehorse. Tim Conway, Harvey Korman. PG13. 1:29

EVENING

6:00 [2] College Baseball LSU vs Florida State (L)
 [3] Lawrence Welk A Musical Tour of Europe
 [4] 4 Our House The Witherspoon kids are stranded on an island with no food or gear.
 [5] MOVIE: Nobody's Fool (1986) A passing theatrical troupe changes the life of a small town girl. Rosanna Arquette, Eric Roberts. PG13. 1:47
 [7] 7 XV Olympic Winter Games Ice hockey, bobsled, Alpine (L)
 [8] Crossfire
 [10] 10 60 Minutes
 [11] 11 MOVIE: The Roaring Twenties Robinson (R)
 [1939] Buddies clash in bootlegging racket. James Cagney, Humphrey Bogart. NR. 1:46
 [12] One on One
 [13] Billy Joe Daugherty

6:30 [8] Animals of Africa Birth Among the Seas
 [12] Sports Sunday
 [13] Jack Hayford

7:00 [3] Nature (1988) Explore southern Africa's spectacular wilderness habitats.
 [4] 4 Family Ties Lauren quits college to spend more time with Alex.
 [8] Paper Chase Outline Fever
 [10] 10 Murder, She Wrote Jessica witnesses a fatal accident and hears a dying man's confession.
 [12] PrimeNews
 [SHOW] MOVIE: Crocodile Dundee (1986) G day, America! A bloke from down under takes New York by storm. Paul Hogan, Linda Kozlowski. PG13. 1:38
 [14] 4 My Two Dads Michael uses his influence to get a role in a commercial for Nicole.
 [9] 9 At the Movies Review Sweet Hearts Dance & More
 [13] Charlie Osborn

8:00 [3] Upstairs, Downstairs (1988) Hudson is seen at the Wembley Exhibition with a young girl.
 [4] 4 NBC Sunday Night at the Movies Noble House, Part 1 (1988) Noble House becomes a takeover target of an American conglomerate. Pierce Brosnan, Deborah Raffin.
 [5] MOVIE: The Bedroom Window (1987) A man can't prove his innocence without revealing his secret affair. Steve Guttenberg, Elizabeth McGovern. R. 1:53
 [8] In Touch
 [9] 9 Star Search 1:00
 [10] 10 MOVIE: CBS Sunday Movie Bring Me the Head of Dovie Gillis (1988) Dovie's now living out a quiet life...until

* LEGEND *

Channel	Station
[2]	ESPN
[3]	OETA
[4]	KAMR
[5]	TMC
[7]	KVII
[8]	CBN
[9]	WGN
[10]	KFDA
[11]	TBS
[12]	CNN
[13]	TBN
	SHOW

Thalia and Maynard return. Dwayne Hickman, Bob Denver.
 [11] 11 National Geographic Explorer
 [12] Week in Review
 [13] E.V. Hill
 8:30 [13] Lloyd Ogilvie
 9:00 [2] Baseball 1987 Old Timers Series (T)
 [3] Masterpiece Theatre Harriet decides to return to England, but heads for Damascus instead. Kenneth Branagh,

Emma Thompson.
 [8] Changed Lives
 [9] 9 News
 [12] Evening News
 [13] Kenneth Copeland
 [SHOW] MOVIE: Mannequin (1987) An artist falls in love with a mannequin that comes to life. Andrew McCarthy, Kim Cattrail. PG. 1:31
 9:30 [8] Rock Alive

MONDAY February 22

6:00 [2] SportsCenter (L)
 [3] Nightly Business Report
 [4] 4 [7] 7 [10] 10 News
 [8] Remington Steele Scene Stealers
 [9] Cheers Everyone Imitates Art
 [12] Moneyline
 [SHOW] Comedy Spotlight: A Dynamite Evening (1987) Jimmie Walker hosts this side splitting comedy showcase. NR.



The Family Restaurant You Can Afford!

Specializing in Mexican Food
 Broasted Chicken
 and the finest Steaks Around!

El Vaquero in Gruver

Open 6 a.m. to 9 p.m. Closed Sundays
 Harvey & Phyllis Atwood owners

[12] Moneyline
 6:05 [11] 11 Andy Griffith
 6:30 [3] Oklahoma News
 [4] 4 M*A*S*H
 [7] Wheel of Fortune
 [9] 9 Barney Miller Slave
 [10] 10 Love Connection
 [12] Crossfire

6:35 [11] 11 Sanford and Son
 7:00 [3] People's Business
 [4] 4 Highway to Heaven Jonathan helps renowned journalist escape death in S. American prison.
 [7] 7 XV Olympic Winter Games Hockey, Alpine skiing, skating (L)
 [8] Second Honeymoon
 [9] 9 MOVIE: Superman (1978) Superman must stop evil Lex Luther's plot to destroy California. Christopher Reeve, Margot Kidder. PG. 2:23
 [10] 10 MOVIE: CBS Special Movie The Wizard of Oz (1939) A little girl dreams of the magical land of Oz. Judy Garland, Ray Bolger. NR. 1:41
 [12] PrimeNews
 [13] TBN Today
 [SHOW] Brothers Two macho types attempt to deal with their brother's homosexuality. Robert Walden, Brandon Maggart. NR. 0:30

7:05 [11] 11 MOVIE: Ride the High Country (1962) Two aging gunmen team up to guard a gold shipment. Randolph Scott, Joel McCrea. NR. 1:34
 7:30 [8] Animals of Africa Birth Among the Seas
 [13] Dino Show
 [SHOW] It's Garry Shandling's Show Crazy comic deals with life's daily problems. Garry Shandling. NR. 0:30
 8:00 [2] College Basketball Georgetown at St. John's (L)
 [3] Mark Russell Comedy Special Russell is resolutely impartial, sparing no one with his satire.
 [4] 4 NBC Movie of the Week Noble House, Part 4 (1988) Plans are disrupted by a landslide in a residential area of Hong Kong. Pierce Brosnan, Deborah Raffin.
 [5] MOVIE: The Fringe Dwellers (1986) Young aboriginal woman breaks away from life in a shantytown. Kristina Nehm. NR. 1:38
 [8] 700 Club
 [12] Larry King Live!
 [13] Kenneth Hagin
 [SHOW] MOVIE: Assassination (1987) A plot to kill the First Lady has a secret agent on the run. Charles Bronson, Jill Ireland. PG13. 1:28

8:30 [3] Great Performances (1987) Moving drama about love's power to revitalize an abandoned old woman. Jean Simmons, Mona Washbourne.
 [13] Doug Clark

9:00 [8] Straight Talk
 [10] 10 The Equalizer McCall is mystified by Manon's ghost and shocked by revelation.
 [12] Evening News
 [13] Praise the Lord Live

9:05 [11] 11 MOVIE: The Last Challenge (1967) Retired gunfighter turned marshal is challenged by young gunslinger. Glenn Ford, Angie Dickinson. NR. 1:45
 9:30 [8] American Snapshots
 [9] 9 News
 [SHOW] Super Dave (1987) Super Dave Osborne goes off on his hilarious quest. NR. 0:30
 [13] LaVerne Tripp Family

6:30 [2] College Basketball Michigan State at Michigan (L)
 [9] 9 Hogan's Heroes Hell Kink
 [10] 10 Frank's Place The Chez is selected as the location for a scene in a Hollywood movie.
 [13] Hal Lindsey

9:00 [3] Television Examine the impact of TV news on certain politicians' careers.
 [8] Straight Talk
 [9] 9 News
 [10] 10 Wiseguy Mel is obsessed with a supposed voodoo death curse and falls apart.
 [12] Evening News
 [13] Praise the Lord Live
 [SHOW] MOVIE: Manhunter (1986) A retired FBI agent reluctantly agrees to help find a serial killer. William Petersen, Kim Greist. R. 2:00

9:05 [11] 11 MOVIE: Meatballs (1979) Nobody is safe from the practical jokes at this summer camp. Bill Murray, Harvey Atkin. PG. 1:32
 9:30 [8] Women Like Us

TUESDAY February 23

6:00 [2] SportsCenter (L)
 [3] Nightly Business Report
 [4] 4 [7] 7 [10] 10 News
 [8] Remington Steele Scene Stealers
 [9] Cheers Everyone Imitates Art
 [12] Moneyline
 [13] TBN Today
 [SHOW] Brothers Two macho types attempt to deal with their brother's homosexuality. Robert Walden, Brandon Maggart. NR. 0:30

6:05 [11] 11 Andy Griffith
 6:30 [3] Oklahoma News
 [4] 4 M*A*S*H
 [7] Wheel of Fortune
 [9] 9 Barney Miller Brother
 [10] 10 Love Connection
 [12] Crossfire

6:35 [11] 11 Sanford and Son
 7:00 [3] Nova The new drug IL-2 may be the long-sought cancer breakthrough.
 [4] 4 Matlock The popular writer of an advice to the lovelorn column is murdered.
 [7] 7 XV Olympic Winter Games Skating, ski jumping (L)
 [8] Crossbow The Prisoner
 [9] 9 MOVIE: Death Wish 3 (1985) Angry man shoots holes into a cruel gang that killed his best friend. Charles Bronson, Deborah Raffin. R. 1:30
 [10] 10 48 Hours
 [12] PrimeNews
 [13] TBN Today
 [SHOW] MOVIE: Amadeus (1984) Court composer Salieri hated and envied Mozart for his genius. Tom Hulce, F. Murray Abraham. PG. 2:38

7:05 [11] 11 NBA Basketball Superonics at Bulls (L)
 7:30 [8] Branded The Ghost of Murietta
 [13] Betty Jean Robinson
 8:00 [3] Nature of Things Visit Quebec's George River caribou herd of over 600,000.
 [4] 4 NBC Movie of the Week Noble House, Part 3 (1988) Lando Mata and the Bank of China both refuse to help Noble House. Pierce Brosnan, Deborah Raffin.
 [5] MOVIE: The Best of Times (1986) A nerdy bank executive wants a rematch of a lateful football game. Kurt Russell, Robin Williams. PG13. 1:44
 [8] 700 Club
 [10] 10 Jake and the Fatman McCabe is suspicious of a kidnapped heiress's miraculous escape.
 [12] Larry King Live!
 [13] Dan Sheaffer

9:00 [3] Frontline Probe continuing struggles between penitentiary inmates and guards.
 [8] Straight Talk
 [9] 9 News
 [10] 10 Cagney & Lacey Drug-related murder may be the work of Central American Death Squads.
 [12] Evening News
 [13] Praise the Lord Live

9:20 [11] 11 MOVIE: 2010: The Year We Make Contact (1984) Stunning sequel to 2001 investigates the fate of spacehoi Discovery. Hoy Scheider, John Lithgow. PG. 1:56

8:30 [2] All-American Pulling Series From Indianapolis, IN (T)
 [8] Celebrity Chefs

WEDNESDAY February 24

6:00 [2] College Basketball Kansas at Oklahoma (L)
 [3] Nightly Business Report
 [4] 4 [7] 7 [10] 10 News
 [5] MOVIE: Once Bitten (1985) A gorgeous vampire makes her move upon a red blooded high school boy. Lauren Hutton, Jim Carrey. PG13. 1:35
 [8] Remington Steele Steele Threads
 [9] 9 Cheers Dance, Diane, Dance

Energy Wire

By Bill Garland

Drilling activity will take a significant leap throughout oil states as the oil and gas industry continues to recover in 1988, according to new forecasts from two of the industry's leading magazines.

The Oil & Gas Journal and World Oil both projected that the average rig count would rise in 1988 by more than 100 operating units and bring an increase to the overall number of wells drilled throughout the United States.

World Oil predicted a 9.4 percent increase in the number of total U.S. wells, from an estimated 35,358 in 1987 to 38,696 in 1988. Using a slightly different base, the Oil and Gas Journal forecast a more sizable increase, from 35,744 wells last year to 41,294 in 1988.

Both magazines said the biggest drilling jump would come in Texas, followed by additional drilling activity in Kansas, Louisiana, New Mexico and Oklahoma.

World Oil projected the number of wells to go up from 12,459 to 13,428 in Texas, from 2,850 to 3,185 in Kansas, from 1,670 to 1,834 in Louisiana, from 800 to 877 in New Mexico and 3,967 to 4,105 in Oklahoma.

The Oil & Gas Journal said the active rotary rig count would go up to about 1,080 rigs in 1988, an increase of 15 percent from 936 last year. World Oil projected the 1988 count between 1,050 and 1,070 operating rigs.

Projections for World Oil's drilling estimates were based on a willingness by the Organization of Petroleum Exporting Countries to keep oil production in line with demand, average West Texas Intermediate crude oil prices in the range of \$19 to \$20 per barrel for the year and stable prices for natural gas.

The Journal said "uncertain crude prices could hold back spending" by the industry in the first three months of 1988. "But there are few signs of panic, and 1988 could still be the year the drilling bust turns around."

"There is little chance oil prices will move above \$20 per barrel (in 1988), possibly not during the next two year," the Tulsa-based Journal said. "But there could be some recovery in gas wellhead prices during this period, and gas wellhead prices will be a key factor in any drilling activity recovery."

Discussing regional drilling trends, the magazine said "the big offshore story is in Texas where the industry plans 200 wells in 1988. Independent producers are moving into U.S. Gulf of Mexico operations in increasing numbers." Last year, there were 108 offshore Texas wells, the magazine said. Most of the 10 Texas Railroad Commission districts will see an upswing, particularly in West Texas and in East Texas around the Alabama Ferry field near Centerville.

In Louisiana, the magazine noted that onshore and offshore drilling would both pick up, with an increase from 614 to 702 in the number of offshore rigs.

"If operators stick with plans, both Kansas and Oklahoma will also get increased drilling in 1988," said the Journal. Most of the increase "will be in and around older producing areas. But there is a definite upswing in development drilling...planned for the western Oklahoma and Texas Panhandle sectors."

John C. McCaslin, the Journal's exploration editor, said the magazine's drilling figures were based on surveys of both major and independent oil companies, projected oil prices and other industry trends.

THE MIGHTY 98
ROCKS
 KRDF-FM 98.3 Mhz
Keep Rockin' DRUG FREE
Top 40 Pop/Rock Hits
 REPORTS FROM WANDRIN' LARRY
...AND MORE!
Catch Our Good Vibrations
Every Friday & Saturday 7 p.m. to midnight
Then Crank It Up!
AND REMEMBER
 *LET'S PARTY - CHEMICAL FREE!

6:05 [11] 11 Andy Griffith
 6:30 [2] College Basketball Pittsburgh at Seton Hall (L)
 [3] Oklahoma News
 [4] 4 M*A*S*H
 [5] MOVIE: Assassination (1987) A plot to kill the First Lady has a secret agent on the run. Charles Bronson, Jill Ireland. PG13. 1:28
 [7] 7 Wheel of Fortune
 [9] 9 College Basketball Notre Dame vs Creighton
 [10] 10 Love Connection
 [12] Crossfire
 [11] 11 Sanford and Son
 7:00 [3] The Brain (1984) Examines physiological factors which affect the process of memory. 1:00
 [4] 4 ALF Overprotective ALF tries to be a seeing-eye alien for a blind friend.
 [5] MOVIE: Assassination (1987) A plot to kill the First Lady has a secret agent on the run. Charles Bronson, Jill Ireland. PG13. 1:33
 [7] 7 XV Olympic Winter Games Speed & figure skating, skiing (L)
 [8] Father Murphy False Blessings
 [10] 10 Kate & Allie Kate and Allie represent modern working women in Jennie's class video.
 [12] PrimeNews
 [13] TBN Today
 [SHOW] MOVIE: 48 Hrs. (1982) A streetwise cop helps a cop catch two vicious killers. Eddie Murphy, Nick Nolte. NR. 1:33
 7:05 [11] 11 MOVIE: Valley Girl (1983) A girl gives up her Val boyfriend for a Hollywood punk rocker. Nicolas Cage, Deborah Foreman. R. 1:35
 7:30 [4] 4 Valerie's Family David struggles to keep the house to himself during a hot date.
 [10] 10 Designing Women Charlene takes a stand on her convictions and resigns from her church.
 [13] Marilyn Hickey
 8:00 [3] Discover: World of Science (1988) Follow a dramatic new procedure called valvuloplasty for newborns.
 [4] 4 NBC Monday Night at the Movies Noble House, Part 2 (1988) Duros watches helplessly as Gorn destroys Struan's stock price. Pierce Brosnan, Deborah Raffin.
 [5] MOVIE: Anything Goes (1956) Lightweight story of musical partners and their quest for girls. Bing Crosby, Jeanne Marie. NR. 1:46
 [8] 700 Club
 [10] 10 Newhart Michael receives an offer he can't refuse, but it's for Dick's show.
 [12] Larry King Live!

Among the Neighbors

by Helen Fisher

Many are the Spearman folk grieving with Cleo and Dennis George in the passing of their son, Benny, 46. He died early Sunday morning in the Methodist Hospital in Lubbock. The services were Tuesday afternoon at Post where he lived.

Mr. and Mrs. George had returned Thursday from his bedside where they had spent much time since he was hospitalized in Oct.

Their daughter, Patsy, had been with him the last month. She lives in Littleton, Colo. and her husband Olin Isham, arrived in Spearman Sunday evening to take the George family to the services since both Dennis and son, Jerry, require almost constant oxygen.

Benny attended school here, graduating with the class of 1960. He leaves a wife, son and daughter. On Sat. Dennis' sister died in Eufala, Ok.

Sgt. Preston Taylor is visiting his parents, Barbara and Willie Taylor. Sgt. Taylor has been stationed at Sembach Air Base in the southwest section of Germany for two years. He is communication computer operations specialist. Since he has finished his tour in Germany, he is being reassigned to Offute Air Base, southeast of Omaha, Neb.

Prior to his assignment in Germany he had served at Peterson Air Base at Colorado Springs.

He graduated from high school here in 1983. He will be in Spearman another two weeks. His plans are to reenlist for six years when his present enlistment is over.

Mrs. A.F. Loftin was notified of the passing of her daughter, Mrs. Oscilee Cooksey of Richardson, and the services were Fri. in Austin.

Mrs. Cooksey had visited Spearman many times and had a number of friends here. Among her survivors in addition to her mother is her sister, Wren Loftin, of Spearman and a brother, Paul Loftin of Austin.

Darlene Pierce spent a few days with their daughter, Mr. and Mrs. Danny Ellis at Midland last week.

She went on to Monahans to attend the funeral of H.E. Jenkins on Sat.

Opal and H.E. Jenkins lived Spearman for 17 years. He was employed by Sun Oil Co. and they left here about 8 years ago. Their four sons, Eddie, Wesley, Jim and Ocie, all attended school here.

Others going to Monahans for the service were Bonita Reimer and Elaine Morris. They were accompanied by Karen Whitlow of Amarillo.

Mr. and Mrs. Jimmy Greene attended the National Convention of the R.E.A. held last week in New Orleans. Since it was the first trip there for both, they found the city very interesting.

Bonita enjoyed shopping and sight seeing between convention sessions, but Jimmy, who is a new director of the North Plains Electric Coop, was occupied with the convention business.

Cricket Giles now living in Amarillo wants her friends here to know how deeply she appreciates their concern. She especially wants to thank those in Spearman who sent her money anonymously. She would be happy to thank each individually if she knew who they were.

She reports that her health is improving slowly.

Roger Buchanan, student at Lubbock, accompanied by his parents, Burl and Nellie Buchanan, drove to Oklahoma City during the weekend. He had a good report from the McBride Clinic on his recent bone surgery.

Ollie and Owen Pendergraft attended the meeting of the Wheat Belt Good Sam Camper group at Ulysses, Kan. on Sat. There were 15 in attendance and enjoying the luncheon at Peddlers Restaurant.

The Pendergrafts took Mrs. Ottaway of Tyrone with them and they spent the night with her daughter, Mrs. Vera Gray.

Mr. and Mrs. John Allen and Mr. and Mrs. David Wilson of Waka returned late Saturday from

several days visit with Nancy and Harold Ridgeway of Kaufman, Tx. Their grandson, John, returned to Waka with them for a weeks visit.

In Abilene, they visited David's brother and in Cheyenne with his mother. They also stopped in Oklahoma City to see a hospitalized friend.

This community is saddened by the passing of Lola Melton. Mrs. Melton was an example to all by her gentle acceptance of her life in the face of many adversities, always presenting a brave, cheerful attitude. The loss of her presence in her church and neighborhood will be felt for a long, long time.

Sympathy is extended to her family member.

Thea and Edward Beck and children of Dennison spent a long weekend here with his parents, Mr. and Mrs. Verlin Beck. They plan to move to Lubbock in the near future.

Mr. and Mrs. Fred Cavin of Clayton, N.M. were guests in the home of their daughter, Mary and Buford Baker over the weekend.

Mr. and Mrs. Matt Kirk of Carrollton visited in the home of the Richard Gaines during part of the weekend.

Arriving to live in the atmosphere around the home of Carla and Neil McGarrough on Saturday, Feb. 13 was Peyton Thomas. He was born at Ochiltree General Hospital in Perryton weighing 8 lbs 4 oz.

He was welcomed by one sister, Kallie. Grandparents are Dr. Tom and Linda Latta, Spearman; Cliff McGarrough and Tizzy Nelson, both of Perryton.

Great grandmother Mrs. Alice Harrison, Edmond, Ok., Mr. and Mrs. Donald Latta, Ft Supply, Ok; Ann and Bob Doffer, Perryton and Mrs. Alta Wood, Perryton.

Braving the gale-force winds during the weekend several from Amarillo visited in Spearman.

Betty Lou and Troy Mays called on her mother, Mrs. Ethel Ellsworth, the Alton Ellsworths and Archie Smiths.

Tammy and Lance Simpson spent the weekend with her parents, Mr. and Mrs. Don Maize. Verna and Bill Strawn enjoyed

Spearman boys, girls strong at tournament

The Spearman junior varsity Lynx and Lynxettes competed in the White Deer junior varsity tournament this past weekend with the Spearman girls winning the consolation bracket while the boys claimed second place in tournament action.

The Lynx JV took wins over Panhandle and West Texas to gain the finals, but bowed out to Amarillo Highland Park for their second place finish.

The Lynxette JV lost their opener to Panhandle, 27-39, to enter the consolation bracket.

Once there, they downed West Texas, 39-37, then beat Wheeler 38-31, to claim the consolation title.

Shelley and Dirk Smith over the weekend.

Mrs. Irene Parks of Amarillo spent the weekend in the home of her daughter, Betty and R.L. Uptergrove.

Other guests were their daughter and family, Dan and Lee Josephson with Mark and Megan. They are from Lubbock.

Guests from Fri. thru Mon. of Mrs. Wilma Lackey were her daughter, Ann Russell and her daughters, Abby, Alicia and Amanda. The girls were out of school on Monday.



ENGAGEMENT ANNOUNCED . . . The engagement and approaching marriage of Jana Denise Pittman to Cole William Ivey is announced by her parents, Mr. and Mrs. Steve Mathews and Mr. and Mrs. Bill Pittman, all of Spearman. Ivey is the son of Mr. and Mrs. Jim Ivey, also of Spearman. The couple, graduates of Spearman High School, are students at Texas Tech University, both majoring in finance. Ivey is a member of Kappa Alpha Order. A May 21 wedding in Spearman's First United Methodist Church is being planned.

Reeves to speak on encouraging "creative thinking" in children

Mary Jane Reeves will speak on encouraging "creative thinking" in children at the First Christian Church next Monday at 7 p.m.

Reeves is associated with the Education Service Center in Amarillo. She is past director of the Gifted and Talented Institute at West Texas State University and

has taught in the Canyon public school system.

Babysitting services will be provided for kindergarten age and younger. All those interested are encouraged to attend.

If there are basketball play-off games, this meeting will be postponed.

Re-Elect
Compton for D.A.
Republican

LOOK AT THE RECORD:
Gene Compton has worked to bring the 84th Judicial District one of the HIGHEST CONVICTION RATES in the State of Texas all within a reduced budget.

DON'T TAKE A CHANCE
KEEP GENE COMPTON
YOUR DISTRICT ATTORNEY
Pol. advt. paid for by Gene Compton

Your Home Is Full Of Hidden Dollars

Call 659-3434

Turn idle items into cash fast with a Want Ad

L & M

Body Works

1501 Hwy. 15
659-2775

Tailpipes - \$29.95
Mufflers - \$39.95
Most Duals - \$160.00 complete

NOTICE

Wallace Monument Co.
Monuments, Curbing,
Grave Covers
Local Representative
LEONARD JAMESON
Spearman, Texas

STEAM RINSE & VAC Rinse and Vac Shampooer for rent at Gordons Drug. \$10.95 up to 24 hours.

WANTED: Any J.H. Gruver & Sons Advertising Gifts that you do not wish to keep, please contact Helen Shapley at 733-2671 or 733-2641. Especially bond books, coin purses, calendars, knives and pen and pencils.

S11

FEDERAL, STATE & CIVIL SERVICE Jobs \$19,646 to \$69,891/Year. Now Hiring! CALL JOB LINE 1-518-459-3611 Ext F8017 for info. 24HR F 18, 25 M 3 3tp

1,000'S WEEKLY POSSIBLE. Rush mailing sales circulars. Rush stamped envelope: IMOC-Q1, 804 Old Thorsby Road, Clanton, Alabama 35045-2459 S15S rtn

Real Estate

FOR SALE: nice 3 bedroom brick home, approx. 1300 sq. ft.; single garage. Priced in 30's. Good neighborhood! Call 659-2263 after 5:00.

FOR SALE: Nice house in good neighborhood. 3 bedrooms, 1 1/2 baths, office, lots of cabinet storage, garage, on 2 lots. 727 Wilbanks. Price reduced. Call Sheila Watley 659-3970 S13 rtn

FOR SALE: 1983 Bonneville Mobile Home, 16x80. 3 bedroom, 2 full baths, fireplace, spacious bi-level kitchen. Set up on Corner lot. Must see to appreciate. Call 659-2354 after 5:30 p.m. S09-rtn

ABANDONED HOMES - Take over payments on 2 and 3 bedroom homes. Qualify by phone. (806) 351-1352. Call collect. S46-rtn

OWN YOUR OWN APPAREL OR SHOE STORE, CHOOSE FROM: JEAN/SPORTSWEAR, LADIES, LINGERIE OR ACCESSORIES STORE. ADD COLOR ANALYSIS. BRAND NAMES: LIZ CLAI-BORNE, HEALTHTEX, CHAUS, LEE, ST MICHELE, FORENZA, BUGLE BOY, LEVI, CAMP BEVERLY HILLS, ORGANICALLY GROWN, LUCIA, OVER 2000 OTHERS. OR \$13.99 ONE PRICE DESIGNER, MULTI TIER PRICING DISCOUNT OR FAMILY STORE. RETAIL PRICES UNBELIEVABLE FOR TOP QUALITY SHOES NORMALLY PRICED FROM \$19. to \$60. OVER 250 BRANDS 2600 STYLES. \$17,900 to \$29,900: INVENTORY, TRAINING, FIXTURES, AIRFARE, GRAND OPENING, ETC. CAN OPEN 15 DAYS. MR. LOUGHLIN 612/888-6555. S68-1tp

Real Estate Sampler

Allen Alford-Broker-659-3034
Hester Sue Crawford-Sales
659-3060 or 659-2074
Dennis Nelson-Sales-659-3608
Larry Trosper-Sales-659-3491

316 S. Bernice - 2366 sq. ft.
101 W. 12th - 1344 sq. ft.
619 Evans - 1350 sq. ft.
1014 Linn Dr. - 2,000 sq. ft.
734 Wilbanks - 1192 sq. ft.
32 N. Snider - 1850 sq. ft.
729 Cotter - 1519 sq. ft.
506 Endicott - 1100 sq. ft.
907 Drexler - Nice starter
505 Haney - 1600 sq. ft.

We want to be Your REALTOR

Offered by
EMMETT R. SANDERS
REALTOR

3 bedroom home, attached garage.

EMMETT R. SANDERS
REALTOR
659-2516, nights 659-2601

BOB HARDY REALTY

803 Wilmeth Dr.
659-3440

NEW LISTINGS:

820 Linn Drive - Imp. 3 bd - 2 bath - fire - double car garage: 2,200 sq. ft. living area Custom drapes. Lawn Sprinkler System. Satellite dish and receiver. Fenced. Excellent location. Call for quote

1001 Haney - 3 bd, 2 bath. Den with fireplace. Corner lot fenced. Carpeted. Nice, price-reduced. Approx. 1450 sq. ft.

Robert Hardy - broker

VISA OBTAINED EASILY! Been Turned Down? Bankrupt? No Credit? No Problem! Write Immediately for Details! Credit-Q1, Box 297, Mount Olive, Alabama 35117. Enclose envelope!

NEED MONEY? When Banks Stop collateral or co-signer. For application write: Global-Q1, Box 112, Verbena, Alabama 36091-0112. Enclose envelope. S15S rtn

Century 21

GOLDEN SPREAD REALTY

Janye Helton Pointer, Broker
Owner, 435-5444
SALES ASSOCIATES
T.O. Lesly - 659-2028

1112 S. Bernice - 3-1/4 location! Location!
322 Hazelwood - 2/1 owner will finance.
607, 609, 611, 615, Haney Small house/2 apartments.
615 E. Kenneth - 3/2. Corner lot with extra acreage!
102 Wanda - 3/1 immaculate!
118 Townsend - 4/2. Apartment included!
711 Collier - 3/1 Why rent?
322 S. Barkley - 3/1 Good location at affordable price!
811 Townsend-2/1 affordable! COMMERCIAL

15 N. Hazelwood
201 Bernice - Former M&M grocery store. Can be sold with or without fixtures.

FARM

640 acres of grass in Sherman Co., over 500 acres in the C.P.R. Program
640 acres of wheat and milo land in Hansford Co.
3 RANCHES in Brownwood area. Call today!

© 1988 by Century 21 Real Estate Corporation. Equal Housing Opportunity. INDEPENDENTLY OWNED AND OPERATED.

INVITATION FOR BIDS

Sealed proposals addressed to Johnnie C. Lee, General Manager of the Palo Duro River Authority, will be received at the Authority's Office, at P.O. Box 1046 or 511 S.W. Eleventh Street, Spearman, Texas 79081, until 10:00 a.m., March 16, 1988, for the construction of the following item:

PALO DURO RESERVOIR

The bids will be publicly opened and read aloud at the Spearman High School Auditorium at 10:30 a.m. Any bid received after closing time will be returned unopened.

Contract Documents, including Plans and Specifications, and Geotechnical Report are on file and may be examined without charge in the office of the Palo Duro River Authority, and in the offices of Freese and Nichols, Inc., Consulting Engineers, 811 Lamar Street, Fort Worth, Texas 76102, Telephone (817)336-7161. Contract documents, including Plans, Specifications and Geotechnical Report may be procured from Freese and Nichols, Inc., at the above address as follows: Cost: \$40.00 per set (Half size plans and specifications) Non-refundable. \$75.00 per set (Full size plans and specifications) Non-refundable \$100.00 per set (Geotechnical Report) Non-refundable

A cashier's check, certified check of acceptable bidder's bond, payable to the Palo Duro River Authority in an amount not less than five (5%) percent of the bid submitted, must accompany each bid as a guarantee that, if awarded the contract, the Bidder will, within fifteen (15) days after receipt of Notice of Award, enter into a contract and execute bonds on the forms provided in the Contract Documents.

Attention is called to the fact that not less than the prevailing wage rates, as established by the Owner and as hereinafter set forth in the Contract Documents hereinbefore described and which are made a part hereof, must be paid on this project.

Performance and Payment Bonds will be required.

In case of ambiguity or lack of clearness in stating proposal prices the Owner reserves the right to adopt the most advantageous construction thereof, or to reject any or all bids, and waive formalities. No bid may be withdrawn within sixty (60) days after date on which bids are opened.

PALO DURO RIVER AUTHORITY

Johnnie C. Lee
General Manager

Service Repairs

REPAIR on vacuum cleaners and appliances call 659-3301. S16 4tp

Autos for Sale

FOR SALE 1987 Nissan Maxima half paid for, take up note, no equity, call 733-2066. S16 1tp

FOR SALE: 1981 Chevy, customized van. 57,000 miles, loaded with extras. Very clean. Call 658-4825 after 6 p.m. S15-4tc

FOR SALE 1980 Buick Park Avenue excellent shape, good tires 30,000 miles. Call 659-2202 S15S

Miscellaneous

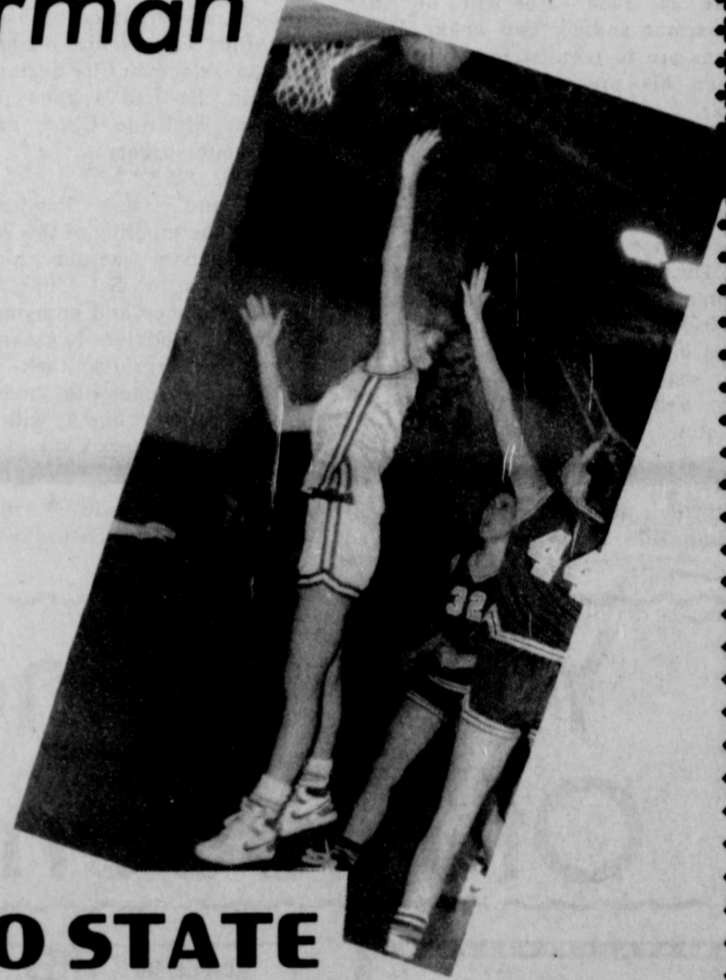
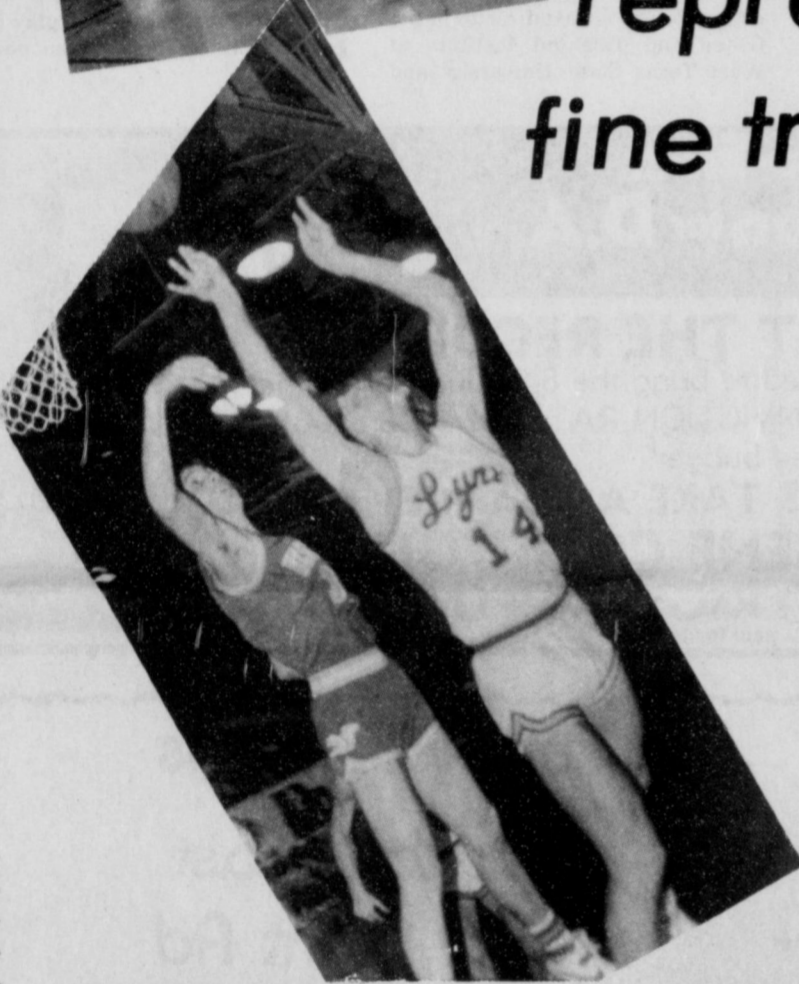
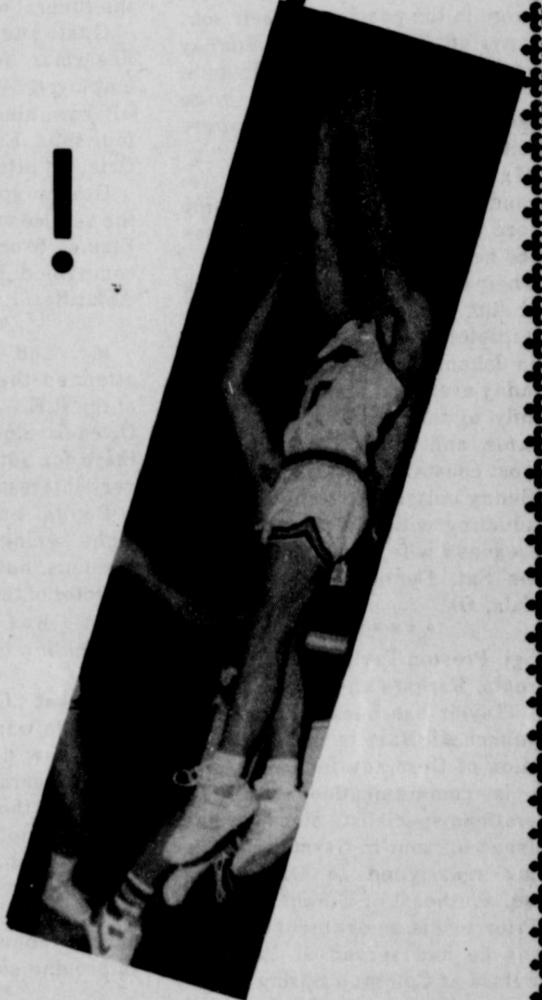
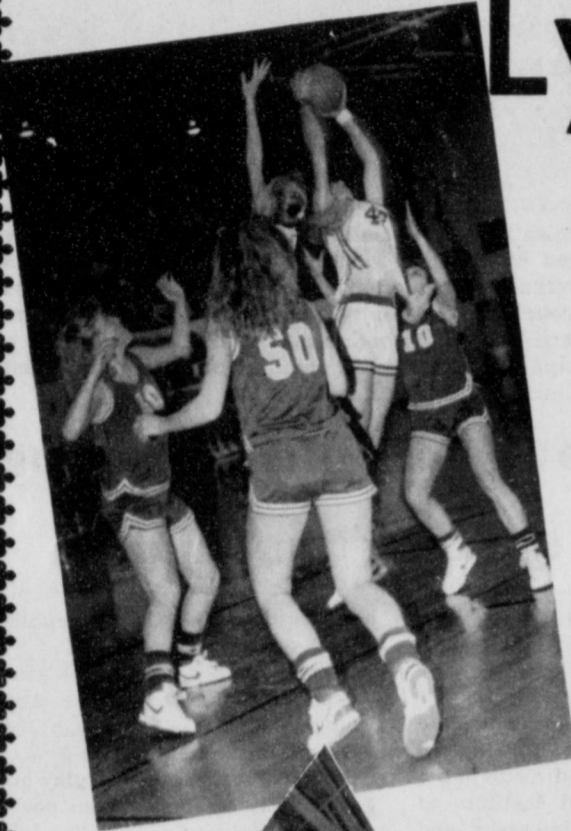
Will do babysitting in my home. Call Julie Farr at 659-2300 day or night. Reasonable rates. Drop ins welcome. S16 2tp

Eighty percent of the world's rose species come from Asia.

We're Behind You All The Way

Lynx and Lynxettes!

We're proud of your many achievements this season and know that you will represent Spearman in the fine tradition of all Spearman athletes ...



WE'RE BEHIND YOU ALL THE WAY TO STATE



Hansford County Farm Bureau
Box 578 307 W. DAVIS
SPEARMAN, TEXAS 79081

Troy James Agency Manager

**SPEARMAN
Boosters Club**

Charolette Fords Trunks
Trunks and Country Crafts

313 Main 659-3027

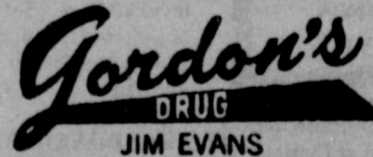
Agco



Kids Stuff & Lady Fair

719 W.7th. 659-2608

314 MAIN
PHONE
659-2141



SPEARMAN
TEXAS

**Tico Magnetic
Inspection**

659-3157

**Spearman
Jaycees**

Adela's Flowers

659-5180
511-J Plains Shopping Center



Cha Lor's
"The Wedding Store"

214 Main 659-2767

**IV'S HUNGRY
Cowboy**



Hwy. 207 S. (806) 659-5151



The Spearman Chamber of Commerce 1988 Annual Banquet

Saturday, February 20, 1988

PROGRAM

Dinner	Spearman High School Cafeteria
Master of Ceremonies	Gary Ellsworth
Invocation	Spearman Pastor
Pledge of Allegiance	Master of Ceremonies
Acknowledgements	Master of Ceremonies
Introduction of out-of-town guests	Robert Queener
Rotary Employee of the Year	Scott Beedy
Out-going Chamber President	Bill Pittman
In-coming Chamber President	Lynanne Maize
Out-going WDSCC President	Helen Melton
In-coming WDSCC President	Mae Wofford
WDSCC Member of the Year Ward	Sheri Benton
Introduction of Speaker	Master of Ceremonies
Speaker	John R. Erickson
Door Prize Drawings	Cora Queener
Presentation of Citizen of the Year Award	
Presentation of Citizen Over the Years Award	

ACKNOWLEDGEMENTS

Entertainment	Kellie McWhirter and Travis Francis
Miss Hansford County	Kellie McWhirter
Miss Hansford Teen	Rae Lynn Scribner
Miss Hansford Pre-Teen	Laura Pearson
Junior Miss Hansford	Kaysha Cluck
Little Miss Hansford	Catrina Brooks
Decorations	WDSCC -- Cindy Rice, Chairman
Committee Members	Helen Melton, Kari Schumann
Meal	Virginia Cates and High School Cafeteria Staff
Steaks	Spearman Jaycees

SPECIAL THANKS TO

Sheri Benton	Thriftway	Cindy Rice
4-H Members	Pat Sutterfield	Karen Babitzke

1988 has challenges for Spearman Chamber

New WDSCC president excited about new year

By Lynanne Maize

This year, as in years past, the Chamber has numerous challenges ahead of it. Our greatest resources are the people of our community and especially those who become members of the Chamber of Commerce and serve to the best of their abilities. We have so much untapped potential within our community that has been untouched. One of our challenges for this year is the involvement of as many individuals and businesses as possible in the various activities of the Chamber. We have within the Chamber the following committees: Agriculture; Recreation; Existing Business; Health; Quality of Life; Membership; Economic Development; Hansford County Round-Up; Retail Merchants; Women's Division of the Spearman Chamber of Commerce; and the Ambassadors. We would welcome anyone who would desire to serve on any of the committees listed above or for any suggestions or comments that they may feel needed. Our success as a Chamber depends on the level of commitment and willingness of each of us to stay involved in the productivity of our chamber.

I am honored to have the privilege of being elected the first women president of the Spearman Chamber of Commerce. This also issues a challenge to me to strive to do my very best in the coming year. I have an excellent team heading the committees listed above and each have dedicated their full support and efforts to the chamber and community.

Another challenge for us this year will be the Palo Duro River Authority project. We will be actively involved in this effort by promoting our community business and products which will be available to those involved in the completion of this building project.

The Chamber of Commerce is an organization through which the volunteers of our community work effectively to make our community a better place in which to live, work and raise our families. We welcome all your suggestions and we seek your assistance in the way of membership and volunteering for the various areas of work. We are here to serve with your help.

By Mae Wofford

The 1988 president of the women's division of the Spearman Chamber of Commerce; Mae Wofford, is excited about the new year with new projects and new members, in addition to the "tried and true" members. We meet the third Wednesday of each month at the Cattlemans.

This year's Round Up theme is "Those were the Days". This doesn't mean we want to dwell in the past; says Mae, but we do want to reflect on the activities and people that brought us to this point and to show them we appreciate their effort. By looking at "those days" we can move forward to expand and grow. The women's division increased in membership in 1987 and we'd like to see us keep up that type of increase and involvement in our community.

Our main project this year over and above our community service, will be to purchase some additional equipment for the chamber office. One goal is to finish the storage building project began last year. We want to see each member actively working for the betterment of Spearman, Hansford County and the Spearman School District.

Mae has been married to Dale Wofford for 30 years. Besides her chamber work, she is 2nd vice-president of the Holt Extension Club and has served as vice-president of the Association of Panhandle Travel Agents. The Woffords attend the First Christian Church.

"I'm excited about serving as president of the Women's Division and am looking forward to a successful and productive year. Serving with Mae are vice-president Patty Schnell, secretary Karen Babitzke, treasurer Cindy Rice and Parliamentarian Adella Lopez. Her executive board consist of the above mentioned plus Helen Melton, past president, Tammy Brinkley, Nancy Graves, Linda (Mrs. Wirt) Davis, Lynanne Maize, chamber president, and Cora Queener, executive vice president of the chamber.

"Dale and I are happy to be an active part of the Spearman area and hope to continue as an asset to our community," Wofford declares.

Support The
Chamber
of Commerce!

**Kids' Stuff
&
Lady Fair**

719 W. 7th Spearman

SAVE UP TO 70%
ON FALL AND WINTER
FASHIONS
**SALE ENDS MONDAY,
Feb. 29**

For Best Selection, Shop Early!

Support
Your
Chamber



... It Supports You!

Through the years the Chamber has been involved in the progress of our community!

Be A Part Of Making Good Things Happen!

**COUNTRY
STITCHES**

715 W. 7TH 659-2080

Open Letter from the Chamber Exec

by Cora Queener

Working with the different businesses and business leaders in Spearman has proven a rewarding, and often invigorating, experience and 1987 has been no exception. As the executive vice-president of the Spearman Chamber of Commerce, it is my duty to see to the day-to-day functions and to help coordinate the efforts of the different committees and boards.

One of the best received projects of the Spearman Chamber this past year was the Existing Business articles and interviews which were run by both **The Spearman Reporter** and KRDF-FM Radio. These proved to be interesting and informative and were well received by our Spearman membership.

Probably the most rewarding experience during 1987 was the Bingo Nights initiated by the Health Committee of the Chamber. These were held every Tuesday night at the Hansford Manor Nursing Home with different clubs and civic organizations taking the responsibilities a month at a time.

Yes, your Chamber of Commerce is a community leader, and rightfully so. Often, good ideas are translated into action by your Spearman Chamber of Commerce and the Health Committee's leadership in the area of the Bingo Nights is but one example.

Quarterly membership meetings were reinstated during 1987 with both breakfast meetings and one evening meal during the year. Attendance was strong at all four meetings -- with anywhere from 70 to 80 making the early morning breakfasts each time.

This has proven a good way to let our membership know what is happening with, in and for our Spearman Chamber of Commerce. In addition, it's a great time of fellowship and camaraderie which otherwise wouldn't exist without the quarterly meetings.

During 1987, we also recognized the many different businesses in Spearman who have had their doors open for 25 years or more. This proved to be quite a revelation with some 33 businesses earning that distinct honor. In the future, as a business reaches it's 25th anniversary, they will be awarded Appreciation Plaques from the Spearman Chamber.

"... still a lot
of
opportunities ..."



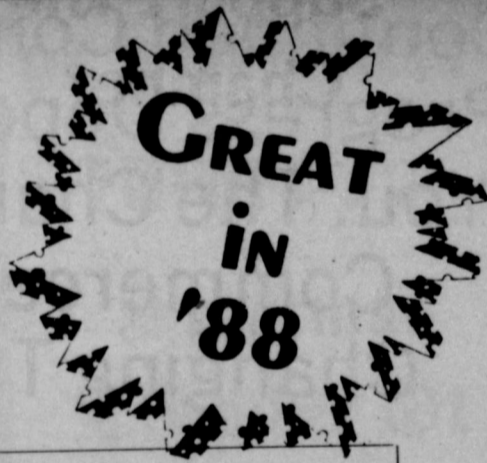
CORA QUEENER

Looking to the year ahead, there is, as always, still a lot of opportunities for our chamber. Opportunities to maintain the leadership roll we have assumed, opportunities to help our community grow and prosper. As always, the Spearman Chamber of Commerce will be in the forefront of that growth and prosperity due to the many individuals who have committed their energies, time and dedication to make that possible.

With the Palo Duro River project there are opportunities galore. Even the Valley View Energy project is not dead -- they are still paying their penalties and have expressed their intentions to build in Hansford county again and again. Indeed, in 1988 and on into the next decade, construction projects in or near Spearman total nearly \$17-million and that will increase both the opportunities and responsibilities of your Spearman Chamber of Commerce.

Looking ahead, the future is bright for Spearman, for Hansford county. And the Spearman Chamber of Commerce -- through its membership -- continues to express an infectious optimism and dedication to high ideals and hard work which will prove to be beneficial to our community as a whole.

We are proud of our citizens
who have had a part in the
growth of our area.



As everyone knows,
the Key to Progress
is PEOPLE

Gillaspie Chevrolet-Olds

Hwy 207 South

659-2541



Mr. Goodwrench

1987 busy year

by Helen Melton

1987 has been a busy year as well as a fun one. I've really enjoyed serving as president for the WDSCC. This would not have been possible without the total support of my husband, Richard, and daughter, Cindy.

The WDCC held monthly meetings on the third Wednesday at noon at the Cattlemen's. Prior to this meeting, the executive board met at the chamber office on the second Wednesday of the month. We would have a brown bag lunch and discuss business to present to the organization.

In January, we started marking plans for the annual chamber banquet. We were privileged to have Kenneth Wyatt from Tulia as our speaker. He proved to be very entertaining. The banquet was a success on Feb. 7 last year with the theme, "Spearman -- Positive, Proud, Prosperous". The WDCC has the job of doing the decorations. Many of our membership helped to make the Follies a success, as well.

April is the month we have a fun party for the members and their husbands or dates. We had a covered dish supper and played crazy bridge. Fun was had by all who attended. Also in April, many ladies were busy getting started on the Hansford county Round Up. The WDCC is responsible for the Miss Hansford Pageant. Also for the float that the girls ride on in the parade. The pageant is our main way of making monies for our projects.

In August we host the ice cream social for our teachers. Each year we have tried to honor some volunteer group in the community.

In September, six of us went to Hereford for the Sixth Annual Regional Conference. This is a time for other WDCC's to share ideas and things happening in their community.

We have helped the chamber with all the things they are involved with to make Spearman a better place to live that we could. In November, we helped four families with food baskets for Thanksgiving.

In 1987, we acquired a building to put behind the Chamber office to store equipment.

The most important thing we did in 1987 was to purchase a sound

Texas neighbor guest speaker at banquet

John R. Erickson is not only a native Texan, he's a neighbor to people in Hansford county, living only a few miles up the road in Perryton.

The now well known author of the **Hank, the Cowdog** series, Erickson is the featured speaker at the annual Spearman Chamber of Commerce dinner.

Well traveled, Erickson is also becoming quickly known as a quality after-dinner speaker.

With his home-spun humor and natural Texas wit, the Perryton author provides an amusing and entertaining story wherever he goes.

Master of ceremonies for the annual Chamber Banquet will be Gary Ellsworth. And featured activities include the naming of the Citizen of the Year and the Citizen over the Years during the banquet.

The Women's Division will also name their Member of the Year and the Spearman Rotary Club will recognize their selec-

tion of Employee of the Year as well.

The meal will consist of Rib-Eye Steaks cooked by the Spearman Jaycees. There will also be baked potatoes, salad, Texas toast along with coffee or tea. Then there's the dessert feature -- Spearman Baby Bull Chips -- eat at your own risk.

The banquet will be a western affair with boots and jeans considered 'dressed up'. The Women's Division has done all the decorations and members of the Hansford county 4-H group will be acting as waiters and waitresses.

Entertainment will be provided by Kellie McWhirter and Travis Francis, a signing duet from Baylor University -- with at least one of them via Spearman.

McWhirter will also be on hand as the reigning Miss Hansford county and all the division winners from the Miss Hansford Pageant will be introduced as well.

system for the Chamber which we have enjoyed many times this past year.

As always, a successful year only comes about with the help of a lot of dedicated women. Thanks, ladies, for making my year as President of the Women's Division Spearman Chamber of Commerce a success.

Continued Community
Progress Depends On
You. The Chamber of
Commerce and
Changing Times!

Support
Your Chamber!

THE
BUNKHOUSE

210 MAIN 659-2476



Be A Part
Of A
Working
Effort...

It's A Special Formula
For Community Growth
Through The
Chamber of Commerce
And You!

Five Star
Equipment Hwy 15
659-3743

1988 OFFICERS

Lynanne Maize	President
Scott Beedy	Vice-President
Don Townsen	Treasurer
Bill Pittman	Immediate Past President

STAFF

Cora Queener	Executive Vice President
--------------	--------------------------

BOARD OF DIRECTORS

Terms Expire 1988
 Stan Cobb
 Lynanne Maize
 Scott Beedy
 Mike Cudd

Terms Expire 1989
 Larry Butler
 Wirt Davis
 Randall Sauer
 Don Townsen

Terms Expire 1990
 Jackie Pearson
 George Young
 Jim Murray
 Sheri Benton

1987 Women's Division Officers
 Mae Wofford President
 Patti Schnell Vice-President
 Karen Babitzke Secretary
 Cindy Rice Treasurer
 Adela Lopez Parliamentarian

Outgoing Directors 1987
 Marilyn Cline
 Ed Garner
 Nancy Graves

As A Growing Business



Community Involvement Is One Of Our Goals

Having a business is a give-and-take situation and we believe in giving our time and energies to help keep our community strong and growing. We wish to thank our friends and customers for their past support and we are looking forward to serving you with professional insurance service.



Brock Insurance Agency

121 Main

659-2514

Working for a brighter future . . .



Spearman Chamber Of Commerce



INTERSTATE SAVINGS & LOAN

SPEARMAN

322 MAIN 659-2559

Proud To Be A Working Member Of A Growing County Community!

The 1988 Spearman Chamber of Commerce Officers



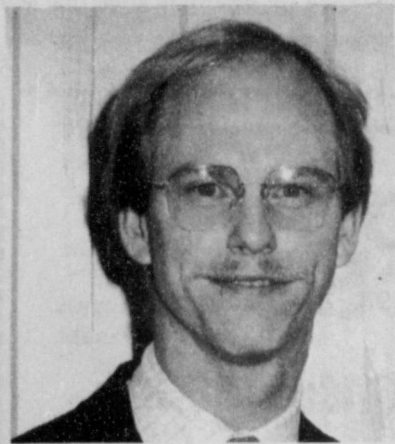
LYNANNE MAIZE
... President



SCOTT BEEDY
... Vice-President



DON TOWNSEN
... Treasurer



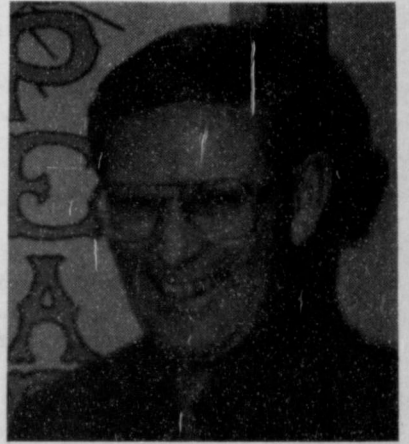
STAN COBB
... Director



LARRY BUTLER
... Director



WIRT DAVIS
... Director



GEORGE YOUNG
... Director



YOUR CHAMBER AND YOU ... PARTNERS IN PROGRESS

Being a Chamber member,
As you may or may not know,
Is really beneficial
To a business on the 'grow'.

by Sheri Benton
So, if you are a member,
I must say 'Thanks a lot',
But if you aren't a member,
Now I must ask 'Why not?'

Spearman Chamber of Commerce

211 Main

Spearman, Texas

659-5555

Support your community by
supporting your Chamber!

of Commerce Board of Directors



BILL PITTMAN
... Past President



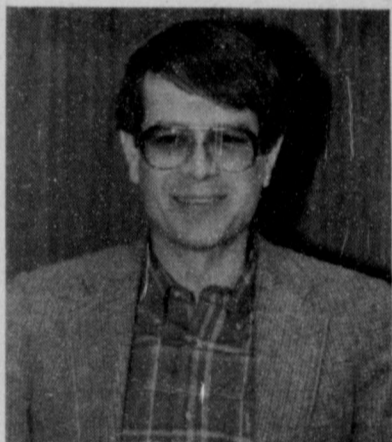
MAE WOFFORD
Women's President



JACKIE PEARSON
... Director



MIKE CUDD
... Director



JIM MURRAY
... Director



RANDALL SAUER
... Director



SHERI BENTON
... Director

*Good
for* You

Spearman Chamber of Commerce

... for helping to make it better for all of us.

Through the effort of many individuals, working together as a team, the Spearman Chamber of Commerce has worked to make the quality of life even better for all of us in Spearman and Hansford County.

We salute your dedication and tireless efforts and pledge our support to the Chamber and the betterment of the community in which we live

Spearman



First National Bank of Spearman

Member FDIC

659-5544

Myriad projects ahead for Spearman Chamber

A special project of the Spearman Chamber of Commerce is a 'Community Profile' folder which will contain information about Spearman -- its schools, health facilities, parks, and a variety of aspects concerning Spearman. This special information packet will serve several functions in the future.

Those functions include serving as an information packet for businesses looking to move to Spearman, newcomers to the community and will also serve to help inform the numerous construction crews expected to be in Spearman within the upcoming months.

The idea was originated by the Directors of the Chamber last year -- and idea which came out of the Economic Development Committee. Work is still ongoing and the information folder would be completed within the new few months.

Another project to serve as a plus to Spearman will be the designing of a new brochure, again a project of the Spearman Economic Development Committee. This will be a full-color brochure, and will include not only information on Spearman,

but facts about the Palo Duro River project as well.

Other plans call for the design of a new post card for Spearman. Before too long, a special 'Welcome to Spearman' sign which will measure 8-feet by 16-feet will be located on State Hwy 207 coming from Borger and Perryton into Spearman.

Work on these special signs is a team effort with Gary Ellsworth providing the construction labor and Gina Davis providing the artistic touch on the lettering.

New 'Spearman' T-shirts will be available within the next few weeks. These T-shirts will be purple with white letters and will include the special chamber emblem of the state of Texas printed on the front.

These will be available to the general public at a cost of \$10 each and will be available in sizes for both children and adults.

Work toward the design and manufacture of a special 'Spearman' lapel pin is still in the work.

Work toward the design and manufacture of special 'Spear-

1988 Committees and Chairmen

Agriculture	Jim Turner and Steve Benton Member, Randall Sauer
Economic Development	Mike Cudd and Jim Murray Member, Richey Thompson
Education	John R. Collard, Jr.
Entertainment	Nancy Graves
Existing Business	Members, Jan Williamson, Donna Murray Vance McGee
Hansford Round Up	Members, Buford Baker, George Young Buford and Karen Babitzke Stephen and Susan Poole
Health	Rosa Lee Butt
Membership	Members, Muriel Boyd and Wirt Davis Jackie Pearson
President's Council	Members, All Directors Pat Dear
Quality of Life	Members, All Presidents of Clubs/Organizations Kevin Russell
Retail Merchants Chairman	Marilyn Cline
Ambassadors	Robert Queener
Women's Division President	Mae Wofford
Palo Duro Task Force	Dick Gillaspie
Valley View Task Force	John Hutchison

man' lapel pins is ongoing. Directors are still searching for a manufacturer who can make the pins large enough to be readily visible.

Promotion of Existing Businesses will continue to be a key factor for the Spearman Chamber of Commerce. That committee is headed up this year by Vance McGee who is bringing several new ideas to that chairman's position.

A new project of the Chamber this year is the President's Council which is being headed up by Pat Dear.

There are a host of other projects which either will be started or are ongoing at the Chamber. The words "Great in '88" are more than a slogan at the Spearman Chamber of Commerce.



**For An Active Community
It Takes Two . . .
YOU and Your Chamber!**

**Support Your
Chamber Of Commerce**

**B & B Farm Ind.
Inc.**

703 Collard 659-5507



**Be A Part
Of A
Working
Effort . . .**

**It's A Special Formula For
Community Growth Through
The Chamber Of Commerce
— And YOU!**

**WHITE HOUSE
LUMBER Co.**

306 DAVIS 659-3792

From 1928 to 1987 . . .

Past Presidents of the Spearman Chamber of Commerce

1928	Jot Horton	1965	James Bramlett
1929	John R. Collard, Sr.	1965	J.L. Brock
1930	C.A. Gibner	1966	K.E. Evans
1931	W.W. Merritt	1967	Peyton Gibner
1932	A.F. Barkley	1968	Richard M. Countiss
1939	Ray Platt	1969	Orvil Brummett
1940	Hobbs Heard	1970	Kent Guthrie
1941	T.R. Shirley	1971	Gene Cudd
1947	William E. McClellan	1971	A.L. Dedmon, Jr.
1948	Marvin Chambers	1972	J.E. Blackburn
1949	Roy Wilmeth	1973	G.K. Rupprecht
1950	Ralph Blodgett	1974	G.K. Rupprecht
1951	Roy L. McClellan	1974	C.D. Riggins
1952	R.C. Fisher	1975	C.D. Riggins
1953	Joe Trayler	1976	John L. Hutchison
1954	Gene Cline	1977	Jerry Gee
1955	E.H. Hester	1978	Jim McLain
1956	E.J. Copeland	1979	Gerald Heinrich
1957	Dr. D.E. Hackley	1980	L.E. Thomas, Jr.
1958	J.K. Hicks	1981	Dick Elbert
1959	James P. Linn	1982	Ray Ingle
1960	Oscar Donnell	1983	Monty Blackman
1961	George Collard	1984	Robert Elliott
1962	Burl McClellan	1985	Bob Pearson
1963	Charles Gilliam	1986	Mike Cudd
1964	James Bramlett	1987	Bill Pittman

We Are Proud To Be A Part Of This Community



Support The
Chamber of Commerce

Video Hut
Plains Shopping Center
659-2973

Involvement Is The Key!

*There is nothing magic about
good things happening when
everyone works together.*



Support Your
Chamber of
Commerce!



Chamber Honorees

- CITIZEN OF THE YEAR**
- 1956 Mrs. R.B. Archer, Sr.
 - 1957 B. J. Copeland
 - 1958 Oscar Donnell
 - 1961 Frank Massad
 - 1963 John R. Collard, Jr.
 - 1965 Sam Watson, Jr.
 - 1967 J.B. Cooke
 - 1969 Mrs. E.A. Greever and Jesse Davis
 - 1970 Mrs. Frank Davis and Bruce Sheets
 - 1971 Harry Stumpf
 - 1972 Dean Weese
 - 1973 Charlene Bulls
 - 1974 L.L. Anthony
 - 1975 J.L. Brock
 - 1976 Dee Jackson
 - 1977 Frances Loftin
 - 1978 C. Ralph Blodgett
 - 1979 Jim McLain
 - 1980 Orvil Brummett
 - 1981 Junior Lusby
 - 1982 Gene Cudd
 - 1983 Jackie Pearson
 - 1984 Marsha Murphy
 - 1985 Judy Nelson
 - 1986 Janie Kunselman

- Citizen over the Years**
- 1983 Rosa Lee Butt
 - 1984 Mary Lou Wysong
 - 1985 Frances Stumpf
 - 1986 Betty Jean Davis

- Citizen of the Decade**
- 1979 C.A. "Clay" Gibner

1988 Chamber

- Adela's Flowers
- Agco of Spearman
- Anthony Electric
- Gertrude B. Archer
- Joe and Wanda Archer
- B&B Farm Industries
- B&B Sales
- B&M Automotive
- Buford and Karen Babitzke
- Baker Hotel
- Charles R. Ball
- Verlin and Audene Beck
- Beedy Furniture
- Steve and Sheri Benton
- Berry Cleaners
- J.E. Blackburn
- Blackburn's Flower Basket
- Mrs. Deta Blodgett
- David and Cathy Boyd
- Granville and Muriel Boyd
- Boxwell Brothers
- Melvin Bradley
- Brock Insurance Agency
- Kim and Stephanie Brock
- Bill and Joan Brown
- Brown, Graham & Company
- Larry and Paula Butler
- The Bunkhouse
- Buster's Aerial Dusters
- Rosa Lee Butt
- Terry and Linda Butt
- Buzzard Farms
- Mr. Frank Buzzard
- E.J. and Byrnic Callaway
- Cates Men & Boys Wear
- Chalor's
- Charlotte Ford Trunks
- Cinderella Beauty Salon
- Deacon and Willie Clement

- Joe and Debbie Clement
- Stanton W. Cobb, DDS
- Country Stitches
- John R. Collard, Jr. Agency
- Robert J. Collier
- Consumer Sales
- Mike and Pat Cudd
- Cunningham Insurance Agency
- Terry and Rita Curtis
- Marjorie Curtis
- Cut Rate Thriftway
- C.O.'s Supply and Sporting Goods
- D&M Travel Service
- Dairy Queen
- Travis and Elvonna Davis
- Davis & Davis Petroleum Company
- Alex Duggan
- Earl's TV & Appliance
- Tom and Helen Etter
- Enron Pipeline Company
- Equity Exchange
- Farber Livestock Transportation
- First National Bank
- First State Bank
- Helen B. Fisher
- Five Star Equipment
- Fuller's Jewellery
- Mr. and Mrs. Ed Garner
- Mr. Wesley Garnett
- General Telephone Company
- Russ and Vickie Gibbs
- Dick and Leann Gillaspie
- Golden Spread Sales
- Gordon Drugs
- Terry and Nancy Graves
- Mrs. E.A. Greever
- H&H Water Well Service

**The Future Of Our
Community Is
Important . . .**

**Let's work together through
the Chamber of Commerce
to make good things happen!**



**TROY JAMES
AGENCY MANAGER
KELLY MAHANEY
CAREER AGENT**



**Hansford County
Farm Bureau**

307 W. Davis

CC1C-659

**The Key To Success On A
Day-To-Day Basis!**

**It takes all
of us to do
the job!**



**Support The
Chamber of Commerce**

Hansford Imp.

Hwy 207



1837-1987

50 659-2568

Membership Roster

Hansford Abstract	E.E. Novak, DDS
The Hansford Agency	Nursanickel Motel
Hansford County Vet Hospital	Patton Motel
Hansford Implement	Perryton Coca-Cola Bottling
Henton, Beedy & Company	Bill Pittman
Hickerson Jewelers	Porter Dir Construction and
Hi-Plains Auto Supply	Custom House Painting
Hi-Plains Conoco	Mr. and Mrs. R.C. Porter
Mr. and Mrs. Nolan Hotl	Joe and Beth Raper
Hotel Royal	Mr. and Mrs. N.F. Renner
John L. Hutchison, Atty-at-Law	Sacks Third Avenue
Interstate Savings and Loan	Safety Glass Company
Doyle and June Jackson	Mr. and Mrs. Rex Sanders, Jr.
Jarvis Law Office	Mr. and Mrs. Burton Schubert
J.G.'s	Claude and JoNell Sheets
Amelia C. Johnson	Jimmy and Lois Shieldknight
Junior Lusby "Cats"	Southern Office Supply
KRDF-FM Radio	Spearman Auto Supply
Kid's Stuff	Spearman Cable TV
Don Kunselman	Spearman Cattle Feeders
L&L Coffee Service	Spearman Industrial Engines
Lady Fair	Spearman Jack & Jill
Charles and Claudine Laxton	Spearman Pizza Hut
Johnnie C. Lee	Spearman Redi-Mix
Mr. P.A. Lyon, Jr.	Spearman Reporter
Lyric Theatre	Spearman Rexall Drug
Kelly and Michele Mahanay	Spearman Super Service
Jane S. Meek	Speartex Grain
Rich Melton	Stanfield Printing Company
Dwayne and Donnie Mitchell	Irvin and Betty Jean Davis
Larry and Marsha Murphy	TGY/McCrory's
Jim and Donna Murray	Texas-New Mexico Power Company
Mr. and Mrs. R.L. McClellan	Tharin Company
Mr. and Mrs. Wilson McClellan	Rusty and Judy Tindell
McClure Paint and Supply	Video Hut
R.L. and Kay McFarlin	Wardrobe Cleaners
Jack and Dolly McWhirter	West Texas Gas
National Hardfacing	White House Lumber
Dennis Nelson	Friday Wise

Get Involved . . .

**Support
Your Chamber
We Are
Proud To
Be A Part
Of A**



Progressive Community

**Chalors
Your Wedding Store**

214 Main 659-2767

**Let's
All
Work
Together
To
Accomplish
Your Goals**



**Support Your
Chamber of Commerce**

**H & H Water Well
Service**

Gruver Hiway 659-5577



Hank the Cowdog
and

Faded Love

Plus many more adventures of
Hank the Cowdog, by John Erikson

Available Now at
Sacks 3rd Ave.

203 Main 659-3350

Support Your Chamber!



THE CONTINUED GROWTH OF OUR COMMUNITY IS REALLY A SIMPLE MATTER— EACH ONE OF US MUST WORK TOGETHER FOR THE BENEFIT OF ALL.

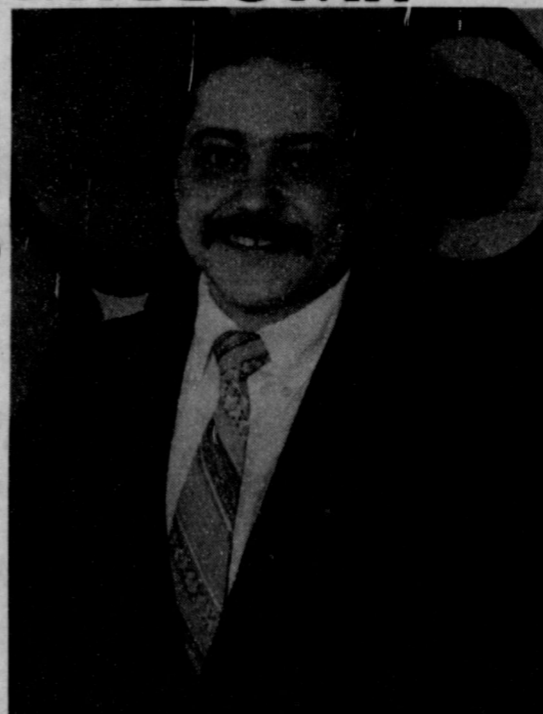
AT FIRST STATE BANK

WE'RE PROUD OF OUR DEDICATED STAFF



Lynanne Maize
President
Spearman C-of-C

**FOR THE IR
LEADERSHIP
AND
SERVICE**



Randall Sauer
Director
Spearman C-of-C



One NE Court Spearman 659-5565

