

Academic award presented at Spearman Banquet

Wednesday morning at 10 in the Spearman High School auditorium the awards banquet was held.

The following students were presented with an award certificate in these respective courses.

English 1 - Cam Butts, English 2 - Laura Dyess, English 3 - Olivia Mendoza, English 4 - Kevin Nelson;

Correlated L.A. 1 - Raul Anaya, Correlated L.A. 2 - John Hughes, Correlated L.A. 3 - Shawn Cook; Spanish 1 - Laura Dyess, Spanish 2 - Kevin Nelson, Fund. of Math - Martin Martinez, Consumer Math - Sandra Acevedo;

Informal Geometry - Oscar Anaya, Pre-Algebra - Beverly Burton, Algebra 1 - Cam Butts, Algebra 2 - Ginger Pearson;

Geometry - Laci Lasater, Elem. Analysis - Charles Roper, Trig. - Charles Roper, World History -

Cacy McGill;

U.S. History - Mitzi Pearson, Am. Gov't. - Charles Roper, Economics - Paige Pittman, Health - Jarrett Swan and Chris Williamson;

Girls' P.E. - Connie Woolley, Boys' P.E. - Ruben Vela, Band - Aprill Graham, Boy Chorale Member - Clint Patterson;

Girl Chorale Member - Connie Woolley, Physical Science - Leroy Cazarez, Intro. Biology - Rodney Mestas, Biology 1 - Cam Butts;

Biology 2 - Ginger Pearson, Chemistry - Laura Dyess, Physics - James Tindell and Charles Roper, Computer Science - Vernon Tindell;

Typing - Jennifer Reimer, Accounting - Lynette Williams, Homemaking 1 - Haley Shieldknight, Homemaking 2 - Kristin

Dunnihoo;

Homemaking 3 - Kim Gross, Clothing - Nora Garcia, Home and Family - Christa Sims, Food and Nutrition - Sandy Hill;

Consumer Ed. - Pete Mauk, Home Management - Sherry Moyer Bullard, Child Development - April Davis, Home Furnishings - Kathy Vanlandingham;

Speech - Cam Butts, Theater Arts - Jeff Spencer, Horticulture Science - Vernon Tindell, Ag. Mechanics - Brooks Beck;

Management and Marketing - Daryl Hawkins, Animal Science - James Tindell, Ag. Science - Joel Shields and Art - Frank Salgado.



3 Spearman athletes on the road to Austin

regional track

In the regional track meet held in Big Spring Spearman had a total of three individuals to qualify for the state track and field contest to be held in Austin on May 14.

Heather Murrell, Matt Tucker and Jerold Blan will head to Austin May 13 to try their skills in the state contest.

Murrell placed third in the long jump with a jump of 17 feet and 2 inches. She also did well in the 200 meter dash, placing third with a time of 25.89 seconds. Murrell was awarded a second place in the 100 meter hurdles with a time of 15.55 seconds and a first place in the 400 meter dash with a time of 58.33 seconds. She qualified for state in the 100 meter hurdle and the 400 meter dash.

Krista Kirkland placed third in the 3200 meter run with a time of 12 minutes and 47.1 seconds. She

also received a third place in the 1600 meter run with a time of 5 minutes 39.3 seconds.

Haley Shieldknight finished seventh in the 3200 meter run, and Laci Laster placed seventh in the triple jump at the Big Spring contest.

In the boys track event Spearman came in third place behind Haskell and New Deal.

Matt Tucker came in with a first place in the discuss with a throw of 175 feet. Matt also placed first in the shot put with a throw of 56 feet and 6 inches.

Jerold Blan came in 2nd in the 2 mile run with a time of 10 minutes 17 seconds and third in the one mile with a time of 4.40

Lance Swan finished fourth in the discuss with a throw of 156 feet 6 inches.

Just Say No May 13

The Just Say No Club and Families in Action are inviting the public to attend a walk and rally against substance abuse, Friday, May 13 at 5:30 p.m.

The Club members will line up for a walk down Main Street at 5:15 in the parking lot of B&B Farm Industries. They will be carrying the "Just Say No" banner and wearing green and white "Just Say No" T-shirts.

The public is also encouraged to wear the green and white club colors and to make banners to join

in the walk.

Donations from John R. Collard, Jr. and Rosa Lee Butt made possible the setting up of the "Just Say No" Club. The T-shirts were purchased as a result of donations from Rho Rho Sorority, Xi Zeta Epsilon Sorority, Perceptro Epsilon Zeta Sorority, Laureate Gama Gamma Sorority, and Women's Division of Spearman Chamber of Commerce.

Community support is encouraged as these young people show their commitment to lead drug-free lives.

Craig named Women of the Year

Millie Craig has been chosen by four local chapters of Beta Sigma Phi as Woman of the Year. She was honored at the Founders Day banquet held at the First Methodist Church on April 28.

The groups noted some of the qualities they found in Millie that lead them to choose her as woman of the year.

Most notable among her many fine qualities were her ready smile, friendliness, great determination and sense of responsibility. They also noted her as being a homemaker that made her abode a place of welcome and positive influence.

Mrs. Craig is married to L.C. Craig, Jr. and they have six children who include Debbie Crouch of Amarillo who has 2 children of her own; Judy Collins of Amarillo who has three daughters; Cheryl Tension of San Antonio with one daughter; Sharon Wilson of Amarillo; Angela Lotten of Amarillo with three daughters; and L.C. Craig, III of Spearman.

Millie has lived in the community since the late 1950's. Her hobbies and activities include bowling in league play, swimming and fishing. She has been an active member of the Eastern Star and was named Worthy Matron for that group at one time.



MILLIE CRAIG
WOMAN OF THE YEAR

County Extension office

Beef checkoff approaches May 10

Like a fleet Olympic runner, the beef checkoff came out of the blocks full steam on Oct. 1, 1986. That was the date the nation's producers began contributing \$1 per head for research, promotion and education about beef.

Now the beef checkoff is entering the stretch run of its 22-month trial period as cattlemen ready for the May 10 vote on whether to approve it permanently.

However, unlike that Olympian whose energy is spent as the finish line comes in sight, the beef checkoff's momentum becomes stronger as the referendum date comes closer. Ongoing programs on national, state and local levels continue to encourage increased beef consumption. All these programs are coming together to improve the profit potential of cattle production.

"Studies reveal that the number of Americans who believe beef fits into their lifestyle increased from 59 percent in January to 64 percent in June," said Linda Latta of Spearman, Texas, chairman of the Hansford County Steering Committee.

"Those who believe beef is an important part of a well-balanced diet increased from 51 percent to 56 percent. These increases show that every dollar checked off by cattlemen in this program is an investment that pays dividends."

In the first year of the program, checkoff dollars collected nation-

wide totaled about \$73 million. About \$5 million of this amount came from beef and cattle importers. In Texas, checkoff dollars totaled \$12.6 million.

"The checkoff is structured so that all producers invest an equal amount for each animal sold in the program," said Latta. "Importers and all producers participate. The law sets a 5 percent cap on use of checkoff funds for administration so dollars go to their intended purposes of promotion, research and information. And the state council decides how to invest 50 cents of each dollar. This allows our Texas Beef Industry Council to respond to those needs within our state. The remaining 50 cents goes to the Beef Board for national programs."

Major programs on both national and state levels resulting from checkoff dollars include:

--Announcement of a working relationship to promote "heart-healthy" diets between the American Heart Association, Texas Affiliate and the Texas Beef Industry Council.

--Cooperating with health professionals to produce brochures on the nutrition of red meat (distributed to 4.5 million supermarket shoppers), cholesterol and heart disease, and the truth about common misconceptions of beef.

--Getting the word out to the media that beef is back. More than 4,700 positive articles reaching

approximately 371 million consumers have recently run in major prestigious publications.

--Providing secondary and elementary school teachers with lesson plans, films, software and multi-media packages for the classroom. Through these tools, educators can instruct millions of students on beef's proper role in the diet.

--Cooperating with Paul Harvey, America's best known radio personality, to promote beef two times per week. His spots run from December 1987 to June 1988.

--Using point of purchase (POP) materials effectively. A recent study of 18,000 supermarkets showed industry POP materials increased fresh beef sales from 3 to 5 percent in a four-week period. In other words, every checkoff dollar invested for POP returned \$62 in projected additional beef sales.

--Distributing beef promotion placemats that provide nutrition information. More than 500,000 have been used by Texas restaurants and 200,000 by Texas hospitals.

Airing more than 500 television spots and 1,920 radio spots about beef. For instance, during the Winter Olympics coverage on ABC, beef checkoff dollars sponsored 19 commercials, one Olympic Diary, and one Olympic Moment. Overall, the beef ads have reached 94 million adults between the ages of 25 to 54.

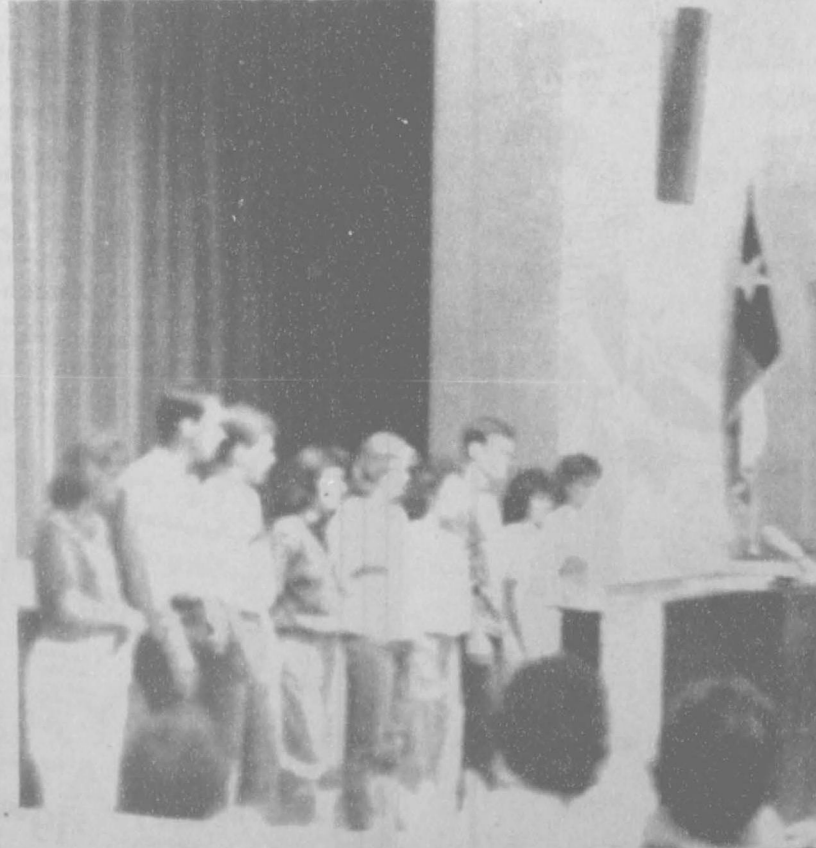
"It's just good business for beef producers to join together through the checkoff to sell our product," Jimmy Owen, chairman of the Texas Beef Industry Council board of directors, said. "This joining together is paying off. Hundreds of projects are currently being funded through checkoff dollars. In addition to our TV spots and magazine ads, checkoff dollars support projects in research, education, food-service, and retail, as well as provide nutritional information to consumers, food editors, dietitians, and doctors."

Anyone who has owned or acquired one head of cattle between Oct. 1, 1986, and March 31, 1988, is eligible to vote May 10. One vote per business entity is allowed. For purposes of the referendum, the U.S. Department of Agriculture has defined a business entity as any individual or group of individuals who has a common ownership in cattle, such as a partnership, corporation or family.

Registration and voting will take place May 10 at county extension service offices around the nation. You may vote in your county of residence unless your cattle are corporately owned.

Absentee ballots are available from Dr. Milo Shult, Associate Director, Texas Agricultural Extension Service, 105 System Bldg., Texas A&M University, College Station, Texas 77843-9990.

Pittman, Williams named top grads



NINE SPEARMAN STUDENTS were given top academic honors. All nine students have G.P.A.'s above 90% [l to r] Sandy Hill, Kevin Nelson, Norman Scroggs, Karl Schneider, Andi Lopez, Wanda Wagoner, Charles Roper, Lynette Williams and Paige Pittman.

Paige Pittman and Lynette Williams have been named the Spearman High School valedictorian and salutatorian and seven other seniors showed academic excellence.

Paige had an average grade point of 95.0 to be named valedictorian of the graduating class of 1988 she is the daughter of Mr. and Mrs. Steve Mathews and Mr. and Mrs. Bill Pittman. She has been involved in many different activities during her high school years.

She has been a member of Future Farmers of America for one year, Future homemakers of America for 3 years, Fellowship of Christian Athletes 4 years. She was class favorite her sophomore and junior year, and was president her junior and senior year.

Paige has also been named to Who's Who by the teachers of Spearman High School. She has been a cheerleader and was football homecoming queen for the 87-88 year.

Paige plans to attend Texas Tech and study psychology or economics next fall. Her hobbies include snow skiing, swimming, music and reading.

Lynette Williams was named salutatorian with a grade point average of 94.088. She is the

daughter of Burt and Lynell Williams.

Lynette has been a member of the National Honor Society, Future Homemakers of America, she has served on the annual staff and been a member of 4-H for 10 years.

While a member of 4-H, Lynette has served as vice chairman of the council and as district 4-H delegate. She has also received the Gold Star award in her junior year.

In academics Paige has received awards in English III, Algebra II, Home Economics III, Accounting, and the U.I.L. Scholar award.

She was a regional qualifier in U.I.L. Accounting. She was selected to Who's Who by the teachers of Spearman High School. She was also selected to Who's Who Among American High School Students.

She is a member of First Baptist Church. She plans to attend Texas Tech to major in agriculture economics.

Other students named as honor graduates are Charles Roper with a grade point average of 93.555; Wanda Wagner, 93.335; Andi Lopez, 92.769; Karl Schneider, 92.692; Norman Scroggs, 92.444; Kevin Nelson, 91.861; and Sandy Hill with a grade average of 90.615.

Imagine That . . .



It was a make-believe session. Most of the audience were of grandparent age. The speaker asked everyone to close their eyes. Only half of the audience complied. The other half was already asleep. "Imagine yourself 20 years into the future. Imagine where you will be, whom you will be with, what you will be doing. Relax, visualize. Now be at peace and concentrate on those circumstances for the next 30 seconds."

At the end of that period, an amazing thing happened. The half of the audience that was asleep woke up and the other half fell asleep.

"Now, said the speaker, 'where have you been?' as she pointed to an elderly lady. With a puzzled look, the lady replied, 'Where am I now?' Another volunteer, who was

paying attention, said, 'I'll tell you where I was. I was on the beach at Waikiki surrounded by a trio of hula girls, living like Tom Selleck.' "And just where was I?" snapped his wife. "Dead three years ago," he replied. A retired doctor had a pleasant look on his face so the seminar leader said, "Tell us about your fantasy." He replied, "I don't even remember it." The latter remark is typical of people who get to a certain age where they forget important things . . . like who they have a grudge against, which direction is town, and what the opposite sex is for. This elderly lady told her husband to go get her a banana split, whipped cream, and a cherry on top. "Write it down or you'll forget," she admonished.

"Don't need to write it down," he proudly said as he shuffled off as if he were walking inside two empty shoe boxes without straps. An hour later, he returned with a little styrofoam container. She opened it to reveal a hot dog. "You old fool," she replied. "I told you to write it down. You know I like mustard on my hot dog." I guess it just takes time, visualization, and wisdom of the ages to develop your imagination. We could learn a lot from folks who have been around a long time. A classic example is the couple who had a lengthy argument. Afterwards, the wife tried to make up. She said, "You're not perfect, honey. . . but almost." He grunted. "Come on honey," she cooed. "Now you say something nice to me." He replied, "Okay, you're not perfect either."

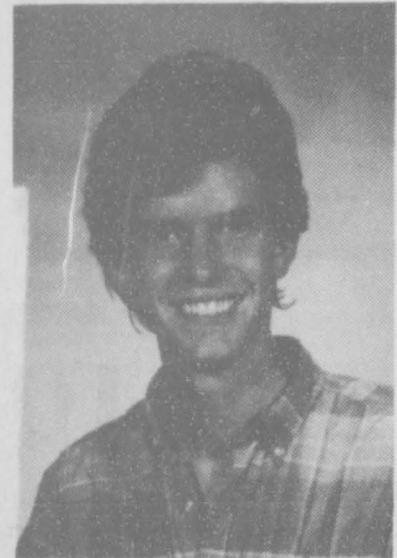
The Spearman **Reporter**
Your Hometown Newspaper

USPS 509660 Spearman, Tx. 79081
213 Main, Box 458, 659-3434

Published Weekly at
213 Main, Spearman, Texas

Owned and Operated by:
Texas Independent Newspapers, Inc.
19906 Encino Grove, San Antonio, Tx 78259
Second class postage paid at Spearman, Texas 79081.
Any erroneous reflection upon the character of any person or firm appearing in these pages will be gladly and promptly corrected upon being brought to the attention of the management.
PUBLISHER

Subscription Rate: Spearman, adjoining counties, combination with the **Hansford Plainsman**, \$19.95; non-adjoining counties, \$24.95 annually.
Postmaster: Send address changes to **Spearman Reporter**, Box 458, Spearman, Tx. 79081.
The publisher reserves the right to revise or reject at its option any advertisement which it deems objectionable, either in subject or phraseology, or which it may deem detrimental to its business.



WILLIAM (SEAN) EVANS

Evans included in OHSAs directory

William S. Evans, grandson of Kenneth and Margaret Evans of Spearman, has been included in the 1988 OHSAs Directory (Outstanding High School Student). William (Sean) is the son of Gary and Patti Evans of Denver where he attends Montbello High School. He is an honor student there and belongs to the National Honor Society and ACCP (Accelerated College Program). As a new inductee of the Outstanding High School Student's Directory, Sean, will be listed among the top high school students across the country. The directory is distributed to American colleges, universities and corporations for their use in student recruiting. He will also be the candidate for several scholarships as a result of the directory.

Black licensed

Will Black 18 year old son of Monte and Sharon Black of Spearman was licensed to preach March 20 by the congregation of First Baptist Church in Spearman. The licensing ceremony was brief, but carried with it a lifetime commitment from both Will and the congregation. Licensing is an honor First Baptist Church has not afforded one of Will's age in many years. The licensing took place after a recommendation from the deacons and staff and as a result of Will's consistent support and involvement in the church and a demonstration and statement of calling into the gospel ministry. Will is a senior at Spearman high school and plans to attend Wayland Baptist University next fall.

It keeps more than memories alive.

THE AMERICAN HEART ASSOCIATION MEMORIAL PROGRAM

WE'RE FIGHTING FOR YOUR LIFE



Spearman girls golf team places fifth in Big Spring

In the recent golf tournament held at Comanche Trail Golf Course in Big Spring the Spearman girls golf team placed fifth out of 15 teams with a total score of 797, reports golf coach James Mireless. The first place team, Memphis had a total score of 757, only separating their score from Spearman's by 40. The team scoring was lead by Carly Shieldknight with a total on Tuesday of 102 and on Wednesday of 96 with a total score of 198. Sunshine Smith had a score of 107 then 100 for a total score of 207. Nancy Ivey has scores of 99

and 99 for a total of 198. Marci Womble had scores of 101 and 97 for the same total of 198. Jennifer Turner brought in scores of 106 and 97 for a total scoring of 213. In boys action, Spearman came in 11th out of 16 teams, with a score of 713. Boys scoring was lead by Kevin Nelson with scores of 89 and 88 for a total of 177 on the greens. Keith Clark shot a 95 and 84 for a total of 179. Carson Womble had an 85 and 97 totalling 172. Matt Jones shot 87 and 93 totalling 180, and Pat Shields had a

109 and a 96, totalling 215 on the course. Taking first place in the girls tournament was Memphis with a 757. Second place went to Stanton with 785. Taking third was Quahah with 787; Ozono took fourth place with a 789. Spearman was fifth. San Saba took sixth, followed by Wingers, merga, Panhandle, Spur, Abernathy, Marfa B team, Shallowater, Hale Center, and Hamlin. In boys tournament Ozona took first with 655. Stanton was awarded second place with 660. Panhandle came in third with 673; Seagraves fourth with 681; Memphis took fifth with 681, followed by Marfa, Hamlin, Shamrock, Stamford, San Saba, Spearman, Morton Abernathy, Winters, Olton and Van Horn.

Bike rodeo May 11

The Bike Rodeo which was scheduled for last Tuesday, and was postponed due to the weather, has been rescheduled for Wednesday, May 11. The program will be held at the Spearman elementary building from 1 to 3 p.m. The course will include a bicycle safety film, bicycle safety inspection and a driving course designed for the children to see the safety techniques they learned during the

program. Jerry Borgtorf, public safety officer with the TDPS will be on hand for the event which is being co-sponsored by the Spearman PD, the Spearman PTA and the Spearman Servitors Club. The Spearman Police Department will be supervising the event along with the Department of Public Safety. Children are to bring their own bicycles which are properly adjusted for their use.



The highly flavored spice known as mace is actually the covering of the nutmeg. It is usually sold ground and is often used to flavor fruit pies.

Being a spoilsport could save your child's life

When your children want to listen to the radio in the bathtub, be a spoilsport and say no. You won't win a popularity contest, but you could save their lives. Water and electricity are a dangerous combination.

If your children want to climb a tree or fly a kite near power lines, don't worry about spoiling their fun by saying no.

Power lines are dangerous if anything comes into contact with them - including a tree branch or kite string.

Saying no to dangerous activities helps you say yes to electrical safety.



Respect your rights

VOTE

May 7th

Vote it's your constitutional right

Pol. Adv. paid for by Harry Stumpf 301 W. 12th Spearman Tx.

LAST THREE DAYS THUR. - FRI. - SAT.

Hickerson Jewelers

42nd Anniversary Sale

20% to 60% off

All Merchandise in Stock

Register for .42 ct. diamond earrings to be given away May 7, 1988
No purchase necessary - You don't have to be present to win.

Diamond Buttercup Earrings .03 tw. - Reg. \$49.00	\$29.00
Diamond Buttercup Pendant .01 - Reg. \$59.00	\$39.00
Diamond Solitaire Studs .36 tw. - Reg. \$449.00	\$299.00
1/2 Ct. Earrings 1/4 ct. tw. - Reg. \$649.00	\$399.00
Diamond Buttercup Earrings .10 tw. - Reg. \$150.00	\$99.00

A Perfect Gift For Mother Or The Graduate!

Gold Vermeil
C. Z. Tennis Bracelets
Reg. \$95. Anniversary Sale Priced **\$59.95**

Introducing New Line of Crystal
Astral
• Hand Blown
• Hand Cut
• Full Lead
• Crystal
Reg. \$21. Anniversary Sale Priced **\$19.00**

Introducing **Tiny Treasures**
Fashioned for your little one, these Tiny Treasures rings, earrings and bracelets put the year into your young lady.
Regular price \$17.95 \$15.95

AMERICAN EXPRESS VISA DISCOVER

We Welcome 3 and 6 Month Lay-A-Way Plans

Looking forward to seeing you -
Thanks - For making the past 42 years possible!

J.C. & Elbre Hickerson

721 West Seventh St. 659-3566, Spearman

Due to financial strait's 17 Hospitals close in Texas makes deficiency payments

In 1987, 17 Texas hospitals closed, according to the Texas Hospital Association, the industry's trade association. This compares with 18 closures in 1986, nine in 1985 and eight in 1984. Of the 52 hospitals that have closed in the past four years, five have reopened under either different ownership or management.

"Nearly all of the 52 hospitals in Texas that closed during the past four years were relatively small, and the majority (31) were located in rural (non-metropolitan statistical areas) counties," said Karl Shaner, Dr. P.H., vice president, research and information services.

Only two of the 52 closed hospitals had more than 100 beds. A total of 692 beds were closed in 1987, as compared to 627 in 1986, 355 in 1985 and 272 in 1984. The five facilities that reopened account for 169 beds.

"With regard to their ownership status at the time of closure, nine hospitals were publicly-owned, 13 were private/non-profit institutions and 30 were investor-owned, either by individuals or a corporate

system," Shaner noted.

In Texas, small and rural hospitals account for 220 of the 530 hospitals in the state, and serve an estimated 3 million people. Of the 52 closures, 29 hospitals were the only provider in their communities. "This means that 29 small Texas towns, people's access to health care services has been curtailed and compromised," said Charles Bailey, J.D., vice president of legal affairs.

Why have so many hospitals closed in Texas? The bottom line answer is financial problems, Bailey noted. "The problems experienced by small, rural hospitals are caused by many of the same factors affecting urban hospitals, such as lower occupancy rates, more intensely ill patients who require more complex care, increased regulatory requirements, and inadequate payment from Medicare/Medicaid programs," he said.

"Because small, rural hospitals also serve a greater than average proportion of Medicare patients, recent changes in the payment and review of care provided Medicare beneficiaries have had a more profound effect on their facilities and their ability to preserve financial stability," he added.

"Rural hospitals also face the problems of attracting sufficient numbers of qualified professional personnel and physicians, less access to capital and insufficient funding for marketing and diversification in order to respond to a more competitive health care environment," Bailey noted.

Since 1980, hospitals have seen a decline in discharges and in their average daily census; however, this has affected small and rural hospitals more severely. "In the first half of 1987, average occupancy rates were 25 percent in small hospitals with fewer than 25 beds, and 33 percent for hospitals with

26-49 beds," Bailey said.

Small, rural hospitals are more affected by declining patient revenue margins. Higher inflation in the goods and services hospitals purchase, more severely ill patients with increased lengths of hospitalization, and slowed growth in outpatient visits, which in previous years offset the financial effect of drops in inpatient use, contributed to the continued downturn in revenue margins for 1987, according to economic analysts for the American Hospital Association.

Combined with declining revenue margins is an increase of nearly one percent in the average length of stay for 1987, which had declined during much of the 1970s and in each year from 1982-85. The increase in length of stay in the first half of 1987 was highest among patients over age 65, a group for whom hospitals have incentives and pressures to reduce stays. "This places an additional strain on hospital expenses, as they are paid a fixed rate for Medicare patient hospitalization," Bailey noted.

HOSPITAL CLOSURES IN 1987

Mitchell Clinic & Maternity Hospital, McKinney; Dallas Medical and Surgical Clinic-Hospital, Dallas; Deaton Hospital, Inc., Galena Park; Wortham Hospital, Wortham;

Brazos Valley Hospital, Sealy; Harris Methodist Meridian, Meridian; New Boston General Hospital, New Boston; Shelby General Hospital, Center;

Hospital in the Pines, Lone Star; Rosebud Community Hospital, Rosebud; Harris Methodist Hamilton, Hamilton; Continental Hospital North, Fort Worth;

Northpark Hospital, El Paso; Foard County Hospital, Crowell; Hart Clinic Hospital, Gladewater; Ysleta General Hospital, Inc., El Paso; Institute for Immunological Disorders, Houston;

U.S. Agriculture Department makes deficiency payments

The U.S. Department of Agriculture's Commodity Credit Corporation will make about \$1.45 billion in deficiency payments this month to eligible producers of 1987 crop corn and sorghum.

Milton Hertz, CCC executive vice president, said the payments will be generic commodity certificates and will be issued through local offices of USDA's Agricultural Stabilization and Conservation Service as soon as possible.

Eligible corn farmers will receive about \$1.3 billion and sorghum producers approximately \$145 million. Advance payments of about \$2.6 billion have been made to corn producers and about \$225 million to sorghum producers.

Deficiency payments are required under the 1987 corn and sorghum programs because national weighted average market prices received by producers during the first five months of the marketing year (September through January) were established target price levels.

Deficiency payment rates are based upon the difference between the target price for the commodity and the higher of the five-month average market price or the basic price support for the commodity.

The following table shows the

The following table shows the maximum amount of deficiency payments that producers are entitled to receive as determined by a statutory formula:

Target Price, Corn (\$/bu) 3.03, Sorghum (\$/bu) 2.88, Basic Loan Level Corn (\$/bu) 2.28, Sorghum (\$/bu) 2.17, Five-Month Market Price Corn (\$/bu) 1.63, Sorghum (\$/bu) 1.48, Deficiency Payment Rate Corn (\$/bu) .75, Sorghum (\$/bu) .71, Advance Payment

Amount Corn (\$/bu) .484, Sorghum (\$/bu) .456, Five-Month Final Deficiency Payment Corn

(\$/bu) .266, Sorghum (\$/bu) .254.

Arizona, Maricopa; California, Fresno, Tulare; Georgia, Washington; Idaho, Latah; Illinois, Champaign, McLean, Morgan, Stark; Indiana, Clinton, Knox; Iowa, Benton, Hardin, Monona, Washington; Kansas, Meade, Sumner; Louisiana, Morehouse; Michigan, Gratiot, Huron; Minnesota, Polk, Swift; Mississippi, Leflore, Sunflower.

Missouri, Lafayette, New Madrid; Montana, Chouteau; Nebraska, Lincoln, Saunders; North Dakota, Cass; Ohio, Allen, Darke; Oklahoma, Garfield; South Dakota, McCook; Texas, Hansford, Hidalgo, Lubbock, Lynn; Virginia, Southampton; Wisconsin, Dane.

Additional information on the administration of the Pilot Program at the county level will be available in May from county offices of the USDA's Agricultural Stabilization and Conservation Service and the Cooperative Extension Service.



In old England, the word "child" referred only to a girl.



In 18th-century England, eye-glasses were often worn purely as fashionable accessories, not as aids to vision.

Flowers say

Happy
Mother's Day

"Tell Her you care with a bouquet of fresh flowers"

Also have blooming and green plants silk arrangements and gifts.

Adela's Flowers
& Gifts

511 Hwy. 207 S. 659-5180

American hybrid Seed

WHEAT
OATS
SUDAN GRASS

BARLEY
HYBRID CORN
FORAGES

MORRIS SEED CO
806-733-2203
HCR 3 Box 31
Gruver, Texas 79040

Kim's Catfish Farms
CATCH-ALL-THE-FISH-YOU-CAN TOUR

From 9 a.m. to 5 p.m. on May 28.

\$50 per person prepaid registration must be by May 21. Tagged price fish also.

Call Kim's Catfish Farms 435-2624 or 435-2776.
OPEN NOW FOR FISHING.

LENIS SIMPSON CANDIDATE FOR CITY COUNCIL



QUALIFIED AND EXPERIENCED

★ **B.S. DEGREE FROM WTSU IN PUBLIC ADMINISTRATION**

★ **CITY MANAGER OF SPEARMAN FROM 1978-1980**

★ **EIGHT YEARS EXPERIENCE IN THE NATURAL GAS INDUSTRY, AN INTEGRAL PART OF THE CITY UTILITY SYSTEM**

**YOUR VOTE ON MAY 7th
WOULD BE APPRECIATED**

Pol. advt. pd. for by Lenis Simpson campaign committee, Lenis Simpson treasurer, 27 Golden Circle, Spearman, Tx.

ELECT BURL BUCHANAN Candidate For Mayor, City of Spearman

Sat. May 7, 1988



Independent Insurance Agent - Successful Businessman
Owner of the Hansford Agency

Board of Director of the Panhandle Regional Planning Commission

City Council Member - 5 years

Lions Club - Past President and Member

Member of the Chamber of Commerce

Past YMCA Board Member

Chairman - High Plains Natural Gas Rate Case Steering Committee

Active Member First United Methodist Church

Father - Husband

BURL BUCHANAN HAS A PULSE ON OUR COMMUNITY!
Burl's objective is to hold down taxes while at the same time continuing to improve our community!

WE ASK FOR YOUR SUPPORT IN ELECTING

BURL BUCHANAN

A MAN WITH A CONSCIOUS AND A VOICE
FOR THE PEOPLE OF SPEARMAN!

Burl would like to encourage everyone to exercise their right to vote for their favorite candidate!

Pol. advt. pd. for by supporters of Burl Buchanan, Burl Buchanan, treasurer, Box 608, Spearman, TX

Among the Neighbors

By Helen Fisher

The Canon Beach and Lincoln Sands Beach on the Pacific were ideal, except the water is still mighty cold, so Henry had to postpone his ocean dips.

For the average person, one 80th birthday is sufficient for a lifetime, but not for Mrs. Eva Adkison who is eager for another.

In honor of the occasion two of her daughters arrived last Thursday, then on Friday three more

On Saturday the daughters and husbands were taking her out to lunch and stopped at the hospitality room of the First State Bank. To her amazement there awaited her entire Sunday School Class, and numerous friends. Tables were complete with flowers, gifts and refreshments.

When Mrs. Adkison had recovered from her surprise, she greeted 67 guests. She was very touched by a lovely floral arrangement from Seattle, Washington from her three nieces and three nephews.

Her out of town family guests were: Velora Farar and daughter, Debra, from Albuquerque; Eva and R.E. Lee, Hobbs; Freda and Jim Pearce, Durant, Oklahoma; Darla and David Barnes, with sons-John, Paul, Luke and Seth of Raytown, Missouri and Susie and James Woods, and son James of Odessa.

The Lees are remaining for a few days further visit. Mrs. Adkison wants all her kind friends to know how appreciative she is for the gifts, flowers, and above all, for their caring.

On Tuesday the annual migration of the Baker Custom Cutters began. They left for Gila Bend, Arizona for wheat harvest, then they will return to Texas for the wheat. After that is finished they will head for Colorado, South Dakota, and Montana. In September they will return for the corn harvest and follow it as the crops dictate.

There are 17 crew members and

the group forms quite a caravan with 4 house trailers, 7 combines, 2 semi-trucks, 8 trucks, and numerous pick-ups, tractors, grain carts, etc.

Jim and Beth Baker have been in this business for 18 years, and she grew up with it. Her parents, Mr. and Mrs. Frick, did custom cutting in this vicinity for many years, and were well known here.

Beth is an indispensable part of the crew doing the cooking, minor nursing, even a mother confessor. Their daughter, Tina Lozano, accompanies the crew also.

Others from Spearman are Frank Lozano, Bart Baker, Gary Thomas, Robbie Taylor, Davy Turner, and Steve Widener.

Mozelle Sparks is gradually getting back to her daily routine after several weeks of company and travels.

Her daughter, Sheila Munday and son, Chris, of Colbran, Colo. drove down and spent a few days with her, then all went to Amarillo for a short stay with Gene Sparks and family. Teddy Sparks at Lubbock was their next host. Then they went to Portland, Texas, for a short visit with Sheila's daughter, Tammy Janelle and family.

At this point Chris flew to Tucson, and Mozelle and Sheila drove to Port Neches for a visit with some old friends.

Bridgeport was the next stop for some time with Gene's daughter and family, before returning to Spearman.

After another day or so in Spearman, Sheila returned to Colorado the middle of the week.

Betty Pugh has a delightful week last week as her daughter Angie, and husband, Airman First Class Shawn English were her guests.

They also visited his family in Perryton. He is stationed at the Charleston Air Force Base, where they returned after the visit.

Freda and Bruce Sheets were

pleased last week when old friends stopped by for a few days. Harry and Irma Douglas of McCook, Nebraska were enroute home from wintering at Fulton, Texas.

Jerry Gibner of Albuquerque visited in the home of his parents, the Pope Gibners, from Thursday thru Sunday.

Helan Etter and Eddie Largent were part of a tour that spent the weekend in New York City recently. The tour is sponsored by a Pampa group.

They left Amarillo Thursday. Their weekend activities read like a travelogue. They saw some stage plays and musicals on Broadway, including "The Phantom of the Opera" and "Les Miserables". Other activities were a concert at Carnegie Hall; eating at the "21 Club", and other interesting restaurants, and touring the famous Trump Building.

They flew back on Sunday.

Mr. and Mrs. Henry Cornelius returned Thursday from ten days in Oregon. They flew to Portland, where they met old friends from Pittsburg.

The scenery was extraordinarily beautiful this time of year, and they did a lot of sight-seeing.

For one of the older generation, it is always a delight when a young person, known since childhood, returns and takes time to call. Such was the pleasant visit of the charming and talented Candy Hicks when she came by and brought her two pretty little daughters, Nelly and Macy. Candy lives in Amarillo now and was accompanied by her mother, Nell Thoreson and Miranda Thoreson.

Kudos to Karen Goodman and Leslie Gaines and Sheila LaRochelle for the Sunday issue of the Plainsman. None of the girls have had any experience and had to work from scratch.

There has been considerable mention in the news lately of metal fatigue. The question arises-could that have an effect on your neighbor-the metals-cast-iron stomach; the heart of gold; the silver hair; the nerves of steel, the iron will and, er-the lead-----?

This column will not appear in the next few issues due Helen's being out of town.



A fighting fish will even attack its own image in a mirror.



When the male fighting fish gets excited, it becomes colored with reds, greens, purples and blues.

Statement of Intent to Change Rates

In accordance with the regulations of the Public Utility Commission of Texas, Texas-New Mexico Power Company announces the Company's intent to change rates for its entire Texas operations. The effective date of such change is June 3, 1988. All classes of customers will be affected by said proposed changes. The proposed rates will produce an increase in gross revenues to the Company over test year revenues adjusted for test year customer growth and annualization of test year rate increases of \$12,575,887, or 4.47%. Texas-New Mexico Power Company provides electrical service to more than 160,697 customers located within the state of Texas.

A complete copy of the requested rate filing package is on file with the Public Utility Commission of Texas in Austin, Texas, and with all cities served by Texas-New Mexico Power Company which have retained original jurisdiction. You may inspect a copy of the filing during normal business hours at each business office of Texas-New Mexico Power Company in your area.

Persons who wish to intervene or otherwise participate in these proceedings should notify the Commission as soon as possible. A request to intervene, participate, or for further information should be mailed to the Public Utility Commission of Texas, 7800 Shoal Creek Boulevard, Suite 400N, Austin, Texas 78757. Further information may also be obtained by calling the Public Utility Commission Consumer Affairs Division at (512) 458-0223 or (512) 458-0227, or (512) 458-0221 teletypewriter for the deaf.



TNP-5/88

Support
research.



Texas Affiliate

Piano World

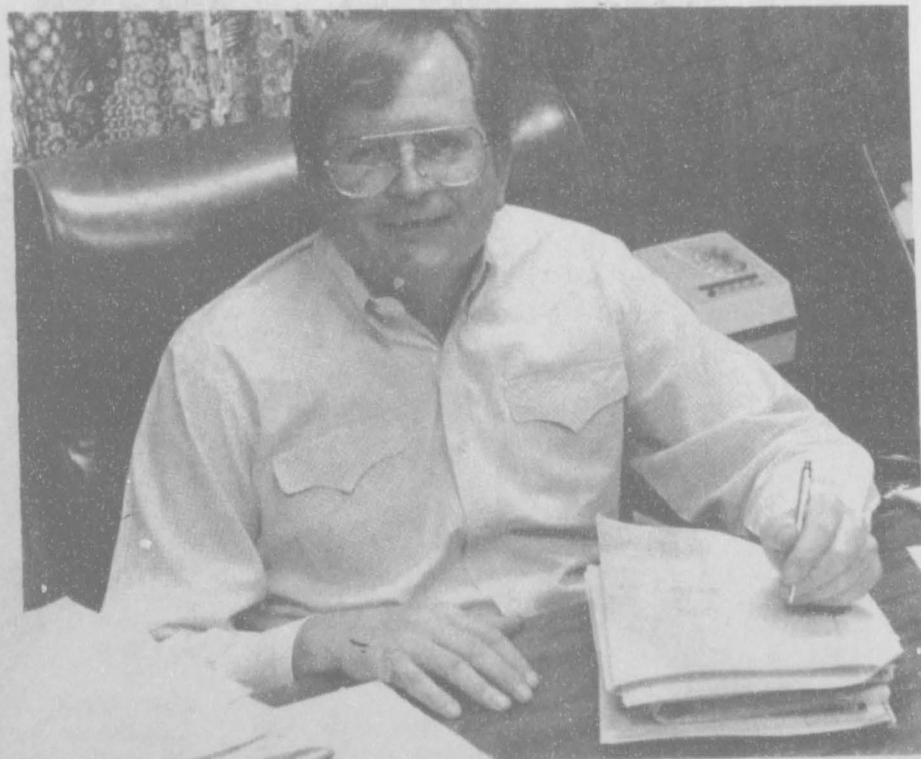
SALE

2115 N. Hobart
Pampa
665-1954

9.9%
APR Financing

OVER 50 TO CHOOSE FROM

Bob Pearson CANDIDATE FOR MAYOR



Attorney, with Degrees from Texas Tech University

Oil & Gas Producer

Farmer-Rancher

Past President of the Chamber of Commerce

City Council Member, 2 Terms

Member of the Church of Christ

Member of Development Council at High Plains Baptist Hospital

Director, First National Bank, Spearman

Member and Supporter of Other Local Civic Organizations

Familiar With Economics of Business

I would appreciate your vote in the May 7 city election for the office of Mayor. Thank you.

Pol. Advt. pd. for by Bob Pearson Election Committee, Bob Pearson, treasurer, Box 545, Spearman, TX 79081



VOTE

Sat. May 7, 1988

DON REED

for city councilman

★ Married with four children

★ Member of First United Methodist Church

★ Spearman resident for 25 years

★ Member of Spearman Lions Club

★ Superintendent of Transpetco for 8 years

I will strive to maintain the quality leadership the Spearman City Council has set forth throughout the past several years.

Please exercise your right to vote Saturday, May 7, in the city election.

Your vote would be appreciated.

*Thank you,
Don Reed*

Pol advt. pd. for by Don Reed, Election Committee, Don Reed, treasurer, 622 S. Townsend, Spearman, TX 79081.

WHAT'S ENTERTAINMENT

A Full Week of Programming.....

THURSDAY AND FRIDAY EVENING'S PROGRAMMING UNAVAILABLE

SATURDAY May 7

- MORNING**
- 8:00 [2] SportsCenter
 - [7] U.S. Farm Report
 - [9] Larry Jones
 - [12] Daybreak
 - [13] Arthlene Rippey
 - 8:05 [1] 17 GunsMoke The Hanging of Newby
 - 8:30 [2] Thoroughbred Digest (R)
 - [5] Voltin
 - [8] Young and Slim Again
 - [9] Heart of Chicago
 - [12] Sports Close Up
 - [13] R.W. Shembach
 - 7:00 [2] Tom Mann Outdoors (R)
 - [3] Market to Market
 - [4] Gummi Bears
 - [5] MOVIE: Firewalker (1986) Soldiers of fortune help a woman search for Indian treasure. Chuck Norris, Louis Gossett, Jr. PG. 1:45
 - [7] Little Clowns of Happytown
 - [8] Superbook Club
 - [9] U.S. Farm Report
 - [10] Hello Kitty's Furry Tale Theater
 - [12] Daybreak
 - 7:05 [1] 17 Bonanza Rich Man, Poor Man
 - 7:30 [2] Best of Bill Dance
 - [3] Madeline Cooks Three international vegetarian dishes are featured.
 - [4] 4 Smurfs
 - [7] All New Pound Puppies
 - [8] Watchkins Pilot Premiere
 - [9] World Tomorrow
 - [10] Muppet Babies
 - [12] Big Story
 - [13] John Jacobs
 - [SHOW] MOVIE: Union Depot (1932) Two hobos find a grip loaded with clothes and money. Joan Blondell, Douglas Fairbanks, Jr. NR. 1:08
 - 8:00 [2] Flahin' Hole
 - [3] Lap Quilting
 - [7] My Pet Monster
 - [8] Gerbert
 - [9] Charlando
 - [12] News Update
 - [13] KPFL
 - 8:05 [1] 17 National Geographic Explorer Serving Time
 - 8:10 [12] Healthweek
 - 8:30 [2] Outdoor Life Magazine With William Conrad
 - [3] Art of William Alexander
 - [7] Little Wizards
 - [8] KidsWorld
 - [9] People to People
 - [10] Moneyweek
 - [13] Toddler's Friend
 - 9:00 [2] All-American Pulling Series From Atlanta, GA (R)
 - [3] Frugal Gourmet
 - [4] 4 ALF
 - [5] MOVIE: Lucky Lady (1975) A widowed saloon owner starts a run running scheme in the 1930s. Gene Hackman, Liza Minnelli. PG. 1:57
 - [7] Real Ghostbusters
 - [8] Rin Tin Tin
 - [9] Minority Business Report
 - [10] 10 Pee Wee's Playhouse
 - [12] News Update
 - [13] Joy Junction
 - [SHOW] MOVIE: Lust for Life (1956) Biographical drama based on artist Vincent Van Gogh's tormented life. Kirk Douglas, Anthony Quinn. NR. 2:02
 - 9:10 [12] ShowBiz Week
 - 9:30 [2] Boardwalk and Baseball's Super Bowl of Trivia (R)
 - [3] This Old House
 - [4] 4 And the Chipmunks
 - [8] Sky King
 - [9] Superman Crime Wave
 - [10] 10 Mighty Mouse: New Adventures
 - [12] Style with Elsa Kienach
 - [13] Gospel Bill
 - 10:00 [2] Scholastic Sports America (R)
 - [3] Make Yourself at Home Learn secrets of refinishing furniture; how to rescue ailing plants.
 - [4] 4 Fraggle Rock
 - [7] Bugs Bunny and Tweety Show
 - [8] Lone Ranger
 - [9] Good Times Matter of Mothers
 - [10] 10 Popeye and Son
 - [12] News Update
 - [13] Davey and Goliath
 - 10:05 [1] 17 NWA Pro Wrestling
 - 10:10 [12] Science Technology Week
 - 10:30 [2] SportsCenter Gameday (L)
 - [3] Great Chefs of Chicago
 - [4] 4 New Archies
 - [7] Flintstone Kids
 - [8] Rifleman
 - [9] 9 Anglers in Action
 - [10] 10 Dennis the Menace
 - [12] Baseball '88
 - [13] Babushka and the Amazing Lamb of God
 - 11:00 [2] Auto Racing Sports Car Club of America
 - [3] Justin Wilson's Louisiana Cooekin' Wilson prepares pig in a microwave, cook's tasso salad, and grillades.
 - [4] 4 Footloose
 - [5] MOVIE: Outrageous Fortune (1987) Rival actresses become unlikely partners in a cross-country man-hunt. Shelley Long, Bette Midler. R. 1:39
 - [7] Animal Crack-ups
 - [8] GunsMoke
 - [9] Soul Train
 - [10] 10 Teen Wolf
 - [12] Newsday
 - [13] Circle Squares
 - [SHOW] MOVIE: My Demon Lover (1986) A woman falls for a sexy bum who suffers from a strange curse. Scott Valentine, Michelle Little. PG. 1:26
 - 11:05 [1] 17 MOVIE: Ben (1972) Rats take to the city drains and are befriended by a young musician. Lee Harcourt Montgomery, Joseph Campanella. PG. 1:35
 - 11:30 [2] Victory Garden
 - [4] 4 Spectacular World of Guinness Records
 - [7] 7 American Bandstand
 - [10] 10 Galaxy High
 - [12] Evans and Novak
 - [13] One Way Game

EVENING

 - 8:00 [2] SportsCenter (R)
 - [3] Depressal Junior High Melanie refuses to join race when she's teased about her first bra.
 - [4] 4 Star Trek: The Next Generation NR. 1:00
 - [5] MOVIE: The River Rat (1984) An old crime and a young daughter complicate the life of an ex-con. Tommy Lee Jones, Martha Plimpton. PG. 1:33
 - [7] 7 Hee Haw
 - [9] 9 It's a Living
 - [10] 10 Star Search 1:00
 - [12] Crossfire Saturday
 - [13] Benny Hinn
 - 8:30 [2] NHL Hockey Playoffs: Campbell Conference (L)
 - [3] Outdoor Oklahoma
 - [8] Campbells Bird of Paradise
 - [9] 9 Mema's Family
 - [12] Sports Saturday

- 6:35 [1] 17 Major League Baseball Phillies at Braves (L)
- 7:00 [3] Lawrence Welk Mother's Day
- [4] 4 Facts of Life Blair preaches against her former practices; Rick returns home to Jo.
- [7] Dolly Dolly's guests are Dabney Coleman, Loretta Lynn and Jackie Mason.
- [8] Crossbow Misalliance
- [9] 9 MOVIE: Wolfen (1981) A man pursues a deadly predator through the streets of New York. Albert Finney, Diane Venora. R. 1:55
- [10] 10 High Mountain Rangers Jesse and an injured runner are marooned in a wilderness snowstorm.(R)
- [12] PrimeNews
- [13] Betty Jean Robinson
- [SHOW] MOVIE: My Demon Lover (1986) A woman falls for a sexy bum who suffers from a strange curse. Scott Valentine, Michelle Little. PG. 1:26
- 7:30 [4] 4 227 Mary envies the success of her friend, now a renowned psychologist.
- [8] Watchkins Pilot Premiere
- [13] Zola Levitt
- 8:00 [3] Great Performances Shakespeare's classic romantic tragedy, from Metropolitan Opera House.
- [4] 4 Golden Girls On Mother's Day, the ladies recall memorable Mother's Days.
- [5] MOVIE: Outrageous Fortune (1987) Rival actresses become unlikely partners in a cross-country man-hunt. Shelley Long, Bette Midler. R. 1:39
- [7] 7 Ohara Ohara and Shaver are plunged into drug smuggling scheme and murder. (R)
- [12] ShowBiz Week
- [13] Robert Schuller
- 8:30 [4] 4 Amen Despite Thelma's protest, the deacon marries Roxanne (Jackee).
- [12] This Week in Japan
- [SHOW] Poison A woman is the object of affection of her boyfriend and ex-husband. Mary Jo Keenan, Victor Slezak. 0:30
- 9:00 [4] 4 Hunter Hunter and McCall suspect a colleague of a series of murders.
- [7] 7 Spenser: For Hire Attempt to keep Spenser from tracking a missing child leads to murder.
- [8] Paper Chase Burden of Proof
- [9] 9 News
- [10] 10 West 57th CBS News primetime magazine. John Ferrugia, Meredith Vieira.
- [12] Evening News
- [13] R.W. Schambach
- [SHOW] Comedy Spotlight: Louie Anderson at the Guthrie (1986) Louie Anderson returns to Minneapolis for a hilarious performance. NR. 1:00
- 9:20 [1] 17 Three Stooges
- 9:30 [2] Legends of the Brickyard 1977; Indianapolis 500 Films

SUNDAY May 8

MORNING

 - 6:00 [2] SportsCenter
 - [5] MOVIE: Garbo Talks (1984) A dying, old style leftist wishes to meet Greta Garbo before she dies. Anne Bancroft, Ron Silver. PG. 1:44
 - [8] Jimmy Swaggart
 - [9] Dr. D. James Kennedy
 - [11] 17 Tom and Jerry
 - [12] Daybreak
 - [13] Jerry Bernard
 - 6:30 [2] World Sport Special (R)
 - [4] 4 New Zoo Revue
 - [7] 7 Christopher Closeup
 - [9] 9 Robert Schuller
 - [12] Big Story
 - [SHOW] Goldy II: The Saga of the Golden Bear An orphan's pet bear is kidnapped. NR. 1:31
 - 7:00 [2] NBA Today (R)
 - [4] 4 James Robison
 - [7] Spiderman
 - [8] Dr. D. James Kennedy
 - [9] 9 Chicago's Very Own
 - [10] 10 Robert Schuller
 - [12] Daybreak
 - [13] John Hagee
 - 7:05 [1] 17 Flintstones
 - 7:15 [9] 9 What's Nu
 - 7:30 [2] Inside the PGA Tour (R)
 - [4] 4 Amazing Grace Bible Class
 - [7] 7 Voltin
 - [9] 9 Heritage of Faith
 - [12] Politics '88
 - 7:35 [1] 17 Tom and Jerry
 - 8:00 [2] Motorweek Illustrated Weekend Edition (R)
 - [3] NatureScene
 - [4] 4 Day of Discovery
 - [5] MOVIE: A New Leaf (1971) A bankrupt bachelor plans to marry and dispose of a wealthy woman. Walter Matthau, Elaine May. G. 1:42
 - [7] 7 Young Universe
 - [8] Sunday Best
 - [9] 9 Mass for Shut Ins
 - [10] 10 Second Baptist Church
 - [12] Newsday
 - [13] Earl Paulk
 - [SHOW] Mom and Dad Can't Hear Me New kid in school won't invite her friends to her deaf parents' house. Rosanna Arquette, Stephen Elliot. NR. 0:46
 - 8:05 [1] 17 Flintstones
 - 8:30 [2] Legends of the Brickyard 1975; Indianapolis 500 (R)
 - [3] Outdoor Oklahoma
 - [4] 4 Larry Jones
 - [7] 7 Daniel Boone
 - [9] 9 Popeye
 - [10] 10 First Baptist Church
 - [12] Your Money
 - 8:35 [1] 17 Andy Griffith Barney Hosts a Summit Meeting
 - 9:00 [2] Lighter Side of Sports (r)
 - [3] National Geographic Mysteries of Mankind
 - [4] 4 World Tomorrow
 - [7] 7 Loyd Ogilvie
 - [9] 9 Visionaries
 - [12] News Update
 - [13] James Robison
 - [SHOW] MOVIE: Pretty in Pink (1986) Rich boy and poor girl fall in love despite their friends' objections. Molly Ringwald, Andrew McCarthy. PG. 1:36
 - 9:05 [1] 17 Good News
 - 9:10 [12] On the Menu
 - 9:30 [2] This Week in Sports
 - [4] 4 Oral Roberts
 - [7] 7 Here Comes the Brides
 - [9] 9 Captain Power
 - [10] 10 CBS Sunday Morning
 - [12] Newsmaker Sunday
 - [13] Richard DeHaan
 - 9:35 [1] 17 MOVIE: Come (1977) A resident surgeon investigates a series of comas at a hospital. Genevieve Bujo, Michael Douglas. PG. 1:51
 - 10:00 [3] Nature Tom Williams gives insights into England's Hampshire Avon River.
 - [4] 4 San Jacinto Baptist Church
 - [5] MOVIE: Tin Men (1987) A couple of aluminum siding salesmen become best of enemies. Richard Dreyfuss, Danny DeVito. R. 1:53
 - [8] Gerbert
 - [9] 9 MOVIE: Broken Arrow (1950) One man's courage helps bring peace between the Apaches and settlers. James Stewart, Jeff Chandler. 1:33
 - [12] News Update
 - [13] Dr. D. James Kennedy
 - 10:10 [12] Travel Guide
 - 10:30 [2] SportsCenter Gameday (L)
 - [3] This Week with David Brinkley
 - [8] Gospel Bill
 - [12] NBA Preview
 - 11:00 [2] Lumberjack World Championships (R)

- 3:00 [2] Best of American Muscle Magazine
- [4] 4 Las Vegas Invitational Final round golf (L)
- [8] GunsMoke
- [12] News Update
- [13] In Touch
- [SHOW] MOVIE: J. Edgar Hoover (1987) This drama traces the life of the dynamic architect of the FBI. Treat Williams, David Ogden Stiers. NR. 1:50
- 3:10 [12] Science Technology Week
- 3:30 [2] Auto Racing IMSA Grand Prix of West Palm Beach
- [3] French Chef
- [12] Politics '88
- 3:55 [1] 17 Three Stooges
- 4:00 [3] This Old House
- [5] MOVIE: Garbo Talks (1984) A dying, old style leftist wishes to meet Greta Garbo before she dies. Anne Bancroft, Ron Silver. PG. 1:44
- [7] 7 War of the Stars
- [8] Empire No Small Wars
- [12] Newswatch
- [13] Garrett Benjamin, Jr
- 4:05 [1] 17 Beverly Hillsbillie The Clampetts Go To Hollywood
- 4:30 [3] Oklahoma Gardening
- [7] 7 Sybervision
- [12] Twilight Zone
- [13] Newsmaker Sunday
- [13] Jimmy Swaggart
- 4:35 [1] 17 NWA Main Event
- 5:00 [3] Tony Brown's Journal
- [4] 4 News
- [7] 7 ABC World News Sunday
- [8] Big Valley Town of No Exit
- 7:00 [3] Nature (1987) Probe the relationship between man and the African elephant.
- [4] 4 Super Bloopers and Practical Jokes Catch new bloopers from programs such as Cheers and Family Ties.
- [7] 7 Remembering Marilyn (1988) Host Lee Remick celebrates the enduring image of Marilyn Monroe.
- [8] Animals of Africa The Spy
- [10] 10 Murder, She Wrote Devastating scandal threatens to ruin a friend's political career.
- [12] PrimeNews
- [SHOW] MOVIE: Down and Out in Beverly Hills (1986) A crazy family gets even crazier when they adopt a derelict. Nick Nolte, Bette Midler. R. 1:37
- 7:30 [8] American Snapshots
- [9] 9 At the Movies
- [13] Ricardo Castellanos
- 8:00 [2] Upstairs, Downstairs (1988) Georgina marries and Richard prepares to retire from public life.
- [4] 4 NBC Sunday Night at the Movies Something is Out There, Part 7 (1988) Intergalactic woman and cop join forces against escaped alien being. Joe Cortese, Maryam d'Abo.
- [5] MOVIE: Tin Men (1987) A couple of aluminum siding salesmen become best of enemies. Richard Dreyfuss, Danny DeVito. R. 1:53
- [7] 7 ABC Mini-Series The Bourne Identity, Part 1 (1988) Man struggles to regain his lost memory and to avoid assassins. Richard Chamberlain, Jaclyn Smith.
- [8] In Touch
- [9] 9 Star Search
- [10] 10 MOVIE: CBS Sunday Movie The Caine Mutiny Court-Martial (1986) Naval trial of a lieutenant who relieved his captain of command. Eric Bogosian, Jeff Daniels.
- [11] 17 National Geographic Explorer Drug Clans of Lebanon
- [12] Week in Review
- [13] E.V. Hill
- 8:30 [13] Loyd Ogilvie
- 9:00 [3] Masterpiece Theatre Mountbatten attempts to ease tensions between the Hindus and Muslims.
- [8] Changed Lives
- [9] 9 News
- [12] Evening News
- [13] Kenneth Copeland
- [SHOW] MOVIE: The Secret of My Success (1987) Young kid from Kansas is determined to take business world by storm. Michael J. Fox, Helen Slater. PG. 1:50
- 9:30 [2] Legends of the Brickyard 1978; Indianapolis 500 films
- [8] Rook Alive

MONDAY May 9

- EVENING**
- 6:00 [2] SportsCenter
 - [3] Nightly Business Report
 - [4] [7] [10] 10 News
 - [8] Remington Steele The Steele That Wouldn't Die
 - [9] 9 Cheers Norman's Request
 - [12] Moneyline
 - 6:05 [1] 17 Andy Griffith New Doctor In Town
 - 6:30 [2] NHL Hockey Playoffs: Campbell Conference (L)
 - [3] Oklahoma News
 - [4] 4 M*A*S*H
 - [7] 7 Wheel of Fortune
 - [9] 9 Barney Miller Chinatown, Part 1
 - [10] 10 Love Connection
 - [12] Crossfire
 - 6:35 [1] 17 Sanford and Son Of Brown Eyes
 - 7:00 [3] The Making of a Continent Look at the Great Basin and Lava Plains and Yellowstone National Park.
 - [4] 4 ALF ALF takes a job as a paper boy to help pay the cost of his upkeep.
 - [5] MOVIE: The Money Pit (1986) A young couple needing a new home quickly tries to renovate a mansion. Tom Hanks, Shelley Long. PG. 1:32
 - [7] 7 MacGyver Protecting two assassination targets, MacGyver nearly becomes victim.
 - [8] Crazy Like a Fox Till Death Do Us Part
 - [9] 9 MOVIE: Fletch (1985) A reporter is asked to commit murder while solving a mystery. Chevy Chase, Dana Wheeler-Nicholson. PG. 1:36
 - [10] 10 Kate & Allie Allie is penniless when she accidentally leaves her purse in a cab.(R)
 - [12] PrimeNews
 - [13] TBN Today
 - [SHOW] MOVIE: 52 Pick-Up (1986) A businessman is wrongly framed in a murder. Roy Scheider, Ann-Margret. R. 1:50
 - 7:05 [1] 17 MOVIE: The Beastmaster (1982) A young man in feudal times uses supernatural powers to recover. Marc Singer, Tanya Roberts. PG. 1:58
 - 7:30 [4] 4 My Two Dads Judge Wilbur invites media scrutiny of Michael, Joey and Nicole.
 - [10] 10 Deigning Women Suzanne resorts to a high flying gamble to settle her IRS debts. (R)
 - [13] Marilyn Hickey
 - 8:00 [3] Discoveries Underwater Classify artifacts found underwater as scraps or valuable relics.
 - [4] 4 NBC Monday Night at the Movies Something is Out There, Part 2 (1988) Brian and Ta'ra attempt to annihilate the super-powered creature. Joe Cortese, Maryam d'Abo.
 - [7] 7 ABC Mini-Series The Bourne Identity, Part 2 (1988) Bloody trail leads Bourne to an inevitable confrontation with Carlos. Richard Chamberlain, Jaclyn Smith.
 - [8] 700 Club Telethon
 - [10] 10 Newhart Joanna sets George up on a blind date with antique dealer Irma Brown.
 - [12] Larry King Live!
 - [13] LaVerne Tripp Family
 - 8:30 [5] MOVIE: Dangerously Close (1986) High school vigilantes use violence to advance their own bigotry. John Stockwell, J. Eddie Peck. R. 1:35
 - [10] 10 Eisenhower & Lutz Bud is the victim of Megan and Kay's self-improvement drives.
 - [13] Hal Lindsey
 - 9:00 [3] Great Railway Journeys of the World A journey from Cape Town to the Victoria Falls, a romantic journey. 1:00
 - [9] 9 News
 - [10] 10 Cagney & Lacey Simple embezzlement case turns into a multi-million dollar fraud case.
 - [12] Evening News
 - [13] Praise the Lord
 - [SHOW] Codename: Kyril (Part 1) (1988) The KGB hierarchy resolves to ferret a traitor within its midst. Edward Woodward, Ian Charleson. NR. 2:00
 - 9:30 [2] Major League Baseball Magazine
 - [11] 17 MOVIE: Corvette Summer (1978) A young man spends his summer looking for his stolen Corvette. Mark Hamill, Annie Potts. PG. 1:45

TUESDAY May 10

- EVENING**
- 6:00 [2] SportsCenter
 - [3] Nightly Business Report
 - [4] [7] [10] 10 News
 - [8] Remington Steele The Steele That Wouldn't Die
 - [9] 9 Cheers I'll Be Seeing You
 - [12] Moneyline
 - [13] Dr. D. James Kennedy

*** LEGEND ***

Channel	Station
[2]	ESPN
[3]	OETA
[4]	KAMR
[7]	TMC
[8]	KVTV
[9]	CBN
[10]	WGN
[11]	KFDA
[11]	TBS
[12]	CNN
[13]	TBN
	SHOW

It's Spring Cleaning Time at Gillaspie Chevrolet-Olds!

You can get
FACTORY CASH REBATES
UP TO \$1,000

On select Chevrolet and Oldsmobiles Now!
But Hurry In... The Rebates Won't Last Forever!

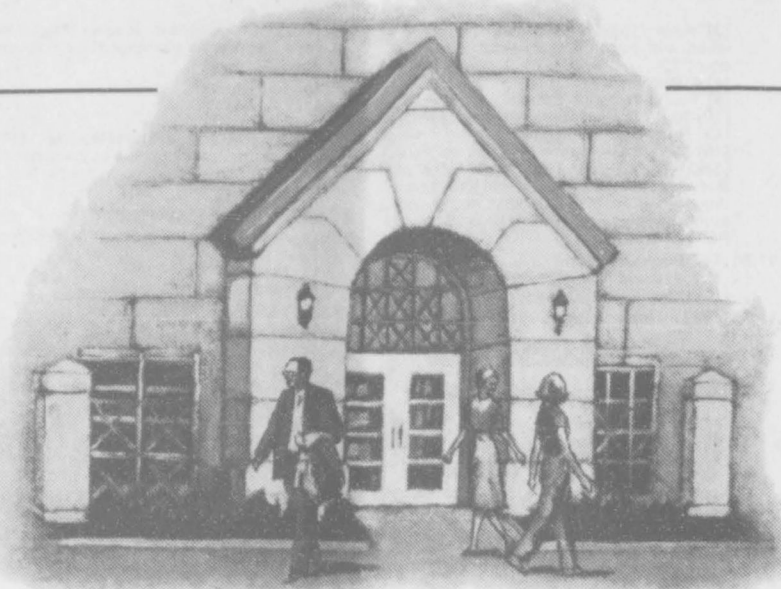
Mr. Goodwrench

GILLASPIE
CHEVROLET-OLDSMOBILE

Hwy. 207 South 659-2541 SPEARMAN

- [7] 7 Texas Country Reporter
- [8] Campbells
- [9] 9 This Week in Baseball 0:30
- [12] Loyd Ogilvie
- [13] Kenny Foreman
- 12:35 [1] 17 Beverly Hillsbillie The Clampetts are Overdrawn
- 1:00 [2] PGA Golf Vantage at the Dominion
- [3] Adam Smith's Money World 0:30
- [4] 4 New Gidget
- [7] 7 Tournament of Champions Tennis (L)
- [8] MOVIE: The Restless Breed (1957) A secret agent's son seeks revenge for his father's murder. Scott Brady, Anne Bancroft. NR. 1:21
- [9] 9 Lead Off Man (L)
- [12] Week in Review
- [13] Chuck Smith
- [SHOW] MOVIE: Invitation to the Dance (1957) This ambitious film tells 3 stories entirely through dance and mime. Gene Kelly, Igor Youskevitch. NR. 1:33
- 1:05 [1] 17 Major League Baseball Phillies at Braves (L)
- 1:15 [9] 9 Baseball Cubs at Giants (L)
- 1:30 [3] Firing Line NR.
- [4] 4 NBC SportsWorld Survival of the Fittest Contest (T)
- [13] John Hinkle
- [5] MOVIE: Jumpin' Jack Flash (1986) Computer operator gets urgent SOS messages from a trapped British spy. Whoopi Goldberg, Stephen Collins. R. 1:40
- [12] Larry King Weekend (R)
- [13] Fred Jordan
- 2:30 [3] The Quietest Death of Eli Creekmore (1988) Examine the case of a three year old boy beaten to death by his dad.
- [10] 10 NBA Basketball Playoff Game (L)
- [13] TBN Today
- [9] 9 MOVIE: The Three Musketeers (1974) D'Artagnan helps the Musketeers recover the Queen's diamonds. Oliver Reed, Raquel Welch. PG. 1:47
- [10] 10 CBS News
- [12] Newswatch
- [SHOW] MOVIE: Pretty in Pink (1986) Rich boy and poor girl fall in love despite their friends' objections. Molly Ringwald, Andrew McCarthy. PG. 1:36
- 5:30 [2] Auto Racing Pro Celebrity Race
- [3] Candid Campus
- [4] 4 NBC News
- [10] 10 Barney Miller
- [11] 17 Leave It To Beaver
- [12] Inside Business
- [13] Fulton Buntain

NOW'S THE TIME TO MAKE THE BEST MOVE OF YOUR LIFE.



AFFORDABLE RETIREMENT IN THE NEW CONTINENTAL

Here's retirement the way it should be lived. Active, productive and surrounded by a community of friends.

Welcome to The Continental. The *new* Continental. One hundred twelve apartment residences like no others in the Southwest.

Right for your budget. Right in the heart of Amarillo.



AFTER A BUSY DAY, UNWIND IN THE ACTIVITIES ROOM. OR RELAX ON YOUR OWN PRIVATE BALCONY, PERCHED ABOVE THE AMARILLO SKYLINE.

YOUR LEGACY OF SECURE, STYLISH LIVING

The Continental's renovations are complete. And you've got to see it to believe it.

Amarillo's finest retirement community offers you spacious residences in one- or two-bedroom models, gracious dining, 24-hour security and a host of other features.

You'll find a fitness center, lounge, convenience store, library, game room, wide-screen cable television and an in-house staff who assure The Continental is everything you want it to be.

As a resident, you have your own private balcony, housekeeping service, beauty parlor, covered parking and scheduled transportation all across the city. Long-time Texans remember The Continental as one of the Panhandle's premier residential addresses. The legacy lives on for you today.

CHEF CHARLES WHITTEN CREATES EVERY MEAL WITH YOUR GOOD TASTE AND GOOD HEALTH IN MIND.

AN ECONOMICAL LIFESTYLE, FREE OF HOMEOWNER HEADACHES

You'll find The Continental's beauty, comfort and security very affordable. Because, joining together as a community, everyone saves.

Plus, The Continental levies no entrance or endowment fee when you move in.

A reasonable monthly charge—rent on your residence and all Delicious, balanced meals are yourself with cooking. You'll taxes and utility bills either. chores that never seem to end.

is your own. That's life at The Continental.



as low as \$575—covers the the accompanying services.

included. So you don't concern never worry about homeowner's

Nor about yardwork, repairs and the other A dollar is worth a dollar again. And your time



A STIMULATING WAY TO LIVE, A UNIQUE PLACE TO CALL HOME

In The Continental, you live in a roomy, fully equipped apartment, surrounded by your own furnishings and belongings.

So you're truly at home. But you're also at the center of the action.

You'll be taking trips, going to movies and cultural events, shopping, playing sports and games, attending worship services, continuing your education, and taking an active part in the life of Amarillo.

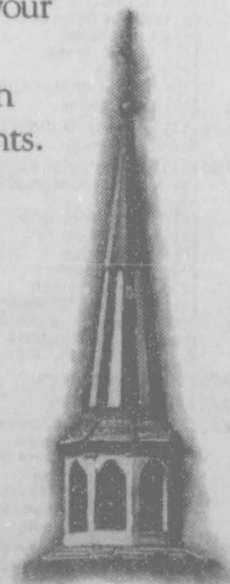
You set your own agenda. Do a lot. Or do a little. Relax for hours in neighboring Elwood Park. Run some errands or keep your appointments. Residents even excel in part-time jobs.

This is the time of your life. Live it in a place like no other.



THE CONTINENTAL HAS COMFORTS AND OPPORTUNITIES FOR EVERYONE, WHETHER YOU PREFER READING OR AEROBICS. YOU DECIDE WHAT "ACTIVE" MEANS.

AT THE CONTINENTAL, YOU'RE CLOSE TO STATELY CHURCHES, PARKS, SHOPPING AND DINING, MEDICAL CARE AND MASS TRANSIT CONNECTIONS.



RESERVE A TOUR TIME JUST FOR YOU

Please come by our Information Office in The Continental at 1300 South Jackson. We're open on weekdays from 8 til 5, Saturdays from 10 til 5, and Sundays from noon to 5. Or call us collect at 806-374-0142.

We'll send The Continental brochure. Then we'll reserve a tour time expressly for you. You'll see everything from our model residences to the penthouse Summit Club.

Once you're ready, we'll help you make the best move of your life.

The Continental

GRACIOUS LIVING FOR THE MATURE ADULT

1300 South Jackson Amarillo, Texas 79101

For information, please call 806-374-0142.

Your Home Is Full Of Hidden Dollars



Call 659-3434

Turn idle items into cash fast with a Want Ad

Bluestem Marketing
Grass seed sales organization representing quality area Producers. Providing a full line of **OLD WORLD BLUESTEM** Grass seed, and some Native Blends. Contracting for 1989 seed at **lowest prices** ever. We stand behind all seed sales.
FINANCING
Competitive Prices
Plains *WW Spar
Canada *Caucasia
Call - Richard Lee
G-S-3tp (405)338-8023

Real Estate

FOR SALE: country home with acreage. By appointment only after 4 p.m. 659-3817.
S24s 7to
FOR SALE: Nice small 3 bedroom home. Fenced, carport, close to school. Great rental property or starter home. 1010 Dressen. Call 1-669-9765, Pampa.
S18-rtn
FOR SALE: 3 br, 1 bath, house with fireplace, storage building, cellar and car-port. Prices in lower 30's. 1007 S Haney, Call 659-3447.
S27 5tp T only
FOR SALE: 1980 Town and Country mobile home, 14x80, 3 br, 2 bath, call 659-3629.
S26s 2tp
ABANDONED HOMES - Take over payments on 2 and 3 bedroom homes. **Qualify by phone.** (806) 381-1352. Call collect.
S46-rtn
FOR SALE: nice 3 bedroom brick home, approx. 1300 sq. ft.; single garage. Priced in 30's. Good neighborhood! Call 659-2263 after 5:00
rtn
Country Home For Sale: 1600 sq. ft., 3 bedrooms, 2 full baths, den with wet bar, large living area. Extra large kitchen with cabinets and counter space to spare. Satellite T.V. and large fenced-in backyard. Located 2 miles from Spearman on paved road. Shown by appointment only. Phone 659-3557 after 5:00 p.m.
S25S-4tp

NOTICE
Wallace Monument Co.
Monuments, Curbing,
Grave Covers
Local Representative
LEONARD JAMESON
Spearman, Texas

L & M
Body Works
1501 Hwy. 15
659-2775
Tailpipes - \$29.95
Mufflers - \$39.95
Most Duals - \$160.00
complete

ALCOHOLICS
ANONYMOUS
MEETING
Hansford County Library
122 Main - Spearman
Open Meeting 2nd Tuesday
ALANON
TUESDAY
8:00 P.M.

OSGOOD
MONUMENT CO.
Amarillo, Texas
Dealers of Rock of Ages
Granite, as well as all
colored granites, marble
and bronze memorials.
represented by
BOXWELL BROS.
FUNERAL HOME
519 S. Evans
659-3802

HELP WANTED
HELP WANTED
Full time & part time at Spearman Pizza Hut. EOE Please apply in person.
G30-2tc

HELP WANTED: Mill hand for feed mill, Caprock #2, apply in person, Northeast of Gruver.

SERVICES
Red River Fish Farms - Stocking Catfish, Bass, Hybrid Bluegill, Fathead Minnows, for your lakes and ponds. Wednesday, May 4 we will be in Gruver at Double D Feed & Seed from 10:30 to 11:30 a.m. and in Spearman at B & B Farm Industries from 1:30 to 2:30. Transport containers with oxygen provided for move. For information call (915)529-4277, Abilene.
S26-3t
REPAIR on vacuum cleaners and appliances. Call 659-3301.
S19S-rtn

CESSPOOLS \$250. Trash holes \$275. Big Hole Drilling. (806)372-8060 or 383-2424.
S-Ap&M
Will do fencing, all kinds. Call 659-2118.
S26-4tp
NEED A CARPORT? Call me, I will erect a custom structure at a reasonable price. Call 435-3222 after 6 p.m.
S26-4tc

micellaneous
GARAGE SALE: Saturday May 7, 27 Golden Circle. 9:00-4:00. Baby items, toys, clothing and more.
1tp

GARAGE SALE: 1017 S. Townsend Lots of adults and children's clothing & misc. Fri. & Sat. 8:00 a.m. S-27, 1tc

For Rent
TRAILER SPACE FOR RENT: Fenced yards, underground utilities, concrete walks and patio. Close to high school and swimming pool. Call 435-6640 or 435-5080.
S19S-rtn
FOR RENT: 3 BR. 2 bath trailer call 659-2506

STRAYED: 9 miles S.E. Spearman, 3 steers or heifers (?), branded 71 left side, weight 170#, call 733-2848 or 733-2293.
S27 3tr

For Sale
FOR SALE: 1977 White Chevrolet pickup, good condition, needs engine repair, \$1195, call 659-3566 or 659-2403.
S24 rtn

FOR SALE: 1987 Ford pickup, 4 sp, 6 cylinder, call Vance 659-2506.
S24 rtn

FOR SALE: Mattress and box springs, Excellent condition. \$200 Call 659-2103.
S27 4tc

FOR SALE: Old World Grass Seed, SPAR, Plains, Canada, \$12 pls. pound. (405)885-7201 before 7 a.m. (806)852-2113 after 5 p.m.
S26-4tc

LEGAL NOTICE
NOTICE OF PUBLIC HEARING
SPEARMAN PLANNING AND ZONING COMMISSION
Date: May 26, 1988
Time: 2:00 p.m.
Place: City Council Chambers, 30 S.W. Court Spearman, Texas
Purpose: To consider in public hearing the rezoning of the tract of land listed below plus one-half of all bounding streets, alleys and public ways: **Outlots 1, 2, and 4, 56 Acres of Outlot 4, City of Spearman, Texas.**

If the Planning and Zoning Commission favorably considers the request or the applicants file a written appeal with the City Secretary by 12:00, noon, June 9, 1988, the City Council will hold a public hearing to consider the proposed change as follows:
Date: June 14, 1988
Time: 8:00 p.m.
Place: City Council Chambers, 30 S.W. Court Spearman, Texas
For additional information call 659-2524.
Cheryl Gibson
City Secretary

S27 1tp

CITATION BY PUBLICATION
THE STATE OF TEXAS: TO LEE BROOKS and wife, EVA BROOKS and all other persons claiming any interest in land under Deed heretofore given to LEE BROOKS and wife, EVA BROOKS of Morse, Hansford County, Texas and the Deed is dated June 11, 1930 and recorded on November 6, 1930 in Volume 34, Page 162 of the Deed Records of Hansford County, Texas; Defendants in the above titled and numbered cause.
YOU ARE HEREBY COMMANDED TO APPEAR before the Honorable District Court, 84th Judicial District of Hansford County, Texas, at the Courthouse

in Spearman, Texas at or before 10:00 a.m. of the first Monday next after the expiration of 42 days from May 2, 1988, the date of issuance of this citation by filing a written answer to Plaintiff's Petition that was filed in the Court on May 2, 1988, Numbered 3559 on the docket of the court and entitled

LLOYD POOLE, Plaintiff, v. LEE BROOKS and wife, EVA BROOKS, Defendants.

A brief statement of the nature of this suit is as follows:
All of Lots Numbered Twenty-One (21) and Twenty-Two (22), in Block Number Four (4), of the Original Town of Morse, Hansford County, Texas as shown by the map or plats thereof duly recorded in the Deed Records of Hansford County, Texas to which reference is here made for a more particular description.

NOTICE: You have been sued. You may employ an attorney. If you and your attorney do not file a written answer with the clerk who issued this citation by 10:00 a.m. on the Monday next following the expiration of forty-two days after you were served this citation and petition, default judgment may be taken against you.

The officer executing this Writ shall promptly serve the same according to the requirements of law, and mandates hereof, and make due return as the law directs.
Issued under my hand and the seal of this Court at Spearman, Hansford County, Texas on the 2nd day of May 1988.

Amelia Johnson, Clerk
District Court
84th Judicial District of
Hansford County, Texas
S27 4t Only

Offered by
EMMETT R. SANDERS
REALTOR
3 bedroom home, attached garage.

EMMETT R. SANDERS
REALTOR
659-2516, nights 659-2601

AA Real Estate Sampler
Allen Alford-Broker-659-3034
Hester Sue Crawford-Sales
659-3060 or 659-2074
Dennis Nelson-Sales-659-3608
Larry Trosper-Sales-659-3491
316 S. Bernice - under contract.
619 Evans - 1350 sq. ft.
32 N. Snider - 1850 sq. ft.
729 Cotter - 1519 sq. ft.
506 Endicott - 1100 sq. ft.
907 Dressen - Nice starter
505 Haney - 1600 sq. ft.
408 E. Kenneth - 3 bd. 2 bth
App 1630 sq ft.
714 Steele Dr. 3 bd 2 bath app
1323 sq ft.
721 Wilbanks 4 bd 2 bath 1838
sq ft.
Duplex - Kenneth & Hoskins
WE WANT TO BE YOUR REALTOR

BOB HARDY REALTY
803 Wilmeth Dr.
659-3440
NEW LISTINGS
718 Cotter - 3/bd. - 1 bath,
fenced. Nice!
Robert Hardy - broker

Century 21
GOLDEN SPREAD REALTY
Janye Helton Pointer, Broker
Owner, 435-5444
SALES ASSOCIATES
T.O. Lesly 659-3836 or 659-2028
1112 S. Bernice - 3-1/4. Location! Location!
607, 609, 611, 615, Haney - Small house/2 apartments.
615 E. Kenneth - 3/2. Corner lot with extra acreage! Reduced!
619 Bernice - 4/2. Big home... small payments!
210 S. Bernice - 3/1. New roof and siding!
102 Wanda - 3/1. Immaculate!
118 Townsend - 4/2. Apartment included!
130 N. Hoskins - 3/2. Roomy inside and out!
711 Collier - 3/1. Why rent?
322 S. Barkley - 3/1. Good location at affordable price!
811 Townsend - 2/1. Affordable!
5 mi. east of Spearman - 3/1 1/2 to be sold as is!
321 N. Hoskins - Trailer & 3 lots!
120 N. Hazelwood - 2/1. Good starter home!
Industrial Road - 40 x 60 all steel building!
402 S. Haney - 3 bd., 2 bath, 2 car garage. All brick. 8' x 31' storage bldg. Storm cellar.
FARM
640 acres of grass in Sherman Co., over 500 acres in the C.P.R. Program.
640 acres of wheat and milo land in Hansford Co.
3 Ranches in Brownwood area. Call today!

Your Help To
ELECT
Bob Pearson
as
Mayor, City of Spearman
Will Be Appreciated

Bob Pearson has the qualifications and experience, two key factors in any candidate for Mayor.

We Urge Your Support In Electing
Bob Pearson
Vote In The City Election
Saturday May 7, 1988

PHILLIP & LYNNA RENNER
R.E. SANDERS
KIM & STEPHANIE BROCK
JIMMY & LOIS SHIELDKNIGHT
RICHARD & ELIZABETH HOLTON
JOHN & JO LINDA HUTCHISON

J.L. & MARY BROCK
JUDITH & BUTCH SCHAEFER
GENE & FRANCIS CUDD
KENT & GLENDA GUTHRIE
JOHN R. COLLARD JR.
BILL & GINGER PITTMAN

Pol. Advt. paid for by Bob Pearson
Bob Pearson, treasurer, Box 545, Spearman, TX 79081

Mother's Day & Graduation
SALE
up to 50% off
Men's slacks Ladies' jeans
sportswear
dresses lingerie children's
at
MAIN STREET
506 Main Gruver 733-5040

Club News

GIRL SCOUTS TROOP 127

By Cathy Biggs

Cadette Troop 127 took tours of the Chamber of Commerce and the First State Bank.

Friday, April 22 the Cadette Girl Scout troop talked with Cora Queener at the Chamber of Commerce that afternoon. She talked about her duties, the coming events in Spearman, what it's like to work in such a position. She shared items of interest with girls and looked at the large picture of Spearman to see where everyone lived. We finished the hour with taking a few brochures and some took applications for Miss Teen Hansford.

Friday, April 29 the Cadette Girl Scout troop talked with Cora Queener at the Chamber of Commerce that afternoon. She talked about her duties, the coming events in Spearman, what it's like to work in such a position. She shared items of interest with girls and looked at the large picture of Spearman to see where everyone lived. We finished the hour with taking a few brochures and some took applications for Miss Teen Hansford.

Friday, April 29 the Cadette troop went to the First State Bank for a tour. Mr. Larry Trosper and Mr. Kevin Russell were so helpful to us in learning how a bank is run.

Mr. Trosper took the girls through the bank vault and showed them the safety deposit boxes. He showed them many of the front offices. The art and paintings in the bank were absolutely beautiful. Then he took them to see the customer service area.

Mr. Russell helped us under-

stand how the small and large IBM Computers operated. They help keep track of everyone's personal accounts and much more bank business that is too numerous to mention. I am sure that the bank functions much easier than 15 or 20 years ago. A final tour of the kitchen was taken and Mr. Trosper served Cokes with lots of cheer from the girls.

THE HIGHLIGHT OF THE TOUR WAS TO SEE THE VERY LARGE BANK VAULT CLOSED AND LOCKED FOR THE WEEKEND. We were also shown how they keep up with the stock market by a little TV by the door.

Girl Scout Troop 127 thanks these two businesses very much for their time and effort in helping them to understand how they work.

Girl Scout Troop 127 would like to thank the many, many people who helped support us in the Bake Sale. By Buying our goods or by donations. We are trying to earn enough money for our trip to White Sands, N.M. to visit the missile range and other sites close by. Thanks Again.

WTSU Quartet to play in Gruver today

The Gruver Music Club is sponsoring a woodwind quartet to perform in Gruver.

The quartet, from West Texas State University, will be at the Gruver High School Auditorium today at 2 p. m.

The public is invited to attend this performance.



BOB BOXWELL

Boxwell seeks candidacy for city councilman

Robert S. Boxwell announces his candidacy for the position of Spearman City Councilman. A Spearman resident since 1972, Boxwell and his wife, Candy, have two daughters; Regan, age 9, and Erin, age 4. Boxwell feels that he has several qualities that would lend themselves well to the work of the city council.

Boxwell has a bachelor's degree in business administration from Texas Christian University. Upon graduation from T.C.U. in 1969, he served in the U.S. Army in Vietnam, and after completing military service and some further education, Boxwell moved to Spearman to assume management of Boxwell Bros. Funeral Home. He has served in positions of leadership in church, civic, and other local organizations for most of the time he has lived in

Spearman.

An active member of the First Christian Church, he has served as deacon, elder, administrative board member and chairperson, of several standing committees. He has also served as a director of the Spearman Chamber of Commerce, as well as a member of the City Planning and Zoning Commission for several years now.

Boxwell has served on the board of the Golden Spread Senior Citizens Center since its inception, and currently serves the center as Vice President. He is also an active member of Spearman PTA, currently serving as a member of the executive committee of that organization.

He feels that his business training and experience, together with his demonstrated leadership in this community, make him worthy of consideration for your vote for city councilman on May 9.

Sixth grade band captures sweepstakes

In the recent band festival held at the Spearman High School Spearman came away with several honors.

The Sixth grade band received sweepstakes with a one (the highest rating) in sight reading and a one in concert. In the solo and ensemble contest, the sixth grade came away with 29 - one ratings and 13 - two ratings.

The Jr. High band received a first division in concert and a second division in sight reading. In the solo and ensemble contest the Jr. High band took 23 firsts and three second divisions.

Texas Craft Festival set for May 7 & 8 in Dumas

Dumas-On May 7th and 8th the General Women's Division of the Moore County and Dumas Chamber of Commerce will co-sponsor with the Top of Texas craft Association the First Annual Top of Texas Craft Festival. The event will be held in the Moore County Community Building in Southeast corner of Dumas on Saturday from 10 a.m. to 6 p.m., and on Mother's Day from 1 to 5 p.m.

Crafters from as far away as Colorado and New Mexico have already reserved booths, as well as several from Amarillo, and of course many crafters from Moore County will be exhibiting their goods. Several booths are still available for \$25 by phoning the Moore County and Dumas Cham-

ber of Commerce Office at 806-935 2123.

The Top of Texas Craft Association is a newly formed organization of area crafters that holds monthly meetings to exchange ideas and information and conduct instructional demonstrations that are open to the public. They have approximately 40 members and this is to be their first major community event since their formation several months ago.

The General Women's Division is co-sponsoring this event as a money making project for the Chamber of Commerce.

There will be door prizes, demonstrations, concessions, chairs to sit and visit, and lots of fun for all!!!

THANK YOU
I would like to thank everyone for their prayers, cards, phone call and visits while I was in the hospital, also the food I received after coming home. A special thanks to Dr. Sangalang and the nursing staff. We really appreciate all of our friends and neighbors in Spearman.
Cecil Reynolds
Itc

Hospital Report

Patients in the hospital are Grace Bennett, Hazel Jackson, Carrie Avila, Paul Lopez, Ailene White, Byron Peddy and Elsie Watley. Dismissed was Jimmy Morley.

Markets

WHEAT	\$2.52
MILO	\$3.12
CORN	\$2.12

BEEF PROMOTION!

LET'S KEEP IT GOING!



VOTE YES May 10 at your county extension office

Beef is coming back because beef producers are fighting back!

Today, more consumers are eating more beef and cattle prices and profits are up.

Let's vote to continue The National Beef Promotion Program. It's working! May 10, vote "YES"!

FACT! The program is controlled by producers. Cattlepeople run it. It's *not* a government program.

FACT! Each state decides how to spend 50 cents of every dollar.

FACT! Beef importers and all producers pay their share - \$1 per head. This money is invested in consumer education, promotion, advertising and research.

FACT! Only 5% is allowed for administrative costs. 95% of every dollar is spent on the program itself.

NATIONAL BEEF PROMOTION IS GREAT!
VOTE YES IN '88

Hansford County Beef

Referendum Committee

Linda Latta, chairman

WANTED!

Non Profit Group to Bring Pro Wrestling to Spearman as fund raiser.

you can raise BIG money for your group or organization! For information call

Carla Mann (806)793-5072.