

# Queen Candidates



Shari Vernon



Anne Marie Jarvis



Mitzi Pearson



Carly Shieldknight



Jill McLain



Kim Jenkins

HANSFORD LIBRARY  
120 MAIN ST.  
SPEARMAN, TX.

24 hr. prayer  
service 659-2911

# The Spearman Reporter

Volume 78 No 51

The Spearman, Reporter, Spearman, Texas 79081

Thursday October 23, 1986



## King and Queen

King Jesse Lozano places a Kiss on the Queen, Shari Vernon!  
Jesse and Shari were crowned Home-

coming King and Queen in ceremonies at the Spearman - Gruver game Friday.



pictured are the 1986 Football Queen and Attendants. L to R are

Kim Jenkins, Carly Shieldknight, Jill McLain, Queen - Shari Vernon, Anne

Marie Jarvis and Mitzi Pearson.



The Spearman Band in action

## Lynx win homecoming game 34-6

Prior to the ballgame Friday night, the Lynx crowned this year's homecoming king and queen. Queen candidates this year were Ann Marie Jarvis, Jill McLain, and Shari Vernon. King candidates were Dusty Hill, Mike Pearson, and Jesse Lozano. The winners being crowned were Shari Vernon and Jesse Lozano.

#11 Tim Stedje, returned the kick-off 15 yards to the 30 yard line of Gruver. #29 Loyd Cator, carried for 6 yards and then the Greyhounds were forced into a punting situation. The Lynx took the ball on their own 22 yard line. #10 Brett Davis carried for 8 yards, followed by a 22 yard carry by #12 Mark Garnett. Davis then connected with #80 Keith Benson for an 11 yard pass. On 4th and a long 4, #45 Dusty Hill tried for the first down, coming up inches short. Gruver's #11 Tim Stedje then found #20 coming out of the back field for a 9 yard pass. #29 Loyd Cator then carried for 23 yards over the right side. Cator again carried for 5 yards. Following a pass attempt that failed Gruver punted.

From the 27 yard line #22 Mike Pearson carried for a 12 yard gain. Hill busted for 4 more before #19 Ross Renner caught Davis behind the line on 3rd and 15. Spearman punted, and Gruver took over from the 45. Completing a pass for 11 yards before #66 Allen Gardiner dumped the Greyhounds for a ten yard loss. #21 Kris York then intercepted a Gruver pass on Spearman's 30 and returned it 26 yards to the 44.

Following a 18 yard run by Davis, the Lynx completed a 24 yard pass. Gruver then forced the Lynx to cough up the ball in a fumble at the 7 yard line. Stedje then connected with #1 for a 13 yard pass. Cator found a hole and scrambled for another 12 yards.

Gruver fumbled and #11 Will Black recovered.

Dusty Hill carried for a 23 yard gain, and Davis then rushed for another 12 to take the Lynx to Gruver's 2 yard line. Davis went the other two for the TD. Davis kicked the extra point to give the Lynx a 7 point lead.

After the kick-off Gruver got the ball on the 45 following a penalty. Stedje connected with #1 for 13 yard pass. Cator hustled for a 12 yard gain. On 4th and 9 a screen pass came up short of the first and the Lynx took over.

Hill carried for 13 yards on two plays, and #22 Mike Pearson gained 8 more. Davis kept the ball tacking on another 20 yards. Hill carried again for 13 yards and Davis went across for the TD. Extra point attempt was blocked.

On the kick-off #12 Brent Wagner returned the ball 10 yards to the 27. On a reverse #10 Tim Fletcher rushed for 8 yards, and Cator carried for two more. Following a penalty, Gruver was faced with 1st and 15. Stedje found Fletcher on a 17 yard pass, and again for 15 yards. #10 Davis then intercepted the ball on the twenty yard line to keep the Greyhounds from scoring before halftime.

Gruver kicked to start the second half. Hill rushed for 18 yards before the Lynx fumbled on the 44 yard line. Stedje connected with #20 Brian Gillispie for 12 yards. Then #21, for the Lynx, Kris York intercepted the ball and returned it 26 yards.

A penalty put the Lynx back to the 36 yard line. Hill gained 4 yards and Davis carried for 13 more before Spearman punted the ball. On third and long Gruver quick kicked from their own 19 yard line. Spearman took over from Gruver's 25. #33 Stan Brandt found room for 6 yards, and Davis connected with #81 twice for 11

yards and 4 yards. Brandt scored on a 15 yard scamper with Davis running for the conversion.

Following the kick-off the Greyhounds were forced to punt. From the Lynx 17, Davis found Benson for 9 yards. Brandt carried twice for 7 yards and 5 yards. The Lynx fumbled and Gruver recovered on Spearman's 17. Stedje hit Cator for a 8 yard pass and #19 Ross Renner carried for 7 yards. Cator scored from the 1 yard line and the conversion failed on a pass attempt.

Spearman took the ball on their twenty yard line after the kick. Hill carried twice for 14 yards and 5 yards. #28 Alan Beeson rushed for 6 yards, and Brandt carried for 3 yards. Davis kept the ball for 12, then following a penalty #33 Stan Brandt busted lose over the left side for a 34 yard TD. Davis kicked the extra point.

Cator returned the kick-off 19 yards to the 34 yard line. A Lynx penalty moved the Greyhounds to the 49. Cator received the ball on a pass from Stedje for a 18 yard gain that was called back due to a penalty. Gruver then fumbled on the 33 yard line with Spearman's #52 Lance Swan recovering. Brandt, finding daylight rushed 33 yards for the goal line. Extra point failed.

Following the kick, Cator carried the ball six times for a total gain of 39 yards. Stedje connected with #1 for 7 yards. #11 Will Black intercepted a Greyhound pass and returned it 28 yards to the 37.

#40 Jeff Gustin then carried for 7 yards. #22 Mike Pearson crashed through the Gruver defense for a fifty yard gain to the 12 yard line. Following a five yard penalty and a 3 yard sack the Lynx found themselves on the Gruver 20. #12 Mark Garnett

## Farmers

The Hansford-Hutchinson Farmers Union will hold its annual meeting on October 24, 1986, at 7:30 p.m. Burton and Wanda Schubert will host a covered dish supper at their home at 1026 Townsend, Spearman.

Farmers Union members are invited to come and bring the family a friend, and a covered dish for the group supper. President Joe Morris of Gruver stated that the officers promise good food and an interesting meeting for all.

President Morris advises that the organization will plan county projects and activities for the 1986-87 year, elect delegates to the Texas Farmers Union state convention, and adopt resolutions to submit to the TFW Policy Drafting Committee. Other officers of the Hansford-Hutchinson Farmers Union are Omar Sutton of Spearman and Nancy Morris of Gruver. Burton Schubert of Spearman serves as District 1 Director on the TFW Executive Board.

found room for ten, and #28 Alan Beeson added on another 6. The downs expired for the Lynx and the Greyhound took over deep in their own territory at the 1 yard line. The clock ran out and the Lynx defeated the Greyhounds by a 34 to 6 score for Spearman's homecoming.

This Friday the Lynx will play at Stinnett, kick-off will be a 7:30. The Stinnett Lions Club are sponsoring a chili supper prior to the Stinnett Homecoming game. All fans are invited to attend.

by Billy Close

## Road check is \$16,049.16

State Treasurer Ann Richards has sent checks totaling \$7.3 million to Texas 254 counties for road construction and maintenance.

The Treasurer each year disburses money appropriated by the legislature for the Lateral Road Program. The grants may be used by counties for the purchase of right-of-way and for construction and maintenance of lateral roads, farm-to-market roads or state highways.

The money is allocated to each county under a formula based on the county's area, rural population and lateral road mileage. Treasurer Richards said.

Hansford County received \$16,049.46 for their share.

## Mexican Dinner

The Sacred Heart Catholic Church will host their annual Mexican dinner on October 26, 1986. Everyone is invited to come and savor this wonderful spanish meal.

Prices for the meal will be children \$3.50 Adults \$5.50. Take out orders will be ready at 11:30 a.m. and you may call for take out order at 659-2166.

We will have an enchilada plate with rice, beans, salad, sopapillas, nachos and hot sauce and to top it off you have a choice of desserts. Tea and coffee is also served. Come on and join us and listen to some easy listening spanish music and savor our spanish cooking. Remember that's This Sun, October 26, 1986.

Stinnett Lions Club chili supper 5-7 Fri!

## The Hansford Hospital Auxiliary

Will Have A Reception For:

Dr. Fred Taylor

Sunday, October 26th

2:00 P.M. to 3:00 P.M.

At The Hansford Hospital

Public Invited



## Legal Notice

FEDERAL EMERGENCY  
MANAGEMENT AGENCY  
FEDERAL INSURANCE  
ADMINISTRATION  
Proposed Flood  
Elevation Determinations

AGENCY: FEDERAL EMERGENCY  
MANAGEMENT AGENCY  
ACTION: PROPOSED RULE.  
SUMMARY:

Technical information or comments are solicited on the proposed base (100-year) flood elevations shown in your community's preliminary Flood Insurance Study and Flood Insurance Rate Map. These base (100-year) flood elevations are the basis for the floodplain management measures that the community is required to either adopt or show evidence of being already in effect in order to qualify or remain qualified for participation in the National Flood Insurance Program (NFIP).

### DATES:

The period for comment will be ninety (90) days following the second publication of this proposed rule in a newspaper of local circulation in the community.

### ADDRESSES:

Study and maps showing the proposed base flood elevations and their delineation are available for review at the City Hall, Spearman, Texas.

Send comments to:

The Honorable C. Ralph Blodgett  
Mayor of the City of Spearman  
P.O. Box 37  
Spearman, Texas 79081

### FOR FURTHER INFORMATION CONTACT:

John L. Matticks  
Acting Chief, Risk Studies Division  
Federal Insurance Administration  
Federal Emergency Management Agency  
Washington, DC 20472  
(202) 646-2767

### SUPPLEMENTARY INFORMATION

The Federal Emergency Management Agency gives notice of the proposed determinations of base (100-year) flood elevations, in accordance with Section 110 of the Flood Disaster Protection Act of 1973 (Pub. L. 93-234), 87 Stat. 980, which added Section 1363 to the National Flood Insurance Act of 1968 (Title XIII of the Housing and Urban Development Act of 1968 (Pub. L. 90-448)), 42 U.S.C. 4001-4128, and 44 CFR 67.4 (a).

These elevations, together with the floodplain management measures required by Section 60.3 of the program regulations, are the minimum that are required. They should not be construed to mean the community must change any existing ordinances that are more stringent in their floodplain management requirements. The community may at any time enact stricter requirements on its own, or pursuant to policies established by other Federal, State, or regional entities. These proposed elevations will also be used to calculate the appropriate flood insurance premium rates for new buildings and their contents and for the second layer of insurance on existing buildings and their contents.

Pursuant to the provisions of 5 USC 605(b), the Administrator, to whom authority has been delegated by the Director, Federal Emergency Management Agency, hereby certifies that the proposed flood elevation determinations, if promulgated, will not have a significant economic impact on a substantial number of small entities. A flood elevation determination under Section 1363 forms the basis for new local ordinances, which, if adopted by a local community, will govern future construction within the floodplain area. The elevation determinations, however, impose no restriction unless and until the local community voluntarily adopts floodplain ordinances in accord with these elevations. Even if ordinances are adopted in compliance with Federal standards, the elevations prescribe how high to build in the floodplain and do not proscribe development. Thus, this action only forms the basis for future local actions. It imposes no new requirement; of itself it has no economic impact.

Lessees and owners of real property in the City of Spearman, Hansford County, Texas, are encouraged to review the preliminary Flood Insurance Study and Flood Insurance Rate Map available at the address cited above. Proposed base flood elevations along flood sources studied in detail are shown on the flood profiles in the study. The flood sources studied in detail are:

Range of Base Flood Elevations  
#Depth in feet above ground.  
Source of Flooding \*Elevation in feet (NGVD)  
Spearman Draw \*3,098 - \*3,102

## "Kids of America"

"Kids of America" are coming to Perryton, Texas for the first time and will offer children from the ages of 0-17yrs. the opportunity to participate in one of the most outstanding and exciting youth development programs in the country. The event will be Sunday, November 2nd at the Perryton High School Auditorium, 1102 So. Jefferson, Perryton, Texas. "Kids" just completed their Grand Finale '86 at the fabulous loews ANatole where children from all over the country participated for Savings bonds, Trips, Wardrobe Attire, Etc. you can win; your chance to compete at Grand Finale '87 by entering our first area competition and receive your entry fee paid to go on to the national level. This youth development program in the form of a beauty and talent pageant will offer participation for boys and girls between the ages of 3-17 yrs in a special up to 3:00 minute talent presentation and judging will be based on skill and entertainment. The beauty competition is separate and judged by a different panel of judges and participants may enter one or both. Beauty contestants will have a judge's interview, model on stage in casual wear and formal wear. (Short dress 3-12 yrs, long gown for 13-17yrs) top five finalist in both beauty and talent receive trophies and winner receive either crowns or medals of honor and

banners. The Beautiful Baby division for ages 0-11mos, 12-23mos, 24-35mos is for both boys and girls and they are judged equally on grooming, alertness and personality. Top five finalist receive a trophy and winner receives a banner, trophy and entry fee paid to Grand Finale. Also offered is a photograph, either black/white or color, no larger than a 8x10. Judging is done by major agencies in the print and media field prior to the pageant date. You may enter the photogenic competition without entering any other event and do not have to be present during the pageant to win. Business sponsors are not required by the sponsors (can also be grandparents, friends, etc.) will be listed in the program book. We are also having a fun competition is for both boys and girls 0-17 yrs. and you do not have to enter any other portion of the pageant. This is a COSTUME CONTEST. So start getting out your ideas for an original costume. You must be pre-registered by mailing your entry form postmarked by Oct. 27th in order to have photographs judged and to be printed in the program book. For more information or to receive an entry form please call (806) 435-4145 or (214) 328-KIDS.

## Southwest Cattlemen's Credit Corporation Promotes Allison

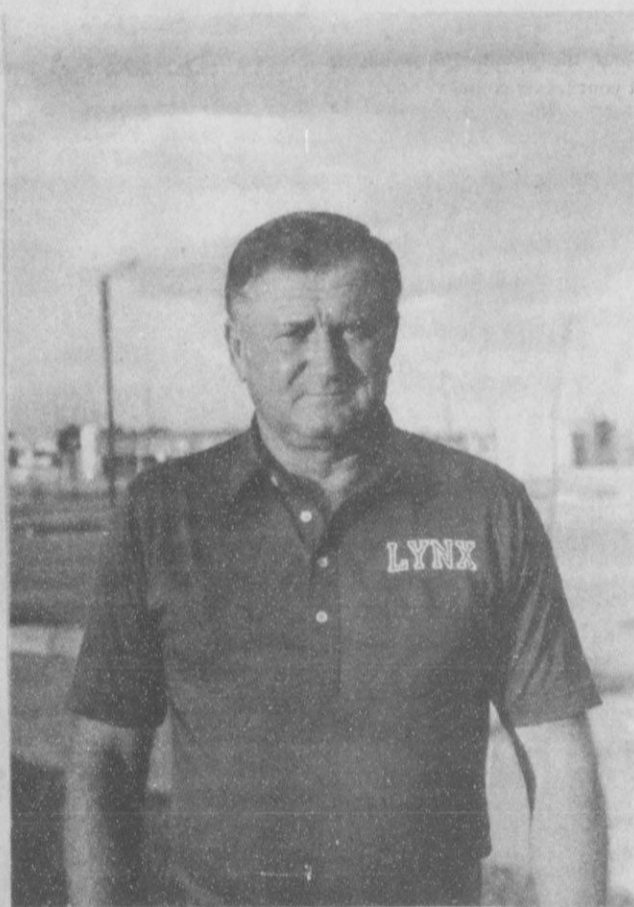
Merry Allison has been promoted to assistant Vice President of Southwest Cattlemen's Credit Corporation, the agricultural credit affiliate of First State Bank & Trust Co., as announced by Randy M. Phillips, executive vice president and trust officer of the booker bank.

Mrs. Allison continues a career which began almost six years ago with Southwest Cattlemen's Credit Corporation. She is responsible for the day-to-day office management and

will be taking on additional responsibilities as a result of her promotion.

Mrs. Allison is an active member of the National Association of Bank Women. She has also attended the Texas Tech Banking School in addition to completing an 11-week course in accounting through First Bank & Trust Company.

A native of Spearman, she now resides with her husband, Charles Allison, and their 10-year-old son, Chuck, at 109 Killingsworth in Booker.



Don Mullins

## Paw Power

Brett Davis, Mike Pearson, Dusty Hill, Stan Brandt, Kevin Nelson, Keith Benson, Alan Beeson, and Jeff Gustin, all had a hand in the most productive offensive show we have had this year. They all had in running and catching; a total of 492 yards for the best game thus far. Brett carried 13 times for 82 yards, passed for 75 yards, scored 2 touchdowns, kicked two extra points and ran another in for two points. Mike Pearson carried the ball for 108 yards on 12 trips. Dusty Hill carried the ball 17 times for 74 yards and caught one pass for 17 yards. Stan carried the ball 10 times for 101 yards and scored on runs of 37, 34, and 10 yards. Kevin and Keith caught 3 and 2 passes respectively for 29 & 29 yards. All this was made possible with blocking up front by Mike Parks, Jesse Lozano, Monte Ross, David Casarez and Allan Gardiner.

Our defense was headed by our secondary people because of the nature of Gruver offense. Dusty Hill led with a score of 44 and was followed by Will Black, Kris York, Jesse Lozano, and Matt Tucker. Kris inter-

cepted 2 passes and was followed by Will and Brett Davis in intercepting one each.

We had two weeks to work on Gruver and it paid off. We were concerned about their passing attack and we only allowed 129 yards passing. We stopped their big plays and they completed the shorter passes which kept them out of the end zone. We went but did not break.

Our offensive team grade was 70% and was led by Brett Davis with a score of 87%. He was followed by Stan Brandt, Alan Beeson, Jesse Lozano, Lance Swan, and Will Black with a score of 85, 83, 82, 82, and 80 respectively.

I think the support of everyone, the teams' attitude, the pep rally and all the hard work that was put forth were great in helping the past two weeks.

We are in preparation to meet a very strong Stinnett team. They are well balanced and we must play with much more determination than ever before to play with them. They are in the thick of the play-off race and will be up for us Friday night.

## Halloween Costume Party and Dance

Panhandle singles will hold their Second Annual Halloween Costume Party and Dance, Saturday, October 25, from 9p.m. to 1 a.m. at the Expo Center, Perryton, Texas.

Music will be provided by DeeJay Eric Stevens and the Music Machine of Kiss FM 108, Amarillo. Prizes will be awarded for the best costumes and the winner of a dance contest.

Cover Charge is \$5 per person in costume and \$7 without costume.

All Panhandle singles are invited to attend and join in the fun and festivities. For more information, call Fonda Brown at 435-3050 or Debra Blackshear at 435-5890.

## PERRYTON

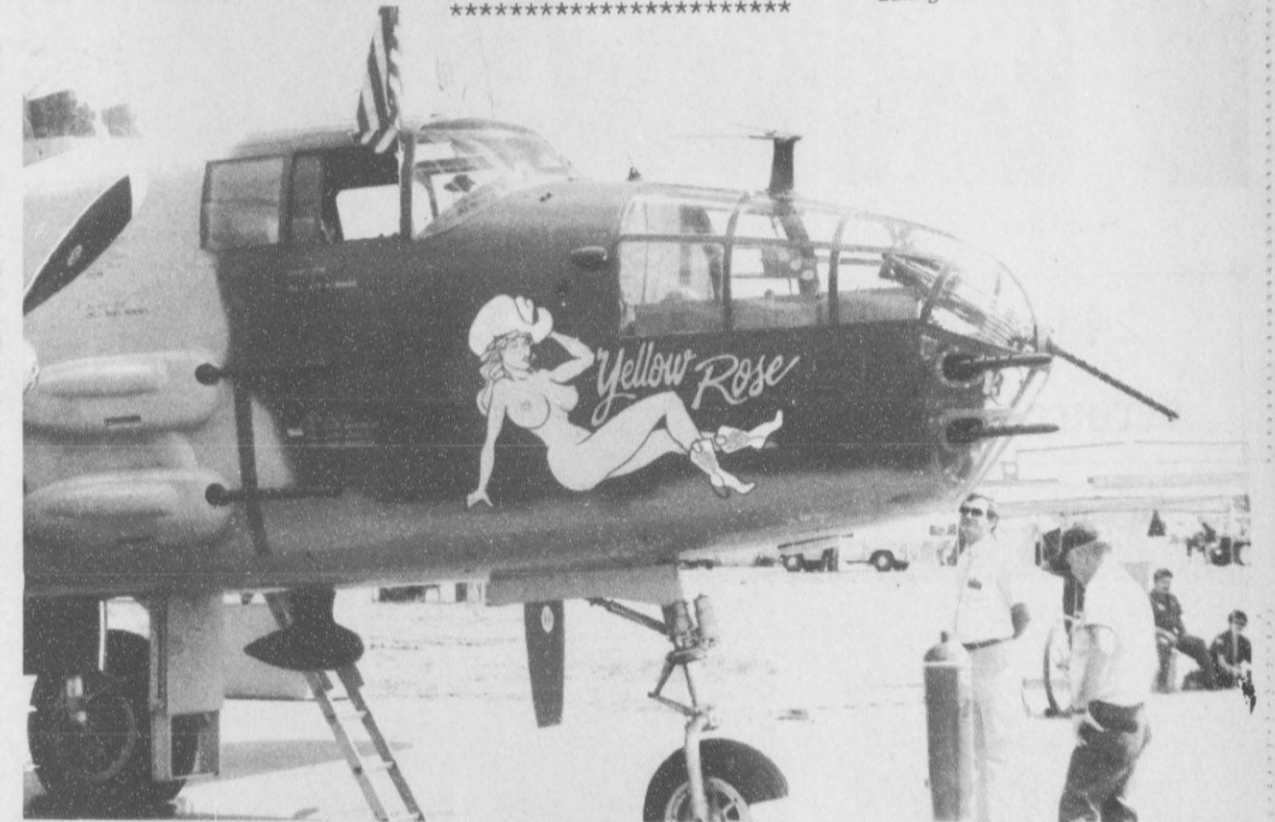


- BEAUTIFUL BABY  
(Boys & Girls ages 0-35 mos.)
- TALENT  
(Boys & Girls ages 3-17 yrs.)
- BEAUTY  
(Girls ages 3-17 yrs.)
- PHOTOGENIC  
(Boys & Girls ages 0-17 yrs.)

For more information call:  
**806-435-4145**  
**(214)328-KIDS**

**CORRECTION:**  
The score on the Rotary Lions Club Slo-Pitch game should have 24-6 not 42-6!  
\*\*\*\*\*

Max Banks owner of Baker and Taylor Drilling Company, also flew in a WW II airplane. Max was a gunner on a B-24, and used a Sears and Roebuck Catalog as a flak jacket during the war!



Eldon Gurley, of Perryton, brought the program at the Rotary Club Monday of this week. The program was about the Confederate Air Force. The B-25 pictured above is one of the

planes belonging to the Confederate Air Force. Members of the Rotary Club who flew in WWII planes include Roy Bulls, a gunner on a B-24, and Pete

Fisher, crew member of a B-17. Also Rotarian John Hutchison's father was one of the first to fly in a B-24

**HERGERT GM**  
SPEARMAN

### HAS WHAT IT TAKES TO TAKE CARE OF YOU...AND YOUR CAR.

**CLIP & SAVE**

We will give a **10% discount** on all **labor and parts** for **CASH** or for being a **Preferred Charge Customer** (bill paid in full every 30 days). This offer is excluded on the **Following low specials and inspection stickers**. This offer ends October 31st, 1986.

**8 POINT AIR CONDITIONER CHECK**  
Includes Drive Belt Adjustment, Adding Freon, Checking For Leaks, Inspecting Hoses & Clamps, Checking Coolant Level, Cleaning the Condenser, Testing the Pressure, and Testing the Performance.

**LUBE, OIL FILTER & OIL CHANGE**  
Proper Lubrication is Cheap Maintenance. If You Have Over 3,000 Miles On Your Oil, It's Time for a Genuine AC/Delco Oil Filter and GM Goodwrench Oil. Let Us Do It Quick and Easy!

**REPLACE WORN SHOCK ABSORBERS**  
Spongy Shocks Are Bad For You AND Your Car. Replace Them With GM Goodwrench Shock Absorbers and Ride In Comfort! They Come With a Lifetime Limited Warranty. See Us For Details.

**FRONT-END ALIGNMENT**  
Misalignment Can Wear Out Tires Before Their Time. Get Your Car Proper Alignment Including Camber, Caster & Toe Adjustment, Steering Linkage Check, and Tire Check. (Alignment Available Only at Hergert Pontiac-Buick-GMC, Spearman).

**HERGERT GM**  
SPEARMAN

ONLY **\$24<sup>95</sup>** SPEARMAN ONLY  
(Front Wheel Drive Slightly Higher)

**FRONT END ALIGNMENT**  
Improves Handling, Eliminates Shimmys, Shakes, Veering

*Mr. Goodwrench*

GM QUALITY SERVICE PARTS

Call For Convenient Appointment  
Offer Valid Until 10-31-86

**HERGERT GM**  
SPEARMAN

**SHOCK THERAPY?**  
Let Us Install Genuine GM Goodwrench Shock Absorbers with a Lifetime Limited Warranty. See Us For Details.

FOUR SHOCKS INSTALLED	<b>\$99<sup>95</sup></b>	TWO SHOCKS INSTALLED	<b>\$49<sup>95</sup></b>
-----------------------	--------------------------	----------------------	--------------------------

*Mr. Goodwrench*

Call For Convenient Appointment. Offer Valid Until 10-31-86

**HERGERT GM**  
SPEARMAN

**SLICK SAVINGS!**  
LUBE, OIL FILTER, AND OIL CHANGE ONLY ...

Includes 5 Quarts GM Goodwrench Motor Oil

**\$19<sup>95</sup>**

*Mr. Goodwrench*

Call For Convenient Appointment. Offer Good Until 10-31-86

**HERGERT**  
**PONTIAC-BUICK-GMC**  
S. HWY. 207 - SPEARMAN  
659-3721

# 10% discount

(PARTS AND LABOR)

*Mr. Goodwrench*



# BUY, SELL, TRADE OR RENT THROUGH THE CLASSIFIED ADS

**CLASSIFIED RATES**  
 Regular.....Per Word-\$0.13  
 Display.....Per Col. Inch-\$4.20  
 Double rate for blind ads  
 Minimum charges  
 Cash:.....\$4.00  
 Charge:.....\$4.50

**CASH IN ADVANCE ADS**  
 Work Wanted\*Trailers For Sale\*  
 Business Opportunities\*No Longer  
 Responsible\*Political Advertising\*  
 Child Care\*Babysitting\*  
 Garage Sales\*Out-of-County Ads-  
 unless advertiser has established  
 credit with  
 The Spearman Reporter

**DEADLINES**  
 To place or cancel ads  
 Fri., 12:00 p.m.....Sun. edition  
 Tues., 12:00 p.m.....Thurs. edition

The Spearman Reporter reserves the right to reject, edit, revise and properly classify all advertising submitted for publication. The Spearman Reporter also reserves the right to cancel any advertisement at any time.

The Spearman Reporter,  
 213 Main, P.O. Box 458  
 Spearman, Texas 79081

**Business Services**

**NOTICE**  
 Wallace Monument Co.  
 Monuments, Curbing,  
 Grave Covers  
 Local Representative  
**LEONARD J AMESON**  
 Spearman, Texas  
 35s-rtm

**MONUMENTS**  
 Save Agents and  
 Undertakers Profits

If it is inconvenient for you to visit our large display please phone collect (405) 327-0626 or write and we will call on you.  
**ALVA MONUMENT WORKS, INC.**  
 Alva, OK 73717

**STEAM RINSE & VAC**  
 Rinse and Vac Shampooer for rent at Gordons Drug. \$10.95 up to 24 hours.

**HAY SWATHING & Baling done.**  
 Call 733-2517 or Dennis at 733-5214.  
 27s-rtm-nc

**APPLIANCE REPAIR:** Call Jim Nobles, 659-3528.

**OSGOOD MONUMENT CO.**  
 Amarillo, Texas  
 Dealers of Rock of Ages Granite as well as all colored granites, marbles and bronze memorials.

represented by  
**BOXWELL BROS. FUNERAL HOME**  
**519 S. EVANS**  
**659-3802**

**PARA TODA OCACION**  
**BODAS\*QUINCEANERAS\*TODA CLASE DE EVENTOS**  
**Grupo Los Tury's**  
 Estan a sus ordenes para cualquier informacion llame a los telefonos 659-3923 y 659-5182  
**FOR ALL OCCASSIONS**  
**WEDDINGS\*BIRTHDAYS OR ANY IMPORTANT EVENT**  
**Grupo Los Tury's**  
 at your service for information contact them by calling 659-3923 or 659-5182  
 N.C.

**Special Notice**

**Panhandle Crisis Center** 101 S. W. Forth, Perryton, Texas 79070, 806-435-5013. Help is available at no charge for domestic violence and sexual assault. Call Panhandle Crisis Center, receive support during a difficult time. Counselors on call 24 hours a day. Call for help.  
 19-rtm-nc

**TOPS CHAPT.#1245 TOPS TAKE OFF POUNDS SENSIBLY.** We Meet Thursday at 6:30 at Boyds Beauty Salon, 310 W. 4th.

**WEIGHT WATCHERS** meets each Monday at 6:00 p.m. at the Home Demonstration Building, Spearman, Texas.

**Real Estate**

**NO DOWN PAYMENT!**  
 No payment for 45 Days  
 Qualify by Phone  
 806 381 1352  
 Call Collect  
 Financing by  
 Shelter America Corp.  
 Alliance Homes Inc.

**TAKE UP PAYMENTS ON TWO AND THREE BEDROOM HOMES.**  
**Alliance Homes Amarillo**  
 Qualify by Phone  
 806-381-1352  
 Call Collect

**FOR SALE or RENT:** 1 bedroom, 1 bath, large utility, kitchen and living room. Fenced front and back yard. Weekdays 8-6, 659-3380. Weekends and after 6, 659-5153. □  
 50-rtm

**FOR SALE:** Large house partially remodeled located at 410 S. Hoskins; includes two lots. Need to sell "as-is". Emmett R. Sanders, Realtor, 659-2516, nights 659-2601.  
 Rtn-T only.

**For Rent**

**FOR RENT:** Nicely Furnished 2 bedroom apartment, rent reduced - No Pets 659-3471  
 43-rtm.

**FOR RENT:** Efficiency apartment furnished, bills paid. Call 659-2117.  
 48S-rtm

**FOR RENT:** Trailer space in Spearman. All utilities, fenced and concrete walk ways. Call 435-5080.  
 38-rtm

**FOR RENT:** 1 bedroom apt. All bills paid.  
 659-3417, 659-3504, 659-3542  
 51-1tp

**For Rent:** 2 bedroom House call 358-9684 in Amarillo  
 46  
 rtn

**FOR RENT:** Why live in a trailer Park? Nice lot For Rent with Big Yard. \$65.00 per month. Call 659-3657.  
 47S-rtm

**Automobiles**

**FOR SALE OR RENT:** in Spearman 2 bedroom 2 bath Lancer mobile home 435-2920  
 50S-4tp

**Pets**

**FOR SALE:** ACFA Registered Smoke Persian Kittens. Price reduced. 659-5163.  
 49-4tp

Vote for  
**Doug Seal**  
 Democrat for Congress  
 P.O. ad. pd. for by Doug Seal for Congress Committee,  
 Bobbie Thomas, Treasurer, 806 First Avenue,  
 Wellington, Texas 79097

**Miscellaneous**

**JUST ARRIVED- 1986 Tri-Chem Christmas catalogue.** See the new Sun-glo, Sticker Art & Liquid Embroidery items. Get a head start on your gift list or craft projects. Call Joy at 733-2517.

**FOR SALE:**  
 King Size Bed-Serta Perfect Sleeper. Complete with headboard, custom spread, etc. Hickerson 659-3566 or 659-2403.  
 47-rtm

\$134.30 per month for a 2 bedroom Mobile Home 14.875 APR - 84 months \$500.00 down free delivery and set up. Ask for Walt at 806-376-4612  
 50S-2tc

**FOR SALE:**  
 Clean 71 pop-up Camper. Call 659-2630

Tomatoes \$4 to \$8 per bushel, you pick. Pumpkins \$2 to \$7 at 810 Barkley. Everything else in frozen. Thanks for your business. See you next year.  
 Mike Skinner 659-2129  
 50s-2tp

**FOR SALE:** 357 Colt Python 6" nickel, 357 Sw model 686, 6" Stainless. Also Dillon RL450B Progressive Reloader for more details Call 659-5189. After 5:00 p.m.  
 49S-49S-4tp

**FOR SALE: HALF PRICE!** Flashing arrow signs \$289! Lighted, non-arrow \$269! Nonlighted \$229! Free Letters! Few left. See locally. 1(800) 423-0163, anytime.

**VISA/MASTERCARD - Get Your Card Today!** Also New Credit Card, NO ONE REFUSED!  
 Call 1-518-495-3546 Ext. C-8017 24 hrs.

**ALCOHOLICS ANONYMOUS MEETINGS**  
 Monday & Thursday 8:00 P.M.  
 Saturday - 8:00 P.M.  
 7th & Birch

**ALANON**  
 Monday & Thursday - 8:00 P.M.  
 Phone: 435-3590, 435-5081  
 Club House Phone: 435-9974  
 [During Meeting Hours]

**WANTED:** Older model pick-up in good condition - call 659-2325  
 nc

**FOR SALE:** 1985 Silverado Suburban 4 wheel-drive, loaded, like-new, low-mileage, \$13,800. Call after 5 P.M. 659-2619.  
 50-2tp

**Situation Wanted**

Reliable babysitter will babysit in my home. Reference if needed. Call 659-3255 Sandra Moizzi  
 51-stp

**WANTED:** Custom work get a jump on your 1987 crop by working your ground this fall. Will Do: Chisel Plowing, discing, listing, rodweeding, NH3 application, combining of corn and milo, for less guaranteed fully insured. 806-384-2086.  
 50s-8tp

Sewing wanted, alterations etc. Baking and decorating cakes. I now have the Wuzzles cake pan "EleRo". Call Joy 733-2517.  
 46-rtm-nc

**WILL DO BABYSITTING** in my home. Any age. Call 659-2716.  
 50S-2tp

## Halloween

Strange and fantastic creatures will soon invade quiet neighborhood streets. Recreation centers will welcome groups of oddly costumed youngsters. Once again, Halloween arrives with all of its enjoyable frights and scares, and Texas Safety Association offers some tips to keep it happy, safe, and "deliciously scary."

"Although our children will spend the night 'pretending,' we, as responsible adults, need to take extra, realistic care to keep them safe on Halloween," advises George Gustafson, president of the association. "The young Franksteins and vampires will be thinking of treats and fun. We must prepare them, our neighborhoods, and ourselves to eliminate as many real dangers as possible."

Dangers that can ruin your child's Halloween thrills:

**--MASKS:** If a mask inhibits vision, it could contribute to a bad fall or a pedestrian accident. Sharp points or edges can scratch the skin or catch on other materials. Make certain masks fit securely, with large enough eye, nose, and mouth openings for unrestricted breathing and sight. Consider using non-toxic face paints or makeup instead of masks.

**--COSTUMES:** If the costume material is easily flammable, too long or flowing, or too dark, a child's safety could be at stake. Look for fire-resistant costumes that fit comfortable, and use reflective tape as part of the costume design.

**--NEIGHBORHOOD ROUTE:** If a child is unfamiliar with a new neighborhood or visits another area, he or she could become easily disoriented in the dark and then lose the way home. Pre-plan your child's route a day or two ahead. Arrange for an older brother, sister, or family friend to accompany the young "monsters" if a parent or other adult is unavailable. Be sure each ghost, goblin, or princess carries a flashlight or light stick.

**--YARD AND DRIVEWAYS:** Garden tools, hoses, trash cans, etc. can trip up even the most careful visitor in the dark. Clear the outside of your home so that your treats come without any threats to safety, and keep the area well lit.

"We must actively accept the responsibility for our children's safety. This includes preparing their costumes, watching for them as we drive, using child safety seats and fastening their safety belts when they ride with us, and inspecting their filled bags of treats when the night's revelry ends," emphasizes Gustafson. "Our children depend on us, expect us to keep them safe from harm, and learn from our continued caution."

*Legal*  
 The chief trouble with this country is too darned many legal ways to steal.  
 -Constitution, Atlanta.

**Century 21**  
**GOLD KEY REALTY**  
 Borger, Texas  
 Bobbie Corbet  
 Broker  
 Hester Sue Crawford--9-2074  
 Sales  
 Debbie Hawkins--9-2288  
 Sales

30 1/2 **Barkley**- Corner lot gives value to this property. Will sell for reasonable offer. 3 bedroom-1 1/2 bath.

610 **Haney**- Quality at low price! 3 bedroom-1 1/2 bath-kitchen-utility room-living area-screened porch-office. All rooms are large. Must see to appreciate. Extra storage.

1116 **Haney**- 3 bedroom-1 1/2 bath-nice location. Large rooms. See today!

1118 **Barkley**- Brick-2 bath-3 bedroom-large kitchen-den area-formal living area-double garage.

1102 **Townsend**- Spacious and beautiful 4 bedroom-3 bath-large kitchen with fireplace-formal living or dining room-large den with rock fireplace-utility and pantry. Inside is in excellent condition!

**Stinnett Lions Club**  
 Chili Supper  
 Friday Sept. 24th  
 5:00 - 7:00 p.m.  
**Stinnett School Cafeteria**  
 Adults \$2.50  
 Students \$2.00  
 Under 6 free  
 Support the Lions  
 then  
 Support the Lynx

**PTA**

The PTA will be sponsoring a Fall Carnival.  
 It will be Saturday November 1st from 6 til 9 at the County Barn. Any group, organization or individual interested in having a booth please call Lynna Renner 659-3587 or Eddie Gage 659-5172.  
 50-5tnc

**Political Calendar**

This newspaper is authorized to announce the candidacy of the following candidates for public office subject to the action of the voters in the PRIMARY ELECTIONS:

**DEMOCRAT**  
**FOR COUNTY TREASURER**  
 NORMA JEAN MACKIE  
**FOR COUNTY AND DISTRICT CLERK**  
 AMELIA C. JOHNSON  
**FOR STATE REPRESENTATIVE**  
 J.W. BUCHANAN  
**REPUBLICAN**  
**FOR COUNTY TREASURER**  
 ESCHOL BLANKENSHIP  
**FOR STATE REPRESENTATIVE**  
 DICK WATERFIELD

**Priority II**  
**REAL ESTATE**  
**806/659-3440**

1106 S. Haney - **PRICE REDUCED** - \$19,900, 3 bedroom, 1 bath, single car garage and fenced.

220 N. James, No Down Payment, Small Closing Cost, must have good credit - your choice, 2 bdrm or 3 bdrm. Owner will pay some of the closing costs for a little painting.  
 Leo K. Meyer Bob Hardy  
 Broker Sales

**Century 21**

118 **TOWNSEND**-LOTS OF ROOM FOR THE MONEY-in this 4 bedroom, 2 bath home. The huge lot and apartment in the rear make this an excellent buy. **REDUCED!**

1117 **Dressen** - 3 bedroom with fireplace, basement, single car garage, quiet neighborhood, central heat and central air.

101 W. 12th: 3 bedroom, 1 1/2 bath brick with wood fence in a quiet comfy neighborhood. Also has fireplace!

707 **Collier-WHY** Rent when you can own this 3 bedroom, 1 bath home. **REDUCED**

1006 S. Evans - Close to School and Park. This 3 bedroom, 1 bath home has a cellar, storage and fence.

121 S. Endicott - Attention Investors!! This corner lot has a house plus 3 trailer houses.

1101 S. Haney - **SOLD** 3 Bedroom, 1 1/2 bath central H/A. Romy ser...ea. Large corner lot located close to both schools.

1002 **Dressen** - Corner lot adds to the appeal of this 3 bedroom, 1 1/2 bath home. Under Contract...as an extra large living room.

623 **Evans** - Corner lot... 3 bedroom, 1 bath, large...bedroom. Lots of work has gone into this property.

**The Spearman Reporter**

**PUBLICATION [USPS 2346-6000]**  
**SPEARMAN, TEXAS 79081**  
 213 Main  
 Box 458  
 Published Weekly at  
 213 Main Street  
 Spearman, Texas 79081

**OWNER-PUBLISHER**  
 William M. Miller  
**EDITOR**  
 William M. Miller

Second Class postage paid at Spearman, Texas 79081.  
 Any erroneous reflection upon the character of any person or firm appearing in these columns will be gladly and promptly corrected upon being brought to the attention of the management.

**POSTMASTER:** Send address changes to Spearman Reporter, Box 458, Spearman, Tx. 79081.

**SUBSCRIPTION RATE:** Hansford adjoining counties, combination with the Spearman Reporter, \$35.00 plus tax. Other points \$52.00 plus tax.

Flattery corrupts both the receiver and the giver.  
 -Edmund Burke.

When he who everyone else flatters, flatters me, I then am truly happy.  
 Samuel Johnson

Offered by  
**EMMETT R. SANDERS**  
**REALTOR**  
 \*\*\*\*

Attractive 3 bedroom brick home in excellent condition with carpets and drapes, established yard, good south location. Shown by appointment only.  
 \*\*\*\*  
 3 bedroom home, attached garage.  
 \*\*\*\*  
 Price reduced on this 3 bedroom brick home on Steele Drive, large living area, central heat and air, carpeted.  
**EMMETT R. SANDERS**  
**REALTOR**  
 659-2516, nights 659-2601  
 45 rtn T only

**GOLDEN SPREAD REALTY**  
 Janye Helton, Broker, Owner  
 435-5444

Allen Alford 659-3034  
 Dennis Nelson 659-3608  
 Larry Trosper 659-3491  
 T.O. Lesly 659-2028

715 **Cotter-Super Value!** in this 3 bedroom, 1 1/2 bath home. Fenced backyard, with 2 storage buildings.

307 W. 12th **Remodeled**-3 bedroom, 1 bath home. It is on a quiet street!

1114 S. Haney-FHA **Assumable Loan.** Available on this 3 bedroom, 1 bath home. **Affordable!**

426 S. Haney. Remodeled 3 bedroom, 2 bath home is close to elementary school. Corner lot with fence and storage.

204 **Lanita - Why Rent** when you can own this 3 bedroom, 1 bath home.

**FORMOST DOUBLE WIDE** 28x52, 3 bedroom, 2 bath to be moved, located 4 miles south of Spearman.

**COMMERCIAL**  
 15 N. HAZELWOOD-LARGE BUILDING and small building, enclosed with fence. Present owner would lease back part of building. **Price Reduced!**

123 W. Kenneth-Ideal Bldg. for sale or lease. Has over 10,000 Square Ft.



# 7th

by Billy Close

Following the early JV game the two seventh grade teams took the field. On their first possession of the ball game Gruver was forced to punt. Spearman's #30 made a 23 yard return and the Lynx took over on Gruver's 37 yard line. #44 Darian Hawkins rushed through the line on a 29 yard carry that ended at the Greyhound 2. #10 Khris Kelp, kept the ball and went in for the TD from the two. Kelp again kept the ball for the 2 point conversion.

On Gruver's next possession they again were forced to punt, but Spearman fumbled the ball on the return. Gruver's #85 found a hole in the Lynx defense and rushed for 15 yards. The downs expired and the Lynx took possession on the 30 yard line. #30 Brian Beck went over the right side for 31 yards, then #10 Khris Kelp found a hole for a 24 yard run that was called back due to a penalty. #11 Chad Riggins then carried for 10 yards, but was short of the first down. Gruver took over with little time left in the first half. Unable to get a drive going the clock ran out.

Gruver kicked-off to start the second half. Spearman's #11 Chad Riggins, returned the ball 29 yards to the 41 yard line. #23 Brandon Rex gained 9 yards followed by a eight yard gain by #30 Brian Beck. #10 Khris Kelp broke loose for 10 yards before being brought down at the one yard line. Kelp scored the TD on a one yard run. Khris Kelp connected with #11 Chad Riggins for the extra point.

Despite a 7 yard run by #43 Chad Stork and a 22 yard run by #15 Chad Brown the Greyhounds were unable to score. Gruver's defense held the Lynx for the remainder of the game and Spearman won by a 16 to 0 score. Thursday night at 5:00 p.m. the 7th graders will kick-off against Stinnett at Lynx Stadium.

# 8th

by Billy Close

The Spearman Eighth graders kicked-off to the Greyhounds to start a late game at Gruver. Gruver's #22 Michael Messer returned the ball 25 yards. Messer carried the ball from the line of scrimmage for a 15 yard gain. Spearman's #32 Joe Voshalike sacked the Greyhounds for a 4 yard loss. Gruver ended up punting the ball. The Greyhound defense held and the Lynx were forced to punt on their first possession. Gruver took the ball at the 28. #12 Michael Messer busted the line for a 9 yard carry. #24 Kyle Haensch found daylight twice, once for 6 yards and again for 7 yards. The Lynx defense held and Gruver punted. After a short drive Spearman's #34 Edgar Nava went 37 yards for the goal line but the play was called back on a penalty. Gruver's #68 J.J. Renteria and #66 Chris Spivey sacked Spearman's QB for a ten yard loss. Spearman punted and Gruver took over from their 24 yard line. Unable to move the ball they too were forced to punt. From the 42 Spearman's #35

Ramon Rosales gained 12 yards following the blocks of #34 Nava. #12 Jay York connected with #87 for a 20 yard pass. Spinning off of one tackle #34 Edgar Nava cut up the middle for 12 yards and the TD. Point after failed. Spearman Kicked-off and Gruver took over from their own 19 yard line. #35 Ramon Rosales intercepted the ball for Spearman on Gruver's 28 yard line. Marking the end of the first half.

Returning to play, Gruver kicked-off to Spearman, where the Lynx took over on their 32 yard line. #34 Edgar Nava found a hole good for 13 yards to the Lynx 45. Spearman fumbled the ball in the backfield and the Greyhounds recovered at the Lynx 43. #22 Michael Messer busted through the line for a 12 yard gain to the 21 yard line. Spearman's defense held and Gruver was forced to punt. Spearman took the ball at their 22 yard line. #35 Ramon Rosales carried the ball for a 28 yard gain to mid field. #34 Edgar Nava then broke through the right side for fifty yard run and the TD. Point after failed.

Following the kick-off both teams were forced to punt. On Spearman's second possession their downs expired giving the ball to Gruver at their own 28. #42 Tracy Kincannon, busted loose for twenty yards. Then #22 Michael Messer connected with #20 Geronimo Ortega for a 49 yard TD pass. Point after failed.

On the kick-off #34 Nava returned the ball 25 yards to the 45 yard line. Nava then carried for 15 yards up the middle. #33 Rosales carried for a 4 yard gain, then Nava again carried.

This time picking up 13 yards. Nava carried for 3 more, and #12 Jay York carried for 2. The final score of the game came on a 6 yard carry by Nava, the conversion failed on a pass attempt. The Lynx won by a 18 to 6 score.

The eighth graders will play Stinnett here this Thursday.

# Junior V

by Billy Close

Following a scoreless first half both JV teams returned to the field fired up and ready to play ball. Gruver fumbled on the kick-off and #65 Larry Dunn recovered on the 27 yard line. The Lynx after making a first down turned the ball back over to Gruver on a fumble at the 10 yard line. Gruver moved the ball to the 30 yard line only to give it back to Spearman. Spearman's #12 Shawn Cook intercepted the ball and returned it to Gruver's 25. The Lynx again coughed up the ball, this time on the 2 yard line. Gruver's #44 Brian Payne recovered. The Lynx defense held and Gruver was forced to punt. A 15 yard punt return was made by #33 Pete Saenz to Gruver's 20 yard line. #22 J. Garnett connected with #12 Shawn Cook on a twenty yard TD pass. Extra point conversion was made good on a kick by #28 Cody Reynolds.

During Gruver's first possession of the fourth quarter they were forced to punt, likewise Spearman was forced to give the ball back on a punt that ended on the 40 yard line of Gruver. The Greyhounds #44 Brian Payne rushed

for a 31 yard carry before finally being brought down. From the Lynx 29 yard line #44 Brian Payne again broke lose, this time for 29 yards and the TD. The extra point conversion failed, and Spearman hung to a 1 point lead.

Following the kick-off Spearman took possession on their own 30 yard line. Mark Garcia broke lose over the right side and pounded his way to the fifty. On first and ten Garcia again went over the right side for 50 yards and the TD. Point after failed.

Gruver received the ball on their 35 yard line after the kick-off. #22 Vance Scarborough found daylight and picked up 30 yards. From the Lynx 25 yard line #14 Justin Armes connected with #20 Ramon Ortega for a twenty-five yard TD pass. Point after failed and the Lynx ended the game with a one point margin. Final score Spearman 13, Gruver 12.

The Lynx JV will play Stinnett at Lynx Stadium this Thursday night, following the two Junior High games.

# Obituary

**Thomas H. Martinez**  
Thomas H. Martinez, 67 years old, died in Amarillo on October 15, 1986. Thomas was born on October 10, 1919 in Kansas City, Kansas.

Services were held on Monday, October 20, 1986 at 1:00 p.m. in the Chapel of Hope Mount Moriah Cemetery in Kansas City, Missouri. The Rev. Howard Pittsley officiated. Interment was at Leavenworth National Cemetery in Leavenworth, Kansas by Mount Moriah Directors.

Mr. Thomas also lived in Spearman for 12 years and served in the Marine Corps in WWII.

He was served by his Mother - Racheal Martinez of Lenexa, Kansas, 2 sisters - Mrs. Grace Lowther Kansas City, Missouri, and Linda Martinez of Lenexa, Kansas.



In the late 1500's, fashionable ladies decorated their hairstyles with daggers.

## The Bargain Store

- ★ New shipment of Antiques
- ★ New Consignment
- Garage Sales
- ★ Used Furniture & Appliances
- ★ Excellent Used Clothing

★ I sell and trade

601 Main  
Gruver, Tx  
733-2129

Owner Anne Whitaker



**E**xperienced  
Effective  
Efficient

Re-Elect

**J. W. "Buck" Buchanan**

To The Texas House Of Representatives

A family man and civic leader, he's a full-time legislator

Political Advertising Paid For By J. W. "Buck" Buchanan Campaign, Ken Morrison, Treasurer, Box 835, Dumas, Texas 79029

### REPORT OF CONDITION

Consolidating domestic and foreign subsidiaries of the

First National Bank of Spearman  
Name of Bank City  
In the state of Texas, at the close of business on September 30, 1986  
published in response to call made by Comptroller of the Currency, under title 12, United States Code, Section 161.  
Charter Number 18609 Comptroller of the Currency Southwestern District

#### Statement of Resources and Liabilities

	Thousands of dollars
<b>ASSETS</b>	
Cash and balances due from depository institutions:	
Noninterest-bearing balances and currency and coin	601
Interest-bearing balances	6,192
Securities	1,577
Federal funds sold and securities purchased under agreements to resell in domestic offices of the bank and of its Edge and Agreement subsidiaries, and in IBFs	750
Loans and lease financing receivables:	
Loans and leases, net of unearned income	6,912
LESS: Allowance for loan and lease losses	067
LESS: Allocated transfer risk reserve	NONE
Loans and leases, net of unearned income, allowance, and reserve	6,845
Assets held in trading accounts	NONE
Premises and fixed assets (including capitalized leases)	147
Other real estate owned	NONE
Investments in unconsolidated subsidiaries and associated companies	NONE
Customers' liability to this bank on acceptances outstanding	NONE
Intangible assets	184
Other assets	16,296
<b>Total assets</b>	<b>16,296</b>
<b>LIABILITIES</b>	
Deposits:	
In domestic offices:	
Noninterest-bearing	2,232
Interest-bearing	12,000
In foreign offices, Edge and Agreement subsidiaries, and IBFs	NONE
Noninterest-bearing	NONE
Interest-bearing	NONE
Federal funds purchased and securities sold under agreements to repurchase in domestic offices of the bank and of its Edge and Agreement subsidiaries, and in IBFs	NONE
Demand notes issued to the U.S. Treasury	NONE
Other borrowed money	NONE
Mortgage indebtedness and obligations under capitalized leases	NONE
Bank's liability on acceptances executed and outstanding	NONE
Notes and debentures subordinated to deposits	118
Other liabilities	14,350
<b>Total liabilities</b>	<b>14,350</b>
Limited-life preferred stock	NONE
<b>EQUITY CAPITAL</b>	
Perpetual preferred stock	NONE
Common stock	1,000
Surplus	999
Undivided profits and capital reserves	(053)
Cumulative foreign currency translation adjustments	NONE
<b>Total equity capital</b>	<b>1,946</b>
<b>Total liabilities, limited-life preferred stock, and equity capital</b>	<b>16,296</b>

We, the undersigned directors, attest to the correctness of this statement of resources and liabilities. We declare that it has been examined by us, and to the best of our knowledge and belief has been prepared in conformance with the instructions and is true and correct.

*[Signatures]*  
Directors

Felma B. Evans  
Name  
Vice President & Cashier  
Title

of the above-named bank do hereby declare that this Report of Condition is true and correct to the best of my knowledge and belief.

*[Signature]*  
Signature

October 21, 1986  
Date

## MIDDLEWELL CATTLE COMPANY Wheat Pasture Needed

MWC needs wheat pasture in your area for a large number of straightened out stocker cattle. We also need good care takers and will pay competitive rates.

Additional opportunities for joint ventures and buy backs.

Contact: Chris Comstock  
Home: 806-383-2940  
Office: 806-372-3877

A Texas Beef Producer's Company



## Engagement Announced



Brenda O'Brien & Verlan Winegarner

Mr. and Mrs. Michael P. O'Brien of Natick, Massachusetts wish to announce the engagement and forthcoming marriage of their daughter, Brenda Marie O'Brien to Verlan Winegarner, son of Mr. and Mrs. Herbert Winegarner of Campo, Colorado.

The bride to be is a 1977 graduate of Natick High School in Natick, Massachusetts. She received her Economics degree in 1981 from Framingham State College, in Framingham, Massachusetts. She is currently employed with First National Bank in Spearman, Texas.

The prospective groom is a 1975 graduate of Campo High School, Campo, Colorado. He received an Elementary Education degree in 1979 from West Texas State University in Canyon, Texas. He is a member of Sigma Nu Social Fraternity and Kappa Delta Pi Honor Fraternity. He is currently employed with Spearman Independent School District in Spearman, Texas.

The couple plans to be married November 28th at the First United Methodist Church in Spearman, Texas. 50s-2nc

## Wedding Vows Exchanged



Rayma Wofford Hartwick

Mr. and Mrs. Dale Wofford are pleased to announce the marriage of their daughter, Rayma Lynn, to Sargent John Paul Hartwick, son of Mr. and Mrs. Clarence Hartwick of Lafayette, Indiana.

The 9:00 a.m. ceremony was performed Saturday morning, October 4, 1986, in the rural home of the bride's parents before a bank of greenery with the Rev. Martin Foster performing the ceremony. The bride wore a pink floral suit of cotton topped with a pink linen jacket. The Matron of Honor, Daleine Burns of Hereford, was attired in a pink and gray dress. The Groom and Best Man, Tony Pflerer, were attired in identical western wear of blue and gray.

For something old the bride carried a pair of her Dad's eyeglasses worn by him when he was a lad. Something new was her pink garter. Something borrowed was a ruby and diamond ring belonging to her Mother, and the something blue was a portion of her corsage. The bridal table was done in shades of peach with highlights of pink and navy. The beautiful two-tier-

ed wedding cake was created by Daleine Burns, the Matron of Honor. The bridal bouquet served as the center piece.

After a short trip the Hartwicks will make their home at RR3, Box 159 Portales, New Mexico. He is with the 27th Tac Fighter Wing, at Cannon Air Force Base near Clovis.

Mrs. Hartwick is a 1979 graduate of Vega High School in Vega, Texas, and is currently a student at Eastern New Mexico University in Portales, New Mexico. Sargent Hartwick graduated from Harrison High School in West Lafayette, Indiana and attends Community College of the Air Force.

Out of town guests attending from Portales, New Mexico, were Mr. and Mrs. Alan Wofford, Cali and Katy, brother of the bride, Bob McDonald and Marsha Fellows, Tony and Kim Pflerer and son Dominique, Brandon Heath, son of the bride, and Mr. and Mrs. Jimmy Jack Burns of Hereford, Texas. Local guests were Mr. and Mrs. Wallace Berner, Mr. and Mrs. Doyle Jackson and Mr. and Mrs. Verlin Beck.

It is our moment to celebrate  
the love that unites us.  
Kathy Lynn McCullough  
and  
Van Duane Lewis  
invite you to share with them  
this joyous celebration of love  
at their marriage  
on Saturday, the twenty-fifth of October  
nineteen hundred and eighty-six  
at three o'clock  
New Hope Baptist Church  
1111 Roosevelt  
Borger, Texas  
Reception following ceremony

### Births



Mr. and Mrs. Jimmy Backus are proud to announce the new arrival of their daughter Amanda Helena born at Ochiltree General Hospital in Perryton on September 9th at 9:04 p.m. weighing 7lb. 4oz.

Her maternal grandparents are Mr. and Mrs. Jerry Younger of Spearman,

great grandmother Nathalie Morgan of Spearman, Helen Jones of Lubbock and Eddie Backus of Arkansas are Jimmy's parents. Great grandfather Robert Gutierrez of New Mexico.

Amanda is their second child. She has a sister Tammy.

### High Plains Quilter's Guild

The High Plains Quilter's Guild of Amarillo, Texas is continuing preparation for its fall quilt show. The date is set for November 22 and 23 at the Amarillo Federation of Women's Clubs Building at 200 Civic Circle. The categories will include applique quilts, pieced quilts, antique quilts 50 years old or older, children's work small items (miniature quilts, pillows, baby quilts, etc.), quilted clothing quilted Amarillo Centennial items. The Amarillo Centennial category is to encourage area quilters to participate in Amarillo's Centennial Celebration in 1987.

The High Plains Quilter's Guild has been active here for three years. This is the first quilt show sponsored by the guild.

Four Amarillo women currently have quilts touring in the Texas Quilt Roundup. These are quilts made by these women in conjunction with this year's Texas Sesquicentennial Celebration. They are Joyce Pryor, Rachel

Tamm, JoAnn Henderson, and Jo Steele. You can expect to see work by these women in the show. Amarillo and its outlying towns are rich in the quilting area. We have some very talented quilters in the Panhandle.

This is a show for all area quilters. Those who would like to enter the HPQG Show please send a self-addressed, stamped envelope to: Sidney Miller 2808 S. Taylor, Amarillo, Texas 79109. The deadline is November 1st.

### Hospital

Patients who were admitted in the Hansford Hospital are:

Steve Saenc Colleen Schaeser  
R.L. Huse Tyelma Wriht  
Carrie Russell

### Weather

DATE	HI	LO
17	77	44
18	74	47
19	70	54
20	65	48

### American Cancer Society

The Hansford County Unit of the American Cancer Society met Thursday October 16th at the Hospitality Room of B and B Industries. The members from Gruver served as hostesses with a noon luncheon.

The meeting was called to order by Mozelle McClellan. The minutes of the previous meeting were read and approved. A treasurer's report was given by Arbeta Nobles. Committee reports were given on Service/Rehabilitation, Public Information, Public Education, and Crusade.

New Business included discussions of a fund raising project which will be ticket sales for an original painting by Marilyn Yanke. The winner will be notified after a drawing at the next Cancer Society meeting on Nov. 20th. The Great American Smokeout will also be observing their 10th Anniversary on November 20th and the Hansford unit received pockets with which we are to use for publicizing this event.

A staff report was given by Melody Miller and brought to our attention the Guest Room program for Cancer

patients receiving treatment in Amarillo, crusade emphasis and also Board orientation about the responsibilities of our officers.

Congratulations go to Mr. James Dorman of Gruver who was honored with a plaque. That noted him receiving a Lifesaver Award in Public Education. Recognition was also given to Georgia Holt of Gruver and Betty Davis of Spearman who received Award of Merit for Crusade. Funds raised by Hansford County in 1985-86 were \$5,617.00 in Residential; \$1,703 Business; Send a Mouse to College \$353.00; Memorials \$1,215.00 for a total of \$8,888.00.

Those attending this meeting were Mozelle McClellan, James Dorman, Joy Henderson, Sandi Foster, Arbeta Nobles, Georgia Holt, Mary TeBeest and Melody Miller, district field representative from Amarillo.

Remember to contact any ACS member for tickets on the drawing for the painting to be given away November 20th. Donations are \$1 per ticket or 6 tickets for \$5.

### Pumpkin Patch Festival

Time is drawing near for the fourth annual Pumpkin Patch Arts & Crafts Festival. Lambda Psi Chapter of Beta Sigma Phi will host the event scheduled for Saturday, November 1, 1986 from 10:00 a.m. to 6:00 p.m. at the Texas County Activity Center in Guymon, Oklahoma.

Over one hundred exhibitors with various arts and crafts will be present along with a concession provided by Lambda Psi including homemade desserts, luncheon items, soft drinks, tea and coffee.

As yet another attraction, the Panhandle Business Professional Women will be conducting a Book Fair at the Activity Center in a room adjacent to the craft exhibits.

Proceeds from the profits of the Pumpkin Patch Festival will be donated to Panhandle Area Sheltered Workshop.

### Teams

REQUIRED FOR JUNIOR WHO WILL GRADUATE IN 1988.

The state law has mandated that students must pass both the mathematics and English language arts section of the Texas Assessment of Minimum Skills (TEAMS) test by the end of their 12th grade year to receive their diplomas. Students will have the opportunity to take TEAMS in both the 11th grade and 12th grade. If they pass both the English language arts and mathematics sections the first time they are tested, they will not be tested again. The TEAMS test will evaluate their knowledge of the mathematics, reading and writing skills they have been learning throughout their school years. The TEAMS test will be given to all 11th grade students on the following dates:

Tuesday, October 28th.  
Mathematics

Wednesday, October 29th.  
English Language Arts

Where:  
Auditorium of Spearman High School  
Time:

8:30 a.m.

### Altrusa Club of Borger

Plans have been announced by the Altrusa Club of Borger for their November Flea Market, to be held November 15 and 16 at the Aluminum Dome, north of Wilson Street on Highway 136, in Borger, from 9 a.m. to 5 p.m. each day.

The Aluminum Dome location was chosen because of additional space for exhibitors as well as better facilities for the sidewalk cafe and more parking for both exhibitors and customers.

Changes have also been made in the administration of the Flea Market by the Altrusa Club. Anyone wishing further information on how to rent space for the event are asked to call Pam Sessions at (806) 273-7741 between the hours of 9 a.m. and 5 p.m.

The Flea Market will provide an opportunity to begin your Christmas shopping early. Exhibitors will have handmade gift items, wooden decorations for the home, dolls, cosmetics, guns, jewelry, toys, antiques, collectables, and as well as Christmas decoration items for sale.

The Altrusa Club will provide a sidewalk cafe featuring all the food specialties they have become known for over the years. All proceeds from the cafe and space rental are returned to the community in the form of community service projects and scholarships to help women improve their vocational education and thus raise their economic status.

### A hardworking woman needs a hardworking investment plan.

Your career keeps you busy. That's why you've gained in responsibilities and income. And it's why you now need sound investment counsel to help make more of all you make.

Chances are you have neither the time nor the special skills necessary to develop a financial program in these uncertain economic times. We can help with a wide range of capital appreciation opportunities from real estate to cable television, leasing to oil and gas, from \$1000 up. For every working woman who wants to put her money to work. Call or write us soon.

Shickelbright, Wilson,  
Slipper, Wood  
& Associates, Inc.  
2014 W. 26th, #4000  
AMARILLO, TX 79109 358-7131  
P.O. BOX 516  
SPEARMAN, TX 79081 659-3880

Integrated Resources  
Equity Corporation

Marcia Shickelbright  
Debra Slipper

Member SIPC

**STORE-WIDE**  
**Pre-Christmas**  
**Sale**

Everything from 20% to 50% off

★ Diamond Rings ★ Pearls  
★ Watches ★ China

**Dunlavy Jewelry**  
Perryton, Tx.  
Phone 435-3136

Master-charge Visa



# McCrorry Stores Celebrates 104 years

McCrorry Stores is celebrating a birthday--its 104th--and everyone is invited to the party.

McCrorry whose stores include trade names such as T.G.&Y., J. J. Newberry, McClellan, H. L. Green and Kress, operates convenient and low priced "five-and-ten" stores which offer a wide assortment of affordable, exciting and fun, everyday basic and seasonal merchandise.

During the month of October, all McCrorry stores are offering sales and other in-store promotions, including a special Halloween promotion.

McCrorry's birthday celebration this year includes an official welcome to over 500 former T.G.&Y. stores that were acquired earlier this year and are now part of the McCrorry five-and-ten family. These stores are being converted to McCrorry's merchandise mix and assortment and will all be renamed McCrorry.

McCrorry, a twenty-two year old entrepreneur, opened his doors in Scottsdale, Pennsylvania. Today, through acquisitions and new store openings, the company operates approximately 1250 stores in 38 states and the District of Columbia and projects sales of approximately \$2 billion for 1986.

McCrorry offered his customers a novel merchandising concept - a wide selection of low-priced merchandise. His approach set the precedent for modern variety retailing. Customers bought the idea--and the merchandise.

McCrorry was able to open a second store in DuBois, PA the next year and by 1884 his chain had grown to five stores in Pennsylvania.

Cost-efficient management was important to John McCrorry. He quickly dropped the silent "E" from his name to reduce the cost of the gilt-lettered signs over his stores.

By 1911, the McCrorry chain boasted 69 stores. Its main offices were moved from Johnstown, PA to New York City.

McCrorry Corporation opened the world's largest variety store in Brooklyn, New York in 1922 with 2,500 lineal feet of counter space on two floors. By John McCrorry's retirement in 1931, his McCrorry Stores had firmly established a tradition of growth and customer service.

In 1936, United Stores Corporation assumed control of both McCrorry Corporation and McLellan Stores, although the two were not merged until years later.

The McCrorry organization pioneered store modernization. In 1940, it extended assortments and price ranges, modernized with special fixtures that highlighted certain merchandise, and changed window displays to bring merchandise closer to the customers eye.

The company's founder, John McCrorry, died in 1943.

An active history of expansion, mergers and acquisitions continued. In 1952, McCrorry Stores opened in Brooklyn one of the largest variety stores at that time with 70,000 square feet of selling space. The store, now with 47,000 square feet of space, continues to operate in the same location today.

In 1959, H.L. Green Company, Inc. acquired United Stores Corporation's interest in McCrorry and McLellan to create the McCrorry-McLellan Green chain of approximately 850 stores (known as MMG).

Mesulam Riklis acquired 50 percent of United Stores Corporation's stock in 1960. He bought control of H.L. Green Company, Inc. in 1961. Returning to its "home" state of Pennsylvania in 1966, the headquarters of McCrorry-McLellan-Green moved from New York City to York. In 1969, 22 former Super Stores were intergrated into MMG.

Riklis' Rapid-American Corporation acquired the 439-unit, J. J. Newberry Company in 1972, merging it with the McCrorry-McLellan-Green organization, and renaming the new variety division G. McNew. The division name changed in 1975 from G. McNew to McCrorry Stores. In that year, fifteen former W. T. Grant locations also became a part of McCrorry Stores.

In 1980, J. Philip Lux was appointed president of McCrorry Stores. Eight former Neisner Brothers Stores were acquired that year and new store openings continued.

Rapid-American Corporation became a privately-owned company on January 31, 1981, owned completely by Mesulam Riklis, chairman of the board, president and chief executive officer.

In 1981, McCrorry acquired 46 S. H. Kress and V. J. Elmore stores from S.H. Kress.

Stephen L. Pistner, former president and chief executive officer of Montgomery Ward & Company, became chairman and ceo of McCrorry

Corporation in 1985.

On January 7, 1986, Rapid-American Corporation completed the largest acquisition in McCrorry history with its purchase of the approximately 700-store T.G. & Y. chain. At the time, McCrorry was comprised of 748 variety stores.

Through an ambitious conversion program, 511 of the T.G.&Y. Stores are being integrated into the McCrorry chain, the remaining T.G.&Y. locations have been closed. All aspects of the conversion program including training merchandise assortment conversion, and changing the store interiors to best display the McCrorry variety merchandise, will be completed in 1986. The Spearman store announces that its new hours are from 8 a.m. until 7 p.m. Monday through Saturday.

McCrorry, now the largest five-and-ten retailer in the nation, continues to meet customers' everyday needs with basic and seasonal merchandise at affordable prices, a pleasant shopping atmosphere, and convenient locations.

## Heart

The Hansford County Heart Association will be hosting a meeting October 27, 7:30 p.m. in the Fellowship Hall of First Christian Church in Spearman. Featured Speaker will be Dr. C.Y. King of Amarillo. Dr. King's current positions include: Assistant Professor of Surgery, Texas Tech University School of Medicine, Amarillo, Texas; Attending Surgeon and Chief, Vascular Surgery V.A. Medical Center, Amarillo, Texas; Board Member Texas Tech University Health Sciences Center Institutional Review Board; Chairman, Tumor Board V.A. Hospital, Amarillo, Texas; Director, American Heart Association in Texas, Amarillo Division; President, American Heart Association, Amarillo, Texas; Council Member West Texas Council of the American Heart Association; Board Member, Pastoral Council of the American Heart Association; Board Member, Pastoral Council, St. Joseph's Parrish; Lay Minister, St. Joseph's Church, Amarillo, Texas.

Dr. King will speak from a wide field of knowledge and experience, specifically he will speak on "Axillofemoral Bypass for Poor Risk Patients with Advanced Aortic Disease." He will be available for questions from the audience following his address. You are cordially invited to attend, for your heart's sake and for the sake of those you love. See you there!

## Borger Concert

The Tennessee River Boys will present the first concert of the season on Sunday, October 26, 1986 at 3 P.M. at the Borger High School auditorium. All members are urged to attend and enjoy an afternoon of good country music.

## Among The Neighbors

At 2:00 A.M. Saturday morning a sleepy, yawning group left here in a bus bound for Dallas. 34 members of the Junior High United Methodist Youth attended the U.M.Y Texas Rally held on the campus of S.M.U. in the afternoon they attended the S.M.U.-Houston football game at Texas Stadium. After assisting the right team in winning, the group returned to the campus.

They arrived back in Spearman Sunday night. Adults making the trip with them were Mr. and Mrs. Steve Donnell, Mr. and Mrs. Richard Trantham, Don Townsen and Linda Butt.

Bobbie Novak is glad to be relaxing at home now after an enjoyable ten days on the go. A week ago Wednesday she drove to Provo, Utah to take daughter Cinda's car to her. The trip thru New Mexico, Colorado and Utah was a foliage tour with the brilliant colors. Cinda is a student at B.Y.U. They enjoyed a visit with Jon Garnett who is also a student there.

This past week-end Dr. and Mrs. Novak spent with his parents, Mr. and Mrs. Ben Yanda, of Binger, Oklahoma. His brother Frank and wife of Montecello, Arkansas, was visiting them also. Frank is a former resident of Spearman.

Word has been received of the passing of Mrs. Laverne Pape Baker on Friday. Services were held in Livingston on Sunday. Mrs. Baker was well known in this area as she and her late husband were the founders and until recently owners of the Porter Baker Enterprises with headquarters in Perryton.

Mrs. Baker was an aunt of Mrs. Mae Wofford.

Mr. and Mrs. Bob Meek returned recently from several days stay with her brother and family, the Rick Driscolls, at Seymour, Texas. He is the Band Director there. Mr. and Mrs. Bob Driscoll, who had been fishing at Canton, joined them. They all attended the district band contest at Wichita Falls. Rick's group was one of two that qualified to attend the regional meet to be held soon.

Guest of Alton and Peggy Ellsworth over the week-end was their son, Gary, of Dallas. Other guests were Peggy's brother and wife of Amarillo, Mr. and Mrs. Robert Gabel.

Robert Nicholas Hazelwood made the week-end a joy for his grandparents, Betty and Paul Hazelwood by spending it here. He was accompanied by his parents, Mr. and Mrs. Gregg Hazelwood of Hereford.

Mr. and Mrs. Shorty Clement of Highmore, South Dakota, are in Spearman for an indefinite stay. He is at the bedside of his mother, Mrs. Carrie Russell, who is recovering from surgery in the Hansford Hospital.

Mrs. Elsie Watley returned Saturday from a months trip thru the northwest. She flew to Seattle where she joined her sister and husband in

Generally the weather was fine and the scenery beautiful, and the sight-seeing fascinating.

Roy Franklin Russell who lives near Denver, Colorado is visiting with his father Roy Russell.

Mrs. R. L. Huse and Juanita Tucker spent a long week-end in Albuquerque with their sister, Jeanette Kiker. They returned Monday evening just as R. L. was hospitalized in Hansford Hospital. However, Smokey says it was not his own cooking, but an ear infection that put him in the hospital.

their motor home. They went first to the Worlds Fair in Vancouver, Canada then to Victoria. They toured Washington, Oregon, California, and Nevada.

This yellow submarine may be needed if it keeps on raining in the area. Spearman received .56 as of noon Tuesday, Gruver had received more rain, approximately 1 inch. The yellow submarine belongs to Don Smith.



**SANTITAS**  
**Tortilla Chips** **\$1.19**  
REG. \$1.79 NOW ONLY!!

**ALLSUP'S SAFE & CONVENIENT**  
**Coffee Mugs** **99¢** REFILLS ONLY 25¢ EACH  
**Money Orders** **19¢** EACH

**FRESH & TASTY ALLSUP'S**  
**Onion Rings** **59¢** ORDER  
**ALLSUP'S**  
**Famous Burritos** **2 99¢** FOR

**del monte**  
**Green Beans** **3 1.00**  
**ALLSUP'S ASST. FLAVORS**  
**Ice Cream** **\$1.59** 1/2 GAL. 1/2 GAL. CTN.

**8 OZ. ASSORTED FLAVORS**  
**Borden's Yogurt** **FREE** BUY 1 GET 1  
**TOM'S TOASTED SPANISH/HOT/ BOSTON BAKED BEANS CANDY**  
**Tube Peanuts** **2 \$1** FOR

**BORDEN'S DIPS AND**  
**Sour Cream** **49¢** 8 OZ. CTN.  
**HUNTS**  
**Tomato Sauce** **5 1.00**

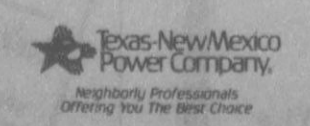
**30 YEAR ANNIVERSARY SPECIAL**  
**Allsup's Tallsup** **39¢** 32 OZ. CUP  
**DATES EFFECTIVE OCTOBER 23, 24, 25, 1986**  
**WHILE SUPPLIES LAST**  
**YOU'RE WITH US**

**GOLD MEDAL Flour** (5lb. bag) **89¢**  
**KRAFT Macaroni & Cheese Dinner** **3 1.00**  
**Diet Pepsi, Pepsi-Cola, Pepsi Free or Pepsi Light** 12oz cans 6 pak. **1 89**

## Should You Install More Insulation in Your House?



Without proper insulation, your home loses warm air in the winter and cool air in the summer. Your heating and cooling system must work harder to maintain a comfortable temperature. The proper amount of insulation will make your home more energy efficient and comfortable. It doesn't really matter if you have batt, loose fill, or foam insulation in your home as long as it meets the recommended "R" value for your area. Not all insulation has the same ability to keep the warmth inside and the cold out, so you need to know how much insulation is needed to adequately protect your home. Having proper insulation assures you of getting the most benefit from the energy you use in the winter and summer. We're here to help with free information about insulation and energy management.





# Fingerpainting



Chad Hall of Goodwell demonstrates his fingerpainting technique to Shelly Friemel, PSU elementary edu-

cation major from Spearman, Tex. The two worked together as part of the

"Public School Art" class at Panhandle State University.

# Area Airports to be Discussed

## AREA AIRPORTS TO BE DISCUSSED

A Texas Aeronautical Facilities Plan regional planning meeting will be held at 10:00 a.m., Wednesday, October 29, in the Community Room, Perryton National Bank, 825 S. Main, Perryton, Texas.

Development of airports in Hansford, Lipscomb, and Ochiltree Counties will be discussed. The meeting will be conducted by the Texas Aeronautics Commission.

All area citizens with an interest in air transportation and airport development are invited to attend. Participating in the meeting will be city and county elected officials, airport board members, airport managers, representatives of the Panhandle Regional Planning Commission, and other citizens.

During the meeting, the airport development needs currently identified in the Texas Aeronautical Facilities Plan (TAFP) for area airports will be reviewed. Preservation and development of airport facilities in the area will be covered. The availability of state and federal funds for airport development will be discussed. Information on area economic development, community goals and objectives, and other factors that may influence the need for, or timing of, airport development will be requested.

The TAFP has been developed for Texas and the Federal Aviation Administration by the Texas Aeronautics Commission. The Plan was first published in 1974. The latest Plan revision was published in August, 1984. Completion of this TAFP revision is scheduled for mid-1988.

## Panhandle State University News

The Panhandle State University humanities department will offer three tours during 1987 which will be available for college credit. Among the destinations are New York City, Europe, and Santa Fe, New Mexico.

The trip to New York, Feb. 27 through Mar. 4 will include several Broadway shows, an opera, tours of the studios of the largest theatrical costume maker in the United States and of The Players, theatre museum. Also included will be a seminar led by a leading New York theatre critic and interviews with directors and actors following play performances. A significant block of time will be allotted for the participants to explore the city and its many attractions on their own.

The international Humanities Tour will depart Oklahoma City on June 1, and return on June 16. The first international destination will be London, England. After spending two nights in London, the group will depart for the continent. Countries to be visited while on the continent include the following: France, Switzerland, Italy, Austria, West Germany, Holland, and Belgium. In addition to London, many other European cities will be visited. Among these are Canterbury and Dover, England; Calais and Paris, France; Bern and Lucerne, Switzerland; Pisa, Florence, Assisi, Rome, and Venice, Italy; Innsbruck, Austria; Munich, Frank-

furt, and Cologne, West Germany; Amsterdam, Holland; and Brussels, Belgium. From Brussels the group will cross the English Channel and return to London for the return flight to the United States.

The annual Santa Fe Opera trip will be made in late August. The time and dates for this trip will be announced in March when the opera schedule has been received.

For specific information about any or all of the trips, prospective participants should contact either Kathryn Bayless, 349-2611 ext 256, office, or 349-2270, home; or Jesse Hankla, 349-2611 ext. 260, office, or 349-2458, home.

## TCFA Fed Beef Carcass Challenge

TO: Area News People  
FROM: Burt Rutherford, communications director  
SUBJECT: TCFA Fed Beef Carcass Challenge

It's just around the corner, and it promises to be the biggest yet. "It" is the TCFA Fed Beef Carcass Challenge, and the \$10,000 in prize money up for grabs this year will make the nation's largest carcass show even bigger as more feedyards than ever before enter the competition.

The purpose of the carcass show is twofold. One, it allows feedyard managers to pit themselves and their cattle against others in friendly competition to see who can produce and select the animals which yield the high-quality, lean meat today's consumers demand. Secondly, the TCFA Fed Beef Carcass Challenge provides

# Halloween will be Saturday Nov. 1st



## PROCLAMATION

"HALLOWEEN EVENING"  
NOVEMBER 1, 1986

TO THE CITIZENS OF SPEARMAN, TEXAS:

WHEREAS, throughout the United States of America, celebrations for Halloween are observed; and

WHEREAS, November 1, 1986, is the evening for all citizens of this fine community to be encouraged to participate in the evening activities including trick or treating; and

WHEREAS, all residents who wish to be visited by witches and goblins are encouraged to have their front outside light on.

NOW, THEREFORE, I, C. RALPH BLODGETT, Mayor of the City of Spearman, Texas, by virtue of the authority vested in me, do hereby proclaim SATURDAY, NOVEMBER 1, 1986, as the evening for trick or treating in the City of Spearman, Texas.

IN WITNESS WHEREOF, I have hereto set my hand and caused to be affixed the great seal of the City of Spearman, Texas.

DATED this the Fifteenth day of October, Nineteen Hundred and Eighty-six.

*C. Ralph Blodgett*  
MAYOR C. RALPH BLODGETT

an educational forum for area students to come and test their livestock judging skills against each other and the experts as they train to become the future of the cattle industry.

The Carcass Challenge will begin Oct. 22 at 10 a.m., when cattle begin arriving at the Amarillo Livestock Auction. The live evaluation contest will run from 3 to 5:30 p.m., to be followed by a calf fry dinner from 6 to 9 p.m. The carcass evaluation will be Friday, Oct. 24, from 7 a.m. to 10 a.m. at the IBP plant near Amarillo.

I hope you can join us Oct. 22 at the Amarillo Livestock Auction for the TCFA Fed Beef Carcass Challenge.

Burt

# GTE

Clyde B. "Ozzie" Osborne has taken the position as Business Office/DART Supervisor at General Telephone Co., Perryton Operations, announced Bob Meyers Operations Manager.

This is a newly created position combining the two departments that perform the internal administrative functions of customer service. He will also oversee the company's local service agencies in Higgins, Follett, Booker, Spearman, Stratford and Dalhart.

Ozzie's experience with telephone business began in 1969 when he worked as a lineman for General Telephone Company of Indiana at Lafayette, Indiana. Since then he has held positions as installer-repairman, cable splicer, communications technician, and I&M Supervisor. He served in the United States Army and was stationed in Germany from 1964-1967, while in the Army he received awards for good conduct and marksmanship.

Ozzie and his wife Chris have four children, Mark, J.R., Wesley, and Ginny. They are making their home in Perryton.

## Hels

A citizen is a man who demands better roads, bigger schools, a new post-office--and lower taxes.

-Lumberman, Nashville.

## GRANDMA'S CORNER

221 Sanders-659-5133

Purple Tagged Items  
25% Off

New and "Good as New"  
50-50 Consignment

Joanne Eaton



Clinic is now

# OPEN

# Dr. Fred J. Taylor

office at

720 S. Roland Spearman, Tx.

Office Hours:

9:00 to 5:00 Monday thru Friday

9:00 to 12:00 Noon Saturday



720 S. Roland

Office Phone 659-2551

## NOTICE TO BIDDERS

Sealed proposals for an annual janitorial service contract on City Hall and the Police Department will be received by the City of Spearman, Texas, at the office of the City Manager up until 10:00 a.m., November 5, 1986, and then publicly opened and read.

The City reserves the right to reject any or all bids, to waive informalities and to accept the bid deemed to be the most advantageous to the City. All bids received after the above closing hour will be returned unopened.

Specifications and bidding documents may be secured from the office of the City Manager, P. O. Box 37, Spearman, Texas 79081.

## JUAN F. VIOLA, M.D., P.A.

General Practice

Announces the Incorporation of the Following Services

ALLERGY TESTING / TREATMENT

MEDICAL ACUPUNCTURE / ACUPRESSURE

for

PAIN CONTROL

SMOKING CESSATION

Gruver

733-5011

Spearman

Call:

659-3733





# Our Way of Saying "Thanks"

## Double Coupons Every Thursday!

THESE PRICES GOOD OCT. 22 THRU 25  
IN PERRYTON

### GROCERY

WE GIVE S&H GREEN STAMPS EVERYDAY  
DOUBLE ON WEDNESDAY & SATURDAY  
WITH \$2.50 PURCHASE OR MORE EXCLUDING CIGARETTES

**CRISCO**  
REG. OR BUTTER FLAVOR

**\$1.98**

3 LB. CAN

**CONTADINA**  
TOMATO SAUCE

**15c**

8 OZ.

**DR. PEPPER**

6/32 OZ.

**\$1.98**

PLUS DEPOSIT

**KELLOGG'S**  
CORN FLAKES

**\$1.79**

24 OZ.

**FINE FARE**  
CRACKERS

16 OZ.

**49c**

**LUCKY LEAF**  
APPLE JUICE

64 OZ.

**\$1.19**

**PLANTERS**  
HONEY ROASTED PEANUTS

**\$1.59**

12 OZ.

PEANUTS with CASHEWS 12 OZ. \$2.09

**WHITE CLOUD**  
BATH TISSUE

6 ROLL

**\$1.49**

**FINE FARE**  
MACARONI AND CHEESE

7.25 OZ.

**51c**

FOR

**DEL MONTE**  
CATSUP

32 OZ.

**89c**

**SUNLIGHT LIQUID**  
DISH SOAP

48 OZ.

**\$1.69**

**COMET**  
LONG GRAIN RICE

28 OZ.

**59c**

**HEALTH AND BEAUTY**

**CREST** TOOTH PASTE 6.4 OZ. TUBE OR 6.6 OZ. PUMP **\$1.49**

**ANACIN** TABLETS 100 CT. **\$3.99**

### QUALITY MEATS

**UNITED TRU**  
TENDR OR USDA CHOICE  
BONELESS  
SHOULDER ROAST

**\$1.38**

LB.

**UNITED TRU** TENDR OR USDA CHOICE  
BONELESS  
FAMILY STEAK

**\$1.48**

LB.

**WILSON**  
MEAT  
FRANKS

**78c**

12 OZ. PKG.

**SCHREIBER**  
AMERICAN  
SANDWICH  
SINGLES

**68c**

12 OZ.

**EXTRA LEAN**  
GROUND  
BEEF

**\$1.38**

LB.

**SWIFT**  
SIZZLEAN  
REG. OR BEEF

12 OZ.

**\$1.48**

**SLICED BEEF**  
LIVER  
PEELED AND  
DEVEINED

LB.

**68c**

**UNITED**  
HOMO MILK

**98c**

1/2 GAL.

**FROZEN & DAIRY**

**DONALD DUCK** ORANGE JUICE 12 OZ. **69c**

**UNITED** ICE CREAM 1/2 GAL. **\$1.19**

**PARKAY** OLEO QUARTERS LB. FOR **2.01**

**ORE IDA**  
CRINKLE CUT  
POTATOES

**\$2.89**

5 LB. BAG

**FRESH CRISP CALIFORNIA**  
SPINACH

**\$1.21**

BUNCHES FOR

**PRODUCE**

**SNO-WHITE**  
CAULIFLOWER

LARGE HEAD

**98c**

EACH

**WASHINGTON EXTRA FANCY**  
RED DELICIOUS  
APPLES

LARGE SIZE

**39c**

LB.