

## For Lynx mascot Daena Smith . . .

# Sunshine -- more than a nickname

She's blonde headed, bright eyed and literally bushy tailed--but only when Daena "Sunshine" Smith is wearing her purple Lynx mascot uniform at basketball games for the Lynx and Lynxettes of Spearman high school.

She's also an effervescent bundle of vivaciousness as she urges SHS students and adult spectators in sprightly moves across the basketball courts prior to the game start or during time outs.

Perhaps a small wonder is a more than apt description for the 15-year old sophomore who claimed the mascot role last month in special election at Spearman high school--she stands just a fraction under five-feet tall.

That may also explain why she's out helping build spirit rather than working on one of the teams herself.

"I'm too short for basketball and not quick enough for track,"

she says with wry grin. And, with the natural aplomb only a 15-year old can muster, she goes on to say, "I'm either going to be a coach or go into business management." Few people know the new Lynx

Rickey teaches history and is head track and assistant football coach at Spearman high. Sandee is a fourth grade teacher at the Spearman elementary school. The family has been in Spear-

man for seven years and the community and school is obviously home to them now.

SHS did without a mascot for at least one school year when the mascot uniform was lost. But a new uniform was ordered this fall and elections were held in December to

decide who would be the new Lynx Mascot for 1987-88. Of course, when the uniform was ordered, no one knew the new mascot would be just under 5-feet tall--and a few slight adjustments were required when the medium-sized uniform was finally delivered.

A special webbing was required in the head of the uniform since the standard webbing supplied was too large for Sunshine's head.

Then strings had to be put in the hands in order for them to stay on her smaller hands and fingers. And, of course, the feet had to be stuffed so they wouldn't slip off her own as she frolics across the gym floor at Spearman junior high school.

Those who regularly attend Spearman basketball games have now grown accustomed to her. See "SUNSHINE", p-2

She's 5-feet tall . . .  
in a 6-foot uniform . . .

mascot by her first name of Daena. And her moniker of "Sunshine" is a remarkable description of her attitude, both on and off the courts.

The daughter of Rickey and Sandee Smith--both teachers in the Spearman ISD--Sunshine comes by her outgoing personality rightfully.



MASKED AND UNMASKED. . . Spearman Lynx Mascot Daena "Sunshine" Smith in full regalia and with head in hand.

## The Hansford Report

by JAMES JARRETT

Nobody likes being the bearer of bad tidings, so today's headline story concerning the invalidity of a pair of petitions for the March 8 primary was distasteful for me.

What's truly sad about the situation is that both Republican candidates' petitions were invalid.

If you're a true believer in the two party system--and that goes for those independents as well--then the fact that candidates from one party have been eliminated seriously undermines the validity of that system.

Republican candidates for local elections have only just begun appearing across Texas. For years the Democratic party has dominated state and local elections in the Lone Star State.

To have that party's candidates eliminated on a technicality seems grossly unfair.

As usual, hind sight is 20-20. If the candidates had paid their \$600 filing fee rather than opting for the petition method, the story would never have been written.

And, \$600 for an opportunity at a position which pays almost \$14,000 annually for a part-time position is not a bad go. Of course, that only goes to the candidate who wins.

The right to have a candidate file by petition goes back to the Constitution of the United States. In order for everyone to be free to run, the law allows a way around the filing fee for all offices.

But then, the law is very specific about how those petitions are generated.

For what it's worth, there are a few Republican candidates for president who are having problems with petitions as well.

It would seem to me that if they are allowed on the ballot, then our people here in Hansford county should be allowed on the ballot as well.

No matter what happens, it doesn't change the fact that voters have lost the opportunity to make a choice. And that, in the final analysis, is the saddest part of it all.

# Lynx, Lynxettes capture wins over Panhandle

The Spearman Lynxettes kept their district record clean at 3-0 by outlasting the Lady panthers of Panhandle, 33-29, Friday evening in Panhandle.

The Spearman Lynx kept their hopes for a district title alive by downing their Panhandle counterparts in a convincing 61-42 win that same night.

Spearman boys, now at 2-1 in 1-AA--are tied with Gruver for second place in district roundball standings. The Spearman girls

hold a half-game lead over Panhandle who stands at 3-1 in district. The picture should clarify for both teams this Friday and Saturday as back-to-back district games are played.

The Spearman teams will host White Deer Friday evening in homecoming activities at the Spearman junior high varsity gym, then will go to Gruver Saturday evening for 1-AA contests there.

Last Friday's contests saw the Lynxettes take a quick first quarter

lead as they outgunned Panhandle, 14-6, in the opening quarter.

But the Lady Panthers proved a tenacious group despite a 9-point halftime deficit which saw Spearman take a 23-12 lead into the lockers at intermission.

Disaster almost struck in the third quarter when the Lynxettes could find the bucket for only two points while Panhandle popped the nets for 10 to come within three points of the Spearman guests, 22-25.

But the Lynxettes proved just as determined as the Lady Panther hosts, putting up eight final frame points while Panhandle hit for seven as Spearman took the win, 33-29.

Krista Kirkland proved the deciding factor for the Lynxettes that evening as she hit on four field goals and eight free throws for a total of 16 points.

The Lynxettes scored almost as many points from the grace line as they did the field, hitting on nine field goals while collecting 15 free throws.

Meanwhile, behind the 16-point effort of Carl Urban and the 14-point shooting spree of Tim Woolley, the Spearman Lynx cashed in another commanding performance as they manhandled their Panhandle hosts, 61-42.

The Lynx outscored the Panthers in every quarter, jumping out to a 14-8 edge at the end of the first period of play.

They added another 14 points in the second frame while Panhandle answered with 10 to stretch that

of the Spearman Reporter this past Monday afternoon. Jarrett checked copies of the petitions filed by the respective candidates against voter registration lists kept by the Hansford county tax assessor-collector.

Confusion over the number of signatures required to make a valid petition, coupled with confusion over election code laws concerning who may sign appear to have caused the discrepancy, notes Jarrett.

One Republican candidate, Wiley Sheets, does not live in the commissioner's precinct for which he is running, voter registration lists showed.

Sheets lives in voting precinct number six which is a part of precinct 2 county commissioner.

"This is where the confusion seems to come from," reports Jarrett. "Most of the invalid signatures on the two petitions were from voting precinct six."

Meanwhile, Vanderburg's petition of 56 names shows only 34 who are registered in voting precinct one which is the only voting precinct in county commissioner's precinct one. The law requires a minimum of 50 names to be valid.

Confusion over the number of signatures stems from a revision of the Texas election code by the 70th legislature which met in regular session last year.

Revisions of the statutes were not received in Hansford county until just before Christmas when county clerk Amelia Johnson received her updates.

## Physician to this weekend visit Hansford

The Hansford Hospital district board of directors will meet in regular session tonight (Thursday) in the board room at the hospital.

Meeting time is set for 7 p.m. Directors will hear a report from Al La Rochelle concerning physician recruitment.

A Missouri general practitioner, Dr. Lawrence Bahney, will be in Hansford county over the weekend to look over the possibility of opening a practice here, notes La Rochelle.

"At this point, he's just looking," La Rochelle states. "He has expressed an interest and will be here to see what we've got going."

The board will also hear the quarterly reports from both the hospital and manor in addition to other routine matters.

The new election codes does away with the 25 minimum and instates a minimum of 50 signatures required from the territory--in this case, the commissioner's precinct--for which the candidate is seeking office.

A check with the secretary of state's office in Austin Tuesday morning concerning the minimum number of signatures required re-affirmed the revised law which requires 50, Jarrett notes.

A breakdown of voting precincts to commissioner's precincts shows that the only voting precinct for commissioner's precinct one is voting precinct one.

Commissioner's precinct two is composed of voting precincts two and six while commissioner's precinct three is composed of voting precincts three, five and seven. Commissioner's precinct four is

comprised of voting precincts four and nine.

"I'm disappointed, naturally," Vanderburg said in a phone interview Tuesday morning. "I still don't know what I'm going to do. I'd still like to run, that was my intention from the start."

Sheets was out of town and unavailable for comment at press-time.

Head, who had 57 names on his petition and all from precinct one, indicated he had purchased a precinct one voter's registration list from the tax assessor-collector's office before seeking names.

## Operation of snowmobiles may be illegal

Recent snow storms which have brought more than one snow mobile out from under wraps may leave their operators open to either civil or criminal prosecution, cautions city police chief Joe Raper.

By state law snowmobiles are off road vehicles and operation on a city street is illegal, he notes.

"Snowmobile operators can be cited for operating them on a city street," Raper says. "Plus there is the potential for personal injury on slick streets where other vehicles are traveling."

Operation on private land can leave the snowmobile operator responsible for damages and possible criminal prosecution, the police chief further notes.

## Drug seminar to highlight Morse meeting

A speaker from the Texas War on Drugs state committee will highlight next Monday's meeting of the Pringle-Morse PTA, announces Johnny Jarvis, program chairman for the group.

The meeting will begin at 7 o'clock that evening at the Morse school. Refreshments will be served.

Guest speaker Marilyn Golightly of San Angelo, will help present a parent education seminar on drug abuse to those present.

The public is invited to attend Monday's meeting, notes Jarvis.

## White Deer, Spearman meet in homecoming

A full evening of activities Friday, along with a special dance Saturday night, will highlight the annual SHS basketball homecoming observance for 1988.

The annual observance will see the crowning of a basketball king and queen along with a special potato dinner hosted by the SHS cheerleader squad Friday evening.

Then a dance will be held in the SHS cafeteria immediately following Saturday's cager tilt in Gruver. The dance is scheduled to last until 1:30 Sunday morning.

Music for the dance will be provided disco-style by Danny White of Amarillo.

The baked potato and ice cream sundae dinner will begin at 5 p.m. Friday in the junior high cafeteria and will run through 7 o'clock that evening.

Tickets for the dinner are \$4 and \$2 for children six years old and under. Proceeds from the event will go to help defray expenses incurred by the cheerleading squad.

Tickets may be purchased from any member of the SHS cheerleading squad or at the door.

But the main event will come between the girls varsity and boys varsity games with crowning of the 1987-88 Basketball King and Queen.

Recipients of the annual honor are voted on by team members with the girls varsity voting for King and the boys varsity voting for Queen.

See "LYNX", p-2

 The Spearman Reporter  
Volume 80, No. 11 YOUR HOMETOWN NEWSPAPER Thursday, January 14, 1988  
25¢ Per Copy 8 Pages

**Wind shield REPAIR & REPLACEMENT**

We can repair damaged areas in your windshield up to 2" in diameter. We'll come to your vehicle's location - in the oilfield or anywhere!

Most insurance companies pay all cost.

**DAVY GURLEY 435-2998**

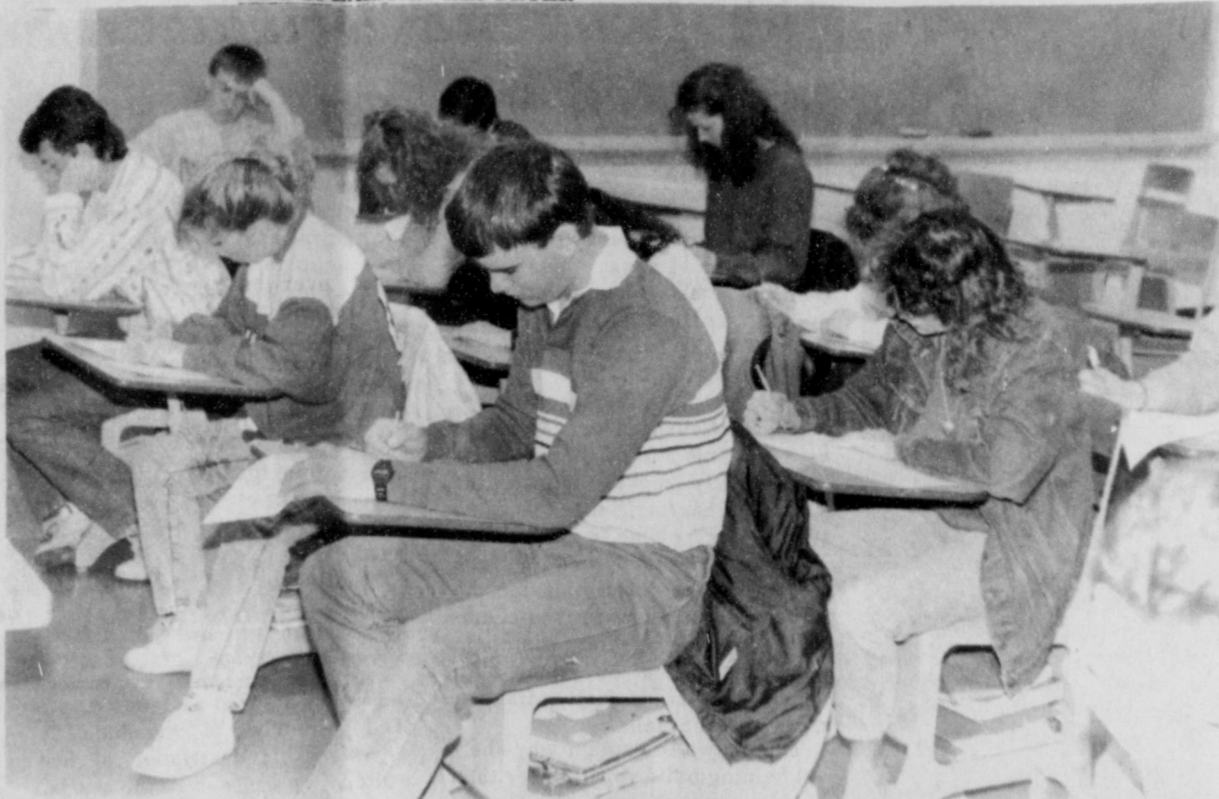
**City has meeting**

A short session of the Spearman city council Tuesday evening saw councilmen order a change from yield signs to stop signs at the intersection of First and Archer Streets.

The change will become effective as soon as signs are ordered and received and the switch made.

The signs will affect only north-south traffic at the intersection with east-west bound traffic remaining a through street.

In the only other action on the agenda, the council authorized city manager Jim Murray to advertise for bids on a plain paper copier and for rental on city employee uniforms.



**THERE'S CONCENTRATION APLENTY** in Spearman schools this week as students first finish up six weeks, then tackle semester finals as the first half of the 1987-88 academic years comes to a close this week. Here, students in Rickey Smith's high school history course finish a 6-weeks test.

**The Spearman Reporter**

Publication [USPS 509660]  
Spearman, Texas 79081  
213 Main, Box 458  
Published weekly at  
213 Main Street  
Spearman, Texas 79081  
**OWNED AND OPERATED BY**  
Texas Independent  
Newspapers Inc.



19906 Encino Grove  
San Antonio, Tx. 78259  
Second Class postage paid  
at Spearman, Texas 79081.

Any erroneous reflection upon the character of any person or firm appearing in these columns will be gladly and promptly corrected upon being brought to the attention of the management.

Member of the Texas Press Association

**PUBLISHER**  
James C. Jarrett  
**ADVERTISING DIRECTOR**  
Kirby McAdams

**SUBSCRIPTION:** Hansford and adjoining counties, combination with The Hansford Plainsman, \$19.95, out of county \$24.95.  
**POSTMASTER:** Send address changes to Spearman Reporter, Box 458, Spearman, Tx. 79081.

The publisher reserves the right to revise or reject at its option any advertisement which it deems objectionable, either in subject or phraseology, or which it may deem detrimental to its business.

returned to the Spearman elementary office at 511 S. Townsend no later than Jan. 31.

**ALPHA MU PSI CHILI SUPPER**

To Benefit  
**Gruver City Library**  
Saturday, January 16  
from 4 to 7 p.m.  
Children - \$2.00 Adults \$3.00  
**Methodist Church**  
Gruver Texas

**THE MIGHTY 98 ROCKS**

HANSFORD COUNTY  
Top 40 POP/ROCK Weekly TOP 10  
COUNTDOWN Dedication Hour...and more  
Now, catch us Fridays following Lynx & Lynxette basketball and Saturdays 7 p.m. to midnight --  
**THEN, CRANK IT UP!!!**  
AND REMEMBER

★ Be Smart-Don't Start! ★  
★ Just Say No to Drugs & Alcohol

**Kindergarten name list is being sought**

continued from p-1  
**LYNX**

lead to a 10-point halftime advantage, 28-18.

Spearman didn't relent in the third quarter either as their total team domination saw the Lynx add 16 points to Panhandle's 11. The Lynx took a 44-29 lead into the final eight minutes of play.

Once there the action continued fast and furious as Spearman hit the nets for six more field goals and five grace shots to rack up 17 points.

Panhandle, meanwhile, could muster on 11 points--seven of those free throws--as Spearman's domination was complete with that 19-point win, 61-42.

Friday, the Spearman varsity and junior varsity crews will host White Deer in games beginning at 5 p.m. in the Spearman junior high gym.

Saturday they will travel across county to rival Gruver for games there as well

**GIRLS**

SPEARMAN	14	23	25	33
PANHANDLE	6	12	22	29

Sp--Krista Kirkland, 4-0-8-16; Vonda Benson, 0-0-2-2; Heather Murrell, 2-0-1-5; Lisa Cazarez, 1-0-0-2; Ginger Pearson, 0-0-2-2; Lon-dee Bradley, 2-0-2-6.

**BOYS**

SPEARMAN	14	28	44	61
PANHANDLE	8	18	29	42

Sp--Brett Davis, 3-0-0-6; Keith Benson, 3-0-0-6; Kevin Nelson, 3-0-0-6; Carl Urban, 7-0-2-16; Tim Woolley, 5-0-4-14; Pat Shields, 3-0-1-7; Matt Tucker, 2-0-0-4; J Garnett, 1-0-0-2.

The Spearman elementary school is beginning its annual list

continued from p-1

**SUNSHINE**

sprightly performances on the cager court.

What may not be realized, however, is that act takes a lot out of whomever is in that bulky Lynx mascot uniforms.

"It's incredibly warm underneath all that stuff," she admits. "The first time I wore it, I could hardly breathe."

Since that time, however, she has managed to find a couple of ways to allow fresh air into the uniform.

"It's still kinda warm for basketball games, but it should work fine for football," she declares.

There is speculation that next year two mascots will be elected--one for football and one for basketball.

With her now seasoned tenure, Sunshine reports that next year she'll try out for football mascot.

Meanwhile, the talented Spearman sophomore will continue to work with the SHS cheerleading corps and her other activities.

In addition to her mascot duties, Sunshine is also a member of the Spearman girls golf team and was a basketball manager last year as a freshman.

She remains an active member of the Fellowship of Christian Athletes and is a member of the United Methodist Youth Fellowship at her church.

**Raise the flag for American agriculture.**

Do yourself and other American farmers a favor. Fill out and return your Census of Agriculture report form by February 1, 1988.

It's vital to our farm economy.

Farm suppliers use it to make sure the goods and services you need are there when you need them. Congress and state legislatures use it to consider important farm legislation. Farm organizations use it. The federal government uses it to plan farm programs and determine the impact of farm legislation.

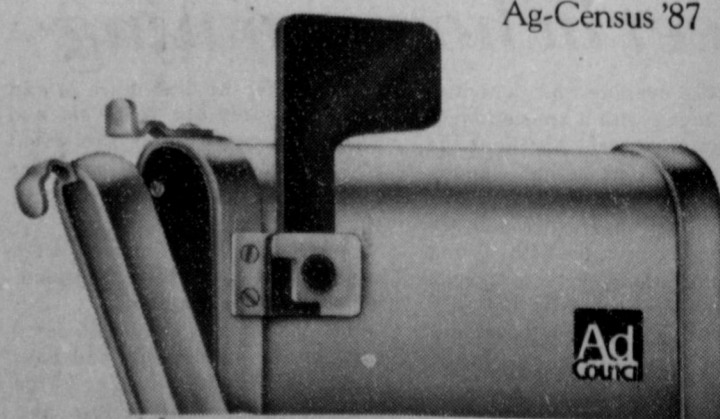
You can use agriculture census data, too. It's available at your local and state university libraries. You'll find facts and figures about every county in America. And you can use that information to better plan your own production and marketing.

You don't have to be a big operator to be counted in the Ag-Census. In fact, you don't even have to be farming now. But, if you receive an Ag-Census form in the mail, we want to hear from you.

So fill out and return your Ag-Census form early. All the information you give is completely confidential. That's guaranteed by law.



Ag-Census '87



**SPEARTEX GRAIN**  
Spearman, Texas

**GREAT DINING**



**\$2.99 Breakfast**

2 eggs, ham, bacon  
toast or biscuits, coffee  
or sausage hashbrowns,

**Lunch Special \$3.98**

Entree, vegetable,  
potato and beverage

**Any Steak in the house \$7.95**

All specials good  
thru Feb. 29

11:30 a.m. to 9 p.m.

**Cattleman's Supper Club**

Hwy. 207 S. Spearman



Says Texas Commission on Alcohol and Drug Abuse. . .

# Hope does exist for child drug abusers

By Bill Britcher

They all have their stories. The fourth grader using marijuana. The elementary school aged boy who has dropped out of school because he doesn't have clothes to wear. The sixth-grader who is taking daily nerve medication. The brother and sister who go to bed early every night for fear of their father.

Each has his or her own special set of circumstances -- yet each shares a common element. They are all children of substance abusers.

In San Antonio, as across Texas, children are suffering -- many silently, without hope. But hope exists -- in the dedication of tireless men and women who recognize the suffering and have built programs to aid these children.

And in agencies like the Texas Commission on Alcohol and Drug Abuse, and communities like San Antonio that are focusing seemingly meager resources on this "next generation" of potential alcohol and drug abusers.

**The Problem**

Children of substance abusers come from families where the drug and the drug-affected parent or parents are the center of every moment and every thing. It is no wonder that they grow up confused, alone, guilty, and with low or no self-esteem.

It's even less of a surprise that they themselves will almost certainly use alcohol or drugs. These children are four times more likely to become alcoholic or chemically dependent than their friends -- and there are 28 to 35 million of them in the United States.

It is estimated that 1 in 4 children in our nation's classrooms are currently living in a substance abusing household. They often exhibit the signs of their parent's addictions in their truancy and delinquency.

They can be found in the principal's office, in children's shelters, in inner-city alleys and at jails and detention centers visiting their mothers. One thing is certain: they need our help or they will be the next generation of

chemically dependent Texans.

All around Texas new programs are beginning to address the state's alcohol and drug abuse problem -- a problem that will cost over \$13.6 billion in 1988 -- and many of these programs are aimed at the special needs of these children.

**One Community's Response**

San Antonio has actively campaigned for increased funding and programming to serve its chemically dependent populations.

Funding for alcohol and drug abuse programs in San Antonio has doubled since 1985, with 93% of that new money being from state or federal sources. Eleven new programs have received slightly over \$1 million this year.

Two of these new programs are outgrowths of other programs. They are the result of the contacts of program personnel with the children of those they already serve -- children who will end up like their parents if they are not reached now.

**The C.O.P.E. Project**

Mary Jo Rodriguez is the Director of the Children of Offenders Prevention and Education (COPE) project in San Antonio.

The only program in the state of its type, COPE is a pilot program to help the children of incarcerated chemically dependent parents.

COPE, funded by a grant to Our Lady of the Lake University of San Antonio from the Texas Commission on Alcohol and Drug Abuse (TCADA), is an outgrowth of the San Antonio Detention Center's MATCH program.

MATCH (Mothers and Their Children) is designed to maintain the relationship between parents and their children during incarceration. Of the approximately 90 women in the Detention Center on a given day, 90% have a child or children under age 16.

Eighty-eight percent of the women list drugs or alcohol as contributing factors to their arrests.

Women in the Center can earn visits with their children by attend-

ing and participating in sessions on parenting education, child abuse, self-concept, alcohol and drug abuse and other concerns. Nearly one third of the women are involved in the MATCH program.

While the parents have been receiving education and counseling that is beneficial, their children have exhibited signs of substance abuse and related problems. Thus the COPE project was born.

Surveys of those incarcerated have resulted in six mini-sites for the COPE project in the inner-city west side of San Antonio.

The many low-income, single-parent families in need have demanded services that are literally brought to where these 6-12 year-old children are located.

Services that will give them an opportunity for something better than a future clouded by drugs.

**Amigos Youth Intervention Project**

The Mexican-American Unity Council (MAUC) has several alcohol and drug abuse programs under its umbrella.

Treatment programs for men and women and prevention programs for youth are ongoing.

Acenete Flores, Director of Alcohol and Drug Services at MAUC, states that the new Amigos Youth Intervention Project adds another component to the continuum of substance abuse services available to children in San Antonio.

Los Amigos, the MAUC prevention program, has been providing alcohol and drug education and counseling in the Edgewood Independent School District for six years.

Los Amigos has also gone into the churches and homes and will provide sessions during lunch hours and on weekends, if necessary, to "get the word out."

The children of those in their treatment programs and the kids in the schools who are already using were the reason behind the new intervention program.

Acenete rides herd over an impressive set of programs, but she would be the first to tell you that her programs cannot handle

the overwhelming need in her community.

That is why she, Mary Jo and others who deal with the children of substance abusers in San Antonio make such a strong effort to know about each other's services and other community resources.

"If I can't handle the problem, I need to be able to reach another who can," said Acenete when questioned about "special problems."

It is an attitude that is brought on by the desperate needs faced by these children -- an attitude that helps to stretch meager resources to meet the needs of many more than seems possible.

Those children who outgrow the COPE program at age 12 can then join an Amigos group that serves 12- to 18-year-olds. Each service adds "a little bit more help" for a community that really wants help.

**Coordination of Services**

Martha Reyes is Regional Alcohol and Drug Abuse Services Coordinator for the Alamo Area Council of Governments in San Antonio.

She is well aware of the enormity of the problem of alcohol and drug abuse facing San Antonio and the surrounding counties.

An estimated 30,000 parents in the San Antonio area are substance abusers. Over 120,000 children of substance abusers are growing up in troubled homes. So much more is needed.

Yet Martha speaks proudly of the strides taken by the area in the last year. There is now almost \$3.6 million in alcohol and drug programming in the Alamo Area Council of Government's 12-county area.

Texas joined New York as the only states that received four grants from the federal Office of Substance Abuse Prevention in 1987 -- with San Antonio receiving three of Texas' four grants.

Aggressive action to acquire program funds, community coordination and cooperation have resul-

ted in a per capita expenditure of \$2.45 for the prevention and treatment of substance abuse in San Antonio. The statewide average expenditure is only 89 cents per capita.

She is also proud that the COPE program, run by the Worden School of Social Work at Our Lady of the Lake University, will use the most advanced evaluation component of any prevention program in the state.

Evaluation results will be used to prove the effectiveness of the COPE program and will be passed to other programs as well.

The expected result is proof that can be taken to the city, state and private sector to show the need for additional funding, not only for San Antonio but across Texas.

**One Community/One State**

The problems of children of substance abusers are no more or less severe in San Antonio than anywhere else in Texas.

TCADA data estimates that over two million persons will be in need of alcohol or drug treatment in 1988. Many of them have children who will also require services to break the vicious cycle of addiction.

Without sufficient services we are condemning a significant percentage of our youth to lives of addiction and pain.

The Texas Commission on Alcohol and Drug Abuse tripled the number of agencies funded to provide services to children of substance abusers on Sept. 1, 1987 when it announced funding for new CoSA programs.

There are now 18 such projects throughout Texas in Abilene, Amarillo, Austin, Corpus Christi, Dallas, El Paso, Ft. Worth, Galveston, Houston, Lubbock, Midland, Paris, San Antonio, San Marcos and Tyler.

The experience of San Antonio's response to the many service needs for children of substance abusers points out the need for greedy expanded service capabilities across the state.

But it also points out how much can be done through coordination of existing services and active pursuit of additional services.

They have set an example for all of Texas -- so that all of Texas' children might have a better opportunity to lead a happy, productive, drug-free life.

**Editor's Note:**

Bill Britcher is Public Information Officer for the Texas Commission on Alcohol and Drug Abuse and has worked in the chemical dependency field for 13 years. His particular interest is in preventing substance abuse problems among our youth.

## Chamber fete slated Feb. 20

A host of awards along with special guest speaker John Erickson of Perryton will highlight the annual Spearman chamber of commerce annual banquet which is slated for Feb. 20 at the Spearman high school cafeteria.

Erickson, author of the *Hank the Cowdog* series of books, will be the featured speaker for the annual event.

In addition, the Citizen of the Year, Citizen Over the Years and Employee of the year awards will be given during the banquet.

Nominations for the two Citizen's honors are being solicited now by the Spearman chamber with names to be turned in no later than Feb. 8.

The Employee of the Year award is given each year by the Spearman Rotary club.

Recipients of the prestigious honors last year were Betty Jean Davis as Citizen Over the Years and Janie Kunselman as Citizen of the Year. Ritchie Thompson was Employee of the Year.

Tickets for this year's event are \$15 for non-chamber members and \$12.50 for members. A steak dinner will be prepared by the Spearman Jaycees.

**You don't HAVE TO WAIT TO SEE**

**BECAUSE WE HAVE 6 TAPES FOR YOUR CONVINCE!**

*Dirty Dancing*

**The Knack Shoppe**  
317 MAIN 659-5046  
HRS. SUN.- THUR. 9-9 FRI. & SAT. 9-11  
Tue. still 2 for 1

Where every 100th Renter gets 1 free  
Newly remodeled and now with over 1000 tapes

**Winners in Every Respect . . .**

The Spearman Lynx And The Spearman Lynxettes

**Beat White Deer**

**Equity Exchange**  
serving the Hansford County Area

Go Spearman!

# Country Basket

## SALE \$1.00

Crisp, tender, chicken-fried fingers of 100% beef, golden fries, Texas toast and creamy country gravy. That's the one and only Dairy Queen Country Basket. So come on by for the Texas taste that's just this side of heaven -- now at a heavenly sale price!

**Monday, January 18 thru Sunday, January 31**  
at participating stores.

**Dairy Queen**  
"better than ever."

Copyright 1985 by D. Q. Co. All Rights Reserved. TM Trademark of the D. Q. Co. Registered Trademark Am. D. Q. Corp.

## Among the Neighbors

by Helen Fisher

Anyone noticing Commissioner Garland Head offering the snow shovel to wife, Virginia, or some such, will be interested in learning that he underwent surgery just last Monday.

He left Hansford Hospital on the weekend and was able to attend the County Commissioners Court meeting this Monday. He is confident that he is recovering rapidly.

Mr. and Mrs. Norlan Winegarner and family and Verlan Winegarner spent Sunday in Campo, Colo. The Winegarner's mother had just returned from the hospital in Pueblo and appears to be recovering from a sudden illness.

Mrs. Maxine Vernon of Springville, Cal. visited in the home of her brother, Mr. and Mrs. Newell Allen and other relatives for a few days before returning to Amarillo. She has been with her aunt, Mrs. Nell McClellan who has been quite ill in the hospital. She was able to return home to recuperate on Monday.

Driving home after flying into Amarillo on Sunday, Mary Brock had to compare the dazzling, brilliant snow scene with the blooming roses and poinsettia and oranges on the trees that she had been enjoying at Mission.

Mary and J.L. had gone to

Austin before Christmas and visited with their daughter, and son-in-law, Debra and Kim Brown and family, and then all shared Christmas with Lester McLains at Mission.

Polly and Les Harlan and family of Austin joined them there.

After Christmas they returned to Austin and spent some time with Reva and Ron Money and Mona and Don May and helped celebrate the 17th birthday of Cheri Harlan. They also drove to Hardin and visited Betty and Lawrence Brown, formerly of Spearman.

Next to Dallas, they enjoyed little Meg with Christi and Tod Brock. J.L. returned home and Mary joined Debra Brown and Carol Paek and all attended the Christian Music Conference in Houston.

Some of the seminars lasted until late in the night, but in spite of a busy schedule, they came home filled with inspiration. Mary and Carol were able to work out the arrangements for the Easter Music for the churches here.

With political races getting in full gear, the timing was very bad (or good?) for one of the politicians to have his jaws wired shut. Now what would the news casts do if all the politicians had their jaws wired shut?

### STATE CAPITAL



### HIGHLIGHTS

By Lyndell Williams  
TEXAS PRESS ASSOCIATION

AUSTIN—In a tumultuous week that can only mean the election campaign season has begun in earnest:

- The Texas Republican Party began investigating whether signatures were forged on the petitions of presidential candidates Bob Dole and Alexander Haig.

- Robert Campbell, a leading Democrat on the Texas Supreme Court, resigned from the bench, angering his party's officials by giving the GOP governor another free appointment; meanwhile, the Republicans launched their slate to reform the high court.

- Former state Sen. Lloyd Doggett, D-Austin, unmasked his well-veiled candidacy for the Supreme Court and cranked up his organization of liberals.

- In order to avoid a primary fight with Doggett, former Congressman Jack Hightower switched his campaign over to the seat being vacated by Campbell.

- A former head of the Ku Klux Klan filed for president on the Texas Democratic ticket.

#### Forgeries Suspected

A spot check of petitions by *The Dallas Morning News* turned up evidence that dozens of names had been forged on the Dole and Haig petitions, including the names of Democrats and one dead person, all from Houston.

Officials in both those campaigns denied knowledge of forgeries, and the Texas Republican Party is seeking out the overzealous worker who may have committed the felony.

The position of those candidates on the Texas ballot could be in jeopardy.

#### Justice Resigns

While the presidential race will dominate the season, it locks like most of the good action will take place in—of all the unlikely places—the Texas Supreme Court races.

Campbell's resignation caught Democratic headquarters by surprise, and they blasted him for giving Gov. Bill Clements "another backroom appointment."

Some party faithfuls contend the party is in no position to exhibit self-righteousness about backroom maneuvering, since it's under fire for favoring one presidential candidate while charged with the duty of conducting a fair and impartial primary election.

The surprise resignation of a Republican District Judge in San Antonio left somewhat of a strain on GOP intentions there when it looked like Democrats would be kept off the ballot altogether. However, Gov. Clements stepped in and restored the race to the voters.

#### Season's Top Secret

The rhubarb over Campbell's departure was somewhat settled on the Democratic side when Hightower used the opportunity to switch targets and avoid a primary fight with Doggett.

Controversial Doggett, adored by the liberals and abhorred by the conservatives, should get the prize for the season's best-kept secret. Not until the filing deadline approached did Doggett reveal his plans to regain public office.

Some saw a basic irony in the initial Doggett-Hightower match-up, for Doggett is closely aligned with Agriculture Commissioner Jim Hightower, to the extent that they share much of the same Austin liberal support.

The irony was that Jack Hightower could be confused with Jim Hightower by uninformed voters—the old name-game snare which is common in Texas.

#### High Court Battleground

The struggle for political dominance of this state will be fought in 1988 on the Supreme Court campaign trail. Certainly, the scenario is in dire disarray, and perhaps well-matched.

At issue is whether the court should be left or right, and whether justices should be elected

#### Hospital Report

Patients in the Hansford Hospital are Becky Shipp, Issac Herndon, Louis Harbour, Rudolph Benson, Marian Benson, and JE Davis.

Dismissed from the Hansford Hospital was Rocky Antalek.

or appointed.

For starters, the majority of justices aren't lappy with recently departed Chief Justice John Hill, who quit in mid-term to lobby for an appointed court.

The expose on CBS' "Sixty Minutes" made justices suspect in the eyes of the nation and as Justice Oscar Mauzy implied in remarks last week, it's war.

Then when Campbell quit to campaign to keep elected judges, the other faction got angry.

Presently, it's the most divisive political issue to hit the Supreme Court and legal profession this decade.

Democrats have lost the edge. Gov. Clements is sitting with two appointments and a well-funded reform slate to topple a Democratic court which is at war with itself.

Observers are convinced it's going to be a bitter fight. The issue of wholesale impropriety by some justices is what started this confrontation, and if the warriors get out of hand during the campaign, Texans may wait a long time before the Supreme Court is again viewed as the hallowed halls of decorum.

## Snow, ice account for accidents

A pair of accidents resulting from last week's snow broke an almost 8-week accident free period in Spearman this week.

One accident occurred Saturday on Main Street where a Guymon, Ok. man—test driving a new LTD Crown Victoria from Crawford Motor—backed into a car driven by Selma Dahl Reneau of Spearman.

Haskell Lee Bohanan of Guymon was backing from the curb on Main when he struck the vehicle driven by Ms. Reneau, according to Spearman police reports.

The accident occurred shortly after noon last Saturday.

The only other accident came when a front loader, operated by a city employee, backed into a pickup Monday evening.

The loader was moving snow on West Fifth Street when it backed up and struck a pickup going east bound, police department records note.

The pickup, operated by Danny Ray Hendricks of Spearman, attempted to back up itself, but slick roads prevented it.

The loader was being operated by city employee Thomas Maldonado Reyes.

No tickets were issued in either accident. Both were investigated by city patrolman Bruce Goehring.

## Buildings that Stand . . .

Call for your free estimate today!

**STRICKLAND**  
BUILDING SYSTEMS, INC.

6208 Canyon Drive  
Amarillo, Texas 79114

P.O. Box 7038  
phone (806)355-3387

A spot check of petitions by *The Dallas Morning News* turned up evidence that dozens of names had been forged on the Dole and Haig petitions, including the names of Democrats and one dead person, all from Houston.

Officials in both those campaigns denied knowledge of forgeries, and the Texas Republican Party is seeking out the overzealous worker who may have committed the felony.

The position of those candidates on the Texas ballot could be in jeopardy.

## ANNOUNCING Mark Rassmussen, OPTOMETRIST

In the offices of Douglas Steger, O.D.

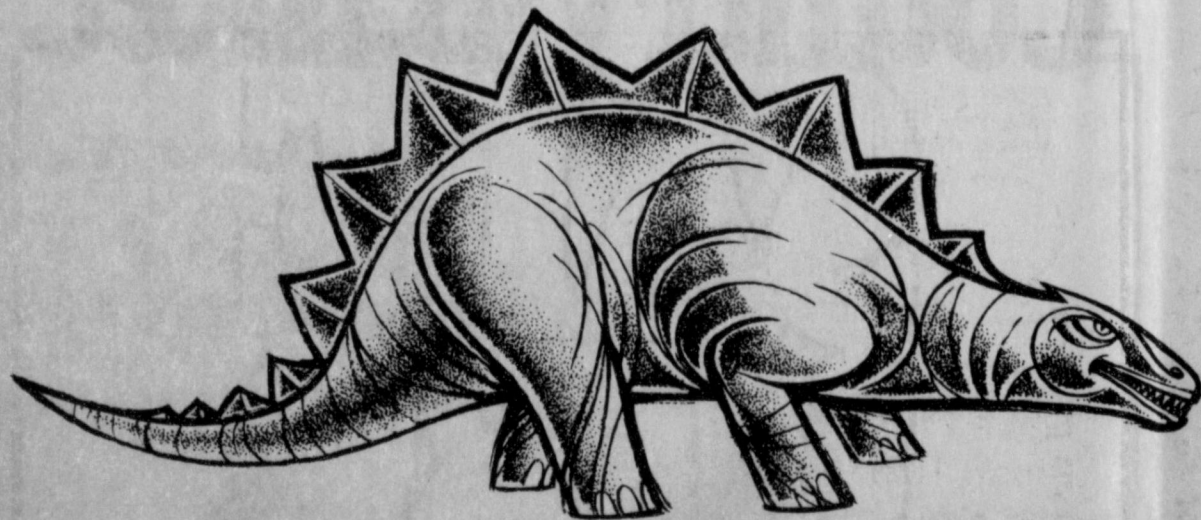
During Normal Business Hours

9 to noon and 1 to 5, Mondays thru Thursdays

and 9 to noon Fridays

Call for appointment -- 659-3650

710 S. Roland Spearman, Tx.



## MOVE WITH US INTO THE 21ST CENTURY . . .

. . . KEEP UP WITH ALL THE  
EVENTS AND HAPPENINGS IN

## SPEARMAN AND HANSFORD COUNTY!

Each edition of the Spearman Reporter and Hansford Plainsman brings you information on businesses, sales and events.

Keep up with city and county happenings, social events and special savings through the pages of Spearman's two

weekly newspapers. Whether it's local sports or issues vital to you or your pocketbook.

Shop and save with all the merchants and businesses utilizing the Reporter and Plainsman. You need look no further to find the best bargains and services around . . .

**WORKING TOGETHER TO MAKE SPEARMAN STRONG!**

# Crisis Center Report

By Mary Frances Ellzey

Happy New Year to all you lucky people who don't need a Crisis Center.

And Happy New Year to all you lucky people who do need a Crisis Center, and have our local one to call on.

This Christmas we did not have anyone in the Shelter, but the office was plenty busy. We had clients from our most outlying areas.

Furthermore, we are very fortunate in being able to find persons who are not directly involved in the Crisis Center, but who are, nevertheless, willing to help out when we need them.

This certainly makes things easier for us, for otherwise we would have to engage in research and/or in even more running around than we usually do. Many thanks to these dear souls.

You may remember that we have to have a certain percentage of cash match for the funds we receive from the Victims of Crime Act.

Friday, Jan. 29, is the date for our major fundraiser, the Mexican Pile-On. Again, it will be at the Christian Church, right across from where those basketball games will be played.

We will begin serving at 5:30 p.m. Remember how good you found it to be last year? Well, this year it will be equally good, maybe even better, so be sure to get your tickets now.

The cost is \$5 for adults and \$3.50 for children, and allows you to have all you can eat.

This is something I won't pre-

pare for myself, so I've been looking forward to it ever since last year's feast.

To make it even more gratifying, the money couldn't go to a better cause.

Now, here is a suggestion for all my friends and enemies: I know how much fun it is to be "in the know" about the problems that other people have, especially their domestic problems, and how much fun it is to be able to tell someone else something he/she did not know about "you know who."

But all too often, this aggravates the problem for those who have it; we don't know all the facts (though we may not realize this), so what we tell does not give the whole picture, so the talk that radiates from our bit of "information dropping" is distorted, and even damaging. So, solving the problem is made even more difficult than it was to begin with.

One story along this line is as follows: A certain man went to the door of the house of some friends. As he knocked, he heard the wife say, "Look, I'm on my knees!"

Later he repeated the tale to his own wife. "Do you know, I think Dick and Jane are having trouble. He was making her apologize by getting on her knees."

His wife was sure he had misunderstood what he had overheard, so she checked it out. Do you know what she learned?

Dick had just told Jane that the best way to plug in the phone jack was to stoop, squat, or squint. She'd answered, "Look, I'm on my knees!" The rest of what she said was muffled. "That's more effective than squatting and squinting! And a whole lot quicker and easier."

Now, just suppose the man in question had spread around his version of the story. What he had overheard was true. But it just wasn't the whole truth.

So, dear readers, resist that temptation to talk about the problems of other people. Almost certainly you don't know the whole story.

# SISD board has meeting

An early-morning breakfast meeting of the Spearman ISD school board saw trustees authorize the school business manager to approve travel expenses of up to \$4,500 for ISD groups if the travel occurs prior to a regular meeting of the trustees.

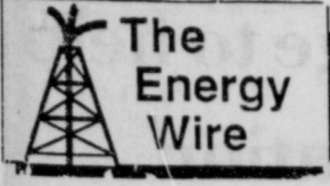
They also awarded a 3-year contract to current school superintendent Larry Butler.

The 1986-87 performance report was approved by trustees as presented by Butler. The report will now be forwarded to the Texas Education Agency as per state requirements.

Butler also outlined possible ramifications of a mistake by the TEA which could result in a loss of some \$5,000 in the state funding to the Spearman ISD this fiscal year.

In other action, the board accepted a bid of \$8.21 for gasoline for the upcoming month from Golden Spread Sales in Spearman. The only other bid came from Davis and Davis at \$8.88 per gallon.

Effective January 1, all governmental agencies are now required to pay the \$.091 federal tax on gasoline, however, they remain exempt from state taxes on fuels.



Petroleum imports in 1988 should reach highest levels since 1980 due to a continuing decline in domestic oil production and a gradual rise in petroleum consumption, according to a report by the Energy Department.

Net energy imports last year leaped by 12 percent and the increase in 1988 probably will be in the same range, said the report, DOE's "Monthly Energy Review."

"Despite the partial recovery in oil prices, the effects of the 1986 price plunge continued throughout the first three quarters of 1987, in the form of higher energy imports," the report said.

"Due to the increase in both the cost and volume of energy imports, the energy trade deficit for the first three quarters of 1987 totaled \$27 billion, about \$4 billion higher than the deficit recorded for the first three quarters of 1986," said the report.

In the first three quarters of 1987, net petroleum imports for the United States were 5.7 million barrels per day, an increase from 5.3 million barrels for the same period in 1986. In 1988, the report said total imports should jump to 6.1 million barrels per day, offsetting a similar decline in domestic oil production.

Domestic production has fallen steadily since the oil price crash of 1986, with a drop in 1987 to 8.3 million barrels per day, 400,000 barrels down from a year earlier.

"Production in 1988 is projected to be even lower -- 8.1 million barrels per day," the report said.

In addition to the decline in domestic production, the report pointed to a continuation of oil prices below pre-1986 levels as spurring imports.

"Relatively low prices tend to depress domestic production and, at the same time, to encourage consumption and a resulting increase in imports" the report said. "Prices of imported crude oil delivered to U.S. refiners during the fourth quarter of 1987 and throughout 1988 are projected to stabilize at \$18.50 per barrel. Although that price is higher than the price was during 1986, when it fell to as low as \$10.91 per barrel, it is still significantly below the high

# Vet questions, answers

Q-Is there a penalty if a VA guaranteed home loan is partially or fully paid before it becomes due?

A--There is no penalty if a VA loan is partially or fully paid in advance.

Q--Do the VA eligibility assessment procedures for medical care apply to veterans 65 and older?

A--VA's eligibility assessment procedures apply to all nonservice-connected veterans regardless of age. Public Law 99-272 repealed a provision in the Veterans Omnibus

prices prior to 1986 and, as such, will tend to contribute to the increase in net oil imports," said the report.

Overall imports of petroleum in the first three quarters of 1987 averaged 34 percent of total U.S. petroleum supply, up 1 percent from the same 1986 period. More than half of U.S. imports -- 18 percent -- came from members of the Organization of Petroleum Exporting Countries for the first three quarters of 1987, also a rise of 1 percent from 1986.

Imports from Arab members of OPEC increased during that period from 6.9 percent of U.S. supply to 7.1 percent, representing a 5 percent increase in petroleum from the Arab OPEC members.

The report predicted that gasoline prices would average about 99 cents per gallon in 1988, up 1 cent from the third quarter average for 1987.

Health Care Act of 1970 that allowed veterans 65 years of age or older to receive care in VA facilities regardless of income.

Q-I receive VA compensation and would like to know why the VA did not send me a W-2 form.

A--VA compensation payments are not taxable. The W-2 forms are sent only to record taxable income.

Q-My husband receives VA pension benefits. If I go to work will this affect his benefits?

A--If your husband established entitlement to pension benefits prior to January, 1979, and continues to receive benefits based on the law in effect at that time, your earned income would not be a factor. If he receives benefits under the current pension law (PL 96-588) your income would be a factor in determining the amount of his pension. If your joint income reaches a specified level his pension would be discontinued.

Q-Will the VA release my new address to my estranged wife?

A--No. Your address is privileged information and may not be released without your permission.

Q-My son who died in the service was cremated and his ashes were scattered without interment of any portion of the ashes. May I still obtain a memorial marker for him?

A--Yes. The memorial may be erected in a private cemetery or the memorial section of a national cemetery.

**FELLOWSHIP BAPTIST CHURCH**  
11th & Archer  
Services each week  
Sunday 10:00 a.m. Wednesday 7:30 p.m.  
11:00 a.m. 6:00 p.m.

Fellowship Baptist Academy  
K-12

An Independent Baptist Church

659-2783  
RON FOX PASTOR

**Markets**

WHEAT	\$2.63
MILK	\$2.85
CORN	\$2.00

# Vet insurance issued since Jan. 1, 1919

Government Life insurance has been issued through various periods starting Jan. 1, 1919, through May 2, 1966, to veterans of world Wars I and II and the Korean conflict. The only VA-administered program now open to new issues is Service Disabled Veterans Insurance. This program, without dividends, is available to veterans with service on or after April 25, 1951, who have a service-connected disability.

During 1988, a total of 2,624 Texas veterans with U.S. Government Life Insurance (prefixed by "K") will share in \$750,000 dividends. Nationwide, 47,540 U.S. Government Life Insurance holders will receive an average dividend of \$225 out of a total distribution of \$12.1 million.

**West Texas State University**  
Spring 1988 Registration

NEW STUDENTS: Tuesday, January 19  
REGULAR REGISTRATION: Wednesday, January 20  
CLASSES BEGIN: Thursday, January 21

Evening registration is the first night of class if only night courses are taken.

For more information call admissions.  
656-2020

**West Texas State University**  
West Texas State University is an equal opportunity institution.

**CARQUEST SUPER CLEARANCE SALE**  
AUTO PARTS STORES

<b>Armor-All Twin Pack</b> Protectant and new CLEAN START cleaner. Each in own refillable bottle. #91290 Limited quantities Sale Price \$6.99 Mail-in rebate \$3.00 Net Price After Rebate <b>3.99</b>	<b>Bravo™ Booster Cables</b> Heavy duty, no tangle design. 12-ft. 8 gauge. All copper. Limited quantities December sale priced at \$12.95 <b>9.99</b>
<b>CARQUEST™ Tonka™ Jeep™ CJ™ Dune Buggy</b> Includes accessories shown. #20012 December sale priced at \$9.95 <b>8.95</b>	<b>Centurion Wet'n Wild Water Resistant FM Radio</b> Mini-headphone sportster. 7 radio for joggers or fishermen. #E210 Uses one AAA battery (not included). December sale priced at \$14.99 <b>12.99</b>
<b>Vise-Grip Gift Set</b> Includes 5 and 10 curved jaw locking pliers. #213C Limited quantities December sale priced at \$10.99 Sale Price \$9.99 Mail-in rebate \$3.00 Net Price After Rebate <b>6.99</b>	<b>Ray-O-Vac General Purpose Batteries</b> Two pack. 2 cells. #20-2B Limited quantities Other sizes available at regular price. Regular \$9.99 <b>59¢</b>
<b>Halon Fire Extinguisher</b> No dry chemical mess. For home, workshop, boat or car. #700A Limited quantities December sale priced at \$14.95 SAVE 2.00 <b>12.95</b>	<b>Allison™ Digital Clock</b> Large numbers for hours, minutes, seconds. Day and date. Attaches with velcro strips. Batteries included. #54-1435 Limited quantities December sale priced at \$4.99 <b>4.49</b>
<b>Centurion AM/FM Cassette Headphone Stereo Cassette Tape Player</b> plus AM/FM stereo radio. Deluxe feather-light headphones. Limited quantities Regular \$19.95 <b>17.95</b>	<b>CARQUEST™ Cap Air Freshener</b> Put a cap on your doors with a CARQUEST™ cap. #52100 CO Limited quantities Regular \$1.99 <b>1.29</b>

Prices good at participating CARQUEST Auto Parts Stores thru January 17, 1988.

**CARQUEST**  
**Gruver Farm Supply**  
515 Main  
Gruver, Tx. 733-2427  
CARQUEST: the Right Place to buy auto parts:

**PARTS VALUE OF THE MONTH**

**Pre-Season Service Savings**

**BE READY TO GO!**

Get a Performance Plus Checkup and save on service work, too!

**SAVE 10% on parts**  
when work is done in our Service Center

**plus SAVE 10% on labor and get FREE HAULING**

Get your tractor in top shape for the busy season and save at off-season prices. Take a good hard look at your equipment and then, if you want repairs, we'll do them in our Service Center at a special discount. Don't wait until the busy season hits. Get your tractor ready to roll now at Special Pre-Season Service Savings.

**case**  
**Five Star Equipment Inc.**  
Hi-Way 15 West Spearman  
659-3743

# Sharp to introduce change to help encourage oil, gas exploration

Railroad Commissioner John Sharp said today he will soon propose a change to Commission rules designed to encourage exploration for new gas supplies in Texas.

Under the rule change, Sharp said gas wells in new fields would be allowed to produce at maximum deliverability for the period of two years from the date the first gas from the field is sold, or until the sixth well is completed in the field, whichever comes first. At that point, the wells would come under the Commission's normal gas pro-rating system.

As an added incentive, the new gas would be given a priority equivalent to most casinghead gas from oil wells - making it equivalent to priority three on the Commission's six-step gas priority scale. Pipelines would be required to take such new gas supplies before gas from most other gas wells could be taken. After two years, or completion of the sixth well in the field, the wells would join other gas wells under the regular priority system.

"I've been told by independent producers that their bankers will not approve loans for new discovery gas wells because they fear they can't sell it if they find it," Sharp said. "This rule does away with that argument by insuring this gas a place in the market."

"Unless we act soon to stem falling gas production in Texas, we're facing serious future prob-

lems as soon as two or three years from now. In fact, we could have some spot deliverability problems this winter if we get a cold snap."

Sharp said Texas drilling has plunged in the wake of one of the worst years in history of the oil and gas industry. He said well completions this year are off 32 percent from last year and that the number of new holes drilled in the state is down 38 percent compared to 1986.

"It isn't that we don't have plentiful gas reserves," Sharp continued, "we just don't have enough rigs running to tap the supplies we will need. This rule change is designed to encourage drilling that will bring that gas to market."

According to the commissioner, Commission statistics show that maximum gas deliverability in the state has dropped 13 percent in the last three years, down to 11.7 billion cubic feet a day. The average annual production of each Texas gas well has plunged from 400,000 mcf (thousand cubic feet) to 100,000 mcf over the last 40 years, a 75 percent drop. Sharp said the average Texas gas well produced 1,126 Mcf per day in 1970 but only 406 Mcf a day in 1986.

"At the present rate, by the year 2000 nearly three-fourths of all gas wells in the state will be stripper wells producing 60 Mcf a day or less," Sharp said.

"We can help reverse this trend," he said "I believe this rule

change will be a step in that direction, although increasing demand for gas by obtaining new markets is the real key.

"however," Sharp added, "it's a two-edged sword. If we don't increase our reserves, new markets will be skeptical about assurances that future supplies are available. We have 100 to 150 years of gas reserves in this state. We need to carry that message all across this country and begin proving that the shortages predicted by some will not occur."

"State and federal governments made tremendous mistakes in the 1970's by prohibiting natural gas as a fuel for power generation," Sharp continued. "The decision was based on the assumption that we were running out of natural gas."

"With the repeal of those bad laws, our chief task now, with 150 years of gas reserves, is to regain markets for Texas gas. Those markets, both in-state and out-of-state, are being told by some that natural gas (now in surplus) will soon become short in supply. This rule change will help Texas prove that we've got the new natural gas reserves to provide all they need," Sharp said.

## Chamber spotlight . . .

### Hickerson in county for almost 2 decades

Hickerson Jewelers, at 721 West 7th, has been in Spearman since 1969. Mr. J.C. Hickerson and the late Mrs. Faye Hickerson moved here from Sunray and opened the store on Main Street. Among other reasons given by Mr. Hickerson for moving to Spearman was the friendly attitude and encouragement of the local people.

After several years here their increase in business necessitated a move to larger quarters, so they built the spacious building they now occupy on west 7th.

Hickerson jewelers carry one of the largest inventories in the Panhandle. They make every effort to stock jewelry stock in a variety to suit various tastes and prices, but always insist on items of quality, whether it is ornate or of simple dignity.

If a customer wants some jewelry not currently stocked, they are most accommodating about obtaining it.

Their repair department contains the most modern equipment in use today. They offer major repairs and custom jewelry casting as well as jewelry fabricating.

They are justifiably proud of the line of Hickerson watches available for their customers. This watch is of Swiss components, assembled in the United States and carries the engraved Hickerson signature. These watches carry a lifetime battery replacement, needless to say, this watch is fine enough for the most discriminating of tastes.

Other lines stocked is the Premier Star Diamond jewelry, Longine-Witnauer watches, all 14 kt gold accessories, and all 14 kt gold jewelry. Cross Pins with various insignia, Colibri lighters.

J.C. Hickerson is a native of Denley County, finishing high school and college in Clarendon. He attended Bradley horology in-

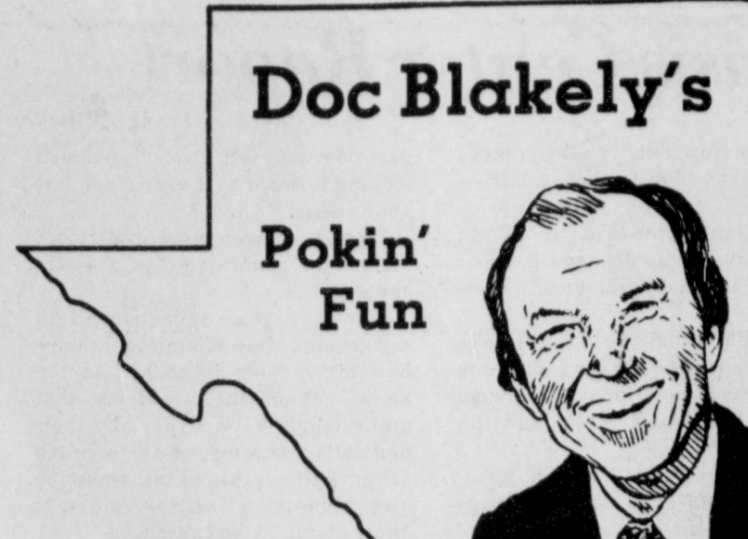
### Students to be awarded scholarships

Some 150 high school seniors from farm families throughout the United States will be awarded \$1,000 college scholarships this spring by the Cargill Scholarship Program for Rural America.

"This program, now in its third year, is designed to recognize and encourage academic achievement, accomplishments and talents of young people from U.S. farm families and to help them get started with their post-secondary educations," said Calvin Anderson, executive director of the sponsoring Cargill Foundation. The foundation is a philanthropic arm of Cargill, a Minneapolis-based agribusiness company.

To qualify, students must have plans for full-time enrollment this year at an accredited two or four-year college, university or vocational-technical school. An independent national scholarship service organization manages the selection process, which is based on several criteria including academic records, leadership and extra-curricular accomplishments.

Scholarships are limited to two per community. Local high schools and Cargill offices have further information and applications forms.



There is too much hate and violence in the world. If you don't believe that just watch TV. You see it in Afghanistan, El Salvador, and Divorce Court.

What we need is more people with a sense of humor. An employee was given an award for efficiency in the plant by his supervisor who obviously also wanted credit for the accomplishment. When asked to say a few words at the company banquet, the employee replied, "It's a darn good thing I didn't do it like he told me."

I was about to make a talk at this very banquet. A fan of mine at the head table said, "I'd rather hear him talk than eat." Her friend replied, "Yes, I've heard him eat."

Waxing philosophically, I asked a young lady next to me what was the first thing she found attractive about her fiance. She answered, "His father's net worth."

So I asked him what quality he most admired in a woman. He said he liked a girl who could open a beer bottle with her belly button. Now I can't vouch for the

sincerity of these remarks but they are certainly as imaginative as teaching a pit bull dog how to tap dance.

At a success rally, people always talk about the winners but its the losers who are learning if they just don't give up on themselves. A trucking official told me, "Experience and progress are directly related to the amount of equipment ruined."

Creative thinkers, that's what the world loves. In my hometown, we have a motel with separate units built to look like wigwams, very distinctive sight. It's called the TeePee Courts. One young guy makes a point to date the new girl in town first. He always uses this great line: "Come on, I'll take you on a tour of the Indian Reservation."

When the girl questions the validity of this Indian reservation, he offers to introduce her to the chief of the tribe, who registers guests. "Aren't you Indian?" asked the boy. "Yes," replied the clerk. "Yeah, where are you from?" queried the girl. "Calcutta," he answered.

## Being a spoilsport could save your child's life

When your children want to listen to the radio in the bathtub, be a spoilsport and say no. You won't win a popularity contest, but you could save their lives. Water and electricity are a dangerous combination.

If your children want to climb a tree or fly a kite near power lines, don't worry about spoiling their fun by saying no.

Power lines are dangerous if anything comes into contact with them - including a tree branch or kite string.

Saying no to dangerous activities helps you say yes to electrical safety.

Texas-New Mexico Power Company  
Neighborhood Professionals  
Offering You The Best Choice

## THE LITTLE BITTY AD . . . with the big punch

### Six Big Reasons To Use Newspaper Classified Ad Section

The "Want Ad" columns are among the most thoroughly read presentations in the English language. Everyone from the individual to leading companies use them. For example, here are six reasons why real estate firms use them to supplement their regular ad programs:

- 1/ They secure new prospects
- 2/ They build company images
- 3/ They obtain new listings
- 4/ They keep the seller happy
- 5/ They build company morale
- 6/ They recruit new associates

. . . and incidentally, "Want Ads" can fit any budget.

Prepared by Texas Newspaper Advertising Bureau (TNAB)  
An affiliate of the Texas Press Association

## eyes on classifieds

Before You Buy Your Next Luxury Car or Sports Car . . . Call 1-800-692-4125 For A No-Nonsense Quote!

We sell for less because we're the volume luxury car and sports car dealer in the Texas Panhandle.

## DON JUDD Cadillac

Porsche - Audi - Saab

2501 Paramount • Amarillo, Texas

## WEIGHT WATCHERS

### NEW 1988 QUICK SUCCESS PROGRAM

LOSE WEIGHT 20% FASTER

Lighten up with the fastest, easiest approach to weight loss ever!

Not only will you lose weight 20% faster in the first few weeks than on any previous Weight Watchers program, you can actually customize a plan that will fit your personal needs and lifestyle.

Sheila Falk, Area Director

Join now for only **\$12**

**Final Week!**

Registration Fee	\$17.00
First Meeting Fee	\$ 8.00
Regular Price	\$25.00
<b>YOU SAVE . . .</b>	<b>\$13.00</b>

Offer Ends January 31, 1988.

Come to the Weight Watchers meeting nearest you.

<b>PERRYTON</b> 1st National Bank 201 S. Main Street Thur: 6:30 pm	<b>SPEARMAN</b> Home Extension Club 309 N. Bernice Mon: 6:00 pm
---	--

**NOTHING WORKS LIKE WEIGHT WATCHERS!**

TEXAS TOLL FREE 1-800-692-4329

## PAINT SALE

Pro Latex \$6<sup>86</sup>/gal.  
5 gal bucket \$29<sup>30</sup>

Stock colors only

Pro Latex

Pro Namel \$9<sup>93</sup>/gal.  
5 gal bucket \$44<sup>65</sup>

While supplies last

## McClure Paint & Supply

307 Main Spearman

# Your Home Is Full Of Hidden Dollars

Call 659-3434

Turn idle items into cash fast with a Want Ad

**L & M Body Works**  
 1501 Hwy. 15  
 659-2775  
 Tailpipes - \$29.95  
 Mufflers - \$39.95  
 Most Duals - \$160.00 complete

**PANHANDLE CRISIS CENTER:** 101 S.W. Forth, Perryton, Texas 79070, 806-435-5013. Help is available at no charge for domestic violence and sexual assault. Call Panhandle Crisis Center, receive support during a difficult time. Counselors on call 24 hours a day. Call for help.

**DIET CENTER. THE WEIGHT-LOSS PROFESSIONALS!**  
 CALL US TODAY, for a free, introductory consultation, at 410 Davis, Spearman, Texas 659-2199

**STEAM RINSE & VAC:** Rinse and Vac Shampooer for rent at Gordons Drug. \$10.95 up to 24 hours.

**SCOTT'S CHIMNEY SWEEP**  
 Prevent Chimney Fires  
 Call 806/323-5859  
 Serving the Panhandle Area for 5 Years  
 \$45 per Chimney  
 Have your Chimney cleaned today!  
**CLEAN-RELIABLE-FRIENDLY**  
 Thurs. only til Jan. 28

**HANSFORD COUNTY Planned Parenthood**  
 412 Davis  
 659-2483  
 Spearman, Tx.  
 Monday - Friday  
 8:30 - 12:30

**WEIGHT WATCHERS:** meets each Monday at 6:00 p.m. at the Home Demonstration Building, Spearman Texas.

**ALCOHOLICS ANONYMOUS MEETING**  
 Hansford County Library (Upstairs)  
 122 Main-Spearman  
 Open meeting 2nd Tuesday  
**AL ANON**  
 Tuesday 8:00 P.M.

**NOTICE**  
 Wallace Monument Co. Monuments, Curbing, Grave Covers  
 Local Representative **LEONARD JAMESON**  
 Spearman, Texas

**OSGOOD MONUMENT CO.**  
 Amarillo, Texas  
 Dealers of Rock of Ages Granite, as well as all colored granites, marble and bronze memorials.  
 represented by **BOXWELL BROS. FUNERAL HOME**  
 519 S. Evans  
 659-3302

**Real Estate**  
**HOUSE FOR SALE:** 2 bedroom 1 1/2 bath 2 car garage newly remodeled 1 block from school priced in the low 20's call 659-3987 S 51 rtn  
**HOUSE FOR SALE:** 1850 sq. ft., 4 bedroom/2baths. Living room with fireplace. Reasonably priced. Located at 720 Wilbanks. Contact Frances Pipkin at 659-3938. S10-8tp

**ABANDONED HOMES -** Take over payments on 2 and 3 bedroom homes. **Qualify by phone.** 806/381-1352. Call collect. S46-rtn  
**FOR SALE** 1983 Bonneville Mobile Home, 16x80. 3 bedroom, 2 full baths, fireplace, spacious bilevel kitchen. Set Up on Corner lot. Must see to appreciate. Call 659-2354 after 5:30 p.m. S09-rtn

Own your own \$14.99 one price Ladies Apparel, childrens (\$20-\$40. value) or Shoe Store. Regular stores choose from Jean/Sportswear, Ladies, Men's Large Sizes, Liz Claiborne, Healthtex, Camp Beverly Hills, St Michele, Forenza, Bugle Boy, Levi, Organically grown, Lucia, over 2000 others. Or \$13.99 one price or multi-tier pricing discount or Family Shoe Store. Retail prices unbelievable for top quality shoes normally priced from \$19. to \$60. Over 250 brands 2600 styles. \$17,900 to \$29,900: Inventory, Training, Fixtures, Grand Opening, Airfare, Etc. Can open 15 days. Call Mr. Loughlin (612) 888 6555.

**For Rent**  
**FOR RENT:** 1 bedroom apartment at 217 E. 6th St. Call Gus McLain at 659-2274. S11-rtn

**FOR RENT:** Nice 3 bedroom unfurnished house, Carpet, drapes, central air and heat. Elec. or gas hookup for cook stove. Cleaning deposit required. No pets. Call 659-3657. S51-rtn

**FOR RENT:** 1 bedroom house located at 321 Endicott. Either furnished or unfurnished. Call Gus McLain 659-2274 or 659-2744. S03-rtn  
**MASTERCARD.** No one refused. Regardless of credit history. Also ERASE bad credit. Do it yourself. Call 1-619-565-1522 Ext. C3559Tx 24 hrs. S10-3tp-T-only

**Century 21 GOLDEN SPREAD REALTY**  
 Janye Helton Pointer, Broker  
 Owner, 435-5444  
**SALES ASSOCIATES**  
 T.O. Lesly - 659-2028  
 1112 S. Bernice - 3-1 1/4 location! Location!  
 322 Hazelwood - 2/1 owner will finance.  
 607, 611, 615, 609 Haney - Small house/ 2 apartments priced reasonable.  
 615 E. Kenneth - 3/2. Corner lot with extra acreage!  
 102 Wanda - 3/1 Immaculate!  
 118 Townsend - 4/2. Apartment included!  
 711 Collier - 3/1 Why rent?  
 322 S. Barkley - 3/1 Good location at affordable price!  
 16 S. James - 3-1 1/2 assumption available - come which is in exc. under condition!  
 811 Townsend-2/1 affordable!  
**COMMERCIAL**  
 15 N. Hazelwood  
 201 Bernice - Former M&M grocery store. Can be sold with or without fixtures.  
**FARM**  
 640 acres of grass in Sherman Co., over 500 acres in the C.P.R. Program  
 640 acres of wheat and milo land in Hansford Co.  
 3 RANCHES in Brownwood area. Call today!

**Help Wanted**  
**PIZZA HUT** is now taking applications for night time employment. Apply in person.

**NURSES AIDES WANTED:** Full or part time, must be able to speak, read and write English, must be able to assist geriatric and handicapped residents, professional demeanor a plus. Evening and night shifts available. Applications may be obtained at the Hansford Manor nurses station or the hospital office. Apply in person only, phone calls will not be accepted. S10-4tc

**HELP WANTED:** Service station attendant needed at Consumers. Fix flats, change oil and other odd jobs. Apply in person at 421 W. Kenneth. S10S-2tc

**Ladies can earn \$50 Tuesday or Thursday** at Spearman and surrounding towns. No parties necessary. Stanley Home Products. Lois Piefer 273-7767. S10-4tc

**GET PAID** for reading books! \$100.00 per title. Write: ACE B856' 161 S. Lincolnway, N. Aurora, IL 60542.

**ADRESS ENVELOPES** for firms, nationwide! \$en\$ational earning\$! No experience. We show you. Begin immediately! Stamped envelope: Publications-1, 804 Old Thornsby Road, Clanton, Alabama 35045. S08-(rt.)

**Miscellaneous**

**VISA! MASTERCARD! GUARANTEED!** Without investigation. Bankrupt? Bad Credit? Divorced? Widowed? On Welfare? No problem. All eligible. Free details. Send #10 self addressed stamped envelope. Success, Drawer 389, Clanton, Alabama 35045. S08-(rtn)

**LEGAL NOTICE**  
 Hansford County will receive bids until 4:00 p.m., Friday, January 22, 1988 on one used tractor between 1973 and 1978 year models for Precinct #2. Bids will be opened January 25, 1988 at the regular meeting of the Commissioners Court.  
 Specifications are available at the County Judge's office or the County Auditor's office in Hansford County Courthouse. The Court reserves the right to accept or reject any or all bids.  
 Roy L. McClellan  
 Hansford County Judge  
 2tc T-Only

**Real Estate Sampler**  
 Allen Alford-Broker-659-3034  
 Hester Sue Crawford-Sales 659-3060 or 659-2074  
 Dennis Nelson-Sales-659-3608  
 Larry Tropper-Sales-659-3491  
 316 S. Bernice - 2366 sq. ft.  
 101 W. 12th - 1344 sq. ft.  
 426 Haney - 1479 sq. ft.  
 1005 Townsend - 1054 sq. ft.  
 619 Evans - 1350 sq. ft.  
 1014 Linn Dr. - 2,000 sq. ft.  
 734 Wilbanks - 1192 sq. ft.  
 32 N. Snider - 1850 sq. ft.  
 729 Cotter - 1519 sq. ft.  
 506 Endicott - 1100 sq. ft.  
 907 Dessen - Nice starter  
 505 Haney - 1600 sq. ft.  
 We want to be Your REALTOR

**WANTED:** Any J.H. Gruver & Sons Advertising Gifts that you do not wish to keep, please contact Helen Shapley at 733-2671 or 733-2641. Especially bond books, coin purses, calenders, knives and pen and pencils. S11

**EARN EXCELLENT MONEY** in Home Assembly work. Jewelry, Toys & others. FT ? PT Avail. **CALL TODAY!** 1-518-459-3535 (Toll-Refundable) EXT B-8017 24 hrs. S09-3tp-Tonly

**Goodness Gracious It's Good**  
**Sausage Show-Offs**  
 2 cups Martha White Self-Rising Flour  
 1/2 cup Snowdrift shortening  
 1/4 cup milk  
 1 pound sausage, at room temperature  
 Preheat oven to 350°F. Cut shortening into flour; stir in milk with a fork until dough leaves sides of bowl. Roll dough into a rectangle about 1/4-inch thick. Spread sausage almost to edges of dough. Roll up like a jelly roll, beginning with long side. Slice into rounds about 1/2-inch thick and place on ungreased baking sheet. Bake 30 to 35 minutes or until browned. Makes about 30.

**NOTICE TO CREDITORS**  
 Notice is hereby given that original Letters of Administration for the Estate of Lanore Irene Boese, Deceased, were issued on January 12, 1988, in Cause No. 1882, pending in the County Court of Hansford County, Texas, to Orville Boese and Elizabeth York. The residence and post office address of Orville Boese is Star Rt. 2, Box Al, Goldthwaite, Texas 76844. The residence and post office address of Elizabeth York is 401 W. 12th St., Spearman, Texas 79081. All persons having claims against this Estate which is currently being administered are required to present them within the time and in the manner prescribed by law.  
 Dated this 12 day of January, 1988.  
 John L. Hutchison  
 Attorney for the Estate

**BOB HARDY REALTY**  
 803 Wilmeth Dr.  
 659-3440  
**NEW LISTINGS:**  
 820 Linn Drive - immediate 3 bd - 2 bath - fire - double car garage. Area 2700 sq. ft. living area. Custom drapes. Lawn Sprinkler System. Satellite dish and receiver. Fenced. Excellent location. Call for quote  
 1001 Haney - 3 bd, 2 bath. Den with fireplace. Corner lot fenced. Carpeted. Nice, price-reduced. Approx. 1450 sq. ft.  
 Robert Hardy - broker

**CLASSIFIED RATES**  
 Regular . . . Per Word-\$0.13  
 Display . . . Per col. Inch-\$4.20  
 Double rate for blind ads  
 Minimum charges  
 Cash . . . . . \$4.00  
 Charge . . . . . \$4.50

**CASH IN ADVANCE ADS**  
 •Work wanted •Trailers for Sale •Business Opportunites •No long term Responsible •Political Advertising •Child Care •Baby sitting •Garage Sales •Out-of-county Ads unless advertiser has established credit with •The Spearman Reporter

**DEADLINES**  
 To place or cancel ads  
 Friday - 12:00 p.m. . . . Sunday edition.  
 Tuesday - 12:00 p.m. . . Thursday edition  
 The Spearman Reporter reserves the right to reject, edit, revise and properly classify all advertising submitted for publication. The Spearman Reporter also reserves the right to cancel any advertisement at any time.  
**THE SPEARMAN REPORTER**  
 213 Main, P.O. Box 458  
 Spearman, Texas 79081

Offered by  
**EMMETT R. SANDERS**  
 REALTOR  
 3 bedroom home, attached garage.  
 \*\*\*\*\*  
**EMMETT R. SANDERS**  
 REALTOR  
 659-2516, nights 659-2601

**Classified Ads:**  
**FAST**  
**HIGHLY VISIBLE**  
**DEPENDABLE**

**Hansford County's Market Place**  
 . . . the classified section of the Spearman Reporter and the Hansford Plainsman

Reach your potential with an inexpensive, cost effective classified ad . . .

**Call 659-3434 Today!**

**THE CLASSIFIEDS**  
**INEXPENSIVE PROFITABLE**

# IT'S HOMECOMING, '88!

Spearman  
Lynx and Lynxettes

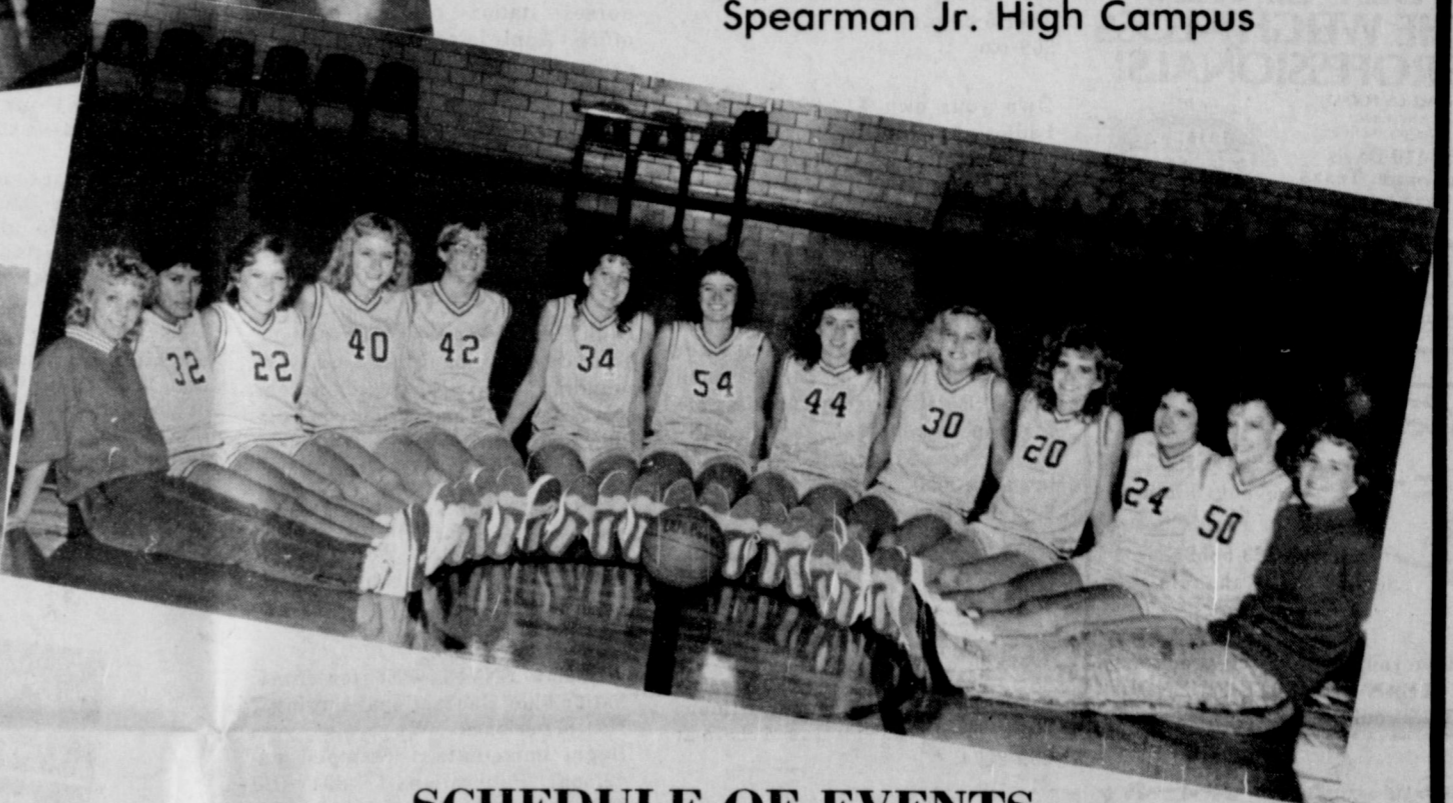
vs. the

White Deer  
Bucks and Does

5 p.m. Friday

Spearman Varsity Gym

Spearman Jr. High Campus



### SCHEDULE OF EVENTS

Friday 5 to 7 p.m. - Potato & Ice Cream Dinner  
Junior High Cafeteria

7 p.m. - Girls Varsity Game

8:30 - Crowning of Homecoming King and Queen

8:35 - Boys Varsity Game

Saturday - Homecoming Dance following Gruver Game --HS cafeteria

**Gillispie CHEVROLET  
Olds Inc.**

Hwy. 207 S. 659-2541

Transpetco



**J.G.'s**

306 Hancock 659-3424

**Archer Inc.**

Oil field Service

AIRPORT Addition 659-5272

**SPEARMAN**

**BOOSTER**

**Club**

**Hansford County**

**Farm Bureau**

307 W. DAVIS 659-3133

**FIRST STATE BANK**

**of SPEARMAN**

member FDIC

**Gordon's Drug**

314 Main 659-2141

24 HOUR SERVICE

**Kid's Stuff**

719 W. 7th 659-2608

**Farber Livestock  
Transportation**

659-3902

**CHA LOR'S**

214 Main 659-2767

**Sack's Third Avenue**

203 MAIN 659-3350

WHEN YOU THINK GIFTS, THINK SACKS