



The Morse Mustang, Reid no 10, shakes hands with Bodey "the body" after he made a record 87 yard touchdown run for the Lynx Friday night. Reid is considered as one of the top offensive and defensive men in the 1-AA district.



No. 58, line backer Pogue, registers a smile of joy, as he visits with trainer Kennard during the Boys Ranch-Spearman game here Friday night. Spearman won the game 36-6! The Lynx will host Panhandle in Spearman this Friday nite. As a feature of the evening, Baker-Taylor will have a chili supper beginning at 5 p. m. Friday. Get your ticket today!

Two purple powers will meet at Lynx stadium Friday night in a game that will possibly have an important effect on the outcome of the District 1-AA race. The Panthers, for all practical purposes, must win Friday night to stay in the thick of the district race, but the Lynx must also win! So, we have two purple power teams meeting in a big game for both teams!

The purple and gold of Panhandle is one of the teams in the district that traditionally is hard for Spearman to defeat! Last year the Lynx were saved when the wind changed to the north and they literally pulled the Lynx from sure defeat at the hands of the classy Panthers. This year will be no exception! Should the Lynx take the Panthers lightly, they can surely lose the game! The Panthers have one of the best defensive units in the district, and they pass very effectively. Most sport fans think that the game here Friday night will feature an aerial circus from the Panthers and another type of circus from the Lynx, complete with everything!

Coach Sherwood is still undefeated in conference play for the past four years. He will not take Panhandle lightly, nor will any of his players! The Lynx could come out of the locker room fired up and ready to play one of their best games of the year against the Panthers.

In last week's game, the entire Lynx team had to be picked as "stars" of the evening! One of the thrills of the night was Bo "Cannon" DeArmond's recovery of a mid-air fumble! The Cannon

almost broke loose for a TD, but was finally tackled after a 4 yard gain! The usual good performance by the offensive and defensive units of both teams was spectacular, and the bands from both Boys Ranch and Spearman performed well!

Fans attending the game this Friday night should get to see a "bunch" of good running backs in action, plus the toughest line play of the year! As we said before, the Panthers scored 22 points Stinnett at Stinnett and beat them in the final quarter after trailing them 20-0! And, Stinnett had their entire first team of talent on the field at the time! We predict a much harder game here Friday night than in the Boys Ranch-Spearman game!

One of the highlights of the evening will be the Baker-Taylor chili supper, to begin at 5:00 'til 7:30 Friday evening at the High School cafeteria. Fans may eat at the high school, walk out the door across the street to the game! All fans from Panhandle and Spearman are invited to the supper! The Baker-Taylor women are the most active group of women in the area, and their money from the chili supper will be used to help some worthy cause in Spearman! Let's get out and eat chili Friday night!

The 7th and 8th grade teams will entertain the Panthers at Lynx stadium Thursday night, while the B team and 9th grade play away Saturday! If you haven't watched these future Lynx in action, you have missed the thrill of your life! Come out Thursday and watch these kids play football!

See you at the chili supper Friday evening at 5 p.m.!

# Spearman Reporter

VOLUME 67, NO. 50

THE SPEARMAN REPORTER, SPEARMAN, TEXAS 79081

THURSDAY, OCTOBER 28, 1976

## Gas Off To Residents Monday

the railroad tracks and other portions of the city last Monday.

City employees worked overtime to relight furnaces, heaters, etc. Monday evening as they were able to resume

the flow of gas into homes. Chuck Rigdon and Keith Hutton worked overtime also to help the city in this emergency.

City gas users are asked to conserve as much gas as possible by turning down thermostats when you are not at home and at night, and using a lower reading even if you are at home. This will not only conserve gas, but will be reflected on gas bills.

## Election Judges Appointed

At the regular County Commissioners meeting Monday, all Commissioners were present.

They approved bills for payment.

They appointed an election judge and alternate for Precinct No. 6 (Spearman School). They are Kerry Henton and Elvonna Davis, and also made plans to contact Elsie Mathews to be election judge for Precinct No. 1 (Spearman Court-house).

Commissioners also approved a request of Texhoma, Texas gas users to cross a county road in the Oslo community.



## Carnival Is Sat.

The annual Halloween Carnival, sponsored by the Spearman High School council, will be held Saturday, October 30, at the County Barn from 6:30 to 11:30 p.m.

There are some fifteen booths that have been rented for this year's carnival by various organizations in the city and school.

Members of the Student Council were busy Tuesday marking off booths, setting up petitions, etc. so that the Barn

will be ready any time Saturday for the booth renters to set up their games, etc.

The fun booths will include the Freshmen-sponsored jail; the Sophomores, the jail; the Juniors will have bingo and the dunking board; the Gladiola Flower Club will have the cake walk; the Rotary Club will have the ping pong toss; the Student Council, the football throw; the Rodeo Club, the basketball throw; and the Fireettes will have the paper throw, popcorn and balloons.

The different food booths include the Lynxets with their ice cream (home-made) parlor; the choir with Dunkin' Munchkins; the Girl Scouts, with snow cones, chocolate bananas, caramel apples and candy and the Town & Country HD Club will be serving cokes and food.

Everything is in order for everyone in Spearman to have a good time at the Halloween Carnival, so be sure and don't miss the fun!

## Nation Returns To Standard Time Oct. 31

Residents of Spearman and the area, as well as those all over the U.S., will get that extra hour of sleep Sunday morning that they lost back in the spring when the nation went on Daylight Savings Time.

The official time of the return to standard time is 2 a.m. Sunday, October 31.

## Spearman boxing club wins 4!

The Spearman Boxing Club journeyed to Lubbock Saturday, and won 4 of 7 matches! The Club was taken to Lubbock by John Sutterfield, Mr. Cator from Gruver, Don McLain, and Mr. Donahue.

Boxers who entered the tournament were Marchal Cator, 59 lbs., decided by Mike Womack of Lubbock. Colby Gamblin lost to Jess Luccero. Ross Donahue won over Jr. Givent; Byron Sutterfield lost to Moses Henandez; Durward Cator won over Shelby Womack; Chad Wilson lost to Billy Chitty; Mack McLain won over Donny Kinger. The Spearman team had 4 wins

and 3 losses!

The Spearman Boxing Club is serving boys in the Spearman-Gruver area and will enter tournaments in several towns this winter. Anyone wishing to make donations to the boxing program may call John Sutterfield in Spearman.

Tournaments will be held in Amarillo, Tulla and Olton on October 30, and the November schedule includes tourneys in Olton, Amarillo, Stinnett, Tulla, Lubbock and Plainview.

The Spearman tournament will be held in the month of November; complete details in a later paper!

## Art Show Will Be November Event

The 7th Annual Arts, Crafts and Antique Show sponsored by the Dahlia Flower Club of Spearman will be held Saturday and Sunday, November 6 and 7, at the Hansford County Library.

Exhibits will be displayed by many artists, craftsmen and collectors in the area. These will be open for viewing from 1 to 5 p.m. both days.

Refreshments will be provided at the Library and door

prizes will be given.

The "Woman of the Year" from the Club will be honored at 3 p.m. Sunday in connection with the event.

Martha Batton is president of the Dahlia Flower Club. For the first time, there will be a Men's Department and she asks all men of the area to bring crafts for display. Jack McWhirter and Major Lackey are head of the department.

## Golden Spread Club To Meet

Kent Guthrie will be the special entertainment at the covered-dish supper meeting of the Golden Spread Club on Tuesday, November 2, at 6:00 p.m. at the Home Demonstration Club Room. The rest of the evening will be spent in table games and visiting. The Golden Spread Club is for all persons 55 years of age or older. Anyone needing transportation may call 3495, 2478, 2246, or 2059.

## Hospital News

Patients in Hansford Hospital are Elvin Garrett, Don Hergert, Hazel Taylor, Jack Crum, Elsie Mathews, Terry Cook and Georgeann Washington.

Dismissed were Forrest Cearley, Otis Dry, Carl Hutchison, and Theresa Scroggs.

REMEMBER ARTS & CRAFTS SHOW Nov. 6-7

## Attendance Good At Swine Flu Clinic

The Thursday night Swine Flu Clinic held at the Fellowship Hall of the First Methodist Church in Spearman from 6:00 to 9:00 P.M. indicated that few in this community had had adverse reactions to the recent publicity which had been so apparent concerning these shots.

According to those administering the shots, few side effects (other than normal sore arms, etc.) were noticeable with most of those participating in the Clinic not evidencing any side effects. The "over-65 year" group at which the Clinic was directed were given the Bivalent shot which is the Swine Flu and Asian Flu combination.

The special groups included in the Thursday night Clinic were made up of teachers,

hospital personnel, police and emergency department people who were given the Monovalent or the Swine Flu shot alone. Shots for all those who appeared at the Clinic were given by Dickie Allen, R.N. and Ruth Skinner, R.N., both from Spearman; and Mozelle McClellan, R.N., from Gruver.

Drs. Thomas and Kleeberger split the time during the evening so that at all times a doctor was on hand in case of any reaction.

\*\*\*\*\*

WEATHER	
OCTOBER 19	52 25
OCTOBER 20	67 25
OCTOBER 21	67 31
OCTOBER 22	78 37
OCTOBER 23	78 45
OCTOBER 24	74 34
OCTOBER 25	63 23

## Grain Harvest Almost Complete

Hansford County grain growers are on the downhill side of the grain sorghum and corn harvest for 1976. It is predicted that the harvest will be completed by Nov. 1, much earlier than normal when some farmers are still harvesting at Thanksgiving.

Early October freezes have brought the milo crop to at least a two-week early period for harvesting, as well as lowering the yield of late maturing crops.

Yields were reported to be slightly less than average this year with some portions of the western and northern part of the county receiving extensive hail damage a few weeks ago. This year's crop was plagued from the beginning with dry weather, high winds, insects, hail, earlier than usual frost, etc.

Probably the most disap-

pointing aspect of the harvest this year is the drop of the past two months or so in prices that the farmer will get for his grain. Hailed by some as good news is the raise of the loan level by the U.S. Department of Agriculture for small grain crops. The loan level for wheat was raised from a previous level of \$1.48 per bushel to \$2.23, the loan level on milo was increased from \$2.06 to \$2.48, and the corn loan rate was hiked from \$1.32 to \$1.57. Even though these loan rates are considerably lower than what the cost of raising a bushel of grain is, it will at least enable the farmer to have financial aid in planting his next crop without having to sell at current low prices.

As of Tuesday, the price of wheat in Spearman was \$2.50, corn \$2.31, and milo at \$3.60 per hundred weight.



# Purple Powers Meet Here Friday!

GAME TIME  
7:30 P.M.

LYNX VS.  
PANTHERS

BE SURE TO ATTEND  
LYNX STADIUM



## Expansion of Medical Training Programs Urged

AUSTIN--To increase the number of practicing physicians in the state, Texas must expand and fully fund primary care training positions, said William F. Ross, M.D., Chairman of the Texas Medical Association's Council on Medical Education and Hospitals, Thursday.

TMA recognizes that we do have a shortage of primary

care physicians--those in family practice, internal medicine, pediatrics and obstetrics/gynecology, Dr. Ross said.

"Between 1972 and 1980, Texas medical schools will have graduated 6,284 new physicians, but to have more doctors for the Texas health care delivery system, we've got to go one step further," said the San Benito physician.

After receiving the MD degree, a medical school graduate generally must take at least three years of graduate training before he or she actually enters the private practice of medicine, he said.

"We do not have an adequate number of primary care residency positions in the state. The new doctor is forced to seek training positions in other states," Dr. Ross said.

Concluding a two-year study, the TMA Council on Medical Education and Hospitals has designed a plan for development and expansion of primary care residencies in Texas, Dr. Ross said.

The doctor said the plan is based on the principle that the number of first year residency positions should approximate the number of graduates of Texas medical schools, and that state funding should be provided for the expansion of primary care residency programs. Appearing before the Program Development Committee of the Coordinating Board, Texas College and University System, Dr. Ross urged the Texas legislature to support state funding for residencies beginning with the 1977-79 biennium. With full funding of proposed residencies, the present 388 primary care residencies could be increased to 618 by 1979, he said.

"If such a plan is not implemented, increasing numbers of Texas graduates will be forced each year to leave the state to do their graduate training. In July 1976, 112 Texas graduates sought positions in family practice, yet Texas had only 85 positions to offer. Thus, 27 potential Texas family doctors left the state, and studies have shown the probabilities of their practicing in Texas are lower since they are training elsewhere," he warned.

"Perhaps the Texas Commissioner of Higher Education, Kenneth Ashworth, put it best when he said, 'You might say that Texas is subsidizing health care delivery in other states.'" By providing full state funding for residency programs, the following should occur--the state will have available physicians who have received their training in quality programs,

## Darkness Encourages Damage



When it's dark around your business property, the chances for vandalism, burglaries, or accidents are increased. For just a few cents per night you can have Metal Halide or mercury vapor lighting directed wherever it is needed on your property. Community Public Service Company will install and maintain floodlighting for a reasonable rate per month.

Leased floodlighting . . . it's a low cost way to protect your property and your customers after dark. For complete information on leased floodlighting, call Community Public Service Company soon.



**COMMUNITY PUBLIC SERVICE**  
Your Electric Light & Power Company  
An Equal Opportunity Employer

### SAFETY TIP

You can play it safe at home by following a money "rule of thumb" of many smart travelers.



Always keep emergency funds on hand--tucked in a corner of your wallet, deep in the glove compartment of your car, or in some safe drawer at home. And just to make sure it's really safe, don't keep that money in cash. Instead, save a travelers check from your last

trip--or buy one if you've spent them all. If you use American Express Travelers Cheques, you can easily get your money back in full if they're ever lost or stolen. If you discover missing cheques after ordinary office hours, you can obtain emergency refunds at Holiday Inns across the U. S. and Canada.

Your travelers cheques are "protected" money, without any time limit for their use. They're valuable for all journeys--even those quick trips to the corner store!

Interior designers suggest you fill an empty corner with a wallpaper panel framed and mounted on a simple pedestal to look like an old fashioned fire screen.



the probability of producing significant numbers of physicians in the least amount of time will be increased, and the types of physicians that are most needed will be made available, Dr. Ross said.

"Because we want more doctors to serve Texans in the quickest possible time, we support full funding and expansion of primary residencies

in Texas," Dr. Ross said.

"By utilizing the state's limited resources in this manner, the Texas Medical Association firmly believes that the state of Texas will be able to provide the largest number of physicians in the least amount of time with the most efficient use of our citizens' tax dollars," he said.

You are cordially invited to attend  
a wedding shower honoring  
Mrs. Rick Whitlow  
(nee Karen Reimer)  
Thursday, November 4  
7:30 to 8:30 p.m.  
B&B Farm Hospitality Room

Hostesses: Mmes.  
Ed Wheeler Ray Martin  
Earl Novak J.L. Brock  
Wesley Jenkins Herman Boone  
Don Wirsdorfer Jerry Morris  
Orvil Brummett Irvin Davis  
50-2tc



It's neater and less wasteful to use a large salt shaker for flouring cake pans, meat and fish.

# Register all hand-guns?

Carter says yes.

Ford says no.

What do you say?

Say it on Nov. 2nd.  
Vote for President Ford.

THE PRESIDENT FORD COMMITTEE, JAMES A. BAKER, JR. CHAIRMAN, REV. JON C. HUGHES, TREASURER

# THANK YOU....

## for your patronage this harvest....

*We look forward to serving you in the future....*

Remember we have Anhydrous Ammonia - Dry Fertilizer  
Chemicals - Seeds  
Skelly Petroleum Products

*Bernstein Elevators*  
*Hitchland Grain Co.*



PRICE EFFECTIVE THURSDAY THRU SATURDAY OCTOBER 28-30, 1976

# ALLSUP'S

CONVENIENCE STORES

OPEN 24 HOURS

GET YOUR SWEET TREATS AT ALLSUP'S

GET YOUR HALLOWEEN CANDY AT ALLSUP'S-YOUR CANDY STORE!

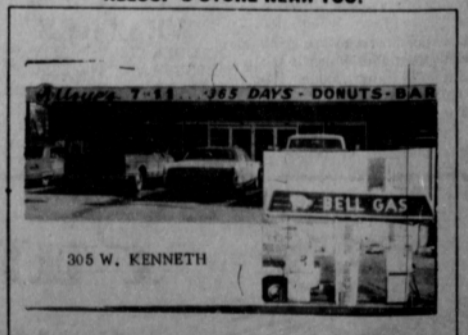
- RACORN BACON 1 LB. 79¢
- RATH SAUSAGE 1 LB. 59¢
- IMPERIAL SUGAR 5 LB. 99¢
- 3 LB. CAN BAKERITE \$1<sup>29</sup>

FOX SAUSAGE OR PEPPERONI PIZZA 13 1/2 OZ. SIZE 69¢ EA.

HOT COOKED FOODS

- BBQ CHICKEN
- HOT LINKS
- BURRITOS
- GERMAN SAUSAGE
- BBQ RIBS
- MILD LINKS
- CORN DOGS
- BULK BBQ BEEF
- BBQ BEEF SANDWICHES

SHOP THE FRIENDLY, CONVENIENT ALLSUP'S STORE NEAR YOU!



305 W. KENNETH

305 W. KENNETH

BORDEN'S ORANGE JUICE 1/2 GAL. CTR. 89¢

BORDEN'S QUALITY ICE CREAM HALF GALLON ROUND CTR. \$1<sup>19</sup>



# WANT ADS

**Boxwell Bros.**  
Funeral Home and Flower Shop  
Day-Night Phone 659-2212  
Spearman, Texas

**O. J. ROOK**  
Phone 274-4968  
PAINTING - INDUSTRIAL RESIDENTIAL  
FREE ESTIMATES  
ACOUSTICAL CEILINGS  
CARS AND TRUCKS

**YOUR LOCAL USED COW DEALER: SPEARMAN BI-PRODUCTS.** Seven days a week dead stock removal. Please call as soon as possible. 659-3544.  
8-rtm

**Hansford Lodge**  
1040  
**A.F. & A.M.**  
W.M. George Young  
Sec. Cecil Biggers  
2nd & 4th Mondays

**SERVICES**  
Hansford County Planned Parenthood  
26 S. Haney  
659-2483  
Spearman Mon.-Fri.  
8 a.m. to 12 noon  
305-rtm

**FOR: Shaklee Products**  
SEE: Leslie Groves  
14 So. Haney  
CALL: 806/659-3027

**KIRBY SALES & SERVICE** of Spearman, 912 S. Bernice. 659-2797.  
30-rtm

**GRADER, Dozier, and Drag Line Work.** Call Lee Roy Mitchell, Gruver, 733-2384.  
28-rtm  
**Custom Farming.** Reasonable rates. Call Jack McWhirter, Phone 659-2249 or 659-3308.  
135-rtm

**NEED MARY KAY COSMETICS.** Call 2751 after 5:00 p.m.  
305-rtm  
**FOR SAND FREE DOMESTIC WELLS** call W. V. Block, 935-4088 at nights, Dumas.  
24-rtm

**Classified Ads Do Get Results!**

**IS ALCOHOL A PROBLEM IN YOUR FAMILY? AL-ANON FOR FAMILIES OF PROBLEM DRINKERS.**  
In this fellowship you can:  
..Meet others who share your problem.  
..Learn about alcoholism as an illness.  
..Encourage the alcoholic to seek help.  
..Replace despair with hope.  
..Improve the family atmosphere.  
..Rebuild your self-confidence.  
For further information: CALL 659-2306 445-rtm

**GENERAL PLUMBING**  
Phone 733-2912  
Gruver  
Call Collect  
Steve Phillips  
"Licensed"  
10 Years Experience

**CUSTOM HARVESTING**  
7700 needs cutting job  
Let us help you get your grain in.  
Wide World trailer parked at J&R Mobile Court  
MADDOX & PAYNE

**Miscellaneous FOR SALE**

**FOR SALE:** Modern dinette with 4 chairs and recliner-rocker. 659-2608. 659-3691 after 5:30 p.m.  
49-3tc

**Rawleigh Vanilla** on sale. Call 659-2631  
475-7tc

1967 Homett Mobile Home, 12 x 50. 2 bedroom, fully furnished and carpeted. 659-3336 after 5 p.m.  
495-4tp

**FOR SALE:** Back Hoe, new re-built transmission and rear end. In good shape. Jim Eller, 659-3169 or 3533.  
31-rtm

**FOR SALE:** One '73 Yamaha and 8 foot pool table. Call 659-3508.  
40-rtm

**FOR SALE:** Hotpoint electric range. Call 659-2336 between 8 & 5.  
50-2tc

**FOR RENT**

**FOR RENT:** VA approved trailer space. 659-3000 after 5:00.  
395-rtm

**LBL Trailer Spaces:** \$40 monthly. 50' x 150' Lots. Trailers also for rent. Call Manager, 659-2617.  
40-rtm-T only

**Real Estate FOR SALE**

**FOR SALE:** Vacant 100 ft. lot on Gruver highway in Crawford Addition. Emmett R. Sanders, Realtor, 659-2516, nights 659-2601.  
44-rtm

7 unit apartment house; good investment for the semi-retired handyman; Emmett R. Sanders, Realtor, 659-2516, nights 659-2601.  
435-rtm

**FOR SALE:** 100 ft. Crawford Addition lot on the Spearman-Gruver Highway, utilities in. includes small office building, priced for quick sale. Emmett R. Sanders, Realtor, 659-2516, nights 659-2601.  
355-rtm

**Mayfield Real Estate**

Price reduced, 911 Haney, 3 bedrooms, gas stove, large fenced corner lot.  
\*\*\*  
Completely redecorated 2 bedroom, water bed, 1 bath, fully carpeted, 521 S. Archer.  
\*\*\*  
Lots in Crawford Addition, 250 front feet x 180.  
Call Ruby Lalr, 659-2188 or call John Mayfield, Perryton, 435-6528.

**FOR SALE:** Charming 3 bedroom, 2 bath home; attractive carpet throughout; large living-den area; electric kitchen; double attached garage; concrete patio; fenced yard; shown by appointment only. Emmett R. Sanders, Realtor, 659-2516, nights 659-2601  
42-rtm

**FOR SALE:** See this home with 3 bedrooms, 2 baths, living room, dining room, kitchen with built-in cabinets, den and office or workshop. Nice carpet and panelling. For the family needing lots of room at an affordable price. Emmett R. Sanders, Realtor, 659-2516, nights 659-2601.  
385-rtm

**FOR SALE:** Two Sections of Land, NO. 1: Section Twenty-four (24), Block 5-T, T. & N. O. Ry. Co. Survey, Hansford and Hutchinson Counties, Texas. No. 2: Section Thirty-three (33), Block 5-T, T. & N. O. Ry. Co. Survey, Hansford and Hutchinson Counties, Texas. Seller shall retain one-half (1/2) of the minerals in and under or that may be produced from the above described land. Owned by The Annie E. Clifton Estate. Said land being approximately one (1) mile west of the town of Morse, County of Hansford, Texas. This land is to be sold for CASH and sealed bids will be received by HOMER A. DAVIS, 513 Denrock, Box 1110, Dalhart, Texas 79022, until 8 o'clock a.m. on Wednesday, November 10, 1976.  
The legal representatives of the Estate of ANNIE E. CLIFTON, Deceased, reserves the right to reject any and all bids, to disregard any informality in the bids and bidding, and to accept any bid that is to the best interest of the Estate of ANNIE E. CLIFTON, Deceased.  
49-4tc

**FOR SALE:** 3 bedroom stucco house, 2 baths, den, double garage. 2 bedroom mobile home included in deal. Emmett R. Sanders, Realtor, 659-2516, nights 659-2601.  
40-rtm

**FOR SALE:** Brick office building, central heat and air, large lot, plenty of parking, ideal for doctor's clinic, located just west of hospital at 7th & Roland, Emmett R. Sanders, Realtor, 659-2516, nights 659-2601.  
29-rtm

**FOR SALE:** 3 bedroom house, plus large basement, has nice fruit trees on 100 ft. lot, plenty of space for low-budget living. Emmett R. Sanders, Realtor, 659-2516, nights 659-2601.  
365-rtm

**ED WHEELER REAL ESTATE**  
Homes - Farms  
Commercial

659-2613 Days  
659-2951 Nights

Crawford Addition, 3 bedroom, 1 3/4 bath, central heat and air, double car garage made into den, extra large lot, fenced, nice storage building.  
395-rtm

4 bedroom, one bath, recently paneled, new roof, 2 lots. Must see to appreciate, 102 S. Hazelwood.  
\*\*\*\*

Beautiful 3 bedroom brick, 1 and 3/4 baths, den, fireplace, carpets, drapes, built-ins, etc. An exceptionally nice house. Near High School.  
\*\*\*\*

Three bedroom, bath and 3/4, cathedral ceiling, total electric, cellar, fenced yard, spotless on a 105 ft. lot. Priced to sell.  
\*\*\*\*

Large lot with nice two bedroom home in front, nice one bedroom house in the back. Double garage with efficiency in the rear. One year rental on one bedroom house paid at time of sale.  
\*\*\*\*

New 3 bedroom, 2 bath, quality home, excellent neighborhood, brick, shake roof, 2 car garage, fireplace, carpeted, central heat and air conditioning. Beautiful wrought ironwork.  
\*\*\*\*

3 bedroom, 1 3/4 bath, electric stove, refrigerator, garbage disposal, excellent carpet, single garage, nice back yard and storage shed, central heat.  
\*\*\*\*

3 bedroom, 1-3/4 bath, corner lot, nice yard, 2 blocks from high school, a home one would be proud to own.  
\*\*\*\*

**FOR SALE:** Nice brick home on quiet street, 3 bedrooms, bath & half, den with wood-burner, central heat and air, dishwasher, disposal, carpets, drapes, fenced yard, carport. Appointment only, Emmett R. Sanders, Realtor, 659-2516, nights, 659-2601.  
49-rtm

**FOR SALE:** 4 bedroom, 2 bath, 508 Cluck St., \$20,000.00, 733-2938, Gruver.  
475-4tc  
Thurs. Only

**FOR SALE:** 240 acres irrigated farmland in Hutchinson County. Ernest Wilmeth, 659-2406 or 659-2720.  
495-rtm

**FOR SALE:** 3 bedroom house, garage. 659-3304.  
30-rtm

**Business Opportunities**

**FOR SALE:** Spearman Car Wash for health reasons. Call 733-2655.  
425-rtm

**Automobiles FOR SALE**

**FOR SALE:** 1975 Malibu Classic. Blue w/dark blue vinyl Landau top, air conditioned, power steering, power brakes. Excellent condition, w/5 new steel belted radials. 659-2271.  
465-rtm

**FOR SALE:** 1973 Monte Carlo. 350 engine. Call 659-3402.  
45-rtm

**FOR SALE:** 1970 Ford 9-passenger Country Sedan. Radio, power & air. May be seen at the School Business Office. Submit sealed bids to School Business Office, 403 East 11th, Spearman, Texas, not later than 5:00 p.m., November 8, 1976.  
495-4tc

**WANTED**

Woman 50 years old wants position as companion to older person or persons. Would like to locate in the Panhandle of Texas. References furnished; references required. Write Margaret L. Davis, 4129 Sherry Lane, Waco, TX 76711.  
485-4tp

**HELP WANTED:** Management position, experience needed in Grocery Store operation. Self Service Gasoline. Call 733-2511 or 733-733-2817.  
49-rtm

**HELP WANTED:** Experienced pump setter. Lonco Pump & Repairs, Gruver. 733-5091.  
495-4tc

**WANTED:** Evening job from 6:00 p.m. to ? Call after 5:00, 659-3038.

**Beauty Operators Wanted:** Commission or booth rental. Evelyn's Beauty Salon, 659-2813.  
41-rtm

**LEGAL NOTICE**

**NOTICE TO BIDDERS**

The Housing Authority of the City of Spearman, Texas will be taking bids for the painting of the trim on 5-Unit Apartments, located at 2nd and Brandt Streets, from now until October 31, 1976. The painting is to be done according to specifications and finished by January 31, 1977. All work guaranteed for 1 year. Send bids to Box 607, Spearman, Texas. Call 2498 for Specifications.  
495-2tc

**Card of Thanks**

I would like to express my thanks and appreciation to all my friends and neighbors for the prayers, cards, flowers and telephone calls during my stay in the hospital.  
A special thanks to Dr. Thomas and the hospital staff for their care.  
Margaret Shedeck

**Political Announcements**

The following persons are party nominees for office in the Nov. 2 general election in Hansford County, who have authorized their listing in this announcement column:  
**DEMOCRATIC PARTY:**  
U.S. Representative, 13th District: Jack Hightower  
State Representative, 64th Texas District: Mrs. Daisy Moore, Dallam County.  
Sheriff: R. L. McFarlin  
Commissioner, Precinct 1: Garland Head  
Commissioner, Precinct 3: B. J. Renner  
**REPUBLICAN PARTY**  
State Representative, 64th Texas District: G. R. (Bob) Close.

The Declaration of Independence was not signed on July 4, 1776. The last signature was put in 1781.

**STEAM**  
CLEANS CARPETS WITHOUT SCRUBBING DIRT IN...  
Now Steamway cleans carpet from bottom up. No dirt or steam you left in fabric. Call us today, we'll be happy to show you our new method... Free Estimates.  
**ROGERS STEAMWAY** 616 N. CHEMLIE GUYMON, OKLA 405-338-7928

## Now Is The Time To Take Soil Samples

Any time after crops mature in the fall is an ideal time to take soil samples, says County Extension Agent Jim Kuykendall.

Once plants reach maturity, he says, they virtually stop taking up nutrients. Therefore, the soil's nutrient state will remain about the same until planting time next spring.

"There are many advantages to soil testing at this time," says Kuykendall. "For one thing, you can now readily identify problem areas in a field. If you think fertility caused reduced yield or unusual symptoms in some areas, sample these areas separately so that a comparative evaluation can be made."

Other reasons for soil testing this time of year include pleasant weather and more favorable soil conditions, he adds.

Although overall shortages of fertilizer are not anticipated, Kuykendall says, there can be a big advantage in having time to make plans with your dealer for the material needed.

## Vocational Training Growing At FPC

The Occupational-Education department at Frank Phillips College, begun in 1973, is growing and expanding its facilities every year. In 1973 the Texas Education Agency approved programs enabling vocational training to begin at the college, and since that time it has experienced continual growth.

Because of this growth and with the help of a grant from Phillips Petroleum Company, a new vocational campus began operation this fall. Located in Buena Vista, it is known as the FPC Vocational campus.

Andy Hicks, who came to the college in 1973, is head of the Occupational-Education department. Head of the Agriculture department is Ed Zweischer, and Dr. Jock Lee is head of the Animal Health division, which was added to the curriculum in 1974.

At present, the Vocational Campus is buying building pens to house cattle, horses, sheep and pigs, and has immediate plans to order 10 head of cattle. Dr. Lee said that the pens should be completed within the next month.

The animals, he said, will be used for judging demonstrations, marketing courses, and animal health programs. He plans to have on the campus inside clinics for both large and small animals.

The departments entered their first judging contest Saturday at the Guymon Fair. They plan to enter a judging contest at West Texas State College in December, and later at Panhandle University. In the spring, they hope to enter contests at Fort Worth and at Houston.

Included in the department of Agriculture are courses covering Feedlot Operations, Farm and Ranch Management, plant science, irrigation, livestock marketing, soils and fertilizers, and many other area-related courses.

In the Animal Health courses, students learn about animal care, principles of sanitation, animal health and hospital orientation, pharmacology and other related subjects. They are also engaged in clinical laboratory work, which

Nobody is truly double-jointed. Some people just have looser ligaments than others.

**FOR SALE**  
Used T.V.'s  
Call 659-2663  
or 659-3363  
Color or B & W

**TEXAS PRESS ASSOCIATION**  
MEMBER 1975  
**Spearman REPORTER**  
SPEARMAN, TEXAS 79081  
213 Main Box 458 659-3434  
Published Weekly at 213 Main Street  
Spearman, Texas 79081  
Owner-Publisher..... William M. Miller  
Second Class Postage Paid at Spearman, Texas  
ANY ERRONEOUS REFLECTION UPON THE CHARACTER OF ANY PERSON OR FIRM APPEARING IN THESE COLUMNS WILL BE GLADLY AND PROMPTLY CORRECTED UPON BEING BROUGHT TO THE ATTENTION OF THE MANAGEMENT.  
SUBSCRIPTION RATE--Hansford, adjoining counties, combination with the Hansford Plainsman, \$10.92 Tax included.  
Other points \$15.12. Tax included.

**FOR THE ULTIMATE IN STORM DOORS**  
CUSTOM BUILT, DESIGNED, AND IN COLORS TO FIT YOUR HOME.....  
CONTACT  
**HOWARD MOYER AT ONLY ALUMINUM INDUSTRIES**  
405 338-6966 or 338-6170  
P. O. BOX 471  
GUYMON, OKLA. 73942

When You TRADE Here, Don't Ever FEAR, Prices Are The BEST, In Any HEMISPHERE.  
**EXCEL CHEV.-OLDS. CO.**

**CWF BAZAAR**  
DECEMBER 4  
**CWF BAZAAR**  
DECEMBER 4  
Dr. Glenn Blodgett has joined Dr. Tom Latta in the practice of Veterinary Medicine.  
**HANSFORD COUNTY VETERINARY HOSPITAL**  
465-8tc

**It's geared for you**

First, choose the car. Second, tell us how you'd like to arrange payments. Third, we work it out and give you the money. Fourth, you're on the road! By keeping our rate in low, we're all geared up to help you.

**Big Wheel Auto Loans**

**EVERYBODY'S BANK**  
IN A GREAT BIG WAY

**FIRST STATE BANK**

SPEARMAN, TEXAS 79081  
© 1975 Leon Shaffer Goinick Adv. Inc.



# Support Urged For Amendments 1 & 2

## Provide For Comprehensive Water Program

Absentee voting for the November 2 General Election will continue through October 29 at the office of the County and District Clerk in the Courthouse here.

Voters living in Hansford County must go to the Clerk's office to mark absentee ballots, but residents living temporarily outside the county and servicemen may ballot by mail. Letters requesting absentee ballots will be honored as soon as they are received. To vote by absentee, including college students away from Hansford County, one must write the Clerk's office, giving their permanent address here, plus the temporary address and enclosing a voter registration card. Those who have lost their voter registration card must state so in their letter of application.

Applicants whose requests are received after October 29 will not be eligible to vote absentee.

Along with the top names on the ballot in the presidential race, are contested races in the area, for 64th District State Representative between incumbent, Republican Bob Close of Perryton and Dalhart ranchwoman and Democrat, Daisy Moore, and the race for 13th District Congressman between incumbent Jack Hightower and Republican Bob Price, who was Congressman for this district, being defeated in the last election by Hightower; the senatorial contest with incumbent, Senator Lloyd Bentsen, Democrat, being challenged by Republican, Alan Steelman.

District and County candidates appearing on the ballot are running unopposed.

There are also two proposed Constitutional Amendments on the ballot for Texas voters. No. 1 would authorize an increase of \$400 million in the amount of Texas Water Development Bonds that may be issued on approval of two-thirds of the legislature; amending and consolidating provisions of Sections 49-C, 49-D, and 49-D1 of Article III of the Texas Constitution; and repealing Sections 49-D and 49-D1 of Article III of the Texas Constitution.

No. 2 would favor a constitutional amendment to increase from \$100 million to \$200 million the amount of Texas

Water Development Bonds that may be issued for water quality enhancement purposes.

Mark White, longtime commissioner of the Texas Department of Agriculture, urges support of these two amendments, saying if these amendments do not pass, the real base of Texas' economy will suffer. Although the loan level would go toward funding rural water projects, the additional money will keep workers out in

the country where food and fiber is produced. White feels that passage of the \$400 million question is the first stage in preparing a comprehensive water program to last for at least 25 years.

Cities and towns, river authorities and water districts, as well as those needing storage space in reservoirs have been assisted with \$231 million in TWDB loans since the program was initiated almost 20 years ago.

## Peggy's Pointers

Cooking with acid foods cleans discolored aluminum pots and pans the quick, easy way.

Acid foods such as tomatoes, applesauce, cranberries, rhubarb or sauerkraut work well for this. The food, of course, is edible—because a harmless iron salt (ozalate) is formed and goes into solution in the food.

Another easy method of removing mineral stains is to boil cream of tartar solution in the pan. Dissolve two tablespoons cream of tartar to each quart of water. Boil five or ten minutes, then scour lightly with a soap-filled steel

wool pad. The pan will shine like new.

And this cream of tartar solution works on the coffee pot too. The solution can be stored in a bottle and used over and over again.

The discoloration on the inside of aluminum utensils is caused by deposits of mineral from food and water. It has no effect on food and is perfectly harmless. Degree of discoloration depends largely upon the amount of iron, calcium and magnesium naturally present in water and is more noticeable in communities with "hard" water. Washing the pans in the dishwasher may also dull the polished finish of aluminum.

And now for a few tips on celery buying.

One way to choose the freshest celery in the market is

to listen for the "best talker."

Pick up a crisp-looking stalk of celery, squeeze it gently and listen to it talk back. The louder the noise is, the better quality the celery will be.

This vegetable is a crisp, low-calorie nibbling treat. One large outer stalk (eight inches long) contains only about seven calories, while one cup diced uncooked celery has only 18 calories.

When shopping for celery, look for bunches that are medium in length, with well-formed hearts, solid and brittle to give a crunchy snap, smooth inside, fresh appearance with green leaves.

Celery is perishable. It needs a cold, moist storage place in a film bag or in a crisper and refrigerator. Use within a week for best flavor and quality.

## CROSSWALK PATROL SCHEDULE

**MONDAY**  
Morn. - Linda Beeson After. - Betty Morrison  
**TUESDAY**  
Morn. - Coy Kingsley After. - Vickie Hargrove  
**WEDNESDAY**  
Morn. - Helen Martin After. - Shirley Messer  
**THURSDAY**  
Morn. - Deb Gilbreath After. - Frances Garrison  
**FRIDAY**  
Morn. - Sharon Swan After. - Charlotte Jackson

"You can straighten a worm, but the crook is in him and only waiting." Mark Twain

REMEMBER ARTS & CRAFTS SHOW Nov. 6-7

REMEMBER ARTS & CRAFTS SHOW Nov. 6-7

REMEMBER ARTS & CRAFTS SHOW Nov. 6-7

# Prices Good In Perryton's United Super Market!

QUANTITY RIGHTS RESERVED **U** PRICES GOOD THRU OCT. 28TH **STRETCH YOUR FOOD BUDGET!** **COME**

**HEINZ WORCESTERSHIRE SAUCE** 89¢ VALUE 10 OZ. BTL. **39¢**

**PRINGLES** 89¢ VALUE 10 OFF 9 OZ. **69¢**

**JOY** 89¢ VALUE 22 OZ. BTL. **69¢**

**YAMS** 89¢ VALUE 40 OZ. CAN **69¢**

**OLEO** REG. 49¢ REG. QTRS. 1 LB. CRTN. **39¢**

**PICKLES** 89¢ VALUE 32 OZ. **69¢**

**PEAS** 4 303 CANS **1.50**

**BEANS** 5 303 CANS **1.50**

**TOWELS** DELTA JUMBO ROLLS **2.89**

**EGGS** GRADE "A" LARGE **65¢**

**AVOCADOES** CALIF. **39¢**

## Girl Scout News

Junior Troop #120 met Friday, Oct. 22, at the Girl Scout House with leaders, Mrs. Junior Hansen and Mrs. Raymond Flores.

A Halloween Party was held and cake, cokes, candy, gum, party hats and favors were enjoyed by members, Christi Dossett, Irma Flores, Cynthia Hendrick, Cindy Hansen, Shenell Phelps, Tammy Welch and Sondra Younger.

Next meeting will be Nov. 5 at the Girl Scout House with Cynthia Hendrick as hostess.

Girls are reminded to bring one skein of rug yarn to the next meeting.

The 1st Year Brownies met Wednesday, Oct. 20, at the Girl Scout House with leaders, Mrs. Tim York, Mrs. Phillip Stumpf, and Mrs. Jimmy McLeod.

Refreshments were served by Rhonda Mathews and Tammy Nollner to members, Neta Burger, Jana Pittman, Sherry Sexton, Sandi McLeod, Stacie Swan, Tammy Shields, Terri Stewart, Cayla Eaton, Tammie Hogan, April Abston, Christa Urban, Dawn York, Melissa McLain, Kimberly Jenkins, Lani Merrill, Pam Stumpf, and Kimberly Branstetter.

Roll call was taken and the girls worked on their bank. The girls practiced the Brownie Pledge and Law and made a Brownie Tunnel.

Each girl is to bring a batch of popcorn balls for the Halloween Carnival.

Next meeting will be Oct. 27 at the Scout House.

If you wish to butter your vegetables, etiquette experts recommend you do so with your fork. Your butter knife is only for bread and rolls.

**"TRICK OR TREAT HEADQUARTERS!"**

**ALMOND JOY** BITE SIZE **79¢**

**MOUNDS** REG. 99¢

**MURINE** CLEAR EYES REG. \$1.59 **98¢**

**NYQUIL** REG. \$2.27 10 OZ. BTL. **\$1.98**

**PEARS** WASH. D'ANJOU NEW CROP **25¢**

**LEMONS** SUNKIST **10¢**

**CABBAGE** NO. 1 COLO. **10¢**

**ONIONS** YELLOW TEX. **10¢**



**Halloween Carnival Committees**

**SET-UP COMMITTEE:** Meet at High School at 9:00 a.m., Saturday: Donna Goff, Margaret Hill, Ricky Alexander, Kyle Nollner (bring pickup), Brent Connelly (bring pickup), Gary McCalman, Cris McClellan, Jed Meisner, Richard Burruss, Terry Burke, Leslie Williamson.

**CLEAN-UP COMMITTEE:** Meet at 1:30 at County Barn: Kurtis Bynum, Kevin Campbell, P. T. Cator (bring pickup), David Cummings, Robbin Keetch, David Martin, Chris Randall, Robert Reed (bring pickup), Chris Trout.

**News From Hansford Library**

The weekly "Children's Hour" for 3 and 4 year olds on Tuesday morning at Hansford Library will be expanded beginning next Tuesday, Nov. 2, with the four year olds to come from 9:30 to 10:30 for their session and the three year olds from 10:30 to 11:30.

The program has become so popular that they were forced to divide the classes. The hour will consist of storytelling, using various media--puppets, tape recorder, flannel board, films, books, etc.--to stimulate an interest in reading and using books for information as well as entertainment. Also part of the hour will be devoted to creative activities--various types of art projects, finger plays, singing and games. The program is under the direction of Marsha T. Murphy, M.Ed., a former teacher of preschool and kindergarten children.

**Junior Class Work Order**

Football Concessions, October 29, 1976.

There will be a \$15 fine for not doing assigned duty, or for not getting someone to take your place.

All workers must be in their places by 6:00 p.m.

P. T. Cator and Robert Reed will be the coordinators. After both stands get started, P. T. is to be at the south stand and Robert at the north stand.

North Side: Carolyn Spears and Barbara Vela-Popcorn machine, Ronda Collins, Donna Goff, Chris Randall, Robbin Keetch, Kevin Campbell, Raymond Barnes, Michael Barnes. South Side: Ana Ruiz, Kathy Volden.

Before 6:30 the following

students should bring these items to the side indicated: Benny Rodriguez-2 big pkgs. napkins; Jed Meisner-4 doz. (2" x 2") North Side: Mona Moss, Don Brogdon, Eric Brown, T. Burke, R. Burruss, K. Bynum, Brent Connelly, David Cummings, Pete Garcia; South Side: Carrie Clark, Dalene Godfrey, Tammy Robertson, Tommy Barber, Mike Bodey, Jim Jones. Sandwiches-North Side: Tuna, 1 doz.-Kenneth Rosser, Charles Price; Chicken, 1 doz.-Gary McCalman, David Martin; Ham, 1 doz.-Raul Ortega. South Side: Tuna, 1 doz.-Brad Chisum; Chicken, 1 doz.-Pam Grayson, Cris McClellan; Ham, 1 doz.-Randy Reid. Two big pkgs. hot drink cups-North Side: Chris Trout,

David Evans, South Side; Twane Friemel, David Stafford.

**Work Schedule For Halloween Booths**

**BINGO BOOTH**  
6:00-7:00: Raul Ortega, Pete Garcia, Deborah Jones, Kyle Nollner and David Evans.  
7:00-8:00: Ronda Collins, Darlene Godfrey, Leann Blies, Donna Goff and Linda Lewis.  
8:00-9:00: Carolyn Spears, Carrie Clark, Barbara Vela, Max McCammond, and Kathy Volden.  
9:00-10:00: Cindy Gressett, Ana Ruiz, Don Brogdon, Scott Boyd, and Lori McAdams.  
10:00-11:00: Kandy Montgomery, Michael Barnes, Raymond Barnes, Kenneth Rosser, and Leslie Groves.

**DUNKING BOARD**

Setters: 6:30-7:00-Charlie Clark; 7:00-7:30-Pam Grayson; 7:30-8:00-La Von Kunselman; 8:00-8:30-Alan Shields; 8:30-9:00-Elaine Reimer; 9:00-9:30-Ricky Alexander; 9:30-10:00-Randy Reid; 10:00-10:30-Tracy Bulls; 10:30-11:00-Twane Friemel.

Workers: 6:30-7:00-Charles Price and Brad Chisum; 7:00-7:30-Annette Littlejohn and Karen Dennis; 7:30-8:00-Tammy Barber and Benny Rodriguez; 8:00-8:30-Crystal Carson and Terrie Bowen; 8:30-9:00-Donna Schmehr and Stephanie Floyd; 9:00-9:30-Jim Jones and David Stafford; 9:30-10:00-Mike Bodey and Eric Brown; 10:00-10:30-Gerri Malze and Tammy Robertson; 10:30-11:00-Robin Denham and Connie Moore.

Poster Makers: Prices and cards to be displayed with prizes: Cindy Gressett, Lori McAdams, and Denise Ware.

**F.T.A. Contestants Compete In District**

Mr. and Miss F.T.A. contestants from Spearman who participated in the District Mr. and Miss F.T.A. Preliminary Contest October 19 at Amarillo High School were David Roser and Etta McBroome.

The contest was to determine the top three contestants or the District XVI F.T.A. meeting to be held November 1 in Canyon, Texas at the District Convention.

Each speaker spoke for three minutes on the topic, "F.T.A.: Facing Tomorrow's Adventures".

Although neither Etta nor David placed in the top three, David scored a total of 103 points out of a possible 120 points and Etta scored 107 of a possible 120.

Sponsor for the Spearman Chapter F.T.A. is Mrs. Minnie Weaver.

**Social Security News**

Three out of five adults getting monthly social security payments are women, according to Howard L. Weatherly, social security branch manager in Pampa, Tx.

"About 27 million people 18 and over get social security payments," Weatherly said, "and about 16 million are women. Over 7 million women get retirement benefits based on their own social security work records. That's over 20 times as many as in 1950."

A working woman can retire as early as 62 and get reduced monthly payments on her own record. Or she can wait until she's 65 and get full benefits as well as Medicare coverage.

"But if she's entitled to higher benefits as a wife or a widow on her husband's record," Weatherly said, "she'll be paid the higher amount."

"The working woman also has disability and survivors protection from social security," he said. "If she becomes severely disabled and isn't expected to be able to do any work for a year or more, she and her family may be eligible for monthly cash payments from social security. After she's entitled to social security disability benefits for 24 consecutive months, she is eligible for Medicare."

Over 614,000 children get monthly social security payments based on their mothers' work records, according to Weatherly. "A child entitled to benefits based on the mother's record can get payments even though the child's father may be working at a full-time job," he said.

CWF BAZAAR DECEMBER 4

**FARMERS AND RANCHERS**  
THURSDAY, OCTOBER 21, WAS THE REGULAR DAY FOR THE AUCTION IN TEXHOMA. WE BEGAN SELLING AT 9:00 AM SHARP AND WE SOLD 5739 CATTLE AND CALVES.


\*\*\*\*\*  
FOR THURSDAY, OCTOBER 28, MAKE YOUR CONSIGNMENTS AS SOON AS POSSIBLE AS WE ARE EXPECTING 4500 CATTLE. MARKET YOUR CATTLE WHERE YOU CAN DEPEND ON GETTING THE BEST POSSIBLE PRICES - WITH US.

YOUR DEPENDABLE AUCTION MARKET  
**TEXHOMA LIVESTOCK COMMISSION COMPANY, INC.**  
P. O. BOX 70, TEXHOMA, OKLA. 73949  
PHONE 405-423-3251 or 405-423-3241 or 405-423-2031  
Cattle Department - Lloyd Goodner & Raymond Choate

**Prices Good In Perryton's United Super Market!**

**AND GET IT!**

COME CELEBRATE OUR BICENTENNIAL BONUS **BONANZA** 1000 extra S&H Green Stamps




**PORK ROAST FRESH PICNIC CUTS LB. 58¢**

**PORK STEAK FRESH LEAN SEMI-BONELESS LB. 88¢**

**PORK CHOPS FRESH FAMILY PACK LB. 88¢**

**"UNITED'S TRU-TENDR BEEF!"**

**ROUND STEAK LB. 98¢**

**RIB STEAK LB. 98¢**

**CHUCK ROAST BLADE CUT LB. 58¢**

**ARMOUR STAR BONELESS HAMS \$1.69**

FULLY COOKED SPEEDY CUTS LB. 3 TO 5 LB. AVG.

**U.S.D.A. CHOICE BEEF BONELESS BEEF BRISKET 78¢**

CRY-O-VAC PACKER TRIMMED LB.

**FINE FARE BOLOGNA MEAT OR BEEF 12 OZ. PKG. 69¢**

**FRYING CHICKEN LIVERS OR GIZZARDS FRESH FROZEN 1 LB. PKG. 59¢**

**FRESH FROZEN COD FILLETS LB. 79¢**

**GLADIOLA POUCH MIXES TREE TOP APPLE CIDER WAGNER FRUIT DRINK**

• CORN BREAD • MEXICORN BREAD • BISCUITS • PANCAKE

6 6 OZ. PKGS. \$1

HALF GALLON 99¢

47" VALUE 3 32 OZ. BTL. \$1

**"FROZEN FOODS"**

**VAN DE KAMP REG. \$2.59 FISH FILLETS 24 OZ. FAMILY SIZE \$1.99**

**MORTON 8 OZ. POT PIES 4 BEEF • TURKEY • CHICKEN FOR \$1**

**MORTON ALL VARIETIES DONUTS FAMILY SIZE REG. 79¢ 69¢**

**TEXIZE SPRAY 'N WASH \$1.29 VALUE 7" OFF LABEL 16 OZ. \$1.00**

**WE RESERVE THE RIGHT TO LIMIT QUANTITIES**

**PRICES GOOD THRU' OCT. 28TH**

**UNITED SUPER MARKETS**

WE GIVE S&H GREEN STAMPS





Spearman's Angry Purple has been outstanding all year. . .

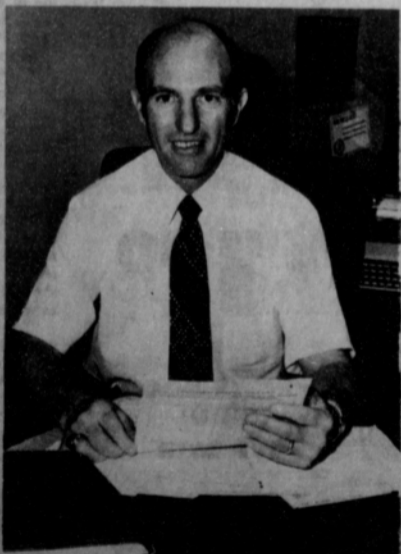
He's doing a good job . . .

let's keep him on it!

# Bob Close

State Representative

64th TEXAS DISTRICT



### THE RECORD TELLS THE STORY:

BOB CLOSE has been an effective State Representative in his first term. He has a perfect attendance record at all legislative sessions and at committee assignments -- he had a 100% voting record for all House sessions and at all committees.

He has done his homework, diligently and with ability. BOB CLOSE knows what he is voting on before he votes -- he knows where the money for legislation is coming from or he does not vote for it. HE KNOWS THE JOB . . . HE IS DOING IT RESPONSIBLY . . . LET'S KEEP HIM ON IT!

Dept. Adv. paid for by L. R. Queener, Campaign Treasurer, P. O. Box 947, Perryton, Texas 79070

### Farmland to Sponsor TV Specials

Two John Denver television specials to be shown this fall will be co-sponsored by Farmland Industries, Inc., Kansas City, Mo.

The regional farm supply cooperative has completed arrangements with the ABC Television Network for co-sponsorship of the shows scheduled during prime time on November 17 and December 11.

"The sponsorship of a national television program will be a first for Farmland. It will give us an opportunity to tell the urban consumer of the farmer's vital role in feeding our nation and millions of others throughout the world," said Ernest T. Lindsey, Farmland president. "We are taking a new approach in our 'speaking out for farmers' campaign that we began in 1969 through newspaper advertisements in major metropolitan markets in the United States.

"The American farmer grows more food on less land than any farmer in the world," continued Lindsey. "Every single day one American farmer produces enough food, meat and poultry to feed 56 of his fellow Americans. We think this is a story worth telling. We think it is a story urban and suburban America should hear."

"America and the American farmer--we need each other" is the theme developed for the commercial messages to be shown during the broadcast of the shows. The commercials have been developed and produced by Brewer Advertising, Inc., Kansas City, and Young & Rubicam, New York.

One commercial features the development of agriculture through America's 200 year history. Another conveys the message that "one farmer feeds 56 of his fellow Americans." The third commercial revolves around the theme of "what if no one wanted to be a farmer."

Julie Andrews will be one of Denver's guests on the November 17 show. The one-hour special will be shown at 8:00 p.m. (CST).

The John Denver Rocky Mountain Christmas special is scheduled for December 11 and will begin at 7:00 p.m. (CST). This is a repeat of the 1975 show and guest stars include Olivia Newton-John and Valerie Harper.

Farmland, the nation's largest farm supply cooperative, provides petroleum, fertilizer, feed, and farm supplies to about 2,200 local cooperative associations in 15 Midwest and Southwest states. The cooperative serves more than 500,000 farmers and ranchers in a trade territory extending from Colorado to Illinois and from the Canadian border to the Gulf of Mexico.

### Farmers Exempt For OSHA Another Year

COLLEGE STATION: Something has happened in our nation's capitol which will be of interest to all agricultural producers as well as other businesses, notes Dr. Gary S. Nelson, safety engineer with the Texas Agricultural Extension Service. As of Oct. 1, farms, ranches and other en-

terprises defined as "agricultural operations" who have 10 or fewer employees at any one time are exempt from all requirements under the Occupational Safety and Health Act (OSHA) for one year.

"Annual attempts to amend OSHA during Congressional floor debate on an appropriations bill succeeded this year," points out Nelson. "Certain amendments have been attached to the appropriations bill for the Departments of Labor and Health, Education and Welfare. All OSHA operating funds for fiscal 1977 are in that bill."

The bill stipulates that no

civil penalties would be proposed on first-instance OSHA violations (other than serious, willful or repeated violations) unless 10 or more violations are found, explains Nelson. The bill also exempts from OSHA coverage farms with 10 or fewer employees.

President Ford first vetoed the \$56.6 billion appropriations bill for the Departments of Labor and Health, Education and Welfare, including \$130.3 million for OSHA, on Sept. 29, on the grounds that it exceeded by \$4 billion the sum he requests for fiscal 1977. However, Congress overrode the veto the following day. The

bill will provide \$130.3 million overall funding for OSHA, including appropriations for the preparation of inflationary impact statements, education, research and consultation activities, and an increase of the compliance staff.

"Someone has said that it is differences in opinion which make horse races, and that is certainly the case here," contends Nelson. OSHA restrictions were designed to give some relief to small firms and small farms. OSHA estimates indicate 87.5 per cent of all farms in the United States have 10 or fewer employees. However, some Congressmen

hold that "exemptions, regardless of the number of employees, regardless of the type of industry, create a second-class group of American workers."

"Future resolution of these differences may be found in the rational use of cost-effectiveness studies which compare the cost of proposed legislation with the benefits received," believes Nelson.



Base cabinets with pullout shelves make more storage space easily accessible.

Have you tuned in to the new corn planting program?

# STAGGERED MATURITY MAKES SENSE

The agronomists at Pioneer Hi-Bred have developed a corn planting program that offers some significant benefits to farmers in this area. They recommend planting three hybrids with different maturities, a short season, a medium maturity and a later maturity. This staggered maturity technique provides four big benefits:

1. Provides insurance against weather and disease.
2. Spreads critical irrigation times.
3. Allows you to harvest each at optimum times.
4. Uses equipment and labor more efficiently.

On the basis of hybrid performance data gathered over several years, our agronomists have selected three hybrids for each area. The selection takes into account soil types, weather patterns, the prevalent cultural practices, water availability and disease and insect problems by area. Here are their recommendations for this area:



### A SHORT-SEASON PROFIT PRODUCER

3780 is a short-season variety that really proved itself in 1976. It is approximately 14 days earlier than 3369A but doesn't concede profit for its earliness. It may yield a little less than the later hybrids, but costs less to grow.



### THE MOST FAMOUS MEDIUM MATURITY

3369A is a medium-maturity corn that has been setting yield records around the Southwest for a number of years. It is planted on more acres than any other hybrid and with good reason... profits in good years and bad.



### LATER MATURITY FOR RECORD YIELDS

3305 makes use of our long growing season to produce more corn. It will normally harvest five days later than 3369A. It is a tall hybrid with the ability to stand well. Its upright leaves make for easy combining.

Your Pioneer seed dealer is taking orders for these hybrids now and will soon have a booklet describing recommended planting times, probable silking, maturity and harvesting dates. The staggered maturity corn growing program is aimed at giving you the most profit possible from your land in 1977 whether it turns out to be a good year or bad.

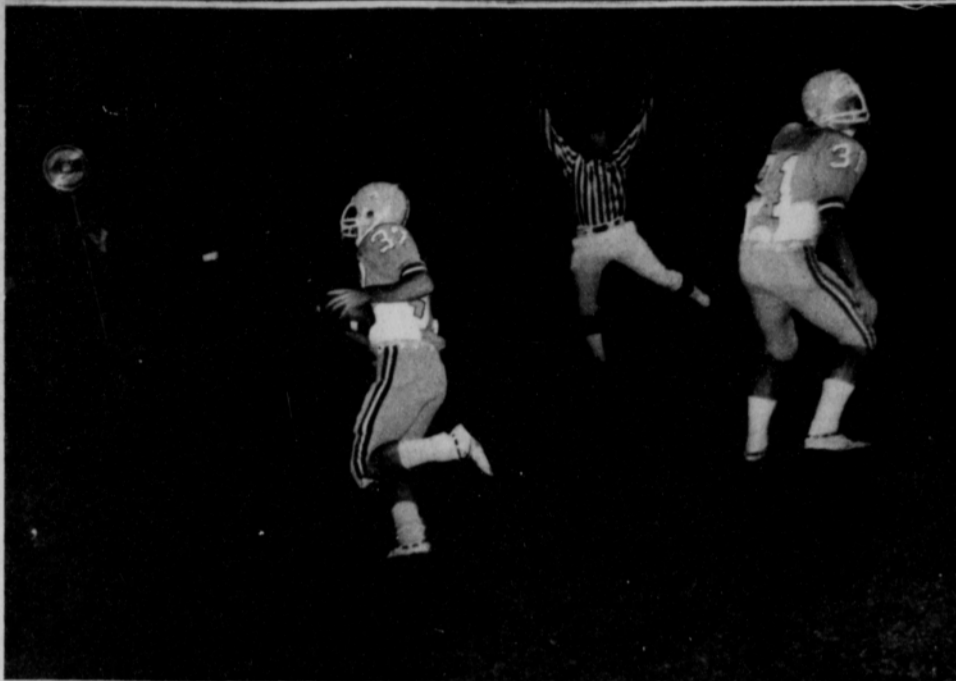
PIONEER HI-BRED INTERNATIONAL, INC.

Southwestern Division P.O. Box 788, Plainview, Texas 79072

Performance of seeds or the crop produced therefrom may be adversely affected by factors beyond our control including environmental conditions, insects and diseases. The limitation of warranty and remedy attached to each bag of Pioneer brand seed is part of the terms and conditions of the sale thereof.

Pioneer is a brand name. Numbers identify varieties. © Reg. trademark of Pioneer Hi-Bred International, Inc. © PIVB 76





Touchdown, touchdown, touchdown boys! You make the touchdowns, and we will make the noise! That is the theme song for the Lynx this week! Spearman's leading scorer, Hargis, the Baker-Taylor bullet scores another one Friday night, as his blocking back Newton stands guard! They will meet Panhandle this Friday nite in Spearman.

these days, some small college like Weatherford will have a "break-through" in this cancer thing! In any event, I am proud that they are trying hard at this college and many others in the Southwest!

West Texas State is having their homecoming this weekend, and I hope that I can attend, but will have to wait and see what comes up! I never make any plans for Saturday, until after the Lynx have played their game on Friday night. If they lose, I go into shock and what-have-you! Also, you Tech fans better contact my wife and see that she takes me to Lubbock Saturday. We have never seen Lubbock lose to a Southwest conference team! Everytime we go, the Raiders win! This offer will be good until noon Friday!

I sure did enjoy talking to several of my buddies who were combining this harvest! They had CB's on their combines, and I would call them and talk with them during harvest! It was quite exciting to turn on my CB, call my buddies who were eating dust, suffering from heat and chafe, and I was laying back on my divan sipping cider through a straw; and I didn't even have to worry about the price of wheat and maize and corn! I shut my operation down three years ago when the market cratered! I plan to crank it up as soon as it rains and the price gets better! Thank goodness all of the farmers aren't like me! Wheat would be \$6.00 per bushel and there would be no surplus!

### Plans Made For Testing Gasoline

AUSTIN—Comptroller Bob Bullock announced Tuesday that his office is initiating a pilot project to test the quality of gasoline sold at service stations in Texas.

Bullock said the Comptroller's Office has received a number of consumer complaints in recent months indicating that some service stations are selling inferior gasoline.

"We've had calls from people whose engines totally burned out a few miles down the road after filling their tanks," he said.

The Comptroller said that Articles 8601-8611, Vernon's Texas Civil Statutes, set out

specific gasoline standards and empower his office to test to see that the standards are met.

Selling inferior gasoline to the public without clearly indicating its substandard quality is a misdemeanor, he added.

Bullock urged motorists who can document that their engines have been damaged by inferior gasoline to call his

Motor Fuels Tax Division toll-free from anywhere in Texas at 1-800-252-5555.

The pilot project will be closely coordinated with efforts by Sen. Lloyd Doggett of Austin to strengthen the State's power to test and enforce reasonable gasoline standards, he said.

"Statutes already on the books obviously contemplate

that the quality of gasoline sold to Texas motorists be monitored," said Bullock. "Yet this has never been done. While our funds are limited at this time, we feel we can support this pilot project. Should it prove beneficial to the motoring public, we will seek additional funding from the Legislature."

"SERVING YOU IN CONGRESS IS A HIGH PRIVILEGE BECAUSE I BELIEVE I'M HELPING CHANGE SOME DIRECTIONS IN WASHINGTON"

"Helping to cut government spending and get the budget back in balance;

"Helping others to help themselves so that we can get the most from taxpayer investment in federal programs;

"Helping farmers and ranchers by pushing for a consistent, predictable agricultural policy instead of the on-again, off-again policies which are hurting our economy;

"Helping to make certain that taxes are fair, spending is prudent, and national policies are honest and understandable;

"Helping to get Congress itself to set an example for fiscal responsibility—by opposing Congressional pay raises and abuse of the postal franking privilege."

"I'M WORKING AS HARD AS I KNOW HOW. I BELIEVE THAT MY CONDUCT IN CONGRESS WILL CONTINUE TO MAKE YOU PROUD OF YOUR VOTE."

CONGRESSMAN JACK HIGHTOWER THINKS FOR HIMSELF... WORKS FOR YOU!

## Greetings To All Cattle Producers

Last Friday, Oct. 22nd was the regular day for the Cattle Auction in Guymon. The action began at 11 A.M. (C.D.T.) and was completed at 9:00 P.M. During that time 2214 Cattle and Calves were sold thru the Arena. Most all classes found a ready outlet as the market was established during the Auction.

Next Friday, Oct. 29th is being arranged as a "Special" Calf and Feeder Sale. Several nice consignments already planned. Call on your consignment to any of the following: Don Prather, Boise City, Okla. - Wayne Roberts, Elkhart, Kansas, Bill Blackmore at the Guymon yards or contact Cliff Augustine.

The Cattle Auction Every Friday with "Action"

## You Name It!

The gas situation in Spearman came as a surprise to me! I didn't think that we would come up two times in a row without any gas in the city. This will be remedied by the weekend, I am sure, and I am extremely proud of the way that the city handled the two emergencies. They have been working on this gas war price for quite some time and when they switch over to the new lines, or whatever they plan to do, I assume that we will not have any more trouble this year.

I had to start up my fireplace Monday, without a gas starter, and it was quite a job to get the Boy Scout Manual out and chip up some dry wood, bark, etc. and prepare to warm up the supper over the old fire, like the Indians did. Fortunately, we have plenty of electric cooking appliances, and after cooking my steaks electrically, me and the good wife tuned up the old TV and prepared for the Monday night football game! We did get our gas pressure restored by late evening, however, and everything turned out great! All of my neighbors were preparing to come over and enjoy the fireplace! They were to bring plenty of food, and I would furnish the heat! It sounds like a good deal to me, but seriously, I want to thank Mark Neff and the city crew for their work during this gas shortage. Chuck Rigdon, Keith Hutton, and all of the city employees worked straight through Monday evening, without supper, trying to restore gas to the city, and they got it done! Thanks once again to everyone on the city crew for their work!

Just had a talk with Mark Neff, and he says Hi-Plains will tie into a Northern Natural Gas line this week. The tie-in will be between Spearman and Perryton and will not have to come through Perryton, as in the past. So, this means that we should have ample gas for the winter months ahead.

Rumors have it that things are looking better at the Hospital. That is, I hear several doctors are taking a look at the situation here, and some new developments should be taking place in the near future.

The weather Tuesday played "whaley" with the maize harvest. Most of the harvest is pretty well along, but it might surprise you how much is still left in the fields!

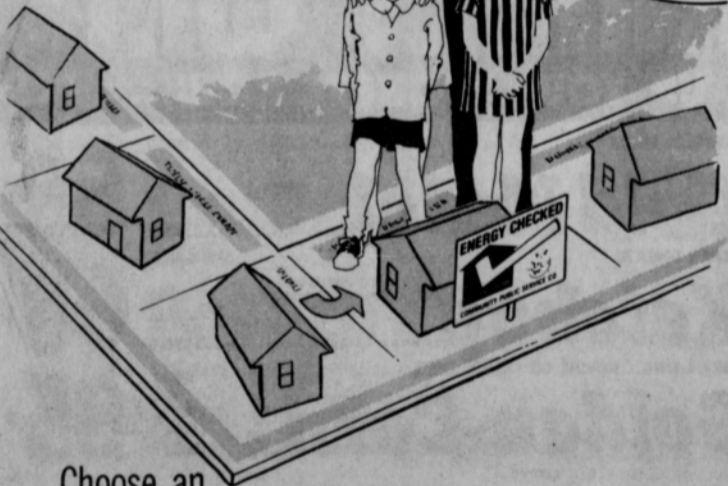
I journeyed to Weatherford, Okla. to watch Southwestern and East Central play at the homecoming affair last Saturday. Earnest and I took the old '62 Ford, and I must say that I never had such an interesting outing! Southwestern State College is the home of Mr. Witherspoon, who founded the Gibson chain of stores! You Gibson people will be thrilled to know that we made a set of pictures, just for this gentleman, if he will start advertising every week in our 3 newspapers! I'm only kidding and we plan to see that he gets a set of them if they are good and they will be!

The most interesting thing about this fine college in Oklahoma is their research in cancer study! I have a sneaking suspicion that one of

## Panhandle Livestock Comm. Co.

Phone: Area (405)-338-3378 Guymon, Okla. P.O. Box 879 73942

Make your next move your best move.



## Choose an Energy Checked Efficiency Home.

When you buy an Energy Checked Efficiency Home, you're buying both economy and comfort. Throughout all the years you live in it, an Energy Checked Efficiency Home helps conserve valuable energy while conserving your valuable money! Before a home can qualify to display this sign, it is checked by Community Public Service Company for such energy saving features as proper size heating and cooling units, insulation, attic ventilation, hot water system, weatherstripping around doors and windows . . . and many others. When you're house-hunting, look for the Energy Checked Efficiency Home sign . . . a service from the friendly folks at Community Public Service Company.

COMMUNITY PUBLIC SERVICE Your Electric Light & Power Company An Equal Opportunity Employer

## Can we afford four more years without effective leadership?

There is a critical decision to be made on November 2nd. It goes far beyond the question of which Presidential candidate can govern with integrity and honesty. We must determine which candidate has the ability and strength to lead our country out of economic chaos, and the vision to see that all Americans—not just the powerful and influential—have a better future.

During the past two years, the middle class has paid far too dear a price for a President lacking that ability. Since Gerald Ford took office, the unemployment rate has risen 50%, from 5.5% or 5 million people, to 7.9% or 7-1/2 million jobless Americans. Today's inflation rate of 6% is higher than it was at any time between the

Korean War and the inauguration of Richard Nixon.

The 1968 food dollar is now worth 57¢. Mr. Ford's budget will account for the largest single deficit and more than 1/3 of the public debt incurred during our entire 200-year history. Real GNP has actually declined during each of Gerald Ford's two years in office.

And who is most affected by these distressing statistics? Not the Washington establishment, or the economic elite courted by the Republicans. The burden falls on the person who can least afford it: the average American. Jimmy Carter means to change all that. As President, he will make government responsive to your needs.

**Tax Reform:** "The average family in this country actually pays a higher proportion of their income in taxes than the average family that makes more than a million dollars a year. That's disgraceful. We need to move toward a truly progressive and simplified tax system, with reduced tax rates for the average American."  
**Economy:** "We'll never have a balanced budget nor an end to the inflationary problems as long as we have 7-1/2 million people out of work. Employment needs to be the major thrust of the whole domestic policy of our government."  
**Efficiency in Government:** "We now have in the

federal government the most bloated, confused, wasteful bureaucracy ever created. There's no way to get an answer out of Washington and no way to understand what's going on there. We need to reorganize completely the executive branch of government, making it fair, efficient, effective, and responsive to our people's needs."  
**Housing:** "No government that cared about our neighborhoods would stack the tax deck against them. A landlord can let a building run down and make a good living on tax breaks. But when a home owner spends a little hard-earned money fixing up his home, the assessor raises his taxes. And the FHA no longer

cares about families getting started in their own homes. I intend to restore the FHA to the time when, for a down payment, a family could get a mortgage which the government would insure."  
**Health Care:** "We need a nationwide health care delivery system which will make adequate health care a right for all people."

Jimmy Carter has the strength to take charge of our government. If you are tired of paying the high price of Republican ineffectiveness, you have only one choice on November 2nd, and that choice is for change.

Paid for and authorized by 1976 Democratic Presidential Campaign Committee, Inc.



Vote for JIMMY CARTER. A leader, for a change.





### Recent Ceremony Unites Couple

Karen Yvonne Reimer became the bride of Richard L. Whitlow in a morning ceremony, Saturday, October 9, in the First Christian Church. The Rev. Donald E. Wirsdorfer, Jr., officiated.

Mr. and Mrs. Paul Reimer, 1001 S. Haney, are the parents of the bride; the bridegroom is the grandson of Mr. and Mrs. G. F. Whitlow of Valley Cen-

ter, Kansas. Maid of honor was Elaine Reimer, sister of the bride and Gary Rushing, of Amarillo, served as best man.

The bride is a court reporting major at Amarillo College. The bridegroom, of Amarillo, is presently a salesman employed with the M. B. McKee Company of Amarillo.



### Wedding Is Planned

Mr. and Mrs. Kenneth Burch of Spearman would like to announce the engagement and approaching marriage of their daughter, Carma Ruth, to Elbert Dean Dorton, son of Mr. and Mrs. Charles Dorton of Perryton. The bride-elect is a 1975 graduate of Spearman High School. Her fiancé is employed at McGinnis and Crawford Inc. of Perryton. A December 3 wedding is being planned.

### Concert Season Begins In Borger

Members of the Tri-City Community Concert Association will be privileged to enjoy the music of the New York Brass Quintet Saturday, Oct. 30, 1976 at 8:00 p.m. in the Borger High School auditorium. This will be the first concert of the season and each member of the Association is asked to bring his membership card for admittance. A rare treat is in store for all who attend.

The New York Brass Quintet is the leading ensemble of its kind concertizing regularly throughout the world. Each member of the group, formed over 20 years ago, is a graduate of a top-flight conservatory and each has acquired both enormous experience and enviable prestige as individual performers in orchestras headed by such notables as Stokowski, Reiner, Bernstein, and the late Casals and Stravinsky.

The group's concerts are by no means restricted to modern compositions. Much of the music they play is pre-Bach in content, such as the antiphonal works of 16th and 17th century composers: the canzonas of Giovanni Gabrieli, or the invigorating suites performed from high towers by German village brass players. Several fascinating late 18th and early 19th century pieces have been unearthed, too, so that the ensemble's repertoire has grown to include a wide variety of styles and periods. In addition, they are acquiring

a special repertory of works for brass quintets and orchestra.

Music for brass instruments began during the late 16th century, and flourished throughout the 17th century. Modern composers and performers are creating a renaissance of brass music in our own time. The trumpet has the most brilliant tone and technique of the brass instruments, with a glorious history dating back to the animal horns and sea shell trumpets of Biblical times. The French Horn which has been the favorite melodic brass instrument of composers since Mozart and Haydn is the mellow-voiced descendant of the ancient hunting horn. The trombone, descended from the 16th century "sackbut", adds a noble tenor voice to the brass quintet. The tuba was invented for the Wagnerian orchestra. In spite of its great size, it has a beautiful tone and surprising technical facility.

The New York Brass Quintet members are artists-in-residence and Applied Music faculty members of the Hartt College of Music of the University of Hartford. They are in greater demand now than ever before for no other ensemble has their skill and amazing repertoire.

You are cordially invited to a wedding shower honoring Mrs. Rick Thomas (nee Katrina Kelp) Saturday, October 30, 1976 3 to 4:30 p.m. B&B Friendship Room

#### Hostesses:

- JoAnn Hawkins
- Gina McLain
- Helen Prachar
- Ruby Riley
- Sara Dossett
- Lorraine Burke
- Pat Mahanay
- Rita Reed
- Jewel McCalmon
- Jo Larson
- Wanda Burke
- Lucille Hagerman
- Colleen Murrow
- Delphine Kopke
- Avo Topp

### Hilton Sutton To Speak

Hilton Sutton, a nationally recognized authority on the subject of current events and world affairs related to Bible prophecies, will be speaking Monday, Nov. 1 and Tuesday, Nov. 2, at 8 p.m. at the Hardesty School Auditorium at Hardesty, Okla.

Monday, he will present a current news analysis of world affairs and current events related to prophetic scripture. Tuesday, he will speak on

"Israel, the 20th Century Miracle." There will also be a film by the same title shown, which is a recent documentary on the nation of Israel, narrated by Mr. Dewey Compton.

CWF BAZAAR DECEMBER 4

REMEMBER ARTS & CRAFTS SHOW Nov. 6-7

Arts - Crafts Antique Show Nov. 6th & 7th

Arts - Crafts Antique Show Nov. 6th & 7th

REMEMBER ARTS & CRAFTS SHOW Nov. 6-7 HANSFORD LIBRARY

### Our Heritage of Faith...

notes from Faith Lutheran Church

"The Lutheran Confessions," a study/discussion class, will be offered by the intern, Harvey Faltisek, on November 3, 17, 24, and December 1, at 8 p.m. It will meet for one hour each of these Wednesdays at Faith. Everyone is urged to come and learn, share and talk about the what's, where's, why's and how's of the Lutheran heritage of faith.

Pastor Andersen will be in California from November 1-6, attending a Committee on Rural Ministry (COM) meeting. The ministry of the church to and in the rural areas of our country is a vital and important mission. With a great deal of the publicity and concern turned towards the large cities and their massive problems, it is very important that we have such a group of people as those of the Committee on Rural Ministry to continue to work on and care about the needs and goals of the rural people.

The Junior League and the Luther League enjoyed a wonderful time at a hayride Saturday night sponsored by the First Presbyterian Leaguers. Many of those on the hayride are probably still finding hay in coat pockets, etc! Thanks to the First Presbyterian League and Church for an enjoyable evening!

At Faith every Sunday morning we use one of the three ancient creeds of the church as a means of verbally confessing our faith in the Triune God to each other and to God Himself. God has revealed Himself as Father, Son, and Holy Spirit. By using one of the ancient creeds, we express our belief in Him and also acknowledge our heritage of being a part of the church universal. Let us praise Him together and love each other as He first loved us.

We invite you to come and join us as together we worship God. Sunday morning worship begins at 9:30 a.m. and the Sunday School Hour begins at 10:30 a.m.

**IDEAL FOOD STORES**

PRICES EFFECTIVE THRU SAT. OCTOBER 30, 1976. NONE SOLD TO DEALERS. LIMIT RIGHTS RESERVED. MON.-SAT. - 8:00 A.M.-9:00 P.M. SUN. - 10:00 A.M.-7:00 P.M.

**"TRICK OR TREAT"**  
Goblin's Pleasers Shop Ideal for our complete selection of Trick or Treat Candies.

**WHOLE FRYERS**  
FRESH DRESSED  
**44¢**  
LB.

FARM-FRESH Cut-Up Fryers..... 54¢  
FAST FIXIN', BEEF OR Chicken Fry Fritters..... 99¢  
WINCHESTER IMITATION Chunk Bologna..... 69¢  
WILSON'S CHUNK Braunschweiger..... 89¢

**PORK ROAST**  
WHOLE ... 6 TO 8-LB. AVERAGE.  
**65¢**  
LB.

FRESH PORK ARM SHOULDER Pork Roast..... 79¢  
FRESH ... ARM SHOULDER SLICES Pork Steaks **99¢**  
LB.

**SLICED BACON**  
BULK PACK **99¢**  
LB.

HICKORY SMOKED, CENTER CUT Ham Slices..... \$1.59  
ASSORTED Pork Chops **\$1.39**  
PORK LOIN  
LB.

**BONELESS ROAST**  
BEEF CHUCK **88¢**  
LB.

U.S.D.A. CHOICE BUTCHER BLOCK BEEF Boneless Steaks..... 57¢/LB. **98¢**  
BAR-B-Q ... MEAT OR BEEF Skinless Franks **69¢**  
12-OZ. PACKAGE

## PLAY CASH KING... WIN UP TO \$80,000 IN CASH PRIZES. PICK UP YOUR TICKETS NOW... NO

SHOP IDEAL FOR SUPERLATIVE SAVINGS, 7-DAYS A WEEK... WE WELCOME FOOD STAMP CUSTOMERS.

### SOMETHING NEW!!

## COUPON EXCHANGE

BRING IN COUPONS YOU CAN'T USE FOR THOSE YOU CAN!!

Help your neighbor . . . and yourself to greater coupon savings! Bring any manufacturer's coupons you may not wish to use to Ideal and drop them in our Coupon Exchange Box. Then help yourself to the coupons you can use that other people have brought in. Take as many as you like to save as much as you can. Share and Save!

It's a whole new way to help each other get the benefit of all the savings offered by manufacturer's at the same time you're getting the benefit of Ideal's low prices. So tell your friends. Help one another! Save money!

**We're working harder than ever to save YOU more!**

ENRICHED FLOUR

**Gold Medal**..... 5-LB. **68¢**  
LIMIT-1 BAG.

HUNT'S TOMATO

**Ketchup**..... 32-OZ. **68¢**  
LIBBY'S WHOLE KERNEL OR CREAM STYLE BOTTLE

**Golden Corn**..... 3 **85¢**  
16-OZ. CANS

LIBBY'S CUT	Green Beans..... 4 <b>93¢</b> 15-OZ. CANS	LIBBY'S SAUER-KRAUT..... 3 <b>83¢</b> 15-OZ. CANS	LIBBY'S Fruit Cocktail..... 2 <b>85¢</b> 15-OZ. CANS
LIBBY'S	Mixed Vegetables..... 15-OZ. <b>39¢</b> CAN	LIBBY'S Whole Tomatoes..... 2 <b>83¢</b> 15-OZ. CANS	LIBBY'S CLING Peaches..... 2 <b>98¢</b> 15-OZ. CANS
LIBBY'S	Sweet Peas..... 3 <b>95¢</b> 15-OZ. CANS	LIBBY'S Tomato Juice..... 15-OZ. <b>49¢</b> CAN	CAMELOT CHUNK OR Sliced IN HEAVY SYRUP Pineapple..... 2 <b>98¢</b> 15-OZ. CANS
VAN CAMP'S	Pork & Beans..... 15-OZ. <b>69¢</b> CAN	<b>Thrift-T Priced Dairy Foods!</b>	
CAMELOT MILD LONGHORN CHEESE..... 15-OZ. <b>\$1.28</b> PKG.		MEL-O-CRUST SWEETMILK OR BUTTERMILK CANNED BISCUITS..... 10¢ 15-OZ. CAN	CAMELOT Milk..... 15-OZ. <b>41¢</b> CTN.
CAMELOT LARGE OR SMALL CURD Cottage Cheese..... 15-OZ. <b>95¢</b> CTN.	PHILADELPHIA Cream Cheese..... 8-OZ. <b>52¢</b> PKG.	FAIRMONT Whiches..... <b>51¢</b> HALF GAL.	Brew..... <b>51¢</b> HALF GAL.
		FAIRMONT Blue Bonnet..... 1-LB. <b>48¢</b> CTN.	FAIRMONT Whipping Cream..... <b>41¢</b> HALF PINT

## Week End Sale

THURS., FRI. AND SAT.

ONE RACK CATALINA **30% OFF**

LONG SKIRTS AND VELVET JACKETS **30% OFF**

CHAMBERS

SPEARMAN, TEXAS 79081

CWF BAZAAR DECEMBER 4

CWF BAZAAR DECEMBER 4



You are cordially invited  
to a reception honoring  
Mrs. Hettie Davis  
on her 100th birthday  
Saturday, Nov. 6  
from 3-4:30 p.m.  
Fellowship Hall  
First Christian Church  
No gifts please  
50-2tc

**United Presbyterian Church News**

There will be a men's prayer breakfast on Thursday, October 28 at 6:30 a.m. at the First Presbyterian Church. Max Baggerly is the chairman. Presbyterian Regional Conference on the Holy Spirit for Texas, Oklahoma, Arkansas, and Louisiana will be held at the Westminster Presbyterian Church in Shreveport, Louisiana Thursday, Friday, and Saturday, October 28-30. There is a Sunday Church School Bible class for every age group every Sunday at 9:45 a.m. with an interesting, well planned lesson. "Don't Be a Goose" will be the subject of Pastor Ed Freeman's children sermon and "The Creative Use of Affluence" will be the subject of his adult sermon at the service for

the public worship of God at 11:00 a.m. Following the morning church worship service there will be the annual congregational meeting to be followed by a family pot-luck dinner.

**Arts & Crafts Guild News**

The Arts and Crafts Guild met Friday, Oct. 22, in the home of Mrs. Clay Gibner. Delicious refreshments were served by Mrs. Gibner to members, Mmes. P. A. Lyon, Joe Trayler, Garrett Allen, F. J. Hoskins, Ned Turner, Pope Gibner, and Guy Fuller. Next meeting will be Friday, Oct. 29, in the home of Mrs. F. J. Hoskins.



**Vows Exchanged In Amarillo**

Miss Loretta Kay Paetzold of Amarillo became the bride of Gary Mac Dryden, also of Amarillo in a 3:00 ceremony performed at St. Joseph's Catholic Church in Amarillo. The Reverend R. H. MacLellan was the officiant for the October 16 service. Parents of the bride are Mr. and Mrs. Walter Paetzold of Hereford and the groom's parents are Mr. and Mrs. Lonnie Swimmer of Gruver.

and Mr. and Mrs. Meniel Dryden of Dalhart. A profusion of white chrysanthemums enhanced the altar background. Miss Patricia Hess of Amarillo presented the nuptial organ music and accompanied Larry Kuper of Hereford as he sang "The Lord's Prayer" and the "Wedding Song" during the service. Acolytes for the afternoon service were brothers of the bride, Stanley Paetzold and Walter Paetzold, Jr. Presiding at the guest registry was Miss Donna Paetzold, sister of the bride. Attending the lovely bride as maid of honor was her sister, Miss Margie Paetzold of Amarillo and serving as the groom's best man was James Paulk of Dalhart. Ushers for the mid-afternoon rites were Van Dryden and Scott Dryden, brothers of the groom from Gruver. For her wedding the bride, who was given in marriage by her father, chose a gown of white bridal taffeta designed with long, full sleeves accented on the wide cuffs by tiny sequins, which also accented the high neckline of the gown. The hemline was banded in scalloped Chantilly lace also adorning the back of the skirt to a full chapel train. Her two-tiered veil of imported illusion edged with Chantilly lace fell from a coil of lace enhanced with tiny seed pearls. Her bridal bouquet was a shower of white rose buds, daisies and stephanotis with white satin lovers knots. Her maid of honor was gowned in a floor length green gown designed with long full sleeves and an A-line skirt. She carried a nosegay of golden chrysanthemums. Following the marriage ceremony, the couple were feted by a reception held at the Amarillo Garden Center with Mrs. Bill Ford of Amarillo and Miss Shelly Lupton of Hereford presiding at the beautifully appointed serving table which was highlighted by the three-tiered wedding cake decorated with cascades of golden flowers and topped by a white orchid. Following a wedding trip to Colorado, Mr. and Mrs. Dryden will be at home at 1105 Alta Vista in Amarillo. The bride is a 1975 graduate of Hereford High School and the groom, who also graduated from Hereford High School, attended Claredon Junior College and West Texas State University at Canyon. He is employed by Allied Plumbing in Amarillo. His grandparents are Mr. and Mrs. Victor H. McRee who were early Hansford County Pioneers, now residing in Amarillo. Out-of-town guests came from Hereford, Gruver, Dalhart, Dumas, Sunray, and Amarillo for the wedding and reception.

**Sorority Selling Stadium Bags**

Xi Zeta Upsilon is selling purple stadium bags for \$15.00 each. Stadium bags will be sold prior to football games. Advance orders may be taken by calling Mrs. Don Floyd at 3158, Mrs. Bob Meek at 2087, or Mrs. Bob Hohertz at 3157.

**HD Club News**

The Town & Country Home Demonstration Club met Tuesday, Oct. 19, in the Home Demonstration Club Room. Mrs. Jerry Holton presided over the meeting. Mrs. Jerry Hayes gave the devotional. Roll call was answered with "My Favorite Superstition." Mrs. Dan Ralston gave a committee report on the Halloween Carnival Booth. The Club will be selling drinks, frito pies, sloppy joes, and hot dogs. Mrs. Hayes gave a report on the Clothing Fair to be held March 29. Mrs. Cecil Biggers gave the program on "Arthritis." Members were reminded to pick up their pecans, which are selling for \$2.50 a pound. Baby gifts were given to Mrs. Kerry Henton for her new baby daughter. Refreshments were served by Mrs. Carl Kunselman to members, Mmes. Cecil Biggers, Bobby Everson, Jerry Hayes, Jerry Holton, Dan Ralston, Phillip Renner, Richard Pipkin, John Trimmell, Gary Taylor, Bob Pearson, Johnny Crawford, Kerry Henton and Chester Martin. Next meeting will be Nov. 12 at the La Casita Room at Gruver State Bank to hear a program on Festive Foods given by Joy Stevenson.

**Couple Wed In Saturday Service**

Wendy Sue Crawford, daughter of Mr. and rs. S. A. Fuller of Carlsbad, California, became the bride of Michael Patrick Griffin in a 7:00 P.M., Saturday, October 16, service at the home of the groom's parents, Mr. and Mrs. Charles Kruse of Gruver, Texas. Officiating at the ceremony was Jon M. Garnett, President of the Perryton Branch of the Church of Jesus Christ of Latter Day Saints. A buffet supper was served to the guests immediately following the marriage rites. Included for the occasion were Mr. and Mrs. Jon Michael Garnett of Spearman; Mr. and Mrs. Chub Gross, Canyon; Bob Griffin and J. R. Ayre of Wheeler; Mr. and Mrs. J. C. Harris, Judy Martin, Mike Martin, Bill Griffin, Marsha Immel, Jim Griffin, Wayne Kruse, Penny Crane, Earl Merchant, Donna Ponder, Adam Crawford, and the groom's parents, all of Gruver. Mr. and Mrs. Griffin are at home in Canyon where Michael is attending West Texas State University.

**Pheleo Circle Has Meeting**

Pheleo Circle met Wednesday, Oct. 20, at the First Christian Church. Mrs. Charlie West presided over the meeting in the absence of the president, Mrs. Darl Hergert. Minutes of the previous meeting were read and approved and the treasury report was given. Mrs. Carl Kunselman reported the Circle had purchased a toy stove and refrigerator for the nursery. Mrs. Kunselman gave the study entitled, "Who Can Know The Mind of God" taken from the book, "Who To Be A Christian Without Being Religious." Mrs. Irvin Davis gave the worship on "Fear," taken from Norman Vincent Peale's book, "How To Cope With Ten of Life's Biggest Problems." It was decided to meet the second Wednesday in November instead of the third Wednesday. Craft Day was held follow-

**Bride-Elect Is Honored**

A Bridal Shower honoring Brenda Wheeler, bride-elect of Fred Shieldknight was held Saturday, October 16, at the B&B Farm Industries Friendship Room. Many lovely and useful gifts were received by the honoree. Punch, cake, and coffee were served to guests by friends of the honoree. The lace covered serving table was centered with a beautiful arrangement of yellow daisies flanked by a crystal punch bowl and silver coffee service. Hostesses were Mmes. Don McLain, J. L. Brock, Hoyt Biles, T. O. Lesly, Brad Beedy, Verlin Hagerman, Edwin Limbocker, Bill Kuehl, Ted Widener, Louis Lemons, Hershel Jones, James Cummings, Frank Hefner, Jim Ivey and Ernest Butler.

**CONGRATULATIONS TO THESE \$1,000 WINNERS!**

 <b>CORA MAESTAS</b> HUGGOTON, KANSAS	 <b>BONETTA HUNTER</b> WOODWARD, OKLA.	 <b>Mrs. FRANCES PHILLIPS</b> PERRYTON, TEXAS	 <b>KATIE WAUGH</b> LAVERNE, OKLA.
 <b>MARY A. McCALLISTER</b> CLAYTON N.M.	 <b>MIKE SAXON</b> BORGER, TEXAS	 <b>MIKE ARCHEBAULT</b> ULYSSES, KANSAS	 <b>KIRK TORRES</b> SPEARMAN, TEXAS
 <b>LOUISE BERNING</b> SCOTT CITY, KANSAS	 <b>J. H. DUNKERSON</b> GUYMON, OKLA.	 <b>Paul Jordan</b> ... Liberal, Kansas	 <b>Fidois Martinez</b> ... Garden City, Kansas
 <b>Harlan Caldwell</b> ... Plains, Kansas	 <b>Allene Eason</b> ... Plainview, Texas	 <b>Ethel Johnson</b> ... Scott City, Kansas	 <b>Ellen Porter</b> ... Pampa, Texas
 <b>Velma-Jean Bush</b> ... Pampa, Texas	 <b>Diana S. Mahaffey</b> ... Guymon, Okla.	 <b>Nancy A. Lantrop</b> ... Enid, Okla.	 <b>Mrs. C. C. Callerman</b> ... Canyon, Texas
 <b>Barbara Royo</b> ... Enid, Okla.	 <b>Vera Jalomo</b> ... Holcomb, Kansas	 <b>Gail Dobson</b> ... Hays, Kansas	

 <b>YOUNG TURKEYS</b> 15 TO 20-LB. AVERAGE. <b>49¢</b> LB.	 <b>FISH STICKS</b> BREADED 2-LB. PKG. <b>\$1.29</b>
 <b>Honeysuckle Turkeys</b> ... 69¢ ALL SIZES 11-19 12-OZ. PKG. BAR-S. MEAT OR BEEF <b>Sliced Bologna</b> ... 89¢ BAR-S <b>Cotto Salami</b> ... 99¢ 12-OZ. PKG. BLUE MORROW, COOKED <b>Beef Fritters</b> ... 99¢ BULK PACK	 <b>Fish and Fries</b> ... 51¢ BREADED 3-LB. PKG. FRESH-WATER <b>Catfish Steaks</b> 3 TO 4-OZ. AVERAGE. <b>98¢</b> LB.

**\$1,000! PURCHASE NECESSARY!**

ODDS CHART	NO. OF TICKETS	1000 TO 1	500 TO 1	250 TO 1	100 TO 1	50 TO 1	25 TO 1	10 TO 1	5 TO 1	2 TO 1
10000	100	10000	10000	10000	10000	10000	10000	10000	10000	10000

**CAMELOT OR GALAXY... ALL FLAVORS**

**Canned Pop**... 8 12-OZ. CANS **\$1.12**

**Potato Chips**... 64¢  
PRINGLE'S...  
LIMIT-2 WITH \$5.00 OR MORE PURCHASE.

**Paper Towels**... 42¢  
LADY CAMELOT... ASSORTED COLORS  
LIMIT-3 WITH \$5.00 OR MORE PURCHASE.

<b>Peanut Butter</b> ... 18-OZ. JAR <b>92¢</b>	<b>Hi-C Drinks</b> ... 2 46-OZ. CANS <b>89¢</b>	<b>Chunk Tuna</b> ... 4 4 1/2-OZ. CANS <b>52¢</b>
<b>Choc. Morsels</b> ... 12-OZ. PKG. <b>\$1.08</b>	<b>Root Beer</b> ... CTN. OF SIX 12-OZ. CANS <b>\$1.23</b>	<b>Marshmallows</b> ... 18-OZ. PKG. <b>46¢</b>
<b>Chocolate Mix</b> ... 3-LB. CAN <b>\$1.98</b>	<b>Mustard</b> ... 34-OZ. JAR <b>53¢</b>	<b>Caramels</b> ... 14-OZ. PKG. <b>79¢</b>
<b>Biscuit Mix</b> ... 40-OZ. BOX <b>\$1.25</b>	<b>Graham Cookies</b> ... 13 1/2-OZ. BOX <b>79¢</b>	<b>Cookies</b> ... 13 1/2-OZ. BOX <b>79¢</b>

**Russet Potatoes**  
10 -LB. BAG **69¢**

**Jonathan Apples**... 4 LBS. **\$1.00**

**Delicious Apples**... 3 LBS. **\$1.00**

**Ocean Spray Cranberries**... L.B. BAG **39¢**

**California Celery**... 2 STALKS **49¢**

**California Persimmons**... 3 FOR **\$1**

**Honeydew Melons**... CALIFORNIA EACH **59¢**

**Peanuts**... FRESH - ROASTED - L.B. BAG **69¢**

**Apple Cider**... FULL GALLON... \$1.99 1/2-GAL. JUG **\$1.49**

**FAIRMONT DAIRY FARM... ALL FLAVORS**

**ICE MILK**... 1/2-GAL. CTN. **79¢**

**Jeno's Pizza**... 13 1/2-OZ. PKG. **68¢**

**ORANGE JUICE**... 18-OZ. CAN **41¢**

**Banquet Dinners**... 2 11-OZ. PKGS. **98¢**

**Banquet Dinners**... 2 11-OZ. PKGS. **89¢**

**Canadian Bacon**... 11-OZ. PKG. **98¢**

**Orange Avocado**... 15-OZ. CAN **38¢**

**Thrift-T Health & Beauty**

**Baby Shampoo**... 16-OZ. BTL. **\$1.99**

**Diapers Daytime**... CTN. OF 24 **\$2.09**

**Regular Vitamins**... BTL. OF 24 **\$2.09**

**Tylenol Tablets**... CTN. OF 24 **73¢**

**Vitamins**... WITH 1/2 BTL. JERON... OF 24 **\$7.29**

**Tuesday, Nov. 2 Photo Hours 9-8**

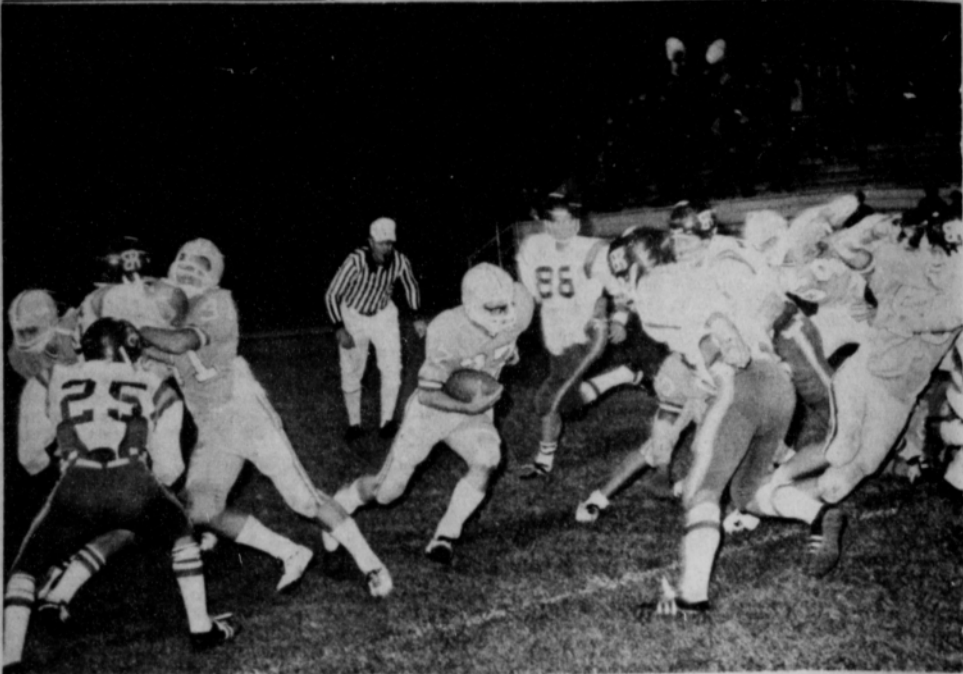
**9 99¢**

**SHUGART COLOR PHOTOS**

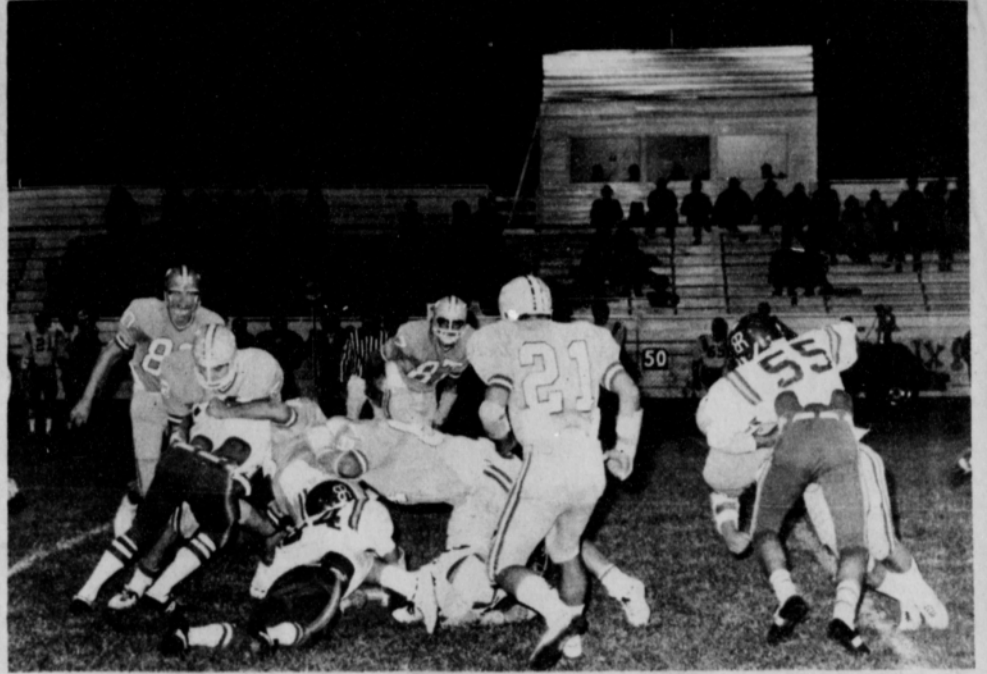
**TG & Y**

521 S. Hwy 207  
Plains Shopping Center





No. 31 Zane the train, Hohertz No. 64, and the entire offensive line of the Lynx open a hole for the Baker-Taylor bullet in Friday night game with the Ranchers. This picture shows the type of blocking that enabled the Lynx to run-up 505 yard total offense. It will be a different story against Panhandle here Friday night as the Panthers and the weather will probably slow down the Lynx steam-rollers!



Angry Purple Stops Boys Ranch for short yardage.....

**Choir Members Sell Magazines**

On October 21, the Spearman High Chorale will begin their magazine drive. This magazine program was developed by the Reader's Digest. The students can renew your present subscriptions or sell you a new one at cheaper rates. There are over 250 different magazines to choose from. The money raised will be used to purchase uniforms to wear when performing, and help to buy materials for the upcoming musical. Please support your choir by renewing or buying a new subscription when called upon.

If you want to have someone call on you, contact a choral student or call 659-2584 and leave your name and address for Mr. Angel.

**Bowling News**

WED. MIXED DOUBLES  
10-20-76

	Won	Lost
Wardrobe Cleaners	17	7
Bowl Mor	16	8
Doug Outs	14	10
Cates Men & Boys	12	12
Wy-Tex	11	13
Ideal	11	13
Panhandle Eastern	11	13
Hansford Impl.	5	19

HIGH TEAM SERIES	
Wardrobe	2451
Wy-Tex	2280
Cates Men & Boys	2246
HIGH TEAM GAME	
Wy-Tex	786
Wardrobe	783
Bowl Mor	758
HIGH SERIES-MEN	
Verlin Behne	535
Millard Tucker	528
Jim & Gene	519
HIGH SERIES-WOMEN	
Sharon Mauk	476
Jane Meek	454
Pat Donnell	450
HIGH IND. GAME-MEN	
Millard Tucker	208
Gene Duryee	186
Jim & Verlin	182
HIGH IND. GAME-WOMEN	
Sharon Mauk	186
Pat Donnell	182
Jane Meek	173

CFW BAZAAR  
DECEMBER 4

**Last Chance For Emergency Livestock Loans**

Livestock producers in Hansford County must act before the end of the year to take advantage of the Emergency Livestock Credit Act of 1974, a temporary Farmers Home Administration program. Now two years old, the Act provides for emergency financial help to the producer whose business has a good chance of success if it can survive the current liquidity crisis, points out Jim Kuykendall, county agent for the Texas Agricultural Extension Service. The revised Act now in effect has changes to make it more palatable to both the borrower and lender. Kuykendall lists some of the

conditions of the Act:  
1. A "line of credit" is permitted, whereas the original Act permitted only a single loan.  
2. Anyone with a "substantial operation" in breeding, raising, fattening or marketing is eligible. (This includes one who devotes at least 25 percent of his time to, derives at least 25 percent of his income from, or has at least 25 percent of his capital invested in livestock operations.)  
3. The Act terminates on Dec. 31, 1976.  
4. The loan period can be up to seven years, with possible renewal for three years.  
5. The guarantee by the Farmers Home Administration

is increased from 80 percent of the loss to 90 percent of the loan principal and interest.  
6. The line of credit has been increased from the previous \$250,000 to \$350,000 per loan.  
7. Secondary financing of the guaranteed portion of loans may now be made by the Federal Financing Bank, thus increasing the marketability of the securities to the lender.  
8. The total authorization under the Act was reduced from \$2 billion to \$1.5 billion. Many cattlemen can use this type of financing due to present economic conditions, points out Kuykendall. Therefore, the Emergency Livestock Credit Act should help them protect their operations from

financial disaster in the coming months. Kuykendall advised stockment to contact the local Farmers Home Administration office or their lender for particular details. This must be done before the Act expires on Dec. 31.

REMEMBER  
ARTS & CRAFTS SHOW  
Nov. 6-7  
REMEMBER  
ARTS & CRAFTS SHOW  
Nov. 6-7  
HANSFORD LIBRARY

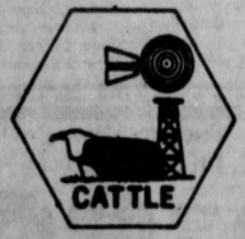
"GET READY FOR WINTER" and  
**SAVE ON FUEL BILLS**  
With STORM WINDOWS & DOORS  
contact - Howard Meyer at  
**Only Aluminum Industries**  
Guymon, Okla. 405 338-6966  
114 W. St. 338-6170

**Bulletin Board**

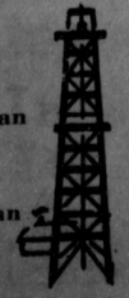
**Chili Supper  
OCTOBER 29**

High School Cafeteria 5:00 til 7:30  
**\$2.50 Adults \$1.50 Children**

Sponsored by the Baker & Taylor Women's Association  
You may purchase your tickets early from any member



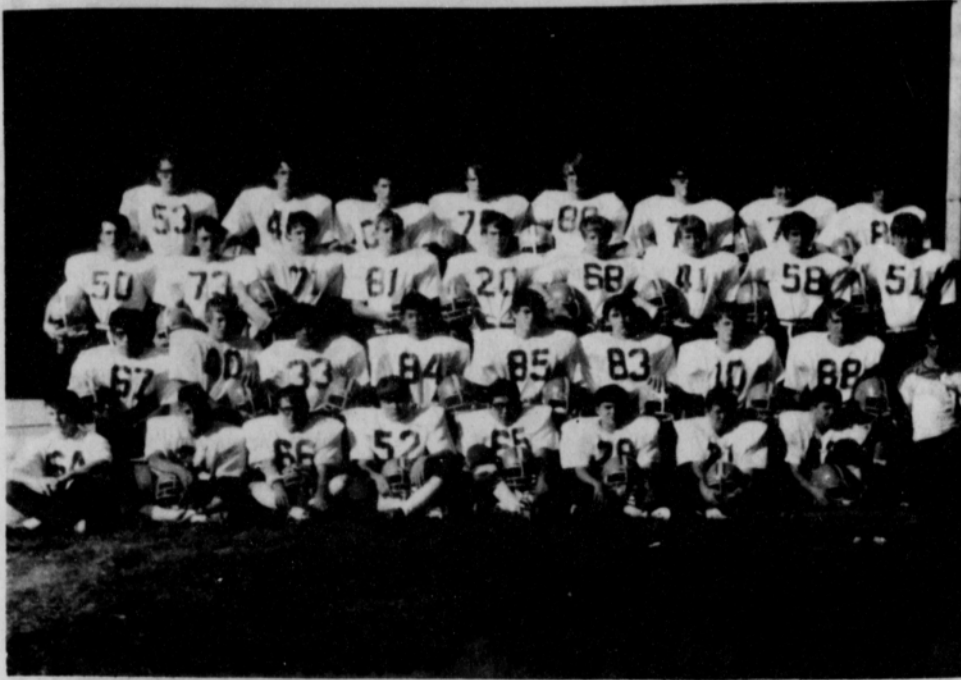
Spearman Perryton  
Canadian Amarillo  
Cheyenne, Oklahoma



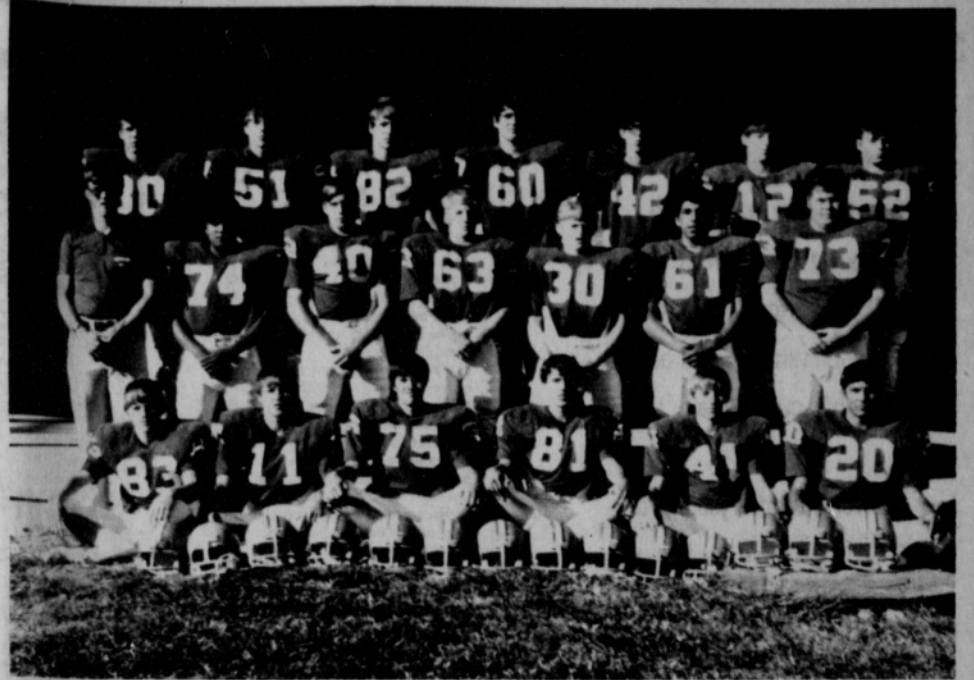
We don't want to get bigger,  
We want to get better!







Spearman Lynx Freshmen are: 67 - Jose Avila, 23 - Mark Back, 20 - Kyle Beedy, 80 - Chris Bodey, 71 - Alvin Byers, 35 - Mike Dennis, 73 - Rickie Dowdy, 10 - Dayton Edwards, 88 - Brad Guthrie, 66 - Greg Hazelwood, 40 - Doug Hohertz, 50 - Mike Kizzlar, 33 - Frank Lozano, 76 - Kerry McMullan, 41 - Kelly Mahanay, 68 - Kermit Mahanay, 51 - Clifton Morrison, 65 - Ray Ortega, 31 - Mike Owens, 45 - Tony Papay, 64 - James Pierce, 78 - Clay Reid, 13 - Rex Reid, 21 - Charles Ross, 86 - Dean Schaffer, 53 - Karl Smith, 81 - Tim Spoonemore, 37 - Randy Stafford, 84 - Jim Trinh, 28 - Cole Umphress, 58 - Ruben Vera, 74 - Brent Ware, 63 - David West. Managers: Mike Messer and Ken Prachar.



Spearman Lynx B-Team are: 20 - Ismael Vela, 74 - Florencio Martinez, 41 - Tony Truelove, 82 - Steve Goff, 52 - Cary Bridges, 73 - Charlie Price, 42 - Brent Connelly, 81 - Kyle Nolner, 83 - James Cummings, 63 - Kirby Hargis, 62 - Rick Alexander, 80 - Gary McCalman, 60 - Chris McClellan, 12 - Eric Brown, 30 - Billy Snider, 40 - Tom Barber, 51 - James Whitaker, 11 - Mark Franklin, 21 - Jerry Trout, 61 - Benny Rodriguez, 31 - David Pope, 75 - Todd Brock.

## Survey Taken On Various Texas Laws

AUSTIN--Take heed Legislators! Texans strongly favor Right to Work Laws; manda-

tory sentences for users of firearms in committing a felony; deny bail to repeaters, those pending appeal and to those already out on bail; no collective union bargaining for Public Employees and other pertinent issues that will be facing Texans during the coming legislative session.

In late September Common Sense of Texas mailed an eight (8) question survey to almost 5,000 Texans requesting answers as to whether they are "for" or "against" these selected issues. Early survey response indicates that the members of Common Sense of Texas and non-member Texans surveyed think almost alike on these eight issues.

97.3 percent of the responding members feel that public employees should not be granted the right to collective union bargaining with 95.8 percent of the non-mem-

bers agreeing. 100 percent of the members feel that no Texan should be required to pay a fee equal to the amount of dues paid a union (agency shop) by union members in order to hold or acquire a job.

When the State of Texas acquires a capital surplus (like this year's estimated 2½ billion dollars) over the previously appropriated levels of the budget, should a special account be created to retain these excess funds in the State Treasury? This was the most controversial question and received the lowest support of all that have responded. 70.8 percent are in favor of creating a special reserve account, 19.4 percent are against, while 9.8 percent needed more information as they were unaware of the issue or that a capital surplus was in the making. Each survey had a section for comments and many respondents took time to jot down their opinions on this issue and others that came to mind as they completed the survey.

In answering, "Should Texas establish 'sunset laws'", some that marked in favor of such laws added the comment, "don't move hastily on this issue." 94 percent of all respondents and 93.8 percent of the members of Common Sense favor Sunset Laws which would require state agencies and bureaus to justify their very existence and budget request at specific designated intervals.

Question number five (5) was close to being the most controversial question. 73.5 percent of the responding Common Sense members favored that Texans should prohibit any taxing authority at the state, county or local level from effectively increasing any taxes without a prior vote of approval by those being affected. The example used was increasing property values. Only 71.7 percent of all surveys were in favor of this and 5.3 percent were confused on this issue, while 23 percent were opposed.

Texas now has a law that says in part, schools will offer a course for credit on the American Economic System. No student must take it nor are adequate teachers requirements established that can qualify a teacher as being prepared to instruct such a course. The question read that Texas needs to require, as a prerequisite for high school graduation, a course in the American Economic System in all public schools. 94 percent were in favor of making the course a prerequisite for graduation, 3.7 percent against, with the remainder not answering the question.

93.1 percent feel that Texas should deny bail to repeat offenders and those pending appeal or already out on bail. Some of the surveys had excellent qualifying comments that clarified their answer. There are many extenuating circumstances that may influence an individual case that the legal minds appeared to wish to retain more flexible.

The final question of whether Texas should impose

mandatory prison sentences for use of firearms in the commission of a felony received 96.8 percent favorable count; 97.4 percent of the membership responding feel such a mandatory sentence is needed.

Don Hoffman, Director of Common Sense of Texas and coordinator for the tallying of results stated that reading the many comments written by respondents add validity to these findings. In many cases it was apparent that in-depth thinking had taken place on many of the questions that were of primary interest to the individual. Almost 92 percent of the surveys were signed (which was optional) and gave

a full mailing address. The survey form was designed as a self-mailer carrying the organization's address and place to affix a stamp. Those surveyed were asked to staple or scotch tape the folded form. It was here that a few smiles were forthcoming. One staple was sufficient, but many had 3 and up to nine. One survey with nine had scotch tape as well over all the staples. Many sealed the three open sides with scotch tape and then added a few staples. Many of the non-members that returned the survey also returned a membership application, joining Common Sense of Texas.

**REMEMBERING**  
LIMITED EDITION  
YOU ASKED FOR IT. WE DID IT.

A collection of 80 all-time favorites from the Remembering series, soft bound in two handsome volumes. **\$395 EACH** Plus 20¢ Tax

ORDER ONE OR BOTH OR A BUNCH. THEY MAKE GREAT CHRISTMAS GIFTS!  
SEND \$4.15 per book today to:  
REMEMBERING:  
1755 Purdue  
Big Spring, TX 79720

DISCOUNTS FOR QUANTITY PURCHASES

**SHUGART COUPON**  
Tues., Nov. 2  
Photo Hours 9-8  
521 S. Hwy 207  
Plains Shopping Center  
**9**  
WALLET SIZE COLOR PORTRAITS  
**99¢**  
ASK About Our **FREE** 8 x 10 OFFER  
Extra charge for GROUPS

**A**

*special salute*  
to the Lions Club of:  
**Gruver Morse Spearman**  
for outstanding  
civil work in  
**Hansford County..**  
**Gruver State Bank**



### Some sound reasons to keep Senator Lloyd Bentsen.

He's a hard worker who puts people and their problems ahead of all else; his record bears this out.

He's helped increase social security benefits for the elderly.

Lloyd Bentsen supported the tax cut and favored its extension to lighten the load on the average working man and woman.

He pioneered major reform of pension laws to protect retirement incomes for millions of Texans.

Lloyd Bentsen not only voted against the Congressional pay raise, but has continued his protest by returning to the Treasury each month the amount of the raise.

He's sponsored legislation to make life more productive for our blind and handicapped.

And, we can credit Senator Bentsen for taking the lead in securing increased funding for agricultural research to keep our nation's food productivity high.

It was Senator Bentsen who introduced the War Powers Act requiring Congressional consent before any President can commit U.S. troops to war.

And, the Senator was a leading proponent of campaign reform legislation to protect America from a recurrence of Watergate.

Lloyd Bentsen's diversified background and depth of experience in the military, business and public life have made him an effective representative. He's helped steer our nation back on the road to economic recovery while working for better management of our tax dollars.

Being a man of values, he places the highest importance on integrity in office and in delivering an honest day's work for a day's pay.

You gave him over 63% of the vote in the Democratic Primary. Let's make it a solid victory November 2nd.

Re-Elect Senator Lloyd Bentsen.

**Keep at least one Democrat in the U.S. Senate working for Texas.**

Political advertising Senator Lloyd Bentsen Re-Election Committee, Box 2023, Austin, Texas 78706. Joe Kilgore and John Mobley, co-chairmen; Larry Lenecke, Treasurer. Copies of our reports are filed with the FEC and are available for purchase from the FEC in Washington, D.C.



**Stephanie Bogle Feted On Birthday**

A birthday party with a Halloween theme was held Sunday, October 24, to honor 6-year-old Stephanie Bogle, daughter of Mr. and Mrs. Charles D. Bogle of 1120

Barkley.

Attending were Jan Crawford, Jennifer Martin, Carl Urban, Christi Urban, Julie Godfrey, Kitty Edwards, Linda Evans, Marjorie Evans and Stephanie's grandmother, Mrs. E. C. DeLozier.

**GAME NUMBER EIGHT**

P lace 'em number one,  
O ur Spearman Lynx;  
L aying it on the Ranchers,  
I t was nice, me thinks.  
S pearman jumped ahead,  
H adn't run a play;  
  
O ffense did a job, and  
F ine defense all the way.  
F or game number eight,

T he Panthers we meet;  
H alloween draws near,  
E vade a trick or treat.

P asses they throw,  
A nd defense very well;  
N ever to be denied,  
T he Lynx have the right spell.  
H ere's to you 'Bunch',  
E xtend the winning streak;  
R omp on the Panthers,  
S eventh victory we seek.

**UMW MEETS**

The Susannah Wesley Circle of the U.M.W. met Wednesday, October 20, at the First United Methodist Church.

Mrs. Monty Blackman presided over the meeting.

The devotional was given by Mrs. Bob Pearson.

Election of officers to take office January 1, 1977 was held. New officers are: Chairman-Mrs. Ray Martin, Vice Chairman-Mrs. Bob Pearson, Secretary/Treasurer-Mrs. Mack McCormack, and Courtesy-Mrs. Stan Hudson.

Discussion was held on the bake sale to be held November 3 at Thriftway. Each member is to take baked goods by 9:00 a.m. November 3.

Mrs. Bert Sheppard continued the study on "The Prophets".

Refreshments were served by Mrs. Pearson to guest, Mrs. John Trindle and to members, Mmes. Bert Sheppard, Dennis Nelson, Clark Mires, Mack McCormack, Ray Martin, Tom Latta, H. O. Abbott, Garland Head, Kent Guthrie, Dick Countiss, and Monty Blackman.

Next meeting will be Nov. 3 at the church.

**Methodist**

**Plan Revival**

The First United Methodist Church of Spearman has completed plans for their upcoming Revival which is scheduled for November 14-18. Rev. Ed Robb will be the evangelist and Gene Moore will be directing the music. This is a great team and everyone is looking forward to this time. The youth will have a special youth rally on Saturday, Nov. 13, with Rev. Steve Harper of Borger bringing the message. It is hoped that everyone will make preparation to attend these special services.

**BIRTHS**

Mr. and Mrs. Barry Goff of Amarillo are the parents of a son, Samuel Len Goff, born Oct. 15 at High Plains Baptist Hospital in Amarillo. He weighed 9 lbs. 4 oz. at birth.

Maternal grandparents are Mr. and Mrs. Jodie Knudson of Spearman. Paternal grandparents are Mrs. Wilma Goff of Spearman and Mr. Leniel Goff of Liberal, Kansas.

Mr. and Mrs. Ron Howter announce the arrival of a daughter, Amy Leslie, born Oct. 17, 1976, weighing 8 lbs., 4 1/2 oz. She has a 3 year old brother, Christopher. Paternal Grandparents are Mr. and Mrs. Harold Howter, Spearman. Maternal Grandparents are Mr. and Mrs. Delbert Garner, Aspen, Colo. Ron is stationed at Kirtland A.F.B. at Albuquerque, New Mexico.

**Bridge Club**

The Tuesday Bridge Club met Tuesday, Oct. 19, in the home of Mrs. Gene Cudd.

High score was won by Mrs. Garland Head.

Delicious refreshments were enjoyed by guests, Mrs. Woody Gibner, Mrs. Max Baggerly, Mrs. Richard Holton, and to members, Mmes. Herb Butt, Don McLain, Tom Sutton, Chalmers Porter, Irvin Davis, Bill K. Jackson, Garland Head and hostess, Mrs. Gene Cudd.

Next meeting will be Nov. 2 in the home of Mrs. Irvin Davis.

**Meeting Held**

The Ella Kate Jagers Chapter of the T.F.T.A. met Monday, October 25, at the Spearman High School with sponsor, Mrs. Weaver.

Etta McBroom and David Rosser gave their Mr. and Miss F.T.A. speeches before a membership of twenty-three members.

President, David Rosser presided over the meeting.

Plans were made for the local chapter's activities and programs for the year.

Margaret Hill assigned an active member to contact an interested inactive member.

The group was enthusiastic and are looking forward to a profitable year's work.



**GET READY FOR THE GOBLINS!**

**COSTUMES WITH MASKS**

Assorted characters, sizes small/Medium and Large. All are flame retardant.

OUR LOW PRICE ... **1.77**

**COSTUMES WITH MASKS**

Various characters. Sizes are small/Medium and Large. Flame retardant.

BUY NOW & SAVE! **1.97**



<p><b>BLACK &amp; ORANGE KISSES</b></p> <p>80 ct. bag.</p> <p><b>.48</b></p>	<p><b>ALMOND JOYS</b></p> <p>BITE SIZE</p> <p>3/4 LB.</p> <p><b>99¢</b></p>	<p><b>THE FONZ</b></p> <p>HALLOWEEN COSTUME VEST AND MASK</p> <p><b>\$1.99</b></p>
<p><b>FLAT WRAP BUBBLE GUM</b></p> <p>3/4 lb. wrapped individually.</p> <p><b>.77</b></p>	<p><b>BABY RUTH® JR. &amp; BUTTERFINGER® JR.</b></p> <p>30 ct. bag.</p> <p>YOUR CHOICE <b>.99</b></p>	<p><b>MILK CHOCOLATE® JR. &amp; KRACKLE® JR.</b></p> <p>9 oz. bag.</p> <p>YOUR CHOICE <b>.99</b></p>
<p><b>TOTSIE ROLL POPS</b></p> <p>10 3/4 OZ. BAG</p> <p><b>99¢</b></p>		<p><b>TRICK OR TREAT BAGS</b></p> <p>Orange and black. Easy to carry and strong. 10" x 5" x 3".</p> <p>OUR LOW PRICE... <b>.13</b></p>

Keep the



**CLOSE TO**



Bob Close had a perfect attendance record and 100 percent voting record at his first session and has worked hard to represent our district.

Re-elect

**BOB CLOSE**  
REPUBLICAN CANDIDATE FOR  
STATE REPRESENTATIVE  
64TH DISTRICT

Pol. Adv. Paid For By L.R. Quener, Campaign Treasurer, P.O. Box 947, Perryton, Tx.

No. 13-882C

**23 Channel CB Radio**

Reg. \$149<sup>88</sup>

**8889**

4.0 watts RF output power High level modulation means maximum talk power and clarity too. Delta tuning Squelch control.

**T.G.&Y.'S ADVERTISED MERCHANDISE POLICY**  
Our company's policy is to always have advertised merchandise in adequate supply at our stores. In the event the advertised merchandise is not available due to unforeseen reasons, T.G.&Y. will provide a Rain Check upon request, in order that the merchandise may be purchased at the sale price when it becomes available. If you have purchased similar quality merchandise at a similar price elsewhere, the policy of T.G.&Y. is to see that you are happy with your purchase.

**We Will Be Happy To Refund Your Money If You Are Not Satisfied With Your Purchase**

BANK AMERICA

Prices good thru Saturday.



Be Sure To Vote

# GENERAL ELECTION (ELECCION GENERAL)

Condado de Hansford County, Texas

November 2, 1976 (2 de noviembre de 1976)

## SAMPLE OFFICIAL BALLOT (BOLETA DE OFICIAL)

November 2, 1976  
(2 de noviembre de 1976)  
GENERAL ELECTION  
(ELECCION GENERAL)  
NOTE: VOTER'S SIGNATURE TO BE AFFIXED ON THE REVERSE SIDE.  
(NOTA: FIRMA DEL VOTANTE SERA FIJADA AL LADO REVERSO.)

**INSTRUCTION NOTE: (NOTA DE INSTRUCCION:)**

Vote for the candidate of your choice in each race by placing an "X" in the square beside the candidate's name. You may vote a straight ticket by placing an "X" in the square beside the name of the party of your choice at the head of the party column. (Vote por el candidato de su preferencia para cada candidatura marcando con una "X" el cuadro al lado del nombre del candidato. Usted puede votar por todos los candidatos de un solo partido marcando con una "X" el cuadro al lado del partido de su preferencia a la cabeza de la columna para partidos.)

Candidates for: (Candidatos para:)	<input type="checkbox"/> Democratic Party (Partido Democratico)	<input type="checkbox"/> Republican Party (Partido Republicano)	<input type="checkbox"/> Raza Unida Party (Partido Raza Unida)	<input type="checkbox"/> American Party (Partido Americano)	<input type="checkbox"/> Socialist Workers Party (Partido de Trabajadores Socialistas)	Independent (Independiente)	Write-In (Voto Escrito)
President and Vice President (Presidente y Vice Presidente)	<input type="checkbox"/> JIMMY CARTER WALTER MONDALE	<input type="checkbox"/> GERALD R. FORD ROBERT DOLE		<input type="checkbox"/> THOMAS J. ANDERSON RUFUS SHACKELFORD	<input type="checkbox"/> PETER CAMEJO WILLIE MAE REID	<input type="checkbox"/> EUGENE J. McCARTHY	
United States Senator (Senador de los Estados Unidos)	<input type="checkbox"/> LLOYD BENTSEN	<input type="checkbox"/> ALAN STEELMAN		<input type="checkbox"/> MARJORIE P. GALLION	<input type="checkbox"/> PEDRO VASQUEZ		
United States Representative, (Representante de los Estados Unidos) Distrito No. - 13th District	<input type="checkbox"/> JACK HIGHTOWER	<input type="checkbox"/> BOB PRICE		<input type="checkbox"/> WILLIAM K. HATHCOCK			
Railroad Commissioner (Comisionado de Ferrocarriles)	<input type="checkbox"/> JON NEWTON	<input type="checkbox"/> WALTER WENDLANDT	<input type="checkbox"/> FRED RODRIGUEZ GARZA		<input type="checkbox"/> PAT O'REILLY		
Associate Justice, Supreme Court, Place 1 (Juez Asociado, Corte Suprema, Lugar 1)	<input type="checkbox"/> JACK POPE						
Associate Justice, Supreme Court, Place 2 (Juez Asociado, Corte Suprema, Lugar 2)	<input type="checkbox"/> DON YARBROUGH						
Associate Justice, Supreme Court, Place 3 (Juez Asociado, Corte Suprema, Lugar 3)	<input type="checkbox"/> JAMES G. DENTON						
Presiding Judge, Court of Criminal Appeals (Juez Presidente, Corte de Apelacion Criminal)	<input type="checkbox"/> JOHN F. ONION, JR.						
Judge, Court of Criminal Appeals (Juez, Corte de Apelacion Criminal)	<input type="checkbox"/> TRUMAN ROBERTS						
Judge, Court of Criminal Appeals - Unexpired Term (Juez, Corte de Apelacion Criminal - Termino no Completado)	<input type="checkbox"/> W. T. PHILLIPS						
State Senator, (Senador Estatal), Distrito No. - 31st District	<input type="checkbox"/> MAX SHERMAN						
State Representative, (Representante Estatal), Distrito No. - 64th District	<input type="checkbox"/> MRS. LEO "DAISY" MOORE	<input type="checkbox"/> G. R. "BOB" CLOSE					
Member, State Board of Education, (Miembro de la Junta Estatal de Instruccion Publica), Distrito No. - District							
District Judge, 84th Judicial District (Juez del distrito, Distrito 84th)	<input type="checkbox"/> RICHARD N. "DICK" COUNTISS						
District Attorney, 84th Judicial District (Fiscal Distrito, Distrito 84th)	<input type="checkbox"/> STEPHEN F. (STEVE) CROSS						
County Attorney (Procurador del condado)	<input type="checkbox"/> J. E. BLACKBURN						
Sheriff (Sherife)	<input type="checkbox"/> R. L. McFARLIN						
County Tax Assessor-Collector (Asesor-colector de impuestos del condado)	<input type="checkbox"/> HELEN DRY						
County Commissioner, Precinct #3 (Precintos #3 Comisionado del condado)	<input type="checkbox"/> B. J. RENNER						

→ Sam Houston

# WRITE IN SAM HOUSTON CANDIDATE FOR SUPREME COURT PLACE 2

### PROPOSED CONSTITUTIONAL AMENDMENTS (ENMIENDAS PROPUESTAS A LA CONSTITUCION)

**INSTRUCTION NOTE: (NOTA DE INSTRUCCION:)**

Place an "X" in the square beside the statement indicating the way you wish to vote. (Marque con una "X" el cuadro al lado de la frase que indica la manera en que quiere usted votar.)

No. 1

FOR (A FAVOR DE)

AGAINST (EN CONTRA DE)

The constitutional amendment authorizing an increase of \$400 million in the amount of Texas Water Development Bonds that may be issued on approval of two-thirds of the legislature; amending and consolidating provisions of Sections 49-c, 49-d, and 49-d-1 of Article III of the Texas Constitution; and repealing Sections 49-d and 49-d-1 of Article III of the Texas Constitution. (La enmienda constitucional autorizando un incremento de \$400 millones de la cantidad de Bonos de Desarrollo de Agua en Texas que podrán emitirse al ser aprobada por dos terceras partes de la legislatura; enmendando y consolidando disposiciones de Secciones 49-c, 49-d, y 49-d-1 del Artículo III de la Constitución de Texas; y revocando Secciones 49-d y 49-d-1 del Artículo III de la Constitución de Texas.)

No. 2

FOR (A FAVOR DE)

AGAINST (EN CONTRA DE)

A constitutional amendment to increase from \$100 million to \$200 million the amount of Texas Water Development Bonds that may be issued for water quality enhancement purposes. (Una enmienda constitucional para incrementar desde \$100 millones hasta \$200 millones la cantidad de Bonos de Desarrollo de Agua en Texas que podrán ser emitidos con el propósito de mejorar la calidad del agua.)





*Be sure and attend the Game  
and back the team on to the  
District Championship*

# Lynx

No.	Name	Pos.	Wt.
10	RANDY REID	QB	143
13	SCOTT SHERWOOD	QB	160
21	PHILIP ARCHER	HB	182
23	BILLY SELLERS	HB	144
28	HECTOR TREVINO	HB	155
30	MIKE BODEY	FB	152
31	ZANE NEWTON	HB	165
33	PETE GARCIA	FB	155
37	KENT HARGIS	FB	150
40	TOMMY BARBER	HB	163
41	DAVID LESLY	HB	145
42	RICK MORRIS	HB	147
44	GREG PRICE	HB	160
45	SAM BOONE	HB	148
50	RAUL ORTEGA	C	167
51	JAMES WHITAKER	C	155
55	JIMMY KENNEY	T	186
58	ED POGUE	C	181
60	CHRIS McCLELLAN	T	154
61	JED MEISNER	G	202
63	DAVID WITT	G	170
64	JEFF HOHERTZ	T	163
65	TERRY LATHAM	G	191
66	MARK CUNNINGHAM	G	186
67	JOHN RENEAU	G	167
68	JOHNNY KENNY	G	155
70	BO DeARMOND	T	243
71	JIMMY VERNON	T	195
73	CHARLIE PRICE	T	205
74	SCOTTY DeWITT	T	206
77	DAVID ORTEGA	T	165
78	TODD BROCK	T	162
80	TWANE FRIEMEL	E	190
81	SCOTT MARTIN	E	150
84	JOHN HOLMAN	E	167
86	DOUG STEELE	E	172
87	JIM JONES	E	171
88	ERIC BROWN	E	147

Coaches: Greg Sherwood, Ed Moore, Kenneth Friemel, Dennis Tomlin, Chuck Steele, Windy Williams  
 Bill Hamilton, Curtis Beasley, Trainer  
 Managers: Ken Prachar, David Rosser, Kenneth Rosser  
 Superintendent: James Cunningham  
 Principal: Eddy Clemmons  
 Band Directors: Vic Kyler, Phillip Newsom  
 Cheerleaders: Cindy Hamilton, Brenda Wadsworth, Karen Dennis, Robin Denham, Christy Collier, Shari Fox, Valerie Hagerman  
 Mascot: Connie Moore

# FOOTBALL '76

**Anthony Elec.**  
 Plains Shopping Center  
 659-2441

**Cates Men & Boys Wear**  
 221 Main  
 659-3426

**HERGERT**  
 SALES SERVICE  
 PONTIAC BUICK GMC  
 SO. HWY. 207  
 659-3722  
 SPEARMAN, TEXAS

**Excel Chev-Olds. Co.**  
 Hwy 207  
 659-2541

**Callaway Lumber Co.**  
 Hwy 207  
 659-2426

**R. L. McClellan Grain Co., Inc.**  
 228 Collard  
 659-3223

**BROWN SUPPLY CO. Co.**  
 102 W Kenneth  
 659-3781

**Equity Elevators**  
 104 Collard  
 Spearman, Texas  
 659-2420

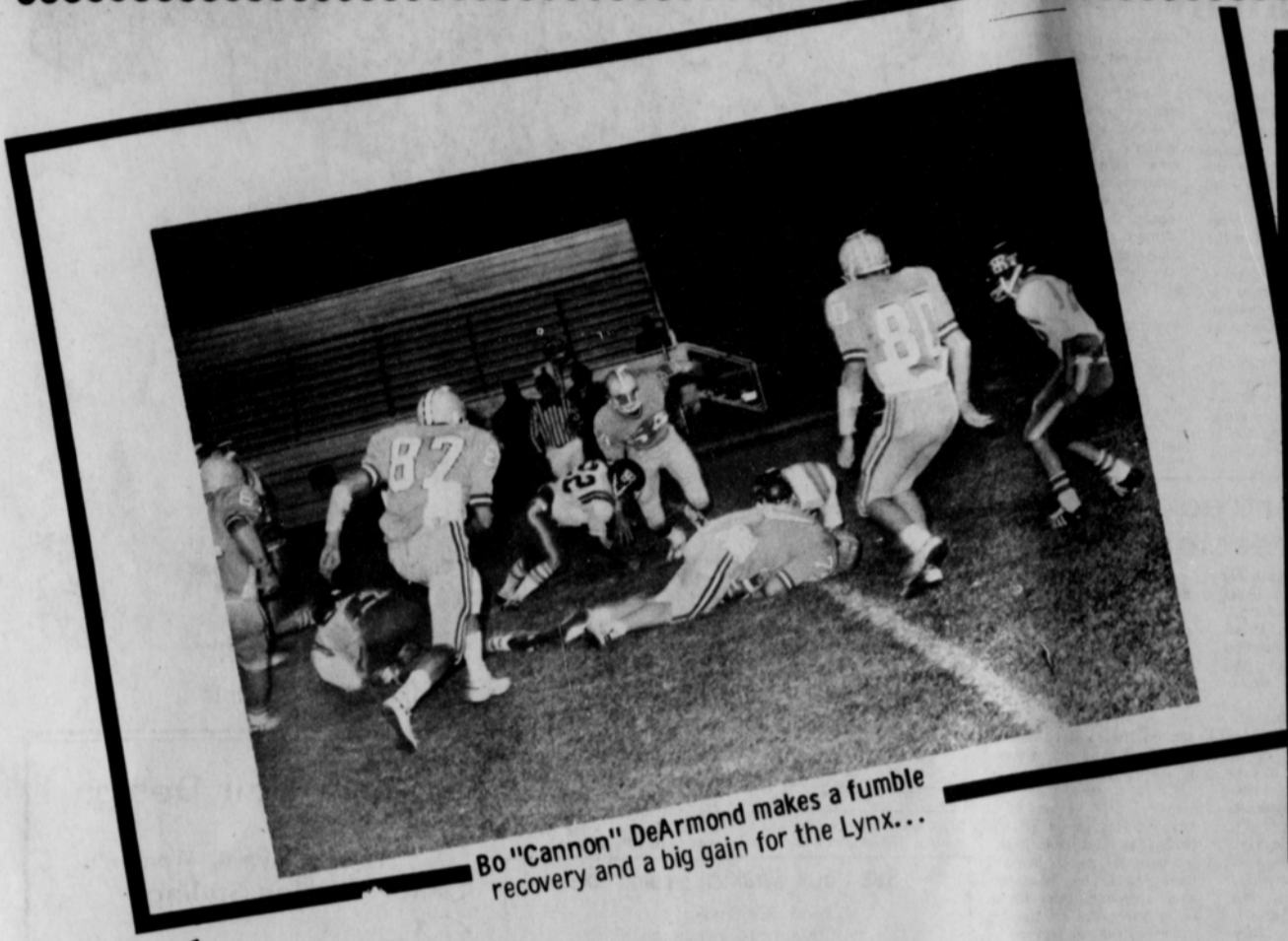
**Lil' Lynx Shoppe**  
 312 Main  
 659-2608  
 Spearman, Texas

**Hi-Plains**  
 415 Collard  
 659-3555

**Gordon's Drug**  
 314 Main  
 659-2141

**Nelson's Builders Supply**





Bo "Cannon" DeArmond makes a fumble recovery and a big gain for the Lynx...

**7th Grade 8th Grade**

Sept. 9	Dalhart	H	5:00
Sept. 16	Boys Ranch	T	5:00
Sept. 23	Open		
Sept. 30	River Road	H	5:00
Oct. 7	Canadian	H	5:00
Oct. 14	Dalhart	T	5:00
Oct. 21	Boys Ranch	H	5:00
Oct. 28	Panhandle	H	5:00
Nov. 4	Open		
Nov. 11	Canadian	T	5:00

**SPEARMAN LYNX 9TH GRADE Football Schedule 1976**

Sept. 9	Dalhart	T	5:00
Sept. 16	Open		
Sept. 23	Guymon	T	6:00
Sept. 30	River Road	T	4:30
Oct. 7	Canadian	T	5:00
Oct. 14	Dalhart	H	5:00
Oct. 21	Open		
Oct. 28	Panhandle	T	5:00
Nov. 4	River Road	H	5:00
Nov. 11	Canadian	H	5:00

**SPEARMAN LYNX B TEAM Football Schedule 1976**

Sept. 9	Dalhart	T	6:30
Sept. 16	Boys Ranch	H	6:30
Sept. 23	Open		
Sept. 30	Open		
Oct. 7	Canadian	T	6:30
Oct. 14	Dalhart	H	6:30
Oct. 21	Boys Ranch	T	6:30
Oct. 28	Panhandle	T	6:30
Nov. 4	Open		
Nov. 11	Canadian	H	6:30



# Spearman Lynx

VS

# Panhandle Panthers

Here

7:30 p.m.



5 miles South on FM 760  
659-3796


**ATEX** GRAIN INC.

DRILLING  
**BAKER & TAYLOR**  
COMPANY

**Consumer Sales Co.**  
421 W. Kenneth Ave.  
Spearman, Texas  
659-2012

**White House Lumber Co.**  
306 Davis  
659-2818

**Hansford Implement Co.**  
Hwy. 207 659-2712  
Spearman, Texas

**Ellsworth Oil Co.**  
  
659-3033

**Jr. Lusby "Cats"**  
W. Gruver Hwy.  
Spearman, Texas  
659-3766

**Speartex Grain Co.**  
514 Collard  
659-3711

**Gruver State Bank**  
GRUVER  
733-5061



## More Cars Per Family In Local Area

The number of cars in operation in Hansford County continues to increase, year by year, with no saturation point in sight.

As a result, the car density in the local area, as well as the number of two-car and three-car families is now greater than ever.

The latest published figures show that, as of the beginning of this year, there were more passenger cars locally, per 100 families, than in most communities.

On January 1st, there were some 3,430 cars registered in the area. This was equivalent to 166 for every 100 local families.

It was a bigger ratio than was found generally through-

out the United States, where the average was 146 per 100 families. In the State of Texas, it was 147.

Despite the slowdown in auto production and sales during the recent recession, the number of cars on the nation's streets and highways is considerably greater than five years ago.

The records show that auto registrations in the United States are now over 105,625,000, which is 15,864,000 more than in 1971. It represents an increase of 8,700 cars per day over the five year period.

The additional millions of cars, combined with more

trucks, buses and other vehicles, is causing traffic jams and bumper-to-bumper driving, especially in urban areas. No relief is in view in the struggle for traveling and parking space.

Much of the increase in car ownership is attributed to the progressive movement of families from heavily-populated urban communities to the suburbs, where the automobile is the basic means of transportation.

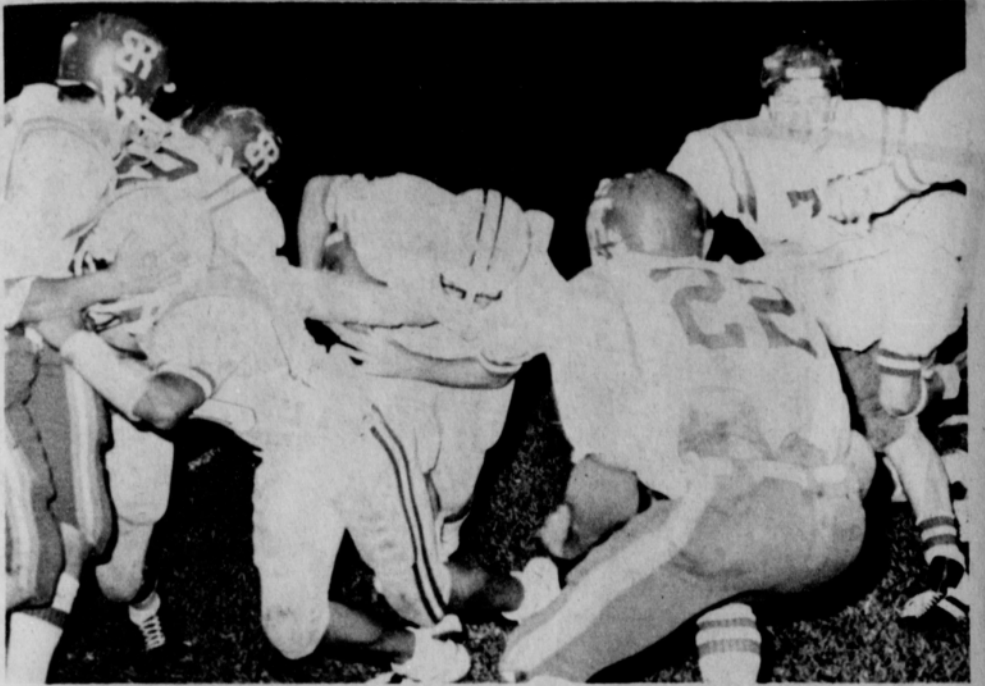
The growing proportion of late model cars in and around Hansford County is a reflection of the rising purchasing power in the area. As family income rises, so does the

number of cars in operation. The net result is that auto registrations locally have increased from 3,290 to 3,430 in the last five years.

With more cars in use, more money is being spent annually for maintenance. The expenditures in the past year in local service stations for gas, oil, repairs and incidentals came to more than \$2,050,000, as compared with the total that was spent five years earlier, \$1,340,000.



Incandescent light bulbs work because an electric current causes a wire to become so hot that it glows.



Kent Hargis, behind the blocking of the entire line scores 6 points..

## Undertreatment of Depression Noted

"Depression probably causes more human suffering than any other condition," said Carroll B. Bryant, President of the Texas Association for Mental Health, "and the suffering it causes is almost totally unnecessary."

Bryant explained that current methods of treatment have been successful in relieving depression and its consequences, but that most people who have the condition remain untreated.

"What we face," he said, "is primarily a problem of attitude. People who would seek treatment for any other serious illness feel that depression is something they should bear, like a punishment, without complaint."

Depression, according to Bryant, is common in all segments of society—young and old, rich and poor, male and female, educated and uneducated. It is thought by some experts to stem from a chemical imbalance in the brain. This imbalance makes the person susceptible to the condition, which can erupt at any time and is particularly likely to strike during periods of stress.

Common symptoms of depression include headache, sleep disturbances, fatigue, loss of appetite, anxiety, inability to concentrate, loss of interest in people and activities, feelings of guilt, helplessness, remorse, fear, exag-

geration of minor obstacles, and other feelings that diminish self-esteem and make even routine activity difficult or even impossible.

According to figures obtained by the Mental Health Association, about 1,500,000 people are currently being treated for depression, but as many as 8 to 15 million more remain untreated.

"This is the figure that concerns us," Bryant said. "We hope that as more people become knowledgeable about the condition and its causes, there will be less hesitancy about accepting treatment. If so, a great deal of human suffering can be spared. People who are depressed should be encouraged to call a physician, or local mental health center or clinic."

Mrs. Margaret Nelson of Gruver led bellringer workers in May to collect donations for The Texas Association for Mental Health.

## TDA Food Price Report

AUSTIN--The Texas grocery shopper spent an average of \$18.22 on a basket of 20 commonly-purchased items during the month of September, Agriculture Commissioner John C. White reported today.

The first monthly survey of grocery prices conducted by the Texas Department of Agriculture was based on reports made in 70 supermarkets in 12 cities, White said. The survey was taken on the fourth Tuesday of the month.

The cities surveyed and the average cost of a basket of groceries in each was: Houston, \$18.25; Austin, \$17.83; Abilene, \$18.72; Laredo, \$18.20; Tyler, \$18.18; Corpus Christi, \$18.89; El Paso, \$18.07; San Antonio, \$16.78; Dallas, \$18.22; Fort Worth, \$18.20; McAllen/Edinburg, \$19.05; and Lubbock, \$18.25.

The statewide average price for each of the 20 items was: one gallon one-half percent low fat milk, \$1.32; one gallon whole homogenized milk, \$1.62; one dozen large Grade A eggs, \$5.86; 12-ounce package of individually wrapped Kraft American cheese food singles, \$1.34; one pound of Parkay stick margarine, \$5.53.

Also, 24-ounce loaf of white sandwich bread, \$4.40; one pound of whole fryer chicken, \$4.49; one pound of regular ground beef, \$7.78; one pound of grain fed round steak with bone, \$1.42; one pound family pack of pork chops, \$1.32; six and one-half ounce can of Star Kist tuna, \$5.63; one pound of bacon, \$1.38.

Also, one pound of red delicious apples, \$4.47; 18-ounce box of Kellogg's Corn Flakes, \$5.69; one head of lettuce, \$5.58; one pound of bulk tomatoes, \$5.51; one pound of dry pinto beans, \$5.24; one pound of Folger's Electric Perk coffee, \$2.00; 49-ounce box of Tide detergent, \$1.37; and six-ounce can of frozen orange juice, \$5.26.

(For your information: The statewide market basket average was reached by first averaging the price of each item in each city. These averages from each city were then averaged to arrive at the statewide figure of \$18.22.)



A dog hears twice as well as a human.

# Allow union organizers on our farms and ranches without permission?

Carter says yes.

Ford says no.

What do you say?

Say it on Nov. 2nd.  
Vote for President Ford.

# Bob Price Knows Farming & Ranching.

When it comes to farming and ranching and their importance to our area, Bob Price knows what he is talking about. We need that kind of first hand know-how at work for us again in Washington.

## We need Bob Price back in Congress.



Paid for by Return Bob Price To Congress Committee, P.O. Box 2476, Pampa, Texas 79065. Harold Barrett, Chairman, Malcolm E. Henke, Treasurer.



In 70 years, the human heart beats 2 1/2 billion times!



Do not over-fertilize house plants. Two or three times a year is usually enough.

See Your Shaklee Dealer for:

- ✓ Food Supplements
- ✓ Household Products
- ✓ Women's Skin Care
- Make Up and Fragrance Collections
- ✓ Men's Toiletries
- ✓ Personal Care For Whole Family

ASK:

- # ABOUT A COSMETIC FACIAL
- # ABOUT BECOMING A DISTRIBUTOR YOURSELF

ASK Leslie Ann Groves 14 So. Haney  
659-3027 Call Anytime  
Spearman, Texas

## Bert's Hair Design

R. S. K. Men & Women's Hair Styling

Opening November 2nd

401 N. 3rd

North Plains Building

Stratford, Texas

for appointment call:

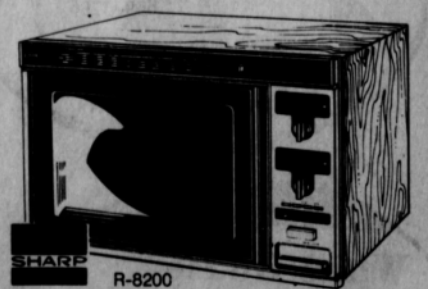
396-2075

## LINDA DAVIS

Customer Services Rep for Community Public Service will holding a microwave oven cooking demonstration, November 4th at 7pm in Spearman, Texas at the H.D. Clubroom



Panasonic NE-7800 MULTI-MATIC Microwave Oven with POWER SELECT and TEMP SELECT



Those in attendance will receive a special discount on the purchase of a microwave oven. Offer good till Dec 8th.

# Earl's T.V.

No obligation — If you already own a microwave oven — come anyway!

106 E. Kenneth Spearman