

And only 3-years old . . .

Hansford bank is leading Panhandle growth records

It's only three years old, but the First National Bank of Spearman is already casting a tall shadow across the financial face of Texas -- a state which has had its problem in recent years with more negative financial news than positive.

But the news out of Hansford county is strong with all four financial institutions reporting strong profits and with its newest member recording phenomenal growth in its first three years of business.

In its three short years, the FNB has grown from its original assets of \$2-million to just over \$22-million at the close of business this past Dec. 31 -- a staggering 1,142 percent increase in assets.

The new Hansford county bank opened its door April 24, 1985 and, on its first day of business its deposits more than doubled with customers adding \$2,700,000 that day alone.

By the end of that first year, assets at the bank had climbed to just over \$13-million, an increase of 665 percent that year alone.

The First National has been a darling of the banking industry in Texas almost since its inception, reporting profits in its third month of operations while other banks which had started operation within 12 months prior to Spearman's new start have yet to post a single month of profit.

"When starting a new bank, the greatest concern is how well it will be received," notes Bill Pittman, chairman of the bank. "The people of Spearman, Hansford county and really, the entire area have shown their acceptance since that first day."

While some area banks have fallen victim to the economic clime of recent years, the First National Bank in Spearman stands as one of the most successful new bank charters in Texas, according to a report from the Financial Institu-

tion Examination Council.

The FIEC compares banks in a peer group -- banks of about the same assets -- as to profitability and several other factors.

The peer group which includes the First National Bank of Spearman shows an average after tax loss of .72 percent while the Spearman bank itself is showing a net after tax profit of .87 percent.

But it doesn't require a balance sheet to tell that the First National is on the grow. Opening in 1985 with eight employees, it now operates with 13 -- and that includes the addition of a new loan officer.

The bank has already initiated steps toward the building of a new bank home as its current business center is becoming more and more crowded.

"We have appointed a building committee and are looking into the feasibility of building a new facility just west of our present location," notes Don Townsen, president of the bank.

The concept for the First National Bank is almost unique in Texas -- it has 90 stockholders with none owning more than 5.7 percent of the stock.

And, the original stockholders remain with the bank today, another unusual feature in banking circles which see stock traded with some regularity within the industry.

It's been a story of rapid and record growth for Hansford county's newest financial institution, but one which leaders of the bank give credit to the people behind the scenes.

"We were fortunate in finding a good manager in the form of Don Townsen," notes Pittman. "And, over the years, we've been able to attract capable people who know the business and work well with and for the community."

The FNB chairman also points to

the board of directors of the bank as key reasons for the success of the financial enterprise, noting them as "conservative, but progressive community leaders".

Officers of the Spearman bank include Pittman, Townsen who is also chief executive officer; Felma Evans, vice president and cashier; Richie Fletcher, vice president; Tindle Ramon, assistant cashier; and Arbeta Nobles, executive secretary.

Directors are Max Baggerly, J.L. Brock, Kent Guthrie, Britt Jarvis, Bill Pittman, Don Townsen, C. Ralph Blodgett, Gene Cudd, Richard Holton, Bob Pearson and Jimmy Shieldknight, all of Spearman.

Gruver directors include Jack H. Hart, Ila Jo Hart and Joe T. Venneman.



FIRST NATIONAL BANK OFFICERS include (back, Don Townsen; (front, l - r) Felma Evans and Arbeta Nobles. l - r) Bill Pittman, Richie Fletcher, Tindle Ramon, Nobles.

The Spearman

Reporter

1985
Award Winner

25¢
Per Copy

8 Pages

Volume 80, No. 26

YOUR HOMETOWN NEWSPAPER

Thursday, April 28, 1988

In special meeting Monday evening . . . Dumas gives OK on dam funding

Dumas city commissioners gave their portion of a \$3.2-million cost over run on construction of a dam in Hansford county.

In a meeting which ran one hour and 40 minutes, Dumas city fathers voiced concern over engineering reports which led to the majority of the cost over run.

In a telephone interview Tuesday morning with Dumas city commissioner Jay B Funk, the Dumas city father noted that the commission

considered all their options concerning future potential water supplies before deciding to give their approval.

"I'm not sure anybody feels real good about it (the decision)", he notes. "And I'm not talking just about Dumas, but the other member cities as well."

With the approval from Dumas, PDRA general manager Johnnie Lee had plans to go to Austin to seek special sessions of both the Texas Water Commission and the Texas Water Board, the two state entities which control water projects in Texas.

Approval from both boards are needed by the PDRA for addition money to fund the cost over runs. The two state agencies will provide the bond money while PDRA member cities will shoulder repayment responsibilities.

Currently, Lee and the PDRA board believes it may be possible to

go ahead with the project without seeking a time extension on the permit which allows construction of the dam. It will expire June 9 if construction has not started by that date.

"We think we can push things through quickly enough that we won't have to get an extension," reports Lee.

However, if the two state agencies cannot be brought together in a special session, the delay could amount to as much as 60 days or more, he notes.

In an attempt to cover all bases, the PDRA general manager plans to go ahead with the extension application process no matter what happens with the two state boards.

Lee also has plans to meet with the low bid contractor next week to confirm in writing the contractor's agreement to extend his bid price by 30 days.

See "DUMAS" p-2

Friday, Saturday in Big Spring . . .

20 SHS athletes in regional meet

Spearman high school will be represented in all three spring regional sports at Big Spring this weekend as 20 SHS athletes are on hand to compete in tennis, golf and track tournaments there.

Both the Spearman boys and girls golf teams, along with a boys doubles and girls single tennis representative and seven members of the Lynx and Lynxette thinclads will take part in the regional events in Big Spring Friday and Saturday.

The Spearman girls golf teams is the district 1-AA title holder while the boys team was runner up in district link competition.

Carl Urban and Alan Beeson won the 1-AA boys doubles title while Cam Butts was girls singles runner up there.

Representing Spearman on the boys track roster will be Jerold Blan, Lance Swan and Matt Tucker.

Lynxette track stars Heather Murrell, Krista Kirkland, Haley Shieldknight and Laci Lasiter will be vying at the class AA regional competition as well.

The Spearman girls golf team is composed of Nancy Ivey -- who will also be competing as a 1-AA medalist -- Sunshine Smith, Jennifer Turner, Marci Womble and Carly Shieldknight.

The Spearman boys golf team consists of Carson Womble, Kevin Nelson, Pat Shields, Matt Jones and Keith Clark.

Murrell will be competing in four events at regional, including the

long jump, the 100-meter hurdles, the 400 and the 200-meter runs.

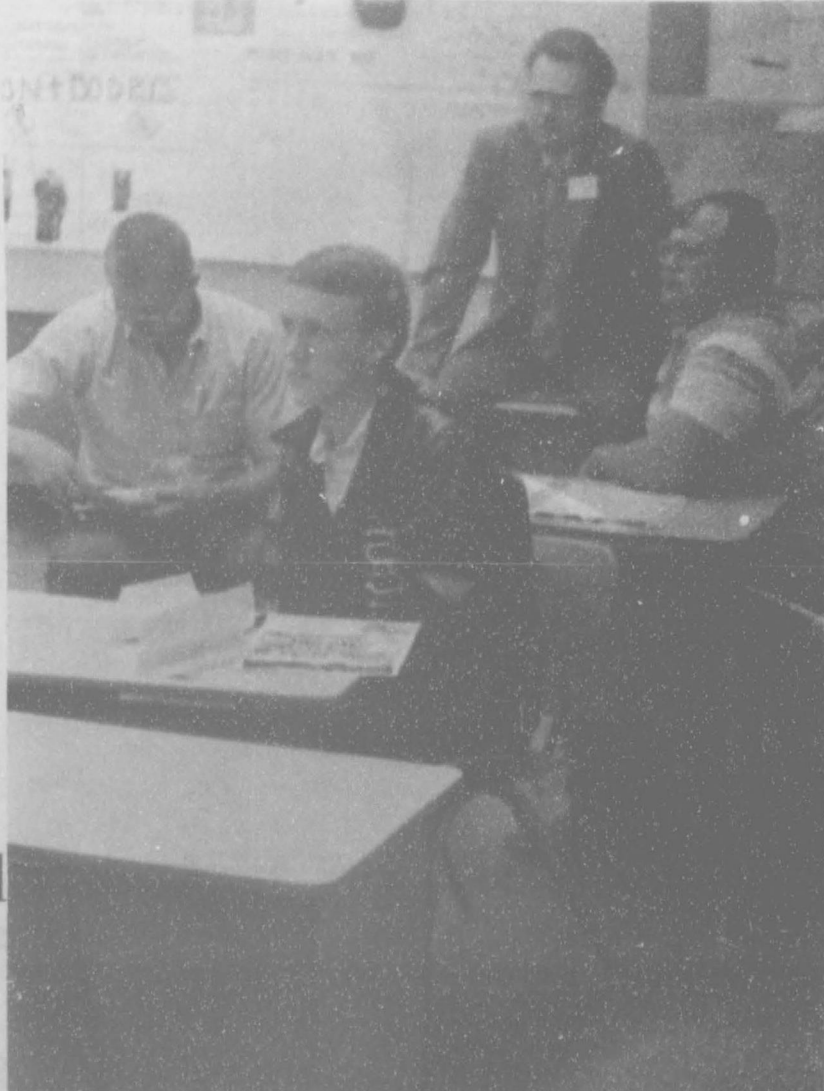
Kirkland will be going in the 1600 and 3200-meter events while Lasiter will preform in the triple jump. Shieldknight will be vying for a state berth in the 3200-meter run.

Tucker won regional berths in both the discus and shot put events while Swan made regional on the strength of his discus throw. Blan's entry is in the 1600 and 3200-meter events.

At a regional qualifiers meet held this past weekend in Gruver, Tucker won both his events, with a heft of 53-1 in the shot and a toss of 161-2 in the discus.

In girls competition, Murrell placed second in the long jump with a leap of 17-5 1/4, and she won the 100-meter hurdles in a time of 15.73 seconds.

Shieldknight was second in the 3200-meter run with a time of 12:47.27 to round out the top three placings in those events.



SPEARMAN HIGH SCHOOL students took a day to learn what career opportunities were available in their future during the annual Career Day which is sponsored by the Spearman Chamber of Commerce and the Spearman Rotary Club. A total of 36 different professions were explained to SHS students during the day long symposium.

Reception to honor council

A public reception honoring outgoing mayor Ralph Blodgett and outgoing city councilmen Ed Garner and Jim Nicholson will be held Saturday afternoon in the Spearman city hall.

The reception will be a come and go affair from 2 to 4 p.m. at the city offices, 30 SW Court.

Blodgett has served as Mayor of the city of Spearman for 12 years

Garland gets nod as GHS cager coach

Tim Garland has been named as head boys basketball coach at Gruver high school, replacing Royce Blackshear who is going to Perryton as head cage mentor there.

Garland has been with the Gruver school system for the past five years, serving as junior varsity football and tennis coach as well as jr, eighth and ninth grade boys basketball coach.

His first four years at Gruver, Garland was head jr football coach, but moved up to varsity assistant this past season where he worked with backs and receivers.

He has served as basketball coach for the boys junior varsity, eighth and ninth grade teams for the past five years and has been tennis coach for the Greyhounds and Lady Greyhounds for the same time period.

As head tennis coach, he has seen Gruver girls teams claim a pair of 1-A titles and one 1-AA district win, while the boys have done likewise with a pair of 1-A district wins and one 1-AA title.

He has coached eight regional tennis representatives and a state semi-finalist. During his tenure he had two boys doubles teams gain the state tournament and, in 1984, coached the regional and state runnerups.

A native of New Deal, the 28-year old coach graduated from Texas Tech before coming to Gruver.

In addition to his coaching duties, the personable Gruver resident also teaches Texas and American History at Gruver junior high.

His wife, Hayle, is a music teacher for the Gruver Independent School District.

Hansford jail contract rates increased to \$15

Hansford county commissioners voted to increase jail contract prices to both Spearman and Gruver, agreed to a trade out arrangement on the two cities' landfill areas and maintained fire contracts at their current levels in their meeting this past Monday in Spearman.

Commissioners followed a recommendation from sheriff R.L. McFarlin that contract prices for housing prisoners from Gruver and Spearman be increased to \$15 per day and \$4 per meal.

4-H horse club being organized

The 1988 4-H Horse Club is being organized with their first riding session scheduled for Tuesday at the Oscar Archer Arena in Spearman.

Instruction will be given on beginning riding, basic horsemanship and horse safety.

The riding session will be followed by a 4-H Horse Club meeting at 6 p.m. in the county barn at Spearman to discuss plans for summer activities such as riding sessions, trail rider and others.

The 4-H Riding Club is open to all interested youth and their parents.

Current rates charged by the county to the two Hansford county communities are \$7 per day and \$3 per meal.

In other action, commissioners agreed to dig pits in the Gruver and Spearman landfills if the two cities would allow county residents to dump at the landfills without charge.

Current fire contracts with Spearman and Gruver were reviewed by the commissioners, but no action was taken. Contracts there don't expire until September, reports county judge R.L. McClellan.

Current contract prices between the county and the city of Spearman calls for the county to pay \$235 fire call and \$135 for each rescue call.

The Gruver contract calls for a flat fee of \$2,700 per year with the county paying Gruver volunteers \$10 per call for each man who responds to a county fire.

In other action, Hansford county commissioners tabled any decision on the purchase of a postage meter, scales and electronic mail opener until they begin to prepare the 1988-89 budget.

Plans call for commissioners to get their first look at a tentative budget plan at their first meeting in May.

The HANSFORD REPORT

by JAMES JARRETT



John Bishop came in Wednesday morning to wish me well -- I think. He shook my hand and offered to kick me.

John was the very first honest-to-God character I met in Hansford county. Since that time, I've been fortunate enough to meet several others.

And, I must admit, that -- on a per capita basis -- Spearman and Hansford county probably has a larger population of characters than any other county in Texas. Of course, there are only 254 counties in our fair state.

As if the home-grown characters aren't enough, however, the county has even imported a few.

Take "Texan" Al La Rochelle, for example. You'd have to say he's from North Texas -- somewhere around New Hampshire. But he claims Texas and claims to be a Texan.

Really, the only training he needs is to have the difference between "you-all" and "youse guys" explained to him. In detail.

I can't tell you the number of times I've heard people exclaim, "Don't put that in your column!"

At one point, I thought about having special T-shirts printed which would declare "I've been on REPORT in the Spearman Reporter" so I could hand them out to my so-called 'victims'.

Then, I checked my bank account and talked myself out of it.

Invariably, some of the best material I've heard was followed by the comment, "Don't put that in your column!"

Like the time at the Stratford football game when, walking down the sideline to the pressbox, SISD superintendent Larry Butler shouted encouragement to the Spearman Lynx.

His wife turned to me and said, "Don't you put that in your column!" His comment of encouragement? It wasn't really that bad, coming from a former coach as it did. As I remember, it had something to do with the kids exercising their feet upon a partic-

ular piece of Elk anatomy.

I can't give you the exact quote because I promised Mrs. Butler I wouldn't. And I always keep my promises. Kind of.

There have been many other instances, but space is short and this is my final shot. Besides, the Butler incident pretty well typifies most of them.

Spearman, Hansford county, I'll miss you. Thank you for a great time. As I've said before, my time here will always carry a special place in my memories.

Spearman is a good community and a great place to live. Don't ever apologize for your town. You simply don't have to.

Just say no club to hold walk, rally

A walk and rally against substance abuse will be staged by the Spearman fifth and sixth grade "Just Say No" Club May 13 with a walk down Main Street and a rally on the courthouse square.

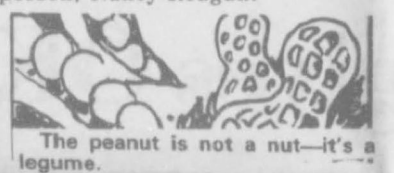
The walk will begin from the parking lot of B&B Farm Industries on State Hwy 207 with walkers meeting at 5:15 that afternoon to organize the group.

Then, at 5:30, the walk will begin with supporters carrying the "Just Say No" banner and wearing green and white "Just Say No" T-shirts.

"We're encouraging everyone to make banners to carry in the walk and to wear the Just Say No colors of green and white," declares Vickie Genn, one of the adult leaders of the group.

The special walk in Spearman is part of the national Just Say No week which runs May 8-14. A walk will be held in Washington, D.C. May 11.

Leading that walk in the nation's capital will be Just Say No chairperson, Nancy Reagan.



Burglars hit city businesses

A series of three burglaries sometime Monday evening or early Tuesday morning probably netted thieves more work than booty, according to reports from the Spearman police department and the Hansford county sheriff's office.

Forced entries were made on three Spearman businesses, including Davis Chevron-Gulf, Corner Service Station and Evelyn's Beauty Shop.

In all three cases, reports show only minor thefts with a maximum value around \$60.

The sheriff's office is investigating the Davis break-in while the Spearman police department is investigating the other two burglaries.

City leaders honored

A pair of Spearman Girl Scout leaders were presented with special recognition at the annual meeting of the Yucca Girl Scout Council held in Goodwell, Ok., recently.

Gene Cudd received the President's Award for his efforts in helping with financial growth of the council while Myrna Biggers was presented with the traveling trophy for the most girl membership increase.

continued from p-1 DUMAS

Whenever the bid is let, however, it will be done in Spearman in an emergency meeting of the PDRA board, if necessary, reports Lee.

"At this point we're doing everything we can to assure the timely start of the project," he declares. "Inevitably, delays are costly and we want to eliminate as much of that as possible."

The Spearman Reporter

Your Hometown Newspaper

USPS 509660 Spearman, Tx. 79081
213 Main, Box 458, 659-3434

Published Weekly at
213 Main, Spearman, Texas

Owned and Operated by:
Texas Independent Newspapers, Inc.
19906 Encino Grove, San Antonio, Tx 78259

Second class postage paid at Spearman, Texas 79081.
Any erroneous reflection upon the character of any person or firm appearing in these pages will be gladly and promptly corrected upon being brought to the attention of the management.

PUBLISHER
James C. Jarrett
Subscription Rate: Spearman, adjoining counties, combination with the Hansford Plainsman, \$19.95; non-adjointing counties, \$24.95 annually.
Postmaster: Send address changes to Spearman Reporter, Box 458, Spearman, Tx. 79081.

The publisher reserves the right to revise or reject at its option any advertisement which it deems objectionable, either in subject or phraseology, or which it may deem detrimental to its business.



Classified ads work 659-3434.

You are cordially invited

to a reception honoring

Mayor C. Ralph Blodgett
Alderman Ed Garner and
Alderman Jim Nicholson

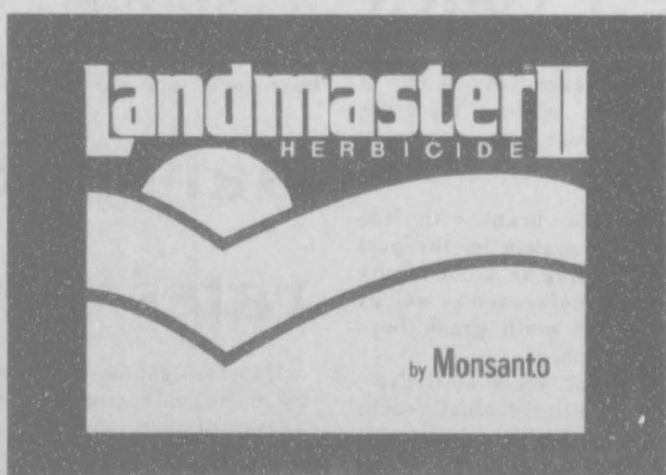
Saturday, April 30th 2 - 4 p.m.

City Hall, Spearman, Texas

BEST VALUE

GET EXCELLENT CHEATGRASS VOLUNTEER AND BROADLEAF CONTROL

USE



- CRP-APPROVED FOR PRE-PLANT.
- BETTER ONE-PASS CONTROL OF CHEATGRASS, VOLUNTEER AND BROADLEAVES THAN TILLAGE
- GET WEED CONTROL AND KEEP RESIDUE TO HELP STOP EROSION
- SAVE MORE MOISTURE THAN TILLAGE ALONE
- NO CARRY OVER

* Allow 7 Days Before Planting

See Your Local Ag-Chem Dealer.

Monsanto

Landmaster® is a registered trademark of Monsanto Co. Monsanto Company 1988 136-88-L-03

REPORT OF CONDITION

Consolidating domestic and foreign subsidiaries of the
First National Bank of Spearman
in the state of Texas at the close of business on March 31, 1988
published in response to call made by Comptroller of the Currency, under title 12, United States Code, Section 161.
Charter Number 18609 Comptroller of the Currency Southwestern District

Statement of Resources and Liabilities

		Thousands of dollars
ASSETS		
Cash and balances due from depository institutions:		654
Noninterest-bearing balances and currency and coin		6,242
Interest-bearing balances		4,878
Securities		375
Federal funds sold		NONE
Securities purchased under agreements to resell		NONE
Loans and lease financing receivables:		
Loans and leases, net of unearned income	11,020	
LESS: Allowance for loan and lease losses	145	
LESS: Allocated transfer risk reserve	NONE	
Loans and leases, net of unearned income, allowance, and reserve		10,875
Assets held in trading accounts		NONE
Premises and fixed assets (including capitalized leases)		472
Other real estate owned		NONE
Investments in unconsolidated subsidiaries and associated companies		NONE
Customers' liability to this bank on acceptances outstanding		NONE
Intangible assets		NONE
Other assets		369
Total assets		23,865
Losses deferred pursuant to 12 U.S.C. 1823(j)		NONE
Total assets and losses deferred pursuant to 12 U.S.C. 1823(j)		23,865

LIABILITIES		
Deposits:		
In domestic offices:		21,517
Noninterest-bearing:		
Interest-bearing:	2,507	
	19,010	
Federal funds purchased		NONE
Securities sold under agreements to repurchase		NONE
Demand notes issued to the U.S. Treasury		NONE
Other borrowed money		NONE
Mortgage indebtedness and obligations under capitalized leases		NONE
Bank's liability on acceptances executed and outstanding		NONE
Notes and debentures subordinated to deposits		NONE
Other liabilities		164
Total liabilities		21,681
Limited-life preferred stock		NONE
EQUITY CAPITAL		
Perpetual preferred stock		NONE
Common stock		1,000
Surplus		992
Undivided profits and capital reserves		185
Total equity capital		2,184
Losses deferred pursuant to 12 U.S.C. 1823(j)		NONE
Total equity capital and losses deferred pursuant to 12 U.S.C. 1823(j)		2,184
Total liabilities, limited-life preferred stock, equity capital, and losses deferred pursuant to 12 U.S.C. 1823(j)		23,865

We, the undersigned directors, attest to the correctness of the statement of resources and liabilities. We declare that it has been examined by us, and to the best of our knowledge and belief has been prepared in accordance with the instructions and is true and correct.

[Signatures]
Directors

Felma S. Evans
Vice President/Cashier

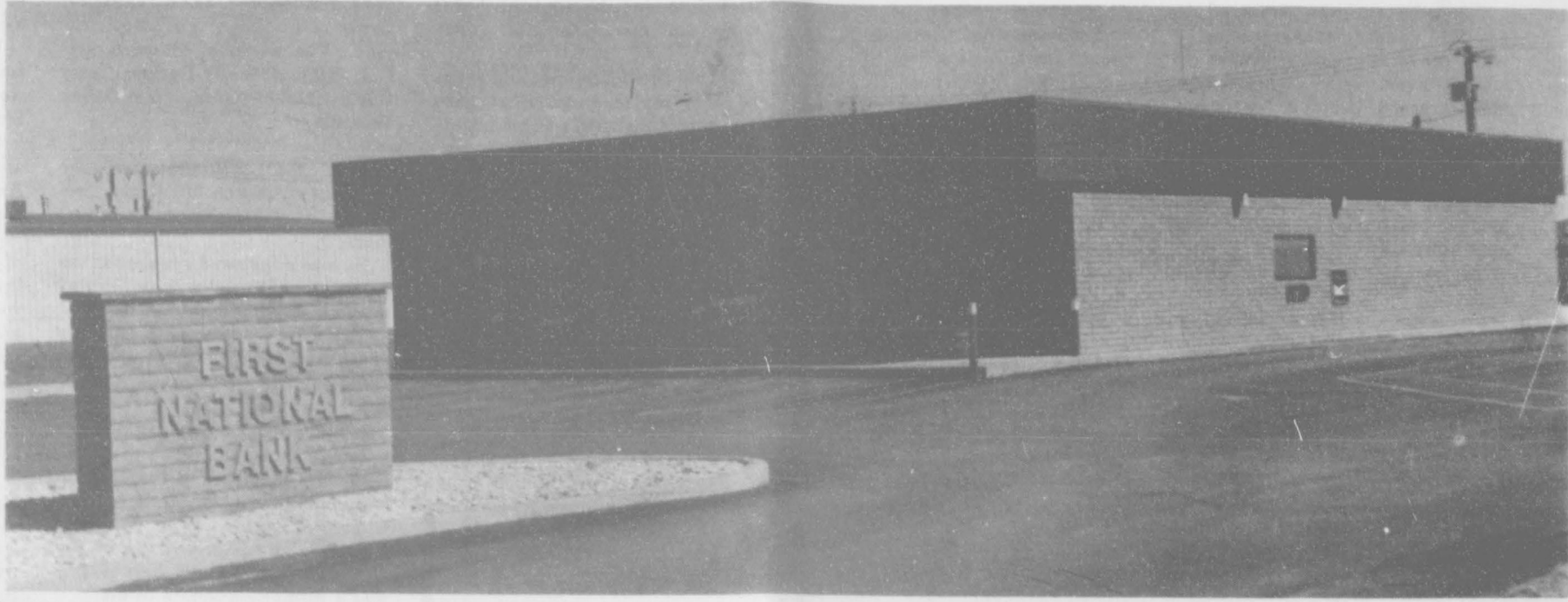
of the above-named bank do hereby declare that this Report of Condition is true and correct to the best of my knowledge and belief.

[Signature]
April 25, 1988



First National Bank

Thank You, Hansford County



For Three Successful Years!

Monday we celebrated our third anniversary and, thanks to you, our third consecutive year of growth.

We appreciate your patronage and commit ourselves to continued good service to all our customers and friends -



Elaine Cook, Cheryl OQuinn, Kathy Boyd



Carrie Avila, Sophie Garrett, Arbeta Nobles



Wanda Lewis, Edna Lee Grimmer



Bill Pittman, Richie Fletcher, Tindle Ramon, Don Townsen, Felma Evans and Arbeta Nobles

We want to make banking in Hansford County . . .

Hours: Mon. - Fri. 7:30 to 3:00

open Thursdays 4 p.m. - 6 p.m.



Spearman gets Mackie attends A & M seminar

new technology

The use of ultra-modern fiber optic cable will eventually change the microwave tower skyline of Spearman, according to Richard Kelly, Operations Manager.

"In late April a buried fiber optic cable will be placed in use between Spearman and Guymon to transport long distance calls."

"Next year, another link will connect Spearman to Amarillo and the microwave tower will no longer be required."

"The use of fiber optic cable to transport long distance calls is a great step forward."

"Fiber optic utilizes laser technology thru hair size glass tubes which are capable of carrying hundreds of calls, efficiently and quietly."

"The need for a modernized long distance communications system

Norma Jean Mackie joined some 200 other elected officials for the 16th Annual County Treasurers' Seminar at Texas A&M University last week.

The program was designed to educate county treasurers on a wide range of responsibilities to include investments, cash management, record keeping, reporting and disbursements of county funds.

Participation in this seminar enables county treasurers to achieve and maintain certification as required by state law.

The seminar commenced with a legislative hearing on April 18. Members of the House Committee on County Affairs heard testimony

for Spearman was recognized and the best available technology will serve our customers," said Kelly.

from numerous county officials on issues affecting the office of county treasurer. The interim charges of this House Committee include possible reorganization of the structure of county government and the possible abolition of the county treasurer's office.

Mackie explained, "The treasurer is the chief financial officer for the county whose function should remain separate from those of the auditor." In most counties where the office of county treasurer has been abolished, the responsibilities were given to the county auditor. "This eliminates the checks and balance concept which is vital for a sound financial operation within the county."

County treasurers who successfully complete the 4-day training receive twenty (20) hours of continuing education credits form Texas A&M University.

Among the Neighbors

By Helen Fisher

To satisfy the interest and curiosity regarding the huge pit and other activity at the Consumers Sales Company, be advised that it is not an installation of super collider.

The old corroded pipes and tanks are being replaced with fiber glass lines and tanks with a submergible pump and ultra modern dispenser.

When completed, there will be eight fuel pumps, available for the prompt and efficient use for the customers. The rural customers will continue to have delivery service.

Consumers Sales is a local stock owned co-op and is one of the oldest businesses in Spearman, being established in 1928.

The courteous and accommodating employees who have done their best under adverse conditions

are looking forward to full use of the new facilities. They are: Manager - Carolyn Cummings, Wayne Ellsworth, Dean Scheaffer, Joyce Cummings and Joe Arjona. The board of directors are: C.J. Renner, Wally Berner, Terry Curtis, Burton Schubert and Danny Womble.

John Scott, Minister of the Spearman Church of Christ, returned early last week from Bismark, N.D.

He was a featured speaker at the regional youth rally from Friday through Sunday.

The rally was well attended by youth from Montana, Minnesota, Wyoming, South Dakota and Canada.

Mr. Scott was especially pleased to have a group from Sturgis, S.D., who were members of the mission church supported by the Spearman Church of Christ.

Adding to his enjoyment of the weekend was that the host pastor was a former classmate of his.

Reversing the usual trend for Spearman shoppers to go to Amarillo, some Amarillo shoppers came to Spearman one day last week.

Bodil Stackhouse and Peggy Floyd Culp, both employees of the Court of Civil Appeals in Amarillo brought a couple of co-workers, Becky Waller and Patti Hoag over to look over the shopping scene. Bodil's mother, Ora Lee Blackburn, conducted them on a tour including lunch at Hotel Royal.

Ora Lee has had an activity filled couple of weeks, recently. On April 9, she hosted a brunch for her sorority, Preceptor Upsilon Zeta, assisted by Zetha Blackburn.

Other guests were Bodil Stackhouse and friend, Shirley Stevens of Amarillo.

Ora Lee then flew to Houston and visited in the home of her son, Eddie Lee and wife, Betty. They took her to several places of interest and entertainment, including one day with friends on a posh ranch in Brenham.

Janet Sauer reports that her grandmother, Rosalie Hill, is recovering from surgery though it is not known when she can return home. She is in St. Anthony's Hospital.

Mrs. Maudie Marshall of Houston is visiting in the homes of her brothers, the Nolan Holts, O.C. Holts, Fred Holts. Another of her hostesses is her sister, Merle

Farrington, of Hansford Manor.

Denise Donnell, with Mr. and Mrs. David Boyd and Crystal, took 18 young people to Amarillo Friday to the Mike Warnke Concert at the Civic Center. In spite of returning in the wee small hours, they had a fun evening. Most were members of the United Methodist Youth.

Wilma Clark is enjoying guests from California for a couple of weeks. Her sister, Wanda and Bill Simmons of Simi Valley are here.

Other Sunday guests were Lou and Ed Howk and son, Wayne of Amarillo. Wayne brought a friend, Jennifer Martin, also of Amarillo.

Wanda and Donald Smith feel that they got a double dip last week. They were at St. Anthony's hospital where their son, David was undergoing surgery. David is from Dumas. Donald unexpectedly had to be hospitalized with pneumonia. Both father and son are recovering at this time.

The Sunday Globe News carried a picture of Reba and John Huffines who observed their 50th wedding anniversary recently at Bethany, Ok. where a daughter lives. Reba is a former resident of Spearman, and is a sister of Virginia Rentfro, Gertrude Archer and Freeman Barkley.

John Allen is at home now, slowly recovering from two major operations. John and Lucile express their appreciation and gratitude for the concern of all those who called, sent flowers, cards and other expressions.

You Are Cordially Invited
To a Bridal Shower Honoring
Shari Vernon
Bride elect of
Alan Jones
in the home of
Mollie Holton
705 Wilmeth Drive
Sat. April 30
from 3 to 4:30 p.m.

Hostesses:

Judy Friemel
Martha Boyd
Virginia Head
Lucille Hagerman
Audene Beck
Mollie Holton
Sheri Benton
Mary Brock
Linda Latta

BEEF PROMOTION!

LET'S KEEP IT GOING!

VOTE YES
May 10
at your county extension office

Beef is coming back because beef producers are fighting back!

Today, more consumers are eating more beef and cattle prices and profits are up.

Let's vote to continue The National Beef Promotion Program. It's working! May 10, vote "YES"!

FACT! The program is controlled by producers. Cattlepeople run it. It's *not* a government program.

FACT! Each state decides how to spend 50 cents of every dollar.

FACT! Beef importers and all producers pay their share — \$1 per head. This money is invested in consumer education, promotion, advertising and research.

FACT! Only 5% is allowed for administrative costs. 95% of every dollar is spent on the program itself.

NATIONAL BEEF PROMOTION IS GREAT!

VOTE YES
IN '88



Caprock Industries, Inc.

The Spearman Chamber of Commerce would like to thank all our non-sale supporters of the 1988 Hansford County Stock Show

Jerald Ray & Cindy Scribner
Norma Jean Mackie
Johnny & Susie Pond
Craig & Judy Solomon
Mr. & Mrs. Willard McCloy
Cindi's Creations
Vernon and Marsha Pipkin
Turner & Turner
Donald & Betty Latta
Lance & Slavin Sparks
Fran Maupin
Mr. & Mrs. Preston Smith
Delbert McCloy
Francis & Phyllis Haefner
Charles & Linda Haight
Tom & Kathleen Sutton
Mr. & Mrs. J. C. Harris
Nolan & Fay Holt
Margaret Ralston
Dan & Penny Ralston
The Feed Box
C. H. & Bernice Clawson
Charles R. Ball
James & Beth Baker
Mr. & Mrs. Brad Spivey
Billy Britt Jarvis Law Office
Berry Grain
Leon Red Oil & Gas
Phil & Linda Sanders
Flint Rock Land & Cattle

R.E. Sanders
Pittman & Sons, Inc.
Bill D. Pittman
Five Star Equipment
Panhandle Satellite
Mr. & Mrs. Melvin Hamilton
Hamilton & Son
Rusty & Judy Tindell
Don Allen
B & B Farm Industries
Claudine's Creations
Hansford County Farm Bureau
H & H Water Well Service
Custom Seed Company
Robert & Cora Queener
Sparks Bros. Drilling
Interstate Savings & Loan
Kevin & Lynette Williams
Burt & Lynell Williams
Speartex Grain
Gruver Lumber Company
Cunningham Insurance Agency
Continental Grain Company
Enron Pipeline Company
First National Bank
Hansford Implement
Jim's Custom Application
Byrd & Grotgat Dekalb
Hergert Pontiac, Buick & GMC
Evans Trucking

C-L Cattle Company

THAT'S ENTERTAINMENT

A Full Week of Programming.....

THURSDAY AND FRIDAY EVENING'S PROGRAMMING UNAVAILABLE

SATURDAY April 30 MORNING

- 6:00 [2] SportsCenter (L)
- [7] U.S. Farm Report
- [8] ProZilla
- [9] Larry Jones
- [12] Daybreak
- [13] Arthelene Rippy
- 6:05 [11] 17 Gunsmoke
- 6:30 [2] Thoroughbred Digest (R)
- [7] Voltron
- [8] Young and Slim Again
- [9] Heart of Chicago
- [12] Sports Close Up
- [13] R.W. Shambach
- 7:00 [2] Tom Mann Outdoors (R)
- [3] Mark:t to Market
- [4] 4 Gummi Bears
- [5] MOVIE: The Fifth Missile (1986) Something goes wrong during a drill with nuclear warheads. Robert Conrad, David Soul. NR. 2:30
- [7] Little Clowns of Happytown
- [8] Superbook Club
- [9] Larry Jones
- [10] Hello Kitty's Furry Tale Theater
- [12] Daybreak
- [SHOW] MOVIE: Tea and Sympathy (1956) Prep school boy believes he must prove his manliness. Deborah Kerr, John Kerr. NR. 2:02
- 7:05 [11] 17 Bonanza
- 7:30 [2] Best of Bill Dance
- [3] Madeline Cooks Madeline provides a guide to choosing meat at the market.
- [4] 4 Smurfs
- [7] All New Pound Puppies
- [9] World Tomorrow
- [10] Muppet Babies
- [12] Big Story
- [13] John Jacobs
- 8:00 [2] Fishin' Hole
- [3] Lap Quilting
- [7] My Pet Monster
- [8] Our Friends on Wooster Square
- [9] Charlando
- [12] News Update
- [13] KPFL
- 8:05 [11] 17 National Geographic Explorer
- 8:10 [12] Healthweek
- 8:30 [2] Outdoor Life Magazine With William Conrad
- [3] Art of William Alexander
- [7] Little Wizards
- [8] Kidsworld
- [9] People to People
- [12] Moneyweek
- [13] Toddler's Friend
- 9:00 [2] All American Pulling Series (R)
- [3] Frugal Gourmet
- [4] ALF
- [7] Real Ghostbusters
- [8] Rin Tin Tin
- [9] Minority Business Report
- [10] 10 Pee Wee's Playhouse
- [12] News Update
- [13] Joy Junction
- 9:05 [SHOW] MOVIE: Hot Millions (1958) Embezzler beats computer and makes a fortune. Peter Ustinov, Maggie Smith. G. 1:45
- 9:10 [12] ShowBiz Week
- 9:30 [2] Boardwalk and Baseball's Super Bowl of Trivia (R)
- [3] This Old House
- [4] 4 Akin and the Chipmunks
- [5] MOVIE: Haunted Honeymoon (1986) A bride and her phobic husband face the horrors of the Abbot mansion. Gene Wilder, Gilda Radner. PG. 1:23
- [8] Sky King
- [9] Superman Runaway Robot
- [10] 10 Mighty Mouse: New Adventures
- [12] Style with Elsa Klensch
- [13] Gospel Bill
- 10:00 [2] Scholastic Sports America (R)
- [3] Make Yourself at Home Junga illustrates the joys of planning a pasta party.
- [4] 4 Fraggle Rock
- [7] Bugs Bunny and Tweety Show
- [8] American Bandstand
- [9] Puttin' on the Hits
- [10] 10 Popeye and Son
- [12] News Update
- [13] Davey and Goliath
- 10:05 [11] 17 NWA World Championship Superbouts
- 10:10 [12] Science Technology Week
- 10:30 [2] SportsCenter Gameday (L)
- [3] Great Chicago
- [4] 4 New Archies
- [7] American Bandstand
- [8] Rifleman
- [9] Angiers in Action
- [10] 10 Dennis the Menace
- [12] Baseball '88
- [13] Babushkas and the Amazing Lamb of God
- 11:00 [2] Pro Tennis USTA Clay Court Championships (L)
- [3] Justin Wilson's Louisiana Cookin' Prepare deep fried turkey, pickled shrimp, and tomato and onion salad.
- [4] 4 Fooler
- [5] MOVIE: Return of the Jedi (1983) Luke Skywalker and comrades reunite to combat the powerful Death Star. Mark Hamill, Harrison Ford. PG. 2:13
- [8] Gunsmoke
- [9] Soul Train
- [10] 10 Teen Wolf
- [12] Newsday
- [13] Circle Square
- [SHOW] MOVIE: Ferris Bueller's Day Off (1986) A clever teen makes the most of his last opportunity to skip school. Matthew Broderick, Alan Ruck. PG13. 1:43
- 11:05 [11] 17 MOVIE: Farewell to the Planet of the Apes (1974) Two astronauts and a talking chimp aid a stranded fisherman. Roddy McDowall, Ron Harper. 1:35
- 11:30 [3] Victory Garden
- [4] 4 Spectacular World of Guinness Records
- [7] Wheel of Fortune
- [10] 10 Galaxy High
- [12] Evans and Novak
- [13] One Way Game
- AFTERNOON
- 12:00 [3] Oklahoma Gardening
- [4] 4 Major League Baseball: An Inside Look (L)
- [7] War of the Stars
- [8] Iron Horse
- [9] MOVIE: Hawk the Slayer (1981) Two brothers, one heroic, one evil, are locked in mortal combat. Jack Palance, John Terry. NR. 1:35
- [10] 10 Lifestyles of the Rich and Famous
- [12] Newsday
- [13] Inside Track
- 12:15 [4] 4 NBC Baseball Game of the Week (L)
- 12:30 [3] The Collectors Vintage advertising is spotlighted; look at early Coca-Cola campaigns.
- [7] 7 Big Open Golf 3rd round, from Houston, TX (L)
- [12] Newsmaker Saturday
- [13] Maker's Match

- 1:00 [2] CBA Basketball Championship Game, if necessary (L)
- [3] Living with Animals
- [8] Bat Masterson
- [10] 10 TBA
- [12] News Update
- [13] Dale Evans
- [SHOW] MOVIE: Wild Thing A young orphan is forced to live by his wits in a surrealistic ghetto. Rob Knepper, Kathleen Quinlan. R. 1:32
- 1:05 [11] 17 MOVIE: McHale's Navy (1964) Crew of WW II PT boat tries to pay off gambling debts. Ernest Borgnine, Joe Flynn. NR. 1:33
- 1:10 [12] Healthweek
- 1:30 [2] Motorweek '88 (1988) Bob Bonderant visits; visit the world's largest auto flea market.
- [5] MOVIE: Rosemary's Baby (1968) Pregnant woman realizes her husband is involved with witches. Mia Farrow, John Cassavetes. 2:16
- [8] Broken Arrow
- [12] Style with Elsa Klensch
- [13] Don Spradling
- 2:00 [3] Wonderworks Andy leaves home and takes his little sister to England.
- [7] 7 Pro Bowlers Tour \$250,000 Tournament of Champions (L)
- [12] Daybreak
- [13] Big Valley
- [9] 9 Kung Fu Sun and Cloud Shadow
- [12] Your Money
- [13] Deaf World
- 2:30 [12] International Correspondents
- [13] Ray Brubaker
- [SHOW] Comedy Spotlight: Jonathan Winters on the Ledger (1986) Jonathan Winters will have you rolling in this comedy special! Robin Williams, Milton Berle. NR. 1:00
- 3:00 [3] Nova (1987) Travel to the Soviet Union for a look at science, technology today.
- [4] 4 Legends of Golf Seniors golf (L)
- [8] Laredo
- [9] 9 Baseball Cubs at Giants (L)
- [12] News Update
- [13] Trumpets in the Morning
- 3:05 [11] 17 Cousteau: Queen Charlotte Islands
- 3:10 [12] Sports Closeup
- 3:30 [2] SpeedWorld ARCA 500 K from Talladega, AL (T)
- [7] 7 Wide World of Sports USA vs Cuba Amateur Boxing (L)
- [10] 10 CBS Sports Saturday NCAA Men's Gymnastics Champs (T)
- [12] Big Story
- [13] TSN Today
- [SHOW] MOVIE: Cover Girls (1977) Two models combine assignments with undercover espionage work. Jaye Kennedy, Cornelia Sharpe. NR. 1:14
- 4:00 [3] Nature (1988) Ranchers in the Llanos protect the caiman and the capybaras.
- [5] MOVIE: Reuben, Reuben (1983) An alcoholic poet turns his life around briefly for a young woman. Tom Conti, Kelly McGillis. R. 1:41
- [8] Wagon Train
- [12] Newswatch
- [13] Diane Bish
- 4:05 [11] 17 Fishing with Roland Martin
- 4:30 [12] Newsmaker Saturday
- [13] Christian Lifestyle Magazine
- 4:35 [11] 17 Fishin' with Orland Wilson
- 5:00 [3] Profiles of Nature NR. 0:30
- [4] 4 News
- [7] 7 ABC World News Saturday
- [10] 10 Barney Miller
- [12] Newswatch
- [13] 100 Huntley Street
- [SHOW] MOVIE: Making Mr. Right (1987) An executive woman searches for the perfect man. John Malkovich, Ann Magnuson. PG13. 1:38
- 5:05 [11] 17 World Class Championship Wrestling
- 5:30 [2] Fishin' Hole (R)
- [3] Capitol Press Report
- [4] 4 NBC News
- [7] News
- [8] Monroes
- [10] 10 CBS News
- [12] Pinnacle
- EVENING
- 6:00 [2] SportsCenter (R)
- [3] Degraded Junior High Joey discovers that Rick's father is abusing him. Theme: child abuse. NR.
- [4] 4 Star Trek: The Next Generation NR. 1:00
- [5] Short Film Showcase
- [7] Hee Haw
- [9] 9 It's a Living
- [10] 10 Star Search 1:00
- [12] Crossfire Saturday
- [13] Benny Hinn
- 6:30 [2] NHL Hockey Playoffs; if necessary (L)
- [3] Outdoor Oklahoma
- [5] MOVIE: Haunted Honeymoon (1986) A bride and her phobic husband face the horrors of the Abbot mansion. Gene Wilder, Gilda Radner. PG. 1:23
- [8] Campbells
- [9] 9 Mame's Family
- [12] Sports Saturday
- 7:00 [3] Lawrence Welk A Tribute to Irving Berlin
- [4] 4 Facts of Life Blair buys control of Eastland and may have to run the school herself.
- [7] 7 Dolly The spotlight's on the music, tradition and people of New Orleans.
- [8] Paper Chase Festival
- [9] 9 MOVIE: Sands of Time (1949) A cocky young recruit is straightened out by a tough sergeant. John Wayne, John Agar. NR. 1:50
- [10] 10 High Mountain Rangers A flunked Ranger turns up, looking for a chance to retaliate. (R)
- [12] PrimeNews
- [13] Betty Jean Robinson
- [SHOW] MOVIE: Ferris Bueller's Day Off (1986) A clever teen makes the most of his last opportunity to skip school. Matthew Broderick, Alan Ruck. PG13. 1:43
- 7:05 [11] 17 MOVIE: Guns for San Sebastian (1968) Army deserter is mistaken for a priest by peasants. Anthony Quinn, Anjanette Comer. NR. 1:51
- 7:30 [4] 4 227 Mary and Lester meet white hillbilly cousins they didn't know about.
- [13] Zola Levitt
- 8:00 [2] Peter Marshall Salutes the Big Bands
- [4] 4 Golden Girls Rose's new boyfriend gets Dorothy a job, and she gets him fired.
- [12] PrimeNews
- [13] Betty Jean Robinson
- [SHOW] MOVIE: The Men's Club (1986) A candid conversation sends seven men to a bordello. Roy Scheider, Harvey Keitel. R. 1:41
- [7] 7 Ohare Shaver fails for attractive artist. Ohare calls on mysterious powers.
- [10] 10 Tour of Duty Morale plummets when Goldman's men must take, then abandon, a hilltop.
- [12] Newsday
- [13] Robert Schuller
- 8:30 [4] 4 Amen Frya falls in love with an accused murderer (Jackee) he's defending.
- [12] This Week in Japan
- 9:00 [3] Austin City Limits (1987) Mel Tillis and the Gazebo's perform some of their greatest hits.
- [4] 4 Hunter Heirs are suspects in death of multi-millionaire (Efron Zimbalist Jr.)
- [7] 7 Spenser: For Hire A young Navy officer is accused of murdering his captain's daughter.
- [12] Evening News
- [13] R.W. Schenbach
- [SHOW] Comedy Spotlight: Jonathan Winters on the Ledger (1986) Jonathan Winters will have you rolling in this comedy special! Robin Williams, Milton Berle. NR. 1:00

- 9:30 [2] All American Pulling Series From Atlanta, GA (T)
- 9:35 [11] 17 Three Stooges
- SUNDAY May 1 MORNING
- 6:00 [2] SportsCenter
- [8] Jimmy Swaggart
- [9] 9 Dr. D. James Kennedy
- [11] 11 Tom and Jerry
- [12] Daybreak
- [13] Jerry Barnard
- 6:30 [2] World Sport Special (R)
- [4] 4 New Zoo Revue
- [5] MOVIE: Keefer (1977) Undercover agents working for the Allies penetrate Nazi lines. William Conrad, Michael O'Hare. NR. 1:14
- [7] 7 Christopher Closeup
- [9] 9 Robert Schuller
- [12] Big Story
- 7:00 [2] NBA Today (R)
- [4] 4 James Robison
- [7] 7 Spiderman
- [8] Dr. D. James Kennedy
- [9] 9 Chicago's Vary Own
- [10] 10 Robert Schuller
- [12] Daybreak
- [13] John Hagee
- [SHOW] The Cap A young boy loses his prized baseball cap. NR. 0:30
- [13] Deaf World
- 7:05 [11] 17 Flintstones
- 7:15 [9] 9 What's Nu
- 7:30 [2] Inside the PGA Tour (R)
- [4] 4 Amazing Grace Bible Class

- 9:30 [2] This Week in Sports
- [4] 4 [8] Oral Roberts
- [7] 7 Here Comes the Brides
- [9] 9 Captain Power
- [10] 10 CBS Sunday Morning
- [12] Newsmaker Sunday
- [13] Richard DeHaan
- 9:35 [11] 17 MOVIE: North by Northwest (1959) Man's life is in continual danger when he's mistaken for a CIA agent. Cary Grant, Eva Marie Saint. NR. 2:16
- 10:00 [3] Nature (1988) Ranchers in the Llanos protect the caiman and the capybaras.
- [4] 4 San Jacinto Baptist Church
- [5] MOVIE: Malone (1987) Ex-CIA agent uncovers evil plot to take over the U.S. Burt Reynolds, Cliff Robertson. R. 1:32
- [8] Gerbert
- [9] MOVIE: Big Jake (1971) A man joins his two estranged sons in search of a kidnapped grandson. John Wayne, Richard Boone. PG. 1:50
- [12] News Update
- [13] Dr. D. James Kennedy
- 10:10 [12] Travel Guide
- 10:30 [2] SportsCenter Gameday (L)
- [7] 7 This Week with David Brinkley
- [8] Gospel Bill
- [12] NBA Preview
- 11:00 [2] Pro Tennis USTA Clay Court Championships (L)
- [3] Nova (1987) Travel to the Soviet Union for a look at science, technology today.
- [4] 4 Jimmy Swaggart
- [8] Young People's Special
- [10] 10 Vegas
- [12] Newsday

- [8] Watchkins Pilot Premiere
- [9] 9 Charles in Charge
- [10] 10 Murder, She Wrote A play based on Jessica's novel sets the stage for murder.
- [12] PrimeNews
- [SHOW] MOVIE: An Officer and a Gentleman (1982) A drill sergeant and a local girl change a tough officer candidate. Richard Gere, Debra Winger. R. 2:04
- 7:30 [4] 4 Day by Day Ross introduces innovative teaching methods which impress his parents.
- [8] Gerbert Pilot Premiere
- [9] 9 At the Movies
- [13] Ricardo Castellanos
- 8:00 [3] Upstairs, Downstairs (1988) Effects of American stock market crash ripple through Great Britain.
- [4] 4 MOVIE: NBC Sunday Night at the Movies Mad Max Beyond Thunderdome (1985) To escape Bartington, Max must battle to the death in Thunderdome. Mel Gibson, Tina Turner. PG13. 1:46
- [5] MOVIE: Malone (1987) Ex-CIA agent uncovers evil plot to take over the U.S. Burt Reynolds, Cliff Robertson. R. 1:32
- [8] Gerbert
- [12] News Update
- [13] Dr. D. James Kennedy
- 8:00 [13] Lloyd Ogilvie
- 9:00 [3] Masterpiece Theatre Mountbatten is sent to oversee the exchange of power in India.
- [8] Changed Lives
- [9] 9 Cheers Just Three Friends
- [12] Moneyline
- 9:05 [SHOW] MOVIE: 52 Pick-Up (1986) A businessman is wrongly framed in a murder. Roy Scheider, Ann-Margret. R. 1:50
- 9:30 [8] Rock Alive

- 8:35 [11] 17 Sanford and Son
- 7:00 [2] Unlimited Hydroplane Racing Las Vegas Silver Cup (R)
- [3] Nova (1987) Techniques to predict when and how forcefully volcanoes will erupt.
- [4] 4 Matlock The defense of mentally unstable heiress is complicated by trust fund.
- [5] MOVIE: Harry and Son (1984) A widowed construction worker tries to cope with his 21 year old son. Paul Newman, Robby Benson. PG. 1:57
- [7] 7 Who's the Boss? Angela offers to help Samantha prepare for her prom date with Jesse.
- [8] Crazy Like a Fox Fox in 3/4 Time
- [9] MOVIE: Cheyenne Autumn, Part 2 (1964) The Cheyennes leave their reservation and return to their native land. Richard Widmark, Carroll Baker.
- [10] 10 Houston Knights La Fiamma and Lundy try to protect burglars from a big-league hit man.
- [12] PrimeNews
- [13] TSN Today
- [SHOW] MOVIE: The Secret of My Success (1987) Young kid from Kansas is determined to take business world by storm. Michael J. Fox, Helen Slater. PG13. 1:50
- 7:05 [11] 17 NBA Basketball (L)
- 7:30 [7] 7 Just Ten of Us J.R. tells an incredible fib about his dad in order to win friends.
- [13] Betty Jean Robinson
- 8:00 [2] All-American Pulling Series From St. Paul, MN
- [3] Beyond 2000 Examine new developments and applications in science. David Birney. NR.
- [4] 4 In the Heat of the Night Escaped convict and his girlfriend take Athens and young boy hostage.
- [7] 7 Moonlighting David fears the wrath of God when a priest hires the detectives.
- [8] 8 700 Club
- [10] 10 MOVIE: CBS Tuesday Movie Necessity (1988) Fashion model discovers her husband in involved in organized crime. Loni Anderson, John Heard.
- [12] Larry King Live!
- [13] Dan Sheaffer
- 8:30 [2] NHL Hockey Playoffs; Campbell Conference (L)
- [9] 9 News
- 9:00 [3] Great Performances (1988) Lauren Bacall hosts a look at the life and career of Humphrey Bogart.
- [4] 4 Crime Story Luca baits trap for Torello by setting an execution date for Krychek.
- [5] MOVIE: Hardbodies 2 (1986) The Hardbodies gang star in a drama that quickly turns into a comedy. Brad Zlotut, Fabiano Udino. R. 1:30
- [7] 7 ThirtySomething Gary probes the fate of his career as he undergoes tenure review.
- [8] Straight Talk
- [9] 9 Baseball Cubs at Padres (L)
- [12] Evening News
- [13] Praise the Lord Live
- [SHOW] MOVIE: Rebel Love (1984) Confederate spy and beautiful Southern belle fall in love. Terence Knox, Jamie Rose. R. 1:28
- 9:30 [8] Celebrity Chefs Lucie Arnaz, Willard Scott
- [11] 17 NBA Basketball (L)

WEDNESDAY May 4 EVENING

- 6:00 [2] SportsCenter (L)
- [3] Nightly Business Report
- [4] 4 [7] [10] 10 News
- [8] Remington Steele Bag, Borrow or Steal
- [9] 9 Cheers Fortune and Men's Weights
- [12] Moneyline
- 6:05 [11] 17 Andy Griffith
- 6:30 [2] NHL Hockey Playoffs; Wales Conference (L)
- [3] Oklahoma News
- [4] 4 M*A*S*H
- [7] 7 Wheel of Fortune
- [9] 9 Barney Miller Examination Day
- [10] 10 Love Connection
- [12] Crossfire
- 6:35 [11] 17 Sanford and Son
- 7:00 [3] National Geographic Special Explore the mystery of the origins of the human race.
- [4] 4 Aaron's Way Mysterious new tutor with unorthodox ways inspires learning, romance.
- [5] MOVIE: Off Beat (1986) A mild mannered librarian agrees to pose as a New York City cop. Judge Reinhold, Mag Tilly. PG. 1:32
- [7] 7 Growing Pains At Mike's graduation, i, the family reminisces about his escapades.
- [8] Crazy Like a Fox Plot (1958) Two teenagers fight to destroy an alien mass that fell to earth. Steve McQueen, Aneta Corsaut. G. 1:25
- [10] 10 Smothers Brothers Comedy Hour (1988)
- [12] PrimeNews
- [13] TSN Today
- [SHOW] Brothers Two macho types attempt to deal with their brother's homosexuality. Robert Walden, Brandon Maggart. NR. 0:30
- 7:05 [11] 17 MOVIE: Torpedo Run (1958) Story of submarine commander's fight against the Japanese. Glenn Ford, Ernest Borgnine. NR. 1:38
- 7:30 [7] 7 Head of the Class Dennis adopts a doomsday attitude and refuses to take important exam.
- [13] Dino
- [SHOW] It's Garry Shandling's Show
- 8:00 [3] Conserving America Americans talk about effort to conserve and restore their home waters.
- [4] 4 Highway to Heaven Young boy flees to a fantasy world after his father's tragic death (R).
- [9] 9 News
- [13] Doug Clark
- 8:30 [3] American Playhouse (1988) Eugene O'Neill's autobiographical work about the Tyrone family. Jack Lemmon.
- [4] 4 St. Elsewhere Axelrod's life is threatened by a severe heart attack.
- [5] MOVIE: Tai-Pan (1986) James Clavell's best selling saga of colonial Hong Kong. Bryan Brown, John Stanton. R. 2:07
- [7] 7 China Beach KC and Cherry confront dangerous black marketers after mortar attack.
- [8] Straight Talk
- [9] 9 Baseball Cubs at Padres (L)
- [10] 10 The Equalizer McCall arrives too late to help a former espionage agent.
- [12] Evening News
- [13] Praise the Lord Live
- 9:05 [11] 17 NBA Basketball (L)
- 9:30 [2] Scholastic Sports America
- [8] New Generations

It's Spring Cleaning Time at Gillaspie Chevrolet-Olds!

You can get **FACTORY CASH REBATES** UP TO \$1,000

On select Chevrolet and Oldsmobiles Now!

But Hurry In . . . The Rebates Won't Last Forever!

GM QUALITY SERVICE PARTS

Mr. Goodwrench

GILLASPIE
CHEVROLET-OLDSMOBILE

Hwy. 207 South 659-2541 SPEARMAN

- [7] 7 Volttron
- [9] 9 Heritage of Faith
- [12] Politics '88
- [SHOW] MOVIE: Gulliver's Travels (1976) Doctor is shipwrecked on an island inhabited by tiny people. Richard Harris, Catherine Schell. G. 1:20
- 7:35 [11] 17 Tom and Jerry
- 8:00 [2] Motorweek Illustrated Weekend Edition (R)
- [3] NatureScene
- [4] 4 Day of Discovery
- [5] MOVIE: The Money Pit (1986) A young couple needing a new home quickly tries to renovate a mansion. Tom Hanks, Shelley Long. PG. 1:32
- [7] 7 Young Universe
- [8] Sunday Best
- [9] 9 Mass for Shut Ins
- [10] 10 Second Baptist Church
- [12] Daywatch
- [13] Earl Paule
- 8:05 [11] 17 Flintstones
- 8:30 [2] Magic Years in Sports 1979; Willie Stargell (R)
- [3] Outdoor Oklahoma
- [4] 4 Larry Jones
- [7] 7 Daniel Boone
- [9] 9 Popeye
- [10] 10 First Baptist Church
- [12] Your Money
- 8:35 [11] 17 Andy Griffith
- 9:00 [2] Lighter Side of Sports (R)
- [3] Nature of Things Learn how the women of Kerala, India, have reduced the birth rate. 1:00
- [4] 4 World Tomorrow
- [8] Lloyd Ogilvie
- [9] 9 Visionaries
- [12] News Update
- [13] James Robison
- [SHOW] MOVIE: Lucas (1986) Book-worm tries out for the football team in order to impress a girl. Corey Haim, Kerri Green. PG13. 1:40
- 9:05 [11] 17 Good News
- 9:10 [12] On the Menu

- [13] Dwight Thompson
- [SHOW] MOVIE: The Gods Must Be Crazy (1981) Desert tribe fights for possession of a bottle discarded from a plane. Marius Weyers, Sandra Prinsloo. PG. 1:48
- 11:30 [7] 7 Texas Country Reporter
- [8] Kidsworld
- [12] International Correspondents
- EVENING
- 6:00 [2] SportsCenter
- [3] Lawrence Welk A Tribute to Irving Berlin
- [4] 4 Our House Rash of burglaries panics the community. Gus tries to stem hysteria.
- [7] 7 MOVIE: Disney Sunday Movie Splash Too, Part 1 (1988) Alan and his mermaid bride try to save his family's produce business. Todd Waring, Amy Yasbeck.
- [8] Crossbow The Pass
- [9] 9 and T
- [10] 10 60 Minutes
- [11] 11 MOVIE: Something About Amelia (1984) Normal family is plunged into turmoil over an incestuous relationship. Ted Danson, Glenn Close. NR.
- [12] World Report
- [13] Billy Joe Daugherty
- 6:30 [2] Legends of the Brickyard 1975; Indianapolis 500 films
- [8] Animals of Africa Kalahari Gemsbok
- [9] 9 Bustin' Loose
- [12] Sports Sunday
- [13] Jack Hayford
- 7:00 [2] NHL Hockey Playoffs; Campbell Div. Finals (L)
- [3] Nature Tom Williams gives insights into England's Hampshire Avon River.
- [9] 9 and T
- [4] 4 Family Ties Mallory tries to persuade Nick to ask his estranged father for money.
- [7] 7 Superstars and Their Moms Carol Burnett & Carrie Hamilton host!

MONDAY May 2 EVENING

- 6:00 [2] SportsCenter
- [3] Nightly Business Report
- [4] 4 [7] [10] 10 News
- [8] Remington Steele Steele at Your Service
- [9] 9 Cheers Just Three Friends
- [12] Moneyline
- 6:05 [11] 17 Andy Griffith
- 6:30 [2] NHL Hockey Playoffs; Wales Conference (L)
- [3] Oklahoma News
- [4] 4 M*A*S*H
- [7] 7 Wheel of Fortune
- [9] 9 Barney Miller Homelass
- [10] 10 Love Connection
- [11] 11 Major League Baseball Braves at Mets (L)
- [12] Crossfire
- 7:00 [3] The Making of a Continent Lock at the Great Basin and Lava Plains and Yellowstone National Park.
- [4] 4 ALF In his fantasies, ALF substitutes for late night host David Letterman.
- [5] MOVIE: 2010: The Year We Make Contact (1984) Americans travel with Soviets to Jupiter to learn Discovery's fate. Roy Scheider, John Lithgow. PG. 1:56
- [7] 7 MacGyver MacGyver and a former girlfriend become prey for backwoods poachers.
- [8] Crazy Like a Fox Dead on Arrival
- [9] 9 MOVIE: Cheyenne Autumn, Part 1 (1964) The Cheyennes leave their reservation and return to their native land. Richard Widmark, Carroll Baker.
- [10] 10 Kate & Allie Feeling unappreciated, Kate and Allie plan reunion with their moms (R).
- [12] PrimeNews
- [13] TSN Today
- [SHOW] MOVIE: Return of the Jedi (1983) Luke Skywalker and comrades reunite to combat the powerful Death Star. Mark Hamill, Harrison Ford. PG. 2:13
- 7:30 [4] 4 Valerie's Family Michael feels alienated when nobody will believe he saw a UFO.
- [10] 10 Designing Woman Suzanne's in deep trouble with the IRS; the solution is not pretty (R).
- [13] Marilyn Hickey
- 8:00 [3] Discoveries Underwater Travel to Port Royal, Jamaica, once a real city under the sea.
- [4] 4 MOVIE: NBC Monday Night at the Movies The Taking of Flight 847 (1988) Story of TWA stewardess whose composure saved lives on hostage flight. Lindsay Wagner, Joseph Nasser.
- [7] 7 ABC Mini-series Onassis: The Richest Man in the World, Part 2 (1988) Follow the inside story of how Onassis amassed his fortune. Raul Julia, Jane Seymour.
- [8] 8 700 Club
- [10] 10 Newhart The Loudon's plans to make beautiful music together hits a sour note.
- [12] Larry King Live!
- [13] LaVerne Tripp Family
- 8:30 [9] 9 News
- [10] 10 Eisenhower & Lutz Bud Jr must decide how much he wants to know about his parentage.
- [13] Hal Lindsey
- 9:00 [3] Great Railway Journeys of the World Travel the plains of Eastern New South Wales across Blue Mountains. 1:00
- [5] MOVIE: Blue Velvet (1986) A naive boy plays detective in a grisly world of sex and violence. Kyle MacLachlan, Isabella Rossellini. R. 2:01
- [7] 7 ABC Mini-series Onassis: The Richest Man in the World, Part 1 (1988) Follow the inside story of how Onassis amassed his fortune. Raul Julia, Jane Seymour.
- [9] 9 Baseball Cubs at Padres (L)
- [10] 10 Cagney & Lacey The recent stock market crash reveals a wealth of robbery suspects.
- [12] Evening News
- [13] Praise the Lord
- 9:15 [11] 17 MOVIE: The Rounders (1965) Two bronc busters sign up with a skinkflint to break horses. Glenn Ford, Henry Fonda. NR. 1:25
- [SHOW] MOVIE: The Trip to Bountiful (1985) Elderly widow makes a sentimental trek back to her childhood home. Geraldine Page, John Heard. PG. 1:46
- 9:30 [2] Major League Baseball's Greatest Hits 1977 World Series
- [8] Good Fishing Mighty Columbia

TUESDAY May 3 EVENING

- 6:00 [2] SportsCenter
- [3] Nightly Business Report
- [4] 4 [7] [10] 10 News
- [8] Remington Steele Steele in the Running
- [9] 9 Cheers Snow Job
- [12] Moneyline
- [13] Dr. D. James Kennedy
- 6:05 [11] 17 Andy Griffith
- 6:30 [2] Skiing Powder 8 World Championship (R)
- [3] Oklahoma News
- [4] 4 M*A*S*H
- [7] 7 Wheel of Fortune
- [9] 9 Barney Miller Torture
- [10] 10 Love Connection

Williams concert set in Borger

The final concert of the 1987-88 Community Concert Association season in Borger will be held this Saturday with Robin and Linda Williams, country and folk music artists.

The program will begin at 8 p.m.

at the Borger high school auditorium.

The Williams draw from a variety of styles, including bluegrass, old time, country western, blues and white and black gospels.

THE SPEARMAN REPORTER

Club News

SERVITORS CLUB By Charlotte Sheets

Servitors met last week in the home of Tina Tucker. The meeting was called to order by First Vice President Carmen Mireles. The prayer was given by Cindy Avila and the Club Collect was led by Ann Rook.

Charlotte Sheets called roll and 12 members answered to "How did you conserve energy this last winter". Minutes were read and approved.

A letter was received from the club in Beaumont inviting our club to the inauguration of President

Under old and unfinished business a motion was made by Tina Tucker to show the film on elderly abuse to the Golden Spread Senior Citizens Center with Kim Vera, Tina Tucker, and Peggy Winegarner volunteering to present the film. Motion unanimously carried.

Cindy Avila reported a treasury balance of \$1,278.26 with all bills paid.

A letter from Police Chief Joe Raper was read stating that the Bicycle Rodeo will be held on May 3, which is being sponsored by the Spearman Police Department, Spearman PTA, and the Servitors Club.

Members then volunteered to be present to help with the Bicycle Rodeo.

Under new business, motion was made by Tina Tucker to change the July softball tournament from a co-ed to a men's tournament. Second by Johnnie Fuller. Motion unanimously carried.

A letter was read requesting sponsorship of Casey McGill to attend the Hugh O'Brien Leadership Seminar. Motion was made by Kim Vera to donate \$50 to the fund. Second by Ann Rook. Motion unanimously carried.

The election of new officers was then held. The president is Laura Mackie, First vice president is Kim Vera, second vice president is Tina Tucker, Third vice president is Maria Ochoa, Recording Secretary is Charlotte Sheets, Corresponding Secretary is Peggy Winegarner, Treasurer is Cindy Avila, Parli-

mentarian is Linda Cummings. Darlene Baker was then voted in as a new member.

Members present were: Cindy Avila, Linda Cummings, Johnnie Fuller, Tina Tucker, Carmen Mireles, Maria Ochoa, Ronda Rutherford, Ann Rook, Charlotte Sheets, Tina Tucker, Kim Vera, Peggy Winegarner. Visitors present were: Terry Duberry, Dalene Baker.

By Dorothy Haner GLADIOLA FLOWER CLUB

The Gladiola Flower Club met last week in the home of Kathleen Sutton. Myra Berner, vice-president, called the meeting to order. Roll was called and answered with

"The First Spring Bird I've seen."

During the business meeting it was decided to give a donation of \$100 to the Golden Spread Center and to raise the amount of the club's scholarship fund to \$500 for 1988.

Kathleen Sutton was the winner in the arrangement of flowers category with her arrangement of lavender lilacs. Mike Hergert won with her borrowed arrangement of Lilacs.

Rose Cummings won with her specimen tulip. Dorothy Haner presented the program on a trip to the Philadelphia Flower Show and a visit to the Mandai Orchid Garden in Singapore via film. Refreshments were served to the

THURSDAY, APRIL 28, 1988

following: Mrs. Dickie Allen, Charlsie Baker, Mrs. Myra Verna, Mrs. Wanda Brown, Mrs. Dorothy Buzzard, Mrs. Rose Cummings, Mrs. Dorothy Haner, Mrs. Virginia Head, Mrs. Estella Jackson, Mrs. Mike Hergert, Mrs. June Jackson, Mrs. Lorene Kunselman, Mrs. Jo Larson, Mrs. Nan McCloy and hostess Mrs. Kathleen Sutton.

Hospital Report

Patients in the Hospital are Martha Mans, J.C. Watson, Santiago Tercero, Sebastian Castro, Fern Fulkerson, Sam Wysong, Vickie Hargrove, Vida Townsend and Robert Bort.

WEIGHT WATCHERS®

NEW 1988 QUICK SUCCESS® PROGRAM

LOSE WEIGHT 20% FASTER

Lighten up with the fastest, easiest approach to weight loss ever!

Not only will you lose weight 20% faster in the first few weeks than on any previous Weight Watchers program, you can actually customize a plan that will fit your personal needs and lifestyle.

Sheila Falk,
Area Director

Final Week!
Join for only **\$12**

Registration Fee	\$17.00
First Meeting Fee	\$ 8.00
Regular Price	\$25.00
YOU SAVE	\$13.00

Offer Ends May 8, 1988.

Come to the Weight Watchers meeting nearest you. PLEASE ARRIVE AT TIMES LISTED.

<p>SPEARMAN Home Extension Club 309 N. Bernice Mon: 6:00 pm</p>	<p>PERRYTON 1st National Bank 201 S. Main Street Thur: 6:30 pm</p>
--	---

NOTHING WORKS LIKE WEIGHT WATCHERS!™

Offer valid April 10 through May 8, 1988. Offer valid at locations listed. Areas 37, 107, 961 only. Offer valid for new and renewing members only. Offer not valid with any other offer or special rate. Weight Watchers and Quick Success are trademarks of WEIGHT WATCHERS INTERNATIONAL, INC. ©WEIGHT WATCHERS INTERNATIONAL, INC. 1988

TEXAS TOLL FREE
1-800-692-4329

WHAT: SPRINGTIME REVIVAL

WHERE: SPEARMAN METHODIST CHURCH

WHEN: MAY 1 THROUGH 4

SUNDAY -	SERVICE COVERED DISH MEAL SERVICE	11 A.M. 12 NOON 7 P.M.
Monday -	}	NOON MEAL NIGHT SERVICE
Tuesday -		
Wednesday -		

FEATURING

REV. JERRY KUNKEL

KATHY KUNKEL (Music)

Report of Condition

LEGAL TITLE OF BANK First State Bank Box 247 Spearman, Texas 79081	STATE BANK NO. 1107-37	FEDERAL RESERVE DISTRICT NO. 11 13 17844
CITY Spearman	COUNTY Hansford	STATE Texas
ZIP CODE 79081	CLOSE OF BUSINESS DATE March 31, 1988	

	Dollar Amounts in Thousands			
	Bal	Mil	Thou	
ASSETS				
1. Cash and balances due from depository institutions				
a. Noninterest-bearing balances and currency and coin			2,513	1.a
b. Interest-bearing balances			5,600	1.b
2. Securities			25,953	2
3. Federal funds sold and securities purchased under agreements to resell in domestic offices of the bank and of its Edge and Agreement subsidiaries, and in IBFs			1,775	3
4. Loans and lease financing/receivables				
a. Loans and leases, net of unearned income	31,261			4.a
b. LESS: Allowance for loan and lease losses	220			4.b
c. LESS: Allocated transfer risk reserve	NONE			4.c
d. Loans and leases, net of unearned income, allowance, and reserve (item 4.a minus 4.b and 4.c)			31,041	4.d
5. Assets held in trading accounts			NONE	5
6. Premises and fixed assets (including capitalized leases)			1,124	6
7. Other real estate owned			NONE	7
8. Investments in unconsolidated subsidiaries and associated companies			NONE	8
9. Customers' liability to this bank on acceptances outstanding			NONE	9
10. Intangible assets			NONE	10
11. Other assets			1,260	11
12. Total assets (sum of items 1 through 11)			69,266	12
LIABILITIES				
13. Deposits			56,666	13.a
a. In domestic offices				
(1) Noninterest-bearing	7,749			13.a.(1)
(2) Interest-bearing	48,917			13.a.(2)
b. In foreign offices, Edge and Agreement subsidiaries, and IBFs			NONE	13.b
(1) Noninterest-bearing	NONE			13.b.(1)
(2) Interest-bearing	NONE			13.b.(2)
14. Federal funds purchased and securities sold under agreement to repurchase in domestic offices of the bank and of its Edge and Agreement subsidiaries, and in IBFs			NONE	14
15. Demand notes issued to the U.S. Treasury			074	15
16. Other borrowed money			NONE	16
17. Mortgage indebtedness and obligations under capitalized leases			NONE	17
18. Bank's liability on acceptances executed and outstanding			NONE	18
19. Notes and debentures subordinated to deposits			NONE	19
20. Other liabilities			1,841	20
21. Total liabilities (sum of items 13 through 20)			58,581	21
22. Limited-life preferred stock			NONE	22
EQUITY CAPITAL				
23. Perpetual preferred stock (No. of shares outstanding)	NONE			23
24. Common stock (No. of shares a. Authorized)	200,000			24
b. Outstanding	200,000			24
25. Surplus			1,000	25
26. Undivided profits and capital reserves			2,000	26
27. Cumulative foreign currency translation adjustments			7,685	27
28. Total equity capital (sum of items 23 through 27)			10,685	28
29. Total liabilities, limited-life preferred stock, and equity capital (sum of items 21, 22, and 28)			69,266	29
MEMORANDA Amounts outstanding as of Report Date.				
1. a. Standby letters of credit, Total			NONE	1.a
b. Amount of Standby letters of credit in memo 1.a conveyed to others through participations			NONE	1.b

NOTE: This report must be signed by an authorized officer(s) and attested by not less than three directors other than the officer(s) signing the report.

I, the undersigned officer(s), do hereby declare that this Report of Condition has been prepared in conformance with official instructions and is true to the best of my (our) knowledge and belief.

SIGNATURE OF OFFICER(S) AUTHORIZED TO SIGN REPORT <i>Lynne Matze</i>	DATE SIGNED APRIL 27, 1988	
NAME AND TITLE OF OFFICER(S) AUTHORIZED TO SIGN REPORT LYNNE MATZE, CASHIER	AREA CODE/PHONE NO. 806-659-5565	

We the undersigned directors, attest the correctness of this Report of Condition and declare that it has been examined by us and to the best of our knowledge and belief has been prepared in conformance with official instructions and is true and correct.

SIGNATURE OF DIRECTOR <i>Shirley</i>	SIGNATURE OF DIRECTOR <i>Maude</i>	SIGNATURE OF DIRECTOR <i>Shirley</i>
State of TEXAS	County of HANSFORD	

(MAKE MARK FOR) Sworn to and subscribed before me this 27 day of APRIL 19 88

I, IRIS WOOD, My commission expires APRIL 7 19 92

Notary Public, State of Texas
My Commission Expires 4-7-92

FSB
First State Bank

The Dude

\$1.29 sale

For Texas Taste, DQ's the place for a Golden Chicken Fried, 100% Pure Beef Sandwich Served on a toasted bun with crisp lettuce and red, ripe tomatoes. So come on by ...

Monday thru Sunday
April 18 thru May 1.

© Copyright 1985 Tex. D.Q. Op. Council. All Rights Reserved. TM Trademarks of the Tex. D.Q. Op. Council. ® Registered Trademark Am. D.Q. Corp.

Your Home Is Full Of Hidden Dollars



Call 659-3434



Turn idle items into cash fast with a Want Ad

Bluestem Marketing
Grass seed sales organization representing quality area Producers. Providing a full line of **OLD WORLD BLUESTEM** Grass seed, and some Native Blends. Contracting for 1989 seed at lowest prices ever. We stand behind all seed sales.

FINANCING
Plains *WW Spar
Canada *Caucasia.
Call - Richard Lee
G-S-3tp (405)338-8023

Unlimited Free Kodak Film, plus free 35mm camera with warranty. Toll free 1-800-433-6312 (24 hours)

HELP WANTED
Full time & part time at Spearman Pizza Hut. EOE
Please apply in person.
G30-2tc

AA Real Estate Sampler
Allen Alford-Broker-659-3034
Hester Euc Crawford-Sales 659-3060 or 659-2074
Dennis Nelson-Sales-659-3608
Larry Trospen-Sales-659-3491
316 S. Bernice under contract
619 Evans - 1350 sq. ft.
32 N. Snider - 1850 sq. ft.
729 Cotter - 1519 sq. ft.
506 Endicott - 1100 sq. ft.
907 Dressen - Nice starter
505 Haney - 1600 sq. ft.
408 E. Kenneth - 3 bd. 2 bth App 1630 sq ft.
714 Steele Dr. 3 bd 2 bath app 1323 sq ft.
721 Wilbanks 4 bd 2 bath 1838 sq ft.
Duplex - Kenneth & Hoskins
WE WANT TO BE YOUR REALTOR

Century 21
GOLDEN SPREAD REALTY
Janye Helton Pointer, Broker
Owner, 435-5444
SALES ASSOCIATES
T.O. Lesly 659-3836 or 659-2028
1112 S. Bernice - 3-1/2. Location! Location!
607, 609, 611, 615, Haney - Small house/2 apartments.
615 E. Kenneth - 3/2. Corner lot with extra acreage! Reduced!
619 Bernice - 4/2. Big home... small payments!
210 S. Bernice - 3/1. New roof and siding!
102 Wanda - 3/1. Immaculate!
118 Townsend - 4/2. Apartment included!
130 N. Hoskins - 3/2. Roomy inside and out!
711 Collier - 3/1. Why rent? 322 S. Barkley - 3/1. Good location at affordable price!
811 Townsend - 2/1. Affordable!
5 mi. east of Spearman - 3-1/2 to be sold as is!
321 N. Hoskins - Trailer & 3 lots!
120 N. Hazelwood - 2/1. Good starter home!
Industrial Road - 40 x 60 all steel building! FARM
640 acres of grass in Sherman Co., over 500 acres in the C.P.R. Program.
640 acres of wheat and milo land in Hansford Co.
3 Ranches in Brownwood area. Call today!

Offered by
EMMETT R. SANDERS
REALTOR
3 bedroom home, attached garage.
EMMETT R. SANDERS
REALTOR
659-2516, nights 659-2601

NOTICE
Wallace Monument Co.
Monuments, Curbings,
Grave Covers
Local Representative
LEONARD JAMESON
Spearman, Texas

L & M Body Works
1501 Hwy. 15
659-2775
Tailpipes - \$29.95
Mufflers - \$39.95
Most Details - \$160.00 complete

ALCOHOLICS ANONYMOUS MEETING
Hansford County Library
122 Main - Spearman
Open Meeting 2nd Tuesday
ALANON
TUESDAY
8:00 P.M.

OSGOOD MONUMENT CO.
Amarillo, Texas
Dealers of Rock of Ages Granite, as well as all colored granites, marble and bronze memorials.
represented by
BOXWELL BROS. FUNERAL HOME
519 S. Evans
659-3802

Real Estate

FOR SALE: country home with acreage. By appointment only after 4 p.m. 659-3817. S24s 7tp

FOR SALE: Nice small 3 bedroom home. Fenced, carport, close to school. Great rental property or starter home. 1010 Dressen. Call 1-669-9765, Pampa. S18-rtm

ABANDONED HOMES - Take over payments on 2 and 3 bedroom homes. Qualify by phone. (806) 381-1352. Call collect. S46-rtm

FOR SALE: nice 3 bedroom brick home, approx. 1300 sq. ft.; single garage. Priced in 30's. Good neighborhood! Call 659-2263 after 5:00 rtm

Country Home For Sale: 1600 sq. ft., 3 bedrooms, 2 full baths, den with wet bar, large living area. Extra large kitchen with cabinets and counter space to spare. Satellite T.V. and large fenced-in backyard. Located 2 miles from Spearman on paved road. Shown by appointment only. Phone 659-3557 after 5:00 p.m. S25S-4tp

For Rent

TRAILER SPACE FOR RENT: Fenced yards, underground utilities, concrete walks and patio. Close to high school and swimming pool. Call 435-6640 or 435-5080. S19S-rtm

Garage Sales

HELD OVER! Golden Spread Center needs your donations of Garage Sale items for our garage sale. Friday April 29, 9-5, call 659-3866 or 659-3521 for pick-up or drop off at Center. S26 1tp

GARAGE SALE: Thursday, April 28 from 8:30 a.m. to 6 p.m. Home Demonstration Building. Also would like to buy old quilts. S26-1tp

RA
Ya'll Come to a Bridal Shower Roundup for Tiki Jackson Farrar at 1116 Dressen, Spearman Saturday, April 30 from 2:30 to 4 p.m. S25-2tTh-only

NOTICE TO BIDDERS

Hansford County Hospital District will be accepting sealed bids for the sale of two upright freezers. 1 - G.E. 19 cubic feet, 1 - Imperial 20 cubic feet.
Contact Margy Schoenhals at (806)659-2535 for further information. Bids must be received no later than 5 p.m., May 5, 1988. Envelope must be marked "Bid for freezer" on the outside.
Bids must be specific as to item wanted. Deliver bids to Hansford Hospital, 707 S. Roland, Spearman, Tx. 79081. Hansford County Hospital District reserves the right to reject any and all bids. S25S-2tc

CARD OF THANKS

The family of "Jared Shufeldt" wishes to thank everyone for your prayers and kindness that was extended to us during Jared's illness and surgery.
Thank you,
Sara, Hal, Jared & Billie Jo

ADVERTISEMENT FOR BIDS

1. Sealed Proposals addressed to Mr. Mike Garnett, President, Board of Trustees, Spearman Independent School District, Spearman, Texas, shall be received in the Board Room at the High School, Spearman Independent School District, Spearman, Texas, until 4:00 p.m., Tuesday, May 24, 1988, at which time they shall be publicly opened and read aloud for the furnishing of all labor, materials and equipment and performing all work required for the Additions & Renovations to the School Facilities, Spearman Independent School District, Spearman, Texas, in accordance with plans, specifications and contract documents as prepared by Huckabee & Donham, Architects and Planners, Andrews, Texas.

2. Proposals will be received for the general construction which will include Plumbing, Heating, and Air Conditioning and Electrical work.

3. A Cashier's Check, Certified Check, or acceptable Bidder's Bond, payable to the Spearman Independent School District, in the amount of not less than 5% of the largest possible total for the bid submitted must accompany each bid.

4. Attention is called to the fact that the Contractor must comply with all Federal, State and Local Labor Laws, including Article 5159a, Vernon's Annotated Revised Civil Statutes of the State of Texas, which requires that the contractor pay not less than the following prevailing wage rates, which have been established by the Owner as follows:

CLASSIFICATION	RATE:
Air Tool Operator	\$3.35
Boilermaker	11.41
Bricklayer, Stone Mason	8.38
Carpenter	8.41
Cement Mason	6.67
Electrician	5.67
Glazier	4.90
Iron Worker	9.37
Laborer, Common	3.35
Lather	8.41
Marble Setter	4.34
Mason Tender	4.00
Millwright	10.49
Mortar Mixer	4.00
Heavy Eq. Operator	8.97
Light Eq. Operator	8.70
Oiler	8.10
Painter, brush	6.00
Painter, spray	6.00
Pipe Fitter, Plmb.	8.85
Plasterer	7.97
Roofer	6.67
Sheet Mtl. Worker	7.53
Soft Floor Layer	3.83
Tile Setter	4.33
Truck Driver	3.35

5. The successful bidder will be required to enter into a contract with the Spearman Independent School District, Spearman, Texas, and furnish a Payment and Performance Bond in the amount of not less than 100% of the contract price, conditioned upon the performance of the contract.

6. The Owner is called to the fact that the Owner is exempt from the payment of the State Sales Tax normally levied against material costs. In order to take advantage of this exemption, material and labor costs must be identified by the successful bidder. In developing this division of labor and material costs, the bidders are cautioned to include all costs and allowances not representing direct material costs with labor. The contract sum, as identified by the Base Bid, shall not include any allowance for the payment of State Sales Tax on materials required to complete the work. The successful bidder, upon award of the contract, will be furnished with a permit number which will enable him to purchase the required material without payment of such taxes.

7. Plans and Specifications may be obtained from the Architect, Huckabee and Donham, Architects and Planners, 405 S.W. 1st St., Andrews, Texas, 79714, (915)523-3450, in accordance with the stipulations set forth under Deposits and Refunds, bound in the Specifications.

8. The bidder acknowledges the right of the Owner to reject any or all bids and to waive any informality or irregularity in any bid received. In addition, the bidder recognizes the right of the Owner to reject a bid if the bidder failed to

furnish any required bid security or to submit the data required by the bidding documents, or if the bid is in any way incomplete or irregular.

HELP WANTED

HELP WANTED
The Hansford County 'Y' is taking applications until May 2 for the positions of Swimming Pool Manager and lifeguard. Applicants must be certified. Applications can be picked up at the 'Y', 501 S. Hazelwood. For more information please call 659-2591. S25-4tc

GET PAID for reading books! \$100 per title. Write: PASE-/3134, 161 S. Lincolnway, N. Aurora, IL 60542 S25 4tp

HELP WANTED: Mill hand for feed mill, Caprock #2, apply in person, Northeast of Gruver.

A&W BAIT SHOP 22 S. Harvard, Perryton Tx. 435-5683, Chicken blood, Bill's sponge bait, worms, shrimp, cut and whole shad, beef chicken and rabbit liver, beef melt. Minnows, watterdogs, crawdads and quannah bait when available. S26 2tp

NOTICE

"To God a Note of Thanks" by Mrs. E.A. Greever at 319 South Bernice. This article is now to be found in a small container on my front porch or lawn. A new sermon every Monday morning, which continues through the week. Feel free to take one. S24-4tp

For Sale

FOR SALE: Old World Grass Seed, SPAR, Plains, Canada, \$12 pls. pound. (405)885-7201 before 7 a.m. (806)852-2113 after 5 p.m. S26-4tc

FOR SALE: 1977 White Chevrolet pickup, good condition, needs engine repair, \$1195, call 659-3566 or 659-2403. S24 rtn

FOR SALE: 1987 Ford pickup, 4 sp, 6 cylinder, call Vance 659-2506. S24 rtn

SERVICES

EYNOLDS TRIM & AUTOMOTIVE. Truck seats our specialty, car seat upholstery - original replacement. Reasonable prices, one day service. 815 N. Cedar, Borger. Call 274-2230. S22-9t

REPAIR on vacuum cleaners and appliances. Call 659-3301. S19S-rtm

CESSPOOLS \$250. Trash holes \$275. Big Hole Drilling. (806)372-8060 or 383-2424. S-Ap&M

Will do fencing, all kinds. Call 659-2118. S26-4tp

NEED A CARPORT? Call me, I will erect a custom structure at a reasonable price. Call 435-3222 after 6 p.m. S26-4tc

Red River Fish Farms - Stocking Catfish, Bass, Hybrid Bluegill, Fathead Minnows, for your lakes and ponds. Wednesday, May 4 we will be in Gruver at Double D Feed & Seed from 10:30 to 11:30 a.m. and in Spearman at B & B Farm Industries from 1:30 to 2:30. Transport containers with oxygen provided for move. For information call (915)529-4277, Abilene. S26-3t

Classified Ads make

King Size Sense!

Whatever you've got to sell or trade, Reporter classified to it better than any other media.
Apartment to rent... house for sale? Use a Reporter classified for best results!

Call a Reporter Ad Taker Today
659-3434

Amarillo man jailed on 3 burglary charges

A 33-year old Amarillo man is in custody of the Hansford county sheriff's office where he is being held in connection with three separate county burglaries, reports Hansford sheriff, R.L. McFarlin.

James Barker has been charged with three counts of burglary and bond has been denied due to pending sentences on the same charges in Colorado.

The Amarillo man was returned to Hansford county on warrants from the sheriff's office, reports McFarlin. Barker has already been sentenced in Springfield, Co., on similar charges, he notes.

The Amarillo man will stand trial in Hansford county for burglaries of three Hansford county country homes, then will face similar

charges in both Ochiltree and Moore counties, McFarlin states.

According to the sheriff, Barker has admitted to burglaries of the Harold Boyd barn, the Jack McWhirter place and the former home of Damon Herndon which is located near the Hansford-Ochiltree county line.

Tools, a pickup, a fireplace heat fan and miscellaneous items were taken from the three country places, notes McFarlin.

Following his trials in Texas, Barker will be returned to Colorado to finish his sentence there. After completing that he will be returned to Texas to serve any sentences which might be made here, says McFarlin.

DPS investigates death of Hansford prisoner

The Texas Department of Public Safety is investigating the death of a Hansford county prisoner who was found dead in his cell by a Hansford county jailer during early morning rounds Monday.

The outside investigation was requested by Hansford county sheriff R.L. McFarlin following the death of 27-year old Roger B. Thurman of Perryton.

The prisoner was found with a bed sheet wrapped around his neck, sitting on the floor of his cell, according to the Hansford county sheriff.

He was discovered around 12:30 a.m. Monday by a jailer who was making early morning rounds,

reports McFarlin. The incident took place between 11 p.m. Sunday and 12:30 a.m. Monday when the early morning cell check was preformed, he notes.

According to McFarlin, the prisoner apparently died after tying one end of the sheet to the bars and wrapping the other end around his neck shortly after midnight Monday.

The Hansford county sheriff reports Thurman was arrested on numerous misdemeanor charges by a Texas Department of Public Safety trooper about 5:30 p.m. Sunday. He was placed in the jail cell about 7 p.m., he said.

Results of an autopsy are pending.

Spearman artist takes second at Amarillo

A Spearman artist has received a second place award in the Amarillo Fine Arts Association "Best of the Southwest Show" held recently in Amarillo.

Karen Reimer, a watercolor

artist, had two entries in the show which boasted over 150 paintings from area artists.

The paintings were displayed in the lobby of the First National Bank of Amarillo and judging was by Benjamin Harjo, an artist from Oklahoma City.

The 150 paintings were chosen from over 270 pieces which were submitted for the exhibit. Ms. Reimer's father, Clarence Lewis of Perryton, also received a second place with a woodcarving of a fish.

The Spearman artist has been an active watercolorist for the past 13 years and in that time she has received several awards, including second place in the 1983 Amarillo show and first place in the Fall Citation show in 1984.

She also won a merit award at the Funfest Guymon Show and is the current Grand Champion of the Hansford county fair.

Ms. Reimer has a studio in her home where she conducts classes and paints subjects ranging from wildlife to delicate flowers.

Currently she has art on display at the Las Pampas in Pampa as well as the Galeria Nativa in Taos, N. Mex.

Bike rodeo set Tuesday

A special Bike Rodeo for children from kindergarten through third grade will be held Tuesday afternoon at the Spearman elementary school building under the supervision of the Spearman Police Department and the Texas Department of Public Safety.

Jerry Borgtorf, public safety officer with the TDPS will be on hand for the 1 p.m. program which is being co-sponsored by the Spearman PD, the Spearman PTA and the Spearman Servitors Club.

The program will include a bicycle safety film, bicycle safety inspection and a driving course designed for the children to use the safety techniques learned during the program.

The program will run three to four hours in length and children should have their own bicycle available for use.

Jarrett takes position with Amarillo tabloid

James Jarrett, former publisher of all three Hansford county newspapers, has been named executive vice president and associate publisher of Fun Country News, Inc. in Amarillo.

The Spearman resident assumes his new position today (Thursday) in Amarillo.

Fun Country News is a weekly tabloid which is being established in the Panhandle metropolitan community. Over the next year, a series of community weeklies and a rural edition in the Amarillo area will be started under Jarrett's

guidance. "Spearman and Hansford county have been very good to me and I've been fortunate to make quite a few friends here," notes the former Hansford county publisher. "Had this opportunity not presented itself, I would probably have made Spearman and Hansford county my home for life."

In addition to the Amarillo weeklies, Jarrett will also be working on a monthly rural edition which will be available to residents in an area which covers the Texas Panhandle down as far as Tahoka, just south of Lubbock.

RCA WEEK

ONCE-A-YEAR VALUES!

NOW'S THE TIME TO BUY RCA, THE LEADER IN HOME VIDEO

QUANTITIES ARE LIMITED!

\$1.00 Rebate

Bonus Bucks
\$1.00 rebate on RCA T-120 Video Tape

Sale Price for RCA T-120	\$3.99
Less RCA Mail-In Rebate*	- 1.00
Your Final Cost Each	\$2.99
	Reg. \$5.95

*Details In Store

RCA Video Tape

When You're Playing for Keeps!
Now... Lifetime Warranty!

5 YEARS PARTS/LABOR AT NO ADDITIONAL CHARGE!

*5-YEAR CONSUMER PROTECTION PLAN GOOD ONLY AT PARTICIPATING INDEPENDENT RCA DEALERS. GUARANTEED NATIONALLY BY EWC ELECTRONICS INCORPORATED

\$1199⁰⁰

RCA VHS Camcorder
With case

- 6:1 power zoom lens
- Infrared auto focus system
- Solid state MOS image sensor
- Excellent low light performance
- HQ (High Quality) VHS capability
- 3-way AC/DC versatility (with optional cord)

\$299

Model FPR500
20" diagonal

RCA 20" diagonal XL-100 Color TV

- Hi-Con™ square-corner COTY picture tube
- Solid-state tuning system
- Automatic contrast/color tracking
- BlackLock contrast circuit
- Unitized XtendedLife chassis

\$219.

Model EPR350E
13" diagonal

RCA 13" diagonal XL-100 Color TV

- Hi-Con™ COTY picture tube
- Solid-state tuning system
- Automatic contrast/color tracking
- Unitized XtendedLife chassis

\$529.

w/Remote

RCA ColorTrak

\$349.

Model VPT294

RCA 25" diagonal ColorTrak TV

- Digital Command unified remote control
- Hi-Con™ square-corner 110° COTY picture tube
- 147-channel cable-compatible tuning*
- Auto-Programming
- Stereo adapter jack
- On-screen time and channel number

\$679.

Model GXR659PR
25" diagonal

RCA 25" diagonal XL-100 Color TV

- ChannelLock digital remote control
- Hi-Con™ square-corner 110° COTY picture tube
- 147-channel cable-compatible tuning*
- Auto-Programming
- On-screen channel number display

\$429.

Model VPT295

RCA Stereo VCR

- MTS Dolby† Stereo recording/playback with SAP
- Infrared remote control
- Remote control 1-year/4-event programming with fluorescent display
- 111-channel broadcast/cable tuning with Auto-Programming*
- High-speed Search and Stop Action (SLP)
- Compatible with RCA audio/video systems

\$799.

Model GPR2530
26" diagonal

RCA 26" diagonal ColorTrak 2000 Stereo Monitor-Receiver

- Digital Control unified remote
- Total remote operation with ESP™
- MTS stereo sound system with 5 watts per channel†
- 3-jack audio/video monitor panel
- Hi-Con™ square-corner 110° COTY picture tube
- 147-channel cable-compatible tuning*
- Auto-Programming

\$469.

Model VPT395

RCA Stereo VCR

- MTS Dolby† Stereo recording/playback with SAP
- On-screen 1-year/6-event remote programming and operating displays
- 120-channel broadcast/cable FS tuning with Auto-Programming*
- "Field-still" video system with jitter-free special effects
- Compatible with RCA audio/video systems

\$949.

Model FPR2722
27" diagonal

RCA 27" diagonal Dimensia Stereo Monitor-Receiver

- Dimensia Digital Control unified remote
- Total remote operation with on-screen prompts
- MTS stereo sound system with 5 watts per channel†
- 20-jack audio/video monitor panel
- "Vista Screen 27" Hi-Con™ picture tube
- 147-channel cable-compatible tuning*
- Auto-Programming

NOW! For a Limited Time.. \$50 CASH BACK*

with purchase of any RCA DIMENSIA 27" diagonal Table Model TV

Boody FURNITURE CO.

Plains Shopping Center
659-3701
Spearman, Texas

MasterCard
VISA

Terms: 30-60 Day Open Account
90 Days Same as Cash
24 Months Bank Rate Financing
24 Month Revolving Accounts
All Terms Subject to Credit Approval

DON POWELL

with 20 years experience in buying and selling Stocker and Feeder Cattle is now also offering you the newest method of marketing your cattle . . .

Electronic Video Auction

Through
Texas Livestock Marketing Association
who have been in the business since 1930

2 Sales a Month

Watch for our next sale on April 28.
SPACENET 1, CHANNEL 23, 9:30 a.m.

Consign your cattle with CONFIDENCE!

For further information call Don Powell at (806)323-6890

Adjusting the antenna for your favorite sitcom is not a laughing matter

Your favorite sitcom may be funny, but adjusting a television antenna to watch it is serious business. That's because antennae often combine two dangerous factors — they're near power lines, and they conduct electricity. If the antenna strikes a power line while you're holding it, the results can be deadly.

To adjust your antenna safely, please remember to make sure it is installed far enough away from power lines that it could fall without striking one.

For more information on power line safety, call or visit your local Texas-New Mexico Power Company office today.

Texas-New Mexico Power Company.

Neighborhood Professionals
Offering You The Best Choice