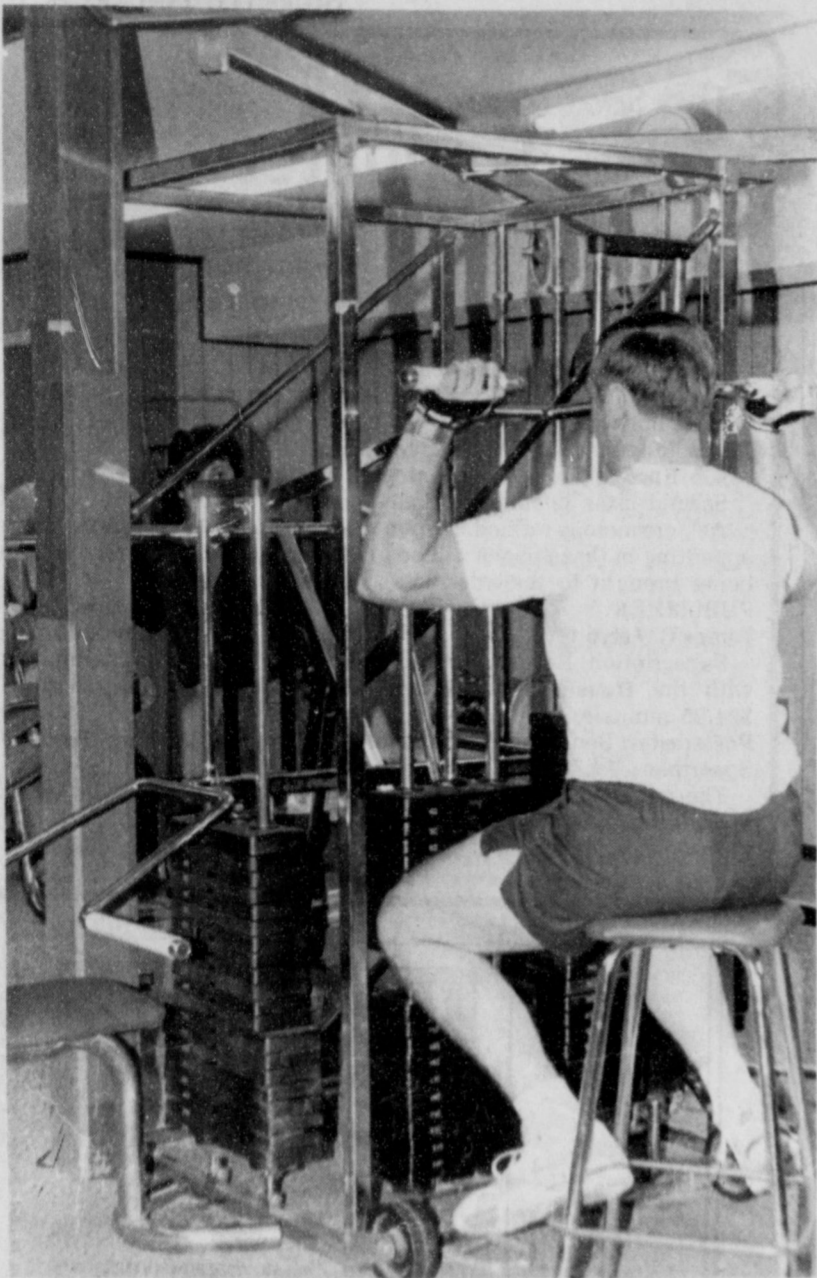
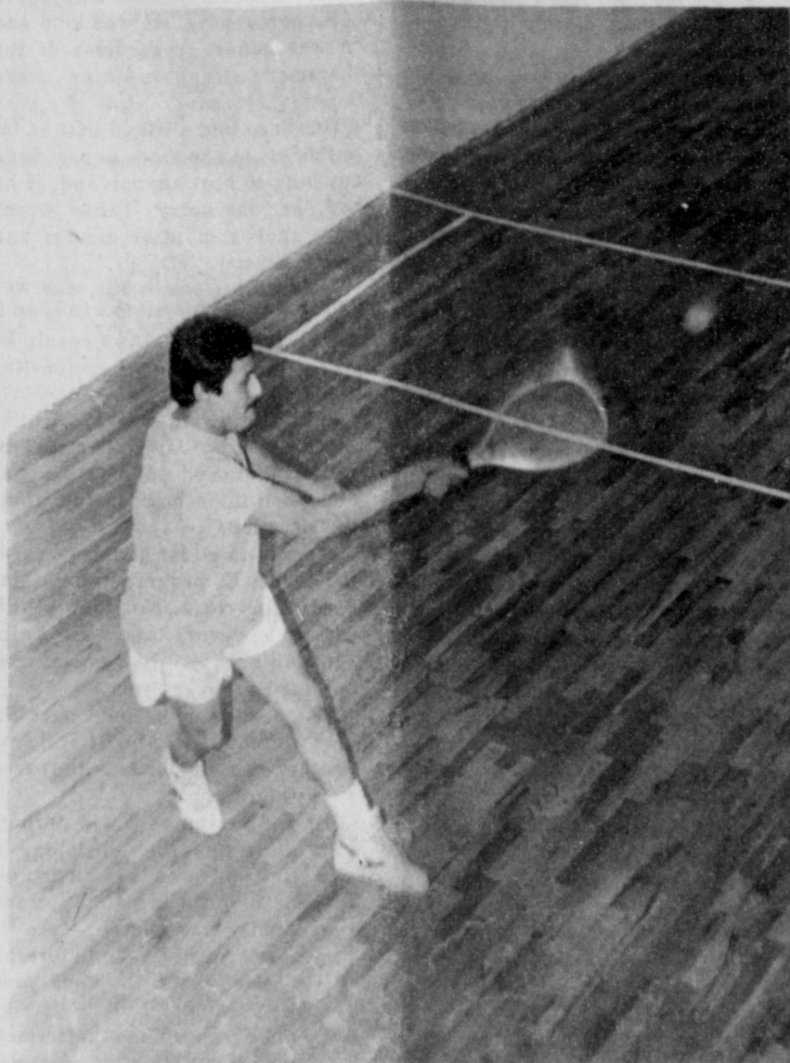


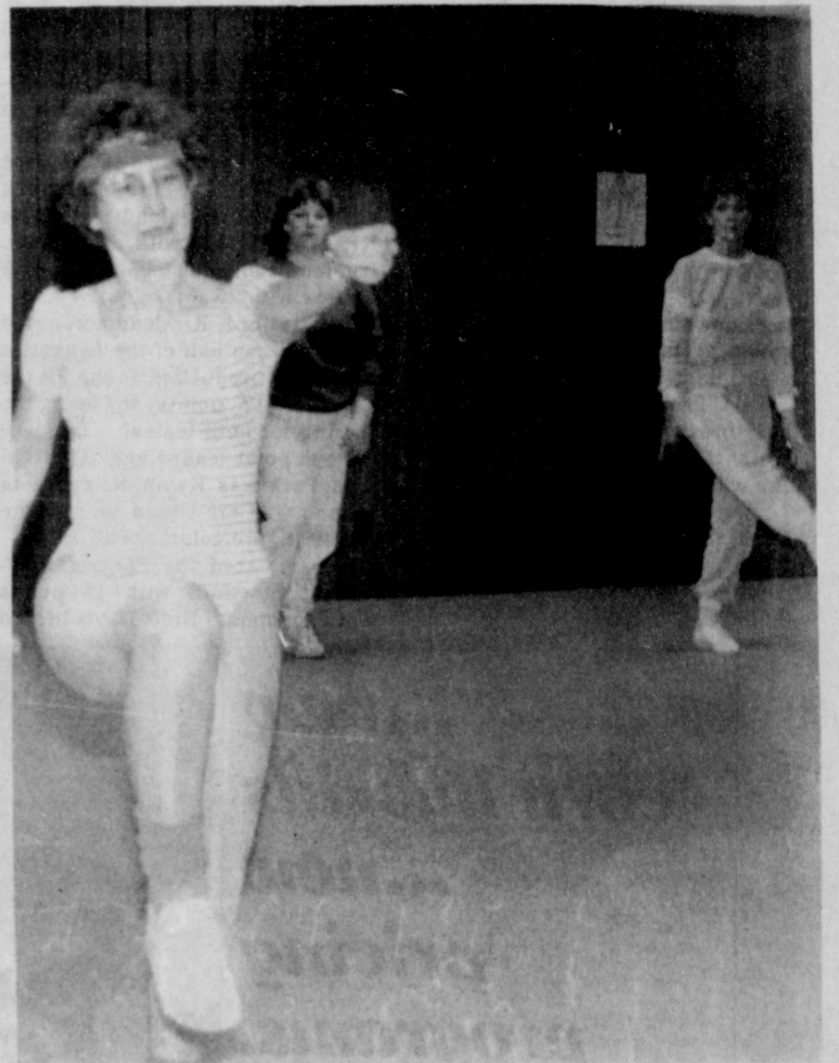
## Working out at the Y...



ACTIVITIES ARE STRONG at the Hansford and vicinity Y during winter months, not only for youth, but for adults as well. This series of photographs pictorially display the varied activities available for both



young people and adults at the Spearman athletic center. For those looking to firm up muscle tone or improve bulk, the Y has a full service weight machine as well as free weights which are available to both men and women. And the racquetball court is available six days a week for



singles or doubles play. Finally, several different aerobics classes are offered at different times during the day and different days during the week for both women and men who are looking to keep their shape during the often sedentary winter months.

### The HANSFORD REPORT

by JAMES JARRETT



Somehow, as I grow older, my cynicism seems to grow proportionately. A gentleman friend of mine suggested that it was in direct correlation with the number of years a man had been married—but if that were the case, my wife would be just as cynical, and she's not.

My most recent outbreak of cynicism came Monday evening with the Presidential State of the Union Address.

The tone of the evening was set when the television announcer said, as President Reagan walked down the aisle of the House of Representatives, "The President is now 76 years old... he will be 77 his next birthday."

With reporting as bold as this, is it any wonder that TV news is in trouble. After all, how many of us would have realized the President would be 77 his next birthday had the announcer not bothered to tell us.

As much as I admire Ronald Reagan, he did little to dissuade my cynical outlook that evening.

First, he promises not to propound on the accomplishments of the past seven years—instead, he tells congress to get their work shoes on because "we're not through yet."

Before 60 seconds had elapsed, he was mightily engaged in propounding the accomplishments of the past seven years.

And, in the usual inimitable style of today's politicians, he spoke in generalities which were indeed factual—but perhaps didn't tell the whole story.

One statement had the President declaring that the ranks of those at the poverty level had shrunk faster during his term than ever before in the history of the nation.

This may well be true. After all, the number of people at or below the poverty level had declined by three-tenths of one percent since the 1980 census.

What I don't know is how many souls this translates into. Nor do I know how many of those are making just above the poverty level, or how many died, or just exactly what segments of society are included in those percentages.

If I file a 1040 for my son and he made some \$2,000 of reportable income last year, does he get counted as a member of those on the poverty report?

I don't know. It's conceivable he could be. But I certainly hope that he wouldn't. It is possible that at one time, this was going on and situations such as this were eliminated? Could that held account for the decrease in the poverty level?

Mr. Reagan is not the only politician to use tactics such as this—indeed, it's popular game on

every level of government.

As long as the American public sees through the sham of such general statements, then no harm is done.

And, please, this is not a treatise for or against any certain party or any certain politician.

Mr. Reagan is but one example of what many Republicans and Democrats alike are doing. Not only on the federal level, but on the state level as well.

As our country continues to sink into a financial morass of unparalleled porportion, it's time to quit the political posturing and get down to the important business of getting our country out of trouble.

It's time to quit being Democrats or Republicans and start being Americans. Let's hope it's not too late to accomplish it all.

### Gruver PTA meet Monday

The Gruver PTA will hold their regular meeting this coming Monday evening at 7 p.m. in the Gruver schools auditorium, reports spokesperson Lisa Salmans.

Three events are scheduled for the meeting with both the second and third grade classes to perform songs for those present.

In addition, Peggy Frick's second grade class will present a special Valentine play during the meeting.

The seventh grade band will also perform for the PTA members present at Monday's meeting.

### District race tightens

With only four games remaining during the 1987-88 regular cager season, district leads are beginning to clarify on the girls side of the ledger while five 1-AA boys teams still have at least a shot at a share of the conference crown.

A total of three girls teams and two boys teams have already been statistically eliminated from conference contention with records of five or more losses.

Highland Park, West Texas and White Deer each have at least five losses in girls competition while West Texas and Panhandle are out of contention in the boys cager listings.

The Lynxettes remain one game in front of Panhandle with a perfect 8-0 mark. The Lady Panthers only loss has been to the Spearman girls as they hold a 7-1 record.

The Lady Elks from Stratford are 5-3 while Gruver girls sport a 3-4 1-AA record.

The Hornets from Highland Park

The largest single charitable gift ever left to a Hansford County school has been bequeathed to the Spearman Independent School District from the estate of Gus O. Birdwell.

Estimates place the value of the bequest between \$600,000 and \$1.2-million, according to the estate's executor, Bob Pearson of Spearman.

Mr. Birdwell's will was entered into the Hansford County probate court Monday morning. The long-time Hansford farmer died Jan. 7. He was 82.

The will stipulates that property in the estate be sold and that cash be delivered to the Spearman ISD.

In addition to the SISD bequest, Mr. Birdwell also directed cash payments to three individuals.

After the cash payments to those individuals, the will states, "All the rest, residue and remainder of my estate shall be paid by my executor to the Spearman Independent School District..."

It goes on to state that the money may be used for construction of

See "GIFT" p-2

continue to lead the boys 1-AA listings with a 7-1 record. Spearman holds a half-game edge over third place Gruver with the Lynx at 5-3 and the Greyhounds at 4-3.

Stratford and White Deer are knotted in fourth place.

The two teams with the best records in both boys and girls district basketball action will advance into post-season playoffs.

#### GIRLS

Spearman	8-0
Panhandle	7-1
Stratford	5-3
Gruver	3-4
Highland Park	3-5
West Texas	1-6
White Deer	0-8

#### BOYS

Highland Park	7-1
Spearman	5-3
Gruver	4-3
Stratford	4-4
White Deer	4-4
West Texas	2-5
Panhandle	1-7

The Spearman

# Reporter

Volume 80, No. 13

YOUR HOMETOWN NEWSPAPER

Thursday, January 28, 1988

25¢  
Per Copy

6 Pages

From Gus O. Birdwell estate . . .

## SISD gift may amount to \$1-million

### An Editorial:

## Birdwell makes headlines in death

By James Jarrett

After a life of quiet concern and totally selfless giving, Gus Birdwell has made the headlines. It had to wait until after his death, because in life, Gus never would have allowed it.

Despite a gruff exterior and a philosophy choiced full of ultra-conservative ideas, Gus Birdwell was generous to fault.

A confirmed bachelor, he nevertheless understood the needs of youth and worked his quiet miracles through anonymous donations to the Hansford and other youth-oriented organizations.

The ultimate gift he bequeaths to the youth of this community through his belief that education is the surest deterrent to communism of any tool available.

As if often the case, Gus was labeled sometimes disparagingly by those who didn't know the true man behind the exterior he presented to the world.

From his size 12 shoes to the clothes he purchased from the thrift store which supports the Hansford Library, Gus was considered an eccentric. But there may have been more method to that supposed "madness" than many would consider possible.

Born in 1905 in Gaines county, available records show him to be the first white man born there. He came to the upper Panhandle as a young man and he worked in Lipscomb county for his uncle, Dudley Stephenson.

He graduated from the Moody Institute of Chicago and was a trained electrician. He was also very well read, and could hold discourses on numerous and varied subjects.

Extremely shy, Gus forced himself to take a Dale Carnegie Course—a course he later declared was "sheer hell" because of the exposure it forces upon those involved.

Needless to say, he didn't like crowds and it was difficult at best

for strangers to get to know Gus Birdwell. For that reason he became known somewhat as a recluse.

Despite his timidity, close friends of the Hansford farmer knew him well for his keen sense of humor.

Once, when questioned about his bachelorhood, Birdwell admitted to having been married once, back in the 1930's. That marriage, however, lasted nine months to the day—the legal requirement before divorcees are granted so soon after a marriage.

"My wife couldn't stand for me to overhaul engines in the living room," he quipped to friends.

And, with that, he made a firm commitment to the life of a bachelor.

A stranger wouldn't know he had money from the way he dressed, wearing clothing from the Library Thrift Store in Spearman.

But many individuals in Spearman and Hansford county knew first hand the generosity Gus Birdwell was capable of doling out.

Most of his gifts were in the forms of loans he never intended collecting. A few were of material things—some of which may have cost the Spearman man \$20,000 or more.

One had to know him personally

See "BIRDWELL" p-2

At Spearman airport . . .

## City okays preliminary plans for improvement

Spearman city councilmembers were presented the preliminary plans on an airport improvement project which will be included with an application for funding to the Federal Aviation Administration during their regular bi-monthly meeting Tuesday evening.

The plans were presented to the council by Amarillo engineer Dwight Brandt. Following a short discussion, city officials asked Brandt to include the cost of sterilizing the ground under the base for the north end of the runway and the entire length of the taxi-way in order to control bind weed problems.

In other business, the council approved changing the city's bi-weekly pay period from a Monday through the second Sunday schedule to a Saturday through the second Friday schedule in order to fit the schedules of personnel on call during weekend periods.

They also revised the personnel

policy handbook to allow compensatory time at the rate of one and one-half hours for every one hour overtime for those employees who elect this form of compensation.

Councilmembers also voted to ratify the Hansford County Appraisal District's right to own property and building as required by a law passed last summer by the 70th Legislature.

They passed over a request by the city of Hereford to participate financially in that city's PCBAN-project.

Instead, they asked the Spearman chamber of commerce to act as a central office for Spearman citizen's who wish to donate to help Hereford with expenses incurred by the project.

The city of Hereford has requested \$500 from Spearman to go toward the better than \$60,000 of expenses incurred by the Deaf Smith county seat during the PCBAN project.

## Lynx, Lynxettes beat Stratford

The Spearman Lynxettes maintained control of the district 1-AA girls lead with a pair of wins this past week and the Lynx eager crew moved into sole possession of second place despite a loss to league leader Highland Park.

The Lynx quintet upped their district record to 5-3 with an edge-of-the-seat double overtime thriller at Stratford Tuesday evening, downing the Elks by a 50-49 count at the end of the second overtime period.

Last Friday, they lost a 59-51 heartbreaker to the Highland Park Hornets in a game played at Amarillo.

The Lynxettes, meanwhile, continue their domination of district 1-AA opponents, keeping their conference mark unblemished at 8-0.

Last Friday they easily handled the Highland Park girls by a 55-36 count, but fought a strong defensive battle with the Lady Elks in Stratford Tuesday evening, winning that tilt with a 29-18 score.

High point for the Spearman girls against Highland Park was Krista Kirkland with 24 points. Londee Bradley also gained double figures with 15 that night.

At Stratford, Kirkland accounted for more than half of the Lynxettes total point production as she hit the nets for 17 points to lead the scoring for both teams.

Boys point leader against Highland Park was Kevin Nelson with 17 points. Carl Urban gained the double figure column with 12.

Urban paced the Spearman effort at Stratford with 15 points while teammate Brett Davis tucked

in 14 to gain double figures as well.

Junior varsity action saw the Spearman girls put together a pair of wins while the Lynx jv'ers fell on the short end of a pair of long scores.

The Lynxettes jv crew posted a 28-23 win over Highland Park and edged out Stratford by a 22-18 count.

The Lynx junior varsity boys saw Highland Park eke out a 37-36 win then Stratford claimed a 31-25 victory Tuesday evening in Stratford.

The varsity and jv boys will take a breather from roundball action this Friday evening while the Lynxettes play host to the Wayland Queen Bees--the junior varsity girls team from Wayland Baptist College in Plainview.

## BIRDWELL

to fully comprehend the true depth of his personality. He was kind and he was honest, regardless of the character strangers may have thought they saw.

Gus once told a friend that as far as he knew, he had never done anything to hurt anyone and, if he had, he was sorry. Those words were spoken in utter candor and deep sincerity.

News of his generosity was well known despite his efforts to keep it as quiet as possible. As a result, he was beset by those requesting donations.

And, Gus would give. It might be as little as a dollar or it might be several thousand dollars . . . it all depended upon how he felt about the situation.

He was noted for giving wheat to the C.A.R.E. program--something he did for years. Not just a little wheat, however; that wasn't Gus Birdwell's style. He gave a train box car load every year.

The next year, he paid back the loan with interest. And he still gave another box car load to the overseas program.

One of the things which perhaps best illustrates the ideology of Gus Birdwell was his insistence that his bequest remain in Hansford county--the place where he had made his private small fortune.

Gus now rests in him home county of Gaines. But he left his personal assets to the betterment of Hansford county and the Spearman community--the place which had served him so well for so long.

Perhaps the most fitting tribute to the man would be to name one of the Spearman school buildings after Gus Birdwell. After all, it's not every day an institution--public or private--is left a million dollars. It would, indeed, be a small thing to do for so grand a gesture.

## continued from p-1 GIFT

new buildings, remodeling of existing buildings, or in payment for existing buildings which must belong to and be located within the SISD.

"We're overwhelmed and extremely appreciative," SISD superintendent Larry Butler declares. "Whatever the amount of the gift, it will be put to good use."

It may be several years before the Spearman school district receives any money from the estate -- depending upon the length of time it takes to sell property of the estate.

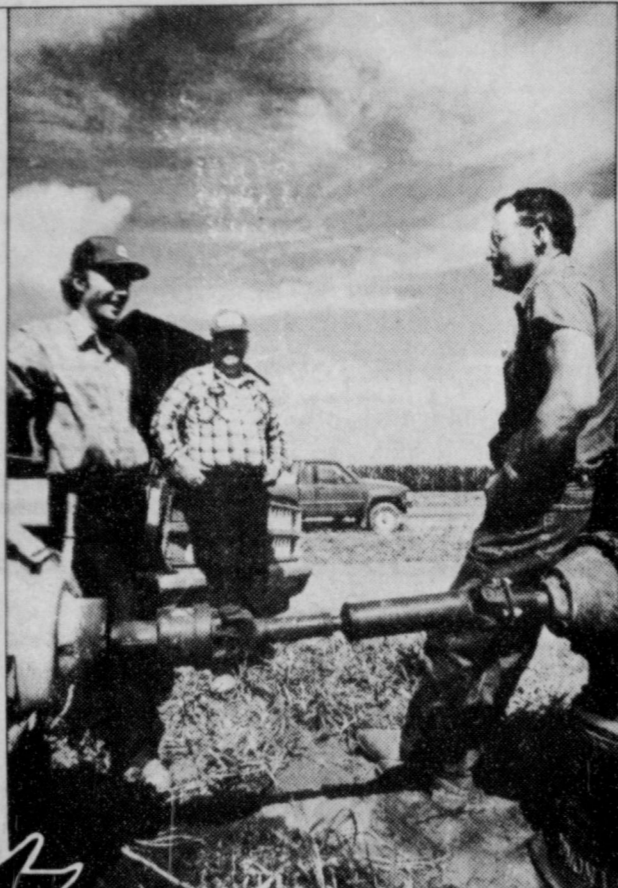
A portion of the property is tied up in a lease which runs until 1990, notes the executor. That property cannot be sold until the lease expires.

"By the time estate taxes are paid and all the property is sold, the cash gift to the Spearman school district could be anywhere from \$600,000 to \$1.2-million," notes Pearson.

...new  
corn hybrids  
...new  
pricing  
programs.

When it comes to seed corn, no one has better hybrids or better pricing options than your neighborhood Pioneer representative.

For the High Plains  
3168 • 3124



Clyde Dammann, Jr., Pioneer Sales Representative (l), with his dad, Clyde Dammann, Sr., and customer Jim Collins (r), near Dimmitt, Texas.

# Get Together

with...

Billy Logsdon  
733-2803

Joe Paul  
435-2501

Andy Watley  
659-3970

COME TO OUR BIG  
**SUPER BOWL PARTY**  
THIS SUNDAY

WATCH THE  
**DENVER BRONCOS**  
TAKE ON THE  
**WASHINGTON REDSKINS**  
ON OUR BIG SCREEN TV  
Beginning at 3 p.m.

FREE HORS D'OEUVRES

**Cattleman's Supper Club**

Hwy. 207 S. Spearman

The Spearman  
**Reporter**  
Your Hometown Newspaper

USPS 509660 Spearman, Tx. 79081  
213 Main, Box 458, 659-3434

Published Weekly at  
213 Main, Spearman, Texas

Owned and Operated by:  
**Texas Independent Newspapers, Inc.**  
19906 Encino Grove, San Antonio, Tx 78259  
Second class postage paid at Spearman, Texas 79081.

Any erroneous reflection upon the character of any person or firm appearing in these pages will be gladly and promptly corrected upon being brought to the attention of the management.

PUBLISHER **James C. Jarrett**  
ADVERTISING DIRECTOR **Kirby McAdams**

Subscription Rate: Spearman, adjoining counties, combination with the **Hansford Plainsman**, \$19.95; non-adjoining counties, \$24.95 annually.

Postmaster: Send address changes to **Spearman Reporter**, Box 458, Spearman, Tx. 79081.

The publisher reserves the right to revise or reject at its option any advertisement which it deems objectionable, either in subject or phraseology, or which it may deem detrimental to its business.

**ULTRAWING**  
**SWEEP**

How does your sweep wear?

- Full parallel wing ends
  - sweep does not narrow during wear
  - retains approximate cutting width
- Wider wing widths
  - heavier construction
  - longer wear
  - more material to wear
- Convex wing surface
  - increased angle of penetration without increasing lift
  - less resistance to penetration
  - enhanced strength

Compare the Wear  
Ask your local farm implement dealer.

**SPEARMAN EQUITY'S EXPO**

SPEARMAN COUNTY BARN

February 4th  
10 a.m. to 4 p.m.

Lunch will be provided

**QUICK HOSPITAL COVERAGE**

Time's Short Term Hospital plan provides fast low cost "interim" coverage. If you're in between jobs. Recently graduated or discharged from service.

It offers a choice of 60, 90, 120, or 180 day protection. Comprehensive coverage. Low rates. And the policy can be issued on the spot. That quick. Of course, there's no coverage for pre-existing conditions.

Let me tell you the details of this quick coverage plan.

**Hansford Agency**  
Buri Buchanan  
659-3888  
TIME INSURANCE COMPANY

# THAT'S ENTERTAINMENT

## A FULL WEEK OF PROGRAMMING.....

Jan. 28 - Feb. 3

Jan. 28 - Feb. 3

### \* LEGEND \*

Channel	Station
[2]	ESPN
[3]	OETA
[4]	TMC
[5]	THC
[7]	KVII
[8]	CBN
[9]	WGN
[10]	KFDA
[11]	TBS
[12]	CNN
[13]	TBN
	SHOW

### THURSDAY January 28

#### EVENING

- 6:00 [2] College Basketball Louisville at S. Mississippi (L)
- [3] Nightly Business Report
- [4] [7] [10] 10 News
- [5] MOVIE: *Waltz Across Texas* (1982) Woman geologist joins a wildcatter in an oil drilling venture. Terry Jastrow. Anne Archer. PG. 1-39
- [8] Remington Steele
- [9] Cheers Peterson Principle
- [12] Moneyline
- [13] Jerry Barnard
- [SHOW] MOVIE: *Assisi Underground* (1986) A faction of the Catholic clergy protects Italian Jews during WWII. Ben Cross. Maximilian Schell. PG. 1-54
- 6:05 [11] 17 NBA Basketball Hawks at Lakers (L)
- 6:30 [3] Oklahoma News
- [4] 4 M\*A\*S\*H
- [7] Wheel of Fortune
- [9] Barney Miller Indian
- [10] Love Connection
- [12] Crossfire
- 6:35 [11] 17 Sanford and Son This Land Is Whose Land?
- 7:00 [3] This Old House A stone wall is built in the garden area at Weatherbee Farm. L
- [4] The Cosby Show Sondra and Elvin return from their honeymoon with surprising news. (R) (L)
- [7] The Charmings Snow, Eric and Lilian discover the magic of a modern credit card. (R) (L)
- [8] Hell Town
- [9] MOVIE: *Ghost Story* (1981) Four elderly New Englanders are tormented by an old secret. Fred Astaire, Alice Krige. R. 1-50
- [10] 10 Tour of Duty The men of Bravo Company suffer a series of successful ambushes. (R) (L)
- [12] PrimeTime Live
- [13] TBN Today
- 7:05 [11] 17 MOVIE: *She Wore a Yellow Ribbon* (1949) A cavalry outpost makes a desperate attempt to repel invading Indians. John Wayne, John Agar. NR. 1-43
- 7:30 [3] Wild America (1987) Explore the behavioral patterns of several species of kingsnakes. (L)
- [4] 4 A Different World Dwayne is caught climbing out of Whitley's window after midnight. (R)
- [7] MOVIE: *ABC Thursday Night Movie Live and Let Die* (1973) Agent 007 investigates the murder of three agents. Roger Moore, Yaphet Kotto. PG. 2-01 (L)
- [13] Dale Evans
- 8:00 [2] College Basketball North Carolina at Wake Forest (L)
- [3] Mystery! Pennyfarther's disappearance seems to be connected to Gorman's murder. (L)
- [4] Cheers Sam hustles to get Carla and Eddie married by a certain time. (R)
- [5] MOVIE: *Macaroni* (1985) Two men meet again nearly 40 years after their encounter in WW II. Jack Lemmon, Marcello Mastroianni. PG. 1-44 (L)
- [8] 700 Club
- [10] 10 Simon and Simon Rick is at war with his emotions when evidence points to his friend. (L)
- [12] Larry King Live!
- [13] Dwight Thompson
- [SHOW] MOVIE: *Critical Condition* (1987) Conman lures insanity to avoid prison but ends up in psycho ward. Richard Pryor, Rachel Picotini. R. 1-47 (L)
- 8:30 [4] 4 Night Court After he's struck by lightning, Bull insists God spoke to him. (R)
- 9:00 [3] Lou Grant Trib reporters pry open two coverups
- [4] 4 L.A. Law Kuzak can't filter his feelings in tobacco lawsuit. (R)
- [8] Straight Talk
- [9] News
- [10] 10 Knots Landing Abby goes all out to destroy Charles. The Williams act out. (L)
- [12] Evening News
- [13] Praise the Lord Live
- 9:20 [11] 17 MOVIE: *Red River* (1948) A rancher feuds with his son on the first Chisholm Trail cattle drive. John Wayne, Montgomery Clift. NR. 2-05
- 9:30 [8] Great American Orchestra 0:30

### FRIDAY January 29

#### EVENING

- 6:00 [2] SportsCenter (L)
- [3] Nightly Business Report
- [4] [7] [10] 10 News
- [8] Remington Steele
- [9] Cheers Dark Imagining
- [12] Moneyline
- [SHOW] *Penn and Teller's Invisible Thread* The magical duo display their unique brand of entertainment. G. Gordon Liddy, Peter Wolf. NR. 1-00
- 6:05 [11] 17 Andy Griffith My Fair Ernest T. Bass
- 6:30 [2] Speedweek
- [3] Oklahoma News
- [4] 4 M\*A\*S\*H
- [5] MOVIE: *Radio Days* (1987) An affectionate, nostalgic look back at a time of innocence and hope. Mia Farrow, Dianne Wiest. PG. 1-28
- [7] Wheel of Fortune
- [9] Barney Miller Voice Analyzer
- [10] Love Connection
- [12] Crossfire
- 6:35 [11] 17 Sanford and Son Donna Pops the Question
- 6:45 [SHOW] *Comedy Club Network* (1987) A unique, short form showcase spotlighting new comedians. NR. 0-15
- 7:00 [2] NFL Super Bowl MatchUp
- [4] 4 MOVIE: *NBC Movie of the Week Return of Six Million Dollar Man and Biopic Woman* (1987) Steve Austin and Jamie Somers are reunited and combine their forces. Lee Majors, Lindsay Wagner. (L)
- [12] PrimeTime Live
- [13] TBN Today
- [SHOW] MOVIE: *Haunted Honeymoon* (1986) A bride and her phobic husband face the horrors of the Abbot mansion. Gene Wilder, Gilda Radner. PG. 1-23
- 7:05 [11] 17 NBA Basketball Celtics at Pistons (L)
- 7:30 [2] Super Bowl XXII Special (T)

- [3] Wall Street Week 0:30
- [7] Mr. Belvedere Heather's 16th birthday is only days away; George is worried. (L)
- [13] Diane Bish
- 8:00 [2] Top Rank Boxing From Las Vegas. NV (L)
- [3] World at War Desert
- [5] MOVIE: *The Ratings Game* (1984) Trucking magnate tries to beat TV ratings system and become producer. Danny DeVito, Rhea Perlman. NR. 1-42 (L)
- [7] The Thorns Chad and the girl next door fall in love, but their parents clash. (L)
- [8] 700 Club
- [10] 10 MOVIE: *Hallmark Hall of Fame Stoned* (1988) American couple leaves comfortable life in quest to return to roots. Glenn Close, Keith Carradine. (L)
- [12] Larry King Live!
- [13] Fred Price
- 8:30 [7] Sledge Hammer! Sledge searches for the woman he believes is the governor's daughter. (L)
- 9:00 [3] Great Performances (1987) A star studied salute to the composer Judy Styne.
- [4] 4 Miami Vice Filmmaker is accused of murdering his leading lady for art's sake. (L)
- [7] 20/20
- [8] Straight Talk
- [9] News
- [12] Evening News
- [13] Praise the Lord Live
- [SHOW] *It's Garry Shandling's Show* Crazy comic deals with life's daily problems. Garry Shandling. NR. 0:30 (L)
- 9:30 [11] 17 NBA Basketball Hawks at Lakers (L)
- [13] Brothers (1987) Paul Regina. Robert Walden. NR. 0:27 (L)

### SATURDAY January 30

#### MORNING

- 6:00 [2] SportsCenter (L)
- [7] U.S. Farm Report
- [8] Children in Crisis
- [9] Cartoons
- [11] 17 Gunsmoke Jesse
- [12] Daybreak
- [13] Art Linkletter
- 6:15 [9] 9 Buyers Forum
- 6:30 [2] Thoroughbred Sports Digest (R)
- [5] MOVIE: *Cocoon* (1985) Senior citizens are rejuvenated when they come in contact with aliens. Steve Guttenberg, Brian Dennehy. PG. 1-57 (L)
- [7] Voltron
- [8] Young and Slim Again
- [9] Issues Unlimited
- [12] Sports Close Up
- [13] Arthelene Rippy
- 7:00 [2] Tom Mann Outdoors
- [3] Market to Market
- [4] 4 Jumbo Bears I
- [7] Little Clowns of Happytown
- [8] SuperBook Club
- [9] U.S. Farm Report
- [10] 10 Hello Kitty's Furry Tale Theater
- [11] 17 Bonanza Eiegy for a Hangman
- [12] Daybreak
- [13] This is the Life
- [SHOW] MOVIE: *The Red Badge of Courage* (1951) Psychological study of soldier who panics in encounter with enemy. Audie Murphy, Bill Mauldin. NR. 1-09
- 7:30 [2] Best of Bill Dance
- [3] Economics USA 0:30 (L)
- [4] Smurfs
- [7] 7 All New Pound Puppies
- [9] 9 World Tomorrow
- [10] 10 Muppet Babies
- [12] Big Story
- [13] John Jacobs
- 8:00 [2] Fishin' Hole
- [3] My Pet Monster
- [7] Our Friends on Wooster Square
- [8] Charlando
- [9] 9 National Geographic Explorer The best scientific, travel, adventure and historical documentaries.
- [12] News Update
- [13] KPTL
- 8:10 [12] Healthweek
- 8:30 [2] Outdoor Life Magazine With William Conrad
- [3] Joy of Oil Painting
- [5] MOVIE: *Bad Medicine* (1985) A student enrolls in a Central American med school for funnies. Steve Guttenberg, Julie Hagerty. PG. 1-40 (L)
- [7] 7 Little Wizards
- [8] Kidsworld
- [9] People to People
- [12] Moneyweek
- [13] Toddler's Friend
- [SHOW] MOVIE: *The Shoes of the Fisherman* (1968) Archbishop returns to religious duties after 20 years in prison. Anthony Quinn, Oskar Werner. G. 2-37
- 9:00 [2] All American Pulling Series From Charlotte, NC (R)
- [3] Frugal Gourmet (1987) Chef Smith prepares rabbit in mustard sauce, and fried rabbit.
- [4] 4 ALF
- [7] Real Ghostbusters
- [8] Rin Tin Tin
- [9] 9 Minority Business Report
- [10] 10 Pee Wee's Playhouse
- [12] News Update
- [13] Joy Junction
- 9:10 [12] ShowBiz Week
- 9:30 [2] Boardwalk & Baseball's Super Bowl of Sports Trivia (R)
- [3] This Old House Random width Southern yellow pine flooring is laid in the new kitchen. L
- [4] 4 Alvin and the Chipmunks
- [8] Sky King
- [9] Superman
- [10] 10 Mighty Mouse: New Adventures
- [12] Style with Elsa Klensch
- [13] Gospel Bill
- 10:00 [2] Scholastic Sports America (R)
- [3] Hometown (1988) Outdoor deck construction is illustrated. (L)
- [4] 4 Fraggle Rock
- [7] Bugs Bunny and Tweety Show (L)
- [8] Lone Ranger
- [9] 9 Good Times Florida Gets a Job
- [10] 10 Popeye and Son
- [11] 17 NWA World Championship Super Bouts
- [12] News Update
- [13] Davey and Goliath
- 10:10 [12] Science Technology Week
- 10:30 [2] SportsCenter NFL Gameday
- [3] New York Master Chefs
- [4] 4 New Archies
- [5] MOVIE: *Assassination* (1987) A plot to kill the First Lady has a secret agent in the run. Charles Bronson, Jill Ireland. PG. 1-28
- [7] Flintstone Kids (L)
- [8] Rifleman
- [9] 9 Jeffersons Jimmy's Opportunity
- [12] NCAA Preview
- [13] Cartoon Carousel
- 11:00 [2] College Basketball Wake Forest at Virginia (L)
- [3] Justin Wilson's Louisiana Cookin' Chef Wilson demonstrates how to prepare barbecue brisket (marinated).
- [4] 4 Football
- [7] 7 Animal Crack-ups
- [8] Gunsmoke
- [9] 9 Soul Train
- [10] 10 Teen Wolf (L)
- [11] 17 MOVIE: *Godzilla's Revenge* (1959) Child dreams of adventures with Godzilla's son & other monsters. Kenji Sahara, Tomonori Yazaki. G. 1-09
- [12] PrimeTime Live
- [13] Circle Square
- 11:30 [3] Victory Garden
- [4] 4 Spectacular World of Guinness Records
- [7] 7 American Bandstand

- [9] 9 Baseball High
  - [12] Evans and Novak
  - [13] One Way Game
  - [SHOW] MOVIE: *Marie: A True Story* (1985) A woman, at grave personal risk, fights political corruption. Sissy Spacek, Jeff Daniels. PG. 1-48 (L)
- #### AFTERNOON
- 12:00 [3] Oklahoma Gardening
  - [4] 4 Weight Control
  - [5] MOVIE: *Rumpelstiltskin* (1987) A simple miller's daughter dreams of marrying a prince. Amy Irving. G. 1-24
  - [8] Iron Horse
  - [9] MOVIE: *Keep 'em Flying* (1941) Abbott and Costello are in the Air Force! Abbott and Costello, Martha Raye. NR. 1-26
  - [10] 10 Lifestyles of the Rich and Famous
  - [12] Newsday
  - [13] Inside Track
  - 12:30 [3] Kovel on Collecting
  - [4] 4 Crook and Chase (1986) Daily magazine with informative interviews and entertainment. 0:30
  - [7] Wheel of Fortune (L)
  - [11] 17 MOVIE: *Abbott and Costello* (1979) Film compilation of the best routines of Abbott and Costello. 1:12
  - [12] Newsmaker Saturday
  - [13] Maker's Match
  - 1:00 [2] All American Pulling Series From Louisville, KY (R)
  - [3] Living With Animals
  - [4] 4 Senior Skins Game Golf from Oahu. HI (L)
  - [7] Road to the Superbowl
  - [8] Alias Smith and Jones
  - [10] 10 College Basketball Georgia Tech at N. Carolina (L)
  - [11] 17 Update
  - [13] Dale Evans
  - 1:10 [12] Healthweek
  - 1:30 [2] All American Pulling Series From Indianapolis, IN
  - [3] Newton's Apple Go underground to explore the hidden mysteries of caves. 0:30 (L)
  - [5] MOVIE: *Lucky Lady* (1975) A widowed saloon owner starts a rum running scheme in the 1920s. Gene Hackman, Liza Minnelli. PG. 1-57
  - [12] Style with Elsa Klensch
  - [13] Don Spradling
  - [SHOW] MOVIE: *Broken Promise* (1981) Five stories of abandoned children dramatize their plight. Chris Sarandon, Melissa Michaelsen. NR. 1-40
  - 2:00 [2] American Muscle Magazine (R)
  - [3] Drug Free Kids: A Parents' Guide This film helps parents understand and cope with teenage drug use. NR. 1:00
  - [7] Pro Bowlers Tour Greater New Orleans Classic (L)
  - [8] Big Valley
  - [9] 9 MOVIE: *The Far Horizons* (1955) Two men set out to map the newly purchased Louisiana Territory. Charlton Heston, Fred MacMurray. 1-48
  - [11] 17 24 Hours of Daytona
  - [12] Your Money
  - [13] Deaf World
  - 2:30 [12] Foreign Correspondents
  - [13] Roy Brunson
  - 3:00 [2] Countdown to Calgary (R)
  - [3] Nova Explore the development of a new snack food -- an inexact science. (L)
  - [4] 4 College Basketball Illinois at Arizona (L)
  - [6] Laredo
  - [10] 10 Phoenix Open Golf From Scottsdale, AZ (L)
  - [11] 17 Andy Griffith On the Artist
  - [12] News Update
  - [13] Trumpets in the Morning
  - 3:10 [12] Sports Closeup
  - 3:30 [3] American Adventure The Colonial Experience
  - [4] 4 Amazing Grace Bible Class
  - [7] 7 Kids Are People, Too
  - [9] 9 Heritage of Faith
  - [12] Crossfire
  - [SHOW] *Gadgets, Gimmicks and Games* Wombles invent gadgets, play games and make good use out of rubbish. NR. 0:27
  - 7:35 [11] 17 Tom and Jerry
  - 8:00 [2] Super Bowl XV Highlights Raiders vs Eagles (R)
  - [3] American Adventure A New Society
  - [4] 4 Day of Discovery
  - [5] MOVIE: *Star Spangled Girl* (1971) Patriotic small town girl conflicts with two magazine executives. Sandy Duncan, Tony Roberts. G. 1-33
  - [7] Young Universe
  - [8] Our Sunday Best
  - [9] 9 Mass for Shut Ins
  - [10] 10 Second Baptist Church
  - [12] Daywatch
  - [13] Earl Paulk
  - [SHOW] *Faerie Tale Theatre: Rip Van Winkle* (1987) Rip discovers that his afternoon nap has lasted 20 years. Harry Dean Stanton, Talia Shire. NR. 1:00 (L)
  - 8:05 [11] 17 Flintstones
  - 8:30 [2] Super Bowl XVI Highlights 49ers vs Bengals (R)
  - [3] Outdoor Oklahoma
  - [4] 4 Larry Jones
  - [7] 7 Father Murphy
  - [9] 9 Popeye
  - [10] 10 First Baptist Church
  - [12] Your Money
  - 8:35 [11] 17 Andy Griffith Divorce, Mountain
  - 9:00 [2] SportsCenter (L)
  - [3] Capitol Press Report
  - [4] 4 NBC News
  - [7] Short Film Showcase Hollywood's legendary actors and actresses are showcased. NR. 0:30
  - [7] 7 News
  - [8] 8 Visionaries
  - [12] News Update
  - [13] Charles Robinson
  - [SHOW] MOVIE: *Harlequin Romance: Cloud Waitz* (1987) A journalist finds love while on assignment in France. Kathleen Beller, Francois-Eric Gendron. NR. 2:00
  - 9:10 [11] 17 Good News
  - [12] On the Menu
  - 9:30 [2] This Week in Sports (T)
  - [4] 4 Oral Roberts
  - [7] 7 Here Comes the Brides
  - [8] Gospel Bill
  - [9] 9 Captain Power
  - [10] 10 CBS Sunday Morning
  - [11] 17 MOVIE: *Once Upon a Time in the West* (1969) Gunslingers fight to acquire possession of a tract of land. Charles Bronson, Henry Fonda. PG. 2-45
  - [12] Newsmaker Sunday
  - [13] Richard DeHaan
  - [8] Superbowl Breakfast
  - [9] 9 MOVIE: *Virginia City* (1940) During Civil War, a rebel spy poses as a dance hall girl. Errol Flynn, Miriam Hopkins. NR. 2:01
  - [12] News Update
  - [13] Dr. D. James Kennedy
  - 10:10 [12] Travel Guide
  - 10:30 [2] SportsCenter Super Bowl Gameday
  - [7] 7 This Week with David Brinkley (L)
  - [12] NBA Preview
  - 11:00 [3] Nova Explore the development of a new snack food -- an inexact science. (L)
  - [4] 4 NBC SportsWorld World Pro Figure Skating Champs (T)
  - [11] 17 MOVIE: *People's Special*
  - [10] 10 NBA Basketball 76ers at Celtics (L)
  - [12] Newsday
  - [13] Dwight Thompson
  - [SHOW] MOVIE: *All the Brothers Were Valiant* (1953) A seafaring family searches for whales and treasure. Robert Taylor, Ann Blyth. NR. 1-41
  - 11:30 [2] Super Bowl XVII Highlights Redskins vs Dolphins (R)
  - [7] Business World
  - [8] Kidsworld
  - [12] Foreign Correspondents

- [9] 9 Star Search 1:00
- [10] 10 MOVIE: *CBS Sunday Movie Love, Mary* (1985) Nearly illiterate teen-ager goes from reform school inmate to doctor. Kristy McNichol, Matt Clark. (L)
- [11] National Geographic Explorer The Sun Trade
- [12] Week in Review
- [13] E.V. Hill
- 8:30 [2] A Turning Point The XIV Winter Olympics (R)
- [13] Lloyd Ogilvie
- 9:00 [3] Masterpiece Theatre June 1940 Prince Yakimov has taken up permanent residence with them. Kenneth Branagh, Emma Thompson. (L)
- [8] Changed Lives
- [9] 9 News
- [12] Evening News
- [13] Kenneth Copeland
- 9:15 [SHOW] MOVIE: *Witness* (1985) Detective falls in love with an Amish woman while protecting her son. Harrison Ford, Kelly McGillis. R. 1-53 (L)
- 9:30 [7] 7 The Wonder Years Look back to the youth of Kevin, as he grows up in the late '60s. Fred Savage. (L)
- [8] Rock Alive

- [2] Super Bowl XVIII Highlights Raiders vs Redskins (R)
- [3] C. Week Rvw. (L)
- [5] MOVIE: *Letter to Brezhnev* (1985) A one night stand becomes the decision of a lifetime. Alexandra Pigg, Peter Firth. R. 1-14
- [5] MOVIE: *Assassination* (1987) A plot to kill the First Lady has a secret agent on the run. Charles Bronson, Jill Ireland. PG. 1-28
- [7] Ohara Ohara pursues a serial killer who took the life of his former partner. (L)
- [12] ShowBiz Week
- [13] Dr. D. James Kennedy
- 8:30 [4] Amen Attorney Frye faces his old law school rival in court. (R) (L)
- [12] This Week in Japan
- 9:00 [3] Austin City Limits (1988) The Desert Rose Band performs Ashes of Love: Rick Cash, Steve Nieve, and The Waitresses.
- [4] J.J. Starbuck Concert pianist strikes false note with J.J., who suspects murder. (R)
- [7] Spenser: For Hire (L)
- [8] Paper Chase The exploits of law students are explored. John Houseman. NR.
- [9] 9 News
- [10] West 57th CBS News primetime magazine. John Ferrugia, Meredith Vieira. (L)
- [12] Evening News
- [13] Fring Line NR.
- [SHOW] *Comedy Spotlight: A Dynamite Evening* (1987) Jimmy Walker hosts this side splitting comedy showcase. NR. 1:00
- 9:30 [5] MOVIE: *Murphy's Law* (1986) A cop, accused of murder, is stalked by a psychopathic killer. Charles Bronson, Kathleen Wilhoite. R. 1-40

- [2] Super Bowl XX Highlights Bears vs Patriots (R)
- [7] Fring Line NR.
- [8] MOVIE: *Indian Paint* (1964) An Indian boy desperately loves an unmanageable white colt. Johnny Crawford, Jay Silverheels. (L)
- [9] 9 MOVIE: *Niagara* (1953) A disturbed war veteran is marked for murder on his honeymoon. Marilyn Monroe, Joseph Cotten. NR. 1-29
- [11] 17 Bonanza The Last Haircut
- [12] Week in Review
- [13] Chuck Smith
- [SHOW] MOVIE: *Crimes of the Heart* (1986) The Macraath sisters deal with life's problems in a peculiar way. Diane Keaton, Jessica Lange. PG. 1-45
- 1:30 [2] Super Bowl XXI Highlights Giants vs Broncos (R)
- [10] 10 College Basketball Michigan at Syracuse (L)
- [13] John Hinkle
- 2:00 [2] NFL Super Bowl MatchUp (R)
- [3] Candidates '88 with Marvin Kalb Kalb interviews Republican and Democratic presidential candidates. (L)
- [5] MOVIE: *Compromising Positions* (1985) A housewife investigates her husband's murder and finds blackmail. Susan Sarandon, Raul Julia. R. 1-38 (L)
- [11] 17 24 Hours of Daytona
- [12] Larry King Weekend (R)
- [13] Fred Jordan
- 2:30 [2] Super Bowl XXII Special (R)
- [11] 17 TBN Today
- 3:00 [2] NFL's Greatest Moments Best Ever Runners (R)
- [3] French Chef
- [4] 4 College Basketball DePaul at N.C. State (L)
- [7] 7 Super Bowl Pregame (L)
- [8] Gunsmoke
- [9] 9 MOVIE: *The Red Pony* (1973) Father gropes to understand his rebellious, ten year old son. Henry Fonda, Maureen O'Hara. 1:40
- [11] 17 Little House on the Prairie Dance
- [12] News Update
- [13] In Touch
- [SHOW] MOVIE: *The Golden Child* (1986) When a magical child is abducted, only the chosen one can save him. Eddie Murphy, Charlotte Lewis. PG. 1-34 (L)
- 3:10 [12] Science Technology Week
- 3:30 [3] Modern Maturity (L)
- [10] 10 Phoenix Open Golf From Scottsdale, AZ (L)
- [12] Evans and Novak
- 4:00 [2] NFL Theater Greatest Games Ever Played (R)
- [3] This Old House Random width Southern yellow pine flooring is laid in the new kitchen. L
- [5] MOVIE: *Waltz Across Texas* (1982) Woman geologist joins a wildcatter in an oil drilling venture. Terry Jastrow, Anne Archer. PG. 1-39
- [8] Empire
- [12] Newswatch
- [13] Jerry Saville
- 4:30 [3] Oklahoma Gardening
- [11] 17 World Championship Wrestling
- [12] Newsmaker Sunday
- [13] Jimmy Swaggart
- 5:00 [2] Ski World (T)
- [3] Tony Brown's Journal
- [4] 4 News
- [7] 7 Super Bowl XXII Redskins vs Broncos (L)
- [8] Big Valley
- [9] 9 MOVIE: *Living Free* (1972) Adventures galore when moving Elsa's three cubs to a game preserve. Susan Hampshire, Nigel Davenport. G. 1-28
- [10] 10 CBS News
- [12] Newswatch
- [SHOW] MOVIE: *Harlequin Romance: Cloud Waitz* (1987) A journalist finds love while on assignment in France. Kathleen Beller, Francois-Eric Gendron. NR. 2:00
- 5:30 [2] World Cup Skiing Men's Super G
- [3] Candid Campus
- [4] 4 NBC News
- [10] 10 Barney Miller
- [11] 17 Leave It To Beaver A Part of Life
- [12] Inside Business
- [13] Fulton Buntant

#### AFTERNOON

### MONDAY February 1

#### EVENING

- 6:00 [2] SportsCenter (L)
- [3] Nightly Business Report
- [4] [7] [10] 10 News
- [5] MOVIE: *Black Widow* (1987) Federal agent hunts a woman she suspects of murdering and murdering. Debra Winger, Theresa Russell. R. 1-43
- [8] Remington Steele Steele in the News
- [9] 9 Cheers Strange Bedfellows, Part 1
- [12] Moneyline
- 6:05 [11] 17 Andy Griffith A Deal is a Deal
- 6:30 [2] College Basketball Georgetown at Villanova (L)
- [3] Oklahoma News
- [4] 4 M\*A\*S\*H
- [7] Wheel of Fortune (L)
- [9] 9 Barney Miller Spy
- [10] 10 Love Connection
- [12] Crossfire
- 6:35 [11] 17 Sanford and Son Crossed Swords
- 7:00 [3] The Brain (1984) Examines how vision and mobility affect our perception of the world. 1:00 (L)
- [4] 4 ALF ALF gets a special visit from cast members of Gilligan's Island. (R) (L)
- [7] 7 MacGyver MacGyver discovers coercion in his hometown hockey team. (L)
- [8] Father Murphy A Horse from Heaven
- [9] 9 MOVIE: *Across the Pacific* (1942) A secret service man pretends to sell out to the Japanese. Humphrey Bogart, Mary Astor. 1-37
- [10] 10 Kate & Allie Allie chases after Paul Newman when he films movie in neighborhood. L
- [12] PrimeTime Live
- [13] TBN Today
- [SHOW] MOVIE: *Crocodile Dundee* (1986) G day, America! Allie chases after Paul Hogan, Linda Kozlowski. PG. 1-38 (L)
- 7:05 [11] 17 MOVIE: *Car Wash* (1976) A day in the life of the waitresses at a car wash operation. Franklin Ajaye, Sully Boyar. PG. 1-37
- 7:30 [4] 4 Valerie's Family Recently divorced Sandy Hogan moves into her brother's home. (R) (L)
- [10] 10 Frank's Place Big Arthur fights rival chef who's accused of stealing his recipes. (R)
- [13] Marilyn Hickey
- 8:00 [3] Horses Power and Plenty
- [4] 4 MOVIE: *NBC Monday Night at the Movies Flashdance* (1983) A girl dreams of becoming a ballerina in Pittsburgh. Jennifer Beals, Michael Nouri. R. 1-36 (L)
- [5] MOVIE: *The Last of Sheila* (1973) Man invites friends on his yacht to find who caused his wife's death. Richard Benjamin, James Coburn. PG. 2:00
- [7] 7 MOVIE: *ABC Monday Night Movie Weekend War* (1988) Routine National Guard duty explodes into horrific guerrilla warfare. Stephen Collins, Charles Hall. (L)
- [8] 700 Club
- [10] 10 Newhart George decides to fulfill his dream fantasy of selling used cars. L
- [12] Larry King Live!
- [13] Silverdale's Family
- 8:30 [2] College Basketball Ohio State at Michigan State (L)
- [10] 10 Designing Women Suzanne is in deep trouble with the IRS; the solution is not pretty. (L)
- [13] Hal Lindsey
- 9:00 [3] Television Look at the evolution of television comedy. (L)
- [8] Straight Talk
- [9] 9 News
- [10] 10 Wiseguy
- [12] Evening News
- [13] Praise the Lord Live
- [SHOW] *Super Dave* (1987) Super Dave Osborne goes off on his own heroic quest. NR. 0:30 (L)
- 9:05 [11] 17 MOVIE: *All the Marbles* (1981) The story of a pair of female wrestlers and their manager. Peter Falk, Vicki Frederick. NR. 1-43
- 9:30 [8] Various
- [SHOW] MOVIE: *Enemy Mine* (1985) An earthling and an alien are stranded together on a deadly planet. Dennis Quaid, Lori Loughlin. PG. 1-48 (L)

### TUESDAY February 2

#### EVENING

- 6:00 [2] SportsCenter (L)
- [3] Nightly Business Report
- [4] [7] [10] 10 News
- [8] Remington Steele Vintage Steele
- [9] 9 Cheers Strange Bedfellows, Part 2
- [12] Moneyline
- [13] Dr. D. James Kennedy
- 6:05 [11] 17 Andy Griffith Fun Girls
- 6:30 [2] Countdown to Calgary
- [3] Oklahoma News
- [4] 4 M\*A\*S\*H
- [7] Wheel of Fortune (L)
- [9] 9 College Basketball Notre Dame vs Maryland (Tentative)
- [10] 10 Love Connection
- [12] Crossfire
- 6:35 [11] 17 Sanford and Son Happy Birthday, Pop
- 7:00 [2] NHL Hockey (L)
- [3] Nova Scientists try to find why members of Franklin expedition were lost. (L)
- [4] 4 Matlock Matlock finds a respected, long-time client is the son of a mob boss. (R) (L)
- [7] 7 Who's the Boss? Tony reunites with his do-wop singing group for one last concert. (L)
- [8] Crossbow The Handmaiden
- [10] 10 48 Hours
- [12] PrimeTime Live
- [13] TBN Today
- [SHOW] MOVIE: *That Was Then... This is Now* (1985) Two boys grow up as brothers and together survive their tough world. Emilio Estevez, Craig Sheffer. R. 1-40 (L)
- 7:05 [11] 17 NBA Basketball Bulls at Knicks (L)
- 7:30 [7] 7 Growing Pains Mike leads the lead in his school play, hoping to score points. (R)
- [8] Branded This Stage of Fools
- [13] Betty Jean Robinson
- 8:00 [3] Nature of Things 1:00
- [4] 4 Hunter Hunter and McCall investigate

- [4] World Tomorrow
- [8] Lloyd Ogilvie
- [9] 9 Visionaries
- [12] News Update
- [13] Charles Robinson
- [SHOW] MOVIE: *Harlequin Romance: Cloud Waitz* (1987) A journalist finds love while on assignment in France. Kathleen Beller, Francois-Eric Gendron. NR. 2:00
- 9:10 [11] 17 Good News
- [12] On the Menu
- 9:30 [2] This Week in Sports (T)
- [4] 4 Oral Roberts
- [7] 7 Here Comes the Brides
- [8] Gospel Bill
- [9] 9 Captain Power
- [10] 10 CBS Sunday Morning
- [11] 17 MOVIE: *Once Upon a Time in the West* (1969) Gunslingers fight to acquire possession of a tract of land. Charles Bronson, Henry Fonda. PG. 2-45
- [12] Newsmaker Sunday
- [13] Richard DeHaan
- [8] Superbowl Breakfast
- [9] 9 MOVIE: *Virginia City* (1940) During Civil War, a rebel spy poses as a dance hall girl. Errol Flynn, Miriam Hopkins. NR. 2:01
- [

**THAT'S ENTERTAINMENT**  
**A Full Week of PROGRAMMING**

**\* LEGEND \***

Channel	Station
[2]	ESPN
[3]	OETA
[4]	KAMR
[5]	TMC
[7]	KVII
[8]	CBN
[9]	WGN
[10]	KFDA
[11]	TBS
[12]	CNN
[13]	TBN
[SHOW]	SHOW

6:35 [11] 17 Sanford and Son Here Comes the Bride

7:00 [3] People's Business  
[4] Highway to Heaven Mark is reunited with his former patrol partner, who asks him to lie. □  
[7] Perfect Strangers Larry's huge cream puff order causes rebellion in the kitchen. □  
[8] Second Honeymoon  
[10] The Law and Harry McGraw  
[12] PrimeTimeLive  
[13] TBN Today  
[SHOW] Brothers Two macho types attempt to deal with their brother's homosexuality. Robert Walden. Brandon Maggart. NR. 0:30 □

7:05 [11] 17 MOVIE: Pony Express (1953) Buffalo Bill and Wild Bill Hickok lead on the mail route. Charlton Heston. Rhonda Fleming. NR. 1:41

7:30 [7] Head of the Class Eric's embarrassed by drunken dad. Maria's mom makes play for Charlie. □  
[8] Animals of Africa Kalamani Cheeta. □  
[13] Dino Show  
[SHOW] It's Garry Shandling's Show Crazy comic deals with life's daily problems. Garry Shandling. NR. 0:30 □

8:00 [2] College Basketball Pittsburgh at St. John's U. □  
[3] Oklahoma Magazine  
[4] A Year in the Life Joe's thrown off balance when he runs into Alice after their break-up. □  
[5] MOVIE: The Postman Always Rings Twice (1981) Two lovers' problems just begin when they do away with her husband. Jack Nicholson, Jessica Lange. R. 2:03  
[7] Hooperman Harry awaits an encounter with a recently released revengeful con. □  
[8] 700 Club  
[10] 10 Kate & Allie Joe Namath hires Kate and Allie to help organize his life. □  
[12] Larry King Live!  
[13] Kenneth Hagin  
[SHOW] MOVIE: Black Widow (1987) Federal agent hunts a woman she suspects of marrying and murdering Debra Winger. Theresa Russell. R. 1:43

8:30 [7] Slap Maxwell Story Slap is flooded with memories and renewed love in his hometown. □  
[9] Hogan's Heroes  
[10] Frank's Place Suggestions from a restaurant consultant threaten future of The Chez. □  
[13] Doug Clark

9:00 [3] American Playhouse Prep school hippies continue at the prestigious Lawrenceville Academy. Zach Galligan, Edward Herrmann. □  
[4] St. Elsewhere Morrison must tell a patient she has incurable Huntington's disease. I. □  
[7] Dynasty Alexis plays cat and mouse with Leslie. Karen and Jesse argue. I. □  
[8] Straight Talk  
[9] News  
[10] 10 Smothers Brothers Comedy Hour 20th Reunion Show (1988) Anniversary and continued popularity of the Smothers is celebrated. □  
[12] Evening News  
[13] Praise the Lord Live

9:05 [11] 17 MOVIE: Villa Rides (1968) An American gunrunner aids Villa in his fight against revolutionaries. Yul Brynner, Robert Mitchum. R. 2:05

9:30 [8] American Snapshots

**WEDNESDAY**  
**February 3**  
**EVENING**

6:00 [2] College Basketball Georgia Tech at Duke U. □  
[3] Nightly Business Report  
[4] 4 [7] 7 [10] 10 News  
[5] MOVIE: Enemy Mine (1985) An earthling and an alien are stranded together on a deadly planet. Dennis Quaid, Louis Gossett Jr. PG-13. 1:48 □  
[8] Remington Steele Steele's Gold  
[9] 9 Cheers Strange Bedfellows, part 3  
[12] Moneyline  
[SHOW] Steve Nicks: Rock a Little Roger Daltrey and Fleetwood Mac join Steve in a high energy special. NR. 1:00

6:05 [11] 17 Andy Griffith Return of Malcom Merrimetter

6:30 [3] Oklahoma News  
[4] 4 M\*A\*S\*H  
[7] Wheel of Fortune I.J.  
[9] College Basketball DePaul at Indiana St. (L8 Tentative)

**Wagner announces for 84th district attorney**

Borger attorney David Wagner today announced his candidacy for the position of District Judge of the 84th Judicial District in the March 8 Democratic primary.

In making his announcement, Wagner stated that he believes three things are essential to the successful management of any court-accessibility, efficiency and integrity.

As a practicing attorney for over ten years, Wagner knows the importance of attorneys and their clients having free access to courts and judges. Although it is improper for a judge to discuss the merits of any case "off the record," Wagner intends to remain readily accessible on a daily basis to all attorneys practicing in the district for setting cases, hearing motions and signing orders.

Efficiency in a court means not only careful stewardship of the court's budget, but also careful and speedy management of the time and expense involved in handling lawsuits. Wagner pledged to give all judicial matters careful and thorough attention, but hopes to minimize delay and expense to the parties in any lawsuit by encouraging prompt hearings and making prompt decisions on all matters submitted to the court.

Finally, as a native Texan, Wagner is embarrassed by the recent attacks on the integrity of

the Texas judiciary. Most of these attacks have focused on the partisan election of judges and political contributions to Texas judges by attorneys practicing in their courts. Believing that it is essential to avoid even the appearance of such impropriety, Wagner today stated his intention not to solicit or accept any campaign contributions from attorneys.

In addition to his law degree from the University of Texas School of Law, where he was on the Legal Research Board, Wagner has a bachelor's degree in chemistry from Texas A&M University. He has practiced law in Borger since 1979, has been Borger City Attorney since March 1986, and is certified as a Family Law Specialist by the Texas Board of Legal Specialization. David is a past president of the Borger Bar Association and Chairman-Elect of the Hutchinson County Child Welfare Board. He is a member of Trinity Lutheran Church.

His wife, Laura, is a teacher with the Phillips-Stinnett-Plemons Consolidated I.S.D. They have two children-Jennifer, age 5, and Joshua, age 2, and reside at 1506 Gawain.

The 84th Judicial District is comprised of Hutchinson, Hansford and Ochiltree Counties. Pol. Advt. pd for by David Wagner.

**Services held for Roger Simpson**

Funeral services for Roger C. Simpson, 69, were held Monday afternoon in Spearman. Mr. Simpson died Saturday.


Dr. Mike Wolfe, pastor of the First Christian church, officiated. Graveside services were at Fairview Cemetery in Pampa, under the direction of Boxwell Brothers Funeral Home.

He was employed by McCroy

Company as a truck driver from 1964 to 1977. He was married to Grace Coffin at Corpus Christi. He has been a resident of Spearman for the past six years.

Survivors include his wife; a son, Mike Simpson of Spearman; a brother, Malcolm Simpson of Vaughn, N.M.; and three grandchildren.

**Don't face the new tax laws alone.**



The tax laws have changed dramatically. And the forms have changed, too. Our experienced preparers know the new laws and how to use the new forms. We'll find you the biggest refund you have coming.

**H&R BLOCK** IF THERE'S EVER A TIME FOR H&R BLOCK, IT'S NOW.

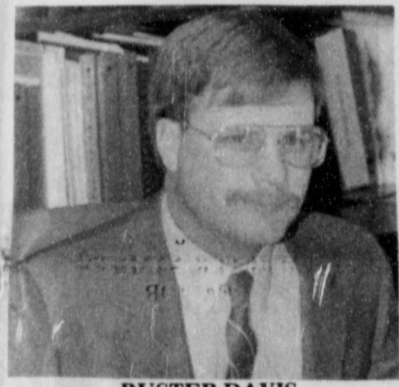
307 W Davis Spearman 659-2310 Late  
Mon. Wed. Fri. 9A.M. - 5 P.M. Appointments Available

**Promotion, new officer listed at Gruver bank**

Ann Burton has been promoted to Administrative Assistant and Buster Davis named as a loan officer at the Gruver State Bank, according to information released Tuesday by George Odom, executive vice-president of the Gruver bank.

Burton has been employed at the Hansford county financial institution since 1981.

She and her husband, Oran, have two children. Debbie is a junior at Panhandle State University in Goodwell, Ok., while Christie is a senior at West Texas High School.



**BUSTER DAVIS**  
... GSB Loan Officer



Women's Fashion

**WINTER - SALE 50%**

2701 Parrishout  
Amarillo, 358-2457  
Mastercard and Visa Welcome

**7-8-9th Lynx bow out to Greyhound squads**

The Gruver 7-8-9th grade Greyhounds swept a trio of games out from under their Spearman counterparts this past Monday evening in games played at Gruver.

The Spearman seventh grade Lynx dropped their game, 7-12. Russell Shaver, Cody Pipkin and Justin Boyd each scored two points apiece.

In eighth grade boys play, Gruver managed to eke out a 14-13 decision over the Spearman counterparts. Dallas Trospier was high point for Spearman with six points.

Meanwhile, the freshmen Lynx bowed out to their cross-county rivals in a 39-20 contest. Danny Lopez paced Spearman with eight points.



**ANN BURTON**  
... receives promotion

Davis is a 1978 graduate of Gruver high school with a degree in Ag Business from West Texas State University in Canyon.

The Gruver man is a new addition to the staff of the Gruver State Bank.

**Markets**

WHEAT	\$2.66
MILO	\$2.95
CORN	\$2.00

**Club News**

**WOMEN'S DIVISION OF CHAMBER OF COMMERCE**

The first regular business meeting of the Women's Division of the Chamber of Commerce was held last week. A regular business meeting is held the third Wed., of each month at noon, in order to conduct the business at hand.

Mae Wofford, president, presided over the meeting. Some of the business that took place included committee chairmen for the different events and projects held throughout the year were announced; the theme to be used this year is "Those Were The Days", and Chamber of Commerce Banquet to be held Feb. 20 with John Erickson as guest speaker.

The WDCC plan, decorate and help conduct this annual event every year. Reservations are available early by calling Cora Queener at the Chamber Office.

Cora presented the program for our Jan. meeting on AIDS. It is a program that Rep. Dick Waterfield along with the Texas Health Dept., presented as a town meeting a few weeks back.

Rep. Waterfield feels it is important not only to let the public know about AIDS, but also about some of the future costs that may be involved.

The film explained the disease and how it attacks the system. It's not the disease itself that kills, but infections that people get which kill.

PCP Pneumonia and a rare cancer are the two main causes of death, with AIDS. Many can live up to five years before the disease becomes detectable, then after the initial detection, most patients live no longer than two years.

AIDS cases doubles each year, so the cost will rise also.

If you would like to see this program, contact Cora Queener at the Chamber of Rep. Waterfield in Canadian.

**THE MIGHTY 98**  
**ROCK'S**

HANSFORD COUNTY

**Top 40 POP/ROCK Weekly TOP 10**

**COUNTDOWN Dedication Hour...and more**

Now, catch us Fridays following Lynx & Lynette basketball and Saturdays 7 p.m. to midnight

**THEN, CRANK IT UP!!!**  
**AND REMEMBER**

**★ Be Smart-Don't Start! ★**  
**★ Just Say No to Drugs & Alcohol**

*GARY*

**Here's the Ticket**

**DISCOUNTS**

discounts 30% 40% even 50% off! discounts

**DISCOUNTS**

**\$\$\$\$\$**

Fall & Winter Merchandise

Drastically Reduced during our Winter Clearance Sale

at **MAIN STREET**

506 Main Gruver 733-5040

# your advertising dollars do better in the classifieds

CALL: (806) 659-3434.

**L & M Body Works**  
1501 Hwy. 15  
659-2775  
Tailpipes - \$29.95  
Mufflers - \$39.95  
Most Duals - \$160.00 complete

**OSGOOD MONUMENT CO.**  
Amarillo, Texas  
Dealers of Rock of Ages Granite, as well as all colored granites, marble and bronze memorials.  
represented by  
**BOXWELL BROS. FUNERAL HOME**  
519 S. Evans  
659-3802

**NOTICE**  
Wallace Monument Co. Monuments, Curbing, Grave Covers  
Local Representative  
**LEONARD JAMESON**  
Spearman, Texas

**DIET CENTER. THE WEIGHT-LOSS PROFESSIONALS!**  
CALL US TODAY, to a free introductory consultation at 410 Davis, Spearman, Texas 659-2199

**SCOTT'S CHIMNEY SWEEP**  
Prevent Chimney Fires  
Call 806/323-5859  
Serving the Panhandle Area for 5 Years  
\$45 per Chimney  
Have your Chimney cleaned today!  
CLEAN-RELIABLE-FRIENDLY  
Thurs. only til Jan. 28

**VISA! MASTERCARD! GUARANTEED!** Without investigation. Bankrupt? Bad Credit? Divorced? Widowed? On Welfare? No problem. All eligible. Free details. Send #10 self addressed stamped envelope. Success, Drawer 389, Clanton, Alabama 35045. S08-(rtn)

**Century 21 GOLDEN SPREAD REALTY**  
Janye Helton Pointer, Broker  
Owner, 435-5444  
SALES ASSOCIATES  
T.O. Lesly - 659-2028

1112 S. Bernice - 3-1/4 location! Location!  
322 Hazelwood - 2/1 owner will finance.  
607, 611, 615, 609 Haney Small house/ 2 apartments!  
615 E. Kenneth - 3/2. Corner lot with extra acreage!  
102 Wanda - 3/1 immaculate!  
118 Townsend - 4/2. Apartment included!  
711 Collier - 3/1 Why rent?  
322 S. Barkley - 3/1 Good location at affordable price!  
811 Townsend-2/1 affordable! COMMERCIAL  
15 N. Hazelwood  
201 Bernice - Former M&M grocery store. Can be sold with or without fixtures.  
FARM  
640 acres of grass in Sherman Co., over 500 acres in the C.P.R. Program  
640 acres of wheat and milo land in Hansford Co.  
3 RANCHES in Brownwood area. Call today!

**Real Estate**  
FOR SALE: 1979 Silverado Suburban. \$3,000 or make an offer. Call 659-3098. S12-2tc  
FOR SALE Newly remodeled house 2 bedroom, central heat and air, by appointment only. Call after 5 p.m. 659-2697. S11S 8tp

HOUSE FOR SALE: 2 bedroom 1 1/2 bath, 2 car garage newly remodeled. 1 block from school, priced in the low 20's call 659-3987. S51-rtn  
HOUSE FOR SALE: 1850 sq. ft., 4 bedroom/2baths. Living room with fireplace. Reasonably priced. Located at 721 Wilbanks. Contact Frances Pipkin at 659-3938. S10-8tp  
ABANDONED HOMES - Take over payments on 2 and 3 bedroom homes. Qualify by phone. (806) 381-1352. Call collect. S46-rtn

FOR SALE: 3 bedroom brick home, close to elementary. Must see to appreciate! Reasonably priced. Call 659-2263 after 5. S13-rtn

FOR SALE: By owner, brick home, \$34,000. Call 659-2262. S12-4tc

FOR SALE 1984 Double Wide 28x60 3 bedroom, 2 bath, fireplace central air and heat. Call collect. 435-5720. Must sell S12S 2tp

FOR SALE: 1983 Bonneville Mobile Home, 16x80. 3 bedroom, 2 full baths, fireplace, spacious bi-level kitchen. Set up on Corner lot. Must see to appreciate. Call 659-2354 after 5:30 p.m. S09-rtn

FOR SALE: Nice house in good neighborhood. 3 bedrooms, 1 1/2 baths, office, lots of cabinet storage, garage, on 2 lots. 727 Wilbanks. Price reduced. Call Sheila Watley 659-3970 S13-rtn

**For Rent**  
FOR RENT: Nice 3 bedroom unfurnished house, Carpet, drapes, central air and heat. Elec. or gas hookup for cook stove. Cleaning deposit required. No pets. Call 659-3657. S51-rtn

FOR RENT 2 bdr House 422 S. Hazelwood first house N of community building. Call 659-3185 S11-rtn

**BOB HARDY REALTY**  
803 Wilmeth Dr.  
659-3440  
NEW LISTINGS:  
820 Linn Drive - immaculate 3 bd - 2 bath - fireplace - double car garage. Area 2,200 sq. ft. living area. Custom drapes. Lawn Sprinkler System. Satellite dish and receiver. Fenced. Excellent location. Call for quote 1001 Haney - 3 bd, 2 bath. Den with fireplace. Corner lot fenced. Carpeted. Nice, price-reduced. Approx. 1450 sq. ft.  
Robert Hardy - broker

**Real Estate Sampler**  
Allen Alford-Broker-659-3034  
Hester Sue Crawford-Sales 659-3060 or 659-2074  
Dennis Nelson-Sales-659-3608  
Larry Trosper-Sales-659-3491  
316 S. Bernice - 2366 sq. ft.  
101 W. 12th - 1344 sq. ft.  
426 Haney - 1479 sq. ft.  
1005 Townsend - 1054 sq. ft.  
619 Evans - 1350 sq. ft.  
1014 Linn Dr. - 2,000 sq. ft.  
734 Wilbanks - 1192 sq. ft.  
32 N. Snider - 1850 sq. ft.  
729 Cotter - 1519 sq. ft.  
506 Endicott - 1100 sq. ft.  
907 Drensen - Nice starter  
505 Haney - 1600 sq. ft.  
We want to be Your REALTOR

**CARD OF THANKS**  
Our sincere thanks to each of you for your prayers, calls, visits, cards, food and concern for E.J. while he was in the hospital and also recuperating at home.  
May God bless you  
For your kindness  
E.J. & Bernice Callaway

**EXCELLENT INCOME FOR HOME ASSEMBLY WORK.** For Info call (504)646-1700. Dt. P-1039 S. J. 24&28, F. 7&11

TEXAS OIL COMPANY needs mature person for short trips surrounding Spearman. Contact customers. We train. Write H.F. Dickerson, Pres., Southwestern Petroleum, Box 961005, Ft. Worth, Tx. 76171 S13 1tp

**ADDRESS ENVELOPES** for firms, nationwide! \$en\$ational earning\$! No experience. We show you. Begin immediately! Stamped envelope: Publications-1, 804 Old Thornsbury Road, Clanton, Alabama 35045. S08-(rtn)

**MISCELLANEOUS**  
GOOD QUALITY HAY small square bales. 733-2893, evenings or evenings. S13 2tc

**TO GIVE AWAY:** 4-year old Pekinese female, house broken-needs a good home. Call 659-3811, Jo Ann Snider. S13-1tf

Offered by  
**EMMETT R. SANDERS REALTOR**  
3 bedroom home, attached garage. \*\*\*\*\*  
**EMMETT R. SANDERS REALTOR**  
659-2516, nights 659-2601

**NOTICE TO ALL PERSONS HAVING CLAIMS AGAINST THE ESTATE OF JOHN VENNEMAN, DECEASED**

Notice is hereby given that original Letters Testamentary for the Estate of JOHN VENNEMAN were issued on January 4, 1988 in Cause No. 1881, pending in the County Court of Hansford County, Texas, to: JOSEPH T. VENNEMAN

The residence of such Executor is Hansford County, Texas. The post office address is: Joseph T. Venneman Box 694 Spearman, Texas 79081.

All persons having claims against this Estate which is currently being administered are required to present them within the time and in the manner prescribed by law. Dated the 22nd day of January, 1988.  
Billy Britt Jarvis  
Attorney for the Estate  
P.O. Box 515  
Spearman, Texas 79081

**NOTICE TO ALL PERSONS HAVING CLAIMS AGAINST THE ESTATE OF GUS O. BIRDWELL, DECEASED**

Notice is hereby given that original Letters Testamentary for the Estate of Gus O. Birdwell were issued on January 25, 1988, in Cause No. 1883, pending the County Court of Hansford County, Texas, to Bob Pearson. The residence of such executor is 708 Wilmeth Drive, Spearman, Texas 79081, the post office address of such executor is Box 545, Spearman, Texas 79081. All persons having claims against this estate which is currently being administered are required to present them within the time and in the manner prescribed by law.  
Dated this 25 day of January, 1988.

John L. Hutchison  
Attorney for the Estate

**Service Repairs**  
STEAM RINSE & VAC - Rinse and Vac Shampooer for rent at Gordons Drug. \$10.95 up to 24 hours.

**Wind shield REPAIR & REPLACEMENT**  
We can repair damaged areas in your windshield up to 2" in diameter.  
-We'll come to your vehicle's location- in the oilfield or anywhere!  
Most insurance companies pay all cost.  
**DAVY GURLEY 435-2998**

**BASSETT/COWDOG** puppies to give away must see to believe how cute and adorable they are. 6 wks old call 733-2118 S13 2tp

**SALES HELP NEEDED**  
Advertising salesperson needed to work Perryton and surrounding area.  
Apply in person only, at  
The Spearman Reporter  
213 Main Spearman, Tx  
Office hours: 8-5,  
Mon. - Fri.

**WANTED:** Any J.H. Gruver & Sons Advertising Gifts that you do not wish to keep, please contact Helen Shapley at 733-2671 or 733-2641. Especially bond books, coin purses, calendars, knives and pen and pencils. S11  
Australian Blue Healer puppies two females and one male 3 mos. old, make offer Call 733-2153

**Steve Cross Cares About Hansford County**  
Be sure to register to vote!  
Feb. 7 - Last Day of Registration  
Feb. 17 - March 4 - Absentee Balloting  
March 8 - Super Tuesday Primary Election  
VOTE FOR  Stephen F. "Steve" Cross  
Republican Primary - 84th District Attorney  
Pol. Advt. Pd for By Stephen F. Cross, Borger Tx.

**NOW FEATURING YOUR FAVORITE VIDEO GAME PACKS FOR RENT**  
Control Decks Also Available  
**TOP GUN**  
Nintendo ENTERTAINMENT SYSTEM  
Northridge Electronics  
Your Local Radio Shack Dealer  
Northridge Shopping Center  
Guymon  
405-338-6306 CALL TODAY!

**REPORT OF CONDITION**

LEGAL TITLE OF BANK: First State Bank, Box 247, Spearman, Texas 79081  
STATE: Texas, ZIP CODE: 79081  
CITY: Spearman, COUNTY: Hansford

STATE BANK NO: 1107-37  
FEDERAL RESERVE DISTRICT NO: 11 13 17844  
CLOSE OF BUSINESS DATE: December 31, 1987

ASSETS	Dollar Amounts in Thousands	(Bil)	(Mil)	(Thou)		
1. Cash and balances due from depository institutions:						
a. Noninterest-bearing balances and currency and coin			3	528	1 a	
b. Interest-bearing balances			2	400	1 b	
2. Securities			26	960	2	
3. Federal funds sold and securities purchased under agreements to resell in domestic offices of the bank and of its Edge and Agreement subsidiaries, and in IBFs				NONE	3	
4. Loans and lease financing receivables:						
a. Loans and leases, net of unearned income		31	491		4 a	
b. LESS: Allowance for loan and lease losses			214		4 b	
c. LESS: Allocated transfer risk reserve			NONE		4 c	
d. Loans and leases, net of unearned income, allowance, and reserve (item 4 a minus 4 b and 4 c)			31	277	4 d	
5. Assets held in trading accounts				NONE	5	
6. Premises and fixed assets (including capitalized leases)				1	124	6
7. Other real estate owned				NONE	7	
8. Investments in unconsolidated subsidiaries and associated companies				NONE	8	
9. Customers' liability to this bank on acceptances outstanding				NONE	9	
10. Intangible assets				NONE	10	
11. Other assets				1	425	11
12. Total assets (sum of items 1 through 11)				66	714	12
LIABILITIES						
13. Deposits:						
a. In domestic offices:						
(1) Noninterest-bearing		9	518		13 a (1)	
(2) Interest-bearing		45	584		13 a (2)	
b. In foreign offices, Edge and Agreement subsidiaries, and IBFs:						
(1) Noninterest-bearing			NONE		13 b (1)	
(2) Interest-bearing			NONE		13 b (2)	
14. Federal funds purchased and securities sold under agreement to repurchase in domestic offices of the bank and of its Edge and Agreement subsidiaries, and in IBFs				NONE	14	
15. Demand notes issued to the U.S. Treasury				0	71	15
16. Other borrowed money				NONE	16	
17. Mortgage indebtedness and obligations under capitalized leases				NONE	17	
18. Bank's liability on acceptances executed and outstanding				NONE	18	
19. Notes and debentures subordinated to deposits				NONE	19	
20. Other liabilities				1	141	20
21. Total liabilities (sum of items 13 through 20)				56	314	21
22. Limited-site preferred stock				NONE	22	
EQUITY CAPITAL						
23. Perpetual preferred stock (No. of shares outstanding)				NONE	23	
24. Common stock (No. of shares a. Authorized b. Outstanding)				200,000	200,000	24
25. Surplus				2	000	25
26. Undivided profits and capital reserves				7	400	26
27. Cumulative foreign currency translation adjustments						27
28. Total equity capital (sum of items 23 through 27)				10	400	28
29. Total liabilities, limited-site preferred stock, and equity capital (sum of items 21, 22, and 28)				66	714	29

MEMORANDA: Amounts outstanding as of Report Date:  
1 a Standby letters of credit in memo 1 a conveyed to others through participations  
1 b Amount of Standby letters of credit Total  
NOTE: This report must be signed by an authorized officer(s) and attested by not less than three directors other than the officer(s) signing the report.  
I, the undersigned officer(s), do hereby declare that this Report of Condition has been prepared in conformance with official instructions and is true to the best of my (our) knowledge and belief.  
SIGNATURE OF OFFICER(S) AUTHORIZED TO SIGN REPORT: Lyhonne Maize, Cashier  
DATE SIGNED: 1-25-88  
NAME AND TITLE OF OFFICER(S) AUTHORIZED TO SIGN REPORT: Lyhonne Maize, Cashier  
AREA CODE/PHONE NO.: 806-659-5565  
We, the undersigned directors, attest the correctness of this Report of Condition and declare that it has been examined by us and to the best of our knowledge and belief has been prepared in conformance with official instructions and is true and correct.  
SIGNATURE OF DIRECTOR: [Signatures]  
DATE: 1-25-88  
State of Texas, County of Hansford  
(MAKE MARK FOR NOTARY'S SEAL) Sworn to and subscribed before me this 25th day of January 1988  
My commission expires 11-17-1988  
Signature Notary Public: Amanda Smith

**Services held for Jim Medley Sr.**

Funeral services for Jim Medley Sr., Spearman were held Monday afternoon in Pampa. Mr. Medley died Friday in Amarillo. He was 56.

The Rev. L.C. Lynch, pastor of the First Freewill Baptist Church in Pampa, officiated. Burial was in Memory Gardens Cemetery by Carmichael-Watley Funeral Directors of Pampa.

He was a Marine Corps veteran. He was a truck driver for Hereford Bi-Products.

Survivors include his wife; five sons, Nelson Medley, Doug Medley and Jimmy Ray Medley Jr., all of Pampa, and Dennis Medley and Bill Medley, both of Springfield.

**Hospital Report**

Patients in Hansford Hospital are Deta Blodgett, Nora Hays, Dave Stewart, Jop Franz, Phil Rios, Nadine Atchley, Nita Bynum, Norma Robeldo, Ruth Garner, Cathy Vanlindingham and Pauline Johnson.

Patients dismissed from Hansford Hospital are Bertha Forrester and Zella Porter.

Mo.

A daughter, Cindy Young of Springfield; his mother, Essie Mae Medley of Pampa; a brother, Leo Medley of Spearman; a sister, Irene Pendrell of San Diego, Calif.; and 17 grandchildren.

Memorials may be to Don and Sybil Harrington Cancer Center.

**Among the Neighbors**

by Helen Fisher

armed services hospital plane within a few days.

Her parents, Winifred and J.D. Hester, of Texline are still with her. Although she has recovered enough to be transferred, she still faces a long convalescence.

Mrs. Joyce Frost spent the weekend in Sublette, Kan. She was the guest of their daughter and son-in-law, Tracie and Joey Burcham, and granddaughter, Robyn.

Mr. and Mrs. Paul Buchanan of Pampa spent the weekend here with Mr. and Mrs. J.B. Buchanan and visited other relatives.

The reason behind the extra smiles of Lucile Hagerman is the arrival of a new granddaughter.

Mollie Brook is the daughter of Valarie and Leon Hagerman. She was born in Lubbock on Saturday, Jan. 23 at 5 P.M. She weighed 6 lbs 4 oz and was 20 inches long.

Her brother, Tanner, is nearly 3 years old. Her other grandparents are Mr. and Mrs. Carter of Lubbock.

Her great grandparents are Mr. and Mrs. Boles of Plainview and Mrs. Ellen Hagerman of Weatherford, Oklahoma.

Leon is coaching at the high school in Plainview.

Appreciating the clear weather though it was a bit nippy was a group of Junior High School students from the First Baptist Church who spent a day and night at Pan Fork Camp. This is the Baptist Youth encampment for the Panhandle area and is near Wellington.

The same age groups from the First Baptist Churches of Wellington, Clarendon and Memphis met with them last Fri. and Sat.

The theme of the retreat was "Fresh Start" and was oriented toward their age group and modern living. Part of the activities were indoor and outdoor recreation.

Mr. and Mrs. Scott Taylor and Will Black were sponsors, and the youth enjoying the outing were Dustin Loomis, Micheal Cummings, David Archer, Brad Butler, Sammy Graham, Chris Brooks, Tracy Tigrett, Lindy Bradley and Hollie Jarvis.

Mrs. Sada Hoskins is relieved to report that her granddaughter, Jenifred Hester, is improving after being seriously injured in a car accident in Baranquilla, Colombia a few weeks ago.

Latest information from the Physician in charge of the hospital there is that he had made arrangements for her to be transferred to High Plains Baptist Hospital in Amarillo. She will be flown by

**7-8-9th Lynxettes take wins over Gruver teams**

The Spearman 7-8-9th grade Lynxettes captured four straight wins over their Gruver Lady Greyhound counterparts in games held in Spearman Monday evening.

The seventh grade girls split into two teams with the Spearman A squad lashing Gruver, 42-3. Holly Jarvis and Gwen Benson scored eight points each to pace the Lynxettes.

In the girls seventh grade B contest, Spearman managed to eke out an 11-10 decision over their Gruver guests. Lindee Bradley led Spearman with five points.

Eighth grade girls action saw

Spearman take a 33-18 win over Gruver. Melody Schumann scored eight points to lead the Lynxettes there.

And the froth Lynxettes held out for a 21-20 win over the Lady Greyhounds in that game. Bonnie Thompson led Spearman with seven points.



The reason there are so many surnames of Smith today is that during the Middle Ages the name was used for all metalworkers, or smelters, which means "to beat."

Bank cards welcome

**1ST Choice FURNITURE**  
"Your Quality Furniture Outlet"  
1406 N. Main, Guymon  
Oak Creek Shopping Center  
405-338-4848

**GRAND OPENING SPECIALS**

Dining Room Suits starting at \$198 <sup>00</sup> table & 4 chairs	Bedrooms starting at \$599 <sup>00</sup>
Recliners over 100 in stock	Dresser, mirror and & head board
Stratfords Lane Cooke 30-50% off	Brass Plant Stands \$6 <sup>00</sup>
Prices start at \$148 <sup>00</sup>	Brass Magazine Racks \$12 <sup>00</sup>
Shop early for Best Selection Limited Quantities	Floor Lamps All 1/2 price
Located right next to Safeway in Guymon	Brass Bar Stools \$14

Thurs. - 9 a.m. to 9 p.m.  
Fri. - 9 a.m. to 9 p.m.  
Sat. - 9 a.m. to 6 p.m.

**Let's have lunch**

Or dinner. Or just an after-work gathering. Whatever the occasion, we'd like to speak to your group's next meeting. Our Speaker's Bureau members are available to address topics such as efficient management of the electricity used in homes and the need for safety around electricity. There is no charge for this service. For more information on obtaining a TNP speaker for your group, call your local TNP office.

**Texas-New Mexico Power Company.**  
Neighborhood Professionals  
Offering You The Best Choice

**ATTENTION**

**Farmers and Ranchers**

You're Invited To A  
**Special Auction**

Thursday, Jan. 28  
10 a.m.

Cattleman's Supper Club  
Communications Satellite  
Telestar 303  
from

**Satellite Cattle Exchange**

Rick Hefley, Broker Local Agent Ron Cook

**SALE**

**1/200 off**  
**1/400 off**

Starts Thursday Jan. 28

on our **Fall & Winter Fashions**

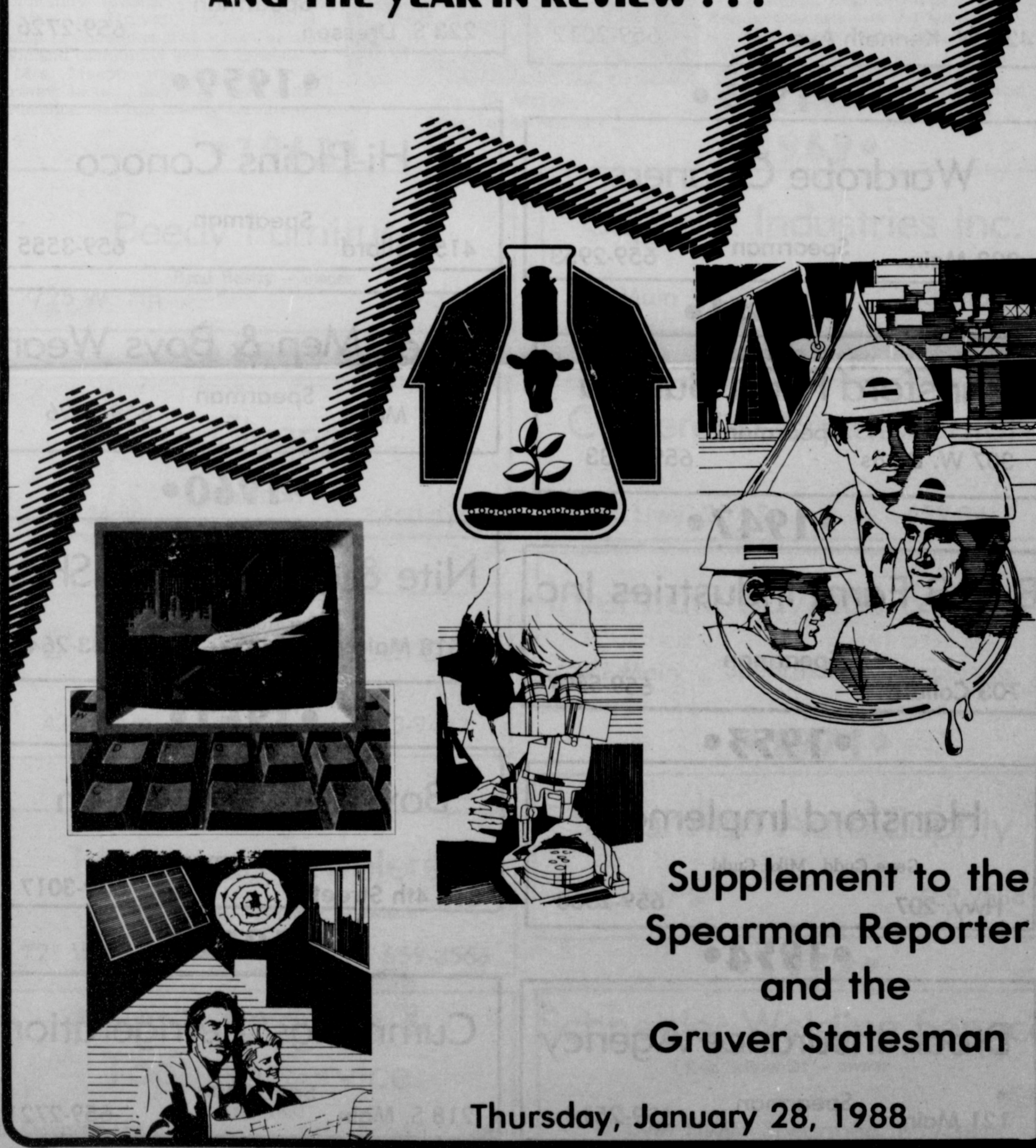
Don't be left out in the cold, Hurry to

**J.G.'S**

306 Hancock  
Spearman,  
Texas

# progress 1987

**HANSFORD COUNTY**  
AND THE YEAR IN REVIEW . . .



Supplement to the  
Spearman Reporter  
and the  
Gruver Statesman

Thursday, January 28, 1988

•1924•

White House Lumber Co.  
 306 Davis Spearman 659-3792

•1955•

Gordon's Drug  
 314 Main Spearman 658-2141

•1928•

Consumers Sales Co.  
 421 W. Kenneth Ave. 659-2012

•1958•

Wynne's Beauty Salon  
 Spearman  
 223 S. Dressen 659-2726

•1935•

Wardrobe Cleaners  
 302 Main Spearman 659-2953

•1959•

Hi-Plains Conoco  
 Spearman  
 415 Collard 659-3555

•1941•

Hansford Farm Bureau  
 Spearman  
 307 W. Davis 659-3133

Cates Men & Boys Wear  
 Spearman  
 221 Main 659-3426

•1947•

B & B Farm Industries Inc.  
 Spearman  
 703 Collard 659-5507

•1960•

Nite & Day Beauty Shop  
 Jean Holland -- owner  
 518 Main 733-2640  
 Gruver

•1953•

Hansford Implement  
 Gene Cudd Mike Cudd  
 Hwy. 207 659-2568

•1961•

Boyd's Beauty Salon  
 Spearman  
 310 4th Street 659-3017

•1954•

Brock Insurance Agency  
 Spearman  
 121 Main 659-2514

•1962•

Cummings' Refrigeration  
 Spearman  
 218 S. Main 659-2721



# 1987...IT WAS A VERY GOOD YEAR...

The 1987 year was one dominated by stories of local portent -- from a year of unusual weather to one of progress and determination as displayed by the rugged individualists who have worked to make Hansford County and its communities strong and prosperous.

Local elections highlighted the 1987 year, along with a legislative session which passed a landmark tax bill for the state -- a tax bill which raised the sales tax rate to seven percent and increased the scope of items and services subject to the state sales tax.

And 1987 was a time of recognition of community leaders -- such as Fran Maupin in Gruver, James "Butch" Noble in Spearman and a host of other civic and community service citizens.

Mrs. Maupin was honored by the Gruver Lions Club for her selfless dedication and community service work



Jill McLain  
Miss Texas entrant

in Gruver while Noble was named the first Fireman of the Year for the Spearman Volunteer Fire Department.

In addition, a record-setting crowd of 270 people saw Janie Kunselman and Betty Davis receive a pair of coveted awards presented at the Spearman Chamber of Commerce annual banquet.

Kunselman was named Citizen of the Year while Davis was recognized as Citizen Over the Years at the annual chamber fete.

Local elections saw Roy Byrd named mayor of Gruver while Ritchie Fletcher won a commissioner's post there. Over in Spearman, Don Townsen and Phillip Renner won seats on the Spearman ISD board of trustees while Mike Cudd and Wilson McClellan gained seats on the Spearman city council.

From basketball at the beginning of

CONTINUED ON PAGE 4

•1962•

**Beedy Furniture**  
Brad Beedy -- owner  
725 W. 7th 659-3701

•1969•

**Caprock Industries Inc.**  
433 Main Gruver 733-2483

•1965•

**Berry Cleaners**  
Spearman  
207 S Main 659-3122

•1970•

**Cinderella Beauty Salon**  
511C Hwy. 207 S. 659-3413

•1968•

**El Vaquero Restaurant**  
Harvey & Phyllis Atwood  
425 Main Gruver 733-9407

**Interstate Savings & Loan**  
322 Main Spearman 659-2559

•1969•

**Hickerson Jewelers**  
Elbre and J.C. Hickerson -- owners  
721 W. 7th 659-3566

**Spearman Auto Supply**  
Hwy. 207 S. 659-2588

•1972•

**Hunt's Spraying & Topping Service**  
Randy Hunt  
Gruver Hwy. 659-3588

**Schneider Welding Service**  
Ken Schneider -- owner  
Gruver Hwy. Spearman 659-3811

### FROM SPORTS TO PAGEANTS . . .

1987 on through track and into the gridiron campaign, not to mention cross country, 1987 sports came full season with basketball winding up the year as well. And there were numerous bright spots for area athletes there. Sports didn't slow down during the summer either, as the Spearman Swim Club dominated the area meet for the third consecutive season.

While Spearman was the host for the 1987 District 1-AA University interscholastic League's literary events, it was Gruver who carried off the lion's share of honors -- and the district title for the ninth consecutive year.

The year was marked by change at the newspaper as well, as owner-publisher Billy Miller sold his interests to a San Antonio-based corporation -- Texas Independent Newspapers, Inc. On April 9 the change became official with the Gruver Statesman, the Spearman Reporter and the Hansford Plainsman.

Later -- on Nov. 5 to be exact -- the Spearman Reporter noted its 80th birthday, marking it as the oldest continuous operation in Hansford County. That

Thursday edition carried the identifying mark of Volume 80, No. 1" denoting the special achievement.

Business continued to thrive and grow in both city communities of Hansford County. Cattle corporate giant Caprock Feeders moved into a new home in Gruver, expanding their working headquarters in a newly remodeled building which featured the latest in technology and innovations in the cattle industry. In Spearman, an Oklahoma-based grocer opened a 7-day a week operation, remodeling a former grocery store building to become the new home of Jack & Jill.

There was a changing of the guard in the Spearman basketball program as Spearman ISD officials hired both new boys and girls coaches to head up the Lynx and Lynxette roundball programs. H.M. Garrett and Jim Kirkland were hired in May to help lead the Lynx and Lynxettes, respectively, with the start of the 1987-88 cager season.

As the 1986-87 school year came to a close, seniors made that long and final trek to receive their diplomas with



Caprock Industries moved into their new co

#### •1976•

**Buster's Aerial Dusters**  
 902 Hwy. 207    Spearman    659-3648

**Phillips Welding Service**  
 Charley Phillips  
 410 Front St.    Gruver    733-2074

#### •1973•

**Hi-Plains Auto Supply Inc.**  
 Vance Snider - Clois (Billy) Baker -- owners  
 118 N. Main    659-2506

**The Bunkhouse**  
 Pat and Ed Dear  
 210 S. Main    659-2476

**Evelyn's Beauty Salon**  
 Evelyn Kingsley owner  
 107 Main    659-2813

#### •1974•

**Gruver Body Shop**  
 104 W. 4th    733-2941

**Hergert Pontiac Buick & GMC**  
 Donnie Hergert -- owner  
 Hwy. 207 S.    659-3721

#### •1975•

**Earl's T.V. & Appliance**  
 Earl and Trudy Goodheart -- owners  
 106 E. Kenneth    659-2121

**Patton Motel**  
 Mr. and Mrs. Evan Buster & Son -- owners  
 Hwy. 207 S.    659-2227

**Spearman Body Works & Radiator Service**  
 14 S. Dessen    659-2366

## FROM ONE END . . . TO THE OTHER

Gruver graduating 26 while Spearman saw 64 make that journey toward the end of their school careers.

A number of Hansford County community leaders were lost during the year -- beginning with the death of longtime Hansford banker C.A. Clay Gibner, April 26. In addition, newspaper photo-journalist Nick Gray died during the summer and, near year's end, John C. Venneman, another Hansford County pioneer, died, thus closing yet another chapter of county history.

The on-again, off-again, Valley View Energy project for Hansford County was put off again in early summer with company officials of the electrical plant project claiming problems with logistics between a plant to be located near Gruver and another to be constructed near Hereford in Deaf Smith County. In June, the group noted construction would begin near the end of the year but the new year came with no word from the Austin-based company -- and no con-

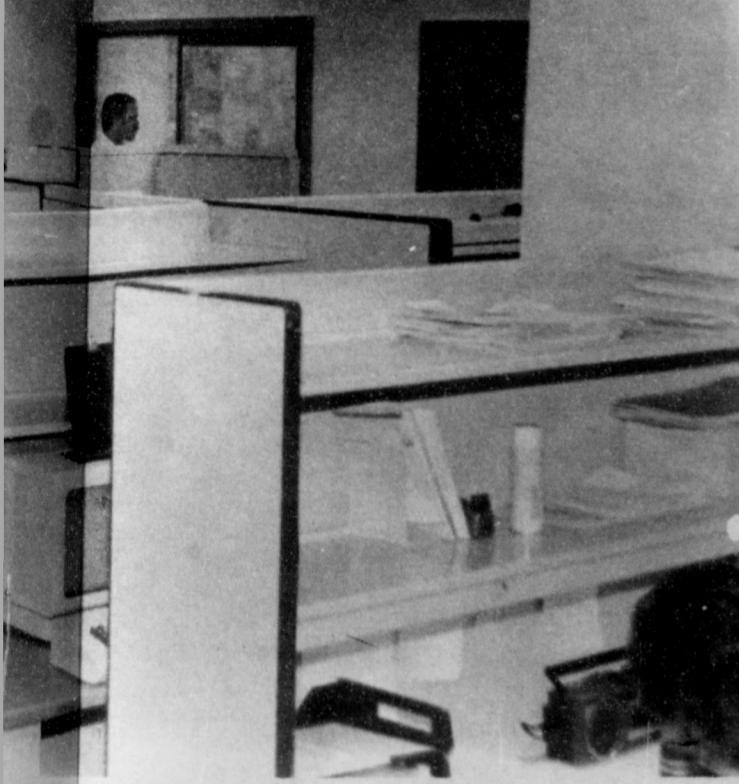
struction, either.

Summer began a long process of budget setting for county governmental agencies and taxes were raised slightly in all jurisdictions. The largest increase -- some 56 percent -- came from the Hansford County Hospital District as the HCHD board moved to undo two consecutive years of deficit budgets. Their rate went from 26.2 cents per \$100 valuation to 40.9 cents under the new plan.

But news from the Hansford Hospital District wasn't all bad -- in fact, one of the brightest stories of 1987 came with completion of a \$2.5-million expansion of the Hansford Manor Nursing Home in late summer. An open house of the 84-bed nursing home facility was held in September with the Hansford Manor becoming a showcase for both private and public-owned nursing home facilities in the state of Texas.

Summer time also saw the annual

CONTINUED ON PAGE 6



their new corporate home in Gruver

### •1976•

**Agco of Spearman Inc.**

511 S.W. 11th 659-3751

### •1978•

**Spearman Redi-Mix  
Concrete**

Hwy. 15 W. 659-5055

### •1977•

**J.G.'s**

Judy Nelson owner

306 Hancock Spearman 659-3424

**Gruver Ford**

531 Main Gruver 733-2431

### •1978•

**Gordon's Custom Cabinets**

Spearman 659-3467

**Sacks Third Ave.**

Jim & Kay Vernon Owners

203 Main 659-3350

### •1979•

**Hansford Agency**

Spearman  
16 S. W. Court 659-3888

**Nursanickel Motel**

Eddie and Laura Jones -- owners

Willis and Idella Randall -- managers

Hwy 207 S. 659-3737

**Watley Enterprises**

Doing business as Watley Seed & Hansford Co. Compost

Hwy. 15 E. 659-3838

**Bort Agency**

Mike Babbs

510 Main Gruver 733-2456

### SCHOOL ACTIVITIES IN THE NEWS . . .

Hansford County Round Up Celebration which featured the Miss Hansford Scholarship Pageant. The 1987 winner was Spearman's Kelly McWhirter. She was crowned by 1986's Miss Hansford County, Jill McLain. Jill -- who also went on to win the Miss Wheatheart title in Perryton -- was to appear in the Miss Texas USA pageant in July.

Cattle prices rose in early summer, definitely good news for the Hansford County agricultural community. Prices went to a high of \$72-\$73 per cwt and fluctuated down to a low of \$62-\$63 per cwt throughout the remainder of the year -- making 1987 one of the strongest cattle market periods ever.

When school started in Hansford County this fall, over 1,300 students filled rosters at Gruver and Spearman ISD's. Gruver registrations topped 532 students while enrollment at Spearman was pegged at 849 for the start of the new school year.

The Spearman schools were to con-



Spring and summer rains ran like rivers in Hansford county

tinue in the news for some time as the junior high campus. There a 60-plus year SISD board of trustees wrestled with a old structure was beginning to show its continuing construction problem at the age. A summer-time project saw steel

#### •1980•

<b>Transpecto</b>	
Spearman	
222 Main	659-2596

<b>Gruver Cablevision</b>	
Sonny and Skeeze Riley -- owners	
308 Main	Gruver 733-5295

<b>Spearman Pizza Hut</b>	
Gary Wysong -- manager	
Hwy. 207 S.	659-2547

#### •1981•

<b>Crawford Motor Co., Inc.</b>	
John & Hester Crawford owners	
321 Main	659-5501

<b>The Desk Set</b>	
Barbara Rosser owner	
312 S. Main	659-3837

#### •1982•

<b>Knack Shoppe</b>	
317 Main	659-5046

<b>Larry's Welding</b>	
Larry Babbs	
Hwy. 15 West	Gruver 733-2991

<b>Pride Mart No. 3</b>	
17 Collard	659-3552

<b>D &amp; C Greenhouse</b>	
Danny and Cindy Howell -- owners	
2 mi. west on Gruver Hwy.	659-5171

#### •1983•

<b>IV's Hungry Cowboy</b>	
Hwy. 207 S.	Spearman 659-5151

# PDRA WAS 1987 HEADLINER . . .

rods lashed from corner to corner of the east portion of the building to help stabilize an outward shift of the walls. By mid-fall, the board had opted to present a \$2.185-million bond election to SISD voters in order to solve building problems there.

On Dec. 8, Spearman school voters approved the proposed project by a slim 14-vote margin with a vote of 256-242.

The Hansford County fair gained county-wide attention in October as the annual event saw entries in all the traditional -- and a few untraditional -- events. The 1987 Hansford County Fair also featured a talent contest.

The Palo Duro River Authority was in the headlines several times in 1987 as a 2-decade plan began to bear fruit. The PDRA received \$4.4-million of a proposed \$22.3-million toward the eventual building of a dam across the Palo Duro draw.

Over the course of the year, arche-

ological testing was done on the proposed lake site, including the dam area. Finally in December, the PDRA received the go-ahead from the Army Corps of Engineers for construction of the 3,700 foot dam. And the PDRA board moved ahead toward making the first purchase of land for the Hansford County project.

Also in December, Gruver's Carrie Hart wound up a full year as Miss Texas Farm Bureau. The personable Hansford County Miss crowned the new Miss Texas Farm Bureau at the company's annual convention in San Antonio.

The year closed out blustery -- much in the same fashion as it came in. The year's weather provided headlines across not only Hansford County, but the area and state as well.

Winter and fall snows accounted for over 60-inches of the white powder in Hansford County and the year wound up as the wettest in the last decade with

over 26-inches of moisture.

While snow headlined the colder months, spring and summer saw rain, wind and hail dominate the picture as the county was inundated by moisture.

Many projects begun or furthered during 1987 may see their culmination this year as Hansford County continues to grow and prosper. That growth and prosperity is due in large part to the foresight of numerous community leaders, both past and present.

But the true strength of the community lies squarely on the shoulders of each individual who makes up the Hansford County community -- their dreams and ambitions brought to life help make for a strong and vital growth; one measured much in the same manner as our ancestors -- through civic groups and organizations, through involvement in city and county government, through the leaders which help pave the way toward an even brighter and stronger future.

## •1984•

**Dan Saldivar's Body Shop**  
1100 W. 7th 659-2531

**D & M Travel Service**  
Mae Wofford - CTC  
Pittman - Shieldknight Building  
511 S.W. 11th Ave. 659-5233

**West Texas Gas Inc.**  
Spearman  
204 S. Main 659-2723

**Double D Fertilizer & Feed**  
Kenneth Slough  
722 Front Gruver 733-2459

**Gillaspie Chevrolet-Olds**  
Dick Gillaspie  
Hwy. 207 S. 659-2541

## •1984•

**Archer Inc.**  
Phillip and Lynn Archer  
Airport Addition 659-5272

**H & R Block**  
Zella Russell -- owner  
307 W. Davis 659-2310

## •1985•

**B & M Automotive**  
Spearman  
403 Hancock 659-3111

**First National Bank**  
Spearman  
729 W. 7th 659-5544

**Debbie's Ready-or-Not**  
Debbie Pearson -- owner  
620 1/2 S. Bernice 659-3328

## •1985•

**Adela's Flower & Gifts**

511 W. 207 S. Gruver 659-5180

**Fuller's Jewelers**

221 Sanders, Spearman 659-5005

## •1986

**Las Dos Amigas**Barbara Rojas Aurora Vela owners  
26 S. Haney 659-2164**C.O.'s Supply Co.**

301 Davis Spearman 659-3781

**Country Stitches**

715 W. 7th Spearman 659-2080

**Sam's Shoe Clinic**Sam Pierson  
307 W. Davis 659-3234**Hair Loft 2100**Mary K. Clubb - Robin Mathews  
310 Main 659-5161**Davis-Chrevron Gulf**

503 Collard 659-2422

## •1986•

**Cattleman's Supper Club**Tom Collier -- owner  
Hwy. 207 S. 659-2664

## •1987•

**Gruver Texaco**Dearl Shelton -- owner  
501 Main Gruver 733-2637**Family Discount Furniture**Wilma Mestas, Louie Shipp, & Nelda Jones  
209 Main Spearman**Mark Sheets Automotive**Spearman  
Airport Road 659-2773**B.J.'s Petal Patch**Judy Virden and Betty Roberts -- owners  
West of Gruver 733-2236**Five Star Equipment**Spearman  
Hwy. 15 659-3743**Video Hut**Donna Porter owner  
Plains Shopping Center 659-2973**Janie's Junk & Crafts**Janie Jeffries -- owner  
Main Street Gruver 733-2981