



## Manor empty stocking fund helps elderly

It's surprising how something as simple as a new robe could make the difference between an otherwise drab day and a Merry Christmas, but for some elderly patients at the Hansford Manor Nursing Home that simple amenity would be the gift of all gifts this Christmas.

For those elderly souls, Christmas would be just another day on the calendar except for the gifts provided by the Manor Empty Stocking Fund.

Money donated to the fund is utilized at Christmas to purchase gifts of clothing, toiletries and other small items for those patients who would otherwise go without during this special season.

In addition, the tax-deductible donations are used throughout the year to purchase items which would otherwise be outside the budget of those elderly citizens whose income is just enough to get by each month.

Money from the fund will be used to purchase one resident a warm pair of slippers while another will benefit from a new pair of shoes -- all made possible by donations to the Empty Stocking Fund by Hansford county residents.

The fund will serve a 3-fold purpose; first to brighten the Christmas holiday by putting a gift under the tree for those residents who either don't have any living

relatives or whose relatives live too far off to make the trip;

Secondly, the gifts are needed items which these residents cannot afford to purchase on their own and, finally, the gifts will keep on coming all year long as money from the fund is carefully doled out to ensure a comfortable situation for these special people.

The Empty Stocking Fund gives everybody the opportunity to help make a difference in another person's life this Christmas and beyond -- a difference which cannot help but brighten what would otherwise become another lonely day in the life of already lonely people.

Between now and Christmas, names of donors and amounts contributed will be printed in each edition of the newspaper.

Contributions may be made to the Manor Fund, 707 S. Roland, Spearman, Tx. 79081, or may be delivered in person to either Carol Hergert or Jody Harnish at the Manor. Please give your name as you would like to have it printed, or, if any anonymous or a memorial donation, please state that information.

Previous Balance: 210.00  
Hergert Pontiac-Buick-GMC 50.00  
Frances Kilgore 10.00  
Anonymous 200.00  
Anonymous 200.00  
Mr. and Mrs. W. Jarvis 20.00  
Ending Balance \$690.00

## Donations gratifying on Christmas projects



Donations to the two Christmas fund projects being sponsored by the Spearman Reporter, the Hansford Plainsman and the Gruver Statesman continue to come in this week from Hansford County residents. The two projects -- the Hansford Manor Empty Stocking Fund and the Hansford Auxiliary's Operation Christmas Greeting -- are annual events supported through contributions by newspaper readers.

Now and throughout the Christmas season, stories and lists of donors to the two worthwhile projects will be featured items of the three county newspapers.

The Operation Christmas Greeting is through the auspices of the Hansford Hospital Auxiliary and money here is used to purchase needed items for both the hospital and nursing home.

Money donated to the Manor Empty Stocking Fund is utilized to benefit those elderly patients at the nursing home facility who would otherwise have no Christmas without the support of individuals who care enough to help with their gifts of cash.

## Operation Christmas Greeting 1987

Hansford residents are again showing their desire for a strong medical facility while at the same time demonstrating their appreciation of the volunteers who serve with the Hansford Hospital Auxiliary as Operation Christmas Greeting 1987 continues.

The only fund raiser of the year for the all-volunteer group, the special event is utilized by area residents in lieu of sending Greeting cards. Money which would be spent there is diverted to the special Auxiliary fund.

Over the years, money from the fund has been utilized to purchase such items as cart vanities and stretchers along with kitchen items and dishes.

Now in its 12th year, the fund has provided curtains, items for the labor room and meal serving cabinets as well as clocks.

As in years past, those individuals listed below send their best wishes for a special Christmas season and a joyous New Year. Instead of sending cards, they have donated to the Hansford Auxiliary

Fund for the benefit of the two Hansford medical institutions.

Donors include:

Ed and Alva Garner  
Phil and Marquerite Jenkins  
Mr. and Mrs. Woodville Jarvis  
Ruth Ann and Marvin Jones  
John and Jolinda Hutchison  
Emmett Sanders  
Robert and Margaret Novak  
John and Wanda Brown  
Bobby, Teresa Brown and children  
Dora Womble  
Ab and Beulah Abston  
Frances Kilgore  
Owen and "Babe" Olive  
Pendergraft  
Bernice Brown  
Billy, Joan, Ashley,  
Travis and Tracy Brown  
Juanita Logan  
Harry and Hazel Stumpf  
Ollie Allen  
Gertrude Archer  
Gene and Frances Cudd

Donations to Operation Christmas Greeting 1987 can be mailed to Mary Fern Terry, Box 225, Spearman, Tx. 79081.



The Spearman

# Reporter

25¢  
Per Copy

10 Pages

Volume 80, No. 6

YOUR HOMETOWN NEWSPAPER

Thursday, December 10, 1987

By slim 14-vote margin . . .

## Voters okay school project

Spearman ISD voters gave grudging approval to a \$2.185-million junior high bond issue Tuesday, with a 14-vote margin passing the proposed project as 256 voted for and 242 voted against issuance of the bonds.

In an otherwise quiet election, 51.4 percent of the 498 people who cast ballots voted for the bond issue while 48.6 percent voted against. Only 2.8 percent separated the two sides of the issue.

The SISD board was scheduled to meet Thursday morning at 7 a.m. for their regular monthly board meeting and one of the agenda items is to canvas Tuesday's election results.

Once the election is canvassed and declared official, then board members can proceed with moving toward rating, then selling of the bonds to finance the improvement project.

Sentiments for the project were almost equally divided as evidenced by the vote.



THIS PORTION OF THE JUNIOR HIGH BUILDING will be torn down sometime between now and 1990 when construction is completed at the junior high and elementary campuses in Spearman. SISD voters

narrowly approved a \$2.185-million bond issue Tuesday, giving board members the go-ahead on the project.

STAFF PHOTO BY KIRBY MCADAMS

## Lynx split games in Dumas tourney consolation tilts

The Spearman varsity Lynx cager crew came within six points of winning their first tournament trophy of the 1987-88 season when they bowed out to district 1-AA rival West Texas Consolidated in the consolation finals of the Dumas Invitational tourney Saturday in Dumas.

Now sporting a 2-4 record, the Lynx's four losses have been by a combined total of only 11 points.

Three of those four losses have been in overtime and one of those was a double overtime period.

Friday, the Lynx earned the right to advance to the consolation finals when they downed Dimmitt by a 53-43 count.

Three Spearman players gained the double figure column in that matchup with Tim Wooley dumping in 14 points, Brett Davis collecting 13 and Kevin Nelson who turned in an 11-point performance.

The Spearman boys continue to be plagued with low shooting percentages from both the field and the free throw line.

Against Dimmitt they hit on nine of 17 grace shots for 52.9 percent but came up to 45.8 percent from the field, connecting on 22 of 48 attempts there.

Against West Texas in the consolation finals, however, they managed only 35.8 percent from the field and a lackluster 31.3 percent from the free throw line.

In that contest they made 19 of 53 field goal attempts and managed to make only five of 16 grace shots.

Spearman lost that contest by a 49-43 count as the Comanches claimed the win and the consolation team trophy.

Against West Texas, only Keith Benson and Nelson managed double figures with 10 and 12 points respectively.

SPEARMAN 10 25 39 53  
DIMMITT 7 24 34 43  
Sp -- Tim Wooley, 6-0-2-14; Brett Davis, 6-0-1-13; Carl Urban, 1-0-0-2; Keith Benson, 3-0-0-6; Kevin Nelson, 4-0-3-11; Carson Womble,

0-0-1-1; Pat Shields, 2-0-0-4; Matt Tucker, 0-0-2-2; Team, 22-0-9-53.

SPEARMAN 14 26 32 43  
WEST TEXAS 11 22 36 49  
Sp -- Tim Wooley, 3-0-1-7; Brett Davis, 1-0-0-12; Carl Urban, 3-0-0-6; Keith Benson, 4-0-2-10; Kevin Nelson, 6-0-0-12; Pat Shields, 1-0-0-2; Carson Womble, 1-0-2-4; Team, 19-0-5-43.



## The Hansford Report

By JAMES JARRETT



Like it or not the Christmas season is upon us and with it comes not only brightly colored lights and ornaments, but warm feelings as well as we busily shop for those special people on our list.

Invariably, this time of year also brings out one of my pet peeves. Sure that's what editorial columns are for -- they're made just so editors can gripe.

However, this is not an earth-shattering complaint. It's one of those things which simply bother me.

You see, I don't like the abbreviation "X-Mas". Call it a religious floundering or a disease brought on by too many years in the newspaper business where names are important -- believe me, they are very important. Ask Viola McNabb Whitson.

As far as I have been able to ascertain, Christ never wrote his name with an "X". Normally, it is always spelled out. Except at Christmas time.

Excuses for the abbreviation run from lack of space to saving time. Seems to be to be nothing but a poor excuse for laziness.

However, on the pro side of the ledger, we are forced to admit that the use of "X-Mas" is theologically correct since the first letter of Christ's name in Greek begins with an "X".

I sincerely doubt that very many, if any, of those who persist in using the term know that, however.

Obviously, my disdain for the term will certainly not lessen its usage now or later.

But surely I'm not the only one who feels this way. Tell you what -- if you agree, then the next time you see Christmas abbreviated, don't go on like nothing happened.

## Hospital board to hear audit report tonight

An audit report of fiscal 1986-87 is the main item on an otherwise routine agenda for Hansford hospital board of directors tonight (Thursday).

The meeting will begin at 7 p.m. in the board room of the hospital in Spearman.

In addition to other routine items, board members will also consider a pair of contracts -- one for grant money and the second a renewal of an existing contract for transfer of patients between Hansford Manor Nursing Home and the hospital.

Board members will also be appraised by physician recruitment efforts and physician services at the hospital.



A CROWD GATHERED around Santa Claus Monday evening in front of the Hansford County courthouse as enthusiastic youngsters waited to give the jolly old elf their list of wants. Santa received some last minute instructions from chamber exec. Cora Queener.

# Food act could affect Hansford agribusiness

The conservation compliance provision of the Food Security Act of 1985 will affect many farm operators in Hansford County.

This provision states that if operators produce crops on land designated to be highly erodible, without an approved conservation plan, they may lose certain USDA program benefits.

Under this provision, the Soil Conservation Service (SCS) has the responsibility of determining which cropland fields for each farm number in the county are highly erodible.

Once a field has been designated as highly erodible, an approved conservation plan must be developed on that field and the producer must be actively applying this plan to stay eligible for certain farm program benefits beginning Jan. 1, 1990.

The conservation plan must be fully operational by Jan. 1, 1995 or the producer may no longer be eligible for certain USDA programs.

Highly erodible land is defined as land which has the potential of eroding at more than eight times the rate at which the soil can maintain continued productivity.

For a field to be considered

highly erodible, at least one-third or 50 acres of the field must consist of highly erodible soils.

USDA programs which would be affected by conservation compliance includes price supports, crop insurance, Farmer Home Administration loans, Commodity Credit Corporation storage payments, Conservation Reserve Program annual payments and other programs under which USDA makes commodity related payments.

The SCS has just recently completed the distribution of letters to farm operators informing them of highly erodible cropland fields present on their respective farm numbers.

If a farmer has received one or more of these letters or has questions regarding conservation compliance, contact the SCS office in Spearman for additional information and planning assistance.



The globefish staves off predators by gulping a large quantity of water, till it becomes simply too large to be swallowed by its enemies.

continued from p-1

## REPORT

rather than things, I have been impressed with the number of people who contribute to the Hansford Auxiliary Greeting Fund. Sure, it eventually winds up helping people, but it's used to purchase equipment for the hospital and nursing home.

It's hard to imagine people getting a warm feeling from knowing they helped purchase a crash cart.

Call it community pride, community concern or whatever. What is obvious is that people of Hansford county care and care enough to part with cash -- no matter what the occasion.

Friends, that says a lot for a community and I, for one, am proud to be associated with it.

\*\*\*\*\*

On the lighter side -- and this column wouldn't be complete without at least one gentle gibe in somebody's direction -- let's talk for a minute about the fine art of cooking.

Cooking is great and I enjoy it almost as much as eating... okay, not anywhere near, but I do enjoy it.

No matter how careful the chef, however, there are going to be the occasional faux pas to be reckoned with.

Take the newspaper's own Karen Goodman for example. One morning this week she got up extra early to cook pancakes for her brood as a special treat before school.

She was somewhat disappointed when their usual enthusiasm for their favorite breakfast meal failed to elicit the customary response.

Karen pondered their refusals for seconds and sat down to eat her pancake. As she sat there thoughtfully chewing her meal, she finally hit upon the answer.

Now she swears she will never, never ever, use garlic butter again on her buttermilk pancakes.

I was careful to avoid laughing as she told this story. I still smart from a fried chicken meal I cooked one evening to surprise my family.

I still haven't figured out how I confused the flour and the baking powder. Believe me, if you want a really crunchy crust on your chicken, then use baking powder.

Oh, by the way, be sure to include a hammer with each place setting.

continued from p-1

## VOTERS OKAY

ed by the closeness of Tuesday's vote.

Those opposing the issue did not seem to be against the project itself, but questioned the necessity of an all purposed gym which was included in the proposed renovation and construction.

Also underlying some of the opposition was the uncertainty of a middle school concept since most of the additional classrooms will be built at the elementary school, giving the elementary-junior high campuses a middle school look.

Once construction is finished -- perhaps in 1990 -- the Spearman elementary will house kindergarten through fifth grades while the junior high building will have sixth through eighth grades in the west wing of the structure.

The middle school concept -- utilized extensively in neighboring states -- is receiving strong criticism in Texas, especially in the Panhandle.

Two panhandle cities -- Amarillo and Dumas -- have had strong voter opposition toward moving to the middle school concept.

Voters in the Dumas ISD turned down a \$6-million plus bond issue this week as opponents mustered an almost 2-1 edge in balloting.

Most school officials in both communities agree that the largest problem concerning the middle school concept is one of misunderstanding, and lack of information available to the general public regarding the idea.

Meanwhile, in Spearman, officials will move toward getting their project started with the possibility of a contract being awarded by late spring or early summer next year.

Included in the project will be the demolition of the east wing of the junior high building, a structure which was built in the 1920's.

Additions will be made to the elementary school with a new bank of rooms added along the south edge of the current building and inbetween the current north and south wings. Also included will be the construction of an all purpose gym which will also serve as an auditorium and stage area for both the junior high and elementary campuses.

# Tournament on tap for varsity crews

The varsity Spearman Lynx and Lynxettes will be in Shamrock this Thursday through Saturday to compete in an 8-team bracket basketball tournament there.

The Lynx are scheduled to play Childress at 5:30 in the opening rounds while the Lynxettes meet their Childress counterparts at 4 p.m. that day.

Win or lose, the Lynx will play at 5:30 Friday afternoon and the Lynxettes will play at 4 p.m. in the second round.

They will meet either Wheeler or Clarendon who are in the bottom half of their half of the bracket.

Other boys teams involved in the 3-day double elimination tournament include Canadian, Vernon, Claude and Shamrock.

For the girls' bracket, other teams include Canadian, Paducah, Claude and host team Shamrock.

The Lynxettes already have one tournament title under their belts this season as they won the Dumas Invitational last week.

The Lynx lost a shot at a consolation trophy last week in the Dumas Invitational when they fell to West Texas Consolidated in the consolation finals, 49-43.

# Texas AAM meets Sunday

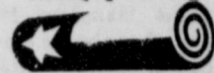
The Texas American Agriculture Movement will celebrate its tenth anniversary at their annual meeting Sunday in Lubbock.

The meeting will be held in the Arlington Room of the Lubbock Plaza, 3201 Loop 289 South.

Registration for the event will begin at 1:30 that afternoon. Main

# The Spearman Reporter

Publication (USPS 509660)  
Spearman, Texas 79081  
213 Main, Box 458  
Published weekly at  
213 Main Street  
Spearman, Texas 79081  
OWNED AND OPERATED BY  
Texas Independent  
Newspapers Inc.



19906 Encino Grove  
San Antonio, Tx. 78259

Second Class postage paid  
at Spearman, Texas 79081.

Any erroneous reflection upon the character of any person or firm appearing in these columns will be gladly and promptly corrected upon being brought to the attention of the management.

Member of the Texas Press Association

PUBLISHER  
James C. Jarrett

ADVERTISING DIRECTOR  
Kirby McAdams

SUBSCRIPTION: Hansford and adjoining counties, combination with The Hansford Plainsman, \$19.95, out of county \$24.95.  
POSTMASTER: Send address changes to Spearman Reporter, Box 458, Spearman, Tx. 79081.

The publisher reserves the right to revise or reject at its option any advertisement which it deems objectionable, either in subject or phraseology, or which it may deem detrimental to its business.

speaker for the meeting will be David Senter.

As part of the celebration, a free barbeque will be held at the South Plains Fairground in Lubbock beginning at 5 p.m.

## Women's Clinic of Dalhart

1422 Texas Boulevard

Dalhart, Texas 79022

Olumide Michael Mughelli, M.D.

Board Certified OB/GYN

Office hours 9-5, M-F,

Thursday evening 6-9

Phone 806 249-4701

# Bring back the "Good old days" ...with GTE CLASSIC SERVICE.

### GTE TURNS BACK THE CLOCK WITH CLASSIC SERVICE.

Remember "the good old days?" Whatever problems you had with your phone service, you'd just call GTE and we'd take care of it. No second thoughts. No repair bill. Your regular phone bill covered everything.

Now, under recent FCC rulings, you're responsible for the cost of repairs to the wiring and jacks inside your home or business. This makes things a little more complicated.

### CLASSIC SERVICE HELPS KEEP THINGS MORE LIKE THEY USED TO BE.

We can't bring back "the good old days" entirely but, with new CLASSIC SERVICE, we can make things more like the way they were.

With CLASSIC SERVICE, you pay only \$1.25 per month to have GTE repair your telephone wiring and jacks during normal working hours, at no additional charge.

Just \$1.25, per telephone number, on your monthly phone bill (about 4¢ a day) covers you, no matter how many jacks you have. And if you sign up before JANUARY 1, 1988, you can avoid the one-time sign-up charge.

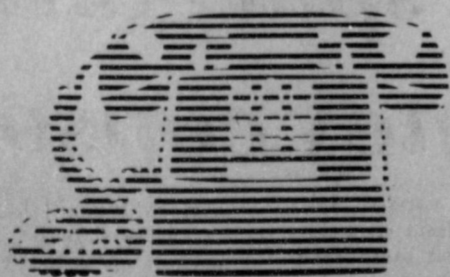
Here's how you'll save with CLASSIC SERVICE ...

### NO SERVICE CALL CHARGES

Without CLASSIC SERVICE, if you have a problem with your phone service, and a GTE service call is needed to locate the trouble, you will be charged for the visit if the problem turns out to be in your wiring, jacks, or telephone instrument.

With CLASSIC SERVICE, there is no service call charge during normal working hours.

## GTE CLASSIC SERVICE



### NO REPAIR COSTS

With CLASSIC SERVICE there is no additional charge for repair or replacement of inside wiring and jacks\*. If you elect not to subscribe to CLASSIC SERVICE and need inside wiring or jack repairs, you have three options:

• As a full-service telephone company, GTE will be happy to make the repairs. But under the new FCC ruling, if you have not subscribed to CLASSIC SERVICE, you will be charged.

• Or, you contract with a third party for repairs, but rates and qualifications vary widely.

• Or, you can make the repairs yourself, but you'll have to supply your own materials. With CLASSIC SERVICE, there is no service call charge. No repair charge. No worry. That's why we call it "CLASSIC."

### HERE'S WHAT CLASSIC SERVICE COVERS ...

- Service call charges
- Identification of the problem.
- Repair or replacement of inside wiring and jacks.

Like anything else, your telephone wiring can deteriorate with age and exposure to air and humidity. CLASSIC SERVICE covers this damage, as well as damage caused by natural disasters such as floods or lightning.

\*Coverage does not include ...

- Willful damage
- Damage due to negligence
- Telephone instrument repair

### AND NOW, NO SIGN-UP CHARGE UNTIL JANUARY 1, 1988.

Whatever problems you may encounter with your phone service, we urge you to call GTE first, even if you don't have CLASSIC SERVICE, because in many cases we can correct the problem from "our end." But if the problem does turn out to be inside your premises, won't it be nice to have CLASSIC SERVICE protection?

Sign up for CLASSIC SERVICE before JANUARY 1, 1988 and avoid a sign-up charge.

**GTE** General Telephone



Chop home grown herbs separately in a blender with a little water and freeze. Freshly thawed they're much tastier than dried herbs.

**WE'VE TRIMMED OUR PRICES.** time to get wrapping

**Clairol BENDERS**

reg. \$30.  
now **\$23<sup>88</sup>**

<p><b>Norelco DELUXE ROTATRACT RECHARGEABLE SHAVERS</b></p> <p>102K31</p> <p><b>5997</b></p>	<p><b>Norelco TRIPLEHEADER RECHARGEABLE SHAVERS</b></p> <p>102K37</p> <p><b>3697</b></p>	<p><b>Norelco TRIPLEHEADER CORD SHAVERS</b></p> <p>102K31</p> <p><b>2597</b></p>
<p><b>RECHARGEABLE SHAVERS</b></p> <p>102K37</p> <p><b>2597</b></p>		<p><b>REMINGTON MICRO SCREEN CORD SHAVERS</b></p> <p>511-000</p> <p><b>2597</b></p>

Choose from standard or printing models. Great for the money manager or student in your family. Get one for yourself, too. The savings really add up!

**calculators sale priced**

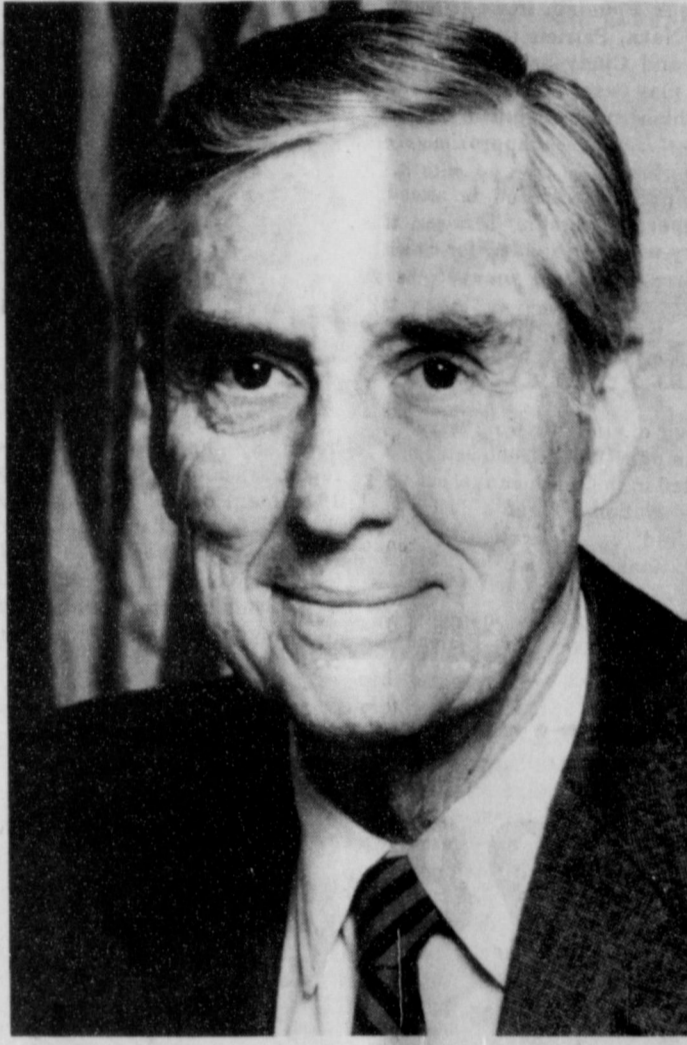
314 MAIN PHONE 659-2141

SPEARMAN TEXAS  
JIM EVANS



# Senator Bentsen

---



Lloyd Bentsen has earned a reputation for effective, responsible leadership through hard work in the Senate and as Chairman of the powerful Finance Committee. For 17 years he has been a leader in the U.S. Senate who can make a difference for the people of Texas and Hansford County.

Let's keep his experience and dedication.

**Let's keep Senator Bentsen working for us by supporting his re-election in 1988.**

**Hansford County Senator Bentsen  
Steering Committee  
C.R. Blodgett, Chairman**

**Senator Bentsen.**

**Leadership that works.  
For Texas.**

**For Hansford County.**





DONNY TEDFORD

### Tedford returns from course

Donny Tedford has successfully completed Allsup's Assistant Manager Training course held at the company's home office in Clovis, N.M.

The 3-day course includes instruction in customer relations, company policies, operational procedures, and management skills.

Tedford returns to his store in Spearman.

## 22 Spearman students named to Who's Who

A total of 22 students from this area have been included in the 21st annual edition of Who's Who Among American High School Students, 1986-87.

Spearman students selected for this year's volumes are Mark Allen, Charlotte Brandt, Keith Clark, Allen Gardiner, Carrie Guthrie;

Bonnie Jarvis, David McGuire, Kevin Nelson, Sharlene Sangalang;

Norman Scroggs, Wanda Wagner, Monte Beck, Tina Breeden, Shiloh Finney;

Bobby Garrett, Anne Marie Jarvis, Tracy Logsdon, Kellie McWhirter;

Mindy Patterson, Kari Schneider, Deana Turner, and Lynette Williams.

Who's Who, published by Educational Communications, Inc., Lake Forest, Illinois, is the largest high school recognition publication in the country. Students are nominated by high school principals and guidance counselors, national youth groups, churches or by the publishing company based upon students performance in scholarship award contests or extracurricular activities.

Final selection is determined on the basis of criteria which include high achievement in academics and leadership in school activities, athletics or community service. Traditionally, 99 percent of Who's Who students have a grade point average of "B" or better and 97 percent are college bound.

The 21st edition of Who's Who, published in 12 regional volumes, features 550,000 students, or 5 percent of the nation's 12,000,000 high school students. They represent 18,000 of the 22,000 public,

private and parochial high schools in the country.

Who's Who students also compete for over \$65,000 in scholarship awards and participate in the publication's annual opinion poll of teen attitudes. The book is distributed to over 15,000 high schools, colleges, universities, and public libraries throughout the country.

### Goodhearts announce birth of daughter

Kamala and Darren Goodheart of Amarillo announce the arrival of their first daughter, Kenzee Lynn, who was born Monday at Northwest Texas Hospital.

She weighed 6-pounds, 10-ounces and was 20-1/2 inches long.

Maternal grandparents are Jerry and Charolette Ford. Great-grandparents are Elvin and Mildred Martin of Spearman and Thelma and Kermit Ford of Synder.

Paternal grandparents are Earl

### Club News

#### THE DAHLIA FLOWER CLUB

The Dahlia Flower Club met Monday in the home of Cleo Denman for their Christmas party.

Myrna Biggers conducted the business meeting.

A program on glass etching was given by Karen Babitzke. She demonstrated how glass etching was done, and showed many

and Trudy Goodheart. Great-grandparents are Almas Ott of Spearman and Maxine Goodheart of Russell, Kan.

examples of her work.

Sada Hoskins gave one of the stories from "Seven Stories of Christmas Love" by Leo Buscaglia.

Myrna Biggers, president, was given her Christmas gift and in return she gave each member a crocheted snowflake.

Refreshments were served by the Social Committee, Cleo Denman, Deta Blodgett and Sammie Bishop to members Myrna Biggers, Mabel Edwards, Karen Babitzke, Louise Archer, Ruth Mary Whitson, Marjorie Curtis, Cleo Denman, and Sammie Bishop, Ethel Ellsworth, Jewell Turner, Ora Sanders and Fada Hofkins.

**Hot Line To Santa**

Buy a call from Santa Claus for your child. Calls will begin on Dec. 14 and are \$5. per child. Each child will be called separately. Deadline for buying a call is Dec. 19. Contact any member of Rho Rho or call 659-5065 or 659-3348.

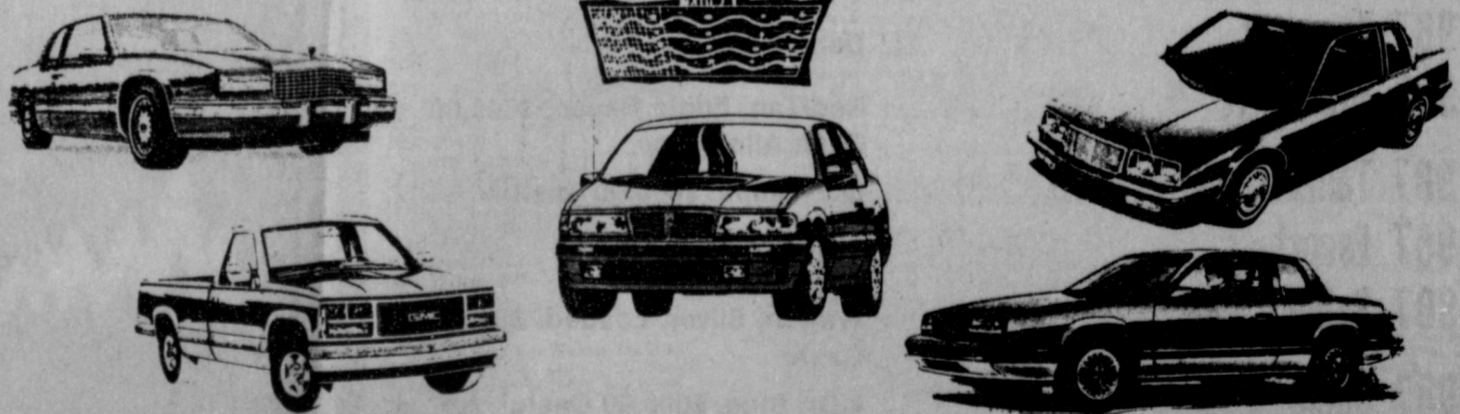
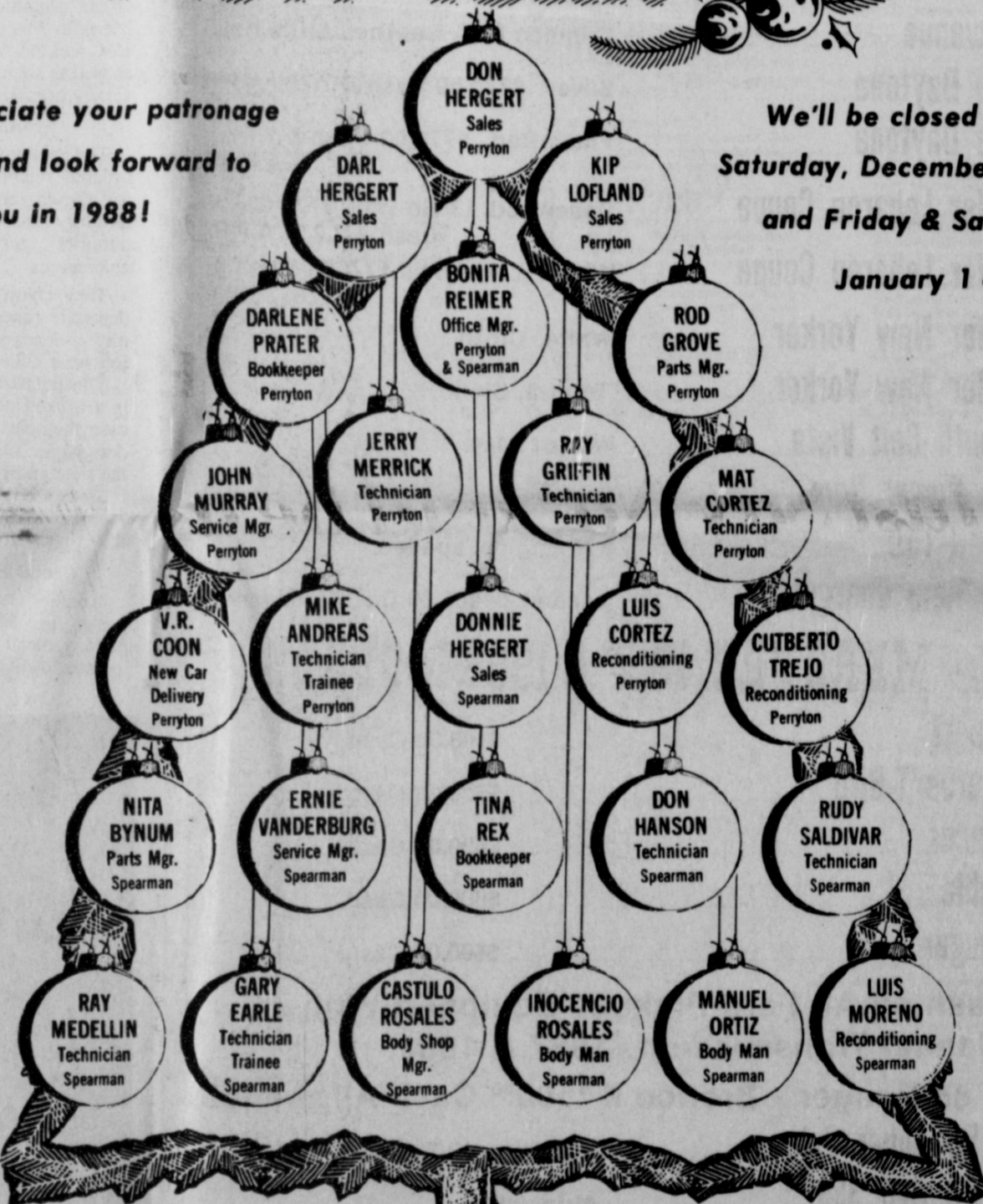
S06-3t

### The Hergert Family & Employees Wish You & Yours ...



We appreciate your patronage in 1987 and look forward to serving you in 1988!

We'll be closed Friday & Saturday, December 25 & 26, and Friday & Saturday, January 1 & 2.



Mr. Goodwrench



420 S. MAIN  
PERRYTON  
435-3686



HWY. 207 SOUTH  
SPEARMAN  
659-3721

Featuring the Award Winning Work of:  
**BRENT BRANHAM, Taxidermist**

**Attention Pheasant Hunters For Quality Mounts**

We are here to serve & here to stay.

**TUMBLEWEED TAXIDERMY**

Hartley Rt. Box 59A1 Dumas, Tx.

or call (806) 935-3529

Come By & Compare Our Work  
Located 1/4 Of Mile W Of Dumas  
On Hwy 87

Open Everyday Through Pheasant Season For Your Convenience

## Keep Your House Warm with a special blanket

Nothing keeps you warmer in the winter than a cozy blanket. When you're wrapped in its warmth, cold air stays out, and warm air stays inside.

This same principle can also work to keep your house comfortably warm for a reasonable cost. When you install proper insulation, you're using a different kind of blanket on your house.

Without proper insulation, your home loses warm air in the winter (and cool air in the summer). Your heating and cooling system must work harder to maintain a comfortable temperature. The proper amount of insulation will make your home more energy efficient and comfortable.

Learn if your home meets the recommended "R" value for your area by contacting us today for a free booklet on energy efficient homes.

Texas-New Mexico Power Company.  
Neighborhood Professionals Offering You The Best Choice

# Johnson-Cooke Motor Co.

## Will Be Blowing These '87's Out-The-Door

### Many Of These Units Will Be Sold Below Factory Invoice!

**WE'RE CLEARING OUT SOME OF OUR MOST POPULAR '87s.**



**GET 7.7% PLUS \$770 CASH BACK!**  
ANNUAL PERCENTAGE RATE\*

**YES — YOU GET BOTH!**

- '87 Dodge Daytonas
- '87 Dodge Pickups
- '87 Dodge Lancer
- '87 Dodge GTS
- '87 Lebaron Coupe

**The Following 1987 Chrysler-Plymouth-Dodge Products Have Got To Go By January 1:**

'87 5th Avenue	Mink Brown Pearl Coat. Cloth
'87 5th Avenue	Crimson Red. Cloth
'87 5th Avenue	Crimson Red. Leather. Little Hail.
'87 Dodge Daytona	Silver. \$770.00 Cash & 7.7% A.P.R.
'87 Dodge Daytona	Flash Red. \$770.00 Cash & 7.7% A.P.R.
'87 Chrysler Lebaron Coupe	Rosewood. Little Hail. \$770.00 Cash & 7.7% A.P.R.
'87 Chrysler Lebaron Coupe	White. Little Hail. \$770.00 Cash & 7.7% A.P.R.
'87 Chrysler New Yorker	White. Cloth.
'87 Chrysler New Yorker	Bronze. Cloth.
'87 Plymouth Colt Vista	Wagon. 4x4.
'87 Dodge Power Ram	4x4. D-50.
'87 Dodge D-150	318 Engine. Loaded.
'87 Dodge Ram Charger	Loaded. \$1000.00 Cash Allowance.

## FORD - MERCURY 1987 & 1988 MODELS

Escort	\$400.00 Cash
Taurus T-Bird	\$600.00 Cash.
Tracer	\$400.00 Cash.
Sable	\$600.00 Cash.
Cougar	\$600.00 Cash.

**\$500<sup>00</sup> Cash on All Ford Pickups Equipped With a Manual Transmission. 1987 & 1988.**

**All '87 & '88 Ranger - Bronco II \$500<sup>00</sup> Cash Allowance.**

1987 F-250 Super Cab	Red/Silver XLT. 5-Spd. (460).
1987 F-250 Reg. Cab	Auto. (460).
1987 Areostar	Demo.
1987 Bronco II	Red/Tan. Eddie Bauer. \$500.00 Cash Allowance.
1987 Taurus	GL. Taupe. \$600.00 Cash.
1987 Escort	White. \$400.00 Cash.
1987 Sable	Wagon. Silver. Loaded. \$600.00 Cash.
1987 Sable	4-Dr. Blue. \$600.00 Cash.
1987 Sable	4-Dr. Smoke. \$600.00 Cash.
1987 Sable	4-Dr. Red. Demo. \$600.00 Cash.
1987 Cougar	Taupe. \$600.00 Cash.
1987 Cougar	White. \$600.00 Cash.

JOHNSON  
COOKE

MOTOR COMPANY

(806) 435-7676  
2322 S. Main  
Perryton, Texas

### STATE CAPITAL



### HIGHLIGHTS

By Lyndell Williams  
TEXAS PRESS ASSOCIATION

**AUSTIN**—Lawyers for Hispanics and students suing to end segregation in colleges say that Hispanics and Black taxpayers are footing the bill for white students across Texas and getting nothing in return.

The lawsuit swings the reform spotlight on the Texas higher education system, the same spotlight that has recently been focused on Texas prisons, mental institutions and public education.

Whatever the outcome, observers contend the system will no longer be the same.

The lawsuit filed last week alleges the state has failed to live up to commitments to upgrade education in South Texas and bring more minorities into universities and colleges.

The lawsuit was filed by attorneys for the Mexican-American Legal Defense and Educational Fund based in San Francisco. Other plaintiffs are two strong Mexican-American groups: LULAC and the American GI Forum, as well as six minority student university organizations.

#### Promise Broken

The plaintiffs seek a court-ordered restructuring of funding for Texas colleges with high minority enrollment and higher minority recruitment at major universities.

They claim that minority students are concentrated in community colleges and less prestigious four-year colleges.

This polarization, they contend, is a broken promise. It does not meet the goals of a 1983 five-year designation plan worked out with the state and federal officials.

State officials, for the most part, are withholding comment while they review the allegations.

#### Mental Health Lawsuit

Another lawsuit filed earlier seeks to force the state to hold judicial hearings for each person involuntarily committed to

a mental institution under state laws now held unconstitutional.

State records indicate some 2,900 mentally disabled persons in state mental hospitals and schools could be affected, or about one in four patients.

Lawyers for the plaintiffs say they believe almost all of them have never had their involuntary commitments reviewed by a court.

The state district court is deliberating whether to hear this case as a class action.

#### School Finance Policy

The state judge who ruled the school finance system unfair urged school officials to oppose capping local enrichment.

State District Judge Harley Clark, who expects the Texas Supreme Court to eventually rule on the case, said lawmakers can consider repealing the prohibition of a state property tax or capping the amount local school districts can spend per student.

Compliance with his court order to restructure funding by 1990 will cost \$4 billion.

#### Mattox, Moody, SMU

Attorney General Jim Mattox said his probe is finding new areas to investigate in the SMU football scandal, but did not elaborate.

Meanwhile, a spokesman for Mattox said his office will insist that the Galveston-based Moody Foundation trustees file suit against former trustee Shearn Moody Jr. to recover \$1.27 million he defrauded from the family charity.

The lawsuit would pit brother against brother. Robert Moody heads the foundation's board of trustees.

#### Relationship Slammed

Texas Water Commission director Larry Soward will leave the agency this week to form a

law firm with former water commissioner Lee Biggart. His career plan has drawn some parting shots from environmentalists who charge Biggart still wields too much influence on the board.

Critics say Soward favored Biggart in cases he represented for developers before the commission, and that Biggart is now rewarding him.

Biggart, who admits Soward is a friend, said if that is the case then he is doing a public service by taking Soward away.

#### Other Highlights

• Comptroller Bob Bullock says his office will waive filing deadlines and penalties for businesses which lost most records during the November tornadoes which swept through Texas. His office will also assist in reconstructing records.

• State agency officials last week instructed 70 black, Hispanic and women professionals on how to compete for lucrative state business contracts.

• Texas will get 1,500 new Texas Army National Guard spots after a restructuring of national units.

• University of Texas regents are seeking a doubling of tuition rates for graduate business students and a 50 percent hike for law students.

• San Antonio chiropractor Terry Peters will seek the GOP nod to oppose U. S. Rep. Henry B. Gonzalez, D-San Antonio.



Benjamin Franklin was one of the first people to manufacture playing cards in America.

**This weeks Christmas Special includes**

## Resistol Hats

**at the BUNKHOUSE**  
210 S. Main 659-2476

**Without advertising  
a terrible thing  
happens ...**

**nothing**



# THAT'S ENTERTAINMENT

## A Full Week of Programming

queen of athletics. Spencer Tracy, Katharine Hepburn. NR. 1:35

[4] **4 Secrets Women Never Share** (1987) Some of America's most glamorous women share their secrets. □

[8] **Straight Talk**

[9] **9 News**

[10] **10 Cagney & Lacey** A racial killing threatens to divide the 14th Precinct. (R) □

[12] **Evening News** A wrap up of today's news and a look ahead to tomorrow's news stories. 1:00

[13] **Praise the Lord Live**

9:20 [11] **17 MOVIE: Cat on a Hot Tin Roof** (1958) A woman wants a baby, but her alcoholic husband refuses her advances. Elizabeth Taylor, Paul Newman. NR. 1:48

9:30 [8] **Courtship of Eddie's Father**

### \* LEGEND \*

Channel	Station
2	ESPN
3	OETA
4	KAMR
5	TMC
7	WHV
8	CBN
9	WGN
10	KFDA
11	TBS
12	TNN
13	SHOW

### MORNING

6:00 [4] **4 Jimmy Swaggart**

[5] **(FR) MOVIE: The Gospel According to Vic**

[5] **(TU) MOVIE: Lady Jane** □

[5] **(WE) MOVIE: Peter Lundy and the Medicine Hat Stallion**

[7] **7 ABC World News This Morning** □

[8] **SuperBook Club**

[9] **9 Muppets**

[10] **10 Morning Ag Report**

[12] **Daybreak**

[SHOW] **(FR) MOVIE: The Nutcracker**

[SHOW] **(MO) Rocking Chair Rebellion**

[SHOW] **(WE) MOVIE: Foreign Body**

6:30 [2] **Nation's Business Today**

[4] **4 NBC News at Sunrise**

[5] **(MO) MOVIE: Foreign Body**

[7] **7 (10) 10 News**

[9] **9 Spiral Zone**

[12] **Business Day**

[13] **(TH) The Hawaiians**

[13] **(FR) Could You Not Tarry?**

[13] **(TU) Betty Jean Robinson**

[13] **(WE) Diane Bish**

[SHOW] **(TH) MOVIE: Firewalker**

[SHOW] **(TU) Santa's Magic Toy Bag**

7:00 [3] **Sunup/Weather**

[4] **4 Today**

[7] **7 Goody Morning America** □

[8] **Our Friends on Wooster Square**

[9] **9 Bozo**

[10] **10 CBS This Morning**

[12] **Daybreak**

[13] **(TH) Roger McDuff**

[13] **(TU) Dean and Mary Brown**

[13] **(WE) Roy Blizzard**

[SHOW] **(MO) MOVIE: Top Gun** □

[SHOW] **(TU) MOVIE: A Challenge for Robin Hood**

7:05 [11] **17 Beverly Hillsbillies**

7:30 [2] **SportsCenter**

[3] **(TH) This Old House** □

[3] **(FR) Write Course**

[3] **(MO) Justin Wilson's Louisiana Cookin'**

[3] **(TU) New York Master Chefs**

[3] **(WE) French Gourmet**

[5] **(WE) MOVIE: Arthur**

[8] **Gentle Ben**

[13] **Richard Roberts**

[SHOW] **(FR) MOVIE: Dark Horse**

7:35 [11] **17 Bewitched**

8:00 [2] **SportsLook**

[3] **Sesame Street** □

[5] **(FR) MOVIE: Arthur**

[5] **(FR) Father Knows Best**

[9] **9 Smurfs**

[12] **Daywatch**

[SHOW] **(WE) The Great Love Experiment**

8:05 [11] **17 Little House on the Prairie**

8:30 [2] **(TH) Running and Racing**

[2] **(FR) Winner's Circle**

[2] **(MO) Windsurfing**

[2] **(TU) Scholastic Sports America**

[2] **(WE) Ski World**

[5] **(TH) MOVIE: Foul Play**

[5] **(MO) MOVIE: Blue Skies Again**

[5] **(TU) MOVIE: Arthur's Hallowed Ground**

[8] **Hazel**

[9] **9 Teddy Ruxpin**

[13] **Joy**

9:00 [2] **(TH) Soccer Classic**

[2] **(FR) College Basketball**

[2] **(MO) Senior PGA Tour**

[2] **(TU,WE) PGA Golf**

[2] **Captain Kangaroo**

[4] **4 Sale of the Century**

[7] **7 Hour Magazine**

[8] **700 Club**

[9] **9 Leave It to Beaver**

[10] **10 Dating Game**

[12] **Daywatch**

[SHOW] **(TH) MOVIE: Heaven with a Gun**

[SHOW] **(FR) MOVIE: Lullaby of Broadway**

[SHOW] **(MO) MOVIE: Far From the Madding Crowd**

[SHOW] **(TU) MOVIE: The Man Who Came to Dinner**

[SHOW] **(WE) MOVIE: The Jazz Singer**

9:05 [11] **17 (TH) MOVIE: A Holiday Affair**

[11] **17 (FR) MOVIE: Christmas Holiday**

[11] **17 (MO) MOVIE: Shamus**

[11] **17 (TU) MOVIE: Hide in Plain Sight**

[11] **17 (WE) MOVIE: How to Save a Marriage (And Ruin Your Life)**

9:30 [3] **(TH) Fast Forward I**

[3] **(WE,FR) Instructional Television**

[3] **(MO) Space**

[3] **(TU) What On Earth**

[4] **4 Classic Concentration**

[5] **(WE) MOVIE: King Solomon's Mines**

[9] **9 Andy Griffith**

[10] **10 New Card Sharks**

[13] **Marilyn Hickey**

10:00 [3] **Television**

[4] **4 Wheel of Fortune**

[5] **(FR) MOVIE: 48 Hrs.** □

[5] **(MO) MOVIE: Death on the Nile**

[5] **(TU) MOVIE: Foul Play**

[7] **7 Wil Shriner**

[8] **Straight Talk**

[9] **9 Love Boat**

[10] **10 Price Is Right**

[12] **Daywatch**

[13] **(TH) Candi Staton-Susswell**

[13] **(FR) Dottie Rambo**

[13] **(MO) Randy Shenkie**

[13] **(TU) Maker's Match**

[13] **(WE) Heritage Singers**

10:30 [4] **4 Win, Lose or Draw**

[5] **(TH) MOVIE: Arthur's Hallowed Ground**

[8] **(TH) Second Honeymoon**

[8] **(TU,WE,FR) Doris Day**

[8] **(MO) American Baby**

[13] **(TH) Dino**

[13] **(FR) Life of Christ**

[13] **(MO) Westbrook Hospital**

[13] **(TU) Don Wellman**

[13] **(WE) Nancy Harmon**

11:00 [2] **Bodies in Motion**

[4] **4 Super Password**

[7] **7 All My Children**

[8] **8 Bill Cosby**

[9] **9 Geraldo**

[10] **10 Young and the Restless**

[12] **Sonya Live in L.A.**

[13] **Get in Shape**

[SHOW] **(TH) MOVIE: Foreign Body**

[SHOW] **(FR) MOVIE: Back to School**

[SHOW] **(TU) MOVIE: Brighton Beach**

[SHOW] **(WE) MOVIE: Thunder Run**

11:05 [11] **17 Perry Mason**

11:30 [2] **Getting Fit with Denise Austin**

[4] **4 News**

[5] **(WE) MOVIE: Gorky Park**

[8] **Dobie Gillis**

[13] **(TH) Ron Cottle**

[13] **(FR) Harold Sala**

[13] **(MO) Bob Hoskins**

[13] **(TU) Jack Hayward**

[13] **(WE) Art Linkletter**

**AFTERNOON**

12:00 [2] **(TH) College Basketball**

[2] **(TU,FR) Skiing**

[2] **(MO) College Football**

[2] **(WE) NHL Hockey**

[3] **(TH) Magic of Oil Painting**

[3] **(FR) Motorweek '88**

[3] **(MO) This Old House** □

[3] **(TU) Computer Chronicles**

[3] **(WE) Lap Quilting**

[4] **4 Days of Our Lives**

[5] **(TH) MOVIE: Creator**

[5] **(FR) MOVIE: King Solomon's Mines**

[5] **(TU) MOVIE: All the Right Moves**

[7] **7 [9] 9 [10] 10 News**

[8] **Wendy and Me**

[13] **(TH,FR) Behind the Scenes**

[13] **(MO, TU, WE) TBN Today**

[13] **(MO) MOVIE: The Bible**

12:05 [11] **17 (TH) MOVIE: Doctor's Secrets**

[11] **17 (FR) MOVIE: I Walk the Line**

[11] **17 (MO) MOVIE: Kitten with a Whip**

[11] **17 (TU) MOVIE: A Countess from Hong Kong**

[11] **17 (WE) MOVIE: Rough Night in Jericho**

12:30 [3] **(MO,WE,TH,FR) Instructional Television**

[3] **(TU) Visions**

[5] **(MO) MOVIE: Red Sonja**

[7] **7 High Rollers**

[8] **Bachelor Father**

[9] **9 (TH) Magnum, P.I.**

[10] **10 (TU,WE,TH) Bold and the Beautiful**

[10] **10 (MO,FR) Bold and Beautiful**

[10] **10 Jimmy Swaggart**

[SHOW] **(WE) Broadway on Showtime: Picnic** □

1:00 [2] **(FR) Billiards**

[2] **(TU) College Soccer**

[3] **(TU) Instructional Television**

[4] **4 Another World**

[7] **7 One Life to Live**

[8] **Doris Day**

[9] **9 Dick Van Dyke**

[10] **10 As the World Turns**

[12] **Newsday**

[13] **James Robison**

[SHOW] **(TH) MOVIE: Eliminators**

[SHOW] **(FR) MOVIE: Top Gun** □

[SHOW] **(TU) MOVIE: Firewalker**

1:30 [3] **(WE) Reading Rainbow**

[5] **(TU) MOVIE: The Gospel According to Vic**

[8] **Bill Cosby**

[9] **9 Andy Griffith**

[13] **(TH) Maureen Salaman**

[13] **(FR) Dean and Mary Brown**

[13] **(MO) Donald Whitaker**

[13] **(TU) This is the Life**

[13] **(WE) Reginald Cherry**

2:00 [2] **(TH) Auto Racing**

[3] **(FR) PGA Golf**

[3] **(FR) Feed to Record**

[3] **(MO) Survival Spanish**

[3] **(TU) Fast Forward II**

[3] **(WE) Instructional Television**

[4] **4 Santa Barbara**

[5] **(TH) MOVIE: Yankee Doodle Dandy**

[5] **(FR) MOVIE: Come Fill the Cup**

[5] **(MO) MOVIE: The Gods Must Be Crazy**

[5] **(WE) MOVIE: Joshua Then and Now**

[7] **7 General Hospital**

[8] **Green Acres**

[9] **9 Leave It to Beaver**

[10] **10 Guiding Light**

[12] **The International Hour**

[13] **700 Club**

2:05 [11] **17 Tom and Jerry**

2:30 [2] **(WE) All American Pulling Series**

[3] **(TH) Countries and People**

[3] **(MO) Storybook International**

[3] **(TU) U.S. Constitution**

[8] **Flying Nun**

[9] **9 Ghostbusters**

3:00 [2] **(TH) World Class Championship Wrestling**

[2] **(MO, TU, WE) A.W.A. Championship Wrestling**

[3] **Sesame Street** □

[4] **Oprah Winfrey**

[7] **7 Donahue**

[8] **Hazel**

[9] **9 Bravestarr**

[10] **10 Little House on the Prairie**

[12] **Newsday**

[13] **Another Life**

[SHOW] **(TH) Bim, the Little Donkey**

[SHOW] **(FR) MOVIE: The Nutcracker**

[SHOW] **(MO) Rocking Chair Rebellion**

[SHOW] **(TU) Santa's Magic Toy Bag**

[SHOW] **(WE) MOVIE: Alice's Adventures in Wonderland**

3:05 [11] **17 Flintstones**

3:30 [5] **(TU) MOVIE: Lady Jane** □

[8] **Father Knows Best**

[9] **9 Transformers**

[13] **(TH,FR) Marilyn Hickey**

[13] **(MO, TU, WE) Lester Sumrall**

[SHOW] **(TU) MOVIE: The Nutcracker**

3:35 [11] **17 Flintstones**

4:00 [2] **(TH) Soeedworld**

[2] **(FR) SpeedWorld**

[2] **(MO, TU, WE) Australian Rules Football**

[3] **Mister Rogers' Neighborhood**

[4] **4 Judge**

[5] **(FR) Short Film Showcase**

[5] **(MO) MOVIE: Dangerously Close**

[5] **(WE) MOVIE: 48 Hrs.** □

[7] **7 (MO, TU, TH, FR) Newlywed Game**

[7] **7 (WE) ABC Afterschool Special**

[8] **Big Valley**

[9] **9 Joe**

[10] **10 (TU, WE, TH, FR) Divorce Court**

[10] **10 (MO) Divorce Court**

[12] **Newswatch**

[13] **Praise the Lord**

[SHOW] **(TH) The Red Balloon**

[SHOW] **(MO) Faerie Tale Theatre: The Dancing Princesses** □

4:05 [5] **(TH) MOVIE: Foul Play**

[11] **17 Munsters**

4:30 [3] **Square One TV** □

[4] **(MO, TH, FR) Getting in Touch**

[4] **(WE) Getting in Touch**

[5] **(FR) MOVIE: The Color of Money**

[7] **7 (MO, TU, TH, FR) Win, Lose or Draw**

[9] **9 Jem**

[10] **10 Superior Court**

[SHOW] **(FR) Charlie's Christmas Secret**

4:35 [11] **17 Laverne and Shirley**

[SHOW] **(TH) The Steadfast Tin Soldier**

5:00 [2] **SportsLook**

[3] **MacNeil/Lehrer NewsHour**

[4] **4 (TH) M\*A\*S\*H**

[4] **(MO, TU, WE, FR) Hollywood Squares**

[7] **7 Jeopardy!**

[8] **Crazy Like a Fox**

[9] **9 Facts of Life**

[10] **10 People's Court**

[12] **ShowBiz Today**

[SHOW] **(TH) MOVIE: Firewalker**

[SHOW] **(FR) MOVIE: Lullaby of Broadway**

[SHOW] **(MO) MOVIE: Top Gun** □

[SHOW] **(TU) MOVIE: Eliminators**

[SHOW] **(WE) MOVIE: The Jazz Singer**

5:05 [11] **17 Alice**

5:30 [2] **(TH) Winner's Circle**

[2] **(FR) Running and Racing**

[2] **(MO) Surfer Magazine**

[2] **(TU) Scuba**

[2] **(WE) NBA Today**

[2] **(TH) NBC Nightly News** □

[7] **7 ABC News** □

[9] **9 WKRP in Cincinnati**

[10] **10 CBS News**

[12] **Inside Politics '88**

5:35 [11] **17 (TU, WE, TH, FR) Carol Burnett**

[11] **17 (MO) Leave It to Beaver**

### TUESDAY December 15

### EVENING

6:00 [2] **SportsCenter (L)**

[3] **Nightly Business Report**

[4] **4 [7] 7 [10] 10 News**

[5] **MOVIE: Arthur** (1981) A rich playboy realizes he must face the realities of life. Dudley Moore, Liza Minnelli. PG. 1:37

[8] **Remington Steele**

[9] **9 Cheers Whodunit**

[12] **Moneyline** Current reports on world economics and financial news with Lou Dobbs. 0:30

6:05 [11] **17 Andy Griffith Class Reunion**

6:30 [2] **College Basketball Ohio State at Florida (L)**

[3] **Oklahoma News**

[4] **4 M\*A\*S\*H**

[7] **7 Wheel of Fortune** □

[9] **9 Barney Miller Bugs**

[10] **10 Three's Company**

[12] **Crossfire** Discussion of the latest controversial issues with leading newsmakers. 0:30

[13] **17 Sanford and Son The Hawaiian Connection, Part 3**

7:00 [3] **The Day the Universe Changed** (1986) Burke investigates the roots of the industrial revolution. □

[4] **4 Family Ties**

[7] **7 Muppet Family Christmas** The Muppets will gather for a musical Christmas dinner reunion. □

[8] **8 Second Honeymoon**

[9] **9 Twilight Zone Changing of the Guard**

[10] **10 The Oldest Rookie** Ike must catch drug smugglers while mending his ex-wife's new romance. □

[12] **Primer News** Wrap ups of the day's world news and in depth feature reports. 1:00

[13] **TBN Today**

[SHOW] **Brothers** (1987) Lou discovers that retirement is not all it's cracked up to be. Paul Regina, Robert Walden. NR. 0:30 □

7:05 [11] **17 MOVIE: A Christmas Story** (1983) Shepherd's whimsical look at family life in the 1940s. Peter Billingsley, Darren McGavin. PG. 1:38

[12] **4 Valerie's Family** Wanting to perform for a favorite teacher, Willie plagiarizes a poem. □

[8] **8 Lat Frontier**

[9] **9 Twilight Zone Five Characters in Search of an Exit**

[13] **Kent and Dru Astell**

[SHOW] **It's Garry Shandling's Show: Anjelica, Part 2** Garry is overwhelmed by his Love Connection date, Garry Shandling, Michael Tucci. NR. 0:30 □

8:00 [3] **Mark Russell Comedy Special** Mark Russell turns the day's worrisome news into fuel for laughter. □

[4] **4 A Year in the Life** Sunny pushes Joe past the breaking point with insufferable behavior. □

[5] **MOVIE: Gorky Park** (1983) A homicide detective tries to solve a brutal triple murder in Moscow. William Hurt, Joanna Pacula. R. 2:08

[7] **7 Julie Andrews...The Sound of Christmas** Join Julie Andrews for traditional and contemporary holiday music. Julie Andrews, Placido Domingo. □

[8] **8 700 Club**

[9] **9 Twilight Zone Night of the Meek**

[10] **10 Candid Camera Christmas**

[12] **Larry King Live** In depth interviews with top newsmakers and celebrities. □

[13] **13 Kenneth Hagin**

[SHOW] **MOVIE: Thunder Run** A retired trucker and his grandson drive plutonium across the desert. Forrest Tucker, Chris Shepherd. PG. 13. 1:24

8:30 [3] **Hanukkah** (1985) A history of the Jewish holiday and its significance to the Jews. Edward Asner.

[9] **9 College Basketball DePaul vs Weber State (L)**

[13] **Doug Clark**

9:00 [2] **CISM Boxing Championships** From Camp LeJeune, NC (T)

[3] **MOVIE: Father's Little Dividend** (1951) A man's peace and quiet is shattered when he becomes a grandfather. Spencer Tracy, Joan Bennett. NR. 1:22

[4] **4 St. Elsewhere** Craig's artificial heart transplant patient surfs Craig's name. □

[7] **7 A Christmas Memory** (1956) Two friends prepare for Christmas in this Truman Capote story. Geraldine Page, Donnie Melvin. □

[8] **Straight Talk**

[10] **10 The Equalizer** McCall receives a desperate plea from a six year old who has AIDS.

[12] **Evening News** A wrap up of today's news and a look ahead to tomorrow's news stories. 1:00

[13] **Praise the Lord Live**

9:05 [11] **17 MOVIE: The Wrecking Crew** (1969) Secret agent Helm is after stolen gold which has been hijacked. Dean Martin, Elke Sommer. PG. 1:45

9:30 [8] **American Snapshots**

[SHOW] **Van Halen: Live Without a Net** (1986) Van Halen rocks the audience with new and classic Van Halen hits. Eddie Van Halen. NR. 1:00

**"The Mighty 98"**

**Rocks Hansford County**

**Static-Free Rock N' Roll**

Every Saturday evening 7 to Midnight on KRDF-FM 98.3 MHz

**Boogie The Night Away With**

**Love Song Dedications**

**Weekly Top 10 Countdown**

**Rock N' Roll News Briefs**

**And Top 40 Rock Hits**

Grab your Mighty 98 Top 20 Survey at: Hickerson Jewelers, Video Hut, and Hi-Plains Conoco in Spearman or Main Street in Gruver

**★ Be Smart-Don't Start! ★**

**★ Just Say No to Drugs & Alcohol**

## Among the Neighbors

by Helen Fisher

Somehow, without any one realizing it, a local kid allowed 70 years to creep up on him. On December 5, Johnnie Pipkin acknowledged his 70 at a party in his home surrounded by 4 generations of family.

Guests were his father, Knox Pipkin, Mr. and Mrs. Richard Pipkin and family and Yvonda and Chris Stokes, Amarillo.

Johnnie and Edith were pleased to receive congratulatory calls from their grandson, Tom Mayes, Jr., in school in S.C. and their daughters-Betty Clifford from Canada and Pauline Mayes from New Jersey

her great granddaughters while their mother, Darlene, was in Ohio for schooling. The rest of the time she spent with daughter, Sue.

Neil and Carol Ann Pack are enjoying a visit by his mother, Mrs. Odell Pack of Waco. She will be here several more days.

She thoroughly enjoyed the marvelous Christmas Musicals at the First Baptist Church Sunday evening. Carol Ann had been much involved with it.

A picture of cute Michael Whitefield appeared in the Amarillo News-Globe on Sunday. He appeared on behalf of the Tascosa road 4-H Club benefit Elf Contest.

He is the son of Jim and Kathi Smith, formerly of Spearman and the great grandson of Mr. and Mrs. Milton Brown. He is also the grandson of Mr. and Mrs. H. Whitefield.

Amarillo News recently carried an article about the Hi Plains Chapter of the Poetry Society of Texas and its annual festival. Nova Bair is the president.

Nova is a Spearman School alumni, being the former Nova Schubert. She has a nephew and niece here.

Emphasizing the spirit of warmth and giving of Christmas, a group of 23 teenagers sang carols at a number of homes of the elderly and Hansford Manor Sunday night.

They were the High School Sunday School Class of the First Baptist Church. Riding on the back of a trailer, they enjoyed it as much as the recipients.

Adults giving their time and enjoying the caroling were Mr. and Mrs. Dick Gillispie, Mr. and Mrs. Scott Taylor, Carol Pack and Tony Ferguson.

The many friends of Mary Ann Martin will be interested in learning that she has returned to the Panhandle from Dallas where she has been employed by a brokerage firm.

She received her broker's license sometime ago, and will be employed by affiliated Marketing Incorporated.

It is not known if Mary Ann returned to the anhandle hoping for a White Christmas but it is known she will be welcomed back.



Interest in model railroading as a hobby began after the Chicago World's Fair of 1933-34. Model railroad exhibits at the fair spurred this interest.

Mr. and Mrs. Newell Allen returned Friday from a month in California. They spent a couple of weeks at Pismo Beach where they met Newell's sister and brother-in-law, Maxine and Dick Vernon.

They all returned to Springerville for Thanksgiving. They were joined by Max Vernon and family, Mr. and Mrs. Cecil Vernon, and Newell's sister, Norma Jo Perigan of Visalia.

Mr. and Mrs. Marcus Larson of Spearman also joined them.

The Allens and Larsons returned to Spearman together.

Mrs. Olga Gafford returned the latter part of the week from a ten day visit over Thanksgiving at Dennison in the home of her son, Glynndon Gafford. She also stopped in Durant, Ok. where her granddaughter lives.

Gertrude Archer is back after six weeks in Phoenix. She stayed with

You are invited to a reception honoring the occasion of **Ralph Bort's 90th Birthday, Sunday December 13, from 2 to 4 p.m. at his home 501 E. Bowdway, Gruver, Tx. no gifts please**

**\$249<sup>62</sup> MO.**

**On this 1988 Corsica**

Corsica LT 4-dr. Sedan

With Approved Credit, No Down Payment Required. SP \$11,222. 60 Months. 12 Percent APR. Plus TT&L DP \$14,977.20. With Small Down Payment, Monthly Price Even Lower.

Price Includes These Options:

- .. 2.0 Liter, 4-Cylinder Engine
- .. Sytled Steel Wheels
- .. AM/FM Stereo Radio with seek scan, cassette deck
- .. Digital Clock
- .. Extended Range Speakers
- .. Tilt Wheel
- .. Cruise Control
- .. Automatic Transmission
- .. Heavy Duty Battery
- .. Air Conditioning
- .. Gauges, Including Tachometer
- .. Tinted Glass
- .. Carpet Floor Mats
- .. Pulse Wipers

**GM QUALITY SERVICE PARTS** GM

**Gillaspie Chevrolet-Olds**

Hwy 207 South 659-2541

Refreshing, non-fattening and delicious: A tall, cool glass of iced tea.





# Time, money are precious items for Christmas time

As the number of shopping days until Christmas decreases, it's easy to run out of money, as well as time.

Christmas is the biggest spending season of the year, yet few families plan ahead for the added burden on their income.

A common strategy is to resort to credit spending for holiday expenses, although that may just postpone the financial problem until after the first of the year.

But it's not too late to evaluate your financial situation and gain some control over holiday spending.

Figure out the amount of money you have available for holiday expenses, including money from paychecks you will receive between now and Christmas. Then estimate your remaining expenses, including holiday food and entertaining, cards, decorations, party clothes, gifts and other costs.

Since gifts are a major expense, setting dollar limits for each gift, making gifts and giving services, limiting gifts to certain members of the family or exchanging names to reduce the number of gifts.

Once you know what gifts you plan to buy, go shopping with a

THURSDAY, DECEMBER 10, 1987 list. That will allow you to comparison shop for items at a specific amount and will reduce impulse buying.

If you decide to use your credit cards, set limits on how much you'll charge, and keep track of credit purchases so you won't run up large bills that are difficult to pay off in a reasonable amount of time.

Remember too, that the finance charges on any unpaid charge card balances will actually add to the cost of your gifts.

Keep accurate records of all holiday expenses this year, so you'll have a good estimate of expenses for planning ahead next year.

## SWD accepts orders for seedlings

The Hansford Soil and Water Conservation District is now accepting orders for windbreak seedlings from rural landowners. The seedlings will be supplied by the Texas Forest Service (TFS) and the Colorado Forest Service (CFS).

Potted evergreen seedlings, including species such as rocky Mountain Juniper, Austrian Pine, Eastern Red Cedar and several other types, will be available at a cost of \$33 per thirty trees.

Bare root deciduous seedlings, such as Bur Oak Russian Olive, Honeylocust, Green Ash and others, will be available at a cost of \$18.50 per fifty seedlings if supplied by CFS or \$12.50 if supplied by TFS.

A new Quail and Pheasant Wildlife Planting Packet is being made available this year through the TFS. This packet will consist of 25 Russian Olive, 25 Lilac, 25 Sand Cherry and 25 Skunkbush Sumac at a cost of \$25.

For further information about the seedling program call 659-2330 or come by the Soil Conservation Service office at 505 West 11th in Spearman.

The delivery date for these seedlings is March 23, 1988 but orders should be placed as soon as possible since the supply of some species will soon be exhausted.

## LION news and notes

Imagine losing your sight today. Tomorrow, how would you prepare breakfast, get to work, function on the job, read or watch television that evening?

Eye disease or injury can strike anyone, causing sudden vision impairment or blindness. It's rarely preventable—and causes one of the most devastating and difficult life-style changes individuals can face.

In the United States alone, over 300,000 persons lose their sight annually, yet for thousands, it could be saved through corneal transplants. Unfortunately, at least 5,000 persons each year continue to wait for medical assistance, due to the shortage of donated corneas.

A new federal law may help. Effective November 21, 1987, hospitals across the country are required to request cornea and other tissue donations from the families of dying patients. The law is expected to increase tissue donations dramatically.

In a recent survey, directors of the nation's eye banks, most operated and funded by Lions clubs, indicate approval of the new law. Over ninety percent agree it will increase cornea donations, although many feel demand will still out-weigh supply in some states. Eye banks and the Lions believe they need to continue to educate the public about the need for corneas. Communities can take action now to ensure an adequate supply of corneas for area eye banks.

### FELLOWSHIP BAPTIST CHURCH

11th & Archer  
Services each week  
Sunday 10:00 a.m.  
Wednesday 7:30 p.m.  
11:00 a.m.  
6:00 p.m.

Fellowship Baptist Academy  
K-12

An Independent Baptist Church

659-2783

R.L. FOX PASTOR



Pleasmor SLICED BACON \$1.49  
16 Oz. Pkg.



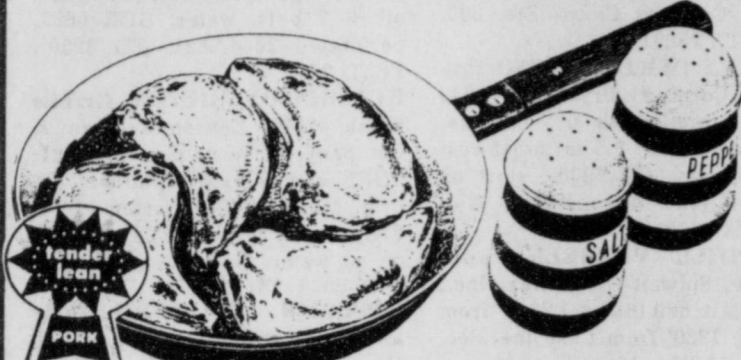
Start Your Day Off With A Delicious Breakfast of Pleasmor Eggs & Bacon!

Tender Lean® COUNTRY STYLE RIBS \$1.39  
Lb.



# The Favorite Brands Sale!

Make our Favorite Brands your favorites too.



Tender Lean® ASSORTED PORK CHOPS \$1.39  
Lb.



Tender Taste® 'FULL CUT' ROUND STEAK \$1.69  
Lb.

Tender Lean® 'CENTER CUT' PORK CHOPS \$1.99  
Lb.  
Market Made SAUSAGE \$1.29  
Lb.  
Tender Taste® BNL'S RUMP ROAST \$1.79  
Lb.  
Tender Taste® 'BONELESS' SIRLOIN TIP STEAK \$2.29  
Lb.

Tender Taste® BEEF CUBE STEAK \$2.69  
Lb.  
Louis Rich TURKEY HAM \$2.29  
Lb.  
Louis Rich TURKEY VARIETY PACK 12 Oz. \$2.29  
Pkg.  
Louis Rich TURKEY BOLOGNA 16 Oz. \$1.49  
Pkg.

John Morrell SMOKED PICNICS \$1.09  
Lb.  
John Morrell SLICED SMOKED PICNICS \$1.19  
Lb.

VALUABLE COUPON  
Our Family SOFT MARGARINE 1 Lb. Tub 9¢  
LIMIT 1 WITH COUPON

VALUABLE COUPON  
Our Family 100% Pure ORANGE JUICE 12 Oz. Can 49¢  
LIMIT 1 WITH COUPON

VALUABLE COUPON  
Our Family WHIPPED TOPPING 8 Oz. Tub 19¢  
LIMIT 1 WITH COUPON

VALUABLE COUPON  
Our Family MACARONI & CHEESE 7 1/2 Oz. Box 219¢  
LIMIT 2 WITH COUPON

VALUABLE COUPON  
Our Family All Flavors 2 LITER POP Each 29¢  
LIMIT 1 WITH COUPON

VALUABLE COUPON  
Our Family BATH TISSUE 4 Roll Package 29¢  
LIMIT 1 WITH COUPON

Our Family 'Regular' PIE SHELLS 2 Ct. Pkg. 79¢  
Our Family 'FROZEN' BREAD DOUGH Pkg. of 5 Loaves \$1.39  
Our Family VEGETABLES Assorted Varieties 16 Oz. Pkg. 79¢

Our Family TOMATO JUICE 46 Oz. Can 89¢

Our Family Medium SWEET PEAS Whole or Cream Style \$1.00  
Our Family GOLDEN CORN Cut or French Style  
Our Family GREEN BEANS

Our Family w/Meat or Mushrooms SPAGHETTI SAUCE 32 Oz. Jar \$1.39  
Our Family TOMATO CATSUP 32 Oz. Btl. 79¢

Washington Extra Fancy Dewy-Fresh RED DELICIOUS APPLES 5 Lb. Bag \$1.59  
Texas Green BELL PEPPERS Each 29¢  
California BROCCOLI Bunch 99¢  
Fresh HONEYDEW MELONS Lb. 39¢

Our Family 'COLBY OR CHEDDAR' HALF-MOON CHEESE 10 Oz. Pkg. \$1.49  
Our Family CREAM CHEESE 8 Oz. Pkg. 89¢  
U.S. No. 2 No. Dakota RED POTATOES 20 Lb. Bag \$1.89  
Cello Bagged MUSHROOMS 8 Oz. Bag \$1.19  
California CARROTS 3 1 Lb. Pkgs. 99¢

Our Family FRUIT COCKTAIL 16 Oz. Can 69¢

Our Family PINEAPPLE CRUSHED CHUNK SLICED 15 1/2 Oz. Can 59¢

Our Family Soups CRM. OF CHICKEN 2 10 1/2 Oz. Cans 89¢  
Our Family FLOUR 5 Lb. Bag 59¢

Our Family RAISINS 24 Oz. Box \$1.99  
Our Family CHUNK TUNA Water or Oil Packed 6 1/2 Oz. Can 69¢

Our Family Creamy or Chunky PEANUT BUTTER 18 Oz. Jar \$1.59  
Our Family Semi-Sweet CHOCOLATE CHIPS 12 Oz. Bag \$1.29  
Our Family APPLE SAUCE 16 Oz. Cans 89¢

Versatile and Practical Sculptured and Embossed Cumberland Stoneware by Heartside at special low prices  
This week's feature Cereal Bowl 69¢  
FOR PARTICIPATING STORES ONLY

Aloe & Lanolin Vitamin E & Lanolin JERGEN'S LOTION 8 Oz. Btl. \$1.59  
Regular or Unscented Aerosol SURE DEODORANT 6 Oz. Can \$2.59  
Reg. or Peppermint SCOPE 32 Oz. \$4.19

CUSTOMER SATISFACTION IS ALWAYS FIRST!  
659-3190 SPEARMAN  
Jack & Jill FOOD CENTER  
PRICES GOOD THRU SUN., DEC. 13  
QUANTITY RIGHTS RESERVED

Hansford County  
**BASKETBALL REVIEW**  
SOUVENIR EDITION

Thursday, December 10, 1987

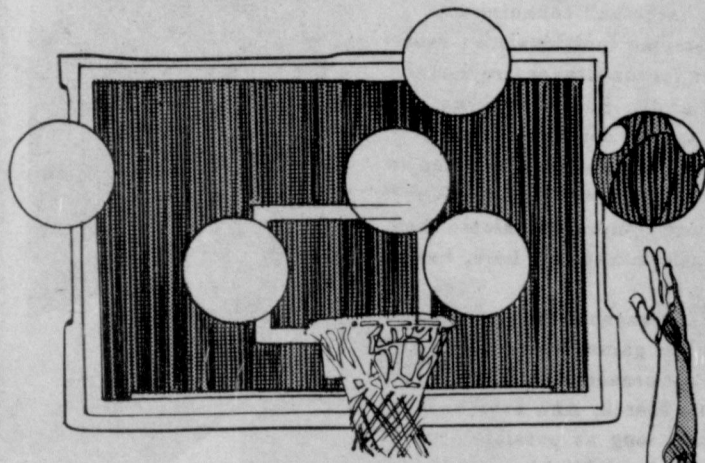
*A Souvenir  
Edition*

*Featuring:*

- Individual Stories
- Individual Pictures
- Team Pictures
- Team Schedules

*And*

*Much More!*



**1987-88**

**BASKETBALL**



**Featuring...**

**THE SPEARMAN**

**LYNX AND LYNXETTES**

**AND THE GRUVER**

**GREYHOUNDS AND Lady GREYHOUNDS**

# Basketball aplenty for area cager fans

Go Spearman!

Go Gruver!

If basketball is what a person lives, breathes, drinks, and eats, then the 1987-88 cager season should leave that type fan in the healthiest possible position as boys and girls varsity roundball action unfolds in both Spearman and Gruver.

If that's not enough, then there's junior varsity play, freshman action and -- of course -- seventh and eighth grade basketball tilts as well . . . more than enough to provide a steady diet for any inveterate basketball connoisseur.

Space limitations prohibit detailing individuals on every team . . . but varsity performers for the Gruver Greyhounds and Lady Greyhounds as well as the Spearman Lynx and Lynxettes are profiled in this special souvenir edition.

It's a special look at Hansford county's finest athletes as they prep for district basketball action which opens in just over a week. And a proud county community salutes their efforts and displays their enthusiasm not only here, but at each and every basketball game.

Basketball is one of the longest seasons of the year with its beginnings in November, there are games every week until the season finale in February. Post-season playoff action can bring the games all the way into March. And everybody is anxious for the season to last as long as possible.

A full season of basketball action is highlighted right from the beginning within these pages -- a capsulated look at the basketball fortunes of the county's four varsity squads along with individual pictures, team pictures, schedules and much more.

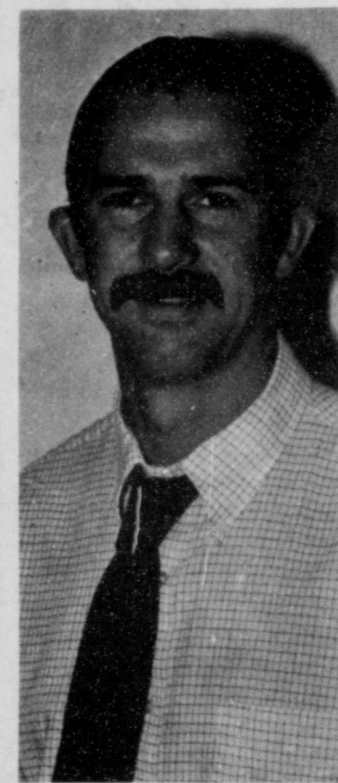
It's a special salute to those young men and women who help provide a focus for community involvement . . . and best wishes for a successful 1987-88 basketball campaign!

## Here's to the coaches of Hansford County!

It's the coaches who put it all together, the ones who sacrifice their time to get our children prepared for compe-

tion. Without their devotion to the sport and our children, none of this would have been possible.

JIM KIRKLAND  
... Spearman Girls Coach



ROYCE BLACKSHEAR  
... Gruver Boys and Girls Coach

H.M. GARRETT  
... Spearman Boys Coach



**ORO**  
HYBRIDS™

**FOR ALL YOUR SEED NEEDS**

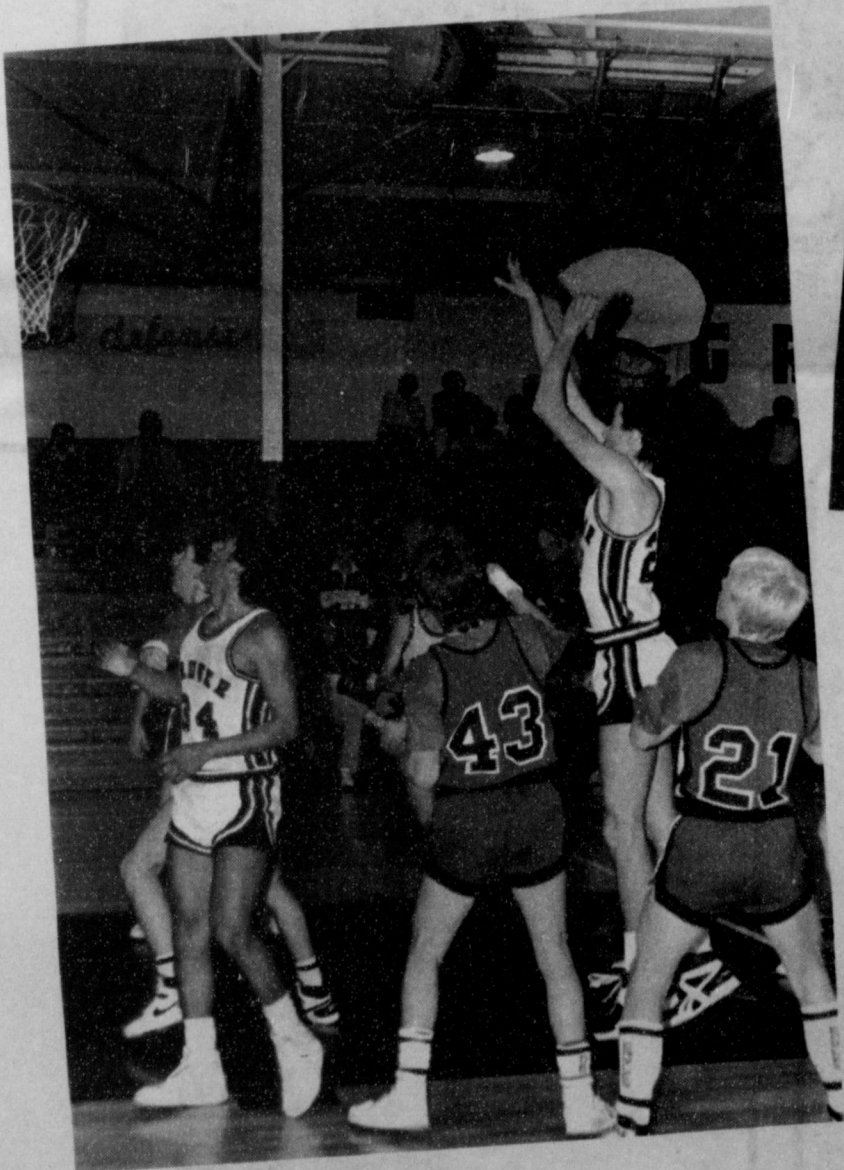
Check with Mike Garnett  
Spearman  
Hicks & Seagler  
Gruver  
J.P. TeBeest  
Gruver  
or your local  
Equity!!!

# WATCHING WITH PRIDE . . .

. . . for a full season of basketball excitement from all our Hansford county teams!



The Spearman Lynx and Lynxettes



The Gruver Greyhounds and Lady Greyhounds

Go Gruver!

Go Spearman!

**FSB**  
First State Bank

FDIC

One NE Court

MEMBER FDIC

659-5565

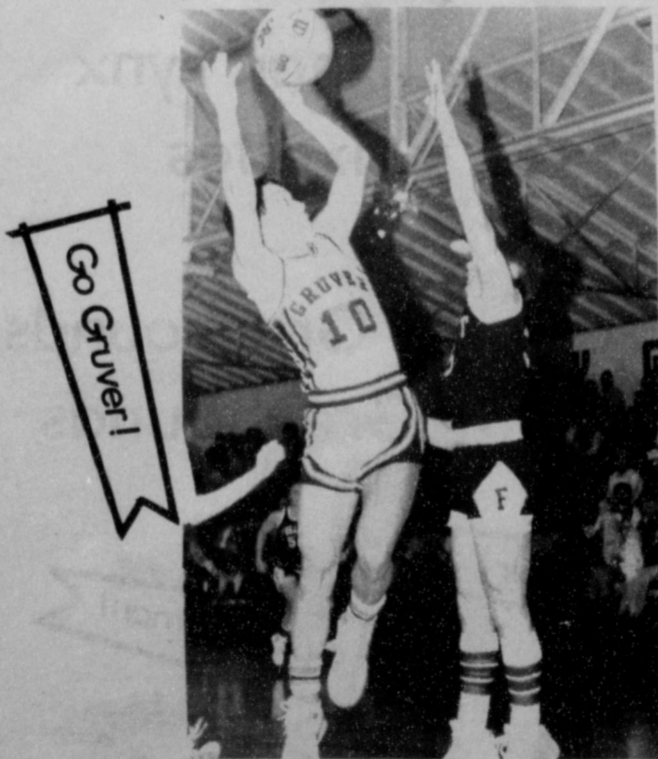
**THE 1987-88  
LYNX**



Go Spearman!

**SPEARMAN BOYS  
BASKETBALL TEAM**

Go Greyhounds!



*Our Teams Are Tops!*

**Gruver Ford**

531 Main

We're Behind You

All the Way!

**Suit up for a  
super season!**

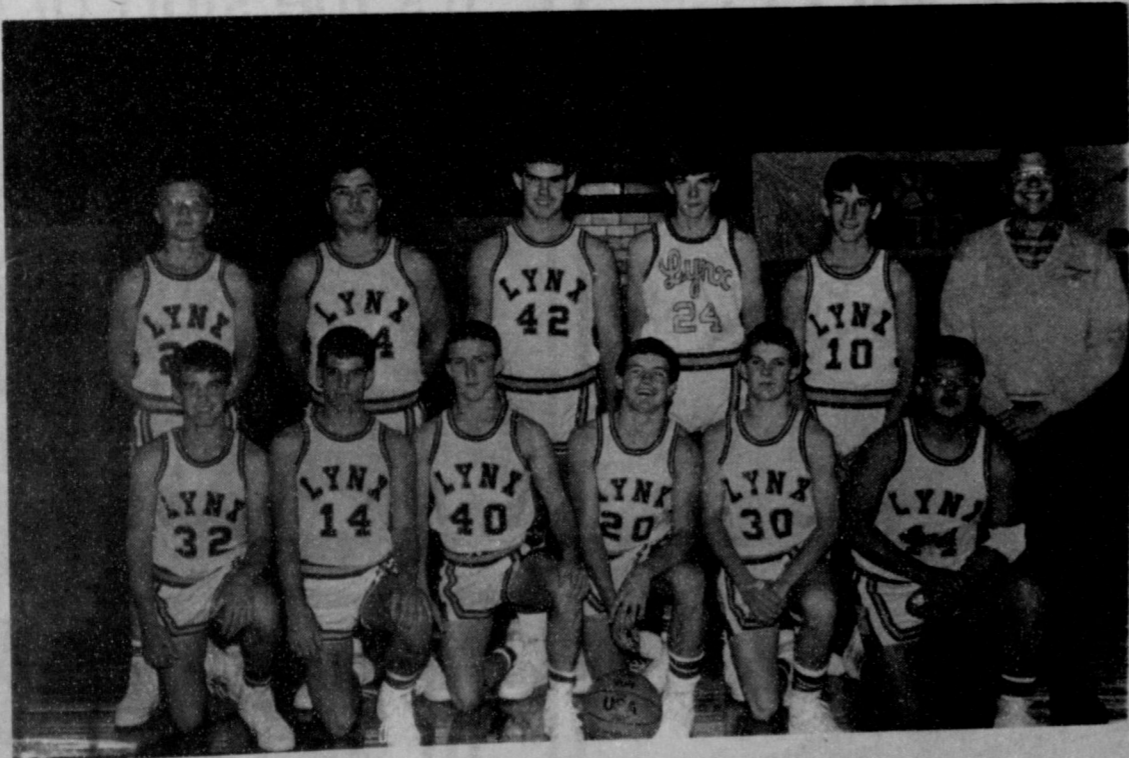


**Main Street Store**

506 Main Gruver



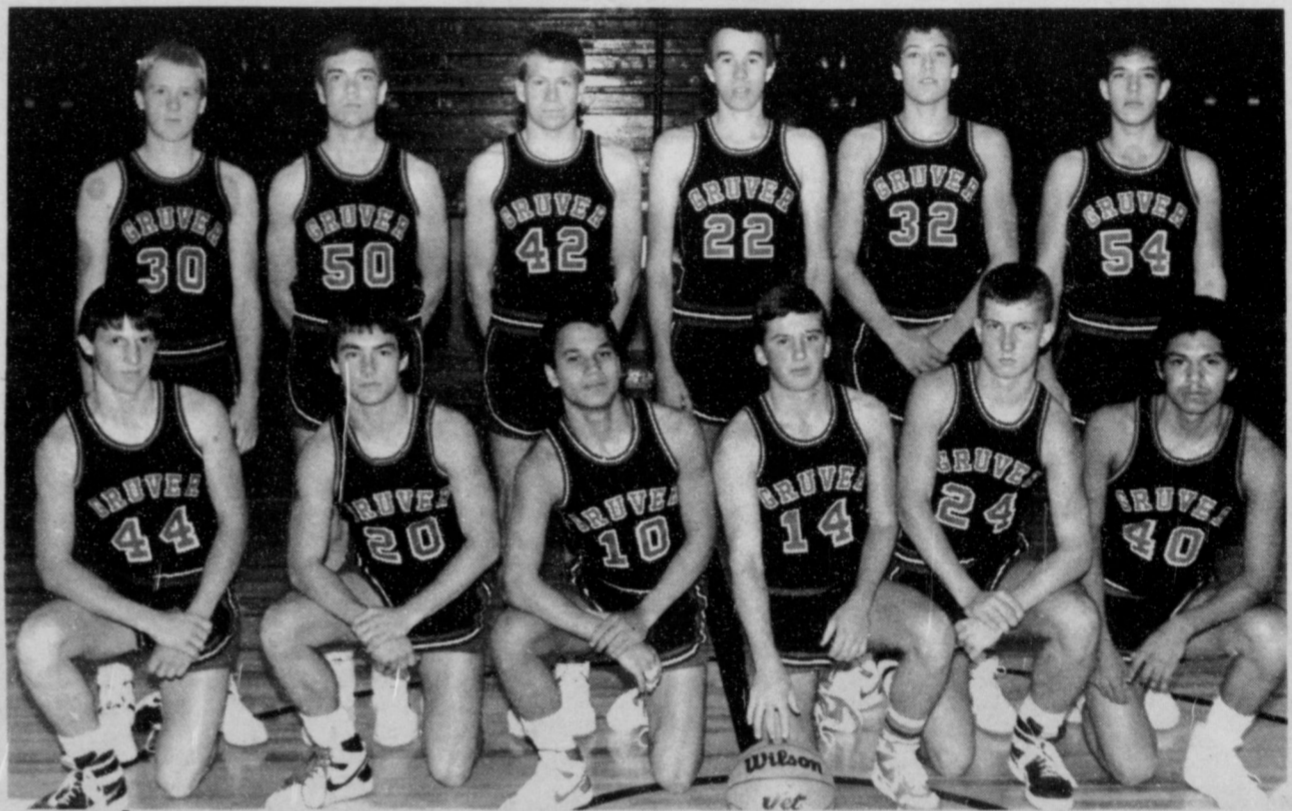
## Community Pride



... it takes a United effort ...

**UNITED SUPERMARKET - PERRYTON**

**The 1987-88  
GREYHOUNDS**



Go Gruver!

**GRUVER BOYS  
BASKETBALL TEAM**

**Urging You On . . .**  
To even greater heights  
in '87 - '88



**Gruver Farm Supply**

515 Main Gruver

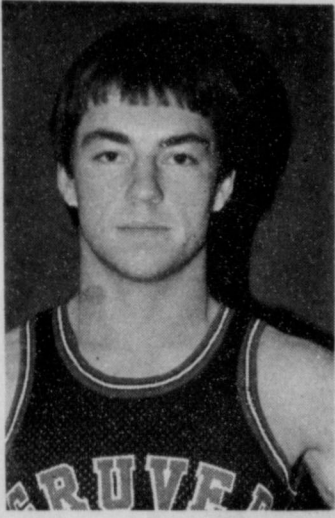
It's the start of a great  
season!



**BORT  
AGENCY INC.**

510 North Main P. O. Box 649  
Gruver, Texas 79040 806-733-2456





**BRIAN GILLISPIE**  
... Gruver Guard

A 3-year letterman for the Gruver Greyhounds basketball squad, senior Brian Gillispie is helping to form that experienced and nucleus every high school coach looks for.

At 5-10 and 150 pounds, Gillispie's talents are evident when he takes to the field for Gruver in basketball games so far this season.

The son of Bob and Kathy Gillispie of Gruver, Brian is one of those selfless team players whom coaches find so easy to work with.

And it's that same dedication to this team sport which makes the talented Gruver cager a steady performer.



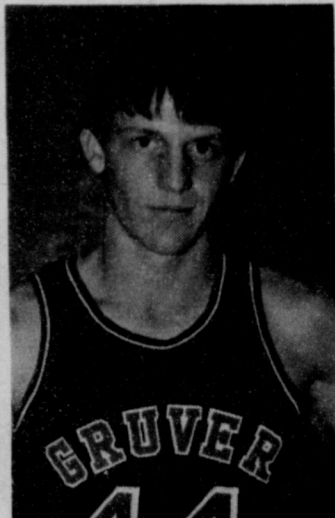
**CISSY SMITH**  
... Gruver Wing

When it comes to provided solid, dependable leadership, the Gruver Lady Greyhounds are fortunate to have senior returning starter Cissy Smith in their ranks.

Voted to the Stratford all tournament squad last season, Cissy's 5-9 frame provides Gruver with strong form.

The daughter of Sue Smith of Gruver, Cissy was one of the Lady Greyhound's premier performers last season.

And her steady play will provide hometown fans with a lot to cheer about during the 1987-88 season as well.



**BRIAN PAYNE**  
... Gruver Guard

Making the transition from junior varsity to varsity can be a difficult step, but not so for Gruver's Brian Payne.

The 5-10, 150-pound junior is proving to be a solid performer for the Greyhounds in early rounds of basketball action this season.

The son of Roy and Edith Kauffman of Gruver, Payne's abilities are helping to fashion a contender out of the Greyhounds.

Look for Payne to make his mark during the 1987-88 basketball district title chase -- he has both the talent and the desire, two prerequisites for any winning combination.



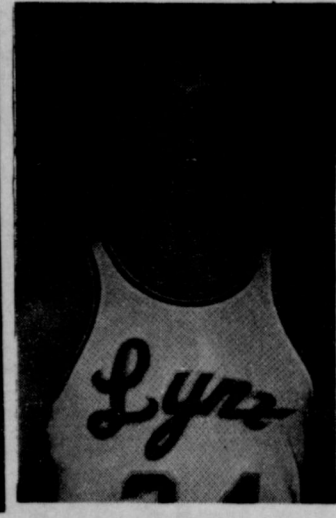
**GINGER PEARSON**  
... Spearman Post

She's 5-feet, 8 inches of dependable basketball performance and Ginger Pearson personifies the best in team players when she hits the hardwoods for the Lynxettes.

The daughter of Bob and Jackie Pearson Ginger's selfless dedication to both the game and the team is readily apparent.

A junior with both varsity and junior varsity playing experience, Pearson holds strong promise for the Spearman girls during their 1987-88 district crown chase.

Any success the Lynxettes enjoy in their 1-AA title chase will come from the unequalled performance of players like Pearson.



**KEITH BENSON**  
... Spearman Post

You learned his name early in football, now you get another look in a different light as Keith Benson dons T-shirt and shorts to show his prowess on the hardwood courts.

The 6-2, 185-pound senior is no stranger to varsity basketball work as he begins his fourth year there for the Lynx.

The son of Frank and Anna Benson of Spearman, Keith had proven himself time and time again in cager contests for his Lynx team.

It's already been an exciting year and, with solid team play from young men such as Benson, it's easy to see why.

Go Gruver!

Go Gruver!

# SPEARMAN '87

## TEAM SCHEDULE



SPEARMAN LYNX & LYNXETTES  
1987-88 BASKETBALL SCHEDULE

DATE	OPPONENT	SITE	TIME	TEAMS
Dec. 8	Channing	There	5:30	JV-V Girls V Boys
Dec. 10-11-12	Shamrock Tournament	There	TBA	V Girls V Boys
Dec. 15	Canadian	There	5:00	JV-V Girls JV-V Boys
Dec. 18	*Highland Park	Here	5:00	JV-V Girls JV-V Boys
Dec. 17-18-19	Perryton Tournament	There	TBA	JV Girls JV Boys
Dec. 22	Nazareth	There	5:00	JV-V Girls V Boys V Girls
Dec. 31, Jan. 1-2	Canadian Tournament	There	TBA	V Boys JV-V Girls JV-V Boys
Jan. 5	*Stratford	Here	5:00	JV-V Girls JV-V Boys
Jan. 8	*Panhandle	There	5:00	JV-V Girls JV-V Boys
Jan. 15	*White Deer (Homecoming)	Here	5:00	JV-V Girls JV-V Boys
Jan. 16	*Gruver (Homecoming Dance)	There	5:00	JV-V Girls JV-V Boys
Jan. 19	*Stinnett (W.T. High)	There	5:00	JV-V Girls JV-V Boys
Jan. 22	*Highland Park	There	5:00	JV-V Girls JV-V Boys
Jan. 26	*Stratford	There	5:00	JV-V Girls JV-V Boys
Jan. 29	Wayland Queen Bees	Here	6:30	V Girls
Feb. 2	*Gruver	Here	5:00	JV-V Girls JV-V Boys
Feb. 5	*White Deer	There	5:00	JV-V Girls JV-V Boys
Feb. 9	*Stinnett	Here	5:00	JV-V Girls JV-V Boys
Feb. 12	*Panhandle	Here	5:00	JV-V Girls JV-V Boys
Feb. 11-12-13	White Deer Tournament	There	TBA	JV Girls JV Boys

\*Denotes District Games



TRANSPETCO<sub>2</sub> I

222 Main

Spearman

**The 1987-88  
LADY GREYHOUNDS**

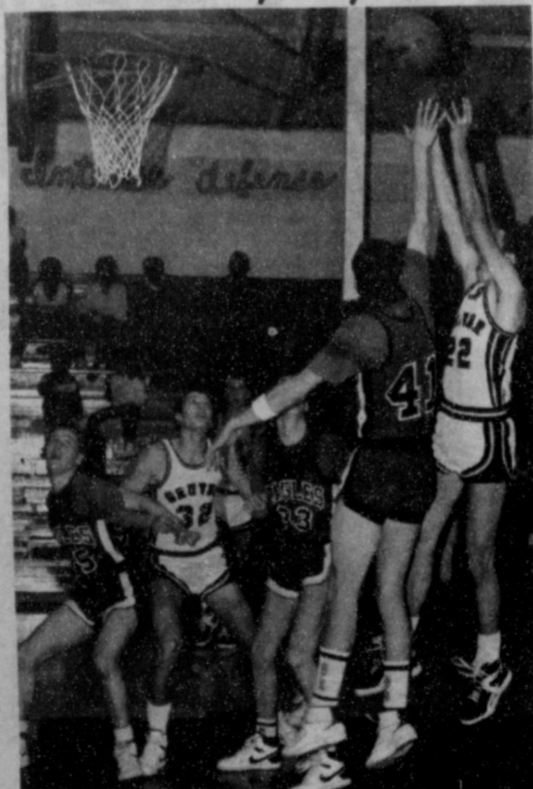


Go Gruver!

**GRUVER GIRLS  
BASKETBALL TEAM**

**Basketball '87**

*a year moving to the top for the Gruver  
Greyhounds and Lady Greyhounds . . .*



**Horse Shoe Inn**

108 Main Gruver

Motivation is a key factor  
in any team's success . . .  
and we've got the best!



**Little Tiffanies**

416 Main Gruver



**LONDEE BRADLEY**  
... Spearman Post

She has the potential to be one of the premier performers in district 1-AA girls basketball action this season, and Lynxette Londee Bradley's abilities will undoubtedly prove themselves before the curtain falls on the 1987-88 cager season.

The 5-10 junior has already given Lynxette fans a taste of her prowess in early goings this season and she is improving with every game.

The daughter of Mr. and Mrs. Melvin Bradley of Spearman, Londee is proving a key performer for the Lynxettes.

If the Lynxettes are to become the district contenders preseason prognosticators claim, it will come off the play of individuals like Bradley.



**AMY SPARKS**  
... Gruver Guard

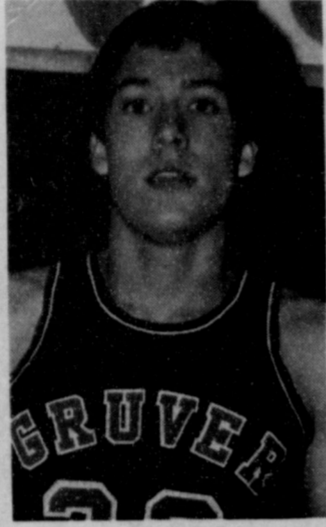
She's a pint-sized dynamo, and 5-2 Amy Sparks is out to prove that basketball also belongs to those who don't tower above their peers.

With junior varsity starter experience, the junior guard is no stranger to the hardwood courts and provides the Lady Greyhounds with much needed depth at guard.

The daughter of Jerry and DiAnne Sparks of Gruver, Amy's abilities on the roundball courts are second to none.

Look for Amy to fire the imagination and provide needed sparks for the Gruver girls varsity cage squad this season.

Go Gruver!



**TY SEAGLER**  
... Gruver Post

He's no stranger to district 1-AA basketball fans and you'll be hearing a lot more from Ty Seagler before the curtain falls on the 1987-88 basketball season.

A 6-2, 165-pound senior, Seagler's talents on the courts are second to none as he begins yet another season of varsity play.

The son of Stan and Sharon Seagler of Gruver, Ty averaged eight points per game last year, adding four offensive and defensive rebounds each while helping with a pair of assists each contest.

From his post position, Seagler proves his varsity position is no fluke with strong, solid performances each game.



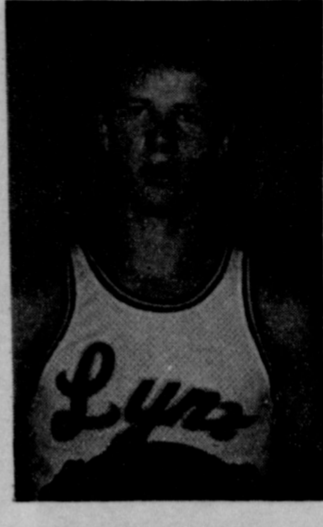
**VONDA BENSON**  
... Spearman Forward

She's one of the only three sophomores to make the Lynxette varsity line up this season and when fans see Vonda Benson play, it's easy to see why.

At 5-7, Benson brings solid play onto the courts for the Lynxettes.

The daughter of Frank and Anna Benson of Spearman, Vonda's performance on the courts for Spearman has proven invaluable so far this season.

It's not always easy to play a backup role, but those roles are important and Benson's abilities will prove themselves during the 1987-88 roundball season.



**BRETT DAVIS**  
... Spearman Guard

When 6-0 senior Brett Davis takes to the hardwood courts for the Spearman Lynx cagers, he brings three years of varsity experience to play.

The son of Curtis and Marlene Davis of Spearman, Brett has proven himself over the years for the Lynx cager crews.

Last season he averaged 15 points per game and hauled in eight rebounds per contest as well.

If the Lynx are to enjoy any success at all this season it will come from the dedicated teamwork which Davis is so capable of displaying.

Go Spearman!

# Like the Lynx and Lynxettes



... we shoot straight on our deals!

Go Spearman!



Go Spearman!



**GILLASPIE CHEVROLET-OLDS**

HWY 207 South

Spearman



GENERAL MOTORS CORPORATION



CHRISTY BROWN  
... Gruver Wing

When 5-7 Christy Brown takes to the hardwood courts for the Gruver Lady Greyhounds, she does so with a flourish.

Up from last year's junior varsity squad, the 16-year old junior adds both strength and depth to the Gruver girls line up.

The daughter of Randy and Diane Brown of Gruver, Christy is proving a more than capable player for the Lady Greyhounds from her wing position.

Look for a season of strong play from the talented junior stalwart.

Go Gruver!

## THE 1987-88 LYNXETTES



Go Spearman!

## SPEARMAN Girls BASKETBALL TEAM

THEY'VE GOT THE  
WHOLE TOWN TALKING!

AND RIGHTFULLY SO . . . BE



SURE AND SUPPORT THE  
GREYHOUNDS AND  
LADY GREYHOUNDS

Go Gruver!

**Gruver Insurance**

120 N. Main Gruver



## Shop Early

and save  
at our  
"Dickens  
of a  
Christmas  
Sale"

Stop in for details

*Hotel Royal*

OWNERS: Linda Sanders, Gina Davis, E. C. Bulls  
502 Davis Spearman, (806) 659-3155



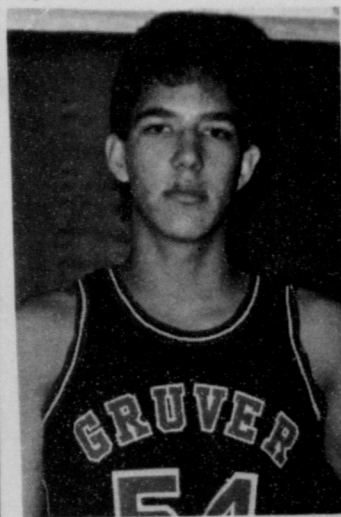
**LIZA CAZAREZ**  
... Spearman Guard

She may not be the tallest player on the courts, but her ready style of play is more than apparent when Lisa Cazarez takes to the courts for Spearman.

A regular on the Spearman girls squad, Liza is the daughter of Mary Jane Cazarez of Spearman.

A 5-4 senior ball handler, Cazarez brings varsity playing experience into the 1987-88 Lynxette basketball line up.

She's also a focal point for the Lynxettes as she helps lead the team up and down court. Strong play such as Cazarez's will provide Spearman with steady action all season long.



**KRIS HORTON**  
... Gruver Post

Senior membership on any high school ball club is important and Gruver coaches had that in mind when Kris Horton made the 1987-88 Greyhound varsity line up.

The 6-1, 178-pound senior helps provide the Greyhounds with strong leadership both on and off the hardwood floors.

The son of Terry Horton of Gruver, Kris has the ability and talent to help construct a winning season for the Greyhounds this year.

Since basketball is a true team sport, Horton's talents are providing Gruver with strong, dependable play, and is giving Greyhounds fans a lot to cheer about.



**KIM JENKINS**  
... Spearman Point

The adage that good things come in small packages seems ready-made for Spearman's Kim Jenkins -- a 5-1 senior who is taking to varsity play like she was born for it.

Playing either point or wing, Jenkins is providing the Lynxettes with a solid performance in early rounds this season.

The daughter of Gene and Beverly Jenkins of Spearman, Kim's basketball abilities are never in doubt when she's matching wits and talent with her opposing team counterparts.

Don't let her size fool you -- Jenkins is a strong performer and will add immeasurably to the Spearman girls basketball fortunes this season.



**PAT SHIELDS**  
... Spearman Post

He's one of those utility players who can mean so much to a team, and junior Pat Shields is ready to play wherever and whenever he's needed -- and in 1987-88, that could mean a lot.

The 6-0 Spearman cager is just as home at post as he is on the wing in the new look Lynx basketball crew.

The son of Lonnie and LeAnn Shields of Pringle, Pat is proving to be a solid addition to the Lynx line up so far this year.

Just up from last year's junior varsity squad, Shield's talent on the courts should hold Spearman in good stead during the 1987-88 basketball season.




**HEATHER MURRELL**  
... Spearman Guard

Her lists of accomplishments would fill almost a full page, and junior Heather Murrell is bringing her talents into play for the 1987-88 Spearman Lynxettes as well.

The 5-7 guard is a 2-year letterman for the Spearman girls cager crew and an all-around athlete on top of that.

The daughter of Butch and Judy Schaefer of Spearman, Murrell's capabilities are readily apparent when she takes to the courts for the Lynxettes.

Competitive play is her trademark and expect no less this season from Murrell as she helps lead the Spearman girls to whatever success they enjoy.

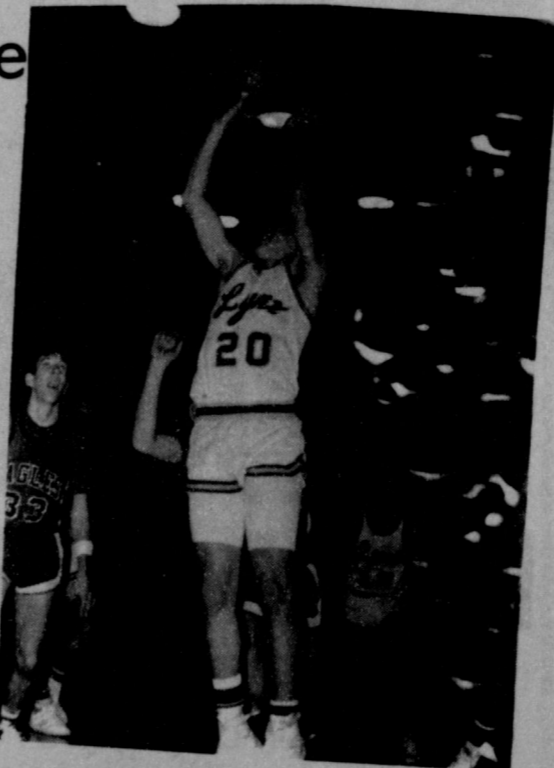


## Backing you all the way

We hope the road goes far for you this year and, if it does, we'll be there to help urge you on to even greater heights!

# GO!

**Spearman Lynx and Lynxettes**



**AGCO OF SPEARMAN**

Box 566  
659-3751

AGCO A - 4 miles South on Farm 760  
AGCO Buzzard - 8 miles South on Farm 760

AGCO B (Mill) - Highway 15 East  
Main Office - 511 S.W. 11th [Pittman-Shieldknight Bldg.]

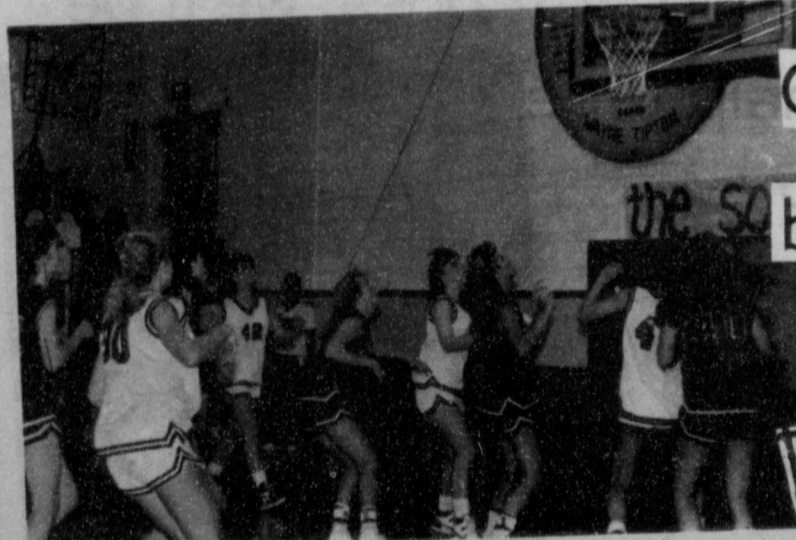


**WINNING  
TRADITION  
... THEY'RE  
BUILT OVERN**

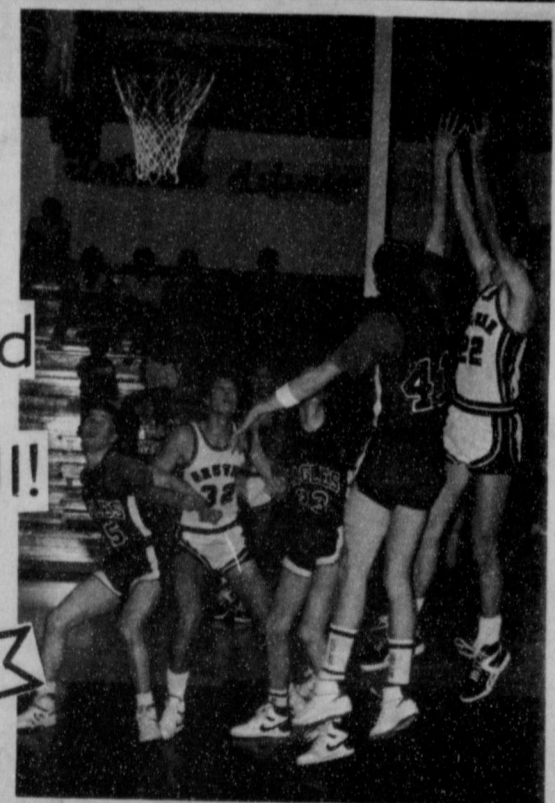
There are strong traditions in Hansford county athletics, but they come from years of hard work by young men and women of both Spearman and abilities to make an entire county community proud. That same tradition is being built by a quartet of Hansford county basketball teams . . . skillfully working toward those ideals with enthusiasm and unmatched dedication.

**Join the crowd . . .**

discover the excitement of



Greyhound  
basketball!



Go Gruver!

**PALO DURO CATTLE FEEDERS**

Manager: Craig Clyburn

Assistant Manager: Duane Zortman



Gruver, Texas

733-2416

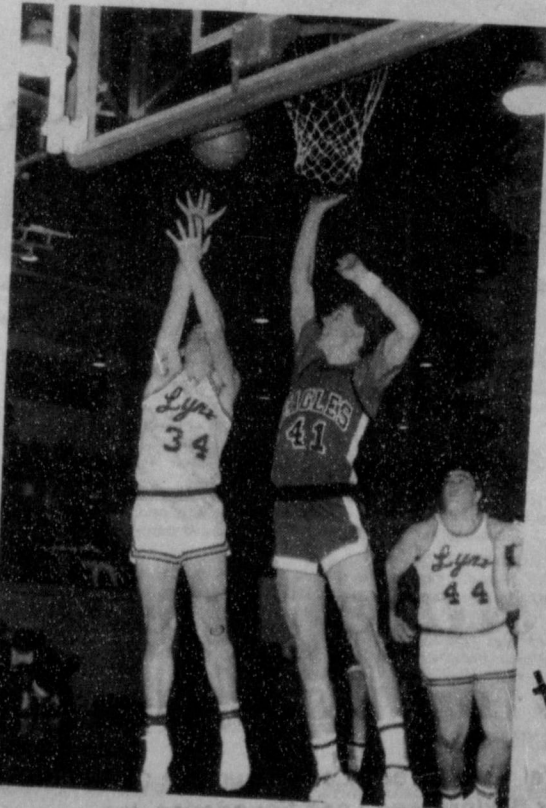
TRAINING  
CONDITIONS  
THEY'RE NOT  
OVERNIGHT...



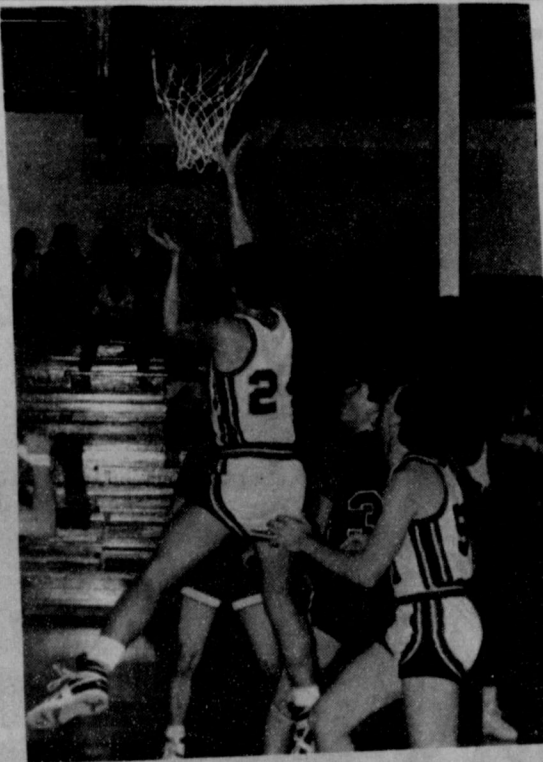
...but they didn't appear from nowhere. Those traditions have come from Bearman and Gruver who have given unselfishly of their time, talents and same proud community stands ready to support the traditions now. . . skillful players who have set their goals higher and who are dedicated.

## TEAMWORK...

Everybody working together for  
a common goal



Put our team  
to work  
for you!



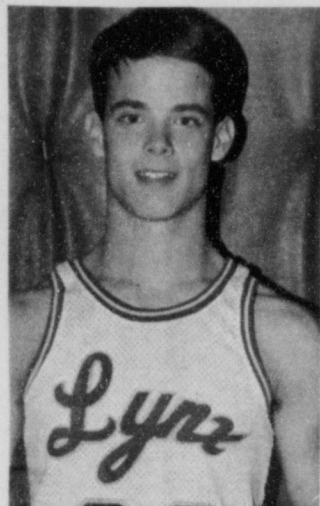
Go Spearman!

Go Gruver!



**First National Bank**  
Perryton and Booker

201 S. Main      115 S. Main  
Perryton, TX 79070      Booker, TX 79005  
Member FDIC



**CARSON WOMBLE**  
... Spearman Wing

With a running, pressing type offense and defense, it's easy to see why Lynx cage mentor H.M. Garrett looks toward junior Carson Womble in the Spearman basketball line up.

The 5-10, 140-pound junior provides a good deal of action on the floor for the Lynx and his presence on the court is felt mightily by opposing teams.

The son of Dub and Betty Womble of Morse, Carson is a team player who fights right into the teamwork scheme the Lynx are displaying this season.

And it will be through solid, dependable play from men such as Womble that the Lynx enjoy success in the 1987-88 roundball season.



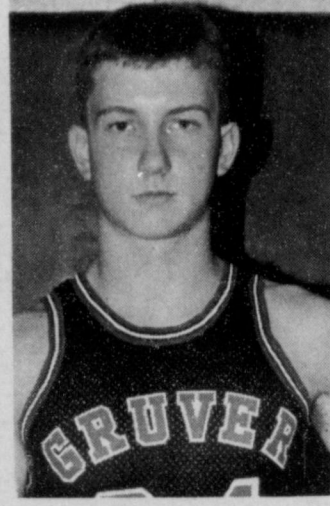
**ANNE MARQUEZ**  
... Gruver Guard

She'll not be one of the taller players on the courts, but 5-2 junior Anne Marquez makes up for her pint-size with a hustle on the court that's not bettered by any player on the team.

The 16-year old Gruver regular is lending the GHS girls basketball team good experience as she enters the varsity ranks from last season's JV squad.

The daughter of Margarito and Ana Maria Marquez of Gruver, Anne is doing a standout job for the Lady Greyhounds so far this season.

When they say good things come in small packages, the Lady Greyhounds have no doubt they're talking about Anne.



**BRIAN HOEL**  
... Gruver Forward

Consistency is the name of the game when Gruver's Brian Hoel takes to the court for the Greyhounds.

The 6-1, 165-pound junior is in his second season of varsity play and brings a solid talent to the Gruver varsity line up.

The son of Mack and Darlene Hoel of Gruver, Brian averaged 18 points per game while hauled in eight rebounds and helping with five assists on the average.

Hoel's leadership and scoring ability is proving a key factor for the Greyhound's success this season -- don't look for it to let up.



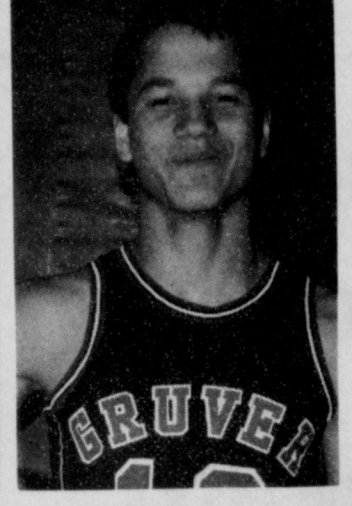
**KRISTA KIRKLAND**  
... Spearman Forward

She's a special talent on the basketball court and should provide Spearman with the winning impetus this season as Krista Kirkland moves to the fore with the Lynxettes.

Honorable mention All American, All State, All Regional and All District, Krista is the daughter of Jim and Phyllis Kirkland.

The 5-9 junior varsity starter brings a proven track record with her in her first season of play for Spearman.

Her stats speak for themselves with an average of 17 points per game and 16 rebounds from her sophomore season.



**TIM FLETCHER**  
... Gruver Point

Life doesn't end after football, and Gruver's Tim Fletcher is a perfect example of that as he trades helmet and pads for shorts and T-shirt during the 1987-88 roundball season.

Bringing an average of 12 points per game along with 10 rebounds and 10 assists, Tim is a team player from the word go. He is the son of Richie and Carolyn Fletcher of Gruver.

The 5-8, 155-pound senior is proving as steady and dependable on the cager court as he did on the gridiron field for Gruver.

Good things happen when Fletcher takes to the courts for Gruver. Watch it happen this season at each Greyhound basketball game.

Go Gruver!

Go Spearman!

**Take it one step at a time!**

*All the way!*

**Spearman Lynx and Lynxettes**

**J.G.'s**

306 Hancock **Go Spearman!** 659-3424

**4 Great Teams**

... four proud traditions ...

Lynx Greyhounds  
Lynxettes Lady Greyhounds

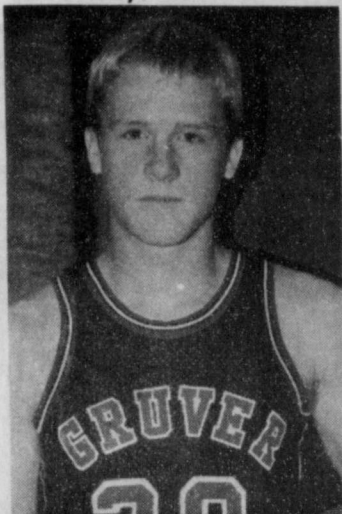
**Go Gruver!** **Go Spearman!**

**Interstate Savings**

**AND LOAN ASSOCIATION**

Member Federal Savings and Loan Insurance Corporation  
Member Savings and Loan Foundation, Inc.





**GANNON HARRIS**  
... Gruver Wing

High school basketball teams aren't fashioned overnight -- it takes experience and dedication and that's what sophomore Gannon Harris is building for the Gruver Greyhounds this year.

The 6-0, 145-pounder has also provided the Greyhounds with some solid play and good depth as the 1987-88 roundball campaign continues to unfold.

The son of Roy and Rhema Harris of Morse, Gannon's talents on the hardwood courts are providing Gruver with a strong asset.

Keep your eyes on Harris this season and expect good things from this young player -- not only this year, but in the years ahead.



**CARLY SHIELDKNIGHT**  
... Spearman Forward

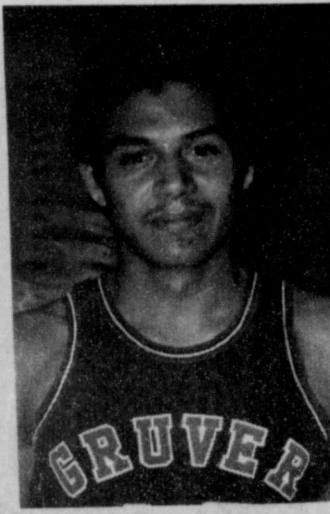
Athletically inclined and physically capable, Carly Shieldknight is a forward on the 1987-88 Spearman cager squad.

At 5-7, the junior Lynxette stalwart is proving a solid performer as the Lynxettes take to the courts in early season play.

Up fresh off last year's junior varsity, Carly is the daughter of Charles and Hazel Shieldknight of Spearman.

Opposing teams have already taken notice of the junior Lynxette and Shieldknight will prove a dependable player for Spearman as the current season unfolds.

**Go Spearman!**



**ROBERTO RODRIQUEZ**  
... Gruver Post

Solid junior varsity stats show ample reason how sophomore Roberto Rodriquez made the Gruver varsity line up this season.

The 5-10, 167-pounder averaged 20 points per game for the JV last year with 11 offensive and 13 defensive rebounds per outing.

The son of Roberto Rodriquez, Sr., of Gruver, this talented Greyhound performer brings much needed depth to the line up.

If exciting basketball keeps the fans happy, then Gruver fans should be ecstatic as Rodriquez helps fashion the Greyhound cager fortunes this season.



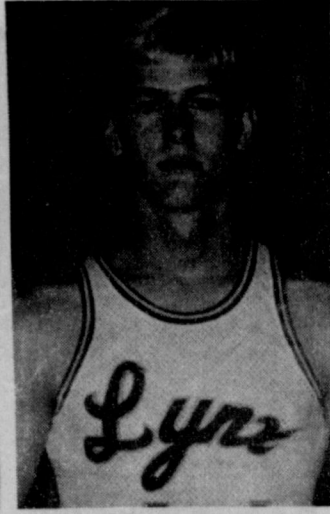
**RAQUEL MATHEWS**  
... Gruver Wing

Helping provide a strong dose of senior leadership for the Gruver Lady Greyhounds is returning letterman Raquel Mathews.

The 5-5, 17-year old wing has proven a steady hand for the Gruver girls roundball squad in early competition this year.

The daughter of Royce and Betty Mathews, Raquel's leadership qualities, both on and off the court, help give the Lady Greyhounds the depth and experience so sorely needed to compete in the tough 1-AA basketball district.

Watch for her on the courts this season whenever the Lady Greyhounds play. She provides plenty of action for her Gruver team.



**TIM WOOLEY**  
... Spearman Post

His presence on the cager court helps knit the Spearman Lynx into a solid unit, and Tim Wooley is coming to epitomize the concept of a team player.

At 6-2 and 172 pounds, the senior basketball is proving a reliable cog in the Lynx's basketball scoring machine for 1987-88.

Tim is the son of Paul and Joyce Wooley of Spearman and brings three years varsity experience into the fray this season.

Expect good things from both Wooley and his Spearman Lynx roundball teammates this season -- they're working hard to make it happen.

Introducing the new

# MAGNUM PERFORMANCE

## 7130

**And the first all-new tractors from Case IH**

Case IH put more into the new MAGNUM tractor line than any farm tractors developed in over twenty years. Here's why you'll get more out of it:

**MAGNUM means more.** Outstanding field performance from a new 505 cubic inch turbocharged engine with reserve power. MAGNUM power.

The MAGNUM tractor's powershift puts 18-speeds of shift-on-the-go workpower at your fingertips -- standard. And only MAGNUM tractors offer a full powershift creeper transmission with six additional

speeds from 5 to 2.1 mph... for more control and performance. MAGNUM performance.

The MAGNUM tractor's new larger cab has 48 square feet of window area... virtually unobstructed visibility... more seating comfort. MAGNUM comfort.

It all adds up: The Case IH MAGNUM 7130 tractor sets new standards for the 170 hp (127 kW) class... and for you. See us for details.

**Full powershift in 18 speeds. Even more if you want.**

With the MAGNUM tractor powershift, more choices means more productivity.

It's a smooth-shifting full powershift that gives you closely spaced speeds from 1.8 to 19 mph in a straight-line selection. And there are seven speeds in the crucial three to eight mph range. What's more, you can get a MAGNUM tractor with more powershift speeds under three mph than anyone else. Thanks to the industry's only full powershift creeper transmission.

You can powershift to higher productivity with a Case IH MAGNUM 130-195 PTO hp tractor. See us for details.

### Five Star Equipment

Hwy. 15 Spearman 659-3743

**MAGNUM means more.**



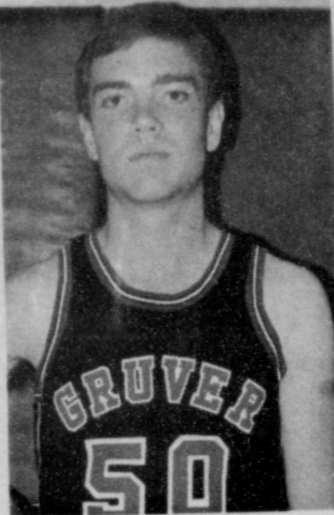
**HOLLY MEYER**  
... Gruver Post

At 5-9, senior Holly Meyer is one of the Gruver Lady Greyhounds big guns and proves it from her post position for the GHS girls cager squad.

The senior varsity returning letterman provides the Lady Greyhounds with strong experience and an ability which should hold them in good stead throughout the 1987-88 season.

The daughter of Robert and Evi Myer of Gruver, Holly's leadership on the courts provides an added bonus to the Greyhound girls team.

Expect good things from Holly Meyer this season -- she's got the experience and talent to spare.



**RON GREEN**  
... Gruver Post

He's a sweet addition to the Gruver varsity line up and Greyhound senior Ron Green is proving it's no accident in early games this season.

With a pair of years jv experience and coming off last year's varsity crew, the 6-1, 165-pound post provides Gruver with excellent play from the field.

The son of Mr. and Mrs. Weldon Green of Gruver, Ron's abilities on the courts are keeping fans on the edge of their seats as the current season goes on.

Small wonder -- Green's talents on the hardwood courts have proven invaluable in the past for the Greyhounds -- as undoubtedly they will again this year.



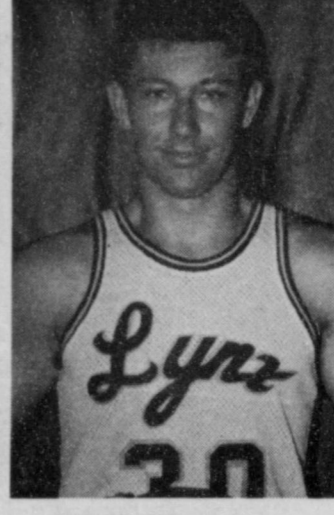
**JENNIFER TURNER**  
... Spearman Post

There will be action aplenty for Spearman Lynxette fans during the 1987-88 basketball season, and Spearman's Jennifer Turner will be on hand to provide a heady portion of that excitement.

The 5-10 junior has already proven a steady performer for the Spearman girls in early games this season.

The daughter of Loyall and Ginger Turner of Spearman, Jennifer is making her debut on the varsity squad after two full years of junior varsity play.

As the season unfolds, Turner's abilities will blossom on the hardwood courts. Watch for her -- opposing teams will be.



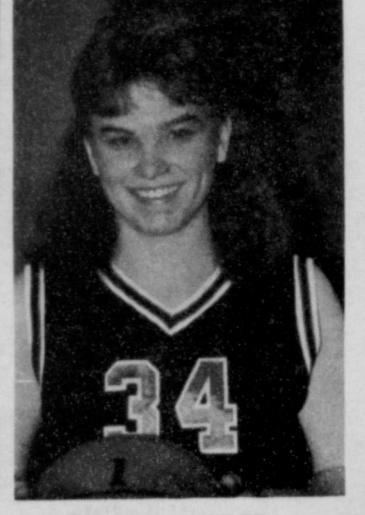
**LANCE SWAN**  
... Spearman Guard

When it comes to capability, there's no better performer than Spearman's Lance Swan. He proved his prowess on the gridiron and now brings that same determination to the basketball court.

The 6-1, 190-pound junior is a strong competitor and that shows up whenever he takes to the hardwoods for the Lynx.

The son of David and Sharon Swan of Spearman, Lance's ball-handling abilities should prove a boon for the Spearman roundballers this season.

Look for that extra spark whenever Swan takes to the field for the Lynx -- it's quickly becoming a Swan trademark.



**DAVONNA CATOR**  
... Gruver Wing/Post

Talented junior Davonna Cator has proven a utility player for the Lady Greyhounds so far this year, operating on the hardwoods from either a wing or post position.

The 5-7, 17-year old varsity performer brings up some solid abilities from last year's junior varsity squad.

The daughter of Bill and Dorothy Cator of Gruver, Davonna has proven her worth to the Lady Greyhounds in early season competition so far this year.

A tenacious basketball standout, her ability to play whatever position she's needed it will prove a boon to the GHS girls cager squad.

*For Beautiful Beginnings*

Visit Cha Lor's for your every need to plan that perfect wedding.

- \*Bridal Crowns
- \*Bridesmaids Dresses
- \*Mother of the Bride Dresses
- \*Hosiery
- \*Garters
- \*Bridal Accessories -- \*Veil & Hats
- \*Cloves
- \*Complete line of
- \*All the traditional
- \*Lingerie
- Spanish accessories for
- accessories
- \*Shoes
- weddings or quincianera
- for the wedding
- (We dye to match)

Napkins engraved for showers or weddings  
Several lines of wedding invitations to choose from with fast delivery.

**COMPLETE BRIDAL REGISTRY**

- \*China, pottery and stoneware
- \*Bath linens & accessories
- \*Stainless & gold electroplate flatware
- \*Crystal
- \*Table Linens

**Cha Lor's**

214 Main Spearman, Tx 659-2767

Go Spearman!

**We've Got Purple Pride**  
**Spearman**  
**Booster Club**

Thursday, December 10, 1987

Hansford County Basketball 17

4 Spearman cagers get AA honors

AA Basketball

When area sportswriters got together before the start of the 1987-88 basketball season, their eyes quickly fastened on a quartet of Spearman players -- and those four young men and ladies were given nods to the class AA honor roll for their efforts last year.

Carl Urban, a 5-8 senior was given recognition for his efforts from the outside for the Lynx while Brett Davis is noted for his inside prowess.

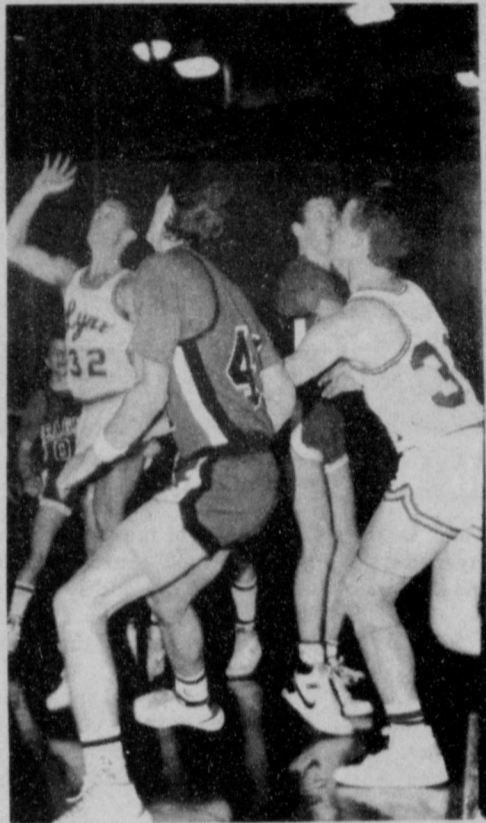
Davis is a 6-0 senior and both varsity performers for the Spearman boys basketball squad this 1987-88 season.

Meanwhile, on the girls side of the schedule, transfer Krista Kirkland brings All State Kudoes while Heather Murrell is an All State performer in several sports.

This dynamic duo has proven themselves -- not only in basketball but in running event competition as well.

Kirkland is a 5-9 junior while Murrell is a 5-6 junior and both should help bolster the Lynxettes fortunes -- not only this year, but next year as well.

The two honor rolls are feature presentations of the Panhandle Plains Basketball magazine.



... it's fast paced action all the way!

Winners in Every Respect ...

The Spearman Lynx And The Spearman Lynxettes

CATTLEMAN'S Supper Club



GOOD DEALS from a Good Dealer



Dear Santa ...

My Christmas would be perfect with one of those special toys from John Deere. If your elves don't have any, you can get some right here in Hansford county at Hansford Implement.



HANSFORD IMPLEMENT CO.

Hwy. 207 659-2568

Love, Jimmy and Joanie



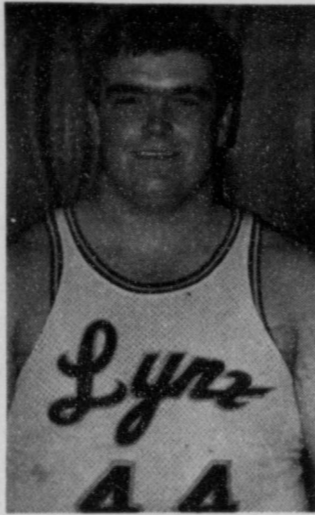
**CAROL POOLE**  
... Spearman Wing

It takes five people on a basketball court to make a team, and Spearman's Carol Poole epitomizes the team performer.

The daughter of Lloyd and Virginia Poole of Morse, Carol's junior varsity playing experience should prove valuable to the Spearman girls this season.

At 5-6, the senior roundball standout brings solid play into action for the Lynxettes in their hardwood contests each week.

Expect good things from the Lynxettes during the 1987-88 basketball year -- with players the calibre of Poole, it's easy to see why.



**MATT TUCKER**  
... Spearman Post

It's easy to see why opposing teams pay attention when Lynx post Matt Tucker takes to the hardwood courts.

His 5-10 frame sports a solid 245 pounds as the junior Spearman cager brings his prowess into play for the Lynx.

The son of Buck and June Tucker of Spearman, Matt has proven a strong performer no matter what the sport.

The basketball fortunes of the Spearman Lynx will be carried by young men such as Tucker -- and chances are, they'll be carried well.



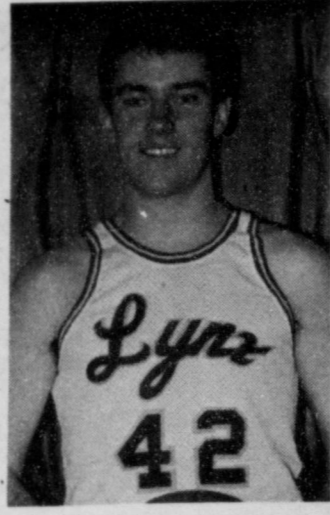
**MARGIE EVANS**  
... Spearman Post

Most coaches look to their post position players to provide that much needed scoring impetus -- either by setting up the play or by shooting it themselves -- and Lynxette Margie Evans is proving a dependable performer so far this season.

The 5-8 junior has both junior varsity and varsity experience to her credit and that's proving a big plus.

The daughter of Jim and Laquita Evans of Spearman, Margie's talents on the basketball court are readily apparent.

As the season goes on, Evans' abilities should continue to improve and that could spell the difference for post-season playoff hopes for Spearman.



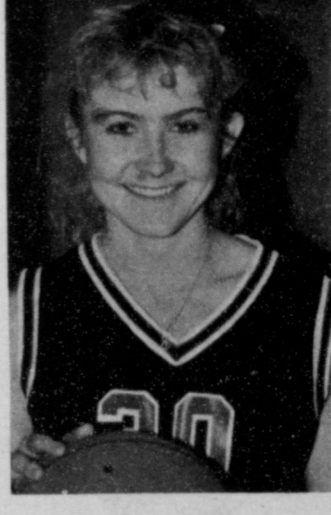
**KEVIN NELSON**  
... Spearman Post

He's one of the big men on the hardwood courts for the Spearman Lynx and it's easy to see why Kevin Nelson helps contribute to the Lynx scheme of things.

The 6-3, 175 pound senior has proven a solid performer for the Lynx during early rounds of cager action this year.

The son of Dennis and Judy Nelson of Spearman, Kevin is as adept on the basketball court as he was on the gridiron field, and that should prove more than healthy for Spearman this season.

Expect good things from both Nelson and the Spearman Lynx this season with a fast-paced team profile that keeps fans on the edge of their seats.



**SHELL BABBS**  
... Gruver Point

A strong senior nucleus provides teams with strong potential and the Gruver Lady Greyhounds nucleus includes the likes of Shell Babbs.

Dedication and strong play are her trademarks when she takes to the hardwoods for the GHS girls roundball squad.

The 17-year old daughter of Mike and Amy Babbs of Gruver, Shell is providing Gruver with dependable performances through early games this season.

It's easy to see why hometown fans flock to the gym when the Lady Greyhounds play -- especially with the likes of Shell Babbs on the team.

Go Spearman!

**WIN NOW!**



**Spearman Lynx and Lynxettes**

**Kids' Stuff & Lady Fair**


719 W. 7th

Go Spearman!

**BEST WISHES ...**


**LYNXETTES AND LYNX**

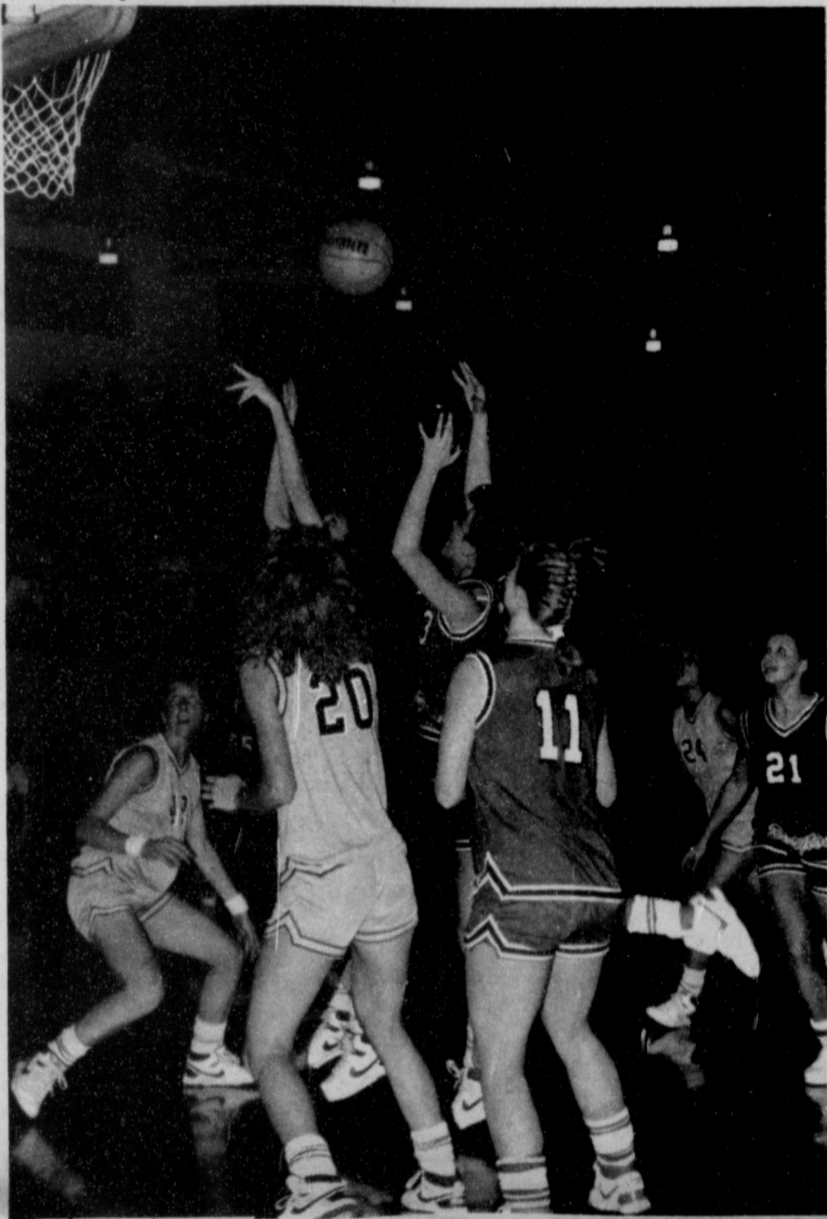
**FOR A SUCCESSFUL '87-'88 SEASON ...**



**McClure's Paint & Supply**

Go Spearman!

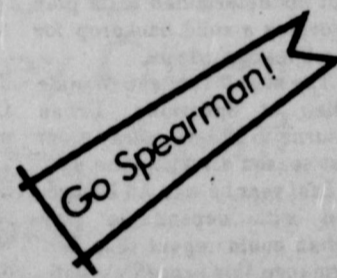




*For Service  
you've come  
to trust...*

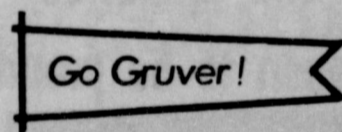


**Come to  
Brock Ins. Agency**

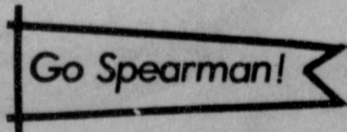


121 Main Spearman 659-2514

**Be a Winner!  
... with quality  
Phillips 66 Petroleum  
Products!**



A proud community salutes  
the efforts and dedication  
of its high school athletes...  
We're proud of you all!!



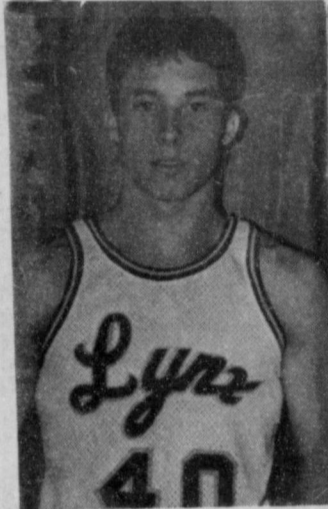
**Golden Spread  
Sales Co.**



412 Collard

Phillips 66 Products

659-3776



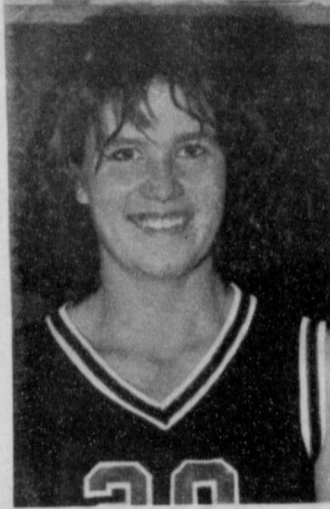
**CARL URBAN**  
... Spearman Wing

He's proving to be a solid performer for the Spearman Lynx cager crew in early goings this season, and senior Carl Urban helps provide fans with plenty to cheer about.

At 5-7 and 140 pounds, he may not dominate the floor, but his determined team play provides a solid backdrop for the Spearman Lynx.

The son of Dee and Winnie Allen of Spearman, Urban returns to the cage fray from last season's varsity line up.

Last year he was All District and with dependable play Urban could repeat that performance this season as well.



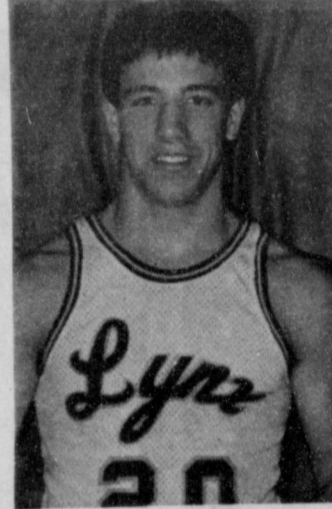
**KRISTA STEDJE**  
... Gruver Post

She's a good reason that opposing teams look up to the Gruver Lady Greyhounds -- especially so when 5-10 Krista Stedje takes to the courts.

A returning varsity starter from last season's squad, Krista is a junior standout who was named a member of the summer league all stars.

The daughter of Lynn and Jan Stedje near the Oslo Community, Krista is a junior post with solid credentials.

The Gruver Lady Greyhound's fortunes for 1987-88 should be greatly enhanced with the likes of Krista Stedje on their roster.



**SHAWN COOK**  
... Spearman Wing

His play on the gridiron proved exciting and junior Shawn Cook promises more of the same during the 1987-88 Spearman basketball season.

A 5-10, 160-pound junior wing, Cook is already seeing plenty of action in the fast-paced game which is the hallmark of Garrett-coached squads.

The son of Mr. and Mrs. Lynn Cook of Spearman, Shawn's abilities on the hardwood court are proving readily apparent during the early going this season.

His tenacity should provide the Lynx with yet another piece in the jig-saw puzzle toward a shot at the district crown.



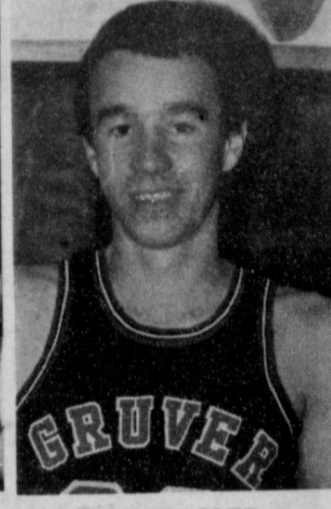
**CINDY BARKLEY**  
... Gruver Wing

The Gruver Lady Greyhounds will be looking for a solid performance from 5-9 wing Cindy Barkley during their 1987-88 basketball season.

The junior cager standout is fresh up from solid performances on the Gruver junior varsity last year.

Hard work and determination are evident factors whenever Cindy takes to the courts. She is the daughter of Rod and Pat Barkley of Gruver.

If success is measured in determination, then Gruver's Lady Greyhounds and Cindy Barkley will provide a more than successful season.



**TROY SEAGLER**  
... Gruver Wing

He's 6-feet, 3-inches of basketball talent, and sophomore Troy Seagler is out to prove himself during the 1987-88 Gruver Greyhound round-ball season.

The son of Stan and Sharon Seagler of Gruver, Troy's abilities are readily apparent on the hardwood courts.

Up fresh from last season's junior varsity squad, Seagler impressed coaches enough to make the varsity line up this year.

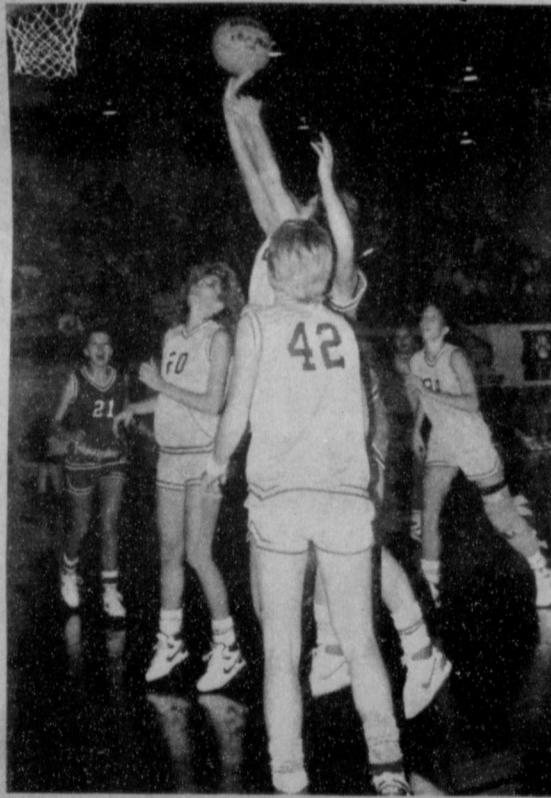
And it will take steady play from young men such as Seagler to help provide the Greyhounds with the winning impetus they need -- and Troy is more than ready to give his all.

Go Spearman!

Go Gruver!

Go Gruver!

Go Lynx and Lynxettes  
Make this a season to be proud of



314 MAIN  
PHONE  
659-2141

**Gordon's**  
DRUG

SPEARMAN  
TEXAS

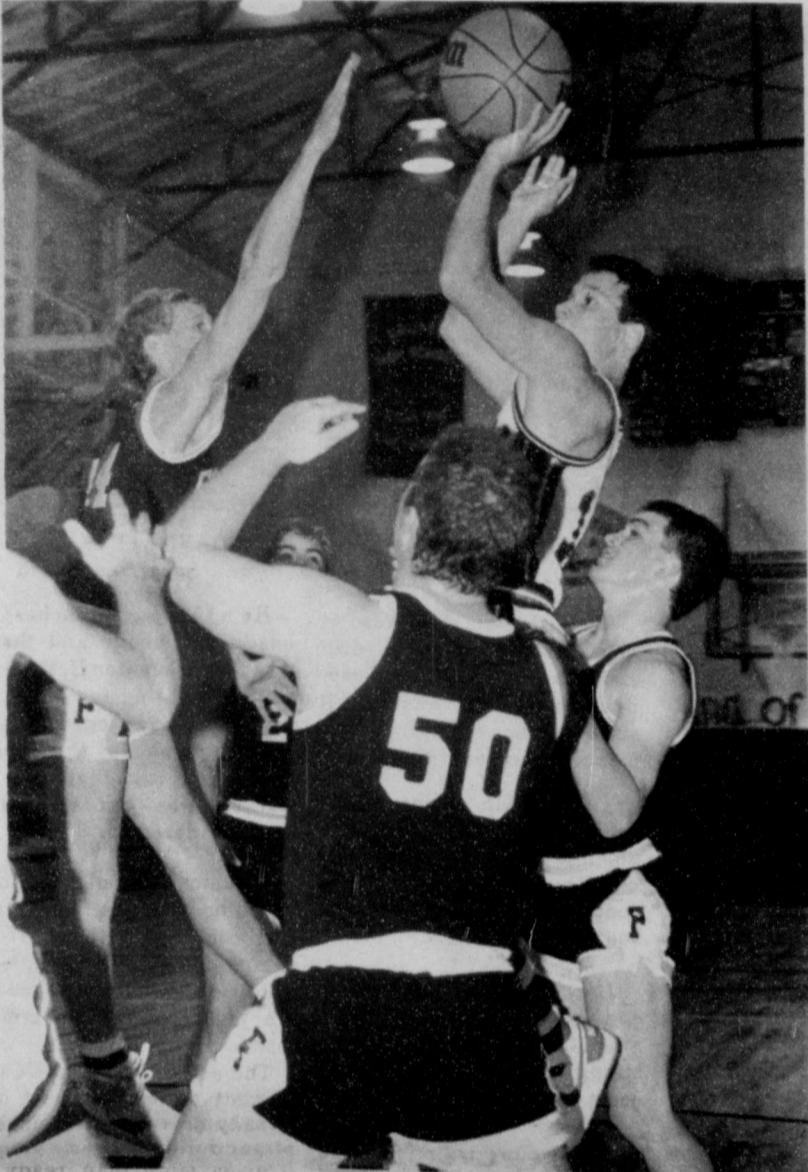
JIM EVANS

WIN OR LOSE  
YOU'RE OUR CHAMPS!



**El Vaquero Restaurant**

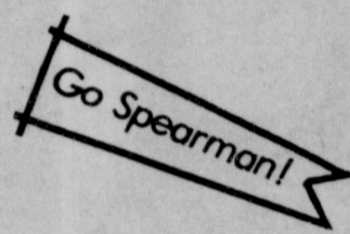
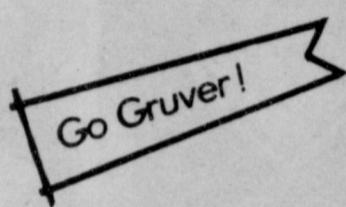
425 Main Gruver



DRAWING A CROWD... Greyhound cager Tim Fletcher draws a crowd in the Gruver-Follett basketball game held in Gruver.

**It's the start of a brand new year!**

*all the way, teams*



Stop in and visit about any of your Insurance needs, whether its Homeowners, Auto, Life, or Crop.

**Troy James, LUTCF**  
**Kelly Mahaney, Career Agent**



**Hansford County Farm Bureau**

659-3133

307 W. Davis

## It takes a special dedication . . .

*Go Spearman!*

Whether it's the grain business or a basketball team, determination to do the job right is the winning difference.

*Backing you all the way!*

*Go Gruver!*

Offices  
405 Collard

Spearman, Texas  
659-3711

# Speartex Grain Co.

ELEVATOR - W HWY 15  
SPEARMAN - 659-2549



**BRENT WAGNER**  
... Spearman Guard

The athletic abilities of Gruver's Brent Wagner are proving a big plus for the Greyhound roundball crew this season.

The junior Gruver performer has already proven himself on the gridiron and undoubtedly will fashion an equally good name for himself on the basketball courts this season.

The son of Richard and Wanda Wagner of the Hitchland community, Brent is a 5-8 point guard for the Greyhounds.

Expect good things from Wagner as the basketball season continues to unfold -- he doesn't know how to give less than 100 percent.



**JODI MARTIN**  
... Gruver Wing/Post

When a 5-9 player can perform at either post or wing, she becomes that much more valuable to her team and coaches -- such is the case for Jodi Martin in Gruver.

The senior varsity ball player is a returning letterman for the Lady Greyhounds and her versatility on the courts is an added bonus.

The daughter of Bill and Lynn Martin of Gruver, Jodi is a proven performer for the GHS girls roundball squad.

Any success that the Lady Greyhounds cager team enjoys this year will come off the play of girls who are able to display the same fervor on the courts as Jodi does each time she plays.



**THERON PARK**  
... Gruver Post

He's one of Gruver's tallest players and, despite being a sophomore, Theron Park is proving his talents for the Greyhound cager crew.

At 6-2 and 160 pounds, Park is a dependable performer for the Gruver roundball team and brings some solid experience into the varsity line up from last season's JV squad.

The son of Bill and Judy Park of Gruver, Theron's abilities should hold the Greyhounds in good stead during the 1987-88 cager campaign.

With dependable help at post from such performers as Park, it's easy to see why the Greyhounds are a team to be reckoned with this year.



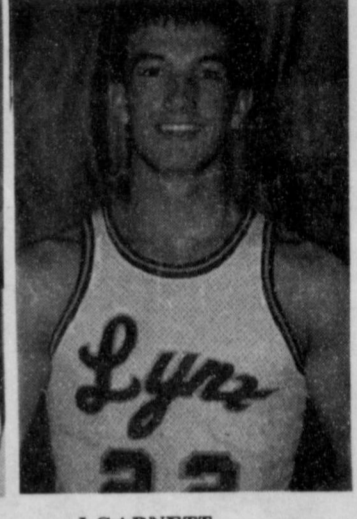
**SHILOH FINNEY**  
... Gruver Post

She's 5-foot, 8-inches of boundless energy and provides the Gruver Lady Greyhounds varsity basketball squad with strong performance at her post position.

That's GHS junior Shiloh Finney who brings a goodly amount of junior varsity play into the Gruver girls cager contest for the 1987-88 season.

The daughter of Michael and Judy Finney of Gruver, Shiloh's 16 years provide for strong play on the basketball court for Gruver.

With young ladies such as Shiloh to look to, the GHS Lady Greyhounds should have a successful season.



**J GARNETT**  
... Spearman Guard

He's 5-feet, 10-inches of hustle and bustle and that's what cager mentor H.M. Garrett was looking for when he began putting together the 1987-88 version of the Spearman Lynx roundballers. J Garnett was just what the doctor ordered.

A junior who plays either guard or wing positions, Garnett comes into the 1987-88 varsity line up with a couple of solid years of performance on the junior varsity Spearman teams.

The son of Mike and Marti Garnett of Spearman, J has already proven a dependable player during the early goings this season.

Watch for Garnett in the Lynx line up.

Show your support by attending the games.

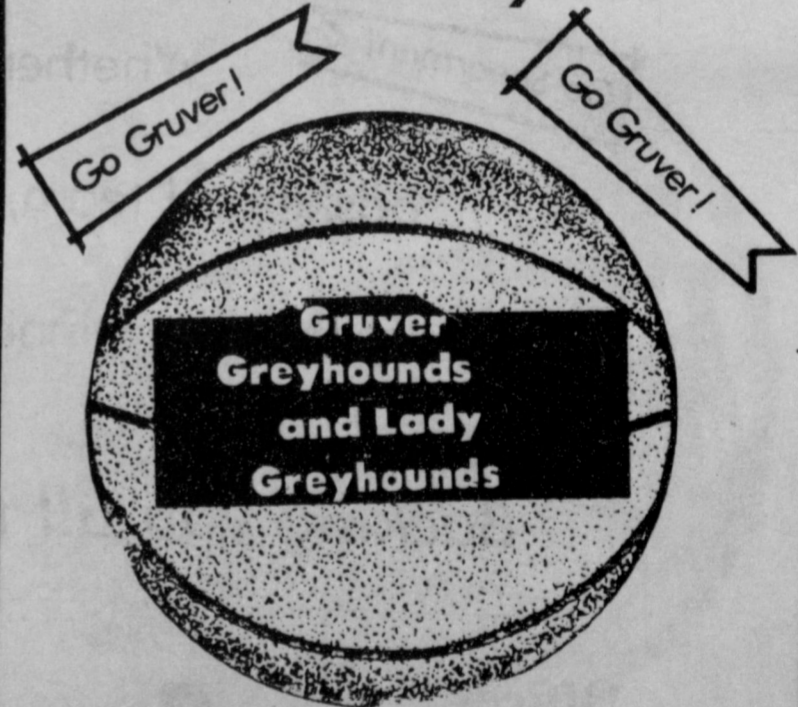
Go Greyhounds and Lady Greyhounds!

Don't forget  
Gruver Lumber  
is now a member of the  
**ACE HARDWEAR Team!**

105 W. Broadway Gruver

**ACE Lumber and Building Supply**

We're behind you all the way!



**Gruver Redi-Mix**  
700 S. McGee 733-2907 Gruver



A look at district 1-AA . . .

A look into the crystal ball . . .

Pre-season prognosticators have gazed into their crystal balls and have come up with their choices for the 1987-88 cager finalists in district 1-AA.

As always, pre-season picks are most appropriately compared with weather forecasts -- maybe it will and maybe it won't. But those brave souls who do the picking are more apt to talk about what might have been rather than actual facts as the season progresses.

But that early season look shows a number of surprises in district 1-AA, especially for Hansford county basketball fans.

Perhaps one of the more popular picks -- at least in Spearman -- is the one which foreshadows the return of the Lynxettes to return as district title holders.

The Gruver Lady Greyhounds were picked to finish the year in the number four spot in district -- just behind second place Stratford and third place Panhandle.

White Deer was given the nods for fifth place and West

Texas consolidated is expected to finish next to last, just in front of Highland Park.

While the Highland Park girls are chosen for the cellar,

the Amarillo boys' team has been given the nod to take top honors in that side of the schedule.

Boys district play is forecast

with Stratford in second -- just like the girls team -- and Spearman gets the nod for third place.

West Texas Consolidated

holds down the number four spot while White Deer is forecast for fifth place.

Panhandle and Gruver wrap up the pre-season listings in sixth and seventh place, respectively.

But there's a lot of basketball to be played before the buzzer sounds on the season finale. And anything and everything can happen in high school cager play.

When the regular season is over and post-season play gets underway, it'll be interesting to see which teams make these pre-season picks look as ignoble as those in the past.

Whatever happens in district roundball action this winter, fans can expect the unexpected. And competition carries a special Hansford county brand when it comes out of either the Spearman teams or the Gruver teams.\*

So no matter what the pre-season prognosticators may imagine before the fact -- there are at least four teams in the district 1-AA line ups who will be heard from before the season ends.



**Spearman Lynx and Lynxettes**

*Winners in every respect!*



**S&L Feeds**

Featuring a complete line of **PURINA FEEDS** Veterinary Supplies

owners Tom Loveday and Bobby Smith 659-2786

Located in the old Tom Penn Bld. Airport Road



**Elaine Littau lost 60 1/4 lbs.!**

Two years ago, my doctor told me to lose 50 lbs., but he did not tell me how. I was in poor health, and had dieted to lose, only to gain back, plus extra. On January 1, 1986, I decided this was my year! I called Diet Center. What I found was amazing; they offer daily support and encouragement plus the Diet Center Program works. I feel great! My health is the best and my family and friends hardly recognize me!

*Elaine Littau*



- It's fast
- It's easy
- It's safe

Call Today for a **FREE** Introductory Consultation

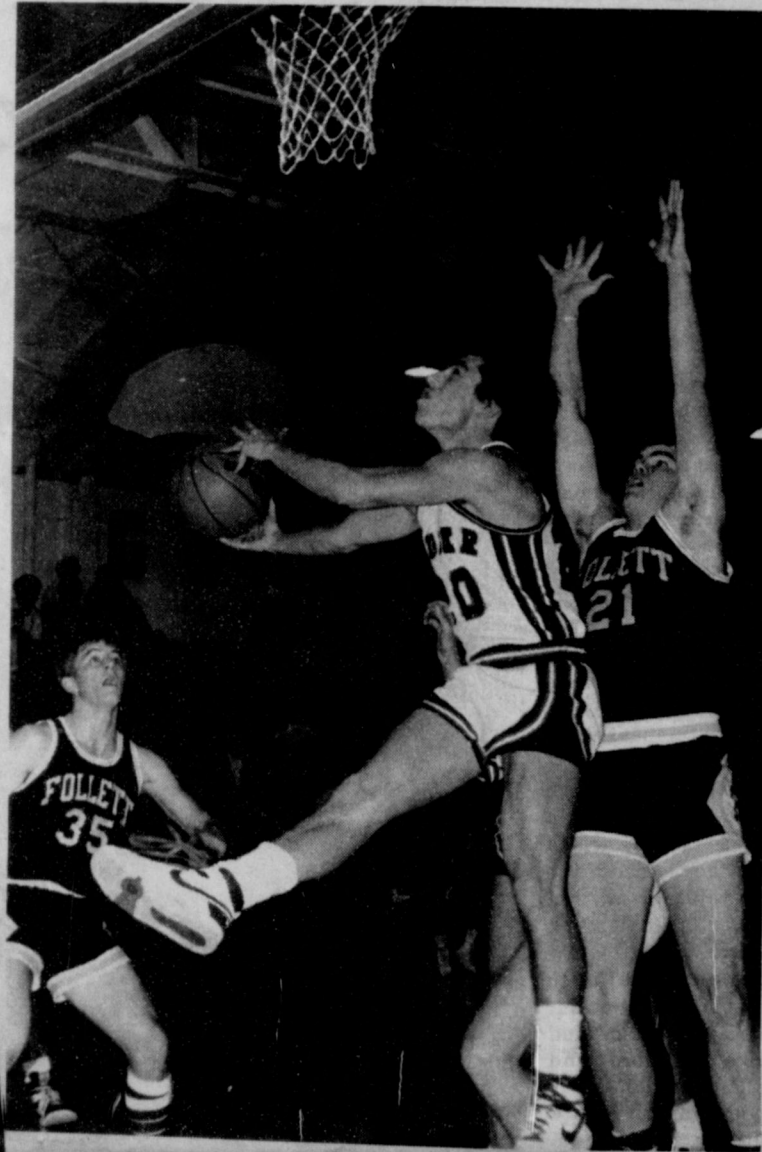
Before: 188 1/4  
After: 128  
Lost: 60 1/4 lbs.



**COME BY OUR NEW LOCATION** at 410 Davis Just off Main St.

We can change

**IT'S A SPECIAL  
BRAND OF  
BASKETBALL...**



**FAST PACED  
AND**   
**FULL OF ACTION...**

*Support the Greyhounds and  
Lady Greyhounds this season!*

**CAPROCK INDUSTRIES, INC.**

Dalhart, Tx.

Gruver, Tx.

Leota, Kan.

Lockney, Tx.

Bovina, Tx.