

Winter wheat crop suffers from drought, insects

Weather is always a topic of conversation, and this season the universal comment seems to be "It's so dry!" Hard on the heels of this comment comes speculation on this year's suffering wheat crop.

Weather and wheat. The two seem to be partnered in an unending dance, but weather always takes the lead, and 1989 isn't striking up the band for a jubilant jitterbug. This year's weather has featured a debilitating lack of moisture and the mildness that makes green bugs, one of wheat's big enemies, thrive.

The Panhandle is famous for its bumper crops of hard red winter wheat, which is planted in the early fall. The wheat plants ideally put down a good root system before the first winter cold snap, after which they go into a dormant stage. Throughout the winter, the wheat plants remain a green color and are nourished by the moisture rain and snow provide. These plants also provide pasture for cattle in the winter months. The cattle are taken off the wheat pasture in the spring when the wheat starts its period of rapid growth. The wheat is generally harvested around the third week of June.

Wheat in Hansford County is grown by both the dry-land and irrigated methods. Carl Archer of Speartex Grain Company estimated that a little less than half of the wheat grown is irrigated. "The people who irrigate tend to grow a combination of dry-land and irrigated wheat," he said.

Last year at this time, fall and winter precipitation from September of 1987 through January of 1988 added up to 8.67 inches of moisture. This precipitation figure includes snowfall, one inch of which equals one-tenth of an inch

of moisture. Precipitation from September of 1988 through January 25 of 1989 equalled only 4.25 inches. (Precipitation figures are for Spearman only and were supplied by radio station KRDF.)

Until Tuesday, Jan. 24, 1989, the month of January had only a trace of precipitation, too small to be considered measurable. KRDF measured .07 of an inch of precipitation on that day. (see chart)

Wheat is an extremely hardy plant, according to agricultural experts, and can grow in climates with a minimum of 12 inches of rain and a maximum of 70 inches of rain. Monnie Edwards of the U.S. Soil Conservation Service Work Unit in Spearman said, "We could get by here on maybe ten to 12 inches of rainfall during wheat growing season, but that would be a minimum." He reported that our area usually has about three inches of precipitation in the fall, up to two inches in the winter (normally as snow), and five to six inches in the spring. "But not this September!" he said. "This is the driest fall and winter in recent memory."

Last summer Hansford County had more than the normal amount of rainfall, and that did help boost the below-ground moisture levels, but Edwards said, "A couple of those rains were hard ones, and it just all went to run-off." He noted that he had recently seen grazing cattle in the fields with an entire wheat plant, roots and all, hanging from their mouths. "That really tells you how dry the ground is!" he commented. Nonetheless, he said the dry conditions here would be even more severe had we not had a fairly wet summer.

When asked how a typical farmer reacts to drought conditions, Archer said, "A farmer can

pray for rain every night, but it's like the old story about the little boy who was told in church to pray for rain who responded, 'Preacher, the prayin' ain't gonna work until the wind's out of the Southwest!'"

"I'm foreseeing a coming disaster by looking at the last six months of poor rainfall and this mild winter's opportunity for bugs to multiply all season," said Keith Martin of the U.S. Agricultural Department of Stabilization and Conservation County Committee. "What the drought doesn't get, the bugs are going to kill." He said he is hoping to get funds from Washington D.C. to help local farmers.

Warmer than normal winter temperatures have caused an infestation of green bugs in wheat crops in the Panhandle and in Texas in general. Green bugs are tiny insects which suck the leaves of wheat plants and, in so doing, also inject a toxin to the plant, according to Jim Turner of Equity Elevators. These pests particularly work on wheat that is already stressed by drought and other factors because healthy plants are better able to withstand green bugs. "I don't ever remember bugs working like this through the winter," Martin commented.

The treatment for green bugs is aerial spraying. Mike Garnett, who farms both irrigated and dry-land wheat reported, "We got a bad, strong infestation of green bugs late in the fall this year. I've had my wheat sprayed twice and

they're still there. The green bugs were so bad on my dry-land wheat that I put cattle on it. A lot of that wheat just looks dead now. It's brown and there isn't much left of it."

Garnett knows a farmer who tried bringing some wheat plants into his kitchen. The farmer had potted the plants in buckets of dirt, watered them and left them in the warmth of his home overnight to see if they were still capable of growing. In the morning, his kitchen was full of green bugs!

Burt Williams of the Hansford Extension Office said, "The bugs get down in the crowns of the plants and then they come out when it's warm. On a cold day, you'll hardly spot one out in the field, but go out there on a warm day like we've had in the last couple of weeks and you can see them everywhere."

A spokesman for Buster's Duster's, a local aerial spraying company, said that their customers who are dry-land wheat farmers have all sprayed twice and some three times, but many have given up trying to control the green bugs and are simply letting the cattle get what little the insects have left behind.

Several of the farmers and agriculturalists consulted reported that the drought and green bug problems are combining to create inadequate wheat pasture. They said many farmers are having to pull their cattle off the wheat pasture early and either sell them

or put them in feed lots. Under normal conditions, wheat pasture can be grazed right up until the beginning of the spring growing season.

County Agent Williams remarked, "We've had good wheat pasture in the past two years. There was good winter growth and it really was excellent for grazing cattle. This year is a different story. We're already short on wheat pasture, and more cattle are being pulled off every day."

He reports that he is receiving phone calls from farmers seeking advice on what to plant on the acreages they've already lost to dry-land wheat. "They are asking about oats and barley. Most of the questions are about oats, because

they haven't been a high-yielding crop in this area traditionally, so not many have cultivated it." He said these farmers are definitely looking for an alternative crop for dry-land wheat.

In the meantime, Edwards is hearing from farmers who are worried about soil erosion due to the extreme dryness. "Wind erosion of soil is certainly up," he said. "Lots of acres of land are in condition to blow." He explained that the Soil Conservation Office encourages farmers to "chisel plow" when erosion conditions occur. Chisel plowing roughens the soil by pulling up clods of dirt, which are less susceptible to the

see WHEAT, p.2

Measurable Precipitation 1987 and 1988 in Spearman, Texas

	(in inches)		
	1987	1988	1989
JAN.	.54	.72	.07
FEB.	1.12	0	[as of Jan. 25]
MAR.	2.55	2.47	
APR.	.48	3.37	
MAY	4.92	2.63	
JUNE	3.75	1.74	
JULY	2.85	5.45	
AUG.	2.44	.35	
SEPT.	5.16	3.61	
OCT.	1.44	.35	
NOV.	.64	.09	
DEC.	.71	.13	
	26.60	20.91	

The Spearman Reporter

Volume 81, No. 13 YOUR HOMETOWN NEWSPAPER Thursday, January 26, 1989

25¢

Per Copy

4 Pages



SUZIE HUMPHREYS

Chamber schedules radio personality as guest speaker

The Spearman Chamber of Commerce Annual Banquet is scheduled for Saturday, Feb. 4, 7 p.m., at the Spearman High School Cafeteria. Master of Ceremonies for the evening will be Mike Schnell.

Hansford County 4-H members will serve the meal: steak cooked by the J.C.'s, baked potatoes, salad and Texas toast prepared by the cafeteria staff. Dessert will be made by members of the Women's Division of the Chamber of Commerce. Spearman's own Fabric Fotos will provide unique door prizes for three lucky persons attending the banquet.

Speaker for the evening will be Suzie Humphreys, Dallas radio personality. Dallas radio listeners know her as the unpredictable suburban career woman, wife and mother who lends humor and a slice of life on Ron Chapman's morning radio show on KVIL-FM. Suzie's career has spanned the boundaries from administrative secretary to television talk shows. For 5 years, Suzie was seen each morning on the Dallas ABC affiliate program "News 8 Etc." She literally "talked" with everyone from Billy Graham to Clint Eastwood.

She has co-starred in Crisis at Central High with Joanne Woodward, and debuted in her first

movie role at the Corsicana "Drive In." She has made hundreds of commercials and industrial shows for Southwestern Bell Telephone, Oldsmobile, and 7-11 Stores. Suzie has "been up and she has been down"...her talk entitled "Life Is What Happens To You While You're Making Other Plans," drives home the message that change usually is followed by something positive.

Tickets are \$15. for non-chamber members and \$12.50 for chamber members. Tickets may be obtained at the Chamber office, or from any director of the Chamber. Directors are: Sheri Benton, Gina Davis, Kevin Bynum, Vance McGee, Helen Melton, Karen Babitzke, George Young, Jim Murray, Larry Butler, Dick Gillaspie, Randall Sauer, Lynanne Maize, Jackie Pearson and Don Townsen.

The Directors will be contacting all Chamber members for tickets. Only 275 tickets will be sold, so those wishing to purchase one need to do so early.

In addition to the food and speaker, awards presented will be Rotary Club's Employee of the Year, Women's Division "Member of the Year," plus an "honorary Member of the Year." Highlights of the evening will be the presentation of the "Citizen of the Year" and "Citizen Over the Years."

Funds request to be reviewed Jan 31 by PRCC

Over \$8 million worth of water and sewer systems, solid waste management projects, and gas distribution networks will be on the minds of Panhandle area city and county elected officials during a Jan. 31 meeting at the Panhandle Regional Planning Commission.

Every year, the elected officials meet with a Panhandle Regional Review Committee appointed by the governor's office. That committee reviews applications submitted by the cities and counties and scores them according to state guidelines. The applications are then forwarded to the community development division of the Texas Department of Commerce, where final funding and scoring decisions are made.

The review committee has a challenging job this year. Applications from around the 25-county region total \$8,271,673, covering 40 projects. Last fall, the department of commerce notified the PRPC there would be \$1,123,351 available to the region for community development projects.

The City of Gruver has made a request for \$90,896 for gas improvements with \$9,090 in matching funds. Hansford County has made a \$250,000 request for sewer and water improvements with matching funds of \$53,630 for the total project cost of \$303,630.

The funding requests range from a \$333,258 request for street, flood control and drainage improvements in Canadian to a \$55,000 water improvement project requested by Oldham County for the community of Wildorado.

Water system improvements are a high priority among the applications. Sixteen deal with water or sewer improvements with the rest covering street flooding and drainage programs, solid waste projects, courthouse elevators, and gas systems.

Most applications contain a ten percent or higher local match from the city or county. The PRPC's Community Development Division has helped with the preparation of a large number of the applications.

Lynxettes move to 4-0 in district 1-2A play

The varsity Lynxettes continue their winning ways by compiling a 4-0 record in district 1-2A.

Their game against Panhandle was won by a score of 52-35. Panhandle's sticky defense caused the Lynxettes to struggle the first half before building a commendable lead in the fourth quarter with Krista Kirkland leading all scorers with 26 points. Vonda Benson and Ginger Pearson had 6 points, Joy Gafford and Londee Bradley had 4, and Michelle Cook, Laci Lasater, and Heather Murrell added 2 a piece.

In the game against Highland Park the Lynxettes had a superb team effort with everyone playing the type of basketball they are capable of playing, especially in the first half. Everyone contributed to the 50-36 victory with Krista Kirkland leading all scorers with 14

points. Ginger Pearson played one of her best scoring games with 13, followed by Londee Bradley with 10, Heather Murrell with 7, Joy Gafford with 4, and Vonda Benson with 2. The Lynxettes held Highland Park to 11 points the first half with their pressure defense.

The Lynxettes dominated in their game against W.T. Tuesday night 67-38. This win was the result of consistent play from all members of the Lynxette squad.

Leading all scorers with 25 points was Krista Kirkland. Londee Bradley had 13, Carly Shieldknight and Joy Gafford had 8, Laci Lasater, Vonda Benson, and Heather Murrell had 3, and Michelle Cook and Ginger Pearson added 2.

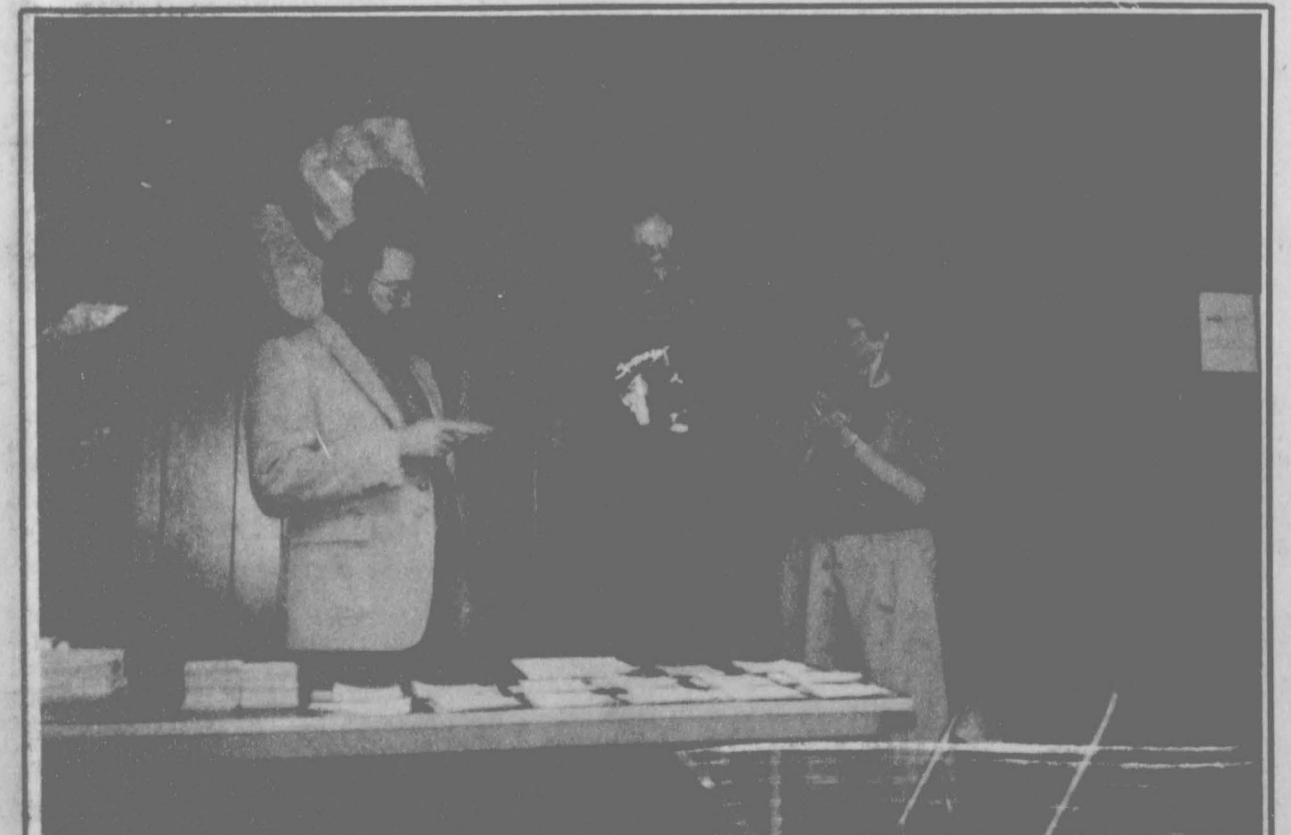
The Lynxettes take on the Lady Hounds from Gruver this Friday night Jan. 27 in the varsity gym.

Lynx lose heartbreaker to Hornets

The varsity Lynx put out an outstanding effort Friday night only to be edged out in a one point defeat by Highland Park. Highland Park boys are 4-0 in district play.

The fighting Lynx battled to the very end with an outstanding effort from Shawn Cook hitting 21 points, (3-3 pointers), Ron McCown 10, Pat Shields 7, J Garnett 6, Carson Womble and Slaid Jones 4, and Jerold Blan 2. The Lynx played well after coming off a 66-52 defeat by Panhandle Tuesday night.

The Lynx, leading by as much as 12 points, improved their record to 2-3 by defeating the W.T. Comanches Tuesday night 52-43 in the Lynx Varsity gym. This much needed win came from the scoring efforts of Carson Womble and Pat Shields with 13, Slaid Jones and J. Garnett with 8, Ron McCown had 5, Shawn Cook had 3, and Jerold Blan added 2. Keep it going Lynx! Beat Boys Ranch Friday night!



The Spearman Chamber of Commerce held its annual installation of officers and directors at the December membership breakfast. Installing officer and past president of the Chamber, Mike Cudd is shown with Don Townsen, 1989 Chamber president and Jackie Pearson, vice president.



MARANDA LOOMIS

Loomis added to OHSA directory

A senior at Spearman High School, Maranda Loomis, has been selected as an Outstanding High School Student of America and will be listed in the 1988-89 OHSA Directory. She is the daughter of Duane and Kay Loomis of Spearman.

The directory is distributed to many of the nation's colleges and universities. Some of Loomis' accomplishments that gained her a place in the OHSA directory include being a member of the National Honor Society for three years; a member of the Spearman High School Celebrate Choir for three years; an outstanding soloist in UIL contest; a Lion's Club Sweetheart; and she was also a member of the All Star Cast of a UIL one-act play. She is a member of the First Baptist Church and participates in youth groups there.

As an OHSA member, Loomis' benefits could include a 'Guaranteed Student Loan' Service, newsletter and several educational programs. Members may also be eligible for a \$2,000 scholarship.

9th graders win Gruver tournament

Both the Lynx and Lynxette basketball teams won first place in the Gruver tournament last weekend.

The Lynx defeated Panhandle first by a score of 46-41. Trosper had 16 points, Beck 15, Kizziar 9, Kelp 4, and Riggins added 2.

Then the Lynx outlasted Gruver in the finals 45-41 with Trosper scoring 14, Berk 13, Kelp 12, Strawn 8, Riggins and Kizziar 2.

The Lynxettes wiped out W.T. 34-12 with Lasater scoring 7 points, Greene 6, Holton 5, Schumann and Townsen 4, Nitschke 3, Pearson and Kunselman 2, and Lieb added 1. They then strapped Stratford in the finals 38-21 with Lasater scoring 9 points, Schumann 8, Holton 6, Townsen 4, Nitschke 3, and Pearson, Lieb, DeArmond, and Green adding 2 a piece.



This is a scene at the Spearman 8th grade Tournament held Saturday Jan. 21. Spearman girls won 1st place. Spearman boys got 3rd place. Teams who participated were Spearman, Gruver, Morse, Perryton, and Dalhart.

Junior varsity box scores

BOYS				
SPEARMAN	8	20	25	41
PANHANDLE	12	26	36	50

SPEARMAN	13	28	41	52
HIGHLAND PARK	10	23	33	51

SPEARMAN	13	25	36	45
W.T.	6	19	26	32

GIRLS				
SPEARMAN	2	11	17	26
PANHANDLE	14	20	26	31

SPEARMAN	5	12	20	30
HIGHLAND PARK	4	9	15	20

SPEARMAN	14	24	35	42
W.T.	4	10	15	25

I wish to thank everyone for visits, calls, cards and flowers during my hospitalization and recovery. I appreciate your thoughtfulness and concern very much.
Porky Holland

Farm families invited to land program

Pointing to the importance of recognizing and remembering the pioneer farm and ranch families in Texas, Rep. Dick Waterfield has invited long-time farming families to participate in the Texas Department of Agriculture's Family Land Heritage Program.

Registration for the program, which recognizes families who have had land in agricultural production for 100 years or more, is now open and will extend through July 15, 1989.

The basic requirements of the program include continuous agricultural production on the farm or ranch for 100 years, land ownership within the family, complete operation or supervision of the farm/ranch production by family members who are Texas residents, and a size of at least 10 acres with a minimum income of \$50 from farm or ranch products. If the farm or ranch is smaller than 10 acres, sales must total \$250 per year.

"These families are living, productive symbols of our family farm unit. We celebrate their past achievements, and acknowledge the importance that such family farms hold for us in the future," he said.

This year's certified registrants will be honored at a state ceremony to be held in Austin in the Fall. Honorees will receive a certificate with an official sign/marker to be placed on the recipients gate or home designating their property as a "Century Farm" or "Century Ranch". Property owners of 150 years or more will be awarded a special Sesquicentennial certificate. Additionally, a Family Land Heritage Registry will later be published and distributed to all honorees.

Those who wish to apply may obtain an application from their County Judge, R.L. McClellan, county historical commission chairperson, the nearest TDA district office or by writing to: Family Land Heritage Program, Texas Department of Agriculture, P.O. Box 12847, Austin, Tx. 78711.

Garnett named to honor roll

Jon Garnett of Spearman is among 354 students named to the Dean's Honor List for the fall 1988 semester at South Plains College.

To be selected for the Dean's Honor List, students must maintain a minimum 3.25 grade point average

WHEAT, from p.4

wind.

Martin and Turner both said they see evidence of a second pest, the Russian aphid. This insect usually doesn't start putting in an appearance in the wheatfields until spring. All of the experts interviewed predicted a dangerously "buggy" growing season for this year's wheat crop in the absence of extremely cold temperatures, which kill off much of the rapidly-multiplying insect population.

Those interviewed extensively by the Spearman Reporter were reluctant to make too many concrete predictions about the losses this year's wheat crop will have due to the dry weather and insect damage. All agreed that irrigated wheat is less affected at this point than dry-land wheat, but that the insects will be a big problem for all wheat this spring. They claim that the wheat season is still in its early stages and that wheat is a crop "full of surprises."

"It's too early to predict what the harvest will be," said Garnett. "The dry-land wheat has definitely had some loss, but wheat is a hardy plant. It may look dead as can be, but then you get a little moisture and it will start growing and really surprise you."

Martin commented, "they say

wheat can die three times and still make a wheat crop. I just don't know if this is the first time it is dying or the third! I do know that it is going to take a good two or three inches of rain over a full week to help this year's crop. A big portion of the dry-land wheat is certainly already a disaster."

Archer estimates that 15 to 20 percent of the dry-land wheat is already lost, even if daily rainfall were to begin today. "Every day without moisture will deteriorate what's out there in the fields even further," he said.

"Substantial moistures--at least two inches--by Feb. 15 would really help what's still good out there," commented Edwards. "And a couple of inches of real wet snow would sure perk everybody up," added Turner.

Despite the bad start this year's wheat crop has gotten, all those interviewed had realistic outlooks tempered by optimism. "Yes, the farmers are concerned, but they have been here long enough to know we will get rain sometime," said Edwards. Turner added, "Most of the farmers are taking things in stride because there isn't too much else they can do about weather conditions, and it is still early. And, the wheat they eventually bring to the elevator will be worth something, no matter what!"

Pearson chosen homecoming queen finalist

Miss Ginger Pearson, daughter of Mr. and Mrs. Bob Pearson of Spearman has been selected finalist for Texas' Ninth Annual Homecoming Queen Selection to be held April 8 and 9 at the Dallas Ft. Worth Airport Marriott in Irving. She is the Spearman High School Homecoming Queen.

Texas' Homecoming Queen will expense paid trip to compete with Queens from the other states for America's Homecoming Queen in July in Honolulu, Hawaii. America's Homecoming Queen will receive a cash scholarship plus an expense paid educational trip to Europe. America's Homecoming Queen, Inc. is a non profit organization promoting education and educational travel for high school Homecoming Queens in all fifty states.

Garnett named to honor roll

age while carrying at least 12 semester hours. An additional 166 students were named to the President's Honor List, maintaining a 4.0 or straight A grade point average.

"We are very proud of the outstanding scholastic excellence achieved by our honor students at SPC," said Dr. Orlo Sundre, vice president for academic affairs. "They have proved to be highly successful in their college careers."

Special guest speaks at 'Just Say No' rally

This Saturday Jan. 28 at the Hideout on Main Street a special guest speaker will be in Spearman to kick-off a "Just Say No" rally beginning at 11 a.m.

Bobby Heard, a native of Round Rock, Tx., will be the speaker for the event. Heard worked with former First Lady Nancy Reagan as an intern for the "Just Say No" Foundation. He was recently invited as a guest at the Inauguration ceremony for President George Bush.

A junior at the University of Texas, Heard helped form the "Just Say No" clubs in the Round Rock I.S.D. and the Texas "Just Say No" Foundation.

Heard was appointed by Governor Bill Clements to serve on the Juvenile Justice and Delinquency Prevention Advisory Board and is a member of the National Conference for a Drug-Free America as well as a member of the Texas Commission on Alcohol and Drug Abuse Statewide Advisory Council. He is also assistant youth coordinator for Texans' War on Drugs, while attending the University of Texas as a full-time student.

The rally will begin with the third and fourth grade "Just Say No" club at 11 a.m. At 1 p.m., the first and second grade "Just Say No" club will join in. And at 3:30 p.m., the seventh and eighth grade "Just Say No" club and the high school youth-in-action teen leaders will join the rally.

 You are Cordially Invited
 to a
 Wedding Shower honoring
 Jeanne Close Lang
 Fri. Feb. 3, 6-7:30 p.m.
 Fellowship Hall
 First Christian Church
 Given by Hostesses
 Gift selections at Sacks

Is a power line running through your child's favorite branch of the house?

A power line near a tree can turn your child's favorite play area into a dangerous place.

Before you let your child build a tree house or climb a tree, make sure there are no power lines nearby.

Even if children don't touch a line directly, they can still be shocked if they touch a branch that is touching the line.

If you'd like more information about power line safety, call or visit your local TNP office today.

Texas-New Mexico Power Company.
 Neighborly Professionals
 Offering You The Best Choice

BARGAIN BASKET!

\$1.99* Regular Size

The COUNTRY BASKET is a genuine legend in DQ Country! With four steak fingers, golden fries, Texas toast, and DQ's own special country gravy. All yours, with a basket full of savings! ON SALE JANUARY 16-29, 1989

THIS IS DQ COUNTRY

*Reg. TM Tex. D.Q. Op. Coun. © Reg. TM Am. D.Q. Corp. © 1989 Tex. D.Q. Op. Coun. All participating Dairy Queen stores.

J & G's

Fall & Winter Merchandise

1/2 price

Sale starts Thurs. Jan. 26

306 Hancock Spearman, Texas

You are Invited to a Baby Shower Honoring
 Elaine Morris and Daughter
 Saturday, Jan. 28
 from 2:00 to 3:00 at the
 First Christian Church

Classifieds!

For Sale

HOUSE FOR SALE: 3 bedroom, 1 1/2 bath, good location. 659-3801. s11-6tp

FOR SALE: 3 bedroom, 2 bath home. Sunken living room, parquet floors, fireplace, covered patio, 2 car garage, sprinkler system, 2193 sq. ft. living space, excellent location. Call 659-3587 or 659-5022. s11s-4tc

FOR SALE: House for sale in Waka. Two blocks from school. Call 435-4674 or 435-4139. S12S 4tp

HOME FOR SALE: 3 Bedroom, 2 bath, 1001 Barkley. Call Jim Shirley at 659-5565 or 659-3214. S12S-2t

FOR SALE OR LEASE: Office building for sale or lease. Owner will finance. Call 659-5051 before 5 p.m. and 659-2719 after 5 p.m. S05s-rtn

USED AUTO PARTS FOR SALE: Located 4 miles west of Hooker, Ok. on highway 54. Muss Cat Auto Salvage. (405)652-2400. S10-rtn

FOR SALE: Real nice 1981 Ford F 100 pick-up. \$2,950. After 6 p.m. 733-2817. S12 2tp Thurs. only

OWN YOUR OWN APPAREL OR SHOE STORE. CHOOSE FROM: JEAN/SPORTSWEAR, LADIES, MEN'S, CHILDREN/MATERNITY, LARGE SIZES, PETITE, DANCEWEAR/AEROBIC, BRIDAL, LINGERIE OR ACCESSORIES STORE. ADD COLOR ANALYSIS. BRAND NAMES: LIZ CLAI-BORNE, HEALTHTEX, CHAUS, LEE, ST MICHELE, FORENZA, B'JGLE BOY, LEVI, CAMP BEVERLY HILLS, ORGANICALLY GROWN, LUCIA, OVER 2000 OTHERS. OR \$13.99 ONE PRICE DESIGNER, MULTI TIER PRICING DISCOUNT OR FAMILY SHOE STORE. RETAIL PRICES UNBELIEVABLE FOR TOP QUALITY SHOES NORMALLY PRICED FROM \$19. TO \$60. OVER 250 BRANDS 2600 STYLES. \$18,900 TO \$29,900. INVENTORY, TRAINING, FIXTURES, AIRFARE, GRAND OPENING, ETC. CAN OPEN 15 DAYS. MR. SCHNEIDER (612) 888 1009. S13-1tp

Give A Hoot. Don't Pollute.

Forest Service-USDA



Century 21
GOLDEN SPREAD REALTY
 Janye Helton Pointer, Broker
 Owner, 435-5444
SALES ASSOCIATES
 T.O. Lesly 659-3836 or 659-2028
 3/4 miles E. of Spearman High.
 3/2 - large log home on 1 acre!
 609 E. Kenneth - UNDER CONTRACT art style, s1 UNDER CONTRACT art style.
 515 S. Bernice - 4/3/4, extra large lot & close to school!
 1012 S. Haney - UNDER CONTRACT to school!
 703 Collier - 3/1, Close to High School!
 712 Collier - 3/1 1/2, foreclosure! Fireplace & extra lot!
 607, 609, 611, 615 Haney - Small house / 2 apartments.
 118 Townsend - 4/2, Apartment included!
 108 S. James - 3/1. No down payment to eligible buyers!
 310 Townsend - 3/1 home with large lot!
 1010 Drossen - 3/1 brick home with carport!
 322 S. Barkley - 3/1. Good location at affordable price!
 121 Endicott - Attention Investors!
 511 Haney - 2/1 Small price tag!
 220 S. Snyder - Make an offer!
 315 1/2 N. Bernice - Lot for sale!
FARM & COMMERCIAL
 Industrial Road - 40 x 60 steel building!
 Buster Duster's - Large office building with or without shop.
 640 acres of grass in Sherman Co., over 500 acres in the C.P.R. Program.
 2 Ranches in Brownwood area. Call today!

Help Wanted

"ATTENTION-HIRING!" Government jobs - your area. Many immediate openings without waiting list or test. \$17,840-\$69,485. Call 1-602-838-8885. EXT R4514." S12-4tp

Miscellaneous

MITCHELL GARAGE DOOR REPAIR & INSTALLATION: Residential and commercial. Also will install electric openers. Experienced. Call after 5 p.m. 323-8210 or 435-3033. s10-rtn

PERSONAL: For those wishing to get in contact with me, Pete Fisher, my new business address is 511 G. Plains Shopping Center in Spearman, phone number 659-3482 or Box 126, Spearman. S11-8tc

Music Ed. Graduate would like to teach piano lessons. Please call 659-2774 or 659-3434. S12-rtn f

WANT TO RENT: Family needs a nice 3 Bedroom home to rent. Call 659-3434 days or 659-2912 evenings and weekends. S13- rtn

WILL DO FENCING. ALL KINDS. 659-2118 S13-4tp Thurs. only

Do you like working with people? Get the facts about becoming a professional hair stylist. 'Bet you think you're not able to get financial aid. 'Bet you might be surprised. Check with us for the facts. Next classes start: March 7, May 2, 1989 Federal aid programs available. **LIBERAL ACADEMY OF HAIR DESIGN**, 530 South Kansas, Liberal, Kansas 67901, 316-624 3271 s11s-4tc

Found

FOUND: A ring in J.J.'s Restaurant parking lot. Call 659-3420 or 659-2106 after 6 p.m. to identify. S13-1tf

Offered by **EMMETT R. SANDERS REALTOR**
 3 bedroom home, attached garage. ****
 Owner's 2 bedroom home plus 3 rental units. Good investment package. ****
 Call for details on almost new FmHA repo's, 3 bedroom homes **EMMETT R. SANDERS REALTOR**
 659-2516, nights 659-2601

BOB HARDY REALTY
 803 Wilmeth Dr.
 659-3440
NEW LISTINGS
 We need your listing
 We also have some (FmHA) Repo Homes for sale - Call for details.
 Robert Hardy-broker

Real Estate Sampler

Allen Alford-Broker-659-3034
 Hester Sue Crawford-Sales
 659-3060 or 659-2074

Dennis Nelson-Sales-659-3608
 Larry Trospen-Sales-659-3491
 715 Steele Dr. - 3 br, 1 1/2 baths. Price Reduced!

Duplex - Kenneth & Hoskins
 1111 BAUNDER CONTRACT th
 316 Roland - 2 bdr., 1 1/2 bath
 Crawford Addition - 3 bdr - nice.

811 Townsend - 2 bdr, double car garage.

727 Wilbanks - Double lot, 3 bdr.
708 Steele Dr., 3 br, fireplace
 Price Reduced.

Country Home-3 Bdr/1 1/2 Baths,
 2 1/2 ACRES -

1016 Townsenu - 3 br - garage - nice.

1116 Townsend - 3 br - double garage - extras.

Acreage for sale(Crawford Ad.)

Check for other listings.
WE WANT TO BE YOUR REALTOR

Club News

TOWN AND COUNTRY EXTENSION HOMEMAKERS by Carma Dorton

Town and Country Extension Homemakers met Jan. 17 in the clubroom. LaVon Reid was the hostess.

President Darrie Francis called the meeting to order. Roll call was answered to "when was the last time you washed your windows," by eleven members.

Carma Dorton read the previous minutes and they were approved.

Darrie Francis reported on the Hansford County Round-Up to be held June 2, 3, and 4.

Janie Kunselman read a thank you note from the club Christmas family.

Pam Ledgewood reported on the treasury.

Annetta McIver reminded everyone of Bingo night at the Hansford Manor. The group planned a Valentine Party for Feb. 10, at 1:00 in the home of Janie Kunselman.

Peggy Winegarner gave a program on fiber and also served muffins high in fiber.

After the program, members enjoyed refreshments served by LaVon Reid. The meeting was adjourned.

Those who attended were: LaVon Reid, Peggy Winegarner, Michelle Scott, Carma Dorton, Annetta McIver;

Janie Kunselman, Jeanie Laughlin, Dixie Smith, Pam Ledgewood, Darrie Francis and Laura Mackie.

RAINBOWS AND RANGLERS by Wanda Archer

The Spearman Rainbows and Ranglers square dance club has regular club dances the 4th Saturday of each month from 8 to 11 at the county barn. The public is always welcome at the dances, either to watch or dance.

Beginners' square dance lessons start this Thursday night at 7 p.m. at the County Barn. Anyone who has square danced in the past and wants to brush up or those who have never square danced are invited to attend. For those who can't make it this Thursday, plan to be there next Thursday.

For \$5, a couple donation to pay the caller and expenses, participants dance all evening, eat and drink all they want (tea, coffee, punch or cola- no liquor).

Square dancing is one way to help relieve stress and tension, is good moderate exercise, and best of all - it's fun. Participants can meet lots of people and gain new friends. Square dancers from all over the Texas Panhandle, Oklahoma, and Kansas visit Rainbow and Ranglers dances.

Square dancing is not just for older people, either, but is good for people of all ages. There are many teen-agers square dancing in other parts of the country.

SPEARMAN STUDY CLUB by Sandee Smith

Karen Babitzke presented an informative and enlightening program on computers to the Spearman Study Club for their January meeting. After the program, business was addressed. The members voted to give a \$200. scholarship to Cheryl Whitefield and they are sponsoring the third and fourth grade "Just Say No Club" with a donation of \$100.

Refreshments were served by hostesses Marilyn Wilson and Patty Sheppard. Members present were Eulalia Blankenship, Linda Close, Trudy Schneider, Claudine Hardy, Donna Trantham, Virginia Young, Sandee Smith, and guest, Carolyn James.

Letter to the Editor

Editor:
 I'm enclosing a check for renewal to the Reporter but I want to tell you how much I enjoy Helen's column each week. In fact sometimes that's about the only thing I read. I've been away so long (nearly 50 years) that I have to hunt for a name I recognize but in Helen's column I usually find one-keep writing.

Sincerely,
 Lois Bailey McCarty

Birth announcement

Becky Shipp announces the arrival of a baby brother, Joe Don. He was born Jan. 14 at Ochiltree General Hospital in Perryton. He weighed 8 pounds 4 1/4 ounces. Parents are Buddy and Lorrie Shipp of Spearman. Grandparents are Sarah Shipp of Rotan, Tx., and Bill and Becky Ritchie of Lakeview.

JOIN IN

LEARN TO SQUARE DANCE

NEW BEGINNERS CLASS STARTING
 January 26
 7:00-9:00 p.m.
 Murry Beasley
 County Barn
 Before 5:00 659-5581
 After 5:00 659-3465

TERRITORY SALES MANAGER

Grow with the leading manufacturer in custom lubricant and fuel conditioner sales. Solid company since 1916 - outstanding product line and excellent earnings serving fuel jobbers, industry, agriculture, transport-

tion and other businesses. Mechanical, agricultural, or sale background helpful. In field training. Call: Danny Thomas Primrose Oil Company, Dallas, Texas 1-800-444-3330.

Panhandle Crisis Center

MARY FRANCES ELZEY

The other day, shortly after I had entered the office of the Panhandle Crisis Center, Bernice Lawson came in, full of pleased excitement. Of course we asked how come, and she told us the following story:

The Attorney General had sent an assistant attorney from Amarillo to Perryton to hear, among other things, cases concerning non-payment of child support. Bernice was present to act as advocate for a client of the PCC. This woman was the mother of a small baby, and the father was pleading his case with the usual grace and reasonableness of men in such a situation. (Their reasons for non-payment, though varied, are skillful.) The client also presented her case clearly and concisely. The attorney was apparently readying himself to decide in favor of the father of the child. Bernice then spoke up, remarking to the attorney that evidently he was not hearing the woman's statements. Again she pointed out that the father had repeatedly struck his former wife while she was holding the baby, and that such experiences had caused distressing nightmares for the baby.

Although the woman had herself described this situation, the attorney failed to let it catch his attention. Bernice, in her quiet but firm manner pointed it up again. That changed the entire picture, resulting in a court order to the father to pay the child support that was due.

Tell you this to demonstrate the value of Bernice's acting as advocate to the women who are not getting a fair hearing from the representatives or courts of law.

I also asked Bernice how she managed to sit in on the discussion. She answered that she had to be

forceful. Not hateful, not loud, but forceful.

Many women do not receive a fair hearing in court cases because why? Partly because they are so accustomed to allowing the masculine style (and masculine authority) to dominate any and all disagreements that they do not know how to defend their points of view. Is there also something about the conditioning of men that they find it hard to give weight to what women say?

Of course I know there are women who have become practiced at venom. Which reminds me of something else: When Bernice protested about the mild attitude taken toward a local man accused of rape, the answer she received was: "Many women use that as a means of getting back at a man. We can't take it seriously." Bernice's response was, "Are you going to punish all women for what a few women do?"

And that reminds me of the municipalities that have been successfully sued for over \$1,000, 000 for having failed to take seriously the cries for help from abused women, who were subsequently either maimed for life or murdered by those men from whom they asked protection.

At any rate, Bernice's value as an advocate is often demonstrated. Remember, too, the article of last month: If those in public office are made aware of our watching them, they very often perform much more equitably - and honestly - in their office. This holds true for every office in the land. Remember Lord Acton's statement: All power corrupts. Absolute power corrupts absolutely.

In the public forum, it pays to be a Watch Bird!



If you start with a penny and double your money every day for a month, you'll end up with more than five million dollars.

Coming March 23rd & 24th

FOCAS - An AWESOME EVENT

For 7th thru 12th graders

Registration begins Feb. 15th

\$10 curriculum fee - Limit 100 people

1- 10x13 (Wall Photo)
 1- 8x10
 2- 5x7
 2- 3x5
 16- King Size Wallets
 8- Regular Size Wallets

30 Color Photos

99¢ Deposit \$10.00 Due at Pick up (plus tax)

\$10.99

WE USE KODAK PAPER

AT **Kid's Stuff**
 719 West 7th
 Date: Fri. Jan. 27

Shugart's inc.

Group charge 99¢ per person

Kodak PAPER
 FOR CREATIVE COLOR PORTRAITS



Coch Richard North, Heather Murrell, Carly Shieldknight, Krista Kirkland, Michelle Cook, Suzanne Sanders, Halee Shieldknight, Shannon Holton, and Nancy Ivey were recipients of this plaque as 1988 AA State Cross Country Champions.

State champions honored

The 1988 Cross Country State Champions were honored with the presentation of a magnificent plaque, which will hang in the varsity gym along side the four other state champion plaques proudly displayed there.

The Cross Country plaque, in the shape of the state of Texas, bears the names of the eight girls and their coach who earned this special honor.

Earning the title of State Champions is no easy task and happens

to only a handful of people in this state. We are fortunate to be among the few towns who can claim such exceptional athletes. Thanks to these nine people, Spearman can now be synonymous with the word champions.

A word of recognition also belongs to Richard North and Linda Wilkerson, who single-handedly constructed and painted this plaque for the Cross Country Lynxettes.

Among the Neighbors

by HELEN FISHER

On January 12, the wedding of Jeanne Close and Clifford Lang was solemnized in the home of her father, Mr. and Mrs. Billy Close, in Sunray.

Her attendants were Pam Stumpf and Tina Lozano, and Pam Barber. Standing up with the groom were Brent Lawrence and Frank Lozano. Others from Spearman who attended the ceremony and reception were the bride's mother, Jean Close, Sue Close, Mr. and Mrs. Billy Frank Close and children, and Mabel Adams.

The couple left on a trip after spending the night in Amarillo. They visited his family in Nevada, Missouri and toured some places of interest.

They are now at home at 623 S. Evans. He is employed by Hodges Trucking of Perryton and she is a nurse at Hansford Manor.

A former resident of Spearman, Mike Crawford, visited his aunt, Maxine Banister, on Saturday. Mike now lives in Rangely, Colo. and is a geologist with Chevron Oil Company.

Another guest of Mrs. Banister was Mrs. Rita Crawford of Amarillo, who spent part of the weekend with her.

Elsie Mathews drove to Oklahoma City recently and visited for several days in the home of her sister, Mrs. Warren Towe.

Mr. A.F. (Porky) Holland is at home now, recovering from surgery and welcoming callers.

He underwent surgery on Jan. 10 at St. Anthony's in Amarillo and returned home on Wednesday.

David Holland, a son, came up from Houston and stayed several days.

A group of ladies enjoyed a "night on the town" on Friday night when they drove to Amarillo, enjoyed dinner at the Great Escape Restaurant, and then attended the musical "42nd Street." The musical was performed in the Civic

Center by a touring group.

Those sharing the delightful evening were: Mona Beth Windom, Darlene Howell, Maudine Patterson, Dorothy Buzzard, Gwen McLain, Barbara Collier, Barbara McClellan, Barbara Schnell, Carolyn Gressett, Glenda Guthrie, Elaine Floyd, Jane Meek, Elsie Mathews, Mary Dixon, Marva Hohertz, Rosalie Butt, and Lou Chapman of Gruver.

Judge Roy L. McClellan stopped by and had dinner with the ladies (checking on their conduct, perhaps?).

Steve and Mary Lou Mathews, Donna and Randy Hendrickson, and Omar and Sharon Sutton were members of a junket that spent the weekend in Elko, Nev. for a little "R & R."

Weekend guests of Mr. and Mrs. Jim Ivey and Nancy were Mr. and Mrs. James White of Porum, Okla.; Cole and Jana Ivey, of Lubbock; Cindy Atkins and son, Ryan, of Guyton; and Kindra and Wayne Davis and three children of Canyon.

Wally and Myra Berner and Ed spent the weekend in Silverton. They were guests in the home of their daughter, Denise Kellum and family.

Those beaming smiles on the faces of Mae and Dale Wofford are the result of the Our Diamond Miss Contest on Saturday held in Manhattan, Kan. Their 17-month-old granddaughter, Lauren Hartwick, was the first runner-up in two divisions, the Photogenic and the Beauty. She was awarded two trophies.

Funeral services were held in Spearman on Monday morning for Mrs. Lillie Wilson, 100, of Littleton, Colo.

Mrs. Wilson was the widow of Grover Wilson and they lived in Spearman many, many years ago. Interment was at Hansford

Cemetery.

Mrs. Wilson was an aunt of Roy Lee and Wilson McClellan. Those from out of town attending the services were Mr. and Mrs. Walt Dewitt and Gregg Dewitt of Littleton; Mrs. Cassie Wilson, Dumas; Mr. and Mrs. Otto Mangold, Pampa; Becky Madison, Amarillo; Mr. and Mrs. Bill Shuey, Amarillo; and Mrs. Elaine Floyd, Lubbock.

Congratulations to Jon Garnett for making the Dean's list at South Plains College at Lubbock. Jon is specializing in Real Estate and will graduate in July. He plans to move with his wife and baby to California where a business opportunity awaits. He is the son of the Mike Garnetts.

Congratulations are also due another son of the Garnetts, J, a senior in high school here.

Representative Beau Boulter nominated him for appointment to the U.S. Air Force Academy some time ago. J was notified this week of his acceptance. This is considered a very prestigious award, and the requirements are very rigid. It is certainly a worthy achievement.

Jon and J, and indeed all the children of Mike and Mardi, exemplify the hopes of every parent -- children who excel in academic as well as athletic and social activities and whose ethics are based on honor and Christian principles.

Elaine Floyd spent the weekend

THURSDAY, JANUARY 26, 1989

here. She is from Lubbock and visited her mother, Mrs. Fred Daily, sister and daughter.

Elaine did manage to squeeze in the time to watch her granddaughter, Jill Lusby, play ball during the tournament. Jill is in the 7th grade.

It is good to be able to report that Fred Shieldknight continues to improve from injuries received in an accident some time ago.

The Fred Shieldknights spent the weekend in Red River with other family members. Mr. and Mrs. Jimmy Shieldknight, Mr. and Mrs. Charles Shieldknight, and Mr. and Mrs. Dick Gillaspie all relaxed and enjoyed the fellowship and scenery.

MESSNER HEREFORDS



PRODUCTION SALE

SAT. FEB. 4 at 1 p.m.

At the ranch, 6 miles south, 11 west of Laverne, Okla.

85 HORNED HEREFORD BULLS

40 SPRING CALVING HEIFERS

28 years of performance testing

Van or Milton Messner

Rt. 1, Box 45, Laverne, Ok. 73848

phone (405)837-5384 or 5532

Senior Citizens \$1 hearing test

If you have trouble hearing or understanding, this test (which uses the latest electronic equipment) will determine your particular loss. Test is performed by state licensed hearing aid personnel. You will see a hearing aid so tiny it fits totally within the ear.

January 26



Miracle-Ear®

309 N. Bernice Extension Homemakers Club 659-2030

Call 355-9957 for appointment to avoid waiting.

Sponsored by West Texas Miracle Ear Center

H & H Credit Union

Annual Meeting

Monday - Jan. 30th 7:30 p.m.

Borger Community Activity Center
Frank Phillips College

PUBLIC SALE NOTICE

Friday One Day Only Jan. 27, 1989

NEW UNCLAIMED SCHOOL SEWING MACHINES WITH THE PROFESSIONAL SERGING STITCH.

NECCHI EDUCATION DEPARTMENT placed orders in anticipation of large school sales. Due to budget cuts these sales were unclaimed. These machines must be sold! All machines offered are the most modern machines in Necchi line. These heavy duty machines are MADE OF METAL and sew on all fabrics: LEVIS, CANVAS, UPHOLSTERY, NYLON, STRETCH, VINYL, SILK, EVEN SEWS ON LEATHER! **THESE MACHINES ARE NEW WITH A 25-YEAR WARRANTY.** With the new 1989 Necchi Machine, you just set the color code and see magic happen: Straight sewing, zigzag, buttonholes (any size), invisible blind hem, monogram satin stitch embroider, applique, sews on buttons and snaps, top stitch, elastic stitch, **PROFESSIONAL SERGING STITCH, SPECIAL SWEATSHIRT APPLIQUE**, all of this and more without the need of old-fashioned cams or programmers. Your checks are welcome and lay-aways available. All models come cabinet ready.

Your Price With This Ad

\$237

without this ad \$529



TGII

Factory
Demonstrators
Will Be
On Hand.