

'Tech Salutes' Recognizes 29 Top Students

Twenty-nine Tech students have been selected for "Tech Salutes" by the executive council of the Tech Student Senate, Student Body President Roland Anderson announced.

The students were selected for outstanding service to Tech in a variety of fields during the 1965-66 school year. These outstanding campus citizens will be featured in La Ventana's 1966 Post Magazine.

Three of the honorees, Donny Anderson, Dub Malaise and Roland Anderson, are repeaters from last year's selections.

Those recognized included Sad-

dle Tramps, Bob Fillpot of Childress and F. E. Busby, Nolan; Tech Union, Sue Walker, El Paso, and Beverly Barlow, Richardson; Football, Anderson, Stinnett, and Tom Wilson, Corsicana; Basketball, Malaise, Odessa, and Norman Reuther, Fort Worth; Rodeo Association, Garland Weeks, Wichita Falls; Women's Service Organization, Melody Stenis, Lubbock; Toreador, Cecil Green and Pauline Edwards, both of Lubbock.

Intrafraternity Council, Alan Murray, Dallas; Board of Student Organizations, Ernie Cowger, Stamford; Junior Council, Liz Gerbetz, Dallas; Model United Nations, Chris Hickey, Taft; La Ventana, Winston Odom, Brownfield, Diane Weddige, Lubbock; Cheerleader, Ziggy Nicholson, Plainview; Student Government, Anderson, Fort Worth, Bill Beuck, Midland, Gary Rose, Lubbock, and Jerry Pittman, Sweetwater.

University Theater, G. W. Bailey, Port Arthur; Traffic, Jack McClure, Lubbock; Science and Engineering Show, Jay Carter, Wichita Falls; Army ROTC, Jan Peer, Waxahachie; Angel Flight, Barbara Birmingham, Dallas; and Corpsdettes, Joy Cox, Plainview.

Enrollment Record Set

Total enrollment for the first summer term is a record 7,216, according to Miss Evelyn Clewell, assistant registrar.

This is a 744 increase over last summer's first term enrollment of 6,472.

The breakdown by schools is 402 in Agriculture; 2,442 in Arts and Sciences; 1,290 Business Administration; 617 in Engineering; 759 in Home Economics; and 1,706 in the Graduate School.

There are 4,068 men and 3,148 women enrolled in summer school.



BIOLOGY INSTITUTE—Dr. Paul V. Prior, biology professor, is shown looking at the variety of animals kept by the Tech biology department. Dr. Prior is director of the Institute for High

School Biology teachers now in session on the Tech campus. The National Science Foundation sponsored institute continues through Aug. 4. (Staff Photo)

— By Faculty Members —

Tech Research Circles The Globe

With the regular academic year just ended, faculty members have headed out to all parts of the world on a wide variety of research projects to probe the secrets of science and problems of industry.

Current studies will extend Tech's educational arms around the globe—to agricultural projects in Somalia, schools in Jordan and to research fields in Antarctica.

Many of these rewarding and imaginative studies are made possible by recent grants totaling more than a half million dollars from private industry, foundations and government agencies who have been attracted by the talent and opportunities offered

by a multi-purpose university.

Range Management Prof. Thad-is Box is in the Somalia Republic as a consultant for the Food and Agriculture Organization of the United States. Dr. Box will assess range resources and recommend methods of improving range production to sustain the growing population of Somalia. His findings will be reported to the Somali government and the UN Agriculture Committee.

Tech Business Administration Prof. John C. Gilliam will take a year's leave of absence in August to assist in establishing a junior college of business administration in Beit Hanina, Jordan, a suburb of Jerusalem. Dr. Gilliam, serv-

ing as a consultant to the Ford Foundation, will spend the 1966-67 school year as a special advisor to the school, which is being financed by a Ford grant.

Tech Biology Prof. Russell W. Strandmann, an authority on medically important parasitic mites, has been awarded a National Science Foundation grant to do a special study in Antarctica. Dr. Strandmann will take a year's leave of absence, going first to Washington in September for orientation before embarking on several months of Antarctica field investigations.

A special range management study has zeroed in on migratory and nesting habits of Blue Quail. Birds on the Tech farm were marked and banded to test marking techniques as well as dispersal habits of a wintering covey of quail. Project findings will be reported to the Texas Parks and Wildlife Department.

Tech's Department of Agricultural Economics has been awarded a U.S. Department of Agriculture research grant for a study of economics of water use. Dr. James Osborn is project director.

Connally Requests Study

Research dealing with water use and conservation has claimed the attention of the West Texas Water Institute at Tech. At the special request of Governor Connally, reports of five studies by Tech professors have been prepared for the Texas Water Development Board. These studies—covering water reuse, relation of water to public health and the importance of irrigation—were conducted by Profs. W. F. Schwiesow, George A. Whetstone, Herbert Grubb, Ellis Huddleston, C. Clark Harvey and instructor Virginia Riggs.

Industrial Engineering Professor Edwin R. Tichauer is conduct-

ing research in biomechanics to determine results of physical fatigue, stress and strain on today's industrial worker. Dr. Tichauer's findings are expected to be of particular interest to industries employing assembly line techniques and keyboard type operations.

Grants to Tech's Institute for New Uses of Cotton supports research projects aimed at increasing the demand for cotton in U.S. and world markets. Toward this end, Tech researchers supervise experiments involving the use of cotton in durable press fabrics and improvement of cotton yarns, notably a stretch yarn using a core of spandex swathed in cotton fiber.

Noon Forum Set Thursday

Dr. Elizabeth Sasser, architecture and allied arts professor, will speak on "Motion and Art" at the first Noon Forum next Thursday.

The forum sponsored by the Ideas and Issues Committee will be in the Union Blue Room. Deadline for signing up to eat at any of the Thursday forums during summer school will be by 5 p.m. on the Wednesday before each forum.

FHA Meet Scheduled

Approximately 1,300 girls from 156 different high schools are expected on campus Tuesday and Wednesday for the Future Homemakers of America Leadership Training Workshop.

Featured speakers for the workshop will be Jenny Matthews, graduate student in elementary education and president of AWS last year, and Russell Sanders, graduate student in psychology.

In addition to general sessions, students will divide up into group workshops for officer training.

Directors for the workshop are Billie Williamson, associate professor in home economics, and Dr. Margaret Ann Sitton, associate professor of home economics education.



PROF. GRAVES

Faculty Club Elects Prexy

Tech History Prof. Lawrence Graves was elected president of the Tech Faculty Club for the 1966-67 school year recently.

Other officers include Animal Husbandry Prof. John H. Baumgardner, vice president; Clothing and Textiles Prof. Mrs. Lila Kinchen, secretary; Accounting Prof. Raymond Green, treasurer; and Public Information Director Ron Hamm, publicity chairman.

New board members are Vice President for Business Affairs M. L. Pennington, Librarian Ray Janeway, Music Head Dr. Gene Hemmle, Dairy Industry Prof. Milton Peeples, Mathematics Prof. Shelby Hildebrand, and Petroleum Engineering Prof. Duane Crawford.

Exam Applications Due For Teachers

Less than two weeks remain for prospective teachers who plan to take the National Teacher Examinations at the Tech Counseling Center on July 16 to submit their registrations to Educational Testing Service, Princeton, New Jersey, Dr. James E. Kuntz, director of the Counseling Center announced today.

Registrations for the examinations must be forwarded so as to reach the Princeton Office not later than next Friday, Dr. Kuntz said.

Bulletins of information describing registration procedures and containing registration forms may be obtained from the Counseling Center or directly from the National Teacher Examinations, Educational Testing Service, Box 911, Princeton, New Jersey.

At the one-day test session a candidate may take the Common Examinations, which include tests in professional education and general education, and one of the thirteen Teaching Area Examinations which are designed to evaluate his understanding of the subject matter and methods applicable to the area he may be assigned to teach.

Each candidate will receive an Admission Ticket advising him of the exact location of the center to which he should report, Dr. Kuntz said. Candidates for the Common Examinations will report at 8:30 a.m. on July 16 and will continue until 3:10 p.m. Dr. Kuntz said. The Teaching Area Examinations will begin at 3:15 p.m. and should finish at 5:20 p.m., according to the time schedule for these examinations which has been set up by Educational Testing Service.

- Runs Father's Route -

Coed Replaces Milkman (?) During Summer

by SHARON LEWIS
Staff Writer

Catching up on sleep and getting a long-needed rest may well have been on most Tech student's minds when they returned home for the summer months.

But for one Tech coed from Ft. Stockton, three months of vacation holds just the opposite of plenty of sleep and rest.

Sophomore Carolyn Dawson's summer is one filled with early morning arisals, 16-hour working days and no pay—she's the summer replacement for the town's milkman and she's also his nine-teen-year-old daughter.

Works For Father

Carolyn, whose father owns the distributorship for Gandy's milk in Ft. Stockton, has taken on the summer job simply because "daddy needs a rest sometime." She adds, "But I don't mind, because in return for my work I am able to go to college."

Her working day begins at 3 a.m. when she starts deliveries on the first of her two routes, aided by a Mexican named Ricardo. She explained, "We have a retail route, house-to-house, which we make in a pick-up truck.

Ricardo helps me load the cases of milk into the back from a dock

outside our vault. At that hour of the morning, we have no problem keeping the items cold. The air is really brisk—it also helps in keeping me awake."

Begin Commercial Route

After the first run, Carolyn and her assistant return to the vault between 7:30 and 8 a.m. to leave the pick-up, load a refrigerated milk truck and begin on the commercial route. Stops on this route include restaurants, motel, hospitals, schools, drive-in grocery stores and supermarkets.

She said, "I really look forward to stopping at noon. I count the money collected from commercial orders and take it to the bank. I also eat my first meal of the day!"

Carolyn returns to work at 3 p.m. for a second commercial run, but her day doesn't end there. When she finishes "usually about six in the evening," she must unload the empty cases back at the vault and prepare for the next day's work.

Her job still isn't complete until she returns to several drive-in groceries at least three times a night

"to make sure the milk is holding out."

Complaints Are Few

Although Carolyn's job is one which an ordinary girl would never consider, her complaints are few. In fact, Carolyn loves the work, probably because she is no ordinary girl.

"You have to learn to get along with people in all types of situations, and this is the best way to learn." She added, "It teaches me tact, promptness—to be a good saleswoman in general."

One problem Carolyn does have is getting up on time. She explained, "With two alarm clocks and friends calling every ten minutes to make sure I'm up, I finally get going."

Carolyn added, "At many of our stops the employees speak only Spanish. That's when Ricardo comes to my rescue while I make an exit through the back door saying, 'Gracias, gracias!'"

Asked what she most enjoyed about the job, Carolyn replied, "I love sitting down for a cup of coffee and just talking to the employees at the restaurant stops."

Laughing, she added, "I also love of the truck when no one is look- to sneak ice cream from the back ing!"

Murray Selected Chairman

Dr. Grover E. Murray, Tech president-elect, has been appointed Chairman of the U.S. National Committee on Geology.

The Committee was formed five years ago to foster American participation in international geological sciences activities, and operates under the joint aegis of the National Academy of Sciences and the Interior Department.

Membership is comprised of geologists who were presidents of major national societies at the time of their selection, plus the Chairman of the NSF Section of Geology and the Director of the Interior's Geological Survey, both ex-officio members.

Currently At LSU

Dr. Murray, currently vice president for academic affairs for Louisiana State University, is the only man to serve as president of both the American Association of Petroleum Geologists (1964-65) and the Society of Economic Paleontologists and Mineralogists (1963-64).

The Committee adheres to the International Union of Geological Sciences on behalf of American geologists and acts as liaison to the International Geological Congress in regard to IGS sessions and technical excursions.

Principal activities relate to programs of the IUGS, its commissions and affiliated organizations. The Committee participates in formulation of plans, provides for U.S. representation to the Union and provides dissemination of information between the IUGS and American geologists.

Workers Needed For Toreador

Students interested in writing or typing for the summer Toreador should contact editor Jim Jones as soon as possible.

Jones will be in his office Room 103 of the Journalism Building from 9 a.m. to 5 p.m. Tuesday and Wednesday.

The only positions open are non-paid.

THE IN TOWN INN BARBER SHOP

MAIN & AVE. K

The Only Men's Hair Stylist Using The Cliffcut Technique

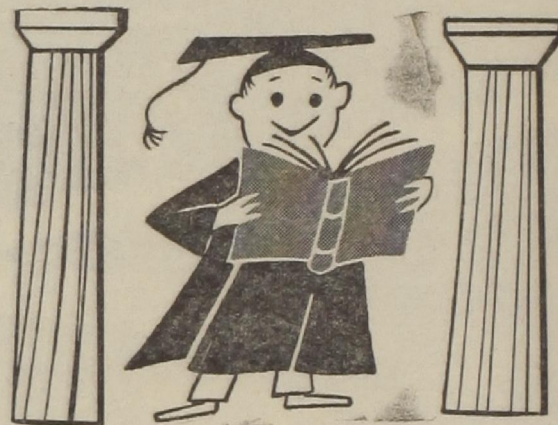


CLIFFORD HARDIN, OWNER

- Jack Chamberlain
- Jerald Miller
- Rudy Vara
- Norma Loyd, Manicurist
- Dan Anderson, Shine
- Mary Hardin, Cashier

Call PO2-1287

- Complete Barber Service
- Hair Styling
- Hair Coloring
- Hair Straightening
- Toilet Articles
- Jels
- Sprays



SENIORS

And All Candidates for Degrees

Reserve Now

Your

Cap and Gown

and Order

Senior Invitations

For Commencement

Wednesday — July 13th — 5 P.M. Last day to Order

TEXAS TECH COLLEGE BOOKSTORE

Introducing the summer hair-style sensation for '66! the

"Water Baby Cut"

For All Ages

Deceptively simple, Bill & Jessie Lee's "Water Baby" cut lets you enjoy life this summer—

in style. Get in the swim—

and when you get out, flick a comb through

your "Water Baby" cut—and forget about it.

Drive along country lanes with the top down

and the breeze in your hair. "Water Baby" falls

right into place again . . . and again and again.

It's surprisingly elegant for evening, too!

There's a "Water Baby" cut just perfect for

you, from \$2 to \$4.



ADD WAVES TO YOUR "WATER BABY" BODY WAVES FROM \$15

Bill's

BEAUTY SALON

805 COLLEGE AVE.

PO2-5223

Kirkwood Named Coordinator

Jerry Kirkwood, associated with the Tech supervising architect's office since 1957, has been named Campus Planning Committee Coordinator, Vice President for Business Affairs Marshall L. Pennington, announced.

A native of Amarillo, she received her Bachelor of Architecture degree from Tech in 1954, becoming the sixth woman in the 38-year history of the Tech Department of Architecture and Allied Arts to do so.

Miss Kirkwood, who assumed her new duties last month, will prepare planning committee agendas, keep minutes on the sessions and insure that committee building recommendations are implemented.

"As the overall building program continues to grow and become more complex," Pennington said, "there is an increasing need for more coordination, communication and expedition, and we are delighted that Miss Kirkwood, an architect who has been closely associated with the development over the past years, has agreed to serve as Cam-

Professor To Grade CPA Tests

Dr. Doyle Z. Williams, Accounting professor, has been named to serve on the grading staff of the American Institute of Certified Public Accountants.

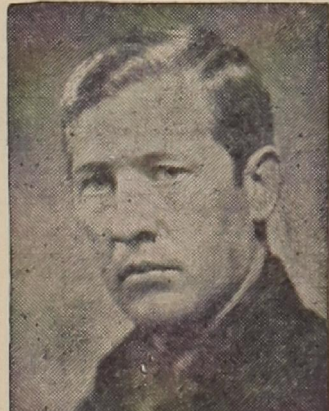
Dr. Williams, who holds the bachelor's degree from Northwestern State College in Louisiana and the PhD from LSU, will be in New York through July 8 grading CPA examinations administered nationally in May.

A former professional accountant in New Orleans, Dr. Williams is a Certified Public Accountant in both Texas and Louisiana.

He holds memberships in many honorary and professional organizations including the National Association of Accounting, American Accounting Association, American Institute of CPA's and the Texas Association of University Instructors in Accounting.

His publications include articles in "The Accounting Review," "The New York Certified Public Accountant" and "The Louisiana Certified Public Accountant."

"THE UPPER ROOM"



CHUCK EWING
TECH'S OWN PERSONAL
HAIR-STYLIST
Continental Razor-Kut
For Men

A Continental Razor-Kut is just the thing for summer grooming, whether swimming, skiing, or whatever activity you have planned, your appearance can look better with a Continental Razor-Kut this summer.

Curly hair straightened.

1203 College Ave.
Suite 207
PO3-6663

pus Planning Committee Coordinator. I know she will make a splendid contribution in a most important area."

Miss Kirkwood is a graduate of Ball High School in Galveston, and is a graduate of Amarillo Junior College, ranking in the top 10 per cent of her class.

As a student at Tech, she served

as secretary to the student chapter of the American Institute of Architects and was a delegate to a national AIA convention in New York City.

Miss Kirkwood currently is a member of the Texas Society of Architects and a corporate member of the Lubbock chapter of the American Institute of Architects.

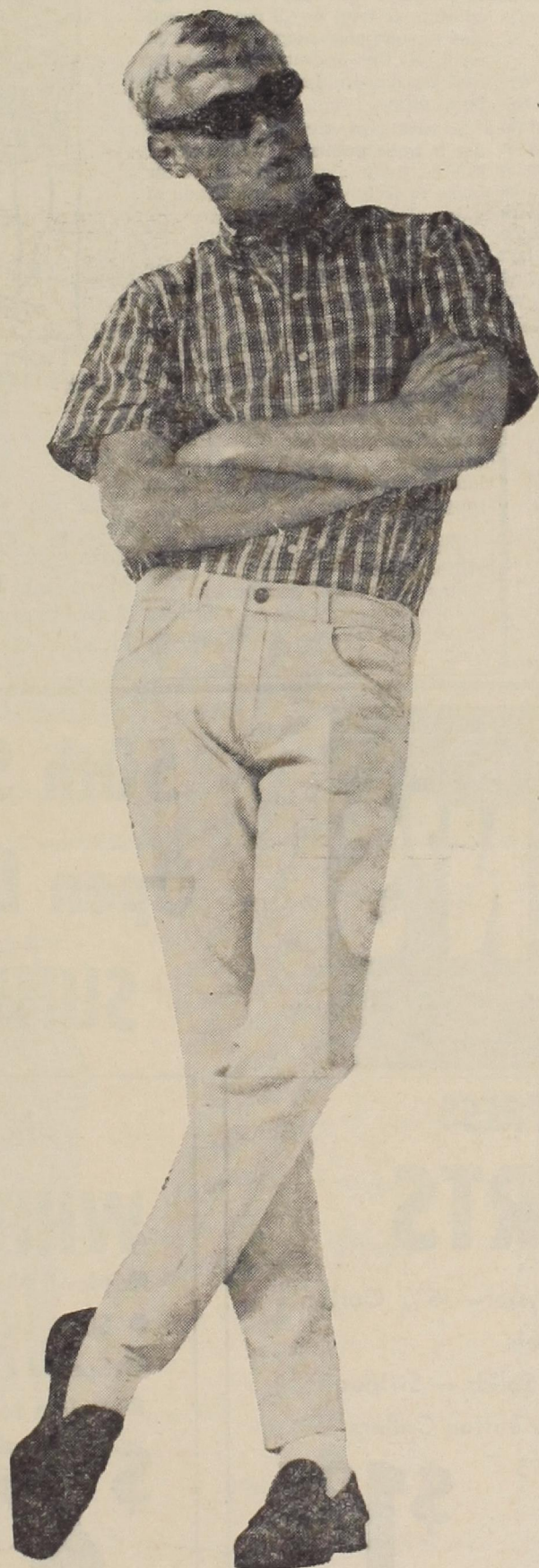
New Tech Professors Receive Doctors Rank

Two women associated with Tech have received their doctoral degrees this spring under scholarships from Delta Kappa Gamma International Society.

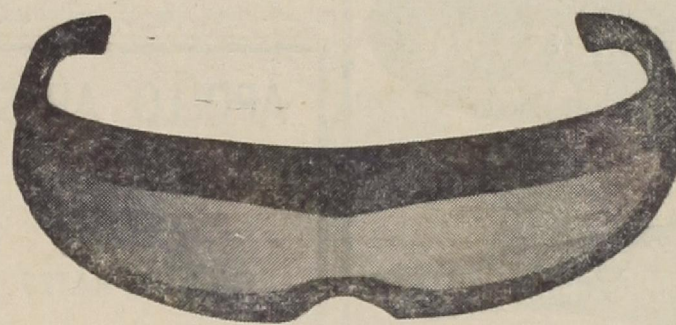
Dr. Nancy Boze who was recently appointed assistant professor of education at Tech, received her degree from Tech May 28. Dr. Boze

will supervise student teachers and teach an advanced English course next fall.

Mrs. Dahlia Terrell, who received her degree from the University of Texas June 4, will be assistant professor of English at Tech next fall and will also collaborate on a volume of the "Complete Works of Washington Irving."



WIN FROM LEVI'S®



SEA & SKI® POLARIZED SUNGLASSES

FREE

with each purchase of two or more Levis' products, one pair of \$2.95 Polarized Sunglasses will be given FREE of any additional charge. These are the new Sea & Ski Polarized—no bounce-back glare—wrap-arounds.

GET YOURS
NOW!
SUPPLY IS
LIMITED

BROWN'S Varsity Shop

Corner of College Ave. at Broadway

for Father
on his day
June 19th



See our complete selection of

Gibson FATHER'S DAY CARDS

Texas Tech College BOOKSTORE ON THE CAMPUS

a face in the crowd
Jim Jones

A coin operated laundry is probably the most unjournalistic place possible to write for a newspaper, but as circumstances have it, this is where we have ended up. We started out this week with every intention of getting this column written by Wednesday morning. It seems there is a small problem known as the La Ventana.

We have been informed that the La Ventana must be mailed to the publishers by this afternoon at 5. Being editor of the Life section of the yearbook is a small task (especially when he is three months behind) involving keeping up with every event that has taken place on the Tech campus since last September 1. Besides knowing about the campus activities, we

must have pictures to illustrate each event and sufficient information to write what seems like pages about each one. Even by working until midnight each night on the yearbook, we can't ask for sympathy from our co-workers. The La Ventana co-editors are with us all the way and also anyone else caught walking in front of the Journalism Building who can be dragged into the yearbook office.

So at 1 a.m. the day the Toreador is to be published, with a closet full of dirty clothes, what better place to write than the solitude of a laundromat.

It is time to make amends for past mistakes. Last week, when complimenting Mrs. Dorothy Pijan, Tech Union program director, on an outstanding summer program, we overlooked the various Union committees. Working with Mrs. Pijan, these committees planned the various summer activities. To the committees we also offer congratulations on an outstanding Union program.

With the first summer term enrollment figures released, it again seems the men outnumber the women, although not as much as during the fall and spring semesters.



"I HOPE I DON'T LOOK 'MUSSED'—OUR HOUSE MOTHER MAKES US PASS A PRETTY TOUGH INSPECTION WHEN WE COME IN."

APOLLO APTS.

- Two Bedrooms
- Studio Apts.

SUMMER RATES

2413 9th St.
PO3-3303

TOREADOR
THE TEXAS TECHNOLOGICAL COLLEGE

Editor Jim Jones
Managing Editor Pauline Edwards
Advertising Manager Ziggy Nicholson
Head Photographer Allyn Harrison

WHERE YOU ALWAYS BUY THE BEST FOR LESS

GIBSON'S

GIBSON'S

DISCOUNT CENTER

50th St. & Ave. H
Open DAILY 9 to 9
SUNDAY 1 to 6

MEN'S PERMANENT PRESS SPORT SHIRTS

- 65% Polyester—35% Cotton
- Two Pockets
- Plaids — Solids — Stripes
- Spread or Button Collars

Values to 2.95

Gibson Price **\$1.97**



VITALIS HAIR TONIC

12 OZ. KING SIZE

1.49 VALUE

GIBSON PRICE **79c**

MEN'S MIRA-PRESSED WHITE DRESS SHIRT

- Never Need Ironing
- Short Sleeves
- Spread or Tab Collars
- Values to 3.98

\$2.27



LISTERENE TOOTHPASTE

4 TUBE BAG

\$2.16 VALUE

GIBSON PRICE **77c**

-Scheduled Throughout Summer-

Workshops Begin In Music, Speech, Art

Emphasis is on methods of developing effective speech at Tech's High School Speech Workshop which opened Monday under direction of Speech Department Head Dr. P. Merville Larson.

Approximately 50 high school speech students are participating in the program which includes training in dramatics, declamation, debate, discussion, extemporaneous

speaking, poetry reading, radio and television.

Special assistance is provided by the Speech Clinic to those students with particular speech problems, Dr. Larson said.

Workshop participants are divided into two groups of no more than 25 each—one on dramatics and the other for forensics. Study and practice emphasize voice and diction training, personality development,

role-playing, bodily action and development of good speech habits.

Drama students will produce as many plays as can be cast from the group, and also will be instructed in the theory and practice of make-up, costuming and lighting.

The workshop will be capped next Friday with a public demonstration featuring all participants.

More than 400 high school band and baton students are at Tech this week for two weeks of intensive training in Texas Tech's summer music program in band and twirling instruction.

Tech Band Director Dean Killion is in charge of the band program and National twirling champion Terry Stephens is directing the twirling camp.

Band clinician is University of Illinois band director Mark H. Hindsley, nationally known for his transcriptions and for his work, "Method for Band," used by many U.S. high school and college music departments.

Classes meet from 9 a.m. to 4 p.m. each week day, Monday through Friday, closing with a public concert next Friday.

In addition, music workshops in various divisions with nationally-known musicians as guest clinicians will be scheduled throughout the first six weeks of summer school.

Guest conductor of the high school choir division, June 20-24, will be Hugh Ross of the Manhattan School of Music, New York City. Director will be Gene Kenney of the Tech music faculty.

Tom Lewis, conductor of the Roswell, N.M., Symphony Orchestra will be guest conductor for the high

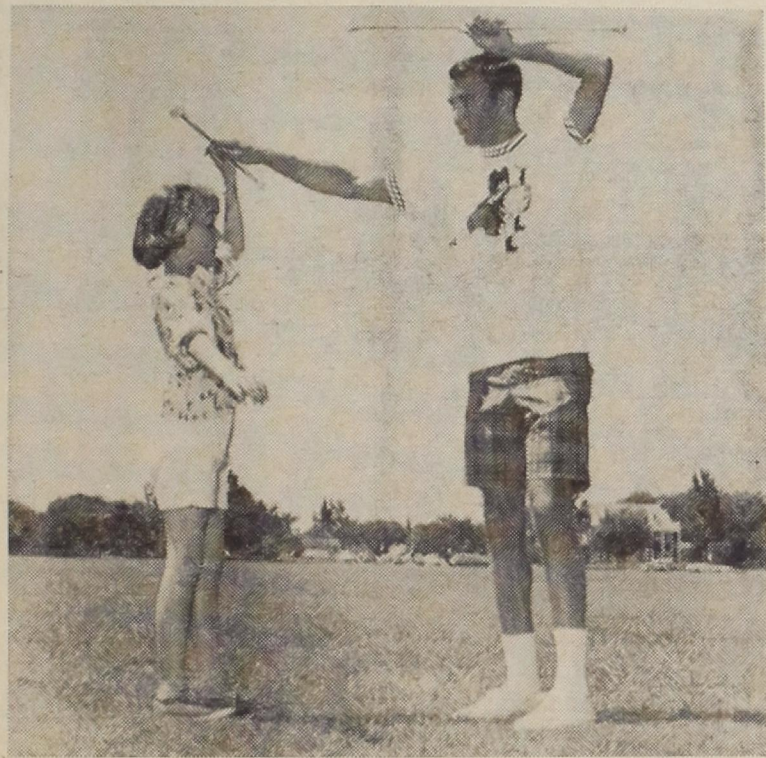
school orchestra division which meets June 20 through July 1.

Tech orchestra director Paul Ellsworth will direct the high school orchestra and also the Junior High-Elementary orchestra workshop from June 27 to July 8. Instruction will be from 9 a.m. to 4 p.m. daily Monday through Friday for high school and junior high students, and from 8 a.m. until noon for elementary school pupils.

Applied Arts Prof. Frank Kriwanck is conducting the workshop which is sponsored by the applied arts department in the School of Home Economics.

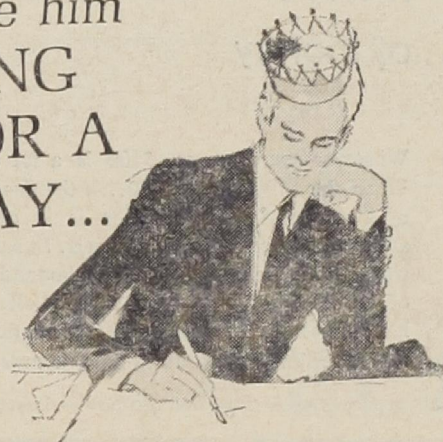
Dr. Bill Lockhart, department head, said the first sessions have stressed crafts, including work with wood, cardboard, construction paper, clay and other three-dimensional materials.

The second phase next week will deal with bulletin boards and displays, including simple lettering, posters, bulletin boards and the application of creative ideas to display children's art.



TWIRLING SCHOOL—Tech's feature twirler, Terry Stephens of Stephenville, is shown teaching Teresa Huie, 11-year-old Ropesville resident, some of the basic fundamentals of twirling at the annual Tech Music Department's Twirling School.

Make him
KING
FOR A
DAY...



TO FATHER, POP, PA, PAPA
DERE, DAD, DADDY ON HIS DAY.

BOOKS SAY—
"HAPPY FATHER'S DAY BEST"

Give him a book he can enjoy
every day of the year.
We have a book that will please him.
Gift Wrapping — Wrap for Mailing



One Group Summer
Sport Coats

Your Choice \$15.88



One Group Short Sleeve
Sport Shirts

1/2 Price

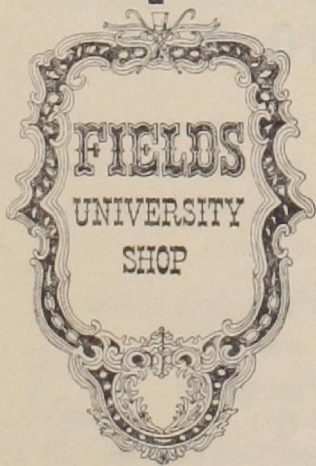
Large Group Ties
Stripes, Pasileys, Clubs

1/2 Price

One Group Cologne
and After Shave

1/2 Price

All Swimwear
1/2 Price



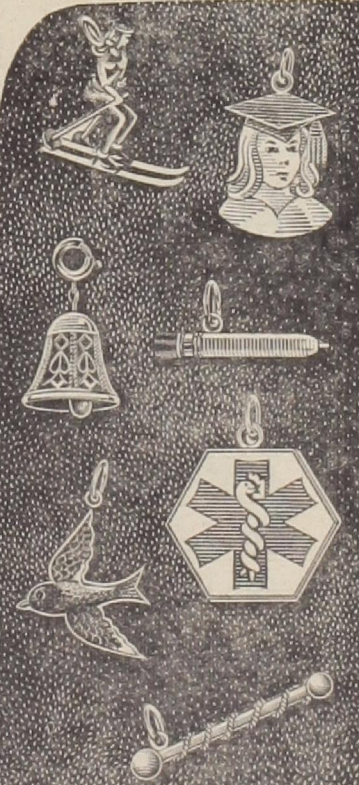
Sox
Compare at \$1.50
79c

The Shake Shingle Shop
On College Ave.
Charge Accounts Invited

Sterling
Silver

WROUGHT
with
charm...

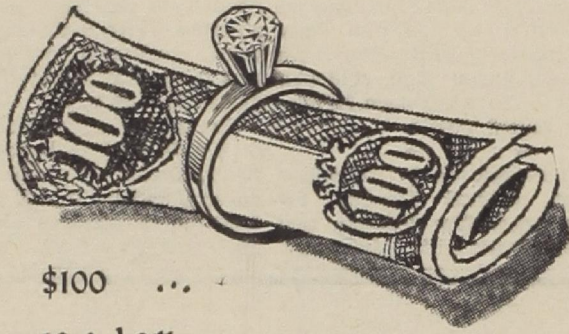
For giving...for
yourself...nowhere
is the workmanship
superior, if you're
choosing charms of
sterling silver.



Furr's Family Center
Jewelry Department
34th & Quaker

Prof Will Leave July 15

William F. Schwiesow, Tech Agricultural Engineering Professor who received his Ph.D. in Engineering from Oklahoma State University this spring, will join the faculty of the University of Maryland July 15. Dr. Schwiesow, who joined the Tech faculty in 1957, holds a bachelor's degree in Agricultural Engineering from South Dakota State University and a master's from the University of Illinois.



\$100 ...
is a lot
of money

Whatever your means, \$100 is a lot of money. When the \$100...or \$1,000...is the purchase price of a diamond, extra caution is in order. After all, you are not a diamond expert. In such a case, we recommend you consult a diamond merchant of unimpeachable reputation who offers a truly large selection of fine quality diamonds. Such a reputation, we are proud to note, is ours.

Delivery Service — Frontier Stamps — Layaway — Charge

FURR'S JEWELRY DEP.
Furr's Family Center

34TH & QUAKER



**YES,
WE ARE
OPEN.**

For your convenience,
we open at 7:00 a.m.
every morning. And,
we remain open until
7:00 p.m.
So, early in the morning
or late in the evening,
come by and see us
for all your supply needs.

**Book & Stationery
Center**

1103 College Ave. PO5-5775

Departments Launch Urban Parks Study

Tech's Department of Park Administration, Horticulture and Entomology and the Department of Economics, in cooperation with the Dallas Park Department, has been authorized by the Coordinating Board of the Texas College and University System to launch a study entitled "A Pilot Program to Determine Social and Economic Impact of Urban Parks in Metropolitan Communities."

The study, the first phase of which started Wednesday, is expected to have a wide impact on park operations throughout the United States. The Coordinating Board approved \$31,855 in federal funds granted under the Higher Education Act of 1965. The Dallas Park Department supplemented the grant by approximately \$10,000, bringing the total to \$42,250.

Prof. Elo J. Urbanovsky, head of park administration, horticulture and entomology at Tech, will direct the study. He will be assisted by Park Administration Prof. James W. Kitchen; Tech Economics Prof. W. S. Hendon; Visiting Professor of Park Administration Charles E. Doell; TCU Statistics Prof. A. Franklin Murph; and SMU Sociology Chairman Dr. Bruce Pringle.

Urbanovsky termed the study approval as a "major breakthrough for the entire park industry." He said it is the beginning of a program which, in the future, will include the state of Texas and the nation.

"Governor Connally and the Coordinating Board are to be commended for their long-range vision and interest in the evergrowing need for more and better park and recreational areas," Urbanovsky said.

Alfred B. LaGasse of New York, General Manager of the National Recreation and Park Association whose president is Laurance S. Rockefeller, said research into economic aspects measuring the effect of park and recreation areas adjacent to real property values and human values has long been needed.

"The significance of the study," Urbanovsky said, "lies in its ability to provide basic data and methodology for park planners in particular and the community in general."

Contribute To Park Knowledge
"The study will contribute to the basic knowledge of the social and economic values of urban parks and present methods for sound

community choice. Not only will the results be valuable to Dallas park planning, but also in park planning in all metropolitan areas," Urbanovsky said. Results will be published and made available to members of the park profession.

The project was jointly planned by Tech's Departments of Park Administration and Economics in cooperation with the city of Dallas, the Southern Methodist University Sociology Department and the Texas Christian University Statistics Department.

To Interview 4,000

Park Administration research assistants will interview youngsters in 13 Dallas parks chosen out of 147 for the study. The students will interview 4,000 children and 600 adults on park preferences and activities.

"As a direct result of this study," Urbanovsky said, "we feel that persons directly responsible for park planning and operation will be able to make wiser economic choices for the public benefit."

The results of the sociological study are expected to include identification of the recreational consumer, identification of his use of leisure time, his attitude and concept of recreation and his values concerning recreation.

The research should result in increased knowledge of the value of effectiveness of present Dallas parks and should serve as a flexible guide for present and future recreational planning for cities.

WHY BE BOTHERED WITH THE TROUBLE AND EXPENSE OF
SENDING YOUR CLOTHES HOME FOR THE SUMMER?
LET US STORE THEM!

PARISANS CLEANERS

2305 4th St.

PO5-3194

AUTHENTIC ITALIAN FOOD...

— Best Pizza At —

Lubbock's Number One Italian Restaurant



Weekdays:
Lunch 11:30-2:30
Dinners 5:00-10:00
Friday & Saturday
Dinner 5:00-11:00

College at 13th

PO2-9255



LEARN TO FLY!

Now, as a part of your education, learn to fly. It is the fastest growing and the most modern method of transportation. You will not want to be without this knowledge in future years.

THIS DOESN'T EXCLUDE YOU GIRLS EITHER!

Instructors. JACK RIDATH

GARY MORRISON

Call PO5-9271

\$11.00 Solo—\$15.00 Dual (with instructor)

SPECIAL DISCOUNT FOR CASH

RIDPATH AVIATION

East Side of Airport—Take first turn before main terminal entrance.

Sports Briefs

A novice tennis tournament sponsored by the Lubbock Tennis Association will be held Saturday and Sunday at the new Lubbock Tennis Center.

Deadline for signing up for the tournament, which is for men and women who have not entered more than one tennis tournament in the last five years, is noon Saturday.

Two singles matches will be played 2:30 p.m. Saturday and one single and one double match will be at 2:30 p.m. Sunday.

The new VASSS system of scoring tennis matches will be used in the tournament. Under the system, the first person to reach 31 points wins the match. Therefore, games will last approximately 30 minutes.

There is no entry fee for the tournament and anyone wishing to register may do so by calling SW5-9722. Entries may be with partners or single. Any entrant who wants to enter the doubles and does not sign up with a partner will be matched with one.

The Tennis Center is located just east of Coronado High School on West 34th Street.

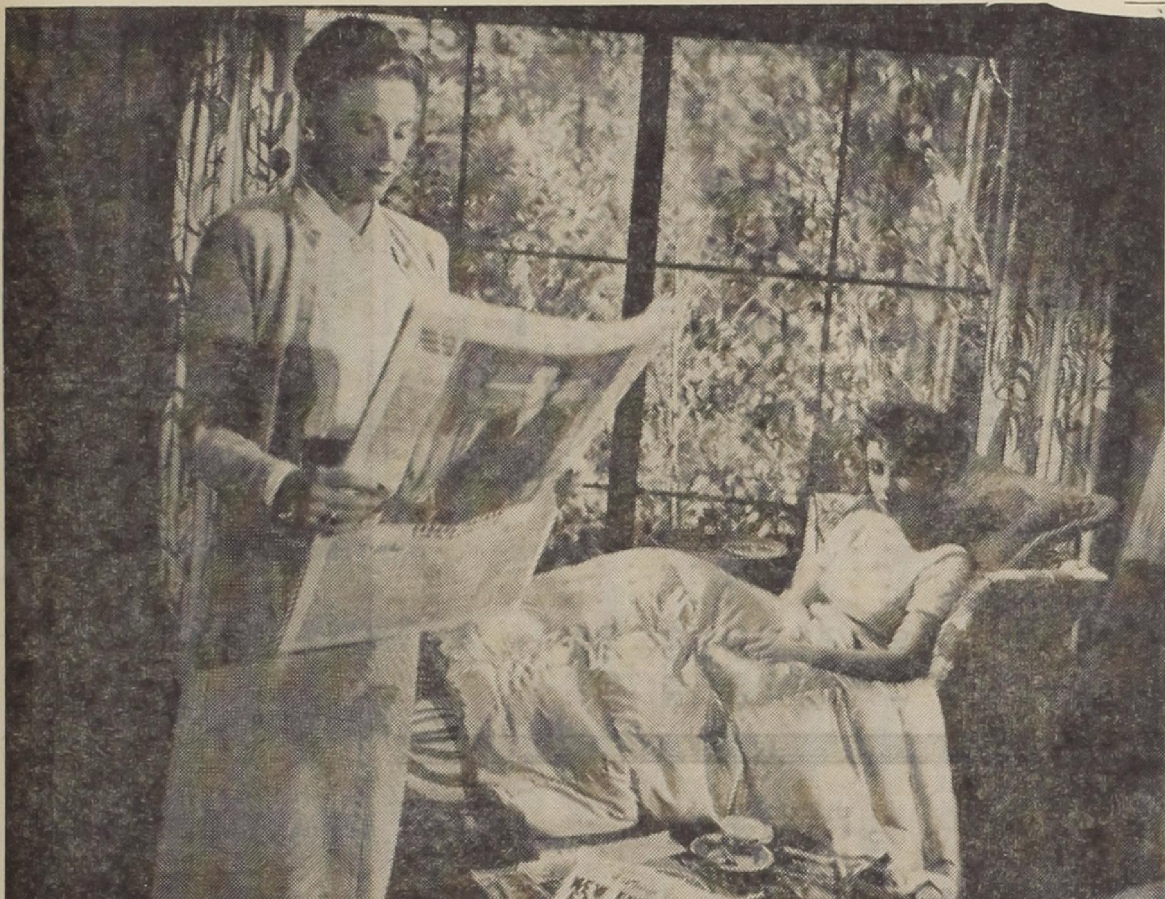
★ ★ ★
Deadline for registering for the summer intramural program is June 17, according to Edsel Buchanan, director of Intramurals.

Activities offered during the two summer terms include table tennis, golf, horseshoes, spaceball, tennis, badminton, handball and paddleball.

Anyone wishing to sign up may do so in the Intramural Gym directly south of Jones Stadium and behind the Men's Gym. Buchanan said graduate students also may participate in the summer program.

The swimming pool located in the Men's Gym is also open throughout the summer terms for student, faculty and staff use.

Pool hours are 4-6 p.m. Monday through Friday.



TECH UNION MOVIE—Anne Revere and Elizabeth Taylor are shown in a scene from tonight's free Union movie, "A Place in the Sun." Also starring Montgomery Cliff and Shelly Winters, the

movie is based on the novel "An American Tragedy," by Theodore Dreiser. The movie will be shown at 8 p.m. in the Union Coronado Room.

Series To Feature Hitchcock Thrillers

An Alfred Hitchcock movie series will begin next week in the Tech Union. The movies, shown every night at 8 p.m., trace the Hitchcock "touch" in which the camera tells the story instead of the dialogue.

Monday night's movie, "To Catch a Thief," stars Cary Grant, Grace Kelly and Jessie Royce Landis. Cary Grant, an ex-convict, ex-jewel thief, falls in love with Grace Kelly, a very wealthy American looking for a European husband.

The "Cat" thief is suspected of continuing his old thievery and the film becomes a Hitchcock thriller as the guilty party is sought out.

"Trouble With Harry"

"The Trouble With Harry," Tuesday night's movie, stars Shirley MacLaine, John Forsythe, Edmund Gwenn and Mildred Dunnock in one of Hitchcock's few comedies. The story revolves around the discovery of a corpse in the Vermont woods and the devious means used to dispose of it by a group of native innocents.

Another Cary Grant-Hitchcock combination, "Suspicion," will be shown Wednesday. Also starring Joan Fontaine, the movie involves a shy provincial British girl who marries an unprincipled charmer whom she believes is trying to poison her.

The newest of the Hitchcock movies to be shown during the series, "Marnie," stars Tippi Hedren, Sean (James Bond) Connery and Diane Baker.

Compulsive Thief

Marnie, a first-class secretary and also a compulsive thief, is blackmailed into marrying her employer, Connery. All Connery must do is uncover the mysteries of her past that contribute to her penchant for taking other people's money.

The last movie in the series is the epitome of Hitchcock terror at its best. "Psycho," which stars Anthony Perkins, Vera Miles, John Gavin and Janet Leigh, defies description. The story, simply stated, is that of a young woman who steals a fortune and encounters a young man too long under the domination of his rather eccentric mother.

The movies will be shown in the Coronado Room at 8 p.m. Monday through next Friday.

OPPORTUNITY DAYS

LARGE GROUP

SUMMER DRESSES

1/3 off

ONE GROUP

SUMMER SKIRTS

6.00

FUN HATS

2.00

SPRING & SUMMER

SUITS

1/3 off

Jean Neel's

1150-07

COLLEGE AVE.



SPECIAL GROUP

SUMMER BLOUSES

1/2 price

ALL OTHER GROUPS

1/3 off

'POOR BOY'

SWEATERS

from 4.50 to 7.00

3.00-4.00-5.00

SUMMER SLACKS

1/3 off

BELTS

1.25

OPEN A
CHARGE
ACCOUNT

TECH ADS

TYPING

TYPING: Experienced, fast service term papers, research papers. Barbara Langston, 2510 63rd St., SW2-2376.

TYPING: EXPERIENCED, TERM PAPERS AND RESEARCH PAPERS, FAST SERVICE. Mrs. McMahan, 1412 Avenue T, PO3-7620.

EXPERIENCED TYPING, work guaranteed. Elwanda Carlisle, 2801 Slide Road—Apt. 56, SW9-5758.

Dependable typing of all kinds, with corrections if necessary. 4408 21st St., weekdays, SW9-3691, nights and weekends, SW2-4164.

Fast, dependable typing of all kinds. Mrs. Penny, 832-4587 or Mrs. Evans, 832-4280.

EXPERIENCED TYPIST: Theses, theses, dissertations, VERY ACCURATE. Electric typewriter, spelling corrected. Mrs. Tommy Kirk, SH4-7967.

SECRETARIAL SERVICE: Typing — theses, technical reports, research papers, lab reports, etc. PO2-3815, PO2-1538, before 9 a.m. or after 1 p.m.

FOR SALE

4-bedroom house, 2 baths, central heat, ref, air, sprinkler system, large living-dining, very large family room, rent apartment on back of lot, carport, excellent neighborhood, 2305 17th St, appointment — Call PO3-4867.

FOR SALE: Membership in 180 mph. Mooney Mark 21, \$650. Call Ridpath Aviation.

FOR SALE: Tower Attache Portable Typewriter, excellent condition, \$35. Call SH4-6346.

FOR SALE: Used Austin Healy Sprite engine. PO3-1464.

FOR SALE: 1966 Yamaha 250cc, Big Bear Scrambler, \$600. SW5-5341, 3208 37th.

FOR SALE: Used Vacuum cleaner 820, \$30. Call SW9-7973. Ask for Jerry.

FOR SALE: \$40. 180 pound weight set for \$20. Call SW9-7973.

FOR RENT

FOR RENT: Efficiency apts., outside entrance, shower, close to campus, cafes, etc.; also two rooms furnished. 2405 Main, PO2-1836.

FOR RENT: Garage apartment, ideal for one or two boys, quiet, private parking. \$60, bills paid. PO2-2063.

FOR RENT: Efficiency apartment will be vacant June 1. Call PO5-9271 or PO2-3389.

EXCLUSIVE TO MARRIED TECH STUDENTS: One-bedroom furnished apartments, air-conditioned, carpeted, swimming pool, \$87.50 per month, utilities paid. UNIVERSITY VILLAGE APARTMENTS, 3102 4th St., PO3-8822.

MISCELLANEOUS

MATH TUTOR: Certified experienced teacher. Full time tutoring by appointment. 3117 22nd St., SW5-2632.

Ask about new and used aircraft. Best Prices — All Kinds. Ridpath Aviation.

IRONING WANTED: All kinds, 2405 9th St., PO3-2671.

SALES PERSONNEL: New product, excellent profit. SW5-7839.



Summer Clearance

SALE

SWEATERS

LARGE GROUP
60% off

EXAMPLE: Reg. 15.00 Now \$6.00

SUITS

WERE	NOW
40.00	25.95
42.50	27.50
45.00	29.95
50.00	32.25
55.00	35.75
60.00	38.95
65.00	42.25
70.00	45.50
75.00	48.75
80.00	51.95
85.00	55.25

SOCKS

ENTIRE STOCK
40% off

SPORT COATS

WERE	NOW
30.00	19.50
35.00	22.75
40.00	25.95
45.00	29.25
50.00	32.50
55.00	35.75

PAJAMAS & NIGHT SHIRTS

MATCHING
MEN'S & WOMEN'S **1/2 price**

JEWELRY

ONE GROUP
1/2 price

DRESS SLACKS

WERE	NOW
10.00	6.50
11.00	7.15
12.00	7.80
13.00	8.45
14.00	9.10
15.00	9.75
16.00	10.40
17.00	11.05
18.00	11.70

LONG SLEEVE

DRESS SHIRTS

NOT ALL SIZES

1/2 price

DRESS SHIRTS

SHORT SLEEVE

WERE	NOW
5.00	3.25
6.00	3.90
6.50	4.25
7.50	4.75

TOILETTRIES **1/2 price**
RAIN COATS **1/2 price**

SILK HANDKERCHIEFS

1/2 price

ENTIRE STOCK

TIES 40% off
SPORT SHIRTS

WERE	NOW
5.00	3.25
6.00	3.90
7.00	4.55
8.00	5.20
9.00	5.85
10.00	6.50

FALL WEIGHT

SUITS and SPORT COATS

ONE GROUP

1/2 price

BERMUDA SHORTS

WERE	NOW
5.00	3.75
6.00	3.90
7.00	4.55
8.00	5.20

LIGHT WEIGHT

JACKETS 1/2 price

BELTS 40% off

WERE	NOW
3.50	2.10
4.00	2.40
5.00	3.00

HENLY MODEL

SPORT SHIRTS

LARGE GROUP

1/2 price

SWIMWEAR

WERE	NOW
5.00	3.50
6.00	4.20
7.00	4.90
8.00	5.60

LONG SLEEVE

SPORT SHIRTS

1/2 price

SHOES

WERE	NOW
15.00	10.50
16.00	11.20
17.00	11.90
18.00	12.60
19.00	13.30
20.00	13.95
22.00	15.40
25.00	17.50
28.00	19.60
30.00	20.95
35.00	24.50

JACKETS

FALL WEIGHT

CLOSE OUT
WERE TO 15.00 **5.00**



2422 Broadway

Free Parking
just east of store

You are invited

TO OPEN A BRAY'S "CUSTOMERS OPTION"
CHARGE ACCOUNT. USE AS A 30 DAY
ACCOUNT OR WITH CONVENIENT EXTENDED TERMS

Please...

- NO LAY-A-WAY OR PHONE ORDERS
- NO EXCHANGES, APPROVALS OR GIFT WRAPPING

PLEASE NOTE: CHARGE MADE ON ALTERATIONS ON SALE ITEMS
ALLOW APPROXIMATELY 2 WEEKS FOR DELIVERY ON ALTERATIONS