

APO Directs Homecoming

TRAMPS PRESENT DIRECTIONS

Saddle Tramps, campus organization in charge of card stunts for the homecoming game against Arkansas, have devised a set of instructions for persons in the card section during the game.

The instructions, devised to smooth out execution of the card stunts, are:

1. Sit directly behind the person in front of you, so the outer edges of the letters formed will be smooth, and fans will be able to read them.

2. Hold the cards just below your eyes and tilted at 45 degrees.

3. On stunts that call for flashing two different colors alternately, place the two cards back to back so that the colors used will be facing out.

According to Don Spencer, chairman of the card section, there will be five stunts.

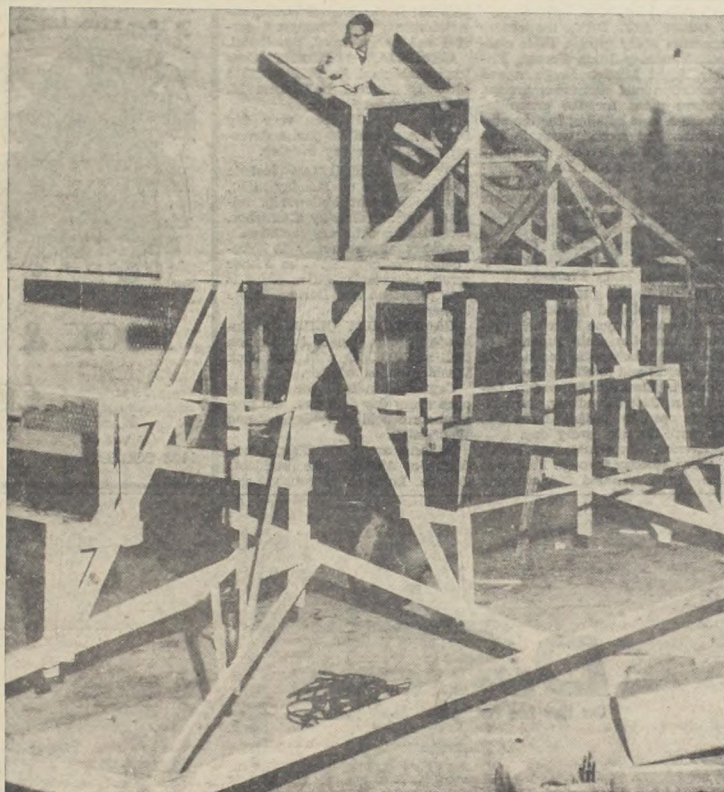
They are "A" (for Arkansas) "Hi Exes", homecoming queen's name and the double T.

On the last stunt, persons with red cards will stand up during the school song, while persons with black cards will remain seated. The cards should be held at the same level as the card on the left.

The cry of the Army nurses who came into the hospital wards to give hypo injections was "bottoms up." One popular nurse's patients chipped in at Christmas time to buy her a present, which they tagged: "To the best rear gunner in the outfit."

THE TEXAS TECHNOLOGICAL COLLEGE TOREADOR

Vol. 34 The Toreador Section II Saturday, Nov. 22, 1958 No. 28



ALONE, ALONE—Ben Anderson feels like the Ancient Mariner while preparing a float for the homecoming parade. Of course there is no sea any closer than the Gulf of Mexico, but Anderson is alone.

(photo by Joe Spears)

Other Services Rendered

by ARTHUR BURKS

Co-ordinating the events and activities of homecoming week is quite a job, and Alpha Phi Omega, national service fraternity, has taken on this responsibility for the past several years.

APO's co-ordination of homecoming events is only one of their services throughout the school year.

They furnish information for entering freshmen, co-sponsor Dad's Day with AWS and usher at various college functions.

THE FRATERNITY also works with World University Service in promoting the "Mile of Pennies" and with the Student Council in sponsoring a car wash to send money overseas to provide academic materials for under privileged students.

APO is in charge of most election booths during campus wide elections.

MOST PARKING permits were put on by APO members in cooperation with the Campus Police.

The cement benches at the bus stops can be attributed to them. They also donated the clock and the ride board in the Tech Union.

ONE OF THE highlights in the history of the Tech chapter was in 1956 when Time magazine published an article complimenting them in helping establish a Boy Scout group in a handicapped school here in Lubbock. They have sponsored the scout troop since 1953.

APO has contributed approximately \$1100 to the Saddle Tramp Circle. They hope to contribute at least \$500 more by the end of the year.

ONE WAY they have of making money is the sponsorship of the Ugly Man contest. This contest, held in the spring semester, will have another name this year, being called Beauty and the Beast. A girl will be elected to fill the beauty spot.

The APO chapter, named Beta Sigma, is celebrating its 20th year on the campus Saturday with a banquet in the Recreation Hall.

DURING THE 20 years APO has been in operation at Tech, they have followed the traditions set by the original organization. Former Boy Scouts established the original chapter at Lafayette College at Easton, Penn., in 1925.

The organization was founded with the idea of developing friendship and promoting service to humanity in the fellowship of the Scout Oath and Law.

MOTTO OF APO is similar to the scouts, "be a leader, be a friend, be of service."

It would seem possible for two people to live happily with one car, but how can a family of two or more live agreeable with only one television screen?

TO CAMPUS

Dorm Decorations Welcome Exes

BY LARRY BRUMMETT

"Welcome Exes" is the theme of the dorm decorations this year, with many head aches, hours and puzzlements going into the construction of the decorations.

Even the notification of the theme came too late for some dorms, because they had already constructed their decorations.

But whatever the case may be, the dorm decorations are up and are the best we have seen in many a year.

SINCE THE "Exes" aren't accustomed to the new construction here at Tech, they will be surprised at the new men's dorms and their excellent homecoming decorations which face back toward the Tech Campus.

All the men's dorm decorations are facing the campus, with the exception of men's no. 5 which is facing the football stadium.

All dorms have their decorations on the front except men's 6, 7, and 8 which have their decorations located on the back side of the dorms.

The dorms ran into trouble from the beginning. First it was the administration, who finally gave their consent for the men to climb onto the roof in order to hang the decorations.

ANOTHER problem which faced them was a place in which to construct the decorations. They couldn't work on the projects outside because of the wind, rain, and dust, and they couldn't work on the decorations inside because they were too large.

Also there was the problem of who was to work and when they were to work.

THIS WAS quickly taken care of, though, with the help of the freshmen, under the guidance of the upperclassmen. The last, but not least, problem to face the dorms was that of time: seeing that the decorations were up last night. But no matter how great the difficulty, the dorms came through.

Men's No. 5 really ran into trouble when the occupants were moved from Doak to the new dorm, for they left the 40'x20' decoration's structure behind on Doak's roof.

BUT THIS was taken care of with the consent of the dorm mother at Doak. Also the plans for the dorm decoration of 7 and 8 were stolen just before construction got under way.

A complete new set of plans were drawn up and the decoration constructed.

IDEAS THAT "just happened" were the results of the creation of homecoming dorm decorations.

In Knapp Hall for instance, the girls were just standing around when one girl said, "Why don't we shave a pig!"

Then the wheels began to click, and they came up with their theme "OK Shave the Razorbacks."

ALSO IN WEEKS Hall the idea "just happened," and was added to as it took form, as the girls suggested ideas of the typical "Exes," in the raccoon coats and the "crazy dress" of their college days.

They finally came up with their theme of the "Exes" in 1928 and the "Exes" of 1958, with the question of which "flappers" are the "Exes."

IN HORN HALL a contest was run offering the girl with the best suggestion a small card which allowed her to cut in the lunch line whenever she desired. The girl who won was Michelle Dillard.

Bledsoe Hall ran a contest with a five dollar prize for the best idea. Sonny Price won the contest with his idea of "Hi Exes."

HIS MAIN IDEA was to have

a huge matador standing in front of Bledsoe with a hand moving back and forth.

But with the help of other students in the dorm the idea changed slightly. Instead of the big matador, there is a small matador with his hand moving back and forth waving "Hi Exes."

DIRECTLY BEHIND him is a large double "T" which stands some 14' high.

The construction periods for the dorm decoration were divided into wing shifts, with each wing working on different nights. The upperclassmen and freshmen worked hand in hand in order to complete this design in time.

THIS DESIGN is also unique in that the hand that moves back and forth is powered with a motor instead of a freshman.

A contest judged on the homecoming dorm decoration theme "Welcome Exes," was held Friday night. The winning dorm was presented a plaque this morning.

ALTHOUGH EVERY dorm did an outstanding job on their dorm decoration, only one could win.

So, with the headaches, hours and puzzlements gone until next year when the problems will arise again, sweet dreams, dorm residents.

Religious Centers Fulfill Major Roles

by LINDA TULL

Religious student centers now play a major role in the daily life of a Tech student, as eight denominations have student centers near campus.

MOST OF the groups have slated receptions and teas after the Homecoming game in each of the centers.

Established in 1925, Baptist Student Center provides a place for the students to serve in Christian work, according to L. R. Cobbs, the BSU director. The center has two daily devotionals; morning watch and vespers in the evening.

OPEN FROM 7:30 a. m. until 10 p. m., the center offers recreation, study programs and a library. The group has a special Friday night mission program. Approximately 300 students participate in the activities of BSU, according to Cobbs. The present building was erected in 1951.

Student officers include Tom Jenkins, president; Deann Buske, vice president; Pat Rainer, secretary; Dr. J. J. Willingham, faculty sponsor and Rev. I. D. Walker, pastoral advisor.

METHODIST Student Center, established in 1935 for Tech students, now has an active participation of about 500, according to director Cecil Matthews. Located at 2420 15th, the present building was constructed in 1950.

The center program includes morning worship, vespers, Bible classes, luncheons, recreation, discussion and study groups and Thursday night program hours. The Student center is open every day from 7 a. m. until 10 p. m. for all Tech students. The group works with the migrant class as a project.

STUDENT OFFICERS of the Methodist Center are Arthur Berg, president; Carl Crouch, vice president; Carol Cummings, secretary and Jeannice Marks, publicity. Others on the executive

As prosperity marches on, even the dogs look healthier.

It is safer to challenge a woman's virtue than to challenge her taste.

Self-interest remains the prime mover of progress despite protestations by do-gooders.

When speaking compliments to a lady, don't press down on the soft pedal.

Sometimes an ill-wisher is a better spur than a well-wisher.

If parents were not a merciful lot, the young fry would seldom reach maturity.

Smearsay, meaning hearsay with a smear. Half the talk and writings of some people is smearsay.

No need to wonder — if she has pretty legs, she'll display them.

What you get from close friends is indifference; but from those who know you least, applause.

The older you are, the sillier you look when you try to look young.

council are Jerry Matthews, Mary Ann Smalley, Marvin Glenn, Hugh Dick Toll, treasurer, Smith, Bob La Grone, Helen Locke and Sue Mimms.

Approximately ten years ago Westminster Fellowship was established for Presbyterian Students. Located at 2414 13th, Presbyterian Student Center offers study, worship and fellowship, according to Dave Richmond, Presbyterian University Pastor.

OPEN ALL DAY, the center sponsors study groups, Bible classes, Thursday Noon Forum, Friday Night Mission Program and recreation and discussion groups. Future plans for the group include a new building for the students. The second week in December will be devoted to a study of "Faith, Sex and Love."

Officers of the group are Don Luke, president; Jeanette Duncan, secretary; Bob Muse, treasurer and Bill Blann, publicity. Other executives are Cathie Conklin, Betty Jack Hawkins, Dorothy Daniels and Mary Francey.

CHURCH OF CHRIST'S Bible Chair, established in 1947, has as its director, Wayne Harris. He reports that the main function of the Bible Chair is to teach Bible for credit and to offer daily devotional in Christian fellowship. Located at 2406 Broadway, the center is open to students from 8 a. m. until 10 p. m. every day.

Evening devotionals are held every Monday through Friday at the center. Around 200 students

participate in the Bible classes, student guidance programs, recreation and library facilities of the center.

THE ROSS-GILLILAND Memorial Library is there for all students. The group publishes a monthly publication entitled "The College Christian."

Student leaders are Ed Ponder, personal work; Wayne White, entertainment; Roy Thompson, service and Larry Baird, devotional. **CHRISTIAN STUDENT** Center, established in 1952 at 2318 13th, is directed by Robert M. Platt, campus minister.

The center is open every day from 8 a. m. until 10 p. m. and vespers are held every evening. **OTHER ACTIVITIES** include interest groups on Monday night, Disciple Student Fellowship, migrant work on Sunday afternoons, recreation and library facilities.

Among approximately 175 students participating, Jim Fisher serves as president. Don Hunt is vice president and Dorane Drake is secretary.

CANTERBURY CLUB, the Episcopal group, meets in Seamon Hall at 2406 16th with Rev. Jack Washington as advisor.

Organized in 1932, the center is open every day 4-10 p. m. and programs are held every Sunday and Wednesday.


Officers are Kent Sims, president; Joy Amberg, vice president; Jullene Loomes, secretary; and

GAMMA DELTA of the Texas District of the Lutheran Missouri Synod, meets at 1508 Ave. X with Rev. Orville A. Buntrock as the pastoral advisor.

The center was organized in 1957. Officers of the Beta Rho chapter of Gamma Delta, the Lutheran group, are Eugene Hill, president; Bill Pilgrer, vice presi-

socials, recreation, Bible Classes and discussion groups. The center is open for the Tech students from 7 a. m. until 10 p. m. House mother and father, supervisors are Dr. and Mrs. James McDaniels.

The Catholic group, the Newmar Club, is headed by student president, Richard Riojas, and is newly organized.



WELCOME EXES..

Long Time No See!

BOOK & STATIONERY CENTER

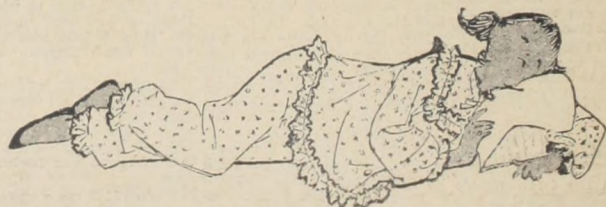
1103 COLLEGE PO 5-8721

Dunlap's
One Hour Free Parking With Any Purchase

where



Christmas Dreams



come true

SHORTHAND IN 6 WEEKS

Typing Optional

Famous Speedwriting System. Uses ABC's, no signs, no symbols, no machines. For Business and Civil Service. Classes now starting. DAY, 5 P.M. Low Cost. Schools in Principal Cities. Come, Observe, Speak to Our Pupils.

Speedwriting

DRAUGHON'S COLLEGE
1414 Texas Ave.

SPEECH PR
Modern

Tech's speech depart
long been recognized
curate and talented pe
of the world's leading
THE SPEECH DEPA
reached a new height
when it presented Jean
"Antigone" to the pu

Welco
Tech
Exes

MENS WEAR
"Exc
2416 BROADWAY

A Thin
Is A

THE OF
TEXAS TE
SPLENDID
THOU



For your conven-
ence, the Book-
store has a
complete assort-
ment of samples
and full informa-
tion about the only
official standard
ring. Stones can
be incrust
with the Double
T, Masonic Emb-
lem or Greek
Letters. Any Date
can be secured.

WRITE F
AND CO

Texas Tech
BOOKS

SPEECH PRODUCTION

Modern 'Antigone' Is Success

Tech's speech department has long been recognized for its accurate and talented presentations of the world's leading plays.

THE SPEECH DEPARTMENT reached a new height this fall when it presented Jean Anouilh's "Antigone" to the public.

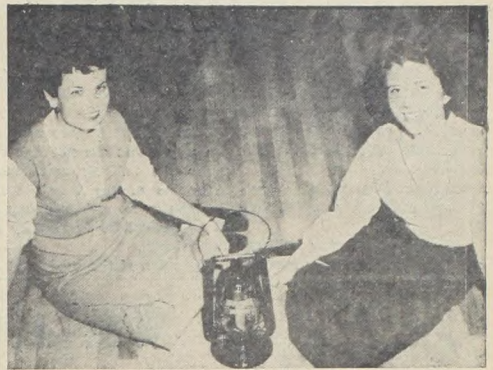
It was presented in the state fair in Dallas and again in Lubbock during the Fine Arts Festival. Dallas critics applauded the play, and overflowing crowds during the Fine Arts Festival forced the speech department to give several extra performances after the festival ended.

THE PLAY is a Greek tragedy, revised for modern sets, costumes and language. It was presented on an arena type stage, with the audience seated on four sides of the stage.

Ronald Schulz, Tech speech department, directed the production.

A girl listens attentively until she has learned to talk, and from that moment ceases to listen.

Gratitude for one favor is often promptly expressed by the request for another favor.



SYMBOLISM—Freshmen coeds Carroll Wheeler (left) and Melinda Harrison light the lantern symbolizing Tech spirit. The lantern will burn during the homecoming weekend.

FINE ARTS

Festival Presented

High on the list of firsts for planning, presented Tech's first Annual Fine Arts Festival. Talents of music, speech, allied arts, applied arts, women's physical education, English and foreign language departments were combined, following three years of

OFFERINGS OF the festival included the showing of foreign films, modern dance presentations, the combined talents of Tech's musical groups, speech department's presentation of "Antigone", jam sessions, lectures and jazz concerts.

Purpose of the festival, in the words of Dr. Truman Camp, English Department head, "is to help students realize the value of fine arts in a well-rounded education."

THE FESTIVAL provides a balance for the long established Engineers Show, which presents the best Tech has to offer in the fields of science, engineering and military.

Any secretary who knows more than her boss is working for a poor fish.

What makes the world go round is the temptation to attempt something that can't be done and to succeed.

It isn't necessary to know the answers, provided you know where to find them.

It's just about impossible for a naturally prim person to look casual, especially in casual clothes.

Welcome Tech Exes



BRAY'S MENS WEAR-CAMPUS CLEANERS
"Excellent Dry Cleaning"

2416 BROADWAY

PO 2-4962

A Thing of Beauty Is A Joy Forever

THE OFFICIAL STANDARD RING OF TEXAS TECHNOLOGICAL COLLEGE IS A SPLENDID EXAMPLE OF PRESENT DAY THOUGHT IN COLLEGE RINGS



DATE SIDE

The Ring, in 10 Karat Gold, is available with a synthetic Ruby or Blue Spinel, either Buff top facet Back or Facet top, Facet Back; and in these finishes — Dark Military Gold, Natural Gold and Antique Green Gold.

For your convenience, the Bookstore has a complete assortment of samples and full information about the only official standard ring. Stones can be incrustated with the Double T, Masonic Emblem or Greek Letters. Any Date can be secured.



DEGREE SIDE

WRITE FOR DESCRIPTIVE FOLDER AND CONVENIENT ORDER BLANK



Welcome Exes



TECH STUDENTS HAVE PREFERRED LUBY'S FOR OVER 10 YEARS

LUBY'S CAFETERIAS

Suburban
2410 Broadway
PO 2-1207

Downtown
1102 14th St.
PO 5-6192

XMAS FRATERNITY SORORITY HEADQUARTERS

We Invite You To Drop In Today To Place Christmas Gift Orders For Deliver Before School Closes For The Holidays.

THOMAS JEWELRY
1207 COLLEGE

Tech Building Continues At Fast Rate

Ground was broken for the new classroom and office building Thursday. The building will be constructed, at a cost of \$931,198, north and west of the Journalism Building.

THE CONTRACT was let to S. R. Duncan Construction Co., Lubbock, last week.

This is one of many buildings and improvements being made as result of the Constitutional Building Amendment passed by the Texas Legislature in 1949.

The amendment provides for a 30-year educational and general building program with funds coming from a 5-cent ad valorem tax.

"Texas Tech, one of the 12 state supported schools benefiting from this legislation, will receive \$8 million, or approximately 21 per cent of the tax money, during this, the second of three 10-year periods," says M. L. Pennington, vice president.

"DURING THE FIRST 10-year period Texas Tech received \$4,486,020 and for the third period the estimated amount is \$12 million."

The second 10-year period began Jan. 1, 1958. High on the tentative priority list for the building program, besides the classroom and office building, are expansion of the Textile Engineering Building, physical plant facilities, mechanical engineering shops, a women's gymnasium, addition to the Science Building, a library, chemical engineering and nuclear reactor building, agricul-

ture plant science facilities, TV station and more walks, drives and parking areas.

TWO PROJECTS are now under way that are not financed under the building amendment.

Expansion of the Tech Union Building at an estimated cost of \$1 million will be financed by revenue bonds.

Expansion of the stadium at an

estimated cost of \$1,700,000 will be financed by option seat sales.

"ARCHITECTS HAVE been employed and are now working on plans for Tech Union. Plans for the stadium were presented at the meeting of the Board of Directors last night," Pennington said.

Educational and general construction during the first 10-year period (January, 1949-December,

1957) included the Music, Science, and/or the general college fund during the first period included

Engineering Buildings; the In-Men's Dorms 5, 6, 7, and 8 and Weeks Hall, at a total cost of \$7,885,000; The Bookstore addition; and annex; the Museum; and the Tech Union Building.

The value of Texas Tech's physical plant, at cost, on Aug. 31,

CONSTRUCTION FOR various 1958, was \$29,266,612.15, according to Pennington.

Trip Breaks Monotony For Students

Providing a need break for students from the daily monotony of academic life was the annual school trip. This year the school trip was to Fort Worth, where the Raider football team met the Horned Frogs of TCU.

A SPECIAL Train was chartered to carry the more than 500 students making the trip to Fort Worth. The train was equipped with a snack bar, and Tech band members provided informal music during the trip.

Besides enjoying the TCU-Tech game, students were able to view the current Broadway hit, "The Music Man," the Oklahoma-Texas football game, the Ice Capades and Walt Disney's "Fantasia."

The STATE FAIR, being held in Dallas during the trip, also offered entertainment in the way of carnivals and exhibits.

After the TCU-Tech game, TCU students treated Tech students to a dance.

ALL-IN-ALL, the trip was considered a success by all persons going to Fort Worth.

Small girl showing bathroom scales to playmate: "All I know is, you stand on them and it makes you mad."

Roast-carving host to rotund guest: "Would you care for another 50 or 60 calories, Mrs. Smith?"

Diet is a short period of starvation preceding a gain of five pounds.

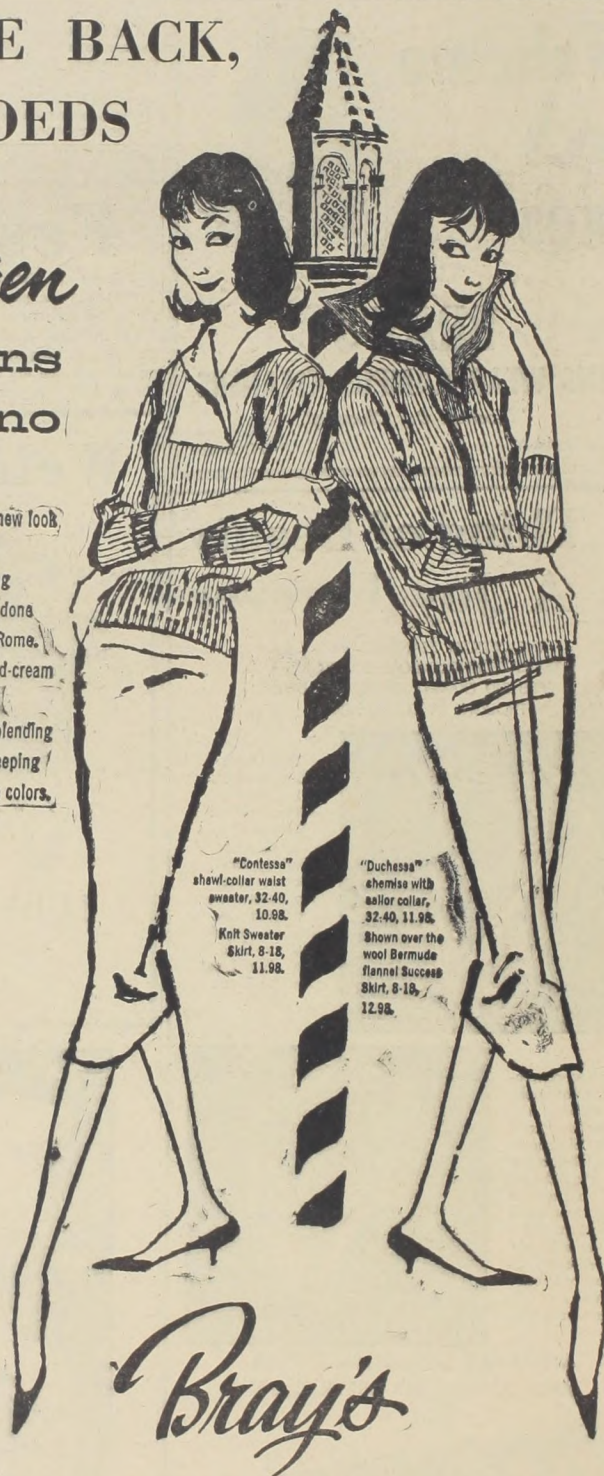
Without at least one fretful member in the family, nothing would ever get done on time.

Until he gets married, the average man doesn't know what a budget is.

WELCOME BACK, EX-COEDS

Jantzen turns italiano

Come sightsee this elite new look. In Jan-khara sweaters. Fashionable wide-wale ribbing that might have been done somewhere in the heart of Rome. Combined with the whipped-cream softness you've always loved about Jantzen's exclusive blending of wool and vicars. In a sweeping range of Autumn landscape colors.



"Contessa" shawl-collar waist sweater, \$2-40, 10.98. Knit Sweater Skirt, 8-18, 11.98.

"Duchessa" chemise with sailor collar, \$2-40, 11.98. Shown over the wool Bermuda flannel Success Skirt, 8-18, 12.98.

Bray's

LADIES' SPORTSWEAR