

Red Raiders Host Horned Frogs Tonight

FOREADOR

THE TEXAS TECHNOLOGICAL COLLEGE

Vol. 33 Lubbock, Texas, Tuesday, January 7, 1958 No. 39

Director and Producer Chosen for Varsity Show

by MARY ALICE ATCHISON
Varsity Show gears finally began to turn Dec. 19 with the selection of a producer and director for the 1958 show.
Roger Loter, Plainview senior, will serve as producer. Chosen as director was John Gilbert, Amarillo Junior.
THESE STUDENTS who were selected by the Varsity Show Advisory Board have both had previous Show experience. Loter was 1957 Varsity Show business manager and Gilbert was director of last year's show.

Thus far, Matt Mathews is the only one who has responded to the call for student scripts. Scripts written by students will be accepted through noon Saturday at the Tech Union Program Office.

FINAL SELECTION of the script will not be made until later in the year. Broadway scripts have been written for in case there are not any suitable student scripts.
Business manager for this year's show will be selected today at 4:30 p.m. when the Advisory Board meets with Loter. Applicants are David Edwards, and Bruce Lokey.

Tryouts for 1958 Varsity Show will probably be held the first week in February.

THE VARSITY SHOW is scheduled for April 17 and 18 in the Municipal Auditorium during the Spring Festival, which runs April 16 through 18.

Miss Quannah Lewis, Tech English instructor, was appointed Show sponsor by the Advisory Board.

When the Varsity Show was approved, a set of recommendations was adopted with the intention of correcting incidents which have happened in the past.

THE REGULATIONS adopted by the Welfare Committee are:

The Varsity Show will be held entirely on campus.

All campus regulations will be strictly adhered to. This regards eligibility, dormitory regulations, etc.

Recommendations of those in charge of the facilities for producing the Varsity Show will be closely followed.

CERTAIN MEMBERS of the faculty, the Welfare Committee, and persons from the Student Union will attend dress rehearsals and performances for purposes of evaluation and constructive criticism.

Following the show, these people will meet with the east to sum up all evaluations and compile recommendations for continued improvement.

NO UNAUTHORIZED personnel will be permitted to attend either rehearsals or performances.

If these recommendations are violated, the Varsity Show will be stopped, no matter what stage of production it is in. The Union Program Council will have this responsibility.

Members of the Advisory Board include Don Ludwig, business manager of the Student Council; Betty Byerly, Tech Union Program Council; Nelson Longley, Tech Union director and Bob Huff, Tech Union treasurer.

GAME AT A GLANCE

Who: TCU vs. Tech
When: 8 p.m.
Where: Lubbock Municipal Coliseum
Probable Starting Line-ups

Tech	Pos	TCU
Myers	G	King
Lynch	C	Branson
Key	F	Nippert
Waltz	F	Stevenson
Hill	C	Kirchner

by BILL DEAN

TEXAS TECH'S RED Raiders have a chance to make hay while the sun shines tonight when they host the TCU Horned Frogs in their first Southwest Conference basketball game in Lubbock before an expected record crowd.

Before the main event the unbeaten Picadors meet the Wayland College freshmen at 6 p.m. The varsity game is at 8.

The Raiders, fresh from their 66-63 upset of pre-season favorite Rice in Houston Saturday night, could strengthen their position in the conference race greatly with a win tonight.

THESE TWO HAVE met before

—in the second round of the SWC Tournament in Houston last month — and the Froggies pulled from behind in the closing seconds to nip Tech 71-69 and hand Polk Robison's cagers their first loss of the year.

The Frogs then went on to whip Rice and capture the tourney title.

But that's all over now as both well know. Every game now is for keeps.

FROG COACH BUSTER Branson, beginning his tenth year as head man, owns a 10-1 record. His scoring punch is built around center H. E. Kirchner (6-10) and forwards Derrill Nippert (6-4) and hotshot Ronny Stevenson (6-5).

In their conference debut against Texas A&M these three accounted for 47 of the 71 scored by the Purple in a 71-48 bout.

Stevenson was named the most valuable player in the tournament.

He leads all individual scorers for the season with 204 points on 77 field goals and 50 free throws. Page 6 . . .

A&H Forms Ready For Spring Term

★ Students may now obtain the A&H forms, which must be filled out before registration packets will be sent, at these places: East and West foyers of the Administration building, Home Economics building, East Engineering building and Agriculture building.

Registration for the Spring Semester will begin Jan. 30 and end Feb. 1. Late registration will be held only on Feb. 5.

The forms will be in places mentioned until around Jan. 24, after which no more registration packets will be sent out.

The Registrar's office stresses the accuracy of filling in the right mailing address so that the registration packet will not be late in arriving. If the applicant will be living in the dorm at the time of registration, use that address; if not, use the permanent home address.

Human In Rocket Soars 186 Miles

MOSCOW, Jan. 6 (AP) — The Soviet Union has launched an experimental rocket 300 kilometers (186.42 miles) into the atmosphere with a human aboard, reliable sources here said tonight.

The man aboard the rocket parachuted successfully to earth, these sources said.

There was no official announcement whatsoever concerning this latest Soviet venture into the atmosphere.

The successful experiment reportedly took place within a day or so after the new year, the reports said.

Some time ago Soviet scientists said they sent up dogs to a lesser height.

The dogs were released and parachuted to safety, they said.

Rumors about the experiment with a human being began circulating in Moscow about a week ago.

Tech 'Tots' Drive Was Huge Success

★ Toys for Tots 1957 campaign on the Tech campus collected 1,338 toys and turned them in to be distributed among needy children.

Delta Sigma Pi won the award for the organization turning in the most toys — 538. The prize was a permanent plaque with the inscription, "Toys for Tots Award to Delta Sigma Pi, 1957, by Circle K International."

Other participating organizations were Pi Beta Phi, Kappa Hall, Phi Kappa Psi, Kappa Alpha Theta, Delta Delta Delta, Phi Gamma Delta, Sigma Nu, Pi Kappa Alpha and Tech Vets.

KTTC's marathon radio program served as a pickup station for toys during the campaign. A miscellaneous box was set up at the tent where the marathon was held, and 85 toys, other than the ones turned in by organizations, were deposited there.

Also, \$18 was turned in at the marathon, and this money was used to purchase about \$45 worth of toys.

'Ad Lot Divided 50-50' Says Committee, Jones

by C. J. WREN
A 50-50 student-faculty division of the Administration parking lot was decided upon during the Christmas holidays, after a special meeting of the College Traffic

Committee Dec. 19 in President Jones' office.

The division, announced by Dr. Jones during the holidays, is the two double rows at the east side of the parking lot and the two double rows at the west side of the lot for students and visitors.

THE FOUR DOUBLE rows in the center of the parking lot are assigned to faculty and visitors.

The division gives an increase of 22 spaces to the faculty, with the assignment of visitors to the student area calculated to give further relief to the faculty, it was stated. Visitors have parked in faculty area only previous to this decision.

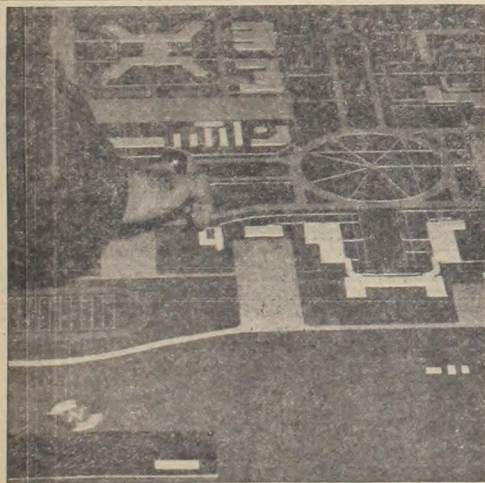
THERE ARE 198 spaces for staff and visitor area on the lot, and 208 spaces are assigned to student and visitor it was stated. An island for a traffic light on the southwest corner of the parking lot and a shorter outside row on the east side of the lot account for the difference in number of spaces.

At present, direction signs on the lot for students read "Student Parking", without a visitor stipulation on the signs. New signs for the lot with the stipulation will be posted in about 30 days, it was announced. The signs were not available and had to be ordered.

"IT WILL BE noted that visitors are now assigned to both sections of the lot, in an effort to more nearly equalize the availability of spaces to the staff on one hand and students on the

other," Dr. Jones said in reference to the decision.

"Heretofore, visitors have been assigned to the staff side only. I hope that by an actual increase of 22 spaces, plus some additional increase by distributing visitors into both sections of the lot, a reasonable equity is established," he continued.



A map of Texas Tech in "Braille" has been devised by the Vocational Rehabilitation Counseling program. Originated by William L. Dauterman of the psychology department and Jerry Dunham, graduate student, the map gives sightless persons like themselves a mental picture of the campus.



Cool, Man!

CAMPUS

New Course Featuring Computers Will Be Inaugurated Next Semester

Beginning with the Spring Semester, an introductory course in the operation of electronic computers will be inaugurated at Tech

with the course open to any Tech student.

Electronic computers are being used increasingly in business, industry, government and social studies as well as science," said Dr. William R. Pasewark, head of the interdepartmental committee on data processing.

Dr. Reginald Rushing, accounting department head, said, "while the course has no prerequisites, it is recommended for students with junior standings or above."

The course will be concerned with electronic computers and will not be limited to machines produced by any one manufacturer.

Pasewark said his committee found that other leading educational institutions are starting similar courses in their curricula.

Wendorf Attends Santa Fe Meeting

Dr. Fred Wendorf will attend a discussion of the Society for American Archeology on means of saving valuable archeological resources currently being destroyed by highway construction Friday and Saturday in Santa Fe, N. M. Wendorf is chairman of the committee for highway salvage archeology appointed by the Society.

The problem of salvaging scientific resources in archeology, paleontology and history that are being removed by expansion of the nation's highway system will be surveyed by the committee, composed of scientists from throughout the United States.

The group will meet at the New Mexico Laboratory for Anthropology and will be guests of the Associated Contractors of New Mexico.

Lutheran Center Receives Grant

Tech's Lutheran Student Center will receive a grant of \$1000 from the Aid Association for Lutherans of Appleton, Wis.

The grant has been received by the Texas District Board of Missions of the Missouri Synodical and the Board will administer it to the student center.

A similar grant was made for a Lutheran Student center at the University of Texas.

The Aid Association for Lutherans is a fraternal life insurance organization for Synodical Conference Lutherans.

Dance Committee Plans Last Hop

Tonight the Tuesday Night Dance committee of the Union is sponsoring its last hop this semester before Dead Week begins.

It will be from 7 to 9 p. m. in the Rec. Hall.

KTTC disc jockies will be present to spin the records and will be taking requests. It is a drag dance.

Pat Cassidy is chairman of the Tuesday Night Dance Committee.

USE TOREADOR CLASSIFIED ADS

ALL MAGNOLIA PRODUCTS
Lester Jones Mobil Ser.
2424 Main

DAN PORTWOOD
AUTOMOTIVE
TUNE-UP, BRAKES
STATE INSPECTION
1108 Ave. X PO 3-3151

My Merchandise is on Sale All Time
watches bands
Howard's Watch Repair Service
Bud Howard 2422 Blvd.
Certified Watchmaker
PO 3-3680

JANUARY CLEARANCE SALE

DRESSES

group value to 29.95.....	7.99
group value to 35.00.....	9.95
group value to 49.95.....	14.99
group value to 89.95.....	19.99

SWEATERS

group value 5.95 to 25.00..... 1/2 PRICE

BLOUSES

group, Ship-n-Shore.....	1.99
group, Shapely Classics.....	2.99

SKIRTS

group, dressey.....	1/2 PRICE
group, wool.....	1/2 PRICE

Many other drastic reductions on lingerie, sports wear, coats, belts etc.

Bray's Ladies Sportswear

2417 BROADWAY

STOP

Take A Look At

The Values We've Got . . .

- PARKER "51" PEN & PENCIL SETS REG. 17.50 9.95
- SHEAFFER PEN & PENCIL SETS REG. 17.95 9.95
 - SWEAT SHIRTS . . . 1.00 ea.
 - TECH TOWELS . . . 98c ea.
- FRATERNITY AND SORORITY STATIONERY •
 - CREST Reg. 1.60 NOW 98c •
 - PLEDGE Reg. 1.25 NOW 78c •
- BIG SELECTION TRADE BOOKS 1/2 OFF
- BICYCLE PLAYING CARDS 50c DECK
 - TYPING PAPER 1/2 REAM 59c
- ASSORTED DRAFTING PENCIL REG. 15c ea. NOW 3 for 10c
 - DIETZGEN DRAFTING TRIANGLES •
 - 8 IN. 45° — Reg. 50c NOW 10c10c
 - 8 IN. 30 x 60° — Reg. 40c NOW 5cW 5c
- ALL TECH MONOGRAMMED JEWELRY 20% OFF

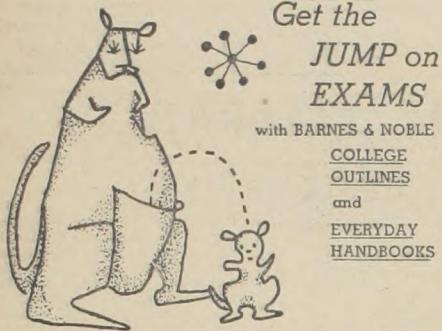
Varsity

BOOK STORE



famous
over 140 titles
ANTHROPOLOGY
ART
BUSINESS
DRAMA
ECONOMICS
EDUCATION
ENGINEERING
ENGLISH
ON DISPLAY
TEXAS

"In a
Here at General
year-old market
about the future
fact, I've discovered
ica's needs 10 a
of the electrical
me, General El
future into acc
ment in the Con
— all planned
"I'm pretty
too. For one th
been doubling
even faster as
tion by 1978 —
to new electric
ter. The way I
ing and market



Get the
**JUMP on
EXAMS**

with BARNES & NOBLE

**COLLEGE
OUTLINES**

and

**EVERYDAY
HANDBOOKS**

famous educational paperbacks —
over 140 titles on the following subjects:

ANTHROPOLOGY	ETIQUETTE	POLITICAL SCIENCE
ART	GOVERNMENT	PSYCHOLOGY
BUSINESS	HANDICRAFTS	RECREATIONS
DRAMA	HISTORY	SCIENCE
ECONOMICS	LANGUAGES	SOCIOLOGY
EDUCATION	MATHEMATICS	SPEECH
ENGINEERING	MUSIC	STUDY AIDS
ENGLISH	PHILOSOPHY	

Average price \$1.50

ON DISPLAY AT YOUR BOOKSTORE
TEXAS TECH COLLEGE
BOOKSTORE

Union Events

Tuesday — Hospitality Hour,
Union, 3:30 to 5:30 p. m.

"Club D. J." Dance, Rec. Hall,
7 to 9 p. m.

Wednesday — Toastmasters,
Room A, noon.

Thursday — Square dance, Rec.
Hall, 7 p. m.

Friday — Dance, "Ad Libs,"
Ballroom, 8:30 p. m.

Saturday — Begin week of re-
stricted activities, through 17.

Sororities Arrange Chapter Dinners

Two social sororities are having
dinners tomorrow night.

Alpha Chi Omega is planning a
chapter dinner at 6:15 p. m. in the
Union.

Pi Beta Phi has scheduled a sup-
per meeting for 6:30 p. m. in its
lodge.

Texas Tech Biology Instructor Studies Insects, Present Papers

Thomas C. Barr, Tech biology in-
structor, presented two papers at
the 124th meeting of the American
Assn. for the Advancement of
Science in Indianapolis, Ind. Dec.
28.

Barr has made an intensive
study of cave insects in Kentucky,
Tennessee and New Mexico.

"RECENT ZOOLOGICAL in-
vestigations in Carsbad Caverns
have shown that at least 15 species
of invertebrate animals — all an-
thropods — regularly inhabit the
caverns," Barr said. "These in-
clude one species of Crustacea
(sow-bug), three of spiders and
11 species of insects."

He also reported that the crus-
tacean and a silverfish-like insect
appear to be restricted to a sub-
terranean existence.

BARR ALSO stated in his paper
that "two species of cave silphid

beetles were found in Tennessee
cave and one species was found
in Mammoth Caves of Kentucky
and neighboring caverns.

He said the cave beetles are
believed to have descended from
cold and moisture-loving ancestors
which populated the earth's sur-
face during the glacial ages.

"THUS, THE anophthalmid
cave beetles may be regarded as
living fossils," Barr stated.

Barr has reported findings of 20
species of predatory cave beetles
that are eyeless and have long and
slender legs and antennae in Ten-
nessee and central Kentucky.

Sigma Delta Chi Sponsors Drive

Sigma Delta Chi, national jour-
nalist fraternity, is sponsoring a
campaign for young citizens who
will be eligible to vote for the first
time this year.

Henry McKee of Lubbock, presi-
dent of the SDX group, said that
the first phase of the campaign
will be a continuance of the pro-
gram, begun by the Mayor's Com-
mittee last year, to encourage new
voters to get their poll tax ex-
emptions before the January 31
deadline.

Exemptions may be obtained
now from the Tax Collector's Of-
fice at the Lubbock County Court
House or from any of a number of
locations to be set up within the
next week by local service organi-
zations, McKee reported.

Lubbock Mayor S. S. Forrest
announced official acceptance by
SDX of that responsibility Satur-
day. The change has been ap-
proved by the City Commission.

In a statement on behalf of the
Mayor's Committee on young citi-
zens and the ballot, chairman G.
E. Giesecks said that, "after its
experience with the project on an
experimental basis, the committee
decided that the work could be
carried out most effectively by an
organization with special talent
for promotional work."

"The Sigma Delta Chi group is
the type of organization that can
handle this project well," he con-
tinued. "We are delighted to see
them take over the campaign."

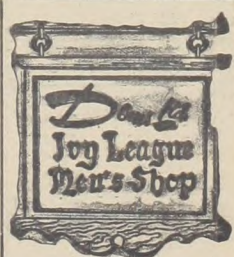
Tech AIEE-IRE Meets Tonight

Tech's student branch of the
AIEE-IRE is sponsoring a joint
meeting with the Lubbock section
of the IRE at 7 p. m. today in the
Union workroom.

J. R. Campbell of the electron-
ics design section of Chance-
Vought Aircraft will speak at the
meeting. He will speak on "Iner-
tial Guidance" and use slide illus-
trations.

DR. C. EARL HILDRETH Optometrist

Visual Analysis 2421-B Broadway
Visual Training Phone 702-4828
Vision Related to Reading



2420 BROADWAY



PENN R. POST received his B.S. in
engineering from U.C.L.A. in 1956.
He is now in the second year of
General Electric's Technical Mar-
keting Program, in the Company's
General Purpose Motor Department.

"In a growing industry, there's room for me to grow"

"Here at General Electric," says Penn R. Post, 24-
year-old marketing trainee, "you hear a lot of talk
about the future — even as far ahead as 1978. In
fact, I've discovered that planning ahead for Amer-
ica's needs 10 and 20 years from now is characteristic
of the electrical industry. And, what's important to
me, General Electric's long-range planning takes my
future into account. I'm now on my fourth assign-
ment in the Company's Technical Marketing Program
— all planned steps in my development.

"I'm pretty confident about the electrical future,
too. For one thing, America's use of electricity has
been doubling every ten years. And it will increase
even faster as our population grows another 65 mil-
lion by 1978 — and as research and development lead
to new electrical products that help people live bet-
ter. The way I look at it, the technical, manufactur-
ing and marketing resources of large companies like

General Electric are important factors in the growth
of the electrical industry. And in a growing indus-
try, there's room for me to grow."

Young people like Penn Post are an important
part of General Electric's plans to meet the oppor-
tunities and challenges of the electrical future. Each
of our 29,000 college-graduate employees is given
opportunities for training and a climate for self-de-
velopment that help him to achieve his fullest capa-
bilities. For General Electric believes that the prog-
ress of any industry — and of the nation — depends
on the progress of the people in it.

Progress Is Our Most Important Product

GENERAL  ELECTRIC

Great Losers, Poor Winners

THE ANNUAL PROBLEM of booing is in full bloom again.

John Q. Techsan can sit through a losing football season, yelling his head off in the finest of the sportsmanship tradition. This is to be commended. However, with the coming of basketball, this spirit vanishes as if it were actually a "spirit." Our sportsmanship at basketball games is not commendable.

This isn't a new problem. It has been a trouble spot for the last four of five years — and for some time before this, it is reported. It was possibly worse in the Old Barn because the building was smaller, was more conducive to booing.

This isn't a problem unique to Tech. Schools all over the nation have the same trouble. But these aren't the points at hand. These would be poor reasons for letting the situation go on.

A decision called against Tech, a Red Raider fouled, a display of temper by a player on an opponent team or even a display of fancy ball-handling by another team are all prime meat for the Tech "booing section."

As the letter below points out, this year is the first of actual competition in the Southwest Conference. How the Raiders perform is going to make a big

first impression of the big school out west. If Tech should win the conference in its first year of competition, it would be a milestone in the history of the college.

It would truly be shameful for Tech to win, in one sense. To have a fine team and coach of the caliber to win, and yet to have fans in the stands that act like so many monkeys in a cage seems disgraceful. The showing Big Red makes in the first year of conference play is only part of the impression given other SWC schools. The student body attending games is the other part. It would be a disgrace to the team to have its record marred by a howling cheering section.

Further, this booing doesn't help our team out on the floor any. Rather it hurts the play. It is a distraction in the noise itself. It hurts morale because the Raiders can't find any pride in a student body who is booing an opponent they are playing.

Also, why should we boo an opponent for its mistakes? Big Red isn't perfect. He can foul, get mad, make mistakes as easily as any other team.

We should have as good a student body as we have a team.

TECHSANS TALK BACK

Fellow Techsans,

I feel that recognition is in order to the Texas Tech Student body for its undying support of the Red Raiders during the past football season. Even though the team was defeated several times in score, the spirit of Tech remained high. To support the Raiders through their ups and downs and through victory and defeat, because they represent US, the Texas Tech student body, is genuine school spirit.

YES, TECHSANS, we have proved ourselves to be good losers when the occasion arises, but are we proving that we can be good winners as well? This year, our first year in Southwest Conference basketball competition, I wholeheartedly disagree with the predictions. I say that we will win the conference championship, instead of finishing the season in last place in the conference, as some seem to believe.

Even if we should finish the season in second or third place, the eyes of Texas are going to be focused on us. People across

the state are waiting to see Texas Tech in action, and to form opinions about Tech. Believe me, the student body figures into this picture just as much as the athletic teams which represent us.

LET'S DISPROVE any preformed opinions, and prove to ourselves and the conference schools that we do know how to be good winners. We can do this by doing away with booing and opponent-criticism, and by cooperating with the cheerleaders in organized yelling. Let's give the Red Raiders our very all, and show the SWC that Texas Tech is here to stay.

Another point to keep in mind is the SWC sportsmanship trophy, which is awarded to the school displaying the best sportsmanship each year. We are now eligible to receive the trophy. Let's add this trophy along with the basketball championship trophy to our trophy case next fall.

Remember Techsans, that during these first several years in the Southwest Conference, we will be setting precedents

that will be carried out for many years to come at old Double-T. Let's start right now setting our goals and standards high, and give Texas Tech a secure and respected place in the Southwest Conference.

Sincerely,
Dick Sewell
Head Boy Cheerleader
Bledsoe Hall

Shine Receives Two-Year Grant

A two-year grant of \$25,030 for chemical research has been awarded Dr. Henry J. Shine, assistant professor of chemistry, by the Robert A. Welch Foundation.

The grant was made for the study of benzidine-type rearrangements of aromatic and non-aromatic hydrazo-compounds and of aromatic disulfides.

The grant to Shine was part of the \$1,066,993 in renewals and new grants recently announced by Daniel R. Bullard, senior trustee of the Welch Foundation.

wren

For What It's Worth

The old year has had it. A new one is in for it. And first things first.

The old year was a good one. Inflation and taxes went up. So did Sputniks I and II. Uncle Sam had some beautiful fizzles in the meantime. (As did we with some of our own rocket experiments during the holidays with soda straws and ground-up match heads.)



But on the home front the picture had some brighter events. Working from the inside out, THE TOREADOR started the fall semester with some new starchy in it. Pogo, a paper

staring cheery Techsans in the face bright and early three mornings a week, the services of the Associated Press which have served not only Tech, but THE TOREADOR in a couple of tight moments in a special way which we will not go into, our own engraving machine for pictures and art work and an enlarged staff working under a new system have made for a "new" TOREADOR.

Working a little further out, we can't remember when there has been a more rambunctious year at Tech. Certainly not in our experience. Spirit was high during a losing football season. The student body has been fighting one thing or another almost since the first of the semester.

AND, AT LEAST to our way of thinking, there have been some pretty important accomplishments. It was a fast furious haul to get the Varsity Show over. No need for torturing old ghosts, but a more equal committee representation might have shortened the battle. (Notice we didn't say equal but more equal.)

Then the Administration Building parking lot fiasco. When the College Traffic Committee on practically no solid ground, without even a survey to accurately size-up the situation, decided to revamp the Ad parking lot, things began to look a little dark. The sun shone again when a fair-minded administration vetoed the committee decision and a more sensible division was adopted, which benefited the faculty without cutting too drastically into student parking area.

PUBLICATIONS SEEM especially to have caught it in the neck. First, THE TOREADOR's new budget was cut \$4,000. No comment. And then it was La Ventana. The squabble is still going on over the allotment of pages to campus organizations.

These are the major items. There are many smaller. The whole atmosphere was charged — and as far as we can tell, still is.

So much for the old. The new promises to be just as interesting. Committee representation must have something done about it. A question is coming up on insurance for the student body. It looks good from what has been reported. There is a very pathetic situation of booing at the basketball games. If we can't do something about this, it might be well to climb back up into the trees with our hairy cousins.

AND IF THINGS get dull, there is always parking — the high fee, unpaved lots, questions about the security patrol.

And underlying everything: there is no understanding between faculty and the students. Both parties are guilty. Both should grow up and do something about it.

HAPPY NEW YEAR !!!

Wet Wash

WETHERINGTON

The New Year always comes in with a loud slap. All things achieve a rude awakening in this way at birth. At death, there's only a sigh.

With this on his mind, the Old sat on a star, weeping.

"Why do you weep?" said an angel.

The Old looked down on the weary cinder of Earth. "Look at what they've done to me," he wept. "When I was born, they pitched a big party for me and made speeches and were happy. I was important, then. Now,



when I sit here dying, no one cares. They mistreated me all my life and forgot I existed and now they don't even care. Now they're down there waiting for the New Year with another big party."

"You've been pretty important. You'll go down in history," the angel smiled. "This is your grandest hour. One last moment of glory to give to the world. You should be happy."

"But not half as weary as those down there. Tonight is their moment of glory, too." They looked down at the people. "There's always glory at birth; and a kind of glory at death. The hardest job comes somewhere in between."

THEN LET'S GET it over with," said the Old, sighing. "I'm awfully tired."

"So are they," said the angel. "That's why they want to try it again. They will, too."

"Guess it's time I left, then," sighed the Old. "Don't want them to try again while I'm around." The Old got up and looked around and just stood there for a long time — not as one who, immersed in a flood, clings to the debris around him — but as a meteor which, having let go its tiresome hold to the womb of its mother star, stretches out the remainder of its life in a glorious streak of light — seen by a few; forgotten by all.

POGO

by WALT KELLY



TOREADOR

Member The Associated Press
Member Associated Collegiate Press

Editor — C. J. Wren
Sports Editor — Bill Dean
Campus Editor

Ext. 423.
Subscription — \$3.50 per year.

Arts & Schedules

The first annual Exhibition of Art sponsored by the Tech department will present by seven outstanding artists from Texas and neighboring states through Jan. 30.

The exhibit will be in the Museum on campus. Art and craft works have been exhibited in national international shows will exhibit, Prof. Arne Rasmussen.

Rites for Held

Last rites were held for Miss Gussie Lee T. social science professor of E. Texas Tech. Services in the Chapel of Christ and in the Rosewell, New Mexico.

Miss Tague had been for a week prior to her St. Mary's Hospital. T. of death was contributory liver disease.

Coming here in 1926 after Tech was opened Tague taught at Tech 11 years. In 1943 she became associate professor of E.

Upon graduation from university of Colorado, she had M. A. Degree. At university of Oklahoma she had a B. A. Degree. Miss Tague studied at Oxford University.

Technsans Welcome Red Raiders

Approximately 50 to 70 were present for the Red Raiders' plan Sunday night.

The cheerleaders, members of the Saddle Tramps and band were in the group to cheer back.

The Saddle Tramps at Monday afternoon decided to pop rallies when the team from out-of-town trips.

"We would like to see the entire Tech student show their loyalty to the basketball team by coming to the game," said Tramp president Dub.

What we really think always care to say print.

LUBBOCK BOWLING CLUB
4020 Ave. Q. SH 4
Lubbock, Texas

"Let us offer you years experience as in Bowling in West"

Ben Brown
E. A. "Chris" Christ
Year-Round Conditioning

Arts and Crafts Exhibit Scheduled to End Jan. 30

The first annual Invitational Exhibition of Arts and Crafts sponsored by the Tech applied arts department will present art work by seven outstanding artists from Texas and neighboring states through Jan. 30.

The exhibit will be conducted in the Museum on campus. "Art and craft works that have been exhibited in national and international shows will be in the exhibit," Prof. Arne Randall, Tech

applied arts department head, said.

THREE OF THE artist-craftsmen whose work will be exhibited are Eric Gibberd, Paul Hatgil and Francis Stephen. "Some of Gibberd's paintings border on abstractions, some are more realistic interpretations," Randall said, "but all of his paintings are vibrant with color." Gibberd became a professional artist at the age of 54 after a successful business career.

FRANCIS STEPHEN will be exhibiting jewelry made from sterling, gold, ebony and stone; both hand wrought pieces and centrifugal cast. He taught at Pharr, Texas, High School until 1957 when he was appointed assistant professor of art at Phillips University.

"Paul P. Hatgil is one of the younger Texas artists who is doing outstanding work in ceramics," Randall said. He graduated from the Massachusetts School of Art in 1950 and received his M. A. degree from Columbia University in New York City in 1951.

HATGIL'S MOSAIC, "Juggler on Unicycle" won a \$25 prize at the ninth annual Texas exhibition in Dallas this fall.

"We are looking forward with pride to the many unusual and outstanding items of painting, jewelry, ceramics, weaving and leather-crafts which will be included in the exhibit, which will become an annual event," Randall said.

Rites for Miss Teague Held During Holidays

Last rites were held December 27 for Miss Gussie Lee Teague, associate professor of English at Texas Tech. Services were held in the Chapel of the Broadway Church of Christ and burial was in Roswell, New Mexico.

Miss Teague had been confined for a week prior to her death in St. Mary's Hospital. The cause of death was contributed to a liver disease.

Coming here in 1926, one year after Tech was opened, Miss Teague taught at Tech for some 31 years. In 1943 she was made associate professor of English.

Upon graduation from the University of Colorado, she obtained her M. A. Degree. At the University of Oklahoma she secured a B. A. Degree. Miss Teague also studied at Oxford University in London, England, and at the University of Texas.

Before coming to Tech, she taught at Louisiana State Normal College. She had held all offices in the Quarterly Club at Tech.

Rice Institute Receives SWC Trophy

Rice Institute received the Southwest Conference Sportsmanship Trophy at halftime of the Cotton Bowl game New Years Day to culminate the winter meeting of the SWC sportsmanship meeting in Dallas Dec. 30-Jan. 3.

During the regular meeting in the Statler-Hilton Hotel Dec. 31, Texas A&M expressed to the group that they would like to have the sportsmanship code rewritten to allow them to yell at the same time other schools did during timeouts in the games.

After a lengthy discussion and explanation of the A&M school spirit and traditions, the motion failed to pass.

Texas Tech, which in the past had been listed as a visiting school

at the sportsmanship meetings, was allowed to vote on questions brought before the meeting.

LIKE MUSIC?

Classes now starting on Steel-Spanish Guitar and Accordion. Instruments rented with Lessons.

DUNAGAN STUDIO OF MUSIC
Call PO 5-7955 For An Appointment



Draperies

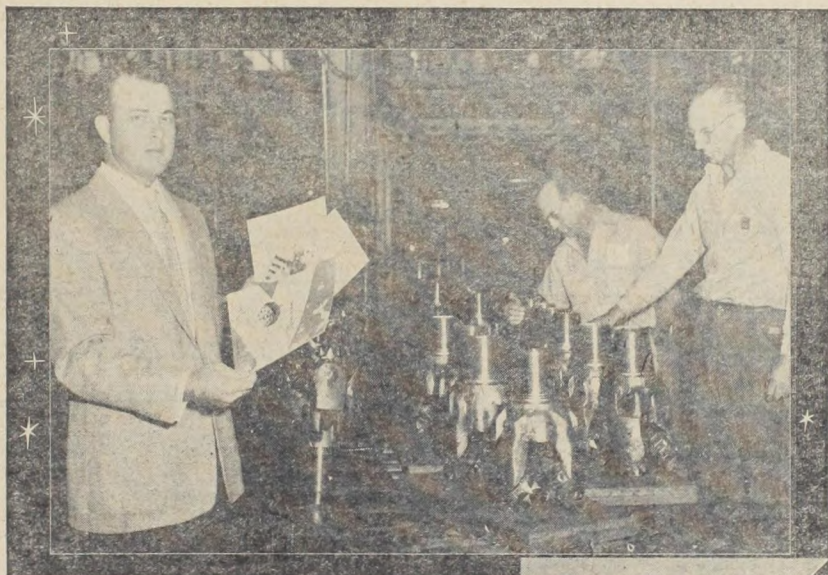
Margaret Trish, Decorator

PHONE SH 4-9900

RES. PHONE SW 9-6036

2701 - 26th Street

Lubbock, Texas



Techsans Welcome Red Raiders Home

Approximately 50 to 75 Techsans were present for the arrival of the Red Raiders' plane at 7:45 Sunday night.

The cheerleaders, members of the Saddle Tramps and a small band were in the group welcoming the team back.

The Saddle Tramps at a meeting Monday afternoon decided to have pep rallies when the team returns from out-of-town trips in the future.

"We would like to encourage the entire Tech student body to show their loyalty to the Raider basketball team by coming out," Tramp president Dub Heffington said.

What we really think, we don't always care to say — much less print.

This Reed Man will give you the Facts

about the challenging career opportunities in the Petroleum Equipment Industry!

Give this Reed Representative a few minutes of your time. You'll learn the vital role that Reed Roller Bit Company, major pioneer manufacturer of rotary oil well drilling tools, plays in the great petroleum industry. You'll get complete facts on the openings available in research, engineering, manufacturing, accounting, and sales which provide every opportunity for rapid advancement and professional growth.

Reed is known for its stability and record of achievements, but her sights are ever on new horizons. You will enjoy this progressive climate in a fast-moving, fascinating industry.

For Personal Interviews

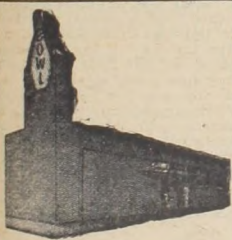
Mr. P. B. Cravey

Salary Placement Supervisor,

will be at your university on

January 8, 1958

to provide complete details to interested graduate engineers, business students, and accountants. Please make arrangements for the exact time of an interview through your placement office.



LUBBOCK BOWLING CLUB
4020 Ave. Q SH 4-5535
Lubbock, Texas

"Let us offer you our 18 years experience as pioneers in Bowling in West Texas."

Ben Brown
E. A. "Chris" Christenson

Year-Round Air Conditioning



REED ROLLER BIT COMPANY

HOUSTON 1, TEXAS

NEW YORK

LONDON

BUENOS AIRES

READOR

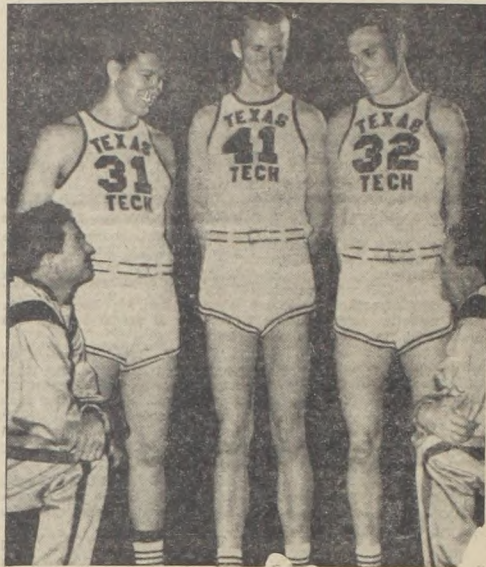
The Associated Press
Associated Collegiate Press

C. J. Wren
Bill Dean
Editor

Subscription — \$3.50 per

Dates, club meetings and, yes final exam dates belong on a desk calendar, not on your French cuffs — See our wide selection of Desk calendars and diaries.

TEXAS TECH COLLEGE
BOOKSTORE



HEAD COACH POLK ROBISON and Assistant Gene Gibson concentrate their attention on three cagers who have contributed greatly to the Raiders recent surge. In the picture are, left to right, Gibson, Wade Wolfe, Pat Noakes, Podd Hill and Robison.

...Raiders

throws. He is tied in conference scoring with Tech's Gerald Myers with 19. He also boasts an 18.5 average to lead in that department.

AT GUARDS THE FROGS will use Kenneth Brunson (6-3) Kenneth King (6-2), with help from Bobby Tyler (5-11) and Tommy Turner (5-11).

Tech, on the other hand, is rapidly making believers out of down state writers who picked them to finish dead last in the conference race.

Myers has led the attack. The little playmaker has a 16.7 average for the year. He is deadly at the free throw line, hitting 51 out of 59 thus far.

ASIDE FROM THIS his ball-handling has been superb in combining with center Podd Hill to guide the Raiders to a 8-2 mark and a 1-0 record in conference play.

Hill is the leading scorer with 17.3 but he has been off a little lately.

Forward Wade Wolfe owns a 10.3 average with guard Charlie Lynch right behind with 9.2.

Chuck Key with 6.7 and Gene Arrington with 5.5 alternate the other forward post.

However, lately sophomore center Pat Noakes (6-9) has been used a good deal. Against Rice Noakes did a fine job in rebounding and scored nine points.

THE FROGS will be favored on the basis of their earlier win. In that game the Raiders trailed most of the way, finally caught up and went ahead by three points but couldn't hold on and lost 71-69.

The game is expected to draw the largest crowd to ever witness a Raider home game which would be around 7,500.

Jimmie Wilson, business manager of athletics, said that reserved tickets for \$2 and general admission tickets for \$1.50 were still available.

SWC STANDINGS

Team	Season		Conf.	
	W	L	W	L
Tech	1	0	8	2
TCU	1	0	10	1
SMU	1	0	7	4
Arkansas	1	0	7	3
Rice	0	1	5	5
Texas	0	1	5	5
Texas A&M	0	1	3	7
Baylor	0	1	2	9

TONIGHT'S SCHEDULE

TCU at Tech
Texas at Texas A&M
SMU at Rice

Baseball Meeting Set..

Baseball Coach Beattie Feathers has issued a call for all baseball prospects to report to the lounge of West Hall Jan. 15 at 7 p.m. Organizational plans will be discussed.

HILLTOP BARBECUE PARTY HOUSE
FOR YOUR PARTY AND DANCING PLEASURE
CATERING TO LARGE AND SMALL GROUPS
1205 Oak Ph PO 2-9601
Just off Bldgwy.
Nite PO 3-9663

• TUXEDOS • RENT THEM FROM
Costume Studio
COSTUMES FOR ALL OCCASIONS
Wigs - Mustaches - Novelties
2422A-Bdwy. PO 3-2388

Sticklers!

WHAT IS A BIG METALS TYCOON?

DAVID ALEXANDER
N. CAROLINA STATE
Steel Wheel

WHAT IS A POLICEMEN'S BALL?

HENRY BURKHARDT, JR.
U. OF DETROIT
Cop Hop

WHAT IS A POMPOUS BULLY?

JAMES HIBBS
INDIANA STATE
Stuffy Toughie

WHAT IS PUPPY LOVE?

MARINA LA MADRID
U. OF WASHINGTON
Collie Folly

WHAT IS A MARCHING BAND THAT NEVER GETS A LUCKY BREAK?
(SEE PARAGRAPH BELOW)

MEMO TO MAESTROS: is your band dawdling instead of tootling? Is it full of feeble fifers and drooping drummers? Well, this musical slowdown may be traceable to lack of Luckies. Better give your band a break—and make it a Lucky one! A Lucky, you see, is a light smoke—the right smoke for everyone. It's all cigarette—all naturally light, wonderfully good-tasting tobacco. And Luckies' fine tobacco is toasted to taste even better. Now then, what's a marching band that never gets a Lucky break? Why, it's a Sore Corps! (Wasn't that cymbal?)

STUCK FOR DOUGH?
START STICKLING! MAKE \$25

We'll pay \$25 for every Stickler we print—and for hundreds more that never get used! So start Stickling—they're so easy you can think of dozens in seconds! Sticklers are simple riddles with two-word rhyming answers. Both words must have the same number of syllables. (Don't do drawings.) Send 'em all with your name, address, college and class to Happy-Joe-Lucky, Box 67A, Mount Vernon, N. Y.



WHAT'S A FRENCH BASKETBALL PLAYER?

MELVYN NITZY
U. OF CINCINNATI
Tall Gait

WHAT IS A WELL-DRESSED BOXER?

WARREN BODOW
SYRACUSE
Dapper Scrapper

WHAT IS A CLAIM JUMPER?

LOIS REICHARD
KUTZTOWN STATE
Teacher's Coll.
Acre Taker

LIGHT UP A *light* SMOKE - LIGHT UP A LUCKY!

Outlook
by BILL DEAN
THE LARGEST CRO...
to witness a Raider home...
game should be pl...
night when Polk Robison...
beat the Texas Christ...
Frogs.
If this game doesn't...
please I don't know wh...
like.
TCU was the villain in...
er cause at the SWC Te...
to Houston, handing Tec...
loss, 71-69, in second rou...
THE RAIDERS SHO...
blood in their eyes tonig...
Another drawing fac...
extreme importance of...
test. Both clubs opened...
ference race with wins l...
day. But the Raider wi...
the expense of the pre...
vocate, Rice, 66-63 in H...
TCU stopped a weaker...
A&M team 71-48 at Fort...
A WIN TONIGHT fo...
a most.
THE RAIDERS COME...
captured the fancy of th...
ty of fans and writers...
tournament. The gener...
before the meet was t...
had a good team, but w...
ly out of their class as...
likes of SMU, Rice, TCU...
Right before action bet...
Raider-SMU tilt one Pon...
asked, "Have you-all be...
not be replied, "Oh well...
He wasn't heard again t...
ten minutes deep in th...
half.
During the TCU-Raid...
someone observed th...
must feel like they're p...
home with all this sup...
ONE HOUSTON PA...
scored Gerald Myers a...
times powered huddle-be...
Robison also came i...
good deal of comment...
server, commenting on...
series of Arkansas Co...
Rose the first night, ren...
another, "Boy he sure...
excited doesn't he?" To...
the reply, "You haven't...
thing yet—wait till you...
Texas Tech coach."
It was easy to see th...
rise at the meet had th...
respect for the Raider...
...
THE BIGGEST SURP...
sides Tech, was Arkan...
Hogs look like, and c...
play like a bunch of ver...
zines establishing a beac...
They have good height...
really rugged under th...
Ha...
We...
Thro...
BO

Outlook

by BILL DEAN

THE LARGEST CROWD ever to witness a Raider home basketball game should be present tonight when Polk Robisons cagers host the Texas Christian Horned Frogs.

If this game doesn't pack the place I don't know what it will take.

TCU was the villain in the Raider cause at the SWC Tournament in Houston, handing Tech its first loss, 71-69, in second round action.

THE RAIDERS SHOULD have blood in their eyes tonight.

Another drawing factor is the extreme importance of this contest. Both clubs opened the conference race with wins last Saturday. But the Raider win came at the expense of the pre-season favorite, Rice, 66-63 in Houston.

TCU stopped a weaker Texas A & M team 71-48 at Fort Worth.

A WIN TONIGHT for Tech is a must.

THE RAIDERS COMPLETELY captured the fancy of the majority of fans and writers at the tournament. The general opinion before the meet was that Tech had a good team, but were stricken out of their class against the likes of SMU, Rice, TCU etc.

Right before action began in the Raider-SMU tilt one Pony faithful asked, "Have you-all been beaten yet?" When informed that we had not he replied, "Oh well, too bad." He wasn't heard again till almost ten minutes deep in the second half.

During the TCU-Raider struggle someone observed that "Tech must feel like they're playing at home with all this support."

ONE HOUSTON PAPER described Gerald Myers as an "atomic powered bumble-bee guard."

Robison also came in for a good deal of comment. One observer, commenting on the wild antics of Arkansas Coach Glen Rose the first night, remarked to another, "Boy he sure does get excited doesn't he?" To this came the reply, "You haven't seen anything yet — wait till you see that Texas Tech coach."

It was easy to see that everyone at the meet had the deepest respect for the Raider mentor.

THE BIGGEST SURPRISE, besides Tech, was Arkansas. The Hogs look like, and sometimes play like, a bunch of veteran marines establishing a beachhead.

They have good height and are really rugged under the boards.

Unbeaten West Virginia Still On Top Of College Cagers

by BEN OLAN
The Associated Press

Unbeaten West Virginia hauled in 55 per cent of the first place votes to increase its lead in the weekly Associated Press basketball poll. Mississippi State, Oklahoma State and Bradley also made notable gains in the national rankings.

After an 11-day layoff, West Virginia started off the new year on the right foot by clobbering Canisius and Washington and Lee last week. These successes

Fayetteville will be the downfall of more than one team this year.

THE BIGGEST DISAPPOINTMENT was the Rice Owls. They seem to have everything it takes to be a real powerhouse.

But somewhere something is missing. I suspect it is a lack of teamwork. It couldn't be lack of material.

Coach Don Suman has the two tallest lads in the conference in center Temple Tucker (6-10) and forward Tom Robitaille (6-9). Adding to this are forwards W. A. Preston (6-6), and Gary Griffin (6-5).

AT GUARDS THEY have tremendous speed in Dale Ball (6-0), Gerry Thomas (6-2), Bob Higgins (5-11) and E. Jay McIlvain (6-3).

In fact, the Owls have several boys on their bench that several conference coaches would love to have in their starting line-ups.

Rice is a good solid team right now, but they certainly are not at all what many thought they would be.

gave the Mountaineers a 10-0 record.

FIFTY-SEVEN of the 104 participating sportswriters and broadcasters considered the Mountaineers the best team in the country. On the basis of 10 points for first place, 9 for second etc. The Southern Conference leaders piled up 894 points. Kansas remained in second place with 735 points and North Carolina moved up a notch to third with 720.

Kansas, which trailed West Virginia by 52 points a week ago, suffered its first loss of the year—a 52-50 overtime thriller to Oklahoma State. The defeat came with Wilt Chamberlain, the Jayhawks' star, on the sidelines with a groin injury.

THE UPSET DIMMED the prestige of the Jayhawks and enabled Oklahoma State to advance six places to the No. 8 spot.

Oklahoma State and Bradley were the new clubs in the top 10. They replaced Maryland, which was beaten by Clemson and Michigan State, loser to both Washington and Ohio State.

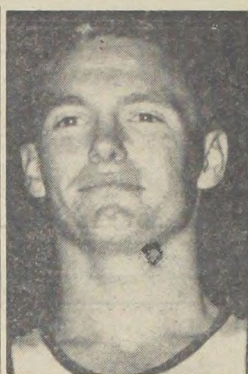
North Carolina and Kansas State traded positions. North Carolina walloped Wake Forest 71-45 while Kansas State lost to Kansas

after nine straight victories. The leaders with points on a 10-9-8-7-6-5-4-3-2-1 basis first place votes and won lost records through Saturday in parentheses:

1. West Virginia 57 (10-0)	894
2. Kansas 12 (10-1)	735
3. North Carolina 10 (9-1)	720
4. Kansas State 1 (9-1)	466
5. Mississippi State 10 (10-0)	454
6. San Francisco 3 (10-1)	441
7. Cincinnati 3 (8-1)	355
8. Oklahoma State 2 (8-1)	245
9. Kentucky (8-3)	207
10. Bradley 2 (6-1)	191

SECOND TEN

11. Maryland (7-2)	147
12. Temple (8-2)	139
13. North Carolina State (9-2)	130
14. Michigan State (7-2)	122
15. Oregon State 1 (10-1)	103
16. St. John's Bkn. (7-0)	87
17. Illinois (7-1)	70
18. Memphis State (4-3)	59
19. Utah (9-2)	53
20. Wichita (9-1)	46
21. Seattle (4-4)	46



ROBERT ECHOLS, Raider guard has been out of action for the past week due to a cut received on his hand and arm in an accident while the team was in Houston for the SWC Tournament. As a result he was unable to go back to Houston last Saturday for the Raiders 66-63 upset of Rice. Echols, a sophomore from Amarillo, is expected to be back in good shape soon.

Irish Comeback Is Rated No. 1

Notre Dame officials were elated, but not surprised, that the Fighting Irish football team was voted as making the No. 1 comeback of 1957.

Coach Terry Brennan's Irish erased some of the memories of the 2-8 season in 1956-worst in the school's history-with a 7-3 showing last fall.

MID-TERM SALE SAVE NOW

PANTS

	Was	Now
DICKIE POLISHED COTTON Tan and Blk.	5.95	2.95
All Wool in Ivy and Regular	8.95	7.20
	10.95	8.80
	12.95	10.40
	15.00	12.95
	17.95	14.40
	19.95	15.95

Ivy League Corduroys 20% to 25% OFF

SHIRTS

Up to 40% OFF

4.00 value	NOW 2.85
5.00 value	NOW 3.85
6.00 value	NOW 4.85

FULL LINED QUILTED SUBURBANS WITH ZIP ON HOOD Grey and Charcoal	24.95
WOOL AND CASHMERE SUBDRBAN (lined)	19.95
SUEDE JACKETS (Dry Cleanable) Blue, Charcoal, Tan, Gray	19.95

SPORT COATS

BROKEN SIZES IN ALL IMPORTED WOOLS

32.50	NOW 24.95
29.50 Value	NOW 22.50
22.95 Value	NOW 16.95

Save Now on Quality Merchandise

Priced to Sell

BROWN'S Varsity Shop

1205 COLLEGE

Q. C. BOWL

Lubbock's Largest Bowling Alley



and Keep Healthy

SPECIAL STUDENT RATES 30c per line

for reservations 7301 College SH 4-8451

Happy New Year!

We invite You to
Dine With Us
Throughout the entire
Year

— We Strive to Please —

BOB'S CAFE

2401 MAIN

...Raiders

is tied in conference Tech's Gerald Myers also boasts an 18.5 lead in that depart-

DS THE FROGS will Brunson (6-3) Ken- (6-2), with help from (5-11) and Tommy

the other hand, is ing believers out of writers who picked ish dead last in the

led the attack. The ker has a 16.7 average. He is deadly at the me, hitting 51 out of

OM THIS his ball- been superb in com- center Podd Hill to Raiders to a 8-2 mark record in conference

leading scorer with has been off a little

Wade Wolfe owns a with guard Charlie behind with 9.2 with 6.7 and Gene with 5.5 alternate the d post.

ately sophomore cen- (6-9) has been deal. Against Rice line job in rebound- nine points.

is will be favored on their earlier win. The Raiders trailed way, finally caught ahead by three ouldn't hold on and

is expected to draw crowd to ever witness the game which would 500.

lson, business mana- geries, said that re- sults for \$2 and general tickets for \$1.50 were

STANDINGS

Season	W	L	Conf.
0	1	0	8 2
1	0	10	1
1	0	7 4	
1	0	7 3	
0	1	5 5	
0	1	5 5	
0	1	3 7	
0	1	2 9	

MEETING SCHEDULE

as A&M

Meeting Set.

Coach Beattie Pres- sured a call for all pects to report to the est Hall Jan. 15 at, nizational plans will

OP BARBECUE TY HOUSE

OUR PARTY AND ING PLEASURE

ING TO LARGE SMALL GROUPS Ph PO 2-9601

t off Brady, PO 3-9663

EXEDOS • THEM FROM

WINE Radio LIVES FOR ALL OCCASIONS Postcards - Novelties PO 3-2388

JANUARY Clearance

Special Store Hours - 7 AM to 7 PM Mon and Tues Only

SUITS

55.00 Values	35.00
60.00 Values	37.50
65.00 Values	42.50

SPORT COATS

29.95 Values	18.95
32.50 Values	20.95
35.00 Values	21.95
37.50 Values	23.95
39.95 Values	24.95
45.00 Values	27.95

CORDUROY SPORT COATS

19.95 Values	12.95
24.95 Values	15.95

SLACKS
Regular Models

13.95 Values	9.80
14.95 Values	10.50
15.95 Values	11.20
16.95 Values	11.90
17.95 Values	12.60
18.95 Values	13.30

Ivy Models
POLISHED COTTONS

5.95 Values	3.95
6.95 Values	4.95

Corduroy Ivy Models
BROKEN SIZES

8.95 Values	5.95
6.95 Values	2.95

JACKETS
ONE GROUP
Assorted Patterns

12.95 Values	7.80
16.95 Values	10.20
19.95 Values	12.00
21.95 Values	13.20

Suedes
ONE GROUP

24.95 Values	14.95
29.95 Values	17.95

SWEATERS

7.95 Values	5.60
8.95 Values	6.30
9.95 Values	7.00
10.95 Values	7.70
11.95 Values	8.40

CAR COATS

17.95 Values	12.00
19.95 Values	13.00
24.95 Values	16.00
29.95 Values	19.00
32.95 Values	21.00

SHOES
ONE GROUP

Values to 14.95	7.95
<i>ONE GROUP</i>	
13.95 Values	9.80
14.95 Values	10.50
15.95 Values	11.20
16.95 Values	11.90

SPORT COATS

4.95 Values	3.00
5.95 Values	3.60
6.95 Values	4.20
7.95 Values	4.80
8.95 Values	5.40
9.95 Values	6.00
10.95 Values	6.00

SOCKS

1.00 Values	.59
1.25 Values	.75
1.50 Values	.89
1.90 Values	1.19
2.50 Values	1.49
2.95 Values	1.79

TIES
ONE GROUP

Values to 2.50 2 for 1.00

ONE GROUP

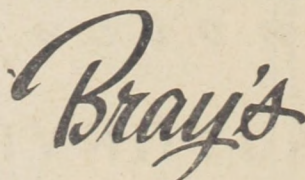
2.50 Values	1.25
-------------	------

JEWELRY
One Group 1/2 Price

GIFT ITEMS
SHAVING KITS, TIE RACKS
CLOTHES BRUSHES, JEWELRY
BOXES, ETC.
One Group 40% OFF

USE OUR FREE PARKING LOT EAST OF STORE

SMALL CHARGE
FOR
ALTERATIONS



ALL SALES
FINAL

2422 Brdwy.

Campus Toggery

PO2-3501