

Cousins get nine years for assault

By RICK WHITE
Managing Editor

Two cousins who savagely beat and burned Earth man in January were sentenced to nine years in prison Monday in the 287th Judicial District Court in Muleshoe.

Joe Rincon, 21, of Earth and David Rincon, Jr., 24, of Muleshoe pleaded guilty to aggravated assault Nov. 10 in exchange for dropping an additional charge of attempted murder. The maximum sentence for aggravated assault is 10 years.

The cousins were accused of beating of the 35-year-old Francisco DeLeon Samarron and then setting him on fire Jan. 22 according to investigators.

"We're every satisfied with what we got in this particular case," Bailey County Attorney Paul Crosnoe said Thursday.

Crosnoe said that one of the reasons his department accepted the plea bargain is because neither of the Rincons had been in trouble before, and were eligible for probation even if they got an attempted murder conviction.

"We felt confident in our ability to a conviction in this case," Crosnoe said. "But the thing you never know is about sentencing. We didn't believe they would be put on probation, but you never know."

The three apparently had been drinking for an extended period before the incident.

Samarron was found in the sand hills along County Road 1090, known locally as Rabbit Road, southwest of Muleshoe, in near freezing

Continued on page 3



Journal photo by Rick White

All couped up

Laborer Joe Sherrill of Clovis (front) reaches down for a piece of siding Thursday afternoon while Johnny Vazquez looks on. VCI of Amarillo is building an addition to the weight room at Muleshoe High School. Construction is expected to be completed by sometime next week.

Report cites need for more diversity

By MARTHA TOLES FROST
City Editor

A peer review team from the Texas Education Agency visited Muleshoe High School last week to see if it could determine why economically disadvantaged students are falling behind in math scores and why the dropout rate at MHS is high.

"The team cannot change our accreditation status," said Bill Moore, Superintendent of Muleshoe Independent School District. "But they can recommend ways for us to improve."

Two school superintendents, a principal, a teacher and two representatives of the Texas Education Agency made up the team, which talked to teachers, students, parents, interested community members, staff, school board members and the superintendent.

They also read campus self-evaluations and made on-site visits.

The TEA team praised the "positive climate" at Muleshoe High School. Students were described as "courteous, well-behaved and orderly."

The team's observation revealed positive relationships between teachers and students, and found that teachers cared about the academic and per-

sonal welfares of their students and were "highly motivated to provide the best instructional programs for their students."

The review team noted that teachers demonstrated respect for their students as well as for the administration.

"The report emphasizes to me that we are already—in nearly every case—starting to do what they are recommending," Moore said.

"Homework Helpline" is expected to decrease the dropout rate by supporting students and helping them experience successes in the classroom and avoid failing grades.

"Zero Period," a tutorial period designed to improve the dropout rate by providing personal attention for students with academic problems, is deemed a success.

Teacher mentoring and peer tutoring programs are expected to improve student performance in the area of mathematics.

And peer tutoring is expected to bolster the self-esteem of the "teaching" students as well as helping the "tutored" students to perform better in class.

But the report suggested that staff development could be

Continued on page 10

Muleshoe bid includes \$5.75 million incentive package

By MARTHA TOLES FROST
City Editor

A proposal containing an estimated \$5,750,000 in incentives and savings was approved Friday to be presented by the Muleshoe Area Industrial Foundation (MAIF) to Lubbock Plains Co-op Mill.

At a joint meeting of the Muleshoe Economic Development Corporation (EDC) and the Muleshoe City Council, both entities voted unani-

mously to approve the Muleshoe proposal.

The document will be considered at the company's board meeting on Monday, with a decision scheduled to be announced by January.

The package includes a donation of a 657 acre tract of land, a cash contribution of \$1million, a tax abatement package from Bailey County and Muleshoe Area Hospital District, as well as other incen-

tives, such as a 10-year, non-annexation agreement from the City of Muleshoe.

MAIF President David Marricle, who was preparing to take Muleshoe's proposal to Lubbock Friday, said he made the initial phone call concerning the economic development opportunity in late October.

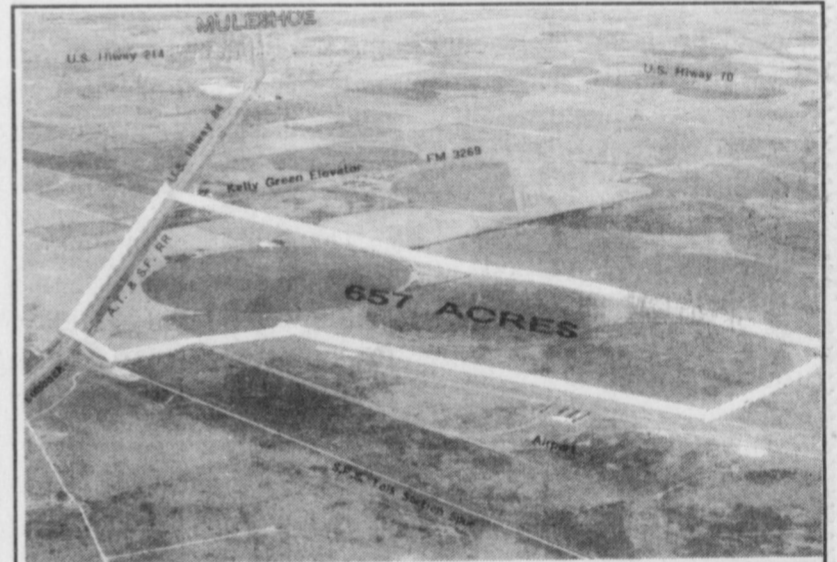
About the eleventh hour proposal, Marricle said, "We didn't want to tip our hand. Waiting helped us gauge where

we were."

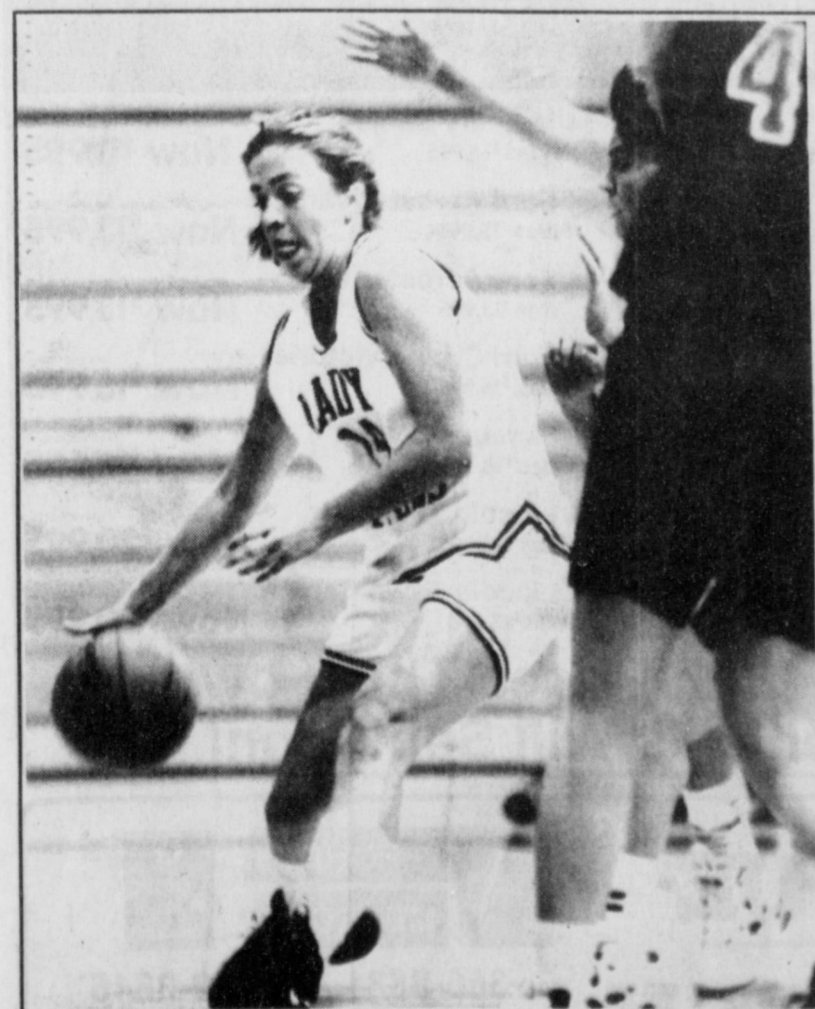
"When the people approved the economic development sales tax, this is the kind of thing they wanted us to do," said Jay Messenger of the EDC. "It's an established business—not risky. The company has built up good quality products."

"We're not willing to sit here and do nothing. The community has shown the oil mill that

Continued on page 2



Proposed oil mill site near the Muleshoe Airport



Turning the corner

Muleshoe senior guard Allyson Field drives past a Tascosa defender Thursday in the first round of the Canyon Classic.

Parker retiring from Three Way

By MARTHA TOLES FROST
City Editor

MAPLE — Don Parker—the primary force behind keeping the Three Way School open during an attempt to consolidate small schools—is retiring in December after 14 years as superintendent of the school.

When legislators from rich districts mentioned the word "consolidation" to Parker before the passage of Senate Bill 1, the Three Way superintendent went to bat for small school schools, which he considers a valuable asset to the State of Texas.

"It is just as easy to send Lubbock students to Three Way as it would be to send Three Way students to Lubbock," Parker told legislators in no uncertain terms. "And we have an excellent facility for them. You (urban districts) will have to build. We have some

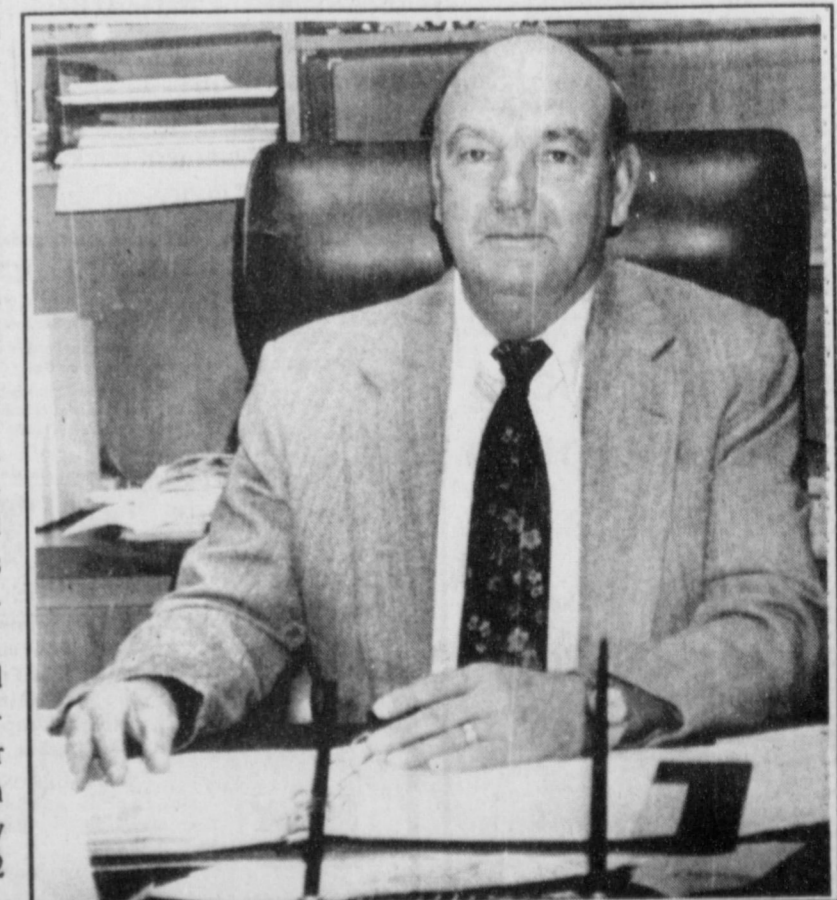
half-full classrooms, and transfer students are welcome."

"The children at Three Way will probably never know the love and compassion that has been bestowed upon them, because most of it has been done behind the scenes," said Three Way school board member Terry Pollard.

Parker, 55, worked closely with Speaker of the House, Rep. Pete Laney of Hale Center and Senator John Montford of Lubbock, who were assets in getting Three Way recognized and keeping it open.

Senate Bill 1, which passed in May, exempted school districts covering an area larger than 300 square miles from being consolidated. Three Way School District consists of 352 square miles.

Of the school's future, Continued on page 10



Journal photo by Martha Toles Frost

Three Way Superintendent Don Parker is retiring.

AROUND MULESHOE

Alzheimer's Support Group meets Thursday, Dec. 7

The Muleshoe Area Alzheimer's Support Group will meet Thursday, Dec. 7, at 7 p.m. in the parlor of the First United Methodist Church, 507 West Second Street.

Greg Joiner will be present to lead the session.

Senior Class parents to host dances after home games

The Muleshoe High School senior class parents will sponsor a dance every Friday night following varsity home games.

Dances will be held from 10 p.m. to 12:30 a.m. at the Legion Hall. Admission will be \$4 per person. Music will be provided by Louie Pacheco.

New voter registration cards mailed last week

The Bailey County Tax Assessor's office reports new voter registration cards have been mailed.

Those failing to receive the new cards are asked to come by the Assessor's office in the Bailey County Courthouse. For information, contact Kathleen Hayes in the Assessor's office.

Computer courses for area farmers set at A&M Center

HALFWAY — The Texas Agricultural Extension Service will offer three computer short courses for area farmers during the month of December.

The courses will be held at the Texas A&M Computer Training Center at Halfway, 14 miles west of Plainview on U.S. 70. All courses are hands-on, one-day sessions starting at 9 a.m. and concluding at 4 p.m.

Courses include:

- Help for current and potential FmHA borrowers on Dec. 5. Registration fee of \$40 includes a meal, course handouts and a copy of the spreadsheet template used in the course.
- BUDPRO will be offered on Dec. 7. The course is designed to assist farmers and ranchers in prepared cost of production estimates.

• Quicken will be offered to help farmers and ranchers develop income and expense reports. The date has not yet been set.

For more information, contact the local county agent or Jackie Smith at (806) 746-6101.

Muleshoe native to receive BS degree at SWOSU

Tricia Underwood of Muleshoe is one of approximately 191 students at Southwestern Oklahoma State University who will complete requirements for degrees in the 1996 Fall semester.

Underwood will receive a bachelor of science degree in pharmacy.

Latham inducted into WTAM Alpha Chi honor society

Galin L. Latham, a senior pre-dentistry major from Muleshoe, was inducted into the West Texas A&M University Zeta Chapter of the Alpha Chi Honor Society.

Membership of Alpha Chi is by invitation only and limited to juniors and seniors with an overall grade point average of 3.5 or higher and a ranking in the top 10 percent of their class.

MHS senior parents to offer gift wrapping service Dec. 16

The Muleshoe High School senior class parents will offer a gift wrapping service Saturday, Dec. 16, at the office of Mark Morton Insurance between the hours of 9 a.m. and 9 p.m.

Proceeds from the service will go to Project Graduation.

United Methodist youth to provide live nativity scene

The Muleshoe First United Methodist Church youth will provide a live nativity scene for the community on the church lawn Sunday, Dec. 10, beginning at 6:30 p.m.

The performance will continue through 7:45 p.m., with a 15-minute intermission from 7-7:15. Families are invited to drive by and enjoy the reenactment of the birth of Jesus Christ.

Minding Your Own Business

Words of Wisdom XIV

Often in this column we've devoted some portion of the quotes we use to subjects related to success. Equally often we've used quotes related to success in business.

Most of your regular readers know how I feel about the subject of business. I believe that well-managed businesses are the backbone of this country, and are mostly responsible for our robust economy. Therefore, we could say that business and success are related. Here are some quotes on business success.

Business and success

• Big companies are small companies that have succeeded. - Robert Townsend

• Capitalism and communism stand at opposite poles. Their essential difference is this: The communist, seeing the rich man and his fine home, says: "No man should have so much." The capitalist, seeing the same thing, says: "All men should have so much." - Phelps Adams

• Try not to become a man of success but rather try to become a man of value. - Albert Einstein

• The business of America is business. - Calvin Coolidge

• Remember that just the moment you say, "I give up," someone else seeing the same situation is saying, "My, what a great opportunity." - H. Jackson Brown

• Business underlies everything in our national life, including our spiritual life. Witness the fact that in the Lord's Prayer, the first petition is for daily bread. No one can worship God or love his neighbor

on an empty stomach. - Woodrow Wilson

• Business is never so healthy as when, like a chicken, it must do a certain amount of scratching for what it gets. - Henry Ford

• The value decade is on us. If you can't sell a top-quality product at the world's lowest price, you're going to be out of the game. - Jack Welch

• Success is never final. - Winston Churchill

• The privilege of a lifetime

Continued on page 3

ROLEX
Oyster Perpetual Lady Datejust
Oyster Perpetual Day-Date

Celebrating 54 YEARS
Holmberg Jewelry
1941 1995
Clovis
1908 N. Prince • 762-9376

Bid

Continued from page 1

we are willing to be pro-active in these things—to go after the longshot."

Mayor Robert Montgomery expressed delight that "a proposal as unusual as this can come out of a small community—with virtually no negative response."

"We are ready to make a deal. This package of land, cash and other incentives should convince you that the Plains Co-op Mill is wanted in Bailey County," the report states.

The Site

The package includes 657 acres of land valued at \$410,000, along approximately one mile of main line rail frontage along U.S. Highway 84.

The site has paved access to U.S. 84 via FM 3269 and the entrance to the Muleshoe Municipal Airport.

The property is currently under option to Muleshoe Area

Industrial Foundation (MAIF) and is basically flat, with no identified flood prone areas.

Electric service is provided to the tract by Bailey County Electric Cooperative, with Energas providing natural gas service to the property.

Telecommunications are provided to the site by Five Area Telephone Cooperative, and the tract has twelve irrigation wells, nine of which are interconnected by underground pipe.

The Cash

The Muleshoe Area Industrial Foundation will offer the cotton seed oil mill \$1 million for infrastructure and other capital improvements at the proposed site.

MAIF has arranged a \$1 million grant from the Muleshoe Economic Development Corporation—with \$250,000 coming from economic development sales tax and \$750,000 in matching loan commitments of \$375,000 each from Muleshoe State Bank and First Bank of Muleshoe.

Tax Abatements

The Muleshoe proposal offers a tax abatement package from Bailey County and Mule-

shoe Area Hospital District, and the site will be designated as a reinvestment zone, with an enterprise zone designation to be sought from the State of Texas.

Bailey County Commissioners Court has agreed to grant tax abatement to the fullest extent possible within County policy, with the potential value of the abatement over seven years reaching \$887,460.

The Muleshoe Area Hospital District has agreed to follow the lead of the County Commission in tax abatement, with a potential seven-year value of \$525,000.

Other Incentives

Miscellaneous other valuable assets, include:

• A 10-year non-annexation agreement, valued at \$1,393,000, with the City of Muleshoe;

• Application for a Texas Capital Fund Grant of \$500,000 for additional infrastructure improvements, with a possible principal and interest savings of \$800,000 and;

• Application for a \$400,000 Rural Utility Services zero interest loan, with possible interest savings of \$250,000.

COPY DEADLINE

Copy deadlines for society news: wedding, anniversary, engagement and birthday announcements are 5:00 p.m. on Monday & Wednesday for the Thursday and Sunday editions.

USED CAR BLOWOUT



V6 Engine, Automatic Transmission, Air Conditioning, Power Windows, Power Door Locks, Power Mirrors, Am/Fm Cassette, Aluminum Wheels, Factory Tinted Glass, Tilt Steering Wheel, Cruise Control, Rear Window Defroster

1989 Mercury Sable LS
Only \$119 Month

This Is Only A Partial List Of The Huge Selection Of Quality Trade-Ins & Program Cars!

89 Oldsmobile 88 Was \$5,995 Now \$3,995	94 Mercury Sable Was \$14,995 Now \$11,995
92 Ford Ranger Was \$8,995 Now \$6,995	94 Ford Aerostar Van Was \$15,995 Now \$13,995
95 Ford Escort Was \$10,995 Now \$8,995	94 Ford Aerostar Van Was \$15,995 Now \$13,995
92 Dodge Caravan Was \$12,995 Now \$9,995	94 Ford Crown Victoria Was \$16,995 Now \$13,995
93 Ford Thunderbird Was \$12,995 Now \$9,995	95 Mercury Cougar Was \$18,995 Now \$15,995
94 Ford Taurus Was \$12,995 Now \$10,995	94 Lincoln Town Car Was \$23,995 Now \$20,995
90 Chevrolet Suburban Was \$14,995 Now \$11,995	94 Lincoln Town Car Was \$23,995 Now \$20,995

Hurry In - With Prices This Low, These Vehicles Will Sell Soon!

TEAGUE STREBECK
The very best prices and service anywhere... We personally guarantee it!

FORD MERCURY
(505) 356-8581 (505) 762-3845
1115 North Chicago Portales, NM
(On the first curve into Portales)



Send a friend a subscription to the Muleshoe Journal this Christmas!

Call 272-4536

Bailey County Journal USPS 040-200
Established March 31, 1963. Published by Triple S Publishing, Inc. Every Sunday at 304 W. Second, Box 449, Muleshoe, TX 79347.
Second Class Postage paid at Muleshoe, TX.
POSTMASTER: Send address changes to the Bailey County Journal, P.O. Box 449, Muleshoe, TX 79347.
We are qualified members of:
Panhandle Press Association, National Newspaper Association, West Texas Press Association and Texas Press Association

WEST TEXAS PRESS ASSOCIATION
PPA
Panhandle Press Association

MEMBER 1995
TA
TEXAS PRESS ASSOCIATION

Scot Stinnett, Publisher
Lisa Stinnett, Vice-President/Comptroller
Rick White, Editor
Holly Millaap, Classifieds
Pat Durben, Advertising

© 1990
SUBSCRIPTIONS: Muleshoe Journal and Bailey County Journal By Carrier Yearly - \$15.00
Bailey and surrounding counties: by mail - \$16.75
Elsewhere - \$18.50
Advertising Rate Cards on Application

Advertisers should check their ad the first day of insertion. The Journals will not be liable for failure to publish an ad or for a typographical error or errors in publications except to the extent of the cost of the ad for the first day of insertion. Adjustment for errors will be limited to the cost of that portion of the ad where the error occurred.

TAAS % Passing Summary of grades 3,8 & 10			
	State	Region	MISD
Reading			
1995	78.4%	79.6%	77.8%
1994	76.5%	76.5%	70.2%
Writing			
1995	82.0%	83.7%	90.7%
1994	79.0%	80.2%	79.6%
Math			
1995	65.9%	69.2%	67.7%
1994	60.5%	61.4%	55.7%
All Tests			
1995	60.7%	63.8%	62.4%
1994	55.6%	56.6%	51.2%

MISD Board Notes

The Board of Trustees began Monday night's meeting with a public hearing on the district's Academic Excellence Indicator System (AEIS) report, which was approved.

In reviewing the report, Superintendent Bill Moore drew the attention of the Trustees to some of the district-wide statistics concerning last year's TAAS scores.

For the first time this year, the AEIS report includes TAAS scoring information at a district-wide level. Those scores indicate that MISD students had an overall gain in test scores.

The Trustees heard and accepted a report on the district's 1994-95 financial records by Randy Field, auditor for the district's financial records.

Other business items included approval of the district's Health Advisory Committee

and the approval of the legal and local policies concerning the district's investments.

Following the business portion of the meeting, the Trustees heard reports from the Board president and the administrators present at the meeting.

Those reports varied from a review of the agenda for the TSII visit, to the progress of construction on the weight room and tennis courts, to upcoming staff development plans.

The Trustees ended their meeting with a closed session after which they accepted the resignation of Randy Adair as Athletic Director and Head Football coach effective at the end of the school year.

The next meeting of the Board will be held on Dec. 4. The meeting adjourned at 10:11 p.m.

Christmas Card in full swing

Years ago, Volunteer Plus figured out a way to deliver a giant Christmas card to the whole community and spread joy to the Muleshoe Area Health Center.

It's called the Christmas Card project, and relies on the kindness of others to provide the Health Care Center with gifts like a big screen television, carpeting and new furniture.

Volunteer Plus is a non-profit auxiliary organization of the Health Care Center.

The idea behind the project is that instead of people sending Christmas cards locally, they were asked to donate the money to organization. In turn, the organization "sends" one giant Christmas card in the form of a full-page ad in the local paper just before Christmas. The ad contains all individuals and groups that make donations to the project.

Donations can be mailed to the Christmas Card project, Box 202, Muleshoe, Texas, 79347-202, or be left with Fern Warren at the 1st Bank; Mary Moore at the Muleshoe State Bank; or organizers Lona Embry of Lazbuddie and Joyeline Costen of Lariat.



Spreading Christmas cheer

Volunteer Plus organizers Lona Embry (left) and Joyeline Costen raise money for the Muleshoe Area Health Center every year through the Christmas Card project.

Embry wins Power Points grid contest

Muleshoe's Kyle Embry flirted with a \$1,000 statewide prize in the weekly Muleshoe Journal Power Points football contest for games of Nov. 23-27.

Embry totalled 115 points for the week to win the local contest easily. His total was just three points short of the statewide winner, Loraine Coussons of Nacogdoches.

Coussons, a 70-year-old grandmother, had 118 points. She got her insight from a family that "loves football" and three sons who played high school football.

As the local winner, Embry collects \$10 and a gift certificate from Leal's Restaurant.

Second in the local contest went to the tie-breaker, with Donnie McDonald and Wilma Davis, both of Muleshoe, deadlocked at 102 points each. But McDonald's 36-point guess in the Cowboy-Chief game was right on the nose, giving him second place money of \$7.50.

Davis, whose 38-point prediction was just two points off, was third and won \$5.

Honorable mention for the week went to Raymond Villalobos of Muleshoe with 100 points.

Commissioners sweeten mill bid

By MARTHA TOLES FROST
City Editor

Bailey County Commissioners Monday considered a Muleshoe Area Industrial Foundation request to offer tax abatement to Plains Co-op Oil Mill, if Bailey County is chosen as the new plant site.

The County agreed to offer tax abatement incentives, to designate the site as a reinvestment zone and to apply for an enterprise zone designation.

"It will be a super good deal, no doubt about it, if we get it,"

Commissioner Benny Claunch said.

"The payroll will grow bigger than 30 employees and it will get on the tax roll in a matter of time. I'm behind it 100 percent."

Commissioners also:

- Appointed Dillman Elementary school nurse Cindi Pace to the Bailey County Child Welfare Board,
- Authorized First Bank of Muleshoe to release securities pledged to Bailey County and

replace them with securities of equal or greater value,

- Declined to sign an agreement with Liberty Marketing Company endorsing laminated county maps,
- Discussed the Department of Transportation meeting on Dec. 8, concerning State Highway 214, and

- Authorized the County Judge to advertise for bids on general liability, automobile liability and automobile physical damages coverages.

Minding

Continued from page 2

is being who you are, and doing what you enjoy. - unknown

• A wise man will make more opportunities than he finds. - Francis Bacon

• If you can dream it, you can do it. Always remember that this whole thing was started by a mouse. - Walt Disney

• Things do no happen; they are made to happen. - John F. Kennedy

• A corporation - or any business for that matter - must

Cousins

Continued from page 1

temperatures. A passerby reported someone carrying a man over their shoulder and another with what looked like a shovel.

Samarron was beaten with an unknown weapon and suffered severe head injuries and a broken shoulder.

The Bailey County Sheriff's apprehended the suspects within 30 minutes after the two were spotted in the sand hills.

first do well before it can do good. - Richard C. Gerstenberg

• Unless the cash register rings, the factory whistle can't blow. Nothing happens in our economy until something is sold. - unknown

• Business more than any other occupation is a continual dealing with the future; it is a continual calculation, an instinctive exercise in foresight.

- Henry R. Luce

• It is not the employer who pays the wages. Employers only handle the money. It is the customer who pays the wages. - Henry Ford

• Work banishes those three great evils: boredom, vice, and poverty. - Voltaire

• A minute's success pays the failure of years. - Robert Browning

For your shopping convenience, in addition to our regular hours, Tiffin II will be open:
 Mon., Dec. 4 until 9 p.m. (OPEN HOUSE)
 Tues., Dec. 12 until 8 pm, Wed., Dec. 13 until 8 pm
 Thurs., Dec. 14 until 8 pm, Tues., Dec. 19 until 8 pm
 Wed., Dec. 20 until 8 pm, Thurs., Dec. 21 until 8 pm
 Sun., Dec. 24 1 pm - 5:30 pm

SAVE 20% OFF On Most Items

Rocky Mountain and Blaze
Jeans 30% OFF
Arrow Shirts 30% OFF
 ... FREE GIFT WRAP ...

Tiffin II
 Reg. Hours:
 10 a.m. - 6 p.m. Mon.-Fri.
 10 a.m. - 5 p.m. Sat.

Where We Specialize in Friendly Personalized Service
 715 E. Hwy. 70 Earth 257-2223

LA-Z-BOY
 in celebration of life's special moments
HOLIDAY Sale

Slip into something comfortable this holiday season. A brand new, quality crafted chaise recliner from La-Z-Boy® offers superb cushioning from head to toe. It's the perfect gift to give your home this holiday season. And our special holiday prices make them even more comfortable!

SAVE 30% And More
 Prices starting at \$278

See Our Selection La-Z-Boy Sofas & Sleepers

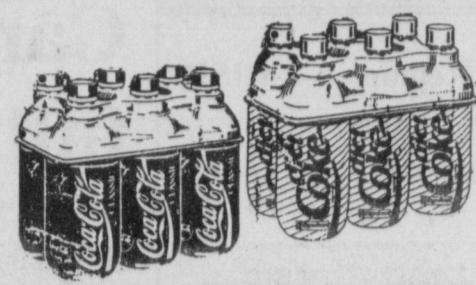
Calton Furniture
 507 E. 2nd Portales, NM
 359-1442
 Where Hwy. 70 Divides



Hassle-Free

Shopping for the Holidays

DOUBLE COUPONS EVERYDAY

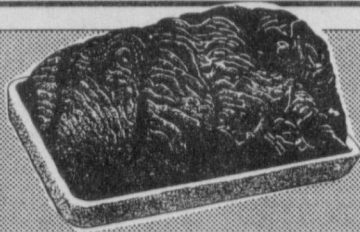


All Types
6 pack, 20 oz. btl.
Coca-Cola
2/\$5

Meat



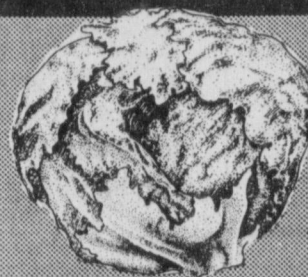
Beef Boneless
Top Round Roast
\$1.59
lb.



Value Pack, Superb
Ground Beef
\$1.79
lb.

Small Pack
lb. **\$1.99**

Produce



Dole Cello Wrapped
Lettuce
2 heads
for **\$1**



Mix or Match
Super Select
Cucumbers or
Medium
Bell Peppers
3 for **\$1**

4 lb. bag
Mixed Nuts **\$7.99**

Hot, Mild, or Extra Hot, 6 oz. bag
Del Sol
Chili Pods **99¢**

- Corn King, 12 oz. pkg. **Meat Franks** **69¢**
- Corn King, 1 lb. pkg. Salami or **Meat Bologna** **\$1.29**
- Wilson, 12 oz. pkg. **Variety Pack Lunchmeats** **\$1.29**
- Wilson Extra Lean Original **Whole Ham** lb. **\$2.99**
- Country Style, 2 lb. roll Regular or Hot **Owens Sausage** **\$2.99**
- Assorted, 4.5 oz. pkg. **Oscar Mayer Lunchables** **99¢**



Value Pack, Bone-In
Fryer Breast
99¢
lb.



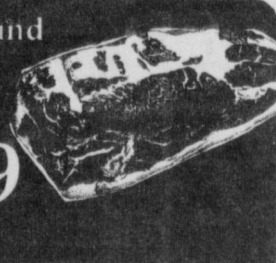
Beef Boneless
Top Round Steak
\$1.79
lb.

Corn King
Sliced Bacon
99¢
12 oz. pkg.



- Boneless Eye-Of-Round **Steak** lb. **\$1.99**
- Whole Market Trimmed **Beef Brisket** lb. **\$1.99**
- Bar S, 2 lb. pack **Meat Franks** **\$2.79**
- Bar S, Regular or Cajun, 3 lb. pkg. **Smoked Sausage** **\$3.79**
- Bar S, 5 lb. box **Beef Patties** **\$6.99**
- Bar S, 12 oz. pkg. **Chopped Ham** **\$1.89**
- Bar S, Extra Lean, 12 oz. pkg. **Cooked Ham** **\$2.79**

Boneless Eye-Of-Round
Roast
\$1.89
lb.



FOOD PRICES
Yule Love



Fac Regular, Perfect Balance or French Roast, 12-13 oz. can
Hills Bros. Coffee **\$1.99**

MEXICAN FOOD TONIGHT!
Old El Paso, Thick'n Chunky, Mild or Medium **Salsa** 15 oz. jar **\$1.99**



New 80 Sheet Scott Clean Plus Paper Towels roll **79¢**



Fritos® CHILI CHEESE OR REGULAR HOT (JALAPENO)
Bean Dip **\$1.79**

12 Two Shells
Tostada Shells
Taco Shells **2 For \$3**



LATINBY DETERGENT REGULAR OR WBLEACH
Ultra Surf **\$4.99**



RITE FLAKE OR CHEESE AIR CRISPS
Ritz Crackers **\$2.59**

Old El Paso Mild, Hot or Medium **Enchilada Sauce** 10 oz. can **79¢**



COTTONELLE W/MAKES BODA
Bath Tissue **\$1.69**

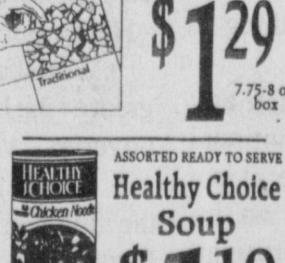


TRADITIONAL CHeddar OR BOLD N ZESTY
Chex Snack Mix **\$1.29**

OLD EL PASO WHOLE OR CHOPPED
Green Chilies **79¢**



PURINA
Dog Chow **\$4.99**



ASSORTED READY TO SERVE
Healthy Choice Soup **\$1.19**

Old El Paso Regular **Refried Beans** 16 oz. can **79¢**

PURINA
Cat Chow **\$7.99**



HOME COOKING CHICKEN NOODLE VEGETABLE BEEF OR CHICKEN VEGETABLE
Campbell's Soups **2 For \$3**

CONTADINA
Tomato Sauce **4 \$1**

JONNY CAT.
America's #1 Premium Cat Litter
Jonny Cat Litter **2 \$3**

Wolf Brand With Beans or No Beans **Chili** 19 oz. can **99¢**



SUNSHINE ASSORTED
Krispy Crackers **88¢**



Del Monte **Ketchup** 28 oz. btl. **88¢**

Ambassador Boxed Christmas Cards \$3.98-\$7.98



Country Collection
16" Authentic Porcelain Dolls
\$19.99

Assorted 12" Original or Thin Crust **Tombstone Pizza** **2/\$5**

Frozen

4 Compartment, 10-14.5 oz. pkgs.
Swanson Dinners **3/\$5**



CRUNCH BARS, ENGLISH TOFFEE STICKS, OR ORANGE COOL TUBES
Blue Bunny **\$1.79**

Dairy

Shurfine **Buttermilk** 1/2 gallon **\$1.39**

Margarine Squeeze **Parkay** 16 oz. btl. **\$1.19**

15 oz. Shampoo, Conditioner, or 7 oz. Hairspray
White Rain **89¢**

Shurfine **Biscuits** **5 \$1**

TROPICANA SEASON'S BEST FLAV VITAMIN C
Orange Juice **2 \$3**

WESTERN FAMILY
Cherry/Original Nighttime, or Daytime **\$2.49**

IMPERIAL QUARTERS
Margarine **2 \$1**

DURACELL
Duracell Batteries **2 \$3**

Western Family **Colds Medicine** 6 oz. btl. **\$2.49**

WESTERN MONEY UNION TRANSFER
"The fastest way to send money"

Lowe's MARKETPLACE 515 W. American Blvd. Muleshoe 272-4585

Pay-n-Save 515 W. American Blvd. Muleshoe 272-4406

WE RESERVE THE RIGHT TO LIMIT QUANTITIES IN TEXAS

Sports

Lady Mules rally past Tascosa in Canyon Classic

CANYON — Brandi Harrison won a long-distance game of horse, and it turned out to be the turning point in the Muleshoe High School girls to a 57-51 win Thursday in the first round of the Canyon Classic.

Harrison banked in a running two-hander from just inside the mid-court jump circle as the buzzer sounded to end the third quarter. The 3-pointer heave offset a two-handed fling by Tascosa's Christen Schardbauer five second earlier and pulled the Lady Mules within 43-41 heading into the final eight minutes.

"That changed the whole momentum of the game," Muleshoe coach Jim Gruhlkey said. "When (Schardbauer) hit that shot it just took the air out of us."

That's when senior guard Allyson Field took over.

With Muleshoe clinging to a 47-46 lead with 2 1/2 minutes left, Field scored seven straight points to give the Lady Mules a

Canyon Classic

Thursday	1-2, Pohlmeier 1 2-24, Ball 2 2-46, Hoelting 1 2-24, Schmucker 5 92) 0-0 16. Totals 13 (2) 10-15 42.
First round	
Muleshoe 57, Tascosa 51	1 2 3 4 tot
Nazareth 62, EP Riverside 30	Muleshoe 11 9 8 6 34
Canyon 64, Spearman 18	Nazareth 16 8 8 10 42
Clovis 39, Happy 28	
Friday	
Second round	Muleshoe 57, Tascosa 51
Championship semifinals	Muleshoe (57) — Myers 1 0-0 2, Nazareth 42, Muleshoe 34
Consolation semifinals	Field 7 3-5 17, Williams 1 3-6 5, C. Cleavinger 2 0-0 4, Puckett 1 1-4 3, Schuster 1 0-0 2, Nichols 1 0-0 2, M. Cleavinger 4 3-4 11, Harrison 1 91) 6-9 11. Totals 19 (1) 16-28 57.
Happy vs Spearman	Tascosa (51) — Walker 5 4-6 14, Doherty 1 0-2 2, Trujillo 2 (1) 1-3 8, Johnson 2 1-3 5, Tucker 0 (1) 1-2 4, Smith 2 (2) 0-0 4, Colbert 0 3-4 3, Scharbauer 0 (1) 22-25. Totals 12 (5) 12-22 51.
EP Riverside vs Tascosa	1 2 3 4 tot
Nazareth 42, Muleshoe 34	Muleshoe 15 15 11 16 57
Muleshoe (34) — M. Cleavinger 5 4-8 14, Field 4 1-4 9, Harrison 2 (1) 0-0 7, Puckett 2 0-1 5, Nichols 1 0-0 2, Hutton 0 0-0 0, Williams 0 0-0 0, C. Cleavinger 0 0-0 0, Myers 0 0-0 0, Schuster 0 0-0 0. Totals 12 (1) 5-13 34.	Tascosa 14 20 9 8 51
Nazareth (42) — Wethington 0	

cushion.

Her three-point play off a steal by Michelle Williams gave Muleshoe a 54-46 lead with a little more than a minute left in the game.

Field finished with a game-high 17 points.

Harrison and Mandy Cleavinger added 11 points each for Muleshoe.

Kristy Walker led the Class 4A Rebels out of Amarillo with 14 points and Carey Smith added 10. Tascosa fell to 2-3 with the loss.

Nazareth handcuffs Muleshoe in semis

CANYON — Texas Tech signee Melinda Schmucker tossed in 16 points and Nazareth played its usual smothering man-to-man defense, leading the Swifts to a 42-34 win over Muleshoe Friday in the championship semifinals of the Canyon Classic.

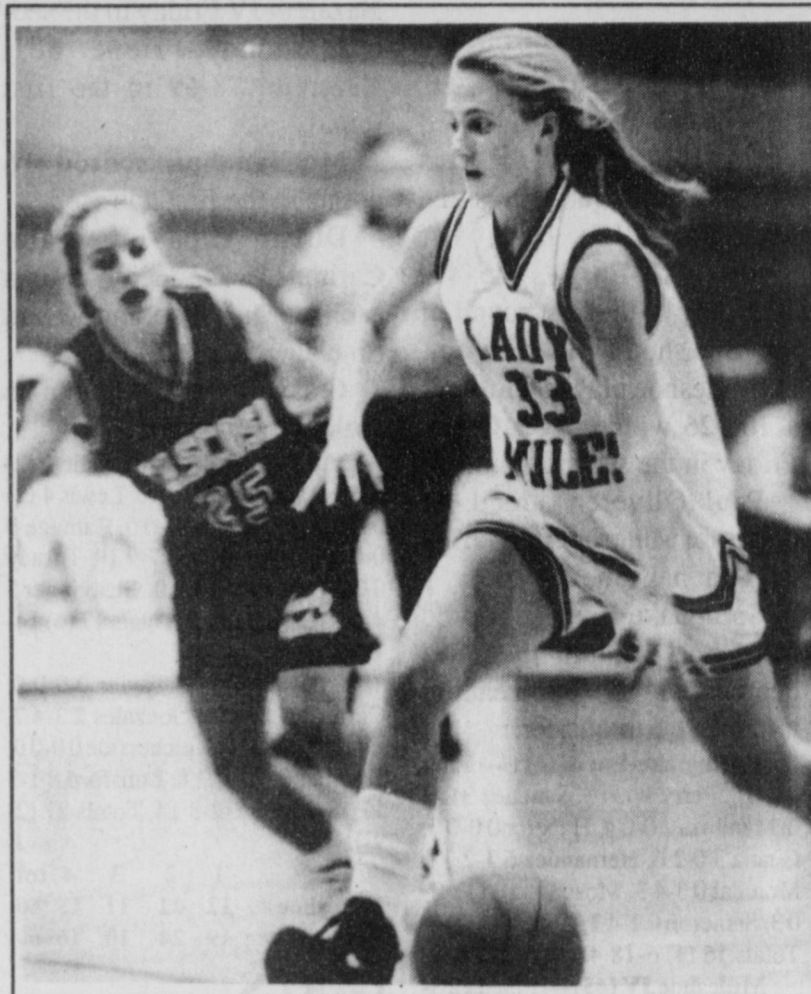
Muleshoe (5-1) played Clovis (2-1) in the third-place game Saturday afternoon.

"We've got to learn from games like this," Muleshoe coach Jim Gruhlkey said. "I was pretty pleased. We adjusted pretty well to this style of play."

Mandy Cleavinger led Muleshoe with 14 points and Allyson Field added nine.

Gruhlkey said that Muleshoe struggled at times with the Swifts' vaunted full-court pressure, but thought it did a good job of sticking with Schmucker, who is an offensive machine.

Nazareth is 6-0.



Blowin' by

Muleshoe senior guard Lauri Puckett (33) has a step on Tascosa's Berkley Johnson during the Lady Mules' 57-51 win Thursday in the first round of the Canyon Classic. Muleshoe played Nazareth in the Championship semifinals Friday.

Mules stumble in early rounds of DC Invite

DENVER CITY — The Muleshoe Mules got rattled by Canutillo's full-court pressure in the fourth quarter and dropped a 48-41 decision here Friday in the second round of the 36th annual Denver City Invitational.

It was the Mules (2-4) second loss in as many days. Denver City manhandled them in Thursday's first round, 68-42.

Muleshoe (2-4) played Seagraves Saturday in the seventh-place game.

"We kind of had a basketball spasm," Muleshoe coach Ralph Mason said about Friday's loss. "We started to rush things."

Mason said that the Mules had handled Canutillo's full-court pressure well through three quarters.

The game was tied at 41 headed into the fourth quarter.

Alfonzo Mendoza led Muleshoe with 15 points and Josh Slayden added 13, including two 3-pointers.

"We played much better than we played the other night," Mason said. "We're still young and learning every time out."

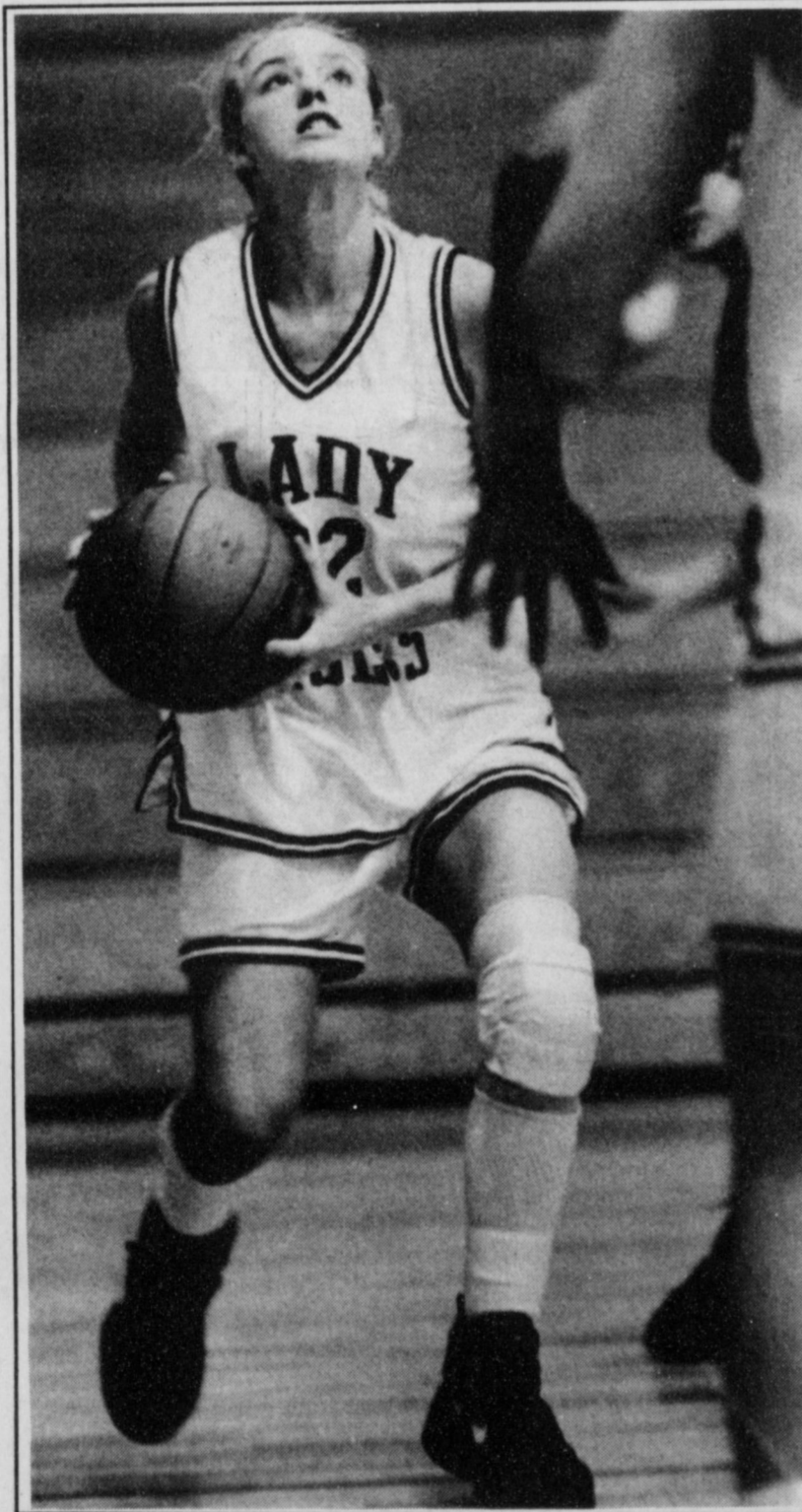
Marcus Villarreal and Charles Wendler had 13 points each for Canutillo, which lost to Lovington, NM, 59-58, in overtime in the first round.

Thursday, Tony McCray drilled four 3-pointers and finished with 22 points to lead the Mustangs to an easy win. Denver City (3-1) led 46-18 at the half.

Ed Sturdivant added 14 points and Clay Rush 12.

Mendoza again led Muleshoe with 10 points. Slayden and Jesse Gonzales added seven points each.

"We handled their pressure real well," Mason said. "But we had a lot of turnovers in our half-court offense. They played the passing lanes well."



True grit

MHS junior Brandi Harrison looks determined to score Thursday during the first round of the Canyon Classic.

Denver City Invitational

Thursday	Gonzales 1 0-0 2, Mason 0 (1) 0-3 3, Williams 0 0-2 0. Totals 12 (4) 5-14 41.
First round	
Denver City 68, Muleshoe 42	1 2 3 4 tot
Lovington 59, Canutillo 58 OT	Canutillo 10 9 11 18 48
El Paso Bowie 65, Midland JV 45	Muleshoe 8 11 11 11 41
Snyder 64, Seagraves 43	
Friday	
Second round	Denver City 68, Muleshoe 42
Championship semifinals	Muleshoe (42) — Mendoza 2 (3) 0-2 10, Slayden 2 3-4 7, Gonzales 3 1-4 7, Shelburne 2 0-0 4, Williams 1 0-0 2, Sierra 2 2-4 6, Mason 0 2-2 2, Kemp 0 2-2 2, Morris 1 0-0 2. Totals 13 (2) 10-18 42.
Consolation semifinals	Denver City (68) — McCray 2 (4) 6-6 22, Sturdivant 4 (1) 3-4 14, Rush 4 4-6 12, Esquivel 3 2-2 8, Rivas 3 2-2 8, Curtis 1 0-0 2, Woosley 1 0-0 2. Totals 18 (5) 7-20 68.
Canutillo 48, Muleshoe 41	1 2 3 4 tot
Canutillo (48) — Villarreal 2 (2) 2-3 15, Wendler 4 5-5 13, Leiske 1 3-6 5, Estrada 3 0-0 6, Black 2 0-2 4, Deanda 2 0-2 4, Torres 0 (1) 0-0 3. Totals 14 (3) 11-21 48.	Muleshoe 11 7 13 11 42
Muleshoe (41) — Mendoza 5 (1) 2-3 15, Slayden 3 (2) 1-2 13, Shelburne 2 1-2 5, Sierra 1 1-2 3,	Denver City 20 26 9 13 68

ALLSUP'S

EFFECTIVE DEC. 3-9, 1995
318 W. American Blvd. 272-4862

SAVE ON Coca-Cola
6 pack, 12 oz. cans
\$2.39

FRESH CHRISTMAS TREES
SCOTCH PINE
FROM NORTHERN MICHIGAN
5'-7' Tall
12.99
Your Choice

ALLSUP'S HAM OR SAUSAGE, EGG AND CHEESE Breakfast Burritos
EACH
99¢

ALLSUP'S Barbeque Beef Sandwich
EACH
99¢

LANA'S Pork Egg Roll
2\$1
FOR

RUSSET Potatoes
10 LB. BAG
\$1.29

SANTA FE Flour Tortilla
12 CT. PKG.
99¢

NABISCO® PREMIUM Saltine Crackers
1 LB. BOX
99¢

ALLSUP'S Homogenized Milk
GALLON
\$1.99

MELLO CRISP Bacon
1 LB. PKG.
99¢

Johnny Rib Que Sandwich
99¢

Turkey Fajita
\$1.09

German Sausage Sandwich
99¢

Best Holiday Days

DORITOS® OR FRITOS® GRAB BAGS REG. 75¢ 2 FOR **\$1.00**

CUDDLES 20 LRG. OR 26 MED. DIAPERS EACH **\$4.99**

ALLSUP'S SANDWICH 1.5 LB. LOAF BREAD 69¢ EACH OR 2 FOR **\$1.00**

OZARKA SPRING WATER 33.8 OZ.

Muleshoe splits four games in 1st round of home tourney

BOYS

Muleshoe JV45

Springlake-Earth41

Michael Woodard scored eight of his team-high 14 points in the fourth quarter as the Muleshoe JV held off Springlake-Earth, 45-41, Thursday in the first round of the Muleshoe JV tournament.

Muleshoe played Dimmitt, a 106-26 winner over Olton, Friday in the second round.

Paul Oliverez added 11 points for Muleshoe, which led 31-21 at halftime.

Springlake-Earth outscored Muleshoe 16-4 in the third quarter and led 37-35 heading into the fourth quarter.

Springlake-Earth (41) — King 0-0-0, Perry 1-1-4, Sanchez 3-0-2, Mendoza 2-0-4, Haber 0-0-0, Guana 3-0-2, Hernandez 6-1-2, Monreal 0-3-4, Mosqueda 0 (1) 0-0-3, Sameron 0-1-4, Garcia 1-0-2. Totals 16 (1) 6-18 41.

Muleshoe JV (45) — Pineda 2-3-5, Hines 0-0-2, Florez 1-2-3, Villa 0-5-8, Woodard 3 (1) 5-12-14, Olivarez 5-1-6, Purdy 1-0-4, Gutierrez 1-0-2. Totals 13 (1) 16-40 45.

	1	2	3	4	tot
SL-Earth	10	11	16	4	41
Muleshoe	13	18	4	10	45

Farwell JV69

Muleshoe 9th60

Matt McClanahan led four Muleshoe freshman players in double in double figures with 19 points but it was enough as the Farwell JV beat the Mules, 69-61, in the first round of the Muleshoe JV Tournament.

Muleshoe played the Nazareth JV Friday in the second round. Friona beat Nazareth, 78-69 in the first round.

McClanahan scored 16 points in the first half.

Dustin Cleavinger and Carlton Lewis added 14 points each for Muleshoe, and Mason Sinclair added 11.

Cleavinger scored 9 points in the fourth quarter.

Muleshoe (60) — Sinclair 1 (2) 3-4 11, McElroy 0-0-0, Lewis 4 (2) 0-1 14, Gonzales 0-0-0, Ramage 0-0-0, McClanahan 6-7-9 19, Turney 0-0-0, Nunez 0-0-0, Cleavinger 5-4-5 14, Pyle 1-0-2. Totals 17 (4) 14-19 60.

Farwell (69) — Taylor 0-0-0, Curtis 3 (1) 0-0-9, Gonzales 2-3-4 7, Everett 6-2-2 14, Ketcherside 0-0-0, J. Miller 2 (1) 10-3 8, Lunsford 8-1-3 17, S. Miller 6-2-3 14. Totals 27 (2) 9-15 69.

	1	2	3	4	tot
Muleshoe	12	22	11	15	60
Farwell	19	24	10	16	69

GIRLS

Muleshoe JV48

Springlake-Earth35

Amy Locker led a balanced Muleshoe JV attack with 12 points in a 48-35 win Thursday in the first of the Muleshoe JV Tournament.

Muleshoe played Clovis Friday in the second round. Clovis beat Olton, 68-13, in the first round.

Heather Hooten added six points for Muleshoe and Cari Faver five. Twelve of the 14 Muleshoe players scored at least two points.

Muleshoe JV (48) — Harlan 1-1-2, B. Locker 0-2-4, Whitt 1-1-2, Faver 1-1-2, Powell 2-0-4, Benham 1-1-2, Gilleland 1-0-2, Kennedy 1-0-2, A. Hooten 0-0-0, Locker 2-8-9 12, Slayden 1-0-2, H. Hooten 3-0-6, Schuster 1-2-3, Aguirre 0-0-0. Totals 16 16-24 48.

SL-Earth (35) — Garza 0-0-0, Townsend 0-0-0, Parish 3 (1) 2-2 11, Padilla 0-2-5 2, Freeman 0 (1) 0-0-3, Kelly 1-2-3 4, Burton 2-0-2 4, D. Garza 2-1-2 5, Garcia 0-0-0, Conkin 0-0-0, Bratton 0-0-0, Johnson 2-2-6. Totals 10 (2) 6-9 35.

	1	2	3	4	tot
Muleshoe	9	9	15	15	48
SL-Earth	5	3	9	18	35

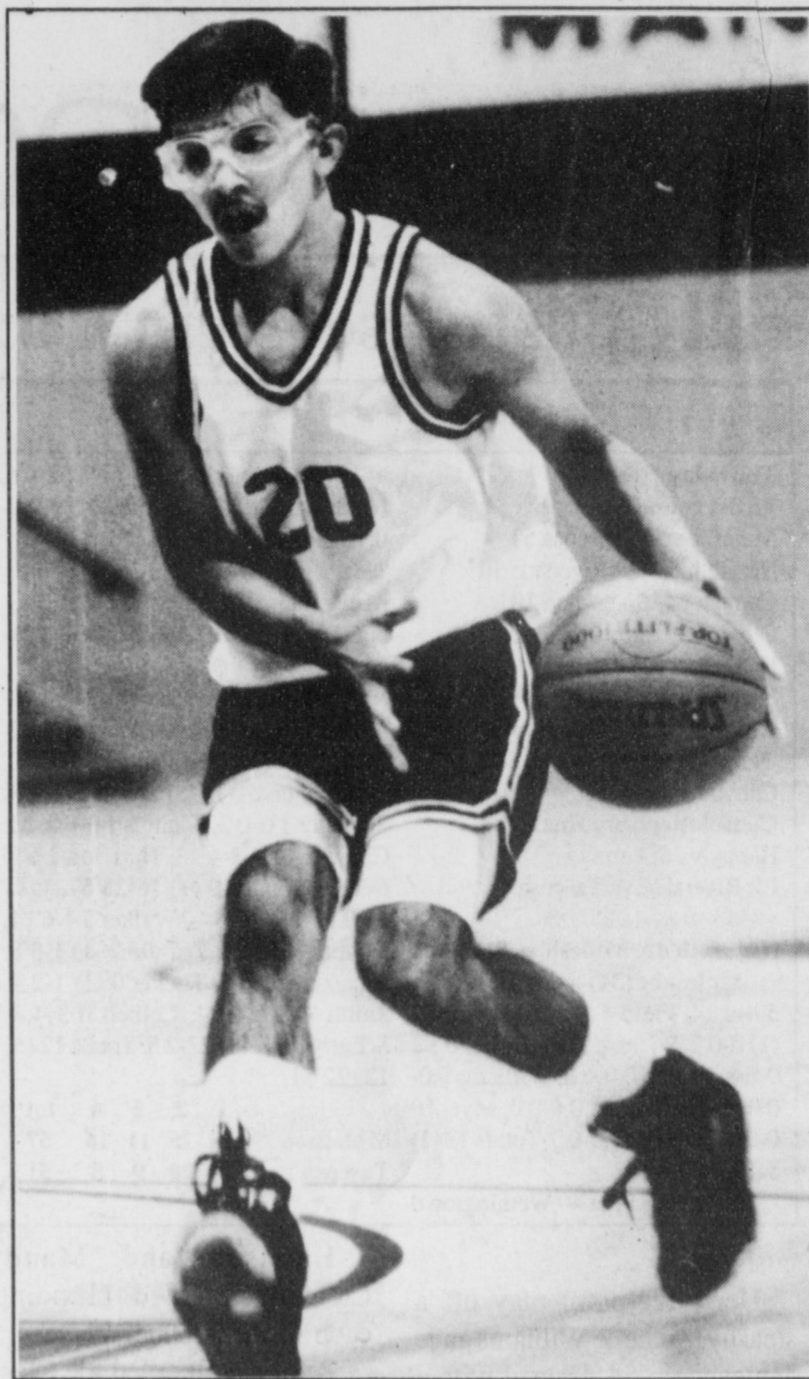
Portales JV48

Muleshoe 9th45

A fourth-quarter rally by the Muleshoe freshman fell short and the Lady Mules dropped a 48-45 decision to the Portales (NM) JV Thursday in the first round.

Muleshoe played Farwell Friday in the second round. Nazareth beat Farwell, 42-37, in the first round.

Continued on page 8



Hitting the brakes
Johnny Florez of the Muleshoe JV pulls up for a jump shot during the first half of the Mules' 45-41 win over Springlake-Earth Thursday in the Muleshoe JV Tournament.

Please see Thursday's paper for complete results of all the tournament action this weekend.

Muleshoe JV Tournament

BOYS
Thursday
First round
Muleshoe JV 45, SL-Earth 41
Farwell 69, Muleshoe 9th 60
Dimmitt 106, Olton 26
Friona 78, Nazareth 69
Friday
Second round
Winner's bracket
Farwell vs Friona
Muleshoe JV vs Dimmitt
Loser's bracket
Muleshoe 9th vs Nazareth
SL-Earth vs Olton

GIRLS
Thursday
First round
Muleshoe JV 48, SL-Earth 35
Portales JV 48, Muleshoe 9th 45
Nazareth 42, Farwell 37
Clovis 68, Olton 13
Friday
Second round
Winner's bracket
Portales JV vs Nazareth
Muleshoe JV vs Clovis
Loser's bracket
Muleshoe 9th vs Farwell
Olton vs SL-Earth

This is...

Gown Town

Bridal & Party Resale Shop
Come In and Order Custom Made Invitations For Your Special Day.
• Sequin Cocktail Slips & Veils
• Wedding Gowns
• Jewelry & Shoes



2153 50th Street, Lubbock TX 79412 763-9007
OPEN 10-6 p.m. BUY • SELL • TRADE

Lazbuddie remains unbeaten

Tuesday's games

FARWELL — Chris Smith and Jason Thomas combined for 11 points in the fourth quarter, leading Lazbuddie to a 67-56 win.

Josh Warren, who led the Longhorns (3-0) with 20 points, made 6-of-8 free throws down the stretch to seal the win.

Smith added 16 points (three 3-pointers) and Thomas finished with 10.

Lazbuddie led by 18 early in the third quarter, but rallied to tie the score behind the hot shooting of Landon Lunsford (8 points) and Chase Hardage (7 points) to tie the score at 44-44.

Lunsford finished with 14 points and Hardage added 10 for the Steers (0-3).

"We just started standing around," Lazbuddie coach Gary Grahn said. "But I give them a lot credit. They did a good job."

Lazbuddie (67) — St. Clair 2-4-5 8, Nickels 3-0-6, Warren 6-8-11 20, Smith 3 (3) 1-1 16, Brown 0-1-2 1, Lopez 3-0-6, Thomas 5-0-10. Totals 22 (3) 14-18 67.

Farwell (56) — Taylor 2-1-4 5, Nichols 3 (1) 0-0-9, Hardage 4-2-4 10, Lunsford 6-2-2 14, Franse 1-0-0 2, Anderson 1-0-2, Littlejohn 1 (2) 0-0-8, Ketcherside 3-0-6. Totals 20 (3) 7-12 56.

	1	2	3	4	tot
Lazbuddie	12	24	8	23	67
Farwell	12	11	21	12	56

Three Way77

Union61

UNION — Three Way jumped out to a 15-point first-quarter lead and held on for a 77-61 win over Union.

Russell Pollard led Three Way (3-1) with 18 points. Keith Kindle added 16, Lupe Landeros 12 and Cody Wil-

son 11.

	1	2	3	4	tot
Three Way	24	16	17	20	77
Union	9	15	17	18	61

Leading scorers — Three Way: Russell Pollard 18, Keith Kindle 16, Lupe Landeros 12, Cody Wilson 12. Union: Rivas 22, McWilliams 11, Correa 10, Herrera 10.

GIRLS

Farwell71

Lazbuddie58

FARWELL — Candace Travis scored 28 points, leading Farwell to a 71-58 win.

Holly Engelking led Lazbuddie (0-3) with 16 points and Mandy Magby added 14.

Engelking, Dawn Weir and Shana Foster each had two 3-pointers.

"This was our best game by far," Lazbuddie coach Carey Sudduth said. "We pushed the ball up floor a little bit more and the girls seemed comfortable with it."

Farwell (2-2) clinched the game at the free throw line, making 20 of 31 attempts.

Lazbuddie (58) — Weir 0 (2) 0-1 6, Foster 0 (2) 1-2, Rodriguez 0-0-0, Ho. Engelking 2 (2) 6-8 16, He. Engelking 1-0-2 2, Reyes 0-0-0, Jones 3-0-6, Hill 1-0-2, Warren 1-4-9 6. Totals 13 (6) 15-27 58.

Farwell (71) — C. Travis 6 (3) 7-13 28, Austin 3-3-4 9, Wood 0-0-0, C. Travis 1-3-5 5, Kirkland 3-0-6, Bennett 0-1-2 1, Mace 2-3-4 7, Mace 4-2-2 10, Corn 2-1-1 5, Roberts 0-0-0, Hasseloff 0-0-0. Totals 21 (3) 20-31 71.

	1	2	3	4	tot
Lazbuddie	16	16	18	8	58
Farwell	21	16	18	16	71

Three Way73

Union19

UNION — Five players scored in double figures as the Three Way Lady Eagles glided to a 73-19 win over Union here Tuesday.

Melanie McCaul led the

Way for the Lady Eagles (2-2) with 15 points. Alma Pina added 14, Nadine Webb 12, and Jessica Hood and Olivia Martha 10 each.

Angelita Munoz scored 15 points for Union (0-3).

Three Way (73) — Diana Salamanca 3-2-2 8, Jessica Hood 5-0-10, Melanie McCaul 6-3-7 15, Olivia Martha 5-0-3 10, Rosie Rodriguez 2-0-4, Nadine Webb 6-0-0 12, Alma Pina 6-2-3 14.

	1	2	3	4	tot
Three Way	18	26	13	16	73
Union	0	4	10	5	19

Monday

BOYS

Muleshoe59

Littlefield55

Matt McClanahan led three Mules in doubles figures as the Muleshoe High School freshmen remained unbeaten with a 59-55 win at home.

Carlton Lewis added 16 points for the Mules and Mason Sinclair finish with 11, including a pair of 3-pointers.

Muleshoe outscored Littlefield, 20-8, in the third quarter and held on for the win.

	1	2	3	4	tot
Littlefield	17	12	8	18	55
Muleshoe	16	12	20	11	59

Muleshoe (59) — McClanahan 18, Lewis 16, Sinclair 11, Cleavinger 8, Pyle 3, Ramage 2, Gonzales 1.

Home Folks Caring For Folks At Home.



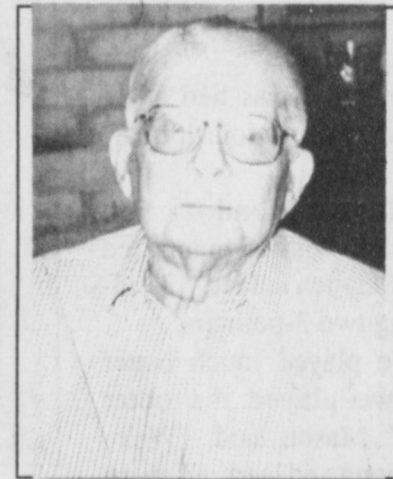
MULESHOE AREA HOME HEALTH

Agency

Featured Patient

Mr. Elbert Nowell moved into the Muleshoe area in 1928. He was married to the late Hazel Nowell. He farmed in the Lazbuddie District. He's the great uncle to Darrel and Linda Nowell of Muleshoe.

Mr. Nowell loved to work in his yard when he was able. He will be 90 on January 12th. The girls at the Muleshoe Area Home Health Agency are wonderful. Arlene Brozek helps with his physical therapy. Other girls come to take his blood pressure, temperature and other things. They'll do anything for him. They always go that extra mile.



Mr. Elbert Nowell

To receive Home Health Services Talk with your physician or talk with hospital personnel when you are hospitalized.

24 Hour # 272-3346

Local Nurse on call 24 hours a day to offer prompt service.

We accept Medicare, Medicaid and Private Insurance



Affiliated with

LUBBOCK METHODIST HOSPITAL SYSTEM

Having A Garage Sale?
Advertise It In **The Muleshoe Journal Classifieds!**
Call **272-4536**

The Muleshoe Journal & Bailey County Merchants

Football Contest

Weekly Prizes

1st - \$10
2nd - \$7⁵⁰
3rd - \$5

GRAND PRIZE

\$150

At The End Of The Season

NFL PRIME TIME

Monday Prime Time

Inside the NFL on HBO

Game Day



Leal's

SportsCenter

GNN Sports

ESPN
SUNDAY NIGHT NFL

NFL on TNT



ULTIMATE FOOTBALL CONTEST

WIN **\$1,000.00** WEEKLY

Clip along dotted line

WEEK 16 Games of Dec. 16 - 18	
16	
15	
14	
13	
12	
11	
10	
9	
8	
7	
6	
5	
4	
3	
2	
1	FREE POINT - NO COLLEGE

HOW TO PLAY

Select a winner from each of the week's games, listed below. Select in descending order of your CONFIDENCE in your choices. Win points at left for each correct selection toward possible total of 136 points. See complete rules below. You must be at least 8 (eight) years old to enter. To enter, clip along dotted line, then place game entry in POWER POINTS container at co-sponsor's retail outlet(s). Entrants must list name, address and phone number below.

LIMIT: You may enter only one coupon statewide per week.

DEADLINE: 2 P.M. FRIDAY

TIEBREAKER 1 Total points scored (both teams) in OILERS game.

TIEBREAKER 2 Total offensive yards (both teams) in this game.

THIS WEEK'S GAMES

Green Bay at New Orleans	N.Y. Giants at Dallas
New England at Pittsburgh	N.Y. Jets at Houston
Arizona at Philadelphia	San Diego at Indianapolis
Atlanta at Carolina	Tampa Bay at Chicago
Cincinnati at Cleveland	Washington at St. Louis
Denver at Kansas City	Oakland at Seattle
Jacksonville at Detroit	Minnesota at San Francisco
Miami at Buffalo	

136 TOTAL POINTS

Name _____
Address _____
City, State (zip) _____
Day Phone () _____
Night Phone () _____

Deposit Your Entries at the

Muleshoe Journal
304 W. 2nd

POWER POINTS OFFICIAL RULES

- Object of the game is to amass as many of the 136 possible points as you can. Simply review the week's schedule of games, listed on entry form, and decide which game you are surest of picking a winner in. Write the name of your projected winner on the 16-point line. If that team wins its game that week, you win 16 points. Write the name of your second-surest winner on the 15-point line, and so on down to the 1-point line, which game you figure to be a toss-up. Next, fill in Tiebreaker 1, the total points scored by both teams in the week's Cowboys or Oilers game. If this step fails to produce a winner, the judges will apply Tiebreaker 2, total offensive yardage from scrimmage in this game. If a winner still doesn't emerge, a drawing will be held among those contestants still tied. Decisions of the judges are final. The weekly winner of the contest will receive \$1,000.
- Any entry form that does not contain a legible name, address, etc., will be disqualified.
- Entries that fail to forecast a winner from each and every game will be disqualified, as will entries that fail to distinguish between the Jets and Giants of New York and, when necessary, between the Houston Oilers and the Houston Cougars.
- No points are awarded on tie games or in case any game is not played for any reason during its scheduled week.
- Entering POWER POINTS constitutes permission by contestant for his or her name and photograph to be used for news and reasonable promotional purposes at no charge.
- Employees of this newspaper and their immediate families are ineligible to participate.
- No purchase necessary. Facsimile game entry forms will be accepted and are available at all outlets of participating co-sponsors. Enter contest by dropping entry form into POWER POINTS container at participating co-sponsors.
- Weekly deadline for entry will be 2 p.m. Fridays except when noted otherwise on weekly entry form.
- Neither this newspaper nor any co-sponsor will be responsible for illegible entry forms or those lost, stolen or damaged in any way.
- Limit: one entry per person per week. Each entry must represent the original work of one entrant; "group" entries, "systems" or other attempts to enter multiple entries will be disqualified. Filling out extra forms and putting your friends' and relatives' names on them violates this rule. Any such entries are destroyed prior to grading.
- Contestants must have reached the age of eight (8) years by the Sunday of any week's play.

Muleshoe Feed Barn

311 West American Blvd. 272-5626

Lowe's Marketplace #33

401 West American Blvd. 272-4585

Pay-N-Save #10

515 West American Blvd. 272-4406

Leal's Restaurant

1010 West American Blvd. 272-3294

Bailey Gin Co.

946-3397

Bob Stovall Printing

221 E. Ave. B 272-3373

Wilson Drilling Co.

West Highway 84 272-5521

Western Drug Co.

A Leader Drug Store

114 Main Muleshoe, TX 272-3106

For All Your Prescription Needs

Scoggin Ag Center, Inc.

1532 W. American Blvd. 272-4613

Higginbotham-Bartlett Co.



215 Main 272-3351

James Crane Tire Co.

322 North First 272-4594

Henry Insurance Agency

111 W. Ave. B 272-4581

Muleshoe Journal

304 W. 2nd 272-4536

Terra International

Clovis Hwy 272-4203

Pizza Hut

1412 American Blvd.

Public Record

Police Incidents

Nov. 30 — A business in the 1200 block of W. American Blvd. reported a fight.

Nov. 30 — A male reported the theft of \$158.47 sometime in the last two months from a house in the 500 block of W. Ave. B.

Nov. 29 — A female reported a burglary in the 700 block of E. 1st St.

Nov. 27 — A female reported a burglary in the 700 block of E. Ave. D.

Nov. 27 — A female reported an attack of a domestic animal by dogs in the 1500 block of W. Ave. C.

Nov. 25 — A male reported being harassed in the 500 block of W. American Blvd.

Nov. 24 — A male reported the theft of electronic/video equipment valued at \$150 from 500 W. 3rd St.

Nov. 24 — A male reported being threaten in the 300 block of E. Ave. E.

Nov. 24 — A female reported the theft of \$50 from a house in the 800 block of S. 1st St.

Nov. 24 — A male reported \$1,000 in damage to vehicles in the 1600 block of W. American Blvd.

JV Tournament

Continued from page 6

Erin Whilite scored 7 of her team-high 9 points in the fourth quarter as the Lady Mules nearly rallied from a 11-point third-quarter deficit.

Melissa Williams and Ellen Wood added eight points each for Muleshoe.

Muleshoe (45) — Pool 2 1-2 5, Cowart 0-0-0, Heathington 1 1-2 3, Gonzales 1 1-2 3, Mirricle 0 1-2 1, Copley 1 3-4 5, Morris 2 1-3 5,



Business of the Month

Wade King's new Western 66 Card Stop was named the Business of the Month by the Muleshoe Chamber of Commerce & Agriculture. King (center) is pictured with Lary Hooten (left), Starla and Colt Ellis, Jim Henderson and Hugh Young of the Chamber.

Journal photo by Martha Tolos Frost

Nov. 22 — A male reported the assault of a family member in the 100 lock of W. Quincy St.

Nov. 22 — A female reported finding bicycles worth valued at \$25 along Highway 214 South.

Arrests
Nov. 29 — George Kasey Whatley, 25, was charged with

disorderly conduct (fighting).

Nov. 29 — Christopher Darin Bass, 28, was charged with disorderly conduct (fighting).

Nov. 24 — Abel Guerro Barron, 23, was charged with the issuance of a bad check.

Sheriff

Nov. 30 — Alfred Duran Flores, 40, was charged with public intoxication.

Nov. 29 — Matthew Newman Davis, 18, was charged with five counts of burglary.

Nov. 29 — Leo Aragon Potter, 40, was charged with contempt of court for failure to pay child support.

Nov. 28 — Larry Don Wauson, 17, charged on a grand jury for injury to a child.

Need to hire extra help for Christmas?

Advertise in the classifieds in the Muleshoe Journal, Call 272-4536 Today!

Whilite 2 5-7 9, Williams 4 0-0 8, Messenger 0 0-0 0, Wood 2 4-5 8, Totals 14 17-27 45.

Portales (48) — Gonzales 0 1-2 1, Rackler 4 2-2 10, Kathy Thompson 2 1-2 5, Gonzales 2 0-0 4, Cain 2 0-0 4, Blossom 2 0-0 4, Kari Thompson 3 0-0 6, Burns 1 0-2 2, Clabaugh 0 1-3 1, Garcia 3 0-0 6, Padilla 0 0-0 0, Partin 0 2-4 2, Wood 3 1-1 7, Holden 0 0-0 0, Luce 0 0-0 0, Totals 20 8-16 48.

	1	2	3	4	tot
Muleshoe	4	12	11	19	45
Portales	12	9	17	10	48

DOWNTOWN COUNTDOWN

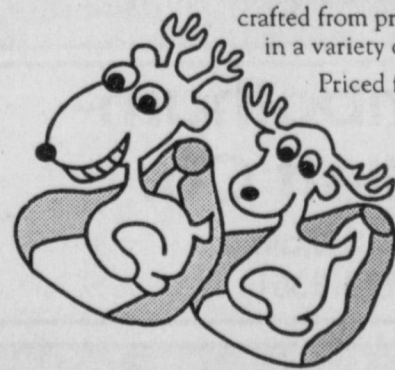


Jingle Bags, Jingle Bags

(Bean Bags all the way)

Mr. Bean Bag® chairs are the perfect gift. Made in the USA, our bean bags are hand crafted from premium materials and come in a variety of sizes, shapes, and colors.

Priced from: \$24.95



BEALY Furniture INC.

601 Main St. Clovis, NM 505-763-7121

CHRISTMAS HEADQUARTERS

In Store Specials Up To

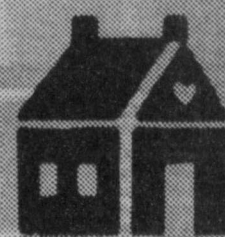
75% off

Queens & Teens

500 Main, Clovis

763-7153

Mastercard, Visa, Discover, Queens Charge



The Patchwork House

519 Main Street, Clovis, NM

505-769-8072

OPEN Wednesday-Saturday 10-5

Quilting Supplies, Custom Quilting & Classes

Featured Quilter - Helen Barbar

Rachel's Fashions

512 N. Main 763-4885 Clovis, NM

25% OFF Storewide

excluding Purses and Some Flower Arrangements

OPEN 1:00-5:30

Layaways Accepted

We Welcome Visa & Mastercard

- Mention You're From Muleshoe -

Tankersley's

The Clothing People

Select Group Men's Sport Coats

20% off

Select Group Ladies Dresses

20% off



Downtown Clovis 762-0362 762-0017

Freeman's Bridal Shop & Formal Wear

20% Off All Dresses in the Store



520 N. Main • 762-0474

Senior Citizens elect new officers Nov. 27

The Bailey County Senior Citizens met Nov. 27 at the depot for their regular covered dish luncheon. The invocation was given by Katie Roubinek. The salute to the flag was led by Buster Kittrell.

After the luncheon, Buster Kittrell called for the election of officers. Minutes were read and approved. Buster Kittrell was then elected president by acclamation. Margaret Collins was re-elected vice president and Crystal Walton was elected

secretary. The callers are Zida Mae Black and Wanda Kittrell. Katie Roubinek will send cards.

The group sang several songs, led by Buster Kittrell and J.C. Shanks, with Velma Gwyn, Odessa Shanks and Clara Coffman playing the piano.

There will be no meeting in December.

Closing prayer was led by Buster Kittrell.

Going Out Of Business! Playmates

After Serving Eastern New Mexico and West Texas for

23 Years

EVERYTHING MUST GO!

Several Racks At

30% off	40% off
40% off	50% off
50% off	60% off
75% off	85% off

(Colognes - 20% off)

Open Sunday, December 3rd, 12-4 p.m. When We Say EVERYTHING MUST GO We Mean Merchandise, Fixtures, and Property

2800 Sq. Ft. Building For Sale Or Lease. No Phone Calls, Inquire Within

1508 N. Prince

Clovis, NM

Mastercard-Visa-Discovery • All Sales Final • No Layaways • Gift Wrap Available

Shop Early For Christmas!!!

More than 9,000 pivots operating in HPUWC

Approximately 9,118 center pivot sprinkler systems are currently in operation within the 15-county High Plains Underground Water Conservation District No. 1 service area, according to a recent inventory conducted by the District.

This represents an additional 2,532 center pivots installed since the previous 1993 inventory.

Given an average cost of \$30,000 per center pivot sprinkler system, the 9,118 pivots in operation are a \$273 million investment in water conservation by area agricultural producers.

Center pivot totals by county are Parmer, 1,564; Lamb, 1,459; Castro, 1,003; Hale, 990; Bailey, 794; Hockley, 731; Deaf Smith, 624; Lubbock, 539; Cochran, 493; Crosby, 336; Lynn, 308; Floyd, 210; Randall, 61; Potter, five; and Armstrong, one.

Hale county had the largest increase with 386 center pivots since the previous inventory in 1993. Other increases are as follows: Parmer, 306; Hockley, 259; Lubbock, 235; Castro, 217; Lamb, 204; Crosby, 189; Deaf Smith, 172; Cochran, 146; Lynn, 138; Floyd, 132; Bailey, 123; Randall, 22; Potter, two; and Armstrong, one.

"This inventory shows that farmers are making huge investments to be more efficient in applying their irrigation water.

"The center pivot systems provide more flexibility in irrigating and help maintain current yields with less water," says High Plains Water District Assistant Manager Ken Carver.

Low Energy Precision Application (LEPA) center pivot systems and achieve irrigation application efficiencies of up to 95 percent. Since the ground water is applied at low pressure directly into the furrow, water losses associated with wind drift and evaporation are virtually eliminated.

LEPA systems also help reduce labor costs, reduce fuel costs, and save 20 to 40 percent of the water previously pumped for irrigation when compared to conventional furrow irrigation.

Additional information about LEPA center pivot irrigation is available from the High Plains Underground Water Conservation District No. 1, 2930 Ave. Q, Lubbock Texas, 79405-1499, or by calling (806) 762-0181.

CSFA Bulletin Board

Cooperating Ginners

All gins in Bailey County have signed cooperating ginner agreements with CCC. This means that any cotton ginned at these gins will be eligible for loan. Contact this office for more information.

CRP emergency grazing

Producers are reminded that Nov. 30 was the final date to graze CRP acres. All producers grazing CRP acres are reminded to certify the acreage grazed and the number of livestock by December 15.

Report operation changes

All farm operators and owners are asked to report any changes in their operation such as renting a new farm, losing a lease on a farm, purchase of a new farm, or change of addresses to this office as soon as possible.

News from NRCS

Producers are reminded that there has been no change in the requirements for conservation compliance. There will be no changes until the new Farm Bill is approved.

As it stands at this time, each operator has a plan covering each tract farmed. These plans are minimum requirements and could contain 25 percent high residue requirements or wind strips as examples. These practices are in effect each year and are to

be maintained until April 1

If there are any questions or proposed changes from the existing plan you should contact Jim Lutz at the NRCS prior to implementing the changes.

Base & yield notices

As of this date, legislation on the new Farm Bill has not been finalized. Under current provisions the authority to mail out annual base and yield notices was rescinded on Sept. 30.

Therefore, we will not be mailing any base and yield notices until further notice. The county office has this information on file. If needed please contact us anytime.

CRP payments

All annual CRP payments have been issued for Bailey County. If you did not receive your payments, please contact Helen Bickel at 272-4538.

Agency names changes

Effective October, Farmers Home Administration (FmHA) became a part of the Farm Service Agency (FSA).

All employees will eventually be cross trained in order for each county office to provide efficient and effective service to our producers.

— Karen Byrd
County Executive Director
Bailey County FSA

Bill would replace major commodity programs Much remains to be done on compromise farm legislation

Work on compromise farm legislation between the House and Senate is mostly complete according to information received by Lubbock-based Plains Cotton Growers, Inc. (PCG).

While the final Bill will not contain all of the trappings of previous legislation it does maintain several important provisions sought by the cotton industry.

"This legislation is still a long way from being signed into law," says PCG Executive Vice President Donald Johnson.

"This compromise is part of the Budget Reconciliation Act that the President has said he will veto. We expect that when the budget differences between the President and congressional leaders are resolved that the agriculture portion of the Bill will be included essentially unchanged from the current proposal."

Johnson adds that several of the provisions agreed to were key to the success of the cotton programs enacted in 1985 and 1990. These provisions are maintained, although modified, in the current proposal.

Under the conference agreement major commodity programs will be replaced by an "Agricultural Market Transition Program."

Producers of wheat, feed grains, upland cotton and rice

will be eligible for this program. Producers who participated in the wheat, feed grains, upland cotton and rice programs in any one of the past

five years can enter into a seven-year "production flexibility contract" effective between 1996 and 2002.

The deadline for entering into one of these contracts is April 15, 1996, and payments will be made on September 30 of each year beginning in 1996.

An option is included that will allow a producers to receive up to one-half of their payment by Dec. 15 on the previous year (except in 1996, when the advance will be paid within 60 days of the date the production flexibility contract is signed).

Payments will be made on 85 percent of a farm's contract acreage. Producers may plant any program crop, oilseed, industrial or experimental crop, mung beans, lentils or dry peas in this paid acreage.

Planting of fruits and vegetables will be prohibited on paid acreage, as will haying and grazing during the five principal growing months.

The remaining 15 percent unpaid acreage will be restricted, and producers may plant any crop. There will be no restrictions on haying and grazing on the unpaid acreage.

The following is a run-down of some of the currently agreed

to provisions.

Noncourse Marketing Loan

The marketing loan program was retained with a cap on the upland cotton loan rate was set at 51.92 cents per pound. A minimum loan rate was set at 50 cents per pound.

The current agreement eliminates the eight-month cotton loan extension. The cotton marketing loan will continue to provide for redemption at lower of loan plus accrued storage and interest or the adjusted world price.

The three-step competitiveness provisions are unchanged except for a cap on expenditures during the seven-year period of \$701 million.

CCC Interest Rates

Rates for Commodity Credit Corporation loans are increased by 100 basis points.

Payment Limitations

The conference agreement reduces the current payment limitation from \$50,000 to \$40,000 and limits marketing loan gains and loan deficiency payments to \$75,000 per person.

Current provisions defining "persons" and the three-entity rule are maintained. Contract payments will be calculated as follows: contract acreage X .85 X program payment yield X payment rate.

Crop Insurance

The conference agreement eliminates the mandatory purchase of catastrophic coverage and phases out dual delivery of

Dec. 6 is deadline to file for water district election

December 6, 1995 is the final day to file District Director and County Committee candidate applications for the upcoming High Plains Underground Water Conservation District No. 1 election.

The election, ordered by the High Plains water District Board of Directors for Saturday, January 20, 1996, is to elect District Directors and County Committee members to represent residents in District Directors Precincts Three in Water District matters.

Precinct Three consists of Bailey and Parmer Counties, as well as most of Castro County. The incumbent District Director is A.W. "Webb" Gober of Farwell.

District Directors oversee all operations, programs, and activities of the Water District, as well as review and approve all financial expenditures.

County Committee members review all water well permit applications and make recommendations to the Board for approval or disapproval of these permits, review ag loan applications and make recom-

mendations to the Board for approval or disapproval, make recommendations to Directors concerning programs and activities that they believe will be beneficial for the county they serve, and advise the Board and District staff on problems requiring district attention in their local communities.

James L. Wedel, Jay Herington, Lloyd Throckmorton and Eugene Shaw, all of Muleshoe and Cliff Heinrich of Maple represent Bailey County.

Anyone who wants to file an application to have their name placed on the ballot for any of these offices should contact Becca Williams at the Water District office, 2930 Avenue Q, in Lubbock, or call (806) 762-0181. Candidates must be at least 18 years old and reside within the Precinct in which they are to be candidates.

All candidate applications must be received no later than 5 p.m. on December 6, 1995, at the High Plains Water District's Lubbock office.

Aloha Travel

"The Low Airfare Specialists"
800-274-9777

Laughlin, Nevada \$79 PP

Roundtrip air, hotel, tax & transfers
BONUS FOR BAILEY COUNTY RESIDENTS:

\$50 off 7 night cruise or

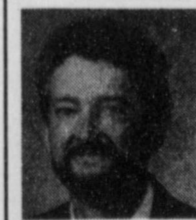
\$25 off any 7 night tour package

based on double occupancy
Call DEBB HICKS
for all your travel needs.



A Christmas Without Christ? No, Thanks!

I always enjoy the wisdom and insight in Dr. James Dobson's *Focus on the Family* magazine. In the "Q & A" section this month, one reader asks a question that pops up annually just as regularly as Ebenezer Scrooge. I doubt the questioner meant to be Scrooge-like, but she wanted to know,



Focus On Faith
Curtis Shelburne

"Doesn't our celebration of Christmas have roots in pagan practices? How do you feel about Christians participating in that sort of thing?"

My answer might be, "Good grief, lighten up! Humbug to humbugs!" Dobson's was better.

Partly his words and partly paraphrased, here's what he said: It is true that the timing of the Christmas season coincides with the Roman festival, the Saturnalia, and that there is a historical connection. In the fourth century, Emperor Constantine declared Christianity the official religion of the Roman Empire and outlawed pagan religious practices. Wisely understanding human nature and hoping to avoid an outcry, he declared that the time for Saturnalia would continue to be holiday

time but would be given a new meaning. Thus the old pagan holiday was transformed into a celebration of the birth of Jesus Christ and, in time, the pagan associations faded and were forgotten.

Respectfully understanding that some find this troubling, Dobson wisely continues that, to his mind, it's what you make of an event that counts, and that he seriously doubts that any of us are in much danger of being lured into the worship of pagan deities, that the much more serious threat is the one posed by the gods of materialism and secularism that have so established themselves on what Constantine hoped would be holy ground. It is perhaps more important than ever, for people of faith, and for families building treasured memories, that we allow this beautiful time to be one of the spiritual highlights of the year.

I enjoy old Frostie the Snowman as much as anyone, but if our spirits can rise no higher than Jingle Bells during this holy season, we've missed the heart and core of Christmas, the real Reason for the season, and robbed ourselves and our families of a great deal of genuine joy.

(By the way, Dr. Dobson's magazine is available free of charge. Call 1-800-232-6459 or write to Focus on the Family, Colorado Springs, CO 80995-7451, to request it.)
Curtis Shelburne is minister of the 18th Avenue Church of Christ in Muleshoe.

Got a news tip? Call 272-4536

Know of an interesting human interest story, news worthy event or photo opportunity in Bailey County? The Bailey County and Muleshoe Journal strives to offer complete coverage of area events but many times, we do not know about things unless our readers let us know. Give us a call today! We will be glad to listen! Call us at (806)272-4536.



OPEN HOUSE



604 9TH ST., FARWELL, TX

Sunday, Dec. 10, 1995 2-5 p.m. CST

Featuring the home of Vernon & Julia Syncox.

Constructed by Maple Leaf Enterprises,

Harold Murray, Contractor

Report

Continued from page 1

improved in the areas of teacher expectations for student achievement, teacher/student mentor programs and "awareness of cultural diversity."

The campus English as a Second Language (ESL) program was criticized because the campus seemed "to refuse to take responsibility" for the language deficiencies of students whose parents refuse the ESL program.

"The campus must recognize the educational needs of these students and meet their needs because it is the appropriate educational action, not simply because it must comply with the law regarding such programs," the report states.

The team directed the campus to offer staff development in the methodologies of ESL to provide support for limited English proficient (LEP) students in all academic classes, not just ESL or bilingual classes.

The campus was further criticized for having a language proficiency assessment committee (LPAC) that is not a functioning body.

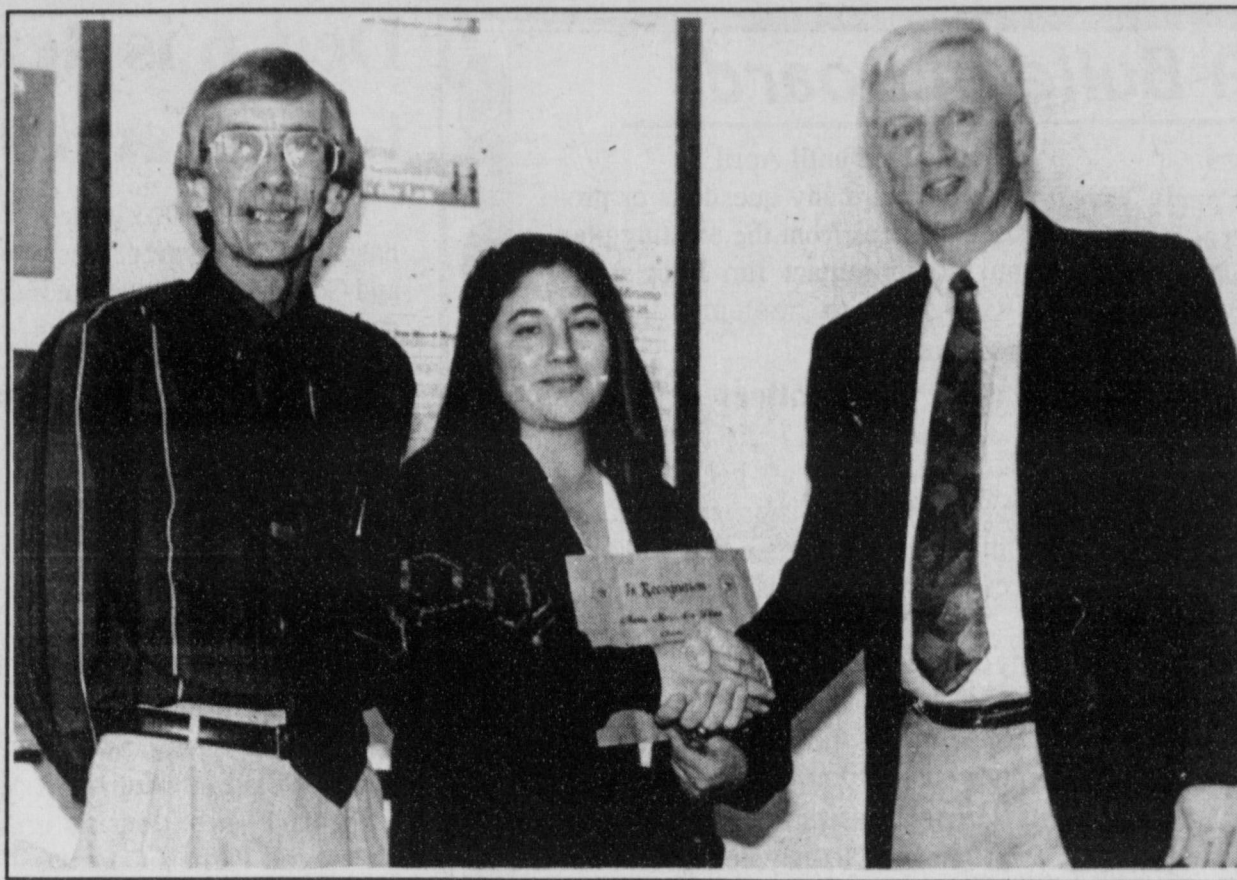
It is the LPAC's responsibility to determine which students are having a problem with language and should be recommended for bilingual classes or the ESL program.

It is also the LEP which determines when students should be recommended for mainstreaming and taken out of these programs.

The peer team indicated a suspicion that low-performing students were being "sent" to the alternative campus at Pep to absolve MHS of responsibility for their performance.

Moore strongly disagreed, and said the administration should do a better job of communicating to the staff the function of Pep School as a campus to provide hope for students who are failing in regular classrooms and of the school district's continuing interest in their success.

"It is the only peer review I



Volunteer success

Maria Mercedes Diaz of Olton (center) recently completed six months of work experience training in the Texas Employment Commission's volunteer services program at the Muleshoe office. Pictured with her are (left) Bob Copeland of the TEC's Muleshoe office and regional coordinator Don Nicholson.

have ever been through," said Moore, who was still "digesting" the report Thursday, soon after receiving it. "I think we're on the right track."

The report praised the campus' attention to students who failed the Texas Assessment of Academic Skills (TAAS) test as sophomores, but recommended that more attention be directed toward eighth graders who had trouble with the test.

While "TAAS Across the Curriculum" is supposed to be addressing student's specific academic needs, the committee found no evidence of systematic monitoring to insure implementation of the program through observations or walk-throughs.

And the peer review team discovered a lack of focus on the performance of certain student groups, especially the economically disadvantaged, whose low performance might be "masked" by the higher scores of other groups.

Moore said that some of the groups the team talked to might not have been aware that the school does look at the test

scores of each student group, as well as each student individually.

"That is a communication problem we need to address. We need more teacher orientations, because we have a staff that is constantly changing," Moore said.

The team questioned the process by which the campus plans had been formulated, revealing that some teachers said they had worked only on isolated portions of the document or had merely "edited" the proposals of others.

The TEA team advised the campus to conduct a strong needs assessment to identify areas of students' academic needs, then focus the campus improvement plan, initiatives,

and staff development on addressing those identified needs.

The team recommended more communication between campuses to determine if students are being prepared for the next level, or if their instruction is repetitive.

At the public meeting Monday, Nov. 27 for parent and community input, only a handful of individuals showed up to talk to the review team.

The hearing coincided with a junior high basketball home game, as well as a school board meeting.

These six individuals were exceptionally verbal, and members of the review team said they were able to learn a lot from the few who attended.

Parker

Continued from page 1

Parker said to Three Way students, parents and staff at the school/community hamburger cookout this fall, "Three Way School is going to be here as long as you care."

Parker said his years at Three Way School had been the best years of his life. "The community has been good to me, to my family, to the kids and to this school."

He praised Three Way's teachers and students for their hard work. "When I passed by classrooms, students and teachers were working—working hard."

"Mr. Parker is leaving Three Way at a time of peak educational performance throughout the system, and he can truly be proud of his leadership in helping to accomplish these goals," said Three Way Principal Bill

Hood, who will be stepping in as superintendent at Three Way in January.

Three Way was one of only 137 out of 1,061 Texas schools to be designated with a "recognized" status, meaning that more than 70% of all students in each student group passed the Texas Assessment of Academic Skills (TAAS) test last year. Drop out and attendance rates also were considered.

Three Way garnered a Texas Successful School Award and was granted \$1,000 because more than 80% of all migrant students in the school passed the TAAS last year.

Mary Furgeson, a Three Way home economics, computer and yearbook teacher, sees Parker as "a dynamic

Continued on page 12

LONGHORN CAFE

Lazbuddie, TX 806-965-2657

Open Monday-Saturday
6:00 a.m. to 3:30 p.m.

Daily Lunch Specials
Homemade Donuts & Cinnamon Rolls

WELCOME PHEASANT
HUNTERS
Open at 5:00 a.m.
on Dec. 9

Come Meet
New Owners:
Corine Mallouf &
Netta Haney

Subscribe today!

Call the Muleshoe Journal
272-4536

Rip's

482-3363
1-800-748-2459

314 Wheeler in Texico 52 Years of Personalized Service

Christmas GIFTS

- Roper Gloves for men, ladies' children
- Sterling Silver Buckles & Jewelry
- All Leather Billfolds & Credit Card Cases

Belts Personalized - FREE -

All Ladies' Wear 20%-60% OFF

Specials In Store
• Boot Discounts

Pendleton Shirts & Jackets 20% OFF

Layaways Welcome
We Have Gift Certificates!

Complimentary Gift Wrapping
No Charge For Alterations

All First Quality Merchandise
No Seconds
No Irregulars
We Stand Behind What We Sell

Cotton Blend Interlock
Turtlenecks starting at \$16
Windsuits starting at \$49

3802
Justin Ropers \$79⁹⁸

Special for kids
- Leather Vests
- Hats - Saddles
- Spurs - Ropes

We accept
MasterCard Visa Discover American Express

New Season Hours:
9 a.m. - 7:30 p.m. est Mon.-Sat.
1-6 p.m. est. Sunday

A Brand New Video . . .

BAXTER BLACK by Himself

BAXTER PERFORMING HIS POETRY, ONE-ON-ONE. JOIN HIM AS HE TAKES YOU TO THE CORRAL FOR *THE SQUEEZE CHUTE* AND *JOSÉ AND THE HOODOO COW*. OR GO TO THE WOODS WITH HIM IN *SPRINGTIME IN THE ROCKIES* AND *THE WILDERNESS WALL*. AND OF COURSE WE CAN'T FORGET THE ARENA WITH *THE ROPER'S RULE, HEADER OR HEELER?* AND *THE DOG AND THE RABBIT*.

17 IN ALL, AND ALL PURE BAXTER . . .

Yes, send me copies of **BAXTER BLACK by Himself** at \$22.95 each = \$ _____

More? You want more? . . . help yourself!

New	<input type="checkbox"/>	BAXTER BLACK - COWBOY PRIDE (cassette tape)	\$ 9.99	\$ _____
New	<input type="checkbox"/>	BAXTER BLACK BUCKS OFF (cassette tape)	\$ 9.99	\$ _____
	<input type="checkbox"/>	DUNNY AND THE DUCK (64 pg softcover book)	\$12.95	\$ _____
	<input type="checkbox"/>	HEY, COWBOY, WANNA GET LUCKY? (223 pg hardback book)	\$21.00	\$ _____
	<input type="checkbox"/>	CROUTONS ON A COW PIE, VOLUME II (208 pg hardback book)	\$24.95	\$ _____
	<input type="checkbox"/>	COYOTE COWBOY POETRY (208 pg hardback book)	\$24.95	\$ _____
	<input type="checkbox"/>	BAXTER BLACK'S FIRST VIDEO (62 min/video)	\$19.95	\$ _____
	<input type="checkbox"/>	BAXTER BLACK LIVE ON PUBLIC TV (78 min/video)	\$19.95	\$ _____
	<input type="checkbox"/>	BAXTER BLACK LIVE UPTOWN (cassette tape)	\$ 9.99	\$ _____
	<input type="checkbox"/>	BAXTER BLACK LIVE AT THE GRANGE (cassette tape)	\$ 9.99	\$ _____
	<input type="checkbox"/>	BAXTER BLACK ON MONDAY (cassette tape - 3 VOLUMES Available)	\$ 9.99	\$ _____
		(Please select one or more Tape #1 _____, Tape #2 _____ or Tape #3 _____ at \$9.99 each)		
	<input type="checkbox"/>	4 PAK Cassette Collection (4 cassette tape set)	\$25.75	\$ _____
		(Baxter Black Live, Baxter Black & Friends, Generic Cowboy Poetry & The Buckskin Mare)		

Shipping Charges	Order total:	Add
	Up to \$20.00	\$2.00
	\$20.01 to 35.00	\$3.00
	\$35.01 to 50.00	\$4.00
	\$50.01 to 75.00	\$5.00
	\$75.01 & up	\$6.00

Total \$ _____

Shipping Charges \$ _____

Grand Total \$ _____
(U.S. Funds)

Please send your check or money order to: **COYOTE COWBOY COMPANY**

NAME _____

ADDRESS: _____

CITY: _____ STATE: _____ ZIP: _____

ATTN: DEPT. MULE

P.O. BOX 190
BRIGHTON, CO 80601
MC & VISA

Brandy Martin, Green married in Maud, Texas

Brandy Lann Martin and Phillip Wayne Green were married Nov. 21 at Maud in a private ceremony.

Brandy is the daughter of Cindy Crim Martin of New Boston, and Phillip is the son of Kelly and Monica Green of Simms.

Brandy is the granddaughter of Max and Barbara Crim of Muleshoe. Phillip is the grandson of Melvin B. and Glenda Oliver of Simms and Billie Green of Maud.

The groom is employed at Ward Timber and Tie Co. in Simms. The bride will graduate from Simms High School in December. The couple is at home in the Simms Community.

Honor Rolls

Lazbuddie

Principal's "AB"

8th Grade — Randy Bohler, Desirae Brakebill, Staci Foster, Jason Jesko, Zulema Marquez, Bobby Martha, Veronica Mata

9th Grade — Holly Engelking, Rosalinda Marrufo, Christina Martha, Joshua McDonald, Rachel Rodrigues, Adam St.Clair

10th Grade — Melissa Aguirre, Brice Redwine, Jason Thomas, Roxann Warren

11th Grade — Rocio Aguilar, Janis Hernandez, Jennifer Hill, Mandy Magby, Rebecca Mata, Blake Mimms, Justin St.Clair, Edward Terry, Tina Walker, Sarah Watson

12th Grade — Wade Angeley, Travis Barber, Keith Burch, Marisol Godinez, Suzy Hodges, Elizabeth Juarez, Adolfo Mata, Guy Nickels, Jeremy Partain, Joann Rodrigues, Krista Smith

Howling mad about endangered species act

Who's against "Saving the Whales?" I imagine you'd be hard put to find one person in a thousand in our country who would rather see whales become extinct.

Who's against saving the mountain gorillas, panda bears, snow leopards or koalas? Same again. Wouldn't most people in our country vote to preserve these creatures in their natural environment?

Of course they would... it's not personal. Most of us have never seen any of these animals outside of National Geographic or the zoo. It requires no sacrifice on our part to "save" them.

But *personal involvement* is at the crux of the bitter conflict regarding the Endangered Species Act.

Twenty years ago, California passed the Mountain Lion Initiative which prohibited hunting lions. Human lion encounters have increased dramatically, resulting in human deaths and an undercurrent of fear in some California communities. Now it is becoming personal. I haven't read about residents of Miami or Ft. Lauderdale voting to transplant mountain lions to their home state to take the place of the extinct Florida panther.

The nearly extinct North Carolina Red Wolf has been preserved and bred in captivity. Some were released in the country side. Enough pets and livestock have been killed that the Fish and Wildlife Service has allowed the shooting of red wolves caught in attacks on private property.

The gray wolf, that villain of Peter and the Wolf, Little Red Riding Hood and wolf whistle, that hero of "The Call of the Wild" and "The Jungle Book" is a staging a comeback.



BAXTER BLACK

ON THE EDGE OF COMMON SENSE.

The romance of saving a magnificent predator has been a big selling point in winning the support of the American public. But it's not personal. Most people, even most farmers and ranchers, have never seen a wolf. As long as the reintroduction process remains far removed from one's own backyard, it looks like a noble cause.

I've heard it suggested that wolves used to inhabit Manhattan Island. So why not reintroduce them in Central Park, as well. But people in the sparsely populated mountain states appreciate the futility of such logic. It is not politically viable.

Yellowstone Park is a mystical kingdom in some faraway state if you live in the wilds of Detroit, New Orleans, Philadelphia or Burbank.

Like the ranchers who surround Yellowstone Park where the wolves are being introduced, I harbor no malice against wolves. I admire their pack hunting abilities and right to exist.

However it is not out-of-line to insist that these ranchers be able to protect their land and livelihood. Hunting is prohibited in Yellowstone Park (3,468 square miles) Wolves have an abundance of protected fawns, crippled elk, aging moose, varmints, sage hen eggs and buffalo calves to prey upon in the parks. If these reintroduced wolves venture outside their protected hunting grounds for a taste of calf or lamb, they should become fair game.

And what would surprise most people is that the wolves would not be slaughtered en-masse. It was not ranchers who decimated the buffalo, the grizzly bear or the eagle. Only those individual predators who were suspect or caught in the act would pay. And how would a rancher know, you ask? It's personal to them. They make it a point to know.



Certified success

Lara Jones of Earth, who works at Damron Drug, recently became a certified pharmacy technician after passing a Pharmacy Technician Certification board exam in October.

Better Business Bureau

The holiday season of the year brings many inquiry calls to your Better Business Bureau regarding charitable organizations.

Many legitimate charities use the holidays to solicit funds for their various causes and to further their programs and patient care.

Unfortunately, though, there are some charities that solicit your monies and pocket those funds for use other than what they state. When you receive a request for a donation, give with your head as well as your heart.

Legitimate charities will allow you time to check them out before you give. Not so legitimate charities will pressure you into giving right now.

Legitimate charities will be totally up front with you on how their monies are spent. The not so legitimate charities will be vague about how their monies are spent and will not give you a straight answer.

Before you give, call your Better Business Bureau and check them out first. Our phone numbers are 763-0459 and long distance (800) 687-7890.

Your Better Business Bureau has been receiving inquiry

calls regarding a certificate received by South Plains residents offering a vacation package.

According to information supplied by the company to the BBB/Clearwater, Florida, Promotional Travel began business in October 1990. Frank Burkett is president.

The BBB files show the company has received complaints alleging misleading selling practices, pressure to make a decision on the initial call and dissatisfaction with the company's services.

The company responded to complaints brought to its attention by the BBB and offered an explanation or adjustment when it deemed warranted.

The best advice from your BBB is to exercise caution by checking out the offer thoroughly before signing an agreement or sending any money.

Remember that the entire trip is not free—there are some expenses that you are responsible for. Many times these trips are for the purpose of selling you something else—and finally, check with your local travel agent first.

By Nan Campbell

Pheasant numbers below average

Pheasant hunters in West Texas may be in for a disappointing year if Texas Parks & Wildlife Department survey figures are an indication of actual pheasant numbers.

The Texas Parks & Wildlife Department annually surveys the pheasant population in the Panhandle and South Plains by conducting roadside counts along 44 routes during late October and early November.

Each route, measuring 20 miles in length, is driven from east to west at 20 mph and begun 15 minutes after sunrise.

Across the Panhandle District as a whole, the number of pheasants sighted along the 44 survey routes decreased by 32 percent compared to last year.

The 1994 pheasant survey resulted in 14.4 birds per survey route, while 9.8 birds per route were observed in 1995.

Pheasant numbers in 1995 are down by 37 percent compared to the average over the past five years (15.9 birds/route).

Some of the highest numbers were recorded in the northern portion of the Panhandle. In the counties of Dallam, Sherman, Hansford, and Ochiltree, eight pheasant surveys produced an average of 36 birds per route, with one route in Hansford County showing a count of 65 pheasants.

Other counties showing respectable pheasant numbers were Hutchinson and Deaf Smith, which averaged about 18 birds/route on four survey lines. The other eight Panhandle counties that were surveyed showed an average of only 1.1 pheasants per route.

In the South Plains region (from Parmer County, south to Cochran, east to Crosby and north to Briscoe County), it has been another good year for cotton and a less than average year for pheasants.

Generally, the more acres that are in cotton, the less acres that are in grain crops which are beneficial to pheasants as

food and cover.

Based on 24 survey routes conducted in 12 South Plains counties, the 1995 census resulted in 2.8 birds/route. This represents an 11 percent decline compared to the 1994 figure (3.2 birds/route). The 1995 count was 67 percent less than the five-year average (8.7 birds/route) for the South Plains region.

The highest concentrations of pheasants in the northern Panhandle this year are probably associated with a combination of dense cover (ie., playa lakes) and irrigated grain crops.

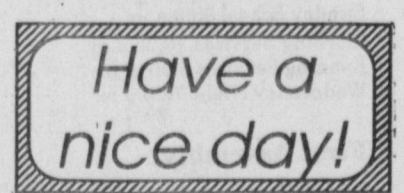
Not only does this situation provide a good mix of food and cover, but it provides adequate ground-level humidity that is critical for nesting success under relatively hot, dry conditions.

The pheasant season begins

Saturday, Dec. 9, and continues for 16 days, concluding Dec. 24. The bag limit is three cocks per day with a possession limit of six birds.

Hunters are required to leave one foot or all feathers attached to their harvested birds until they reach their final destination.

For further information on pheasants, other wildlife, or to request free technical assistance on your property, contact Calvin Richardson, Wildlife Biologist in Lubbock at (806) 746-6101, or Danny Swepston (District Leader) and Gene Miller (Technical Guidance Biologist) in Canyon at 806/655-3782.



Q: What corn hybrid should you plant that's tough and adaptable?

A: ASGROW. RX899 ASGROW. RX897 ASGROW. RX943W

Proven corn hybrids from Asgrow are the answers you need to achieve top performance for your High Plains farm. All three are well adapted to a wide range of growing conditions and deliver excellent standability for optimum harvest potential.

With these Asgrow hybrids you'll get a combination of high yields and good smut tolerance with an excellent grain quality rating - what more do you want?

All of this at a good price? Asgrow has the answer for that, too. Ask your dealer about our "early delivery, early pay" incentive that can save you money.

Call us for more information on the Asgrow corn hybrids. We'll help you decide which one will deliver proven performance for your farm.

Call Bennie Pickrell 1-800-880-2189

Have A White Christmas

Rheata White
Various Acclaimed Artist & Awesome Artist Showing
in Studio and Gallery
228 Main

OPEN 6-9 Saturday, Dec. 2
Paintings, Enamels, Silks, Prints, Art Objects,
and more in Floral Design.

Poinsettias are here!
Red, pink, white & jingle bell
• 6" and 8" • FREE Delivery

We Also Have Christmas Cactus

Kristy's Plants
710 E. American Blvd. 272-5536

Subscribe Today!
Call 272-4536 for more information



Gwen Carter Diebold

Gwen Carter Diebold

Julia S. and Michael P. Diebold, of Wilmington, DE, would like to announce the birth of a daughter, Gwen Carter Diebold.

She was born at the Wilmington Delaware Birthing Center Tuesday, Oct. 24, 1995, at 5:25 a.m. She weighed 8 pounds and was 21 1/2 inches long.

Gwen's grandparents are Mr. and Mrs. Charles Shain of Mulleshoe, Carol Diebold of Lisle, IL and Mr. and Mrs. Robert Diebold of McClean, VA.

Great-grandparents are Eva Carter of Leitchfield, KY and Mr. and Mrs. Charles H. Diebold of Peralta, NM.

Gwen has one brother, three-year-old Shain C. Diebold.

Parker

Continued from page 10

force" in the success of Three Way ISD.

"His witticisms and humor brought me through some difficult times, and I will remember him as energetic, fast-thinking, honest and caring."

"I have enjoyed working with Mr. Parker for the last three years," said Principal Hood. "He has helped provide valuable insight into the administration of a school system through his many years of experience."

Parker earned his bachelor's degree at West Texas State University and his M.Ed. Ad. at Texas Tech University.

It was at Parker's work with children at the Amarillo Community Center during his years as a student at WTSU (now WT A&M) that got him involved in coaching and working with kids.

He began his career as a teacher and coach at Dimmitt, and continued teaching and coaching various sports at Lubbock Estacado and Ropes.

A desire to go into administration led Parker to Three Way School at Maple, where he was principal for three years before serving as superintendent the last 14 years.

"I wouldn't change my career choice, because I love children," said Parker, who is looking forward to retirement after 28 years in the field of education. The Parkers have built a house in his hometown of Happy.

Jean Parker, who serves as secretary to the principal and administrative officer at Three Way, will continue to work at the school until her retirement next year, while Don will work on the house and raise cattle.

When Jean retires next year, the Parkers plan to travel and see the world. "This is the end of my career," Parker said, "but I have only just begun to live!" (Cristy Kessler, English teacher at Three Way School, contributed to this article.)

WJHS actors take second at competition

By **MARTHA TOLES FROST**
City Editor

The Watson Junior High School one-act play, "Robin Hood," won second place in the district UIL one-act play contest in Friona on Nov. 18.

"It was worth all the work to place second," said Stacy Locker, who played one of the women in Robin Hood's merry band of thieves.

Kyle Hahn as Robin Hood and Lela Hancock, as the Wife of the Sheriff of Nottingham, were named to the all-star cast.

"I felt shocked that I received an individual award," said Myndi Heathington, named Myndi Heathington, named all-star cast for her role as the Sheriff's scatter-brained daughter, Salome.

Students began working on the play two months ago, with 85 trying out for parts. (UIL rules limit productions to 15 cast members and four stage crew members.)

Lindsey Field, who got to

play the evil schemer Lady Merle, cousin to Prince John, said she learned "to be more outgoing and to speak clearly."

Lynsie Black (Maid Marian's Lady-in-Waiting) said she enjoyed getting to pretend to be "someone you're not."

The one-act play was presented for DeShazo Elementary and Watson Junior High School students on Nov. 9 and for the public on Nov. 13 in preparation for district.

Written by Tim Kelly, "Robin Hood" takes place in England during the reign of Richard the Lion-Hearted (Matt Conklin).

The play contains scenes from "Robin Hood Prince of Thieves" as well as "Robin Hood, Men in Tights" and the archery contest from Disney's animated version of the classic story.

Maid Marian, Robin's childhood sweetheart (Barbara Morales), is among the mem-

bers of a caravan held up by the outlaw and his merry band while Richard is fighting in the Crusades, leaving his brother Prince John in charge.

Robin's band consists of Greyson Rennels as Friar Tuck, Landon Black as Little John, Jeremy Tosh as Will Scarlet, Stacy Locker as Beth, Brandy Whitt as Mother Meg and Kala Johnson as the Old Widow.

During the fray, the Sheriff of Nottingham (played by Joseph Anguiano) is "stripped" of his dignity in Nottingham Forest.

The capture of Robin at the county fair is followed by a botched rescue attempt at Nottingham Castle.

The conflict between the Sheriff and Robin Hood reaches a climax in Sherwood Forest, when King Richard appears and Robin and Marian arrange to be married.

Also participating were B.J. Copeland, as Kaspar the soldier, as well as Hadley



The cast of "Robin Hood" celebrates its victory as second-place one-act play in district UIL competition.

Henderson, Elizabet Lozano and Kole Magby.

Stage crew consisted of Lindsey Altman, Alisha Gutierrez, Phillip Hardt and Blake Gartin. WJHS speech classes helped with make-up, costumes and stage props.

The next production will be based on the American Girls doll and book collection.

Junior high school speech students will perform for elementary students reading the books about girls who lived during various decades of American history.

(Lori Haseloff, WJHS speech teacher and the director of "Robin Hood," contributed to this article.)

Immaculate Conception Catholic Church
805 E. Hickory
Father Joseph Augustine

First Baptist Church
220 West Ave. E.
Pastor, Stacey Conner

Emmanuel Baptist Church
Iglesia Bautista Emmanuel
107 East Third
Isaias Cardenas, Pastor

Trinity Baptist Church
314 E. Ave. B
Pastor Robert Brown

Circle Back Baptist Church
Intersection FM 3397 & FM 298
Rev. Jessie Shaver
946-3676

Calvary Baptist Church
1783 W. Ave. C
Pastor Ben Davis

Progress Baptist Church
Progress, Texas

Richland Hills Baptist Church
17th & West Ave. D
Brad Gathright

St. Matthews Baptist Church
Corner of West Boston & West Birch
Pastor, Floyd R. Monroe

Progress Second Baptist Church
1st and 3rd Suddays
Rev. Arthur Hayes

Primitive Baptist Church
621 South First
Elder Cleveland Bass, Pastor

1st Baptist Church
Lazbuddie, Tx.
965-2126

There is a reward at the top of . . .

THE CLIMB

EVERYONE IN THE CHURCH THE CHURCH IN EVERYONE

The church is God's appointed agency in this world for spreading the knowledge of His love for man and of His demand for man to respond to that love by loving his neighbor. Without this grounding in the love of God, no government or society or way of life will long persevere and the freedoms which we hold so dear will inevitably perish. Therefore, even from a selfish point of view, one should support the Church for the sake of the welfare of himself and his family. Beyond that, however, every person should uphold and participate in the Church because it tells the truth about man's life, death and destiny; the truth which alone will set him free to live as a child of God.

Even when you climb with skis and when the way up becomes easier, it still exerts you. However, the way is made even less of an effort when you think of the rewarding ride down.

The reward of an eternal life with God is easier still because it is a gift.

"For the wages of sin is death; but the gift of God is eternal life through Jesus Christ our Lord."

Attend church . . . learn more of this wonderful gift.

Coleman Adv.

Lazbuddie Church of Christ
Minister, Nathan Crawford
Sunday School 9:30 a.m.
Morning Services 10:20 a.m.
Evening Services 5:00 p.m.
Wednesday Night 7:00 p.m.

First Assembly of God
272-3017 or 272-3984
Rev. Darrell R. Sanderlin, Pastor
521 South First Street
Sunday Services:
9:45 & 11:00 a.m.
6:30 p.m.
Wednesday Services 7:30 p.m.

First United Methodist Church
507 W. 2nd Street
Dr. James Bell, Pastor

El Divino Salvador Methodist Church
E. 5th and E. Ave. D
Rev. Libney Peneda, Pastor

Shepherd's Chapel of the Sacred Heart of Jesus Christ
Non-Denominational Spirit Filled Fellowship Worship:
809 E. Fir, Mulleshoe
Rev. Manuel A. Cruz-Medina
Sunday Services:
9:00 a.m. - En Espanol - Devine Services
11:00 a.m. - In English - Devine Services
6:00 p.m. - In English - Devine Services
The Doors Are open each day from 9 a.m. to 6 p.m. for whomever needs our Lord, Jesus Christ or to talk with the Pastor.

St. John Luthern
Lariat, Texas
Sunday School and Bible Classes 9:30 a.m.
Church Services 10:30 a.m.
Rev. Richard Greenhaner

The Christian Center
Morton Hwy.
Reydon Stanford
272-5105

New Covenant Church
Plainview Hwy
Sunday School 9:00 a.m.
Sunday 10:00 a.m.
Wednesday 6:00 p.m.
Phil Ensminger, Pastor

Lazbuddie Methodist Church
965-2121
G. Scott Richards, Pastor

New Vision Church Of The Nazarene
814 W. Ave. C
272-3622
Pastor David R. McIntire

Primera Iglesia Bautista
223 E. Ave. B
Roy Martinez, Pastor

"Iglesia Pentecostal Unida"
207 East Ave. G
272-3636
Pastor: Wenceslado Trevino

Lariat Church of Christ
Sunday School 10:00 a.m.
Worship 11:00 & 6:00
Wednesday Services 7:00 p.m.
Sam Billingsley, Minister

Muleshoe Church of Christ
22nd & W. Amer. Blvd
Sunday School 9:30 a.m.
Morning Worship 10:20
Evening Services 6 p.m.
Wed. Night 7:30 p.m.

16th & Ave. D Church of Christ
Sunday 10:30 a.m.
Evening 6:00 p.m.
Wednesday 7:30 p.m.
Curtis Shelburne, Minister
272-4619

<p>Irrigation Pumps & Power W. Hwy 84 272-4483</p>	<p>Attend the church of your choice</p>		<p>Bob Stovall Printing 221 E. Ave. B. 272-3373</p>
<p>5-Area Telephone Cooperative, Inc. 302 Uvalde 272-5533</p>	<p>James Crane Tire Co. 322 N. 1st 272-4594</p>	<p>Bobo Insurance Agency 108 E. Ave. C 272-4264</p>	<p>Wes-Tex Feed Yards, Inc. 272-7555</p>
<p>Western Drug 114 Main 272-3106</p>	<p>First Bank Member F.D.I.C. 202 South First 272-4515</p>	<p>American Valley, Inc. W. Hwy 84 272-4266</p>	<p>Bailey Gin Co. 946-3397</p>

Journal Classifieds

Call 272-4536 Deadlines: For Thursday, Noon Tuesday; for Sunday, Noon Friday Call 272-4536

R REALTOR
 Planning to move to Lubbock? Home buyers representative working for you, the buyer. Any price range. No cost to you! Competent, experienced, and skilled negotiator.
Clarence Mason (Broker) 795-7116
 44S-7tpd Member MLS

MUST SELL! 1995 Ford Windstar
 Dual air bags, ABS, power windows, power locks, tilt wheel, cruise control, AM/FM stereo cassette with front and rear controls, front and rear air conditioning, 7/8 passenger package, dual electric mirrors, power rear vent windows and much more. No old contract to assume, no back payments to make, just need responsible party to make reasonable monthly payments.
 Contact Ali in the Credit Dept.
 Friona Motors, 806-247-2701

MUST SELL! 1993 Chevrolet C-2500
 4x4 extended cab, automatic, tilt, cruise, 350 V-8, AM/FM cassette, power windows, power locks, air conditioning and much more. No old contract to assume, no back payments to make, just need responsible party to make reasonable monthly payments.
 Call Ali Roder in the credit dept.
 Friona Motors, 806-247-2701

MUST SELL 1993 Ford Explorer XLT
 4 door, 4x4, air conditioning, AM/FM cassette, power windows, power locks, 2 captain chairs, rear window defroster and window wiper, four wheel ABS, tilt wheel, cruise control, power mirrors, power windows, luggage rack and much more. No old contract to assume, no back payments to make, just need responsible party to make reasonable monthly payments.
 Contact Ismael Roeha in the credit dept.
 Friona Motors, 806-247-2701

MUST SELL! 1991 Pontiac Firebird
 Automatic, power windows, power locks, power mirrors, T-top, AM/FM cassette, air conditioning, tilt wheel, cruise control, rear deck spoiler, aluminum wheels and much more. No old contract to assume, no back payments to make, just need responsible party to make reasonable monthly payments.
 Contact Kim in the credit dept.
 Friona Motors, 806-247-2701

Having A Garage Sale? Advertise It In The Muleshoe Journal
 Deadline Tuesday - 12 p.m.
 Friday - 12 p.m.

Legal Notice
NOTICE OF PROPOSED ACQUISITION OF BANK ASSETS AND ASSUMPTION OF LIABILITIES
 Notice is hereby given that Muleshoe State Bank, Muleshoe, Texas has made application to the Federal Deposit Insurance Corporation, Washington, D.C. 20429, for its written consent to acquire the assets of and assume liability to pay deposits made in the following: Bank of America, 203 Avenue D, Farwell, Texas 79325; and Bank of America, 304 Main Street, Muleshoe, Texas 79347.
 This notice is published pursuant to Section 18(c) of the Federal Deposit Insurance Act.
 Any person wishing to comment on this application may file his/her comments in writing with the Regional Director of the

Federal Deposit Insurance Corporation at its Regional Office, 1910 Pacific Avenue, Suite 1900, Dallas, Texas 75201. If any person desires to protest the granting of this application, such person has a right to do so if the protest is filed with the Regional Director by December 3, 1995. The nonconfidential portions of the application are on file in the Regional Office as part of the public file maintained by the Corporation. This file is available for public inspection during regular business hours.
 November 3, 1995
 Muleshoe State Bank
 Muleshoe, Texas
 Bank of America Texas, N.A.,
 Irving, Texas

Public Notice
 The Bailey County Commissioners Court will be accepting **SEALED PROPOSALS** for Comprehensive General Liability Insurance, Automobile Liability, and Automobile Physical Damage coverage. Proposals are to be mailed or delivered to Marilyn Cox, County Judge, 300 S. 1st, Muleshoe, TX 79347, and must be received by 11:00 a.m., Thursday, December 21, 1995, at which time they will be opened and read.
 The effective date for coverage is January 1, 1996. For specifications contact Judge Cox at the above address or call (806) 272-3077 between the hours of 8:00 a.m. and 5:00 p.m., Monday through Friday.
 All proposals must be plainly marked "Insurance Proposal - General Liability and Automobile Coverage."
 Bailey County reserves the right to accept or reject any or all proposals submitted.

James F. Hayes & Co.
AGRICULTURAL REAL ESTATE SERVICES
 152 Acres West of Muleshoe. Electric Center pivot sprinkler, 2 wells, 1/2 circle of improved grass. Good barbed wire fence. Priced for immediate sale.
 120 acres west of Muleshoe. 2 wells. Good soil. Lays good. Immediate possession available.
 Dodd Area - 160 acres with electric center pivot. Excellent soil and water.
 320 Acres Northwest of Lariat. 2 center pivot sprinklers, 2 wells, modest home, quonset barn.
 480 Acres of C.R.P. West of Muleshoe One payment left \$150 per acre.
 480 Acres on highway 1760, 3 miles from New Mexico state line. 6 wells, lots of underground pipe South of Lariat - 160 acres with center pivot. Priced to sell in order to settle estate.
 639 Acres Northwest of Earth. 5 wells, 3 sprinklers, livestock feeding pens. Nice 4 bedroom home with basement. One 3 bedroom home for employee or to rent our. NICE COMPLETE OPERATION!
 320 Acres East of Farwell on hwy 145. 2 Valley water drive sprinklers, 2 wells, excellent water
 80 Acres South of Lariat. Irrigated, lays good. Call for details.
 1 labor of C.R.P. Southwest of Muleshoe. One year left on contract. \$200 per acre.
 160 Acres East of Farwell on Hwy. 145 with modes home and large quonset barn
 177 Acres with center pivot Southwest of Muleshoe Lays good, allotted.
 120 Acres of C.R.P. in Stegall Area. Good soil, good turf. Price reduced to sell.
 320 Acres East of Farwell on hwy 145. 2 Electric sprinklers, 3 wells, fully allotted. Excellent soils and water
Vic Coker, Agent
 310 Main St. Suite 103 Muleshoe
 Office 272-3100 Home 965-2468

Miscellaneous
 Hay for Sale: Large Round Bales, Quantity Discounts, Delivery Available. German Millet \$65 bale, \$95 ton; Milo Hay \$65 bale, \$95 ton; Haygrazer \$55 bale, \$85 ton; Wheat \$50 bale, \$75 ton; Oat \$60 bale, \$90 ton., (505) 276-7527, (505) 276-7522.
 48t-1tc
 For Sale: Console/Spinnet Piano, Take on small payments. See locally. 1-800-343-6494.
 49s-1tpd
Help Wanted
 C&H Equipment, W. Hwy. 84, Muleshoe, is now taking applications for a parts counter person. Experience preferred but not required, apply in person only, no phone calls please.
 48s-4tc

6.1 billion dollar corporation expanding! Needs people from Muleshoe and surrounding area. \$486 to \$624 per week if you qualify. Also management/trainee positions available, benefits, company paid training and advancement opportunities. Apply in person at Bailey County Coliseum, Dec. 4, 1 p.m. sharp. No phone calls please!
 48t-2tc

Real Estate
 For Sale: 3 bedroom, 1 bath, brick home. Newly remodeled kitchen, 806-481-3502.
 33t-tfc
YOU WILL FALL IN LOVE with this beautiful house in Country Club estates, 3/2/2, recently renovated, isolated

master bedroom, approx. 2200 sq. ft. Sun room, large brick-look patio, fireplace, central heat and air. Sprinkler system. Storage shed, landscaped yard. **Must see to appreciate. Possible Lease Option. Appointment 272-4496 or 272-3380.**
 48t-3tpd
 Nice 3 bedroom house, 1 bath, in Lenau Addition. Call 272-3920.
 46s-4tsun chg.
 Richland Hills - 3, 1 3/4, 2, Great location. Recently remodeled, lg storage building, low \$70. Call 806-272-4754.
 32s-Sun tfc
 For Sale: three bedroom, three bath, approx. 2100 sq. ft. home, in Richland Hills addition. For further information call (505) 763-6581 or (505) 372-6611. Only serious inquires please.
 49s-4sun pd

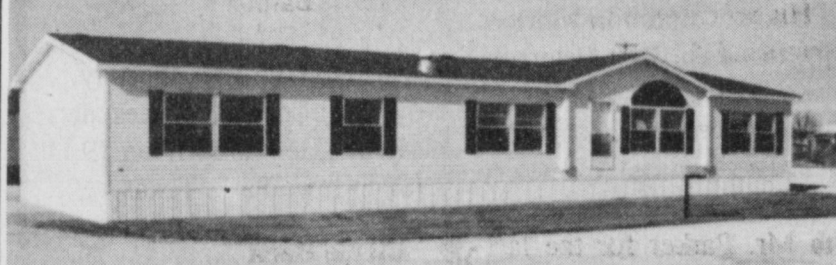
SALES Braun Wheelchair Lift

 SERVICE & REPAIRS ON ALL BRANDS
AMERICAN EQUIPMENT & TRAILER
 3707 M.L.K. Jr. Blvd. - Lubbock, TX
 806-747-2991

Pets For Sale
 Dalmation Puppies For Sale, Call 272-3842.
 47s-4tpd.

Automobile
 1991 Chevy Extended Cab Pickup with short bed. 34 K, custom seats, excellent condition. 272-3698.
 49s-4tc
 1994 Plymouth Voyage, driftwood color, 22,000 miles, \$13,195. (505) 359-1775, Portales
 1995 Dodge Dakota, regular cab, sports, red color, 10,794 miles, \$9,295. (505) 359-0947, Portales
 1991 Chevy Extended Cab S-10 pickup, white color, 68,000 miles, \$8,995. (505) 359-1775, Portales
 1993 Dodge Shadow, 4 door, white color, 34,000 miles, \$7,495. (505) 359-0947, Portales
 1993 Chevy Suburban, Silverado, 4x4, dual air, loaded, \$22,995. (505) 359-0947, Portales

BETTER LIVING HOMES & LAND
 New Mobile Home Dealer Serving Eastern NM and West Texas!
 We Will Trade For Used Mobile Homes, Land or Anything of Value.



Come By And See The Difference In Our Quality Homes and What Competitive Pricing Is All About

Located 1/2 Mile North Of Portales On US 70 "The Mobile Home Dealer That Will Not Be Undersold!"

CALL CLEVE TEAGUE, KEN CREASEY OR LARRY POOL
(505) 356-5448
 Lic. # D00681

Nieman Realty
 116 E. Ave. C George Nieman, Broker 272-5285 or 272-5286

HIGHLAND AREA
 2 Bdrm, 1 bath home, fenced yard. \$16,500!!! HL-4
 VERY NICE 3-2-2 Brick, Cent. A&H, built-ins, fenced yd., spklr. sys., MUCH MORE!!! \$60's !!! HL-1
 Very nice 3-1 1/2-2 carport home, Geothermal heat and air, dishwasher, fireplace, nice carpet, storage building, fenced yard. \$30's!!! HL-5
 JUST LISTED 3-2-2 home, Cent. A&H, built-ins, fenced yd., corner lot. \$30's !!! HL-2
 JUST LISTED - VERY NICE 3-2-1 carport Home, heat pump, built-ins, nice carpet, fans, storage-workshop! MUCH MORE!!! \$50,000 !!! HL-6
 NICE 4-2-1 Brick, cent. A&H, built-ins, fenced yd. spklr. sys., stor. bldg., PRICED TO SELL!!!!
LENAU ADDITION
 JUST LISTED - 3-1 Home, floor furnace heat, evap. air, fenced yd. \$18K !!! L-5
 NICE 3-2-1 carport Home, geothermal heat pump, fenced yd., storage bldg. \$27,500!!! L-3
 Nice 2-1-1 Home, new interior paint, new carpet, fenced yd., storage bldg. MORE!!! \$20's !!! L-4
IN CONTRACT
 VERY NICE 3-2-1 Home, Heat Pump, storm windows & doors, extra insulation, nice carpet, spklr. sys. & MORE!!! \$30's!!! L-2
 JUST LISTED - Nice 2-2-2 Brick, on corner lot, heat pump, fenced yard, storage bldg., MORE! \$40's !!! L-1

HIGH SCHOOL
 JUST LISTED - NICE 3-2-2 carport home, cent. A&H, built-ins, guest cottage or eff. apartment, insul. wkshop-stor. bldg., w/elect., fenced yd., & MORE!!! \$40's!!! HS2
 NICE 3-2-2 Brick Home, Cent. Heat, built-ins, fenced yd., large shop & office (ideal for automotive-woodworking, etc.), storage, eff. apartment, MORE!! \$80's HS-3
 JUST LISTED - 2-2-2 carport Mobile Home, Cent. Heat, built-ins, fenced yard, More!!! \$12K HS-1

RURAL HOMES
 2-2-2 Carport Mobile Home on hwy. close to town, 1.99 acres wharn and corrals!! \$20's!! HR-1
 BEAUTIFUL 4-3-4 carport home on 2.4 acres on Highway, Geo. Heat pump, FP, nice carpets, loads of storage. SHOWN BY APPOINTMENT. \$90's!! HR-4
 VERY NICE 3-2-2+2 Carport Brick Home on 2.5 acres on pavement, close to town, Heat PUmp, built-ins, FP, MUCH MORE. \$70K !!! HR-3

COUNTRY CLUB
 2-1-1 carport home, wall furnace heat, nice carpet, storm shelter, storage bldg., fenced yd. MORE!!! \$20's.

ASK ABOUT OUR COMMERCIAL LISTINGS!!!
 COMMERCIAL-200' Hwy. 84 frontage-Former Richland Hills Texaco, excellent business location. PRICED TO SELL!!!!!!

HENRY REALTY

4 bedroom, 2 full baths, 2 half baths, attached 2-car garage, BV home, wood roof, new carpet, new tile floor coverings, freshh paint. Central heat, evaporative air, fireplace, ceiling fans, kitchen builtins, sunroom, storm cellar, great landscape, automatic lawn sprinkler front and back yards, fenced backyard, automatic garage door openers. Roomy home with excellent storage east of Muleshoe on Hwy 70. Call for appointment.

3 Bedroom, 1 bath, carpet located on 10th street. refrig. air window unit. Storm doors and windows.

80 acres in CRP with 2 bedroom, 1 bath house. 8 miles east of Muleshoe. Call for appointment

Near High School - 3 bedroom, 3 bath, BV central heat, ducted in evaporative air cond., carpet throughout., large den with rock fireplace, top grade wood paneling throughout. Storm windows and doors. Insulation in ceiling, large utility room and spacious storage area. Kitchen built-ins.

Country Club Addition, 29- 60' lots to sell as one package, Great opportunity for apartments or single family development.

2 Bedroom, 1 bath, recently remodelled - new paint, new floor covering throughout. Wood fence. Storm doors and windows.

Four bedroom, 2 bath, 2 car garage, 2 - car carport. Refrig. air, central heat. Carpet, beautiful dining area with built-in china cabinet and paneled walls and other extras. Storm doors, storm windows and awnings. Concrete fence, front yard has automatic sprinkler. Kitchen built-ins. 1,000 sq. ft. storage. Large home with extra storage.

Small acreage on highway near Muleshoe. New development. Please call for information. 5 acres to 40 acres Excellent location.

2 Bedroom, 1 bath, stucco. Ready for occupancy

1 bedroom, 1 bath on same property as above. Good for rental property

Near High School, 3 bedroom, 1 bath, floor furnace heat, roof ducted, Evaporative air cond, storm windows & doors, equipped for washer/dryer. Fenced back yard.

COMMERCIAL PROPERTY
 West American Boulevard 150' frontage. Priced to sell. Ideal location on west American Blvd. 150' highway frontage. A great business opportunity.
 Mobile home park with 13 rental spaces includes 2 bedroom home with carpet and storage building. Duplex on property for rental. Great business opportunity.
 4,000 Sq. Ft. Commercial Building. Ready to be occupied.
 111 WEST AVENUE MULESHOE, TX 272-4581



Employee of the Month
Tom Grissom, named Chamber of Commerce & Agriculture's Employee of the Month, has worked at K.C. Muffler in Muleshoe for the past four years. He says being around the other employees is what he enjoys most about his job. Pictured with him is his employer Duane Castleberry.

Public Record

Obituaries

W.J. Waltrip

MORTON — Funeral services for W.J. Waltrip, 88, of Morton, were held Thursday, Nov. 30, at the First United Methodist Church in Morton, with the Rev. Ken Peterson, pastor, officiating. Burial followed in the Morton Memorial Cemetery under the direction of the Ellis Funeral Home of Morton. Mr. Waltrip died Tuesday, Nov. 28, at his home. He was born March 29, 1907 in Itasca. He married Edna Lieske Dec. 24, 1935 in Crosbyton. He had been a resident of Morton since 1934 moving there from San Jon, NM. He was a farmer and a member of the First United Methodist Church. Survivors include his wife, Edna, of the home; one son, Dub Waltrip of Morton; two daughters, Edna Rowland of Morton and Barbara Boyd of Lubbock; nine grandchildren and six great-grandchildren. The family suggest memorials to the First United Methodist Church, 419 W. Taylor, Morton 79346.

Bill Hail
Graveside services for Bill Hail, 70, of Lubbock, were held Friday, Dec. 1, at the Muleshoe Cemetery with Sherri Reid, of Plainview, officiating. Burial was under the direction of the Ellis Funeral Home of Muleshoe. Mr. Hail died Wednesday, Nov. 29, of natural causes, at his home. He was born Jan. 19, 1925 in Iowa Park, Texas. He married Lou Willie Thompson, Dec. 24, 1946, in Wichita Falls, Texas. She died Dec. 2, 1979. He had been a resident of Lubbock since 1980, moving there from Muleshoe. He had been a resident of Muleshoe since 1954, moving here from Iowa Park. He was a WWII veteran, serving in the U.S. Navy. He was an electrician retiring from Harvey Bass Appliance, in Muleshoe, in 1980. He was a member of the Baptist Church. Survivors include one daughter, Darlene Lightner of Lubbock; one brother, L.B. Hail of Deming, NM; two sisters, Vivian Mason of Paris, Texas and Bobbie Hall of Bryan, Texas; three grandchildren and one great-grandchild.

Rotary News

By Dan Lusk

The Muleshoe Rotary Club held its regular weekly meeting on Nov. 28, at the Bailey County Civic Center at noon. President Mike McDearmon opened the meeting by requesting Jay Feagley to lead the group in the Pledge of Allegiance followed by Rev. James Bell leading the prayer. The guest at the meeting this week was Lance King, son of Max King. Club Sweetheart Reagan McElroy was also present and tickled the ivory during singing. President Mike reminded everyone of the Old Fashioned Christmas and Christmas parade this Saturday, Dec. 2. The festivities start at 6:30 p.m. Mike also reminded the club that a representative from Opportunity Plan will be here next week to discuss the program and to receive a donation from the club. Dr. Mark McClanahan

brought the program for the meeting. Third year medical student, Richard Albertson, discussed the medical program at Texas Tech and some of the experiences he has had thus far. He is very positive on the Tech program and the affiliation they have with St. Mary's Hospital. Although he is enjoying learning and some of the specialties he is experiencing, he had to admit that May 17, 1997 will be a special day, his graduation. Richard is very thankful for all the support Muleshoe has give both him and his family over the years and will not forget them. Clifton Finley was selected as the Polio Plus winner for the week.

Subscribe today!
272-4536

What's Cooking?

Area school menus

Muleshoe High School
Watson Junior High
Breakfast

Monday-Breakfast on a stick, fruit or juice, milk
Tuesday-Cheeses toast, fruit or juice, milk
Wednesday-Scrambled egg, toast, fruit or juice, milk
Thursday-Ham biscuit, fruit or juice, milk
Friday-Cinnamon roll, fruit or juice, milk

Lunch

Monday-Soft tacos, lettuce & tomatoes, refried beans, mixed fruit, milk
Tuesday-Footlong chili dog, baked beans, sliced peaches, milk
Wednesday-Fajitas, lettuce & tomato, mexicali corn, cornbread, milk
Thursday-Fish filet, macaroni & cheese, sweet peas, fruit cocktail, milk
Friday-Chicken fried steak, mashed potatoes, green beans, hot roll, milk

Dillman, DeShazo
Breakfast

Monday-Breakfast on a stick, fruit or juice, milk
Tuesday-Cheese toast, fruit or juice, milk
Wednesday-Scrambled egg, toast, fruit or juice, milk
Thursday-Ham biscuit, fruit or juice, milk
Friday-Cinnamon roll, fruit or juice, milk

Lunch

Monday- Cheeseburger, French fries, lettuce & tomatoes, peanutbutter cookie, milk
Tuesday-Chicken nuggets, mashed potatoes, green beans, hot roll, milk
Wednesday-Pizza, French fries, peas & carrots, birthday cake & ice cream, milk
Thursday-Crispy tacos, lettuce & tomatoes, refried beans, cornbread, milk
Friday-Chicken fingers, mashed potatoes, crinkle cut carrots, hot roll, milk

Three Way
Breakfast

Monday-Pancakes, sausage, juice, milk
Tuesday-Cereal, juice, graham crackers, pears, milk
Wednesday-Biscuit & gravy, juice, milk
Thursday-Blueberry muffins, juice, milk
Friday-Two waffles, juice, milk

Lunch

Monday-Chicken strips w/ gravy, creamed potatoes, corn on cob, hot rolls, applesauce, milk
Tuesday-Beef stew, cheese, raw vegetables, cornbread, pears, milk
Wednesday-Hamburger, lettuce, tomatoes, fries, jello w/ fruit, milk
Thursday-Fajitas, salad, refried beans, tortillas, milk
Friday-Hotdogs w/ chili & cheese, baked potatoes, corn, apples, milk

Lone Star Santas delivers dreams

It's hard to be a child and wonder if you'll be forgotten once again this holiday season. Thanks to Lone Star Santas, many deserving children in Muleshoe will remember this holiday season as an exciting, happy time. Lone Star Santas is a non-profit organization whose goal is to collect and distribute new toys through established community organizations to children throughout Texas. Bank of America Texas is the primary sponsor of Lone Star Santas. During the past 12 years, Lone Star Sants has given new toys to more than 244,000 children throughout Texas through more than 300 charitable organizations. The toys are given to community organizations serving children in need such as child abuse shelters, orphanages, hospital, battered women's shelters and children's homes. The branches of Bank of America Texas serve as collection points for the toys. Each branch of Bank of America Texas chooses a charity of charities serving children within their own communities to receive the toys. New, unwrapped toys may be dropped off at the Mulshoe Bank of America branch. Toys will be collected through Christmas Eve. Lone Star Santa is a non-profit organization, run entirely by volunteers and private donations. All contributions are tax-deductible.

STOREWIDE SAVINGS

30% OFF

Come see our selection of just the right gift and holiday goodies at 30% off.

Especially For You

Open Mon.-Fri. 8:30-5:30

217 Sycamore, Clovis 769-1470

Inside Guy's Electric

In Our Ladies' Boutique

Support the Muleshoe Mules!

Attend all school activities!!

Doctor's discovery may end obesity

HILTON HEAD, S.C. -- A doctor has discovered that an ingredient found in a small fruit grown in Asia, combined with an ingredient praised by the U.S. Department of Agriculture can help cause significant weight loss. In a study published in a prestigious American medical journal, Dr. Anthony A. Conte, M.D. reported that the formula, now called Bio-Max 3000, caused patients to lose more than twice as much weight as a control group on the same fat reduced diet. Neither group was instructed to decrease the amount of food they ate or to increase their exercise levels. An article published in the *American Journal of Clinical Nutrition* confirms that you don't have to reduce the amount of food you eat to lose weight, provided that you limit the fat. Scientists suggest that the mechanism behind the weight reduction includes decreasing sugar cravings and interruption of the "Krebs Cycle", an important step in the body's fat storage process. "The best part of this unique discovery is that it is not a drug, but a safe dietary food supplement" says Dr. Conte. The Asian fruit, called garcinia, is similar to citrus fruit found in the United States with one big exception-- it may help some people fight obesity! While Dr. Conte's study may be preliminary, the exclusive North American distributor, Phillips Gulf Corp., is calling the Bio-Max 3000 supplement "Nature's Ideal Diet Aid." According to a spokesperson for the company, Bio-Max 3000 is now available on a limited basis through pharmacies and nutrition stores or call 1-800-729-8446. © 1995 Phillips Gulf Corp. Bio-Max 3000 is available locally at: DAMRON DRUG STORE 308 Main St. Muleshoe 272-4210

Author's Note: This statement has not been evaluated by the FDA. Bio-Max 3000 is not intended to diagnose, treat, cure, or prevent any disease.

COPY DEADLINE

Copy deadlines for society news: wedding, anniversary, engagement and birthday announcements are 5:00 p.m. on Monday & Wednesday for the Thursday and Sunday editions.

ORDER EARLY FOR A PICTURE PERFECT

Christmas

Enjoy a "Picture Perfect Christmas" from DSTV™. DSTV is the perfect gift for the entire family with up to 175 channels of picture perfect TV - TV you can't get on cable or ordinary TV, delivered direct to your home using an 18" satellite dish.

For a limited time only, DSTV's Holiday Purchase Price Special will put picture perfect TV in your home for only \$499*. This is a limited time offer, so please order now.

Digital Satellite Television

DSTV

Clear Across West Texas

82nd & Quaker (Kingsgate North) Lubbock, TX

Holiday Hours: M-F 9 am - 6 pm; Sat. 10 am - 4 pm

*Price listed is for Model DS1121 and includes a \$100 In-store Holiday Rebate off retail price of \$599. Financing available. Also accept Visa, MasterCard & Discover. Rebate ends December 31, 1995. DIRECTV is a trademark of DIRECTV, Inc., a unit of GM Hughes Electronics • DSTV is an authorized programming provider for DIRECTV

(806) 788-0030 or 1-800-65-0030

\$499*

HOLIDAY PURCHASE PRICE

EXP. 12/31/95