

News File  
HC 65m Box 201  
Dark, AR 73652-9501  
MXD 8/27/2000

## County youth held in slaying

TEXICO, N.M.—A Bailey County teenager is among four people arrested in connection with the slaying of a 73-year-old Texico store owner.

Everett Clint "Red" Prather, owner of the Border Playaroma, died Thursday afternoon of multiple gunshot wounds, according to a press release from Clovis district attorney Randall Harris.

Ronald Armstrong, 18, was being held Friday in the Curry County Adult Detention Center in Clovis, N.M., on charges of accessory to armed robbery, conspiracy to commit armed robbery and harboring a felon.

Armstrong, who lives just inside the Bailey County line, is a senior at Farwell High School, according to a school official.

Mike Treadway, 18, of Farwell allegedly shot Prather during a robbery attempt while Armstrong and two others waited in a vehicle outside the store, according to police reports.

Treadway is being held without bond on charges of first degree murder, conspiracy to

see **SLAYING** on page 9

## LIFTING HER SPIRITS



Ali Weaver, 3, of Lazbuddie places an ornament on a Christmas tree at Kinder Korner Preschool in Muleshoe earlier this week. She's getting a boost from Debbie Tunnell.

JOURNAL PHOTO BY RICK WHITE

## Young retiring after 4 decades as elected official

By TERESA STONE  
Journal staff writer

After 40 years of serving the community, longtime Muleshoe resident Jack Young has decided to turn in his gavel at the end of his current term as



Jack Young

District Judge. This past week, Young, who is the Judge of the 287th District Court of Bailey and Parmer Counties, formally announced that he will not be seeking reelection in 1998.

"There comes a time when we all must step down," said Young, "and although reluc-

tant, I believe that time has come for me. I intend to complete my elected term, God willing, and retire effective Jan. 1, 1999."

Just because Young will not be working full time starting in 1999, it doesn't mean that he isn't already making plans to keep busy.

"I plan to play a lot of golf, do a little fishing, travel, and most important, spend time watching my four grandkids grow up."

Although the Judge plans to relax, he doesn't plan to completely forego his love of the law and the judicial system.

"I was in grade school when

see **JUDGE** on page 9

## Green announces judge candidacy

Gordon Houston Green of Muleshoe has announced his candidacy for the office of District Judge.

Green said that he began making plans to run for the office of District Judge of the 287th Judicial District, consisting of Bailey and Parmer counties, when it became apparent that Jack D. Young would not run for reelection.

Green has been a lawyer in Muleshoe for the past 27 years. He served as Bailey County attorney from 1971 to 1980, as Bailey County Judge from 1983 to 1988, and as Justice of the Peace from 1991 to 1994.

As a member of the faculty of the Texas Justice Court Training Center for two years, he taught civil law at the Justice of the Peace Schools which were conducted six times each year at various cities in Texas. Green also served as a member of the Executive Committee of the South Plains Trial Lawyers Association from 1994 to 1997, and as President of that organization during 1995-1996.

Gordon Green started school at Lazbuddie, graduated from Muleshoe High School, re-



Gordon Houston Green

ceived a Bachelor's degree of business administration from the University of Texas El Paso, and a Doctor of Jurisprudence degree from the University of Houston.

He is a native of Muleshoe, a life-long resident of Bailey and Parmer Counties, and is married to the former Donna Gaston. They have three children, Wendy Patton and Amber Towers, both of Dallas, and Rhett, who is a sophomore at Muleshoe High School.

Green stated, "I hope that the citizens of Bailey and Parmer Counties find that my experience and background qualify me to serve as their District Judge."

## PAGE ONE

A QUICK READ OF THE NEWS

### Stamping out postal debt

WASHINGTON — The Postal Service made a \$1.3 billion profit in 1997, the third year in a row it finished more than \$1 billion in the black.

Profits totaling \$4.7 billion over three years have allowed the post office to substantially reduce the debt accumulated during years of poor financial performance by \$3.3 billion.

Anticipating rising costs, the agency has applied for a 1¢ increase in the current 32¢ first-class stamp rate.

### MEETINGS

Tuesday, Dec. 16 — Muleshoe City Council, 8:30 a.m., City Hall.

Tuesday, Dec. 16 — Muleshoe Area Hospital District, 7:30 a.m., Muleshoe Area Medical Center, 708 S. First Street

### LOCAL WEATHER

	High	low	Pre.
Tuesday	52	37	—
Wednesday	37	23	—
Thursday	31	22	.02
Total to date			21.26

### EXTENDED FORECAST

Fair Monday with highs in the 60s. Partly cloudy Tuesday and Wednesday with lows in the 30s, highs in the mid 50s.

Remember folks, Santa letters are due Friday, Dec. 19

## Cotton yields below average

By TERESA STONE  
Journal staff writer

With winter coming on fast, farmers are hurrying to harvest the last of their cotton crops.

At the beginning of harvest, gins were enthusiastically reporting good yields and decent grades. But with the final numbers being tallied, the cotton crop was a bit disappointing compared to the past few years.

As of Friday morning, the county gins reported over 84,000 bales completed with only a few gins expecting much more business.

"This year we just didn't have the heat like we did in '96 and '95," said Bailey County extension agent Curtis Preston. "The temperatures in May were average, whereas the prior two Mays

have been exceptionally hot."

Most of the gin managers in the county are reporting similar outcomes as yields are proving to be below last year's numbers and grades are either the same or a bit lower.

"The rain early this season seems to have made a real impact on the yield and quality, especially on the irrigated cotton we are receiving," said Enoch's Co-op manager Wade Baker. "The rain made for a pretty stock but it just didn't boll well. We're down about 200-250 pounds per acre."

The Maple area is seeing similar results, reports gin manager Marvin McCall. "The irrigated yield is down with the quality being about the same as

see **COTTON** on page 9

## Hornets sting Mules in OT

By RICK WHITE  
Managing Editor

ABERNATHY — Muleshoe coach Ralph Mason hopes Thursday's overtime loss to Tulia pays dividends come district time.

"Hopefully we'll learn from this game and when we play them when it counts, it'll pay off," Mason said after Tulia beat Muleshoe 62-60 in the championship quarterfinals of the I-27 Tournament at Abernathy High School.

Charles Sims beat the overtime buzzer with a floating, 12-foot jumper

along the right baseline to keep the defending District 1-3A champion Hornets unbeaten at 9-0.

"He's playing with a lot of confidence right now," Mason said after the 5-11 junior poured in a game-high 27 points.

"I think you saw the championship game tonight," Mason said. "That's a bold statement. But I think Tulia will go on to win the title."

Muleshoe (8-2) played Idalou Friday in a fifth-place semifinal game. Slaton beat Idalou 43-40 quarterfinals.

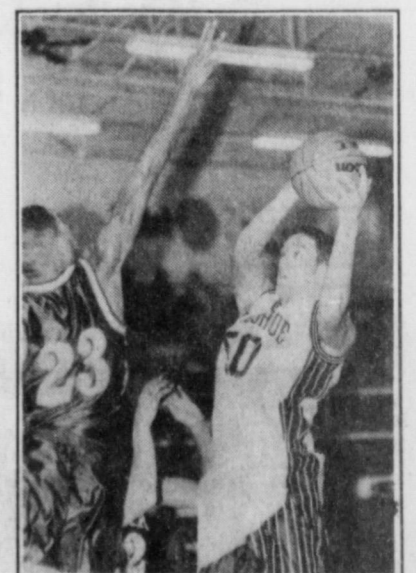
The Mules beat Nazareth 69-52 earlier Thursday to advance to the quarterfinals.

Cyrus Norman scored a career-high 21 points against Tulia and Dustin Cleavinger finished with 19 points before fouling out with 50 seconds left in the fourth quarter.

Bret Clements sent the game into overtime for the Mules, scoring inside with 13 seconds left to tie the game at 53.

In overtime, Muleshoe tied the

see **MULES** on page 6



Dustin Cleavinger shoots over Tulia's Mickey Marshall Thursday in the I-27 Tournament.

## AROUND MULESHOE

### Donna Burton receives nursing degree

Donna Burton of Muleshoe was honored at a Pinning Ceremony held Wednesday at Clovis Community College. At the ceremony, Burton received her Associate Degree in Nursing.

### Team ropers wanted by MHS club

The Muleshoe High School DECA Chapter is interested in sponsoring a Team Roping at Dusty Rhodes Arena on January 17, 1998. The students would like to hear from anyone interested in this event. For more information contact Michael Thompson at 806-965-2382, Josh McElroy at 806-272-3902, or John Paul Bustillos at 272-5729.

### Christmas Card Project needs help

The Christmas Card volunteers at Muleshoe Area Healthcare Center are seeking donations from community members and businesses for the annual fund raiser. All donations, regardless of how big or small, will be greatly appreciated.

Donations will be used for Spring patio renovations to include a new patio cover, repainting patio furniture, and new plants for the garden. Also, extra chairs and card tables for the nursing home will be purchased with extra funds.

Donations can be dropped off at the local banks, or to Joyce Stancell at the nursing home. Also, donations can be mailed to Christmas Card Project, P.O. Box 202, Muleshoe, TX. 79347.

Donations need to be made by **Wednesday, Dec. 17**. All contributors will be individually recognized in the annual Christmas Card to be published in the Bailey County Journal Dec. 22. For more information contact, Lona Embry or Joyeline Costen.

### Open House honoring Rowena Meyers

The staff at the Central Plains MHMR. SA is hosting an Open House in honor of Rowena Meyers who is retiring after serving the Muleshoe community for 26 years. Meyers has touched many lives through her work and her church.

Friends and community members are invited to attend the Open House from 2-5 p.m., Dec. 16 at 119 E. Ave. C.

### MISD hosts Christmas Open House

The staff at the Muleshoe Independent School District invites everyone to attend their annual Christmas Open House.

The community is invited to visit the district office any time between 9 a.m. to 4:30 p.m., Monday, Dec. 15 in the Board Room of the Administration Office.

### Police make arrest in burglary

Western Drug in downtown Muleshoe was broken into Tuesday during the late evening hours.

According to the police report, an illegal entry was made and items reported stolen included controlled substances or prescription drugs.

William Robert Crawford Jr., age 30, of Muleshoe was

later arrested and charged with burglary of a building. Crawford is currently out on bail after posting a \$20,000 bond.

Although Crawford was arrested, Police Chief Don Carter said that the investigation will remain open because they do not feel as if Crawford acted alone.

### Elementary PTA meeting Dec. 15

There will be a Muleshoe Elementary PTA meeting held at the DeShazo gym at 6p.m., Monday, Dec. 15.

Third grade students have prepared a program of Christmas music and holiday fun.

### Lazbuddie students sponsor food drive

Lazbuddie Future Business Leaders of America are collecting canned foods for needy families in the Lazbuddie area.

The food drive starts Dec. 12 and continues through Dec. 19. Community members can contribute to the food drive by dropping off canned goods at various businesses in Lazbuddie, including the Post Office and the school.

Lazbuddie fans attending Tuesday's home game against Trinity Christian are also being asked to bring canned foods for the drive.

For more information contact, Marsella Jennings or Cameron Turner at 965-2152.

### MHS students award prizes from raffle

Muleshoe High School DECA students raised money for the Muscular Dystrophy Association camps by sponsoring a raffle.

Gary Shipman was the winner of the \$100 worth of gasoline donated by Green Brothers. Other winners of various prizes include Glenda Duncan, Rhonda Roberts, Williams Athletics, Crystal Bailey, Viro Siminachor, Josh Kitchens, Jamie Ruiz, Brandon Thomason, Rhonda Toscano, Lori Cuevas, Emilio Estrada, Joe Tarter, Xtacex Herrera, Tammy Flores, Carren Black, Dani Heathington, Casie Height, Debbie Rodriguez, David Tippis, Ray Lueras, Marisa Buenrostro, and Joyce Williams.

### SPC sets spring registration dates

LEVELLAND — Registration dates for the spring 1998 semester have been announced by South Plains College.

The registration date for the Levelland campus is Jan 15, for day and evening registration. For the Lubbock campus, registration is Jan. 14 for returning students, and Jan. 15 for new students. Sign-up for the Reese Center in Lubbock is Feb. 23-24.

Classes will begin Jan 20 at the Levelland and Lubbock campuses. Classes at the Reese Center begin Feb. 25.

### MHS band and choir Christmas concert

The Muleshoe High School band and choir are hosting their annual Christmas Concert to be held at 7:30 p.m., Tuesday, Dec. 16, at the high school auditorium.

*After opening your presents this Christmas, hug all our family members and tell them that they are the best gift of all.*

## SIMNACHER NATIVE GRASSES

Experts in the sowing and harvesting of native grasses of the Great Plains

**Most native grass seeds available at wholesale prices when purchased with turnkey sowing jobs.**

We also provide lifetime care for your CRP Government contract. All work done in compliance with Government specifications.



Please Call:

Darwin Simnacher  
(505) 762-7817  
Fax (505) 763-9115

Vince Simnacher  
(806) 946-3461  
Fax (806) 946-3604

or  
Thomas Simnacher  
(806) 285-2491

References provided upon request.

## Bailey County Journal USPS 040-200

Established March 31, 1963. Published by Triple S Publishing, Inc. Every Sunday at 304 W. Second, Box 449, Muleshoe, TX 79347.

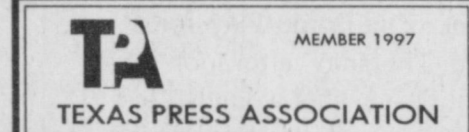
Second Class Postage paid at Muleshoe, TX.

POSTMASTER: Send address changes to the Bailey County Journal, P.O. Box 449, Muleshoe, TX 79347.

We are qualified members of:

Panhandle Press Association, National Newspaper Association, West Texas Press Association and Texas Press Association

WEST TEXAS PRESS ASSOCIATION



PPA

Panhandle Press Association

Scot Stinnett, Publisher

Lisa Stinnett, Vice-President/Comptroller

Rick White, Editor

Mary Ann Dominguez, Classifieds

Leah Bell, Advertising

© 1990

SUBSCRIPTIONS: Muleshoe Journal and Bailey County Journal

By Carrier Yearly - \$22.00

Bailey County — by mail - \$24.00

Elsewhere - \$26.00

Advertising Rate Cards on Application

\*Advertisers should check their ad the first day of insertion. The Journals will not be liable for failure to publish an ad or for a typographical error or errors in publications except to the extent of the cost of the ad for the first day of insertion. Adjustment for errors will be limited to the cost of that portion of the ad where the error occurred.\*

*Have a Great Day!*

# Kids Eat Free

The Holiday Season is upon us. Shopping consumes much of our time and money. We can't give you more time, but we want to free up some of your money. For the entire month of December, we are going to feed your kids for free.

How can you beat a deal like that? Children twelve and under are invited to come to Leal's and order any item off the children's menu, and we'll pick up the tab.

Just another way to show you our appreciation for your loyal support over the past forty years.

## Happy Holidays!

Children must be accompanied by an adult. Drinks not included.

# Leal's

1010 W. American Blvd. • Muleshoe, TX • 272-3294

**MOONLIGHT MADNESS**

**Extended Mall Hours**  
**December 19th**  
**through December 23rd**

Friday & Saturday 10 am to 10 pm  
Sunday 11 am to 6 pm  
Monday & Tuesday 10 am to 10 pm

**Christmas Eve**  
**10 am to 6 pm**

*Wishing You and Yours a Christmas filled with Bountiful Blessings, Cherished Memories & Lots of Wonderful Gifts!*

**NORTH PLAINS MALL**  
2809 N. Prince • Clovis, NM

*Give someone who's disappointed you the gift of a clean slate this Christmas.*

# Art students help build reading skills

## EDUCATION

Four Muleshoe High School students took a hands on approach to encouraging young children to learn how to read.

Using cardboard appliance boxes, roofing insulation, paneling — and a lot of imagination, the students crafted a 10-foot high castle for students at DeShazo Elementary School to lounge in while reading.

Reading teacher Brenda Lackey said it's important to make reading fun for kids who struggle to master the one skill that is central to all learning — reading.

"So many kids that have trouble reading just give up as early as second and third grade," Lackey said.

Senior art student Damon Davenport was delighted to take part in the project.

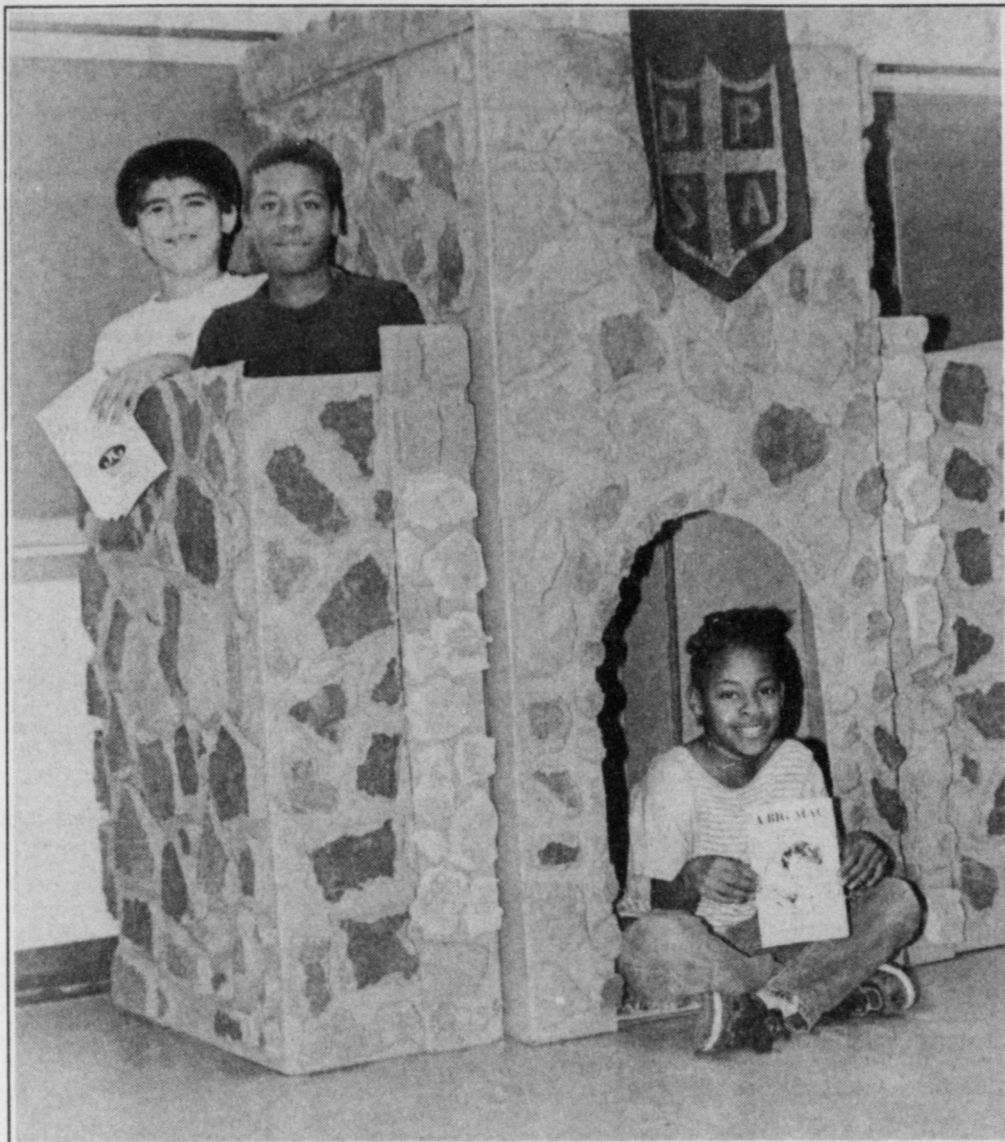
"I never wanted to read when I was their age," Davenport said. "By making them something like this it'll make it fun and hopefully make them want to read."

Also taking part in the project were sophomore Sammy Baeza, junior Alfredo Ortega and senior Peyton Rennels.

All are students in Helen Adrian's Art II class.

Lackey said she hoped the art students who come back later and visit with her class because of the positive example they are setting.

"My kids and all young kids need role models they can look up to."



**Built for a king — or queen**

DeShazo students (from left) George Garcia, Anthony Lewis and Rashida Lewis check out a cardboard castle built by four art students at Muleshoe High School.



*Toys for children & for kids at heart!*

**TOY SALE  
SAVE  
15%  
BIGGEST SELECTION  
IN YEARS!**

**DENT & Co.**

2800 W. AMERICAN BLVD. • MULESHOE, TX  
272-4296



# Time for candidates to file for primaries

Anyone interested in serving Bailey County as an elected official has until January 2, 1998 to file for the Primary.

By filing with local party chairman, candidates can seek election through either the Democratic or Republican primaries scheduled for Tuesday, March 3.

Incumbents who have decided, as of Friday afternoon, to seek reelection include County Judge Marilyn Cox, District Clerk Elaine Parker, County Commissioner of precinct 2, C.E. Grant, County

Commissioner of precinct 4, Bennie Clauch, and Justice of the Peace Jack Bates.

The above incumbents will be participating in the Democratic Primary.

Also on the Democratic ticket will be newcomers Donna Kirk for County treasurer, and Gordon Green for District Judge.

Sherri Harrison will be seeking election as County Clerk on the Republican ticket. County clerk Billie Downing, County Treasurer Dorothy Turner, and District Judge Jack

Young will not be seeking reelection.

Anyone else interested in running in any of the above offices need to contact their political party to obtain an application for a place on the ballot and filing fee information.

Democrats can contact either Nelda Merriot at 272-4071 or Chuck Smith after 5 p.m. at 272-5648.

Republicans can contact Bruce Barrett at 272-3815.

The completed application and the filing fee of \$600, or Petition-in-Lieu of filling fee

must be returned to local party officials by Jan. 2.

If elected in the primary, candidates will participate in November's General Election when local constituents will have the final say in who will serve their county.

**Subscribe Today!**

**Muleshoe Journal and  
Bailey County Journal**

*Local news about local folks!*

**Call Today 272-4536**

# Laney files for reelection as representative

State representative Pete Laney, Speaker of the Texas House of Representatives, announced that he has filed for reelection to continue representing the people who live in the 12 counties that make up House District 85.

Laney, a Hale Center farmer, said his top priorities are to continue creating more job opportunities in the South Plains region, reducing the tax burden on property owners and fighting for the interests of rural areas and agriculture.

Laney has represented the South Plains district in the House of Representatives since 1973. House District 85 includes the counties of Bailey, Briscoe, Castro, Cochran, Crosby, Dickens, Floyd, Lamb, Motley, Parmer, and Swisher.

# Home Folks Caring For Folks At Home. MULESHOE AREA HOME HEALTH Agency

## Featured Patient



Myrtle Creamer

Myrtle Creamer was born November 15, 1907 in Cottle County, which is about 23 miles northeast of Paducah, TX. She grew up in what is now called the Tennessee Valley community. Ms. Creamer moved to Muleshoe with her husband and children in the early 1940's where she has lived in the same house since then. She was married to Buck Creamer who was Deputy Sheriff. Mr. Creamer passed away in 1981.

Ms. Creamer has worked all her life. She spent several years working at the high school lunchroom and selling Avon before she retired.

She is the mother of ten children. Her son Henry lives with her and helps take care of her. She served as President of the local A.A.R.P chapter and is a member of the Primitive Baptist Church.

Ms. Creamer thinks that the people at M.A.H.H.A. are really sweet and knows that it really helps to have them come see about her.

*Happy 90th  
Birthday  
from  
M.A.H.H.A!*

Home Care



Home is where the heart is  
We accept Medicare, Medicaid and Private Insurance  
**It Is Your Right To Choose  
The Home Health Agency  
You Prefer.**

To receive Home Health Services, talk with your physician or talk with hospital personnel when you are hospitalized.

Affiliated with Lubbock Methodist Hospital Systems

**24 Hour # 272-3346  
Local Nurse on call 24  
hours a day to offer  
prompt service.**

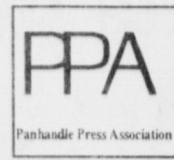
NO GREATER THRILL FOR  
**Christmas**  
**DIAMONDS**

4503 BAGUETTE DIAMONDS \$999  
7266 BAGUETTE DIAMOND SLIDE (FOR YOUR CHAIN) \$599  
6592 SAPPHIRE AND DIAMONDS \$1499

Celebrating 56 Years  
**HOLMBERG JEWELRY**  
1908 N. Prince • Clovis • (505) 762-9376 Voted #1 Jeweler in Clovis



# BAILEY COUNTY JOURNAL



## SPORTS EXTRA

Page 4

Published every Sunday at Muleshoe, Bailey County, Texas 79347

Sunday, December 14, 1997

### Muleshoe cans late free throws

FARWELL — Muleshoe jumped out to an 11-point half-time lead and made its free throws down the stretch, beating Farwell 55-46 Tuesday in a physical game that featured 58 fouls.

Junior post Erin Wilhite made 9 of 10 free throws in the fourth quarter and led Muleshoe (7-4) with a game-high 16 points. Sophomore guard Lindsey Field added eight points and eight rebounds for the Lady Mules, who have won five of their last six games.

The teams combined to shoot 77 free throws. Muleshoe made 27 of 41 from the charity stripe while Farwell connected on 22 of 36.

Ramsey Bennett led Class 1A Farwell (8-2) with 12 points and Ashley Crawford finished with 10.

Muleshoe coach Jim Gruhlkey said balanced scoring and defense were the keys. "We really did a good job of hustling back on defense," Gruhlkey said.

Seven Lady Mules scored at least four points.

Farwell beat Muleshoe 48-35 last year.

**Muleshoe (55)** — Mandy Myers 15-8-7, Lindsey Field 2-4-8-8, Keisha Whitt 0-2-4-2, Rhonda Copley 0-1-3-1, Kellie Morris 1-2-2-4, Amy Locker 2-3-4-7, Melissa Williams 2-0-0-4, Kendra Benham 3-0-0-6, Erin Wilhite

see **FREE THROWS** on page 8

### Farwell JV wacks Lady Mules

FARWELL — Farwell handed Muleshoe a 43-18 loss Tuesday in a girls junior varsity game.

Lynsie Black led Muleshoe (5-2) with seven points and Bobbie Benham finished with five points.

**Muleshoe (18)** — Lynsie Black 7, Bobbie Benham 5, Stacy Locker 4, Ellen Wood 2, Lela Hancock, Kayla

Johnson, Christi Adrian, Brandi Whitt, Michelle Toscano. Totals 56-17-18. 3-pointers: Benham, Locker.

**Farwell (43)** — Maudlin 5, Gast 2, Stout 7, Johnson 2, Lunsford 2, Woods 8, Lusk 2, Edwards 5, Herington 4, Taylor 6. Totals 19-5-8-43. 3-pointers: Maudlin.

**Muleshoe** 3 2 3 10 18  
**Farwell** 10 9 13 11 43

Records: Muleshoe 5-2. Next game: Coronado Tournament in Lubbock Dec. 11-13.



Cyrus Norman takes on two Tulia defenders Thursday during the 1-27 Tournament

### Mules fend off Farwell upset 66-60

FARWELL — The long-range shooting of Matt Mason and the inside work of Dustin Cleavinger and Bret Clements propelled Muleshoe to a 66-60 win Tuesday against Farwell.

Mason hit four 3-pointers and finished with 18 points as Muleshoe (8-1) won its fourth-straight game. Mason is shooting 43 percent from behind the arc and has a team-leading 17 3-pointers.

Cleavinger added 16 points and nine rebounds while Clements chipped in 10 points and seven rebounds.

Clint Corn led Farwell (4-6) with 19 points and Ryan Roberts added 14.

**Muleshoe (66)** — Lewis 1-0-0-2, Shelburne 1-1-2-3, Sinclair 1-0-0-3, Mason 6-2-2-18, Norman 2-1-2-5, Field 2-1-2-5, McClanahan 1-0-0-2, Clements 5-0-0-10, Kemp 1-0-0-2, Cleavinger 8-0-1-16. Totals 28-5-9-66. 3-pointers: Mason 4, Sinclair.

**Farwell (60)** — Taylor 0-0-0-0, Ketcherside 2-1-1-5, Garcia 3-0-0-6, Mendoza 2-0-0-4, Lunsford 3-4-11-10, Monk 0-0-0-0, Chadwick 1-0-0-2, Roberts 5-4-4-14, Miller 0-0-0-0, Corn 8-0-0-19. Totals 24-9-1-60. 3-pointers: Corn 3.

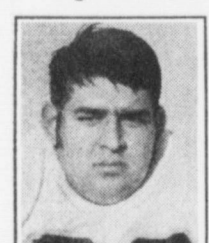
**Muleshoe** 18 9 18 21 66  
**Farwell** 5 20 18 17 60

## Aguirre named All-South Plains

### Muleshoe senior one of nine 1-3A players on team

The postseason honors continue for Muleshoe senior lineman Ricko Aguirre.

Aguirre was named to the



Ricko Aguirre

*Lubbock Avalanche Journal's* Class 3A All-South-Plains team as an offensive lineman

earlier this week after earning all-district honors.

The 6-3, 290-pound guard was the focal point of a Muleshoe running attack that averaged 219 yards a game and produced a 1,000-yard rusher in junior Gilbert Vela.

Aguirre, who is drawing interest from several Division I and II schools, was credited with 48 pancake blocks.

Muleshoe head coach David Wood called Aguirre an inspiration to his teammates because of his work ethic and the kind of kid he is on and off the field.

"He's got his teammates respect because not only is he good, but he works hard at it,"

#### FOOTBALL

#### All-South Plains

##### OFFENSE

OL Landon Wiseman, 6-1, 242, sr. Friona  
OL Frank Longoria, 6-0, 277, sr. Denver City  
OL **RICKO AGUIRRE, 6-3, 290, SR** MULESHOE  
OL Zack Price, 6-3, 215, sr. Littlefield  
OL Dusty Daves, 5-11, 191, sr. Seminole  
TE Charley Sanders, 6-3, 200, sr. Dimmitt  
WR Cody Baker, 6-0, 150, sr. Slaton  
WR Stuart Sutton, 5-11, 165, sr. Dimmitt  
RB Eric Morrison, 5-11, 185, sr. Cooper  
RB Toby Shain, 6-0, 2-05, sr. Seminole  
QB Justin Hill, 6-3, 175, jr. Colorado City  
K Angel Vega, 5-7, 1255, sr. Friona

##### DEFENSE

DL Jeffrey Anzaldua, 5-10, 220, sr. Colorado City  
DL Humberto Olivas, 6-1, 204, sr. Seminole  
DL Quint Ellis, 6-5, 215, sr. Friona  
LB Luis Ramirez, 5-9, 180, sr. Friona  
LB Braughn Curtis, 6-1, 215, sr. Denver City  
LB Chris Fambro, 5-11, 170, sr. Colorado City  
LB Hector Condarco, 5-8, 165, sr. Seminole  
DB Aaron King, 5-10, 170, sr. Friona  
DB Roger Cortez, 5-5, 165, sr. Seminole  
DB Zack Matthews, 6-0, 180, sr. Dimmitt  
DB David Vitz, 5-10, 160, sr. Cooper  
P Michael Black, 5-11, 145, jr. Floydada

##### PLAYER OF THE YEAR

Toby Shain Seminole

##### COACH OF THE YEAR

Greg Hougue Cooper

Wood said. "He was such a force.

Aguirre was joined by eight pother players from District 1-3A, including five from two-time defending champion

Friona and three from Dimmitt.

Seminole senior running back Toby Shain was named player of the year and Greg Hougue of Cooper was named coach of the year.

### Mason scores 17 in JV Mules' 77-34 romp

FARWELL — Mitch Mason scored a season-high 17 points and Muleshoe won its fifth-straight game, beating Farwell 77-34 Tuesday in a junior varsity game.

Jeff Bruns added 13 points for the Mules (7-1), who stormed out to a 33-8 first-quarter lead.

Mason had three of

Muleshoe's seven 3-pointers. James Barrett added a pair of 3-pointers.

Muleshoe played in the Plains Tournament this weekend.

**Muleshoe (77)** — Ryan Hodge 4, Eric Posadas 4, James Barrett 6, Delwyn Latham 1, Clint Black 5, Jesse Reyes 6, Mitch Mason 17, Jeff Bruns 13, Dusty Ramage 2, John McClanahan 4, Manuel Campolla 6,

Kyle Hahn 3, Matt Turney 6, Chris Vaughn, Sammy Baeza. Totals 29-12-17-77. 3-pointers: Mason 3, Barrett 2, Reyes, Bruns.

**Farwell (34)** — Nichols 8, Zachary 4, McFarland 4, Goetsch 4, Franse 4, Crawford 3, Totals 14-5-10-34. 3-pointers: Goetsch.

**Muleshoe** 33 11 12 21 77  
**Farwell** 8 7 10 9 34

Records: Muleshoe 7-1. Next game: Plains Tournament Dec. 11-13.

### MULESHOE INDEPENDENT SCHOOL DISTRICT COMBINED STATEMENT OF REVENUES, EXPENDITURES, AND CHANGES IN FUND BALANCE ALL GOVERNMENTAL FUND TYPES YEAR ENDED AUGUST 31, 1997

	Governmental Fund Types		(Memorandum Only)
	General Fund	Special Revenue Funds	August 31, 1997
<b>REVENUES:</b>			
Local and Intermediate Sources	\$ 3,252,976	\$ 137,050	\$ 3,390,026
State Program Revenues	5,725,756	76,476	5,802,232
Federal Program Revenues	13,266	994,461	1,007,727
Total Revenues	\$ 8,991,998	\$ 1,207,987	10,199,985
<b>EXPENDITURES:</b>			
Current:			
Instruction & Instructional Related Services	\$ 4,899,536	\$ 582,967	\$ 5,482,503
Instructional and School Leadership	665,750	44,647	710,397
Support Services - Student (Pupil)	812,964	581,178	1,394,142
Administrative Support Services	402,168	166	402,334
Support Services - Nonstudent Based	856,198	295	856,493
Ancillary Services	4,237	31,350	35,587
Capital Outlay	574,290	---	574,290
Total Expenditures	\$ 8,215,143	\$ 1,240,603	\$ 9,455,746
Excess (Deficiency) Revenues Over (Under) Expenditures	\$ 776,855	\$ (32,616)	\$ 744,239
Other Resources	---	---	---
Other (Uses)	---	---	---
Excess (Deficiency) of Revenues and Other Resources	---	---	---
Over (Under) Expenditures and Other Uses	\$ 776,855	\$ (32,616)	744,239
Fund Balance - September 1 (Beginning)	5,085,791	109,524	5,195,315
Increase (Decrease) in Fund Balance	---	---	---
Fund Balance - August 31 (Ending)	\$ 5,862,646	\$ 76,908	\$ 5,939,554

# 'Horns place seven on all-district team

## Eagles gain three berths on elite squad

Lazbuddie was one of the top offensive teams in the area, and it showed in the selection in the District 3A six-man football team.

Four Longhorns were selected to the first-team offense, including junior quarterback Josh Morris and junior running back Adam St. Clair, who combined for almost 4,000 yards and 54 touchdowns.

The district champion Longhorns (12-2 overall, 5-0 in district) also had three first-team defensive selections.

Three Way (5-5, 3-2) had three first-team selections.

Morris completed 145 of 221 passes for 2,370 yards and 32 touchdowns in 14 games with only two interceptions.

St. Clair finished with 1,547 yards and 22 touchdowns on 200 carries.

Teammates joining Morris and St. Clair on offense were senior wide receiver Chris Smith and senior Jason Thomas, who selected at both center and kicker.

Smith hauled in 46 passes for 910 yards and 15 touchdowns as Morris' favorite target.

Thomas caught 14 passes for 185 yards and three touchdowns and kicked 57 of 80 extra points.

First-team selections Blaz Martinez, Brice Redwine and Dustin Weir, all seniors, led a

Longhorn defensive unit that allowed 197 yards a game.

Martinez recorded 64 tackles, including nine for losses, recovered four fumbles and intercepted two passes.

Redwine had 53 tackles, including four for losses while Weir made 44 tackles and intercepted four passes.

Three Way junior Jonathan Kindle earned first-team honors at tight end for both his blocking and pass catching skills.

Kindle caught 19 passes for 384 yards and six touchdowns, averaging 20 yards a catch.

Gerald Perez and Randall Rodriguez were first-team defensive selections for the Eagles, who finished in a three-way tie for second in the district.

Perez, a junior defensive end, had 72 tackles, including 17 for losses.

Rodriguez, a senior cornerback, was credited with 51 tackles and picked off two passes.

All three Eagles were also second-team picks along with Lazbuddie senior wide receiver Deon Gallman and Three Way senior quarterback Cody Wilson.

Rodriguez was a second-team running back after gaining 1,388 yards and scoring 17 TDs. Perez caught 27 passes for 452 yards and seven TDs as a tight end. Kindle recorded 67 tackles and nine sacks at linebacker.

Gallman caught 23 passes for 500 yards and 4 TDs while Wilson passed for 1,245 yards and 19 TDs.

### FOOTBALL

#### All-District 3-1 six-man team

##### FIRST TEAM

###### Offense

SB	B.J. Reynolds	Whitharral
QB	Josh Morris	Lazbuddie
WR	Chris Smith	Lazbuddie
WR	Justin Stracener	Whitharral
TE	Jonatahn Kindle	Three Way
TE	Armando Lopez	Whitharral
C	Jason Thomas	Lazbuddie
RB	Jewremy Holt	Silverton
RB	Adam St. Clair	Lazbuddie
K	Jason Thomas	Lazbuddie

###### Defense

L	Gerald Perez	Three Way
L	Brice Redwine	Lazbuddie
L	Blas Martinez	Lazbuddie
LB	Leland Wood	Silverton
LB	B.J. Reynolds	Whitharral
CB	Randall Rodriguez	Three Way
CB	Dustin Weir	Lazbuddie
S	Justin Stacener	Whitharral
P	Jarred Holt	Silverton

##### SECOND TEAM

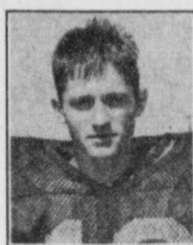
###### Offense

SB	Zeb Land	Cotton Center
QB	Cody Wilson	Three Way
WR	Jared Holt	Lazbuddie
WR	Deon Gallman	Lazbuddie
TE	Gerald Perez	Three Way
TE	Jay Arnold	Silverton
C	Charlie Bomar	Silverton
RB	Randall Rodriguez	Three Way
K	Jared Holt	Silverton

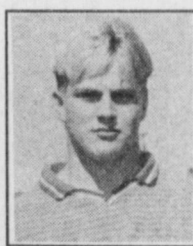
###### Defense

L	Chris Justice	Silverton
L	Chester Nesbitt	Amherst
L	Justin Sulivan	Whitharral
LB	Victor Cueto	Amherst
LB	Jonathan Kinlde	Three Way
CB	Kyle Dunlap	Whitharral
CB	Jared Francis	Silverton
S	Jonathan Land	Cotton Center
P	Zeb Land	Cotton Center

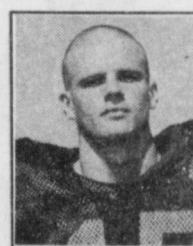
selected by district coaches



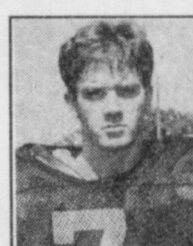
Josh Morris



Adam St. Clair



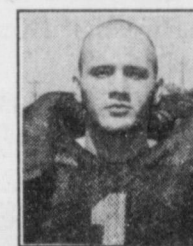
Chris Smith



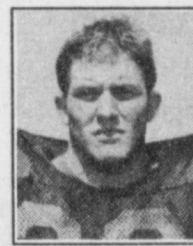
Dustin Weir



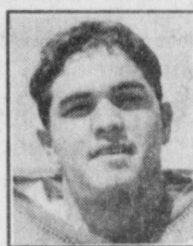
Blaz Martinez



Brice Redwine



Jason Thomas



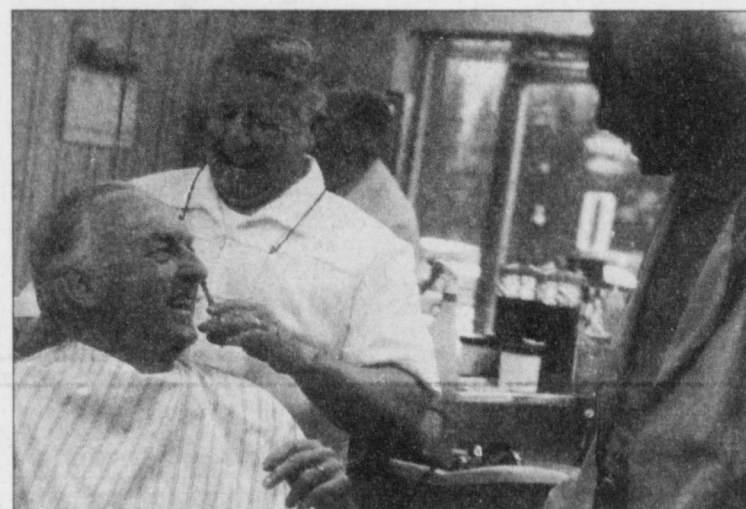
Gerald Perez



Jonathan Kindle



Randall Rodriguez



*If you haven't heard about it yet, you will.*

Electric deregulation. It's a hot topic of conversation — around the country and in Texas, too.

This means someday, you may be able to choose who provides your electricity. You'll get to shop around. But before you do, there are some things you need to know, and there are some safeguards that decision makers must put into place to protect you.

They must ensure that everyone gets all the benefits of electric competition. That all Texans — not just the largest power

users — get electricity at an affordable price. That past commitments — to you and the companies that currently serve you — are honored. And that reliability stays a top priority.

If we do it right, we can make sure electric competition works for our state.

We're the Association of Electric Companies of Texas, your local electricity providers. And we're working to make sure electric competition is done right — for you.

ASSOCIATION OF ELECTRIC COMPANIES OF TEXAS, INC.

Advertising paid for by the Association of Electric Companies of Texas, Inc., Walt Baum, Acting President.

### SCOREBOARD

#### FRESHMEN BOYS

##### TULIA 69, MULESHOE 64 OT

Muleshoe (64) — Dan Williams 6, Landon Nichols 1, Brandon Broyles 3, Danny Ramirez 5, Moises Garcia 7, Sonny Chavez 9, Darrell Lewis 26, Jeff Shelburne 7, Jordan Dale, Jerrell Otwell, Stephen Woodard, David Morris. Totals 25 11-25 64.

Tulia (69) — Criswell 28, Sublealdea 2, Brookins 2, Amburn 2, Olivares 7, Rogers 4, Diaz 20, Hawthorne 4. Totals 28 11-34 69.

Muleshoe 12 13 21 10 3 64  
Tulia 6 18 10 27 7 69

Records: Muleshoe 3-4. Next game: Jan. 8 at Sudan.

#### GIRLS

##### MULESHOE 50, TULIA 20

Tulia (20) — Hernandez 2, Sturge 3, Miller 9, Rogers 2, Gardner 2, Brown 2. 9 2-9 20.

Muleshoe (50) — Megan Tipps 8, Michelle Parker 2, Melissa Flores 7, Chyla Torres 9, Myndi Heathington 14, Rhea Gonzales 3, Tasha Norman 1, Tommie Henandez 6, Roxann Garcia, Melinda Scott. Totals 22 4-12 50. 3-pointers: Heathington 2.

Tulia 8 2 8 2 20  
Muleshoe 13 12 13 12 50

Records: Muleshoe 4-3. Next game: Dec. 15 at Bovina.

#### JUNIOR HIGH

##### GIRLS

##### WJHS 8TH 44, TULIA 18

Tulia (18) — Vaughn 2, Cardona 2, Durbin 4, Williams 2, Preston 4, Olivarez 4. Totals 9 0-0 18. 3-pointers: none.

WJHS (44) — Rendi Hodge 9, Laura Wood 10, Megan Barrett 4, Amanda Bell 4, Jessica Carpenter 4, Candace Hutto 3, Suzanne Messenger 2, Britni Gartin 8, Kayla Glover. Totals 20 4-16 20.

Tulia 11 0 6 8 18  
WJHS 10 15 9 10 44

##### WJHS 7TH 35, TULIA 15

Tulia (15) — Johnton 1, Gahn 2, Matone 2, Miller 2, Chapman 2, Cruz 2, Hagersheimer 4. Totals 7 1-7 15. 3-pointers: none.

WJHS (35) — Eve Pylant 2, Jodi Hawkins 2, Tiffany Flores 12, Shani

Rasco 4, Johnna Cleavinger 3, Kylie Henderson 10, Gradee Adrian 2, Wyndolyn Allison, Shauna Kitchens, Cystal Bailey. Totals 14 7-15 35. 3-pointers: none.

Tulia 6 2 5 2 15  
WJHS 10 7 6 12 35

Records: Muleshoe 6-2. Next game: at Portales, N.M. Dec. 15.

Records: WJHS 5-2. Next game: Dec. 15 at Portales, N.M.

#### BOYS

##### WJHS 8TH 30, TULIA 14

WJHS (30) — Kyle Atwood 8, Michael Norman 2, A.J. Buhrman 5, Stephan Shelburne 2, D.J. Dominguez 2, Lincoln Riley 4, Daniel Johnson 4, Gerardo Reyes 3, James Hancock, Roddy Spradling, Landon Kerby, Zac Yanis, Matt Luna. Totals 14 0-2 30. 3-pointers: Buhrman, Reyes.

Tulia (14) — Bebout 3, Kinser 1, Barnes 1, Bently 2, Vincent 1, Huckay 3. Totals 3 5-13 14. 3-pointers: none.

WJHS 8 9 10 3 30  
Tulia 0 5 5 4 14

Records: WJHS 3-1. Next game: Hosts Portales, N.M. Dec. 15.

##### TULIA 29, WJHS 7TH 20

WJHS (24) — Philip Field 19, Jeremy Alfaro 5, Cory Hunt, Robert Haire, Valentin Colunga, Ryan Powell, Jordan Dale, Andy Scott, Luis Sanchez, Abraham Baeza. Totals 10 4-9 24. 3-pointers: none.

Tulia (29) — Williams 2, Hawthorne 4, Garza 8, Brown 13, Irlbeck 2. Totals 11 7-16 29. 3-pointers: none.

WJHS 4 8 6 8 24  
Tulia 6 12 2 9 29

Records: Muleshoe 1-3. Next game: hosts Portales, N.M. Dec. 15.



Ted Williams is the last Major League Baseball player to bat over .400. He hit .406 for Boston in 1941. His lifetime average of .344 is the third-highest in history.

Advertise in the Muleshoe and Bailey County Journals  
Call Leah for display or Mary Ann for classifieds  
272-4536

**MULES**

From page 1

game on Layne Kemp's 3-pointer and took a 60-58 lead with 37 seconds left when Carlton Lewis stole a pass at midcourt and fed Douglass Field underneath.

But Tulia quickly inbounded the ball to Sims behind the Muleshoe defense for an uncontested layup.

Muleshoe had a chance to take the lead with seven seconds left, but Matt Mason missed the front end of a 1-and-1 to set up Sims' game-winner.

Muleshoe actually had several chances to win the game in regulation and overtime.

"There was so many little things you could put your finger on," Mason said. "Not having Dustin (Cleavinger) late in the game and overtime was certainly one of them."

"But the kids stepped up and played well. Still, we have to learn to do that every time out."

Cleavinger, Muleshoe's leading scorer and rebounder, scored the Mules' first seven points of the fourth quarter.

With Tulia trailing 51-50, Sims intercepted a lazy Muleshoe pass after a missed free throw and scored, drawing Cleavinger's fifth foul.

Sims completed the three-point play to give Tulia a 53-51 lead.

Mickey Marshall added 14 points for the Hornets, who finished with eight 3-pointers but were never able to establish any kind of inside game.

The game was tight through-

out, with neither team leading by more than four point after the first quarter.

Norman connected on 4 of 4 3-pointers from the corner in the third quarter that ended with Muleshoe up 44-43.

Muleshoe jumped out to a 14-7 lead, but Sims was the catalyst in a 7-0 run to end the quarter.

Sims scored 10 points in the first quarter, including a pair of 3-pointers and a dunk off a steal.

Norman scored 20 points in the opening round as Muleshoe pulled away from Nazareth in the second half. Cleavinger added 16 points.

Muleshoe outscored the Swifts 39-26 in the second half.

Darren Huskert led Nazareth with 24 points.

**TULIA 62, MULESHOE 60 OT**

Muleshoe (60) — Lewis 0 0-0 0,

Shelburne 2 0-0 4, Sinclair 0 0-0 0, Mason 1 2-5 5, Norman 6 4-6 21, Field 1 3-4 5, McClanahan 0 0-0 0, Clements 1 0-2 2, Kemp 1 1-3 4, Cleavinger 8 2-2 19. Totals 20 12-21 60. 3-pointers: Norman 5, Cleavinger, Kemp, Mason.

**Tulia (62)** — Underwood 4 0-0 9, Mahaney 2 0-0 6, Sims 10 5-7 27, Washington 0 0-0 0, M. Marshall 5 3-4 14, Dyer 2 0-0 6, P. Marshall 0 0-4 0. Totals 23 8-15 62.

Muleshoe 14 14 16 9 7 60  
Tulia 14 12 17 10 9 62

**MULESHOE 69, NAZARETH 52**

**Muleshoe (69)** — Lewis 0 0-0 0, Shelburne 1 0-2 2, Sinclair 1 0-0 3, Mason 3 0-0 7, Norman 8 2-2 20, Field 3 2-3 8, McClanahan 1 0-0 2, Clements 4 0-0 8, Kemp 1 1-2 3, Cleavinger 7 2-2 16. Totals 29 7-11 69. 3-pointers: Norman 2, Sinclair, Mason.

**Nazareth (52)** — Huskert 10 3-4 24, Ethridge 1 0-2 2, Schulte 1 0-0 2, Birkenfield 2 0-0 4, Hoelting 7 0-0 16, Cannon 2 1-2 3, McLain 0 0-0 0, Borkman 0 1-2 1. Totals 22 5-10 52. 3-pointers: Hoelting 2, Huckart.

Muleshoe 14 16 21 18 69  
Nazareth 17 9 12 12 52

**BASKETBALL**

**I-27 Tournament**

at **Abernathy, Hale Center and Idalou**

**BOYS**

**Thursday**

**First round**

Muleshoe 69, Nazareth 52  
Lubbock Christian 53, Hale Center 52  
Tulia 75, Trinity Christian 53  
Idalou 53, Happy 36  
Slaton 80, Colorado City 54  
Whiteface 78, Abernathy 63  
Littlefield 70, Shallowater 53  
Cooper 72, Crane 57

**Championship quarterfinals**

Tulia 62, Muleshoe 60 OT

Whiteface 52, Littlefield 48  
Lubbock Chirtian 65, Cooper 63 OT  
Slaton 43, Idalou 40

**Friday**

**Consolation quarterfinals**

Trinity Christian at Nazareth  
Crane vs Hale Center  
Happy vs Colorado City  
Shallowater vs Abernathy

**Fifth-place semifinals**

Muleshoe vs Idalou

Cooper vs Littlefield

**Championship semifinals**

Tulia vs Slaton

Lubbock Christian vs Whiteface

Turn to page 8 for more sports

**Stocking Savings!**  
**Stuffer Shirts**  
**Coats**  
**Caps**

**NASCAR:**  
Dale Earnhardt, 7 Time Champion  
Jeff Gordon, Last Year Winston Cup Champion  
Terry Labonte, Mark Martin,  
Bill Elliot, Driver of the year

**We have:**  
NHRA, John Force  
Cory Mac & Others

**BENDER CHEVROLET PARTS**  
2500 Mabry Drive • (505) 762-4755

*Brighten The Holidays with Holiday Rugs*

*Christmas and the Holidays are just around the corner and has four ways to help make this time of year even more exciting for you!*

The Original Limited Edition

**S•A•N•T•A**  
Rug 6X9

Limited Edition

**Santa's Visit**  
Rug 4X6

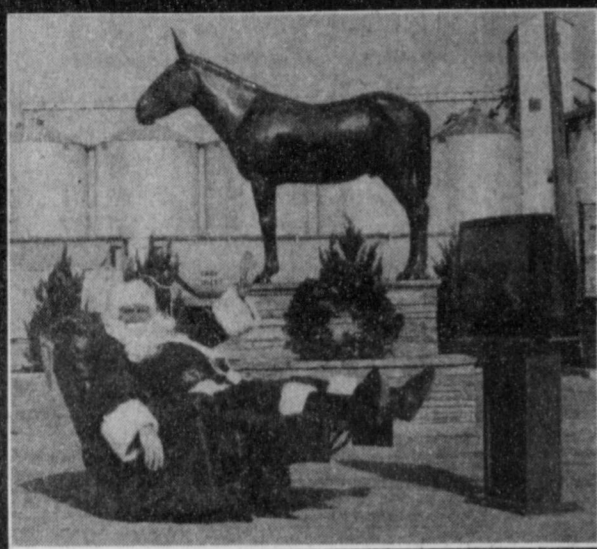
**Holly**  
Rug 4X6 *Can Also Be Used As Wall Hangings*

**Wreath**  
Rug 3X4

Other Christmas Rugs Plus Many Traditional 6X9 Area Rugs That Make Great Gifts Starting at \$49<sup>00</sup>!

**McDaniel's**  
Home Furnishings  
1013 Mitchell St., Clovis, NM 88101  
(505) 762-4481 NM lic. #2841

Store Hours: Mon. - Fri. 8 a.m. - 5:30 p.m.; Sat. 8 a.m. - 12 p.m.



With every purchase of \$25 or more (up to \$500), don't forget to register at these Muleshoe businesses during Moonlight Madness. Only purchases made from 6 pm to Midnight during Moonlight Madness will entitle you to fill out an entry form. You can win a VIBRATING, MASSAGE RECLINER OR TELEVISION just for shopping with Muleshoe merchants.

# MOONLIGHT MADNESS

"Shop Till The Cows Come Home"

Coming December 20

This is the LAST Moonlight Madness of 1997! Don't miss your chance to save \$\$\$ & win!

December 20, 1997  
 In Support of Muleshoe and Moonlight Madness, the Heritage Foundation is opening the Heritage Center (located behind Treasures from the Heart) December 20<sup>th</sup> for afternoon and evening tours. Refreshments will be served. Have your picture taken with Mr. or Mrs. Claus for only \$5<sup>00</sup>. The proceeds from pictures will help support the Heritage Foundation. Come out and have some fun & help support a great organization!

## Leal's

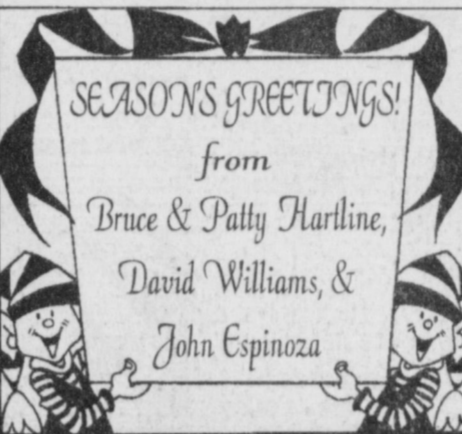
1010 W. American Blvd. • 272-3294

We're Open Tuesday through Sunday 11 am to 9 pm

CATERING & BANQUET FACILITIES AVAILABLE



HIGGINBOTHAM-BARTLETT CO.  
 215 MAIN • 272-3351  
 December 20th  
 We'll be open from 8 am to 1 pm



did somebody say ☺?

25¢ Coffee All Morning All Day Long

1301 W. American Blvd. Muleshoe, TX 272-3333

## WILLIAMS ATHLETICS

322 Main - 272-6853  
 Moonlight Madness Storewide Savings 10% to 50%  
 Nike Caps • Shoes • Windsuits  
 Coats • T-shirts • Duffle Bags

Dec. 20th  
 20% Off Shoes (All Day)  
 6 pm to Midnight take an extra 10% Off of yellow ticket shoes

NEW ARRIVAL  
 JORDAN TEAM SHOE  
 With \$25 purchase, register to win  
 10 am to 6 pm • Dallas Cowboy Fossil Watch  
 6 pm to 9 pm • Men's Fossil Watch  
 9 pm to Midnight • Ladies' Fossil Watch

## FRY & COX TRUE VALUE

401 S. 1ST • 272-4511  
 Moonlight Madness Dec. 20 • 6 pm to 9 pm

Christmas Trees and All the Trimmings!  
 Gift Selections for Everyone  
 Gardeners • Bird Watchers • Wood Workers • Crafters  
 Bakers • Mechanics  
 Bikes • Wagons • Toys for the Kids  
 Stocking Stuffers & Gift Certificates

Save All Over the Store 20%•30%•40%•50%

With every purchase Dec. 15 thru 20 Register to win a Stanley 50 Piece Home Projects Tool Set FREE Gift Wrapping

## BEALLS

321 Main St. • 272-3478

Dec. 20 Open till 10 pm  
 NOVELTY GIFT SELECTIONS  
 • Christmas Decorations  
 • Angels  
 • Crystal  
 • Cologne w/FREE gifts  
 Gentlemen Shop for yourself & your special someone!  
 • Good Selection of MEN'S BIG & TALL SIZES  
 • Lingerie  
 • Fine Jewelry  
 Don't Forget to enter our Letters To Santa Contest! It's a lot of FUN!

## PIZZA HUT

1412 W. American Blvd. • 272-4213

Any Large Pizza for A Medium Pizza Price

Large The Edge

\$11.99 (plus tax)

December 20th Hours • 11 am to Midnight

## FIVE AREA TELEPHONE COOPERATIVE, INC.

P.O. Box 448  
 (806) 272-5533 or 1-800-741-6925

It is our pleasure to help support the community, the Muleshoe Chamber of Commerce and all our wonderful, hometown businesses.

WEST PLAINS TELECOMMUNICATIONS, INC.  
 P.O. Box 1012  
 (806) 272-5533 or 1-800-741-6925

## J & L FASHIONS

202 Main • Muleshoe, TX 272-3000

December 15<sup>th</sup> thru 20<sup>th</sup>  
 Week Long Savings 25% Off All Sweaters & Sweater Vests  
 25% Off All Pants  
 25% Off All Accessories & Socks  
 (excluding Button Ups)  
 And Other In-store Markdowns!  
 FREE Gift Wrap with Purchase  
 Merry Christmas from Leon, Judy & Audrey

## TREASURES FROM THE HEART

2105 W. American Blvd. • 272-4217

Dec. 20 • Open till Midnight  
 LAST CHANCE for those "Special" savings for that someone "Special in your He♥rt"

Door prizes will be given away at 10 PM sharp.

Register with every \$10 spent!

Must Be Present To Win

♥ Mon.-Sat. 10 am to 5:30 pm ♥  
 ♥ Tues 10 am to 7 pm ♥  
 Layaways Welcome  
 M/C, Visa, Discover

WEBSITE • www.maroon.com/treasures

## DECORATORS FLORAL & GIFTS

616 S. 1st St. • 272-4340

MOONLIGHT MADNESS HRS. December 20 • 6 PM until ?



1/2 PRICE CHRISTMAS Silk Arrangements Tree Ornaments Beanpals Containers • Mugs

## JOE'S BOOT SHOP & COUNTRY JUNCTION

106 E. American Blvd. 272-7504 • 1-800-658-6378

Dec. 20 Open till Midnight Entertainment provided by Silver Creek Band

PLAY "LET'S MAKE A DEAL" COME DRESSED IN COSTUME & JOIN IN ON THE EXCITEMENT!

All Boots & Sport Lacers (including sale Boots!)  
 Go on Sale at 6 pm  
 6 pm ~~to~~ \$6 Off  
 7 pm ~~to~~ \$7 Off  
 8 pm ~~to~~ \$8 Off  
 9 pm ~~to~~ \$9 Off  
 10 pm ~~to~~ \$10 Off  
 11 pm ~~to~~ \$11 Off

AUCTION BEGINS at 9:30 pm  
 OVER \$3000 IN MERCHANDISE TO BE GIVEN AWAY DEC. 20<sup>TH</sup>

## MULESHOE MOTOR CO.

1225 W. American Blvd. 272-4251

HOPEL

santa's GOOD TO YOU

1225 W. American Blvd. 272-4251 1-800-432-7617

## ALICO

1401 W. American Blvd. • 272-5525

20% OFF Any One Regular Priced Item

December 20 We'll Be Open From 7 am until 10 pm

## THE FIG TREE

220 Main St. • 272-7561

December 20th Open 10 am to ?

All Merchandise Marked Down

10 • 20 • 30% Off (Regular Price)

Free Gift Wrapping Layaways Welcome

## ART LOFT

1529 W. AMERICAN BLVD. 272-3485

Moonlight Madness Extended Hours Open from 6 pm until ?

We look forward to seeing you. Remember- We're Antiques & Much More!

With each purchase of \$25, you may register to win the Chamber of Commerce Grand Prizes!

Shop at Santa's Favorite Store

## Sheree's Attic

1519 W. American Blvd. • 272-3459

Moonlight Madness 6 pm until Rudolph's nose won't glow!  
 Special Reductions Storewide All Fall & Winter Merchandise & Sterling Silver Up to 50% Off! (Reg. Price)

Brighten Your Holidays with Brighton Belts, Watches & Accessories 20% Off!

Purchase children's outfit at regular price get the 2<sup>nd</sup> one Free (of equal value)

Free Sterling Silver Jewelry (\$15 Val) when you purchase \$100 or more  
 Biggest Moonlight Madness Sale Yet!

## HARVEY BASS APPLIANCE

122 S. 1ST • 272-3030

Come in and see our large selection of vibrating, massage recliners by Berkline.

We know our prices are as good as you'll find!

Come in and see tomorrow's technology- The Neptune by Maytag. This FRONT LOAD washer & dryer are fantastic! December 20th Open 8 am to 9 pm

We'll be open for Moonlight Madness December 20th

We have • Birds • Reptiles • Fish And More!

Remember Circle E Pets when you need your dog or cat groomed or boarded for the holidays!

Come in and take a look at our IN-SHOP special! Register for C. of C. Grand Prize Drawing with purchases!

CIRCLE E PETS 224 W. 2nd 272-4118

# Lazbuddie sweeps Boys Ranch

AMARILLO — Lazbuddie made a smooth from the gridiron to the basketball court.

Playing just four days after being eliminated from the state football playoffs and with just two days of practice, Lazbuddie whipped Boys Ranch 81-46 Tuesday in its season-opener.

Jason Thomas scored 21 points and grabbed 11 rebounds for the Longhorns, who outscored Boys Ranch 47-26 in the second half.

John Burkhard led Boys Ranch (1-4) with 19 points.

"We just wore them down in the fourth quarter," Lazbuddie coach Phil Warren said. "We really wanted to start playing next week, but . . ."

Chris Smith added 17 points for the Longhorns and Adam St. Clair chipped in 12 points and nine rebounds.

**Lazbuddie (81)** — Jason Thomas 7-7-13 21, Chris Smith 7-2-5 17, Dustin Weir 1-0-0 2, Deon Gallman 1-0-1 2, Robert Nail 2-0-0 4, Brice Foster 0-0-0 0, Josh Morris 3-0-0 7, Adam St. Clair 5-2-4 12, Cade Morris 2-1-2 5, Brandon Foster 5-0-0 10, Don Birch 0-1-2 1. Totals 33 13-26 81. 3-pointers: Smith, Morris.

**Boys Ranch (46)** — Campbell 1-0-3 2, Hart 2-2-4 6, Burkhard 7-5-8 19, Blair 1-0-0 2, Branum 5-1-2 11,

Wilson 1-2-7 4, Nevels 1-1-3 5. Totals 17 11-28 46. 3-pointers: none.

**Lazbuddie** 22 12 17 30 81  
**Boys Ranch** 15 6 9 17 46

Records: Lazbuddie 1-0, Boys Ranch 1-4. Next game: Farwell Tournament Dec. 11-13.

## Lady Longhorns cruise to 8th win

AMARILLO — Roxann Warren scored 12 points and Holly Engelking added 11 points Tuesday as Lazbuddie rebounded from its first loss of the season by drubbing Boys Ranch 67-13.

All 12 players scored for the Lady Longhorns, who improved to 8-1.

**Lazbuddie (67)** — Staci Foster 1-0-0 2, Holly Engelking 4-0-0 11, Scottie Brown 3-0-1 6, Rachel Rodriguez 4-1-4 9, Kristen Carson 1-0-0 2, Leah Turner 1-0-0 3, Kia Morris 4-0-0 8, Roxann Warren 6-0-2 12, Maria DeLeon 2-1-2 5, Stephanie Sharp 1-0-0 2, Mayra Hernandez 1-0-1 2, Laura Jo Via 2-1-2 5. Totals 30 3-12 67. 3-pointers: Engelking 3, Turner.

**Boys Ranch (13)** — Wheeler 1-4-5 6, Bell 1-2-4 4, Hillard 1-0-0 2, Bailey 0-1-4 1, Knight 0-0-2 0. Totals 3-7-16 13. 3-pointers: none.

**Lazbuddie** 19 17 17 14 67  
**Boys Ranch** 6 3 2 2 13

Records: Lazbuddie 8-1. Next game: Dec. 11-13 at Farwell Tournament.

## BASKETBALL

### Farwell Tournament

#### at Farwell HS

#### BOYS

#### Thursday

#### First round

Lazbuddie 62, Dora 60  
Friona 68, Grady, N.M. 60  
Elida 64, Texico 58

#### Friday

#### Consolation semifinals

Dora vs Grady, N.M.

Texico vs Melrose

#### Championship semifinals

Lazbuddie vs Friona

Elida vs Farwell

#### GIRLS

#### Thursday

#### First round

Dora 59, Lazbuddie 47  
Friona 52, Grady, N.M. 23  
Texico 50, Elida 47  
Farwell 36, Melrose 28

#### Friday

#### Consolation semifinals

Lazbuddie vs Grady, N.M.

Elida vs Melrose

#### Championship semifinals

Dora vs Friona

Texico winner vs Farwell

## FREE THROWS

From page 4

3-10-12 16. Totals 14 27-41 55. 3-pointers.

FG: 14-35. 3-pt FG: 0-2. Rebounds: 35, 10 off. (Field 8, Morris 7). Blocked shots 3 (Field 3). Steals: 7 (Locker 3). Assists: 10 (Locker 4). Turnovers: 25.

**Farwell (46)** — Crawford 2-6-10 10, Miller 1-2-4 4, Hunt 0-1-2 1, Woods 1-0-0 2, Stout 0-0-0 0, Kaltwassur 0-2-4 2, Bennett 3-6-9 12, V. Mace 1-2-2 4, Ve. Mace 2-3-4 7, Roberts 2-0-1 4. Totals 12 22-36 46.

3-pointers: none.

**Muleshoe** 18 12 9 16 55  
**Farwell** 7 12 11 16 46

Records: Muleshoe 7-4, Farwell 8-2. Next game: Monday at Nazareth.



Although brown hairy tarantula spiders look fierce, their bites are no more dangerous than bee stings.

## RANDY'S SHOES

Semi-Annual Clearance

# SHOE SALE



**SALE STARTS SUNDAY AFTERNOON, DECEMBER 14TH, 1:00 P.M.!**  
*Fantastic Pre-Christmas Savings on Famous Brand Fall & Winter Shoes for the Entire Family*

---

**WOMEN'S**

Dress Shoes, Fashion Boots, Casuals, Flats, Athletic Shoes  
**NOW 20%, 30% & 50% OFF**  
Large Selection of Styles and Colors  
Select from: Naturalizer • Easy Street • Hush Puppies • Madeline Stuart • Soft Spots • Eastland • Nicole • Nike • Annie • Auditions • Keds • Mooties Tooties

---

Large Group  
Fall and Winter Handbags ..... **30%-50% OFF**

---

**MEN'S**

Dress Shoes, Casuals, Athletic Shoes, Work Shoes  
NOW! On many selected styles  
**NOW 20%-50% OFF**  
Select from: Dexter • Skechers • Hush Puppies • Nike • Stacy Adams • Nunn Bush

---

**CHILDREN'S**

Dress Shoes, Casuals, Athletic Shoes  
**30%-50% OFF**  
Select from: Jumping Jacks • Keds • Nike • Little Capezio • Hush Puppies

---

## RANDY'S SHOES

*"Quality Shoes at Affordable Prices"*  
410 Main, Downtown Clovis  
9:00 - 5:30 Mon.-Sat., Sunday 1-5 p.m. until Christmas

Happy Holidays from the Journal

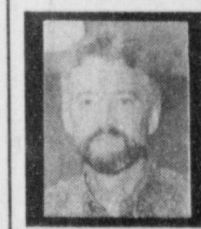
## First Baptist Choir presents Christmas Musical

*A Season, A Savior, A Star*, a Christmas celebration of praise and worship for His majesty, will be presented at 6 p.m., Sunday, Dec. 14 by the adult choir of the First Baptist Church of Muleshoe.

This new, dynamic work by Lanny Wolfe and Bob Krogstad features new songs for Christmas, in a variety of musical styles. Soloists, duets, narration and a dramatic and powerful musical score combine to bring to light, in a fresh and vibrant way, the message and meaning of the Christmas story. Everyone is invited to experience *A Season, A Savior, A Star*.

## A Christmas Without Christ? No, Thanks!

I always enjoy the wisdom and insight in Dr. James Dobson's *Focus on the Family* magazine. In the "Q & A" section this month, one reader asks a question that pops up annually just as regularly as Ebenezer Scrooge. I doubt the questioner meant to be Scrooge-like, but she wanted to know,



**Focus On Faith**  
Curtis Shelburne

"Doesn't our celebration of Christmas have roots in pagan practices? How do you feel about Christians participating in that sort of thing?"

My answer might be, "Good grief, lighten up! Humbug to humbugs!" Dobson's was better.

Partly his words and partly paraphrased, here's what he said: It is true that the timing of the Christmas season coincides with the Roman festival, the Saturnalia, and that there is a historical connection. In the fourth century, Emperor Constantine declared Christianity the official religion of the Roman Empire and outlawed pagan religious practices. Wisely understanding human nature and hoping to avoid an outcry, he declared that the time for Saturnalia would continue to be holiday

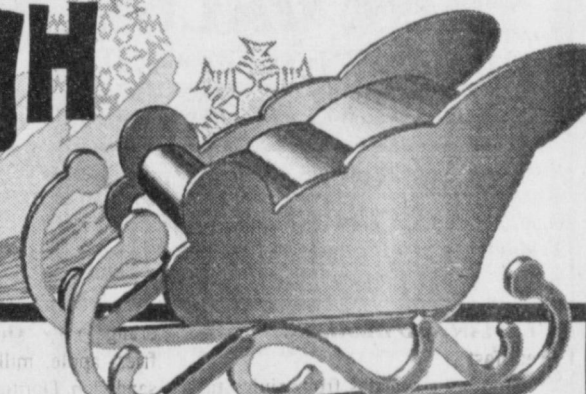
time but would be given a new meaning. Thus the old pagan holiday was transformed into a celebration of the birth of Jesus Christ and, in time, the pagan associations faded and were forgotten.

Respectfully understanding that some find this troubling, Dobson wisely continues that, to his mind, it's what you make of an event that counts, and that he seriously doubts that any of us are in much danger of being lured into the worship of pagan deities, that the much more serious threat is the one posed by the gods of materialism and secularism that have so established themselves on what Constantine hoped would be holy ground. It is perhaps more important than ever, for people of faith and for families building treasured memories, that we allow this beautiful time to be one of the spiritual highlights of the year.

I enjoy old Frostie the Snowman as much as anyone, but if our spirits can rise no higher than Jingle Bells during this holy season, we've missed the heart and core of Christmas, the real Reason for the season, and robbed ourselves and our families of a great deal of genuine joy.

(By the way, Dr. Dobson's magazine is available free of charge. Call 1-800-232-6459 or write to Focus on the Family, Colorado Springs, CO 80995-7451, to request it.)  
Curtis Shelburne is minister of the 16th & Avenue D Church of Christ in Muleshoe.

# Get A New Sleigh For Christmas



<p><b>95 CHEVY S-10 PICK-UP</b> <i>Regular Cab</i></p> <p>#76385A Reg. \$11,995</p> <p style="text-align: right;"><i>Sale Price</i> <b>\$9,995</b></p>	<p><b>97 CHEVY 1/2 TON PICKUP</b> <i>Ext. Cab 2WD</i></p> <p>#86042A Reg. \$22,995</p> <p style="text-align: right;"><i>Sale Price</i> <b>\$21,500</b></p>
<p><b>93 CHEVY 1/2 TON PICKUP</b> <i>Regular Cab</i></p> <p>#86105A Reg. \$8,995</p> <p style="text-align: right;"><i>Sale Price</i> <b>\$7,995</b></p>	<p><b>95 CHEVY SUBURBAN</b></p> <p>#86070A Reg. \$26,995</p> <p style="text-align: right;"><i>Sale Price</i> <b>\$23,500</b></p>
<p><b>94 CHEVY 1/2 TON PICKUP</b> <i>Ext. Cab</i></p> <p>#76297A Reg. \$11,995</p> <p style="text-align: right;"><i>Sale Price</i> <b>\$10,995</b></p>	<p><b>96 CHEVY TAHOE 4x4</b></p> <p>#5208 Reg. \$27,995</p> <p style="text-align: right;"><i>Sale Price</i> <b>\$23,995</b></p>
<p><b>95 CHEVY 1/2 TON PICKUP</b> <i>Ext. Cab 4X4</i></p> <p>#76116A Reg. \$20,995</p> <p style="text-align: right;"><i>Sale Price</i> <b>\$18,995</b></p>	<p><b>96 CHEVY SUBURBAN</b></p> <p>#5234 Reg. \$27,995</p> <p style="text-align: right;"><i>Sale Price</i> <b>\$25,995</b></p>
<p><b>95 CHEVY 1/2 TON PICKUP</b> <i>Ext. Cab 4X4</i></p> <p>#86018A Reg. \$19,995</p> <p style="text-align: right;"><i>Sale Price</i> <b>\$17,995</b></p>	<p><b>97 CHEVY SUBURBAN</b></p> <p>#8609A Reg. \$29,995</p> <p style="text-align: right;"><i>Sale Price</i> <b>\$27,995</b></p>
<p><b>97 CHEVY 3/4 TON PICKUP</b> <i>Ext. Cab 2WD</i></p> <p>#5259 Reg. \$23,995</p> <p style="text-align: right;"><i>Sale Price</i> <b>\$22,995</b></p>	<p><b>95 GMC SUBURBAN</b></p> <p>#76340A Reg. \$26,995</p> <p style="text-align: right;"><i>Sale Price</i> <b>\$23,500</b></p>

# BENDER CHEVROLET

<p style="text-align: center;"><b>BENDER</b></p> <p style="text-align: center;">CHEVROLET OLDSMOBILE CADILLAC</p> <p style="text-align: center;">2500 Mabry Drive • (505)763-4465</p>	<p style="text-align: center;"><b>BENDER</b></p> <p style="text-align: center;">CHRYSLER PLYMOUTH DODGE</p> <p style="text-align: center;">3400 Mabry Drive • (505)762-4511</p>	<p style="text-align: center;"><b>BENDER</b></p> <p style="text-align: center;">HONDA NISSAN</p> <p style="text-align: center;">3000 Mabry Drive • (505)762-3701</p>
---	---	--

Have a nice day



**JUDGE**

From page 1

I decided to be a lawyer," said Young. "I've been very fortunate to be able to do what I always wanted to do. After all these years, I can't imagine not continuing to serve the people in some capacity."

Once retired, he will have senior status with the courts, which will allow him to accept "fill-in" appointments throughout the state on the bench.

Young, who has grandchildren in Muleshoe and in Brazoria County in East Texas, said that he wouldn't mind an appointment in Brazoria a few months out of the year, so he can spend time with all of his family.

Even though Young has plans to travel and visit with family across the state, but has no plans of a making any move permanent.

"Muleshoe will always be

home, it always has been," said the 1947 Muleshoe High School graduate.

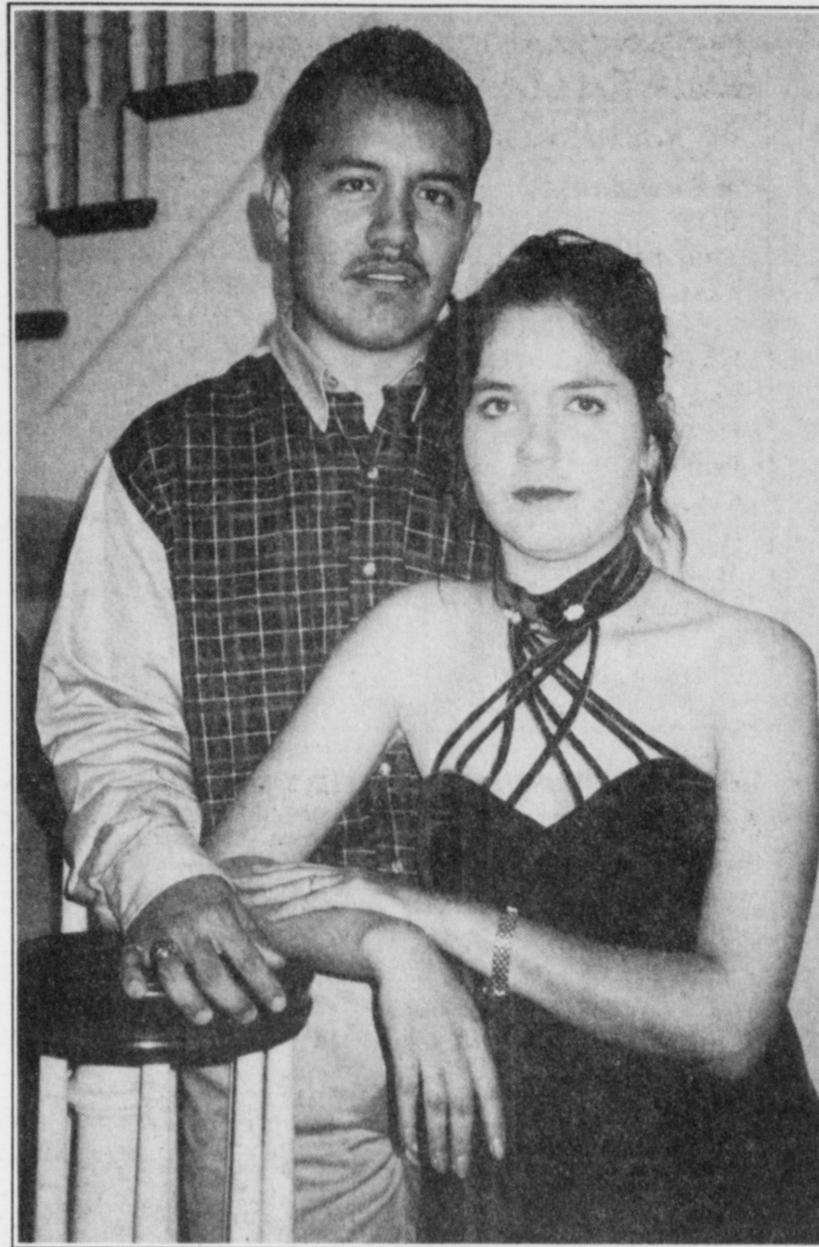
Young has spent the past 40 years serving the town he is so attached to.

After graduating from the University of Texas Law School in 1956, he opened practice in Muleshoe. One year later, he went from private practice to a life of serving the public and never went back.

Young's career includes serving as Bailey County Attorney from 1957-1960, District Attorney for the 154th Judicial District composed of Lamb, Bailey and Parmer Counties from 1961-1981 and finally in his in his current position as District Judge which he has held for over 16 years.

"I've enjoyed all of the work," said Young, "and I would like to express my thanks and gratitude to friends and constituents who have supported me in the past — God Bless."

**ENGAGEMENT**



Barron-Soto

Marivel Soto and Josue Barron announce their engagement and approaching marriage. The couple will marry Jan. 10, 1998 at First United Methodist Church in Muleshoe. The bride-elect is the daughter of Mr. and Mrs. Jesus A. Soto of Muleshoe. The future bridegroom is the son of Mr. and Mrs. Dorotes Barron of Muleshoe.

**COTTON**

From page 1

last year. But dryland is significantly better this year."

One area in the county that seems to be the exception to the mediocre harvest is Bula, where the dryland crops benefited by the spring and summer rains.

Bula farmers are reporting the best crop since 1990, according to Bula Co-op manager Charles Heffington. "Even though we lost about 45 percent of our crop due to hail damage earlier this year, we still have doubled our yield."

Muleshoe Journal  
272-4536

**SLAYING**

From page 1

commit armed robbery, armed robbery and tampering with evidence.

Also being held are Treadway's girlfriend, Kirsten Admunson, and a 17-year-old male juvenile from Farwell. Admunson, 18, was listed as a Kansas resident in the press

release.

It was Armstrong and the juvenile who called 9-1-1 to report the shooting according to Harris.

The fruit stand is located on U.S. Highway 84, less than 100 feet across the state line from Farwell.

**School menus**

December 15 - 19

**MULESHOE JR. HIGH AND HIGH**

**Monday** — waffles, fruit or juice, milk. **Tuesday** — scrambled egg with toast, fruit or juice, milk. **Wednesday** — biscuit with gravy, fruit or juice, milk. **Thursday** — breakfast pizza, fruit or juice, milk. **Friday** — cinnamon roll, fruit or juice, milk.

**Lunch**  
**Monday** — burrito, chile, Mexican corn, sliced peaches, milk. **Tuesday** — lasagna, mixed vegetables, tossed salad, Italian bread, milk. **Wednesday** — beef enchiladas, ranch beans, rice, tossed salad, milk. **Thursday** — corn dog, vegetable soup, cinnamon roll, pineapple tidbits, milk. **Friday** — ham and cheese sandwich, lettuce and tomatoes, potato chips, fruit cocktail, milk.

**DILLMAN AND DESHAZO**  
**Breakfast**  
**Monday** — waffles, fruit or juice, milk. **Tuesday** — scrambled egg with toast, fruit or juice, milk. **Wednesday** — biscuit with gravy, fruit or juice, milk. **Thursday** — breakfast pizza, fruit or juice, milk. **Friday** — cinnamon roll, fruit or juice, milk.

**Lunch**  
**Monday** — pizza, carrot sticks, sliced peaches, chocolate chip cookie, milk. **Tuesday** — beef enchiladas, ranch beans, rice, tossed salad, milk. **Wednesday** — spaghetti, mixed vegetables, mixed fruit, Italian bread, milk. **Thursday** — corn dog, vegetable soup, cinnamon roll, pineapple tidbits, milk. **Friday** — ham and cheese sandwich, carrot sticks, mixed fruit, potato chips, milk.

**THREE WAY**

**Breakfast**  
**Monday** — cream of wheat, frosted Cheerios, toast, fruit, juice, graham crackers, milk. **Tuesday** — donuts, cocoa puffs, fruit, juice, graham crackers, milk. **Wednesday** — biscuit, sausage, apple cinnamon, fruit, juice, graham crackers, milk. **Thursday** — cinnamon roll, lucky charm, fruit, juice, graham crackers, milk. **Friday** — pancakes, sausages, Trix, fruit, juice, graham crackers, milk.

**Lunch**  
**Monday** — ham and cheese sandwich, corn chips, pickle spears, apple, milk. **Tuesday** — turkey, dressing, cranberry sauce, whipped potatoes, green bean, ITALIAN cream cake, milk. **Wednesday** — pepperoni pizza pockets, Cheetos, crispy coat fries, orange, milk. **Thursday** — cheeseburger, fries, apple, milk. **Friday** — submarine sandwich, Doritos, pickle spears, bananas, milk.

**LAZBUDDIE ISD**  
**Lunch**  
**Monday** — pizza, subs, corn dogs, \*teriyaki chicken and rice, broccoli and cauliflower, corn, green beans, salad-fruit-jello, milk. **Tuesday** — tacos, burritos, tuna sandwich, \*enchiladas, pinto beans, Spanish rice, squash casserole, salad-fruit-jello, milk. **Wednesday** — hamburgers, egg rolls, BBQ sandwich, \*fish, macaroni and cheese, black-eyed peas, fried okra, salad-fruit-jello, milk. **Thursday** — pigs-n-a-blanket, pizza, frito pie, \*chicken nuggets, mixed vegetables, green beans, salad-fruit-jello, milk. **Friday** — Friday special, milk.



**Family Hospice**  
MAKING MEMORIES™

Life's ending doesn't need to be a time of isolation, pain and suffering. For nearly 10 years, Family Hospice has been helping terminally ill patients and their families share many meaningful experiences during the final months of life.

At Family Hospice, we offer:

- Physicians trained in palliative medicine
- Registered Nurses who direct the program of care
- Customized treatment in effective pain control and symptom management
- Experienced, certified aides to assist with the patient's personal care
- Pastoral, bereavement and other counselors
- Highly trained volunteers
- On call 24 hour services
- Quality care provided in the home, nursing home or hospital

To learn more about how Family Hospice can help you and your terminally ill loved one, please call us today. Because life's final transition shouldn't be experienced alone.

Payment for services by Medicare, Medicaid, Insurance, CHAMPUS/Tri-Care and HMOs. Unlike home health, these insurers pay 100 percent of pharmacy and equipment related to the terminal illness.

Muleshoe  
(800) 657-7183

Plainview  
(806) 293-5127

**Rip's** 314 Wheeler Texico Australian Oilskin Dusters  
482-3363 or 800-748-2459

**LADIES: 3 Giant Closeout Racks**  
30% - 50% - 75% Off

**JUST ARRIVED**  
New shipment of Goatskin & Buckskin Roper Gloves

**Belts Personalized FREE!**

**Pendleton Shirts & Jackets 10% Off**

**Jeans & Tops For Little Girls by Lawman 20% Off**

**Don't forget: We have a complete line of tack 10% Off**

**New Shipment Of Shirts by CHAPS**

**Sterling Silver Buckles & Jewelry by Montana Silversmiths 10% Off**

**Other Great Buys Throughout The Store!**  
9 a.m. -- 7:30 p.m. cst Monday -- Saturday  
1 to 6 p.m. cst on Sundays

Lay-a-ways welcome  
Free Gift Wrapping

We accept: No Seconds - No Irregulars

*We stand behind what we sell. We sell only 1st quality merchandise*

## Lazbuddie Student of the Month

The following students were honored as Lazbuddie's "Students of the month" for December:

Pre-K — Manuel Bermea, son of Debbie Rodriguez

Kinergarten — Dylan Haney, son of Gregg and Netta Haney

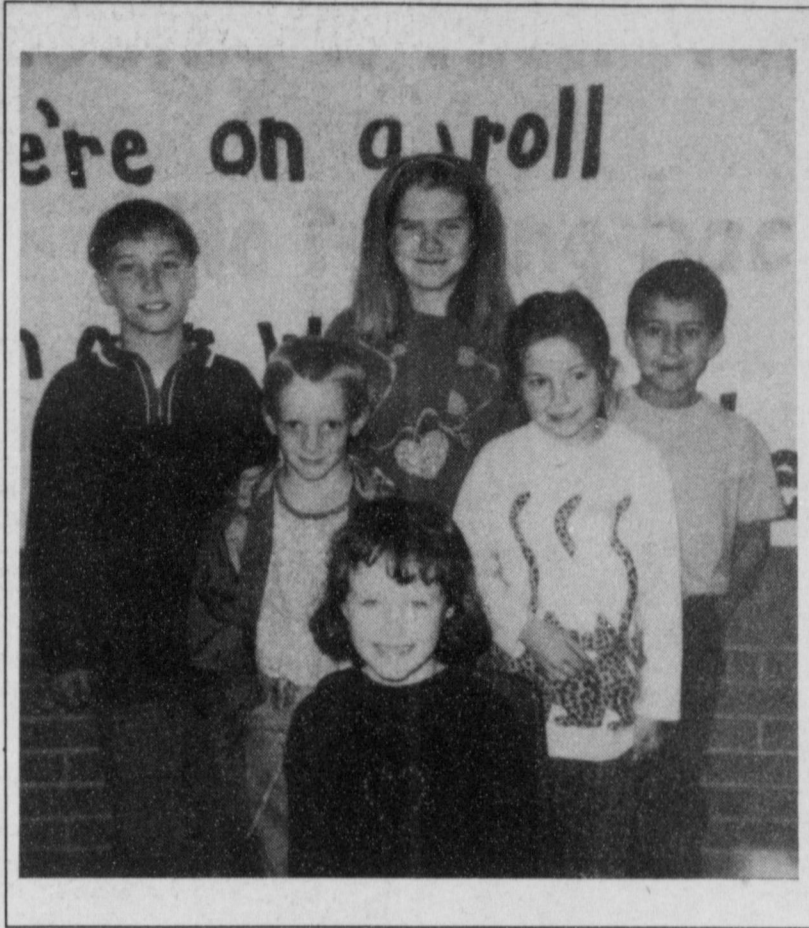
1st Grade — Cassie Steinbock, daughter of Terry and Judy Steinbock

2nd Grade — Mary Martha Hendrickson, daughter of Michael and Annie Hendrickson

3rd Grade — Kayla Whitesides, daughter of Tracy Whitesides

4th Grade — David Campos, son of Sylvia and Jonny Campos

5th Grade — Matt Gammon, son of Mark and Tammy Gammon



Lazbuddie Elementary students of the month

## Searching for the best decorated home

The Teen Leadership students at Muleshoe High School will be assisting the local Chamber of Commerce with the judging of "The Best Decorated Home" in Muleshoe.

Homes will be judged in four different areas: originality, beauty, theme, and Christmas spirit.

For a home to be judged, it must be nominated by leaving a message at the Chamber of Commerce at 272-4248 or contacting Carolyn Johnson at 272-7571 or 272-3284.

The winners will be announced on Dec. 22. Prizes of \$100, \$50, and \$25 will be given by the Chamber.

Teen Leadership students will be having a festive night as they are judging the homes.

The students will leave Muleshoe High School Thursday, Dec. 18 on a hayride that will take them to the Muleshoe nursing home for Christmas caroling. After leaving the

nursing home, they will visit 7571 or 272-3284. other homes for caroling.

When the carolling is complete, the students will then enjoy hot cider and hot chocolate. If you know of someone who would enjoy hearing the carollers on this night, please call Carolyn Johnson, Teen Leadership Sponsor at 272-

late before making the rounds to all the homes that have been nominated for the competition.

The Adult Choir of First Baptist Church, Muleshoe, will present . . .

# A Season of Praise and Worship

## for His Majesty

written and arranged by Lanny Wolfe and Bob Krogstad  
**Sunday, December 14, 1997, 6 p.m.**  
**at First Baptist Church**

Everyone is invited to attend and experience the message of Christmas through this new, dynamic musical.

## Epsilon Delta News

Members of the Epsilon Delta Chapter from Sudan, Springlake/Earth Olton and Muleshoe enjoyed a "Country Christmas" celebration on Dec. 4, in the home of Julie Cage of Muleshoe.

In the beautifully decorated country home, the 34 members exchanged Christmas ornaments and feasted on stew, cornbread, assorted fresh vegetables, and cobbler prepared by the Muleshoe members.

The president of the Chapter, Johanna Wrinkle, presided over a short business meeting and a monetary collection was taken for the Woman and Children's Shelter in Lubbock.

The Journal  
 272-4536

NO DISH TO BUY • NO DISH TO BUY • NO DISH TO BUY • NO DISH TO BUY

The best thing to happen to holiday entertainment since Junior played lead elf in the school play.

# \$00\*

Installed  
 No Dish To Buy

PRIMESTAR  
**Holidaygift PACK**

\$50 Rebate Coupon.  
 (Reg. \$149 - \$50 Rebate = \$99 Installed)  
 Free Disney Channel™ watch. (SRP \$79.99)  
 Plus, the new PrimeFinder™ remote.

PRIMESTAR  
 by COX

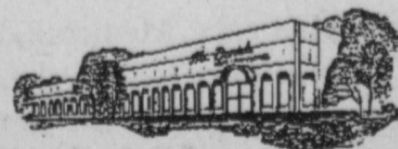
Nothing to buy, nothing to maintain, everything to enjoy.  
 1-800-658-6858  
 Visit our new Lubbock showroom at 6909 B. Indiana.



## A Beautiful Way to Warm Your Home For the Holidays.

Bring the spirit of the season to your home year after year with one of these holiday area rugs! Make those special times come alive with these festive designs that will bring charm to your home. McDaniel's area rugs are also great for giving. So plan early for the holidays and save now!

McDaniel's  
 Floor Covering  
 1013 Mitchell St., Clovis, NM 88101  
 (505) 762-4481 NM lic. #2841  
 Store Hours: Mon. - Fri. 8 a.m. - 5:30 p.m.; Sat. 8 a.m. - 12 p.m.



\*Maximum \$50. Installation price of \$149 and cost of \$50 rebate coupon. Please refer to region and distributor and exclude premium services. Offer good at participating PRIMESTAR dealers. Additional restrictions and limitations. Offer ends December 31, 1997. Installation and in-home merchandise sold separately. ©1997 PRIMESTAR. All rights reserved. PRIMESTAR is a registered service mark and PrimeFinder™ is a trademark of PRIMESTAR Partners, L.P.

# BAILEY COUNTY DEVOTIONAL PAGE

**Risinger Plumbing**  
Serving Muleshoe Area  
All Plumbing Repairs  
**272-6772**

**Springlake Potatoes, Inc.**  
P.O. Box 280 • Springlake, TX  
**262-5542**

**EASTER GRAIN, INC.**  
Easter **276-5255** Labuddie **965-2817**

**WEST CAMP GIN, INC.**  
Route 2 Box 1000  
Muleshoe, TX • 925-6681  
James Sheppard • Phyllis Sheppard

**LLD LANDMARK LABEL & DESIGN**  
218 Main Street  
(806)272-6767

**IRRIGATION PUMPS & POWER**  
ZIMMATIC CENTER-PIVOTS  
W. Hwy. 84 **272-4483**

**MAPLE COOP GIN**  
**927-5501**  
Maple, Texas

**Leal's Tortilla Factory, Inc.**  
"Serving West Texas since 1957"  
107 E. Ash **272-5772** Muleshoe, TX

**O & C OSONS**  
Erection Sprinkler Ser. Welding & Repair  
Repair & Assemble  
Lupe Olivarez **272-5018** 909 W. American Blvd. **272-3475**

**Discount Computer & Repair Service**  
**CompuTek**  
206 Main **272-5404**  
**1-800-687-3816**

**BOBO INSURANCE AGENCY**  
108 E. Ave. C **272-4264**

**Shipman's Body Shop**  
Auto Painting • Wrecker Service • Free Estimates  
Tractor Glass & Windshields  
410 N. 1st **272-4408** Muleshoe, TX  
FAX **272-3366**

**SAIN IRRIGATION & MACHINES**  
Complete Pump Service  
W. American Blvd. **272-4397**  
Walt Sain Muleshoe, TX **272-4148**

**Bob STOVALL Printing**  
The Wells & Janet Hall Family  
221 E. AVE. B • MULESHOE, TX  
**(806) 272-3373**

**TERRA INTERNATIONAL, INC.**  
**272-4203**  
Muleshoe, Texas

**RONNIE HOLT INSURANCE AGENCY**  
Specializing in Crop, Life & Health Insurance  
Western 66 Office Bldg.  
**272-3614** Muleshoe, TX

**PACO FEED YARD, INC.**  
Commercial Cattle Feeders  
P.O. Box 956 265-3281  
Friona, TX  
Feller Hughes-Mgr.

**Jarman Seed**  
**PIONEER** 801 W. American Blvd.  
Muleshoe, TX • 272-5985

**JAMES CRANE TIRE CO., INC.**  
107 Main **272-4594**  
Mike Hahn Muleshoe, TX

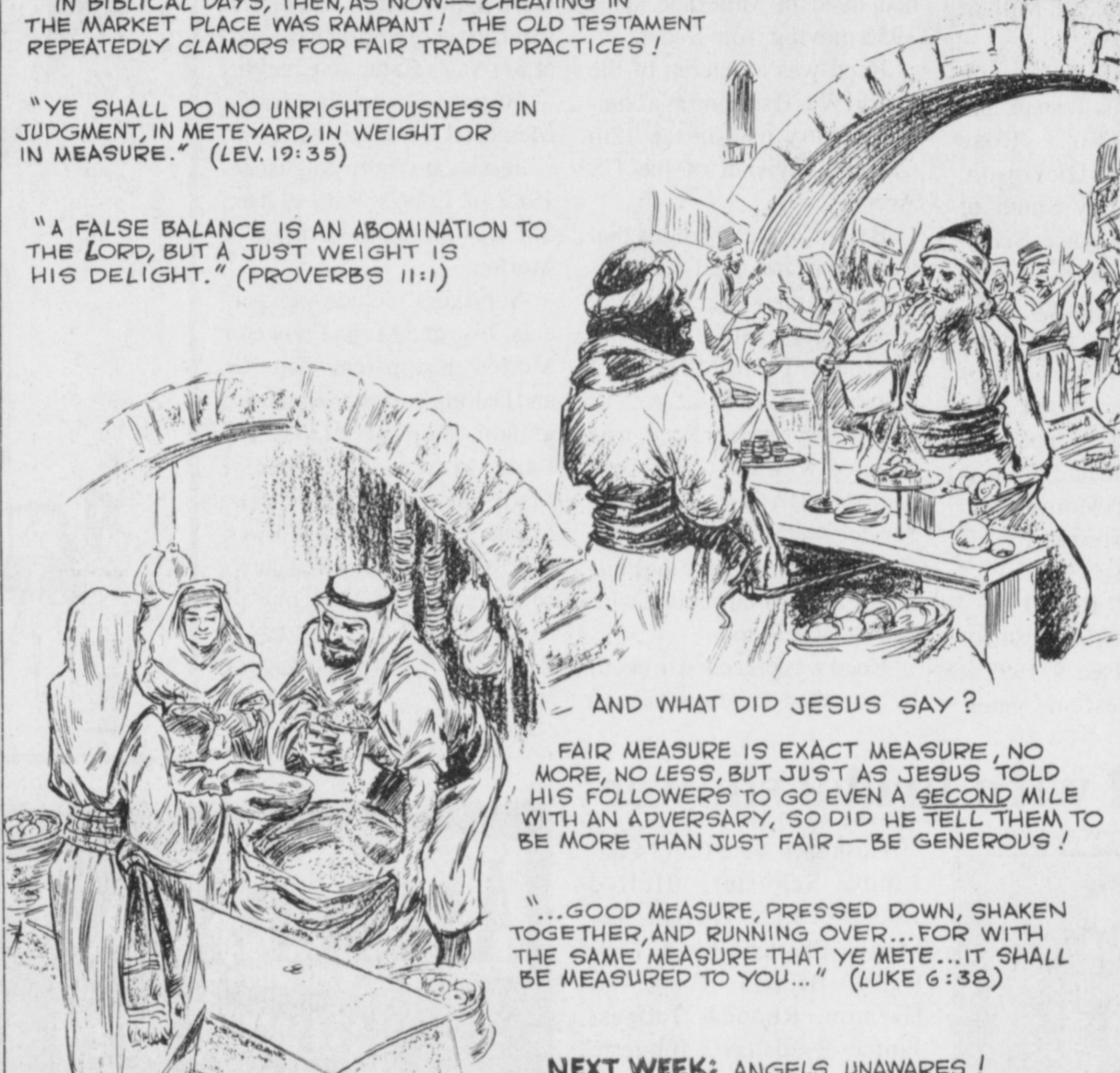
## Facts About The BIBLE BY JOHN LEHTI

**GOOD MEASURE—THE LORD'S DELIGHT!**

IN BIBLICAL DAYS, THEN, AS NOW—CHEATING IN THE MARKET PLACE WAS RAMPANT! THE OLD TESTAMENT REPEATEDLY CLAMORS FOR FAIR TRADE PRACTICES!

"YE SHALL DO NO UNRIGHTEOUSNESS IN JUDGMENT, IN MEASURE, IN WEIGHT OR IN MEASURE." (LEV. 19:35)

"A FALSE BALANCE IS AN ABOMINATION TO THE LORD, BUT A JUST WEIGHT IS HIS DELIGHT." (PROVERBS 11:1)



— AND WHAT DID JESUS SAY?

FAIR MEASURE IS EXACT MEASURE, NO MORE, NO LESS, BUT JUST AS JESUS TOLD HIS FOLLOWERS TO GO EVEN A SECOND MILE WITH AN ADVERSARY, SO DID HE TELL THEM TO BE MORE THAN JUST FAIR—BE GENEROUS!

"...GOOD MEASURE, PRESSED DOWN, SHAKEN TOGETHER, AND RUNNING OVER... FOR WITH THE SAME MEASURE THAT YE METE... IT SHALL BE MEASURED TO YOU..." (LUKE 6:38)

**NEXT WEEK: ANGELS UNAWARES!**

SAVE THIS FOR YOUR SUNDAY SCHOOL SCRAPBOOK

*This devotional & directory is made possible by these businesses who encourage all of us to attend worship services.*

**ASSEMBLY OF GOD**  
FIRST ASSEMBLY OF GOD  
521 South First Street • 272-3017  
Jack Stone, Min. • 272-3984  
S.S. 9:45 a.m., W.S. 11 a.m. & 6:30 p.m.,  
Wed. 7:30 p.m.

**BAPTIST**  
CALVARY BAPTIST  
1733 W. Ave. C. Rev. Jeff Coffman  
CIRCLE BACK BAPTIST  
Intersection FM 3397 & FM 298  
Jessie Shaver, Min • 946-3676  
FIRST BAPTIST  
220 West Ave. E.  
Stacey Conner, Min.  
FIRST BAPTIST  
Lazbuddie • 965-2126  
PRIMERA IGLESIA BAUTISTA  
223 E. Ave. B Roy Martinez, Min.  
PRIMITIVE BAPTIST  
621 South First  
Elder Cleveland Bass, Min.  
PROGRESS BAPTIST  
Progress, TX  
PROGRESS SECOND BAPTIST  
Arthur Hays, Min.  
1st & 3rd Sundays  
RICHLAND HILLS BAPTIST  
17th & West Ave. D  
George Malis, Pastor  
ST. MATTHEWS BAPTIST  
Corner of W. Boston & W. Birch  
Floyd R. Monroe, Min.  
THREE WAY BAPTIST  
927-5467  
James Sinclair, Pastor  
TRINITY BAPTIST  
314 E. Ave. B  
Robert Brown, Min.

**CATHOLIC**  
IMMACULATE CONCEPTION  
CATHOLIC  
805 E. Hickory  
Joseph Augustine, Min.  
CHRISTIAN  
THE CHRISTIAN CENTER  
Morton Hwy. • 272-5105  
Reydon Stanford, Min.

**CHURCH OF CHRIST**  
LARIAT CHURCH OF CHRIST  
Sam Billingsley, Min.  
S.S. 10 a.m.; W.S. 11 a.m. & 6 p.m.,  
Wed. 7 p.m.

**LAZBUDDIE CHURCH OF CHRIST**  
Nathan Crawford, Min.  
S.S. 9:30 a.m.; W.S. 10:20 a.m. & 5 p.m.;  
Wed. 7 p.m.

**MULESHOE CHURCH OF CHRIST**  
John Knox, Min.  
S.S. 9:30 a.m.; W.S. 10:20 a.m. & 6 p.m.;  
Wed. 7:30 p.m.

**SIXTEENTH & AVE. D CHURCH OF CHRIST**  
Curtis Shelburne, Min. • 272-4619  
W.S. 10:30 a.m. & 6 p.m.;  
Wed. 7:30 p.m.

**LUTHERAN**  
ST. JOHN LUTHERAN  
Lariat, TX  
Richard Greenthamer, Min.  
S.S. 10:30 a.m.; W.S. 9:30 a.m.

**METHODIST**  
FIRST UNITED METHODIST  
HISPANIC MINISTRIES  
E. 5th and E. Ave. D  
Pastor Benito Cavazos  
FIRST UNITED METHODIST  
507 W. 2nd St.  
Pastor Brad Reeves  
LAZBUDDIE METHODIST  
965-2121  
EL DEVINO SALVADOR  
814 W. Ave. C, Muleshoe, TX  
Guadalupe Ballinas, Min.

**NAZARENE**  
NEW VISION CHURCH OF THE NAZARENE  
814 W. Ave. C • 272-3622  
David R. McIntire

**PENTECOSTAL**  
UNITED PENTECOSTAL CHURCH  
207 East Ave. G • 1-800-454-6051  
Pastor McKibben, 3 pm Sunday Service

**INTER DENOMINATIONAL NEW COVENANT**  
Plainview Hwy. Jimmy Low, Min.  
S.S. 9:30 a.m.; W.S. 10:15 a.m.;  
Wed. 7 p.m.

**WINKLES TRUCKS, INC.**  
Box 757 (806) 247-2724  
Friona, TX

**Lowe's MARKETPLACE**  
401 W. American Blvd.  
Muleshoe 272-4585

**Decorators Floral & Gifts**  
616 South First 272-4340  
Muleshoe, TX

**SHERLEY-ANDERSON LAZBUDDIE ELEVATOR**  
**965-2922** Lazbuddie, TX

**THE BANK** MEMBER FDIC  
202 South First **272-4515**

**WES-TEX FEED YARDS, INC.**  
Custom Cattle Feeding  
**272-7555** Muleshoe, TX

**AMERICAN AVI INC.** West Hiway 84 272-4266 Muleshoe

**BAILEY GIN COMPANY, INC.**  
**946-3397**  
Sudan, TX  
Peanut Hawkins, MGR

**WESTERN DRUG**  
114 Main **272-3106** Muleshoe

**B/S & More Family Fun Center**  
123 Main • Muleshoe • 272-3828

**HERITAGE HOUSE INN**  
2301 W. American Blvd. **272-7575**  
Muleshoe, Texas  
Clint & Evelyn Peat - Resident Owners  
Reservations 1-800-253-5896

**BRUCE, INC.**  
AIR CONDITIONING  
Hwy. 214 North **272-5114**  
Muleshoe, TX  
TAEL-B003350C, LP08638

**MULESHOE COOPERATIVE GINS**  
P.O. Box 569  
**272-4794** Muleshoe, TX

**MULESHOE AREA HEALTHCARE Center**  
"Committed to Caring"  
106 W. Ave. H Muleshoe **272-7578**

**MULESHOE MOTOR CO.**  
1225 W. American Blvd. **272-4251**

**"THE FIVE AREA TELEPHONE COOPERATIVE ORGANIZATION"**  
West Plains Telecommunications Co.  
Five Area Systems, Inc., Plateau Cellular Network  
Five Area Long Distance • Five Area Internet  
302 Uvalde Muleshoe, USA (806)272-5533

**WANDA BROWN, INSURANCE AGENCY**  
118 E. Ave. C Muleshoe **272-7548**

Since 1957 - The Original  
**Leal's Mexican Restaurant**  
1010 W. American Blvd. **272-3294**  
Muleshoe, TX Victor & Debbie Leal

**FIRST TEXAS FLBA MULESHOE**  
"Serving Farmer & Bailey Counties"  
**272-3010 • Fax 272-5388**  
316 Main • P.O. Box 424 • Muleshoe, TX

**Triple S Publishing**  
304 W. 2nd St.  
Muleshoe, TX 79347  
**272-4536**

**MULESHOE LIVESTOCK AUCTION**  
Muleshoe, TX • Sale Every Saturday  
Clayton Myers • 272-4201

**OBITUARIES**

**RAYMOND F. MARDIS**

Raymond F. Mardis, 73, of Victoria died Sunday, Dec. 7, 1997.

Memorial services were held on Monday, Dec. 8 at Rosewood Funeral Chapel in Victoria with Rev. Clayton Taylor officiating.

Mardis was born July 3, 1924 in Bluntsville, Ala., to the late Matthew Luther and Sarah Cornelius Mardis.

Mardis, a veteran of World War II, was a retired teacher and principal of Muleshoe Independent School District. He was a member of the Lion's Club, CTA and a life member of the Texas State Teachers Association.

Survivors include his wife Mary Johnson Mardis; daughter, Cathy Taylor of Hudson, Ohio; son, Jim Mardis of Harlingen; three sisters; two brothers; and four grandchildren, Jimmy Mardis, Bobby Mardis, Nicholas Taylor, Courtney Taylor.

The family request memorials be sent to the American Heart Association.

**FRANK GRINSTEINER**

Frank Grinsteiner, 38, of Morton died Monday, Dec. 8,

1997 at University Medical Center in Lubbock.

Memorial services were held Dec. 11, at First Missionary Baptist Church in Morton with Rev. Gordon Renshaw officiating.

Grinsteiner was born on March 23, 1959 in Halliday, ND. He married Shelia Davis on March 23, 1978 in Morton.

Grinsteiner moved to Morton in 1977 from Halliday. He was a foreman for ADM Southern Cotton Oil Mill of Levelland.

Survivors include his wife Shelia; sons, Erik, Joshua, and Dustin; mother, Rose Grinsteiner of Dickinson, ND.; sisters, Mary Smith of Aberdeen, SD., Alice Schuh of Bismark, ND., Clara Privatsky of Mandan, ND. Elizabeth Fisher of Devils Lake, ND., Katherine Genz of San Antonio, and Susan Akin of Levelland; brothers, Leonard, Richard and Thomas Grinsteiner of Morton, and Jacob Grinsteiner of Dickinson, ND.

**RAY "MACK" REED**

Ray "Mack" Reed, 84, of Muleshoe died Dec. 9, 1997 at Farwell Convalescent Center.

Memorial services were held Dec. 11, at the Ellis Funeral Home Chapel with Rev. Jack Tiffin of Earth officiating.

Burial followed in Muleshoe Cemetery under the direction of Ellis Funeral Home.

Reed was born on March 23, 1913 in Wichita Falls. He married Ruby Lillian Thomas on Oct. 12, 1956 in Clovis.

Reed, a farmer and barber, had lived in Muleshoe since 1956 moving from Sudan.

Reed was a veteran of the World War II serving as a combat infantry man in the 12th Cavalry Division of the US Army.

Battles and campaigns that Reed was involved with include Bismark Archipelago, New Guinea GO 4 WD 45, Southern Philippines, and Luzon GO 33 WD 45.

For his service Reed was honored with the Good Conduct Medal, American Defense Service Medal, Asiatic Pacific Campaign Medal, and the Philippine Liberation Ribbon with two Bronze Stars.

Reed was preceded in death by 5 brothers and three sisters.

Survivors include his wife Ruby L. Reed of Muleshoe; two daughters, Rosemary Bell of Muleshoe, and Gloria LeVeque of Amarillo; six grandchildren, seven great-grandchildren.

**JESSICA FRANCO**

Jessica Franco, 15, of Morton died Dec. 10, 1997 at Cochran Memorial Hospital in Morton.

A Rosary was held Dec. 11 at the Ellis Funeral Home Chapel in Morton. Memorial services were held on Dec. 12, at St. Ann's Catholic Church.

Burial followed in Morton Memorial Cemetery.

Jessica was born August 28, 1982 in Lobo's Valley, Tex. She was a lifelong resident of Morton.

Survivors include her parents, Jose and Maria Franco of Morton; grandparents, Thomas and Deloris Lopez of Van Horn; grandmother, Isabel Saiz of Lake Arthur, NM; sisters, Marie Durango, Erica Franco, Michelle Franco all of Morton, and Rosemary Marin of Jackson, Tenn.; brothers Tony of Moscow, Kansas, Miguel of Woforth, Tx, and Jessie of Morton.

1- 10x13 (Wall Photo)  
1- 8x10  
2- 5x7  
2- 3x5  
16- King Size Wallets  
8- Regular Size Wallets

30 Color Photos

99¢ Deposit  
\$11.00 Due at Pick up (plus tax)

**\$11.99**

AT  
**LOWE'S MARKETPLACE**  
401 W. American Blvd.  
Tuesday & Wednesday  
December 16<sup>th</sup> & 17<sup>th</sup>  
9:30 am to 6 pm

Group charge  
99¢ per person

During this promotion  
you will receive  
**4 FREE 3X5's**  
with each \$11.99  
package purchased.



**Leah Bruns honored with bridal shower**

Leah Bruns of Muleshoe was honored with a bridal shower Nov. 9 in the American Blvd. Church of Christ Family Room.

Leah is the daughter of Benny and Gail Bruns of Muleshoe. John is the son of Jeff Spears of Dallas and Rebecca Malek of Oklahoma City.

Special Guests who attended Gail Bruns mother of the bride, Freda Locker and



**Leah Bruns**

Betty Bruns; brides grandmothers.

Hostesses were Carol Cox, Lindy Schuster, Hollye Hooten, Lenda Trussell, Jan Morris, Charlotte Field, Terri Hahn, Brenda Black, Jo Harmon, Rhonda Hodges, Janice Bradshaw, Johnette Marlow, Dianne Brown, Kerma McGuire, Julie Broyles, Patti Kent, Druscilla Hutton, Marilyn Wilson, Peggy Dent, and Jean Richardson.

Hostess gift was a Vacuum Cleaner.

**Newcomer Sherri Reeves leads the Junior Girl Scouts**

Sherrie Reeves of Muleshoe has volunteered to be a Junior Girl Scout Leader.

Reeves, who recently relocated to Muleshoe from Merkel, is a special education teacher at Watson Junior High School.

Reeves was a Girl Scout herself for many years, and as an adult has served the scouts as a Daisy Leader and an assistant Brownie leader.

As the Junior Girl Scout leader, the busy mom of two is looking forward to an eventful year with her troop. Plans for the girls include earning several badges such as a video

photography badge and embarking on several community service projects.

Reeves believes that Girl Scouts offers a chance to do wholesome, Christian learning and other activities.

Reeves is married to Rev. Brad Reeves, pastor of First United Methodist Church of Muleshoe.

The Reeves have a son Andrew in the seventh grade and a daughter Chrisie in fourth grade.

The new scout leader enjoys church activities, singing, song writing, music, camping and cross stitch. She is also a



**Sherri Reeves**

Pampered Chef consultant. Reeves will be assisted by Judy Coffman.

**BIRTHS**

**JOHN MILLER**

Chris and Brandy Miller of Georgetown are proud to announce the birth of their son John Nickolas.

He was born Nov. 6, 1997 in Georgetown. He was 21 1/2 inches long and weighed 7 lbs. and 12 oz at birth.

Grandparents are John and Peggy Miller of Lampasas, Texas and are Nicky and Tawny Miller of Denver City.

Great-grandparents are Charles and Dolores Harvey of Muleshoe, Sherrill Miller of Lake Whitney, the late Pat Grippando of Muleshoe and Richard Kelton of Lubbock.

Great great grandparents are Alice Kelton of Muleshoe and the late Omer Kelton, Nell Jordan of Carlsbad, NM., and Roy Shoemaker of Ralls, TX.

**JORDAN BRATCHER**

Joel and Judy Bratcher of Arlington, Texas proudly announce the birth of their son, Jordan Charles Bratcher, born Oct. 26, 1997 in Fort Worth.

He weighted 5 lbs. and 14 oz. at birth.

Grandparents are Sputter and Marisue Thomason of Lubbock and Charles and Tommie Bratcher of Muleshoe.

Great-grandmothers are Kate Moore of Amarillo, and Nonie Thomason of Spur.

*May you have the gladness of Christmas which is hope; the spirit of Christmas which is peace; the heart of Christmas which is love.*  
Ada V. Hendricks

Retiring? Liquidating? Need Cash?  
**Think Auction**  
AUCTION? Who Needs It?  
You... If You Are:  
• Considering Retirement  
• Discontinuing Business  
• Dissolving Partnership or Corporation  
• Liquidating Joint Venture  
• Settling an Estate  
• Liquidating Surplus Equipment  
**What Are the Advantages?**  
• Sell For CASH to YOU  
• Sell When You Are Ready  
• Bring the Buyer to Your Market  
• Your Price Determined by Competitive Bidding  
• Your Complete Sale is Over in a Matter of Hours  
Your decide the time, place and terms of the sale.  
For a Confidential, No Obligation Consultation Contact:  
**Cullen Johnson & Auction**  
(806) 298-4607  
Rt. 2 Box 116C  
Abernathy, TX 79311  
Cullen Johnson, Lic. 11859

**ALLSUP'S ALWAYS Low Prices**  
ALLWAYS OPEN • ALLWAYS FAST  
The Grocery Store for People on the GO!!!



Honcho Fountain Drink 44oz. 69¢  
Doritos Chips 2 FOR \$3  
Bread 1 1/2 LB. LOAF - ALLSUP'S \$1.19  
Ham or Turkey 8 OZ. PKG. \$1.69  
Allsup's Water 1.5 LTR. BTL. 99¢  
Shurfine Dip 8 OZ. TUB. 89¢  
Solo Party Ware 99¢  
Snack Makers 2 OZ. PKG. 99¢  
Pepsi-Cola 6 pack, 12 oz. cans \$1.49 3 liter \$1.69

**COMBO MEAL DEAL**  
Allsup's Rib-B-Q Sandwich, Potato Wedges & a Tallsup \$1.99

**BREAKFAST COMBO**  
Allsup's Sausage or Canadian Bacon & Egg Biscuit, Hash Brown & 22 oz. Fountain Drink or 16 oz. Coffee \$1.89

FITTI DIAPERS med. or large \$5.19	FOLGER'S COFFEE 13 oz. can \$3.99	SUNNY COOKIES 12 oz. assorted 99¢	VIENNA SAUSAGE 5 oz. can 59¢
------------------------------------	-----------------------------------	-----------------------------------	------------------------------

CHECK YOUR FRIENDLY ALLSUP'S STORE FOR ADDITIONAL MARKDOWN SPECIALS!  
Store #34 • 318 W. American Blvd 272-4862 • MULESHOE  
PRICES EFFECTIVE 12/14/97-1/3/98 • OFFER GOOD WHILE SUPPLIES LAST

**NURSING HOME NEWS**

Friday morning our residents hosted a Christmas open house for the of Muleshoe Area Health Care Center, Medical Center, and Home Health staff, employees and volunteers.

Friday afternoon Harald and Ovis Carpenter entertained us with music and songs bringing back memories of the songs of days gone by.

Saturday morning J.C. Shanks came to cut the men's hair and give shaves.

Melvin and Wanda Griffin came Saturday afternoon to direct the Bingo Bonanza. Clark Price provided refreshments with his home made cookies.

Each Sunday morning The Muleshoe Church of Christ directs a Communion Service. Clara Lou Jones teaches Bible

Study.

Sunday afternoon the First United Methodist directed a Communion Service.

The Calvary Baptist Church came Sunday for Church services. The children and youth of their church made Christmas cards for the residents.

Tuesday afternoon Beverly Wagnon, Claudine Embry, Mary Jo Burge, Pat Watson, Velta Fryie, Jennifer Walls, Ozell Cherry, Chickie Henderlite, and Joy Stancell shampooed and set the ladies hair and gave manicures.

The Followers Sunday School Class of the First Baptist Church gave a donation to the Healthcare Center, as well as, the local A.A.R.P.

Dee Clement's son Olan Clements was here visiting

over the weekend.

Our heartfelt sympathy goes to the family and friends of John L. Seaton. We too shall miss him.

Gladys Wilson made us two large bags of peanut brittle. Christmas wouldn't be Christmas with-out peanut brittle.

Our home is just embellished with beautiful poinsettias, that were a gift from our friends.

Frank and Betty Wuerflein brought us a pretty amaryllis plant. The flowers are just gorgeous and fun to watch grow.

Ruby Garner brought us banana nut bread Wednesday morning. It was served during coffee time.

Buster and Wanda Kittrell and Loyce Killingsworth served coffee and do-nuts to the residents Wednesday morn-

ing. Jane Reader was back with us too.

Brother Cliff Hargrove, pastor of the Sudan Baptist Church brought our devotional and Loyce Killingsworth, Pat Watson and Buster directed the Sing-spiration.

Steve Claybrook from the The Spudnut Shop in Fawell, brought us, fluffy Spudnuts Tuesday afternoon.

Glenda Jennings and Jonessa Jennings entertained us Wednesday with a puppet show and sing-a-long. Barbara Lust was a welcomed guest for the occasion.

Reminder: The December Birthday Party will be Thursday Dec. 18 at 3 p.m. Happy Birthday to M. Dehoyas and Alex Sisneros. Our resident Christmas Party is scheduled for Friday Dec. 19 at 4:30 p.m.

**Alcoholics anonymous meetings**

Alcoholic Anonymous (AA) meetings are held from 8 -9 p.m., every Thursday and Friday at the Bailey County Sheriff's office in Muleshoe.

**THROCKMORTON'S REFINISH MIRROR RESILVERING**

319 E. American Blvd. • 272-5345 • Robert & Ann Johnson, Owners

We're OPEN and ready to help with all your furniture refinishing and repair!

WE DO

- Mirror Resilvering
- Chair Caning
- Veneer Replacement and Repair
- Trunk Renovations
- Antique Refinish and Repair



We Use "Dip Vat" It's SAFE!

Come In and Take A Look At the Finished Product



Bring In Your Antique Hoosiers and Wooden Ice Boxes!

FREE Pick up of furniture within 5 miles of Muleshoe city limits. Mileage fee beyond city limits. Call for information.

**HOSPITAL ADMISSIONS**

The Muleshoe Area Medical Center reported admitting the following patients:

Dec. 5 — Kaylin Smallwood, Goldie Baker, Eula Howard, Jack Hicks, Annie Chavez

Dec. 6 — Goldie Baker, Betty Rhinehart, Travis Lambert, Annie Chavez

Dec. 7 — Irma Lugo, Baby Boy Trevizo, Goldie Baker, Betty Rhinehart, Travis Lambert, Annie

Chavez

Dec. 8 — Betty Rhinehart, Sabea Watson, Travis Lambert

Dec. 9 — Betty Rhinehart, Sabea Watson, Tina Villalobos, Travis Lambert, Sherbon Morris, Julie Flores

Dec. 10 — Sabea Watson, Betty Rhinehart, Travis Lambert, Sherlon Morris

Dec. 11 — Sabea Watson, Lanell Stancell, Betty Rhinehart, Travis Lambert, Sherlon Morris

**Annuities**

*Planning...*  
for what matters most

**FARM BUREAU INSURANCE**  
Life • Auto • Home

We can help you plan for your retirement or for any other reason you wish with our flexible premium retirement annuity.

(806) 272-4567

Southern Farm Bureau Life Insurance Co. • Texas Farm Bureau Underwriters  
Southern Farm Bureau Casualty Insurance Co. • Texas Farm Bureau Mutual Insurance Co.

**Journal Classifieds**

Deadlines are 5 p.m. Monday and Thursday **Call 272-4536** Deadlines are 5 p.m. Monday and Thursday

REAL ESTATE  
AUTOMOBILES  
HELP WANTED  
GARAGE SALES

**STOP & SHOP**

<p><b>BUSINESS OPPORTUNITY</b></p> <p><b>QUICK OIL CHANGE BUSINESS IS GROWING</b> Great profits for owners/operators / investors. <b>NO FRANCHISE FEES!</b> Financing, training, site assistance &amp; low down payment available. Call Burt 1-800-605-4004. 50s-3tch</p> <p><b>NO JOKE</b> \$1,125 ? Week net. Tired of empty premises? Work from home with proven turn key system. Not MCM. 800-322-6169 x9944. 50t-6tc</p>	<p><b>SUNSET CONST.</b> Remodeling, bathrooms etc.. Carports &amp; Patio Fence's Tile Concrete All phase's. 505-762-7689. 50t-6tpd</p>	<p><b>FOR SALE</b></p> <p>1995 Chevy Cheyenne short bed pickup. Tilt, cruise, air, auto., 4.3 Vortec engine, silver color. Under 13,000 miles. Very sharp! \$14,000 (505) 356-5509 45t-1tnc</p>	<p><b>FOR SALE</b></p> <p><b>ATTENTION!!</b> Kirby Sales &amp; Service 207 W. 7th next to Sonic Drive-in. (505) 762-4991 Call for FREE Home demonstration or Repair work. Clovis, NM 35t-1tc</p> <p>Whirlpool Electric range 6 mo. White on white, like new. Purchased new home with built-in range. Must sell 499.00 Call 272-4063. 50t-1tc</p> <p>Kimbell ctnr with entertainment ctr all together. Call 272-5263 or see at 505 E. Austin. Helen Hall. 50t-4tch</p> <p>1994 GMC SLE extended cab with short bed. 350, V-8, automatic, tilt, air, cruise, power windows and lock. \$14,000. (505) 356-5509. 45t-1tnc</p>	<p><b>HELP WANTED</b></p> <p>Caprock Feeders, to ship fat cattle. Would be on call employee, paid by head ship, need horses in tack. For more information call Brian 225-4400 ext. 30. 49t-2tc</p> <p>Wanted truck drivers, some experience, CDL required, be home most everynight. (915) 758-9855. 49t-5tc</p> <p><b>Certified Nurse Aid</b> 54 - bed medicaid approved nursing home. Competitive salary. Excellent benefits. Contact Terri Brown, D.O.N. at Muleshoe Area Health Care Center, 106 W. Ave. H, Muleshoe, TX 79347. 806-272-7578. 48s-6tsun</p>	<p><b>MOBILE HOMES</b></p> <p>16 X60 Skyline mobile home 2 brm, 2 bath. Needs to be moved. Air conditioning and heat included, take over payments. 965-2967.46t-ftc.</p>	<p><b>REAL ESTATE</b></p> <p>Nice 3 BRM., new roof, 414 E. Dallas. Will be in Muleshoe this weekend. Call Collect (806) 745-0902. 51s-1tch</p>	<p><b>RENT</b></p> <p>Want to rent 2 BRM. references required. 272-3777. 51s-3tch</p>	<p><b>REAL ESTATE</b></p> <p><b>James F. Hayes &amp; Co.</b> AGRICULTURAL REAL ESTATE SERVICES</p> <p>390 Acres with 3 bdrm Austin stonehouse. Stegall area. 70 acres of native grass. 320 Acres of CRP just renewed for 10 yrs @ \$39.50 per acre. House and 70 acres can be sold separately.</p> <p>240 Acres in northwestern Lamb County near Bailey County line. Good soil, Lays good, 3 wells.</p> <p>Parmer County 1 Section with new half mile sprinkler 600 gallon to 800 gallon water. Immediate cash flow.</p> <p>160 Acres in northwestern Lamb County near Dodd.</p> <p>280 Acres near Earth. 3 wells, srong water. center pivot.</p> <p><b>Vic Coker, Agent</b> 310 Main St. Suite 103 Muleshoe Office 272-3100 Home 965-2468 WHEN LAND INVOLVES COWS AND PLOWS</p>
---	--	---	---	--	--	--	---	--

**THE CLASSIFIEDS**  
★ ALWAYS A BEST SELLER ★

<p><b>REAL ESTATE</b></p> <p><b>SCOTT LAND COMPANY</b> Route 4, Box 9-K DIMMITT, TEXAS 79027</p> <p>• 5 SECTION in Dimmitt, Herford area, (1 section grass-4 cult.) 16 wells, 3 return systems, domestic wells for stock and house water, on pavement, divide easily for multiple buyers.</p> <p>• 1/2 SECTION between Dimmitt &amp; Herford, 2 more years in CRP.</p> <p>• DEAF SMITH CO. — 544 acres, nice brick home &amp; yard, on pavement, 5 irr. wells, one sprinkler.</p> <p>• PARMER CO. 320 with two new Valley's &amp; 3 wells, small shop, pavement.</p> <p>• LAMB CO. 7 CIRCLE &amp; 14 CIRCLE package, one on pavement; all complete with wells, sprinklers, etc., excellent area for peanuts, vegetables, alfalfa, cotton, grains and cattle production.</p> <p>• 7.8 SECTION RANCH watered by mills, subs and pipeline, good usable pens, 14 cicles adjoining ranch for sale also.</p> <p>• PRECON YARD, fully equipped, nice home, pavement, constant supply of cattle a possibility.</p> <p>• WE HAVE OTHER farms and ranches in Texas &amp; NM</p> <p><b>SCOTT LAND COMPANY</b> Ben G. Scott (806) 647-4375 Day or Night FAX (806) 647-5125</p>	<p><b>REAL ESTATE</b></p> <p><b>Byrd Realty</b> Box 156 • 308 3rd St. Farwell, TX 79325</p> <p>Price Reduced, Country Living at it's Best - 6 miles West of Muleshoe on Highway 1760. Approx. 3500 sq. ft. Gorgeous 3-3-3 Brick home with lots of builtins, fireplace, central heat, ref. air, sunroom with hot tub, lots of storage, large family room and utility room, every woman's dream. All on 2 1/2 acres. Also 30x50 metal barn with corrals. If you want it! This place has it!</p> <p>• 481 ac., Nice 3-2-2 Brick, Home, 6 wells, 3 electric sprinklers, grain storage, hay barn <b>In Contract</b></p> <p>• 640 ac. 5 wells, 2 irrigation systems, 3 bedroom stucco house and domestic well..</p> <p>• 320 ac. NE of Muleshoe, 2 story stucco house, very large barn, 2 sprinkler systems, 4 wells, lays out Area Owner says "Sell It!"</p> <p>• 160 ac. SE of Lazbuddie, Excellent water area, Circular sprinkler, 100 hp elect. Motor. Excellent cash lease in effect on this farm.</p> <p>• 207 ac. NW of Lazbuddie, 125 hp. Elect Motor, electric sprinkler. Domestic well.</p> <p>• 323 ac. S. of Lazbuddie, good water area! 3-wells, 1 valley electric sprinkler. Domestic well.</p> <p><b>Price Reduced</b>, 656 ac. N. of Clays Corner. 3-8" wells, Brand New 1/2 mile Zimmatic Sprinkler. Wheat crop and Cattle Lease agreement also! Over</p> <p>(806) 481-3846 • Toll Free: 1-888-999-3846 Ronald Byrd, GRI Licensed Broker Home: (806) 481-9318 Crista Bass, Sales Associate • Home: (806) 925-6464</p>	<p><b>REAL ESTATE</b></p> <p><b>Nieman Realty</b> 116 E. Ave. C • George Nieman, Broker • 272-5285 or 272-5286</p> <p><b>RICHLAND HILLS</b></p> <p>3-3-1 Brick, cent. Heat, Evap. Air, built-ins, 2000' + lv. area, fenced yd., stor. bldg, MORE!! \$60K !!! RH-2</p> <p><b>PARKRIDGE - NICE 3-2-2 Brick, Cent. A&amp;H, built-ins, FP, cov. patio, fenced yd. \$50's!!</b></p> <p><b>HIGHLAND AREA</b></p> <p>3-2-2 Brick, Cent. A&amp;H, built-ins, gas log FP, fenced yd., stor. bldg., MORE!! Price Reduced!! HL-5</p> <p>2-1-1 Home, vinyl siding, wall furnace heat, fenced yd. \$17,000!!! HL-1</p> <p><b>LENAU - COUNTRY CLUB AREA</b></p> <p>2-1-1 Carport Home, wall furnace, nice carpet, storm shelter, stor. bldg., fenced yd. \$20's!!!!CC-3</p> <p>2-1-1 Home, Cent. Heat, built-ins, Hardwood floors! \$19,500!! L-3</p> <p>2-1-1 Home, floor furnace, win. fer. air, fenced yd, stor. bldg., \$19,500 !!!L-1</p> <p>Commercial Bldg. &amp; Lot, Approx. 1790' area, Numerous uses!! \$22K!!!</p> <p><b>HIGH SCHOOL</b></p> <p>3-1-1 Brick, Cent. Heat!!! \$25K!!! HS-4</p>	<p>Nice 3-2-2 Brick, Cent. A&amp;H, built-ins fenced yd., MORE !!! \$40's !!! HS-5</p> <p>Very Nice 3-1-1-Brick Home, cent. Heat &amp; Air, built-ins, fans, woodburning stove, nice carpets, storage bldg., fenced yd., More !!! \$40's!!! HS-7</p> <p>NICE 2-1-1 Brick, Heat Pump, nice carpets, well insulated, storm windows &amp; doors. \$30's!!! HS-6</p> <p>BUSINESS FOR SALE-SNACK SHACK - Lot, Buildings, furniture, and fixtures!!!!</p> <p>NICE R.V. STORAGE, 14' X 40' metal bldg, 12' doors, corner lot!!</p> <p><b>RURAL</b></p> <p>3-2-2 Home on .92 acre at edge of town, Cent. Heat, evap. air, DW, storage bldg., fenced yd., &amp; MORE !! \$30K!!</p> <p>W. of SUDAN-NICE 3-2-2 Brick Home, 5 acre tract on Hwy. 298, Cent. Air &amp; Heat, built-ins, large Quonset Barn, MORE!!!! \$95K!!!</p> <p>JUST LISTED- NICE 4-1-2 Home, Heat Pump, Built-ins fenced yd., 2 Stor. bldgs., approx. 10 acre tract, on pavement close to town!! \$ 50's !!!</p> <p>5 Acre tract on pavement close to town!</p> <p>W. of Sudan- 177 acre tract in CRP !!! Price To Sell !!!</p> <p>Needmore- 1.44 ac., 3 bldgs., \$5k!!!</p>
--	--	---	--

# WELCOME TO THE HOLIDAYS!

PRICES EFFECTIVE DECEMBER 10-16, 1997

## MEAT

- WHOLE SMOKED PICNICS OR  
WHOLE CRY-O-VAC  
YOUR CHOICE
- BEEF BRISKETS**.....LB **89¢**
- ASSORTED ANY SIZE PACK
- PORK CHOPS**.....LB **\$1.49**
- YOUR CHOICE BEEF BONELESS  
CHUCK TENDER
- ROAST OR STEAK**.....LB **\$1.69**
- BEEF BONELESS
- ARM ROAST**.....LB **\$1.59**
- JUMBO PACK CHICKEN
- DRUMSTICKS OR THIGHS**.....LB **59¢**
- SELECT SLICED
- BEEF LIVER**.....LB **\$1.09**
- BEEF
- OX TAILS**.....LB **\$2.29**
- DECKER
- MEAT BOLOGNA**.....12 OZ. PKG **89¢**
- YOUR CHOICE DECKER BEEF
- FRANKS OR BOLOGNA**.....12 OZ. PKG **\$1.39**
- DECKER
- COOKED HAM**.....10 OZ. PKG **\$2.29**
- DECKER
- COTTO SALAMI**.....12 OZ. PKG **\$1.39**
- WILSON REGULAR OR POLISH
- SMOKED SAUSAGE**.....1 LB. PKG **\$1.69**
- DECKER MEAT
- CORN DOGS**.....1 LB. PKGS **2/\$3**
- DECKER REGULAR, MESQUITE,  
OR MAPLE
- SLICED BACON**.....12 OZ. PKG **\$1.19**
- CORN KING BONELESS
- WHOLE HAMS**.....LB **\$1.79**
- CORN KING BONELESS
- HALF HAMS**.....LB **\$1.89**



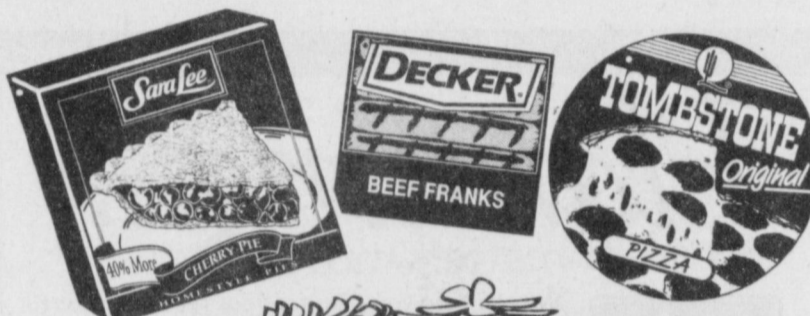
**Tostitos**<sup>®</sup>  
BRAND



- BORDEN'S SHELLED RAW
- PEANUTS**.....12 OZ. PKG **99¢**
- 6 PACK-12 OZ. CANS OR  
3 LITER BTL ALL TYPES
- PEPSI**.....YOUR CHOICE **\$1.19**
- SHURFINE
- FLOUR**.....5 LB. BAG **59¢**
- SHURFINE
- SUGAR**.....4 LB. BAG **\$1.19**
- SELECTED VARIETIES
- TOSTITOS<sup>®</sup> SALSA/DIP
  - FRITOS<sup>®</sup> DIP
  - RUFFLES<sup>®</sup> DIP
- DIP**.....REG. \$2.19 11 OZ. SIZE **2/\$4**
- ASSORTED TOSTITOS<sup>®</sup>
- TORTILLA CHIPS**.....REG. \$2.99 SIZE **2/\$4**
- PERFECT BALANCE, REGULAR,  
100% COLOMBIAN, OR FRENCH ROAST
- HILLS BROS. F.A.C.**
- COFFEE**.....12-13 OZ. CAN **\$2.79**
- SHURFINE APPLE
- CIDER OR JUICE**.....64 OZ. PLASTIC BTL **99¢**

## PRODUCE

- CELLO
- TOMATOES**.....4 CT. **99¢**
- CRISPY
- CARROTS**.....1 LB. PKGS **4/\$1**
- CELLO WRAPPED
- LETTUCE**.....HEAD **69¢**
- GREEN SKIN
- AVOCADOS**.....LB **3/\$1**
- NEW CROP CALIFORNIA
- NAVEL ORANGES**.....LB **20/\$1**



## FROZEN & DAIRY

- ASSORTED (EXCLUDING OVEN RISING)
- TOMBSTONE**
- PIZZA** .....20.5-23.6 OZ. PKGS **2/\$6**
- SARA LEE APPLE, CHERRY,  
PEACH OR PUMPKIN
- HOMESTYLE PIES**.....37-40 OZ. PKGS **2/\$5**
- SHURFINE
- SOUR CREAM**.....1/2 PINT **69¢**
- SHURFINE
- MARGARINE QUARTERS**..16 OZ. PKGS **3/\$1**
- ASSORTED CITRUS PUNCH
- SUNNY DELIGHT**.....64 OZ. BTL **88¢**
- ASSORTED
- BUDGET**
- GOURMET ENTREES**.....10 OZ. PKG **\$1.19**
- ASSORTED
- BUDGET GOURMET**
- VALUE CLASSICS**.....8.5-9 OZ. PKG **79¢**
- YOGURT OR ASSORTED  
LIGHT/DIET/REGULAR  
(BLUE BUNNY 1/2 GAL. RND. WHERE  
BLUE BELL 1/2 GAL. NOT AVAILABLE)
- BLUE BELL**
- ICE CREAM**.....1/2 GAL. **2/\$5**



- PACE MILD OR MEDIUM
- THICK & CHUNKY SALSA**....24 OZ. JAR **\$2.79**
- BLUE OR RED LABEL
- KARO SYRUP**.....16 OZ. BTL **\$1.39**
- 9.5 OZ. SWISS • 8 OZ. BACON FLAVORED • 10 OZ. TWIGGS SESAME & CHEESE STICKS • 13.1 OZ. SOCIALBLES • 8 OZ. CHICKEN IN A BISKIT • 8 OZ. VEG-ETABLE THINS • 9-10 OZ. REDUCED FAT/ORIGINAL/LOW SALT/MULTI-GRAIN WHEAT THINS • 10 OZ. OAT THINS • 6.75-7 OZ. ORIGINAL/REDUCED FAT/LOW SALT BETTER CHEDDAR • 8.5-9.5 OZ. ORIGINAL/REDUCED FAT/GARDEN HERB/LOW SALT TRISCUITS • 8.5 OZ. ORIGINAL/FRENCH ONION TRISCUIT THIN CRISPS • 7-8 OZ. RITZ/CHEESE NIPS/FAT FREE PRETZEL/RITZ SOUR CREAM & ONION/WHEAT THIN/WHEAT THIN RANCH AIR CRISPS • 8 OZ. HONEY/CINNAMON HONEYMAID CRISPS
- ASSORTED
- NABISCO SNACK CRACKERS**.... **2/\$3**



## HEALTH & BEAUTY

- NASAL DECONGESTANT
- TAVIST-D**.....8 CT. PKG **\$2.99**
- WESTERN FAMILY NIGHTTIME OR DAYTIME
- COLDS MEDICINE**.....6 OZ. PKG **\$1.99**
- LEMON, COOL MINT OR CHERRY
- MYLANTA LIQUID**.....12 OZ. BTL **\$2.99**
- COLGATE ASSORTED
- SHAVING CREAM**.....11 OZ. CAN **89¢**
- 24 CT. ALLERGY-SINUS CAPLETS/GELTABS/20 CT. GELCAPS
  - 24 CT. SEVERE ALLERGY CAPLETS
  - 24 CT. PM EXTRA STRENGTH CAPLETS/GELTABS
  - 24 CT. ALLERGY-SINUS NIGHTTIME CAPLETS
- TYLENOL**.....YOUR CHOICE **\$3.59**
- ORIGINAL OR GRAPE CHEWABLE TABLETS
- CHILDREN'S TYLENOL**....30 CT. PKG **\$1.99**



See ya at  
**LOWE'S**

- 6 PACK-12 OZ. CANS
- DR. PEPPER**.....ALL TYPES **2/\$3**
- REGULAR, REDUCED FAT, LOW SALT,  
OR WHOLE WHEAT
- RITZ CRACKERS**...14.5-16 OZ. BOXES **2/\$5**
- SHURFINE
- VEGETABLE SHORTENING**....3 LB. CANS **2/\$3**
- BETTY CROCKER ASSORTED TUNA OR
- HAMBURGER HELPER**....3-9.25 OZ. BOX **\$1.29**
- DISH DETERGENT
- SUN LIGHT LIQUID**.....22 OZ. BTL **98¢**
- 83-87 OZ. BOX POWDER  
100 OZ. LIQUID ULTRA  
REGULAR OR W/BLEACH
- WISK DETERGENT**.....YOUR CHOICE **\$4.99**
- REG./FAT FREE/LIGHT WISH-BONE
- SALAD DRESSING**.....8 OZ. BTL **\$1.19**
- CUDDLE-UP FRESH OR  
SPRING BLOSSOM
- ULTRA SNUGGLE**
- FABRIC SOFTENER**.....40 OZ. BTL **\$2.99**

WESTERN MONEY  
UNION TRANSFER<sup>SM</sup>  
"The fastest way to send money"

**Lowe's**  
MARKETPLACE

401 W. American Blvd.  
Muleshoe 272-4585

WE RESERVE THE RIGHT  
TO LIMIT QUANTITIES  
IN TEXAS



515 W.  
American Blvd.  
Muleshoe  
272-4406