



BAILEY COUNTY JOURNAL

'The Community of Opportunity-Where Water Makes the Difference'

20¢

WEATHER

July 27	100	62
July 28	103	65
July 29	104	69
July 30	99	69

Volume 21, No. 30

12 Pages Today

Published Every Sunday at Muleshoe, Bailey County, Texas 79347

Sunday July 31, 1983

Around Muleshoe

The Bailey County Farm Bureau will hold a Board of Directors meeting on Thursday evening at 8:30 p.m., August 4, 1983 in the Bailey County Farm Bureau Office.

The 1983-84 annual budget hearing for the Three Way Independent School District will be held on Thursday, August 11, 1983 at 8:00 p.m. in the school administrative office.

A women's slow pitch Class C and D Softball Tournament will be held in Levelland on August 5, 6 and 7 with entry fee of \$65 per team. A 15 player per team roster will be imposed and should be turned in prior to the playing of the first game. No additions will be allowed after that time. Team and individual trophies will be awarded to first, second and third place teams. To enter or to obtain information call Luis Perez at 894-6451 or 894-9971; also Robert Guajardo at 894-5044 or 742-3616.

The Bronco All-Stars who have been in regional play this past week came in third place in regional competition winning against Hereford and Amarillo (red) and then losing to El Paso on Thursday.

The Mustang All-Stars won first place in the regional games played this past week in Amarillo.

The dates for the Muleshoe Golf Club's Mens Partnership, originally scheduled for August 5, 6 has been changed to August 6, 7 instead due to complications. Deadline for Cont. Page 8, Col. 1

School Starts August 22

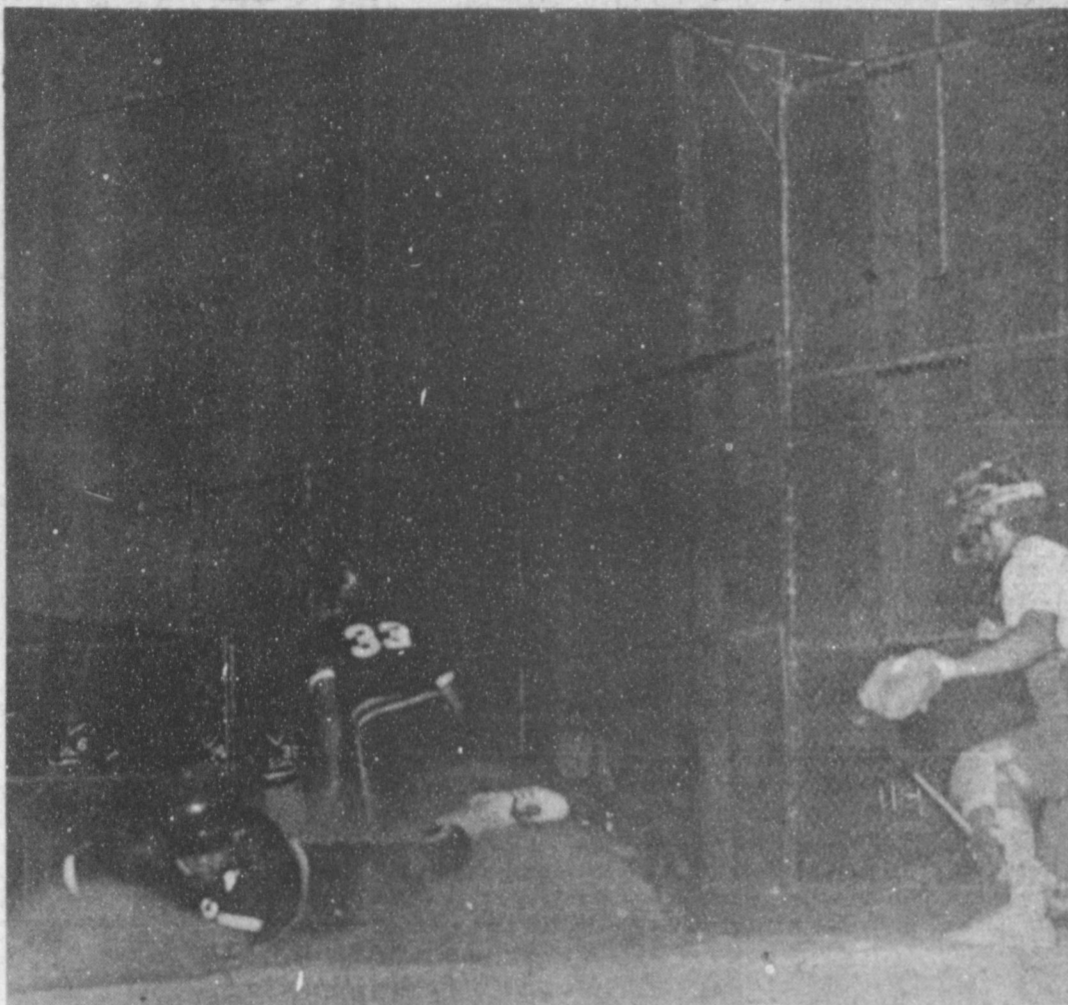
School is scheduled to get underway for the Muleshoe Independent School District on August 22, with teachers reporting on August 18.

Since pre-registration was held prior to the May dismissals, no registration days will be observed here. New students to the area may enroll on August 4 if they desire, but new student enrollment is not required until the first day of school, according to Superintendent H. John Fuller of Muleshoe.

A schedule of bus routes and times will be made available in the near future and will be in the Journal prior to the time school starts.



STATE WINNER-Kristi Spies, daughter of Mr. and Mrs. Ronnie Spies of Muleshoe was named first place winner in the 21st Annual Texas State 4-H Horse Show held in Waco July 25-30. Kristi and her horse, "Hollywood Junior" won first place in the open reining competition, over 56 other contestants, giving her the opportunity to advance to Southern Regional Competition in Atlanta, Georgia.



SLIDING FOR HOME PLATE.....Sam Gonzales, Jr. made a sliding run for the home plate in the ALMO game against a tough Graham team. The ALMO team was ahead for a while, but dropped that lead when a Graham hitter grand slammed a ball for four runs. The final score was 10-8 in Graham's favor. However, a double header with Plainview on Thursday night closed Graham out of the running and leaving the Plainview team to advance to Southwestern Regional play in Arkansas beginning Monday.

City, County Get Quarter Mixed Drink Tax Rebate

State Comptroller Bob Bullock Monday said collection of the state's 10 percent mixed drink tax during the second quarter of 1983 was up 5.4 percent over the same period last year.

Bullock said the state collected \$37.9 million in taxes on the sale of mixed drinks during the quarter. Bullock's office is sending checks totaling \$11 million to 219 counties and 416 cities as their share of the gross receipts tax on mixed drinks for the second quarter.

The state's general revenue fund will receive the balance--\$26.9 million--of the tax money collected.

Bailey County's 15 percent rebate for the second quarter of 1983 was \$951.84, with the total county revenue for the quarter being \$6,345.62. The City of Muleshoe had total revenue of \$3,169.00 with \$475.35 being their 15 percent remittance.

Mixed drink tax revenue for Castro County for the second quarter totaled \$8,174.15, with the county's 15 percent amounting to \$1,226.12. Total city tax revenue for Dimmitt in Castro County, reached \$5,972.36 with \$895.85 being the city's 15 percent remittance. Nazareth, another town in Castro County,

had a total tax revenue of \$590.16, with a 15 percent rebate of \$88.52 on mixed drinks.

Cochran County reported \$604.70 in mixed drink tax revenue and \$90.71 as the county's 15 percent remittance. No city in Cochran County reported tax revenues or remittances.

In Deaf Smith County total mixed drink tax revenue was \$17,378.29 and the county's 15 percent remittance was \$2,606.74. Hereford, the only reporting city in Deaf Smith County had the same amounts as the county in revenue and remittance.

Cont. Page 8, Col. 1

Grain Deal Reached With Soviet Union

Reports from the United States Department of Agriculture indicate that on Thursday, the United States and the Soviet Union reached an agreement on a five-year grain sales agreement, under which Moscow would be allowed to buy up to 12 million metric tons of wheat and corn annually from American stockpiles.

Under the agreement, Moscow would be required to buy a minimum of 9 million metric tons of grain annually and would be permitted to purchase up to 12 million metric tons.

According to lawmakers and farm leaders, the agreement which provides a 50 percent increase in the maximum amount the Soviets can buy could be an uplift to the depressed U.S. farm economy.

The former minimum amount that the Soviets could purchase was 6 million metric tons, with the maximum set at 8 million metric tons. Secretary of Agriculture,

John Block and others indicated that a purchase above the maximums could help U.S. prices. With the 1983 harvest, a record 150 million metric ton grain surplus is expected. Prior to the Carter Embargo of 1980, the U.S. was the Soviet Union's chief grain supplier, importing 70 percent of their grain; following that embargo, the U.S. has about a 20 percent share of the market for the Soviets, Block said.

Last year, (1982) the Soviet Union imported 14 million metric tons of grain from the United States. To date in 1983, they have imported about 16 million metric tons. According to U.S. officials, the Soviets are still the single largest buyer of U.S. wheat. Though no immediate increase will be seen, this agreement will increase the minimums that the Soviets must buy and will guarantee they will play a major role in American wheat.

Encounter Crusade Activities Underway

"Saturday promises to be a great day in Muleshoe as churches and their members prepare for the 'ENCOUNTER CRUSADE' beginning Sunday evening at 8:00 at the High School Auditorium," according to Rev. Brock Sanders.

A final Prayer Breakfast will begin at 6:40 a.m. at the First Baptist Church, followed by the ladies' Prayer Coffee at 10:00 a.m. Throughout the day, teams from churches will endeavor to visit each home in Muleshoe. Simultaneously, phone committees will be calling each number in the phone book to invite people to the 'ENCOUNTER CRUSADE'.

The day will be topped off with a "GIGANTIC PRAYER MEETING" at the High School Auditorium at 7:30 p.m. Dr. Jess Moody, the evangelist for the encounter crusade will be here to participate in the prayer meeting.

All choir members from all churches are encouraged to be at the Auditorium at 6:00 p.m. Saturday for choir rehearsal. This is for choir members of all Muleshoe area churches.

On Sunday evening at 7:00 all area children are encouraged to be at the Children's Emphasis Meeting at the High School Gym.

At 7:15, the 'ENCOUNTER CRUSADE'.

Cont. Page 8, Col. 2

Reappraisal Process Begins In District

New School Budget Planning Scheduled

The Board of Trustees of the Muleshoe Independent School District will meet on Monday, August 1 at 8 p.m. in the School Administration building for a special meeting regarding the preparation of the 1983-84 school budget.

No official action is scheduled to be made at this meeting; rather, the Trustees are meeting as a committee to discuss and plan the 1983-84 budget.

In a recent school board session, Superintendent John Fuller gave the school board a preliminary analysis of the upcoming school budget. Fuller indicated that the 1983-84 budget would be significantly smaller than the 1982-83 one. He emphasized however, "There is still much planning and attention that has to be given to this."

Budget planning processes actually began in early spring, with the approval of budgets from the various campuses of the school district. Each building principal and the athletic director were asked to reduce current budgets by 10 percent. Fuller said that this had been accomplished and approval and commendations were given to the planners by the local school board in the May session.

Salaries have also been approved for 1983-84 and according to the Superintendent, they will be less than last year's budget. Fuller says that the line by line analysis of the budget will be accomplished during

School Physicals Set August 7

Coach Windy Williams has announced that physicals for all junior high school and high school boys will be held on Sunday, August 7 at 2 p.m. in the High School Gym.

All sophomore, junior, and senior athletes will be issued shoes and socks at the field house on August 3.

August 8 is the date set for the first work-outs for football and will begin at 7 a.m. that day.

Bovina Bull Town Days Celebration In August

As time grows nearer for the annual Bovina Bull Town Days Celebration on August 18, 19, 20 and 21, plans are beginning to progress. This year events will include a softball tournament, a salad supper and talent show, a First Annual Bull Run and a fiddler's contest.

In addition to the newly added attractions, there will be the regular annual events which include a chuckwagon breakfast, old-timers luncheon, a quarterhorse show, parade and a barbeque. The tug-of-war event will return this year along with a trap shoot.

According to the Bovina Chamber of Commerce, ten different types of booths have signed up for the Saturday, August 18, activities at the park. The theme of the parade will be "Bovina, Past and Present." Float and bicycle prizes will be awarded, with Keith Ingram of Clovis being the judge of the parade. Those who wish to enter a float or any other type entry in the parade should contact Terry

Cost Will Be Split Among Five Entities

According to Dale Jones, Chief Appraiser of the Bailey County Appraisal District, re-appraisal of real property for this district has begun. The appraisal firm of McMorries and Associates of Hereford are performing these services and have been in the field since July 21. Beginning in the southwest corner of the county, the Three Way Independent School District appraisals will be completed first, with the workmen moving northward from there, east to Lamb County and south to the Cochran County line.

The re-appraisal now underway has come about as a result of public meeting and the Bailey County Appraisal District board meetings last spring, and is required by law. Current

laws now call for a review of all real property in the district or county, as applicable, at least once every five years; however a new law which will go into effect on January 1, 1984 will provide for the reappraisal to be done once every four years.

Jones stated that the McMorries and Associates firm was chosen by the District by competitive bidding and the reappraisal cost of the 885 square miles in Bailey County Appraisal District will not exceed \$60,000. This is guaranteed by contract.

In a special not to property owners, Jones stated that "Field personnel from the appraising firm should have no need to go inside a home, since the methods of appraisal are from outside of the home measurements and grading." Owners should ask for identification and those having any questions concerning the situation should call the district office or the Enterprise Number, Jones explained: "To call the Enterprise number: dial 'operator' and ask for Enterprise 67563."

Appraisers are required to physically touch, grade, inspect and measure each item of real property in the reappraisal process. The Chief Appraiser told the Journal that improvements to property, new buildings, the condition of soil, erosion, a dry irrigation well and many other things could make a difference in appraisal values.

Re-appraisal is designed specifically to equalize values, and make the scales

Cont. Page 8, Col. 2

Medical Center Gets New Administrator

Board Members of the West Plains Medical Center named Bob Haralson, formerly of Las Vegas, New Mexico as new Hospital Administrator on Monday.

A get-acquainted meeting with board members and Haralson was held at 8:30 a.m. on Wednesday in conjunction with a local press conference.

The new official comes to Muleshoe after serving as Chief Financial Officer and Assistant Administrator at the hospital in Las Vegas.

Haralson is a native of northeast Alabama and obtained a CPA designation at the Jacksonville State University in Jacksonville, Alabama. He has 15 years experience in hospital administrative work; and has been associated with both large and small hospitals.

Haralson and his wife, Lynn are the parents of three children, aged 18, 16 and 13-all boys. The oldest child has just graduated high school and the other two - Jamie, 16 and Michael, 13 are both active football enthusiasts, as Haralson is and will be involved in Muleshoe Athletics. Mrs. Haralson enjoys arts and crafts and plans to work with the local hospital auxiliary when they complete their move sometime

Thomas at 238-1442. The salad supper and talent show are scheduled to begin at 7 p.m. on August 8, 9, 10 and 11. Cont. Page 8, Col. 1

SBA Proposal Opposed

A proposal to eliminate all agriculture-related lending programs of the Small Business Administration is drawing opposition from the National Cotton Council.

In a letter to a Senate committee, Council President Gerald Brewer said such action "would not only adversely affect many agribusinesses but it would also be inherently unfair." He noted that many agribusinesses such as cotton gins are by definition "small businesses" and thus may apply for needed assistance under SBA's programs if they meet all other requirements. Brewer pointed out that under bill these same small businesses, even though otherwise eligible, would

Cont. Page 8, Col. 1

Local Students Named Smallwood Scholars

Tamara Gilliland of Muleshoe and Mark Lust of Lazbuddie have been named to receive South Plains College's most prestigious scholarship award.

Both honor graduates have been named a Smallwood Scholar for 1983-84 and has been awarded a \$2,000 stipend which will be dispensed over four consecutive fall and spring semesters in the amount of \$500 per semester.

SPC named 43 area students to receive the award, including seven area valedictorians, two salutatorians and 34 honor graduates.

"It gives the college great pleasure to name

these students Smallwood Scholars," said Dr. Marvin Baker. "They are among the most academically adept students on the South Plains and we are pleased that they have chosen South Plains College to continue their education."

Ms. Gilliland, daughter of Mrs. Jessie Robinson, was a member of the National Honor Society and was named to Who's Who.

Lust, son of Mr. and Mrs. Glenn Lust, was valedictorian of the 1983 LHS class. He was a member of the National Honor Society, FFA and was named to Who's Who.

Cont. Page 8, Col. 1



NEW ADMINISTRATOR.....Delbert Watson (right) welcomes Bob Haralson, new Administrator of the West Plains Medical Center of Muleshoe. Haralson is formerly of Las Vegas, New Mexico and has 15 years experience in the field of hospital administration. A special meeting was held on Wednesday morning announcing Haralson's appointment.



MORE JULY BIRTHDAYS.....Nursing Home residents (six in all) had a birthday party on Thursday to celebrate all July birthdays. All honorees were given corsages by Decorators. From left: Marcus Laney, born July 16, 1897; Laura Northcutt, born July 14, 1901 and Grace Kemp, born July 2, 1900.

Creative Woman

By Sheryl Borden

Topics to be presented on "The Creative Woman" show on August 2 and 6 include low sodium stir-fry cooking, quick breads and muffins and information on fructose. "The Creative Woman" airs at 12:30 p.m. on Tuesday and at 2:00 p.m. on Saturday on KENW-TV, Channel 3.

Fructose is appearing in more foods and on more labels these days. Laura Jacobs, County Extension Agent from Farwell, Texas will present this part of the program and explain what fructose is and what its uses are.

Stir-fry cooking is not only quick and easy but very much fun. Louise Erickson will demonstrate a stir-fried chicken and vegetable dish that's not only low in sodium but low in calories, too.

Nina Swan, Director of Consumer Relations with the National Oats Co. in Cedar Rapids, Iowa will demonstrate making cinnamon applesauce bread and surprise muffins and will discuss using oats in other standard recipes.

On August 4, the topics will include the final part of the low sodium series and information on sewing bedspreads. The show will air at 12:30 p.m. on KENW.

Hazel Wallace, Consumer Affairs Officer for the Food and Drug Administration in Dallas, Texas will conclude the three-part series entitled "Sodium...Think About It."

Jewell Limacher, Extension Home Economist in Roswell will demonstrate how easy it is to sew bedspreads. They are not only fun to make, but can be a great money saver! With a few basic rules, the home

sewer will be able to create a wide variety of styles to satisfy the needs of every member of the family.

"The Creative Woman" is produced and hosted by Sheryl Borden. The show is also carried by KNME-TV in Albuquerque and by KRWG-TV in Las Cruces. Beginning in August, "The Creative Woman" show will be carried via satellite to PBS stations across the country. The show is being fed by the Pacific Mountain Network.

Viewers can request copies of printed materials offered on "The Creative Woman" show by calling on KENW-TV's toll-free telephone lines. The numbers are: New Mexico: 1-800-432-2361 and out-of-state: 1-800-545-2359. Portales and Roosevelt County viewers can call 562-2112.

In Fashion

Necklines on fall blouses vary and one can choose from the classic shirt waist to stand-up neck bands, rolled collars or a simple bound neckline.

News of Area Servicemen

Airman Richard L. Williams, son of John A. and Charls A. Williams of 607 Boesch St., Sudan, Texas, has been assigned to Chanute Air Force Base, Ill., after completing Air Force basic training.

During the six weeks at Lackland Air Force Base, Texas, the airman studied the Air Force mission, organization and customs and received special training in human relations.

In addition, airmen who complete basic training earn credits toward an associate degree in applied science through the Community College of the Air Force.

The airman will now receive specialized instruction in the aircraft maintenance field. He is a 1981 graduate of Sudan High School.

Jake Garn, Senator, (R-Utah), on deficit: "If Congress had a little bit of political courage, a little backbone, we'd change those entitlement programs over a long period of time."

Microwave Cooking With Seafood Ideal

Seafood is ideal for microwave ovens because it cooks rapidly with delicious results.

Annette Reddell Hegen, seafood consumer information specialist with the Texas Agricultural Extension Service, offers a few general tips for cooking

seafood in a microwave oven:

*Before cooking, brush the fish with butter or a dilute solution of a gravy browning agent to enhance the color of the dish. If you're baking a whole fish, shield the head and tail with a small piece of

aluminum foil (unless your oven manufacturer forbids the use of foil) to prevent excessive drying during cooking.

*Cook the seafood in a covered container to retain moisture and reduce the cooking time. Plastic wrap makes a good covering, but be sure to pierce it or turn back one edge before removing it so excess steam can escape.

*When cooking more than one piece of seafood, spread the pieces out to allow space between each. Place the thickest portion to the outside and do not stack or layer pieces in the pan.

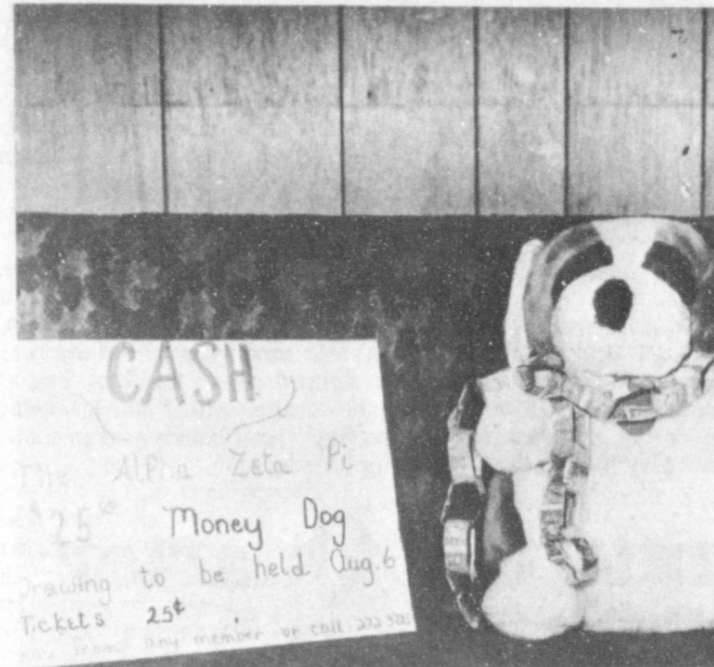
Jerry Jasinoski, chief economist, National Asso. of Manufacturers:

"The recovery is now becoming broadly based as the recessed durable manufacturing sector have come back."

*Remember that microwave cooking involves residual cooking, so most recipes allow for a "standing" period to complete the cooking process. The seafood should remain covered during the standing period.

*Seafood cooks so rapidly and is so delicate that when preparing a whole meal, it is probably best to cook it last to avoid reheating it. Fish is done when the flesh turns opaque and flakes easily. Shellfish is done when the flesh turns opaque and, if cooked in the shell, the shell turns red.

Since microwave ovens vary in power and features, Hegen recommends consulting the owner's manual for further cooking instructions. A free brochure on microwave cooking with shrimp and a set of fish recipes are available by writing to "Seafood Recipes," Texas Agricultural Extension Service, P.O. Box 158, Port Aransas, TX 78737.



MEET "CASHE".....The Alpha Zeta Pi Sorority is now selling tickets at the price of 25 cents each on this "money dog" that members have dubbed "Cashe". A string of 25 one dollar bills is around his neck and the lucky winner will get Cashe and the money. The drawing will be held on August 6 and tickets may be purchased from any member or by calling 272-3755.



Twirling & Tap Classes Now Registering For Fall Enrollment

The MULESHOE TWIRL TEAM is now accepting registration in pre-school class, beginner, intermediate and advanced class. They are again offering a Contest class which is extra and offers more individualized help in solo routines, modeling and strutting. Some taking the class go on to compete in area twirling contests held during the year. The twirl team marches in the Christmas parade and participates in a Spring recital. Something new this year is a beginners tap class. Instructors for the team include: Debbie Cloud, Sue and Sherri Bessire and student teacher is Selina Gonzalez. For more information or for enrolling, contact:

Sue or Sherri Bessire

965-2757 After 5 p.m.
or
Debbie Cloud 272-3584

MULESHOE SUPERMARKET

HOME OWNED AND HOME OPERATED

WE SPECIALIZE IN QUALITY MEATS AT THE BEST PRICES IN TOWN

Store Hours: Mon.-Fri. 7:30 to 9:00 P.M. / Sat. 7:30 to 10:00 P.M. Sun. 9 A.M. to 9 P.M.

Pure Pork Owen's Sausage 2lb. \$2.99	B&B Corn Shucks Buy One Get One FREE	Bel Half & Half Pint Ctn. 59¢	Sizzler 6-32 oz. Pepsi Cola or Diet Pepsi \$1.49 Plus Deposit
Del Monte Catsup 32 oz. Bottle 99¢	Super Suds Gaint Size Detergent 79¢	Jeno's Pizza 12 oz. \$1.19	Fiesta Zee Napkins 60 Count Pkg. 3 for \$1
Frito-Lay Doritos 8 oz. Pkg. 69¢	Super Suds Fauitless Spray Starch 15 oz. 79¢	Gladiola Flour 25 lb. Bag \$4.99	Borden Potato Chips 6.1/2 oz. Pkg. 49¢
Seven Seas Dressing 8 oz. Bottle 49¢	Nice & Soft Bath Tissue 4 Roll Pkg. \$1.09	Big Red Soda 2 liter Bottle 79¢	Velvet Oleo 2 lb. Tub 89¢
Orange Juice 12 oz. Minute Maid 99¢	White Swan Vegetable Oil 48 oz. Bottle \$1.69	Minute Maid Orange Juice	

With Super Saver Cards
White Swan 48oz Bottle Veg. Oil **1.29**

With Super Saver Cards
DelMonte Tomato 32oz. Bottle Catsup **59¢**

With Super Saver Cards
Gaint Size Detergent Super Suds **39¢**

With Super Saver Cards
Fauitless Spray Starch **39¢**

With Super Saver Cards
4 Roll Pkg. Nice & Soft Bath Tissue **69¢**

With Super Saver Cards
6-32oz. Pepsi Cola or Diet Pepsi **1.09** Plus Deposit

French Teenager Enjoys Visiting In Henry Home

For almost four weeks, Mr. and Mrs. Kenneth Henry and Sherri have hosted a French teenage girl in their home in Muleshoe.

During the time Christele Bruchon has been visiting in Texas, she has been involved in a lot of "firsts" for her. Christele rode a horse for her first time as she visited the Amarillo Stockyards -- the first time she has ever been to a cattle auction.

"That was one of my favorite things to do," she said. "I also got to see the production of 'Texas' and also enjoyed that very much."

No stranger to travel, Christele has traveled in Europe and Spain before coming to the United States, and said she had

always been told the people of the United States are very friendly. "I have really found that out for myself," she commented.

Christele is a resident of Besancon, France, which is ten miles from the Switzerland border. She is a high school student, who will be a senior this fall. She said she plans to go to the university after she completes France's High School. However, she said that if she does not pass a test given for university entrance at the completion of her high school year, she will have to go to high school for another year.

She is the daughter of a watchmaker in Switzerland, who travels each day to Switzerland to work, and her mother, who is a French headmaster (princi-

pal) of a school. She has one brother, 14.

Another thing Christele has enjoyed while visiting Texas is a first for her -- waterskiing. "It is not very popular in France," she added, "as waterskiing is very expensive in France. In France, it is too expensive to rent a boat, and it is so very expensive to own a boat. But, where I live, we snow ski for six months out of the year. That is the main thing we do for recreation there."

Food is one thing the French visitor found to be very different here. Christele said she did not care very much for Mexican food, finding it too spicy for her taste. She also expressed amazement that so very little cooking is done around Muleshoe, citing

the several courses of food served at each meal in French homes.

"French people eat more," said the slender teenager. "We start out with sausages or other food, then eat meat and vegetables, and perhaps other foods, before ending a meal with cheeses and wine."

Although Christele said she enjoyed going to drive-in food places she was amazed that so many people here ate "quick" foods. People here spend a lot of time in their cars, she observed. In France, almost everyone walks or takes public transportation, such as buses to travel around.

Smilingly, she also added, "People here also drink a lot of Coke -- we don't do so much of that in France."

Christele said when she is not in school, she enjoys snow skiing, visiting with friends, and going to the movies.

When Christele Bruchon leaves Muleshoe Wednesday to return to her home in France, she says she will take a lot of good memories back with her.

Christele's trip to the United States, Texas, and the Kenneth Henry Home in Muleshoe was sponsored through the Nacel Cultural Exchange who handles several hundred cultural exchange young people each year.

The program was founded by language teachers who have now spent the past twenty-five years arranging student exchanges between France and the English-speaking countries.

The Henrys have said the program, and their French visitor has "enriched their lives" through the sharing experience.



FRENCH VISITOR HERE--When Christele Bruchon leaves Muleshoe this Wednesday for her home in France, she will take with her memories of "friendly people, riding horses, water skiing--and several other 'firsts' for the teenager." She has spent the last four weeks in the Kenneth Henry home. Christele is at the left, and Sherri Henry is pictured at the right in the photo in the Henry's backyard.

Thomas P. O'Neill, House speaker: "The military budget must withstand the same scrutiny for waste and mismanagement that all other programs must undergo."

Notice Of Correction

The Three Way Independent School District Estimated Unencumbered Fund Balance is hereby corrected by the Below Corrected Figures. Instead of \$43,020, the correct balance should

have been reported as \$-0-.

Authorized by:

Dale Jones Chief Appraiser
Bailey County Appraisal District

Three Way Independent School District

NOTICE OF CALCULATION OF EFFECTIVE TAX RATE AND PUBLICATION OF ESTIMATED UNENCUMBERED FUND BALANCES

Dale F. Jones, Chief Appraiser for Three Way I.S.D., in accordance with the provisions of Sec. 26.04, Property Tax Code, have calculated the tax rate which may not be exceeded by more than three percent by the governing body of the Three Way I.S.D. without holding a public hearing as required by the code. That rate is as follows: \$1.00 per \$100 of value.

The estimated unencumbered fund balance for Maintenance & Operation fund: \$-0-. The estimated unencumbered fund balance for Interest & Sinking fund: \$-0-.

Dale F. Jones, Chief Appraiser
July 21, 1983

CALCULATIONS USED TO DETERMINE EFFECTIVE TAX RATE

I. DATA

1. 1982 Total tax levy from the 1982 tax roll	\$ 352175
2. 1982 Tax rate (\$ ____ M&O and \$ ____ I&S)	\$.90 /\$100
3. 1982 Debt service (I&S) levy	\$ -0-
4. 1982 Maintenance and operation (M&O) levy	\$ 352175
5. 1982 M&O taxes on property in territory that has ceased to be a part of the unit in 1983	\$ -0-
6. 1982 M&O taxes on property becoming exempt in 1983	\$ 43347
7. 1982 M&O taxes on taxable value lost because property is appraised at less than market value in 1983	\$ -0-
8. 1983 Total taxable value of all property	\$ 35,099,044
9. 1983 Taxable value of new improvements added since Jan. 1, 1982	\$ 83,000
10. 1983 Taxable value of property annexed since Jan. 1, 1982	\$ -0-
11. 1983 Tax levy needed to satisfy debt service (I&S)	\$ 43020
*12. Rate to raise 1982 tax levy due to appraisal roll errors (rate that should have been less rate that was levied) (\$ ____ -0- /\$100 - \$ ____ -0- /\$100)	\$ -0- /\$100
*13. Rate to recoup taxes lost in 1982 due to appraisal roll errors (lost dollars divided by the difference of 1983 taxable values minus 1983 over-65 homesteads taxable value) (\$ ____ -0- ÷ (\$ ____ -0- - \$ ____ -0-))	\$ -0- /\$100
14. 1983 Taxable value of over-65 homesteads with frozen taxes	\$ 134890
15. Frozen M&O levy of over-65 homesteads with frozen taxes	\$ 750
16. Frozen I&S levy of over-65 homesteads with frozen taxes	\$ -0-

II. CALCULATION

MAINTENANCE AND OPERATION (M&O) TAX RATE

1. (A) 1982 Total tax levy (Data 1)	\$ 352175
(B) Subtract 1982 Debt service levy (Data 3)	\$ -0-
(C) Subtract 1982 Taxes on property no longer in unit (Data 5)	\$ -0-
(D) Subtract 1982 Taxes on exemptions (Data 6)	\$ 43347
(E) Subtract 1982 Taxes on productivity valuation (Data 7)	\$ -0-
(F) Subtract frozen M&O levy of over-65 homesteads (Data 15)	\$ 750
(G) Adjusted 1982 M&O levy	\$ 308078
2. (A) 1983 Total taxable value of all property (Data 8)	\$ 35,099,044
(B) Subtract 1983 Value of new improvements (Data 9)	\$ 83,000
(C) Subtract 1983 Value of annexed property (Data 10)	\$ -0-
(D) Subtract 1983 Value of over-65 homesteads (Data 14)	\$ 134,890
(E) Adjusted 1983 Taxable value for M&O	\$ 34,881,154
3. (A) Divide the adjusted 1982 M&O levy (1-G above) by the adjusted 1983 taxable value for M&O (2-E above) (\$ 308078 ÷ \$ 34,881,154)	\$.008832
(B) Multiply by \$100 valuation	× \$.8832 100
(C) Calculated maintenance and operation (M&O) rate for 1983	\$.8832 /\$100

INTEREST AND SINKING (I&S) TAX RATE

4. (A) 1983 I&S levy needed to satisfy debt (Data 11)	\$ 43020
(B) Subtract frozen I&S levy of over-65 homesteads (Data 16)	\$ -0-
(C) Adjusted 1983 I&S levy	\$ 43020
(D) 1983 Total taxable value of all property (Data 8)	\$ 35,099,044
(E) Subtract 1983 Value of over-65 homesteads (Data 14)	\$ 134,890
(F) Adjusted 1983 Taxable value for I&S	\$ 34,964,154
(G) Divide the adjusted 1983-I&S levy (4-C above) by the adjusted 1983 taxable value for I&S (4-F above) (\$ 43020 ÷ \$ 34,964,154)	\$.001230
(H) Multiply by \$100 valuation	× \$.1230 100
(I) Calculated interest and sinking rate (I&S) for 1983	\$.1230 /\$100

APPRAISAL ROLL ERROR RATE

5. (A) Rate to raise 1982 levy due to appraisal errors (Data 12)	\$ -0- /\$100
(B) Add rate to recoup taxes lost due to errors (Data 13)	+ \$ -0- /\$100
(C) Total rate to adjust for appraisal roll errors	\$ -0- /\$100

TOTAL EFFECTIVE TAX RATE FOR 1983

6. (A) Calculated maintenance and operation (M&O) rate (3-C above)	\$.8832 /\$100
(B) Add calculated interest and sinking (I&S) rate (4-I above)	+ \$.1230 /\$100
(C) Add rate to adjust for appraisal roll errors (5-C above)	+ \$ -0- /\$100
(D) Calculated 1983 Effective Tax Rate	\$ 1.00 /\$100

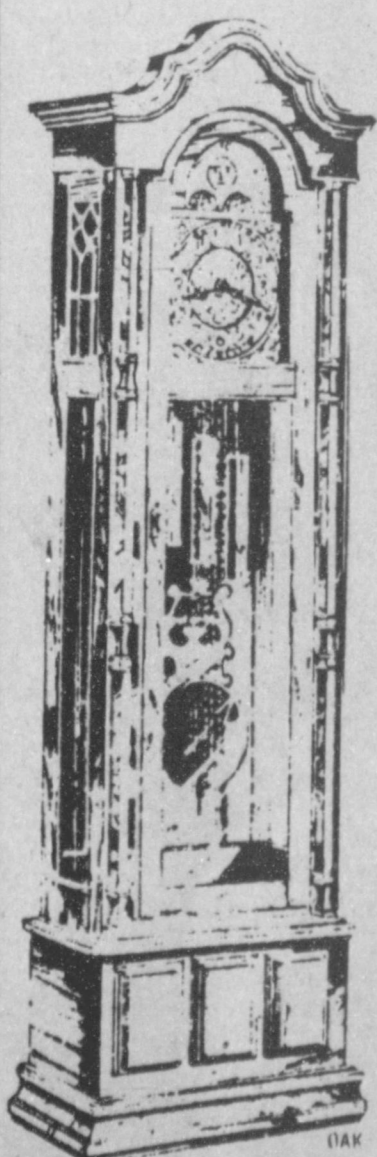
1983 Effective Tax Rate is the tax rate published as required by Sec. 26.04, Property Tax Code.

A GREAT GRANDFATHER CLOCK AT A GREAT GRAND PRICE -

\$599

SAVE OVER 40%

REGULAR PRICE \$1010

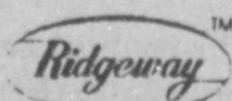


- Raised Arabic numerals on brass finished numeral track for a decorative yet easy to read face.
- Chimes resonate through cathedral designed sound panels that provide easy access to the movement.
- Chain wound West German movement plays melodious chimes as well as the Big Ben hour count.
- Lockable door with ornate key opens for winding the chain movement.
- Handrubbed finish
- Stands a majestic 77-inches tall.
- Beautiful brass finished dial surrounded with gold tone raised corner ornaments and ornamental black hour and minute hands.
- Glass pendulum door and side panels reveal weights and swinging pendulum.
- Polished brass lyre pendulum is complete with polished brass harp.

Fans & Fancies

1609 N. PRINCE

762-5704



CURRY
MOTOR FREIGHT LINES, Inc.

Bob Phillips
Agent
300 W. 12th
272-4668

Kelly Bayless, David Poynor Exchange Wedding Vows



MRS. DAVID PAUL POYNOR
(nee Kelly Koleene Bayless)

Kelly Koleene Bayless and David Paul Poynor exchanged wedding vows at the 16th and D. Church of Christ on Saturday, July 9, with Frank Poynor, uncle of the groom, of Portales, N.M., officiating.

The bride is the daughter of the late Ikey and Billie Bayless and the groom is the son of Mr. and Mrs. Paul Poynor.

Vows were exchanged in the 7 p.m. ceremony in a setting of a white arch candelabra and two spiral candelabra trimmed with jade and leather fern and featuring burgundy candles.

Providing traditional wedding selections were Pat Watson and Bess Washburn, who also accompanied soloists, Doug Washburn of Waco and Cheryl Dacus of Sanford, both cousins of the groom. Songs included "Let It Be Me," "Love Lift Us Up" and "Make Us One."

The bride wore a white taffeta gown designed by Mori Lee of New York. The ruffled scoop neckline featured Venise lace trim. Her pinafore effect bodice featured a natural waistline with Venise lace trim. The sleeveless gown was accented by lacy gauntlets and the full taffeta skirt was accented by a swirling ruffled flounce that encircled the attached chapel length train.

Her hat was made by Marilyn Cox. It was covered with illusion, and trimmed in lace matching that on the wedding gown. Top of the hat was covered with lace flowers and six pearls from the groom's grandmother Poynor's jewelry. The right side of the hat was turned up with two silk gardenias tucked into the fold. Left side of the hat was also decorated with two silk gardenias and the back was accented by a large bow of illusion with two buds centered in the bow.

The bridal bouquet was a silk cascade of mauve roses and rose buds, white stephanotis with English ivy accented with burgundy ribbon loops and streamers of white lace attached to a lace and pearl fan mounted on a lace covered Bible belonging to her grandmother Bayless.

Maid of honor was Kayla Bayless, sister of the bride, of Augusta, Ga. Bridesmaids were Shannon Field, niece of the bride of Augusta, Ga. and Mrs. Thurman Myers of Muleshoe.

They were attired in long formal dresses of mauve whisper taffeta. They were worn on the edge of the shoulder with a wide ruffle

encircling the top. Wine colored scalloped ribbon was worn at the waist and tied in a bow at the back. They carried white chantilly lace fans with mauve and burgundy rose and rosebuds intertwined with burgundy ribbon and satin tubing.

Shelbi Robinson, cousin of the groom, from Muleshoe was flowergirl. She wore a pink dress with burgundy lace pinafore and carried a white wicker basket filled with mauve and burgundy roses and rosebuds, baby's breath and love knots.

Ring bearer was Ryan Cook, cousin of the groom, of Portales, N.M.

Candlelighter was Cody Field, nephew of the bride, of Augusta, Ga.

Brad Poynor of Lubbock served his brother as best man and the groomsmen were Victor Leal, Muleshoe and Larry Parker, Muleshoe. Ushers were Danny Wilson, Muleshoe and Bill Bruns of Sudan.

The groom wore a white Ashley formal tuxedo and the groomsmen and candlelighters wore burgundy Denon tuxedos.

Mother of the groom was attired in a gray street length dress with a red rose corsage.

Immediately following the ceremony, a reception was held in the friendship room at the church.

Serving in the house party were Berna Lopez, registering guests; Laura Leal and Darla McGuire served at the bride's table and Robin Burgess and Charli Hawkins served at the groom's table.

A burgundy cloth covered with mauve lace was featured on the bride's table. A wedding cake, pink-edged and decorated with roses and a Johathan and David bride and groom enhanced the setting. A burgundy rose centerpiece centered the table. Raspberry punch and mints in the bride's chosen colors were served.

The groom's table was laid with burgundy centered with brass trays holding assortments of cheese and grapes. Other brass trays held another assortment of crackers.

For traveling, the bride chose a white lace dress with navy belt and hat. Following a wedding trip to Hawaii, the couple planned to be at home at 1500 S. Calvin, Monahans after

July 27.

The bride is a 1983 graduate of Muleshoe High School and the groom is a 1979 graduate of Muleshoe High School.

Out of town guests registering for the wedding included Max and Jennie Field, sister of the bride, of Augusta, GA.; Nan Williamson, grandmother of the groom, of Des Moines, Iowa and Tom Williamson, uncle of the groom of Des Moines, Iowa; and Garner Briscoe, grandmother of the bride.

A buffet rehearsal dinner was held at the fellowship hall of the 16th and D Church of Christ and a bridesmaids' brunch was co-hosted by Lynne Box and Marilyn Cox in the Box home.



ANGELA MATTHEWS

Angela Matthews Feted With Bridal Shower

The home of Mrs. Elvis Powell was the setting Saturday, July 16, for a wedding shower honoring Angela Matthews, bride-elect of Lance Dunn.

Receiving the guests were the honoree, her mother, Mrs. C.C. Matthews, Jr., the prospective groom's mother, Mrs. Joe Stanley, his step-mother, Mrs. Darrell Dunn; grandmother of the honoree, Mrs. Olen Ivy; his grandmother, Mrs. L.D. Jackson and great-grandmother,

Mrs. Beulah Brewer.

The serving table was laid with a white sheer cutwork cloth over pink satin. A silk pink and burgundy flower arrangement was the centerpiece. Strawberry punch was served from a brass and copper punch bowl with accompanying brass and copper trays of pina colado cake, nuts and pink mints, completed the table setting. Serving the guests were Mrs. Rick Parson of Abi-

lene and Mrs. Vernon Turner of Hereford.

Hostess gift was a kitchen center. Hostesses included Mrs. Elvis Powell, Mrs. Don McDonald, Mrs. Chuck Smith, Mrs. Gene Smith, Mrs. Vernon Turner, Mrs. Bill Jennings, Mrs. Ted Treider, Mrs. Glenn Scott, Mrs. Dalton Mimms, Jr., Mrs. Larry Kitchens, Mrs. Raymond Treider, Jr., Mrs. Reaford Wenner and Mrs. Wayne Moore.

SENIOR CITIZENS

Bailey County Senior Citizens met last Monday at the First United Methodist Church fellowship hall for a covered dish luncheon. After the invocation was given by Rev. Brock Sanders, the 51 persons at the meeting had lunch.

Visitors included 11 from the Muleshoe Nursing Home - Helen Free, Willie Mae Walker, Effie Smith, Ruby McCamish, Clara Rickert, Bonnie Hurd, Ora Roberts, Cordelia Cochran, Lois Ethridge, Joy Stancell and Cleo Bellar.

Other visitors included Rev. Brock Sanders, Julie Sanders, Debbie Hicks, Chantel Robison, Debra Neiman, Rose Sain, Amanda Ashford, Nettie Quesenberry, Virgil Wilbanks and Mr. and Mrs. Robert Sanders, who are new members.

Rev. Brock Sanders introduced the four girls from the Richland Hills Baptist Church Choir - Debbie Hicks, Chantel Robison, Julie Sanders and Debra Neiman, who presented "He Was There For All Time" and "Heed The Call." Rev. Sanders then presented a devotional from Proverbs, Chapter Nine, on "Wisdom."

Mrs. Mildred Head, president, called business meeting to order and the minutes were read and approved.

Doc Goucher was honored with the "Birthday Song" with Zed Robinson

leading the singing at the piano. Cards were signed for Mrs. Mae Loyd and Mrs. Lena Hawkins, who are both on the sick list.

Mrs. Katherine Sanders spoke briefly to the group, explaining the "Sixty-Five or Over Club" being instituted by the Muleshoe Independent School System. She said it is designed to involve the older citizens of the community in the activities and functions of the schools.

Mrs. Head informed the group about the Governor's Commission on Physical Fitness leadership training workshop to be held in Lubbock on Friday, August 5, at the First Methodist Church, 1411 Broadway.

Isn't it funny how petty habits become so important, once they're habits.

Good judgment includes knowing the proper joke to tell on every occasion.



NEW ARRIVALS

Amanda Albritton

Mr. and Mrs. Richard Albritton (formerly Jana Jones) are the proud parents of a brand new baby girl born on July 12 at Herman Hospital in Houston, Texas. The young miss was named Amanda Marie and weighed in at 8 pounds and 15 ounces. She is the couple's first child.

Grandparents of the new-born are Mr. and Mrs. James Roy Jones of Muleshoe and Rev. and Mrs. Ted Albritton, Sr. of Pittsburg, Texas. She also has two proud uncles: Todd Jones of Muleshoe and Ted Albritton, Jr. of Houston.

As a rule, local people know how to settle local problems best.

1/2 Price

Sale!

Starts August 1

Lookin' Good

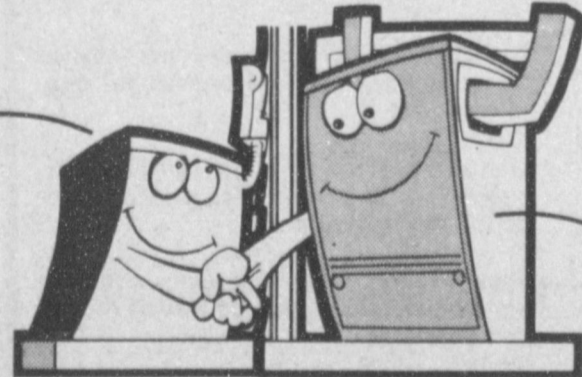
206 Main

272-5052



A broken air conditioner can be the best thing that ever happened to your household budget.

The add-on heat pump is an efficient air conditioner that cools your home when it's hot. But that's not all.



In cold weather, the add-on heat pump works with your present furnace to help heat your home.

When your air conditioner breaks down, you have several choices. Repair. Replace. Buy a whole new system. All major investments.

Southwestern Public Service Company suggests that you consider a more efficient alternative, for much less than a new heating and cooling system: the electric add-on heat pump. The add-on heat pump is a very special air conditioner that works

with your present furnace. Besides cooling your home in the summer, it helps heat your home in the winter.

As one of the most efficient ways to heat and cool, the add-on heat pump can really make a difference. And helping you manage electricity efficiently is one way we're working to justify your trust.

Call us to see what your savings could be.



SOUTHWESTERN PUBLIC SERVICE COMPANY

DALLAS DIET™

LOSE UP TO 10 LBS. IN 15 DAYS

THE MOST EFFECTIVE DIET FOR TODAY'S FAST-PACED LIFESTYLE

- DELICIOUS
- SAFE ● SIMPLE
- EFFECTIVE

LOOK AND FEEL GREAT CALL

925-6644

PREFERABLY MORNINGS

WEEKDAYS

ELLEN GLOVER DISTRIBUTOR



MR. AND MRS. DOUGLAS ALAN LEFEBRE

Double Ring Wedding Unites Patzer, LeFebre

In a candlelight morning ceremony at the Immaculate Conception Catholic Church in Muleshoe on Saturday, July 16, Father Patrick Maher, read the double ring wedding ceremony for Miss Kimberly Jo Patzer and Douglas Alan LeFebre.

She is the daughter of Michael and Cindy Patzer, Tacoma, Wash.; Shirley Davies, Anchorage, Alaska and Mr. and Mrs. John McMullen, Eltopia, Wash. Parents of the groom are Mr. and Mrs. James LeFebre of Muleshoe.

Escorted to the altar by her uncle, Richard Davies of Albuquerque, N.M., the bride was attired in a white formal length wedding gown of sheer organza over wedding satin. The V-neck bodice was inlaid with silk organza and lace bands, ending in a high, lace-neckband. The gown featured a short lace capelet ending above the elbows and her sleeves were full length silk organza with deep bands of lace and satin. In front, the dress fell to ruffled tiers of lace and a single lace ruffle encircled the bottom of the skirt. The back of the dress featured tiny pearl buttons and a large satin bow.

The bride wore a garland of lace, satin and white and apricot flowers and carried a cascade bouquet of white roses and baby's breath, intertwined with greenery and satian ribbon.

She wore pearls, a gift from her parents.

Something old was a wishbone pin at her waistline, with a pearl birthstone; something new was her wedding attire; something borrowed was a rhinestone bracelet from her mother-in-law and something blue was a garter.

Candlelighter was Jana Davies, a cousin, from Albuquerque and attending the bride was Matron of Honor, Mrs. Ami Mac-

Hugh, Pasco, Wash. The groom's attendant as best man was Donnie Chavez of Farmington, N.M.

Roland Perez of Muleshoe sang "Flesh of My Flesh" as the bride and groom lighted the memory candle.

A reception was held at the Bailey County Civic Center meeting room following the ceremony. Servers at the reception were Mrs. Dolly Orton and Mrs. Susan Davies, both aunts of the couple.

Out of town guests included Mrs. Dolly Orton, aunt of the groom and her son, Harry, Bellvue, TX; Mr. and Mrs. Billy Orton, Bellvue, TX; Donnie Chavez, Farmington, N.M.; Mr. and Mrs. Richard Davies and family, Albuquerque, N.M. and Mr. and Mrs. Dave MacHugh and family, Pasco, Wash.

Following a wedding trip to Amarillo and Palo Duro Canyon, the couple is at home at 121-B West Ave. J. Muleshoe.



ANGELA MATTHEWS

Lubbock Honors Held For Angela Matthews

Miss Angela Matthews, bride-elect of Lance Dunn, was honored with a lingerie shower Tuesday, July 19, in the home of Mrs. Gerald Bevers in Lubbock.

Registering guests was Mrs. Don Mitchell.

A glass top serving table was informally set with a pink silk flower arrangement with pink Hallmark plates, cups and napkins. Fruit balls, cookies, crackers, cheese and fruit punch were served, along with nuts and mints.

Out of town guests were Mrs. Joe Stanley and Mrs. Randy Connor of Post;

Mrs. Roy Whitt, Jan Whitt and Mrs. C.C. Matthews of Muleshoe. Other guests were from Plains National Bank where the bride-elect is employed.

Hostess gift was a rose gown and negligee.

Hostesses were Mrs. Gerald Bevers, Mrs. Dan Mitchell, Mrs. Marge Ball, Mrs. Harold Reno, Miss Ginny Gilbert and Miss Cathy Amos.

Maddox Elected To SPS Board

Don Maddox, partner of Maddox & Renfrow, attorneys and counselors at law at Hobbs, New Mexico, has been elected to the Board of Directors of Southwestern Public Service Company (SPS).

Maddox, 42, was elected to the SPS Board Tuesday (July 26, 1983).

He is a native of Bristol, Va., has a bachelor of science degree in business administration from Pfeiffer College at Mesenheimer, N.C., and a doctor of law degree from Wake Forest University at Winston-Salem, N.C.

Maddox is chairman of the Board of Trustees of the College of the Southwest at Hobbs, and a director of the J.F. (no period following F) Maddox Foundation of Hobbs.

He is a member of the Lea County (N.M.) Bar Association, the New Mexico Bar Association, the American Bar Association, the New Mexico Trial Lawyers Association, and

the American Trial Lawyers Association.

Maddox also is a member of the Hobbs Rotary Club, the New Mexico Oil & Gas Association, and other professional and business organizations. He is a former Assistant District Attorney of Lea County and a former instructor in business law at New Mexico Junior College at Hobbs.

Golden Gleams

Affection bends the judgment of her uses.
-Dante.

Be kindly affectioned one to another with brotherly love.
-Romans 12:10

When affection speaks Truth is not always there.
-Thomas Middleton.

'Tis sweet to feel by what fine-spun threads our affections are drawn together.
-Laurence Sterne.

Get Your Wedding Invitations Here.
Williams Bros Office Supply
322 Main 272-3113

August Is Child Support Month

August has been proclaimed Texas Child Support Enforcement Month in a resolution passed by the Legislature during the last legislative session. August will be devoted to emphasizing the payment of child support. In addition, non-custodial parents will be urged to spend time with their children.

Representative Rene O. Oliveira (Brownsville), sponsor of the resolution, noted that, "Child support enforcement has become a problem of such overwhelming magnitude that the issue had to be addressed and legislative solutions enacted to minimize the problem."

"Texas had to make a statement that our children

are our number one priority and that parents have to take responsibility for supporting their children. That responsibility should not be placed on the shoulders of the taxpayers. We need to remember that child support payments are not an option, but are mandatory and ordered by a court of law. By designating August as Texas Child Support Enforcement Month, we are reminding negligent parents of their responsibilities," Oliveira said.

According to statistics from the Texas Department of Human Resources, 85% of the children eligible for AFDC benefits are not receiving financial assistance from the non-custodial parent. "Too many people do not realize the consequence of non-payment of child support," Oliveira noted. "So often the mother,

who is usually awarded custody, raises the children without any input and assistance, financial or otherwise from the father. The children lose out on two fronts; they do not receive necessary financial support and they do not have a close personal relationship with their father. Kids need love and support. Please, pay your child support and spend time with your children," Oliveira urged.

In addition to the resolution, legislation sponsored by Oliveira and Senator Ray Farabee (Wichita Falls) and passed this session deals with the multitude of child support enforcement problems. One provision of this legislation, a constitutional amendment strengthening enforcement procedures, will have to be approved by voters in the November elections.

Charles Percy, Senator, (R-III):

"We do not want to see the interest rates go back up. Economic recovery that is under way now must be sustained and carried forward."

WWII vet helps ex-POWs deal with post-combat stress

TEMPLE—A young soldier left for dead in the snow during World War II is today helping older veterans—especially ex-POWs—deal with the same kinds of post-combat stress suffered by their nephews and sons after Korea and Vietnam.

Dr. Merrill Lipton is reluctant to dwell on his own combat experience, but he feels it gives him a bond with the veterans he talks to.

"They know I understand what they went through," says Lipton, an associate professor of psychiatry with Texas A&M University's College of Medicine and a staff psychiatrist with Olin E. Teague Veterans Center, one of two Temple facilities where Texas A&M medical students receive training.

Some World War II veterans and former prisoners of war have just recently begun to have serious symptoms, Lipton explained.

"Many of the vets returning from World War II and Korea grew up in a time when nerve problems were regarded as abnormal, as evidence of defects in character. You were a weakling if you had fear or nerve problems," he explained. Modern psychiatry has done much over the past five years to document these problems as bona fide disorders, however.

"My own interest in this problem is natural since I was a young combat soldier in World War II," said Lipton. During the days following the Battle of the Bulge, he was so severely wounded by shrapnel that he was left for dead and lay in the snow for two days.

THE "ZEPHYR" BY CASABLANCA FAN COMPANY



\$269.00
2 or more
\$249.00

WINTER ENERGY SAVINGS

Increases heating efficiency by eliminating stratification of hot air on your ceiling — maintains a more comfortable living area.

SUMMER ENERGY SAVINGS

Set your thermostat at 78 to 80 — maintain a comfort level of between 70 to 72.

REVERSE AIR FLOW

Our reverse option on our fans improves conditions with or without air conditioning by circulating air both downward and outward.

LOW ENERGY CONSUMPTION

All Casablanca Fans use the equivalent energy of a 150 watt light bulb running at full speed.

WE WON'T BE UNDERSOLD

Fans & Fancies

1609 PRINCE

Clovis New Mexico

762-5704



CRUSADE MULESHOE AREA

MULESHOE HIGH SCHOOL AUDITORIUM

8:00 P.M. Nightly

Sunday Through Thursday



EVANGELIST
Dr. Jess Moody



SINGER
John McKay

July 31
to
August 4

Supported By The Following Churches:

First Baptist Church, Lazbuddie Methodist, New Covenant, Richland Hills Baptist, Trinity Baptist Church, Progress Baptist Church

Bailey County Journal USPS 445-200
Established March 31, 1963. Published by Muleshoe Publishing Co., Inc. Every Sunday at 304 W. Second, Box 445, Muleshoe, Texas 79347. Second Class Postage paid at Muleshoe, Texas, 79347.

MEMBER 1983
TEXAS PRESS ASSOCIATION

L.B. Hall President
James Woods Vice President
Shirley Farmer News
Evelyn Harris-Sagers
Clara Williams Advertising
Sammy Hall Bookkeeper

Muleshoe Journal and Bailey County Journal
Bailey and surrounding counties... 12¢
Muleshoe Journal and Bailey County Journal
elsewhere... 15¢

Advertising rate card on application

Enochs News
By
Mrs. J.D. Bayless

Visiting Mr. and Mrs. Dale Nichols the weekend were Mr. and Mrs. Donnie Nichols of Canyon, the Jerry Nichols family had been with them a week, Mrs. L.B. Davis, of Shallowater, Myrlene Nichols, Jo Anna Cole of San Antonio, and several other relatives.

Mr. and Mrs. Edd Autry have been to visit their son, Mr. and Mrs. George Autry at Pep, New Mexico.

Mr. and Mrs. Guy Sanders and grandson's Ronald Beasley of Enochs, Erick and Micah Wright of Lubbock and Ted Thomas of Lubbock did some fishing and skied at Lake Kimp recently.

Mr. and Mrs. Ken Jackson from Seattle, Washington were guests in the home of Mr. and Mrs. Bill Key Tuesday night.

Hubert Kidd manager of the Five Area Telephone Cooperative Muleshoe will speak at the Bula-Enochs Community Center August 8, at 8:00 p.m. to explain about the Telephone business and rates.

Mr. and Mrs. Bill Key were in Littlefield Sunday afternoon and visited his sisters, Mr. and Mrs. Robert Butler and Mr. and Mrs. Homer Howard, Mrs. Key and Mrs. Robert Butler attended the Open House at the Security State Bank also.

C.W. and Vonna Hamilton of Roswell, New Mexico are visiting their mother, Mr. and Mrs. Sid Key.

Mr. and Mrs. Goldman Stroud attended the funeral service of Harlan Reese 3:00 p.m. Monday July 18, at the First Baptist Church in Muleshoe.

Mr. and Mrs. J.E. Osborn of Sunray visited in the home of Mr. and Mrs. Harold Pollard recently and were visitors at the Methodist Church.

Mrs. Winnie Byars attended her family the Roller family reunion last Saturday and Sunday at the Fair Park Coliseum in Lubbock. Those coming the farthest were the Harold Ray Hull's of Adel, Georgia, Mr. and Mrs. Ted Renear and children Ani Sky and Sarah Lyn of Austin, there were 150 in attendance. They had an ice cream supper at the home of Ruby Nichols on Saturday night.

Mr. and Mrs. E.N. McCall were in Lubbock Monday to visit his brother, G.H. McCall who was a patient in the General Hospital, he was dismissed Tuesday and has gone back to Harlingen where he is in

the hospital.

Mr. and Mrs. Donnie Nichols of Canyon spent Friday night with Mr. and Mrs. Chester Petree.

Guests in the home of Mrs. Etta Layton were Mrs. Harold Layton of Dell City and her daughter, Mrs. Mark Derrington, and son's Jermy and Jason from the Air Force Base at Blytheville, Ark. also Lesli and Kelly McDaniel of Fort Worth, Kristen Nichols came over and went home with her grandmother Mrs. Layton and the other group.

Mrs. Winnie Byars visited Mrs. Ollie Cook in Levelland Monday afternoon.

Visiting in the home of Mr. and Mrs. J.D. Bayless Tuesday afternoon were a niece, Mrs. Avenell Moffeit and her daughter, Mrs. Jimmie Sue Blose of Cushing, Oklahoma, Jim Swanner and Mr. and Mrs. Claud Coffman all of Muleshoe.

Visiting Mr. and Mrs. Clifford Snitker Thursday afternoon was his cousin, Dennis Cheek of Hereford, they hadn't seen him in 15 years.

Mr. and Mrs. J.E. Layton visited his sister, Mrs. Oleta Burris at Wellman Sunday afternoon.

Mr. and Mrs. Dennis Turney and family were in Littlefield Sunday afternoon to visit her parents, Mr. and Mrs. Trueman Nix.

Relatives and friends attending the wedding of Miss Paula Nichols and James Grant 3:00 p.m. Saturday at the First Baptist Church in Enochs, were Mrs. L.B. Davis of Shallowater, Gary Nichols of Quinton and Richard Nichols of Enochs, Myrlene Nichols and Jo Anna Cole of San Antonio, Texas Mr. and Mrs. Sammie Nichols and children of Guymon, Oklahoma, Mr. and Mrs. Harold Dean Nichols and daughter of Idalou, Texas, Mr. and Mrs. Jerry Nichols and children of El Paso, Mr. and Mrs. Donnie Nichols of Canyon, Texas, her sister, Mrs. Ralph Pugh and nieces, Mrs. Mervin Pugh, and daughter Hilary, Mrs. Lonnie Odham, Mrs. Linall Click all of Midland, Mrs. L.M. Bunn, Mr. and Mrs. Milburn Bunn and daughter all of Amarillo, Texas. Mrs. Edd Stevens of Motron, Donald Grusendorf of Plainview, Mr. and Mrs. Harold Layton of Dell City, Texas and grandchildren, Jermy and Jason McDaniel of Ark, Lesli and Kelly of Fort Worth, Texas, Mr. and Mrs. John Gunter of Muleshoe.

Have you ever wondered why it's so much easier to tell someone else how to do something than it is to do it yourself?

TRU-TEST
PAINTS
PAINTING HELP
SPOKEN
HERE.



By Uncle Bob

Dear Uncle Bob:
I like to retain my leftover paint for touch-up purposes but I've had very little luck keeping it. So much is lost by evaporation and skinning over. Do you have any suggestions?

Signed, Prudent Painter

Dear Prudent:
With a mallet or hammer pound the paint can cover firmly in place first covering the can with a paint rag to catch the paint that spurts out as you pound around the rim. Then turn the can upside down to coat the closure with paint. This completely seals the can from the inside. With this method your paint will keep indefinitely without skinning over.



Fry & Cox, Inc.

401 S. First

272-4511

VALUE VARIETY



Winner Of Stamps This Week

Faye Krebbs

27¢ OFF LABEL
LIQUID JOY
32 OZ. BTL.
\$1.59

ARM & HAMMER
LAUNDRY DETERGENT
65 OZ. BOX
\$1.29

IMPROVED FORMULA
PRICE TOO!

50¢ OFF LABEL
DOWNY
96 OZ. BTL.
\$2.89

OREO DOUBLE STUFF
COOKIES
20 OZ. PKG.
\$1.69

NABISCO NUTTER BUTTER
COOKIES
13 1/2 OZ. PKG.
\$1.19

GLADIOLA FLOUR 5 LB. BAG **99¢**
GLADIOLA CORNBREAD MIXES 3 6 OZ. PKGS. **69¢**

FRESH FROM THE FARM PRODUCE
PECOS VINE RIPENED
CANTALOUPE
29¢ LB.

CALIFORNIA FRESH PEACHES LB. **59¢**
CALIFORNIA HASS AVOCADOS 5 FOR **\$1**
CALIFORNIA RED POTATOES LB. **29¢**

STARKIST WATER/OLIVE OIL
CHUNK TUNA
6 1/2 OZ. CAN

20¢ OFF LABEL
CLOROX II
61 OZ. BOX **\$1.99**

15¢ OFF LABEL
FORMULA 409
22 OZ. BTL. **99¢**

GLAD WRAP 100 FT. ROLL **69¢**

GLAD MED. GARBAGE BAGS 20 CT. PKG. **\$1.19**

GLAD FAMILY GARBAGE BAGS 20 CT. PKG. **\$2.19**

RAID INDOOR FOGGER 8 OZ. CAN **\$2.98**

RAID OFF REPELLANT 6 OZ. CAN **\$1.99**

RAID FLYING INSECT BOMB 12 1/2 OZ. CAN **\$2.19**

MILD OR SHARP
CHEETOS
8 OZ. PKG.
89¢

STORE HOURS:

MON.-SAT: 8:00-9:00

SUN. 9:00-7:00

PRICES EFFECTIVE AUGUST 1 THRU AUGUST 6, 1983
WE RESERVE THE RIGHT TO LIMIT



QUALITY

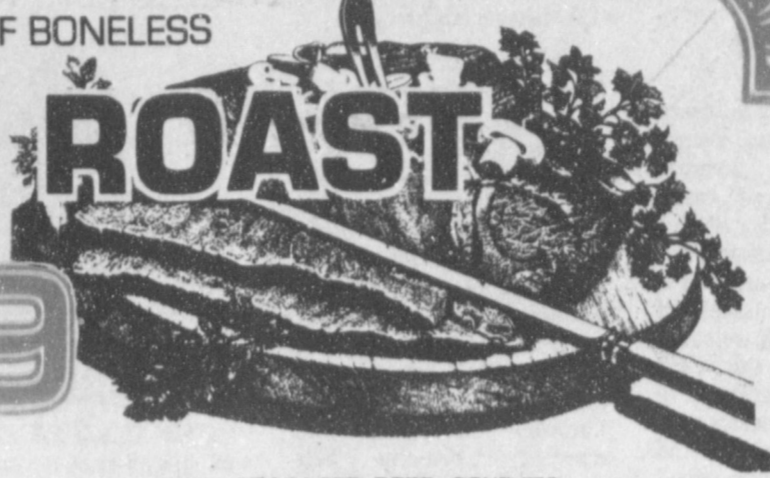


QUALITY MEAT SPECIALS

HEAVY GRAIN FED BEEF BONELESS

CHUCK ROAST

\$1.59



EXTRA LEAN CHUCK QUAL.	LB.	\$1.69	GOOCH GERMAN BRAND SMOKED	12 OZ. PKG.	\$1.59
GROUND BEEF	LB.	\$1.69	SAUSAGE	12 OZ. PKG.	\$1.59
WILSON REG. MEAT	12 OZ. PKG.	99¢	GOOCH MEXICAN STYLE	12 OZ. PKG.	\$1.29
FRANKS	12 OZ. PKG.	99¢	HOT LINKS	LB.	\$1.29
WILSON SLICED MEAT	12 OZ. PKG.	\$1.19	WISCONSIN LONGHORN MARKET CUT REG./COLBY	12 OZ. PKG.	\$1.99
BOLOGNA	12 OZ. PKG.	\$1.19	CHEESE	LB.	\$1.99

FRESH GUAR. 73% LEAN

GROUND BEEF
LB. **\$1.19**

HEAVY GRAIN FED BEEF 8-12 LB.

BRISKETS
WHOLE IN THE BAG LB. **\$1.19**

ARMOUR **TREET** 12 OZ. **99¢**

ARMOUR VIENNA **SAUSAGE** 2 5 OZ. CANS **89¢**

ARMOUR POTTED **MEAT** 4 3 OZ. CANS **\$1**

32 OZ. PLUS DEPOSIT

COCA-COLA



Buy 1 Get 1

FREE

6 BTL. CTN.

ASSORTED OR PRINT

SPILLMATE TOWELS

69¢



ROLL

ALL GRINDS COFFEE

MAXWELL HOUSE

\$1.99



1 LB. CAN

Nursing Home News

By Joy Stancell

Rosemary Pool, Louise Sullivan.

Mrs. Kenneth Johnson and girls visited the residents in group Wed. morning.

Our thanks to Betty Johnson for bringing us the large canister of pop corn Wednesday.

Annie Brown's son Clyde Brown and his wife are here visiting this week.

Maggie Daniells has had several out of town family members visiting her this week. Among them were Curtis Daniell & wife Wonda, Kay Rosburg of El Paso and Paula.

Lois Ethridge was visited by her sister and brother Monday.

Fri. noon Cordelia Cochran, Lois Ethridge, Bunnie Hurd, Ruby McCamish, Effie Smith, Cleo Bellar, Sammie Moore, Ora Roberts attended the AARP luncheon at the Civic Center. Our thanks to them for inviting us and to Helen Free, Mr. and Mrs. Floyd Ruthardt for helping us take the residents.

The Hospital and Nursing Home Aux. came Tues. for Beauty Shop, Glenda Duncan came Tues. morning for ceramic class. Mrs. Kenneth Johnson and girls came for Reading Wed. morning. Thurs. Retta Shipp, Maud Kersey, Mac Bellar, J.E. Embry and Floyd Ruthardt came to play 42 and dominoes with the residents.

Bro. Cochran from the Lazbuddie Methodist Church came Wed. to have a Sing-a-long with the residents.

Lynn Bratcher was admitted to W.P.M.C. for surgery Wed. Morning.

Grace Kemp was visited by Argilee and Don.

Edith Bruns was visited by Chubby Douglas Monday.

Mrs. Shafer visited Mr. and Mrs. Moore Mon. They also received a beautiful bouquet from Muleshoe, Tx.

David Stovall visited his mother Dewey Stovall Mon.

Sammy Moore's granddaughter and great granddaughter took her out for a coke Wed. afternoon.

Mrs. O'Hair visited Mr. Holland Tues.

Marie Engram was visited by Jeff Whatley, Maud Young, Ollie Sebring, Wilma Waddle, Mrs. Edward Engram.

Orpha Bartley was visited by her brother John Kirkpatrick and family from Toledo, Ohio. Her sisters Mr. and Mrs. Elbert Ford and family from Chilcathe and Grand Prairie, Mrs. Nela Jackson from Wichita Falls and son from Red River, New Mex. Mr. and Mrs. Curtis Stewart from Grand Prairie, Don Marlow from Vernon.

Annie Dunn spent the weekend in the home of her daughter Denny Weid-bush-her daughter from Lubbock visited with them too.

Barbara Billery gave her mother Ruby McCamish a perm Wed. afternoon.

The Muleshoe Church of Christ came to lead the Devotional. Jacque Baker lead them in song. The ladies served refreshments of homemade ice cream and cake.

Alta Tyler's family from out of town visited her over the weekend. They entertained Alta and other residents in the Day Room.

Harry Freeman's grand daughter visited him Tues. She is from Amarillo.

Clara Weaver's daughter has been here visiting.

Our thanks to the Mary Martha S.S. Class of the First Baptist Church for their generous donation for our craft class.

Mr. and Mrs. Scarborough visited Ethel Askew and Effie Smith Tuesday. Billy Jean also visited Effie Smith.

Bro. Meeks from the First Baptist Church visited Mr. Moore Tuesday.

Laverne James played Skip-Bo Tuesday afternoon with Bertie Hendrix, Alma Henley, Cordelia Cochran.

The Kings Kids sang for the Nursing Home Thursday night. We had a real good crowd and everyone appeared to enjoy it. Our thanks to The Kings Kids and to all of our visitors who came to hear.

Marie Engram was visited by Lavern Stephenson, Mrs. Cooper, Edward Engram, Jerry Hutton, Jeff Whatley, Maud Kersey, Wilma Waddle, Josie Flowers.

The Auxillary came Tuesday to shampoo and set the ladies hair and give manicures. Wednesday, Glenda Jennings and Jackie Johnson came for a Sing-A-Long. Sunday morning E.B. Wilson came for Bible Study, Sunday afternoon the Methodist Church sang for the residents.

Thursday afternoon, Homer Millsap took the residents for a ride to the Tolk Plant, in the Sr. Citizens Van. Those going for the ride were Cleo Bellar, Effie Smith, Sammie Moore, Ruby McCamish.

The best show on earth is the human race, the performance is continuous, and free.

One of the mysteries of life is how some people manage to think so much of themselves.

To hear some people, one would think that lung-power is more important than brain power.

Hot weather enthusiasts should have no complaints left about the summer of 1983.

As a rule, those who never have to hustle for a living fail to appreciate the value of a dollar.

Work is often tiresome and boring but have you ever tried no work?

WELCH'S FROZEN **GRAPE JUICE** 12 OZ. CAN **89¢**

WELCH'S CRANBERRY **JUICE** 12 OZ. CAN **\$1.09**

BORDEN'S FRUIT **DRINK** GAL. **89¢**

BORDEN PUDDING **BARS** 12 CT. PKG. **\$1.49**

BORDEN ASSORTED **ICE CREAM** 5 QT. BKT. **\$3.99**

DOWNYFLAKE FROZEN **WAFFLES** 12 OZ. PKG. **69¢**

PET RITZ DEEP DISH **PIE SHELLS** 2 CT. PKG. **89¢**

HEALTH & BEAUTY AIDS

MENNEN FRESH/SPICE **SPEED STICK** 2.5 OZ. SIZE **\$1.99**

PRO 21 **HAIR SPRAY** 9 OZ. CAN **\$1.39**

PRO 21 REG./OILY/DRY **SHAMPOO** 7 OZ. BTL. **99¢**

ACT DENTAL **RINSE** 12 OZ. BTL. **\$1.99**

YOUTH TOOTHBRUSH **REACH** EACH **\$1.19**

PLUS/MED/SOFT TOOTHBRUSH **REACH** EACH **\$1.19**

BAND-AID Brand 30 CT. CAN **\$1.59**

TRICOT MESH/FLEX FABRIC

STORE ADDRESS:

515 W. AMER. BLVD.

272-4406

CAN WIN \$1,000,000
Canadian Government Lottery
OVER \$30,000,000 IN CASH
Draws Every Month
One In Four Chance Of Winning Cash Prizes Up To \$1,000,000 — Many U.S. Winners —
Write for info & FREE brochure: C.W. AGENCIES
P.O. Box 729, Station "A"
Vancouver, B.C., Canada V6C 2M3
(604) 683-5861

Save



Save With Budget Bob!

Around Muleshoe

Cont. From Page 1

entry is August 5 at 6 p.m. and entry fees are \$80 per team. For further information call Cliff Geoff at the Muleshoe Country Club Pro Shop.

A hospital fund has been established at the First National Bank for Ricky Barrett, long time Muleshoe resident, who was injured in a car roll-over in early June. The fund is to be used to help defray Barrett's hospital bills which now range over the \$20 thousand mark.

Members of the West Texas Parkinsonism Society will gather for a salad supper at 7:00 p.m., Friday, 29th in the home of society president, Fred McGarrett, 3515-55th Street. Persons interested in becoming members of the West Texas Parkinsonism Society are especially invited. For further information call Mr. McGarrett at 806-797-1149.

Budget...

Cont. From Page 1
cerns regarding budget meetings or the budget itself may be directed to H. John Fuller, School Superintendent of the Muleshoe Independent School District at 272-3389.

BullTown...

Cont. From Page 1
ust 19 and all area talent acts are urged to participate. Contact Sheila Carson at 238-1243 for entry on the talent show.

Scholars...

Cont. From Page 1
The scholarship honors John L. and Vergie Belle Smallwood, longtime business and church leaders in Levelland. Through their bequest to the College, funds are made available annually to recognize outstanding students.

Diet drink sugar substitute aspartame okayed.

A semi-annual dividend of \$2.75 per share on the 5.50% Cumulative Preferred Stock of Transwestern Pipeline Company was declared by the Company's Board of Directors at a meeting here today. The dividend is payable November 1, 1983, to stockholders of record at the close of business on October 7, 1983.

State Comptroller Bob Bullock has announced that Phillip Land from his Lubbock Field Office will be at the Bailey County Courthouse in the County Commissioner Courtroom on Tuesday, August 9, 1983 from 2:00 p.m. to 4:00 p.m. A comptroller's representative is available to assist local residents at the courthouse the second Tuesday of each month.

Crusade...

Cont. From Page 1
COUNTER CRUSADE" Choir will meet in the Auditorium for practice with Mr. John McKay. "The public is definitely encouraged to attend," said Sanders. Nursery will be provided by individual own church.

Special emphasis nights will be: Sunday - Childrens Emphasis; Monday - Sunday School Emphasis; Tuesday - Youth Night; Wednesday - Family Night; and Thursday - Good Neighbor Night.

Administrator...

Cont. From Page 1
care and services in the West Plains Medical Center will not be lowered, Haralson stated. "We want to provide the highest quality of care that we can for the least amount of dollars," the Administrator commented. Haralson realizes that it will take time to accomplish his goals and those of the Board; however, it would seem at this point, they have made a good start.

Tax Rebate...

Cont. From Page 1

Mixed drink tax revenue in Hockley County for the second quarter totaled \$13,788.33 with the county's remittance being \$2,068.25. The city of Levelland in Hockley County had a total tax revenue for this period of \$10,986.93 with a 15 percent remittance of \$1,648.04.

Lamb County's second quarter mixed drink tax revenue amounted to \$8,244.40, with the 15 percent remittance being \$1,236.66; while the city of Littlefield had revenue of \$4,286.38 with the city's 15 percent remittance being \$642.96.

In Lubbock County, total county tax revenue for the quarter amounted to \$661,641.40, with the coun-

ty's 15 percent remittance being \$99,246.21.

Farmer County had a total county tax revenue of \$193.60 and a 15 percent remittance of \$29.04 for the second quarter.

Texas cities and counties each receive a 15 percent rebate of the tax collected on mixed drinks sold within their boundaries under the law that legalized the sale of mixed drinks in the state.

The mixed drink tax is collected by the Alcoholic Beverage Commission and city-county rebates are sent out quarterly by the Comptroller's office.

Bullock said the mixed drink tax brought in a total of \$74 million during the first half of 1983.

Reappraisal Begins...

Cont. From Page 1

balance, so to speak. While reappraisal was formerly not used except in an effort to raise operating funds, it was mandated by law on January 1, 1984.

The results of a reappraisal might show that some taxes will go up and some down; but the main objective is to achieve equalization.

The cost of the reappraisal, which was mentioned previously to be in the neighborhood of \$60,000 will be split among the five entities of the Bailey County Appraisal District according to a formula provided by State law. Jones stated that the Muleshoe Independent School District would have the lion's share of the cost, followed by Bailey County and the City of Muleshoe.

The Three Way Independent School District and the High Plains Underground Water District will follow accordingly. The reappraisal will be paid for in 1984 and will be used to compile the 1984 tax roll for the Bailey County Appraisal District. Each entity of the District will pay no more, nor no less than their share of the reappraisal fee, Jones said.

Barring bad weather and roads, it should take approximately three months to complete the field work

of the reappraisal. The Chief Appraiser urges taxpayers having questions regarding this matter or any other tax matter to contact him at the District office, phone 272-5501.

Agriculture...

Cont. From Page 1
be denied such assistance simply on the basis they are engaged in agricultural processing or handling.

LAZUBDIE FARMER'S SUPPLY RETAIL / WAREHOUSE FACILITY
14,000 sq. ft. of office, retail and warehouse space in Lazubdie. Priced to sell at \$195,000.

XIT STEAK HOUSE, MULESHOE.
Excellent restaurant facility on Highway 84. Ample parking. Could be converted to offices or retail. Priced below market at \$70,000. Building 5100 sq. ft. Parking area 17,000 sq. ft.

BROKER COOPERATION INVITED

West Texas Investors Realty, Inc.
5760 40th Street
Lubbock, Texas 79407
(806) 797-3231

Relatives Of Local Man

Killed In Collision

A sister and brother-in-law of a local man, Buddy Buckner, were killed Thursday morning when the pickup in which they were traveling crashed into a loaded gravel truck.

Outstanding Young Men Announced

The Board of Advisors for the Outstanding Young Men of America Awards Program announced today that Larry David Shafer formerly of Muleshoe and now of Vaudenburg AFB and David B. Lasater of Dalhart have been selected for inclusion in the 1983 edition of Outstanding Young Men of America.

These men were selected from nominations received from Senators, Congressmen, Governors, Mayors, State Legislators, University and College Presidents and Deans as well as various civic groups, including the United States Jaycees which also endorses the Outstanding Young Men of America program.

In every community there are young men working diligently to make their cities, as well as their country, better places in which to live. These men, having distinguished themselves in one or more fields of endeavor, are outstanding and deserve to be recognized for their achievements. The criteria for selection include a man's voluntary service to community, professional leadership, academic achievement, business advancement, cultural accomplishments and civic and political participation.

Order Issued For Sale Notices On VLB Tracts

Texas Land Commissioner Garry Mauro today issued an order for sale notice on approximately 120 tracts of land that had previously been ordered forfeited by the Veterans Land Board. The owners of the delinquent tracts failed to comply with a July 22 deadline to bring payments current for reinstatement. The action was taken at the monthly meeting of the Veterans Land Board.

Mauro, who serves as Chairman of the Veterans Land Board, said, "The sale is in keeping with my commitment to run the Veterans Land Program in a sound, efficient business-like manner."

"In order for the Veterans Land Board to continue offering generous terms to our veterans, a strong delinquent collection policy must be maintained. Some loans on this list were as old as four years with no payments made. If we are going to continue to close loans in this program in 90 days, payments will have to be made on time," Mauro stated.

Delinquent contract hold-

Norman C. Chisholm, Sr., 52 and Wilma Naomi Chisholm, 51 were ruled dead at the scene by Lamb County Justice of the Peace Beulah Dunlop.

According to DPS officials, Chisholm made a U-turn and drove in front of the truck about 8:15 a.m. approximately 2 miles east of Earth on Highway 70.

Services for Mr. and Mrs. Chisholm were held at 3 p.m. Saturday at Missionary Baptist Church in Littlefield with Rev. Tom Hobgood, pastor, officiating. Burial was in Littlefield Memorial Park under the direction of Hammons Funeral Home.

Mrs. Chisholm was a Snyder, Oklahoma native and had been a resident of Littlefield since 1915. She married Chisholm September 17, 1951 in Clovis, New Mexico. She was a Baptist. Chisholm was a Littlefield native, a welder and a U.S. Navy veteran.

Survivors include two sons, Norman, Jr. of Littlefield and Shawn of Dumas; a daughter, Debra of Littlefield and six grandchildren.

Mrs. Chisholm's survivors also include her mother, Alma Buckner of Lubbock, six brothers, Buddy Buckner of Muleshoe, Bill Buckner of Fort Worth, Lyndell Buckner and Gary Buckner, both of Hamilton, and Sam and Jake Buckner, both of Lubbock; four sisters, Martha Reindal of Scarville, La., Beverly Hicks of Ventura, California and Anne Hodges and Dandra Gorrell, both of Arlington.

Chisholm's survivors also include a sister, Gwenda Collier of Tivoli; and two brothers, Gerald and Mike, both of Sunray.



YOUTH FEATURE FOR CRUSADE....Dr. Vernard Johnson, a well-known young sax player in the ministrations of music, will be guest speaker and musician for the "Encounter Crusade" youth night scheduled Tuesday, August 2 at 7:30 p.m. in the High School Auditorium. Johnson is a seasoned veteran of television and has also made many guest appearances in the international ministry. His program on Tuesday will be directed to the youth and all are encouraged to attend.

Gas Decontrol Can

Cause Loss In Taxes

State Comptroller Bob Bullock today said he has asked the Texas congressional delegation to take a close look at proposed changes in federal natural gas policy that could cost the state more than \$100 million in lost natural gas production tax revenue.

The nation's largest gas producer, Texas produced more than six trillion cubic feet of gas last year and the state collected more than \$1 billion in natural gas production taxes.

Bullock sent a report to Texas congressmen showing the Reagan Administration's gas decontrol proposal could cost the state \$56 million in lost gas production taxes during the next two budget years and about \$42 million the year after that.

"Efforts to eliminate some natural gas pricing problems are to be commended, but no one wants to cut off an arm to cure a hangnail," Bullock said.

Bullock said decontrol is a complex and complicated

issue and its impact on Texas gas producers and consumers has not been presented to Texas congressional leaders.

Bullock said that his report indicates Texas gas customers would not benefit significantly from the Reagan Administration proposal.

"A second major proposal to deregulate natural gas, developed by the Senate Energy and Natural Resources Committee, would impact Texas less severely than the Reagan-backed proposal," Bullock said.

"This will be a decision for those who represent Texas in Washington but I felt they needed to have the facts on what would happen when they pressed the voting buttons."

"They've got 'em now," he said.

NOTES--- COMMENTS

The trouble with vacations is that they end too soon.

Olton To Celebrate 75th Anniversary

A major feature of Olton's annual Sandhills Celebration will be a birthday party honoring the 75th anniversary of the town's founding.

As the story goes: "In 1908, William Pulver Soash bought 87,000 acres of the Running water Ranch in Lamb County and resold these lands to northern homeseekers. Among the lands Mr. Soash purchased from Col. Slaughter was a post office named Olton. Arrangements were made to move the post office to Section 35 which was designated as the new town-site. This location was chosen because it was in line for a railroad from Hereford. The railroad, which had already been surveyed and some grading done, never materialized. Later, a railroad did come through Lamb County but it passed through Littlefield.

History shows when Lamb County was organized in 1908, Olton was selected as the first county seat. Throughout the years, Olton faced conflicts with her sister cities in the county for the right to the county seat. In early years,

Springlake sought to become the seat of county government but had just one committeeman to Olton's two and thus lost the fight. Finally, in 1946, voters in the south portion of the county outnumbered those in the northern part and the county seat was moved to Littlefield.

Olton received its name when early settlers were asked to submit proposed names for a post office. The A.B. "Doc" Powells submitted the name of their infant son, Olton, and that name was selected.

Olton's birthday party will feature a giant birthday cake, balloons, an ice cream freeze-off and a "Texas Championship" cook-off.

The Sandhills Celebration will kick-off Friday night with the crowning of the Sandhills Sweetheart. The pageant will start at 8 p.m. in the high school auditorium. All day events for Saturday will include a knife show, an arts and crafts bazaar and an antique tractor display.

Other events for Saturday will start with the Sandhills Half-Marathon beginning near Hart Camp and extending 13 miles to the finish at the town square. The marathon will begin at 8 a.m. and the finish is expected to coincide with the start of the parade at 10:00. A Buckaroo Rodeo will start with the road race at 10:30 and at 11:30 the Olton Chamber of Commerce will begin serving barbecue sandwiches for lunch. Other morning events will include the Cow Chip Throw and the Watermelon Seed Spitting Contest.


At 1:00 p.m., events will get under way in the big tent with the welcome and introduction of guests. Competition will reveal the best beard and the champion liar. There will be recognition of Olton's pioneer families and the presentation of awards. A horse-shoe tournament will also begin at 1:00.

At 3:30 a fiddlers contest will take place in the tent

and at 4:30 a goat roping will get underway on the south side of the square. Olton's Young Homemakers will serve a hamburger supper from 5:30 to 7:30.

At 6:00 p.m., the Texas State Championship Calf Fry Cook-off will take place on the square and judging for the ice cream freeze-off will begin at 7:00. Olton's birthday party will start at 7:30 with the presentation of a giant birthday cake. At 8:30 the streets will be roped off and the square dance will begin to the lively calling of Bob Graham of Clovis, New Mexico.

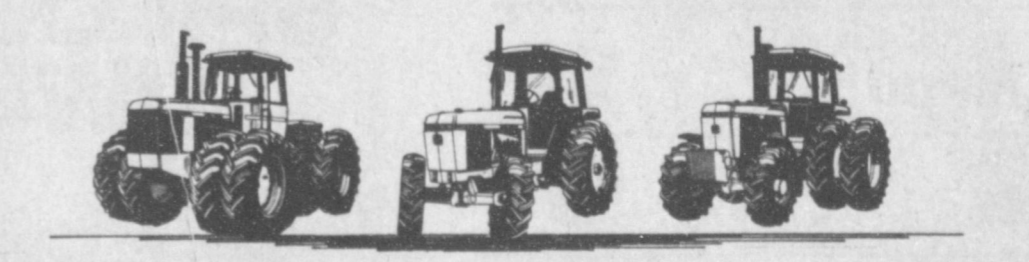
The three day event will close Sunday morning with a community wide church service under the big tent at 11:00 a.m. followed by "dinner on the grounds" at 12:00. Anyone wishing to participate in any of the scheduled events, including the crafts booths, may contact Lois Brimhall at the Chamber of Commerce office (phone 806-285-2292) for more information.



summer bonus

BONANZA

Big introductory cash rebates up to \$8,200 on new 50 Series John Deere 2WD and 4WD tractors...plus finance waiver to March 1, '84



Pick the power size that'll boost your farming efficiency through the 1980s from the lineup below. Check the big cash rebate John Deere offers on that model. Combine that amount with the offer we'll make and the price of a John Deere 50 Series competes with other makes that don't offer comparable quality, durability or resale value.

On top of that, look at the even bigger introductory rebate John Deere offers if you equip your 50 Series 2WD with MFWD. You'll save money when you buy MFWD; you'll save fuel when you work MFWD.

To make buying now a practical matter, consider this offer: Finance your new 50 Series with John Deere (your trade-in may cover the downpayment), and finance charges will be waived to March 1, 1984! Or consider leasing, with discounted lease payments giving you a value comparable to that of the waiver of finance offer.

Now's the time to choose from the 15 models listed here. Get the new tractor you want while these John Deere cash rebates are still in effect.

Model	Rebate on Purchase, 2WD	Rebate on Purchase, 2WD w/MFWD**
40-hp 1250	\$ 900	\$1,200
45-hp 2150	1,150	1,450
50-hp 2255	1,075	N/A
55-hp 2350	1,150	1,600
65-hp 2550	1,600	1,900
75-hp 2750	1,450	1,800
85-hp 2950	1,700	1,900
100-hp 4050	1,400	4,000
120-hp 4250	1,500	4,000
140-hp 4450	1,600	4,000
165-hp 4650	2,000	4,000
190-hp 4850	2,200	4,000
185-hp 8450		\$5,700 (4WD)
235-hp 8650		6,400 (4WD)
300-hp 8850		8,200 (4WD)

*Availability of John Deere financing subject to approval of credit. Leases not eligible for cash rebates.
**This rebate is not an addition to "Rebate on Purchase, 2WD" (left). These offers may be reduced in value or withdrawn at any time.

Best Hotel Location in Town

Next to New Orleans' Famous French Quarter

We're on world famous Canal Street in the central business district overlooking the mighty Mississippi River, opposite the Convention Center and next to the exciting historic French Quarter with its sidewalk artists, famous restaurants, antique shops, naughty Bourbon Street and all that jazz.

Just minutes from Louisiana's unrivaled Superdome and 20 minutes from International Airport via Interstate 1-10.

Excellent accommodations and service at reasonable prices await you at the first class International Hotel...375 handsomely appointed rooms and suites, color TV, fingertip climate control, great restaurants and lounges, pool, valet parking, airport transportation...everything!

The International Hotel is "the place" to stay in romantic New Orleans...one of the world's most unique cities...debonair, pleasure-loving, with a live and let-live philosophy. New Orleans hasn't forgotten her European heritage, nor has she abandoned the flavor of the Old South.

You'll love New Orleans and she'll love you right back.

FAMILY PLAN
(UP TO 4)
\$48
JUNE 15-SEPT. 15
Subject To Availability

INTERNATIONAL HOTEL
300 Canal Street, Now Orleans, Louisiana 70140
For Reservations Call Toll Free: Louisiana, 800-662-1930
United States, 800-535-7783

Dent-Rempe, Inc.

1516 W. Amer. Blvd. 272-4296

Beef Cattle Session On Genetic Improvement Options

Among many other things, America is blessed with the most diverse population of beef cattle found anywhere in the world. Name it and we have it, or we can try to breed it.

Fortunately, among these breeding stocks are some of the most productive cattle ever to graze the earth. Yet, some of the poorer cattle are found on our ranges as well.

A major problem facing the beef cattle industry is to sort out the most useful cattle and place them into effectively designed genetic programs, says Dr. Marvin Koger, professor of animal science at the University of Florida and one of the industry's most respected animal geneticists. Another major problem to be addressed by cattlemen, Koger

points out, is how to best utilize the major breed groups in genetic problems in order to maximize efficiency of beef production in sustained commercial programs.

Koger will discuss several genetic options designed to counter those basic industry problems during beef cattle sessions at the International Ranchers Roundup (IRR) August 1-5 in the San Angelo Convention Center. He will also present his ideas of the best breed combinations in producing crossbred dams as developed by observations and research. Registration information is available from the San Angelo Convention Bureau (915/653-1206).

Koger says a three-breed terminal cross calf from an

F-1 dam is theoretically the ultimate in crossbreeding since the 3-breed calf is heterozygous at all loci and has an F-1 dam. This maximizes heterosis in both cow and calf. Koger points out that from a practical point of view F-1 replacement heifers are expensive and generally difficult to acquire. Further, the F-1 females frequently are generated in an environment different from where they are to be used, generating cost in movement and getting them adjusted to the area where they are to be utilized as dams. He knows of only one commercial operation that has successfully maintained a three-breed terminal cross over a substantial period of time.

Koger also likes a two-breed-of-sire rotation, starting with available females assigned to the

Secret of Stradivari discovered by Texas A&M chemist

COLLEGE STATION—The secret of quality violin making—lost since the time of Stradivari and his Italian colleagues—may have been rediscovered by a Texas A&M University chemist.

Dr. Joseph Nagyvary has developed a wood preservation process that he believes duplicates the effects of formulas Stradivari, Guarneri and others used in making their violins in the 17th and 18th centuries. Although less well known, Guarneri's instruments are even more remarkable than Stradivari for their tone quality, he said.

Nagyvary, professor of biophysics and biochemistry, formulated his process after analyzing a piece of a Guarneri cello under an electron microscope.

He has an agreement with master craftsmen in China and Cremona, Italy, to craft violins from wood treated with his preservation process. Nagyvary carves the inside of the instruments himself.

The instruments have been played by and received high praise from members of the Cleveland String Quartet, he said. Equally as important as their tone quality, Nagyvary's violins are affordably priced at \$2,000-\$5,000. A Stradivarius can cost \$1 million.

You can get into trouble by repeating what you heard someone say.

breed of sire where they best fit. Thereafter, daughters of breed Z sires are mated to A bulls and daughters of A sires are mated to Z bulls. He says the only inconvenience associated with simple two-breed-of-sire rotational crossbreeding is that cows must be sorted into two breeding herds during the breeding season in order to pair cows with the appropriate breed sires.

Most philosophical discussion would include three breed-of-sire rotations. Yet, in his opinion, a three breed-of-sire rotation generally will result in no more hybrid vigor than the right two-breed rotation and is more difficult to manage.

A final alternative, a return to upgrading, utilizes available females mated generation after generation to sires of the preferred breed. Although now not a popular system, Koger believes it still has merit for many situations.

The Ranchers Roundup speaker says achievement of real genetic improvement in straightbred cattle is a slow painstaking process. Making the best use of the genetic resources already at our disposal, however, is another matter.

Through simple sustained crossbreeding programs, production efficiency can be increased by plus or minus 25 percent. He notes this can be achieved just as rapidly as crossbred cows of the right breed combinations are brought into production.

Koger says a companion management practice to systematic crossbreeding should be to eliminate all open cows at weaning time and replace them with a heifer. He emphasizes that this practice will do more than all other strategies combined to improve production efficiency in a commercial cow herd. And what's wrong, he asks, with a set of cows, each of which has weaned a good calf every year of their productive life?

Koger will also appear in the special "discussion session" which is designed to place IRR speakers in personal contact with participating ranchers for more in-depth discussions.

Government, unions to blame for high unemployment

COLLEGE STATION—America's unemployment problems are largely due to workers who have priced themselves out of jobs, says a Texas A&M University economist.

"In a nutshell, labor is overpriced in certain industries and that has resulted in high unemployment levels," said Dr. Morgan Reynolds.

Sustained, massive unemployment has resulted because wages have been influenced more by government policies than by free market competition, Reynolds said.

"Governments, and their coercive offspring—labor unions—prevent competitive pricing," he said. "They are the major causes of unemployment."

The economist said unemployed people aren't finding jobs largely because the work force has overlooked the principle that pricing must please both buyers and sellers before transactions occur.

It's not very difficult, in hot weather, to feel too tired to work.



WHO KNOWS

1. What causes oil from oil wells to flow upward?
2. What does habeas corpus mean?
3. What is the study of weather conditions called?
4. Three presidents were born in August. Name them.
5. Name the flower for the month of August.
6. What is the August precious stone?
7. When was Colorado admitted to the U.S.?
8. What is a williwaw?
9. On what day was the Korean Armistice signed in 1953.
10. When did WAVES first join the Navy?

Answers to Who Knows

1. Gas pressure from inside the well.
2. A Latin phrase, meaning literally: "You may have the body."
3. Climatology.
4. Benjamin Harrison, Herbert Hoover and Lyndon Johnson.
5. Poppy or gladiolus.
6. Sardonyx or Peridot.
7. August 1, 1876.
8. A violent, cold wind blowing from mountains to coast in far north or south latitudes.
9. July 27.
10. July 30, 1942.

There're too many leaders who would rather be smart than be right.

Legislation is not the cure for every economic and social ill.

Overpaid Veterans To Get "Due Bills"

Some 850,000 veterans who have been overpaid for GI Bill education benefits will receive letters from the Veterans Administration advising them of new statutes affecting money owed the government.

Some 42,000 letters per day will be mailed from the Centralized Accounts Receivable Section (CARS) of VA's St. Paul Regional Office. Similar ones are scheduled for veterans who show overpayments in compensation, pension and loan guaranty defaults.

The mailing to start July 19 is the second in a series of steps taken by VA in response to a Congressional mandate to intensify collection of \$954 million owed in some 1.3 million accounts. Amounts owed range from several thousand dollars to as little as five dollars. Some of the accounts are more than 10 years old.

In the first three months following the first mass collection effort in January, VA received \$24 million, almost double the normal amount for that period. This month's mailing to veterans who have ignored their overdue obligations will advise that annual interest on their balance will be charged at 15.05

percent. Legislation enacted in 1980 (Public Law 96-466) authorized interest charges in such cases at the rate charged by the Treasury during fiscal year 1982. While that rate is reviewed each year, the initial rate assigned to an account remains unchanged while the debt is outstanding.

Veterans are advised that the interest cost can be avoided by remitting the full amount due within 30 days of the date of the letter. Those unable to repay in full are advised to submit a partial together with a proposed repayment plan. If no repayment plan is submitted within 30 days, an administrative fee of 61 cents is added monthly in addition to interest. Those who have established repayment plans won't be charged interest and administrative costs unless the account becomes delinquent.

All repayments are to be made to CARS in St. Paul. A remittance form is provided with each letter. Local VA regional offices can assist in explaining such repayment procedures, but all of the delinquent accounts are maintained in St. Paul.

DOES YOUR STORE LOOK LIKE A HAUNTED HOUSE?

Chase the ghosts of inflation and bring back money-spending customers by advertising now in...

Muleshoe Or Bailey County Journals

CALL DISPLAY ADVERTISING TODAY

272-4536

Our sales representative is ready to serve you.

SHOOK

TIRE & SERVICE

MICHELIN

\$29⁹⁵

145-12
Blackwall
FET: \$1.16
EXCHANGE
FET: \$1.16- 2.96

MICHELIN
LIGHT TRUCK TIRE

\$119⁹⁵

750R 16 XCA
TL 8 Ply
FET: 14.54

Size	Price
P155-13	27.00
P185-14	38.00
P195-14	39.00
P205-14	42.00
P215-14	44.00
P205-15	43.00
P215-15	45.00
P225-15	47.00
P235-15	49.00
FET: \$1.53-3.01	

PEACE OF MIND

Battery 24 Month

- Group 24
- 300 Cold cranking amps
- 45 Amp hours
- Hard rubber case
- 42 Plates

\$29.95

Plus exchange battery

CUSTOM Wheels
As Low As \$25

ROBERT D. GREEN, INC.

2400 West American Blvd.
MULESHOE, TEXAS 79347

DAEWOO — BUICK — PONTIAC — GAC

TERRY YELL
Sales Representative

Business Phone
806 272-4588
505 762-2772

Home Phone
806 272-4948

PEACE OF MIND

TIRE SERVICE CONTRACT

- Covers all road hazards
- Free replacement*
- Free safety check
- Free mounting

*WITHIN FIRST 10% TREAD WEAR

Steel Belted Radial

Whitewall

\$27

P155-13
FET: \$1.53
Exchange

PEACE OF MIND

Complete Road Hazard Protection

Prices good through August 6, 1983

FREE MOUNTING!

301 North First • 272-3420
Manager: Don Taylor

Rural Appraisal Course Announced

Individuals interested in learning about rural appraising can register for a weeklong course at Sam Houston State University this summer.

"Basic Principles of Rural Appraising," a comprehensive introductory course will be offered Aug. 14-20. The course is a cooperative venture between Sam Houston State University and Texas A&M University, with participants eligible for continuing education units from Texas A&M.

"The course is designed to give beginning appraisers some basics in rural appraising," says Dr. James Ahrenholz, economist with the Texas Agricultural Extension Service, Texas A&M University System, who is coordinating the course.

Included are such topics as "Principles of Real Estate Value," "Area and Neighborhood Analysis," "Site Analysis and Evaluation," "Soils and Appraising," "Field Procedures" and "Administration, Legal and Ethical Considerations."

"This course is approved by the Texas Real Estate Commission for educational requirements toward licensing and by the Board of Tax Examiners toward professional accreditation."

notes Ahrenholz. "It also is approved for credit toward Accredited Rural Appraiser (ARA) designation."

Fee for the course is \$100 and includes all course materials.

Additional information or application forms are available from Paula Tallant, Scheduling and Service Office, Rudder Center, Texas A&M University, College Station, TX 77843; (409-845-1311). Registration will be on a first-come, first-served basis.

Course sponsors in addition to SHSU, TAMU and the Extension Service are the Texas Society of Farm and Ranch Managers and Appraisers, Texas Chapter of the American Society of Farm Managers and Rural Appraisers, and the Texas Real Estate Research Center at Texas A&M.

A&M officials report all imported macaws are alive and well

COLLEGE STATION—Veterinary doctors have reported to Texas A&M University President Frank Vandiver that not a single Bolivian macaw parrot has died or become ill since more than 150 of the birds were shipped here for study at the university's veterinary school several months ago.

After attending a special briefing and touring bird-holding facilities, Vandiver said he was pleased and impressed with the way Texas A&M's veterinary school is conducting the privately funded program, which would improve the way jungle birds are captured, handled and transported and cut down on the number of deaths.

Dr. Vandiver said he wished all concerned conservationists could see the macaw activity. "I believe they would regard it as a model program," the Texas A&M president declared.

The research program does not increase in any way the number of parrots and other exotic birds that would be shipped from Bolivia otherwise, officials explained.



JULY BIRTHDAYS....The Needmore Community Club helped members of the Nursing Home celebrate birthdays on Thursday. (L to R) Maggie London born July 15, 1902; Alma Henley born July 1, 1898 and Alta Tyler, born July 4, 1904. Music was provided by Mrs. J.C. Shanks.

Oil - Production - Rate Set

The Railroad Commission today set the Texas oil production rate for August 1982 at the market demand factor of 100 percent for the 78th month in a row and the 134th time since the Commission first went to the ceiling level in April 1972.

Chairman Mack Wallace and Commissioner Jim Nugent directed the continuation of the maximum statewide allowable after receiving and reviewing purchaser nominations for Texas oil in August totaling 2,454,718 barrels per day, an increase of 629 barrels daily when compared with July buyer requests. August 1982 nominations totaled 2,474,041 barrels daily.

Next month's permissible rate of output is calculated to average 2,893,959 b/d with actual production estimated at 2,355 million b/d. The maximum allowable applies to all but 10 fields in Texas that are assigned lower legal rates of

flow for conservation purposes. Actual production in August 1982 was 2,359,564 barrels daily.

Wallace reported that August 1983 nominations for the purchase of Texas gas totaled 18,878,070 Mcf/d (thousand cubic feet per day). Gas nominations for July amounted to 18,777,756 Mcf/d. August 1982 gas nominations totaled 22,022,381 Mcf/d.

The next statewide oil and gas hearing will be held Thursday, August 18, at 9 a.m. in Room 107 of the Railroad Commission headquarters building in Austin at 1124 S. IH 35.

Major purchasers filed these floor nominations for Texas oil in August: Amoco Product Co., 165,000 barrels daily, down 2,000 from the previous month; Chevron U.S.A. Inc., 42,650, unchanged; Citgo Petroleum Corp., 74,000, unchanged; Conoco, 64,000, up 4,000; Exxon, 275,200, down 1,500; Gulf Oil, 103,000, unchanged; Mobil,

172,000, down 2,400; Phillips Petroleum, 72,100, up 100; Shell Oil, 162,000, down 800; Texaco, 88,000, down 1,000.

Significant changes in August nominations were submitted in writing by these purchasers of Texas crude oil:

American Petrofina Co. of Tex. 13,600, down 1,500; Geer Tank Trucks, Inc., 8,910, down 1,112; JM Petroleum Corp., 31,277, up 1,702; Matsdor Pipelines of Texas, Inc., 68,251, down 1,432; P & O Falco, Inc., 18,114, up 1,196; Sun Refining & Marketing Company, 87,725, up 10,900; Tesoro Crude Oil Company, 34,508, down 1,009.

Chairman Wallace reported that crude oil and petroleum products imported into the U.S. averaged 4,891,000 barrels daily for the four weeks ending July 1, down 381,000 barrels from the same period a year earlier.

Three Way News

By Mrs. H.W. Garvin

Mr. and Mrs. Rayford Masten spent Thursday in Stamford visiting her father Clarence Benton.

Friday evening Miss Mery Jo Dupler and Bobby Sinclair exchanged wedding vows at the Three Way Baptist church with Rev. Robert Edwards cousin of the bride officiating. The

Ford Funeral Rites Held Here Monday

Cecil Wayne Ford, 44, a former resident of Muleshoe, died on Sunday, July 24, in a hospital at Hobbs, N.M. following a lengthy illness.

Funeral services were conducted in Hobbs on Monday, followed by graveside services at Bailey County Memorial Park in Muleshoe.

He was born August 15, 1938 at Antlers, Okla. and moved to Muleshoe in 1943 from Oklahoma. While living here, he was in the restaurant business with P.Q. and Ruby Stickney and worked for the U.S. Post Office and the Santa Fe depot.

He later moved to Ruidoso where he operated Cecil's Cafe before moving to Hobbs, where he was employed by Halliburton at the time of his death. He married LaVon Black in Muleshoe in 1959.

Survivors include his wife, LaVon; a daughter, Lanita Kay and a son, Ricky Wayne, both of the home; his mother, Ruby Stickney of Muleshoe and a sister, Betty Moore of Earth.

The reason people have so few friends is that they think a friend should give them something for nothing.

couple will reside in Monahans where the groom works.

Mr. and Mrs. S.G. Long visited Mrs. H.W. Garvin Thursday evening.

Several in the community attended the Muleshoe Co-op elevator dinner and meeting Friday evening.

The Three Way Baptist had lunch at the church after Sunday morning services.

Mrs. Kenneth Fox from Clovis attended the wedding of Mery Jo Dupler and Bobby Sinclair Friday evening and spent the night with her mother Mrs. H.W. Garvin.

The Gospel services at the Maple Church of Christ was well attended with the people having lunch at the park in Morton and singing at the church in the afternoon.

Mery Ann and Melissa Toombs from Muleshoe spent the weekend with their grandparents the H.C. Toombs.

Rev. and Mrs. Jack McCarty and children from Wyoming are visiting her parents the Joe Sowders.

Mr. and Mrs. Roy Miller and Mrs. Clay Miller from Oklahoma spent the weekend with Mrs. Minnie Dupler and Mr. and Mrs. Bill Dupler and attended the wedding of Mery Jo Dupler and Bobby Sinclair.

Brian Green from Shallowater is visiting his grandparents the Jack Fergusons.

German document project suffering from lack of funds

COLLEGE STATION—The German Document Retrieval Project at Texas A&M University is a victim of the temporary oil glut that has shut down the synthetic fuels program, says the leader of the stymied program.

Through the unique project, researchers at Texas A&M were attempting to make available World War II records pertaining to the production of synthetic fuels with the goal of helping reduce U.S. energy dependence on imported petroleum.

Funds for collecting, cataloging, abstracting and indexing of the documents are no longer available, said Dr. Kurt Irgolic, professor of chemistry and principal investigator of the project.

Tons of German documents that were captured after World War II contain technical information about the German synthetic fuel industry including detailed plans for synthetic fuel plants.

Regardless of who is to blame, relying on petroleum-based fuel puts the United States in a vulnerable position, he said. "The problem is dependence on imports—specifically from regions of the world not characterized by stability. Suppose the Russians move into the Middle East and shut off our supply of oil from there. That would mean a shortfall of 30 percent or 4 million barrels a day," he said. Past embargoes from those countries which caused long lines at gas stations around the country were caused by a shortfall of only a few percent, Irgolic said.

Few smokers believe that tobacco does them any harm.

John Kingman M.D.

Announces The Opening Of His Professional Office At

2508 N. Prince - Clovis

(Temporary Address) 763-5555 Practice Of Dermatology

A&M
FARM AND RANCH SUPPLY
OPEN ALL DAY SATURDAY

Prices Effective Thru Aug. 3rd

LAWN MOWER SALE

CLOVIS
2600 E. Mabry Drive
PORTALES
1601 S. Ave. D
MULESHOE
1200 W. American Blvd.

Murray 21" Self-Propelled Lawn Mower
249⁹⁵
21" cut. Deluxe height adjuster. 4 hp engine. Engine shroud with oil fill extension.
Model 3-21951

Murray Electric Start Lawn Tractor
\$ 999
* 36" cut. * 11 hp Synchro-balanced engine * 5-speed in-line shift transaxle. * Full floating deck.
* Adjustable cutting heights from 1 1/2" to 4 1/2"

Murray 22" Self-Propelled Lawn Mower
189⁹⁵
3.5 hp. engine. Fully baffled deck 8" cog tread wheels. Deluxe height adjusters. Fixed box style handle.
Model 3-21951

Murray 22" Lawn Mower
149⁹⁹
3.5 hp engine. Tunnel style deck. 7" diamond tread wheels. Economy height adjuster. Fixed "A" loop handle.
Model 3-22351

MTD Rear Discharge Tractor
\$ 999
8 H.P. with 26" cut. Electric start.
Model 133-526

Murray 21" Lawn Mower
239⁹⁵
Self-propelled (cog drive), deluxe height adjusters. 3.5 hp engine, folding box style handle.
Model 3-21951

Murray Side Mounted Grass Catcher
18⁹⁹ Our Reg. Price

JACOBSEN® LAWN KING™
248⁹⁵ 21" Cut
* Convenient on-handle Command Control™ system.
* Briggs & Stratton engine.
* Heavy-gauge steel deck, fully baffled for better discharge.
* Quick change wheel height adj.

Jacobsen® Super Bagger™
279⁹⁵
* 3.5 hp rear bagger.
* Large reinforced 3-bushel capacity.
* Powerful Briggs & Stratton engine.
* Convenient on-handle Command Control™ system.
Model S-21

Jacobsen® Super Bagger™
323²⁵
* Large reinforced 3-bushel rear catcher.
* Powerful Briggs & Stratton engine.
* On-handle Command Control™ system.
* Rust-resistant die-cast aluminum deck.
S21E

