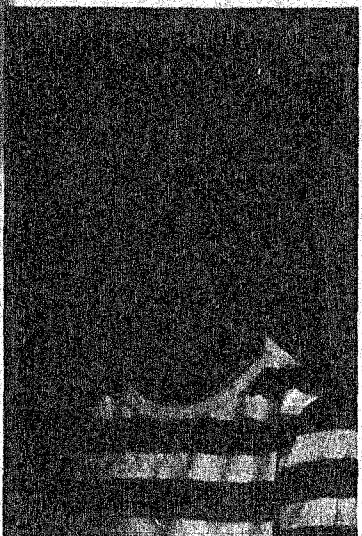
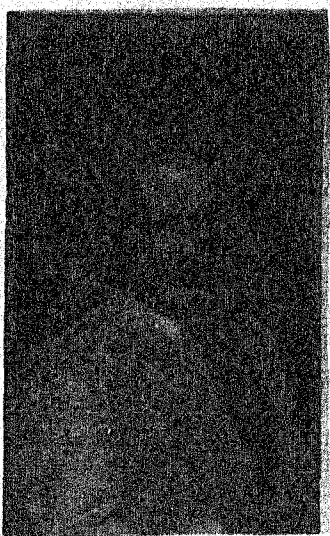


# Santa Anna News

## CHRISTMAS PAGEANT ENTRIES TO DATE



Shamey Brand and Corey Brown



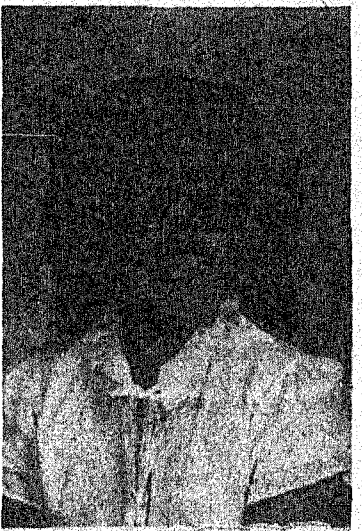
Jetta Rutherford



Jodi Watson



Rachel Phillips



Tai Musick and Glen Donham



LeAnn Musick



Taffy Rutherford



Missy Bryce

The Delta Omicron Chapter of Epsilon Sigma Alpha wants to remind everyone the Christmas pageant will be held on Sunday, December 2nd at 1:00 p.m. in the high school auditorium.

There will be a rehearsal on Saturday, December 1, at 10:00 a.m. at the auditorium. Money will be turned in at the rehearsal and the sorority will set out the jars at the door Sunday for last minute votes.

There is no deadline for entering the pageant; but for your picture to appear in the paper it must be given to Bernidine Watson at City Hall by Friday, November 23rd.

Admission will be \$1.00 for adults and .50 cents for children. Remember the proceeds go to help local people and St. Jude's Hospital for Children, so please help support our pageant.

Entries and escorts at this date are: Anna Pearce and Kenton Brixey in the pre-school division; Melissa Stark and William Loyd, Shamey Brand and Corey Brown, Tina Compton and Larry Moody, Sandi Watson and Shane Watson, and Tai Musick and Glen Donham in the first through fourth grade division; Taffy Rutherford and Lawrence Langford, Jody Watson and Scotty Anderson, Missy Bryce and Chris Bryce, Rachel Phillips and Jacky Duquette, and LeAnn Musick and Rhett Guthrie in the fifth through eighth grade division; Jetta Rutherford and Wesley Crye, and Melissa Buse and Shelby Tuttle in the ninth through twelfth grade division.



Sandi Watson and Shane Watson



Anna Pearce and Kenton Brixey



Melissa Stark and William Loyd



### Food Show Winners

The Coleman County 4-H Food Show was held Saturday, November 11 from 12:30 to 3:30. Fifty nine 4-H members participated in this Foods Show. Junior Leaders Marcie McDonald and Shana Ehrler presided over the 4-H Awards Program.

Winners were selected in four categories which include Breads and Cereals, Fruits and Vegetables, Main Dish and Nutritious Snacks and Desserts. A Junior and Senior Winner and alternate were named in each category. Also, a high point Junior and Senior winner were selected for 4-H project records.

4-H Records Winners include Doug Gilder, Senior, and Alicia White, Junior. These two 4-H members received a microwave cookbook from the Coleman County Electric Cooperative.

Winners in the 4 categories include: Bread and Cereals—Shellah Vaughn, alternate to district, junior; Staci Pinkerton, junior; and Marcie McDonald, senior. Fruits and Vegetables—Ranee Merriam, alternate to district, junior; and Allison Scott, junior. Main Dish—Alicia White, alternate

to district, junior; Shanna Ehrler, junior; Shana Papasan, alternate to district, senior; and Racie Calfy, senior.

Nutritious Snacks and Desserts—Misti Hubbard, alternate to district, junior; and Amy Rhoads, junior.

Coleman Bank provided two \$35.00 savings accounts to the Junior high point winner and the senior high point winner. These were Allison Scott, junior, and Marcie McDonald, senior.

Coleman County Electric Coop provided a cookbook to the runner up high point junior and senior winners. These were Staci Pinkerton, junior, and Racie Calfy, senior.

Other participants were awarded red and blue ribbons.

### City Notes

Monthly cheese and butter allotments will be in Tuesday, November 27. Please pick them up as soon as possible after that time.

The city hall will be closed on Thursday for the Thanksgiving Holiday.

Citizens who normally have their trash picked up on Thursday will have it picked up on Friday morning this week due to the holiday. Normal Friday pick up will be on Friday afternoon.

### WTU Rate Increase Effective

New rates for West Texas Utilities Company customers became effective Friday, November 16, by order of the Public Utility Commission of Texas.

The Commission earlier had approved a settlement agreement reached by WTU, the intervening cities and the PUC staff. The agreement gives WTU an annual base rate increase of about \$12.4 million and a fuel charge decrease of about \$13.3 million. This would result in a net decrease in revenue for WTU, to allow for an expected decline cost of boiler fuel during the coming year.

The new rates, which include a winter-summer differential, will raise average residential rates by about 4.2 per cent. The rates will be slightly lower than current rates during the November-April period, but higher during the rest of the year. This feature was insisted upon by the PUC staff to encourage conservation during the peak usage months.

Bills for all electric meter readings recorded after Friday will reflect the new rates, according to Holman King, WTU vice president and director of corporate relations.

## HAPPY THANKSGIVING

### From The Santa Anna News Staff

Our office will be closed on Thursday, November 22, in observance of the Thanksgiving Holiday.









Thursday, November 22, 1984

# Mountaineers BASKETBALL SEASON BEGINS

The 1984-85 Lady Mountaineers are looking for another successful campaign. The ladies return four starters from last year's 23-4 team. Gone is last year's leading scorer, Connie Culpepper, but a wealth of talent returns.

Three of the returnees are seniors and all were starters last year. Yolanda Kirven was last year's leading rebounder (9.7), had the best

field goal percentage (44.1) and was the second leading scorer (9.6). Brenda Jackson had the highest free throw percentage (88.8) and was second in steals (3.0). Lesha Eubank returns as a point guard and a playmaker. Although she does not lead any of the statistical categories, Lesha will be floor captain and will be responsible for controlling the tempo of the game. The fourth returning starter is a junior, Deveda

Bible. Deveda has the second highest totals of the returners in scoring (4.8) and steals (4.6).

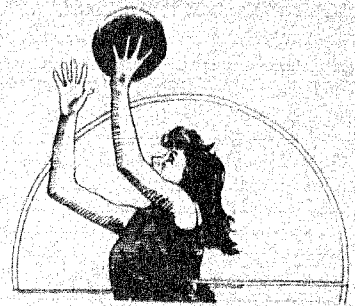
Three other lettermen return to add strength and depth to this year's squad. Dilcy Kirven (junior), Melissa Buse (sophomore) and Irma Castillo (sophomore) all figure to play important roles on this year's squad. Diana Castillo, a freshman, is the eighth player on the varsity.

The 1984-85 Junior Varsity players are Cathy Baxter (junior), Bertha Garza (sophomore), Shanna Hensley (sophomore), Leslie Martin (sophomore), Carmen Banda (freshman), Becky Lewis (freshman) and Patricia Taylor (freshman).

Coach Freeman commented, 'We have a good group of girls and I am looking forward to a successful season. This group of girls has been well coached. We will try to stay with the basic philosophy that has been successful for them. There are some little things that I want to add as we go along. I feel these will com-

pliment our basic style of play and add to our attack.'

In Thursday's scrimmage at Priddy, the varsity girls were outscored 42-19. Nadine Tiemann, an All-Stater, led Priddy with 28 points. Dilcy Kirven was the leading scorer for the Lady Mountaineers with 8. The JV contest was also won by Priddy, 23-18. Diana Castillo had 8 points and Leslie Martin 7.



## Bright Red Berries

by John Frederic

Cranberries have been known and used for a long time. One of the favorite foods of the Indians in what is now New England was pemmican. Pemmican was made of cranberries, deer meat, and fat. The Indians also dyed their blankets, clothing, and rugs with the bright red

juice of cranberries.

The Pilgrims learned about cranberries from the Indians. They probably ate cranberries with their turkey at the first Thanksgiving feast.

Cranberries went around the world in sailing ships. Sea captains used to take a barrel of them in fresh water to be served to the crew with their regular food. Cranberries are full of vitamin C. They helped prevent scurvy, a disease caused by the lack of vitamin C.

So, when you eat your Thanksgiving dinner, remember that cranberries don't just taste good. They're also good for you!

James, Cindy and Chrystal Pelton would like to announce the birth of their newest family addition. Jennifer Leah Pelton was born Thursday, November 8, 1984 at 2:21 a.m. in the Brownwood Regional Hospital. Jennifer was 6 lbs. 4 oz. and 19 inches long.

She is the granddaughter of Mr. and Mrs. D. D. Wright of Santa Anna, Mr. and Mrs. James F. White of Waco, Mr. and Mrs. Jack Pierce of Roton, New Mexico, Mr. and Mrs. Dan Pelton of Alpine, Texas. She is the great-granddaughter of Mr. and Mrs. Robert Robinett of Santa Anna, Mr. and Mrs. A. C. Pierce of Santa Anna, Mr. and Mrs. C. E. Cowder of Dallas and Audrey Wright of Santa Anna. She is the great-great-granddaughter of Mrs. L. V. Cope of Coleman and Mrs. Dallas Robinett of Santa Anna. Welcome Jennifer!

## R.E. Horner Real Estate

625-5625 or 348-3715

**PRICE REDUCED** on 2 BR 1 Bath Brick carpeted, extra nice, lots of storage. Fenced in corner lot come see this one & make an offer walls & 6th.

**COUNTRY LIVING IN TOWN** 3 BR house on 2 large lots, C/W/A Fireplace, price to sell.

**Price Reduced** 3 BR Bath 1 1/2 Bath on 2 large lots 14.70 ac. Nice trees tank game.

16.87 ac. near santa anna lake good hunting.

303.8 ac. 1/2 min, good hunting, you need to see this one.

### Card of Thanks

Our sincere thanks to our many friends who were so thoughtful and kind to us during our bereavement.

THE FAMILY OF  
MRS. J. L. McCAUGHAN

H-25928-47-47-11c

### Miscellaneous

NEW AND USED furniture, antiques, at Traps Trading Post, 402 N. Colorado, Coleman. We're a U-Haul dealer, too. 35-11c

Place your orders now for wooden gifts and toys for Christmas giving. PAUL'S WOODCRAFT. Call 348-3260.

B-25907-44-47-47p

We would like to express our sincere appreciation for all of the cards, calls, prayers, floral offerings, donations, food, visits and other acts of kindness during the illness and at the death of our Mother and Grandmother. A special thanks to the ladies who sat and or helped in any other way during her illness. Also a special thanks to Bro. Steven Ramsdell.

THE CHILDREN & GRAND-CHILDREN OF  
OMIA LEE DOCKERY  
JOHN, EARLENE & CHILDREN,  
RAY (TINKER), BARBARA & CHILDREN

D-25928-47-47-11c

### Real Estate

FOR SALE  
2 BEDROOM AT 606 AVENUE C  
\$6,900.00  
Call after 5 p.m. 643-1455.

T-25921-46-47-28p

HOUSE FOR SALE BY OWNER  
3 bdrm, 2 bath double wide mobil home. Two lots, fenced backyard. 1507 Avenue B. Call 348-9217.

B-27494-42-47-81p

### Services

#### AUCTIONEER

Charles Neff, Post 41, Box 14, Brownwood, TX 76801. Phone 915-643-5561, TXS-124-0601. N-27349-28-11c

#### Help Wanted

PART-TIME BOOKKEEPER WANTED

The Santa Anna News has an opening for a part-time bookkeeper. Interested individuals should come by the office at 214 N. Second St. and fill out an application or call Mr. John Laforge at 646-2541.

Federal, state and civil service jobs available. Call 1-619-569-6304 for information 24 hours.

A-27499-44-48-51p

### Services

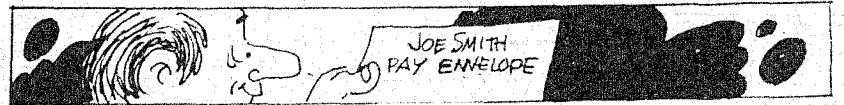
#### MARTIN MEMORIALS

2500 South Commercial  
Coleman, Texas 76834

Quality monuments at reasonable prices.  
625-4927 or 625-3313  
Nights: 625-2438

PAUL'S CARPENTRY  
Additions and remodeling. Free estimates. Call 348-3260.

B-25906-44-51-81p



In total income, U.S. workers earn over \$1 trillion.

# 1984 & 1985 Basketball Santa Anna Mountaineers



### Basketball Schedule

Date	Opponent	Time	Place	Girls	Boys
NOV. 27	Miles (4games)	4:00	Here		
NOV. 29,30,31	Talpa Tourney		There		

Pape Bros  
**Precision Drilling Co.**  
Santa Anna 348-3178

**H & H Food Mart**  
Eddie & Stanley Hartman 348-3148

**Oakes Foods inc.**  
Coleman Texas

**Henderson Funeral Home**  
Santa Anna 348-3131 Coleman 625-2121

**Santa Anna National Bank**  
Santa Anna 348-3108

**Taylor Motor Co.**  
Coleman 625-4111

**Williams Tire Store**  
Coleman 625-5152

**Santa Anna News**  
Santa Anna 348-3545

**Countywide Insurance Agency**  
Coleman 625-4126

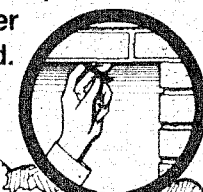
**Tomlinson Transport**  
Tex & Roberta 348-9146

**Coleman County Telephone Cooperative inc.**  
Santa Anna 348-3124

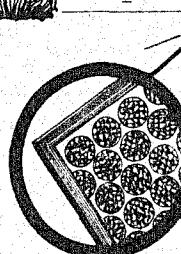
**1st Coleman National Bank**  
Coleman 625-2115

## Help Keep Winter Heating Costs Down By Following These Suggestions

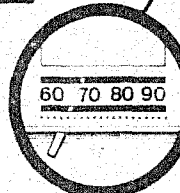
Keep Fireplace Damper Closed.



Open Drapes & Blinds.



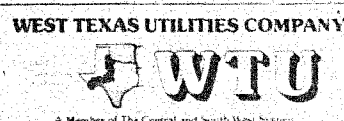
Change Filter Regularly.



Set Thermostat At 68°.

Remember how cold weather caused your energy costs to go up last winter? Well, West Texas Utilities has a few simple suggestions that will help you keep energy costs down this winter.

- Tightly close the damper in your fireplace when you're not using it. The same draft that is needed to help make a fire burn could circulate through your fireplace and pull warm air out of your home.
- Keep drapes and blinds open during the day so the sun's energy can help warm your home. Be sure to close them on cloudy days and at night so they can serve as added insulation against the cold.
- Set your thermostat at 68 degrees or lower during the day. Turn it down at night and even lower when you leave home for any extended period of time. Every degree you lower your thermostat will help to increase your energy savings.
- Check the filter in your heating unit regularly. Cleaning or replacing a dirty filter will often make a difference in your systems performance. Also, make sure air vents aren't blocked by furniture or drapes.



Electricity  
It's the Power  
of Choice.

