

# Santa Anna News

"He Profits Most Who Serves Best"

Single Copy 25 cents plus tax

Volume 102, No. 08

THURSDAY, FEBRUARY 19, 1987

## Girls 2nd In District



BROOKSEMITHS Julie Stratton tries a shot among several Santa Anna defenders, including No. 24 Shannon Brown and No. 42 Rhonda Fleeman. Santa Anna won the District 24-A playoff game 47-38. The Lady Mountaineers faced Irion County this past Tuesday evening at Eden for Bi-District and lost that game 56-36.

## "Farm Bureau Week"

A proclamation signed by County Judge Pete Skelton designates February 16-20, 1987 as, "Farm Bureau Week" in Coleman County.

The week is part of a statewide observance which focuses attention on efforts of county Farm Bureaus to enroll new members, according to John Vance of Coleman, president of the Coleman County Farm Bureau.

Bucky Duvall of Coleman is chairman of the membership committee which will be conducting a membership drive during this period of the year to sign up new members. Working with Duvall on this committee is Bill Martin of Whon Rt., Santa Anna.

The proclamation points out that Farm Bureau is a grass-roots organization of farmers and ranchers which represents agriculture at the county courthouse, in Austin and in Washington, D.C.

"Farm Bureau is financed by voluntary dues," the proclamation reads, "Across the nation, the organization has 3.5 million member families. The Texas Farm Bureau has 323,000 member families in 217 organized counties, including the Coleman County Farm Bureau, which has 1176 members."

The local president said that although Farm Bureau is thought of primarily as an organization that represents farmers and ranchers in legislative and regulatory matters of government, it is also an organization that has activities for the entire family.

Vance said that the Farm Bureau sponsors a number of youth activities, including an annual citizenship training seminar, a public speaking contest on free enterprise, a Miss Texas Farm Bureau competition, and a talent find. Scholarships awarded for winners of these competitions total \$25,000 annually. The FFB also gives \$25,000 annually in scholarships to youths in FFA, FHA and 4-H.

The FFB has several activities for young farmers and ranchers, in-

cluding a competition for the outstanding young farmer-rancher of the year.

The state farm organization is now active in a pilot project to furnish materials for an "Agriculture in the Classroom" educational program targeted at fourth-graders.

The Farm Bureau also has many other programs for its members, including commodity activities, educational activities, and economic services, the county leader said.

## Lawson Sentenced to 99 Years For Shooting Leroy Pollock

(The following was taken from the Austin American-Statesman newspaper dated Saturday, February 14, 1987 and was written by Jerry White of the American Statesman staff.)

AUSTIN—Rolland Lawson was found guilty of murder Friday by a jury that decided he still hadn't told the truth about the death of his business partner.

The state district court jury took less than two hours to decide that Lawson, 47, had murdered Elvin Leroy Pollock, on June 6, 1986.

On the day Pollock disappeared, Lawson said that Pollock had drowned after a boating accident. Seventeen days later—when Pollock's body floated to the surface of Lake Travis with an anchor and rock tied to it—Lawson admitted to killing the man, but said it was self-defense. The two men were partners in Austin Honda at 1831 E. First St.

The jury had to discount Lawson's claim of self-defense to return the guilty verdict.

Lawson testified that after he shot

## Election Deadline Arrives

Candidates for the three races in the City Election had until 5:00 p.m. Wednesday, February 18 to file. Santa Anna City Council seats to be filled in the April 4 election are those currently held by Joe Guerrero, Mayor; J. T. Avants and James Spillman, city council seats.

As of press time on Wednesday morning Joe Guerrero had filed for re-election for the mayor seat. Thelma Brooker had also signed up for the mayor seat and James Ford, Pearl Wilson and James Keeney had signed up for the two at-large council seat positions.

Absentee voting will begin on March 16 and end at 5:00 p.m. March 31. Individuals wishing to vote in person need to vote at City Hall.

## Chamber Banquet Set For March 7th

The annual Chamber of Commerce Banquet has been scheduled for Saturday, March 7, at the School Cafeteria, at 7:00 p.m. Judy Hartman is committee chairman for the banquet with Donna Bradley, Bernidine Watson and Michelle Morgan as her assistants. Theme for the banquet is "Go For The Goal" using a rainbow with a pot of gold at the end representing Santa Anna's goals.

It is hoped to use the Community Band for entertainment, with arrangement to do so to still be arranged.

The menu will include barbecue brisket, beans, potato salad, and all the fixings and cobbler for dessert.

Tickets for the banquet will be \$5.00 per person and will be available at the door.

The Citizen of the Year will be presented at the banquet.

All Chamber members and other interested persons are invited and encouraged to attend the banquet.

The Chamber is also currently in-

## School Board Election Set For April 4

The Santa Anna Independent School District board of trustees has set the school board election for Saturday, April 4th. This action was one of several agenda items attended to at the regular meeting of the board on Monday night. Rose Bass was appointed election judge. School business manager, Judy Hartman was appointed absentee judge.

Polly Warnock and Terry McIver currently hold the two seats up for election. Mrs. Warnock has served 2 three year terms and McIver is concluding his first three year term. Mrs. Warnock has indicated that she will not seek another term. She wishes to express her admiration for the school administration and faculty as well as fellow board members, but feels it is time for someone else to fill the position of service on the board.

Persons wishing to file for the two positions on the board may do so at the school administrative office any school day during school hours. Deadline for filing as a candidate in the school trustee election is 4:00 p.m. March 4.

In other matters before the board, a letter from Robert Pritchard was read, concerning mandated attendance of activities on weekends. Mr. Pritchard had planned to speak to the board in person, but due to a schedule conflict, could not be in attendance. No action was taken on the matter.

Marsha Lindall, special education director, was appointed as a teacher appraiser for the special education teachers. The elementary and high school principals also serve as appraisers.

Several contracts were considered

and extensions made. Frank Gray, elementary principal was given a two year extension of his contract with one year remaining. High school principal Dale Freeman received a one year extension with one year remaining on his present contract. Judy Hartman's contract as school business manager was extended one year giving her a two year contract. Band director, Lonnie Baker, received a one year extension of his contract.

In a called meeting prior to the regular meeting, the board accepted the bid of the Masters Company of Greenville, Texas for the roofing of the elementary building. The bid for the polyurethane roof was \$46,320.

The board enjoyed refreshments that had been prepared by Sharyl Fuller's 7th grade Exploratory Home Economics Class.

## Burglary At School Sunday

Police Chief Craig Terry was called to the school Monday morning to investigate a burglary in the Perry Gymnasium.

Approximately 14 pairs of boys basketball shoes had been taken. Cost of the shoes is about \$40 per pair. It was later learned that several pairs of girls larger sizes of basketball shoes were also missing.

The thieves broke into Coach Galen Privitt's office where they stole some money and caused approximately \$35 damage to the doors of the office. Also taken was a case of Slice canned drinks.

Later in the day, as the basketball

team prepared for showers following practice, it was discovered that shower heads were missing from the boys showers.

Terry estimated the loss at approximately \$600, not including the shower heads.

Two of three suspects have been questioned in the incident.

The police report from Police Chief Craig Terry also shows that on February 14, Richard Allen Kemp of Bronte was picked up and placed in the Coleman County Jail on DWI charges following an incident on Highway 84 East inside the City of Santa Anna.

## Coleman Tax Board Meets

The Coleman County Tax Appraisal District board of directors heard a report that tax collections averaged 80 percent at the end of January when they met Monday, February 9 at the Coleman office.

Also, monthly reports were given by chief appraiser Bill Jones, and accounts were approved for payment. The largest outlay was for the quarterly payment to Thomas Y. Pickett and Co. for mineral, utility and commercial appraisals.

According to Jones, the Santa An-

na and Panther Creek school districts have each collected 82 percent of their taxes, and the Coleman County General Fund, the Road and Bridge Fund and the City of Santa Anna each have 81 percent collection to date.

Jones announced that LeAnn Warren has submitted her resignation as office clerk to devote her time as homemaker and mother.

A contract for the collection of delinquent taxes will be considered at the meeting of March 9.

## Booster Club Selling Shirts

The Athletic Booster Club is selling solid black hooded and non-hooded sweat shirts with the Mountaineer logo on the front. Orders are being taken in advance. Interested persons may contact Debbie Dean or any booster club member to place an order.

All sizes of the hooded shirts are priced at \$15.00. The adult size non-hooded shirt is \$11.99 and the youth size non-hooded is \$10.99. They also have sports bags for \$10.00. All prices are plus tax. All profits made from Booster Club projects are used to benefit the athletic programs of the Santa Anna school.

Pollock, he decided to attach weights to the body and sink it in the lake to keep from hurting Pollock's family, avoid the embarrassment of a trial and to keep from being ostracized by his friends at the Austin Yacht Club.

Lawson faces a sentence ranging from five years probation to life in prison and a \$10,000 fine. State District Judge Carl Anderson ordered the punishment hearing in the case to begin Monday. Lawson was allowed to remain free on the \$25,000 bond he posted last year.

Terry Keel, the lead prosecutor in the case, said in his argument to jurors that they should not be fooled into convicting Lawson of lesser charges of voluntary or involuntary manslaughter.

"I submit to you that if he is not guilty of murder you should set him free and go on beating with him," Keel said. "He is the most dangerous criminal to ever all in this courtroom and perhaps himself. His dangerousness is not just because he committed a heinous murder,

...The man is a pathological, amoral liar. He could convince you that night is day, black is white and wrong is right."

Jim Doty, an assistant district attorney, told the jury that the case was like a script from a Perry Mason rerun.

"But in Perry Mason, usually someone jumps up and says, 'I did it.' That didn't happen in this case, and there's a good reason for it. That's because that's the man who did this offense," Doty said while pointing at Lawson.

Prosecutors said Lawson's claim that Pollock was shot at the end of a struggle was nonsense. They said that had such a struggle occurred, there would have been injuries on Pollock's body. Robert Bayardo, Travis County medical examiner, testified that there were no injuries to Pollock's body except the bullet wound to his head.

Keel told jurors that that meant Lawson walked up behind Pollock, pressed the muzzle of a .38 caliber automatic pistol to Pollock's head and pulled the trigger.

"The sad thing about this is that there are only going to be two witnesses and one of them is dead," Keel said. "Leroy Pollock would have had a different story to tell you if he was able to come down here and testify, and it would have ended when a blinding flash of light hit his head while he was driving the boat."

Defense lawyer Don Higginbotham argued that his client's attempt to disguise Pollock's shooting as a boating accident was stupid, but that did not make Lawson a murderer.

"The state has not brought you one shred of evidence about how the shooting occurred," Higginbotham

## Delta Omicron March of Dimes Drive Continues

The Delta Omicron Mother March of Dimes Drive began last Sunday, February 15 and will continue thru this Saturday, February 21, with members calling on homes throughout the week. If you would like to make a donation and you are not contacted, call Betty Moore at 833-0111.

**Music Festival To Be At 1st Baptist**

The regular meeting of the Coleman County Baptist Association will be held Sunday, February 22 at the First Baptist Church, Santa Anna.

There will be NO Executive Board, NO W.M.U. meeting, and NO meal will be served.

The program begins at 6:00 p.m. The program is a Music Festival. The festival will consist of special music, presentations by church choirs, groups and individuals. Ron Hardin, Association Music Director, is in charge of the program.

The public is invited to attend.

**Mrs. Clifford Visits With Family**

Mrs. Mary Lela Clifford returned last week from a trip to El Paso; Tucson, Arizona; and Phoenix, Arizona. She was visiting with family and attending to business.

SANTA ANNA NEWS  
P.O. Box 399  
Santa Anna, TX 76878  
(915) 348-3545  
(USPS 481540)

The Santa Anna News is published every Thursday at Santa Anna, Texas 76878 and entered as second class mail under the Act of Congress of March 2, 1879.

SUBSCRIPTION PRICE: Coleman County and all other areas, \$11.95. As of October, 1984, all Texas subscriptions are taxable making the amount due on them \$12.56. Subscriptions for out of state remain \$11.95.

CLASSIFIED RATES: \$1.50 for the first 15 words; five cents per word thereafter per week for personal items. Rates for business advertising are by the agate inch.

DANNA TURNER  
Managing Editor  
TANDY HOWARD  
Advertising Manager  
POLLY WARNOCK  
Bookkeeper-Circulation

MEMBER 1987  
**TEXAS PRESS ASSOCIATION**

**Deaths**

**William Ragsdale, 73**

CARROLLTON--Services for William Earl (Bill) Ragsdale of Farmers Branch were held Wednesday morning, February 11, 1987, at Midway Hills Christian Church in Dallas with the Rev. Stanely Hagadone officiating. Concluding prayer and interment was Wednesday afternoon at 2:30 p.m. in the Smith Cemetery in Ellis County with the Rhoton Weiland Funeral Directors of Carrollton in charge of arrangements.

He passed away Monday, February 9, 1987 at the Trinity Medical Center.

Born November 16, 1913, in Comanche, Texas, he was a microbiologist. Memorial gifts of donation may be sent to the Minister's Benevolent Fund of the Midway Hills Christian Church or the charitable cause of the donor's choice.

Survivors include his wife, Mrs. Ruth Ragsdale of Farmers Branch; two daughters, Mrs. Daniel L. (Janet) McMillen of Neveda, Texas and Mrs. Cornell G. (Diane) Reeves of Garland, Texas; two grandchildren, Sarah Reeves of Garland and Catherine McMillen of Neveda; and two brothers, G. A. Ragsdale of Andrews and Vernon L. Ragsdale of Glendale, California.

**Morgan Makes Honor Roll**

STEPHENVILLE--A total of 1281 students were recognized on the A and B Honor Roll and Distinguished Students list at Tarleton State University for the fall semester of 1986. The announcement of students receiving honors for the fall term was made by Dr. Robert C. Fain, Vice President for Academic Affairs at TSU.

Students listed on the A Honor Roll must have a 4.0 grade point ration (GPR) on the 4.0 system and be taking a minimum of 12 hours. Students on the B Honor Roll must have a grade point ration between 3.00 and 3.99 with no grade lower than B and taking a minimum of 12 hours.

Freshmen and sophomore students who have a minimum GPR of 3.25 with no grade lower than C, and junior and senior students who have a minimum GPR of 3.50 with no grade lower than C in good standing are designated "Distinguished Students."

Pamela Morgan of Santa Anna was one of the 586 students making the B Honor Roll and one of the 569 students named as "Distinguished Students."

**Library Notes**

**Check It Out**

Soon one-fourth of the total U. S. Population will be over 55 years of age. Available now for this audience are new magazines and many, many books.

FIFTY PLUS is a new magazine. LIFE BEGINS AT SIXTY by Bill Case tells about people who achieved greatness after age 65.

IT TAKES A LONG TIME TO BECOME YOUNG by Garson Kanin is a light look at the "Youth Cult" of our country.

YOU'RE ONLY OLD ONCE by Dr. Seuss, facing all those tests at the hospital.

GROWING OLDER, GETTING BETTER by Jane Parcino. Interviews of women and their special problems.

Our library does not have these books on the shelves, but you can ask the Librarian to order them from a larger Big Country Library. This information from OPENERS, American Library Newspaper.

It is much easier to be critical than to be correct. -Disraeli

Education makes a people easy to lead, but difficult to drive; easy to govern, but impossible to enslave. -Attributed to Lord Brougham.

**Learn To Deal With Stress Of Parenting**

A sequence of ordinary little events--like spilled juice, thrown toys, an overflowing sink and ringing phone--can quickly lead to a screaming child and a distressed parent.

Stress is something that parents of young children can't avoid; it's the reaction to stress that counts, says family life specialist Diane Welch.

"Parents should be aware of the symptoms that signal stress pile-up and potential danger," says the Texas A&M University Agricultural Extension Service home economist.

Some people react by developing physical symptoms such as headaches, dizziness, appetite loss or an increase in eating, she explains. Other parents become aggressive, which can lead to child abuse.

"Even when parents don't develop physical symptoms, they may cry, become fatigued, sad, angry, very irritable or feel depressed and guilty," Welch says. "It's not unusual for a parent experiencing stress to feel helpless and doubt his or her worth as a parent."

Lack of adequate sleep often contributes to parents' stress, notes the specialist. Sleep requirements vary from person to person, she says, but it's easy for any parent to lose sleep because of a young child's erratic sleep schedule.

According to the specialist, it's best to develop some ways of dealing with stressful events as they occur, so the stress doesn't pile up. She suggests some of the following stress-relievers:

- +After putting the child in a safe place, such as his crib or room, step away until you feel you're again in control. You may want to count to ten, sit down and rest or close your eyes for a few minutes.
- +Share your frustrations with your

**Fannies Funnies**

BY FANNIE GILBERT  
How well do you know your fish?

1. What fish is the struggling fish?
2. What fish is precious metal?
3. What fish is a royal fish?
4. What fish is a Heavenly fish?
5. What fish is in the band?
6. What fish is a household pet?
7. What fish is good with biscuits?
8. What fish is used by a fencer?
9. What fish is a very evil fish?
10. What fish is seen at night?
11. What fish is a very dark color?
12. What fish is useful in hot weather?
13. What fish is good with peanut butter?
14. What fish warms the earth?

See if you can put the number of the question on the right answer below:

Goldfish; Drum; Flounder; King; Jelly; Sunfish; Cat; Angel; Sword; Devil; Butter; Fantail; Black; Star.

What is the difference between a fish and a piano? You can't tuna fish.

Joe: How did you lose those fingers on your left hand? Moe: I stuck them in a horse's mouth to see how many teeth he had. Joe: Then what happened? Moe: He closed his mouth to see how many fingers I had left.

**Thoughts From Our Pastors**

By Anthony Thibodeaux  
Pastor of First Christian Church

Few people ever sincerely and conscientiously consider what the church has to offer to the individual and the community. Consider this bit of Poetry: "And the hour shall be filled with music, With songs and praise and prayer, And the burdens of life shall be lifted, From all who enter there."

These lines aptly describe what the church promises those who enter its portals. The church seeks to give expression and reality to those wonderful words of the Master when he said, "Come unto me all ye who are heavy laden and I will give you rest." "Take my yoke upon you, and learn of me; for I am meek and lowly in heart: and ye shall find rest unto your souls, for my yoke is easy, and my burden is light." Perhaps Jesus referred here primarily to the Jews who groaned under the weight of their ceremonial laws and the tradition of their fathers. He is telling them, that by coming to him, and embracing the new system of religion, they would be freed from these burdensome rites and ceremonies. There can be no doubt that Jesus meant to convey the thought that to the poor, the lost sinners, the man burdened with a consciousness of his transgressions, trembling at his danger and seeking deliverance...For such a one there is relief...Jesus is saying here, come to him, believe in him, trust him. And by doing this he will find rest. Rest from their sins; rest from the alarms of conscience; from the terrors of the law; and fears of eternal death.

The invitation of Jesus, "COME UNTO ME," is also the assurance that those who come will find that the music, the prayers, the sermon...all point to him who can meet the needs of them who seek strength, guidance, comfort and peace.

There are reservations regarding the words of Jesus. In a sense these words are far anyone who enters the church. But in a very special, real sense such a promise presupposes a habit of life, and attitude of the soul, a regular seeking because there is an ever-recurring need.

No one would think of expecting one meal to do for a whole week. Yet many go to church only once or twice a year and expect their souls to be sustained for a year on the nourishment received. As a rule, they are the people who blame the church for its failure to help them, who accuse the church of being unfeeling to their needs.

The church must have a chance with people if its mission to act as a medium for the spirit of God is realized. Our church seeks to demonstrate to the people that it is a channel of God's grace; it only asks that it be given a chance.

Possibly some people stay away because the church isn't perfect. But I would ask a candid question, "Wouldn't you feel a little lonesome if you got into a church that was perfect?" The church wants to help us make the church a far better institution than it is now. Come help us.

**Whirly Birds Active Again**

The Whirly Birds organization for Santa Anna children has resumed after a January recess. The leaders of the group announced awards for the children who were enrolled in the interdenominational activity.

First Grade students awarded for memory work that included learning several Christmas carols and Thanksgiving songs were Ryan Keeney, Patrik Asher, Zackary Lawhon and Renee Guerrero.

Second Grade students who memorized Bible verses were Devin Brand, Chris Cheaney, Tim Abernathy, Brandi Bible, Rudy Estrada, Briana Horner, Rachel Guerrero, Albert Villareal, Darbi Neff and Mark Yancy.

Third Grade students who have

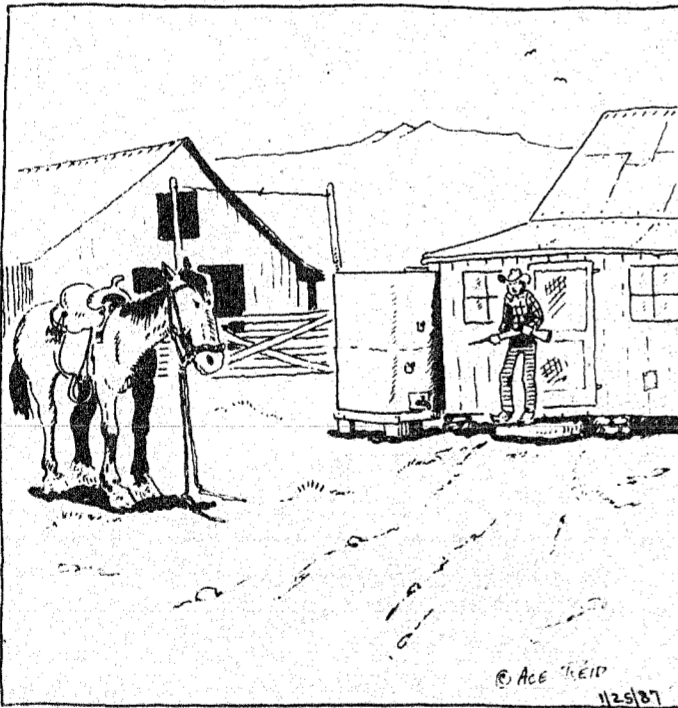
learned the books of the Old Testament are Ben Diaz, Beatrice Estrada, James Jones, Johnny Lawhon, William Loyd, Brandi Martin, Sally McIver, Asuncena Rodriguez, Melanie Smith, Melissa Stark and Barbara Ward.

Approximately 60 children are enrolled in the organization, with Orabeth McIver as director, assisted by ladies from several community churches.

Meetings of the group are held each Wednesday afternoon at United Methodist Church, with refreshments provided this semester by ladies of the host church and from the Seventh Day Adventist Church.

**COW POKES**

By Ace Reid



"Awright, I know I can't ride you, but I shore as heck can shoot ya!"

**Santa Anna National Bank**

Deposits Insured By  
FDIC Up To \$100,000  
Ask About Our Interest-bearing  
Checking Accounts  
\$1,000 Minimum  
Pass Book Savings  
Certificates of Deposit  
Substantial Interest Penalty is Required  
For Early Withdrawal

**Wagon Wheel RESTUARANT**

Santa Anna, Texas 348-3169

SPECIAL!

**Monday - Saturday Bar-B-Que Special**

- Your Choice  
Brisket, Ribs or Sausage  
Served With Pinto Beans,  
Potato Salad or Cole Slaw **\$4.00**
- Club Steak**  
Choice of Baked Potatoes or  
French Fries, Salad &  
Tossed Salad **\$4.50**



American Heart Association

**Fresh Vegetable Salad Bowl**

Give iceberg lettuce the cold shoulder.

- 1 head romaine lettuce
- 1/2 pound fresh button mushrooms
- 1 pound cherry tomatoes
- 1 small head cauliflower
- 1 pound very young raw asparagus spears

Remove outer leaves of romaine, separate stems from mushrooms, and snap off stem ends of tomatoes. Break cauliflower into florets, and trim stalk end from asparagus.

Wash all vegetables except mushrooms. Drain well. Wipe mushrooms with a paper towel.

Place inner leaves of romaine upright, around the sides of a deep round salad bowl. Arrange remaining ingredients neatly in the center. Chill until serving time. Serve with your favorite dressing.

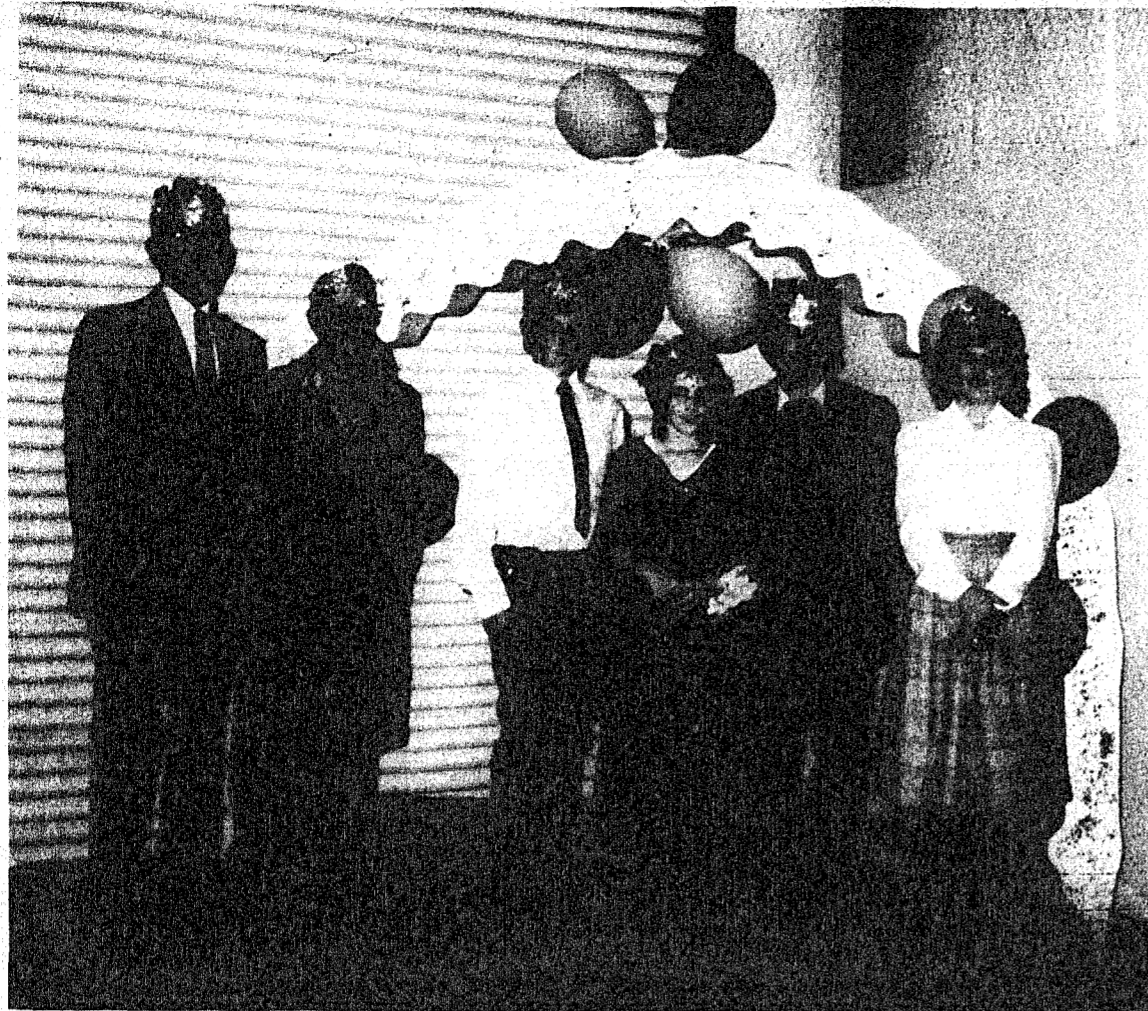
Yield: 8 Servings

Approximate Calories/Serving: 50

Help Your Heart Recipes are from the Fourth Edition of the American Heart Association Cookbook. Copyright © 1973, 1975, 1976, 1984 by the American Heart Association, Inc.

The Santa Anna Funeral Home Offers  
Pre-Arranged Funerals  
Burial Insurance  
We Honor All Burial Insurance...  
No Matter From Whom Purchased.

Santa Anna Funeral Home  
Wells At R. Lee 348-3169



The First Baptist Church had their Valentine Banquet last Wednesday night, February 11 in the First Baptist Church Christian Life Center gym. Crowned as Valentine King and Queen were Pete and Winnie Rutherford (left) by last year's winners, Elton and Bessie McDonald. Crowned Prince and Princess were Jeremy Hartman and Shelly Smith (right), high

school students, crowned by last year's prince and princess, Curtis Puckett and Amy McGough. As a new feature this year a Duke and Duchess (jr. high students) were crowned; they were Jason Dean and Brandi Horner (center). They were also crowned by Curtis Puckett and Amy McGough.

## Group forms to curb teen pregnancy

AUSTIN—A statewide group was formed this week to tackle the teen-age pregnancy problem by emphasizing the education and self-esteem of children, according to Helen Farabee of Wichita Falls, chairwoman of the Teen Pregnancy Forum.

"We're the third worst in the United States in the problem of teen pregnancy," Farabee said, citing Texas' pregnancy rate for girls ages 15-19.

"We're trying to stop that with a concerted strategy that will involve all the agencies in coordination rather than a fragmented approach," she said. "We also make the realistic assumption that even after a young teen-ager has a child, we can do more to make sure the teen-ager can get a job and support the family."

"Sex education is not what we're stressing as much as responsibility for decision making by young people," Farabee said. "We're concerned about self esteem, about young people not having any vision of themselves as breadwinners, employed in a job."

One-third of Texas students drop out

of school, Farabee noted, claiming the state cannot move forward into the 21st Century with that kind of statistic. Two-thirds of female dropouts are due to pregnancy or marriage.

"I've heard major business people say that by the year 2000, unless we do better training of our young people for the jobs available, we'll have to import workers," Farabee said.

Farabee said the Forum was sponsored not only by corporations and foundations, but by state departments of education, health, human services, and community affairs. About 200 representatives of organizations concerned with the teen pregnancy issue attended the two-day strategy session.

The Forum identified priority activities in the areas of primary prevention, health, education, social and emotional development, legal, and economic self-sufficiency.

Farabee said that Forum delegates may stage community forums to tailor the statewide strategy to fit individual cities and even specific neighborhoods.

## 55 or Older? Exclude Gain on Home Sale

A once-in-a-lifetime \$125,000 exclusion of gain on the sale of a home is available to taxpayers who are 55 or older, the Internal Revenue Service says.

To qualify, taxpayers must be 55 years or older on the date of the sale of their home. The home must have been owned and lived in as the principal residence for at least three years out of the five year period ending on the date of sale, and the gain on the sale of a home after July 26, 1978, must never have been previously excluded by the taxpayer or his/her spouse.

A principal residence is the home owned and lived in, whether it be a houseboat, mobile home, condominium, apartment or house. If a taxpayer owns two homes and lives in both, the principal residence is the one resided in most of the time.

The gain is the selling price of the residence minus selling expenses and the adjusted basis of the home.

If married, a taxpayer may not choose to exclude the gain unless the spouse joins in making the choice.

However, if married and filing separately, a taxpayer may choose to exclude no more than \$62,500 of the gain. The decision to exclude the gain from a particular sale or exchange may be made or revoked at any time before the latest of: the due date of the tax return for the year of sale; three years from the date the return was filed; or, two years from the date the tax was paid.

For further information, IRS Publication 523, *Tax Information on Selling Your Home*, and IRS Form 2119, *Sale or Exchange of Principal Residence*, are available free of charge. Copies can be obtained by using the handy order form found in the tax package or by calling the IRS.

## CALENDAR OF EVENTS

THURSDAY, FEBRUARY 19  
Masonic Lodge 7:30

SUNDAY, FEBRUARY 22  
Church

MONDAY, FEBRUARY 23  
Campfire Girls, after school  
Boys Scouts, 7 p.m.  
Nitia Daniell Circle

TUESDAY, FEBRUARY 24  
Lions Club, noon  
Cub Scouts, 4:00 p.m.  
1st Baptist Church CLC  
Masonic Chapter & Council

WEDNESDAY, FEBRUARY 25  
Whirly Birds

## Birthdays Anniversaries

THURSDAY, FEBRUARY 19  
Kenneth Brixey  
Pat Smith  
Mr. and Mrs. Rod Musick

FRIDAY, FEBRUARY 20  
Mr. and Mrs. Bill Martin

SATURDAY, FEBRUARY 21  
Scott Moore  
Jerry Wright  
Sebe Garza

SUNDAY, FEBRUARY 22  
Tommy Blanton  
Mr. and Mrs. John Stanislaw

MONDAY, FEBRUARY 23  
Junior Garza

WEDNESDAY, FEBRUARY 25  
Roberta Tomlinson  
Alonzo Hernandez  
Gay Martin  
Mr. and Mrs. Frisby Bible

Water has a greater molecular density in liquid form than as a solid. This is why ice floats.

The Extension Homemaker's Club will meet at the Community Center Tuesday, February 24 at 2:00. Debbie Reber, Extension Agent will present the program; Sadie Bryan and Ella Gray will host the meeting.

Mrs. Marshall Campbell of Fort Worth spent Friday to Sunday with her mother, Lillie Box. Lillie Box also had a telephone visit with Mr. and Mrs. Johnny Pat Campbell in Fort Worth.

Wednesday night Bill and Sadie Bryan and Jack and Skeeta Cooper visited in Brady with Mr. and Mrs. P. L. Ulstad.

Mrs. Bryan attended the Thursday quilting and Mr. and Mrs. Carroll Hemphill of Pear Valley visited Thursday afternoon; Mrs. Bryan and Mrs. Wayne Bray attended the Valentine Party at Ranger Park Inn Rest Home on Friday; The Bryans attended the ball game at Lohn Friday night.

Recent visitors with Mrs. Mary Emerson were Rev. Gregory Hamilton, Mrs. Hamilton, Joetta and Shellie of Early, the Brusenhans, Lillie Box and Ella Gray.

Junior Brusenhan was in Eden Saturday visiting his brother, Frank Brusenhan; Mrs. Emerson was Sunday visitor with the Brusenhans, who also attended the Thursday Family Night game party.

Charlie Bengé visited Kenneth Brusenhan Saturday afternoon.

Mr. and Mrs. Elec Cooper went to Brady Sunday, joining Mr. and Mrs.

Denny Densman going to San Angelo visiting Dorinda Densman and doing some shopping.

Marcus Johnson visited with the Aubrey McSwains Saturday afternoon.

Mrs. Grace Kemp was admitted to the Coleman Hospital Monday afternoon.

Mrs. Isabelle McCutcheon and her brother-in-law, Thurman McCutcheon, spent a couple of days in Menard on business.

Mr. and Mrs. Blake Williams spent Friday in Brownwood, visiting Mr. and Mrs. Donald Williams and Barney Williams.

Recent visitors with Linnie Box were Mrs. Gene Rehm and Mr. and Mrs. Walter Hodges of Brownwood, Mr. and Mrs. Bill Hodges of San Angelo, Mr. and Mrs. James Hodges and Cody of Clyde, Jack Rutherford of Lewisville, Joe Ed Wise of Santa Anna, who had visited his grandmother, Gertie Wise in San Antonio, Joe Fred Estes of Abilene, who reported his mother, Myrtle Estes, who is at Odessa, was improving nicely.

Mr. and Mrs. Wayne Esslinger, Kurt, Kyndall and Tony of Kerrville spent the weekend with Tony and Wade Rehm.

David Pearson of San Antonio spent the weekend with his parents, the Howard Pearsons.

The Thursday Family Game Party was a huge success to be held monthly.

## School Menu

MONDAY, FEBRUARY 23  
Breakfast: Cereal, Juice, Milk  
Lunch: Pizza, Buttered Corn, Salad, Pears, Milk

TUESDAY, FEBRUARY 24  
Breakfast: Donuts, Juice, Milk  
Lunch: Chicken Nuggets with Gravy, Cream Potatoes, English Peas, Hot Rolls, Peanut Butter & Syrup, Milk

WEDNESDAY, FEBRUARY 25  
Breakfast: Toast & Jelly, Juice, Milk  
Lunch: Stew, Cheese Chunk, Apple, Crackers, Milk

THURSDAY, FEBRUARY 26  
Breakfast: Biscuit & Gravy, Juice, Milk  
Lunch: Turkey Roast with Gravy, Whipped Potatoes, Green Beans, Hot Rolls, Peaches, Milk

FRIDAY, FEBRUARY 27  
Breakfast: Pancakes and Syrup, Toast, Juice, Milk  
Lunch: Chili Dog with Cheese, French Fries with Catsup, Salad, Cookies, Milk



To Report Information On Missing Persons Contact

TEXAS DEPARTMENT OF PUBLIC SAFETY  
BOX 4143, AUSTIN, TEXAS 78764-4143

MISSING  
Persons Clearinghouse



1-800-346-3243 (IN TEXAS)

## ATTENTION PIZZA LOVERS:

Pinocchio's Pizza of San Angelo will be in Santa Anna every Tuesday for lunch at 12:00 with your favorite hot, fresh, Pizza!

LOCATION: IRA PUMP

For Call In Orders \$1 OFF

For Special Orders Call 949-6666!

Please Call The Day Before!

SEE YOU THEN!

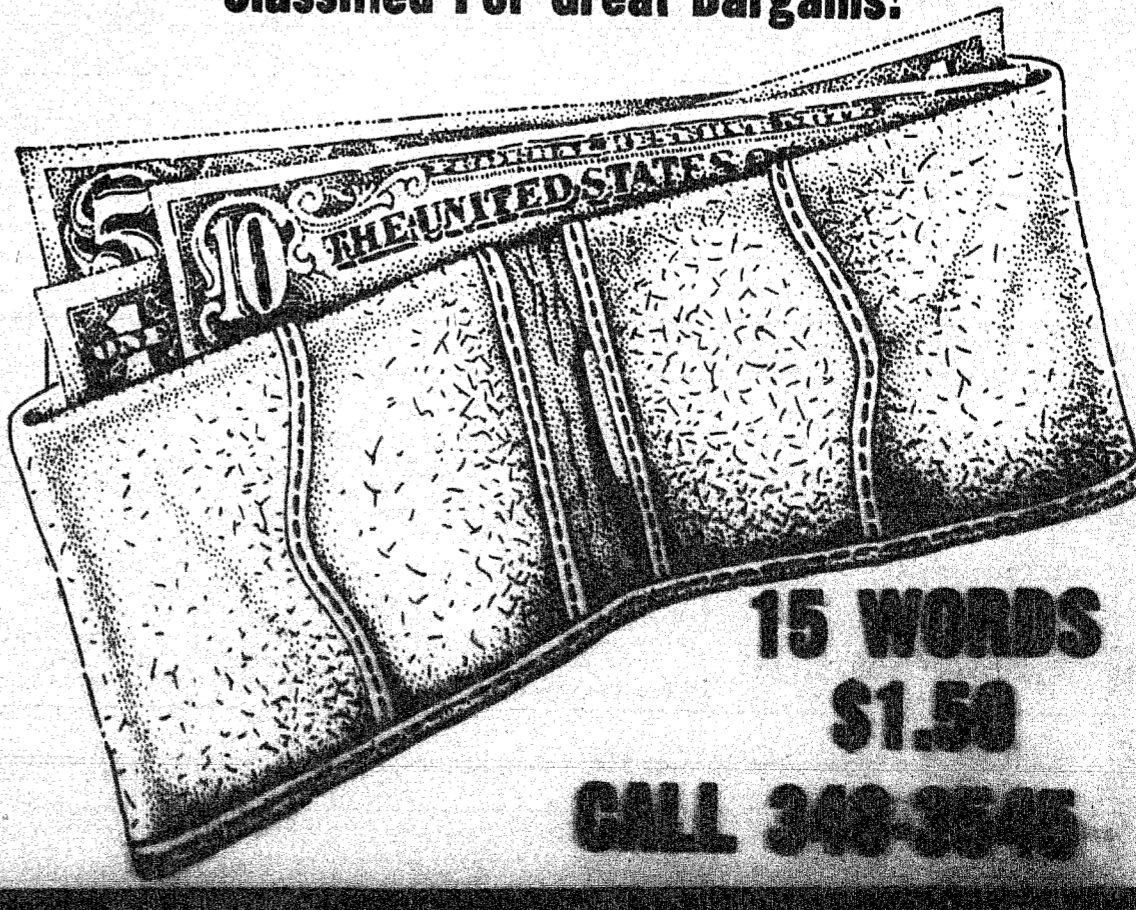
**Pinocchio's**  
PIZZA



## Savin' of the Green

is easy with a  
**SANTA ANNA NEWS**  
CLASSIFIED AD.

Check The Santa Anna News  
Classified For Great Bargains!



15 WORDS

\$1.50

CALL 348-3545

**Charles E. McDonald**

takes pleasure in announcing

the association of

**Randy Sikes**

in the general practice of law.

101 South 1st. Street

Bangs, Texas

(915) 752-7321

Hours: 9:00 A.M. to 5:00 P.M.

(Both Lawyers admitted to practice in Supreme Court of Texas, but neither is Board Certified in any speciality.)



To accurately portray right-handed Gary Cooper as southpaw Lou Gehrig in the movie, "Pride of the Yankees," the director reversed the numbers on the uniform, shot him at third base instead of first, ran him from home to third. Then these scenes were simply spliced in backward.

**Coleman Monument Works**

1200 1st St.  
80 Years in Coleman



THE LADY MOUNTAINEERS OF SANTA ANNA are the 1986-87 District 24-A runnersup and met Irion County Tuesday evening at Eden for bi-district play-off. The Santa Anna girls lost that game 56-36. Members of the squad, include, kneeling, left to right: Eva Frausto, Amy McGough, Jodi Watson, Shera

Lewis, Silvia Castillo, Irma Castillo; back row: Coach Kathy McGough, Shannon Brown, Rhonda Fleeman, Melissa Buse, Tammi Morrow, and Nikki McGough. The Lady Mountaineers defeated Brookesmith in Early last Friday night 47-38 to earn their playoff spot.



DISTRICT 24-A RUNNERSUP...the Santa Anna Mountaineers are in the playoffs again this year and will meet Bronte next Tuesday in bi-district. The Mountaineers were edged by county rival Novice 40-36 in Early last Friday evening to earn the runnerup spot. Members of the team include, kneeling, left to right: Scotty Anderson, Clarence McDowell,

Buddy Hardin, Alonzo Hernandez, Dennis Absher; middle row: Robby Pritchard, Reece McIver, James Hartman, Bobby Pritchard, and Rex Harper; back row, Joey Anderson, Kendall Davison, Fernando Castillo, Eddie Tomlinson and Coach Russell McGough.

127-8075  
127-8072  
862-1605  
581-4526  
1432  
AREA CODE 409  
JOHN SMITH 26 REVERE  
JOHN SMITH 536 BEACH  
JOHN SMITH 72

Telephone call for Mr Smith. Anytime you hear that refrain, it could be referring to one of 2.5 million Smiths who live in the U.S.

## Lady Mountaineers Lose Bi-District Game

The Lady Mountaineers hopes of making it to state were shattered Tuesday evening when they came up against the Irion County Lady Hornets. According to the girls coach, Kathy McGough, the girls just went into the game cold, but their defense was excellent. The Lady Mountaineers finished the

season 16-12, and as Coach McGough said "it was an excellent season and now the girls will take a break and will be ready to start all over again for next year." She added that she "couldn't have asked for a better bunch of girls and Melissa and Irma were good team leaders."

The score at the end of the first quarter was Santa Anna 7, Irion County 14; the score at halftime had Santa Anna still behind 19 points, 30-11. The Lady Mountaineers came back strong in the second half of the game, with the final score being Santa Anna 26, Irion County 56. The Santa Anna girls shut down two of Irion County's scores and as Irion County's Coach Kiser said, he had never seen his girls hit the basket like they had that night.

## Boys 2nd Place In District Play-Off Game Tuesday

The Novice boys edged the Santa Anna Mountaineers for the District 24-A boys title last Friday evening 40-36, causing the Mountaineers to finish 2nd in District.

An ice-cold first half forced the Mountaineers to play catchup almost from the opening tap. The Mountaineers trailed 14-4 after the 1st quarter and 20-12 at halftime, then came roaring back to make the second half of the game very interesting.

The two teams had finished regular-season play at 5-1 atop the

24-A standings. The Mountaineers will have a practice game Thursday night (tonight) at Winters and at McMurry in Abilene on Friday night. The Mountaineers Bi-District game will be against Bronte at Wylie in Abilene on Tuesday night, February 24 at 7:06 p.m.

Congratulations Girls For a Good Season!!!

The Mountaineers had a total of 17 field goals, 3 free throws and 12 fouls. Those scoring for the Mountaineers were Reece McIver, 10; Eddie Tomlinson, 10; Kendall Davison, 6; Fernando Castillo, 6; Joey Anderson, 4 and James Hartman, 0.

## Boys Take 2nd Place

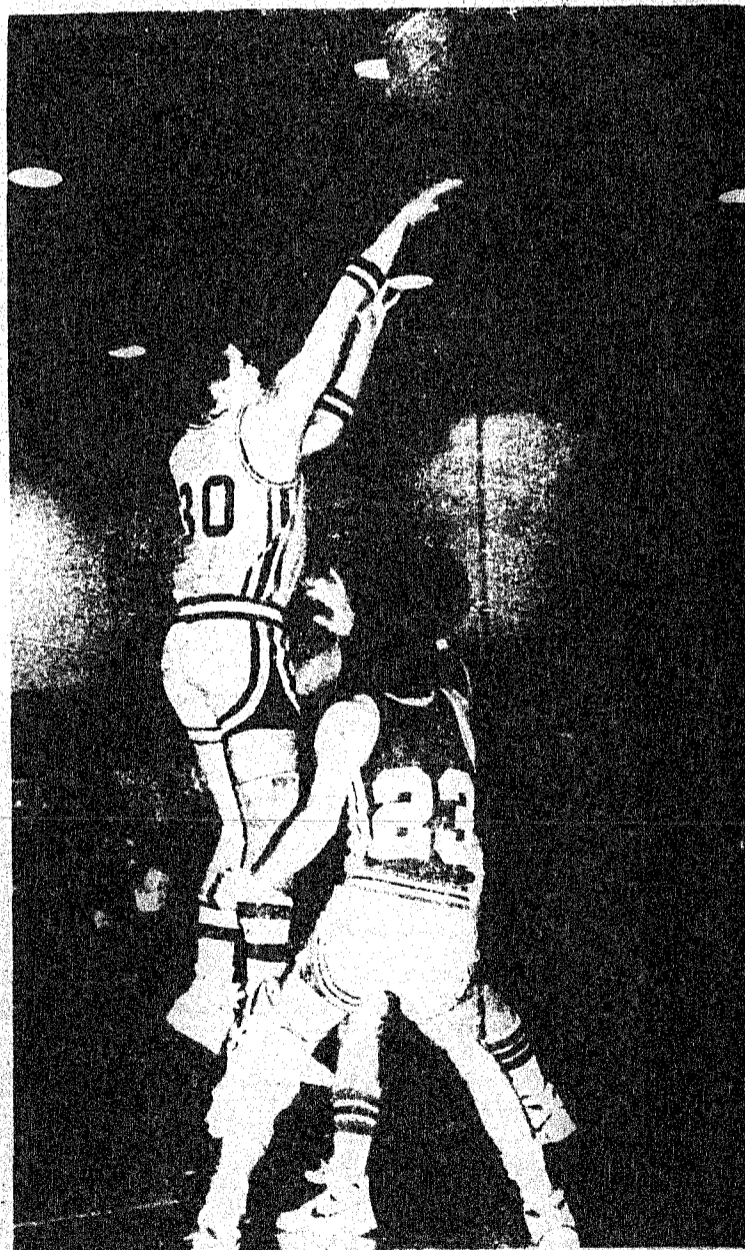
## Girls Finish 2nd In District

The Lady Mountaineers won their district play-off game last Friday night when they came up against Brookesmith. The girls took the second-place playoff spot in District 24-A behind first place Novice, who has a 6-0 district record and played Irion County at Eden this past Tuesday night for Bi-District.

The girls have a season record of 16-11 and a district record of 4-3.

The Lady Mountaineers were behind after the first quarter 14-9 but gained four points on Brookesmith by halftime, with the score being 36-32. The ladies continued to stay ahead to the end of the game with the final score being 47-38. The Santa Anna girls had 15 field goals, 17 free throws and 21 fouls.

Those playing and scoring for the Lady Mountaineers were Irma Castillo, 15; Shannon Brown, 8; Melissa Buse, 7; Amy McGough, 6; Nikki McGough, 5; Silvia Castillo, 4; Tammi Morrow, Eva Frausto, Shera Lewis and Jodi Watson, 0.



SANTA ANNA'S Reece McIver, No. 31, takes a jump shot for two points as Novice's Rick McGee, No. 23, fights for position underneath. Although Novice won the 24-A playoff game, both teams advanced to bi-district play. The Mountaineers will come up against Bronte next Tuesday night at Wylie Gym in Abilene with the game starting at 7:00 p.m.

You can bank anytime when you bank by mail.

All types of Savings Accounts.

**First Coleman National Bank**  
Member F.D.I.C.

"Always Willing- Always Prepared"

Your Good Neighbor Bank

We Sponsor The News Each Day At 12:30 Over KSTA

**Reed Memorial Co. Limited**  
Monuments of Distinction  
Ft. Worth Hwy.  
Brownwood, Texas  
Box 285 Ph. 646-7625  
Sylvia Herring  
Local Representative

**MOUNTAINEER BASKETBALL 1986-87**

Congratulations Mountaineers You Had A Great Season!!

**MOUNTAINEER BASKETBALL SUPPORTERS!!!**

**HENDERSON FUNERAL HOME 348-3131**

<b>GEO. D. RHONE CO.</b> 625-4141	<b>PHILLIPS DRUG</b> 348-3151
<b>ROCKWELL BROS. &amp; CO. OF COLEMAN</b> KENNETH REWMAN - OWNER 625-2435	<b>COLEMAN CO. TELEPHONE COOP</b> 348-3124
<b>FRAMES &amp; THINGS</b> 646-8811	<b>G &amp; E HARDWARE</b> 348-3373
<b>SANTA ANNA NATIONAL BANK</b> 348-3108	<b>SANTA ANNA FUNERAL HOME</b> 348-3163
<b>JO ANN'S KUT &amp; KURL</b> 348-3298	<b>SANTA ANNA NEWS</b> 348-3648
<b>HERRING FLOWERS &amp; GIFTS</b> 348-3881	<b>H &amp; H FOOD MART</b> 348-3148

**Sherry Michon**  
Band Student of the Week

Sponsored by:  
**S & M MUSIC CO. OF BROWNWOOD**  
646-8221

**Stevens Funeral Home**  
Since 1889

Member By Invitation of National Selected Morticians

400 West Pecan 625-2175

# Classifieds

15 Words For \$1.50

Call 348-3545

## Legal Notice

**CITY ORDINANCE NO. A N O R D I N A N C E ESTABLISHING THE RATES FOR WATER SERVICE FOR BUSINESS CUSTOMERS PROVIDING A PENALTY FOR DELINQUENT PAYMENT OF ACCOUNTS, PROVIDING FOR DISCONTINUANCE OF WATER SERVICES FOR CHARGES NOT PAID BY THE 15TH DAY AFTER ACCOUNTS BECOME DELINQUENT, PROVIDING FOR NOTICE OF TERMINATION OF SERVICE AND APPEALS; PROVIDING FOR THE ASSESSMENT AND COLLECTION OF SERVICE FEE FOR RESTORATION OF ANY SERVICE DISCONTINUED DUE TO NON-PAYMENT OF SUCH ACCOUNTS.**

**BE IT ORDAINED BY THE CITY OF SANTA ANNA, TEXAS:**

**Section 1:** On and after the effective date of this Ordinance, the rates for water service provided by the City to each commercial meter customer shall be as follows, to-wit:

For the first 2,000 gallons, as a minimum charge—\$22.11 per month  
For each additional 1,000 gallons used—\$2.95 per month.

**Section 2:** On and after the effective date of this Ordinance, the rates for commercial sewer service provided by the City to each customer shall be as follows:

Nursing homes—\$200.00 per month  
Schools—\$150.00 per month  
Grocery Stores—\$7.50 per month  
Grocery with cooking facilities—\$25.50 per month  
Restaurants W. B.—\$25.50 per month

month  
Car Washes—\$25.50 per month  
Funeral Homes—\$24.00 per month  
Telephone Cooperation—\$15.00 per month  
Motels—\$50.00 per month  
Service Stations with grease rack—\$15.00 per month  
Bank—\$15.00 per month  
Laundries—\$25.50 per month  
Other commercial users—\$7.50 per month

**Section 3:** On and after the effective date of this Ordinance, the rates for residential sanitation service provided by the City to each customer shall be as follows:

Pickup 5 days per week—\$30.00 per month  
Pickup 4 days per week—\$24.00 per month  
Pickup 3 days per week—\$18.00 per month  
Pickup 2 days per week—\$12.00 per month  
Pickup 1 day per week—\$6.00 per month

**Section 4:** The rates for customers outside the City Limits of the City of Santa Anna, Texas, shall be 1 1/2 times the rates set forth in Section 1 above.

**Section 5:** That on and after the effective date of this Ordinance, each monthly account owed the City of Santa Anna, Texas, by any person, firm or corporation for water services furnished during the month shall be and is hereby declared due and payable on or before the 15th day of the succeeding month, and if not paid on or before the said date shall become delinquent, and there shall be assessed and collected by the City on each delinquent account a penalty of 10 percent of the amount owing thereon.

**Section 6:** To help reimburse the City for the extra cost of processing and collecting delinquent accounts, the following fees will be paid in

cash to the City:  
a. Collection fee for each returned check—\$3.00  
b. For broken seal—cost of other damage plus \$10.00 for each occurrence.

These fees and damage costs will be assessed as follows:  
(1) Residents will be charged if active account.  
(2) Owner or manager will be charged if inactive account.  
(3) Charge will be added to bill and statement will be sent outlining charges.

**Section 7: NOTICE TO CUSTOMERS**  
A customer whose account is subject to termination or suspension for non-payment of a delinquent account shall be given seven (7) days written notice of the proposed termination. The notice shall:

a. Be sent by mail to the billing address of the customer;  
b. Be printed in English and Spanish;  
c. State the reason for the proposed termination;  
d. State in bold print the customer's right to a hearing before such termination occurs;  
e. State that the customer who so desires must request a hearing by contacting the Utility Customer Service Office at a stated telephone number or in person before the expiration of seven (7) days from the date of mailing; and  
f. State in bold print that the customer's water service will be terminated automatically unless payment or hearing request is received within the requisite seven (7) day period.

**Section 8: Service Reconnect Fee:** A customer whose service is disconnected for nonpayment of a delinquent account pursuant to the provisions of this ordinance shall be assessed a fee of \$10.00 for reconnection of service.

**Section 9: Appeal Hearing** shall be conducted as follows:

(a) Appeals: a customer objecting to the actions, policies, or decisions of the Utility Customer Service Office may appeal to the City Secretary, either in person or by telephone, and attempt to resolve the problem administratively. A document shall be prepared to indicate the reason for the appeal, the persons present during the meeting, and the decision of the City Secretary.  
(b) The City Secretary shall be the sole judge of the evidence, credibility of witnesses, and the facts, as well as the rules and regulations of the City of Santa Anna. The City Secretary shall render his decision at the close of the hearing or as soon thereafter as possible. Upon request of either party, the Hearings Officer shall render his decision in writing.  
(c) In the event the City Secretary's decision is in favor of the customer in whole or in part, he shall instruct the Utility Customer Service what corrective action shall be taken and the Utility Customer Service Office shall take such action within three working days. To the extent that the Hearings Officer finds the disputed billing to be accurate and due in whole or in part, the customer shall be allowed three business days to pay such amount or until the due date of the billing, whichever is longer.  
(d) During the pendency of the appeal, the customer's utility service shall be continued if not terminated prior to a hearing. In the event utility service was disconnected prior to a hearing, utility service will be restored upon payment of the current Connection Service fee, which fee, in the event the City Secretary's decision is in favor of the customer in whole or in part, shall be either refunded to the customer or credited on his bill.  
(e) The failure of the City of Santa Anna to comply with any time provision contained

herein shall in no way result in the City's waiving its right to seek termination of service for the reasons specified in this ordinance.

**Section 10:** A two-thirds vote of the members of the Council being present, the rule requiring two readings of this ordinance is suspended, and this ordinance shall be effective from and after passage on first reading, and published.

**PASSED AND APPROVED** this 5th day of February, 1987.  
—Joe Guerrero  
Mayor  
—Vikki Wristen  
City Secretary  
S-15800-07-07

## Card of Thanks

Thank you Becky Martin and the Student Council for marking the crosswalks at the school.  
—The Santa Anna PTO  
S-15816-08-08p

Our thanks and appreciation goes to the County Commissioners and the County Road Crew for the sand delivered to the Grade School Playground.  
—Santa Anna PTO  
S-15818-08-08p

## Card of Thanks

I want to express my thanks to everyone who visited, sent cards, telephoned and sent flowers while I was confined to the hospital. Special thanks to Jimmy Eisenhower and his staff for their support and efficient service. May God bless each of you in my prayer.  
—Garland Powell  
P-15899-08-08p

## Lost & Found

**LOST:** 9 week old Chow, brown and black. Missing since Saturday night. Call 348-3145 or after 5, 348-3293. REWARD OFFERED.  
M-15890-08-08p

## Merchandise

**PIANO FOR SALE**  
WANTED: responsible party to assume small monthly payments on piano. See locally. Call Credit Manager 1-800-447-4266.  
J-15809-08-10p

## Services

**GARY STARK ELECTRIC & PLUMBING**, electric sewer and drain cleaning. Day or night 348-3804.  
S-28455-45-4f

**GARY STARK ROOFING** of all kinds. Free estimates. Call 348-3804.  
S-44004-17-4f

Positions available for child care in my home. No traffic, big yard and references. Call Gayla Pritchard Lishka, 348-9145. Drop-ins welcome.  
L-15902-06-08p

## Help Wanted

**AIRLINES NOW HIRING.** Reservationists, flight attendants, and ground crew positions available. Call 1-619-565-1657, ext. A3546TX for details. 24 hrs.  
T-15906-07-08p

**TYPISTS—\$500 weekly at home!** Write: P. O. Box 975, Elizabeth, NJ 07207  
W-15900-08-15p

## Real Estate

**MUST SELL—PRICE REDUCED** to move quickly, or make us an offer on 2 bdrn. remodeled house in Santa Anna, carpeted and fenced. Call 625-4261 or 625-5186.  
C-43004-03-4f

**FOR SALE:** 3 bedroom brick on Ave. A, carpeting, vented heat, ceiling fans, garage and storage room. \$34,500. Owner wants offer. ROSS KELLEY REAL ESTATE, 348-3486.  
K-62008-04-4f

## Farm & Ranch

**DOUBLE B FARM SUPPLY** Lake Brownwood Dry Fertilizer Sale and Application. All blends available. 915-784-6660.  
B-15809-07-09p

## Miscellaneous

**MARTIN MEMORIALS, INC.** 2700 S. Commercial Coleman Beautiful Cemetery Monuments.  
625-4927 or 625-2438 night.  
M-26492-05-4f

# NEWS OF SAFETY

## PROTECTING CHILDREN

Here's news many parents may greet warmly: baby and children's clothing can be made from material that's inherently flame resistant. Originally introduced for children's sleepwear, the "Trevira for FR" 100 percent polyester fiber is now used by hotels, hospitals, and nursing homes and, by one of the world's leading producers of baby and children's wear: Spencer's. According to experts at that company, the fabric feels like cotton and "its safety is inherent. Rather than having a topically treated

finish which can come off after repeated washings, with this product, Spencer's can guarantee its sleepwear." The fabric has passed the standard government tests for fire safety and received the *Good Housekeeping* seal of approval. The clothes can be found in leading stores nationwide. For a list of local retail outlets, write: Mary Wilkins, Spencer's Inc., P.O. Box 988, Mt. Airy, N.C. 27030.



Baby's clothes can be made of flame resistant material such as "Trevira for FR".



The 84 party was held at Annie Lou Vaughn's Thursday night with 19 present; all had a good time and Lou served nice refreshments; she had valentine cookies and drinks and other things.

Saturday Rev. F. E. Suttle and wife gave a Valentine dinner at their home at Bangs and invited all the Trickham people that go to church at Trickham (13 got to go with 16 in all at the party). Those who went from Trickham were Howell and Gertrude Martin, Lou Vaughn, Carrie Stacy, Florence Stearns, George and Goldie Haynes, Genia McIver, Sherrie Blake, Sug Stearns, Anna Laura York, Daisy McClatchy and Mary Lou Jones. Several others were planning to go and company came in before they left.

The Suttles had their home looking so pretty decorated for Valentine's Day.

Verna Bolton came Saturday to visit her mother, Florence Stearns; they went to Coleman Saturday night and visited Alice Wells and Barbara and her family were there; she spent the night with Florence and went home Sunday morning; Florence visited Winnie Haynes Thursday evening.

Tom and Sue Stacy of Abilene visited his mother, Carrie Stacy Wednesday and Joyce Kirk had dinner with Carrie Friday.

Mr. and Mrs. Jim Minter of Fort Worth and daughter, Katie, spent the weekend with Felton and Betty Martin.

Bill and Dorris Sheld, my nephew and wife, from Bolton came Wednes-

day afternoon to visit my; they went home Thursday; a short stay but I sure enjoyed their visit.

Marvin and Ruth Smith came Thursday evening and stayed for the 84 party that night at Lou Vaughn's; Genia McIver visited Sunday morning. Lou had dinner with John and Earlene Dockery Sunday; they had fish for dinner; also Mary Ola and Elmer Woods were there.

Rankin and Natalie McIver and George and Goldie Haynes went to Brownwood and ate out at the Section Hand Restuarant Sunday evening.

Russie James and family all spent the weekend at the Turkey Peak Lake, Cindy and Kelly and Libby came from Lubbock and spent the weekend. Russie visited Carrie Stacy, Florence Stearns and Edna Laughlin during last week.

Royce and Wanda McIver spent Saturday night with his mother, Genia McIver and Terry McIver visited Sunday evening.

Sug Stearns visited Leona Henderson one evening last week.

The Ray Kirk family visited in Brownwood last Wednesday night with Jackie and Judy Roberts and family. Saturday night the Ray Kirk family visited the Don Cothran family in Brooksmith.

Don, Donna, Melissa and Justin Cothran came to visit the Kirk family Sunday afternoon and I visited the Kirk family Sunday afternoon.

Margaret and Warren Barton spent most of last week in Midland with friends.



To accelerate the baking of a potato, first boil it for about ten minutes.



Mr. Everest is a foot higher today than it was a century ago, and it may be growing at an accelerating rate.

**Henderson Funeral Homes**  
"People Who Care"  
Offering At Your Request  
Pre-arranged Funerals  
Funeral Insurance and Counseling  
Solemn Services  
Coleman 625-2121 Santa Anna 348-9131

**OUT-OF-TOWN SPENDING IS ECONOMIC SUICIDE**

Local stores say -- **USE US OR LOSE US!**

It's a bold statement..... and unfortunately very true. Dollars spent in your hometown are not only the lifeblood of local merchants but also the entire community.

Each dollar spent at home helps farmers, teachers, wage earners, everyone. As money rolls over locally it helps support public services, schools, churches and hundreds of other groups and organizations. Recent surveys indicate that small town residents that leave their communities to shop in big-city malls are committing a form of economic suicide. This trend is so severe that the end of many small town business districts is very near.

The secret to changing the 'use us or lose us' headline to 'Local economy prospers' is simple: Shop At Home.

**This Message Sponsored By:**  
**The Santa Anna News**  
and  
**The Santa Anna Chamber of Commerce**

# RANGER PARK INN

By Annie Mae Brimer

The residents enjoyed an hour of singing by the Melody Makers Tuesday afternoon. Jim Boyle played the piano while Doris and Les Aderholt, Wanda Wallace, Allene Needham, Tina Whittington, Virginia Wood, Lorene Wynn, Gladys Creek and Neal Smith sang.

Thirty-two first grade students and their teachers, Dorothy Harris and Coyita Bowker, presented a program in music and song Friday morning. After the program the students visited with the residents and gave them Valentines they had made at school. Angie Hernandez attended the program with the students.

The residents enjoyed Valentine's Day more this year than any other time. The ladies of the First Baptist Church of Santa Anna, Glen Cove Baptist Church, North Coleman Baptist Church and Rockwood Baptist Church sponsored the party Friday afternoon at 2:00 p.m. Refreshments of cake, cookies and punch was served from a table decorated by Ruby Sanges, Maggie Wood, Ruth Donica, Oma Dean Horner, Edith Dodson, Beulah Helm, Viola Pond, Minnie Bray and Sadie Bryant to a large number of residents. After they ate refreshments, Valentines were distributed from a decorated Valentine box to each resident.

About 4:00 Friday afternoon Mrs. Morris brought Valentine Cups that members of Delta Omicron Sorority made and gave one to each resident.

Saturday at noon the trays with Valentines Gay and Gay Turner made and mailed from Waco, Texas for each resident to enjoy.

The Northside Baptist Church conducted the third Sunday afternoon service Sunday for a large number of residents. Those helping with the service were Luther McCrary, Fannie and Clarence Gilbert and Wanda Dietzel.

The residents enjoyed the 42 games Monday afternoon. Wilmoth Russell and Ollie Pembroke helped with the program this week.

## LIVING CENTER

Edna Wells visitors were JoAnn Hale and Ollie Pembroke.

Thelma Whitehead visitors were Stena Mitchell and Beulah Hyden. Minnie Greer was visited by Alma Webb.

Vista Cox visitors were Claudine and Sarah Stewart. We are sorry Mrs. Cox had to go to the hospital Tuesday. We express our deepest sympathy to Mrs. Cox at the death of her daughter.

## NURSING HOME

Ora Caldwell visitors were Charles and Jean Caldwell, Myrtle Chapman, Gladys Hunter, Katherine Horner, Blanche Harris and the Sorority girls.

Cora Mikeska visitors were Lola Larence, Joel Aaron, Liddie McFarland, Roy Hopper, Charlie and Del Mikeska.

Karen Lemond was visited by Thelma Sides.

Frances Eckert visitors were Chuck Hoffman, Alma Marrs, and Virginia Turney.

Marie Hill visitors were Glenda, Lee and Kristen Keeney.

Mae Tyson visitors were Ben Taylor, Charles Taylor and Jo Tyson.

Myrtle Burden visitors were Raleigh and Sandra Bruton.

Eunice Stout visitors were Annette and Bill Lengefeld and Gladys Glover. We are sorry Mrs. Stout went to the hospital Saturday. Get to feeling better soon Eunice, We miss you.

Wilma Spencer visitors were Ann Schulz, Alan Daniells and Terry, Ann Puckett, and Theatus LeMay.

Beulah Hyden visitors were S. D. Conner, John Cross and Nelma Crump.

Doris Wagon visitors were Fawn Wagon and Wanda Daniel.

R. V. (Red) Cupps visitors were Doris and Raymond Cupps, Charlie and Thelma Fleming, Mr. and Mrs. S. D. Cupps, Casey Herring and Rodney Dean.

Nancy Menges and Clarinda

Menges visitors were Fannie Gilbert, Henry Cornett, Mary Griffin and Ann Spencer.

Norval Wylie visitors were Doc Scarbrough, Pete Wylie, Nancy Pinkerton, Dick and Eunice Longbrake.

Mary Phillips visitors were Fannie Gilbert and Angell Hamm.

Faye Jewell visitors were Dexter Jewell and Allan Jewell.

Lorene Pepper visitors were Gladys Hunter and Maxine Crenshaw.

Frances Tucker visitors were Ann Puckett and Archie Tucker.

La Dona Estes visitors were Louise McClellan, James Estes and Bruce Estes.

Nyla Simmons visitors were Ann Puckett, Jeanette Brock and Katherine Horner.

Mildred Absher visitors were Teresa, Dennis and Toby Absher.

Ovie Jenkins visitors were Richard and Maudie Kelley and Claris Billings.

Opal Maples visitors were Agnes Thompson, Ruby and David Thompson, Nieves Guerrero, Billie and De Witt Simmons and Henry Cornett.

Cleo Canady was visited by Stena Mitchell.

Johnnie Thompson visitors were James Thompson and J. T. Thompson.

Estelle Todd visitors were Jerry and Helen Todd.

Christine Sanders visitors were Peggy Johnson, Lucille Sanders and Thelma Ward.

Jim Daniel visitors were Jeanette Brock, Myrtle Chapman, Rubye Wenzel, Dick Longbrake, Katherine Horner, Henry Cornett, Amanda Lemmons, Shamey Brand, Karen Morris, Deanne Simons, and W. D. Scarbrough.

Mildred Pittard visitors were Edwin Pittard and Marion Lusk.

Vera Shield visitors were Lonella Raesch and John Walker Taylor.

Earl Chapman visitors were Gladys Hunter, Lonella Raesch, John W. Taylor, Dick and Eunice Longbrake, Blanche Harris and Pauline Eubank.

We are sorry Mr. Chapman went to the Brownwood Hospital Saturday. Hope you are better soon.

the home of her son, Mr. and Mrs. Brand Lovelady and girls, while in Brownwood.

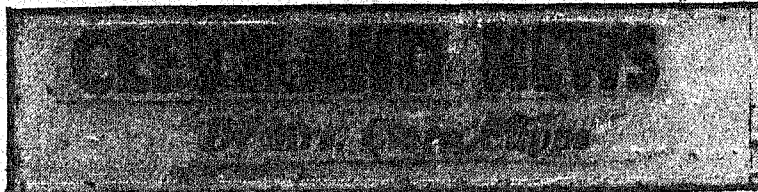
Mrs. Pearl Avant had a nice telephone visit with her son, Mr. Douglas Avant in Brady on Monday. Her son, Mr. James Avant and wife check with her almost daily.

Mr. and Mrs. George Daniel Wheatley were Sunday dinner guests after Sunday morning church services with her mother, Mrs. Ryley McFarlin in Santa Anna. They were in Brownwood Sunday afternoon.

We are sorry to report that Mrs. Dave (Mary) Shields, who with her husband, Dave Shields, have been making their home in the Rising Star Nursing Home for some time, suffered a heart attack Saturday morning and is a patient in the Intensive Care Ward in the Brownwood Regional Hospital. I called down Sunday night and they were in hope (a son) that she may be a little better than she was Saturday, but not so well. We trust she will soon be recovered, but she has been in failing health for several months.

I also talked with Mrs. Moud Shields (who is my aunt) Sunday night. She has recently fell in her home and broke her arm near the wrist and has really been having a lot of discomfort. She told me it had really pained her all day Sunday. We are in hopes she will be completely recovered soon.

Thanks for your news. I really need your help, so a big thanks.



Mrs. Carmilla Baugh was at Bangs Monday and Wednesday to visit her mother; Naomi Reid of Teague came Friday to visit the Baughs. The Dick Baughs and Naomi visited Mrs. Mae Flores Saturday, Sunday afternoon Joe and Debbie Bible of Stephenville came for a while.

The Adolph Kellys went to visit the Emil Williams Saturday afternoon; C. E. Wise dropped by one night.

The Jerry Ellis family visited the Cecil Ellis' Saturday evening.

Charlie Fleming was over to visit his mother, Mrs. Bula Fleming and Margie Monday morning; Eddie and Phillis Dillard were out Saturday evening; Mr. and Mrs. Mack Boyet and children visited Sunday evening, also Max and Donna Mapson and Jason of Brownwood.

Dorothy Brown visited Syble Huggins Saturday afternoon. David and Amber Huggins had Sunday lunch with the Lee Ray Huggins; they went to Coleman Sunday afternoon to visit the Phill Huggins family.

Dena and Lance Rasch and Kris of Brownwood spent Sunday with their grandparents, Mr. and Mrs. Calvin Campbell.

R. G. Bland of Tyler spent a couple of days with the Edd Hartmans. Sandra Walker of Bangs spent the day Friday with her parents, Mr. and Mrs. Edd Hartman.

Those visiting Mr. and Mrs. Buck Mills were Mr. and Mrs. Odell Box of Brady, Jim Box of Fort Worth and Mr. and Mrs. Edd Hartman.

Mr. and Mrs. Pete Moore went to Abilene Tuesday to visit her cousins, Florence and Florida Phillips.

Pam Morgan, John and Josh of Stephenville spent the weekend with her parents, Mr. and Mrs. Casey Herring. Kenneth Herring of Odessa came Saturday to spend the day.

James and Billie Perry and girls

visited Mr. and Mrs. John Perry Friday.

Leon Phillip of San Angelo came Thursday to visit Hardon Phillip. They went down to visit Billy William. Billy visited Hardon Saturday night; Cory Halmon visited Hardon Wednesday; Hardon dropped by Bruce Alsbrook's Wednesday.

Sterling and Trey Naron spent the weekend with their grandparents, Mr. and Mrs. John Naron.

Billy Don Cupps and John Gilbreath of Beaumont came in Sunday evening to visit his parents, the R. W. Cupps; they were supper guests Sunday night. Kasha Cupps is visiting him while he is here. Mr. and Mrs. George Teeters of Bangs also came over Sunday evening. Russell and Jolinda Carnes and Bleakly of Georgetown were dinner guests Sunday. I visited Marie Hellman Friday a while.

Thursday Vera Wise visited Keetie Haynes and Dorothy Alsbrook. Visitors with the Mr. and Mrs. C. E. Wise were Junior and Odell Henderson, Gladys Haynes, Jimmy Eisenhower, Emmitt and Margaret Simmons, Eveline and Casey Herring and Bro. Coy Cavitt.

Weekend visitors with Mrs. Tavy Ford were her daughters, Mary Jackson and Peggy Miller of Eden, who spent Friday night with their mother, and Judy Straughan of Conroe came Saturday; all were with Tavy on Valentine's Day. She was very happy. Sure there were others who droppe in.

Mr. and Mrs. Clarence Proctor of Comanche visited Mr. and Mrs. V. H. Russell Sunday afternoon.

Russell Williams was home visiting his parents, Mr. and Mrs. J. E. Williams over the weekend. He goes to college at Belton.

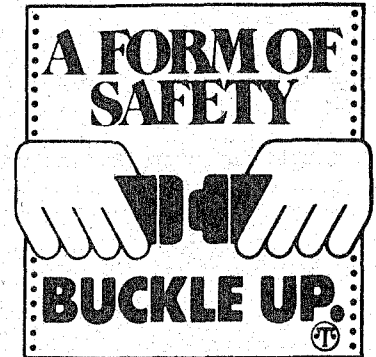
Tom and Bobbie Howard of Zephyr came up and ate supper with

Mrs. Ruby Howard; Bessi Parish came Sunday afternoon to visit. Teh Christina on his knees sees more than the philosopher on tiptoe. Hope all of you have a nice week.



Some say safety begins with a belt: A seat belt. By buckling yours, you can be part of a nationwide campaign to reduce by thousands the number of people who die in traffic accidents each year.

Buckle Up is the message that comes from Transportation Secretary Elizabeth Dole. That message is being passed on to many business establishments — and the people who work there—thanks to the efforts of a national trade organization.



The National Business Form Association (NBFA), whose members distribute, manufacture and supply business forms both nationally and internationally, has adopted a campaign to get people to use seat belts. Called "A Form of Safety," the NBFA campaign aims to encourage its members and other manufacturers of business forms to use the Department of Transportation's Buckle Up logo on the stubs and margins of the forms they make. NBFA's goal is for the slogan to appear on 180 billion forms, enough to be seen by every working person in the country.

The NBFA campaign is in support of the Buckle Up program adopted by Dole. Her goal is to save 16,000 lives and \$57 billion in motor vehicle accident costs per year.

# OKLAUNION





## STILL OUR BEST CHOICE!

Oklaunion Control Room

WTU's new power station will soon be on line! The Oklaunion Power Station near Vernon, Texas, will be WTU's first coal-powered plant.

A coal-powered plant was our best option back in the 70's when WTU first began planning for a new power station. At that time a new federal law known as the Fuel Use Act prohibited the use of oil or gas as boiler fuel for new utility plants.

Coal is still our best choice, especially over the long haul. The unlimited supply of clean-burning coal means more stable fuel prices and a continued reliable supply of electric energy for WTU customers



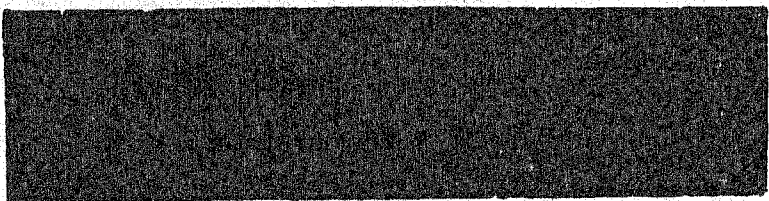
Coal Delivery at Oklaunion

WEST TEXAS UTILITIES COMPANY



A Member of The Central and South West Utilities

We're happy the Oklaunion Power Station is coming on line! It will be good for our Company and good for our customers!



Weekend guests with Mr. and Mrs. Graham Fitzpatrick were Mr. and Mrs. Don Fitzpatrick of Odessa, his children, Stephanie and Brandon of Brownwood. Mr. Fitzpatrick's sister, Mr. and Mrs. Bruce Halmon of Grande Prairie, Jim Rice of Trickham Community visited with the ones mentioned Sunday afternoon.

Visiting with Mrs. Ruby (Maye) McFarlin in Santa Anna during the past week were Mr. and Mrs. Byrl Brown of Cross Plains, Mrs. Russel and her sister-in-law, Mrs. Velda Mills and Mrs. Sis Lowery of Santa Anna and Mr. and Mrs. Darrell Cupps of Bangs.

Mr. and Mrs. Floyd Morris were guests of Mr. and Mrs. Clois Jones in Coleman Sunday; other guests in the home were Mr. and Mrs. Ray Perkins of Hugo, Oklahoma, and Mr. and Mrs. William Perkins of Coleman. The folks enjoyed a nice reunion together.

Mr. Buddy Lovelady of Leander and Mrs. Ruth Dodson of Coleman were guests of Mr. and Mrs. Darwin Lovelady and Mrs. Myrtle Roberson in Santa Anna Thursday evening.

Louelle Sorrells of Coleman visited with Mrs. Darwin Lovelady during the past week.

Mr. and Mrs. Amon Ott were in Abilene the past Thursday; Mr. Ott had knee surgery and is doing well even though he isn't running any foot races, and not even moving so fast, but has did great. His father, Mr. and Mrs. Grand Ott of Throsmorton came to Abilene for the surgery; also Mrs. Ott's mother, Mrs. Leon Griffin of Gouldbusk was with the; m. Mrs. Ott reports they have had numerous calls who were concerned about Amon's condition and they deeply appreciate everyone who called or who were interested in playway.

Mr. and Mrs. Leon Griffin of Gouldbusk were with Mr. and Mrs. Amon Ott on Friday assisting Mrs. Ott with some work she needed help with. Mrs. Ott's brother, Bryan Grif-

fin of Gouldbusk was with them over the weekend. Rocky Rutherford of Coleman was a visitor Saturday morning and Mr. and Mrs. Don Fitzpatrick was checking with them Saturday night.

Mr. Floyd Morris visited with his brothers, Mr. and Mrs. C. H. Morris and Mr. and Mrs. Rocky Morris in Brady on Saturday.

Mrs. Thomas Rutherford was in Dallas Monday at the Dallas Airport to meet her daughter, Jill York, who will be with her visiting a few days. She is from New Hampshire state.

Those with myself and my son, Mr. and Mrs. Thomas Rutherford of New Hampshire, on Sunday were Mr. and Mrs. Hilary Rutherford of Coleman, Mr. and Mrs. Bobby Boatright and girls of Brownwood, Mr. Loyd Rutherford and son, Todd, Rocky Rutherford was with us during the week and Mr. and Mrs. Wimpy Watson of Brownwood were with us Sunday afternoon; the Watson's are former residents of our community. We feel they are still a part of us. They are doing fine.

Mrs. Darwin Lovelady visited her sister, Mrs. Elva McDaniel in Brownwood on Friday and also in

## FISH

Now is the time for Pond and Lake Stocking Hybrid Bluegill, Florida Hybrid Bass, Channel Catfish, Fathead Minnows and Black Crappie.

The Hybrid Bluegill will REACH the weight of 2 1/2 to 3 Lbs. We furnish your Hauling Containers.

We guarantee live delivery.

Delivery will be FRIDAY, FEBRUARY 27, at the times listed for the following towns and locations.

- Bangs- Bob's LP Gas, Feed & Seed 7:30-3:30 A.M. 752-4422
- Santa Anna- Simmon's Feed & Supply 9:00-10:00 A.M. 348-3188
- Winters- Tom Poe Feed Store 11:00 A.M.-12:00 P.M. 754-6022
- Bullinger- Robinsons Big Mart 1:00-2:00 P.M. 285-3913
- Odessa- Bureau Holding Service 3:00-4:00 P.M. 453-4211
- San Angelo- Bob's Feed & Supply 4:00-6:00 P.M. 658-1823

Call your local Food Store to place you order or call 455-777-2302

Fishery Consultant and Pond Rotaenon available. Special Deliveries on Large Ponds and Lake Orders.

**BUNN'S FISH FARM**  
P.O. Box 11  
FITZPATRICK, TX 76842

**WALTER**  
**FUNERAL HOME**  
625-4103  
Coleman, Texas  
Pre-arranged Funerals

# Whirlpool

HOME APPLIANCES

## Specials

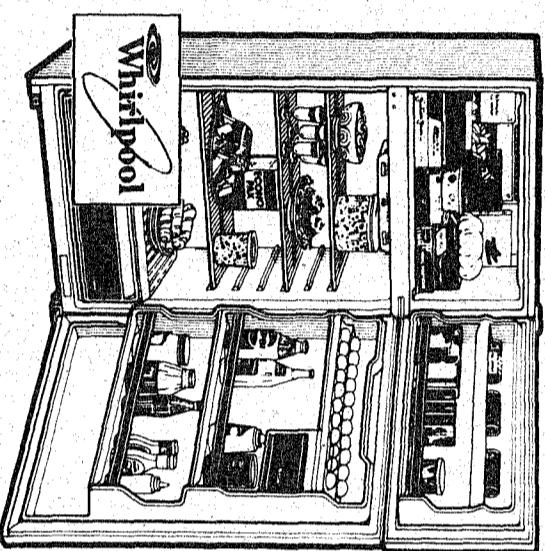
### Good Through Saturday

### February 21st

Making your world a little easier.

#### Whirlpool Customized Series

AUTOMATIC WASHER AND DRYER



- 18 Cu. Ft.
- Adjustable Shelves
- Textured Door

**\$599.88**

**FREE INSTALLATION**  
OF ANY WHIRLPOOL DISHWASHER  
PURCHASED DURING THIS  
SALE EVENT

- 5 Grate
- Energy Saving Air Dry
- Dual Action Filter

**\$349.88**

**HURRY!  
BUY NOW  
AND SAVE!**

- No Money Down!
- No Payments For 90 Days!
- No Finance Charges For 90 Days!



All Whirlpool products have earned this seal.

• LAYAWAY

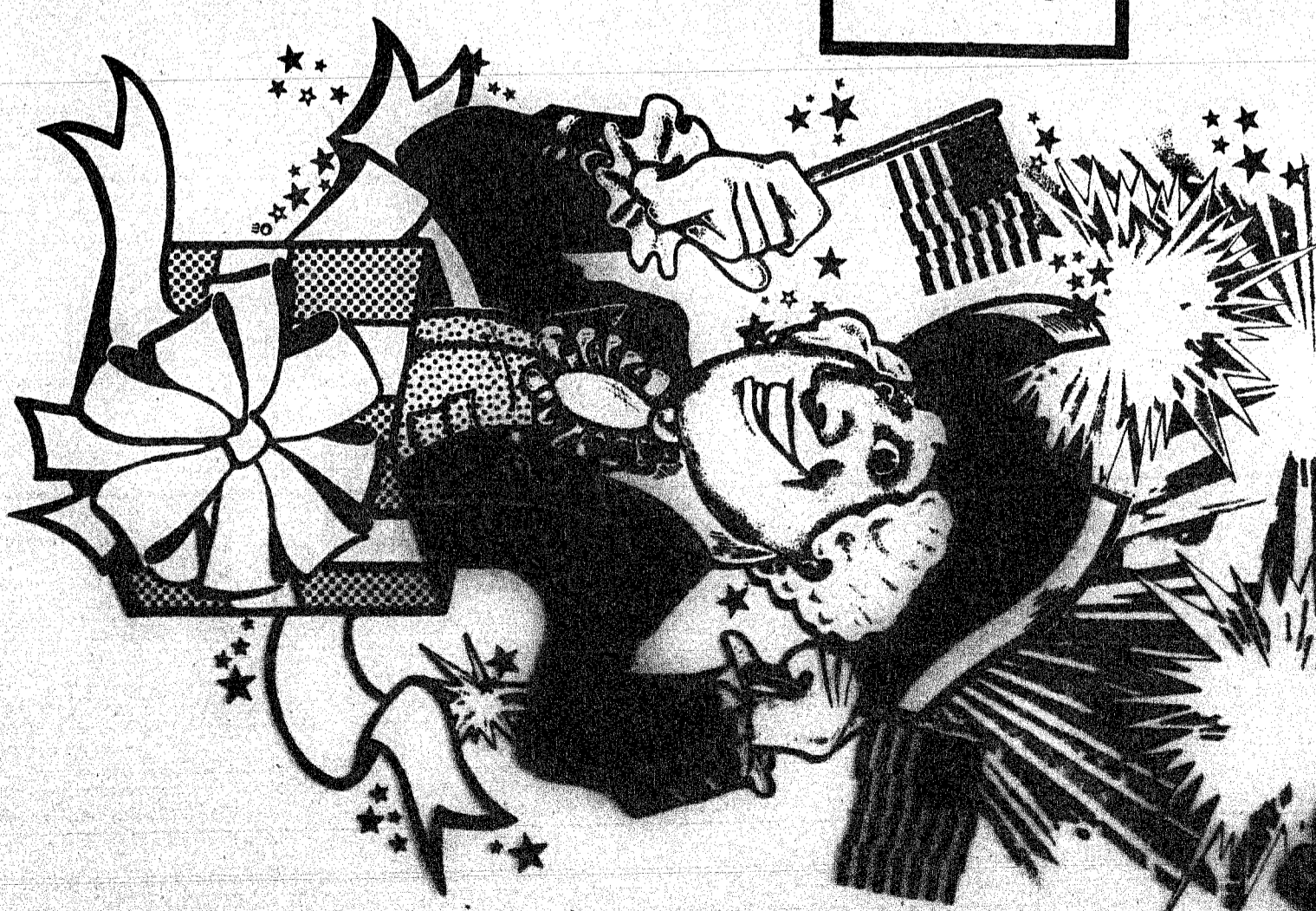
• FINANCING AVAILABLE



# WE'RE BURNING UP WITH BIRTHDAY WASHINGTON'S BIRTHDAY

**THE SANTA ANNA NEWS**  
Thursday, Feb. 19, 1987  
Section B  
16 Pages

**George Washington's  
Birthday Tabloid**

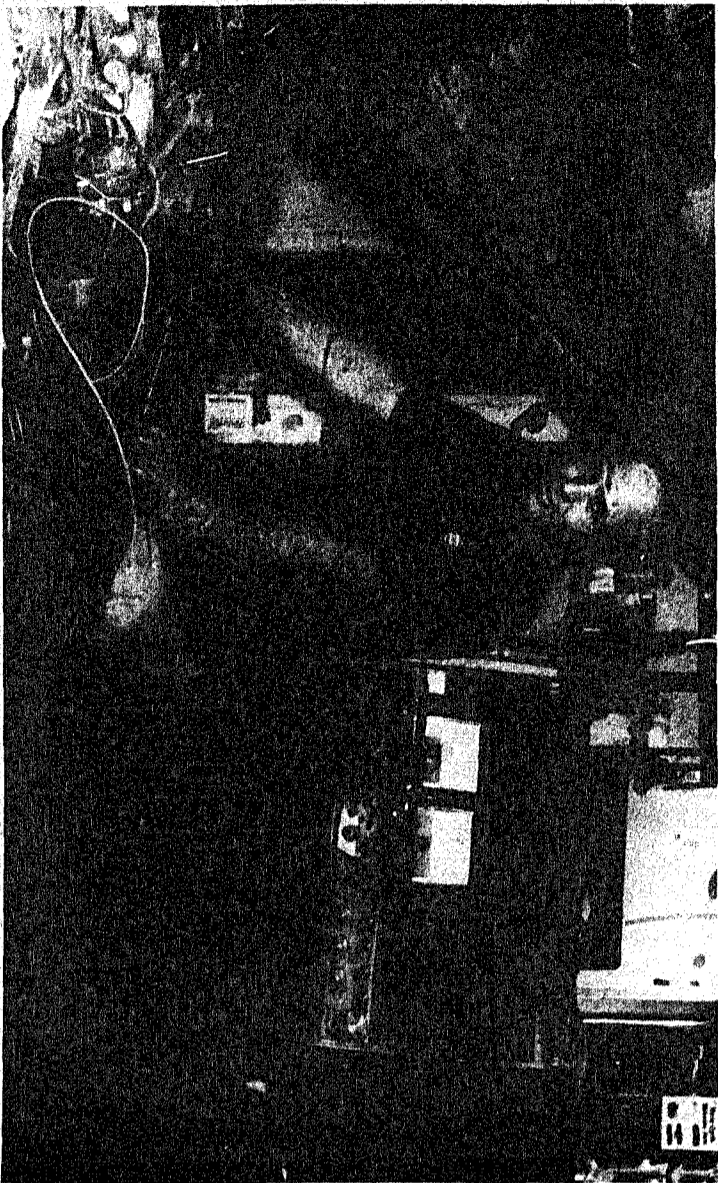


# BANGS AUTOMOTIVE

HIGHWAY 67 AT SOUTH 3RD  
BANGS, TEXAS  
PHONE (915) 752-PART

Today's Cars Require Special Tools And Equipment  
To Get Them Running Properly.

Bangs Automotive Has The Equipment And Know  
How To Work On Your Late Model Computer Controlled Car.



Dale Gantrell working with his new Electronic Engine Analysis System on a late model car.

**WE TURN DRUMS  
AND ROTORS**

**BRAKE SPECIAL  
\$49.95**

MOST CARS & LIGHT TRUCKS

**TUNE UP SPECIAL  
\$39.95**

V8 CARS AND LIGHT TRUCKS

**CHANGE OIL, FILTER  
& LUBE  
\$19.95**

MOST CARS & LIGHT TRUCKS

## Glenda's Beauty Salon

615 Wallis Phone: 348-3582  
Santa Anna, Texas

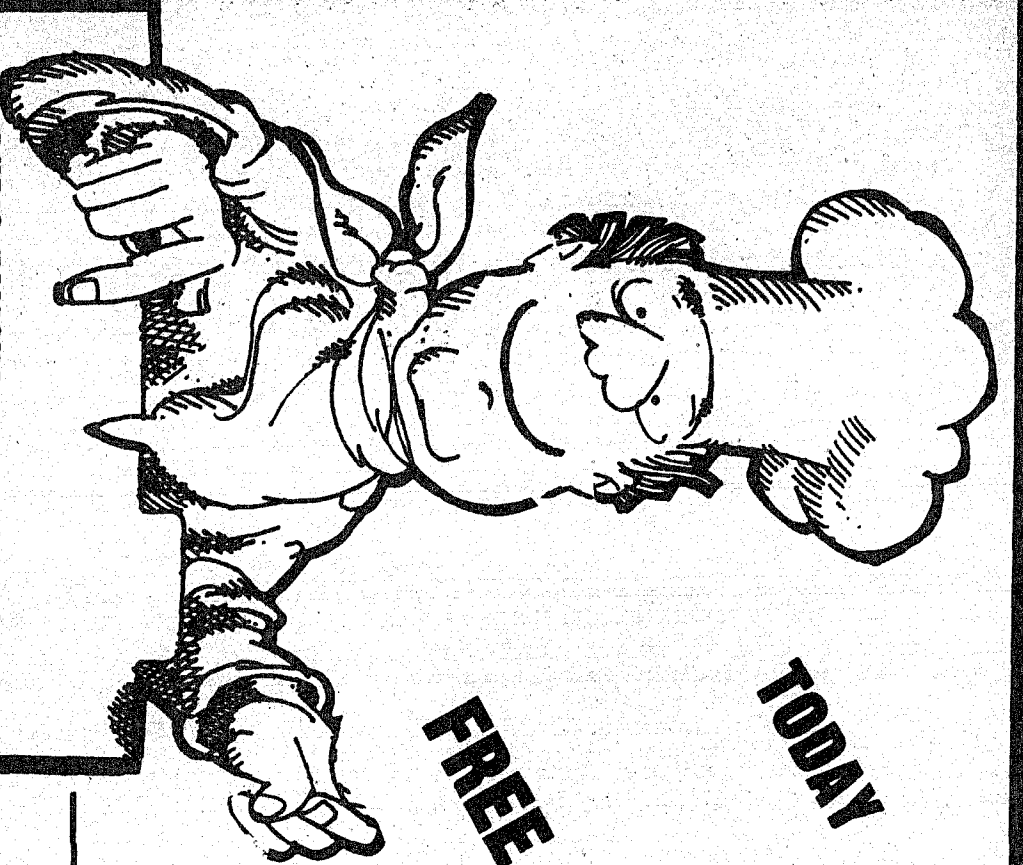
# SPECIAL

# FREE

Bottle Of Shampoo  
With Each  
Opticurl Permanent

- Glenda Cook - Owner
- Marcia Holt - Operator
- Frances Ford - Operator
- Juanita Frausto - Operator





**TODAY GRAND OPENING**  
**FEBRUARY 19TH**  
**THURSDAY**

**Celebrate With Us!**

**FREE SPAGHETTI TONIGHT!**

**6:00 PM - 8:30 PM**

Dub Franklin - Owner

Close-Out  
**T-SHIRTS**  
**\$5**

**MENU**

**BREAKFAST**

- Biscuits & Gravy \$1.00
- Bacon & Eggs \$2.25
- Ham & Eggs \$2.25
- Sausage & Eggs \$2.25
- With Hash Browns, Toast & Coffee
- 1 Pancake \$1.00
- Stack \$1.50
- Small Stack \$1.25
- Ham, Bacon or Sausage \$1.00 Extra

**MEXICAN FOOD**

- Dub's Chili \$2.00
- Enchilada Plate \$4.00
- Taco Plate \$3.50
- Burritos \$2.50
- Tostada \$1.35
- Nachos \$1.25

**SANDWICHES**

- Hamburger & Fries \$1.65
- Hamburger & Chips \$1.55
- Cheeseburger & Fries \$1.90
- Cheeseburger & Chips \$1.80
- Grilled Cheese Sandwich \$1.20
- Steak Sandwich \$2.00
- Bacon, Lettuce & Tomato Sandwich \$1.80
- Ham Sandwich \$2.00

**DRINKS**

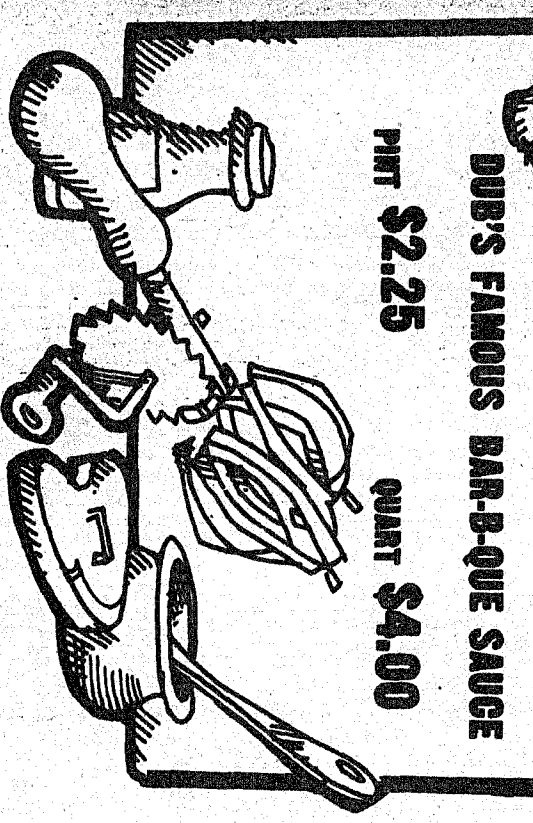
- Tea .25
- Coffee .25
- Hot Tea .25
- Milk .60-.70
- Hot Chocolate .40
- Orange Juice .65
- Tomato Juice .65
- Sodas .50

**SOUP OF THE DAY**

\$1.25

**CALL IN ORDERS**

**348-9916**



**DUB'S FAMOUS BAR-B-QUE SAUCE**  
 PINT \$2.25    QUART \$4.00

**DUB'S BAR-B-QUE**

- Bar-B-Que Plate \$4.00  
 With Beans, Potatoes, Rolls or Cornbread
  - Chopped Bar-B-Que Sandwich & Fries \$2.25
  - Bar-B-Que & Sauce LB. \$4.25
- DINNERS**
- Hamburger Steak \$4.00
  - Chicken Fried Steak \$4.25
  - Bar-B-Que Plate \$4.00  
 Served with Potatoes, Salad & Texas Toast

**Sharon's Beauty Shop**

Specializing In  
**Men, Women & Children**

**Offers These Specials Through February!**



**Come In & Try Some Of The Newest Styles In Hair Color!**

- Matrix Prisms
- Se-Colorizing
- Natural Looking Hair Colors

**We Offer Gentle To The Hair.....**  
 Tipping, Stripping, Frosting, Winking and Stripping

**Paraffin Bath**

Paraffin is excellent for dry, itchy, aging skin, dehydrated cuticles and temporary relief of arthritis. The Paraffin Bath can be used on hands or feet, as a moisture or a pedicure.  
**FEEL FREE TO CALL FOR MORE INFORMATION**

**\$4**

**Depilatory Hair Wax Remover**

**\$4**

**Manicure**

**\$4**

**Perms**

**\$25**

With FREE 8 Oz. Matrix Shampoo

**Ear Piercing**

**\$6**

Includes Earrings

Sharon Guthrie - Owner-Operator  
 Gindy Polton - Operator  
**Walk-ins Welcome!**  
**PHONE: 348-3433**

# To The Citizens of Goleman Gounty

Santa Anna Funeral Home would like to take this opportunity to inform the citizens of Goleman Gounty that we are still in Ambulance Service and that we will respond to any location in Goleman Gounty when called.

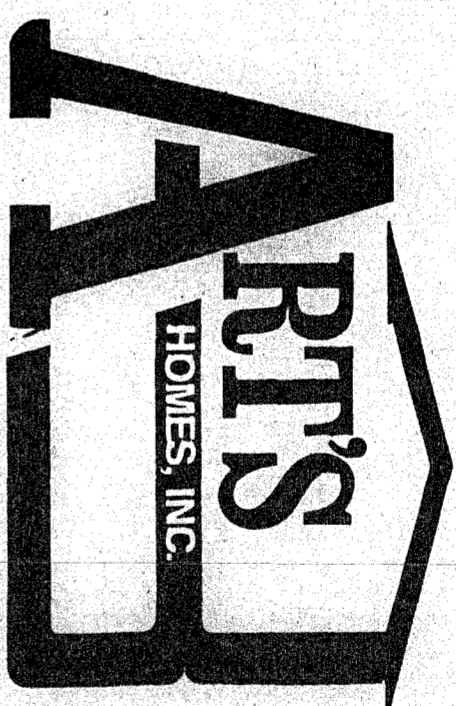
If you have family in any of the nursing homes in Goleman Gounty, we would be happy to take care of any ambulance need. We are a Medicare participating firm, which means we accept assignments on all Medicare calls.

Our ambulances are state certified, with trained personnel. We are equipped with radios for contact all area hospitals and police departments.

In Goleman:  
Call Collect **348-3153**

All other areas in Coleman County will be local calls.

# MOBILE HOMES AT FACTORY-DIRECT PRICES



**OAK CREEK VILLAGE**

Authorized Factory Outlet

4 Mi. East of Brownwood on Hwy. 377  
915-643-3608 915-643-3509

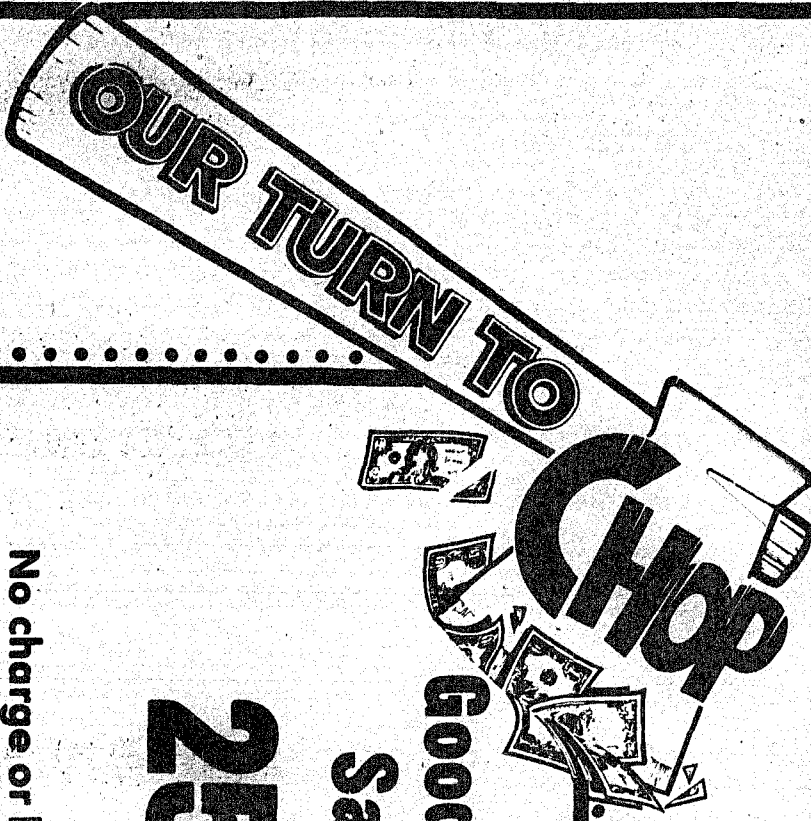
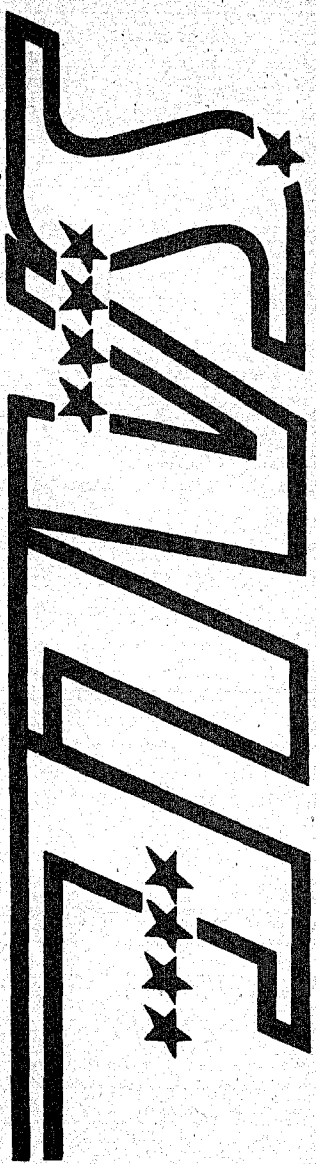
- 1987 OAK CREEK 18' WIDE** \*  
3 Bedrooms 2 Baths  
Composition Roof  
Fully Furnished  
\$268.75 Per Month 180 Months  
11.75 Percent \$2270 Down
- 1987 OAK CREEK 16' WIDE** \*  
2 Bedrooms 2 Baths  
Fully Furnished  
\$215.11 Per Month 180 Months  
11.75 Percent \$2019 Down
- 1986 OAK CREEK 16' WIDE** \*  
3 Bedrooms 2 Baths  
Fully Furnished  
\$238.85 Per Month 180 Months  
11.75 Percent \$2241 Down

**1986 COLUMBIA DOUBLEWIDE 28' X 60'** \*  
4 Bedroom 2 Bath  
\$310.03 Month 180 Months  
11.75 Percent \$2909 Down

\* All Pricing Includes Air Conditioning, Set-Up and Delivery.

- Land-Home Financing Available
- 5 Percent Down Payment Available To Qualified Buyers
- Customizable Your Home To Fit Your Needs
- Over 20 Rooms On Display
- New, Used & Repeated Showings
- We Take Trades-In
- Insurance Available
- Complete Service Department On Our Location
- Art's Office: The Benefit Of 11 Years' Experience.
- Art's Is Rated No. 18 In Texas Of Over 200 Businesses.
- Art's Has An Outstanding Service Program & Professional Sales Staff To Help You Choose The New Home You're Looking For.

# WASHINGTON'S BIRTHDAY



## COUPON

Good at G&E Hardware  
Santa Anna, Texas

**25%** Discount off  
any purchase

No charge or layaways. Limited to items in stock.  
1 coupon per purchase. Discount with coupon only.  
Coupon expires 3-1-87.

discount can apply toward toys, tools,  
housewares, fans, garden supplies, plumbing  
supplies, small appliances or any other item.

# G & E HARDWARE

Santa Anna, Texas

## Help Us To Serve You Better

The Santa Anna Funeral Home Emergency Medical Service  
Is Now Compiling A File With Important Medical Information  
To Have Available In An Emergency.

This information will be kept in each of our ambulances,  
so that when needed, it will be available to the personnel  
making the call.

In Coleman  
Call Collect: **348-3153**

(ALL OTHER AREAS IN COLEMAN COUNTY WILL BE A LOCAL CALL)

NAME: \_\_\_\_\_

PHONE NUMBER: \_\_\_\_\_

LOCATION & DIRECTIONS  
TO YOUR RESIDENCE: \_\_\_\_\_

\_\_\_\_\_

\_\_\_\_\_

FAMILY PHYSICIAN: \_\_\_\_\_

HOSPITAL PREFERRED: \_\_\_\_\_

MEDICAL HISTORY: \_\_\_\_\_

CURRENT MEDICATION BEING TAKEN: \_\_\_\_\_

\_\_\_\_\_

KNOWN ALLERGIES TO MEDICATION: \_\_\_\_\_

PERSON TO CONTACT IN CASE OF AN EMERGENCY: \_\_\_\_\_

Please Complete This Form And Return To The Santa Anna  
Funeral Home Or Mail To:

Santa Anna Funeral Home  
P.O. Box 129 Santa Anna, Texas 76978  
**SANTA ANNA FUNERAL HOME**  
348-3153

# WASHINGTON'S BIRTHDAY

AT OUR  
NEW LOCATION

S & M Music Co.

100 N. FISK

## Guitars

Guitar Closeout—Select Group

Was \$595 Now \$195<sup>00</sup> SAVE \$400<sup>00</sup>

(Guitar Has Lifetime Guarantee)

Grate Amplifier 7' "Stack"

Was \$250<sup>00</sup> Now \$800<sup>00</sup> (Must Sacrifice)

All Guitar Strings (Sets)—Buy 1, Get 1 FREE

(Individual Strings Not Included)

## Keyboards

Yamaha Keyboard

PSR-70

Was \$995<sup>00</sup> Will Sacrifice For \$795<sup>00</sup> SAVE \$200<sup>00</sup>

PSR-50

Was \$695<sup>00</sup> Will Sacrifice For \$525<sup>00</sup> SAVE \$170<sup>00</sup>

# SEAL A PUNCTURE-SEALING DEAL ON MASTER

UNIROYAL

OUR AMAZING PUNCTURE-SEALING STEEL-BELTED RADIAL

GOODYEAR & MICHELIN CAN'T MATCH THESE FEATURES!

FEATURES	GOODYEAR VECTOR	MICHELIN X44	UNIROYAL MASTER
Sealant	No	No	Yes
Road Hazard	No	No	Yes
Mileage Warranty	No	No	Yes 45,000 miles!
Extra-wide Tread	No	No	Yes
SR Speed Rated Import Sizes	No	No	Yes
All-season Design	Yes	Yes	Yes

IT'S UNBELIEVABLE! LOWEST PRICES EVER ON MASTER W/TREAD- PUNCTURE SEALANT

\$6378

P155/80R13

HURRY! ONLY WHILE PRESENT INVENTORIES LAST!



PUNCTURE-SEALANT\* 45,000-MILE MILEAGE WARRANTY\* ROAD-HAZARD WARRANTY\*

See your Uniroyal Dealer for details. AVAILABLE ONLY AT CUSTOMER-CONCERNED, FULL SERVICE UNIROYAL DEALERS.

P155/80R13	\$63.78	P205/75R14	\$68.04
P165/80R13	\$65.14	P215/75R14	\$69.57
P175/80R13	\$69.37	P205/75R15	\$72.25
P185/80R13	\$79.49	P225/75R15	\$85.48
P195/75R14	\$85.48	P235/75R15	\$94.83

Mounting & Computer Balancing Included In Sale Price W-Normal Exchange

LT TRUCK, RV AND VAN RADIAL  
**109.41** PER 1,00  
L1735-55R16  
10 PLY  
RADIAL BELTED BY DUNLOP

Steel Belted Radials

P155/80R13	37.60	P205/75R14	48.75
P165/80R13	40.25	P215/75R14	52.73
P175/80R13	41.32	P205/75R15	50.92
P185/80R13	43.45	P215/75R15	52.97
P185/5R14	46.09	P225/75R15	56.16
P195/5R14	47.15	P235/75R15	58.84

SAVE \$5!  
4 Tire Computer Balancing  
ONLY \$15.00

"Where Service and Bargains are a Tradition"

**Williams Tire Store**

2003 Commercial

# WASHINGTON'S BIRTHDAY SALE

# 1/2 OFF

All Junior Styles

Dresses

Pants

Sweaters

Tops

Shoes & Boots

## The Carousel Nell's Fashions

201 Commercial

108 Commercial

Coleman, Texas

# SALE



Drums

GB 700 "Rack Mount" 5 Piece  
Without Cymbals Reg. \$1299<sup>00</sup>

**\$899<sup>00</sup>**

SAVE \$400<sup>00</sup>

★  
Drumsticks  
2 For Price  
of 1

Special Shipment of

Zildjian Cymbals

**\$165<sup>00</sup>** Per Cymbal Set

Normally As Much as \$500<sup>00</sup> Per Set

Used Peavey Amp **Must Sacrifice at 50% OFF**

Pianos & Organs

Used Console—Was Asking \$1200<sup>00</sup>

Will Sell For Only \$700<sup>00</sup>

Used Studio—\$900<sup>00</sup> Normally \$1100<sup>00</sup>

Used Hammond—\$1500<sup>00</sup> Model-T-500

Buy Now And Save Like Never Before  
During Our First Annual Washington's  
Birthday Sale at S&M Music Co.

# PRESIDENT'S FOODS SPECTACULAR

## SAVE

## ON

## FOOD

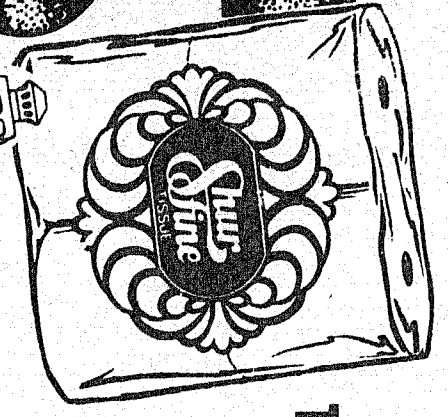
WE RESERVE THE RIGHT TO LIMIT QUANTITIES

Dublin - 208 N. Patrick  
Bronte - 124 W. Main

Llano - 104 W. Young  
Gorman - 104 Kent

3 Locations To Serve You  
Effective Feb. 19-21

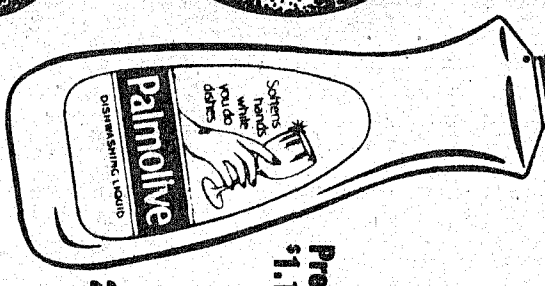
#1 Corner of Austin & Goggin  
#2 On The Circle Brownwood  
#5 817 Melwood



**SHURFINE ASSORTED TOILET TISSUE**  
4 Roll Pkg.

**68¢**

**PALMOLIVE LIQUID**  
Reg. or Lemon



Pre-Priced  
\$1.19

**88¢**

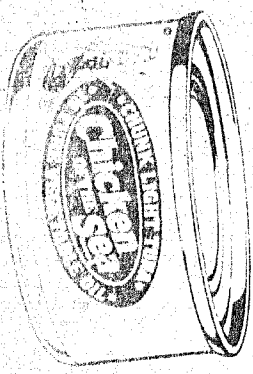
**PRICE SAVER SUGAR**



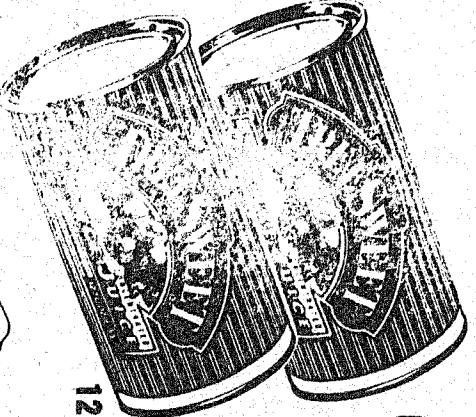
Limit 1 w/10¢ Purchase Please

**99¢**

**CHICKEN OF THE SEA CHUNK LIGHT TUNA**  
In Oil/Water



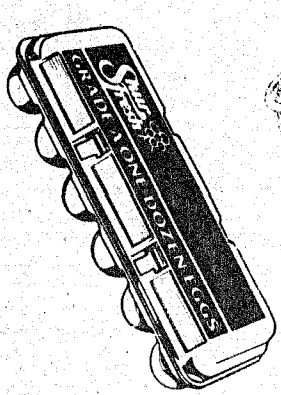
**59¢**



**TREESWEET ORANGE JUICE**

**88¢**

12 Oz. Can



**SHURFRESH GRADE "A" MEDIUM EGGS**

**57¢**

Doz.



**PILLSBURY HUNGRY JACK BISCUITS**

**\$2**

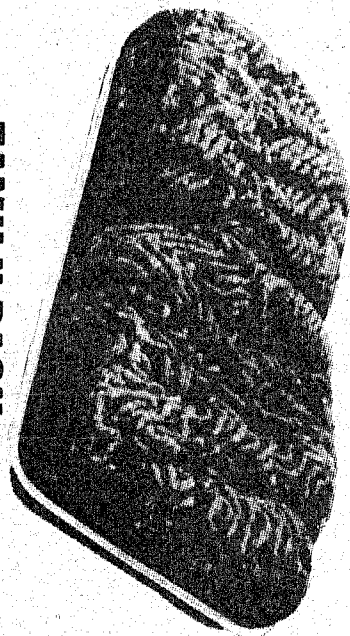
For

**SHEDD'S SPREAD COUNTRY CROCK**



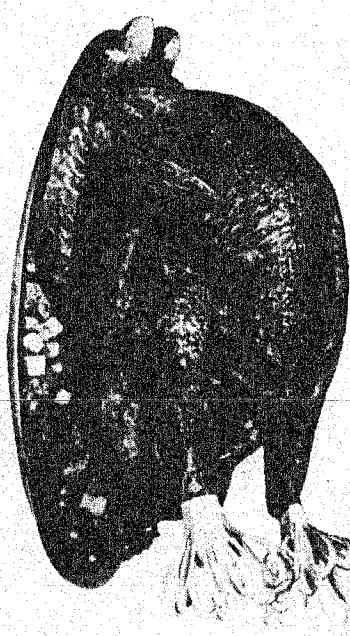
**\$1.39**

3 Lb. Tub



**FAMILY PACK GROUND BEEF**  
3 Lbs. or More

**\$1.19**



**SHURFRESH GRADE "A" SELF-BASTING YOUNG TURKEY HENS**

**48¢**

10-14 Av. Gwt.



**U.S.D.A CHOICE BONELESS CHUCK ROAST**

**\$1.28**

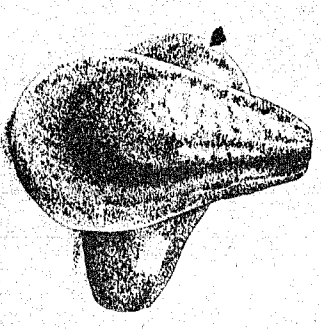
Lb.



**THOMPSON WHITE OR RED FLAME SEEDLESS GRAPES**  
Mix or match

Save \$1.00 Per Lb.

**99¢**



**LARGE CALIFORNIA AVOCADOS**

**\$1**

For  
**FRESH BROCCOLI**

**89¢**



**HOME BAKED FRESHNESS DAILY**

**ASSORTED SINGLE LAYER CAKES, 12**

**1.99**

**HONEY GLAZED DONUTS**

**1.99**

**CAKES FOR ALL OCCASIONS WEDDINGS - BIRTHDAYS - ANNIVERSARIES**

**CALL TODAY 648-9677**