

Santa Anna News

"He Profits Most Who Serves Best"

Single Copy 25 cents

Volume 102, No. 43

THURSDAY, OCTOBER 22, 1987



Kallie Gray Homecoming Queen

Senior Kallie Gray was elected Homecoming Queen for Santa Anna High School. Due to the rain on Friday night the crowning of the Homecoming Queen had to be postponed until Saturday night during the high school dance. Kallie is the daughter of Mr. and

Mrs. Frank Gray. Her escort for the festivities was Mountaineer Football player Vernon Valdez, also a senior and the son of Mr. and Mrs. Joe Green.

Other nominees for the queen were Shelly Smith, Dianna Castillo and Cynthia Garrett.

Sales Tax Rebate Down

State Comptroller Bob Bullock last week sent checks totaling \$55.3 million in local sales tax to 904 cities levying the one-percent city tax. According to Bullock, this year's payments are down by 5.5 percent overall compared to payments made by October last year.

October checks represent taxes collected on sales made in August and reported to the Comptroller by September 20.

Santa Anna received a check totaling \$627.97. For the same period last year the city received a check for \$1,136.09. 1987 payment to date to the City of Santa Anna total \$14,896.75. By this time last year the city had collected a total of \$21,105.49 in sales tax rebate. The total for the year to date is down 29.42 percent from this same time last year.

The rebate to date for the City of Coleman is up 2.56 percent over this time last year.

TEAMS Test Scheduled

The TEAMS exit level test will be given on Tuesday, October 27 and Wednesday, October 28, at 8:30 a.m. in the school cafeteria. This test will be given to all juniors and to seniors who did not pass one or both tests given last year. The math test will be given on Tuesday and the language arts test on Wednesday.

If any former student is interested in testing or retesting to obtain a diploma, please contact Nanette Newbern, counselor, at 348-3136.



Band To Be In Brady Saturday

The Santa Anna High School "Mighty Mountaineer Marching Band" will be in Brady Saturday for the district UIL marching contest. The Santa Anna Band has annually been a strong contender in the contest and everyone is encouraged to be in Brady Saturday to support the Band as they perform and try for that coveted I rating.

The Mountaineer Band will be the first in the class A division to perform and will be on the field at approximately 8:30 a.m. The event is to be held at the Brady High School Stadium.

During their performance the band will be playing **DIABLO, CALIFORNIA ROCKIN'** and **MEET THE FLINTSTONES** which features

the percussion section. They will close with **AMAZING GRACE**.

The Band is pictured above as they performed for the spectators at a recent football game.

Lonnie Baker is the Band Director, Stephanie Hartman is Drum Major and Tammi Morrow is the feature twirler.

Race For Sheriff Is Developing

Election year 1988 is some time off but since Sheriff H.F. Fenton announced he was going to "hang 'em up" a three-way race has developed for the office.

Deputy Sheriff Wade Turner was the first to make an announcement that he intended to make a run for the office. Week before last, former sheriff Corky Chapman announced he would be filing as a candidate for the office and the latest to toss his

hat in the ring is Eddie Odom. Odom has served on both the Coleman city police force and the county sheriff's department.

Official filing date for the office opens early in December.

235 Ex-Students Register For Meeting

The Annual meeting of the Santa Anna High School Ex-Students Association met Saturday morning at the high school auditorium with 235 ex-students registering.

The meeting was led by president of the group, Leana Hartman. The Santa Anna High School band directed by Lonnie Baker entertained the crowd with several selections. Patrick Hosch informed the audience of the plans to restore old pictures of the band in celebration of the 50th anniversary of the formation of the high school band. Hosch requested anyone having pictures of the band to please notify him or Mr. Baker.

Kallie Gray, president of the Santa Anna High School student council, welcomed all ex-students and guests on behalf of the student body. Eddie Jones led the invocation.

Gerald Brister, superintendent of the Santa Anna Schools, gave a report of the schools.

The nominating committee gave its recommendations for officers for the coming year. The Association

accepted the committee's recommendations and elected the following officers; Dickie Horner, President; Billy Gay Rutherford Abernathy, Ist. Vice President; Eddie Jones, 2nd Vice President; Debra Aldridge Long, Secretary-Treasurer. Leanna Pollock Hartman, retiring president, will become a member of the the board of directors.

A very special presentation was made by Mary Ford Fields of the class of 1936. She presented the school with an original architectural drawing of the high school building, dated 1926, by Elmer Withers. Mrs. Fields explained to the crowd how she had located the print that will be placed on display in the high school. Gerald Brister accepted the picture on behalf of the school.

Dickie Horner presented plaques for special recognitions to each of the following; Ex-Student from the earliest graduating class, Carroll Kingsbery, 1914; Ex-Teacher from the earliest class, Mae Allen Blue, 1916; Ex-Student traveling the greatest distance, Ina Niel Ubail, 1939, traveling from Mearring, New Hampshire. Mr. Kingsbery was also presented with a copy of his high school transcript. Frank Gray, high school principal, had found the transcript among old records.

All classes ending in "7" were recognized with the class of 1937 having the largest number in attendance.

Mrs. Hartman introduced the special honorees, Homecoming Queen, Marguerite Horner Gilbreath of the class of 1967; Homecoming King, Carlton Watson of the class of 1967; Ex-Student of the Year Rosalie Nell Strickland of the class of 1937. Mrs. Gilbreath was presented with a special hand-painted china plate and a bouquet of flowers. Watson was given a special plaque and Mrs. Strickland was also presented with a hand-painted china plate and a bouquet of flowers. Each honoree gave a short talk

about the influence Santa Anna High School had on their lives. They also gave special thanks to all who had helped make this homecoming special for them.

Dickie Horner then presented President Leanna Hartman with a special hand painted china plate for her 6 years of service to the Ex Student Association.

The Ex Student Association would also recognized those who helped make this year special. Kay Kingsberry Gray hosted the morning coffee. Sybil Eubanks and Coyita

School Board In Routine Meeting

The Santa Anna School Board met on Tuesday of last week to take care of mostly routine business, with all members present.

The board accepted the bid of Vineyard Construction for replacing the roof of the old gym at a cost of \$11,358. Two other bids had been received.

The board tabled a request from a parent for bus transportation for a student not living two miles from the school, pending a letter from a doctor.

TASB policy update was reviewed but no action was taken as this was the first reading of the policies. Results of the TEAMS tests for the Santa Anna ISD were reviewed.

The spring break was changed from March 21-25 to March 28-April 1 for the 1987-88 school calendar, and the board approved property values as appraised by the Tax Appraisal District. The board declined to make nominations to the Appraisal District Board of Directors.

Purchase of a 10 passenger bus was approved unanimously as was the purchase of a 3 year-old international tractor-mower with attachments.

Bowker assisted her. Debra Long, Lois Ann Harper, Dixie Alvey and Michelle Morgan helped with the registration. A very special thanks goes to Oma Dean Horner for painting the china plates and to Lucille Wylie for keeping permanent records and the memorial list.

A list of those registering for Homecoming will be found in next week's edition of the Santa Anna News.

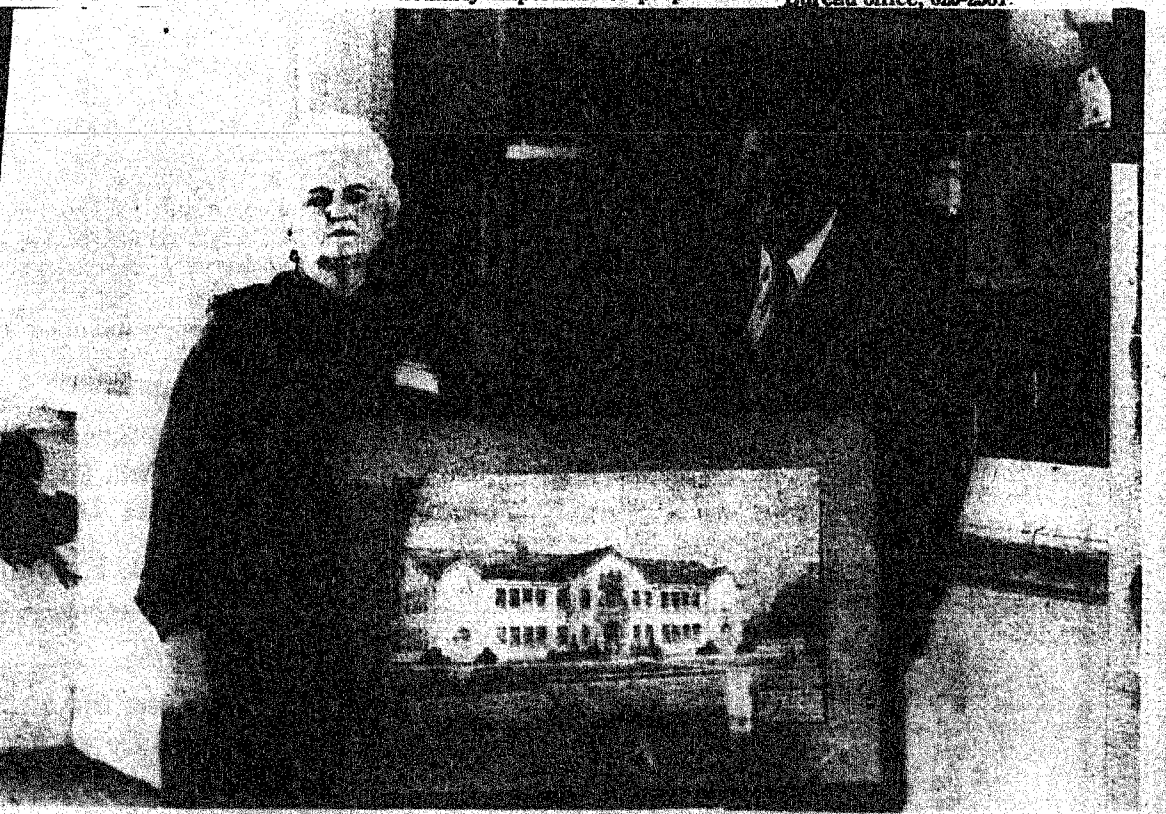
Farm Bureau to offer CPR Class

John Vance, President of the Coleman County Farm Bureau states that the Farm Bureau will be sponsoring another CPR class October 26 and 27 from 6 p.m. to 10 p.m. at the Coleman County Farm Bureau office. The cost of the class will be \$8.00. Heart attacks are the number one killer in the U.S. The CPR technique saves thousands of lives each year. This technique is particularly important for people who

live in the rural areas, since emergency medical help may be delayed.

This program is offered through the Texas Farm Bureau Health and Safety Department and the local Farm Bureau offices. The class will be taught by Cully Leslie with the Texas Farm Bureau.

For further information or to sign up for this class, please call Margaret Roberts at the Farm Bureau office, 625-2361.



Superintendent Gerald Brister accepts drawing on behalf of the Santa Anna ISD, present by Mary Lee Ford Fields Of Dallas, Class of 1936.

School Presented With Original Architectural Drawing Of High School

Mary Lee Ford Fields of Dallas, a 1936 graduate of S.A.H.S. presented to the School at Homecoming the Original Architectural Drawing by Elmer Withers who was the Architect that designed Santa Anna High School in 1927.

The home of Mr. and Mrs. Withers, after they passed away, had an estate sale in Ft. Worth. In the sale

there were ten of his drawings of schools he had designed that had been stored in his attic. A friend saw the drawings and before she could purchase the one of S.A.H.S. an antique dealer had purchased all ten of the drawings. The company name of the dealer was not listed with telephone information after ten months the drawing was located.

After sixty years the drawing is still beautiful and colorful in water colors. One of the most unusual things about the drawing is the blue vintage cars that are in front of the building. The front ground is very scenic and in the front have there are people sitting on the lobby.

The drawing will be hung in the school for viewing and appreciation.

Editor To Vacation

Polly will be on vacation this next week and Betty will be managing the office alone, although she and Tandy together will be putting out the paper.

This will necessitate as much consideration as possible from those with news to be used. It would help her a great deal if as many articles as can possibly be brought into the office on Thursday (today) or Friday. She will most certainly need all news by noon on Monday in order to get it prepared for the paper.

Your cooperation and consideration has been very much appreciated and we know we can expect nothing less at this time.

Memorials To Stewardson Cemetery

The following have given memorials to the Stewardson Cemetery in memory of Mildred Stewardson Strother: Era Walters, Dorothy Dillingham, Laverne and Doyle Evans, Mr. and Mrs. Calvin Campbell, Gayle and Burgess Stewardson.

Out Of State Guests With Wilma Welch

Mr. and Mrs. Leonard Welch of Fresno, California were recent visitors in the home of Wilma Welch. The couple also visited in Coleman with Merle Welch and family.

FUNERALS

Agnes Chamberlain

Agnes Fae Chamberlain, 83, of Abilene died Monday, Oct. 12 at Hendrick Medical Center in Abilene after a brief illness.

She was born Agnes Hays, October 16, 1903 in Santa Anna. She was the daughter of Dr. and Mrs. T.M. Hays. She married Benjamin Frank Chamberlain on June 11, 1943 in Houston. She was a retired Home Economics teacher and a member of the Presbyterian Church. Her husband preceded her in death, January 10, 1975.

Survivors include: one sister, Madie Ada Brown of Childress, Tex.; several nieces and nephews including those in this area, Alice Louise Walker and Thomas M. Hays; both of Santa Anna, and Wesley M. Hays of Winters.

Graveside services were held in Evergreen Cemetery in Crock-ett, Tex. at 4:00 p.m.

Samuell Swafford

ABILENE-Samuel Burdell Swafford, 81, of 1002 Portland died Saturday, October 17 at an Abilene nursing home.

Services were at 1 p.m. Monday at the Elliot-Hamil Funeral Chapel of Faith in Abilene, with Dr. Charles Whittle and the Rev. Loyd Mayhew officiating. Burial was in the Santa Anna Cemetery.

Horn in Rice, he moved from Dallas to Abilene in 1939.

He was a Civil Service employee at Dyess Air Force Base for 17 years, a U.S. Navy veteran of World War II and a member of Veterans of Foreign Wars No. 2012.

He was a member of the First United Methodist Church, the 50-50 Sunday School Class and the Dart Baseball Club.

He was the widower of Frankie Holt Swafford.

Survivors include three brothers, Henry Swafford of Rice and James N. Swafford and Joe W. Swafford, both of Dallas; and a sister, Mary Nan Edmundson of Abilene.

FBC Music Director Resigns

Brian, Day, music director at the First Baptist Church of Santa Anna, has recently resigned the position. Day and his wife, Pam, are students at Howard Payne University and have been chosen for the "Heritage Singers" group.

Patrick Hosch is interim director at the church.

FUNERALS

W. (Rich) Richardson

W. (Rich) Richardson, 91, of Coleman died Saturday, October 17 at 5:35 p.m. at Leisure lodge Nursing Home in Coleman. Services were Monday, October 19 at 2:00 p.m. in the Henderson Funeral Home Chapel, John Holtz, elder of the Elm Street Church of Christ, officiating. Burial was in the Coleman City Cemetery.

He was born October 8, 1896 to J.D. and Liddie McGlarity Richardson in Bowie, Texas. He attended Santa Anna and Concho Peak schools. He married Willa Mae Sims, Oct. 6, 1923 in Santa Anna. She died in 1970.

He had been a resident of Coleman County since 1907, was a retired cafe owner and a member of the Church of Christ.

Survivors include three sisters; Mrs. Flora Smith of Fort Worth, Mrs. Trula Thornton of Rome, Tex. and Mrs. Lera Grice of Fort Worth; and several nieces and nephews.

Palbearers were Cecil Berry, Wayne Crye, Marshall Griffith, W.T. (Tuffy) Harmon, Jim Hayes, and Sherrill Tisdale.

Christine Watkins

NASHVILLE, TENN.-Christine Marshall Watkins, 74, died October 9 in Edgefield Hospital after a long illness.

Services were 11 a.m. Monday at Woodland Presbyterian Church. The Rev. John McCullough and the Rev. R.M. Hudson officiating. Burial was in Spring Hill Cemetery.

Mrs. Watkins was a former public school teacher and one of the soloists who sang on WSM radio in its earlier years.

She was a native of Arkansas and daughter of the late Hamilton and Bertha Newton Marshall. In 1937 she married Gene Watkins.

She attended the University of New Mexico and Peabody College.

She was a member of Woodland Presbyterian Church, a teacher of its Round Table Class and a leader of one of its women's circles.

Mrs. Watkins was a former Girl Scout leader and a member of Cheekwood Community Concerts and Historic Nashville.

Survivors besides her husband include two daughters, Alice Cothron and Beth Luttrull, both of Hendersonville, and six grandchildren.

Porcelain Art Club To Meet In Brownwood

The Heart of Texas Porcelain Art Club will meet Saturday, October 24, from 9 to 12 noon at the Adams Street Community Center. Guest artist will be Mae Tucker from Corpus Christi where she is a member of the Nueces Porcelain Art Club. She is the first vice president of that club, and a member of the Texas Teachers and International Porcelain Art Teachers.

Mrs. Tucker has been china painting for sixteen years, and teaching for seven years. Due to her teaching she has to limit her travels to around four thousand miles a year doing demonstrations for Porcelain Art Clubs. She will be demonstrating "Rooster" for the Saturday morning meeting followed by a paint along.

Those painting will be doing baby chickens. Anyone wishing to stay and paint are encouraged to do so. Bring a sack lunch.

Next month on November 21, Sakae Sawyer will be the artist demonstrating birds followed by a paint along.

Library Notes

CHECK IT OUT

Every month the Santa Anna Library receives 15 books from the Abilene Library. These books are left in our library for several months and then returned to Abilene.

At this time there are some large print books in our library. Some of these books are: "The Unforgotten" by Laura Conway, "A Zoo in My Luggage" by Gerald Durrell, "Wagons to Backsight" by J.T. Edson, "The Last Tudor King" by Hester Chapman, "The Rhino Stayed for Breakfast" by Lee Rowena, "Domestic Affairs" by Miriam Finkelstein, "Arizona Clan" by Zane Grey, "Moment of Decision" by Jean S. Macleod, "The Guilty Guns" by Lewis B. Paten, "The Accent of D 13" by Andrew Garve, "Died in the Wool" by Ngaio Marsh, "Hospital Across the Bridge" by Lisa Cooper, "Sleeping Desire" by Charlotte Lamb, "The Greatest Story Ever Told" by Fulton Oursler. Come in and 'check it out'.

DROP EVERYTHING AND READ, a KTAB-TV for Kids' Sake special vividly illustrates the importance of learning to read and how books and reading can become a vital part of family life. Hosted by Meredith Baxter Birney and her husband David Birney, the show airs Saturday, October 24, 1987, 8:00-9:00 p.m. Susan Saint James, Tony Randall, Mrs. George Bush, Fred Rogers, Willie Stargell and other celebrities also appear on the special talking about the importance of reading in their lives.

Library Closed October 27th

The Santa Anna Library will be closed October 27th. The library workers will be attending a Green Thumb Workshop in that day.

Over The Hill For Absher

An "Over the Hill" surprise party was given in honor of local postmaster Gary Absher on September 29. Santa Anna area postal employees met at the Lowake Steak House for their annual dutch treat party.

The festivities included a wheelchair and black dunce cap for Absher. "Over the hill" decorations were black table cloths, black balloons, and dried floral arrangements. To complete Mr. Absher's surprise, all were served K.C. steaks and he was served a bowl of beef bullion.

Our postmaster, never to be caught speechless, ended the celebration with a "thanks a lot" speech, to be able to share his 40th birthday and 20th anniversary with the Postal Service with dedicated postal employees.

Delta Omicron Calendars Still Available

Delta Omicron wants to remind everyone that there are still some community calendars available for sale. These calendars list community and school events as well as birthdays and anniversaries. The calendars may be purchased for \$3.00 each by contacting any sorority member.

Thoughts From Our Pastors

By Linwood Bishop
Northside Church of Christ

In the beginning God created all things necessary for man's physical needs even before He created man. When Adam and Eve were created they were placed in a perfect environment, unmarried and unblemished by sin. Everthing they needed for their happiness and well-being was within easy reach. They were given the responsibility of dressing and keeping the garden (their home) in its state of perfection as God had given it to them, and to be fruitful and multiply and replenish the earth.

They were also placed under one restriction. That is, they were forbidden to eat or to touch the fruit of the tree of "knowledge of good and evil". They were told that if they did eat of it they would "surely die". They chose to obey Satan rather than God and by their disobedience to God they brought sin, death and destruction into the world.

Before man sinned he had only a perfect environment in which to live, but he had a perfect relationship and association with God, but sin changed all that. He not only lost his beautiful garden home, but his fellowship with God as well.

In spite of man's sin and rebellion and the havoc and ruin it caused, God's love for man and His infinite mercy would not let man go forever. He, therefore, immediately devised a plan whereby man could return to his state of acceptability and fellowship with God. Paul referred to this plan as God's "eternal purpose which He purposed in Christ Jesus our Lord," (Ephesians 3:1-11)

God's "eternal purpose" or plan, for the redemption, reconciliation and salvation of man called for th birth, perfect life, death, burial and resurrection of His Son for the sin of the world. Every bloody sacrifice under the Old Testament from Abel to Calvary was only typical of the blood of Jesus. See Hebrews 10:1-10.

God's "eternal purpose" or plan includes the obedience of man to the commands of Jesus, as set forth in the Great Commission, recorded in Matthew 28:18-2; Mark 16:15-16; Luke 24:44-47. These conditions of obedience are 1) Faith in Jesus as Christ and Lord, 2) repentance for past sins, 3) baptism in the name of the "Father, and of the Son and of the Holy Ghost" (for the "remission of sins" Acts 2:38. Upon obedience to these conditions stipulated by Jesus one is promised, the sanction and approval of the Father, Son, and the Holy Spirit, "remission of sins", "salvation." (from past sins, of course).

The church is also included in God's "eternal purpose." This is clearly set forth in Ephesians 1:18-23; 2:11-22; 3:1-11, 5:22-32. There is no other way provided in the Holy Scriptures for God's eternal purpose to be perpetuated and carried forth in the world than by and in and through the church of Jesus Christ.

Seminar: The Twelve Steps Of Recovery

The West Central Texas Council of Governments along with the Hendrick Medical Center and the Texas Commission on Alcohol and Drug Abuse are co-sponsoring a seminar on November 6-7, 1987, entitled "The Twelve Steps of Recovery...History, Theory, Practice" to be held at Hendrick Medical Center's Tom Roberts conference Center.

The seminar is an in-depth analysis of the Twelve Steps of the Alcoholics Anonymous, which, if practiced as a way of life, can expel the obsession to drink and enable the alcoholic and or addict to become happily and usefully whole.

The seminar will also show that many persons who are not alcoholic report success in meeting the difficulties of life by using the AA Twelve Steps and that over 100 support groups have adopted them.

Jerol Graves, Chemical Dependency Therapist for the Care Unit, Hendrick Medical Center, is the presenter.

Cost of the seminar is \$40 which includes a textbook, workbook and lunches for two days. Participants must register by November 2, 1987.

For further information, please call Sue Smith, WCTCOG, (915)762-6544 or Joanne Bell, Care Unit, (915)670-6351.

Birthdays Anniversaries

THURSDAY, OCTOBER 22

- Kevin Fritz
- Melinda Horner
- Mary Lou Jones
- Douglas Taylor
- Karen Cannon
- Sandra Harris Walker
- Judy Michon
- J.R. Alvarez

FRIDAY, OCTOBER 23

- Mary Tom Watson
- Stephen Donham

SATURDAY, OCTOBER 24

- Melissa Buse
- Karen Lewis
- Geneva Garrett
- Brenda Barker

Letter To The Editor

The 1987 Santa Ann High School Homecoming is history now and by most standards can be determined a success. However, speaking as one with several years experience in dealing with the Ex-Students Association there are a few aspects of this Homecoming that trouble me enough to merit my speaking out by writing this letter.

The Band Boosters served another superb meal for the Exes. This meal is one of their major fund raisers of the year as well as a convenience for all the exes to eat TOGETHER and enjoy the fellowship. However, this year the largest class having a reunion went to Underwoods in Brownwood for their noon meal. Underwoods serves excellent food but this was in direct conflict to what the Ex-Students Association and the Band Boosters are trying to accomplish.

Two other reunions were held in Coleman even though space was available in Santa Anna.

The people of Santa Anna and Santa Anna High School must all pull together to have a place to come back to next year. If the exes take their reunions and consequently their money out of town, it not only hurts the school but the whole town.

I hope in the future all reunions of our school exes will be held in Santa Anna and especially that they eat the meal prepared at the school for them.

Respectfully yours,
(Name withheld by request)

SUNDAY, OCTOBER 25

- Laura Alvarez
- Kristi Morrow
- Murray McKenney
- Bill Watson
- Clint Day

MONDAY, OCTOBER 26

- Billy Joe Barnes
- Mr. and Mrs. G.A. Morgan, Jr.

TUESDAY, OCTOBER 27

- Lee Wristen

WEDNESDAY, OCTOBER 28

- Rusty Fleeman
- Daniel Beal
- Mr. and Mrs. Freddie Dodson

SANTA ANNA NEWS
214 N. 2ND.
SANTA ANNA, TEXAS
(915)348-3545
(USPS 481540)

The Santa Anna News is published every Thursday at Santa Anna, Texas 76878 and entered as second class mail under the Act of Congress of March 2, 1879.

SUBSCRIPTION PRICE: Coleman County and all other areas in the state of Texas...\$11.95

SUBSCRIPTION PRICE for out of the state of Texas is \$11.95.

CLASSIFIED RATES: \$1.50 for the first 15 words; five cents per word thereafter per week for personal items. Rates for business advertising are charged by the agate inch at the rate of 25 cents per agate inch.

POSTMASTER: Send change of address to Santa Anna News Box 399 Santa Anna, Texas 76878

POLLY WARNOCK
Managing Editor

TANDY HOWARD
Advertising Manager

BETTY KEY
Bookkeeper-Circulation

MEMBER 1987
TEXAS PRESS ASSOCIATION

COWPOKES By Ace Reid

© ACE REID 8/23/87

"Don't ask what kind of stick, jst hand me a stick!"

Santa Anna National Bank

Deposits Insured By FDIC Up To \$100,000

Ask About Our Interest-bearing Checking Accounts \$1,000 Minimum Pass Book Savings Certificates of Deposit Substantial Interest Penalty is Required For Early Withdrawal

FISH

Now is the time for FALL Stocking Hybrid Bluegill, Florida Hybrid Bass, Channel Catfish, Fathead Minnows, Hybrid Grass Carp and Black Crappie.

The Hybrid Bluegill will REACH the weight of 2 1/2 to 3 Lbs. We furnish your Hauling Containers. We guarantee live delivery.

Delivery will be Thurs. Oct. 29, at the times listed for the following towns and locations.

Rising Star- Farmers Supply 8-9 AM 643-3181
Cross Plains- Cross Plains Grain & Peanut Co. 10-11 AM 725-7345
Santa Anna- Simmon's Feed & Supply 12-1 PM 283-3188
Bonga- Bob's LP Gas, Seed & Feed 2-3 PM 752-6422
Brownwood- Longhorn Feed & Supply 4-5 PM 646-8766

Call your local Feed Store to place your order or call 405-777-2202

Fishery consultant and pond retreating available. Special Deliveries on large ponds and lake orders.

BOB'S FISH FARM
P.O. BOX 305 FRYSDALE, TX 74862

We're Fighting For Your Life

American Heart Association

The Santa Anna Funeral Home
Emergency Medical Service
Serving Santa Anna & Coleman County
We would like to invite you to come by and fill out an emergency medical form to keep in our file.

Santa Anna Funeral Home
North of E. Lee PHONE: 340-3150



Mr. and Mrs. Alfred Cullins



Mr. and Mrs. Alfred Cullins

Couple Marks 60th Date

Mr. and Mrs. Alfred Cullins will celebrate their 60th wedding anniversary at a reception from 1 to 3 p.m. Saturday October 24 in the fellowship hall of the Southside Baptist Church, 1219 Indian Creek Rd. in Brownwood.

Hosts for the celebration will be Mr. and Mrs. Edmond Cullins of San Antonio, Mr. and Mrs. Elmer (Joyce) Ralston of Brownwood, Mrs. Glenda Gassiot of Valera, Mr. and Mrs. Edwin (Colis) Cox of Early, Mr. and Mrs. Freddie Cullins of League City, and Mr. and Mrs. Sammy (Velda) Johnson of Cleburne.

Mr. and Mrs. Alfred Cullins have 21 grandchildren and 18 great-grandchildren. Their granddaughters will register the guests at the reception.

Alfred Cullins was born August 11, 1906 in Bell County, son of the late Don and Sallie Cullins, and moved to

Coleman County at the age of three months.

Mrs. Thelma Cullins, daughter of the late John and Lelia Simmons, was born October 26, 1909 in Santa Anna.

Thelma Simmons and Alfred Cullins were married October 27, 1927 at the home of Mr. and Mrs. Charlie Gibson with the Rev. Gid Gibson performing the ceremony.

Until 1953, the couple farmed and lived in the White Chapel area. They raised stock and poultry. They then moved to Santa Anna where Cullins was employed by the Santa Anna Tile Plant until his retirement in 1970.

The couple are now residing in Brownwood where they are members of the Southside Baptist Church.

Friends and relatives are invited to attend the couple's 60th anniversary celebration. The couple requests no gifts.

Barnes Retires After 30 Years With Bureau Of Reclamation

Joe Barnes, Chief, Geology Branch, retired in September after more than thirty years with the U.S. Department of Interior Bureau of Reclamation. He served the inire time at Grand Junction, Colorado, starting while still a college student. He is a graduate of the University of Colorado.

Barnes has been involved with geologic investigations on nearly every dam constructed in western Colorado since 1957, including Crystal, Ridgeway, Paonia, Rifle

Gap, Silver Jack, and Crawford Dams.

He has also been involved in every planning study in western Colorado including Dominguez, West Divide, Mesa-Delta M&I Groundwater Study, Juniper, Upper Gunnison, Grand Mesa, and several saline control projects.

Barnes is a 1954 graduate of Santa Anna High School and is the son of Mr. and Mrs. Joe Christi Barnes of Santa Anna. He and his wife Thelma plan to continue living in Grand Junction.

Brownwood Band Looking For Members

The Brownwood Community Band is looking for new members for its 1987-88 ensemble. Under the direction of Doyle Combs, Howard Payne University band director, the band is sponsored by HPU and rehearses every Thursday from 7:30 - 9 p.m. in the HPU band hall.

The band now includes thirty members from Brownwood, Blakely, Bangs, Early, Goldthwaite,

and San Saba. Its members range from band directors and college professors to housewives and businessmen.

For more information, contact Dr. George Baker, HPU School of Music, at 649-2502, ext. 282.

Head Memorial Co. Limited
 Headquarters of Distinction
 Ft. Worth Hwy.
 Brownwood, Texas
 800-557-7444
 Specializing in
 Local Memorabilia

Donnie and Ronnie Lappe Announce
 The opening of their Law Office in Santa Anna.
 348-3157
 700 Wells
 (across Postman Inc. Building)
 Office Open on Wednesdays Only.

HPU Students Include Several Local People

Howard Payne University of Brownwood has announced that several from Santa Anna are among the large group of new students accepted for the fall term.

They include Suzan Daniel, Sandra Hosh, Casey Litton, Scott Moore, James Pelton, and Archie Michael Ramirez.

New students help account for a 30 percent increase in enrollment at HPU over the past two years. Enrollment peaked this year at 1,105 students registered for degree credit, up 12.75 percent from similar figures last year.

Mrs. Daniel, a 1974 graduate of Santa Anna High School, is a freshman at HPU. She is the wife of Ronnie Daniel of Santa Anna.

Mrs. Hosh is a 1972 graduate of Odessa High School. She is taking special studies this semester and is the wife of Patrick Hosh.

Mrs. Litton is the wife of Gregory Litton. She is a sophomore and is a 1984 graduate of Santa Anna High School. She is the daughter of Mr. and Mrs. Norman Anderson.

Moore is a freshman and is a 1985 graduate of Mozelle High School. He is married to the former Becky Lewis of Santa Anna and is the son of Gene Moore.

Pelton is a 1982 Santa Anna High School graduate and is a freshman. He is married to Cindy Pierce Pelton and is the son of Patsy Wright of Santa Anna.

Ramirez is also a freshman. He attended Highland High School in Ault, Colorado.

Fannies Funnies

Commissioners Vote Funding For Coleman Public Library

Eight citizens attended the 10:00 a.m. October 12 meeting of the Coleman County Commissioners Court. Precinct 2 Commissioner, Jake McCreary, was the only member absent.

Patty Eubank spoke to the court on behalf of the Coleman Public Library Board. She requested and received funding for the library in the amount of \$4,000.00 for 1988. The purchase of books will require half the funds granted. T.V. and Video Recorder and a table account for almost all of the remainder of the grant.

June Bowen said that the library needs additional room, especially for the summer children's reading program and for archives. The library board is considering trying to raise funds to acquire the building just south of the present location for that purpose.

Sheriff H.F. Fenton and 3 Deputies presented proposed specifications for 2 replacement vehicles needed by that department. The specifications were approved, and advertising for bids on the automobiles was authorized. The opening of bids will be on November 9.

Lula Havner of Santa Anna told the court that some modification needs to be done on the county road at her property. The existing "tin horn" pipe she feels is not large enough and is not buried deeply enough to handle water runoff. No action was taken since the trouble is in Commissioner McCreary's jurisdiction. The problem will be discussed with McCreary when he returns from Colorado.

In other business and discussion, the commissioners:

- Approved the Treasurer's Report for the final quarter of the

county's fiscal year. Receipts for the year totaled, \$2,356,904.81; and disbursements were, \$2,506,038.81. On September 30 the bank balances totaled \$778,348.95. It was announced that County Treasurer, Barbara Freeman, has a broken ankle and has not yet been able to return to her office. Commissioner Max Horne continues to use crutches to get around, his leg is still in a cast from a separate and earlier accident.

The South Court House steps are now officially designated to be the area where all foreclosure sales are to be held. The one, sole, designated area becomes effective January 1, 1988.

County Auditor, Shirley San-sing, read off the bank balances which are little changed from the Sept. 30 totals. The bills she presented for payment were approved.

Adjournment was at 11:25.

Simmons Family Reunion Held At Santa Anna

The family of the late Sealy (Watson) Simmons met last weekend in the home of Emmitt and Margaret Simmons in Santa Anna. The group gathered on Friday for a barbecue supper and during the weekend they enjoyed visiting, games and fishing in the area. A Mexican supper was a feature of the weekend on Saturday night.

In addition to the hosts and their children, Shane and Chanda, others present were Burt and Valden Watson; Jimmy, Lana, Lori and Jenny Watson; Amy, Lindi and Jessica Hendrick, all of Kermit; Ted, Doris and Danny Young of Fort Stockton; Bobby and Carl Fisher of Odessa; Aline and Bill Fincannon of Burk-burnet; Melissa and Justin Shep-ard of Lewisville; Dorothy Ewing and Ruth Ewing of Coleman; Tencie and J.D. Green, Ruby and Joyce DeSha, Billie Lovelady and Juanita Minica, all of Santa Anna.

The family has met annually in the Simmons home in Santa Anna since 1985.

Presbyterian Women Meet For Program

The Presbyterian Women met in their regular monthly meeting October 7. The study "Walking With Christ" was led by the pastor, Jasper McClellan. Veva McClellan read the correspondence for the women of the church.

There was a very good report from Era Walters and Mary Lela Clifford who attended the Ladies meeting in Sweetwater.

Mary Lela Clifford, Pat DeWitt, Era Walters, Louise McCaughan, Mee Wallace, Claudine Brown, Nell Myers, Veva McClellan, and Gayle Stewardson were in attendance at the meeting.

Homecoming Visitors With Derriol Warnocks

Visitors with the Derriol Warnocks over the Homecoming weekend were Mr. and Mrs. Ray Hawkins of Albany, Shirley Minyard of Snyder, Linda Howell and Lia of Lubbock, Jaunita Smith of Lov-ington, N.M., Loraine Hahn of Mid-dletown, Pa., Betty Courage of San Angelo, Mr. and Mrs. Fred Harris of Lubbock, Iva Ferguson of Hale Center, and Doug Warnock of San Angelo.

Ruby Box joined the group for dinner at the Warnock home before the ballgame Friday night. Local people visiting with the group after the game included, Mr. and Mrs. Robert Pritchard, Robby Pritchard, Bobby Pritchard, Shelly Smith, Shannon Brown, Mr. and Mrs. Don Pritchard, and Richard Mearar and a friend from Alban and Gene Turner of Coleman. Jaunita Naron visited in the Warnock home Saturday afternoon with her friend and classmate, Shirley Minyard.

McCreary Visitors

Recent visitors with Mr. and Mrs. Jake McCreary have been Mr. and Mrs. Mickey Davidson, Trent and Tyler of Big Lake; Mr. and Mrs. Bobby Lee, J.J. and Jenna of Clyde; Jim Everett of Lake Buchanan; Garland McSwain of Dallas; Greg Mobley of Austin; Winifred Weaver of San Angelo; and Joe and Richey Bell of Euless.

An old mountaineer watched the store keeper unwrap some mens bright colored pajamas. "What's that?" he asked. "They're pajamas." the store keeper replied. "What are they for?" "You wear them at night, would you lide to buy a pair?" asked the store keeper. "Nope don't go no place at night, except to bed", the moun-taineer answered.

A new preacher was performing a wedding ceremony for close friends. He wanted it to be perfect. Every thing proceeded according to schedule right up to the moment to pronounce the couple man and wife. Oh, he was appalled to realize he had said, "I baptise you in the name of the Father, the Son and the Holy Spirit."

Ruby Box Has Weekend Visitors

Visitors with Ruby Box over the weekend were Betty Courage of San Angelo and Loraine Hahn of Mid-dletown, Pa. Mrs. Box went to Brownwood Sunday to spend a couple of days visiting with the gathering of the Pritchard family at the home of Mr. and Mrs. Elmer Pritchard.

HOUSE LEVELING
 All Types Slab or Pier & Beam
 FREE Inspection & Estimates
 PHONE 648-8206

Country Basket

SALE \$1.89

Crisp, tender, chicken-fried fingers of 100% beef, golden fries, Texas toast and creamy country gravy. That's the one and only Dairy Queen Country Basket. So come on by for the Texas taste that's just this side of heaven — now at a heavenly sale price!

Monday, October 19 thru Sunday, November 1
 at participating stores.

Dairy Queen
 "better than ever..."

ALMA MATER
Hail Santa Anna,
Hail Mountaineers,
We're always loyal
All through the years.

Lift to our praises
Hear our pledge to you,
Hail to thee, S.A.H.S.
Alma Mater True.

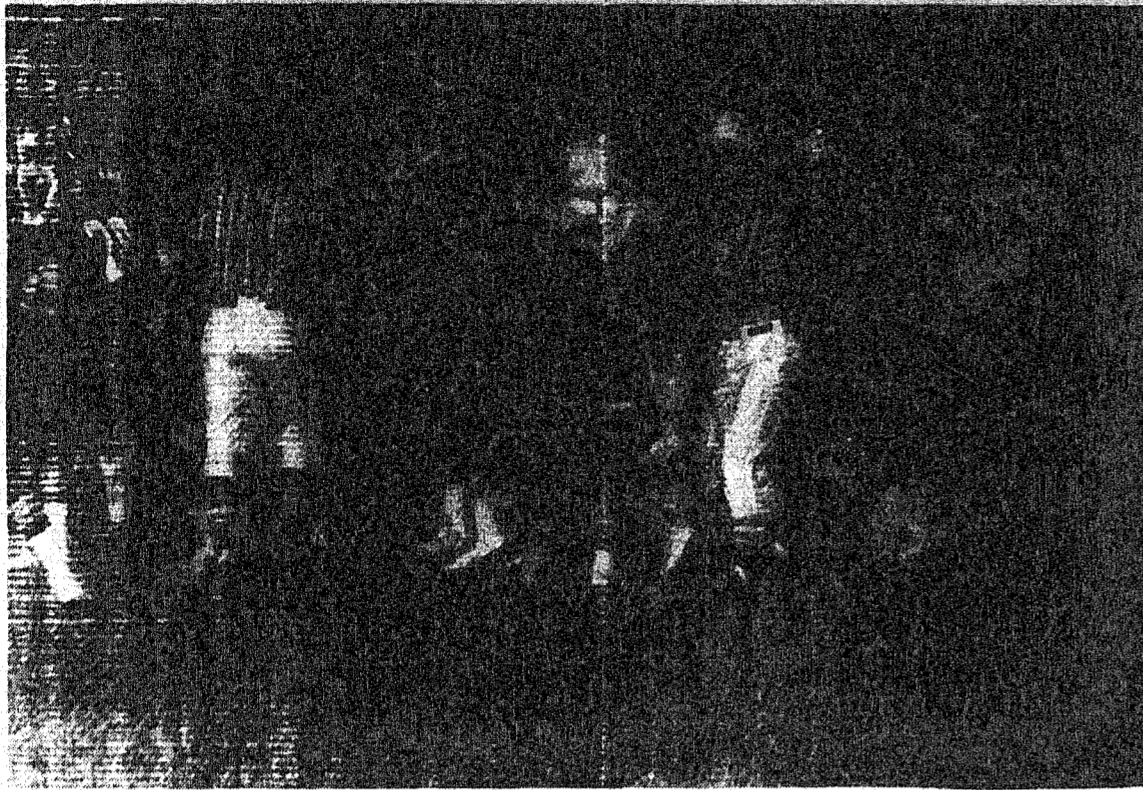
SANTA ANNA VS. BAIRD

FRIDAY OCT. 23 7:30

THERE

FIGHT SONG
On Santa Anna, On Santa Anna,
Push Fight through that line,
Carry the ball around the goal
post.
We will win this game...
Fight! Fight! Fight!

On Santa Anna, On Santa Anna,
Fight hard for your fame,
Fight fellows. Fight, Fight, Fight,
We'll win this game.



Lots of action as everyone got in on the act during the game Friday just before the rains began. (Photo by Derriel Warnock)

School Menu

- BREAKFAST**
- MONDAY**
Cereal, Juice, Milk
- TUESDAY**
Biscuit, Jelly, Juice, Milk
- WEDNESDAY**
Glazed donuts, juice, milk
- THURSDAY**
Cinnamon toast, juice, milk
- FRIDAY**
Cereal, raisins, milk
- LUNCH**
- MONDAY**
Pizza, buttered corn, green beans, ice cream, milk

Citizen Of The Week

Francis Weems, the daughter of Mr. and Mrs. Homer Weems of Rockwood has been selected to be honored as the Citizen of the Week at Santa Anna High School.

Francis uses her spare time being helpful to the school counselor, the principal and teachers, in any way she can. She is indeed a good citizen of the school.

Francis is a Junior at Santa Anna High School.



Francis Weems

TUESDAY
Nachos with peppers, refried beans, Spanish rice, apple, cornbread, milk

WEDNESDAY
Barbecue pork patties, baked beans, potato salad, peanut butter brownie, hot rolls, milk

THURSDAY
Sliced turkey with gravy, creamed potatoes, tossed salad, jello with fruit, hot rolls, milk

FRIDAY
Chili dogs with cheese, French fries, tomato wedge, Halloween decorated cake, milk

Mountaineers Cage Blanket Tigers

The rains came Friday night but not before the Santa Anna Mountaineers were able to put two quick touchdowns on the scoreboard in the game against the Blanket Tigers before a large Homecoming crowd. The Mountaineers won the outing 21-0 and handed Blanket their first district defeat.

Santa Anna scored twice in the first period of play. Jacky Duquette reached paydirt on a 2 yard run and moments later James Hartman went into the endzone on a 5 yard run. Hartman also kicked the PAT. after the first TD. The halftime score was 13-0.

The rain started in the second quarter, but did not dampen the spirits of the Mountaineers, although many fans had to run for cover from the downfall.

The Mountaineers made it 21-0 in the third quarter when Alonzo Hernandez scored from three yards out

and then added the two bonus points.

The lone Blanket TD came late in the fourth quarter when Jason Gibbs hooked up with James Diaz on a 39-yard pass.

Sophomore Clarence McDowell rushed for 105 yards for Santa Anna on 19 carries. The decision leaves both teams standing 2-1 in district play.

Elsewhere in the district, Baird defeated Rising Star and Evant upset Gorman. Friday's developments leave Baird alone at the top in District 8A at 3-0. Santa

Anna, Rising Star and Blanket are all 2-1.

STORY IN FIGURES

| Santa Anna | Blanket |
|------------|---------|
| 15 | 8 |
| 233 | 94 |
| 9 | 25 |
| 1 of 3 | 2 of 9 |
| 1 | 0 |
| 5 | 2 |
| 2-42 | 6-30 |
| 2-20 | 2-20 |

Judy Hartman Wins Shootout A Second Time

For the second time in as many weeks, Judy Hartman has won the Mountaineer Shootout football contest. Judy picked 9 of 10 games correctly to win another years subscription to the Santa Anna News.

Rob Cheaney was declared the second place winner with 8 of 10 picked correctly. Rob guessed the Santa Anna-Blanket score right on the money. Rob wins five free classified ads for his second place entry.

Raymond Jones of Sidney is the third place winner and will receive one free classified ad. Jones also had 8 of 10 correct, but missed out on the score of the game of the week.

We at the News had goofed when we gave the Coleman opponent as Cross Plains, but everyone entering picked Coleman to win, so it caused no problems as far as the outcome of the contest was concerned.

Delta Omicron Plans Christmas Pageant

The Delta Omicron Chapter of the ESA held their meeting on Monday, October 12, in the Methodist Church Annex.

Before beginning the business meeting, members met at Henderson Funeral Home for a very informative program presented by Donnie Henderson assisted by Chris Henderson and J.D. Green. Various phases of funeral arrangements



First Place Homecoming Float

The Senior Class float using the theme, "Scrub the Tigers" was awarded first place in the parade on Friday of Homecoming.

Second place went to the Junior Class with their float "Cage the Tigers". Third was the Freshman float "Blanket the Tigers". Fourth place was awarded to the Santa Anna Fire Dept. Ladies Aux. with their float of children with their fire prevention posters.

In the car division, the car carrying Homecoming Queen candidate Dianna Castillo, was awarded first place for best decorated.

WALKER FUNERAL HOME
625-4103
Coleman, Texas
Pre-arranged Funerals

| Junior Varsity Schedule | | |
|-------------------------|--------------|--------------|
| DATE | OPPONENT | PLACE & TIME |
| Oct. 15 | Irton County | There 6:00 |
| Oct. 22 | Baird | Here 7:00 |

| Junior High Schedule | | |
|----------------------|-------------|--------------|
| DATE | OPPONENT | PLACE & Time |
| Oct. 15 | Blanket | There 6:30 |
| Oct. 22 | Baird | Here 5:30 |
| Oct. 29 | Rochelle | Here 6:30 |
| November 5 | Lometa | There 6:30 |
| November 12 | Rising Star | There 6:30 |

Other Game Scores

- Baird 30-Rising Star 21
- Evant 7-Gorman 6
- Lometa 32-Rochelle 20
- Coleman 28-Jim Ned 6
- Cross Plains 26-Bangs 21
- Goldthwaite 35-Wall 8
- Brownwood 35-Joshua 7
- Lampasas 21-Early 7
- May 62-Zephyr 24
- Sul Ross 37-HPU 7

The Freshman class had a class meeting Wednesday, the 7th. The class discussed the subject of donating 60 cents per person for shrubs, which will be located in front of the high school. They also talked about making a poster to promote Homecoming. The class discussed making a float for the Homecoming parade. Chris Simmins was appointed chairman of the float committee. Jeffrey Hartman, Leanda Kellar, Tonya Ford, and Charles Dixon were also appointed to the float committee. Class dues for the Freshman this year are \$7.00 per student. This can be paid all at once or \$3.50 a semester.

By Jeffrey Hartman, reporter

| VARSITY FOOTBALL SCHEDULE | | | |
|---------------------------|--------------|------------|------|
| Sept. 4 | Bangs | Santa Anna | 8:00 |
| Sept. 11 | Irton County | Mertzon | 8:00 |
| Sept. 18 | Jim Ned | Tuscola | 8:00 |
| Sept. 25 | Open | | |
| Oct. 2 | +Evant | Santa Anna | 7:30 |
| Oct. 9 | +Gorman | Gorman | 7:30 |
| Oct. 16 | +Blanket | Santa Anna | 7:30 |
| Oct. 23 | +Baird | Baird | 7:30 |
| Oct. 30 | +Rochelle | Rochelle | 7:30 |
| Nov. 6 | +Lometa | Santa Anna | 7:30 |
| Nov. 13 | +Rising Star | Santa Anna | 7:30 |

SANTA ANNA MOUNTAINEER BOOSTERS

SANTA ANNA NATIONAL BANK
348-3108

CLARK'S 100,000 AUTO PARTS
626-2168

FIRST COLEMAN NATIONAL BANK
626-2116

COLEMAN COUNTY TELEPHONE COOP
348-3124

COLEMAN RURAL ELECTRIC COOP
626-2128

HENDERSON FUNERAL HOME
625-2121 348-3131

MARY'S BEAUTY SHOP
348-3740

SANTA ANNA NEWS
348-3545

CLASSIFIEDS

15 WORDS \$1.50

CALL 348-3545

WHON NEWS

By Mrs. Tom Rutherford

We will first say happy delayed wedding anniversary to Mr. and Mrs. Floyd Morris on October 14, on their 54 years together. Mr. and Mrs. Morris drove to DeLeon on Wednesday and assisted their son and his wife Mr. and Mrs. Jamie Lee Morris unload their furniture, moving from Smithville. At noon they went out to eat celebrating the anniversary and then for supper, the daughter-in-law prepared a bountiful supper. We wish Mr. and Mrs. Morris many years together and good health.

Mr. and Mrs. Darwin Lovelady of Santa Anna visited Sunday afternoon with Mrs. Lovelady's sister Elva McDaniel in Brownwood. Mr. and Mrs. Don Bible visited with Mr. and Mrs. Graham Fitzpatrick one afternoon the past week. Mrs. Floyd Morris was in Coleman Thursday and visited Mrs. Elmo Hudson and also managed a nice short visit with a nephew, Mr. David Perkins.

Mrs. May McFarlin of Santa Anna enjoyed a telephone visit with a sister-in-law (sister of her husband) Sunday who lives in Centerville, La. Sorry to hear she was not well and quite ill.

My son Hilary Rutherford of Coleman was with me today getting some work done on the place.

Mr. and Mrs. Morris had a granddaughter for a few days while the mother returned to Smithville. Another granddaughter was with them Saturday night and Sunday. Mr. and Mrs. Jamie Lee Morris

came for Lejay Sunday. Others in the home on Sunday were Mrs. Morris' sister Ola Bell Morris and Mr. and Mrs. Rocky and Nina Morris of Brady.

Mr. and Mrs. Douglas Avant of Brady visited Saturday afternoon with his mother Mrs. Pearl Avant in Santa Anna. As they were returning home they came by the Avant farm in our community.

Mr. and Mrs. Darwin Lovelady and Fay McKinney drove to Evant one day last week and visited a cemetery where Mrs. Lovelady's grandfather Baker was buried. Mrs. Lovelady did not know where the cemetery was and Mrs. McKinney accompanied them since she had relatives buried there. They also visited the grave they had been told about. A Mr. Joe Lovelady. But not the grave of Mr. Darwin Lovelady's relative who disappeared years past.

I drove to Santa Anna Friday afternoon to have a flat fixed and while there I visited Mrs. Pearl Avant.

Mr. Darwin Lovelady visited one day last week with their son, Mr. and Mrs. Randall Lovelady and girls in Brownwood.

Mrs. May McFarlin and her children, Mr. and Mrs. George David Wheatly and son Danny attended church Sunday and enjoyed Dinner at the church kitchen. Mrs. McFarlin accompanied her children home and visited during the afternoon. Mr. and Mrs. L.A.

Johnson of Coleman joined the family for an afternoon visit.

Mrs. Aron Ott and baby were guests of her parents in the Gouldbusk community Friday night following getting caught in a storm. Lots of wind and hail and rain. After starting home, she returned to stay with her parents. We only had a small amount of rain. Only 3 tenths. Aron reported 1 1/2 inches of rain Friday night.

Answering the blow of a car horn Wednesday afternoon, I was surprised and very glad to greet Mrs. May McFarlin of Santa Anna and her half sister Mrs. Floyd (Vernie) Bennett of Mexia and Mrs. Howard (Betty) Williams and daughter Elaine of Pasadena. The ladies were former residents of our community in their real young years. The ladies visited thru Whon and Rockwood Cemeteries. Drove around in the Hill Community where they has at one time attended school and reported Nella Davington who lived in our community at the time was their teacher. They then drove to Coleman and ate their supper before returning to Mrs. McFarlin's in Santa Anna. Thursday morning the ladies started driving and visiting again. They visited the Howe Cemetery east of Echo. These ladies (Vernie and Betty) parents were buried there. Then on to the home place of the grand parents, the Eubank home place near Groesvenor. Then to Fair View Cemetery and to Mudd Creek, Through the Buffalo Community where some of the ladies graduated, to Bangs then to Brownwood where the ladies were ready for lunch. After lunch drove to the ladies fathers home place, Mr. and Mrs. Elder Smith home place south of Liberty. On to the Cleveland Cemetery and Santa Anna Cemetery and then back to Mrs. McFarlin home for a nights rest. The ladies left for their homes on Friday feeling time was well spent.

evening Lou Vaughn visited her. Saturday Doyné McIver and Mindi visited Genia McIver. Lou Vaughn ate dinner with Genia Sunday. Doyné went with Genia to Junction Monday.

Visitors with Mary Lea Mitchell: Lea and Loyd Mock and granddaughter visited over the week end, also J. Miller and friend Todd spent the week end. Russle James had all her family with her Sunday. Russle spent Wednesday night with Yette Cole, her sister in Brownwood. Tuesday morning Byrdie Miller and Mav McFarland visited Lou

Public Notice

A public hearing will be held in the City of Santa Anna for discussion on preparing an application to the Texas Department of Community Affairs for Community Development Project Funds.

October 29-Thursday, 3:00 p.m. at the Civic Center (National Guard Armor). The purpose of this hearing is to provide citizens with information about project selection and grant application development for the selected project.

City of Santa Anna
Thelma Brooker
Mayor

Cc-3403-41-43

Public Notice

THE CITY OF SANTA ANNA is accepting sealed bids on the sale of a 1978 Chrysler. Bids will be received at the Santa Anna City Hall until 5:00 p.m., November 5, 1987. The City of Santa Anna reserves the right to refuse any or all bids.

CITY OF SANTA ANNA
Thelma Brooker, Mayor
Vickki Wristen, City Secretary

Cc-3403B-42-44

Help Wanted

FEDERAL, STATE & CIVIL SERVICE Jobs \$14,877 to \$63,148 per year. Now hiring. Call JOB LINE 1-518-459-3633 Ext. F8008B for info. 24HR. TP-3811-41-44

Vaughn. Tuesday Ilene Haynes and Lois Wallace of Palmer ate dinner with Lou. They visited the quilting club in the afternoon. John Dockery and Wes visited Lou Sunday night.

The Wagner family had a reunion at the Trickham Community center Saturday. They had a good turn out and good time.

Visitors with Betty and Felton Martin, Paul Martin's little girl spent Sunday with them. Also they visited Betty's aunt at Blanket Sunday.

Tuesday Ilene Haynes of Hermleigh and Lois Wallace of Palmer visited Alla Lara York.

We are having some pretty weather but need a good rain.

For Rent

FOR RENT: Mini Warehouses. 10x20, 10x10, and 8x10 sizes. Located in Santa Anna at Santa Anna Laundry and Storage. Call collect for Gene at 915-648-2477. A-28470-11-4f

Automotive

FOR SALE
1973 Pontiac \$800 Call 348-9145
Lp-9145-42-45

Real Estate

MUST SELL-PRICE REDUCED to move quickly, or make us an offer on 2 bdrm. remodeled house in Santa Anna, carpeted and fenced. Call 625-4261 or 625-5186. C-43004-03-4f

For Rent

FOR RENT: Mini Warehouses. 10x20, 10x10, and 8x10 sizes. Located in Santa Anna at Santa Anna Laundry and Storage. Call collect for Gene at 915-648-2477. A-28470-11-4f

Farm & Ranch

BOB OATS, RECLEANED \$3.10 in bulk \$3.25 per 2 bushel bag. 348-3004 Hp-1918-40-47

Services

GARY STARK ROOFING of all kinds. Free estimates. Call 348-3804. S-44004-17-4f

GARY STARK ELECTRIC & PLUMBING, electric sewer and drain cleaning. Day or night 348-3804. S-28455-45-4f

Mountaineer Plumbing-- Repair and new work. Electric Sewer and Sink Machine. Call anytime, Days 348-3193; nights 348-3645 or 752-6736. M-15478-13-4f

DAY CARE EDUCATIONALLY PROGRAMED. Hot meals and snacks. Infants to age 13. 7 a.m. to 6 p.m. KARE-A-LOT 752-6786 Bangs, Tex.

Re-6786-41-44

CHILD CARE In my home. \$30 per week for one, \$50 per week for two. Have experience and references. Call Gayla 348-9145 Lp-9145-42-45

Opportunities

WANTED: RESPONSIBLE PARTY to assume small monthly payments on piano. See locally. Call credit manager; 1-800-447-4286 Jp-4242-43-45

SEARS KENMORE WASHER AND DRYER, \$375. Gold color. Call after 6 p.m. 348-3341 Ap-3341-43-34

TRICKHAM NEWS

By Mrs. O.R. Boenicke

My brother Charlie Sgield visited me from Saturday evening until Wednesday morning. Tuesday our cousin Annette Clark had dinner with us and one evening after that she brought her mother Vera Shield to see me.

The 84 party was held at George and Goldie Haynes Thursday night. Was 25 present. All has a good time and Goldie served nice refreshments.

Visitors with Rankin and Natalie McIver were: Roy Miller of Coleman visited Tuesday, Saturday Sherrie Blake and Natalie went to Brownwood, Saturday Darla and Terry McIver visited them.

Bro. Bill Taylor and wife Nann spent Saturday night with me. They attended church Sunday morning at the First Christian Church at Santa Anna and Rev. Bill Taylor preached. We had a number of visitors. Their daughter and husband sang a special song, we also had a fellowship dinner at noon.

Margaret and Warren Barton were in Marlin Texas on Monday of this week attending the funeral of Warren uncle, Loyd Parton. They visited with Evelyn Mires, Eddie Mires and Gene Parton. After the

general they were in Waco visiting Margaret's family, Ben and Jane Varner, Maureen, Keith, Jr. and Kelly Bilbrer. Sunday afternoon Margaret Barton visited Bille Faye McDonnell and Billie Faye copson, Virginia Zirkle of Shields.

Sug Stearns visited Leona Henderson Saturday evening.

Bill and Tavy Heidbrier of Fort Worth spent the day Sunday with her mother Carrie Stacy. They had a good day, they did a lot of things to help her get ready for winter.

Thursday evening Winnie Haynes visited Florence Stearns and Sunday

evening Lou Vaughn visited her.

Saturday Doyné McIver and Mindi visited Genia McIver. Lou Vaughn ate dinner with Genia Sunday. Doyné went with Genia to Junction Monday.

Visitors with Mary Lea Mitchell: Lea and Loyd Mock and granddaughter visited over the week end, also J. Miller and friend Todd spent the week end.

Russle James had all her family with her Sunday. Russle spent Wednesday night with Yette Cole, her sister in Brownwood.

Tuesday morning Byrdie Miller and Mav McFarland visited Lou

Stevens Funeral Home Since 1889

Member By Invitation of National Selected Morticians

400 West Pecan

625-2175

SANTA ANNA MOUNTAINEER BOOSTERS

RCA GE APPLIANCES MAYTAG

GEO. D. RHONE CO. PHONE 625-4141 COLEMAN, TX.

IVOMEC 50 CC WORMER

SHIMONS FEED & SEED 11. 1st. & Wallace 348-3188

MYLANTA 12 Oz.

239

WILLIAMS BROS

Make Us An Offer On This Nice 3 Bdrm., 2 Bth Brick Home!

R.E. HORNER REAL ESTATE

348-3715 Santa Anna

NEED BUSINESS CARDS? CALL 348-3545

THIS WEEK ONLY!

SANTA ANNA NEWS

20% NATURAL RANCHER CHOICE BREEDERS CUBES \$158 PER TON

WILLIAMS BROS FEED & SEED

OPEN 87 00 507. 04

The 1988 CHEVROLET TRUCKS HAVE ARRIVED!

TAYLOR MOTOR CO. COLEMAN COUNTY'S FULL LINE GENERAL MOTORS CAR & PICK-UP LINE!

POULEN CHAIN SAW 2.3 CU. ENGINE 16IN. BAR & CHAIN 129⁰⁰

J.E. STEVENS HARDWARE "Since 1889"

READY MADE FRAMES

FRAMES & TRUCKS 625-2171 Brownwood, Tx.

NAME: _____
TELEPHONE: _____
ADDRESS: _____
CITY: _____ STATE: _____ ZIP: _____

The Santa Anna News' Mountaineer Football Shoot-Out!!!

- 1st Place- 1 Yr. FREE Subscription to The Santa Anna News
- 2nd Place- 5 FREE Classifieds in The Santa Anna News (LIMIT 15 WORDS PER AD)
- 3rd Place- 1 FREE Classified in The Santa Anna News (LIMIT 15 WORDS PER AD)

Entry Forms Must Be Brought By The Santa Anna News Office NO LATER THAN NOON FRIDAY OR BE LOCALLY POST MARKED NO LATER THAN 5:00 P.M. FRIDAY.

SEND TO: SANTA ANNA NEWS P.O. BOX 399 SANTA ANNA, TEXAS 76878

GAME OF THE WEEK!

CIRCLE THE WINNER & GUESS THE SCORE!

SANTA ANNA _____ BAIRD

CIRCLE THE WINNER ON THE FOLLOWING GAMES!

| | | |
|---------------|-----|----------------|
| PANTHER CREEK | VS. | MORAN |
| BLANKET | VS. | GORMAN |
| EVANT | VS. | LOMETA |
| RISING STAR | VS. | ROCHELLE |
| COLEMAN | VS. | WALL |
| SAN SABA | VS. | CROSS PLAINS |
| BANGS | VS. | JIM NED |
| EARLY | VS. | LLANO |
| HOWARD PAYNE | VS. | TEXAS LUTHERAN |

Be Sure & Fill in What Item Your Local Merchant Advertded in This Week's Issue Of The Santa Anna News!

| | | |
|-------------------|-----------------|----------------------------|
| GEO. D. RHONE CO. | SANTA ANNA NEWS | SHIMONS FEED & SEED |
| WILLIAMS BROS | SANTA ANNA NEWS | SAL. HENDERSON REAL ESTATE |
| TAYLOR MOTOR CO. | SANTA ANNA NEWS | WILLIAMS BROS |
| FRAMES & TRUCKS | SANTA ANNA NEWS | J.E. STEVENS HARDWARE CO. |

ROCKWOOD NEWS

By Mrs. John Hunter

The Extension Homemakers Club will meet at the Community Center, Tuesday, Oct. 27 at 2 p.m. Betty Dues is hostess and will present a program on 'Stress'.

Kim Bloom of San Angelo spent the weekend with her parents, Minnie and Wayne Bray and attended the SAHS Ex-Student reunion and visited Sunday afternoon with Gladys Hunter.

Rose Cooper and Minnie Bray were among those attending the Extension Homemakers tour of Santa Angelo Friday.

Greg Mobley of Austin spent last weekend with his mother Oleta Mobley, Sammie McCreary and her guest Frances Shamblin of Fort Worth visited Oleta Saturday evening.

Mr. and Mrs. David Pearson and David Jr. of San Antonio spent the weekend with the Howard Pearsons. Albert Pearson and son Albert Jr. of Brady visited Sunday.

Coroline McWhorter of Houston came Thursday visiting to Sunday with her parents, Blake and Wilma Williams. Coleta Pearson, Wilma Williams and Caroline McWhorter visited Vivian Stewart Friday evening. Vivian and Angie Hernandez were shopping in Brady Saturday and visited at the hospital with Jack Cooper. Vivian and Angie also visited with Jane Wise Sunday afternoon.

Nell Brushenhan visited Mrs. Joann King Wednesday afternoon. Thursday afternoon Mr. and Mrs. Jody Brushenhan, Ashley and Jennifer and Jerry Brown visited the Junior Brushenhans. Jennifer remained till Sunday. The Brushenhans and Mary Emerson took her to Fredericksburg to meet her parents. En route home they stopped in Mason to visit Mrs. Emerson's sister, Edith Reichneau.

Mr. and Mrs. Jim Brushenhan of Midland visited Nora and Kenneth Brushenhan Thursday afternoon.

Visiting Friday to Sunday with Bill and Sadie Bryan were Patricia Greener of Richardson, Judy Surlis and Serena Bryan of Arlington, Lynn Armstrong and Mr. and Mrs.

Paul Hendrix of Dallas. James Hodges and Cody of Clyde visited Saturday.

Minnie Bray and Rose Cooper were among those attending the Extension Homemakers Club tour of Santa Angelo, Friday. Rose visited her daughter Dorinda Young.

Veoma Adams of Anderson, Ind. had a telephone visit with Dorothy and Aubrey McSwain Sunday. Callers were Dorothy Mills of Bug Lake, Sam Estes, Elec Cooper, Wilma Williams and Carolyn McWhorter visiting Sunday evening.

Jerry Johnson of Abilene spent Saturday and Sunday with Marcus Johnson. Dorothea Wells visited Saturday morning.

Elec and Rose Cooper visited Jack Cooper at the Brady hospital Saturday afternoon. He was admitted Thursday night and is doing nicely. The Rockwood Home Extension Club was represented at the Fall Festival for retired citizens in Brownwood recently by Isabelle McCutcheon, Maggie Williams, Pebble Ellis, Wilma Williams, Fredna Horner and Louise McClellan.

Going by to say howdy to Linnie Boy were Lana Sturgill of San Angelo and Eddie Valacek of San Antonio. Linnie reports Mrs. Gertie Wise has been hospitalized in San Antonio.

Friday visitors with the Deals were Leno Siler and Georgia Turner of Melvin. The Rev. Joey Wilbourn visited Friday afternoon. Sunday visitors were Mr. and Mrs. Terry Thomason and Joshua of Brownwood and Mrs. and Mrs. Ken Rogers of Killeen.

The Deals visited her sister, Norene Winstaed, at Holiday Hills in Coleman Saturday and again Monday.

Jennifer Rutherford of San Angelo spent the weekend with her parents, Jim and Claudia Rutherford. Margot and Megan Rutherford of Santa Anna spent Saturday night with their grandparents. Others dropping by Sunday were Bob Rutherford, Jimmie Gail Slate and children, and Ricky and Gay Abernathy, Troy, Tim and Tony.

CLEVELAND NEWS

By Mrs. Clara Cupps

Carmilla Baugh was at Bangs Wednesday, to visit her mother Mrs. Mae Flores and Nancy Lee and babies. Saturday nite visitors from San Angelo were Glen and Nancy Avants. They spent the nite with the Dick Baugh.

Wednesday evening the Cory Brooke visited Mrs. Frances Densman in Coleman. Cory visited with Sidney Sackett several times this past week.

Mr. and Mrs. Jack Banta of Coleman visited the R.W. Cupps Sunday afternoon.

L.V. Cupps visited the Adolph Kelly several times this past week. Vera Wise dropped by a couple of nites. C.E. dropped by for a while Saturday.

Dena and Lance Rosch and Chris of Brownwood spent Sunday with their grandparents the Cavin Campbell. Carman Donham came over and went to the football game with the Cavin Campbell.

Charlie Fleming was over to visit her mother Mrs. Bula Fleming and Margie. Eddie and Phillis were out Friday. Donna Mapson and Jason came out Sunday.

Joe Ed Wise and Kasha Cupps and a girl friend went to Beumont over the weekend. He graded a Sheep Show there and visited the Billy Don Cupps and boys.

I visited with Marie Hellman awhile Friday. Also Winnie dropped by one evening late to visit.

Those spending the weekend with the Casey Herring were The David Morgan and boys, and Peter and

Jeff Herring. They were celebrating Joseph third birthday and Jeffery's fifteenth birthday. Other visitors Sunday were Jefferey Morris, Dale

Herring, Casey, Derek, Kenneth Herring was by Saturday. Danny and Cassie Williams and boys Casey and Eveline visited Sug Starnes Friday evening.

Joe Wallace of Santa Anna, Joe Anne Goodwin of Early, Jeffery Goodwin from Grandbury, Matt Heis from Early all visited Mrs. Ruth Hibbits Sunday afternoon. Mrs. Ruth Hibbits, Buddy and Irma Bengel went to Austin to the wedding of his daughter Tammy Bengel and John Bourne of Austin.

Dana Evans spent Saturday nite with his grandmother Mrs. Winnie Haynes.

Visiting the Hardon Phillips Tuesday was Billy William. Dick Baugh dropped by Sunday evening. Hardon dropped by the Bruce Alsbbrook.

Russell Williams visited the Emil Williams Sunday morning.

The Emil Williams came Tuesday from Bisbee Arizona to visit the Cecil Ellis until Wednesday. Jerry and Cathy Ellis visited the Emil Williams awhile Wednesday morning. The Cecil Ellis had supper with the Jerry Ellis family Saturday nite.

Bryce and Jamie visited their grandparents the Cecil Ellis Saturday.

Monty and Janera Cagle and Rachel spent the weekend with her parents the John Haron. Lou Pierce visited Cindy Pierce and

girls Saturday morning. Linda White, Troy Pierce visited with the A.C. Pierce Sunday morning. The A.C. Pierce visited the James Pelton and girls Sunday evening.

Those visiting Mrs. Velda Mills over homecoming weekend were Helen Hawthorn, Doris Penny, Mrs. Odele Box of Brady, Gean Watkins of Tenn., and Bessie Stanley of Odessa. Louise Moore also dropped by.

Those visiting the Charlie Flemings over the weekend were Randy and Ann Sikes, Samuel and Peggy Sikes of Bangs, Ronnie and Iris Seaton and Jeremy of Brownwood, Emmitt and Eunice Terry, and Casey Herring.

Ruby Howard ate dinner over at Bessie Parish's. Tom and Bobbie Howard were there.

Bill and Carol Henderson and children of Bangs visited the Junior Hendersons, Sunday afternoon.

Lonny and Nancy Lowry and children and Gladys Haynes all had dinner with the Bill Lowrys. LeRay Casey and Coy Rice visited Sunday evening.

James and Billie Perry and Lorie, Lasha and Jeff Remy visited Amanda Perry Thursday night. Amanda Perry visited the John Astas and the Rodney Spences at the cafe down town in Santa Anna.

We will have preaching this coming Sunday. We are planning to have a picnic at the picnic grounds at Charlie Fleming's place after church. Bro. Dalton Moss of Brownwood will be preaching.

All who want to work on the picnic grounds Saturday there is lots of work to do. Bring hammers. Ladies bring dish for workers.

Regina Walker, Tonya, Shane spent Friday night at Betty Joyce Cupps'. All went to the school reunion.

Weekend visitors with Tavy Ford were her children, Judy Straughan and daughters and a friend of Conroe; Peggy Miller of Eden; Dayton and Mary Jackson and Shellie and James and Mildred Ford. Sunday visitors were Mrs. Frankie Davis and Jerald of Brownwood.

Recent visitors in the home of Mr. and Mrs. C.E. Wise were Coy Rice of Malakoff, Leroy Casey of Slaton, Jerry Herring and Ben of Lake Hubbard, Gene Fowler of San Angelo.

Casey Herring visited Rachel Cupps Friday evening.

Hope all of you have a nice week and weekend. See you next week.

Don't forget our picnic Sunday and the work day Saturday. Lots to be done to the picnic ground at Charlie Flemings. Ladies bring some dinner for the boys who work Saturday.

Henderson Funeral Homes

"People Who Care"

Offering At Your Request

Pro-Arranged Funerals

Funeral Insurance and Counseling

Ambulance Service

Coleman 625-2121 Santa Anna 348-3131

RANGER PARK INN

By Annie Mae Brimer

Members of the Melady Makers presenting the program in song Tuesday afternoon were Wanda Wallace, Jim Boyle, Allene Needham, Doris and Les Aderholt, Neal Smith, Gladys Creek, Larene Wynn, Tina Whittington and Virginia Wood. The residents enjoy this program so much and appreciate each visit.

The Tuesday evening singing was conducted by Rev. P.A. and Mrs. Lindley, Mrs. Don Keeney and Sandra Steffey. This was a very enjoyable program. The residents enjoy their visit each week.

The ladies were so happy to get a nice box of quilt scraps Ruby Wenzel brought them. They are sure staying busy and making beautiful quilts.

Every one was happy to have Scott and Marge Bell of Plano stop and conduct a short devotion. They come by three or four times a year. We sure appreciate their visits.

We are so sorry Jim Daniell, Ida Morton and Ivy Sparkman are in the hospital. We miss them so much and hope they come back soon.

The birthday party was attended by more residents than any other time. The Northside Baptist Women sponsored the party. Aunt Samantha (Fannie Gilbert) read her funny sayings to the honorees, Rev. John and Virginia Ridley sang gospel songs and picked the guitar for entertainment. The cakes were baked by Viona West, Linda Moore, Fannie Gilbert, Hazel McCary, Amanda Perry, Virginia Ridley, along with Geneva Garrett and Coyita Bowker of Teh Delta-Omicron Sorority. Ruby Parker

gave the punch. Jean Caldwell, Peggy Johnson helped Viona West, Linda Moore, Fannie Gilbert and Virginia Ridley serve the birthday cakes and punch to Marie Hill, Nancy Menges, Estelle Todd and the other residents and guests. This was such a beautiful party. Everyone had such a good time. Peggy Johnson took pictures of the honorees and the V.F.D. Auxiliary gave gifts and cards to the honorees also.

The third Sunday Service was conducted by the Northside Baptist Church. Helping with the service were Rev. John and Virginia Ridley, Robert and Maggie Robinett, Clarence and Fannie Gilbert, Amanda Perry, Ruby Howard, Elroy and Wanda Dietzel, Frances Reems, Ethelene Stewart, Imo Herring, Chuck and Wanda Green of Abilene. This is such an inspiring service. The residents enjoyed every song and appreciate this service each third Sunday.

Every one had such a good time playing 42 Monday afternoon. We appreciate Wilmoth Russell, Peggy Johnson and Louise McClellan helping with this program.

LIVING CENTER

Thelma Whitehead visitors were Fannie Gilbert and Stena Mitchell. Edna Wells visitor was Jo Ann Hale.

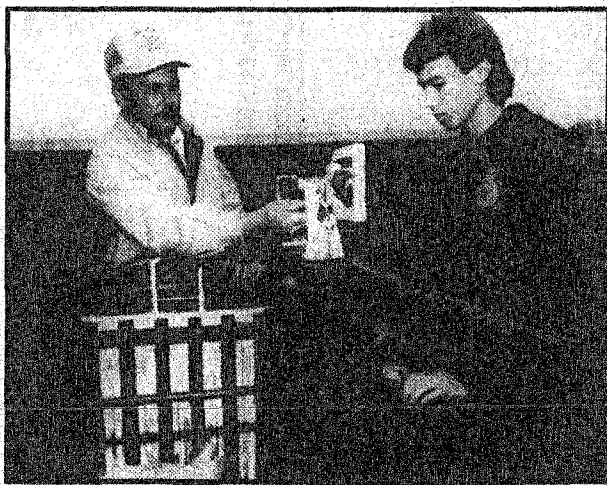
Preston Cude visitors were Anita P. Cupps, Ann Smith, Cleo Cude, Wayne and Wanda Morton.

Due to limited space, are sorry we have to omit much of Ranger Park News this week, but will resume as usual next week.

From the Red River to the Rio Grande: WTU people are good neighbors!

West Texas Utilities is proud of its employees and their community involvement. WTU people are working to help their neighbors, and to better their communities throughout the WTU service area. ■ Where there's a need, there's a WTU employee willing and able to help. They're involved in youth athletic activities, school programs, community improvement projects, church and civic affairs, as well as in volunteer work with senior citizens, ambulance services, fire departments and much more. ■ WTU people are truly good neighbors, from the Red River to the Rio Grande.

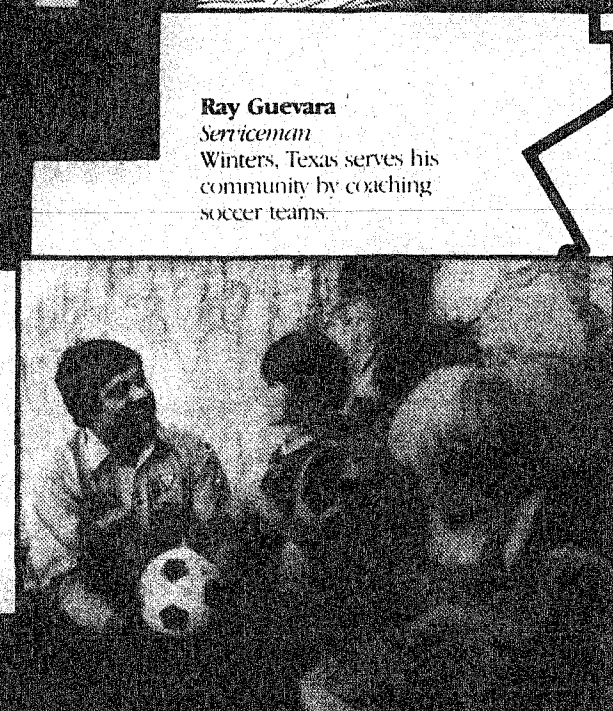
Wilbur Wilson
Construction Superintendent
Stamford, Texas, works with 4-H young people. Wilbur helps out with livestock and club meetings.



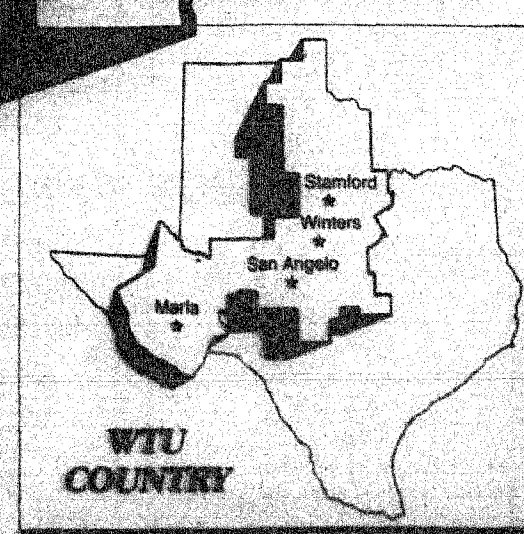
L. H. "Holle" Holtheuser, Jr.
Serviceman
Marfa, Texas, helped make Marfa a safer place for over 15 years through his work with the Volunteer Fire Department.



Becky Johnson
Secretary
San Angelo, Texas, volunteers for the Adopt-A-School program. She is committed to giving kids the special attention that kids deserve.



Ray Guevara
Serviceman
Winters, Texas, serves his community by coaching soccer teams.



FIRST COLEMAN NATIONAL BANK
All types of Savings Accounts. Member F.D.I.C.
"Always Willing- Always Prepared" Your Good Neighbor Bank
You can bank anytime when you bank by mail.
We Sponsor The News Each Day

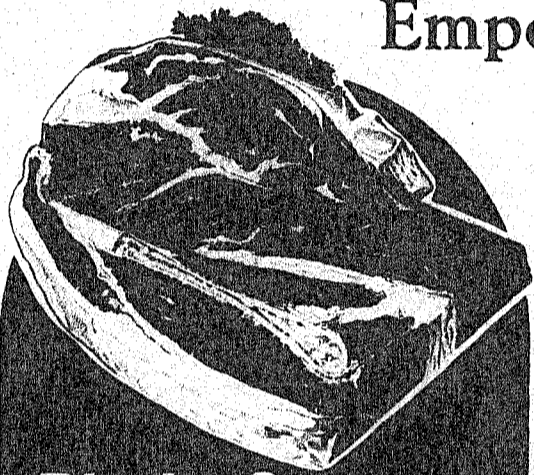
ENJOY A HARVEST OF AUTUMN ABUNDANCE!

Not only is autumn the most colorful season of the year, it's also the most abundant! Here at The Emporium, our shelves are overflowing with the goodness of the season. Fresh fruits and vegetables, tender meats, succulent seafood, freshly baked pastries — all this and more is waiting for you today! C'mon in and enjoy the sights, the scents and the flavors of autumn at The Food Emporium.



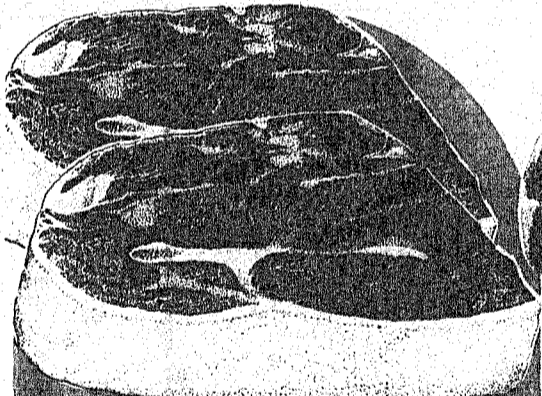
**Boston Butt
Pork Roast**

Lb. **.89**



**Blade Cut
Chuck Steak**

Lb. **.98**



**7-Bone Chuck
Steak**

Lb. **1.19**



**Chuck Arm
Swiss Steak**

Lb. **1.49**

EMPORIUM COUPONS

Turkey Drumsticks
Lb.

With Coupon .19

Limit 2 pkgs. with coupon, thereafter 49¢ lb.
One coupon per customer. Expires 10/27/87.

EMPORIUM COUPONS

**Red Delicious
Apples**
5 Lb. Bag

With Coupon .69

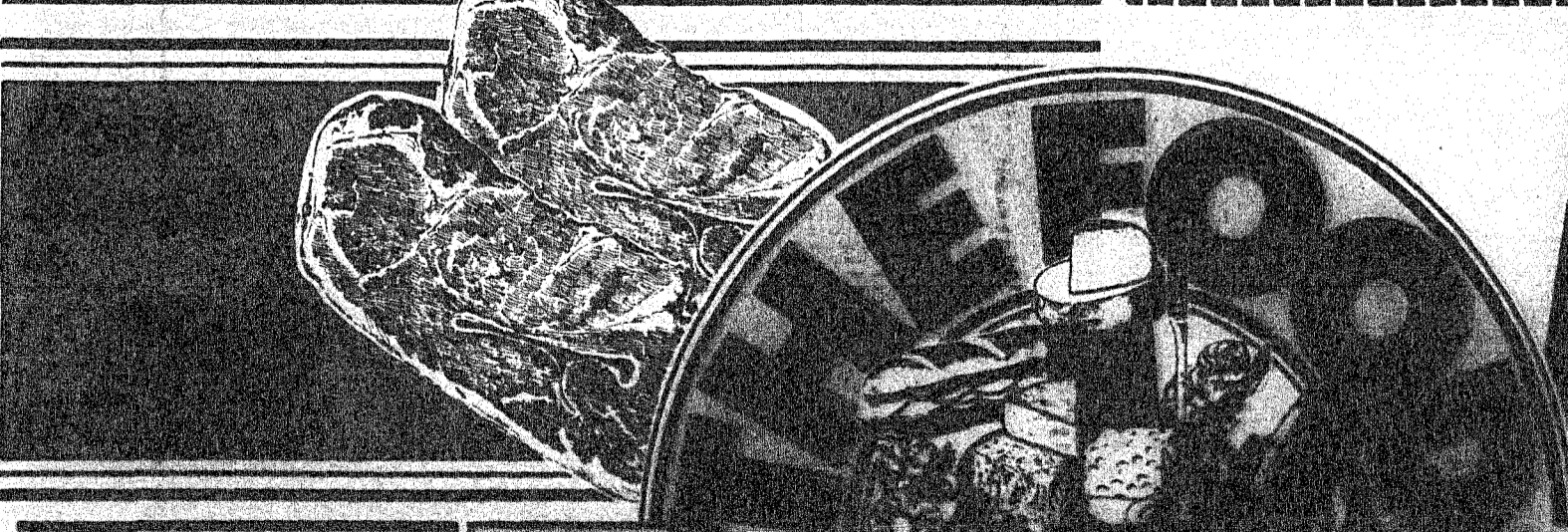
Limit 1 bag with coupon, thereafter 99¢.
One coupon per customer. Expires 10/27/87.

EMPORIUM COUPONS

Pamper Diapers
Ultra
Jumbo Size
Medium 96's
Large 64's

With Coupon 14.99

Limit 1 pkg. with coupon, thereafter reg. price.
One coupon per customer. Expires 10/27/87.



See inside for our complete selection of Halloween costume, candy, and more!

**4654
S. 14TH
ABILENE**

THE EMPORIUM

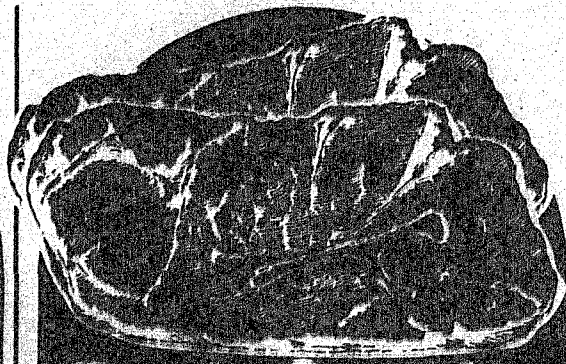
**THERE'S
NEVER BEEN
ANYTHING
LIKE IT!**

Prices are effective Wed., October 27 through Tues., October 27, 1987.



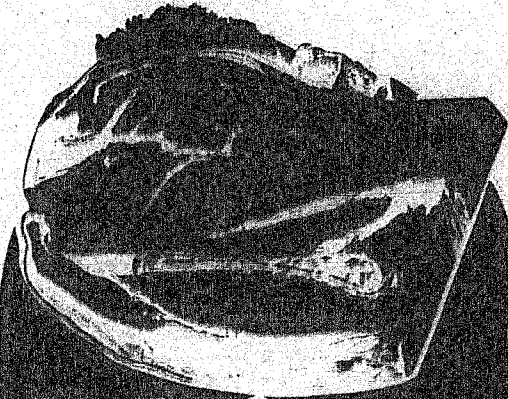
Boston Butt
Pork Roast

Lb. **.89**



Pork Steak

Lb. **.98**



Blade Cut
Chuck Steak

Lb. **.98**



Fryer Thighs
Jumbo
Pack

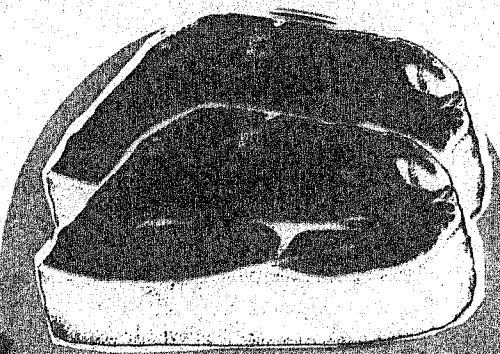
Lb. **.59**

THE MEAT MARKET



Extra Lean
Ground Beef
Fresh Daily, Lb.

1.68



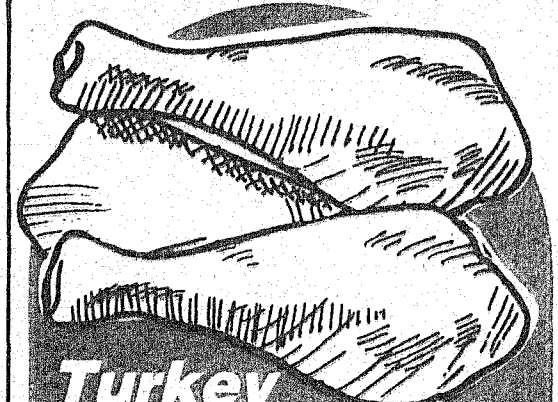
7-Bone Chuck
Steak

Lb. **1.19**



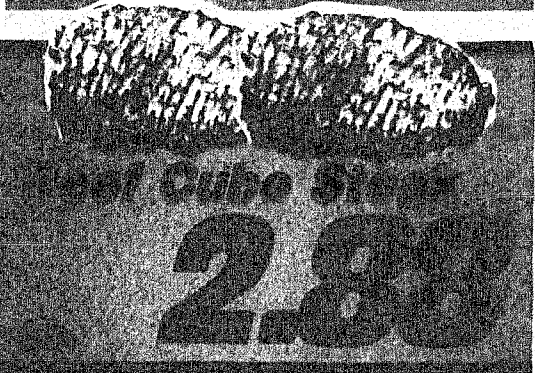
Chuck Arm
Swiss Steak

Lb. **1.49**



Turkey
Drumsticks

Lb. **.49**



Hot Cube Steak

2.89

INT'L FOODS

GOURMET MEATS



Stuffed Cornish
Game Hens

Lb. **2.19**

VARIETY MEATS

Variety meats are very perishable and require careful purchasing and storage. They should be stored, loosely wrapped, in the refrigerator, and cooked within 24 hours. Loose wrapping will allow air to circulate around the meat, drying its surface and retarding the growth of bacteria. Most variety meats freeze very well.

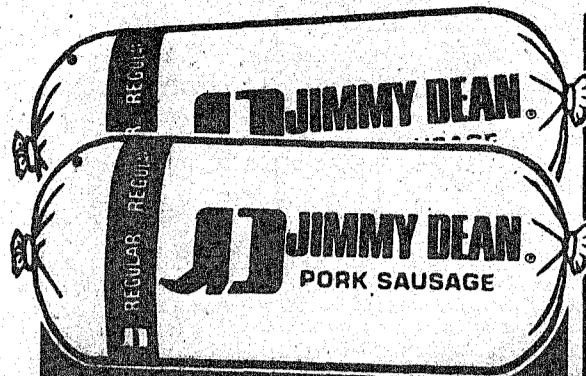
Droste Chocolate Bar
Bittersweet, Milk, White or
Milk & White Chocolate, With
Almonds or Doublet, 1 Oz.

1.69

Carrs Table
Water Crackers
4-25 Oz.

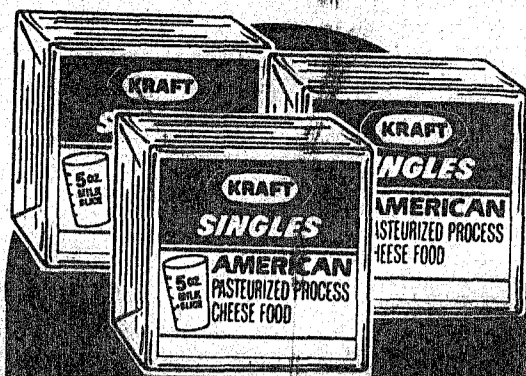
1.59

MORE SHARP PENCIL VALUES!



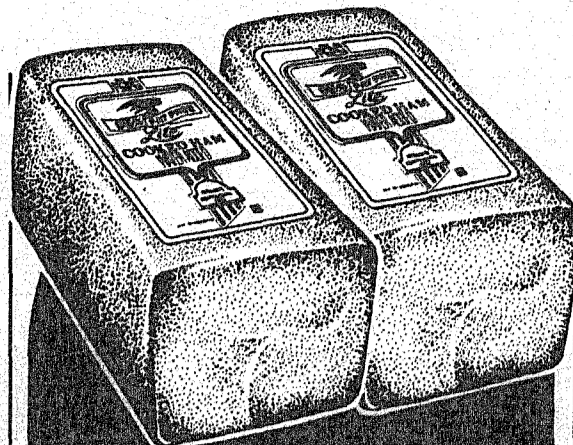
**Jimmy Dean
Pork Sausage**
All Varieties,
32 Oz. **4.35**

16 Oz. **2.19**



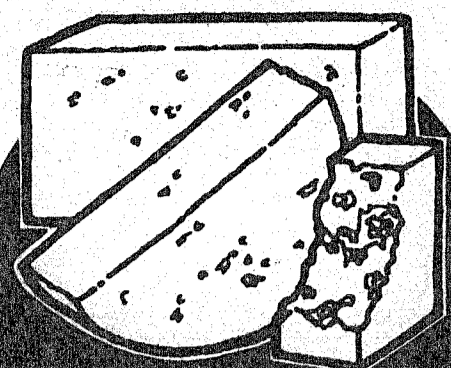
**Kraft American
Singles**
8 Oz. Pkg.

1.38



Wilson Lite Ham
Fresh Sliced or
Shaved, Lb.

2.25



**Wisconsin Colby
Longhorn Cheese**
Fresh Sliced, Lb.

1.99

PREPARED MEATS



**Oscar Mayer
Variety Pack**
Meat or Beef - 12 Oz.
or Ham - 9 Oz.

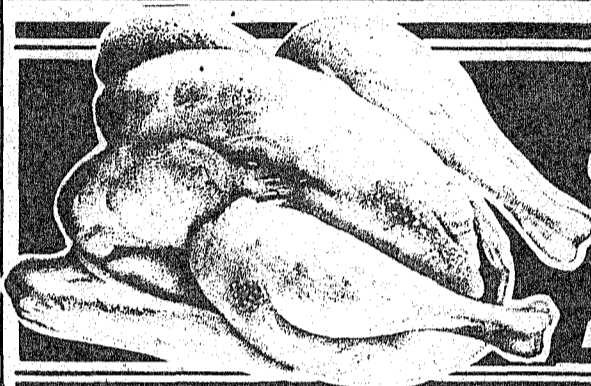
2.69



**Philadelphia Soft
Cream Cheese**
Regular or Light, 8 Oz.

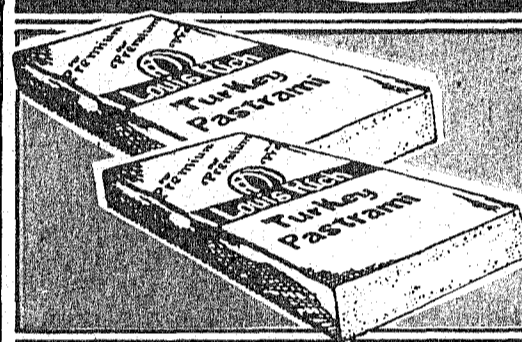
1.19

DELICATESSEN



**Whole Barbecued
Chicken**

2 For \$5



**Loon's Rich Turkey
Pastrami**

Fresh
Sliced
or Shaved
Lb.

2.29

Decker Lunchmeats
Bologna, Salami
or Luncheon
12 Oz.

1.39

Kraft Parmesan Cheese
Grated
8 Oz.

2.98

Kraft Mozzarella
Shredded
8 Oz.

1.75

Glenmark Patties
Double-
Cheeseburger
1.5 Lb. Box

3.99

**Fisherboy Fish
Sticks**
8 Oz.

.65

Boer Sausage
Hans
Fein
Lb.

2.49

Deluxe Tuna Salad
Lb.

2.49

Loon's Peppercorn
Normal
Fresh
Sliced, Lb.

3.86

Wilson Olive Leaf
Fresh
Sliced
Lb.

2.91

**Macaroni
Salad**
Lb.

.80

American Swiss Cheese
Sliced,
Bulk Cut
Only, Lb.

2.24

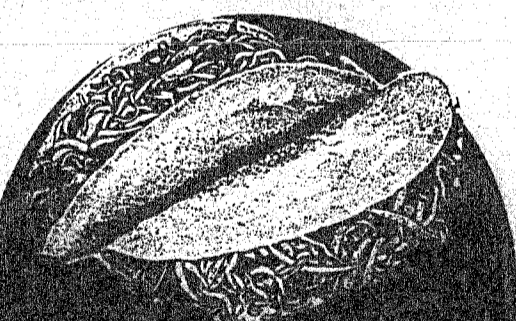
Kaiser Roll Sandwich
Fresh
Made
Each

.50

COFFEE BAR

**French
Toast**
Regular Order

.69



Taco Plate
2 Tacos,
Refried
Beans
2 for the
Price of 1

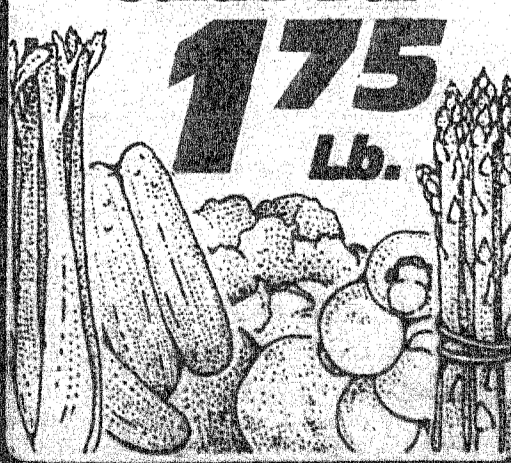
1.99

SALAD BAR

Crisp. Fresh.
Crunchy.
Flavorful. Tender,
Plump. Juicy,
Delicious. Try our
Salad Bar today!

**Garden Fresh
Salad Bar**

1.75
Lb.



**HANS FEIN
SAUSAGES**



Polish Sausage
Hans Fein, Lb.

1.50

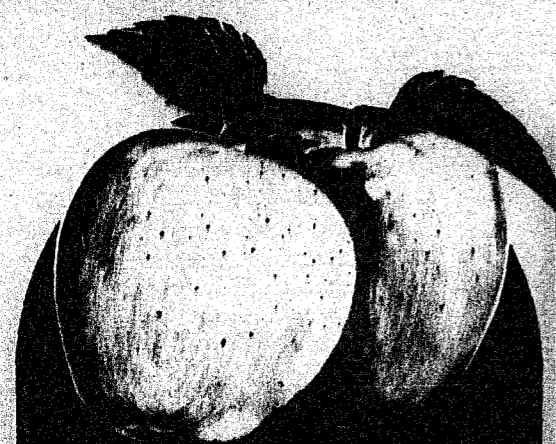
All Meat Wieners
Hans
Fein

1.99

Canadian Bacon
Fresh
Sliced

3.99

MORE SHARP PENCIL VALUES.



Golden Delicious
Apples

Washington State

3
Lbs. **1.00**



Jack-O-Lantern
Pumpkins

"Just the right size"

Lb. **.10**



Russet
Potatoes

8 Lb.
Bag

.99

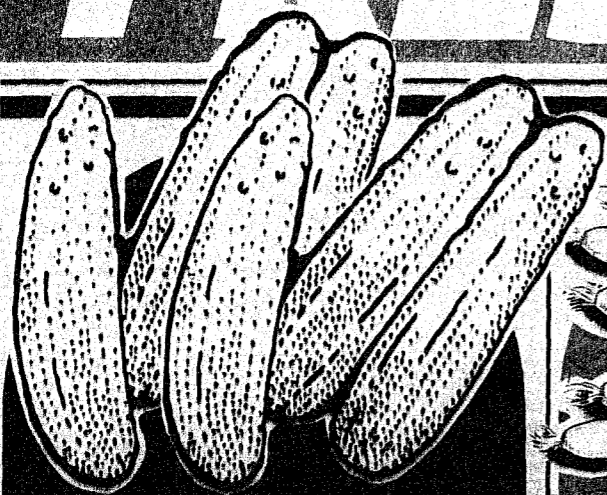


Red Ripe
Tomatoes

Large Size Slices

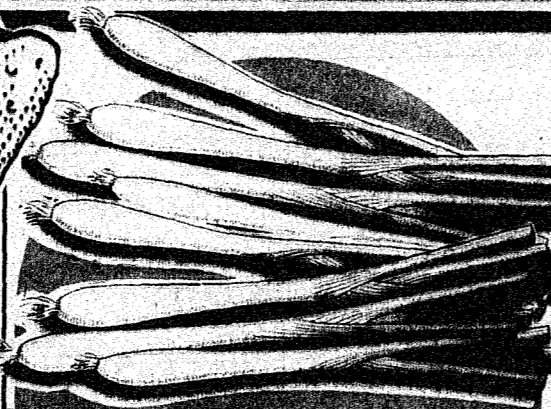
Lb. **.59**

FRESH PRODUCE



Cucumbers
Fancy Slicers

5
FOR **1.00**



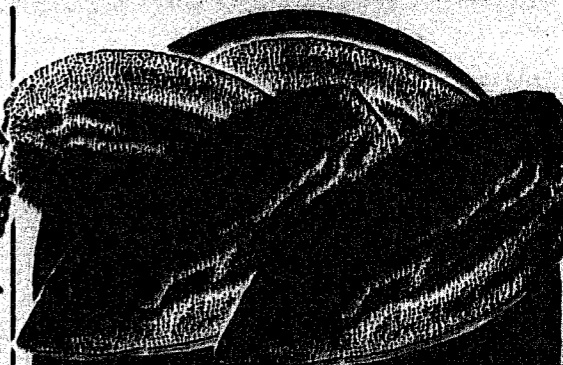
Green Onions
Fresh Large Bunches

4
FOR **1.00**



**Green Leaf
Lettuce**
Large Bunches

2
FOR **1.00**



Shelled Almonds
California, New Crop
Cello Tray Package, Lb.

2.48

BULK

GALLON

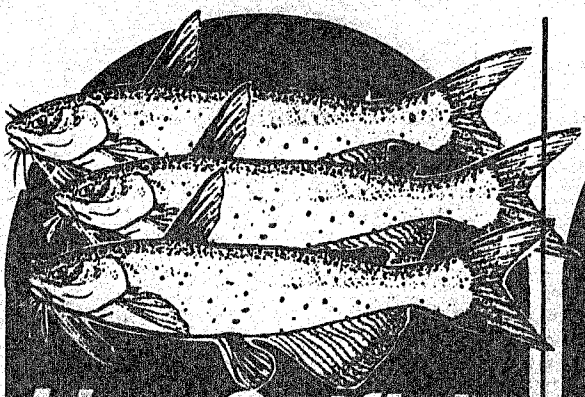
FLOWER SHOP



**Long Stem
Roses**

Each **.99**

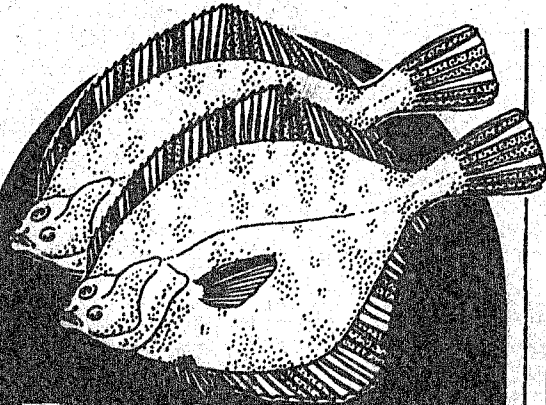
MORE SHARP PENCIL VALUES!



Live Catfish

1.99

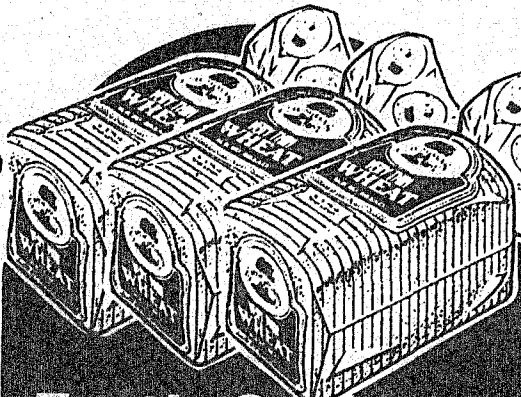
Lb.



Fresh Whole Flounder

3.55

Lb.



Earth Grains White or Wheat Bread Very Thin

16 Oz.

.89



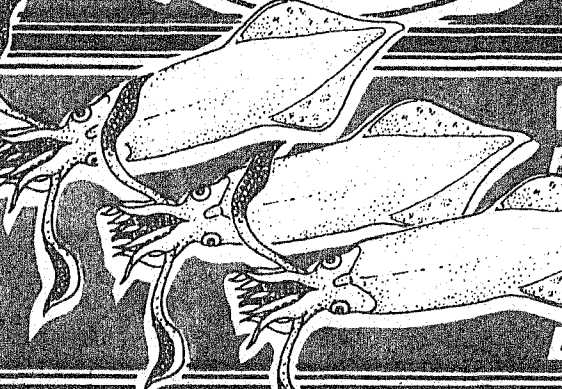
Farm Pac 5" Hamburger BUNS

6 Ct.

.59

FRESH FISH

National Seafood M.O.N.T.H.

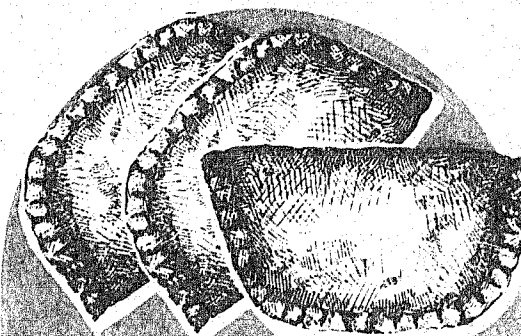


Whole Squid
Previously Frozen

Lb.

.99

SHELF BAKERY



Kitchen Pride Fried Pies
Apple or Cherry, Indiv.

4/\$1



Kitchen Pride Pecan Sweet Rolls

8 ct.

.69

Fresh Catfish Nuggets
Lb. **2.99**

Alaskan King Crab Legs
Prev. Frozen
Lb. **11.49**

Fresh Scrod Cod Fillets
Lb. **6.15**

Shrimp or Lobster Eggrolls
Each **.50**

Grouper Fillets
Prev. Frozen, Lb.
2.99

Fresh Whole Pompano
Lb. **4.75**

Hake Fillets
Prev. Frozen
Lb. **2.85**

Country Meal Bread
24 Oz. **.79**

Break Cake Chocolate Rounds
Multi-Pack **1.59**

Farm Pac Flaky Rolls
Brown & Serve
12 Ct. **.59**

Mrs. Baird's Bread
Split Top Wheat, 24 Oz. **.99**

Mrs. Baird's Cinnamon Rolls
Plain, Apple or Cherry, Each **3/.99**

Holsum Wheat Bread Sandwich
24 Oz. **.89**

Holsum White Bread
Old Fashion 18 Oz. **.69**

TORTILLERIA

Flour Tortillas
Fresh, 12 Count
2/\$1

PHARMACY

PHONE: 692-7232

HOURS: Monday-Saturday 9 AM-9 PM
Sunday 12 NOON-6 PM

Soft Contact Lens Replacement Center

15 minutes to a hour relief from constipation

Dulcolax LAXATIVE

Dulcolax LAXATIVE

MORE SHARP PENCIL VALUES!



Farm Pac
Cottage Cheese
Reg. or Lowfat

24 Oz. **.98**



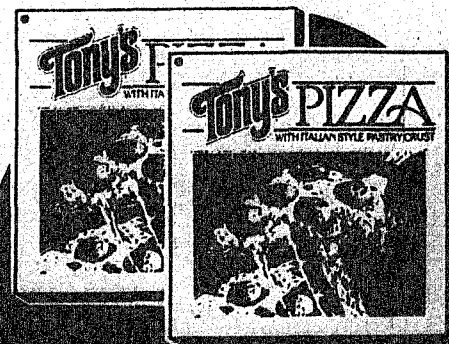
Borden Ice Cream
Assorted Flavors,
1/2 Gallon Rnd. Ctn.

1.79



Texsun
Orange Juice
Reg. or High Pulp

12 Oz. **.89**



Tony's Italian Pizza
Sausage, Hamburger, Extra
Cheese or Pepperoni, 10 1/2"

1.79

FRESH DAIRY

FROZEN FOOD



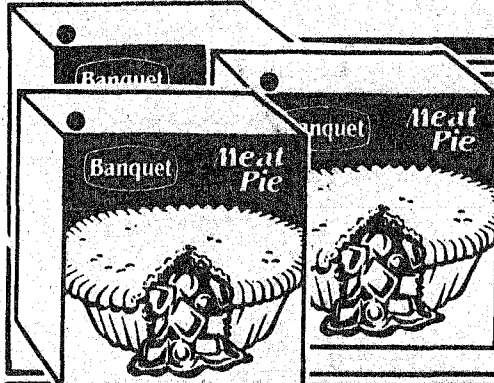
Borden Homo
Milk 1/2 Gallon

1.09



Borden Ice Cream
Sandwiches

6 Ct. **.98**



Banquet Pot Pies
Chicken,
Beef or
Turkey

7 Oz. **3/\$1**



Aunt Jemima Waffles
Original,
Buttermilk
or Blueberry

10 Oz. **.75**

FRESH BAKERY

MADE IN-STORE, HOURLY!

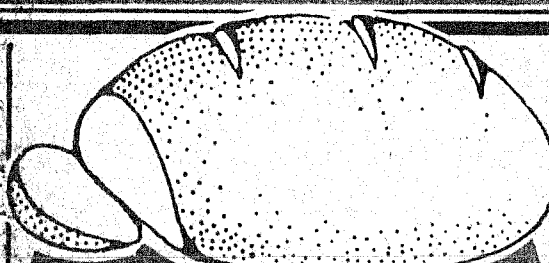
VIDEO

PHOTO



Fresh
Sourdough Rolls

10 Ct. **.79**



Fresh French
Bread

16 Oz. **2/.89**



Peggy Sue
Got Married

Francis Ford Coppola's smash hit
starring Kathleen Turner and Nicolas
Cage. If you could live your life all
over again would you change
anything? What does Peggy Sue do?

62.95



FREE
FILM

OR
FREE
PICTURES

FREE Second set of prints
from each color negative
at time of developing.
OR...One print from each
color negative plus a FREE
replacement roll of color print film.

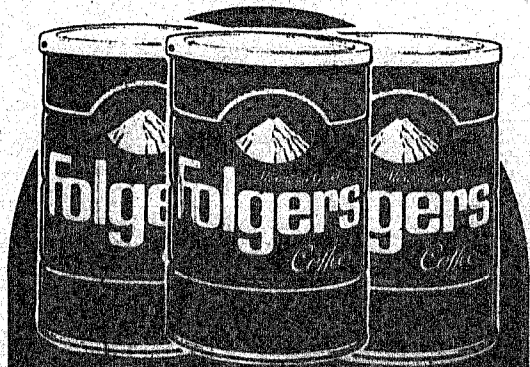
TOPCO brand 12 exposure, 24 exposure,
or disc only. See Clerk for Details



Fresh Fancy
Muffins

4 Count
1.69

MORE SHARP PENCIL VALUES!



Folger's Coffee
All Grinds, 3 Lb. Can

5.99



Trail Blazer Dog Food
20 Lb. Bag

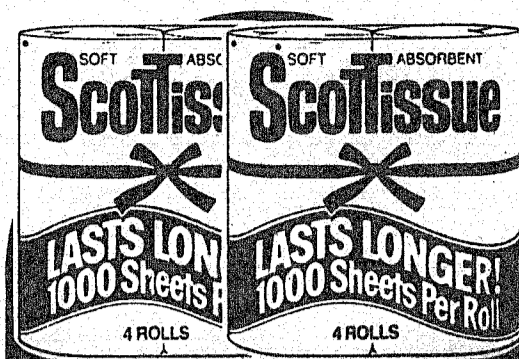
2.99



Pepsi
All Types

6 Pk.
12 Oz.
Cans **1.79**

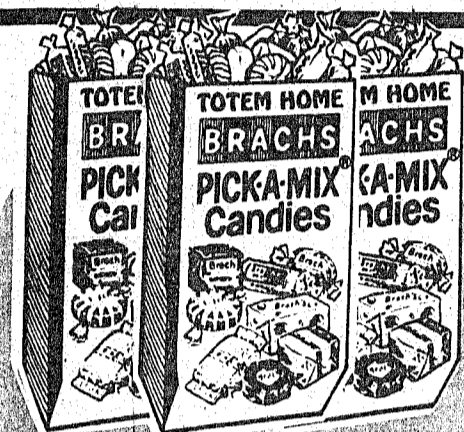
Limit 3 at \$1.79, thereafter \$2.25.



Scottie Tissue
Assorted, 4 Pack
1000 Sheet Roll

1.69

GROCERY



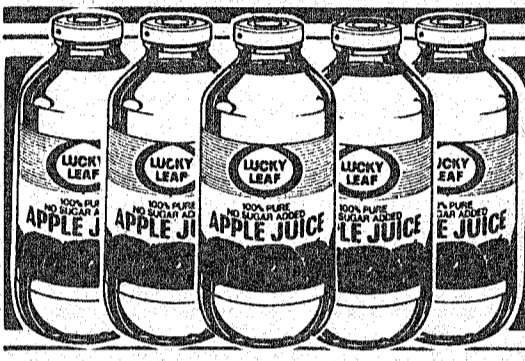
Brach's Pic-A-Mix Candies
Asst.

Lb. **.99**



Contadina Tomato Sauce
15 Oz. Can

2 For **.89**



Lucky Leaf Apple Juice

32 Oz. **.79**



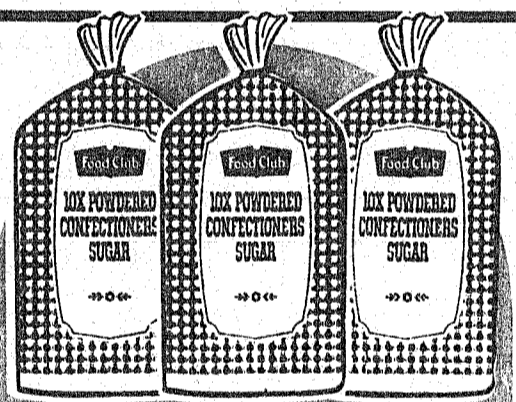
Ritz Crackers
Ribisco, Reg. or Low Salt

16 Oz. **1.59**



Old El Paso Taco Shells
6.75 Oz., 18 Count

1.25



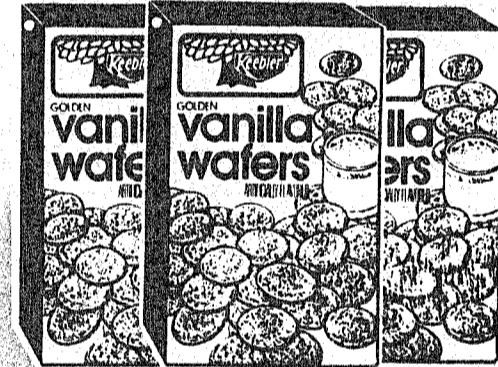
Food Club Sugar
Brown or Powdered

2 Lb. Bag **.85**



La Famous Tortilla Chips
All Types, 1 Lb. Bag

.99



Keebler Vanilla Waters
12 Oz. Box

1.49



EMPORIUM RECIPE

THE DEVIL'S OWN PECAN PIE

- Dough for single-crust pie pastry
- 4 eggs
- 1 lb. light brown sugar
- Pecan halves
- 3/4 cup water
- 1/4 cup soft butter or margarine
- 1 teaspoon vanilla extract

Line 9-inch oven-proof glass pie plate with pastry. Beat eggs in small mixing bowl until frothy; set aside. Combine sugar and water in 2-qt. thick saucepan. Place over moderate heat, stirring until sugar dissolves. Bring to a full boil and cook for 3 minutes. Gradually stir hot syrup into eggs. Blend butter and extract into mixture. Turn filling into pastry-lined plate. Arrange pecans on filling in desired pattern. Bake in moderate oven 350°F. about 1 hour or until set. Remove to cooling rack. *Yield: one 9" pie*

Walnut Pie: Substitute walnut halves for pecans.
Toasted Almond Pie: Substitute toasted almond halves for pecans.

MORE SHARP PENCIL VALUES!



Pro Essence Shampoo or Conditioner
Apple Pectin or Jojoba
32 Oz.

2 For 3⁰⁰

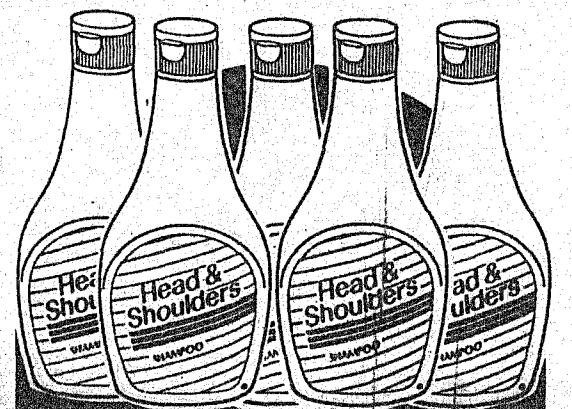
Brookside Hand Lotion
Honey & Almond, 32 Oz.

.99



Alka Seltzer Original
36 Count

2.29



Head & Shoulders Dandruff Shampoo
60 Off, Normal or Dry, 15 Oz.

2.99

GENERAL MERCHANDISE



Prell Shampoo or Conditioner
Assorted Variety, 16 Oz.

2.69



Secret Deodorant
Round Solid or Wide, Assorted Variety, 2 Oz.

2.09



Crest Toothpaste
Reg., Mini, Gel, Tartar Control Reg. or Gel

4.6 Oz. **1.27**



New Ultra Plus Pampers Diapers
Jumbo Size Sale:
Medium-96's or Large-64's

15⁹⁹



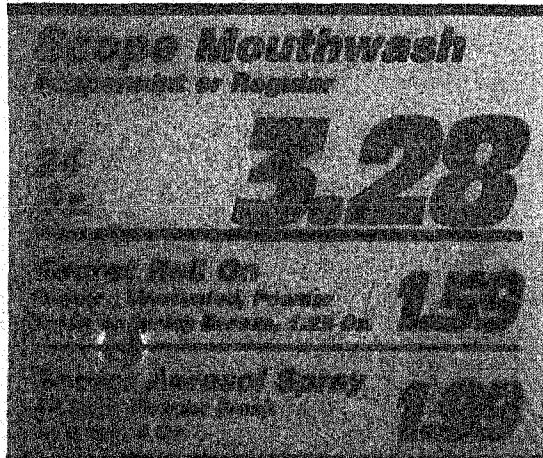
Always Maxi Pads
Deodorant or Reg.-30's or Thin Deodorant or Reg.-30's

2/5⁰⁰



Always Super Plus Maxi Pads
Super or Reg.-26's or Slender Teens-27's

2/\$5.00



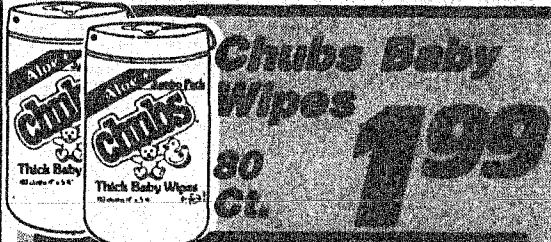
Scope Mouthwash
Regular or Regular

3.28

Regular, 16 Oz. **1.59**

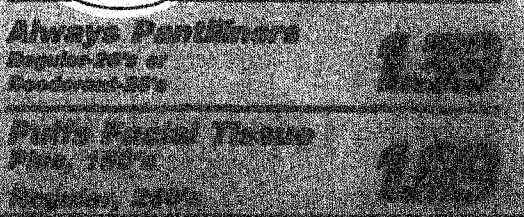
Regular, 8 Oz. **1.29**

Regular, 4 Oz. **1.09**



Chubs Baby Wipes
80 Ct.

1.99

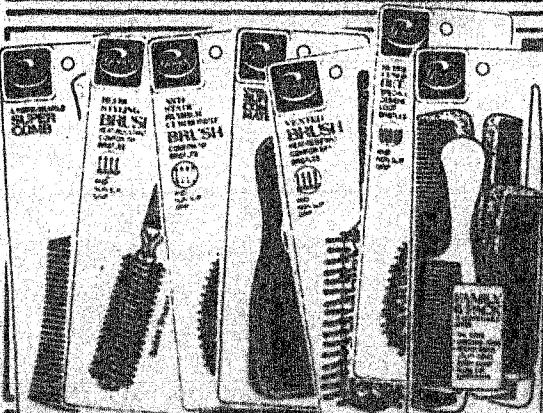


Always Pantliners
Regular or Regular

1.39

Always Pantliners
Plus, 20's

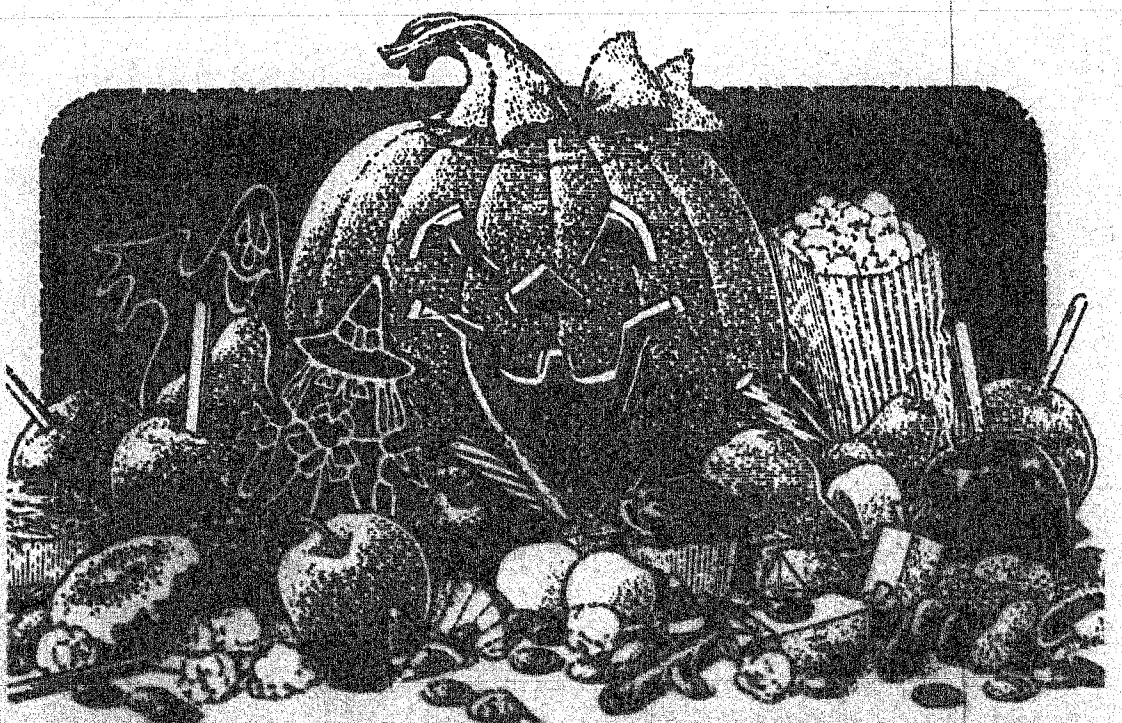
1.29



MORE SHARP PENCIL VALUES!

MONSTER VALUES!

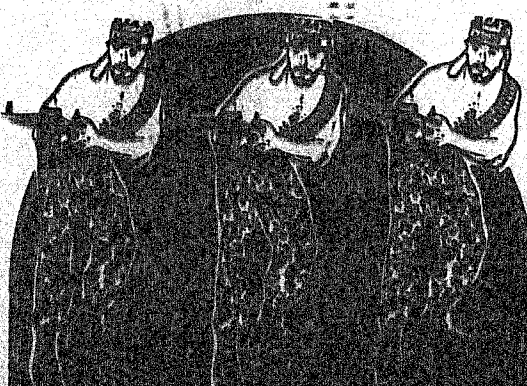
You'll find monster values on all your Halloween needs this year at The Food Emporium! Costumes, makeup, trick-or-treat bags, candies and more are value priced to make this holiday a treat for all little ghosts and goblins. Don't wait for the sun to go down (unless you're a vampire!) Hurry in now and save!





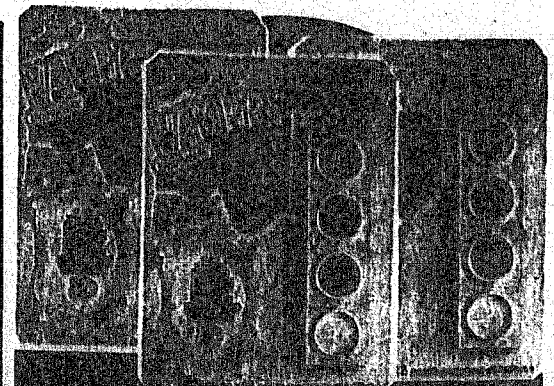
Halloween Cape Costumes
 Lady Bug, Grasshopper, Spider, Little Stinger, 900X

1.89



Transformers or Rambo Costumes
 Small 4-6 Yr., Med. 8-10 Yr., Large 12-14 Yr., No. 9401B

5.79



Super Vampire Kit
 Vampire Blood, Fake Skin, Glow in the Dark Fangs, No. 1344J

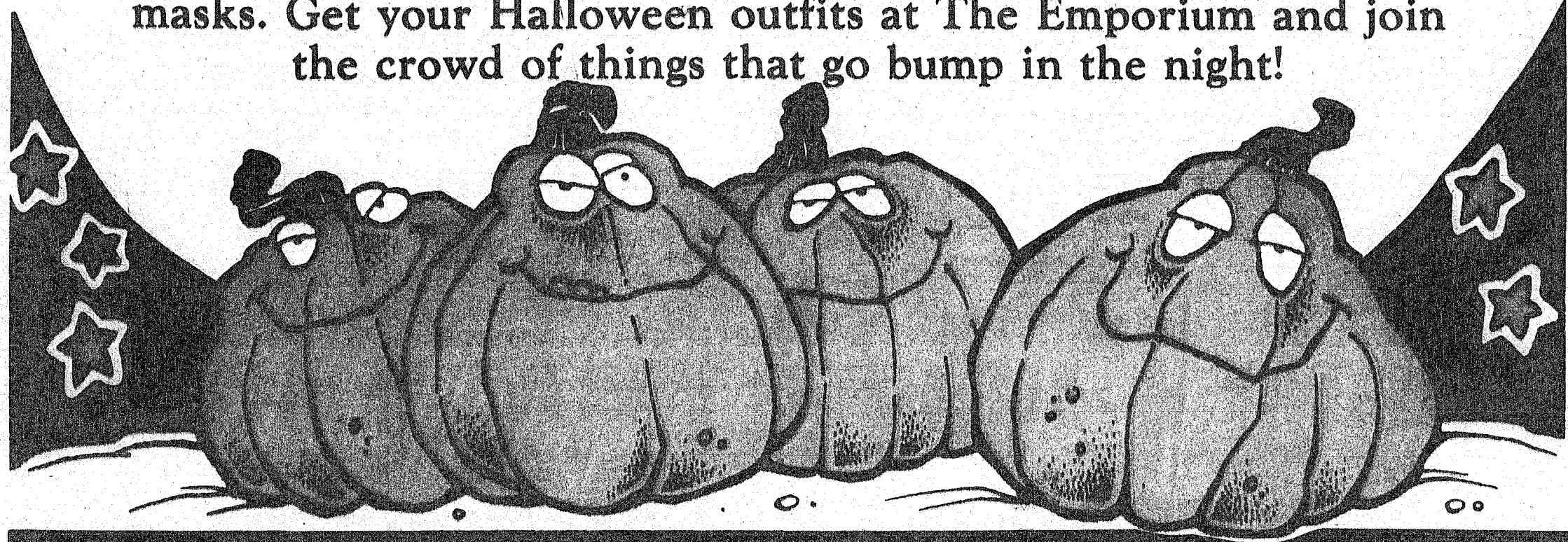
1.69



Plastic 8" Pumpkin Basket
 Ideal for Candy, No. 7161

.89

When the Great Pumpkin rises out of the pumpkin patch on Halloween night, it's a sure bet that he'll be carrying a trick-or-treat basket and wearing a costume from The Emporium! We have a full selection of the most popular costumes this season as well as makeup kits and masks. Get your Halloween outfits at The Emporium and join the crowd of things that go bump in the night!

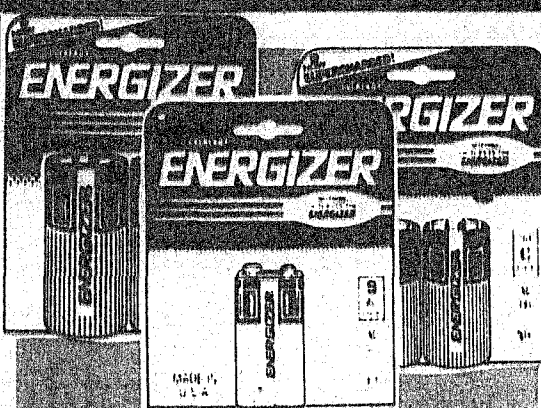


GENERAL MERCHANDISE



Slim Fast
 Asst. Flavors, 16 Oz.
 Sale Price **4.99**
 Less mail in rebate **-1.00**

Final Cost 3.99



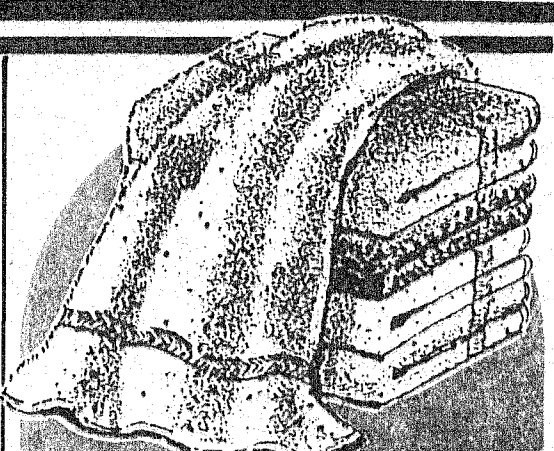
Energizer Alkaline Batteries
 2 Pack - C, D, AA or AAA or Single 9 Volt

1.59



Master Windshield Washer Solvent

Gal. .88



Bath Towels
 Cannon, Asst. Solids & Prints, 24"x44", Irregulars

1.99

\$1.00 CASH REFUND
 WITH PURCHASE OF SLIM-FAST SHAKES OR NUTRITION BARS

SEND OFFER DETAILS
 Buy Any Flavor of Slim-Fast Shakes or Nutrition Bars (except Hot Chili)

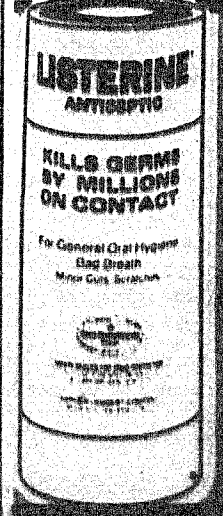
Send The Retail Unit Code (RUC) stamped upon the Slim-Fast can or container plus the cash refund slip enclosed with your purchase of Slim-Fast with the price you paid enclosed and the completed form.

Resend to Post: \$1.00 Cash Refund

Mail to: SLIM-FAST Cash Refund
 P.O. Box 5472
 Plymouth Depot
 Milford, CT 06461-0399

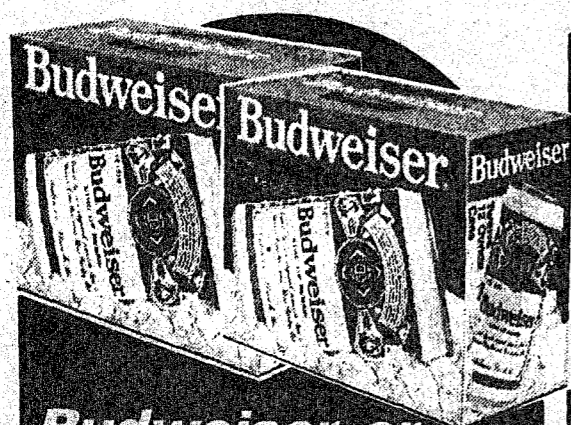
NAME _____
 ADDRESS _____
 CITY/STATE/ZIP _____

Offer good in U.S.A. This money cannot be exchanged for merchandise. Void where prohibited. Please allow 4 to 6 weeks for refund.
 Offer expires September 31, 1992



LISTERINE ANTISEPTIC
 KILLS GERMS BY MILLIONS ON CONTACT
 For General Oral Hygiene
 Bad Breath
 Minor Cuts, Scratches

MORE SHARP PENCIL VALUES!



Budweiser or Bud Light Beer
12 Pack, 12 Oz. Cans

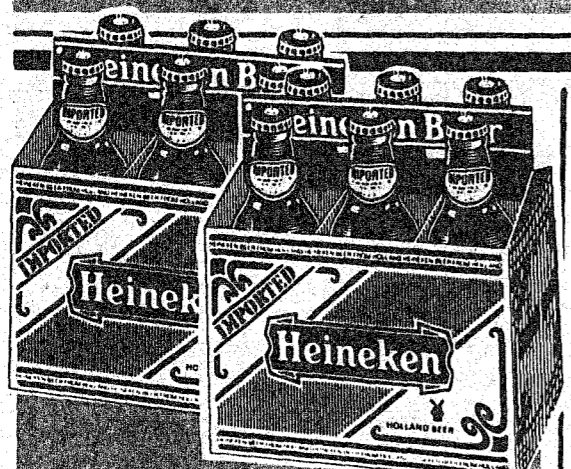
4.95



Old Milwaukee Beer
Regular or Light
6 Pack, 12 Oz. Cans

1.99

BEER & WINE



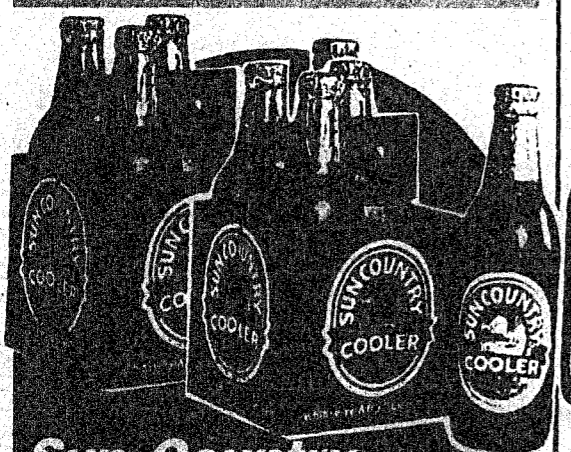
Heineken Beer
Imported, Light or Dark
6 Pack, 12 Oz. NRB

3.89



Gallo Premium Table Wine
All Varieties, 1.5 Liter

2.69



Sun Country Wine Coolers
All Varieties, 4 Pk. 12 Oz. NRB

2.39



Beck's Beer
Imported, Light or Dark, 6 Pack
12 Oz. NRB

3.89



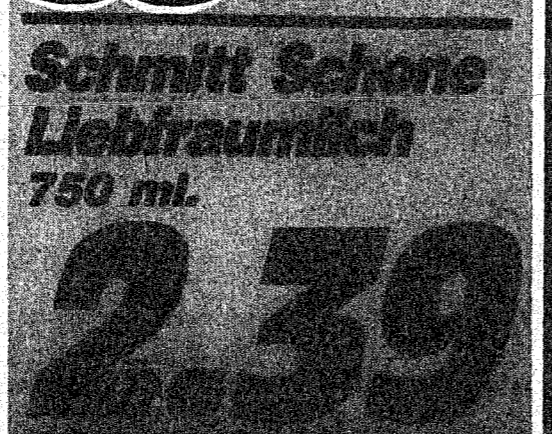
California Coolers
All Varieties
2 Liter NRB

2.39



Cella Wine
All Varieties
Italian, 750 ml.

2.39



Schmitt Schone Liebraunbich
750 ml.

2.39

MORE VALUES!

SAY HELLO TO Share Bear

Say hello to Share Bear! He's the cutest, smartest, cuddliest, hardest working bear you've ever seen and he's coming to our town this week!



A KID'S BEST FRIEND!

Share Bear is a kid's best friend — a friend who's going to make this Christmas very special for thousands of children.

For many kids, Christmas is a magic day filled with new toys, warm food and the love and devotion of caring family members. But for far too many other children, Christmas is just another day in their bleak existence. Another day to be cold. Another day to be hungry. Another day to be abused or neglected.

These kids need a best friend and that's why Share Bear is here to reach out to them.

YOU CAN HELP TOO!

The major fund-raising project for the Furr's Foundation Christmas Campaign is the sale of Share Bears. Because of the scope of our mission, we need to price each Share Bear at

\$12.99.

From this purchase price, \$5.00

goes into the Share Bear Christmas Fund.

Five dollars may not seem like a lot of money, but it can do a great deal for a child. It can help buy warm clothes or shoes in winter. It can provide hot meals and day care. It can pay for after school care and counseling. It can make life a little easier for kids who need hope.

A HELPING HAND!

Share Bear is the official mascot for the Furr's Foundation Christmas Campaign, a program aimed at raising \$750,000 for needy kids in Texas and New Mexico.

This money will be donated to kids' organizations in cities where there are Furr's Inc., stores. The goal of the Share Bear Christmas Campaign is to share the joy of Christmas all year long. We plan to give kids a Christmas present they can enjoy for years to come — the opportunity to grow up with a healthy mind and body.

For some kids, this means a place to go after school so they won't be all alone in the house. For others, it means a counseling center where caring adults can guide them through the troubled waters of their lives. And for yet others, it means a place where they can escape abusive parents and get food and medical care. There are thousands of children with hundreds of different needs and Share Bear wants to help them all!



WATCH FOR SHARE BEAR!

Share Bear will be in our stores early this week, so watch for him. You can't miss him — he's almost two feet tall and is the cutest bear to come out of the woods in a long time. With plush fur and a jaunty red bow tie. Share Bear is the perfect friend to play with during the day and to cuddle up with at night.

Remember, the purchase price for Share Bear is a low \$12.99 and \$5 of that money goes into the

Share Bear Christmas Fund. You'll be seeing a lot of Share Bear between now and Christmas. He's going to be popping up in our ads, showing up on TV and radio and even appearing in person. He's working hard to make Christmas special this year so don't be surprised if you see him every day! Share Bear is a kid's best friend. Is there room in your child's life for a new friend?



EA
rov
Sci
Ra

B
In
Se
Ann
UIL
Brac
In
rater
cons
celle
is av
ta A
brou
II. Di
form

Pe
Ea
The
comin
the ar
sooner
Can
Decen
the pa
March
two pe
their i
sheriff
Wade
Corky
Tern
pire at
Sheriff
he will
cinct I
Strickl

Ha
Se
The c
Queen a
nual ca
31st, at
High Sch
Follow
Hallowe
High Sch

Trail
Arrow
servicing
Pearl
bus term
Walle an
In Fun
freight
from Ath
Browne
Hansen