





# CAST YOUR VOTE SEPTEMBER 24 FOR PEANUT PROGRESS IN TEXAS

## Questions Most Asked On Proposed Assessment Program -

Q. Who will get a vote in the peanut referendum in Texas?

A. All producers of peanuts on record in Texas - sharecroppers, tenants, landowners and farm operators who are listed by ASCS offices or those who can show they have a financial interest as producers - does not include wives of producers unless they were the actual producers of the crop.

Q. Where can I vote?

A. A ballot will be mailed to all producers the week of September 24 on which you will vote For or Against the assessment. You will mark your ballot and return it in the enclosed self-addressed envelope.

Q. Will the "Check-Off" program go into effect if a majority of growers vote for it?

A. The program will go into effect if two-thirds of the growers voting in the referendum vote For it, or if those voting in favor of the proposition produced at least 50 percent of the volume of production during year preceding the election.

Q. How will the money be collected?

A. The assessment will be made at the time you market your peanuts. The buyer or warehouse operator will make the deduction.

Q. How much will be assessed against the grower?

A. A fee of \$1.00 per net ton is being proposed the first year.

Q. Can the assessment be raised once the program is in effect?

A. Yes, but only if a two-thirds majority of peanut growers o. k. a raise in a statewide election.

Q. If I do not wish to participate can I get my money back?

A. Yes, if you are not satisfied with the program, you may get a refund of your money by contacting the secretary-treasurer of the new organization within 60 days of the date of assessment.

Q. Where does the money go?

A. The funds collected by buyers are sent to the secretary-treasurer of the producers board.

Q. What is the producers board?

A. This is a 9-member board elected statewide by peanut growers to administer the program.

Q. When will this board be elected?

A. In the September 24 referendum growers will be provided a ballot to vote for 9 producers. The 9 growers receiving the most votes will be elected.

Q. What are the qualifications for serving on the board?

A. You must be a peanut producer and qualified to vote in the referendum.

Q. What are the terms of board members?

A. Members serve for 6-year terms except that the initial 9 members will serve as follows: 3 members - 2-years; 3 members - 4-years and 3 members - 6-years (terms of initial members to be selected by drawing lots).

Q. Will the new organization be organized completely independent from existing organizations?

A. Yes, once the board is elected it will meet, elect board officers and adopt by-laws all its own. Its membership will be those growers paying assessments into the organization.

Q. How will the funds collected be used?

A. The funds will be used as determined by the board in programs of research, promotion, education, disease, and insect control.

Q. Is there any precedent for this kind of organization of peanut producers?

A. Yes, similar statewide associations are operating under state enabling legislation in Oklahoma, Georgia, Alabama, North Carolina, Florida, New Mexico, and Virginia. All of these associations have been operating satisfactorily for periods ranging from 4 years in Oklahoma to over 20 years in North Carolina and Virginia.

Q. What kind of research would be carried on under this program?

A. The board may contract with the Texas Agricultural Experiment Station or other agencies to initiate new research projects or to expand current research work. The board also has leeway to contract for research work with other agencies or private business. It may also wish to secure research in peanut marketing which could be carried out under agreements with the Texas Agricultural Extension Service or other agencies.

Q. What activities are possible in the area of promotion?

A. Here again the board may contract with public relations or advertising firms in promotional activities. The board also may contribute to and participate in promotional activities of such organizations as the National Peanut Council and the Texas Department of Agriculture. The board may participate in promotional activities at state and local fairs and similar events.

Q. How do such associations function in the area of education?

A. Other statewide peanut associations spend substantial time in sponsoring and conducting peanut producers meetings throughout the state on a variety of educational type programs. In addition large volumes of printed materials are published and distributed to potential consumers of peanut products. Written material of various sorts is, of course, made available and distributed to grower members of the association on a substantial basis. Effective educational activities including peanut production meetings and crop demonstrations may be sponsored in cooperation with the Texas Agricultural Extension Service.

Q. Who will determine the percentage of funds allocated annually for the 3 major areas - research, promotion, and education?

A. The producers board will compile information from all parts of the state relative to projects most needed and desired by peanut producer members. The board will then propose a budget for the ensuing year allocating the expenditure of funds in the manner deemed most advantageous to Texas peanut growers.

Q. What is the over-all purpose of this proposed new organization?

A. Stated simply, the over-all purpose is to bring about increased production and improved quality in Texas producer peanuts resulting in increased net income to the peanut producer.

LET'S ADD TEXAS TO THE LIST OF PEANUT PRODUCING STATES OF ALABAMA, FLORIDA, GEORGIA, NEW MEXICO, NORTH CAROLINA, OKLAHOMA AND VIRGINIA CARRYING ON SUCCESSFUL SELF-ASSESSMENT PROGRAMS.

Sponsored By THE FIRST NATIONAL BANK, Gorman, Texas

# Welcome Back to School

## TEACHERS and STUDENTS

WE WISH YOU EVERY SUCCESS IN THE NEW SCHOOL YEAR



### SCHOOL DAYS ARE BACK

All good things come to an end—at least temporarily. And so it is, as the long school summer holiday draws to a close. Very shortly, millions of youngsters will be shouldering their school books once again. Other millions will see the inside of a school room for the first time when school opens this fall.

While it is true that an educated man does not remain uneducated, the fact remains that formal education is the foundation and best hope of civilization. Education is the seed bed of tolerance and understanding. It is the source of progress in every field of human endeavor.

Tomorrow's astronauts, engineers, scientists, technicians, men of medicine and the arts and business will be trudging back to the halls of learning, as the crisp days of autumn approach. Their return is an omen of a steady advance toward a better life.



This Greeting of Welcome is sponsored by the following Merchants who are proud of our School and its programs.

Todd's Variety Store

Stacy Gulf Service Station

Blackwell Hospital

Mehaffey Drug

Brown Feed Store

Lawndale Home For Senior Citizens

Munn Cleaners  
PHONE 5318

TRACE ELEMENTS  
INC.

Smith Bros. Chevrolet Co.

Southwestern  
Peanut Growers' Association

Davis Coin Operated Laundry

Preston's Florist

Higginbotham Bros. & Co.

Leonard Humble Station

Rankin Army & Navy Surplus

Frossard's Department Store

Jay's Grocery & Market

Joe's Grocery  
Daryl Hirst, Mgr.

Friendly Service Agency

Gorman Insurance Agency

Kellogg Plumbing & Service

Dairy King

Brown Jug Steak House

Lewis Fina Station

Lo's Beauty Shop

Lone Star Gas Company

First National Bank

Bo's Grill & Coffee Shop  
— OPENING SOON —

Blackwell Hospital & Clinic

Westside Mobil Station

Revel's Garage

Seaton's Variety

Barbee & Bramlett Impl Co.  
LONG FARM EQUIPMENT

Watson Corner Pharmacy  
OPENING ON TUESDAY, SEPTEMBER 2

## HATS OFF

To

Cheerleaders - -

Barbara Williams, Jana Brown, Dana Weldon  
Debra Smith and Bernadean Reeves  
For your Spirit, Enthusiasm and Hard Work.

Friendly Service Agency

ROONEY & RAY WILLIAMS



## THE GORDON SPOT

By DeMarquis Gordon  
Eastland County Agric. Agent

Peanut producers all over the county are having a lot of trouble with the lesser cornstalk borer in peanuts. I found the insects in 18 of the 20 fields I checked last week. They seem to be doing more damage in dryland fields, but are also found in some irrigated peanuts.

Best control has been obtained with Diazinon or Parathion applied to cover the lower stems and a band of soil 6 to 8 inches wide on each side of the row.

Plans are being made for the annual fall pecan tour September 12. A committee of the Eastland County Pecan Growers Association has been at work making plans. This committee composed of Ben Freeman and Chester Marrs of Ranger, A. D. Ellington of Cisco, and myself, visited several orchards last week. It was decided that three orchards in the Gorman area and Marrs' orchard would be visited on the tour. Some of the best pecan crops found were in the Gorman area. Overall pecan production will be low this year. Growers in this county expect only a 20 percent crop this year.

This is the time of year that the hickory shuckworm and the pecan weevil begin doing damage to the pecan. The shuckworm causes the shucks to turn black and failure to turn loose of the pecan. For best control of the shuckworm the trees should be sprayed in late August with Guthion.

The pecan weevil lays eggs in the pecans. These eggs hatch into grubs which eat the kernel and then emerge leaving a little round hole in the pecan. They can be controlled by spraying with Sevin in early September.

Several meetings are being held in Eastland County to inform peanut growers of the proposed "check-off" plan that growers will be voting on in September. About 35 growers attended a meeting in Rising Star August 21 and heard Ross Wilson explain the plan. If anyone has questions concerning the plan that growers will be voting on between September 9 and 24, I will be glad to discuss it with them.

Trees and shrubs, like humans and livestock, are being affected by the continuing dry and hot weather.

The most common symptom of drought injury to trees and shrubs is the dying around the margin of leaves with the dead area progressing into the leaf and causing dying of leaf tissue between the veins toward the midrib.

A deficiency of water affects the marginal leaf tissue most, as compared with other parts of the plant. If prolonged, the lack of soil moisture results in the death of feeder roots. When this happens, recovery of the plant to

## Cora Lee Bennett Attends Insurance Seminar In Austin

Cora Lee Bennett attended the "Gal Friday" seminar held in Austin last Thursday, Friday and Saturday. This is sponsored by the Texas Association of Insurance Agents in an effort to keep all personnel working with insurance aware of what is happening now and how they can best help the people.

Dwight Sleeper, president of the association, spoke to the women on Friday about our present auto insurance rates. "Texas is first in the number of highway miles and third in the country in the number of motor vehicles registered. There are 33 states that have higher average auto insurance rates." He also reported a U. S. Senate committee said in 1965 "The state of Texas has for many years operated with great success a state rate-making bureau. . ."

A tour of the state checking office was a highlight of Cora Lee's stay in Austin. Most people realize all fire policies written by independent agents must clear the checking office and she says it is fascinating to see the steps they take to be sure every policy is correct in every detail.

Elbert Bennett made the trip to Austin with his wife. However, he preferred to entertain his grandchildren while Cora Lee listened to the many outstanding speakers on the program.

Cora Lee and Elbert returned to Gorman on Sunday by way of Arlington where they attempted to help their son and wife, Dwight and Kathy Bennett, move into their new home.

normal condition is slow. Beautiful shade trees add much to the comfort and pleasure of the home, but they do need attention. Now is one of those times when water and attention may be necessary to pull them through.

## Dr. Fehrman H. Lund, Optometrist

MA 9-1177 - 405-6 Exchange Bldg  
EASTLAND, TEXAS  
313 Main St. - RANGER, TEXAS  
In Ranger - 1 to 5:30 Tuesdays  
8:30 to 12:00 Fridays  
Closed Thurs. & Sat. Afternoon

## NOTICE Irrigation Pumps Pipe - Wheel Lines & General Supplies

LARGEST SUPPLY IN  
CENTRAL TEXAS  
Pump & Service Department  
**KIMMELL  
IRRIGATION  
SERVICE**  
Hwy. 16 and Bivar St.  
Phone 893-6266  
DE LEON, TEXAS

## Dr. W. H. Stephen Optometrist

Thursdays in De Leon  
Phone 893-6799  
445-3444 Dublin, Texas

## INSURANCE For All Your Needs



Rest Assured...

Drive Insured!

You are prepared for any eventuality when you're adequately covered by accident and liability insurance! Call soon.

Be Sure... Insure!

Gorman  
Insurance Agency

Chas. Duran Berenice Jeffs  
RE 4-5312 Gorman

## Lesser Cornstalk Borers Continue Damage In County

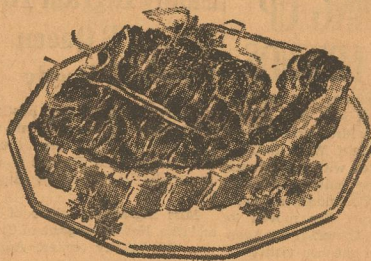
Commissioner John C. White, Texas Department of Agriculture today issued the latest progress report on the lesser cornstalk borer infestation. The peanut fields of Eastland, Erath, Callahan and Comanche Counties show that lesser cornstalk borer numbers are decreasing slightly.

The decrease in corn borer populations is the result of the control programs being applied to the peanut fields. The survey indicated that peanut fields which have had a complete series of treatments for corn borers have a low population at this time. However, almost all fields which are not in the control program are showing a sharp increase in num-

bers of corn borers. Commissioner White pointed out that because of the short life cycle of the corn borer, it is very important that farmers check their fields at least weekly. Many fields were not known to be infested with corn borers previously but are now showing large populations. Commissioner White urged that once a control program is started, the series of applications of the insecticide should be carried out without a break in the schedule. In the event this schedule is interrupted, then the control program should be started again as if no previous insecticide had been applied. The manufacturers recommended rates and intervals of applications of the insecticides should be followed.

HIGGINBOTHAM'S  
AMBULANCE SERVICE  
Phone 2272 - Day or Night

## EVERY THURSDAY NIGHT IS STEAK NIGHT AT THE BROWN JUG



## T-BONE STEAK

1/2 POUND - Only \$1.58

SERVED WITH GREEN SALAD, TEXAS TOAST,  
BAKED OF FRIED POTATOES - COFFEE OR TEA

## BROWN JUG STEAK HOUSE

LARRY & ROSE FARROW, Owners  
Open 6 To 9:30 P. M. Weekdays - 6 To 9 P. M. Sundays  
Highway 6 West Phone RE 4-2205 Gorman

## BOBBIE BROOKS BACK TO SCHOOL

# Specials

NEW JUMPERS  
Were \$12.98 - NOW \$9.98

1 TABLE OF FABRIC  
Reg. \$1.98 Yd. - NOW 59c Yd.

## BOY'S SPORT SHIRTS

Were \$2.98 - NOW \$2.29

Were \$2.49 - NOW \$1.98

Were \$1.98 - NOW \$1.79

Were \$1.29 - NOW 98c

## BOY'S

## STAY-PRESSED JEANS

our most famous brand

3 Colors To Choose From

Reg. \$3.98 - SALE \$2.98

## MEN'S

## STAY-PRESSED JEANS

Choice of 2 Colors

Were \$6.98 - SALE \$4.98

## W. H. SMITH DEPARTMENT STORE

WE GIVE S&H GREEN STAMPS  
PHONE 2135 DE LEON, TEXAS

## GROCERIES - GAS - OIL TIRE REPAIR

For An Oil and Filter Change and Grease Job,  
Come in and see us!

## BURGESS SKELLY SERVICE

Mr. and Mrs. Richard N. Burgess, Owner  
CARBON, TEXAS

## Check Your List

Of Money Needs

- Chain Link Fence
- Extra Bathroom
- Central Air Conditioning
- Building Site
- Your Childs Education

Then See Us For A  
Better Living Loan



## Best buy in sight

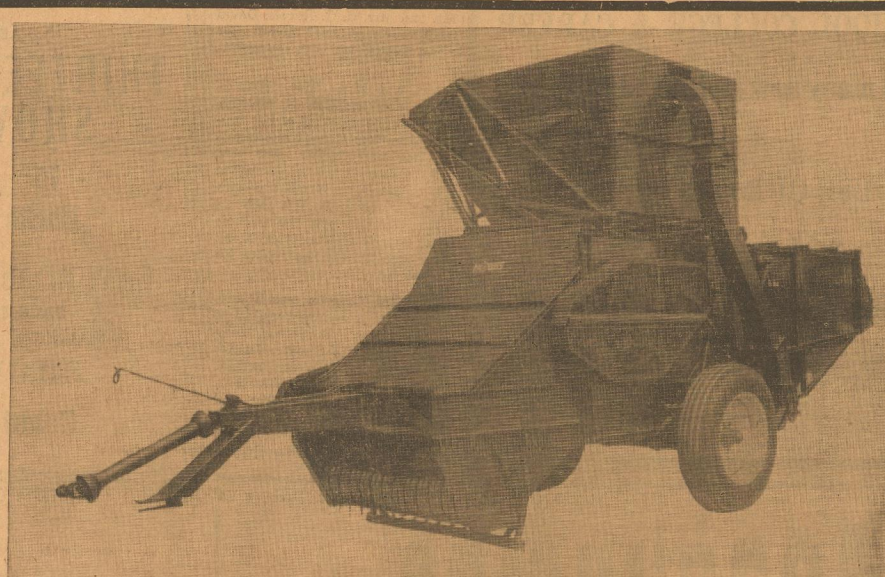


## A study lamp with this tag

You can be sure you're providing your youngsters with the best possible light for home study when you choose a lamp with this tag. It comes in a variety of styles and certifies that the manufacturer has met the rigid specifications of the Better Light Better Sight Bureau and the Illuminating Engineering Society. A study lamp with this tag provides high level diffused illumination without direct glare from any angle. It is especially designed for the needs of young eyes spending long hours at homework.

Select one soon at your dealer's

TEXAS  
ELECTRIC SERVICE  
COMPANY



Hobbs Model 520 Peanut Combine

## NEW FROM HOBBS

Hobbs Engineering introduces a new peanut combine that harvests peanuts over a wide range of harvesting conditions with less damage, loss, operator skill or maintenance.

- New pickup system
- New picking control
- New cleaning system
- New automatic pneumatic conveyor
- New straw rack
- New picking system
- New stemmer
- New dirt removal system

ASK FOR A FIELD DEMONSTRATION!

**TRACE ELEMENTS, Inc.**

Phone RE 4-5590

Gorman, Texas

