

## Judge slaps gag order on murder trial

Fearing pre-trial publicity, a judge issued a gag order in the case of two Muleshoe men charged with the capital murder of a Littlefield convenience store clerk.

Judge Felix Klein of the 154th District Court late Wednesday afternoon ordered lawyers and enforcement personnel involved with the case not to talk about the slaying of Evangelina Cruz during a robbery last week.

Alberto Sifuentes, 23, and Jesus Ramirez, 47, were arraigned Tuesday for the shooting death of the 32-year-old mother of four. Both suspects are being held in the Lamb County Jail on \$500,000 bail.

The Journal learned about the gag order Thursday when it contacted Department of Public Safety Detective Lt. Barry Carver and District Attorney Mark Yarbrough about the case.

"I want to make sure the defendants can get a fair trial," Klein told the *Lubbock Avalanche-Journal*. "Preferably in Lamb County."

Sifuentes was arrested in May of 1995 for a misdemeanor assault charge. Ramirez has no known criminal record.

Both men worked in the Muleshoe area, Sifuentes repairing sprinklers for a subcontractor for American Valley, Inc., and Ramirez at Prairie View Dairy.

The suspects allegedly shot Cruz nine times with a .22 caliber-weapon during a robbery attempt. An eyewitness placed the suspects in the store shortly before the shooting.

In a separate case, a reputed gang member with Muleshoe ties has been charged with attempted murder in connection with the Aug. 9 shooting of a Clovis man in Clovis.

Lucio "Chano" Torres, 20, allegedly shot Johnny Sena, 26, once in the forehead in a trailer park at 1501 N. Thomas Ave., according to a Clovis Police Department spokesman. Witnesses said the two were arguing at the time of the shooting, which took place shortly before 5 a.m.

Sena underwent surgery at Plains Regional Medical Center and was still listed in critical condition Thursday.

Torres remains in the Curry County Adult

Continued on page 3

## Carrying a full load



### Quite a handful

Fourth-grader Jeremy Copley carries his school supplies to homeroom Thursday during the first day of school at DeShazo Elementary.

## Fire destroys motor home

A vehicle fire Thursday morning along U.S. Highway 84 completely destroyed the RV motor home of a Muleshoe couple.

All that was left was the charred skeleton of the 30-foot RV. No one was injured.

Warren Givens was experiencing motor troubles when he pulled over on the shoulder of the westbound lane of U.S. 84 seven miles west of Muleshoe.

When Givens checked the engine, he saw it was on fire, according to Bailey County Sheriff Jerry Hicks. Givens tried to put out the fire with an extinguisher, but the fire spread too quickly, Hicks said.

At one point, flames shot across both lanes of the westbound highway when the propane tank caught on fire.

The Sheriff's Department had diverted all traffic into the eastbound lane by that time.

"I could see the smoke from town," Hicks said. "It looked like a big, black funnel cloud."

Mrs. Givens said the RV was packed for a camping trip in the mountains near Las Vegas, N.M. Warren Givens, driving alone, was en route to Clovis to get the refrigerator unit checked.

They lost nearly everything packed in the RV except for a small TV and a few clothes, Mrs. Givens said.

## Expectations growing for local cotton producers

By RICK WHITE  
Managing Editor

Near normal summer rains have left Muleshoe area farmers with lush green cotton fields, six-foot high corn, and guarded optimism for a good year.

Bailey County Extension Service Agent Curtis Preston said cotton production looks promising with a month to go.

"If they can keep doing a good job of keeping water on it, and insects off it, the potential is there to have a big crop," Preston said.

The same can't be said for cotton production across the state.

The drought has had a major impact on the U.S. Department of Agriculture's upland cotton estimates.

Texas production was pegged at 3.717 million bales this year, compared with 4.512 million in 1995.

Yields, though, are expected to increase from 372 pounds per acre last year to 427 in 1996.

Things certainly look more promising for area producers

than they did in April and May, when unseasonably hot temperatures and the prolonged drought left all the High Plains sun-baked and parched.

Even irrigated farmers were having trouble keeping crops wet.

Gentle sundown showers in June and July came to the rescue.

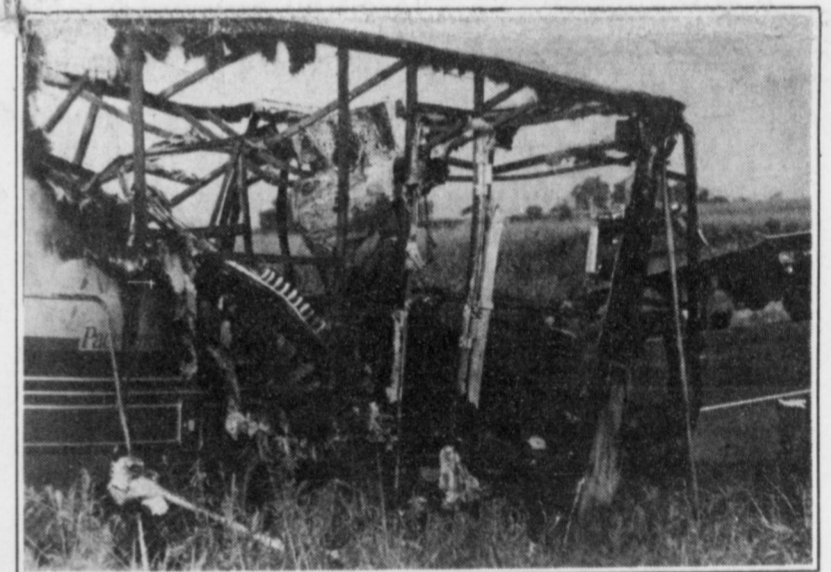
"We're still in a drought," Preston said. "All it did was help the guys who were short on water, catch up," Preston said. "It was so abnormally hot in May, it was hard to keep water on the plants. The rain came at the perfect time."

With a warm, dry September, the harvest should be excellent for both quality and quantity, according to Della Puckett of the Muleshoe Co-Op Gin.

"We should have an excellent crop," Puckett said. "With the right weather, we could have two-bale cotton (between 800-1,000 pounds per acre)."

"The quality is excellent, it's

Continued on page 3



### Vehicle fire

An RV motor home belonging to a Muleshoe couple was completely destroyed in a Thursday morning fire along U.S. Highway 84 west of Muleshoe.

## Muleshoe Area Health District Nursing home an adjustment for both family, patient

Editor's note: This is the final article in a series of stories on the Muleshoe Area Hospital District.

By JOANNA GALLMAN  
Journal staff writer

Lillie Wuerflein had always taken care of everyone else. That's why it was so hard to let everyone else take care of her.

After a stroke rendered her unable to care for herself, Lillie has adjusted to a life many dread—life in a nursing home.

"For over a month after the stroke, I didn't know anything," said Lillie, who has been a resident of the Muleshoe Area HealthCare Center for nearly four years. "After I woke up, I realized I couldn't go home."

Born in Stone County, Ark. in 1906, Lillie's life is now quite different from the one she knew before the stroke.

"She was always a very independent person," said Lillie's son, Frank Wuerflein. "She always did for herself and others, and then she couldn't do either one. We kept hoping she would be able to come home, but she never did," Frank said.

Lillie receives what HealthCare Center Administrator Ed Dudley calls "long-term care," which is provided for patients who need daily supervision.

A part of the Muleshoe Area Hospital District, the 54-bed facility also provides short-term surgery rehabilitation and respite care.

Respite care is when a patient who is normally cared for at home is admitted to the nursing home for a short stay while their family rests or vacations. Dudley said the approxi-



### Spinning yarns

Lillie Wuerflein, a Muleshoe Area HealthCare Center resident for almost four years, keeps busy by making yarn hot mats.

mately 50-member HealthCare Center staff and the Muleshoe Area Medical Center work hand-in-hand.

"We're all part of the hospital district," Dudley said. "We work really closely with the hospital on the Medicare beds, but if any patient needs something, the hospital usually just sends someone over."

The HealthCare Center has

been in operation since the 1950s. Dudley said that although the Center is now tax-supported, it has been under private ownership in the past.

As in Lillie's case, patients and their families often establish a need for assisted care once a patient is no longer able

Continued on page 9

## Tips for selecting nursing home

### Location

Location is one of the more important factors in finding a nursing home. Choose a place that you can visit easily and frequently.

### Shop around.

Visit each nursing home you are considering. Go unannounced and make initial observations. If you are comfortable with what you have seen, call the facility and schedule an interview with the administrator. Trust your instincts.

### Be prepared

Prepare a list of questions in advance so that you can compare each nursing home. There are many questions you can ask: the amount of staff turnover, the name of the attending physician, and how medical needs or emergencies are handled when the doctor is not available.

### History is important

Ask about the home's history of compliance with standards. Ask to see the survey reports of "HCFA 2567" reports and complaint investigation reports for the past

Continued on page 9

## Want to know more?

Elder Law and Public Health Division, write to P.O. Box 12548, Austin, Texas 78711-2548, or call (512) 936-1300.

Texas Department of Human Services, (800) 458-9858

Texas Department on Aging, at (800) 252-9240. Office of the Attorney General, (512) 936-1300.



AROUND MULESHOE

**Muleshoe Memorial Park Cemetery Inc. annual meeting slated Monday**

The annual meeting of the Muleshoe Memorial Park Cemetery, Inc. will be held Monday, Aug. 19 at 6:30 p.m. The meeting will be held in the cemetery association office in the Smallwood Building, located at 232 Main St. All interested persons are invited to attend.

**Senior Citizens slate weekly dances at American Legion Hall**

The Muleshoe Senior Citizens will be holding dances for seniors 55 years and older every Tuesday night at 8 p.m. in the American Legion Hall.

**Muleshoe High School yearbooks available for pickup next week**

The Muleshoe High School yearbooks will be available for pick up beginning Monday in the high school library.

**Reserve seating football tickets available for pick up at business office**

Persons who held reserve seats for the 1995 football season can pick up the tickets at the Muleshoe High School Business office, located at 514 W. Ave G., through Aug. 23.

Ticket holders may pick up their tickets in person, by mail with the ticket holder's personal check, or by third party when purchased with a ticket holder's personal check.

Reserve tickets may be purchased from 8:30 a.m. to 5 p.m.

**Bailey County Cemetery Association elects board of directors at meeting**

More than 20 individuals attended the first meeting of the Bailey County Cemetery Association meeting Thursday.

The group elected five directors who will draw up by-laws for the non-profit organization.

Directors include: Paul Poyner, Dick Chitwood, Vivian White, Gary Gilleland, and David Wyer.

**Extension Service hosting cattle conference Monday at civic center**

The Texas Agricultural Extension Service is sponsoring a Stocker Cattle & Forage Conference Monday at the Bailey County Civic Center.

Registration begins at 8:30 a.m.

Various speakers will discuss the latest in stocker cattle health and nutrition, as well as cool season forages. Pharmaceutical company representatives will also display the latest technology in animal health aids.

Contact Curtis Preston at the Bailey County Extension

Office for more information.

**Muleshoe student gains top honors at WTAMU radio station**

Courtney Graves, a 1996 graduate of Muleshoe High School, served as general manager for KWTS FM 91.1, West Texas A&M University's radio station, and helped the station receive top honors in the National Association of College Broadcasters poll.

KWTS FM 91.1 was named one of the top five college stations in the nation by the NACB for the 1995-96 academic year. The station was also named a finalist in the community service/marketing category.

**Clovis Community College offers new fall classes, lower tuition rates**

Clovis Community College will be offering a variety of new classes at lower out-of-state tuition rates this semester.

The CCC Board of Trustees approved new rates of \$38 for the first credit hour and \$30 per hour up to 12 hours for all non-resident students. Resident in-district and non-district students will continue to pay \$29 and \$30 respectively for the first hour, and \$21 and \$22 per hour up to 12 hours.

New fall classes include beginning guitar, raku pottery, computer technology and basic skill building, internet applications for educators, multimedia design, job coach training, and financial and estate planning for older adults.

**ENMU Symphony Orchestra requesting area musicians for upcoming season**

The Eastern New Mexico University Symphony Orchestra is requesting area musicians to participate in its upcoming season.

Players of all instruments are invited to audition. String players are especially invited to audition.

The orchestra is comprised of 40 musicians, and performs pops, classical, and children's tunes.

Instruments will be available for players participating in the ensemble who do not have an instrument. Rehearsals begin Aug. 26. For more information, call Dr. Radmer at (505) 356-5646 or (505) 562-2736.

**Veterans of Battle of the Bulge slate annual reunion Sept. 8-11**

Veterans of the Battle of the Bulge, Inc. (VBOB) will hold an annual reunion in Hyannis, Mass. Sept. 8-11.

The reunions are held annually to honor Americans who served in the Battle of the Bulge, a battle fought in eastern Belgium and northern Luxembourg.

For more information about the reunion, write to VBOB, PO Box 11129-P, Arlington, Va., 22210-2129.

**Community calendar**

For more information, call Norma Perez at 272-4528

The deadline to appear in the Journal's Community Calendar is Thursday at 5 p.m.

**Tuesday, August 20**

Alcoholics Anonymous, 7 p.m., 723 W. Ave. E. For more information, call 272-3002.

Rebekahs, 7:30 p.m., Rebekah Lodge.

The Rotary Club, 12-1 p.m., Bailey County Coliseum meeting room.

Beta Sigma Phi Alpha Zeta Phi, 7:30 p.m.

Beta Sigma Phi Zeta Rho, 7:30 p.m.

Senior Citizen Dance, American Legion Hall, 8 p.m.

City Council, 8:30 a.m.-

12:00 p.m.

**Thursday, August 22**

Alcoholics Anonymous, 7 p.m., 723 W. Ave. E. For more information, call 272-3002.

Oddfellows, 8 p.m., Oddfellows Lodge.

TOPS, 6 p.m., Church of Christ.

Town Hall meeting, 7-9 p.m.

**Friday, August 9**

Kiwanis, 6:30-8 a.m., Snack Shack.

AARP, 11:30 a.m., Civic Center.

*Editor's note:* The Community Calendar appears in Sunday's Bailey County Journal.

*The Best Just Got Better!*

**ALL YOU CAN EAT Plate Lunch**

(Includes Salad Bar)

For Lunch on Monday & Wednesday.

— Also —

**ALL YOU CAN EAT Fish Plate**

On Friday

Served from 11:30 to 2:00

*DON'T FORGET - LaVonne's Catering & Baked Goods and Great Location For That Special Party of 10 or More (Lunch or Dinner)*

**The Carrousel**

of Good Food

1902 W. American Blvd.  
Muleshoe (806) 272-4131



**Employee of the month**

Walter Marie Boness of Muleshoe Motors was named the Chamber of Commerce employee of the month for August. Pictured are (from left) Hugh Young, Starla Ellis, Larry Hooten, Colt Ellis, Walter Marie Boness, Chamber President J.B. Douglas, Jim Henderson, Robert Hooten, and Dawn Williams.

**REBEKAH NEWS**

The Muleshoe Rebekah Lodge #114 met Thursday, Aug. 13, 1996 with Noble Grand Mary Ann in Chair.

Patsy Chance read the minutes and a letter noting that President of the Rebekah Assembly of Texas, Ella Lind, will be here Aug. 27.

Jill Costen is in Methodist Hospital and Bill Maddox is in the Muleshoe HealthCare Center.

The Rebekah garage sale will be Thursday afternoon. Skating will be on Friday.

**Have a nice day!**

**Bailey County Journal** USPS 040-200  
 Established March 31, 1963. Published by Triple S Publishing, Inc.  
 Every Sunday at 304 W. Second, Box 449, Muleshoe, TX 79347.  
 Second Class Postage paid at Muleshoe, TX.  
 POSTMASTER: Send address changes to the Bailey County Journal, P.O. Box 449, Muleshoe, TX 79347.  
 We are qualified members of:  
 Panhandle Press Association, National Newspaper Association,  
 West Texas Press Association and Texas Press Association

WEST TEXAS PRESS ASSOCIATION

PPA Panhandle Press Association

MEMBER 1995

**TA** TEXAS PRESS ASSOCIATION

Scot Stinnett, Publisher  
 Lisa Stinnett, Vice-President/Comptroller  
 Rick White, Editor  
 Holly Millsap, Classifieds  
 Pat Durben, Advertising

© 1990

SUBSCRIPTIONS: Muleshoe Journal and Bailey County Journal  
 By Carrier Yearly - \$22.00  
 Bailey and surrounding counties: by mail - \$24.00  
 Elsewhere - \$26.00  
 Advertising Rate Cards on Application

\*Advertisers should check their ad the first day of insertion. The Journals will not be liable for failure to publish an ad or for a typographical error or errors in publications except to the extent of the cost of the ad for the first day of insertion. Adjustment for errors will be limited to the cost of that portion of the ad where the error occurred.\*

**Bailey Co. Propane Customer Appreciation Day**

**Saturday, August 24**

**FREE Hot Dogs & Cokes**  
**FREE Drawing**

**Register For A Grand Prize Drawing for FREE BBQ Grill**

**Gas Will Be At A Discount Price All Saturday, Aug. 24 ONLY**

**11:00 to 1:00**

**Friona Hwy.  
 (806) 272-4678**



**PAGE THREE**

**TEXAS tops nation in train/vehicle wrecks**

Texas continues to lead the nation in the number of accidents at railroad crossings.

Texas had 464 vehicle-train accidents in 1995, resulting in 55 deaths and 227 injuries, according to preliminary figures released by the Federal Railroad Administration.

Still, it was a decrease from 1994, when 557 accidents resulted in 58 deaths.

Texas has 11,646 public and 6,544 private crossings, according to the Railroad Commission.

Other states with the highest number of railroad crossing accidents include Illinois, Indiana, Ohio, Louisiana, California and Alabama.

**Graham can bank on campaign finances**

Texas Republican Sen. Phil Graham is one of the best financed incumbents in the nation.

The Federal Election Commission recently ranked Graham second among all U.S. senators for the amount of campaign cash he has in the bank. Graham reportedly has more than \$3.5 million.

Graham is facing a grass roots challenge from Democratic candidate Victor Morales, who took a leave of absence from his job as a high school teacher in Mesquite to campaign for Senate. Morales surprised many veteran observers by defeating two well-funded congressman to win the Democratic nomination.

**Combest now second in line for Ag Chair**

Answering the call of the Republican Party, former Oregon Congressman Bob Smith has reluctantly agreed to come out of retirement and run for the seat given up by troubled incumbent Wes Cooley.

Smith was reluctant to get back into politics, but was lured with the promise of becoming the Chairman of the Agriculture Committee should the Republicans retain majority in Congress.

U.S. Rep. Larry Combest (R-Lubbock) was first in line for the chairmanship of the Ag Committee.

Both Smith and Combest have served 12 years on the House Ag Committee, but Smith first took office in 1983, two years ahead of Combest.

**Fast facts**

■ According to Congress, Americans lose an estimated \$40 billion each year due to fraudulent sales of goods and services over the telephone.

■ The FBI's recent raid of illegal telemarketing operations around the country, revealed that more than 78 percent of target victims were over the age of 55.

**Cotton**

Continued from page 1

very mature for this time of year," Puckett added.

Corn production is expected to drop 25 percent this year.

Preston said that even with corn bringing top dollar, the corn harvest will be average.

"They might make a little money, but not big money," Preston predicted.

Corn is a water hog, and the amount of money spent irrigating the corn offset near-record prices.

With an estimated 1 million acres of failed cotton, grain sorghum estimates shot up drastically. Production was estimated at 102.6 million hundredweight, up 43 percent from last year.

Preston said southern Bailey County dryland farmers need

rain "real soon" to save grain sorghum planted behind failed cotton.

Rain in recent weeks has been in the form of isolated showers, leaving many fields burning up.

**Discover THE POWER of Choice**

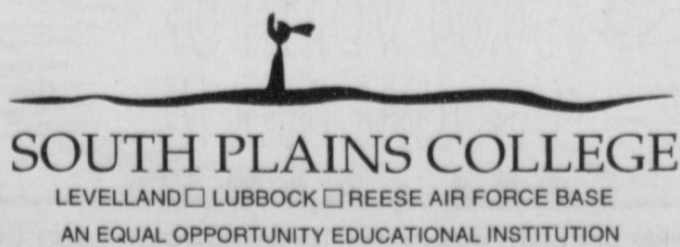
At South Plains College, you have a choice about what you want your college education to be. If you need a college degree or just a college course to advance in your job, it's worth your time to discover the power of choice at South Plains College.

Small Classes • Teachers Who Care  
Academic Transfer Programs  
Technical Programs • First-Class Facilities  
Affordable Tuition and Fees • Financial Aid

**FALL REGISTRATION  
AUGUST 22, 1996**

Late Registration August 26 - 30

CALL 806-894-9611 in Levelland  
or 806-747-0576 in Lubbock  
FOR ENROLLMENT DETAILS



**It's a round world after all**

*Harrison plays B-ball in Belgium*

Brandi Harrison followed the bouncing ball all the way to Belgium.

The Muleshoe High School senior played on one of several Texas high school teams that participated in an international girls basketball tournament in Brussels through Sports Challenge. Sports Challenge is an international company that helps high school students "experience the world through sports."

Players are selected on an invitation basis, but must finance their trip.

Harrison's team finished 2-3 in pool play against Belgium club teams. Several of her teammates were from Lubbock Roosevelt, one was from Olton, and most of the rest were from the Dallas area.

"It was a totally different game," said the Lady Mules starting point guard last year. "It's a lot more aggressive and physical."

The eight-day trip earlier this month included plenty of time for sight-seeing, includ-

ing a day-trip to Paris.

She was overwhelmed by the size of the Notre Dame Cathedral.

"It was so huge. I felt like an ant in it," Harrison said.

She dipped her toe in the waters of the English Channel, viewed Michaelangelo's famous Madonna & Child sculpture in Brugge, Belgium and toured the French countryside.

She marvelled at the ancient cities of Europe.

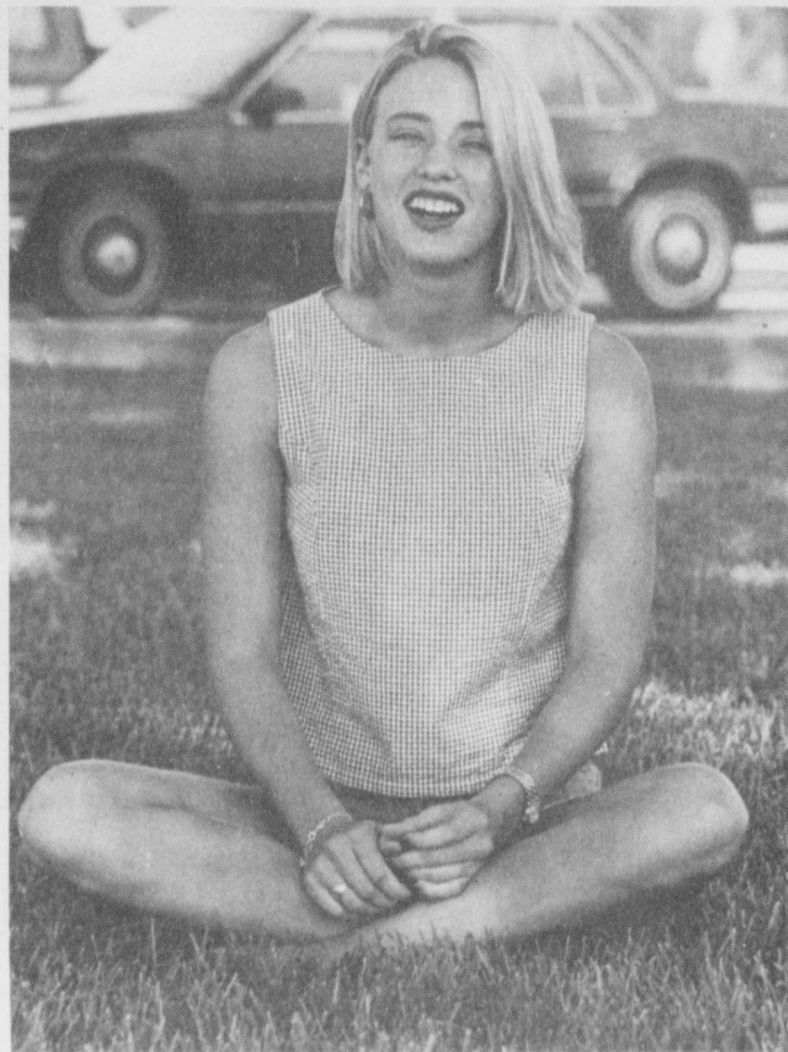
"It makes you realize how young America is and how rich those cities are in history," Harrison said.

Food was a small problem. Harrison said she wasn't exactly enamored with French and Belgium cuisine, which was quite expensive.

So most of the girls "tried to find anything American."

There were McDonalds and Pizza Huts, "but you'd have to wait in long lines because that's where all the American people went," Harrison said.

"It was a great experience.



**World traveler**

MHS senior Brandi Harrison recently traveled to Belgium to play in a girls basketball tournament.

I don't think I'll ever be able to do something like that again."

Traveling now holds a whole new meaning for the MHS basketball player.

**Trial**

Continued from page 1

Detention Center on \$150,000 bond.

Torres is known "to frequent Muleshoe," according to Clovis Police Department Detective David Williams. Torres gave the CPD a Clovis address as his residence.

Bailey County Sheriff Jerry Hicks said his department had "handled" Torres before.

Torres pleaded no contest to a charge of aggravated battery as a 15-year-old in connection with a May 26, 1991 shooting in Clovis. Torres admitted shooting an Amherst teenager, who lost his right eye as a result of the shooting.

Torres was sentenced to two years in the New Mexico Boys School.



*Muleshoe Area  
Medical Center*

**Announces that effective  
August 15, 1996  
the hospital joins**

**Blue Cross of Texas**

**as a provider facility for  
HMO Blue, Blue Choice  
and Traditional Insurance**

*Muleshoe Area  
Medical Center*

is also a provider for

- HealthSmart • FirstCare
- National Healthcare Alliance Inc.
- Medical Control • Champus
- MultiPlan Inc.

*Local news about local folks.*

**Muleshoe Journal**

To subscribe, call 272-4536

**Federal Land Bank Association**

316 Main St., Muleshoe  
806-272-3010

Long Term Financing for Farms, Ranches, Rural Housing, Operating and Improvements.

**Current Variable Rate 8.15%.**

Fixed rates are available. Call for quote.

A Property Rights Advocate and Equal Opportunity Lender.

There's a difference between a philosopher and a bumper sticker.

—Charles M. Schulz





**Runs like a Deere**

The Muleshoe Athletic Booster Club recently donated a John Deere "Gator" utility vehicle to the Muleshoe athletic department. Pictured on the vehicle are senior football players (clockwise) Harvey Alfaro, Jarrod Redwine, Alfonso Mendoza and Issac Miramontes and student trainer Chelsey Conklin. The Gator can be used for carrying equipment, helping injured players off the field, and numerous other reasons. Muleshoe athletic director David Wood said the Gator will be used at all home athletic events.

**Muleshoe Mules**

<b>SCRIMMAGES</b>		Sept. 26	Dimmitt*	5, 7:00	
Aug. 23	Floydada	7:30	Oct. 3	Tulia*	7:00
Aug. 29	Morton	7:30	Oct. 10	Friona*	5, 7:00
<b>REGULAR SEASON</b>		Oct. 18	Perryton (at Randall)	5:30, 7:30	
Sept. 6	Portales	8:00	Oct. 24	Dimmitt*	5, 7:00
Sept. 13	Denver City	8:00	Oct. 31	Tulia*	5, 7:00
Sept. 20	Springlake-Earth	8:00	Nov. 7	River Road*	5, 7:00
Sept. 27	Dimmitt	7:30	<b>JUNIOR HIGH (7th &amp; 8th)</b>		
Oct. 4	Dalhart*	7:30	<b>SCRIMMAGE</b>		
Oct. 11	Friona*	7:30	Sept. 5	Levelland (7)	4:00
Oct. 19	Perryton	2:00	<b>REGULAR SEASON</b>		
Oct. 25	Sanford-Fritch*	7:30	Sept. 5	Portales (8)	5:00
Nov. 1	Tulia*	7:30	Sept. 5	Denver City	5, 7:00
Nov. 8	River Road*	7:30	Sept. 26	Dimmitt*	5, 7:00
<b>JUNIOR VARSITY &amp; FRESHMAN</b>		Oct. 8	Friona*	5, 7:00	
<b>SCRIMMAGES</b>		Oct. 15	Tulia*	5, 7:00	
Aug. 23	Floydada	4:30, 6	Oct. 22	Dimmitt*	5, 7:00
Aug. 29	Morton	4:30, 6	Oct. 29	Friona*	5, 7:00
<b>REGULAR SEASON</b>		Nov. 5	Tulia*	5, 7:00	
Sept. 5	Portales	5, 7:00	<b>Home games in bold</b>		
Sept. 12	Denver City	5:30, 7	* — District 3-1A games		
Sept. 19	Springlake-Earth	7:00			

**BEAT THE HEAT IN ALLSUP'S AUGUST**

<p>6 PACK 12 OZ. CANS 6 pk., 12 oz. cans <b>\$1.59</b></p> <p>Coca-Cola</p>	<p>COMBO MEAL Piping Hot Link, Potato Wedges &amp; Tallsup <b>\$1.99</b></p>
---	--

<p>DECKER Meat Bologna 12 OZ. PKG. <b>79¢</b></p>	<p>LAY'S® OR WAVY LAY'S® Potato Chips REG. \$1.59 <b>99¢</b></p>
---	--

**SUMMERTIME ALLSUP'S VALUES!**

<p>LIBBY'S Potted Meat 3 OZ. CAN <b>39¢</b></p>	<p>ALPO ASSTD. FLAVORS Dog Food 13.2 OZ. CAN <b>69¢</b></p>	<p>SHURFINE Citrus Punch 16 OZ. BTL. <b>59¢</b></p>	
<p>You'll find all this and more at your Allsup's store Store #34 318 W. American Blvd. 272-4862 MULESHOE</p>	<p>AJAX Laundry Detergent 32 OZ. BOX <b>\$1.49</b></p>	<p>VALLEY FARE Bathroom Tissue 4 ROLL PKG. <b>69¢</b></p>	<p>ALLSUP'S Sausage &amp; Biscuit EACH <b>79¢</b></p>

SHURFINE, GALLON BLEACH.....	<b>\$1.09</b>	WHOLE B-B-QUE CHICKEN.....	<b>\$4.99</b>
------------------------------	---------------	----------------------------	---------------

LOW PRICES, GREAT PRODUCTS 24 HOURS A DAY

**ALLSUP'S**  
*Always*

**\$50.00 WORTH OF GASOLINE FREE !!!**

Take this coupon to any Strebeck location. If you purchase a new vehicle before August 31, 1996, you will receive \$50.00 worth of free gasoline courtesy of ALLSUP'S.

PRICES EFFECTIVE AUGUST 18-24, 1996 OFFER GOOD WHILE SUPPLIES LAST

**BOVINA RURAL HEALTH CLINIC**

WELCOMES

Sherry Whiteaker, R.N.  
Master of Science In Nursing  
Family Nurse Practitioner  
Women's Health Care Advanced Nurse Practitioner

as she locates her practice to this area.

As always, Bovina Rural Health Clinic provides you the best in primary health care, with emphasis on care of the whole person, family, and community.

Tony Elliott, P.A.-C is still on staff but also helping at other clinic sites.

**BOVINA RURAL HEALTH CLINIC**

509 Ave. I

Bovina, Texas 79009

806-238-1260

HOURS: 9:00 A.M.-12:00 & 1:00 P.M. - 5:00 P.M.

**1-800-335-1260**



*Local news about local folks.*

**Muleshoe Journal**

To subscribe, call 272-4536



## DPS urges observance of bus traffic laws

AUSTIN — New clothes, backpacks, lunch boxes, school buses. The first day of school is exciting for students, but the new school year can bring tragedy if school bus safety rules are not followed. The Texas Department of Public Safety reminds motorists to obey traffic laws and watch for children boarding or exiting school buses. Parents and teachers should talk to children about school bus safety.

In 1995, no school bus drivers or passengers were killed while riding on school buses in

Texas, but 1,370 people were injured while traveling on them. Seven people were killed in accidents directly or indirectly involving school buses, while 2,556 were injured.

The most common time for accidents is when school buses are loading or unloading students. Students should be taught to follow safety rules and to watch for traffic before crossing streets. Students also should watch for vehicles illegally passing stopped school buses on either side of the bus. According to the National

School Bus Loading and Unloading Survey, most children injured or killed while getting on or off buses are under the age of 10.

A safe, reliable and efficient system for transporting children to and from school is part of the total educational program. To ensure the proper operation of school transportation systems, the DPS oversees and updates the state's school bus driver training program.

## SAFETY TIPS

### Reminders for motorists

■ Drive with care when near a school bus. If you approach a school bus from either direction and the bus is displaying alternately flashing lights, you must stop until the school bus has resumed motion, until you are signaled by the driver to proceed, or until the red lights stop flashing.

■ You are not required to stop when meeting or passing a school bus which is on a different roadway or a controlled-access highway where the stop is in a loading zone and pedestrians are not permitted to cross. **Reminders for parents and students:**

■ Handling a school bus requires skill and concentration. Remind children to stay in their seats and keep hands and arms inside the windows.

■ If you are meeting your child at the bus, make sure you are on the same side of the road as the bus stop. This will help prevent your child from running across the road to meet you and being struck by a vehicle whose driver has ignored the school bus stop law.

■ Make sure your children know the safe way to wait for the school bus. They should stay on the sidewalk or — in rural areas — well off the road. Remind them not to board until the bus comes to a complete stop and then to get on the bus one by one.

■ Be on time for the bus. ■ Stay out of the danger zone — the space 10 feet all around the school bus.

■ Remain in the bus driver's line of vision.

■ Cross the roadway only after receiving permission from the bus driver or the safety patrol.

■ Obey the school bus driver and the school bus patrol.

■ Be quiet and well-behaved on the bus.

## Changes in mail collection will strengthen security

WASHINGTON — The U.S. Postal Service recently announced changes in mail collection procedures designed to increase security of commercial airlines carrying mail.

The changes, effective Aug. 16, affect packages mailed to international or domestic addresses deposited in mail collection boxes, such as street mail boxes, lobby and apartment drop boxes/receptacles, even rural customer mailboxes.

Now customers will have to bring to post offices for entry with retail clerks:

■ domestic mail bearing stamps and weighing 16 ounces

and over.

■ all international mail or military APO/FPO mail weighing 16 ounces and over and which in some cases may also require a customs declaration form.

The Postal Service will retain a record of the international and military APO/FPO mailing and the customer will be advised of this when the item is mailed.

Packages found in collection boxes will be returned to the sender if the addressee is outside the local area identified for overnight First-Class Mail.

## Dilts selected Senior Citizen of the Year

Years of volunteer work have paid off for Irene Dilts.

An avid volunteer at the Muleshoe Area Medical Center, Dilts was recently named Senior Citizen of the Year for Muleshoe at the Senior Citizens Jamboree, sponsored by the South Plains Association of Governments (SPAG).

Dilts was honored for her volunteer work at the Muleshoe Area Medical Center, the Heritage Thrift Shop, and the First Baptist Church of Muleshoe.

Dilts organized a volunteer service for the medical center four years ago. She and three other volunteers work with patients, and do "everything a nurse's aid does, except give medication," she said.

She is also a member and officer of the the First Baptist Church Choir, Senior Joy Choir, and is a member of the Church's hospitality committee.

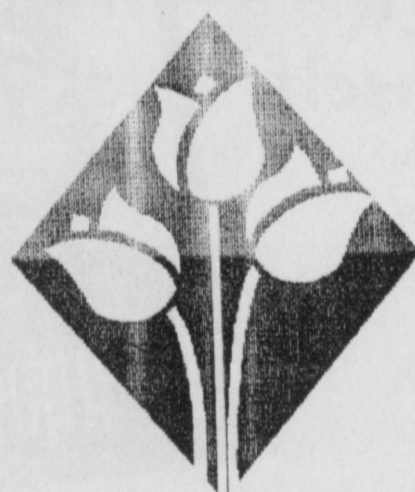


### Senior Citizen of the Year

Irene Dilts was recently named the Senior Citizen of the Year for Muleshoe at the Senior Citizens Jamboree.

Friends and Family -  
*Perhaps you sent a lovely card,  
 Or sat quietly in a chair.  
 Perhaps you sent a funeral spray,  
 If so we saw it there.  
 Perhaps you spoke the kindest words,  
 As any friend could say;  
 Perhaps you were not there at all,  
 Just thought of us that day,  
 Whatever you did to console our hearts,  
 We thank you so much whatever the part.*  
 God Bless you  
 The family of Odessa Shanks  
 J.C. Shanks  
 Gerald & Lula Maye Shanks  
 Donald & Betty Shanks  
 Jeep & Patricia Shanks  
 Nikki & Kami Shanks  
 Tonya Shanks  
 Tim Shanks

**Have A Nice Day!**



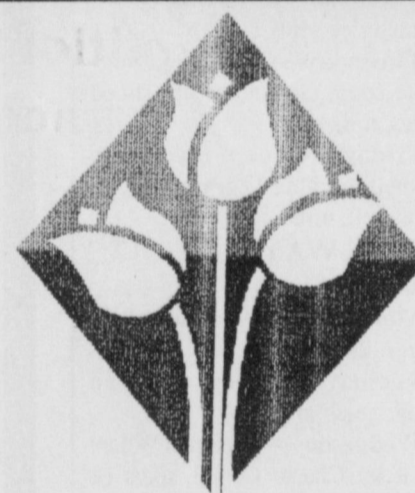
## DE MUJER A MUJER: ESTOY PARA SERVIRLES

Sherry Whiteaker, R.N.  
**MASTER OF SCIENCE IN NURSING**  
 Women's Health Care Nurse Practitioner  
 Family Nurse Practitioner

**BOVINA RURAL HEALTH CLINIC**  
 509 AVE. I  
 BOVINA, TEXAS 79009  
 806-238-1260  
 1-800-335-1260

HOURS: 9:00 A.M.-12:00 & 1:00 P.M. - 5:00 P.M.

- Cuidado Prenatal •Ginecologia
- Cuidado General •Planificacion Familiar
- Pruebas del Cancer •Tratamiento Hormona
- Exámenes de los Cenos



## WOMAN TO WOMAN: I'M HERE FOR YOU!

Sherry Whiteaker, R.N.  
**MASTER OF SCIENCE IN NURSING**  
 Women's Health Care Advanced Nurse  
 Practitioner  
 Family Nurse Practitioner

**BOVINA RURAL HEALTH CLINIC**  
 509 AVE. I  
 BOVINA, TEXAS 79009  
 806-238-1260  
 1-800-335-1260

HOURS: 9:00 A.M.-12:00 & 1:00 P.M. - 5:00 P.M.

- Prenatal Care •Gynecology
- Genrerall Health Concerns •Family Planning
- Pap Smear •Breast Exams •Hormone Therapy





### 4-H clothing project

The following Lazbuddie students participated in the 4-H clothing project: (back, from left) Savannah Black, Jodi Coker, Shawndee Nichols (middle, from left) Shonnah Black, Kelli Harris, Tristan Thorn, Suzanne Aragon (front, from left) Chelsey Nichols and Rochelle Smith.

## Lazbuddie 4-H members complete clothing projects

Nine Lazbuddie 4-H members recently participated in the annual 4-H clothing project in Lazbuddie.

Groups leader was April Coker, junior 4-H member. Terri Smith, Sarah Black, and Parmer County Extension

Agent Debra Pollard assisted the youth.

Junior 4-H participants sewed vests from pre-printed fabric panels, and pee-wee 4-Hers constructed scented potholders.

## Muleshoe scouts make 100-mile hike

Three members of Muleshoe Boy Scout Troop 620 took part in a 100-mile expedition in north/central New Mexico last month.

Aaron Purdy of Muleshoe led a group of scouts that included Muleshoe's Tyson Purdy and T.J. Hutto on an 11-day hike through the mountains of the Philmont Scout Camp near Cimarron.

Most of the time was spent hiking. The expedition also included several staff camps featuring instruction in conservation, climbing and target shooting.

The scouts stayed at overnight camps along the trail.

"The best part is you get to see a beautiful part of the coun-



### Scout expedition

Three Muleshoe boy scouts took part in a 100-mile expedition in north/central New Mexico. Pictured are (back, from left) Advisor Roger Rehder, lead advisor Tracy Anspaugh, advisor Mike Anderson. (Front, from left) Scouts Troy Carpenter, Tyson Purdy, T.J. Hutto, Philmont Ranger Renee Hamilton, Aaron Purdy, Heather Anderson, Britton Carpenter and James Anderson.

try," said Roger Rehder of the Boys Scouts of America Explorer Post 620 of Muleshoe. He added that the group got an up close look at a herd of male buffalo.

## NOTICE OF PUBLIC HEARING ON BUDGET

The Board of Directors of Muleshoe Area Hospital District will hold a public hearing on a proposed budget for the 1997 fiscal year.

The public hearing is scheduled for August 29, 1996 at 6:30 p.m. in the staff dining room of Muleshoe Area Medical Center, 708 South First Street, Muleshoe, Texas.

The proposed budget is for the Fiscal Year October 1, 1996 through September 30, 1997.

If you're grazing cattle under a center pivot... you need

**Matusa**  
EASY-DRILL  
BROME GRASS

225-250 Days of Grazing  
16-26% Protein  
70-75% TDN

Matusa is a cool season perennial that continues to grow through the summer months under center pivot. Matusa can provide more grazing days than any other forage available... with an 1800# of gain per acre potential!

... just like wheat pasture from March 'til November! —Stratford, TX

**Wiedebush & Co.**  
1516 W. American Blvd. • Muleshoe, Texas  
(806) 272-4281

## School menus

For the week of August 19-23

### MULESHOE

#### Dillman & DeShazo

##### Breakfast

Monday — Pancakes, fruit or juice, milk

Tuesday — Sausage biscuit, fruit or juice, milk

Wednesday — Breakfast burrito, fruit or juice, milk

Thursday — Scrambled egg, toast, fruit or juice, milk

Friday — Cinnamon roll, fruit or juice, milk

##### Lunch

Monday — Cheeseburger, oven fries, lettuce & tomato, vegetable stix, milk

Tuesday — Burrito w/ chili, corn, pears, milk

Wednesday — Pizza, tator tots, green beans, mixed fruit, milk

Thursday — Soft taco, lettuce & tomato, refried beans, Spanish rice, milk

Friday — Fish nuggets, scalloped potatoes, mixed veggies, roll, milk

#### Jr. High and High School

##### Breakfast

Monday — Pancakes, fruit or juice, milk

Tuesday — Sausage biscuit, fruit or juice, milk

Wednesday — Breakfast burrito, fruit or juice, milk

Thursday — Scrambled egg, toast, fruit or juice, milk

Friday — Cinnamon roll, fruit or juice, milk

##### Lunch

Monday — Burrito w/ chili, corn, pears, milk

Tuesday — Szechuan chicken, rice, egg roll, oriental veggies, milk

Wednesday — Crispy tacos, lettuce & tomatoes, refried beans, Spanish rice, milk

Thursday — Corn dog, vegetable soup, cinnamon roll, sliced apples, milk

Friday — Chicken fried steak, Mashed potatoes, gravy, green beans, roll, milk

##### THREE WAY

##### Breakfast

Monday — Two pancakes, juice, milk

Tuesday — Biscuit, Canadian bacon, juice, milk

Wednesday — Cream of Wheat or Lucky Charm Cereal, toast or graham crackers, juice, milk

Thursday — Blueberry muffins, milk

Friday — Waffles, sausage, juice, milk

##### Lunch

Monday — Turkey on a bun, lettuce, tomatoes, pickles, tator tots, peaches, milk

Tuesday — Nacho grande, salad, Spanish rice, apricots, milk

Wednesday — Cheeseburger, fries, banana, milk

Thursday — Steakfingers w/ gravy, corn, vegetable salad, rolls, cherry bar, milk

Friday — Pizza, salad, corn on cob, apple cobbler, milk

## Golden Spread Co-op considering options

Golden Spread Electric Co-operative, Inc., has asked the Public Utility Commission of Texas for time to evaluate an "improved" proposal for a major new electric power generating station, to be constructed at Denver City for service beginning in mid 1998.

The proposal is offered jointly by Southwestern Public Service Company subsidiary Quixx Corporation, and by LS Power, LLC, of St. Louis, MO. The two propose to be part owners, with Golden

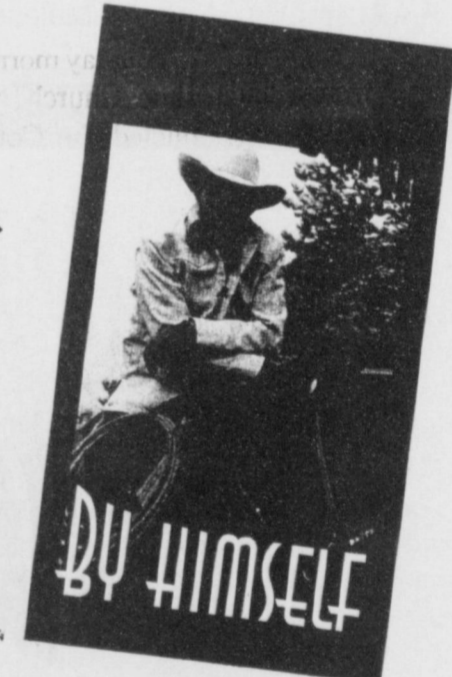
Spread, of a natural gas - fueled station that eventually would generate 488 megawatts of power.

Golden Spread would own 50 percent of the plant, with Quixx and LS Power owning 25 percent each. The station would be called Mustang Station.

Golden Spread member systems include Bailey County Electric Cooperative (Muleshoe), Deaf Smith Electric Cooperative (Hereford), and Lamb County Electric Cooperative (Littlefield).

## A Brand New Video... BAXTER BLACK by Himself

BAXTER PERFORMING HIS POETRY, ONE-ON-ONE. JOIN HIM AS HE TAKES YOU TO THE CORRAL FOR *THE SQUEEZE CHUTE* AND *JOSÉ AND THE HOODOO COW*. OR GO TO THE WOODS WITH HIM IN *SPRINGTIME IN THE ROCKIES* AND *THE WILDERNESS WALL*. AND OF COURSE WE CAN'T FORGET THE ARENA WITH *THE ROPER'S RULE, HEADER OR HEELER?* AND *THE DOG AND THE RABBIT*.  
17 IN ALL, AND ALL PURE BAXTER...



Yes, send me  copies of BAXTER BLACK by Himself at \$22.95 each = \$

More? You want more? ... help yourself!

- NEW** BAXTER BLACK - COWBOY PRIDE (cassette tape) ..... \$ 9.99
- NEW** BAXTER BLACK BUCKS OFF (cassette tape) ..... \$ 9.99
- DUNNY AND THE DUCK (64 pg softcover book) ..... \$12.95
- HEY, COWBOY, WANNA GET LUCKY? (223 pg hardback book) ..... \$21.00
- CROUTONS ON A COW PIE, VOLUME II (208 pg hardback book) .... \$24.95
- COYOTE COWBOY POETRY (208 pg hardback book) ..... \$24.95
- BAXTER BLACK'S FIRST VIDEO (62 min/video) ..... \$19.95
- BAXTER BLACK LIVE ON PUBLIC TV (78 min/video) ..... \$19.95
- BAXTER BLACK LIVE UPTOWN (cassette tape) ..... \$ 9.99
- BAXTER BLACK LIVE AT THE GRANGE (cassette tape) ..... \$ 9.99
- BAXTER BLACK ON MONDAY (cassette tape - 3 VOLUMES Available) ... \$ 9.99  
(Please select one or more Tape #1, Tape #2 or Tape #3 at \$9.99 each)
- 4 PAK Cassette Collection (4 cassette tape set) ..... \$25.75  
(Baxter Black Live, Baxter Black & Friends, Generic Cowboy Poetry & The Buckskin Mare)

Shipping Charges	Order total:	Add
	Up to \$20.00	\$2.00
	\$20.01 to \$35.00	\$3.00
	\$35.01 to \$50.00	\$4.00
	\$50.01 to \$75.00	\$5.00
	\$75.01 & up	\$6.00

Total \$

Shipping Charges \$

Grand Total \$

Please send your check or money order to: **COYOTE COWBOY COMPANY**

NAME \_\_\_\_\_  
ADDRESS: \_\_\_\_\_  
CITY: \_\_\_\_\_ STATE: \_\_\_\_\_ ZIP: \_\_\_\_\_

ATTN: DEPT MULE  
P.O. BOX 190  
BRIGHTON, CO 80601  
MC & VISA



## PUBLIC RECORD

### OBITUARIES

#### Rena Mae Precure

Services for Rena Mae Precure, 86, of Oklahoma City, Okla., were held Saturday, July 13, at the Britton United Methodist Church in Oklahoma City.

Burial followed at the Arlington Memory Gardens in Midwest City, Okla.

Mrs. Precure died July 10 in Oklahoma City. She was born March 8, 1910, in Choctaw, Okla. She married Robert B. Precure in 1929. He preceded her in death in 1965.

Mrs. Precure was employed at Western Electric for several years. She was a member of the Britton Methodist Church.

She and her husband lived in Muleshoe in the 1940s-50s.

Survivors include two sons and daughters-in-law, Robert E. and Kathryn Precure of Oklahoma City, Okla. and Donald R. and Jonan Precure of Gainesville, Fla.; nine grandchildren and ten great grandchildren.

#### Cecil L. "LeRoy" Holley

ODESSA — Graveside services for Cecil L. "LeRoy" Holley, 78, of Odessa were held Thursday, August 15, at East Hill Cemetery in Fort Stockton, with Mr. Charles Jones officiating. Arrangements were under Frank W. Wilson Funeral Directors.

Mr. Holley died Monday, August 13, at Avalon Place Nursing Center. He was born March 23, 1918, in Hollis,

Okla. He married Leona Holley March 4, 1943 in Sioux Falls, S.D.

Mr. Holley moved to Odessa in 1986 from Fort Stockton. He was a member of Parkview Church of Christ, a WWII Army Air Corps Veteran, and a retired insurance agent.

Survivors include two sons, Roger Holley of San Angelo and Randy Holley of Odessa; two brothers, Odell Holley and Dee Holley of Odessa; one sister, Evadna Foster of Channing; seven grandchildren and five great grandchildren.

The family suggests memorials be made to the Christian Children's Home of Portales, N.M.

#### Frank Kemp

MULESHOE — Services for Frank Kemp, 78, of Mule-

shoe were held Saturday, August 17, at the First United Methodist Church with the Rev. H.D. Hunter & Rev. John Wagoner, Pastor of First United Methodist Church officiating.

Burial will be in the Muleshoe Memorial Park under the direction of Ellis Funeral Home.

Mr. Kemp died August 14 at Methodist Hospital. He was born August 3, 1918 in Roscoe. He married Margie Sterling on June 11, 1928, in Clovis, N.M.

Mr. Kemp moved from Needmore to Muleshoe in 1946. He was a member of the First United Methodist Church of Muleshoe. He was employed by the City of Muleshoe as a mechanic, retiring in 1980.

Survivors include his wife,

Margie Kemp of Muleshoe; three sons, James Elbert Kemp and Jimmie Don Kemp of Midland, and Danny Frank Kemp of Lubbock; two daughters, Deborah Yvonne Kemp of Lubbock, Vicki Lynn Smith

of Lubbock; one brother, James Kemp of Muleshoe; two sisters, Ida Mae Shofner of Muleshoe and Ruby Pearl Evans of Muleshoe; twelve grandchildren and twelve great grandchildren.

## HOSPITAL ADMISSIONS

- August 8 — Flor Sanchez, Cox
- August 11 — Velma Fried, Teresa Shelby, Leopoldo Barrera, Claire Brown, Pearl Cox
- August 9 — Leopoldo Barrera, Leola Stroud, Pearl Cox
- August 10 — Leopoldo Barrera, Leola Stroud, Pearl
- August 12 — Marcella Madrid, Pearl Cox, D.W. Puckett, Teresa Shelby

## HERITAGE FOUNDATION NEWS

The Muleshoe Heritage Foundation Board of Directors discussed several projects during an Aug. 12 meeting at the Muleshoe Depot.

Members took an inspection trip of the old cookhouse, which is undergoing renovations.

The Heritage Foundation will again take part in the Tour de Muleshoe Aug. 31.

The board discussed the need to distribute sign-up forms

as soon as possible. Board members were urged to be present by 7:30 a.m. at the Civic Center to help conduct the bike run. Board member Gordon Green made the motion that door prizes be purchased this year for the event. SCAC members will again man one of the rest stops this year.

The board requested that thank-you letters be written to Lowe's Marketplace and the Sonic Drive In for the popcorn

and cups furnished to the Heritage Foundation during the outdoor drama "Keepers of the Legend." A contract was signed with Muleplex for the use of the Heritage Foundation next year as the site for the play.

The board also agreed to accept an outhouse being offered to the foundation, and is considering the possibility of obtaining a Pullman car from a private donator. The donation

is contingent on funding being available to maintain the car.

The board agreed to look into getting a grant for funding the project.

Board members present included: Kim Shafer, Jack Hicks, Vivian White, Charles Flowers, Kristy Price, Chuck Smith, Gordon Green, Jean Allison, and Student-Community Action Club (SCAC) representatives Heather Hooten, Mark McGuire and Cari Faver.

By Joy Stancell

## NURSING HOME NEWS

Glenda Dale and Marilyn Wilson visited the HealthCare Center Thursday. Among those they visited were Bill Darnell, Kathryn Hancock, Kathrine Rogers, Blanch Awbrey, and Mr. and Mrs. Hukill.

A beautiful bouquet of flowers was brought to us by the family of Odessa Shanks.

Rosie Toscano was visited Saturday, August 10, by Anita Davila and Senovia Davila of Levelland. Romero, her son from Sudan, visited Saturday and Monday.

Thursday morning, Lucille Whisinhunt and Jean Kemp directed our music and song devotional time.

Friday afternoon, Harold and Avis Carpenter from the Oklahoma Lane Community entertained us with our favor-

ite piano tunes and singing. Benny and Jean O'Brien also participated in the enjoyable event.

Sunday morning, the Muleshoe Church of Christ conducted the Communion Service. Willie Maye Graves assists the residents to and from the service.

Ladies from the Muleshoe Church of Christ baked and served homemade pies in all of our favorite kinds.

The Bleeker family brought sheet cakes to the Care Center during the weekend.

Kathrine Rogers celebrated her birthday Sunday at Leal's. Her son and daughter-in-law, Clinton and Maxine Rogers, her pastor and his wife from Circle Back, and friends from Circle

Back attended the party.

The Muleshoe Singers came Sunday to sing and play Gospel music.

Ruby Garner and Velta Fyie visited the HealthCare Center Tuesday.

Aline Locke also went on the bus ride with the residents and Buster Kittrell on Wednesday, August 7. Sorry Aline.

Wednesday morning, Buster and Wanda Kittrell and Jane Reeder hosted coffee / donut and around the table talk. The discussion this week was "Remember the 50s."

Following the event, Bro. Cliff Hargrove of the Baptist Church in Sudan lead us in a devotional and thanksgiving. Buster Kittrell and Jane Reeder directed the songs and music.

Jim Claunch was the guest of Cordie Claunch.

Glenda Jennings and her puppets Billy Bob and Geraldine entertained Wednesday afternoon. Bro. Bob from the Lazbuddie Methodist Church also participated. We were pleased to have Alice "Shorty" Williams

as our guest.

Maxine Rogers took her mother, Naomi Black, on an outing Wednesday evening.

We received beautiful flowers from the family of Velma Fried and Elsie Goss Wednesday.

Congratulations to us, and thanks to the Christmas Card project for being picked for the Garden Spot of the Week by the Jennyslippers.

### Wilson Appliance

Authorized Representative for Plateau Cellular Phone Service

## NEC 820

**Talk Time 820**

- 135 minute Talk Time
- 36 Hours Standby Time
- One Touch Dialing
- 24 Number Memory
- Full/Partial Locking Capabilities
- Battery Level Indicator
- Individual Call and Total Air Timers
- Two NAMs
- Large, Illuminated Display
- Call-In-Absence Display
- Rechargeable NiCd Battery
- Authentication Ready



# \$49

Requires New Activation With Plateau Cellular Service  
\*Some restrictions may apply  
Offer Good Thru Aug. 31, 1996  
Limited Quantity


### Wilson Appliance

(L.A.C. Cellular)  
117 Main Muleshoe 272-5532

## On Fences and Walls

*This week's column is a re-run, but one I thought particularly appropriate since Stacy Conner, pastor of the First Baptist Church, and I are exchanging pulpits this Sunday. The Baptists, by the way, are in mortal danger as they trade a pastor who preaches 20 minute sermons for one who finds cutting sermons to 30 minutes like cutting off the fingers of his children!*

The story below comes to me from my brother Gene and his



**Focus on Faith**  
Curtis Shelburne

Amarillo Globe News column. He doesn't remember where he got it, but it's a tale worth re-telling.

Near the end of the First World War, a band of French soldiers came to a village church. Rousing the priest from slumber, they asked him to grant last rites and burial privileges to a fallen comrade.

"I understand your concern, my sons, but the laws of the Church will not permit me to do what you ask. I have no way to know if the man you bring received the baptism of the true faith. The hallowed ground here is reserved for the faithful."

Dismissing the young soldiers, he called out, "I am truly sorry."

Stymied by the priest's refusal, the dead man's friends did for him the best they could. Six feet outside the cemetery fence, they dug a crude grave, said their own prayers, and committed their comrade to the earth without the benefit of clergy.

The next morning before moving to the front lines, they hurried to pay one last visit to the burial site. To their dismay, they could not find it. Carefully they measured the distance from the fence. The grave was gone. Before them lay only unbroken ground. Puzzled that a grave could vanish, they knocked on the priest's door.

"All night long my soul troubled me because I had refused to bury your friend," the old man confessed to his callers. "So I rose before dawn and set about to correct my mistake."

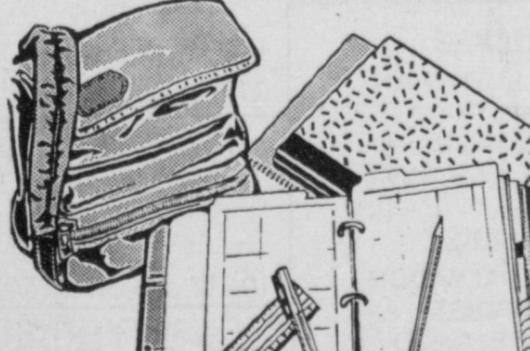
By the time the sun's first rays touched the tops of the marble monuments in the cemetery, the priest had moved its fence to include the grave of the man who had given his life for his homeland.

"Rules and regulations put up the fence," the storyteller observed decades later. "but love moved it."

If God is not pleased to see fences being moved, walls coming down, He is a different deity than the One whose Son prayed poignantly that His followers might be one so that the world might be won (John 17) and who told his jealous followers in Mark 9 that it was really okay that others who were not in "their group" were doing good works in Christ's name.

Thank God that the fences that have been put up to divide one lover of God from another are coming down. It is a wonderful thing when men and women of good heart and sincere love of the Lord, but from different traditions, honor Him by raising their voices together in His praise.

Curtis Shelburne is minister of the 16th & Avenue D Church of Christ in Muleshoe.



Send That College Student A Subscription So They Can Keep Up With The Local News!

## Muleshoe Journal and Bailey County Journal

### SUBSCRIPTION RATES

Carrier .....	\$22 <sup>00</sup> Year
Muleshoe-By Mail .....	\$24 <sup>00</sup> Year
Out Of Town .....	\$26 <sup>00</sup> Year

Call Today 272-4536



## Farwell girl wins spelling bee

By JOANNA GALLMAN  
Journal staff writer

Cassie Street of Farwell can spell lots of words. Her favorite is "champion."

Capturing the Texas State Spelling Championships title in only 45 minutes of competition, Street chalked up another spelling victory and added a few more words to her repertoire.

"My winning words were 'February' and 'niece,'" said Street, a Farwell seventh-grader. "But they were really easy."

Street is the daughter of John Street of Muleshoe and Becky Landrum of Farwell.

Street was nominated by her school teachers to attend the meet Aug. 10 in the Dallas/

Irving Marriott Hotel. She was sponsored by Westex Feedyard in Muleshoe.

She will receive a \$3,000 college scholarship for winning the spelling bee.

Having learned most of the bee's words in an advanced spelling class at school, Street spent about two months preparing for the contest by studying words from the dictionary.

"Most of the words I already knew," she said. "But I studied in the mornings and before I went to bed."

Street, who has placed three times in University Interscholastic League competitions and won the County division of the *Amarillo-Globe News* spelling bee, said her performance in



### W-i-n-n-e-r

Cassie Street, a Farwell seventh-grader, studies spelling words from the dictionary. Street won the Texas State Spelling Championships in Dallas.

Dallas was routine.

"I wasn't really nervous," she said, noting that she didn't

really have time to meet the 17 other middle-school students. "It was just another thing."

## Local softball team wins second championship

The softball team "Back 4 More" won their second consecutive championship during the Leal's Softball Tournament July 4.

The team won the championship after defeating a Portales team and wrapped up the tourney with only one loss.

Team members included: Coach Andy Perez of Muleshoe, Assistant Coach Freddie Perez, Sr. of Muleshoe, Roland Perez of Mississippi, Norman Perez of Alabama, Ronnie Perez of San Antonio, Adrian Perez of Muleshoe, Andy A. Perez of Austin, Freddie Perez, Jr. of Muleshoe, Eddie Zamora

of Muleshoe, Mike Nichols of Lazbuddie, and Ricky and Beto Diaz of Muleshoe.

The Perez family co-ed team won its second consecutive 2nd-place trophy during the tournament as well.

Team members included: Coach Andy Perez, Assistant Coach Freddie Perez, Roland Perez, Norman Perez, Ronnie Perez, Adrian Perez, Diamond Perez of Hereford, Connie Eiche of Clovis, N.M., June Perez of Friona, Denise Carreon of Hereford, Rosalinda Serna of Bovina, and Mike Nichols of Lazbuddie.

# BAILEY COUNTY DEVOTIONAL PAGE

### Scoggin Ag Center, Inc.

"Where Fertilizer Is Our Business"  
1532 W. American Blvd.  
272-4613

**IRRIGATION  
PUMPS & POWER  
ZIMMATIC CENTER-PIVOTS**  
W. Hwy. 84 272-4483

### MAPLE COOP GIN

927-5501  
Maple, Texas

### Leal's Tortilla Factory, Inc.

"Serving West Texas since 1957"  
107 E. Ash 272-5772 Muleshoe, TX

### Muleshoe Country Club & Golf Shop

900 Country Club Dr. 272-4250  
Swimming, Dining, Golf Lessons Available  
Golf Accessories & Clothing

**Henry Insurance Agency**  
Auto, Home, Life, Health, Property & General Insurance  
111 West Avenue B  
Muleshoe, TX 272-4581

### BOBO INSURANCE AGENCY

108 E. Ave. C 272-4264

### Shipman's Body Shop

Auto Painting • Wrecker Service • Free Estimates  
Tractor Glass & Windshields  
410 N. 1st Muleshoe, TX  
272-4408 FAX 272-3366

### SAIN IRRIGATION & MACHINES

Complete Pump Service  
W. American Blvd. 272-4397  
Walt Sain Muleshoe, TX 272-4148

### Bob STOVALL Printing

Quality -- Service  
221 E. AVE. B 272-3373  
C.R. & EVA NELL DALE MULESHOE

### Ellis Funeral Homes

Muleshoe - Morton - Earth - Sudan  
Texas

### RONNIE HOLT INSURANCE AGENCY

Specializing in Crop, Life & Health Insurance  
Western 66 Office Bldg.  
272-3614 Muleshoe, TX

### PACO FEED YARD, INC.

Commercial Cattle Feeders  
P.O. Box 956 265-3281  
Friona, TX  
Feller Hughes-Mgr.

### WEST CAMP GIN, INC.

Better Ginning & Courteous Service  
Rt 2, Box 1000  
925-6681 Muleshoe, TX  
James Shepard • Phyllis Shepard

### JAMES CRANE TIRE CO., INC.

322 N. First 272-4594  
Mike Hahn Muleshoe, TX

**Facts About The BIBLE** BY JOHN LEHTI

A CASE OF "WOMENS LIB" OVER THREE THOUSAND YEARS OLD!

IT IS RECORDED IN JUDGES, CHAPTERS 4+5 THAT DEBORAH (CIRCA 1296 B.C.)... THE WIFE OF LAPIDOTH, JUDGED ISRAEL AT THAT TIME. THIS WAS BEFORE THE ADVENT OF KINGS. WHOEVER JUDGED ISRAEL WAS ACCREDITED LEADER OF ALL THE PEOPLE. DURING THIS PERIOD, THE ISRAELITES WERE BEING SEVERELY PERSECUTED BY A CANAANITE KING, NAMED JABIN, AND THEY APPEALED TO DEBORAH TO RID THEM OF HIS DOMINATION....

... DEBORAH APPOINTED A MAN OF GREAT VALOR, BARAK, TO LEAD TEN THOUSAND ISRAELITES AGAINST THE VAUNTED ARMY OF SISERA, KING JABIN'S GENERAL WHO HAD NINE HUNDRED CHARIOTS OF IRON! BARAK, KNOWING DEBORAH ALSO IS A GREAT PROPHETESS AND SEER, INVITED HER TO BE WITH HIM ON THE FIELD OF BATTLE AND BECAUSE OF THIS, SHE SAID THAT SISERA WOULD DIE BY A WOMAN'S HAND AND NOT BY A MAN'S... FOLLOWING DEBORAH'S ADVICE, BARAK ATTACKED THE CANAANITES FROM THE HEIGHTS OF MT. TABOR, KILLING SISERA'S ARMY HARD AGAINST THE BANKS OF THE KISHON RIVER, WHERE HIS CHARIOTS COULD NOT MANEUVER AND, IN FACT, WERE SWEEPED AWAY BY THE WATERS, GIVING ISRAEL A GREAT VICTORY!

THE GENERAL, SISERA, ESCAPED FROM THE BATTLE AND SOUGHT REFUGE BY HIDING IN THE TENT OF HEBER, THE KENITE. HERE, HEBER'S WIFE, Jael, SLEW HIM WHILE HE SLEPT—THUS FULFILLING DEBORAH'S PROPHECY AND PLACING HER NAME NEXT DEBORAH'S AS THE TWO PERSONS MOST RESPONSIBLE FOR THE CRUSHING DEFEAT OF THE CANAANITES!

NEXT WEEK: THE MAN WHO LOST HIS HEAD OVER A DANCE!

SAVE THIS FOR YOUR SUNDAY SCHOOL SCRAP-BOOK

Copyright © John A. Lehti, Distributed by Linage-Plus, P.O. Box 884, Middletown, NY 10940. NATIONAL SALES REPRESENTATIVE, Daily Advertising Service, 2702 E. Ash St., Goldsboro, NC 27530

This devotional & directory is made possible by these businesses who encourage all of us to attend worship services.

- |   |  |  |
|---|--|--|
| <p><b>ASSEMBLY OF GOD</b><br/>FIRST ASSEMBLY OF GOD<br/>521 South First Street • 272-3017<br/>Jack Stone, Min. • 272-3984<br/>S.S. 9:45 a.m., W.S. 11 a.m. &amp; 6:30 p.m., Wed. 7:30 p.m.</p>  | <p><b>ST. MATTHEWS BAPTIST</b><br/>Corner of W. Boston &amp; W. Birch<br/>Floyd R. Monroe, Min.<br/><b>TRINITY BAPTIST</b><br/>314 E. Ave. B<br/>Robert Brown, Min.</p>  | <p><b>LUTHERAN</b><br/><b>ST. JOHN LUTHERAN</b><br/>Lariat, TX<br/>Richard Greenthamer, Min.<br/>S.S. 10:30 a.m.; W.S. 9:30 a.m.</p>   |
| <p><b>BAPTIST</b><br/><b>CALVARY BAPTIST</b><br/>1733 W. Ave. C.<br/>Ben Davis, Min.<br/><b>CIRCLE BACK BAPTIST</b><br/>Intersection FM 3397 &amp; FM 298<br/>Jessie Shaver, Min • 946-3676<br/><b>EMMANUEL BAPTIST</b><br/>107 East Third<br/>Isaias Cardenas, Min.<br/><b>FIRST BAPTIST</b><br/>220 West Ave. E.<br/>Stacey Conner, Min.<br/><b>FIRST BAPTIST</b><br/>Lazbuddie • 965-2126<br/><b>PRIMERA IGLESIA BAUTISTA</b><br/>223 E. Ave. B<br/>Roy Martinez, Min.<br/><b>PRIMITIVE BAPTIST</b><br/>621 South First<br/>Elder Cleveland Bass, Min.<br/><b>PROGRESS BAPTIST</b><br/>Progress, TX<br/><b>PROGRESS SECOND BAPTIST</b><br/>Arthur Hays, Min.<br/>1st &amp; 3rd Sundays<br/><b>RICHLAND HILLS BAPTIST</b><br/>17th &amp; West Ave. D<br/>Brad Gathright, Min.</p> | <p><b>CATHOLIC</b><br/><b>IMMACULATE CONCEPTION CATHOLIC</b><br/>805 E. Hickory<br/>Joseph Augustine, Min.<br/><b>CHRISTIAN</b><br/><b>THE CHRISTIAN CENTER</b><br/>Morton Hwy. • 272-5105<br/>Reydon Stanford, Min.</p> <p><b>CHURCH OF CHRIST</b><br/><b>LARIAT CHURCH OF CHRIST</b><br/>Sam Billingsley, Min.<br/>S.S. 10 a.m.; W.S. 11 a.m. &amp; 6 p.m., Wed. 7 p.m.<br/><b>LAZBUDDIE CHURCH OF CHRIST</b><br/>Nathan Crawford, Min.<br/>S.S. 9:30 a.m.; W.S. 10:20 a.m. &amp; 5 p.m.; Wed. 7 p.m.<br/><b>MULESHOE CHURCH OF CHRIST</b><br/>22nd &amp; W. American Blvd.<br/>John Knox, Min.<br/>S.S. 9:30 a.m.; W.S. 10:20 a.m. &amp; 6 p.m.; Wed. 7:30 p.m.<br/><b>SIXTEENTH &amp; AVE. D CHURCH OF CHRIST</b><br/>Curtis Shelburne, Min. • 272-4619<br/>W.S. 10:30 a.m. &amp; 6 p.m.; Wed. 7:30 p.m.</p> | <p><b>METHODIST</b><br/><b>EL DIVINO SALVADOR METHODIST</b><br/>E. 5th and E. Ave. D<br/>Guadalupe Ballinas, Min.<br/><b>FIRST UNITED METHODIST</b><br/>507 W. 2nd St.<br/>John Wagoner, Pastor<br/>9 a.m. Holy Communion-Chapel, 9:45 a.m. Sunday School, 11 a.m. Morning Worship<br/><b>LAZBUDDIE METHODIST</b><br/>965-2121</p> <p><b>NAZARENE</b><br/><b>NEW VISION CHURCH OF THE NAZARENE</b><br/>814 W. Ave. C • 272-3622<br/>David R. McIntire</p> <p><b>PENTECOSTAL</b><br/><b>IGLESIA PENTECOSTAL UNDIS</b><br/>207 East Ave. G • 272-3636<br/>Wencelado Trevino, Min.</p> <p><b>OTHER</b><br/><b>NEW COVENANT</b><br/>Plainview Hwy.<br/>Jimmy Low, Min.<br/>W.S. 10 a.m.; Wed. 7 p.m.</p> |

**1ST BANK** MEMBER FDIC  
202 South First 272-4515

**WES-TEX FEED YARDS, INC.**  
Custom Cattle Feeding  
272-7555 Muleshoe, TX

**AMERICAN AVI INC.** West Highway 84 272-4266 Muleshoe

**BAILEY GIN COMPANY, INC.**  
946-3397  
Sudan, TX  
Peanut Hawkins, MGR

**WESTERN DRUG**  
114 Main 272-3106 Muleshoe

**Church's CHICKEN** 272-5581  
1411 W. American Blvd., Muleshoe

**HERITAGE HOUSE INN**  
2301 W. American Blvd. 272-7575  
Muleshoe, Texas  
Clint & Evelyn Peat - Resident Owners  
Reservations 1-800-253-5896

**BRUCE, INC.** AIR CONDITIONING  
Hwy. 214 North 272-5114  
Muleshoe, TX  
TACL-B003360C, LP08638

**MULESHOE COOPERATIVE GINS**  
P.O. Box 569  
272-4794 Muleshoe, TX

**MULESHOE AREA HEALTHCARE Center**  
"Committed to Caring"  
106 W. Ave. H Muleshoe 272-7578

**MULESHOE MOTOR CO.**  
1225 W. American Blvd. 272-4251

**"THE FIVE AREA TELEPHONE COOPERATIVE ORGANIZATION"**  
West Plains Telecommunications Co.  
Five Area Systems, Inc., Plateau-Cellular Network  
Five Area Long Distance - Five Area Internet  
302 Uvalde Muleshoe, USA (806)373-5533

**WANDA BROWND INSURANCE AGENCY**  
118 E. Ave. C Muleshoe 272-7548

Since 1957 - The Original  
**Leal's** Mexican Restaurant  
1010 W. American Blvd. 272-3294  
Muleshoe, TX Victor & Debbie Leal

**Risinger Plumbing**  
Serving Muleshoe Area  
NO CHARGE TIL I ARRIVE AT DOOR!  
1-800-749-4472



# Journal Classifieds

Call 272-4536 Deadlines: For Thursday, 5 p.m. Monday; for Sunday, 5 p.m. Thursday Call 272-4536

## Adjustment

Continued from page 1

to live independently. Once the need is established, a Registered Nurse performs an evaluation of the patient to determine the condition and need of the individual.

"Basically it is just to see if we can take care of the patient in the way they need to be taken care of," Dudley said.

Residents in the nursing home are reviewed periodically to determine if different levels or methods of treatment are necessary.

Dudley said the cost of the Muleshoe Area HealthCare Center's services averages about \$65 per day. The cost may be paid by the individual or the patient's family, or through Medicaid if the patient meets certain criteria.

Approximately 70 percent are Medicaid patients.

Admission to a nursing home often robs patients of their independence.

"The most significant adjustment to nursing home life is the feeling of total loss of control, as well as losses in general, including your home, life-style, spouse or family member," said social worker Sarah Griffin, who is contracted by the HealthCare Center to counsel patients and their families twice a month.

Griffin uses "reminiscence therapy" to counsel HealthCare Center residents.

"The thing I do most is reminiscence therapy, which helps them to do a life review," Griffin said. "If you can get them talking about their past, it raises their ego and integrity. It helps them to cope more adequately with their losses."

Griffin said patients' families are often riddled with guilt.

"Most families are dealing with the guilt of not being able to continue to take care of their parents or loved ones," she said.

Moving to Muleshoe in 1956, Lillie raised three children while helping her husband farm.

"She always had a big garden," Frank said, remembering his mother's days of independence. "She canned a lot and helped on the farm when needed."

Frank said the decision to place his mother in the nursing home was a difficult, but necessary one.

"I hate that it came to that — that I couldn't do better for her than that," Frank said. "She apologized to me on several occasions for causing trouble, but I always just told her, 'well, you took care of me when I couldn't take care of myself — it's just turnabout.'"

Frank believes his mother has adapted well to the nursing home environment.

"She refers to the HealthCare Center as 'home' now," he said.

"I really like it here, and I appreciate this little room," Lillie said, swinging her arm to encompass a room covered with ceramic trinkets and crafts she has made. "When I learned that I couldn't go home, I just made the best of it."

"I learned just recently that a good hard laugh is as good as a dose of medicine," she added, giggling about volleyball exercises the residents do with a net and a balloon.

Lillie has found a second home.

## Tips

Continued from page 1

two years. The facility is required to provide survey reports upon request.. not summaries prepared by the facility.

### OAG protects Texans

The Office of the Attorney General investigates and prosecutes nursing homes that abuse and prosecutes nursing homes that neglect seniors.

## Help Wanted

Now taking applications for LVN Charge Nurse for 3 - 11 and 11 - 7 shifts. Excellent benefits and competitive salaries. Call Jo Blackwell or Deb Hendly for appointment or information, Mon. thru Fri. 9 am. thru 4 pm.

**Prairie Acres**  
201 E. 15th  
Frona, TX 79035  
(806) 247-3922

Now taking applications for (Texas) Certified Medication Aide for 3 - 11 shift. Apply in person with certificate. For additional information, call Jo Blackwell or Deb Hendly, Mon. thru Fri. 9 am. thru 4 pm.

**Prairie Acres**  
201 E. 15th  
Frona, TX 79035  
(806) 247-3922

**Attention Mothers and Others**  
House of Lloyds, Christmas Around the World is now hiring demonstrators. Free \$300 kit. Get \$50 in Free merchandise for holding a party. Call Cammy 505-769-8377

**No Experience Needed. \$500/\$900 weekly potential.** Process mortgage refunds in your area. Part or full time, Call 1(216)233-4209. EXT. 111 (24hrs).

**Attendants Needed**  
To provide personal care and house keep in home of elderly and handicapped. Call 1-800-657-7115, Cap Rock Homehealth.

**For Rent**  
3/2 brick home in Country Club addition. Large fenced back yard and storm cellar. Call 965-2361.

**For Rent**  
3/2 brick home in Country Club addition. Large fenced back yard and storm cellar. Call 965-2361.

**For Rent**  
3/2 brick home in Country Club addition. Large fenced back yard and storm cellar. Call 965-2361.

**For Rent**  
3/2 brick home in Country Club addition. Large fenced back yard and storm cellar. Call 965-2361.

**For Rent**  
3/2 brick home in Country Club addition. Large fenced back yard and storm cellar. Call 965-2361.

## Real Estate

**For Sale**  
2 miles north of Enochs turn Right on 1282 - 3 bedroom house, big utility room with pantry, double garage. (806) 925-5540

**House For Sale**  
Nice 3 bdrm, one bath, in Lenau addition. Call 272-3920.

**House for Sale**  
3 Bedroom, 2 bath, den, kitchen, livingroom, diningroom, laundry, carpet. On 2 lots. Needs some work. \$17,500 as is. We fix it \$20,000. Call for appointment 272-4662 or 272-3162. 214 Quincy.

**Automobile**  
1993 Ford OLT Supercab 4x4 pickup. Very clean. \$9,500 OBO. 272-3102 or 925-6766.

1991 GMC Jimmy Blazer, 4 X 4, Maroon, EXTRA NICE, \$11,750 (505) 359-0947 Portales

1993 Ford Taurus, 4 door, loaded, silver, local owner, \$9,995 (505) 395-0947 Portales

1977 GMC C35 one ton flat bed truck. 454, standard transmission. \$3000. (505) 356-5509, Portales.

**For Sale**  
'86 Ford pickup, 4 wheel drive, Extended Cab. Call 272-3137 or 272-4838.

**For Sale**  
'86 Ford pickup, 4 wheel drive, Extended Cab. Call 272-3137 or 272-4838.

**For Sale**  
'86 Ford pickup, 4 wheel drive, Extended Cab. Call 272-3137 or 272-4838.

**For Sale**  
'86 Ford pickup, 4 wheel drive, Extended Cab. Call 272-3137 or 272-4838.

## Miscellaneous

**Round-Up Applications**  
Pipe-Wick mounted on high-boy. 30" or 4" rows. Cotton, Milo, Soy Beans and Corn.

**Must move 28x24 house.** Excellent for storage building or remodel. Ready to move. See at Shamrock Station in Sudan or Call Mike Hill at 227-2373 or 227-2587.

**NOTICE**  
I will not be responsible for debts other than mine and my husband's.

**PRIMESTAR**  
Available for your home TODAY  
Call Gabriel at 272-3072 or 1-800-815-2358 pin 9240

**Byrd Realty**  
Office (806) 481-3846  
Mobile (505) 760-1495  
308 Third St., Farwell, TX

**IN THE COUNTRY,** 3 bedroom, 1 3/4 bath, 2 car garage. Additional 2 bedrooms, 1 bath, home, 30' x 80' quonset barn, large domestic metal R.V. storage building. Highway frontage. All on 8 acres. Many, Many extras! Call For Details

**Northwest of Muleshoe -** Nice 3 bedroom, 1 3/4 bath home, has nice utility room and large living room with single car garage. Also large storage building and an additional mobile home hook-up. Call for more details

## For Sale

**For Sale:** Two choice cemetery plots, Muleshoe Memorial Park. Call 946-3696 or 272-3332.

**For Sale:** 2 lots in Muleshoe Memorial Park. (806) 355-8384.

**LOST**  
Reward offered - Lost August 12 near Country Club area. Red and White Brittany Spaniel. Orange collar and very fat.

**CRANES**  
**AMERICAN EQUIPMENT & TRAILER**  
3707 M.L.K. Jr. Blvd.-Lubbock, TX  
806-747-2991

**Ronald Byrd**  
Licensed Broker  
Farwell, Texas

**Crista Bass**  
Sales Associate  
Home (806) 925-6464

**FOR SALE**  
78 Acres NW of Muleshoe, Highway Frontage. Excellent development property. Owner will sell as one unit for \$40,000 or will divide into 5 or 10 acre tracts at \$750.00 per acre. If you have wanted a small acreage, this is your prime opportunity

## Wanted

**\$\$\$WANTED\$\$\$**  
We buy used mobile homes. We pay top dollar, any year, any condition. We need your used mobile home. Please call 1-800-404-1321.

**Certified**  
NURSE AIDES for all shifts. Temporary and full-time positions. Excellent benefits. Shift differential. Contact Terri Brown or Julia Smith at Muleshoe Area HealthCare Center, 106 W. Avenue H, Muleshoe, TX 79347. (806) 272-7578.

**1-800-404-1321**  
(505) 356-5448  
**Portales**  
Lic. # D00681  
'Se Habla Espanol'

**MUST SELL! 1994 Chevrolet Silverado**  
4x4, Power windows, power locks, tilt, cruise, AM/FM stereo, 350 V-8, 4 speed automatic with overdrive, air conditioner, rally wheels, rear chrome bumper and much more No old contract to assume, no back payments to make, just need responsible party to make reasonable monthly payments.

**Contact Freddy in the Credit Dept.,**  
Frona Motors, 806-247-2701

**MUST SELL! 1995 Ford Contour**  
Power windows, power locks, air conditioning, AM/FM cassette, automatic, cruise, power mirrors, rear window defroster, and much more. No old contract to assume, no back payments to make, just need responsible party to make reasonable monthly payments.

**Contact Freddy in the credit dept.**  
Frona Motors, 806-247-2701

**MUST SELL 1995 Ford Mustang**  
Convertible, power windows, power locks, AM/FM Stereo cassette, tilt steering wheel, cruise control, dual electric mirrors, aluminum wheels and much more. No old contract to assume, no back payments to make, just need responsible party to make reasonable monthly payments.

**Contact Eddie in the credit dept.**  
Frona Motors, 806-247-2701

**VIP PLUS, Ltd.**  
PERSONNEL SERVICES  
JOBS! JOBS! JOBS!  
Immediate Openings  
ADM - Valley Grain and Texas Sesame are now hiring. Needing Mill workers and Office scale help. Apply at either location : 1600 Railroad Ave. or 1 / 4 Mile E. on Hwy. 84.  
"Never A Fee"  
1-800-242-3569  
33s-2tc

**James F. Hayes & Co.**  
AGRICULTURAL REAL ESTATE SERVICES  
656 Acres of C.R.P. — Clays Corner Hub Area. Two years left on contract. 3 irrigation wells, 1 domestic well. 90% lays good with good soils. Will be productive farm when it comes out of C.R.P.  
640 Acres Oklahoma Lane — 2 Sprinklers, 4 irrigation wells, 115 Acres of pasture, modest home, 2 domestic wells  
152 Acres West of Muleshoe. Electric Center pivot sprinkler, 2 wells, 1/2 circle of improved grass. Good barbed wire fence.  
120 acres west of Muleshoe. 2 wells. Good soil. Lays good. Immediate possession available. \$250.00 per acre.  
320 Acres in the Lazbuddie area, 2 wells, 1 sprinkler, 80 acres of C.R.P. PRICED RIGHT  
160 Acres Northeast of Muleshoe in Parmer County. Excellent water. Excellent soil. Electric Center Pivot Sprinkler. New set of bowls on pump. Top Notch Farm  
317 Acres in Lamb County on Bailey County line. 3 wells, 1 sprinkler, lays good. Call for details!  
**Vic Coker, Agent**  
310 Main St. Suite 103 Muleshoe  
Office 272-3100 Home 965-2468  
WHEN LAND INVOLVES COWS AND PLOWS

**Nieman Realty**  
George Nieman, Broker 272-5285 or 272-5286

**116 E. Ave. C**

**RICHLAND HILLS**  
JUST LISTED-IMMACULATE 3-2-2 Brick Home, Geo. Heat Pump, Built-ins, FP, Nice landscaped yd., Stor. Bldg., MORE!! \$70's!!! RH3  
NICE 3-3-1 Brick, cent. Heat, Evap. Air, built-ins, 2000' + lv. area, fenced yd., stor. bldg., MORE !! \$60's !!! RH-2  
VERY NICE 3-2-2 Brick, cent. A&H, built-ins, FP, approx. 2,000' + lv. area, auto, spkrl., storage bldg., fenced yd., MORE !!! \$60's !!! RH-1  
NICE 3-2-2 Brick, cent. A&H, built-ins, FP, approx. 2150' lv. area, fenced yd., MORE!!! \$69K!!! RH-7

**HIGHLAND AREA**  
VERY NICE 2-1-1 Home, wall furnace, window air, nicely decorated, storm cellar, stor. bldg. \$20's !! HL-7  
2 Bdrm, 1 bath home, fenced yard. \$16,500!!! HL-4  
VERY NICE 3-2-2 Brick, Cent. A&H, built-ins, fenced yd., spkrl. sys., MUCH MORE!!! \$60's !!! HL-1  
3-2-2 home, Cent. A&H, built-ins, fenced yd., corner lot. \$30's !!! HL-2  
VERY NICE 3-2-1 carport Home, heat pump, built-ins, nice carpet, fans, storage-workshop! MUCH MORE!!! \$40's !!! HL-6  
NICE 3-2 Home, Heat Pump, FP, fenced yd., stor. bldg. \$30's!! HL-3  
VERY NICE 3-11/2-2 carport home, Geothermal Heat Pump, built-ins, FP, fenced yd., Stor. Bldg. !!! HL5

**COUNTRY CLUB**  
2-1-1 carport home, wall furnace heat, nice carpet, storm shelter, storage bldg., fenced yd. MORE!!! \$20'S.

**RURAL HOMES**  
NICE 3- 2-2 Brick, cent. A&H, built-ins, FP, approx. 15 acres, irrig. well & equip., barns, corrals, MUCH MORE!!! \$95K!!! HR-4  
NICE 3-2-2+2 Carport Brick Home on 2.5 acres on pavement, close to town, Cent. heat, pump, built-ins, FP, MUCH MC .E. \$70K !!! HR-3  
JUST LISTED-3-2-2 Home 1.36 ac. on pavement, Cent. A&H, built-ins, freshly painted interior & exterior, fans, fenced yd., 31' x 40' barn !!! \$40's!!! HR-2

**LENAU ADDITION**  
Nice 2-2-2 Brick, on corner lot, heat pump, fenced yard, storage bldg., MORE! \$40's !!! L-1  
NICE 3-2-1 carport Home, geothermal heat pump, fenced yd., storage bldg. \$27,500!!! L-3  
NICE 3-2-1 Home, built-ins, heat pump, extra insulation, fenced yd., stor. bldg., \$30's!!! L-4

**HIGH SCHOOL**  
NICELY REMODELED 3-2-2 carport Home, Heat Pump, built-ins, fans, fenced yd., stor. bldg., & MORE!!! \$40's !!! HS-8  
NICE 2-1-1 Brick, Heat Pump, nice carpets, well insulated, storm windows & doors. \$30's!!! HS6  
NICE 3-1-3/4 1 Brick Home, Cent. Heat, Evap. Air, Built-ins, fans, fenced yd., stor. bldg., \$30's !!! HS-2

**IN CONTRACT**  
JUST LISTED -2-1-1 Home, floor & wall furnace, evap. air, siding exterior, stor. bldg., fenced yard !!! \$20's !!! HS-7  
JUST LISTED-NICE 2-1-1 Home, nice carpets, stove, refrig., wall furnace, covered deck, fenced yd., stor. bldg., MORE !!! \$20's!!! HS-4

NICE 4-3 Home on corner lot, Heat Pump, built-ins, FP, fenced yd., stor. bldg., 3100' + Lv. area, storage basement, MORE!!! \$70's!!! HS-9

**DeAnna & Larry Rasco**  
Muleshoe, TX 79347  
806-272-5269  
29s-tfc

**D&L Upholstery**  
Farm Equipment  
Auto - head liner  
Residential  
Commercial  
Marine  
Free Estimates  
Non-Smoking Environment

Subscribe to the Muleshoe Journal 272-4536

ASK ABOUT OUR COMMERCIAL LISTINGS!!!  
160 acre tract, 8" well, circle spkrl. w/drops, fully allotted!!  
PARMER - BAILEY CO. Area-Elevator & Cleaning Facility - 12 million lb. Capacity, Scales, Dryer, & Office on approx. 6.5 acres!!! PRICED TO SELL !!! POSSIBLE OWNER FINANCING!!!



# EASY Summer Cooking STARTS HERE...



ALL TYPES  
Pepsi Cola  
2 liter bot. **89¢**

12 pack, 12 oz. cans  
**Pepsi Cola**  
**\$2.39**

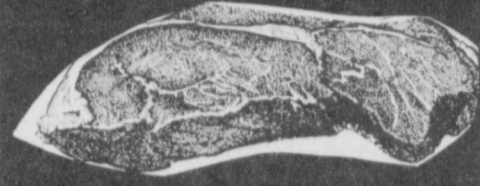
## MEAT

Value Pack, Bone-In Split  
**Chicken Breast**

lb. **99¢**

Whole Market Trimmed  
**Beef Brisket**  
lb. **\$1.39**

- Louis Rich Boneless, Portion Smoked or Oven Roasted **Breast of Turkey** ..... lb. **\$3.39**
- Decker, 12 oz. pkgs. **Meat Bologna** ..... **3/\$3**
- Decker, 1 lb. pkg. **Smoked Sausage** ..... **2/\$4**
- Decker, 1 lb. pkg. **Meat Bologna** ..... **89¢**
- Old Mill **Hot Links** ..... lb. **\$1.59**
- Assorted Las Campanas **Burritos** ..... 40 oz., 10 pk. **\$2.69**
- Las Campanas Beef **Taquito** ..... 10 oz. pkg. **2/\$5**
- Pepperoni or Deluxe, Mama Rosa **Pizza** ..... 2 pk., 48 oz. **\$4.49**
- Johnsonville Bratwurst, or Mild/Hot **Italian Sausage** ..... lb. **\$2.29**
- Stone River Resealable Bag, Cheddar, Mozzarella, or Marble Jack **Shredded Cheese** .. 24 oz. pkg. **\$4.89**
- NEW! Eckrich Assorted • 3.3 oz. Pepperoni Pizza • 3.77 oz. Sausage Pizza • 3.66 oz. Cheese Pizza • 3.77 oz. BBQ Chicken, Chicken Taco, • 3.56 oz. Honey Ham **Lunch Makers** ..... **4/\$5**



Value Pack,  
Beef Boneless  
**Rib-Eye Steak**  
lb. **\$3.69**

Wilson  
**Variety Pack**  
12 oz. pkg. **\$1.69**

Wilson Jumbo  
**Meat Hot Dogs**  
1 lb. pkg. **\$1.19**

Wilson Jumbo  
**Beef Hot Dogs**  
1 lb. pkg. **\$1.79**

Corn King, 2 lb. pkg. **Sliced Ham** ..... **\$4.99**

Regular, Low Salt or Thick, Bar S  
**Sliced Bacon**  
1 lb. pkg. **\$1.59**

## PRODUCE

Star Extra Large  
Ruby Red  
**Grapefruit**

**2/\$1**

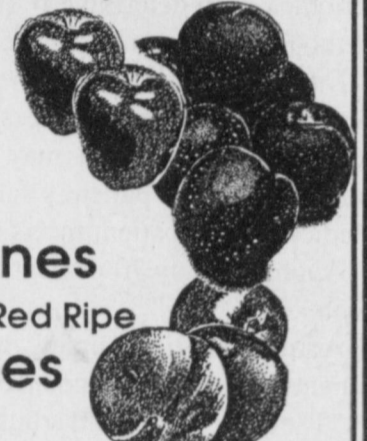


Small Sweet Juicy  
**Oranges** ..... **20/\$1**

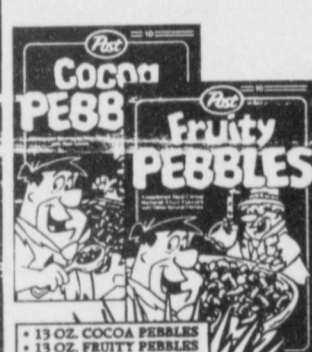
## YOUR CHOICE!

LB. **69¢**

Washington Granny Smith  
**Apples**  
Sweet Juicy  
**Plums**  
Sweet  
**Nectarines**  
Extra Large Red Ripe  
**Tomatoes**



**Post Cereal**  
• 18 oz. Golden Crisp  
• 14.5 oz. Honey Comb  
**2/\$4**



**Post Cereal**  
• 13 oz. Cocoa  
• 13 oz. Fruity Pebbles  
**\$1.79**



Bull's-Eye, Original,  
Hickory Smoke  
**Barbecue Sauce**  
18 oz. bot. **\$1.79**



Oscar Mayer Assorted  
Regular  
**Lunchables**  
4.5 oz. pkg.  
**\$1.19**



Louis Rich Stack Pack Fat Free  
Smoked Ham or Oven Roasted/  
Smoked/Fat Free  
**Turkey Breast** ..... 12 oz. pkg. **\$3.17**  
Louis Rich Red Rind, 16 oz. pkg.  
**Turkey Bologna** ..... **3/\$4**  
Louis Rich  
**Bun Length Turkey Franks** ..... 16 oz. pkg. **\$1.09**



Oscar Mayer, Regular,  
Bun Length, Light  
**Beef Franks**  
16 oz. pkgs.  
**2/\$4**

CASSEROLE  
Pinto Beans **1.99**  
4 lb. bag

Quesitos  
Doritos  
YOUR CHOICE  
**2 \$4**  
For

California of Florida  
Sunny Delight  
128 oz. bot. **1.99**

ASSORTED  
Hershey's Candy  
**99¢**  
10 pack

LAWETS  
Garlic Salt • Season Salt  
**1.59**  
6-8 oz. bot.

GOLD MEDAL  
Corn Muffin Mix  
**3 \$1**  
6.5 oz. pkg. For

NABISCO ASSORTED SNACKWELLS  
Cookies or Crackers  
**1.79**  
5-7.75 oz. pkg.

BETTY CROCKER  
Instant Potato Buds  
**99¢**  
13.75 oz. box

WONDER  
LONG GRAIN PREMIUM  
Comet Wonder Rice  
**2.59**  
13.75 oz. box

REGULAR OR WEIGHT  
LACINANT DETERGENT  
**Ultra 2 Gain**  
4.99  
83-87 oz. bot.

POPS PREPARED 2 LAY AUTOMATIC  
DISHWASHING DETERGENT  
**Sun Light**  
1.99  
50 oz. bot./box

HEFTY ONE  
**3 \$5**  
For

Cocoa or Fruity Pebbles  
**Post Cereal**  
13 oz. box  
**\$1.79**

Homestyle or  
Buttermilk, Downyflake  
**Waffles**  
19 oz. pkgs.  
**2/\$3**

Shurfine Grade A  
**Medium Eggs**  
Doz.  
**59¢**

## FROZEN & DAIRY

ITALIAN PASTRY  
ASSORTED  
**Tony's Pizza**  
**2 \$5**  
16-16.5 oz. pkgs. For

SWEET PEAS,  
MILLETTS CORN OR  
MIXED VEGETABLES  
**Green Giant Vegetables**  
**3 \$3**  
10 oz. pkg. For

ASSORTED  
Shurfine  
Biscuits  
**6 \$88¢**  
7.5 oz. 10 ct. For

BANQUET ASSORTED  
CREAM PIE  
**99¢**  
16 oz. pkg.

PILLSBURY ASSORTED  
**Taster's Strudel**  
**3 \$5**  
11.5 oz. pkg. For

SANDWICH MATE  
**Cheese Slices**  
**99¢**  
10.5 oz. pkg.

ASSORTED  
**Budget Gourmet Entrees**  
**2 \$3**  
10-10.5 oz. pkgs. For

BLUE BUNNY SWEET FREEDOM  
**Juice Bars or Krunch Sticks**  
**1.99**  
12 pack

## HEALTH & BEAUTY

MURINE  
REGULAR OR PLUS  
**Murine Eye Drops**  
**2.99**

TABLETS  
REGULAR, GRAPE,  
OR TABLET GDM  
**Children's Chewable Tylenol**  
**1.99**

EXTRA STRENGTH  
**Tylenol PM Caplets**  
**2.99**

ASSORTED DEODORANT OR  
NON DEODORANT  
**Playtex Tampons**  
**2.99**

Nickelodeon®  
"U"  
Pick The Sounds  
Sweepstakes!



Enter for a chance to  
Win A  
**Nickelodeon BlaStBoX™**  
From Lowe's & Kraft

## SAVINGS FOR EVERYONE!!!

REGULAR OR EXTRA THICK  
**Velveeta Slices**  
**1.99**  
12 oz. pkg.

KRAFT ASSORTED  
**Salad Dressings**  
**1.29**  
8 oz. bot.

SAVE \$1.50  
ON TWO (2) KRAFT® Deluxe Macaroni & Cheese Dinners or Velveeta Shells & Cheese Dinners  
IN-AD COUPON  
VALID: THRU AUGUST 21, 1996  
KRAFT®  
21000-41036-6  
\$1.50 OFF TWO (2) KRAFT® DELUXE MACARONI & CHEESE DINNERS OR VELVEETA® SHELLS & CHEESE DINNERS

WESTERN MONEY UNION | TRANSFER™  
"The fastest way to send money"  
**Lowe's MARKETPLACE**  
515 W. American Blvd.  
401 W. American Blvd.  
Muleshoe 272-4585  
WE RESERVE THE RIGHT TO LIMIT QUANTITIES IN TEXAS  
**Pay-n-Save**  
515 W. American Blvd.  
Muleshoe 272-4406  
OPEN MONDAY-SATURDAY 7:30 A.M. - 9:00 P.M., SUNDAY 8:00 A.M. - 8:00 P.M.