

## PAGE ONE

A QUICK READ OF THE NEWS

### Dead birds cover yard

In a scene reminiscent of an Alfred Hitchcock movie, Charles Getsinger walked outside to get his newspaper in Anderson, S.C., and found dozens of dead blackbirds in his yard.

"I said to myself, 'Lord have mercy. What's going on?'" the 66-year-old Getsinger said after discovering the grisly sight when a bird dropped out of a tree and landed next to him.

Clemson University researchers took the carcasses from Getsinger's lawn and are testing them to find a cause of death.

Theories range from poisoning to a bird virus that caused deaths in New York last summer.

### Nebraska bone case solved

There is no murder behind the mystery of the bones discovered in the elevator shaft of the elegant Blackstone Hotel in Omaha.

What was first considered possible evidence of a long-ago murder is probably the remains of someone's lunch.

"It's all butchered cattle and pigs and turkey and chicken," said Rob Bozell of the Nebraska State Historical Society, who was asked by the State Patrol to examine the bones.

The bones may be leftovers from a construction worker's lunch, or maybe something an animal dragged in, he said.

### Dry county gets DWI plates

Hundreds of Arkansas license plates with the letters "DWI" have been issued to motorists in a dry county, of all places.

The Department of Motor Vehicles said it was coincidence that Craighead County received that combination of letters, well-known as an abbreviation for "driving while intoxicated."

The department screens out license plates it deems inappropriate, but none of the agency screeners were bothered by DWI. Among the banned three-letter combinations are SEX, FAT and PIG.



**Drawing date:** Wednesday, Jan. 5  
**Winning numbers:** 3-4-22-23-31-43  
**Estimated jackpot:** \$4 million  
**Winners:** 0  
**Next drawing:** Saturday, Jan. 8  
**Estimated jackpot:** \$7 million

### On this date in history

**Jan. 10** — The Lucas gusher comes in at Spindletop, setting off the Texas oil boom (1901).  
**Jan. 11/12** — On Jan. 11, legislation is passed to create the State Military Board (1862) and the Confederate ship *Alabama* sinks the U.S. ship *Hatteras* off the coast of Galveston (1863).

### LOCAL WEATHER

The area should be mostly sunny, but then turn partly cloudy through mid-week. Temperatures should be moderate, with morning lows in the upper 20s through Tuesday and about 35 Wednesday. Highs should reach the upper 50s Sunday and Monday, mid-60s Tuesday and about 67 Wednesday.

Editor Ronn Smith can be reached at 272-4536 or ctyankee@fivearea.com

**Missed your paper?** Call carrier Melissa Flores at 272-6719 or the Journal during business hours, 8:30 am-5 pm. Carriers begin deliveries about 5 p.m.

## Cotton conference being planned for Muleshoe

JOURNAL STAFF REPORT

South Plains cotton farmers can update their production knowledge and learn more about marketing and alternative crops at several January regional agriculture conferences — including one at Muleshoe on Jan. 27 — hosted by the Texas Agricultural Extension Service.

Bailey County Extension Agent Curtis Preston said Friday that

some details of the Muleshoe conference are still being worked out, but it will be held at the Bailey County Coliseum, probably starting at 8:30 a.m.

Further details will be released well before the conference.

Known as the Llano Estacado West Cotton Conference, the event will allow area farmers to learn directly from expert speakers that are being lined up.

Preston said the following speakers are definite:

- Terry Futch, Northwest High Plains zone manager for the Texas Boll Weevil Eradication Foundation, presenting an overview of the 1999 efforts against the weevils plus a preview of 2000;

- Jim Leser, a Lubbock entomologist, speaking on boll weevil management;

- Calvin Trostle on alternative crops;

- James Esty of the Texas Department of Agriculture on pesticide laws;

- Randy Bowman, a cotton agronomist, with an overview of 1999 on the South Plains and information on new genetics for cotton; and

see **CONFERENCE** on page 2

## Stock show coming up in two weeks

SPECIAL TO THE JOURNAL

The Bailey County Junior Livestock Show is scheduled for Jan. 21-22 at the Bailey County Coliseum in Muleshoe.

The sheep and goat show — about 35 entries each — will begin at 8 a.m. Jan. 21. At 1 p.m. the same day will be the gilt show, with the barrow show immediately after that. About 20 to 25 gilts and 170 barrows are expected.

The steer and heifer show will begin at 7:30 a.m. Jan. 22.

Judges will include Cody King of Boerne for sheep and goats, Mark Standlee of Floydada for swine, Dennis Poole of Gail, Texas, for steers and heifers, and Bill Morrison of Texico for showmanship.

The junior livestock shows are for FFA and 4-H members. After the county show, many of the exhibitors will travel to statewide shows to compete during the season.

All the young exhibitors at the county show will be considered for the Jimmy Dale Black Showmanship Award, which has been given for a number of years to the best showman. The judge will be making his choice throughout the various shows, with the award to be presented after the steer show.

After the awards presentation on Jan. 22, a premium sale will begin at 2:30 p.m.

The sale will be conducted by members of the Bailey County Junior Livestock Show Board, and proceeds from the "sale" of animals and products will be placed in the general fund and

see **SHOW** on page 2



Jerry Sherbon (left) helps 2-year-old Jasmyne Guerra try to find her "trampoline legs" during a recent beautiful day. Others visible are (left to right) Priscilla Arzola, 5; Billy Sherbon, 11; and Joey Guerra, 5.



Journal photos: Beatrice Morin

### Some winter!

Despite a few mornings as cold as 10 degrees the winter so far has encouraged kids of all ages to pursue their favorite outdoor activities. At right center, 2-year-old Ramiro Bustillos Jr. is ready to take on all challengers with his 4x4 truck. At lower right, Salvador Gonzales, 5, and Belén Gonzales, 6, try their wheels. And above, Adrian Torres, 4, shows off the latest in both footwear and monster trucks.



## Vandiver seeks re-election to commission

JOURNAL STAFF REPORT

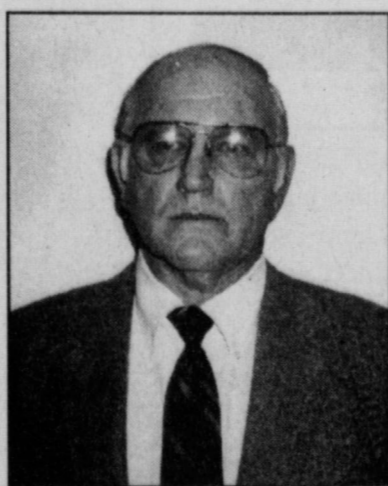
Two-term Bailey County Commissioner Floyd "Butch" Vandiver is seeking the endorsement of voters in the March Democratic primary for a third term.

He says his priority is economic development.

"What I really want to push is this prison deal," he said. "We (commissioners) are all in favor of it, and we're about to have a public hearing on it the last of the month or first of February.

"We've got to get some industry in this county — that is my biggest goal," he said.

"This fiscal year, we've taken a lot of money out of each precinct and put it into the



Vandiver

general fund, and we can't do that but once," he said.

He pointed out that the new detention facility at Post is projected to generate \$350,000 a year for the Garza County general fund — enough to solve Bailey County's revenue prob-

lem and possibly allow for a sizable tax cut.

Vandiver has been a Bailey County resident for 41 years; he and his wife, Doris, have two sons who are farmers — Monti in Bailey County and Tyri in Parmer County — and a daughter, Staci Marchand, who is a nurse at St. Mary's Hospital.

Vandiver himself farmed in the YL area for 39 years. He also has managed Leo's Machine Shop and now works for the Texas Boll Weevil Eradication Foundation.

He is being opposed by Donald Harrison in the primary and by Republican Jack Dunham in the November general election.

## Election confusion settles down quickly

JOURNAL STAFF REPORT

Confusion last week about whether several Bailey County candidates' names would be allowed on the March primary ballot sorted itself out quickly — in most cases to the candidates' satisfaction.

The lone exception may be incumbent Precinct 3 constable Gerry Pierce, who filed the required notice with the county clerk's office but apparently did not file with the county Democratic Party chairman by the Monday afternoon deadline.

However, he will still be able to run for constable as a write-in candidate in the general election.

The situation for five other Democratic candidates was considerably different.

see **CONFUSION** on page 2



## AROUND MULESHOE

### City to test sirens Wednesday

Muleshoe City Manager Rick Hanna announced Friday that the city plans to test its storm sirens Jan. 12 at 5 p.m. if the weather is not threatening.

He said the plan is to conduct weekly tests at about that time, whenever the weather is calm. In the event of a severe weather alert, he added, the test would not be conducted in order to avoid confusing the public.

### Mammograms to be available

A breast-cancer screening clinic will be held Jan. 18 at South Plains Health Care Providers, 208 W. Second St. in Muleshoe.

Participants will receive a low-cost screening mammogram, a breast risk appraisal and individual breast self-examination instruction by a registered nurse.

Funding is available through the Texas Department of Health for residents who qualify.

All exams will be by appointment only. More information is available by calling (800) 377-4673, or from any Girl Scout.

### Public Calendar

**Jan. 10** — 10 a.m. Bailey County Commissioners' Court, in the commission room at the courthouse.

7 p.m. Muleshoe School Board, in the meeting room at the district administrative office.

The deadline for items to appear in *Around Muleshoe* is 5 p.m. Monday for Thursday's edition and 5 p.m. Thursday for Sunday's edition. Items may be brought to the office at 304 W. Second, mailed to P.O. Box 449, called in to 272-4536 or faxed to 272-3567.

## Horse competition to repeat at Portales' Ag Expo

SPECIAL TO THE JOURNAL

The annual New Mexico Ag Expo, set for Feb. 22-23 in Portales, will again host a Working Ranch Horse Competition on Feb. 23 at 1 p.m. (Mountain time) in the Special Events Arena at the Roosevelt County Fairgrounds.

This is the Ag Expo's second competition sanctioned by the Ranch Horse Association of America. The 1999 competition had 29 entries; Wendy Toombs, chairman of the Working Ranch Horse Committee, expects at least as many this time.

"RHAA sanctioning means that people qualifying will be able to compete in finals held in May in Abilene, Texas," Toombs said.

There will be two classes in the competition — a cowboy class and an open class. According to Toombs, the cowboy class is for competitors who are not members of the association and have not earned more than \$500 in competition. The open class is for association members only.

However, association rules apply to both classes.

Two buckles will be awarded in the open class to the entrants with the highest number of points, one for senior champion horse and one for junior champion horse, both competing in the open class.

"A horse that is 5 years old or less, as of Jan. 1, 2000, is

in the junior division," Toombs said. "Senior division horses are 6 years old and older. Both winners will receive payback as well as added purse," she said. "Payback will be made to third and fourth place and beyond, according to the RHAA payback schedule."

There are no buckle awards in the cowboy class, but payback and added purse will be there, Toombs said.

The riders may be male or female, and it is recommended that they be at least 18 years old. The entry fee is \$50 per horse, and riders may enter more than one horse.

Horses must meet certain qualifications to enter the competition. They may be either gelding, mare or stallion. The owner must have owned the horse a year prior to the competition and have a negative coggins conducted within the 12 months prior to the competition, along with current health papers. The horse may be any breed registered or non-registered.

Each horse will have five minutes to perform. Time will start when the contestant enters the arena. The announcer will let the exhibitor know when two minutes remain and when one minute remains.

Specific performance requirements are given for the three categories of work:

- Reining/horsemanship:

## Home buyer should check all warranties

SPECIAL TO THE JOURNAL

Murphy's Law applies more than ever to owning a home. As much as the homeowner would like the house and everything in it to last forever, something is always breaking down or wearing out.

Home buyers need to be aware of the quality of their new home and the products that go into it.

"Be sure to look carefully at builders and the warranties they offer before choosing one that really stands behind the home," said Richard Roll, president of American Homeowners Association.

"By keeping an eye on the construction warranty and the life cycle of various parts of your home, you'll be protected and better prepared to deal with a problem." More information is available at the web site <http://www.ahahome.com>

Homebuilders vary widely in the quality of building materials or products they use. Quality lumber, for example, is hard to find in many areas of the country. When a warped or green timber starts to dry, nails can pop out or a door can stick to the jamb.

That's why a warranty can be critical. It pays to research a builder's reputation and their warranties carefully for what they do and do not cover.

A typical new home warranty covers mechanical items such as plumbing, electricity and heating and cooling systems for two years. Some builders offer a ten-year warranty against construction defects and repairs.

The real test, though, is not the warranty but the builder's reputation for following up on problems and fixing them to the customer's satisfaction.

For example, concrete is supposed to last 50 years, but won't if it's improperly mixed or formed. If a sidewalk breaks or the house foundation settles and cracks, is the builder going to stand behind the work or hide behind excuses?

The time to find out is before buying. Ask for at least three customer references and call them, and check with state and local consumer affairs agencies for complaints.

And remember that no warranty is perfect or idiot-proof.

The horse's ability to stop and roll back, change leads, and spin in each direction. There will be a designated pattern that will be posted and given to contestants prior to the performance. Contestants can earn up to 30 points in this category.

• Cow work: The category consists of two segments, boxing and holding a cow at the end of the arena, and turning the cow down the fence in both directions. Each segment is worth 15 points.

• Roping: A cow will be roped, stopped and then led far enough to demonstrate horse's ability to pull. Only two loops are permitted. An-

other 30 points are possible for this category.

Two judges will score the riders and horses for a total of 180 points possible.

"The competition is growing all over. They are being held in Texas, Colorado, Oklahoma, Louisiana, Kansas, Arizona and Wyoming. In fact, our Working Ranch Horse Competition is the first sanctioned show for the millennium," Toombs said.

More information about the competition or obtaining a booth at the New Mexico Ag Expo is available by calling the Roosevelt County Chamber of Commerce at (800) 635-8036.

### CONFUSION

from page 1

ferent but apparently was resolved more easily.

This situation arose when County Democratic Chairman Linda McGonagill believed that her signature on candidate filings was sufficient, but she then discovered that the paperwork had to be signed by a notary public.

This could potentially have affected incumbent Sheriff Coy Plott, his challenger Ronnie Kemp, incumbent Precinct 1 Commissioner Butch Vandiver, his Democratic challenger Donald Harrison and incumbent Precinct 1 constable Gary Don Gartin.

But state officials apparently

said it was sufficient that the candidates fulfilled their obligation in good faith and in a timely manner, and that was enough to satisfy election law.

Tax assessor candidate Berta Combs and County Attorney Criss Cleavinger were the only Democratic candidates whose filings were not at least briefly in doubt.

And just to add one more note of confusion, the *Journal* left Cleavinger's name out of a story announcing that nine candidates had filed for the primary!

### Curtis Hunt

wants the opportunity to help you with your next new or used vehicle purchase! Call him or come by!



### Teague-Strebeck Motors

Ford • Mercury • Dodge • Chrysler  
Right on the curve and right on the price in Portales, NM  
Office (505) 356-8581 • Cell (806) 946-7589

## Christmas Is Over, But We Still Need the Angels' Message

Christmas is over, but we still need to hear the message of the angels. Yes, we need to hear that God's Son has come. But we also need to hear another message beautifully tied to that angelic announcement. It's the message that comes every time an angel speaks to Mary or Joseph or the shepherds. It's the message that logically flows from the good news of Christ's birth. It's the message straight from Heaven to people like you and me, people prone

sailing a bit low in the water anyway. You can recount an experience or two of your own much like this one, but the cold wind of fear chilling my life was blowing off the iceberg of a looming and unpleasant potential diagnosis. My wife, she wasn't sick. Didn't feel sick. Felt fine. And by God's grace, we later received very good news. Just the answer to our prayers we wanted. (Yes, it was the best Christmas present ever, and yes, like you, I wonder about the times in our lives and the lives of our friends when the answer given is not the one so badly wanted.) But preliminary tests were heading in a direction that scared us some. Well, her some. Me, a lot. Me, probably more than was reasonable, except, as I later realized, this fear added to what my younger brother calls the "drips and crickets" annoyance-type fears (related to raising kids, paying for college or helping them find ways to, keeping the cars running, and your means of livelihood afloat, etc.), well, this fear added to those was swamping the boat. You've felt those waves, those winds, too.



### Focus On Faith

Curtis Shelburne

to fear. It's this message, a fine word from Heaven whether we're launching a new millennium, a new century, a new decade, a new year, or just a new day: "Do not be afraid."

I'm afraid I spend more time being afraid than we realize. I like to think of myself as independent, positive, confident, fearless and unafraid, full of faith, not filled with fear. But then something harshly reminds me how much time I spend anxiously, fretfully, and, yes, fearfully, worrying about, well, lots of things.

Lots of our fears can be lumped together under fear of the unknown and fear of the future. Flavor those fears with some additional and usually easy-to-come-by finance-related or health-related or relationship-related anxieties, and you have a pretty potent and bitter brew that can choke out faith and effectively gag real joy.

I guess I'd forgotten that until a few weeks before Christmas a wave of fear just about swamped the ship of my faith, which I now realize was

A few days before we celebrate Christ's birth, my wife and I are at the mall. Walking into Mervyn's. I drop 13 cents into the scruffy-looking bell-ringer's bucket. He hands me a small card with a little flap to open. I stick it in my pocket and finger it as we walk, and, honestly, as I worry. And then, finally, that night, I pull it out and open it.

"Do not fear, for I am with you. . . . I am your God. I will strengthen you. . . . help you; I will uphold you" (Isaiah 41:10).

That guy didn't look much like an angel, but he gave me an angel's message, one that beats a fortune cookie any day. And it's a message for this preacher, and maybe you, too, for every day.

Curtis Shelburne is minister of the 16th & D Church of Christ in Muleshoe.

### Bailey County Journal USPS 040-200

Established March 31, 1963. Published by Triple S Publishing, Inc. Every Sunday at 304 W. Second, Box 449, Muleshoe, TX 79347. Second Class Postage paid at Muleshoe, TX. POSTMASTER: Send address changes to the Bailey County Journal, P.O. Box 449, Muleshoe, TX 79347. We are qualified members of: Panhandle Press Association, National Newspaper Association, West Texas Press Association and Texas Press Association

WEST TEXAS PRESS ASSOCIATION



PPA Panhandle Press Association

Scott Stinnett, Publisher  
Lisa Stinnett, Vice-President/Comptroller  
Ron Smith, Editor  
Andrea Kemp, Classifieds  
Leah Bell, Advertising

© 1990

SUBSCRIPTIONS: Muleshoe Journal and Bailey County Journal  
By Carrier Yearly - \$22.00  
Bailey County — by mail - \$24.00  
Elsewhere - \$26.00  
Advertising Rate Cards on Application

\*Advertisers should check their ad the first day of insertion. The Journals will not be liable for failure to publish an ad or for a typographical error or errors in publications except to the extent of the cost of the ad for the first day of insertion. Adjustment for errors will be limited to the cost of that portion of the ad where the error occurred.\*

### CONFERENCE

from page 1

• Craig Fincham on risk management.

"Every year these conferences provide farmers a wealth of information on ways to improve their crop and livestock enterprises," said Jett Major, Extension district director for agriculture in Lubbock.

"The information provided at each conference is specifically designed to help producers in that region or county," he added.

The conferences also offer producers a chance to earn continuing education units for their private applicator licenses.

The conferences also feature

agribusiness exhibits.

A Jan. 18 Olton conference, known as the Llano Estacado Cotton Conference, is scheduled from 7:30 a.m. to 3:45 p.m. at the Olton Ag Center.

Speakers will address cotton production and marketing, alternative crops, risk management and crop insurance.

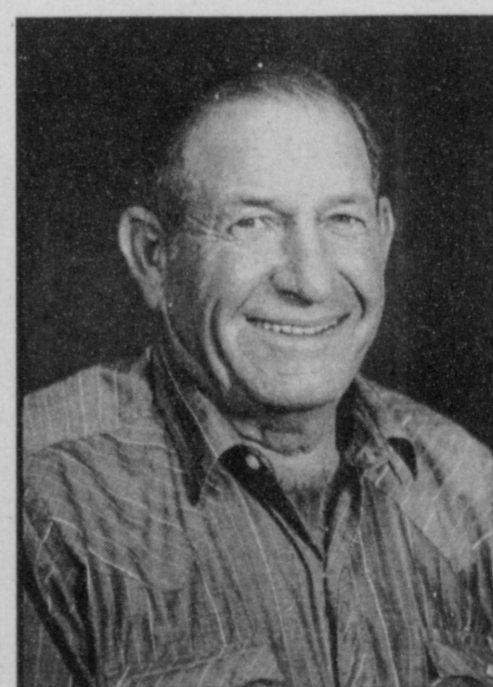
Similar conferences in the area include the Southern Mesa Ag Conference at Lamesa on Jan. 17, The Caprock Cotton Conference at Floydada on Jan. 18 (same day as the Olton event) and the West Plains Cotton Conference at Whiteface on Jan. 19.

### SHOW

from page 1

awarded to the exhibitors in accordance with their placement in the show and the rules governing funds distribution.

It is important for sale participants to know that this is a premium sale and the animals are not actually purchased by the buyer. The general public is encouraged to attend and participate in the sale. Many donated products will be auctioned off along with the animals, and the proceeds all go to benefit the youth.



"I want to be your Precinct 1 Commissioner. I will strive to give you the service you deserve."

## Donald Harrison Announces His Candidacy for Bailey County Commissioner Precinct 1

I have lived in Muleshoe since 1941. I am married to the former Bobbie Collins. We have two children, four grandchildren and two step-grandchildren. Bobbie is employed at Bailey County Farm Bureau.

I am retiring this year and will be able to devote my full time to being your commissioner.

After eighteen years, I am departing from Wheelabrator Coal Services of Muleshoe. I have been a heavy equipment operator, motor maintenance person for five years, and shift foreman. I am experienced with the repairs and upkeep of Caterpillar equipment.

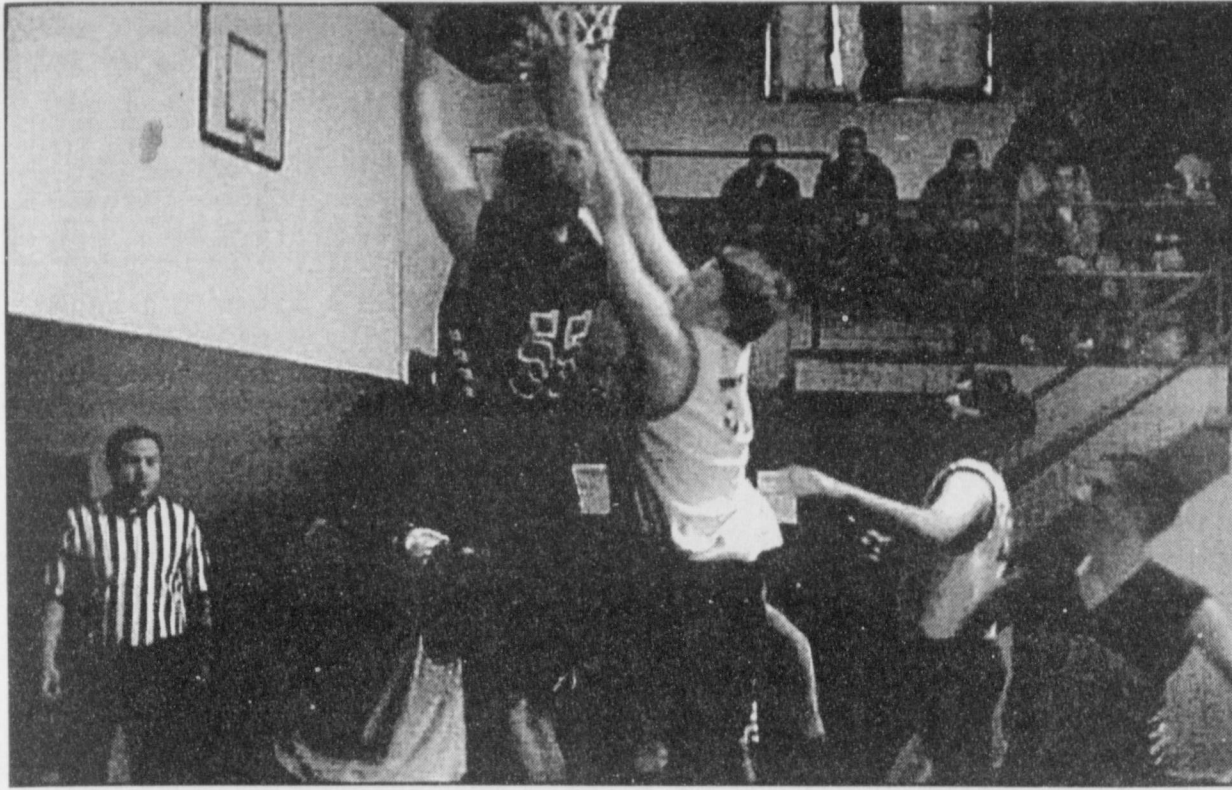
Prior to my employment with Wheelabrator Coal Services, I had my own custom harvesting business.

I have been a member of the Muleshoe Volunteer Fire Department since 1961. I was Assistant Fire Chief for five years and am presently serving my tenth year as Fire Chief.

I served twenty-six years on the Bailey County Junior Livestock Show board and continue to help the 4-H and FFA youth.

Pol. adv. paid for by Donald Harrison





Journal photo: Janie Sherbon

### Lazbuddie battle

Lazbuddie's Jake Loudder (No. 55) battles M. Eisenwine of Amherst for a rebound during Thursday's early action in the Lazbuddie junior varsity and junior high basketball tournament, which was scheduled to last through Saturday. Watching for his own chance at the ball is the Longhorns' Shannon Redwine (No. 12). A spokesman for the Lazbuddie Athletic Department said 60 games were scheduled during the tournament. The Lazbuddie JV came up short against Amherst, 80-29.

## Help session for small meat processors planned

**SPECIAL TO THE JOURNAL**  
COLLEGE STATION — A one-day help session to assist small-scale meat processors in finalizing their Hazard Analysis Critical Control Points will be held Jan. 14 at Texas A&M University.

The session is designed for companies that have initiated or even completed the process of writing their HACCP plans.

According to Dr. Jeff Savell, professor in the animal science department, "We realize that many small and very small food processors are still struggling with issues associated with writing, validating and implementing their HACCP plans."

The program includes a program update, followed by a segment during which the processors can discuss their plans one-on-one with experts.

The program stems from federal food safety programs and requires the food industry to identify the sources of potential contamination in food production and transportation and then put

in place preventive measures.

"We are rapidly drawing closer to the next HACCP implementation deadline for very small-scale processors," Savell said.

There is no registration charge

for participants to attend the help session. However, space is limited and participants must register for their one-on-one appointments and specify the number of people attending by calling Pam McConal at (409) 845-3935.

**Muleshoe Meals on Wheels**  
wishes to take this opportunity to thank each of you for making our year such a success.

**YOUR GENEROUS DONATIONS ARE GREATLY APPRECIATED.**

16th & D Church of Christ  
Alco Store  
Alene Bryant  
Bailey County Adult Probation Department  
Five Area Telephone Cooperative, Inc.  
Muleshoe A.A.R.P.  
Muleshoe Motor Company

Sain Irrigation & Machine  
SPS Employees of Talk  
Trinity Baptist Church  
Truth Seekers Sunday School Class of First Baptist Church  
United Supermarkets  
Wesley Sunday School Class of First Methodist Church  
West Plains Telecommunications, Inc.



## AROUND THE AREA

### Conservation district cancels election

The High Plains Underground Water Conservation District has declared that all unopposed candidates in the Jan. 15 election are duly elected and the election will not be held.

That means Dale Gober of Bovina will serve his second four-year term as the director representing Bailey and Parmer counties and a portion of Castro County.

The new Bailey County Committee consists of Gerald Shanks, Lavon Hunt, Rodger Buhrman, Jerry Nichols and Joe King, all of Muleshoe.

The Castro County Committee consists of Ronnie Hoelting of Nazareth and Kevin Riley and Vic Nelson, both of Dimmitt.

The Parmer County Committee is made up of Mitchell Wiseman of Friona, Ellen Gallman of Lazbuddie, and Tommy Williams, Todd Christian and Pat Ware, all of Farwell.

### Clovis college sets registration

Spring registration at Clovis Community College is scheduled for Jan. 12-13.

Students who have not applied for admission should report to the college's admissions office, Room 126.

Those who have already applied for admission may register in Room 101 in the order listed on Page 7 of the college's Spring Course Schedule.

Senior citizens who wish to receive a reduced tuition rate may register Jan. 14. Late registration will continue through Jan. 21. More information about registration is available by calling (505) 769-4025.

Students enrolling at the college for the first time should plan on attending one of two Jan. 10 orientation sessions, either 9 a.m. (Mountain time) to 10:30 a.m. or 5 p.m. to 7:30 p.m. These students may register Jan. 10-11. More information is available by calling (505) 769-4112.

### SPC sets alternative TASP tests

South Plains College in Levelland has scheduled an alternative exam for Jan. 13 for students who have not yet taken an official TASP test and did not sign up for the Jan. 10 test.

Monday's test is to begin at 10 a.m. on the third floor of the library building; the fee is a \$29 money order, payable to the college. Students also need to bring a driver's license and one other form of identification.

The additional test will be given Jan. 13 at 9 a.m. and 1 p.m. during open enrollment.

Orientation for new full-time students is scheduled for 8 a.m. to 4 p.m. Jan. 11 and will include advisement and pre-registration for spring classes.

TASP is now required of nearly all students before they can enrollment in college-level classes at a Texas public college or university.

More information is available by contacting the college's counseling office at (806) 894-9611, ext. 2366 or ext. 2368.

### Dimmitt man gets light sentence

A federal judge in Amarillo has given a Dimmitt resident the minimum sentence for his role in a vehicle scam.

Raul Tijerina, 35, was sentenced to eight months in prison and ordered to report to prison by Jan. 24. He has been free on a \$25,000 bond in the case.

Tijerina pleaded guilty in October to possessing and intending to sell a Jeep with the knowledge that it was stolen and had an altered vehicle identification number.

Officers discovered vehicles with altered VIN numbers, along with tools for making the plates that display the numbers, when they raided Tijerina's after receiving a narcotics tip.

He still faces a charge of possessing more than 460 grams of methamphetamine with a street value estimated at about \$500,000. He posted a bond of \$200,000 in that case.

### Ground broken for prison

The city of Littlefield was scheduled to break ground Friday for its proposed Bill Clayton Detention Center.

The project had been planned as a juvenile detention center and is still expected to house young offenders when it opens, but the word "juvenile" was left out of the name so the facility will be able to house older inmates should the occasion arise.

The 112-bed facility will be located half a mile south of U.S. 84.

### Power wheelchairs available

Miracle on Wheels makes available electric wheelchairs to non-ambulatory senior citizens (age 68 and up) in the area, usually at no cost if the people qualify. No deposit is required.

The wheelchairs are provided to those who cannot walk and cannot self-propel a manual wheelchair in their home or independent-living

quarters and who meet the additional qualifications of the program.

This service also may be available to the permanently disabled of any age.

More information is available by calling (800) 749-8778 or visiting [www.durablemedical.com](http://www.durablemedical.com).

### Nurse aide class is postponed

The starting date for South Plains College's course in nurse aide training has been postponed from Jan. 10 to Jan. 19.

Students in the course will complete 56 hours of classroom instruction and 24 hours of clinical instruction and then take the State of Texas Certified Nurse Aide Competency Examination.

Registration is still being accepted. More information is available by calling (806) 894-9611, ext. 2341.

### Depth-to-water survey under way

The High Plains Underground Water Conservation District is in the process of making the annual depth-to-water measurements to determine the effect of pumpage on groundwater levels in the 15-county district area.

The measurements are made in a network of more than 1,200 privately owned wells, spaced at about nine square miles per well throughout the district.

District personnel make the measurements by lowering a steel tape to a pre-determined depth in the well. The lower several feet of the tape are coated with carpenters' chalk, which turns a darker blue when it comes in contact with water.

The same wells are used in the survey every year so the latest measurements can be accurately compared to those of the previous year.

More information is available by calling the district office at (806) 762-0181.

## Deadline near for seeking courthouse aid

**SPECIAL TO THE JOURNAL**

AUSTIN — The Texas Historical Commission's Texas Historic Courthouse Preservation Program has several upcoming deadlines for counties interested in applying for grant money to restore historic courthouses.

Bailey County is among those in the process of refurbishing courthouses.

The deadline to submit a master plan for Historical Commission approval is Feb. 1.

The master plan is a comprehensive planning document that includes historical background on the courthouse as well as a detailed analysis of its architectural integrity, current condition and future preservation needs.

The master plan is a prerequisite to applying for a grant and must be submitted to and approved by the commission prior to the county sending a grant application.

The commission will accept completed master plans right up until the Feb. 1 deadline. Then, the counties face a deadline for grant applications of March 7.

Additional information about master plan requirements and the application process is on the commission's web site, [www.thc.state.tx.us](http://www.thc.state.tx.us).

More information is available by contacting Dan Utley at (512) 463-6218.

Come See The All New Ford

# FOCUS

## 5 IN STOCK

ALL BODY STYLES IN STOCK

Payments beginning at

# \$250/mo.\*

## ZERO \$\$ DOWN

Stop by today and let Staci, John, Larry or Wanda show you the new Focus!



See our complete vehicle lineup at [muleshoemotor.com](http://muleshoemotor.com)

1226 West American Blvd. • 272-4251 • 1-800-432-7617

\* 36 month FMCC RCO with Approved Credit. Pymts. plus TT&L. MSRP \$13,525; 6.75% ; balloon \$6,492.

## "Telecommunication Needs"

### Hometown Company Pride

**IF** your Long Distance Carrier -or- your Cellular Company -or- your Paging Company -or- your Internet Company -or- your Telecommunications Sales and Service Company **DOES NOT;**

- ✓ **Employ Local Area People**
- ✓ **Support the Local Area Economy**
- ✓ **Pay Taxes to your State, County, City, Hospital or Schools**
- ✓ **Support the City, County, Hospital, Nursing Homes, Schools, Churches, Civic Clubs and Youth Organizations**

-THEN-

## HAVE YOU CONSIDERED?

That you are supporting an out of the area company that does nothing for your community!

We believe in supporting and investing in our communities

Bula Earth Lariat Lazbuddie Lehman Maple  
Muleshoe Needmore Olton Springlake Sudan

## "The Five Area Telephone Organization"

Five Area Telephone Cooperative, Inc.  
West Plains Telecommunications, Inc.

Five Area Systems, Inc. Five Area Long Distance  
Plateau Wireless Five Area Paging Five Area Internet  
&

Supporting Five Area Community Telecommunications  
"FACT" (Schools)

-----Locally Owned & Operated-----



# BAILEY COUNTY DEVOTIONAL PAGE

**MULESHOE MOTOR CO.**  
 1225 W. American Blvd. 272-4251

**WES-TEX FEED YARDS, INC.**  
 Custom Cattle Feeding  
 272-7555 Muleshoe, TX

**IRRIGATION PUMPS & POWER**  
**ZIMMATIC CENTER-PIVOTS**  
 W. Hwy. 84 272-4483

**MULESHOE VALLEY INC.** West Hiway 84  
 272-4266 Muleshoe

**AGRO DISTRIBUTION**  
 Hwy. 84 • 272-4203  
 Muleshoe, Texas Bruce Bruns - Mgr.

**Tino's SERVING BUFFET**  
 OPEN 7 DAYS Hours: 11 am-2 pm Tues. & Sun.  
 272-7528 5 pm-8:30 pm Close at 2 pm

**WEST CAMP GIN, INC.**  
 Better Ginning & Courteous Service  
 James & Phyllis Rt. 2 Box 1000 • 925-6681  
 Shepard Muleshoe, TX

**Leal's** 107 E. Ash  
 Muleshoe, TX  
 Tortilla Factory, Inc. 272-5772

**BRUCE, INC.** TAOL-B003350C, LP08638  
 HEATING & AIR CONDITIONING  
 Hwy. 214 North Muleshoe 272-5114

**Henry Insurance Agency, Inc.**  
 "Serving You Since 1964"  
 111 West Avenue B 272-4581  
 Muleshoe, TX

**minsa corporation**  
 P.O. Box 484 272-5545  
 Muleshoe, TX  
 FAX (806) 272-5135 (800) 852-8291

**SAIN IRRIGATION & MACHINES**  
 Complete Pump Service  
 W. American Blvd. 272-4397  
 Walt Sain Muleshoe, TX 272-4148

**AG AVIATION**  
 2 1/2 miles North on HWY 214  
 272-3066 FAX 272-3534  
 P.O. Box 68 • Muleshoe, TX

**BAILEY COUNTY ELECTRIC COOPERATIVE ASSN.**  
 Muleshoe — 272-4504 Morton — 266-8500

**MULESHOE PEA & BEAN, INC.**  
 RR 2, Box 297 272-5589  
 Muleshoe, TX

**PARMER Co. COTTON GROWERS Co-OP GIN**  
 825-3701  
 RON RILEY-GENERAL MGR. FARWELL, TX

**United Supermarkets**

**AZTECA MILLING L.P.** 1/4 Mile East On Hwy. 84  
 272-6701 Muleshoe, TX FAX 272-6703


**"Do All" Family Enterprises**  
 302 W. 7th (N. Entrance) • 272-4725  
 Muleshoe, Texas  
 Gift Wrapping Shipping Via UPS Party Planning Catering & Floral Design Minor Home Repair & Remodeling

**NEEDMORE Co-OP GIN COMPANY**  
 946-3361 • Sudan, TX

*Facts About The* **BIBLE** *BY JOHN LEHTI*

**THE TAR PITS OF SIDDIM**

EARLY IN THE BIBLE THE MENTION OF SLIME AS A MATERIAL FOR CEMENTING BRICKS IS NOTED IN THE STORY OF THE TOWER OF BABEL. (GEN.11:3) THIS MATERIAL IS WHAT WE CALL TODAY BITUMEN OR ASPHALT WHICH SINKS IN WATER, IS EASILY MELTED AND IS VERY INFLAMMABLE. IT HAS BEEN DESCRIBED AS PETROLEUM HARDENED BY EVAPORATION AND OXYDATION, AND IT MAY VARY FROM A SOLID TO A SEMI-LIQUID CONDITION. THERE ARE MANY PLACES WHERE BITUMEN, OR ASPHALT, EXISTS AT OR NEAR THE DEAD SEA. IN FACT, THE GREEKS AND ROMANS CALLED THE DEAD SEA LAKE ASPHALTITES. BUT OF ALL THE ACCOUNTS OF THIS TAR, OR ASPHALT, THE MOST OUTSTANDING SEEMS TO BE THE STORY OF THE BATTLE OF THE KINGS OF SODOM AND GOMORRAH IN WHICH THE KING LOST AN IMPORTANT BATTLE, THEIR ARMIES AND THEIR VERY LIVES! THE KINGS HAD DECIDED TO RETREAT WITH THEIR TROOPS INTO THE VALE OF SIDDIM, WHICH HAD MANY PITS OF TAR, OR SLIME, AND THERE WERE SO ENTRAPPED BY THIS STICKY SUBSTANCE THAT THEY LOST THEIR MOST IMPORTANT BATTLE, THEIR THRONES AND THEIR LIVES!



SAVE THIS FOR YOUR SUNDAY SCHOOL SCRAPBOOK.

This devotional & directory is made possible by these businesses who encourage all of us to attend worship services.

**ASSEMBLY OF GOD**  
**FIRST ASSEMBLY OF GOD**  
 521 South First Street • 272-3017  
 Jack Stone, Min. • 272-3984  
 S.S. 9:45 am, W.S. 11 am & 6:30 pm, Wed. 7:30 pm

**EL BUEN PASTOR**  
 415 E. Ave. F • Pastor Felix Cadena  
 S.S. 9:45 am, W.S. 11 am & 6 pm; Wed. 7 pm

**BAPTIST**  
**CALVARY BAPTIST**  
 1733 W. Ave. C. Rev. Jeff Coffman

**CIRCLE BACK BAPTIST**  
 Intersection FM 3397 & FM 298  
 Jessie Shaver, Min • 946-3676

**FIRST BAPTIST**  
 220 West Ave. E., Stacey Conner, Min.

**FIRST BAPTIST**  
 Lazbuddie • 965-2126

**PRIMERA IGLESIA BAPTISTA**  
 223 E. Ave. E, Rev. Greg Guzman

**PRIMITIVE BAPTIST**  
 621 South First, Elder Cleveland Bass, Min.

**PROGRESS BAPTIST**  
 Progress, TX

**PROGRESS SECOND BAPTIST**  
 Arthur Hays, Min.  
 1st & 3rd Sundays

**RICHLAND HILLS BAPTIST**  
 17th & West Ave. D, Randy Tucker, Pastor

**ST. MATTHEWS BAPTIST**  
 Corner of W. Boston & W. Birch  
 Floyd R. Monroe, Min.

**THREE WAY BAPTIST**  
 927-5467

**TRINITY BAPTIST**  
 314 E. Ave. B, Robert Brown, Min.

**CATHOLIC**  
**IMMACULATE CONCEPTION CATHOLIC CHURCH**  
 805 E. Hickory, Joseph Agustine, Min.

**CHARISMATIC EPISCOPAL**  
**ST. CLEMENTS**  
 1536 W. American Blvd. • 272-5954  
 Father Sergio Leal  
 Sun. W.S. 10:30 am

**CHRISTIAN**  
**TRINITY CHRISTIAN CENTER**  
 1723 W. American Blvd. • 272-3877  
 Reydon Stanford, Min.

**CHURCH OF CHRIST**  
**LARIAT CHURCH OF CHRIST**  
 Sam Billingsley, Min.  
 S.S. 10 a.m.; W.S. 11 a.m. & 6 p.m., Wed. 7 p.m.

**LAZBUDDIE CHURCH OF CHRIST**  
 Nathan Crawford, Min.  
 S.S. 9:30 am; W.S. 10:20 am & 5 pm; Wed. 7 pm

**MULESHOE CHURCH OF CHRIST**  
 22nd & W. American Blvd.  
 Harry Riggs, Min.  
 Albert Garcia, Min. (Spanish service)  
 S.S. 9:30 am; W.S. 10:20 am & 6 pm; Wed. 7:30 pm

**16th & AVE. D CHURCH OF CHRIST**  
 Curtis Shelburne, Min. • 272-4619  
 S.S. 10:30 am & 1:30 pm; Wed. 7:00 pm

**LUTHERAN**  
**ST. JOHN LUTHERAN**  
 Lariat, TX-David Simm, Min.  
 S.S. 10:30 am; W.S. 9:30 am

**METHODIST**  
**FIRST UNITED METHODIST**  
**HISPANIC MINISTRIES**  
 E. 5th and E. Ave. D  
 Pastor Benito Cavazos

**FIRST UNITED METHODIST**  
 507 W. 2nd St.  
 Pastor Brad Reeves

**LAZBUDDIE METHODIST**  
 965-2121

**EL DEVINO SALVADOR**  
 814 W. Ave. C, Muleshoe, TX  
 Guadalupe Ballinas, Min.

**NAZARENE**  
**NEW VISION CHURCH OF THE NAZARENE**  
 814 W. Ave. C • 272-3622  
 Hugh Hayes, Interim-S.S. 10 & 11 am;  
 W.S. 7 pm

**PENTECOSTAL**  
**UNITED PENTECOSTAL LIGHTHOUSE**  
 207 East Ave. G • 1-800-454-6051  
 Pastor McKibben, S.S. 10 am  
 Thursday, Bible Study 7 pm

**INTER DENOMINATIONAL**  
**NEW COVENANT**  
 Plainview Hwy. Jimmy Low, Min.  
 Steve Claybrook, Assoc. Pastor  
 W.S. 10 am; Wed. 7 pm

**Shipman's Body Shop**  
 Auto Painting • Wrecker Service • Free Estimates  
 Tractor Glass & Windshields  
 410 N. 1st Muleshoe, TX  
 272-4408 FAX 272-3366

**Muleshoe Feed Barn**  
 311 W. American Blvd. HI-PRO  
 Muleshoe, TX  
 272-5626 FEEDS

**JAMES CRANE TIRE CO., INC.**  
 107 Main 272-4594  
 Muleshoe, TX  
 Mike Hahn

**BOVINA FEEDERS, INC.**  
 Custom Cattle Feeders  
 Route 1 • Farwell, TX  
 (806) 825-2103 or 825-2113

**MOHAWK AUTO PARTS**  
 1701 W. American Blvd.  
 272-4425 Muleshoe, TX

**TEXAS FARM BUREAU INSURANCE CO.** Life-Auto-Home-Crop  
 1612 W. American Blvd. • 272-4567 • Muleshoe

**Decorators Floral & Gifts**  
 616 South First 272-4340  
 Muleshoe, TX

**WINKLES TRUCKS, INC.**  
 Box 757 (806) 247-2724  
 Friona, TX

**Two locations to serve you**  
 1900 W. American Blvd. 272-5337  
 107 E. American Blvd. 272-3978  
 Muleshoe, TX

**ST. BANK** MEMBER FDIC  
 202 South First 272-4515

**Dairy Queen**  
 1201 W. American Blvd.  
 272-3412 Muleshoe  
 Local Owners Jack & Joy Nicholson

**MULESHOE AREA HEALTHCARE Center**  
 "Committed to Caring"  
 106 W. Ave. H Muleshoe 272-7578

1315 W. American Blvd.  
 272-3333  
 Muleshoe, TX

**"THE FIVE AREA TELEPHONE COOPERATIVE ORGANIZATION"**  
 West Plains Telecommunications Co.  
 Five Area Systems, Inc., Plateau Cellular Network  
 Five Area Long Distance - Five Area Internet  
 302 Uvalde Muleshoe, USA (806) 272-5533

**WESTERN DRUG**  
 1411 W. American Blvd. 272-3106 Muleshoe

**FIRST TEXAS FLBA MULESHOE**  
 "Serving Farmer & Bailey Counties"  
 272-3010 • Fax 272-5388  
 316 Main • P.O. Box 424 • Muleshoe, TX

**MAPLE COOP GIN**  
 927-5501  
 Maple, Texas

**MULESHOE LIVESTOCK AUCTION**  
 Muleshoe, TX • Sale Every Saturday  
 Clayton, C.L. & Thurman Myers • 272-4201

**FARMERS CO-OP ASS'N**  
 of ENOCHS  
 "Your Farmers Owned Gin"  
 Chemicals • Seed • Fuel & Oil • Fertilizer  
 806-927-5511 Wade Baker, Mgr.

**PACO FEED YARD, INC.**  
 Commercial Cattle Feeders  
 P.O. Box 956 265-3281  
 Friona, TX  
 Feller Hughs-Mgr.

**Lowe's MARKETPLACE**  
 401 W. American Blvd. • Muleshoe • 272-4585

**THE TRINITY COMPANY**  
 MULESHOE, TEXAS

**CENTRAL COMPRESS & WAREHOUSE**  
 SUDAN, TEXAS

**Boehning Dairy**  
 965-2708  
 Brian Boehning Earth, Texas

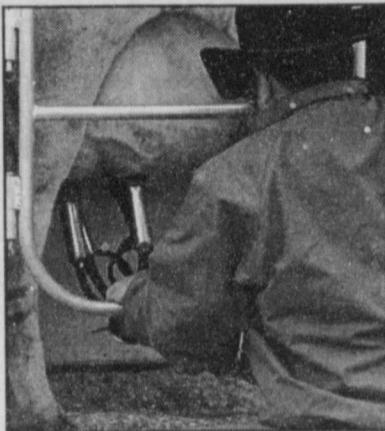




Journal photos: Janie Sherbon

### How a dairy works

Cody Lightfoot, who travels with the mobile dairy that visited Dillman Elementary School on Wednesday, explains the milking process (above) to Dillman second-graders as Esperanza the cow, known also as "Espy," waits patiently behind him. Then he attaches the milking machine (right) and students watch as milk begins to flow into a container.



## HONOR ROLL

### WATSON JUNIOR HIGH Third Six Weeks Sixth grade

- Brady Black
- Brook Bettleman
- Ashley Dickson
- Arsenio Geter
- Lindsey Hall
- William James
- Chelsea López
- Vanessa López
- Lorenzo Nuñez
- Janice Pacheco
- Monica Posadas
- Randall Radford
- Christine Reeves
- Madison Smith
- Hillary Tipps
- Cami Vandiver
- Corey Wallace
- Brandi Wood
- Emily Zackoski

### Seventh grade

- Elena Aburto
- Cristobal Almanza
- Ashley Beggs
- Michael Black
- Robert Bomer
- Thomas Bonds
- Kami Brown
- Brady Broyles
- Morgan Burton

The family of Karla Stroud Conner expresses heartfelt thanks to each person for your gifts of love through her recent illness and passing. We are grateful for your prayers and your many acts of kindness and support.

Dwayne Conner Joe & Kat Stroud  
Truman & Martha Stroud The Brandon Hall family

## T.J.'s Donuts

of Muleshoe

328 S. Main St. 272-3542

All specials come with bread, dessert and drink.

- Monday** — Steak fingers, french french, gravy, toast and salad or Mushroom burger with french fries
- Tuesday** — Chicken strips, french fries, gravy, toast and salad or Bacon swiss burger with french fries
- Wednesday** — Hot steak sandwich, gravy, salad, french fries and toast or Chill cheeseburger with french fries
- Thursday** — Ribeye steak, baked potato and salad or Cheeseburger with french fries
- Friday** — Fish platter, hush puppies, french fries, toast and salad or Chicken fried steak, french fries, gravy, salad and toast

**WE NOW HAVE TWO SIZES OF CAPPUICINO!**

Open Monday thru Friday, 5 am to 2 pm • Saturday, 5 am to 1 pm

## OBITUARIES

### VERNON O. BROWN

Services were held Friday at the Second Baptist Church in Amarillo for Vernon O. Brown, 66, of Dumas. The Rev. Charles Jones officiated.

Morrison Funeral Directors of Dumas handled arrangements.

Mr. Brown was born April 22, 1933, in Melrose, N.M. He died Tuesday in Dumas.

He had lived in Dumas for 14 months and was a longtime Guymon, Okla., and Muleshoe resident. He was a farmer and welder.

He was a member of Calvary Baptist Church in Muleshoe and was a U.S. Army veteran of the Korean War.

He is survived by two sons, Dan R. Brown of Lubbock and Robert V. Brown of Post; a daughter, Frances R. Zion of Amarillo; a stepdaughter, Robin Alexander of Dumas; his special friend, Mickey Alexander of Dumas; three brothers, Charles

Brown of Brownfield, Leo Brown of Amarillo and Joe Ed Brown of Houston; two sisters, Mabel Howard of Muleshoe and Ethal Mae Widner of Jacksboro; and eight grandchildren.

The family suggests memorials to Memorial Hospice, 224 E. Second, Dumas 79029.

### JOE EVERETT DEWBRE

Services were held Friday at the First Assembly of God in Morton for Joe Everett Dewbre, 71, of Clyde, Texas. The Revs. Forest Srader and Jimmy Ray Bennett officiated. Burial was in Morton Memorial Cemetery.

Ellis Funeral Homes handled arrangements.

Mr. Dewbre was born April 17, 1928, in Crosbyton. He died Tuesday in Midland.

He married Edith Estelle Bennett in Lubbock on June 22, 1945. He was a lay minister and a member of the First Assembly of God in Morton.

He is survived by his wife;

two sons and daughters-in-law, Justin and Sandra Dewbre of Mesquite and Randy and Linda Dewbre of Abilene; two daughters and a son-in-law, Kathie and Jim Curfew of Midland and Lynn Rosebery of Austin; two sisters, Lucille Freeman of Eden, Texas, and Mary Schultz of Levelland; a brother, Percy Dewbre of Morton; 11 grandchildren; and 12 great-grandchildren.

He was preceded in death by three brothers, Virgil, Bill and R.Z. Dewbre, and three sisters, Cora Langdon, Goldie Singleton and Mattie Billington.

### FILEMON ANTILLON

Services were held Wednesday at St. Ann's Catholic Church in Bovina for Filemón Beltrán Antillón, 78, of Bovina. The Rev. Fern Couture and Deacon John Nino were the celebrants. Burial was in Bovina Cemetery.

Ellis-Blackwell Funeral Home of Friona handled arrangements.

Mr. Antillón was born Aug. 1, 1921, at Nacore, Sonora. He died Monday at home.

He moved to Bovina in 1974 from Chihuahua and had been a farmhand in the Bovina area for 25 years. He was a member of St. Ann's Catholic Church in Bovina.

He is survived by his wife, Olga; three sons, Filemón Antillón Jr. of El Paso and Ricardo Antillón and Sergio Antillón, both of Bovina; seven daughters, Lorena Antillón, Rosalva Antillón and Mirna Jiménez, all of El Paso, Olga Gómez of Guymon, Okla., Yesenia Guillén of Eunice, N.M., Guadalupe Robles of Bovina and Maria F. Vega of Friona; two sisters, Hortencia Antillón of Chihuahua and Carolina De La Vega of La Junta, Mexico; 30 grandchildren; and five great-grandchildren.

He was preceded in death by a daughter, Mirna Olga Antillón.

When you cast your vote March 14...

**Vote**  
**RONNIE KEMP**  
for Bailey County Sheriff



★★★ VOTE FOR ★★★

- ✓ Twenty six years of Law Enforcement experience
- ✓ Eight years Supervisory & Management experience
- ✓ Four years Investigative experience
- ✓ Narcotics Investigative experience
- ✓ Extensive schooling in Search & Seizure and Laws of Arrest
- ✓ Integrity & Impartiality
- ✓ A Dedicated Professional
- ✓ Muleshoe Graduate
- ✓ Devoted husband & father
- ✓ Decorated Army veteran
- ✓ Self motivation. Since 1998, I have started new evidence holding procedures and have initiated a night shift for deputies.



**Tap Into The Experience**

Rt. 2 Box 1260, Muleshoe, Texas 79347, 806-272-3002

Thanks for reading the Journal!

# JANUARY PRICE BUSTER SALE!

TRADES ARE WELCOME! Call for a quick quote on any new car or truck 800-299-2438!

SALE PRICES GOOD thru January 14th, 2000. All prices or payments include rebates and/or discounts. All vehicles are subject to prior sale.

**2000 GMC Jimmy SLE**  
4x4 #7619-G

**\$299.00** per mo.

4.30% A.P.R. 36 Mos. GMAC Smart Buy \$2,296.46 Down + TT&L \$ P \$27,224.58, 35 @ \$299.00, 1 @ \$17,185.92, W.A.C. 12,000 miles per year, MSRP \$29,128.00

**2000 Buick LeSabre Custom**  
#7738

**\$399.00** per mo.

7.60% A.P.R. 36 Mos. GMAC Smart Buy \$1,175.48 Down + TT&L \$ P \$24,417.72, 35 @ \$399.00, 1 @ \$13,455.56, W.A.C. 12,000 miles per year, MSRP \$25,953.00

**2000 Chevrolet S-10 Reg. Cab Pickup**  
#7668-T

**\$99.00** per mo.

4.30% A.P.R. 36 Mos. GMAC Smart Buy \$2,386.43 Down + TT&L \$ P \$13,991.34, 35 @ \$99.00, 1 @ \$8,273.30, W.A.C. 12,000 miles per year, MSRP \$14,610.00

## Pre-Owned Vehicles

<b>1991 Buick Century Limited #273GMA</b> ..... \$3,495	<b>1999 Pontiac Grand Am #363GM</b> ..... \$14,495	<b>1998 Chevrolet Ext. Cab #7141TA</b> ..... \$18,900	<b>1992 Dodge Grand Caravan #7489TA</b> ..... \$4,995
<b>1996 Oldsmobile Ciera #5295CA</b> ..... \$8,495	<b>1998 Buick Century #372GM</b> ..... \$14,495	<b>1997 Toyota T100 Ext. Cab #336XA</b> ..... \$14,900	<b>1996 Chevrolet Astro #7465GA</b> ..... \$9,995
<b>1995 Mercury Sable #326GMA</b> ..... \$8,495	<b>1998 Pontiac Sunfire #373GM</b> ..... \$10,750	<b>1995 Chevrolet Ext. Cab 4x4 #7540TA</b> ..... \$13,995	<b>1989 Dodge Caravan #7603TA</b> ..... \$2,995
<b>1994 Oldsmobile Cutlass #7164TB</b> ..... \$7,995	<b>1999 Buick LeSabre #376GM</b> ..... \$18,995	<b>1995 Chevrolet Ext. Cab 4x4 #7371GB</b> ..... \$11,900	<b>1992 Chevrolet Conversion Van #7475BB</b> ..... \$6,995
<b>1995 Pontiac Bonneville #7192GB</b> ..... \$8,995	<b>1999 Pontiac Grand Prix #383GM</b> ..... \$18,995	<b>1995 Chevrolet Ext. Cab 4x4 #7687TA</b> ..... \$23,900	<b>1999 Chevrolet Conversion Van #7475BB</b> ..... \$6,995
<b>1995 Buick Regal #7467PA</b> ..... \$7,995	<b>Sport Utility Vehicles</b>	<b>1998 Chevrolet Ext. Cab 4x4 #7722TA</b> ..... \$22,995	<b>1999 Chevrolet Astro Van #7465GA</b> ..... \$9,995
<b>1995 Ford T-Bird #7450CB</b> ..... \$8,995	<b>1996 Jeep Grand Cherokee #6617CA</b> ..... \$16,900	<b>1996 Chevrolet Ext. Cab 4x4 #7766TA</b> ..... \$19,495	<b>1992 Chevrolet Conversion Van #7475BB</b> ..... \$6,995
<b>1996 Mercury Sable #7465GA</b> ..... \$8,495	<b>1997 Ford Explorer 4x4 #7370TA</b> ..... \$17,950	<b>1993 Chevrolet Ext. Cab 3/4 Ton #7784TA</b> ..... \$11,995	<b>1994 Jeep Cherokee #7545TA</b> ..... \$9,995
<b>1996 Chevrolet Astro Van #7465GA</b> ..... \$9,995	<b>1997 GMC Jimmy 4x4 #374GM</b> ..... \$19,995	<b>1996 Chevrolet Astro #380GM</b> ..... \$18,995	
<b>1992 Chevrolet Conversion Van #7475BB</b> ..... \$6,995	<b>1999 Oldsmobile Bravada #375GM</b> ..... \$24,995	<b>1997 Chevrolet Astro #380GM</b> ..... \$18,995	
<b>1994 Jeep Cherokee #7545TA</b> ..... \$9,995	<b>1999 Chevrolet Blazer 4x4 #378GM</b> ..... \$22,995	<b>1997 Chevrolet Suburban #7682TA</b> ..... \$21,995	
	<b>1995 Chevrolet Suburban 4x4 #7523GA</b> ..... \$18,900	<b>1999 Chevrolet Blazer 4x4 #381GM</b> ..... \$22,995	
	<b>1997 Chevrolet Tahoe #75950A</b> ..... \$24,950	<b>1995 Ford Bronco XLT 4x4 #7654TA</b> ..... \$12,900	
	<b>1997 Chevrolet Suburban #7682TA</b> ..... \$21,995		
	<b>1999 Chevrolet Blazer 4x4 #381GM</b> ..... \$22,995		
	<b>1995 Ford Bronco XLT 4x4 #7654TA</b> ..... \$12,900		

**Trucks**

**1998 Chevrolet Ext. Cab #7141TA** ..... \$18,900

**1997 Toyota T100 Ext. Cab #336XA** ..... \$14,900

**1995 Chevrolet Ext. Cab 4x4 #7540TA** ..... \$13,995

**1995 Chevrolet Ext. Cab 4x4 #7371GB** ..... \$11,900

**1998 Chevrolet Ext. Cab Z71 4x4 #7687TA** ..... \$23,900

**1998 Chevrolet Ext. Cab 4x4 #7722TA** ..... \$22,995

**1996 Chevrolet Ext. Cab 4x4 #7766TA** ..... \$19,495

**1993 Chevrolet Ext. Cab 3/4 Ton #7784TA** ..... \$11,995

**1996 Chevrolet Ext. Cab 4x4 #7670TA** ..... \$19,995

**1997 Chevrolet S/W #7805TA** ..... \$13,995

**Vans**

**1994 Plymouth Grand Voyager #6545TA** ..... \$7,795

**1998 Oldsmobile Silhouette #365GM** ..... \$19,900

**1996 Plymouth Voyager SE #7066TA** ..... \$11,900

**1991 Plymouth Grand Voyager #335GMB** ..... \$4,995

**Stevens 5-STAR**  
CAR & TRUCK CENTER

HOME OF THE NO HASSLE QUICK QUOTE!

**364-2160 or 800-299-2438**

www.stevens5star

Our everyday prices are BETTER THAN their sale prices!!

You are minutes away from BIG SAVINGS!  
N. Hwy 385 in Hereford, Texas

**Stevens 5-STAR**  
CAR & TRUCK CENTER

N. Hwy 385 in Hereford, TX • 364-2160  
Se Habla Español





### Grocery bonanza

Lowe's Muleshoe store manager Bill Gilbert presents Evalyn Brewster with her certificate as the winner of the store's \$2,000 grocery giveaway. Brewster said that since she and her husband are on Social Security, the win was especially welcome.

## Dry weather still worrying cattle producers in Texas

SPECIAL TO THE JOURNAL  
COLLEGE STATION — Cattle producers rang in the new year hoping for rain to replenish dry tanks across the state, the Texas Agricultural Extension Service reports.

Extension beef cattle specialist Dr. Stephen Hammack of Stephenville said that although the severity of the problem varies across Texas, water availability is a growing concern for most producers.

"Some producers have had to move cattle from completely dry areas," he said. "Others are still holding out with just adequate water in their tanks."

Hammack said tanks that are low but not completely dry present a dangerous situation to cattle.

"When the tanks get low, the

areas around the edge still have moisture," he said. "This becomes a marshy area that is not safe for cattle trying to get to the water and, in some cases, cattle have been lost that way."

Hammack said surface tanks in Central Texas received no runoff water in 1999. "The water is being depleted all the time, but it is not being replenished," he said. "Major relief is needed this spring, not only for cattle, but for all crops and livestock."

Hammack said there are not many options for cattle producers. He said they can either haul in water, or they can move the cattle to water.

"When producers encounter water availability problems, they typically try to provide water in some way," Hammack

## 'CREATIVE LIVING'

Information on potato recipes and using fabric dyes to decorate will be featured on "Creative Living" on Jan. 11 at 1 p.m. and Jan. 15 at 3 p.m. (All times are Central).

"Creative Living" airs on public broadcasting station KENW-TV from Eastern New Mexico University in Portales.

Connie Cahill of Monte Vista, Colo., representing the Colorado Potato Administrative Committee, will demonstrate recipes using potatoes. Specifically, she will show several desserts made with potatoes, including potato fudge, potato mocha brownies and others.

Deborah Durham of Indianapolis, a spokesperson for Rit Consumer Products, will show how to use fabric dyes to create some

unique decorating projects for the home.

Pear recipes, composting at home, and preparing quick meals will be featured on Jan. 11 at 10:30 p.m. and on Jan. 13 at 1 p.m.

Tamsen Salvador of San Francisco, representing Pacific Northwest Canned Pears, will demonstrate some quick and elegant dessert recipes that call for canned pears.

Joyce Gagnon, an expert in using recycled products in landscape design who represents the American Plastics Council in Washington, D.C., will talk about setting up a compost program at home.

Cookbook author Sue Vaughn of Lamesa will share some ideas for cutting down meal preparation time.

Osborn added that despite the dry weather, the cattle are in good condition.

"They're in great shape considering everything," he said. "Some are a little thin, but their body scores are still pretty good."

## BIRTH

David and Angela Lutz of Muleshoe are the parents of a daughter, Madison Gene Lutz, born at 1:19 a.m. Dec. 30 at Lamb Healthcare Center in Littlefield.

She weighed 8 pounds, 1 ounce and was 21 1/2 inches long. She has one brother, James David Lutz.

Grandparents include Jim and Barbara Scott and Jim and Linda Lutz, all of Muleshoe.

## School lunch menus

FOR THE WEEK OF JAN. 10-14

### LAZBUDDIE

Jan. 10

**Lunch** — Swiss steak, pizza, sub sandwiches (PK-1), rice, green beans, okra gumbo, fruit, salad, Jell-O and milk.

Jan. 11

**Lunch** — Chicken, barbecue franks (PK-1), tuna, mashed potatoes, corn, spinach, fruit, salad, Jell-O and milk.

Jan. 12

**Lunch** — Mexican fiesta, hamburgers, rice, beans, hominy casserole, fruit, salad, Jell-O and milk.

Jan. 13

**Lunch** — Chicken spa-

ghetti, corn dogs (PK-1), pizza, green peas, carrots, fried okra, salad, Jell-O and milk.

Jan. 14

**Lunch** — Manager's special.

### THREE WAY

Jan. 10

**Breakfast** — Pancakes with syrup, graham crackers, juice and milk.

**Lunch** — Cheeseburger, onion rings, lettuce and tomatoes, pickles and onions, applesauce and milk.

Jan. 11

**Breakfast** — Cinnamon rolls, ham, graham crackers, juice and milk.

**Lunch** — Frito pie with grated cheese, fried okra, pinto beans, peaches and milk.

Jan. 12

**Breakfast** — Biscuit with gravy, sausage, graham crackers, juice and milk.

**Lunch** — Chicken strips, mashed potatoes, gravy, green beans, frozen yogurt, hot roll and milk.

Jan. 13

**Breakfast** — Scrambled eggs, bacon, toast, graham crackers, juice and milk.

**Lunch** — Sloppy Joes, corn, chips, green salad, fruit cocktail, cheese sticks and milk.

Jan. 14

**Breakfast** — Malt-o-meal, cinnamon toast, graham crackers, juice and milk.

**Lunch** — Seasoned chicken breast, broccoli and rice casserole, macaroni salad, fruit cobbler, hot roll and milk.

*Muleshoe school lunch menus were unavailable as of press time.*

## Congenital heart defects affect wider range of ages

SPECIAL TO THE JOURNAL  
HOUSTON — Surgical patients with congenital heart defects tend to come in two groups: very young children and adults who have lived with the defects since they were born.

"The real challenges are the extremes of ages," said Dr. Charles D. Fraser Jr., associate professor of pediatrics and surgery at Baylor College of Medicine.

"Our average patient is less than a year, and many patients are less than 6 months old. Some are hours old," he said.

On the other end of the age spectrum, Fraser is performing an increasing number of surgeries on adults. These range from cases where a diagnosis was not made until adulthood to those where multiple corrective surgeries have been performed.

"Both groups have hearts that are very sick," he said.

Congenital heart defects are abnormalities in the formation of the heart or blood vessels near the heart that occur before birth. The cause of the defect is unknown, in many cases.

Fraser, who serves as chief of congenital heart surgery at Texas Children's Hospital, leads a specialized team that performed about

600 operations in 1999.

In the past, surgeries on children were often delayed until the child grew larger; however, Fraser noted that is no longer a major factor.

"The technology has improved, the instruments have improved, our understanding of the physiology of smaller babies has improved and our confidence in taking care of little babies has improved," he said.

Fraser said children with complex congenital heart defects can develop secondary major organ problems and the heart itself can suffer major difficulties because of uncorrected lesions.

"We've become more aggressive in correcting these lesions earlier and earlier, with the idea of trying to head off secondary problems. A lot of our patients have prenatal diagnoses so we often have the opportunity to operate on them within a few days of birth. For some problems, that's ideal," he said.

The field of congenital heart surgery has evolved over the past decade, largely due to the recognition that it is a small and very specialized area of practice, Fraser said.

"The best results are only achieved in highly specialized centers with a lot of focused people. I believe the real improvements in

the next 10 to 20 years are going to be more in the organization of care, rather than any giant breakthrough in technology," he said.

Fraser said the technology and techniques continue to be refined, but the most important factor is

experience.

"We do this every day. We see these problems every day. Our team works together every day. The more you do something, the better you're going to be at it," he said.

## Newspaper Policies

**EDITORIALS** are the opinion of the newspaper. They are written by staff members of the *Muleshoe Journal*. They are not signed because they express the position of the publisher, owners and newspaper staff.

**LETTERS TO THE EDITOR** are written by readers of the newspaper. They are brief expressions of opinion, most concerning issues of local interest. Letters must be legible. They may be edited for content, length and space. All letters must be signed by the writer and must include a daytime telephone number (used solely for verification). Open letters, letters to third parties and/or unsigned letters will not be published.

**COLUMNS** are the personal opinion of the writer whose by-line appears. Columns from readers should address an issue of local concern and general interest. Columns may be edited for content, length and space.

Letters to the Editor and Columns can be sent to:

Editor

Muleshoe Journal

P.O. Box 449, Muleshoe, Texas 79347

FAX 806.272.3567 or e-mail ctyankee@fivearea.com

"Creative Living" is produced and hosted by Sheryl Borden of Portales.

The show is carried on more than 100 PBS stations in the United States, Canada, Guam and Puerto Rico and is distributed by West Link of Albuquerque.

Viewers can request copies of materials offered on the show by sending a first-class stamp for each handout requested, along with name, address and booklets requested, to "Creative Living" Requests, c/o KENW-TV, 52 Broadcast Center, Portales 88130.

# LOANS

## \$100 TO \$467

### CONTINENTAL CREDIT

Loans while you wait. Call and apply today.

Mon.-Thurs. 8:30 a.m. to 5:30 p.m.  
Fri.-8:30 a.m. to 6 p.m.  
206 S. Main Street  
Se Habla Español

# 272-3673

The Mendoza, Orozco and Castorena families want to give a heartwarming thank you to the public for your generous thoughts and prayers regarding the loss of our wife, mom, daughter, sister and aunt, Pat Orozco Mendoza. We would also like to thank each of you who brought food, flowers, plants and visited our families. Everything is greatly appreciated.

A special thank you to the City of Muleshoe Police Department for their police escort, Chief Don Carter, Lt. Otis Carpenter and officers Richard Wills, Benny Parker and Rodney Stevens. Thanks also to the Bailey County Sheriff's Office, Sheriff Coy Plott and officers.

A special thank you to Father Joe of the Immaculate Conception Catholic Church for your blessing of the Holy Crucifix, to Ramon Mendoza, pastor of the Church of God of the First Born, and to Ellis Funeral Home for your special care of our loved one.

La familia Mendoza, Orozco y Castorena quieren darles el mas profundo agradecimiento a todo el publico que fue tan generoso de haber compartido el gran dolor y trizeza con ellos y al mismo publico les damos las profundas gracias por sus ramos y coronas de flores y agradecemos tambien a todos aquellos que tan generosamente compartieron sus platillos de comido con nosotros. Nuestras mas sinceras gracias de parte de nuestra familia.

Alberto, Alberto Jr., Leticia, Anson, TJ & Abraham Mendoza  
Clara Castorena, grandmother  
Josemaria & Maria (Cuca) Orozco  
Yolanda Orozco Martinéz & Michael Joe & Gina Orozco

Mary Alice Orozco,  
Amanda & DiAnna Mendoza  
Mary Helen Orozco Saenz,  
Cesar & Enrique  
Jessica Orozco Vara,  
Alfredo & Adrian

## YOUR ELECTED Officials

- U.S. Sen. Kay Bailey Hutchison (R-Dallas)  
703 Hart Building  
Washington, DC., 20510-4301  
(202) 224-5922
- U.S. Sen. Phil Gramm (R-College Station)  
370 Russell Building  
Washington, DC., 20510  
(202) 224-2934  
Lubbock Office: Federal Building, Suite 113, 1205 Texas Ave., Lubbock, TX 79401  
(806) 743-7533
- U.S. Rep. Larry Combest (R-Lubbock)  
19th Congressional District  
1026 Longworth Building  
Washington, D.C. 20515  
(202) 225-4005  
Lubbock Office: Federal Building, Suite 810, 1205 Texas Ave., Lubbock, TX 79401  
(806) 763-1611
- State Rep. Pete Laney (D-Hale Center)  
Legislative Dist. 85  
1400 N. Congress Ave.  
Austin, TX 78701  
(512) 463-1000
- State Sen. Teel Bivins (R-Amarillo)  
Senatorial Dist. 31  
203 W. 8th Street, Suite 301  
Amarillo, TX 79101  
(806) 374-8994
- Bailey County Commissioners Court  
300 S. First Street • 272-3307  
Precinct 1: Butch Vandiver  
Precinct 2: C.E. Grant  
Precinct 3: Joey Kindler  
Precinct 4: Jerry Damron
- Muleshoe City Council  
215 S. First Street • 272-4528  
City Manager: Rick L Hanna  
Mayor: Robert Montgomery  
Council members: Cliff Black, Juan Chavez, Jerry Hicks, Sharon Grant
- Muleshoe Area Hospital District  
708 S. First Street • 272-4524  
Hospital Administrator: Jim Bone  
President: Buck Campbell  
Vice President: Victor Leal  
Secretary: Phil Kent  
Board Members: L.T. Johnson, Mike Miller
- Muleshoe Independent School District  
514 W. Ave. G • 272-7404  
Superintendent: David Hutton (as of July 1)  
President: Cindy Purdy  
Vice President: Curtis Shelburne  
Board Members: Sergio Leal, Arnold Price, Thurman Myers, David Tipps, Nick Bamert

Brought to you by the

# Muleshoe Journal

We urge you to get involved in your local government.



# No country has ever dominated the world as U.S. does now

Future historians will have a hard time describing America's role in the world today.

That is because no single country has ever exercised as much economic, cultural and military power as America does.

So I hope you will complete the following survey questions on key military and foreign policy issues.

Your answers will help me better understand the kind of role you believe America should shoulder in the world.

As always, I am grateful for this newspaper's help in printing this survey.

This year Congress passed the national Missile Defense Act, a law that makes it the policy of this country to deploy a network of missile interceptors able to shoot down enemy ballistic missiles.

The U.S. has been prohibited from building a shield against such threats because of the 1972 Anti-Ballistic Missile Treaty signed with the Soviet Union. The treaty intentionally left both nations vulnerable to each other's nuclear arsenal. But the Cold War is over and new threats are growing.

On a scale of 1-10, "1" being the most important and "10" being the least, how important is it


for the United States to go ahead and build a missile defense system to protect the nation?

Would you feel differently if building this system forced us to withdraw from the ABMTreaty? YES NO.

If the United States does build this missile defense system, should we share it with our overseas allies such as Taiwan, Europe and Japan? YES NO

The U.S. is the world's last remaining superpower, capable of deploying troops to almost every crisis in the world. But if we are not careful, we could over-extend our troops and weaken our ability to respond to the big crises that demand a superpower's attention.

**CAPITOL COMMENT**

U.S. SENATOR  
**KAY BAILEY HUTCHISON**

Please rank the importance of the following regions, with "10" being the most important and "1" being the least important region:

EUROPE — Our 50-year involvement in the North Atlantic Treaty Organization and our historic ties to Western

Europe.  
ASIA — Our longstanding treaties with allies Japan and South Korea, our special commitment to Taiwan and the rise of a more powerful China.  
RUSSIA — Helping Russia's transition from communism to democracy and a free

market and trying to contain the proliferation of its nuclear arsenal.

LATIN AMERICA — Anti-drug assistance to Mexico and Colombia and ensuring the security of the Panama Canal.

MIDDLE EAST — Our longtime commitment to Arab-Israeli peace and our protection of Persian Gulf oil supplies.

The U.S. has deployed troops to humanitarian crises in countries like Somalia, Haiti, Kosovo and Bosnia which do not directly threaten our national security interests.

Our leadership on these missions is expected by other nations and has temporarily stopped civil wars.

But it has come at a cost, di-

minishing our military readiness. Recently, for example, two Army divisions were declared unfit for combat partly because of their peacekeeping duties.

Which is most important (you may choose more than one):

Participate in more peacekeeping missions

Guard our troops' combat edge

Urge allies to handle more peacekeeping

In your opinion, what is the most important foreign or national security matter now facing the United States?

Please clip this survey from the newspaper and mail it to me at 284 Russell Senate Office Building, Washington, D.C. 20510.

## HONORS

### HODGES

Suzy Hodges, a 1996 graduate of Lazbuddie High School, was among the Dec. 18 graduates of the University of North Texas at Denton.

She earned a bachelor's degree in early childhood and family studies.



Hodges

Hodges is the daughter of Mack and Rhonda Hodges and the granddaughter of Joe and Claudine Embry, all of Muleshoe.

She is employed at Kids Are Kids in Plano, Texas.

### ALTMAN

Lindsey Altman of Muleshoe is a new junior member of the American Angus Association, headquartered in St. Joseph, Mo.

Junior members are able to register cattle in the association and take part in association-sponsored shows and other events.

### PIERCE

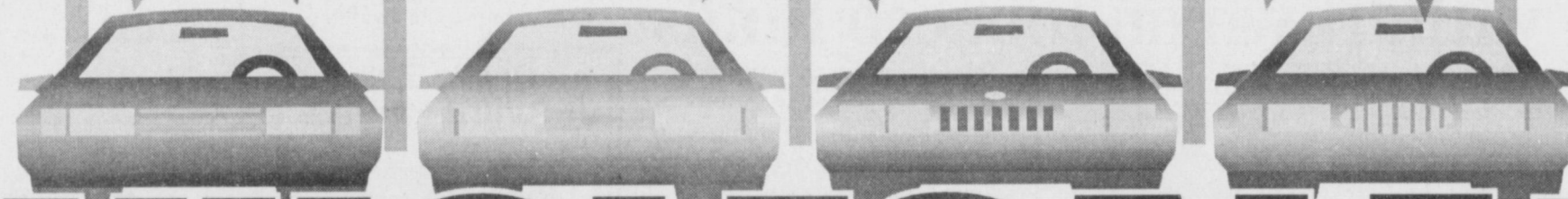
Susie Pierce, former administrative assistant to Muleshoe City Manager Rick Hanna, recently completed Session II of the of the Economic Development Institute conducted in San Diego, Calif., by the University of Oklahoma.

The institute is a three-session program of advanced education for economic development professionals.

The Session II theme, "Influencing Investor Decisions," includes courses in such subjects as "Marketing Plan Development," "Targeting Techniques," "Advertising and Public Relations," "Entrepreneurial Development" and "Existing Business Development." Also required for graduation is the completion of a project; Pierce's subject was "Strategic Planning As a Community Education Process."

Pierce received a scholarship during the session, and the city will be reimbursed for her tuition.

# Bender Family of Dealerships



## WHOLESALE TO THE PUBLIC SALE!\*

**At All Bender Locations. One Week Only. Over \$5 million dollars of used vehicles! 250 vehicles in stock and more on the way!**

There will be cars, minivans, sport utilities, trucks & suburbans. Savings of over \$6,000 from retail\*\*. Bring in your last check stubs & we'll figure your tax refund so you can use it as a down payment now!! No need to wait. This is your opportunity to buy like the dealers do. No dealers please! Lenders will be on sight for approval on the spot. **Call toll free 1(888) 9YES-YES (888-993-7937).** We say yes when others say no. Think Benders before you buy your next vehicle.

## Look At Some of The Examples of Savings:

### BENDER

Honda  
 Nissan

3000 Mabry Drive  
762-3701

### Examples:

#050371  
1995 Jeep Gr. Cherokee LTD  
Retail: \$21,760

**Your Wholesale Price \$16,675**

#6338  
1998 Dodge 1500 Club Cab  
Retail: \$23,040

**Your Wholesale Price \$18,925**

### BENDER

Chrysler  
 Plymouth  
 Dodge

3400 Mabry Drive  
762-4511

### Examples:

#950061  
1998 Eagle Talon  
Retail: \$12,700

**Your Wholesale Price \$10,675**

#6386  
1998 Acura CL  
Retail: \$20,100

**Your Wholesale Price \$18,500**

### BENDER

CHEVROLET  
 Oldsmobile.  
 Cadillac

2500 Mabry Drive  
763-4465

### Examples:

#5833  
1996 Chev Blazer 4x4  
Retail: \$18,340

**Your Wholesale Price \$14,075**

#96446B  
1997 Geo Prizm  
Retail: \$8,810

**Your Wholesale Price \$5,950**

\* Based on Kelley Blue Book December 99\*\* Stock #5862

NORRIS  
2500 Mabry Drive  
763-4465  
Clovis

BENDER  
3000 Mabry Drive  
762-3701  
Clovis

BENDER  
3400 Mabry Drive  
762-4511  
Clovis

— Bender Blvd. —

— To Farwell —





Journal photo: Beatrice Morin

### Young voice of democracy

Jill Gladden accepts her \$100 prize as the local winner in the Veterans of Foreign Wars' Voice of Democracy scholarship contest held in December. Making the presentation are Joe Ambriz (left), commander of Muleshoe's Post 8570, and Douglas Tennell, chairman. The theme for this year's competition was "America's Role in the Next Century." Gladden earned the right to compete at the state level and could possibly go on to win a \$20,000 scholarship.

## Claim withdrawn on tobacco funds

AUSTIN — Private attorneys who fought for and won a \$17.3 billion settlement against tobacco companies have withdrawn their claim for about \$2.3 billion in legal fees from the state.

The lawyers still will collect about \$3.3 billion over the next 25 years from a national fund paid into by the cigarette industry.

Michael Tigar, a former University of Texas law professor representing the private attorneys, told the *Austin American-Statesman* his clients chose between accepting the 25-year payout or collecting \$2.3 billion in legal fees from the state.

**Improvements touted**  
Almost 11 months into her four-year term as Texas comptroller of public accounts, Carole Keeton Rylander gave a status report on her pledge to improve service to Texas taxpayers.

"When I was sworn into office, I said that innovation would be our daily companion and that treating Texas taxpayers as second-class citizens must come to a screeching halt," she said back on Nov. 18.

Her four-point program, the Taxpayer Fairness and Accessibility Plan, reshapes the relationship between taxpayers and state government, she said.

**Point 1: Interest must be paid.** Effective Jan. 1, a new law requires the state to pay interest (1



percent over the prime rate) to Texans who overpay their taxes.

**Point 2: Settlement authority.** A new law gives the comptroller authority to close tax cases more quickly and avoid litigation, saving a projected \$44 million over two years.

**Point 3: Self-audits.** A new law allows taxpayers with a good track record to perform "managed self-audits" with state oversight, freeing up more time for the comptroller's office to do more audits.

**Point 4: Before Rylander took office,** taxpayers had to travel to Austin to resolve tax matters with the comptroller. Now, the comptroller's office uses its 52 audit and enforcement bureaus across Texas to conduct administrative hearings, making them more convenient for taxpayers.

**Top teachers singled out**  
Forty outstanding teachers

from across Texas were honored by the Texas Education Agency at the annual teacher of the year awards luncheon in Austin.

Garnering the highest honors were Mary Beth Castillo Tierce, a teacher at Kostoryz Elementary School in Corpus Christi, and Jack Cody, an English teacher from Graham High School.

Tierce was named elementary teacher of the year and Cody is secondary teacher of the year.

Cody will be Texas' representative in the national teacher of the year program, in which a U.S. teacher will be named national teacher of the year this spring.

**TNRCC cites Chevron**  
The Texas Natural Resource Conservation Commission has announced it will take action against the Chevron Chemical facility in Baytown.

Enforcement action relates to unreported emissions on Oct. 7 that may have contributed to the highest ozone reading in the Houston area in the past 10 years, the agency reported.

According to the TNRCC, the facility violated Texas law by releasing and failing to report excessive emissions of ethylene and propylene, two types of volatile organic compounds.

The violations could be resolved through a fine and/or corrective action.

**Jan. 2** — Margarite R. Bustamante, Lydia A. Cavazos, Juanita Chisman, S. Clements, Francisco Escalante, Mildred N. Ferrell and Francisca Martínez.

**Jan. 3** — Mildred N. Ferrell and Francisca Martínez.

**Jan. 4** — Mildred N. Ferrell and Wanda Muñoz.

**Jan. 5** — Joyce Coffman, Karen Cook, Sheryl Engelking, Ruby F. Everett, Mildred N. Ferrell, Julia Hernández, Gladys M. McAlister, Wanda Muñoz and Dewitt Precure.

**Jan. 6** — Joyce Coffman, Karen Cook, Sheryl Engelking, Ruby F. Everett, Mildred N. Ferrell, Julia Hernández, Iva I. Locker, Gladys M. McAlister and Dewitt Precure.

served along an assortment of Fruitalia teas.

Artistically decorated finger sandwiches, topped-twice baked potatoes, queso and chips were served on table appointments bearing the fall motif.

Dessert was an artist's creation of a pumpkin roll topped with whipped cream red velvet cake.

Janelle Turner was the door-prize winner. Service Committee chairwoman Jo Spinks spoke to the sorority about the Women's Protective Service Agency and the need for volunteers to serve as outreach coord-

inators. Social Committee chairwoman Sherri Shipman asked that the committee plan the December Christmas social. Members were asked to bring canned goods for the Food Bank and coats for children.

Jinks also suggested that the tree donated to the city park be placed close to the swing set that was donated by the chapter.

Members attending were Black, Miller, Jinks, Turner, Sandi Chitwood, Lindy Schuster, Judy Wilbanks, Gayla Gear, Lucy Faye Smith, Gayla Toombs, Diana Harrison. Graves was a special guest.

## TOPS NEWS

Thirteen members of TOPS No. 34 met Jan. 6 for the weekly weigh-in and meeting at the Church of Christ on American Boulevard.

Leader Laverne James, welcomed back after being absent for a week, called the meeting to order and led the prayer and pledge.

Secretary Janie Hughes, read the minutes from the previous meeting. The TOPS songs were led by Noemí Sánchez.

The weigh-in was conducted by Betty Jo Davis and Alene Bryant, weight recorders.

Polly Otwell was the best loser, and the first runner-up was Cheryl de Graffenreid. Lucille Harp was the second runner-up.

In the monthly report, Bryant was named the best loser; Rose Sain was first runner-up and Davis was the best K.O.P.S. loser.

For our six-month report, Linda White was named the best loser, Joline Franklin first runner-up and Bryant and Hughes tied for the second runner-up position.

Jewel Peeler and Franklin received perfect attendance awards for six months. The awards were

charms for bracelets.

Get-well cards were sent to Jerrell Otwell, Ozelle Cherry, Aurora Mata, Ruth Clements and

Alma Robertson.

Tops No. 34's next meeting will be at 5 p.m. Jan. 13 at the usual meeting place.



## ATTENTION

Young Artists

Enter the 2000 U.S. Savings Bonds National Student Poster Contest.

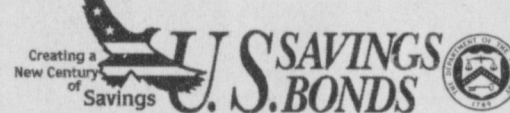
It's a fun, educational project and a great way for 4th, 5th, and 6th grade artists to use their talents and learn the benefits of saving. Plus, they can win prizes including a \$200 to a \$5,000 U.S. Savings Bond, a trip to Washington, D.C., and school prizes.

To enter students must design a poster promoting the contest theme "U.S. Savings Bonds - Making Dreams a Reality." The contest deadline is **February 11, 2000.**

For your copy of the contest rules visit: [www.savingsbonds.gov](http://www.savingsbonds.gov)

Contact your school or write:

National Student Poster Contest  
Savings Bond Marketing Office, Room 309  
Department of the Treasury  
Washington, D.C. 20226



A public service of this publication.  
\* Upon issuance, Series EE Savings Bonds are valued at half the face amount.

## Journal Classifieds

Deadlines are 5 p.m. Monday and Thursday

Continued on page 9

Call 272-4536

### LEGAL

January 9, 2000  
**GRANT MANAGEMENT SERVICES PUBLIC NOTICE**

The City of Muleshoe is soliciting proposals from qualified individuals or firms for management, administrative, and planning services required by the city for implementation of the Texas Community Development Program. This project is being financed with federal funds from a grant received by the city from the Texas Department of Housing and Community Affairs under the Texas Community Development Program. In order to be considered proposals must be submitted prior to 5 p.m. on Jan. 24, 2000. The City reserves the right to negotiate with any and all management consultants or firms that submit proposals, per the Texas Professional Act and the Uniform Grant and Contract Management Standards. The city reserves the right to reject any or all proposals. A complete Request for Proposal outlining services required by the City, submission requirements, and evaluation criteria has been prepared. Interested parties may obtain copies of this Request for Proposal by contacting the person below: Mayor Robert Montgomery; City of Muleshoe; City Hall; 215 South First; Muleshoe, Texas 79347. The City of Muleshoe is an Affirmative Action/Equal Opportunity Employer. Published in the Bailey County Journal on January 9, 2000.

### LEGAL

January 9, 2000  
**GRANT MANAGEMENT SERVICES PUBLIC NOTICE**

The City of Muleshoe has recently received a Contract award from the Texas Department of Housing and Community Affairs (TDHCA) for water system improvements. Accordingly, the City is seeking to contract with a qualified engineer/engineering firm (registered to practice in the State of Texas) to prepare all preliminary and final design plans and specifications, and to conduct all necessary interim and final inspections. Please submit your proposal of qualification for these proposed services to the address below: Mary Robert Montgomery; City of Muleshoe; City Hall; 215 South First; Muleshoe, Texas 79347. Proposals must be received by the City no later than 5 p.m. on Jan. 24, 2000 to be considered. The City reserves the right to negotiate with any and all engineers or firms that submit proposals, per the Texas Professional Services Procurement Act and the Uniform Grant and Contract Management Standards. The City of Muleshoe is an Affirmative Action/Equal Opportunity Employer. Published in the Bailey County Journal on January 9, 2000.

### LEGAL

**REQUEST FOR BIDS ON TEXAS HIGHWAY CONSTRUCTION**

Sealed proposals for thermoplastic striping at various locations district-wide covered by C 905-00-22 in Lubbock County, will be received at the Texas Department of Transportation, 200 E. Riverside Drive, Austin, Texas, until 1 p.m., on Feb. 2, 2000, and then publicly opened and read. It is the bidder's responsibility to ensure that the sealed proposal arrives at the above location and is in the hands of the letting official, by the specified deadline regardless of the method chosen by the bidder for delivery. Plans and specifications, including minimum wage rates as provided by Law, are available for inspection at the office of Teddy J. Copeland, Area Engineer, Lubbock, Texas, and at the Texas Department of Transportation, Austin, Texas. Bidding proposals are to be requested from the Construction Division, 200 East Riverside Drive, Austin, Texas 78704-1205. Plans are available through commercial printers in Austin, Texas, at the expense of the bidder. The Texas Department of Transportation hereby notifies all bidders that it will insure that bidders will not be discriminated against on the ground of race, color, sex or national origin, in having full opportunity to submit bids in response to this invitation, and in consideration for an award. Usual rights reserved. 5-D-22080 5-76-0905-00-022. Published in the Bailey County Journal January 9, 2000 and January 16, 2000.

### ADOPTION

Note: It is illegal to be paid for anything beyond medical and legal expenses in Texas adoption.

A BRIGHT FUTURE awaits your newborn in 2000. Give your child loving, stable parents. Financially secure and happy home with church ties. Call Janet, 1-888-592-7779.

### AUCTION

FIFTH ANNUAL TEXAS Brangus regulation bull/commercial female sale, 1/15/00. East Texas Livestock Auction, Crockett, Texas. Selling 300+ females 11 am, 72 bulls 1 pm. Pierce Sale Company, 1-409-357-2777.

### BUSINESS OPPORTUNITIES

FASTEST GROWING NETWORK marketing company in America! Join now! 1-800-707-5003, ext. 6259. B.E.E.P. Minimum investment \$309.

MAKE MONEY WITH your computer. Call for free catalog. Quality Products, phone: 1-877-804-0605; fax: 1-915-573-0909.

DRIVER - COVENANT TRANSPORT \*Coast to coast runs \*Teams start 35c-37c \*\$1,000 sign-on bonus for experienced company drivers. For experienced drivers and owner operators, 1-800-441-4394. For graduate students 1-800-338-6428.

**IT PAYS TO ADVERTISE IN THE JOURNAL (806) 272-4536**

Smile!

Classifieds (806) 272-4536

## HOSPITAL NOTES

Muleshoe Area Medical Center reported the following patient load:

**Dec. 31** — Margarite R. Bustamante, Lydia A. Cavazos, Juanita Chisman, S. Clements, Maria Costilla, Francisco Escalante, Mildred N. Ferrell and Francisca Martínez.

**Jan. 1** — Margarite R. Bustamante, Juanita Chisman,

S. Clements, Francisco Escalante, Mildred N. Ferrell and Francisca Martínez.

**Jan. 2** — Margarite R. Bustamante, Juanita Chisman, S. Clements, Francisco Escalante, Mildred N. Ferrell and Francisca Martínez.

**Jan. 3** — Mildred N. Ferrell and Francisca Martínez.

**Jan. 4** — Mildred N. Ferrell and Wanda Muñoz.

## BETA SIGMA PHI NEWS

Preceptor chapter of Beta Sigma Phi sorority held its November meeting in the home of Pamela Miller. Vicki Black served as co-hostess.

Kay Graves spoke about the first Annual Cranefest held Nov. 6 in Muleshoe and of all the events held during the Cranefest. She also spoke of the plans for next fall's event.

The fall theme was carried out through the decorated table adorned with scarecrows and pumpkins as well as cornucopias spilling over with autumn fruits and foliage.

Raspberry spritzers were



# Journal Classifieds

Deadlines are 5 p.m. Monday and Thursday

Call 272-4536

Deadlines are 5 p.m. Monday and Thursday

## STOP & SHOP

### DRIVERS WANTED

DRIVERS - LONG HAUL and regional drivers. Regional drivers can start up to 31.5 cpm. Class-A CDL required. Student graduates welcome. Continental Express, 1-800-727-4374.

DRIVERS - CFI NOW hiring! OTR drivers. Company and O/O. Super teams split up to 40c - Company, 84c - O/O. 1-800-CFI-DRIVE, www.cfidrive.com.

DRIVERS-OWNER OPS check us out! Paid: base plate, permits, fuel taxes, 80cpm loaded and empty, plus premium pay to stay out. 1-800-454-2887, Arnold Transportation.

OWNER OPERATORS - AT Sitton Motor Lines, we pay: \$700 sign-on, tolls, permits, cargo and liability, worker's compensation, payroll taxes, holidays, vacations. Call 1-800-533-4765 now! www.sitm.com.

OWNER OPERATORS AND fleet drivers don't miss out! We are hiring now! Call recruiting today! Get the "Elite" facts. National Carriers, the "Elite" Fleet, 1-800-654-6710.

SWIFT TRANSPORTATION HIRING drivers and teams! Contracted CDL training available. Excellent pay and benefits, consistent miles, assigned equipment. Ask about sign-on bonus! 1-800-587-1013 (EOE - M/F).

### AUCTION

## AUCTION

Saturday, January 15, 2000 — Sale Time 10 a.m.

LOCATED: Muleshoe, Texas, 9 miles west on FM 1760, then 3 miles north on FM 1731, then 1 mile west; or, from Lariat, TX, 3 3/4 miles south on FM 1731, then 1 mile west.

Jay Herington & Neighbors — Owners

Telephone: Jay (806) 272-5482 home, or Auctioneers: Jim Summers (806) 864-3611 or Jimmy Reeves (806) 864-3362  
LUNCH WILL BE SERVED BY FAMOUS T-C BARBEQUE  
NOTE: Don't miss this high-quality, clean line of farm equipment — Your Attendance Will Be Appreciated!  
I am Changing My Farming Operation and the Following Will Be Sold at Public Auction:

- TRACTORS - FRONT END LOADER**
- 1-1980 John Deere 4840 Diesel Tractor, Cab, A/C, Htr, Radio, P/S Trans, Dual Hyd., Wts, Quick Hitch, 18 x 42 Rubber w/ Duals, 1 Owner, Shredded, 8,753 Act Hrs.
  - 1-1978 John Deere 4440 Diesel Tractor, Cab, A/C, Htr, Radio, P/S Trans, Dual Hyd., Wts, Quick Hitch, 18 x 38 Rubber w/ Duals, 1 Owner, Shredded, 6,129 Act Hrs.
  - 1-1970 John Deere 4020 Diesel Tractor, Factory Cab, Single Hyd., New 16.9 x 38 Rubber, Shredded, 6,532 Act Hrs.
  - 1-1997 John Deere 725 Hyd. Front End Loader, 6 Bucket w/ Grapple fork, Shredded & Nice.
- COMBINE, CORNHEAD**
- 1-1983 John Deere 7720 Turbo Diesel Combine, Cab, A/C, Htr, Radio, Monitor, Hydrostat w/ John Deere 224 "4" Header, Pickup Reel, Corn & Wheat Sieves! 2 yrs. ago New Feeder House Chains, New Concaves, New Sprockets, Bearings! 2,288 hrs. 1 Owner & Operator, Nice, Shredded When Not In Use.
  - 1-John Deere 4444-Row 40 Cornhead
  - 1-S M. 4 Wheel Header Trailer
  - 1-Big 12, 400 Bu. Grain Cart
- GRAIN TRUCKS**
- 1-1973 Chevrolet T.A. Grain Truck, 427 Eng., 5 Sp. 2 Sp. Air Brakes, Hobbs 22" Grain Bed, T/C Hoist, 10 00 x 20 Rubber, Shredded & Nice, 45,150 Miles.
  - 1-1974 Chevrolet S.A. Grain Truck, 350 Eng., 4 Sp., 2 Sp. Midwest 16" Grain Bed, T/C Hoist, 9 00 x 20 Rubber, 36,023 Miles.
  - 1-1974 Chevrolet C-60 S.A. Grain Truck, 350 Eng., 4 Sp., 2 Sp. Midwest 16" Grain Bed, T/C Hoist, 9 00 x 20 Rubber, 50,000 Miles.
- FARM EQUIPMENT**
- 1-John Deere 7100, 8 Row, 40", 3 pt. Max Emerge
- PLANTER, PLATELESS DOUBLE BOXES, MONITOR, INCORPORATORS, J.D. MARKERS, 2-70 GAL. POLY TANKS, CLEAN & SHEDDED**
- 1-John Deere 320, 8 Row, 40" Hyd. Fold Hooded Sprayer, 300 Gal. Tank, Directed Spray, All Attachments, 4 Corner Wheels, Clean & Shredded, Used One Season
  - 1-John Deere 650, 24 Hyd. Folding Tandem Disk, 28" Disks
  - 1-John Deere 610, 41 D.T. Hyd. Fold Sweep Plow
  - 1-John Deere 1010, 31" Field Cultivator
  - 1-John Deere 875, 8 Row, 40" Cultivator, 3 pt. Rolling Fenders
  - 1-Miler 28 D.T. Hyd. Fold Chisel / Sweep Plow w/ Harrows
  - 1-John Deere 4800, 6 Bottom 18", 3 pt. Spinner Mouldboard Plow
  - 1-Bigham Bros 6 Bottom Plow Packer, Used Very Little
  - 1-John Deere 400, 30" 3 pt. Rotary Hoe
  - 2-John Deere 400, 8 Row 40", 3 pt. Rotary Hoe
  - 1-Yetter 8 Row, 40", 3 pt. Rotary Hoe
  - 2-Hamby 8 Row, 40", 3 pt. S.S.B. Stiff Shank Cultivators, 2 1/4" Bar Behind, L.T.M., 2 Sets Gauge Wheels
  - 1-Winkle 24 D.T. Double Blade Land Float
  - 1-Hutchmaster 21 Double Offset Disk
  - 1-Big Ox 9 Shank, 3 pt. Ripper Plow, D.G.W.
  - 1-8 Row, 3 pt. Lister, 5x7" Bar w/ 2 1/4" Bar Behind, 2 sets G.W.
  - 1-RJL 8 Row, 3 pt. PTO Rowdewer, G.W.
  - 1-John Deere 400, 14", 3 pt. Rotary Hoe
  - 1-Cardwell 8, 3 pt. Blane
  - 1-John Deere 506, 2-Row Shredder
  - 1-8 Row D.T. Sandfighter
  - 1-5x21" Bed Roller
- IRRIGATION**
- 1-Chev. 292 Irrigation Motor
- 2-Amarillo 50 HP Gearheads**
- 25-Ingalon Hydrants, 12"x7", 12"x8"
  - 80-Joints, 7x20" Galed Pipe, 40" Rows
  - 1-Lot Irrigation Tubes (3", 2", 1 1/2")
  - 1-Lot T's, L's, End Caps, 7" & 8"
  - 1-Lot Irrigation Motor Hoods
  - 1-2 Wheel Pipe Trailer
  - TOOLBAR MAKEUPS, THREE WHEELER
  - 1-Set Bigham Bros. 8-Row Hyd. Row Markers
  - 5-2 Paddle Dikers
  - 5-Sam Stevens 3 Paddle Row Dikers
  - 2-Hamby Coulters
  - 2-Picup Toolboxes
  - 1-Lot Drive Shafts
  - 1-Lot Tractor Weights
  - 1-Lot Shanks, Clumps, Pickers
  - 1-Set Dual Propane Tanks for Pumps
  - 1-Lot Row Drags
  - 4-Palo Recliners
  - 1-Lot Sweeps, Knives, Chisels
  - 1-Honda 185 Three-Wheeler, runs good
  - TRAILERS, TANKS, AUGER
  - LIVESTOCK EQUIPMENT
  - 2-Ranchers Pride 16 T.A. Portable Self Feeders, 1 New
  - 1-Hale 16 T.A. Stock Trailer
  - 1-NC 1150 Portable PTO Grinder Mixer, Shredded
  - 1-Donahue 30 T.A. Implement Trailer
  - 5-Cober 4-wheel Expanded Metal Cotton Trailers, 20' & 24'
  - 1-1,000 Gallon 4-Wheel Water Trailer, New Pump, Gas Engine
  - 1-300 Gallon 4-Wheel Diesel Fuel Trailer w/ Elect. Pump
  - 1-Twin Set 200 Gal. Poly Saddle Mount Spray Rig
  - 2-S.M. Single-Axle Pipe Trailers
  - 1-500 Gallon Propane Tank, Converted to Diesel
  - 1-45" x 25" Grain Auger w/ Elect. Motor
- NOTE: Any Announcement Sale Day Taxes Precedence

### HELP WANTED

## Texas Boll Weevil Eradication Foundation Safety/Vehicle Officer

Muleshoe Zone Office Promotes the maintenance of a safe, accident free, and health work environment and coordinates operational activities of fleet management for approximately 300 vehicles in 5 locations. Tracks vehicle accidents, maintains records on vehicles. Coordinates repairs of vehicles and spray equipment used.

All applicants must be an insurable driver according to the TBWEF Fleet Insurance Policy.

Submit your resume and cover letter to:  
Attn: HR Department  
P.O. Box 5089  
Abilene, TX 79608  
Fax: 915-677-1006  
E-mail: JJW@txbollweevil.org or apply in person at  
310 Main Street, Suite 107  
Muleshoe, TX  
EEO & Drug Free Workplace  
For more information call 915-672-2846  
Ext. 3131 or 3109

## Texas Boll Weevil Eradication Foundation District Supervisor Muleshoe District Office

Desirable qualifications:

- \* Management skills
- \* Cotton background
- \* Public information
- \* Strong computer skills

All applicants must be an insurable driver according to the TBWEF Fleet Insurance Policy.

Submit your resume and cover letter to:  
Attn: HR Dept.  
P.O. Box 5889  
Abilene, TX 79608  
Fax: 915-677-1996  
E-mail: JJW@txbollweevil.org or apply in person at  
310 Main Street, Suite 107  
Muleshoe, TX  
EEO & Drug Free Workplace  
For more information, call 915-672-2846  
Ext. 3131 or 3109

### HELP WANTED

Helpers needed immediately in Earth, TX. \$6 per hour. Call (806) 763-8835.

Need 36 people to lose up to 30 lbs. in the next 60 days. Natural, guaranteed results. Dr. approved. Lost 23 lbs. in 1 month.  
1-888-734-9626

### FOR SALE

**FOR SALE**  
• Weight Bench w/200 lb. weights; 3 months old. Will take best offer.  
• Female Rotweiler; 2 years old. Will take best offer.  
Call 272-3072

**For Sale HAYGRAZER**  
Very Good Quality  
4x6' Round Bales  
\$60/ton in field  
Stegal/Goodland area  
(505) 273-4220  
before 8 a.m. or after 6 p.m. (CST)

Journal  
806-272-4536  
**REAL ESTATE**  
**HOUSE FOR SALE**  
2 BEDROOM  
W. 9TH STREET  
Call 272-3962 or 272-3976

For Sale or Lease  
2 Bedroom, 2 bath  
2 car garage  
505 E. Chicago  
Day (806) 354-5290  
Night: (806) 467-1886  
Financing Available!

First Texas Ag Credit  
**Long & Short-Term Financing**  
• Rural Housing  
• Operating & Improvements  
• AgFAST Credit Approval  
• Cash Percentage Program  
• Low Stock Requirement  
• 2% to \$3,000 Maximum  
• Equipment Leasing  
316 South Main  
Muleshoe, Texas  
806-272-3010

2 Def Leppard Concert Tickets. \$27.00 each. Call (806) 272-4532 and leave a message.

**1995 - Polaris 4 x 4 4 Wheeler**  
Excellent condition  
272-5109 after 6 p.m.

## Vic Coker Land Co.

Agricultural Real Estate

- **160 Acres.** North of Muleshoe. Nice clean farm with center pivot. Good soil. Good Yields. 2 submersible wells. Reasonably priced.
- **West Camp.** 160 acres with 2 wells and sprinkler on pavement.
- **Lazbuddie Area - 160 Acres Sold.** Castro County. 2 wells. Excellent farm tenants. Sprinkler can be purchased separately.
- **70 Acres on U.S. Highway 84 near Progress.** Pavement on 2 of 3 sides. Irrigation well. Nice place to build a home and have small place in the country.
- **North of Lazbuddie.** 320 acres. 550 G.P.M. well. 2 Valley sprinklers owned by tenant, can go with sale of land. Nice opportunity at a reasonable price.
- **438 Acres.** East of Muleshoe, 4 center pivot sprinklers, nice barn, small house, other improvements. Has some improved grass under pivot. Excellent livestock operation.
- **320 Acres.** Northwest of Muleshoe, 2 center pivot sprinklers.
- **315 Acres West of Muleshoe** on pavement. Quonset barn. 2 pivot locations. Late model towable sprinkler can go with sale.

**310 Main Street, Suite 103**  
Muleshoe, Texas  
Office (806) 272-3100 Home (806) 965-2468

### DRIVERS WANTED

DRIVERS/FLATBED - Little John Trucks, Inc., 3000-4000 miles/week. Health insurance paid 100%. Tarp pay, drop pay, monthly bonus. Average 31 cpm. Call 1-800-647-3864.

### LOST

LOST 14 Crossbred steers 400 lbs., yellow ear tags, TP on left hip. Lost southeast of Lazbuddie. Call 965-2694, with information.

### FOR RENT-CONDO

**Ruidoso Condo**  
3 Bedroom 3 Bath  
Sleeps 8  
Call Debbie at (505) 420-6700 or (806) 285-3053

## AUCTION

THURSDAY, JANUARY 13, 2000 • SALE TIME 9:37 A.M.

LOCATED: Muleshoe, Texas (West Side of Town on U.S. 84) Go 5 Miles West on FM 1760 (Portales Highway) then 3 3/4 Miles South; or from Lariat, Texas go 7 miles South on FM 1731 then 4 miles east on FM 1760, then 3 3/4 south. (Turn south at West Tex II Feedlot sign).

Lew's Scoggin & Others, Owners

I have sold my farm, retired and will sell the following at public auction.

For more information, call (806) 272-4881 or (806) 946-7600 or Cruce & Fletcher Auctioneers (806) 296-5050 or (806) 866-4201

- TRACTORS - LOADER**
- 1-1983 John Deere 4850 Diesel Tractor, 2 WD, 50 Cab, AC, Htr, Radio, WF, Wts, Triple Hyd, QH, PS Trans, 20 x 38 Rubber & Duals, 8490 hrs
  - 1-1983 John Deere 4850 Diesel Tractor, MFRHD, 50 Cab, AC, Htr, Radio, QH, Triple Hyd, PS Trans, 18 4 42 Rub & Duals, 6920 hrs
  - 1-1981 John Deere 4440 Diesel Tractor, 2 WD, 50 Cab, AC, Htr, Radio, WF, Wts, DH, QR Trans, 13 6 45 RIC Rubber & Duals, 9035 hrs
  - 1-1975 International 1066 Diesel Tractor, Cab, WF, Wts, DH, 18 4 38 Rubber
  - 1-1961 John Deere 4010 Diesel Tractor, WF, SH, 13 6 38 Rubber
  - 1-John Deere 280 Hydraulic FE Loader
  - 1-John Deere 280 Loader Mounting Bracket (Extra)
- COMBINE - HEADERS**
- 1-1976 Massey Ferguson 760 Diesel Combine, Cab, 24" Header, 6 cyl Perkins Eng, 24 5 32 Rubber, SNR 1746, 147,2516 354
  - 1-McDon 960 25 ft Triple Deck Header, PU, Reel, IHC Conversion
  - 1-John Deere 20' Grain Platform w/10 ft PU Attachment
- PEANUT & LIVESTOCK - HAY EQUIPMENT**
- 1-Case IHC 580 Big Square Hay Baler, 4 x 8, 28L 26 Rubber, SNR OFHD026347
  - 1-New Holland 1118 Soil Prepped Diesel Hay Swath, Cab, AC, 18 ft Cut
  - 1-McDon 960 25 ft Triple Deck Header, PU, Reel, IHC Conversion
  - 2-Round Hay Bale Feeder
  - 1-2 ft Metal Enslight Hay Baling Gate
  - 1-4 wheel Coil Link Trailer - Chassis
  - 1-2 wheel 10 ft Flatbed Trailer
  - 1-16 ft Cattle Trough
- McDON HEADER - GRINDER CARTS - GRINDER MIXER**
- 1-McDon 960 25 ft Triple Deck Header, PU, Reel, IHC Conversion Kit
  - 1-AXL 650 Bu Grain Cart, Tandem Axle
  - 1-Big 12 400 Bu Grain Cart, New Bottom
  - 1-Gelvi 120 Portable Grinder-Mixer
- EQUIPMENT**
- 1-John Deere 7100 Max Emerge Planter (Rigged 8 row, 30" on 10 row Bar) or 8 row 40" DB, Monitor, Markers
  - 1-Great Plains 45 ft Grain Drill w/ Grass Boxes, 10" Spaced, DD, FW, DT, FW
  - 1-Crutchfield 3700, 3 pt Grain Drill, 42", 8" Spaced, DD, PW
  - 1-International 140 4 x 18 Spinner Mouldboard
  - 1-John Deere 16 ft Double Crosscut Tandem Disc Plow
  - 1-King 18 ft Offset Disc Plow
  - 1-8 Row 40" 3 pt Disc Bedder, DRTB, GV, Markers
  - 1-Krause Landsman Finishing Plow, Disc, Chisel, Rollers, Harrows, 348 31, 21
  - 1-Winkles 24 ft Double Blade Land Float
  - 1-Krause 3 pt 17 shank Chisel Sweep Plow TSB, HC, GW
  - 1-Speedline 4 yd Dri Mover Scraper
  - 1-John Deere 727 4 row DT Sheeder
  - 1-John Deere 707 4 row DT Sheeder
  - 1-Rhino 2000 3 pt 9 ft Blade, Hyd Control
  - 2-Hancock 12 x 30 Land Floats
  - 1-John Deere 400 25 ft 3 pt Rotary Hoe
  - 1-John Deere 400 21 ft 3 pt Rotary Hoe
  - 1-IHC 16' DT Spike Tooth Drag Harrow, HD
  - 1-Big Ox 3 pt 7 shank V Ripper Plow
  - 1-John Deere 6 row Lister Planter, 4' x 7", GWD, FT Disc
  - 1-Arn Deere 210 14 ft Tandem Disc Plow
  - 1-John Deere DR, 8 x 20 Grain Drill, SD CC, Chasis, w/ Malle's Boxes
  - 1-7 row Lister 3 pt GW 4 x 7" Bar, Markers
  - 1-Chevy 3 pt 10 ft Blade
  - 1-Lifton 6 row Rolling Cultivator, Big Bar
  - 1-International 300 14 ft Tandem Disc Plow
  - 1-Krause 14 ft Tandem Disc Plow
  - 1-Massey Ferguson 2 row 3 pt Planter
  - 1-John Deere Centrel, 3 pt, 9 shank Orchard Shank Plow
  - 1-G Hoeme 12 ft DT Chisel Sweep Plow
  - 1-Schlags 5 btm Clobuster Placker
  - 1-G Hoeme 18 ft DT Chisel Sweep Plow
  - 1-3 pt 10 ft Orchard Shank Plow, DTB, GV
  - 1-G Hoeme 3 pt 9 shk Chisel Sweep Plow
  - 2-Elaston 3 pt Gopher Machines
  - 1-3 pt 7 shank DTB Sweep Plow
  - 1-Chevy 3 pt 10 ft Blade
  - 1-Frontier Dream 3 pt 2 row Grass Drill
  - 1-3 pt 5 ft Blade
  - 1-3 pt 5 ft Arm Cranes
  - 1-6 x 24" DT Roller
  - 1-16 row DT Diskcutter
- TRUCKS - PICKUPS - TRAILERS**
- 1-1978 Chevrolet Brigard 8 A Truck
  - Tractor, Detroit Eng, 6 sp Trans
  - 1-1996 Ford F-350 Pickup, 4x4, 302 Eng, AT, R, H, AC, LWB
  - 1-1971 Ford F-350 Pickup, DW, V8 Eng, 4 sp, Flatted w/ags Powered Air Comp, Electric Winch, Gm Foles, on Butane
  - 1-Hobbs 45 ft TA Trailer Float, 10 00-20 Rubber
  - 1-Hobbs 45 ft TA Open Top Peanut Van Trailer, 9 ft Sides, Trap Doors
- TRACTOR & TOOL MAKEUPS**
- 1-Set 18 4 38 Snail on Tractor Duals
  - 1-18 4 38 Tractor Tire & Rim
  - 1-3 pt Guidance System
  - 1-Lee 3 pt Quick Hitch
  - 1-Lot John Deere 71 Flex Planter Parts
  - 1-18 4 38 OTB Tool Carrier
  - 1-Lot Shanks & Clamps
  - 10- John Deere Straight Orchard Shanks
  - 1-Lot Hydraulic Cylinders
  - 1-Lot LM Lister Beams & Bottoms
  - 1-Lot New Plow Disks
  - 1-8 Row Scrappers
  - 8-John Deere Rotary Fenders
  - 1-Set TB Gauge Wheels
  - 1-Set John Deere Row Markers
  - 1-Lot LM Lister Beams & Bottoms
  - 1-Lot New Plow Disks
  - 8-Row Row Scrappers
  - 1-Lot Wire Weeder, Buffers
  - 3-Tractor Buggy Top
  - 1-Lot Plow & Header Parts
  - 1-Lot Hay Equipment Parts
  - 1-Sprayer Boom, 1 Ace PTO Pump
  - 1-Lot Saws, Knives, Chisels, Blasters
  - 1-Lot Items Too Numerous to List
- SHOP EQUIPMENT**
- 1-Lincoln SA 200 Portable Welder-Generator
  - 1-Black Max 5 hp Upright 60 gal A.C.
  - 1-Timco Electric Drill Press
  - 1-Arn Burger Jack
  - 1-Small Shop Press
  - 1-Alexc Axyxer Cutting Torch
  - 1-Ski 3 4 hp DA Grinder
  - 1-Round Winding Table w/ Vise
  - 2 Sets Shop Pipe Wrenches
  - 1-Welding Jig & Holder
  - 2-Small Shop Drills
  - 1-Ortal Electric Arricer
  - 1-Lot Power Tools
  - 1-Lot Hand Tools
  - 1-Portable Electric Air Compressor
  - 1-Lot Bolts, Nuts, Washers, Etc.
  - 1-Set Parts Bins, Bolt Bins & Containers
  - 1-4 Compartment Locker
  - 1-Drip Vise
  - 1-Shop Arvil
  - 1-Lot Tool Chest - Boxes
  - 1-Lot Handyman Jack
  - 1-Ortal Shop Heater
  - 1-Butane Cart
  - 2-Shop Croppers
  - 1-Craftsman DA Grinder
  - 1-Craftsman Radial Arm Saw
  - 1-Space Ray Shop Heater
  - 1-Lot Wooden Plans
  - 1-Groove Dispenser
  - 2-Work Tables - Benches
  - 1-Lot Items Too Numerous to List
- IRRIGATION**
- 1-IKRP 8' Portable River or Tailwater Pump
  - 1-4 1/2" & 5" Sprinkler Pipe - VL
  - 1-Amarillo 50 hp Groundwell 1 1/2" Rotor
  - 1-Big Gun Sprinkler Gun
  - 2-Ingalon Motor Covers
  - 1-Lot 1/2" Colman Pipe
  - 1-Lot 2" Dressing
- SPRAYERS - TANKS - TRAILERS - AUGER WAGON**
- 1-Lee SR 4 wheel Sprayer, 2 WD, Kohler Magnum 18 Motor, 3 Seat, 30 gal, Raggy Top
  - 1-NH 5537 Storage Mist Sprayer, 500 gallon F.G. Tank, 2 wheel Chassis, 12 6L, 15 Rubber, w/PTO Mist Blower
  - 1-800 gal Water Tank on Skids w/ Pumps
  - 2-1000 gal Fuel Tanks on Skids w/ Pumps
  - 1-500 gal Propane Tank, 4 wheel Chassis
  - 1-500 gal Rubber Lined Tank, 4 wheel
  - 1-3 pt 200 gal Alum Spray Tank w/Booms
  - 2-200 gal Poly Spray Tanks, SM Brackets
  - 1-John Deere 58 2 wheel Auger Wagon w/Roller Top
  - 1-Big 12 4 wheel 24" Seed Tr, 5th wheel
  - 1-Big 12 4 wheel 24" Bun Feeder Trailer
  - 1-AXL 4 x 11 12 Volt Van from Grain Auger
  - 1-8x10x4 EM Cotton Seed Tr, 4 wheel
  - 1-500 gal Metal Tank
  - 1-300 gal Aluminum Tank
  - 1-11 ft Stock Water Tank
  - 2-12 gal Propane 250 W/P Tanks
  - 2-4 wheel Trailer Chassis
- NON CLASSIFIED**
- 1-Troy Bit Sickle Mower, Gas Powered
  - 1-Troy Crankshaft for Ford 300 Engine
  - 1-Toyota 20R Motor & Transmission
  - 1-20 gallon Propane Bottle
  - 1-5 gallon Propane Bottle
  - 1-Rolls Barbed
  - 1-Lot Shaves - Shelving
  - 1-Lot Rolls Electric Fence Wire, Post, Insulators
  - 1-GE Refrigerator
  - 1-Magic Chef Microwave Oven
  - 1-Buane Filler Hose
  - 1-Lot Bolts, Nuts, Washers
  - 1-3 pt PTO Wire Roller
  - 1-Lot Fence Chargers
  - 2-Come A Longs
  - 8-New Criss Ties
  - 1-Lot Part Barrel Oil
  - 1-Lot Pipe Stands
  - 1-Lot Barrel Pumps
  - 1-Lot Tires, Wheels
  - 4-Large Evaporative Coolers
  - 1-Lot PVC Fittings
  - 1-Lot Cars Oil & Grease
  - 1-Lot Alternators, Generators, Car starters
  - 1-Lot Fences, Hole, Bolts
  - 1-Box Fan
  - 1-Air Tank
  - 1-Lot Extension Cords
  - 1-Metal Canine
  - 1-Aluminum Extension Ladder
  - 1-Lot Baling Wire
  - 1-Lot Post
  - 1-Lot Pipe, Various Size & Length
  - 1-Lot Sprinkler Parts
  - 1-Lot Forks, Spikes, Hoes, Etc.
  - 1-4 x 8 Working Platform
  - 1-Set Auto Ramps
  - 1-Lot Chains, Welders, Come A Longs
  - 1-Lot Junk, Scrap & Boilers
- Announcements Take Precedence  
Terms: Cash or Check w/Prozo-10  
All Accounts Settled Sale Day

### HELP WANTED

Losers Wanted  
Need or want to lose weight? Hottest guaranteed diet in USA. 100% Natural. Dr. approved. Toll Free: 1-888-524-8363

### HELP WANTED

Kitchen and wait staff.  
Full or Part-time  
Apply in Person  
2-4 p.m.  
Tinos  
104 W. American Blvd.  
NO PHONE CALLS, PLEASE!

## Smile!

## Nieman Realty

516 E. Ave. C • George Nieman, Broker • 272-5285 or 272-5286

**RICHLAND HILLS - PARK RIDGE**

- VERY NICE 2-2-2 Brick, Heat Pump, built-ins, FP, fans, fenced yd., stor. bldg., MORE!!! RH-2
- JUST LISTED - VERY NICE 3-2-1 Brick, Cent. A&H, built-ins, FP, fans, auto splkr., 1 car detached garage-workshop, fenced yd. More!!! \$70's!!! RH-1

**HIGHLAND - HARVEY AREA**

- VERY NICE 2-1-1 carport home, nicely remodeled, Cent. Heat, DW, fans, fenced yd., stor. bldg. \$29.5K!!! HL-1
- PRICE REDUCED-3-2-2 Brick, corner lot, wall furnace heat, cent. evap. air, fenced yd., stor-workshop!! MORE!!! \$49,500!! HL-4

**LENAU - COUNTRY CLUB AREA**

- 2-1-1 Home, Cent. A&H, DW, MORE!!! \$29.5K!!! L-3
- VERY NICE 3-2-1 Brick, Elec. Heat Pump, built-ins, fans, fence yd., MORE!!! \$39K!!! L-4
- PRICE REDUCED 3-1-1 Carpet Home, wall furnace, nice carpet, storm shelter, stor. bldg., fenced yd. \$19K!!! CC-3
- NICE 3-2-2 Brick, Cent. Heat & Cent. Evap. air, built-ins, FP, fenced yd., stor. bldg!!! \$40's!!! CC-1
- 2-1-1 carport Home, wall furnace, evap. air, fenced yd.!! L-2
- 3-1-1 Home, wall heat, DW, fenced yd., \$20's!! L-5

**COMMERCIAL**

- R.V./Mobile Home Park on 2.95 acres, home, office, 3 M.H. units. Let's LOOK TODAY!!
- APPROX. 4,800' shop plus 600' office area on a 60' x 130' lot!!! \$60K!!!
- 246' x 145' tract, Hwy. 84, \$29.5K!!!
- VERY NICE 51 UNIT MOTEL, Priced to sell!!! Call for details!!!
- NICE 26 UNIT MOTEL, Priced to Sell!!! Call for details!!! Mobile Home for classrooms or parsonage!!!

**HIGH SCHOOL**

- NICE 3-1-1 Brick, cent. heat, evap. air, DW, fans, fenced yd., workshop-storage, extra garage, MORE!!! \$38K!!! HS-6
- VERY NICE 3-1-1 Brick, Heat Pump, DW, nice carpets, fenced yd., MORE!!! \$30's !!! HS-1
- NICE 3-2-1 Brick, Cent. A&H, built-ins, fenced yd., stor. bldg. \$50's!!! HS-2
- VERY NICE 3-1-1 Home, Cent. A&H, nice carpets, six fans, 2 stor. bldgs., fenced yd., \$30's!!! HS-5
- VERY NICE 3-1-1 Brick, Cent. A&H, stove, DW, fenced yd., MORE!!! \$38K!!! HS-4

**RURAL**

- PLEASANT VALLEY, Approx. 320 acres, 2 bdrm home, 1 bath, 2 car detached garage, on pavement!!!
- VERY NICE 4 bdrm., 2 bath, Brick Home on Hwy. 70, total elec., Geo Heat Pump, built-ins, FP, loads of storage, fenced yd., auto splkr., storage bldg. & shed, 2 acre tract. MORE!!!
- W. of SUDAN-NICE 3-3-2 Brick Home, 5 acre tract on Hwy. 298, Cent. Air & Heat, built-ins, large Quonset barn, MORE!!! \$95K!!!
- 5 Acre tract on pavement close to town!
- Approx. 108 acres, 15 hp & 20 hp. sub., Lockwood splkr., 85 acres seed grasses & 35 acres wheat. \$475.00 per acre.
- EARTH - (Hite Park Add.), 3 bdrm. 2 bath!! Call for Details!!!

**James G. Cruce**  
Planview, TX  
(8





# RING IN THE NEW YEAR

with these X-tra Savings from your friends at Lowe's!

**SAVE BIG ON THESE ITEMS WITH YOUR X-TRA SAVINGS REWARD COUPONS!**

## TIDE DETERGENT

92 oz. Powder or 100 oz. Liquid

Ultra, Ultra w/Bleach, Ultra Free, Ultra Mountain Spring, Ultra Mountain Spring w/Bleach

**FREE**

WITH 3 REWARD COUPONS



## COKE PRODUCTS

6-pack 0.5 liter Bottles

Coca-Cola Classic, Diet Coke, Sprite, Caffeine-Free Diet Coke, Dr. Pepper, Diet Dr. Pepper, Nestera Cool, Dasani Water



**Frito's Corn Chips .....5¢**

Chips, King Size, Regular, pp 3.29, with Reward Coupon

**Vicks NyQuil .....3¢**

Regular, Cherry, 6 oz., with Reward Coupon



**Gallon Milk .....5¢**

Lowe's Homo, ShurFine 2%, ShurFine 1%, ShurFine Skim, with Reward Coupon

**Tony's Italian Style Pastry Crust Pizza .....2¢**

Sausage, Hamburger, Taco, Pepperoni, Canadian Bacon, Cheese, Sausage & Pepperoni, Supreme 16.05-17.6 oz., with Reward Coupon



**Nabisco Premium Saltines....4¢**

1 lb., with Reward Coupon

**ShurFine Large Eggs .....2¢**

18-ct carton, with Reward Coupon



**Wolf Brand Chili .....4¢**

with beans, no beans, 19 oz., with Reward Coupon

**Casa de Lowe's Tamales.....2¢**

with Reward Coupon



**#1 Russett Potatoes .....4¢**

5 lb. bag, with Reward Coupon

**Bounty Big Roll Paper Towels.. 1¢**

Rinse & Reuse, Microwave, Medley, Fun Prints, Select-A-Size, with Reward Coupon



**Field Trial Dog Food .....3¢**

17 lb. bag, with Reward Coupon

**Casa de Lowe's Flour Tortillas.. 1¢**

Regular, Burrito Size, 10-ct, with Reward Coupon

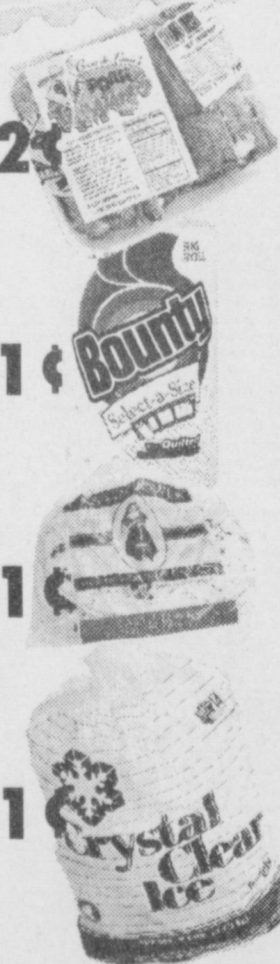


**Family Pack Hamburger Meat.....\$2 off**

Medium Regular, Regular, Preferred, Ground Chuck, Ground Round, Superb, Ultra, with Reward Coupon

**Reddy Ice .....1¢**

8 lb. bag, with Reward Coupon



ONE ITEM PER REWARD COUPON

Why shop at your neighborhood Lowe's Supermarket?...

# OUR PRICES ARE LOWER!

**SPECIAL PRICING GOOD 12/26/99 - 2/01/00 • Prices Good At Muleshoe & Canyon Stores Only**

No substitutions please on X-tra Savings Reward Items. Only one item may be purchased at the special deep discount per Reward Coupon.