

The Gorman Progress

SERVING THE HEART OF THE RICHEST AGRICULTURE DISTRICT IN TEXAS
GORMAN, EASTLAND COUNTY, TEXAS, JULY 29, 1948

Volume 48

Number Twenty-Four

Omar Burleson Makes Short Visit In Gorman

The following article was received from the Anson newspaper to late for publication last week. Representative Omar Burleson visited the Progress Office last week and asked that we give his regards to all the folks he failed to see on his short visit.

Anson, July 21—Doubtful that much constructive legislation will come from the special session of Congress, but strong in his conviction that America should carry spiritual as well as material aid to Europe if she is to live up to responsibilities of world leadership, she has assumed, Representative Omar Burleson was busy early this week preparing a series of radio addresses to the citizenship of the 17th congressional district. The Anson congressman will be late in arriving back in Washington since he will not start his return trip until after the session is opened. He and Mrs. Burleson were on their way home when the special session was called and Mrs. Burleson turned back.

Burleson said he was disappointed in not being able to get around over his congressional district and visit with his friends as he had planned but circumstances will not permit.

He has been invited to attend a conference for moral rearmament in Caux, Switzerland in September but is now doubtful if plans can be formulated in time. Moral rearmament brings together leaders of government, labor, industry and from all walks of life the world over who are willing to admit that their judgment alone is insufficient and who are willing to join together in requesting spiritual guidance.

"I am skeptical that the special session will accomplish very much Burleson said. "With the seriousness of the world situation confronting us, it is actually sad that we should be so concerned with issues involving state's rights that have been handled by the individual states for years. It simply adds up to a lot of politics.

"We, as a nation, find ourselves in a position of world leadership which has been thrust upon us. And never before has foreign policy effected our domestic life as it does now. Everyone, of course, knows the situation in Berlin and the time has come when we must decide to either deal energetically with the problems of Europe, as created by Russia, and form what amounts to an alliance with the countries outside of the Iron Curtain, or get out of Europe all together and establish a protective curtain in the Western Hemisphere.

"It seems that the first question to ask ourselves in making these great decisions is whether it is good for America and to predicate everything she does on that. That is not selfishness, it is simply survival.

"Our policy is to remain in Europe, particularly in Berlin where a critical situation now exists, and the indications are that the American people have more or less indicated a willingness to back up this commitment. As individuals I wonder if we realize fully what is involved in continuing such policy. In such policy it seems to me there are two essential elements involved, the same two which have caused mistaken democracies in the past. The British made promises to Poland and Rumania without the power to back it up. In the case of the United States we soon had the strength in an army and a navy but not the commitment.

"It seems now that the thing we have got to do if we stay in Europe is to make certain that both the power and the pledge are unequivocal. If the Western world is charged, determined and committed I feel that it is entirely possible for us to continue, even though our problems are unsolved, in the present situation without allowing it to lead to actual war. We, as American people, do not like to have our problems unsolved, but having them solved is one of the privileges of living in a closed world and we simply are no longer isolated. Although we may not like it, I think we must make up our minds we are not going to have a peaceful, absolutely certain world, but even with that there is no more reason why we cannot develop a rich and varied life in America any more than we should

W. A. Sutton Dies After Long Illness

Mr. W. A. Sutton, long-time resident and merchant of Gorman died at the home of his son, John at 12:40 A. M., July 25, 1948.

He had been bed-ridden several months and spent some time in the Blackwell Sanitarium before being moved to his son's home.

William Aston Sutton was born Oct. 24, 1869 in Abington, Virginia. He joined the Presbyterian Church at an early age and was an active member and took great interest in the church until it was dissolved.

Mr. Sutton was united in marriage October 15, 1906 to Miss Mattie Parker and to this union was born one son, John Edward of Gorman.

He has been a resident of Gorman since 1917, having moved here from Bisbee, Arizona to enter into a partnership with his brother Edward C. Sutton in the dry goods business.

Mr. Sutton was active in civic affairs and served on the school board several years. He held the love and respect of his neighbors and those who came in contact with him in the business world.

His wife preceded him in death four years ago and since that time he has been in ill health.

His brother Ed also preceded him in death. He is survived by his son, John Edward of Gorman.

Funeral services were held Sunday afternoon at the Methodist Church with Rev. W. F. Smith, pastor officiating.

Interment was in the Gorman Cemetery.

CARD OF THANKS

We wish to take this method of expressing our sincere thanks and appreciation for the many kind deeds and words of comfort shown by our friends and neighbors during the illness and death of our Dad.

May God Bless each of you.
John and Ethel Sutton

TO THE VOTERS OF PRECINCT TWO

I want to take this opportunity to thank each and every one that voted for me for Commissioner on last Saturday. Especially do I appreciate my home people and the adjoining communities for their vote of confidence.

I know this speaks for itself on my campaign until the second primary. To those that didn't vote for me in the first primary I feel sure there was no personal feeling or any doubt in your mind as to my qualifications, but with so many in the race, more or less some one of them in time past favored you in some way and you felt obligated to support them.

Since you have fulfilled that obligation I would greatly appreciate your vote and influence in the second primary. I have never asked for public office before. Give me a chance and I will prove to you what I can and will do.

Thanking you in advance for your support.
Yours
H. H. (Howard) WILLIAMS
Pd. adv.

say that we cannot sit down and eat a meal because there is crime and sin in Chicago and New York. "To act in the best interest of America, with intelligence and patriotic leadership, backed up by a brave and courageous people, I am led to the reasonable conclusion that we must remain in Europe where we have already made such great investment in peace and not withdraw our defenses to the Western hemisphere.

"However, I feel that material aid alone to Western Europe may not purchase, redeem and reconstruct all we hope, unless we are willing to send along with it a spiritual understanding which is so sadly needed by the whole world. We can build up our defenses, our armaments, strengthen our armed forces and multiply our material resources, but it is my conviction that unless we impart a faith, built upon a spiritual foundation, the only common ground on which all men can meet who believe in God, we may still be lost. This may be our only chance to survive as a nation. Moral rearmament should accompany our physical efforts."

MASONIC RITES FOR W. E. McCALL OF CARBON, TEXAS

William Edgar McCall of Carbon died at the Blackwell Sanitarium July 23, 1948. Mr. McCall suffered a heart attack a short time ago and had been in the hospital since.

The Masonic Lodge of Carbon were in charge of the service which was held at the Carbon Baptist Church, July 24, 1948 at 4 p. m., Rev. Lee Fields, pastor, assisted by Brother Moore, Eastland Church of Christ.

Mr. McCall is survived by his wife and three boys.

A Statement From Harley Sadler

Time will not permit a personal letter, so I take this means of expressing my sincere appreciation to all friends in this section for their efforts in my behalf during my recent campaign for the State Senate.

I regret that in the closing hours of this campaign misleading information was distributed through the U. S. Mail and by cleverly designed newspaper ads. The returns of the election established that these tactics resulted in causing me to lose the vote of many of the type of people with whom I have had my most intimate relationship throughout my life and for whom I have always attempted to work for their best interests. Except for this I have no regrets.

Personally, I feel that a great responsibility has been lifted from my shoulders. During my six years of legislative service I took my work seriously and endeavored to give fair and impartial service to all. I did so at a great personal expense and absence from my business. I fully realize that the future of Harley Sadler is of very little consequence, but the importance of the legislative branch of our government means everything to the people, and I urge that the voters, not just during the elections but at all times, show an interest in it.

So I ask you, my friends who believe in me please feel as I do. With kindness in our heart and malice toward none, let us all work for a bigger and better world.

HARLEY SADLER

THANKS

To each of you who made it possible for me to continue as a candidate for County Commissioner of Precinct No. 2.

In the run-off August 28th, I wish to express my sincere thanks I am grateful for your influence and vote and will appreciate your continued support.

A. M. THURMAN

Public Address System Used By Pastor At Meeting



Woodie Holden, minister of Midland Church of Christ, is using a public address system at the Alameda Church of Christ where he is conducting a meeting.

Bruce Laminack is leading the singing. The meeting will close Sunday night, August First.

BABY BOY

Mr. and Mrs. Glen Shoemaker of Columbus, Ohio announce the birth of a son, Glen C. Shoemaker Jr. on July 21, 1948. The mother will be remembered as the former Florene Love, daughter of Mrs. R. B. Love of Gorman.

Local Preacher Accepts Church In Arkansas



Evangelist Ward Hogland

Brother Ward Hogland, Minister of the Gorman Church of Christ has resigned to accept work with the Park Hill Church of Christ in Fort Smith, Arkansas.

In the two and one-half years Brother Hogland has been associated with the Gorman Church of Christ, the members have appreciated the fine work he has done for the Church. There has been a steady increase in attendance and contribution.

His standing in this locality is manifested by the meetings he has held at the Churches of Christ in this community. Brother Hogland will remain here until September as he is engaged in a series of gospel meetings.

Though young in life Brother Hogland has served as minister in Alabama, Mississippi, Tennessee, Illinois, Oklahoma, and Texas. He was reared at Tuttle, Oklahoma where he graduated from High School. He then attended Freed-Hardeman College at Henderson, Tenn. and also Abilene Christian College. He is firm in the faith and stands ready to defend the truth against all error or innovations.

His wife, Maxine, has worked in some of our local stores and has made many close friends along with Ward.

The Park Hill Church Hill in Fort Smith, is the oldest and largest Church of Christ in that City. The attendance for Sunday Service is about four hundred. At present the Church is sponsoring work at Heavner, Oklahoma where the assistant preacher is laboring. Evangelist Hogland will speak on a radio program each Sunday morning.

Midway Baptist Church Revival Starts August 1

The Summer Revival Meeting at the Midway Baptist Church will be held August 1 through the 8th. Rev. I. K. Holmes will preach.

The Pastor, Floyd Allen, will conduct the singing. Everyone is invited to attend.

O. D. Dial To Conduct Meeting At Duster Church Of Christ

O. D. Dial from Le fore, Texas will conduct a meeting at the Duster Church of Christ beginning August 6th and extending through Sunday August 15th.

Brother Dial has conducted meetings for the Duster Church for the past two years.

A cordial invitation is extended to all who wish to attend these services.

Business Men's Club To Meet At Memorial Park Monday Night

The Business Mens Club will have an outdoor meeting at Memorial Park Monday night August Second.

Rudolph Mehaffey and Amos Eakers are in charge of food arrangements and have stated that the men will be surprised when they sit down to eat.

Dick Gray is supposed to assist with arrangements but has not been contacted yet. We take for granted that he will accept and be on hand to assist in handling all mavericks.

All of the people acting foolish aren't acting.

You can't carve anything out of rotten wood.

Goobar Softball Tournament To Start August Ninth Brogdon Field

Carnival At Park For Week End

A Carnival consisting strictly of Rides and good clean entertainment will be at Frank A. Gray Memorial Park Thursday, Friday, Saturday and Sunday afternoon. There will not be any games of chance.

NOW HE TELLS ME ! ! !

Received a short note from Mr. O. H. Dick, co-owner of the Eastland Telegram, Thursday morning. The note read as follows: Please run us a story that "Eastland will play Weatherford at Eastland Sunday, August 1, at 3 P. M. This is hard ball."

One would think that a newspaper man would be a little more explicit -- but I guess this proves that newspaper folks are human to and not much different from the rest of us.

Okey, Dick, we will see you at the game, if possible.

To Conduct Revival At Comanche



Elder H. F. Wilkins

Elder H. F. Wilkins, pastor of the Gorman Pentecostal Church will have charge of the Evangelistic Services for the Pentecostal Church in Comanche which begins August First and will extend thru August Fifteenth.

Elder Wilkins has been in the ministry for 22 years, during which he has engaged in evangelistic, pastoral and foreign mission work and has also engaged in the teaching of the Bible. He held a pastorate in Phoenix, Arizona for seven years prior to coming to Gorman.

During the wuh Elder Wilkins was field superintendent for the Paramount Citrus Assn., resigning this position in February, 1947.

During this period he continued his pastoral and evangelical activities in addition to his other work. He conducted a very successful revival in Comanche last year.

Rock Bluff Baptists Open Revival Meeting Friday Night, July 30th

Brothers To Conduct Meeting

Rev. H. F. and W. L. Skaggs will begin a revival meeting Friday night, July 30th at the Rock Bluff Baptist Church. A singing will be held Sunday at 2 P. M.

Mrs. Tommy Grey, Church Clerk stated that each and everyone is extended a cordial invitation to attend all services.

TRUCK TO PICK UP TRASH ON DAYS LISTED BELOW

The truck will pick up trash in the various sections of town according to the schedule listed below:
NORTH SECTION—First Monday and Tuesday of each month.
EAST SECTION—First Wednesday and Thursday
WEST SECTION — First Friday and Saturday.
SOUTH SECTION —Second Monday and Tuesday.
Clip this schedule and pin it up where it will be handy to see.
Have your trash ready on the days the truck calls in your neighborhood.
A Clean Town Is a Healthy Town



OIL NEWS and PERSONNEL In and Around GORMAN

A. W. Gregg et al, No. 1 Phillips made 66 Bbls. oil in 12 hours on 11/64 inch choke. It is going into the tanks now.

A. W. Gregg et al, No. 2 drilling at 2464 feet.

Ownby Drilling Co. No. 1 Clay-ton waiting on storage tanks.

George and Wrather from Longview who have been drilling for Wrather, Penn and Walters on the Dominy and the Wallis leases in the Kirk Field and are now located at Albany on the Lewis lease between Cisco and Breckenridge, will bring their rigs back to the Kirk Field to complete drilling on their holdings in this area as soon as the Albany Cisco operations are completed, according to Mr. Wimberly, Field man, Partner and Production Superintendent for this outfit in the County.

France and Gillespie No. 1 McMullen getting ready to run tubing. This well will produce some oil and will have to be put on pump.

Coast Oil Corp. No. 2 Griffin with J. C. Man Drilling Co. in charge of operations are running pipe and finishing off, after having encountered pay at 2748.

Mellard and Clemens No. 1 Pete Mauney has a very light showing of oil after having been treated with 3000 gallons of acid during the weekend. It only makes about 15 BBLs. per 24 hour period.

J. W. Baldwin No. 2 J. N. Watson being put on pump after having acidized trying to increase gas pressure enough to bring oil to surface. There seems to be plenty of oil of a high grade but there is no pressure to elevate it.

Luling Gas and Oil on the No. 1 H. I. Stapp are writing orders. They cored from 2335 to 2365 in the Caddo with a faint showing of oil—no gas. Another core was taken from 2686 to 2728 with only a faint showing. Then for 37 feet or from 2728 to 2765 no core was taken and that was drilled with a 9 inch bit. At 2765 to 2860 they cored again for a distance of 95 feet. This is in shale with no showing. If they decide to finish off now they will probably work the area from 2686 to 2728 where This has been hard tight formation the saturation was the strongest. tion all the way.

Approximately 10 new locations have been made in and around the field. This will be reported on definitely as soon as rigs are available to begin drilling.

KING THEATRE

Thursday and Friday

William Powell - Ella Raines

In The Senator Was Indiscreet

Also

Two Cartoons - Novelty

Saturday

Eddie Dean

In

Shadow Valley

And

Billy Hallop

In

Dangerous Years

Also

Brick Bradford No. 5

Sunday and Monday

Abbott and Costello

Marjorie Main

In

The Wistful Widow of Wagon Gap

Also

Three Stogie Comedy

Tuesday and Wednesday

Roy Rogers - Jane Frazee

In

Under California Stars

Also

Two Cartoons - Novelty

Jon Hall - Evelyn Ankers

Tyrone Power - Joan Blondell

In

Last of the Redmen

Also

Two Color Cartoons

The second annual softball tournament sponsored by the Quarterback Club of Gorman will begin August Ninth, (Monday) 7:30 p. m. The Tournament will run ten nights, except Sunday. Ten teams will be entered with a two game elimination. Doubleheaders will be played each night - in case a team fails to show and only one game is played - it will be nine innings.

The winning team will receive \$200. Second place \$100 and third place \$50.00.

There will be no advance in price of tickets.

A number of business men and firms have contributed the prize money for this tournament. A list of their names and also the teams competing in the tournament will be carried in next week's Progress

Difference In Support Price On Peanuts Explained

The following is taken from the SWPG News.

The Southwestern Peanut Growers' Association has received some inquiries pertaining to the difference in support price on South-eastern and Southwestern Spanish type peanuts. The difference is explained by the following information.

According to actual out-turns on several thousand tons of Spanish peanuts which Commodity Credit Corporation had shelled from the 1947 crop, the actual figures show that in the Southeast from a ton of farmers' stock peanuts, basis 70 percent sound mature kernels, there was produced 1,204 pounds No. 1 shelled and 175 pounds No. 2 shelled or a total of 1,739 pounds No. 1 and No. 2 shelled peanuts. In the Southwest from the same base grade, there were produced 1,005 pounds No. 1 shelled and 355 pounds No. 2 shelled or a total of 1,360 pounds No. 1 and 2 shelled peanuts, which is 19 pounds less of shelled peanuts recovered from a ton of farmers' stock peanuts. No doubt the recovery of a larger quantity of No. 1 shelled peanuts in the Southeast is due to the fact that peanuts in this area are shocked as they are plowed from the ground and allowed to cure from 3 to 8 weeks before picking. The difference in total recovery of sound mature kernel is no doubt due to weight of bags as peanuts in the Southeast are marketed in bulk.

No. 2 shelled peanuts always bring less per pound than No. 1 shelled peanuts.

In order to supply a market and maintain prices, it was necessary that Commodity Credit Corporation buy and divert approximately 50 percent of the 1947 crop Spanish peanuts in the Southwest, whereas it was only necessary for Commodity Credit Corporation to purchase and divert approximately 12 percent of the Spanish peanuts in other areas.

We wish to assure you that the officers and directors of the Southwestern Peanut Growers' Association, as in the past, will continue to exert every effort to see that the producers in this area receive an equitable price for their peanuts as compared with other peanut producing areas.

The following table was compiled from information in "Agricultural Statistics" published yearly by U. S. Dept. of Agriculture.

Average Price per Pound to Growers, F. O. B. Country-Shipping-Point Basis.

Crop Year	SE Sp. (Cents)	SW Sp. (Cents)
1938	2.6	2.6
1934	3.9	3.3
1935	3.0	2.8
1936	3.6	3.7
1937	2.9	3.0
1938	3.0	2.9
1939	3.1	3.2
1940	3.4	3.1
1941	6.0	4.5
1942	8.0	7.4
1943	7.4	6.8
1944	8.4	8.2
1945	8.6	8.3
Average Price	4.91	4.6

Having too much money not only goes to a woman's head, but finds its way to her back.

LIVERMON PEANUT PICKERS

We have just received our first shipment of Livermon peanut pickers for the Central Texas area. We can furnish these with or without automatic self-feeders, baggers, straw carriers and tires.

We have also received a consignment of parts for these machines to take care of the Texas and Oklahoma districts, and we are prepared to fill your orders for parts.

SHANNON SUPPLY COMPANY

Telephone 168 P. O. Box 327 STEPHENVILLE, TEXAS

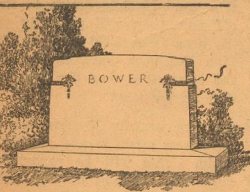
You Don't Take Chances When You Trade With Us....



- COOK'S PAINTS and VARNISHES •
- DIAMOND EDGE TOOLS •
- MAGIC CHEF RANGES •
- Westinghouse and Crossley Appliances •
- KOHELAR BATH SETS •
- American Standard Bath Sets •

EPPLER & THOMPSON

INDEPENDENT MERCHANTS
Hardware - Furniture - Plumbing Supplies
Cook's Paints & Varnishes - Butane Gas Systems
Gorman, Texas
Phone 157



For over sixty-two years it has been our privilege to render a service to this community.

Alex Rawlins & Sons

MONUMENT BUILDERS
Weatherford Phone 24 Texas
Mrs. Dave Ramsey Gorman Representative



General Repair Work
We use only Genuine Ford and Chevrolet Parts

FOSTER'S GARAGE

Phone 154 Gorman, Texas

My pa told me, "Allus do what's right first an' find out later if it wuz th' smart thing t'do."

FREE AND SURE REMOVAL OF DEAD OR CRIPPLED STOCK
Phone Collect 303

HAMILTON RENDERING CO
Hamilton, Texas

FAST SANITARY SERVICE

WANT ADS

DEAD ANIMAL SERVICE—Free and Sure - Call collect Phone 303 Hamilton, Texas. 2-5FN

FOR RENT—2 room apartments, Blue Haven Courts, De Leon, Tex.

FOR SALE—Nice homes in Ranger. Cash or Terms. C. E. May, Insurance and Real Estate, 214 Main, Ranger, Texas. Phone 418. 7-8fn
NEW Samples are now on display. See Don Rodgers for your tailor-made suits. 7-8fn

WANTED—A young man for employment with large company, attractive future, as outside buyer and salesman. Must be 24-30 years old with at least high school education. Give experience and references and send application in own handwriting to Box 178, Stephenville, Texas. 7-22c

FRANK HOLLAND, Blacksmith, Automatic Saw filing, Lawn mower grinding, De Leon, Texas fn

FOR SALE—New House. N. O. Whitfield. 722fn

NOTICE—We do first class renovating on mattresses. We make new cotton and innerspring mattresses. Prices reasonable. Pritchard Mattress Factory, Phone 160-W2, De Leon, Tex. We pick up and deliver. 8-26p

FOR SALE—Franklin Sewing machine, A-1 condition. New Singer Button hole attachment. Mrs. Onie W. Anderson 8-5p

"YOUR OPPORTUNITY NOW"

160 acres of sandy land near Rising Star: 50 acres in cultivation, no improvements, oil tests on two sides, 1/2 royalties gone. \$20.00 per acre.

100 acres near Brownwood: 60 acres in cultivation, 30 acres fine orchard, good home, electricity, Butane and ample water. Oil tests on adjoining tract, fruit crop will average \$2,000.00 and better annually. \$100.00 per acre, possession now.

80 acres commercial orchard: Come and see it producing. Oil tests drilling on tract. You will like it and it is priced right.

1340 Acres: Sandy to mixed-sandy land, 300 acres in cultivation, 500 bearing pecan trees, most of them budded, 20-acre commercial orchard, net fences, large and deep surface tanks, 4 wells and windmills, 4 houses, school bus and mail route, all minerals intact. This year's crop: 80 acres cotton, 200 acres peanuts, 20 acres melons — 3 1/2 miles off pavement but accessible by good road. \$40.00 an acre with crop — \$35.00 per acre. Possession January 1, This is a bargain, in our opinion; located in San Saba County, Texas.

BERT E. LOW
505-06 First National Bank Bldg.
Phone 5925 Brownwood, Texas

FOR SALE—Brown Jersey Cow, has young white face calf — will give 4 or 5 gallons of milk per day Ernest Broom, R. 2 8-5p

LOST—The writing end of a lifetime Parker Fountain Pen. Dark gray color. Reward to finder. Leave at Progress office.

Man has now conquered almost everything dangerous in nature.

Lots of people's incomes are what they can't live without or within.

POLITICAL ANNOUNCEMENTS

The Gorman Progress is authorized to publish the following announcements of candidates for public office, subject to the action of the Democratic primaries:

For Commissioner Precinct No. 2
H. H. (Howard) WILLIAMS
A. M. (Judge) THURMAN

Gorman Progress

Published on Thursday at Gorman Eastland County, Texas
EUGENE (Gene) BAKER
Owner - Publisher

Entered as Second Class Mail at the Post Office in Gorman, Texas under the Act of March 3, 1879.

SUBSCRIPTIONS
Local, per year \$1.50
Local, 6 mos. \$1.00
Out of Trade Territory \$2.00
Six Months \$1.25

Cheaney News

By MRS. BILL TUCKER

Mr. and Mrs. Joe Tucker, Mr. and Mrs. Richard Tucker, Miss Betty Tucker, Claude Tucker, Mr. and Mrs. Kenneth Brown and Sharon and Mrs. Jno Love went to Arlington last Friday to attend funeral services and re-burial of a grandson, nephew and cousin. Staff Sergeant Melbourne Tucker who lost his life on his 22nd birthday, Thanksgiving Day, November 30, 1944. He was a radio-gunner on a B-29 and had completed 14 missions over enemy territory when fatally injured by flak over Nuremberg, Germany on his fifteenth mission.

He completed high school at Gorman; attended Ranger Junior College until he voluntarily entered the service.

He was posthumously awarded the Purple Heart medal.

His body was moved from Cambridge Cemetery in England and was interred in Rose Hill Cemetery at Arlington.

His parents, Mr. and Mrs. G. C. (Chris) Tucker, Joe Dale, Autry and Miss Christeen Tucker of Arlington and a host of relatives survive.

Cooling, slow falling showers which began early Tuesday morning have been very helpful to the crops especially the late planted grain sorghum and black-eyed peas. This last mentioned item being a MUST on every dinner table, and surely these showers will revive the cantaloupes, which are second place on the menu.

Everybody always predicts rain for the Alameda meeting. For a great many times this has been true. The meeting in progress now is being well attended and much interest shown. Bruce Laminack of Plainview is song leader.

Visitors from other congregations so far have been Mr. and Mrs. Wells Needham and family and his sister Mrs. Barbara Long of Ranger; Mrs. Laminack and Mr. and Mrs. Wynn of Ranger; Steve Laminack and family and Mrs. E. E. Warren and family of Midland.

Mr. and Mrs. Smith, Mr. and Mrs. Pippen and Mrs. Johnston, all of Cisco. Mrs. Johnston's parents and sister, T. L. Hanks, Mrs. Hanks and Miss Kitty of Midland and Miss Maureen Nunnally of Levelland.

I. C. Underwood and wife and party, Mrs. Eva Wright, Georgia and Frankie all of Gorman.

Minister Harry Payne of Abilene, and family, who has just closed a meeting in Gorman, visi-

Carbon News

Mrs. R. F. Mitchell returned home Sunday after an extended visit with her sister, Mrs. Rouse in Albany.

Mrs. Mamie Redwien visited relatives in Dublin over the week end. Misses Billie and Nelda Clark were entertained with a farewell party at the lake Friday evening. Those present were Rev. and Mrs. J. D. Holt and son, James. Dortha Gene Snodgrass, Eddie Mitchell, Vonia and Reba Campbell, Janice Richardson and Janet Murray.

BABY BOY

Mr. and Mrs. R. D. Craighead announces the arrival of a son, born July 13 at the Blackwell Sanitarium. He has been named Ray Don.

Mrs. Walker Puett of Plainview visited Mr. and Mrs. S. S. Sherrell last week.

Mr. and Mrs. T. G. Jackson of Phillips, Texas are visiting their parents, Mr. and Mrs. Laud Black and Dr. and Mrs. Jackson. Dr. Jackson is seriously ill.

Mrs. Tonn of Big Spring is visiting her son, Mr. and Mrs. J. R. Tonn.

Mrs. R. E. Jackson of De Leon is visiting her parents Mr. and Mrs.

ted Alameda Monday morning after spending Sunday night with Mr. and Mrs. John Love and Mrs. Ann Love. Woodie Holden was a dinner guest Monday.

Honored on First Birthday

A birthday dinner, honoring little Miss Sharon Brown on her first birthday was given Sunday by her parents Mr. and Mrs. Kenneth Brown. A minute description was not obtainable, but we may be sure the traditional cake with one tiny candle and all the grand moms and grand pops were there.

Visiting Billy Tucker Monday were friends: Ray Case of Elgin and his cousin Roy Williams of El Paso who is here vacationing with Mr. and Mrs. J. W. Case, his grandparents of Cisco and with the Raymond Case family of Ranger.

House guest last week in the home of Mr. and Mrs. Henry Perrin was a sister, Mrs. Lillie Perrin. These all visited the John Tucker family on Thursday.

A number of Cheaney and Alameda folk attended the singing at the Gorman Church of Christ Sunday afternoon.

Sue and Ann Weekes are here for a visit with the Hatley Dean and Ben Freeman families. They and their mother Mrs. Dick Weekes of Comanche, visited at Alameda on Sunday.

METHODIST NEWS

W. F. SMITH, Pastor

Trips of various kinds seem to be in favor with most of our members. A number have entertained relatives and friends in their homes. Wilbur Mehaffey and J. L. Owens are attending the Senior Camp at Glen Rose, this week.

The Pastor and his wife are spending a few days in Bryan, guests of their daughter, Mrs. James Wade, and her husband, and little son.

Some serious sickness has prevailed among our members. Mrs. Dallas Jobe, an official in our W. S. C. S. underwent major surgery more than a week ago in Ranger. Dr. Jackson suffered a severe heart attack Saturday, and Mr. Wood was quite ill last week, by reason of a stroke. We sincerely hope that all have a speedy recovery.

Our schedule remains the same throughout the month unless other wise announced.

Sunday School, 10 o'clock; Morning Worship, 11 o'clock; Evening Worship, 8 o'clock; following M. Y. F. at 7: 15.

Stewards meet the second Monday evening and the W. S. C. S. the second Wednesday evening. Other meetings are held as announced.

J. T. McGregor.

Mrs. Jack Hazelwood visited her daughter, Mr. and Mrs. Orville Deeds of Houston last week.

M. P. Mayes of De Leon visited his sister Mrs. Fannie Bridges last week.

Mrs. Eva Long Elmont visited Mrs. Fannie Bridges over the week end.

Mrs. R. K. Justice visited her son Rufus and family of Elvasville last week.

Mr. and Mrs. Henry Manes and Mr. and Mrs. Walker Knight of Brady left Friday to visit relatives and friends in Mississippi.

Mr. Lum Poe of Baird is visiting his son, Mr. and Mrs. Bonnie Poe and other relatives.

Mr. and Mrs. Douglass Cates and baby of Sundown visited her parents Mr. and Mrs. Joe Barnett over the week end.

Mr. and Mrs. Norris Shirey of Clifton, Arizona are spending their vacation with her parents Mr. and Mrs. Clyde Campbell and other relatives of Eastland.

Mr. and Mrs. Buel McGaha and Royce of Clifton, Arizona are visiting their parents Mr. and Mrs. McGaha and Mrs. Allie Campbell.

Mrs. Lizzie Wilson is spending this week with Mr. and Mrs. J. S. Wilson and Mrs. J. T. Wilson and family.

J. T. Wilson left Tuesday for So Texas on business.

See the Beautiful "Rio Grande Valley" the most fertile soil in America

See or write Roy Carwile Roy Skaggs Agency Realtors

408 Mims Bldg. Off. Ph. 3925 Abilene, Texas Res. Ph. 5489

SAFE Driving
even on Wet Pavement with the GATES Silent Safety TIRE

Let us show you definite reasons why the unique tread of the Silent-Safety Tire gives SAFER, EASIER, MORE ECONOMICAL driving. A tire so tough and durable that WE PAY THE BILL if you damage it! With every handsome Silent-Safety tire we give you a full SATISFACTION CONTRACT in writing.

WRIGHT BROS.

GENE and GABE
Phone 139 Gorman

TYPEWRITERS Adding Machines

NEW and REBUILT

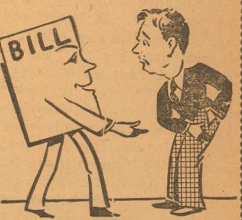
EARL STEPHENS
415 S. Lamar St.
3 blocks south of Square
Tel. 639 Eastland

Your Prescription filled as ordered by the Doctor.

Ph. 55 Night Ph. 109
J. E. WALKER, Druggist
Mehaffey Drug

COMPLETE MAGNETO SERVICE
We Rebuild All Types of --- MAGNETOS
Farm - Oil Field - Industrial
OIL FIELD ENGINES -
AUTOMOBILES -
TRUCKS • TRACTORS

SMITH BROS. CHEVROLET CO.
Phone 16 Gorman



From Your Pocket?

AFTER A FIRE, you find that the amount of fire insurance on your household gods is not enough to pay for replacing many of the things that were destroyed.

Do you want to pay for them from your own pocketbook because you neglected to carry sufficient fire insurance?

Before you have a loss, go over your policies with

Gorman Insurance Agency

GLYNN KIRK, BERENICE JEFFS

Phone 134 Gorman

YOUR FAMILY YOUR VACATION YOUR RETIREMENT

SAVINGS ACCOUNT

SELECT and PROTECT Your FUTURE

by setting aside a portion of your income regularly and depositing it in a savings account here. This is the easy sure way of making your life what you'll want it to be.



The FIRST NATIONAL BANK

"Oldest Bank in Eastland County"
GORMAN, TEXAS

H. L. R. No. 24
HOUSE JOINT RESOLUTION
 proposing an Amendment of Section 1-a of Article VIII of the Constitution of Texas to provide that no ad valorem tax shall be levied for State general revenue purposes after January 1, 1951, and authorizing the several counties to levy additional ad valorem taxes for certain purposes, providing for a Three Thousand Dollars (\$3,000) residential homestead exemption, and providing for tax levies in counties having tax donations, providing for submission to the qualified electors and for the necessary proclamation by the Governor.

BE IT RESOLVED BY THE LEGISLATURE OF THE STATE OF TEXAS:

Section 1. That Section 1-a of Article VIII of the Constitution be amended so as to be and read as follows:

"Section 1-a. From and after January 1, 1951, no State ad valorem tax shall be levied upon any property within the State for general revenue purposes. From and after January 1, 1951, the several counties of the State are authorized to levy ad valorem taxes upon all property within their respective boundaries for county purposes, except the first Three Thousand Dollars (\$3,000) value of residential homesteads, not to exceed thirty cents (30c) on each One Hundred Dollars (\$100) valuation, in addition to all other ad valorem taxes authorized by the Constitution of this State, provided the revenue derived therefrom shall be used for construction and maintenance of Farm to Market roads or for Flood Control, except as herein otherwise provided.

"Provided that in those counties or political subdivisions or areas of the State from which tax donations have heretofore been granted, the State Automatic Tax Board shall continue to levy the full amount of the State ad valorem tax for the duration of such donation, or until all legal obligations heretofore authorized by the law granting such donation or donations shall have been fully discharged, whichever shall first occur; provided that if such donation to any such county or political subdivision is for less than the full amount of State ad valorem taxes so levied, the portion of such taxes remaining over and above such donation shall be retained by said county or subdivision."

Sec. 2. The foregoing Constitutional Amendment shall be submitted to a vote of the qualified electors of this State at an election to be held on the date fixed by law for the General Election in November, A. D. 1948, at which all ballots shall have printed thereon "FOR the Constitutional Amendment of Section 1-a of Article VIII of the Constitution of the State of Texas to provide that no ad valorem tax shall be levied for State general revenue purposes after January 1, 1951, and authorizing the several counties to levy additional ad valorem taxes, providing for a Three Thousand Dollars (\$3,000) residential homestead exemption, and providing for tax levies in counties having tax donations," and "AGAINST the Constitutional Amendment of Section 1-a of Article VIII of the Constitution of the State of Texas to provide that no ad valorem tax shall be levied for State general revenue purposes after January 1, 1951, and authorizing the several counties to levy additional ad valorem taxes, providing for a Three Thousand Dollars (\$3,000) residential homestead exemption, and providing for tax levies in counties having tax donations," and each voter shall scratch out one of said clauses on the ballot, leaving the one expressing his vote on the proposed Amendment. In counties or other subdivisions using voting machines, the above provided for voting for and against this Constitutional Amendment shall be placed on said machine in such a manner that each voter shall vote on such machine for or against the Constitutional Amendment.

Sec. 3. The Governor shall issue the necessary proclamation for the election and have the same published as required by the Constitution and Laws of this State.

Fighting Words Weld Party



PRESIDENT HARRY S. TRUMAN

by the California, Wisconsin and Minnesota delegations spearheaded by Mayor Hubert J. Humphrey, of Minneapolis.

This plank paid high tribute to President Truman for his civil rights stand and called upon the congress to support the President in (1) the right to full and equal political participation; (2) right to equal opportunity of employment; (3) the right of security of person and (4) the right of equal treatment in the service and defense of our nation. The resolution was adopted by a vote of 651 1/2 to 582 1/2. The vote does not indicate relative strength of the opposing forces since many states voted against the resolution merely to uphold the resolutions committee which had adopted a compromise plank on civil rights.

The platform differs from the Republican platform in some essentials—it demands repeal of the Republican Taft-Hartley labor act and declares it has proven a failure; it demands repeal of the discriminatory taxes on oleomargarine; it pledges to oppose any revision of federal laws "designed to curtail the most effective functioning of farm cooperatives." This is interpreted to mean the party goes on record against change of the tax-exempt status of farm cooperatives. As a matter of fact the platform supports all forms of co-operatives and "other democratic associations for the purpose of carrying out any proper business operations free from any arbitrary and discriminatory restrictions."

The foreign policy plank pledged continued support of the Truman doctrine, the Marshall plan, the United Nations, the Good Neighbor Policy with respect to South America; and, taking a slap at the Republicans, pledged sufficient appropriations to carry out the will of the congress on its foreign commitments.

Truman's Opposition Lacked Leadership

In the hectic days prior to the roll call of states, the revolt against the nomination of President Truman, followed much the same pattern that was evident in the Republican convention held in the same hall only a few short weeks before . . . the opponents of the President could settle on no single leader to make the race.

So it was in the GOP convention . . . opponents of Governor Dewey could settle on no concentrated opposition. So the President ran away with the nomination on the first ballot as Dewey did on the third.

While many of the faces of by-gone glory were at Philadelphia and the ghost of Franklin D. Roosevelt still hovered over the conglomeration of factions which always has made up the Democratic party, there was no single leader able to cement these factions into unity as Roosevelt and his brain-trusters did through four national conventions, one of them here at Philadelphia in 1936.

While some sources sought to interpret this factionalism in the convention as a "wake" or a "breaking up" of the party, the political history indicates there has always been such factionalism in Democratic conventions. This fact

THERE WAS DANCING in the streets of Philadelphia during the Democratic convention. But it wasn't Democratic delegates. The traditional Mummer's parade was staged for free for the benefit of the delegates. During the Republican convention three weeks before the Mummer's show was staged in Philadelphia stadium at \$2 a head, attracting some 30,000 people. Perhaps the convention committee thought the Democratic visitors less prosperous than their Republican cousins.

ionalism or sectionalism has been brought about by geographical and political philosophy factors . . . the south . . . the liberal element, labor, even religion and race.

As a matter of fact in only three conventions since the civil war has this factionalism been brought together with any degree of national unity . . . the 1884 Chicago convention which first nominated Cleveland; the 1912 convention at Baltimore which nominated Roosevelt. In all three the cement of unity was a national crisis.

A great many of the delegates believed the nation again faces a major crisis . . . that any day some incident may touch off World War III. Hence they sought Gen. Eisenhower as a national leader who could weld the party into unity. Eisenhower refused. Then they turned to the liberal and New Dealer, Justice William O. Douglas. He refused. Then in attempting to center on someone else revolted could find no one.

Sen. Claude Pepper, of Florida, one of the better known liberals, put himself forward. But the big states . . . California, New York, Illinois refused to take him and swung back into the Truman column after James Roosevelt, son of the late President, had been severely chastised by his own California delegation.

The south wouldn't accept Pepper's liberalism. So, Gov. Ben T. Laney, of Arkansas, was tossed into the ring by conservative and reactionary southerners who put states rights above civil rights. Party caucuses were bitter.

Barkley's Keynote Sparked Enthusiasm

The delegates were whipped into something like old-fashioned "democracy" when Barkley delivered his blistering, fighting keynote speech. The veteran Kentuckian was given a 28-minute demonstration. These delegates were just waiting for something to cheer over, to lift the morale from the bitter depths of factionalism and Barkley gave it to them. He speeded up the tempo of the convention so that by the third day there was some evidence of the will to win and to fight for the nominee of the convention.

Due to the absence of competing downtown headquarters at the various hotels, such as was the case in the Republican convention, there was not quite the activity and enthusiasm engendered among delegates at this convention. Aside from this fact however, the convention hall pageantry was just as hectic and in all probability these Democratic delegates wanting desperately something to cheer about, cheered all the louder for their speakers and the demonstrations were just as vigorous and noise-some as the Republican convention held here such a short time previous.

Comparatively, the convention set-up was identical. Some of the state delegations had been changed around to give the more favored Democratic states better positions with regard to the speaker's podium.

DEMOCRATS SAY REPUBLICANS put 'em up to it. Maybe it was because convention goers will buy almost anything. But vendors were offering buttons reading "draft Pershing."

LESLIE BIFFLE, the sergeant-at-arms, had strict orders to keep folks out who didn't have the proper credentials. But the guards were locked out of their own dressing room at convention hall one session when the lock jammed.

DEMOCRATIC CHALLENGE

Truman, Barkley Head Ticket

By WALTER A. SHEAD

WNU Washington Correspondent
 PHILADELPHIA, Pa. — In a thrill-packed convention, probably the most dramatic in modern political history, President Harry S. Truman was nominated for a full term for the presidency and the veteran Senator, Alben W. Barkley, of Kentucky, was named his running mate to head the Democratic ticket for the 1948 campaign.

And to feed the flames of a bedlam-rocked convention hall, the President broke all precedents and threw down the gauntlet to the Republicans by literally daring them to carry out their platform pledges at a special session of the Congress which he said he would call July 26.

While sweltering delegates who had battled each other throughout a day in which irate southerners had staged an open revolt against the civil rights plank of the platform, cheered themselves hoarse, the President openly challenged his Republican opponents in a ringing declaration of war:

Let's see if their platform means anything. If it does then we can get some action in 15 days.

The President's spirited and bristling speech of acceptance topped and threw into the background events which at any other convention would have been top news . . . the walk-out of the Mississippi delegation . . . the threat of a rump southern convention at Birmingham . . . the spanking of the southerners who were given a sound drubbing when they sought to challenge the report of the platform committee and the delegates by overwhelming vote adopted a more drastic civil rights plank . . .

Checking off the promises of the GOP platform on domestic issues, the President, in a fighting mood which swept the delegates and galleries in rafter-rocking applause, declared he had time after time asked the Republican-controlled 80th Congress for action on the very pledges made in their platform. But they won't get away with promises, he told the packed convention hall.

He said that he would demand that the special session of the congress take action to halt high prices, to aid education, a national health law, civil rights, increase in



SEN. ALBEN W. BARKLEY

minimum wages, extension of social security, funds for public power and cheap electricity, an adequate displaced persons' law to substitute for "the anti-semitic and the anti-catholic law they provided" in the 80th Congress.

The dramatic climax of the convention overshadowed the fight for the presidential nomination which became a rout when the southerners switched from Governor Ben Laney, of Arkansas, their announced candidate, to Senator Richard B. Russell, of Georgia. The only ballot vote was 263 for Russell and 947 1/2 for Mr. Truman.

One highlight of the convention was the platform fight on the floor over the civil rights program. Southern delegates led by Gov. Dan Moody, of Texas, offered a minority report to the platform committee program to supplement the civil rights plank adopted by the committee. Not only did the convention snow under this southern states offering by a vote of 925 to 309, but the convention then immediately adopted a minority report offered

Convention Briefs

PUMMELING HOME HER charge that Republicans were responsible for high prices, Mrs. India Edwards, director of the Democrats Women's Division of the National committee, waded a juicy, raw T-bone steak above her head as she addressed the delegates. She said the steak cost her \$1.10 a pound at a Philadelphia butcher shop. Other women speakers highlighted the high cost of housekeeping because of inflated prices.

Go To Hail
 FOR NEW
 SMITH-CARONA
 TYPEWRITERS AND
 ADDING MACHINES
 421 West Commerce Street
 Tel. 48 Eastland

Better
 Photographs
 —of—
 Livestock
 The-
 GRESSETT STUDIO
 Rising Star
 Phone 155 Box 416

Dr. Edw. Adelston
OPTOMETRIST
 Eyes Carefully
 Examined
 Glasses Guaranteed
 To Fit
 406 Exchange Bldg.
 Eastland, Texas

Now more than ever before—
FIRST IN VALUE
FIRST IN DEMAND

Only Chevrolet brings you all these major advantages of **BIG-CAR QUALITY AT LOWEST PRICES** . . . prices now decidedly lower than those of any other car that even remotely approaches it in quality!



You'll have so much more comfort with the genuine United Knee-Action Ride—exclusive to Chevrolet and higher-priced cars.



You'll enjoy more thrills and more savings with Chevrolet's world's champion Valve-in-Head engine. Valve-in-Head, too, is exclusive to Chevrolet and higher-priced cars.



You'll know that your Chevrolet leads in tasteful luxury, for it has the world-famous Body by Fisher—available only on Chevrolet and costlier cars.



You'll have the safety of Fisher Unisteel Construction, the Knee-Action Ride and Positive-Action Hydraulic Brakes—combined only in Chevrolet and costlier cars.

Compare Values! . . .
 Compare Prices! . . .

CHEVROLET—and Only CHEVROLET—IS FIRST!

Smith Bros. Chevrolet Co.

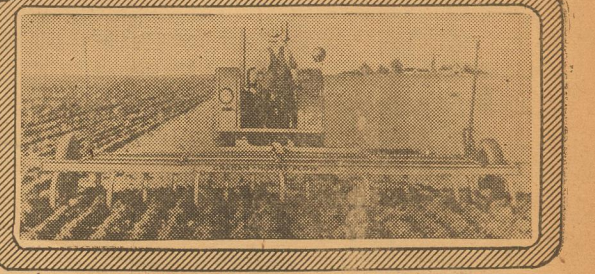
Gorman, Texas

The GRAHAM-HOEME PLOW



Self Sharpening Points • No Side Draft
 Extra Light Draft • Nothing to Grease
 Plows All Types of Land Without
 Adjustments
 Prevents Erosion by Wind and Water
 Cuts Plowing Cost in Half
 Doubles Sub-Soil Moisture
BUILT TO LAST A LIFETIME
 KEEP VEGETATION ON TOP
 Nature's own method is to keep vegetation on top. That cuts down evaporation, keeps the soil in place in spite of heavy winds. The Graham-Hoeme Plowing Method with the two-inch chisel, as shown in illustration, permits water to by-pass the top soil into the sub-soil. It's a moisture storage center.

WE HAVE 'EM ON HAND



Manufactured by GRAHAM-HOEME PLOW CO., INC. AMARILLO, TEXAS

PROVEN FACTS

On the average, enough rain falls on your farm every year to make fine crops. But, after the first few minutes of rain a smooth surface seals itself, causing run-off. It has been scientifically proven that the same field will NOT seal itself when plowed with the Graham-Hoeme All Purpose Plow with a 2-inch chisel furrow every 12 inches. This method by-passes the rainfall through the top soil and keeps a straw mulch on TOP. Upwards of three times the moisture enters the ground.

Hoeme Plow leaves vegetation on top to shade and protect, and moisture stays in the soil longer to bridge between rains.

These are not just opinions, but proven facts. A covered corrugated field in a good, brisk rain, will absorb 200 per cent more moisture than a bare field and 60 per cent more than a field with vegetable matter plowed into the surface. To supply this covering for the soil without the expense of artificial cover, and to place the soil in a condition to by-pass the moisture through the top soil is the purpose and achievement of the Graham-Hoeme Plow.



D. J. JOBE & SON
 FARM MACHINERY and SUPPLIES
 Phone X 2 GORMAN, TEXAS



MORE EGGS than your GRAIN
 GRAIN
 Purina Lay Chow provides the vitamins, minerals and proteins to balance your grain—in supply the essentials for lots of eggs. And that means money for you. Try Purina Lay Chow with your grain today—see what an egg-making ration it makes!

LOOK FOR OUR CHEST BOARD SIGN
W. G. BAKER

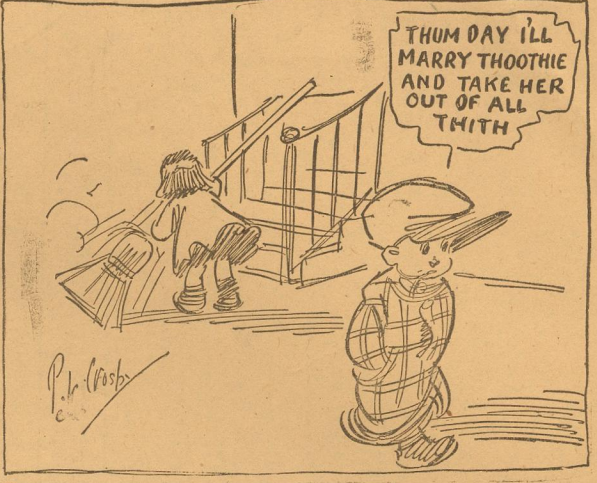
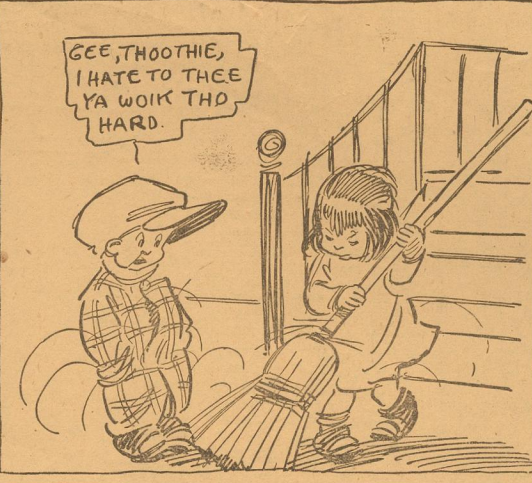
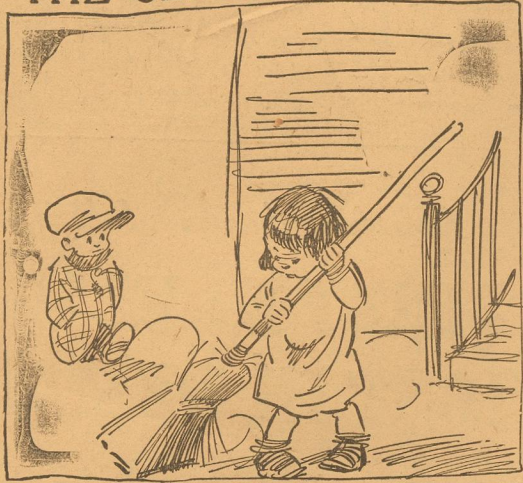
I have just installed a . . .
 NEW
LINCOLN WELDING TORCH
 and can take care of your Welding Needs
SHELL MACHINE & WELDING SHOP
 "Your Business Appreciated"
 Gorman, Texas

DEAD ANIMALS
 Un-skinned
 REMOVED free
 CALL COLLECT
 Gorman 300 or Brownwood 9494
BROWNWOOD RENDERING COMPANY

THE CLANCY KIDS

It's a Question Whether Susie Will Wait Thirty-Five Years.

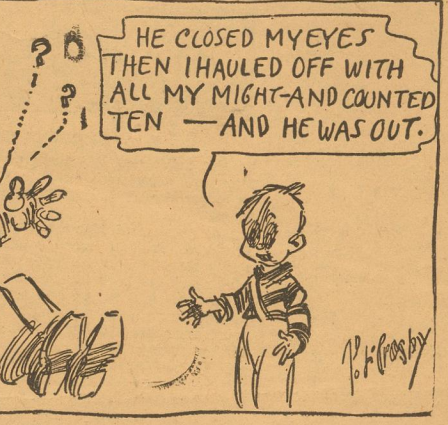
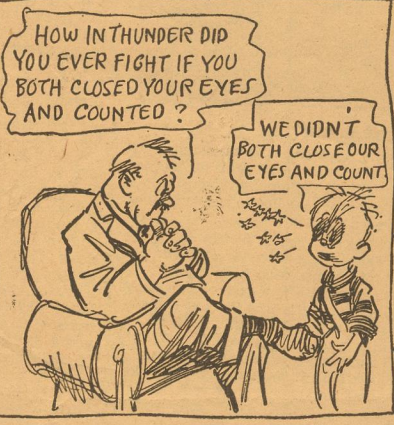
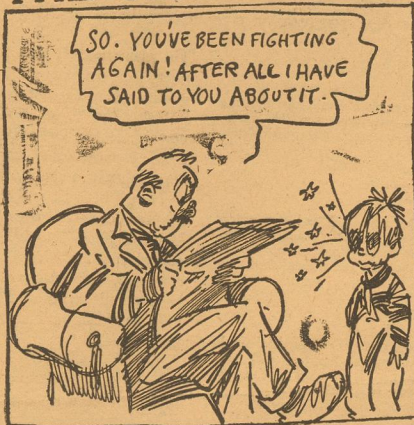
By PERCY L. CROSBY



THE CLANCY KIDS

Timmie got him with a counter.

By PERCY L. CROSBY



enjoy
Extra pleasure
on your
vacation trip

You'll enjoy the way your car drives with Esso Extra gasoline. You'll enjoy the extra power...you'll enjoy the extra anti-knock performance when you step on the accelerator. This extra performance is something extra for your money. As you drive vacation highways, fill up with Esso Extra at any Humble sign.

HUMBLE
Esso
Extra
GASOLINE

SOMETHING EXTRA FOR YOUR MONEY

HUMBLE OIL & REFINING COMPANY

NOT ONE OF THESE BEAUTIES WILL GO TO WASTE!

With a General Electric Home Freezer, you can keep 'em fresh, and eat 'em when you want 'em!

Now, you can freeze the fish and game you get (subject, of course, to your state laws) and...
...eat them when you will enjoy them most!

The General Electric Home Freezer is wonderful, too, for freezing and storing vegetables and fruits, baked goods, and ice cream. It's a good way to cut food costs these days!

To get every advantage in a home freezer, get a General Electric. This is why:
Dependable, economical, proved!!

The sealed-in refrigerating system is the same type as that used in General Electric Refrigerators. More than 1,700,000 of these systems have been in service ten years or more.

In repeated laboratory tests, the General Electric exclusive Perfect Seal cabinet construction proved so efficient that it kept food frozen for several days after the current was shut off.

General Electric's know-how covers a thorough knowledge of the refrigeration and freezing of foods, born of years of experience in our Food Research Laboratory.

Let us show you the dependable, economical General Electric Home Freezers today.

General Electric Home Freezers are available in either 4- or 8-cu-ft models.

PLAN TO CAN?
HERE'S EVERYTHING YOU NEED IN CANNING SUPPLIES

Our stores are a veritable treasure house of canning and preserving supplies ready for you to choose your requirements. There's a complete assortment of everything you need including jars, lids, jar rubbers, wax, sugar, pectin, spices and fresh fruits and vegetables.

CLOVER FARM STORES

Glendale Peas	No. 2 Can	15¢	Peaches	Clover Farm No. 2 1/2 Can	33¢
Glendale Beans	No. 2 Can	19¢	Clover Farm Tea	Colossal Halves 1/4 Lb. Pkg.	25¢
Glendale Tomatoes	No. 2 Can	15¢	Gelatin Dessert	Clover Farm No. 1 Pkgs.	23¢
Hominy	Clover Farm No. 2 Can	10¢	Apricots	Clover Farm Whole Peeled Tall	15¢
CORN	Clover Farm No. 1 Cream Style Can	13¢	Pork & Beans	Clover Farm 2 16 Oz. Cans	23¢
Grapt. Sections	Clover Farm No. 2 Can	15¢	Beans	Ranch Style 2 16 Oz. Cans	23¢
Mixed Vegetables	Clover Farm No. 2 Can	15¢	Egg Noodles	Clover Farm 8 Oz. Cello	15¢
New Whole Potatoes	Clover Farm No. 2 Can	15¢	Ranch Style Spag	Glendale Rich, Smooth 16 Oz. Can	15¢
Spinach	Clover Farm No. 2 Can	17¢	Peanut Butter	Clover Farm 16 Oz. Jar	33¢
KRAUT	Clover Farm No. 2 Can	15¢	Potted Meat	Clover Farm 2 Cans	19¢
Orange Juice	Clover Farm 46 Oz. Can	23¢	Vienna Sausage	Clover Farm 2 Cans	37¢
Grapt. Juice	Clover Farm 46-Oz. Can	15¢	Corned Beef Hash	Clover Farm 16 Oz. Can	33¢
Grape Juice	Steel's Natural Pint	19¢	SUPER SUDS	Clover Farm Large	33¢
Tomato Juice	Clover Farm 46 Oz. Can	27¢	VEL	Clover Farm Large	29¢
Apple Juice	Crystal Pure Quart	15¢	FLOUR	Light Crust Enriched 10 Lbs.	75¢
Macaroni	Clover Farm 2 7-Oz. Pkgs.	17¢	MEAL	Light Crust Enriched 5 Lbs.	52¢

SPECIAL - 3 BARS
Castile Soap 25c
F A B One Cent Sale
THREE POUNDS Pure Lard 99c
ICE CREAM
DRESSED FRYERS

CHOICE FRESH MEATS

Sliced Bacon	Armour's Dexter Lb.	59¢
Seven Roast	Tender Veal Lb.	61¢
Seven Steak	Tender Veal Lb.	63¢
Pork Sausage	1 Lb. Roll	
Lunch Meat	Assorted Lb.	53¢
Salami	Star Cooked Lb.	54¢
Picnic Shoulders	Half or Whole, lb.	
Dry Salt Jowls	Lb.	29¢

FOODS CLOVER FARM STORES MEATS

ATLAS TIRES and BATTERIES

KENNON'S
Humble Service Station
OPEN SUNDAYS

Phone 150 Gorman, Texas

BENNETT APPLIANCE
FARM - HOME - AUTO SUPPLIES

Phone 160 GORMAN P. O. Box 298

SPECIAL SALE

Men - Women - Children
BATHING SUITS
1-4 Off

Women's and Girls
VOILE BLOUSES
1-2 Price

DRESS MATERIAL
Organdie, Batiste, Powder Muslin
1-4 Off

FREE
Dress Material
Buy Material For One Dress and receive FREE
Material of your choice for another Dress

BIBBY'S
DEPARTMENT STORE
Gorman, Texas

ROYAL TYPEWRITERS

The World's No. 1 Typewriter

VICTOR ADDING MACHINES

Hand or Electric

Peeler Printing Co.

COMPLETE OFFICE OUTFITTERS

Authorized District Representatives

Phone 526 Breckenridge, Texas

Whatever The Distance . . .

. . . Between your present residence and your new home, we will transfer your belongings safely and promptly. Call us NOW.

LOCAL and LONG DISTANCE HAULS
WE ALSO SPECIALIZE IN LIVESTOCK HAULING
BONDED and INSURED — OIL FIELD PERMIT
RANGER TRANSFER & STORAGE
A. L. WOOD, Owner
Day and Night Phone 49 Elm and Rusk

NOT SO LONG AGO

Most abstractors were wondering where the next order would come from. Then came the gradual rise in the price of petroleum products, release of more building materials, and increased inflation which swelled the price of lands out of all reason. These factors and others contributed greatly to the demand for title work. But thru good times and bad for more than 25 years we have never thought it wise to sacrifice quality for quantity. And that's our business platform today!

Earl Bender & Company

Eastland Abstracting Since 1923 Texas



PRESTON FLORIST

(blocks South of Hotelon Highway)

ELECTION RETURNS

Following are the unofficial returns from Eastland County of the First Primary Election, July 24, 1948.

U. S. SENATOR
Peddy, 1321; Myers, 59; Clark, 28; Collier, 92; Stevenson, 2624; Davis, 62; Cortez, 13; Sanders, 29; Sledge, 41; Alford, 24; Johnson, 2271.

GOVERNOR
Evans, 1208; March, 1744; May, 111; Stockton, 511; Hutchison, 187; Jester, 2646; Minton, 53; Whitely, 78.

FOR LT. GOVERNOR
Shivers, 4750; Walker, 1773.

ATTORNEY GENERAL
Daniel, 6711

Chief Justice of Supreme Court
Hickman, 6172; Rowland, 376

For Associate Justice of Supreme Court (Place 2)
Rawlins, 2853; Hart, 3536

For Associate Justice of Supreme Court (unexpired term-Place 3)
Garwood, 5674; Smith, 3548

For Judge of Court of Criminal Appeals
Myers, 3959; Graves, 2308

For Railroad Commissioner (Reg. Term)
Thompson, 4417; Blakely, 2075

For Railroad Commissioner (Unexpired term)
Murray, 4184; Moore, 834; Austin, 1194.

For Comptroller of Public Account
Shepard, 4986; Butler, 1439

For Commissioner of General Land Office
Giles, 3979; Smith, 1090; Mayfield, 710; Robison, 460

For Treasurer
James, 4088; Loyd, 2280

For Commissioner of Agriculture
Griffin, 3176; McDonald, 3238

For Congress, 17th District
Burleson, 6731

For Associate Justice Court of Civil Appeals, 11th Judicial District
Dabney, 3550; Collings, 1819; Gray 1172.

For State Senator, 24th District
Sadler, 3508; Bullock, 3123

For Rep. 107th Floterial District
Pearson, 3315; Jobe, 2866; Dawson, 418

For Rep. 106th District
Collie, 4272; Slaughter, 2213

For Dist. Judge, 91st District
Conner, 3301; Davenport, 3400;

For County Judge
Eldridge, 3115; Crossley, 3502

For District Clerk
Lane, 6663

For County Attorney
Grisham, 6746

For County Clerk
Love, 6765

For County School Supt.
Elliott, 6765

For Tax-Assessor and Collector
Day, 6742

For Sheriff
White, 3168; Williams, 3545

For Treasurer
Collins, 6732

For County Surveyor
Landon, 6767

For County Chairman
Lyerla, 6759

COMMISSIONERS:

Precinct No. 1
Castleberry, 3027

Precinct No. 2
Bennett 308
Brown 143
Reynolds 21
Greer 223
Thurman 348
Williams 316

Precinct No. 3
Carter, 744

Precinct No. 4
Bint, 909; McCanlies, 670

Justices of the Peace

Precinct 1
Wood, 1200; Cooper, 582

Precinct 2
Bobo, 1227

Precinct No. 5
Turner 549
Grisham 465

Precinct No. 6
Brown, 1581

Precinct No. 7
Favors, 596

Precinct No. 8
Nabors, 227

FOR CONSTABLE

Precinct 1
Barton, 1042; Street, 730

Precinct 2
Rose, 223; Blackwell, 464; Lee, 417

Court House News

INSTRUMENTS FILED

W J Adams to E A Ringold, deed of trust.

Austin Bros. to K E Mason, ML. J C Allison to James H Snowden Trustee, oil and gas lease.

W I Allison, dec. to The Public, proof of heirship.

C W Blackburn to C W Rhoads, deed of trust.

J E Brewer to Alma Brewer, MD. D Breeding to W E Tyler, royalty deed.

Claude Bell to Charles W Scott, release and assignment.

J E Brewer to A W Gregg, oil and gas lease.

N B Bunnin to James H Snowden, oil and gas lease.

J B Brown to J W Donowho, warranty deed.

City of Ranger to Ranger Ind. School Dist., quit claim deed.

City of Ranger to Leslie H Hagaman, quit claim deed.

C M Caldwell to A C Scott, oil and gas lease.

L B Culpepper to Don Cameron, warranty deed.

County of Eastland to R E Sikes, deed and resolution.

Commercial State Bank, Ranger to Walter McIntire, release of vendor's lien.

J J Collins to R A KeKsler, warranty deed.

J E Collins to James H Snowden, oil and gas lease.

City of Ranger to The Public, cc minutes.

C F Denton to The Public, proof of heirship.

J Frank Dean to T N Davey, MD. Elnora Duggan to M O Proctor, warranty deed.

William E. Dunigan to G C Snyder, assignment of oil and gas lease.

La Verne Decker to S J Raynor, assignment of oil and gas lease.

Lizzie Dillard to Fred M Manning, oil and gas lease.

Eugene Day to Neil Day, warranty deed.

Neil Day to Horace Walker, deed of trust.

Eugene Day to Horace Walker, transfer of vendor's lien.

Earl Edwards to Lois A Dunn, warranty deed.

First National Bank, Gorman to Doy Blair, quit claim deed.

First National Bank, Gorman to Doy Blair, special warranty deed.

John W. Fields to Joe W Summers, deed of trust.

First Federal S & L Assn. to W T Wilson, release of deed of trust.

J E Foster and Son, Inc. to Protective Life Ins. Co., trans. of lien.

First Federal S & L Assn. to A. D. Anderson, rel. of deed of trust.

J E Foster & Son, Inc. to James L. Fields, sub. of lien.

Homer T. Glover to Morty Freedman, assignment of oil and gas lease.

Homer T Glover to Dnck Duncan, assignment of oil and gas lease.

Willard E. Gage to A H Gage, warranty deed.

Tom S Gates to E C Bramlett, warranty deed.

Mrs. T. L. Gates to E C Bramlett, warranty deed.

Homer T Glover to David McGee, assign. of oil and gas lease.

Allene Gilbert to James H Snowden, oil and gas lease.

W W Gilbert to Allene Gilbert, MD.

Home Owners Loan to M G Martin, release of deed of trust.

Roscoe C Hopper to C A Strong, warranty deed.

Harmony Baptist Church to M H Perkins, deed.

J F Hazel to Homer T Glover, MD.

Precinct 5
Bryant 1123

Precinct 6
Cearly, 568; Davis, 275, Farmer, 695

Precinct 7
Hulin, 679

For Public Weigher
Precinct 7
Bucy, 689

Cora Harrell to A W Gregg, oil and gas lease.

Beulah Harrison to J C Hamner, warranty deed.

Home Owners Loan to Cassie J Mobley, release of deed of trust.

H D Hall to Fred M Manning, oil and gas lease.

C E Lovell to Petroleum Dev. Co., Inc., oil and gas lease.

JJ Lash to Nettie Emily Lash, royalty deed.

George Mallenkopf to McElroy Ranch Co., oil and gas lease.

Carroll Michael to Homer T Clover, oil and gas lease.

L A Moore to A H Richardson, oil and gas lease.

Guy Parker to James H Snowden, oil and gas lease.

of heirship.

Frank Pierce to Fred M Mann-P S Pullig to The Public, proof ing, oil and gas lease.

Roy D Pierce to The Public, affidavit.

J Z Phillips to Fred M Manning, oil and gas lease.

A H Richardson to LaVerne Decker, assignment of oil and gas lease.

Lloyd Rice to Fred M Manning, oil and gas lease.

Sam Sklar to Premier Oil and Refining Co. warranty deed.

H I Stapp to Luling Oil and Gas Co., cor. oil and gas lease.

M B Shook to D J McCarty, lease contract.

P T Sharples to The Sharpless Oil Corp., assignment of oil and gas lease.

J Wesley Smith to C W Broyles oil and gas lease.

D K Scott to Fred M Manning, oil and gas lease.

J R Stubblefield to The Public, proof of heirship.

F J Stubblefield to The Public, affidavit.

F J Stubblefield to Fred M Manning, oil and gas lease.

H D Thomasson to Fred M Manning, oil and gas lease.

Hall Walker to Ranger Ind. School Dist., quit claim deed.

E J Williamson to Morris Cannon, oil and gas lease.

E K Winge to McElroy Ranch Co., oil and gas lease.

J E Walters to J B Brandon, deed of trust.

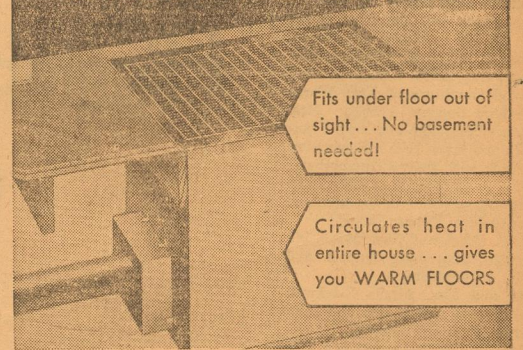
C D Wods to James H Snowden, oil and gas lease.

F D Wright Estate to Fred M Manning, oil and gas lease.

Bennie Williams to Fred M Manning, oil and gas lease.

W E Wyatt to Fred M Manning oil and gas lease.

15% OFF on this Coleman Floor Furnace
If You Act Before July 31



Get rid of chilly, old-type heaters . . .
A small payment puts this amazing Automatic Furnace in your home:

Our summer sale saves you real money! Replace your old-type home heater with this amazing automatic furnace. No expensive ducts. No dirt. No ashes. Perfect system for all sizes of 1-story homes. Easy terms.

Models for Oil, Gas or LP-Gas **BENNETT APPLIANCE**

FARM - HOME - AUTO SUPPLIES

EVERYTHING ELECTRICAL

Phone 160 GORMAN P. O. Box 298

Cottonseed And Peanuts Slated For New Treatment

The Southern Cottonseed and peanut is slated to get a new treatment soon, with radioactive tracer atoms, as the result of study being conducted by a former resident of Nacogdoches.

Jett C. Arthur Jr., research at the Southern Regional Research Laboratory New Orleans, La., will seek background for the work at a one-month course in the technique of using radiotopes in research at the Oak Ridge, Tenn., Institute of Nuclear Studies, it has been learned. It is the first class of its kind ever held.

Mr. Arthur plans to use radiotopes at the New Orleans laboratory where he is project leader on research on cottonseed and peanut protein.

The laboratory plans to apply tracer techniques to its research on the chemical treatment of seeds to prevent heating deterioration and loss of viability during storage.

BAPTIST NOTES First Baptist Church TAYLOR HENLEY, Pastor

Sunday:
Sunday School 10 A. M., Morning Worship, 11 A. M., Training Union, 7 P. M., Evening Worship, 8 P. M.

Monday:
W. M. U., 4 P. M.

Wednesday:
Prayer Meeting 8 P. M., Choir Practice 7:30 P. M., - Officers and Teachers.

The Intermediate Girls Camp will meet at the Leuders, Texas Camp grounds August 2-5, 1948.

Mrs. Taylor Henley will be in charge of the group to go from the local Church and those girls interested should see her this week.

Mr. Arthur will also try to modify the proteins with the tracer technique to form industrially useful fibers and adhesives. He is one of the thirty-two United States scientist attending the course.

SAVE TIME! SAVE MONEY!
Save Wear and Tear On Your Equipment



Buy your 0-20-0 and other grades of fertilizer delivered and spread on your fields and pastures.

This new method of applying 0-20-0 to cover crops will save you time when you are the busiest - during the peanut harvest. There is no need to stop your harvesting to fertilize your cover crops. This big 6-wheel, all-wheel drive truck will bring the fertilizer right to your field and accurately distribute it for you. The cost is very reasonable - come by and let us explain this new plan to you - works equally in pastures and with all grades fertilizer.

Plenty of 20% Super-Phosphate Now Available

GORMAN PEANUT CO.

SHELLERS SEED PEANUTS PABAK FERTILIZER

THANKS

For the confidence and the support you folks gave me in the July Primary.

Put me down now as a candidate for the same office in 1950.

B. M. (Foggy) BENNETT

Personals

Dr. T. G. Jackson, well known Eastland County physician, is in a very critical condition at the Blackwell Sanitarium following a heart attack last Saturday morning. He has developed pneumonia.

Mrs. G. H. Baird of Oxford, Mississippi; Guy Baird, Mrs. T. J. Lindley and daughters of Fort Worth were here Sunday visiting Mrs. Eula Lindley. The two girls Frances Jo and Mary Nell are spending the week with their grandmother.

Mrs. J. C. Patterson of Albany spent the weekend in the home of Mr. and Mrs. Homer Mason.

J. W. Brooks of Ibex visited his daughter, Mrs. Jack Bennett and family on Saturday.

Dr. and Mrs. Almus Blackwell of Stamford visited Dr. and Mrs. George Blackwell Sunday.

Mrs. Bill McCarty and son Roy Allen of Guyman, Okla. are spending this week with her parents Mr. and Mrs. Roy Choate. Audrey Nell who had been visiting her sister in Guyman returned home with them.

Mrs. J. T. Brightwell had the pleasure of having all her children at home on last Sunday.

Those present were: Mr. and Mrs. J. P. Westmoreland and son of Hamlin; Mr. and Mrs. O. J. Ernsen of Drumwright, Oklahoma Mr. and Mrs. Billie Armstrong of Abilene; Mr. and Mrs. Odell Bethany of De Leon; Mr. and Mrs. Roy Choate and Audrey Nell of Gorman; Mr. and Mrs. Bill Simpson, and children of Gorman; Mr. and Mrs. Leslie Helms and children of Dublin; Mrs. B. Bill McCarty and Roy Allen of Guyman, Oklahoma.

Reports from Ranger General Hospital tell us that Mrs. Mary (D. J.) Jobe is progressing nicely after a major operation.

Mr. and Mrs. W. H. Mullings of Eastland were visitors of Mrs. Elsie Gates Sunday. Mr. and Mrs. Henry Capers were also dinner guests of Mrs. Gates.

Mrs. Sallie Gilbert of Abilene spent the week end in Gorman with Mrs. Jane Eppler and others.

Mrs. John Kimble and John Edward spent Sunday in Comanche.

Other Comanche Sunday were Mr. and Mrs. Weldon Glasgow and children who attended a family reunion.

Billie Earl Simpson is spending this week in Abilene with his aunt and uncle.

Mr. and Mrs. Duane Hite of Austin and Mr. and Mrs. Gene Ellison and daughters of San Antonio spent the week end in the home of their parents Mr. and Mrs. Jimmie Ellison.

Mrs. Wilma Lane attended a family reunion in Cisco Sunday.

Mrs. Reece Allday entertained with a party honoring Mrs. Wilbur Shell on her birthday on Monday evening in the backyard of the All-day home. Those present were: Mr. and Mrs. Chas. Underwood, Mrs. Marvin Blair and Anye Kate Mr. and Mrs. Luther Wright, Mr. and Mrs. Shell and the host and hostess.

Mr. and Mrs. Elmer Todd of Fort Worth visited his parents Mr. and Mrs. Bob Todd over the week end.

Mr. and Mrs. Check Smith were guests of Mr. and Mrs. Earl Stone Jr. of Fort Worth Saturday and Sunday.

Mrs. Rena Smith and son, Joe of Ventura, California are visiting relatives and friends. They came especially to attend the Hansard family reunion which was held at Lake Eanes in Comanche.

Mrs. Carrie Kaigler of Harlingen has been visiting her sister, Mrs. Leazar. Mrs. Leazar has returned home with her to visit in Harlingen, Austin and other places.

Mrs. L. R. Davenport and her son, P. A. Davenport of Dallas are spending the week end in Gorman visiting friends and relatives.

They visited the Progress office and expressed their pleasure in receiving the Progress every week.

A Correction

Mr. and Mrs. Oda Monroe, Mr. and Mrs. Bill Simpson, Mrs. Fred Rodgers and Mrs. Scythia Bagwell went to Munday July 18th to attend the funeral of Mrs. Bagwell's nephews who were killed in a gasoline explosion at Amarillo.

MARRIAGE LICENSES

Elton Glen Ivie to Bertie Lou Stewart, Cisco.

J. H. Finley to Mrs. Ella Moore, Cisco.

Dellie East to Mrs. Mary E. Sholder, Eastland.

Henry Wodrow Youngblood to Mrs. Blanche M. Donowho, Haskell

If you want to get rid of a man who tries to borrow some money, lend it to him.

Nature sure pulled a boner when she made prunes more healthful than strawberries.

by Popular Demand -

Higginbotham's Summer CLEARANCE SALE

CONTINUES



LADIES DRESSES

—Cotton and all Better Dresses to flatter you through the rest of Summer

Dresses Now Selling At	SALE Price
4.49 and 4.95	3.59
5.95 and 6.95	4.59
7.95	5.59
8.95 and 9.95	7.79
10.95 and 12.95	8.79
14.95	9.79
16.95, 17.95 and 19.95	12.79

Children's Dresses

3.95	2.49
5.95	3.95

SUSPANTS

The panty you can wear with garters - Replaces a garter belt. Ideal for Junior Type Figures that do not require a girdle.

Sizes 9 - 11 - 13 - 15

\$1.49



Manhattan and McGregor SUNTIME SPORTSHIRTS

Here's a way to stay cool carefree and really glad of your place in the Sun.

The "Suntime" comes in many choice color shades. Visit us today and share in this great Sale.

Reg. Values	SALE Price
2.50	1.89
3.50	2.59
4.00	2.89
5.00	3.59

Manhattan and McGregor

MENS SUMMER SLACKS

Tailored with the New continuous waistband that gives you a slimmer, trimmer athletic look.

Reg. Values	SALE Price
6.95	4.89
7.95	5.89
9.50	6.89
11.95	7.89
13.95	9.89



Manhattan and McGregor

TEE SHIRTS

In the hills or by the ocean, you'll be glad to have cool Tee Shirts for casual week-end wear - and you can't find better made Tees than these beauties by Manhattan & McGregor.

Your choice of bright solid colors or new striped patterns:

Reg. Values	SALE Price
1.25	98c
1.65	1.39
2.00	1.59
2.49	1.89



WHITE SHOES

Sizes 4 1/2 to 9 Widths AA - A - B and C

All of these shoes are brand new and the sale coming at this time assures you a full summer's wear at a real saving in price.

Values \$6.95 - \$7.95 - \$8.95



SALE PRICE

ONLY

4.97

SHOES FITTED BY X-RAY

LADIES FABRIC GLOVES

In Summer Pastel Shades Were

\$1.00 and \$1.50

NOW

69c and 98c

MEN'S

SWIM TRUNKS

Reg. Values	SALE Price
2.95	1.98
3.95	2.79

COTTON SHEERS

Group One

Consists of 89c cross bar and stripe dimity in solids and print NOW

69c per Yard

Group Two

Consists of 98c dotted swiss and faile NOW

79c per Yard

Group Three

Consists of \$1.19 muslins and organdie NOW

89c per Yard



Group Four

Consists of 1.29 and 1.39 powder puff muslin, organdie and tissue gingham NOW 98c Yard

HIGGINBOTHAM BROS. & Co.

Gorman, Texas