

"Serving Gorman For Over 91 Years"

The Gorman Progress

Gorman, Eastland County, Texas 76454

Member of Texas
Press Association

NUMBER TWENTY-NINE

AUGUST 15, 1991

PRESS POINTS
JOE BENNETT - PUBLISHER

Did it ever rain - - or what? The weatherman sure turned on the faucet around our area early Sunday morning...and every day since. Gorman residents and surrounding communities have reported from 4 inches way up to 10 and 11 inches total for the four day period. Most of the rain fell early Sunday and in the early hours of Wednesday. Tremendous thunder and lightning was heavy during these storms.

Anyway, everyone is thanking the Good Lord for the fine moisture and for all the other blessings he sends our way. This moisture should go a long way in making the prospects for a very good peanut crop look even better. There are a lot of peanut fields with water standing in them. However, with the sunshine and the wind I am sure the water will soon disappear. But for now the peanut farmers and ranchers of the area are all smiles!

School will get underway on Monday, August 19th. So be sure and be on the lookout for the school children who will be going to and from school. They may not be looking out for us - - so we had better be looking out for them! Right?

The Gorman Chamber of Commerce has decided to start a series of Business Spotlight of the Month in the Progress to help boost the local business firms in their fight to survive. The series will begin this week and the honoree is George Simmons of the Gorman Pharmacy. George has a well-supplied pharmacy and is always ready to serve the needs of the folks in this area. Be sure and look at the advertisement in this weeks Progress honoring Gorman Pharmacy and George Simmons.

The series will be published monthly and the honorees will be picked by the Gorman Chamber of Commerce Board of Directors. We congratulate George on this honor.

It has been mentioned that the community might hold some kind of fund-raising project for the West Texas Rehab Center. Maybe a barbecue, a hamburger supper, fish fry, or some other event to help this most worthwhile organization continue to be able to serve the folks of this area in their rehabilitation efforts and there is sure a great need for the West Texas Rehab Center. They have helped thousands and thousands of people in this area and in Texas.

So let's all try to come up with something that we can get together and do for the benefit of the Rehab Center.

The date has been set for the upcoming Peanut Festival. September 28th is the date for the annual event, which is the highlight of the year for our community.

The usual date of the third Saturday in September got caught in a snag of conflict with an event being held in Eastland on the 21st. The CJC Wranglers and RJC Rangers already had their ball game scheduled for that date, so the Eastland folks had to hold their event on that date.

So being the great, generous folks that the people of Gorman are, they most graciously moved the date for the Annual Peanut Festival from September 21st to September 28th so as not to conflict with other events.

So this way area folks can enjoy the Peanut Bowl Game on the 21st and then attend the activities at the Peanut Festival in Gorman on the 28th. The Gorman School Home-

Gorman Voters Approve Tax Exemptions; Oppose Bond Issue

Gorman voters tallied 149 votes in Saturday's election for two proposed Constitutional Amendments.

Proposition No. 1 won approval with 81 votes for and 68 against. Statewide voters also approves the proposal clearing the way for school property tax exemptions for the residence homesteads, elderly or disabled.

Amendment No. 2 for the selling of bonds to finance college student loans failed with 71 votes for and 73 against. The Amendment lost statewide also.

Voters cast 133 votes in the

Eastland County Special Education Election.

Voters opposed Proposition No. 1 with 8 votes for and 124 against. The proposition was the option to tax personal property. It lost county-wide. Proposition No. 2 was passed with 112 votes for and 19 against, allowing the approval of \$10,000 exemption for the elderly and disabled. The amendment won county-wide.

Proposition No. 3, exemption of 20 percent homestead exemption, was favored by 102 for and 30 against. The propositions 1 and 2 were approved by Eastland County voters.

Reports On City Commission Meetings July 18-August 5

The Gorman City Commission met in regular session on July 18 with the following present: Mayor C. M. Avery and Commissioners Ann Maxfield, Howard Hagood, John Rice and Johnny Smith.

The meeting was opened with prayer at 6 p. m.

Ann Maxfield made the motion, seconded by John Rice, to approve the minutes of June 20, June 24, and July 2. Motion carried.

Johnny Smith made the motion, seconded by John Rice, to transfer \$12,000 from the Systems Fund over to the General Fund and future transfers will be approved as needed at council meetings. Motion carried (4-0).

Howard Hagood made the motion, seconded by Ann Maxfield, to have the secretary keep a running total of amounts transferred so that the money can be replenished to the Systems Fund. Motion carried (4-0).

John Rice made the motion, seconded by Ann Maxfield, to approve the reports from the department heads. Motion carried (4-0).

Ken Parker was present to give the auditor's report.

Howard Hagood made the motion, seconded by John Rice, to acquire credit cards from Eastco Fuel (one card for each department: police, fire, water, and sewer) plus another card for diesel at the market value each day (95.9 at present). Motion carried (4-0). Each card is to be maintained by an appointed person of authority.

Ann Maxfield made the motion, seconded by Howard Hagood, to adopt the 1991-92 budget as presented, provided it is legal to do so without a public hearing. Motion carried (4-0).

The subject of the tax rate will be put on the next agenda.

Ann Maxfield made the motion, seconded by Johnny Smith, to have the secretary call Ken Martin and have the mayor or mayor pro-tem set a date for a public hearing on the loan for the sewer plant as soon as possible. Motion carried (4-0).

Howard Hagood wanted it noted that all bills as well as transfers (voted on above) should come before the commission before being paid. All agreed.

Selling or leasing property to Jessie Ramirez was tabled.

Jack Simpson commented earlier in the week to the secretary and Howard Hagood that he would check into the letter received from Birdsong and that he would try to straighten things out.

coming has been set for Friday and Saturday, Sept. 27th and 28th, so it should be a very great weekend for folks to come to Gorman and see all their friends and the many, many other folks who are here for the big weekend!

And remember to smile - - because God Loves You!

John Rice made the motion, seconded by Ann Maxfield, to pay the policemen holiday pay as has been done in the past. Motion carried (4-0).

The next meeting will be held on August 8.

The meeting closed at 9:20 p. m. There being no further business, the meeting adjourned.

The Gorman City Commission met in a public called meeting on August 5, 1991 with the following present: Mayor pro-tem John Rice, and Commissioners Howard Hagood, Ann Maxfield and Johnny Smith. Mayor C. M. Avery was absent. The meeting was opened at 6:10 p. m.

Ken Martin, engineer, was present to explain to the citizens of Gorman the situation of the sewer plant and the application of \$400,000 loan from Farmers Home Administration.

Ken explained to the citizens that the purpose of this meeting is to give the citizens of Gorman the opportunity to give comments and ask questions concerning the economic and environmental effect of the sewer plant project. Ken further explained that the environmental effect will be greatly improved because the water presently being released to the sewer system does not meet EPA requirements. The improvements to the sewer system are mandated by the government.

From the economic standpoint, Ken explained that many area cities have sewer rates nearly as high as their water rates because of the rising cost of sewer. The Farmers Home Adm. has offered the City a \$200,000 grant which would make the loan \$200,000 with a 5% interest. In order to receive this grant the city has various mandates that it must comply with in order to receive the funds.

Citizens were given an opportunity for comments. Several questions were asked and answered. One issue was that sewer rates will not be lowered.

Howard Hagood made the motion, seconded by Ann Maxfield, to adjourn. Motion carried (4-0).

The meeting closed at 6:45 p. m.

MRS. CLAUDE FULLER TO PRESENT STUDENTS IN RECITAL ON SUNDAY, AUGUST 18

Mrs. Claude Fuller will present her piano students in recital on Sunday, August 18th at 3 p. m. at the First Baptist Church in Gorman.

Everyone is cordially invited to attend.

NOTE OF APPRECIATION

The members of the Gorman Fire Dept. wish to express their appreciation to Layne Marlow for opening Bob's Grocery and getting the firemen cold drinks while fighting a fire at the Dela Torrie residence Friday morning between the hours of 12:30 a. m. and 4:00 a. m..

Thanks to the De Leon Fire Dept. for their mutual aid.

Gorman Fire Dept.

School Begins Here On Monday, August 19th

School classes will begin on Monday, August 19th at Gorman Public Schools.

Classes will begin at 8 a. m. The lunchroom will be open on Monday. Buses will run at their regular time.

The Gorman ISD faculty for the 1991-92 school year is as follows:

G. W. Maxfield, Superintendent
Bill Sandlin, High School Principal
Allan Gibbs, Elementary Principal
Jerry Brown, Kindergarten
Karen Burleson, First Grade
Cheryl Smith, First Grade
Jean Lasater, Second Grade
Mary Reeves, Second Grade
Linda Gibbs, Third Grade
Pat Caraway, Third Grade
Shirley Good, Fourth Grade
Martha Harrington, Fourth Grade
Gaytha Bear, Fifth Grade
Vicki Johnson, Special Education
Lisa Laminack, Band
Bo Caraway, Ag
Lisa Chandler, Soc. Studies/Science
Kayla Duke, English/ESL
Linda Glover, Counselor
Ellen Gressett, Homemaking
Lee Kindard, Math/Computer
Sandra Porter, Science
Janda Taylor, Reading
Rowena Wilson, Business
Vicki Wilson, English/Spanish
Diane McCarty, Math/PE
Dudley McCarty, Business/PE
Bryan Allen, Athletic Coord./Math
Eddie Pettit, Correlated LA/PE
Doug Shanafelt, Social Studies/PE
Helen Browning, Tax Collector/
Adm. Secretary

Frances Rivers, Adm. Secretary
Pam Childers, High School Secretary
J. R. Jones, Elem. Secy./Bus Driver
Debbie Burleson, Aide
JoKay Hand, Aide
Carolyn Little, Aide
Traci Keith, Aide
Jo Norris, Cafeteria
Gena Rone, Cafeteria
Betty Kennedy, Cafeteria
Jack Harrison, Maintenance
Yolanda Ramirez, Maintenance
Barbara Tucker, Maintenance
Sammye Mauney, Bus Driver
Sandra Osborne, Bus Driver
Donna Grisham, Bus Driver
Rosa Aguilar, Nurse
Louise Hall, Elementary Librarian
Wynogene Smith, HS Librarian

Kokomo Community Plans Joint Picnic

The Kokomo Extension Homemakers Club, The Kokomo Baptist Church and Kokomo Community Club will have a joint picnic at the Kokomo Community Center grounds on Saturday, August 17th at 6 p. m.

All members and their guests are invited to attend.

Reporter, Nancy Hendricks

CARD OF THANKS

We would like to thank the Gorman and De Leon Fire Departments for the quick response to the fire at our home early last Friday morning.

The Dela Torrie Family

Rosa Bennett Marks 90th Birthday

Rosa Bennett celebrated her 90th birthday recently.

Though it wasn't a big blow out, Rosa said she had a very nice birthday.

Joe, Kay, Rebecca and Kristen Tucker, Alpha Andry, Bertha Gregory and Jack Harrison, along with Claude and Barbara Tucker were on hand to have a piece of cake and punch.

They also watched Rosa open all the pretty gifts. She also received 25 birthday cards and lots of phone calls.

"Miss Texas Rejects Pageant" Set Friday Night In Gorman

Have you ever been to a "Miss Texas Rejects Pageant"? It's a chance in a lifetime. Your sides will ache, you'll laugh so much. Mark your calendar folks, August 16th - Friday night, Gorman High School Auditorium - 7:30 p.m.

We have top contestants sponsored by area merchants - De Leon, Gorman, and Proctor. Come be a part of this Special Event.

The contestants are busy checking out that special dress, make-up with a flare, and hair do's to dazzle the judges. The talent will knock you the spectator out of your seat.

You may see history here Friday. If there are contracts to be signed you'll help these contestants make history.

Judges are Harry Holt - KRBC TV Channel 9 & 3; Mrs. Larry Dwayne Snider - Stephenville; and Janis Harak - Drama Department Tarleton State University, Stephenville.

First - Second and Third Place Trophies will be presented. There are the special awards - Greta Garbo Legs Award; Dolly Parton Chest Award and Charo Hips Award and more.

BE THERE!!!
Sponsored by the Senior Class 1992.

Registration For Elementary Set For August 16

Registration for students in Kindergarten through 8th grades will be Friday, August 16 at 10:00 a.m. in their home rooms.

School will start Monday, August 19th.

Lightning Destroys Large Ball Cypress Tree At Brinegar Home



The early Sunday morning severe thunderstorm was one of the most severe electrical storms the area has experienced in many years.

The ball cypress, a large tree at the home of John and Joyce Brinegar was struck by lightning and completely destroyed the tree. It fell partly across the street.

The lightning also knocked out the Brinegar's TV and VCR. Other residents reported similar damage.

The thunderstorm dumped from 4 to 5 inches of rain in and around Gorman.

The welcome moisture is a boom to peanut farmers and ranchers as well as home owners lawns.



The Gorman Chamber of Commerce's float brought home a Third Place trophy in De Leon's Peach and Melon Festival Parade held August 7. Congratulations.



Pictured are the Gorman High School Twirlers for the 1991-92 school year. They are (l to r) Connie Rone, Angela Treadway, and Edith Torres. They, along with Drum Major Jill Rainey, attended camp at the University of North Texas in Denton this summer and are looking forward to a great season this fall.

Peanut Festival Dates Set September 27-28

Gorman Business Alliance met Thursday night to organize the Annual Peanut Festival.

Due to conflicting dates with the Peanut Football Game in Eastland. Dates for the Festival was moved from the regular dates to September 27-28. Gerald Scitern was named Festival Chairman.

Booth space for Vendors will be available as in the past and at the same space fee.

Everyone is urged to assist the Business Alliance to help make the festival a huge success.

For information contact Jeanie or Brad Whittier and Brent Lasater.

NOTICE!!!

The water system will be shut off Wednesday, August 21, 1991 from 8:00 a.m. until 1:00 p.m. (approximate times) for the installation of 2 new water valves. Thanks For Your Cooperation.

Joe Williams
Director of Public Works
City of Gorman

CLASSIFIEDS

CANTERBURY VILLA NEWS

NANCY HENDRICKS - REPORTING

FOR SALE: SHAKLEE PRODUCTS. Food Supplements, Environment Safe, Household Cleaners, Natural Beauty Aids, Water Purifiers. Joy Campbell - 734-2121. 4-8-29 P.

HELP WANTED: Full Time RN, LVNS and Nurses Aides. Apply in person at Canterbury Villa Nursing Home in Gorman. 6-20-FNC.

PHOTO PROCESSING
Jumbo or Twin-Regular Prints
Roll of 12 - \$2.99; Roll of 15 - \$3.99
Roll of 24 - \$5.99
and Roll of 36 - \$7.99
GORMAN PHARMACY
5-11-FNC.

NITA DANSBY
REAL ESTATE COMPANY
Commercial Residential
Farm Ranch
108 S. Texas 893-6441

MAKE OFFER! Spacious 3 Bedroom, 1 1/2 Bath Frame at 335 Winkler! Possible Financing to Qualified!
A HOME To Call Your Own! Affordable 3 BR, Extra Clean, Frame in nice areal New Carpet accents this Inviting Home! Priced to Sell @ \$28,500!
LOVELY Country Home on 6 acres! Very Private & Secluded, Yet Close In! 4 BR Brick, 3 Baths, estimated 3500' SF! You Will Be Impressed! \$78,500.
FINALLY! A Home You Can Afford! Neat 2-1-1 Frame on Large Lot with Trees! Check 331 Pershing & Call for Appointment! \$12,000.
80 ACRES - N. of Rucker. All in Cultivation; 3 wells! 20% down; 10% APR. Reduced to \$500 per A.

MOVING SALE - Friday and Saturday. 403 Sesquehana. 734-2116. Miscellaneous items. 1-8-15c
NEED SEWING DONE? Zippers replaced, buttons and/or button-holes, hems, patches, garment construction, monograms, curtains, draperies, etc. Contact Joy Campbell 335 S. Fisher, 734-2121 or Tammy Jones, 432 Love Acres. 1-8-15-c

YARD SALE: Friday 8-5, Saturday, 8-12. 335 S. Fisher. Solo-Flex-Type Weight Bench, air conditioner, clothes, misc. sizes. Larry Campbell. 1tc

FOR SALE - Fresh home-grown tomatoes for table use and canning. 25c per lb. Call Sam at 734-2704. 1tp

Elizabeth Cubbison, Lorene Jay, Jess Hallmark will be honored at 2 p. m. on Thursday, August 29th for having August birthdays. There will be refreshments and entertainment. Everyone is invited.

Rosie Daniels, Dorothy Le Bleu, Neva Ross, Neil and Judy Rogers visited Cynthia Earles, Dallas Jobe and Ola Walker.

On Saturday Rev. Joyce Dennis of Congregational Methodist and Rev. Joe O'Neal of Sipe Springs Baptist Church brought church services for 17 residents.

Manning Fairbetter of Abilene visited Junior Fairbetter Saturday.

On Sunday morning at 10 Rev. Ron Carroll of First Baptist in Gorman taught the Sunday school lesson for 7 residents.

Those visiting Lorene Jay were Brent and Mayvis Lasater, Gladys Chambless and Anna Rush.

At 2:30 p. m. on Sunday those coming from the First Baptist of Gorman were Rev. Ron Carroll, Martha Rainey, Brent Lasater, Jeff, Veronica and Kaci Seaton, Frankie Jo Shipman, Nina Beth Joiner, Connie Hall, Anns Rush and Era Maupin.

Those visiting Robert McClellan were Mr. and Mrs. Jimmy Hughes of Carbon, Agnes McClellan and Priscilla Caraway of Dublin, Iola Wilkins of Stephenville, Hope Joiner and Mr. McClellan's grandchildren.

On Monday morning Betty Sand-

ers helped us paint pictures and do exercises. 12 residents were present.

Those visiting Ida Lewis were Willadean Ormsby, Joe O'Neal, Velsie Rawson, Nell Scott, Archie Skaggs, Era Maupin, Eunice Love, Lucille Broom, Sue Seaton and Lois Buchanan.

On Monday Nancy Hendricks helped with bingo. Winners were Cynthia Earles, Ida Lewis, Garnett Adams, Ora Mae Atchison, Mae Quinn, Ola Walker, Henry Rice, S. D. Gilmore, Dorothy Beaty, Jess Hallmark, Veno Hale, Iola Johnson, Gertie Leeper, Emma Shugart, Junior Fairbetter, Kathryn Dunlap. Nettie Denton visited Dorothy Beaty.

CYNTHIA EARLES ATTENDS FAMILY REUNION

Mr. and Mrs. Vardie Huff took Cynthia Earles to the family reunion at Lamkin over the weekend.

There were over 200 people attending fish fry and music was furnished by the "Daniels Band."

Among the guests were Cynthia's relatives, David Keith Wallace, Katie McKinney and Jimmy of Dallas, Bobby J. McCool of Gustine, Christine Daniel White of Hamilton, Jack and Barbara June Huff, J. D., Kathy, Jackie and Jennifer Perry of San Saba, Randy Jenkins of Grand Prairie. She reported a grand time.

Those visiting Cody and Pauline Love were Anette and Jason Ward of Dublin, Mr. and Mrs. Randy Ormsby and baby of Houston, Joe O'Neal, Era Maupin, Frankie Jo Shipman, Mayvis Lasater, Ima Brown. Lavoyce Hirst and Carol Ervin.

It sure was great for Thelda Turner of Stephenville to visit everyone on Monday. She once was our director of activities.

Mr. and Mrs. Sam Tarver visited Mattie Tarver.

On Sunday afternoon at 4 p. m. those coming from the Gorman Church of Christ were Bro. Curtis Maness, Bro. T. A. Grice, Janda and Tracey Taylor, Cathy, Samantha, Jenny and Tana Goode, Kristin Gibbs, Odell, Don, Rhyn, Shannon and Michell Weehunt, Odie Brightwell, Zina Simpson, Georgie and Frankie Stacy, Faye Brewer, Lorene Foster, Nettie Denton, Purnia Faye Smith and Juanita Files.

Those visiting Mae Quinn and Cleo Clement were Joe O'Neal, Anna Rush, Archie and Georgie Faye Skaggs, Sue Seaton, Era Maupin, Mayvis Lasater, Jeff, Veronica and Kaci Seaton, Connie Hall and Marie White of De Leon, Nerbice Farley and Elsie Robinett of Rock Bluff and Glen and Shirley Clement of Lake Leon.

On Tuesday morning Betty Sanders helped 12 residents play games, paint pictures and then she did our fingernails.

Lee Fields of Carbon, Jean Jackson of Eastland visited Ola Walker on Sunday.

Tuesday at noon Betty Sanders took Veno Hale, Ora Mae Atchison, Dorothy Beaty, Era Whitehurst and Mae Quinn to the Gorman Senior Citizens Center for lunch honoring Nona Bond's birthday. A good time was had by all.

Those visiting Gertie Leeper were Ruby Johnston of Fort Worth, Hans Petree of Granbury and Norma Tedford.

Tuesday afternoon those coming for singing were Billie Stacy, Willo Rice, Melba Frasier, Nancy Hendricks, Joe O'Neal, Anna Rush and Estelle Erwin.

Those visiting Ora Mae Atchison were Chessley and Barbara Atchison of Fort Worth, Quida Joyce and Kacey Gartman of Big Spring.

On Wednesday morning Brother Dewey Bailey brought the devotional for 21 residents.

Those visiting Emma Shugart and S. D. Gilmore were Modess Burgess, Idell Warren and Dixie Pack.

On Wednesday afternoon Nancy Hendricks helped with bingo. Winners were S. D. Gilmore, Gertie Leeper, Veno Hale, Cynthia Earles, Ervin Miere, Kenneth Walker, Henry Rice, Junior Fairbetter, Jess Hallmark, Ida Lewis, Ruby Vandergriff, Ora Mae Atchison, Nancy Holloway, Mae Quinn, Ola Walker and Dorothy Beaty.

Wayne Forrest enjoyed neices Tommie Guthery and Zelma Sharp.

On Wednesday Bro. Ron Carroll

GORMAN WINNERS NAMED IN P&M FESTIVAL PARADE

Gorman came home with some top honors at the De Leon Peach and Melon Festival Parade last Wednesday.

Birdsong Peanuts float was the Sweepstakes winner.

Gorman Chamber of Commerce float placed third in the out of town floats.

Gorman Junior High Cheerleaders placed second in non-entry floats. Horman high school cheerleaders placed third.

Glenda Ripley placed first in out-of-town antique vehicles.

Barbie White placed second in the Duchess cars.

came and played, sang and preached for 17 residents.

Those visiting with Minnie Brightwell, Stella Thurman and Mary Hogan, Ella Mae Hogan, Mildred Choate were Mr. and Mrs. Elmer Waite of Hurst, Zella Mae Wright of Ballinger, her daughter, Sharron and children of Anchorage, Alaska, Fred and Beth Owens of Fort Worth, Elmer and Odell Bethany of De Leon, Willadean Ormsby of Stephenville, Zina Simpson and Odie Brightwell.

Those visiting Jim Hogan were Mr. and Mrs. Bill Carlton, Joan Hull of Brownwood, Carrol and Leta Hogan, Ella Mae Hogan, Mildred Freed, Earl Freed, I. D. and Ruby Hogan, Shirley Morgan of Olden and Randy, Bradley and Britt.

Nancy Hendricks helped with bingo on Friday. Winners were Ruby Vandergriff, Veno Hale, Emma Shugart, Ida Lewis, Ora Mae Atchison, Ervin Miere, Kenneth Walker, S. D. Gilmore, Dorothy Beaty, Iola Johnson, Gertie Leeper, Garnet Adams and Henry Rice.

Town & Country REAL ESTATE

BARBARA LOVE, Broker
HIGHWAY 80 EAST
817-629-1725
EASTLAND, TX 76448
NICE LOCATION for this 3 BR, 1 3/4 bath brick on 2.25 acres. Cen. h/a, total elect. & more! ONLY \$45,000.00
REMODELLED 3 BR, 2 bath frame on corner lot.
82 ACRES: Approx. 1/2 in cult., small tank. Owner will convey minerals.
NEAT FAMILY HOME -- 3 BR, 2 bath brick. Some built-ins, cen. H/A 4 BR, 2 bath Frame Home. CH/CA, water well, pretty lot with large trees, nice home. MUST SEE! G2

NINTENDO GAME RENTALS
Rent 1 - \$2.50
Second One Only \$1.25
At The Same Time
GORMAN PHARMACY - 734-2859
7-11-FNC.

DIRT WORK: Dump Truck Service - Lot Preparation and Leveling - Driveway and Road Material - Sand - Topsoil. Reasonable. K. D. Boyd, 734-2122. 2-3-FNC.

Real Estate

95+ ACRES, 2BR Frame Home, Barn, Steel Corral, 3 Tanks, Some Timber, Co-op Water, East of Carbon, \$70,000. - Good Terms - 20% Down.
54.35 ACRES - Most all Coastal - Fenced and Cross Fenced, Tank and well, 1/2 mile off pavement. \$750.00 Acre.
1 ACRE M/L AT RUCKER - 2 Br, carpeted home, well, pavement, nice storage, satellite dish, \$15,000.00
10 A - M/L, edge Gorman, clean 3 - 1 1/2 home, 2 BIG barns, big trees, fine well, city water, enjoy both Country and City life here. \$40,000.00.
1 + AC - 3 - 1 Frame, attached garage, storage building, Corner lot, garden to your hearts delight here. Only \$10,000 Cash or 20% Down.
1.5 ACRES - M/L between Gorman and Carbon, Clean 2-1 partly insulated home, big oaks, city water, storage bldgs, fine garden, just off Hwy. Yours for \$20,000.
182 A + Near Hogtown, solid 2-1 home, big carport, excellent well, 2 tanks, spring, 20 cult, live oaks, lots hwy. front, deer area, rolling and scenic. \$600.00 A - 1/4 Down
COGBURN REALTY
We WANT Your Listings - Peanut Farms - Houses - Small and Large Acreages.
893-6666 DE LEON, TX 5-30-FNC.

DE LEON VARIETY DE LEON FLORAL SEARS CATALOG STORE
Open Monday thru Saturday 8:00 a.m. to 5:30 p.m.
10-29-FNC.

CASH FOR SPINETTE Piano's. Call 817-965-4221. 13-8-29 C.

FOR RENT: Mobile home, fully furnished, 2 bedroom, close to school. Call 734-2578 or 893-2097. 1-17-FNC.

DE LEON INSURANCE AGENCY
108 S. Texas De Leon, Tx

DIAL 893-6616

AUTO HOMEOWNERS FIRE HEALTH NOTARY PUBLIC LIFE FARM LINES

CUSTOM DRAPERIES MADE: No Labor Charge when fabrics, etc., are bought from our store. Free estimates. W. H. Smith Department Store, Phone 893-2135. 5-26-FNC.

FOR YOUR SHOPPING NEEDS AND CONVENIENCE, STOP IN AT SEARS CATALOG AGENCY IN DE LEON OR CALL 893-2086. 11-21-FNC.

SAVE ON CARPET: Buy at Wholesale plus 10% and freight. CASH - NO STAMPS. W. H. Smith Department Store, De Leon, Tex. 5-26-FNC.

THE GORMAN PROGRESS
P. O. Box 68
Gorman, Texas 76454
Phone 817-734-2410 or 2411
Publication Number 222780

PUBLISHER: Joe Bennett
ASST. PUBLISHER: Lorraine Bennett
EDITOR: Herman Bennett

SUBSCRIPTION RATES: By Mail in Eastland and Comanche Counties - 1 year - \$8.00, Outside Eastland and Comanche Counties but in Texas - 1 year - \$12.00, and Out of State - 1 year - \$13.00.
Any erroneous reflection upon the character, standing, or reputation of any person, firm, or corporation which may appear in the columns of the Gorman Progress will be gladly corrected upon being brought to the attention of the publisher.

Entered as 2nd Class Mail at the Post Office in Gorman, Tx 76454, under the Act of March 3, 1879. Published Weekly at Gorman, Eastland Co., Texas 76454. Sec. Class Postage Paid at Gorman, Tx 76454

DISPLAY AD RATE
\$2.10 Per 840 COL. INCH
CLASSIFIED ADVERTISEMENTS
.15 cents Per Word
Minimum charge - \$3.00 per issue - CASH
Charged - \$4.00 First 20 Words plus 15c each additional word. \$4.00 minimum charged. No Commission
Additional 50 cents for Borders
ADVERTISING DEADLINE - TUESDAY NOON
Card of Thanks - \$3.00

An Extra Charge of 50 cents per issue will be added to Classified Ads for Tearshots and Billing.
THE GORMAN PROGRESS RESERVES THE RIGHT TO REFUSE ANY ADVERTISING.
POSTMASTER: Please Send Change of Address To: GORMAN PROGRESS, P. O. Box 68, Gorman, Texas 76454-0068

EVENING COLLEGE

Over 100 Degree - Related Night Courses
TARLETON STATE UNIVERSITY

REGISTRATION
WEDNESDAY AUGUST 28TH 6 PM-8 PM
TARLETON CENTER
Call 617-968-9121 for information

We Now Have a FAX PHONE

Available To
The General Public
At An Economical Cost
THE GORMAN PROGRESS

REPAIRS ADD-ONS REMODELING NEW CONSTRUCTION
ELECTRIC SEWER AND DRAIN CLEANING

Steve Sheetz
Plumbing and Electrical Service
Licensed Master Plumber
10 Years Experience
Phone 817-893-3191

SALYER CHIROPRACTIC CLINIC
Highway 6 East
Dublin, Texas

Complete Lab, X-Ray & Treatment Facility
All Insurance Accepted.
Phone (817) 445-3317 or (817) 445-2205

PLUMBING REPAIRS

Clark Construction
734-2755
FNC

J & J

Air Conditioning, Inc.
201 S. Lamar -- Eastland, Texas -- 817-629-2251
(Just On The Square)

We Insulate Walls and Attics
With Cellulose Insulation for
Homes and Businesses

We Now Have
Maytag - Frigidaire - Tappan - Kelvinator
In Stock
Financing Available

SUMMER SALE

Come by and look at all the new appliances such as dishwashers - refrigerators - stoves - electric or gas - freezers - and air conditioners

* York & Carrier Dealer *

We Now Have Available Extra
Hi-Efficiency Ground Source
Heat Pump Systems
Carrier Window Units
Free Estimates On Installation
Financing Available

Call Today For Your Heating
and Cooling Needs.
TACL002300C

At Riley Gardner Memorial Service Company

We Specialize In:

- Permanent care cemetery lots
- Granite and cement curbing
- Stone cleaning and leveling
- Quality memorials
- Marble, granite & bronze vases.
- Cemetery lettering

Dorothy Johnson is our new representative for the Gorman Area. If you need Dorothy, you may reach her at 817-734-2367.

DR. CARL H. MALONE

Optometrist

- Comprehensive Eye Health Evaluation
- Eyeglasses Now Available
- Contact Lenses
- Medical Accepted
- Participating Medicare Provider

LOCATED IN DOCTOR'S MEDICAL CLINIC
105 Valley Forge - Comanche, Texas 76442
For Appointments Call 915-356-5211
4-8-29

HIGGINBOTHAM'S

For All Your Carpet Needs!
AUGUST SPECIAL
25% OFF Retail
Phone 893-2081 105 W. Reynosa
De Leon, Texas
Visa - MasterCard - Discover

KIDS KOUNTRY

201 S. Lamar (Inside J&J A/C Building)
Phone 817-628-2828
Eastland, Texas

Great Selection
of
Hair Bows!!!

Shop Kids For Your
Back - To - School
Needs!!!

Size Range: Newborn to Size 14
Boys and Girls
Owners: Joetta Schuman and Karen Lee

James E. 'Jim' Hogan Laid To Rest On Wednesday

James E. "Jim" Hogan, 86, of Carbon, passed away Tuesday, August 13 at Canterbury Villa in Gorman.

Services were held at 2:30 p. m. Wednesday at the Bakker Funeral Home Chapel in Eastland with the Rev. Jimmy Maples officiating, with Rev. James Haynes assisting. Burial was in the Murray Cemetery.

Mr. Hogan was a lifetime resident of Eastland County. He retired as superintendent of operations from

Ranger Peanut Co. in 1970. He then worked for nine years as a security guard for Moylan Construction Co. of Eastland. He was a former member of the Carbon City Council and a Baptist.

Survivors include his wife, Ella Mae Hogan of Carbon; three sons, Carroll Hogan of Gorman, Lynn of Silsbee and Bob of Carbon; four daughters, Jimmie Kinard of Odessa, Lee Carlton of Eastland, JoAnn Hull of Brownwood and Shirley Morgan of Olden; a brother, I. D. Hogan of Carbon; two sisters, Marie Welch and Lula Petree, both of Cisco; 25 grandchildren; 35 great-grandchildren; and three great-great grandchildren.

KOKOMO NEWS

ZELDA JORDAN -- PHONE 639-2289

What an electrical storm we had in the early hours of Sunday morning, along with a lot of rain that continued to fall until up into the afternoon. We received over 4 inches here at our house, and there were reports of up to five inches or more in some places. Another one-half inch fell on Monday. It seems a little unusual to me to get that much rain in August, but we thank God for his continued blessings on us. And isn't the cooler weather so very nice.

Bro. A. J. Quinn of Morgan Mill was the guest preacher at the Kokomo Baptist Church on Sunday. Special music was rendered by the choir under the direction of Brown Browning with Wynelle Wood at the piano. Visitors were Rick and Pat Fuller of Irving, Kevin Fuller of Abilene and Richard, Teresa, Taylor and Trevis Nachtigall of Morgan Mill.

Sunday night visitors at the Kokomo Baptist Church were Denzel and Faye Ables of Gorman.

We are always happy when we have visitors to our church services, and invite you to come at anytime to worship with us.

Those from the Kokomo Baptist Church going to Canterbury Villa in Gorman on Sunday afternoon for the church services were Jimmy and Verna Lee Little, Nancy Hendricks, Hope Joiner and Wanda Rainey and her church, Denzel and Faye Ables.

CHURCH PICNIC — There will be an all-church family picnic at the Kokomo Baptist Church on Saturday, August 17th, beginning at 6 p. m. There will be brisket and all the trimmings and home-made ice cream. All members are urged to attend and visitors will be welcome.

Wesley and Kevin Fuller visited last week with their grandparents, Claude and Juanita Fuller. Rick and Pat Fuller of Irving spent the weekend with them. Chad Eaton of Ovalo is spending this week with the Fullers.

Deliah and Christopher Lewis of Ennis visited with Delmon and Joyce Eaves from Monday until Wednesday last week. Mark Eaves of Mansfield visited on Tuesday and Wednesday with them.

CHRISTOPHER LEWIS CELEBRATES 2ND BIRTHDAY
Randy and Deliah Lewis honored their son, Christopher, with a party to celebrate his second birthday at their home in Ennis on Sunday, August 11th. Chris will be two on August 19th.

Hos grandmother, Joyce Eaves, baked his birthday cakes which was a large cake in the form of a football and four smaller cakes in the forms of a baseball, basketball, soccer ball and a golf ball. The larger cake had the inscription "Happy 2nd Birthday Chris" and two candles. Chris really enjoyed blowing out the candles, and setting on the table opening his gifts.

The tablecloth, napkins and cups carried out the "Ball" theme. Chris's grandparents, Jelly Lewis and Laura Gay Sandefer of Ennis and Delmon and Joyce Eaves of Kokomo, were among the many guests helping

Billie Jeanne Grisham of De Leon, Lucille Joiner and Joyce Bramlett of Stephenville were visiting with their mother, Hope Joiner, on Saturday.

Visitors with Nancy Hendricks were Delmon and Joyce Eaves, Deliah and Christopher Lewis of Ennis, Doris Bradshaw, Hope Joiner and Ruth Bryant.

Nancy Hendricks and Bro. Joe O'Neal visited with Daisy Wood at the nursing home in Eastland on Thursday. Nancy was also a recent visitor with Sarah Tuggle at the Western Manor Nursing Home in Ranger.

Richard, Teresa, Taylor and Trevis Nachtigall of Morgan Mill and Buster Johnson of Carbon were weekend visitors with Vernon, Deon and Lindell Fields.

John and Troy Scitern were recently in Colorado to be with her brother, Lester Rich, who suffered a heart attack and underwent by-pass surgery. Troy reports that Lester seems to be doing well now. We wish him a speedy recovery.

SCHOOL MENU

BREAKFAST

Monday - Cereal, toast, juice and milk.
Tuesday - Cheese toast, juice and milk.
Wednesday - Eggs, bacon, toast, juice and milk.
Thursday - Two cinnamon rolls, juice and milk.
Friday - Sausage, biscuits, gravy, juice and milk.

LUNCH

Monday - Ham and cheese sandwiches, lettuce, tomatoes, pickle spears, pineapple chunks, potato chips, bread slices and milk.
Tuesday - Chicken nuggets, cream potatoes, peas, gravy, hot rolls, apple crisp and milk.
Wednesday - Taco salad, grated cheese, lettuce, red beans, tortilla chips, Jello with topping, hot sauce and milk.
Thursday - Lasagna, salad, corn, pears, hot rolls and milk.
Friday - Hamburgers, cheese, all the trimmings, french fries, ice cream and milk.

LETTER TO HOUSEHOLDS (Multi-child Meals) NATIONAL SCHOOL LUNCH PROGRAM/SCHOOL BREAKFAST PROGRAM

Dear Parent/Guardian: The Gorman school serves meals each school day. Children may buy lunch for \$1.28 and breakfast for .98. Children also may get meals free or at a reduced price.

If you now get food stamps or AFDC for your children, your children can get free meals. If your total household income is the same or less than the amounts on the Income Chart below, your children can get free meals or reduced price meals. A foster child may get free or reduced price meals regardless of your income. The reduced price is .40 for lunch and .30 for breakfast.

TO GET FREE OR REDUCED PRICE MEALS FOR YOUR CHILDREN, YOU MUST COMPLETE AN APPLICATION AND RETURN IT TO THE SCHOOL. WE CANNOT APPROVE AN APPLICATION THAT IS NOT COMPLETE.

HOW TO APPLY
If you now get food stamps or AFDC for the children you are applying for, the application must have the children's names, a food stamp or AFDC case number for each child, and the signature of an adult household member. If you are applying for a foster child, the application must have the child's name, the child's personal use income, and an adult signature. If you do not list a food stamp or AFDC case number for all the children you are applying for, then the application must have the children's names, the names of all household members, the amount of income each person got last month and where it came from, the signature of an adult household member and that adult's social security number or the Social Security number of the adult does not have a Social Security number.

HOUSEHOLD SIZE	ANNUAL	MONTHLY	WEEKLY
1	12,287	1,024	236
2	16,428	1,369	316
3	20,409	1,718	397
4	24,790	2,066	477
5	28,971	2,415	558
6	33,152	2,763	638
7	37,333	3,112	718
8	41,514	3,460	798
9	45,695	3,809	879
10	49,876	4,158	960
11	54,057	4,507	1,041
12	58,238	4,856	1,122

Verification: Your eligibility may be checked at any time during the school year. School officials may ask you to send papers showing that your children should get free or reduced price meals.

Fair Hearing: You may talk to school officials if you do not agree with the school's decision on your application or the results of verification. You also may ask for a fair hearing. You may do this by calling or writing:

Name: G.W. Maxfield Phone: 734-3171

Address: Box 8 Gorman, Tx. 76454

Reporting Changes: If your children get free or reduced price meals because of your income, you must tell the school if your household size decreases or your income increases by more than \$50 per month or \$600 per year. If your children get meals because they get food stamps or AFDC, you must tell the school when you are not getting AFDC or food stamps for them. You may then fill out another application giving income information.

Confidentiality: School officials use the information on the application only to decide if your children should get free or reduced price meals.

Reapplication: You may apply for meals anytime during the school year. If you are not eligible now but have a change, like a decrease in household income, an increase in household size, become unemployed or get food stamps or AFDC for your children, complete an application then.

IN THE OPERATION OF THE CHILD FEEDING PROGRAMS, NO CHILD WILL BE DISCRIMINATED AGAINST BECAUSE OF RACE, SEX, COLOR, NATIONAL ORIGIN, AGE OR HANDICAP. IF YOU BELIEVE YOU HAVE BEEN DISCRIMINATED AGAINST, WRITE IMMEDIATELY TO THE SECRETARY OF AGRICULTURE, WASHINGTON, D.C. 20250.

We will let you know when your application is approved or denied.

Sincerely,

G.W. Maxfield

1991-92 INCOME ELIGIBILITY GUIDELINES

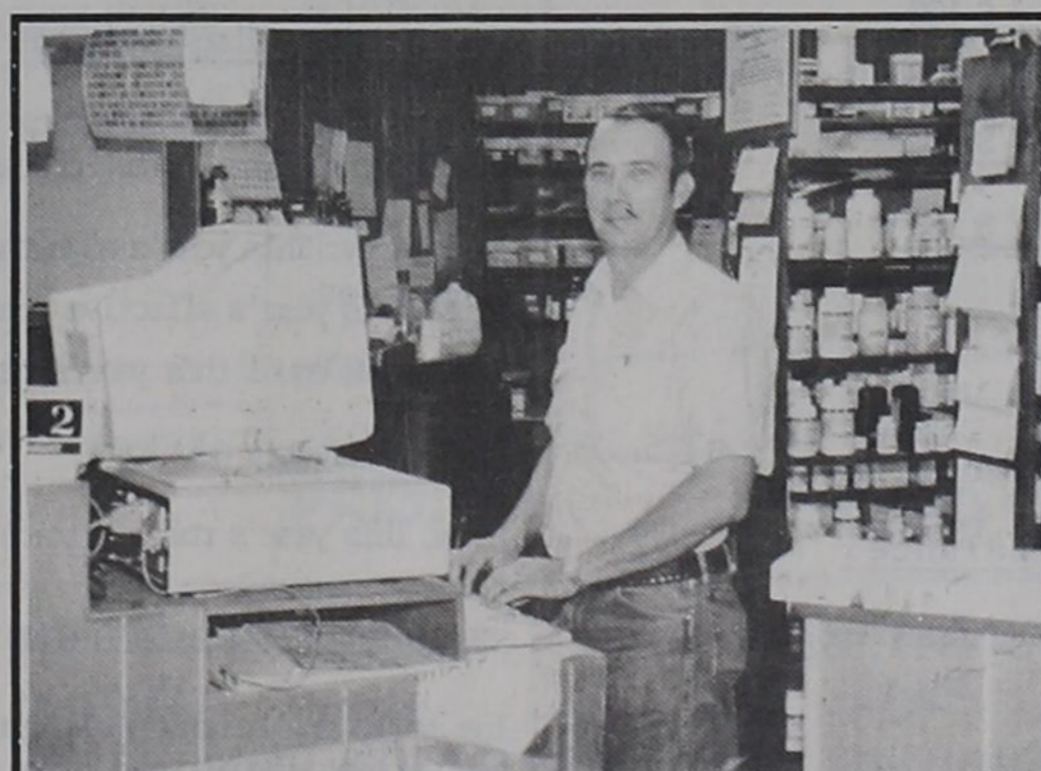
FAMILY SIZE	ANNUALLY		MONTHLY		WEEKLY	
	FREE	REDUCED PRICE	FREE	REDUCED PRICE	FREE	REDUCED PRICE
1	\$ 8,606	\$12,247	\$ 718	\$1,021	\$166	\$ 236
2	11,544	16,428	962	1,369	222	316
3	14,482	20,609	1,207	1,718	279	397
4	17,420	24,790	1,452	2,066	335	477
5	20,358	28,971	1,697	2,415	392	558
6	23,296	33,152	1,942	2,763	448	638
7	26,234	37,333	2,187	3,112	505	718
8	29,172	41,514	2,431	3,460	561	798
9	32,110	45,695	2,676	3,809	618	879
10	35,048	49,876	2,921	4,158	675	960
11	37,986	54,057	3,166	4,507	732	1,041
12	40,924	58,238	3,411	4,856	789	1,122
Each additional family member:						
	\$ 2,938	\$ 4,181	\$ 245	\$ 349	\$ 57	\$ 81

Over 100 Degree - Related Night Courses

★ **EVENING COLLEGE** ★
★ **TARLETON STATE UNIVERSITY** ★
REGISTRATION
WEDNESDAY AUGUST 28TH 6 PM-8 PM
TARLETON CENTER
Call 817-968-9121 for information

Effective August 12
Lone Star Gas
Collection Station
will move from
Lasater's Dept. Store
to
Higginbotham's Bros. Store
101 N. Kent - Gorman, Tx

Chamber Of Commerce Business Spotlight of Month Gorman Pharmacy



George Simmons, owner of Gorman Pharmacy has been named Progressive Businessman of the month by Gorman Chamber of Commerce. George came to Gorman in 1967 following graduation from South Western State University School of Pharmacy and was employed as Pharmacist at Mehaffey Drug, owned by Jerry Mehaffey. The drug store was located at that time in the building now known as Foster Floral. He formed a partnership with Jerry in 1968 and they moved to the present location, following the purchase of the building from Ray and Rooney Williams when they closed the Insurance and Electrical business in 1977. He has been sole owner of the pharmacy for the past 10 years. In addition to the pharmacy, George has provided an up dated the store into a complete convenience facility for his customers. Stocking a complete line of over the counter drugs, Coty and Max Factor Cosmetics, Hallmark Cards, Watches, Jewelry, Pangburn Chocolate, Candy, Film and Film Processing and a limited selection of



magazines and paperback books. A snack bar is provided with booths for coffee, cold drinks and snacks. The pharmacy is completely computerized and all medicaid and third party insurance plans are accepted. The aggressive business man is active in Civic activities in the city. He has served on the Housing Authority of 8 years, Lions Club, and President 2 terms with Chamber of Commerce and Fire Department since 1967 and was Fire Marshal 5 years. Served on City Commission 3 years. He was president of the J.C.'s the year it organized - it only lasted one year. As a member of the State Pharmacy Association, he has served 3 years on the Board of Directors. The Chamber of Commerce is proud to Salute this aggressive businessman for providing an excellent pharmacy and modern drug store.

SUPPORT YOUR LOCAL BUSINESSES!!!

Some banks have it and some don't.

We have it. **MPACT**. The remarkable automatic teller that lets you get instant cash from your MPACT accounts, make deposits, transfer funds, even check your balance. And best of all, you can use MPACT 24 hours a day, 7 days a week. When you've got it, you've really got it.

Citizens State Bank

Phone 734-2255
Gorman, Texas

Member FDIC

MPACT
12 3456 789012 123

ROBERT FOSTER

Gorman Police Report For Month Of July

The following is a Police Report to the City Commission of Gorman by Brett Ashley, Chief of Police for the month of July, 1991:

During the month the Gorman Police Dept. reported the following:

Issued 8 traffic citations: 1 stop sign; 3 no drivers licenses; 1 FYROW; 1 no liability; and 2 speeding.

Arrested or detained 4 persons, as follows:

2 adult males on warrants; 1 adult male P.I.; and 1 juvenile disorderly conduct.

Investigated 49 reports, as follows:

6 unsecured property; 19 disturbance calls; 2 wreckless driver; 6 criminal mischief; 2 burglary; 10 suspicious vehicles; 2 accidents and

2 lost child. Answered 51 calls for assistance, as follows:

10 public assistance; 3 emergency message; 7 fire calls; 3 house watch requests; 8 animal control; 2 fire meeting; 1 dispatch meeting; 2 funeral escort; 5 assist other agencies; 3 welfare concern; and 7 medical assists.

Vehicle information was as follows:

Beginning mileage	81124
Ending mileage	83637
Total mileage	2513
Fuel used	260.60 gals.
Fuel Economy	9.65 MPG
Maintenance reported was a rebuilt compressor	93.86
Total Maintenance Totaled	93.86

Surplus Commodities To Be Distributed August 20-22

The Central Texas Opportunities, Inc. will distribute USDA Commodities in Eastland County at the following locations, dates and times:

- Cisco: 1161 Hwy. 80 - August 20 - 8:00 to 10:00 a. m.
- Rising Star: Senior Center - August 20 - Noon to 1:00 p. m.
- Eastland: Senior Center - August 21 - 8:?? to 10:00 a. m.
- Carbon: Downtown - August 21 - 11:00 to 11:30 a. m.
- Desdemona: School - August 21 - Noon to 12:30 p. m.

GORMAN: Senior Citizens Center August 21 - 1:00 to 2:00 p. m.
Ranger: Senior Center - August 22 - 8:00 to 10:00 a. m.

Items available this month are Applesauce and Flour.

CTO, Inc. has no control over what items are available or the quantity of the items. All locations of all commodities depends on the availability of food items from USDA.

All eligible persons will receive emergency food assistance without regard to race, sex, color, age, etc.

Pentagon Seeks Pearl Harbor Vets

Washington — The Department of Defense wants to honor veterans of the Japanese attack on Pearl Harbor nearly 50 years ago, and has launched a nationwide search to locate them, says U. S. Sen. Phil Gramm.

"Sailors and soldiers who served at the naval station and at the airfields and other military facilities on the island of Oahu on Dec. 7, 1941, are eligible for a bronze medal commemorating their service," the senator said.

Under a bill approved by Congress last year, Gramm noted, Pearl Harbor veterans, including civilian employees of the Navy and other services, or their families may be awarded the medal.

An estimated 100,000 service personnel were stationed in the vicinity of Pearl Harbor when the massive air attack that pulled America into World War II occurred, killing more than 3,000.

The medals will be struck by the U. S. Mint after a design is approved by the Treasury Department.

Eligible veterans or next of kin may apply for the medal by calling the Navy's Awards and Special Projects Office at 1-800-545-4052, or writing to the Chief of Naval Operations, Room 5E589, the Pentagon, Washington, D.C. 20350.

Shut-ins are encouraged to designate an authorized rep to pick up for them.

Volunteers are greatly needed and appreciated to help with this much needed program.

Carl Earl Simpson Laid To Rest On Wednesday

Carl Earl Simpson, 86, of De Leon, passed away on Monday, August 12 in the De Leon Hospital.

Services were held at 2 p. m. Wednesday at the First United Methodist Church with John Fourie officiating. Burial was in the De Leon Cemetery, directed by Nowlin Funeral Home.

Mr. Simpson was born in Comanche County and lived in De Leon most of his life. He had worked at the Dabney Hardware Store since 1930 and then bought it in 1963. He was a Methodist.

Survivors include his wife, Ruby Simpson of De Leon; three sons, Charles Simpson of Seguin, Bobby Carl Simpson of De Leon and John Ed Simpson of Fort Worth; a brother, M. V. Simpson of De Leon; seven grandchildren; and four great-grandchildren.

Services For Ray Butler Held on Saturday

Ray Butler, 83, of Lake Leon passed away Wednesday, August 7th at his home.

Services were held at 2 p. m. Saturday at the Edwards Funeral Home Chapel in Eastland with the Rev. John Taylor officiating. Burial was in the Merriman Cemetery, south of Ranger.

Mr. Butler was born in the Desdemona area and grew up in Desdemona and De Leon, graduating De Leon High School in 1927. He attended John Tarleton College. He worked in the oil fields in Iraan and Abilene, later moving to Dallas where he worked for Briggs Weaver Machinery Co. and was a territorial salesman in Clovis, N. M.

In 1865 he moved to Amarillo and was office manager for Allis Chalmers, retiring in 1970.

He was a member of the Lake Leon Baptist Church.

Survivors include his wife, Bertie Butler of Eastland; a son, Walter Butler of Lake Leon; a sister, Ava Collings of Midland; and five grandchildren.

Mr. and Mrs. Paul Bedingfield of Brownwood visited on Tuesday with her aunt, Ina Mae Tarrance.

New Son Born To David and Holly Good

Brett David Good and his parents, David and Holly Good of Abilene, proudly announce the birth of his baby brother, Christopher Thomas, on August 5th. Christopher weighed 8½ pounds and was 22 inches long.

Grandparents are Kenneth and Shirley Good of Gorman and Dwain and Marie Carlisle of Abilene. Great-grandparents are Irven and Bertie Thompson of Tuscola, Mr. and Mrs. James Walker of Abilene and Mr. and Mrs. Lester Irvin of Midland.

Evening Class Registration Slated August 28 At TSU

Registration for evening courses for the fall 1991 semester at Tarleton State University will be held Wednesday, August 28 from 6 to 8 p. m. in the Tarleton Center. There are over 100 undergraduate and graduate classes included on the fall schedule representing just about every department.

Despite budget problems, the University has attempted to provide non-traditional students with every opportunity to enroll in courses designed toward any number of degree programs.

Registration for the evening courses will be accepted during regular registration dates on August 28 and 29 according to an alphabetized time table; however, the special evening registration period has been set up for working students who may not be able to attend daytime registration sessions.

These are fully accredited courses and students interested in enrolling in the night program at Tarleton for the fall semester must be accepted

Cisco Junior Rodeo Set For August 16 - 17

The Cisco Ag Boosters will be sponsoring the annual Cisco Junior Rodeo to be held August 16-17. It will be held at the Cisco Arena across from Cisco Junior College.

Contestants may enter upon arrival. Cash Only. Books open at 6 p. m. and close at 7:30 p. m. Sixty percent jackpot paid nightly. Rodeo starts at 8 p. m. Admission is Adults \$2, children 6-12 \$1, and 5 and under free.

Six Montana Silversmith Trophy Belt Buckles to All Around Cowboy and Cowgirl in each age group. Age groups are 10 an dunder, 11-14, and 15-19 as of January 1, 1991. There will be a stick horse race for 5 and under. (First place - prize).

For more information call 442-1063 or 442-2426.

KEEPING UP WITH FRIENDS

Sharon Jones of Austin was a weekend visitor with her parents, Mr. and Mrs. George Bennett.

Mr. and Mrs. Bob Ragland of Lovington, N. M. spent the weekend with his father, C. E. Ragland. They attended the Desdemona Homecoming and school reunion. C. E. was recognized as the oldest former resident attending.

Weekend visitors with Mr. and Mrs. L. D. Holliday were Nancy Hendricks and Ruth Bryant of Kokomo and Sandy and Debbie Sanders, Melissa and Jason of Odessa.

for admission to the University and cleared for registration by the Registrar. More information on admission requirements is available by calling the Office of the Registrar at 817-968-9121 weekdays.

Notice of Effective Tax Rate

1991 Property Tax Rate in Eastland County

This notice concerns 1991 property tax rate for Eastland County. It presents information about the tax rate. Last year's tax rate is the actual rate the taxing unit used to determine property taxes last year. This year's effective tax rate would impose the same total taxes as last year if you compare properties taxed in both years. This year's rollback tax rate is the highest tax rate the taxing unit can set before taxpayers can start tax rollback procedures. In each case these rates are found by dividing the total amount of taxes by the tax base (the total value of taxable property) with adjustments as required by state law. The rates are given per \$ 100 of property value.

General Fund	
Last year's tax rate:	
Last year's operating taxes	\$ 1,430,338
Last year's debt taxes	\$ 0
Last year's total taxes	\$ 1,430,338
Last year's tax base	\$ 434,330,822
Last year's total tax rate	\$.32932 /\$ 100

This year's effective tax rate:

Last year's adjusted taxes (after subtracting taxes on lost property)	\$ 1,423,000
Divided by: This year's adjusted tax base (after subtracting value of new property)	\$ 422,126,707
Equal: This year's effective operating rate	\$.33710 /\$ 100
Total effective tax rate	\$.33710 /\$ 100

Times 1.03 equals maximum rate unless unit publishes notices and holds hearing

This year's rollback tax rate:

Last year's adjusted operating taxes (after subtracting taxes on lost property)	\$ 1,423,000
Divided by: This year's adjusted tax base	\$ 422,126,707
Equal: This year's effective operating rate	\$.33710 /\$ 100
Times 1.08 equal this year's maximum operating rate	\$.36406 /\$ 100
Plus This year's debt rate	\$.00000 /\$ 100
Equals: This year's rollback rate	\$.36406 /\$ 100
This year's rollback rate:	\$.36406 /\$ 100

Schedule A: Unencumbered Fund Balance

The following balances will probably be left in the unit's property tax accounts at the end of the fiscal year. These balances are not encumbered by a corresponding debt obligation.

Type of Property Tax Fund	Balance
Maintenance & Operation (General Fund)	\$ 897,356.00

Schedule B: 1991 Debt Service

The unit plans to pay the following amounts for long-term debts that are secured by property taxes. These amounts will be paid from property tax revenues (or additional sales tax revenue, if applicable).

Description	Principal	Interest	Other	Total Payment
NONE	0	0	0	0

This notice contains a summary of actual effective and rollback tax rate calculations. You can inspect a copy of the full calculations at: Eastland County Auditor's Office, Eastland County Courthouse, Eastland, Texas

Name of person preparing this notice: Steve Thomas, R.P.A., R.T.A.
Title: Chief Appraiser
Eastland CAD

Date: August 2, 1991

1991 Property Tax Rates in Gorman City

This notice concerns 1991 property tax rates for Gorman City. It presents information about three tax rates. Last year's tax rate is the actual rate the taxing unit used to determine property taxes last year. This year's effective tax rate would impose the same total taxes as last year if you compare properties taxed in both years. This year's rollback tax rate is the highest tax rate the taxing unit can set before taxpayers can start tax rollback procedures. In each case these rates are found by dividing the total amount of taxes by the tax base (the total value of taxable property) with adjustments as required by state law. The rates are given per \$ 100 of property value.

Last year's tax rate:

Last year's operating taxes	\$ 79,460
Last year's debt taxes	\$ -0-
Last year's total taxes	\$ 79,460
Last year's tax base	\$ 17,716,850
Last year's total tax rate	\$.44850 /\$ 100

This year's effective tax rate:

Last year's adjusted taxes (after subtracting taxes on lost property)	\$ 78,788
Divided by: This year's adjusted tax base (after subtracting value of new property)	\$ 17,361,741
Equal This year's effective tax rate	\$.45380 /\$ 100
Times 1.03 equal the maximum rate unless unit publishes notices and holds hearing	\$.46741 /\$ 100

This year's rollback tax rate:

Last year's adjusted operating taxes (after subtracting taxes on lost property)	\$ 78,788
Divided by: This year's adjusted tax base	\$ 17,361,741
Equal: This year's effective operating rate	\$.45380 /\$ 100
Times 1.08 equal this year's maximum operating rate	\$.49010 /\$ 100
Plus This year's debt rate	\$.00000 /\$ 100
Equal This year's rollback rate	\$.49010 /\$ 100

SCHEDULE A: UNENCUMBERED FUND BALANCES

The following balances will probably be left in the unit's property tax accounts at the end of the current fiscal year. These balances are not encumbered by a corresponding debt obligation.

Type of Property Tax Fund	Balance
Maintenance & Operation	-0-

Schedule B: 1991 Debt Service

This notice contains a summary of actual effective and rollback tax rate calculations. You can inspect a copy of the full calculations at: Gorman City Tax Office, Gorman City Hall, Gorman, Texas

Name of person preparing this notice: Steve Thomas, R.P.A., R.T.A.
Title: Chief Appraiser - Eastland CAD
Date: August 9, 1991

Over 100 Degree - Related Night Courses

★ **EVENING COLLEGE** ★

★ **TARLETON STATE UNIVERSITY** ★

REGISTRATION
WEDNESDAY AUGUST 28TH 6 PM-8 PM
TARLETON CENTER

Call 817-968-9121 for information

FARM AND GARDENS

By
David L. Tunmire - County Extension Agent

CONTROL WHITE GRUBS IN LAWNS NOW

The time to control white grubs is here. If you think you have white grubs in your lawn now is the best time to control this pest.

Homeowners will need to treat anytime between now and mid-August. The timing of insecticide application is critical for adequate control.

May or June beetles have emerged from the soil now. Females are laying eggs and white grub worms that hatch will soon be feeding on the roots of bermuda grass and St. Augustine grass in home lawns. Once grubs begin feeding, control measures should be taken.

White grubs in excessive numbers can heavily damage lawns. Check for white grubs by cutting a square foot section of sod with a shovel and examining the roots and soil to a depth of 4 inches. Examine at least one square foot of sod for 1,000 square feet of lawn area. Insecticide treatment is needed if there are more than four grubs per square foot of sod.

An easier method to determine if you have a white grub problem is by examining the turf. Grab the turf with both hands at a site where white grubs are suspected. If the turf can be lifted from the ground with little to no resistance then control measures are needed.

Diazinon or Dursban provide adequate control and should be used at recommended rates given on the container label. The granular form may be easier to apply and to wash into the soil than liquid or spray formulations. After using granules, drag the grass with a tow sack or water hose to knock them down to the soil. Then apply enough water to soak the granules into the soil.

Always keep children and pets off the treated lawn according to label instructions.

Further information is provided in the publication, "White Grubs in Texas Turfgrass", available at the County Extension office.

TIME TO CONTROL PEACHTREE BORER

The peachtree borer is a very damaging pest of peach trees. Many people have seen first hand what kind of damage the peachtree borer

can do.

Timing is very critical to the control of the peachtree borer. The time to control this pest in Eastland County is mid-August till the end of August.

The peachtree borer can be controlled by using one of these pesticides, Lorsban 12.9%, Lindane 20% emulsifiable concentrate or Thiodan 9.7% emulsifiable concentrate. Read and follow label instructions for mixing and rates.

The pesticide solution should be applied to thoroughly wet the base of the tree up to the first scaffold limbs. Don't apply to leaves or fruit. Read label for any harvest restrictions.

Two publications, "The Peachtree Borer" and "Homeowner's Fruit and Nut Spray Schedule" are available free of charge at the County Extension Office. The office is located in the basement of the County Courthouse.

SHEEP AND GOAT PRODUCTION SEMINAR FOR AUGUST 20

A Sheep and Goat Production Seminar has been scheduled for 9 a. m. Tuesday, August 20th by the Eastland County Extension Program Council Livestock and Forage Committee. The seminar will be held in the Calvary Baptist Church Fellowship Hall located on Conrad Hilton Avenue in Cisco.

The program will cover a variety of topics focusing on management and profitability of sheep production. The program will also investigate opportunities in meat goat production and angora goat production.

All interested persons are encouraged to attend.

—GP—

Texas Farmers & Ranchers Alarmed

Waco — Texas farmers and ranchers are alarmed by what they understand are alternatives being considered in the Texas House of Representatives regarding taxes, according to S. M. True, president of the Texas Farm Bureau.

"Proposals to increase the state fuel tax by 13 cents to a total of 28 cents a gallon is bad enough for all Texans," True said. "But, changing the off-road exemption for tractors

Congressional Leaders Applaud Texas ASCS

Washington — More than 150 Agricultural Stabilization and Conservation Service employees from across Texas were in Washington to receive awards from the administrator of ASCS for outstanding service to the farmers and ranchers of Texas.

The group met with members of Congress, including Senator Phil Gramm and House Agriculture Committee Chairman Kika de la Garza.

"Each year, ASCS employees find their work made more difficult by the increasing complexity of our farm programs. It really says something that 150 of our Texas ASCS employees overcame every hurdle and served the public so efficiently that they received the highest honor ASCS can bestow for excellence in service," Gramm said.

Senior Citizens News

By Mozelle Rhymes

Mrs. Don Sherrod of Keller spent the weekend with her mother, E. J. Whitlock.

Anna Rush and Estelle Erwin spent the weekend in Wichita Falls visiting relatives and friends.

MEMBER
1991
TEXAS PRESS ASSOCIATION

Crimestoppers
Call 629-TIPS

and other production equipment to a once-a-year refund - as proposed - substantially increases producers' up-front production costs."

The president of the state's largest general farm organization said the damage becomes even more severe with the concept of allowing the refund to equate to only 75 percent of the charge.

"That would result in a new 7-cents-per-gallon tax on fuel used for food and fiber production," True said. "That is unacceptable and intolerable. We strongly urge that this entire concept be dropped."

The farm leader said another proposal floating in the Texas House of extending the state franchise tax to farm and ranch enterprises is no more than an "income tax in disguise."

Texas Farm Bureau has expressed support for streamlining government, increasing the state sales tax by one percent, and a voter-approved state lottery, True said. All of these actions would affect farmers and ranchers the same way as all citizens of the state, he explained.

"The fuel tax proposal and the franchise tax extension are grossly unfair, as agriculture is the only industry that cannot pass along taxes to consumers," True said. "The proposals are not the proper means to address the budget dilemma."

Support Hay Show For County Show Grounds

Just a quick reminder to the hay producers, we need your entries for the hay show. This is the hay show that is a joint effort between the Eastland County Livestock Raisers Association and the Eastland County Agricultural Extension Service.

Proceeds from this hay show will assist in debt retirement on the livestock show facilities at the County Showgrounds. Last year's hay show helped a great deal in making the annual payment, and with more effort on everyone's part, this year can be even better.

We are asking you to donate as many bales, round or square, to the association. We will have protein analysis on them and the results will be available at the hay show December 14th. Ribbons will be placed on

each entry and a plaque given to the best entry in each class. Following the hay show, all hay will be sold at auction.

Each town in the county has at least one contact person. In Gorman, Speedy Clark is the main contact person. In addition, Bo Caraway and agriculture supply facilities can help you. Other persons working with the hay show are David Tunmire, County Ag Agent, Truett Hart, or any member of the Eastland County Livestock Raisers Association. In the Carbon area, the persons to contact will depend on your location. We do not have anyone designated at the present time. Carbon Farm Supply would be a good contact.

We realize that December 14 seems a long ways off, but it will be here before you know it. Don't delay, contact someone and let them know you have hay to donate to this worthy cause. We will accept donations from outside the county.

Let us hear from you.

Fullen Motor Company

305 East Main - Eastland, Texas - 629-2676

THE Heartbeat OF AMERICA



USED TRUCKS

1991 FORD RANGER EXTENDED CAB
4X4 XLT - V6 - 5 SPEED
ALL THE OPTIONS

\$10,995.00

1991 S/10 PICKUP 4 CYL. 5 SPEED
W/POWER STEERING
AIR CONDITIONING - AM/FM STEREO

\$8,750.00

1991 FORD RANGE XLT
4 CYL. 5 SPEED
AM/FM STEREO CASSETTE PLAYER

\$9,250.00

1990 PLYMOUTH VOYAGER EXTENDED
MINI VAN - V6 - AUTOMATIC
POWER STEERING - AIR COND.

\$12,750.00

1989 FORD F250
351 - 5 SPEED W/POWER STEERING
AIR CONDITIONING

\$6,500.00

REMEMBER IF YOU DO NOT SEE THE NEW OR USED VEHICLE ON OUR LOT YOU'RE LOOKING FOR JUST LET US KNOW AND WE WILL LOCATE ONE FOR YOU WITHIN 2 DAYS IF AT ALL POSSIBLE.

CALL COLLECT 817-629-2676 OPEN MONDAY - FRIDAY 8 A.M. TIL 6 P.M. CLOSED SATURDAY AND SUNDAY

USED CARS

1990 CHEVROLET CAVALIER 4 DR
4 CYL. AUTOMATIC w/AIR CONDITIONING
AM/FM STEREO 27,000 MILES

\$6,995.00

1988 CHEVROLET CAVALIER Z24
V6 - AUTOMATIC w/ALL THE OPTIONS

\$7,250.00

1990 PONTIAC GRAND AM LE - 4 DR
SEDAN - 4 CYL. AUTOMATIC
W/TILT STEERING & CRUISE CONTROL
AM/FM STEREO CASSETTE

\$9,750.00

1985 CHEVROLET CAPRICE CLASSIC
4 DR SEDAN - FULLY EQUIPPED
EXCELLENT TRANSPORTATION

\$3,950.00

1986 FORD ESCORT - 4 DR
4 CYL. AUTOMATIC
W/AIR CONDITIONING

\$2,995.00

ITEMS OF INTEREST

For anyone who would like to donate to the De la Torre Family after the fire at their home last friday morning. All items may be left at the house just west of Thompson's Store on the Kokomo Highway or to P.O.Box 193 - Gorman Post Office. Thank You.

THE PTO WILL BE SELLING SCHOOL SUPPLIES IN PACKETS FOR GRADES K-4 AT REGISTRATION. NOTEBOOKS AND T-SHIRTS WITH A SCHOOL LOGO WILL ALSO BE SOLD.

THE FMHA OFFICE LOCATED AT 1309 EAST MAIN STREET IN EASTLAND, WILL BE CLOSED FROM TUESDAY, AUGUST 20 THRU FRIDAY, AUGUST 23. PERSONNEL WILL BE ATTENDING A STATE TRAINING SESSION. THE OFFICE WILL REOPEN AT 8:00 A.M. ON MONDAY, AUGUST 26TH.

THE CLASS OF 1992 WILL BE DOING ODD JOBS THIS SUMMER. IF YOU SOMETHING YOU WOULD LIKE US TO DO, PLEASE CALL THE SENIOR SPONSORS:
LANA SHARP AT 758-2238 OR
JEFF & ANGELA BUCKLEY AT 758-2660

The Gorman Support Group is now meeting at the City Hall on Wednesday nights at 7:30 p.m. Anyone needing support may contact Ina & Gerald Scitern at 734-2720 or Joy Campbell at 734-2121.

STATED MEETINGS FOR GORMAN MASONIC LODGE NO. 716 ARE SECOND TUESDAYS OF EACH MONTH AT 7:30 P.M. VISITORS ARE MOST WELCOME, AND MEMBERS ARE URGED TO ATTEND. ELWOOD RAGLAND, MASTER 758-2552, HOWARD HAGOOD, SECRETARY 734-2977.

NEED HELP???

We would like to invite your to join our OPEN NARCOTICS ANONYMOUS meetings. Meetings will be held at the old Fire Hall in Gorman at 8:00 p.m. on Tuesday nights.

Gorman PTO is accepting Donations for the Louise Rankin Memorial Library. If you would like to make a Donation in Memory of or In Honor of Someone, Please Call Janda Taylor at 734-2497 or 734-2617 Amy Wood - 734-2973.

Gorman Primitive Baptist Church has Services on 2nd - 3rd - 4th Sundays. Services begin at 10:30 a.m. Elder Barry Brown, Pastor - Everyone Welcome To Attend.

The Order of the Eastern Star holds its regular stated meetings on the first Monday of each month at 7:30 p.m. - Ann Jay, Worthy Matron - 734-2733 and Howard Hagood, Worthy Patron 734-2977.

NANCY TROUT WILL BE IN GORMAN THE THIRD WEDNESDAY OF EACH MONTH AT THE CITY OFFICE TO RENEW AUTO LICENSE PLATES. HER NEXT VISIT WILL BE AUGUST 21ST FROM 9 - 12 NOON.

ATTENTION: WE NEED YOUR ASSISTANCE IN LOCATING THE FOLLOWING PEOPLE FOR A HOMECOMING PARTY. IF YOU HAVE AN ADDRESS FOR: Tommy Richardson, Eddie Robertson, Patricia Davenport, James Blackshear, Patsy Glasson, Joe Pendarvis, Larry Chambers, Norman Woodall, Carol Bennett, Weldon Grissom, Eunice Welch, Carolyn Kanady. PLEASE CONTACT: GLENDA (LAMINACK) BURGER AT 817-629-2126 OR 817-629-1731.

SUMMER SALE

Whirlpool Washer

Model LA5558XS
Two Speed
5 Cycle
Super Capacity
Reg. \$469.95

SALE
\$439.95

Whirlpool Dryer

Model LE7680XSW
6 Cycle
Infinite Heat Temp
Super Capacity
Reg. \$429.95

SALE
\$389.95

Side By Side



MODEL ED20PXXSN
20 Cu. Ft. - Almond
Reg. \$969.95

\$889.95

Top Freezer



MODEL ET20ZKXXN
20 Cu. Ft. - Almond
Reg. \$699.95

\$639.95

DESIGNER STYLE™

Refrigerators

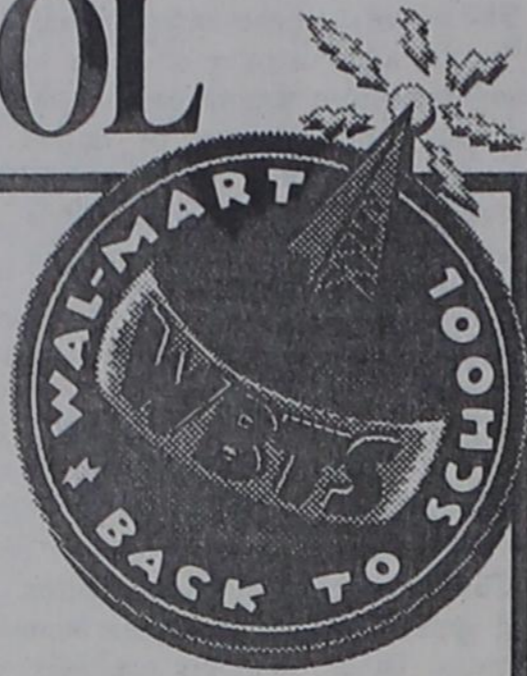
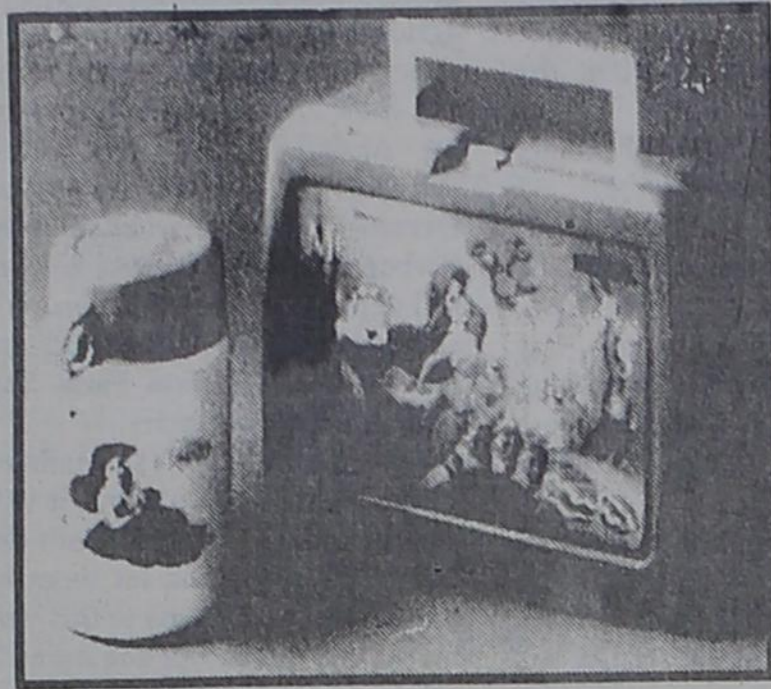
- * Illuminated Up-Front Temperature Controls
- * See-through Humidity-Controlled Sealed Crispers
- * Adjustable Tempered Glass Shelves

Financing offered to qualified credit customers through Whirlpool Financial Corporation
Ask For Details.

HIGGINBOTHAM'S

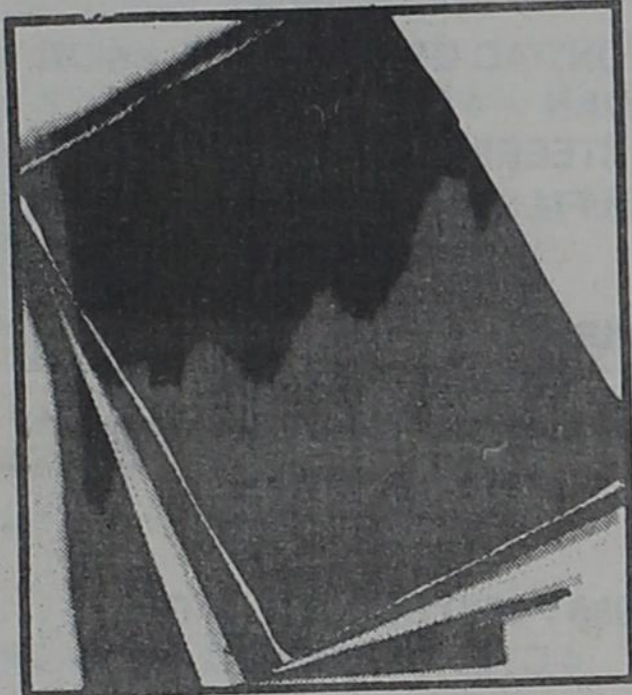
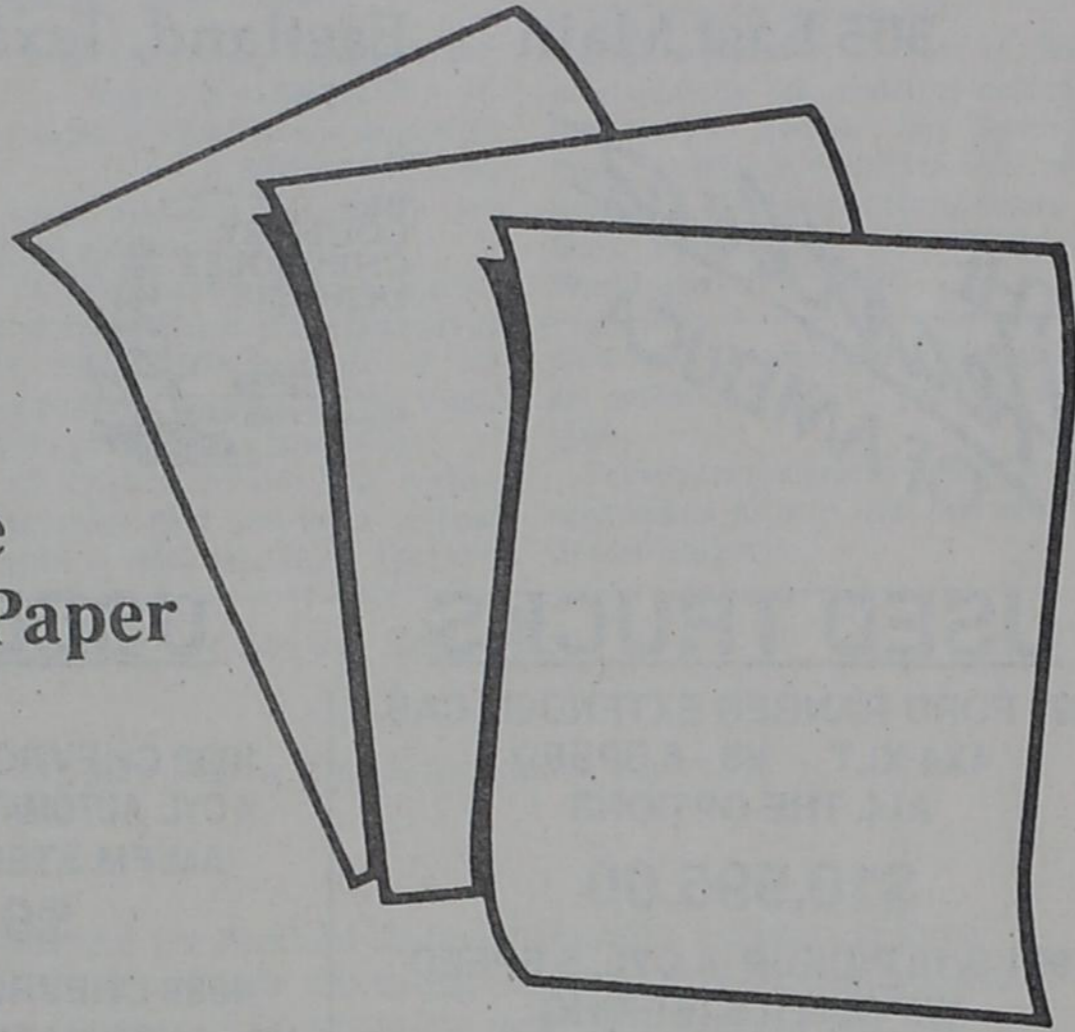
101 N. KENT - 817-734-2227 - GORMAN, TEXAS

BACK TO SCHOOL



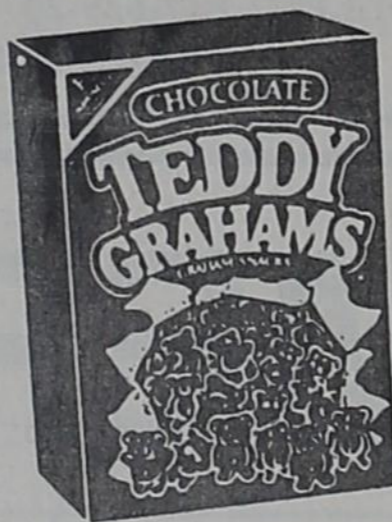
4.86 Every Day
Assorted Children's Lunchboxes
Includes insulated bottle. Manufacturer may vary.

37¢
Reg. 48¢
Norcom White Construction Paper
20 Sheets 9"x12"



\$1.97 Every Day
Norcom Colored Construction Paper
48 sheets 12"x18"

\$1.74
Reg. \$1.88
Nabisco Teddy Graham Bearwiches
Chocolate, Cinnamon, Vanilla



\$1.00 Every Day
Nabisco Toastettes
Frosted Cherry, Apple, Blueberry, Strawberry, Brown Sugar and Cinnamon

WAL-MART



WAL-MART'S ADVERTISED MERCHANDISE POLICY - It is our intention to have every advertised item in stock. However, if due to any unforeseen reason, an advertised item is not available for purchase, Wal-Mart will issue a Rain Check on request, for the merchandise to be purchased at the sale price whenever available, or will sell you a similar item at a comparable reduction in price. We reserve the right to limit quantities to normal retail purchases. Limitations void in New Mexico.
August 1991 © WAL-MART STORES, INC.

STORE ADDRESS: Hwy 80 East Eastland, Texas
SALE DATE: Aug. 14-Aug. 18 Wed.-Sun.
STORE HOURS: Mon.-Sat. 9 a.m.-9 p.m. Sun. 12:30-5:30 p.m.

OVERSTREET REUNION HELD AUGUST 3-4 IN DE LEON

The children, grandchildren, nieces, nephews and friends of the late Dee F. and Mary Overstreet met August 3 and 4 at the Reunion Center in De Leon for their annual two-day reunion with 69 in attendance.

All enjoyed a sandwich supper with chips and desserts on Saturday with visiting and music by family members.

A delicious lunch was spread at noon on Sunday. Then more visiting, picture taking and catching up on events of the past year.

Barbara Rogers of Eastland filmed a video tape of all present. All enjoyed the time together and plan to meet back at the same place next year on August 1 and 2.

Those attending were Eddie and Vesta Lee Overstreet of Ponca City, Okla. Eddie is pastor of the Ranch Drive Baptist Church in Ponca City. Also attending were Steve, Bobbie and Micah Overstreet of Frederick, Oklahoma; Annis Lasater of De Leon; Jim, Cecilia, Jeanette, Charlotte and Jacob Overstreet of Webster; Frances Overstreet of Abernathy; Billy and Jo Nell Overstreet of Grand Prairie; Morma, Sammy, Chris and Crystal Eddleman of Grand Prairie; Mary Lee and Homer Langford of Eastland; Bud and Dee Smithey of Gorman; Sherman and Bonnie Wayne Overstreet of Petersburg; Wayne Overstreet also of Petersburg; Johnny and Rita Overstreet of Grand Prairie; Wilburn and Ruby Overstreet of Gorman; Gary and Martha Overstreet, Jennifer and Sara of Kermit; Neil, Karen and Kara Overstreet of Madisonville; George and Elizabeth Bingham of Gorman; Ronnie, Ann and Ricky Cagle of Eastland; Robbie and Janice Overstreet and granddaughters, Meagan and Shelly Miles, all of Fort Worth; Bobby, Sandra, Charla and Shelli Cagle of Eastland; Oleta Werley of Eastland; Verlan and Faye Overstreet of Gorman; Randal and Elnora Overstreet of Eastland and granddaughters, Debbie Overstreet and Amanda Overstreet of Eastland; Sharon and Delcina Harper of Eastland; Edward and Marion Williams of Fort Worth; Linda, Joe, Joey and Casey White of Jacksboro; Richard Kinser of Eastland; Rex Kinser of Gorman; Barbara Rogers of Eastland and Mary Clark of Gorman.

WARREN-GRAHAM REUNION HELD AUGUST 3-4 IN DE LEON

The Texas 1991 Warren-Graham reunion was held in the De Leon City Hall on Saturday and Sunday, August 3rd and 4th.

There were 70 people in attendance on Saturday, and 132 on Sunday. Many family members came from Mississippi, Arizona and New Mexico.

A great time was had by all with plenty of good food, refreshments and visitation.

1991 DUSTER HOMECOMING

It has been 41 years since Duster School affiliated with De Leon, but at the homecoming this past Saturday every Duster Ex would have won a prize for their performance in the greeting category when they recognized a school mate of long ago. The "Howdys" rang out, but we peeked at the name tags to be sure we were on target as to who was who.

Credit for organizing Duster Exes goes to S. W. Walker, Bernice Farley and Verdell Miller, who thought it would be nice to get old friends and classmates together during the annual De Leon P&M Festival. And from that decision the announcement was published in the De Leon Free Press. One of these years we may be on an 18 wheeler flat-bed truck in the P&M Festival Parade...provided we can get a boost from the ground in order to mount the truck.

The watermelon slicing on main street preceded the homecoming gathering, which began at 6 p. m. in the Heritage Hall of De Leon First United Methodist Church. It began to rain just as the crowd arrived, but no one melted, although a few were a mite damp when they entered the foyer.

Mary Jo Boswell and Doris Franks Kinnard tried to way-lay the happy visitors and have them register and get a name tag, but some might have been detracted with a shout from an old school buddy. Anyway...they tried their best, in case someone isn't listed.

Duster school teachers who attended the homecoming were: Dora Fay McPhail Brewer, Wayne Chambers, Hope Dukes Joiner, Bernice Farley, Fay Hattox and Minnie Myrl Vaughn White.

Bill Frazier was the oldest Duster Ex. He was born April 12, 1897 in Arkansas, and became a Texas in 1900. Needless to say, he enjoyed the homecoming!

Doyle Wilson of Las Vegas, Nev. traveled the farthest.

Next year there will be awards made to the oldest, who came the farthest, oldest teacher, etc. And the homecomings are going to get bigger and better and any Duster Ex that misses one will miss out on a heart-warming get-together.

Re-elected by acclamation were Bernice Farley, president; Mary Jo Boswell, secretary-treasurer. Money was donated at the door to underwrite the expenses of stamps, stationery, name tags and refreshments.

The Heritage Hall has already been engaged for next year's homecoming, which will fall on Saturday, August 8...same time...during the P&M Festival.

Rain continued to pour but the happy laughter and visiting did not let up. We had to turn on our headlights as we began turning out on Hwy. 16...after saying "Goodbye, see you next year".

Those who registered were: Wil-

ma Collins Ash, -Corpus Christi; Mary Jo and Marvin Boswell, Houston; C. D. and Faye Alldredge, Abilene; Bettye Bradford Aslakson, Isora Carroll Bingham and Doc Carter, De Leon; Frankie and Ferrill Anglin, San Angelo; Dora Faye Brewer, Gorman; Edward and Rachel Brewer, Corsicana; Pauline Blair Crow, Eastland; Arlie and Lynell Forrest Coan and grandchildren; James and Gayle Elliott and son, Sam, Carrollton; Mr. and Mrs. Joseph (Joy) Elliott, Ada, Okla.;

Tom Coan, Mansfield; Jean Keith Dukes, Gorman; Herman Dukes, Comanche; Opal Dennis Burton, Gorman; Betty Greer, Carbon; Anna Bell Gooden, De Leon; J. D. and Syble Brewer Golden, De Leon; Calvin (Bill) Frazier, Gorman; Jay and Jackie Franks, Abilene; Jack and Odessa Graham, Comanche; Bernice Skaggs Farley, De Leon; Lelon and Vi Grace, Corpus Christi; Odean Wilson Gilchrist, Andrews; Cleo and Dixie Heathington, Gorman; Mr. and Mrs. C. D. Hodges, Houston; Mr. and Mrs. James E. Haynes, Whitney; Bob Huddleston, De Leon; Jewell Dukes Huddleston, Comanche; L. T. and Elsie Hagood, De Leon; Fay Hattox, De Leon; Lessie and Nadine Hattox, Gordonville; Bill and Nan Yahnes, Gorman; E. C. Huddleston, Eastland; Doris Franks Kinnard, De Leon; Geneva Hattox Rutherford, Rising Star; Ennis and Nina Beth Joiner, Gorman; Hope Dukes Joiner, Gorman; Deryl Johnson, De Leon; Sam Jenkins, Denton; Delton and Mae Ross Killebrew, Abilene; Jewel Brewer Kimmell, De Leon; Pansy Coan Preston, De Leon;

J. E. Porter, Gorman; Verdell Frazier Miller, Odessa; Mozelle Blair Pyburn, De Leon; Elsie Skaggs Robinett, Gorman; Doris Cadenhead Montgomery, De Leon; Dean and Marie Nowlin, Comanche; Dean and Gladys Pounds, De Leon; Gerald Richberg, De Leon; Noel Ross, San Antonio; Hazel Dukes Roberts, Comanche; Seal Smith, De Leon; Polly Coan Simpson, Fort Worth; Johnny Wilson Seckinger, De Leon; Pearl Skaggs Spruill, De Leon; George (Bud) and Lois Hodges Skaggs, Snyder; J. T. and Edith Greer, Eastland; Buck and Bobby McPhail Speer, Haskell; Mr. and Mrs. Alan Ray Solomon, De Leon; Elvin Walker and Wenona Harrison, De Leon; Allene Rhodes Martin, Fort Worth; R. D. and Lyra Walker, De Leon; Jo and Kellis Welch, Comanche; Jewel Kimmel and son, Harold Dean Kimmel and family; Syble and J. D. Golden, De Leon; Thelma Skaggs Bigham, Hobbs, N. M.; Mr. and Mrs. Jim Ed Haynes, Mr. and Mrs. C. D. Hodges, J. E. Porter, Durward and Idell Warren, Gorman; Doris Cadenhead Montgomery; Junior Montgomery, Minnie Myrl and Buddy White, De Leon; John Brewer; Nancy Johnson Standlee, and Betty Broom Wofford, De Leon; Doyle Wilson, Las Vegas, Nev.; and Mr. and Mrs. Leland Grace.

Eastland County will use the following rules and procedures to comply with its responsibility under the Indigent Health Care and Treatment Act.

Application can be requested from/at the County Judge's Office, Eastland County Courthouse. Assistance in completing the application will be provided if needed. Contact the County Judge's Office/Auditor's Office for assistance.

Eastland County will use rules and procedures found in the County Indigent Health Care Program Handbook published by the Texas Department of Human Services. In summary, these are the rules:

1. Application forms must be completely filled out.
2. Verification of income, termination of income, residence, household composition, and resources is required, if questionable.
3. Net income cannot exceed

COUNTY INDIGENT HEALTH CARE PROGRAM Maximum Countable Income Standards

Family Size	Single Adult and Adult with Children	Couples and Couples with Children	Children Living with Ineligible Adults Who are not Legal Parents
1	\$ 75	\$---	\$ 63
2	158	120	90
3	184	200	126
4	221	226	151
5	246	262	194
6	284	289	210
7	308	324	261
8	351	350	287
9	377	392	330
10	420	418	356
11	446	461	399
12 *	488	487	425

*Add \$38 for each additional household member if the household size exceeds 12 persons.

4. Liquid resources assets cannot exceed \$1000. The equity value of a car greater than \$1500 is counted against the \$1000 limit. Personal property and homestead are exempt assets.
5. Eligible persons must be a resident of Eastland County and NOT RESIDING IN A HOSPITAL DISTRICT.
6. Applicants must provide all requested information and documentation requested or applications will be denied.
7. Applicants have the right to appeal adverse decisions.
8. Eastland Memorial Hospital has been designated as mandated provider for CIHCP for persons not in a hospital district.

BUDGETARY AND APPROPRIATIVE MATTERS

Public hearing on Eastland County's proposed Operating Budget for 1992 was held at 2:00 p. m. on Monday, August 5, 1991; salaries, expenses or allowances; proposed indigent health care \$38,337.80; Commissioners' Court \$5,939.00; County Court \$18,154.00; ambulance service \$60,000.00; computer equipment and services \$25,500.00; necessary matching funds for Social Security, retirement, and Workers' Compensation Insurance. Budget to be adopted at a regular Commissioners' Court meeting.