

# The Gorman Progress

"Serving Gorman For Over 111 Years"  
Gorman, Eastland County, Texas 76454

2010 Member - Texas Press Association

NUMBER ONE

JANUARY 6, 2011

## Justin Southall New Youth Pastor For Gorman First Baptist Church



Sunday, Jan. 9, 2011 marks the beginning of our new Youth Pastor's Ministry. Justin Southall comes highly recommended from his Professors of Howard Payne University. Justin has served as Youth Minister for several churches here in central Texas.

Justin was raised in Maypearl, TX. We are delighted to introduce him, his beautiful wife Katie and also their son Jake, who is three.

## What Is Your Story?

How do you remember January 1, 2006 --- The beginning of a new and very different time in the lives of many folks? As we approach the five-year anniversary of the Carbon Area (much of Eastland County) burn perhaps you would be willing to share your story with others.

This horrible fire forever changed the lives of so many people -- We would like to know your feelings and/or observations of that day and the following days, months, years.

The suggestion is "on the table" to possibly make these articles into a book as a fund-raiser for the county fire departments. Your story will appear as written -- Please mail to:

Jody Forbus, Chief, CVFD  
P. O. Box 566  
Carbon, Tx 76435

Thank you

## Red River Angus Assn. To Hold Meeting

The Red River Angus Association will have a meeting Tuesday, January 11, 6:30pm, at the Smokehouse Restaurant in Lindsay, Texas. A program on developing bulls and supplementation choices for winter feeding will be presented. Directors for the new year will also be elected and program ideas for 2011 will be discussed.

The program is free and the meal is dutch treat. All interested cattle producers are welcome to attend. For further information, contact Rayford Pullen, 940-841-1510.

## G.E.D. Study Classes To Resume Jan. 11

January is typically the month to begin good habits and make resolutions. If you are 18 years of age or older and need study classes or information about taking the G.E.D. Test, now is the time! Take advantage of this FREE service in Eastland County sponsored by Texas AgriLife Extension Service and Abilene I.S.D. Adult Education.

Eastland County G.E. D. Study Classes will resume January 10, 2011. Trained G.E.D. volunteer tutors will be on site at each study class to help students prepare to take the G.E.D. test. Each student is required to go through placement testing the first two weeks of class to identify specific areas of intensified instruction. It is critical that students attend the first two weeks of class. Study Guides and computer software will be available to students. Eastland G.E.D. Study Classes will be held at 504 South Madera Street in Eastland and classes start at 5:00 and are held every Monday and Tuesday night with Mike and Debbie Parsons along with Larry and Judy Smith will be the instructors. At The Open Door Center located at 27 East Hwy 80 in Cisco study classes start at 3:30 p.m. to 5:30 p.m. and are held every Monday and Tuesday night with volunteer tutors.

The Spring '11 Study Session begins in January and usually ends in April. A Spring Graduation will be held in June to celebrate all G.E.D. graduates throughout Eastland County.

Locally, the G.E.D. test is given at Cisco College and at the Abilene Adult Education Center (325/671-4419).

If you need more information or would like to ask questions regarding the G.E.D. program, please call Halee Mitchell at Texas AgriLife Extension Service, Eastland County at 629-2222. E-mail address is hdmitchell@ag.tamu.edu. Provisions from the American Disability Act will be considered when planning educational program and activities. Please notify the Eastland County Extension Office as far in advance of the program as possible if you plan on attending and require specialized services. This will allow ample time to acquire resources to meet your needs. Extension programs serve people of all ages, regardless of socioeconomic level, race, color, sex, religion, disability or national origin. The Texas A&M University System, USDA, and the County Commissioners Court of Texas Cooperating.

## 2011 County Stock Show Begins January 12

The Eastland County Livestock Show kicks off Wednesday, January 12, at the ECLRA Show Grounds north of Eastland on FM 3101. ECLRA is pleased to announce that participation continues its upward trend with more showmen and animals entered in 2011 than 2010.

Judging events will begin Thursday at 10:00 am when the chickens take the ring. They will be followed for the second year, with a lunchtime cattle show special. Beef heifers will show at 11:00 am. They will be followed by the steers which will be followed by the commercial pens.

The swine show begins at 3:30 pm, Thursday. Breeding swine will be followed by market hogs. Friday, sheep and goats take center stage. Dairy Goats will show at 11:00 am. They will be followed by Angora goats, breeding sheep, market lambs, market goats and breeding meat goats. The rabbits will show Saturday morning.

The buying public is once again invited to attend a hamburger supper at 5:00 pm Saturday in the Hutto-Humiston Building. The presentation of awards and sale will begin at 6:30. The Eastland County Livestock Raisers Association hopes you will come support our local 4-H and FFA members again this year.

### 2011 Eastland County Livestock Show Schedule

#### Wednesday, January 12, 2011

4:00 pm - Scales open for all animals except rabbits. (Livestock & Cattle Barns)  
8:00 pm - Ag Mechanics projects must be checked in, All animals except rabbits must be weighed and in place. Rabbits must be checked in Friday between 10:00 am and 12:00 noon.

#### Thursday, January 13, 2011

10:00 am - Broilers (Moylean Exposition Arena)  
11:00 am - Beef Cattle - Heifers followed by Steers (Moylean Exposition Arena)  
12:30 pm - Commercial Heifer Show (Commercial Cattle Pens)  
3:30 pm - Swine - Breeding followed by Market (Moylean Exposition Arena)

#### Friday, January 14, 2011

9:00 am - Food Show (Hutto-Humiston Building)  
11:00 am - Ag Mechanics Show (Hutto-Humiston Building)  
11:00 am - Dairy Goats (Moylean Exposition Arena)  
12:00 pm - Angora Goats - Breeding followed by Market (Moylean Exposition Arena)  
Rabbits must be weighed and checked in with Superintendent (Livestock Barn)  
2:00 pm - Sheep - Breeding followed by Market (Moylean Exposition Arena)  
3:30 pm - Meat Goats - Market followed by Breeding (Moylean Exposition Arena)

#### Saturday, January 15, 2011

9:00 am - Rabbits - Market followed by Breeding (Moylean Exposition Arena)  
5:00 pm - Hamburger Supper (Hutto-Humiston Building)  
6:30 pm - Auction & Presentation of Awards (Moylean Exposition Arena)

## January is School Board Recognition Month

(Austin) - Governor Rick Perry has proclaimed January 2011 as School Board Recognition Month. Districts across the state will use this opportunity to show their appreciation of the critical role elected boards of education play in their local schools and communities.

"The biggest challenges facing the education system can also be among its greatest strengths. For example, during a time when state and national mandates rightly place more emphasis than ever on setting the bar high for education, it remains important for each community to retain control of its own educational system," Governor Perry said.

"Balancing the need for local control with directives coming down from larger governmental bodies is a difficult and often-times unappreciated task, but for over two centuries, American school boards have risen to such challenges. School boards also deal with issues such as the rapidly expanding role of technology in the classroom, the challenge to keep our children both well-educated and physically active, and—as always—the difficulties inherent in dealing with budgetary priorities.

"The people who make up these boards volunteer their time because they care about their communities and their schools. Each year, the Texas Association of School Boards (TASB) designates January as School Board Recognition Month, to emphasize the importance of the services these dedicated men and women provide to the schools and students of Texas. At this time, I urge all Texans to recognize the invaluable contributions realized through the work of our school boards," he said.

"More than 7,000 locally elected school board members serve a crucial role in our communities and schools. These dedicated men and women strive to maintain the health of every district and serve as strong advocates for our kids. In a time of financial uncertainty, they are willing to step forward to face the critical challenges facing our public schools," said James B. Crow, TASB executive director.

"We hope every community will say thanks to these board members for their commitment and offer support as they voluntarily tackle the important task of governing school districts. Local trustees tirelessly work with parents and educators to develop sound education policies and set high standards for student success. We applaud them for shouldering enormous responsibilities and making the time to share their vision and voice about the future of Texas schoolchildren," Crow said.

TASB is a nonprofit association established in 1949 to serve local Texas school districts. School board members are the largest group of publicly elected officials in the state. The districts they represent serve more than 4.7 million public school students.

## Eastland County Livestock Show Photography Contest

There will be a Photography Contest at the Eastland County Livestock Show. All photographs must have been taken between the dates of January 1, 2010 and the time of entry. Photos may be submitted only one time. Entries for the contest will be due January 3rd; turned in at the Extension Office in the Courthouse, with entries being displayed at the Eastland County Livestock Show starting January 12th to January 15th. The Photography Contest is open to everyone of all ages. A list of complete rules may be picked up at the Eastland County Extension Office located in the Eastland County Courthouse.

For questions, please contact Halee Mitchell, Eastland County Extension Agent at 254/629-2222.

## Eastland County Bake-Off

We are searching for great cooks to enter the second annual Eastland County Bake-Off. If you are certain that your wife, husband, mother, father, daughter or son is the best cook in the county, NOW is the time to give them the opportunity to demonstrate their talents. The Eastland County Bake-Off will be held in conjunction with the Eastland County Livestock Show, January 12th to 15th. Bake-Off entries will be checked in January 12th at the Eastland County Livestock Raisers Association Show Grounds starting at 3:00 p.m. to 7:00 p.m. This contest is open to everyone. A list of complete rules may be picked up at the Eastland Extension Office located in the Eastland County Courthouse.

For questions, please contact Halee Mitchell, Eastland County Extension Agent at 254/629-2222.

## ITEMS OF INTEREST

Oakland Cemetery Association is accepting donations for the Care of the Cemetery. Donations can be sent to Oakland Cemetery Association, P. O. Box 532, Gorman, Tx 76454 or to American State Bank, Gorman, Texas 76454.

4-H - The Club is going to meet the first Wednesday of each month in the New Gym. All people interested in participating are encouraged to attend. The meeting will be at 3:45 -4:45. For more information Call Cindy Underwood 734-5085.

Gorman Masonic Lodge No. 716 A.F. & A. M. Regular stated meetings are 2nd Tuesday of each month at 7:30 p.m. Members are urged to attend. Visitors are always welcome. Cecil Funderburgh, Master - Kenneth Good, Secretary.

Gorman Oaklawn Cemetery Association is accepting donations for the Care of the Cemetery. Donations can be sent to Oaklawn Cemetery Association, 7726 QR 362, Desdemona, Tx 76445 or to American State Bank, Gorman, Texas 76454

Gorman Senior Citizens meet every Wednesday at 11:30 in the Gorman Senior Center. Bring Covered Dish or \$3.00 Per Plate.

The Order of the Eastern Star holds its regular stated meetings on the First Monday of each month at 7:30 p.m.

**Food Bank**  
New Hours - 10 to 11 a.m.  
Second Thursday

**Boy Scouts**  
Meeting Weekly  
Mondays - 6:00 p.m.  
Methodist Church

SANDRA CAGLE WILL BE IN GORMAN AT THE CITY OFFICE TO RENEW AUTO LICENSE PLATES. HER NEXT VISIT IS WEDNESDAY, JANUARY 19th FROM 9 TIL NOON.





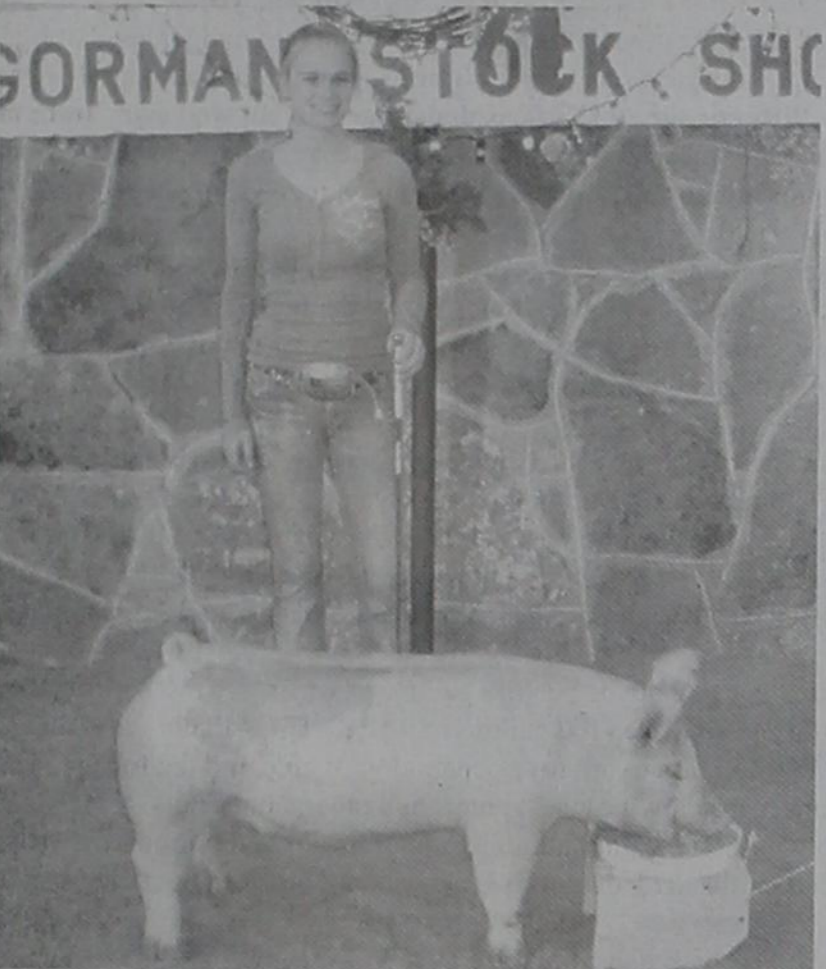
**Champion Berkshire - Kaylan McDonald**  
**Reserve Champion Duroc - Kaylan McDonald**  
**Reserve Champion Hampshire - Braden McDonald**



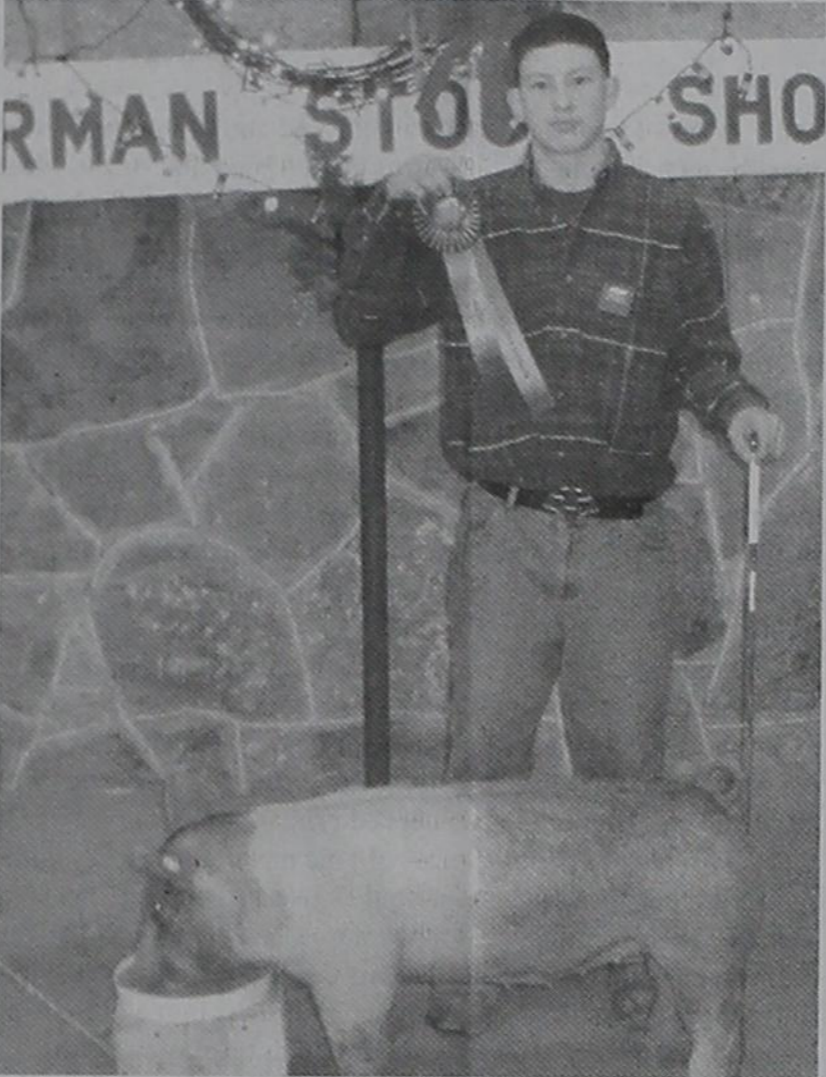
**Champion Chester - Keaton Moore**  
 He also had **Reserve Champion Hampshire - Keaton Moore**



**Grand Champion Market Goat - T J Warren**



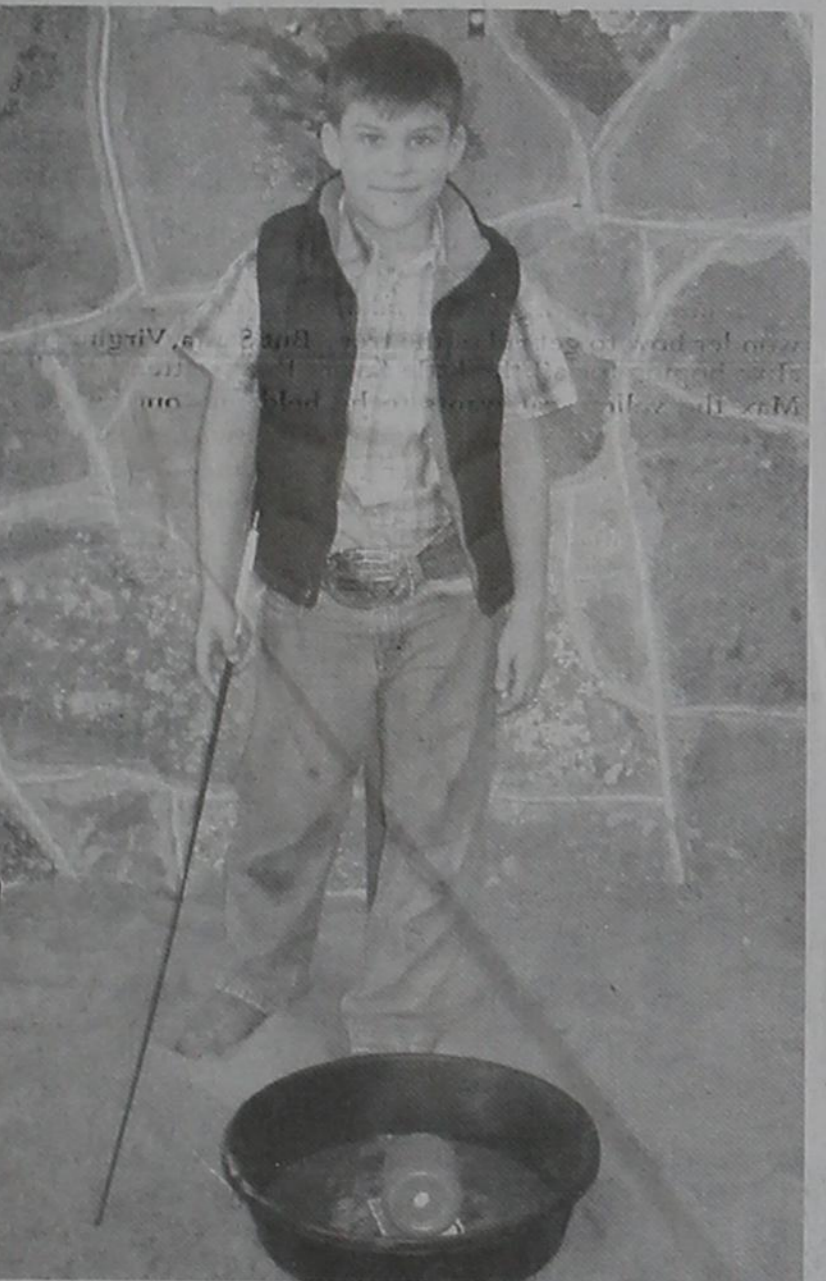
**Reserve Champion Cross - Madison Warren**



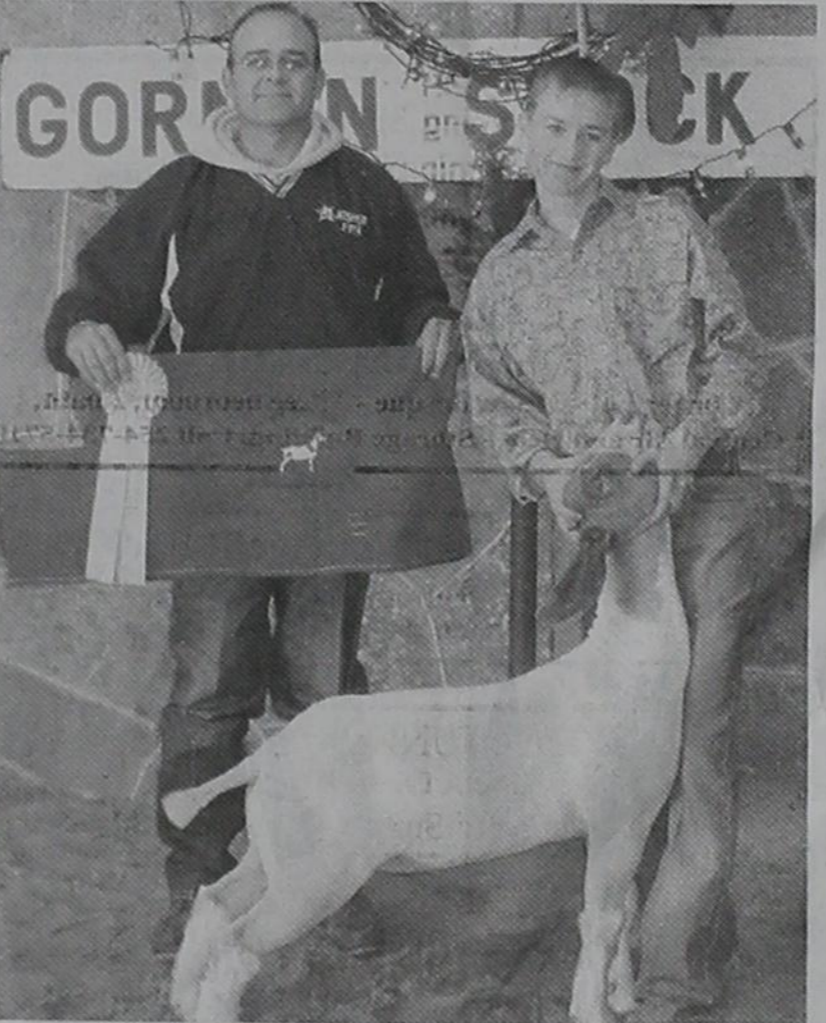
**Champion Cross - Robert Shawver**  
**Grand Champion Market Swine - Robert Shawver**



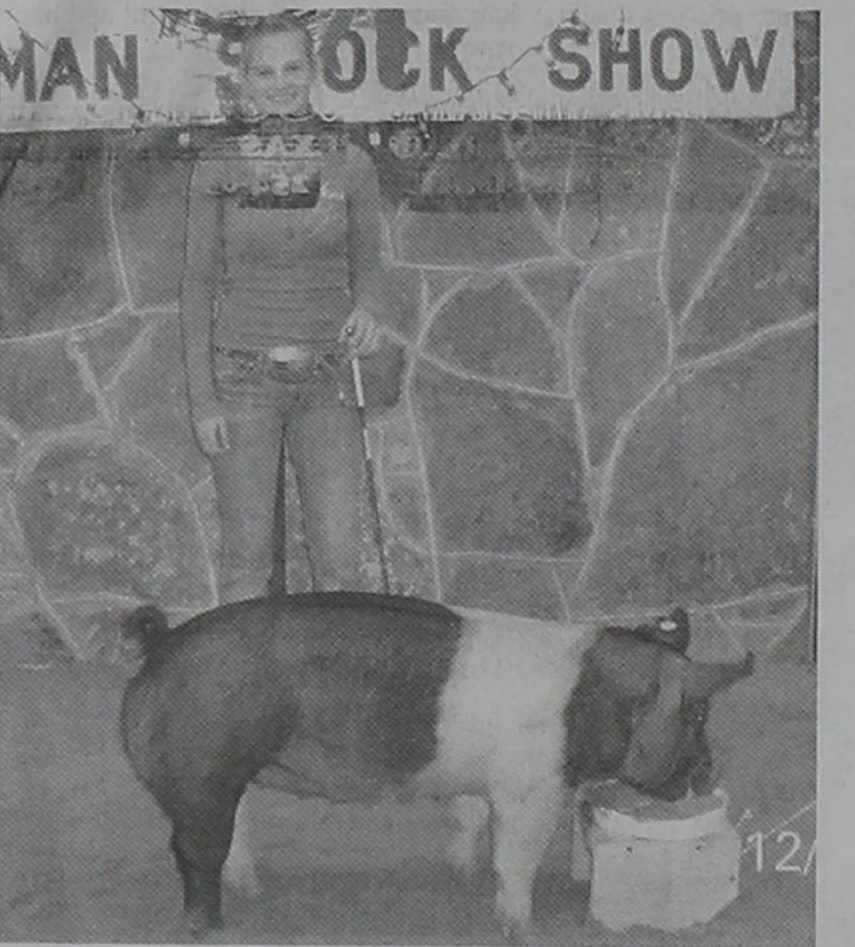
**Junior Goat Showmanship - Karsyn Scitern**



**Junior Showmanship - Keaton Moore**



**Reserve Champion Market Goat - T J Warren**



**Champion Hampshire - Madison Warren**  
**Reserve Grand Champion Market Swine - Madison Warren**



**Senior Showmanship - Shawn Rainey**



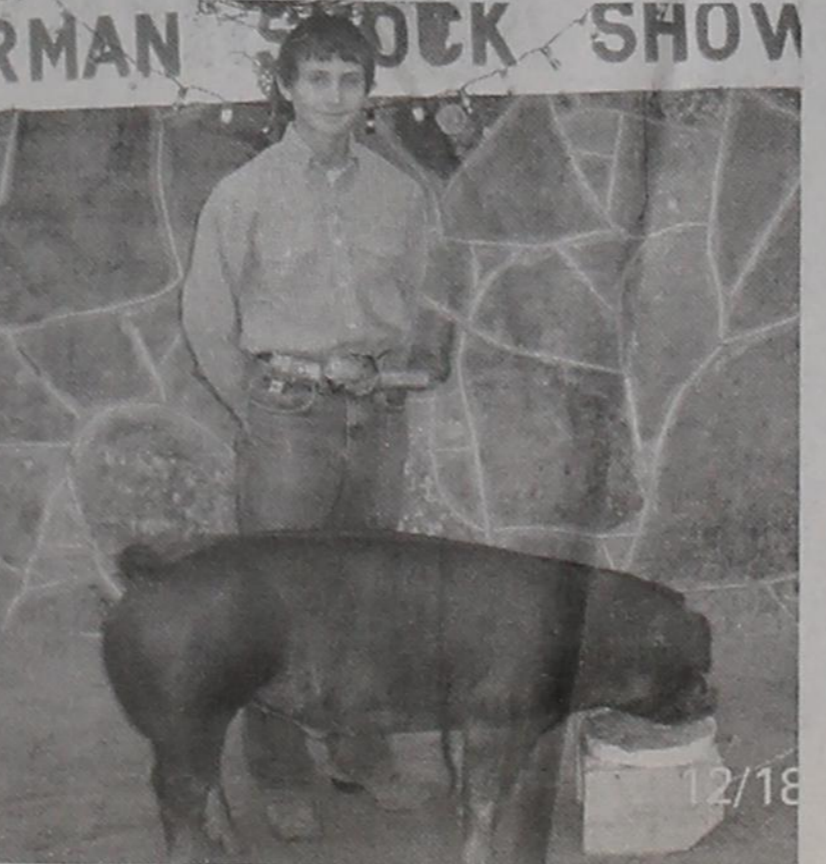
**Senior Goat Showmanship - T J Warren**



**Pee Wee Goat Showmanship - Nashton Guthery**



**Pee Wee Showmanship - Nashton Guthery**



**Champion Duroc - Shawn Rainey**

**Jacks Pool and Spas**  
 Jacks Chemical and Janitorial Supply, Inc  
 894 N. Graham Street -- Stephenville, Tx 76401  
 Call 254-965-4125 or Call 254-922-3159  
 For Pool Sales & Service - Call 254-965-4145

# Happenings At FBC!!

Faith! It's not commitment to denomination, body, or doctrine. Faith is one act of commitment to Jesus Christ, and the believer experiences the free gift of Salvation that comes from knowing Him. Where do you place your faith?

Mark your calendars:

**Jan. 8th - 8:00am** - Brotherhood Breakfast - Come, fellowship, pray, eat, & enjoy!

**Jan. 9th** - Welcome Our Youth Pastor - Justin Southall, wife Katie, and son Jake.

**WEDNESDAYS:** Come join us for fun learning about Jesus - TEAMKIDS at 6:00pm, MISSION FRIENDS at 6:00pm, and YOUTH at 6:30pm.

Children's Sermon: Traci pulled a stuffed toy out of a box. Eli exclaimed, "The Grinch!" We all know how the story goes; the Grinch stole Christmas. Traci asked the children why the Grinch did this, and they said that the Grinch had a small heart. Then the Grinch found out that Christmas was about the joy and love in the heart, and he couldn't steal that from the people. The Bible tells of King Herod, whom could be likened to the Grinch, and he sent the Wise Men to find the King of the Jews because he wanted to harm Jesus. Jesus has the biggest heart of all. The real Christmas is in our heart; and the love and joy of Jesus is in our heart. Neither can be taken from us, and we must tell others of Jesus all year long. Thank you, Lord, for those that bring their children to the Lord's House to learn more about Jesus. Amen.

Bro. Barry's Message: "Something Old, Something New" - John 8:31 - We're all familiar with the old saying, "Something old, something new, something borrowed, something blue, and a silver sixpence in her shoe." It's very definitely an English tradition. Is there something old that you need to leave in 2010? Leave it!

Those that know Jesus, believe Him, follow Him, and remain faithful to His teachings will know freedom; the truth shall set you free!

Our USA Military is the backdrop to our freedom, and it's the testimony of a Special Forces Soldier that has lost him limbs that recites the motto, "We free the oppressed!"

**OPPRESSION:** Exercise of authority and power in an unjust manner. Feeling heavily burdened mentally and/or physically by troubles and circumstance; anxiety. Exodus 1

**I. TAKE A STAND.** - Hebrew Midwives, Shiphrah and Puah, said no to Pharaoh. Hence, Pharaoh changed the order and would go get the baby boys. Thus, Moses was placed in a basket and floated down the river to Pharaoh's daughter. This baby boy lived, and proved faithful to God. Our old ways may come out at times. How could your stand impact the future of yourself and those around you?

**II. GET A PLAN.** - You cannot build a house without a plan. Identify the block to your freedom. Give a "compliment", not a "compliment" - so say something nice without following it up with a "but". It's not Biblical that God will put you in hurtful and harmful circumstances. It is Biblical that following Jesus will get you through life's hurtful and harmful circumstances. (1) Our Addictions. - Problems with alcohol, drugs, food, anger, etc. (2) Our Finances. - Money rips people apart, whether too much or not enough. (3) Our Relationships. - We need each other. Help one another to make good decisions. The shoulders of our Church Family help us carry our burdens. The greatest compliment to a Pastor is the great things the Church Family can accomplish together to glorify God.

**III. TRUST THE MAN.** - Did you barely get through 2010? Do you want this year to be the best ever? Trust Jesus with your life! Have a little Heaven in 2011! If you are reading this and you have not accepted Jesus Christ as your Lord and Savior please call Bro. Barry, ask Bro. Barry to talk with you about being saved or just ask him to pray with you, just call (254) 734-2420.

Our Worship Service begins at 11:00AM on Sunday mornings, please come and join us! 1X100

Remember: God loves you like no one else!  
Email us at fbcgorman@hotmail.com

## FINANCE

### Your New Year's Resolution: Track Finances and Pay Off Debt

NewsUSA

(NU) - Better budgeting contributed to Americans paying off nearly \$1 trillion in debt over the past two years, according to a recent report by the Federal Reserve Bank of New York.

"This is good news for the nation's long-term economy as it shows that Americans are doing a better job at budgeting," said Suzanne Poole, executive vice president, retail sales strategy and distribution, TD Bank.

With the new year now upon us, this is the perfect time for Americans to commit to a New Year's resolution to keep better track of their finances in 2011. If implemented with easy-to-use financial tools, consumers may actually stick to the resolution throughout the entire year, and it will undoubtedly help Americans continue - and maybe even increase - their rate of debt payments next year.

Here are a few tips that consumers can put to use in order to keep better track of their finances in 2011:

- **Develop a realistic plan.** Figure out what you want and what you need, and make sure you factor both into your budget. Also, don't forget to be realistic and set aside funds for fun activities.
- **Set up a savings account.** Consider opening a high-yield savings account that you will be able to rely on for future emergencies, so you don't have unexpected spending items.
- **Easy-to-use programs** always help. Today, consumers have access to a wide range of inexpensive programs and online services that can be used to develop budgets. From Quicken's computer programs and online services, to pre-formulated spreadsheets on Microsoft's Excel and Apple's Numbers pro-

grams, there is a plethora of user-friendly options.

- **Pay in cash.** People tend to spend less when they pay with cash. Swiping a plastic card has less of an emotional impact. There are times when it makes sense to use your debit card, such as to generate rewards or to avoid ATM fees. Make sure your bank offers debit card rewards and free ATM use. These options can save you money.

- **Take full advantage of mobile and online banking.** Unlike four years ago, when a majority of Americans did not have access to their checking account at their fingertips, mobile banking apps for smartphones and hand-held computers allow consumers to keep track of their expenses and budgets on a daily basis. The same can be said for online banking. These options give you instant access to your money and better control over your finances.

"To avoid all fees, consumers should use mobile banking apps and online banking to track their checking accounts on a daily basis," said Poole. "They should also consider using automatic bill pay so they know their bills are paid on time every month and avoid late payment fees."

- **Get a full return on your smartphone investment.** Mobile banking apps aren't the only tools consumers have to track their spending. A quick search of app stores for iPhone, Android and BlackBerry devices will generate "checkbook" apps that are easy-to-use tools to keep detailed records of your daily expenses, bills and due dates, and bank accounts. The apps are password protected, and most don't even require consumers to add sensitive information such as bank account numbers.

# Desdemona News

By Vonnie Guthery

**First Baptist Church of Desdemona** started the "New Year" off to a good start with good attendance and a few visitors on Sunday. At the end of the morning service three local residents moved their Church letters back "HOME". Bro. Charlie Johnson, his wife, Jana and all the members invites visitors to attend each Sunday at 10 a.m. for Sunday School and 11 a.m. for the Morning Service.

Pug and Vonnie Guthery Hosted the Guthery Family Dinner on Sunday, January 2, 2011. Those attending were Frank and Ella (Guthery) Reeves; Eula Beth Guthery and Junior Guthery, all of Irving; Richard and Glenda Garrett of Justin; David and Martha Guthery, Jim and Karen Guthery and Deborah (Guthery) Jackson, all of Gorman; Emerald (Guthery) Sandlin of Eastland; Karen (Guthery) Fair and Lorin, Belinda Guthery, Holly Guthery and Jade, Kandice Coggburn, Dylan and Taiah, all of Desdemona.

Please contact this reporter with your weekly news. Your help will be appreciated.

**Ladies Monthly Social** will be held on Monday, January 10th at the Community Center. Make plans to arrive at 9 a.m. to enjoy the good food served by the Hostesses. Visitors are welcome.

Have a great day, "Coon".

## Senior Citizens News

By Carol Ward

We will come back on the 5th of January. See you next year. Carol

## AGRICULTURAL VIEWPOINT

By: Heath Begeman

### Looking Ahead - 2011 Pecan Management

Most of your hands are still cracked and sore from shelling pecans in the early winter months, and you probably do not want to even see a pecan tree until it warms up in March and April. I feel that it is never too early to start thinking about managing pecan trees for the 2011 harvest. So in this article I wanted to hit some critical needs for the pecan crop to be successful this year.

The first issue that comes to mind when I think about pecan trees is fertilization. This is very important for young trees. Nitrogen is necessary for rapid tree growth and is the only soil-applied nutrient that most pecan trees ever need. It is important to apply nitrogen in frequent small amounts during the first few years. Spread fertilizer on the soil surface, under the tree, but well away from the trunk. Nitrogen fertilizers are very soluble and are readily moved into the soil by watering. It is inefficient and unnecessary to make holes around the tree to pour the fertilized into the ground. Ammonium sulfate (21-0-0) and ammonium nitrate (33-0-0) are common, economical nitrogen fertilizers that can be used.

For mature trees apply 1 pound of 21-0-0 or 33-0-0 for each inch of trunk diameter in late March before bud break. If the tree produces a very heavy nut set in May, make a second application in late May or early June. Apply the fertilizer broadcast on the surface starting 3 to 5 feet from the trunk and extending out a few feet past the tree canopy. Water the fertilizer into the soil promptly. Avoid scattering fertilizer on sidewalks or paved driveways because some materials can cause unsightly, although seldom, permanent spotting.

Frequent zinc sprays are essential for rapid tree growth. Trees deficient in zinc usually have small, weak leaves, highly branched (rosetted) twigs at shoot tips and, in severe cases, dieback of twigs and branches. During the first seven (7) years, trees grow best if foliar sprays of zinc are applied at least every 2 weeks throughout the growing season of April through early August. If the trees are not growing, reduce the spray frequency. Spray mature trees with zinc at least three (3) times between bud break in late March or early April and early June. Zinc is needed primarily by young expanding leaflets. Leaflet expansion on mature trees usually stops by mid-June. Two (2) of several choices of zinc materials to spray with are:

Zinc Nitrate is formulated as a liquid. Use 2 to 4 teaspoons per gallon or 1 to 2 quarts per 100 gallons of water. Zinc sulfate is formulated as a powder. Use 2 teaspoons per gallon or 2 pounds per 100 gallons of water. UAN liquid fertilizer (32-0-0) can be added at a rate of 1 quart per 100 gallons of the zinc sulfate solution to improve penetration of zinc into the foliage. Zinc sulfate spray can cause leaf burn on other trees in the home landscape, especially peaches, plums and other stone fruits. Zinc sprays are most effective if applied early or late in the day with little or no wind. The higher humidity under these conditions allows longer wetting and more zinc absorption. Zinc sprays pose a minimal hazard to man and animals, yet care should be taken not to contact the spray directly. Zinc sprays are not likely to stain sidewalks, houses, cars, etc.

For more information on pecan management or insect control, call the Extension Office at 254/629-1093.

**0% - 72 Mos. WAC**  
**OR UP TO**  
**\$6,000**

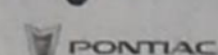
## IN FACTORY REBATES ON FULL SIZE 2010 SILVERADO AND SIERRA PICKUPS



## Bayer Motor Company, Inc.



218 E. Grand - Comanche



1-800-843-5230

M-F 7:30 a.m. to 5:30 p.m. Sat. 7:30 a.m. to 3:00 p.m.

Web Pages: [www.bayermotor.com](http://www.bayermotor.com) or [www.bayermotorco.com](http://www.bayermotorco.com)