

The Gorman Progress

"Serving Gorman For Over 110 Years"
Gorman, Eastland County, Texas 76454

2010 Member - Texas Press Association

NUMBER THIRTY-THREE

AUGUST 19, 2010

Gorman Bullrider Wins Reserve World Title At 2010 Cinch Youth Bull Riding Finals



JENNINGSRODEOPHOTOGRAPHY.COM

Fort Worth, Texas—Daniel Keeping, the 11-year-old son of John and Lisa Keeling of Gorman, won the Jr. Steer Riding Reserve Champion title at the 2010 Cinch Youth Bull Riding World Finals (YBR) held at the Will Rogers Coliseum in Fort Worth Aug 4-7.

"I feel pretty good knowing I came in second in the world," Keeping said after the win which netted him a little over \$972 which will go into a college fund and the coveted HD Silver buckle.

The new reserve champion was only 1/2 point behind the first place winner, Kaiden Cato from Bristow, OK, and only one of three bull riders to cover all four steers. He won the second and tied for the short go win taking home three buckles total. "They are pretty nice."

When asked how the steers suited him, he said his short round steer was "the best one of the pen. It jumped high and kicked hard" which made up for the third round steer that was "a pain in the chute."

The Cinch Youth Bull Riding World Finals presented by Championship Bull Riding is a non-profit 501 c 3 organization based in Fort Worth, Texas. Founded on the belief that every child's dream can come true if only given something to believe in, the YBR's mission is to host the richest youth bull riding and crown World Champions in six categories mutton bustin, calves, jr steers, sr steers, pee-wee and open. While at the same time, bring awareness and cash donations to a variety of children's health care issues.

Keeping has been riding for almost six years, starting out on "small wimpy calves that were really fast. The first two years were training years with my face planted in the dirt. Then I started covering." And, covered he has. Currently he has a riding average in the high 90s covering 45 out of 46 steers in all the association with include Texas Youth Bull Riding (TY), Pro-Youth, Future Pro and a jackpot series held at Mike Young's arena in Stephenville. The one buck-off was at a Pro-Youth event in Cleburne. "The steer got his horn caught in the chute, and then he kicked hard away from my hand."

He qualified for the YBR by winning second at the TY finals in Saginaw in July. Last year, he won both the Pro-Youth and Future Pro Jr. Steer divisions.

Thinking that with all these wins, the young man would be cocky? You would be wrong. Even though he has meet bull riding greats Tuff Hedeman and Mike Lee, his idol is his dad John. "He is the one who has helped. When I don't win, he still reminds me of all the good rides (I've had)." Keeping would like to thank his parents and Mike Young who has helped him at the practice pen and for the advice, his sponsor Glock. By the way, he is looking for more sponsors.

Over 315 bull riders from across the country and Mexico competed during the four-day action packed event with total payout and awards over 60 thousand.

Sales Tax Holiday Starts Friday

Texas' annual Sales Tax Holiday arrives this weekend, just in time for families to save money on clothes and supplies for the new school year.

"This is the 12th straight year in which families will take advantage of sales tax savings," Texas Comptroller Susan Combs said. "This Friday, Saturday and Sunday, Aug. 20-22, shoppers can stock up on tax-free school supplies, school backpacks and most children's and adults' clothing and shoes priced at less than \$100."

To help families plan to make the most of the Sales Tax Holiday, lists of tax-free apparel and school supplies can be found on the Comptroller's website at http://www.window.state.tx.us/taxinfo/taxpubs/tx98_490/tx98_490.html.

"No Charge Policy" At Gorman ISD

The School Board has adopted a "No Charge Policy" in regards to lunch and breakfast effective at the beginning of school. Previously, breakfast was served free to all students. If your household received child nutrition program benefits at the end of school last year, they will receive the same benefits at the beginning of school for both lunch and breakfast for a grace period of time (30 operating days) until your new application has been approved in the office. If your child forgets their money for lunch, your child will receive a nutritious alternative meal. The prices for lunch and breakfast are as follows:

LUNCH

Reduced Price Lunch - \$.40 Elementary Lunch - \$1.75
Jr. High and High School Lunch - \$2.00 Salad Bar - \$2.00
School Employees Pay - \$2.75 for Lunch Meals
Visitors pay \$3.50 for Lunch Meals Additional Milk - \$.30
There will be an extra charge for milk for adults

BREAKFAST

Reduced Price Breakfast - \$.30 Elementary Breakfast - \$1.25
Jr. High and High School Breakfast - \$1.25
School Employees - \$2.00 Visitors pay \$2.00
Additional Milk - \$.30
There will be an extra charge for milk for adults

Gorman ISD "Meet The Teacher"

Maxfield Elementary, High School and Middle School classrooms will be open Thursday, August 19th from 5:30 to 7:00 p.m. for the students and their parents to bring their school supplies. This will be a good opportunity for parents and students to meet their teacher for the 2010-2011 School year.

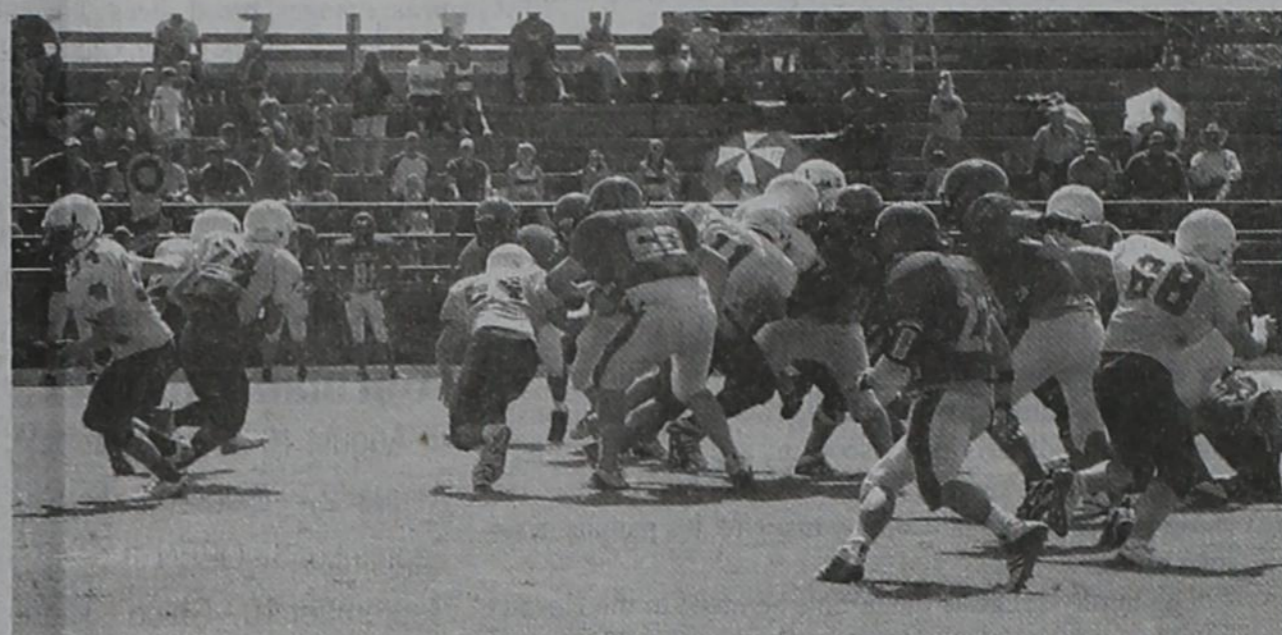
NOTE TO THE EDITOR:

IF YOU ARE HAPPY WITH YOUR CITY COUNCIL and their ORDINANCES, the Lord Bless You. If not, give me a call - Denver Rainey at 254-734-5131.

Gorman Panthers Scrimmaged Electra; Host San Angelo TLC - Scrimmage Friday

The Gorman Panthers scrimmaged Electra in a 10 a.m. scrimmage at Brogdon Field with a fair crowd for both teams. The Panthers looked good against Electra. The Panthers will be playing San Angelo TLC at Brogdon Field on Friday at 7:30 p.m. Come out and support the Panthers. The Panthers will be hosting the Eldorado on August 27 for the First Game of the Season.

The Panther Roster is inside this issue of the progress.



Scenes From the Scrimmage against Electra



Lady Panthers Volleyball Team

Places Third At Albany Tournament



The Lady Panthers played in the Albany tournament this past weekend starting with pool play on Thursday...the girls lost to Rotan 15-25, 26-24, 19-25 then won against Hawley 25-17, 25-17 and lost against Eastland 13-25, 13-25 and finished pool play 3rd on Thursday...We started up again on Saturday playing Veribest and beating them 25-21 and 25-15 with Ally Little having 1 kill and 3 aces, Courtney Shirley with 1 kill and 3 aces, Jaime Johnston with 7 kills, 2 aces and 1 block, Kinsey Johnston with 1 kill, Holly Wood with 2 aces, Melissa Ramires with 3 kills and 4 aces and Chelsea Griffin with 6 aces...2nd game on Saturday we lost to Cornerston which is a private school from San Angelo 25-21, 22-25, 11-25...Ally had 2 aces, Courtney with 4 kills and 1 ace, Jaime had 13 kills, 1 ace and 1 block, Kinsey with 2 kills, Holly had 1 kill and 3 aces, Melissa with 2 kills 1 ace and 1 block. We then beat Aspermont in three sets: 25-27, 25-20, 25-22. Ally- 1 kill and 2 aces, Courtney- 3 kills and 2 aces, Jaime- 8 kills, 1 ace and 3 blocks, Kinsey- 3 kills, Holly- 1 kill and 3 aces, Melissa- 2 kills, 2 aces and 1 block, and Chelsea- 3 aces. The Lady Panthers finished 3rd in the tournament.

We are looking forward to a great year with Coach Wood...Everyone come out and support the Lady Panthers! I would like to thank the Athletic Booster Club for sending our girls BBQ sandwiches and gatorades...the girls greatly appreciated them...The school is cutting budget and will not be providing meals for the kids when they are on out of town games and tournaments...as parents we are getting together to provide a goody bag for these kids. if you would like to make a donation to the Lady Panthers or Panthers, contact Amy Johnston or Becky Swanner...Your support is greatly appreciated. Not pictured: Jaylon Miley

Amy Johnston

Obituaries

C. A. Ross, Jr.



C.A. Ross Jr., 84, of Midland, passed away on Sunday, August 15, 2010, at the Hospice House of Odessa. Funeral services were held on Wednesday, August 18, 2010, at 11:00 am with Rev. Gary Groves, pastor of the Church on the Journey, officiating. The family received friends on Tuesday, August 17, 2010, from 7:00pm to 8:00pm, at the funeral home.

He was born August 27, 1925, in Grandview, Texas, and married Annette McLelland December 4, 1947, in Thornton, Texas.

He proudly served in the United States Army Air Corps from 1945 to 1951, and was recalled from 1951 to 1953 into the Air Force. He flew B-52s and C-47 transport planes and had been stationed in Anchorage, Alaska before moving to Greenland. He then flew planes from Greenland to England over the Arctic Realm in 1952. C.A. then served as a Flight Instructor at the rank of First Lieutenant, and spent many years teaching. He joined Sherwin Williams in 1954 and moved to Big Spring, before moving to Midland and retiring in 1981.

C.A. was a member of the Midland Centennial Masonic Lodge #1448, Midland Scottish Rite Association, Midland Amateur Radio Club, Confederate Air Force Amateur Radio Club, and the American Legion Woods W. Lynch Post #19. He also was a graduate of the first Midland Police Department Citizen's Police Academy.

He is survived by two daughters, Beth Ann Broughton of Midland, and Jerilyn Wilkerson and husband Mark of Gorman; two granddaughters, Courtney Broughton of Midland, and Shelby Broughton-Settles of Levelland; two great grandsons; a sister, Janis Porfilio of Crivitz, Wisconsin; and numerous nieces and nephews.

He was preceded in death by his wife, his parents, a sister and two brothers.

The family suggests memorials be made to the Hospice House of Odessa, 903 N Sam Houston, Odessa, TX 79761 or to Shriners Hospital for Children, 815 Market ST, Galveston, TX 77550.

Arrangements are under the direction of Nalley-Pickle & Welch Funeral Home & Crematory of Midland. Online condolences can be made at: www.np.welch.com

Classifieds

NEED: LVN for 10 p.m. to 6 a.m. - Sunday and Monday nights and every other Tuesday night. Also 2 to 10 LVN - Thursday thru Sunday. No Taking Applications for CNA's for All Shifts. Homestead Nursing and Rehab in Gorman.

PAUL WILLIAMS ROOFING
CARBON, TEXAS
FREE ESTIMATES
254-639-2330

FREE TO A GOOD HOME: We have a Lab/Rot Cross Dog named "Bear". He is about 2 years old. We have moved back to the Lake Leon and do not have big enough yard. Needs fenced area if possible. Call Lonnie at Gorman Progress - 254-734-2410.

28 X 80 - 4 Bdrm. REPO!!!
REFURBISHED, NEW CARPET, NEW APPLIANCES.
CROWN HOMES
817-279-8505 RBL-35823 4-8-26 C.

IMMEDIATE OPENING: Homestead Nursing & Rehabilitation of Gorman has an opening for Weekend R.N.. For additional information, contact the facility at 254-734-2202. EEOC FNC



BARBARA LOVE, INC. Broker
317 E. Main St. - 254-629-1725
EASTLAND, TX 76448
www.tcrealty.net

MOTIVATED SELLER - Brick Home on 3.7 ac. - REDUCED - 3 BR, 1 1/4 baths, LR, DR, office, DAG, stg. Bldg. & metal barn w/elec., outbuildings. Excellent location at the edge of Gorman. 03
"EDGE OF GORMAN" - 1.3 AC, m/l. Maintenance free Brick 3 BR, 1 1/4 bath, open LR-DR, kitchen area w/bk. bar, Utility, CH/A fenced yard, SACP w/stg. & barn. 06
HUNTING & GRAZING - 257.53 AC. Mostly mesquite, food plots for deer, grazing or hay, tanks, good fences on 2 sides, Nash Creek, rolling terrain A18
CHARM, WARMTH, COMFORT - This 2 BR, 1 bath brick has all of this & more. Large inviting living room, kitchen/dining combo, CH/A, utility w/extras, DACP & cov. porch overlooking the oversized back yard with it's beautiful pecan trees. Call us to make your appointment today. 08
PRODUCTIVE - 160 AC, m/l, N. of Gorman. Coastal, good soil, 2 tanks, water well & frontage on 2 county roads. A13
STOP & TAKE A LOOK - 2005 DWHM - quiet neighborhood & large trees on half an acre. Comfortable living with spacious LR, 4 BR, 2 baths, a front deck & Nice stg. Bldg. OWNER AGENT 02
INVESTORS - INVESTORS - INVESTORS - Lots of possibilities - 2 story office building & old cafe. C19

The Gorman Progress

P. O. Box 68 - Gorman, TX 76454
Phone 254-734-2410 or 254-734-2411 FAX - 254-734-2799
Email: jake@txol.net or gprogress@txbusiness.com
PDF Ads - EPS or JPEG Photos By email
Publication Number - 222780
Publisher - Lonnie Bennett

DISPLAY AD RATE

\$4.00 Per NAA Column Inch. PROCESS COLOR - \$100.00 Flat Rate - Extra
NATIONAL AD RATE - \$6.00 Per NAA Column Inch
NO COMMISSION DISCOUNTS
CLASSIFIED ADVERTISEMENTS - .25 CENTS A WORD
MINIMUM CHARGE - \$4.00 PER ISSUE
NO COMMISSION - INSERTS - \$72 Per ISSUE
ADDITIONAL 50¢ FOR BORDERS.
WEDDING ANNOUNCEMENTS - \$5.00 OR \$10.00 WITH PICTURE
WEDDINGS - \$10.00 MINIMUM
NEWS AND ADVERTISING DEADLINE - TUESDAY NOON
CARD OF THANKS - \$5.00

SUBSCRIPTION RATES: By Mail in Eastland or Comanche Counties - 1 year - \$15.00; In Texas - \$20.00 per year and Out of State - \$22.00 per year. Effective January 1, 2008.

Any erroneous reflection upon the character, standing or reputation of any person, firm, or corporation which may appear in the columns of the Gorman Progress will be gladly corrected upon being brought to the attention of the Publisher.

Entered as Periodical Postage Paid at the Post Office in Gorman, TX 76454, under the Act of March 3, 1978. Published Weekly by Gorman Progress, 196 S. Kent, Gorman, TX 76454. Periodical Postage Paid at Gorman, TX 76454. The Gorman Progress Reserves the Right to Refuse Any Advertising!! Postmaster: Please send Change of Address To: Gorman Progress - P. O. Box 68 - Gorman, TX 76454.

Doyle Allen Whitworth

Doyle Allen Whitworth, age 51 of Gorman, passed away, Wednesday, August 11, 2010 at the Eastland Memorial Hospital.

Doyle was born October 29, 1958 in Odessa, Texas to Doyle Ray Whitworth and Mackie Lee (Allen) Whitworth. He was a laborer.

Doyle's wishes were to be cremated. A Memorial Service will be at a later date.

He is survived by his father, Doyle Whitworth of Odessa; brother, Bobby Whitworth of Joshua; three sisters, Drenda Dossey of Eddy, Feye Woods of Marysville, WA. And Missy Thompson of Stephenville. He was preceded in death by his mother, Mackie Lee (Allen) Whitworth, grandparents, Lloyd and Aza Lee (Golden) Allen and Owen and Gertie Whitworth.

SCHOOL MENU Week of Aug. 23 thru Aug. 27

BREAKFAST
MONDAY - Cereal, Biscuits, Juice and Milk
TUESDAY - French Toast, fruit, Juice and Milk.
WEDNESDAY - Cheese toast, hash brown, Juice and Milk.
THURSDAY - Eggs, toast, gravy, Juice and Milk.
FRIDAY - Bacon, Egg, Biscuits, Juice and Milk.
LUNCH
MONDAY - Baked Ham or Corn Dog, Mac/cheese, blackeyed peas, oranges, bread slices and Milk.
TUESDAY - Pork Chop, Chicken legs, cheese potatoes, broccoli, roll, strawberry cake and Milk, July & August Birthday Table.
WEDNESDAY - Chicken/rice or Pigs in a Blanket, Carrot Coins, Tossed salad, fruit and Milk.
THURSDAY - Chicken Spaghetti or Ravioli, cheese sticks, corn, green beans, bread stick, fruit and Milk.
FRIDAY - Chili dogs or toasted ham and cheese, baked beans, french fries, ice cream and Milk.

Gorman Panthers Football Schedule

- * August 19-21 - San Angelo - There
- August 27 - Eldorado - Here - 7:30 - First Game of Season
- September 3 - OPEN
- September 10 - Chico - There - 7:30
- ◆ September 17 - Perrin - Here - 7:30 - Homecoming
- September 24 - Menard - There - 7:30
- * October 1 - Santo - There - 7:30
- * October 8 - Ranger - Here - 7:30
- * October 15 - Cross Plains - There - 7:30
- * October 22 - OPEN DATE
- * October 29 - Baird - Here - 7:30
- * November 5 - Meridian - There - 7:30

- * Scrimmages
- ◆ Homecoming
- * District Games

New Enrollee Registration For Maxfield Elementary

Parents of students who are new to our district and who will be enrolling for the 2010-2011 School year, are invited to come to the elementary office, on Thursday, August 19th to register their children. Parents are asked to bring: Student's Birth Certificate, Social Security Card, and Copies of their Vaccination Records.

We are looking forward to having your child attend Maxfield Elementary School and are expecting to have a wonderful school year.

FOR SALE: A few good Black Cow and Calf pairs. Call 254-758-2231 - Don Holder. 1TP
FOR SALE: Electric Range - \$50.00. Call 254-639-2103. 1TP

HELP WANTED:

Applications are now Being accepted at the TX Cooperative Inspection Program for the following Seasonal Positions:

Inspector 1

Analyze peanut samples for quality & condition. High School graduate or the equivalent. Beneficial if able to travel or relocate temporarily. \$1,472.00 Monthly - \$8,492.3 Hourly. Training Provided.

Aides & Sample Pullers

Assist Inspector in grading, pulling samples & Other duties as assigned. \$1,256.67 Monthly - \$7.25 Hourly.

TCIP Policy -- Drug Free, EOE

For more information please call, come by:
304 S. Kent Street -- Gorman, Texas - (254) 734-3006
412 W. Tate - Brownfield, TX - (806) 637-8381

Riley Gardner Memorial Represented By:
JONELL TORREZ - 254-734-2535

Our Memorial Display Is Now Located Behind Higginbotham's Funeral Home. We Guarantee You Can Buy The FINEST QUALITY Memorial At The LOWEST PRICE. All Work Guaranteed.



COGBURN REALTY

254-893-6666 DE LEON, TX

NEW LISTING: 2-1 Frame, window A/C, 50 x 125 lot. Only \$14,900
Rising Star, operating laundromat, washers, dryers, folding tables and seating. Great investment opportunity. \$27,500.

NEW - 56.01 Acres: Erath Co. N. De Leon, paved frontage, good small acreage recreational place, heavy brush cover, deer, wild turkey and hogs! Over 1/2 mile of creek frontage. \$2,995 per acre, smaller tracts of 15A or more, \$3,495 per acre.

NEW - 14.12a Lake Proctor, secluded, join lake property, elec., well, wooded, lots wildlife. \$67,070.00

S/E Gorman: 45 A, sandy land, few Pecan trees, 7 water wells, irrigation reservoir, close to pavement. \$2,300.00

S/E Gorman: 60 A, good sandy soil, some coastal, good fences, elec., nice pond site. \$2,800.00

100 A west De Leon FM587, 3 - 1 1/2 - 2 brick, 1444 sq. ft., C/HA, fireplace, carpeted, some remodeling, 3 ponds, 30a crop land, 35a coastal, some native, fenced, 2 steel corrals, 2 wells, shop building Nice setup. Mineral Rights. \$2,300 A.

179 A. south of Gorman: Part wooded, part old fields, deer & hogs, 2 nice ponds, sandy soil, elec., water well, metal building. \$2,350.00 acre.

SELLERS SAYS MAKE OFFER!!
NEW LISTING: 322A. Oak & Elm Trees, 2 creeks, great water shed project! 40 A. Coastal, owner reports 300 round bales/year, 55 A. Cultivable soils, 6 ponds, water well, 1200' metal Bldg with slab floor, elec. Deer, turkey, and other wildlife. \$2,300 A.

We NEED Your Listings. The Market Is Good. Call Us.
www.cogburnrealestate.com
SELLING GORMAN - DELEON AREAS OVER 50 YEARS

NOTE OF THANKS

I AM WRITING TO THANK A YOUNG MAN WHO HELPED ME IN EASTLAND ON AUG.10TH . I AM AN 87 YEAR OLD WIDOW. I HAD A FLAT ON THE MAIN THROUGHFARE IN EASTLAND. HE STOPPED IMMEDIATELY TO HELP AND CHANGED MY TIRE. I DO NOT HAVE AN ADDRESS FOR HIM, BUT HIS NAME WAS RONNY HUFF. I AM SO GRATEFUL FOR HIS HELP.

MRS. ALICE POWELL

Thank You

DESDEMONA HOMECOMING COMMITTEE WOULD LIKE TO THANK THE GORMAN LIVESTOCK ASSOCIATION FOR THE GOOD FOOD, DESSERTS AND DRINKS THEY SERVED ON SATURDAY IN "HOGTOWN". IF ANY CLUB OR ORGANIZATION NEED A FOOD CATERER - I REALLY DO RECOMMEND THIS GROUP AS THEY SERVE VERY GOOD FOOD AND TEY DO A TERRIFIC "CLEAN UP" JOB.

HOMECOMING SECRETARY
VONNIE (KEITH) GUTHERY

My Apology

My apologies to the Class Of 06. I do remember that it was your inspiration and the foundational work was done by you. Please accept this apology and know that I did not mean for "my senior moment" to slight you in any way.

Cliffa Vaughn

Mini Blizzard® Mighty Good.



Introducing the new Mini Blizzard® Treat. Everything you love about the Blizzard® Treat, just smaller.



That's What I Like About Texas!

dq.texas.com

Blizzard, DQ and the ellipse shaped logo are trademarks of Am. D.Q. Corp., Mpls. MN © Reg. U.S. Pat. & TM Off. Tx, D.Q. Com., © 2010.

GIRLING HEALTH CARE PERSONAL CARE ATTENDANTS

Seeking caring and dependable people to work in the homes of elderly and disabled clients. Will assist with preparing meals, shopping, personal care, errands, light housekeeping, and other assigned duties. We offer flexible day, evening, and weekend shifts. Must be at least 18 yrs of age with a clean criminal background. MUST have reliable transportation. No certifications or prior experience required.

Fax Resume referencing Ad # 10612 to 325-646-2278
For an application, call 325-643-5604
Apply online at www.girling.com E.O.E / M.F.D.V.

CLAY'S PROCESSING & SMOKER HOUSE

254-445-4180

111 WEST ELM . DUBLIN . TX 76446

We don't sell all the meat in Texas just the BEST!

Retail Meat Market
Custom Slaughter and Process

New D/Wide

\$49,900!!!

3 + 2, Island Kitchen, Family Room, Del. and SetUp with A/C
Crown Homes

817-279-8505
RBI-35823 4-8-26 C.

USED S/Wides

\$19,900 & Up!

& Up. Three bedrooms, 2005 Models.

Del. & Set Up With A / C

817-279-8505
RBI-35823 4-8-26 C.

Business Directory

CUSTOM HOME BUILDERS SINCE 1980
Let Us Build Your New Home or Room Addition
If You Can Dream It, We Can Build It!!!

T. J. Clark Construction Co., Inc.
(254) 734-2755
P. O. Box 176 - 111 E. Roberts St. - Gorman, Tx 76454
General Building Contractors - All Work Guaranteed
Custom Homes - Remodeling - Commercial - Industrial - Farm
Financing - Free Estimates - Design, Engineering & Plan Services

Beef Cattle Field Day

The 2010 Beef Cattle Field Day will be held on August 24th at the Carbon Community Center in Carbon. The program this year will be based on Beef Cattle Winter Supplementation and Sandbur control. Three CEU hours will be given to all participants with pesticide licenses. Registration will start at 8:30 a.m. with the program starting at 9:00 a.m. Gerald Hobson with DuPont will discuss Pastora and other chemicals available for sandbur control for improved and native pastures. Dr. Sonja Swiger, Extension Entomologist will present control methods for stable flies and other problem insects. The last presenter will be Dr. Jason Cleere, Extension Beef Cattle Specialist. Dr. Cleere will discuss winter supplementation of beef cattle.

There will be a FREE Hamburger lunch provided by Eastland County Beef Committee. With such great presenters this should be a great opportunity for all questions about cattle or weed control to be answered and/or discussed. We need a head count for lunch, so please call the Extension Office at 254/629-1093 or 629-2222 to sign up.

Those with disabilities are asked to call by August 22nd so that reasonable accommodations can be made. Educational programs of Texas AgriLife Extension Service are open to all people without regard to race, color, sex, disability, religion, age, or national origin.



MISS GORMAN - Cortney Shirley & LITTLE MISS GORMAN - Kayle Nichols attended the Peach and Melon Festival Parade held recently in De Leon.

ORDINANCE NO. 2010-03

AN ORDINANCE OF THE CITY OF GORMAN, TEXAS, LEVYING TAXES FOR FISCAL YEAR BEGINNING OCTOBER 1, 2010 AND ENDING SEPTEMBER 30, 2011: PROVIDING DISCOUNTS FOR ADVANCE PAYMENT OF AD VALOREM TAXES; PROVIDING FOR THE COLLECTION OF DELINQUENT TAXES; AND DECLARING AN EFFECTIVE DATE.

Card of Thanks

We want to say Thank You to all who gave a word of comfort or served us any way when our beloved mother passed away. It is good to live in a Community with people who care. God Bless each of you.

The Family of Marie Cook

First Baptist Church

Invites You To Join Us For A

Renewal Fellowship

on

August 29th thru Sept. 1st



Featuring: "The Anderson Family Ministries"

A Preaching and Singing Ministry

Devoted To Proclaiming The Gospel Of Christ

First Baptist Church

August 29th thru Sept. 1st

Sunday, Morning - 11:00 a.m.

Sunday, Evening thru Wednesday Evening - 6:00 p.m.

Gorman City Minutes

AUGUST 5, 2010

The Gorman City Commission met on the above date. Those present were Mayor Robert Ervin, commissioners Durward Webb, David Stanley, Joe Casey and Nathan Files. (Nathan arrived @ 5:45 p.m.) Also present was Chief Barbara Fenley and Public Works Director Glenn S.

Joe led the opening prayer followed by the Pledge of Allegiance and the Texas Pledge. Durward made the motion to approve the minutes of the previous meeting. David made a second to the motion. Motion carried 3-0.

Joe made the motion to approve the bills for payment with a second from Durward. Motion carried 4-0.

No Citizens present for comment.

Mayor Ervin read the letter of rate increase from Allied Waste. The rate already in effect will remain as is. This increase was considered during budget consideration. No changes will be made.

Nathan made the motion to be a host city for S. Ryan Holt through the Veterans Rehabilitation and Employment Program. Joe made a second to the motion. Motion carried 4-0.

The Commission discussed with Glenn about getting some of the fire hydrants repaired or re-built. This item will be on the next agenda.

The use of golf carts, ATVs etc will be discussed more at the next meeting.

Barbara informed the Commission that the funds had been put in the seizure account from the stop that Officer Nichols conducted about a year ago.

Commissioner Stanley and Chief Fenley have narrowed it down to two applicants for the police position. They will be interviewing the week of the 9th. Nathan made the motion to allow Chief Fenley and Commissioner Stanley to make the hiring decision. Joe made a second to the motion. (David obtained from voting) Motion carried 3-0.

Department heads submitted written and oral reports.

David made the motion to re-appoint Aline Garrett and Linda Simmons to the Charlie Garrett Memorial Library Board. Durward made a second. Motion carried 4-0.

Nathan made the motion to add the building security fee to the municipal court fines. An ordinance will be published, and the 1st reading will be at the next Commission meeting. David made a second to the motion. Motion carried 4-0.

David made the motion to contribute \$400 to the Eastland County Crisis Center and Child Advocacy Program, dividing equal parts to each. Joe made a second. Motion carried 4-0.

After considering all bids submissions for the EECB Grant Joe made the motion to accept Shirley's Air Conditioning bid. Nathan made a second to the motion. Motion carried 4-0.

Discussion of the 2010 Tax Rate for Ad Valorem taxes concluded, as discussed with budget considerations earlier in the year, that the rate will be 1.05 per \$100 of value. Nathan made this in the form of a motion, and David made a second. Motion carried 4-0. A Public Hearing will be held at a later date, with publishing of the ordinance for adoption.

At 7:00 p.m. Durward made the motion to go into Executive Session, David made a second. Motion carried 4-0.

At 7:17 p.m. Nathan made the motion to adjourn from Executive Session and return to Regular Open Session. Joe made a second. Motion carried 4-0.

No action was taken upon adjournment of Executive Session.

There being no further agenda items for discussion, Nathan made the motion to adjourn, with a second from David. Motion carried, time was 7:18 p.m.

Lady Panthers Volleyball Schedule 2010

Date:	Opponent:	Site:	Time:	Team:
8-6-10	Scrimmage with Graford	Here	TBA	JV, V
8-10-10	Poolville	Here	4:00	JV, V
8-12/14	Albany Tournament	There	TBA	V
8-13-10	Albany Tournament	There	TBA	JV
8-17-10	Santa Anna	Here	TBA	JV, V
8-20-10	De Leon	There	10:00	JV, V
8-24-10	Santa Anna	There	TBA	JV, V
8-26/28	Breckenridge Tournament	There	TBA	V
8-31-10	Open			
9-4-10	OPEN			
9-7-10	Mullin	There	6:00	V
9-11-10	Mullin	Here	10:00	V
9-14-10	OPEN			
9-18-10	OPEN			
9-21-10	Albany*	Here	5:00	JV, V
9-25-10	Lingleville	There	10:00	JV, V
9-28-10	Ranger*	Here	5:00	JV, V
10-2-10	Moran*	There	10:00	V
10-5-10	OPEN			
10-9-10	Albany*	There	10:00	JV, V
10-12-10	Lingleville*	Here	5pm	JV, V
10-19-10	Ranger*	There	5:00	JV, V
10-23-10	Moran*	Here	10:00	V

* District Games

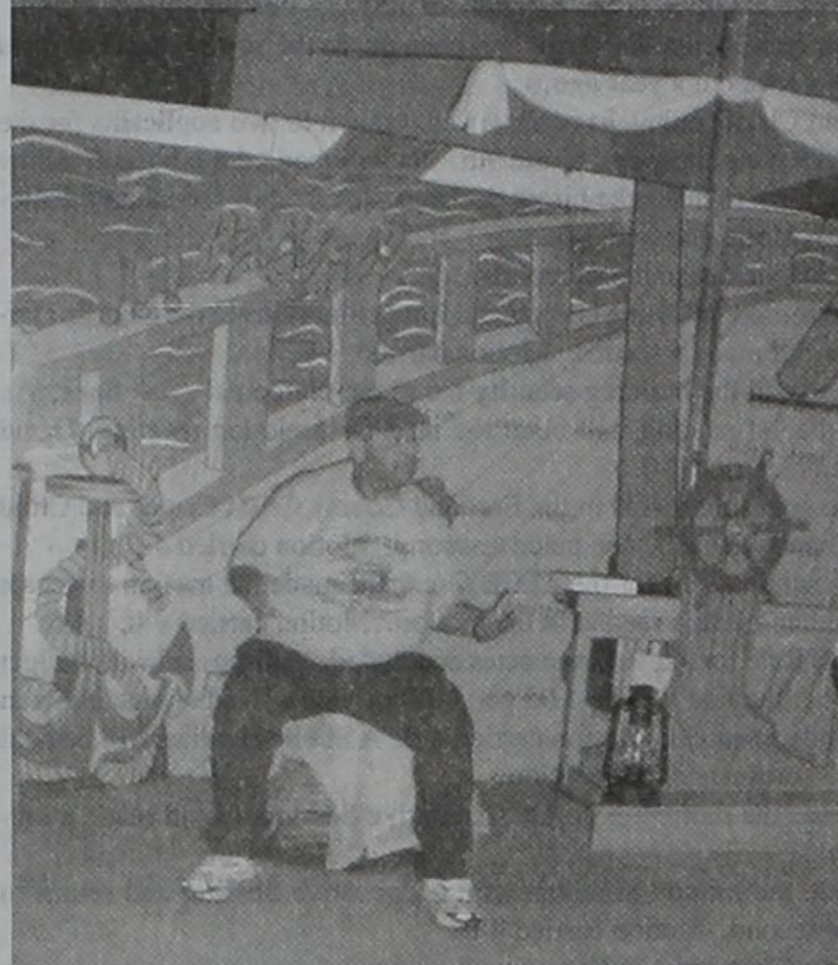
2010 Gorman Panthers Football Roster



NUMBER	NAME	CLASS
8	Cade Cole	Jr.
10	Josh Ryon	Jr.
11	Matt Fox	Jr.
12	BJ Ramirez	Soph.
20	Sergio Garcia	Soph.
21	Brice Campbell	Sr.
22	Zach Carlton	Fr.
24	Brandon Velasquez	Soph.
30	Dakota Pacheco	Fr.
32	Cody Wood	Sr.
34	Drew Flanary	Soph.
42/64	James Thomas	Jr.
50/51	Skylar Henderson	Soph.
52	Randall Miley	Fr.
54	Cameron Clark	Sr.
55	Nico Velasquez	Jr.
56	Daniel Rivas	Sr.
60	Matt Keith	Sr.
62	Sheldon Fenley	Fr.
65	Jose Huerta	Sr.
70	Tony Ramirez	Fr.
71	Bradley Lipson	Soph.
72	Trey Howard	Fr.
74	Randy Woodall	Sr.
75	Luis Limon	Soph.
77	John Fenley	Jr.
84	Stetson Thompson	Jr.
88	Sergio Hipolito	Jr.

Head Coach: Charlie Bunch
 Assistant Coaches: Trey Felan, James Gerick, Tommy Simmons
 Superintendent: G. W. Maxfield
 High School Principal /Athletic Director: Jeff Byrd
 Elementary Principal: Mary Reeves
 Band Director: John Howard
 Cheerleader Sponsors: Keri Guthery and Lara Gillen
 Cheerleaders: Haven Gibbs, Chelsea Griffin, Carlie Jackson, Kinsey Johnston, Ally Little, Melissa Ramirez, Luisa Silva, Cortney Shirley
 Mascot: Mykisha Hampton
 Drum Major: Cortney Shirley

Vacation Bible School Held Recently At Gorman United Methodist Church



More Photos In Next Weeks Issue

2010 CUBS AND JV SCHEDULE

DATE	OPPONENT	PLACE	TIME
Sept. 9	Chico	Here	4:00 & 6:30
Sept. 16	Perrin	There	4:00 & 6:30
Sept. 23	Menard	Here	4:00 & 6:30
Sept. 30	Santo	Here	4:00 & 6:30
Oct. 7	*Ranger	There	4:00 & 6:30
Oct. 14	*Cross Plains	Here	4:00 & 6:30
Oct. 21	Open	There	4:00 & 6:30
Oct. 28	*Baird	There	4:00 & 6:30
Nov. 4	*Meridian	Here	4:00 & 6:30

* District Games

NOTE OF THANKS

DESDEMONA HOMECOMING COMMITTEE WOULD LIKE TO THANK THOSE THAT HELPED IN ANY WAY TO MAKE OUR HOMECOMING AND SCHOOL REUNION A BIG SUCCESS. IT TAKES EACH AND EVERYONE DOING THEIR PART TO KEEP OUR COMMUNITY CENTER GOING STRONG.

THANKS AGAIN,
VONNIE (KEITH) GUTHERY
HOMECOMING SECRETARY

HOMESTEAD HAPPENING

By Ina Smith

Well it feels like summer has made it. The nice cooler temperatures and rains we had in July are gone. We could sure use some rain.

We had 3 residents to celebrate birthdays last week, Christina Crews on the 8th, Mary Donham on the 10th and Melvin Daniels on the 14. Wes Couch will celebrate his birthday on Aug. 21. Our monthly birthday party will be on Tuesday Aug. 31 at 3:00 please come and join us.

We would like to welcome 2 new residents to Homestead. Mrs. Nell McAnally and Mrs. Ora Lee Lawrance. We are so honored to have them join us. Again, Welcome ladies.

We have been having some great singing on Monday afternoon. Everyone is invited to come and join us, most of the songs we sing are the ole gospel songs everyone knows. Ruby Lee Kinser, Ernestine Campbell and Helen Browning are our piano players. Everyone who comes do such a great job. Thank you Monday afternoon Gospel singers we really appreciate you.

Visiting with Mayvis Lasater were Heather and Lukas Weaver, Linda Rodgers Weaver and Lou Evelyn Rodgers of Midlothian and Brent Lasater.

Velda Baze visited Anna Watson, Sam Kraus of Carbon, Billy Self, and Cecilia Hirst visited Christine Self. James McCloud and Linda Gibbs visited Ora Lee Lawrance. Laverne and Tommy Carr of Whitney and Johnny Scitem visited Troy Scitem.

Please sign our register book in the front lobby when you come to visit.
Have a good week.

PEANUT FESTIVAL QUEEN'S CONTEST

This year's contest will be on Sunday, September 5th. Any girl entering Pre-k thru 12th grade enrolled in Gorman school is eligible. We have 5 age groups and would love to have you represent Gorman as our next Queen.

The High School girls will also be eligible to win a \$250.00 scholarship.

For more information, please contact Veronica Seaton @ 254-734-5052.

Entry deadline is Friday, Aug. 27th.

Gorman ISD Has A New Phone System

During the past week Gorman ISD has put in a fully automated phone system. This transfer will save the school district time and money. GISD will only have 4 phone numbers that will be directed to all school number and departments. The main numbers to call are 254-734-3171, 254-734-2616, 254-734-4727, 254-734-2617. All other phone lines will be disconnected as of Friday August 20, 2010. The phone extensions are as follows:
Superintendent - 210 - GW Maxfield
High School Principal - 211 - Byrd, Jeff
Elementary Principal - 212 - Reeves, Mary
Tax Admin Office - 213 - Treadway, Terry
Admin Office - 214 - Nickels, Terrye
Elementary Secretary - 215 - Whitten, Melissa
Peims Secretary - 216 - Snider, Dianne
High School Secretary - 217 - Childers, Pam
Middle School Office - 218 - Administration
Middle School Secretary - 219 - Roemisch, Jeanene
Maintenance - 220 - Childers, Ron
Cafeteria - 221 - Rone, Gena
Technology - 222 - Underwood, Cindy
Nurse - 223 - Little, Shellie
Elementary Counselor - 231 - Byrd, Marlo
High School Counselor - 232 - Hampton, Latricia
Ag Building - 240 - Boles, Shawn
Field House - 241 - Bunch, Charles
Boys Coaches Office - 242 - Simmons, Tommy
Girls Coaches Office - 243 - Banker, Glen
Band Hall - 244 - Howard, John
Life Skills - 245 - Scitem, Dena

GORMAN SPIRIT SHIRTS

The new Gorman spirit shirts have arrived!! These shirts will sell for \$10.00, and you can currently buy them at Panda's Flowers and Gift Shop. The booster club will also try to put some out in other places around town. The shirts may also be bought from Becky Swanner at the high school, call 254-734-2614 for information on these shirts. Sizes are from youth extra small to adult XXX large, however sizes are limited, so get yours soon and let's all BACK THE GORMAN PANTHERS AND LADY PANTHERS.

50-197 (Rev. 08-09/13)

Notice of Public Hearing on Tax Increase

The County of Eastland will hold two public hearings on a proposal to increase total tax revenues from properties on the tax roll in the preceding tax year by 7.74 percent (percentage by which proposed tax rate exceeds lower of rollback tax rate or effective tax calculated under Chapter 26, Tax Code). Your individual taxes may increase at a greater or lesser rate, or even decrease, depending on the change in the taxable value of your property in relation to the change in taxable value of all other property and the tax rate that is adopted.

The first public hearing will be held on Sept. 7, 2010 3:00 p.m. at 100 W. Main St., Suite 203, Eastland, TX 76448
The second public hearing will be held on Sept. 13, 2010 9:00 a.m. at 100 W. Main St., Suite 203, Eastland, TX 76448

The members of the governing body voted on the proposal to consider the tax increase as follows:

FOR: Comms. Wayne Honea, Norman Christian, Thomas Cummings, Reginald Pittman and County Judge Rex Fields
AGAINST:
PRESENT and not voting:
ABSENT:

The average taxable value of a residence homestead in the County of Eastland last year was \$ 32,304 (average taxable value of a residence homestead in the taxing unit for the preceding tax year, disregarding residence homestead exemptions available only to disabled persons or persons 65 years of age or older). Based on last year's tax rate of \$ 0.5500 (preceding year's adopted tax rate) per \$100 of taxable value, the amount of taxes imposed last year on the average home was \$ 177.67 (tax on average taxable value of a residence homestead in the taxing unit for the preceding tax year, disregarding residence homestead exemptions available only to disabled persons or persons 65 years of age or older).

The average taxable value of a residence homestead in the County of Eastland this year is \$ 34,083 (average taxable value of a residence homestead in the taxing unit for the current tax year, disregarding residence homestead exemptions available only to disabled persons or persons 65 years of age or older). If the governing body adopts the effective tax rate for this year of \$ 0.54763 per \$100 of taxable value, the amount of taxes imposed this year on the average home would be \$ 186.65 (tax on average taxable value of a residence homestead in the taxing unit for the current tax year, disregarding residence homestead exemptions available only to disabled persons or persons 65 years of age or older).

If the governing body adopts the proposed tax rate of \$ 0.5900 per \$100 of taxable value, the amount of taxes imposed this year on the average home would be \$ 201.09 (tax on the average taxable value of a residence homestead in the taxing unit for the current tax year, disregarding residence homestead exemptions available only to disabled persons or persons 65 years of age or older).

Members of the public are encouraged to attend the hearings and express their views.

Special Provisions if Applicable

Criminal Justice Mandate (use for counties, if applicable):
The Eastland County Auditor certifies that Eastland County has spent \$ -0- in the previous 12 months beginning August 1, 2009, for the maintenance and operations cost of keeping inmates sentenced to the Texas Department of Criminal Justice. Eastland County Sheriff has provided information on these costs, minus the state revenues received for reimbursement of such costs.

Enhanced Indigent Health Care Expenditures (use if applicable):
The County of Eastland spent \$ -0- from August 1, 2009 to July 31, 2010 on enhanced indigent health care at the increased minimum eligibility standards, less the amount of state assistance. For the current tax year, the amount of increase above last year's enhanced indigent health care expenditures is -0-.

50-197 (Rev. 08-09/13)

Notice of Public Hearing on Tax Increase

The City of Gorman will hold two public hearings on a proposal to increase total tax revenues from properties on the tax roll in the preceding tax year by 7.6% percent (percentage by which proposed tax rate exceeds lower of rollback tax rate or effective tax calculated under Chapter 26, Tax Code). Your individual taxes may increase at a greater or lesser rate, or even decrease, depending on the change in the taxable value of your property in relation to the change in taxable value of all other property and the tax rate that is adopted.

The first public hearing will be held on August 31, 2010 at Gorman City Office 116 S. Kent St.
The second public hearing will be held on September 7, 2010 at Gorman City Office 116 S. Kent St.

The members of the governing body voted on the proposal to consider the tax increase as follows:

FOR: Joe, Nathan, David and Dunward
AGAINST: None
PRESENT and not voting: All Present
ABSENT: All Present

The average taxable value of a residence homestead in Gorman last year was \$ 22,915 (average taxable value of a residence homestead in the taxing unit for the preceding tax year, disregarding residence homestead exemptions available only to disabled persons or persons 65 years of age or older). Based on last year's tax rate of \$ 1.05 (preceding year's adopted tax rate) per \$100 of taxable value, the amount of taxes imposed last year on the average home was \$ 240.61 (tax on average taxable value of a residence homestead in the taxing unit for the preceding tax year, disregarding residence homestead exemptions available only to disabled persons or persons 65 years of age or older).

The average taxable value of a residence homestead in Gorman this year is \$ 25,574 (average taxable value of a residence homestead in the taxing unit for the current tax year, disregarding residence homestead exemptions available only to disabled persons or persons 65 years of age or older). If the governing body adopts the effective tax rate for this year of \$ 0.97511 per \$100 of taxable value, the amount of taxes imposed this year on the average home would be \$ 249.38 (tax on average taxable value of a residence homestead in the taxing unit for the current tax year, disregarding residence homestead exemptions available only to disabled persons or persons 65 years of age or older).

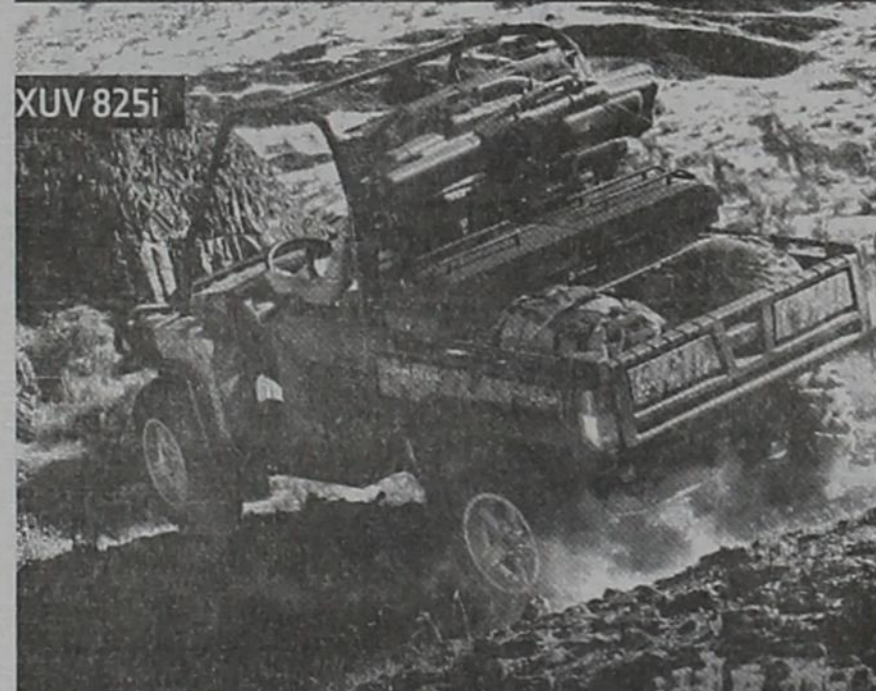
If the governing body adopts the proposed tax rate of \$ 1.0500 per \$100 of taxable value, the amount of taxes imposed this year on the average home would be \$ 268.53 (tax on the average taxable value of a residence homestead in the taxing unit for the current tax year, disregarding residence homestead exemptions available only to disabled persons or persons 65 years of age or older).

Members of the public are encouraged to attend the hearings and express their views.

Special Provisions if Applicable

Criminal Justice Mandate (use for counties, if applicable):
The County Auditor certifies that County has spent \$ in the previous 12 months beginning for the maintenance and operations cost of keeping inmates sentenced to the Texas Department of Criminal Justice. County Sheriff has provided information on these costs, minus the state revenues received for reimbursement of such costs.

Enhanced Indigent Health Care Expenditures (use if applicable):
The spent \$ from to on enhanced indigent health care at the increased minimum eligibility standards, less the amount of state assistance. For the current tax year, the amount of increase above last year's enhanced indigent health care expenditures is .



THE FASTEST, MOST POWERFUL GATOR[™] YET

4.9%
FOR 60 MONTHS¹

- Starting at \$11,199
- 50-HP*, 44 MPH
- 812 cc, 3-cyl. DOHC engine
- Double wishbone suspension
- 16.4 cu. ft. cargo box

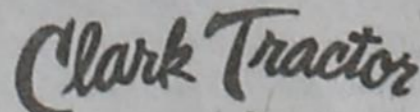
GATOR VS. THE EXPECTED



XUV 625i
• Starting at \$9,899
• 23-HP*, 30 MPH
• 617 cc v-twin EFI engine
• Double wishbone suspension
• 16.4 cu. ft. cargo box



XUV 855D
• Starting at \$11,299
• 25-HP*, 32 MPH
• 854 cc, 3-cyl. diesel engine
• Double wishbone suspension
• 16.4 cu. ft. cargo box



DE LEON, TX
509 W. Navarro
(254) 893-2061

COMANCHE, TX
11150 Hwy 36 S
(325) 356-2593

www.clarktractor.com



WWW.JOHNDEERE.COM/GATOR

¹Offer available 7/13/10 - 10/29/10 on all new 2011 XUV models. Subject to approved credit on John Deere Credit Revolving Plan, a service of FPC Financial, L.L.C. For consumer and commercial use. No down payment required. 4.9% APR for 60 months only. Other special rates and terms may be available, including installment financing. Available at participating dealers. Prices and models may vary by dealer. *Engine horsepower is provided by engine manufacturer for comparison purposes. Actual operating horsepower may be less. For your safety, always wear a helmet and eye protection when driving aggressively, on rough terrain or at speeds greater than 35 mph. John Deere's green and yellow color scheme, the leaping deer symbol and JOHN DEERE are trademarks of Deere & Company.

Desdemona News

By Vonnie Guthery

In the tiny community of Whitehall, Arkansas you won't find any shopping malls or even gas stations for that matter. The only thing you will find in Whitehall is a very small congregation of believers who meet in an old brick building that was built over 100 years ago by the oldest members' parents.

As you walk through the unlevel front doors of the building you are overwhelmed with the smell of must and mildew. You won't find vents for central heat and air, instead you will find window unit air conditioners and old propane Dearborn heaters. The auditorium is filled with old theater seats from the 1850's and the interior walls are painted lime green. No doubt these seats were once filled with Spirit driven worshippers who enjoyed "that old time religion" and the foot-tapping songs that the hard wood floors once knew.

The building is secluded deep into the woods and you won't even find a sign on the building or near the road. Just to get there you have to drive down a perpetually muddy road filled with pot holes almost a foot deep. In short, the building's appearance and location would get nothing more than a chuckle from someone used to attending some of the massive cathedrals we call churches in the larger cities.

Though you couldn't tell by seeing the structure, there is a spirit filled handful of believers who very faithfully serve God in that ugly little building. I thank God that He doesn't look at the appearance of the building to judge the people inside and He doesn't look at the appearance of man to judge his heart (1 Sam 16:7). I pray that we look at people's hearts, not simply their appearance.

Fight the good fight (1 Tim 6:12)

Jason Wilder
Gorman Church of Christ

Desdemona Homecoming and School Reunion was held on Saturday, August 14th at the "OLE" School Building. A large group of Ex-Students and Friends signed the register book. Those that signed were from Odessa, Amarillo, Kyle, Stephenville, Whitney, Fort Stockton, Marble Falls, Tennyson, Arlington, North Richland Hills, Carbon, Fort Worth, Lubbock, Ranger, Snyder, Graham, Graford, Sealy, Dublin, Gorman, Deer Park, Lampasas, Seminole, Oklahoma, Wink, Irving, Rowlett, Greenville, Strawn, Carrollton, Aledo, Grand Prairie, Eastland, Comanche, Lake Kiowa, De Leon, Clyde, Houston, Ballinger, Pflugerville, Midland, Lake Leon, Salt Lake City, Utah and Desdemona. The Homecoming Committee would like to say "Thanks" to those who drove a long way to attend and "Thanks" to our local ones too. Even tho it was a very hot day in "Hogtown" - the visitors did enjoy visiting with former Classmates and friends. When this Annual event began in 1921 at the Community Tabernacle, it was called the "Old Settler's Reunion". This Homecoming was always held on the second Saturday in August and lasted all day Saturday and Sunday. The oldest woman present this year was Pauline (Robinson) Owens (age 97) of Stephenville and the oldest man present was Lawrence "Bruz" Robinson (age 91) of Stephenville. Each one was awarded a gift bag donated by Lindley Clayton, Robert and Ima Brown. The noon meal was catered by the Gorman Livestock Association.

Desdemona Senior Class of 1951 had ten classmates to attend the annual Homecoming on Saturday the 14th. They are Bates Duke of Midland, James Buckley of Graham, Jim Craig of Deer Park, Tommy Beaty of Lake Kiowa, Joe Ben Koonce of Lake Leon, P. D. Ash of Stephenville, Alla Rae (Friday) Kelley of Sealy, Ann (Lindley) Miers of Stephenville, June Jacobs and Vonnie (Keith) Guthery, both of Desdemona. Next year (2011) this class will celebrate their 60th Class Reunion.

This reporter receives letters, phone calls, etc., real often from former residents of Desdemona, especially a week before our annual Homecoming. Lois (Moore) Ervin of Nashville, Tennessee called last week to let me know she received the Homecoming invitation card. She is not able to attend due to health reasons. Lois would like to say "Hello" to all her former classmates and friends in this area. She graduated from Desdemona with the Class of 1942. Her parents are the late Floyd and Myrtie (Dyson) Moore.

Desdemona Senior Class of 1949 had five classmates to attend the annual Homecoming on Saturday the 14th. They were Don Wittie and wife, Gayle of Synder; Winford Lindley and wife, Elnora, Pug Guthery and wife, Vonnie, Tommy Jacobs and Nell (Grimshaw) Ragland all of Desdemona.

First Baptist Church of Desdemona had very good attendance on Sunday. Charlie Johnson of Fort Worth was the guest speaker for the morning service. His wife, Jana led the song service with Gary Shirley at the piano and Karen Fair at the organ. Visitors attended from May and Weatherford. There were three to come forward to move their Church membership back to our First Baptist. Visitors are welcome each Sunday at 11:00 a.m. to share God's message.

Have a great day, Vonnie



Gorman Church of Christ Meeting Times
Sunday Morning Bible Class - 10:00
Sunday Morning Worship - 10:45
Sunday Evening Worship - 6:00
Wednesday Evening Class - 7:00

ITEMS OF INTEREST

Oakland Cemetery Association is accepting donations for the Care of the Cemetery. Donations can be sent to Oakland Cemetery Association, P. O. Box 532, Gorman, Tx 76454 or to American State Bank, Gorman, Texas 76454

4-H - Meets Second Monday of Each Month at 6:00 p.m. at the First United Methodist Church Fellowship Hall - Amy Wood - 734-2973.

VET Science 4-H Project - 4th Tuesday each Month. Techology Center / Gorman Community Center. Contact Lee or Amy Wood at 254-734-2973.

Gorman Masonic Lodge No. 716 A.F. & A. M. Regular stated meetings are 2nd Tuesday of each month at 7:30 p.m. Members are urged to attend. Visitors are always welcome. Cecil Funderburgh, Master - Kenneth Good, Secretary.

SANDRA CAGLE WILL BE IN GORMAN AT THE CITY OFFICE TO RENEW AUTO LICENSE PLATES. HER NEXT VISIT IS WEDNESDAY, SEPTEMBER 15th FROM 9 TIL NOON.

The Order of the Eastern Star holds its regular stated meetings on the First Monday of each month at 7:30 p.m. Gorman Senior Citizens meet every Wednesday at 11:30 in the Gorman Senior Center. Bring Covered Dish or \$3.00 Per Plate.

Gorman Oaklawn Cemetery Association is accepting donations for the Care of the Cemetery. Donations can be sent to Oaklawn Cemetery Association, 7726 CR 362, Desdemona, Tx 76445 or to American State Bank, Gorman, Texas 76454

Food Bank
New Hours - 10 to 11 a.m.
Second Thursday

Boy Scouts
Meeting Weekly
Mondays - 6:00 p.m.
Methodist Church



FREE Childhood Immunizations
(Available for children 2 months to 18 years of age)

Sponsored by:
Abilene Care Van &
Caring For Children Foundation of Texas

Thursday, August 19
5 pm - 7 pm
Medical Care Mission
1857 Pine, Abilene, TX

*Please bring your child's immunization record
*Child must be accompanied by parent or guardian
*VFC Eligible

For additional information please call
2-1-1 Texas A Call for Help

www.carevan.org

REMINDER

TRASH PICK UP ON TUESDAY
BEGINS AT 7:00 a.m.
IF YOU DON'T WANT YOUR
TRASH TO BE MISSED
IT MUST BE INSIDE
THE POLY CONTAINER.
YOU MUST HAVE IT OUT BY THE CURB.

We Are Open Monday thru Friday 9 a.m. To 5 p.m.
Jacks Chemical and Janitorial Supply, Inc. **Jacks Pool and Spas**
894 N. Graham Street - - - - Stephenville, Tx 76401
Call 254-965-4125 or Cell 254-592-3159 For Pool Sales & Service - Call 254-965-4145

0% - 72 Mos. WAC

OR UP TO \$6,000

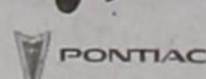
IN FACTORY REBATES ON FULL SIZE 2010 SILVERADO AND SIERRA PICKUPS



Bayer Motor Company, Inc.



218 E. Grand - Comanche
1-800-843-5230



M-F 7:30 a.m. to 5:30 p.m. Sat. 7:30 a.m. to 3:00 p.m.
Web Pages: www.bayermotor.com or www.bayermotorco.com

Delayed Payments Distributed to Unemployment Claimants Affected by Deadline Extension

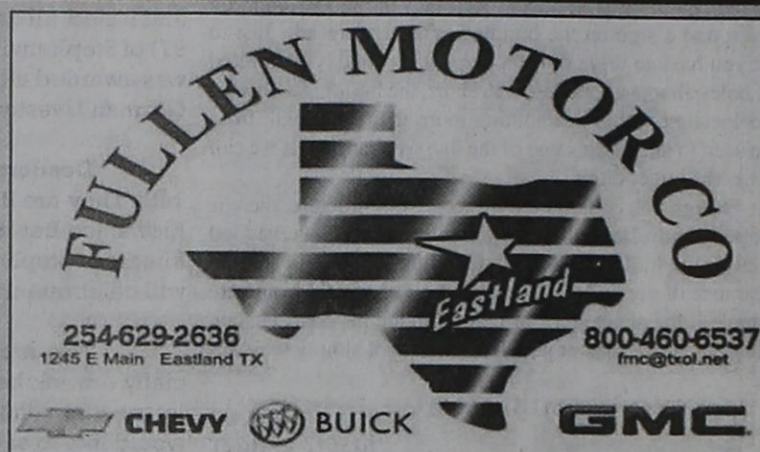
AUSTIN - More than 100,000 long-term unemployed Texans have received more than \$150 million in federal Emergency Unemployment Compensation (EUC) and Extended Benefits (EB) payments from the Texas Workforce Commission (TWC) as a result of the passage of the Unemployment Compensation Extension Act of 2010 signed into law on July 22, 2010.

This deadline extension only applies to claimants who have not exhausted all of their benefits. TWC sent letters to claimants whose applications for EUC or EB payments were delayed while Congress considered the deadline extension. All eligible claimants have received payment for missed weeks.

The deadline extension did not include additional weeks of benefits for claimants who have exhausted all of their regular, Emergency (EUC) and Extended Benefits. Claimants may check ui.texasworkforce.org "Claim and Payment Status" for their Unemployment Insurance benefit balances or by calling Tele-Serv at 1-800-588-8321. Emergency unemployment benefits are entirely federally funded, so Texas employers will not be charged for any claims paid on this extension.

TWC and the 28 local workforce development boards remain committed to providing work search assistance, training and other services to unemployed Texans. Thousands of job postings are available on WorkInTexas.com, TWC's online, job-matching Web site.

Putting You 1st Has Kept Us 1st For Over 60 Years



**SHOP EASTLAND
COUNTY FIRST!**

07 GMC Yukon Denali
Stk. #8194, Sun, DVD, Lthr, Gold



\$32,255*

08 GMC Acadia SLT
Stk. #8222, Lthr., Brown



\$30,530*

09 Buick Enclave CXL
Stk. #8226, Lthr., White



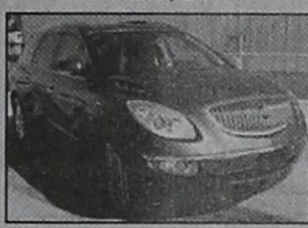
\$32,995*

07 Chevy Trailblazer LT
Stk. #8217, Lthr., Maroon



\$18,200*

08 Buick Enclave CXL
Stk. #8216, Brown



\$31,995*

09 Chevy 1/2 Ext.
Stk. #8061B, LT, Graystone



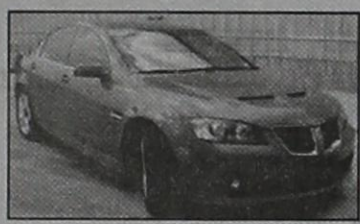
\$20,350*

08 GMC Envoy
Stk. #8224, Sun Roof, Silver



\$20,440*

09 Pontiac G8
Stk. #8078C, Lthr., Red



\$22,350*

07 GMC Acadia
Stk. #7754E, Dk Blue



\$23,950*

08 Chevy Tahoe LTZ
Stk. #8202B, White Diamond



\$35,995*

07 Chevy Equinox LT
Stk. #8227, Gold



\$15,200*

*All prices +TT&L

Great Deals On Used Vehicles

09 GMC 1/2 Ext.



Stk. #8192A,
4x4, White

\$24,950*

05 Chevy 3/4 Crew LS



Diesel, 4x4,
Silver, Stk. #8214

\$24,525*

10 Buick LaCrosse CXL



Lthr., White,
Stk. #8225

\$28,625*

07 Hummer H3



4x4, Blue,
Stk. #8219

\$21,800*

05 Chevy 3/4 LT



Diesel, Crew, Long
4x4, Lthr., Black,
Stk. #8147C

\$19,995*

07 Lincoln MKX LE



Lthr., Tan,
Stk. #8220

\$23,300*

07 Chevy 3/4 Crew



Diesel, 4x4, White,
Stk. #8136C

\$26,950*

08 Buick LaCrosse CXL, Gray, Stk. #8031.....	\$15,995*	06 Toyota Sequoia, SR5, Lthr., Black, Stk. #8212A.....	\$17,950*
07 Cadillac CTS Lthr., Gray, Stk. #8215.....	\$20,500*	04 Jeep Wrangler, White, Stk. #7946C.....	\$13,950*
07 Ford Edge, SEL, Lthr., Gray, Stk. #8218.....	\$19,900*	08 VW New Beetle, Stk. #8116A.....	\$13,950*
05 GMC 3/4 SLE, 4x4, Diesel, Crew, White, Stk. #8221.....	\$24,700*	06 GMC Sierra 1/2 Tan, Stk. #8133A.....	\$15,950*
06 Ford F350 Super Duty Diesel, 4x4, Crew, Maroon, Stk. #7952B.....	\$19,995*	07 Mazda CX7, Gray, Stk. #8148B.....	\$13,950*
06 Chevy 1/2 Crew LT, Maroon, Stk. #8074A.....	\$11,995*	97 Toyota Camry, Champagne, Stk. #8131B.....	\$4,995*
05 Chevy 1/2 Ext. LT, 4x4, Maroon, Stk. #8097A.....	\$11,995*	97 Buick LaSabre, Blue, Stk. #8237.....	\$3,995*
07 Nissan Versa Hatchback, SL, Red, Stk. #8098A.....	\$10,995*	04 Chevy Malibu, Classic Tan, Stk. #8208A.....	\$6,995*
05 Chevy Tahoe LS, White, Stk. #8148A.....	\$16,995*	02 Buick LeSabre, Lthr., Tan, Stk. #8030A.....	\$5,995*
06 Chevy HHR LS, Orange, Stk. #8080A.....	\$7,995*		

*All prices +TT&L

Reduced Vehicles

09 Chevy Silverado 1/2 Ext. LT, Stk. #8061B.....	\$22,500 \$20,350*	06 Chevy Silverado 1/2 Crew, Stk. #8074A.....	\$12,995 \$11,995*
05 Chevy Crew 1/2, 4x4, Stk. #8097A.....	\$12,995 \$11,995*	08 Buick LaCrosse CXL, Stk. #8031.....	\$16,495 \$15,995*
06 Chevy HHR, Stk. #8080A.....	\$8,950 \$7,995*	06 Ford F350 Super Duty Diesel, 4x4, Crew, Maroon.....	\$22,550 \$19,995*
05 Chevy Silverado Crew 4x4, Diesel, Stk. #8147C.....	\$22,220 \$19,995*		

*All prices +TT&L