

By BILLY DE BECK

PROGRAM

TEMPLE—"Midsummer Madness," featuring Lois Wilson, Lila Lee, Jack Holt and Conrad Nagel. Also comedy and Selznick News.

MERRY JESTER AND 'CULLUD PORTAH' TOP BILL AT MAJESTIC

Topping the bill at the Majestic theatre this week is Harry Hines, comedian, in a number of old, old jokes but yet told in a new way so that his listeners are convulsed with laughter from the beginning until the end.

Theatre-goers Sunday night were equally interested in the juggling act staged by Jack Gregory and company. Here was one of the best acts of its nature that has appeared in Ranger recently.

Between acts, Estor and Dena rendered a few "choice bits of harmony."

LAMB

Elaine Hammerstein will essay in her latest Selznick picture, "The Daughter Pays," which comes to the Lamb theatre today and Tuesday, a role that offers greater dramatic and emotional opportunities than any she has yet appeared in.

TEMPLE

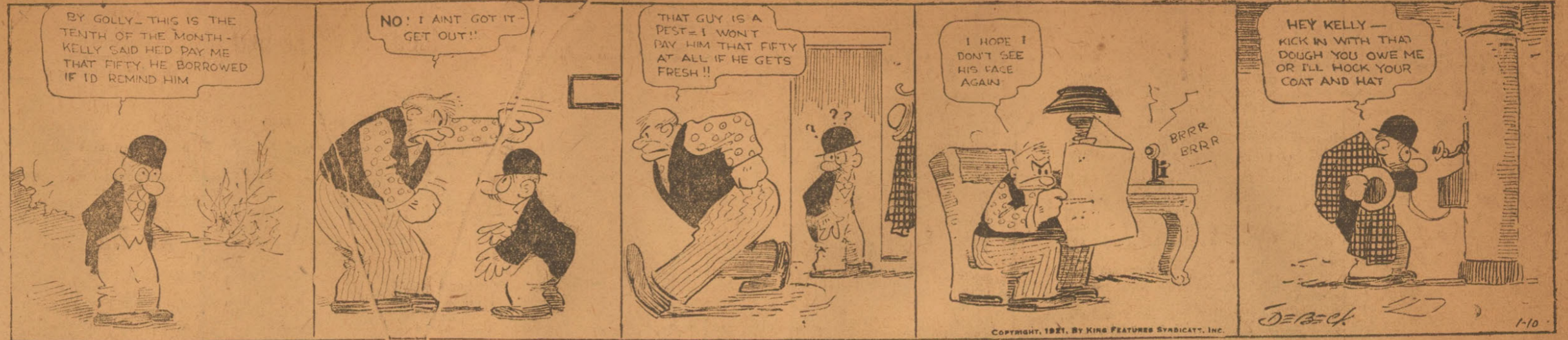
There is no star in "Midsummer Madness," the feature picture at the Temple theatre, but the leading roles are played by four film favorites who are considered of star caliber.

SUES FATHER FOR \$600,000 ON CHARGE OF LIBEL



Mrs. Virginia Groux Sauer, of Los Angeles, who has filed suit against her father, Joseph L. Groux, millionaire mining man, for \$600,000, alleging libel.

No Cash, No Clothes, Says Barney



SPORTS

POSITIVELY! COLUMBUS TEAM COMING HERE

Confirmation is received. The Columbus team, American association, will go its springtime training in Ranger. They will pasture here with big league clubs and with the Nitros.

The Columbus team is not in the International league, as boldly stated in the Times headlines Saturday night. It is in the American association, which is just as good a circuit, both classing AA.

Ralph Stockman is today the most tickled man in town. Columbus is his old home hangout, and therefore his desire for giving Ranger the best there is in baseball is not only appeased, but he relies upon the visitors to show 'em what a fine town he built from.

MANY NATIONS WERE COMPETITORS IN WATER REGATTA IN BRAZIL

BUENOS AIRES, Jan. 10.—England has its Thames and America its Hudson, and its Schuylkill where onward armed youths have made historic in the sport of rowing.

Here is held annually, opposite the swimming course called "Las Barbas Internacionales" in which eight oared and four-stroke crews, double and single scullers representing clubs of different nationalities in Argentina struggle for supremacy.

The longest of the twelve races of the day was an eight-oared senior contest of 2,500 metres, for a cup presented by the King of Spain.

California Used Five Men on Line Against Buckeyes

PASADENA, July 10.—California's victory over Ohio State in the great inter-sectional struggle decided at Pasadena, Cal. New Year's day, by a score of 28 to 0, showed beyond a doubt that Pacific coast eleven play a calibre of football that equals the brand displayed in other sections of the country, especially the far east.

While the Buckeyes did not show the dash and speed which characterized their conference season, plays which gained ground against Big Ten elevens were checked before they reached the scrimmage line.

Ohio Attack Lacked Punch. The power of Ohio's attack may be gathered from the fact that California played a five-man line, defense most of the time.

For the most part, however, the California ends, instead of playing on the scrimmage line, generally dropped back about five yards. This permitted the secondary offense to lie back 15 to 20 yards.

Missouri Citizen Gained 25 Pounds By Taking Tanlac

"My Strength Is So Fine I Never Get Tired," Says Thompson—Gives Tanlac Credit.

"All my friends are congratulating me on my improvement," said S. L. Thompson, 1310 New Hampshire Ave., Joplin, Mo., in relating his experience with Tanlac.

"I suffered from a general breakdown, had no appetite, was very nervous and could not rest at night. The slightest noise would wake me and I could not get back to sleep.

Tanlac is sold in Ranger by Phillips Bros. and in Eastland by Butler Drug Co.—Adv.

The Golden state defense opened and spread in such a manner there was no chance of executing forward passes.

Like all forward pass attacks which are executed perfectly, the long hurds of California which turned the tide of battle still are the talk of football men who remained in Pasadena after the game.

This game should be a severe lesson for other elevens in the east who may be asked to come west in future years.

Andy Smith, one of the best coaches in the history of Purdue football, who developed the California eleven, showed beyond all question he is alive to the possibilities of the new game.

Announcement Beginning This Week—The—Summer Garden

Will hold only three dances a week—on TUESDAY, THURSDAY—and SATURDAY EVENINGS.

Remember and be with us then.

ST. LOUIS, Jan. 10.—There were 38 commercial failures in St. Louis last year, with liabilities of \$1,453,833, according to records of R. G. Dun & Co.

ST. LOUIS, Jan. 10.—There were 38 commercial failures in St. Louis last year, with liabilities of \$1,453,833, according to records of R. G. Dun & Co.

ST. LOUIS, Jan. 10.—There were 38 commercial failures in St. Louis last year, with liabilities of \$1,453,833, according to records of R. G. Dun & Co.

The period of financial depression began to be reflected in the failure returns at Dun's about July 30.

High heels are designed to go in Massachusetts if the bill sought from the legislature by the Massachusetts Osteopathic society becomes a law.

ST. LOUIS, Jan. 10.—There were 38 commercial failures in St. Louis last year, with liabilities of \$1,453,833, according to records of R. G. Dun & Co.

ST. LOUIS, Jan. 10.—There were 38 commercial failures in St. Louis last year, with liabilities of \$1,453,833, according to records of R. G. Dun & Co.

ST. LOUIS, Jan. 10.—There were 38 commercial failures in St. Louis last year, with liabilities of \$1,453,833, according to records of R. G. Dun & Co.

ST. LOUIS, Jan. 10.—There were 38 commercial failures in St. Louis last year, with liabilities of \$1,453,833, according to records of R. G. Dun & Co.

ST. LOUIS, Jan. 10.—There were 38 commercial failures in St. Louis last year, with liabilities of \$1,453,833, according to records of R. G. Dun & Co.

ST. LOUIS, Jan. 10.—There were 38 commercial failures in St. Louis last year, with liabilities of \$1,453,833, according to records of R. G. Dun & Co.

ST. LOUIS, Jan. 10.—There were 38 commercial failures in St. Louis last year, with liabilities of \$1,453,833, according to records of R. G. Dun & Co.

ST. LOUIS, Jan. 10.—There were 38 commercial failures in St. Louis last year, with liabilities of \$1,453,833, according to records of R. G. Dun & Co.

ST. LOUIS, Jan. 10.—There were 38 commercial failures in St. Louis last year, with liabilities of \$1,453,833, according to records of R. G. Dun & Co.

ST. LOUIS, Jan. 10.—There were 38 commercial failures in St. Louis last year, with liabilities of \$1,453,833, according to records of R. G. Dun & Co.

ST. LOUIS, Jan. 10.—There were 38 commercial failures in St. Louis last year, with liabilities of \$1,453,833, according to records of R. G. Dun & Co.

ST. LOUIS, Jan. 10.—There were 38 commercial failures in St. Louis last year, with liabilities of \$1,453,833, according to records of R. G. Dun & Co.

ST. LOUIS, Jan. 10.—There were 38 commercial failures in St. Louis last year, with liabilities of \$1,453,833, according to records of R. G. Dun & Co.

ST. LOUIS, Jan. 10.—There were 38 commercial failures in St. Louis last year, with liabilities of \$1,453,833, according to records of R. G. Dun & Co.

ST. LOUIS, Jan. 10.—There were 38 commercial failures in St. Louis last year, with liabilities of \$1,453,833, according to records of R. G. Dun & Co.

ST. LOUIS, Jan. 10.—There were 38 commercial failures in St. Louis last year, with liabilities of \$1,453,833, according to records of R. G. Dun & Co.

ST. LOUIS, Jan. 10.—There were 38 commercial failures in St. Louis last year, with liabilities of \$1,453,833, according to records of R. G. Dun & Co.

ST. LOUIS, Jan. 10.—There were 38 commercial failures in St. Louis last year, with liabilities of \$1,453,833, according to records of R. G. Dun & Co.

ST. LOUIS, Jan. 10.—There were 38 commercial failures in St. Louis last year, with liabilities of \$1,453,833, according to records of R. G. Dun & Co.

ST. LOUIS, Jan. 10.—There were 38 commercial failures in St. Louis last year, with liabilities of \$1,453,833, according to records of R. G. Dun & Co.

ST. LOUIS, Jan. 10.—There were 38 commercial failures in St. Louis last year, with liabilities of \$1,453,833, according to records of R. G. Dun & Co.

ST. LOUIS, Jan. 10.—There were 38 commercial failures in St. Louis last year, with liabilities of \$1,453,833, according to records of R. G. Dun & Co.

ST. LOUIS, Jan. 10.—There were 38 commercial failures in St. Louis last year, with liabilities of \$1,453,833, according to records of R. G. Dun & Co.

ST. LOUIS, Jan. 10.—There were 38 commercial failures in St. Louis last year, with liabilities of \$1,453,833, according to records of R. G. Dun & Co.

ST. LOUIS, Jan. 10.—There were 38 commercial failures in St. Louis last year, with liabilities of \$1,453,833, according to records of R. G. Dun & Co.

ST. LOUIS, Jan. 10.—There were 38 commercial failures in St. Louis last year, with liabilities of \$1,453,833, according to records of R. G. Dun & Co.

LOWER RENTS in Ranger mean MORE HOMES

High heels are designed to go in Massachusetts if the bill sought from the legislature by the Massachusetts Osteopathic society becomes a law.

High heels are designed to go in Massachusetts if the bill sought from the legislature by the Massachusetts Osteopathic society becomes a law.

High heels are designed to go in Massachusetts if the bill sought from the legislature by the Massachusetts Osteopathic society becomes a law.

High heels are designed to go in Massachusetts if the bill sought from the legislature by the Massachusetts Osteopathic society becomes a law.

High heels are designed to go in Massachusetts if the bill sought from the legislature by the Massachusetts Osteopathic society becomes a law.

High heels are designed to go in Massachusetts if the bill sought from the legislature by the Massachusetts Osteopathic society becomes a law.

High heels are designed to go in Massachusetts if the bill sought from the legislature by the Massachusetts Osteopathic society becomes a law.

High heels are designed to go in Massachusetts if the bill sought from the legislature by the Massachusetts Osteopathic society becomes a law.

High heels are designed to go in Massachusetts if the bill sought from the legislature by the Massachusetts Osteopathic society becomes a law.

High heels are designed to go in Massachusetts if the bill sought from the legislature by the Massachusetts Osteopathic society becomes a law.

High heels are designed to go in Massachusetts if the bill sought from the legislature by the Massachusetts Osteopathic society becomes a law.

High heels are designed to go in Massachusetts if the bill sought from the legislature by the Massachusetts Osteopathic society becomes a law.

High heels are designed to go in Massachusetts if the bill sought from the legislature by the Massachusetts Osteopathic society becomes a law.

High heels are designed to go in Massachusetts if the bill sought from the legislature by the Massachusetts Osteopathic society becomes a law.

High heels are designed to go in Massachusetts if the bill sought from the legislature by the Massachusetts Osteopathic society becomes a law.

High heels are designed to go in Massachusetts if the bill sought from the legislature by the Massachusetts Osteopathic society becomes a law.

High heels are designed to go in Massachusetts if the bill sought from the legislature by the Massachusetts Osteopathic society becomes a law.

High heels are designed to go in Massachusetts if the bill sought from the legislature by the Massachusetts Osteopathic society becomes a law.

High heels are designed to go in Massachusetts if the bill sought from the legislature by the Massachusetts Osteopathic society becomes a law.

High heels are designed to go in Massachusetts if the bill sought from the legislature by the Massachusetts Osteopathic society becomes a law.

High heels are designed to go in Massachusetts if the bill sought from the legislature by the Massachusetts Osteopathic society becomes a law.

High heels are designed to go in Massachusetts if the bill sought from the legislature by the Massachusetts Osteopathic society becomes a law.

High heels are designed to go in Massachusetts if the bill sought from the legislature by the Massachusetts Osteopathic society becomes a law.

High heels are designed to go in Massachusetts if the bill sought from the legislature by the Massachusetts Osteopathic society becomes a law.

High heels are designed to go in Massachusetts if the bill sought from the legislature by the Massachusetts Osteopathic society becomes a law.

High heels are designed to go in Massachusetts if the bill sought from the legislature by the Massachusetts Osteopathic society becomes a law.

High heels are designed to go in Massachusetts if the bill sought from the legislature by the Massachusetts Osteopathic society becomes a law.

High heels are designed to go in Massachusetts if the bill sought from the legislature by the Massachusetts Osteopathic society becomes a law.

High heels are designed to go in Massachusetts if the bill sought from the legislature by the Massachusetts Osteopathic society becomes a law.

High heels are designed to go in Massachusetts if the bill sought from the legislature by the Massachusetts Osteopathic society becomes a law.

High heels are designed to go in Massachusetts if the bill sought from the legislature by the Massachusetts Osteopathic society becomes a law.

High heels are designed to go in Massachusetts if the bill sought from the legislature by the Massachusetts Osteopathic society becomes a law.

High heels are designed to go in Massachusetts if the bill sought from the legislature by the Massachusetts Osteopathic society becomes a law.

High heels are designed to go in Massachusetts if the bill sought from the legislature by the Massachusetts Osteopathic society becomes a law.

High heels are designed to go in Massachusetts if the bill sought from the legislature by the Massachusetts Osteopathic society becomes a law.

High heels are designed to go in Massachusetts if the bill sought from the legislature by the Massachusetts Osteopathic society becomes a law.

High heels are designed to go in Massachusetts if the bill sought from the legislature by the Massachusetts Osteopathic society becomes a law.

Majestic Theatre advertisement for 'Ashes of Desire' featuring Mrs. Sessue Hayakawa and other acts.

Temple Theatre advertisement for 'Midsummer Madness' featuring William de Mille and other acts.

Selznick Pictures advertisement for 'The Daughter Pays' and 'The Lamb' featuring Elaine Hammerstein.

Losses

Like most all retail merchants, are now doing

WE ARE TAKING OURS

LEATHER COATS
Full Length—Reversible

\$37.50

CLOTH HATS
\$5.00 and \$6.00 Values


\$2.95

Simpson - Alexander

"A Man's Store."

Main and Marston Streets, Ranger, Texas.

ACCURACY SERVICE COURTESY



PHONES 40

111 N. AUSTIN ST. RANGER, TEXAS

Wichita Falls, Ranger & Fort Worth Frisco Railways

Passenger Service Between

Breckenridge, Ranger, Fort Worth

"THE OIL FIELD SPECIALS."

Trains Nos. 7 and 8.

Train No. 8 leaves Breckenridge 8:30 P. M., leaves Ranger 11:00 P. M., Arrives Fort Worth 6:07 A. M.

Train No. 7 leaves Fort Worth 11:00 P. M., arrives Ranger 6:00 A. M., Arrives Breckenridge 8:10 A. M.

Through Standard Sleepers, Chair Cars and Coaches—Solid Vestibule Trains
NO CHANGE OF CARS

At Ranger sleepers can be occupied 9 P. M. and until 7:30 A. M.
At Fort Worth sleepers can be occupied 10:00 P. M. and until 7:30 A. M.
J. M. STRUPPER, G. F. & P. A. Ranger, Texas

Times Want Ads Bring Results—Try Them

Peerless Cleaning and Dyeing Co.

315 Pine Street.

—We Clean Rugs—one trial will convince you.

The Peerless Way Is the Only Way.

We Call and Deliver. Just Get Acquainted With

Peerless Cleaning and Dyeing Co.

315 Pine Street.

COUNTRY PRIDE CREAMERY BUTTER

is made with rich cream from healthy cows in a sanitary creamery by expert workmen. That is why you will find it better butter. Order it from your grocer.

HICO CREAMERY CO.

Manufacturers and Distributors
R. L. Watson, Local Mgr.
S. Rusk

Phone 101

Gypsum Plant at Sweetwater Will Cost \$1,000,000

Construction May Begin in March; to Make Sheet Rock and Wall Board.

W. HAMILTON WRIGHT
Times Staff Correspondent.

SWEETWATER, Jan. 10.—Work will probably start in the next two months on the \$1,000,000 gypsum plant which the United States Gypsum company will build here, according to H. E. Brookby, engineer for the company, who has just inspected the immense gypsum deposits the company recently purchased on the eastern outskirts of Sweetwater. Mr. Brookby was accompanied by Consulting Engineer Coons of the same concern, which has headquarters in Chicago.

Demand for Product.
"The demand for products of our factories over the country has been light for the last six weeks so that our present output exceeds the requirements of orders. Prior to that our plants could not meet the demands," declared Mr. Brookby. "However, we expect this decline in consumption to immediately dissipate and work to start on the Sweetwater plant, which has available probably the greatest and most valuable gypsum deposits in the United States."

The company will manufacture sheet rock, or room wall board; blocks, plaster and several preparations for export. It is also figuring on putting in a paper plant in connection with its molding department.

To House Employees.
In addition to the factory buildings to be erected the company will erect a large number of residences for employees in the city limits. Each of these will cost around \$4,000. The plant will have truckage from the Gulf, Colorado & Santa Fe and Texas & Pacific railroads which traverse the properties.

Some of the ledges of pure gypsum on the property are twenty feet in thickness. Much of it will be quarried as ordinary stone is quarried, while a great amount will be taken from under the ground by shafts, with subterranean passages with small tramways.

When removed the gypsum is ground in an enormous plant, treated to water and molded into any form necessary. These engineers pronounce the quantities of gypsum here as the famous Nova Scotia grade, recognized as the best in the world. There is no limit to the quantity. Borings on more than 400 acres the company purchased in fee simple reveal that the deposits are practically inexhaustible. Adjacent sections of land equally as rich in the gypsum have been leased for long periods.

The proposed plant will be located on the banks of Sweetwater creek. They will be pretentious, substantial structures that will be conspicuous from passing trains on the Santa Fe and Texas & Pacific railways.

One of the products which will be manufactured for consumption both at home and abroad is sheet rock, or room wall board. This is superior to any other similar wall board, since it is absolutely fireproof and may be nailed on to any wall. It can be made cheaply and exported to all parts of the world.

How the "Tip" Came.
The United States Gypsum company

CHEF'S CAFE
217 S. Rusk St.

(Next to Liberty Theater)

"Hot Biscuit!"

No doubt you have said often to a friend:

"How I wish I could find a place where I could get good hot biscuits, like home."

Well, we have them—continuously from 11 A. M. to 9 P. M. and they are always Red Hot.—Everything else is the very best and the most reasonable to be found in Ranger.

—THE—

Ogden Tailoring

COMPANY
119 Rusk St.

(Opp. Majestic Theater.)

CLEANING PRESSING
DYEING

Expert Tailor Arrived from Chicago.

Tailor Made Suits a Specialty.

LOWER RENTS

in Ranger mean more

INDUSTRIES

Oats

No. 2 Red or White

75c

W. L. COOK

Cor. Hunt and Pecan Sts., Ranger, Texas.

was "tipped" off about this great deposit by Mayor George H. Sheppard of Sweetwater. While reading the Saturday Evening Post several months ago he came across the advertisement of the company telling of its products and how they were made. Familiar with the immense gypsum deposits about the city he wrote the company asking if it would be interested in developing them. The company shortly sent its engineers down to Sweetwater. They were so surprised by the wealth of gypsum that they made a startlingly favorable report. Officials of the company were soon upon the scene. Sheppard was instructed to close up a transfer of the property on which it is found. This was a large sum in itself. The company then announced its plans.

The property adjoins a large scope of fine agricultural land which the city of Sweetwater contemplates offering for a site for the new West Texas A. & M. college should the legislature authorize its erection and the committee selected finds Sweetwater the most logical place.

To Employ 200.
The proposed plant will employ regularly about 200 men. In the southwest part of Sweetwater the same company is figuring on deposits of other minerals for use in new plants that it contemplates erecting in time. Officials of the company declared recently that the advent of their company presaged the coming of a rival manufacturing plant, which, it is understood, has already sent out emissaries who are trying to secure acreage of gypsum bearing earth.

ARMY EXAMINATIONS PROVE PHYSIQUE RICH PEOPLE WEAK

OKIO, Jan. 10.—Medical examination for military service, which has just been concluded, revealed that considerable percentage of conscripts belonging to well-to-do families escape service owing to relatively weak physique.

Lieut. General Horvuchi in view of the fact that the burden of conscription falls with increasing weight on the lower classes suggests that youths who are exempted of defective physique should pay a special tax. The military authorities are against the proposal on the ground that it would tend to encourage the idea of purchasing exemptions, which is inconsistent with the fundamental principles of the army.

The shrinkage of prices has not caught up with the shrinkage of skirts.—Washington Post.

GLASS

Plate Glass, Window Glass, Windshields, Mirrors.

McElroy Plate Glass Company
115-17 N. Marston

YE— Old Fashion Revival

The Place to Buy Is where you can get the greatest returns for your money

—At Ye old Fashioned Revival you have the opportunity of buying such clothing as Kuppenheimer, Style-Plus, Hart Schaffner & Marx at prices that will not be repeated in years to come.

It's a Real Sale Staged in a Different Way.

HAT SPECIALS--BOOT SPECIALS

See Display in Our Windows

—FOR—

TUESDAY AND WEDNESDAY ONLY

"Honest Merchandise. Honestly Priced. Will Surely Win."

Nothing Reserved—Everything Goes During This Sale.

Castellows

"IF ITS FOR MEN, WE HAVE IT"

118 Main St.

SERVICE THAT SERVES

OUR JOB PRINTING DEPARTMENT

Is equipped to turn out every class of printing. Each job receives our particular attention—no matter how large or how small.

Let us know what you want and how you want it. We can satisfy the most fastidious. Let us have your next order of Envelopes, Letter Heads, Statements, Blank Forms or any other kind of job printing.

PHONE 224. We will have one of our salesmen call on you and assist you in selecting what you want.

JOB DEPARTMENT OF THE DAILY TIMES