



should contain the best bargains your money can buy. When you buy

DIAMOND STAR Pure Cane Sugar

you are getting a product which is the best of its kind. You are also getting a real food—one which should have a prominent place on every table, in its natural form and in preserves, jellies, cakes and other wholesome delicacies.

Ask your grocer for it and watch for our recipes.

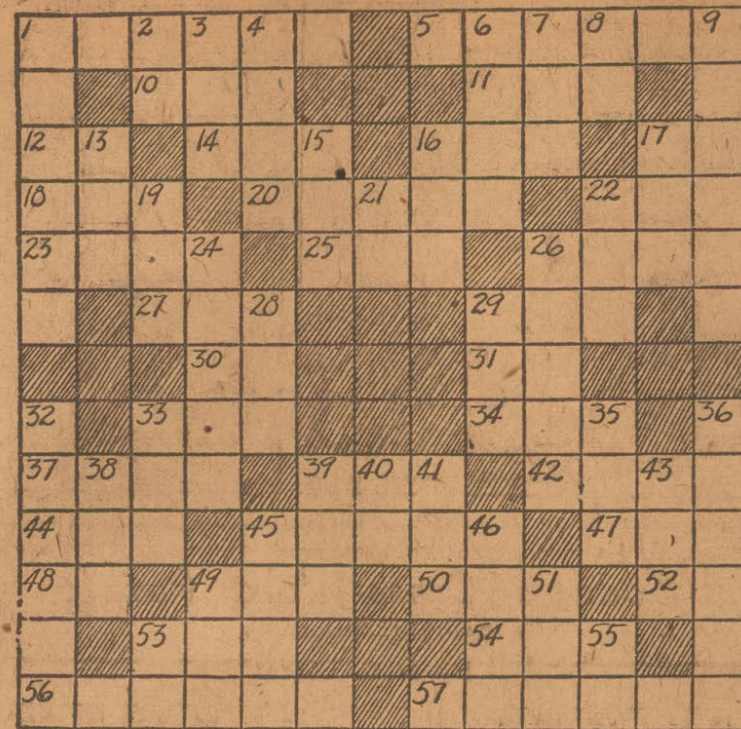
Made in the Southwest—Sold in the Southwest

TEXAS SUGAR REFINING CO. TEXAS CITY, TEXAS

Today's Cross-Word Puzzle

THE FOUR CROSSES—PUZZLE NO. 94

By J. C. BOYD



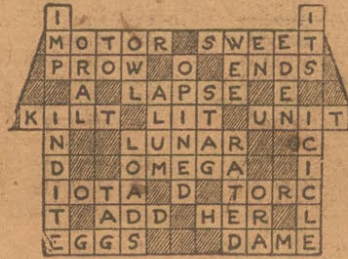
HORIZONTAL

- 1—great burst of excitement
- 5—act of erasing
- 10—before
- 11—lid
- 12—Royal Mail (abbr.)
- 14—take sustenance
- 16—part of a circle
- 17—preposition
- 18—cylindrical container
- 20—gnat
- 22—dessert
- 23—paradise
- 25—sound made by a dove
- 26—cease
- 27—in addition
- 29—hobby
- 30—parent
- 31—chat is (abbr.)
- 33—cistern
- 34—ostrich-like bird
- 37—dry
- 39—light blow
- 42—musical air
- 44—matter in its most refined state
- 45—one of the war tribes of Kaffirs (pl.)
- 47—prefix meaning not
- 48—Southwestern State (abbr.)
- 49—place where pigs are kept
- 50—mark on playing cards
- 52—exclamation of an infant
- 53—impede
- 54—color
- 56—Mexican cat
- 57—Robed

VERTICAL

- 1—compels
- 2—prefix denoting repetition
- 3—metal as extracted from earth
- 4—480 sheets of paper
- 6—measure of land
- 7—pouch
- 8—above
- 9—sterile
- 13—insane
- 15—convulsive motion of the muscles
- 16—past
- 17—unctious substances
- 19—open-work fabric
- 21—act
- 22—cushion
- 24—wanderer
- 26—prefix meaning blood
- 28—grassy plant
- 29—for shame
- 32—Turkish prison
- 33—force (Lat.)
- 35—vessel in which ashes of dead are preserved
- 36—Extravagant report
- 38—male sheep
- 39—large cask
- 40—aluminum (abbr.)
- 41—small dog
- 43—prefix meaning pertaining to iodine
- 45—nothing
- 46—plot
- 49—close friend
- 51—precedence (law)
- 53—exist
- 55—division of Bible (abbr.)

Herewith is solution to Puzzle No. 93.



MRS. M. E. HINES DIES IN LONG BRANCH COMMUNITY

Mrs. M. E. Hines, 54, mother of Mrs. Clifford Reed of Eastland, died last Saturday at her home in the Long Branch community. The funeral was conducted by Rev. Alta Hardin, pastor of the Baptist church at Long Branch, assisted by Rev. W. J. Nelson of Eastland and Rev. W. J. Lawrence of Cisco.

Mrs. Hines had been a resident of Eastland county 35 years. She had been married twice and had two children by her first husband and three by her second husband. Surviving her are her husband and five children as follows: Mrs. Clifford Reed, Eastland; Mrs. Henry Carter, Long Branch; Mrs. Leo Pratt, McKinney; Mrs. Ertha Clements, Long Branch; Virgil Hines, Long Branch.

BRONCHITIS

At bedtime rub the throat and chest thoroughly with—

VICKS VAPORUB

Over 17 Million Jars Used Yearly

EASTLAND GUN CLUB HAS ITS FIRST SHOOT OF SEASON

The Eastland Gun club held its first shoot of the season at the traps near the States Oil corporation building, east of town, Wednesday afternoon. No charges are made for admission and there are at present about 40 members. Weekly shoots will be held on Wednesday afternoons.

It is stated that the use of the Eastland traps are to be extended to the gun club of Cisco.

bank, on appeal from justice court No. 5.

Heid Bros. Mercantile & Supply company vs. J. W. Sanders et al., suit on account.

SUITS FILED.

Suits filed in county court-at-law: Filtzborough Plate Glass company vs. W. W. Johnston et al., suit on account.

B. & H. Motor company vs. J. A. Hensley, suit on note.

F. E. Harrell vs. C. W. Ramsey, suit on note.

L. C. Martin vs. Continental State

KERRVILLE.

Homer D. Wade, assistant manager, and Kingsford Goodman, advertising manager, represented the West Texas Chamber of Commerce at the annual banquet of the Kerrville Chamber of Commerce. Others present were Nat Goldsmith, president, and William Ochse, first vice president, of the San Antonio Chamber of Commerce and a director in the West Texas Chamber of Commerce; Senator Real, the only republican state senator in Texas, and Texas' new adjutant general, Mark Magee of Brownwood. W. M. McIntosh, editor of the San Antonio Light, attended the banquet and made one of the principle addresses.

An attractive complexion is the sign of good health. Eat foods made with

CALUMET THE WORLD'S GREATEST BAKING POWDER

SALES 2 1/2 TIMES THOSE OF ANY OTHER BRAND

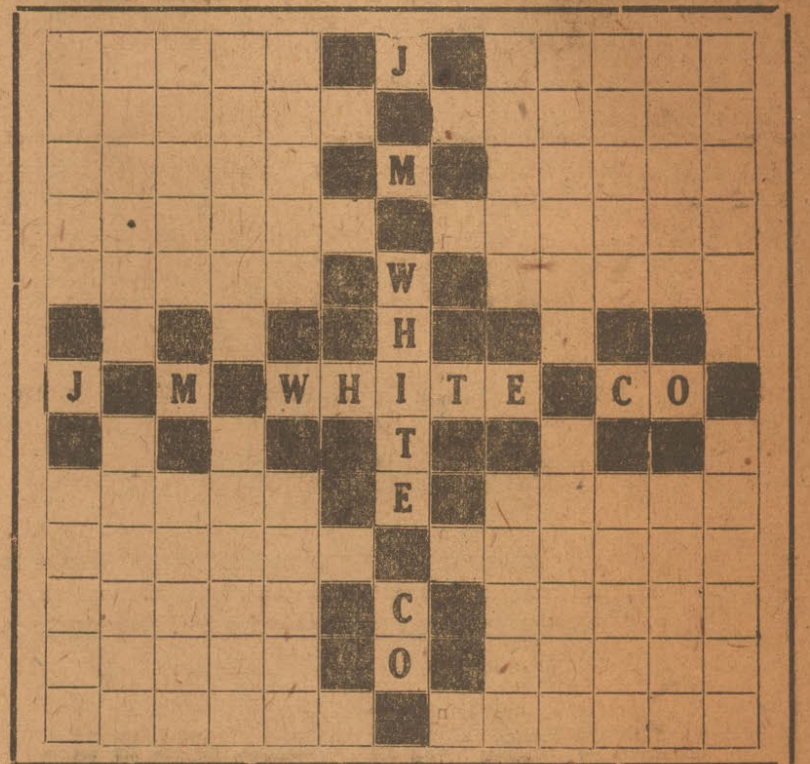
Trade Us

Your Account in Peoples State Bank for a good Used Car or a New Ford.



Sample of Design J. M. White & Co. CROSS-WORD PUZZLE CONTEST \$17.50 In Gold Given as Prizes

- 1st Prize \$10 in Gold
- 2nd Prize \$5 in Gold
- 3rd Prize \$2.50 in Gold



SEE COMPLETE PUZZLE IN OUR WINDOW RULES OF CONTEST

Any person may enter—Neatness and arrangement of design as well as correctness will be considered in points.

Five or more lines sold by J. M. White & Company must be featured. You may arrange your design but the name of J. M. White & Company must be used as in the above design.

See complete puzzle in our window—

Call at our store for the different lines carried, visit each department and ask the clerks to help you with the words needed to complete your puzzle.

Hundreds of your friends are working on a puzzle for us, get busy today and cash in on this cross-word puzzle.

Get Busy, Fans—Make a Cross-Word Puzzle, Win a Gold Prize.

J. M. WHITE & CO. RANGER, TEXAS

SHOES Bargains for Saturday at J. M. White & Co.

Table Number One

One lot of Men's High-Grade Shoes in such well known makes as Nettleton, Glove Grip, Crawford and Star Brand. Kangaroo, kid and calf, in tans and black. These are wonderful shoes for the working man. Some of these shoes have sold as high as \$14.50. Special sale Saturday, your choice only

\$2.95

Table Number Two

All Ladies' Velvets and Suede Strap Pumps, in \$7 to \$10 values, on sale Saturday at

Half-Price

House Shoes in Felts and Corduroy only 95c

The above advertised items are truly wonderful values, and if you are in need of shoes it will pay you to take a look at these.

J. M. White & Co.

The House of Values—Ranger

IN THE TURN OF A HEEL

In the rounding of a toe, in the studied simplicity of a strap, the placement of a buckle, or the lack of a strap altogether—in such subtleties has Fashion worked the classic beauty of the new footwear for spring.

To achieve such perfection, keyed to the nicety of a hair's breadth of line, one turns to the models of the master makers, revealed in the hosts of designs in our stocks.

HOSIERY

Light colors to harmonize with the brilliant Spring costumes make our hosiery section inviting indeed. The sheerest Chiffon Hose perfectly woven in the late colors of the new season await your selection.

RANGER SHOE CO.

206 Main Street—Ranger

The Only Exclusive Shoe Store in Eastland County.

Specials

- Sugar, 13 lbs. \$1.00
- With Additional Purchases
- Red Salmon, tall. 27c
- Grated Pineapple, flat. 15c
- Del Monte Sliced Peaches, No. 2. 25c
- Pears, No. 3. 27c

DAVIS' DEPENDABLE GROCERY

Phone 239 CASH Ranger

NEWS THROUGH THE CAMERA'S EYE

"Picture Frames" Author Pictured In a New Frame

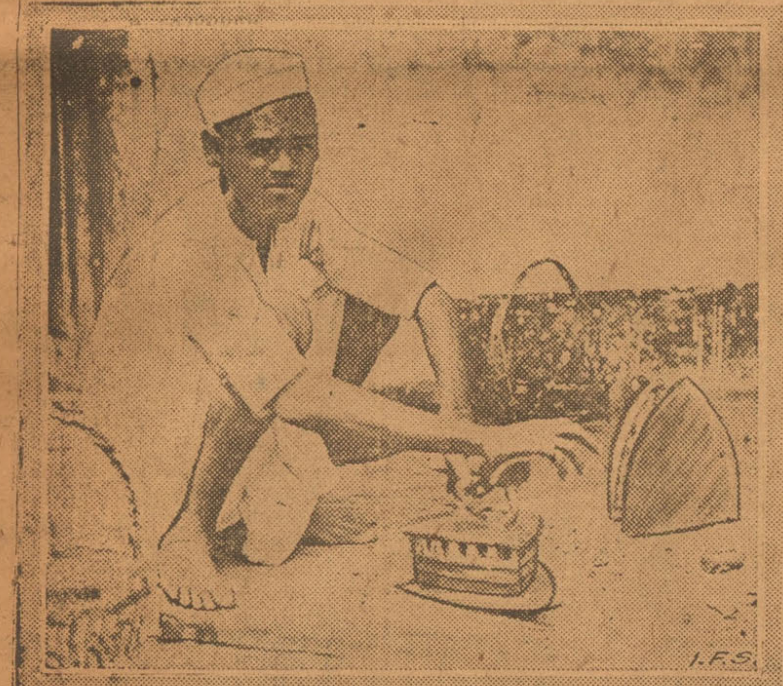


THOSE who have known Thyra Samter Winslow only through her book "Picture Frames" and her other writings may be interested to learn that her delightful Sunday afternoon "at homes" in Kew Gardens, New York, are a frame which sets off still another picture of the writer. Here she draws about her a variety of interesting personalities, and it is evident that to all of them her hospitality is still more gracious because the delectable dishes she serves have been prepared by her own hands.

Her "Chicken Cream," which she served recently, was an epicure's "best seller," and we asked for her recipe:

- 1/2 tablespoonful Gelatine
 - 1/2 cup cold Chicken Stock
 - 1/2 cup hot Chicken Stock, highly seasoned
 - 1 cup cooked Chicken, cut in dice
 - 1 cup heavy Cream
 - Salt and Pepper
- Soak gelatine in cold stock, dissolve in hot stock and strain. When mixture begins to thicken, beat, using an egg beater, until frothy; then add cream, beaten until stiff, and chicken dice. Season with salt and pepper. Turn into one-fourth pound baking powder tins, first dipped in cold water, and chill. Chicken served in this way, is more digestible than when it is served without the addition of gelatine.

Pressing Business-- Waiting for a Customer



WHILE the Malayan ironer pictured above irons wrinkles from clothes, a mass of wrinkles are collecting on his forehead while he waits for a customer. Malayan women do their own washing, but regard whatever ironing they need as an expert's job—requiring expensive and elaborate machinery with which they are not familiar. The Malayan ironer is proud of his mechanical equipment.

The Malayan woman who considers sad irons a mystery, would be perplexed by the workings of a

modern American laundry, its use of intricate machinery for washing and ironing, and its careful attention to the purity and cleansing properties of its soap. Laundry work here is highly specialized, and with the possible exception of a few dainty pieces which the modern housewife prefers to wash herself in white ivory flakes, all her laundry is entrusted to the big laundry.

Housewives who are readers of this newspaper may obtain free a helpful 80 page book, "Approved Methods of Home Laundering," by Mary Beals Vail, B. S. Write for it to Health Cleanliness Service, 80 East 11th Street, New York City.

An Ideal Motor Coat



Spring brings new clothes for motor wear, and the woman who insists on looking chic at the end of a long motor ride will like a coat like the one sketched today, a Paris model by Henriette Bourdeaux.

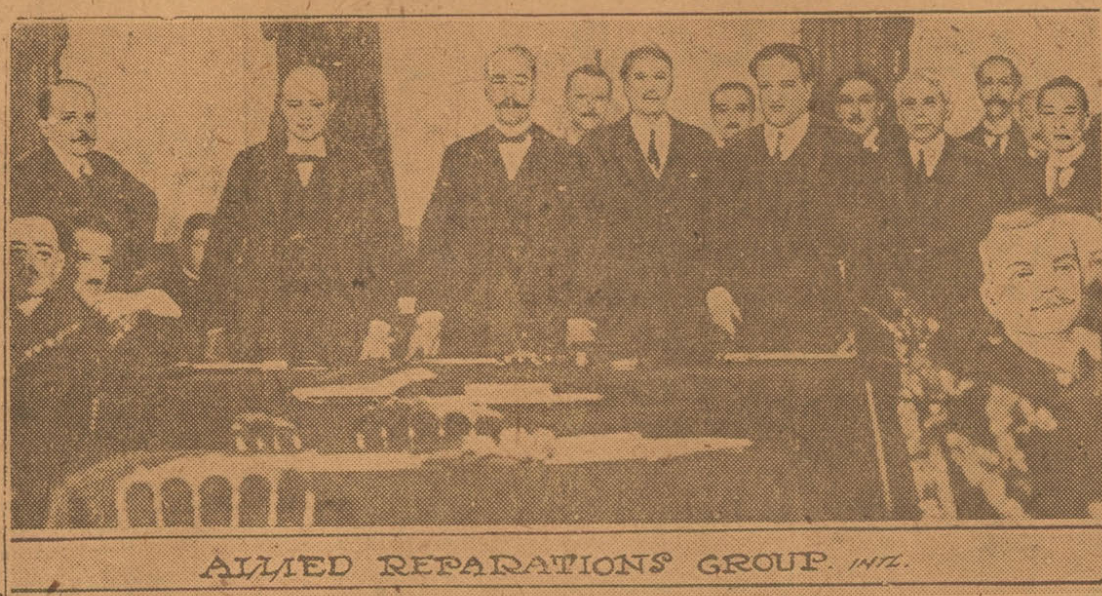
The color is bisque or sand, excellent for concealing dust marks, and the fabric is moshien, that lustrous, soft, and pliable new kind of mohair which is now so fashionable for all day-time wear, whether for business, shopping, sports, travel or motoring. No other material so obligingly sheds the dust, remains unwrinkled and crisp even after long hours in a motor car.

Woman Whom Daughter Shot for Rebuke.



This is the only photograph of Mrs. Annie Ellingson, San Francisco woman, shot to death by her daughter, Dorothy, sixteen, when she reproved the latter for her late hours and evil companions.

NEW VICTORY FOR U. S. IN REPARATIONS



Above is shown a meeting of the Allied leaders in the Paris reparations Conference which resulted in a victory for the United States in her claims for the cost of the Army of Occupation in Germany and in her claims for damages done to American interests by German submarines. From left to right in the group are M. Theunis, of Belgium; Winston Spencer Churchill, of England; M. Clementhal, French Minister of Finance; Myron T. Herrick, American Ambassador to France; Signor Stefan, Finance Minister of Italy; Frank B. Kellogg, American Minister to England, and Viscount Ishii, of Japan, photographed at the Quai d'Orsay.

WOMEN'S PARLEY ON WAR OPENS IN CAPITAL



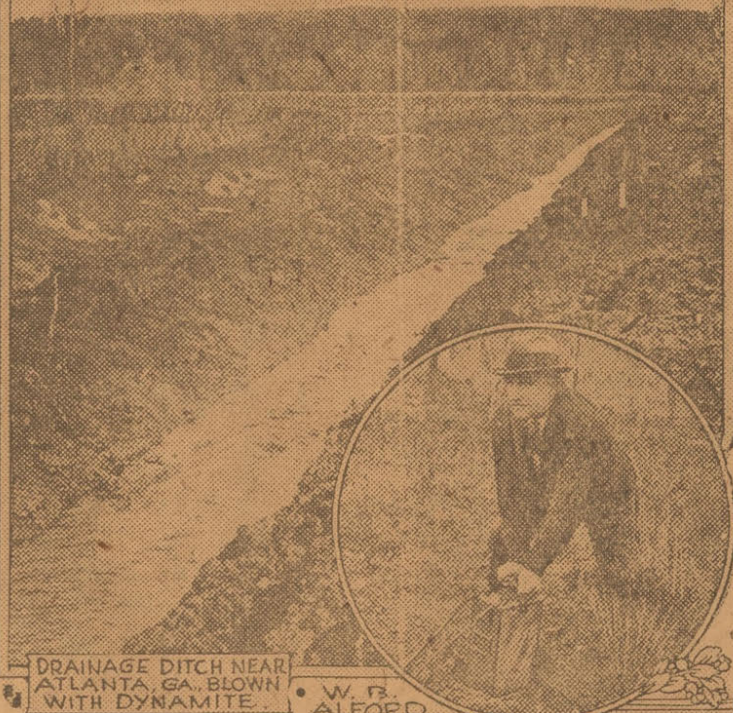
Seated, left to right, are Mrs. Carrie Chapman Catt, chairman; Mrs. T. G. Winter, of Minnesota, secretary; and Mrs. W. L. Purby, of Washington. Standing are Mrs. Edgerton Parson, of Washington; Mrs. Ruth Morgan; and Mrs. George D. Ford. They were the leaders of the women's parley called by the nine national organizations of women to discuss the cause and cure of war. Many prominent military leaders accepted invitations to address the parley.

Explosives Expert Tells Malaria Workers the Way To Blast Ditches



A QUARTER MILE OF BLAST.

HOW to use dynamite in blasting ditches and thus fight the malaria and mosquito plagues was described in detail to the recent conference of malaria field workers at New Orleans by W. B. Alford, one of the foremost experts in the South on the subject of blasting ditches. Mr. Alford, has personally blasted out many miles of ditches both for health control and for land reclamation and recently made a world's record at Patterson, Louisiana, by blasting 1200 feet of ditch, in one shot, through a right of way covered with stumps, logs, roots and debris, in the course of the anti-malaria campaign being conducted at that place by national and state health officials. "His work as an explosives expert of the du Pont Company has taken him into many of the districts in the South where health work is being successfully carried on."



DRAINAGE DITCH NEAR ATLANTA, GA., BLOWN WITH DYNAMITE. W. B. ALFORD.

"The draining of waste land is becoming an important phase of agricultural development and malaria control," Mr. Alford told the conference. "Immense areas throughout the country are not under cultivation. Marsh lands which might be drained occupy approximately 75,000,000 acres.

"We find that straight nitroglycerin dynamite shot by the propagation method is the most effective and economical. The right of way, preparatory to shooting, should be cleared somewhat wider than the proposed ditch, as overhanging limbs have a tendency to throw the soil back into the ditch as it is blasted. It is not necessary to remove logs, heavy timber, or stumps, as this will all go out with the blast. Heavy timbers should be cut in lengths of from ten to twelve feet. Debris should be cleared away.

"The ditch should be staked out in one hundred foot lengths and as many lines of dynamite used as is necessary to make a given sized ditch. Loading is done by first putting down holes with a punch bar at intervals of sixteen to eighteen inches. If more than one line is used, they should not be more than two feet apart unless very large deep ditches are required.

"The propagation method of shooting is recommended for wet soil and if a fifty per cent nitroglycerin dynamite is used, it is practical to blast from 300 feet to 1,200 feet at one shot. It is preferable to have wet soil, although too much standing water is a disadvantage.

"Ditches can be made with explosives most any size from two feet deep and four feet wide to ten feet deep to one hundred feet wide. If the proper amount of dynamite is loaded in the right way, it will lift the necessary amount of soil. We find that it takes approximately one-half to one pound of fifty per cent nitroglycerin dynamite to lift a cubic yard of soil. Increase should be allowed for heavy stumps. When we have sufficient grade the flood water will erode the ditch, reducing the cost sometimes a half."

"In making very small ditches, half cartridges of explosives spaced from nine inches to twelve inches apart and fired by the propagation method, should be used. Explosives can be used to great advantage in clearing out old and neglected canals. Care should be taken, not to load too deep and unless the old ditch is very wide at the top only from one to three lines of dynamite can be used. Half cartridges or sometimes cartridges cut into three pieces can be used for cleaning out small ditches.

"In cleaning or widening old ditches, it is practical to load them on one side, lifting one bank, and making the ditch wider and deeper at the same time and not molesting the opposite bank. In fact explosives are now used scientifically. It is no longer guess work. During the last few years, no less than 800 miles of ditches having been blasted by the use of the explosive."

Hints From a Housewife's Kitchen Diary



New Year In The Kitchen

WATCH THE HOUSEWARES SALES

January is the month of sales and although these are usually varied, nearly all department and house furnishing stores are sure to include one in kitchen outfits. The housewife who wishes to replenish or add to her equipment can avail herself of good bargains by watching the advertising of the stores in this newspaper during this month and next. A sale of this kind will give her an excellent opportunity to acquire many conveniences which she may have long wanted. If she has not added it already, she will certainly want one of the popular self-basting enameled ware roasters. Also, there is the enameled ware ham boiler with its removable tray, which is so invaluable for fish, ham or any meat which should be boiled.

And the housewife who does her own preserving should be on the lookout for preserving kettles which can be used to advantage even before the first crop of fruit is available.

Among the smaller pieces of enameled ware are refrigerator dishes, and these are very desirable household aids. Some of these are covered and therefore provide greater safety for leftovers which otherwise often contract odors from cheese, pineapple, bananas and other food stored in the ice box. And besides being handy receptacles and saving considerable space in the ice box, these porcelain-like dishes are easily cleaned.

SCALLOPED CORN AND TOMATOES

A delightful combination vegetable dish for luncheon or a light supper is made of canned corn and fresh tomatoes.

Put a layer of corn in the bottom of an enameled ware baking dish, then a layer of bread crumbs, sprinkled with pepper and salt and dotted with butter. Add a layer of sliced tomatoes. Alternate with corn and tomatoes until the dish is nearly full. Finish with a layer of bread crumbs dotted with butter. Bake for twenty minutes, or until the crumbs are brown and the vegetables are heated through.

The enameled baking dish, being dainty and china-like in appearance, can be brought to the table without hesitancy and used as a serving dish.

If the vegetables are not served with meat, serve them on toast or with saltine crackers.

A BIG DINNER WITH LITTLE TROUBLE

Every good housekeeper is confronted with the question, how can the preparation of food be made easier? The self-basting enameled ware roaster will do this to a great extent, as housewives experienced in its possibilities know.

A whole dinner consisting of a roast, vegetable and potatoes can be done in the roaster and the only demand on the housewife is the preparation and proper timing.

Rub a five or six pound loin of pork with flour seasoned with salt and pepper, place in an enameled ware self-basting roaster and cook in a hot oven for one hour. Open the roaster and put the desired amount of raw peeled sweet potatoes around the pork. If large, cut in halves. Put around also small tart apples, well washed and cored but not peeled.

When finished, make a brown gravy of the liquid in the pan, pouring off most of the grease before stirring in the flour.

A DAINTY DATE WHIP

To save time at the dinner hour, the stewing of the fruit, the shelling of nuts and the cutting up of the marshmallows for this dessert should be done in the morning.

Remove the pits from two cups of dates, put them, together with four tablespoonfuls of water and the juice of an orange, in an enameled ware saucepan. Stew slowly until tender. Enameled ware being impervious to the action of citrus acids, the stewed fruit can be set aside in the saucepan in which it is cooked until it is needed.

About an hour before the dessert is to be served, mix the fruit with one cupful of fresh marshmallows

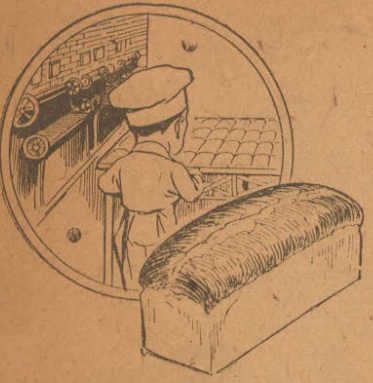
CONNECTICUT FIGHTS FOR CHAPMAN.



GERALD CHAPMAN UNDER ARREST.

In an effort to try Gerald Chapman, notorious gunman and bandit, arrested in Muncie, Ind., following a gunfight, a grand jury has indicted him for the alleged murder of Policeman James Skelley, of New Britain, Conn., who was shot to death by a burglar said to have been Chapman. If the Connecticut claim is granted by Washington, he will be tried there. In the meantime he has been returned to the Federal prison in Atlanta, Ga., from which he escaped while serving a twenty-five-year sentence for a \$2,400,000 mail robbery in New York City. Chapman is shown here after his arrest, guarded by Deputy Walter Cook and Deputy S. T. Hickman.

Thousands of Loaves Every Day



and every one alike in quality, lightness, whiteness, purity and flavor. We call that an achievement, yet it is taken as a matter of daily routine by our bakers. A American Beauty loaf is a quality loaf, every day, every day.

SPEED'S BAKERY

122 N. Austin St. Ranger Phone 188



IT'S A REAL FOOD

YOU WILL COME TO THE CONCLUSION THAT IT'S A REAL MAN-BUILDING FOOD AFTER YOU TRY

JONES BEST FLOUR

GOOD ENOUGH FOR ANYBODY

K. C. JONES MILLING CO.

BUY IT MADE IN RANGER

TRADERS GROCERY AND MARKET

Phone 192 Corner Walnut and Rusk

SPECIALS FOR SATURDAY

- Granulated Sugar, 10 lbs for... 80c
Carnation Milk, tall, 5 for... 55c; Small, 9 for... 50c
Nice, firm Irish Potatoes, 10 lbs. for... 30c
Nice, juicy Prunes, 2 lbs. for... 25c
Pinto Beans, nice flavor, easy cooking, 5 lbs. for... 50c
Compound Lard, 8-lb. pail, each... \$1.45
Campbell's Pork and Beans, 2 cans for... 25c
No. 2 Hominy, 3 for... 25c
Skinner's Macaroni, Spaghetti and Noodles, 3 pkgs. 25c
Jello, any flavor, 2 packages for... 22c
No. 1 Tall Pink Salmon, excellent brand... 15c
No. 2 Sliced Pineapple, Sun Kist brand, each... 30c
N. C. Butter, delicious flavor, per lb... 45c
Decker's Sugar Cured Bacon, fine quality, lb... 30c
Baby Beef Stew Meat, 5 lbs. for... 25c
Loin, T-Bone and Round Steak, lb... 25c
Pork Sausage, lb... 20c

SPECIAL OFFER ON PROCTOR & GAMBLE

16 bars of soap, 1 bar ivory soap, 1 package chips, 1 package Ivory flakes, and 1 package Star Naptha washing powders, all for ONE DOLLAR

HAVE YOU ATTENDED OUR BIG Distress Sale

Just one week more, then your opportunity is gone. Prices are the lowest in the history of Ranger.

All Merchandise in our store of high-grade goods is going at a big sacrifice. We were forced to raise money in order to meet our obligations. This is our plan: Cut the price to cost and below cost.

WE LOSE—YOU WIN

But we'll turn merchandise INTO CASH and that's what we started out to do.

Saturday—tomorrow—will be a busy day here. The values are greater than ever. Don't fail to visit this big sale tomorrow if you are looking for sure-enough money-saving bargains. You know the place.

The Toggery

201 Main Street Ranger

B. A. TUNNELL, RAILROAD MAN, POINTS OUT WHY RANGER IS ATTAINING DOMINANT PLACE

"It is an admitted fact that within five years there will be another large town between Fort Worth and Abilene that will become the leading city in this section of the state, controlling the various industries, and holding the center of trade activities," said B. A. Tunnell, freight and passenger agent of the Texas & Pacific railroad in Ranger, "and it is my opinion that Ranger is undoubtedly better qualified to become this city than any other in this section of the state."

Mr. Tunnell was expressing unbiased views, as he is a newcomer to Ranger, having been recently transferred from Chicago to occupy the vacancy caused when S. A. White, former freight and passenger agent, was transferred to another department. Although a newcomer, Mr. Tunnell has plunged wholeheartedly into the vortex of business life in Ranger. He said:

"Business conditions in Ranger are more stable than in surrounding towns because the town is dependent on no particular industry, and then, too, is surrounded on all sides by varied industries whose headquarters are being gradually attracted to Ranger. On the west lies a level, fertile stretch of land with farming as the main industry. On the east, chicken and cattle ranches predominate, with a few goat ranches. Then farther east lies the biggest coal producing area in the state, from which Ranger draws trade. On the north and south there are the oil wells, gasoline and gas plants. A survey of the natural resources of Ranger will show that there is an abundant supply of glass sand, and sand suitable for the manufacture of the highest grade cement. While the oil and gasoline indus-

try predominated in Ranger at the present time, unless another field is discovered, this may last only for another decade. Should the oil and gas supply give out in this country several of our neighboring towns will be without a source from which to draw their trade revenue. Other industries are being developed and manufacturers being induced to locate in Ranger and the citizens are all pulling together working in connection with the Chamber of Commerce to make Ranger the leading town that will eventually become the ranking city in this section.

Mr. Tunnell pointed out that in commercial organization work Ranger was not dependent upon the efforts of any one man. That while there are a number of hard working leaders in the movement to build Ranger, if one of them was to drop out or move to another section of the state the work would go on the same. A one-man town is like a one-man athletic team, when the pivot man fails the entire structure falls. Ranger is foremost in the thoughts of not one leader but a number of leading business men who are all working together, asking advice of each other and taking the course that meets with the approval of the majority.

Ranger merchants are at present drawing trade from a very large section of the state and the reason for that is simple and perfectly plain, when one visits the Ranger stores. Not one or two but six or eight merchants in Ranger carry complete lines of merchandise and the customers have varied stocks to select from.

The passenger station of Ranger is one of the most attractive in any town in this part of the country and

according to Mr. Tunnell, "while not as large as some, it will compare favorably with any passenger station on the Texas & Pacific railroad."

CAMERON MARSHALL SINGS TONIGHT AT HIGH SCHOOL



One of the finest concerts ever given in Ranger will be offered to music lovers tonight at the High school auditorium when Cameron Marshall, baritone singer, and head of the music department of Howard Payne college at Brownwood, will give the following program. The concert is sponsored by the Parent-Teacher associations of Ranger and is being offered free of charge, a cordial invitation being extended to all to attend.

Mr. Marshall's program will include some of the best known and admired musical compositions of the ages, as follows:

- I. "Where' You Walk," aria from "Semela," Handel.
b. "Sylvia," Speaks.
c. "The Trumpeter," D'x.

- II. a. "Lascia ch'io Pianga ("Rinaldo" 1711), Handel.
b. "The Old Road," Scott.
c. "The Four Leaf Clover," Coombs.

- III. Piano solos: a. "Resemblance," Davies. b. "Polish Dance," Scharwenka. c. "The Bobo."

- IV. a. The Sea, MacDowell. b. "The Yaga Boatmen's Song," Russian folksong. c. "Roses of Picardy," Wood.

- V. a. "There Is No Death," O'Hara. b. "Loch Lomond," old Scotch. c. "Sun-Land," Tours.

Two numbers in crayon and song, selected. Program subject to change. Ralph Bobo, accompanist.

PEOPLE WHO WERE ONCE GOOD LOOKING

A heartrending and yet interesting thing happened in a downtown store when a middle-aged lady got into a loud argument with a clerk. "I know what I want," she kept saying. "I have tried all these other things, but I know from what I saw it do for some friends of mine that it is Black and White Ointment which gets rid of these pimples and blotches. I was just as pretty as any girl when I was young, but I got careless and now I am in the fix you see."

So many people are now insisting on Black and White Ointment, and Black and White Soap, to get rid of pimples, blotches, eczema, rash, tetter, ringworm, "breaking out," etc., because they see and hear of the thousands of others who now know they can depend upon it. And they are more economical, too. The 50c size Ointment contains three times as much as the liberal 25c size. All dealers have both the Ointment and Soap.—Adv.

DO YOU KNOW—

That a few massage treatments will relieve the nerve tension, stimulate your circulation and enable you to resist the many so-called diseases your body is subject to at this time of the year?

P. W. BOONE, Scientific Masseur

EASTLAND OFFICE 208 Exchange National Bank Bldg. Office Hours 8 to 12 A. M. Phone 636
RANGER OFFICE 203 P. & Q. Bldg. Office Hours 1 to 6 P. M. Phone 69

Another Bargain

23 FORD ROADSTER

New top, good paint, lock wheel, fender braces, foot feed, double Hassler shock absorbers, license paid, runs good, price \$250.00

CASH OR TERMS

BOHNING MOTOR CO.

EASTLAND

THEODORE FERGUSON

CERTIFIED PUBLIC ACCOUNTANT INCOME TAX SERVICE OIL DEPLETION

514 Texas State Bank Building EASTLAND, TEXAS

Green Stuffs

Direct From the South Texas Gardens

MUSTARD, SPINACH, TURNIP GREENS, RADISHES, YOUNG ONIONS, CARROTS, BEETS, ETC.

Day-Old Infertile Eggs

40c Per Dozen

The Jamesons

NEVER HIGHEST CHEAPEST IN THE LONG RUN BECAUSE "YOU EAT IT ALL" THE GROCERY ON MAIN ORDER EARLY—PHONE 132

Fancy Pleating—Odorless Cleaning Dyeing—Alteration

Modern Dry Cleaners and Dyers

Only Dry Cleaning Plant in Eastland

Phones 132-445

Saturday & Monday

Specials CASH--CASH

With Every \$5.00 Purchase

15 pounds of Sugar \$1

First Ten Persons Trading \$5.00 Will Be Given 6-lb. Sack of Cotton White Flour

- 3 lbs. Maxwell House Coffee... \$1.48
1 lb. Maxwell House Coffee... 50c
3 lbs. State House Coffee... \$1.30
1 lb. State House Coffee... 45c
3 lbs. Admiration Coffee... \$1.35
1 lb. Admiration Coffee... 45c
3 lbs. White Swan Coffee... \$1.78
10 lbs. Calumet Baking Powder... \$1.48
1 lb. Calumet Baking Powder... 28c
Primrose Corn, per can... 17c
Primrose Corn, per doz... \$1.95
Kohinoor Corn, per can... 17c
Kohinoor Corn, per doz... \$1.95
No. 2 can Ozark Best Tomatoes... 11c
No. 2 can Ozark Best Tomatoes, doz... \$1.25
1 box Post Toasties... 11c
2 boxes Post Toasties... 21c
1 box Post Bran Flakes... 11c
2 boxes Post Bran Flakes... 21c
Mother's Oats, per box... 28c
2-lb. box Saltine Crackers... 40c
2-lb. jar Glen Rosa Peach Jam... 50c
4-lb. jar Glen Rosa Peach Jam... 95c
2-lb. jar Glen Rosa Apricot Jam... 50c
4-lb. jar Glen Rosa Apricot Jam... 95c
2-lb. jar Welch's Peach Jam... 50c
4-lb. jar Welch's Peach Jam... 95c
16-oz. White Swan Jelly... 28c
48-lb. sack Blue Bonnet Flour... \$2.40
24-lb. sack Blue Bonnet Flour... \$1.25
1 gal. Brer Rabbit Syrup... 90c
1 gal. Mary Jane... 75c
1 gal. White Karo... 70c
1 can tall Carnation... 10c
1 can small Carnation... 5c
No. 2 1/2 Del Monte Peaches... 27c
No. 2 can Del Monte Peaches... 21c
8-lb. can Swift's Jewel Lard... \$1.35
4-lb. can Swift's Jewel Lard... 70c
Swift's Hams, whole or half... 28c
All Soups, per can... 10c
16-oz. Stuffed Olives... 40c
Grandma's White Laundry Soap, bar... 4c
11-oz. Heinz Baked Beans... 11c
Mistletoe Butter, lb... 45c
12 lbs. Good White Potatoes... 30c

These Are a Few of the Many Bargains We Have—Come and See

DELL COX Grocery

Lamar, South of Barrow Furniture Co.

Phone 124 and 174

EASTLAND.

PHONE IN YOUR WANT AD TODAY

14 LBS. cane SUGAR \$1

(With Additional Purchases)

- FRESH COUNTRY EGGS, right off the farm, doz.40c
- 8 lbs. Shortening \$1.40; 48 lbs. Flour \$2.55
- Folger's Golden Gate Coffee, lb. 60c; Tall tins \$1.45
- Breakfast Bacon, sliced, lb. 35c; Hams, lb. 30c
- No. 2 Sifted Peas 15c; Sugar Corn, 2 cans for 35c
- Hominy 10c; Tomatoes, 2 cans for 25c
- Old Dutch Cleanser, 3 for 25c; Faultless Starch 3 for 25c
- Large Dill Pickles, 6 for 25c; Homemade Kraut, lb. 10c
- Fresh Louisiana Oysters received daily, dozen 15c
- Channel Catfish, dressed, lb. 28c; Fresh Buffalo Steak 30c
- Salt Mackerel, breakfast size, 2 for 35c; Herrings, 2 for 25c
- Scotch Lake Perch, lb. 18c

PHONE 458 Free Delivery **City Fish Market** 311-313 WALNUT ST. RANGER "We Want to Serve You" BRECKENRIDGE

Phone 57

ABBOTT & BILLS DRY CLEANERS—DYERS

We Call for and Deliver EASTLAND, TEXAS

PHONE IN YOUR WANT AD TODAY

The Boston Store, Ranger, Texas

NEW SPRING MERCHANDISE

\$10,000 WORTH, PART OF OUR SPRING PURCHASE ALREADY IN AND THE BALANCE TO FOLLOW SOON.

All this week we have been kept busy as Trojans unpacking, checking and marking new merchandise.

Piece Goods of every description, Accessories, Novelties, Notions, Ready-to-Wear, Men's Furnishings and Shoes.

That there is great advantages in New York markets in personal selections of goods by expert buyers is abundantly proven in this purchase. There is hardly any comparison as a casual glance will reveal. The colors are better, the styles and patterns are always more desirable and the saving is also a factor.

SATURDAY OUR BUSY DAY

While in Town Visit Us and Let Us Show You The New Things.

Special Prices Throughout Each Department

Everything of a Wintery Nature Must Give Way for Heavy Shipments Yet to Come

LAST CALL ON BLANKETS

- An extra special on large size Cotton Bed Blankets, \$4.95 values now per pair **\$3.27**
- Men's All-Wool Suits, now selling at only **\$17.50**
- Men's All-Wool Dress Pants, values up to \$6.50 **\$3.95**
- Beautiful Flat Crepe Silk Dresses, all colors, the season's new, smart styles, now only **\$17.50**
- 36-in. Outing, best 35c quality, Saturday only **22c**
- Many snaps in Pumps and Oxfords.
- Special low prices on Children's and Misses' Shoes.
- OVER 150 PAIRS OF LADIES' FINE PUMPS — A complete clearance of broken lots, now on sale at **\$2.95 \$3.95 \$4.95**

If You Are a Wise Buyer It Will Be to Your Interest to Watch Our Ads Daily

Quality First



Courtesy Always

INSTRUMENTS RECORDED.

Warranty Deed—W. H. Stone et ux. to Adams & Co., land in city of Ranger, Eastland county, being part of Francis Blundell survey; \$1.

Assignment Oil and Gas Lease—Jack B. Roberts et al. to Welch & Harvey company, first tract being part of S. J. Robinson survey, containing 6.7 acres; second tract, 47 lots in block 10, town of Olden; third tract, 7 1-3 acres of land in Eastland county, being part of S. J. Robinson survey; \$10.

Release Oil and Gas Lease—A. J. Barbrug et al. to J. W. Fox et al., undivided 1/2 interest in all minerals on 100 acres out of the Elz Finley survey, Eastland county; \$10.

Warranty Deed—Joe E. Orr to R. E. Sikes, 147 feet by 15 feet, beginning 10 feet south of southwest corner of lot 4 in block 17, Hillcrest addition to city of Eastland; \$5.

M. Lease—Humble Oil & Refining company to J. T. Brown, southeast 1/4 of section 70, H. & T. C. Ry. Co. survey, containing 160 acres, block 3, Eastland county.

Warranty Deed—W. P. Clark et ux. to M. M. Nanney, lot 3, block 8, Evans-Riddle addition to town of Ranger; \$100.

Extension—W. H. Snell et al. to J. L. Johnson, 160 acres, being northeast 1/4 of section 29, block 2, H. & T. C. Ry. Co. survey, Eastland county.

Release Deed of Trust—C. E. Maddocks, trustee, to Clyde O. Manning, lot 5 in block 4, Glenn addition to Ranger, Eastland county.

M. Deed—George Brogdon to Frank R. Murray, mineral interest in northeast 1/4 and east 1/2 of northwest 1/4 of east 1/2 of southeast 1/4 of section 43, block 4, H. & T. C. Ry. Co. survey, except 26 1-3 acres in name of Rio Bravo Oil company out of south part of northeast 1/4 of said section 43, Eastland county; \$20.

Contract between Continental Oil & Gas Prod. Co. to William A. Middleton, first tract, 160 acres out of J. W. Richardson survey, being northwest 1/4 of section 38, block H. & T. C. Ry. Co.; second tract, 40

acres of west side of P. H. Myers 160 acres, northeast 1/4 of section 38, block 4, H. & T. C. Ry. Co. survey; \$1.

M. Deed—E. A. Clayton Jr. et ux. to George Brogdon, undivided interest in northeast 1/4 and east 1/2 of northwest 1/4 of southeast 1/4 of section 4, H. & T. C. Ry. Co. survey, except a 26 1-3-acre tract out of south part of northeast 1/4 of section 43, Eastland county; \$40.

Warranty Deed—D. C. Frost to Ed Hatten, 1-11 interest in surface rights of Fannie Frost, northwest 1/4 of section 30, block 4, H. & T. C. Ry. Co. survey, Eastland county; \$150.

Gdn. Deed—M. L. Luse, Gdn., to Howard Manahan, undivided 1/2 interest in south 1/2 of N. Turknett survey, second tract 260 acres of land out of northeast part of section 12, block 2, B. B. B. & C. Ry. Co. survey, Eastland county; \$2,550.

EXPORTS TO MEXICO.

By United Press. DALLAS.—North Texas exported \$2,154,403 worth of merchandise to Mexico during 1924, according to the annual report of the foreign trade department of the chamber of commerce to the board of foreign and domestic commerce at Washington. "The cities of Dallas, Fort Worth, Sherman and Wichita Falls are the only cities of importance in North Texas, exporting to Mexico and they rank in order named," the report said.

BREAD

8c Per Loaf or 2 for 15c

We Have Heretofore Been Wholesaling MRS. SMITH'S HOME MADE BREAD

to Grocers At 8 Cents Per Loaf.

Hereafter it will not be on sale at grocers but will be offered to the public at the wholesale price, 8c per loaf, or 2 for 15c, at the Bakery only.

PINE AND MARSTON.

IT'S NOW OR NEVER!

CAMPBELL & FAGG

Department Store—Eastland, Texas

Great Sale

POSITIVELY ENDS

TOMORROW NIGHT

YOU ARE THE LOSER IF YOU DON'T TAKE ADVANTAGE!

Want Ads Will Pay

It Will Be a Pleasure to Shop Here Saturday

Featuring New Spring Dresses \$26.85

For tomorrow (Saturday) only, we feature a One-Day Sale of New Spring Frocks. We call it a one-day sale, because the price for tomorrow is much lower than the regular retail price.

Beautiful Dresses of Crepe in Cinnamon, Tan, Brown, Brick, Cocoa and figured designs. Also some pretty combination effects. One of flat crepe is in tan and cinnamon.

These frocks are the best styles from several leading designers, among them being Co-Ed.



Sizes 16 to 46 1/2

Final Clearance of Men's and Boy's Clothing

Tomorrow We Make a Final Effort to Clear Out All Fall and Winter Clothing The Price Has Been Cut to the Lowest Possible Sale Price

Boys' Suits Now 1/3 Off

Without reserving a single Suit we offer our entire stock of Boys' Suits at this drastic reduction. Nearly all have two pairs of trousers that are lined throughout and seams are taped. There are exactly fifty Suits in this lot and sizes are from 6 to 19 and sell regular for \$7.50 to \$19.95, but now—

ONE-THIRD OFF.

Men's Suits 1/4 Off

Fifty Men's Fall and Winter Suits go on sale tomorrow at a saving of one-fourth—These Suits can be had with either one or two pairs of trousers. Many of them can be used for Spring Suits, and some are termed year-round suits. Did sell for \$25.00 to \$39.50. Now sell for \$18.75 to \$29.50.

\$18.75 to \$28.65.

Overcoats 1/3 Off

A final clearance of Overcoats for both boys and men. At the price these coats are offered you can buy one now for another season. Several serviceable top coats are included in this lot. They are just the right weight for now. See them tomorrow.

ONE-THIRD OFF

CAREFULLY SELECTED SPECIALS FOR SATURDAY ONLY

- 40-in. Crepe de Chine, \$1.75 value for only **\$1.48**
- Genuine 12 Momme Silk Pongee for **78c**
- 38-in. Velva Broche, \$6.50 quality for **\$4.95**
- \$3.50 value Satin Back Canton for **\$2.95**
- 36-in. Ratine, 95c grade, for only **69c**
- 36-in. Colored Indian Head 50c value **42c**
- 36-in. Fancy Voile, 65c value for **48c**
- 36-in. Madras, good 45c grade for **38c**
- 32-in. Soisette, 60c grade, now for **48c**
- 32-in. French Gingham, 50c quality **39c**
- 27-in. Dress Gingham, 25c value for **16c**
- 27-in. Cheviot in good 25c grade for **18c**
- 36-in. Percalé, assorted colors, 25 value for **19c**
- 36-in. Quaker Craft Lace, grade **78c**
- 70-in. Pure Table Linen, \$1.95 value for **\$1.58**
- 36-in. Genuine Hope Domestic, 25c value **18c**
- 36-in. Outing, 30c value, for only **25c**
- 36-in. Terry Cloth, 98c value for **78c**
- 9-4 Pepperell Bleached Sheeting, 65c value **55c**
- 42x36 Pillow Case, 45c grade for **38c**
- 5-piece pure linen Lunch Set, \$6.50 value for **\$4.95**
- 14x33 Hand Towels, 35c seller, pair **25c**
- Ladies' Onyx Pure Silk Chiffon full fashion Pointex Hose, with lisle tops and in black, tan, and gunmetal; regular \$2.50 value for **\$1.95**
- Ladies' Gordon Hose, pure thread silk, full fashioned, with lisle tops, \$2.95 value, tomorrow only **\$2.48**
- One assortment of ladies' fine Kid Gloves, in a \$3.50 and \$3.75 value, for tomorrow priced at only **\$2.50**
- One assortment of Ladies' Kid Driving Gloves, with cuff, \$2.50 seller for **\$1.50**
- Children's Black Cat Lisle Hose, with double, triple and single knee, 50c value, for tomorrow at **38c**

SEE WINDOW DISPLAY

Spring Hats \$7.50

With our Spring Dress offer for Saturday comes this wonderful offer of Spring Hats. These are the newest and smartest style Hats that sell regular for \$12.50. See them here tomorrow.

Joseph Dry Goods Co.

Ranger's Foremost Department Store.

PHONE 315

Children Shoes 20% Off

Children's Red Goose School and Dress Shoes from infants' soft sole up to size 2, 20 per cent for Saturday. See Them in Our Window