

Bailey County Journal

Published by
The Muleshoe Publishing Co.
Publishers of
Bailey County Journal
and
The Muleshoe Journal

MULESHOE TEMPERATURES
Compiled by
R. J. Klump, Official U. S.
Weather Observer

Dec. 5	65	21
Dec. 6	64	22
Dec. 7	65	26

"The Community of Opportunity — Where Water Makes the Difference."

VOLUME 1, NUMBER 32

TEN PAGES

Published Every Sunday At Muleshoe, Bailey County, Texas — 79347

SUNDAY, DECEMBER 8, 1963

Muleshoe United Fund Goes Over The Top

First County Effort '20,407.50

With all divisions, work virtually complete this week, the Muleshoe Area United Fund's first campaign was reported a resounding success. Officers of the new organization were jubilant as reports from the Rural Division came in Friday, bringing total contributions and pledges to \$20,407.50.

Marie White, Campaign Chairman, said, "The generous response from both volunteer workers and contributors throughout the area has been simply wonderful! Muleshoe and Bailey County can be proud. As of this date, we have the top results of any United Fund or Community Chest in the state in relation to our goal."

Store Window Broken; \$1,000 In Jewelry Gone

Sometimes during the quiet, sleep filled hours Thursday morning a thief boldly smashed in a display window at Muleshoe Jewelry, and made off with approximately \$1,000 in loot.

Police believe the thief or thieves used a heavy ballpen hammer to batter their way through the one-quarter inch plate glass window. They drew their conclusions from indented marks found on several areas of the glass which were not broken.

It is believed the thief carefully pre-selected the diamond rings and watches he wished to steal before the crime, and then returned during the dark hours.

Although considerable noise must have been made by the smashing of the heavy plate glass

The victorious report session and the successful results indicated were the culmination of five months of intensive efforts, involving over 200 civic leaders and workers.

In July 1963 Chamber of Commerce president Bobby Airhart appointed a committee to investigate the possible need and desire for some form of united campaign to meet the needs of health, welfare, and youth agencies active in the area.

Under the leadership of Pat Bobo this committee determined there existed such a need and further found that there was considerable demand, especially for the elimination of some of the many fund drives held each year. Bobo's group became a steering committee in the formation of a new, autonomous organization which was to be known later as the Muleshoe Area United Fund.

A group of approximately 60 interested persons from Muleshoe and surrounding area met on September 3 and heard chamber manager Roy Davis describe a united fund and how it could become a reality in the community. This group became the initial board of directors and went on to elect as officers: Inez Bobo, President, Sam E. Fox, 1st Vice President and chairman of the Budget and Admissions committee; Marie White, 2nd Vice President and Chairman of the Campaign Committee, and Bo Bryant, Treasurer. Jack Young was appointed Chairman of the Constitution and By-Laws Committee.

All committees began to function, and soon Muleshoe residents became "united fund conscious". Newspaper and radio coverage intensified, and local charitable agencies were urged to consider applying for inclusion in the United campaign. On September 17 the Budget and Admissions Committee hearing was held, and 11 agencies were represented. A budget of \$13,000 was recommended, with allocations for 10 agencies: Babe Ruth League, Bailey County Junior Livestock Show, Boy Scouts, Girl Scouts, Red Cross, Muleshoe American Field Service Scholarship, Muleshoe Area Youth Center, Salvation Army, Texas United Fund, and the 4-H Club Recognition Program.

This budget was approved as recommended by the entire Board of Directors on September 20. (Any funds expended over and above the approved budget and its individual allocations would require specific recommendation of the Budget and Admissions Committee and approval of the Board of Directors.)

The campaign was officially launched on October 21, with 150 workers from every part of the county organized into 6 divisions. The first division to complete its work was the School Division under Chairman Neal Dillman, followed closely by the Commercial Division, headed by Myron Pool, II. Harmon Elliott was chairman of the division that achieved top production, the Special Advance Gifts Division.

Other division chairmen were: Gil Lamb, Employee Division, W. D. (Bill) Moore, Rural Division, and David Branson, Ministerial Division.

Top solicitation team captains were: Roger Albertson, N. L. Johnson, and Ralph Stevenson. Of the rural communities, the YL team had the top production. Other team captains of the Ad-

Only
14
Shopping
Days Until
Christmas

Cotton Acres Increase Here For Next Year

According to figures released this week Bailey County's 1964 Cotton Allotment has been increased over that of 1963.

Cotton allotment reports received from the Texas State Stabilization and Conservation Committee offices reveal an increase here of 834 acres for the coming year.

This year's original cotton planting allotment was 94,855 acres. Next year the county will be allowed 95,689 acres, according to the report.

Increases were also granted Farmer, Deaf Smith, Lamb and Castro counties as well as others over the High Plains.

35-Passenger Bus Will Be Used By Teams

Thanks to the Muleshoe Athletic Boosters Club the Muleshoe School system will shortly have a bus with which to carry the various teams to athletic and other functions.

The bus, a 35-passenger 1950 Flexible, has been checked at the local Gray Hound Depot and is in "very good" condition. The new engine is expected to carry the bus for 200,000 miles or more before any major work is done on it, according to reports.

The vehicle will cost about \$4500. Approximately \$1,700 will be paid from funds that have been in the treasury of the Athletic Boosters' Club and other funds recently donated to the project by local businessmen.

The remainder will be paid for by the school system, according to John Smith, president.

Methodists Slate Fete For Mules

Methodist Men's Organization of the First Methodist Church will honor the 1963 Mules, coaches, trainers and dads at an appreciation breakfast next Thursday.

To be held in Fellowship Hall at 7 a.m., the breakfast will feature a program to be presented by Coach Merrill Green of the Texas Tech Athletic Department. Neil Dillman, superintendent of schools and Ralph Stevenson, Muleshoe High School principal will be special guests.

(See MULES, page 6)



ON DISPLAY — Winners of the annual Christmas Art Show sponsored by the Muleshoe Art Association are "Dancers" by Richard Goodrow, 1st place; "Hotel Juanita" by Juanita Jarman, 2nd place and "Flowers" by Mildred Williams, 3rd place. Honorable mention ribbons were presented to Pam Lenau, Arlene Phelps and Marie Lenau. (bottom row)

44 Area Artists Enter Annual Art Association Xmas Show

Muleshoe and Bailey County's definite interest in art was highlighted by the number and quality of painting judged at the annual Christmas Art show sponsored by Muleshoe Art Association this week.

A total of forty-four paintings by twenty-six area artists were entered in the annual affair. The paintings ranged from ultra-modern expressionist figures to traditional, high gloss still lifes.

First place in the cash competition was won by Richard Goodrow for his "Dancers", an oil done in the technique of Degas. Second place went to Juanita Jarman for a minutely detailed study of an abandoned desert hotel. Her technique reminds viewers of Hank Boss, Dutch painter, whose work has recently been hung in the Duveen Galleries in New York. Third place went to Mildred Williams for a softly rendered flower still life somewhat in the manner of the late French impressionists.

Honorable mention went to Arlene Phelps, Pam Lenau and Marie Lenau.

The show will hang in the Muleshoe State Bank for one week. After that time parts of it will hang in Paul's Cafe. Many of the paintings are for sale.

The show was sponsored with the assistance of the bank which donated cash prizes for the annual showing.

Others displaying works in the show are Dorothy Bowers, Jim Wood, Everett Young, Clara Mounts, Dana Arnold, Jackie Smith, Velma Davis, Bernice Amerson, Tiny Forbes, Daisy Conwell, Elvina Fowler, Bobby Airhart, Arlene Phelps, Leona Nichols, Kathleen Moss, Mildred Williams, Ethel Allison, Jeanne Garth, Matilda Stemmons, Mildred Neely and Blanche Lenderson. (See FACULTY, page 6)

Cotton Quota Vote Slated For Tuesday

Bailey County cotton farmers will cast ballots Tuesday to decide marketing quotas for the 1964 crop.

The question is "Are you in favor of marketing quotas for Upland Cotton for the 1964 crop?"

The vote is not on allotments. No matter what the outcome of Tuesday's voting cotton allotments will stay in effect as a means of determining eligibility for government price supports. Such supports will be available only to growers who do not exceed individual farm allotments.

The quotas are approved Tuesday all marketing quotas and acreage allotments will go into effect. Excess cotton grown on a farm where the allotment is exceeded will be subjected to quota penalty.

Price support at a level within the range of 65-90 percent of parity will be available to those growers who do not exceed their allotments.

If quotas are not approved no marketing quotas and no marketing penalties will apply to the 1964 Upland Cotton crop. Farm acreage allotments will continue. Price support of 50 percent of parity will be available to growers who do not exceed individual farm allotments.

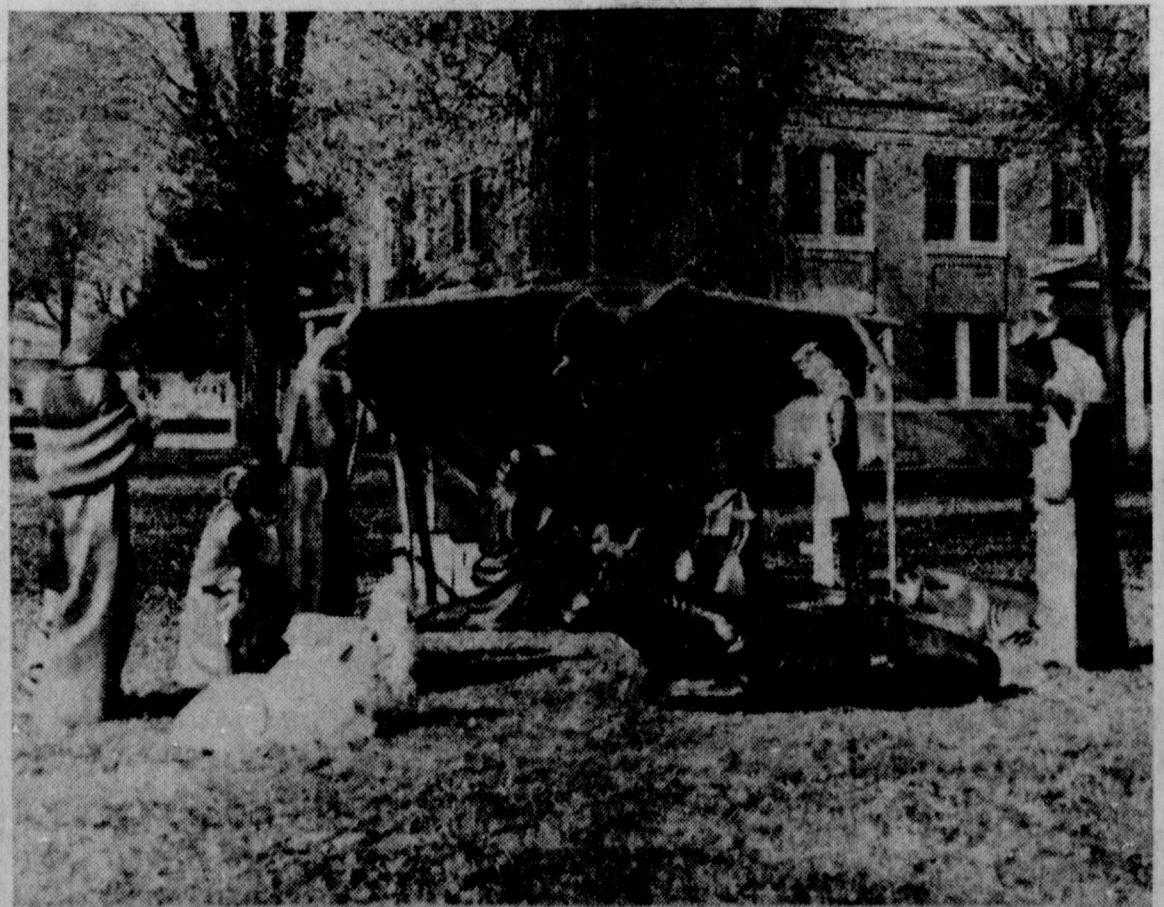
Lone Star Gas Buys Littlefield Fertilizer Co.

The Chemical Division of Lone Star Producing Co., a wholly owned subsidiary of Lone Star Gas Company, has begun final negotiations for the purchase of Caprock Fertilizer Company properties in Littlefield, Texas; Deming, New Mexico, and Artesia, New Mexico, according to Roy E. Jury, Chemical Division vice-president.

Jury said that actual purchase of the properties is subject to satisfactory finalizing of details. He pointed out that Arnold E. Neumann of Littlefield will continue to direct the activities of Caprock after the sale is completed.



SMASHED — Buddy Ray, owner-manager of Muleshoe Jewelry examining window smashed during a late hours robbery Thursday. The thief or thieves got away with about \$1,000 in diamond rings, watches and other jewelry.



NATIVITY SCENE—This scene was placed on the southeast side of the courthouse square last Monday night by the Muleshoe Retail Merchants Assoc. The local Jaycees erected the scene.



CHRISTMAS PARTY — Needmore Womens Club annual Christmas Party was held at the Community Center at Needmore noon Wednesday. Thirteen members and three guests were served turkey, dressing and all the trimmings. A party followed the meal and gifts were exchanged. Guests were Dorothy Kincannon, Joella Lovvorn and Toof-

sie Murry. Members attending were Lois Poteet, Dana Arnold, Sammie Moore, Zeffa Shafer, Virginia Barrett, Sharron Dale, Loota McMakin, Helen Smitz, Bertha Beene, Alice Evans, Margaret Phipps, Martha Warren and Janie Moraw.

Salad Supper Held For Eastern Stars

The regular meeting of Muleshoe Chapter No. 792, Order of the Eastern Star was held Tuesday Evening, December 3, with presiding.

Preceding the meeting a delicious salad supper was served, honoring Mrs. Nell Culpepper, Deputy Grand Matron, District 2, Section 3, who made her Official Visit to the Chapter.

Routine business was transacted and plans completed for the Annual Family Night Christmas party which was held Sturday Evening, December 7.

An impressive Memorial Service was held and the Charter draped in memory of Mrs. Aileen Dyer, a 50 year member, who passed away December 1. Mrs. Culpepper was presented in the West, escorted to the East, introduced to the Chapter and given a silver corsage. She brought greetings from Mrs. Mollie Goodpasture, Worthy Grand Matron and E. F. (Vart) Plumlee, Worthy Grand Patron and gave instructions on Chapter procedure.

She was accompanied to Muleshoe by Mrs. Belle Hromas, Juanita Hershey and Vivian Majors of Hereford Chapter No. 312.

An invitation was read, to a Tea honoring Mrs. L. E. Dudley of Abilene, in the home of Mrs. T. R. White, December 12, and to the Book Review, by Mrs. Dudley, for the benefit of the Library.

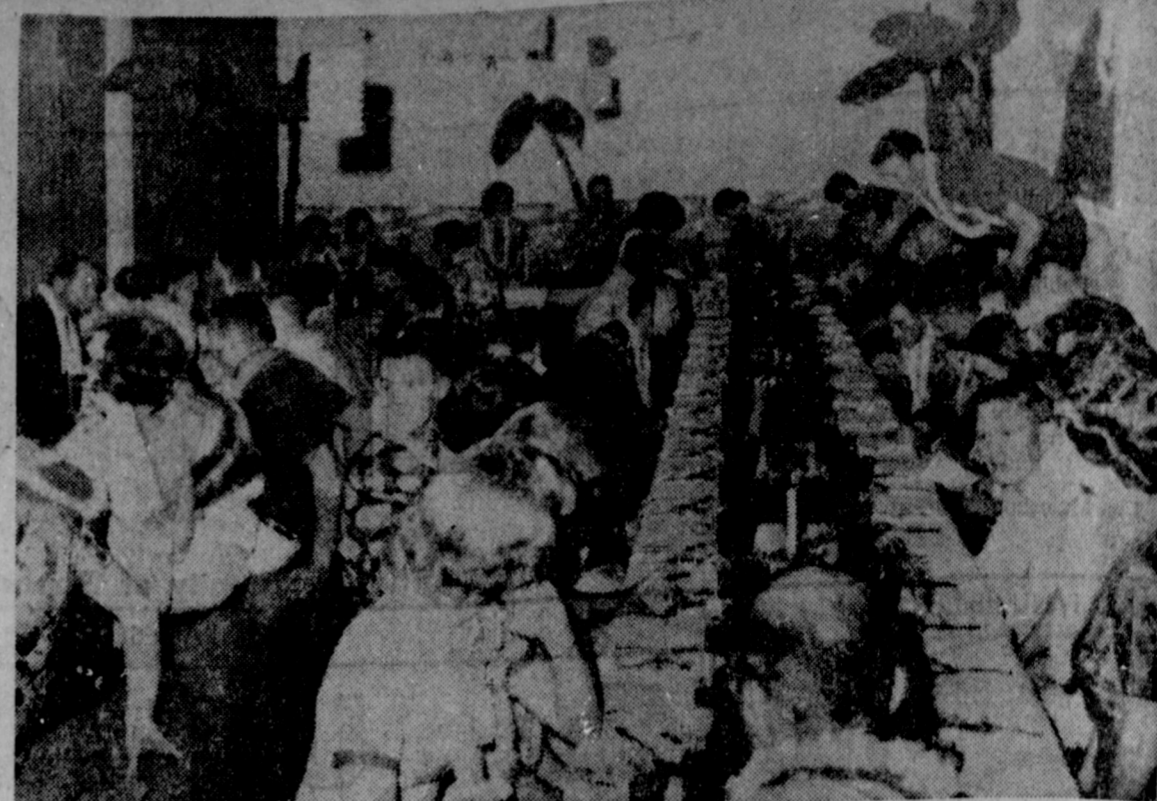
Eastern Stars were reminded of their contributions for the box to be sent to the Eastern Star Home in Arlington.

Hostesses were Mary Farley, Wynnie Dunn, and Betty Davis.

Christmas Candy Made By 4-H Unit

The Progress Unit IV 4-H Club met in the home of Mrs. Ed Little, December 3 to make Christmas candy. They made plans for their next meeting which will be January 7, in which they will cook and serve a complete breakfast.

Those present were Kay Floyd, Kathy and Marcy Baker, and their hostess Ann Little.



HAWAIIAN LUAU — Seniors of Muleshoe High School were guests at a banquet Friday night at the First Baptist Church dining hall sponsored by the WMU. Here the boys and girls are shown in a Hawaiian setting of palms, leis and other decorations typical of the island traditions. Wearing Hawaiian garments, they are seated on the floor for the evening of festivities.

Club Christmas Party Scheduled

A Christmas party for members of the Muleshoe Hobby Club has been scheduled for 2 p.m. Tuesday, December 17. Mrs. O. C. Kirk will be hostess with Mrs. Mae Atkins and Mrs. W. O. Barbour as co-hostess.

Each member has been asked to bring samples of Christmas delicacies they have made and the receipt for exchange on request. A sunshine gift and a gift to be numbered is to be taken. Thirty-one members attended the meeting Tuesday, December 3 held in the Community Club room.

A beautiful array of centerpieces made of felt and sequins, door decorations and numerous items for the coming Christmas holiday season were displayed.

Mrs. Howard Carlyle has been elected reporter for the Club for the 1964 year.

Mrs. George Chambliss was hostess and Mrs. W. D. Dement assisted as co-hostess.

Council Members Attend Yule Event

Bailey County Home Demonstration Council met for a Christmas party held in the club room. The table was covered with a red cloth and centered with a flocked Christmas tree. Gifts were exchanged and gifts were presented from the Council to the president and the County Home Demonstration Agent.

A devotional in keeping with Christmas was given by Ada Murrah.

New officers named were Phebe Gray, Council chairman; Dorothy Bowers, vice-chairman; Laurita Baker, secretary-treasurer; Leona Evans, finance; Betty Williams, yearbook; Dorothy Bowers, recreation; Myrtle Wells, reporter; Fern Davis, family life; Dolores Gaddy Civil Defense; Barbara Crosby, citizenship; Veta Self, health and safety and Letha Wheeler, 4-H club.

When you oven-bake individual custards in a pan of hot water, see that the custard cups do not touch one another.

SHOP MULESHOE FIRST



SEASHORE — The head table for the Hawaiian Luau was centered with a fountain spraying water over lilies. The background was formed with the ocean illusion complete with the beach, sea shells and star fish. A huge palm was placed in the center of the background. The banquet is an annual event sponsored by the First Baptist WMU. (Journal Photo & Engraving)

Dad's Night Set By DeShazo PTA

Dad's Night has been slated for Monday, December 9, at 7:30 p.m. by Mary DeShazo PTA with the meeting to be held in the school cafeteria.

All fathers attending will give their child's room two points when they register for room count. Mother's registration will count one point as usual.

The Tuberculin Heaf test sponsored by the PTA will be given to the school children December 10. All parents are urged to sign permission slips for this test to be given your child and return to the school. The test is painless and will screen the children that have active cases or are

carriers of the disease. This project needs the full cooperation of all parents. Twenty-five cents may be paid or the test will be given free.

It is hoped that a large group will be in attendance at the regular meeting and that the fathers will be in attendance.

Best Assortment OF Christmas Trees From 2-ft. UP

We Do Our Own Flocking!

SWAP SHOP
W. AM. Blvd. & 2nd
PHONE 3-0740

SHOP MULESHOE FIRST



Slip into these Jarmans—you'll be

two feet deep in comfort

... in the best-looking, best-wearing slip-on shoe of the season! It's a Jarman, of course, and it will give you so much comfortable wear you'll consider it an outstanding value. The sooner you come in, the sooner you can begin to enjoy all its comfort and style.

HAYDON'S SHOES

Shoes For The Entire Family
MULESHOE

Wittes Enjoying Life In Alaska

Lamar Witte are getting settled in their new home in Anchorage, Alaska after being transferred there from Nebraska.

Sgt. Witte writes, his parents, Mr. and Mrs. Walter Witte that

they both like the country there very much and although it has already reached 10 below zero it wasn't nearly as cold to them as the same degrees was in Nebraska.

Witte said Alaska is a sportsman's paradise and they are enjoying all these features of the north country.

SHOP MULESHOE FIRST



Holiday shirtwaist

in superb Cara Mia crepe is softened with pretty collar, new fuller sleeves, Arnel® triacetate and Fortrel® polyester silken-touch blend

Lay-A-Way for Christmas

FREE GIFT WRAPPING

THE FASHION SHOP
Phone 3-2880 MULESHOE

YOU'LL BE ASTONISHED at the Low Grocery Prices When you shop the Food Stores Advertised in the JOURNAL today and EVERY SUNDAY and THURSDAY!

Advertisers Do More Business, Volume Business Means Lower Prices!

"HEY HONEY... ..WHO DRYCLEANED THIS SUIT? Bet they used Sanitone's Style-Set® finish"

He's right. We did!

LAMBERT CLEANERS

The proof is in the postmark! There is a SANTA CLAUS!

Send your child a personal letter from Santa Claus. You may select one of our beautifully printed, full color letters. Each letter comes complete with a full color envelope showing a picture of Santa Claus. Mail your Santa Claus letters in our special mail box and we will have them sent from the famous Santa Claus Post Office, in Santa Claus, Indiana. Every child will be delighted to receive a personal letter from Santa Claus.

This Complimentary Offer is our way of saying Merry Christmas to children of all ages

COME IN TODAY!

DAMRON DRUG



SORORITY PLEDGES — Pledge ceremonies were conducted for seven women at the Tuesday night meeting of the Epsilon Sigma Alpha. From left to right, they are: Mrs. Bob Bliss, Mrs. Wayne Wash, Mrs. Milton Eoff, Mrs. Don Seales, Mrs. Chester Yerby, Mrs. Louis Powers and Mrs. Roald Johnson. Dr. Ray Santos was guest speaker for the evening program.

Off The Runways



MEXICO FLIGHT
By DORIS KINSER

Leaving Muleshoe airport Tuesday, John Young and Morgan Locker flew to Laredo enroute to Monterrey, Mexico to pick up a farm hand.

ery below.
Landing at Monterrey airport, a distance of 16 miles from the city, they obtained transportation by airport limousine for the low sum of \$2.80.
After lunch at the famous Sanborne Restaurant, they went to the U. S. Council for the processing of papers on the laborer, one who has worked for Young for several years.
After this was completed, Young explained to the man that they would be making the trip by air. This, the man said, was a great shock to the man and he first said he'd ride a bus, then even decided walking here would be a better way to travel than by air.
Finally, more out of devotion to Young than deciding the method of travel would be alright, he agreed to come with them.
Having never seen the inside of an airplane, he got in, and beads of perspiration were visible on his face. Young and Locker watched him closely while

taking off and by the time they were airborne, he had his head down as far as he could bend without taking off the seat belt. They finally persuaded him to sit up and being observed constantly, they noticed by the time they were in the air less than an hour, he had begun to look down, and from then on, saw everything they flew over.
They made several passes over Sugar Lake to let him see the water from the air and upon landing here, he commented that he enjoyed the ride and it was lots of fun.
CLAYTON, N. M.
A flight was made Sunday to Clayton, N. M. in the Comanche with Morgan Locker flying Doug Hudson and his son, Kenneth. Kenneth, 10 years of age, had spent Thanksgiving holidays here with his father who is engaged in construction work at the airport.
Locker said the Clayton airport was a real nice strip with good caliche runways.

panied on a local flight by a representative of the State of Texas Federal and Loan looking over the area.
Their flight took them all around Sudan, Amherst, Plant X, Lazbuddie, Friona, Bovina, Farwell, Texico, and south over the area and over the Blackwater Farms southwest of Muleshoe. Locker piloted the craft on the flight.
IN GROUND SCHOOL
New students in ground school are Russell Bryant and Hugh Wingo, both area farmers.
Bryant is also taking flight training and doing real well.
SOLO FLYING
Mark Grimsley is practicing solo flying in both the Super Cub and Cherokee.
SP4 Lyndol Kinsler, on leave from Fort Rucker, Ala., flew the Cherokee locally Thursday. Passengers on the flight were his father, Noah Kinsler and Miss Glenda Cooper.

OLD STOVE ROUND-UP
time to see your
GAS APPLIANCE DEALER
and get a top
TRADE ON A GAS RANGE

SPECIAL VALUES NOW!
Pioneer Natural Gas Company

ZALE'S COMPLETE WATCH OVERHAUL
Only \$5.95

INCLUDES:
• cleaning, oiling, polishing
• adjusting, electrical timing
• replacing needed parts
• Fully guaranteed by America's largest jeweler!
• ONE LOW PRICE for any standard watch

Put your watch in the hands of expert Zale's craftsmen use the latest scientific equipment, replacing all needed parts including crystals, mainspring and balance staff.
DIAL REFINISHING EXTRA

ZALE'S JEWELERS
Clovis

Lazbuddie Artist Continues Study
One of the area's accomplished artists is Myrtle Steinbock, Lazbuddie.
Mrs. Steinbock moved to that community with her family from Frederick, Okla. and reared two sons, Rex and Max, before taking up art work as a hobby.
In 1959 she began to study under a number of artists at different times. From that time until present day, she has been instructed by Ramon Froman, Dallas; Henry Rancey, San Antonio; Dr. Emil Cabellero, Canyon, Mary Lee Garrett, Clovis, N. M.; Fredrick Taubes and Henry Gasser, Lubbock; Dean Merriott, Clovis; and has taken a New York course by correspondence.
Mrs. Steinbock spent five weeks during the past summer at San Gabriel Art Center in California taking lessons from David Swartz and Helen Varner.
She is presently enrolled in a course at Eastern New Mexico University. Her favorite type of paintings are landscape and still life, however, she has done some portraits. "I have in mind to do all phases and forms of art as it serves as a challenge for me," the artist said.

Progress News

By MRS. M. O. NIGH
Monday night Dec. 2, there were several who attended "M" night at the First Baptist Church, Muleshoe.

W. M. U. met at the Progress Baptist Church Tuesday Dec. 3, for Mission Study book, Mrs. Elmer Downing was in charge.

We wish to extend our sympathy to Mrs. Marvin Gaddy and relatives on the loss of an uncle in Amarillo hospital this past weekend.

Mrs. Johnnie Westbrook visited last Sunday with Mrs. C. A. Bishop.

Mr. and Mrs. Lee Raney, Floydada visited Sunday with Mr. and Mrs. J. D. Gray Sr.

Mr. and Mrs. Tony Lunsford Shawnee, Oklahoma, visited here with her parents, Mr. and Mrs. W. M. James and her brother, Frank.

Mr. and Mrs. Marvin Gaddy and son visited a few days in Dallas.

Mr. and Mrs. M. O. Nigh and Larry spent Sunday visiting their niece and husband, Mr. and Mrs.

Diane Hoybook Feted With Party

Diane Hoybook was honored with a farewell party in the home of Sharron Houston Thursday evening.

Linda Gross assisted Miss Houston as co-hostess.

Cokes, Brownies, and sandwiches were served to Glenna Guinn, Anna Lou Harrison, Regina Hawkins, Judy Burge, the honoree and the hostesses.

The girls enjoyed a record session during the remaining hours.

THOMPSON'S GUESTS

Mrs. Don Harbert and daughters, Michelle, DeEtte and Cheryl Beth, Galt, Calif. are visiting in the home of Mrs. Harbert's parents, Mr. and Mrs. Andy Thompson and other relatives during the month of December.

Harbert, an electrical engineer, now in the testing field of the Saturne Missile, Douglas Aircraft, will join his family here for Christmas week.

SHOP MULESHOE FIRST

LATE WANT ADS

Sales agency with 25 years service on the South Plains has opening for man or woman that has sales aptitude and is willing to be trained. Salary open. Apply Box 449.

32-3-8tc
Robert McCurdy, Atlantic City jockey who led Garden State's apprentice riders this fall, will ride in Florida this winter.

COX DRIVE-IN Theatre
MULESHOE

will be
CLOSED 'TIL FRIDAY
Dec. 13



for those who perspire heavily

A new anti-perspirant that really works! Solves underarm problems for many who had despaired of effective help. Mitechum Anti-Perspirant keeps underarms absolutely dry for thousands of grateful users. Positive action coupled with complete gentleness to normal skin and clothing is made possible by new type of formula produced by a trustworthy 50-year-old laboratory. Satisfaction guaranteed. Don't give in to perspiration worries; try Mitechum Anti-Perspirant today.

90-day supply \$3.00 plus tax

WESTERN DRUG CO.

MURRAY'S

Big Gifts Come In Little Packages

TRY US FIRST!
MURRAY'S JEWELRY

116 Main MULESHOE Phone 6170

When other gifts are forgotten SHE'LL REMEMBER HER BULOVA DIAMOND WATCH

SHOP MULESHOE FIRST

The Perfect Christmas Gift!

ZENITH COLOR TV

Model 5011
New, beautiful console ensemble. Vinyl etched metal cabinet in grained Walnut color or grained Mahogany color and matching full base.

AS LOW AS
Easy Terms \$499.95 WITH TRADE NO PAYMENT UNTIL FEB. 64

Extra Performance Features only in Zenith Color TV

- HANDCRAFTED CHASSIS**—All connections handwired and hand soldered for greater dependability. No printed circuits.
- SUPER GOLD VIDEO GUARD TUNER**—Greater picture stability, ultra sensitive signal reception, and longer TV life.
- EXCLUSIVE PATENTED COLOR DEMODULATOR CIRCUITRY**—the "electronic brain" of color TV for most true-to-life color pictures.

JOHNSON-POOL HDWR. & APPLI

320 Main Muleshoe Phone 7370

School 'Roundballers' Might Turn Out Better Than Expected

By DAVID JONES
Drive and plenty of spirit describes the 1963-64 Muleshoe basketball team. Muleshoe High's Roundballers, that is the basketball team's expression for their sport, started another season Thursday night against Plainview.

scored 23 points for Muleshoe. The competition has been keen in quest of a starting berth on the team during this week's practices.

Impressive in workouts have been Don Marray, C. J. Spence, Darrell Burton, and Donald Williams. These boys along with Steve Young, Kenny Heathington, and Robert Seagroves make up the muscles of the squad.

In a scrimmage Wednesday afternoon against Littlefield the lack of practice time was apparent. The Mules will have a tough slate these first few weeks, but when they gain their "basketball

legs" opponents watch out. The Mules are fast, tough, and aggressive with fine outside shooting. They will probably run a full court press this year and a single post offense. The Mules will make it a clean sweep by winning District and possibly earn a state tournament trip this year. Good Luck Mules. Go all the way.

BARBOUR'S GUESTS

Mr. and Mrs. H. O. Barbour have had their son and family as recent guests. Mr. and Mrs. Billy Don Barbour and family, Farmington, N. M. The family flew in for the visit.

SCHOOL MENUS

MONDAY

1-2 Pint Milk
Juicy Burger
Pickles-onions
Lettuce and Tomato Salad
French Fries
Home made Buns
Peach Halves

TUESDAY

1-2 Pint Milk
Chicken Fried Steak
Buttered Carrots
Creamed Potatoes
Cranberry Salad
Hot Rolls
Butter

WEDNESDAY

1-2 Pint Milk
Corn Dogs - Mustard
Veg. Beef Soup
Crackers
Fruit Cup
Cinnamon Rolls

THURSDAY

1-2 Pint Milk
Barbequed Pork
Ranch Beans
Cabbage and Apple Salad
Buttered Rice
Hot Rolls
Butter

FRIDAY

1-2 Pint Milk
Hot Dogs - Chili
Macaroni Salad
Coney's
Jello Fruit Salad
Frosted Brownies



SYMBOL OF MEXICO — Officers of the Ladies Golf Association were installed in a ceremony set to the theme of Symbol of Mexico. Marie Lenau, left, was installing officer and gave each a sketch depicting their officer. Cookie Bamert, president, was the Spanish Guitar, setting the pitch and key; Ruby Hart, vice-president, was the serape to cover for the president when things turn cold; Ruby Cox, secretary-treasurer, the Mexican piggy bank, to guard the funds; Johanna Green, historian, the Mexican

basket inside which goes the new and historical documents of the club; Marlene St. Clair, play day chairman, the Spanish dancer, who performs on the stage each Wednesday and Mary Sweetman, High Plains Director, the Mexican burro, a line of communication between the local and area clubs. Each member was presented a Mexican jumping bean and issued the challenge to jump around when called on by any office. (Journal Photo & Engv.)

OPEN MONDAY THRU SATURDAY 7 to 9

We Give Buccaneer Stamps
Double on Wednesday

These LOW PRICES Good 'til Wednesday!

CHUCK ROAST lb.	39c
FRESH GROUND BEEF 3 lbs.	\$1.00
FRYING CHICKENS Pound	39c
BANANAS Lb.	10c
TOMATO JUICE DIAMOND 46 oz. Cans	4 for \$1.00
TOMATOES Lb.	39c
DR. PEPPER 12 bottle Carton	69c
KING-SIZE 7 UP 6 bottle Carton	39c

TRY OUR 'HOME-MADE' CHILI AND BARBECUE

BILLY'S SUPERETTE

302 N. First MULESHOE

Farm Bureau Hears Report No New Crop

The Bailey Co. Farm Bureau Board of Directors met at Needmore Thursday Dec. 5 with 19 members along with John Gregg agent, Joe Sooter assistant agent, Mrs. Norene Thomas, office secretary and Vera Engelking, publicity chairman.

Joe Holmes, Farm Bureau field director, Gil Lamb and Bill McDonald of KMUL were guests. Ed Little presided at the meeting and gave a report "The State Farm Bureau Convention." Stating Texas would have 9 voting delegates along with its Queen, Judi Shubert of Petersburg.

Joe Holmes Field Director spoke on "Guar an upcoming Commodity." John Gregg, agent, gave a report on Blue Cross and Blue Shield Insurance.

Lester Howard, host, served coffee and pie to the group after which the group adjourned to meet Jan. 9 at Maple, Texas.

Gifford Hill Western Opens Branch Plant

Open house for Gifford-Hill Western's new plant in Farwell as held Saturday, according to Buck Clarke, manager of the Farmer County industrial firm.

Gifford-Hill has manufactured concrete pipe in their plant in Farwell since July of 1955, but they have just completed a move into new facilities and are expanding their operations.

The new facilities include office space for the manager, book-patcher, office clerk and an inventory clerk; the plant which is equipped to manufacture not only the old mortar-type concrete pipe and a shop where fabrication work and equipment maintenance is done.

The plant sprawls over 24.2 acres between the Amarillo and Lubbock branches of the Santa Fe Railroad.

Business has grown constantly until at this time three salesmen are employed.

Offices are maintained in Hereford, Muleshoe and Portales. Other key men in the operation are a plant foreman, two foremen of the installation crews and a dozer operator, with plans calling for a second with the completion of the new plant, in addition to the office personnel.

At the present time a crew of approximately 55 men is employed during the slack season with an additional 30 men employed during the busy season, November through May.

Other Gifford-Hill Western Co. plants are located in Plainview and in Lubbock, Texas and in Roswell. Main office for the company is in Lubbock.

The Gifford-Hill company has plants which cover a five-state area, including Kansas, Texas,

New Mexico, Nebraska and Colorado which manufacture other types of pipe and construction needs.

Try filling the cavities of apples readied for baking with chopped fresh dates and nuts — pecans or walnuts.

DO YOU HAVE INSURANCE PROBLEMS?

The "Quick As A Wink," yet thorough service that we have given our policyholders over the years has been the foundation for our growth as an insurance agency.

If you are looking for "Insurance Service," give us a call today.

Representing Harford Fire Insurance Co.

Member Hartford Ins. Group, Hartford, Conn.

JENNINGS INSURANCE AGENCY

Muleshoe

Phone 3-4970

this is YOUR bank

It's the financial headquarters for your family and business. Every type of financial service is provided at your full service bank.

It is a secure depository for your checking and savings accounts. Safety deposit boxes protect your valuable papers.

Your bank furnishes you credit for family purposes, for farming operations, a new automobile, home improvements, business and for all those occasions when financing is needed.

Above all, your bank is your friend, and it's people are your friends. This is foremost in every function we perform for you. We enjoy you as a customer and want you to enjoy your bank.

FIRST NATIONAL BANK

MEMBER OF F.D.I.C.

"Give Us The Opportunity To Serve You"

PERRY'S HAS EVERYTHING FOR CHRISTMAS

Open Every Night until 8 p.m. til Christmas

MAKE PERRY'S YOUR Headquarters For All Your HOLIDAY DECORATION AND PARTY NEEDS

CHOOSE FROM A LARGE AND VARIED STOCK AT PRICES YOU'LL LIKE!

PERRY'S MULESHOE

5 - 10c 25c - \$1.00

Texas May Get Park in Guadalupe Mts.

WASHINGTON, — Rep. Joe Pool, who is serving his freshman term as Congressman at Large from Texas, first planned his bill when he was still campaigning, on a tour through the West Texas area of the Guadalupe Mountains. Guadalupe Peak is the highest spot in the state. It stands on the high plateau like a pillar supporting the roof over Texas. The beauty of the peak is the greater for its shock value — nobody expects to run into a 8,751 foot mountain in Texas.

Research Shows Great Potential. — During the spring and summer, Rep. Pool and members of his staff went to West Texas to go over the area around the Peak and interview those who would tell

some of its story. They learned that nearly all of the land under consideration is the property of J. C. Hunter, Jr., an Abilene businessman with a lifelong interest in conservation. He has established a herd of elk and flocks of wild turkey on his Guadalupe Mountain Ranch, and by stocking has created Texas' only trout stream in a beautiful wilderness area called McKittrick Canyon.

Part of McKittrick Canyon, about 6,000 acres, once belonged to Wallace Pratt, one of the nation's leading geologists. In retirement, he gave 6,000 acres to the National Park Service.

From Washington, Rep. Pool worked with historians, geologists, archeologists, and leaders of the U. S. tourist industry to learn the full story of the Guadalupe and their potential and as an economic as well as a spiritual asset to the people of West Texas.

He learned from geologists that the Guadalupe present one of the most spectacular exposures of a fossil organic reef known in the world. From archeologists came the fact that the mountains are crisscrossed with caves containing pictographs and relics, that C-14 dates of over 12,000 years have been found.

From those who know the tourist business, he learned that a national park in the Guadalupe

Male Weevil Is Ladies Man

COLLEGE STATION, — What is believed to be the first natural attractant ever obtained from male insects has been extracted from male boll weevils. Females of the species are attracted by the substance. Thus, a new approach may be opened for controlling the most destructive of all cotton insects, say entomologists of the U. S. Department of Agriculture, discoverers of the new substance.

The natural attractant was isolated by entomologists of the USDA's Agricultural Research Service working in cooperation with the Mississippi Agricultural Experiment Station.

To obtain the chemical substance, they enclosed the male boll weevils in a plastic cage, then drew air from it into a column of activated charcoal. After 11 weeks, they removed the charcoal and soaked it in chloroform. When the chloroform was evaporated, a residue was left that attracted female boll weevils. Chemists are attempting to chemically identify the attractant so that a similar attractant can be made synthetically for possible use in a search for new pest-control

attractants obtained from females of several insect species have opened the way to broad-front attacks, which include luring pests to traps, to isolated insecticides, and to chemicals that sterilize them.

Attractant research is just one of several approaches ARS has emphasized during recent years methods that limit or avoid the need for insecticides and that involve only the target pest. At-

BUREAU MEETING

Mrs. Norene Thomas, Bailey County office secretary was a supper guest of Mrs. Vera Engelking Thursday evening. Afterwards, the women drove to Needmore to attend the Farm Bureau Board of Director meeting.

CHRISTMAS Money—See Credit Union, 306 W. 2nd. etc



MRS. JERRY DON HALEY
Shower Honoree

Bridal Shower Honors Mrs. Haley

Mrs. Jerry Don Haley was the honoree for a bridal shower given Tuesday afternoon in the home of Mrs. T. R. White.

The serving table was laid with a white sheer cloth gathered full at the edge over blue. The bride's chosen colors of white and blue were carried out in the centerpiece of white carnations and

spider mums and blue Christmas balls.

Presiding at the crystal punch bowl was Mrs. M. W. Vise and Mrs. Harry Waddle served individual white squares of cake decorated with a blue wedding ring.

Hostesses were Mrs. M. W. Vise, Mrs. Carl Bamert, Mrs. Harry Waddle, Mrs. Ray Quisenberry, Mrs. S. M. Ethridge, Mrs. John Mock, Mrs. Dorothy Green, Mrs. Vernal King, Mrs. Alvin Allison, Mrs. Roy Dyer, Mrs. James Glaze and Mrs. White.



NEW BUS — 35-passenger, Flexible Bus to be purchased to carry the various athletic teams to athletic and other events. The 1950 bus will be purchased in part with funds donated by the Muleshoe Athletic Boosters. (See story on page 1)

For a long-remembered Holiday... buy her a push-button **DuoCycle** portable **KitchenAid** the Professional Dishwasher/Dryer

Dishes get cleaner... drier, too, in this new, big family capacity KitchenAid. Plus these special features:

- Durable and out
- New Classic Look with swept-front styling
- Guided Action Power Washing
- No hand-rinsing
- Exclusive fan-circulated hot air for safe, Flo-Thru drying
- Automatic Rinse Agent Dispenser helps dry dishes spot-free
- Convenient automatic-lift top rack... tilted design
- Automatic reel gently retracts extra-long power cord
- DuoCycle lets you RINSE and HOLD breakfast and lunch dishes so you use FULL CYCLE just once a day
- No installation or remodeling cost

MODEL KD-4P \$35.00

Compare and you'll buy the best... per week **KitchenAid** DISHWASHERS See them at **JOHNSON-POOL Hdw. & Appl.** 320 Main MULESHOE Phone 7370

NUN BUSH SHOES

MASSAGIC SHOES

BOTANY 500 SUITS

JOCKEY UNDERWEAR

H.I.S. JACKETS AND SUITS

STETSON HATS

MANHATTAN Shirts & Pajamas

JASON SHIRTS & PAJAMAS

BOTANY SLACKS AND SPORT COATS

SAN GABRIEL SLACKS

SAMSONITE LUGGAGE

JERKS SOCKS

SWEET TIES

HOUSE SHOES BY SCAMP

STYLE MARK OVERCOATS

CATALINA SWEATERS

BIG SMITH WORK CLOTHES

LEVI'S CASUALS

CHRISTMAS GIFTS... Of Fashion Are Favored By Men Of Good Taste!

Suits By ...

- BOTANY '500'
- H.I.S.
- SEWELL

Sport Coats By...

- BOTANY '500'
- CAMPUS

Overcoats By Heathermore

White Shirts

Manhattan Skyway 100% Dacron Completely Washabl	\$8.95	Manhattan Plus 100% Cotton Spindry	\$5.00
Jayson Carlyle 100% Cotton, Sanforized Wash & Wear	\$4.25	Fruit of the Loom 100% Cotton Tab Collar, Wash 'N' Wear	\$2.99

VISIT OUR GIFT BAR!

- Wallets
- Jewelry boxes
- Brushes
- Tie Racks
- Briefcases
- Dopp-Kits
- Stetwell Hangers
- Shoe Polish Kits

St. Clair's
MULESHOE

Cotton Crop Going Into County Gins

The big question this week is how many bales will Bailey County produce this year. Predictions fall into two definite classes — both optimistic. One says the county will top last year's 110,000 count; the other that the area will hit 90-100,000 bales.

Who's right? Nobody knows, but to date Bailey County has ginned a total of 61,734 bales as compared with 42,562 at the same time last year. However, even these latest bales counts are inaccurate due to the rapidity with which King Cotton is flowing into the area's gins.

A slow starting harvest has jumped into high gear during the past few days with most gins operating on a round-the-clock, as long as the cotton is here basis.

The ground-gaining is primarily due to the weather — the beautiful, high and dry, sunny phenomenal weather. It is literal-

CHRISTMAS Money—See Credit Union, 306 W. 2nd.

ly putting thousands upon thousands of extra dollars into the pockets of cotton growers and the Bailey County economy.

An almost historically warm dry fall has changed a doleful early summer cotton crop into what may well be one of the best in county history when considered on a per acre basis.

Most farmers and others dealing in cotton were downhearted in May and June when plant damaging hails swept over the area, causing many farmers to replant one or more times. This planting was still going on when the calendar closed on June. Hundreds upon hundreds of acres of cotton were put in more in desperation than hope.

The only thing that could save the crop was a long, long and very dry fall . . . And Bailey County got it.

SHOP MULESHOE FIRST

Comment On Sports

By PETE FRITCHIE

WASHINGTON, D. C.—This is the time of year sports writers start voting, talking and writing about the greatest feats of the year. Looking over all the greats on the U. S. sports scene, the biggest item must be the sweep of the New York Yankees in four straight games by the Los Angeles Dodgers in the World Series.

This would have been big sports news if the Dodgers had merely won. But they scored an early knockout. Yet it would not be right to say the Dodgers breezed through the Yankees.

They didn't. Every game played, of the four, was respectable. The Yankees could have won any one of them with one big inning late in the game. They were consistently smothered with great pitching.

The story of this series was

Cotton--
(Continued from Page 1)
the state's total allotment for 1964 was reduced 30,657 acres, from 6,869,104 to 6,838,447. According to Johnson the increased High Plains acreage is the result of the state ASC Committee making more efficient use of the states allotment.

The national cotton allotment for 1964 was set at the 16 million acre statutory minimum, as it was in 1963.

Faculty--
(Continued from Page 1)
WATERBOY
"Honeybee" Miller
COACHES
Dianne Chappell
Sharlotte Childs
JUNIOR HIGH
"Curly Cue" Adamson
"Little Abner" Davis
"Polly" Durham
"Ever Ready" Everett
"Lover Boy" Graves
"Longshot" Oyler
"Big Wheel" Dillman
"Martha" Washington
"Hotshot" Edwards
COACHES
Peggy Lewis
Lola Harrell
CHEERLEADERS
"Little Feet" Watson
Page "the Rage"
"Prissy" Liz Siewert
"Zero" Laughlin
"Quite Contrary Mary" Scoggin
WATERBOY
"Patty" Paterson
REFEREES
Margie Kinsey
Glyna Masten

pitching and it is the old story in baseball. The Yankees' Whitey Ford is as cool under the guns as anyone. He didn't have the fine edge in the first game, though, to beat Sandy Koufax, though he could have won allowing a run or pitching a shutout. Koufax was socked for a two-run homer.

What many fans and some sports writers missed was the fact that Podres and Drysdale pitched as well or better than Koufax. Sandy was more spectacular. He deserved the honors for the overall performance of the year. But in the Series Drysdale didn't allow a run and Podres departed in the ninth inning of the second game with the Yankees at zero.

That was simply too good, from the number two and three men. Downing and Bouton could not match that, even against the lighter-hitting Dodgers. In the second game he worked, Whitey Ford shouldn't have lost. He gave only two hits but should have given up Joe Pepitone instead. Ford really outpitched Koufax, if a choice had to be made, though it was head-to-head.

The Yanks taken in four! That has to be the big sports story of 1963.

Mules--
(Continued from Page 1)
according to Rev. Don Murray. A man with winning ways is

Fund--
(Continued from Page 1)
vance Gifts Division were Robert Alford, Bobby Airhart, Frank Ellis, and Irvin St. Clair.

Also serving as Team Captains in the Commercial Division were Jessie Leal, Pat Glover, Russell Bryant, Wayne Williams, and Ray Hardy.

Additional captains in the School Division were R. E. Everett, W. O. Coltrane, Milton Oyler, F. D. Harris, and Jewell Blackwell.

Best individual solicitors in their divisions were: Thurman White, Myron Pool II, Mrs. Sam Damon, Mrs. Carl Bamert, and Ralph Stevenson.

Of Navy's eight varsity football ends, four are from California.

The Detroit Tigers will play 30 night games at home next season.

a good description of Merrill Green.

He played on three national championship teams — at Oklahoma in football and baseball and at Fort Sill in football — and helped coach successful teams at Missouri and Arkansas (Southwest Conference co-champion and champion his two seasons there.)

A native of Chickasha, Okla., he was a standout halfback for Bud Wilkinson's teams of 1950, 1952, and 1953.

Green scored Oklahoma's only touchdown in the Sugar Bowl game with Kentucky. After missing the '51 season with a knee injury, he returned to his starting post for two seasons.

Among Green's top plays his senior year were an 86-yard game-winning touchdown in a 19-14 win over Texas, a last-quarter score that edged Colorado 27-20. His punt-return average of 45 yards per runback is the best in Oklahoma history. The Sooners capped the season with an Orange Bowl win over Maryland.

A shortstop and second base-

man, Green played on the Sooners' title-winning team of 1950. After separation from the Army, he coached a year at Wichita University and a season at Missouri before accompanying Coach Frank Broyles to Arkansas in 1958. He joined J. T. King at Texas Tech as offensive line coach in January of 1961.

WELL, it's almost that easy with SATIN LUMINAL!



ALKYD-LATEX PAINT
Applies easier, binds tighter, looks richer. Amazing 1-coat coverage on all interiors. Easy-to-apply with brush or roller. Dries in 20 min. It's scrubbable! No fumes or fust!

STOP IN FOR COLOR CHART

MADE WITH Acrypolyrene

LENAU LUMBER COMPANY

FRANCIS IMPLEMENT CO.
FORD TRACTOR
Mulshoe, Texas

THOSE HORRID AGE SPOTS*



FADE THEM OUT

*Weathered brown spots on the surface of your hands and face tell the world you're getting old—perhaps before you really are. Fade them away with new ESOTERICA, that medicated cream that breaks up masses of pigment on the skin, makes hands look white and young again. Equally effective on the face, neck and arms. Not a cover-up. Acts in the skin—not on it. Fragrant, greaseless base for softening, lubricating skin as it clears up those blemishes. At leading drug and toiletry counters and beauty shops. If you have these age-revealing brown spots, blotches, or if you want clearer, lighter skin, begin using ESOTERICA today.

WESTERN DRUG

JOHNSON FURNITURE'S
Gin Whistle
CHRISTMAS SALE
Now In Progress

Be sure to take advantage of the huge savings on such name brands as . . .

KROEHLER G.E. TELEVISIONS
SPRAGUE & CARLETON
G.E. Appliances
DREXEL MOHAWK
G.E. STEREOS
SIMMONS HIDE-A-BED
BASSET

JOHNSON FURNITURE
317 Main Phone 5150

WONDERFUL CHRISTMAS GIFTS FOR EVERYONE

Anthony's

MEN'S AND YOUNG MEN'S LAMINATED JACKET
Handsome New Link Stitch

12.95

Stings: 34 to 46

Beautifully detailed and tailored men's jacket fashioned in 100% Orlon Acrylic laminated to Scotchfoam and lined with wide shadow stripe 100% Acetate. Handsome new "baby" link stitch. Two-button adjustable cuff, mandarin collar, front zipper closure. Hand washable.

Colors:
White with Black & Red trim.
Fen with White & Pewter trim.
Green with White & Gold trim.
Stone Blue with White & Navy trim.

Merry Roses On Christmas Dresses . . .

A. Shimmering young holiday dress in red and white. Red nylon top with puff-sleeves, sheer white nylon full flare skirt with beautiful rose trim. Nylon taffeta underskirt.
Sizes: 7 to 14
5.95

B. Little girl's red and white sashed cotton dress. Red top with puff-sleeves, full white skirt trimmed with roses. Nylon net underskirt.
Sizes: 3 to 6X
3.98

A man's idea of a gift . . .

Sport Shirts
• solids • prints
• embroideries

5.00

Sizes: S, M, L, XL

Man's long sleeve sport shirts with 2 novelty trimmed pockets, regular collar. Fashioned in all the newest types of fabrics: in solids, prints, embroideries. One of the finest shirt selections you have ever seen! Sizes: S, M, L, XL.

The DeLuxe Jewel Box



Give her The DeLuxe Jewel box for her treasure . . . with twinkling stars outside, pretty cloisonné with an emblem inside. It has dividing trays for her small and large pieces of jewelry. Size: 14x8 1/2x5 1/2.

Pink, Ivory, Black Gold.
2.98

Pretty Holiday Dresses For The Young Set

A. Smart dress fashioned in embossed-effect cotton, crease-resistant. Velvet trim on bodice, sleeves and neck gives it a bolero look. Self belt, full skirt. Red with black trim or turquoise with black.
Sizes: 7 to 14
5.95

B. Little girl's all sashed Lustrac cotton. Embroidered panel front with ruffle. Elastic in sleeve. Full skirt. Red only.
Sizes: 3 to 6X
2.98

C. Really Christmas-y girl's dress fashioned in combed cotton, crease resistant. Red with white ric-rac and embroidery trim. Full skirt.
Sizes: 3 to 6X
2.98

Boys' Long Sleeve SPORT SHIRTS

2.98

Sizes: 10 to 20

Long sleeve sport shirts tailored to perfection. Fashioned in new Holiday patterned cotton seersucker. Condotti prints in medium dark tones. Button down collars, nicely detailed. See our grand selection . . . you'll want one for the young man in your life.

Ladies' GIVE-Y HANKIES



Cute, useful and . . . so pretty. Solid hankies in white and white with colored trim. Always appropriate.

BOX — **1.00**

Let it rain . . . She'll love to wear Her pretty raincoat And umbrella . . .



She'll love a gift for a rainy day . . . all weather coat in cotton poplin lined with print taffeta, reversible. Styled beautifully with a lined hood and raglan sleeves. Slash pockets. Pretty matching umbrella beige or Willow.

Sizes: 7 to 14
8.95
Ladies Sizes

Anthony's
C. R. ANTHONY CO.

..Lazbuddie Society News..

By MRS. C. A. WATSON
Mr. and Mrs. Fred Wilbanks and Paul, had visiting them over the weekend. Mrs. Wilbanks sister, and husband Mr. and Mrs. John Stephenson of Marshall, Arkansas. Mrs. Dodavah Lawrence of Lubbock visited them also. Mrs. Stephenson is Mrs. Lawrence's mother.

Mrs. David Brown and daughter, Connie Lee from Lordsburg, N. M. visited her mother, Mrs. Laura Treider during the weekend. Laura Faye Chaney, Amarillo, spent the weekend with her grandmother, Mrs. Treider.

Mrs. Ruth Williams, Dorris and Lorene were in Lubbock during the holidays visiting her mother, Mrs. F. A. Armstrong, a brother, Richard Armstrong and family and two sisters, Mrs. Paulene McBride and Mrs. Brad Smith and family.

Guests in the Leon Smith Sr. home during the weekend were his parents, Mr. and Mrs. Dee Smith, Tyler and his brother, Colonel H. D. Smith, San Antonio. Sunday dinner guest in the Smith home were Elder Dennis Day, Canyon, Mr. and Mrs. Hubert Dykes, Sudan and Mr. and Mrs. J. Bouldin from near Hub.

Mr. and Mrs. W. R. Linkhart and their grandson, Sherman Morgan spent the Thanksgiving holidays in Oklahoma, visiting in Bristow, Sapulpa and Tulsa with friends and neighbors.

Mr. and Mrs. Albert Fuller and children were in Dallas while on the Dallas Cowboys-Yankees play and visited with friends and relatives.

The E. C. Ketchums had their children, Thomas, Canyon, Ed, Amarillo and Wanda from Lubbock hom for Thanksgiving.

Mr. and Mrs. R. G. Treider and Mrs. T. D. Waugh were in Lubbock Friday to do some shopping and attended to business matters.

Mr. and Mrs. Hartley Ethridge and children visited his parents, Mr. and Mrs. Earl Ethridge in Mullens, Tex. over the weekend holidays.

Mr. and Mrs. Alton Warren and boys spent Thanksgiving visiting Mrs. Warren's parents, Mr. and Mrs. Cecil Billingsley of Canyon

and Mr. Ethridge parents, Mr. and Mrs. E. I. Warren at Lockney.

Miss Dalton, Lazbuddie music teacher, visited in Fritch and Berger with her parents and friends and relatives during the holidays.

Mr. and Mrs. Charlie Neeley, Wichita Kansas was here during the weekend visiting their daughter and family the Raymond Treider Jr.'s.

Mr. and Mrs. E. A. Parham and Terry left Wednesday immediately after school closed for Merkel to spend the holidays with his parents the W. M. Parhams. Terry spent some time trapping with friends on the Fork of the Brazos river. He caught two possums, two coyotes, two skunks, one coon, one armadillo and one bobcat. The bobcat was caught by the foot and was captured alive. Terry left the bobcat in a cage at his grandparents home near Merkel.

Mr. and Mrs. Joe Bates Jennings, Tamba and Hoppy spent last week at their ranch at DeKalb.

Edna Willoughby, accompanied by her family were in Hereford Thanksgiving visiting Mr. Willoughby's sister, Cora Bentley. Friday the Willoughby's visited her father, H. H. Richardson at Edida. Edna Willoughby is one of the first grade teachers at Lazbuddie. The family lives at Portales.

Mr. and Mrs. Dee Chitwood and Patsy were at College Station Thanksgiving to see Dick and to watch the Texas A & M game.

Mrs. and Mrs. Preston Cargile and children, Lariat and Mr. and Mrs. Dwan Menefee and children, Friona spent Thanksgiving with the Dan Cargiles.

Mr. and Mrs. Richard Engeling celebrated their wedding anniversary Friday, Nov. 29.

Lazbuddie winners of 5000 stamps each last week given in Muleshoe, were Mrs. Leon Lewis and Mrs. Charlie Watson.

Mr. and Mrs. Claud Blackbuk visited their daughter and family the Raymond Lesters in Lubbock Sunday. We are sorry to re-

port that a car ran over and killed the Blackburns German-Shepherd dog early Monday morning. They bought the pup at six weeks old and gave \$75.00 for it.

Visiting the Orville Burnett's Thanksgiving were her parents, Mr. and Mrs. Bill Short, Mrs. S. M. Jones and Mr. and Mrs. Frank Davis, Halecenter and Mr. and Mrs. Silas Short, Muleshoe.

The Dee Brown family had as guest during the holidays her brother, L. G. Harris from Houston.

Mrs. Lee Nicholls Wichita, Kansas is here visiting a few days with her sister and family the Don Schumanns. Thanksgiving dinner guest in the Schumann home MnHi.a anreiu rrvr,e dnM s M Clovis, Mr. and Mrs. Johnny Larue also of Clovis, Mr. J. J. Haun, Aztec and Mr. and Mrs. Andy Fuquay and boys, Lazbuddie.

Birthday Greetings to: Darrell Matthews, Nola Ivy, T. L. Byrd, J. R. Harris Sr., Belinda Hartley, Edna Willoughby, Toni Smith, Joe Fox, Terry Parham, Rhonda Treider, Linda Weaver, Shirley Puman, Lorene and Dorri SWilliams and Rickie Ketcherside.

The Minnesota Twins led the major leagues in home runs during the 1963 season with 225.



RAIN OR SHINE—Peter Conto designs a cape-coat of cotton poplin, combining the smartness of a great cape with the flattery of a belted coat. Cotton knit sleeves provide a pleasing contrast of textures.

FRANKLY SPEAKING

THE HIGH COST OF CHRISTMAS

Taking everything into consideration Christmas is expensive for us. In a deeper sense, it is more expensive for God. We should be profoundly humbled by the cost of Christmas, for God paid a great price in order that Christ might bring us the good news which we are tempted to take so casually.

The real meaning of the day called Christmas is the fact that a kind loving heavenly Father God touched a sinful world to bring salvation. The Christmas fact must become the Christmas faith. Much of our nation and world is so harried and hurried we lose sight of what we are celebrating and know only that we must get on with it or we will never be ready for December twenty-fifth! The truth is that we will never be ready for Christmas until we are ready in spiritual understanding. Only when the Christmas fact becomes a living faith do our hearts sing with real joy, "Silent Night, Holy Night".

The National Safety Council is calling for "sense and sobriety" during the holiday season. The Council is appealing again for the "dry office party," and is joining the religious world in striving to keep "Christ in Christmas".

A true Christmas is a time to renew our faith in the experience of love and devotion. It is a time of family fellowship — a time of giving without the self-centered hope of receiving a material expression. It is a time of giving self and in doing so receiving the love of a spiritual blessing.

This is the fact of Christmas; that God has entered the life of man in order that man might find new life in God! The promise of God becomes a living reality. The true Christmas shows God taking the form of human flesh to dwell among us that we might behold His glory. "The glory as of the only begotten of the Father, full of grace and truth. (John 1:14)

Frankly Speaking — Christmas is meant to be a joyous time centered in the joy of a Savior. God grant that the spirit of the true Christmas shall take hold our world and the message of heaven, "Peace on earth, good will toward men" shall be practiced in our town.

CHRISTMAS Money—See Credit Union, 306 W. 2nd. ttc

HERE'S ALL YOU HAVE TO DO! FREE! FREE! Hundreds of Dollars will Be Given Away. Each Game lasts approximately one week. Get your Free Big Do Card Today. No Obligations or Purchase Necessary.

Libby Fancy Cut, Green BEANS
No. 303 Can **19¢**

- Chase & Sanborne, 10c off Label, 6 oz. jar Instant Coffee with coupon from paper 79¢ without Coupon 89¢
- Scott, Luncheon Napkin, Ass't. Colors, SCOTKINS 50 ct. Pkg. 17¢
- Dromedary Pitted, 16 oz. Pkg. 49¢
- DATES 49¢
- Tender Leaf, 48 Ct. Pkg. 67¢
- TEA BAGS 47¢
- Betty Crocker, 23 oz. Pkg. BROWNIE MIX 47¢
- Nestle Chocolate Drink, 32 oz. Box 85¢

- Fresh Produce**
- No. 1 Quality Baking Size SWEET POTATOES Pound 10¢
 - Roma Beauty (For Cooking or Munching) APPLES Pound 10¢
 - Green Pascal Large Stalk CELERY 9¢
 - New Crop in Shell NUTS Pound 49¢

Azar Halves & Pieces PECANS
10 oz. Pkg. **69¢**

Samsonite FOLDING TABLE
PLASTIC SURFACE TUBULAR STEEL LEGS
Nationally Advertised!
\$3.99
WITH \$25 WORTH OF REGISTER TAPES
Reg. \$6.95 Value

- Fresh Frozen Foods**
- Corn Somer-Dale, Cut 2 10 oz. Pkg. **29¢**
 - Seabrook, French Fries, 16 oz. Pkg. POTATOES 29¢
 - Treesweet, 6 oz. Can ORANGE JUICE 29¢
 - Swanson, TV 11 oz. Pkg. MEXICAN DINNER 49¢
 - Ashley's, 8 oz. Pkg. GUACAMOLE SALAD 49¢

Rolls Parkerhouse, HOLSOM, 24 ct. Pkg. **19¢**

- FRESHEST MEATS**
- Chuck Roast Armour Star, Aged, Heavy Beef, "Valu-Trim", Pound 49¢
 - Fryers USDA FROZEN FRESH, FRESHER THAN FRESH, Whole, Lb. 33¢
 - Pork Chops Lean, Northern Pork, Center Cut, Rib Chops, Pound 59¢

DETERGENT TIDE
Giant Box **73¢**

TOILET SOAP
Zest 2 bath bars 49¢
COMET Household Cleanser Large Can 17¢

- Applesauce Orchard Pride, No. 300 Can 12 1/2¢
- Ice Cream Plains, or Glacier Club, Assorted Flavors, 1/2 Gallon 69¢
- Choc. Chips Baker's, 5c off Label, 12 oz. Pkg. 37¢

CATSUP
Snider's Chili Catsup 2 14 oz. 35¢

THRILL
Liquid Dish Detergent 22 oz. Bottle 69¢

JOY
For Dishes, Mild & Gentle 12 oz. Btl. 39¢

TOILET SOAP
Zest 2 bars 31¢

- Silver Bar, Pink, No. 1 Can SALMON 49¢
- Calrose in Syrup, No. 2 1/2 can PEARS 29¢
- Baker's Angel Flake, 7 oz. can COCONUT 29¢
- 3 Minute, White or Yellow Pop Corn 32 oz. Pkg. 27¢
- Pillsbury Pancake Mix 2 lb. box 39¢
- Sunshine, 16 oz. Pkg. OATMEAL Cookies 39¢

County Kist Golden Whole Kernel CORN
12 oz. Can **12 1/2¢**

HEALTH & BEAUTY AIDS
Regular 89¢ Retail, 60 Count Bottle BUFFERIN 67¢
Pyrex, Reg. \$3.95 Retail, 6 Cup PERCOLATOR \$3.95
Holiday, By Thermos, Standard Neck, Regular \$1.98 Retail, Pint Size VACUUM BOTTLE \$1.69
Jeannette, White Glass, Reg. 15¢ Retail COFFEE MUG 2 for 25¢
Saran Silver, Reg. 77¢ Retail, 1000 ct. ICICLES per pkg. 53¢

Oleo Crunrgold Corn Oil 1 lb. Ctn 29¢

Eggs IDEAL, Grade A Medium, Dozen 45¢

FOR GREATER FARM PROFITS SEE BELL FERTILIZER, INC.

Continental Mix-O-Blender Factory

All Analysis -- Bagged or Bulk Material
State Guaranteed Analysis
Anhydrous Ammonia ---- Rental Equipment

For Your Famous BIG 12 COTTON TRAILERS

- STEEL OR WOODEN RUNNERS
- ALL STEEL TRAILERS
- COMBINATION GRAIN AND COT TON TRAILERS

Trailers Located 2 Blocks North of Crossroads Cafe on East Side of Plainview Highway

- Book your PAG Planting Seeds with us NOW, for GUARANTEED Delivery for 1964. There will be a SHORTAGE on these SEEDS. See—

BELL FERTILIZER, INC.
123 WEST BIRCH AVENUE
Phone 3-2750 or 4690
DICK BELL, Mgr. RES. 3-5760

Lowest Prices... Greatest Variety... always at...
Piggly Wiggly