

# The Wheeler Times

Serving WHEELER and MOBEETIE

THE COUNTY SEAT NEWSPAPER

5c Per Copy

WHEELER, TEXAS, THURSDAY, MAY 22, 1947

## WATER IN TOP PLACE FOR 3 GAMES

### LEAGUE RESULTS

Played May 18	W	L	Pct.
at Miami 4	3	0	1.000
at Briscoe 2	2	1	.667
at Kellon 9	1	1	.500
	0	1	.000
	0	1	.000
	0	2	.000

### SCHEDULE FOR MAY 25

Wheeler at Briscoe.  
Miami at Erick.  
Kellon at Sweetwater.  
Wheeler seems to have un-  
der command of the Texas-  
baseball circuit at the  
three weeks playing. The  
team has 3 wins in as  
many while Erick is in  
series with 2 wins and one

Wheeler pasted Miami 27 to 4  
to break into the win  
column got off to a bad  
start to Erick 9 to 11.  
Wheeler ran up its third win  
turning back Briscoe 3

Wheeler played in luck Sun-  
day only 4 hits and 8  
runs on the scoreboard. Bris-  
coe hit up 8 hits but they  
were not and they were un-  
able to take advantage of Sweet-  
water's errors. Both clubs  
played defensive ball.

Wheeler, due partly to lack  
of hitting, got Kellon too deep  
in early innings to  
allow Erick's three-  
run 9th was deserved.  
Wheeler's good club, with good  
pitching, will be in the race  
for the title. So will Kellon,  
who got off on the  
front in the opener. The  
contested games between  
Wheeler, by the way,  
played on June 8.

## OLIVER GOES AWAY

Oliver, 74-year-old re-  
tired business man,  
left at 3:05 o'clock  
this morning at St. Josephs  
at Wellington. He had  
been ill for four  
weeks and his condition became  
serious.  
He and step-son, Seibert  
were with him when the  
illness began. Another step-son, Con-  
Eugene Worley, and a  
nephew, Mrs. Louise Fields,  
Washington D. C., arrived  
Thursday afternoon.  
Arrangements were  
made for the body to be taken  
to the Wash. for interment  
in the family plot. It was Mr.  
Seibert's request that he be buried  
where he resided for a  
number of years in childhood and  
before moving to  
Wheeler in 1907.  
He operated the Liberty  
for 22 years, retiring in  
1943 when he and  
Mrs. Seibert sold the business to  
Seibert. He was active  
in management all of that  
time.

Oliver was born in Alton,  
Ill. April 20, 1873. At the  
age of 14 he moved to Spokane  
and resided until 1907 when  
he moved to Oklahoma City to be-  
come associated with his brother,  
M. Tull, in the furni-  
ture business. They later entered  
the business there, and in  
1912 they moved to Wheeler.  
He was married to Mrs.  
M. Tull in 1907. She died  
July, 1922, at Sulphur,  
Okla. and the family estab-  
lishment in Wheeler, Mr.  
Oliver was a good father to the  
children. He played a part in  
community activities during  
years he resided in Sham-  
rock, Okla. who extend sym-  
pathy to the family in its bereavement.

His widow and three  
children, Mr. Oliver is sur-  
vived by a sister, Mrs. Clara Tull  
of Oklahoma City, a brother,  
W. L. Oliver of Spokane, and  
four children.

## Saturday, May 24, Is Poppy Day



### ON POPPY DAY

They'd rather not remember, they'd rather not talk about the bravery that meant for them . . . lost limbs, blinded eyes, seared lungs. It's up to you to remember, to say "thanks" on Poppy Day.

## Saturday, May 24, Is The Day!

## Memorial Day Poppies To Go On Sale Saturday

Memorial poppies which will be worn in Wheeler county on Poppy Day, Saturday, May 24, have been received by local American Legion Auxiliary units. The little red flowers came from Legion, Texas, where they were made by disabled veterans employed by the Auxiliary.

"The poppies are crepe paper replicas of the wild flowers which grow in France and Belgium where so many of the battles of both wars were fought," explained the Wheeler Auxiliary unit committee. "They are the poppies which grew between the crosses, row on row, in the World War I battle cemeteries and so became the memorial flower for the war dead. Now they symbolize memory for those who died for America on land, sea and in the air in every part of the world."

"Each flower is made by hand by a disabled veteran, the paper petals carefully attached to the

wire stem and shaped to resemble the blooms with which nature decorated the battle field graves. The work gives the disabled men something interesting to do during the long hours of hospitalization and convalescence. It occupies their hands and minds, helping them get well. It also enables them to earn money, which builds their morale and makes things easier for themselves and families."

The poppies are being unpacked and counted by the Auxiliary's poppy committee and made ready for the volunteer workers. No price will be asked for the little flowers but everyone receiving one will be asked to contribute something for the welfare of the disabled veterans, their families and the families of the dead.

The Poppy Day contribution makes possible the Legion Auxiliary's extensive rehabilitation and child welfare work.

## MOSS IS HEAD CHINA RELIEF

Homer L. Moss, chairman of north Wheeler county's United Service to China campaign, formerly United China Relief, asks persons wishing to make contributions to war-torn China may address them to him at Wheeler and they will be promptly remitted to state headquarters.

"During the past six years, nearly \$45,000,000 has been contributed and sent to aid our gallant wartime ally and all of this money was utilized for worth-while, lasting projects," said Moss. "More than 24,000,000 people felt this friendly help."

"Among those benefitting were: 2,500,000 defuegeds fed, clothed or sheltered; 185,000 children received expert care; 3,900,000 civilians given medical attention; 13,600,000 soldiers received medical or hospital services; 360,000 students and teachers aided; 600,000 individuals received needed assistance and 115,000 partime project workers were trained."

"Contributions to USC are budgeted carefully, spent under scrupulous supervision, and are regularly audited. Each project is closely studied to its importance in the overall objectives of the program. Plans are prepared by expert workers in the field, and are reviewed in the U. S. by leaders of business, industry, education, medicine and social welfare specialists."

"United Service to China has designated its program to conform with Chinese plans to help themselves. It is aimed at the heart of China's problems and will produce lasting benefits."

### NOTICE!

All members of the Ladies Auxiliary are urged to attend the regular meeting which will be Tuesday night, May 26, at the Legion Hall.

Mrs. Artie Hunt, Mr. and Mrs. E. C. Pounds and son, Carl, of Lubbock visited with Mrs. I. B. Lee over the weekend.

## WHEELER DRUG LOOTED \$500

Jewelry valued at more than \$500 was taken by burglars in a haul at the Wheeler Drug Store Thursday night of last week.

Gaining entrance by breaking the glass in a rear door, the thief or thieves sacked up watches, diamond rings and wedding sets in the jewelry department, and made their escape without molesting other valuable merchandise, Harry Wofford, one of the owners, said.

The burglary was discovered by John Wofford, manager, when he opened the store Friday morning. The store had been locked at 9:30 o'clock the night before.

No finger prints were found by B. M. Litton, Wheeler minister who engages in finger print work as a hobby. Investigating officers reported no clues.

There was no burglary insurance covering the loss, the owners stated.

## Denson Grill Opens At Jim's Cafe Stand

Announcement is made in this week's Times of the opening of Denson Grill by Mr. and Mrs. Cecil Denson. Mrs. Nora Watson will be chef of the new eating house which takes the place of Jim Magruder's cafe which was purchased by Denson. The cafe was closed for a week for renovation and installation of new fixtures.

The Densons and Mrs. Watson invite the patronage of old and new customers. Special Sunday dinner will be a new feature.

Mr. and Mrs. W. B. Wileman had as their guest over the weekend relatives and friends from Booneville, Miss. They were Mrs. Tom Peeler and daughter, Tressa, Mrs. Matt Peeler and daughter, Mrs. Dick Price, and Martha Nan Yates.

## MOBEETIE WILL BE CHALLENGED IN QUAIL GAME

Still undefeated in the Red River Valley League after nosing out Childress Sunday 10 to 9, Mobeetie's pace-setting ball club will be hard pressed in disposing of the league challenging Quail club next Sunday.

The game will be played at Mobeetie and is expected to draw a record out-of-town attendance since Quail is tied with Childress as runner-up in the Red River Valley circuit.

Mobeetie was admittedly lucky in coming out last Sunday's home slugfest unbowled. The Times reproduces a story of the game which appeared in Monday's Childress Index, written by Frank Hatt of the Index staff:

### By Frank Hatt

In a spirited slugfest yesterday Mobeetie, undefeated leaders of the Red River Valley baseball league nosed out Childress 10-9.

There were 34 hits in the game including 13 doubles and two triples. Each team slammed out 17 hits.

J. W. Redwine and Adron Lobban led the Childress attack, each getting 4 hits in 5 tries. Redwine had two doubles and two singles and Lobban had a triple, two doubles and a single. Ross James and Wayne Butler each got two hits.

Eight players on the Mobeetie team hit safely twice with Bus Dorman getting a triple and a double.

Childress had little trouble hitting Metz Lafollette, leading pitcher of the league but loose fielding by the infield cost the game. Each infielder except J. Mills committed blunders.

The outfield on both teams had a busy day with a wind blowing from home plate carrying the ball well out. The outfield was muddy to further slow down the fielders. Childress opened with a run in the first inning thanks to doubles by Redwine and Lobban and an infield single by James.

Mobeetie came right back to score four off W. M. McDonald with two out. Two hits and two errors did the damage.

Butler pitched the balance of the game for Childress and might have won except for a few bad breaks.

Childress picked up two in the third to trail by a run when Red-

## Roscoe Allen Buys Store From Clark

Roscoe Allen has bought C. C. Clark's new and used furniture and hardware store west of the postoffice and has moved his radio repair shop from Nash Appliance to the new location. He will continue to handle a small furniture and hardware stock, both new and used, but will specialize in radio sales and service.

Allen's Radio Service and Sales store is equipped with the very latest equipment. He carries a complete stock of radio tubes and parts.

Mr. and Mrs. J. I. Maloy visited Mr. and Mrs. T. S. Puckett, Tony and Phyllis Kay in Clinton, Okla. Sunday.

## Need Help Of Readers To Make Times Newsy

The Wheeler Times asks your help in reporting more news. We appeal to readers everywhere to turn reporter and mail send or phone us happenings of local interest.

The Times is printing several more columns of news each week than ever before in its history. The trouble is that since we enlarged the page size from 6 columns to 7, and increased the number of pages from 8 to 10 and sometimes more, some readers are led to believe there is less news than there used to be.

Several subscribers have complained lately we were not carrying enough news. We respectfully call their attention to the fact that when we acquired The Times 19 months ago the newspaper consisted of 6 and 8 pages, 6 columns to the page. That is a total of 36 to 48 columns of news and advertising. At the present time we are

## COUNTY WHEAT GROWERS GIVEN CHEERFUL NEWS

Wheeler county wheat growers will be cheered by the prediction in Amarillo this week of Joseph P. Henican, Jr., partner in one of America's largest brokerage firms, that high wheat prices will continue for at least one more season.

Mr. Henican is one of a group of 20 members of the firm of Merrill Lynch, Pierce, Fenner & Beane, which is making a tour of the country, interviewing business leaders to get some indication of the nation's economic future.

"We must feed the world or turn it over to Russia," he said in support of his claim of continued high commodity prices.

The world surplus of eight million tons of grain, which existed in 1938, is exhausted, he pointed out and many countries have not been able to resume normal production due to lack of fertilizer and machinery.

Until normal production can be achieved, the United States must feed these countries, Mr. Henican said.

He says that his firm feels a period of readjustment is inevitable to liquidate over-extended inventories. Construction prices also must be lowered before building can return to normal, he said.

## WHEELER CLUB ENJOYS FEED

The Wheeler Chamber of Commerce held its regular bi-monthly meeting in the dining room of the Denson Grill Tuesday noon with approximately 20 members and one visitor present. The guest was Staff Sgt. Miller of the U. S. Recruiting Service.

A delicious fried chicken dinner was enjoyed by the entire membership. In fact, club members liked it so well that they decided to meet once a week beginning the first Tuesday in next month. The next meeting date will be June 3.

The club also voted to limit the membership to 30 active members and when the membership reaches 30 anyone who desires to become a member will have to be retained on a waiting list until such time as one of the old members drop out.

C. J. Meek and club president, G. W. Hefley gave a report on the Highway 41 meeting which was held in Cordell, Okla., and which nine local men attended.

## Bonds and Eubanks Meet After 44 Years

Two cousins, Will Eubanks of Quanah and H. H. Bonds of Mobeetie, met for the first time in 44 years Sunday when Will Eubanks and another cousin, Guy Eubanks, also of Quanah, spent the day in the home of H. H. Bonds. Mr. Bonds has been living in Mobeetie twenty years and Mr. Eubanks has lived in Quanah thirty one.

Others visiting in the home Sunday were Mrs. J. L. Mixon and Mr. and Mrs. Clyde R. Bonds.

## Mobeetie Women Are Invited To Meeting

The women of Mobeetie are cordially invited to attend a demonstration on the canning of pineapple in the homemaking department of the Mobeetie High School, Thursday, May 29, at 2:30 P. M. by the county home demonstration agent, Mrs. Emma Hastings. "Come and bring your friends and neighbors," said the announcement. Plans will be made for organizing a home demonstration club for Mobeetie.

## DATE OF DAIRY SHOW IS MOVED UP TO MAY 27

Date of the second annual Wheeler-Collingsworth County Dairy Day Show has been moved up two days and will be held in Shamrock on Tuesday, May 27. Instead of May 29, County Agent Hubert Martin announced this week.

Date of the show was changed so that G. D. Gibson, Extension Dairy Specialist of College Station and a group of other Extension Service workers can attend and take part in the day's activities. Many north Wheeler county herd owners plan to compete.

Gibson, prominent throughout Texas as an authority on dairying, will classify the animals entered in the two-county show, and with his group of workers, will lead discussions on various problems confronting dairymen.

Many entries are expected to be exhibited in this year's show which will be held in the recently purchased farm-livestock building on West Second Street in Shamrock. Opening at 9:30 o'clock Tuesday morning, the program of the day will go as follows:

9:30 to 10:15 a. m.—judging contest open to public. Everyone is invited to enter this contest and merchandise prizes will be awarded the winning adult and junior contestants.

10:15 to 11:15 a. m.—exhibitors and spectators are invited to visit with members of the Amarillo good-will tour and hear a concert by the West Texas State College Band, Canyon.

1:00 p. m.—exhibitors and spectators will assemble at the Texas Theatre where a moving picture on the production of clean milk will be shown by the Wheeler County Sanitarian W. R. Ritter. Discussions on various phases of

## PROMPT REPORT ILLNESS ASKED

If every case of suspected communicable disease could be promptly visited either by the family physician or the local health officer, thousands of susceptible persons would be protected from disabling illnesses, according to the State Health Officer.

To quote Dr. Geo. W. Cox, "The old fashioned theory that it is a good thing for children to have a number of the catching diseases and get them over with, has long since been known to be a serious and sometime fatal error. The longer a child can keep from having these diseases, the better it is for him. Every child should be completely protected by vaccination or inoculation against any such diseases where an immunity can be produced."

Prompt diagnosis, isolation, good medical and nursing care give the patient the best chance for a satisfactory recovery without the serious complications that sometimes accompany even the mild forms of communicable diseases. Dr. Cox emphasized that obeying the public health laws regarding isolation and quarantine of communicable diseases protects not only the patient, but helps prevent others from contracting the illness.

"The State Health Department," Dr. Cox said, "is doing everything in its power to protect the health of the people of Texas. The co-operation of every individual in protecting his own health, and that of his community, will do more than anything else to help check the spread of communicable diseases."

D. O. Beene of Andrews was a Wheeler visitor over the weekend. Mrs. M. McIlhenny and Miss Blanche Grainger visited in Dallas the first part of this week.

## CLOSING GAPS ROAD TO SAYRE SEEMS NEARER

The outlook has improved for paving the gap on Oklahoma State Highway 41 between the Wheeler county line and Sayre, members of Wheeler's 9 member delegation to a recent road meeting at Cordell reported.

Delegations from Pampa, Wheeler, Sweetwater and Sayre were present at a session of the Highway 41 association, seeking to pave the road gaps in Oklahoma. It was the first full dress meeting of the 41 organization since 1940.

State Senator Wheeler Tiddle of Oklahoma summarized the opinion of several representatives and senators present when he declared, "First consideration should now be given to Highway 41." Bobb Barr who will soon become a member of the Oklahoma Highway Commission said the state was definitely interested in completing some cross roads in Oklahoma and that personally he was in favor of filling the gaps on 41.

No assurance was given when the project could be placed on the list of roads up for immediate consideration but the general feeling of those present was that progress was made at the Cordell meeting.

County Judge G. W. Hefley of Wheeler was appointed a director of the association of which George Stovall of Sayre is president; T. P. Quayle of Minco, vice president, and George Thomas of Sayre, secretary.

Those attending from Wheeler were: Judge Hefley, C. J. Meek, Thomas Daughtry, Commissioner S. B. Davis, Harold Nash, Bob Holt, Commissioner Lloyd Anglin, George Warren and Raymond Sayre.

## COUNTY LUCKY IN HAIL STORM

No reports have been received by The Wheeler Times of any serious damage to either wheat or fruit in this county during a series of hail storms which caused widespread destruction in many Panhandle counties.

Hail fell Friday afternoon over the Panhandle, damaging crops, cars and roofs in an area extending from west of Panhandle to three and four miles east of Pampa and varying from one-half to two and one half miles wide.

Motorists from Amarillo to Pampa reported trees stripped of leaves around Panhandle and hail on the ground from four to five inches deep in spots.

Wheat crops were virtually destroyed in some areas, most extensively around Panhandle and Kingsmill.

Gray County farmers estimated that 4 to 8 percent of the Gray County wheat had been destroyed. Gray county insurance firms were not in possession of all the facts it was learned, due to the existence of water and heavy mud in many wheat fields. However, one insurance man said a claim for 70 percent loss had been filed with him.

Wheat farmers of Armstrong County, Friday suffered damage from two days of hail storms which destroyed three-fourths of 12,000 acres of wheat.

Weather observers at Childress said heavy hail fell there Friday night and observers at Pampa said a light hail fell there.

Earl E. Morris, United States Weather Bureau observer at Clau-

## County Former Navy Men To Make Cruise

One or more former Navy men from Wheeler County will be called to active duty for a two weeks cruise starting the last of May. Eighth Naval District headquarters has announced today. All men making the cruise have volunteered for peacetime training to keep up with latest developments of the Navy. They will be paid according to rank or rate they held at the time they went to inactive duty after the war.

Orders have been issued to 525 enlisted men and 118 officers from the district who asked to make the cruise. They will make the 14-day trip aboard three United States warships—the carrier, Wright, and the destroyers Owens and Keith.

**THE WHEELER TIMES**

Published Every Thursday at Wheeler, Wheeler County, Texas, By COOPER, HOWELL & MONTGOMERY

J. C. Howell ..... Editor-Mgr.  
Annie Mae Howell.....Society Editor  
Richard L. Bradley ..... Printer  
Delbert L. Mitchell.....Apprentice

MEMBER  
Panhandle Press Association  
National Editorial Association

MEMBER 1946  
TEXAS PRESS ASSOCIATION

SUBSCRIPTION RATES  
In Wheeler, Bockham and Hemphill Counties  
1 Year .....\$2.00  
6 Months .....\$1.25  
3 Months ..... 75c

Everywhere Else  
1 Year .....\$2.50  
6 Months .....\$1.50  
3 Months ..... 85c

ADVERTISING RATES  
National Rate.....42c Column Inch  
Local Rate.....30c Column Inch  
Classified.....See Want Ad Page

Entered as second-class matter Dec. 18, 1933, at the postoffice at Wheeler, Texas, under act of March 3, 1879.

NOTICE TO PUBLIC  
Any erroneous reflection upon the character, standing or reputation of any person, firm or corporation, which may appear in the columns of this paper will be gladly corrected upon due notice being given to the Editor personally at the office at Wheeler, Texas.

THURSDAY, MAY 22, 1947

WHY GERMANY CHANGED  
The old time Germans were thought of as a quiet and home-loving people. Many Americans who had lived in German families while abroad, were strongly attached to them in the old days. How come it that the nation abandoned these old traits, and went in for war so violently? One reason might be that the

**LEGAL NOTICE**

**SHERIFF'S SALE  
THE STATE OF TEXAS  
COUNTY OF WHEELER**

WHEREAS, on the 14 day of April, 1947, in Cause No. 3787, in the District Court of Wheeler County, Texas, wherein The State of Texas in behalf of itself and Wheeler County, Texas, and Mobeetie Independent School District No. 21 were Plaintiffs, and Impleaded Party Defendants respectively recovered judgment against the unknown heirs and legal representatives of J. W. Mayfield, Deceased and all unknown persons, owning, having or claiming any interest or lien in the hereinafter described property, Defendants, for taxes, penalty, interest, and cost against the hereinafter described property;

WHEREAS, on the 5 day of May, 1947, by virtue of said judgment and the mandates thereof the Clerk of the above mentioned District Court of said county did cause to be issued an Order of Sale commanding me as Sheriff of said county to seize, levy upon, and sell in the manner and form as required by law the hereinafter described property;

WHEREAS, by virtue of said judgment and said Order of Sale and the mandates thereof I did on the 5 day of May, 1947, seize and levy upon as the property of the above defendants the following described property, situated in Wheeler County, Texas, to-wit:

(Said description showing the number of acres, original survey, locality in county, and name by which said property is most generally known.)  
Lot 10, Block 110 in the town of New Mobeetie, Wheeler County, Texas, according to the plat thereof on file in the office of the County Clerk of said county.

And I will on the First Tuesday in the month of June, 1947, the same being the 3 day of said month

Franco-German war of 1870-71 had a bad effect on the country. They won an easy victory over France, and collected an indemnity that was very heavy for those days. It no doubt seemed to many of them that war was a paying proposition. So Germany abandoned the noble thoughts of its philosophers and humanitarians, and went in for war on two occasions.

th, proceed to sell all the right, title, and interest of the Defendant in and to said property at the Court House door of said county in the city or town of Wheeler, between the hours of 2:00 p. m. and 4:00 p. m. to the highest bidder for cash, provided, however, that none of said property shall be sold to the owner of said property directly or indirectly or to anyone having an interest therein or to any party other than a taxing unit which is a party to this suit for less than the amount of the adjudged value of said property or the aggregate amount of judgments against said property in said suit, whichever is lower, subject also to the right of the Defendants to redeem same in the time and manner provided by law and subject also to the right of the Defendants to have said property divided and sold in lots or divisions than the whole.

Dated at Wheeler, Texas, this 5 day of May, 1947.  
JESS SWINK  
Sheriff, Wheeler County, Texas.

21-3 to.

**LAWN CULTURE IS DISCUSSED**

COLLEGE STATION—Every spring many people in Central and West Texas make the mistake of applying lime on lawn grasses to promote good growth.

Lime is not a fertilizer, as many people suppose, but a mineral for "sweetening" acid soil. Miss Sadie Hatfield, Extension landscape gardening specialist of Texas A. and M. College, explains that lime will be helpful to lawn grasses only if the soil is definitely "sour". Sour soils are largely in East Texas, where rainfall is heavy and the soil has a high vegetable matter content. Liming lawns in East Texas probably will help to some extent, the specialist says, but it is safe to say that nowhere in Central and West Texas does soil need lime for better lawns.

Most Texas soils already have enough, and in many cases too much lime for the healthy growth of lawn grasses. A smart procedure in liming lawns is to make a check on whether crops in the area are limed, as they are in East Texas. If crops need lime, then the lawn needs it, Miss Hatfield says.

In sections where lawns do need

lime, it is often applied at the wrong time and in the wrong way. Landscape gardeners have found that acid lawn soils are sweetened to best advantage when lime is applied in late fall, so that freezing and thawing during the winter can help work it into the soil. A good treatment for lawns now is a light top dressing of fine loam and fertilizer, to help get the grass off to a good start.

WHEELER TIMES WANT-ADS GET RESULTS!

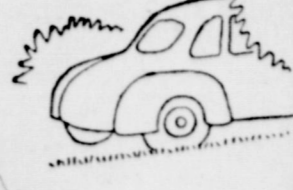
Newspaper Advertising Pays!

DR. JOEL M. GOOCH  
OPTOMETRIST

200 S. Wall Street  
Phone 123

SHAMROCK, TEXAS

"One more thing!  
are you absolutely  
sure you're using  
Phillips 66 Motor Oil?"



PROVED BY 66 BILLION MILES OF SATISFACTORY SERVICE



**If Natural Gas could be carried in Buckets . . .**

Every family within reach of a gas well could have natural gas service . . . every Jack and Jill in Texas would be fetching a pailful . . . if gas could be carried in buckets!

But that's impossible, of course.

The only way to move natural gas from wells to markets is through pipe lines—great steel arteries that wind over hills and under rivers, through swamps and wastelands, linking enormous underground reservoirs with the burners in your home and factory

United Gas has more than 6,000 miles of such lines, connected to more than 100 fields in Texas, Louisiana and Mississippi. At the outlet ends of United's pipe lines are 322 southern cities and towns, many of which are served by United Gas distribution systems. By providing this link between wells and markets, by making this gas available for use, United is giving value to gas that might otherwise remain worthless in the ground . . . is helping to bring the comfort and convenience of natural gas service into your home and that of your neighbor.

**UNITED GAS**

★ ★ UNION PRODUCING COMPANY ★ ★

**"I'LL COME TO YOUR HOME OR PLACE OF BUSINESS and help you with your Lighting Problems"**

With lighting so important to the eyesight of your family, especially your children, it's wise to have this lighting survey made by a Public Service specialist. Using the latest scientific instruments, our lighting specialist will measure the light in every room of your home. And he'll be glad to check the lighting in your place of business.

*Free!*

Yes, the service comes to you without charge. Fill in the coupon and mail, or call your nearest Public Service office to find out from our specialist if the lighting in your home or place of business is correct. The survey places you under no obligation.

SOUTHWESTERN PUBLIC SERVICE CO.  
(Please Mail to Your Nearest Public Service Co. Office)  
Please send a representative to advise me on better lighting and adequate wiring.  
Name \_\_\_\_\_  
Street Address \_\_\_\_\_  
City \_\_\_\_\_ State \_\_\_\_\_

We are acting only in an advisory capacity. We have nothing to sell but good electric service.

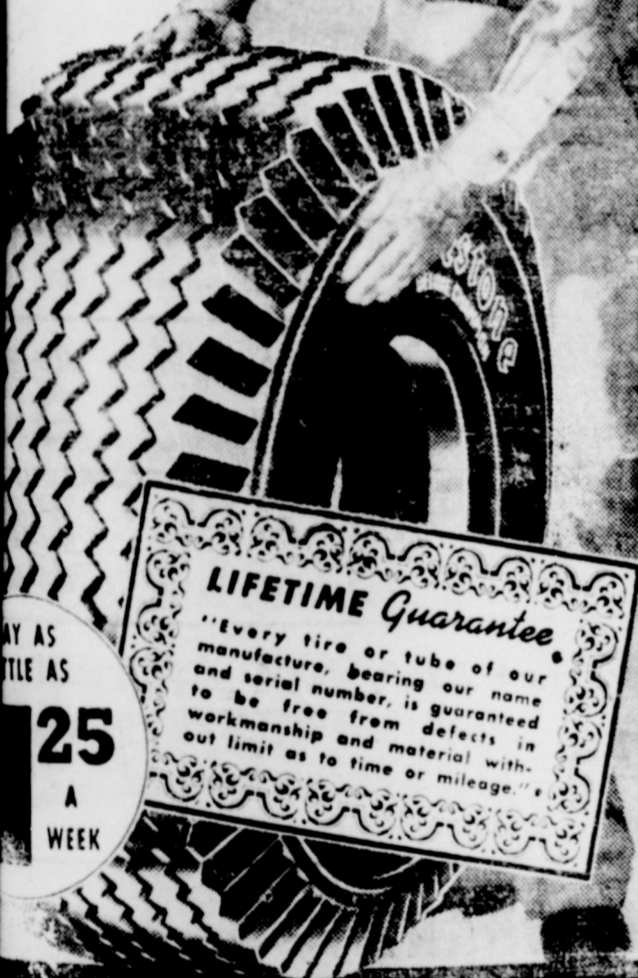
**SOUTHWESTERN PUBLIC SERVICE COMPANY**

25 YEARS OF GOOD CITIZENSHIP AND PUBLIC SERVICE

**YOUR USED TIRES ARE WORTH MORE AT Firestone**

**NEED THOUSANDS OF USED TIRES!! YOU'LL BE AMAZED AT THE LIBERAL ALLOWANCE THIS MONTH IN FIRESTONE DELUXE CHAMPIONS . . .**

in and equip your car for driving and vacation. You can't afford to miss opportunity to buy the De Luxe Champion at a big savings! We used tires for retreaded and if your tires are partly worn you'll save money by trading in now. Don't put it off. **COME TODAY.**



**YOU SAVE 3 WAYS**

- Save BY THE FIRESTONE LIBERAL TRADE-IN ALLOWANCE
- Save MORE ON MILEAGE AND SAFETY
- Save TIME AND TROUBLE . . . USE THE CONVENIENT FIRESTONE BUDGET PLAN

**Compare these FEATURES**

- up to 85% STRONGER New Safi-Sured cord body gives extra protection against blowouts and can be recapped again and again.
- up to 60% MORE NON-SKID ANGLES New Safi-Grip tread assures extra traction and extra protection against skidding.
- up to 32% LONGER MILEAGE Wider, flatter tread and Vitamic Rubber provide extra protection against wear.

SEE OUR EXTRA VALUE MERCHANDISE HOME AND FARM - CAR AND WORK AND RECREATION

**NASH APPLIANCE & SUPPLY**  
"Better Things For Better Living" WHEELER

**LEGAL NOTICE**

**SHERIFF'S SALE**  
THE STATE OF TEXAS  
COUNTY OF WHEELER  
BY VIRTUE OF AN ORDER OF SALE issued pursuant to a judgment decree of the District Court of Wheeler County, Texas, by the Clerk of said Court on the 19 day of May A. D. 1947, in a certain suit No. 3788, wherein The State of Texas in behalf of itself and the county of Wheeler are Plaintiffs and John Marquis

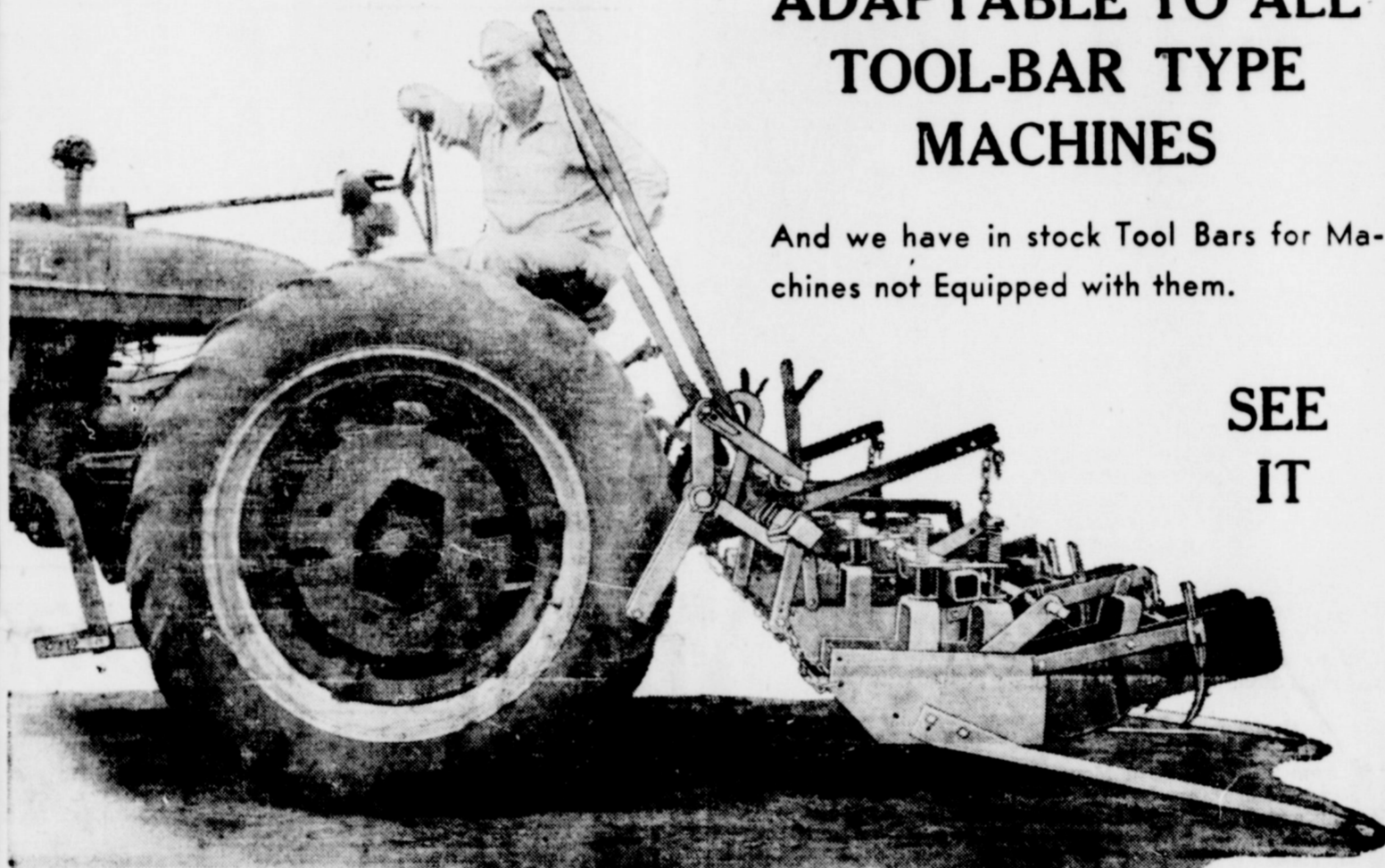
and Pearl Clemens, if living and if dead their unknown heirs and legal representatives are Defendants, in favor of said plaintiffs for the sum of \$64.11 for taxes, interest, penalty and costs, with interest on said sum at the rate of six per cent per annum from date fixed by said judgment, together with all costs of suit, that being the amount of said judgment rendered in favor of said plaintiffs by said District Court of Wheeler County, on the 28 day of April A. D. 1947, and to me directed and delivered as Sheriff of said Wheeler County, I have seized, levied upon, and will on the first

Tuesday in July A. D. 1947, the same being the 1 day of said month, at the Court House door of said Wheeler County, in the City of Wheeler between the hours of 2 o'clock P. M. and 4 o'clock P. M. on said day, proceed to sell for cash to the highest bidder all the right, title and interest of said defendant in and to the following described real estate levied upon as the property of said defendants, the same lying and being situated in the County of Wheeler and State of Texas, to-wit:  
Lot No. 14, Block No. 57, Woodley's South Side Addition to the Town of Shamrock,

Wheeler County, Texas, according to the recorded plat of said sub-division in the office of the County Clerk said County. or, upon the written request of said defendants or their attorney, a sufficient portion thereof to satisfy said judgment, interest, penalties and costs; subject, however, to the right of the plaintiff for any other or further taxes on or against said property that may not be included herein, and the right of redemption, the defendant or any person having an interest therein, to redeem the said property, or their interest therein, at any time within two years from

the date of sale in the manner provided by law, and subject to any other and further rights the defendant or anyone interested therein, may be entitled to, under the provisions of law. Said sale to be made by me to satisfy the above described judgment, together with interest, penalties and costs of suit, and the proceeds of said sale to be applied to the satisfaction thereof, and the remainder, if any, to be applied as the law directs.  
Dated at Wheeler, Texas, this 19 day of May, 1947.  
JESS SWINK  
Sheriff Wheeler County Texas.  
23-31c.

IN FOURTH YEAR OF PROVEN OPERATION  
**New To Wheeler**  
**Boone Power-Lift Go-Devil**  
2-Row and 4-Row Ready For Delivery NOW!  
ADAPTABLE TO ALL TOOL-BAR TYPE MACHINES



And we have in stock Tool Bars for Machines not Equipped with them.

SEE IT

**ORIGINAL POWER-LIFT GO-DEVIL**

Turns Around In Same Radius With Tractor—Clears Ground

**Fits Your Needs**

The BOONE GO-DEVIL will last a lifetime . . . has no bearings . . . It's automatic, easily installed. Suitable for 2 to 4 rows, enough space between units for various row widths. By reversing stops on bar, units become stationary. Fenders adjustable to any height or can be removed.

IT'S A MODERNIZED GO-DEVIL AND CULTIVATOR COMBINED!

**Here's Why**

**Boone's Go-Devil IS A GOOD BUY**

- Lasts a lifetime.
  - Knifer plates replace cultivator runners to get beds in shape for planting.
  - One man operates it.
  - Turns around clear of ground.
  - Fits all tractors with tool bars.
- (Special tools for most makes of tractors)

**Lower Prices**

2-Row Model  
**\$65.00**

4-Row Model  
**\$125.00**

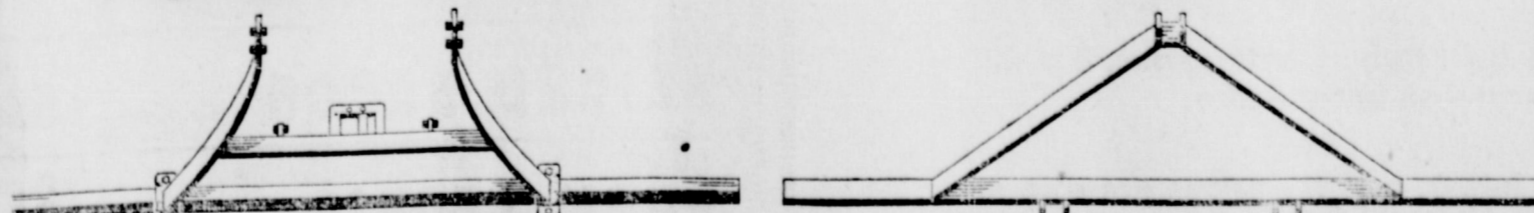
(4-row can be changed to two 2-row by substituting Bar).

**QUICK ... EASY ... MODERN**

Designed and Developed in West Texas for West Texans

**TOOL BARS**

FOR FORD TRACTORS And Most Other Makes



Standard Tool Bar

Ford Tool Bar

These Go-Devils on Floor Ready for Delivery Now!

**NASH APPLIANCE & SUPPLY**

"Better Things for Better Living"

Home Owned

Wheeler

**Veterans' News**

**QUESTIONS AND ANSWERS**

- Q—At what rate of interest can I borrow on my National Service Life Insurance policy?
- A—After your converted NSLI policy has been in force by payment of premiums for one year or longer, you can borrow an amount up to 94 percent of the cash value. The interest charged you on your loan will be 4 percent.
- Q—My claim for disability compensation based on an ailment incurred while I was a prisoner of war has been disallowed. Now it is getting worse and I would like to know what I can do to get compensation.
- A—Veterans Administration will give special consideration to disability claims filed by veterans interned in enemy prison camps. You should get in touch with your nearest VA office and have your case reopened.
- Q—I am going to college under the G. I. Bill but am dissatisfied with the school and would like to know if I can transfer to another school?
- A—Yes. Under the regulations of Veterans Administration you may change your school, but you must have the approval of VA in advance.
- Q—Can I make National Service Life Insurance premium payments on my policy at any Veterans Administration Office?
- A—All VA offices except contact offices are authorized to receive premium payment on National Service Life Insurance.

Veterans claiming readjustment allowances for unemployment during the week ending April 26 fell below the 900,000 mark for the first time since November, VA announced.

Claims have fallen off slowly but steadily from 1,200,000 in mid-January to a new low of 872,000. Veterans drawing unemployment compensation in VA's Branch No. 10 area at the end of this period included 48,142 in Texas; 27,429 in Louisiana and 7,095 in Mississippi. Most of the reduction was attributed by VA to improve seasonal employment opportunities, but contributing to reduction was the fact that, during March, 40,000 veterans claiming benefits under the unemployment phase of the program had exhausted all allowances.

**"BURNED OUT" REALLY MEANS BURIED OUT TODAY**



TODAY'S fire may mean months of vain search for another home. It will mean extra expense. Let us tell you how to provide maximum protection—in safeguarding your home—in safeguarding your investment. Phone us today.

**DORIS FORRESTER AGENCY**

Wheeler, Texas

# SOCIETY

## Local Boy Marries At Lowrey Field Colorado

Wedding vows were exchanged by Miss Helen Lucille Beichle and Sgt. Waymon Herd, May 2, in the chapel at Lowrey Field, Colo., with Chaplain James G. Barrons officiating.

The bride wore a lovely gown and veil of white net, with which she wore white lace gloves. She carried a bouquet of white roses and sweet peas.

Attending the bride as maid of honor, Miss Ester Hellang, was attired in a pink formal and carried an arm bouquet of pink roses and sweet peas.

Sgt. Harvey Collins was the groom's best man.

The bride is the daughter of Mr. and Mrs. Carl Beichle, prominent farmer of near Strasburg, Colo.

The groom is the son of Mr. and Mrs. Hammie Herd of Wheeler. He served two years with the U. S. Army overseas and is now stationed at Lowrey Field, Colo.

The couple is at home at 727 Sherman St. Denver, Colo.

## Mrs. Hubbard Honored With Bridal Shower

Mrs. Charles Hubbard, the former Miss Jo Rean Moore, was honored with a bridal shower in the home of Mrs. George Porter on Tuesday afternoon, May 13. Mrs. Jimmie Swink and Miss Yvonne Clark were hostesses.

Guests were greeted at the door and registered by Mrs. Jimmie Swink. Miss Yvonne Clark showed the gifts which were on display after having been opened by the honoree.

The entertaining rooms were decorated with bouquets of larkspurs. The refreshment table was laid with a white lace cloth and crystal appointments were used. Centerpiece for the table was a lovely bouquet of snapdragons. Mrs. Porter poured the punch.

Those registering during the receiving hours were: Mesdames J. C. Crofford, B. M. Litton, Bill Black, D. A. Hunt, Ira Passon, Hazel Parks and Richard Max Wiley, Geese Pett, W. O. Carrick and Ladine, Harry Wofford, Hazel Davidson, J. E. Stoen, Minnie Farmer, Raymond Moore and Karen, O. W. Pendleton, Homer Pittcock, Lee Barry, Lawrence Crowder, Lindon Sims, Kent and Carland, Roy Bailey, W. A. Finsterwald, Milton Finsterwald, Spuds Moore, Coy Bradstreet, Mrs. H. Gary of Colorado City.

Mr. and Mrs. J. C. Moore, Jr. and family spent Sunday with Mr. and Mrs. Raymond Moore of Kelton.

Mrs. C. B. Nash and Mr. and Mrs. Harold Nash had as their guests from Thursday until Monday Mrs. Nash's brother and wife, Mr. and Mrs. W. E. Pettit of Corpus Christi, two nieces, Mrs. H. Gary of Colorado City.

Jim Trout of Lefors was a Wheeler visitor Monday.

COCA COLA BOTTLING CO., Shamrock, Texas

Refreshingly DRINK Coca-Cola

5¢

COCA COLA BOTTLING CO., Shamrock, Texas

Refreshingly DRINK Coca-Cola

5¢

COCA COLA BOTTLING CO., Shamrock, Texas

Refreshingly DRINK Coca-Cola

5¢

COCA COLA BOTTLING CO., Shamrock, Texas

Refreshingly DRINK Coca-Cola

5¢

COCA COLA BOTTLING CO., Shamrock, Texas

Refreshingly DRINK Coca-Cola

5¢

COCA COLA BOTTLING CO., Shamrock, Texas

Refreshingly DRINK Coca-Cola

5¢

COCA COLA BOTTLING CO., Shamrock, Texas

Refreshingly DRINK Coca-Cola

5¢

COCA COLA BOTTLING CO., Shamrock, Texas

Refreshingly DRINK Coca-Cola

5¢

COCA COLA BOTTLING CO., Shamrock, Texas

Refreshingly DRINK Coca-Cola

5¢

COCA COLA BOTTLING CO., Shamrock, Texas

Cecil Martin, Jess Moore and Irene, H. W. Coffman and Janet, O. H. Starkey, Grady Havenhill, Jud Johnson, R. H. Dyson, Terrell Gunter, J. C. Moore, Jr., Laveta, Bob, Jerry and Sherry, V. B. Hubbard, Pat, Kay and Jo.

Misses Odessa Calcutt, Pat Noah, Lucille Hutchison, Neva Jane Weatherly, Patsy Burgess, Lois May and Evonne Hubbard.

Many gifts were sent by ones unable to attend.

## Mission Study Program Enjoyed By WMS Group

The W.M.S. met at the Baptist Church, Monday, May 19, with Mrs. Frank Wofford in charge of the Mission Study Program. Those taking part in the program were Mrs. Bob Rodgers, Mrs. Lee Guthrie and Mrs. C. N. Wofford.

Those present were: Mesdames Gordon Whitener, Frank Wofford, Lee Guthrie, Bob Rodgers, J. W. Williams, Jewel Rimmer, Harry Wofford, Tom Bradstreet, and Mrs. C. N. Wofford.

## Mrs. Porter Hostess Wednesday Study Club

Mrs. George Porter was hostess to members of the Wednesday Study Club, May 14, for the first regular business meeting of the month of May.

Mrs. H. M. Wiley was leader of the religious program and introduced the guest speakers to be Rev. S. Y. Allgood, pastor of the Methodist church, and B. M. Litton, minister of the Church of Christ.

Those answering roll call were: Mesdames R. Wm. Brown, J. W. Barr, T. M. Britt, M. L. Gunter, Lee Guthrie, R. J. Holt, D. A. Hunt, Jimmie Mitchener, Floyd Pennington, J. M. Porter, H. M. Wiley, H. E. Nicholson, L. C. Lafflin, Frank Wofford, Max Wiley, Harry Wofford, S. Y. Allgood and the hostess, Mrs. George Porter. Guests included Mrs. W. O. Carrick, Rev. S. Y. Allgood and B. M. Litton.

Mr. and Mrs. J. C. Moore, Jr. and family spent Sunday with Mr. and Mrs. Raymond Moore of Kelton.

Mrs. C. B. Nash and Mr. and Mrs. Harold Nash had as their guests from Thursday until Monday Mrs. Nash's brother and wife, Mr. and Mrs. W. E. Pettit of Corpus Christi, two nieces, Mrs. H. Gary of Colorado City.

Jim Trout of Lefors was a Wheeler visitor Monday.

COCA COLA BOTTLING CO., Shamrock, Texas

Refreshingly DRINK Coca-Cola

5¢

COCA COLA BOTTLING CO., Shamrock, Texas

Refreshingly DRINK Coca-Cola

5¢

COCA COLA BOTTLING CO., Shamrock, Texas

Refreshingly DRINK Coca-Cola

5¢

COCA COLA BOTTLING CO., Shamrock, Texas

Refreshingly DRINK Coca-Cola

5¢

COCA COLA BOTTLING CO., Shamrock, Texas

Refreshingly DRINK Coca-Cola

5¢

COCA COLA BOTTLING CO., Shamrock, Texas

Refreshingly DRINK Coca-Cola

5¢

COCA COLA BOTTLING CO., Shamrock, Texas

Refreshingly DRINK Coca-Cola

5¢

COCA COLA BOTTLING CO., Shamrock, Texas

Refreshingly DRINK Coca-Cola

5¢

COCA COLA BOTTLING CO., Shamrock, Texas

Refreshingly DRINK Coca-Cola

5¢

COCA COLA BOTTLING CO., Shamrock, Texas

## CUTE IN COTTON



Cute in cotton is the word for pretty Fayette Goddard, Paramount star, who wears one of her 1947 cotton favorites. The low cut square neckline and the short, pushed-up sleeves add interest to the design which is done in soft blue cotton crash.

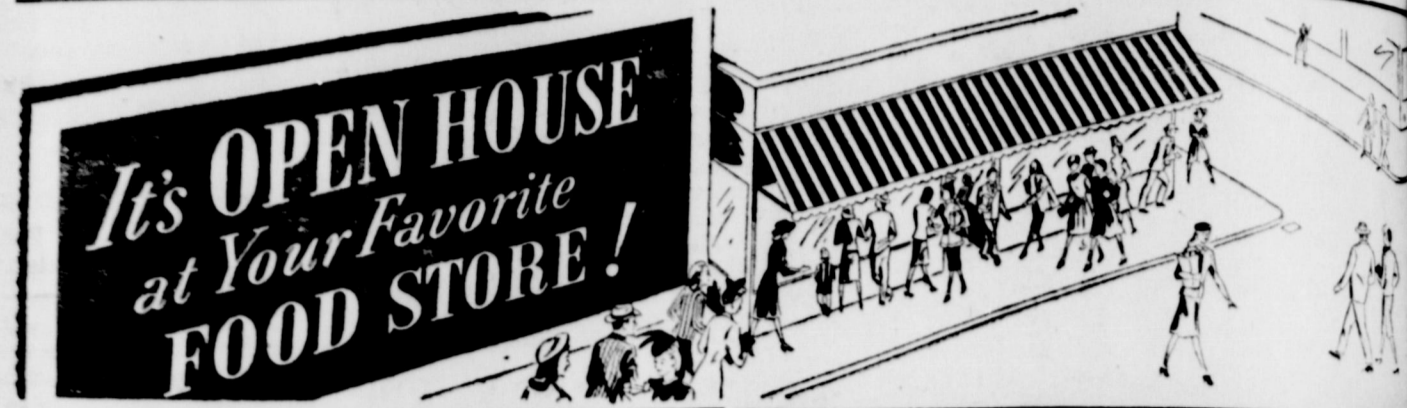


Pretty Betty Crump of Memphis, Tenn., will rule as queen of that city's annual Cotton Carnival, May 12-17. Reigning with Miss Crump as King Cotton will be Hugo Dixon, prominent Memphis cotton merchant. The week-long Memphis Cotton Carnival is known as the greatest annual cotton celebration in the nation.

Texas and Mrs. Bedford Dillin and daughter, Patricia, of Pyote, and a sister, Mrs. H. L. Bassham of Colorado City, Texas who came Thursday also but remained for a longer visit.

Jim Trout of Lefors was a Wheeler visitor Monday.

## SPECIALS FOR FRIDAY & SATURDAY MAY 23 & 24



PEACHES IN HEAVY SYRUP NO. 2 1/2 CAN 2 for 3

DREFT Limit, per box 2

COFFEE MAXWELL HOUSE Per Pound 4

CARNATION MILK 2 tall cans 2

LIBBY'S PEARS NO. 2 1/2 CAN 39c

WHITE CREAM STYLE CORN 2 NO. 2 CANS 25c

COCONUT HEAVY SYRUP NO. 2 1/2 CAN 3

ICE CREAM POWDER JUNKETS 2 for 2

Now You Can ENJOY ICED COFFEE and TEA LIPTON'S TEA 1/4-POUND PACKAGE

ADMIRATION COFFEE lb. 3

MARGARINE MEADOWLAKE Pound 3

PURE LARD ARMOURS STAR 3-POUND CARTON 5

TOMATOES, SLICERS LB. 19c FLAVOR-RICH

GREEN BEANS LB. 10c FRUITS AND VEGETABLES

NEW POTATOES LB. 5c

360 SIZE SUNKIST LEMONS Dozen 25c FRESH RHUBARB

NEW ARIZONA ORANGES TWO POUNDS 15c

NICE, FIRM ONIONS TWO POUNDS 15c

FANCY SLICERS CUCUMBERS PER POUND 10

Dozen Winning Selection of FINE MEATS DRY SALT BACON

FRESH LOIN STEAK Pound 59c FRESH BOLOGNA

ARMOUR'S STAR SLICED BACON Pound 63c BONELESS PERCH FISH

LEAN PORK CHOPS Pound 59c AMERICAN or LONG HORN CHEESE

FINER QUALITY AT LOWER PRICES FROM COAST TO COAST CLAY'S FOOD IGA STORE Home-Owned Some-Operated 25c RAISINS SUN-MAID SEEDLESS 2-15-OZ. BOXES

## NEW STOVES AND NEW PRICES

We have in another shipment of new Hardwick gas ranges.

These stoves are built to burn natural gas, but will operate on butane also.

Designs are the latest, and the prices are also of THE NEW DESIGN

## Wheeler Gas Co.

Wheeler, Texas

**Society**

**L. Clark Honored 75th Birthday Dinner**

Miss Jacqueline Clark honored her father, M. L. Clark, with a surprise birthday dinner, Sunday, his 75th birthday. Others celebrating their birthday with him were Johnny Barr, grandson, and sister, Mrs. Reatha Bearden of address.

A white cake with candles centered the white covered dining table, flanked with bouquets of pink roses.

Those enjoying the bountiful dinner were: Messers and Mesdames John Barr, Johnny, Nathan, Lois, Margie and Regie, M. L. Clark, Jr. and Sonny of Albuquerque, N. M., Sherfield Clark, Wellington, Andrew Bearden and Kenneth of Childress, Wheeler Cobb, McLean, Dugan McLaughlin, Joanne and Jene and Mrs. Pearl Mitchell all of Hollis, Okla., Dick Clark, Delores and Jay, Bill McNeil, O. Nations, M. L. Clark and Jacqueline.

**LET US MARFAK YOUR CAR**



**FOR "CUSHIONY" DRIVING!**

You can feel the difference in "cushiony" driving and smoother handling when you get tough, longer-lasting Marfak Chassis Lubrication. Marfak fights wear and friction right from one lube job to the next. We apply Marfak scientifically by chart, never by chance — this "stick-to-the-job" lubricant resists squeeze-out and wash-out. Let us give your car that "Marfak feeling." Stop in today and say "Marfak!"



**OWEN SERVICE STATION**

PHONE 101—WHEELER



**"YOUR CHEAPEST WAY TO BUY OR SELL" WANTED ADS**

**RATES**—10c per line (counting 5 words to line) for first insertion. Minimum charge, 30c; 5c per line after first time. Minimum charge 15c. Reader ads scattered among local items 15c per line each insertion. Cards that run every week 25c per column inch per week.

**DISPLAY ADVERTISING**—National rate, 42c an inch; Local Advertising rate, 30c per column inch, 25c per inch when 30 inches or more used each week during calendar month.

**MISCELLANEOUS**

**WANTED**—Wallpapering to do Mrs. P. A. Martin, Phone 915-F-12, Wheeler. 23-2tp.

**WANTED**—Pigs and shoats also top hogs at Shamrock Sale Barn, 1 mile north of Shamrock. 45-4tp.

**MALE HELP WANTED**—Reliable man with car wanted to call on farmers in Wheeler County. Wonderful opportunity. \$15 to \$20 in a day. No experience or capital required. Permanent. Write today. McNeess Company, Dept. A. Freeport, Ill. 23-2tp.

**ALCOHOL PUBLIC ENEMY No. 1—**

**SHARP SAWS**—Have your saws filed and jointed by machine. Mechanically precise filing. Saws cut truer, cleaner, faster. Quicker service. You'll like our work. C. D. Evans at White House Lumber, Shamrock, Texas. 23-2tp.

No Fishing or Hunting on my place. Also no swimming in my lake without permission. Albert Chapman. 21-tfc.

**STRAYED OR STOLEN**—White face steer calf branded OO on left thigh, weight about 500 lbs. Should have yoke on. Please notify Cliff Mason. 23-3tp.

**NOW IN STOCK**—International Harvester milk coolers. Hibler Implement Co. 21-3tc.

**LOST**—Black billfold, somewhere between bank and Wheeler Drug. If found bring to Times Office. Reward. 23-1tc.

We can now do your cemetery work. Grave markers, covers, and curbing. Will Warren, Wheeler. 29-tfc.

**NOTICE!** Last year out of town people came in inquiring where they

could buy fruits and vegetables. Any time we knew of any that was ready to be sold we directed the inquirers to the owner's places. This year we are going to keep a list of names of people that have fruits and vegetables ready. If you have produce about ready to be sold come in and put your name and directions on how to get to your place on our list.

This service will be handled free of charge. Puckett's Food Market, Wheeler, Texas. 23-4tc.

Sweet Potatoes, tomatoes and cabbage plants ready now. Will Warren. 21-tfc.

**CHICK HATCHING EVERY MONDAY**—Book your orders now. Plenty feeders and water fountains. Lawrence Hatchery & Feed. 10-tfc.

**FOR SALE**

**FOR SALE**—nice fryers \$1 each. Henry Greenhouse. 23-1tp.

**FOR SALE**—Good quality cotton seed. See J. C. Moore or J. C. Moore, Jr. 22-3tp.

**FOR SALE**—1933 Model B Ford pickup. Vernon Brown. 23-1tc.

**SHAMROCK MATTRESS FACTORY**—Have that old bed made like new. Special prices on new beds. Shamrock Mattress Factory. 19-26tc.

**FOR SALE**—Farmall tractor, regular, motor A-1 shape, good rubber, and all equipment. Priced right. See Bill Powers, Mobeetie. 23-1tp.

**DEMPSTER PLOWS** with power lift now in stock for immediate delivery. These are chisel plows, just the thing for deep plowing to keep the moisture in the ground. 7-ft. to 12-ft. lengths. We also have Dempster windmills. L. L. Jones Hardware and Implement Co. Allison, Texas, Phone 28.

**FOR SALE**—1936 Chevrolet coupe, motor A-1 shape, good tires. See Aronid Jones. 23-2tp.

**BOOK your orders for baby chicks NOW.** Hatches every Monday. Lawrence Hatchery & Feed. 9-tfc.

**FOR SALE**—Piano, Simmons bed, divan and chair. Call 179 or write box 146, Wheeler. 23-2tc.

**FOR SALE**—4-room house, good condition, with barns, chicken houses, etc. Several lots, good orchard. Immediate possession. In south Wheeler on highway. Mrs. O. G. McCormick, Box 325, Dimmitt, Texas. 22-2tp.

**FOR SALE**—Turkey Eggs. See Deward Wofford, Wheeler. 23-1tc.

**BUTANE SYSTEMS**—No down payment. Payments as low as \$61.66 per year or \$4.92 per month if you prefer monthly installments. Nash Appliance & Supply.

**FOR SALE**—Shelled Grain. C. O. Killingsworth. 23-2tp.

**FOR SALE**—10 head high bred young jersey cows, bred to high bred registered jersey bull. W. H. Templeton, Wheeler, Texas. 22-2tp.

**MILK COOLERS** in stock for immediate delivery. Nash Appliance & Supply. 18-tfc.

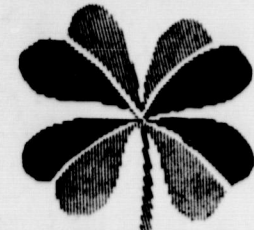
**PRICED FOR QUICK SALE**—103 Surplus Army Bldgs. (Most with hardwood floors). All types.

**ROGUE THEATRE**

**FRIDAY AND SATURDAY—**  
"The Glass Alibi"  
—starring—  
Paul Kelly Douglas Fowley and Anne Gwynne

**PREVUE SATURDAY NIGHT—**  
**SUNDAY AND MONDAY**  
"Crack-Up"  
—starring—  
Pat O'Brien, Clara Trevor and Herbert Marshall

**WEDNESDAY AND THURSDAY—**  
"Without Reservations"  
—with—  
Claudette Colbert and John Wayne



**4/H CLUB NEWS**

Lela Club

The Lela 4-H Club girls have now solved their problem of not having a club room so if there are any more 4-H clubbers who do not have a club room perhaps you may do as the club at Lela did.

The girls took their problem to school Supt. Vodja and he gave them permission to use a vacant store room and then they went to work. They scrubbed the walls and windows and secured benches and tables, then built a storage place for club books and material and made a bulletin board for posting club news.

They now have a club room to be proud of and says club president, Modene Griffin, "We enjoy club meetings more now that we have a place of our own."

**Mrs. Meek Is Hostess Good Neighbors Club**

The Good Neighbors Club met Thursday, May 8, in the home of Mrs. A. R. Meek for a Mother's Day program.

Refreshments were served to: Mesdames Herbert Finsterwald, Weaver Barnett, Vernon Sivage, C. C. Dyson, O. H. Upchurch, Ralph Oldham, Bill Finsterwald, Albert Newman, one visitor, Mrs. R. H. Dyson, and the hostess, Mrs. A. R. Meek.

barracks, administration, shop, warehouse, etc. Doors and windows. Seasoned lumber at 4 to 8c per foot. EQUIPMENT: Pipe, fittings, lavatories, commodes, air conditioners, electrical fixtures, locomotive type boilers, electric light plants. Refrigeration unit suitable for locker plant. All at Dalhart Army Air Field, Texas. Representative on property or call, write or wire: JACK LITTLE FOUNDATION, DE SOTA HOTEL, DALHART, TEXAS.

**HOSPITAL NEWS**

Mrs. Harold Lester, Miami, received treatment May 15.

Mr. and Mrs. Ambrey Higdon of Twitty are the parents of a boy born May 20.

Daughter of W. A. Godwin of Sweetwater underwent a tonsillectomy May 16.

Frank Vines, Kelton, entered for treatment May 16.

J. W. Wolfe entered for treatment May 17.

Reginold Barr entered for treatment May 21.

Mrs. P. L. Meadows of Wheeler entered for treatment May 20. Mrs. Jess Walker of Wheeler underwent minor surgery May 20.

H. S. Weeks returned home Monday after visiting with relatives in Durant, Okla. the past few weeks.

**Society**

**W.S.C.S. in Meeting At Methodist Church**

The W.S.C.S. of the First Methodist Church met Monday afternoon, May 19, at the church, with twelve members present.

Mrs. C. J. Meek, president, presided over the business meeting at which time there was a discussion on the W.C.T.U. meeting.

The program consisted of a devotional by Mrs. Hubbard, Mrs. Hutchison gave a supplementary topic, "What is in the Future for Negroes", and Mrs. Glover gave the fifth folio of the study. Annett Hutchison gave a scripture reading, after which they were dismissed with prayer by Mrs. J. M. Porter.

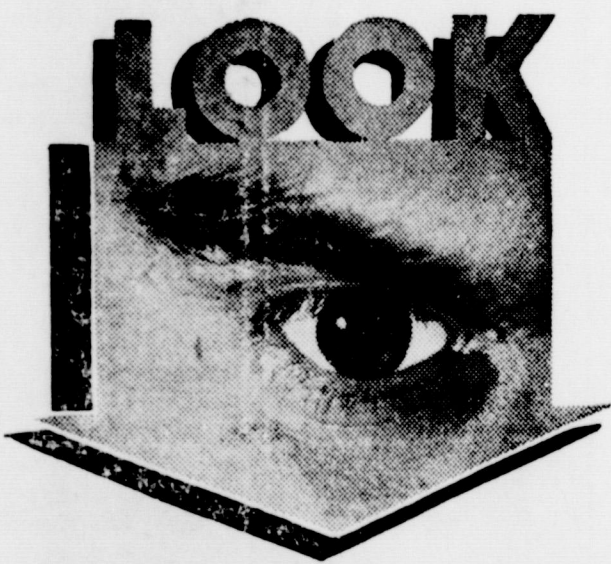


**WREATHS and SPRAYS**

SPRAYS	WREATHS
39c	\$1.39
to	to
\$1.29	\$3.95

**RUSS VARIETY**

WHEELER, TEXAS

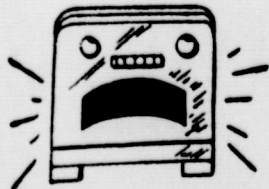


**What I've Done**

I have bought C. C. Clark's New and Used Furniture and Hardware Store located just one door west of the Post Office and have moved my RADIO REPAIR SHOP from the Nash Appliance & Supply Store to this location. I will continue to do all types of radio and phonograph repair work and I will handle new and used radios in addition to a small line of new and used furniture and hardware. If you wish to buy or sell see me first.

My radio shop is completely equipped with the very latest test equipment on the market and I am carrying a complete stock of radio tubes and parts so that I will be able to fix any radio you may bring in.

**I'LL CURE THAT SQUAWKING NOISE**



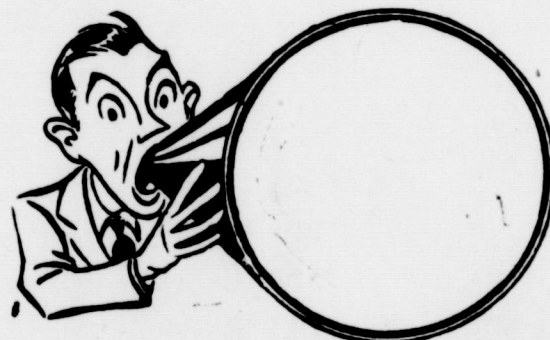
Radio ills are just as hard on the audience as on the wretched radio. Repairing them to their original shape is our talent. When your radio or phonograph needs fixing just give me a ring.

**Allen's Radio Service & Sales**

1st Door West Post Office

Wheeler, Texas

Phone 181



**Ladies and Gentlemen!**

**There's A New Cafe In Wheeler**

Yes Sir, we have bought the cafe formerly operated by Jim Magruder and completely overhauled it, redecorated it inside and out and installed new equipment and have opened a completely modern and clean eating establishment to the people of Wheeler and the Wheeler trade territory.

We have opened a nice dining room in the back portion of the building where you can bring your family or party and dine in comfort.

The building will be completely air-conditioned so that you will be able to enjoy yourself even in the hottest weather.

**NORA IS BACK**

In order that we might offer you the finest food at its best we have employed NORA WATSON to be our chief cook.

Everyone in this trade territory knows NORA and knows that her motto is "I do not serve my customers anything that I would not eat myself".

We invite you to visit our place and see for yourself.



—WE WILL SPECIALIZE IN SUNDAY NOON DINNERS—

**Denson Grill**

WEST SIDE SQUARE

WHEELER, TEXAS

Mr. and Mrs. C. C. Robison spent the weekend in Springfield, Colo. with her mother, Mrs. G. B. Cole of Chula Vista, Calif. who is visiting in the home of her son, Bun Cole and family. While there they visited with their son and wife, Mr. and Mrs. R. G. Robison, also of Springfield, Colo.

Days will pass and years will go,  
Older and older you will grow,  
Stop and think and don't delay,  
Have your picture made today.

**Bromofone Studio**  
PHOTOGRAPHERS

Wheeler, Texas  
OPEN EVERY DAY.

with 5% MICRON-SIZED DDT

ITS NO USE, BOYS! SHE HAS PURINA FLY SPRAY!

There's a difference in DDT's! "Micron-sized" means the DDT in Purina Fly Spray for the Home is extra finely ground to cover more surface more thoroughly. For quick kill—spray in the air. For effective protection against flies, mosquitoes, roaches, waterbugs, ants and other pests—spray on walls and ceilings, paint baseboards, screens, etc. Try it!

WHEELER CO. PRODUCE ASS'N  
Wheeler, Texas  
Phone 142

Full Pint 40c

ALSO SOLD BY  
**OLIVER W. ELLIOT**  
KELTON, TEXAS

**LEGAL NOTICE**

**SENATE JOINT RESOLUTION NO. 4**

PROPOSING AN AMENDMENT to Article VII of the Constitution of the State of Texas by the addition of two new sections to be known as Sections 17 and 18 providing a special fund for the payment of Confederate pensions and providing a method of payment for the construction and equipment of buildings and other permanent improvements at state institutions of higher learning; providing for a five-cent reduction in the maximum allowable state tax on property; providing for an election and the issuance of a proclamation thereof.

**BE IT RESOLVED BY THE LEGISLATURE OF THE STATE OF TEXAS:**

SECTION 1. That Article 7 of the Constitution of the State of Texas be amended by adding thereto Sections 17 and 18 which shall read as follows:

SECTION 17. In lieu of the state ad valorem tax on property of Seven (7c) Cents on the One Hundred (\$100.00) Dollars valuation heretofore permitted to be levied by Section 51 of Article 3, as amended, there is hereby levied, in addition to all other taxes permitted by the Constitution of Texas, a state ad valorem tax on property of Two (2c) Cents on the One Hundred (\$100.00) Dollars valuation for the purpose of creating a special fund for the payment of pensions for services in the Confederate army and navy, frontier organizations, and the militia of the State of Texas, and for the widows of such soldiers serving in said armies, navies, organizations or militia; provided that the Legislature may reduce the tax rate hereinabove levied.

SECTION 18. In lieu of the state ad valorem tax on property of Five (5c) Cents on the One Hundred (\$100.00) Dollars valuation for the purpose of creating a special fund for the purpose of acquiring, constructing and initially equipping buildings, or other permanent improvements at the designated institutions of higher learning; and the governing board of each of such institutions of higher learning is fully authorized to pledge all or any part of said funds allotted to such institution as

hereinafter provided, to secure bonds or notes issued for the purpose of acquiring, constructing and initially equipping such buildings or permanent improvements at said respective institutions. Such bonds or notes shall be issued in such amounts as may be determined by the governing boards of said respective institutions, shall bear interest not to exceed three (3%) per cent per annum and shall mature serially or otherwise not to exceed ten (10) years from the first (1st) day of January of each year in which such funds are allocated or re-allocated to said respective institutions; provided, the power to issue bonds or notes hereunder is expressly limited to a period of thirty (30) years from the date of the adoption of this amendment; and provided further, that the Five (5c) Cent tax hereby levied shall expire finally upon payment of all bonds hereby authorized; provided further, that the state tax on property as heretofore permitted to be levied by Section 5 of Article VIII, as amended, exclusive of the tax necessary to pay the public debt, and of the taxes provided for the benefit of the public free schools, shall never exceed Thirty (30c) Cents on the One Hundred (\$100.00) Dollars valuation. All bonds shall be examined and approved by the Attorney General of the State of Texas, and when so approved shall be incontestable; and all approved bonds shall be registered in the office of the Comptroller of Public Accounts of the State of Texas. Said bonds shall be sold only through competitive bids and shall never be sold for less than their par value and accrued interest.

SECTION 18. For the purpose of constructing, equipping or acquiring buildings or other permanent improvements, the Board of Directors of the Agricultural and Mechanical College of Texas is hereby authorized to issue negotiable bonds or notes not to exceed a total amount of Five Million (\$5,000,000.00) Dollars, and the Board of Regents of The University of Texas is hereby authorized to issue negotiable bonds or notes not to exceed a total amount of Ten Million (\$10,000,000.00) Dollars. Any bonds or notes issued hereunder shall be payable solely out of the income from the Permanent University Fund Bonds or notes so issued shall mature serially or otherwise not more than twenty (20) years from their respective dates, and in no event later than twenty-five (25) years after the date of the adoption of this amendment. This amendment shall be self-enacting.

"SAID BOARDS ARE severally authorized to pledge the whole or any part of the respective interests of the Agricultural and Mechanical College of Texas and of The University of Texas in the income from the Permanent University Fund, as such interests are now appropriated by Chapter 42 of the Acts of the Regular Session of the 42nd Legislature of the State of Texas, for the purpose of securing the payment of the principal and interest of such bonds or notes. The Permanent University Fund may be invested in such bonds or notes.

"ALL BONDS OR NOTES issued pursuant hereto shall be approved by the Attorney General of Texas and when so approved shall be incontestable."

SECTION 2. The foregoing Constitution Amendment shall be submitted to a vote of the qualified electors of this state at a special election to be held throughout the state on the fourth Saturday in August, A. D. 1947, at which election all ballots shall have printed thereon:

"FOR THE AMENDMENT to Article VII of the Constitution of the State of Texas, adding Sections 17 and 18 providing for the levying of a state ad valorem tax

on property in lieu of the present state ad valorem tax of Seven (7c) Cents for Confederate pensions in order to create special funds necessary for the payment of Confederate pensions and for the financing of the construction and equipment of buildings and other permanent improvements at state institutions of higher learning, in the amounts of Two (2c) Cents and Five (5c) Cents respectively; providing for a Five Cent reduction of the maximum allowable state tax on property, making such tax not to exceed Thirty (30c) Cents on the One Hundred (\$100.00) Dollars valuation; providing a method of payment for the construction and equipment of improvements at the Agricultural and Mechanical College of Texas and The University of Texas."

SECTION 3. The Governor shall issue the necessary proclamation for said election and have same published as required by constitution and laws of this state.

SECTION 4. The sum of Ten Thousand (\$10,000.00) Dollars, or much thereof as may be necessary is hereby appropriated out of the fund in the treasury of the state not otherwise appropriated, to pay the expenses of such publication and election.

Mr. and Mrs. Charles Hubbs left Friday on a three week tour through Colorado and Wyoming.

W. B. Wilson and son of Amarillo are visiting his parents, Mr. and Mrs. Marshall Wilson, and will return to Amarillo Sunday where he is employed with the Santa Fe Railroad.

23-4tc

NEWSPAPER ADVERTISING RATES

Mr. and Mrs. Charles Hubbs left Friday on a three week tour through Colorado and Wyoming.

W. B. Wilson and son of Amarillo are visiting his parents, Mr. and Mrs. Marshall Wilson, and will return to Amarillo Sunday where he is employed with the Santa Fe Railroad.

23-4tc

NEWSPAPER ADVERTISING RATES

23-4tc

NEWSPAPER ADVERTISING RATES

23-4tc

NEWSPAPER ADVERTISING RATES

23-4tc

23-4tc

NEWSPAPER ADVERTISING RATES

23-4tc

NEWSPAPER ADVERTISING RATES

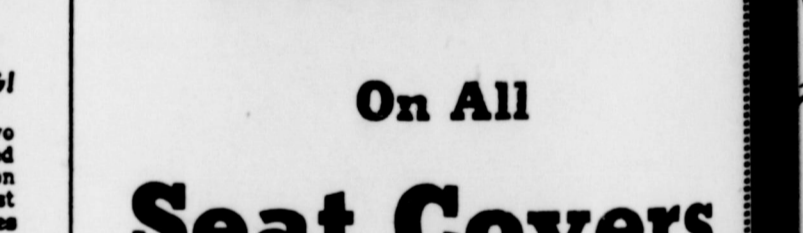
23-4tc

NEWSPAPER ADVERTISING RATES

23-4tc

NEWSPAPER ADVERTISING RATES

**SERVICE TODAY KEEPS BREAKDOWNS AWAY**



BE AN EARLY BIRD THIS YEAR

**FARMER'S EQUITY SERVICE, INC**

JACK MILLER, Mgr. MOBEETIE, TEXAS

**Milk**

**Must Be Cooled Quickly**

Summer has finally made its appearance on the scene so you will be having a harder time than ever cooling your milk down to 50 degrees in order to keep bacteria from multiplying. In order to have good marketable milk you must cool it down to 50 degrees immediately after it is milked.

You can't set this milk in the shade of a tree and expect it to cool down to 50 degrees when the temperature is more than that around it.

**TO COOL MILK QUICKLY AND EFFICIENTLY . . .**

We suggest that you let us install a wet storage milk cooler for you. We have several sizes and kinds on hand for you to choose from and we can handle the papers for you in case you need some financing. Come to see us today.

**4 AND 6 CAN COOLERS**  
And Airator Pumps  
On The Floor For Immediate Delivery

**Wheeler Radio & Refrigerator Service**  
CARL LAFIN, Owner  
Wheeler, Texas

**FOR IMMEDIATE DELIVERY**

**SPEEDCRETE**

SEWER PIPE

CULVERT and IRRIGATION PIPE

CINDER and CONCRETE BUILDING BLOCKS and TILE

CHASE AND McGINNIS INC

**SEE the TIRE**

that has been SPECIALLY DESIGNED for POSTWAR DRIVING!

Tire engineers spent two years developing it. Proved by more than 1 1/2 Million Miles of road tests. A most unusual tread design gives you a smooth, easy ride—with many extra miles of service. Sturdy carcass for safety—Rayon Cord now becoming available.

Made by the Gates Rubber Company—makers of fine tires for more than 36 years. On display at

**15 Percent Discount**

On All **Seat Covers**

Until June 1

**Extra Good Allowance**

On Your Old Tires

GET READY FOR YOUR VACATION TRIP NOW

**MUD CHAINS--BATTERIES--WHEELS**

TAKE ADVANTAGE OF OUR SEAT COVER DEAL BEFORE JUNE 1

**The TOWER SERVICE STA.**

THE HOME OF—  
JOHN HRNCIAR, JR. LIVESTOCK TRANSPORT

24 HOUR SERVICE SHAMROCK, TEXAS PHONE 24

**WOMEN WANT-ADS GET RESULTS!**

Shop At Your Friendly  
**WHEELER LOCKER**  
For Quality Meats and Groceries  
At Reasonable Prices.

SUGAR CURED SQUARES	Pound	
<b>BACON</b>		35c
FULL CREAM LONG HORN	Pound	
<b>CHEESE</b>		39c
SA QUALITY—SLICED OR PIECE	Pound	
<b>BOLOGNA</b>		25c
SMALL CAN—MILK	3-Cans For	
<b>ARMOUR</b>		17c
MUSTARD GREENS	Can	
<b>BRIMFULL</b>		10c

**Mobeetie Happenings**  
By Louise St. John

Madge Patterson spent Sunday with Edwina Brown.  
Mr. and Mrs. Norma Dysart and children and Virginia Greenhouse spent Sunday in the Willard Godwin home.  
Mrs. R. L. Cooksey and children and Louise St. John were business visitors in Wheeler Monday.  
Bob and Bill McPheerson spent the weekend in the C. A. Dysart home.  
Mrs. Joe Thompson and Virginia

Henderson were business visitors in Wheeler Monday.  
Mr. and Mrs. C. A. Dysart spent Sunday night in Pampa.  
Mr. and Mrs. Robert F. St. John and son, Teddy, of Madison, Wis. are visiting in the R. St. John home.  
The Boy Scouts have gone to Lake McCellan to spend a few days.  
Mr. and Mrs. Lee Barry and Lawrence Barry were visitors in Hollis, Okla. Thursday.  
Rev. and Mrs. F. C. Carmack of Tahoka, Texas visited in the W. B. Wileman home Sunday night.

**MOBEETIE HI-LIFE**

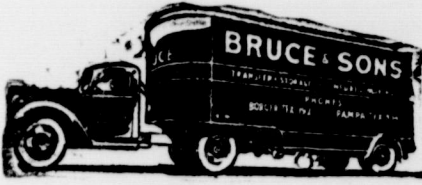
Items of interest pertaining to the Mobeetie Schools, written and edited by Mobeetie School pupils.

Editor ----- Roberta Leonard  
Assistant Editor ---- Peggy Ware  
Reporters ----- Betty Brewer  
Betty Jean Patton, Lou Beck

**JUNIOR NEWS**  
(Written for Last Week)  
The Juniors of Mobeetie High School would like to take this opportunity and thank the parents and others who cooperated with us so well in making preparations for the banquet and our trip.  
We would like to thank Mr. and Mrs. Bob Hood and Mrs. Prock who showed us such a grand time on our trip in which we took last weekend.

**SENIOR NEWS**  
The seniors had a bad night for their service Sunday night.  
The eighth grade are looking forward to their graduation Wednesday evening at two o'clock.

**GOSSIP**  
Tom, who was that cute girl you skated with at Craterville? Wonder why Doyle and Delton are so bruised up? It couldn't be because Nellie Davis got mad at them could it?  
Mary Louise, why didn't you have a nice time on the trip? Could it have been because you couldn't find a boy friend?  
Betty Jean and Imogene got to ride the merry-go-round free because their boyfriends ran it. Virginia, whose picture did you take? Who was he?

**Pampa Texas Ph. 934**  **Plenty Storage Space**  
**EXPERT MOVING—CAREFUL HANDLING**  
**VAN SERVICE—NATION-WIDE SERVICE**

**DR. M. V. COBB**  
CHIROPRACTOR  
A Complete Health Service  
Colon Irrigation—X-Ray—Electrotherapy  
Lady Assistant  
Phone 180 104 W. 2nd St. Shamrock



**NATIONAL PRESS BUILDING**  
WASHINGTON, D. C.

By Anne Gools  
A junior sized refrigerator will be on the market in early summer. Styled for cottages, hotel rooms and small places it weighs only 55 pounds, measures 22 inches high, ice capacity is 11 quarts.

Did you know that frozen food lockers now supply nearly 16% of the U.S. population? Well, an Agriculture Department survey says they do.

When Spring comes we generally think of salads and sandwiches along with warmer weather. So keep the pantry shelf stocked with necessary staples such as real mayonnaise, prepared sandwich spreads and such. Then it will be easy to come in from out of doors and fix a snack in no time at all.

Easter's gone but not the bonnets. And from parades in Washington and New York almost anything goes as a topper. Most promoters seemed to prefer flowers with veiling but ribbons were used in all sorts of effects, too.

Shoes are still hard to find in some sizes despite the fact that general shoe production is 12% over last year. Be sure to polish your new leather ones with a good wax-liquid or paste polish before wearing. The polish, you know, helps to prevent them from scuffing.

Heard of a cute mail box the other day which was fashioned in super letter size, self-addressed with stamp just like a real letter.

Nancy, what does the M. stand for? It seems Bobby Cramer from Foss, Oklahoma was interested.

Doris, why did you send your heart to Foss, Oklahoma? Could Pete know the answer? Nancy and Bobbie watched Dor-

is and Coach waltz across the skating rink.

Betty Jean, where did you get all those pins? Imogene has a lot too.

Jimmie Shelton was really glad to see Ed. We don't know why. Bonnie and Joyce are limping around because of blisters on their feet. You girls skate too much.

Hugh, did you and Vernie meet your girls at Medicine Park?

Onie and L. J. fell in love and couldn't eat anything while we were gone.  
David found a lot of cute girls down there, but they wouldn't pay any attention to him.


The students of Mobeetie high school wish everyone a happy vacation.  
Miss Melba Little of Perryton spent the weekend in Wheeler with friends.

**TOO LATE TO CLASSIFY**

Please return the following articles taken by mistake at the Home Economics building, blouse, dress, scarf, and pajamas belonging to Pat Williams. 23-1tp.

FOR SALE—11 3x10's 20 ft. long, dressed. Straight and clear of knots. See Luter Sides at American Legion Building. 23-2tp.

FOR SALE—4-burner oil cook stove, in good condition. Mrs. Harvey Close. 23-1tp.

**SPEED-O-PRINT**  
**DUPLICATORS and Duplicating Supplies**  
Save Time  
  
Save Money  
Reproduce anything that can be typed, drawn, traced or photographed on a stencil.  
Authorized Dealer

**THE WHEELER TIMES**  
WHEELER, TEXAS

**WE MAKE SHOPPING A TREAT FOR YOU!**  
  
**YOU'LL SAVE TIME... AND MONEY TOO!**

**PUCKETT'S FOOD MARKET**

<b>Puckett's Best FLOUR</b> 25-lb. Sack \$1.69 50-lb. Sack \$3.35	<b>Mary Lee Taylor's Fruit Icebox Cake</b> Broadcast: May 24, 1947 1 1/2 cups Pet Milk 2 teaspoons unflavored gelatin 3 tablespoons cold water 1 1/2 cups sliced, fresh strawberries 1/4 cup sugar 1/4 cup white cream cheese 12 oz. lemon juice few grains salt 8 strips plain cake 1 1/2 inches	<b>DREFT SOAP FLAKES</b> PER BOX 29c	<b>FOLGER'S COFFEE</b> PER POUND 47c
<b>GENERAL MILLS 2-Large Boxes WHEATIES 33c</b>	<b>SCHILLING'S PEPPER</b> 4-OUNCE BOX 25c	<b>ARMOUR'S SLICED BACON</b> PER POUND 65c	<b>ARMOUR'S BUTTER</b> PER POUND 65c
<b>Penick's White SYRUP</b> 5-LB. CAN 56c	<b>ASSORTED FLAVORS KOOL-AID</b> SIX PACKAGES 25c	<b>FRESH HAMB'GER</b> PER POUND 29c	<b>GRADE A BEEF ROAST</b> PER POUND 39c
<b>ELLOGG'S CORN SOYA</b> 2 Boxes 29c	<b>SUNSHINE CRACKERS</b> 2-POUND BOX 45c	<b>MEADOWLAKE OLEO</b> PER POUND 29c	<b>Philadelphia Cream CHEESE</b> PER PACKAGE 15c
<b>Penick's Golden SYRUP</b> 5-LB. CAN 55c	<b>HUNT'S TOMATO JUICE</b> 16-OUNCE CAN 29c	<b>GARDEN FRESH VEGETABLES</b> FOR CLEANING VEGETABLES PER POUND	
<b>COMEDY CAKE MIX</b> Box 27c	<b>BESTYETT SALAD DRESSING</b> PER PINT 35c	<b>NEW RED SPUDS</b> Pound 7 1/2 c	
	<b>MRS. TUCKER'S SHORTENING</b> 3-POUND CARTON \$1.15	<b>ARKANSAS STRAWBERRIES</b> Quart 35c	
		<b>SUNKIST LEMONS</b> Dozen 29c	

**FOR ALL YOUR POULTRY NEEDS**  
from **Chick to Nest**   
SHOP AT THE STORE WITH THE CHECKERBOARD SIGN

**... READY TO LAY EARLY!**  
**BIG PULLETS** of **PURINA GROWING CHOW**  
Hurry pullets to the nest with this feed made especially to supply what your own grain lacks for early, profitable layers.

**Kill POULTRY LICE**  
Fumes permeate feathers, kill lice. Won't stain feathers or blister feet. Safe, economical. 1 pint treats 500 ft. of perches.  
Use **PURINA ROOST PAINT**.

**On the Nest Early with PURINA CHOWDER**  
Balance your grain to make a real growing ration. Ask us about approved growing formulas.

**NEW IMPROVED**  
... Feeds 25 broilers or 20 layers. Convenient to use... just hang it up.

**WORM PULLETS**  
FOR LARGE ROUND-WORMS with **PURINA CHEK-R-TON**  
GIVE BIRDS PLENTY OF FEEDING SPACE with the **PURINA FEEDER**  
JUST MIX IT IN THE MASH

**Don't Forget Our Field Seeds**  
Are High Quality Seeds.  
Highest Market Prices Paid For CREAM, POULTRY AND EGGS

**WHEELER COUNTY PRODUCE ASS'N**  
PHONE 142 P. O. BOX 93  
WHEELER, TEXAS

**LEGAL NOTICE**

**SHERIFF'S SALE**  
THE STATE OF TEXAS  
COUNTY OF WHEELER  
BY VIRTUE OF AN ORDER  
OF SALE issued pursuant to a  
judgment decree of the District  
Court of Wheeler County, Texas,  
by the Clerk of said Court on the  
5 day of May, A. D. 1947, in a  
certain suit No. 3784, wherein  
The State of Texas in behalf of  
itself and the County of Wheeler  
is Plaintiff, and the unknown  
heirs of A. S. Garrett, deceased,  
and the unknown owners of the  
hereinafter described property are  
Defendants in favor of said plain-  
tiffs, for the sum of \$4283 for  
taxes, interest, penalty and costs,  
with interest on said sum at the  
rate of six per cent per annum  
from date fixed by said judgment,  
together with all costs of suit,  
that being the amount of said  
judgment rendered in favor of  
said plaintiffs, by the said Dis-  
trict Court of Wheeler County, on  
the 14 day of April A. D. 1947,  
and to me directed and delivered  
as Sheriff of said Wheeler County,  
I have seized, levied upon, and  
will, on the first Tuesday in June  
A. D. 1947, the same being the 3  
day of said month, at the Court  
House door of said Wheeler  
County, in the City of Wheeler,  
between the hours of 2 o'clock P.

M. and 4 o'clock P. M. on said day,  
proceed to sell for cash to the  
highest bidder all the right, title  
and interest of said defendant in  
and to the following described  
real estate levied upon as the  
property of said defendant, the  
same lying and being situated in  
the County of Wheeler and State  
of Texas, to-wit:  
All of Lot No. 1, Block No.  
28, Original Town of Sham-  
rock, Wheeler County, Texas,  
according to the recorded plat  
of such town in the office of  
the county clerk said county  
and state.  
or upon the written request of  
said defendants or their attorney,  
a sufficient portion thereof to  
satisfy said judgment, interest,  
penalties and costs; subject how-  
ever, to the right of the plaintiff  
for any other or further taxes on  
or against said property that may  
not be included herein, and the  
right of redemption, the defendant  
or any person having an interest  
therein, to redeem the said prop-  
erty, or their interest therein, at  
any time within two years from  
the date of sale in the manner  
provided by law, and subject to  
any other and further rights the  
defendants or anyone interested  
therein, may be entitled to, under  
the provisions of law. Said sale to  
be made by me to satisfy the above  
described judgment, together with  
interest, penalties and costs of  
suit, and the proceeds of said sale  
to be applied to the satisfaction

thereof, and the remainder, if any,  
to be applied as the law directs.  
Dated at Wheeler, Texas, this  
5 day of May, 1947.  
JESS SWINK  
Sheriff Wheeler County  
Texas.

**LEGAL NOTICE**

**SHERIFF'S SALE**  
THE STATE OF TEXAS  
COUNTY OF WHEELER  
BY VIRTUE OF AN ORDER  
OF SALE issued pursuant to a  
judgment decree of the District  
Court of Wheeler County, Texas,  
by the Clerk of said Court on the  
14 day of April A. D. 1947, in a  
certain suit No. 3779, wherein  
The State of Texas and Wheeler  
County, Texas are plaintiffs and  
Geneva D. Mullen, and husband,  
L. V. Mullen, if living and if dead,  
their unknown heirs and legal  
representatives are Defendants,  
in favor of said plaintiffs, for the  
sum of \$81.74 for taxes, interest,  
penalty and costs, with interest on  
said sum at the rate of six per  
cent per annum from date fixed  
by said judgment, together with  
all costs of suit, that being the  
amount of said judgment rendered  
in favor of said plaintiffs by the  
said District Court of Wheeler  
County, on the 14 day of April  
A. D. 1947, and to me directed and  
delivered as Sheriff of said Wheeler  
County, I have seized, levied  
upon, and will, on the first Tues-  
day in June A. D. 1947, the same  
being the 3 day of said month, at  
the Court House door of said  
Wheeler County, in the City of  
Wheeler between the hours of 2  
o'clock P. M. and 4 o'clock P. M.  
on said day, proceed to sell for  
cash to the highest bidder all the  
right, title and interest of said  
defendant in and to the following  
described real estate levied upon  
as the property of said defendant,  
the same lying and being situated  
in the County of Wheeler and  
State of Texas, to-wit:  
Ninety acres of land known  
as a part of Section 93, Bk.  
No. 13 H&GN RR. Co. Sur-  
veys, Cert. No. 2-307, Wheel-  
er County, Texas and being  
the land between the North  
and South Banks of the  
North Fork of Red River, ac-  
cording to its meanderings,  
and being the land described  
in a deed from G. M. Counts  
to Geneva D. Mullen and re-  
corded at Page 392, Vol. 48,  
Deed Records of Wheeler  
County, Texas.

**Professional Column**

**C. J. MEEK**  
AGENT  
**INSURANCE**  
Night Phone 124, Day Phone 48

**HOMER L. MOSS**  
LAWYER  
GENERAL PRACTICE  
WHEELER TEXAS

**Dr. C. C. Merritt**  
**CHIROPRACTOR**  
WHEELER, TEXAS  
Equipped to give complete  
chiropractic service

**SHELBY PETTIT**  
REAL ESTATE, LIVESTOCK  
FARM SALES A SPECIALTY  
PHONE 158 FOR A DATE  
OR  
WRITE BOX 283, WHEELER

**W. A. GAINES**  
District Manager  
American National Ins. Co

**CHAPMAN'S DAIRY**  
Good fresh Milk, Cream, Butter  
and Buttermilk  
Deliveries twice daily  
Phone 70 Wheeler

**REMINGTON**  
**TYPEWRITERS and**  
**ADDING MACHINES**  
**E. J. COOPER**  
Box 38 PHONE 799-W-4  
SHAMROCK, TEXAS

**TO EACH—**  
**ONE PAIR OF EYES**  
**TO LAST A**  
**LIFETIME.**  
**DR. J. E. HEWETT**  
OPTOMETRIST  
107 East Fifth, Amarillo, Tex.  
Next door to KFDA, Ph. 9934

**FOR SALE**  
COTTON SEED MEAL  
AND CAKE  
SOY BEAN MEAL  
BRAN, SHORTS AND  
BARLEY  
—ALSO WHEAT & MILO—  
**JOHNSON'S**  
Grain Company

**J. WADE DUNCAN**  
**REAL ESTATE**  
AND  
**CATTLE**  
Duncan Bldg. Phone 312  
Pampa, Texas  
"40 Years In The Panhandle"

TRY  
**Wheeler Bread**  
and  
**Family Loaf**  
—  
**CITY BAKERY**

**Canadian Valley**  
**Production Credit**  
**Association's**  
**Representative**  
IS IN THEIR  
**Wheeler Office**  
EACH  
**Thursday**

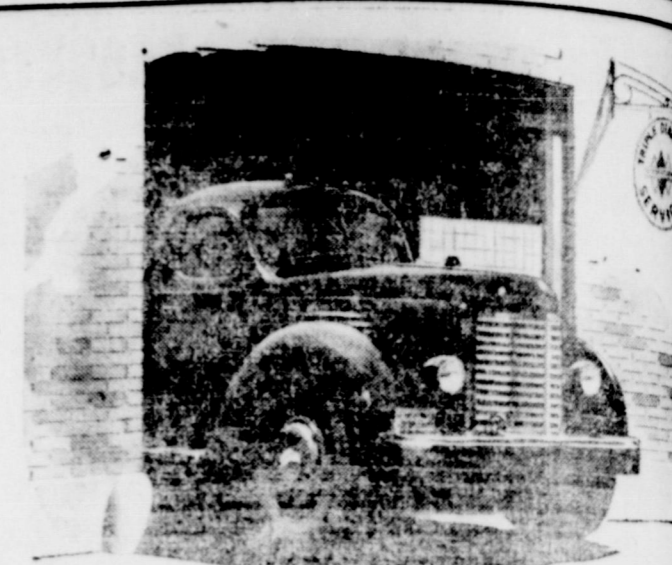
or upon the written request of  
said defendants or their attorney,  
a sufficient portion thereof to  
satisfy said judgment, interest,  
penalties and costs; subject how-  
ever, to the right of the plaintiff  
for any other or further taxes on  
or against said property that may  
not be included herein, and the  
right of redemption, the defen-  
dant or any person having an  
interest therein, to redeem the  
said property, or their interest  
therein, at any time within two  
years from the date of sale in the  
manner provided by law, and sub-  
ject to any other and further  
rights the defendant or anyone  
interested therein, may be entitled  
to, under the provisions of law.  
Said sale to be made by me to  
satisfy the above described judg-  
ment, together with interest, pen-  
alties and costs of suit, and the  
proceeds of said sale to be applied  
to the satisfaction thereof, and  
the remainder, if any, to be applied  
as the law directs.

Dated at Wheeler, Texas, this  
5 day of May, 1947.  
JESS SWINK,  
Sheriff Wheeler County,  
Texas.

PAY YOUR SUBSCRIPTION  
TO WHEELER TIMES NOW!

**DAB Auto Paint**  
The new wonder paint for auto-  
mobiles. Just wipe it on. Leaves  
factory-like paint job, guaranteed  
two years. \$9.95 paints car. Free  
literature. Dealers wanted in Pan-  
handle. Wholesale distributors,  
Cover Co., 1911-N, Lubbock, Tex.

**Rheumatism**  
**and Arthritis**  
Doctors differ as to the merits of  
NUE-OVO. Many users say it has  
brought them relief. If you suffer from  
Rheumatism or Arthritis why not  
write for literature on NUE-OVO  
from Research Laboratories, Inc.,  
403 N. W. 9th, Portland, Oregon.  
Pd. Adv.



**Why INTERNATIONAL Truck Service**  
**Means TON-MILE ECONOMY**

• Contact us if you're interested in truck service  
that keeps trucks operating economically. Here's  
why:

We plan your work efficiently. Our shopmen are  
competent craftsmen. They find and fix little  
troubles before they become big ones. They have  
the skill and will to do thorough jobs.

We are part of the International Truck service  
organization. We have factory-standard Interna-  
tional parts. We have special International equip-  
ment for testing, servicing and repairs.

So contact us for service that pays off in the  
language the truck operator understands best—  
ton-mile economy. This service available for other  
makes as well as International.

**HIBLER IMPLEMENT COMPANY**  
PHONE 151 WHEELER, TEXAS

**INTERNATIONAL Truck**



From where I sit... by Joe Marsh

**When Ed's Crops Failed**

Three years ago Ed Smith's luck  
went bad. His crops failed, and it  
wasn't long before Ed's home and  
furnishings were up for auction.

Half the town turned out, and  
Ed must have thought his neigh-  
bors were a bunch of hungry vul-  
tures—buying up all his precious  
possessions for a song.

When it was over, and the auc-  
tioneer had left, Sam Abernathy  
turns to the crowd and says: "All  
right, folks, let's take time out for  
a glass of beer, and then put this  
stuff back where it belongs!"

Two hours later, Ed was in pos-  
session of his home and furnish-  
ings; and the folks who'd paid for  
them were sitting around Ed's fire  
enjoying a neighborly glass of beer  
—to show their friendship and  
their confidence in Ed.

Today, Ed's back on his feet—an-  
other constructive member of the  
community. And from where I sit,  
we've all been well repaid—a good  
investment in a good man.

*Joe Marsh*

Copyright, 1947, United States Brewers Foundation

**Never too late to OIL-PLATE!**



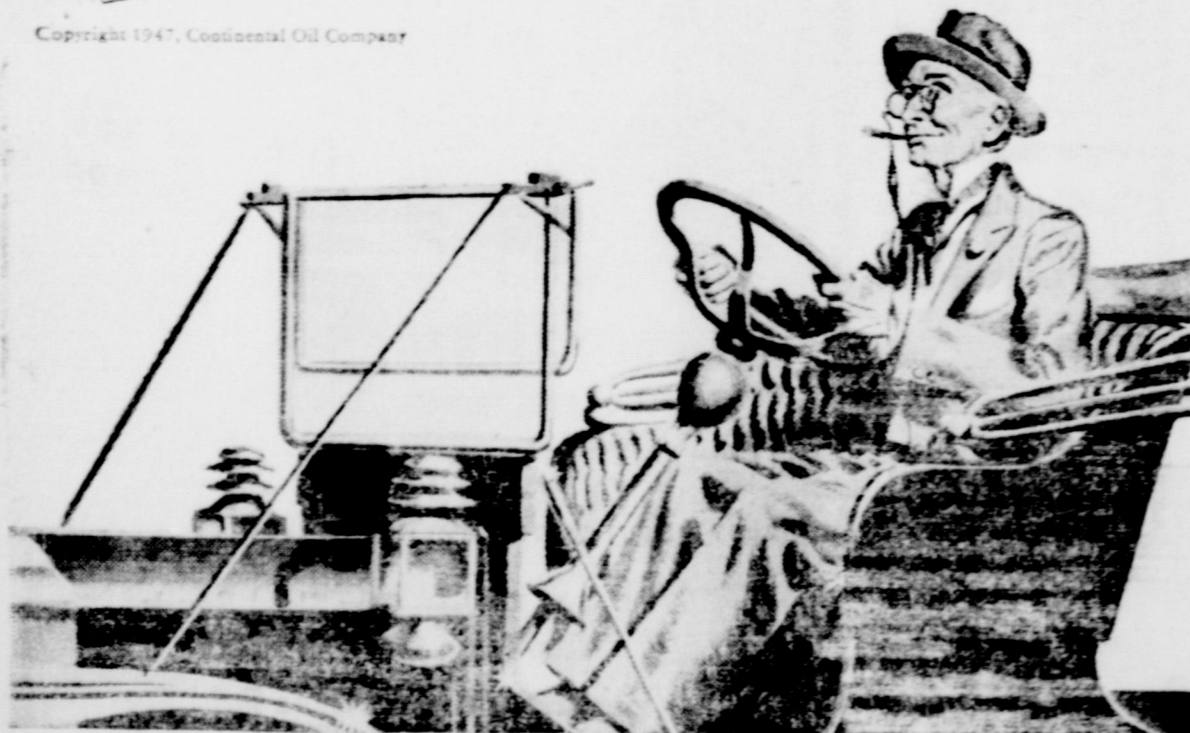
**BECAUSE**, molecular attraction fastens a special in-  
gredient in Conoco N<sup>th</sup> Motor Oil so closely to  
metal surfaces of your engine that cylinder walls are  
actually Oil-Plated . . .

**BECAUSE**, this extra lubricant resists gravity . . . stays  
up on cylinder walls . . . can't all drain down, even  
overnight . . . Conoco N<sup>th</sup> gives EXTRA protection  
from "dry" starts . . . EXTRA protection from carbon  
and sludge caused by wear . . . EXTRA smooth, cool,  
silent miles!

**BECAUSE** it's never too late, make a date to Oil-Plate  
your engine . . . today!

*Your Conoco Mileage Merchant*

Copyright 1947, Conoco Oil Company



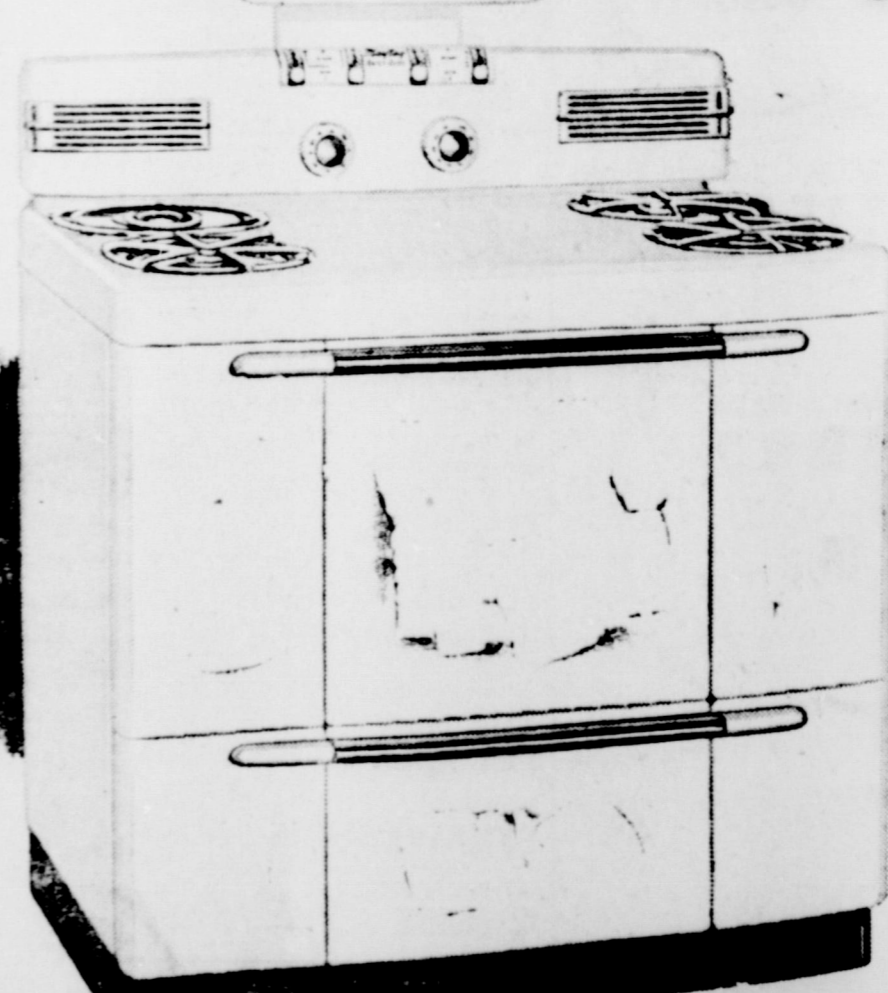
**WE HAVE CONOCO N-TANE GASOLINE**

**CONOCO Nth OIL — GAS — GREASES — TRACTOR FUEL**  
WHOLESALE RETAIL  
**LESTER LEONARD** **FARMERS EQUITY SERVICE, Inc.**  
Mobeetie Mobeetie

**It's Here! See It Today!**

**MAYTAG**

*Dutch Oven Gas Range*



It cooks ON . . . with the gas OFF . . . Automatically

Your kitchen's cooler, cleaner! Retained heat is the secret of Maytag's heavily insulated Dutch Oven. Kitchen stays cool and free of cooking odors, greases.

Cooks while you're away! Dutch Oven control dial automatically turns off gas, yet foods keep cooking by retained heat until deliciously done.

Full meal on one burner! The thrifty Dutch Cooker Well cooks an entire meal with only one top burner. Also ideal for cooking fruits, cereals, puddings.

Wipes clean in a jiffy! Heat-focusing Spiral Flame burners and chrome grills lift out so porcelain burner bowls and range top can be wiped sparkling white.

**CICERO SMITH LUMBER**  
AND HARDWARE  
Mobeetie, Texas



**Church Calender**

**BAPTIST CHURCH**  
 School Prayer Meeting  
 School ----- 10:00 a. m.  
 Worship ----- 11:00 a. m.  
 Worship ----- 7:30 p. m.  
 D. FULLINGIM, Pastor

**CHURCH OF CHRIST**  
 Morning Bible study 10:00  
 Worship ----- 11:00  
 Worship ----- 7:45  
 Evening, "The Life of  
 Jesus" ----- 7:45 p. m.  
 M. LITTON, Minister

**METHODIST CHURCH**  
 School ----- 10:00 A. M.  
 Worship ----- 11:00 A. M.  
 Worship ----- 7 p. m.  
 Worship ----- 8 p. m.  
 All are welcome.  
 S. Y. ALLGOOD, Pastor.

**W. BAPTIST CHURCH**  
 Meeting second and fourth  
 School every Sunday.  
 McDonald, Sunday School  
 S. Bridges, Pastor

**ASSEMBLY OF GOD**  
 Mobeetie, Texas  
 Service ----- 7:45 p. m. Sat.  
 ----- 10:00 a. m. Sunday  
 ----- 7:45 p. m. Sunday  
 All always welcome.  
 M. HUDSON, Pastor

**W. BAPTIST CHURCH**  
 School ----- 10:00 a. m.  
 Worship ----- 11:00 a. m.  
 Worship ----- 8:00 p. m.  
 Prayer service 8:00 p. m.  
 A. C. LYONS, Pastor

**KELTON  
 METHODIST CHURCH**  
 School ----- 10:00 a. m.  
 ----- 11:00 a. m. on second  
 and fourth Sundays.  
 W. S. and Bible Study  
 ----- 8:00 p. m. on second  
 and fourth Sundays.  
 O. C. EVANS, Pastor

**W. BAPTIST CHURCH**  
 School each Sunday at  
 -----  
 each Sunday at 7:30 p. m.  
 each Sunday at 11:00  
 ----- 8:30 p. m.  
 E. ROBERTS, Pastor

**News In  
 World of  
 Religion**

By W. W. Reid

is something new in co-  
 operation between industry and  
 religion. The Bristol Manu-  
 facturing Co. of Providence, R. I.,  
 has engaged the Rev. Dale P. Dut-  
 ton, pastor of Providence's Cen-  
 tral Church, as "vice-  
 president in charge of Christian  
 relations." In this new post Mr.  
 Dutton, on behalf of the shoe  
 manufacturing company, will "do  
 what he is led to do it" in the  
 factory, taking his instruc-  
 tions from the company but  
 "not" the company looks  
 at this as part of its steward-  
 ship to the community from which  
 it employs.

American Friends Com-  
 mittee, the Quaker "service arm"  
 is known around the world  
 for its work wherever there is  
 need—is now observing its  
 75th anniversary. In 1917 it  
 began rebuilding homes and re-  
 building life in the Marne Val-  
 ley. It helped Polish re-  
 fugees in Russia, took milk and  
 cheese to Austria and Hungary,  
 evacuated German children,  
 helped in rebuilding of France.  
 World War I it was active  
 in rehabilitation in Serbia, Po-  
 land elsewhere. During the  
 war years in America, it  
 provided relief for the children  
 of miners, and conducted  
 camps for youth in migrant  
 areas. Before the entry of Ameri-  
 ca into World War II, the Com-  
 mittee Quaker units to aid  
 soldiers in Germany, and to care  
 for children on both sides in  
 Civil War. Throughout the  
 war, an ambulance and  
 service was maintained in  
 China, relief groups  
 in Europe on both sides.  
 Active relief was given to  
 the famine in India and  
 Quaker relief units are  
 ministering to the children  
 in France, Italy, Aus-  
 tralia, Poland, Hungary,  
 Spain.



**BOY meets GIRL!**

An important moment!  
 The course of our children's lives is often determined by these first casual meetings and the deepening friendships that spring from them. Wise parents are vitally concerned with the circumstances and place of such youthful contacts.  
 At what better place could these young people meet than their church? Here they are learning to discover the best that is in themselves and in others. Here, too, they are provided natural opportunities for finding friends with common interests and a mutual sense of moral values.  
 But first must come the example of parents. It is when we support the Church by regular attendance and constant interest that our sons and daughters realize its importance in their own lives.  
 And happily, for parents and children alike, worshipping God and meeting other people on a common ground of faith and understanding, we discover the finer things of life.

**THE CHURCH FOR ALL . . .  
 ALL FOR THE CHURCH**

The Church is the greatest factor on earth for the building of character and good citizenship. It is a storehouse of spiritual values. Without a strong Church, neither democracy nor civilization can survive. There are four sound reasons why every person should attend and support the church of his choice. They are: (1) For his own sake. (2) For his children's sake. (3) For the sake of his community and nation. (4) For the sake of the Church itself, which needs his moral and material support. Plan to go to church on Sunday and read your Bible daily.

Copyright 1947 by  
 E. E. Keister, Strasburg, Virginia

**This Series of Church Ads Is Being Published Each Week in the Support of a Nationwide "GO TO CHURCH" Movement, and Is Being Sponsored by the Business Firms and Individuals Listed Hereon.**

W. E. PENNINGTON AND SON "Oldest Store in Town" Wheeler, Texas	FRED FARMER GARAGE & MACHINE SHOP Wheeler, Texas	OWEN'S SERVICE STA. Wheeler, Texas	WHITE AUTO STORE Wheeler, Texas
CITY BAKERY Wheeler, Texas	CITY DRUG STORE The Rexall Store Wheeler, Texas	BOB RODGERS Wheeler, Texas	CICERO SMITH LBR. CO. Wheeler, Texas
THE BRITT RANCH Wheeler, Texas	WHEELER COUNTY PRODUCE ASSOCIATION Wheeler, Texas	PERCY'S GARAGE Percy Farmer, Owner Wheeler, Texas	WHEELER GAS CO. Wheeler, Texas
BROWN'S CAFE Wheeler, Texas	GUYNES SERVICE STA. Phillips Products Wheeler, Texas	THE WHEELER ABSTRACT CO. Wheeler, Texas	SOUTHWESTERN PUBLIC SERVICE Wheeler, Texas
TITLE ABSTRACT CO. C. J. Meek, Owner Wheeler, Texas	J. P. GREEN & SON HARDWARE Wheeler, Texas	W. E. BOWEN IMPLEMENT CO. Your John Deere Dealer Wheeler, Texas	HIBLER IMPLEMENT COMPANY Wheeler, Texas
	CLAY FOOD STORE & ICEBERG LOCKERS Home Owned — Home Operated Wheeler, Texas	J. C. WOOLDRIDGE CO. Building Materials Wheeler, Texas	
	R. H. FORRESTER Wheeler, Texas	WHEELER DRUG STORE Wheeler, Texas	
	CHAPMAN'S DAIRY Wheeler, Texas	EBB FARMER SERVICE STATION Conoco Products Wheeler, Texas	
	PLANTER'S GIN Bill Darnell, Mgr. Wheeler, Texas	BURGESS SHOE SHOP Wheeler, Texas	
		GARRISON SERVICE Wheeler, Texas	

### Mobeetie Will

(Continued from Page One) wine opened with an infield single and Lobban doubled to center. J. Mills singled them both home.

Childress took the lead in the fifth on hits by Lobban, James and Butler. Lobban had been caught stealing but James and Butler scored on Pettyjohn's screaming double over shortstop.

Redwine pulled a classic in the sixth to put Childress two runs ahead when he stole home after James' infield fly to first base.

Mobeetie came back, however, with three runs to go in the lead again on hits by Funston, Elmore, Dorman, Fulenwider and Braden.

Mobeetie scored twice in the seventh and once in the eighth, while Childress picked up three in the eighth on hits by Later, Smith, Redwine and Butler.

Childress looked good at bat and

their base-running showed improvement. Mobeetie played a steadier game with some terrific clouting, too. It was a hard day on pitchers.

**RESULTS SUNDAY**

Mobeetie 10, Childress 9.
Quannah 9, Wellington 3.
Kirkland 1, Quail 10.
Clarendon 8, Memphis 10.

**LEAGUE STANDINGS**

	W	L	Pct.
Mobeetie	4	0	1.000
Quail	3	1	.750
Quannah	3	1	.750
Memphis	3	2	.600
Childress	2	2	.500
Wellington	1	3	.250
Kirkland	1	4	.200
Clarendon	0	4	.000

### Date Of Dairy

(Continued from Page One) dairying will be held, led by Dairy Specialist Gibson and his group, and winners of the morning's judging contest will be announced. 3:00 p. m.—the group will return to the farm-livestock building where the animals will be classified by Gibson and prizes awarded.

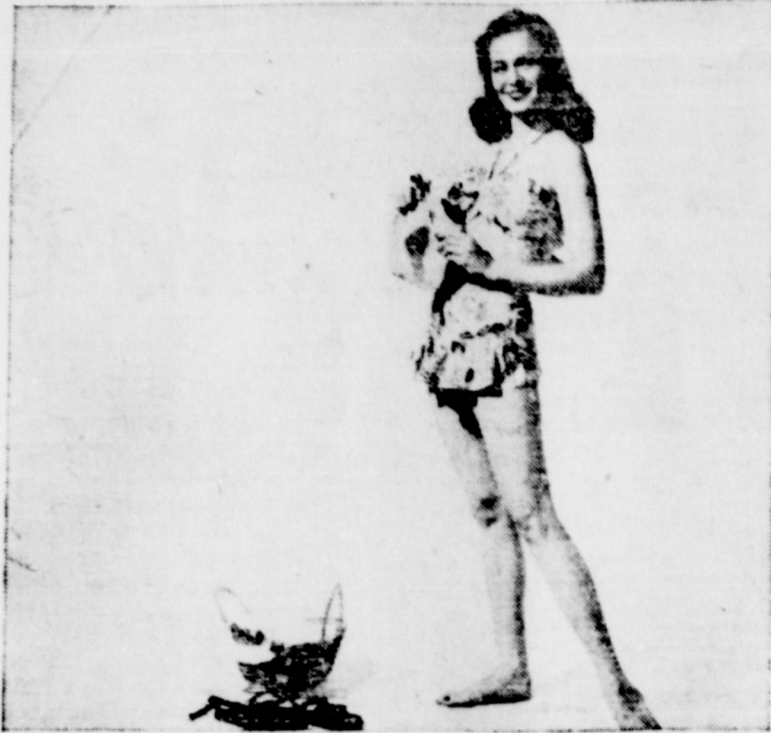
All dairymen of Wheeler and Collingsworth Counties are urged to enter their cattle in the show which will be one of three of its kind held this summer in the Texas Panhandle. The other two shows will be one for Ochiltree and Lipscomb Counties at Perryton and another for Randall and Potter Counties at Amarillo.

Howard C. Weatherby of Shamrock and Hubert Martin of Wheeler are in charge of entries and exhibitors should contact them for information concerning the show.

All cattle entered must have been tested by an accredited veterinarian within 30 days prior to the show, officials emphasized.

Mrs. Laura Holt of Springfield, Colo., returned home Tuesday after spending a few days with her sister, Mrs. Clarence Lee and family of Mobeetie.

### Dual Personality Suit



Pat O'Brien of the cinema and Sherman Billingsley of Stork Club fame were among the celebrities who voted the above bathing suit "tops" for the coming season. The suit, appearing in the May issue of Cosmopolitan magazine, is in yellow, aqua, maroon or pink on a white background. The jury, which also included Dane Clark, Stanley Marcus, president of Neiman-Marcus, and Jack Williams, president of L. Bamberger & Company, declared that the creation had a dual personality—that it could be young and fresh or as exotic as a Tahitian maiden—depending on the beholder.

Designed by Lee, it is a Henry Glass printed pique and will be available for early vacationers.

### Straight Shooters Expose Fakery



Ernie and Dot Lind, husband-and-wife sharpshooting team, expose the props once used by phony marksmen who pretended to hit a moth ball with a rifle bullet. Actually, they fired at a big plate concealed behind the curtain. This set off a hidden rat trap which shattered the ball. The Linds, Western-Winchester shooters, are now on their annual exhibition shooting tour.

### All Teachers Hired Back At Kellerville

All teachers in the Kellerville School were re-elected, subject to their signing contracts, at a recent meeting of the board.

The school board and Parent-Teacher Association are proud of accomplishments of the past year.

Last year the school cafeteria served well-balanced meals for 25 cents; the P-T A, under direction of Mrs. Byron L. Holley, purchased skates and the gymnasium was

used for skating parties and weekly skating. The association cleared about \$50 a week on the project.

There is complaint that the warnings of the prophets are frequently ignored, but at least when prophets predict that stocks are going up, many people are sufficiently impressed so that they buy these securities.

WHEELER TIMES WANT-ADS GET RESULTS!

### FARM FACTS WORTH KNOWING

**Q. What is Anaplasmosis?**  
A. Anaplasmosis is a disease of cattle caused by a protozoan parasite which gains entry into the blood stream of cattle and destroys the red blood cells. The protozoa are spread by flies, ticks, and uncleanliness with dehorners or vaccination needles. This disease is becoming more common in certain sections of the country and emphasizes the need for proper sanitation measures.

**Q. Last year I had trouble with my turkey poults and lost nearly half of them. They were about three days old when I fed them. Do you think they should have been fed earlier?**

A. Poults should be placed in the brooder and fed and watered immediately after they are received from the hatchery. According to research conducted by the Raiston Purina Company's Research Department, for every hour that feeding was delayed, mortality increased one-half of one per cent, and weight was one-fourth of one per cent less at six weeks of age. Three groups of poults were fed and watered at 24, 48, and 72 hours after hatching, respectively, and the livability at six weeks of age was as follows:

Age when first fed	Livability at six weeks
24 hrs.	97.7%
48 hrs.	90.0%
72 hrs.	73.7%

**Q. Will hogs fed fish meal or fish oil in their ration produce pork with a fishy flavor?**

A. Studies made at the Indiana Agricultural Experiment Station indicate that hog rations containing 2.5% and 10% of fish meal produced pork without a fishy flavor. However, 10% of fish meal plus 0.5% or 1.5% of fish oil in the ration resulted in fish flavored pork. The fishy flavor was more pronounced in the fresh roasts and cured bacon than in the fresh chops. Fish flavor was also more pronounced in the fat than in the lean tissue of the meat.

**Q. What is the incubation period for pea-fowl eggs?**

A. The incubation period for pea-fowl eggs is 28 days.

Send your questions about livestock or poultry problems to FARM FACTS, 815 South Eighth Street, St. Louis 2, Missouri. Questions will be answered without charge, either by mail or in this column, as a service of this newspaper.

### County Lucky

(Continued from Page 1) de said. "Every cloud that comes up seems to have hail in it and pound our wheat fields."

Friday afternoon shortly before 4 o'clock a strip 5 miles wide, located 2 to 7 miles west and northwest of Pampa, suffered hail damage, said Mr. Morris. He estimated 75 percent damage to crops.

Another strip northwest and northeast of Pampa, ranging from 2 1/2 to 3 miles wide and 8 to 10 miles long, was damaged heavily Friday about 10 miles south of Pampa another hail storm destroyed crops in a strip a mile wide and about 15 miles long.

The hail Thursday fell over an area about 5 miles wide and 10 miles long, located northwest and

### MRS. VAUGHAN DIES SUDDENLY

Funeral services were held at the First Christian Church in Shamrock Monday afternoon for Mrs. Beulah Katherine Vaughn, 53 years old, who died in an Oklahoma City hospital Friday morning following a major operation. Minister Bedford W. Smith was in charge of the rites and burial was in the Shamrock cemetery.

Mrs. Vaughn was the wife of Hal Vaughn, pioneer Wheeler county rancher and prominent in the oil and gas business.

She was a member of the First Christian church and of the Eastern Star.

Survivors include one daughter, Mrs. Jim Stroud of Pep, N. M., three sisters, Mrs. Emmagene Vaughn, Richland, Wash., Mrs. Bert Edwards, Minida, Mont., and Mrs. Hilliard Scott, Dodson; two brothers, Lacy McPhearson, Alamogordo, N. M., and Conrad McPhearson, Amarillo; and her father, S. B. McPhearson, Shamrock.

Word has been received here that the condition of Mrs. E. G. Pettit, long time resident of Wheeler, is greatly improved. She is undergoing medical treatment in Amarillo at present.

Friends of T. S. Puckett will be glad to know that his condition

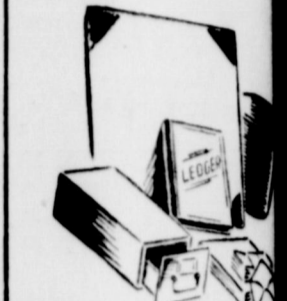
north of Claude.

Mr. Morris said about 130,000 acres in Armstrong County is in wheat. "About 15,000 acres of this has been damaged and 12,000 acres has been damaged 75 percent," he said.

is very much improved. He heart attack while at his store at Clinton, Okla., day of last week.

**NOTICE:**  
WE SCALD HOGS TUESDAY & THURSDAY OF EACH WEEK.  
Wheeler Lock

**ALL OUT**  
for your Office



Give your office a break, put off buying that wastebasket you've been putting off. New equipment will only increase your efficiency. Everyone from the office to the boys will work and faster with these better business.

**THE WHEELER TIMES**  
OFFICE SUPPLIES  
JOB PRINTING

### FOR THE YOUNG BRIDE

**BRIDE**



**FOSTORIA GLASSWARE**

Any bride, young or old, would be overjoyed to have you start her a set of FOSTORIA CRYSTAL GLASSWARE by giving her a piece or several pieces.

We have just received a large shipment of FOSTORIA and invite you to come in and pick out the pieces you might wish to give someone or the pieces you might need to fill in your own set.

We invite you to visit our store often for gifts for any occasion.

**WHEELER DRUG STORE**

JOHN WOFFORD, Mgr.

PHONE

### SILQUE Cream SHAMPOO



A cream that turns into rich, billowing lather, enhancing the natural highlights of your hair. Non-splishable convenience, plus Lanolin, makes it a delight for all the family. Get a jar today!

\$1 per jar

**CITY DRUG STORE**

## Memorial Day Wreaths & Sprays \$1.00 up

Large Selection To Choose From

**CITY DRUG STORE**

WHEELER, TEXAS



### GOOD FARMERS TAKE CARE OF THEIR STOCK

A good way to take care of your stock is to give them a preventative early in life.

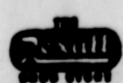
Most GOOD FARMERS use FRANKLIN'S BLACK LEG SERUM, which we think is a good idea.

GET YOUR FRANKLIN'S SERUM FROM US.

TRY—  
**INNER-AID**

Laxative Stomachic—Stimulate to Appetite

**CITY DRUG STORE**



**WHITE POPPY SLEEVES** flare out crisp and cool... lend a frosty touch to stripes! Marcy Lee adds a stairway of buttons, new and smart... fashions this town-perfect dress of Marvlo Sanforized woven cotton seersucker in a candy-play of red, capen or brown stripes on white. Matching Marilyn Belt Lamicel lined for permanent crispness. Sizes 10 to 16.

Have Received new stock of "GIBSON" on Junior.

**MILHANY'S**

For Everything You Wear

WHEELER

TEXAS

## BASEBALL

Sunday, May 25 3:00 p. m.

**MOBEETIE VS. QUAIL**

**MOBEETIE'S NEW DIAMOND ON HIGHWAY**

ADMISSION—50¢ (including tax)

—Children Under 12 Years Free—