

AGENT OFFERS HOW TO CONTROL WORMS

Agent W. K. Frey expressed doubt that pink worms had been found in Wheeler County. This opinion was given in writing this week by the Division leader of the United States Department of Agriculture, Division of Entomology and Plant Quarantine, who is in charge of bollworm inspection and

in answer to specific information by the agent on behalf of farmers of Wheeler County. Following information: a survey of status destructive of the cotton crop in the Lower Valley is primarily for the purpose of determining the growing season for bollworm resulting from the reproduction of bollworm being produced. One of its benefits the of a very small pro- over-wintering larvae the summer months, so a minimum of pink boll- to go into hibernation to the ensuing crop. The maj- pink bollworms produced the hot summer months into hibernation, but im- immediately pupate, and a

of such records in an area of Wheeler County, and other legionnaires feel that it is quite a break for the local post to see the services of such a noted band leader to play for a dance in a place the size of Wheeler and they join in extending a cordial invitation to the general public to plan now to come out and see this band perform whether you care to dance or not.

Dr. Harold Nicholson, commander of the local post, and other legionnaires feel that it is quite a break for the local post to see the services of such a noted band leader to play for a dance in a place the size of Wheeler and they join in extending a cordial invitation to the general public to plan now to come out and see this band perform whether you care to dance or not.

Believing that lights interpret feelings, Orrin Tucker and his Orchestra use a novel lighting arrangement to reveal musical moods. In the building the effect of illumination in creating thoughts has been realized and utilized. Somber scenes become more gloomy under blue lights. Green gives a macabre effect, white and other light hues a scene of well being.



ORRIN TUCKER
FAMOUS BAND
HERE JAN. 22

Orrin Tucker, nationally famous orchestra leader will bring his orchestra to Wheeler for an appearance at the New American Legion Building Thursday night, January 22. Tucker's Orchestra will play for a dance beginning at 9:00 P. M.

Orrin Tucker and his orchestra are now playing at the Stevens Hotel in Chicago and are coming out this way to make one appearance in Oklahoma and the appearance here, which will be their only stop in the Panhandle of Texas.

Flower bearers were: Mrs. Elva Green, Mrs. Irene Dyer, Mrs. Lucille Burgess, Mrs. Lottie E. Denson, Mrs. Alvern Hutchison, Mrs. Joyce Martin, Mrs. Bennie Mae Whitener, Mrs. Billie Jean Moore, Mrs. Katie Finsterwald, Mrs. Jaunita Allen, Miss Charline Bradshaw, and Miss Lucille Hutchinson.

Stamps Quartet to Be At Gym Friday Night

The Stamps Quartet from Wichita Falls, which was supposed to have appeared at the high school gymnasium on Wednesday night, January 31, will give a concert at the gymnasium Friday night, January 10 beginning at 7:30 p. m.

Mr. and Mrs. J. E. Willard returned Monday afternoon after having spent the recent holidays in the homes of relatives in Henderson, Texas.

MAY MITCHELL FUNERAL HELD, BAPTIST CHURCH

Funeral services for Miss May Mitchell, 26-year-old daughter of Mr. and Mrs. C. D. Mitchell, were conducted from the First Baptist Church Tuesday afternoon at 2:15 by Rev. M. B. Smith, pastor, who was assisted by B. M. Litton, minister of the local Church of Christ.

Miss Mitchell left behind a host of friends and relatives who loved and appreciated her. Many of the friends she left to mourn her passing, she had waited on at the Wheeler Hospital where she had been employed as a nurse for two years prior to her entry into the service of her country and the two years following her release from the service. Miss Mitchell served 34 months in the Women's Army Corp.

May Orlis Mitchell was born October 16, 1921 at Goodlet, Texas and passed away at the local hospital January 4, 1948 at the age of 26 years, 2 months and 18 days. Miss Mitchell moved to this community with her parents and brothers and sisters in 1940.

Survivors besides the parents, Mr. and Mrs. C. D. Mitchell, include seven brothers, C. C. Mitchell, Vernon, Jack and Joe all of Wheeler, and Frank who is in the armed services; two sisters, Mrs. Gene Hornsby of Amarillo, and Barbara Mitchell of Wheeler.

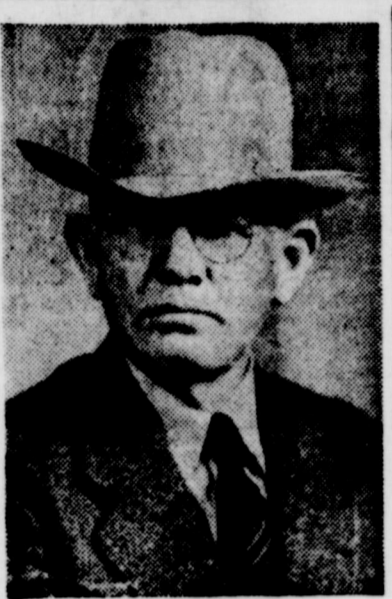
Interment was in the Wheeler Cemetery with Hunt Funeral Home in charge of arrangements.

WOFFORD SEEKS CLERKS OFFICE

County Clerk Harry Wofford this week authorized the Times to announce his candidacy for reelection with the following statement:

"To the voters of Wheeler County: "Even though, at the expiration of my present term, I will have served you as your County Clerk for eight years the job has not become the least distasteful; therefore, I am happy and willing to serve you again and I sincerely trust you desire that I do so and will evidence your willingness by voting for me. "I deeply appreciate favors bestowed upon me through out the years and in case you do elect me as your County Clerk for another term I will continue my efforts to make you the best County Clerk I know how."

Wofford signed the statement "Gratefully yours",
Newspaper Advertising Pays!



W. Z. BAKER
BAKER ASK FOR SHERIFF'S JOB

W. Z. Baker, Wheeler county resident for 32 years who ran a close second as a candidate for sheriff two years ago, broke the ice in county political circles Tuesday by again announcing his candidacy for that office.

Mr. Baker was less than 200 votes behind the successful candidate in a three-cornered sheriff's race in 1946 after entering the race late. In thanking voters for their support at that time he indicated he would be a candidate again in 1948.

"I appreciate what all my friends did for me two years ago and I ran a good race," Mr. Baker stated this week. "By announcing early this year and thus having a little more time to spend with voters in between my jobs on the farm, I hope to run a successful race this year."

"I shall conduct my campaign on the same principals I did two years ago. I shall have the highest personal regard for any persons who may announce for the same office and I ask the support of voters solely on my qualifications and ability. Win or lose, I hope to finish the race with more friends than I started. I will hold no ill will against anybody who cannot support my candidacy."

Mr. Baker moved to Wheeler county 32 years ago and lived here continuously with exception of one year he spent in the service of his country in World War I. His only Navy served four years in the U. S. Navy during the last world war.

Mr. Baker has lived in Shamrock for the past five years. He has farmed all that time and took on the extra job of night superintendent at the Shamrock oil mill for a while during the war.

Mr. Baker has never held public office and his campaign two years ago was his first one. As a proud citizen he has always stood for enforcement of the laws and if elected he says he will try to fulfill his oath of office fairly. He has no friends to reward or enemies to punish and will be in position to fulfill duties of the office without fear or favor. If elected he will be available to those needing his services day or night.

He will appreciate your support in the July Democratic primary.

Carl Mason returned to Canyon Sunday where he is attending school, after having spent the holidays at home.

AGENT OFFERS TAX AID TIPS FOR FARMERS

The County Agent's office stated Monday that many farmers frequently overlooked several small items of expense in their farming operations which can properly and legally be deducted. One of these is the farm telephone. Now, we all know that not all the use made of this telephone was in gabbing with the neighbors. A common sense view indicates that at least 50 per cent of the telephone bill each year could be charged off as a farm operation expense.

Another item is that of electricity. A per centage of the electric bill, depending upon equipment in the way of electric brooder, feed grinder, milking machine, milk cooler, lights in the barns and laying houses, electric water pumps, etc., can be charged against farm operation.

Simple things that people forget about are subscriptions to farm magazines and other publications necessary to the efficient operation of the farm business. For instance books on farm veterinary medicine, books on horticulture, books on scientific farming and animal husbandry and newspaper subscriptions to for commodity and livestock quotations.

Membership dues in farm organization are deductible. Also deductible are meals purchased when away from home on farm business; for example when on a long line of cotton-filled trailers and trucks ahead of a man at the gin makes it necessary for him to stay over at lunch or supper to gin his cotton. The meal can be deducted as a necessary expense. There are a few of the minor ones and the ones most frequently overlooked. There is no deduction, however, that most farmers do not know about and which can mean enough saved by taking the deduction that it would buy a water pump and a kitchen sink in some cases and in some cases it would mean the difference between getting and not getting a new pickup truck.

This item is capital gains on breeding stock eliminated from the herd for herd improvement reasons or for management reasons. Any mature breeding stock sold for more than they originally cost brings about an increase in capital and only 50 per cent of the increase is taxable; for example, you pay \$200.00 for a cow and sell her for \$300.00 making a net gain of \$100.00. Only 50 per cent of this gain (or \$50.00) is taxable therefore you deduct \$50.00 from your income tax after putting down (Continued on Last Page)

Play Bingo At Legion Building Each Tuesday

Local citizens who like to play Bingo are invited to come out to the New American Legion Building each Tuesday night and play. The basement of the building is being fixed up for a nursery for the children so you may come out and bring your children and leave them down there and play bingo without being disturbed. Proceeds from the bingo will be used toward paying for the new building. The general public is invited.

More Than Two Million Now On Deposit At The Wheeler, Mobeetie Banks

S. E. POWELL IS BURIED SAT.

Funeral services were conducted for S. E. Powell, former Wheeler resident, from the Methodist Church here Saturday afternoon at 3:00 o'clock with Rev. S. Y. Allgood in charge. Mr. Powell was a resident of San Angelo at the time of his death.

Mr. Powell, who is well remembered here by his many friends and acquaintances here, passed away in a San Angelo hospital suffering from a heart condition, January 1, Mr. and Mrs. Powell lived near Wheeler from 1921 until late in 1945 when they moved to San Angelo where they have made their home since that time.

The body was brought overland from San Angelo by Johnson Funeral Home of that city. Interment was in the Wheeler Cemetery with Hunt Funeral Home of this city in charge of arrangements.

Stephen E. Powell was born in Jackson, Miss., September 2, 1878 and was married to Bertha Duffie in Anson, Texas in 1910. Powell was 69 years, 3 months and 29 days old at the date of his death. Survivors include the widow, 2 sons, Dennis Powell of San Angelo, and Lonnie Powell of Pueblo, Colo., 4 brothers, C. F. Powell of San Angelo, S. J. Powell of Roswell, N. M., W. V. Powell of Abilene, and A. D. Powell of Barber, Arkansas, and a sister, Mrs. Nora Tinker of Andrews, and Mrs. Jeff Moseley of Alameda, Calif.

Funeral services were held for Reuben S. Watkins at Rio Frio, Texas Saturday, January 3 at the First Baptist Church. Mr. Watkins moved to Mobeetie in 1922 and lived in the Union and Totty communities until 1937 when he moved to Leakey, Texas to live with his son, George.

Reuben S. Watkins was born at Moulton, Alabama, January 15, 1851. In 1886 he was married to Addaline Robertson and to this union were born four children. Pert Watkins of Legion, Texas, George Watkins of Leakey, Talmage Watkins of West Columbia, Texas.

He leaves to mourn his death, besides his sons, three grand children and 7 great grand children. His wife and one daughter preceded him in death in 1906.

Mr. Watkins had made his home with his son, George, for 32 years.

Mr. and Mrs. Tom L. Waters and son, Tommie, of Vega spent the weekend with her brother and family, Mr. and Mrs. Aaron Williamson and Sue.

Bank deposits for the two banks in the north part of the county passed the two million dollar mark for the first time in history according to the statements of the Citizen's State Bank of Wheeler and the First State Bank of Mobeetie as carried in this issue of The Times.

Combine demand deposits of the two banks in this portion of the county at the close of business on December 31, 1947 was \$2,063,123.13 as compared to \$1,780,404.38 on December 31, 1946 or a gain of \$282,718.75 during the past year.

Deposits climbed \$304,423.04 during the last quarter of 1947 due to the harvesting of the crops in this section of the county and the money which came in from the oil leasing play which has been going on during the last couple of months.

On December 31, 1944 deposits of the two banks only totaled \$1,366,210.69 or \$696,912.44 less than the present amount on deposit at the two banks.

Combined demand deposits of the two banks for the past four years at the close of business on December 31 were:

1944	-----	\$1,366,210.69
1945	-----	1,834,073.43
1946	-----	1,780,404.38
1947	-----	2,063,123.13

DON STEVENSON DIES SUDDENLY

Wheeler friends of Donald R. Stevenson were saddened last Friday to learn of the untimely death of the 38-year-old owner of the Cap Rock Bus Line.

Funeral services for Stevenson were held at 2 o'clock Sunday afternoon at the First Baptist Church in Shamrock with Rev. Edwin C. Derr, pastor, officiating.

The body was taken to Oklahoma City for another service and burial. Mr. Stevenson died of a heart attack Friday afternoon at 5:15 o'clock. He had attended Rotary Club and was in his office in Shamrock when he was stricken. Mr. Stevenson came to Shamrock from Oklahoma City May 1, 1945, when he purchased the Cap Rock Bus Lines, operating between Berger and Childress.

Mr. Stevenson was a Mason, member of Khiva Temple of the Shrine in Amarillo, member of the consistory in Guthrie, Okla., an Oddfellow, member of the Rotary Club and the Baptist Church.

Survivors are his widow, Mrs. Juanita Stevenson, his father, John Stevenson, two brothers, C. E. and Worth, and two sisters, Mrs. Evelyn Williams and Mrs. Alvin Teel, all of Oklahoma City.

Girls Win, Boys Lose In Games With Higgins

The Wheeler boys and girls basketball teams played corresponding teams from Higgins last Friday night and reversed the usual procedure by having the girls team win and the boys team lose by a 6-point margin.

Melba May was high point girl for the Wheeler sextet with a total of 15 points. Red Richerson's Wheeler High School Exes team which is made up of Richerson, Harvey Wright, Adrian Risner, Carol Pettit, Delbert McWhorter, Loyd Weatherly and Leon Weatherly played a team from Pampa. Supt. Carrick played with the above team in the absence of a couple of the regular players.

Here Are The Dates For Candidates And Voters To Remember

- June 19—Last day for filing as candidates for county and precinct offices, county party chairmanship and district offices in districts made up of only one county.
- June 21—County executive committee meets to plan July primary and July precinct conventions.
- June 24—First day for filing campaign expense statements.
- June 26—Last day for candidates to pay filing fees.
- June 28—County primary committee makes up official ballot for July primary.
- June 28—Last day for filing first campaign expense statement.
- July 4—Absentee voting begins for first primary.
- July 12—First day to file second expense statement.
- July 15—Last day for filing second expense statement.
- July 19—Last day for applying for change of residence on voting lists.
- July 20—Last day for absentee voting for first primary.
- July 24—Primary election day, 7 a. m. to 7 p. m.
- July 24—Precinct conventions to name delegates to county convention (2 p. m. in rural precincts and 7 p. m. in city precincts).
- July 26—County executive committee meets to declare results of election and certify to county clerk.
- July 29—First day to file campaign expense statements for second primary.
- July 31—County executive committee meets to declare nominees and prepare runoff primary off ballot.
- July 31—County conventions meet at 2 p. m. to name delegates to state convention in September.
- Aug. 2—Last day to file campaign expenses for second primary.
- Aug. 3—Last day to file complete statement of first primary expenses.
- Aug. 8—First day of absentee voting for second primary.
- Aug. 9—Commissioners court election precincts are declared.
- Aug. 9—State executive committee meets to canvass returns of first primary.
- Aug. 16—First day to file second statement of second primary campaign expenses (last day is Aug. 19).
- Aug. 23—Last day for obtaining residence transfers on voting lists.
- Aug. 24—Last day for absentee voting.
- Aug. 28—Runoff primary election day (7 a. m. to 7 p. m.).
- Sept. 7—Last day for candidates and campaign managers to file final expense statements.
- Sept. 13—State executive committee meets to canvass election returns and make temporary list of delegates to state convention.
- Sept. 14—State convention meets at 10 a. m. (in Fort Worth this year) to declare nominees and adopt party platform.
- Oct. 13—Absentee voting for general election begins (last day Oct. 29).
- Oct. 27—County chairman names election supervisors.
- Nov. 2—General election day.
- Nov. 17—Secretary of state, in presence of governor and attorney general, opens and counts election returns.

NOTICE!

The veterans tractor mechanics class will meet Tuesday January 13 at 7:30 P. M. at the courthouse with Albert S. Thomas, instructor, in charge.

A Child May Dare So Drive With Care

THE WHEELER TIMES

Published Every Thursday at Wheeler, Wheeler County, Texas, By COOPER, HOWELL & MONTGOMERY

J. C. Howell Editor-Mgr.
Annie Mae Howell Society Editor
Richard L. Bradley Printer
Delbert L. Mitchell Apprentice

MEMBER
Panhandle Press Association
National Editorial Association

MEMBER 1947
TEXAS PRESS ASSOCIATION

SUBSCRIPTION RATES
In Wheeler, Beckham and Hemphill Counties
1 Year \$2.00
6 Months \$1.25
3 Months 75c
Everywhere Else
1 Year \$2.50
6 Months \$1.50
3 Months 85c

ADVERTISING RATES
National Rate 42c Column Inch
Local Rate 35c Column Inch
Classified See Want Ad Page

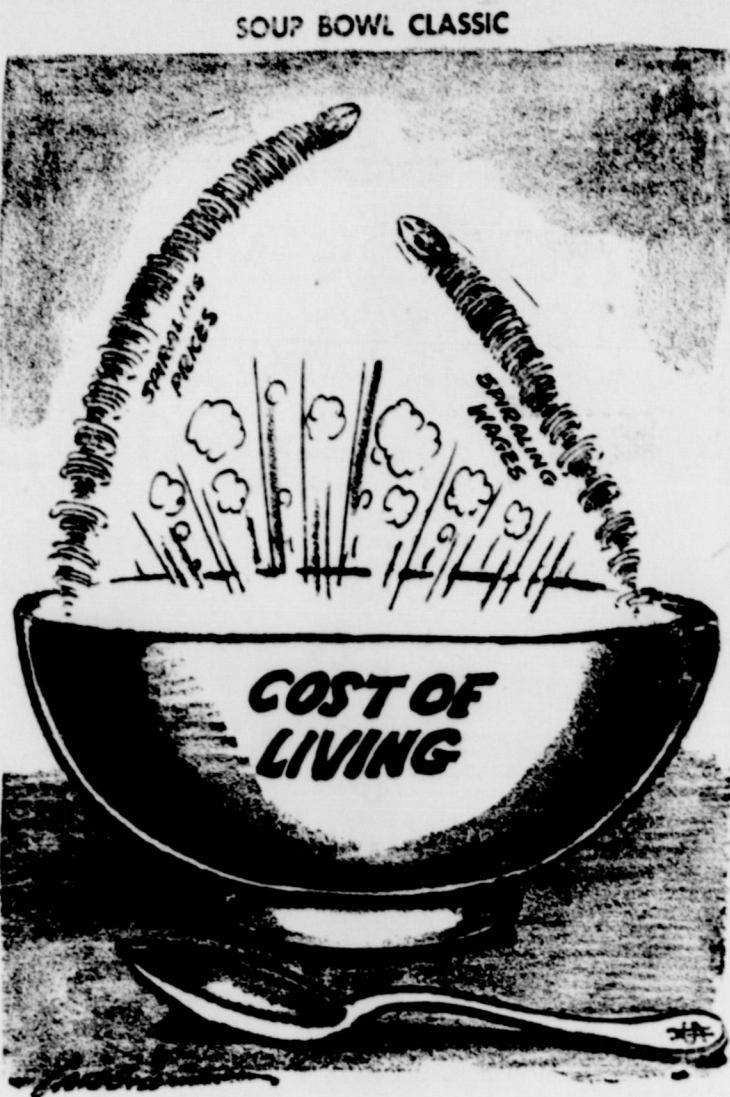
Entered as second-class matter Dec. 18, 1933, at the postoffice at Wheeler, Texas, under act of March 3, 1879.

NOTICE TO PUBLIC
Any erroneous reflection upon the character, standing or reputation of any person, firm or corporation, which may appear in the columns of this paper will be gladly corrected upon due notice being given to the Editor personally at the office at Wheeler, Texas.

THURSDAY, JANUARY 8, 1948

FARM PROBLEM APPROACH IN ELECTION YEAR

The problem of farm prices, like the poor, we have with us always, although under present conditions high agricultural prices and poverty seem to have little in common. But Republican leaders in Congress, who had been laying plans for a thorough overhauling



of farm policy during the next session to place it on a long-range basis, now seem strongly disposed to fight shy of the problem during 1948. The reason, of course, is politics.

The wartime law guaranteeing support of most farm prices at 90 per cent of parity will expire at the end of this year. Hearings conducted at various points throughout the country in recent months by the House agricultural committee revealed that farmers will insist upon government establishment of a permanent floor under farm prices. On the other hand, the present farm program, designed as a depression safeguard, has been criticized widely as tending to contribute to the current inflation and high food prices. Caught between these two viewpoints, both parties in Congress hesitate to tackle so controversial a problem during a present election year. Many farm state congressmen seem inclined to continue action in 1948 to a simple extension of the present price support law, leaving long-range farm policy to be determined later.

Happily, the outlook makes it probable that long-range action can be deferred without running the risk of farm price collapse that would pull the rest of the economy down with it, as it did after the last war. The needs of Europe seem to assure that demand for all the food that American farmers can produce will continue for two or three years at least, a circumstance that should sustain agricultural prices at high levels during that period.

More extension of the present support program that the government to a degree will be underwriting the high farm prices that



Meatless Tuesdays can be taken care of with a nourishing dish of low-cost spaghetti Toss Casserole. Put 1 tsp. salt into 8 qts. boiling water. Add gradually 8 ozs. spaghetti, boiling for about 12 mins. Drain, rinse. While spaghetti is cooking, mix 1/4 cup chopped onion, 1/4 cup chopped green pepper, 1/4 cup condensed tomato soup, 1/4 tsp. Worcestershire sauce, 1 tsp. salt, 1/2 cup halibut tuna (102 cans), 1/2 cup grated American cheese and 2 hard-boiled sliced eggs in 1/2 cup water. Fold in spaghetti, pour into greased 1 1/2 qt. casserole and bake in moderate oven (350°) 25 mins. 4 servings.

Leftover pound cake, too dry to serve as is, can be sliced, fried in a buttered skillet over a low flame. Brown both sides and serve with jelly.

It takes more than just to keep an uncovered vessel boiling. If you turn the flame to the lowest point, that will keep covered contents boiling continuously with a great deal less cost on the fuel bill.

If the family is late getting home for dinner, pans of food can be put in the roaster-filled half full with hot water, and kept hot over low flame. Mashed potatoes can be turned into a casserole, dotted with butter or margarine, then popped into a medium heated oven. Just before serving give them a quick stir.

If you have pancakes ready for the table and find no syrup on the shelf, mix cream with honey and use in place of the syrup.

LEGAL NOTICE

NOTICE OF THE FILING OF FINAL ACCOUNT

THE STATE OF TEXAS, to the Sheriff or any Constable of Wheeler County, Greetings:

Lucile Tipps, administratrix of the estate of N. M. Tipps, deceased, having filed in our County Court her final account of the condition of the estate of said N. M. Tipps, deceased, together with an application to be discharged from said administration, and that said estate be vested in the names of those entitled to receive it under the law, you are hereby commanded, that by publication of this writ once in a newspaper regularly published in Wheeler County, Texas, and said publication shall not be less than ten days before the return day hereof, you give notice to all persons interested in the final account of said estate, and the disposition thereof, to file their objections thereto, if any they have, in said court on or before Monday, the 19 day of January 1948, when said account and application will be considered by said Court.

Given under my hand and seal of said Court, at my office in the City of Wheeler, Texas, this 3 day of January, 1948.

(SEAL)
HARRY WOFFORD
Clerk County Court,
Wheeler County, Texas.
Audrey Pearce, Deputy
4-11c.

After Christmas Toys Problem For Mothers

After Christmas, many a mother is at her wit's end wondering what to do about the toys scattered around the house as the result of Santa's visit.

Mrs. Eloise T. Johnson, extension family life education specialist for Texas A. and M. College, says that young children need a variety of toys because they do not concentrate on any one thing for any length of time, but too many at once will only cause confusion and may lead to disorder and destruction. It's a good idea, she says, to put some toys in reserve after Christmas and have a special box for rainy days.

Shelves are better than a chest to keep the toys in order. An accessory box with several small

drawers is a fine place for small articles and doll clothes.

Mrs. Johnson says the old idea that small children should put away all their playthings is no longer accepted as good. Children are tired at the end of the day and need a "lift", just as adults do. A member of the family should help to "tidy up" and make a game of it. As the child grows older, he will accept the facts that toys should be out of the way by bed-time and will naturally assume the responsibility.

THE WHEELER TIMES classifieds offer more for less money, to both buyer and seller, than any other business device we know about.

Wheat is a good export because it is easily shipped, stored and has a high value in relation to its cost.

During 1946-47, 574,000 bushels of U. S. grain, primarily wheat and wheat in the flour, have been exported.

A nationwide farm rat campaign will be sponsored by the U. S. Department of Agriculture and the Wildlife Service of the Department of Interior, with industry and citizen groups operating.

A Child May Drive With So Drive With

CHARTER NO. 343
BANKS
OFFICIAL STATEMENT OF FINANCIAL CONDITION OF
THE CITIZENS STATE BANK

at Wheeler, Texas at the close of business on the 31st day of December, 1947, pursuant to call made by the Banking Commission of Texas in accordance with Banking Laws of this State.

RESOURCES

Loans and discounts, including overdrafts	\$ 10,000.00
United States Government Obligations, direct and guaranteed	70,000.00
Obligations of states and political subdivisions	50,000.00
Cash, balances due from other banks, including reserve balances, and cash items in process of collection (including exchanges for clearing house)	50,000.00
Banking house, or leasehold improvements	10,000.00
Furniture, fixtures, and equipment	10,000.00
TOTAL RESOURCES	\$190,000.00

LIABILITIES AND CAPITAL ACCOUNTS

Common Capital Stock	100,000.00
Surplus: Certified \$30,000.00	30,000.00
Undivided profits	10,000.00
Demand deposits of individuals, partnerships, and corporations	10,000.00
Deposits of banks (excluding reciprocal balances)	10,000.00
TOTAL LIABILITIES AND CAPITAL ACCOUNTS	\$190,000.00

STATE OF TEXAS, COUNTY OF WHEELER:
I, R. J. Holt being Vice-President of the above named bank, solemnly swear that the foregoing statement of condition is the best of my knowledge and belief.

R. J. HOLT, Vice-President

(SEAL)
CORRECT—ATTEST

DAMARIS E. HOLT, D. E. HOLT, FLAUCY B. HOLT, D. O. BEENE, Notary Public, Wheeler, County, Texas.

COME OUT OF THE DARK

AND SAVE YOUR EYES

EYE SIGHT is so precious and good lighting so cheap there's no need to strain your eyes because of insufficient light.

Good lighting is so necessary for good eyesight that you should make sure that in every room of your home, or in every section of your place of business there is always enough light.

Whenever you find your eyes tiring quickly, CHECK YOUR LIGHT. It may be too weak or possibly too strong. If you can't determine the proper light yourself, call a Public Service lighting specialist.

I'LL COME TO YOUR HOME OR PLACE OF BUSINESS

A Public Service Company lighting specialist will come to your home, office, or place of business to give you recommendations as to how to obtain the best in lighting. There's no obligation. Just call or write your nearest Public Service office.

We Have Nothing to Sell But Good Electric Service

SOUTHWESTERN PUBLIC SERVICE COMPANY
33 YEARS OF GOOD CITIZENSHIP AND PUBLIC SERVICE

PAY YOUR SUBSCRIPTION TO WHEELER TIMES NOW!

DUPLICATORS and Duplicating Supplies

Save Time
Save Money

THE WHEELER TIMES
WHEELER, TEXAS

Specialty CONCRETE
BUILD FOR STRENGTH

HOME FARM BUSINESS

IRRIGATION & CULVERT & SEWER

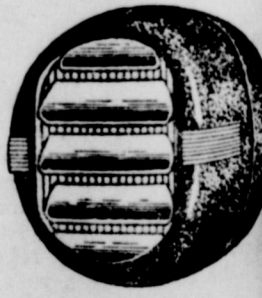
Free...
Write today for your pictorial review of model homes and business buildings.

CHASE AND McBENNIS INC



ZERONE
\$1.50 Per Gal.
Sorry We Do Not Have Permanent Anti-Freeze

MOTOROLA AUTOMATIC GASOLINE HEATERS
TROPIC AIRE HEATERS
ARVIN HEATERS



DELCO BATTERIES
WILLARD BATTERIES

- CRAWFORD SEAT COVERS
- FLOOR MATS
- WINDSHIELD DEFROSTERS
- TRICO WINDSHIELD WIPERS, BLADES & MOTORS
- MUFFLERS & TAILPIPES
- GILLETTE TIRES & TUBES, Reg. & Med. Tread

Owen's Service Station

Phone 101

TIMES WANT-ADS GET RESULTS!

It has been found that grain are particularly rich in vitamin that helps elagra.

In 1930 and 1946, including highest average weight slaughtered under federal regulation was 961 pounds in the lightest was 909 in 1935.

One-fourth of the rain that falls in the forest is caught by tree leaves and branches and released back into the air.

Frozen baked apples are among the newest cooked fruit desserts to appear in frozen food stores.

THE WHEELER TIMES classifieds offer more for less money, to both buyer and seller, than any other business device we know about.

THE CORRAL

Published weekly by the Students of Wheeler High School.

Editor ----- Ruby Reid
 Ass't Editor ----- George Swink
 Sports Editors ----- Jody Reid
 Happy Martin
 Senior Reporter ----- Dolores Pendleton
 Junior Reporters Gene Hubbard
 Melba May
 Sophomore Reporter Winnie Reid
 Freshmen Reporters Dick Pendleton and Glenda Laycock

F.F.A. NEWS

The future farmers received their jackets, which are bright blue with their names and emblems. These are the first jackets the Wheeler F.F.A. Chapter has received.

The boys all seemed to learn a lot in hog killing and butchering. Experience is the best teacher, thanks to Mr. Clepper.

Some students have already closed out their record books on more than one project, others are working to hand theirs in by mid-term.

THE OLD HOME TOWN By STANLEY



BASKETBALL NEWS

The Wheeler boys and girls had a game with Higgins Friday night and did a pretty swell job. The girls beat their game with a final score of 35 to 21, but the boys were unfortunate at losing theirs with a score of 25 to 19. Both of the games were very exciting and everyone seemed to enjoy them very much. We hope to see as many at every game; that we have this season as at the last game.

SENIOR NEWS

The seniors had the assembly program this morning, and what a time they didn't have. Having talked to the boys for a half day, we finally talked them into putting on a style show. James had on a huge hat, and a night gown. Happy a one piece bathing suit. Bill an evening gown, with a

schawl around his head and shoulders. Robert modeled a sun-suit. They all agreed that Happy looked very glamerous.

The girls did a little novelty act, and Georgie and Lois told a little story of the "Three Bears". Jody and Vaneta had a boxing match, while Ruby tried to referee, and Jody must have made a mis-lick once because she hit the referee on the side of the head. We also had a little pantomime act, which Bill, Joyce and Yvonne acted for us.

We think it was a nice assembly and nearly everyone enjoyed it.

Ruby, I'll declare kid, once we looked at you and we would swear you had a mouth full of chewing tobacco, and the next time it looks like Cecil might have hit you on the side of the head. But, really though, it is where you had a tooth pulled, isn't it?

The girls were very disappointed Tuesday night when they were supposed to play Allison and then when they finally come there was nothing but the boys there. Maybe they can make it the next time.

Jody, just where did you get that big blue spot on your arm? Don't tell us that Nanu got that rough with you.

Bob wasn't feeling very good last Wednesday morning, because you see he turned his car over. But it didn't hurt him, he is really a tough character.

Happy, why don't you model a bathing suit more often?

JUNIOR NEWS

The juniors seem to be very proud of their pens. The rings will be here soon, we hope.

We hope that you will be very happy Pat and Clyde.

Melba, we are wondering who will be next?

It seems that we have a lot in common, Weeks. Hollywood the limit!

Duane had been very busy, gathering acorns for the winter.

Some students thought that J. H. had a lot of unknown talent until they found out he had been given a hot foot.

Someone ask if Bill and Harold weren't planning to be married. What name will you use Bill? Hardcastle or Robertson? You are a Casanova. Horace Lee.

SOPHOMORE NEWS

All the boys had better watch out. It's leap year and the girls want to go somewhere every night.

Why wonder! It doesn't concern some certain people if the Wheeler girls were in Allison.

JoAnn seemed very mad Monday morning. Was it because of Sunday night? Ask Dorothy.

Winnie things were different Saturday night. We hear everything turned out o. k. Lets hope that doesn't happen again.

Imogene, we saw you in quite

a rage Saturday night when you got in the car with Ruby and Cecil. Gene, why didn't you let the little Casanova take you home?

J. T. and Garland are always in the library the first period. We wonder why?

Floy Bell, shorten the ribbon please, it isn't supposed to be as long as the dress.

Charlotte, why didn't you come to school Monday? He was here. Red, we hear you broked your watch.

Annie and Ruby love to miss school. Don't you girls?

Linda, Jack, and Jerry are studying for mid-term exams. There will be three juniors next year anyway.

Bobbye we like your boots and red plaid shirt. By the way, who were you sitting in the middle of the street with Sunday?

Did anyone see the expression on Linnie's face when Coach Baker said James had moved back to California.

C. R., that gold football will look good on your jacket next year.

Answer to last week's Guess Who? Bob Lowrie.



FIRESTONE '48 Sale
 Celebrating
 THE NEW YEAR WITH MANY SMASHING VALUES
 GREATLY REDUCED IN PRICE!!

CAR BATTERIES
 Up to \$3.00 allowance for your old Battery
\$15.95

FREE!
 \$1.00 Value! ROAD MAPS OF AMERICA
 by Rand McNally
 Eighty pages of maps of every state with street maps of principal cities. Get yours today!

FIRESTONE SPARK PLUGS
 Reg. 69c Special **39c**
 In sets of 4 or more.

SUPER SPECIAL
HOUSE BROOM
 Reg. 1.59 **98c**
 Finest broom corn. Five rows of strong stitching.

BARGAIN!
 Reg. 1.89 **DOOR MAT 1.18**
 Thick, brushy coconut fibers make this fine quality mat extra tough.

MONEY-SAVERS!
FLASHLIGHT BATTERIES
 We Will Refill Any Size Flashlight for only **18c**

7-PIECE KITCHEN KNIFE SETS
 Reg. \$5.95 NOW **4.89**

HUGE VALUE!
Wheलगrip DRIVING GLOVES
 Reg. 1.29 **98c**
 Fabric with leather strips on thumbs and fingers for easy gripping.

Sensational Bargains IN EVERY DEPARTMENT

AUTO SUPPLIES REDUCED!
 Rear View Door Mirrors \$1.79-\$1.48
 Dual Fender Guards \$3.79-\$2.98
 Defrosting Fans \$7.95-\$5.98
 Power-tone Horns \$8.95-\$6.88

HARDWARE PRICES SLASHED!
 Padlocks and Keys 55c-38c
 Flashlights, incl. battery 75c-58c
 Ring Master Appliance Cords \$1.39-\$1.08
 10" Jaw Wrenches \$1.95-\$1.48

SAVE ON HOUSEWARES!
 Dust Mops 98c-68c
 Ironing Board Pad and Cover Sets \$1.39-\$1.18
 Self-Polishing Wax and Wax Applicator \$1.68-\$1.38
 Velon Shower Curtains \$3.79-\$2.88

Bathroom Shag Rug and Lid Cover Sets \$4.27-\$3.39

HOME APPLIANCE BARGAINS!
 The Headliner Radio, latest Electronic advancements, pin point tuning \$29.95-\$22.95
 Deluxe Rubbish Burner \$2.79-\$1.79
 2-Ft. Step Ladder \$1.79-\$1.39
 All Metal Folding Step Stool \$3.98-\$2.98
 Rock-R-Swing \$6.95-\$5.95

There is a Tarpaulin at Firestone for every job—Prices from \$8.25 up.
 Kitchen Exhaust Fans \$27.95-\$22.95
 Firestone Vacuum Cleaners \$69.50-\$59.50 with your old cleaner

NASH APPLIANCE & SUPPLY CO.

Are You Saving All The Grain You Can?

The grain needed to Win the Peace must be saved on the farm. That calls for efficient feeding and management practices. The way to save the grain is to cut feed waste—not cut out good producing flocks and herds!

Come in and ask us for information that will help you tie-in with this vital program.

Check yourself on these feed saving practices that can help supply the grain the world needs:

CULL LOW PRODUCERS

1. Remove hens as soon as they stop laying. Sell all old hens.
2. Sell low producing cows—don't waste feed on them.

FEED BALANCED RATIIONS

1. Every bag of Purina Pig & Hog Chow saves 12 to 13 bushels of corn when fed according to the Purina Plan.
2. Efficient rations can save about 3 pounds of feed per dozen eggs.
3. A good broiler ration can save up to 3 lbs. of feed per bird.

FEED ACCORDING TO PRODUCTION

1. Know how much milk each cow gives. Then feed according to her production.
2. Feed 26 lbs. of feed per 100 bird per day to keep them at peak production. Top feed Layena Checkers to get enough feed into birds.

MARKET EARLY

1. Market hogs at 200-225 lbs. Heavier hogs take more grain per pounds of gain.
2. Market broilers at 3 lbs. or less. Early gains use less feed per pound.

STOP WASTE FROM GERMS, WORMS, RATS

1. Keep stalls and houses clean, dry and disinfected to guard against disease losses.
2. Worm pigs at 12 weeks with Purina Pigtab Granules—Save up to 2 bushels of grain.
3. Kill rats—one rat eats and wastes about 100 lbs. of grain in a year. Use Purina Rat Killer.

WHEELER COUNTY PRODUCE ASSOCIATION
 PHONE 142 — P. O. BOX 93
 WHEELER, TEXAS

SOCIETY

Marrs-Pettit Nuptial Vows Exchanged Sun.

Wedding vows for Miss Virginia Marrs, daughter of Mrs. L. C. Lafin, and Carroll Pettit, son of Mr. and Mrs. Shelby Pettit, were exchanged at the Church of Christ, Sunday evening, January 4, at 2:30 P. M. B. M. Litton, minister, officiating at the single ring service.

The bride was attractive in a street length dress of brown crepe, trimmed with gold sequins. She wore a gold off-the-face felt hat, brown shoes and pigskin gloves, the later being "something borrowed" which belonged to her sister, Mrs. Earl Barnes. A corsage of white carnations completed her ensemble. "For something old and for luck", she wore an Indian head penny in her shoe.

Miss Virginia Lowrie, as maid of honor, wore a rose colored wool crepe dress, with brown accessories and a corsage of white carnations tied with blue ribbon.

Mrs. Harvey Wright attended as matron of honor. She wore a two piece dress of rose wool crepe, with black accessories and a corsage of white carnations tied with blue ribbon.

The groom was attended by his brother, Maurice Pettit, and Harvey Wright.

Mrs. Pettit is a graduate of the Wheeler high school and attended West Texas State College at Canyon. For the past few months she has been employed at the Wheeler Radio and Refrigerator Service.

The groom graduated from the Wheeler high school and attended North Texas Agriculture College at Arlington. He served one year with the U. S. Navy, nine months of which time was spent overseas.

After a short wedding trip the young couple will make their home in Wheeler.

Fiftieth Anniversary Is Celebrated Sunday By Mr. and Mrs. Farmer

Mr. and Mrs. E. E. Farmer were honored with a surprise dinner, Sunday, January 4, at their home in the Corn Valley Community, on their Golden Wedding Anniversary. All but three of their ten living children were present to celebrate the occasion with their parents.

The children presented their parents with a beautiful electric ice box.

Those attending were: Mr. and Mrs. Ben Helton and daughter, Paula Sue, of Gageby, Mr. and Mrs. Fred Farmer and baby of Shamrock, Mrs. Foy Satterfield and daughters, Miss Elma Mae and Mrs. Reese Fields and baby of Pampa, Mr. and Mrs. Percy Farmer, Edna Helen and Mr. and Mrs. Don Farmer, Mr. and Mrs. Ebb Farmer and Glen, Paul Farmer and Mr. and Mrs. Roscoe Meek, Mrs. Meek is a cousin of Mrs. Farmer.

Those unable to attend were Mr. and Mrs. Bill Farmer and Clifford Farmer of Borger and

Mr. and Mrs. Morris Boone of south Texas.

Mr. and Mrs. Farmer were married January 5, 1898 at Fortrestburg, Texas in Montague County. They moved to the Corn Valley Community in 1927.

Mrs. Bailey Honored By Quilting Club

The Mt. View Quilting Club met December 16 and quilted one quilt for Mrs. Alfred Hill. Christmas gifts were exchanged

before the covered dish luncheon and Mrs. Jap Bailey was honored with a pink and blue shower in the afternoon.

Those attending the quilting and shower were: Mesdames G. T. Errington, Frank Totty, J. D. Seitz, Pierce Walker, Ernest Howard, Douglas Baird, Alfred Hill, Tom Hathaway, Joe Thompson, N. J. Tyson and Nanette, Brooks McLaughlin, H. A. Eisenmenger, Bob Galmor, Doyle Grimes, G. A. Martin, Terrell Gunter, Lawton Hoffer, Pearl Bailey, W. M. Quarles, Jeff Brewer, Lon Thomas, Clyde Gray, Julia Williams, Mattie Williams, S. H. Salley, L. D. McCauley, Hugh Bailey, Lucille Roper, Lucille Bailey, and the Misses Betty Brewer and Chestnut Thomas.

WHEELER TIMES WANT-ADS GET RESULTS!

CHARTER NO. 121

BANKS

OFFICIAL STATEMENT OF FINANCIAL CONDITION OF THE FIRST STATE BANK OF MOBEETIE

at Mobetie, Texas, at the close of business on the 31st day of December, 1947, pursuant to call made by the Banking Commissioner of Texas in accordance with Banking Laws of this State.

RESOURCES	
Loans and discounts, including overdrafts	\$ 82,547.65
United States Government Obligations, direct and guaranteed	377,940.00
Corporate stocks, including stock in Federal Reserve Bank	5,000.00
Cash balances due from other banks, including reserve balances, and cash items in process of collection (including exchanges for clearing house)	246,019.32
Banking house, or leasehold improvements	5,951.60
Furniture, fixtures, and equipment	1.00
Other real estate owned	4.00
TOTAL RESOURCES	\$717,463.57
LIABILITIES AND CAPITAL ACCOUNTS	
Common Capital Stock	20,000.00
Surplus: Certified \$10,000.00, Not Certified	10,000.00
Undivided profits	17,024.97
Demand deposits of individuals, partnerships, and corporations	654,934.10
Public funds (Incl. U. S. Govt., states and political subdivisions)	15,504.50
Total all deposits	670,438.60
TOTAL LIABILITIES AND CAPITAL ACCOUNTS	\$717,463.57

STATE OF TEXAS, COUNTY OF WHEELER:

I, H. L. Flanagan, being Cashier of the above named bank, do solemnly swear that the foregoing statement of condition is true to the best of my knowledge and belief.

H. L. FLANAGAN, Cashier

(SEAL)
Subscribed and sworn to before me this 6th day of January, 1948.
D. LEONARD, Notary Public, Wheeler County, Texas.
CORRECT—ATTEST

E. E. JOHNSTON, JACK MILLER, J. H. SCRIBNER, Directors.

TWO WAY-KNEE PLAY

Rayon Hosiery

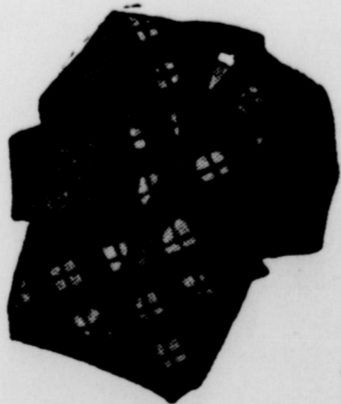
Just what you have wanted for everyday wear in winter hose.

49c Pair

Clean-Up

MEN'S
and
BOY'S
SWEATERS

1/2 Price



A FEW —

Jackets For Boys
CLEAN-EM-UP

\$1.98

RUSS VARIETY
WHEELER, TEXAS

HE'S BACK!

MCA PRESENTS
In Person
ORRIN TUCKER

GREAT NEW BAND

AMERICAN
LEGION HUT
WHEELER, TEX.
JANUARY 22

THE HOLIDAY SEASON IS OVER IT'S

PANTRY STOCK-UP TIME Again

CUT GREEN BEANS 3 No. 2 Cans 25¢ Case Of 24 \$2.29	VAN CAMP'S PORK & BEANS 2 No. 2 Cans 35¢ Per Case \$3.79	PINEAPPLE NO. 10 CANS Per Can \$1.05 6 Cans \$5.98
---	---	---

SUGAR 10 lbs. 95c	100 lbs. \$9.25
-------------------	-----------------

ADAM'S SWEETENED ORANGE JUICE 46-OUNCE CAN 25¢	WELCH'S GRAPE JUICE PER QUART 47¢	FARGO GRAPEFRUIT JUICE 16-OUNCE CAN 17¢
---	--------------------------------------	--

RED ROSE—5-TIE BROOMS Each 69¢	LIQUID WAX—NO RUB FLOOR-GLOSS 25¢
-----------------------------------	--------------------------------------

GERBER'S BABY FOOD SIX CANS 45¢	MALT-O-MEAL PER PACKAGE 27¢	EAGLE BRAND MILK PER CAN 25¢
------------------------------------	--------------------------------	---------------------------------

ORANGES 5-POUND BAG 25¢	BANANAS FANCY 2-POUNDS 29¢
GRAPEFRUIT 8-POUND BAG 31¢	BRUSSELL SPROUTS PER QT. 31¢

RED POTATOES IDAHO McCLURES 100 lbs. \$3.50	GOOD NO. 2's
---	--------------

CAULIFLOWER PER POUND 15¢	SUNKIST LEMONS 360 SIZE PER DOZEN 31¢	LETTUCE LARGE CRISP HEAD 10¢
---------------------------	---------------------------------------	------------------------------

FANCY TEXAS CARROTS TWO BUNCHES 19¢	GREEN PASCAL CELERY LARGE STALK 19¢	FANCY NEW POTATOES TWO POUNDS 19¢
-------------------------------------	-------------------------------------	-----------------------------------



FANCY BEEF CHUCK ROAST Pound 40¢

LEAN PORK CHOPS Pound 59¢

FANCY LOIN STEAK Pound 59¢

SMALL WEINERS Per Pound 31¢	AMERICAN CHEESE 5-lb. Loaf 2.35 Pound 48¢
-----------------------------	---

RANCH BOY DOG FOOD 25¢

CAMPBELL'S TOMATO SOUP 21¢

CLEANSER BAB-O 19¢

DEL MONTE DRIED BEETS 10¢

AMERICAN BEAUTY SOUR KRAUT No. 2 10¢

QUART JAR VINEGAR 10¢

PINK SALMON 1-lb. 49¢

FINER QUALITY AT LOWER PRICES FROM COAST TO COAST

CLAY'S

Home-Owned FOOD IGA STORE Home-Operated

IGA LYE 3 CANS 27c

OUR CHEAPEST WAY TO BUY OR SELL WANT ADS

15c per line (counting 5 words to line) for first insertion. Minimum charge, 45c; 10c per line after first time. Regular charge 30c. Reader ads scattered among local items per line each insertion. Cards that run every week 30c per column inch per week.

DAY ADVERTISING—National rate, 42c an inch; Local advertising rate, 35c per column inch, 28c per inch when ads or more used each week during calendar month.

- FOR SALE**—Modern four room stucco house, all hardwood located on North Houston. Mrs. Pearl Brigham, Shamrock, 4-1tp.
- FOR SALE**—No down payment. Payments as low as \$4.92 per month. You prefer monthly installments. Nash Appliance & Supply.
- FOR SALE**—White sweet clover. Virgil Helton, 3 miles S. 3 miles north of Briscoe. 4-2tp.
- FOR SALE**—3 piece Walnut living room suite, in good condition and three electric irons. Mrs. Rich Brown, Briscoe. 4-1tp.
- FOR RENT**—Two room house for couple. Dr. V. N. Hall, Wheeler. 4-1tp.
- FOR SALE OR TRADE**—1940 Chevrolet truck, 1945 Ford tractor, 1942 Dodge Station Wagon with all steel body. Cap Rutherford, Gageby. 51-4tp.
- FOR SALE**—640-Acre stock farm, about 250 acres in cultivation, balance in grass. 2 sets of

FOR SALE—1/2-section, well improved; 1/4-section, close in, well improved; nice residence, nice home in west Wheeler. W. S. Williams. 4-tfc.

good improvements, 3 wells of good water. Located 7 miles northwest of Wheeler. Pettit Estate, call 158, Wheeler. 1-tfc.

FOR SALE—Baby Basanette. Mrs. J. E. Brown. 4-1tp.

Fruit trees, flowering shrubs, evergreens, shade trees, hedging. See Will Warren.

FOR SALE—Good electric Maytag washer. Priced at \$65.00. Wheeler Radio & Refrigerator Service. 4-1tc.

BELIEVE IT OR NOT—You can own the famous DeLaval 2 unit milker for only \$37.50 down and payments of approximately \$15.00 per month, at a total price of \$307.50. Nash Appliance & Supply Co. 43-tfc.

FOR SALE—5-room modern house on 5 acres of land, 2 large chicken houses, 20x30 and 20x24, 1 12x14 wash house. Ideal location. 7 blocks from courthouse.

MOBETTIE HI-LIFE

Published each week by the students of Mobettie High School
 Editor — Nancy Ware
 Assistant Editor — Mary Louise Matthews
 Senior Reporter — Betty Jean Patton
 Junior Reporter Beverly Caldwell
 Sophomore Reporter — Geneva Reynolds
 Freshman Reporter — Betty Jo McCray
 8th Grade Reporter Virginia Ware
 Sports Reporter: Boys: Onie Sims
 Sports Reporter: Girls: Virginia Henderson

"GOSSIP"

Beverly, where did you get that blue spot on your arm?
 Preacher, what was your trouble in typing Monday? Embarrassing wasn't it?
 The basketball boys are good enough to play college boys. But that doesn't mean that they won.
 Ted, are you still disgusted with girls?
 Everyone that wants an annual had better pay a deposit on them so you can be sure and get one.

Tom, you sure looked good making these points. Do it again.
 Billy Leonard, you sure can mix up some drinks.

All the kids were really glad to see Marchbanks and Si. We just can't forget all the good times and hard times and hard English assignments. Hurry back to see us Marchie and Si.

The seniors are eager to get started on their play.
 Virginia, why don't you do something mean, we never get to talk about you?

FOR SALE—One 4 year old Jersey cow giving 2 1/2 gals. and 1 red cow 6 yr. old, giving 3 gal. See Client Higgins, Briscoe. 4-1tp.

Priced right. Herbert Whitener. 4-2tc.

FOR SALE—3-room house, 12x34. Sheetrock inside. Good condition. B. T. Fulks, near Gageby. 3-3tp.

FOR SALE—1940 Model Plymouth 2-door with radio and heater. See J. C. Howell at Wheeler Times. 3-tfp.

FOR SALE—1/2-section land close in, well improved, nice residence, nice home in West Wheeler. W. S. Williams. 3-tfc.

Piano For Sale. Bargain. See Loyd Lee at Ernest Lee Hardware. 4-1tc.

MISCELLANEOUS
BRUCE & SONS TRANSFER
 Local and long distance moving. Best equipment and vans. We have plenty storage space. Phone 934, Pampa, Texas. 48-tfc.

FISHING!
 Lakes open for fishing. Daily or season tickets. 9 miles east, 5 miles north of Wheeler, Texas. Tobe Frye. 3-4tc.

STRAYED OR STOLEN—3-yr. old white face cow branded T-bar on left side. Anybody knowing her whereabouts please notify Glen Porter. 1-tfc.

WANTED—More farm land for sale. Have some nice choice building lots. Mrs. J. M. Glover. 1-2tp.

WILL PAY—\$10.00 per ton for scrap iron delivered to my shop in Wheeler. Bob Rodgers. 44-tfc.

We can now do your cemetery work. Grave markers, covers, and curbing. Will Warren, Wheeler.

ALCOHOL
 PUBLIC enemy No. 1—

Alcoholics Anonymous offers help to men and women who have an honest desire to stop drinking. Write P. O. Box 589, Shamrock, Texas. 5-tfc.

WANTED—Ironing to do. See Mrs. G. M. Hibbits at the Lee Apartments. 4-2tp.

ROGUE THEATRE

FRIDAY AND SATURDAY—
"Western Union"
 —with—
 Robert Young and Randolph Scott

PREVUE SATURDAY NIGHT—
 SUNDAY AND MONDAY
"Mother Wore Tights"

—starring—
 Betty Grable and Dan Dailey

WEDNESDAY AND THURSDAY—
"Nightmare Alley"

—starring—
 Tyrone Power

SENIOR NEWS

The seniors really have a lot of work ahead of them trying to get their annual in to be printed and next week being mid-term examination week too.

David, if you will start getting around more maybe you will learn more about life. You sure learned a lot Thursday night didn't you? All we ask of you is just be careful who you practice on, you know some girls like to stay at home.

We hope no one else takes up Joyses and Preacher's habits. Everyone was glad to see Mrs. Marchbanks again during the Christmas holidays.

BASKETBALL NEWS

The girls played Quail Tuesday night and was defeated by two points. They played Samnorwood Friday night and were defeated again. The line-up in Friday night's game was forwards—Mary Louise Matthews, Sidney Lancaster, Lou Beck, guards—Beverly Caldwell, Evelyn Robison and Patsy McCauley.

The girls are going to the Shamrock Tournament January 8, 9, and 10. Come on girls, let's bring back a trophy and some basketballs!

SOCK SOCIAL

Attention everyone! There is to be a sock social at the Mobettie gym Monday night, January 19. It is sponsored by the P.T.A. and receipts will go on the new refrigerator.

The women are to buy a pair of men's socks and fill them with anything good to eat and the men are to bring plenty of money. Remember ladies the fullest sock will bring the most money.

GUES WHO?

Answer To Last Week's Guess Who:—L. J. Seitz.

He is of medium height and has black hair. He goes out for basketball and took part in football. We like for him to sit by a certain junior girl on basketball trips. He is a senior. Guess Who?

MID-TERM TESTS

Just in case some of the students and parents (you may need to see that Johnny and Mary study a little more right now) have forgotten that the first semester is about over, this is a little reminder. It is a gentle hint, also, that most of us students really need to "burn the midnight oil" to get some facts in our heads, some term themes written, and such. The teachers have been warning us seniors that we might fail to graduate if we don't do better on our mid-term tests next week than we have done on some of our heretofore tests. Also, we might pass along the information that others besides seniors could fail! But, make next week, the week for our mid-term tests, the one showing our very best work. Let's fool everybody and pass all those tests!

Check-up On Physical Resources Important To Each Individual

If you have not had an audit made recently of your physical assets and liabilities, go to your doctor now and have it done, is the advise of Dr. Geo. W. Cox, State Health Officer, to all grown ups in Texas. "It is quite as important," Dr. Cox said, "to check up on your physical resources as it is to look into the state of your financial possessions. By regular care under your physician's direction, you can conserve your physical assets and avoid the accumulation of destructive liabilities."

"Each of us starts with a certain amount of physical capital. Merely as a business proposition, it is worthwhile to conserve it to the best of our ability. In infancy and childhood our physical resources, as a rule, are safeguarded for us. As we grow older, the responsibility for doing so rests upon the individual. The critical period may come in middle life with the sudden realization that the physical capital is yielding diminishing returns in the way of physical well-being. A large number of the deaths reported each year in Texas are due to the degenerative diseases of middle age."

"Nearly all of these diseases have slow beginnings, and their onset can often be recognized in the course of a thorough physical examination before they have gained serious headway. In the majority, early detection of menacing conditions with a readjustment of physical expenditures and a better budgeting of activities, under the physician's direction, will help to shift the balance from unfavorable to the favorable side of the ledger."

Newspaper Advertising Pays!

POLITICAL ANNOUNCEMENTS

Subject to the action of the voters in the Democratic Primary, July 24, 1948.

- For County Attorney:**
HOMER L. MOSS
- For Commissioner, Precinct No. 2**
S. B. DAVIS
- For Tax Assessor-Collector:**
T. J. DAUGHTRY
- For County Clerk:**
HARRY WOFFORD
- For Sheriff:**
W. Z. BAKER

CARD OF THANKS

We want to thank all our good friends here in Wheeler, also other friends and relatives, who came in to assist us in our time of need. It is hard to say in words what we feel in our hearts, it is a real comfort to know that you do have friends that are willing and ready to help when you need them. We thank you one and all sincerely.

Mrs. S. E. Powell
 Lonnie, Dennis, Margaret and Tommie Powell

Mr. and Mrs. O. O. Beaty of Briscoe returned home New Years Day from Herington, Kansas where they visited their daughter and family, Mrs. E. H. Hess, and another daughter, Mrs. Herman Bolte, Jr. and family, of Hills-bora, Kansas, over the Christmas holidays.

Keep 'em warm on Cold Days WINTER DAY SPECIALS!

QUAKER OATS	3-lb. pkg.	29c
GOLD MEDAL FLOUR	50-lbs.	\$3.89
5-POUND TIN CRISCO	Each	\$1.29

SCOTTY DOG FOOD

3-POUND CANS 25c

Mary Lee Taylor's Ham Leaves with Catsup Gravy
 Broadcast: January 10, 1948

YELLOW SQUASH	lb.	25c	CHUCK BEEF ROAST	lb.	48c
FRESH GREEN BEANS	lb.	25c	CENTER CUT PORK CHOPS	lb.	59c
SUNKIST LEMONS	lb.	15c	DRY SALT BACON	lb.	55c
ROME BEAUTY APPLES	lb.	10c	FRESH PORK BRAINS	lb.	35c

HOME STYLE BRICK CHILI

PER POUND 48c

TREND MILK

REGULAR BOX 1c

With Purchase of ONE REGULAR BOX AT 39c

ROLLED OATS 3-lbs. 29c

TOMATO CATSUP Bottle 19c

SAVE ON THESE CANNED FOODS

FOR CREAMING VEGETABLES—USE PEY MILK

SWEETENED SUNNY CONDENSED MILK	15-5z. Can	29c
DEL MONTE PUMPKIN, No. 2 1/2 can		16c
KRAFT DINNER, 2 boxes		25c
YUBAN COFFEE, pound		39c
MEADOWLAKE OLEO, pound		43c
PORK & BEANS, Van Camp's No. 2		17c

PUCKETT'S FOOD MARKET

"B" BEE HONEY CREME
 PER PINT 39c

'YES' TISSUE
 400 COUNT 29c

From where I sit... by Joe Marsh

Thad's Feet Hurt

After a long, hard day's work on the farm, Thad's idea of how to spend an evening is to take off his shoes, and relax with a mellow glass of beer.

But his missus has other ideas. After being in the house all day, she's all for walking to the village, if it's only for a soda. Likes to see people, catch the latest gossip. But Thad says, no, his feet hurt! Began to cause unpleasantness in Thad's home.

Then Bill Webster comes up with an idea. If Thad takes the missus to

Andy's Garden Tavern. Thad can relax with his glass of beer, and the missus can also chat with all the neighbors there. Each gets his (or her) own way.

Worked, too! In fact, now the missus likes an occasional temperate glass of beer herself. And Thad finds it's pleasanter to enjoy his beer with good companions, rather than alone. In fact, his feet stopped hurting too!

Joe Marsh

Copyright, 1948, United States Brewers Foundation

1948

NOW—make a date to OIL-PLATE!

BEST WAY TO BABY that great new '48... or to keep "Old Faithful" going while you wait... is to make a date to OIL-PLATE... with Conoco Nth!

Nth Motor Oil (patented) contains a special ingredient that fastens an extra film of lubricant so closely to metal surfaces that cylinder walls and all working parts are OIL-PLATED!

This means extra protection from winter's hard "dry-friction" starts because extra OIL-PLATING actually resists gravity! Won't all drain down, even overnight! And that's why, also, whether you're standing still or running hot... you're extra-protected from metal-eating combustion acids... from "dry" friction... from sludge and carbon due to wear!

Get extra starting power... get extra pickup... get extra mileage... make a date to OIL-PLATE your engine today!

Your Conoco Mileage Merchant

Copyright 1948, Continental Oil Company

NEW LINE OF DODGE TRUCKS IS ANNOUNCED

A complete new line of Dodge "Job-Rated" trucks comprising 248 basic chassis models ranging from 4250 to 23,000 pounds gross vehicle weight and up to 40,000 pounds gross train weight was announced today by L. F. VanNortwick, Director of Truck Sales of the Dodge Division, Chrysler Corporation.

Some models of the new trucks will be displayed starting January 7 by Deikle Bros. Motor Co. in Shamrock.

A combination of massive strength and smoothly flowing lines is the keynote of styling for the new trucks. They were designed to combine appearance with comfort, safety, performance, economy and ease of handling.

Front axles have been moved back and engines have been moved forward to place more of the gross vehicle weight on the front axle and provide better weight distribution. The wheelbase for conventional models through the 2-ton has been reduced eight inches, while the 2½ and 3-ton models have been reduced six inches. The new trucks have been engineered so that despite the shorter wheelbases, the cab-to-axle dimensions remain practically unchanged, making it possible to use the same length bodies as before.

New ease of handling and driving has been provided by the shorter wheelbases and wider spread front axle, together with cross steering, which is a new feature on all conventional cab models. The cross steering permits a 37-degree turning angle both right and left. Drivers now can park or back into alleys or up to loading platforms with much greater ease. Road shock through the steering wheel is greatly reduced by the cross steering, which has the drag link running parallel with the front axle.

Standard, de luxe and custom cabs provide more room, more visibility, more safety, and more comfort for the driver.

Seat width has been increased to 57½ inches to permit three large men to ride without crowding. The chair-height seats provide leg support under the knees and can be adjusted seven inches. The natural back support also is

Dodge introduces New Trucks



Among the 248 basic gross vehicle weight chassis models just announced in the new Dodge "Job-Rated" truck line is this B-1-H tractor of 128-inch wheelbase, 15,500 pounds gross vehicle weight (1½-ton nominal rating) and 28,000 pounds gross train weight. The trucks have many new features.

adjustable for maximum comfort. The seat cushion utilizes air in combination with coil springs to provide comfort. A hand control allows the driver to adjust cushion buoyancy to his weight or road conditions.

Comfort in any season or weather is provided by an all-weather heating and ventilating system which is an ingenious combination of truck heater, defroster vents, vent windows, cool ventilator, and fresh air intake.

De luxe and custom cabs have what is termed "360-degree vision" through increased glass area and installation of rear quarter windows. Windshields and windows of the new "Pilot-House" cabs are higher and wider, adding to vision and safety. Drivers can enter or leave the conventional cab easily from either side since the gear shift and emergency brake levers have been moved forward to give clear floor space from door to floor.

Conventional models can be road-serviced from the left side as the fuel tank, oil filter, radiator filler, and battery are so located. Dodge has seven different engines to handle the power requirements of its new line. Numerous engine improvements have been made. Braking systems are larger and improved. Front and rear axles have increased load-carrying capacity. Front springs are longer. Radiator cores have been redesigned to facilitate better cooling. Exceptional improvements have been made in frame construction.

Standard, de luxe and custom cabs provide more room, more visibility, more safety, and more comfort for the driver.

Seat width has been increased to 57½ inches to permit three large men to ride without crowding. The chair-height seats provide leg support under the knees and can be adjusted seven inches. The natural back support also is

Physical Condition Is Big Factor In Keeping Healthy During Winter

"Keep your body in good physical condition," advised Dr. Geo. W. Cox, State Health Officer. While colds, influenza, and pneumonia are different conditions, all three may be brought on or made worse by lowered resistance, and all three may often be prevented in the same ways.

"When these communicable diseases are prevalent, avoid crowds as much as possible and plan your work and recreation so that you will not overtax your strength and get tired out. Be sure that the room where you are, is always well ventilated. Drink plenty of water and don't let your system get clogged.

Sufficient rest, cleanliness of hands, mouth and teeth, fresh air while at work and during sleep, regulation of meals and bodily functions, wholesome food and freedom from anxiety will increase bodily resistance and help avoid contracting these diseases.

One attack of cold or influenza does not confer immunity. Individuals have been known to have several attacks during an epidemic. Segregation of the patient is desirable to avoid giving the disease to others.

If you develop symptoms of cold or influenza, consult your doctor early and follow his advice.

Newspaper Advertising Pays!

Church Calendar

FIRST BAPTIST CHURCH

Sunday School Prayer Meeting 9:30 a. m.
 Sunday School 10:00 a. m.
 Morning Worship 11:00 a. m.
 Evening Worship 7:00 p. m.
 M. B. SMITH, Pastor

CHURCH OF CHRIST

Bible Classes 10:00 a. m.
 Worship and Sermon 11:00 a. m.
 Evening Worship 7:00 p. m.
 Ladies Bible Class, Mon. 3:00 p. m.
 Wed. Eve. Classes 7:00 p. m.
 B. M. LITTON, Minister

THE METHODIST CHURCH

Church School 10:00 A. M.
 Morning Worship 11:00 A. M.
 Vespers 5:00 p. m.
 S. Y. ALLGOOD, Pastor.

BRISCOE BAPTIST CHURCH

Preaching second and fourth Sundays.
 Sunday School every Sunday.
 Frank McDonald, Sunday School Superintendent.
 Howard S. Bridges, Pastor

ASSEMBLY OF GOD
 Mobeetie, Texas

C. A. Service 7:45 p. m. Sat.
 Worship 10:00 a. m. Sunday
 Worship 8:30 p. m. Sunday
 Bible Study Wednesday night 7:30 p. m.
 You are always welcome.
 BONITA HUDSON, Pastor

TWITTY BAPTIST CHURCH

Sunday School 10:00 a. m.
 Morning Worship 11:00 a. m.
 Evening Worship 8:00 p. m.
 Mid-week prayer service 8:00 p. m.
 A. C. LYONS, Pastor

KELTON METHODIST CHURCH

Church School 10:00 a. m.
 Preaching 11:00 a. m. on second and fourth Sundays.
 MYF, WSCS and Bible Study 7:30 p. m.
 Preaching 8:00 p. m. on second and fourth Sundays.
 H. R. BENNETT, Pastor

KELTON BAPTIST CHURCH

Sunday School each Sunday at 10:00 a. m.
 T. U. each Sunday at 7:30 p. m.
 Preaching each Sunday at 11:00 a. m. and 8:30 p. m.
 A. G. ROBERTS, Pastor

BRISCOE METHODIST CHURCH

Sunday School Each Sunday 10:00 a. m.
 Preaching, second and fourth Sundays 11:00 a. m. and 8:00 p. m.
 A hearty welcome to all.

ALLISON METHODIST CHURCH

Sunday School Each Sunday 10:00 a. m.
 Preaching, first and third Sundays 11:00 a. m. and 8:00 p. m.
 A warm welcome to all.

ALLISON BAPTIST CHURCH

Sunday School 10:00 a. m.
 Preaching Service 11:00 a. m.
 Training Union 7:30 p. m.
 Preaching Service 8:30 p. m.
 L. P. FORT, Pastor

FIRST BAPTIST CHURCH
 Mobeetie, Texas

Sunday School 10:00 a. m.
 Morning Worship 11:00 a. m.
 Training Union 7:30 p. m.
 Evening Worship 8:30 p. m.
 Prayer Meeting, Wed. 8:00 p. m.
 R. L. COOKSEY, Pastor

CHURCH OF THE NAZARENE

Sunday School 10 a. m.
 Worship 11 a. m.
 Evening Worship 7:15 p. m.
 Prayer Meeting Thurs. 8 p. m.
 J. D. ROEDLER, Pastor

ALLISON PENTECOSTAL CHURCH

Sunday School 10:00 a. m.
 Worship 11:00 a. m.
 Young Folks Service 7:30 p. m.
 Worship 8:00 p. m.
 Wednesday Night Prayer Meeting 8:00 p. m.
 REV. ROBERT ESTES, Pastor

FIRST METHODIST CHURCH
 Mobeetie, Texas

Church School 10:00 a. m.
 Morning Worship 11:00 a. m.
 M. G. F. Meeting 6:45 p. m.
 Evening Worship 7:30 p. m.
 Wed. Evening Prayer Service 7:30 p. m.
 You Are Welcome.
 S. H. SALLEY, Pastor

THE WHEELER TIMES classifieds offer more for less money, to both buyer and seller, than any other business device we know about.

Allison Rambles
 Published by the students of Allison High School

GIRLS BASKETBALL NEWS

We are expecting to play Mobeetie at Allison January 6. This will be our second game since the Mobeetie Tournament, and we are raring to go. Due to a misunderstanding of dates, the girls missed a game with the Wheeler girls December 30, but we hope to play them soon.

AROUND TOWN

Betty Sue and Peggy seem to have gotten some awfully good looking boyfriends from Pampa. Nice going kids.

Hey, did you people see the wristwatch Mary Lou's boyfriend sent her for Christmas? Better stay with him Mary.

Lynn is driving your Dad's car to Wheeler getting to be a habit? Evelyn is going with Sparkie getting to be a habit also?

Myrt, where were you Saturday night? We certainly did miss you. Jonell says that guy from Dumas will be down this weekend.

Gosh, Virginia, we missed you Saturday night. Maybe next Saturday night, huh?

Reta says she believes there is a Santa Claus after all. Don't you Sparkie?

Jonell says that all the sales talks in the world won't make her buy a "hot-dog" with onions. Say Clifton, please, please tell your Dad to act his age.

Did every one notice that Slat

was really dressed up Saturday? We hope that it doesn't snow any more this winter. The boys ran the girls crazy last week with snowballs. But we were saved by Clifton and his jeep, thanks son, for giving us a hand.

Bessie, aren't you ashamed to let Lynn go around with lipstick on his chin?

Shirley, does Roy fill in Hugh's place pretty good?

Helen, you seem to keep everyone in laughter all the time. Schoochie, let me know when you get ready for that malt.

Johnnie, who in the world broke your finger? Has Shirley S. gotten that tough?

R. C. and Parilee are still that forever steady couple. Edna, I just don't know what the girls would do without you to pick up after them.

Punk, you'd better quit telling off on your big brothers.

THE WHEELER TIMES classifieds offer more for less money, to both buyer and seller, than any other business device we know about.

TUCKER PLAYS IN WHEELER JANUARY 22

"Drifting and Dreaming", lovely theme melody which Tucker and his orchestra use their signature on all engagements is an old favorite of the leader's mother. When he and Tucker began using the theme the theme because his mother liked it especially well. Too, says, it seems a nice, gentle number to wait the music of the through the radio into the house and then to take it off the smoothly at the program's close.

Among the mineral products of California are gold, petroleum, gas, cement, clay, stone, gravel, silver, salt, mercury, copper, borax, platinum, tungsten, chromite, magnesia, pyrites, silica, diatomaceous earth, potash, talc and lead.

The first co-operative dairy America was established in Orange county, New York, in 1856.

INCOME TAX SERVICE

Palmer Sivage
 County Treasurer's Office
 Wheeler, Texas

BUSINESS AND PROFESSIONAL DIRECTORY

C. J. MEEK
 AGENT
INSURANCE
 Night Phone 124, Day Phone 48

TRY WHEELER BREAD
 "IT'S FRESH"
CITY BAKERY

HOMER L. MOSS
 LAWYER
 GENERAL PRACTICE
 WHEELER TEXAS

Dr. C. C. Merritt
 CHIROPRACTOR
 WHEELER, TEXAS
 Equipped to give complete chiropractic service

AUCTIONEER
 SHELBY PETTIT
 Will cry your sale any time or place
 Phone 158—Wheeler, Tex

J. WADE DUNCAN
 REAL ESTATE
 AND
CATTLE
 Duncan Bldg. Phone 21
 Pampa, Texas
 "41 Years In The Panhandle"

Protect Children's Health
 GIVE THEM
BORDEN'S
 Fine Dairy Products
Crossland & Son Dairy
 Phone 901-F-11 Wheeler

TO EACH—
 ONE PAIR OF EYES
 TO LAST A
 LIFETIME.
DR. J. E. HEWETT
 OPTOMETRIST
 107 East Fifth, Amarillo, Tex.
 Next door to KFDD. Ph. 9934

FOR SALE
 COTTON SEED MEAL
 AND CAKE
 SOY BEAN MEAL
 BRAN, SHORTS AND
 BARLEY
 —ALSO WHEAT & MILK—
 See Us For
Big C
 POULTRY & DAIRY FEEDS
JOHNSON'S
 Grain Company

Canadian Valley
Production Credit
Association's
Representative
 IS IN THEIR
Wheeler Office
 EACH
Thursday

W. A. GAINES
 District Manager
 American National Ins. Co

DR. JOEL M. GOOCH
 OPTOMETRIST
 200 S. Wall Street
 Phone 123
 SHAMROCK, TEXAS

Refreshling
Coca-Cola
 DRINK
 5¢

REMINGTON
 TYPEWRITERS and
 ADDING MACHINES
E. J. COOPER
 Phone 36 119 W. 2nd.
 SHAMROCK, TEXAS

Texas Insurance
FOR TEXAS PEOPLE
 State Reserve Life
 Insurance Company
 Old Line Legal Reserve
 Registered Policies
 For Information See
Denzil Leonard
 Mobeetie, Texas

Notary
Seals
Rubber Stamps
Salesbooks of
all kinds...

QUALITY
PRINTING
 of all kinds...
THE WHEELER TIMES
 "The Voice of North Wheeler County"

WHEELER Phone 164 LOCKER
 WHEELER TEXAS

NOTICE!

Would You Like To Buy Your Groceries And Cured Meats At WHOLESALE PRICES? WHERE?

At Your Friendly WHEELER LOCKER. Come See Us At Once And We Will Show You How It Works.

WHEELER Phone 164 LOCKER
 WHEELER TEXAS

Most Important Item In Culture Of Roses Is The Selection Of Proper Site

Without a heavy root growth the bushes cannot be expected to support the continued production of flowers all summer, and stand the strain of a constant drain on the supply of food and moisture they must provide regularly. Unfortunately, the root growth cannot be seen, so that its sturdy growth is often not sufficiently encouraged or promoted.

Good drainage of the rose bed is essential to the success of rose bushes. On no account must they be planted in any place where water lies in puddles after heavy rains or where the soil ever becomes sticky or muddy. Should the soil be poorly drained, it would quickly produce a condition under which the plant's roots would become suffocated. This suffocation can be caused by poor drainage or by the use of improperly prepared soil which "packs", preventing the roots from breathing and consequently stopping them from growing and feeding properly.

Rose roots must be active at all times, from the appearance of the first green shoots in spring until late fall. They can only do this when the soil in the bed where the bushes are grown has been sufficiently and properly prepared, enriched, aerated and good drainage provided.

Should the soil be shallow or if there is any hardpan near the surface, it will be very hard to provide a suitable soil condition for roses. If possible, choose a place where the soil is deep, and where it is easy to spade at least two feet deep—deeper is even better. Since the rose bush roots will go as deep as they are able, depth is most important to ultimate success. If, when digging the hole, it is found that the lower layer of the soil is poor or that it has most likely been there untouched for years and never seen the light of day for generations, it should be entirely removed. Remember that the roses will live for years and thrive with much less care when the hole is properly prepared.

After removing all "dead" soil, the only material which should be spaded back into the hole or bed is that which is rich and fertile. To accomplish this, the soil to be used should be taken from a "rich" part of the garden. Failing this, it should be prepared or procured well in advance of the actual planting. Most gardeners obtain this good soil by making a compost pile or pit and using this rich fertile material mixed with

other good garden soil in correct proportions.

FARM FACTS WORTH KNOWING

Q. Does it pay to feed a protein supplement to hogs when prices are so high?

A. Yes, with present high corn prices the feeding of properly balanced rations is even better business than normally. The Missouri College of Agriculture recommends feeding a good protein supplement to fattening hogs in dry lot this winter not only to save grain but to increase the profits for the hog producer.

Q. How much butterfat should a dairy cow produce in a year?

A. Any mature cow which doesn't give 300 lbs. of butterfat a year should be culled, and this is particularly important now when grain should be fed only to high producing stock. According to the "Program for Dairy Cattle" published by the Raiston Purina Company, here is what 300 lbs. of butterfat a year equals in milk:

	Lbs. a Day	Lbs. a Year
Jerseys	20	6,600
Guernseys	22	6,500
Ayrshires	25	7,500
Brown Swisses	25	7,500
Mixed Herds	27	8,600
Holsteins	33	9,900

Q. How much window space is needed in poultry houses?

A. With modern feeding methods, the amount of window space required is much less than was formerly supposed, for we no longer depend upon direct sunlight for Vitamin D but need only enough light so the birds can see well. Too much window space makes it difficult to keep the temperature above freezing in winter. If the inside of the house is painted with a white or aluminum paint, as little as one square foot of glass for each 25 square feet of floor space may suffice. If such paint is not used, of course, more glass will be needed.

Q. How large a broiler operation is necessary for a successful commercial enterprise?

A. A commercial broiler operator must have sufficient volume to cover overhead and have efficient labor utilization. Most successful operators have a capacity of 5,000 to 10,000 broilers. Four broods a year mean 20,000 to 40,000 birds annually. Some farms have developed labor saving devices to such an extent that one man can care for 15,000 to 18,000 birds.

Send your questions about livestock or poultry problems to FARM FACTS, 813 South Eighth Street, St. Louis 2, Missouri. Questions will be answered without charge, either by mail or in this column, as a service of this newspaper.

POLAR RENDEZVOUS



The far-flung activities of American submarines during World War II that brought the undersea craft to the home waters of the Japanese Empire in the van of the fighting fronts, are continued into peacetime as the submersibles, like the USS Sennet (above), penetrate the Arctic and Antarctic. Submarines are important units of the Navy's postwar expeditions and projects probing the mysteries of distant oceans for scientific data to be used for future planning.

or under the GI Bill?

A—No.
Q—I am receiving compensation for injuries received during World War II and would like to know if my compensation check is subject to seizure by creditors or for taxes?

A—No.

More than 52,000 veterans in Texas, Louisiana and Mississippi were admitted to Veterans Administration hospitals during the past year, VA's Dallas Branch Office reported this week.

The report showed that 143,000 treatments and 242,000 examinations of veterans in the tri-state area were given by VA in outpatient clinics during the same period.

VA offices in the three states dispatched 11,000,000 pieces of mail and conducted 1,700,000 personal interviews with veterans during 1947.

Direct payments to veterans in the Dallas Branch Area during the year amounted to more than \$425,000,000. This included disability compensation, death claims, insurance settlements, and tuition and subsistence to veterans in schools or training.

At the end of the year, VA was paying disability compensation to 181,000 veterans in the three states.

More than 43,000 loans on homes, farms or businesses were guaranteed by VA during 1947, bringing the cumulative total for the three states to 75,200 loans with \$27,400,000 guaranteed by the government.

Veterans in training in the three-state area at year's end totaled almost 254,000. The number in school institutional work increased 63 per cent compared to a 15 per cent increase in the number of veterans training on-the-job.

Around 75,000 veterans reinstated lapsed National Service Life Insurance amounting to \$510,000,000 during the year.

Postal laws and regulations pertaining to delivery of checks for many benefits administered by VA have been modified for the greater convenience of veterans and beneficiaries.

The new regulations allow checks to be placed in city and county post office boxes, and in mail receptacles on the routes of city or rural mail carriers. Checks affected are mainly for disabled veterans and for subsistence allowance of veterans in training.

Veterans' News

QUESTIONS AND ANSWERS

Q—What is vocational advisement all about and why is it required under Public Law 16?

A—The main purpose of vocational advisement is to determine whether a disabled veteran should train for a professional or for a particular trade or occupation based on his previous education, experience, personal desires and present ability. The veteran is interviewed by highly trained specialists who will

consider his desires, but are required to advise him against starting a course for which his aptitudes or physical limitations do not insure likelihood of success. In short, this advisement is mandatory under the program to insure the disabled veteran's proper rehabilitation.

Q—Under Public Law 16, must I go to a vocational school or may I go to a liberal arts college, a high school, or similar institution?

A—You may enroll in any VA-approved educational institution or training establishment offering the course of training which VA has found you need to insure your proper rehabilitation in line with your own desires.

Q—Will my disability compensation be reduced if I go into training under Public Law 16?

ANKLE HANK SEZ

IT LOOKS LIKE SOME OF THE WOMEN NOW-A-DAYS SELECT THEIR HUSBANDS AS TO HOW MUCH ALIMONY THEY CAN PAY.



Select the HIBLER IMPLEMENT COMPANY when your International truck needs service. It pays to deal with a shop that maintains a high reputation of quality merchandise and service. Drop in and look over our stock of fine McCormick-Deering implements, also.

HIBLER IMPLEMENT CO.
 PHONE 151
 WHEELER TEX.

Many, Many THANKS

We wish to take this means to express our most profound THANKS for the bountiful patronage you have given us during the time we have been in the John Deere Implement business in Wheeler and to let you know that we have truly and sincerely appreciated everything you have done for us and also to let you know it has been a pleasure to serve the good people of this trade territory.

We are happy to announce that we have sold the John Deere Agency to a man whom we believe is thoroughly experienced in the tractor and implement business and who we believe will endeavor to serve you in a most efficient manner and will do his best to have the John Deere farming equipment you want when you want it.

Our plans for the future are somewhat indefinite, but we are not pulling up stakes and leaving the people who have been so gracious to us over the past several years.

Again may we say, many, many thanks for the fine patronage you have afforded us during the years we have been in business in Wheeler.

MR. & MRS. W. E. BOWEN
 Wheeler, Texas

READ THE WHEELER TIMES WANT ADS!

NOTICE!
 WE SCALD HOGS ON TUESDAY & THURSDAY OF EACH WEEK.
Wheeler Lockers

You Can't Afford Cheap Seed Corn!



"BURNED OUT" REALLY MEANS BURNED OUT TODAY



TODAY'S fire may mean months of vain search for another home. It will mean extra expense. Let us tell you how to provide maximum protection—in safeguarding your home—in safeguarding your investment. Phone us today.

DORIS FORRESTER AGENCY
 Wheeler, Texas

Office Supplies

We May Not Have Everything You Need, But We Do Have These Articles

- Adding Machine Paper
- Sales Pads
- Carbon Paper
- Mimeograph Paper
- Staples
- Letter Files
- Index Cards
- Index Card Guides
- Stencils — All Sizes
- Marking Pencils
- Copy Pencils
- File Folders
- Erasers of All Kinds
- Ledger Folders
- Duplicate Receipts
- Order Books
- Boston Pencil Sharpeners
- Boxed Papers
- Ledger Sheets
- Ledger Sheet Post Binders
- Ink Pads
- Rubber Stamps
- Pound Head Brass Fasteners
- Typewriter Ribbons
- Gummed Labels
- Blank Envelopes—Reg. & Large
- Open End Manila Envelopes
- Lead Pencils
- Shipping Tags
- Blank Bond Papers
- Parcel Post Labels
- Many Other Practical Articles

PRINTED TO ORDER

- Letterheads
- Envelopes
- Statements
- Circulars
- Meal Tickets
- Cards
- Rule Forms
- Shipping Tags
- Visiting Cards
- Work Order Blanks
- Cafe Menus
- Wedding Announcements
- Office Forms
- Birth Announcements
- Catalogs — Booklets
- Window Cards
- Index Cards
- Gummed Stickers
- Blotters
- Window Envelopes

Wedding Announcements, Business Stationery, Envelopes, Etc.

Let Us Figure Your Jobs—Large or Small

The Wheeler Times

Commercial Printing Department

Phone 35 — Our Representative Will Call

County Agent

(Continued from Page One)
 burrs could not be used as formerly, and expressed the hope that ginners and producers could work out a plan for grinding and composting the burrs so they could be used to turn under on the sandy soils that so badly need this organic mater.

- Remember:**
1. No burrs or trash can be carried from gin unless ground up or put through hammer mill or beated to 150 degrees.
 2. All cottonseed must be treated except planting seed.
 3. Lint and samples leave quarantined area only under permit.

Agent Offers

(Continued From Page 1)
 the \$100.00 capital gain.
 County Agent Frey hopes these suggestions will be of assistance to those farmers winding up their income tax reports this week. Frey has on hand some mimeograph forms which may be helpful to any farmer desiring help in figuring their income tax.

Prizes Offered For Writing About Texas

The Texas State Historical Association has announced a first prize of \$100 for the winner of the 1947-1948 Junior Historian Writing Contest. Seventeen papers will receive awards totaling \$420.
 Contest entries may deal with any topic in Texas history, but contestants are urged to work on some subject related to their community or local history. Some suggestions for topics are: cattle trails, saddles, Indian depredations, transportation, natural history, exploration, oil, economic, political, or biographical subjects.

Society

Mobeetie WSCS Elects Officers For New Year

At a recent meeting of the Mobeetie W.S.C.S. the following officers were elected for 1948: president, Mrs. R. W. Oldham; vice-president, Mrs. H. E. Matthews; secretary, Mrs. L. D. McCauley; treasurer, Mrs. John Dunn; secretary of Missionary Education, Mrs. H. E. Matthews; C.S.R. and L.C.A. Mrs. Homer Salley; Student Work, Mrs. Ralph Simms; Youth Work, Miss Maurita Laman; Children's Work, Mrs. C. C. Dyson; Spiritual Life, Mrs. A. A. Burch; Literature and Publications, Mrs. John Dunn; Supply Work, Mrs. Hugh Bailey and States of Women, Mrs. W. A. Scribner.

The first meeting in the New Year will be held January 14 at the home of Mrs. Homer Salley. All officers are urged to be present and new members and visitors welcome.

"Any boy or girl in Texas under twenty-one years of age may become eligible for competition," stated H. Bailey Carroll, Editor of the Junior Historian, the magazine of the Association which is written almost exclusively by young Texans.

April 1, 1948, is announced as the closing date of the contest. All interested are invited to write for further information to the Junior Historian, Box 2131, University Station, Austin 12, Texas.

Jack Allen of Wichita, Kansas has been a recent visitor in the home of his son and family, Mr. and Mrs. Roscoe Allen.

SCOTT'S SCRAP BOOK

By R. J. SCOTT

A POLAR BEAR CAN STAND UP STRAIGHTER AND LEAN FORWARD BACKWARD THAN CAN ANY OF THE FOUR-FOOTED ANIMALS

NO, IT IS NOT AN AIRPLANE!

WIDE BLACK RIBBON BOWS WITH FRINGED ENDS ARE WORN BY THE WOMEN LIVING IN THE BLACK FOREST OF GERMANY.

WHAT ANIMAL THOUGHT EXTINCT HAS BEEN REDISCOVERED? AUSTRALIAN RAT KANGAROO.

Hot SANDS OF THE DESERT BECOME COOL A FEW INCHES DOWN. ARABS DISCOVERED THIS CENTURIES AGO AND SCRAPE A FEW INCHES OF SAND AWAY TO MAKE THEIR BEDS.

Some Good Food "Stretchers"

By ALICE DENHOFF

WITHOUT further comment, here are some good stretchers, and expense and food cutters, all designed to make a meal and various foods go further without depriving the family of its proper quota of essential minerals and vitamins.

Have a first course that is a good dinner stretcher, especially if the main course is not what it is wont to be. Mash fresh left-over or canned salmon with a little prepared mustard, sweet pickle juice to moisten, celery seed, mayonnaise, salt and freshly-ground black pepper to taste. Blend in minced onion or finely sliced scallions and green pepper, minced.

Individual Molds
 Pack in individual molds, chill, then unroll on a tomato slice or lettuce leaf, with a decoration of scissored parsley. This is a really satisfying item, that is nice on its own for luncheon or supper.

Make expensive hamburger go further by adding one-third ground raw potato along with ground onion to taste. Sauté the onion and potato until onion is light yellow before adding to the meat. Spread each hamburger with prepared mustard, sprinkle with garlic salt, then pan-broil and you've got super-duper hamburger, despite the "stretcher." If the meat course is scant, make up for it by serving something special in the way of a vegetable. Brussels Sprouts go exotic when combined with grapes.

Cook 4 c. of sprouts 15 min., then add one c. of halved, seeded green grapes. Continue cooking until sprouts are tender. Serve garnished with paprika.

Use in Soups
 Of course you are carefully saving any remaining liquor in which vegetables are cooked, for use in soups and such. Make the best possible use of every drop of this valuable liquor. Add it in lieu of water to canned condensed soups, or add it to gravies.

A hearty dessert will round out a simple meal in high style, especially if the sweet is carefully prepared and nutrition-rich as is this one: Combine one c. cold mashed pumpkin, one c. corn meal and 1/4 tsp. ground ginger. Scald one quart milk and stir into the pumpkin mixture. Cook and stir until slightly thickened. Add 1/2 c. granulated sugar, 1/2 tsp. salt, 1/4 c. molasses, grated rind of 1/2 lemon and one tbs. table fat.

Place mixture in baking dish. Cover closely and bake slowly and steadily 2 hours at 325-350 F. Add an extra c. of milk at the end of an hour. Serve warm with table fat and syrup, with top milk, or, with very small scoops of vanilla ice cream.

State Of Texas First In Tomato Production

Tomatoes are the state's leading vegetable crop—Texas has a larger acreage and a greater production of the vegetable than any other state.

Plant pathologists and horticulturists of Texas A. and M. College, recognizing the importance of the crop, recently outlined a tomato improvement program. The group of 19 plant scientists, called together by Director R. D. Lewis of the Texas Agricultural Experiment Station, will coordinate their work to develop varieties with greater disease resistance and to improve market quality.

Specific future objectives of the committee are the development of better spring and fall tomatoes, the development of tomato varieties that will set and bear fruit during the summer, and the development of better canning tomatoes.

The conference also authorized further work on a new summer tomato variety, to be known as "Summer Prolific", which shows a great deal of promise. The variety was developed at the Stephenville station.

Additional meetings of the committee will be held in two of the state's leading tomato growing centers just before the crop starts moving—in the Lower Rio Grande Valley in March and at Jacksonville in May.

Personal

Mr. and Mrs. G. A. Lamberth and children, Ronnie, Jimmy, Linda and Pearl Beth of Amarillo, Mr. and Mrs. Bob Ramsey and daughter, Patsy Ann of Briscoe, and Mr. and Mrs. C. A. Mason and children, Dot, Wilma Lou and Carl had Sunday dinner with Mr. and Mrs. G. N. Hibbits. Mr. and Mrs. Herbert Finsterwald and children also visited them in the afternoon.

Mo. and Miss Beulah Hubbard of Amarillo spent the recent holidays with their mother, Mrs. Ollie Hubbard and other relatives.

Mr. and Mrs. E. B. Dobbins of Marshall, Okla. spent several days recently in the home of Mr. and Mrs. C. B. Kirk.

Nellie B. Candler of El Paso and Bill and Bob Candler of N.T.S.C. at Denton, spent the holidays in the home of their parents, Mr. and Mr. C. H. Candler of Jawett. Other visitors in the

Mr. and Mrs. Clifford Mason and Mrs. George Mason attended the funeral of Tommie O'dell in Pampa Tuesday.

Mr. and Mrs. J. D. Merritt and children, Elizabeth, Ruth, Roy and Roselynn, of Sercy, Ark. have been guests of Dr. and Mrs. C. C. Merritt and Naomi Blackwell. J. D. is the brother of Dr. Merritt and he and his family are missionaries from Rhodesia, South America. They will return some time in the later part of this year. The two older girls will remain in the States to continue their education in Harding College at Sercy, Arkansas.

Mr. and Mrs. Marvin Womack and granddaughter of Susanville, Calif. are visiting relatives in and around Wheeler.

Mr. and Mrs. Horton Kutch and son, Richard Lynn, and Mr. and Mrs. Clay Kutch of Wellington were visitors in the home of their sister and family, Mr. and Mrs. Claude Cox. Mrs. Clay Kutch was the former Miss Phobe Elizabeth Jenkins of Swansea, Wales. She was among the 607 passengers arriving in New York November 22 aboard the steamship, Marine Falcon. The young couple met when a merchant ship on which Clay was a radio operator was grounded off Wales for several months. Clay has many friends in Wheeler and is also a nephew of Clyde Kelley, Wheeler.

Mr. and Mrs. Ed Johnson of San Angelo spent New Years Day in the home of her parents, Mr. and Mrs. Jess Crowder.

Mrs. Mary Johnson of St. Louis,

Candler home were Mr. S. M. Oates of Berger and Gene Oates of San Diego.

Mr. and Mrs. John Wright as guests in their home of recent holidays, their friends and their families, that all were able to be at the same time. Other guests were Mrs. Roscoe Allen and family and Mrs. Harvey Wright, side in Wheeler, included Mrs. J. T. Wright, Jr. and Mrs. H. L. Wright and family of ita, Kansas, and Mr. and Mrs. Gilbert Wynn and son of

Miss Gladys Pettit has to her home in Oklahoma after spending the holidays with relatives.



Glamour Beauty

... And these may be more easily attained by you if you will use the famous line of DUBARRY COSMETICS which we feature.

We are carrying a complete and up-to-date stock of Richard Hudnut's DU BARRY cosmetics for women, including all types of powders, creams, perfumes, colognes and other items which women use in their make-up.

ASK FOR YOUR COUPONS

We invite you to be sure and ask for your coupons which entitle you to buy Autumn Bloom and Camellia Pottery at very low prices.

WHEELER DRUG STORE

PHONE 11 WHEELER TEXAS

WHETHER YOU WANT A HAMBURGER OR A FULL COURSE DINNER

The proper place to eat is at the DENSON GRILL, where courtesy, service and FINE FOOD are the main interests of the people who like nothing better than to feed you when you are hungry.

You will always find tempting food properly cooked and served at our cafe and you can bet your last cent we are always happy to have you come in and eat with us.

DENSON GRILL

Mac Appreciates Your Patronage Wheeler

REMEDIES and Cold Aids

Whatever you may be needing in the way of cold remedies or medicine you can find it on the shelves of our complete drug store.

We suggest that you take a few preventatives along and try to ward off bad colds and influenza because it is much easier to do this than it is to cure a cold or other illness after you have one.

CITY DRUG STORE

LADIES HATS
 1/2 Price

1 Rack of Ladies Suits & Coats At Reduced Prices.

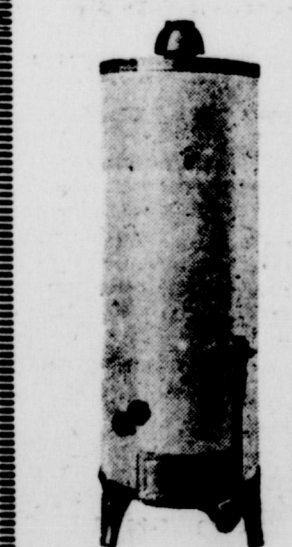
SPRING MERCHANDISE

Our new Spring Fashions are arriving daily and we invite you to come in now and pick out parts of your new spring wardrobe.

McILHANY'S
 For Everything You Wear

WHEELER TEXAS

AUTOMATIC WATER HEATERS



For Natural Gas Or Butane

We have some of the best water heaters available today and they are priced right; if you need a heater see us.

RADIANT HEATERS

We still have a few radiant bathroom heaters left. If you are in need of one of these stoves we can save you some money.

Wheeler Gas Co.

WHEELER TEXAS