

THE WHEELER TIMES

Published Every Thursday at Wheeler,
Wheeler County, Texas, By
COOPER, HOWELL & MONTGOMERY

J. C. Howell Editor-Mgr.
Annie Mae Howell Social Editor
Richard L. Bradley Printer
Delbert L. Mitchell Apprentice

MEMBER
Panhandle Press Association
National Editorial Association
MEMBER 1946
TEXAS PRESS ASSOCIATION

SUBSCRIPTION RATES
In Wheeler, Bockham and
Hemphill Counties
1 Year \$2.00
6 Months \$1.25
3 Months .75c
Everywhere Else
1 Year \$2.50
6 Months \$1.50
3 Months .85c

ADVERTISING RATES
National Rate...42c Column Inch
Local Rate...30c Column Inch
Classified...See Want Ad Page

Entered as second-class matter
Dec. 18, 1933, at the postoffice at
Wheeler, Texas, under act of
March 3, 1879.

NOTICE TO PUBLIC
Any erroneous reflection upon the
character, standing or reputation of
any person, firm or corporation,
which may appear in the columns of
this paper will be gladly cor-
rected upon due notice being given
to the Editor personally at the of-
fice at Wheeler, Texas.

THURSDAY, JULY 3, 1947

PUZZLING FARM FRONT

Strange things are happening
along the farm front these days.
Some of them are difficult to ex-
plain. When tent caterpillars de-
sert their favorite pecan trees
to web up in cotton stalks farm-
ers know that something has
gone wrong. When other thou-

sands of acres of Texas cotton
suddenly suffer from curly leaf
and other forms of erratic devel-
opment it seems time to probe
matters. It may be the Texas
heat or humidity, or maybe the
Texas zephyrs. South Texas plant-
ers blame the latter for carrying
poison dust from airplane-treated
rice fields many miles to their
cotton fields causing overstimu-
lation in the young plants that
may result in crop destruction.
Talk of suing somebody is in the
air. New chemical poisons desig-
ned to exterminate noxious weeds
are charged with injuring many
broad-leaved crops, flowers and
shrubs. We are in a new era that
holds many mysteries.

Not only in Texas but in many
parts of the nation rivers are on
a rampage, destroying the farm-
er's crops and property just at a
time when Congress trims long-
established measures enacted to
lighten the tiller's burden. It is
naural that many farmers are be-
coming bitter about what they
consider the unfair attitude of
many city people toward their
problem. But city people, it should
be said in justice, fully realize the
importance of the farmer in our
modern tightening economy. They,
too, are harassed by heavy tax
burdens which must be lightened
as soon as possible. But they do
not clamor for anything that
smacks of unfairness toward agri-
culture.

There need be no rift between
town and country, and there will
not be any as long as common
sense on both sides prevails. May-
be nerves are a little upset by
the excessive humidity just as
nature is upset. Floods, insects,
mysterious new poisons about
which we know too little, imper-
ial crops, rising tax burdens all
contribute their part to make
many people jittery. But after all
city folk appreciate the farmer.
City and country can and will
work together for their mutual
good.—From Dallas News.

During the month of May,
almost 13,000 farm workers were
placed by the Texas A. and M.
College Extension Service farm
labor program.

Supplies of oilseed cake and
meal available for food from now
through September are expected
to be about the same as a year
ago.

A long ton is 2,240 pounds. A
metric ton is 2,204.6 pounds.

**FARM FACTS
WORTH
KNOWING**

Q. Does milk taste after bitterweed
because the cow eats the bitterweed,
or can the bitter taste be caused by
the cow's teats rubbing against the
weed when she's out on pasture?

A. When the cow eats the bitter-
weed, the bitterness is transmitted to
the milk, but the milk is not af-
fected by the udder rubbing against
bitterweed in the pasture.

Q. Is it safe to use DDT in laying
houses?

A. Yes, DDT is a safe insecticide
for use in the laying house, either
as a residual surface spray for fly
control, or applied direct to birds as
a treatment for lice. For residual
spray purposes, we recommend
Purina Fly Spray for Farm Build-
ings, mixed with water at the rate
of 1 pound per 5 quarts. For direct
application to birds, use Purina In-
sect Killer. This product contains
DDT 10% and rotenone 1.67%. Re-
peat treatment as often as neces-
sary.

Q. Will 2-4D kill a small patch of
honeysuckle vines?

A. Yes, 2-4D is effective against
the honeysuckle vine.

Q. How can I get uniform egg pro-
duction throughout the year? How
many hatches should I have in a
year and at what seasons?

A. Most commercial poultrymen
who raise chicks for egg production
have two or more broods at different
seasons in order to get uniform pro-
duction for the year. Usually they
have a brood of chicks in the spring
and another in the fall.

Q. Do weather conditions affect
fertility?

A. Yes, fertility is usually
lower in the hot summer months.
It will also be affected adversely if
the birds are not protected from
extreme cold, particularly if the
combs and wattles are frozen.

For more articles about livestock
and poultry problems in FARM FACTS,
see "Farm Facts" direct, St. Louis 2.
"Farm Facts" will be delivered
without charge by mail or in this
column, as a service of this newspaper.

Chlordane, a new insecticide, is
reported to be ten times more
powerful than DDT against cer-
tain insects.

Fertilizing fruit trees is an
early spring orchard job. Recom-
mended application is one pound
of 5-10-5 or 4-12-4 fertilizer for
each inch of the tree trunk di-
ameter.

Professional Column

C. J. MEEK
AGENT
INSURANCE
Night Phone 124, Day Phone 48

HOMER L. MOSS
LAWYER
GENERAL PRACTICE
WHEELER TEXAS

Dr. C. C. Merritt
CHIROPRACTOR
WHEELER, TEXAS
Equipped to give complete
chiropractic service

SHELBY PETTIT
REAL ESTATE, LIVESTOCK
FARM SALES A SPECIALTY
PHONE 158 FOR A DATE
OR
WRITE BOX 293, WHEELER

W. A. GAINES
District Manager
American National Ins. Co

CHAPMAN'S DAIRY
Good fresh Milk, Cream, Butter
and Buttermilk
Deliveries twice daily
Phone 70 Wheeler

REMINGTON
TYPEWRITERS and
ADDING MACHINES
E. J. COOPER
Phone 36 119 W. 2nd.
SHAMROCK, TEXAS

TO EACH—
ONE PAIR OF EYES
TO LAST A
LIFETIME.
DR. J. E. HEWETT
OPTOMETRIST
107 East Fifth, Amarillo, Tex.
Next door to KFDA, Ph. 9934

FOR SALE
COTTON SEED MEAL
AND CAKE
SOY BEAN MEAL
BRAN, SHORTS AND
BARLEY
—ALSO WHEAT & MILO—
JOHNSON'S
Grain Company

J. WADE DUNCAN
REAL ESTATE
AND
CATTLE
Duncan Bldg. Phone 312
Pampa, Texas
"40 Years In The Panhandle"

TRY
Wheeler Bread
and
Family Loaf
CITY BAKERY

Canadian Valley
Production Credit
Association's
Representative
IS IN THEIR
Wheeler Office
EACH
Thursday

IN PITCHING
OR GASOLINE....

IT'S Control
THAT COUNTS

PHILLIPS 66
IS CONTROLLED* TO GIVE
SMOOTH POWER DELIVER

You know it takes control to
called strike over the outside
ner—it takes control, too, to
a gasoline that will produce
formly powerful performance
every season of the year!

You get that control in Phi-
66! Phillips high-quality gas-
components are selectively be-
to give you high quality per-
ance no matter how hot or
it gets!

Stop at your nearest Phillips
Dealer and try this "control"
gasoline in your car. See if
can't feel the difference.

*PHILLIPS 66 IS SELECTIVELY
BLENDED FOR
HIGH-LEVEL PERFORMANCE
ALL YEAR ROUND!

PHILLIPS 66 GASOLINE
CLEAN REST ROOMS AT PHILLIPS 66 STATIONS

**Electric Iron Causes
Many Household Fires**

COLLEGE STATION—Among
the items that help start house-
hold fires as the housewife goes
about her daily tasks, the electric
iron ranks up among the worst
of them.

Ordinarily the blame can't be
put on the iron, but on the person
who goes off for a few minutes
and forgets to turn it off.

Home management specialists of
Texas A. and M. College Extension
Service say that if a house-
wife is really safety-minded, she
will not only turn off her iron
when she leaves it, but disconnect
it as well, even if she leaves only
a few minutes.

"Octopus connections"—several
electrical connections from one
outlet—are another serious house-
hold fire hazard, the specialists
say. A safe rule is to make only
one or two connections from an
outlet and avoid the use of ex-
tension cords except as temporary
wiring.

Other electrical "don'ts" around
the house are: don't hang exten-
sion cords over nails, or run them
through doors or underneath rugs;
don't use worn cords on lamps
and appliances; don't let clothing,

draperies, or other inflammable
materials come too close to light
bulbs.

Mechanized farming
ed United States farm-
duce a third more ac-
cent less total labor in
World War I.

Newspaper Advertising Pays!

From where I sit... by Joe M.

The Picnic Was
a "Hug" Success!

Our local Wild Life League went
on a picnic Saturday, and I went
along to cover it for the Clarion.
Monday, folks kept stopping me,
and saying: "Must have gotten out
of hand, that picnic!"

"Nonsense," I says. "It was
mighty pleasant and congenial.
Just beer and hot dogs, cheese and
cider." And then they show me the
headline reading: "WILD WIFE
PICNIC HUG SUCCESS."

Of course it was Elmer, my type-
setter, who had made the misprints:
But is my face red? It's only be-

Copyright, 1947, United States Bureau of

BIG CROPS

---from little ditches *Grow*

Tomatoes, potatoes, carrots, yams, peanuts, and many other
vegetables—all from little ditches grow!

Truck farming—BIG money to the folks in our area—is made
possible in many sections only through inexpensive irrigation.

Yes—the crops grow big in the Panhandle-Plains-Pecos-Valley
Area, bringing additional income to more and more people.

We have so much confidence in truck farming—and other
industries we serve, that we are investing 35 million dollars in
a building program. This expansion program in our territory
will bring more dependable electric service to industry and
better living—electrically—to everyone!

SOUTHWESTERN
PUBLIC SERVICE
COMPANY
22 YEARS OF GOOD CITIZENSHIP AND PUBLIC SERVICE

**NEW STOVES
AND
NEW PRICES**

We have in another shipment of new Hardwick gas ranges.

These stoves are built to burn natural gas, but will
operate on butane also.

Designs are the latest, and the prices are also of
THE NEW DESIGN

Wheeler Gas Co.
Wheeler, Texas

YOU ALWAYS GET THE BEST BUY AT Firestone

HOW CAN YOU BUY FIRESTONE De Luxe CHAMPIONS

AT LOWER THAN PRE-WAR PRICES!

Used Tires Are Worth More to Us **BUY IN TODAY FOR BIG SAVINGS**

You Save 4 Ways

- Buy With Firestone's Low Prices!
- Buy With Our Liberal Mileage Allowance!
- Buy More on Mileage Safety!
- Buy Time and Trouble Use the Convenient Budget Plan!

PAY AS LITTLE AS 1.25 PER WEEK

Brand New! 80 Pages! Absolutely **FREE!**

1.00 Value

ROAD MAPS OF AMERICA

Includes maps of main highways and principal cities throughout the U. S., also adjoining areas in Canada and Mexico. Get your copy today!

Quality Trouble-Free Service **Firestone BATTERIES** 13.95 Exchange

EVERYBODY'S USING THE Firestone EASY BUDGET PLAN THE CONVENIENT WAY TO BUY

FREE INSTALLATION

Beautiful SEAT COVERS 6.95 up Coupes
Made of fine materials and precision tailored to fit perfectly. They'll protect the upholstery and add smart good looks, too. They're a grand buy!
Couches and Sedans Proportionately Low

Kills Most Garden Pests and Fungus Diseases **EMBO-PEST** 65c

CASTING REEL 7.98
A level wind reel of top quality. Beautiful chrome finish. Extra strong and sturdy.

Beautiful Modern Styling **Electric TOASTER** 5.29

STAR SPECIAL 4.19
Toaster fits air tight. Keeps liquids piping hot or cold.

Wash Appliance & Supply Co.

"Better Things For Better Living" **WHEELER**

A Wise Polio Precaution: Keep Foods Well Covered!

Cover food to keep flies away, especially during the polio danger months in summer, is another wise precaution to follow in combating spread of the disease, the National Foundation for Infantile Paralysis cautions through its local chapter. The "blue-bottle" fly, particularly, is suspected as a possible factor in transmitting the virus as a result of evidence disclosed by investigations financed by March of Dimes funds. The National Foundation also urges that all fresh fruit and vegetables should be washed before use; left-over foods covered properly, and garbage or rubbish placed in containers with lids so that flies cannot get to it.



How About Spuds As Feed For Dairy Cows

COLLEGE STATION—Folks all over are asking about the practice of using potatoes as feed for dairy cows. Extension dairymen at Texas A. and M. College are telling them that spuds are satisfactory in a dairy ration if fed in limited amounts, as a substitute for grain or other feed. Sometimes, say the dairymen, cows may choke on the potatoes, but this can be remedied if the

dairy farmer will slice or chop the vegetables before feeding. Potatoes are not the most tasty feed a cow can get, and she needs to become accustomed to them gradually. Feeding too large amounts of potatoes may cause scours. When fed at the rate of 24 to 40 pounds per head daily, the spuds are a good substitute for

corn silage, the dairymen say. Even at that, the animals will probably lose their appetite for the vegetable after several months. The long-time value of legume crops is the fertility that they add to the soil, and the fact that they prevent erosion by holding the soil in place.

DR. M. V. COBB
CHIROPRACTOR
A Complete Health Service
Colon Irrigation—X-Ray—Electrotherapy
Lady Assistant
Phone 180 104 W. 2nd St. Shamrock

Veterans' News

QUESTIONS AND ANSWERS

Q—My National Service Life Insurance premium was due two weeks ago. Is my policy lapsed now, or do I have more time to send in my premium payment?
A—Your policy is not lapsed, nor will it be lapsed until 31 days after the date on which your unpaid premium was due.
Q—I have repaid a \$4,000 business loan, \$2,000 of which was guaranteed by Veterans Administration under the G. I. Bill. Is my guaranty privilege restored to its original amount now that all of my indebtedness has been paid?
A—No. You may use your full loan guaranty entitlement only once.
Q—I live and work in the city, but would like to buy a small farm with a guaranteed loan. Do I have to live and work on the farm to get the loan?
A—No, but you must be in position to supervise and direct the farming operations.
Q—Can I get a guaranteed loan to buy or build a small apartment house?
A—Yes, you may buy or build a small apartment house with a home loan or with a business loan, but the total number of family units cannot exceed four. If more than one veteran is buying an apartment house, then one additional unit for each veteran participating may be added to the basic four.
Q—I am going to school under the G. I. Bill and would like to get

a loan to buy a small home. Am I eligible for a guaranteed loan now?
A—Yes, provided you can qualify financially and otherwise.

Upwards of 150,000 World War II veterans now taking correspondence courses under the G. I. Bill, the Veterans Administration announced today.

The courses cover a wide range of subjects, including such specialized studies as gemology, criminology, yacht designing, cinematography, industrial plastics and air conditioning.

VA has contracts with approximately 130 state-approved schools, colleges, universities and other institutions to give veterans mail-order courses at government expense. Veterans may be enrolled only in those correspondence courses for which contracts have been negotiated, VA said. Subsistence allowance may not be paid. Information can be secured from the nearest VA office.

Three out of five, or 61 per cent of all World War II veterans are under 30 years of age, according to a new Veterans Administration tabulation. Based on the estimated total of 14,361,000 World War II veterans as of June 30, 1947, the under-30 group accounts for 8,785,000 veterans. Of these, 43,000 are under 20 years of age.

VA estimates the average age of all World War II veterans at 29.1 year as of June 30. More than two and a quarter billion dollars has been spent to provide education and on-the-job training for veterans of World War II. This was revealed this week when VA reported cumulative expenditures of \$2,283,000,000 by May 1 for education and training under the G. I. Bill and the Vocational Rehabilitation Act for disabled veterans.

RANGE RIDERS ALL STAR Rodeo
JULY 4-6
BIG SHOWS AFT. 6 EVE.
An R. C. A. Jones Bros Production
★ Rougher Horses—Wilder Bulls—Fastest Calves—Best Cowboys!
★ Buss Carson and Family, Hollywood, Calif., featuring Trick Horses—Fancy Riding and Roping!
★ Colorful Parade and Texas Notables!
ADM: Adults, \$1.25; Children, 50c; Box Seat, 50c Extra.
DON'T MISS IT! AMARILLO

Going Fishing or Picnicing?
WE HAVE PLENTY OF PICNIC SUPPLIES
PAPER PLATES... CUPC... HOT DRINK CUPS... WOODEN SPOONS & FORKS.
RUSS VARIETY
WHEELER, TEXAS

Mother! Mother! I am now small.
Soon I'll grow up big and tall
The cutest baby—that WAS me.
But my picture I'll want to see.
Copyright W. D. Barrymore

Bromoffone Studio
PHOTOGRAPHERS
Wheeler, Texas
OPEN EVERY DAY.

Announcement...
I wish to announce that I have moved my store from Mobeetie to Briscoe.
Will handle general line of groceries, Lawrances dairy feed, and egg and growing mash, and I will sell ICE CREAM.
I cordially invite the patronage of old and new customers alike.
FRANK O. MOTE

More Thrills... Fewer Fills!
It may be you're convinced all gasoline in town is just about the same. If so, you're in for a thrill when you pull up at the next red pump... and fill up with Conoco N-tane! For here are **FIRECRACKER-STARTS... ROCKET-SMOOTH** pickups... **LONGER** jumps between pumps... in a new-day gasoline that's power-packed for you... for NOW!

CONOCO N-tane NEW-DAY GASOLINE
Copyright 1947 Continental Oil Co.

WE HAVE CONOCO N-TANE GASOLINE
CONOCO Nth OIL — GAS — GREASES — TRACTOR FUEL
WHOLESALE **LESTER LEONARD** Mobeetie
RETAIL **FARMERS EQUITY SERVICE, Inc.** Mobeetie

SOCIETY

Mrs. Guthrie Hostess To Group of Youngsters

Mrs. Lee Guthrie entertained with a lawn party Friday night, June 27, in honor of Misses Jovena Jackson and Beth Hendricks of Eden, Texas.

A delicious picnic meal was served and afterward games were played.

Those enjoying the occasion were: Dorothy Esslinger, Billie V. Brown, Pat Noah, Frances Porter, Ida Mae Martin, Peggy Rodgers, Henry Risner, Maurice Pettit, Robert Lowrie, Corky Guthrie, Bill Robertson, Happy Martin, the honorees, and the hostess.

Kelton WMS Meets In G. Henderson Home

The Kelton Baptist WMS met in the home of Mrs. George Henderson.

FARM NEEDS NOW IN STOCK AT YOUR IH DEALER

- International Milk Coolers with pneumatic agitator.
- International Milking Machines, single and double units.
- International Cream Separators, hand and electric.
- International One Bottom Moldboard plows.
- International Hammer Mills.
- Hammer Mill Belts, 50-ft., 6-in., 4-ply, endless.
- International 10-ft. grain binders.
- International One-Row Corn Binders.
- Tractor Umbrellas.
- Water Bags.
- Goodyear Tractor & Implement Tires and Tubes.
- Power Operated Grain Scoops for mounting in truck beds.
- Graham-Home Plows, any size 8 to 34 feet.
- Graham-Home Chisels, Spikes and Sweeps.
- Fertilizer Distributors for 2-row planters.
- IHC Cultivator sweeps, any size 4 to 36-inch.
- Hand Operated Sickle Grinders.
- Quart Size Fire Extinguishers.
- Spark Plug Tire Pumps.
- Cover Chains for grain drills.
- 1 Used McCormick-Deering Cream Separator, reconditioned.
- Gasoline Engines, 1 1/2 to 2 1/2-H. P.
- International Manure Spreader on Rubber with tractor hitch.
- International 4-wheel Tractor Trailer on rubber.

HIBLER IMPLEMENT CO.

Phone 151 Wheeler

erson, Monday afternoon, June 30.

Mrs. Lawrence Davis taught the Bible Study after which a social hour was enjoyed, at which time a lovely box of gifts were presented to Mrs. Irvin Davis, who has recently moved to Kelton from California to make her home.

Those present and sending gifts were: Mesdames B. Neal Austin, T. J. Austin, H. T. Carman, C. D. Davis, J. A. Tucker, Joe Pitecock, Geo. Davidson, T. B. Killingsworth, L. F. Rathjen, F. J. Rathjen, L. T. Davis, Jr., L. T. Davis, Sr., L. W. Davidson, Wilson Hill, Whitener, Edna Wright and the hostess, Mrs. George Henderson.

Union Quilting Club Holds Meet Thursday

The Union Quilting Club met Thursday, June 26, in the home of Mrs. Mae Ayers. One quilt was quilted and everyone enjoyed a plentiful basket lunch at noon.

Members attending were: Mesdames Bud Scribner, Frank Mote, Leslie Waters, Albert Scribner, Gene Gudgel, Jack Kuykendall, Jake Allen and the hostess, Mrs. Mae Ayers. Visitors included Mrs. Ayer's daughter from Pampa, Mrs. John Corcoran and Mrs. Everett Coleman.

The next meeting will be with Mrs. John Corcoran on Thursday, July 10.

School House Scene of Pakan H. D. Club Meet

The Pakan Home Demonstration Club met at the school house, Thursday afternoon, June 26.

Mrs. Andrew Morgan of Shamrock, who was a special guest, gave a talk on hair grooming and told it was best for one to shampoo their hair every ten days, using a soap that would leave the hair soft and healthy and to brush your hair often.

Refreshments were served to the following guests: Kay Belle McCurley of Lela and Miss Louise Hicks, Wheeler Members. Mrs. Paul Macina, Mrs. W. L. Walker, Louise Rislan and May Ruth Stauffer.

The next meeting of the club will be July 10 with Mrs. W. A. Allen.

HOSPITAL NEWS

Mrs. Bob Ramsey, Briscoe, underwent major surgery June 25.

Mrs. Bill Chapman entered for treatment June 25.

Mrs. S. A. Salley, Mobeetie, underwent minor surgery June 27.

Mr. and Mrs. H. Blair, Pampa, are the parents of a daughter born June 25.

Daughter of G. T. Stacy of

Shamrock entered for treatment June 28.

C. L. Powell, Briscoe, entered for treatment June 29.

Mrs. Homer Steen, Magic City, entered for treatment June 29.

Mrs. Ollie McPhearsen, Twitty, entered for treatment June 28.

Louvina Mooney of Panhandle underwent an appendectomy June 26.

Mary Ellen and Bill Scribner of Mobeetie underwent a tonsillectomy July 1.

Paul Hathaway of Mobeetie received treatment June 30.

Small daughter of Mrs. Ruth Corcoran, Sunray, underwent a tonsillectomy July 1.

David Stone of Allison entered for treatment June 30.

Mobeetie Happenings

By Edith St. John

Rev. Murphy attended to business in Pampa Tuesday.

Miss Ima and Eddie Mae Scott and Mrs. Glen Scott and children visited in the R. St. John and Johnny Jones home Tuesday.

Mrs. Dora Hogan, who has been visiting her daughter in Bridgeport, Okla., returned to Mobeetie Monday.

Mr. and Mrs. Tince Williams and Peggy returned Tuesday from Turkey, Texas where they had been visiting his folks.

Mrs. Hayes and Charlotte and Bernice Carter were visitors in Wheeler Tuesday.

Mr. and Mrs. Ed Brown, Edwina and Benny of Wheeler visited in Mobeetie Sunday.

Mrs. R. J. Patterson and Madge were visitors in Wheeler Tuesday.

Mr. and Mrs. W. C. Hogan, Gaylon and Wayne visited in Oklahoma Sunday.

Rev. and Mrs. Murphy and children left early Saturday morning for Mexico where they plan to stay a few weeks.

Sue and James Meddley of Bridgeport, Okla., are visiting their grandparents, Mrs. Dora Hogan.

Mary Louise Matthews who has been working in McLean has returned to Mobeetie to stay.

Mrs. Tince Williams, Peggy Mrs. Boyd Beck and Lou visited in Pampa Thursday.

Jimmy Batman of Guthrie, Texas has been visiting in the Tince Williams home.

Louise St. John left for Pampa early Monday morning where she is going to work in a new cafe opening July the first.

F. L. R. L. Elliott is visiting his grandparents, Mr. and Mrs. C. D. Loter, and other relatives and friends this week. Fireman Elliott is stationed aboard the USS Hollister.

Mr. and Mrs. Henry Delavon and Mrs. J. E. Delavon of Lubbock visited Mrs. M. L. Gunter this past week. Mrs. Gunter has been sick. Mrs. Delavon is Mrs. Gunter's sister. Mr. and Mrs. Terrell Delavon and son, Nelson, came Sunday and Mrs. Delavon returned home with them.

DEVELOP...

PROFITABLE PULLETS

—with—

FORTIFIED PULLET DEVELOPER

Your pullets between eight and twenty-four weeks of age are going through a vitally important stage in their lives insofar as future egg-laying ability is concerned. It is during this important period that rugged, vigorous and strong egg-making organs must be developed . . . if the pullet is to hold up under the strain of heavy egg production later on.

Develop Egg Organs . . . Quickly Safely

Fortified PULLET DEVELOPER is designed to quickly and safely develop egg-making organs, and at the same time, to furnish the elements scientific feeding tests show are necessary for all 'round strength and ruggedness.

FREE

We will give absolutely FREE with each 100-lb. sack of Fortified Pullet Developer sold 1 genuine Anchor-Hocking (skid-proof) crystal glass mixing bowl.

LAWRENCE HATCHERY AND FEED

PHONE 131-A

WHEELER, TEXAS

Specials for Week July 5 Thru July 10

HIGH PRICES MUST END!

THE VERY LIFE OF AMERICA IS IN JEOPARDY! THE PRESENT HIGH COST OF LIVING IF CONTINUED WILL DESTROY OUR ECONOMIC STRUCTURE. IGA STORES ARE PLEDGED TO DO THEIR PART TO ALLEVIATE THIS EXTREMELY DANGEROUS CONDITION BY BRINGING TO THE PUBLIC LOWER AND STILL LOWER PRICES EVERY DAY! NOT JUST FRIDAY AND SATURDAY BUT EVERY DAY!

GREEN BEANS
NO. 2 CAN
2 FOR
25c

PEAS
NO. 2 CAN
2 FOR
25c

CORN
NO. 2 CAN
2 FOR
25c

TOMATO JUICE
FANCY NO. 2
2 FOR
25c

LIPTON'S TEA

Colonial French Dressing 1/2-pt. Bottle

1/4-LB. BOX **23c**

1/2-LB. BOX **46c**

1-LB. BOX **91c**

Pineapple Crushed 2 7-oz. can for 25c

HOMINY
WHITE SWAN
2 NO. 2 1/2 CANS **25c**

SAUER KRAUT
LIBBY'S
2 NO. 2 1/2 CANS **25c**

SPINACH
WHITE SWAN
2 NO. 2 1/2 CANS **25c**

Sausage
PURE PORK LINK
PER POUND **49c**

PORK STEAK
LEAN
PER POUND **53c**

PORK SAUSAGE
PURE
PER POUND **53c**

COLD MEATS
ASSORTED
PER POUND **35c**

CHEESE
AMERICAN or LONG HORN
Per Pound **39c**

CHUCK ROAST
FANCY BEEF
PER POUND

WEINERS
LARGE or SMALL
PER POUND **35c**

CHUCK STEAK
FANCY BEEF
PER POUND

SWANSDOWN CAKE FLOUR

44-OUNCE PACKAGE **35c**

CLOROX
QUART BOTTLE **15c**

LYE
IGA 3 CANS **25c**

BABO
CLEANSER 2 CANS **21c**

BROOM
GOOD EACH

SPECIAL SOAP SALE

OXYDOL
2 FOR **57c**

DREFT
2 FOR **57c**

MAGIC WASHER
2 FOR **57c**

DUZ
2 FOR **57c**

VEL
2 FOR **57c**

TOMATOES 2 Pounds **25c**

LETTUCE head **9c** **SPUDS** 10 lbs. **35c**

GREEN BEANS lb. **10c** **CABBAGE** lb.

ORANGES dozen **15c**

FINER QUALITY AT LOWER PRICES FROM COAST TO COAST

CLAY'S FOOD IGA STORE

Home-Owned Home-Operated

Maxwell House COFFEE PER POUND **41c**

Mr. and Mrs. Delbert Hallman and sons of Stillwater, Okla. visited from Friday until Monday in the home of Mr. and Mrs. C. C. Hallman.

Mr. and Mrs. Johnny Clark and Mrs. W. L. Curtis of Dallas returned home Tuesday after a few days visit with their aunt, Mrs. Lee McCasland and Mr. McCasland and other relatives.

Trade at your friendly Wheeler-Loocker for quality meat and groceries.

A Child May Dare So Drive With Care

We Have Them

- ... Aermotor Windmills
- ... Steel Towers
- ... Wood Pump Rod
- ... Stock Watering Tanks
- ... Pressure Cookers
- ... Presto Cookers
- ... Kitchen Sinks
- ... Lavatories
- ... Radios and Electric Irons
- ... Cultivator Sweeps
- ... Gas and Butane Water Heaters
- ... Most anything in Kitchen ware.

J. P. GREEN & SON
HARDWARE
Wheeler, Texas

"YOUR CHEAPEST WAY TO BUY OR SELL" WANTS ADS

RATES—10c per line (counting 5 words to line) for first insertion. Minimum charge, 30c; 5c per line after first time. Minimum charge 15c. Reader ads scattered among local items 15c per line each insertion. Cards that run every week 25c per column inch per week.

DISPLAY ADVERTISING—National rate, 42c an inch; Local Advertising rate, 30c per column inch, 25c per inch when 30 inches or more used each week during calendar month.

MISCELLANEOUS

FOR RENT—Small modern house in town. Couple, permanent renter preferred. Dr. V. N. Hall. 29-11p.

LOST—Blue velour upholstered ottoman between Pampa and Wheeler, Saturday, June 21. Finder please leave at Wheeler Times Office. Reward. 28-2tp.

WANTED—Pigs and shoats, also top hogs at Shamrock Sale Barn, 1 mile north of Shamrock. 45-4tp.

ALCOHOL

PUBLIC enemy No. 1—No Fishing or Hunting on my place. Also no swimming in my lake without permission. Albert Chapman. 21-1fc.

We can now do your cemetery work. Grave markers, covers, and curbing. Will Warren, Wheeler. 29-1fc.

Alcoholics Anonymous offers help to men and women who have

an honest desire to stop drinking. Write P. O. Box 589, Shamrock, Texas. 5-1fc.

FOR SALE

Hogs for sale. Inquire at Brown's Cafe. 29-11c.

SHAMROCK MATTRESS FACTORY—Have that old bed made like new. Special prices on new beds. Shamrock Mattress Factory. 19-26c.

FOR SALE—Kitchen cabinet and living room suit. Cheap. See Homer Pitcock. 29-11c.

FOR SALE—Eight lots in Benonine. Write Box 9, Gorman, Texas. 28-2tp.

FOR SALE—Chevrolet pickup, 1/2 ton, good shape, good tires. See Homer Pitcock. 29-11c.

FOR SALE—Syrup mill, includes engine. Can be seen at J. C. Woodbridge Lumber, or P. H. Schaub, 405 Roberta St., Pampa. 28-2tp.

We still have those Dempster pressure water systems complete with pipe. See us about water softeners, completely installed if customer desires. Ernest Lee Hardware. 29-11c.

FOR SALE—New A-B apartment size cook stove. Used 3 weeks. Paid \$67.00. Will sell for \$57.00. Mrs. William Barrymore, Bromotone Studios, Wheeler. 27-1tp.

FOR SALE—Peaches, plums and apricots. H. O. Miller, 1 mile north of Wheeler. 29-11c.

FOR SALE—One 1939 International school bus. Good running condition, good tires. Complete with body. Also bus chassis, '41 Dodge Motor. Allison School Board. 28-2tp.

FOR SALE—One dollar, goggles for pets. Mrs. V. N. Hall. 29-11p.

FOR SALE—1 slightly used collapsible baby buggy and pad. Very good condition, sell for \$15. Mrs. William Barrymore, Bromotone Studios. 27-1tp.

FOR SALE—Completely equipped beauty shop. See Lillie McClain. 29-11c.

FOR SALE OR RENT—Vacuum Cleaners. L. A. McWhorter. 24-8tp.

FOR SALE—Nice peaches ready now. Will Warren. 29-2tc.

FOR SALE—2 houses and lots located at New Mobeetie. 1 3-room and 1 1-room with 100 ft. front. City water and well, cellar, garden, chicken house and

cow barn. Will sell both together or separate. E. A. Babb, Wheeler. 27-3tp.

NEW PORTABLES HERE

We have a new Remington portable typewriter, just received and expect to receive one more. Factory is now on strike. Price is \$78.95 including excise tax. THE WHEELER TIMES. 29-2tp.

BUTANE SYSTEMS—No down payment. Payments as low as \$61.66 per year or \$4.92 per month if you prefer monthly installments. Nash Appliance & Supply.

FILING CABINETS—We expect to receive one or two 4-drawer letter size metal cabinets within the next two weeks. Please call and we will reserve you one. THE WHEELER TIMES. 29-2tp.

FARM FOR SALE—1280 acres located north of Roy and just over in Colfax Co., N. M. About 300 acres in cultivation. Balance in grass. 2 good wells. Partly fenced. Three room farm house. Some sheds. Priced at \$12.50 per acre. Owner sick and must sell. J. B. Procter, Realtor, Roy, N. M.

MILK COOLERS in stock for immediate delivery. Nash Appliance & Supply. 18-1fc.

STRAYED—Big White Face Bull branded Rafter E on left side from John Dunn place South of Mobeetie. Reward for information as to his whereabouts. John Dunn. 27-3tp.

FOR SALE—32-volt delco light plant complete with practically new batteries. W. E. Bowen Implement Co., Wheeler. 29-1tc.

LOCAL NEWS ITEMS

Mrs. O. K. Henson, Jr. of Sweetwater, Okla. spent Monday visiting in the home of her sister, Mrs. W. D. Barrymore.

Mr. and Mrs. George L. Sides of Jacksonville, Fla. are here on an extended visit in the home of his parents, Mr. and Mrs. Luther Sides.

T. M. Bowman was called to be at the bedside of his father at Childress Tuesday.

Mr. and Mrs. A. L. Glover of Wooster, Arkansas are visiting Mr. and Mrs. J. M. Glover.

Mrs. Floyd Pennington left Monday night for Alpine where she will visit in the home of her son, Mr. and Mrs. W. E. Pennington II who are the proud parents of a young daughter which was born last week.

Miss Vondell Starkey, who is attending business college in Wichita Falls, is visiting her parents here this week.

Trade at your friendly Wheeler-Loocker for quality meat and groceries. 29-1tc.

Mr. and Mrs. Leslie Waters and sons were Sunday dinner guests in the Bill Corcoran home.

LEGAL NOTICE

CITATION BY PUBLICATION THE STATE OF TEXAS TO: Albert E. Hopewell GREETINGS: You are commanded to appear and answer the plaintiff's petition at or before 10 o'clock A. M. of the first Monday after the expiration of 42 days from the date of issuance of this Citation, the same being Monday the 24th day of August, A. D. 1947, at or before 10 o'clock A. M., before the Honorable District Court of Wheeler County, at the Court House in Wheeler, Texas. Said plaintiff's petition was filed on the 2nd day of July, 1947. The file number of said suit being No. 3819.

The names of the parties in said suit are: Mary Gean Hopewell as Plaintiff, Albert E. Hopewell as Defendant.

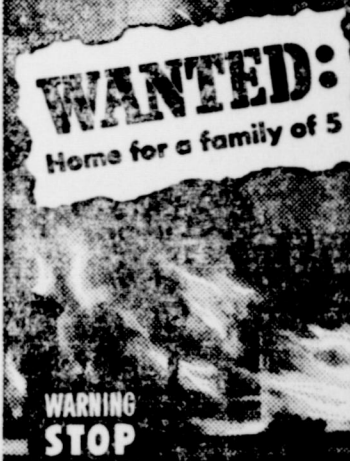
The nature of said suit being substantially as follows, to-wit: "This is a suit for divorce on grounds of cruel treatment."

Issued this the 2nd day of July, 1947.

Given under my hand and seal of said Court, at office in Wheeler, Texas, this the 2nd day of July, A. D. 1947.

(SEAL) CHRISTOPHER S. McCLAIN Clerk, District Court, Wheeler County, Texas. 29-4tc.

WANTED:
Home for a family of 5



WARNING STOP FIRE!

"BURNED out" today may well mean being out of a place to live. Be doubly careful to eliminate fire hazards in your home. And consult us about today's higher values. Don't let fire catch you under-insured.

DORIS FORRESTER AGENCY
Wheeler, Texas

THINGS ARE POPPIN' AT OUR 4th of JULY FOOD SALE!



REAL BUYS IN CHOICE MEATS
USE PET MILK IN ALL YOUR COOKING

LARGE WEINERS	Pound	35c
FRESH BOLOGNA	Pound	35c
AMERICAN CHEESE	Pound	45c
FRESH CHUCK ROAST	Pound	39c
FRESH HAMBURGER	Pound	29c
ARMOUR'S BACON	Pound	69c

FRESH TOMATOES	Pound ...	12 1/2c
SUNKIST LEMONS	Dozen	29c
ICEBERG LETTUCE	Pound	13c
CALIFORNIA ORANGES	Dozen	25c

Mary Lee Taylor's Tomato Surprise
Broadcast: July 3, 1947

3 tablespoons finely cut onion
2 tablespoons hot shortening
1/4 cup flour
1 teaspoon salt
few grains pepper
No. 2 can tomatoes
1/2 cup Pet Milk
8 crisp bacon slices

Cook onion slowly 5 min. in shortening. Blend in flour, salt and pepper. Stir in tomatoes. Boil slowly and stir 3 min. Heat milk to boiling. Remove tomato mixture and milk from heat. Stir tomato mixture into hot milk. Do not heat after combining. Serve hot on toast topped with bacon. Serves 4

*To use peeled, cut-up fresh tomatoes, increase amount to 2 1/4 cups and cook 10 minutes.

You Will Need:

LARGE CAN PET MILK	Each	12 1/2c
CAN TOMATOES	Each	15c
POUND BACON	Each	69c
25-LB. SACK FLOUR	Each	\$1.69

WAXTEX WAX PAPER Roll 19c

MRS. TUCKER'S 4-lb. cartop SHORTENING ... \$1.33

CONCHO TOMATOES
NO. 2 CAN 15c

FOR PICNICS

PAPER PLATES	Dozen	12 1/2c
ARMOUR'S TREET	Can	39c
UNCLE WILLIAM'S PORK & BEANS	Can	19c
ARMOUR'S VIENNA SAUSAGE	2 Cans	29c
SUNKIST PEACHES	No. 2 1/2 Can	31c
MAXWELL HOUSE COFFEE	Pound	45c
DIXIE PAPER CUPS	6 for	10c
MORTON'S POTATO CHIPS	25c Package	19c
MORTON'S SALAD DRESSING	Pint	27c
SOFT DRINK KOOL-AID	6 Packages	25c
LONE STAR PINEAPPLE JUICE	NO. 2 CANS	33c
SWAN NAPKINS	PER PKG.	15c

PUCKETT'S BEST FLOUR
25-lb. . \$1.69
50-lb. . \$3.39

Thanks..

We are closing the bakery in Wheeler July 5

We wish to take this opportunity to thank our friends and customers of Wheeler and surrounding territory for their support and patronage during the past eight years that we have been operating the bakery here

The Williamsons

All Day JULY, 4th

We Will Be CLOSED PUCKETT'S FOOD MARKET

HAY BAILING TIME IS HERE

COLLEGE STATION — Better methods of harvesting, curing and storing could mean a big rise in the quality of hay that is produced on Texas farms at this season every year.

The time of harvesting a hay crop, says E. A. Miller, Extension agronomist of Texas A. and M. College, has more to do with turning out good hay than many

producers realize. When the crop is allowed to get too ripe, it becomes coarse and loses a great deal of its feed value, especially protein. Sudan grass and Johnson grass need cutting as soon as the first seed heads begins to form, or even earlier, to get a bale rich in feed value, says Miller. Producers have found that alfalfa makes the richest hay if cut when the field is about one-tenth to one-fourth in bloom. Sweet clover, the agronomist says, is best cut before it begins to bloom.

Curing has a lot to do with the way hay turns out, too. Grass hay may be left in the swath until fairly well cured, Miller explains, but legume hay, like alfalfa, clover, and cowpeas, will suffer a big loss of leaves through shattering if it is not raked into windrows soon after cutting. The leaves contain most of the feed value, the agronomist says, so it's the wise farmer who gets his legume hay shocked before the leaves begin to shatter.

Lightning rods do protect buildings, but only when the connections to the ground are good.

DR. JOEL M. GOOCH
OPTOMETRIST

200 S. Wall Street
Phone 123

SHAMROCK, TEXAS

Refreshing



COCA COLA BOTTLING CO., Shamrock, Texas

Pampa
Texas
Ph. 934



Plenty
Storage
Space

EXPERT MOVING—CAREFUL HANDLING
VAN SERVICE—NATION-WIDE SERVICE



GET YOUR BIRDS IN

the Nest Parade

See Us For All Your PULLET-GROWING NEEDS



... Ready to Lay

Early

ARE THE MOST PROFITABLE

Cash in by getting your pullets in the nest EARLY... with growth and vigor for lasting egg production. A complete feed.

PURINA CROWENA



For FAST GAINS

Many leading hog men average 100 lbs. of pork with 5 1/2 bu. of corn and only 50 lbs. of Hog Chow on the Purina plan.

Grain with HOG CHOW

Yes! We want you as Cream, Poultry and Eggs Customers.

WHEELER COUNTY PRODUCE ASS'N

PHONE 142 P. O. BOX 93

WHEELER, TEXAS



Worley Defends Farm Practices

EDITOR'S NOTE:—The following is a continuation of the speech made by Congressman Eugene Worley during the debate on the Agricultural Appropriation bill.

Mr. Chairman: Admittedly, the war was a big factor in the booming prosperity many farmers have enjoyed these last five years. But prosperity was well on the way long before Pearl Harbor—long before war broke out in Europe. The growth of buying power of the American farmer started in 1933.

I am not going to recite the details of the climb and of the sweeping agricultural legislation that helped farmers to climb out of the depression. I am merely going to put into a few sentences the highlights of what has been accomplished, using my own State of Texas as an example.

1. The Agricultural Adjustment program helped farmers produce in accordance with the needs of the people. It enabled them to set up a complete Ever-Normal Granary program which supported prices of basic crops and maintained stable reserves. It made it possible for farmers to use soil conserving practices that added untold wealth to the nation's natural resources. Did that program pay dividends? I have heard it said that the Ever Normal Granary alone meant as much to the Nation in the winning of the war as an extra army or an extra fleet of ships.

2. Under the national soil conservation program, 30 million acres have been devoted to organized conservation. In 1945 more than half the Nation's farms, containing three-quarters of our cropland, participated in carrying out soil-conserving or erosion-preventing practices. Under this program and the adjustment program, American farmers built up a "bank" of fertility and they drew upon it heavily to help win the war. Did it pay? In Texas alone some 40,000 farms covering 15 million acres have been aided by the Soil Conservation Service in applying conservation plans. A survey of typical farmers showed that soil conservation enabled them to step up their yields per acre by an average of 26.5 per cent.

3. The Farm Credit programs during the tough going of the 1930's helped farmers refinance their mortgages, reduce their interest payments, and keep their farms. Did it pay? In Texas 250,000 Farm Credit and Production Credit Association loans were made in amounts totalling 725 million dollars.

4. The Farm Security program helped farm tenants become owners and small farm owners to improve their economic position either by getting additional land or by more efficient farming. Did that pay? I wish the 87,000 Texas farmers who received rehabilitation loans were here to answer that question. I wish the 4,000 farmers who took out farm ownership loans were here to tell you. Already nine-tenths of the principal of the rehabilitation loans has been repaid and the tenant purchase borrowers have paid up 86 per cent more than would be required on the basis of equal annual installments to pay their loans in full in 40 years.

5. The Rural Electrification program brought power and light to millions of American farmers, helping them to increase their production efficiency and to improve their living standards. In Texas alone, from the beginning of the Rural Electrification Administration in 1935 until the end of 1945, a total of 53 1/2 million dol-

lars was loaned to provide electric power to farmers. REA loans were used to construct 44,000 miles of distribution lines serving 114,000 consumers in rural Texas. At the end of 1945, REA borrowers in the State had met all interest and principal payments due on their loans and had paid \$1,200,000 on principal ahead of due dates. Did it pay? Here is an interesting fact: Eleven years ago when the Rural Electrification program was started, only about one Texas farmer out of 50 had electrical service. That proportion has been stepped up to one out of three. For the whole nation, the proportion of farms with electricity has risen from about 10 per cent to close to 50 per cent.

I could go on for a long time talking about the marketing agreements, about water facilities, and flood control, about price supports, commodity loans, and conservation payments. I could talk about the farm labor program that in 1945 helped more than 77,000 Texas farmers secure workers. I could talk about the research programs which have paid such big dividends to the nation—hybrid corn seed, for example, or the production of penicillin in commercial quantities, or the development of dais and sprays containing DDT.

But I am going to pass over all of those features and mention simply the protection farmers are given under the so-called Steagall Amendment, which assures price support for major agricultural commodities at 90 per cent of parity or higher until January 1, 1949. Thus, American agriculture is protected by a floor under prices. We all know why this measure was adopted. It was adopted because the Democratic Party was determined that American farmers should not again be the forgotten men they were after the other World War. It was adopted because looming very big in the minds of the President and Congress was the memory of the terri-

ble collapse of farm prices in 1920 and 1921. In less than a year, at that time, farm prices plummeted down more than 40 per cent. That is not happening this time. Well, there is the record. There are the facts. As has been said: "The farmer and the farmer's family can measure for themselves the vast difference between the desperation which was theirs and the recovery which is theirs." Surely the record—in peace and war alike—is good.

And today the people of this nation are enjoying the greatest abundance of the products of the farm they have ever known. Let me again cite the record. With fewer farms and with 10 per cent fewer workers than in 1937, with shortages of machinery and materials, without plowing up the parks and plains, American agriculture during World War II stepped up production more than one-third, sent up to one-fourth of its products off to war, and at the same time fed civilians 10 per cent better than in peacetime.

Not only that, but year by year and every year—beginning not in 1942 or in 1940 but away back in 1937 and going right through the war—American agriculture set new production records every year. Every year a new record. Every year more food than the year before. Meat production jumped by about one-half over the 1935-39 average, and egg production by about three-fifths. Commercial truck crops increased by about two-fifths. Output of some of the war-valuable vegetable oil crops, such as soybeans and flaxseed, tripled or more than tripled.

And how was it done? Not by putting on three shifts. First, there wasn't labor available and, second, it wouldn't have made much difference anyway, because three shifts can't make the land produce and the sun and the rain work any faster.

It was done by long hours, by hard work, by technological improvement—and by a legislative program that helped the farmer go all-out.

It was possible only because agriculture had been snatched from the near death of the 1930's and restored to the vigor and good health of the 1940's. (To be continued)



with 5% MICRON-SIZED DDT
IT'S NO USE, BOYS! SHE HAS PURINA FLY SPRAY!

There's a difference in DDT! "Micron-sized" means the DDT in Purina Fly Spray for the Home is extra finely ground to cover more surface more thoroughly. For quick kill—spray in the air. For effective protection against flies, mosquitoes, roaches, waterbugs, ants and other pests—spray on walls and ceilings, paint baseboards, screens, etc. Try it!

WHEELER CO. PRODUCE ASS'N
Phone 142
Wheeler, Texas

Full Pint 40c

ALSO SOLD BY

OLIVER W. ELLIOT

KELTON, TEXAS

ADAMS GROCERY

WHEELER, TEXAS

A Cub in Size... but a BEAR for Work!

and Now-

INTERNATIONAL HARVESTER PRESENTS

THE Farmall Cub!

- For all operations on farms of 40 acres or less—and truck gardens.
- For special operations on truck farms.
- For large farms that need an extra tractor.

That's the Farmall Cub, the first tractor in history that's built right and priced right for a great new group of tractor owners.

The Cub is the newest member of the famous FARMALL FAMILY. It brings the advantages of the FARMALL SYSTEM OF FARMING to the small, family farm.

It's a Cub in size, but "a BEAR for work." You get big Farmall quality and design, plus scaled-down, small tractor economy. And there is a full line of matched, quick-change, easy-to-control implements.

The smooth-running 4-cylinder engine develops approximately 9 1/4 h.p. on the belt. It uses considerably less than a gallon of gasoline an hour. There's a comfortable, roomy seat... ample crop clearance under the chassis... and "Culti-Vision" to give a clear, unobstructed view of your work.

Fit the Cub into your farming operations. We'll have one on hand soon, so you can climb in the seat and drive it. You'll find it handles as easily as your car.

*Registered trade-mark. ONLY International Harvester builds FARMALL Tractors.

ROGUE THEATRE

FRIDAY AND SATURDAY—
"The Devil's Playground"
—starring—
William Boyd

PREVUE SATURDAY NIGHT—
SUNDAY AND MONDAY
"Cross My Heart"
—starring—
Betty Hutton and Sonny Tufts

WEDNESDAY AND THURSDAY—
"Two Years Before The Mast"
—with—
Alan Ladd, Brian Donlevy,
William Bendix and
Betty Fitzgerald

SEE THE CUB ON DISPLAY NOW AT

HIBLER IMPLEMENT CO.

Your International Harvester Dealer
Wheeler, Texas

Phone 151

Church Calender

FIRST BAPTIST CHURCH

Sunday School Prayer Meeting
 9 a. m.
 Sunday School 10:00 a. m.
 Morning Worship 11:00 a. m.
 Evening Worship 7:30 p. m.
 P. D. FULLINGIM, Pastor

CHURCH OF CHRIST

Classes 10 a. m.
 Worship and Sermon, "Prophecies
 Isaiah" 11 a. m.
 Morning Worship 8 p. m.
 Bible Class - Mon. 3 p. m.
 Wednesday Evening Service, "The
 Church of Christ" 8 p. m.
 B. M. LITTON, Minister

METHODIST CHURCH

Sunday School 10:00 A. M.
 Morning Worship 11:00 A. M.
 Evening Worship 7 p. m.
 Evening Worship 8 p. m.
 Everyone welcome.
 S. Y. ALLGOOD, Pastor.

BRISCOE BAPTIST CHURCH

Teaching second and fourth
 days.
 Sunday School every Sunday.
 Frank McDonald, Sunday School
 Superintendent.
 Edward S. Bridges, Pastor

ASSEMBLY OF GOD

Mobeetie, Texas
 Service 7:45 p. m. Sat.
 10:00 a. m. Sunday
 8:30 p. m. Sunday
 Study Wednesday night
 are always welcome.
 BUNTA HUDSON, Pastor

CITY BAPTIST CHURCH

Sunday School 10:00 a. m.
 Morning Worship 11:00 a. m.
 Evening Worship 8:00 p. m.
 Week prayer service 8:00 p. m.
 A. C. LYONS, Pastor

KELTON

METHODIST CHURCH

Sunday School 10:00 a. m.
 Morning 11:00 a. m. on second
 and fourth Sundays.
 WSCS and Bible Study
 8:00 p. m. on second
 and fourth Sundays.
 O. C. EVANS, Pastor

WHEELER BAPTIST CHURCH

Sunday School each Sunday at
 10 a. m.
 Morning each Sunday at 7:30 p. m.
 Evening each Sunday at 11:00
 and 8:30 p. m.
 G. ROBERTS, Pastor

BRISCOE

METHODIST CHURCH

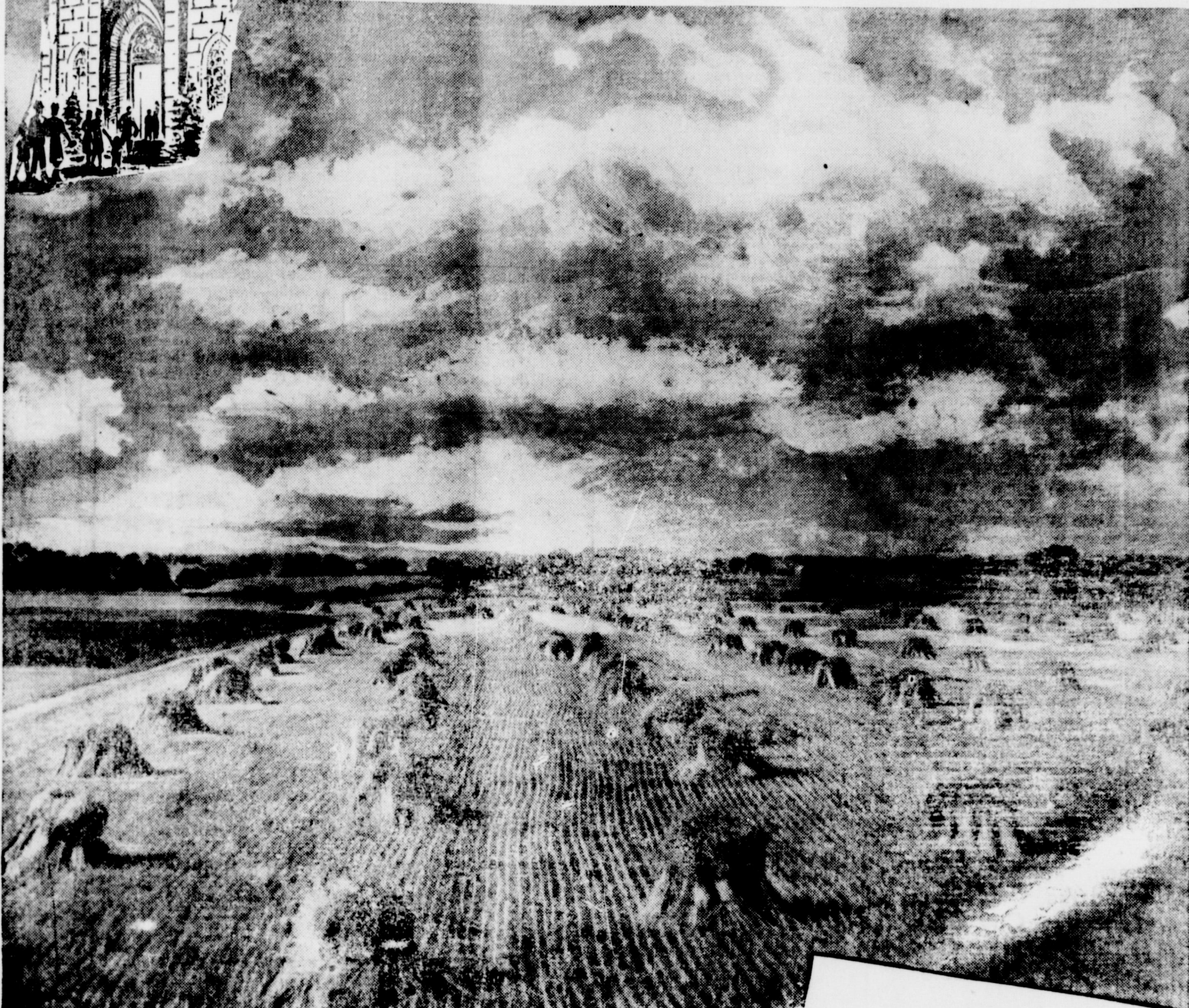
Sunday School Each
 10:00 a. m.
 Morning second and fourth Sun-
 11:00 a. m. and 8:00 p. m.
 Evening welcome to all.
 A. N. MOTES, Pastor

ALLISON

METHODIST CHURCH

Sunday School Each
 10:00 a. m.
 Morning first and third Sun-
 11:00 a. m. and 8:00 p. m.
 Evening welcome to all.
 A. N. MOTES, Pastor

Glorious Harvest



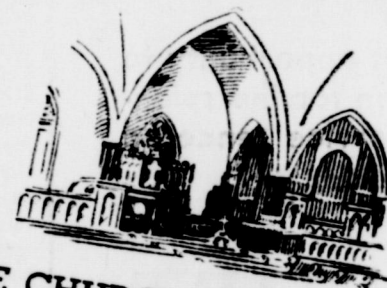
From this pleasant field and thousands like it comes the daily bread of the American people and the millions abroad who share our bounty.

Agriculture is the most basic of all industries, because it produces the food which sustains human life. It calls for hard work and a high degree of intelligence, training, foresight and skill.

The farmer is essentially a man of faith. He plows and plants and cultivates with firm belief that a gracious and all-wise providence will bring him an abundant harvest. This faith is the basis of his effort and the inspiration of his toil.

Faith in God is needed in every occupation and every walk of life. Without it, life is meaningless and our efforts are as those of a bird vainly beating its wings against an iron cage.

The mission of the Church is to teach men to love and trust God and walk in His ways. They are the ways of pleasantness, the paths of peace. Go to church on Sunday. It will inspire you to live better and labor with more purpose next week.



THE CHURCH FOR ALL . . . ALL FOR THE CHURCH

The Church is the greatest factor on earth for the building of character and good citizenship. It is a storehouse of spiritual values. Without a strong Church, neither democracy nor civilization can survive. There are four sound reasons why every person should attend and support the church of his choice. They are: (1) For his own sake. (2) For his children's sake. (3) For the sake of his community and nation. (4) For the sake of the Church itself, which needs his moral and material support. Plan to go to church on Sunday and read your Bible daily.

Copyright 1947 by
E. E. Keiser, Strasburg, Virginia

News In World of Religion

By W. W. Reid

Young Men's Christian Association, which through the war has had a special interest in prisoners of war on both sides of the conflict, is going to help and assist the men now in camps until they are turned home, according to Dr. Strong, general secretary of the World's Committee of Y.M.C.A. Dr. Strong reports that a million men are in camps in Europe to-day, mostly in Germany and 50,000 POW's in Egypt; 100,000 Japanese in Burma and some of them have been in their homes for more than five years. The withdrawal of the Y.M.C.A. has placed added responsibility for these camps and men upon the Y.M.C.A. and the Church World Service, Dr. Strong reports. These needs are in line with the needs of millions of displaced persons all over the world.

The poultry industry is one of the state's largest—worth \$200 million.

This Series of Church Ads Is Being Published Each Week in the Support of a Nationwide "GO TO CHURCH" Movement, and Is Being Sponsored by the Business Firms and Individuals Listed Hereon.

W. E. PENNINGTON AND SON "Oldest Store in Town" Wheeler, Texas	FRED FARMER GARAGE & MACHINE SHOP Wheeler, Texas	OWEN'S SERVICE STA. Wheeler, Texas	CICERO SMITH LBR. CO. Wheeler, Texas
CHAPMAN'S DAIRY Wheeler, Texas	CITY DRUG STORE The Rexall Store Wheeler, Texas	CLAY FOOD STORE & ICEBERG LOCKERS Home Owned—Home Operated Wheeler, Texas	PERCY'S GARAGE Percy Farmer, Owner Wheeler, Texas
THE BRITT RANCH Wheeler, Texas	WHEELER COUNTY PRODUCE ASSOCIATION Wheeler, Texas	R. H. FORRESTER Wheeler, Texas	WHEELER DRUG STORE Wheeler, Texas
TITLE ABSTRACT CO. C. J. Meek, Owner Wheeler, Texas	GUYNES SERVICE STA. Phillips Products Wheeler, Texas	PLANTER'S GIN Bill Darnell, Mgr. Wheeler, Texas	THE WHEELER ABSTRACT CO. Wheeler, Texas
		W. E. BOWEN IMPLEMENT CO. Your John Deere Dealer Wheeler, Texas	SOUTHWESTERN PUBLIC SERVICE Wheeler, Texas
		J. P. GREEN & SON HARDWARE Wheeler, Texas	HIBLER IMPLEMENT COMPANY Wheeler, Texas
		GARRISON SERVICE Wheeler, Texas	

Pension Plan

(Continued from Page One) and services necessary to the program's operation.

The Amarillo office was opened in July 1937 in the Oliver-Eakle Building and moved in 1939 to its present location in The New Post Office Building.

It is the local field office of the Social Security Administration that processes claims for benefits under the old-age and survivors insurance program. The field office gives all information and assistance needed by workers in employment covered by the Social Security Act in preserving their insurance rights so that they will be able to receive the full benefits they have earned. The specific duties of the local office include also the issuance of new and duplicate social security account cards and assistance to workers in checking on their accounts and getting the accounts put straight where errors have been made.

The steady growth of the old-age and survivors insurance system is reflected in the year-by-year increase in the number of living workers who have accumulated wage credits toward possible benefits. In the first year—1937—this figure stood at 32,800,000 persons; by 1940 it had increased to 44,800,000; by 1943 to 65,700,000; and 1945 to 73,200,000.

As in all parts of the nation, comparatively few retired wage earners in the Amarillo area qualified for benefits in 1940, the first year in which they were payable. By the end of 1946, however, a total of 1826 men, women and children in this area were receiving earned retirement or survivors benefits each month that total \$25,343.22.

Nationally, the old-age and survivors insurance program has grown from approximately 100-

TELLS HOW TO MAIL PARCELS

Persons who mail parcels can save themselves a lot of trouble by addressing them on one side only. Postmaster Chester Lewis calls attention to a recent bulletin from the Post Office Department instructing postmasters to discourage the practice of addressing parcels on more than one side.

Many people think it is desirable to address packages on more than one side, but to do so only causes confusion, especially when the parcels are sent special delivery, insured or C.O.D., and when the endorsements showing such special services are not placed on all sides that bear the address. The endorsements are liable to be overlooked and the parcels do not receive the special treatment intended.

Postmaster Lewis said mailers making a practice of addressing parcels on more than one side are to be requested to discontinue the practice and additional addresses are to be crossed out at the time of mailing.

The postmaster stated, by way of illustration, that people do not address their letters on both sides and that it is no more necessary to address a parcel on both sides. "Address them alike," he urged, "with your return in the upper left-hand corner and the destination just a little to the right and below the center of the package."

Miss Waunetta Burgess returned home Tuesday from Childress where she spent the past week with Melva Sue Savage.

1000 beneficiaries in 1940 to a total of more than 1,800,000 beneficiaries who are receiving more than \$33,000,000 in benefits every month.



NATIONAL PRESS BUILDING WASHINGTON, D. C.

By Anne Goode

Don't throw away those empty perfume bottles! Instead, lay them uncorked with your lingerie until the fragrance has gone, then collect them for your dressing table.

When the front of your old blouses remains good after the sleeves have become frayed, make a dickie. Give it a brand new appearance by changing the color. Use an all-purpose dye, though. It's guaranteed to work on all types of fabrics and these days its hard to tell synthetic from natural fibers.

It's fairly certain that soap prices are due for another spill since the two basic ingredients—coconut oil and tallow—have had their prices cut twice recently.

And now tuna is getting vitaminized since company chemists of one California packer have discovered a way to extract vitamins from the tuna liver. Each 7-ounce can of tuna will contain two-and-a-half times the normal adult's daily requirements of vitamins A and D.

Summertime is salad-time, too. Remember to keep salad ingredients fresh and crisp. Also remember that real mayonnaise is a rich, flavorful topping for all types of salads and that it combines with different ingredients, such as chives, cheese, tomatoes, french dressing or fruit juice, to give an endless variety of dressings.

Did you know that house plants need a bath? Wash the leaves once a week with thin suds of soap and lukewarm water and you'll find the plants will be much healthier.



This unlighted trailer, moving slowly along the darkened highway, was completely invisible to an overtaking motorist as he came suddenly upon it from around a corner. He crashed into it and was fatally injured. Just one more of the many bitter ironies of highway deaths, where a lawbreaker who was indifferent to his own safety and the safety of others escaped injury, while an innocent victim paid for that indifference with his life.

Rodeo performances will be held on Wednesday-Thursday-Friday and Saturday nights August 6, 7, 8, and 9. Arrangements are being made for the world famous Hardin-Simmons Cowboy Band to play for all rodeo performances as well prizes and trophies being furnished by the National Quarter Horse Association. Only 115 stalls will be available for each of the three shows, first come—first served—according to Quentin Williams, General Superintendent.

NOTICE

Due to an agreement between Panhandle Trailways and the Cap Rock Bus Line, we will use the City Drug Store for our Bus Station. The Cap Rock will no longer stop at the Wheeler Drug.

I would like to take this opportunity to express my appreciation for the splendid cooperation and service rendered by the Wheeler Drug.

CAPROCK BUS LINE

Don Stevenson, Owner

IT'S PEST KILLING TIME

Flies and bugs are thick as hops now days and if you don't do something about them they will get thicker and thicker every day. We have what you need to control them with.

FOR HOUSEHOLD USE, We Have—

L. K. FLY SPRAY WITH DDT

FOR LIVESTOCK, We Have—

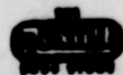
50%, 25% AND 10% DDT LIVESTOCK SPRAY AND POWDER.

We Also Have—

ACME TOMATO DUST which controls certain blights and worms on tomato plants.

BUY YOUR BUS TICKETS HERE FOR ANY POINT IN THE U. S.

CITY DRUG STORE



PAMPA SHOW AUGUST 5 TO 9

The Top of Texas Rodeo and Horse Show to be held in Pampa on August 5-9 will feature three horse shows. The Palomino Show will be held on Tuesday, August 5, featuring a reining contest on Tuesday night.

The official American Quarter Horse Show will be run off on the 6th and 7th with grand champion trophies being awarded by the American Quarter Horse Association in addition to the cash prizes totaling well over \$500.00. A reining contest will be held in connection with the show, with all entry fees being added back as prize money plus a trophy for the winner.

The National Quarter Horse Show will be held on Friday and Saturday August 8 and 9, with

NOTICE!
WE SCALD HOGS ON TUESDAY & THURSDAY OF EACH WEEK.
Wheeler Lockers

LET US TAILOR YOUR AUTO SEAT COVERS Tailored for all models.

SHAMROCK UPHOLSTRY

Phone 380 Shamrock

LEE R. BANKS OFFICE

First National Bank Bldg. PAMPA, TEXAS
Office Phone 388
Res. Phone 52

If you would like to sell your farms or ranches I would like to have a list on them.

ENJOY FINE FOODS AT Wheeler Cafe

Just Back of Gulf Service

JUST RECEIVED

LARGE SHIPMENT SHEAFFER PENS & PENCILS

We have just received a large selection of the very latest SHEAFFER fountain pen and pencil sets. We have all prices and styles and many different combinations of pen and pencil sets. Some sets have gold plated caps, many of them are in different colors. Come in and buy yourself one or buy one for a friend, they make nice gifts for many occasions.

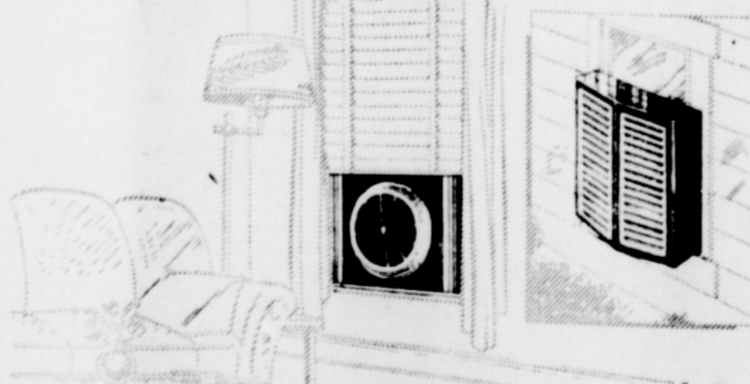
WHEELER DRUG STORE

JOHN WOFFORD, Mgr.

PHONE 11



the Home Cooler..



.. you've waited for!

CONTROLLED AIR DIFFUSION
ADVANCED ENGINEERING
CONTROLLED HUMIDITY
SMART DECORATOR STYLING



ALLEN'S RADIO SERVICE

1st. Door West Postoffice

Wheeler

LOCAL NEWS ITEMS

Mr. and Mrs. Howard Kern of Detroit, Mich. have announced the arrival of a son born July 1. Mrs. Kern will be remembered here as Miss Leloyd Revious, daughter of Mrs. Alma Revious of Wheeler.

Misses Jovena Jackson and Beth Kendrick of Eden, Texas are visiting in the Lee Guthrie home. Miss Jackson is a niece of Mr. Guthrie's.

as the big street parade at 4:00 p. m. on Wednesday August 6.

Stock for this year's rodeo will be furnished by Goat Mayo of Petrolia, Texas, who will also serve as arena director. Fifteen hundred dollars (\$1,500.) in prize money plus half of all entry fees is expected to draw the largest entry list in the history of the show.

The Cowgirl sponsor contest will again be a special added attraction with a beautiful handstamped saddle as first prize, a hand-tailored riding outfit as second prize, and a pair of shop made boots for third prize. All entry fees will be added back as day money.

Mr. and Mrs. Enos Morgan and children of Pampa, Mr. and Mrs. Dorsie Hutchison and Annabel, Mr. and Mrs. Alvin Hampton and Richard spent Sunday in the home of Mr. and Mrs. C. M. Hampton.

Word has been received here of the birth of a daughter to Mr. and Mrs. Dale Lowe of Amarillo on June 6. The little lady has been given the name Brenda Lee. Mrs. Lowe was the former Dorothy Pond of Wheeler.

The Buster Blacks are vacationing in New Mexico and Colorado this week.

Miss Doris Hooker of Amarillo spent several days in the Harro Pitcock home last week.

Mrs. Amy Craig and sons, Leis and F. B., are vacationing in Dallas this week.

Trade at your friendly Wheeler Locker for quality meat and groceries.

Complete eradication of weeds quite from rangeland, no matter what method is used, depends upon killing the sprout buds the underground stem of the weed.



LADIES...

COME IN AND SEE OUR LARGE ASSORTMENT of SLIPS and PANTIES

In both tearose and white which we are now featuring at new REDUCED PRICES

SPECIAL FOR SATURDAY ONLY

\$1.00 off on our entire assortment of beautiful BATES bedspreads in both single and double sizes.

M'ILHANY'S

For Everything You Wear

WHEELER

TEXAS



Bedroom Furniture

We now have on hand one of the largest selections of bedroom furniture that we have had in a long time. We invite you to come in and look over these bargains. Suits priced from \$89.50 up.

- 2-PIECE STUDIO SUITES ----- \$95.00
- 2-PIECE LIVING ROOM SUITES
- STUDIO COUCHES
- 9x12 WOOL RUGS AND PADS
- EGG SHAPED COCKTAIL TABLES
- COFFEE TABLES
- OAK BREAKFAST ROOM SUITES, 5-PIECE Extra Special ----- \$115.00
- IRON BED STEADS
- MATTRESSES ----- \$19.50

USE OUR CONVENIENT MONTHLY PAYMENT TERMS

ERNEST LEE HARDWARE

Furniture - Rugs - Radios - Hardware