



THE WHEELER TIMES

(USPS 681-960)
VOLUME 60, NUMBER 37

THURSDAY, AUGUST 11, 1994

Single Copy: **40c**
"Wheeler, town of friendship and pride."

CLASSES TO BEGIN

Wheeler I.S.D. Enrolls Thursday, August 11

Wheeler I.S.D. will begin classes for the 1994-95 school year on Monday, August 15. Elementary and high school registration will be held from 9:00-10:30 A.M. on Thursday, August 11. Teachers will have two workdays prior to the beginning of classes. These workdays will occur on August 11 and 12 from 9:00 A.M. until 3:00 P.M.

Allison School Starts Monday, August 15

The Allison School will open its doors for the 94-95 school year on Monday, August 15th. School will begin at 8:00, with breakfast being served at 7:40 a.m., and will be dismissed at 3:00.

CWE CHAT WITH EDITOR
By Louis C. Stas

The summer ends as Wheeler students enroll today and school will get underway Monday. Area schools will be following suit. Where did it go?

We are working to get the student handbooks printed, folded, gathered and stapled in time for the enrollment. I have only been responsible for the printing; Jennifer is in charge of the folding, gathering and stapling. We have the rodeo handbooks yet to go, along with Wheeler School's Calendar which Wheeler Banking Center furnishes.

We took our annual excursion to Six Flags over the past weekend. The first stage of the trip was our journey to Sherman, made Friday with C. B. and William joining Barbara, Jennifer, Liz and I. We gladly turned the driving over to William about Oklahoma City.

We arrived at Sherman to find Cathi had arrived earlier. We spent the night at Sherman and left early Saturday morning for our group of 11 to have a day of fun. (You will be happy to know that we took two vehicles.)

The sign at Six Flags warned that a large crowd was expected and they were not wrong. For the next five hours we toured the park standing in line and riding. Barbara spent her time waiting for us to get in line again.

We had a great time and would recommend the trip to anyone.



PERFORMANCE SET: Area resident Pam Jones has been singing throughout the Panhandle this summer. She has sung at the Bar H Dude Ranch Opry in Claremore, and the Memphis Opry. On August 23, she will sing at the Big Texan Opry along with other performers. The Big Texan is well known for its steak dinner and good country entertainment. All are invited to attend the opry. Performance time starts at 7:15 that evening. Six to eight performers sing every Tuesday. Reservations may be made by calling The Big Texas 372-OPRY. Pam Jones teaches second grade at Ft. Elliott CISD and resides in Mobeetie.

WEATHER				
DATE	DAY	Lo	Hi	Pre
08-03	Wed.	65	93	0.03
08-04	Thurs	65	95	0.25
08-05	Fri.	64	95	0.00
08-06	Sat.	64	98	0.00
08-07	Sun.	68	105	0.00
08-08	Mon.	66	96	0.00
08-09	Tues.	66	95	0.00
Low for the year:		01-31	0	
High for the year:		06-25	109	
Total moisture the month:				0.33"
Total for year:				9.54"
Total Snow:				10.00"

Courtesy: KPDR-FM Radio

The teachers and staff will come for a workday on Friday, August 12th. Parents should register any new students to the Allison district by calling the office at 375-2381. Our teachers and staff are waiting to welcome all of our students back for the new school year.

Our teachers for the 1994-95 school year are as follows: Kindergarten - Becky Herren, 1st grade - Sally DeSpain, 2nd grade - Suzanne Lohberger, 3rd grade - Connie Davis, 4th grade - Peggy Dukes, 5th grade - Sally Thomas, 6th grade - Cynthia Hendry, Math - Sheila Hunter, English - Kathy Kliever, Social Studies - Alton Lohberger, Science - Katherine Krulik, Business - Terrel Fry, Ag - Daryl Adams, Homemaking - Angela Forward, Coach/P.E. - Larry Jackson. Our Librarian will be Lynna Crockett and our Counselor will be Rosanna Verden. We are looking forward to a fun and rewarding year in Allison.

Fort Elliott Starts Classes, August 19

Fort Elliott CISD will begin the 1994-95 school year on August 19. Classes will begin at 8:10 a.m. and will release at 12:45 on Friday. Teacher workdays are scheduled for August 17th & 18th.

Kelton To Begin Year Monday, August 15

The 1994-95 school year will begin with teacher workdays on August 11th and 12th. Students will report for class August 15th. Breakfast will be served at 7:45 A.M. with classes beginning at 8:05. Enrollment will take place the morning of the 15th. New students and Pre-kindergarten students must bring health records, birth certificates and social security cards. Buses will run regular routes on the 15th.

Allison I.S.D. Is A "Recognized" District

The Allison ISD was given a "Recognized" Accreditation status from the Texas Education Agency. This rating is based on the Spring, 1994, TAAS scores. To qualify as a "Recognized District", at least 65% of all students in each group tested must pass all 3 tests (reading, math, and writing). The dropout rate must be below 3.5% and the attendance rate must be at least 94%. Allison ISD had a 93.3% passing rate on Reading, (represents a 9.2% increase over 1993 scores), an 80.0% passing rate on Math, (a 44.5% increase over 1993 scores) and a 90.9% passing rate on Writing (a 14.4% increase over 1993 scores). The dropout rate was 0% and the attendance rate was 97.3%.

All Recognized districts automatically qualify for a Texas Successful Schools excellence award and may apply for additional funding awards. The highest rating for Texas School Districts is "Exemplary". Only 5 districts in the state qualified for this rating. The "Recognized" rating is the next highest. Only 52 districts in Texas qualified for this rating out of the 1,046 districts in the state. This puts the Allison ISD in the top 5.5% of the public school districts in Texas based on TAAS tests results.

ALLISON JR. & SR. CLASS

Pie Auction
Allison Jr. - Sr. Class invites you to an Old Fashioned Box Supper Auction, Saturday, Aug. 20 at 6 p.m. on the school grounds. Ladies young and old fix up a box supper and bring your fellows.

A back to school dance will follow the supper from 9-12 p.m. Everyone is welcomed. Come join the fun!

MOBEETIE

Ex-Students Reunion

The Mobeetie Ex-Student Reunion is coming up Sept. 3. The events will start at 10:00 with a parade. The school gym will be open. There will be a snack at noon. The evening meal will be barbeque by Steve Walker. If you did not get a letter and plan on eating, let the ex-students know how many. You will pay for the meals at the door. You can send the letter to Mobeetie Ex-Students, P.O. Box 52, Mobeetie, Tx 79061. The business meeting and election of officers will be held with a drawing for door prizes throughout the program and meals. If any class would want a float or to ride in the parade, be at the Service Station in town by 9:30. The quilt is on display at the First State Bank in Mobeetie this week. The tickets are \$1.00 donations each. Make plans on Sept. 3 to attend. The classes honored are the ones ending in 4's.



GETTING READY: The 1994 Wheeler Mustangs are reporting for practice twice a day in preparation for the upcoming season. Wheeler's new homegrown coach, Jim Verden, has eight seniors this year and is looking forward to a good season as Wheeler returns to 1A after two years as 2A. Seniors pictured are (back row, l. to r.) Corey Case, Jarred Ledbetter, Clifton Fletcher, Brad Harrison, (Saul Meraz, Robert Stiles, Justin Heffley and Phillip Wiggins. The Mustangs are ranked No. 2 in the state; the team intends to make every effort to correct that error—THEY'RE NO. 1.

ROAD SIGNS INSTALLED AT PARK

U. S. Highway 83 spans nearly 900 miles through Texas from Brownsville at the Gulf of Mexico to Perryton near the Oklahoma border. The highway was dedicated as the Vietnam Veterans Memorial Highway by the Texas Department of Transportation (TxDOT) nearly ten years ago to recognize the contributions of American men and women during the Vietnam conflict. During July, in the 13 counties of the Childress District, TxDOT crews erected special signs in all roadside parks from King to Wheeler Counties. The Texas flag is overlaid with a map of South Vietnam on the black face of the sign. The distance across Texas from northern to southern state boundaries roughly approximates the actual size of South Vietnam as it is seen on the colorful signs. U. S. Highway 83 plays a very important role in Texas and internationally. The highway links Mexico, the United States and Canada, running through scenic ranch and farmlands in the heart of the U.S.



SIGN INSTALLED: The Texas Department of Transportation recently installed a sign at the roadside park south of Wheeler on Highway 83. The sign designates the dedication of Hwy 83 in Texas to veterans of the Vietnam conflict. Pictured are TxDOT maintenance technicians (l. to r.) Lee Thomas, Heath Mitchell, David Deger and Justin Rose.

BIKE-A-THON PLANNED FOR AREA, SEPT. 10

St. Jude Children's Research Hospital has announced plans for the Briscoe/Mobeetie "Wheels For Life" Bike-A-Thon to be held on September 10, 1994. Mrs. Pam Jones will serve as coordinator of the event and encourages all residents to support this important community effort.

St. Jude Children's Research Hospital, founded in 1962 by the late entertainer Danny Thomas, is the largest non-profit childhood cancer research center in America in terms of the number of patients treated and treatment success. All findings and information gained at the hospital are shared freely with doctors and hospital.

GIRL SCOUTS

Host Hot Dog Supper

The Ft. Elliott Girl Scouts will be hosting a "chili dog supper" Friday, August 19, 1994 from 6:00 p.m. to 8:00 p.m. at the Old Mobeetie Jail.

Come register your daughter(s), ages 5 to 17 years, with the Texas Plains Girl Scout Council, Ft. Elliott Girl Scouts, and stay for a wonderful chili dog supper complete with "SMORES" for dessert. Entertainment will be provided. Girls must be registered for families to enjoy the supper. Registration fee is \$6.00. If you know you will be attending, please contact Pam Jones 845-2019. Volunteer leaders and helpers welcome.

MOBEETIE

Scrapbook Items

With the Mobeetie Reunion approaching, organizers would like to remind people not to forget the Mobeetie High School Scrap Book. If you have anything for it you may send it to Wanda Stringer, 4110 Cline, Amarillo, Tex., 79110, or LaRue Pierce, 207 Ramada Trail, Amarillo, Tex., 79108, or bring it to the reunion.

WHEELER COUNTY

1994 JUNIOR 4-H RODEO RESULTS

Ages 5 & Under
ALL-AROUND: Austin Pritchett, Pampa
Stick Horse Barrel Race
1. Chelsea Luster, Pampa
2. Austin Pritchett, Pampa
3. Keeley Longo, Pampa
4. Ashley Price, Pampa

Rosario Mendiola, 84 Services August 14

Rosario Mendiola, 84, the mother of Dr. Louie Mendiola, died Monday, August 8, in Manila Philippines. Services will be Sunday, August 14. Dr. Mendiola, Gena and Rocky had gone to the Philippines to be with Mrs. Mendiola as she underwent surgery. Parkview Clinic will be closed Friday, August 12.

Services Held For Homer D. Dyson, 87

Homer D. Dyson, 87, died Saturday, Aug. 6, 1994. Graveside services were at 10:30 a.m. Tuesday in the Mobeetie Cemetery with the Rev. Gary Jahnel, pastor of First Methodist Church, officiating. Arrangements are by Wright Funeral Home.

Mr. Dyson was born March 22, 1907 in Oklahoma. He was a longtime resident of Mobeetie and had lived in Oklahoma, California and Idaho before moving to Pampa in 1993. He was a farmer and Methodist. He married Ophie Hathaway in Mobeetie; she died in 1939. He also was preceded in death by three sons and four brothers. Survivors include a brother, Roy Dyson of Pampa; three sisters, Ester Key and Virginia Myatt, both of Salinas, Calif., and Helen Conner of Denver; two grandchildren; and a great-grandchild.

Ettie M. Wilsford Morris, Burial Aug. 5

Ettie M. Wilsford Morris, 83, died Friday, Aug. 5, 1994. Services were at 3 p.m. Sunday in First Baptist Church with the Rev. M.B. Smith, formerly of Pampa, and the Rev. Robert Helsley, pastor of First Baptist Church, officiating. Burial will be in Wheeler Cemetery by Wright Funeral Home.

Mrs. Morris was born in Cave City, Ark. She married Edmar Estes Wilsford in 1927 at Clarksville. He died in 1968. She married Sebern Morris in 1978 at Pampa. She had lived in Wheeler since 1936 and had worked at the West Motel and Parkview Hospital. She was a member of First Baptist Church.

Survivors include her husband; a son, Dennis Wilsford of Amarillo; a sister, Elizabeth Ray of Temple; three grandchildren; and two great-grandchildren.

The family requests memorial be to Hospice of the Panhandle in Pampa.

Hospital Notes

Old Admissions

None
New Admissions
8-5 Dorothy Walker
8-6 Darville Atherton
8-7 Mildred Porter

Dismissals

8-2 Essie Finsterwald
Annie Eudey
8-4 Lina Jackson

Kelton Car Wash

The Kelton High School Cheerleaders are sponsoring a Car Wash on August 12-13 at the Kelton School Bus Barn. Donations will be accepted. Call Kim Ray, 826-5708, for the pickup of your car or more information.



SMELLING THE FLOCKS: Clark Reagan of 505 Sweetwater is quite proud of his perennial flocks this year and takes time quite often to smell their fragrance. He does admit his wife had a little bit to do with the care of the flowers.

5. Chantel Longway, Groom
6. Allison Reynolds, Shamrock
Stick Horse Flag Race
1. Austin Pritchett
2. Keeley Longo
3. Chelsea Luster
4. Allison Reynolds
5. Chantel Longway
6. Ashley Price

Goat Ribbon Race

1. Allison Reynolds
2. Austin Pritchett
3. Chelsea Luster
4. Keeley Longo
5. Chantel Longway
6. Ashley Price
Stick Horse Pole Bending
1. Austin Pritchett
2. Keeley Longo
3. Ashley Price
4. Allison Reynolds
5. Chelsea Luster
6. Chantel Longway

Ages 6-9: ALL-AROUND: Curtis Pritchett, Pampa Barrell Race

Friday
1. Curtis Pritchett, Pampa
2. Travis Lay, Stinnett
3. Katie Crowdis, Elk City
4. Taylen Gregory, Maimi
5. Brent Longway, Groom
6. Kade Zybach, Briscoe
Saturday

1. Curtis Pritchett
2. Katie Crowdis
3. Reese Douglas, Pampa
4. Brent Longway
5. Hawk Tucker, Pampa
6. Cody Atwood, Pampa
Pole Bending

Friday
1. Kade Zybach
2. Curtis Pritchett
3. Taylen Gregory
4. Katie Crowdis
5. Brent Longway
6. Lindsey Price, Pampa

Saturday
1. Curtis Pritchett
2. Brent Longway
3. Travis Lay
4. Katie Crowdis
5. Reese Douglas
6. Jeremy Pritchett, Pampa
Flag Race

Friday
1. Curtis Pritchett
2. Travis Lay
3. Katie Crowdis
4. Reese Douglas, Pampa
5. Taylen Gregory
6. Brent Longway
Saturday

1. Katie Crowdis
2. Curtis Pritchett
3. Cody Atwood
4. Brent Longway
5. Joe Bill Rogers
6. Hawk Tucker
Goat Ribbon Race

Friday
1. Kade Zybach
2. Brent Longway
3. Jeremy Pritchett, Pampa

(Continued Page 10)

McCasland, Stiles, On SWOSU Honor Roll

Southwestern Oklahoma State University at Weatherford has announced both the President's and Dean's Honor Roll for the 1994 summer semester.

An undergraduate student who earns all A's in 8 or more hours during a semester qualifies for the President's Honor Roll. There were 67 students who were named to the summer President's Honor Roll.

Named to the summer semester list was Bryan Keith Markham of Allison.

There were 174 students on the Dean's Honor Roll after completing 8 semester hours of undergraduate work with a grade point average of 3.0 ("B") or higher, with no grade lower than a ("C").

Named to the summer semester lists were: Lindsey Dell McCasland and Melinda Ann Stiles of Wheeler.

Isaiah 30:21 "And thine ear shall hear a word behind thee saying, This is the way walk ye in it."

Happy Birthday to Krista Murray on August 14, Shawn Hunt, Eula Newman and Trey Wood on Aug. 15, Richard Meadows, Gertie Cornell and Katie Cornell on Aug. 16, Sam Wash, Rosalie Keelin, Vea Fillingim and Jenny Van Vranken on Aug. 17, Willis Fillingim, William Fillingim and Mildred Treadwell on Aug. 18, Charlie Phillis on Aug. 19, Kathy Meek, Mike Goad and Keith Horn on Aug. 20.

Happy Anniversary to Wade and Michelle Moore on Aug. 17 and J.P. and Martha Meek on Aug. 19.

Fort Elliott girls volleyball schedules are out. The first game will be at Briscoe with Fritch Tuesday Aug. 16 at 6:30 with Varsity and J.V. girls playing. Aug. 20 will be a game at Amarillo for Jr. High, Varsity and J. V. at West Texas Christian. Fort Elliott started Volleyball practice Monday and Cross Country a few days later. Kelton also started volley ball.

The Shamrock Hospital LVN class will be graduating Friday Aug. 12 at 7:00 p.m. at the United Methodist Church in Shamrock. Relatives and friends are invited to attend.

Sue Ratliff, Barbara Fourier, Darla Yowell are graduating. And others.

Sincere sympathy to the family of Ann Lackey Carver, a sister-in law to Rita Pearson's mom, Nellie Lackey. Watson Burgess is also a cousin. She was 94 and a very perky lady. Graveside service was Thursday August 4 at Wheeler. Nice to have Rita and Lindsey and Joe Lackey eat lunch with us after the funeral.

Praise the Lord! E.G. Fillingim is finally seeing things he hadn't seen in a long time. Keep praying for E.G. that he might be able to see better and get around better.

Praise the Lord! Joel Robbins is getting some feeling back in his upper body and arms since the accident that left him paralyzed. Pray for Joel and his family. May have surgery Monday to fuse neck vertebrae where crushed. Still hopes he may walk again. Dallas Fillingim visited him Saturday at Northwest Texas Hospital.

Many of our youth will be starting back to schools and colleges soon. Pray for our youth. So many temptations and many get homesick. Remember: "I went out to find a friend and couldn't find one anywhere. I went out to be a friend and friends were everywhere."

Claude Laverty will be starting to TSTC soon and take electrical training. Good Luck! David Hale, Jason Wesbrooks and Davy Gilmer also plan to go to T.S.T.C. Some planning to go to W.T. include Elizabeth Hale, Deidre Dukes, Todd Meek, Dallas Fillingim and Lori Morrison.

Congratulations to Gary and Kathy Brotherton of Amarillo on the birth of their new baby girl, Janae Nicole. God bless you everyone!

I goofed. I tried to warm a casserole in the microwave oven without removing the foil, which reflected the heat. Didn't warm much and could have damaged the oven.

Shauna Nail spent Thursday and Friday nights with Teri Crownover and went to Gageby Church.

Visiting Mae Welch Saturday on their way to Perryton to a family reunion were old friends Dwayne and Carol Fox from Texola, Oklahoma. Visiting Mae Tuesday was Rosalie Keelin.

Dan and Teresa Trimble and Dana enjoyed a trip up to Utah and through the Navajo Nation. They hiked all over the north rim of the Grand Canyon. Where they stayed they met up with many Europeans and other foreign tourists and enjoyed visiting with them and swimming. Dana went to Dallas with Teda Seuhns and Lacy and Lauren later.

Visiting Dan and Teresa and Dana over the weekend were Larry and Tish Trimble. They bought a house and moved to Canyon. Larry still works at a feedyard at Hereford and Tish is a social worker in Amarillo.

Nice to have Matt, Mark and Doug

Helton and their grandmother Katie Cunningham eat lunch at Wheeler Dairy Queen with us Tuesday. Also there were Kathy Zybach and Casey, Julie Zybach and Carissa Dukes.

Lisa Helton and Doug and Mark took Katie Cunningham to Oklahoma City Saturday to catch a plane back to Indiana after three weeks here. Matt Helton rode with Dale Helton to California in the truck. So good to see Katie.

Sorry to hear that Betty Ann, daughter of Billy and Shelia Touchstone, and granddaughter of James and Alesha Moffett has been very ill with high fever in Coronado Hospital. Pray for her and her family. Betty Ann got to go home from the hospital Friday and doing O.K. So nice to have them out to church Sunday night.

Thursday Dorothy Walker had the misfortune to slip and fall at Wheeler swimming pool and hit a cement bench. Broke two ribs and spent a few days in Wheeler Hospital. Pray for Dorothy. That was her first day at Water Aerobics. Also bruised a hip pretty much.

At Wheeler First Baptist Church there was a beautiful wedding joining Katie Jo Mabry and Billy John Hennig Friday night August 5, 1994. Misty young was matron of honor and John Jones was best man. Zachary Mabry and another ushered and lighted the candles. Serving at the beautiful table were Sue Mayfield, Brandy Luttrell, Keri Nelson and Tiffany Gonzales. Jerry Mabry gave his daughter away. Billy is employed at Easley Trailer Manufacturing. For now they plan to live near Mobeetie and Katie go to Fort Elliott High School.

Nice to see Preston and Elsie Glazner with Jerry's children, Shirley and Clint Glazner at the wedding from Guymon.

"The man who removes a mountain begins by carrying away small stones."

Chinese Proverb

Nice to have Jewell Holloman and Jean Pollack out to church Sunday. They also visited Evelyn Meek.

Connie Irvine and Justin and Marie came Monday to visit a few days with Grace Irvine and Dick and Ruth. Nice to see Ruth Irvine and Justin and Edna Argo and Jamie eating at the Pizza Hut Monday in Canadian. Ruth and Edna are getting ready for school to start.

Don and Bonnie Hall of Quail are having a production and dispersion



sale of Ostriches, Emus, Miniature horses. The sale will be Sept. 24 and admission is \$10.00, but will be returned and deducted from purchase price if you buy any. This is a very big sale. The Halls have been in the Ostrich business 19 years.

Gageby Church youth enjoyed an outing after church and lunch Sunday to Crownover place west of Reames place. They practiced repelling off a pretty steep cliff. The Hartlines frequently do this. Ones going and repelling were Gaye Hale and Sarah, David and Doug Helton, Chuck and Phoebe Hartline, Charles and LaJo Crownover and Boyce, Jodie and Londa. Also going were Aaron and Tamera Hartline and Terri Crownover. John Moffett also repelled. Brave people!

So good to have John Moffett back and out to church. He spent all of June and July playing with the Hooker Oklahoma Horny Toads. Then he has visited Jamey and Diane Brice in Amarillo and Shelia and Billy Touchstone and Betty Ann in Pampa.

We really enjoyed having Richard and Karen Laverty and Trey 9, Shaleena 7, and Brenee, 2 from Gail all last week for the revival and visiting in our homes.

Venson Smith says wild hogs are tearing up his watermelon patch. Don't think we need them around.

Dean and Georgia Tipps and Jimmy and Tammy Maddox and Jennifer and Amber met Mike and Cindy Maddox and Chris in Amarillo Saturday. They ate and went to see the 'Dillas play. It was fun, even though the 'Dillas lost.

Nice to see Possum Jannel at Canadian. She and Kyle and Lisa and Cindy Zumstein and Carrie and William were fixing to go to Wonderland Park in Amarillo for a nice outing before school started.

Best wishes to John David Forbes

Listen to . . .
KPDR-FM, 90.5
Wheeler, Texas

MAXEY'S STEAKHOUSE

SUNDAY BUFFET

- Salad Bar
- Pot Roast
- Beef Tips on Rice
- Assorted Vegetables
- Hot Rolls
- Iced Tea/Coffee
- Dessert

THURSDAY NIGHTS

All the Fresh Water Catfish and Shrimp you can eat.
Served with Onion Rings, French Fries, Hush Puppies and Cole'Slaw.

Sun.-Noon Buffet (Only) 11:30 a.m. -1:30
Tues.-Wed.-Thurs.: 11:00 a.m. to 10:00 p.m.
Fri.-Sat.: 11:00 a.m. to 10:00 p.m.

CLOSED MONDAY
PHONE 826-3441

1 Mile South of Wheeler on U.S. 83

EXPECT THE UNEXPECTED.

FORD FACTORY-AUTHORIZED CLEARANCE



1994 FORD AEROSTAR XL PLUS WAGON
SAVE UP TO \$1,900⁽¹⁾
2WD 401A Regular Length

Standard Equipment	• Interval Front Wipers
• 3.0L EFI V-6 Engine	• Convenience Group
• Driver's-Side Air Bag ²	• And More
• Power Brakes with Rear Wheel Anti-Lock	Package 401A Equipment
• Power Steering	• Air Conditioning
• AM/FM Stereo with Clock	• Privacy Glass
• 7-Passenger Seating with Dual Captain's Chairs	• Tilt Steering
	• Speed Control
	• Deluxe Paint Stripe

Package Discount	\$950
Double Bonus Discount	\$950
TOTAL SAVINGS	\$1,900



1994 FORD F-150 XL 4X2
SAVE UP TO \$1,935⁽¹⁾
500A Reg Cab Manual Transmission Decor B

Standard Equipment	Texas SE/Decor Package B
• Driver's-Side Air Bag ²	500A Manual Transmission Equipment:
• 4.9L EFI Engine	• Air Conditioning
• Power Steering	• Chrome Wheels
• Power Brakes with Rear Wheel Anti-Lock	• Two-Tone Paint
• Dual Fuel Tanks	• Speed Control
• Chrome Front Bumper	• Tilt Steering
• Tinted Glass	• AM/FM Stereo Cassette
• Removable Tailgate	• And More
• Vent Windows	
• And More	

Decor Package Discount	\$364
Package Discount	\$1,571
TOTAL SAVINGS	\$1,935



1994 FORD TAURUS GL
SAVE UP TO \$1,165⁽¹⁾

Standard Equipment	• Interval Wipers
• 3.0L Sequential EFI V-6 Engine	• And More
• 4-Speed Automatic Overdrive Transmission	Package 204A Equipment
• Dual Air Bags ²	• Air Conditioning
• Tilt Steering	• Power Windows and Locks
• Power Steering	• AM/FM Stereo Cassette
• Power Brakes	• Speed Control
• Tinted Glass	• Rear Window Defrost
	• And More

Package 204A Discount	\$665
Cash Back	\$500
TOTAL SAVINGS	\$1,165



1994 FORD TEMPO GL 2-DOOR
SAVE UP TO \$1,990⁽¹⁾

Standard Equipment	Package 226A Equipment
• 2.3L SEFI I-4 Engine	• Air Conditioning
• Power Steering	• Automatic Transmission
• Power Brakes	• AM/FM Stereo Cassette
• Tinted Glass	• Tilt Steering
• Sound Insulation Package	• Rear Window Defrost
• Interval Wipers	• Dual Electric Remote Mirrors
• And More	• And More

Package 226A Discount	\$1,240
Cash Back	\$750
TOTAL SAVINGS	\$1,990



1994 FORD ESCORT LX 3-DOOR
SAVE UP TO \$1,590⁽¹⁾
w/321S Manual Transmission Sport Appearance

Standard Equipment	Package 321S Equipment
• Driver's-Side Air Bag ²	• Air Conditioning
• 1.9L SEFI I-4 Engine	• Aluminum wheels
• 5-Speed Manual Transmission	• AM/FM Stereo Cassette
• 4-Wheel Independent Suspension	• Power Steering
• Power Brakes	• Rear Window Defrost
• And More	• Liftgate Rear Spoiler
	• Tachometer
	• And More

Package Discount	\$1,190
Cash Back	\$400
TOTAL SAVINGS	\$1,590

Extension Update
Joan Gray, CEA-HE

SNACKS—ARE THEY BAD FOR YOU?

Snacks are not really bad, they just need to be planned into the total calories allowed for the day. Make snacks and meals work together to give you the total balanced meal plan. Snacks, if cooked with sugar, can be bad if you are already overweight. Wisely select snack foods from the basic food groupings that are relatively low in calories but high in nutrients. Avoid snacks that are higher in fat such as fried or greasy foods. Remember, you can snack if you keep it healthful.

Menu

Aug. 15 - Aug. 19, 1994
Monday; Breakfast: Juice, cereal, toast, milk.
Lunch: Corn dog, tater tots, pineapple, cookie, milk/tea.
Tuesday; Breakfast: Juice, cereal, toast, milk.
Lunch: Pizza, corn, salad, peaches, milk/tea.
Wednesday; Breakfast: Juice, cinnamon roll, peanut butter & jelly sandwiches, milk.
Lunch: Cheeseburgers, lettuce, tomato, pickle, french fries, pears, milk/tea.
Thursday; Breakfast: Juice, hash browns, sausage, toast, peanut butter, milk.
Lunch: Chicken nuggets, mashed potatoes/gravy, green beans, hot roll, cake, milk/tea.
Friday; Breakfast: Juice, cereal, toast, milk.
Lunch: Ham & cheese sandwiches, tater rounds, fruit, cookie, milk/tea
Menu subject to change.

Menu

Aug. 15 - Aug. 19, 1994
MONDAY: Fried chicken breasts, whole new potatoes, buttered carrots, yogurt.
TUESDAY: Chicken casserole, zucchini & tomatoes, fruit.
WEDNESDAY: Meat loaf with picante sauce, red beans & rice, mixed veggies, peachupside down cake.
THURSDAY: Smothered pork chops, duchess potatoes, winter mixed viegs., lime whip with apple sauce.
FRIDAY: Fried Chicken, noodles, green beans, cheese roll, margarine, fruit cobbler.
(Menu subject to change)

L & F Repair

110 W. Okla. St.
Zenith & R.C.A. TV's
Frank E. Coates, Owner
34 YEARS EXPERIENCE
...in TV Repair
P.O. Box 220
Wheeler, Texas 79096
Phone:
806/826-3241

BURTON FORD
Phone: 826-5588 West Hwy. 152 Wheeler

It's that time of year! We're making room for the new '95s during Ford's Factory-Authorized Clearance. You can save hundreds, even thousands depending on the model, on a great selection of new cars and trucks. There may never be a better time to buy. But these offers are only for a limited time, so hurry to your Ford Dealer today!



1) Options Package savings based on MSRP of option package vs. MSRP of options purchased separately. For customer cash back, take new retail delivery from dealer stock between 6/3/94 - 9/28/94. Residency restrictions apply. See dealer for details. 2) Always wear your safety belt.

Sweetwater News

By Lois Flowers

Quite a bit of excitement Monday when a grass fire got out of hand. Seems Richard McEntire was baling hay when a bearing went out on the baler. Next thing he knew the fire was going. Our Sweetwater Volunteer firemen appreciated Cheyenne, Erick and Reydon firemen coming to help. Were some mighty scared folks for a while but no one was injured and all the buildings undamaged. A lot of grass and 37 bales of hay burned. Everything is so dry tho we had .35 in. this week.

I'm sorry Amber Anderson's name was omitted from those going to Falls Creek. It was her first time and she had a fine time.

Visiting Mellie Stone were John and Reva Greer, Burns Flat, Keith Stone and Patty from Dallas. Keith did a lot of chores for his grandmother.

Had a nice letter from J.B. and Bert Morgan of Broken Bow Nebraska. They are cousins. Reported that the Morgan Reunion in Elk City was a great success. Maybe we can go next year.

Elbert and Eva Atkinson, Brendon and Brad attended the Moore reunion at Roman Nose Park last week. The boys came over Tuesday and Brad

did our mowing.

Julie Schmidt and Cindy McIntyre were on the Spring Dean's honor roll at SWOSU.

William and Ladonna Dodd, Franky Smith, Brenda and Jeffrey Smulcer are back from a great vacation. Went to San Antonio, and Sea World, Corpus Christi, Padre Island. Toured the Lexington, rode the boats in the harbor. Drove over into Mexico at Brownsville. And were glad to get back to Oklahoma. Later Brenda and Jeffrey spent a few days at Woodward with Elaine.

The class of '54 had a 40 year

reunion recently at the Elk Holiday. Those attending were Doyle Tucker, Elk, June Mattox, Houston, Joe and Oleta Whitaker Reams, Mr. and Mrs. Dale Thompson, Lyndon Moss, all Amarillo, Della Welch Wolfe, Buffalo, Mr. and Mrs. Royce Coffey, Woodward, Curtis and Helen Coffey, Ray Smart, Sayre, Mr. and Mrs. Gale Thompson, Erick, Y.C. and Donaleta Fuchs, Windell Fuchs, Dolores Witt McKay, Borger.

The Kitchen Band met Tuesday at the Erick Home. Among the visitors were Joy and Ernest Brookshire, and Wanda Guenzel. Saw Mary Nell

Nichols downtown. Band Members were Billy and Basil Doss, Richard Crawford, Roy Swagger, Iona Miller, Hazel Francis, We three and Old Five String. If you can play an instrument, strum a washboard, of beat a pan, come join the fun.

Our post office got a face lift this week. They built a handicapped parking with a ramp where folks with wheelchairs may go in.

Betty and Hersel Anderson attended funeral services at Dalhart for a cousin Dora Moore Loggins.

Matt Coker and Carl Pyeatt attended the Basketball Camp at Weatherford recently.

Visiting Elec Atchley were Sue and Tammy Keathley, Y.C. and Donaleta Fuchs, Kenny, Carolyn Newell, and children, and Tim Bryan. Rena Mae is visiting her kids.

We may have an early winter. The crickets are already moving in. Elec says that a sprinkle of Sevin around the door step will keep them out.

We've had a few politicians come by, Ike Duke, Mr. and Mrs. Ronald Baker. I forgot to show her the pretty quilt, Birdie Whipkey made me. Ronald's folks used to live in this community. The twins graduated here.

Birdie says her guests were Lena Luman, Shamrock, Irene Reed, Erick and her girls, Wilma Fox and Doris Ray. She also had a good visit with Dean Whipkey, CA, via Ma Bell.

Doris Smith had a big birthday at the home of her son and wife, Mr. and



THE WHEELER TIMES

Page 3—Thursday, August 11, 1994
"Wheeler, town of friendship and pride."

Mrs. Arnold Waggoner, and Jonathan, at Yukon. Others of her children there were Mr. and Mrs. Chris Kochenower and Brandon, Minco, Mr. and Mrs. Jim Waggoner, and Abbi, Woodward, Mr. and Mrs. Bob Berry, Longdale, Carol Nunn, Watonga, Mr. and Mrs. Bill Shaklee, OKC.

Happy Birthday to Dovie Wilson, Elec Atchley, Viola Stewart, Hersel Anderson, Judy Tipton, and Kent Bryan. I went to Dr. Morrison Wednesday, it was Linda Nix's birthday and they were carrying her high. Even had a wheel chair for her. I told her she could stay 39 til her kids

Isn't It The Truth

By Ab Gunter

A few days ago Mama and I were in need of a few things at the grocery and she was shopping as I am not a good shopper an she knows it. I had gone to the lottery counter to get us one uv them 20 M sure shot tickets an happened to hear someone that was buying a bunch of them. This feller was taller than me by quite a bit an he had a certain drawl that I had heard before. I ast this gent what part uv Texas he was from an he said The Panhandle, growing up there I knew the Panhandle consisted of thousands of square miles an ast this lanky Texan just where he lived an he said Perton. I immediately realized he meak Perryton which is quite near where we were raised. I ast this gent just how tall he wuz an he said 5 ft. 17 inches. I had no time to use my calculator but realized he wuz what they call a tall Texan.

Mama an I found out he was a musician, a rancher an farmer an worked with another gent writing music an books. By the way I forgot to mention I had envited Tex over to visit with us an since it wuz close to supper time I ast Mama if we could have a bite to eat. That Gal loves me, honest she does but when I envite someone to have a meal with us she expects me to give her a we bit uv notice which I always forget to do. Anyhow Tex an I had a nice meal, a visit an we went to our sons place an the son Terry took Tex a ridin in his new Desert Storm Sand Buggy. Mama drove around the outside of the Indy Track, since it wuz closed I mean around the street outside uv the track an naturally Tex commented it wuz about the size uv his mothers garden back home. I have never figered how come us Texans have to sort uv stretch the truth so much but we do, recon it is to enflagerate the tourist. Some times I enflagerate my self.

Wont be but a few days till The Brickyard 400 will be run here in Speedway. This NASCAR doins is sumthing new to me, hope I get to see it but since they have sort uv patched all the holes I usually sneak through I mite not get to see it live but hear it will be on the tube. I ant got to identify even one uv the drivers as I said they are new to me. I heard Doctor Foyt wuz on the track the other day but didnt get to wave at him. Someone said there will be 80 or so cars trying for a field of 40, golly that sounds like a Saturday Nite there in Wheeler Texas a few years ago.

Say neighbor, me an Mama have a problem. We have a peppercorn grinder that we have had for many years and not long ago we ran out uv peppercorns an the only ones you can get are in a tiny glass jar an they run about a dollar three eighty seven a jar an that is too much. We had been getting the corns fum a slaughterhouse but they aint got any more. I went into Babbs Super Fine Grocery the other day just knowin them folks would have peppercorns by the hundred weight but golly they didn't even have such in their order catalogues. Ive heard uv folks cornerin the market in camode bases an bobwire an silver but PEP-PERCORNS, who would want to do that to country folks that had been used to buying such in 5 lb. boxes. If you ever hear uv someone that has the corn in 2 or 3 lb. boxes please let us know. We were so used to it we just dont like the ground kind you get in the store. Sort uv like Corn Licker, you get used to it an that bottled an bond sort aint fitten to drink.

Hope we get a follow up on that Texan, Tall Texan I guess I ought to say. He an a buddy write music, poems and childrens books. Ought to be fun sayin we know one uv them celebrities woudnt it. Hes got a big long car that has nearly 300 thousand miles on it an he hopes by the time he gets back up here it will have the 300, I cant get one to go near that far, wonder what his solution is?
See you next week.
Ab an Mama

Rook Theatre
It Could Happen To You
"A Romantic Comedy"
AUG 12-18 Rated: PG
New Summer Hours: 7:30 each evening
(Closed Tuesday)
7:30 & 9:45 PM Saturdays
Cheyenne, OK 405/497-3415

CHECK OUT THESE Savings Today!

CELLO WRAPPED Head Lettuce
49¢ EACH

JUMBO PACK FRESH FRYER Drumsticks or Thighs
49¢ LB.

SHURFINE Charcoal Briquets
20 LB. BAG \$1.99

ASSORTED FLAVORS SHURSAVING Soft Drinks
6 PACK 12 OZ. CANS 88¢

ASSORTED PAPER Viva Towels
REGULAR ROLLS 2 \$1.50 FOR

THRIFTWAY White Bread
1 1/2 LB. LOAVES 2 \$1 FOR

SHURSAVING 2% OR 1/2% Lowfat Milk
GALLON JUG \$1.99

Citizens Of Tomorrow



Erika and Garrett Ellison
Parents: Edwin & Melanie Ellison

Listen to . . .
KPDR-FM, 90.5
Wheeler, Texas

HOUSE PAINTING & LIGHT CARPENTRY, ROOFING, PLUMBING & ELECTRICAL

SPRAYED ON ACOUSTICAL TYPE CEILINGS
DONALD FORD
806/826-3106



Christopher Dalton is the 7 year old son of Michelle Cross Dalton of Katy, Texas. He is the grandson of David and Kathleen Cross of Wheeler and Norma Dalton of Amarillo.

For all your . . .
Insurance Needs, See
Eastern Panhandle Insurance Agency, Inc.
117 W. Texas St.--Wheeler, Tex.
806/826-3573
*Auto *Home *Life *Health *Commercial *Bonds

THRIFTWAY SUPERMARKET
300 EAST OKLA. WHEELER, TEXAS

DOUBLE COUPONS Seven Days A Week!
Double Manufacturers Coupon up to 99¢; Thereafter Face Value. (Excluding Cig. & Tobacco Coupons)
Food Stamp & W.I. C. Customers Welcome!

TEXAS TECH UNIVERSITY HEALTH SCIENCES CENTER
TEXAS CORRECTIONAL HEALTH CARE
Texas Tech University Health Sciences Center has an opening for a part time dentist at the Rufe Jordan Correctional Facility in Pampa, Texas. This position is available on a contractual basis or as a Texas Tech employee, up to 20 hours per week.
Please call (806) 743-1331 for an application.
Return application and resume to the following address:
Texas Tech University Helth Sciences Center
Correctional Health Care
1400 Wallace Dlv.
Amarillo, Texas 79106

Wheeler County & District COURT RECORDS

List of Instruments filed in Wheeler County Clerk's Office, July 28 thru August 3, 1994.

JULY 28, 1994
D—Letha Harriet Corcoran to Tommy George Corcoran, 7-27-94, NW1/4, Sec. 7, Block A-5, H&GN Survey.

DVL—Joyce Rector to Delbert Rector, 6-6-94, Lots 1-22, Block 24, Mobeetie, ExclUnd1/16of 1/8 Roy STI OF MIN—Lou H. Killingsworth, et al to Lou H. Killingsworth, et al, 6-23-94, Pt. Sec 6, E1/2, Sec 19, Pt. Sec. 20, J M Lindsay Survey.

D—Gary Hill to George Garza, 6-17-94, Lot 1, Block 31, Orig. Town, Shamrock
DVL—George Garza, et ux to Robert Griffin, et ux, 7-21-94, Lot 1, Block 31, Orig. Town, Shamrock.

DT—Robert Griffin, et ux to First State Bank & Trust Company, 7-21-94, Lot 1, Block 31, Orig. Town, Shamrock
BS—Donald Ewing Blackketter to Richard Carlton Erickson, 7-1-94.

D—Charles Keith Shields, et ux to Wellington State Bank, 1-12-94, E 60' Lots 19 & 20, Block F, Potts Add, Shamrock
RDT—Wellington State Bank to Charles Keith Shields, et ux, 1-12-94, E60' Lots 19 & 20, Block F, Potts Add, Shamrock

JULY 29, 1994
EXTDT—Medall F. Hunter, et ux to

Canadian Production Credit Association, 7-28-94, See Instrument.

ROY/MD—Jessica Ann Stines to T R Havins Jr, 7-22-94, S1/2 NW1/4, Sec 48, Block 24, H&GN Survey.

ROW—W Greg Smith to Southwestern Bell Telephone Company, 7-19-94, Pt N1/2, Sec 41, Block 24, Pt. NW1/4 Sec 14, Block 27, H&GN Survey.

DT—Ayers Energy Inc to Quail Creek Bank, NA, 7-22-94, Pt. Sec 34, Block 23, H&GN Survey.

RDT—First State Bank of Mobeetie to Jerry Dan Hefley, et ux, 7-29-94, Lot 10, 10' Lot 11, Block 32, Orig. Town, Wheeler.

D—Jerry Dan Hefley, et ux to Maurita M Smith, 7-29-94, Lot 10, Lot 11, Block 32, Orig. Town, Wheeler, exc. mins.

AUGUST 1, 1994

PALACE THEATRE

210 Main — Canadian, TX

Showtime: 7:30 Fri. thru Tues.
Adults: \$3.50—12 & Under: \$2.50
Monday Nights: All Seats \$2.00
All Other Nights Reg. Price.
Sunday Matinee at 2 p.m.
Starting Aug. 12 thru Aug. 16

"I Love Trouble"

Rated: PG Julia Roberts

Nick Nolte

Bring this ad in and get 50c off

Regular Admission Price.

Not Valid on Monday Night

(Limit 4 per Coupon)

CC PROB PROC—Winston E. Trostle to Ex-Parte 7-27-94.

AFF HEIR-SHIP—Aliomae Wall, et vir to J H Wilson, et vir, 6-21-94.

MD—Mable B Wilson to Margie Dennis, et al, 6-22-94, Sec 45 Block A-5.

POA—Mable B Wilson to Jimmie Ray Wilson, 6-22-94.

DT—Ron J Wooten to First National Bank Carmi, 7-15-94, See Instrument.

OL—Dale McGinnis to Enron Oil & Gas Company, 6-27-94, SW1/4, Sec 4, AB&M Survey.

AUGUST 2, 1994

D—Russell Gene Gibson to Stacy McQueen-et vir, 7-25-94, Lots 20-24, Block K, Park Add, Wheeler.

D—Sharon Kay Myers, et ux to Gaylord L Thompson, et ux, 8-2-94, 8.56 acs. SE 1/4 Sec. 65, Block A-5, Exc Mins.

TDT—Bank Of Montreal to Bank One, 7-13-94, See Instrument.

TDT—R G Mason Trustree to Bank One, 7-13-94, See Instrument.

AUGUST 3, 1994

APPT SUB TRUSTEE—United States Of America to John W Earp IV, 7-27-94.

MD—Emily Roberts, et vir to Sharon G Koehn, 6-27-94, Secs. 20 & 39, Block A-3.

ASSIGN OVERRID ROYALTY—William E Richardson to William E Richardson, Trustee, 5-1-94, Sec 12, Block 1, B&B Survey, Sec 28, Block R E.

EXECUTOR ROY D—Maymie Simpson, et vir to R L Simpson Revo-

WVFD Holds Training Meeting, August 4

The Wheeler Volunteer Fire Department met Thursday, August 4, 1994 at the Wheeler Fire Station. Seventeen WVFD members and one area Fire Department member participated in Basic Forcible Entry certification training.

Robert Ford, Level II Instructor, taught the Forcible Entry Class. WVFD members receiving 2 hours training in Basic Forcible Entry: Jack Sparlin, Jon Sullivan, Robert Ford, H.L. Owens, Steven Horton, Jason Brownfield, Luke Horton, Bobby McNeil, Daryl Snelgroves, Ken Daughtry, Kyndal Murray, Chuck Hartline, Dell Ford, Gary Davis, Justin Rose, Russell Gaines and Lee George. Ron Moon, Mobeetie VFD, also received one hour training in Basic Forcible Entry. Others attending the meeting of the WVFD: Steve Walker.

The Wheeler Volunteer Fire Department meets on the 1st, 3rd and 5th Thursday of each month. The next meeting is scheduled for Thursday, August 18, 1994, 7:00 p.m., with 2 hours of Basic Emergency Vehicle Operation training, to be taught by Jon Sullivan, Level II Instructor.

The public is invited to visit the fire station and the meetings of the WVFD are open to the public.

WALLACE MONUMENT COMPANY

MONUMENTS, CURBING,
GRAVE COVERS

Represented By: **David Wright**

Wright Funeral Home

Wheeler, Texas Phone: 806/8265214

You are Invited:

Berean Assembly of God

704 Alan L. Bean (Hwy 83 South)

SUNDAY SERVICES 10:30 AM and 6:00 PM

Century \$14,995*

Skylark \$13,995*

You're welcome.

Century

- Standard driver air bag and anti-lock brakes.
- Power locks and windows, air conditioning, cruise control, tilt-wheel.
- AM-FM stereo with seek and scan.
- DynaRide® suspension.

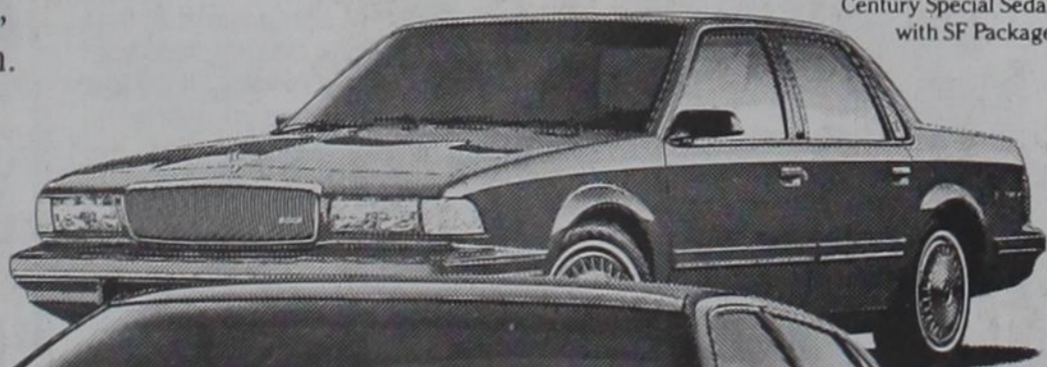
Skylark

- Standard driver air bag and anti-lock brakes.
- Power locks and rear-door child security locks.
- Air conditioning, AM-FM stereo with seek and scan, cruise control, tilt-wheel.
- Stainless steel exhaust, DynaRide® suspension.



BUICK
The New Symbol For Quality
In America.

Skylark Custom Sedan
with SF Package.



GMAC SmartLease® also available to qualified buyers. See your Buick dealer for details.

*MSRP includes dealer prep and destination charge. Tax, license and other optional equipment extra. Skylark four-speed automatic transmission required in N.Y. and Calif. where prices are higher.

©1993 GM Corp. All rights reserved.
Century and Skylark are registered trademarks of GM Corp. Buckle up, America!

WARE CHEVROLET-BUICK-OLDS-PONTIAC
Wheeler, Texas • (806) 826-5521



THE WHEELER TIMES

Page 4—Thursday, August 11, 1994
"Wheeler, town of friendship and pride."

Corporation, 7-11-94, SE1/4 Sec 34, NW1/4 Sec 35, Block 17.

AOL—A D Hanna to J B Petroleum Corporation, 7-11-94, See Instrument.

RELEASE FEDERAL TAX LIEN—United State of America to Ray S Hudson, et ux, 7-25-94.

AOL—Roden Associates LTD, et al to Upland Resources Inc., 7-22-94, Secs. 29, 30, 31, 32, 32A, Block OS2.

D—James E Finkenbinder to Kenneth Campbell, et ux, 7-18-94, 9 acs. NW1/4, Sec 34, Block 23, Sand Spur Lake.

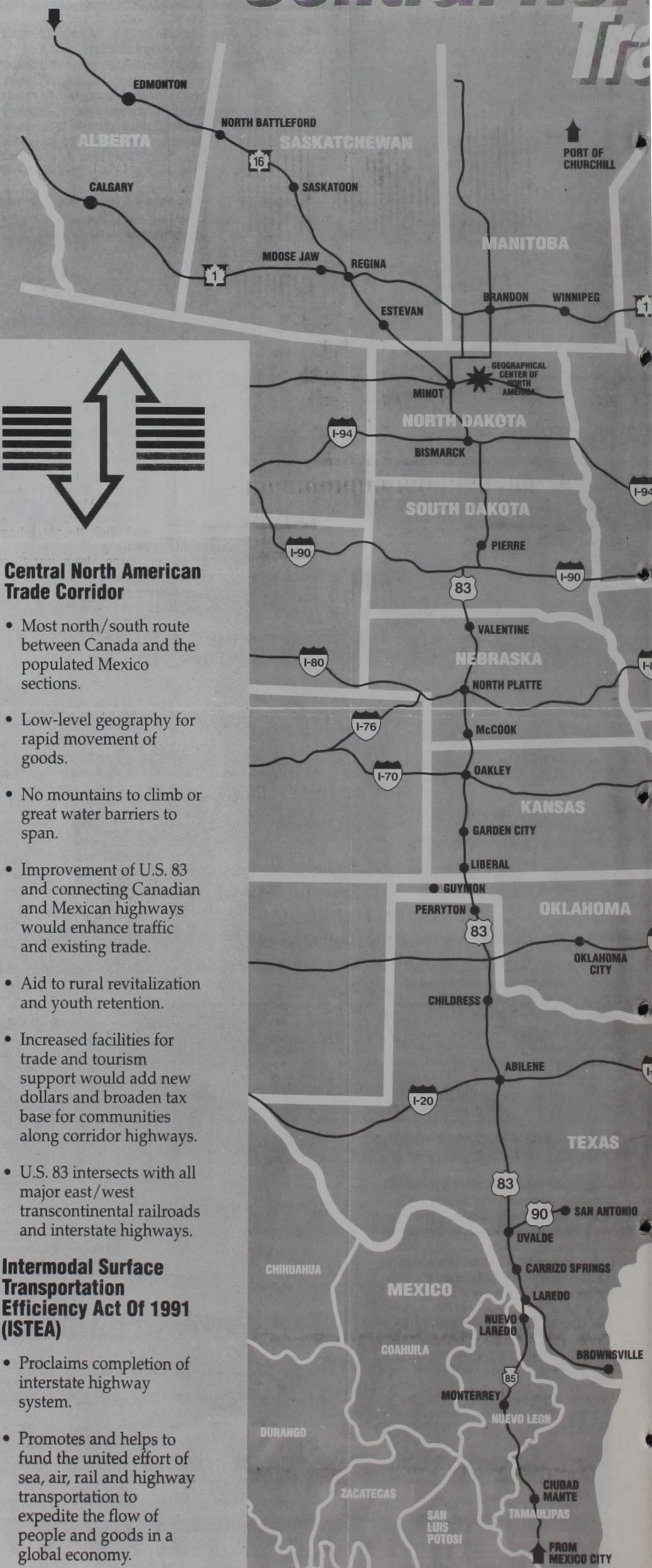
DT—Kenneth Campbell, et ux to Lurline Benson, 7-25-94, 9 acs. NW1/4, Sec 34, Block 23, Sand Spur Lake Survey.

Total abstinence is easier for me than perfect moderation.
—St. Augustine

Listen to...
KPDR-FM, 90.5
Wheeler, Texas

The Heartland's Low-Level, Direct Artery of Commerce

Central North American Trade Corridor



Central North American Trade Corridor

- Most north/south route between Canada and the populated Mexico sections.
- Low-level geography for rapid movement of goods.
- No mountains to climb or great water barriers to span.
- Improvement of U.S. 83 and connecting Canadian and Mexican highways would enhance traffic and existing trade.
- Aid to rural revitalization and youth retention.
- Increased facilities for trade and tourism support would add new dollars and broaden tax base for communities along corridor highways.
- U.S. 83 intersects with all major east/west transcontinental railroads and interstate highways.

Intermodal Surface Transportation Efficiency Act Of 1991 (ISTEA)

- Proclaims completion of interstate highway system.
- Promotes and helps to fund the united effort of sea, air, rail and highway transportation to expedite the flow of people and goods in a global economy.

CNATC Association. Working Together

ALLISON NEWS

By Christine Gilmer

and overnight guest Sunday night was Virginia Jesseph from Hollis, Oklahoma.

Last Tuesday night Tanner McWhorter from Wheeler spent the night with Me-Ma Ruby Craig, and his brother Tyler spent Wednesday night with Me-Ma. Ruby's guests last Thursday were Susan Finney, Jesse and Samantha from Pampa.

Weekend guests in the home of Betty Dyer was her daughter Betty Ann Dyer from Amarillo.

Sunday dinner guest in the home of Frank George were Evelyn Elliott and Charlie Henderson from Elk City, Betty Ann Dyer from Amarillo, Leon and Nadine Lane of Allison, Betty Dyer of Allison, Alisha and Teena Robinson, Franklin and Traci, Kelly, Kendra and Tera Lane visited in the afternoon. I spent about two weeks at Clovis,

Wilma Gilmer last Sunday afternoon

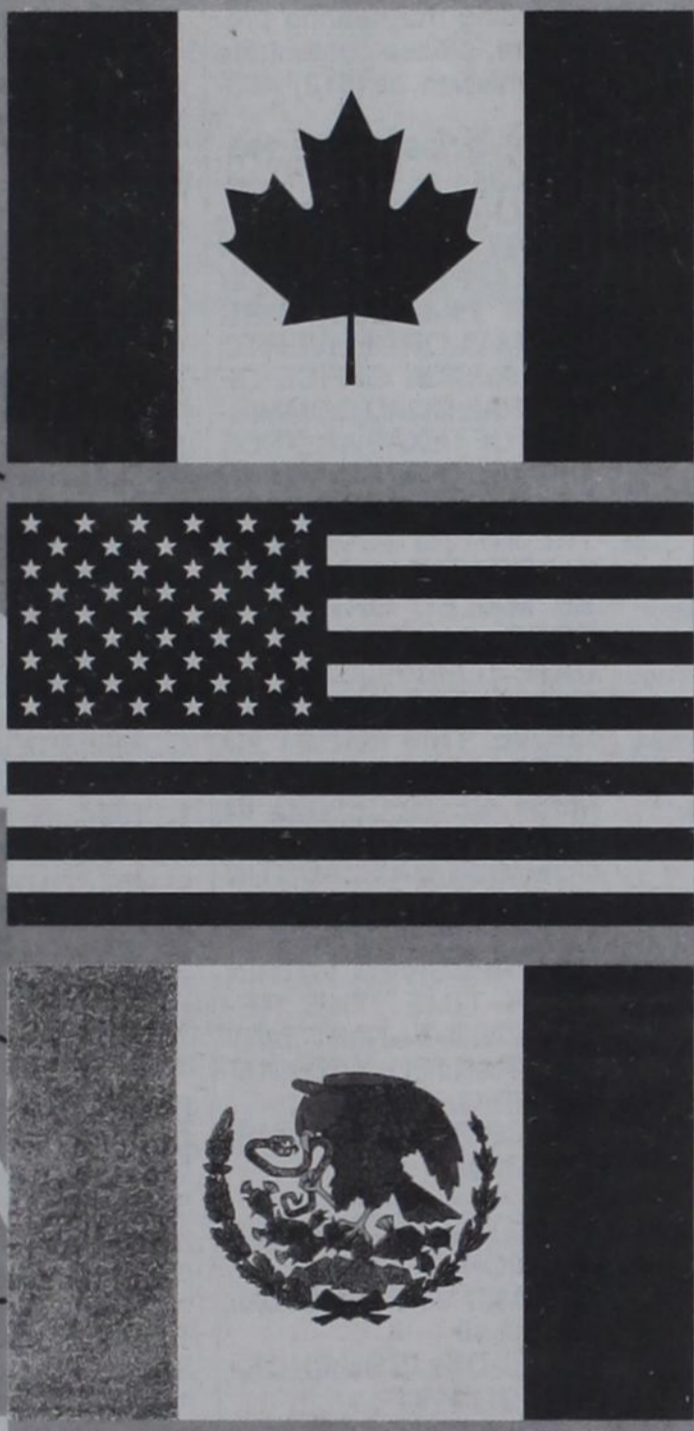
Proverbs, 3-13 & 14
Happy is the man that findeth wisdom, and the man that getteth understanding.

For the merchandise of it is better than the merchandise of silver, and the gain thereof than fine gold.

Sorry their was no Allison News last week, but I'm back home and will get it in this week. The weather is nice early this Monday morning here in Allison but the making of another hot day.

Between Alaska and Mexico ...

North American Trade Corridor



Wheeler County Officials traveled to Minot, North Dakota, July 21, for a meeting concerning the Highway 83 Coalition. The delegation consisted of Commissioner Hubert Moore, Commissioner Kenneth Childress, Shamrock City Manager Johnny Rhodes, South Wheeler County Ambulance Coordinator George Hooten, and South Wheeler County Constable Jerry Bob Jernigan.

The purpose of the meeting was to gather support to keep the already established Highway 83 as a trade route for transporting goods from Alaska to Mexico.

We need all the people of Texas to help us promote the corridor. There are currently 25,000 Canadian companies considering relocating their businesses to small towns in America. We need the North American Trade Corridor.

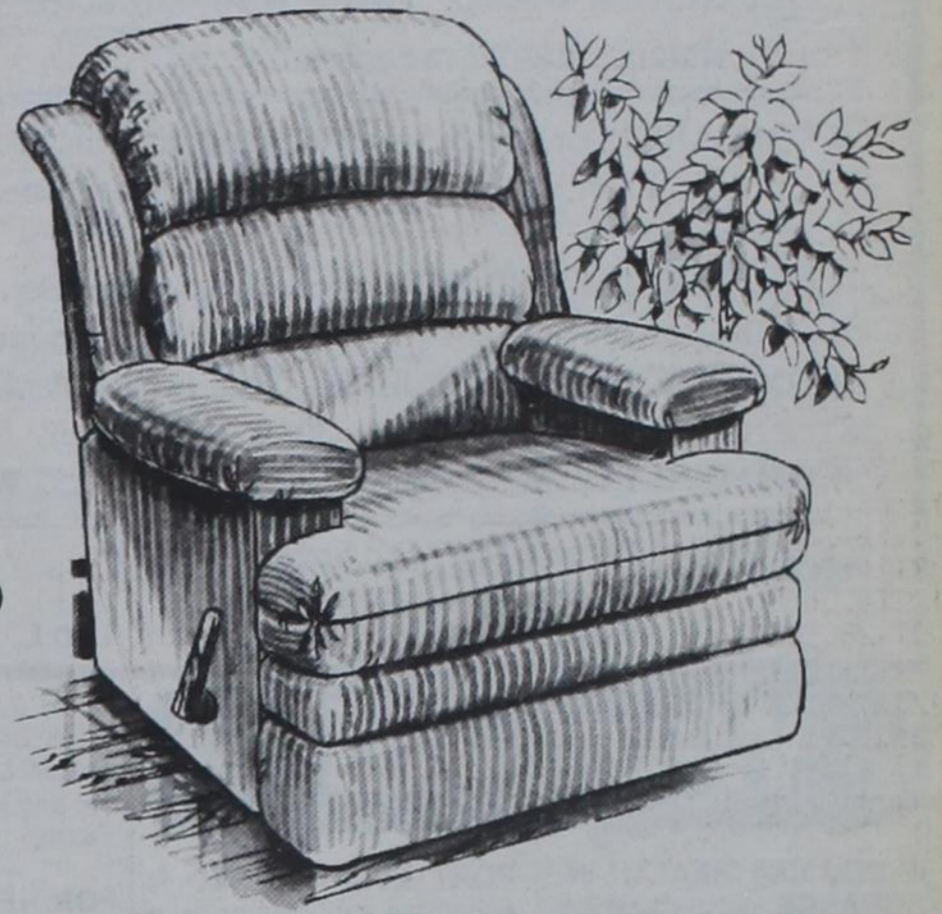
If the people of Wheeler County want to keep Highway 83 as a trade route, we need your help and support.

For more information, contact Wheeler County Commissioner Kenneth Childress 826-5219

Market North America!

"The Goliath"

When all the "Man Size" recliners get together they call "GOLIATH" the boss. Oversized, overstuffed plush comfort but not over done. A classic style combined with the standard Stratford® quality and comfort, to suit the big man in all of us.



STRATFORD
IMAGINATION IN FURNITURE

Reg. \$619⁰⁰
Sale: \$489⁰⁰

LEE Hardware & Furniture
General Hardware, Furniture & Appliances
Phone: 826-5532 420 S. Main Wheeler, Texas

New Mexico recently with my daughter Peggy White who had surgery July 19th. I returned home last Friday evening, Peggy was doing well when I left her.

We received word last Thursday that our brother Fred Giddens had passed away suddenly at his home in Chesapeake, Ohio, we were all made sad by his sudden death, Fred was 68 years old.

Mattie Elrod from Anson, Texas has been spending some time with Bob and Lou Cornell and had cataract surgery at Pampa recently. Last Thursday Bob and Lou traveled to Duncan, Okla. for a long weekend spent with Harmon and Brenda Parks, while there Bob and Lou also visited with Shane Parks and family and also visited Kelly Parks for a while, they returned home Sunday evening.

Hiram and Darendra Begert spent five days in Nashville, Tennessee last week where Hiram attended the summer meeting of the North American Limousin Foundation board of directors.

J.R. and Leota Black had their grandson's Robert and Nathan Black from Amarillo most of last week.

Gary and Julie Boydston and Amie went to Amarillo and picked up their grand daughter Tori Boydston and she spent the weekend with them and Greg and Misty came Sunday evening and spent Sunday night with them and took their daughter home Monday morning.

Edna May's last Sunday dinner guest were her daughter and husband Mr. and Mrs. Dean Lieb from Stinnett.

Opal and Juanita Boydston spent Wednesday and Thursday night in Amarillo with Warren and Charlene Brown and attended camp meeting and Juanita went to the dentist in Canyon on Thursday. Last Saturday Opal, Juanita and Tia Boydston and babies visited Sarita and Robbie Green and Carissa at Minco, Oklahoma and helped Sarita about getting straightened up in her new home. They also shopped in El Reno, Oklahoma.

Several from the Allison United Pentecostal attended the Oklahoma and Amarillo camp meetings the past two weeks.

Roma and Billy Brown spent Monday, Tuesday and Friday night of last week with Warren and Charlene Brown and attended the camp meeting. Last Sunday dinner guest with Roma and Billy were Nellie Long, Thursia Poindexter from Cheyenne and Sylvia Brown from Wheeler.

Peggy Chandler and Jennie Walker visited Gertie Cornell at the Wheeler Care Center last Wednesday, and also visited Sue Chandler and Bridget Thursday evening.

Anthony and Judi Cornell were last Sunday dinner guests with Judi's parents Fred and Pauline Cordell at Cheyenne, Pauline and Fred ate lunch with Judi and Anthony on Monday.

Allen and Vicki Donaldson, Ashley and Bret from Amarillo spent the weekend with Bill and Kay Donaldson, other's there for the weekend were David and Jackie Lewis from Panhandle.

Recently Red and Anna Dukes visited Reds aunt Mollie Dickenson at the Clarendon rest home. Adeline and Jack Hammer from Panhandle came Thursday July 28. And also Clyde and Jane Dukes and Stacie from Briscoe, Bob and Peggy Dukes, Monty and Glenda, they all took Anna and Red to Maxeys for dinner to celebrate Anna's birthday. A surprise visit on Friday July 29th was from Anna's daughter Sylvia and Joe Richardson, they spent the weekend with Red and Anna, July 30th, Red and Anna, Sylvia and Joe went to Shamrock and visited Bessie

Crenshaw and they all went out to dinner together. Red and Anna were in Amarillo last Tuesday for Red to see the doctor. Last Friday Red and Anna went to Eurkea Springs, Arkansas to a Brotherhood meeting of the Church of Christ, they spent the weekend and reported a good time.

Pete and Margaret Gilmer spent last Monday, Tuesday and Wednesday with Becky and Jeannie Gilmer and attended the camp meeting. Pete and Margaret, Rodney and Linda Ingersall and Andrew were in Amarillo last Saturday for business.

Suzanne Lohberger had foot sur-



THE WHEELER TIMES
Page 5—Thursday, August 11, 1994
"Wheeler, town of friendship and pride."

gery recently at Oklahoma City. When Suzanne went back to Oklahoma City for a check up with the doctor, Verne and Susie Lohberger and Nova Powladge went with her. They visited John and Iris Gleason at Oklahoma City. Iris and John took them out for a wonderful noon meal. Alton and Ariel Lohberger and children and Ariel's

sister Iris just returned recently from a vacation to Penn. and other points of interest. Danny and Sarah Lohberger from California are visiting several in the Verne and Susie Lohberger home. Verne and Susie visited Dorothy Walker at the Parkview hospital in Wheeler last Sunday afternoon.

Rex and Virginia Miller just returned recently from a vacation to South Fork, Colorado they had a good and enjoyable trip. Dwight Higgins from White Face, Texas spent a couple of days last week with Rex and Virginia.

Bruce and Pearl Harrison, Louise and Clifton Boydston and Henry and Cheryl Dupont, Sabrina and Cody and also Wanda Walker attended the Harrison Family Reunion last weekend at Cheyenne. Bruce and Pearl were in Elk City last Friday for medical reasons.

Kevin and Melissa Fleming and Meagan from Lutkin Texas spent last week with Eddy and Wanda Walker. Jonathon and Justin and they all attended camp meeting at Amarillo and spent the weekend at Red River, New Mexico.

FREE ESTIMATES 24 HR. WRECKER SERVICE

McCain's Auto Body
117 W. OKLAHOMA - BOX 65 - WHEELER, TX 79096
PH. 806/826-3433

INSURANCE CLAIMS OWNER: BOB MCCAIN

WELCOME TO
FIRST UNITED METHODIST CHURCH
8TH AT MAIN - P. O. BOX 89 - WHEELER, TEXAS 79096
CHURCH (806) 826-3114 - PARSONAGE (806) 826-3079

Warren K. Schoenecker
Pastor

Sunday School 9:45 a.m.
Morning Worship .. 11:00 a.m.
Evening Worship 6:00 p.m.

BACK TO SCHOOL SPECIALS

Valu-Rite

2 FOR \$1

Mead notebook paper 200 wide ruled sheets

\$1.79 DURACELL #5 Batteries
Your Choice Assorted sizes

RADIO Special

HYLAND'S PHARMACY
108 W. TEXAS
Wheeler
Phone: 806/826-5561

\$2.99 #4
Basic Calculator

VITAMIN SALE
(see inside) M-2

33¢ Each School Stationery Accessories

#42

BUY 1 GET 1 FREE!

\$1.39 Your Choice
Flavor House®
Peanuts 12 oz.
Assorted flavors

2 FOR \$1.00

Mead Writing Tablet & Envelopes

59¢ Your Final Cost
Purex Laundry Detergent

Regular, 39 oz.
With bleach, 39 oz.
Liquid, 32 oz.

Sale Price \$1.59
Less Mfg.'s Mail-in Rebate..... \$1.00

WHEELER PLUMBING
511 S. Cheyenne
New Construction
Remodel
Repair
Sewer Service
Septic System

Phone: 826-5907
MAX McQUEEN
P.O. Box 754 Wheeler, TX

LISTINGS NEEDED — ALL TYPES

FARM & RANCH

WHEELER COUNTY—Where the hunting is great!
80 Acres CRP by Twitty.
One-Half Section CRP west of Twitty.
One Section west of Twitty with 420 acres CRP.
 Balance native rangeland.

COMMERCIAL: Sand & Sage Motel and large rent house next door. Eight motel units with furnishings. Owner might finance.

COMMERCIAL BUILDING formerly known as Don Lynn's Restaurant West Oklahoma St.

COMMERCIAL OFFICE BLDG. With Fenced Yard. Priced to Sell. 305 S. Sweetwater

COMMERCIAL: West Motel, 7.38 acres, Hwy. 152 West.

LOTS Prime lot on Main Street in Wheeler Lot on Alan L. Bean Blvd.
 # 110 Vacant lot on south end of Alan L. Bean Blvd.

RESIDENTIAL

- Three bedroom 2 1/2 bath home with Central H/A, living room, den, large lot, attached garage.
- Three bedroom, 1 3/4 bath frame home with den, enclosed porch and attached single car garage. Also has detached garage/workshop, fruit trees & well. 608 Cheyenne
- #108 Large three bedroom, 2 bath home with one fireplace and one wood stove, two living areas, an office, cellar & double garage. Owners have been transferred. 510 S. Reynolds
- #140 Three bedroom, one bath frame home with cellar, fenced yard, and large lot. Further Reduced To \$15,000 1134 S. Main
- #137 Two Bedroom, one bath stucco home with garage, carport, cellar. Make appointment to see. 701 S. Main
- #142 Three bedroom, 1 3/4 bath home with siding/brick exterior. Assumable FmHA loan. 403 S. Cheyenne St.
- #139 Remodeled three bedroom, 1 3/4 bath brick home with two living areas, fenced yard, double garage. Assume loan. 211 Jackson

- #146 Large four bedroom, 1 3/4 bath, 2 car attached garage. Large Lot. 512 S. Reynolds
- #136 Three bedroom, 1 3/4 bath brick home with central air, fenced yard, storage building and garage. 1102 S. Mobeetie St.
- #145 Three bedroom 1 3/4 bath. Corner of Ellis and Jackson Street. Lots of storage space. Central heat. By Appointment.
- Two bedroom, 1 bath on ten acres. Great for horse. South of Kelton
- NEW LISTING:** 3 bedroom, 1 3/4 bath, brick w/fireplace, cellar, storage building & fenced yard. 207 S. Franklin
- NEW LISTING:** Brick, Central H/A, 3 bedroom, 1 3/4 bath. Appointment Only. 600 7th Street

Wheeler Realty

806/826-5541 or 806/826-3526

Gwen Emmert, Manager 112 E. Texas Street
 Ruth Smith, Broker Wheeler, TX 79096
 Jim Hill, 826-3094



Want Ads

IF YOU BUY HEALTH INSURANCE, you could be paying too much. Specializing in Major Medical and Medi-Care Supplements. CONTACT: Kenneth McCasland, 826-3573 or 826-3036.

FORT ELLIOTT CISD is accepting applications for a part-time Secretarial Position. Days will be Tuesday and Thursday of each week, during school. For application contact Bob Downs at (806) 375-2454.

FOR RENT: 3Bdr. House- \$250/month. Lease and Deposit Required. 352-2950 or 826-3096.

BABB
 Portable Buildings
 8x12-1995
 10x16-1595
 10x20-1995
 820 W. Kingsmill, Pampa, Tx.
 Free Delivery
 826-3842 1-800-244-4623

LOST! Brown Men's Billfold w/lace trim at Speedi-Mart, Sunday at 11 a.m. Please call 512-749-5343.

GARAGE SALE: Friday & Saturday 8-4. 207 East 12th.

GARAGE SALE: Multi-family. Sat. Aug. 13, 8-5, 512 S. Main. Building across from Lumberyard. Clothes, furniture, dishes. Many 25 cent items.

YARD SALE: Friday & Saturday, 8-7. Baby Clothes, adult clothes, antique dishes, 100 N. Osage.

GARAGE SALE: Adult and children clothes, toys, dishes, misc. items. Place: 702 S. Osage, Time: 8 a.m.-?, Date: Aug. 12-13.

Wheeler Care Center
 ..is hiring
 Certified Nurse Aides, R.N.
 and also will train for certification.
 Contact:
 Karen Puryear, R.N.
 826-3535

WANT TO BUY: good used canning size pressure cooker. 826-5721.

FOR SALE: 1992 Dodge Conversion Van. 3/4 ton, Fully loaded, miles 27,000, \$14,000. Call 375-2129.

FOUND: Old Beagle. Call: 826-5821.

Sale: Closing Out Pipe Yard
 6", 5", 4", 2 1/2" & 3", 2" & 1" black pipe, plow parts, & misc., 2 galvanized metal boats, 300 ga. fuel tank. Chester Payne. Ph. 256-3614.

WANTED: Carpet for college dorm room, 10' x 12' or larger. 826-3740.

HAY FOR SALE: big round bales, prairie hay, red top cane, wheat & love grass. \$25 a bale. Call after 8 p.m. 826-5835.

FORT ELLIOTT CISD is accepting applications for a custodial position. Applications may be obtained by contacting Bob Downs at P.O. Box 138, Briscoe, TX. 79011 or (806) 375-2454.

REAL ESTATE APPRAISAL & SALES
 Farm & Ranch Land Specialist
 State Certified Appraiser
 TEXAS SUNBELT SERVICES
 Lavon Williams
 806/826-5232
 or 826-5803

SHEPARD NURSING, Wheeler office, is now accepting applications for L.V.D. Apply in person at 107 W. Texas Street. 826-3669.

LIVE IN SUPERVISOR of Adolescent home. Good salary and benefits. Must be dependable and self motivated. Relief or full time position available. Rewarding career. Call: 665-7123 or 665-0235 weekend.

WILL DO Babysitting in my home, anytime. 826-3473 or 826-3351.

PUBLIC NOTICE CITY OF WHEELER TEXAS COMMUNITY DEVELOPMENT PROGRAM

The City of Wheeler will hold a second public hearing at 5:15 p.m. on August 15, 1994 at the Wheeler City Hall in regard to the submission of an application to the Texas Department of Housing and Community Affairs for a Texas Community Development Program (TCDP) grant. Topics to be discussed will include the application for water system improvements for the City in the approximate amount of \$250,000.00 and the estimated amount of funds proposed for activities that will benefit low and moderate income persons. The application will be available for review at City Hall during regular business hours. Handicapped individuals wishing to attend the public hearing should contact the City for assistance.

NOTICE OF BUDGET HEARING

Wheeler County will conduct a Public Hearing on the 1994-95 proposed budget on August 22, 1994, at 10:00 A.M. in the Commissioners Court Room, Wheeler County Courthouse in Wheeler, Texas. In accordance with Article 39.12 K, V.A.T.C. Notice is hereby given that the proposed budget includes a 4 percent salary increase for elected officials and a 4 percent increase for employees. All interested persons may have the opportunity to inspect the proposed budget at the County Clerk's Office during business hours.

NOTICE TO CREDITORS

Notice is hereby given that original Letters Testamentary upon the estate of Beatrice Huffman, Deceased were granted to me on July 5, 1994, by the County Court of Wheeler County, Texas. All persons having claims against said estate are hereby required

to present the same to me within the time prescribed by law at the following address: Marion H. Wheeler 8618 Merlin Drive Houston, TX 77055

NOTICE

The Board of Trustees of Kelton Independent School District will hold a public hearing on August 11, 1994 at 8:00 p.m. in the cafeteria of the Kelton School Building. The purposes of the meeting are:

- 1) To adopt the budget for the 1994-95 school year, and
- 2) To set the 1994 tax rate.

All interested patrons are welcome to attend.

BIDS

The Allison ISD is accepting sealed bids for Milk Products for the 1994-1995 school year. Please call for details. (806-375-2381) The sealed bids should be sent to the attention of JIM COPELAND, Supt., Allison ISD, P.O. Box 50, Allison, TX, 79003 and marked SEALED MILK BID. They must be received by 7:00 p.m. on August 11, 1994. The Board reserves the right to reject any or all bids.

BIDS

The Allison ISD is accepting sealed bids for Food Products for the 1994-1995 school year. Please call for details. (806-375-2381) The sealed bids should be sent to the attention of JIM COPELAND, Supt., Allison ISD, P.O. Box 50, Allison, TX, 79003 and marked SEALED FOOD BID. The Board reserves the right to reject any or all bids.

RAILROAD COMMISSION OF TEXAS OIL AND GAS DIVISION

District 10
 DATE OF ISSUANCE: JULY 21, 1994
 RULE 37/38 CASE NO. 0206035
 NOTICE OF APPLICATION

NOTICE IS HEREBY GIVEN that the Applicant, James Reneau Seed Co., P.O. Box 40, Shamrock, TX 79079, has made application for a spacing and density exception permit under the provisions of Railroad Commission Statewide Rule 37 and Rule 38 (16 Tex. Admin Code Section 3.37 and 3.38) Applicant seeks exception to the distance between wells and the density of the subject field(s). Applicant seeks authority to amended. Well No. 2 G Bell Lease, 160 Acres. Section 71, Block 13 H&G RR Co. Survey A-61, Panhandle, East Field, Wheeler County, being 3 miles in an east direction from Shamrock, TX. The location of this well is as follows:

- 1650' from the north line and 330' from the west line of lease.
- 1650' from the north line and 330' from the west line of survey.
- Field Rules for the Panhandle East field are 330/660, 160 acres.
- This well is to be drilled to an approximate depth of 2,195 feet.
- Pursuant to the terms of Rule 37(b)(2)(A) and Rule 38 (p. 3.38). This application may be granted without hearing if protest to the application is not received. An affected person is entitled to protest this application. Affected persons include owners of record and the operator or leasees of record of adjacent tracts and tracts nearer to the proposed well than the minimum lease line spacing distance. If a hearing is called, the applicant has the burden to prove the need for an exception. A protestant should be prepared to establish standing as affected person, and to appear at the hearing either in person or by qualified representative and protest the application.

THE WHEELER TIMES
 Page 6—Thursday, August 11, 1994
 "Wheeler, town of friendship and pride."

with cross-examination or presentation of a direct case. The rules of evidence are applicable in the hearing. If you have questions regarding this application, please contact the Applicant's representative, Rebecca Pena, Agent, at (806) 256-3216. If you have any questions regarding the hearing procedure, please contact the Commission at (512) 463-6718.

RULE 37/38 CASE NO. 0206035

IF YOU WISH TO REQUEST A HEARING ON THIS APPLICATION, YOU MUST FILL OUT, SIGN AND MAIL OR DELIVER TO THE AUSTIN OFFICE OF THE RAILROAD COMMISSION OF TEXAS NOTICE OF INTENT TO APPEAR IN PROTEST. A COPY OF THE INTENT TO APPEAR IN PROTEST MUST ALSO BE MAILED OR DELIVERED ON THE SAME DATE TO APPLICANT AT THE ADDRESS SHOWN ABOVE. THIS INTENT TO APPEAR IN PROTEST MUST BE RECEIVED IN THE RAILROAD COMMISSION'S AUSTIN OFFICE BY SEPTEMBER 1, 1994. IF PROTEST IS NOT RECEIVED WITHIN SUCH TIME, THE REQUESTED PERMIT MAY BE GRANTED WITHOUT HEARING. NOTICE REQUIRES PUBLICATION.

RULE 37/38 CASE NO. 0206035

IF YOU WISH TO REQUEST A HEARING ON THIS APPLICATION, YOU MUST FILL OUT, SIGN AND MAIL OR DELIVER TO THE AUSTIN OFFICE OF THE RAILROAD COMMISSION OF TEXAS NOTICE OF INTENT TO APPEAR IN PROTEST. A COPY OF THE INTENT TO APPEAR IN PROTEST MUST ALSO BE MAILED OR DELIVERED ON THE SAME DATE TO APPLICANT AT THE ADDRESS SHOWN ABOVE. THIS INTENT TO APPEAR IN PROTEST MUST BE RECEIVED IN THE RAILROAD COMMISSION'S AUSTIN OFFICE BY SEPTEMBER 1, 1994. IF PROTEST IS NOT RECEIVED WITHIN SUCH TIME, THE REQUESTED PERMIT MAY BE GRANTED WITHOUT HEARING. NOTICE REQUIRES PUBLICATION.

RAILROAD COMMISSION OF TEXAS OIL AND GAS DIVISION

District 10
 DATE OF ISSUANCE: JULY 21, 1994
 RULE 37/38 CASE NO. 0206036
 NOTICE OF APPLICATION

NOTICE IS HEREBY GIVEN that the Applicant, James Reneau Seed Co., P.O. Box 40, Shamrock, TX 79079, has made application for a spacing and density exception permit under the provisions of Railroad Commission Statewide Rule 37 and Rule 38 (16 Tex. Admin Code Section 3.37 and 3.38) Applicant seeks exception to the distance between wells and the density of the subject field(s). Applicant seeks authority to amended. Well No. 1 G Bell Lease, 160 Acres. Section 71, Block 13 H&G RR Co. Survey A-61, Panhandle, East Field, Wheeler County, being 3 miles in an east direction from Shamrock, TX. The location of this well is as follows:

- 360' from the west line and 360' from the south line of lease.
- 360' from the west line and 2280' from the north line of survey.
- Field Rules for the Panhandle East field are 330/660, 160 acres.
- This well is to be drilled to an approximate depth of 2,200 feet.
- Pursuant to the terms of Rule 37(b)(2)(A) and Rule 38 (p. 3.38). This application may be granted without hearing if protest to the application is not received. An affected person is entitled to protest this application. Affected persons include owners of record and the operator or leasees of record of adjacent tracts and tracts nearer to the proposed well than the minimum lease line spacing distance. If a hearing is called, the applicant has the burden to prove the need for an exception. A protestant should be prepared to establish standing as affected person, and to appear at the hearing either in person or by qualified representative and protest the application with cross-examination or presentation of a direct case. The rules of evidence are applicable in the hearing. If

you have questions regarding this application, please contact the Applicant's representative, Rebecca Pena, Agent, at (806) 256-3216. If you have any questions regarding the hearing procedure, please contact the Commission at (512) 463-6718.

RULE 37/38 CASE NO. 0206035

IF YOU WISH TO REQUEST A HEARING ON THIS APPLICATION, YOU MUST FILL OUT, SIGN AND MAIL OR DELIVER TO THE AUSTIN OFFICE OF THE RAILROAD COMMISSION OF TEXAS NOTICE OF INTENT TO APPEAR IN PROTEST. A COPY OF THE INTENT TO APPEAR IN PROTEST MUST ALSO BE MAILED OR DELIVERED ON THE SAME DATE TO APPLICANT AT THE ADDRESS SHOWN ABOVE. THIS INTENT TO APPEAR IN PROTEST MUST BE RECEIVED IN THE RAILROAD COMMISSION'S AUSTIN OFFICE BY SEPTEMBER 1, 1994. IF PROTEST IS NOT RECEIVED WITHIN SUCH TIME, THE REQUESTED PERMIT MAY BE GRANTED WITHOUT HEARING. NOTICE REQUIRES PUBLICATION.

NOTIFICATION TOTAL COLIFORM VIOLATION

The City of Mobeetie Water System collected one (1) water sample during the month of July, 1994, that contained coliform bacteria. The City of Mobeetie Water System is required to submit a minimum of one (1) water sample each month for bacteriological analysis. The Texas Natural Resource Conservation Commission (TNRCC) sets drinking water standards in Texas and has determined that the presence of total coliforms is a possible health concern. Total coliforms are common in the environment and are generally not harmful themselves. The presence of these bacteria in drinking water, however, generally is a result of a problem with water treatment or the pipes which distribute the water, and indicates that the water may be contaminated with organisms that can cause disease. Disease symptoms may include diarrhea, cramps, nausea, and possibly jaundice, and any associated headaches and fatigue. These symptoms, however, are not just associated with disease-causing organisms in drinking water. The TNRCC has set an enforceable drinking water standard for total coliforms to reduce the risk of these adverse health effects. Under this standard, no more than 5.0% of the samples collected during a month can contain these bacteria, except that systems collecting fewer than 40 samples/month that have one total coliform-positive sample/month are not in violation of the standard. Drinking water which meets this standard is usually not associated with a health risk from disease-causing bacteria and should be considered safe.

If you have questions regarding this matter you may contact the City of Mobeetie (806) 845-3581
 The City of Mobeetie
 Jackie May,
 Water Manager

NOTICE

The Fort Elliott Consolidated Independent School District will hold a Public Hearing August 25, 1994, at 7:00 P.M. at the Superintendent's office at 501 E. Wilson, Briscoe, TX. The purpose of this hearing is to adopt the budget for the 1994-95 school year.

TEXAS SCAN
 Statewide Classified Advertising Network
 314 Texas newspapers for \$250. Call this newspaper for details.

ENJOY BRANSON MUSIC shows and Silver Dollar City crafts festival. Free reservation service for beautiful Table Rock Lake resorts. Indian Point Chamber of Commerce, 1-800-888-3313.
BIG 3-DAY HORSE sale, August 19, 20, 21, expecting over 1,000 head, 750 already consigned. Clovis Livestock Auction, Clovis, N.M. 505-762-4422.
STEEL BUILDINGS, SUMMER sale. Save 1,000's, engineer certified: 30 x 40 x 10, \$4,364; 30 x 50 x 12, \$6,927; 40 x 60 x 14, \$8,135; 50 x 75 x 14, \$10,878; 60 x 80 x 14, \$13,545; 60 x 100 x 16, \$16,721; factory direct, free brochures, 1-800-327-0790.
FRIENDLY TOYS AND gifts has openings for demonstrators. No cash investment. Part time hours with full time pay. Two catalogs, over 700 items. Call 1-800-488-4875.
EXPERIENCED EQUIPMENT OPERATORS, laborers and truck drivers for utility construction. Qualified individuals wanting advancement opportunities. Drug testing required. Relocate to Southwest U.S.A. area. O.J.T. call 913-829-0744, E.O.E.
MELTON TRUCK LINES, hiring experienced drivers for expanded flatbed fleet. Great pay, benefits and equipment (T-600 Kenworths). Training available, minimum age 23, Contact Perry Elliott, 1-800-599-9913.
HAROLD IVES TRUCKING hiring drivers. Free driver training. Students welcome. Experience pay up to 28¢ per mile. 1995 conventional KW's here. Excellent benefits: 1-800-842-0855.
ECK MILLER EXPANDING need flatbed company drivers. All miles paid (new scale). Life/health, rider/bonus program. 23 year & 1 year experience. 1-800-395-3510. Owner operators also welcomed! Please inquire about new... opportunities.
DRIVERS: FLATBED 48 State OTR. Assigned new conventional. Competitive pay, benefits \$1000 sign on bonus, rider program, flexible time off. Call Roadrunner Trucking 1-800-876-7784.
DRIVER-NOW'S THE time to join the rising star! Adding 1,200 new tractors & 3,500 new trailers. \$750 experienced sign-on bonus. Call anytime - Burlington Motor Carriers: 1-800-JOIN-BMC, EOE.
ATTENTION DRIVER TEAMS: \$15,000 in bonus. Paid monthly, quarterly & yearly, plus top mileage pay. 401(K) plan, \$500 sign-on bonus. Other paid benefits - Vacation - Health & life - Dead head - Motel/lavover - Loading & unloading. Covenant Transport 1-800-441-4394/915-852-3357, solos and students welcome.
BREAST IMPLANTS, FREE registration forms and free consultation. Call 1-800-833-9121. Women and post-implant children. Carl Waldman, board certified personal injury trial lawyer, Texas since 1978.
SALESMAN/WOMEN - FREE leads, training. Entry level. 1st yr. high earning commissions potential enrolling rural Texans in our unique financial services programs. Call: 1-800-633-6508.
CZECH BOY INTERESTED in sports, computers. Other Scandinavian, European, South American, Asian high school exchange students arriving August. Become a host family/AISE. Call AISE 817-467-1417 or 1-800-SIBLING.
IF SHAMPOOS & collars won't solve your flea-tick

problem, Happy Jack Kennel Dip will. The most effective tick & flea killer available. At TSC stores ... and other feed stores.
BECOME A MEDICAL Transcriptionist. Great opportunity - typing for doctors and hospitals. Home study. Free career literature. P.C.D.L., Atlanta, Georgia. 1-800-362-7070, Dept. YJ722.
L E A R N AUCTIONEERING I.Q. School of Auctioneering. Train elite auctioneers, P.O. Box 579, Quitman, Texas 75783, 903-878-2225. Certified by Texas Education Agency. Next term Sept. 26, 1994.
S A N D I E G O BEACHFRONT condominiums, luxurious one and two bedrooms. Great location to attractions, excellent restaurants and shopping. Daily, weekly, monthly rates. Capri Beach Accommodations, 1-800-542-2774.
HOME-SCHOOL! K-12! Beautiful academic kits! Self-paced! Daily plans! Workbooks, lessons, tests, answers. Phone advisors! Legal transcripts! Meets state education requirements! Sykes Academy, 1-800-767-7171.
GOT A CAMPGROUND membership or timeshare? We'll take it! America's most successful resort resale clearinghouse. Call Resort Sales Information toll free hotline 1-800-423-5967.
YOU CAN OWN your own home! No downpayment on Miles materials, attractive construction financing. Call Miles Homes today, 1-800-343-2884, ext. 1.
75.4 ACRES, \$295/ACRE, Rocksprings/Del Rio. Borders 6,000 acre ranch. Fenced two sides. Rugged hunting land. Deer, turkey, exotics, hogs. \$1,100/down, \$241/month (11%-15yrs). 210-257-5572.
MONEY MAKING OPPORTUNITY catalog, hundreds of books, tapes and reports. Money making mail order ideas, self-employment opportunities, dealerships. Free details, 1-800-770-8045, 24 hour recording.
SUNQUEST WOLFF TANNING beds new commercial-home units from \$199. Lamps-lotions-accessories. Monthly payments low as \$18. Call today, free new color catalog, 1-800-462-9197.
FREE DEBT CONSOLIDATION. Too many debts? Overdue bills? Cut payments 30% to 50%, reduce interest/late fees. \$4,000-\$100,000. NCCS (non-profit) licensed/bonded, 1-800-955-0412 (M-Sat).
CASH FOR REAL estate notes up to 95% of your balance! No points or commissions. Cash in 5 days. Free quote. 1-800-879-2324. Open Saturdays too.
ADOPTION IS A loving choice. Caring couple-both health professionals wish to adopt newborn. We understand and can help. Call 1-800-826-7924. It's illegal to be paid for anything beyond medical/legal expenses.
ADOPTION: ABUNDANT LOVE, laughter, secure life await your newborn. Peace of mind for you. Loving father, stay at home mom. Allowed expenses. Wendy and John 1-800-727-9662. It's illegal to be paid for anything beyond medical/legal expenses.
LOOKING FOR HAPPY family to adopt your baby to be? We are Mama "Nurse/Therapist" Papa "doctor", 2 year old boy, in cozy forest home with laughter, warmth, toys, books, love, joy, dog, cats. Collect 408-688-3025. It's illegal to be paid for anything beyond medical/legal expenses.

APPLICATIONS are being taken for a Water Manager for the City of Mobeetie. Part Time. Apply at City of Mobeetie between 10:00-12:30 or 1:30-4:00.

FOR SALE: 3 bedroom home, 2 bath, 2 car garage, large lot, deck 1001 Mobeetie St. Call (210) 693-3283.

POSTAL JOBS Start \$11.41/hr. For exam and application info. call (219) 769-8301 ext. TX 815, 8AM-3 PM., Sun.-Fri.

PANEL RAY: For sale. \$75, 826-3085.

FOR SALE: 3 bedroom, 2 bath house on 11 acres east of Wheeler. 806-826-3213 or after 806-826-5717.

FOR SALE: Complete Queen Size Waterbed, \$100. 826-3360.

LOSE WEIGHT! Need to lose more in '94? To be fat-free, call me! 100% Natural, doctor approved. 806/256-2276.

TA MEMBER 1994 TEXAS PRESS ASSOCIATION

THE WHEELER TIMES
 P.O. Box 1080
 Phone: 826-3123
 Entered as second-class matter December 18, 1933, at the Post Office at Wheeler, Texas 79096, under the act March 3, 1879.
 Postmaster Send Address Changes to The Wheeler Times, P.O. Box 1080, Wheeler, TX 79096-1080
Louis C. Stas, Owner and Publisher
SUBSCRIPTION RATES:
 Wheeler County ... \$16.50 Outside County ... \$18.00

THE BUSINESS DIRECTORY

Royal Alliance Associates, Inc.
 Member NASD/SIPC
 David Zybach, Securities Broker
 1-800-999-9352
 Stock-Bonds-Mutual Funds-C.D.'s
 Insurance-Retirement Plans-Tax Free Investments

WHEELER LUMBER CO.
 Permanent year-round protection. Changeable from inside. Easy to clean, powder proof. Eliminates drafts... outside bills.
 Storm-Screen Windows
 Aluminum Self-Storing
 Phone 826-5543 Wheeler, TX
 Fine Service for Fine People

CROSS CAR CENTER
 GUARANTEED AUTO GLASS INSTALLATION & BODY REPAIR
 CHEVROLET
 PHONE: 826-5515
 WHEELER, TEXAS

Wheeler Lodge No. 1099
 A.F. & A.M.
MONDAY 7:30 P.M.
 Walter Simmons, Wm. Jim Jackson, Sec'y. Box 675
 Members Urged To Attend. Visitors Welcome

AA MEETING
 Alcoholics Anonymous meets at 8:00 p.m. in the Wheeler Masonic Lodge on Thursday of each week.

OLD MOBEETIE ASSOC. MEETING

The Old Mobeetie Association met Thursday, Aug. 4., at the Hospitality Room of the First State Bank with president Dale Corcoran in charge. Austin Caldwell led the opening prayer. Eudell Gifford of Bluegrass Com-

mittee discussed problems with electricity in C & D section of the camp ground. The program will be corrected before next year. Peggy Newman of the Bluegrass gave the report of income and expense of the Bluegrass.

She presented the old Mobeetie Association a check for their part of the Bluegrass Festival.

Melba Corcoran read the minutes. Louise Hogan gave the finance report. Ada Lou made a motion the reports be accepted as given. Sec. by Margaret Dorman. Carried.

Volunteer hours report was 296.

Visitors report was 6407 with 10 from other Countries. Cataloging Report showed 6976 sheets with 11,687 items done. Dale Corcoran appointed the following nomination committees: Linda Daughtry, Margaret Dorman and Jimmy Hill. They will present a slate of officers in September for the election. Melba Corcoran made a motion to give the two refrigerators out of the Lodge Building to the Mobeetie Fire Department. Seconded by Louise Hogan. Carried. Ada Lester gave a report on a consultant for the rehab of the Lodge Building. Killis Almond said he would work with us. The need to get him a package of pictures inside and out of the building and list of displays planned. He will go from there with the plans. The Fort Jail door was picked up and is in storage; Melvin May gave the museum the door.



THE WHEELER TIMES

Page 7—Thursday, August 11, 1994
"Wheeler, town of friendship and pride."

The work calendar was passed around and work day and training day has been set for August 27 at 9 a.m. Bring a sack lunch. The training will be in the afternoon. Ada Lester made motion to adjourn. Sec. by Louise Hogan. Carried.

Those attending were Eudell Gifford of Lefors, Chester Jones of McLean; Peggy Newman of Amarillo; Jimmy Hill, Margaret Dorman, Linda Daughtry, Susan Coates, Rhonda Gallagher, April Hampton, Jauna Benefield, Rhonda Blanchard all of Wheeler, Austin Caldwell, Ada Lou

Lester, Louise Hogan, Randy and Carol McCurley and Dale and Melba Corcoran.



More than half the world's tallow is produced in the United States; over five billion pounds a year.

50-211 (Rev. 5-9-73)

1994 Property Tax Rates in WHEELER COUNTY

This notice concerns AD VALORUM property tax rates for WHEELER COUNTY. It presents information about three tax rates. Last year's tax rate is the actual rate the taxing unit used to determine property taxes last year. This year's effective tax rate would impose the same total taxes as last year if you compare properties taxed in both years. This year's rollback tax rate is the highest tax rate the taxing unit can set before taxpayers can start tax rollback procedures. In each case these rates are found by dividing the total amount of taxes by the tax base (the total value of taxable property) with adjustments as required by state law. The rates are given per \$100 of property value.

	General Fund	Farm to Market/ Flood Control Fund	Special Road/ Bridge Fund
Last year's tax rate:			
Last year's operating taxes	\$1,269,203.59	\$247,421.99	\$101,094.00
Last year's debt taxes	\$-0-	\$-0-	\$-0-
Last year's total taxes	\$1,269,203.59	\$247,421.99	\$101,094.00
Last year's tax base	\$395,667,639	\$391,333,799	\$395,667,639
Last year's total tax rate	\$.32140 /\$100	\$.06340 /\$100	\$.02560 /\$100

This year's effective tax rate:			
Last year's adjusted taxes (after subtracting taxes on lost property)	\$1,269,203.59	\$247,421.99	\$101,094.00
÷ This year's adjusted tax base (after subtracting value of new property)	\$413,834,333	\$409,494,643	\$413,834,333
= This year's effective tax rate for each fund	\$.30669 /\$100	\$.06042 /\$100	\$.02442 /\$100
Total effective tax rate	\$.39153 /\$100		

In the first year a county collects the additional sales tax to reduce property taxes, it must insert the following lines unless its first adjustment was made last year:

- Sales tax adjustment rate	\$ -0- /\$100
= Effective tax rate	\$ -0- /\$100

x 1.03 = maximum rate unless unit publishes notices and holds hearing	\$.40327 /\$100
---	------------------

This year's rollback tax rate:			
Last year's adjusted operating taxes (after subtracting taxes on lost property and including taxes for state criminal justice mandate.)	\$1,269,203.59	\$247,421.99	\$101,094.00
÷ This year's adjusted tax base	\$413,834,333	\$409,494,643	\$413,834,333
= This year's effective operating rate	\$.30669 /\$100	\$.06042 /\$100	\$.02442 /\$100
x 1.08 = this year's maximum operating rate	\$.33122 /\$100	\$.06525 /\$100	\$.02637 /\$100
+ This year's debt rate*	\$ -0- /\$100	\$ -0- /\$100	\$ -0- /\$100
= This year's rollback rate for each fund	\$.33122 /\$100	\$.06525 /\$100	\$.02637 /\$100
This year's total rollback rate	\$.42284 /\$100		

A county that collects the additional sales tax to reduce property taxes, including one that collects the tax for the first time this year, must insert the following lines:

- Sales tax adjustment rate	\$ -0- /\$100
= Rollback tax rate	\$ -0- /\$100

For a county with additional rollback rate for pollution control, insert the following lines:

+ Additional rate for pollution control	\$ /\$100
= Rollback tax rate	\$ /\$100

Schedule A: Unencumbered Fund Balances

The following balances will probably be left in the unit's property tax accounts at the end of the fiscal year. These balances are not encumbered by a corresponding debt obligation.

Type of Property Tax Fund	Balance
Maintenance and Operation	\$800,000

Schedule B: 1994 Debt Service

The taxing unit plans to pay the following amounts for long-term debts that are secured by property taxes. These amounts will be paid from property tax revenues (or additional sales tax revenues, if applicable).

Description of Debt	Principal or Contract Payment To Be Paid	Interest To Be Paid	Other Amounts To Be Paid	Total
None				
Total required from 1994 debt service			\$ 0	
- Amount (if any) paid from funds listed in Schedule A			\$ 0	
- Excess collections from 1994			\$ 0	
= Total to be paid from taxes in 1994			\$ 0	
+ Amount added in anticipation that the unit will collect only 100% of its taxes in 1994			\$ 0	
= Total Debt Service Levy			\$ 0	

This notice contains a summary of actual effective and rollback tax rate calculations. You can inspect a copy of the full calculations at 223 Main Street, Canadian, Texas.

Name of person preparing this notice: James McCarley
Title: Tax Assessor-Collector
Date prepared: August 8, 1994

50-179 (Rev. 5-9-73)

Schedule A Unencumbered Fund Balances

The following estimated balances will be left in the unit's property tax accounts at the end of the fiscal year. These balances are not encumbered by a corresponding debt obligation.

Type of Property Tax Fund	Balance
ALL FUNDS	\$912,767.00

Schedule B 1994 Debt Service

The unit plans to pay the following amounts for long-term debts that are secured by property taxes. These amounts will be paid from property tax revenues (or additional sales tax revenues, if applicable).

Description of Debt	Principal or Contract Payment to be Paid from Property Taxes	Interest to be Paid from Property Taxes	Other Amounts to be Paid	Total Payment
(Expand as needed)				
Total required for 1994 debt service	\$ -	\$ -	\$ -0-	\$ -
- Amount (if any) paid from funds listed in Schedule A			\$ -0-	
- Excess collections last year			\$ -0-	
= Total to be paid from taxes in 1994			\$ -0-	
+ Amount added in anticipation that the unit will collect only 95% of its taxes in 1994			\$ -0-	
= Total Debt Levy			\$ -0-	

Schedule C Expected Revenue from Additional Sales Tax

(For hospital districts, cities and counties with additional sales tax to reduce property taxes) In calculating its effective and rollback tax rates, the unit estimated that it will receive \$ -0-

Schedule D State Criminal Justice Mandate (For Counties)

The WHEELER County Auditor certifies that WHEELER County has spent \$ 885.00 in the previous 12 months beginning JAN. 1, 1994, for the maintenance and operations cost of keeping inmates sentenced to the Texas Department of Criminal Justice. WHEELER County Sheriff has provided information on these costs, minus the state revenues received for reimbursement of such costs.

Schedule E Transfer of Department, Function or Activity

The COUNTY OF WHEELER spent \$ -0- from -0- to -0- on the -0- . The -0- operates this function in all or a majority of the -0-

This notice contains a summary of actual effective and rollback tax rates' calculations. You can inspect a copy of the full calculations at WHEELER COUNTY TAX OFFICE

Name of person preparing this notice: JERRY DAN HEFLEY
Title: COUNTY TAX ASSESSOR/COLLECTOR
Date prepared: 8-2-94

1994 Property Tax Rates in the Allison Independent School District

This notice concerns 1994 property tax rates for the Allison Independent School District. It presents information about three tax rates. Last year's tax rate is the actual rate the school district used to determine property taxes last year. This year's effective tax rate is the same total taxes as last year if you compare properties taxed in both years. This year's rollback tax rate is the highest tax rate the school district can set before it must hold a rollback election. In each case these rates are found by dividing the total amount of taxes and state funds by the tax base (the total value of taxable property) with adjustments as required by state law. The rates are given per \$100 of property value.

Last year's tax rate:	
Last year's operating taxes	\$ 2,251,588
Last year's debt taxes	\$ 0
Last year's total taxes	\$ 2,251,588
Last year's tax base	\$ 173,197,365
Last year's total tax rate	\$ 1.300/\$100

This year's effective tax rate:	
Last year's adjusted taxes (after subtracting taxes on lost property)	\$ 2,256,534
÷ This year's adjusted tax base (after subtracting value of new property)	\$ 190,522,550
= This year's effective tax rate	\$ 1.17914/\$100
x 1.03 = maximum rate unless the school district published notices and holds hearing	\$ 1.21451/\$100

This year's rollback tax rate:	
School maintenance and operations component	\$ 2,453,827
÷ This year's tax base	\$ 191,445,300
= This year's local maintenance and operating rate	\$ 1.2818/\$100
+ \$.06 cents = this year's maximum operating rate	\$ 1.3418/\$100
+ This year's debt rate	\$.00000/\$100
= This year's rollback rate	\$ 1.3418/\$100

Mobeetie News

By Melba Corcoran

Happy Birthday to Glen D. Hodges, Don Quarles, Gene Richards on Aug. 11; to Angela Keelin, Leon Fillingim on Aug. 12; to Claude Lavery, Ethan Lowrey, Garce Moore, Sharon Gowin on Aug. 13; to Kenny Sherell, Floyd Morris, Melvin Tindol and Krista Murray on Aug. 14; to Shawn Hunt, Trey Wood, Toby Newman, Eula Newman, Sheen Kysar, Floyce Corcoran on Aug. 15; to Bethany Hamilton and Richard meadows on Aug. 16.

Happy Anniversary to Jack and Bernice Hefley on Aug. 12; to Marion and Ethel Grimes and Charlie and Edie Phillis on Aug. 13; to Glen D. and Estelle Hodges on Aug. 15; to Gerald and Sherry Gudgeon on Aug. 16.
Lisa Barton and Dena of Reydon

visited Tuesday with Leon and Rose Mary Dockins, Dena stayed for a visit. Our sympathy goes out to the family of Homer D. Dyson. He was buried Tuesday in Mobeetie. Clifford and Eulene Walsler attended the Walsler Reunion Sunday at Cedar Glen Methodist Camp in Palo Duro Canyon.

B & B ELECTRIC CO.

APPLIANCE REPAIR ON ALL MAKES AND MODELS

No Mileages or Trip Charges—In Wheeler, Mobeetie, Briscoe, Allison and Shamrock every Thursday.

806-779-3252

Loyd Bybee, Owner—Call McLean Toll Free: 1-800-834-6058

JENNINGS PLUMBING & ELECTRICAL SERVICE



"A Flush... Is Better Than a Full House!!"
LARRY JENNINGS, Owner

Air Conditioning & Heating

Roto-Rooter Service—Repairs

Remodeling—Septic Tank Installation

1000 N. GILMER
WHEELER, TEXAS

(806) 826-3153

Clifford and Euline Walsler visited Sunday evening in Claude with her nephew Bryan Bischell and children.

Virginia Mixon and Dumas and Orville Greenhouse shopped in Pampa Sat.

Kelley and Edith Cross visited Thursday night in Abilene with their children. Tracy Densberg stayed with R. St. John while they were gone.

Friday Tyler and Caitlyn Burch of Wheeler visited Jud and Lorene Rector, Dale and Melba Corcoran and C. W. Burch. William picked them up later.

Gary and Marilyn Grimes of Amarillo visited the weekend with Doyle and Bulah Grimes.

Doug and Doris Whaley visited several days in Oklahoma with their daughter, Elaine and Tom Haley.

Bill Bailey of Pampa visited Monday with Jap and Alice Bailey.

Hugh Bailey visited Saturday with Jap and Alice Bailey.

Sam and Amanda Childress moved to Odessa over the weekend. We hated to see them move.

Don and Willene Burke went to Pampa Monday for Don's doctor appointment. He is doing better.

Louise and Chuck Hogan went to Amarillo Monday for Louise's doctor's appointment. She got a good report.

Aaron Lancaster of Amarillo visited with Ariza and Anna Bell Corcoran. Thursday night Ernest and Brenda Lancaster and Stormi of Pampa brought quail and cooked them for supper.

Visiting Wednesday with Jud and Lorene Rector was Amy Garcia of Amarillo, Stephen Rector and Melissa McGinnis of South Carolina and Dale and Melba Corcoran.

Virginia Mixon of Dumas spent the weekend with Orville Greenhouse. She played the organ at the First Baptist Church morning services.

Doyle Greenhouse of Dumas ate dinner Sunday with them.

Visiting Sunday night with James and Alisha Moffett was her brother, Denny and Sue Moore of Mineral Wells, Shelia Touchstone and Ann of Pampa and John was also there. John is spending this week in Pampa with Billy and Shelia and Ann.

Visiting with Calvin and Leola Stuart was grandsons, Zack and Jeremy of Amarillo.

Calvin and Leola Stewart and Julie Stuart, Jessie, Zach and Jeremy of Amarillo attended the Richardson family reunion in Shamrock Sunday.

Leola Stuart visited her mother Gladys Richardson in Erick Wednesday. They visited in Elk City with Barbara Richardson and in Sayra with Sheryl Richardson, Katie and Tyler.

Calvin and Leola Stuart went to Oklahoma City last weekend.

Clinton and Mareta Stribling, Roy Lynn and family of Wheeler, Tom and family of Miami and Wayne and family of Pampa all just returned from a family vacation to the Salida area of Colo.

Joe and Melba Darnell, Kent and Debbie McLaughlin and boys and Wade and Gayla Hathaway and children just returned from camping in Colorado.

Dale and Melba Corcoran and Verna Corcoran of Wheeler Care Center spent Sunday with Earl and Pauline Barnes of Wheeler.

Melba Corcoran spent Saturday in Amarillo doing family research at the L.D.S. Church.

Keep praying for Troy Stravner of Colorado. He underwent cancer surgery for the removal of a lung Thursday. He is doing better. The doctor said he couldn't explain it. He didn't think he would live the night. Sandy told the doctor it was all the prayers from the east to west coast for him. He is Anna Bell Corcoran's brother.

Mobeetie XYZ
The Mobeetie XYZ met Friday night at the First Baptist Church Fellowship Hall. Marion Grimes, president in charge. Louise Hogan took blood pressures. Mona Cook brought the



THE WHEELER TIMES

Page 8—Thursday, August 11, 1994

"Wheeler, town of friendship and pride."

program. Birthday people were R. St. John and Doris Finsterwald. Those enjoying the covered dish dinner and fellowship was Lester Leonard, R. St. John, Austin Caldwell, Doris Finsterwald, Marion and Ethel Grimes,

Doyle and Bulah Grimes, Chuck and Louise Hogan, Kelly and Edith Cross, Bro. Robert and Mona Cook, Artie, Daniel and William and Dale and Melba Corcoran.

Wheeler Church of Christ

Congregational Concerns:

A thank-you note has been received from Billy Thompson. Billy is the young man from the Bible Chair in Canyon, who recently preached for this congregation. This thank-you note is posted on the bulletin board in the lobby.

Congratulations must be expressed to Tony Votto and Kristi Finsterwald, who were married last Saturday afternoon in Wheeler.

From the Minister's Desk:

In the Wednesday, August 3rd issue of *The Pampa News*, there was a thought-provoking editorial by Paul Harvey, the famous news commentator. This editorial was entitled, "Can Singapore Teach Americans?" And it said:—

"Chicago and Los Angeles have essentially the same population as Singapore. But where Chicago last year had 851 murders and Los Angeles had 1,058 murders—Singapore had 58. Los Angeles had 1,781 rapes. Singapore had 80. In the United States, the most common victims of crime are young people, ages 12 through 17. They are raped, robbed, and assaulted at five times the rate for adults."

"The American Federation of Teachers at its recent convention in Anaheim, California, gave their number one priority to classroom and school yard violence. Yet any appeal for corporal punishment for youthful criminals was rejected."

"When an American boy in Singapore was whipped for vandalism, segments of our nation erupted in righteous wrath. The young man's parents hired lawyers and petitioned officials all the way to the White House to 'have mercy' on their son. The whipping, they said, equated with torture."

"In the United States, both teachers and students agree that the number one factor influencing student behavior is the 'lack of discipline'. But teachers blame parents and parents blame teachers until finally it becomes a problem for the police."

"Are we now enough removed from the boy in the headlines to dispassionately discuss juvenile

crime in our nation? Any parent knows that a youngster is constantly testing parental authority—even as the parentless boy stealing hubcaps keeps glancing around expecting to be slapped across the behind. When it doesn't happen, it's likely he will do 'something worse' next time."

"Lee Kuan Yew, prime minister of Singapore for thirty-one years, took that country from poverty to plenty in one generation. At the same time, he made Singapore the safest city in the world. Now senior minister, he remains enormously influential."

"Might he usefully advise us? Lee Kuan Yew says: 'In the United States, the expansion of the right of the individual to behave or misbehave as he pleases has come at the expense of an orderly society. Certain basics about human nature do not change. Evil is not the result of being a victim of society. An evil person is prone to do evil things, and he has to be stopped from doing them.'"

"In today's Singapore, the rules are very clear. If you want to stay alive, you don't deal drugs. If you don't want to get whipped, you don't vandalize. If you don't want to pay a \$250 fine, you don't spit your chewing gum onto the sidewalk."

"No plea bargaining, no clemency, no expensive lawyers—no room to maneuver. So to all the residents of Singapore—Chinese, Malay, Tamal and white boys from the United States—causing trouble is just not worth it."

Bill Morrison, Minister
Church of Christ
Wheeler, Texas

Services:

Sunday Bible Study 10:00 A.M.

Sunday Morning Worship 11:00 A.M.

Sunday Night Worship 6:00 P.M.

Wednesday Bible Study 7:30 P.M.

An Invitation: You are cordially invited to attend any of the weekly services of the Wheeler Church of Christ which meets at 1001 S. Alan Bean Blvd. in Wheeler, Texas.

We're working to protect you—but we need your help!



Our most important goal at Natural Gas Pipeline Company is to safeguard everyone who lives and works along our pipeline route. But as hard as we try, we can't do the job alone. We need your help to spot and report pipeline emergencies so we can react promptly. And we need your cooperation to prevent accidents from happening.

Help prevent pipeline accidents:

- Call BEFORE you dig, drill, blast or doze.
- Watch for our signs at road, railroad and river crossings, at fence lines, ditches and other sites.
- For no-cost location of underground facilities, call the 24-hour "TESS" number (1-800-DIG-TESS) to reach Texas Excavation Safety System. Please call two working days in advance.



Signs of a pipeline emergency:

- Hissing or shrill SOUND.
- Unusual BLOWING dirt or dust.
- Persistent BUBBLES in water.
- DYING PLANTS amid healthy ones.
- FIRE or EXPLOSION near pipeline.

To report a pipeline emergency:

- Phone 1-800-733-2490, our toll-free, 24-hour line.

Steps to take in a pipeline emergency:

- Evacuate the area immediately.
- Avoid potential ignition sources.
- Warn others to stay away.



Natural Gas Pipeline Company of America
A MIDCON CORP COMPANY

1994 Property Tax Rates in CITY OF MOBEETIE

This notice concerns 1994 property tax rates for CITY OF MOBEETIE. It presents information about three tax rates. Last year's tax rate is the actual rate the taxing unit used to determine property taxes last year. This year's effective tax rate would impose the same total taxes as last year if you compare properties taxed in both years. This year's rollback tax rate is the highest tax rate the taxing unit can set before taxpayers can start tax rollback procedures. In each case these rates are found by dividing the total amount of taxes by the tax base (the total value of taxable property) with adjustments as required by state law. The rates are given per \$100 of property value.

Last year's tax rate:

Last year's operating taxes	\$ 12,795.22	
Last year's debt taxes	\$ -0-	
Last year's total taxes	\$ 12,795.22	
Last year's tax base	\$ 1,752,770	
Last year's total tax rate	\$.73000	/\$100

This year's effective tax rate:

Last year's adjusted taxes (after subtracting taxes on lost property)	\$ 12,795.22	
÷ This year's adjusted tax base (after subtracting value of new property)	\$ 1,759,590	
= This year's effective tax rate	\$.72717	/\$100

In the first year a hospital district or city collects the additional sales tax to reduce property taxes, it must insert the following lines unless its first adjustment was made last year:

- Sales tax adjustment rate	\$ -0-	/\$100
= Effective tax rate	\$ -0-	/\$100

x 1.03 = maximum rate unless unit publishes notices and holds hearing	\$.74898	/\$100
---	-----------	--------

This year's rollback tax rate:

Last year's adjusted operating taxes (after subtracting taxes on lost property and adjusting for transferred function)	\$ 12,795.22	
÷ This year's adjusted tax base	\$ 1,759,590	
x This year's effective operating rate	\$.72717	/\$100
x 1.08 = this year's maximum operating rate	\$.78534	/\$100
+ This year's debt rate	\$ -0-	/\$100
= This year's rollback rate	\$.78534	/\$100

A hospital district or city that collects the additional sales tax to reduce property taxes, including one that collects the tax for the first time this year, must insert the following lines:

- Sales tax adjustment rate	\$ -0-	/\$100
= Rollback tax rate	\$ -0-	/\$100

For a taxing unit with additional rollback rate for pollution control, insert the following lines:

+ Additional rate for pollution control requirement	\$ -0-	/\$100
= Rollback tax rate	\$ -0-	/\$100

50-179
(Rev. 5-94/3)

Schedule A

Unencumbered Fund Balances

The following estimated balances will be left in the unit's property tax accounts at the end of the fiscal year. These balances are not encumbered by a corresponding debt obligation.

Type of Property Tax Fund Balance

Schedule B 1994 Debt Service

The unit plans to pay the following amounts for long-term debts that are secured by property taxes. These amounts will be paid from property tax revenues (or additional sales tax revenues, if applicable).

Description of Debt Certificate of Obligation 1983	Principal or Contract Payment to be Paid from Property Taxes	Interest to be Paid from Property Taxes	Other Amounts to be Paid	Total Payment
(Expand as needed)	\$ 4500.00	\$ -0-	\$ -0-	\$ 4500.00
Total required for 1994 debt service			\$ 4500.00	
- Amount (if any) paid from funds listed in Schedule A			\$ -0-	
- Excess collections last year			\$ -0-	
= Total to be paid from taxes in 1994			\$ 4500.00	
+ Amount added in anticipation that the unit will collect only 85 % of its taxes in 1994			\$ 794.11	
= Total Debt Levy			\$ 5294.11	

This notice contains a summary of actual effective and rollback tax rates' calculations. You can inspect a copy of the full calculations at CITY HALL MOBEETIE, TEXAS

Name of person preparing this notice Claudine Finsterwald

Title RTA City of Wheeler

Date prepared 8-9-94

1994 **Property Tax Rates in NORTH HOSPITAL DISTRICT**

This notice concerns AD VALORUM property tax rates for NORTH HOSPITAL DISTRICT. It presents information about three tax rates. Last year's tax rate is the actual rate the taxing unit used to determine property taxes last year. This year's *effective* tax rate would impose the same total taxes as last year if you compare properties taxed in both years. This year's *rollback* tax rate is the highest tax rate the taxing unit can set before taxpayers can start tax rollback procedures. In each case these rates are found by dividing the total amount of taxes by the tax base (the total value of taxable property) with adjustments as required by state law. The rates are given per \$100 of property value.

Last year's tax rate:

Last year's operating taxes	\$ 456,395.00
Last year's debt taxes	\$ -0-
Last year's total taxes	\$ 456,395.00
Last year's tax base	\$ 233,774,021
Last year's total tax rate	\$.19560 /\$100

This year's effective tax rate:

Last year's adjusted taxes (after subtracting taxes on lost property)	\$ 456,395.00
+ This year's adjusted tax base (after subtracting value of new property)	\$ 250,015,538
= This year's effective tax rate	\$.18254 /\$100

In the first year a hospital district or city collects the additional sales tax to reduce property taxes, it must insert the following lines unless its first adjustment was made last year.

- Sales tax adjustment rate	\$ -0-	/\$100
= Effective tax rate	\$ -0-	/\$100

x 1.03 = maximum rate unless unit publishes notices and holds hearing	\$.18801	/\$100
---	-----------	--------

This year's rollback tax rate:

Last year's adjusted operating taxes (after subtracting taxes on lost property and adjusting for transferred function)	\$ 456,395.00
+ This year's adjusted tax base	\$ 250,015,538
= This year's effective operating rate	\$.18254 /\$100
x 1.08 = this year's maximum operating rate	\$.19714 /\$100
+ This year's debt rate	\$ -0- /\$100
= This year's rollback rate	\$.19714 /\$100

A hospital district or city that collects the additional sales tax to reduce property taxes, including one that collects the tax for the first time this year, must insert the following lines:

- Sales tax adjustment rate	\$ -0-	/\$100
= Rollback tax rate	\$ -0-	/\$100

For a taxing unit with additional rollback rate for pollution control, insert the following lines:

+ Additional rate for pollution control requirement	\$ -0-	/\$100
= Rollback tax rate	\$ -0-	/\$100

Walker-Draper Vows Are Exchanged

Melody Dianne Walker, daughter of Eddy and Wanda Walker of Allison, Texas was united in marriage to Richard Dale Draper, son of David and Barbara Draper of Tyler, Texas. The ceremony was held in Allison at the First Baptist Church at 3:00 p.m. on July 2, 1994. The stirring double Bible exchange ceremony was conducted by Rev. Roy Jones, pastor of the Allison United Pentecostal Church and Rev. Mike Littlefield, pastor of Tyler Tabernacle UPC, of Tyler, Texas.

Melody is the granddaughter of Clifton and Louise Boydston and Jennie Walker and the great-granddaughter of Bruce and Pearl Harrison and Opal Boydston, all of Allison.

Worship and traditional wedding music was played by Sister Bobby Jones, wife of Pastor Roy Jones. Four beautiful song selections were sang by either Donnie and Teresa Hendrick, of Dumas, Texas or by C. Derrin Graham of Tyler, Texas and Kimberly Forse of Baytown, Texas who was also a student at Texas Bible College in Houston.

Flower girl was Cherish Draper, a niece of the groom. Bible bearers were Kimber Boydston and Sabrina Dupont, cousins of the bride. Ushers and candlelighters were Jonathan and Justin Walker, brothers of the bride.

Maid of honor was Vickie Lipscomb of Corsicana, Texas and student of TBC. Bridesmaids were Cheryl Dupont, aunt of the bride, of Allison and Melissa Fleming, sister of the bride, from Lufkin, Texas.

Bridal attendants wore hunter green two-piece dresses with ivory buttons and carried wine-colored long stemmed silk roses with ivory baby's breath. Their hair was swept up in a french twist and curls with baby's breath for accent.

Best man was Kevin Linconhoker of Lufkin, Texas and a student at TBC. The groomsmen were James Burris of Oregon, a TBS student, and C. Derrin Graham of Tyler. Groomsmen wore black tuxedos and ivory shirts with black cummerbunds and bowties.

The bride, given in marriage by her father, wore a full white satin gown decorated with iridescent sequins and lace with a long full train. The veil was long netting with sequined tierra and full pouf.

The reception held in the church fellowship hall featured a three-tiered cake with white steps leading to two small cakes on either side with flowers decorating the steps. The white cake was decorated with silk flowers which were purple, hunter green and ivory.

The bride's table was served by Kim Thompson, aunt of the bride, of Amarillo and Genevieve LaVoi of Mustang, Oklahoma, student of TBC.

Two large wreaths of grapevines and ivory Magnolias decorated the reception hall as well as purple and green crepe streamers. A table with nuts, mints, and fruit was provided.

The groom's table had a chocolate bundt cake with white and dark chocolate drizzled over it. Coffee and a plate of grapes completed the groom's table. It was served by Dana Draper, sister-in-law of the groom, also of Tyler, Texas.

The couple went to Palo Duro Canyon. They saw the "TEXAS" play and also visited the Plains Historical Museum in Canyon. They are now living in Houston on the campus of Texas Bible College at 816 Evergreen Drive, Houston, TX, 77023.

The bride is a 1992 graduate of Allison school. She is pursuing a career in Christian Education.

The groom graduated from Whitehouse High School near Tyler in 1985. He then served four years in the Navy and attended two years of college at Tyler Junior College where he received his Associate's Degree. He completed one year of Bible study and plans to graduate from Texas Bible College in two more years. Richard has had some preaching engagements in the past year. The couple have a burden for Missions. Richard is currently employed by Fingers Furniture Warehouse in Houston as a security officer.



Mrs. Richard Draper...Nee Melody Walker

Canadian Supply & Redi-Mix
for all your Concrete Needs!
1-800-491-0593
Jerry Smith, Owner
806-323-5379

**Schedule A
Unencumbered Fund Balances**

The following estimated balances will be left in the unit's property tax accounts at the end of the fiscal year. These balances are not encumbered by a corresponding debt obligation.

Type of Property Tax Fund	Balance
---------------------------	---------

**Schedule B
1994 Debt Service**

The unit plans to pay the following amounts for long-term debts that are secured by property taxes. These amounts will be paid from property tax revenues (or additional sales tax revenues, if applicable).

Description of Debt	Principal or Contract Payment to be Paid from Property Taxes	Interest to be Paid from Property Taxes	Other Amounts to be Paid	Total Payment
(Expand as needed)	\$	\$	\$	\$
Total required for 1994 debt service			\$ -0-	
- Amount (if any) paid from funds listed in Schedule A			\$ -0-	
- Excess collections last year			\$ -0-	
= Total to be paid from taxes in 1994			\$ -0-	
+ Amount added in anticipation that the unit will collect only 95% of its taxes in 1994			\$ -0-	
= Total Debt Levy			\$ -0-	

**Schedule C
Expected Revenue from Additional Sales Tax**

(For hospital districts, cities and counties with additional sales tax to reduce property taxes) In calculating its effective and rollback tax rates, the unit estimated that it will receive \$ -0- in additional sales and use tax revenues.

**Schedule D
State Criminal Justice Mandate (For Counties)**

The _____ County Auditor certifies that _____ County has spent \$ _____ in the previous 12 months beginning _____, 19____, for the maintenance and operations cost of keeping inmates sentenced to the Texas Department of Criminal Justice. _____ County Sheriff has provided information on these costs, minus the state revenues received for reimbursement of such costs.

**Schedule E
Transfer of Department, Function or Activity**

The _____ spent \$ _____ from _____ to _____ on the _____ The _____ operates this function in all or a majority of the _____

This notice contains a summary of actual effective and rollback tax rates' calculations. You can inspect a copy of the full calculations at WHEELER COUNTY COURTHOUSE TAX OFFICE

Name of person preparing this notice JERRY DAN HEFLEY
Title COUNTY TAX ASSESSOR/COLLECTOR
Date prepared 8-4-94

Clarendon Offers Driver's Safety Course

A Driver Safety Course will be held at Clarendon College on Saturday, August 13, 1994. It will meet from 9:00 a.m. to 4:00 p.m. in Room 101 of the Administration Building. The fee is \$25.00. Please contact Clarendon College at 1-806-874-3571 for further information. Upon completion of this course, participants will be eligible for a 10% discount on their liability insurance or dismissal of a traffic violation. All dismissals of traffic violations must be approved by the appropriate Justice of Peace. This course is offered by Clarendon College and USA Training Company, Inc.

Mt. View Quilting Club

The Mt. View Quilting Club met Thursday at Totty School house with Bulah Grimes as hostess. Those attending were Eva Webb, Esther Hodges, Audrey Seitz, Flora Mae Kelley, Orville Greenhouse and Bulah Grimes. Hostess next week will be Edith Cross.

DQ Treats & Eats

Full Meal Deal™
1/2-lb⁺ Hung-Buster*, fries, drink and a sundae.
\$2.99

DQ Kid's Pick-nic™
The only kid's meal that lets kids pick! Pick your favorite food, your favorite treat - even your favorite prize! Plus, you also get a drink and fries!
\$1.99

On Sale at Dairy Queen® August 8-21, 1994.

©Reg. TM Am. D.Q. Corp. *Reg. TM Tx. D.Q. Op. Coun. ©Tx. D.Q. Op. Coun. †Pre-cooked weight. At participating Dairy Queen stores.

Rodeo (From Page 1)

4. Travis Lay
5. Curtis Pritchett
6. Joe Bill Rogers, Elk City
- Saturday**
1. Curtis Pritchett
2. Joe Bill Rogers
3. Travis Lay
4. Katie Crowdis
5. Brent Longway
6. Steve Bowen, Childress

Ages 10-13

ALL AROUND: Julie Dawson, Arnett, OK

- Steer Riding**
1. Tristan Carr, Canadian (Friday)
1. Preston Farmer, Fritch (Saturday)

Breakaway Roping

1. Julie Dawson, Arnett (Friday)

Barrel Race

- Friday**
1. Julie Dawson
2. Heather Elder, Elk City
3. Amanda Lay, Stinnett
4. Teddra Simmons, McLean
5. Jalynn Rogers, Elk City
6. Caryn Lowrey, Pampa
- Saturday**
1. Jaicee Herren, Allison
2. Heather Elder

3. Julie Dawson
4. Jalynn Rogers
5. Amanda Lay
6. Heath Carlisle, Borger

Pole Bending

- Friday**
1. Julie Dawson
2. Jennifer Elder, Elk City
3. Dana Hayes, Borger
4. Lindsey Tidwell, Pampa
5. Caryn Lowrey
6. Robyn Lowrey, Pampa

Saturday

1. Jaicee Herren
2. Dana Hayes
3. Lindsey Tidwell
4. Caryn Lowrey
5. Jennifer Reynolds
6. Heath Carlisle

Flag Race

- Friday**
1. Andrea Whaley, Miami
2. Jalynn Rogers
3. Lindsey Tidwell
4. Darla Hayes, Borger
5. Kirbie Kinnaman, Briscoe
6. Jennifer Reynolds, Shamrock
- Saturday**
1. Caryn Lowrey
2. Jennifer Reynolds
3. Lindsey Tidwell
4. Julie Dawson
5. Jalynn Rogers
6. Dana Hayes

Ages 14-19

ALL-AROUND: Sumer Leffew, Wheeler

- Calf Roping**
1. Kyle Zybach, Briscoe (Friday)

Saturday

1. Shawn Hill, Higgins
2. Travis Hill, Higgins
3. Matt Carlson, Sweetwater
4. Jamey Herren, Allison

Ribbon Roping

1. Kyle Zybach, Briscoe (Friday)
- Saturday**
1. Matt Carlson
2. Travis Hill

Breakaway Roping

- Friday**
1. Amy Carr, Canadian
2. Kyle Zybach
3. Grayson Lewis, Pampa
4. Andy Lisle, Shamrock
5. Kasia Lewis, Pampa
6. Brent Hargrove, Elk City
- Saturday**
1. Shawn Hill

2. Amy Carr
3. Jamey Herren
4. Brent Hargrove, Elk City

Pole Bending

- Friday**
1. Kyle Zybach
2. Sumer Leffew
3. Deanna Lax, Shamrock
4. Dee Ann Lee, Pampa
5. Stacey Miller, Wheeler
6. Kaci Cook, Elk City
- Saturday**
1. Sumer Leffew
2. Lana Nix, Elk City
3. Amy Carr
4. Amy Miller
5. Kaci Cook
6. Stacey Miller



Barrel Race

- Friday**
1. Sumer Leffew
2. Amy Carr
3. Kyle Zybach
4. Amy Miller, Clinton
5. Andy Lisle, Shamrock
6. Kasia Lewis

Saturday

1. Sumer Leffew
2. Kaci Cook
3. Lana Nix
4. Amy Miller
5. Andy Lisle
6. Stacey Miller



A COWBOY IN THE PAST: What goes around comes around. Paybacks are ----! This picture was brought in to be an ad, but, alas, temptation was too great. And if anyone deserves it, this one does. He will be 40 Sunday. His herding these days involves trucks. Happy Birthday!

Care Center Comments

By Cathy

We would like to welcome another new resident to Wheeler Care Center. Her name is Alta Lee Pillars. Mrs. Pillars is from Shamrock, but I was told that she grew up in the Twitty area. Welcome Mrs. Pillars!!

We would like to thank Thurman Bradstreet for the watermelons. The residents really enjoyed the special treat. We also want to thank Phillip Patterson for donating a TV to the Care Center for a resident to use.

Monday I worked on nails for the residents who needed manicures. The residents sure do line up when they see the manicure cart. That afternoon I took some residents outside to enjoy the sunshine.

We want to wish Irene Stewart a speedy recovery. Mrs. Stewart is in St. Anthony's Hospital with a broken hip. I was told she came out of surgery ok and was going good.

Tuesday Barbara read the paper then we decorated the dining room for the month of August. Mrs. Hyatt had church with the residents. Barbara and I helped out some in the singing department. That afternoon we worked on arts and crafts. We have alot of crafts started so it's hard to choose which one to work on and finish.

Wednesday the paper was read by Barbara, she had a big turn out to hear the current events, but I was told she puts everyone to sleep. Janice Sparlin was back from her vacation. The residents were real happy to see her. While Janice had Bible Study with some of the residents Barbara and I took a group of residents to the lobby and had exercises with them. We had lots of fun. We had a nice surprise, Mr. Hyatt went to Shamrock to pick up the new TV that the activity department has been raising money for. A big thank you to the ones who donated their money toward the fund, and a thank you to Wheeler Care Center for finishing up the balance. I also want to thank Family TV for letting us have the TV at cost. The residents really do like the TV alot. Again thanks to everyone. That afternoon we played bingo. We had 19 resident to play. Our blackout winner was Alta Lee Pillars.

Thursday we had church with the Christian Center ladies. Fern Young, Rozena Zybach and Mrs. Pfiel led the singing. Kerry Moore also helped out with the singing. After the singing Mrs. Pfiel had devotion. That afternoon we had care plan meeting all afternoon. Barbara popped popcorn and Lyna Watson helped serve the popcorn.

Friday Barbara and I went to Thriftway to buy the fixins for homemade ice cream. That afternoon we made 3 freezers of ice cream and not one drop was left. We had strawberry, banana and vanilla. It was really good.

Saturday Barbara did nails and afterwards passed the mail. That afternoon they played bingo and had 21 residents to play. The blackout winner was Shorty Crawford.

Sunday the First Baptist Church had afternoon services with the residents. Wade Hampton sang to the residents.

CattleWomen Discuss Plans For Style Show

The Top O' Texas CattleWomen met for their August meeting, August 8, at the Weatherly's Quail Creek home, with the Wheeler women furnishing the meal and Nancy Riemer and Mary Weatherly as hostesses. The opening prayer and meal blessing was offered by Amelia Sims. Bethel Robinson, president, presided over the meeting.

Nadyne Williams read the minutes of the last meeting, and they were approved as corrected. Carolyn Buckingham gave the treasury's report.

Reports were made concerning Beef For Father's Day Beef Gift Certificates winners, also various other projects we have going. But the main business was finalizing the Style Show plans. All committees were reporting to be about ready for action, and anyone could volunteer to help other committees, if they wished for more help. The Air Lines tickets are bought and have arrived for the winner of the trip to Las Vegas that will be drawn at the end of the style show.

Those attending the meeting were Anita Brown, State President, Bethel Robinson, Panhandle, Nadyne Williams, Diane Buckingham, and Diana Pate, all from Shamrock, Barbara Meadows, Brenda Wood, Briscoe, Pat and Sally Youngblood, Lefors, Berklee Clements, Skellytown, Lilith Brainard, Pampa, Amy Brainard, Sally Wicker, Risa and Rachel, Canadian, Vida Brown, Amelia Sims, Mary Mitchell, Sandra Christner, Carolyn Buckingham, Nancy Reimer, Mary Weatherly all from Wheeler, and Bonnie Abraham from Hoover.

REMEMBER, THE TOP O' TEXAS STYLE SHOW AND BRUNCH ON SEPTEMBER 10, AT THE PAMPA COUNTRY CLUB, STARTING AT 10:00 A.M. GET YOUR TICKETS FROM ONE OF THE CATTLEWOMEN FOR \$10.00 AND HAVE A CHANCE TO GO TO LAS VEGAS.



Happy Birthday, Kid You've Finally Made It!

The first free, tax-supported public library in the United States is believed to be the Scoville Memorial Library in Salisbury, Connecticut, founded in 1803.

HOSPICE OFFERS LIFE-CHANGING EDUCATIONAL OPPORTUNITY

Hospice of the Panhandle, a non-profit agency serving the terminally ill and their families, is offering a life-changing educational opportunity to the public.

An information night detailing this opportunity is set for 7 p.m., Tuesday, Aug. 23, at First United Methodist Church, 500 N. Main, in Shamrock. "We invite everyone from Wheeler, Shamrock, Wellington, and the surrounding areas to join us at this meeting," said Sherry McCavit, executive director. "We'll be providing information about a class offered through Clarendon College in September, about the hospice philosophy of care and about services available to this area through Hospice of the Panhandle."

Those attending the hour-long informal meeting will be given the opportunity to ask questions and to sign up for "The Hospice Approach to Living & Dying," a 30-hour course to be

Million's Available In Special Funding

Would your community benefit by having a historic property rehabilitated? Maybe you town could profit by having landscaping and other scenic beautification projects. How about revitalization of your downtown area? These are just three possibilities of many transportation enhancement categories available for special funding.

The Intermodal Surface Transportation Efficiency Act of 1991 allowed \$180 million to help fund special projects in communities across Texas. Historically, there has been low interest in West Texas and the Panhandle since the inception of the program. The \$180 million will be consumed over a course of six years, which means time is running out. Communities in other areas of Texas have benefited greatly. Some projects funded include rehabilitation and operation of historic transportation buildings, structures and facilities. Facilities could include old railroad stations, historic airports such as those used as training bases in World War II, or even the construction of bicycle and pedestrian paths.

Categories are not simply limited to "Planes, Trains and Automobiles!" Other categories for funding might include projects to control and remove outdoor advertising, archaeological planning and research or mitigation of water pollution due to water runoff.

During the first round of submissions from various communities across Texas, 291 projects were found eligible out of 339 received. Out of this group, 112 were selected for funding in which approximately \$98 million was awarded. The program is cost-reimbursable up to 89%. Remaining costs for must be furnished locally.

The first call for project proposals was issued in August 1993. The second call began May 18 and ends August 16, 1994. A third call for project proposal will be issued in the near future. For information concerning this program, contact Sterling Brooks, Public Information Officer, Childress District, Texas Department of Transportation (TxDOT) 817-937-2571.

taught in Shamrock. The classes explore the unique hospice philosophy of caring for the terminally ill.

"Everyone can benefit from what is taught in this class," said McCavit. "The principles taught in the course can be applied to everyday living. In fact, almost everyone who has completed the course says it has changed their lives in one way or another."

Hospice of the Panhandle Inc. is a charitable service committed to meeting the physical, emotional, and spiritual needs of the terminally ill and their families. Hospice operates as a tax-exempt, not-for-profit home and community services support agency with hospice designation, is licensed by the State of Texas, and is certified to care for Medicare/Medicaid patients.

Formed in 1988 as Hospice of Pampa, the name was later changed to Hospice of the Panhandle as referrals poured in from surrounding communities. Hospice's service area now includes Carson, Gray, Hemphill, Hutchinson, Roberts, Wheeler, Lipscomb, Donley and Collingsworth counties.

To date, 460 patients and their families have received care through Hospice of the Panhandle. Presently, three patients from the Shamrock area are enrolled in this program.

For more information about the upcoming public meeting and/or Hospice of the Panhandle's services, call McCavit or Dee Lee Laramore at (806) 665-6677.

NOTICE OF EFFECTIVE TAX RATE

1993 PROPERTY TAX RATES IN Fort Elliott CISD

This notice concerns 1993 property tax rates for Fort Elliott CISD. It presents information about three tax rates. Last year's tax rate is the actual rate the school district used to determine property taxes last year. This year's effective tax rate would impose the same total taxes as last year if you compare properties taxed in both years. This year's rollback tax rate is the highest tax rate the school district can set before it must hold a rollback election. In each case these rates are found by dividing the total amount of taxes and state funds by the tax base (the total value of taxable property) with adjustments as required by state law. The rates are given per \$100 of property value.

Last year's tax rate:

Last year's operating taxes	\$ 2,430,455
Last year's debt taxes	\$ -0-
Last year's total taxes	\$ 2,430,455
Last year's tax base	\$ 197,586,715
Last year's total tax rate	\$ 1.26/\$100

This year's effective tax rate:

Last year's adjusted taxes (after subtracting taxes on lost property)	\$ 2,483,270
+ This year's adjusted tax base (after subtracting value of new property)	\$ 223,585,315
= This year's effective tax rate	\$ 1.110658/\$100
x 1.03 = maximum rate unless unit publishes and holds hearing	\$ 1.150077/\$100

This year's rollback tax rate:

School maintenance and operations component	\$ 2,857,695
+ This year's tax base	\$ 223,585,315
= This year's local maintenance and operating rate	\$ 1.277251/\$100
+ \$.06=this year's maximum operating rate	\$ 1.337251/\$100
+ This year's debt rate	\$ -0-/\$100
= This year's rollback rate	\$ 1.337251/\$100

Small investment, huge return

TexSCAN, the state-wide classified advertising network, is an inexpensive way for you to place your classified advertisement in front of millions of people.

In fact, you will reach more than 3 million readers for only \$10 per word.

Call this newspaper for details, today.



Texas Statewide Classified Ad Network
A service of the Texas Press Association

SCHEDULE A: UNENCUMBERED FUND BALANCES

The following estimated balances will probably be left in the unit's property tax accounts at the end of the fiscal year. These balances are not encumbered by a corresponding debt obligation.

Type of Property Tax Fund	Balance
Maintenance & Operating	\$788,244

This notice contains a summary of actual effective and rollback tax rates' calculations. You can inspect a copy of the full calculations at the Fort Elliott CISD Administration Office.

Name of person preparing this notice Jerry Dan Hefley

Title Wheeler County Tax Assessor Collector

Date prepared August 10, 1994