



THE WHEELER TIMES

(USPS-681-960)
VOLUME 77, NUMBER 7

THURSDAY, FEBRUARY 3, 2011

SINGLE COPY **50c**

“Wheeler; town of friendship and pride.”



GROUND BREAKING: Greenbelt Electric Cooperative, Inc. board of directors broke ground Monday, January 31, 2011, for a new office and storage facility south of Wheeler. Shown here breaking ground are (back row, l. to r.) Stan Shelton, Billy Conner, Carson Bird, Jim Balton, (front) Walter Camp, Steve Mathews, and Jimmie Taylor.

Greenbelt Electric To Open Office Building; New Employees For Local Construction Crew

CWE CHAT WITH EDITOR
By Louis C. Stas

Monday we were awaiting the arrival of the snow and ice storm of 2011. We could use the moisture, but we do not need the ice.

Upon our arrival at home Monday around 5 p.m. we saw a few tiny flakes of snow.

Tuesday morning we found about 4" snow—blowing and temperature showing on the bank is -3°. We have not ice.

Glad to get the picture and article about Greenbelt Electric putting an office in Wheeler. This will be good for the town.

The pictures and results of the Wheeler County Junior Livestock Show were not available to the Times by press time. We will have them as soon as we can.

I understand the show was a huge success. Not only does the show represent a lot of work on the part of the youngsters, it is a lot of work for the individuals who help with the show. You all deserve a 'Tip of the Hat'.

Have you sent in your nominations for 'Outstanding Individuals' to be recognized at the Chamber of Commerce banquet. If you know a deserving man, woman and/or employee, please let the

(Continued Page 8)

STORM REPORT

As Reported by...
Stormie Meriwether,
First Grade Student

Dear Friends, My dad puts a lot of hay out for the cows. The mama cows eat the hay and the babies can snuggle in the hay and stay warm. I help my dad. My dad says, "let it down". I have to push the button and put the hay down. He has to get the string off the bale and put the big round thing over the hay.

Sometime I'm the gate opener. If it's too cold my mom is the gate opener. When it's very very cold my mom and I stay in the house and my dad feeds the animals all by himself, even my horse. That's so nice of my dad.

Finally it's snow! I very want snow for a long time. Now it's snow but it is too much wind. It all blows away. The road looks like white ocean waves. Sometimes the snow curls up in the air like a cloud. We go to school, but we can't go outside. That's no fun.

I am a little worried 'bout the animals in the cold. The deer and the little birds don't have a warm place to stay. Maybe I like some sunshine for the animals and I can play outside. That's it.

Greenbelt Electric Cooperative, Inc.'s board of directors and staff broke ground on Monday, January 31, 2011, for a new office building in Wheeler County which will be located on Highway 83 South of Maxey's Steakhouse. The 7,200 square foot building will be constructed on five acres of land and will be used for warehouse storage, office space and a lineman's area. The yard will be used for storing materials such as transformers, poles and wire. Other expansion plans are to add a construction crew to the existing service crew already in Wheeler, making a total of five employees in the Wheeler. A digger truck, a large bucket truck and two smaller bucket trucks will be located at the new facilities. These additions are being made to meet GEC's growing electrical demand in Wheeler County. "GEC's electrical loads in Wheeler County are expected to increase substantially in the next 18 months," stated GEC's General Manager, Stan McClendon. Rick Bond, GEC's Operations Manager added, "Having additional

Shelter/Safe Room Rebates Available

There is another chance for Texas panhandle residents to be involved in a program to receive a rebate of 50% of the cost (not to exceed 3,000) for the installation of a tornado shelter or safe room in or around their homes.

This same program resulted in the installation of 1,415 tornado shelters in homes across the Panhandle between 2006 and 2008. Currently the Panhandle Regional Planning Commission has 350 rebates available. People interested in applying for a rebate can

(Continued Page 8)

personnel and equipment will assure that we can meet our growing loads and bring value to our current members." Greenbelt EC

Chamber Needs Help

NOMINATIONS NEEDED FOR AWARDS

The Wheeler Chamber of Commerce is once again taking nominations for the five outstanding individuals who will be recognized at the annual Chamber of Commerce Installation Banquet March 12, 2011.

It is the desire of the Chamber to recognize the most deserving individuals in each of the five categories. To be recognized are the Woman, Man, Employee, Teenager and Farmer/Rancher of the year and Pioneer Spirit Award.

Please make you ideas for the Woman, Man and Employee known and also list the reasons why the individual should receive the honor. The Teenager of the year is selected by the Wheeler

school faculty. The Farmer/Rancher award recipient is selected by the banks, Capital Farm Credit, Soil Conservation Dist and Agriculture Service Center.

Your nominations will be considered by the committee appointed to select the respective individuals to be named. Each nomination is to be accompanied by a list of reasons for the nomination. The list will be used in determining the most deserving.

It is necessary that the nominations be received by February 25, 2011.

Nominations may be delivered to the office of the Wheeler Chamber of Commerce or mailed to P.O. Box 221, Wheeler, Texas 79096.



SNOW STORM OF 2011: Wheeler woke to about 4" of blowing snow Tuesday, February 1, 2011. There was no ice accompanying the snow. Shown here is the corner of Main and Texas streets. Someone has been out and pushed up a pile of snow. The picture was taken about 8:15 a.m.



LIVESTOCK SHOW PARTICIPANTS: Students from Kelton FFA competed in the Wheeler County Stock Show on Friday, Jan. 28. There were five participants in the breeding goat exhibition. Brett Johnson placed 1st, Ethan Johnson placed 2nd, and Brody Calcote placed 4th. Pictured (l. to r.) are Brett Johnson, Brody Calcote, and Ethan Johnson.

Norris Calvin Walker Passes Jan. 29

Norris Calvin Walker passed away January 29, 2011. He was born March 8, 1926, in Twitty, Texas, to Edwin and Sarah Walker. Norris was raised in the Locust Grove Community. He was preceded in death by his parents, four brothers and one sister, Frank Walker, Cash Walker, Bus Walker, Huffman Walker and Stacy Walker (Hill).

Norris served his country bravely in two wars. He served in the United States Navy during World War II from March 1944 to January 1946 and was recalled to duty in 1950 to serve with the Navy in the Korean War. He was honorably discharged in 1951.

In 1952 Norris was hired by Phillips Pipeline Company and moved to Pampa, Texas. He continued with Phillips until his retirement in 1985.

Mr. Walker met and married Leoma Martin from Shamrock, Texas, on December 18, 1954. Norris and Leoma made their home in Pampa until they moved to Amarillo, Texas, in 2009.

Leoma and family would like to thank the Ussery-Roan Texas State Veterans Home and staff for their loving care of Norris these last 2 years.

Norris was a Christian, a dedi-

cated, loving husband, and a dear uncle to many nieces and nephews. He worked tirelessly to serve his family, his neighbors, his church and his community. Norris gave generously to all who were in need and had a special place in his heart for children, especially children who were in need of foster care or adoption.

Norris' funeral services were held at 10:00 a.m. in Pampa, Texas, at the Mary Ellen and Harvester Church of Christ on Monday, January 31, 2011.

Graveside services followed at 12:45 p.m. at Shamrock Cemetery in Shamrock, Texas.

Norris and his family request in lieu of flowers, please consider making a donation in the name of Norris Walker to the Westview Boys Home in Hollis, Oklahoma. Norris and sweet remembrances of his life will live long in the hearts of all he touched.

James C. Barber, 71 Burial In Wheeler

James C. Barber, 71, died Sunday, January 30, 2011 at Wheeler, TX. He will be buried in the Wheeler Cemetery.

J. C. was born on July 10, 1939 to Randall Barber and Alta Wigginton Barber. J. C. was a cowboy at the feedlots and area ranches. He was preceded in death by his parent, two brothers, Donald and Dewayne Barber, and two sisters, Francine Barber Harris and Betty Couch.

Immediate survivors are eight nephews, Randy Barber, Johnny Barber, Larry Barber, Darrel Harris, Carrel Harris, Danny Harris, Curtis Couch and Gary Couch; two nieces, Paula Couch and Nina Barber.

The family has requested in lieu of flowers and memorial, a donation can be made to a favorite charity.

Dr. Hugh M. Jeffus Celebration Of Life

Dr. Hugh M. Jeffus, 79, Fayetteville, AR., passed peacefully January 18, 2011, at Circle Of Life Hospice in Springdale, Arkansas. He was surrounded by family and his caring spouse of 57 years.

Hugh was born June 16, 1931, in Wheeler County, Texas, to Paul Vain Jeffus and Fannie Mae (Adcock) Jeffus. Growing up on a family farm in the Panhandle of Texas, Hugh graduated from high school in Mobeetie, Texas, in 1948. After finishing high school, his family relocated to northwest Arkansas where Hugh worked on the family farm until he was drafted into the Army in 1952 during the Korean War. Hugh went to leadership school and Officer Candidate School and was commissioned as a 2nd lieutenant in the Medical Field Service School.

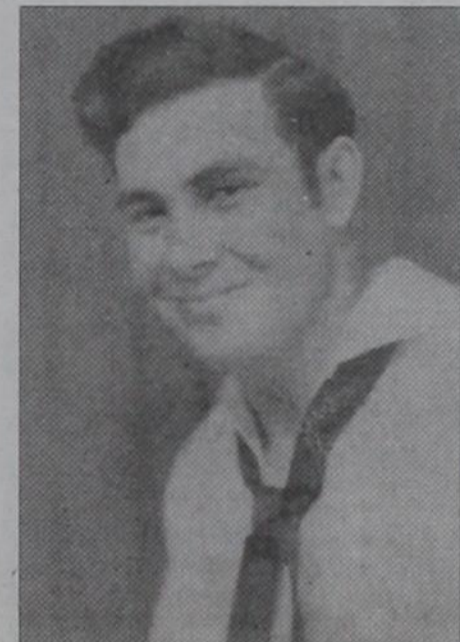
After his army service, Hugh returned to Gentry, Arkansas, where he and a friend ran a dairy farm before a loan program for veterans gave him the opportunity to enroll at the University of Arkansas to study Civil Engineering in 1962. After receiving a Master of Science degree in Civil Engineering, Hugh was employed by the University as a lecturer for the Civil Engineering program. Hugh went back to school and received a Doctor of Engineering degree in Water Resources Engineering from the University of Oklahoma in 1969.

Hugh then accepted a teaching position with the University of Arkansas Civil Engineering Department and found his calling. He was very passionate about helping his students learn and effectively apply engineering principles. During his tenure at the university, Hugh published a number of research papers and technical articles and received numerous accolades such as the Outstanding Faculty Award, Halliburton Outstanding Research Award, and the Chi Epsilon Honorary Alumni Award.

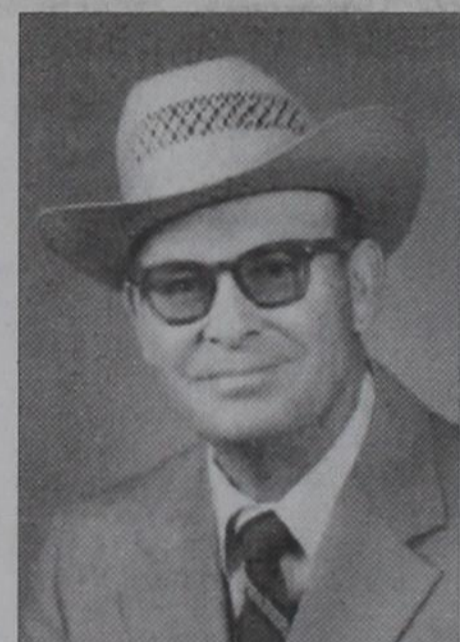
After retiring from the University of Arkansas, Hugh worked as a Water Resources Engineer at what is now the Arkansas Natural Resources Commission for a couple of years before the call of teaching lured him to Tarleton State University where he taught Hydrology and pre-engineering courses. Hugh retired from Tarleton in January 2000. That retirement gave him and his wife a chance to move back to northwest Arkansas where they could be closer to their family.

Hugh's other passion was his faith. He helped start and nurture the Hill Avenue Church of Christ in Fayetteville, AR. Hugh served in every church he attended by

(Continued Page 8)



Norris Calvin Walker



Norris Calvin Walker

Filing Opens For Mayor, Council

The City of Wheeler will hold an election May 14, 2011, for the purpose of electing the mayor and (4) council members. Each position will be for a two year term. Also on the ballot will be

The first day to file for Place on Ballot is February 12, 2011. The last day to apply for a place on the ballot is March 14, 2011.

Councilmembers, whose terms expire, are Barbara Koelzer, Jim Hill and Walter Simmons.

Voters will elect individual to serve the unexpired terms of the Mayor and Place 2 councilman. Individuals appointed to office only serve until the next city election.

Anyone interested in filing for an application for a place on the ballot should come by City Hall, 505 Alan Bean Blvd., Wheeler, TX

Wheeler I.S.D.

Three Places Open On Wheeler Board

The first day to apply for a place on the Wheeler ISD trustee ballot is February 12, 2011. The filing deadline is Monday, March 14. Applications may be obtained at the Wheeler ISD Business office, #1 Mustang Drive. The May 14 election will fill three full term positions currently being held by Dr. Mike Smith, Mark Marshall and Brian Richardson.

Account Is Opened For Nathan Willeford

Wheeler Area Activities Improvement Council has opened an account at Wheeler Banking Center to help offset medical expenses of Nathan Willeford.

Donations may be taken to Wheeler Banking Center or mailed to P.O. Box 1040, Wheeler, TX 79096.

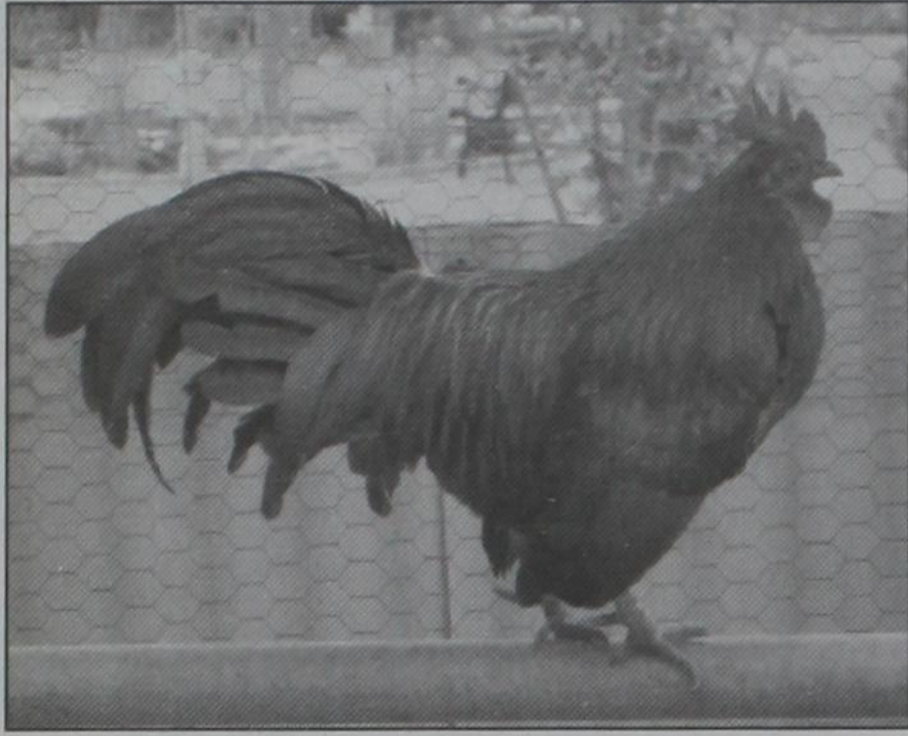
All donations are tax deductible.

The View of a Southern Woman

Southern California that is

Memories of Henry;

It is with regret that I am reporting the death of my bantam Henry. We bought him and eight others back in 2005 at Atwoods and they were our pets. He gave us many years of fun and surprises along with some wild times



When he was a baby he would sit on us out in the patio along with Gertrude our hen. Climbing all over us and doing a dirty deed at times. When he grew up, he would find a short stick and give it to me as a gift. It had to be just the right one and then he would put it on my shoe. Henry was the king of the roost and he dictated to the other bantams making sure they knew who was boss. Henry loved for me to carry him around the yard and he also like to ride on my golf cart with me. He would come to the patio door and want in. Forrest Glenn "Frosty" refused this request so Henry never got in the house. In return Henry decided that Glenn was the enemy and the attack was

on any time Henry caught Glenn in the back yard. He would attack his shoes or boots with lots of energy and loved to sneak attack from the back. I warned Glenn that Henry was making a run for him and he turned around and catch him. Henry did not like to be caught by the enemy and it was quite an embarrassment. This attack went on all of Henry's life and I think Glenn looked forward to it. If he did not attack, we knew he was not feeling well. I know Glenn misses it and Henry almost as much as I do. Now the odd thing is that Silver, our tiny bantam, has taken up the slack and attacked Glenn a few days after Henry died. I guess he thinks it is his job now since he is



THE WHEELER TIMES
PAGE 2 — Thursday, February 3, 2011
"Wheeler: town of friendship and pride."

the new king. I only have three people would say that he was just a bantam chicken but Henry and I know he was something special. He had a regal stance that was so different from other birds. And so beautiful. No, I will never forget him. I have enjoyed spending five years writing articles about my life for all of you to read and even though I did give it up a couple of years ago, I just wanted all of my readers to know that the bantam I wrote so many stories about is gone. With love to all of you, Betty Boydston.

MOBEETIE NEWS

By Melba Corcoran

Those working at the museum this week were Louise Hogan, Maurita Stribling, Suzanne Lohberger, Ada Lou Lester, Gina Seitz, Melba Corcoran and Dale Corcoran.

Pauline Barnes and Joey Stone of Wheeler visited Monday night with Dale and Melba Corcoran.

Melba Corcoran went to Wheeler for blood work Tuesday morning.

Our sympathy goes out to the family of Bill Brickey.

Dale and Melba Corcoran visited Wednesday night in Wheeler with Pauline Barnes and Joey Stone.

Dale and Melba Corcoran tended to business in Pampa Thursday. They visited with James Trusty and Boyd Austin at Walmart.

Nancy Shelton is a patient at the Wheeler Nursing and Rehab facility.

Frances Dickey came home Friday. She brought Loretta home with her. They will stay a week or so. They visited Sunday in Wheeler with her father, T.J. Cole, in the hospital.

Nathan and Nelda Lancaster and Lee and Melba Brown visited the museum Friday.

The First Baptist Church had their 5th Sunday fellowship following the morning services. There was a good crowd.

Betty and Danny Rogers went to Pampa for Betty's doctor's appointment. They left from there and headed for a vacation in Florida.

Dale and Melba Corcoran went to supper Friday night in Wheeler.

Doris Finsterwald, Arica Lancaster and Laura Vandever visited with Marion and Ethel Grimes. They enjoyed refreshments and playing music.

Wheeler County COURT RECORDS

List of instruments filed in the Wheeler County Clerks office from January 24, 2011 – January 28, 2011.

JANUARY 24, 2011
OL-Terry Lynn Vanpool, et ux to Forest Oil Corporation, 10-3-10, N/2 NE/4; SW/4 NE/4 Sec. 23, Blk. A-4, H&GN Ry. Company Survey.

OL-Rebecca Louise Garrett to Forest Oil Corporation, 11-9-10, N/2 NE/4; SW/4 NE/4 Sec. 23, Blk. A-4, H&GN Ry. Company Survey.

OL-Carolyn S. Vanpool to Forest Oil Corporation, 12-24-10, N/2 NE/4; SW/4 NE/4 Sec. 23, Blk. A-4, H&GN Ry. Company Survey.

STIPULATION MIN. INTEREST-Peggy J. Bryant Family Trust, et al to Peggy J. Bryant Family Trust, et al, 7-23-10, Sec. 22, Blk. A-7, H&GN Ry. Company Survey.

ASSIGN.-Bracken Operating LLC to Chesapeake Exploration LLC, 1-4-11, See Instrument.

ASSIGN.-BNC Inc. to Chesapeake Exploration LLC, 1-6-11, See Instrument.

ASSIGN.-W M Smith Energy LLC to Chesapeake Exploration LLC, 1-6-11, See Instrument.

D-Quad County Land & Cattle LP to Moore Five LP, 1-19-11, NW/4 Sec. 50, Blk. A-8, H&GN Ry. Company Survey.

D-J Adeline Ludwig to J Adeline Ludwig Irrevocable Trust, 9-29-10, Sec. 33, Blk. R.E., Roberts & Edleman Survey.

D-Ludwig Family Survivor's "A" Trust to J Adeline Ludwig, 9-29-10, Sec. 33, Blk. R.E., Roberts & Edleman Survey.

ASSIGN.-WM Assets LLC to Rio Petroleum Inc., 1-10-10, W/2 SE/4; E/2 NE/4 Sec. 86, and W/2; N 60 acs. SE/4; NE/4 Sec. 76, Blk. A-5, H&GN Ry. Company Survey.

Parkview Artery Heart Disease in Women

All women face the threat of heart disease. But becoming aware of symptoms and risks unique to women, as well as eating a heart-healthy diet and exercising, can help protect you. Although heart disease is often thought of as a problem for men, more women than men die of heart disease each year. One challenge is that the heart disease symptoms in women can be different from symptoms in men. Fortunately, women can take steps to understand their unique symptoms of heart disease and to begin to reduce their risk of heart disease. Heart attack symptoms for women: The most common heart attack symptom in women is some type of pain, pressure or discomfort in the chest. But it's not always severe or even the most prominent symptom, particularly in women. Women are more likely than men to have heart attack symptoms unrelated to chest pain, such as:

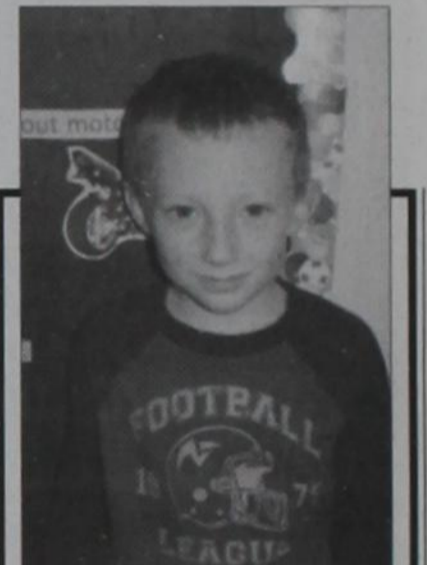
- Neck, shoulder, upper back or abdominal discomfort
- Shortness of breath
- Nausea or vomiting
- Sweating
- Lightheadedness or dizziness

Unusual fatigue: These symptoms are more subtle than the obvious crushing chest pain often associated with heart attacks. This may be because women tend to have blockages not only in their main arteries, but also in the smaller arteries that supply blood to the heart — a condition called small vessel heart disease or microvascular disease. Many women tend to show up in emergency rooms after much heart damage has already occurred because their symptoms are not those typically associated with a heart attack. If you experience these symptoms or think you're having a heart attack, call for emergency medical help immediately. Don't drive yourself to the emergency room unless you have no other options.

Medcat
Hear your heart. Heart your health.

Int. in Wheeler County. D-Lannie Mecom to B and R Minerals, et al, 12-31-10, Int. in Wheeler County. ROW-Dorothy Walker to PVR Natural Gas Gathering LLC, 12-15-10, Pt. Secs. 30 and 31, Blk. OS-2. ROW-Miller Family Trust to PVR Natural Gas Gathering LLC, 12-13-10, Pt. E/2 SE/4 Sec. 10, Blk. 2, Brooks & Burleson Survey. ROW-Dorothy Walker to PVR Natural Gas Gathering LLC, 12-15-10, Pt. Sec. 30, Blk. OS-2. ROW-Dusty Don Walker to PVR Natural Gas Gathering LLC, 12-15-10, Pt. Sec. 29, Blk. OS-2. MD-Ruby Jones to Arrowhead Resources Inc., 1-6-11, NE/4 Sec. 18, Blk. A-4, H&GN Ry. Company Survey.

(Continued Page 3)



The Fort Elliott Library All Star student this week is Gavin McDowell. Some of Gavin's favorite things are color blue, his favorite books are any book written by a motorcycle, his favorite thing about school is "PE". Gavin is 6 years old and his parents are Kenny and Lori McDowell, and he is in the 1st grade.

For all your...
Insurance Needs, See
Eastern Panhandle Insur. Agency, Inc.
117 W. Texas St.—Wheeler
806/826-3573
•Auto •Home •Life •Health
•Commercial •Bonds

Canadian Supply & Redi-Mix
for all your Concrete Needs!

Jerry Smith, Owner
806-323-5379

MARSHALL'S HEATING & AIR CONDITIONING
WHEELER, TX—PHONE: 664-5395—CELL: 662-7876
 NOW DOING...
AIR DUCT CLEANING
It's Hard To Stop A Trane —24 Hour Emergency Service—
LICENSED & INSURED
License No. TA CLB022710E
Mark Marshall, Owner

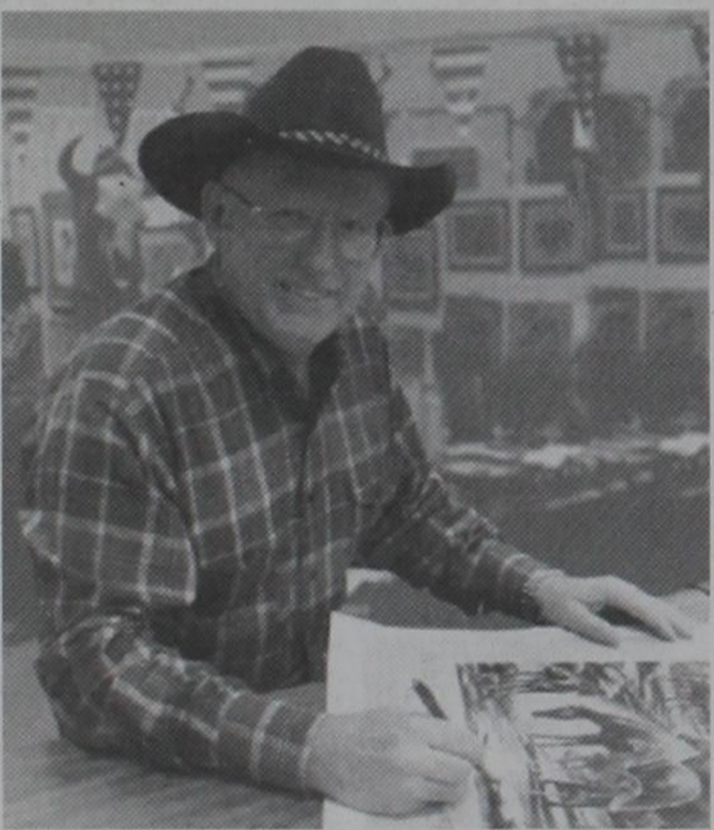
Not too Late for Flu Shots
Free Flu Shots
at Parkview Hospital
Monday thru Friday
8:00 to 5:00 p.m.
While they last!

Dennis Edmondson
REALTOR®
RE/MAX HOMETOWN 2100 Perryton Pkwy Pampa, Texas
LOVELY 2,023 SQ. FT. HOME on 400 acres. 3 Bedroom, 2 1/2 Baths, Fireplace, Sunroom, Huge Utility Room & Back Deck, 30'x60' Garage/Shop with Built-in Loft, Water Well, Windmills, Beautiful Trees & Storm Shelter. Peace & quiet in this gorgeous setting. County living at its best! Selling all or part of the 400 acres. The house and 200 acres for \$350,000; just 200 acres for \$200,000, or the house and another combination—the price depending on the acreage with the house. The house and 400 acres still listed for \$530,000. 8320 County Line Rd. Wheeler, To. TX. \$530,000. Call Dennis Edmondson (Agent) 806/662-7503. Re/Max Hometown. Patti Hudson/Broker 1/27/11

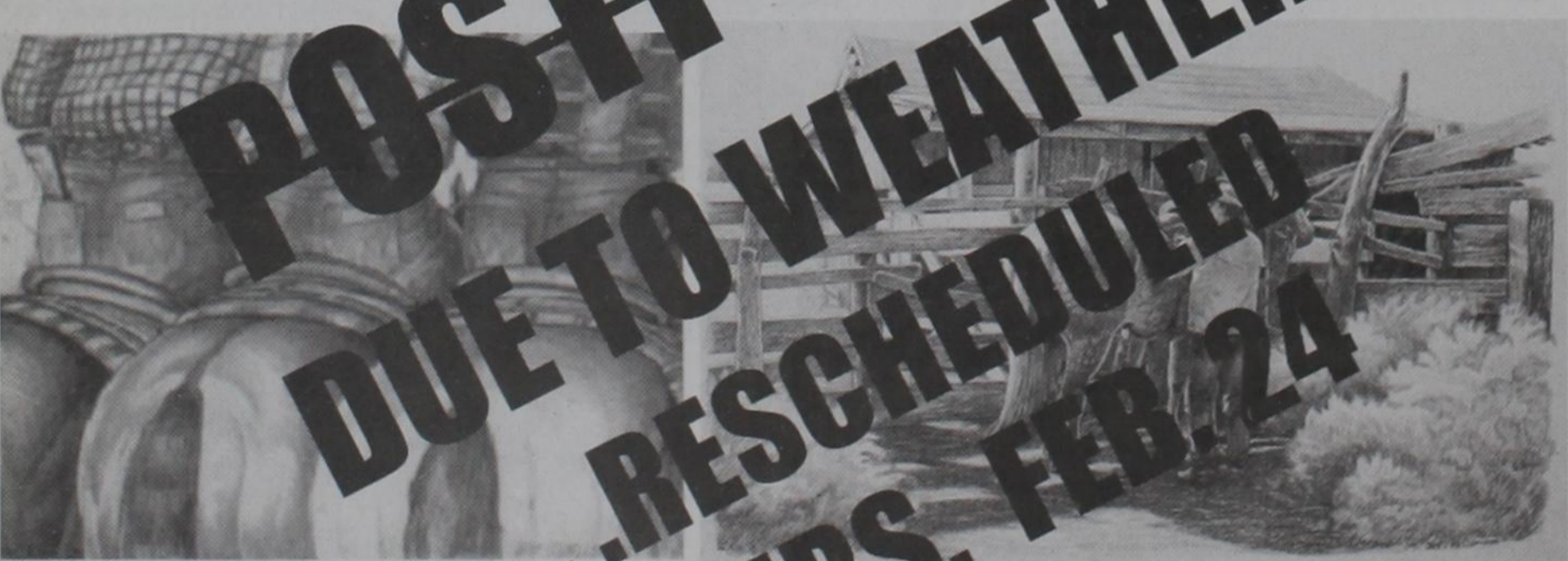
GIFTS — CARLTON CARDS
HYLAND'S PHARMACY
HOURS: 8-5:30 M-F, 8:30-Noon Sat
109 W. TEX. ST.—WHEELER, TEXAS
Phone: 806/826-5561
WEDDING/BABY SHOWER REGISTRY

"TENACIOUS LAND SERVICES"
Tommy F. Yowell, CPL
PETROLEUM LANDMAN
OFFICE 940-825-5000
CELL 940-872-7000
TFYowell@aol.com
211 MAIN ST.
NOCONA, TEXAS 76255

Jack J. Wells Western Artist



Jack J. Wells was born and raised in the horse and cattle country. He received an education of his western subject matter on a first hand basis, and his painting and horse trading were the family business. Jack and his older brother, Judd, began riding about the same time they began riding and walking. This early sibling rivalry led to the development of their artistic talents. They would often draw the horses and riders for fun. Jack's formal training has since consisted of being there. From art shows to horse shows to art shows, he has completed his work all over the country.



POSTPONED
DUE TO WEATHER
...RESCHEDULED
THURS. FEB. 24

WESTERN ART SHOWING
DATE: THURSDAY, FEBRUARY 3, 2011
EXHIBIT: 2:00 PM TO 5:00 PM
PLACE: WHEELER COUNTY AG AND FAMILY ACTIVITY CENTER
SPONSORED: THURSDAY REVIEW CLUB
REFRESHMENTS WILL BE SERVED

CitizensBANK

711 N. Main St. • Shamrock • 806.256.3255



"Big City Banking -- Small Town Service"

Member
FDIC



The Lady Lions and Coach Kimbro huddle before the game starts.



#12 Reonna Dyck goes up for a shot against a Canadian Wildcat defender.



#24 Traylen Drake goes up for a shot.



#18 Felicia Butler brings the ball down against a Canadian Wildcat defender.



Cheyenne Powell looks for an open team mate.

The Kelton Jr. High Boys and Girls played in the Sunray Tourn on Jan 15th . Both teams played extremely well.



Mark Herndon, Emily Cook, Fernando Garza, Kaleb Kimbro and Ransley Cochran pass there balloons while the music plays.



Larry Galvan, Zac Butler, Kassidy Carter, Clint McKee, and Brock Buckingham have fun passing there balloons around.



Jayton Couch, Laney Garcia, Kyle Brown and Callie Crabtree

OLD TIMES NOT FORGOTTEN

By Roland Miles

AFTER SCHOOL JOBS

In the winter of 1956, when I was a sophomore at Wheeler High, we had pretty much quit farming. Dad, still had a few acres of cotton and some cane he had planted to make bundles for the ten or fifteen cows he had left. He had gotten a job over at the carbon black plant, east of Sham-

rock, and that furnished our main living. With this change, I was pretty much freed up to get a job, for after school.

There was a man named Coy Revious, that made most of his living doing custom farming. At that time, there were a lot of people

having their fields "deep broke." This involved plowing about twelve to fifteen inches deep with a moldboard plow (sometimes called a turning plow) which would turn the soil upside-down. A lot of people were wanting that done, so Coy had all the business he could handle. He needed to keep the tractor running, day and night.

This was a shift work job that I was hired for. Coy, would run the tractor all day and then I would run it after I got out of school until about ten at night. I did this most of the winter. His tractor didn't have a cab; I don't think any did at that time, but it did have a canvas cover over the sides. That kept most of the cold wind off of you. Some heat would even be funneled from the tractor engine back to the driver. Doggone, it sure did get lonely out there in the field all by yourself...and a little spooky, too.

My junior year, Darrell and I, went to work for Buster Black. As I've mentioned before, he had a grocery store with a small slaughter-house in the back. People would bring in their animals and we would kill and dress them out, then hang'em up in a refrigerated room. Later, Buster and another man that worked for him, would cut-up and package the meat. Some people would take it home and some would leave it in the rented freezer. One time, a man brought in a hog for us to butcher, that weighed a whopping, one thousand and ten pounds. He was huge! I'd never seen one that big before, and I haven't since.

At the end of each day's work, we usually hauled off the "left-over" cow, or hog parts. Buster, had an old pickup-bed trailer that we used to do the hauling and an old car, a Mercury, I believe, that was used to pull the trailer. We'd worked late the night before and had pretty much filled up the trailer. The next evening, as soon

as we got to work, we jumped in the car and headed to the dump grounds. We figured the coyotes and other critters were always glad to see us coming; kind-of the local "feed wagon" to them. Anyway, we had turned on the radio, weren't paying much attention, and apparently....driving a little too fast? We'd barely reached the dump grounds when Buster drove up....

"You guys need to get back as soon as you can. The lady that lives at the corner just north of the store, called me and she wasn't too happy!" "Looks like ya'll slung out a cow stomach and a head.... right into her driveway!"

We didn't waste any time get-

Court (from Page 2)

Survey.
DT-Eula Jean Arnold, et al to Capital Farm Credit PCA, 1-18-11, S 107 acs. SW/4 Sec. 889 and Pt. NW/4 Sec. 72, Blk. 13, H&GN Ry. Company Survey.
RDT-Capital Farm Credit PCA to Brandon Wheeler, 1-21-11, See Instrument.
RDT-Capital Farm Credit PCA to Brandon Wheeler, et ux, 1-21-11, See Instrument.
A. of JUDG.-CACV of Colorado LLC to Hugo Corral, 1-8-11.
ASSIGN. CONVEY. BS-Roger M. Wheeler Jr. to Chesapeake Exploration LLC, 1-14-11, See Instrument.
AMEND. OL-Allar Company to PAC Production Company, 1-20-11, SW/4 Sec. 1, Blk. 4, Brooks & Burleson Survey.
AMEND. OL-Allar Company to PAC Production Company, 1-20-11, NE/4 Sec. 2, Blk. 4, Brooks & Burleson Survey.
ASSIGN.-Neil K. Braverman to North Military Ltd., 1-15-11, S 143.6 acs. Sec. 34; 99.47 acs. Sec. 32-A, Blk OS-2.
ASSIGN.-Neil K. Braverman to North Military Ltd., 1-15-11, Sec. 4, Blk. R.E., Roberts & Eddleman Survey.
ASSIGN.-Neil K. Braverman to North Military Ltd., 1-15-11, N/2; SW/4 Sec. 3, Blk. R.E., Roberts & Eddleman Survey.
POA-James Carlton Barber to Carrel Harris, et vir, 1-24-11.
ROW-Huff Ranch to Linn Energy Holdings LLC, 9-23-10, Pt. Secs. 2 and 5, Blk. 5, Brooks & Burleson Survey.
ROW-Huff Brothers to Linn Energy Holdings LLC, 9-23-10, Pt. Sec. 2, Blk. 5, Brooks & Burleson Survey.
ROW-Huff Ranch, et al to Linn Energy Holdings LLC, 9-23-10, Pt. Secs. 3 and 4, Blk. 5, Brooks & Burleson Survey; Pt. Secs. 33 and 48, Blk. A-3, H&GN Ry. Company Survey.
ROW-Huff Brothers to Linn Energy Holdings LLC, 10-11-10, Pt. Sec. 32, Blk. A-3, H&GN Ry. Company Survey.
ROW-Huff Ranch Partnership to Linn Energy Holdings LLC, 10-11-10, Pt. Sec. 32, Blk. A-3, H&GN Ry. Company Survey.
ROW-Huff Brothers to Linn Energy Holdings LLC, 10-11-10, Pt. Sec. 32, Blk. A-3, H&GN Ry. Company Survey.
ROW-Huff Brothers to Linn En-

THE WHEELER TIMES

PAGE 3 - Thursday, February 3, 2011

"Wheeler: town of friendship and pride."

ting back and taking care of the problem. We were expecting to get a tongue-lashing from the lady, but she didn't even come out of the house. I suppose she'd already seen about all she could stand that day.

Darrell, graduated that year, so the next year, Jimmy Hill became my working partner. We had that

job our whole senior year. We didn't make a lot of money, but we didn't need much either. We got seventy-five cents each, for butchering hogs and a dollar and a half each, for cattle. It wasn't as much fun as hauling hay, but it furnished us gas money. Besides that, if you're working, you're not burning gas....

THANK YOU

HARVESTER CLEANERS
... would like to thank the people of Wheeler and the surrounding area for their patronage this past year and look forward to continuing to serve you. Our "Pickup & Drop" location in Wheeler is Shear Delight, 209 E. Third.

1/13-2/3p

Get Your Refund FAST! Because It's Your Money

Get Your Tax Refund FAST with Electronic Filing!

ALVEY Tax & Service
101 E Oklahoma St. — (806) 826-3736
Mon-Fri - 9:00 A.M. - 6:00 P.M.
Sat - 9:00 A.M. - 1:00 P.M.
Wheeler, Texas 79096

irs e-file

Wheeler United Methodist Church
Eighth at Main St. - P.O. Box 89
Wheeler, TX 79096
(806) 826-3114 - Fax 826-3780
wheelerumc@windstream.net

Sunday Schedule
Coffee & Donut Fellowship - 9:30 A.M.
Sunday School - 9:45 A.M.
Worship - 11:00 A.M.
Youth Fellowship - 5:00 P.M.
Pastor's Bible Study - 5:00 P.M.
Wednesday Schedule
Choir Rehearsal - 7:00 P.M.

Limited Time 5.03% APY* Ask About IRA/401K Specials!
INSURED CD

FIRST FIDELITY
Financial Group, LLC
Your Safe Money Solution®

1800 Washington, Suite 110 - Amarico, TX
806-373-9480
1-800-371-9201
By appointment only

Robby Schaffer
Firearms, Ammunition & Reloading Supplies

602 Cheyenne • Wheeler, TX
806.826.0129 • 806.898.0916

E-mail: robschaf@windstream.net

Store Hours: Mon. to Fri. 5 P.M. to 9 P.M. Sat. 12 to 8 P.M.
I can order almost any gun now. Tell me the price you find and I will do my best to beat it.

- Selection of Ammunition in stock.
- Check with me if you have difficulty finding ammunition.
- Bring your gun in to have it cleaned.

(Continued Page 4)



EASTEX
CRUDE COMPANY



NOW ACCEPTING APPLICATIONS

Class A CDL-X Endorsement
401 Benefits, Etc.
800-443-8580
www.eastexcrude.com

10/7rn

Want Ads

HELP WANTED: Robert C. Galutia, M.D. is now accepting applications for **Office Help**. Applications may be obtained at 309 E. 9th, Parkview Clinic, Wheeler, Texas. 2/3-10c

Part-time Position at Wheeler Library. For application, please contact the City Office at 505 Alan L. Bean Blvd or call 806-826-3222 1/20-2/10c5

Missing 3 cows from off Washita River, Hemphill County, branded

with a Lazy C topped with a three point M on the left hip. If you have information please call 806-375-2235 or the Hemphill County Sheriff office. 2/10c

Parkview Hospital Home Health is looking for a Certified Nurse Aide to work Full time. Contact Susan Leffew at 826-1370 or come by 306 E. 9th St., Wheeler, to pick up application. 1/13-2/3c

REAL ESTATE APPRAISAL & SALES
Farm & Ranch Land Specialist
State Certified Appraiser
TEXAS SUNBELT SERVICES
Layon Williams
806/826-0234
or 334-0909

Parkview Hospital Home Health is looking for a Full Time RN. Please apply at 306 E. 9th St., Wheeler, or call Susan Leffew at 806-826-1370. 1/13-2/3c

Parkview Hospital is now accepting applications for a **Nurses's Aide** for the 11 p.m.-7 a.m. Shift. Competitive Salary with full benefits. Please call Sue Stiles D.N.O. at 826-5581 or apply in person at 901 Sweetwater Street, Wheeler, Texas. 12/9rn.

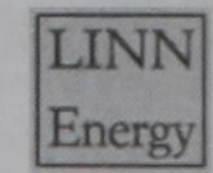
HOUSE FOR SALE: 901 Canada St., Wheeler. Spacious Brick Home on corner lot: 3 bedroom, 2 bath, 2 living areas, fireplace, heat and air, 2 garages (double & single), and storage bldg. Joyce Edwards, 806-826-5948 after 6:00 p.m. 11/4rn

Farrar Lawnmower and Small Engine Repair. 806/336-8960. 4/22rn

Listen to...
KPDR-FM, 90.5
WHEELER, TEXAS

Court (from Page 5)

ergy Holdings LLC, 10-11-10, Pt. Secs 2 and 5, Blk. 5, Brooks & Burleson Survey.
SURFACE LEASE AGREE.-Huff Ranch, et al to Linn Energy Holdings LLC, 10-26-10, Pt. Sec. 32, Blk. A-3, H&GN Ry. Company Survey.
SURFACE LEASE AGREE.-Huff Ranch, et al to Linn Energy Holdings LLC, 10-26-10, Pt. Sec. 32, Blk. A-3, H&GN Ry. Company Survey.
SURFACE LEASE AGREE.-Huff Ranch, et al to Linn Energy Holdings LLC, 10-26-10, Pt. Sec. 32, Blk. A-3, H&GN Ry. Company Survey.
FTL-United States of America to Tim Wilson, et ux, 1-18-11.
RDT-Farm Credit of Western Oklahoma FLCA to TL Rental Properties Limited Partnership, 1-18-11, See Instrument.
ROY./MD-Leon Ellis Gregory to Southwest Petroleum Company, 12-14-10, Sec. 39, Blk. 24, H&GN Ry. Company Survey.
C/C PROBATE-Ernest Theodore O'Neil to Ex Parte, 1-3-11, N/2 Sec. 8, Blk. 2, Brooks & Burleson Survey.
ROW-Thurman J. Horn, et ux to MarkWest Oklahoma Gas Company LLC, 12-7-10, See Instrument.
ROW-Keith Horn, et ux to MarkWest Oklahoma Gas Company LLC, 12-3-10, Secs. 1 and 6, Blk. C, George Turcotte Survey.
ROW-Walker Family Trust, et al to MarkWest Oklahoma Gas Company LLC, 10-12-10, E/2 SE/4 Sec. 2, Camp County School Land.
ROW-Bobby Gene Finsterwald, et ux to MarkWest Oklahoma Gas Company LLC, 12-22-10, S/2 Sec. 5, Camp County School Land.
ASSIGN.-Crest Resources Inc. to Crest Energy Ltd., 1-12-11, E/2 Sec. 21, Blk. L, J. M. Lindsey Survey; W/2 Sec. 58, Blk. A-7, H&GN Ry. Company Survey.
ASSIGN.-Crest Energy Ltd. to



Career Opportunities (Admin. Asst. I & Admin. Asst. II)

LINN Energy is seeking two highly motivated individuals who, with the skills listed below, will become team members. While LINN Energy is expanding their operations in the Granite Wash, near Elk City, OK, new career opportunities become available. The newest positions are Administrative Assistant I and Administrative Assistant II. Some of the job responsibilities are as follows:

- Administrative Assistant I**
- Requires a High School Degree or equivalent
 - Preferred Oil and Gas Background but not required
 - Under direct supervision, this role provides required clerical and administrative support to a management level(s), department or group of professionals.
 - Performs routine office duties such as: answering telephone calls and making appointments; composing routine correspondence; compiling and analyzing basic information and data for reports; answering routine inquiries; picking up and distributing incoming mail and faxes; faxing outgoing documents; maintaining and updating office supplies and assisting in maintenance of department files
 - Provides basic typing and word processing support
 - Uses computer software such as Microsoft Suite
 - May enter prepared data into database or spreadsheet by following detailed instructions and guidelines
 - May handle confidential records or information
 - Perform other duties as requested or assigned

- Administrative Assistant II**
- Requires a High School Degree or equivalent
 - Preferred Oil and Gas Background but not required
 - Preferred Accounting experience but not required
 - Ability to work with minimal supervision carrying out detailed written and oral instructions.
 - Performs routine office duties such as: answering telephone calls; compiling and analyzing basic information and data for reports; answering routine inquiries and assisting in maintenance of department files
 - Provides basic typing and word processing support
 - Proficient in Microsoft Suite
 - Experience in Wellview, PRS and/or Enerlia desired, but not required
 - Data entry into database and spreadsheet
 - May handle confidential records or information
 - Perform other duties as requested or assigned

LINN Energy is an equal opportunity employer who provides many benefits such as: Medical, Dental, Vision, Prescription Plan, Life Insurance, 401-k match to name a few.

All resumes should be sent to:

Paige Ballard
LINN Energy
103 Stout Drive
Elk City, OK 73644
pb Ballard@linnenergy.com
No phone calls please.

Cindy Bolton
LINN Energy
14000 Quail Springs Pkwy, Suite 5000
Oklahoma City, OK 73134
cbolton@linnenergy.com

1/27-2/3c

Lovegrass Hay For Sale Anhydrous: Call 375-2578 or 806-679-8891. 1/21rn

NOTICE OF PUBLIC SALE OF PROPERTY to satisfy landlord's lien. Sale is 10 a.m., Feb. 18, 2011, at 1011 S. Main, Shamrock, TX. All property will be sold to highest bidder for cash. Seller reserves right to withdraw property from sale. Property includes contents for spaces of following tenants: Dorothy George—household furniture, boxes, dishes, books, antique radio; Bo Eddleman—household furniture, boxes, books, Christmas yard decorations. Contact Stor & Lok, 826-3733, Box 1136, Wheeler, TX 79096. 2/3-10c

ATTENTION MINERAL OWNERS
Buying Oil & Gas Leases & Minerals
in Wheeler & Hemphill Co's.
Call: **806/334-0370**

Chesapeake Energy Corporation is seeking talented professionals for the positions listed below. Chesapeake, an Oklahoma City-based company, is the second-largest independent producer of natural gas in the U.S. and the most active driller of new wells in the U.S. Ideal candidates should be self-motivated team players and possess excellent interpersonal skills. A high degree of analytical ability and excellent oral and written communication skills are necessary for success in our fast-paced and rewarding environment.

Pumper—Monitor, maintain, and report the operations of wells and sites on an assigned route. Inspects and maintains property and equipment, and works to optimize production in a safe, cost-effective manner. Must have ability to understand gauges, dials, and other indicators to ensure machinery is working properly. Pumper must demonstrate basic computer knowledge and ability to learn company specific applications. High School diploma or equivalent and one to two years experience in the oil and gas field required.

For three consecutive years, Chesapeake has been named to the **FORTUNE 100 Best Companies to Work For** list. Chesapeake offers excellent compensation and benefit packages including a very generous equity compensation plan. For immediate and confidential consideration, please visit our company website, www.chk.com/careers, to either submit a résumé or complete an online personal profile.

No telephone inquiries please. An Equal Opportunity Employer.

Crossword Puzzle

1	2	3	4	5	6	7	8	9
10			11					
12			13					
14		15				16		
17				18	19			
		20	21		22	23	24	25
26	27	28		29	30			
31			32				33	
34							35	
36							37	

H&H Tire & H&H Dirt Works
403 S. Red River
Wheeler, TX 79096
806/826-5759

- ACROSS**
- Loose gown worn at mass
 - Type of paint
 - Atmosphere
 - One of the N. and S. States
 - BB association
 - Calculator
 - Generator
 - Set of supplies
 - Beeps cousin
 - Beryllium (abbr.)
 - Teacher's assistant, for short
 - Water pipe
 - Feign
 - Slushy mass
 - Dainty
 - Bullfight cheer
 - SW Asian river
 - Pea holder
 - Inactivity
 - Doll
- DOWN**
- Root beer brand (3 wds.)
 - African country
 - Cereal ingredients
 - Swiss-like cheese
 - Rich man
 - Precedes an alias
 - Twit
 - Decorative needle case
 - Endure
 - Flightless bird
 - Computer code for character
 - Choose
 - Ice house
 - Homeless
 - Fifth book in the New Testament
 - Voucher for a small debt
 - Roman cloaks
 - Not as much
 - Tax agency

© 2011. Feature Exchange

GAINESVILLE FUEL INC.
FUEL TRUCK DRIVER
Full time position available for transport drivers living in the Western Oklahoma or Texas Panhandle area. Must have Class A CDL w/hazmat. Fuel hauling and oilfield experience a plus.

\$1,000 BONUS OFFER
Any driver living in the area between Amarillo and Perryton will receive a \$1,000 bonus after six months of employment. Call for details.

BENEFITS INCLUDE:
Paid Vacation • Sleeper Pay
Health, Dental, Disability and Life Insurance
Paperwork Incentive Pay • Yearend Safety Bonus
Yearend Christmas Bonus

Download an application at www.gainesvillefuel.com or request one to be faxed by calling 940-668-8593.

THE WHEELER TIMES
PAGE 4 — Thursday, February 3, 2011
"Wheeler: town of friendship and pride."

MEMBER 2011 TEXAS PRESS ASSOCIATION

City of Wheeler Turns 100
Aug. 6, '05 Celebration Planned

P.O. Box 1080
Wheeler, Texas 79096
Phone: 806/826-3123

Entered as second-class matter December 18, 1933, at the Post Office at Wheeler, Texas 79096, under the act March 3, 1879.
Postmaster: Send Address changes to *The Wheeler Times*, P.O. Box 1080, Wheeler, TX 79096-1080 — wtimes@centramedia.net

Louis C. Stas, Owner & Publisher
SUBSCRIPTION RATES:
Wheeler County...\$20.00 Outside County...\$22.00

THE BUSINESS DIRECTORY

CROSS COUNTRY BARN ★ 24 Hr. Gas & Diesel ★ Convenience Store
★ Hunt Bros. Pizzeria
301 E. Oklahoma St.
Wheeler, TX
Phone: 806-826-2276
Dale, Monica & Rachel Kidd

It's worth to Advertise in The Wheeler Times
Phone & Fax: 826-3123
wtimes@centramedia.net

Classified:
Cash—\$5.00 for first 20 words
Charge—\$6.00 for first 20 words
15¢ for each additional word
Open Rate: \$2.50 Per Col. In.
Card of Thanks: \$6.00

J. M. Lindsey Survey.
ROW-A. Michael Raticar to Elk City Oklahoma Pipeline LP, 4-9-10, Pt. Sec. 44, Blk. A-4 and Pt. SE/4 Sec. 4, Blk. E, Harry Parris Survey.
ROW-Bryant Family Trust to Elk City Oklahoma Pipeline LP, 4-30-10, Pt. SE/4 Sec. 22, Blk. A-7, H&GN Ry. Company Survey.
ROW-Clem Bratcher to Elk City Oklahoma Pipeline LP, 6-5-10, Pt. W 100 acs. SW/4 Sec. 5, Blk. L, J. M. Lindsey Survey.
ROW-A. Michael Raticar to Elk City Oklahoma Pipeline LP, 4-30-10, Pt. W/2 Sec. 44, Blk. A-4, H&GN Ry. Company Survey.

(Continued Page 5)

COSTA RICA
10 Day Guided Vacation.
\$995 Rainforest, Beaches, Volcanoes.
+ tax & fees Free Brochure. Call 1-800-Caravan.

Available at Caravan.com. Since 1952
8 to 10 day guided tours. **Caravan.com**
USA, Canada, Panama.
Priced between \$995 - \$1,295.

FREE HD FOR LIFE!
Only on DISH Network

• Lowest Price in America!
• \$ 24.99/mo for over 120 channels!
• \$500 Bonus!

Call Now!
1-866-799-8039

GET CASH NOW!
1-866-FUND-108
Get cash for your structured settlement or annuity payments.
High payouts. Rated A+ by the Better Business Bureau.

J.G. WENTWORTH™
www.jgwentworth.com

COUNTRY NEWS

By Verna Fillingim

Thank you, Lord, for saving my soul; thank you, Lord, for making me whole. Break down every bar-

rier, cast out every foe; Now wash me and I shall be whiter than snow.

Nice to have a letter from Fredia Caldwell who was married to Geoff Caldwell and lived at Mobeetie till he died. Then, she moved to Gruver to be near her kids and going to their ballgames and visiting. Her new mailing ad-

dress is Fredia Caldwell, P.O. Box 632, Gruver, TX 79040. She enjoys hearing from friends, but doesn't get back to Mobeetie, but plans to move their stuff out and sell the Mobeetie house across from the Bank in Mobeetie. Her family has been helping.

Pray for Wheeler School Superintendent, Clay Mahler, who suffered a stroke and was taken to the hospital at Lubbock. Hope he soon will be all right. He was a young man, 47.

Caroline Cornett and her husband, Dan, of Canadian went to a stock show farther south and she suffered a stroke. She did go to a hospital for a time, but is doing pretty well now. Keep praying for Caroline and Dan. They are back home in Canadian. God be with you! Special people! Always helping with community things.

Edwin and Laurel Hershman returned to Wheeler from a trip to Harlingen, TX. The weather was wonderful and warm most of the time they were there. They visited several interesting national parks and museums. The two Jima memorial was interesting. Just driving the back roads was fun. They saw a sugar cane processing

plant and a movie about how it was grown. Of course, they tried out the fresh oranges and grapefruit and learned about the different kinds being grown there. They saw lots of fields with onions, cabbage and other crops. South Padre Island had several interesting things to see and do. The butterfly and bird nature center was especially nice. The campgrounds provided a lot of entertainment and fellowship. The church services were attended by, at least, 200 and very nice. On the way home, they spent a couple of days at Medina Lake Campground. They sure have a lot of deer in that part of the country. They visited Fredericksburg one day and enjoyed a German dinner and mu-

Court

(from Page 4)

H&GN Ry. Company Survey. ROW-Sidney Jackson, et al to Elk City Oklahoma Pipeline LP, 12-3-08, Pt. SE/4 Sec. 2, AB&M Survey.

JANUARY 26, 2011 MEMORANDUM OL-Frost National Bank, Trustee to Bob J. Weatherly, 1-24-11, W/2 Sec. 25, Blk. A-4, H&GN Ry. Company Survey.

AMEND. UNIT DESIGN.-Cordillera Energy, et al to AD Weatherly Family Trust, et al, 12-7-10, Pt. Sec. 1, Blk. 2, Brooks & Burleson Survey.

EXT. DT-Citizens Bank, et al to Citizens Bank, et al, 12-7-10, 20 acs. SW/4 Sec. 4, T&NO Ry. Company Survey.

PART. CHILD SUPPORT RELEASAGE-State of Texas Attorney General to James C. Walker Jr., 1-24-11, 21.25 acs. SE/4 and .25 acs. W/2 SE/4 Sec. 6, Blk. A-4, H&GN Ry. Company Survey.

RDT-Wheeler Banking Center to O B Pete Burton, et al, 9-4-09, See Instrument.

RATIF. OL-Britt Land & Cattle Company, et al to Forest Oil Permian Corporation, 1-25-11, NE/4 Sec. 47, Blk. A-4, H&GN Ry. Company Survey.

RATIF. OL-Britt Land & Cattle Company, et al to Forest Oil Permian Corporation, 1-25-11, NE/4 Sec. 46, Blk. A-4, H&GN Ry. Company Survey.

JANUARY 27, 2011 OVERRID. ROYALTY AGREE.-Fred Brown Methanol Inc., et al to C. Wilbur Walls, et ux, 12-31-10, See Instrument.

LEASE REVIVOR AMENDMENT-Michael J. Davis to Mobeetie Resource Development LLC, 11-14-10, W/2 NW/4 NW/4 Sec. 57, Blk. A-5, H&GN Ry. Company Survey.

LEASE REVIVOR AMENDMENT-Gary Thomas Bender to Mobeetie Resource Development LLC, 11-14-10, W/2 NW/4 NW/4 Sec. 57, Blk. A-5, H&GN Ry. Company Survey.

LEASE REVIVOR AMENDMENT-Kelly Duane Bender to Mobeetie Resource Development LLC, 11-14-10, W/2 NW/4 NW/4 Sec. 57, Blk. A-5, H&GN Ry. Company Survey.

ROY./MD-Lawrence Curtis Pickens Sr. to Lawrence Curtis and Carolyn Pickens Living Trust, 1-12-11, 14.11 acs. Sec. 9, Blk. R.E., Roberts & Eddleman Survey.

RATIFICATION OL-Debra Gail Glazner to Questar Exploration and Production Company, 9-24-10, SW/4 Sec. 34, Blk. A-4, H&GN Ry. Company Survey.

RATIFICATION OL-Wesley Paul Bradstreet to Questar Exploration and Production Company, 9-27-10, SW/4 Sec. 34, Blk. A-4, H&GN Ry. Company Survey.

RATIFICATION OL-Roger David Bradstreet to Questar Exploration and Production Company, 10-12-10, SW/4 Sec. 34, Blk. A-4, H&GN Ry. Company Survey.

RATIFICATION OL-Michael Wade Bradstreet to Questar Exploration and Production Company, 9-27-10, SW/4 Sec. 34, Blk. A-4, H&GN Ry. Company Survey.

OL-William P. Pannill to Sanguine Gas Exploration LLC, 10-4-10, S/2 Sec. 2, Blk. A-2, H&GN Ry. Company Survey.

OL-William P. Pannill to Sanguine Gas Exploration LLC, 10-4-10, E/2 Sec. 88, Blk. A-5, H&GN Ry. Company Survey.

OL-William P. Pannill to Sanguine Gas Exploration LLC, 10-4-10, E/2 Sec. 88, Blk. A-5, H&GN Ry. Company Survey.

OL-William P. Pannill to Sanguine Gas Exploration LLC, 10-4-10, E/2 Sec. 88, Blk. A-5, H&GN Ry. Company Survey.

OL-William P. Pannill to Sanguine Gas Exploration LLC, 10-4-10, E/2 Sec. 88, Blk. A-5, H&GN Ry. Company Survey.

OL-William P. Pannill to Sanguine Gas Exploration LLC, 10-4-10, E/2 Sec. 88, Blk. A-5, H&GN Ry. Company Survey.

OL-William P. Pannill to Sanguine Gas Exploration LLC, 10-4-10, E/2 Sec. 88, Blk. A-5, H&GN Ry. Company Survey.

OL-William P. Pannill to Sanguine Gas Exploration LLC, 10-4-10, E/2 Sec. 88, Blk. A-5, H&GN Ry. Company Survey.

OL-William P. Pannill to Sanguine Gas Exploration LLC, 10-4-10, E/2 Sec. 88, Blk. A-5, H&GN Ry. Company Survey.

OL-William P. Pannill to Sanguine Gas Exploration LLC, 10-4-10, E/2 Sec. 88, Blk. A-5, H&GN Ry. Company Survey.

OL-William P. Pannill to Sanguine Gas Exploration LLC, 10-4-10, E/2 Sec. 88, Blk. A-5, H&GN Ry. Company Survey.

OL-William P. Pannill to Sanguine Gas Exploration LLC, 10-4-10, E/2 Sec. 88, Blk. A-5, H&GN Ry. Company Survey.

OL-William P. Pannill to Sanguine Gas Exploration LLC, 10-4-10, E/2 Sec. 88, Blk. A-5, H&GN Ry. Company Survey.

OL-William P. Pannill to Sanguine Gas Exploration LLC, 10-4-10, E/2 Sec. 88, Blk. A-5, H&GN Ry. Company Survey.

OL-William P. Pannill to Sanguine Gas Exploration LLC, 10-4-10, E/2 Sec. 88, Blk. A-5, H&GN Ry. Company Survey.

OL-William P. Pannill to Sanguine Gas Exploration LLC, 10-4-10, E/2 Sec. 88, Blk. A-5, H&GN Ry. Company Survey.

OL-William P. Pannill to Sanguine Gas Exploration LLC, 10-4-10, E/2 Sec. 88, Blk. A-5, H&GN Ry. Company Survey.

OL-William P. Pannill to Sanguine Gas Exploration LLC, 10-4-10, E/2 Sec. 88, Blk. A-5, H&GN Ry. Company Survey.

OL-William P. Pannill to Sanguine Gas Exploration LLC, 10-4-10, E/2 Sec. 88, Blk. A-5, H&GN Ry. Company Survey.

OL-William P. Pannill to Sanguine Gas Exploration LLC, 10-4-10, E/2 Sec. 88, Blk. A-5, H&GN Ry. Company Survey.

OL-William P. Pannill to Sanguine Gas Exploration LLC, 10-4-10, E/2 Sec. 88, Blk. A-5, H&GN Ry. Company Survey.

OL-William P. Pannill to Sanguine Gas Exploration LLC, 10-4-10, E/2 Sec. 88, Blk. A-5, H&GN Ry. Company Survey.

OL-William P. Pannill to Sanguine Gas Exploration LLC, 10-4-10, E/2 Sec. 88, Blk. A-5, H&GN Ry. Company Survey.

THE WHEELER TIMES

PAGE 5 - Thursday, February 3, 2011
"Wheeler; town of friendship and pride."

seum. They are glad to be back, but are ready for warmer weather.
A MOTHER'S PRECIOUS LOVE
God must have known there would be times We'd need a gentle touch, A tender, understanding heart to love us very much, He must have known we'd need someone To listen to our cares—To comfort and remember us In loving thoughts and prayers, So in His boundless wisdom, He

sent us from above The dearest blessing in the world—
A Mother's Precious Love!
In Loving Memory
Juanita Fillingim
Nov. 08, 1933 - Jan. 17, 2011
Friday, January 21, 2011
2:00 P.M.
United Methodist Church
Allison, TX
Gary Jahnel & Rev. Tom Carter
...Officiating
Pallbearers
Hiram Begert
Larry Elmore
Johnny Crawford
John Huff
Bevard Dukes
Alton Lohberger
Internment
Cataline Cemetery
Allison, TX

Alexander to Ex Parte, 1-12-11.
JANUARY 28, 2011
ASSIGN. CONVEY.-Mary Maxine Steeby, et vir to Steeby Revocable Family Trust, 1-26-11, Sec. 25, Blk. 43, Camp County School Land. (No such Blk. for Camp County School Land in Wheeler County)
ASSIGN. CONVEY.-Mary Maxine Steeby, et vir to Steeby Revocable Family Trust, 1-24-11, Sec. 8, Blk. R.E., Roberts & Eddleman Survey.
CORR. RDT-Wheeler Banking Center to Gilberto Parra, et ux, 1-21-11, W/2 N 90' S/2 Blk. 19, Wheeler.
ROW-Devon Energy Production Company LP to Enbridge Pipelines (Texas Gathering) LP, 12-21-

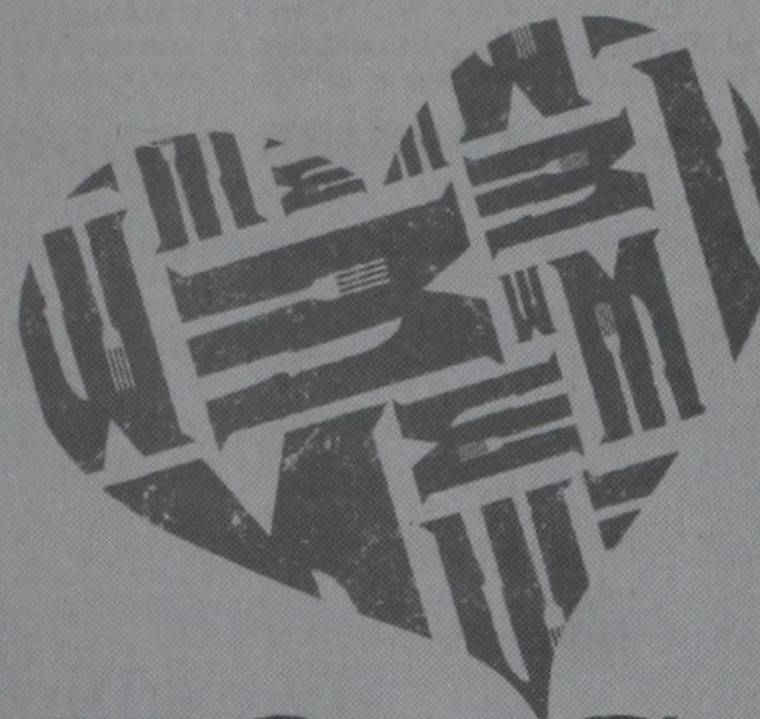
Sincere sympathy to family and friends of Bill Brickey, 90, of Wheeler in his death. Services were at Wheeler First Baptist Church, Wednesday at 2:00 with burial at Wheeler Cemetery and lunch at noon.
Wes and Cindy Bradstreet plan to go visit their kids, Sandy and Brad Cooper at Coppell and Andy and Tracy and baby Hailey at Frisco. They will take their little dog, Pete, and visit over the weekend. Have fun! Think teachers had a day off. Hope you have a fun time with family.
So sorry about the death of Kevin Rarden, 51. Survivors include his mother, Patsy Rarden, of Wheeler and other relatives.
"God be with you till we meet again"

(Continued Page 8)

News, Views & Commentary
KPDR-FM, 90.5
WHEELER, TEXAS
Weekdays: 6:00 a.m. to 7a.m.

JENNINGS PLUMBING HEATING & AIR CONDITIONING

P.O. BOX 423 - Wheeler, Texas 79096
LARRY & BOBBY JENNINGS, Owners
Licensed, Insured & Bonded
(806) 826-3153
American Standard
HEATING & AIR CONDITIONING
Carrier
TX# TA CLB017641E
"A Flush... Is Better Than A Full House!!"



Maxeys

STEAKHOUSE

Valentine's Day
MONDAY, FEBRUARY 14TH, 2011
Candlelight Dinner for Two!

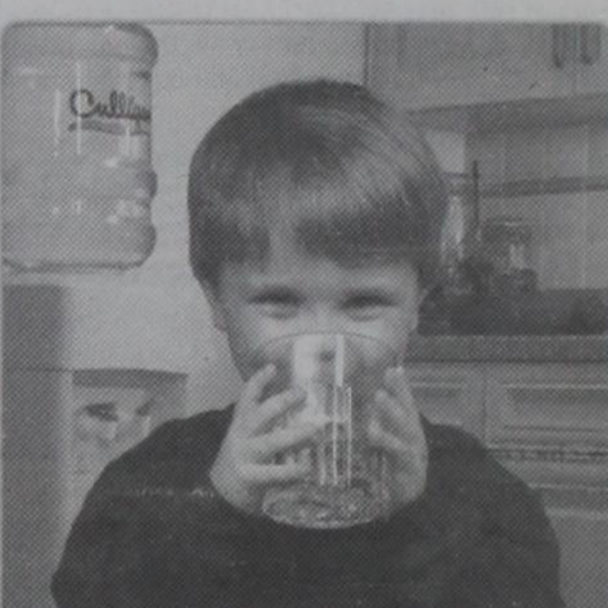
BEEF TENDERLOIN MEDALLIONS (10oz & 6oz) with Bernaise Sauce	\$50
BONE-IN RIB-EYE (14oz) & FILET MIGNON (8oz)	\$60
PARMESAN CHICKEN OR GARLIC GRILLED SHRIMP with Fettuccini Alfredo	\$40

ALL ENTREES SERVED WITH:
Appetizer: Shrimp Cocktail or Southwestern Egg Rolls
Salad: House or Caesar Salad
2 Sides: Three Cheese Mashed Potatoes & Mixed Vegetables
Dessert: Creme Brulee or Decadent Chocolate Layer Cake

Reservations Preferred by Friday, February 11th 2011.
Seating at 6:00 p.m. and 8:00 p.m.

(806) 826-5441 US HIGHWAY 85, WHEELER, TX

"Don't drink the water"
should never be said at home.



Tap water may contain harmful contaminants*. Protect your family against unwanted elements with a Culligan® reverse osmosis drinking water system.

*Contaminants may not be in your water.

Culligan of Pampa, Berger & Dumas
314 S. Starkweather Street
Pampa, TX 79065
806-665-5729
WaterTalk101.com

Culligan
better water. pure and simple.

2/3-24c

TEXAS STATEWIDE CLASSIFIED ADVERTISING NETWORK

TexSCAN

TexSCAN Week of January 30, 2011

AUCTIONS
CONSIGN YOUR CAR! April 8th and 9th. The Branson Auction, Branson, MO. Over 300 cars expected. Call today. 1-800-335-3063. www.bransonauction.com

BUSINESS OPPORTUNITIES
DO YOU EARN \$800.00 in a day? Your own local candy route; 25 machines and candy all for \$9995. All major credit cards accepted. 1-877-915-8222.

DRIVERS
ASAP NEW PAY increase! 34¢-46¢ cpm. Excellent benefits. Need CDL-A and 3 months recent OTR. 1-877-258-8782. www.meltontruck.com

DRIVER: CDLA: Regional Texas opportunity, steady miles and regular home time. Great equipment, must have CDL-A, 8 month OTR experience, 1-888-730-9312 www.deboentrans.com

DRIVERS- 100% Tuition paid CDL training! No credit check, no experience required. Trainers earn 49¢/mile. 1-888-417-7564. CRST EXPEDITED. www.JoinCRST.com

DRIVERS- FOOD TANKER Drivers needed OTR positions available now! CDL-A with Tanker required. Outstanding pay & benefits! Call a recruiter today; 1-877-882-6537 www.oakleytransport.com

DRIVERS-OWNER/OPERATORS Solo, teams, fleets. At least 2,800 miles per week. Home every 10-14 days. We have more freight than available trucks. 1-877-901-8591.

DRIVERS- REGIONAL Van drivers. 35¢-37¢ cpm based on experience. BCBS benefits package. Home every week. CDL-A with 1 year experience required. Call 1-888-362-8608 or apply at www.aventuracareers.com. EOF

OWNER OPERATORS/REEFER 100% Owner/Operators company. CDL-A regional freight. \$1,000.00 sign-on bonus! Home weekly, call 1-888-377-7537 or visit www.suncoarriers.com

REGIONAL DRIVERS WANTED! More home-time, top pay, excellent benefits, newer equipment. Up to 41¢/mile company driver! Heartland Express. 1-800-441-4953. www.heartlandexpress.com

YOU GOT THE DRIVE, we have the direction. OTR drivers, APU Equipped, Pre-Pass, EZ-pass, Pets / passenger policy. Newer equipment. 100% NO touch. 1-800-528-7825

HELP WANTED
ABLE TO TRAVEL: Hiring 8 people, no experience necessary. Transportation and lodging furnished. Paid training, work and travel entire USA. Start today! www.protekchemical.com. 1-832-495-8428

REAL ESTATE
20.15 ACRES, north of Brackettville. Oaks and heavy brush. Deer, turkey, exotics, and hogs. \$1700/acre, long term owner or TX Vet financing. 1-800-876-9720. www.texasranchland.com

676 ACRES-REEVES County, 15 Miles North Pecos. River frontage. Call Jack 1-214-755-6224

ABSOLUTELY THE BEST VIEW Lake Medina/Bandera 1/4 acre tract, central W/S/E. RV/motor home/house, OK only \$830 down \$235 month (12.91%/10yr). Guaranteed financing. More information call 1-830-460-8354

RUIDOSO, NM AREA, 5 acres with city water and city maintained roads near small fishing pond and golf course. Only \$19,900. financing available. Call NMRS; 1-877-926-8201.

\$106 MONTH BUYS land for RV/motor home/house, pier, boat ramp, pool, clubhouse, gated entry, on Lake Fork, \$690 down (\$6900/10.91%/7yr) Guaranteed financing. 1-903-878-7265

\$106 MONTH BUYS land for RV, MH or cabin. Gated entry. \$690 down, (\$6900/10.91%/7yr) 90 days same as cash, Guaranteed financing. 1-936-377-3235


SCHOOLS/TRAINING
AIRLINES ARE HIRING Train for high paying aviation career. FAA approved program. Financial aid if qualified, job placement assistance. Call Aviation Institute of Maintenance. 1-877-523-4531

HIGH SCHOOL DIPLOMA graduate in 4 weeks! Free brochure! Call now! 1-866-562-3650, ext. 55. www.southeasternHS.com

Run Your Ad In TexSCAN!

Statewide Ad	\$500
301 Newspapers, 942,418 Circulation	
North Region Only	\$230
98 Newspapers, 263,811 Circulation	
South Region Only	\$230
101 Newspapers, 366,726 Circulation	
West Region Only	\$230
102 Newspapers, 311,881 Circulation	

To Order: Call this Newspaper direct, or call Texas Press Service at 1-800-749-4793 Today!



Rock-N Okie

Complete Tree Service
Fully Insured

Mitch or Barbee
Horstkoetter
580-243-7494

P.O. Box 327
Erick, Ok 73645
www.rocknokie.com

HOME PHONE SERVICE

NO Pre-Payment • NO Deposit Required!
Rates from \$6.99 per month*
(\$17/month including approximate taxes & fees)

FREE 1st Month of Service
Caller ID & Call Waiting included in Packages**

New-Talk 866.934.3448

*\$19.99/month with auto pay **Requires silver or gold package



285+ Channels
160+ HD Channels
Packages Start At
\$29.99
Mo.

2 FREE Upgrades - HD DVR & HD Receiver - Ask How!
FREE

HBO SHOWTIME starz cinemax
For 3 Months

DIRECTV
Direct Sat TV
1-800-360-1395
Local Installers!

Offers end 2/8/11, on approved credit. New customers only. Other restrictions apply. Call for details.

Old Time Gospel Music
KPDR-FM, 90.5
... In Wheeler
Sundays: 6:00 a.m. to 8:00 a.m.

NOTICE: While most advertisers are reputable, we cannot guarantee products or services advertised. We urge readers to use caution and when in doubt, contact the Texas Attorney General at 1-800-621-0508 or the Federal Trade Commission at 1-877-FTC-HELP. The FTC web site is www.ftc.gov/bizop

Extend your advertising reach with TexSCAN, your Statewide Classified Ad Network.

Local Business Update

Prepared By County News, Inc. ©2011 All Rights Reserved
(800) 580-0485 • www.countynewsinc.com

National Bank of Commerce

An Office of First National Bank – Waupaca, WI
Member FDIC • Equal Housing Lender

FDIC

Pioneers in Your Financial Future



Make your life a little easier by banking at National Bank of Commerce, located at 1224 North Hobart in Pampa, phone (806) 665-0022 and at 305 North Main in Shamrock, phone (806) 256-2181 and at 501 Commerce St. in Childress, phone (940) 937-2514. They work hard to earn your trust and would like to ensure that your family or company's banking needs are met. The services that National Bank of Commerce offers are based on the relationship that is built with each customer. National Bank of Commerce strives to provide innovative services such as home loans, consumer loans, ag loans, commercial loans, bill pay, CDs, IRAs, Safe Deposit Boxes, Checking, ATM/Debit Cards, Telephone Banking at (800) 831-4409 and Internet banking at www.nbwauapaca.com. They are dedicated to always growing and evolving – that makes them the leader in the banking industry. National Bank of Commerce's staff takes great pride in providing personal, individualized service to their clients. National Bank of Commerce is your friendly banking service, ready to meet your every banking need.

The editors of this 2011 Winter Local Business Update suggest that you call National Bank of Commerce to find out how they can help you with all of your banking needs.

Railhead Club & Restaurant

David Lewis, General Manager • Janelle Hardin, Assisted Manager

If you appreciate delicious food at its best then Railhead Club & Restaurant is exactly what you are looking for. This has become the restaurant of choice for many desiring the highest quality service and food at a reasonable price in the area.

Railhead Club & Restaurant has created a menu of a variety of tasty dishes that will have something on it that you would like, no matter how hungry you are or what you're hungry for. They offer a wide range of meals from steaks, seafood, BBQ, burgers to salads and much more. The Railhead Club & Restaurant now exclusively serves Bonsmara Beef, the healthiest, juiciest and most tender beef available! Based on a Texas A&M study lasting 10 years, Bonsmara Beef on average has about 25% of the fat of an 8oz chicken breast, with skin. They also feature a full service bar serving ice cold beer and delicious mixed drinks to complement your meal. Railhead Club & Restaurant even has a kid's menu to feed your little ones.

At Railhead Club & Restaurant, diners are treated to fine dining and full service at a leisurely, enjoyable pace in a comfortable, casual atmosphere. Their fast, friendly servers are always at your service – to make sure that your meal is just right!

So, if you were planning to go to a place with great food and fun for everyone in the family, Railhead Club & Restaurant, located at 240 North Second Street in Canadian, phone (806) 323-9435 would be the perfect choice.

The editors of this 2011 Winter Local Business Update suggest that you stop in often at Railhead Club & Restaurant and enjoy a delicious meal. Their hours are Monday-Thursday 11:00am-9:00pm, Friday 11:00am-10:00pm and Saturday 5:00pm-10:00pm.

Easy's Eastside Package Store Easy's Westside Package Store

Quench your thirst with wines and spirits from Easy's Eastside Package Store and Easy's Westside Package Store. Their seemingly endless inventory includes such favorites as beer, wine, liquor, lotto tickets and cigarettes. They also carry a variety of non-alcoholic beverages and mixers.

Easy's Eastside Package Store and Easy's Westside Package Store will help you find the perfect wine to complement any meal and suggest appropriate beverages.

Tip your cup towards Easy's Eastside Package Store and Easy's Westside Package Store to stock the bar for your next large gathering or event. They're sure to have the perfect sipper to seal your wedding kiss with a toast during your reception. Kegs of beer are also available in a number of name brands.

Their experienced, friendly staff is extremely knowledgeable and can provide you with helpful information and recipes for nearly every cocktail.

The authors of this 2011 Winter Local Business Update suggest that you stop by Easy's Eastside Package Store at 201 E. Brown, phone (806) 669-3817 or their newest location Easy's Westside Package Store at 1300 North Price Road, phone (806) 669-5902 and browse through their fine wines and liquors and enjoy money saving specials, today!

Vintage Woodworks

Brian McAdoo, Owner

www.vintagewoodworkspampa.com

Vintage Woodworks, located at 810 W. Foster in Pampa has been making homeowner's visions a reality. They are committed to your complete satisfaction and providing the finest in customized cabinetry for your kitchen, bath, library, entertainment space and anywhere else fine cabinet works and functionality meet.

Special attention is given to all aspects of hand-making your custom cabinets down to the smallest detail to assure a quality cabinet that will stand up to a lifetime of constant use. Their goal is to make sure that your cabinets are the best quality possible, as well as having superior customer service, all for a reasonable price. They use only the finest quality select hardwoods, which are available to you in your choice of color and finish. Styles range from contemporary to traditional, but they create exactly what you want or have in mind to complete your cabinets to your satisfaction. Vintage Woodworks can take care of all your cabinet needs, including custom cabinets, furniture, bookshelves, mantels, tables and remodels.

The writers of this 2011 Winter Local Business Update suggest that you call Vintage Woodworks today at (806) 898-3410 for a free consultation and estimate on your future cabinetry. Mention this Local Business Update ad when calling.

Funding For Education & Health In Rural Communities

Agriculture Secretary Vilsack Announces Funding To Increase Educational and Health Care Access in Rural Communities

Agriculture Secretary Tom Vilsack today announced that 106 projects in 38 states and one territory have been selected to receive more than \$34.7 million in grants to fund educational

projects and expand access to health care services in rural areas through USDA's Distance Learning and Telemedicine Program.

"Too many rural areas cannot take full advantage of the opportunities afforded by broadband for improved education and health care. These funds will help communities enhance their educational and training programs and

deliver improved health care services for their residents," Vilsack said.

"Schools and health care sys-

10 Free Red Bud Trees

Spring Planting is Near: Join the Arbor Day Foundation in February and Receive 10 Free Redbud Trees

Here's an ideal way to get into the mood for spring planting: Join the Arbor Day Foundation and receive 10 free trees to plant when the weather turns warm.

Every person from Texas who joins the Arbor Day Foundation in February 2011 will receive 10 free Eastern redbud trees.

"Redbuds will add beauty to landscapes across Texas for years to come," said John Rosenow, chief executive and founder of the Arbor Day Foundation. "They will also add to the proud heritage of Texas' 70 Tree City USA communities. For more than 30 years, Tree City USA has supported community forestry across Texas, and planting these lovely redbuds will add to this important tree-planting tradition."

The 10 free Eastern redbud trees are part of the nonprofit Foundation's Trees for America campaign.

The trees will be shipped post-paid at the right time for planting, between March 1 and May 31, with enclosed planting instructions. The 6- to 12-inch trees are guaranteed (to grow, or they will be replaced free of charge).

Arbor Day Foundation members also receive a subscription to the Foundation's colorful bi-monthly publication, Arbor Day, and The Tree Book with information about tree planting and care.

To become a member of the Foundation and receive the free trees, send a \$10 contribution to TEN FREE EASTERN REDBUD TREES, Arbor Day Foundation, 100 Arbor Avenue, Nebraska City, NE 68410, by February 28, 2011, or go to www.arborday.org/February.

Interim HEALTHCARE

We know how difficult it is to devote the proper care and attention to your loved ones who may need special care following an accident or illness. Home is the most desirable and effective place for recuperation. Let Interim Healthcare bring their quality care right to your door – where and when you need it most.

Interim Healthcare values quality of service above all else. Their commitment to patients is visible through their Registered Nurses, Physical Therapists, Speech Therapists, Social Workers, Licensed Practical Nurses and Home Health

HOME CARE AND HOSPICE

www.interimhealthcare.com

Aides. Each staff member is eager to provide the best possible home health services. When someone you love has an advanced life-limiting illness, Interim Healthcare's hospice care staff and volunteers are there to offer options that maximize comfort and maintain dignity. Referrals to Hospice can come from anyone and at any time.

Interim Healthcare's caregivers are compassionate and highly skilled professionals who listen to patients' needs. They are trained to manage physical, psychological and emotional barriers to recovery. They work for each individual's safety, welfare and best interests.

The editors of this 2011 Winter Local Business Update suggest that if you would like more information about Interim Home Health and Hospice, just call (866) 688-0184. They would be glad to answer any questions you may have.

Wheeler Nursing & Rehabilitation

Kenna Howard, Administrator

Finding the right care facility takes time. It is important to search for a suitable home well in advance of seeking admission to the facility. Planning ahead also makes the transition of moving into a care facility much easier.

Wheeler Nursing & Rehabilitation, located at 1000 Kiowa Street in Wheeler, phone (806) 826-3505, offers care to the people who cannot be cared for at home. They provide excellent skilled nursing care, rehabilitation services, nutritious, delicious meals, activities, help with daily living and supervision. They encourage residents to stay active and to participate in a variety of community services and social activities. They offer 24-hour guidance by a qualified, compassionate staff with both private and semi-private rooms available. Their staff oversees the administration of medication and insures the health and safety of the residents at all times. Safety concerns are also addressed with up-to-date fire and smoke alarms, as well as an emergency call system. Wheeler Nursing & Rehabilitation also offers occupational, physical and speech therapy.

As you and your family assess your needs, it's important to acknowledge financing options. Payment for care can be made through Medicare, Medicaid, Private Insurance and private pay.

We, the editors of this 2011 Winter Local Business Update, give our unconditional recommendation to Wheeler Nursing & Rehabilitation for providing compassionate care in a home like setting. Kenna Howard invites you to stop by their fine facility for more information or a personal tour.

Canadian Supply & Redi-Mix

Jerry Smith, Owner

Built on a solid foundation, Canadian Supply & Redi-Mix provides competitively priced concrete products and services to both homeowners and contractors for residential and commercial building projects.

Canadian Supply & Redi-Mix is sure to carry the concrete materials you are looking for. They have an extensive inventory of colored, lightweight and Fillcrete concrete products, as well as concrete blocks, crushed concrete, concrete fibers and more! Patios, driveways, sidewalks, home foundations, fence posts and decks are only a few of the more common projects they capably service.

Their honest, reliable service is complete with timely delivery, right to your front door. Canadian Supply & Redi-Mix's well-equipped and highly maintained trucks quickly and efficiently transport and distribute pre-mixed concrete directly onto the desired application! All of their products are freshly mixed and precisely measured to insure quality.

The authors of this 2011 Winter Local Business Update suggest that you shape up your building budget today! Call the ready-mix professionals at Canadian Supply & Redi-Mix, located at 11130 US Highway 60 & 83 in Canadian, phone (806) 323-5379.

Mike's Dirt Works

Mike Hobbs, Owner

Mike's Dirt Works is the area's excavating experts dedicated to providing the highest standard of quality services and are capable of handling any excavation project. Big or small, there is no job too difficult or complex for them.

Specializing in projects such as plat development, commercial site development, underground storage tank removal, plus general excavation and dirt work, Mike's Dirt Works can tackle any of your excavating needs. These excavating experts are dependable, experienced, trained and willing to work hard to satisfy your needs. They are very safety conscious, and most of all, they are people you can trust to get the job done right. Why waste your time with just the average when you can have the best? They offer dump trucks, belly trucks, sand, gravel and topsoil. Mike's Dirt Works is a Licensed UST Contractor and provides all types of dirt work.

The editors of this 2011 Winter Local Business Update are pleased to bring to your attention that Mike's Dirt Works, located at 411 South Arkansas Street in Shamrock, phone (806) 256-3983 or Mike Hobbs' mobile phone (806) 334-2062, is ready to serve you with the best possible and most affordable excavating there is!

tems in rural Texas have increasingly tighter budgets each year. Distance Learning and Telemedicine grants are powerful tools for providing expanded educational and medical opportunities which otherwise may be unavailable to students and residents of rural communities," said Paco Valentin, USDA Rural Development State Director of Texas.

The Distance Learning and Telemedicine (DLT) Grant Program provides access to education, training and health care resources in rural areas. In Texas alone, four educational service center regions, one Coop and one home healthcare business were chosen to receive over \$1.7 million in grants through the DLT program.

Cuidado Casero Home Health was awarded \$52,846 for the purchase and implementation of 34 telehealth monitors and 1 corresponding base platform. These telehealth monitors will allow patients to be monitored in between nurse visits. The monitor tracks vital signs from the patient and corresponding condition information, in the patient's native language, and reports the condition daily to the platform base station, which will be monitored by a registered nurse. This service will help close the gap in home health service and prevent costly re-hospitalizations, while providing remote monitoring of patients in rural areas.

Four Educational Service Center Regions, including Regions 6, 11, 12 and 15, were awarded collectively, over \$1.2 million to purchase distance education and



THE WHEELER TIMES

PAGE 6 – Thursday, February 3, 2011

“Wheeler, town of friendship and pride.”

computer equipment and to increase or introduce broadband capabilities to the rural communities the service centers encompass. These new services will be available for school students, rural community members and college students, to increase the availability of educational opportunities for rural community members.

Info-Net Consortium was also awarded a DLT grant for \$446,176 to provide 10 rural central Texas communities, with over 15,000 total residents, increased access to distance learning technology. Students, parents, community members and public service officials will have access to this equipment for educational and job training purposes.

Funding through the DLT program is contingent upon the recipient meeting the conditions of the grant agreement. Further information on the program and the application process, can be found at http://www.rurdev.usda.gov/UTP_DLT.html

USDA, through its Rural Development mission area, administers and manages more than 40 housing, business and community infrastructure and facility programs through a national network of 6,100 employees located in the nation's capital and nearly 500 state and local offices. These programs are designed to improve the economic stability of rural

communities, businesses, residents, farmers and ranchers and improve the quality of life in rural America. Rural Development has an existing portfolio of nearly \$142 billion in loans and loan guarantees

February Production Stats & Allowables

The Texas average rig count as of Jan. 14, 2011, was 726, representing about 44 percent of all active land rigs in the United States. In the last 12 months, total Texas reported production, was 356 million barrels of oil and 7.3 trillion cubic feet of natural gas.

Texas natural gas production represents approximately 29 percent of total U.S. natural gas demand.

The Commission's estimated final production for November 2010 is 29,859,505 barrels of crude oil and 518,014,173 Mcf (thousand cubic feet) of gas well gas.

The Commission derives final production numbers by multiplying the preliminary November 2010 production totals of 28,273,369 barrels of crude oil and 476,773,284 Mcf of gas well gas by a production adjustment factor of 1.0561 for crude oil and 1.0865 for gas well gas. (These production totals do not include casinghead gas or condensate.)

Texas natural gas storage reported to the Commission for December 2010 was 412,041,298 Mcf compared to 410,546,930 Mcf in December 2009. The January 2011 gas storage estimate is 368,321,646 Mcf.

The Texas Railroad Commission's Oil and Gas Division set initial February 2011 natural gas production allowables for prorated fields in the state to meet market demand of 12,031,597 Mcf (thousand cubic feet).

In setting the initial February 2011 allowables, the Commission used historical production figures from previous months, producers' demand forecasts for the coming month, and adjusted the figures based on well capability. These initial allowables will be adjusted after actual production for February 2011 is reported.

Hear the

"Abundant Living Broadcast"

KPDR-FM, 90.5

WHEELER, TEXAS

Saturdays: 9:00 a.m. to Noon



KIM'S KITCHEN

Dine-in, Carry-out,
& Catering
Hwy 152 & 83
806.826.5102

Daily Buffet – Bakery
Open Seven Days A Week

UNDERWOOD

ATTORNEYS AND COUNSELORS AT LAW

KEN FIELDS, A SHAREHOLDER OF THE UNDERWOOD LAW FIRM, AND BRYAN GUYMON, ARE AVAILABLE FOR CONSULTATION AT THE WHEELER COUNTY OFFICE ON FRIDAYS FROM 9:00 A.M. TO 5:00 P.M. THE OFFICE IS LOCATED AT: 315 N. MAIN SHAMROCK, TEXAS 79079

APPOINTMENTS ARE ENCOURAGED. FOR AN APPOINTMENT WITH KEN FIELDS OR BRYAN GUYMON, PLEASE CALL OUR PAMPA OFFICE AT (806) 669-6851 SHAMROCK OFFICE PHONE NUMBER (806) 256-1474

DOUG BOYD MOTOR CO.

Buy Here / Pay Here

No Credit Check • Areas Largest Selection

Pampa • Corner of Hwy 60 @ Hwy 70

806-669-6062 • www.dougboydmotors.com



In Wheeler—15 Acres on County Road 15-A, Good Farmland, utilities available

Linda Laycock
Broker, ABR,
GREEN, SRES, e-Pro
806.662.1312

Larry Hadley
Assoc.
806.662.2779

Jordan Oneal
Assoc.
806.670.6623

Pampa MLS www.househunterspampa.com Amarillo MLS



MAIN STREET: 8:15 A.M. Tuesday morning, February 1, 2011, found a pile of snow at the corner of Main and Texas streets. Looking south shows some activity. Blowing snow continued. Approximately 4" snow was received.

ALLISON NEWS

By Juanita Boydston



THE WHEELER TIMES

PAGE 7 - Thursday, February 3, 2011

"Wheeler, town of friendship and pride."

THESE PICTURES SPONSORED BY:

FIRST STATE BANK

Mobeetie Office:
First & Wheeler St.
Mobeetie, Texas
845-2311



Wheeler Office:
1408 S. Alan Bean Blvd.
Wheeler, Texas
826-5546

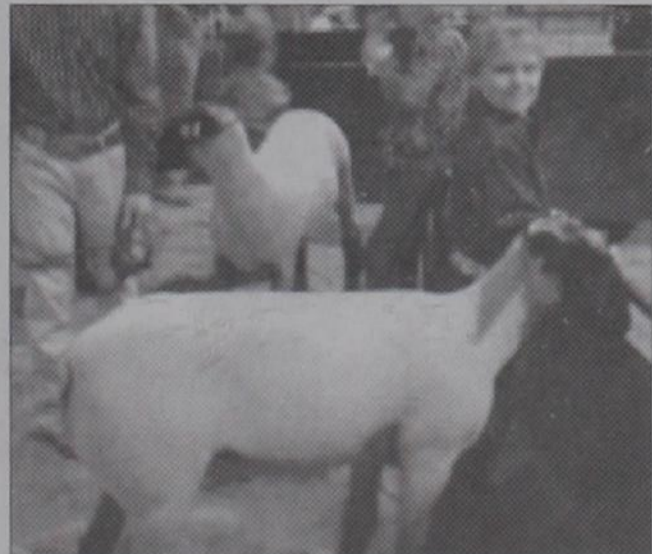


January 26, 2011 was the 100th Day of school at the Fort Elliott Elementary. Pre-k through the 2nd grade had a fun day doing all kinds of 100 things. The students made hats, glasses, took 100 bites of cookie, took 100 steps in the gym, and put together 100 cheerios in a necklace. Pictured are (front row, l. to r.) Tayton Auldrige, Gavin McDowell, Ben Willson, Molly Meek, Roper Pigg, Yesenia Perez, Austin Adkins, Cutter Barr, Jacob Hoover, (second row) Brandon Carter, Jarique Mitchell, Hope Adkins, Madison Swearingim, Gatlin Goad, Jasmime Johns, Freedom Hill, Alyssa Walker (back row) Mrs. Jones, Mrs. Hale, and Mrs. Galmor.

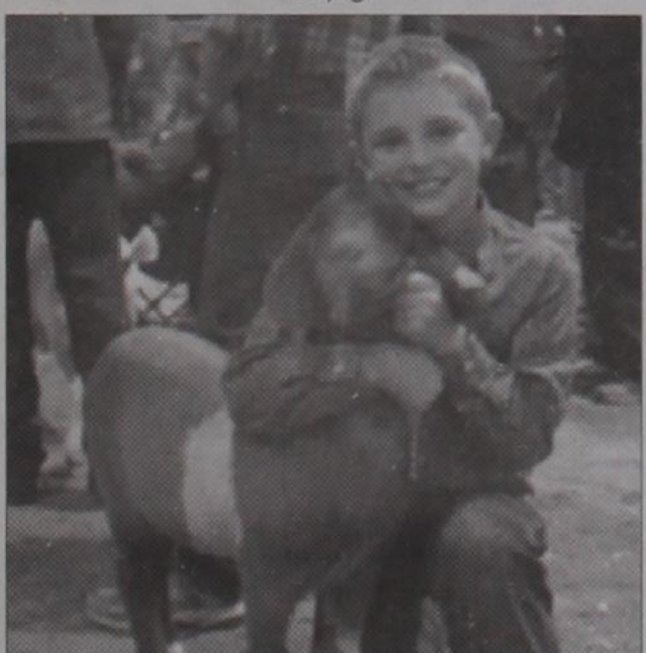
Kelton Students At Wheeler Co. Junior Livestock Show



Brock Buckingham, a Kelton student, shows his pig.



Ransley Cochran, a Kelton student, shows his lamb.



Kaleb Kimbro, a Kelton student, shows his goat.



Kayleigh Coomer, a Kelton student, shows her lamb.

NOW faith is the substance of things hoped for, the evidence of things not seen. For by it the elders obtained a good report. Through faith we understand that the worlds were framed by the word of God, so that things which are seen were not made of things which do appear. By faith Abel offered unto God more excellent sacrifice than Cain, by which he obtained witness that he was righteous, God testifying of his gifts: and by it he being dead yet speaketh. By faith Enoch was translated that he should not see death; and was not found, because God had translated him: for before his translation he had this testimony that he pleased God. But without faith it is impossible to please him; for he that cometh to God must believe that he is, and that he is a rewarder of them that diligently seek him. By faith Noah, being warned of God of things not seen as yet, moved with fear, prepared an ark to the saving of his house; by the which he condemned the world, and became heir of the righteousness which is by faith. By faith Abraham, when he was called to go out into a place which he should after receive for an inheritance, obeyed; and he went out, not knowing whither he went. Hebrews 1:1-8

O PRAISE the Lord, all ye nations: praise him, all ye people.

For his merciful kindness is great toward us: and the truth of the Lord endureth for ever. Praise ye the Lord. Psalm 17

The weather in Allison, Texas on this Tuesday morning is very frigid COLD and wind is blowing very high and snow is blowing and it is overcast and the temps are below zero. Our front porch thermostat on the wall says it is five degrees but we know with this wind and high as it is it is so much colder. Stay in and stay warm that is my motto today. Don't know if you could go very far if you even tried to get out. Praise the Lord for his goodness and mercy to us. Praise the Lord for keeping our electricity on. Praise be to Jesus!!

Janice McCloy of Morse, Texas visited her mother, Alice Kelly, and drove her around some. I know its good to get out of the house every once in awhile and good to be with your daughter.

Louise Boydston and Shirley Chadwick visited with Pearl Harrison in the Elk City Nursing Home on Friday last week. Pearl is not feeling well at all and needs your prayers.

On Saturday, Louise Boydston attended a graveside service at Fairview Cemetery in Pampa, Texas for her great aunt Mamie Myers. There was a large crowd attending and Louise enjoyed seeing her relatives, and visiting. Dinner was served at the Cham-

ber of Commerce. Some of the family came from Kansas. Alice McCaskill made the trip. She will be 95 in August.

Also received the news her cousins husband passed away a couple of weeks ago. Ivan Brekham from Alamogordo, New Mexico. Also another cousin, Kay Bradley had passed away a few months ago. One by one we are losing more family.

Sorry to hear of Charlene Rainey falling and breaking her hip. We pray that she is doing much better at this writing. Haven't heard an update, but we are praying Charlene!

Monday, Opal and Juanita Boydston enjoyed a delicious meal at Louise Boydston's house with Shirley Chadwick, Debbie Boydston and granddaughter, Paisley and Daisy and Gary Boydston. It was a belated get together for Debbie. Juanita made a couple of pies, a chocolate and a coconut cream. Had a good visit and good meal. Thanks for sharing it with us, Louise!!

Sunday after church, Opal and Juanita Boydston accompanied Louise Boydston and Shirley Chadwick to Wheeler, Texas where they enjoyed a very delicious meal at Mel's Diner.

Stay WARM and HAPPY!
God Bless and Keep ya'll till next time!!

Mel's Diner announces ...

706 W. Oklahoma St., Wheeler, TX

NEW HOURS

Mel's will be open
5:00 A.M. to 5:00 P.M.
Seven Days A week
beginning Feb. 7.

We appreciate your past patronage and are looking forward to continue serving you in the future.

We will Continue to Cater
Morning, Noon and/or Evening
806/826-3756

Jeffus (from Page 1) assisting with the preaching and encouraging spiritual growth. After retiring to Arkansas, Hugh was a member of the Springtown Church of Christ in Springtown, AR.

Shelter (from Page 1) download the application package from the PRPC's website at: www.thepRPC.org or contact Elizabeth Thomas, the program specialist for the package at (806) 372-3381. The deadline for application is February 18, 2011. If you need help with downloading and securing an application please contact Lanette or Monica at Parkview Hospital 826-5581.

Jeffus; three children, Stephanie Cowan and husband, David, of Fayetteville, AR., Stephen Jeffus and wife, Elena, of Dallas, TX. and Scot Jeffus and his wife, Sabra, of Springdale, AR.; and six beautiful grandchildren.

Visitation was held on Thursday, January 20, from 5:00 PM until 7:00 PM at Nelson-Berna Funeral Home in Fayetteville.

A Celebration of his life was held at 10:00 AM, Friday, January 21, at the Chapel of Nelson-Berna Funeral Home with Mr. Larry Jo Johnson officiating.

Memorial contributions may be made to the University of Arkansas Civil Engineering Department, the Circle of Life Hospice, Springdale, Arkansas, or the Springtown Church of Christ, Springtown, Arkansas.

Court (from Page 6) 10, SW/4 Sec. 10, Blk. R.E., Roberts & Eddleman Survey. ROW-Stephen D. Eden, et al to Enbridge Pipelines (Texas Gathering) LP, 1-3-11, SE/4 Sec. 11, Blk. R.E., Roberts & Eddleman Survey.

AMEND. UCC DT-Walter O. Hill to Bank of Texas NA ---, See Instrument.

AMEND. UCC DT-Walter O. Hill to Bank of Texas NA ---, See Instrument.

Instrument. D-Louise Calhoun (Estate) to I. M. Gipson, et al, 1-25-11, 10.9 acs. NE/4; 5 acs. NE/4 Sec. 4, T&NO Ry. Company Survey.

Chat (from Page 1) Chamber know. Please attach a list of reasons for the individual being deserving.

— cwe —

The beautiful weather over the weekend certainly makes the cold weather seem colder.

— cwe —

We traveled to Huntsville this past weekend to help Cathi and Dorcie get everything back in order at the townhouse. This is the second time a broken water line



Crossword Solution

A	L	B	E	N	A	M	E	L
A	I	R	D	A	K	O	T	A
N	B	A	A	B	A	C	U	S
D	Y	N	A	M	O	K	I	T
W	A	S	P	B	E			
	T	A	M	A	I	N		
A	C	T	S	L	U	D	G	E
C	H	O	I	C	E	O	L	E
T	I	G	R	I	S	P	O	D
S	T	A	S	I	S	T	O	Y



OKLAHOMA
CHEYENNE • HINTON • EUFAULA
TEXAS
SHAMROCK • SUNRAY
WELLINGTON • WHEELER



PRICES GOOD
WEDNESDAY, FEBRUARY 2 THRU
TUESDAY, FEBRUARY 8, 2011

NOT LIABLE FOR TYPOGRAPHICAL OR PICTORIAL ERRORS.
WE RESERVE THE RIGHT TO LIMIT QUANTITIES.
SOME ITEMS NOT AVAILABLE IN ALL STORES.

MPK Foods
Guacamole Mix mild or spicy 1 oz. **99¢**

Large Avocados 5 for **\$5**

IT'S A SUPER BOWL SHOWDOWN

Jalapeño Peppers **69¢** lb.

Meaty Pork Shoulder Country Style Ribs
family pack
\$149 lb.
Small Pack \$1.79 lb.

Kraft Velveeta **\$4.49**
pre-priced \$4.99 regular or 2%
32 oz. loaf

Shurfine Diced Tomatoes & Green Chiles
select varieties 10 oz.
2 for \$1

Fryer Leg Quarters
10 lb. bag **\$3.99**

T-Bone Steak
preferred trim **\$4.99** lb.

Pace Picante Sauce
select varieties 16 oz.
3 for \$5

SUPER SNACK SPECIALS

EatSmart Vegetable Tray
with dip 2.5 lb.
\$7.99

Red Diamond Tea
select varieties gallon
2 for \$4

PALERMO'S
Naturally Rising
Primo Thin
Ultra-Thin Crust
PEPPERONI PIZZA

Great Coke Prices for Super Bowl
See Back Page for Pricing in Your Area

Palermo's Pizza
select varieties 14.8-32.2 oz. **\$4.99**

Shurfine Soda
select varieties 12 pk. cans
4 for \$10

Thriftway or Shurfine White Bread
sandwich or large 24 oz. **79¢**

LOOKING TO SAVE? BE SURE AND CHECK OUT OUR PRIVATE LABEL PET FOOD PRODUCTS