



# THE WHEELER TIMES

(USPS-681-960)  
VOLUME 75, NUMBER 33

THURSDAY, AUGUST 5, 2010

SINGLE COPY **50c**

“Wheeler; town of friendship and pride.”

## CWE CHAT WITH EDITOR

By Louis C. Stas

Maybe it is right this week. First we advertised the Childress Benefit was a dance. Last week we corrected it to a Mexican Pile-On and the headline read dance. **The Childress Benefit is a Mexican Pile-on.**

— cwe —

The temperature read 100° at 2:42 Monday at the bank. No relief from the heat is in site, as far as I know. It was 105° in Wheeler, according to the TV report.

— cwe —

The Wheeler Mustangs had a nice warm day to start football practice Monday.

— cwe —

It is not going to be so difficult to keep up with the mowing, since we do not have the moisture. But the lawn is nice and green at the present time.

— cwe —

The work on the south side of the square at the courthouse is completed. It certainly does look nice and is a lot more convenient to get upon the sidewalk.

— cwe —

The Wheeler County 4-H'ers are going to have a pool party Friday, August 13, to get organized for the coming year.

— cwe —

I put a bug in the County Agent's ear shortly after her (Wendy Hazzard) arrival in Wheeler. I would like the extension agents to offer gardening as a project. Our present youngsters need to know how to grow their food. All that time I spent in the garden as a youngster did not hurt me; and I enjoyed gardening into my adult life.

— cwe —

It does not take much space to have a few plants in the ground.

— cwe —

In the spring the extra garden (Continued Page 6)

## STORM REPORT

As Reported by...  
**Stormie Meriwether,**  
First Grade Student

Dear Friends, One day I went to the swimming pool with Natalie. It was so fun! Natalie is a pretty good swimmer. I very want to swim. It was Natalie's birthday a long time ago. Now she is seven! Bill and Tristan (Blanchard) had a birthday. I very wanted to make them a cake. Happy Birthday guys!

One day I went to a store to buy me a beautiful dress and the store didn't have any beautiful dresses. I went to another store and I found this beautiful-beautiful dress! There are pink, turquoise and purple flowers on the dress. It has little poofy sleeves. I tried it on, because maybe it fits or not. It fits and it is so perfect! The bow is very soft. We tried to find shoes, but we didn't find any.

The next day I stayed at home with my dad. My mom went out to buy me some shoes. My dad and I were watching TV and mom came in. Then mother gave me some brand new shoes! The shoes are white. They are slippers shoes with "diamonds" on the straps. We are going to a wedding!

One day I was a flower girl in a beautiful wedding. It was Jennifer (Maddox) and Justin (Lee). I remember that. It was a very long time ago, I was a little girl. My mom told me, now it's their Anniversary! Happy Anniversary Jennifer and Justin!

It's an Anniversary to Dale and Monica (Kidd) too. I went to see them and I saw "Jofus" (Joseph) and his sisters. There are lots of anniversaries!

We had a very great day with the big family. It was a party for Ethan! He is 'bout to marry Taylor! That's it!



## Wheeler Co. Walk Across Tex. Slated For Sept. 13 Thru Nov. 7

Wheeler County Walk Across Texas will start on September 13, 2010 and the eight weeks will finish on November 7, 2010. Team packets are currently available

## Kelton Schedules '10 Fireman's Ball

The Annual Kelton Fireman's Ball is scheduled for Saturday, August 21, 2010 at the Big Red Barn, nine miles east of Wheeler and 1 1/2 south on Hwy 592. Calf Fries will be on the menu with food being served from 6-9 p.m.

The dance will start at 9 p.m. Playing for the dance will be Tom Velasquez and The Global Nomads.

There will be door prizes and a silent auction.

A Weatherby Orion 12 Ga. Over and Under shotgun will be raffled. The gun is a 3" mag. 26" barrel w/ screw-in chokes. You could be the lucky winner.

Mark your calendar and plan to be in attendance at this event.

## Methodist Women To Host Bible Study

The Wheeler United Methodist Women invite you to attend a seven week video session bible study. Faithful/Abundant, True is part of a DEEPER STILL event which features: Kay Arthur, Priscilla Shirer, and Beth Moore. This study challenges women to Faithfulness, to trust God's Abundance, and to grow in Discernment. The study will be held on Wednesday evenings beginning August 11th, 2010, at 6pm in the Fellowship Hall of the Wheeler Methodist Church at 704 Main Street. Those who wish to attend will be provided with a seven week daily study book. To sign up for the study, or should you have any questions, you may contact the church office at 826-3114, or Nancy Emmert at 826-3160.

## Mobeetie Ex-Student Reunion Set For Saturday, Sept. 4, 2010

Mobeetie Ex-Students will gather at the Mobeetie School Gym on Saturday, Sept. 4, 2010 for the annual reunion.

Registration will begin at 9:30 in the gym. A parade will begin at

and can be picked up at the Wheeler County Ag and Family Life Center in Wheeler during business hours.

•Meet new people! •Start a healthy habit!  
•Enjoy a little friendly competition!

•Get Fit! •Have Fun! •Spend prime time with your kids!

September 13, 2010 – November 7, 2010

Walk Across Texas! Is a fun and flexible way to exercise. Just get together with seven other people – friends, neighbors, coworkers, or family members – and start walking, or jogging, or even biking.

You can walk together or individually (Continued Page 6)

## Annual Pool Party For County 4-H'ers

Wheeler County 4-H will be having its annual Enrollment and Pool Party on August 13 at 5pm at the Wheeler City Park. All current members are encouraged to attend along with anyone who is interested in joining 4-H. We will be filling out enrollment forms and information about entries at the Tri-State Fair will be available. We will have hot dogs and chip and would like families to bring either cookies or brownies for the dessert. At 6pm the party will move over to the Wheeler City Pool till 8pm. If you are interested in 4-H please bring your family and friends and join us for a great evening. For additional information please contact Texas AgriLife Extension Service Wheeler County at 806-826-5243. Educational programs of the Wheeler Extension Service are open to all people without regard to race, color, sex, disability, religion, age, or national origin. The Texas A&M University System, U.S. Department of Agriculture, and the County Commissioners Courts of Texas Cooperating.

10:00 along Main Street of New Mobeetie. At 1:00 bar-b-q will be served at the gym. A business meeting will follow the meal. Classes to be honored end in 0.

Two items will be raffled. Tickets are being sold for a home-made quilt, made by Melba Simpson Darnell. A painting by Bernice Carter Hefley will also be raffled. Contact Melba Darnell or Wanda Hefley for tickets. Contact Melba Darnell at 845-2311 or Wanda Hefley for any additional information.

## Pile-On To Benefit Childress Family

The Wheeler Volunteer Fire Department will hold a Mexican Pile-On Supper on Thursday, August 12, 2010, to help the family of Brenda Childress with their medical expenses. Serving will begin at 6:30 in the Wheeler County Ag & Family Life Center

## CHAMBER WELCOME: Maxey's Steakhouse in Wheeler is under new management, as of June 1, 2010. The new owners are Ron and Donna Rives, Chayse and Jessy Rives and Derek and Makesha Maupin. The Rives family took over the management from Wanda and Jeff Herd; Maxeys has been a part of Wheeler for over 25 years, when Maxey and Wanda moved back to Wheeler. Numerous changes have been made with many new items on the menu. Maxeys received a 'Chamber of Commerce Welcome' Wednesday, July 28, 2010. Pictured are Chamber President, Chad Helton, Chamber Secretary, Matt Sullivan, Treasurer, Kristi Petit; members, Ryan Smith, Frankie Jackson, Dr. Lee Ann House, Dr. Ben Ed Hillhouse; and Donna and Chayse Rives.

## Donations Being Received For Wheeler Swimming Pool

Wheeler Economic Development Corporation

June 14, 2010 Minutes

Directors Present: Ben Ed Hillhouse, Lanette Lewis, Gary Alston, Charles Kuntz, Bob Stiles, Randy McCurley, Stacy McCasland, and Coordinator, Kristi Petit

Ben Ed called the meeting to order at 7:05 p.m.

Randy McCurley said the opening prayer.

Randy made a motion that the May minutes be amended to add Stacy McCasland as absent. Lanette seconded. Motion carried.

Discussion on Lamar Billboards on specific quotes. Charles Kuntz made a motion to table any further discussion until we get more quotes that are closer to the I-40 exit West bound between Canute and mile marker 41. Stacy seconded. Motion carried. Kristi to obtain new quotes.

Kristi reported on the swimming pool grant to inform Directors of the donations made:

- FSB Mobeetie ..... \$1000.00
- Turner Energy ..... \$100.00
- Bravo Gas ..... \$500.00
- Newfield ..... \$4000.00



**FEATURED:** Thomas McKeown was recently featured in The Atlantian, a magazine published in Atlanta, GA. Thomas is a executive chef at Terrace on Peachtree, a restaurant in The Ellis Hotel in Atlanta. The article reads: "...McKeown brings an uncommonly authentic perspective to his culinary approach at downtown Atlanta's newest, chic and eco-friendly boutique hotel. The restaurant offers a modern polish to heirloom recipes made with traditional, locally grown ingredients." McKeown commented, "Eating and cooking with great local dairy and grass-fed beef was part of my everyday life in Ireland, so I love working with so many great Georgia farmers and producers at Terrace." Thomas is the son-in-law of Mike and Beverly Bryant; he is married to Lacey, who is a chef at The Hyatt in Atlanta.

Forest Oil ..... \$25,000.00  
County ... 150 hrs of in-kind serv. Letter of support from Girl Scouts, Lions Club, Ft Elliott CUSD

On behalf of the Chamber of Commerce, Kristi presented advertising quotes from area radio stations and newspapers to advertise for the 25th anniversary of the 4th of July Celebration week-

## K. Zybach Named Future Bus. Leader

Three Southwestern Oklahoma State University students finished in the Top 8 of business-focused contests at the recent Future Business Leaders of America-Phi Beta Lambda National Leadership Conference held in Nashville, Tennessee.

Nearly 1,700 future business leaders from across the United States attended the conference and competed for cash prizes and recognition.

SWOSU student Kelsey Zybach of Briscoe (TX) received eighth place in Financial Analysis and Decision Making; Sa'Vana McDannald of Vici received eighth place in Sales Presentation; and Heather Leach of Owasso received eighth place in Public Speaking.

Other SWOSU students who attended the national conference were: Kelsey Boone, Vici, competed in Future Business Executive and Sports Management and Marketing; Blake Bustin, Elk City, competed in Contemporary Sports Issues; Dalton Holdge, Fort Cobb, competed in Accounting Principles and Business Law; and Sara Thomas, Weatherford, competed in Justice Administration.

SWOSU's PBL chapter funding was provided by the PBL mem-

(Continued Page 6)

## Wheeler Jr.H. & Hi. Registration Dates

The Wheeler Junior High and High School will have registration on the following dates:

All 7th and 8th Graders on Wednesday, August 11th at 9AM – 12PM

9th and 10th Graders on Thursday, August 12th at 9AM – 12PM

11th and 12th Graders on Friday, August 13th at 9AM – 12PM

All new students need to bring a copy of their social security card, birth certificate, and immunization record. Also a transcript from prior school would be helpful.

If you have any questions, please feel free to contact the high school office at 806-826-5534

## July 4th Is Topic Of June Cof C Meet

Minutes

June 16, 2010, Mel's Diner  
Present: Chad Helton, Kenna Howard, Matt Sullivan, Karry Rose, Louis Stas, Dale Kidd, Frankie Jackson, Kristi Petit, Zodelle Swift, Ryan Smith, Keith Rose

Chad called the meeting to order at 12:02 p.m.

Louis made a motion to approve the April minutes as presented. Ryan seconded. Motion carried.

Discussion on ticket sales vs. cash sales for the booth operators on the 4th of July. Louis made a motion to order tickets and continue the Chamber Booth ticket sales for this year. Frankie seconded. Motion carried.

Kenna motioned to order 4 porta-potties and place them along the fence on the south side of the (Continued Page 5)

## Wheeler Council Conducts Business

Regular Meeting  
June 21, 2010

Mayor Wanda Herd called the regular meeting to order at 6:45 p.m.

Mayor Pro-tem Bob McCain administered the Oath of Office to Stacy McCasland, Council member Place #2.

Barbra Koelzer made the motion to approve the minutes as written. Walter Simmons seconded the motion. The motion carried.

Walter Simmons made the motion, seconded by Barbra Koelzer to pay bills as written. The motion carried. Barbra Koelzer made the motion, seconded by Jimmy Hill to adopt a resolution authorizing the application of a grant with the Texas Parks and Wildlife Program. The motion carried unanimously.

Walter Simmons made motion, seconded by Barbra Koelzer to approve \$1280.00 from the Occupancy Tax Account for advertising for the Chamber Fourth of July celebration. The motion carried.

Paul Arganbright reported on the activities of the city. He stated they had cleaned up the Scales property with the help of the County equipment.

Walter Simmons made the motion seconded by Barbra Koelzer the meeting adjourn. The meeting adjourned at 7:05 p.m.

Those present: Mayor Wanda Herd. Council members: Walter Simmons, Jimmy Hill, Barbra Koelzer, Bob McCain, and Stacy McCasland. Guests: Paul Arganbright and Claudine Finsterwald.

## Xcel Energy Asks You To Curb Usage

Xcel Energy is asking electric customers in its Texas and New Mexico service territory to conserve energy because of expected high electric demand and limits in generation capacity today.

The utility company urges consumers to limit their power use through 7 p.m. in order to reduce the strain on the power grid. Xcel Energy should produce enough power to meet demand today, but it is possible that reserve margins

(Continued Page 3)

## Wheeler ISD 2010-2011 Calendar

Staff In-Service/Work Days	August 16-20
Classes Begin	August 23
End First Six Weeks	October 1
Holiday	October 11
End Second Six Weeks	November 12
Thanksgiving Holiday	Nov. 24-26
End Third Six Weeks	Dec. 22
Christmas Holiday	Dec. 23-Dec 31
Staff Work Day	January 28
End Fourth Six Weeks	February 18
Holiday	February 21
Spring Break	March 16-18
End Fifth Six Weeks	April 8
Holiday	April 22
Bad Weather Day	May 2
Holiday	May 13
End Sixth Six Weeks	May 27
Bad Weather Day	May 27
JH Graduation	May 27
Staff Workday	May 28
HS Graduation	May 28



# OLD TIMES NOT FORGOTTEN

By Roland Miles

## PICKUP RIDES AND OPENING GATES

As every experienced farm kid knows, when you get invited to ride in the pickup with an adult, there's probably going to be some gates to open.

This was especially true when Uncle Fat took some of us kids with him. He wasn't just craving our company, he needed some "gate-openers." Most of the time it took two of us to accomplish opening and shutting a gate. Closing was always harder than opening, because Uncle Fat liked for his gates to be "good and tight." He didn't want the barbed-wire to sag what-so-ever.

Racing for a favorite spot on the pick-up seat had evolved around to the point where, if we thought there might not be any gates, we wanted to sit next to the window. However, if we thought there might be gates to open, we'd try to sit in the middle. Like I said earlier, much of the time it took two of us, anyway.

I remember one time, I managed to get in the middle, because I knew there were gates to open. Darrell got out and opened the gate and Uncle Fat, drove through and stopped. Darrell managed to get the gate closed and latched by himself, so I didn't get out. He opened the door to get in and I raised my right arm up and rested

it on the top of the seat, so it would be out of his way. He jumped in and slammed the door. I hadn't realized it, but my little finger was sticking in the doorway just a little. The door slammed shut on it and latched! I began hollerin' and flounderin' around, but it took a while for him to realize what the problem was. Once he did, he opened the door. In short order, the nail turned black and eventually came off, like they always do. Looking back, I would say it served me right... for not helping him with the gate.

Incidents like this, helped with my country-education. Sometimes, it seemed like I was getting more education than I could hardly stand. Some folks refer to it as, "over-educated, for the job."

### Canadian Supply & Redi-Mix for all your Concrete Needs!



Jerry Smith, Owner  
806-323-5379

## Wheeler County COURT RECORDS

List of instruments filed in the Wheeler County Clerk's office from July 26, 2010 - July 30, 2010.

**JULY 26, 2010**

TRUSTEE MIN. D/ROY. D./ASSIGN.-I & S Trust to Thomas T. Holley Jr., 7-20-10, Sec. 7, Blk. A-8, H&GN Ry. Company Survey. ASSIGN. OVERRID. ROYALTY-Jack E. Wheeler, et al to Lane Financial Inc., 7-20-10, Sec. 29, Blk. R.E., Roberts & Eddleman Survey.

CORR. EXT. DT-Howard L. Evans, et ux to National Bank of Commerce, 6-18-10, .694 acs. NW/4 Sec. 43, Blk. 17, H&GN Ry. Company Survey.

C/C DIVORCE-Katherine Hope Noblitt to Jimmie Edward Noblitt, 3-19-10, Land Not Listed. QCD-Jim Ed Noblitt to Hope Ross Noblitt, 7-1-10, SW/4 Sec. 79, Blk. 17, H&GN Ry. Company Survey.

RDT-Gateway Business Bank to Keith Yates, 7-22-10, Lots 9 and 10, Blk. 60, WSSA, Shamrock. HEIRSHIP AFF.-James L. Romines to Eunice Juanita Reed, 7-21-10, NE/4 Sec. 21, Blk. A-7, H&GN Ry. Company Survey.

P. of ATTY.-Richard G. English to Marlene Gabral English, 6-17-10, No Land Listed. P. of ATTY.Marlene C. English to Richard Gayle English, 6-17-10, No Land Listed.

HEIRSHIP AFF.-Virginia H. Laurent to Victor S. Huggins, 7-6-10, No Land Listed. OL-Margaret H. Pernau to R K Pinson & Associates TX LLC, 4-28-10, N/2 Sec. 47, Blk. M-1, H&GN Ry. Company Survey.

OL-Virginia H. Laurent to R K Pinson & Associates TX LLC, 4-28-10, N/2 Sec. 47, Blk. M-1, H&GN Ry. Company Survey. OL-Sidney Ileta Miller to R K Pinson & Associates TX LLC, 4-28-10, S/2 Sec. 47, Blk. M-1, H&GN Ry. Company Survey.

FEDERAL TAX LIEN-United States of America to J. W. Breeding, 7-14-10. FEDERAL TAX LIEN-United States of America to Michael D. Neeley, 7-15-10.

RELEASE OVERRID. ROYALTY INTEREST-Sanguine Gas Exploration LLC to Apache Corporation, 7-21-10, S/2 Sec. 19, Blk. A-7, H&GN Ry. Company. ASSIGN. OVERRID. ROYALTY-Sanguine Gas Exploration LLC to Michael K. Barber, et al, 7-22-10, SE/4 Sec. 19, Blk. A-7, H&GN Ry. Company Survey.

ASSIGN. OVERRID. ROYALTY-Sanguine Gas Exploration LLC to Donohue Properties LLC, 7-22-

10, SE/4 Sec. 19, Blk. A-7, H&GN Ry. Company Survey. ASSIGN.-Sanguine Gas Exploration LLC to Donohue Properties LLC, et al, 7-22-10, SE/4 Sec. 19, Blk. A-7, H&GN Ry. Company Survey.

RELEASE OVERRID. ROYALTY INT.-Sanguine Gas Exploration LLC to Apache Corporation, 7-21-10, SE/4 & NW/4 Sec. 15, Blk. A-7, H&GN Ry. Company Survey. ASSIGN. OVERRID. ROYALTY-Sanguine Gas Exploration LLC to Michael K. Barber, et al, 7-22-10, SE/4 Sec. 15, Blk. A-7, H&GN Ry. Company Survey.

ASSIGN. OVERRID. ROYALTY-Sanguine Gas Exploration LLC to Donohue Properties LLC, 7-22-10, SE/4 Sec. 15, Blk. A-7, H&GN Ry. Company Survey. ASSIGN. OVERRID. ROYALTY-Sanguine Gas Exploration LLC to Donohue Properties LLC, et al, 7-22-10, SE/4 Sec. 15, Blk. A-7, H&GN Ry. Company Survey.

MD/ROY. D.-J D Minerals to Holloway Energy LLC, 7-22-10, Interest in S. R. Wiant Survey, D. W. Davies Survey, and BBB&C Survey.

RDT-Mortgage Electronic Registration Systems Inc. to Mark Brown, et ux, 7-13-10, 10 acs. & 20' ROW N/2 NW/4 Sec. 9, Blk. A-3, H&GN Ry. Company Survey. MIN. QCD-Leslie Nooncaster to Nooncaster Investments LLC, 7-20-10, See Instrument.

OL-ROYALTY CLEARING-HOUSE PARTNERSHIP to Fort

Old Time Gospel Music  
KPDR-FM, 90.5  
... In Wheeler  
Sundays: 6:00 a.m. to 8:00 a.m.



THE WHEELER TIMES  
PAGE 2 - Thursday, August 5, 2010  
"Wheeler: town of friendship and pride."

Worth Royalty Company, et al, 7-22-10, Sec. 33, Blk. A-3, H&GN Ry. Company Survey. ASSIGN.-Mariner Energy Inc. to Plains Production Inc., 7-6-10, E/2 & SW/4 Sec. 31, Blk. A-3, H&GN Ry. Company Survey.

JULY 27, 2010  
TDT-Jan Cantrell, et al to Linda B. Chaffin, 3-31-05, See Instrument.

TDT-Linda B. Chaffin to Greg A. Chaffin, 7-23-10, See Instrument. D-Truman Gilmore, et ux to David A. Burnett, et ux, 4-29-10, Pt. Outlot 4, Shamrock.

D-Kiker Property Company Ltd. to Cheryl Brennan, 7-21-10, 2.7 acs. NE/4 Sec. 24, Blk. 17, H&GN Ry. Company Survey.

AMEND. DT-Wheeler Feed Yard Inc. to Amarillo National Bank, 7-21-10, See Instrument. DVL-Wanda S. Herd Revocable Living Trust to RLR Properties LLC, 6-9-10, 3 acs. Sec. 8, Blk. E, T. M. Kell Survey.

DT-RLR Properties LLC to Happy State Bank, 6-9-10, 3 acs. Sec. 8, Blk. E, T. M. Kell Survey. OL-Harry Garrison III to Barker Production Co., et al, 10-23-08, SW/4 SW/4 Sec. 98, Blk. 17, H&GN Ry. Company Survey.

OL-Mary Kathleen Cross to Barker Production Co., et al, 9-29-08, SW/4 SW/4 Sec. 98, Blk. 17, H&GN Ry. Company Survey. OL-Robert O'Gorman to Barker Production Co., et al, 1-7-08, SW/4 SW/4 Sec. 98, Blk. 17, H&GN Ry. Company Survey.

OL-Larry R. Garrison to Barker Production Co., et al, 2-20-08  
(Continued Page 7)

### Parkview Artery The Importance of Vaccines

Do we really need to keep giving kids vaccines?

We often hear about reports of possible side effects of vaccines, but rarely hear about kids actually getting the illnesses that vaccines protect against. That may lead some parents to question the importance of vaccines in today's day and age.

Many of us have older family members who were affected by a vaccine preventable illness. Maybe a grandfather who is deaf after having mumps, an uncle who is still suffering the disabling effects of polio, or an aunt who died from Hib (haemophilus influenzae type B) meningitis or measles. But when was the last time that you personally knew a child who had a vaccine preventable illness, such as polio, measles, or diphtheria?

Here are a few statistics: Polio is almost fully eradicated worldwide, with only six polio endemic countries remaining, including Nigeria, India, Pakistan, Niger, Afghanistan, and Egypt.

Diphtheria, although now rare in the United States, is still a big threat worldwide.

Measles infections are at record low levels in the United States, but there were 64 measles outbreaks from Jan to June 2008, secondary to cases imported from international travelers.

Although there were only 41 cases of tetanus in the United States in recent years, around the world, tetanus kills 300,000 newborns and 30,000 birth mothers who were not properly vaccinated. Keep in mind that since the tetanus bacteria is 'widespread in the environment,' even though it is not contagious, we will likely always need this vaccine.

Let's face it, getting our children vaccinated is one of the easiest and best things we can do for our children. Protect them now, protect their future, and protect their health.

Medcat  
Children are one third of our population and all of our future.

GIFTS - CARLTON CARDS  
**HYLAND'S PHARMACY**  
HOURS: 8-5:30 M-F, 8:30-Noon Sat  
109 W. TEX. ST. - WHEELER, TEXAS  
Phone: 806/826-5561  
WEDDING/BABY SHOWER REGISTRY

**MARSHALL'S**  
HEATING & AIR CONDITIONING  
WHEELER, TX - PHONE: 664-5395 - CELL: 662-7876  
NOW DOING...  
**TRANE** AIR DUCT CLEANING  
It's Hard To Stop A Trane - 24 Hour Emergency Service -  
LICENSED & INSURED  
License No. TACL022710E  
Mark Marshall, Owner

**First United Methodist Church**  
Eighth at Main St. - P.O. Box 89  
Wheeler, TX 79096  
(806) 826-3114 - Fax 826-3780  
wheelerumc@windstream.net  
Coffee & Donut Fellowship 9:30 A.M.  
Sunday School: 9:45 A.M.  
Morning Worship: 11:00 A.M.  
Women's Bible Study Wednesday 6:00 P.M.

Limited Time **5.03%** APY\*  
INSURED CD  
Ask About IRA/401K Specials!  
**FIRST FIDELITY**  
Financial Group, LLC  
Your Safe Money Solution®  
1800 Washington, Suite 110 - Amarillo, TX  
806-373-9480  
1-800-371-9201  
By appointment only

**SWOSU**  
Southwestern Oklahoma State University  
409 East Mississippi  
Sayre, Oklahoma 73662  
580.928.5533 or 580.928.5534  
www.swosu.edu

## Fall Class Schedule Classes Begin August 18, 2010

SEC	CRSE	COURSE TITLE	TIME	DAYS	INSTRUCTOR	BLDG	ROOM
<b>CLASS SCHEDULE FALL 2010</b>							
<b>TUESDAY - THURSDAY (DAY CLASSES)</b>							
44	0123	FUNDAMENTALS OF ENGLISH	8:00-9:15	T	HAUGHT	J C	SMH 135
46	1063	UNITED STATES HISTORY	8:00-9:15	T	INSTRUCTOR	**	SMH 130
49	1103	AMERICAN GOVT & POLITICS	8:00-9:15	T	DeLEON	D J	SMH 131
68	1023	COMPUTER/INFORMATION ACCESS	8:00-10:45	T	CARPENTER	D S	SMH 104
69	1113	ENGLISH/COMPOSITION I	9:30-10:45	T	BREWER	L P	SMH 139
71	1133	WELLNESS CONCEPTS & EXER + LAB ARR	9:30-10:45	T	STUFFLEBEAN	C W	SMH 110
87	1053	RADIOGRAPHIC POSITING (WITH LAB)	10:00-12:50	T	PARKER	J A	SMH 109
109	1023	COMPUTER/INFORMATION ACCESS	11:00-12:15	T	CARPENTER	D S	SMH 104
115	1003	GENERAL PSYCHOLOGY	11:00-12:15	T	FRONEBERGER	D S	SAB 136
116	0123	IMPROVEMENT OF READING	11:00-12:15	T	INSTRUCTOR	**	SMH 139
172	1313	INTRODUCTION TO PUBLIC SPEAKING	12:30-1:45	T	INSTRUCTOR	**	SMH 139
174	2263	INTRO TO MACROECONOMICS	12:30-1:45	T	HERNANDEZ	H M	SMH 105
175	0124	BASIC ALGEBRA	12:30-2:10	T	COKER	D	SAB 132
128	1001	FRESHMAN ORIENTATION (8/19 - 9/14)	2:25-3:15	T	HERNANDEZ	H M	SMH 105
42	3193R	HEALTH CARE DELIVERY	8:00-9:15 AM	T	PRICHARD	M L	SAB 119
43	3513R	CMM MATH ELEMENTARY TEACHERS	8:00-9:15 AM	T	BOYD	R M	SAB 120
45	3223R	COMMERCIAL LAW	8:00-9:15 AM	T	CRALL	L D	SAB 106
47	4133R	PRODUCTION/OPER MANAGEMENT	8:00-9:15 AM	T	LONG	J M	SAB 132
48	4923R	STRATEGIC MANAGEMENT & POLICY	8:00-9:15 AM	T	RAMSEY	R	SAB 131
70	3123R	LEGAL ENVIRONMENT OF BUSINESS	9:30-10:45 AM	T	HACKER	R T	SAB 130
72	3443R	CONSUMER BEHAVIOR	9:30-10:45 AM	T	SIMPSON	E M	SAB 132
73	3263R	HUMAN BEHAVIOR SOC ENV I	9:30-10:45 AM	T	INSTRUCTOR	**	SAB 106
88	3522R	CMM/SOCIAL STUJELM TCHRS	10:00-10:50 AM	T	BOYD	R M	SAB 120
110	4222R	PHONICS & PENMANSHIP	11:00-11:50 AM	T	BOYD	R M	SAB 120
111	3132R	EXCEPTIONAL CHILDREN	11:00-11:50 AM	T	KELLY	K A	SAB 130
117	4833R	PRIN TEACHING ELEM SCH	11:00AM-12:15 PM	T	CASE	D A	SAB 106
112	3823R	QUANTITATIVE METH OF BUSINESS	11:00AM-12:15 PM	T	GRANT	M L	SAB 119
173	4423R	PLAY-MM PRESCH & KINDERGRTN	12:30-1:45 PM	T	KELLY	K A	SAB 130
178	4013R	SEM: CHILD ABUSE/NEGLECT	12:30-1:45 PM	T	INSTRUCTOR	**	SAB 106
50	3432R	TEACHING OF READING II	1:00-1:50 PM	T	RUSSELL	L A	SAB 120
181	3453R	EDUCATIONAL PSYCH (ELEM)	2:00-3:15 PM	T	BURGESS	S R	SAB 131
129	5763R	ADV BUSINESS STATISTICS	2:30-5:10 PM	T	DUNN	J W	SAB 106
132	4012R	RECREATION & SPORT EMPL LAW	4:00-5:50 PM	T	BEECH	J G	SAB 131
33	2104	HUMAN ANATOMY	8:00-8:50 MWF		BROOKS	K L	SCB 308
52	2104L	HUMAN ANATOMY LAB	8:00-9:50	R	BROOKS	K L	SCB 302
89	2104L	HUMAN ANATOMY LAB	10:00-11:50	R	BROOKS	K L	SCB 302
34	2205	HUMAN ANATOMY & PHYSIOLOGY			CLIFTON	E R	SCB 302
126	2205L	HUMAN ANAT/PHYS LAB	2:00-3:50 M & 1:00-2:50 R		CLIFTON	E R	SCB 302
35	1023	COMPUTER/INFORMATION ACCESS			CARPENTER	D S	SMH 104
37	1113V	ENGLISH COMPOSITION I			HAUGHT	J C	SAB 130
180	1113	ENGLISH COMPOSITION I			INSTRUCTOR	**	SMH 135
39	0124	BASIC ALGEBRA	8:00-8:50 M W F		COKER	D A	SAB 132
			AND 12:00-12:50 M				
41	1513V	COLLEGE ALGEBRA			SWARTWOOD	B H	SAB 120
36	2113R	FOUNDATIONS OF ED (+ 30 HRS OBSERV)			BOYD	G A	SAB 119
38	4463R	CHILDREN'S LITERATURE			PERKINS	P L	SAB 131

SEC	CRSE	COURSE TITLE	TIME	DAYS	INSTRUCTOR	BLDG	ROOM
<b>"INTERACTIVE VIDEO COURSES CONTINUED"</b>							
<b>CLASSROOM D (SAB 131)</b>							
38	4463R	CHILDREN'S LITERATURE	8:00-9:50 AM	M W F	PERKINS	P L	SAB 131
48	4923R	STRATEGIC MANAGEMENT & POLICY	8:00-9:15 AM	T	RAMSEY	R	SAB 131
54	3963R	HEALTH CARE ADMINISTRATION	9:00-9:50 AM	M W F	FOLEWER	B L	SAB 131
82	2623R	CRIMINAL LAW & PROCEDURE	10:00-10:50 AM	M W F	BROWN	D R	SAB 131
107	3132R	EXCEPTIONAL CHILDREN	11:00-11:50 AM	M W F	KELLY	K A	SAB 131
165	1113R	INTRO TO CRIMINAL JUSTICE	12:00-12:50 PM	M W F	MC GHEE	M K	SAB 131
122	4283R	TEAM MANAGEMENT	1:00-1:50 PM	M W F	RAMSEY	R	SAB 131
181	3453R	EDUCATIONAL PSYCH (ELEM)	2:00-3:15 PM	T	BURGESS	S R	SAB 131
132	4012R	RECREATION & SPORT EMPL LAW	4:00-5:50 PM	T	BEECH	J G	SAB 131
142	4633R	INTERNATIONAL MANAGEMENT	5:15-7:45 PM	M	COBB	K J	SAB 131
152	4012R	NATURAL RESOURCE LAW	6:00-7:50 PM	T	BEECH	J G	SAB 131
137	* 5933R	THE PRINCIPALSHIP (10/13-12/8)	5:00-9:00 PM	W	HENDERSON	D I	SAB 131
<b>CLASSROOM E (SAB 119)</b>							
36	2113R	FOUNDATIONS OF ED (+ 30 HRS OBSERV)	8:00-9:50 AM	M W F	BOYD	G A	SAB 119
42	3193R	HEALTH CARE DELIVERY	8:00-9:15 AM	T	PRICHARD	M L	SAB 119
60	3423R	MEDIA & TECHNOLOGY	9:00-9:50 AM	M W F	KLEIN	E O	SAB 119
84	2503R	INTRODUCTION TO SOCIAL WORK	10:00-10:50 AM	M W F	INSTRUCTOR		SAB 119
98	3343R	BUSINESS FINANCE	11:00-11:50 AM	M W F	BUDDY-PENNER	N J	SAB 119
112	3823R	QUANTITATIVE METH OF BUSINESS	11:00AM-12:15 PM	T	GRANT	M L	SAB 119
139	* 5983R	PUBLIC SCHOOL LAW (8/18-10/6)	5:00-9:00 PM	W	HENDERSON	D I	SAB 119
136	* 5613R	EDUC ADMIN THEORY (10/13 - 12/8)	5:00-9:00 PM	W	ASPEDON	M D	SAB 119
145	3423R	MEDIA & TECHNOLOGY	5:15-7:45 PM	R	KLEIN	E O	SAB 119
<b>CLASSROOM E (SAB 115)</b>							
63	4433R	ENTREPRENNEW VENTURES	9:00-9:50 AM	M W F	HACKER	R T	SAB 115
76	4833R	PRINCIPLES OF TEACHING ELEM SCH	10:00-10:50 AM	M W F	CASE	D A	SAB 115
102	3433R	ORGANIZATIONAL DESIGN	11:00-11:50 AM	M W F	RAMSEY	R	SAB 115
178	1054R	ELEMENTARY LATIN I	12:00-12:50	M T W R F	MOOR	K S	SAB 115
<b>CLASSROOM E (SAB 132)</b>							
47	4133R	PRODUCTION/OPER MANAGEMENT	8:00-9:15 AM	T	LONG	J M	SAB 132
72	3443R	CONSUMER BEHAVIOR	9:30-10:45 AM	T	SIMPSON	E M	SAB 132



Pray for former pastor, Dennis Williams, who had to have surgery for an aneurysm. Hope he is soon all O.K. To write Pastor Williams, his address is 351 CR 615, Early, Texas 76802.

We've missed Anne Killingsworth at Wheeler Baptist Church. Hope she will soon be O.K. She did go to visit a daughter in Oklahoma. Hope they had a wonderful time there. Pray for

**Old Time Gospel Music**  
**KPDR-FM, 90.5**  
... In Wheeler  
Sundays: 6:00 a.m. to 8:00 a.m.

**WHEELER PLUMBING**  
511 S. Cheyenne  
New Construction  
Remodel  
Repair  
Sewer Service  
Septic Systems  
Site Evaluations  
Phone: **826-5907**  
MAX McQUEEN  
P.O. Box 754 Wheeler, TX

**Weatherly Roofing** WR  
20 plus yrs Experience  
All Work Guaranteed  
Insured & Bonded  
Metal Roofing  
Flat / Built-Up  
Composition  
Permakote  
Wood  
Wellington, Texas  
**Free Estimates**  
**(806)205-0800**

"Take your burdens to the Lord and leave them there. If you trust and never doubt, God will surely bring you out. Take your burdens to the Lord and leave them there."

"Happy Birthday" to Emily Beard, Jo Dean Earney, Josh Edwards, Linda Garner, Kathy Henderson, Jake Houska, Bailey Johnson, Anne Kirkpatrick and Steve Simmons, Aug. 1; Penny Clark, Leola Farris, Lisa Mahler, Logan Martin, Michael Mittelstitt, Connie Porter and Ervin Waldo, Aug. 2; Tysen Aldridge, Drew Bonner, Kristi Hastings, Austin Jordan, Roy Kroeker, Brent Lee, Joni Loyd, Darryl Luttrell, Kris Patterson, Julie Reed and Katelyn Toelle, Aug. 3; Juana Benefield, Danny Fillingim, Paige Jones, Carson Mansoor and Doug Reed, Aug. 4; Laura Dodd, Samuel Hillhouse, Marsha McDowell and Alexandra Rivera, Aug. 5; Tyler Maddox, Bob Schubert and Haylee Smith, Aug. 6; Eddie Hughes, David Mayfield, Audra Mitchell, Noah Rogers, Mathew McNeil, Matt Nelson and Kaden Sullivan, Aug. 7.

"Happy Anniversary" to Heath and Tricia Mitchell, Aug. 2; Vernon and Twilla Devoll and Sam and Stacey Adams Mansoor, Aug. 3; Shawn and Hilary Lindsey, Aug. 4; Lyndon and Novaline Loyd and Shea and Bridget Weatherly, Aug. 6; Larry and Suzanne Hampton, Aug. 7; Tyler and Rebecca Lewis, July 5; Josh and Courtney Blackmon, July 8; Weldon and Dolores Simmons, July 10; Danny and Lori DeBose, July 12; Troy and Madeline Dunn, July 20; Tony and Tonya Jackson, July 24; Russ and Kara Woodward, July 25; Jimmy and Kimberly Morgan and Derek and Jennifer Murray, July 26; Rusty and Kathy Henderson, July 29; Kathy and Cecil Thomas, July 30; and Mike and Mendy Bailey, July 31. God bless you, everyone!

Anne. Pray for Johnny Wilson who suffered a broken arm, but is able to get around in his scooter and is doing better and back at Wheeler Care Center.

Jeanette Bird went to Seagraves Saturday to help her mom get moved and to celebrate her mom's 80th birthday. Happy Birthday! God bless you! Missed you at church, Jeanette.

Cindy Bradstreet went to Spearman Thursday to visit Mike and Ember Keith and Miles, Jenna and Zach. They all took their tent out to Lake Fryar and camped out for the night. Everyone had a good time, especially the kids. They roasted hot dogs, made s'mores and played in the water and had fun.

Sunday night was First Sunday Singing at Mobeetie Baptist Church with a good program and good food and fellowship. Some making music and singing were Marion Grimes, Doris Finsterwald, Briscoe Community Church pastor and wife, Charlie McDerment, Martha Meek (harmonica), Terri Crownover, Tiffany Powell from Waxahachie, Cheryl Fraley and others. Singing will meet in September at Allison.

Many thanks to all the ex-students and others who worked hard to prepare for the Briscoe Ex-Student Reunions. God bless you, everyone! Good crowd with lots of good food and fellowship Saturday, July 31, at the new school at Briscoe for a good time. Some there Saturday for a fun time:

Larry, Richard, and Eddie Meadows; Bobby Horn, Mary Diane and Bevard Dukes, Kathy Hunt, Wanda and Fat Childress; Thurman Horn, Keith, Tyna and Larry Lee Horn; Beth, David, Darren, Chalone, Logan and Dawson Hefley; Steve, Joyce and Katelyn Walker; Bob and Gena Zybach; Charlie Finsterwald; Mary Nell and Bobby Finsterwald; Doris Finsterwald and sister, Dorothy; Deanna Simpson and son; Carl Simpson; Steve, Joyce and Katelyn Walker; Ruth Irvine; Ray, Glenda, Rodney and Sonya Hudson; Dewayne, Gabby, Tommy and Ronny Hayes; Gayle Singleton; Laurel and Ed Hershman; Gaye Hale and Sarah; Bill, Thomas and Jack Helton; Alberta and Pat Helton; Sam, Barbara and Brenda Meadows; Noah Fulks; Mary Margaret Dodd; Winnie Gilmer; Harper Muse; Kay Gatlin; Diane Dukes; Mike and Brady Meadows; Lilly and Sharron Sumpter; Bonnie Meadows; Wesley and Helen Steen,

**ALLISON NEWS**  
By Juanita Boydston

**PRAY** ye the Lord. Praise God in his sanctuary: praise him in the firmament of his power. Praise him for his mighty acts: praise him according to his excellent greatness. Praise him with the sound of the trumpet: praise him with the psaltery and harp. Praise him with the timbrel and dance: praise him with the stringed instruments and organ. Praise him upon the loud cymbals: praise him upon the high sounding cymbals. Let every thing that hath breath praise the Lord. Praise ye the Lord. Psalm 150

The weather in Allison, Texas on this Tuesday morning is beautiful, but very HOT. But altho its breezy, its still not very cool at all. But thank the Lord it does get cooler at nights. Praise the Lord for his goodness and mercy to us. Praise be to Jesus!!

Bret, Hayley, Mackie and Boone Begert were in San Antonio, Texas last Thursday through Sunday attending the summer meeting of the Texas Association of School Board of Directors. Bret represents the 63 school districts in Region 16.

On Sunday, Bret, Hayley, Mackie and Boone Begert were at the State Capitol in Austin, Texas attending the memorial service of former Texas Governor, Dolph Briscoe, who had been governor from 1973 - 1979. The Begerts returned home to Allison, Texas late Sunday night.

Louise Boydston, Shirley Chadwick and Sue Martin went to Mustang, Oklahoma to the 50th Campmeeting Celebration of the Oklahoma District on Sunday the 25th of July. They stopped by Pearl Harrison's room and visited a little while.

Then on to campmeeting at Mustang, Oklahoma. On Friday they also visited Pearl Harrison again for a couple of hours and then went to Cheyenne, Oklahoma to the Harrison/Bradley Family Reunion at the Croten Creek Ranch. Also Saturday was an auction and hamburgers and hotdog feast in evening. Also Gary and Julie Boydston, Bennie and Debbie Boydston, Eddy and Sheila Walker, Justin and Stephanie Walker and children, Tyler, Addison and Alyssa of Allison, Texas and Chuck and Kim Thompson of Amarillo, Texas. On Sunday it was a Pot Luck dinner. There was about 64 in total. Good times visiting. Willis and Mary Harrison from Claremore, Oklahoma and Jimmy and Vivian Wallace from Elk City, Oklahoma were also there. Ivan Brenham was the oldest one there. He and his wife Lila are from Alamogordo, New Mexico.

Robert and Peggy Rehkopf of Dumas, Texas came by and visited Opal and Juanita Boydston

**Xcel** (from Page 1)

could tighten as air conditioning load rises in the afternoon hours. Customers can help avoid power emergencies by:

- Turning off unneeded lights, computers and appliances.
- Setting the thermostat to 78 degrees or higher at home.
- Turning up the thermostat to 85 degrees before leaving home.
- Using major appliances and equipment after 7 p.m., when power demand is lower.

"We take our responsibility to supply energy to our customers very seriously, and we will declare an Energy Alert only after exhausting all other options," said Riley Hill, president of Southwestern Public Service Company, an Xcel Energy company.

"Our customers have helped us through similar situations in the past, and we look to them today to help us maintain the integrity of their electricity system. Turning off all lights and appliances that are not essential to health and safety will help us meet everyone's energy needs without service interruptions. We at Xcel Energy - and your friends and neighbors - thank you."

**Sunday Nite Live**  
**KPDR-FM, 90.5**  
... Live from Canadian  
9:00 p.m. to 10:00 p.m.

Katelin and Mary Newman; Tiffany Powell; Laverna Fillingim; Harvey Puryear and wife; Rosena and R. L. Zybach; Thurman and Betty Zybach; Melody Goad, Bob Powell; Cheryl Fraley, Leroy Parker, Sharron Helton and Bill and Tonya Finsterwald. Hope I didn't leave anyone out.

About 250 plates of delicious barbeque, ice cream and other goodies were served to people at the Briscoe School Reunion. Good to see some that had not seen in several years. God bless you all! Many there to enjoy the good food and fellowship. Great job, Steve, Joyce and Katelin. Good to see the new Briscoe School. It looks great! Enjoy! I attended Briscoe School from sixth grade until I graduated. I attended

and enjoyed a hamburger and chips and lots of visiting. They were on their way home from Oklahoma Campmeeting being held in Mustang, Oklahoma. This was their 50th Anniversary of the Campgrounds in the Oklahoma District. That is a lot of years and lots of changes had been made through the years.

Robert and Peggy Rehkopf also visited with Roma and Billy June Brown before heading back to Dumas, Texas. Robert and Peggy also had attended the Texico Campmeeting held in Amarillo, Texas. Texico Campmeeting was a week before Oklahoma Campmeeting.

Opal and Juanita Boydston enjoyed a delicious meal and good ole visiting in the home of Roma and Billy June Brown on Monday evening.

Monday night, Opal and Juanita Boydston visited in the home of Louise Boydston and Shirley Chadwick. Sue Martin of Leedy Oklahoma was also there. Enjoyed our visit. Also there was Sabrina Dupont and her daughter, Makenna of Amarillo, Texas.

Opal and Juanita Boydston accompanied Vance and Carol Boydston to Amarillo, Texas where they enjoyed two nights and a day of campmeeting at the Texico Campmeeting. Good preaching of the word and good fellowship as well. Saw people we hadn't saw for awhile.

Opal, Juanita, Vance and Carol left Amarillo Wednesday night after service and made it to Allison late and then on Thursday morning they left to go to Norman, Oklahoma with Vance and Carol to be with Carol and attend Carol's cousin's funeral. Homer Lee Goad who was born February 18, 1935 in Bloomfield, Indiana and passed away July 18, 2010 in Del City, Oklahoma. His services were at 2 p.m. Thursday, July 22nd in Primrose Chapel in Norman, Oklahoma with Pastor Kevin Borders officiating. He was buried with military honors from the United States Marine Corps Honor Guard. The Norman United Pentecostal Church served a bountiful meal to the family of Homer Goad.

Then for the next few days Vance and Carol showed Opal and Juanita a very good time in Norman, Oklahoma and Oklahoma City, Oklahoma. They all (Continued Page 5)

WTAM and came back and taught about 5 years at Briscoe. Lots of good people around.

Briscoe-Fort Elliott School usually meets every 5 years about the last Saturday in July. Everyone welcome!

"Ah, Lord God! behold, you have made the heaven and the earth by your great power and stretched out arm, and there is nothing too hard for you:" (Jeremiah 32:17).

There was a party at Mr. Gattis' at Amarillo Thursday to celebrate Dagen Criswell's 6th birthday. David and Rita Pearson went up for the party. Happy Birthday, Dagen. Hope you had fun. Later, Dagen and Blain spent a few days with the Pearsons. God bless you all!

Nice to have Mary and Katelin Newman and Katie's friend, Tiffany Powell, come from Waxahachie Wednesday to go to church with us and spend a few days. All went to Briscoe School Reunion on Saturday. Friday, Mary, Katie Tiffany and Verna went to Canadian and had lunch at the Pizza Hut with Rita Pearson for a good meal! Nice to see and visit with Pam Ratliff (Mrs. Kevin), Melody Rodgers and Mandy Ratliff. Heather Ratliff married Shane Stanton in 2003. They have two kids, Ryan, almost 6, and Lawren (girl), 2 years old. They moved from Dallas back to Canadian about 3 years ago. Melody Rodgers has three kids, Gabe, 20 years, Nikki, 15 years, and Allison, 10 years. God bless you all. Pam and Kevin Ratliff have been married several years and live in Canadian. Ratliffs were our neighbors and friends for many years. God bless you all. We also got to see David Pearson there. Later, David went to Stamford to see his mom, Mary Pearson.

"God be with you till we meet again."



**Colton Case**, 8 years old, is the son of Corey Case and Dawn Case. Grandparents are Harvey and Linda Banks and Howard Lohberger of Sweetwater, and Mike and Becky Case of Wheeler.

For all your...  
**Insurance Needs, See Eastern Panhandle Insur. Agency, Inc.**  
117 W. Texas St. - Wheeler  
806/826-3573  
•Auto •Home •Life •Health  
•Commercial •Bonds

**GREAT WESTERN WINDOWS & SIDING**  
109 Cox • Granite, OK 73547  
Windows • Siding • Roofing

**NEAL HALL**  
District Representative

**PLY GEM WINDOWS**  
Qualifies for \$1,500 Energy Rebate  
Buy Two - Get One FREE!  
- 30 Years Experience -  
**580-706-1591**

LIMITED LIFETIME WARRANTY

**Robby Schaffer**  
Firearms, Ammunition & Reloading Supplies  
602 Cheyenne • Wheeler, TX  
806.826.0129 • 806.898.0916  
E-mail: robschaf@windstream.net

Store Hours: Mon. to Fri. 5 P.M. to 9 P.M. Sat. 12 to 8 P.M.  
**GUN SALE**

**New Guns:**

<b>Rifles:</b>	RUGER MINI 14 - Stainless Steel Wood Stalk	\$700.00
	SMITH & WESSON IBOLT 30-06	\$425.00
	SAVAGE MOD 10 223 BULL BARRELL	\$750.00
<b>Pistols:</b>	SMITH & WESSON MOD SW40VE 40S&W	\$299.00
	SMITH & WESSON MOD SW9VE 9MM	\$299.00

**Used Guns:**

<b>Pistols:</b>	SMITH & WESSON MOD 22A 22LR BB	\$275.00
<b>Rifles:</b>	TAURUS MOD 63 22LR	\$185.00
	CENTRY ARMS AK74 5.45X39	\$450.00
	REMINGTON MOD 5 22LR WITH SCOPE	\$120.00

New Policy: I will not sell anything to anyone that is not a US citizen. That includes ammunition and accessories.  
I can order almost any gun now. Tell me the price you find and I will do my best to beat it.

- Selection of Ammunition in stock.
- Check with me if you have difficulty finding ammunition
- Bring your gun in to have it cleaned.

**Dennis Edmondson**  
REALTOR

**RE/MAX HOMETOWN** 2100 Perryton Pkwy Pampa, Texas **NLS**

**LOVELY 2,023 SQ. FT. HOME** on 400 acres. 3 Bedroom, 2 1/2 Baths, Fireplace, Sunroom, Huge Utility Room & Back Deck, 30'x60' Garage/Shop with Built-in Loft, Water Well, Windmills, Beautiful Trees & Storm Shelter. Peace & quiet in this gorgeous setting. County living at its best! 8320 County Line Rd. Wheeler, To. TX. \$530,000. Call Dennis Edmondson (Agent) 806/662-7503. Re/Max Hometown.

3 Bedroom 1 1/2 Bath home with Garage, Carport, Storm Shelter, Fruit Trees on 20 Acres. CR15 1/2, Wheeler, TX. 1737. \$165,000 Call Dennis @ 806/662-7503.

2 Bedroom, 1 Bath Home on Nice Corner Lot. 812 S. Sweetwater St., Wheeler, TX. \$35,000 Call Dennis @ 806/662-7503. Patti Hudson/Broker 8/26

**DOUG BOYD MOTOR CO.**  
Buy Here / Pay Here  
No Credit Check • Areas Largest Selection  
Pampa • Corner of Hwy 60 @ Hwy 70  
806-669-6062 • www.dougboydmotors.com

**DIRECTV**  
Direct Sat TV  
1-800-577-1322  
Local Installers!

285+ Channels  
160 HD Channels  
**5 MONTHS FREE**  
INCLUDES HBO, SHOWTIME, STARS, CINEMA  
When you get NFL SUNDAY TICKET for \$50.99 a month for 5 months  
**2 FREE Upgrades - HD DVR & HD Receiver - Ask How!**



# Want Ads

**Black & White Dog Found** north of Wheeler. 806/826-5028 7-29/8-5p

**HOUSE FOR SALE:** 901 Canadian St., Wheeler. Spacious Brick Home on corner lot: 3 bedroom, 2 bath, 2 living areas, fireplace, heat and air, 2 garages (double & single), and storage bldg. Joyce Edwards, 806-826-5948 after 6:00 p.m. 7/22-29

**HOUSE FOR SALE:** 3 Bedroom, 2 Bath. 1139 S. Main in Wheeler. For more information, call 806-334-0741 or 334-0745 17/15c

Parkview Hospital is now accepting applications for a **Full-Time LVN**, 7 p.m. to 7 a.m. shift, excellent benefits, competitive salary. Mileage paid. Please call Sue Stiles, C.N.O., at 826-5581. Apply in person at 901 Sweetwater St., Wheeler, TX, or email resume to [cythiap@parkviewhosp.org](mailto:cythiap@parkviewhosp.org) 4/15rtn

Farrar Lawnmower and Small Engine Repair. 806/336-8960. 4/22rtn

Lovegrass Hay For Sale Anhydrous: Call 375-2578 or 806-679-8891. 1/21rtn

**2 Bedroom House For Sale** in Wheeler. 602 Sweetwater. Newly remodeled with new cabinets, new floors & new bathroom fixtures. 580-515-2080 or 580-339-2698. 11/24rtn

Your land or family land gets you your new home call 580-254-5504 5/20rtn

Parkview Hospital and Assisted Living is now accepting applications for nurse's aides. Full time, part time, and PRN positions

**ATTENTION MINERAL OWNERS**  
Buying Oil & Gas Leases in Wheeler & Hemphill Co's.  
Call: 806/334-0370 7/29rtn

## Turner Energy Services, LLC A Complete Production Service Company

### TRANSPORT DRIVERS

These full-time positions are immediately available in our Wheeler location. Previous experience and a valid CDL Drivers License required.

#### Competitive Wages & Excellent Benefits!

- Health, Dental & Vision Insurance
- Company Paid Life Insurance
- STD/LTD Insurance
- Vacation/Sick Leave
- Paid Holidays
- Uniforms
- 401(k) Retirement plan

Interested Candidates please apply at our Wheeler yard  
7927 County Road 16 Wheeler/ office 806-826-3522

EOE / Drug Free Workplace 7/15-8/5

available. Competitive salary and excellent benefit package. Please call Sue Stiles, CNO @ 826-5581 or apply in person @ 901 Sweetwater St. Wheeler, Tx 1/21rtn

**Mountain Cedar Fence Posts, T-Posts, Stays, Barbwire, and Oak or Mesquite Fire Wood**  
Butch McBoo  
806/455-1310 or 806/346-1105  
If no answer, leave a message. thru July  
Listen to... **KPDR-FM, 90.5** WHEELER, TEXAS

## Oil & Gas NEWS

(New Location, Completion and Plugging Report made possible by Oil & Gas Reporting Service, 3930 Beaver St., Vemon, TX 76384. Doris Harrison, Phone: 940/552-6644.)  
Week Ending July 29, 2010

**Intentions to Drill**  
HEMPHILL (WILDCAT) Kenneth W. Cory Ltd., #3 L.P. Humphreys, 2129' from North & 2500' from East line Henry Schmidt Survey, PD 17300'. Recompletion  
HEMPHILL (ALLISON-PARKS Granite Wash) Samson Lone Star LLC, #2259H Aitkenhead, 225' from South & 1075' from East line, Sec. 259, C, G&MMB&A, PD 12500' (BHL: 467' from North & 567' from East Sec. line) Horizontal  
HEMPHILL (BUFFALO WALLOW Granite Wash) Forest Oil Corp., #1101H Walker, 467' from South & 2500' from East line, Sec. 11, 41, H&TC, PD 11500' (BHL: 267' from North & 2589' from East Sec. line) Horizontal  
HEMPHILL (MEG Granite Wash) Latigo Petroleum Inc., #2H Cook '39', 240' from South & 660' from West line, Sec. 39, 41, H&TC, PD 13000' (BHL: 500' from North & 660' from West Sec. line) Horizontal  
HEMPHILL (WILDCAT & BEGERT 10200) Laredo Petroleum Inc., #3 Elm Creek Ranch '34', 1564' from North & 2169' from West line, Sec. 34, A-1, H&GN, PD 14500'.  
HEMPHILL (WILDCAT & BUFFALO WALLOW) Melrow Chevron USA Inc., #2 Melvin Helton, 990' from North & 1120' from East line, Sec. 21, M-1, H&GN, PD 14140', Recompletion  
HEMPHILL (WILDCAT & SHREIKEY Granite Wash) Range Production Co., #2678 Make Believe, 305' from South & 524' from West line, Sec. 78, A-2, H&GN, PD 12000'.  
ROBERTS (N.W. MENDOTA Granite Wash) Unit Petroleum Co., #7H Waterfield 'A', 1178' from North & 1107' from East line, Sec. 102, C, G&M, PD 9965' (BHL: 467' from South & 1600' from East Sec. line) Horizontal  
ROBERTS (WILDCAT & SHREIKEY Granite Wash) Cordillera Energy Partners III, LLC, #5 McCoy, 1521' from South & 1508' from West line, Sec. 13, M-1, H&GN, PD 11300'.  
WHEELER (FRYE RANCH Consolidated) Quester E&P Co., #7H Puryear '13', 271' from South (off lease) & 470' from West (off lease) line, Sec. 28, A-3, H&GN, PD 17000' (BHL: 267' from South & 467' from West line, Sec. 13, A-3, H&GN) Horizontal  
WHEELER (WILDCAT & S.E. MILLS RANCH Des Moines) Sanguine Gas Exploration LLC, #2037 R.D. Mills, 567' from South & 900' from West line, Sec. 37, A-7, H&GN, PD 15000'.  
WHEELER (WILDCAT & WHEELER-PAN Hunton) Sanguine Gas Exploration LLC, #1012 Schell, 967' from South & 1700' from West line, Sec. 12, A-8, H&GN, PD 16000'.  
WHEELER (STILES RANCH Granite Wash Cons.) Newfield Exploration Mid-Con. Inc. #19 Britt Ranch 'C' 35SL, 500' (off lease) from South & 1000' (off lease) from West line, Sec. 46, A-3, H&GN, PD 14775' (BHL: 300' from South & 567' from West Sec. line) Horizontal  
WHEELER (N.E. WHEELER Granite Wash) Forest Oil Corp.,

#3045H Blasdel, 550' from South & 2344' from East line, Sec. 56, A-4, H&GN, PD 17500' (BHL: 300' from South & 5640' from West Sec. line) Horizontal  
WHEELER (WEST PARK Granite Wash) Devon Energy Production Co. LP, #6H Effie Hayes '18', 230' from South & 660' from West line, Sec. 18, RE, R&E, PD 17000' (BHL: 375' from North & 660' from West Sec. line) Horizontal  
**Gas Well Completions**  
HEMPHILL (BUFFALO WALLOW Granite Wash) Cimarex Energy Co., #2H Washita Ranch '22', Sec. 22, A-1, H&GN, spud 12-27-07, drlg. compl 4-1-08, tested 7-14-10, potential 1113 MCF, MD 12950' - Horizontal  
HEMPHILL (N.E. RAMP Granite Wash) Granite Operating Co., #2 Eubank '44', Sec. 44, 41, H&TC, spud 12-28-09, drlg. compl 1-11-10, tested 3-19-10, potential 3390 MCF, TD 12900', PBD 12058' - Horizontal  
HEMPHILL (SHREIKEY Granite Wash) Range Production Co., #659 Imagine, Sec. 59, A-2, H&GN, spud 6-3-10, drlg. compl 6-18-10, tested 7-3-10, potential 1568 MCF, TVD 11440' MD 11222' - Horizontal  
WHEELER (N.E. WHEELER Granite Wash) Chesapeake Operating Inc., #2010H Zybach, Sec. 2, -, CCSL, spud 4-16-10, drlg. compl 5-19-10, tested 7-9-10, potential 28704 MCF, TVD 11591', MD 16252' - Horizontal  
**Plugged Wells**  
GRAY (PANHANDLE) Gunsmoke Energy Co., #40 A. Chapman, 'A' NCT-3, 330' from North & 2324' from East line Sec. 50, A-9, H&GN, spud unknown, plugged 4-13-10, TD 2994' (oil) -  
GRAY (EAST PANHANDLE) Kellerville Operating LLC, #2 Langham 330' from North & West lease line, Sec. 1, B-2, H&GN, spud 6-3-30, plugged 4-1-10, TD 2829' (oil) Form 1 in Cabot Petroleum Co.  
GRAY (PANHANDLE) MK Operating Co., #175A Cabot Sidwell-Kirby, 1650' from South & 1670' from East lease line, Sec. 75, B-2, H&GN, spud 6-23-83, plugged 3-23-10, TD 2980' (oil) Form 1 in Cabot Petroleum Co.  
HEMPHILL (ANTERO Upper Morrow 'D') Chesapeake Operating Inc., #1025 Shell

**MEMBER 2010**  
TEXAS PRESS ASSOCIATION

**City of Wheeler Turns 100**  
Aug. 6, '05 Celebration Planned  
P.O. Box 1080  
Wheeler, Texas 79096  
Phone: 806/826-3123  
Entered as second-class matter December 18, 1933, at the Post Office at Wheeler, Texas 79096, under the act March 3, 1879.  
Postmaster: Send Address changes to *The Wheeler Times*, P.O. Box 1080, Wheeler, TX 79096-1080 - [wtimes@centramedia.net](mailto:wtimes@centramedia.net)  
**Louis C. Stas, Owner & Publisher**  
SUBSCRIPTION RATES:  
Wheeler County...\$20.00 Outside County...\$22.00

## THE BUSINESS DIRECTORY

**CROSS COUNTRY BARN**  
★ 24 Hr. Gas & Diesel ★ Convenience Store  
★ Hunt Bros. Pizza  
301 E. Oklahoma St.  
Wheeler, TX  
Phone: 806-826-2276  
Date, Monica & Rachel Kidd

It pays to Advertise in **The Wheeler Times**  
Phone & Fax: 826-3123  
[wtimes@centramedia.net](mailto:wtimes@centramedia.net)  
Classified:  
Cash - \$5.00 for first 20 words  
Charge - \$6.00 for first 20 words  
15¢ for each additional word  
Open Rate: \$2.50 Per Col. In.  
Card of Thanks: \$6.00

On the end, it's all about the baby.  
**Dr. Smith's Diaper Ointment.**  
Problem solved.  
Dr. Smith's Premium Blend

Urgent news for people who took  
**ACCUTANE**  
The acne drug, Accutane, has been linked to serious abdominal illnesses, even months or years later, including Inflammatory Bowel Disease (IBD), Ulcerative Colitis, and Crohn's Disease. If you have suffered from any of these conditions after taking Accutane, call us now at 1-800-THE-EAGLE about monetary compensation. No fees or costs until your case settles. We practice law only in Arizona, but associate with lawyers throughout the U.S.  
GOLDBERG & OSBORNE  
1-800-THE-EAGLE  
(1-800-843-3245)  
[www.1800theeagle.com](http://www.1800theeagle.com)  
Open 7 days a week

**HOME PHONE SERVICE**  
NO Pre-Payment • NO Deposit Required!  
Rates from \$6.99 per month\*  
(\$17/month including approximate taxes & fees)  
FREE 1st Month of Service  
Caller ID & Call Waiting included in Packages\*\*  
**New-Talk 866.934.3448**  
\*\$8.99/month with auto pay. \*\*Requires silver or gold package.

Fee #25', 1320' from South & West Lease line, Sec. 25, 42, H&TC, spud 3-2-96, plugged 4-2-10, TD 11800' (gas) - Form 1 in Southwestern Energy Co.  
HEMPHILL (Feldman Tonkawa) Continental Trend Resources Inc., #1 Lockhart, 467' from North & East Lease line, Sec. 40, 42, (Continued Page 6)

## Crossword PUZZLE

**Crossword**

1	2	3	4	5	6	7	8	9	10
11			12	13	14				15
16					17				
	18		19		20				21
22		23		24					25
26			27	28			29	30	
31		32			33		34		35
			36		37		38		39
	40	41		42		43		44	45
48			49		50			51	52
53			54		55			56	57
58			59				60		61
62			63				64		65
67							68		
69									70

Copyright © 2009 PuzPuz Puzzles - [www.puzpuzpuzzles.com](http://www.puzpuzpuzzles.com)

- |                                  |                         |                                       |
|----------------------------------|-------------------------|---------------------------------------|
| Across                           | 54. Blast from the past | 13. Notable period                    |
| 1. Trousers                      | 56. Reside (in)         | 14. Thermic                           |
| 6. Part of a set                 | 58. T.G.I.F. part       | 15. Parenting challenges              |
| 11. Out of it                    | 59. Dough               | 20. Gray ___                          |
| 14. Religious residence          | 61. Conjunction         | 22. Have or possess                   |
| 16. Bungle                       | 62. Back pain           | 23. Shoe part                         |
| 17. Firm pasta                   |                         | 28. Throw out                         |
| 18. Hot temper                   |                         |                                       |
| 19. Masked man with a stick      |                         |                                       |
| 21. French beverage              | 64. Stalkless           | 30. Sushi selection                   |
| 22. Edward ___ (Brit politician) | 67. Rat                 | 32. Precipitate                       |
| 24. Sing like Bing               | 68. New hire            | 34. Change                            |
| 25. Baseball score               | 69. ___ a high note     | 37. In the open air                   |
| 26. Small colonist               | 70. Court employee      | 39. Old Italian bread                 |
|                                  |                         | 40. Height                            |
|                                  |                         | 41. One of the family                 |
|                                  |                         | 43. Letters                           |
|                                  |                         | 45. Laughable                         |
|                                  |                         | 46. Tot                               |
|                                  |                         | 47. Ball in a socket                  |
|                                  |                         | 48. Artificial leg?                   |
|                                  |                         | 49. Cherry or beefsteak to name a few |
|                                  |                         | 51. Creature                          |
|                                  |                         | 55. Enter a computer(2wds.)           |
|                                  |                         | 57. Pesto base                        |
|                                  |                         | 60. ___ Royal Highness                |
|                                  |                         | 63. Auction action                    |
|                                  |                         | 65. Bag                               |
|                                  |                         | 66. It's a scream                     |

**H&H Tire & H&H Dirt Works**  
403 S. Red River  
Wheeler, TX 79096  
806/826-5759

**THE WHEELER TIMES**  
27. Used as an anaesthetic  
29. Lock of hair  
31. Dorm room staple  
33. Televisive  
35. Poetic homage  
36. In addition  
38. Kind of phone  
40. Go downhill fast?  
42. Amount  
44. Enlarge  
48. Time on the job  
50. Small drum  
52. Tofu base  
53. Beachgoer's goal

Down  
1. A fluid product of inflammation  
2. Very old  
3. Recount  
4. Chirping sound  
5. Got an eyeful  
6. Salk's conquest  
7. Set in from the margin  
8. Adam's madam  
9. Focused on  
10. Excite  
12. Toupee, slangily

**DIRECTV's Best Package FREE for 5 months!**  
PLUS: **FREE Standard Installation**  
**FREE HD for LIFE!**  
No start costs! Local installs!  
ASK HOW! CALL DIRECTSTARTV An Authorized DIRECTV Dealer  
Toll Free 800-214-7110

**NOTICE TO PUBLIC**  
Any erroneous reflection upon the character, standing or reputation of any person, firm or corporation, which may appear in the columns of this paper will be gladly corrected upon due notice being given to the editor personally at the office at 110 East Texas St., Wheeler, TX. Postmaster: Send address changes to The Wheeler Times, P.O. Box 1080, Wheeler, TX 79096-1080.  
The Wheeler Times does not knowingly accept false or fraudulent advertising or other advertising of an objectionable nature, is printed in full confidence in the presentation made. Readers will confer a favor if they will promptly report any failure on the part of the advertiser to make good any misrepresentation in our advertisements.

## TEXAS STATEWIDE CLASSIFIED ADVERTISING NETWORK

**TexSCAN Week of August 1, 2010 DRIVERS**

**DRIVER CDL-A** Stay loaded and earn big! Our drivers run more miles. \$500 sign-on bonus, new trucks coming soon. Flatbed division CDL-A, TWIC card and good driving record. Western Express; 1-866-863-4117

**DRIVER CDL-A:** Regional runs; I-35 corridor, stay in Texas, home most weekends. Great pay, benefits, paid orientation, 8 month OTR experience. deBoer Transportation Inc. 1-888-730-9312

**DRIVERS-OAKLEY TRANSPORT** OTR positions now available in your area. New equipment, premium pay package, great benefits. Need Hazmat and TWIC card. Call 1-877-882-6537 for your opportunity today! [www.oakleytransport.com](http://www.oakleytransport.com)

**DRIVER -** Up to 3¢ performance pay in 1st year. Weekly home time, average 2,400 miles/week! Local orientation. Daily or weekly pay. CDL-A, 6 months OTR experience. 1-800-414-9569. [www.drievknight.com](http://www.drievknight.com)

**DRIVERS-ASAP!** New pay increase, 34¢-40¢ cpm. Excellent benefits, need CDL-A and 3 months recent OTR. 1-877-258-8782. [www.meltontruck.com](http://www.meltontruck.com)

**DRIVERS-OWNER OPERATOR!** \$2000 sign-on bonus paid in 60 days! New pay increase. Paid FSC. Home daily with local and regional runs based out of Dallas. Call Comtrak at 1-866-338-2958 or apply online at [www.comtraklogistics.com](http://www.comtraklogistics.com)

**DRIVERS-FOOD TANKER** drivers needed OTR positions available now. CDL-A with Tanker required. Outstanding pay & benefits; call a recruiter today! 1-877-810-1041. [www.oakleytransport.com](http://www.oakleytransport.com)

**NATIONAL CARRIERS** needs O/O's. Lease purchase. Company drivers for it's expanding fleet. Offering Regional/OTR runs. Outstanding pay package, excellent benefits, generous home-time. 1-888-707-7729 [www.nationalcarriers.com](http://www.nationalcarriers.com)

**SLT \$3000 BONUS** team drivers needed. Class A-CDL with Hazmat and 2 years experience. Teams split up to \$1.10/mile. Flatbed owner operators \$1.40/mile. 1-800-835-9471.

**THE MASON & DIXON** Lines; Experienced Owner/Operators wanted, daily settlements, no forced dispatch, fuel discount programs, flatbed & van divisions. Contact Donna, 1-877-242-1276 or [dreyolds@mgdl.com](mailto:dreyolds@mgdl.com)

**FINANCIAL**  
**CASH NOW!** GET cash for your structured settlement or annuity payments. High payouts. Call J.G. Wentworth. 1-866-SETTLEMENT (1-866-738-8536). Rated A+ by the Better Business Bureau.

**MISCELLANEOUS**  
**\$10,000 OR MORE** in debt? Credit cards, store cards, medical bills. Help eliminate harassing calls. Debt free in 12-48 months. Free consultation, 1-800-631-9149. Debt Help Experts

**REAL ESTATE**  
**ABSOLUTELY THE BEST VIEW** Lake Medina/Bandera 1/4 acre tract, central W/S/E. RV/motor home/house, OK only \$830 down \$235 month (12.91%/10yr). Guaranteed financing. More information call 1-830-460-8354

**AWESOME 1 ACRE** Lake access homesite with high views of the 3rd largest lake in Texas. Paved roads, water, electric and phone with high speed internet included. Build when you want. Was \$49,900 now \$29,900. Call now 1-214-613-1284.

**BANK REPO'D 5 ACRES!** This big, beautiful five acre property is perfect for the horse lover with access to a state-of-the-art equestrian center, stable and miles of riding trails. Clear title, survey. Priced way below market value at \$29,900! Call 1-903-284-2521.

**BUY MY LAKEFRONT** - Get my boat! 1 acre dockable lakefront on 3rd largest lake in Texas with brand new Sea Ray boat for only \$99,900. Lakefront was \$124,900 and boat retailed for \$30K. Must have quick sale. 1-214-506-1043

**\$106 MONTH BUYS** land for RV/motor home/house, pier, boat ramp, pool, clubhouse, gated entry, on Lake Fork, \$690 down (\$6900/10.91%/7yr) Guaranteed financing, 1-214-696-2315

**18.95 ACRES** acres, north of Brackettville. Oaks, heavy brush, dry creek bed. Deer, turkey, exotics, hogs. \$1,610-down, \$317/month, (\$32,215, 11%-interest, 20-yr) or TX Vet financing. 1-800-876-9720. [www.texasranchland.com](http://www.texasranchland.com)

**676 ACRES-REEVES** County, 15 Miles North Pecos. River frontage. Call Jack 1-214-755-6224.

**\$106 MONTH BUYS** land for RV, MH or cabin. Gated entry, \$690 down, (\$6900/10.91%/7yr) 90 days same as cash. Guaranteed financing. 1-936-377-3235

**MEYERS CANYON #31A**, 160.41 acres. Whitetail deer, dove, and quail. Good draws an canyon. West Texas near Sanderson. \$395/acre. 1-866-286-0199. [www.westtexasland.com](http://www.westtexasland.com)

**RVs FOR SALE**  
**SELL YOUR RV FAST!** Online at RVT.com Access millions of RV buyers. Thousands of RVs sold - Serving RV traders since 1999. [www.RVT.com](http://www.RVT.com) or call 1-877-700-8798

**SCHOOLS/TRAINING**  
**AIRLINES ARE HIRING** Train for high paying aviation career. FAA approved program. Financial aid if qualified, job placement assistance. Call Aviation Institute of Maintenance, 1-877-523-4531

**CAN YOU DIG IT?** Heavy equipment school, 3 week training program. Backhoes, Bulldozers, Trackhoes. Local job placement assistance. Start digging dirt now. 1-866-362-6497

**HIGH SCHOOL DIPLOMA** graduate in 4 weeks! Free brochure! Call now! 1-866-562-3650, ext. 55. [www.southeasternHS.com](http://www.southeasternHS.com)

**Run Your Ad In TexSCAN!**  
Statewide Ad.....\$500  
307 Newspapers, 1,018,288 Circulation  
North Region Only.....\$230  
99 Newspapers, 270,048 Circulation  
South Region Only.....\$230  
107 Newspapers, 501,889 Circulation  
West Region Only.....\$230  
101 Newspapers, 248,591 Circulation  
To Order: Call this Newspaper direct, or call Texas Press Service at 1-800-749-4793 Today!

**NOTICE:** While most advertisers are reputable, we cannot guarantee products or services advertised. We urge readers to use caution and when in doubt contact the Texas Attorney General at 1-800-621-0508 or the Federal Trade Commission at 1-877-FTC-HELP. The FTC web site is [www.ftc.gov/bizop](http://www.ftc.gov/bizop)

Extend your advertising reach with TexSCAN, your Statewide Classified Ad Network.



**Court** (from Page 2)

SW/4 SW/4 Sec. 98, Blk. 17, H&GN Ry. Company Survey.  
 OL-Pat Grametbauer to Barker Production Co., et al, 2-20-08, SW/4 SW/4 Sec. 98, Blk. 17, H&GN Ry. Company Survey.  
 OL-John Hogan to Barker Production Co., et al, 5-20-08, SW/4 SW/4 Sec. 98, Blk. 17, H&GN Ry. Company Survey.  
 OL-Terry Hogan to Barker Production Co., et al, 3-14-08, SW/4 SW/4 Sec. 98, Blk. 17, H&GN Ry. Company Survey.  
 OL-Pam Vogt to Barker Production Co., et al, 5-10-08, SW/4 SW/4 Sec. 98, Blk. 17, H&GN Ry. Company Survey.  
 ELEVENTH SUPPLE./AMEND. DT-Larchmont Resources LLC to TCW Asset Management Company, 7-9-10, See Instrument.  
**JULY 28, 2010**  
 OL-Clifford Bradstreet to Maverick Exploration Company, 7-15-10, E/2 Sec. 33, Blk. A-4, H&GN Ry. Company Survey.  
 OL-Crystal M. Bradstreet to Maverick Exploration Company, 7-16-10, E/2 Sec. 33, Blk. A-4, H&GN Ry. Company Survey.  
 OL-Francis F. Bradstreet to Maverick Exploration Company, 7-16-10, E/2 Sec. 33, Blk. A-4, H&GN Ry. Company Survey.  
 OL-Robert A. Farrington to Maverick Exploration Company, 7-16-10, E/2 Sec. 33, Blk. A-4, H&GN Ry. Company Survey.  
 CD-Wheeler Community Cemetery Association to Nan Rhine, 7-28-10, SW/4 Lot 2, Blk. L-3, NE/4 Add., Wheeler Cemetery.  
 CD-Wheeler Community Cemetery Association to Benjamin Soto, 7-28-10, SW/4 Lot 1, Blk. M-4, NE/4 Add., Wheeler Cemetery.  
 RDT-Citizens Bank to Wendell C. Morgan, et ux, 7-26-10, S/2 Sec. 23, Blk. 13, H&GN Ry. Company Survey.  
 OL-Johnie Lowrance to Linn Energy Holdings LLC, 4-20-10, S/2 Sec. 39, Blk. A-3, H&GN Ry. Company Survey.  
 OL-Hampton Farms Inc. to Manning Land LLC, 7-21-10, E/2 SE/4 Sec. 5, IRR Company Survey.  
 ROW-David and Beckey Zybach Irrevocable Trust to Devon Energy Production Company LP, 5-17-10, Pt. NE/4 Sec. 11, Camp County School Land.

OL-Ravonda L. Hardcastle, et vir to Questar Exploration and Production Company, 6-2-10, NE/4; 1 ac. SW/4; SE/4 Sec. 6, IRR Company Survey.  
 OL-Gary Ronald Hardcastle, et ux to Questar Exploration and Production Company, 6-14-10, NE/4; 1 ac. SW/4; SE/4 Sec. 6, IRR Company Survey.  
 OL-Jerry C. Jenkins, et ux to Questar Exploration and Production Company, 6-14-10, Pt. SW/4 Sec. 6, IRR Company Survey.  
 UNIT DESIGN.-Cordillera Energy Partners III LLC to Ruth T. Caperton Trust, et al, 7-16-10, SE/4 NW/4; E/2 SW/4 Sec. 41, Blk. A-3, H&GN Ry. Company Survey.  
**JULY 29, 2010**  
 ROY./MD-Daphne J. Smith (Estate) to Wilton Layne McCasland, et al, 7-21-10, Sec. 94, Blk. 13, H&GN Ry. Company Survey.  
 ROY./MD-Daphne J. Smith (Estate) to Wilton Layne McCasland, et al, 7-21-10, Sec. 6, Blk. A-7, H&GN Ry. Company Survey.  
 ROY./MD-Daphne J. Smith (Estate) to Wilton Layne McCasland, et al, 7-21-10, Sec. 95, Blk. 13, H&GN Ry. Company Survey.  
 RDT-James B. Miller (Trustee) to Mike Case, 7-12-10, See Instrument.  
 EXECUTRIX ROW-Loretta Sue Grayson Eslinger, et al to Chesapeake Midstream Gas

Services LLC, 7-14-10, Pt. W/2 Sec. 22, Blk. R.E., Roberts & Eddleman Survey.  
 ROW-Rogers Marital Trust, et al to Chesapeake Midstream Gas Services LLC, 7-23-10, Pt. SW/4 Sec. 5, Blk. R.E., Roberts & Eddleman Survey.  
 NON HOMESTEAD AFF.-Hope Ross-Noblitt to Great Plains National Bank, 7-9-10, SW/4 Sec. 79, Blk. 17, H&GN Ry. Company Survey.  
 EXT. DT-Thomas Adkins to FirstBank Southwest, 6-1-10, Pt. 31.59 acs. Sec. 3, Blk. C, S. R. Cooper Survey.  
 HEIRSHIP AFF.-Thomas Anthony Adkins to Ruth Ann Morehead Adkins, 7-26-10, No Land Listed.  
 MD-Leland E. Garber to Andrew L. Garber, et al, 7-28-10, N/2 S/2 Sec. 18, Blk. R.E., Roberts & Eddleman Survey.  
 DT-G H Land Company Inc., et al to BancFirst, 6-25-10, See Instrument.  
 DT-Gentry Minerals LLC to BancFirst, 6-25-10, See Instrument.  
 UCC DT-Gentry Minerals LLC to BancFirst, — — —, See Instrument.  
 UCC DT-Gentry Minerals LLC to BancFirst, — — —, See Instrument.  
 DVL-Gilberto Garcia, et ux to Elizabeth Garcia, 7-29-10, W/2 S 100' Blk. 44, Stanley Add., Wheeler.

ROW-Dean Tipps, et ux to Eagle Rock Field Services LP, 7-27-10, Pt. NE/4 Sec. 13, Blk. R.E., Roberts & Eddleman Survey.  
 D-Harold Keith Bennett, et ux to Tina Bennett Morrison, 7-21-10, 32.21 acs. SW/4 Sec. 35, Blk. 13, H&GN Ry. Company Survey.

**Farmers, Friends, Feds Feed Families**

The Natural Resources Conservation Service (NRCS) is a proud participant in this year's USDA Feds, Farmers and Friends Feed Families food drive running now through Tuesday, August 31. Announced by Secretary of Agriculture Tom Vilsack, this annual event is designed to help food banks across the nation that are struggling through tough economic times. Each NRCS office across the state of Texas will be collecting non-perishable items, preferably nutritious foods and sources of protein.  
 "When school lets out for the summer, our nation's youngsters who receive free and reduced price meals through the National School Lunch and School Breakfast programs are at a higher risk of going hungry," Vilsack said. "While USDA's Summer Food Service Program helps fill that gap, these tough economic times mean that needy families throughout America are turning to emergency food assistance agencies such as food banks, food pantries, and soup kitchens to put food on the table. Unfortunately the summer is also a tough time for these organizations, as they typically see a rise in demand coupled with a decrease in donations. The good news, however, is that while the needs of our hungry neighbors are especially great in the summer months, our opportunity to make a difference in their lives is also great."  
 A recent study revealed that 49.1 million Americans, or 14.6 percent of U.S. households, lived in food insecure households. This number includes 32.4 million adults and 16.7 million children.  
 According to the USDA Household Food Security in the United States 2008 report, Texas is ranked #3 (14.8 percent) among the top ten states that exhibited statistically significant higher household food insecurity rates than the national average (12.2 percent).  
 Please help make a difference by contributing your non-perishable food items to your local NRCS office prior to August 31. The NRCS office in Wheeler County is located at 1410 S. Alan Bean Blvd., Wheeler, TX. If you have any questions or are interested in volunteering in this effort, please contact Calvin Devereaux, with USDA NRCS at 806-826-3565 or via email at (Insert email here).

USDA is an equal opportunity provider, employer and lender. To file a complaint of discrimination, write: USDA, Director, Office of Civil Rights, 1400 Independence Ave., S.W., Washington, D.C. 20250-9410 or call (800) 795-3272 (voice) or (202-720-6382 (TDD)).

**TxDOT Given Nat'l Recognition**

The American Road & Transportation Builders Association (ARTBA) named Texas Department of Transportation (TxDOT) Executive Director Amadeo Saenz, Jr. Public Sector Entrepreneur of the Year on Thursday. In addition, ARTBA honored the LBJ Express and North Tarrant Express (NTE) comprehensive development agreement projects in the Dallas-Fort Worth region as the Public-Private Partnership (P3) Projects of the Year. The awards were presented at the 22nd Annual ARTBA P3s in Transportation Conference held in Washington, DC.  
 "Amadeo Saenz has implemented innovative strategies to improve our roadways and bring congestion relief to Texas communities," said Gov. Rick Perry. "TxDOT and their private sector partners are bringing the LBJ Express and North Tarrant Express projects to the DFW region much earlier than would otherwise be possible, which will help keep our Texas residents and economy moving forward."

**Allison** (from Page 6)

visited Curtis and Lillian Boydston and played a couple of games of Mexican Train. Had a good time and lots of good visiting.  
 Then on Sunday night, they all enjoyed a good time on the ole Campgrounds at Mustang, Oklahoma, they were privileged to get to attend Sunday night and Monday till two when they ate and left. Had a wonderful time and saw kin-folk and friends that they hadn't saw in awhile. Thanks Vance and Carol for making that possible.  
 God Bless and Keep ya'll till next time!

Hear the "Abundant Living Broadcast" **KPDR-FM, 90.5** WHEELER, TEXAS Saturdays: 9:00 a.m. to Noon

**Chamber** (from Page 1)

park. Matt seconded. Motion carried.  
 Discussed amount to pay the band "The Rockin Plowboys" at the Cajun Boil. Matt motioned to offer \$600.00 with \$800.00 being the maximum. Keith seconded. Motion carried. Chad will talk to Jimmy Taylor about booking the band and payment amount.  
 Karry reported that both the Brickeys and Seymour Sandwiches would be opening their booth at the dance on Saturday, July 3rd. They were informed to operate on cash during the dance.  
 Matt motioned to purchase paper goods and last minute items for the Cajun Boil at Thriftway. Dale seconded. Motion carried.  
 Matt gave information about ABC rentals. He obtained a quote from them in the amount of \$550.00 for the big water slide. This includes delivery, set up, and tear down by the company. The person who delivers the slide will stay with it all day and maintain it. Kenna made a motion to rent the water slide from ABC rentals in the amount of \$550.00. Louis seconded. Motion carried. Matt will call ABC to reserve the slide.  
 Talked about having golf carts driving around parking area and giving people rides down to the park. Matt, Keith, Charles Petit, and Bob Hink will be the chauffeurs.  
 Louis made a motion to adjourn at 1:00. Ryan seconded. Motion carried.

TDT-Amarillo National Bank to S Bank NA, 6-4-10, Lot 7, Blk. 40, Wheeler.  
 OL-David Beaty to Newfield Exploration Mid-Continent Inc., 2-13-10, NW/4 Sec. 29, Blk. A-7, H&GN Ry. Company Survey.  
 CORR. AMEND. DT-Wheeler Feed Yard Inc. to Amarillo National Bank, 7-21-10, See Instrument.  
 ASSIGN.-Plains Production Inc. to Partin Petroleum Inc., 7-22-10, E/2 and SW/4 Sec. 31, Blk. A-3, H&GN Ry. Company Survey.  
 TRUST MEMORANDUM-William E. Gee and Carol E. Gee Revocable Trust to William E. Gee (Trustee), et al, 7-27-10.  
 MD-Carol Elaine Gee to William E. Gee and Carol E. Gee Revocable Trust, 7-27-10, Secs. 37, 39, 43, Blk. A-3, H&GN Ry. Company Survey.

OL-B & G Operating Ltd. to Sanguine Gas Exploration LLC, 7-26-10, SW/4 Sec. 10, Blk. A-7, H&GN Ry. Company Survey.  
 OL-Catherine J. Dennett to Sanguine Gas Exploration LLC, 6-28-10, NW/4 Sec. 11, Blk. A-7, H&GN Ry. Company Survey.  
 OL-Claudia L. Dimonte to Sanguine Gas Exploration LLC, 6-28-10, NW/4 Sec. 11, Blk. A-7, H&GN Ry. Company Survey.  
 OL-B & G Operating Ltd. to Sanguine Gas Exploration LLC, 7-26-10, NW/4 Sec. 31, Blk. A-7, H&GN Ry. Company Survey.  
 HEIRSHIP AFF.-George M. Estridge to Robert Lee Burrell, 7-16-10, N 124 acs. S/2 Sec. 33, Blk. A-7, H&GN Ry. Company Survey.  
 OL-Patricia A. Burrell to Sanguine Gas Exploration LLC, 4-22-10, N 124 acs. S/2 Sec. 33, Blk. A-7, H&GN Ry. Company Survey.  
 MEMORANDUM FARMOUT AGREE.-QEP Energy Company, et al to Sanguine Gas Exploration LLC, et al, 7-7-10, Sec. 12, Blk. A-8, H&GN Ry. Company Survey.  
 D-Bobby D. Galmor, et ux to Gary Lee, 7-30-10, Lot 1, Blk. LXXXIII, Shamrock.  
 POA-Kenneth Joel Frankenberg to Bob L. Frankenberg, et al,

News, Views & Commentary **KPDR-FM, 90.5** WHEELER, TEXAS Weekdays: 6:00 a.m. to 7a.m.

**HOUSE HUNTERS-REALTOR**  
 In Wheeler—15 Acres on County Road 15-A, Good Farmland, utilities available  
 Linda Laycock Broker, ABR, GREEN, SRES, e-Pro 806.662.1312  
 Larry Hadley Assoc. 806.862.2779  
 Jordan Oneal Assoc. 806.670.6623  
 Pampa MLS www.househunterspampa.com Amarillo MLS

**Harvester Cleaners Pick-up/Drop Off**  
 The Shear Delight Boutique 209 E. 3rd St. — Wheeler  
 Call for details: 806-665-2222 or 806-826-3168

**Premier Floor Warehouse**  
 Jerry Wilmoth, Manager  
 301 S. Cuyler • Pampa, Texas • (806)669-7001  
**Carpet • Tile • Wood • Laminate Counter Tops • Showers • Supplies**  
 Residential & Commercial Installation  
 Our Friendly Service and low prices will beat the pants off our competitors! **806-669-7001**

**UNDERWOOD** ATTORNEYS AND COUNSELORS AT LAW  
**KEN FIELDS, A SHAREHOLDER OF THE UNDERWOOD LAW FIRM, AND BRYAN GUYMON, ARE AVAILABLE FOR CONSULTATION AT THE WHEELER COUNTY OFFICE ON FRIDAYS FROM 9:00 A.M. TO 5:00 P.M. THE OFFICE IS LOCATED AT: 315 N. MAIN SHAMROCK, TEXAS 79079**  
 APPOINTMENTS ARE ENCOURAGED. FOR AN APPOINTMENT WITH KEN FIELDS OR BRYAN GUYMON, PLEASE CALL OUR PAMPA OFFICE AT (806) 669-6851 SHAMROCK OFFICE PHONE NUMBER (806) 256-1474

**Reappraisal of Fort Elliott C.I.S.D.**  
 The Wheeler Central Appraisal District will begin their reappraisal of the FORT ELLIOTT CISD starting August 2, 2010. The appraisers will be in the area for the next two months. The appraiser are with firm of Pritchard & Abbott and are contracted with the appraisal district. If you have any questions please contact the appraisal office 806-826-5900. Thank you for your corporation with this appraisal.  
 Kimberly Morgan RPA  
 Chief Appraiser Wheeler Central Appraisal District

**WHEELER METHODIST WOMEN HOST BIBLE STUDY**  
 The Wheeler United Methodist Women invite you to attend a seven week video session bible study. Faithful/Abundant, True is part of a DEEPER STILL event which features: Kay Arthur, Priscilla Shirer, and Beth Moore. This study challenges women to Faithfulness, to trust God's Abundance, and to grow in Discernment. The study will be held on Wednesday evenings beginning August 11th, 2010, at 6pm in the Fellowship Hall of the Wheeler Methodist Church at 704 Main Street. Those who wish to attend will be provided with a seven week daily study book. To sign up for the study, or should you have any questions, you may contact the church office at 826-3114, or Nancy Emmert at 826-3160.

**JENNINGS PLUMBING HEATING & AIR CONDITIONING**  
 P.O. BOX 423 — Wheeler, Texas 79096  
 LARRY & BOBBY JENNINGS, Owners  
 Licensed, Insured & Bonded  
**(806) 826-3153**  
 American Standard HEATING & AIR CONDITIONING  
 Carrier TX# TACLB017641E "A Flush... Is Better Than A Full House!!"

**FREE SCOOTER MONTHLY!**  
 SIGN UP FOR MONTHLY SCOOTER GIVEAWAY!  
 No Gimmicks, No Catches! DONT DELAY, Call for your chance to win TODAY!  
 CALL TOLL-FREE 877 POWER-17 (769-3717)  
 Apr. - Mozetta Youngers, Merkel, Tx.  
 Mar. - Janet High, Morla, Tx.  
 Feb. - Linda Love, Springtown, Tx.  
 Jan. - Becky G., Bridgeport, Tx.  
**Med Care MEDICAL SUPPLY**

**70th Annual Post Stampede Rodeo** - Aug. 12-14 -  
 Museums • Live theater performances  
 Old Mill Trade Day - 1st Saturday  
 A short trip, a long weekend and wide-open fun!  
 www.postcitytexas.com 866-360-9496

**real estate auctions**  
 110+ TX Homes - Auctions Begin Aug 11th  
 Nominal Opening Bids from \$1,000  
 For details, see [williamsauction.com](http://williamsauction.com)  
 Many Available for Online Bidding  
 WILLIAMS & WILLIAMS worldwide real estate auction 800.801.8003

**FREE HD FOR LIFE!** Only on DISH Network  
 • Lowest Price in America!  
 • \$ 24.99/mo for over 120 channels!  
 • \$500 Bonus!  
 Call Now! **1-866-799-8039**

**Visit... FAMILY POOL FUN.COM**  
 • Our pools create Generations of Memories everyday, vacations never end!  
 • Aboveground & Inground pools at WHOLESALE PRICING  
 • SIMPLE DIY Pool Kit Assembly  
 • SAVE MONEY on All Pool Supplies & Accessories. Ships Fast.  
 Call Today! **800-250-5502**

**Go Painlessly**  
 Go Painlessly  
 Go PAINLESSLY BACK TO MUSCLE  
 MAXIMUM STRENGTH **THERA-GESIC**  
 Compare and Save! Buy **THERA-GESIC®**



**Walk** (from Page 1)

vidually, outside or at a mall or gym, any way that fits your schedule and lifestyle. You keep track of your miles, to see if your team can walk the 830 miles "across Texas" in 8 weeks. Report your totals to see how your team "measures up!"

By the end of Walk Across Texas!, you'll have a healthy habit that will last a lifetime!

Educational programs of Texas AgriLife Extension Service are open to all people without regard to race, color, sex, disability, religion, age, or national origin. The Texas A&M University System, U.S. Department of Agriculture, and the County Commissioners Courts of Texas Cooperating.

211, 214, 217, 220, 1393, 1522

**Zybach** (from Page 1)

bers' fund-raising projects, SWOSU's Collegiate Activities Board, Dr. Nancy Penner, Great Plains National Bank of Elk City, lochem Corporation of Oklahoma City, and the Everett Dobson School of Business and Technology.

"The national conference is a great experience for the SWOSU students—they have the opportunity to expand their network of contacts and compete on a national level," said Dr. Patsy Parker, assistant professor of the SWOSU School of Business and Technology. Dr Parker has served as advisor to SWOSU's PBL chapter for 10 years.

**Chat** (from Page 1)

produce could be sold at the local Farmer's Market.

I need to say 'Thank You' to Candy Ferris, of the County Star News for sharing her picture, taken at Maxeys; my pictures were blurred.

And, I mixed up some names recently. I ran Keith Rose's picture and named him Justin. Not my first mistake and won't be my last. Apologies!

Don't forget the Farmer's Market on Wednesday afternoons and Saturday mornings; hopefully the gardens haven't burned up.

I do appreciate Gil Perkins coming in to inform me they needed to cut off our electricity to work on the new electrical lines. The choice of days to interrupt our service was Tuesday morning. They rescheduled when they learned Tuesday was our busy day. Thanks, guys.

We were in OKC the latter part of the week and enjoyed a Meriwether family dinner on Sunday at OKC.

Some of the Meriwether grandsons and I got in a game of cards.

Barbara and I were skunked Monday evening. I new my winning streak would end; it's a lot more fun to win. Patsy and Dwight were the winners.



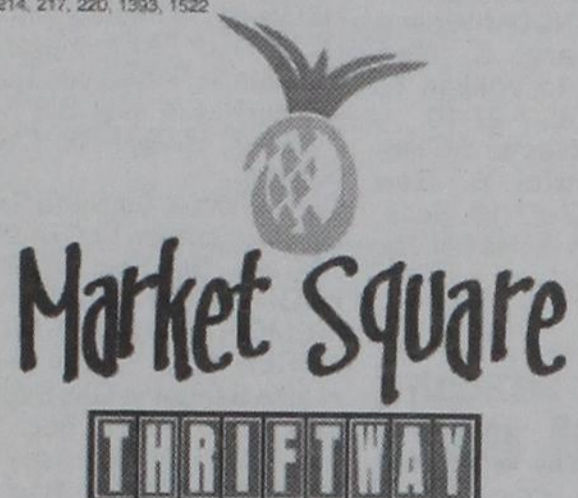
**THE WHEELER TIMES**

PAGE 6 — Thursday, August 5, 2010

"Wheeler: town of friendship and pride."

**Solution**

PANTS	UNAWARE	SCREWUP	IRE	HEATH	ANT	STEREO	ALSO	SKI	STINT	TAN	ITS	LUMBAGO	TRAITOR	ENDON
PIECE	CONVENT	ALDENTE	GOALIE	CROON	ETHER	AIR	CELL	SUM	LABOR	OLDIE	MOOLAH	SESSILE	TRAINEE	CLERK
								DILATE	SOY	ABIDE	AND			



**OKLAHOMA**  
**CHEYENNE • HINTON**  
**TEXAS**  
**SHAMROCK • SUNRAY**  
**WELLINGTON • WHEELER**



**PRICES GOOD**  
**WEDNESDAY, AUGUST 4 THRU**  
**TUESDAY, AUGUST 10, 2010**

NOT LIABLE FOR TYPOGRAPHICAL OR PICTORIAL ERRORS. WE RESERVE THE RIGHT TO LIMIT QUANTITIES. SOME ITEMS NOT AVAILABLE IN ALL STORES.

**PILGRIM'S PRIDE**  
**GRADE "A"**  
**Whole Fryers**  
**59¢** LB.

**FARM FRESH**  
**Cantaloupe**  
EACH  
**79¢**

**SELECTED VARIETIES**  
**REGULAR OR NO SALT ADDED**  
**ShurFine**  
**Vegetables**  
11-15.25 OZ. CAN  
**39¢**

Including: Green Beans, Golden Corn, Sweet Peas, and Mixed Vegetables

**ShurFine**  
**HOI!**  
**BUYS**  
**FOR SUMMER**  
**STOCK-UP**

**UPRIGHT OR**  
**UP-SIDE DOWN**  
**ShurFine**  
**Ketchup**  
32-36 OZ. BTL.  
**\$1**

**SHURFINE**  
**ASSORTED VARIETIES**  
**Barbecue**  
**Sauce**  
18 OZ. BTL.  
**2 \$1** FOR

**FAMILY PACK BONELESS**  
**Pork Sirloin Roast**  
GREAT FOR ROAST, CHOPS, STEW, OR TAMALES  
**\$1.69** LB.  
SMALL PACK LB. \$1.99

**NEW MEXICO, LONG GREEN**  
**Chile Peppers**  
ASSORTED "HEAT"  
**69¢** LB.

**FRUIT, ORANGE, OR**  
**KIWI-STRAWBERRY**  
**ShurFine**  
**Punch**  
GALLON  
**\$1**

**SHURFINE**  
**DINNER**  
**Macaroni**  
**& Cheese**  
7.25 OZ. BOX  
**4 \$1** FOR

**PREFERRED TRIM BONELESS BEEF**  
**Arm Roast**  
**\$1.99** LB.

**FRESH SWEET**  
**Peaches, Nectarines,**  
**Red or Black Plums**  
**69¢** LB.

**ShurFine**  
**Frosted**  
**FLAKES**  
SELECTED VARIETIES  
**ShurFine**  
**Cereal**  
11.25-17 OZ. BOX  
**2 \$3** FOR

**ShurFine**  
**Toaster**  
**TARTS**  
ASSORTED FROSTED  
**Toaster**  
**Tarts**  
14.6 OZ. BOX  
**\$1**