

Join the  
H OF DIMES  
January 3 to 31

# The Wheeler Times

Join the  
MARCH OF DIMES  
January 3 to 31

XXIII — NUMBER 5

THE WHEELER TIMES, WHEELER, TEXAS, JANUARY 12, 1956

5c Per Copy

THE COUNTY SEAT NEWSPAPER

## MOBETTIE NEWS

BECK, Correspondent

Monthly meeting of the P-TA will be held on Monday at 7:30 with a program.

Evening the boys and Mobeettie elementary play basketball with school at the Mobeettie. No admission will be charged.

Dr. L. R. Reaves and practice is shaping the drama My Three Girls will be presented by cast of Mobeettie school students.

Mr. and Mrs. Bill Haddock; Mr. and Mrs. Dumas; Mr. and Mrs. Burke; Mr. and Mrs. in and boys, Amarillo; Mrs. Nathan Lancaster; and Mrs. Thorne grandchildren, Juka, and Mrs. Doug Baird and Mr. and Mrs. Arthur Don, Loy and Mobeettie.

Mrs. Charles J. Hill came Wednesday last a visit with their son, Hill and family in daughter and family, s. Bud Griffin of Dimmick in Farwell.

Mrs. Kenneth Walker Beck, of Dumas, was in Mobeettie last week.

Mrs. Albert Scribner and Bill of Olton of his mother, Mrs. Scribner, and his brother, s. Bud C. Scribner, returned.

Mrs. Boyd Beck released a dry cleaning and will shortly return to city. Mr. and Mrs. Dunn and her parents, Mrs. Tince Williams, returned.

Mrs. R. H. Dyson and Mr. and Mrs. C. C. Dyson visited in Mobeettie last week.

Thomas, Jr., and sons, visited his parents, Mrs. Sam A. Thomas.

## March of Dimes Drive Getting Underway Here

The wheels have been set in motion for the annual March of Dimes to be conducted in Wheeler County during the month of January.

Preliminary plans for the drive were made at a meeting held in the court house Friday and attended by Harry Wofford, Raymond Moore, Jim Hathaway and Mr. and Mrs. Harold Sivage.

Serving as campaign director in the various communities this year will be: Carl Levitt, Allison; Jack Finsterwald, Briscoe; Mrs. Orphus Tate, Heald; Earl Tarbet, Keller; Raymond Moore, Kelton; Mrs. Cecil Bradley, Lela; Dennis Porter, Magic City; Jim Hathaway, Mobeettie.

## FIELD DAY DEMONSTRATION THURS. JAN. 19

Al Thomas of Thomas Garage and Implement this week announced a John Deere Field Day Demonstration to be held at the Charley Clemens farm five miles south of Wheeler on Highway 83. The demonstration will start at 10:00 a.m. and continue until 4:00 p.m.

## JOE D. ROGERS NOW AT BANK

Joe D. Rogers this week assumed his duties at the First National Bank in Wheeler. He is assistant Cashier. The appointment came after the resignation of Carroll Pettit who will soon be employed on another job.

## HOSPITAL NOTES

**PATIENTS DISMISSED**  
Clydine Markham, Allison, January 4  
Mrs. C. W. Gatlin, Mobeettie, January 4  
Mrs. M. L. Giehart, Shamrock, January 4  
Carey Montgomery, January 4  
Mrs. W. S. Simpson, Allison, January 5  
S. P. Britt, January 7  
Dan Pruitt baby, Allison, January 7  
Kenneth Hammon, Pampa, January 8  
Mrs. Jerry Lewis, Ft. Worth, January 9  
R. W. Shelton, Twitty, January 9

**PATIENTS ADMITTED**  
Barney Burgess, Briscoe, January 9  
Mrs. White George, Magic City, January 6  
Mrs. O. Lewis, January 5  
E. L. Fowler, Jr., baby, Sweetwater, January 5  
Judy Denham, Shamrock, January 7  
Janie Lee Barton, Mobeettie, January 6  
Clydine Markham, Allison, January 6  
Mrs. C. W. Gatlin, Mobeettie, January 8  
Mrs. M. L. Giehart, Shamrock, January 8  
Carey Montgomery, January 7  
Mrs. W. S. Simpson, Allison, January 8  
S. P. Britt, January 8

## KIDS PHOTOS TO BE PRINTED IN THE TIMES

Friday, January 20, is the big day for the picture taking of your youngsters. The pictures will be taken of children accompanied by their parents or guardian at the Watson Hotel between 10 a.m. and 5 p.m. free of charge.

There is absolutely no charge or obligation for taking the pictures. Parent's don't even have to be a subscriber to The Times, nor even a reader. You do not have to purchase pictures either, though you may obtain additional prints by arranging direct with the Studio representative if you want them. It is entirely up to you!

## SILVER \$ DAY PROGRAM WILL END SATURDAY

Wheeler's Silver Dollar Program, underway for the past 14 months, will be discontinued temporarily following activities on Saturday, January 15, Chamber of Commerce Manager E. D. Guynes, announced this week.

Starting with 72 sponsors more than a year ago, only 19 merchants are now contributing to the fund to keep the trades day program alive, Mr. Guynes stated.

## THIEVES TAKE AUTO RADIOS

Sheriff Bus Dormna this week said thieves had taken at least two radios from cars in Wheeler County the past week. Others were molested and partially stripped.

## WHEELER VFD RECEIVE GIFT

At the regular training meeting of the Wheeler Volunteer Fire Department held last Thursday night the announcement was made that H. M. Wiley and Levi Reid had made donations to the recreation fund of the department.

## THREE PERSONS ARE SENTENCED FOR FORGERY

A Wheeler County grand jury last Thursday returned forged indictments against three persons who subsequently pleaded guilty and were sentenced by Judge Lewis M. Goodrich in 31st District Court.

## Two Auction Sales Being Advertised

Advertisements of two auction sales appear on inside pages of this issue of The Times. Howard Caswell announces his sale to start at 11 o'clock Tuesday morning, January 17, at his home, two miles east from Wheeler, and two miles south.



## FRANK LEE ASKS COMMISSIONER JOB PRECINCT 1

Having been asked by my friends and neighbors in all parts of the Precinct to make the race for Wheeler County Commissioner in Precinct No. 1 I have offered myself for candidate for this office, which term will be for four years.

I have been in Wheeler County for more than 50 years and have had 12 years experience in this precinct on the grader and maintainer. I feel I am qualified for the job from a business standpoint as well as in road building know-how.

## C-C SCHEDULES ANNUAL LADIES NIGHT BANQUET

Harry Wofford was named president and Lewis Lancaster was selected as vice president of the Wheeler Chamber of Commerce at a called meeting of the board of directors held Monday.

## 4-H BOYS TO SHOW STEERS

Wheeler County 4-H Club members exhibited their fat steers at the Childress Junior Breeders Show yesterday, and will show them in the Wheeler County Livestock Show, the Amarillo Fat Stock Show and the Top O' Texas Livestock Show in Pampa.

## CALENDAR OF THE WEEK

**THURSDAY, JANUARY 12** — Thursday Review Club, Hostess, Mrs. Robert Holdeman. Progressive Study Club, Hostess, Mrs. Paul Green.  
**FRIDAY, JANUARY 13** — American Legion Zone Meeting, American Legion Hall, 7:30.  
**SATURDAY, JANUARY 14** — Dance, American Legion Hall, 9:00.  
**SUNDAY, JANUARY 15** — American Legion Auxiliary, American Legion Hall, 7:30.  
**TUESDAY, JANUARY 17** — '54 Study Club, Hostess, Mrs. Cecil Denon. Briscoe Home Demonstration Club. Dance, American Legion Hall, 9:00.

## Epidemic Of Hogs Cholera Reported

An epidemic of hog cholera which apparently broke out in the Shamrock area and has spread north of Red River has been reported. The cholera is believed to have been strated by the feeding of uncooked garbage to hogs, which is a violation of a state law.

## Junior Livestock Show Slated For January 17

The Annual Wheeler County Junior Livestock Show will be held at the Community Show Grounds in Wheeler on Tuesday, January 17.

All livestock will be in the barn by 9:30 a.m. on the day of the show and will be released at 4 o'clock that afternoon. George Gandy is general superintendent of the show, with C. J. VanZandt in charge of the beef cattle division, and Jerry Swarts vocational agriculture teacher of Mobeettie, in charge of the swine division.

The show is being sponsored jointly by the Wheeler Chamber of Commerce, the Wheeler Kiwanis Club and the Wheeler County Farm Bureau. Dr. "Nig" Callahan, head of the Agriculture Department of West Texas State College, Canyon, will begin judging sheep at 10 a.m. and finish judging fat hogs in the morning. He will place the fat

## RENA SIVAGE DISTRICT CLERK ASKS ELECTION

Mrs. Rena Sivage, who is the former Miss Rena Johnson of Kelton, this week announced her candidacy for the office of district clerk of Wheeler County.

Her candidacy will be subject to the will of the voters in the July Democratic Primary. Mrs. Sivage is presently handling the duties of the office to which she seeks election, having been appointed by District Judge Lewis M. Goodrich to replace Miss Barbara Fry who recently resigned and moved away.

Born and reared in Kelton, Mrs. Sivage is the daughter of Mr. and Mrs. A. C. Johnson, who have owned and operated a grocery store in Kelton for many years. She is a graduate of Kelton High School and attended West Texas State College in Canyon. In

## 4-H BOYS TO SHOW STEERS

Wheeler County 4-H Club members exhibited their fat steers at the Childress Junior Breeders Show yesterday, and will show them in the Wheeler County Livestock Show, the Amarillo Fat Stock Show and the Top O' Texas Livestock Show in Pampa.

4-H exhibitors at the Childress show on Wednesday of this week were: Bob Martin of Briscoe 4-H Club with two Ferris Hess steers; George Harris of Kelton 4-H Club with two steers bred by Jimmie Harris of Kelton; and Frank Walker of Wheeler 4-H Club showing a George and Ed Davis steer. Dean Sims exhibited two steers at the

## THREE PERSONS ARE SENTENCED FOR FORGERY

A Wheeler County grand jury last Thursday returned forged indictments against three persons who subsequently pleaded guilty and were sentenced by Judge Lewis M. Goodrich in 31st District Court.

## CALENDAR OF THE WEEK

**THURSDAY, JANUARY 12** — Thursday Review Club, Hostess, Mrs. Robert Holdeman. Progressive Study Club, Hostess, Mrs. Paul Green.  
**FRIDAY, JANUARY 13** — American Legion Zone Meeting, American Legion Hall, 7:30.  
**SATURDAY, JANUARY 14** — Dance, American Legion Hall, 9:00.  
**SUNDAY, JANUARY 15** — American Legion Auxiliary, American Legion Hall, 7:30.  
**TUESDAY, JANUARY 17** — '54 Study Club, Hostess, Mrs. Cecil Denon. Briscoe Home Demonstration Club. Dance, American Legion Hall, 9:00.

steer classes beginning at 1:15 o'clock in the afternoon. There will be one class of fat lambs with six lambs being shown. There will be five classes of fat steers, including the following: (Continued on last page)

## J-LEE DEPT. STORE TO OPEN IN SHAMROCK

Announcement has been made by Lee Whitworth of Quannah that the J-Lee Department Store to open soon in Shamrock will not effect the operation of the local store. Lewis Lancaster, local store manager stated that the two stores would handle a lot of the same brand lines and corresponding merchandise but that the new store would not eliminate the local store.

Mr. Whitworth said a tentative date of early February had been set for the opening of the Shamrock store, located in the old Hunter Department Store location on Main Street. The building is undergoing a remodeling and painting job then the fixtures will have to be installed and new merchandise arrive and be stocked before the opening date. Exact date of the opening will be announced later.

Mr. Lancaster stated this week that the new store would enable the J-Lee Department Stores to bring their customers even greater values in wearing apparel and piece goods.

## WELLINGTON, SHAMROCK ARE CAGE CHAMPS

Wellington boys and Shamrock girls are champions of the Wheeler Invitational Basketball Tournament held last week end.

Consolation honors were won by Kelton boys and Wheeler girls. The Skyrockets won the championship Saturday night by defeating the Wheeler boys, 61-45. The Irish Lassies from Shamrock eked out a 56-55 victory over McLean in their final game.

In the consolation games, which preceded the championship finals, the Kelton lads took an easy victory from Miami, 65-35; and the Wheeler girls defeated Allison, 60-48.

## SHAMROCK MAN NO-BILLED ON MURDER CHARGE

A Wheeler County grand jury last Thursday no-billed a Shamrock man who had been charged with murder with malice in the death of a Quail Community farmer.

The jury cleared Louis Stephens, 29, Shamrock service station worker, who was charged December 27, in the death of Robert Edd Wofford, Wofford, 37, died at the home of a brother, Maple Wofford, in the Quail Community, a few hours after he was hit over the head with a part of a car jack.

The affray occurred the night of December 26, at Stephen's home in Shamrock, and was said to have arisen over a bad check which Stephens is said to have given Wofford.

## New WSCS Circle To Be Organized

A new Circle of the WSCS of the First Methodist Church of Wheeler will be organized next Wednesday morning. The new circle will meet at 9:30 a.m. and is designed especially for mothers with young children and others who find it difficult to attend at the other hours.



**THE WHEELER TIMES**

Published Every Thursday at Wheeler, Wheeler County, Texas, by Cooper, Slemmer & Montgomery

Entered as second-class matter, December 18, 1933, at the postoffice at Wheeler, Texas under act of March 3, 1879.

Chas. Slemmer -- Editor-Manager  
Lona Williams -- Society Editor  
Jimmy Goad -- Printer  
Hershell Hutchison -- Apprentice

**MEMBER**

Panhandle Press Association



**NATIONAL EDITORIAL ASSOCIATION**  
REGULAR MEMBER

**Subscription Rates**

|   |        |
|---|--------|
| 3 Months  | 75c    |
| 6 Months  | \$1.25 |
| 1 Year  | \$2.00 |
| In Wheeler, Beckham and Hemphill Counties Everywhere Else |        |
| 3 Months  | 85c    |
| 6 Months  | \$1.50 |
| 1 Year  | \$2.50 |

**Advertising Rates**

|               |                  |
|---------------|------------------|
| National Rate | 56c Column Inch  |
| Local Rate    | 50c Column Inch  |
| Classified    | See Want Ad Page |

Any erroneous reflection upon the character, standing or reputation of any person, firm or corporation, which may appear in the columns of this paper will be gladly corrected upon due notice being given to the Editor personally at the office at Wheeler, Texas.

**ON THE RECORD**

ROY D. - Walter Ellerbee et ux to Dwight L. Stubblefield 11-28-55 1/32 int E 1/2 NE 1/4 NW 1/4 & W 5/8 ac N 1/2 NE 1/4 Sec 27 Blk 13

Sherfield et ux 6-9-55 Sec 23 Blk OS 2

CONTRACT—Dan Lester et al to LeCuno Oil Corp 11-16-55 3, 694 ac being parts of Sees 57 to 64, 78, 79 Blk 17, and Pt Secs 51, 52, 70, 69 Blk 13 All the following instruments marked with \* cover this same land.

AOL—Chas A. Koons to LeCuno Oil Corp 12-2-55\*

AOL—George J. Feskoe to LeCuno Oil Corp 12-2-55\*

AOL—Charles A. Koons and Co to LeCuno Oil Corp 12-2-55\*

AOL—D. W. Frease to LeCuno Oil Corp 12-2-55\*

AOL—Emil W. Steffens to LeCuno Oil Corp 12-5-55\*

AOL—William A. Kelly to LeCuno Oil Corp 12-5-55\*

AOL—Warren M. Huff to LeCuno Oil Corp 12-6-55\*

AOL—Charles L. Gerli to LeCuno Oil Corp 12-6-55\*

AOL—Richard Becker to LeCuno Oil Corp 12-5-55\*

AOL—Pamela J. Woolworth to LeCuno Oil Corp 12-14-55\*

AOL—Homer W. Orvis to LeCuno Oil Corp 12-8-55\*

AOL—Gerhard Wagner to LeCuno Oil Corp 12-6-55\*

AOL—Jerome P. Boucher to LeCuno Oil Corp 12-6-55\*

AOL—Evelyn Gerli Spears to LeCuno Oil Corp 12-7-55\*

AOL—Jackson Edward Spears to LeCuno Oil Corp 12-7-55\*

AOL—Francis B. Farr to LeCuno Oil Co. 12-6-55\*

AOL—F. D. Hammer to Harold D. Park et al 12-28-55 W 1/2 NW 1/4 & W 1/2 E 1/4 NW 1/4 Sec 27 Blk 13

AOL—C. C. Hammer to Harold D. Park et al 12-28-55 E 1/2 NE 1/4 NW 1/4 & W 5/8 ac N 1/2 NE 1/4 Sec 27 Blk 13

RATIF OL—Millie Alice Porter to Elbert Kesler 10-6-55 Sec 44 Blk A-8

AOL—Elbert Kesler to Seaboard Oil Company 10-17-55 Sec 44 Blk A-8

AOL—Elbert Kesler to Seaboard Oil Company 10-17-55 Sec 44 Blk A-8

AOL—Elbert Kesler to Seaboard Oil Company 10-17-55 Sec 44 Blk A-8

MD—Anglo California Natl Bk to Colonial Royalties Co. 11-1-55 1/315 Int NW 1/4 Sec 49 Blk 24 exc 2 1/2 ac NW Cor

MD—Anglo California Natl Bk to Colonial Royalties Co. 11-1-55



**You CAN Pick Your CANDIDATE BUT... THE RIGHT TO VOTE IS YOURS ONLY IF YOU... PAY YOUR POLL TAX!**

2.157.5 int NW 1/4 Sec 49 Blk 24 exc 2 1/2 ac NW Cor

MD—Anglo California Natl Bk to Colonial Royalties Co. 11-1-55 1.157.5 int NW 1/4 Sec 49 Blk 24 exc 2 1/2 ac NW cor

OL—Dallie Miller to H. A. Howell 5-23-55 NE 1/4 S 1/2 SW 1/4 Sec 104 Blk 23

AOL—W. H. Stephens to Prudential Petroleum Corp 11-30-55 NE 1/4 S 1/2 SW 1/4 Sec 104 Blk 23

AOL—H. A. Howell to W. H. Stephens 10-27-55 NE 1/4 S 1/2 SW 1/4 Sec 104 Blk 23

Witness, Harry Wofford, Clerk of the County Court of Wheeler County, Texas.

Given under my hand and seal of office this 5th day of January 1956.

HARRY WOFFORD  
Clerk County Court, Wheeler County, Texas.

By JOYCE BLEVINS  
deputy 5-1tc

Mr. and Mrs. B. F. Holland of McLean, formerly of Briscoe, were Wheeler visitors, Wednesday.

A Child May Dare  
So Drive With Care!

**LEGAL NOTICE**

**NOTICE BY PUBLICATION OF FILING FINAL ACCOUNT**

THE STATE OF TEXAS, to any Sheriff or any constable within the State of Texas; Greeting:

Mauleic Nance, administratrix with the will annexed, of the Estate of W. L. Hollis deceased, having filed in our County Court her final account of the condition of the estate, of said W. L. Hollis, deceased, as administered in Wheeler County, Texas, together with an application to be discharged from said administration, you are hereby commanded, that by publication of this writ once in a news paper regularly published in the County of Wheeler, State of Texas, and said publication shall be not less than ten days before the return day hereof, you give due notice to all persons interested in the account for final settlement of said estate, to file their objections, thereto, if any they have, in said Court on or before Monday, the 23rd day of January 1956, when said account and application will be considered by said Court.

Mr. and Mrs. Geo. Faulkner and son visited over the week end with her parents Mr. and Mrs. E. N. Byers. Mr. Faulkner is here on leave from Guam. Sunday they and Mr. and Mrs. Byers visited in Quitaque with Mr. and Mrs. W. Wheeler.

O. Carrick. Sunday guests in the H. H. Herd home were Mr. and Mrs. Waymon Herd, Mr. and Mrs. Amos May and Miss Wanda Sue Waters, Wheeler, Sunday.

Mr. and Mrs. J. C. family of Levelland Wheeler, Sunday. Bring your doctor to Wheeler Drug for vice.

**Low ... in price**

The price of a Mainline Tudor Six is typical of our low prices. But it's only a clue to the trades, the deals our quick turnover (the industry's fastest) lets us offer. Come in and be amazed!

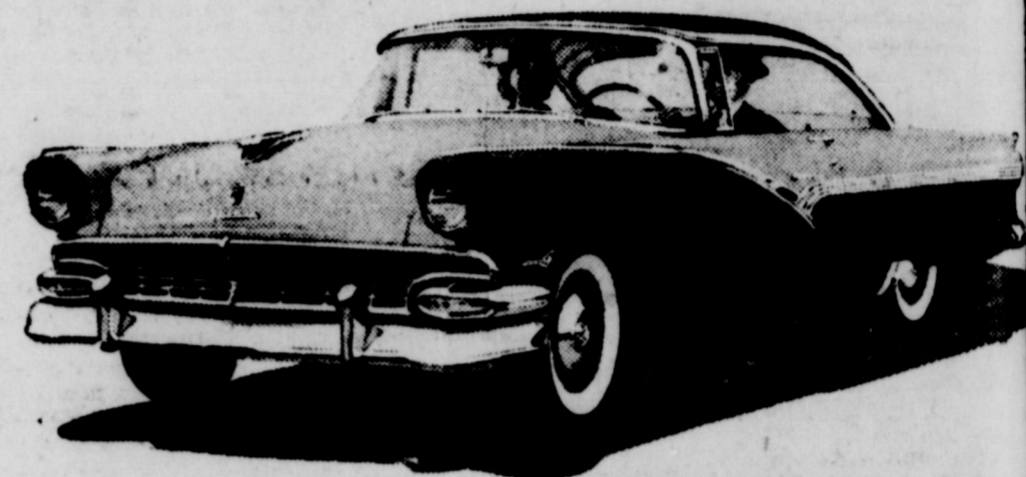
Get our Quick Turnover Deal now!

**Lively ... with the Thunderbird Y-8 engine**

When you try Ford's lively new Thunderbird Y-8 engine, you'll find more fun in driving... more confidence in its instant passing response. The Thunderbird Y-8 is the standard eight for all Fairlane and Station Wagon models, at no extra cost.

**Lovely ... with Thunderbird-inspired style**

When you run your eyes along Ford's long, low silhouette... from stem to stern, from top to tread—you'll see that every lovely line boasts its Thunderbird kinship. But even more important than its Thunderbird beauty and "GO," is Ford's new Lifeguard Design—engineered for your safety... and offered only in Ford.



The fine car at half the fine-car price '56 Ford (with Lifeguard Design)

**Johnson-Burton Motor**

FORD SALES and SERVICE WEST HIGHWAY 152 PHONE 2311 WHEELER.

A Motion Picture That Could Have Been Made at YOUR House...

**"Tim's Choice"**



A Story Built Around Our Remarkable, Unpredictable Rural Youth, Their Anxieties and Triumphs.

plus

- \* A New Gordon Family Hit
- \* "ODDITIES in FARMING"
- \* "Proof of Tractor Quality"

and Added Short Subjects All in Full Color

You'll enjoy every minute of this interest-packed program... an entertaining and informative program that will delight young and old alike... and it's ALL FREE.

**JOHN DEERE DAY** Jan. 27  
The "Day of the Year" for the "Man of the Soil" and His Entire Family

**THOMAS GARAGE & IMPLEMENT**  
Wheeler, Texas

**THESE ARE IMPORTANT PEOPLE IN YOUR LIFE**



Dear Friends

The people in the picture in this advertisement are Humble researchers on their way to work in Humble's Houston Research Center.

They are important people in your life, because their studies and their constant experimentation have only one purpose: to supply your increasing needs for oil and natural gas.

At the Houston Research Center, they pool their efforts to make the finding and production of oil and natural gas more efficient. And since they are top people in their different fields, their work has met with notable success.

It has helped to make the Humble Company not only the largest but also one of the most efficient producing companies in the country.

The new ideas, new methods and new practices developed by Humble researchers have resulted in the discovery of new reservoirs of a valuable natural resource; in making these reservoirs more productive; and in prolonging their life for your future.

Sincerely

HUMBLE OIL & REFINING CO





**ON NEWS**

**Lester Levitt** eral from here will attend the funeral at Cheyenne, Okla., Wednesday.

Clifton Boydston and family and Mrs. Roxie Sanford from Reydon, Okla., were dinner guests in the Bruce Harrison home Sunday.

Ira Fish and family visited Jim Burns and family at Pampa over the week end.

Rev. Howard Smelser and family visited relatives at Magnolia.

CHARTER NO. 121  
**BANK'S**  
STATEMENT OF FINANCIAL CONDITION OF THE  
**FIRST STATE BANK**

Texas at the close of business on the 31 day of December to call made by the Banking Commissioner of Texas with the Banking Laws of this State.

**RESOURCES**

|  |                   |
|--|-------------------|
| Accounts, including overdrafts   | 134,923.01        |
| Government Obligations, direct and   |                   |
| U. S. C. C.  | 51,790.25         |
| Notes, and debentures  | 225,000.00        |
| Checks   | 10,000.00         |
| Due from other banks, including reserve and cash items in process of collection (exchanges for clearing house) | 293,380.52        |
| Real estate or leasehold improvements  | 3,340.40          |
| Furniture, and equipment   | 1.00              |
| Real estate owned  | 3.00              |
| <b>Total</b>   | <b>718,438.18</b> |

**LIABILITIES AND CAPITAL ACCOUNTS**

|  |              |
|--|--------------|
| Capital Stock                                | \$ 20,000.00 |
| Surplus                                      | 20,000.00    |
| Reserves                                     | 36,100.94    |
| Liabilities of individuals, partnerships and |              |
| incl. U. S. Govt., states and political      | 627,087.64   |
| Liabilities                                  | 15,249.60    |
| Assets                                       | \$642,337.24 |
| Liabilities and Capital Accounts             | 718,438.18   |

TEXAS, COUNTY OF WHEELER  
J. T. JOHNSTON, Cashier of the above named bank do hereby certify that the foregoing statement of condition is true to the best of my knowledge and belief.

TESTED  
JACK MILLER, H. L. FLANAGAN, Directors  
and sworn to before me this 4 day of January, 1956.  
GEWAY, Notary Public, Wheeler County, Texas

**5 NEWSPAPER**

to PUBLISH  
**Pictures of Local Children**  
[INCLUDES RURAL]

**FREE** There is No Obligation!

- Just take your children to the place and at the time given below.
- Several poses will be taken FREE of charge by an expert children's photographer from WOLTZ STUDIOS.
- All proofs will be shown . . . Select your favorite pose for publication and your child's picture will appear in this newspaper at a later date.
- You may, if you wish, order photographs for gifts or keepsakes from the Studio . . . but this is entirely up to you.

HERE IS THE TIME AND PLACE  
Friday, January 20, 1956  
10 a.m. to 5 p.m.  
WATSON HOTEL  
Wheeler, Texas

**Help rebuild lives**

Join the  
**MARCH OF DIMES**  
January 3 to 31

Ark., last week.

Mrs. Martin Newton from Canadian, Lyn Levitt and Roy Langford from Borger, Mrs. Dewey Smith from Stinett visited in the Lester Levitt home over the week end.

Bobbie Dillon and family from Amarillo visited relatives here recently.

Mrs. C. A. Copeland is the proud great-grandmother of a new baby girl born to Mr. and Mrs. Leo Lee of Austin, Thursday.

J. D. Helm and family from Austin and Mr. and Mrs. Jimmy Greenwood from Amarillo visited in the Ray Brown home recently.

Mr. and Mrs. Pat Huff attended the Young-Gitchell wedding at Briscoe, Saturday evening.

Forace Eynans and family were dinner guests in the Ernie Wallace home Sunday.

Mr. and Mrs. M. M. Hamilton from Pampa visited in the Porter Rogers' home recently.

A/2c and Mrs. Eddie Rascoe visited in the home of her mother, Mrs. Norville Giddens recently.

Ada Jones returned to her home here Saturday from Tulsa where she visited relatives for two weeks.

Frank Risner and family from Mobeetie visited relatives here Sunday.

Several members of the Baptist Church attended the baptismal services at the Wheeler Church Sunday. Two candidates from Allison were baptised.

Virgil Stinett and family from Dumas visited in the parental Joe Walsh home over the week end.

Guy Brown and family from Wheeler visited in the Charley Brown home here Sunday.

John Megee and family and Mrs. Barber from Wheeler visited relatives at Morton, Okla., recently.

H. R. Warren was in Cheyenne, Okla., Sunday where he visited relatives.

Mrs. G. A. Wise spent a week recently with the Harold Wright and Bill Wise families at Dumas.

Supt. Malin and family visited relatives at Vernon and Oklahoma City recently.

Ray Giddens and family from Plains, Texas and Mr. and Mrs. John Dan Bowman from Dumas visited relatives here recently.

Rev. and Mrs. Leroy Patterson attended the Evangelistic Conference at Ft. Worth, Monday and Tuesday.

**LOCAL NEWS ITEMS**

Mrs. Dewain Jackson has resigned her position as clerk in the A.S.C. office. The Jacksons are moving to Borger where he is employed.

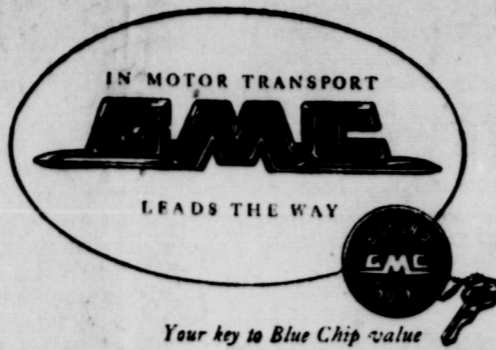
Euel Limer of Lubbock was a business visitor in Wheeler Wednesday.

Ruby Reeves was a recent guest in the home of Mr. and Mrs. Roy Bailey and C. R.

Mr. and Mrs. George Gandy and family visited relatives in Claude and Plainview over the week end.

**SPECIAL PRICES**

- on all
- Oil Filter Elements
  - Batteries
  - Spark Plugs
  - Tires
  - Tubes
  - Piston and Sleeves
  - Anti-freeze
  - Lister Shares
  - Home Freezers
- Limited Stock and Time
- Farmers Equity Service**  
Phone 10  
Mobeetie, Texas



It tells the world you've arrived

A BLUE CHIP GMC helps its owner achieve the prosperity it advertises. Its operating costs are low because the 155-h.p. V8 engine's a fuel miser—its Hydra-Matic Drive's a maintenance shrinker—its rugged construction's a life stretcher. Come in and see one!

\*Hydra-Matic standard on many models; optional at extra cost on some others

See us, too, for Triple-Checked used trucks

**NASH APPLIANCE & SUPPLY CO.**

115 W. Oklahoma

Wheeler, Texas

**Pay Your Subscription**

to  
**The Wheeler Times**

**TODAY!**

Chock Full Of Happenings to  
**YOU and Your Neighbors!**

**Only News of Local Interest!**

**Subscription Price--\$2.00 per Year**

*In Wheeler and Adjoining Counties*



## NEWS ITEMS OF 20 YEARS AGO

**Editor's Note:** Following is a rewrite of news carried in The Times under date of January 9, 1936. If you like this column let the editor know and we will try to pick up items of the past for your entertainment. Ed.

A number of 4-H boys and farmers met in the courthouse and made plans for the first annual Wheeler Calif show to be held February 8, 1936. On the finance committee were Cliff Weatherly and Ira Passons.

"History of the Texas Centennial" was the subject of discussion for the Wednesday Study Club which met in the club room with Mrs. J. M. Porter, hostess, and Mrs. Floyd Pennington leader. A round table study was made of "Some Relics that are to be Restored for the Centennial" Billy Cosper favored the group with a piano selection. Some of the members present were: Mrs. Cora Hall and Mrs. Ernest Lee.

The Wheeler County Farmers Association met in regular session with the main topic for discussion of an Act of the U. S. Supreme Court invalidating an act under which a program of crop control had been operating.

The front page of the Times carried a story "Esslinger Moves to New Location — Former Corner Grocery Locates in City Market Quarters Just One Door North" Besides the grocery line, the change permitted the operation of a fresh and cured meat department. In addition to this a produce station was in operation. Roy Esslinger was the new owner and the same paper carried an Auction Sale advertisement of his farm stock and equipment, with Leonard Green, Mobeetie, Auctioneer and R. J. Holt, Clerk.

"Between Four and Five Inches of Fleecy White Covers Entire County", was the caption for one article which stated, "With clearing skies yesterday and today, much of the snow has melted — Sharp temperatures have prevailed during the week, especially each night."

Cash prizes were offered at a Playtime Event in the new gymnasium, sponsored by West Post No. 138, of the American Legion.

The Wheeler gins reported a big increase. That year's receipts doubled that of 1934, but was far behind the 1933 production. Here are the figures:

1933 ..... 3,596 bales.  
1934 ..... 874 bales.  
1935 ..... 1,651 bales.

John H. Templeton stated that as a convenience to the tax payers, his office was offering his presence at Mobeetie and Shamrock on certain days for the purpose of collecting the taxes.

The Home Demonstration Club met and demonstration on "Kitchen Backgrounds" was given. Some of the members attending were Mrs. J. E. Risner and Mrs. J. M. Porter.

The People's Store held a big Year-End Clearance with men's dress oxfords selling at \$2.98, wool socks at 15 cents per pair, sheep-lined coats \$3.95, colorful prints 10 to 15 cents per yard, ladies' shoes \$1.98 to \$2.98 and children's outing pajamas at 79 cents.

Seven local people whose names weren't given were to help the pastor of the Methodist Church preach



Join the **MARCH OF DIMES**  
January 31, 1956

Comfortless Memories" at the Sunday evening services. Adequate heating facilities assured comfort to all who would attend regardless of weather conditions.

In the Local News we read, that Mrs. Bob Rogers and little daughter are recovering from an attack of the mumps — Ed Watson of Brownfield came Thursday night and remained at home until Sunday morning, when he returned to look after his gin business. — Mrs. Nelson Porter and daughter, Frances, returned Wednesday from Troy where they spent the holidays with her mother — Miss Blanche Grainger returned Friday from Comanche where she spent the holidays with her father. Her nephew, Grainger McIlhenny, clerked in her place at the store while she was away — Mr. and Mrs. A. B. Crump returned Saturday from Dallas where they spent three days attending to business — Herman Morris and Cecil Bailey left today for Merced, Calif., to visit and to look for positions — Mr. and Mrs. Jack Miller of Mobeetie were Sunday guests of his brother, O. B. Miller, and wife at Jowett — Mr. and Mrs. Loyd Lee are driving a new Chevrolet coach — Mrs. Lee Guthrie and son, Marion Lee have been ill with the flu for several days — Lindsey McCasland has been employed at Puckett's to take Herman Morris' place.

### KIWANIS NOTES

Members of the Wheeler Kiwanis Club enjoyed the delicious meal served Monday noon at their regular luncheon meeting. Rev. Allgood, a former local pastor was among visitors present.

Ray did a good job enlightening the membership on the conditions affecting farmers and farm buying power, which is of vital interest to all of us.

Announcement was made of the Junior Livestock Show to be held in Wheeler soon. Harry was notified he would serve as MC of the show.

Jerry Lewis of Ft. Worth, visited with his wife and daughter here Tuesday.

Wheeler's Complete Drug Store — Wheeler Drug. If it is available, we have it. 49-tfc

### '54 Study Club News

The '54 Study Club met January 3rd, in the home of Mrs. J. M. Montgomery. Mrs. George Weems presented a program on Public Affairs. Members present were: Mrs. Carroll Adams, Mrs. Cecil Denson, Mrs. George Weems, Mrs. C. C. Crowder, Mrs. L. H. Davidson, Mrs. Harold Sivage, Mrs. Amos May, Mrs. H. B. Gridler and Mrs. Leo Hubble.

The next meeting will be held in the home of Mrs. Cecil Denson on January 17.

### County Women Attend THDA Training Meeting

Miss Vara Crippen stated today that a group of Wheeler County women attended a THDA Training Meeting held yesterday at Amarillo. The meeting was a training session for County Chairmen of the Home Demonstration Clubs in this district and for any other women interested in the HDA work. It was held in the new YWCA building in Amarillo.

Mrs. Si Mason of Briscoe is the County chairman. Attending the meeting with Mrs. Si Mason and Miss Crippen were: Mmes. Ruth Stephens, Glen Clifton, and E. D. Moore, all of Shamrock.

## Society

### Shower Honors Mrs. Claud Jones

Mrs. Claud A. Jones, Jr. the former Miss Billie Deen Owen, was honored recently in the home of Mrs. George Warren, with a bridal shower. Co-hostesses for the occasion were: Mrs. Milton Finsterwald, Mrs. Jack Mitchell, Pampa, Mrs. Olan Maxwell, Borger, Mrs. Roy Bailey, Mrs. George Martin and Miss Pearl Johnson.

The table covered with white crocheted over pink was centered with an arrangement of pink and white chrysanthemums, the bride's chosen colors. Mrs. Mitchell registered the guests and Mrs. Maxwell and Miss Johnson served white cake and pink punch. Approximately 80 guests called or sent gifts.

Wheeler Drug is headquarters for baby items. 49-tfc

Mr. and Mrs. Lem Gaines, Lora and Gloria were recent visitors in Pampa.

### Evans-Aaron Vows Spoken Recently

Miss Betty Jean Evans, daughter of Mr. and Mrs. Forace Evans of Allison, and Billy Aaron, son of Mr. and Mrs. Bill Aaron of Allison, were united in marriage Friday, December 23, at the First Methodist parsonage at Shamrock with Rev. Frank Beauchamp performing the double-ring ceremony.

Mr. and Mrs. Bill Donaldson were the couple's only attendants. Mrs. Aaron chose for her wedding a grey and blue wool suit with navy accessories and her corsage was of white carnations. After a brief wedding trip to Vernon and Childress, the couple are at home on the Aaron farm west of Allison.

Mr. and Mrs. Forace Evans and Mr. and Mrs. Bill Aaron attended the wedding.

### Shower Honors Mrs. Bernard Pletcher

Mrs. Bernard Pletcher formerly Miss Peggy Rogers, was honored recently with a tea and shower given in the home of Mrs. R. Wm. Brown. Co-hostesses were Miss Billie V. Brown, Mrs. C. C. Robinson, Mrs. George Porter, Mrs. D. A. Hunt, Mrs. Harry Wofford.

Mrs. Harold Nash and Mrs. J. J. Dyer.

In the receiving line were Mrs. R. Wm. Brown, Mrs. Bernard Pletcher, Mrs. George Pletcher, Mrs. Bob Rodgers, Mrs. Cecil Leight, Miss Judy Pletcher and Miss Cecilia Leight.

In a beautifully decorated setting, a pink and mauve theme of the bride's chosen colors was carried out in the table arrangement of mauve and silver on a white linen cloth. Pink punch was served with pink diamond shaped individual cakes centered with a wedding ring.

Pink carnation corsage were presented to the honoree, her mother, Mrs. Bob Rogers, Mrs. George Pletcher, mother of the groom, Miss Judy Pletcher and Mrs. Cecil Leight, sisters of the groom.

Guests were registered by Mrs. Harold Hardcastle, and the hostesses presided at the serving table.

About 100 called or sent gifts. Attend John Deere Demonstration at Charley Clemens place, Thursday, January 19.

Mrs. J. M. Porter has been confined to her home for the past three weeks due to illness, but is somewhat improved at this time.

Newspaper Advertising Pays!

Some newcomers are Mr. and Mrs. Ben formerly of Twitty, who purchased the Mrs. F. property in the south town.

Billy J. Darnell visited Tuesday evening with his daughter, Patricia, who is attending school in Wheeler.

### POLITICAL ANNOUNCEMENTS

Subject to the act in the Democratic Primary, 1956.

For Tax Assessor-Coll THURMAN RIVES

For County Sheriff BUS DORMAN

For Commissioner, Pro SHELBY PETTIT W. L. (Shorty) ERW FRANK LEE

For District Clerk RENA SIVIGE

For County Attorney D. O. BEENE

## MAKE FRIDAY 13TH YOUR LUCKY DAY

by taking advantage of this Lucky 13th Dollar Sale  
Three Big Days, Friday, Saturday and Monday

Hi-C  
**ORANGEADE**  
4 46 OZ. CANS \$1.00

PILLSBURY — Yellow, Chocolate or White 4 Pkgs.  
**Cake Mixes** \$1.00

**ARMOUR STAR - SMOKED PICNICS**  
6 to 8 Lb. Average Cello Wrapped **1 lb. 25c**

**TABLE RITE PURE PORK Sausage 23c**

Table Rite Thick Sliced **BACON** 2 LB. PKG. 79c  
GOOD VALUE **MARGARINE** 2 LBS. 35c

SNOW CROP FRESH FROZEN **GREEN PEAS** 5 10 OZ. PKGS. \$1.00

LARGE GOLDEN **BANANAS** 2 lbs. 29c

EXTRA FANCY DELICIOUS **Apples** 3 LES. 39c

GREEN FLORIDA PASCA **Celery** 2 LARGE STALKS

I.G.A. CUSTOM GRATED **Tuna** 5 CANS \$1.00

**CLAY Food Store** Save Valuable IGA Red Stamps—Double



## Don't Miss This LUCKY '13 Dollar Sale

What could be a better way to start 1956 than by stocking up on these outstanding Lucky 13 "Dollar Values"! Top quality

products that mean greater taste satisfaction plus greater savings. Make this year an IGA shopping year. Buy More... Save More at IGA!

- ARMOURS DASH DOG FOOD** 7 for
- KOUNTY KIST WHOLE GRAIN GOLDEN CORN** 7 for
- SEASIDE BUTTER BEANS** No. 300 Cans 8 for
- VAN CAMP PORK & BEANS** No 300 Can 8 for
- First Lick Fresh Shelled BLACKEYED PEAS** No. 300 Can 9 for
- I.G.A. GRAPEFRUIT JUICE** No. 2 Cans 9 for
- I.G.A. FANCY SAEUR KRAUT** NO. 300 CANS 10 for
- HUNT'S TOMATO JUICE** NO. 300 CAN 10 for
- RAINBOW SPINACH** NO. 300 CANS 10 for
- GOOD VALUE WHOLE NEW POTATOES** NO. 300 CANS 10 for
- RAINBOW CUT GREEN BEANS** No. 303 Cans 10 for
- GRIFFINS BLACKEYED PEAS & BACON** No 300 CAN 11 for
- CHARMIN WHITE TOILET TISSUE** 12 for
- MARS, ALMOND JOYS AND MOUNDS** 12 for
- DOG HOUSE DOG FOOD** 13 for

### JORN DEERE FIELD DEMONSTRATION

at the Charley Clemens place located 5 miles South of Wheeler on Highway 83.

**THURSDAY, JANUARY 19**  
10 A. M. to 4 P. M.

**A P-107 Gyramor powered by a John Deere 60 Tracto.**

Will dmonstrate Brush Beating.

Also being demonstrated:

**John Deere 420 Tractor pulling a 2-bottom 14" Moldboard plow.**

Don't forget "John Deere Day, January 27 at

**THOMAS GARAGE & IMPLEMENT**

West Highway 152 Dial 3212  
Wheeler, Texas



# WANT ADS

20c per line (counting 5 words to line) for first insertion. Minimum charge 60c; 15c per line after first time. Charge 45c. Reader ads scattered among local items in each insertion. Display class 90c inch. 5-  
**ADVERTISING** — National rate 56c per inch; advertising 50c per column inch; 45c if 5 inches or more run every week in the month or 140 inches in calendar; 40c if 20 inches is run every week or 200 inches in month; 40c when same ad is re-run; 40c per inch on monthly cards.

**OBITUARIES** 2771. 1-tfc  
 Monuments, Markers, Grave Covers, Curbing, Surface Burial Vaults, Will Warren. 4-tfc  
**Locals**  
 Attend John Deere Demonstration at Charley Clemens place, Thursday, January 19.  
 Mr. and Mrs. Adrian Risner had as guests recently her mother and father, Mr. and Mrs. F. M. Casey, of White Flat.  
 Mrs. George Warren accompanied her son, Paul Topper to Pampa.

**ROAD MISHAPS TAKE 10 LIVES IN DECEMBER**  
 Sunday where they visited in the home of her daughter, Mr. and Mrs. Jack Mitchell and with Mrs. Milton Finsterwald, another daughter, and her new baby in the Highland General Hospital.  
 Mr. and Mrs. W. L. Williams, Jr., of Borger visited relatives at Wheeler over the week end.  
 Mr. and Mrs. W. O. Weatherly, Mr. and Mrs. Roy Ford and children visited Mr. Weatherly's sister Mr. and Mrs. Jess Mullin in Turkey, Sunday.  
 Mr. and Mrs. Shorty Loter and Joe visited relatives in Wink recently.  
 Mrs. Jack Garrison and children visited relatives in Oklahoma City recently.  
 Mrs. Shorty Erwin, Dwight and Jimmy made a recent visit in Cheyenne, Okla.  
 Mr. and Mrs. Frank Caswell, Billy and Betty visited in Dallas during the past holidays.  
 Mr. and Mrs. Raymond Burks and children have returned home from a visit with relatives in Galveston and Houston.

## ROAD MISHAPS TAKE 10 LIVES IN DECEMBER

Ten persons were killed, 84 injured and property damage estimated at \$57,988.00 in rural accidents investigated by Texas Highway Patrolmen in this district during December.  
 The figures do not include accidents investigated by other agencies.  
 In December 1954, nine persons were killed in traffic accidents in the district, 62 were injured and property damage was estimated at \$77,396.00.  
 During last year, 100 persons were killed, 847 were injured and \$862,272.00 worth of property was destroyed. During 1954, 95 persons were killed, 669 injured and property damage was estimated at \$832,850.00.  
 Of the accidents last month, 63 occurred on state and federal highways, 11 on farm-to-market roads, eight on country roads and 11 in towns of less than 2,500 population.  
 Principal violation listed by the patrolmen as causative factors in the December accidents were: a. speeding, b. driving while drinking, c. failure to yield right-of-way, d. improper passing, and e. driving on the wrong side of the road — not passing.  
 In November the principal violation causing accidents were: a. speeding, b. improper passing, c. failure to grant right-of-way, d. driving while drinking; and e. failure to give proper signal.  
 In carrying out their basic duties of traffic law enforcement, the 18 patrolmen of District 5, composed of the 26 Panhandle Counties, performed the following activities during December:  
 Investigated 99 traffic accidents; made 888 traffic arrests including 632 for speeding and 30 for driving while intoxicated; issued 1,377 warnings for hazardous violations; served 24 safety responsibility police demand orders and made four investigations for restoration of driver's licenses.  
 The 18 patrolmen worked 3,054 day hours and 1,944 night hours, and traveled 78,906 miles.  
 Attend John Deere Demonstration at Charley Clemens place, Thursday, January 19.

## LEGAL NOTICE

**CITATION BY PUBLICATION**  
 THE STATE OF TEXAS  
 TO: Mable Amburn, Defendant,  
 Greeting:  
 YOU ARE HEREBY COMMANDED to appear before the Honorable District Court Wheeler of Wheeler County at the Court-house, thereof, in Wheeler, Texas, by filing a written answer at or before 10 o'clock A. M. of the first Monday next after the expiration of forty-two days from the date of the issuance of this citation, same being the 27 day of February A. D. 1956, to Plaintiff's Petition filed in said court, on the 7th day of December A. D. 1955, in this cause, numbered 4579 on the docket of said court and styled John Amburn, Plaintiff, vs. Mable Amburn, Defendant.  
 A brief statement of the nature of this suit is as follows, to-wit: Divorce as is more fully shown by Plaintiff's Petition in this suit.  
 If this citation is not served within ninety days after the date of its issuance, it shall be returned unserved.  
 The officer executing this writ shall promptly serve the same according to requirements of law, and the mandates hereof, and make due return as the law directs.  
 Issued and given under my hand and the seal of said court at Wheeler, Texas, this 10th day of January A. D. 1956.  
 Attest: Rena Sivage Clerk, District Court Wheeler County, Texas. 5-4tc

said court and styled Edna Fern Condit, Plaintiff, vs. Talmadge Forrest Condit, Defendant.  
 A brief statement of the nature of this suit is as follows, to-wit: Divorce as is more fully shown by Plaintiff's Petition on file in this suit.  
 If this citation is not served within ninety days after the date of its issuance, it shall be returned unserved.  
 The officer executing this writ shall promptly serve the same according to requirements of law, and the mandates hereof, and make due return as the law directs.  
 Issued and given under my hand and the seal of said court at Wheeler, Texas, this 10th day of January A. D. 1956.  
 Attest: Rena Sivage Clerk, District Court Wheeler County, Texas. 5-4tc

Issued and given under my hand and the seal of said court at Wheeler, Texas, this 10th day of January A. D. 1956.  
 Attest: Rena Sivage Clerk, District Court Wheeler County, Texas. 5-4tc  
 Mr. and Mrs. Otis Ford and daughter, Glenda and Mr. and Mrs. R. J. Smith, visited Mr. Ford's mother, Mrs. C. F. Ford and other relatives in Bakersfield and also visited relatives in Pomona and saw the Tournament of Roses.  
 Newspaper Advertising Pays!

**MAKE IT EASY TO BEAUTIFY YOUR LIVING ROOM**  
 ERY combines with modern comfort in these living room groups that use NEW TECHNIQUES and FINE WORKMANSHIP to give you the utmost in long lasting beauty and exceptional values.



**ERNEST LEE HARDWARE**  
 Furniture - Rugs - Radios - Hardware

Principal violation listed by the patrolmen as causative factors in the December accidents were: a. speeding, b. driving while drinking, c. failure to yield right-of-way, d. improper passing, and e. driving on the wrong side of the road — not passing.  
 In November the principal violation causing accidents were: a. speeding, b. improper passing, c. failure to grant right-of-way, d. driving while drinking; and e. failure to give proper signal.  
 In carrying out their basic duties of traffic law enforcement, the 18 patrolmen of District 5, composed of the 26 Panhandle Counties, performed the following activities during December:  
 Investigated 99 traffic accidents; made 888 traffic arrests including 632 for speeding and 30 for driving while intoxicated; issued 1,377 warnings for hazardous violations; served 24 safety responsibility police demand orders and made four investigations for restoration of driver's licenses.  
 The 18 patrolmen worked 3,054 day hours and 1,944 night hours, and traveled 78,906 miles.  
 Attend John Deere Demonstration at Charley Clemens place, Thursday, January 19.

**LEGAL NOTICE**  
**CITATION BY PUBLICATION**  
 THE STATE OF TEXAS  
 TO: Talmadge Forrest Condit, Defendant, Greeting:  
 YOU ARE HEREBY COMMANDED to appear before the Honorable District Court of Wheeler County at the Court-house thereof, in Wheeler, Texas, by filing a written answer at or before 10 o'clock A. M. of the first Monday next after the expiration of forty-two days from the date of the issuance of this citation, same being the 27 day of February A. D. 1956, to Plaintiff's Petition filed in said court, on the 10th day of January A.D. 1956, in this cause, numbered 4585 on the docket of

**GOD IS OUR STRENGTH**  
  
**ATTEND CHURCH EVERY WEEK**  
**PRAY EVERY DAY**  
 Sponsored By Wheeler Kiwanis Club

**DANCE**  
 To The Music Of  
**HURSHUL CLOTHIER and his Oklahoma Travelers**  
 at the  
**Legion Building**  
 Wheeler, Texas  
**THURSDAY, JANUARY 17**

|               |                |            |
|---------------|----------------|------------|
| 10 LB. BAG    | PUCKETT'S BEST | 10 LB. BAG |
| 81¢           | Flour          | 69¢        |
| 15¢           | CELERY         | PACKAGE    |
| 15¢           | Hearts         | 21¢        |
| 3 LB. CAN     | DEL MONTE      | 12 OZ. CAN |
| 81¢           | Corn-n-Peppers | 15¢        |
| NO. 2 1/2 CAN | STURGEON BAY   | NO 303 CAN |
| 31¢           | Cherries       | 21¢        |
| POUND         | GROUND         | POUND      |
| 33¢           | Beef           | 29¢        |
| POUND         | BEEF           | POUND      |
| 35¢           | Ribs           | 21¢        |

These Prices Good Friday, Saturday and Monday.  
 Double Stamps every Wednesday on purchase of \$2.50 or more

# Puckett's WHEELER, TEXAS

## FOOD MARKET

# Auction Sale

Having sold our farm and do not have further use for livestock and farm machinery, we will sell all at farm located 2 mi. East on Highway 152, then 2 mi. South, from Wheeler.

**Tuesday Jan. 17 11:00 a.m.**

- 17 Head Cattle**  
 1—Brown Swiss cow, 5 yrs old, fresh in Feb.  
 1—Jersey cow, 7 yrs old, fresh in Feb.  
 1—Hereford cow, 4 yrs. old, with calf  
 1—Hereford cow, 3 yrs. old fresh in Feb.  
 1—Mixed cow, 6 yrs. old fresh in Feb.  
 1—Roan cow, 4 yrs old and calf  
 1—Blue Roan cow, 5 yrs. old and calf  
 1—Spotted cow, 7 yrs. old and calf  
 1—Mixed cow, 4 yrs. old and calf  
 1—Heifer, 2 yrs. old fresh in March  
 1—Hereford Bull, 3 yrs. old
- Hogs**  
 11—Hogs, 140 lbs to 180 lbs.  
 2—Sows  
 3—Sows with baby pigs  
 16—Weaning pigs
- Poultry**  
 60—Harminson strain Leghorn hens
- Feed**  
 600—Bales Alfalfa  
 130—Bales Millet and feed hay  
 Some threshed grain
- Miscellaneous**  
 1—1950 Chevrolet 1/2 ton pick-up ready to go, subject to private sale.  
 1—Hog feeder, 800 lbs capacity  
 1—Hog feeder, 9,000 lbs. capacity  
 1—Grain Loader 4 in, 16 ft. long (electric)  
 2—Hog houses on skids  
 Some hog fence panels
- Equipment**  
 1—H Farmall tractor and equipment  
 1—'50 Model New Holland hay baler  
 1—International side-delivery hay rake  
 1—John Deere mowing machine  
 1—Sulky rake  
 1—20-hole 8" Van Brunt drill  
 1—John Deere 6 ft. One-way, on rubber  
 1—12' Truck bed  
 Some used Lumber  
 1—8x20 Trailer  
 1—6x14 Trailer  
 1—4-Row Stalk Cutter  
 1—Super 26, 12 ft. Massey Harris Combine

Lunch served on Ground at noon — Terms: CASH  
**Howard Caswell, owner**  
 SHELBY PETTIT, Auctioneer  
 Phone 3536, Wheeler, Texas



### Briscoe H. D. Club Meets At Club House

The Briscoe Home Demonstration Club met at the Club house January 3. The meeting was called to order by the new president, Mrs. Essie Finsterwald. New club books were distributed and were already filled out ready to begin a new year's work. It was decided to start our 42 parties again as they are a part of our recreation in club. The first one to be January 18.

Various committees will be appointed at our next meeting, January 17, at which time we will have an auction sale, the proceeds of which going to the March of Dimes.

Miss Crippen gave a demonstration on selection, planting and everything needed to grow roses, even to the kind to select for this part of the country. This was very much appreciated by those present: Anna Zybach, Lou Dean Douthit, Christmas Mason, Mary M. Dodd, Jane Kiker, Emma Rogers, Irene Zybach, Mattie McCarroll and Essie Finsterwald.

## Locals

Wheeler Drug offers a complete line of veterinary medicines for farmers and ranchers.

Mr. and Mrs. E. H. Herd and daughter, Maurine, visited recently with his sister, Mr. and Mrs. H. O. Hargett, at Tahoka.

Mr. and Mrs. Corky Robertson and son and Mr. and Mrs. Doyle Waters of Borger were guests in the home of Mr. and Mrs. Fred Waters, Sunday.

Mr. and Mrs. Buster Callan and family, Mr. and Mrs. Milton Liles were Sunday guests in the Russell Barker home in Shamrock.

Attend John Deere Demonstration at Charley Clemens place, Thursday, January 19.

Ed Parsley returned to Goodwell, Okla., where he is attending a branch of Oklahoma A&M, after spending the holidays with his

parents, Mr. and Mrs. F. A. Parsley.

Mr. and Mrs. Bill Traylor of Perryton and Mr. and Mrs. Morris Traylor of Phillips were recent guests in the home of Mr. and Mrs. Oscar Traylor.

Guests Saturday night in the home of Mr. and Mrs. Tom Helton include Mr. and Mrs. Bill Crossland, Marsha and Carroll of Borger, Mr. and Mrs. Tooter Helton and Gayle of Canyon, Mr. and Mrs. Bob Helton of Wheeler.

Earl Mitchell of Shamrock visited over the holiday with his mother, Mrs. A. C. Mitchell, and sisters, Mrs. Sibel Carter and Mrs. Leyl Luttrell.

Mr. and Mrs. Oren Horn of Briscoe and Mr. and Mrs. Leon Yell of Canyon were guests Monday night in the home of Mr. and Mrs. Carroll Killingsworth.

Coach Clifton McNeill of Pampa was a guest at the Kiwanis Luncheon Tuesday of last week.

Mr. and Mrs. George Weems, Linda and Frances visited relatives in Temple last week.

Mrs. Edna Yates, Harold and Ann Bell visited over the Christmas holidays in Eakley, Mangum and Erick with relatives and friends.

Mr. and Mrs. Neal Laycock of Pampa visited recently in the home of Mr. and Mrs. Harold Laycock.

Mr. and Mrs. Leo Hubble and children made a recent trip to visit relatives in Bandera.

Mr. and Mrs. Charlie Linderman of Borger visited friends in Wheeler last week.

Wheeler Drug for reliable Prescription Service. Let us fill your next prescription. 49-tfc

Mr. and Mrs. Stuart Dixon and Elaine of Matador visited over the week end in the home of Mr. and Mrs. Adrian Risner and Darla. The ladies are sisters.

Albert Walker of Kellerville was a business visitor in Wheeler Wednesday. Mr. and Mrs. J. C. Moore, Jr. and Mr. and Mrs. Jess Moore visited recently in the home of Mr. and Mrs. Leo Moore of Dalhart.



HELP FOR POLIO PATIENTS is forthcoming from Epsilon Sigma Alpha, business girls' sorority, in the form of a state-wide program through which the Texas chapters of the group will supply self-help devices to Texans recovering from the effects of the disease. Drafting plans for the program are left to right, Mrs. Jean Beasley, Austin, state president; Mrs. E. O. Pearson, Abilene, state women's advisor for the National Foundation for Infantile Paralysis; Mrs. Wilma Shahan, Port Neches, ESA's state projects director. The business girls' group also will assist with the coming March of Dimes (January 3-31) throughout Texas.

ents and other relatives and friends.

C. W. Burch made a business trip to Pampa, Wednesday.

Earl Corse, son of Mr. and Mrs. K. S. Corse, is spending the holidays at home with relatives and friends. Earl is a student at Tech in Lubbock.

Harold Hooker of Canyon is home for the holidays. He is visiting his parents, Mr. and Mrs. S. B. Hooker and brother, Jim.

Mr. and Mrs. Charlie France and Susan visited friends in Mobeetie last week.

Mr. and Mrs. Jack Lewis and family, Mr. and Mrs. J. W. Seitz and family, Kellerville; Mr. and Mrs. C. L. Seitz and son, Mr. and Mrs. Irvin Seitz and family, Monroe Seitz, Mr. and Mrs. Curtis Lancaster and family, Mr. and Mrs. Fayette Seitz and Mrs. Pearl Ferguson all of Mobeetie.

The Coward Laundry tie is closed this week for and setting in new machines. Coward wants her customers know the laundry will be next week.

Mr. and Mrs. Ray S. Eric Don and Brent visited recently in Krump.

Jerry and Paula Killingsworth of Kelton spent the week with their brother, Mr. and Mrs. Killingsworth.

Kennie Sanders has returned from Brownwood after a two week visit with his grandparents and Mrs. Murry Sanders.

Newspaper Advertising

## TO THE VOTERS OF WHEELER COUNTY

I appreciate your courtesy in the past and the opportunity of having served as your County Attorney.

I have decided to withdraw from politics and devote my entire time to the private practice of law. Therefore

I will NOT be a candidate for re-election this year.

Thanks again for past courtesies.

**GUY HARDIN**  
County Attorney

### Engagement Announced

Mr. and Mrs. Roy C. Herd of Wheeler are announcing the engagement and approaching marriage of their daughter, Georgia Gaye, to Dean Tipps, son of Mrs. Lucille Tipps of Briscoe. A January 20, wedding is planned to take place at 3:00 in the First Baptist Church of Wheeler with Rev. M. B. Smith, of Pampa officiating.

Miss Georgia Herd has resigned her position in the County Clerk's office. Mrs. Joyce Blevins will replace Miss Herd.

Mr. and Mrs. Clarence Robison visited last week end in Quannah in the home of Mrs. Robison's brother, Mr. and Mrs. Rusty Cole.

Newspaper Advertising Pays!

### MOBEETIE NEWS

(Written for last week)

Miss Mary Frances Clark is spending the holidays with relatives and friends in Ft. Worth.

Britt Hathaway is visiting his parents, Mr. and Mrs. Tom Hathaway, this week.

Mr. and Mrs. H. E. Matthews are spending the holidays in the home of their son and family, Reverend and Mrs. F. Eugene Matthews of Earth.

Mr. and Mrs. I. E. Barker, shopping in Pampa, Monday.

Superintendent and Mrs. L. R. Reeves are spending the holiday vacation with their parents in Brain and Mount Vernon, Texas.

Mr. and Mrs. Jack Teague are visiting relatives and friends in Hereford and Dimmitt, this week and next.

Jerry Swarts spent the holidays in Mount Vernon, with his par-

## Introducing Joe D. Rogers

Assistant Cashier

Joe D. Rogers, former manager of the Pontiac Dealership here, this week assumed his duties as assistant cashier.

**FIRST NATIONAL BANK**  
of Wheeler, Texas

# Auction Sale

Since we plan to leave the farm, we will sell all farm equipment and livestock at auction. Located 1 mile North, 1 1/2 West, and 1/2 North from Twitty, Texas.

**Wed., Jan. 18th 10:30 o'clock**

### Farm Machinery

- 1-1949 model M Farmall tractor, on butane nearly new rear tires
- 1-No. 11 Four Row Lister and planter
- 1-No. 448 Four Row Cultivator
- 1-1953 UTU Molene tractor on butane complete Four Row Lister Planter and Cultivator and also has the tricycle and wide front axle.
- 1-1949 model A John Deere tractor, with 3 bottom tool bar lister and 2 row planting attachments.
- 7-Chisel tool bar. Any of the above tractors subject to private sale
- 1-International 2 row Lister and Planter, will fit an H or M tractor
- 1-No. 238 International 2 row Cultivator
- 1-Wide Front Axle for International tractor
- 1-1950 model AC 60 Combine
- 1-1950 International Cotton Stripper
- 1-John Deere Cotton Stripper
- 1-4 Section spring tooth harrow
- 1-2 bottom Breaking Plow
- 1-13 hole Dempster Wheat drill and fertilizer box
- 1-7 1/2 ft. John Deere one-way-power tool and on rubber
- 1-4 row Stalk Cutter
- 1-Set of Knife Attachment
- 1-Set of Cultivator disc
- 1-Tractor Heater Comfort
- 1-Hudson row marker for tractor
- 1-John Deere Fertilizer box
- 2-Sets of rotary hoes

- 1-10 in. John Deere hammer mill & 50 ft. endless belt
- 1-10 in. Case hammer mill & belt
- 2-35 lbs. Cap. grease guns — 1 hand grease gun
- 1-4 wheel, 2 bale cotton trailer
- 1-4 wheel, 1 bale Cotton trailer
- 2-2 wheel stock trailers
- 1-Tandem 4 wheel trailer

### Miscellaneous

- 1-250 Chick Brooder, on Butane
- 1-Lawn mower
- 1-Hand turn Cream Separator and also 1 water type separator, milk strainers, and a 3 gal. Cream can
- 1-Galvanized water tank, several feed troughs
- Gas pump, Gas cans, Scoops, Hoes and many other items not mentioned.

### Milk Cows

- 1-Jersey Cow 6 yrs. old, a 4 gallon cow
- 1-Jersey cow, 3 yrs. old to be fresh last of February

### Hogs

- 5 Head of Hampshire & Poland China sows
- 26 head mixed weaning pigs

### Poultry

- 100 Austra white hens, also a few other mixed hens
- 1-1947 model Dodge truck, cab over has 8x16 ft. cattle rack, will hold 4 bales cotton also has 6 new tires
- 1-Stock saddle

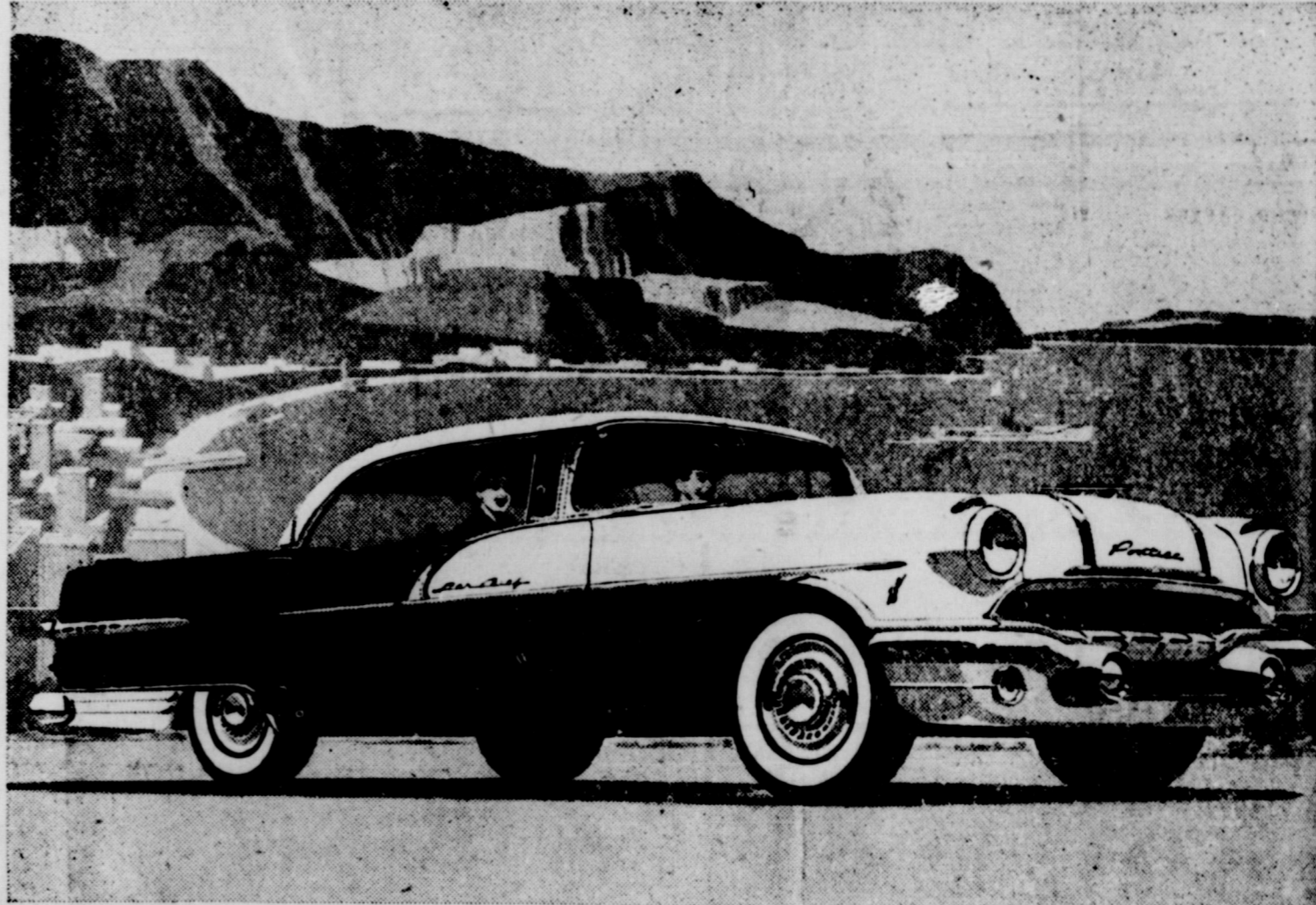
Sandwiches, pie & drinks will be served at the noon hour

Terms—CASH

**Alvis Jolly, owner**

SHELBY PETTIT, Auctioneer  
3561, Wheeler, Texas

C. G. CANTRELL, Clerk  
Shamrock, Texas



The car says GO and the price won't stop you!

## Invest in Dependability... get a Bonus in Go!

You can buy it on its name alone—this big, high-powered '56 Pontiac—and be safe in the knowledge that you couldn't have made a better investment in years of dependable, carefree motoring.

The good things you've been hearing about Pontiac for years assure you that.

But "go" is the word for '56! Performance so new and dramatic it must be experienced to be believed!

A short spell behind the wheel will nail that statement down as a fact. Come along for a drive and see.

Waiting for the light to change, you can't hear the engine. But touch your toe to the accelerator and in a split second there's a torrent of power, sparked by the most advanced engine of them all—the blazing 227-h.p. Strato-Streak V-8.

Team this terrific power plant with Pontiac's all-new Strato-Flight Hydra-Matic\* and you've got the smoothest take-off that ever brightened a highway.

And remember—this easy handling dream is actually among the biggest, huskiest cars built!

Now for the final test—head for the open road and some landmarks you can challenge. Wipe out a hill. Straighten a curve. Smooth out a stretch of rough road that's bothered you for years.

Now see why they're calling this the greatest "go" on wheels?

More than that—it's the greatest buy on wheels! And that too, is easy to prove.

Then take a look at the price tag—a check on our deal.

Nothing will stop this powerful beauty from being yours!

\*A retro-cool option.

You can actually have a big, glamorous Pontiac 860 for less than you would pay for 44 models of the low-priced three!

**PONTIAC**

**NASH APPLIANCE & SUPPLY CO.**

Wheeler, Texas



MENU FOR SCHOOL CAFETERIA

- MONDAY Meat Balls and Spaghetti... Carrot Sticks Milk... TUESDAY Pork Chops Blackeyed Peas... Cabbage Salad Milk... WEDNESDAY Vienna Sausage... Sauer Kraut Milk... THURSDAY Irish Stew... Stuffed Celery Milk... FRIDAY Fish Sticks Navy Beans... Combination Salad Milk... Spiced Cake



She still needs YOUR HELP

Join the MARCH OF DIMES January 3 to 31

CONGRESSMAN WALTER ROGERS

The Southwestern Part of Russia There are two primary methods of travel in Russia. One is by railroad, the other by air. Although some highway work is under way, the roads are not in good shape and it would be most difficult to attempt to travel around the Soviet by automobile.

Next week I shall attempt to cover the trip that we made to a textile mill in Kiev. It had been almost completely demolished in the war, but had been rebuilt and there was very little evidence of any war damage.

Things To Watch For In The Coming Session Of Congress The early days of January '56 will usher in the second session of the 84th Congress, 1956 being an election year there is little doubt that the Congressional session will be a hectic one.

The chances are good for the Senate to act early in the session for a correction of the softest spot in the economy, to wit, the farm problem which involves the tragic decline in farm income.

The Administration can expect terrific opposition to any attempt to tie this country down on a ten

year foreign economic aid program. The truth is that these foreign aid programs have barely skinned through during the last several years. I do not believe that this Congress or any other one will bind this country to a ten year commitment on foreign economic aid.

The natural gas bill will be turned into a political issue by the big utility companies of the East who will use as their spokesman the ultra Liberal Members of Congress whom they usually criticize. Tax cuts for the low and middle income groups will be up for major discussion.

LEGAL NOTICE

Notice to Creditors of Estate of S. Norrid, Deceased Notice is hereby given that original letters of administration upon the estate of S. Norrid, deceased, were granted to me, the undersigned, on the 3rd day of October, 1956, by the county court of Wheeler County.

ELVA VIOLA NORRID, Administratrix of Estate of S. Norrid, Deceased.

LOCAL NEWS ITEMS

Wheeler's Complete Drug Store - Wheeler Drug. If it is available, we have it. Mr. and Mrs. Lee Guthrie have returned from a visit with relatives at Eden.

Mr. and Mrs. Red Richerson, Sib, Sue and Sal of Amarillo are visiting relatives in Wheeler this week.

Burl Chesser and daughter, Jan, of Amarillo were recent visitors in the home of Mrs. A. C. Mitchell. Mr. and Mrs. Buster Robertson and family of White Deer, Mr. and Mrs. Glen Robertson and family of Sudan, and Mr. and Mrs. Bill Robertson of Pampa visited with their mother, Mrs. Bessie Robertson.

Newspaper Advertising Pays!

Can't Get Rid of Your Cold? Then try 666, the wide-activity medicine, for greatest effectiveness against all symptoms of all kinds of colds. 666 combines 4 potent, widely-prescribed drugs and gives positive, dramatic results in a matter of hours. Its combined therapy covers the complete range of all cold symptoms. No other cold remedy can match 666 liquid or 666 Cold Tablets. 666

Income Tax Facts

The 1954 Internal Revenue Service has published the date of March 15 as the date by which income tax returns filed was abolished effective next year. All federal tax returns of individuals may now be filed on or before April 15.

office of the Internal Revenue Service by the due date specified. Tax forms and instructions will be received by most persons during January. The instructions being distributed this year contain the following statement: "The Internal Revenue Service will mail Form 1040 ES, as far as is practical, to each person who may need it. Anyone also required to file should obtain the form from an Internal Revenue Service office in time to file by April 15, 1956."

Wheeler County Soil Conservation District News

The Wheeler Soil Conservation District Supervisors have purchased some roadside signs to mark the District boundary on Highways 66 and 152. These signs were a joint project with the Gray Co. SCD. They will be up in the near future. Soil Conservation Service Technicians assisting the District have just finished 4 miles of terrace lines on Bob Trostle's land northwest of Shamrock.

Portrait of a man with text: COLORADO FARMER William L. Shaffer has been named Rural Consultant to Federal Civil Defense Administrator Val Peterson.

BUSINESS AND PROFESSIONAL DIRECTORY

Directory listings including: CITY CAFE Mobeetic Home Made Pies & Hot Lunches Mrs. Luda Reed; C. J. MEEK AGENT INSURANCE; DR. JOEL M. GOOCH OPTOMETRIST; Gene Hall Bookkeeping, Tax Returns; AUCTIONEER SHELBY PETITT; BORDEN'S Fine Dairy Products; CHAPMAN DAIRY.

Advertisement for remodeling services: Get better living with more space. Add-a-room to your home. Remodel now! PUT MORE COMFORT IN YOUR LIVING WITH OUR EASY BUDGET PLAN TERMS! CERRO SMITH LUMBER COMPANY

Advertisement for Chevrolet: Speaks softly and packs a powerful wallop! THE BEL AIR SPORT COUPE—one of 19 high-priced-looking Chevrolets, all with Body by Fisher. Ware Chevrolet Company, Wheeler, Texas.



**Silver \$ Day**  
(Continued from page one)

cept the prize, which will amount to approximately \$40.00. The exact figure will be announced at 4 o'clock Saturday afternoon.

During the afternoon program, the regular awards of \$25.00, \$12.50, \$7.50 and \$5.00 will be presented.

Bill Smith was awarded the \$65.00 jack-pot last Saturday. Charles Mixon of Mobeetie received \$25.00. Mrs. Bertha Denham of Wheeler was awarded \$12.50; J. C. Holcomb, Wheeler, \$7.50 and Mrs. Minnie D. Belote, Wheeler, \$5.00.

Other names called were Cleve Hamilton, A. W. Shankle, Hugh E. Cooper, Billy Leon Clay and Yates Brewer, all of Shamrock; John H. Seitz, Miami; Vera Boatman, Texola, Okla.; S. E. Mason, Briscoe; G. B. Sloss, Jess Moore, C. H. Turner, Jeff Griffin and J. C. Chandler all of Wheeler.

**Rena Sivage**  
(Continued From Page 1)

March of last year, she was married to Harold Sivage of Wheeler, also a long-time resident of Wheeler County.

From May until November of last year, Miss Sivage assisted County Judge Clarence Morris with the surplus food commodities program in Wheeler County.

Mrs. Sivage stated in announcing her candidacy:

"I would like very much to continue serving the people of Wheeler County as district clerk. I have kept busy familiarizing myself with the duties of the office since my appointment, and I feel that I am thoroughly capable of executing the work in an efficient manner.

"My pledge is to remain on the job at all times in filling the position.

"It is my plan to make a complete canvass of the county between now and election time and solicit the votes of all the people. In the meantime, I will appreciate all residents considering my candidacy and if they see fit to support me, I will be forever grateful."

**MOBEETIE NEWS**  
(Continued from page one)

day season with her children and families; Mr. and Mrs. Cleo Ruff, Pampa; Dr. and Mrs. J. V. London, Groom; Mr. and Mrs. Lynn Myers, Boryer; Mr. and Mrs. Opal Myers, Muleshoe; Mr. and Mrs. Allison Myers, of Meadow; Mr. and Mrs. Clifford Myers, Hart; and a granddaughter, Mr. and Mrs. Dorman Corbin and family in Portales, N. M.

Homer E. Matthews of Amarillo was in Mobeetie on business, Tuesday.

Mr. and Mrs. Jack Crump of Pampa, visited Mr. and Mrs. O. G. Beck Sunday afternoon. They also visited in Wheeler with his parents, Mr. and Mrs. Dick Crump.

**Three Persons**  
(Continued from page 1)

Claude. On Tuesday of last week, Carter pleaded guilty in 31st District Court in Pampa and was sentenced to three years.

Carter's wife and his father, Walter P. Carter of Childress, also pleaded guilty to forgery charges in Wheeler County. Both were put on probation for five years.

County Attorney Guy Hardin said Carter has also been charged with forgery at Wellington, Memphis, Clarendon, Pecos, Anson, Quanah, Vernon, Crowell, Monahans and Wink.

Mr. Hardin said the young Childress man is alleged to have passed worthless checks for a total amount of approximately \$3,000 in the past two months. Plomont was the only town where he was unable to pass a check, he told officers.

**MARCH OF DIMES**

**FIGHT INFANTILE PARALYSIS**

**JANUARY 3-31**

**March of Dimes**  
(Continued from page one)

fact that is being brought to public attention in this country and throughout the country as volunteer workers open the 1956 March of Dimes.

Thousands of polio patients still need aid, according to the National Foundation for Infantile Paralysis. And many of these depend on iron lungs and other mechanical devices for the very breath of life.

"To stop aid now," a statement from March of Dimes Headquarters said, "would be like pulling the electric plug from an iron lung."

Wheeler County residents are urged to contribute generously to the worthwhile cause.

**Joe D. Rogers**  
(Continued from page one)

which to choose but selected Joe for the position.

Mr. Rogers has been a resident of Wheeler for the past six years. He was formerly associated with Nash Supply Co. of Wheeler. His wife Vera is school nurse. They have four children, Neil 10 years, twins Dean and Dale, 5 years, and a daughter Jo Rita, 1 year old. Joe is a member of the Metho-

**C-C Schedule**  
(Continued from page 1)

will be a variety show to be presented under the direction of Red Wedgeworth, manager of the Pampa Chamber of Commerce.

Chamber of Commerce officials feel fortunate to have been able to obtain such an outstanding program.

Persons are urged to mail in their reservations for tickets as early as possible, so that it can be determined the number for which preparation should be made.

Guests will be present from: Amarillo, Pampa, Canadian, Shamrock, Mobeetie, Briscoe, Kelton and Allison.

**School Census**  
(Continued from page one)

age do not think to include them, Mr. Borwn pointed out.

The census is to determine the number of eligible children in the Wheeler School District and will be a basis of distribution of state funds appropriated on a per capita basis.

**Basketball Schedule Announced By Coach**

The Wheeler basketball schedule for the remainder of the season was announced this week by Coach J. D. Atwell.

The schedule follows: January 13, Shamrock, here; January 17, Mobeetie, there; January 20, Allison, here; January 24, Miami, there; January 27, Kelton, here; January 31, Briscoe, there; February 3, Mobeetie, here; February 6, Briscoe, here; February 9, 10 and 11, district tourney at Wheeler.

**1956 LICENSE PLATES TO GO ON SALE FEB. 1**

Wheeler County's 1956 license plates have arrived and will go on sale Wednesday, February 1, according to Thurman Rives, county tax assessor-collector.

The plates must be displayed on vehicles not later than April 1. The new plates have a black background with yellow letters and numerals, and are one and one-half inches longer than previous tags. The new size is in keeping with the standard size adopted by all 48 states which will allow automobile manufacturers to make enclosed license plate holders in future models.

Another change is that the two prefix letters are side by side instead of one on top of the other as they have been for several years.

Wheeler County's passenger car prefix is AR with plate numbers running from 2350 through 5749; commercial truck tags IC with numbers 725 through 1274; and farm trucks 5B with numbers 6700 through 7699.

**Junior Livestock**  
(Continued from page one)

heavy weights, middle weights, light weights, best pair of steers fed by one feeder, and group of five steers fed by one FFA Chapter or County 4-H Club.

About 35 steers are expected. A first and second place showmanship award will be presented the outstanding showman, and grand and reserve champion ribbons will be given the top two calves in the show.

**Wellington**  
(Continued from page one)

ed the winner, runner-up, consolation winner of each. The entire result of day tourney follow:

**Boys Division**  
McLean 48, Kelton 57; ton 60, Mobeetie 27; 57, Allison 37; Wheeler 36; Wellington 63, Mobeetie 53, Shamrock 61, Wheeler 43.

**Girls Division**  
McLean 44, Allison 28; ton 36, Miami 15; Mobeetie 46; Shamrock 51; McLean 53, Wellington 65, Mobeetie 56, McLean 55.

**4-H Boys To**  
(Continued from page one)

show from the herd of Lyndon Sims.

Wheeler County show will be shown at the Children's Junior Breeder Show in Childress; Amarillo Fat Stock Show in Amarillo; and the Top o' Texas Livestock Show in Pampa.

Fat barrows will be shown at Amarillo Fat Stock Show and the Top o' Texas Livestock Show.

If you need furniture, see us. We sell or trade. Parsley Furniture, Dial 4321.

Attend John Deere Demonstration at Charley Clemens place, Thursday, January 19.

Mr. and Mrs. S. W. Daugherty of Pampa visited in Wheeler, Saturday and attended the basketball tournament.

**Wheeler Locker And Grocery**

Pocket the Difference You save with us in 1956.

Prices effective 12, 13, 14 & 16 of January

|   |                                       |
|---|---------------------------------------|
| DIAL ..... 3151                           | DISSOLVING, 40 Oz. Box ..... 49¢      |
| AJAX, Reg. Size 2 Cans ..... 25¢          | DELSEY, Tissue 2 Rolls ..... 25¢      |
| PETER PAN 9 1/2 Oz. Glass                 | STAY-FLO, Liquid Starch qt. ... 24¢   |
| PEANUT BUTTER, ..... 37¢                  | APRICOTS, Whole No. 2 1/2 can . 25¢   |
| HOMINY, 2-300 Cans ..... 19¢              | ARGO 2 Cans                           |
| ARGO CORN STARCH, 2 Boxes .... 29¢        | RANCH STYLE BEANS ..... 25¢           |
| GLASS WAX, Pt. .... 59¢                   | PITTED DATES, 6 1/2 Oz. Pkg. .... 19¢ |
| SPIC & SPAN, Reg. size box .. 26¢         | TISSUE                                |
| SYRUP, Waffle 20 Oz. Bottle .. 39¢        | WHITE SAIL, 4 Rolls pkg. .... 34¢     |
| PINTO BEANS, 2 Lb. pkg. ... 23¢           | MAXWELL HOUSE                         |
| TOMATO JUICE, 46 oz. .... 25¢             | COFFEE, Instant 2 Oz. .... 55¢        |
| PORK & BEANS, No. 2 1/2 Can .. 20¢        | 4 to 6 Pound Average POUND            |
| RED SEAL VIENNA SAUSAGE 2 Cans 35¢        | PICNIC HAMS Ready to Eat 34¢          |
| MINATURE MARSHMELLOWS 10 1/2 Oz. Pkg. 25¢ | PORK CHOPS Small Lean LB. 39¢         |
| POP CORN 2 Lb. Pkg. 31¢                   | PORK ROAST Lean Shoulder LB. 35¢      |
| PRUNE JUICE 24 Oz. 25¢                    | ROAST Fancy Beef LB. 29¢              |
| HEINZ KETCHUP 14 Oz. Bottle 27¢           | BACON Armour's Sliced LB. 39¢         |
|   | SPICED LUNCHEON Meat LB. 39¢          |
|   | CABBAGE LB. 6¢                        |
|   | BANANAS 2 LB. 29¢                     |

**January Clearance Sale**

Sale begins Thursday, January 12th. — ends Saturday, January 14th.

|   |   |  |
|---|---|--|
| <b>HATS</b><br>1/2 PRICE  | <b>CANNON TOWELS</b><br>Solid Colors, 29" by 40" size<br>29¢ EACH<br>4 FOR \$1.00                 | <b>A GROUP OF MEN'S SUITS and TOP COATS</b><br>Values to \$48.95<br>\$29.95 EACH     |
| <b>A LARGE ASSORTMENT OF LADIES WINTER DRESSES</b><br>1/2 PRICE   | <b>50% WOOL DOUBLE BLANKETS</b><br>66" by 80" size<br>\$2.98<br>70" by 80" size for \$3.49        | <b>A GROUP OF MEN'S COATS and JACKETS</b><br>1/2 PRICE                               |
| <b>ALL LADIES' WINTER COATS</b><br>1/3 OFF  | <b>PREMIUM BRAND SHEETS</b><br>81" by 99"<br>\$1.69 EACH  | <b>ALL BOYS' WINTER COATS and JACKETS</b><br>25% OFF                                 |
| <b>ALL LADIES' SUEDE SHOES</b><br>High Heels, Wedges, or Flats<br>1/3 OFF   | <b>CANNON WASH CLOTHS</b><br>10¢ EACH   | <b>ALL BOYS' COWBOY BOOTS</b><br>1/3 OFF   |
| <b>A GROUP OF DRESS MATERIALS</b><br>1/2 PRICE  | <b>A GROUP OF FULLSIZE CHEMISES</b><br>BEDSPREADS<br>At \$4.95 Value<br>\$2.98                    | <b>A TABLE OF CHILDREN'S WINTER CLOTHING</b><br>1/2 PRICE                            |
| <b>LADIES' MIMOSA BRAND NYLON HOSE</b><br>2 PR. FOR \$1.50  | <b>ALL CHILDREN'S WINTER COATS</b><br>1/3 OFF   | <b>BOYS' LONG SLEEVED SPORT SHIRTS</b><br>Values to \$8.95 in two<br>\$1.29 & \$1.98 |
| <b>A Group of Ladies Playtex brand GIRDLES</b><br>We are closing out this group of fine girdles to make room for the new, improved Playtex girdles now in stock, values to \$4.95.<br>\$1.98 EACH | <b>MEN'S "BIG AND TUFF" BRAND OVERALLS</b><br>Blue or Stripe, Waist Sizes 30 to 44<br>\$2.39 EACH | <b>ALL MEN'S WESTERN DRESS SHIRTS</b><br>1/3 OFF                                     |

**McILHANY'S**

"For Everything You Wear"