

# The Wheeler Times

BUY IN WHEELER  
HELP IT GROW

XXIV — NUMBER 5

THE WHEELER TIMES, WHEELER, TEXAS, JANUARY 10, 1957

5c Per Copy

THE COUNTY SEAT NEWSPAPER

## L. C. OF C. MEET TO BE JAN. 29

The Chamber of Commerce and Ladies Night will be held at the region on Tuesday, January 29, 1957. The planning stage will be tops. The dinner will be with the retiring Harry Wofford, and manager, Dick Guynes the services of an speaker in Louie for the evening. The persons to receive the awards as given the most to the award presenters are not as your balance, as time is running. The Man, Woman, and think has done the best this past year. Names on a piece of mail to: Wheeler, O. Box 183, Wheel-

available from Mr. e affair and notices g requesting a re- number of tickets whether you will be On Last Page)

## WHEELER BOYS WIN MIAMI BB TOURNAMENT

Wheeler boys and Miami girls took championship honors in the Miami Grade Basketball Tournament while Miami boys and Canadian girls won second place honors. Consolation awards went to Wheeler girls and Briscoe boys with both Allison teams receiving the sportsmanship trophies.

Wheeler placed tackle, Bill McCormick; Guard, Dennis Wilsford; Center, James Cox; fullback, Jim Porter and halfback Jo Jo Jacob on the first unit. Happy had end, Ray Poage; tackle Gary Caywood; and quarterback, Gary Poage on the first team. Groom placed end Kenneth Frimel and halfback and Whiteface placed guard, Don Read.

Gary Poage, Happy quarterback, was named the outstanding back and Don Read of Whiteface was the outstanding lineman. The teams were picked by a poll of area Class B coaches.

**FIRST TEAM**  
ENDS: Kenneth Frimel, Groom, (Continued On Last Page)

**LAST RITES FOR MOLLIE SEITZ**

Funeral services for Mrs. Mollie I. Seitz of Mobeetie, were conducted at 2 o'clock Wednesday afternoon from the First Methodist Church of that city. Rev. C. R. Copeland, pastor, was assisted by Rev. Grace of Mobeetie, and Rev. Webb of Eldorado, Okla., in conducting the last rites.

Pallbearers were: Aubrey Greenhouse, Ed Johnson, Jeff Brewer, Clarence Dyson, Earl Williams, and Jack Johnson.

Interment was in Mobeetie Cemetery by the side of her husband who passed away November 19, 1948. Kirk Funeral Home of Wheeler supervised the arrangements.

Mrs. Seitz was born in Montague County on November 16, (Continued On Last Page)

## "HIGHLANDER" INTRODUCED

A new, lower-cost Maytag automatic washer, especially designed to bring Maytag quality within reach of today's budget-conscious young Americans is just now being placed on the market here, according to Harold Nash, Manager of Nash Appliance and Supply.

A Scotch theme, stressing thrift- (Continued on last page)

## Grand Champions From Wheeler Livestock Show



Nancy Whitener and her steer that won the Grand Champion award in the Wheeler County Junior Livestock Show held at the show barn in Wheeler on Saturday, December 29, 1956. The steer was then taken to Odesa and entered in the show there last week. It placed sixth in the heavy division.



Bob Hathaway and his Southdown lamb which won the Grand Champion award of the Wheeler County Junior Livestock show in Wheeler on Saturday, December 29, 1956.



This Chester White Barrow, owned by Bud Waters won the Grand Champion of all breeds at the Wheeler County Junior Livestock Show held in Wheeler on Saturday, December 29, 1956.

## Most Unusual Egg

The Times office has an egg on display that was brought in by Mr. G. A. Garrison, Monday morning. The egg is in the shape of an old fashioned gourd, the kind that once was used as a dipped. The large end of it, about the size of a pullet egg and the other end about the size of a regular thimble.

## BANK DEPOSITS SHOW INCREASE OVER LAST YEAR

Combined deposits in the banks in the north part of Wheeler County are almost \$200,000 greater than at this time last year, according to call statements published in this issue of The Times.

The statements, published in response to requests of state and national banking authorities show that deposits in the First National Bank of Wheeler and the First State Bank of Mobeetie total \$2,532,964. This is an increase of \$181,402 over the \$2,351,562 on deposits at the two institutions a year ago.

The statements reflect the financial condition of the two banks as of December 31, 1956.

The First National Bank of Wheeler, at that time, had \$1,933,846 on deposit and the First State (Continued on last page)

## LICENSE TAGS AT TAX OFFICE

The 1957 license tags have been delivered to the office of Wheeler County Tax Assessor-Collector, Thurman Rives. They are white with black letters and numerals. All classes of plates for 1957 are of the same color design. The designation letters are as tall as the numerals in the number.

Approximately 5500 plates are ready to go on sale February 1, 1957 and must be on all vehicles in operation on Monday, April 1. It will be necessary to bring your 1956 registration certificate and the title to your vehicle to get your tags. The same general rules apply as in the past.

Passenger cars plates for 1957 will start with AT675 and run to AT4174; Truck tags, IC5925-IC-6524; Truck Tractor, 8T1710 to 8T1789; Trailer, 7A7300 to 7A7499; Farm Truck, 5B2800 to 5B3649; House Trailer, 9B1275 to 9B1324, and Dealers tags 9N1113 to 9N-1177.

## REP. MCGILHANY NOW IN AUSTIN

Representative Grainger McIlhany of Wheeler left Sunday for Austin, where he will represent this district in the 1957 session of the State Legislature.

The session opened at noon Tuesday, and Price Daniel will be inaugurated as governor of Texas on Tuesday of next week.

Rep. McIlhany was accompanied by Mrs. McIlhany and their young son, Tom. They will remain in Austin during the entire session of the legislature which is 120 days.

McIlhany, re-elected to a two-year term last summer, represents Wheeler, Gary, and Collingsworth Counties as state representative.

## ROSS PURCELL LAID TO REST

Ross Purcell was born in Burton, Kans., on October 12th, 1890. He passed away at his home in Briscoe, at 6:30, January 1st, 1957, after a long illness, at the age of 66 years. He is survived by his wife, a son and daughter. Also by five sisters, and two brothers and a sister-in-law.

Mr. Purcell was married to Miss Dollie Holt at Lipscomb, Texas at the Methodist parsonage on August 16, 1924.

Funeral services were conducted in the Methodist Church at Canadian, at 2:00 p.m. January 3rd, 1957. Rev. P. E. Yarborough officiating, assisted by Rev. Marvin T. McBrayer, Pastor of the Allison-Briscoe charge and Rev. T. G. Craft, Pastor of the Methodist (Continued on last page)

## Wheeler Gas Company Seeks Consumer Rate Increase Locally

At the last city council meeting, the Wheeler Gas Company filed with the council an application for a rate increase.

In an interview with the manager The Times was informed that the company has operated at a loss the past several years, and the increase asked for would be a radical departure from the rate now in effect.

The manager stated that the company has delayed asking for this rate increase from year to year, hoping a gas supply would be discovered nearer town, thus lowering their production and transportation costs.

Such discovery not having been made, the company has during the past summer and fall been compelled to build larger transporta-

tion lines to the field south of town for the purpose of assuring the town an ample gas supply during extreme cold weather.

They are now taking up the old transportation line, removing and converting it into gathering lines and building several miles further into the field to connect with a well recently purchased. They hope to secure one more well which will bring to four, the number of wells from which gas will be available.

Such action has necessitated the purchase and installation of a third field compressor to assure sufficient line pressure to bring gas the longer distance some of their gas will be transported.

These changes and expenditures have been made necessary by rea-

son of a constant drop in pressure in the Wheeler County gas field. Only a few years ago the company used only one well and this well had sufficient pressure to bring gas to Wheeler without the aid of compressors.

The original field pressure in the Wheeler County field was from 425 to 450 pounds. This pressure has now dropped to a low of from 32 to 60 pounds north of the river. A majority of the wells south of the river now have only 10 to 18 pounds. Many have been plugged and abandoned.

The Lone Star Gas Company has taken up its line which formerly carried gas to the Fort Worth-Dallas area. They shut down the large compressor station north of Shamrock two years ago, the compressor units from it are being taken out and moved to other gas fields as needed.

Lone Star has purchased the United Gas Company line which formerly supplied towns to the south and southwest as far as Mineral Wells. They take gas from the Wheeler field to furnish towns only as far south as Childress. Gas beyond Childress comes from the Stamford-Abilene area.

Wheeler Gas Company filed with the City Council the office copies (Continued on last page)

## '57 March of Dimes Campaign Launched

"Let's Finish the Job!"

This is the theme of the March of Dimes for 1957, and Harold Kenady, drive chairman in Wheeler, hopes that local residents will help push through to a successful goal.

The March of Dimes continues through the month of January, and plans are being made to make a good showing, not only in Wheeler but throughout the county.

Monday, January 15, has been designated as Coffee Day in Wheeler, when a number of firms will donate all proceeds from the sale of that popular drink to the March of Dimes.

All residents are urged to "drink up" on Coffee Day, realizing that as they refresh themselves, they are also helping a worthy cause.

## WHEELER BOYS WIN MIAMI BB TOURNAMENT

Wheeler boys and Miami girls took championship honors in the Miami Grade Basketball Tournament while Miami boys and Canadian girls won second place honors. Consolation awards went to Wheeler girls and Briscoe boys with both Allison teams receiving the sportsmanship trophies.

Wheeler boys, undefeated in eleven games this season, took a thrilling 35-31 overtime win over Briscoe to advance to the finals where they defeated Miami 34-25. Jimmy Atherton hit eighteen points against Briscoe and twenty three against Miami to lead in scoring. Briscoe defeated Canadian 26-16 before meeting Wheeler in the semifinals.

Miami boys won over Mobeetie (Continued on inside)

## Births

Mr. and Mrs. R. L. Elliott of Pampa, are the parents of a new baby girl born December 21, in a Pampa hospital. She weighed 6 pounds and 8 ounces, and was named Joyce Elaine.

Mr. and Mrs. Coy Bradstreet are the parents of a baby boy born in the Wheeler Hospital Friday, January 4.

Mr. and Mrs. Amos Reeves of Twitty, are the parents of a baby boy born in the Wheeler Hospital, Sunday January 6.

## Farm Sale Tuesday

Cecil Miller will hold a farm sale on Tuesday, January 15 at the farm known as the George Topper place located 14 miles east of Wheeler or 6 miles west of Sweetwater, Okla., then 1/2 mile north and 1/2 mile east. About 54 head of cattle, two tractors, all kinds of farm implements, some household furnishings and the buildings will be sold.

Shelby Pettit will be the auctioneer. The sale will start at 10:30 a.m. with lunch being served on the grounds at noon by the club ladies.

## STOCKHOLDERS MEETING HELD

Officers and directors of the First National Bank of Wheeler met with the stockholders in their annual meeting on Tuesday, January 8, 1957, according to an announcement made this week by President R. J. Holt.

Mr. Holt reported that deposits were at an all-time high in the First National Bank. He also stated that the bank had more active accounts now than at any previous time in its history.

The stockholders named the same set of officers and directors (Continued on last page)

## Produce Firm Moves To New Location Here

The Wheeler County Produce Association which has been located across the street south of the bank ever since the association was formed and the store opened has started moving to a new location. The site of the skating rink in Wheeler has been remodeled and the produce firm is moving into that building on East Highway 152, Wheeler.

Thurston Young, manager, said this week that he hoped the move would not inconvenience customers too severely, but thought the new location would be much more convenient for all.

"The Wheeler County Produce will remain open for business at the old location until the new one is about ready to open up. There may be a day or two that it will be hard to care for our customers but we are going to do our utmost to keep them cared for", Mr. Young stated.

The new location is one block east of the red light at the intersection of highways 83 and 152 in Wheeler.

**THE WHEELER TIMES**

Published Every Thursday at Wheeler, Wheeler County, Texas, by

Cooper, Slemmer & Montgomery

Entered as second-class matter December 18, 1933, at the postoffice at Wheeler, Texas under act of March 3, 1879.

Chas. Slemmer — Editor-Manager  
Milton Courtright — Apprentice  
Mrs. Tom Helton — Society Editor

**MEMBER**

Panhandle Press Association



**NATIONAL EDITORIAL ASSOCIATION**  
REGULAR MEMBER

**Subscription Rates**

3 Months ..... 75c  
6 Months ..... \$1.25  
1 Year ..... \$2.00  
In Wheeler, Beckham and Hemphill Counties Everywhere Else  
3 Months ..... 85c  
6 Months ..... \$1.50  
1 Year ..... \$2.50

**Advertising Rates**

National Rate — 56c Column Inch  
Local Rate — 50c Column Inch  
Classified — See Want Ad Page

**NOTICE TO PUBLIC**

Any erroneous reflection upon the character, standing or reputation of any person, firm or corporation, which may appear in the columns of this paper will be gladly corrected upon due notice being given to the Editor personally at the office at Wheeler, Texas.

**Society**

**Grady Harris Home Scene Of Reunion**

The Grady Harris home was the scene of a family reunion from December 28th to Sunday December 30.

The brothers and sisters of Mrs. Sallie Harris who attended were as follows: Mr. and Mrs. Virgil Brock and daughters, Jolene and Judy of Canadian. Mr. and Mrs. Fletcher Carson of Oklahoma City. Mr. and Mrs. Gus Brock and Regina of Amarillo and their daughter. Mr. and Mrs. Bobby Martin and babies, Terry & Pamela. Mrs. Helen Ward and husband, David of Jacksonville, Texas. Mrs. Nellie Horton of Amarillo. Mrs. Harris' mother, Mrs. Belle Carson of Canadian also attended.

Mrs. Harris' daughter, Vinita & Tom Hopkins and two sons, came on December 26th and stayed until Sunday December 30, when they returned to Austin where Tom teaches school. Mrs. Dora Harris was also a guest.

Friends calling on Saturday afternoon were: Mr. and Mrs. Earl Breeding of Miami and Mrs. Bernice Caldwell of Mobeetie.

**G. T. Vaughans Observe Wedding Anniversary**

Mr. and Mrs. G. T. Vaughn, of the Mt. Zion Community held open house at their home 4 miles East of Commerce on Highway 11, Sunday December 23, from 9 a.m. to 6 p.m. in celebration of their 65th wedding anniversary.

All four of their living children, Mrs. Charley Carvens, Amos Vaughn and Mrs. Raymon Stewart all of Mt. Zion and Clark Vaughn of Dallas were on hand to assist their parents, as was most of their 11 grandchildren and 9 great-grandchildren.

Mr. Vaughn, more familiarly known as "Uncle Tom" was born in Alabama and came to Texas with his family when he was 14 years of age. Mrs. Vaughn familiarly known as "Aunt Mattie" was born in Arkansas and moved with her parents to Texas when she was 9 years of age. This couple grew up in the Mt. Zion Community, were married there December 24, 1891 and have lived there since.

In addition to rearing their own children, Uncle Tom and Aunt Mattie have given homes to several orphans, six of whom are still living. One of their own children died in youth.

Uncle Tom, who is straight as an arrow, is very active in the work on his farm. He does the managing and a great deal of the work. He helped pick the cotton last fall and hauled it all to the gin and market. He often walks as much as 5 miles in a day. He did all the work of erecting a garage at his farm home 2 years ago.

Uncle Tom is an active leader in religion and community activities, often assuming leadership and

doing much work on committees. For the past 35 years he has been in charge of the keeping of the Mt. Zion Cemetery, doing a great deal of the actual labor. This cemetery is one of the cleanest and prettiest to be found in any state. There is not a weed or any grass in it. Among his other interests Uncle Tom devotes much time to the Annual Homecoming which is held the 2nd Sunday in July at the Mt. Zion Tabernacle and which brings together the descendants of pioneer families of that community from almost every state in the union. Uncle Tom's general health is good and he only uses glasses for reading, his activities, quick step and work belie his age by 30 years.

Mrs. Vaughn is not in real good health, and confines her work to keeping house and doing the family cooking, an crocheting.

Both Uncle Tom and Aunt Mattie attend church activities and are the first to arrive at a neighbor's house if there is sickness or sorrow. Uncle Tom recently drove to Texarkana to visit a sick friend, a man who was an orphan 45 years ago and made his home with Uncle Tom and Aunt Mattie. If there is a flood, storm, fire or other trouble at a neighbor's house, Uncle Tom is usually the first one there to assist physically or financially.

Uncle Tom and Aunt Mattie observed their 86th birthdays during 1956, by having some of their neighbors in for lunch. They often invite relatives, friends and neighbors in for a meal.

The couple is known throughout a five county area for their old fashioned Christian living and doing for others and are a great asset to this area.

**Briscoe Club Met At Club House**

Briscoe Home Demonstration club met January 3, for the first meeting of the new year. Katy Finsterwald took her place, as the new president of the club for '57.

The following officers also took up their work for the year. Vice-President, Josie Lee; Secretary, Anna Zybach; Treas., Emma Rodgers; Council Delegate, LaJuana Puryear was elected first alternate from the floor. Josie Lee was appointed reporter.

Committee chairman were appointed. Finance chairman, Mary Dodd program chairman, Irene Zybach; Exhibit chairman, Emma Rodgers; Education chairman, Jane Kiker; Recreation chairman, Josie Lee; Civil defense, Anna Zybach.

Miss Crippen gave a demonstration on a compost pit. Build your own compost pit and economically supply the soil in your flowerbed and gardens with the nitrogen and mulch so needed for good plant growth, said Miss Crippen, as she explained how to make and fill the pit and how to use the material available to all.

Katy Finsterwald was hostess to the club and those present were: Josie Lee, Jane Kiker, Emma Rodgers, Essie Finsterwald, LaJuana Puryear, Anna Zybach, Irene Zybach, Bernice Ramsey, & Orilla Douthit. There were four visitors present, Rozena Zybach, Helen Puryear, Melody and Gaye Zybach.

The next meeting will be Jan. 15 with Effie Renfro as hostess. Subject of program will be Rug Making. All members urged to attend and visitors welcome. If you are a club member, avoid being the missing spoke from the hub, urged the new president.

**KIWANIS NOTES**

President Frank Wofford assumed his new responsibilities and asked the support of the members to make this a bountiful year in Kiwanis Work.

One visitor, J. E. Shlig, who works for El Paso Natural Gas and is stationed at Shamrock, was the only visitor.

P. E. Yarborough, the new program chairman cut out his job from whole cloth when he arranged this week's program. If this is a sample of the programs for the year Kiwanians have a year of exquisite programs ahead.

Mrs. R. Wm. Brown talked to the club along the lines of thought to encourage inspiration in Kiwanis work. She used "A Man's World", and an appropriate story about a shoe cobbler to drive home the thought of building a tradition by doing your BEST at any task. Showing that sympathy, understanding, and thoughtfulness toward mankind brought their own rewards.

Don't forget the director's meeting Thursday night in the Commissioner's courtrooms. Anyone needing a makeup in January and all committee chairmen and directors are urged to attend. All members are invited.

Mr. and Mrs. Eob Beckham and baby, of Crosbyton, Alma Jean Jennings of Hollis, Okla., Mr. and Mrs. Gale Pringle of Amarillo, visited in the home of Mr. and Mrs. Truitt Jennings over the week end.

**HER WINDOW**



The Bennetts live here. That's Grandmother Bennett's Bible on the window sill, and the whole family goes to the church across the snow covered field.

John Bennett works in the local bank. Martha, his wife, is president of the PTA, and they have three lovely children. Grandmother Bennett has been living with them for the past couple of years, since she broke her hip. She can't always get to church in wintertime and that's why she calls this her window. When she can't be in church, it helps to be able to see it.

To her, the church steeple represents a great many things, and brings back many memories. Her son was married in that church. Her husband was buried from it. Her grandchildren were christened in it.

The Church has helped her to bear grief, in hours of sorrow; and it has seemed to put a benediction upon her happiness, in times of joy. Most important of all, whatever the occasion, whatever the crisis... the Church has always been there.

To Grandmother Bennett, the most comforting thing in the world is knowing that it always will be there.

**THE CHURCH FOR ALL... ALL FOR THE CHURCH**

The Church is the greatest factor on earth for the building of character and good citizenship. It is a storehouse of spiritual values. Without a strong Church, neither democracy nor civilization can survive. There are four sound reasons why every person should attend services regularly and support the Church. They are: (1) For his own sake. (2) For his children's sake. (3) For the sake of his community and nation. (4) For the sake of the Church itself, which needs his moral and material support. Plan to go to church regularly and read your Bible daily.

Day	Book	Chapter	Verses
Sunday	Psalms	1	1-6
Monday	Psalms	23	1-6
Tuesday	Psalms	91	1-16
Wednesday	Matthew	13	10-23
Thursday	Matthew	28	16-20
Friday	Luke	7	18-35
Saturday	John	1	1-18

Copyright 1957, Kellier Adv. Service, St. Louis, Mo.

**This Series of Advertisements is Contributed to the Cause of the Church By the Following Citizens and Business Establishments:**

**Wheeler Lumber Company**  
"For better building" — Dial 3431

**Doris Forrester Agency**  
Insurance and Abstracts

**Title Abstract Company**  
C. J. Meek

**Hall Flower and Gift Shop**  
"Flowers for every occasion"

**Borden's Fine Dairy Products**  
Albert Chapman

**Nash Appliance & Supply Company**  
Harold and Shelton Nash

**The Wheeler Times**  
Job Printing — Office Supplies — Advertising

**Owen's Service Station**  
Mr. and Mrs. Bill Owen

**First Baptist Church**  
Darrell Taylor, Pastor

**Wheeler Drug Store**  
Mr. and Mrs. Frank Wofford

**Percy's Garage**  
Mr. and Mrs. P. L. Farmer

**Southwestern Public Service Co.**  
Electric Service

**Paymaster Gin Co.**

**Vanpool-Burton Motor Co.**  
New and Used Cars

**DeLuxe Cleaners**  
Phone 2881 Pick up and Delivery

**J-Lee Department Store**  
"Your friendly Department Store"

**Clay Food Store**  
Mr. and Mrs. Cecil Denson

**Chapman Service Station**  
Mr. and Mrs. Bill Chapman

**Lowell's Service Station**  
Mr. and Mrs. Lowell Farmer

**Thomas Garage**  
Mr. and Mrs. Al Thomas

**Wheeler County Produce Ass'n.**  
Thurston Young

**Wheeler Gas Company**

**Ware Chevrolet Company**  
N. D. Ware, Sr., and N. D. Ware, Jr.

**Farm Bureau Ins. Service**  
Geo. and Vera Richardson

**Parsley's Furniture**

If you need furniture, see us. We sell or trade Dial 4821

## MOBETT MAN PROMOTED

"Hub" Houchin of Mobett who has been a sales representative with the Moorman Sales Company of Texas. He will have been promoted to

District Sales Manager by that company. He will have responsibility for distribution of Moorman livestock and poultry feed concentrates, minerals and parasite-control products in Beaver, Cimarran and Texas Counties in Oklahoma and the twenty-four upper northwest counties of Texas. He will have ten or more Moorman sales re-



**MARCH OF DIMES PROCLAMATION** — Governor Allan Shivers is shown center, above, signing the official proclamation designating January as March of Dimes Month in Texas. Looking on is Major General K. L. Berry, Adjutant General of Texas and 1956-57 State March of Dimes Campaign Chairman, and Kaye LaGrone, 10-year old daughter of Mr. and Mrs. Gregory LaGrone, 1507 Preston Avenue, Austin. Kaye has been a polio victim since September, 1955.

## STATEMENT OF FINANCIAL CONDITION OF THE FIRST STATE BANK

Texas at the close of business on the 31 day of December 1956 as published in response to call made by the Banking Commissioner of Texas with the Banking Laws of this State.

RESOURCES	
Discounts, including overdrafts	133,390.52
U. S. Government Obligations, direct and indirect CCC	26,976.58
U. S. notes and debentures	225,000.00
Stocks	10,000.00
Due from other banks, including reserve and cash items in process of collection (including exchanges for clearing house)	279,459.40
Real estate, or leasehold improvements	3,014.00
Furniture, and equipment	1.00
State owned	3.00
<b>TOTAL RESOURCES</b>	<b>677,844.59</b>

LIABILITIES AND CAPITAL ACCOUNTS	
Capital Stock	\$ 20,000.00
Surplus	20,000.00
Profits	38,726.34
Deposits of individuals, partnerships and corporations	587,244.73
(Incl. U. S. Govt., states and political organizations)	11,873.52
Deposits	\$599,118.25
<b>TOTAL LIABILITIES AND CAPITAL ACCOUNTS</b>	<b>677,844.59</b>

**TEXAS, COUNTY OF WHEELER**  
I, T. Johnston being Cashier of the above named bank do hereby certify that the foregoing statement of condition is true to my knowledge and belief.  
J. T. JOHNSTON, Cashier

Attest:  
JACK MILLER, H. L. FLANAGAN, Directors  
I and sworn to before me this 4th day of January 1957.  
C. CALDWELL, Notary Public, Wheeler County, Texas

representatives associated with him in the territory he now heads. Mr. and Mrs. Houchin and their children expect to continue residing at Mobett. Mrs. Houchin is the former Mary Sue Upham, daughter of Mrs. L. W. Upham of Lefors. Mr. Houchin was born and reared in the Pampa area and is the son of Mr. and Mrs. A. C. Houchin of Pampa. Prior to taking up Moorman sales work he was FHA loan supervisor.

Mr. and Mrs. Burley Mann and LaJune Alexander went to Amarillo, Sunday to take Debbie Mann to meet her parents, the R. E. Mann's, Jr. Debbie has been visiting with her Aunt and grandparents since Christmas. While in Amarillo, the Mann's and LaJune visited with the Curtis Pond family.

## Wheeler County Soil Conservation District News

The Supervisors of the Wheeler County Soil Conservation District have been overhauling the grass drills for the coming season. The Soil Bank program will greatly increase the demand for drills and seed. There are enough drills on hand to seed the expected acreage this year if they are kept busy. The supervisors urge everyone who uses a drill to speak for it well in advance and return it promptly. A drill setting idle may mean that someone will not get to plant.

The Soil Bank will also give some farmers and ranchers an opportunity to spray brush. Some of the small patches of cotton that

have prevented spraying will not be seeded this year. Spraying has given good results on shinnery, sagebrush and skunkbrush. Soil Conservation Service personnel assisting the district will be glad to show ranchers some of the sprayed areas if they have not yet seen them. Many acres of range have so much brush that good grasses will not grow even under good management.

Mr. and Mrs. Clyde Newsome and Lola Barber of Shamrock visited in the Amos May home Sunday afternoon.

Mrs. Bob Markham of Allison, was shopping in Wheeler Monday.

## REPORT OF CONDITION OF THE FIRST NATIONAL BANK OF WHEELER

In the State of Texas at the close of business on December 31, 1956 published in response to call made by Comptroller of the currency, under Section 5211, U. S. Revised Statutes.

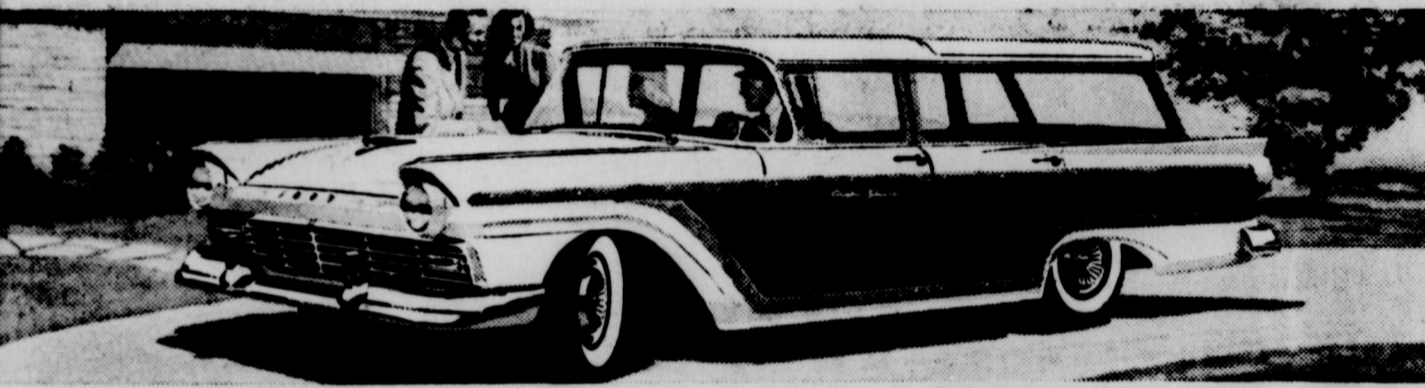
ASSETS	
Cash, balances with other banks, including reserve balance and cash items in process of collection	\$ 898,692.12
United States Government obligations, direct and guaranteed	694,568.00
Obligation of States and political subdivisions	500.00
Corporate stocks (including \$3,000.00 stock of Federal Reserve bank)	3,000.00
Loans and discounts (including \$1,074.07 overdrafts)	487,675.77
Bank premises owned \$1.00, furniture and fixtures \$4,000.00	4,001.00
<b>TOTAL ASSETS</b>	<b>2,088,436.89</b>

LIABILITIES	
Demand deposits of individuals, partnerships, and corporations	1,913,087.22
Deposits of United States Government (including postal savings)	11,686.71
Deposits of States and political subdivisions	4,366.73
Deposits of banks	4,705.65
<b>TOTAL DEPOSITS</b>	<b>\$1,933,846.37</b>
<b>TOTAL LIABILITIES</b>	<b>1,933,846.37</b>

CAPITAL ACCOUNTS	
Capital Stock: Common stock, total par \$100.00	\$ 50,000.00
Surplus	50,000.00
Undivided profits	54,590.52
<b>TOTAL CAPITAL ACCOUNTS</b>	<b>154,590.52</b>
<b>Total Liabilities and Capital Accounts</b>	<b>2,088,436.89</b>

I, R. J. Holt, Jr., Cashier of the above-named bank, do solemnly swear that the above statement is true to the best of my knowledge and belief.  
R. J. HOLT, Jr., Cashier

CORRECT ATTEST: D. E. HOLT, Jr.  
R. J. HOLT  
C. B. HOLT  
STATE OF TEXAS COUNTY OF WHEELER, as Sworn to and subscribed before me this 4th day of January, 1957, and I hereby certify that I am not an officer or director of this bank.  
(SEAL)  
A. B. CRUMP, Notary Public  
My commission expires 6-1-57.

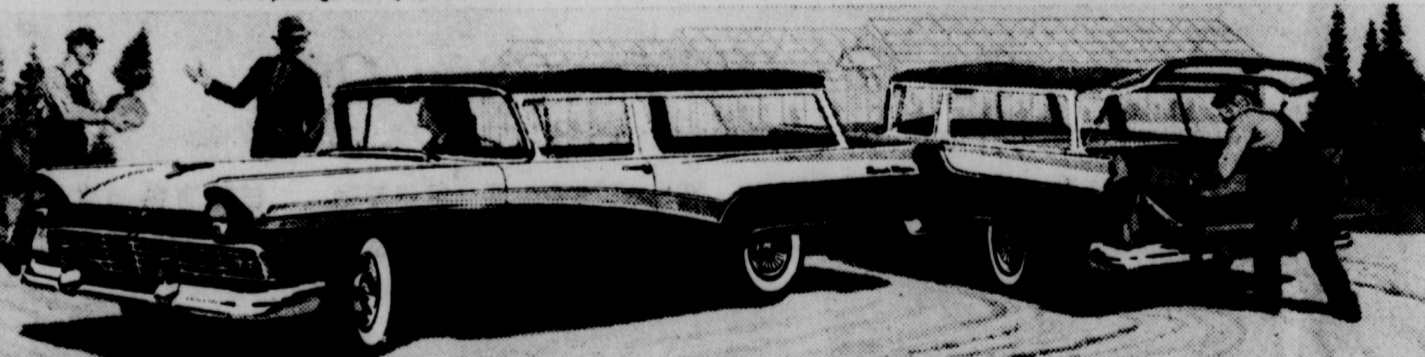


The 9-passenger Country Squire



The 6-passenger Country Sedan

The 9-passenger Country Sedan



The Del Rio Ranch Wagon

The Ranch Wagon

## FIVE NEW FORD glamour wagons long, low and loaded with Go!

Leave it to the station wagon leader to make the big news for '57! And what news! Wagons are big, so full of fine-car prestige that you'll wonder how it can be done at low Ford prices. If your choice is the Country Squire, you'll be proud to pull up at the finest places in this new glamour wagon with its wood-like trim. If your needs call for a 6-passenger wagon with four doors, you'll love the new Country Sedan. It has almost nine feet of loadspace—nearly a foot more than ever before. There's still another 4-door Country Sedan. It has the extra third seat for 9-passenger room. And, as in all Ford wagons for '57, you have the new single-control handle

which opens both the wrap-around liftgate and tailgate with one motion. And they can't be opened from inside! There's good news, too, about Ford's popular Ranch Wagon. This 6-passenger, 2-door model features Ford's new subdued tones, and smart interiors which defy muddy little shoes and drippy chocolate cones. In the wonderful way that Ford can take a fine thing and make it even finer, the Del Rio Ranch Wagon goes beyond the Ranch Wagon in style, fabrics and trim. Better take a Ford wagon for a spin. You'll agree that for styling it's a sweetheart... for work and power, it's an obedient slave!

New '57 Fords have toughest shakedown cruise in history!

The '57 Ford broke 450 national and international records from 1 kilometer to 50,000 miles at Bonneville, Utah. For 50,000 miles, two '57 Fords averaged over 107 and 108 mph respectively. The time included all pit stops... the greatest endurance feat of all time!

Ask for Your **FORD** STATION WAGON Action Test Today

## Vanpool-Burton Motor Co.

WEST HIGHWAY 152 FORD SALES and SERVICE PHONE 2311 WHEELER, TEXAS

## J-LEE DEPARTMENT STORE June In January Jubilee!



Vicky Vaughn JUNIOR

895

as seen in SEVENTEEN and on 'THE BIG PAYOFF'—CBS-TV

### Sissy Shirdresses—Young and Feminine

Take two—they're small in price. Vicky Vaughn Junior gives you two exciting fabrics. Left, the silk print with a frivolous ruffled bib, jewel buttons, a skirt of billowing fullness. In Loomskill's 'Enticement', luxurious blend of rayon and silk. Arabesque print on turquoise, red, blue or grey. Sizes 7 to 15. Right, rich Schilli embroidery atop a bubbling bouffant skirt, perky up-or-down collar with its own sweetheart rose. In Reeve's Pima Glow, blended pima cotton, washable and crease-resistant. Apricot, coral, periwinkle blue, yellow or olive. Sizes 5 to 15.

THESE AND MANY MORE STYLES... ALSO SIZES 10-20 IN TONI TODD!

### Week End Feature!

ONE GROUP OF BETTER COTTON

Piece Goods 44¢

SAVE 35¢ YD.

Beautiful Assortment of Prints, Sanforized, Fast Color, and Crease Resistant. Some Are Drip Dry Cottons! 36" Wide!

### Week End Feature!

ONE GROUP OF WOMEN'S FALL

Dresses 4.00

Big Assortment of Colors and Styles. All Sizes.

### DISCONTINUED THREAD

50 Yd. Spools, Big Assortment Of Colors! Spool 3¢

**666**  
 ... FIGHTS ALL COLDS  
 SYMPTOMS AT ONE TIME...  
 IN LESS TIME! IT'S THE  
 PROVEN COLDS MEDICINE

**Walter Rogers Reports Problems**

Two branches of the Federal Government are eyeing each other like strange dogs. Although on the surface everything is very friendly and cordial, both branches are

sleeping with one eye open so to speak, the big question being: will the Administration be first to announce its program for the coming two years, or will the Congress act first and announce a program of its own? It must be remembered that the three branches of this Government — the Administrative, the Legislative and the Judicial — constitute the tripod upon which this Government must rest. The branches are separate, distinct and independent of each other. To subject one branch to the control of another would be like breaking one leg of a three-legged stool. Therefore, it is much healthier for the Government that the Legislative and the Administrative Branches keep a watchful eye on each other and provide the safeguard intended by the Constitution. Otherwise, these two branches could become so interwoven that the very strength and purpose of the three branches of Government, so indispensable in maintaining a democratic form of government, could be lost.

Actually it makes little difference who first advocates or pronounces a program for the next two years. Unless there is a definite change from the happenings of the past, which is not expected, the 85th Congress will have plenty of issues, plenty of proposals and plenty of needed legislation to work on. Whether it is proposed by the President as a part of his program or by the opposition party in the Congress should be of little consequence. The deciding factor should be whether or not the legislation is needed by the country as a whole. It should not be determined on a strictly political basis either by the President or by the Congress. It should be decided simply because it might appeal to some minority group. It should not be decided because it might furnish a needed vehicle to control a large bloc of votes.

Many members of Congress, both Democratic and Republicans, are wondering today what the President will ask for on certain subjects, but seems to be especially anxious concerning the highly explosive Taft-Hartley Act. It will be remembered that there are those who have demanded the outright repeal of this Act. There are others who staunchly support the Act in its present form. The third group, and the one led by the present Administration, advocates amending the Act. The mystery lies in the fact that the Administration has not yet said what amendments it has in mind, and in what manner it wishes to

**Texan Donates Savings Bonds Flags to Nation**



WASHINGTON, D. C.—E. B. Germany (right) of Dallas was so pleased by the new flag of the Treasury's Savings Bonds Division when it was unfurled at the 15th anniversary bond conference here that he pledged enough to provide one or two for each state. Admiring the division's first flag are Jesse L. Adams, Jr. (left) of Dallas, Texas state director, and John R. Buckley, national director.

change the Act. Several Members of the Congress have indicated to me that the Administration's recommendations on the subject will be in the nature of advocating an expansion of the federal laws to include many additional people under the maximum hour work-week and the minimum pay requirements. If this is done, it will be an amendment to the Fair Labor Standards Act rather than an amendment to the Taft-Hartley Act. Such action would also require the Federal Government to extend its power and control directly and indirectly into transactions that are now wholly within the jurisdiction of the several states.

Another item causing concern has to do with another natural gas bill. The talk here is that the President doesn't want to recommend a gas bill, but will not veto it again if it passed the Congress; that the Members of Congress do not want to initiate a new gas bill unless the President requests it, the reason being that the entire gas situation was misrepresented. The people in the big cities were led to believe that the

owners of the gas in Texas and elsewhere would get large, fat profits at the expense of the poor consumers. Although this was not the case at all, the argument was used in many political campaigns in the East and Middle West. The truth is that the consumer is paying a high price for gas, but it is not going to the producer. The producer gets approximately 8 cents per unit from the pipeline. The pipeline carries the gas to the large cities and sells it to the utility companies for approximately 35 cents per unit. The utility companies then sell it to the consumer for various prices ranging up to \$2.89 per unit. It is unfortunate that the whole truth is not told in legislation of this kind. The misrepresentation results in the natural resources in one section of our country removed, under federal laws and regulations, to other sections of the country at a disproportionate low price to the owners of the natural resources. Yet the same natural resources are sold to the consumers at a disproportionate high price. The one who has to pay the disproportionate high price blames his

plight on the one who receives the disproportionate low price. Let us hope that we get this dilemma cleared up during this session. The limited space available makes it impossible to discuss more than these two examples at this time but it will give you some idea of what we can look forward to in the 85th Congress.

**ON THE RECORD**

- OL—Elsie Lindsey et al to O. J. Walker (Refiled) 6-1-56 NE 1/4 & g 1/2 E 1/2 NW 1/4 Sec 55 Blk 17
- MD—Leo J. Portman to D. W. Jenkins 7-17-45 10/53 int 53 ac NW 1/4 Sec 15 Blk A-8
- MD—Leo J. Portman to D. W. Jenkins 7-17-45 2/3 320 int S 1/2 Sec 39 Blk 4-7
- MD—E. K. Caperton to Leo J. Portman et al 8-9-54 23.34/532 int E 1/2 Sec 95 Blk 13 & S212ac E 1/2 Sec 6 Blk A-7
- MD—E. K. Caperton to Leo J. Portman et al 8-9-54 86.67/640 int Sec 94 Blk 13
- MD—E. K. Caperton to Leo J. Portman et al 8-9-54 66.67/540 int W 1/2 Sec 95 Blk 13 & S220 ac W 1/2 Sec 6 Blk A-7
- OL—George McClintick et al to James A. Cullum 8-29-56 SE 1/4 SW 1/4 NW 1/4 & NE 1/4 SW 1/4 SW 1/4 Sec 4 Blk A-8
- AOL—Tom O'Rourke to Mary M. Brooks 12-5-56 NE 1/4 NW 1/4 SE 1/4 & NW 1/4 NE 1/4 SE 1/4 Sec 55 Blk 24
- ROY D—S. H. Hooker et ux to L. E. Windham 12-14-56 1/2 int 117.68ac E 1/2 N300ac Sec 46 Blk A-5
- OL—B. D. Howe et ux to French Hoehn 12-21-56 S250ac330ac Sec 64 Blk 17 exc 4.59 ac & N 1/2 NE 1/4 Sec 57 Blk 17
- OL—B. D. Howe et ux to French Hoehn 12-21-56 NW 1/4 Sec 63 Blk 17
- D—Robert H. Holmes et ux to Tremarco Corp 12-17-56 N 1/2 Lot 4 Blk XC Shamrock
- ROL—J. M. Huber Corporation to E. T. Beck et ux 12-7-56 NE 1/4 Sec 3 Blk A-5
- ROL—J. M. Huber Corporation to Tom Hathaway et ux 12-7-56 SW 1/4 Sec 68 Blk A-5
- ROL—J. M. Huber Corporation to L. W. Williams et ux 12-7-56 SW 1/4 Sec 52 Blk A-5
- ROL—J. M. Huber Corporation to W. R. Green et ux 12-7-56 NW 1/4 Sec 48 Blk A-5
- ROL—J. M. Huber Corporation to Herman Roper et ux 12-7-56 NW 1/4 Sec 13 Blk A-5
- ROL—J. M. Huber Corporation to E. T. Beck et ux 12-7-56 SW 1/4 Sec 3 Blk A-5
- ROY D—Mathilda Delisle to
- Paul U. Janson 12-4-56 NE 1/4 52 Blk 17
- OL—R. C. Konecny et ux to W. Adams et al 11-27-56 40 Blk 24
- D—W. H. Walker et ux to R. Tindall 12-6-56 NW 1/4 Blk 23
- OL—Edgar Bailey et ux to R. Less 11-28-56 W 1/2 W Blk 23 exc 1 ac NW 1/4
- AOL—John R. Less to Oil & Gas Corp 12-11-56 Sec 97 Blk 23 exc 1 ac
- OL—Edgar Bailey et ux to R. Less 11-28-56 S 1/2 S 23
- AOL—John R. Less to Oil & Gas Corp 12-11-56 96 Blk 23
- OL—Edgar Bailey et ux to R. Less 11-28-56 SW 1/4 S 23 exc W20'
- AOL—John R. Less to Oil & Gas Corp 12-11-56 Sec 11 Blk 23 exc W20'
- MD—Pat Slavin to L. Beebe 12-11-56 1/2 int 560 Blk 13
- OL—C. J. Meek et ux to Wofford 11-15-56 17.43 Sec 2 T&NO Ry Co S
- AOL—Harry Wofford to Oil Corp 11-13-56 17.43 Sec 2T&NO Ry Co Sur
- CD—Wheeler Cemetery Mrs. P. A. Clepper 12-3-56 Sec 2 Blk E-14 Wheeler First
- QCD—Federal Farm to S. H. Hooker 12-11-56 Int 117.68 ac E 1/2 N300 46 A-5
- QCD—Orrin L. Sharp to P. T. Boston 12-4-56 S 17 exc S 1/2 SE 1/4 NW 1/4
- Mr. and Mrs. Glenn and children of White Sunday night with Mr. and Mrs. Amos M.
- Pay Your Subscriptions The Wheeler Times
- Mr. and Mrs. Ray A. Pampa, moved to W. week to make their

**Business and Professional DIRECTORY**

**C. J. MEEK**  
 AGENT  
**INSURANCE**  
 Nite Ph. 3881, Day Ph. 2221

**DR. JOEL M. GOOCH**  
 OPTOMETRIST  
 207 N. Wall  
 Phone 800  
 SHAMROCK, TEXAS

**WATSON HOTEL**  
 Air Conditioned Rooms  
 Phone 4751 — Wheeler

**Gene Hall**  
 Bookkeeping, Tax Returns  
 Real Estate  
 Dial 4001 Wheeler, Texas

**Canadian Valley Production Credit Association's Representative IS IN THEIR Wheeler Office**  
 MONDAY, WEDNESDAY, & THURSDAY  
 Hours: 9-12 and 1-4  
 TUESDAY & SATURDAY  
 Hours: 9-12

**AUCTIONEER SHELBY PETTIT**  
 Will cry your sale any time or place  
 Phone 3561 — Wheeler, Texas

**CESSPOOL & SEPTIC TANKS Cleaned**  
**C. L. CASTEEL**  
 1405 South Barnes  
 MO 4-4659 Pampa, Texas

**Protect Children's Health GIVE THEM BORDEN'S Fine Dairy Products CHAPMAN DAIRY**  
 Phone 2001 Wheeler

**AUCTION SALE**

Located 14 miles east of Wheeler or 6 miles west of Sweetwater, Okla., then 1/2 mile north and 1/4 mile east. Known as George Topper Farm.

**Tuesday, January 15, at 10:30 a.m.**

- 54 CATTLE 54**
- 26 head purebred Hereford cows from 3 to 7 yr. old
- 16 head mixed red, roan, and Jersey cows 5 to 7 yrs. old
- 10 head Whitefaced Calves short yearlings.
- Two of the above cows have baby calves and there will be several more by sale date.
- 1 black steer yearling
- 1 Whitefaced Bull, sub. to Reg., 4 yr. old.
- SADDLE HORSES**
- 1 Light Sorrel Saddle Horse, good cow horse
- 1 Bay Saddle Horse, plenty good
- 1 Nearly new roping saddle
- 1 black stock saddle, plenty good
- 1 small saddle for children
- Bridles, blankets for saddles above
- 1 Spotted Poland China Sow, wt. about 460 lbs.
- CHICKENS**
- About 4 dozen Anstra White Hens
- About two dozen Black hens, also a few bantams.
- IMPLEMENTS**
- 1949 model Ford Tractor, extra good motor, fair tires
- 1957 model F-20 International with good motor, and tires, complete with lister and cultivator.
- 1 2-row knife sled for Ford Tractor
- 1 3-row stalk cutter
- 1 International Fertilizer Box
- 1 McCormick-Deering Row Binder
- 1 Late model John Meere Mowing Machine, 7 ft.
- 1 2-bottom Breaking Plow, 12"
- 1 MW Hammermill, 10' good shape, also 50' endless belt.
- 1 4-wheel Cotton Trailer
- FURNITURE**
- Two piece Living room Suite
- 3 Metal bed steels, springs & Cotton Mattresses
- Good Dresser, Cedar Chest, Chest of Drawers, and end tables
- Firestone Electric Refrigerator, 9-ft.
- 1 Butane Range, divided top
- 1 Butane Tank, 150 gal. cap.
- 2 Living room heaters and a bath heater.
- Oak Dining table and chairs
- BUILDINGS**
- 22x56 ft. 4-room house
- 12x24 Box & Strip Utility House
- 8x10 Brooder House
- 8x16 Garage
- MISCELLANEOUS**
- About 80-ft. 5 1/2" gal. Well Casing. Post hole Diggers, Pipe Wrenches, No. 2 McCormick Deering Cream Separator and lots of other tools and accessories.

**TERMS: CASH**  
 Lunch On Ground By Club Ladies

**CECIL MILLER, Owner**  
 SHELBY PETTIT, Auctioneer  
 Wheeler, Phone 3594

**WE ARE MOVING!**

To The Old Location Of  
**HOWARD'S ROLLER RINK**  
 On East Highway 152  
 One Block East of Intersection Highways 83 & 152

We are sorry if the move has inconvenienced you in any way, but feel that we will be better able to serve you from this new location.

Plenty of Parking Space and We're on the Highway!

**Wheeler County Produce Ass'n**  
 1 Block East East Of Red Light On  
**E. Highway 152 Phone 332**  
 Thurston Young, Manager

**WANT ADS**

20c per line (counting 5 words to line) for first insertion. Minimum charge 60c; 15c per line after first time. Charge 45c. Reader ads scattered among local items in each insertion. Display class 90c inch. **ADVERTISING** — National rate 56c per inch; advertising 50c per column inch; 45c if 5 inches or more in every week in the month or 140 inches in calendar month; 40c if 20 inches is run every week or 200 inches in month; 40c when same ad is re-run; 40c per inch for monthly cards.

**FOR SALE**  
Stoves are good range to a Hardwick's 45-tfc  
Markers, Grave digging, Surface Warren 4-tfc  
Almun Seed with the tag attached. See Wheeler, Tex. 52-tfc  
Alfalfa Hay, \$1.25 Brown, phone 3933. 5-2tp  
John Henry Watts 6 room house, 3 and barn, apple, peach, apricot orchard, part. See J. W. Hooker 3-tfc  
3 bedroom house, part east of Wheeler, after 5 p.m. 5-4tp  
Alfalfa Hay, See 4-2tp

**SCHOOL CAFETERIA MENU**  
DECEMBER 15-22  
MONDAY  
Pork & Gravy, Cream Corn, Blackeyed Peas, Bread, Butter, Milk, and Mince Meat Cake  
TUESDAY  
Vienna Sausage, Sauer Kraut, Pork & Beans, Carrot Sticks, Pickle Slices, Bread, Butter, Milk, Pineapple Slices and Cookies  
WEDNESDAY  
Meat Loaf, Creamed Potatoes, Green Beans, Bread, Butter, Milk and Chocolate Cream Pie  
THURSDAY  
Tamale Pie, Red Beans, Cabbage Salad, Corn Bread, Butter, Milk and Banana Nut Cake  
FRIDAY  
Salmon Croquettes, Spaghetti & Cheese, Mixed Greens, Home made Hot Rolls, Butter, Milk and Apricot Marmalade

**PELLANEOUS**  
apartment for rent Gas Office, phone 1-tfc  
High School or grade diploma awarded. Start left school. Write school. Box 1514. Amarillo. 40-52tp  
3 bedroom modern furnished, close in. C. J. 2221. 52-tfc

**Men and Women**  
Organization has Panhandle Counties, thorough, free, and success. Here is opportunity to change your contact. E. Stinson, Box M. O. 44127 Wed 16 and 17. 5-2tp  
Mrs. Lillian Lee and Joanie Lee Burrell of Kelton, took Lonell Lee and Pat Sanders of Shamrock, to Denton Sunday to resume their school work.



Two local 4-H members, Nancy Whitener and Bob Martin, exhibited their beef calves in the Sand Hill Hereford Show at Odessa this past week and placed sixth and eighth respectively. Nancy showed her heavy weight 977 pound hereford steer to sixth place in the heavy weight class, winning twelve dollars in prize money and seventh place in the sales order. Nancy sold her steer for sixty cents per pound through the auction ring this past Saturday morning.

Bob decided not to sell his light-weight 785 lb. hereford steer so he could show it in the stock show in Amarillo the later part of this month.

Nancy is the daughter of Mr. and Mrs. Gordon Whitener of Wheeler and Bob is the son of Mr. and Mrs. P. A. Martin of Rt. 2, Mobeetie, both belong to the Wheeler County 4-H Club.

The 4-H Livestock Judging team composed of Dean Sims, George Harris, Bob Martin, and Larry Henderson placed third in the 4-H Livestock Judging Contest held in Childress this last Saturday according to Bryan Swaim, County Agent. This was their first Contest this year and was the first Livestock Judging Contest for two of the members. Swaim said he was proud of the boys showing and there was only 15 points spread in the top and bottom grade on the team, which indicates they are all judging alike.

Frank Walker, Jr., took his two calves to the Childress Show and placed seventh with his heavy weight calf and twelfth with his lightweight calf, however his calves, according to Swaim, were about the lightest in each of the two divisions which made it hard to place very high.

Mrs. Lillian Lee and Joanie Lee Burrell of Kelton, took Lonell Lee and Pat Sanders of Shamrock, to Denton Sunday to resume their school work.

**ALLISON NEWS**  
Mrs. Lester Levitt

Pampa visitors Monday were: Mr. and Mrs. Joe Walsh, Mr. and Mrs. Bruce Harrison, Mrs. Roxie Sanford and Mr. and Mrs. Casey Henson.

Mrs. Frank Chandler returned the last of the week from Brownfield, Texas, where she had spent last week with her sister, Mrs. C. R. Stephens.

Edwin Egbert returned to Canyon College Sunday after spending two weeks here with home folks.

House guests in the Frank Chandler home were: Mr. and Mrs. Robert Casas of Amarillo, Robert Fish, Carolyn Morse, Vance Boydston of Amarillo Junior College and Kenneth Chandler and family of Pampa.

Leonard Powlledge and family were in Pampa Saturday on business.

Roy Morse and family visited in the John Unzen's home Sunday. Rev. Howard Smelser and family were dinner guests in the Casey Henson home at Reydon, Sunday.

Bill Donaldson and family were dinner guests in the Loyd Jones home Sunday.

Mr. and Mrs. Lester Levitt were dinner guests in the M. K. Levitt home Sunday.

W. S. C. S. met at the George Parker home Wednesday night and had their program, after which the hostess served refreshments.

Frank Risner and family from Mobeetie visited in the Harold Jones home Sunday. Mrs. Jones is on the sick list.

Supt. D. Malin left Monday for Austin on business.

W. A. (Sam) Powlledge visited relatives in Amarillo Thursday and Friday.

Roy Langford and family of Borger, were over night guests in the Lester Levitt home Friday.

Mr. and Mrs. Jake Morse of Denver, Colo., visited in the Roy Morse home the first of the week.

the R. P. Grayson home last week. Mr. and Mrs. Curtis Hall of Amarillo and Raymond Jones and family visited in the Rayburn Hall home Sunday.

Joe and Clyde Dukes and families visited in Wellington Sunday.

**Locals**

Mr. and Mrs. Waymon Herd of Amarillo, visited in the H. H. Herd home over the week end.

Mr. and Mrs. Charles B. Sandifer and family of Borger, spent the week end visiting in the home of C. O. Sandifer's.

Mrs. Jesse J. Dyer has been on the sick list since last Friday, but is better this Tuesday.

Mr. and Mrs. Gene Waters and boys, visited her mother in Wellington Sunday.

Mr. and Mrs. Loyd Lewis visited friends in White Deer Sunday.

Mr. and Mrs. D. C. Pruitt and family visited in Borger, Sunday with one of Mrs. Pruitt's brothers and his family.

COFFEE DAY for the March of Dimes will be January 15.

Mr. and Mrs. Doyle Waters and baby of Borger, Wanda Sue Waters of Amarillo were visiting in the Fred Waters home over the week end.

Mr. and Mrs. Carl Leflin attended the Kelvinator and Zenith meeting in Amarillo Sunday. They visited with her sister and family.

State Rep. Grainger Melhany, his wife and baby left Sunday for Austin for the present term of the Legislature.

Mr. and Mrs. Leon Yell and Randy of Canyon spent the week end in the home of Mr. and Mrs. Oran Horn.

Mr. and Mrs. Lyndon Sanders and family of Pampa were Sunday guests in the home of Mr. and Mrs. Murray Sanders.

Mr. and Mrs. Ed Trimble of Pampa, formerly of Wheeler are the parents of twin daughters born January 3 in a Pampa hospital. The maternal grandmother is Mrs. Cora Teakell and the paternal grandmother is Mrs. Ed Black,

both of Wheeler.

Mr. and Mrs. Len Helton, Randy and Paula were Pampa shoppers Saturday afternoon.

Don't forget March of Dimes Coffee Day, January 15.

Mr. and Mrs. C. J. Meek have returned from a visit with their son, Mr. and Mrs. Joe Meek, of Baytown. The Joe Meeks' are the parents of a baby boy born December 29. They have two other children.

Mr. and Mrs. David Crouch of Amarillo are the parents of a baby boy born recently and has been given the name of Jeffery Porter, and will be called 'Jeff'. The maternal grandparents are Mr. and Mrs. Nelson Porter of Wheeler.

Maurice Pettit of Borger, visited over the week end in Wheeler, with his parents, the Shelby Pettits.

Mr. and Mrs. Norrell Perkins, of Borger were visiting in Wheeler and Shamrock, over the week end with relatives.

Mr. and Mrs. Rondel Price and family of Amarillo spent the week end visiting in the home of Mr. and Mrs. Isaac Carter.

Mr. and Mrs. Tom Crossland visited Sunday in Borger with the Bill Crossland family.

Mr. and Mrs. R. N. Byers spent Sunday with her mother, Mrs. Elsie Layton, in Tulsa.

Mr. and Mrs. G. A. Robison and family of Laredo, are visiting in the home of Mr. and Mrs. C. C. Robison, his parents.

Mrs. Estell Nash spent last week in Allenreed, with her son and wife, Mr. and Mrs. Shelton Nash.

Mr. and Mrs. Bud Pearce and children of Clovis, N. M., visited relatives in Wheeler Sunday.

Mrs. Gordon Whitener, who is a patient in a hospital in Amarillo, returned to her home in Wheeler, Tuesday. She is recovering from a major operation.

Williams, of Mobeetie, Mr. and Mrs. Harry Wofford, and Rev. Darrell Taylor and family. Mr. and Mrs. Burley Mann and LaJone Alexander, of Pampa visited in the Morris Wayne Fields home in Panhandle Sunday.

Ted Crowder was home visiting his wife, the former Sandra Richardson and other relatives from December 23 to the 6th of January. He has gone to Fort Dix, Newark, New Jersey. He will go to Germany from there, and probably spend two years duty over seas.

Mrs. Della White and daughter-in-law, Mrs. Russell White of Vernon visited Mrs. Dora Harris and Mr. and Mrs. Grady Harris Monday and Tuesday.

Mr. and Mrs. John Manning and children were Sunday dinner guests of the K. L. Franklin's.

Armand Sandifer and family visited with his parents the C. O. Sandifer's Saturday night and Sunday.

Mrs. Clyde Kelly was shopping in Wheeler Monday morning.

Mr. and Mrs. O. Nations spent Sunday in Memphis visiting friends.

Mr. and Mrs. Bill Vance and children of Tucuman, N. M. Mrs. Lena Temple and Jennette of Plainview were recent visitors in the home of Mr. and Mrs. H. Vaughn of Briscoe.

Don't forget March of Dimes Coffee Day, January 15.

Mr. and Mrs. Wayne Edwards and sons were visiting in Amarillo with Wayne's sister and family. Mr. and Mrs. Hank Brown and daughter, over the week end.

Truitt Jennings is going to a Lumbermans School at S. M. U. in Dallas this week end.

Ed Parsley, who has been visiting his parents, Mr. and Mrs. Frank Parsley, during the holidays returned to Goodwell, Okla., Sunday.

Bill Helton and Duane Hays returned to Lubbock Wednesday of last week to their school work, after spending the holidays with relatives and friends. Frank Wofford and Mr. and Mrs. Harry Wofford were in Borger, Monday night for a Kiwanis Installation Banquet.

**RACK UP SAVINGS AT OUR Thrift Sale**

25 LB. SACK	NU-WAY	SWANS DOWN LEMON
<b>our 179</b>	<b>BLEACH quart 15c</b>	<b>Cake Mix pkg. 29c</b>
<b>ed Bacon 2-lbs 89c</b>	<b>STAR KIST CHUNK STYLE TUNA can 29c</b>	
<b>angeade can 25c</b>	<b>Clays</b>	
<b>ROZEN Green Peas 95c</b>	<b>U. S. NO. 1 RED Potatoes 10 lbs. 39c</b>	<b>FIRM CRISP Carrots 1 Lb. Ceilo Bag 10c</b>

Save Valuable IGA Red Stamps—Double on Wed

**CLAY Food Store**

**Here comes the Blue Chip line of trucks:**

**GMC's BIG 1957 MONEY-MAKERS**

With new V8's to 232 hp  
With 4- and 6-wheel models to 60,000 GCW  
With advanced Hydra-Matic Drive\*  
New cabs with 89" b.b.c.

THESE '57 GMC's are going against the amazingly low cost records set by their famous '56 versions. But—as you can see—they've got plenty to smash those records with!

In fact, these Blue Chip advantages are in 36 models that can be practically custom-built for their jobs. What you need, we sure have got. Call us—and we'll have a man over to prove it!

\*Standard on some models; optional at moderate extra cost on others

See us, too, for Triple-Checked used trucks

**NASH APPLIANCE & SUPPLY CO.**  
115 WEST OKLAHOMA WHEELER, TEXAS

**"Highlander" —**  
(Continued from page one)

ness, is being used in introduction of the new appliance, called the "Highlander", which comes in a plaid crate.

The Highlander is an entirely new washer, engineered from the ground up by a Maytag research team whose goal was to develop an efficient, high quality automatic washer to be marketed in the price bracket never before served by the Maytag automatic washer line.

Although of a completely new mechanical design, the Highlander retains basic Maytag features, such as Gyrofoam washing action, a lid shut-off switch, rapid action tub brake, rust-proof steel cabinet, porcelain enamel spin basket and outer tub, unbalance switch, adjustable leveling legs and completely flexible automatic control.

Featuring modern styling, the Highlander also has some exclusives of its own, including Swirl-away draining action, simple and efficient helical drive, toggle-switch water temperature selection, aerated spray rinse, efficient balance band and reversible motor.

**HARKINS RITES IN SHAMROCK**

Funeral services for Mrs. Marly E. Harkins, 75, were conducted at 2 p.m. Monday from the First Baptist Church here. Burial was in Shamrock Cemetery under the direction of Richerson-Lamb Funeral Home of McLean.

Mrs. Harkins died Saturday at the home of a son, F. B. Harkins, of the Finney Community near Plainview. She was a native of Georgia.

Survivors include four daughters, Mrs. Cora Harris of Kelton, Mrs. Mary Holbrook of Warrick, Okla., Mrs. Virgie Martindale of McLean and Mrs. Dorothy Law of Alameda, Calif.; two sons, Tommy Harkins of Plainview and F. B. Harkins of Finney; a brother, Willie Beard, and a sister, Mrs. Alice Herweck, both of Ardmore, Okla.; 30 grandchildren and 27 great-grandchildren.

**MOBEETIE NEWS**  
(Continued from page one)

Mr. and Mrs. Jack Crump of Pampa, visited in Wheeler and Mobeetie, Sunday afternoon.

Kenneth and Don Newman, students at Clarendon College, spent last week end with their parents, Mr. and Mrs. Johnny Newman.

Mr. and Mrs. R. St. John were guests, Sunday in the home of their son and family, Mr. and Mrs. Byron St. John and family, in Dumas.

Mrs. Ruby Seitz Baird, whose home is near Borger and her nephew, visited in the Matt H. Sims, Sunday evening.

O. G. Beck transacted business in Shamrock, Saturday.

Mr. and Mrs. Bill Godwin and son of Amarillo and Arthur Don Burke of Pampa were week end guests in the Alvis Burke home. The Godwins also visited his parents, Mr. and Mrs. Willard Godwin, while here.

The Perry Gobers of Canadian, visited his parents, Mr. and Mrs. P. Gober, Sunday.

Mr. and Mrs. I. T. Goodnight visited in Pampa, Monday.

Mr. and Mrs. Kenneth Walker and daughter of Sunray, visited her parents, Mr. and Mrs. C. Mixon. They also visited his sister and brother, Mr. and Mrs. S. W. Williams and family and Mr. and Mrs. Pierce Walker, while here.

The R. H. Dysons of Pampa, visited in Mobeetie and Wheeler, Saturday.

Mr. and Mrs. Stacey Arnold, Jr., and sons of Shamrock visited in the home of his parents, Mr. and Mrs. S. E. Arnold, Sunday.

TURN ON YOUR PORCHLIGHT!

JOIN THE MOTHERS' MARCH ON POLIO!

**Bank Deposits —**  
(Continued from page one)

Bank of Mobeetie had \$599,118. Combined loans at the two banks show a decrease of \$3,470 over the corresponding date a year ago. Loans total \$821,065, compared with \$824,535 12 months ago. Loans at the First National Bank total \$487,675, lower by a few thousand dollars as compared with \$504,702 a year ago. The First State Bank's loans total \$133,390, an increase over the \$119,833 of 12 months ago.

R. J. Holt, president of the First National Bank, said deposits at his bank were some \$300,000 more than ever before in the long history of the local institution.

**Wheeler Gets —**  
(Continued from page one)

Ray Poage, Happy. TACKLES: Bill McCormick, Wheeler, Gary Caywood, Happy. GUARDS: Don Read, Whiteface, Dennis Wilsford, Wheeler. CENTER: James Cox, Wheeler. QUARTERBACK: Gary Poage, Happy. HALFBACKS: Gerald Hermesmyer, Groom, Jo Jo Jaco, Wheeler. FULLBACK, Jim Porter, Wheeler.

OUTSTANDING LINEMAN: Don Read, Whiteface. OUTSTANDING BACK: Gary Poage.

SECOND TEAM Ends, Leon Auglin, Groom, Gary Bowe, Happy.

Tackles, Ernest Welier, Groom, Jimmy Marshall, Silverton.

Guards, Darrell Moore, Wheeler, Lance Harrington, Stratford. Center, Bill Penn, Happy.

Quarterback, Harold Crossland, Wheeler.

Halfbacks, Wayne Cole, Happy, Neal Allen, Whiteface.

Fullback, Alvin Ellithorp, Matador.

HONORABLE MENTION: Billy Spiller, Spearman; Midge Ramos, Whiteface; Jack Cauble, Vega; C. L. Dunn, Silverton; Sharrad Arnold, Turkey; Richard McMin, Stratford; Garland Cartwright, Matador; Mike Neal, Stratford; Sammy Turner, Silverton; Lance Harrington, Stratford; and Max Reno, Groom.

**Stockholders —**  
(Continued from page one)

to serve another year. They are R. J. Holt, president; R. J. Holt, Jr., vice president and cashier; Adrian Risner, and Joe D. Rogers, assistant Cashiers.

Directors named were: R. J. Holt, R. J. Holt, Jr., C. B. Holt, D. E. Holt, Jr., and Mrs. R. J. Holt.

The bank is to be congratulated upon entering its 49th year of service to Wheeler and surrounding community. It is one of Wheeler's oldest business firms. The call statement published in this issue shows total deposits of \$1,933,846, and total assets of \$2,088,436.

**1957 Kiwanis —**  
(Continued from page one)

Hall, Chairman, Charles Slemmer, Al Thomas, Max Wiley.

Support of Churches & their Spiritual Aims: T. J. Daughtry, Chairman, Wayne Edwards, Geo. Healey, C. C. Merritt.

Achievement Report: George Gandy, Chairman, Tom Britt, C. J. Meek, Earl Brown.

Attendance and Membership: Percy Farmer, Chairman, Wayne Edwards, Tom Britt, C. J. Meek.

Finance: Directors. House: Carlton Thomson, Chairman.

Interclub Relations: Gordon Stiles, Chairman, David Britt, Watson Burgess.

Kiwanis Education & Fellowship: Tom Britt, Chairman, Earl Brown, Grainger McIlhany.

Laws and Regulations: Grainger McIlhany, Chairman, Archie Hibler, Max Wiley.

Program and Music: P. E. Yarbrough, Chairman, C. J. Meek, Carlton Thomson, Carroll Killingsworth, Bill Owens, George Taylor.

Public Relations: Carl Lafin, Chairman, Harry Wofford, Thurman Rives, Charles Slemmer.

Reception: Lewis Lancaster, Chairman, Bill Owen, Dick Guyner.

**Last Rites —**  
(Continued from page one)

1870 and departed this life at Wheeler, January 7, 1957 at 12:10 a.m. Age 86 years, one month and 20 days. She came to Wheeler County in 1921. She was a member of the Mobeetie Methodist Church.

Survivors include the children: Mrs. Aliee Moore, Colorado City; Mrs. Clara Chisom, Miami; Lee and Ernest Seitz of Eldorado, Okla.; Mrs. Bessie Galmor of Mobeetie; Mrs. Oma Ward of Broken Arrow, Okla.; Mrs. Jackie Johnson of Morton; and Mrs. Floyd Weaver of Los Angeles, Calif.

Also surviving are 22 grandchildren and 12 great-grandchildren.

Her husband, three sons, three daughters, a sister, and three brothers preceded her in death.

**Wheeler Gas Co. —**  
(Continued from page one)

of its annual reports filed with the Railroad Commission of Texas covering its operations the past five years. Its reports to the Commission have been sworn to and have been checked and approved by employees of the commission. The company says it will gladly cooperate with any competent auditor the council may see fit to employ to compare these reports with their records for verification.

The company has also furnished the Mayor and each councilman a copy of the 1955 annual report of the state Railroad Commission, stating that these reports show there are 825 towns in Texas using natural gas under the supervision of the Commission.

This report shows that 131 of these towns, with population of from 1400 to 59,000, are paying an average of over \$1.00 per thousand for domestic gas, among which are such towns as Brenham, Cuero, Laredo and San Benito.

221 towns with population as high as 18,000 are paying an average of over 90c per thousand for domestic gas, among which are

**LIBERTY THEATRE**  
Shamrock, Texas  
Phone 111

**LAST DAY TODAY "ARTISTS AND MODELS"**

With Dean Martin and Jerry Lewis as the Artists and Anita Ekberg, Eva Gabor and Shirley MacLane as the models... It's Dean's and Jerry's most laughable and colorful best!

**PLUS "APACHE DRUMS"**  
Starring Stephen McNally

**FRIDAY & SATURDAY**

ROY ROGER'S TRIGGER  
**Sunset in EL DORADO**  
with GEORGE "GABBY" HAYES and BOB BAILEY  
YOU HOLD UP AND THE TONS OF THE PIONEER

PLUS  
**The BIG GAMBLE**  
RE-EDITED FROM "THE INSIDE STORY"

Starring Marsha Hunt, William Lundigan, Charles Weninger, Cal Patrick  
**The BIG GAMBLE**  
A REPUBLIC PICTURE

**CHAPTER 7 & CARTOON**

**Prevue Saturday Nite, SUNDAY, MONDAY AND TUESDAY**

**ADVENTURE SWEEPING FROM KENYA... TO THE CONGO!**

COLOR BY  
**ROBERTO FLEMING-CAREY**  
with ANNA - ELEANOR CUMBERBELL  
**Odongo**  
ADVENTURE ON THE AFRICAN FRONTIER  
CINEMASCOPE  
TECHNICOLOR  
A WARNBROOK PRODUCTION - A COLUMBIA PICTURE

Jungle Thrills!  
Jungle Terror!  
Jungle Love!

Starring  
**4 Girls in Town**  
CINEMASCOPE  
Technicolor

Starring  
**George Nader • Julie Adams**  
Marianne Cook • Elsa Martinelli  
Gia Scala • Sydney Chaplin  
Grant Williams • John Gavin

Also Newsreel and Cartoon

**Del Rio, Estelline, Burnett and Franklin.**

284 towns, including Fort Worth with a population of 343,000 are paying an average of over 80c per thousand for domestic gas, others are Arlington, Comanche, Alice, Knox City, Bonham and Colorado City.

This leaves only 180 of the 825 towns under the jurisdiction of the Railroad Commission paying a lower price than those set out above.

The present Wheeler rate, which was in effect back during the 1930 depression years is: 60c net for the first 10M feet; 50c for the next 15M, and all above 25,000, 40c, with a \$2.00 minimum charge.

We are informed that no special rate is being asked for as yet; or has a time of hearing been set. The Gas Company has asked the information presented to it, and set a rate which will be in line with those in other Texas towns now furnished gas by companies encountering the difficulties now confronting the local company.

Edna Wright, Gordon Whitener and Nancy, Mr. and Mrs. Arthur Whitener, Mr. and Mrs. Bud Vanpool and family, Mr. and Mrs. Herman Whitener and family of Levelland all had dinner with Mrs. Ina Young in Amarillo, Sunday. In the afternoon they visited Mrs. Gordon Whitener who is a patient in the hospital there.

**TEXAS THEATRE**  
Shamrock, Texas  
Phone 110

**LAST THREE DAYS**

**THE PRETTY TEACHER ...AND THE BOY WHO GREW UP TOO FAST!**

UNIVERSAL-INTERNATIONAL Presents  
**ESTHER WILLIAMS**  
**GEORGE NADER**  
**THE UNGUARDED MOMENT**  
and its shocking aftermath!

Co-starring the exciting new personality, **JOHN SAXON**  
with **EDWARD ANDREWS - LES TIDEMAN**

This is the story of suspense and fear that only a woman can experience.

**Sunday, Monday And Tuesday**

**A LOVE STORY FOR EVERY WOMAN!**

The sparkling story of eager young beauties in search of money... men... and marriage!

**4 Girls in Town**  
CINEMASCOPE  
Technicolor

Starring  
**George Nader • Julie Adams**  
Marianne Cook • Elsa Martinelli  
Gia Scala • Sydney Chaplin  
Grant Williams • John Gavin

Also Newsreel and Cartoon

**Annual C of C —**  
(Continued from page one)

in attendance or not will be mailed out within the next few days, Mr. Guyner stated this week.

Nora's Cafe will again serve the banquet. They always serve delicious meals and are not slow in getting the large crowds attending these C of C banquets fed.

A complete report of the accomplishments and plans for next year will be given along with recognition of outstanding visitors and other dignitaries.

Make your plans now to hold open the night of January 29 and attend the C of C banquet at the Legion Hut.

**Ross Purcell —**  
(Continued from page one)

Church at Canadian. Mr. Purcell was a World War 1 veteran and a member of the Briscoe Methodist Church.

Survivors include his wife, Dolly Purcell, Marion and Peggy. His sisters are: Mmes. Lillie Jackson, Perryton; Elsie Bridwell, Crosswell, Oregon; Lora Smith, Salem, Oregon; Mildred Eastburn, Brownsville, Oregon; Neva Bridwell, Pampa; and a sister-in-law, Mrs. Anna Purcell of Hutcheson, Kans. His brothers are: Bill Purcell, Cottage Grove, Ore.; and Cecil Purcell, Saginaw, Ore.

Services at the Cemetery were conducted by the Wheeler and Canadian Posts of the American Legion. Burial was in the Canadian Cemetery.

**Wheeler Boys —**  
(Continued from page one)

and Allison to gain a place in the finals. In the consolation finals, Briscoe once again defeated Canadian to win consolation.

Miami girls, one of the fastest grade teams in this area whipped Mobeetie & Wheeler before downing Canadian in the finals. After their defeat by Miami, Wheeler came back to knock off Allison 25-15 and then trimmed Briscoe 33-29 in the consolation finals.

In other recent grade games, the Wheeler boys squeezed by Samnorwood 34-32 in two overtime with Jimmy Atierton making the winning basket. Wheeler lassies were outclassed 43-19 by Norwood.

On the local court Monday night, Atherton and Watson teamed up for 16 and 13 points respectively to down Allison Antelopes 44-15. Audie Holdeman hit ten points to lead the Wheeler girls to a 17-10 victory over the Allison girls.

The grade teams will go to Miami Thursday night and then will entertain the Wellington teams at Wheeler Monday, January 14 at six o'clock.

Mrs. Thurman Rives was returned to her home Sunday after having been confined to the Shamrock General hospital.

Mr. and Mrs. Amos May, Mr. and Mrs. B. K. Barham, Mr. and Mrs. A. E. Brown, Mr. and Mrs. Burley Mann attended a show in Shamrock, Friday night.

Mrs. G. A. Martin for California where funeral services for Bennie Morgan, Wheeler County.

**SAL CONTINUED With Other**

ALL LADIES HATS 1/2

ALL LADIES Winter Coats 1/2 OFF

FOUR IN ONE BELTS ALL \$1.25

NOSE McILHANNON DRY GOODS

"Headquarters for Advertisers"

**FOOD FOR BETTER MEALS**

PUCKETT'S BEST  
**FLOUR 25 lb bag 1.**

CINCH CAKE MIX	BOX	21c	U. S. GOOD CHUCK ROAST
BESTEX CRUSHED PINEAPPLE	303 CAN	23c	TOP O' TEXAS BACON
STURGEON BAY CHERRIES	NO. 2 CAN	25c	LONGHORN CHEESE
PREMIUM CRACKERS	1 LB. BOX	25c	MY-T-FINE PUDDING

**COFFEE CAINS 8 pound**

RANCH STYLE Beans	2 303-CANS	25c	RED Spuds	6
-------------------	------------	-----	-----------	---

STARKIST CHUNK  
**Tuna 31c**

SKINNERS MACARONI	2 BOXES	25c	TEXAS PURPLE TOP TURNIPS
-------------------	---------	-----	--------------------------

SOAP DIAL	Reg. Size, 2 for	27c	ALLEN GREEN BEANS	2 No.
	Bath Size, 2 for	35c		

These Prices Good Friday, Saturday, and Monday.  
Double Stamps Every Wednesday on Purchase of \$2.50 or more

**Puckett's WHEELER, TEXAS FOOD MARKET**