



THE WHEELER TIMES

(USPS-681-960)
VOLUME 78, NUMBER 16

THURSDAY MARCH 29, 2012

SINGLE COPY **50c**

"Wheeler; town of friendship and pride."

CWE CHAT WITH EDITOR

By Louis C. Stas

Congratulations to those students advancing in U.I.L.! We are proud of you.

Congratulations to Wheeler's One-Act Play Cast! The play will advance to Regional competition on Tuesday, April 2.

Congratulations to those receiving individual recognition in the One-Act Play competition. Abby Bond, Honorable Mention All-Star Cast, Alyssa Johnson, All-Star Cast, and Tanzania Brown, Best Actress.

This is one of those weeks of trying to make room for everything on the front page. Other weeks, we may be looking for something to go on the front page.

Thanks for all the help in getting the pictures of the students.

As we have told you for the last two weeks, we started on the Thursday, April 2, edition of the Times on Tuesday, March 27. You will get your paper on schedule, but we are supposed to be on a week's vacation.

The rain received last week was certainly appreciated. In the two showers, Wednesday and Wednesday night, I measured 7.1". Much appreciated and I don't think any of it was wasted.

The yard has been sprayed and I managed to get it mowed. It is starting to green up.

We were in OKC over the weekend, but our plans were changed, since Seth was diagnosed with strep throat. It was caught early and was over it by Monday to go to school.

Cards were played Monday night with Barbara and Mike winning the first and last game. Patsy and I won the second game.

STORM REPORT

As Reported by Stormie Meriwether, Second Grade Student

Dear Friends, Oh, my world is so beautiful! You can't believe it. All the trees were covered with the pink and white flowers. My favorite tree first had bright pink, almost red, buds and very tiny green leaves. Then they popped open. They were soft pink. Then they opened all the way open and they were white like a cloud.

The next day it rained all day. The beautiful petals fell to the ground like pink and white snow.

Now the ground is beautiful like a fairyland.

I think the tree flowers are doing a life cycle. That's what we learn about in school. Trees have a long life cycle. Every year they make the flowers and the leaves.

Then they die and start over again.

In my class we planted seeds.

Most of the girls planted sunflower seeds. I had to plant cabbage seeds, 'cause I was gone to my reading class and when I got back the teacher said, "Stormie, you have to plant cabbage seeds. All the flower seeds are gone."

I was a little sad about that, 'cause flowers are my favorite.

The I saw my friends Hannah and Grace were planting cabbage seeds too. All of the boys planted cabbage seeds. Now I think it's good that I planted cabbage seeds. My cabbage will have beautiful purple leaves and I can eat it, but I don't think I like to eat cabbage.

I am so excited! It's almost time for Seth to come to see me. I miss that little guy! That's it.

Commissioners Court Meets Mon.

The Commissioners' Court of Wheeler County, Texas, met in regular session on Monday, March 26, 2012, at 9:00 a.m. in the Commissioners' Courtroom of the Wheeler County Courthouse, 401 Main Street, Wheeler, Texas, to consider prior bills and discuss matters of mutual concern.

At 10:00 a.m. the court considered twelve items on the agenda. There were no minutes for the court to consider.

The hourly payroll time sheets were approved for payment. The bills were approved for payment as presented.

(Continued Page 10)

Local Performance Thursday

Wheeler One-Act Play Advances; 3 Individuals Are Recognized

Wheeler I.S.D. entered the Zone One-Act Play competition at Stinnett on Tuesday, April 20, 2012. The high school students made an excellent presentation and will advance to District competition on Tuesday, April 2, 2012, at the Canadian High School auditorium.

Three individual cast members won recognition. Tanzania Brown, a senior, was named Best Actress. Alyssa Johnson, also a senior was named to the All-Star Cast. Abby Bond received Honorable Mention; she is a sophomore.

District U.I.L. Meet In Canadian Friday

A group of Wheeler High School students participated in the District U.I.L. Competition held in Canadian Friday, March 23, 2012. Of the 15 students entering, five will continue on to regional competition on April 20, 2012, in Levelland.

Placing at the event Friday were:

Alyssa Johnson 3rd Overall Science and 2nd Place Biology, 1st Individual Mathematics and 1st Place Team Mathematics, 4th Ready Writing
Elizabeth Horton 1st Place Mathematics Team, 9th Place Literary Criticism

Andrew Coomer 1st Place Mathematics Team
Destrie Kinnaman 1st Place Mathematics Team

Breann Robinson 1st Place News Writing, 4th Place Editorial Writing, 5th Place Headline Writing
Chase Miller 6th Place Editorial Writing

Danni Johnson 7th Place Literary Criticism
Those students continuing on to Regional will be: Destrie Kinnaman, Breann Robinson, Alyssa Johnson, Lizzie Horton and Andrew Coomer

Wheeler Track & Field Placings

Wheeler Varsity Girls Quannah Track Meet Results

4x100 Relay: 6th Gabi Menefield, Abby Bond, Alyssa Kinnaman, Kori Howard
1600m Run: 3rd Dulce Castillo
100m Hurdles: 4th Kori Howard
4x200m Relay: 6th Gabi Menefield, Abby Bond, Alyssa Kinnaman, Kori Howard
800m Run: 6th Danni Johnson

Wheeler Varsity Girls Shamrock Meet Results

400m Relay: 4th Gabi Menefield, Kori Howard, Abby Bond, Alyssa Kinnaman
800m Run: 5th Dulce Castillo
800m Relay: 4th Gabi Menefield, Kori Howard, Abby Bond, Alyssa Kinnaman
1600m Run: 5th Dulce Castillo
Triple Jump: 7th Kori Howard
Discus: 3rd Abby Bond

Here are the Wheeler Varsity Girls track results from the Gruver Track meet March 9, 2012.

400m Relay: 6th Gabi Menefield, Kori Howard, Abby Bond, Alyssa Kinnaman
800m Run: 4th Danny Johnson
800m Relay: 6th Gabi Menefield, Kori Howard, Abby Bond, Alyssa Kinnaman

Quannah Track Results JV Boys

Team finished 6th with 10 points

Fort Elliott Hosts O.A.P. Competition

Fort Elliott High School hosted the UIL One-Act Play competition on Wednesday, March 21 at Briscoe. Advancing plays were Follett, with "Quite Please," and Higgins ISD with their performance of "The Outsiders." Fort Elliott received alternate for their production of "Bad Seed". Darrouzett also participated with a play entitled "Shut and Bar the Door."

Both the Best Actor and Best Actress awards went to Higgins students R.J. Williamson and Melissa Callaway. Other individual honors were:

ALL STAR CAST: Fort Elliott, Kaylynn Kiker and Hannah Stiles; Follett, Corey Tyson and Kendall Hamill; Higgins: Colton Protz, Lance Wear and Andy Mulkey.

HONORABLE MENTION ALL-STAR CAST: Fort Elliott, J.T. Smith and Andrea Martinez; Higgins, Casey Birkett; Darrouzett, Brady McCaslin; Nickki Robinson and Stewart Miller, and Follett's Levi Lohmeyer

(Continued Page 10)

The play performed was "The Cover of Live" by R. T. Robinson. A Community Performance of the play will be offered on Thursday, March 29, 2012.

Because of the intensity of the play, it is not recommended for elementary age children.

Cast members and the parts they play are Abby Bond, Kate Miller; Maggie Jones, Aunt Ola; Bree Carr, Weetsie; Tanzania Brown, Sybil; Alyssa Johnson, Todd; Maggie Jones, Addie Mae, and Brody Richardson, Tommy. Crew members are Andrew Coomer, Jacob Thomas, Jake Ware and Daniel Gonzalez. The play is directed by Suzy Lee; she was assisted by Angie Ware.



WHEELER'S ONE-ACT PLAY CAST: Wheeler's One-Act Play, "The Cover of Live" advanced to District Tuesday, March 20, 2012. Three individuals received special recognition. Cast members are (back row, l. to r.) Daniel Gonzalez, Jacob Thomas, Andrew Coomer (front) Ilene Butler, Abby Bond, Honorable Mention All-Star Cast; Alyssa Johnson, All-Star Cast; Tanzania Brown, Best Actress; Bree Carr and Maggie Jones



U.I.L. REGIONAL QUALIFIERS: A group of Wheeler High School students traveled to Canadian Friday, March 23 for District U.I.L. Competition. The students pictured to the left qualified for Regional competition. They are (l. to r.) Destrie Kinnaman, Breann Robinson, Alyssa Johnson, Lizzie Horton and Andrew Coomer.



14th Annual Ja'Nae Goad Memorial Golf Tournament

The 14th Annual Ja'Nae Goad Memorial Golf Tournament will be held Saturday, April 21 at the Shamrock Country Club. This tournament will be an 18 hole scramble format and will offer tee times of 8:30AM and 2PM. High School students wishing to enter the tournament will play on Friday afternoon. A putting contest for youngsters will also be held on Saturday. For more information please contact Cecil Thomas at 826-5809, Ida Goad at 826-5254 or Bobby Jennings at 826-3153. You may also log on to www.janaegoadgolf.com or find us on Facebook.

Donations of \$25 from businesses will go toward special prizes such as closest to pin, longest drive and longest putt. Donations from individuals or businesses of \$50 or more will sponsor a tee box. Individual gifts for door prizes are also accepted.

Again this year a hole in one prize will be donated by Barber Dyson Ford of Elk City. Contestants will have opportunity to win a new vehicle if they make a hole in one from a pre-determined tee.

Ball Sign-Up Tues.

Wheeler baseball sign-up will be Tuesday, April 3, 2012, in the Wheeler School Cafeteria at 6:00 p.m.

Charges will be: T-ball, \$35, and Machine Pitch, \$40.

Chances to win various donated raffle items will also be available. The items will be on display at local businesses preceding the tournament and at the golf club the day of the tournament. (Continued Page 10)

Wheeler Girls At Gruver Track Meet

The Wheeler Varsity Girls track results from the Gruver Track meet on March 9, 2012, were as follows:

400m Relay: 6th Gabi Menefield, Kori Howard, Abby Bond, Alyssa Kinnaman
800m Run: 4th Danny Johnson
800m Relay: 6th Gabi Menefield, Kori Howard, Abby Bond, Alyssa Kinnaman

OMJM Schedules Mexican Pile-On

A Mexican Pile-On Dinner has been scheduled for Sunday, April 1, 2012 at the Old Mobeetie Jail Museum Visitor's Center. Serving will be from 11:30 A.M. to 2 p.m. Proceeds will benefit the museum.

The Visitor's Center is located 2 blocks east of the Old Jail in Old Mobeetie.

Come out and enjoy some good food and good fellowship.

KELTON HIGH SCHOOL STUDENTS QUALIFY FOR REGIONAL U.I.L. COMPETITION

Kelton HS completed in the UIL 1A District 8 Academic Contest at Frank Phillips College in Borger Friday, March 23rd. For the first time since 1995, Kelton entered contestants in Speaking Events. All 3 of Kelton's entries made the finals in Prose Interpretation. Pictured from left to right are: Jessica Alls (4th overall), Charmayne Hampton (5th overall), Elizabeth Moore (1st overall and will go on to compete at Regionals), and Mrs. Stacy Engelke (English teacher/sponsor/coach). The UIL 1A District 8 Academic Contest had 14 School districts represented in various contests. Tammy Lumpkin placed 4th in Calculator, which makes her an alternate to go on to compete at Regionals. Eleven Kelton students competed at the district meet.

Chesapeake Donates Truck To Mobeetie Vol. Fire Department

Pickup to be Part of Department's First Response Team

Chesapeake Energy Corporation recently donated a 2009 Chevy Silverado half-ton four-wheel drive truck to the Mobeetie Volunteer Fire Department. The pickup will serve as an extra vehicle for the department, helping

improve emergency response time for the firefighters. Fire Marshall Randy Finsterwald requested the vehicle to aid the department's first response team. The truck was formerly part of Chesapeake's fleet.

On Friday, March 23, Chesapeake Manager of Corporate Development James Roller presented the truck to Mobeetie Fire Chief Jackie Don May and his department. Mobeetie Mayor Gor-

Wheeler Plays In Area Golf Meets

Wheeler boys played a golf Monday, March 5, 2012, at Borger Country Club in the West Texas Golf Tourney

As a team they turned in a 420 which put them at 5th in the tournament.

The girls played at Booker in the Booker Invitational.

Brittney Robinson shot a 121 and was good enough to get the second medalist.

Locals Place In Houston Events

Wheeler was well represented at the 2012 Houston Livestock Show and Rodeo on March 8 through 18.

Results:
Kynzi Blankenship - 1st place class 3 of light weight cross barrows (Made Sale)

Houston Hardcastle - 3rd place class 2 light weight cross barrows (Made Sale) Attachment on e-mail Jacob McNeil - 4th light weight Duroc barrows. (Made Sale) Do not have picture yet.

3000 barrows were exhibited from all over the state of Texas
Garrett Andis - Awarded a \$1500 scholarship for his calf scramble heifer.

Also students that exhibited at the Houston Stock & Sheep, Cassidy Andis (Pig and Steer), & Hayden Guest (Pig).



FIRST PLACE IN HOUSTON & SCHOLARSHIP RECIPIENT: Kynzi Blakenship placed 1st at the Houston Livestock Show. She is shown here with her pig "Wbur", and her buyers at the sale. Also pictured is Garrett Andis, who received a \$1500 scholarship for his calf scramble heifer. Kynzi would like to thank everyone for their support! Pictured (front, l. to r.) Renee Blankenship, Kynzi, Macey Blankenship, Justin James, Wheeler Ag teacher; (back row) Garrett Andis, Unknown, and Marcus Hardcastle.

OLD TIMES NOT FORGOTTEN

By Roland Miles

PORCHES

Being raised most of my growing-up years on two different farms, I couldn't help but notice some similarity in the two houses we lived in. Both of them were essentially a square box with a tall, pyramid shaped roof. One of them had a small upstairs room with a door that opened out on top of the front porch and the other one didn't. Seems that just about all farm houses had a porch on the south side and some had one on the east side, also. That...was just about ideal!

In the winter, you could sit on the south porch and you'd have a wind break from any north wind that might be blowing and the sun to do a little warming. On hot summer evenings, you could sit on the east porch and at least be out of the sun. The folks that built these houses had their thinking caps on. Since hardly anyone had air-conditioning, this was as good as it could get. At night, we slept with all the windows and doors open, to hopefully get a breeze to blow through the house. Boy, did it feel great when it did!

Porches were especially good for big families. In the summer, some of the kids could sleep out on the porch, or even make a pallet in the yard. Never mind snakes, or such...with the noise kids make, they would all be long-gone. Some folks would even screen in part, or all of their porch, to keep the mosquitoes from carrying off the kids, so they said. Well, it also

made it a lot more pleasant for mom and dad, too. Besides that, the screen would stop the wind from blowing the lamp out. Even the dogs liked the screened-in porches and it always made me feel better knowing that screen was between me and the coyotes, or any other critters that run around at night.

During the warm months, we'd keep our "cream separator" out on the back porch. Since mom didn't like for us to go tromping through the house after coming in from the hog pen, she'd make us leave our shoes out there, too. Sometimes, that was a little inconvenient, but I knew better than to complain about it.

Canadian Supply & Redi-Mix
for all your Concrete Needs!



Jerry Smith, Owner
806-323-5379

Sunday Nite Live
KPDR-FM, 90.3
... Live from Canadian
9:00 p.m. to 11:00 p.m.



ALL TYPES OF
AERIAL SPRAYING
CHEMICAL & SEED SALES

GRAY AG AIR

Serving Hollis and Wellington

P.O. Box 306
Hollis, OK 73550
(580) 688-2548 OR
(580) 688-2558

LYNN GRAY
Mobile: (580) 381-0306
REID ROBINSON
Mobile: (580) 318-2604

James G. Baker

ATTORNEY AT LAW

- CRIMINAL CASES-CASOS CRIMINALES
 - MIDMEANOR- DELITO MENOR
 - FELONY-FELONIAS
 - JUVENILE CASES-CASOS JUVENILE
 - OCCUPATIONAL LICENSE-LICENCIAS OCUPACIONALES
 - LICENSE SUSPENSION- SUSPENSION DE LISENCIAS
 - TRAFFIC TICKETS- MULTAS DE TRAFICO
- FAMILY LA W - CASOS DE FAMILIA
 - DIVORCES-DIVORCIOS
 - ADOPTION-ADOPCIONES
 - CHILD SUPPORT- CASOS DE MANUTENCION
 - CHILD CUSTODY- CASOS DE CUSTODIA
- REAL ESTATE-BIENES RAICES
 - WILLS-TESTAMENTO
 - PROBATE
 - SALES CONTRACTS-CONTRATOS DE COMPRA Y VENTA
 - DEEDS-ESCRITURAS
- NOTARY PUBLIC

Dumas Office:

Perryton Office:

(806) 934-9818
324 S. Bliss
Dumas, TX 79029
Across from the Post Office

(806) 648-1664
300 S. Ash
Perryton, TX 79070

Se Habla Espanol
Fee Payouts Accepted - Arreglos de Pagos

Did you get your
LICENSE SUSPENDED?

Did you get a
DWI?

Do you owe
SURCHARGES

To the Texas Department of Public Safety?

Then
You Need
An

OCCUPATIONAL LICENSE

PLEASE CALL

JAMES G. BAKER ATTORNEY OFFICE

PERRYTON TEXAS OFFICE: 806-648-1664
DUMAS TEXAS OFFICE: 806-934-9818

2/16-4/4pd

Wheeler County COURT RECORDS

List of instruments filed in the Wheeler County Clerk's Office from March 19, 2012 to March 23, 2012.

MARCH 19, 2012
EXT. DT-Mark J. Cadra, et ux to Capital Farm Credit PCA, 3-9-12, See Instrument.
MD-Laurie Thrash to Elizabeth Lee, 2-29-12, See Instrument.
ROW-Martha E. High to Sanguine Gas Exploration LLC, 2-1-12, E 100 acs. W 200 acs S/2 Sec. 5, Blk. L, J. M. Lindsey Survey.
ROW-Billy Buckingham, et ux to Sanguine Gas Exploration LLC, 2-1-12, NW/4 Sec. 21, Blk. L, J. M. Lindsey Survey.
C/C PROBATE-A. D. Weatherly to Ex Parte, 3-15-12.
EXT. OL-MAP2004-OK to QEP

Donation (from Page 1)
don Estes and State Senator Kel Seliger also attended the presentation.

"Chesapeake wants rural fire departments like the Mobeetie Volunteer Fire Department to have valuable resources to serve their communities," said Roller. "It is our hope that this truck will help the department respond to emergencies more quickly and increase public safety."

Roller added that Wheeler County is an important community to Chesapeake, and the company works to give back in the areas where it operates.

"For all Mobeetie firefighters, we thank Chesapeake for donating this pickup truck," said May. "Year after year our budgets are tight, and new equipment is hard to afford. Without support from companies like Chesapeake, we could not maintain our high level of service to the community."

Elected officials and community leaders are instrumental in working with Chesapeake to help identify local needs for the company to support.

"I hope this donation serves as a catalyst for future private-public partnerships for our city," said Gordon Estes, Mobeetie Mayor. "Through corporate donations, we are better able to serve Wheeler County residents, while staying within our municipal budgets. Thank you to Chesapeake for recognizing the value of rural fire departments and providing equipment that could help save lives of citizens in our community."

Sen. Seliger added his thanks, stating, "Volunteer fire departments are critical to the safety of our communities, but most are struggling through these lean budgetary times. This truck will help us meet the needs of Mobeetie and Wheeler County. I would like to thank Chesapeake Energy for giving back and helping West Texas communities."

Energy Company, 2-14-12, NW/4 Sec. 29, Blk. A-7, H&GN Ry. Company Survey.

ROW-James H. Hill, et ux to QEP Energy Company, 9-30-11, Pt. E/2 Sec. 21, Blk. A-4, H&GN Ry. Company Survey.

REL. FTL-United States of America to John P. Lavelle, 3-7-12.

REL. FTL-United States of America to John P. Lavelle, 3-7-12.

ASSIGN. BS-Upland Exploration Inc. to BXP Partners III LP, 2-27-12, NE/4 NE/4 Sec. 9, Blk. L, J. M. Lindsey Survey.

ASSIGN. BS-Upland Exploration Inc. to BXP Partners III LP, 2-27-12, N/2 NE/4 Sec. 2, Blk. L, J. M. Lindsey Survey.

ASSIGN. BS-Upland Exploration Inc. to BXP Partners III LP, 2-27-12, See Instrument.

ASSIGN. BS-Upland Exploration Inc. to BXP Partners III LP, 2-27-12, See Instrument.

ASSIGN. BS-Upland Exploration Inc. to BXP Partners III LP, 2-27-12, Pts. Sec. 5, Blk. L, J. M. Lindsey Survey.

ASSIGN. BS-Upland Exploration Inc. to BXP Partners III LP, 2-27-12, Pts. Sec. 5, Blk. L, J. M. Lindsey Survey.

ASSIGN. BS-Upland Exploration Inc. to BXP Partners III LP, 2-27-12, N/2 NE/4 Sec. 1, Blk. L, J. M. Lindsey Survey.

ASSIGN. BS-Upland Exploration Inc. to BXP Partners III LP, 2-27-12, Pts. Sec. 5, Blk. L, J. M. Lindsey Survey.



THE WHEELER TIMES
PAGE 2 - Thursday, March 29, 2012

"Wheeler: town of friendship and pride."

12, N/2 NW/4 & NE/4 SW/4 Sec. 1, Blk. L, J. M. Lindsey Survey.
ASSIGN. BS-Upland Exploration Inc. to BXP Partners III LP, 2-27-12, NE/4 NE/4 Sec. 9, Blk. L, J. M. Lindsey Survey.
ASSIGN. BS-Upland Exploration Inc. to BXP Partners III LP, 2-27-12, N/2 NE/4 Sec. 2, Blk. L, J. M. Lindsey Survey.
ASSIGN. BS-Upland Exploration Inc. to BXP Partners III LP, 2-27-12, See Instrument.
ASSIGN. BS-Upland Exploration Inc. to BXP Partners III LP, 2-27-12, See Instrument.
ASSIGN. BS-Upland Exploration Inc. to BXP Partners III LP, 2-27-12, See Instrument.

Inc. to BXP Partners III LP, 2-27-12, N/2 NW/4 Sec. 2, Blk. L, J. M. Lindsey Survey.
WELL-BORE ASSIGN.-Caltex Operating Ltd. to Forest Oil Corporation, 3-2-12, Sec. 32, Blk. A-3, H&GN Ry. Company Survey.
ROW-Stiles Land Assets Ltd. to Enogex Gas Gathering LLC, 3-5-12, Pt. N/2 Sec. 4, Blk. A-3, H&GN Ry. Company Survey.
OL-Rita Beth Weakley Lenoach, et vir to Samson LS LLC, 1-17-12, W/2 NE/4 & W/2 NW/4 Sec. 20, Blk. A-7, H&GN Ry. Company Survey.

(Continued Page 3)

RiverCrest Homes
Building distinctive custom homes designed for your one of a kind lot.
Quail Run Estates Coming Soon
1.5 to 5 acre lots across from Maxey's
Chip Hill 972-989-8019
chip@rivercrestproperty.com

PRESTIGE AUTOBODY & ACCESSORIES COLLISION CENTER

101 S. Hobart * P.O. Box 1140
Pampa, TX 79065
806-665-3500 * Fax: 806-665-2626
www.prestigeofpampa.com

Having an accident is always an inconvenient and emotional time. Our staff will assist you with filing your claim, dealing with your adjustor and finding a comfortable rental vehicle while we repair yours.

When repairing your vehicle back to its pre-accident condition, safety is always the most important issue. That is why our technicians are I-Car Certified and receive on-going training. This assures your vehicle will be repaired correctly and safely.

At Prestige, we know your vehicle is an extension of yourself. So let our friendly staff and quality work serve you today. Remember: All of our work and paint are guaranteed with a lifetime warranty.



Before



After

"Productivity appraisal" may lower the property taxes on your farm, ranch or timberland!

Texas law allows farmers, ranchers, wildlife managers and timber growers to pay property taxes based upon the productivity value of their land rather than on market value. This means qualified land is taxed based on its ability to produce crops, livestock or timber—not on its value on the real estate market. And it can mean substantial property tax savings.

When is the application deadline?

If your land has never had a productivity appraisal or you are a new owner, you must apply to your local appraisal district before May 1 to take advantage of this benefit on your 2012 property taxes. You may get up to 60 extra days if you have a good reason and ask for it before May 1. If you miss this deadline, you may still be able to apply, but you will pay a penalty. Check with your appraisal district office.

Do you need to reapply annually?

If your land already receives agricultural or timber productivity appraisal, you normally don't need to reapply unless the chief appraiser requires you to do so. If a new application is required, the appraisal district will notify you by mail.

For more information, call or come by:

Wheeler Central Appraisal District
PO Box 1200
402 S. Main
Wheeler, TX 79096
(806) 826-5900

Or contact:
Texas Comptroller Susan Combs
Property Tax Assistance Division
P.O. Box 13528
Austin, Texas 78711-3528

or call: 1-800-252-9121 and press "2" to access the menu and then press "1" to contact the Information Service Team.

or on the Web at: www.window.state.tx.us/taxinfo/proptax



A public service announcement courtesy of your county appraisal district.

A variety of homestead exemptions could lower your property taxes!

A homestead exemption lowers the property taxes on your home by lowering its value. If your home is valued at \$50,000 and you receive a \$15,000 homestead exemption, your home will be taxed as if it were worth \$35,000.

Who qualifies for an exemption?

Anyone who owns a home on Jan. 1 and uses it as a primary residence on that date is entitled to a \$15,000 homestead exemption to lower school taxes. It doesn't matter if your home is a house, condominium or mobile home. Counties, cities and special taxing districts may also offer homestead exemptions.

Are other exemptions available?

If you're disabled—or if you're 65 years old or older—you are entitled to an additional \$10,000 school tax exemption on your home. And if you qualify for the 65 or older or disabled exemption, you're also entitled to a permanent, locked-in "ceiling" on the school property taxes on your home. The county, city or junior college may adopt a tax ceiling for 65 and older or disabled homeowners. The age 65 or older homeowners school tax ceiling transfers to the surviving spouse, if the spouse is 55 years of age or older at the time of death and lives in and owns the home. The age 65 or older homeowners (or their surviving spouses 55 years of age or older) also may transfer the percentage of school tax paid, based on their former home's school tax ceiling to a new home.

If you're a disabled veteran who receives from the Veterans Affairs (VA)—(1) 100 percent disability compensation due to a service connected disability and (2) a rating of 100 percent disabled or a determination of individual unemployment, you are entitled to an exemption from taxation of the total appraised value of your resident homestead.

Do I have to apply each year?

No. If you had a homestead exemption on your home in 2011, you won't need to reapply for 2012 unless your chief appraiser requires it. However, if you haven't received an exemption on your present home—or if you've moved to a new home—you'll need to file for an exemption for 2012. If you are 65 this year, you may file for the age 65 or older exemption up to one year after the date you turned 65. And if you became disabled, you need to file for the disabled person's exemption.

When and where should I file?

File applications before May 1 at your appraisal district office. If you need more time, contact us at:

Wheeler Central Appraisal District
PO Box 1200
402 S. Main
Wheeler, TX 79096
(806) 826-5900

Or contact:
Texas Comptroller Susan Combs
Property Tax Assistance Division
P.O. Box 13528
Austin, Texas 78711-3528

or call: 1-800-252-9121 and press "2" to access the menu and then press "1" to contact the Information Service Team.

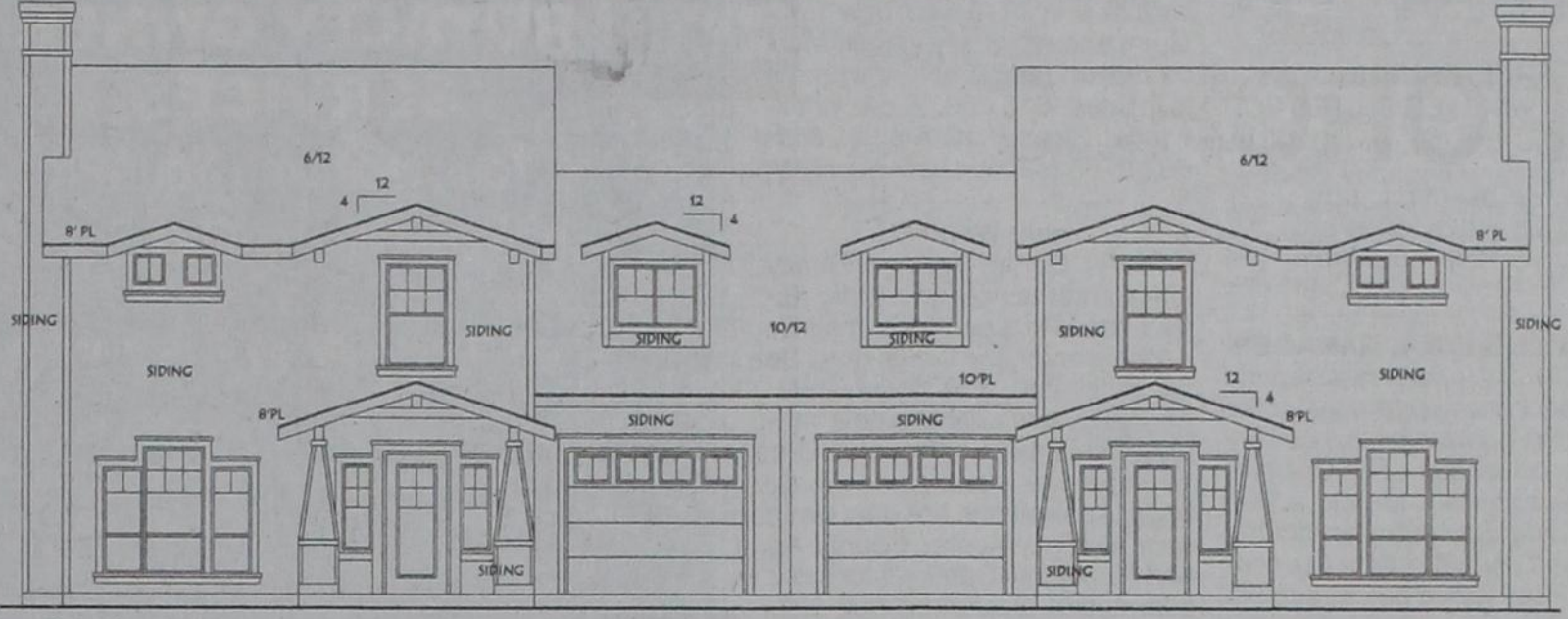
or on the Web at: www.window.state.tx.us/taxinfo/proptax



A public service announcement courtesy of your county appraisal district.

NEW LUXURY TOWNHOUSES FOR LEASE IN WHEELER

- 2-3 BEDROOM UNITS
- 2 BATH
- BONUS ROOM
- COMPLETE KITCHEN W/ REFRIGERATOR
- GRANITE COUNTERTOPS
- ENERGY EFFICIENT
- WASHER/DRYER READY
- 1-CAR GARAGES



Pricing for the homes:

901A (Left side)	1,193 SF Living, 2 bed, 2 bath, 1 car	\$1,750.00 1 year
901B (Right side)	1,193 SF Living, 2 bed, 2 bath, 1 car	\$1,750.00 1 year
809A (Left side)	1,193 SF Living, 2 bed, 2 bath, 1 car	\$1,750.00 1 year
809B (Right side)	1,193 SF Living, 2 bed, 2 bath, 1 car	\$1,750.00 1 year
807A (Left side)	1,404 SF Living, 3 bed, 2 1/2 bath, 1 car	\$1,875.00 1 year
807B (Right side)	1,404 SF Living, 3 bed, 2 1/2 bath, 1 car	\$1,875.00 1 year
805A (Left side)	1,404 SF Living, 3 bed, 2 1/2 bath, 1 car	\$1,875.00 1 year
805B (Right side)	1,404 SF Living, 3 bed, 2 1/2 bath, 1 car	\$1,875.00 1 year
803A (Left side)	1,637 SF Living, 3 bed, 2 1/2 bath, 1 car, bonus room	\$2,050.00 1 year
803B (Right side)	1,637 SF Living, 3 bed, 2 1/2 bath, 1 car, bonus room	\$2,050.00 1 year
801A (Left side)	1,637 SF Living, 3 bed, 2 1/2 bath, 1 car, bonus room	\$2,050.00 1 year
801B (Right side)	1,637 SF Living, 3 bed, 2 1/2 bath, 1 car, bonus room	\$2,050.00 1 year



Chip Hill
972-989-8019

www.rivercrestproperty.com



MOBEETIE NEWS

By Melba Corcoran

Dale Corcoran went to the doctor in Amarillo Tuesday. He had three appointments at the VA. I got chewed out for walking to work, so Dale got my golf cart out for me.

Those working at the museum this week were Suzanne Lohberger, Maurita Stribling, Gena Seitz, Louise Hogan, Melba Corcoran, Bill Finsterwald, Dale Corcoran and Joe VanZandt. The St Patrick display has been taken down and the Easter decoration put up. Typing of cards, filing and regular work normally done was accomplished. Suzanne and Alton Lohberger went to Amarillo Friday

and picked up supplies for the museum. Dale and Bill have been redoing the flower boxes. They were coming apart.

Saturday, a Sunday school class from the First Baptist Church in Pampa visited the museum. Those we knew of the group were Juanita Rogers, Jana Goldsmith and the bus driver, Randy Dyson. It was good to see them.

Sonja Tabor came home from the hospital Monday after her C Section. They named the baby girl Anna Sophia. They are doing fine. Hope the Fire Department did real good on the Little Dribblers tournament. I didn't get to go, but from all reports, the tournament was a good one.

It was good to see Kade Wilson and friends at church. He was visiting his parents, Loney and Melody Wilson and family. Remember Richard Dickey; he

is scheduled for surgery on Monday for his gall bladder.

Our sympathy goes out to the family of Lynn Shelton. He was the son of Tyson and Juanita Shelton and a nephew of Joe Shelton and Mae Bailey.

The Baptist Church had a pulpit committee from Silverton Sunday morning to hear Charley McDermott preach.

This has been a pretty week. Spring has arrived and it is getting warmer. It's warm enough that I have started driving the golf cart to work. We miss Dale coming up at about 15 minutes before time to go home. We knew when he came in that we should start closing down and get ready to leave.

It was good to see Mae Bailey at church Sunday. Candy Hilburn has been staying with them and helping out some.

Paul Vitelia has moved in the Galmor place. We welcome him.

Harry Sims had his RV Park full. He has 10 camp spots on Hamburg Street. His park is full service with electric, water and sewer. He has two over-filled trailers just west of the café. Sorry!

don't know who all the new ones are. For you old timers, we don't know everyone is Mobeetie anymore. There're so many new people here now with the oil field work; we welcome all of them.

Court

(from Page 2)

OL-Jana Kay Helstad to Samson LS LLC, 1-17-12, W/2 NE/4 & W/2 NW/4 Sec. 20, Blk. A-7, H&GN Ry. Company Survey.

DEED-Elmer Gail Ledbetter, et ux to G & S Family Land and Mineral Limited Partnership, 3-19-12, Sec. 66, Blk. A-7, H&GN Ry. Company Survey.

MD-Elmer Gail Ledbetter, et ux to G & S Family Land and Mineral Limited Partnership, 3-19-12, See Instrument.

Bill of Sale-Elmer Gail Ledbetter, et ux to G & S Family Land and Mineral Limited Partnership, 3-19-12, Sec. 66, Blk. A-7, H&GN Ry. Company Survey.

MARCH 20, 2012 AFF-Jimmy Nunn, et al to Methodist Episcopal Church of Wheeler, et al, 3-12-12.

DT-Barry Sanders to National Bank of Commerce, 3-19-12, Lot 6, Blk. 6, Mont-Lew Addition, Shamrock.

CONVEY./ASSIGN. BS-Fairway 2003-1 LLP to Regalo Resources LLC, 2-14-12, NW/4 Sec. 26, Blk. 13, H&GN Ry. Company Survey.

DEED-Bobbye C. Hill, et al to Sandy Basin Properties Ltd., 3-12-12, Lots 13-18, Blk. 1, Parkland Estates, Wheeler.

MARCH 21, 2012 ROW-Apache Corporation to Eileen M. Huyck, et al, 3-12-12, Pt. N/2 Sec. 1, Blk. A-4, H&GN Ry. Company Survey.

DEED-Teresa Harmon, et al to David Seitz, 3-1-12, Lot 25, Blk. 1, Old Mobeetie.

DEED-BAC Home Loans Servicing LP to Secretary of Housing and Urban Development, 1-14-10, 5 acs NW/4 Sec. 56, Blk. 17, H&GN Ry. Company Survey.

MARCH 22, 2012 ROW-Oleta Faye Levitt Ellis to Sanguine Gas Exploration LLC, 3-13-12, Pt. Sec. 59, Blk. A-7, H&GN Ry. Company Survey.

RDT-First National Bank & Trust of Elk City to Eric Bruce Zybach, et ux, 3-12-12, N/2 Sec. 13, Camp County School Land.

RDT-First National Bank & Trust of Elk City to Eric Bruce Zybach,

National Poison Prevention Week Children Act Fast - So Do Poisons

Did you know that each year, more than 1.2 million children ages 5 and under are unintentionally poisoned? Whether it's medication on your dresser, cleaning supplies under your kitchen sink, cosmetics in your bathroom or carbon monoxide from gas appliances in your home, you can take simple steps to keep your kids safe.

Household Poison Prevention Tips

• **Store potentially poisonous household products and medications locked out of your child's sight and reach.**
• Read labels to find out what is poisonous. Unsafe household products include toilet cleaners, bleach, oven cleaners and dishwasher products. Other potential hazards include medicines, makeup, plants, toys, pesticides, art supplies and alcohol.

• Never leave poisonous products unattended while in use. Many incidents happen when adults are distracted for a moment on the phone or at the door.

• Be aware of poisons that may be in your handbag. Store handbags out of the reach of young children.

• Do not mix cleaning products.

• Buy child-resistant packages when available.

• Keep products in their original packages to avoid confusion.

• Use child safety locks on cabinets where you have stored poisonous items.

Always Keep the Number for the Poison Control Center Handy.
Medcat

It's important to keep the number for the poison control center handy. By calling 1-800-222-1222 you will reach professionals that offer fast and free confidential help in English and Spanish. Most poisonings are resolved over the phone. The number works from anywhere in the United States, 24 hours a day, 7 days a week. However, if your child isn't breathing or has collapsed, call 911 immediately.



Citizens of Tomorrow (1961): Brenda Darlene Wallace, daughter of Mr. and Mrs. John Wallace.

For all your... Insurance Needs, See **Eastern Panhandle Insur. Agency, Inc.**
117 W. Texas St. - Wheeler
806/826-3573
•Auto •Home •Life •Health
•Commercial •Bonds



THE WHEELER TIMES
PAGE 3 - Thursday, March 29, 2012
"Wheeler: town of friendship and pride."

(Continued Page 5)
Old Time Gospel Music
KPDR-FM, 90.3
... In Wheeler
Sundays: 6:00 a.m. to 8:00 a.m.

TENACIOUS LAND SERVICES
Tommy F. Yowell, CPL
PETROLEUM LANDMAN
OFFICE 940-825-5000
CELL 940-872-7000
TFYowell@aol.com
211 MAIN ST.
NOCONA, TEXAS 76255

Remember to "Render!" Taxable property renditions are due April 16.

Does this apply to you?
If you own tangible personal property that is used to produce income, such as the equipment or inventory owned by a business, it does.

What is a rendition?
A rendition is a report to your county appraisal district that lists all of the taxable property that you owned or controlled on Jan. 1 of this year. This often applies to furniture, fixtures, equipment or inventory owned by a business.

What are the advantages of filing?

- You give your opinion of your property's value.
- You record your correct mailing address so your tax bills will go to the right address.
- If your property's value depreciated, you can file a report of decreased value.

What is the deadline?

- The last day for filing 2012 renditions is April 16.
- An automatic extension is available if requested in writing by the April 16 deadline.
- The chief appraiser may grant an additional 15 days after the deadline for an owner who shows good cause in writing.

REMEMBER!!
Filing is your responsibility. If you render late, don't render or file an incomplete or false rendition, you may face a 10 to 50 percent penalty.

File renditions with your local appraisal district at:
Wheeler Central Appraisal District
PO Box 1200
402 S. Main
Wheeler, TX 79096
(806) 826-5900

Or contact:
Texas Comptroller Susan Combs
Property Tax Assistance Division
P.O. Box 13528
Austin, Texas 78711-3528
or call: 1-800-252-9121 and press "2" to access the menu and then press "1" to contact the Information Service Team.



A public service announcement courtesy of your county appraisal district.

KIM'S KITCHEN
Dine-in, Carry-out, & Catering
Hwy 152 & 83
806.826.5102
Daily Buffet - Bakery
Open Seven Days A Week

Hyland's Pharmacy Downtown Wheeler
826-5561
Wedding Shower: Corby Chick & Keaton Falls
Shower Date: May 19, 2012
Baby Shower: Jennifer & Justin Lee
Introducing baby girl (Ashlynn)
Shower Date: April 22, 2012
Emily Driskell & Nathan McLaughlin
Shower Date: April 14, 2012
Wedding Date: June 30, 2012
Teresa Martinez Cervantes
Shower Date: April 14, 2012
Shower Place: Maxey's Steakhouse
The store for all your needs:
Prescriptions, Gifts for your loved ones, and More!

HOUSE HUNTERS-REALTOR
In Wheeler-15 Acres on County Road 15-A, Good Farmland, utilities available
Linda Laycock Broker, ABR, GREEN, SRES, e-Pro 806.662.1312
Larry Hadley Assoc. 806.662.2779
Jordan Oneal Assoc. 806.670.6623
Pampa MLS www.househunterspampa.com Amarillo MLS

Continuing Service offered by
Locklear Brothers
... for over 50 years
Residential Commercial For Workmanship You Can Be Proud Of
ORVILLE LOCKLEAR ROOFING
800-466-3120
580-323-3100
ORVILLE LOCKLEAR 40 Years Experience P.O. Box 904 Clinton, OK 73601
11/17-2/24p

Want Ads

Slide-In 5th Wheel Hitch for sale. \$250.00. 334-1573. 3/29c

FREE! FREE! FREE! It costs you nothing. Vote **WES CRITES FOR SHERIFF**. And the reward will be an honest and impartial Wheeler County Sheriff's Department. (Pd. Pol. Adv. by Wes Crites for Sheriff Campaign, Joe McQuay, Treasurer, 6090 US 63, Shamrock, TX 79079) 3/29-4/24p

SWIMMING POOL MANAGER
The City of Wheeler is accepting applications for a manager for the swimming pool for the 2012 swimming pool season. The City prefers the applicant to hold a Red Cross Life Savings Certificate. Applicant should review the contract at City Office before submitting application. Applications are to be reviewed at regular meeting April 16, 2012 at 7:00 p.m. The City reserves the right to accept or reject any or all applications. Send applications to City of Wheeler, P.O. Box 98, Wheeler, Texas 79096 or bring to City Office, 505 South Alan Bean Blvd.

REAL ESTATE APPRAISAL & SALES
Farm & Ranch Land Specialist
State Certified Appraiser
TEXAS SUNBELT SERVICES
Lavon Williams
806/826-0234
or 334-0909

\$5,000 Sign-On Bonus! tons of runs! Frac Sand Hauling. Owner Operators need tractor, pneumatic trailer, blower. 800-397-2338 3/29p

FIRE WOOD: Mesquite, Oak, Pecan. Delivery Available. 580-471-6230 3/23-4/12p

1986 Biltmore double wide mobile home for sale 1,344 sq. Feet, needs a new hot water heater and

back door. Has new energy saver windows in front and new front storm and wood entry door. Must be moved from property where it is located. \$10,000.00 can not finance! Please call Amy at 806-662-0765 (serious callers only!)

Help Wanted:
Wheeler County Ag and Family Life Center is now accepting applications for a part time, maintenance worker. Individual must be self motivated, able to work independently and willing to do a variety of cleaning. This job will be 20 hrs a week and some weekends. Applications are now available at the Wheeler County Ag and Family Life Center or for more information please call 806-826-5243. 3/23c

1990 Oldsmobile Silhouette, 8-passenger. Parked in 2009 due to electrical problem. Well maintained the 19 years it was driven. Slick. 405-200-9705. rtn

RV Park, Wheeler, TX, New addition now open. New Spaces ready to go. 806-669-4110. rtn

BULLS FOR SALE: Black composite, 2 yrs. old, LBW, gentle, moderate size, range raised, no grain, heavy muscle, reasonable priced. Joe VanZandt, 845-2101, cell 669-5436. 3/15pd/5-3c

Taking Applications for Tray Aide or Cook at Parkview Dietary. 826-1355 10/27rtn

Wheeler Historical Museum is looking for: Licensed and Bonded Electrician; Licensed and Bonded Heating and Air Contractor, and Carpenter—Bonded or Provide Equivalent Insurance. P.O. Box 449, Wheeler, TX 79096. Phone: 806-663-9511. 4/28rtn

Parkview Hospital and Parkview

ENERCEPT INC.
ROYALTY OWNER SERVICES
Are You Receiving Your Proper Share of Oil and Gas Sales?
We provide:
• Accounting and Accuracy of Payment Verification
• Accuracy of High Cost Severance Tax Charges
• Identification, Resolution and Collection of Royalty Payment Errors. Provided on either an Ongoing or Project Basis
Local References Available Upon Request.
Call Toll Free 1-800-658-7168
John McNab — Enercept, Inc. 3-3-13p

Assisted Living is now accepting applications for a Nurses's Aide for the 11 p.m.-7 a.m. and 3 p.m.-11 p.m. Shift. Competitive Salary with full benefits. Please call Sue Stiles D.O.N. at 826-5581 or apply in person at 901 Sweetwater Street, Wheeler, Texas. 12/9rtn.

NOTICE
The Wheeler County Treasurer's Office is currently accepting bids for a new computer system and software. Interested parties should submit bids to: Nancy Emmert, Wheeler County Treasurer's Office, P.O. Box 69, Wheeler, Texas 79096 or phone 806-826-3122. Bids will be opened and considered at the regularly scheduled Commissioners' court meeting on Monday, April 9, 2012 at 10:00 a.m. in the Commissioners' Courtroom of the Wheeler County Courthouse, 401 Main Street, Wheeler, Texas. Wheeler County reserves the right to accept or reject all or any part of any bid and to accept the offer most advantageous to us. All bids

POLITICAL CALENDAR
The following is a list of political offices open for election and the names of individuals who have announced in The Wheeler Times their having placed their names on the ballot for the March Primary.
Republican Primary
State Rep. Dist. 68
Trent McKnight
For Co. Commissioner, Pct. 3
Ron Brown
For Co. Sheriff
Rowdy Clark
Wes Crites
For Co. Attorney
Misty Walker
For Assessor/Collector
Scott Porter
(Subject to the action of the voters in the Republican Primary, Tuesday, May 29, 2012.)
Vote in the March 2 Primary
(Paid for by each of the political candidates listed as part of the "Political Announcement" which ran elsewhere in the paper.)

must meet all State and Federal Laws and must be good for 30 day. 2tc

INFORMATION FOR CITY ELECTIONS
To the registered voters of the City of Wheeler, Texas
Notice is hereby given that the polling places listed below will be open from 7:00 a.m. to 7:00 p.m. on May 8, 2012, for voting in a general election to elect a Mayor and 2 Council members.
LOCATION OF POLLING PLACES
City office at 505 Alan L. Bean Blvd, Wheeler, Texas
Early voting by personal appearance will be conducted each week-day at
505 Alan L. Bean Blvd, Wheeler, Texas, between the hours of 8:00 a.m. and 5:00 p.m. beginning on April 30, 2012 and ending on May 8, 2012.
Applications for ballot by mail shall be mailed to: Kristi Petit, Election Judge, P.O. Box 98, Wheeler, Texas 79096.
Application for ballots by mail must be received no later than the close of business on May 4, 2012.
Issued this the 26th day of March, 2012.
(Signed) Bob McCain, Mayor

INFORMACIÓN PARA CIUDAD ELECCIONES
A los votantes registrados de la ciudad de Wheeler, Texas
Aviso queda dado que los lugares de votación enumerados a continuación será abiertos de 7:00 a 19:00 a 08 de mayo de 2012, para votar en unas elecciones generales para elegir un alcalde y dos miembros del Consejo.
UBICACIÓN DE LOS LUGARES DE VOTACIÓN
Oficina de ciudad en 505 Alan L. Bean Blvd, Wheeler, Texas
Votación anticipada por la apariencia personal se llevará a cabo cada día en
505 Alan L. Bean Blvd, Wheeler, Texas, entre las horas de 8:00 y 17:00 comenzará el 30 de abril de 2012 y terminará en 08 de mayo de 2012.
Las solicitudes de voto por correo deberán enviarse a: Kristi Petit, juez electoral, P.O. Box 98, Wheeler, Texas 79096.
Solicitud de papeletas por correo debe ser recibida no más tarde del cierre del negocio en 04 de mayo de 2012.
Esto publicó el día 26 de marzo de 2012.
(Firmado) Bob McCain, alcalde

NOTICE OF JOINT GENERAL PRIMARY ELECTION, DEMOCRATIC AND REPUBLICAN PARTIES

To the Registered Voters of the County of Wheeler, Texas:
Notice is hereby given that the polling places listed below will be open from 7:00 a.m. to 7:00 p.m., May 29, 2012, for voting in the general primary election for the Democratic and Republican Parties to nominate Members of Congress, Members of the Legislature and state, district, county and precinct officers; and for the purpose of electing county and precinct chairs.

On Election Day, voters must vote in their precinct where registered to vote.

Location of Election Day Polling Places and Precinct Numbers
Include Names of Building and Address

Precinct	Location	Address
1	First State Bank, Mobeetie	103 E. First Mobeetie, TX 79061
2	Wheeler Girl Scout Hut	306 S. Canadian St., Wheeler, TX
3	Commissioners Courtroom	401 Main St., Wheeler, TX 79096
4	Allison (Fort Elliott) School	200 West 2nd Allison, TX 79003
5	Heald Methodist Church	FM 1443, Heald, TX
6	Pct. #3 Commissioner Office	1-40 West, Lela, TX
7	Kelton School	16703 FM 2697 Kelton, TX
8	Shamrock City Hall Annex	116 West 2nd Shamrock, TX 79079
9	Shamrock Jr. High Gym	100 S. Illinois Shamrock, TX 79079
10	Briscoe (Fort Elliott) School	501 E. Wilson, Briscoe, TX

For early voting, a voter may vote at any of the locations listed below:

Location of Early Voting Polling Places, Days and Hours of Operation
Main: Wheeler County Clerk, Courthouse: M-F—8:00 A.M.-12:00 Noon & 1:00 P.M.-5:00 P.M.
Branch: Shamrock City Hall, Shamrock: M-F—8:00 A.M.-12:00 Noon & 1:00 P.M.-4:30 P.M.

Applications for ballot by mail shall be mailed to: Margaret Dorman, Early Voting Clerk
P.O. Box 465
Wheeler, Texas 79096
Applications for ballots by mail must be received no later than the close of business on: May 22, 2012.
Issued this the 20th day of March, 2012.
(Signed) Margaret Dorman,
Elections Administrator for Democratic and Republican Parties

AVISO DE ELECCIÓN PRIMARIA GENERAL CONJUNTA, LOS PARTIDOS DEMOCRATA Y REPUBLICANOS

A los votantes registrados del Condado de Wheeler, Texas:
Aviso queda dado que los lugares de votación enumerados a continuación será abiertos de 7:00 a 19:00, 29 de mayo de 2012, para votar en la general de la elección primaria para la democrática y republicana de partes a designar a los miembros del Congreso, miembros de la legislatura y estado, distrito, oficiales de condado y recinto; y con el propósito de elegir sillas de condado y recinto.

En la jornada electoral, los electores deben votar en su recinto donde registrados para votar.

Ubicación de los lugares de votación del día de las elecciones y los números de precinctos

Incluir nombres de creación y dirección	Dirección de ubicación del recinto
1	Banco Estatal de primera de—Mobeetie 103 primera e. Mobeetie, TX 79061

MEMBER 2012 TEXAS PRESS ASSOCIATION
City of Wheeler Turns 100
Aug. 6, '05 Celebration Planned
P.O. Box 1080
Wheeler, Texas 79096
Phone: 806/826-3123
Entered as second-class matter December 18, 1933, at the Post Office at Wheeler, Texas 79096, under the act March 3, 1879.
Postmaster: Send Address changes to *The Wheeler Times*, P.O. Box 1080, Wheeler, TX 79096-1080 — wtimes@windstream.net
Louis C. Stas, Owner & Publisher
SUBSCRIPTION RATES:
Within Wheeler Co: \$22.00 Elsewhere: \$25.00

THE BUSINESS DIRECTORY

CROSS COUNTRY BARN ★ 24 Hr. Gas & Diesel ★ Convenience Store ★ Hunt Bros. Pizza
301 E. Oklahoma St. Wheeler, TX
Phone: 806-826-2276
Dale & Monica Kidd

It pays to Advertise in The Wheeler Times
Phone & Fax: 806/826-3123 wtimes@windstream.net
Classified Rates:
Cash—\$6.00 for 1st 20 wds.
Chg.—\$6.50 for 1st 20 wds.
25c for each additional word
Display Classified: \$6.50 pci
Card of Thanks: \$7.00

Full Dispersal Cattle Ranch Auction
WILLIAMS & WILLIAMS
SELLS WITHOUT RESERVE
Friday, April 20 at 12pm
Working Cattle Ranch - Gainesville, TX
1,400+ Ac in 16 Parcels Plus Homes, Barns & Working Pens, Equipment and 400+ Cow/Cal Pairs
Open Sunday 1-4pm!
williamsauction.com/starnes • 800.801.8003

TX BRANDON MICHAEL RODRIGUEZ (214) 930-1581, LIC # 510797, THOMAS L WILLIAMS AUC LIC 10071.

2 Wheeler Girl Scout Hut—306 S. Canadiense St. Wheeler, TX 79096
3 Comisionados sala—401 Main St. Wheeler, TX 79096
4 Allison (Fort Elliott) escuela—200 oeste 2 Allison, TX 79003
5 FM de Iglesia Metodista de Heald 1443Heald, TX
6 PCT. # 3 Comisionado Oficina—140 oeste Lela, TX
7 Kelton escuela—16703 FM 2697 Kelton, TX
8 Oeste Shamrock Ayuntamiento anexo 116 2° Shamrock, TX 79079
9 Shamrock Jr. High gimnasio—100 S. Illinois Shamrock, TX 79079
10 Briscoe (Fort Elliott) escuela—501 e. Wilson Briscoe, TX
Para la votación temprana, un votante puede votar en cualquiera de las ubicaciones siguientes:
Ubicación de los primeros lugares de votación votación, días y horas de operación
Principal: Secretario del Condado de Wheeler, juzgados: M-F: 8:00-12:00 mediodía y 13:00-17:00
Sucursal: Ayuntamiento de Shamrock, Shamrock: M-F: 8:00-12:00 mediodía y 13:00-16:30
Las solicitudes de voto por correo deberán enviarse a: Margaret Dorman, votación anticipada Clerk
P.O. Box 465
Wheeler, Texas 79096
Las solicitudes de boletas por correo deben ser recibidas no más tarde del cierre del negocio en: 22 de mayo de 2012.
Esto publicó el día 20 de marzo de 2012.
(Firmado) Margaret Dorman,
Administrador de elecciones por los partidos democrata y republicanos

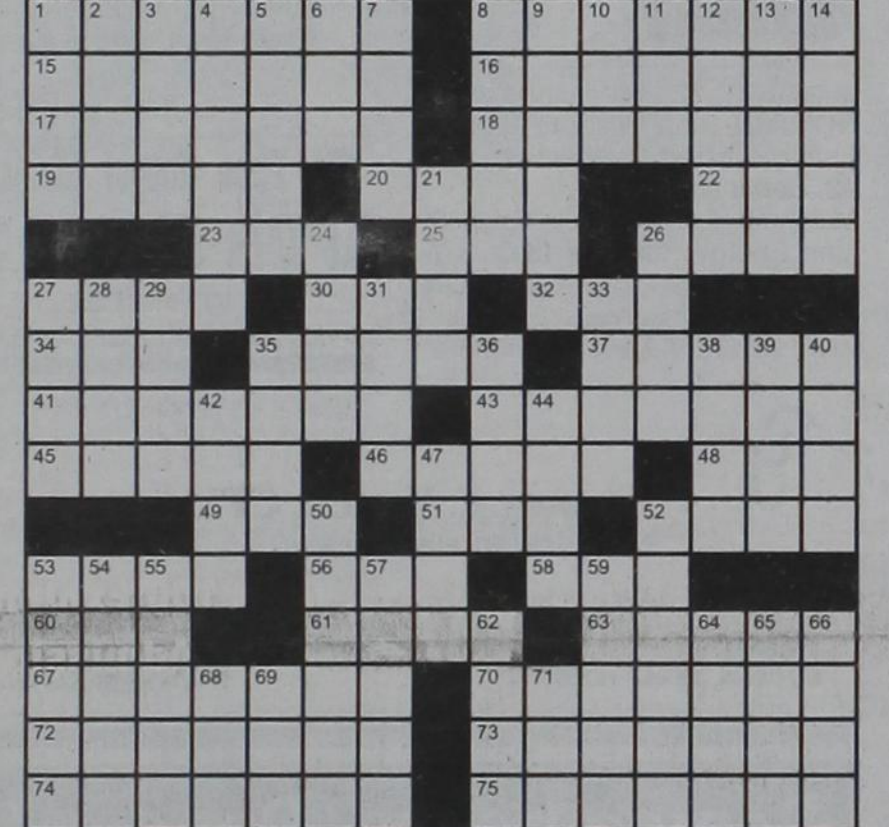
Oil & Gas NEWS

(New Location, Completion and Plugging Report made possible by Oil & Gas Reporting Service, 3930 Beaver St., Vernon, TX 76384. Pete Porter, Phone: 940/552-6644. Cell: 940/839-1345)

Week of Mar 19 - Mar 23, 2012
Intentions to Drill
HEMPHILL (MENDOTA, NW, Granite Wash) Cimarex Energy Company, #4 Isaacs (640ac) 427' from North & 1892' from East line, Sec. 56, 1, I&GN, 8 mi SW from Canadian PD 15116 (BHL: 200' from South & 400' from East) (sgd. Hope Knauls 918 295 1799) Horizontal
HEMPHILL (HEMPHILL Douglas & HEMPHILL Douglas-Oil) Forest Oil Corporation, #3051H Pyeatt (640ac) 250' from South & 550' from West line, Sec. 51, A1, H&GN, 12.5 mi SE from Canadian PD 18000 (BHL: 350' from North & 550' from West) (sgd. Kelly Harris 303 812 1676) Horizontal
HEMPHILL (BUFFALO WALLOW Granite Wash) Granite Operating Company, #10HB Huff 9 (640ac) 1980' from West & 250' from South line, Sec. 9, M1, H&GN, 19 mi SE from Canadian PD 11700 (BHL: 1980' from West & 200' from North) (sgd. Cindy Williford 512 478 3456) Horizontal
WHEELER (MILLS RANCH Granite Wash Cons.) Chesapeake Operating, Inc., #15H Ledbetter 66 (640ac) 290' from North & 2000' from West line, Sec. 66, A7, H&GN, 2 mi NE from Kelton PD 12000 (BHL: 100' from South & 19850' from West) (sgd. Bill Spencer 512 918 1062) Horizontal
WHEELER (MILLS RANCH Granite Wash Cons.) Chesapeake Operating, Inc., #16H Ledbetter 66 SL, (640ac) 290' from North & 2000' from East line, Sec. 66, A7, H&GN, 2 mi NE from Kelton PD 12000 (BHL: 100' from South & 1950' from East) (sgd. Bill Spencer 512 918 1062) Horizontal
WHEELER (STILES RANCH Granite Wash Cons. & MILLS

Listen to...
KPDR-FM, 90.3
WHEELER, TEXAS

Crossword PUZZLE



- Across
1. Medical examiner
8. Swagger
15. Hard to pin down
16. Terse
17. Oil source
18. Spin, wind, or twist together
19. A system of reasoning
20. Newspaper page
22. Poseidon's domain
23. Handful
25. Flurry
26. Beach bird
27. Not solid
30. Breakfast item
- Down
56. Hound
58. Fall back
60. Twitch
61. Licky stuff
63. Extra
67. Knock
70. Rush
72. Period in human
14. Sea
21. Summon
24. In good health
26. Nest part
27. Nile wader
28. Typeface
29. Sham
31. Embellish richly

H&HTIRE
Chad Helton
Owner
806-826-5759
714 W. Okla. Ave.
Wheeler, TX 79096

33. Race place
35. Experienced
36. Regatta
38. Percussion instrument
39. Simplicity
40. Sign from above
42. Erosion of clothing
44. Pews' place
47. Consequently
50. Occupy
52. Take away
53. Take off
54. Pageant crown
55. A theatrical performer
57. Change
59. ___ profundo
62. Hose site
64. "Shucks!"
65. Grimm figure
66. Not far
68. Small colonist
69. Beachgoer's goal
71. Friend

Wheeler Banking Center
PO. Box 1040 Wheeler, Texas (806) 826-5566
CANADIAN • CHILDRESS • MEMPHIS • WELLINGTON • WHEELER

32. Cut the lawn
34. ___ constrictor
35. Ace
37. Visual communication
41. Pen dipper
43. Word game
45. Girder material
46. Windshield attachment
48. "What's the ___?"
49. Dined
51. Gun, as an engine
52. Prayer's end
53. Asterisk
1. Prison compartment
2. Mixed bag
3. Ladder crosspiece
4. Harden
5. Sister's
6. Apple picker
7. Work over
8. Hemorrhage
9. Hit-or-miss
10. Pretend
11. Promise
12. Liquorice-flavoured seeds
13. A restaurant patron

dish AUTHORIZED RETAILER
30 premium movie channels
FREE HBO CINEMAX SHOWTIME STARZ
PLUS BLOCKBUSTER @HOME
FREE 2 Room HD DVR Upgrade
1-800-298-4509 WWW.INFINITYDISH.COM

Visit... **FAMILYPOOLFUN.COM**
Our pools create Generations of Memories everyday, vacations never end!
Aboveground & Inground pools at WHOLESALE PRICING
SIMPLE DIY Pool Kit Assembly
SAVE MONEY on All Pool Supplies & Accessories. Ships Fast
Call Today! 800-950-2210

COUNTRY NEWS

By Verna Fillingim

There was a good crowd at Wheeler Care Center Tuesday night to enjoy the good music and singing of the Country Band. Playing music were Robert Jones, Gene Keelin, Jim Jackson and Ada Lou Lester. Also singing were Winnie Gilmer, Leona Coates, Martha Meek, Joyce Perkins and Kenadie Brooks Sutherlyn. All very good.

Thank you to those who helped

WHEELER PLUMBING

511 S. Cheyenne
New Construction
Remodel
Repair
Sewer Service
Septic Systems
Site Evaluations

Phone: **826-5907**
MAX McQUEEN
P.O. Box 754 Wheeler, TX

get news together for my column, especially Sue Chandler. All donations appreciated! Thank you! Thank you, Johnny and Patty Crawford for coming to Wheeler Care Center Sunday afternoon to make beautiful music. Several from Wheeler Care Center were present for the music. Johnny played his guitar and gave a message from the Bible.

Betty Husted and Deleise Atwood and friends sang some pretty songs on Tuesday.

At the wedding Saturday, Jan. 14, in Oklahoma at the Assembly of God church, Dagen and Blain Criswell helped with Mike Thomas' and Lindsey Criswell's wedding. Also helping with the wedding were Dallas and Kristal Fillingim and Keaira, Kamry and Karissa and David and Rita Pearson. A joyful time. God bless you everyone! Best wishes for many happy years! They will be living in Canyon. Rita helped with boys while Mike and Lindsey took a wedding trip and boys went to school at Canyon. Boys are so proud of their new daddy, Mike.

Bridget, Audra, and Hagen Weatherly along with Brad and Sue Chandler enjoyed traveling to San Antonio, TX during their spring break. While there they went to Sea World for a few days enjoying all the shows at the park several times each. The shows they enjoyed watching at Sea World were One Ocean, Azul, Cannery Row, Shamu Rocks and

Sea Lions Tonight! There at Sea World they all enjoyed getting to feed and touch the Dolphins at Dolphin Cove, going to the Penguin Encounter but found it to have a very fishy smell so was not something they wanted to see more than once, the Animal Connections Conservation Center and Nautilus Amphitheater that had animals to see up close. Hagen was so excited to get to ride the

Court

(from Page 3)
tion Mid-Continent Inc. to Hazel Larue Young, et al, 2-7-12, SE/4 Sec. 32, Blk. A-3, H&GN Ry. Company Survey.
CONVEYANCE-Kaleb Meek (Custodian) to Lake Wobegone LLC, 1-19-12, See Instrument.
HOMESTEAD DESIGN.-Neal Champion Davis, et ux to The Public, 3-19-12, SE/4 NE/4 & SE/4 Sec. 52, Blk. A-7, H&GN Ry. Company Survey.
DVL-Neal Ray Davis, et ux to Neal Champion Davis, et ux, 3-19-12, 5 acs. Sec. 52, Blk. A-7, H&GN Ry. Company Survey.
DT-Neal Champion Davis, et ux to Wheeler Banking Center, 3-19-

Golf

(from Page 1)
ment. The winners will be announced prior to the start of the 2:00 tee time.

Tournament proceeds will benefit the Ja'Nae Goad Golf Scholarship. This scholarship was designed to financially assist a Wheeler County high school senior who has participated in golf or multiple sports and school activities. To date, the tournament has benefited 96 high school seniors from Wheeler County. Past recipients of the award have been Alan Segura, Kacie Schlegal, Amanda Reeves, Jacob Caldwell, Kinsey Cogburn, Jordan Jones, Cassie Crossland, Cory Schlegel, Sheldon Cornett, Laramie Wilson, Jade Hilburn, Darby Oldham, Chelsey Tallant, Kaylee Zaiontz, Cari Caldwell, Courtney Dame, Sarah Sweatt, Cami Creamer, Kaitlyn Otts, Clay Greenwall, Tamra Jernigan, Briana Stewart, Cade Vinyard, Tandy Wright, Jeremy Hobbs, Melissa Velasco and Andrea Copeland from Shamrock High School; Curt Smith, Nathan Hefley, Julie Zybach, Justin Hefley, Stephanie Baker, Seth Meadows, Jason Hathaway, Kade Zybach, Holley McCurley, George Helton, Tamara Hefley, Russell Lohberger, Jason Boydston, Steven Kephart, Blaine Baker, Kelsey Zybach, Sarah Zybach, Lauren Baird, Chance Newman, Mayci Meadows, Megan Horn, Stormi Lancaster, Amber Maddox, Blake Baker, Dawson Clark, Gatlin Duncan and Sarah Horn from Fort Elliott High School; and JJ Johnson, Gavin McQueen, Jake Britt, Kerri Marion, Dee Alston, Josh Miller, Jarrod Haning, Landon Sams, Savannah Hampton, Samantha Chapman, Justin Lee, Lezli Finsterwald, J'Shay McCasland, Lauren Fite, Jonathan Hampton, Lacey Henson, Mikel Tucker, Ricky Salas, Jason Brownfield, Chace Horton, Katlin Rutherford, Jesus Gonzalez, Michael Mendoza, Jared Messer, Nicole Moore, Stefan Tucker, Cesar Gonzalez, Nick Hardcastle, Macie Miller, Braden Moore, Bailey Richardson, Whitney Reed, Brock Sabbe, Johnny Venzor, Spencer Ford, Haley Sparks, Taylor Sparks, Karen Mendoza, Jaten Moore, Jorge Porras and Rachel Kidd from Wheeler High School.

The 14th Annual Ja'Nae Goad Memorial Golf Tournament will be held Saturday, April 21 at the Shamrock Country Club. This tournament will be an 18 hole scramble format and will offer tee times of 8:30AM and 2PM. High School students wishing to enter the tournament will play on Friday afternoon. A putting contest for youngsters will also be held on Saturday. For more information please contact Cecil Thomas at 826-5809, Ida Goad at 826-5254 or Bobby Jennings at 826-3153. You may also log on to www.janaegoaddgolf.com or find us on facebook.

Donations of \$25 from businesses will go toward special prizes such as closest to pin, longest drive and longest putt. Donations from individuals or businesses of \$50 or more will sponsor a tee box. Individual gifts for door prizes are also accepted. Barber Dyson Ford has donated a new vehicle for a hole in one on a designated tee box.

Chances to win various donated items will also be available. Raffle items include a Ping golf bag donated by Mike Leonard, a year's membership to the Canadian Golf Club a water color by artist Sibyl Clark and a Southwest Airlines gift card. Please contact April Goad, Melody Goad or Kim Goad for raffle tickets. The winners will be announced prior to the start of the 2:00 tee time.

Tournament proceeds will benefit the Ja'Nae Goad Golf Scholarship. The scholarship was designed to financially assist a Wheeler County high school senior who has participated in golf or multiple sports and school activities. To date, the tournament has raised over \$122,000 and benefited 96 high school seniors from Wheeler County.

On the day of the tournament this nine hole course in Shamrock draws anywhere for 130-160 golfers. The weather is just about the only thing that doesn't always cooperate. The support for this project has continued to be amazing.

Steel EEL roller coaster with his Papa Brad a few times and they also enjoyed riding the Journey with Atlantis log ride with Audra joining them on this ride. Everyone rode the Rio Loco river raft ride getting cooled off for the day.

While in SanAntonio they also enjoyed going to the San Antonio Zoo, several of Ripley's Believe It or Not places, as well as seeing the Alamo. Hagen also going to IMAX 3 D movie Alamo with his Papa Brad while the girls looked around at the small shopping mall. Everyone also enjoyed riding the Rio San Antonio Cruise downtown at the River Walk. Later they enjoyed looking

12, 5.0 acs. Plus 30' Easement Sec. 52, Blk. A-7, H&GN Ry. Company Survey.
DEED-Wheeler Wagon Train Inc. to Church of Christ, Wheeler Area, 3-22-12, 3 acs. out of 5 acs. SE/4 Sec. 60, Blk. A-8, H&GN Ry. Company Survey.
DT-Cordillera Energy Partners III LLC to JPMorgan Chase Bank NA, 3-15-12, 110.6 acs. SE/4 Sec. 32, Blk. A-3, H&GN Ry. Company Survey.
C/C APPL. PROBATE-Jack M. Meek to Ex Parte, 3-22-12.
C/C WILL-Jack M. Meek to Ex Parte, 3-22-12.
C/C ORDER PROBATE-Jack M. Meek to Ex Parte, 3-22-12.
MARCH 23, 2012
MODIFICATION OL-James



THE WHEELER TIMES

PAGE 5 - Thursday, March 29, 2012

"Wheeler: town of friendship and pride."

around downtown at the River Walk and eating at Salt Grass. They returned home on Friday. Jana, Janessa and Austin Bartholomew from Amarillo TX came to visit her parents Brad and Sue Chandler on Friday evening. Jana, Janessa, Austin, Sue, Bridget, Audra and Hagen went to Shamrock TX on Saturday morning to watch the St. Patrick's Day Parade. It was one of the longest

parades they remembered going too. Janessa and Austin also had lots of fun riding some of the rides there in Shamrock that afternoon with their mom and their grandma Sue joined them on one ride while their mom went to get them a snow cone. Later that afternoon they returned to Wheeler and enjoyed a cook out at Brad & Sue's home.

Henry Hubble to Noble Energy Inc., 6-6-11, 74.62275 acs. W/2 SE/4 Sec. 4, Blk. A-4, H&GN Ry. Company Survey.
MODIFICATION OL-Elizabeth Jane Britton Atchley to Noble Energy Inc., 6-6-11, 74.62275 acs. W/2 SE/4 Sec. 4, Blk. A-4, H&GN Ry. Company Survey.
MODIFICATION OL-Glenda Louise Floyd to Noble Energy Inc., 5-18-11, W/2 N 85 acs. NW/4 & W/2 S 75 acs. NW/4 Sec. 4, Blk. A-4, H&GN Ry. Company Survey.
MODIFICATION OL-Angela R. Wiggins to Noble Energy Inc., 5-18-11, W/2 N 85 acs. NW/4 & W/2 S 75 acs. NW/4 Sec. 4, Blk. A-4, H&GN Ry. Company Survey.
MODIFICATION OL-Candee L. Hinds to Noble Energy Inc., 5-18-

11, W/2 N 85 acs. NW/4 & W/2 S 75 acs. NW/4 Sec. 4, Blk. A-4, H&GN Ry. Company Survey.
MODIFICATION OL-Opal Fern Martin Wood to Noble Energy Inc., 5-18-11, W/2 N 85 acs. NW/4 & W/2 S 75 acs. NW/4 Sec. 4, Blk. A-4, H&GN Ry. Company Survey.
MODIFICATION OL-Thomas R. Dixon Jr. to Noble Energy Inc., 10-7-11, NE/4 Sec. 4, Blk. A-4, H&GN Ry. Company Survey.
MODIFICATION OL-Marsha Lynne Green to Noble Energy Inc., 8-25-11, 78.47975 acs. E/2 SW/4 Sec. 4, Blk. A-4, H&GN Ry. Company Survey.
MODIFICATION OL-Dona C. Malouf to Noble Energy Inc., 5-24-11, NE/4 Sec. 4, Blk. A-4, H&GN Ry. Company Survey.
MODIFICATION OL-John Wiley to Noble Energy Inc., 7-8-11, E/2 NW/4 Sec. 4, Blk. A-4, H&GN Ry. Company Survey.
MODIFICATION OL-Edward Wiley to Noble Energy Inc., 7-8-11, E/2 NW/4 Sec. 4, Blk. A-4, H&GN Ry. Company Survey.
MODIFICATION OL-William Wiley to Noble Energy Inc., 7-8-11, E/2 NW/4 Sec. 4, Blk. A-4, H&GN Ry. Company Survey.
MODIFICATION OL-Robert Wiley to Noble Energy Inc., 7-8-11, E/2 NW/4 Sec. 4, Blk. A-4, H&GN Ry. Company Survey.
MODIFICATION OL-Mary N. Rogers-Goodlett to Noble Energy Inc., 5-19-11, NE/4 Sec. 4, Blk. A-4, H&GN Ry. Company Survey.
MODIFICATION OL-Samuel A. Rogers to Noble Energy Inc., 5-19-11, NE/4 Sec. 4, Blk. A-4, H&GN Ry. Company Survey.
MODIFICATION OL-Barbara Wiley to Noble Energy Inc., 5-23-11, E/2 NW/4 Sec. 4, Blk. A-4, H&GN Ry. Company Survey.
MODIFICATION OL-Elizabeth Boring to Noble Energy Inc., 5-23-11, E/2 NW/4 Sec. 4, Blk. A-4, H&GN Ry. Company Survey.
MODIFICATION OL-Lula M. Buice to Noble Energy Inc., 6-28-11, S/2 SW/4 & Pt. W/2 SE/4 Sec. (Continued Page 6)

Dennis Edmondson, REALTOR

RE/MAX HOMETOWN 2100 Perryton Pkwy Pampa, Texas **MLS**

8320 County Line Rd. Mobeetie Tx. 79061. Great 3 bedroom 2.5 bath property on 31.78 acres. 30x60 shop/garage, mother-in-law's quarters, corrals, storm shelter/storage. Very nice! \$250,000.

16508 Hwy 152 East Wheeler, Tx. 79096. Beautiful 4 bedroom 2.75 bath, 2 car garage home on 3.09 acres. Open floor plan, finished basement, central heat&air (heat pump). New windows, extra buildings, horse stalls, and much more! \$269,000

Wheeler United Methodist Church
Eighth at Main St.—P.O.Box 89
Wheeler, TX 79096
806-826-3114 — Fax 806-826-3780
wheelerume@windstream.net

Sunday Schedule
Coffee & Donut Fellowship—9:30 a.m.
Sunday School—9:45 a.m.
Worship—11:00 a.m.

Wednesday Schedule
Youth Fellowship—6:00 p.m.
Choir Rehearsal—7:00 p.m.

Are you eligible for tax relief?

Property Taxpayer Remedies

Learn about property tax remedies available in the following:

- How to protest property value
- What can be protested
- What is an ARB
- When are protests filed

- You'll learn steps to prepare for a protest hearing. *Property Taxpayer Remedies* will tell you how to prepare a protest to the local appraisal review board.
- You'll learn the kinds of protests the appraisal review board can hear and what kind of evidence you need to bring to your hearing.
- Key dates are listed, so you'll know what you must do and when you're required to act.

Property Taxpayer Remedies is free.
A Spanish language version is also available.
Ask for yours today at:

Wheeler Central Appraisal District
PO Box 1200
402 S. Main
Wheeler, TX 79096
(806) 826-5900

or e-mail: ptad.cpa@cpa.state.tx.us

or write to:
Texas Comptroller Susan Combs
Property Tax Assistance Division
P.O. Box 13528
Austin, Texas 78711-3528

or call: 1-800-252-9121 and press "2" to access the menu and then press "1" to contact the Information Service Team.

or on the Web at: www.window.state.tx.us/taxinfo/proptax

A public service announcement courtesy of your county appraisal district.

"NO" Trenching "NO" Mess

Rick's Lawn Sprinklers
Lic#4823

* Sales - Service - Installation * We trade for almost anything
* Over 25 years experience * In-house financing

FREE ESTIMATES 1-800-466-0915

Altus, OK **RAIN BIRD** Wichita Falls, TX

GR W MOORE

- >Liquid Fertilizer
- >Dry Fertilizer
- >Compost
- >Chemicals
- >Application available

Grow Moore, LLC
Matt & Michelle Moore
Kelton, Tx
(806) 256-2313

Over 100 Exhibits!
Free Admission

Southwest Farm & Home EXPO

APRIL 14 & 15, 2012
Convention Center
ELK CITY, OKLAHOMA

Featuring the Latest Products & Services for the Farm, Home and Garden!

FRIDAY, APRIL 13
10:00 a.m. Exhibitor Registration...Main Exhibit Hall
3:50 p.m. Exhibitor Hospitality
6:00 p.m. Exhibit Hall Closes - On Site Security Provided

SATURDAY, APRIL 14
8:00 a.m. Eggs & Issues Legislative Breakfast
Sponsored by American Farmers & Ranchers Mutual Insurance
9:00 a.m. 28th Annual Southwest Farm & Home Expo Opens to Public
ALL DAY FFA Ag Mechanics Show & Silent Auction South Exhibit Hall
ALL DAY* Antique Tractor Display & Tractor Pull South Exhibit Grounds
10:30-5:30* The Best of the West Talent Show North Exhibit Hall, West Stage

2:00 p.m. All Breed Bull Sale...South Exhibit Hall
6:00 p.m. Expo Closes - On Site Security Provided

SUNDAY, APRIL 15
12:00 Noon Expo Opens to Public
ALL DAY* Antique Tractor Display & Tractor Pull South Exhibit Grounds
1:30-4:30* The Best of the West Talent Show North Exhibit Hall, West Stage
2:00 p.m. Children's Peddle Tractor Pull - Ages 4-12 Registration at 1:30 p.m. South Exhibit Hall
4:00 p.m. FFA Ag Mechanics Awards Presentation & Chamber Dollars Drawing Main Exhibit Hall
5:00 p.m. Expo Closes * Times May Vary

Elk City Chamber of Commerce For More Information Call 800-280-0207 www.visitelkcity.com Elk City Convention & Visitors Bureau

Robby Schaffer FIREARMS & AMMUNITION

602 Cheyenne • Wheeler, TX
806.826.0129 • 806.216.1322
E-mail: robschaf@windstream.net

Store Hours: Mon. to Fri. 6 P.M. to 9 P.M.
Sat. 12 to 8 P.M.

I am going to be away some so please call ahead to be certain I'm home.

CHEVY TRUCK MONTH



**2012 CHEVY SILVERADO
CREW CAB**

0% FOR 72 MONTHS **OR** UP TO \$4,000 IN REBAT
W.A.C. THRU ALLY FINANCING



**2012 CHEVY SILVERADO HD
UP TO \$2,750 TRADE IN ALLOWANCE**

0% FOR 72 MONTHS **OR** UP TO \$4,000 IN REBAT
W.A.C. THRU ALLY FINANCING



**2012 COLORADO CREW CAB
4X4 LT FULL SIZE PERFORMANCE
SMALL TRUCK FUEL ECONOMY**



**2012 CHEVY CRUZE ECO
4 IN STOCK * 39 MPG ***



**2012 CHEVY SONIC
3 IN STOCK * 35 MPG ***

WARE CHEVROLET • BUICK

South Hwy. 83 • Wheeler 806-826-5521
1-800-890-WARE (9273) • www.warecbp.com

PRE-OWNED & PROGRAM CARS



**2011 CHEVY SILVERADO
EXT CAB • ONLY 8,000 MI**



**2011 GMC YUKON SLT
DVD • HEATED SEATES**



**2011 GMC ACADIA
7 PASSENGER SEATING**



**2011 CADILLAC STS
FULL SIZE LUXURY**



**2011 CHEVY MALIBU LT
13,000 MI • 33 MPG**



**2011 BUICK LUCERNE
FULL SIZE LUXURY**

ALLISON NEWS

By Juanita Boydston

Rejoice in the Lord, always; and again I say, Rejoice. Let your moderation be known unto all men. The Lord is at hand. Be careful for nothing; but in every thing by prayer and supplication with thanksgiving let your re-

quests be made known unto God. And the peace of God, which passeth all understanding, shall keep your hearts and minds through Christ Jesus. Finally brethren, whatsoever things are true, whatsoever things are honest, whatsoever things are pure, whatsoever things are lovely, whatsoever things are of good report; if there be any virtue, and if there be any praise, think on these things. Those things, which ye

have both learned, and received, and heard, and seen in me, do; and the God of peace shall be with you. But I rejoiced in the Lord greatly, that now at the last your care of me hath flourished again; wherein ye were also careful, but ye lacked opportunity. Not that I speak in respect of want; for I have learned, in whatsoever state I am, therewith to be content. I can do all things through Christ which strengtheneth me. Philippians 4:4 - 11 & 13

BLESS the Lord, O my soul; and all that is within me, bless his holy name. Bless the Lord, O my soul, forget not all his benefits: Who forgiveth all thine iniquities; who healeth all thy diseases; Who redeemeth thy life from destruction; who crowneth thee with lovingkindness and tender mercies; Who satisfieth thy mouth with good things; so that thy youth is renewed like the eagle's. Psalm 103:1 - 5

The weather in Allison, Texas on this Tuesday morning is just so beautiful!! The sun is shining and not much wind as of yet and everything is looking green and beautiful and flowers are beginning to bloom, my mother's tulips are just so beautiful. Been seeing pictures on facebook of the beautiful blue bonnets blooming so pretty. Spring time is so very wonderful, but for the nasty storms sometimes. But God is our everything!! In him we have peace and joy and faith!! Praise be to Jesus!! So thankful we have Jesus to guide us thru life and keep us in his love. Praise God!!

Sorry to hear of the death of Carrie Louise Wright. Carrie Louise Wright, (known in Allison, Texas as Tootsie Wise), 85 of Amarillo, Texas passed away Monday, March 19, 2012. Graveside services and burial was at 2 p.m. Wednesday in Zybach Cemetery at Allison, Texas. Arrangements were by Cox Funeral Home at 4180 Canyon Drive in Amarillo, Texas. Louise was born March 6, 1927, in El Dorado, Oklahoma to William Wallace and Georgia Anna Wise. She was a past resident of Allison, Texas, where she graduated high school. She married Harold Wright on May 27th, 1946 in Dumas, Texas. She was a homemaker who had been a volunteer with hospice in Dumas, Texas. She moved to Amarillo, Texas in 1991, where she was known for donating clothes to homeless shelters and making Barbie doll clothes for the Ronald McDonald House. She enjoyed quilting and gardening. She was preceded in death by her husband, Harold Wright in 2002 and a daughter, Ann Nelson in 2009. Survivors include a daughter, Janie Haley; a brother, Bill Wise; and two grandchildren, Amy Nelson and Paul Taylor. God Bless the family of Tootsie Wise!!

Sunday after church, Opal and Juanita Boydston accompanied Louise Boydston and Shirley Chadwick to Elk City, Oklahoma where they enjoyed a very delicious meal at Western Sizzler's. Their Sunday buffet has a wide variety of foods and always so very good. Then after the meal, Louise and Opal visited Pearl Harrison in the Elk City Nursing Home. Juanita and Shirley en-

THE WHEELER TIMES
PAGE 6 — Thursday, March 29, 2012
"Wheeler: town of friendship and pride."

joyed shopping at Walgreens and getting a happy hour drink at Sonic. Juanita and Shirley also visited Pearl Harrison after their shopping spree. Then after visiting awhile, a stop by Braum's for a yogurt was in order at least Shirley and Juanita thought so. Then stopped at Dollar Store on way out of Elk. Had a nice time.

Sunday morning, the Allison United Pentecostal Church enjoyed Bro. Ben Corbett preaching for them. He did a great job of preaching the word of God!! Had a great service!!
Glad to report that our pastor, Pastor F.R. Johnson is recovering from surgery and so is Glenn
(Continued Page 10)

TEXAS STATEWIDE CLASSIFIED ADVERTISING NETWORK

TexSCAN

TexSCAN Week of March 26, 2012

AUTOS
CASH FOR CARS We buy any car or truck running or not. Damaged, wrecked, salvaged OK. Get top dollar instant offer today. 1-800-273-9194

CABLE/SATELLITE
AT&T V-VERSE for just \$29.99/month! Save when you bundle Internet+Phone+TV and get up to \$300 back! (Select plans). Limited time call now! 1-877-577-4394

DRIVERS
AVERITT STARTS REGIONAL CDL-A drivers at 37¢ cpm with 1 year experience. 4-12 months experience? Then we have a paid refresher course. 1-888-362-8608 or visit AVERITTcareers.com EOE

CLASS-A TEAM DRIVERS dedicated runs to Morton, IL. \$1000/week. \$500 sign-on bonus. Home weekly, consistent miles/freight. Day one medical. 1-866-331-3335

DRIVER TANGO TRANSPORT now hiring Regional, OTR, team. Top pay, plenty of miles. Great home time. Family Medical/dental. 401K, paid vacations. Call 1-877-826-4605 or www.drivertango.com

DRIVERS - \$2000 SIGN ON bonus. Get miles/home weekends, SW regional. Top pay/benefits. Paid orientation and training. 3 month OTR and CDL required. 1-800-545-1351. www.cypresstruck.com; CHambler@cypresstruck.com

DRIVERS - HOMETIME Choices. Express lanes 7 on 7 off, 14 on 7 off weekly. Full and part-time. Dry and Refrigerated. New Trucks! CDL-A 3-months recent experience required. 1-800-414-9569 www.drivernight.com

DRIVERS-REGIONAL FLATBED home every weekend, 40¢-45¢ cpm. Class CDL-A required. Flatbed load training available. 1-800-992-7863 ext. 185. www.McElroyTruckLines.com

EARN \$1000-\$3200 a month to drive our new cars with ads. www.PaidDriver.com

EXPERIENCED FLATBED DRIVERS. Regional opportunities now open with plenty of freight and great pay. 1-800-277-0212 or primeinc.com

PAID CDL TRAINING! No experience needed. Stevens Transport will sponsor the cost of your CDL training. Earn up to \$40K first year and \$70K third year. Excellent benefits! EOE. 1-800-333-8595. www.becomeadrivers.com

LEASE 2012 KW or FL. Great money, \$500 fuel credit. Full warranty, no surprise maintenance plan. Owner operators, company drivers welcome. 1-888-440-2465 or www.drivenci.com. Apply today!

NEW TO TRUCKING? Your new career starts now! 50 tuition cost, no credit check, great pay & benefits. Short employment commitment required. Call: 1-866-297-6598 www.joinCRST.com

OWNER OPERATOR OPPORTUNITIES brought to you by Greatwide! \$2,500 Sign-On, dedicated runs, industry leading pay, CDL-A, lease purchase program, down payment assistance. 1-866-904-9230. www.driveforgreatwide.com

YOU GOT THE DRIVE, we have the direction. OTR drivers, APU Equipped, Pre-Pass, EZ-pass, Pet/passenger policy. Newer equipment. 100% NO touch. 1-800-528-7825

AIRLINES ARE HIRING Train for high paying aviation career. FAA approved program. Financial aid if qualified, job placement assistance. Call Aviation Institute of Maintenance. 1-888-886-7315

ATTEND COLLEGE ONLINE from Home. Medical, Business, Criminal Justice, Hospitality. Job placement assistance. Computer available. Financial aid if qualified. SCHEV certified. Call 1-888-205-8920. www.CeaturaOnline.com

HIGH SCHOOL DIPLOMA graduate in 4 weeks! Free brochure! Call now! 1-866-562-3650, ext. 55. www.southeasternHS.com

GUN SHOWS
WORLD'S LARGEST Gun Show. March 31st and April 1st. Tulsa, Oklahoma fairgrounds. Saturday 8-6, Sunday 8-4. WANENMACHER Productions. Free appraisals. Bring your guns! www.tulsagunshow.com

HELP WANTED
CAN YOU DIG IT? We will train, certify and provide lifetime assistance landing work. Hiring in Texas. Start digging as a heavy equipment operator. 1-866-362-6497

PURPLE WAVE, a leader in internet auctions of equipment, is hiring an equipment territory manager in Amarillo, TX and Texas Panhandle position. details at http://pw.purplewave.com/careers/

MISCELLANEOUS
SAWMILLS FROM ONLY \$3997.00. Make and save money with your own bandmill. Cut lumber any dimension. In stock ready to ship. Free information/DVD. www.NorwoodSawmills.com 1-800-578-1363 Ext. 300N

REAL ESTATE
2.4 ACRES in Crystal River, FL. Next to world famous Plantation Inn and Golf Resort and faces Kings Bay. Zoned for commercial or multi-family. Call Jack 1-214-755-6224.

3 TRACKS TOTALING 693 acres in Reeves County, 15 miles North Pecos, river frontage. Call Jack 1-214-755-6224

10.1 ACRES, Duval County. Heavy South Texas brush cover. Deer, hogs, quail. Private roads, locked gate. \$3550/acre, owner financing. Toll-free 1-866-286-0199. www.westernexasland.com

25 ACRE RANCH BARGAIN! This one has it all! 100 yr old live oaks, pond with great water well. Historic rock walls, pasture areas for horses/livestock. Asphalt road, concrete ribbon curb, electricity, more. Ag exempt - incredibly low taxes! Just \$199,900/acre! The Best Priced Ranch in the Hill Country. Call now 1-866-999-6697, ext 71

95.43 ACRES, Sonora/Del Rio. Deep canyon, joins large ranch, endless views. Whitetail, axis, aoudad, hogs, turkey. \$895/acre, 20 year owner financing. 1-830-257-5572. www.hillcountryranches.com

ABSOLUTELY THE BEST VIEW Lake Medina/Bandera. 1/4 acre tract, central W/S/E, RV/motor home/house. OK only \$830 down, \$235 month (12.91%/10yr). (\$6900/10.91%/7yr) 90 days same as cash. Guaranteed financing, more information call 1-830-460-8354

AFFORDABLE RESORT LIVING on Lake Fork RV and manufactured housing OK! Guaranteed financing with 10% down. Lots starting as low as \$6900. Call Josh, 1-903-878-7265

\$106 MONTH BUYS land for RV, MH or cabin. Gated entry, \$690 down, (\$6900/10.91%/7yr) 90 days same as cash. Guaranteed financing, 1-936-377-3235

FORECLOSED HILL COUNTRY HOME on 13.93 acres. 3BR/2BA furnished home with incredible hill top views. Canopied amid 100 year old live oaks! Includes 1800's settlers home, 2 water wells, shed, storage barn, fenced animal stalls & pond. Originally \$499,900, liquidation price: \$399,900. Call now! 1-866-999-6697, ext 24

WANTED TO BUY
\$5000 SIGN-ON bonus! Tons of runs, Frac Sand hauling. Owner operators need tractor, pneumatic trailer, blower. 1-800-397-2639

Run Your Ad In TexSCAN!
Statewide Ad\$500
301 Newspapers, 942,418 Circulation
North Region Only\$230
98 Newspapers, 263,811 Circulation
South Region Only\$230
101 Newspapers, 366,726 Circulation
West Region Only\$230
102 Newspapers, 311,881 Circulation
To Order, Call this Newspaper direct, or call Texas Press Service at 1-800-749-4793 Today!

MARSHALL'S HEATING & AIR CONDITIONING
WHEELER, TX — PHONE: 664-5395 — CELL: 662-7876

TRANE NOW DOING... AIR DUCT CLEANING
It's Hard To Stop A Trane —24 Hour Emergency Service—

LICENSED & INSURED
License No. TACLB022710E
Mark Marshall, Owner

DOUG BOYD MOTOR CO.
Buy Here / Pay Here
No Credit Check • Areas Largest Selection
Pampa • Corner of Hwy 60 @ Hwy 70
806-669-6062 • www.dougboydmotors.com

RiverCrest Concrete, LLC
Foundations, Driveways, Piers, & Walls

Chip Hill
972-989-8019

Residential Commercial

Limited Time **5.03%** APY*
INSURED CD

FIRST FIDELITY Financial Group, LLC
Your Safe Money Solution®

1800 Washington, Suite 110 • Amarillo, TX
806-373-9480
1-800-371-9201
By appointment only

First Fidelity is a financial services firm that provides a variety of investment products. Investment products are subject to risk and may be sold through a broker. Any information in this advertisement is not intended to constitute an offer of insurance. First Fidelity Insurance Agency is not a broker or licensed insurance agent, and is not licensed to sell life, health, accident, or disability insurance. First Fidelity Insurance Agency is not a broker or licensed insurance agent, and is not licensed to sell life, health, accident, or disability insurance. © 2012 First Fidelity Financial Group, LLC

NOTICE: While most advertisers are reputable, we cannot guarantee products or services advertised. We urge readers to use caution and when in doubt, contact the Texas Attorney General at 1-800-621-0508 or the Federal Trade Commission at 1-877-FTC-HELP. The FTC web site is www.ftc.gov/bizop.

Extend your advertising reach with TexSCAN, your Statewide Classified Ad Network.

CONGRATULATIONS!

WHEELER ONE-ACT PLAY CAST & Wheeler & Kelton U.I.L. Regional Qualifiers



WHEELER'S ONE-ACT PLAY CAST: Wheeler's One-Act Play, "The Cover of Life" advanced to District Tuesday, March 20, 2012. Three individuals received special recognition. Cast members are (back row, l. to r.) Daniel Gonzalez, Jacob Thomas, Andrew Coomer (front) Ilene Butler, Abby Bond, Honorable Mention All-Star Cast; Alyssa Johnson, All-Star Cast; Tanzia Brown, Best Actress; Bree Carr and Maggie Jones.

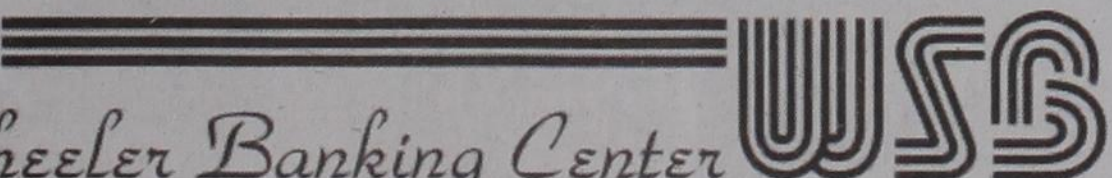


U.I.L. REGIONAL QUALIFIERS: A group of Wheeler High School students traveled to Canadian Friday, March 23 for District U.I.L. Competition. The students pictured to the left qualified for Regional competition. They are (l. to r.) Destrie Kinnaman, Breann Robinson, Alyssa Johnson, Lizzie Horton and Andrew Coomer



KELTON HIGH SCHOOL STUDENTS QUALIFY FOR REGIONAL U.I.L. COMPETITION: Kelton HS continuing to Regional in the UIL 1A District 8 Academic Contest are: (l. to r.) Jessica Alls (4th overall), Charmayne Hampton (5th overall), Elizabeth Moore (1st overall) Tammye Lumpkin placed 4th in Calculator, which makes her an alternate to go on to compete at Regionals.

THIS ADVERTISEMENT CO-SPONSORED BY . . .


Wheeler Banking Center
 P.O. Box 1040 Wheeler, Texas (806) 826-5566

FIRST STATE BANK
 Mobeetie Office:
 First & Wheeler St.
 Mobeetie, Texas
 845-2311

 Wheeler Office:
 1408 S. Alan Bean Blvd.
 Wheeler, Texas
 826-5546

2012 Easter EGG-CITMENT

This Easter Cornerstone Church Presents:

WORLD'S LARGEST EGG HUNT

1000's of eggs filled with candy, cash, and prizes.

APRIL 8TH - 10:30AM @ CORNERSTONE CHURCH

Two Blocks east of the water tower in Wheeler!

COME ENJOY

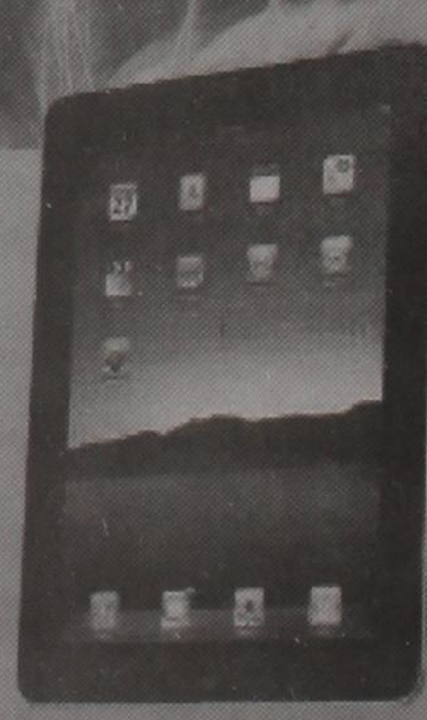
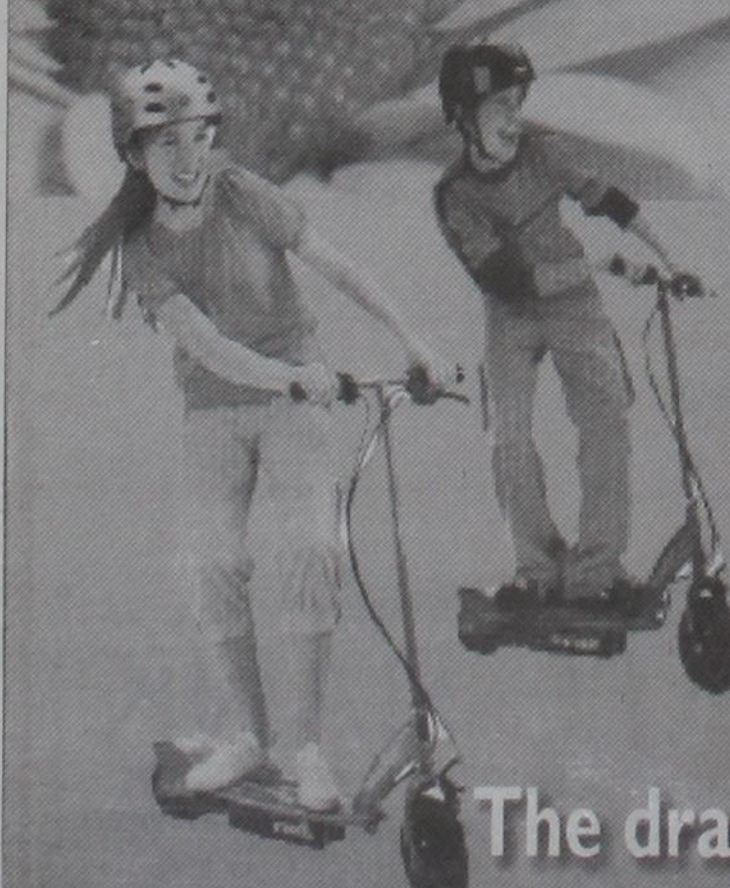
Free Hamburgers and Hotdogs

WE ARE GIVING AWAY...

2 motorized scooters one for a boy - one for a girl!

The Grand Prize drawing will be an IPAD 2 -

The drawing for the Ipad will be held at the church at 10:30am



Court

(from Page 3)

5, IRR Company Survey (158.70 acs.).
 MODIFICATION OL-Richard F. Greenhill, et al to Noble Energy Inc., 5-19-11, NE/4 Sec. 4, Blk. A-4, H&GN Ry. Company Survey.
 MODIFICATION OL-Kenneth A. Rogers to Noble Energy Inc., 5-19-11, NE/4 Sec. 4, Blk. A-4, H&GN Ry. Company Survey.
 MODIFICATION OL-Ruth Wiley to Noble Energy Inc., 5-23-11, E/2 NW/4 Sec. 4, Blk. A-4, H&GN Ry. Company Survey.
 MODIFICATION OL-Patricia Vise to Noble Energy Inc., 5-19-11, 78.479750 acs. E/2 SW/4 Sec. 4, Blk. A-4, H&GN Ry. Company Survey.
 MODIFICATION OL-Larry L. Jones, et ux to Noble Energy Inc., 5-23-11, NE/4 Sec. 4, Blk. A-4, H&GN Ry. Company Survey.
 MODIFICATION OL-Max Brewer Jr. to Noble Energy Inc., 5-19-11, NE/4 Sec. 4, Blk. A-4, H&GN Ry. Company Survey.
 MODIFICATION OL-J. R. Kennedy to Noble Energy Inc., 5-18-11, NE/4 Sec. 4, Blk. A-4, H&GN Ry. Company Survey.
 MODIFICATION OL-Betty M. Watson to Noble Energy Inc., 5-18-11, NE/4 Sec. 4, Blk. A-4, H&GN Ry. Company Survey.
 MODIFICATION OL-Kelly Hollis Baxter (Estate) to Noble Energy Inc., 5-23-11, 78.479750 acs E/2 SE/4 Sec. 4, Blk. A-4, H&GN Ry. Company Survey.
 MODIFICATION OL-Martha A. Miller to Noble Energy Inc., 5-24-11, E/2 SE/4 Sec. 4, Blk. A-4, H&GN Ry. Company Survey.
 MODIFICATION OL-Bill Polston to Noble Energy Inc., 5-25-11, NE/4 Sec. 4, Blk. A-4, H&GN Ry. Company Survey.
 MODIFICATION OL-Linda Ruth Martin Walker to Noble Energy Inc., 5-27-11, NE/4 Sec. 4, Blk. A-4, H&GN Ry. Company Survey.
 MODIFICATION OL-Marilyn Deloris Greenhill Mounce to Noble Energy Inc., 5-27-11, NE/4 Sec. 4, Blk. A-4, H&GN Ry. Company Survey.
 MODIFICATION OL-Linda Speegle to Noble Energy Inc., 5-25-11, NE/4 Sec. 4, Blk. A-4, H&GN Ry. Company Survey.
 MODIFICATION OL-Brenda Polston to Noble Energy Inc., 5-25-11, NE/4 Sec. 4, Blk. A-4, H&GN Ry. Company Survey.
 MODIFICATION OL-Gale Saddy to Noble Energy Inc., 5-24-11, E/2 NW/4 Sec. 4, Blk. A-4, H&GN Ry. Company Survey.
 MODIFICATION OL-Jody S. Woods to Noble Energy Inc., 5-24-11, E/2 NW/4 Sec. 4, Blk. A-4, H&GN Ry. Company Survey.
 MODIFICATION OL-Sharyn Gillespie Thornton to Noble Energy Inc., 5-19-11, 74.622750 acs. W/2 SE/4 Sec. 4, Blk. A-4, H&GN Ry. Company Survey.
 MODIFICATION OL-Marcey Gillespie to Noble Energy Inc., 5-19-11, 74.622750 acs. W/2 SE/4 Sec. 4, Blk. A-4, H&GN Ry. Company Survey.
 MODIFICATION OL-Debra Gillespie Miller to Noble Energy Inc., 5-19-11, 74.622750 acs. W/2 SE/4 Sec. 4, Blk. A-4, H&GN Ry. Company Survey.
 MODIFICATION OL-Clarke B. Gillespie Jr. to Noble Energy Inc., 5-19-11, 74.622750 acs. W/2 SE/4 Sec. 4, Blk. A-4, H&GN Ry. Company Survey.
 MODIFICATION OL-James A. Besselman to Noble Energy Inc., 8-15-11, 78.479750 acs. W/2 SE/4

4 Sec. 4, Blk. A-4, H&GN Ry. Company Survey.
 MODIFICATION OL-Hedberg Family Limited Partnership to Noble Energy Inc., 5-19-11, 74.622750 acs. W/2 SE/4 Sec. 4, Blk. A-4, H&GN Ry. Company Survey.
 MODIFICATION OL-Marion Louise Hubbard to Noble Energy Inc., 5-24-11, E/2 NW/4 Sec. 4, Blk. A-4, H&GN Ry. Company Survey.
 MODIFICATION OL-E. T. Manning Jr. to Noble Energy Inc., 8-18-11, 78.473750 acs. E/2 SW/4 Sec. 4, Blk. A-4, H&GN Ry. Company Survey.
 MODIFICATION OL-Sally Jean Ferrell to Noble Energy Inc., 6-9-11, 78.479750 acs. E/2 NW/4 Sec. 4, Blk. A-4, H&GN Ry. Company Survey.
 MODIFICATION OL-Janet Louise Walsler to Noble Energy Inc., 6-9-11, 78.479750 acs. E/2 NW/4 Sec. 5, IRR Company Survey.
 MODIFICATION OL-E. C. Honath, et ux to Noble Energy Inc., 5-20-11, 78.479750 acs. W/2 SW/4 Sec. 5, IRR Company Survey.

2 NW/4 Sec. 5, IRR Company Survey.
 MODIFICATION OL-E. C. Honath, et ux to Noble Energy Inc., 5-20-11, 78.479750 acs. W/2 SW/4 Sec. 4, Blk. A-4, H&GN Ry. Company Survey.
 MODIFICATION OL-E. C. Honath, et ux to Noble Energy Inc., 5-20-11, 78.479750 acs. E/2 SW/4 Sec. 4, Blk. A-4, H&GN Ry. Company Survey.
 MODIFICATION OL-Elwood Mooney, et ux to Noble Energy Inc., 5-24-11, S/2 NE/4 Sec. 5, IRR Company Survey.
 MODIFICATION OL-Kem Barr Buice to Noble Energy Inc., 6-13-11, S/2 SW/4 & Pt. W/2 SE/4 Sec. 5, IRR Company Survey (158.70 acs.).
 MODIFICATION OL-Julia Carol McCain to Noble Energy Inc., 9-11, 78.479750 acs. E/2 NW/4 Sec. 5, IRR Company Survey.
 MODIFICATION OL-John M. Coffman to Noble Energy Inc., 6-9-11, 78.479750 acs. E/2 NW/4 Sec. 5, IRR Company Survey.
 MODIFICATION OL-Frances Janet Laycock to Noble Energy Inc., 6-9-11, 78.479750 acs. E/2 NW/4 Sec. 5, IRR Company Survey.
 MODIFICATION OL-Billy Wayne Finsterwald to Noble Energy Inc., 10-10-11, 78.457000 acs. W/2 SW/4 Sec. 4, Blk. A-4, H&GN Ry. Company Survey.

Company Survey.
 MODIFICATION OL-Billy Wayne Finsterwald to Noble Energy Inc., 10-10-11, 78.479750 acs. E/2 SW/4 Sec. 4, Blk. A-4, H&GN Ry. Company Survey.
 MODIFICATION OL-Billy Wayne Finsterwald to Noble Energy Inc., 10-10-11, 78.457000 acs. W/2 SW/4 Sec. 4, Blk. A-4, H&GN Ry. Company Survey.
 MODIFICATION OL-Bobby Gene Finsterwald to Noble Energy Inc., 10-10-11, 78.457000 acs. W/2 SW/4 Sec. 4, Blk. A-4, H&GN Ry. Company Survey.
 MODIFICATION OL-Bobby Gene Finsterwald to Noble Energy Inc., 10-10-11, 78.457000 acs. E/2 SW/4 Sec. 4, Blk. A-4, H&GN Ry. Company Survey.
 MODIFICATION OL-Bobby Gene Finsterwald to Noble Energy Inc., 10-10-11, 78.457000 acs. E/2 SW/4 Sec. 4, Blk. A-4, H&GN Ry. Company Survey.
 MODIFICATION OL-William A. McWhorter to Noble Energy Inc.,



6-9-11, NW/4 NE/4 & 10 acs. N/2 NE/4 Sec. 5, IRR Company Survey.
 MODIFICATION OL-Philip Dean McWhorter to Noble Energy Inc., 6-9-11, NW/4 NE/4 & 10 acs. N/2 NE/4 Sec. 5, IRR Company Survey.
 MODIFICATION OL-Debra Denise Reynolds to Noble Energy Inc., 6-9-11, NW/4 NE/4 & 10 acs. N/2 NE/4 Sec. 5, IRR Company Survey.
 MODIFICATION OL-Lynnette Sue McWhorter Myers to Noble Energy Inc., 6-9-11, NW/4 NE/4 & 10 acs. N/2 NE/4 Sec. 5, IRR Company Survey.
 DEED-Shirley Louise Rose to Arlis Jack Rose, 7-22-09, Pts. Sec. 34, Blk. 23, H&GN Ry. Company Survey.
 ASSIGN./CONVEYANCE-Joseph F. Messenbaugh III to GR Coddington Ventures Ltd., 3-15-12, NE/4 Sec. 59, Blk. A-7, H&GN Ry. Company Survey.
 ASSIGN.- Bobby Lee Bailey to Lena Bailey, 3-22-12, Sec. 72, Blk. A-5, H&GN Ry. Company Survey.
 PARTIAL ASSIGN.-Kellerville Operating LLC lto Forked River

Resources LLC, 3-21-12, W 80 acs of SW/4 Sec. 52, Blk. 24, H&GN Ry. Company Survey.
 ROW-Rhonda Lynn Gallagher to Greenbelt Electric Cooperative Inc., 1-24-12, Pt. E/2 NW/4 Sec. 30, Blk. A-3, H&GN Ry. Company Survey.
 ROW-Tommy Puryear to Greenbelt Electric Cooperative Inc., 3-7-12, Pt. SW/4 Sec. 13, Blk. A-3, H&GN Ry. Company Survey.
 ROL-Cambridge Production Inc. to Maurita L. Blackwell Pitman, et al. 3-19-12, SE/4 & SE/4 NE/4 Sec. 22, Blk. A-5, H&GN Ry. Company Survey.
 ASSIGN. OVERRID. ROYALTY-Samson Lone Star LLC to Robert D. McKenna, 3-21-12, NE/4 Sec. 6, Blk. R.E., Roberts & Eddleman Survey.
 OL-B&G Operating Ltd. to Apache Corporation, 3-1-12, Sec. 62, Blk. A-7, H&GN Ry. Company Survey.
 OL-Robert C. Callan Jr. to Apache Corporation, 3-1-12, Sec. 62, Blk. A-7, H&GN Ry. Company Survey.
 DEED-Richard Hefley, et al to Doyle Eugene Glazner, et ux, 3-20-12, Lots 7 & 8, Blk. 26, Shamrock.
 EXECUTRIX ASSIGN./DEED-Donald Rowland Martz (Estate), et al to Sand Lake Inc., 3-13-12, No Land Description Given.
 DEED-Joe David Capps to Donna Marie Capps, 2-1-12, Pts. Sec. 45, Blk. 17, H&GN Ry. Company Survey.
 ASSIGN.-McAfee Land Management LLC to Noble Energy Inc., 3-21-12, S/2 NE/4 & Pt. W/2 SE/4 Sec. 5, IRR Company Survey & All Sec. 4, Blk. A-4, H&GN Ry. Company Survey.

News, Views & Commentary
KPDR-FM, 90.3
 WHEELER, TEXAS
 Weekdays: 6:00 a.m. to 7a.m.



AUCTION

Wednesday, April 4, 2012 — Sale Time: 10:30 a.m.

LOCATED: From Shamrock, Texas: 5 Miles North on Highway 83, Then 11 Miles East-Northeast on FM Highway 592 or From Kelton, Texas: 2 Miles South on FM Highway 592.

MOORE FARMS & NEIGHBORS

Matt is changing his farming operation and will sell the following at public auction:

For Information Telephone: Matt (806) 898-1761 or 5 Star Auctioneers: Jimmy Reeves (806) 864-3362 or Jim Sumners (806) 864-3611.

SHAMROCK ROTARY CLUB WILL BE CATERING LUNCH

TRACTORS, MOTOR GRADER —
 1—2003 J.D. 7420 M.F.W.D. Dsl. Tractor, Cab, A/C, Htr., Power/Quad Trans., D.H., Wts., 380/85R30 Front Rubber, 480/80R42 Rear Rubber (3656 Hrs.) S.N. 1748
 1—2002 J.D. 6420 M.F.W.D. Dsl. Tractor, Cab, A/C, Htr., Power/Quad Trans., D.H. w/J.D. 640 Hyd. Front End Loader, 7' Bucket, Hay Forks S.N. 335990
 1—J.D. 670 A Motor Grader Farmer Owned Ex-State Machine
COTTON PICKER, COTTON STRIPPER —
 1—2008 Case-IH 625 Module Express S.P. 6 Row Cotton Picker (30" & 40") Cab, A/C, Htr., AFS Monitor, Rectangular Modules (Has Had All The Latest Updates) 746 Fan Hrs. S.N. 81013847 (Shedded & Nice)
 1—Allis Chalmers 880 S.P. Cotton Stripper w/Broadcast & Brush Head
PICKUPS, TAHOE, TRUCK —
 1—2003 Chevrolet 2500 HD 3/4 Ton 4x4 Flatbed Truck, 6.0 Eng., A/T, A/C, P/S, P/B, Reg. Cab w/T&S Model P-836 Cake Feeder & DewEze Hay Bed w/Bale Squeeze (130,900 Miles)
 1—2001 Chevrolet 2500 HD 3/4 Ton 4x4 Flatbed Truck 6.0 Eng., A/T, A/C, P/S, P/B, Reg. Cab w/Bramco Hay Bed & Hay Fork, Elect./Hyd. (130,000 Miles)
 1—1997 Chevrolet Tahoe 2 Door, 350 Eng., A/T, A/C, P/S, P/B, P/L, Power Door and Windows (Excellent Shape)
 1—1993 Freightliner Truck Tractor, Detroit Eng., 13 Spd. Trans.

EQUIPMENT —
 1—J.D. 1890 No Till 42' Air Drill w/J.D. 1910 350 Bu. Double Tank Seed Cart, Belt Conveyor Load (Nice) Drill S.N. 730534 Air Cart S.N. 731102
 1—Concord 40'-10" Space Air Seeder, D.D., w/Prax 2 Compartment Air Seeder Cart
 1—Dawn-Plubrush D.T. 10 Row-30" Strip Till Rig w/A.A. & Liquid Fertilizer Attachment
 1—Lilliston 3pt. 12 Row-30" Rolling Cultivator
 1—3pt. 3 Disc Breaking Plow
HAY EQUIPMENT, GRAIN AUGER —
 1—J.D. 956 MoCo D.T. 16' HyraSwing Swather (Shedded & Nice)
 1—New Holland 144 Hay Inverter
 1—6"x40" P.T.O. Portable Grain Auger
FEED GRINDERS, MANURE & FERTILIZER SPREADERS —
 1—Farmhand 880 P.T.O. Portable Tub Grinder
 1—J.D. 400 P.T.O. Grinder/Mixer Shedded & Clean
 1—Spread All TR20-T D.T. P.T.O. 20 Ton Manure Spreader
 1—Willmar 500 D.T. 4 Ton P.T.O. Dry Fertilizer Spreader
 1—Adams D.T. 4 Ton Dry Fertilizer Spreader, Wheel Drive
 1—1990 Terra Gator 1804 w/New Leader L3020 G4 Dry Fertilizer Box (Cummins Eng. 18 Spd. Trans.)
 1—3pt. P.T.O. Spreader
TRAILERS —
 1—2011 Horsecreek 12' S.A. Bumper Pull Utility Trailer, Ramp, H.D. Axles, Bulldog Hitch
 1—Trail Master 10' S.A. Bumper Pull Utility Trailer,

Bulldog Hitch, Tail Gate
 1—Frank's 14' S.A. Bumper Pull Utility Trailer, Bulldog Hitch
 1—2008 Continental Cargo 16' T.A. Enclosed Trailer (Nice)
 1—1000 Gal. 4 Wheel Water Tank/Trailer
 1—14' T.A. Stock Trailer
 1—Pickup Bed Trailer
ATV, GOLF CART, GENERATORS, NON-CLASSIFIED —
 1—Arctic Cat 4 Wheeler ATV
 1—Club Car Golf Cart
 1—100 KW 3 Phase Generator w/J.D. Dsl. Power Unit
 1—Generator w/Lister Dsl. Power Unit
 1—Generator w/Deutz Dsl. Power Unit
 1—Chevrolet 4.3L V-6 Well Motor w/Stand
 1—Blaster 3pt. Mist Blower, 540 P.T.O.
 1—Roll A Cone Barring Off Disc on 1"x3" Shanks (Like New)
 1—Coats 4030 Tire Machine
 1—CDS Squeeze Pump
 1—Lot KBH Fertilizer Coulters
 1—Lot Misc. Row Markers
 1—Clamp on Duals
 1—2003-2008 Chev. L.W. Pickup Bed (Never Used)
 2—2003-2008 Chev. Front & Rear Pickup Bumpers
 1—Lot Misc. Propane Tanks
 1—Lot Misc. Older Spray Tanks
 1—Pallet of J.D. Heaters
 1—Lot Misc. Toolbar Makeup & Items Too Numerous to Mention
 Note: Any Announcement Sale Day Takes Precedence

28th Annual SW Farm & Ranch Xpo

The Elk City Chamber of Commerce and the Elk City Convention & Visitors Bureau is proud to announce that the 28th Annual Southwest Farm & Home Expo will be held on April 14 & 15, 2012 at the Elk City Convention Center located at 1016 E. Airport Industrial Road. Doors open to the public on Saturday, April 14 at 9AM and closes at 6PM. On Sunday, April 15 doors open at 12 Noon and closes at 5PM.

As one of Oklahoma's largest farm and home shows, this year's event will once again offer over 100 displays of products and services in farming, ranching, home and garden. Visitors also will be able to enjoy the Saturday morning 8am American Farmers & Ranchers Mutual Insurance sponsored Eggs & Issue Legislative Breakfast, the FFA Ag Mechanics Show, the Antique Tractor Pull, the Children's Peddle Tractor Pull, the Chamber of Commerce \$1000 Chamber dollars drawing, the Best of the West Talent Show and, the All Breed Bull Sale that takes place beginning at 2pm on Saturday. The All Breed Bull Sale draws people from all over Oklahoma, Texas, Kansas and surrounding communities and will feature top breeders with bulls ranging from yearlings to two year olds.

Now in its 28th year, the Southwest Farm & Home Expo committee and the members of the Elk City Chamber of Commerce prides itself on promoting education in agriculture and has, every year, awarded scholarships to graduating seniors who seek to further their education in this area of expertise.

Members of the 2012 Southwest Farm & Home Expo committee include: Anthony Tarrant, Ted Farris, Melody Cummings, Dusty Davis, Randy Dupree, Kenneth Hart, Jason Simon, Cathy Smith, Jimmy Smith, Spencer Smith, Larry Long, David Misener, Randy Smith, Robert O'Hara, Kathy Giblet, Sharon Carpenter, Jodi Davis, Tawana Thomas and Susie Cupp.

For additional information about the 28th Annual Southwest Farm & Home Expo and events contact the Elk City Chamber of Commerce at 580-225-0207.

Five Star Auctioneers

OFFICE: (806) 296-0379 — P.O. BOX 1030 — PLAINVIEW, TEXAS 79073-1030
 WEB SITE: WWW.5STARAUCTIONEERS.COM

Terms of Sale: Cash, Personal or Business Check, Cashier's Check
 All Accounts Settled Day of Sale — Lunch Will Be Available

NOTE: Please Bring Your Own Check Book. If You Have Not Established Yourself With Our Company, Please Bring Bank Letter.
 WINCH TRUCK AVAILABLE ON SALE DAY • BRING YOUR TRUCK OR TRAILER • WE ARE AGENTS AND AGENTS ONLY

JIM SUMMERS(806) 864-3611
 (1006) (HOME)
 JIMMY REEVES(806) 864-3362
 (Clerk) (HOME)
 DONNA NOEL(806) 292-1990
 (Secretary)

APRIL 2012

This Calendar runs the last Thursday of Each Month and is available for Organizations & School Activities. Call: 806/826-3123 for listings.

SUNDAY	MONDAY	TUESDAY	WEDNESDAY	THURSDAY	FRIDAY	SATURDAY
1 Church... Wheeler Nursing & Rehab W. First Baptist 3:00 P.M.	2 One-Act Play District	3 Wheeler Lions Club Mel's 6:00 A.M. Second Round District golf @ Borger	4 HS District Track Meet @ Panhandle	5 Wheeler Fire Dept. . 7:00 P.M. End of 5 th Six Weeks & Early Out @ 1pm for Wheeler I.S.D.	6 Wheeler I.S.D. Holiday	7
8 Church... Wheeler Nursing & Rehab Allison 3:00 P.M.	9 Kelton I.S.D. Bd. 7:00 P.M. Comm. Court 10:00 A.M. Mobeetie City Coun. 7:00 P.M. Fl. Elliott C.I.S.D. Bd. 7:00 P.M. Wheeler I.S.D. Bad Weather Day	10 Mobeetie Fire Dept. 7:00 P.M. Wheeler Lions Club Mel's Diner 6:30 A.M. Birthday Party 2:30 P.M. Care Ctr. (Meth. Women) Our Country Band Care Center 6:30 P.M. Wheeler I.S.D. Early Dismissal HS Area Track @ Panhandle	11 Wheeler I.S.D. Board Meets 6:30 A.M.	12 Old Mobeetie, Texas, Assoc. Visitors' Center 7:00 P.M.	13 JH District Track @ Canadian	14 District Tennis in Amarillo
15 Church... Wheeler Nursing & Rehab Mobeetie Baptist 3:00 P.M.	16 Wheeler City Council City Hall 7:00 P.M.	17 Wheeler Lions Club Mel's Diner 6:30 A.M.	18 WHEELER CHAMBER OF COMMERCE 12:00 Noon Chamber of Commerce Office 212 W. Oklahoma St.	19 Wheeler Fire Dept. . 7:00 P.M.	20 U.I.L. Regional Competition @ Levelland	21
22 Church... Wheeler Nursing & Rehab Johnnie & Patty Crawford 3:00 P.M.	23	24 Wheeler Lions Club Mel's Diner 6:30 A.M. Our Country Band .. 6:30 P.M. Wheeler Nursing & Rehab	25	26	27	28
29 Church... Wheeler Nursing & Rehab Cornerstone Church... 3:00 P.M.	30 Wheeler Senior Supper @ Church of Christ	Wellington State Bank USB Wheeler • Memphis • Childress • Canadian Wheeler Banking Center 405 Alan L. Bean Blvd. P.O. Box 1040 Wheeler, Texas 79096 Member: F.D.I.C.	CROSS COUNTRY BARN Hunt Bros. Pizza Pumps Open 24/7/365 301 E. Okla. St.—Wheeler Phone: 806/826-2276 Dale, Monica & Rachel Kidd	FIRST STATE BANK OF MOBEETIE Mobeetie & Wheeler Member: F.D.I.C.		

Off the Internet

The phrase 'rule of thumb' is derived from an old English law, which stated that you couldn't beat your wife with anything wider than your thumb.

The first product Motorola started to develop was a record player for automobiles. At that time, the most known player on the market was the Victrola, so they called themselves Motorola.

Chewing gum while peeling onions will keep you from crying!
 The glue on Israeli postage stamps is certified kosher.

Astronauts are not allowed to eat beans before they go into space because passing wind in a space suit damages it. I NEED TO REMEMBER THIS.

George Carlin said it best about Martha Stewart. 'Boy, I feel a lot safer now that she's behind bars.'

Hear the...
"Abundant Living Broadcast"
KPDR-FM, 90.3
 WHEELER, TEXAS
 Saturdays: 9:00 a.m. to Noon

Comm. (from Page 1)

Precinct 4 asked for the court's approval to transfer \$65,000 from his Lateral Road account to County Road Repair and Supply.

No action was taken on the burn ban. The monthly report presented to the court by the County Treasurer was accepted as presented.

The bid received by Precinct 4, for a 2012 Day Cab Truck Tractor were rejected. The county will advertise again for bids.

The County Treasurer ask the court for permission to advertise for bids for a new computer system and software for the Treasurer's office.

The court agreed to sign a one year Cooperative Working Agree-

ment between Tralee Crisis Center and Wheeler County.

TxDOT submitted a County Maintained Road Mileage Certificate, showing the county maintains 598 miles of county roads, for the county's approval. The court requested a map before acting on the certificate.

Eagle Rock Energy Partners, L.P., was given permission to bore under County Road "P" for the installation of an oil and gas pipeline.

Canadian Water Well was given permission to bore under County road "K" for the installation of a water line.

The next meeting of the Wheeler County Commissioners' Court will be Monday, April 9, 2010, at 9:00 A.M. with action on the agenda to begin at 10:00 A.M.

211, 214, 217, 220, 1393, 1522, 1540, 1555

Ft. Elliott (from Page 1)

and Hannah Tyson.

The judge was Stephen Crandall with West Texas A&M. Directors included Paula Meller of Higgins, Janie Robertson of Follett, Debra Cockrell of Darrouzett and Tyna Horn directed Fort Elliott's play. Tonya Finsterwald, Fort Elliott, serves as Contest Manager for the competition.

This was the second year for Fort Elliott to host the Zone One-Act Play Competition.

The award for Lighting and Sound went to Brittanie Booth and Corey Birkett of Higgins. Fort Elliott recieved an award for the Best Crew. Steven Fraley and Kathy Kelley made up Fort Elliott's stage crew.

Allison (from Page 6)

Boydston. Our prayers are with ya'll for a speedy recovery.

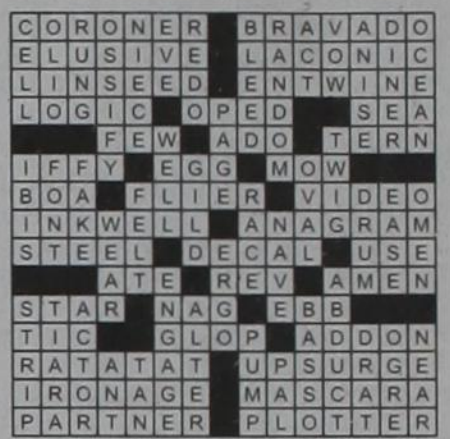
Prayers are still coveted for Vance and Carol Boydston, they are both recovering from pneumonia. They both still have bad coughs. But Praise the Lord they are better and Vance is making his own blood again. What a miracle of God!! Praise be to Jesus!! God is great and greatly to be praised. Praise his holy name!! Just like Bro. Corbitt preached Sunday, its all in the name, which is JESUS!! WOW!!

Opal and Juanita Boydston were in Wheeler, Texas on Monday on business and they visited Roma and Billy June Brown in the Wheeler Care Center and Rehab



and of course happy hour before heading back to Allison, Texas. Also enjoyed some shopping!! Billy June is doing really well, but prayers are needed for Roma Brown.

Mark your calendars for Friday at the Senior Citizens Building at Reydon, Oklahoma. They are serving Grilled Chicken, Baked Potato, Tossed Salad, Fried Okra, Roll and cinnamon roll for dessert. Be worth your time to get a delicious meal. See ya'll there!! God Bless and Keep ya'll till next time!!



OKLAHOMA
CHEYENNE • HINTON
EUFAULA • STILWELL
TEXAS
SHAMROCK • SUNRAY
WELLINGTON • WHEELER



Market Square



www.marketsquareonline.com



THESE SUPER DUPER DEALS GOOD FROM WEDNESDAY, MARCH 28, THRU TUESDAY, APRIL 3, 2012

NOT LIABLE FOR TYPOGRAPHICAL OR PICTORIAL ERRORS. WE RESERVE THE RIGHT TO LIMIT QUANTITIES. SOME ITEMS NOT AVAILABLE IN ALL STORES.

LOOK HERE and save

Banquet Meals select varieties 4.75-10.2 oz. **10 \$10 for**

Shurfine Frozen Vegetables select varieties 16 oz. **10 \$10 for**

Kraft Barbecue Sauce select varieties 17.5-18 oz. **10 \$10 for**

Gatorade select varieties 32 oz. **10 \$10 for**

Del Monte Tomatoes select varieties 14.5 oz. **10 \$10 for**

Casserole Pinto Beans 2 lbs. **\$1.99**

Roma Tomatoes large **8 \$1 for**

Mixed Bell Peppers 3 ct. cello pk. **\$2.99 ea.**

Avocados large **5 \$5 for**

Pilgrim's Thighs or Drumsticks family pack **79¢ lb.**
Small Pack \$1.09 lb.

Sirloin Tip Steak family pack preferred trim boneless beef **\$2.59 lb.**
Single Pack \$2.89 lb.

Sirloin Cut Pork Chops family pack bone in **\$1.29 lb.**
Small Pack \$1.59 lb.

3 Day Sale

- Thursday
- Friday
- Saturday

March 29-31, 2012

Take 10% Off

Our Everyday Price on any Frozen Food Item

Offer Excludes:
 Weekly Ad Price
 Smart Buy
 Smart Price

Offer good in all Market Square Stores while supplies last. No Coupons. No Rainchecks.

LOOKING TO SAVE? BE SURE AND CHECK OUT OUR PRIVATE LABEL PET FOOD PRODUCTS