

Cook Resigns As Hospital Administrator

Ann Cook has resigned her position as administrator at Parkview Hospital, effective Monday, October 8.

The Parkview Hospital board met for their regular meeting on Monday and went into executive session. Upon their return from the meeting, they asked for and received Cook's resignation.

Bill Robertson, retired administrator, will return to serve as administrator until the position can be filled.



THE WHEELER TIMES

(USPS-68) VOLUME 78, NUMBER 44

THURSDAY, OCTOBER 11, 2012

SINGLE COPY 50c

"Wheeler; town of friendship and pride."

Wheeler Slips By Claude, 34-32



Wheeler Slips by Claude

In a game where the Mustangs win and lose the Wheeler Mustangs pulled out a win over the Claude Mustangs by a score of 34-32. The game was a hard fought game that went back and forth with neither team ever having more than a one touchdown lead until the Mustangs from Wheeler went out to a 20-6 lead with 50 seconds left in the first half. Wheeler was led by Cody Clark who rushed for 165 yards on 33 carries and Jake Ware ran for 105 yards on 19 carries. Ware ran for three touchdowns and Clark ran for one touchdown. Wheeler to a 7-0 lead late in the first quarter when Ware scored the first of his three touchdowns. Claude came back in the second quarter when Seth Skarkey threw his first of five touchdown passes to tie the score 7-7.

Andrew Comer scored next for the Mustangs from Wheeler on a one yard plunge and Ismael Buenrostro his second extra point to make the score 14-6 Wheeler. Wheeler won the first half 20-6

after Jake Ware scored his second touchdown with 50 seconds left in the first half on a nine yard run. The extra point was no good and the Wheeler Mustangs led at halftime 20-6.

The Claude Mustangs fought their way back in the second half led by Seth Skarkey. He threw his first touchdown pass of the second half to Taylor Austin on a fifty eight yard pass. Claude went for two on the extra point but failed and the score remained Wheeler 20 Claude 12. Wheeler failed to move the ball and Claude took over and scored on Skarkeys third touchdown pass to Zack Johnson for thirty two yards. Skarkey then ran for the two point conversion. Wheeler 20 Claude 20 and we go to overtime.

(Continued Page 7)

Schedule Change

There will only be 1 Jr. high game this Thurs. at Gruver. The game will start at 5:00 and the JV game will start around 6:00



Christopher "C.J." Butler "C. J." Butler Rites Read In Canadian

Christopher "C.J." Butler, 10 months, of Burns Flat, Oklahoma, passed away Sunday, September 30, 2012, in Elk City, Oklahoma. Services were held at 1:00 A.M. Saturday, October 6, 2012, at The River Ministries with Donald Hill officiating. Burial followed in the Edith Ford Memorial Cemetery in Canadian, Texas, under the direction of Hughs Funeral Home of Canadian, Texas.

C.J. was born November 21, 2011, in Pampa, Texas, to Cortney Steen Butler and the late Christopher David Butler. He was preceded in death by his grandfather, Loren Butler.

He is survived by his mother, Cortney Steen Butler of Burns Flat, Oklahoma; his brother, Landon Butler of Burns Flat, Oklahoma; his grandparents, Wesley and Lori Steen of Canadian, Texas and Kip and Sylvia Francis of Poteau, Oklahoma; his great-grandparents, Wesley Steen, Sr., of Wheeler, Texas; Larry and Janie Taylor of Wheeler, Texas; Curtis and Pat Francis of Canadian, Texas; Margaret Satterlee of Lake Livingston, Texas; his uncles, Jesse Butler of Canadian, Texas; Zachary Butler of Savannah, Georgia; Billy Barnett of Yukon, Oklahoma; Jarry Francis of Fairbanks, Alaska; his aunts, Vanessa Butler of Ft. Worth, Texas; Whitney Martinez of Canadian, Texas; Alicia Francis of Edmond, Oklahoma; and Jessica Steen of Burns Flat, Oklahoma.

The family suggests memorials to the Texas Scottish Rite Hospital for Children, 2222 Wilburn St., Dallas, TX 75219.

Family and friends may send condolences online at www.hughsfuneralhome.com.

MOVING THE BALL: With the help of #10, Ismael Buenrostro, and #52, David Pichardo, #15, Cody Clark pulls lose of the Claude Mustangs as he takes the ball down the field once again.



WHEELER COUNTY HISTORICAL COMMISSION: On October 2, 2012 the Wheeler County Historical Commission Members and Friends visited historical sites in North Wheeler County. The above Photo was taken on County Road G at Dubbs Creek Crossing. Those enjoying the afternoon field trip where (L-R) Kay Batton, Bobbye Hill, Ada Lester, Beth Shelton, Melba Corcoran, Suzanne Lohberger, Rhonda Meriwether, Glenda Ford Floyd, R G Floyd, (front) Susan Redding, Mary Wetherly, and Eric Reams.

CWE CHAT WITH EDITOR

By Louis C. Stas

Way to go, Mustangs! We have a winning streak going, let's keep it up.

— cwe —

Gruver is next, Mustangs, you can do the same to them.

— cwe —

Thanks, for all the pictures. They are appreciated by me and our readers.

— cwe —

The weather has turned cooler and frost warning were issued for parts of the panhandle Friday. Wheeler county was not in the map I saw and I don't think we have had a frost. I have October 25 as the date for our first frost.

— cwe —

Opal Boydston will be celebrating her 100th birthday on October 20. There will be a reception in her honor on that date at Allison. Invitation is on page 5.

(Continued Page 8)

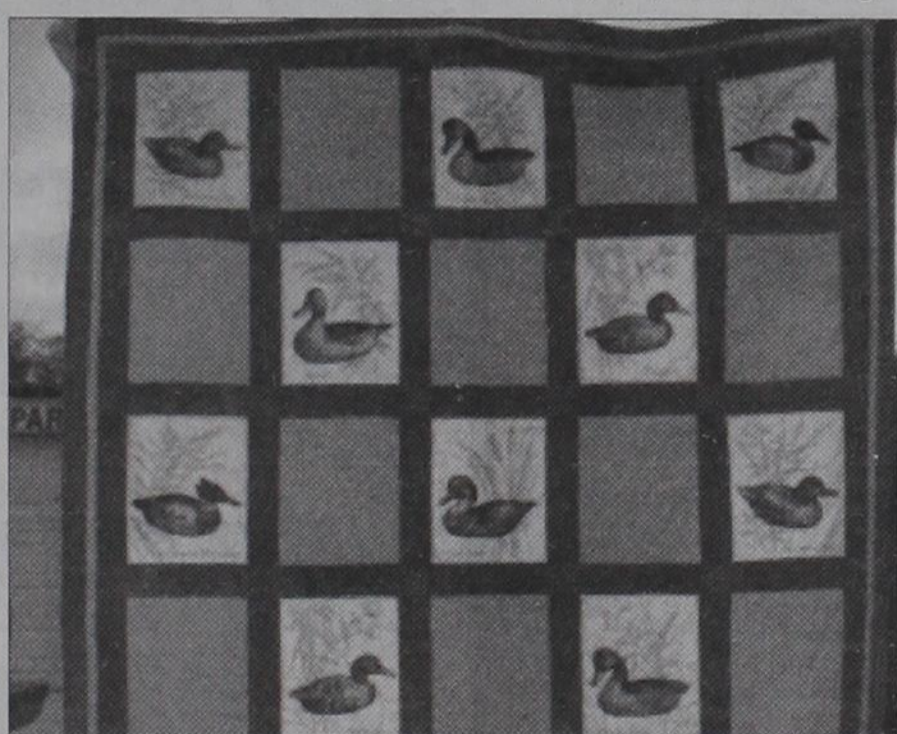
STORM REPORT

As Reported by... **Stormie Meriwether**, Third Grade Student

Dear Friends, It is so wonderful in Fall. I love the cool wind, but not the cold. It was getting very cold and windy and the bees were busy building their bee hive. It was so pretty, but we can't keep bees on the porch of my house.

One day a bee man came to my house. His name is Mr. Jason Ray. He wore a bee coat with a bee hood on it. He had a can with smoke in it. He carried the smoke in the house to the porch upstairs. I stayed in the house and watched him get the bees. He climbed the ladder and very carefully put the pillowcase under the bee hive. Bees were everywhere! They did not like it when he took the bee hive. Most of the bees fell into the sack with the honeycomb. He picked up the other bees and put them in the sack too. I hope he got the queen. My mom got all the bees off of his jacket and the sack before he could come back in the house. I can't believe he is so good at catching bees. Now the bees will live at his house in a box

(Continued Page 8)



Wheeler Volunteer Fire Department Raffle King Size "Duck Quilt" (Donated by Wanda Mitchell) \$1.00 per Ticket. Do not have to be present to win. Drawing to be held 11-03-12 during Pancake Breakfast. See any fireman for tickets.

WCAD Office To Be Closed For Repairs

The Wheeler Central Appraisal District Office will be closed from 12:00 p.m. on Thursday October 11, 2012 until Tuesday, October 16, 2012. We will reopen on Wednesday, the 17th. We will be closed for repairs to office. Thank you for your patience during this time.

Third Week Ranking Walk Across Texas

- Week 3 rankings for Walk Across Texas
1. Happy Hearts 2,184.50
 2. Gageby Gang 2,020.35
 3. Tooth Fairies 1,611.37
 4. YOLO 1,451.61
 5. Lean Green Walking Machines 1,413.56
 6. Team MDA 952.50
 7. Holy Walkamolies 476.61
- Total Miles 10,110.05



The TASA/TASB (Texas Association of School Administrators/Texas Association of School Board) convention was held in Austin, September 27-30. School board members and administrators from throughout Texas attended the annual event. School board members met at length to discuss national education issues. Mark Meadows, Bret Begert, and Richard Meadows from Fort Elliott attended. Left to right: Mark Meadows, NASB President-Elect David Pickler of Tennessee, Bret Begert, NASB President Ed Massey of Kentucky, Richard Meadows. (NASB - National Association of School Board).



MOBEETIE ST. JUDE'S BIKE-A-THON: Fort Elliott held a bike-a-thon on Sat., Sept. 22nd at Mobeetie City Hall for St. Jude Children's Research Hospital. The 25 participants raised a total of \$3,519 for St. Jude's children! Participants who collected money to earn a St. Jude t-shirt are Cutter Barr, Abby Hammock, Jayton Hammock, Braley Long, Journey Sorrell, and Cheylee Tollison. Participants earning a t-shirt and sling bag for their donations were Paisley Archer, Gavin Boydston, and Justin Hunt. Participants receiving a t-shirt, sling bag, and camp stool for their money collected are Boone Swearingin, Lily Forbes, Gatlin Goad, Tanner Horn, Chasey Lane, Barrett Meadows, Molly Meek, Will Parsley, Roper Pigg, Tatum Pigg, Colton, Saavedra, Jaycee Sewell, Savanna Sims, Madison Swearingim, and Ben Wilson. Thanks to Thriftway, Mobeetie City Council, and Mobeetie First State Bank for donating hot dogs and drinks. Thanks to the parents who provided snacks, the Mobeetie Volunteer Fire Department for blocking the street, and those who so generously donated to St. Jude's.

Ft. Elliott Students Bring Disney Classic Kitty Caper To Life Oct. 20

Everybody wants to be a cat in Fort Elliott's All School production of Disney's The Aristocats. Performances will be on Saturday, October 20, 2012 at 7 pm and Sunday, October 21, at 3 pm. The musical will be held at the high school auditorium in Briscoe. Admission is free and a reception will follow Saturday night's performance.

Fort Elliott is excited to bring Disney's classic kitty caper to life. When Madame's jealous butler Edgar cat-naps Duchess and her

Aristokittens and abandons them in the Parisian countryside, what's a cat to do? Luckily, Thomas O'Malley and his rag-tag bunch of Alley Cats come to their rescue! This feline adventure starring an all-kid cast is sure to get you tapping your feet to its hep, jazzy beat, which includes the Disney favorites "The Aristocats," "Scales and Arpeggios" and "Ev'rybody Wants to Be a Cat." (Music and Lyrics by Richard M. Sherman and Robert B. Sherman and Al Rinker and Floyd

Huddleston. Music Adapted and Arranged and Additional Music and Lyrics by Bryan Louiselle. Book Adapted and Additional Lyrics by Michael Bernard. Based on the 1970 Disney Film THE ARISTOCATS) Fort Elliott music teacher Ginger Meers is directing The Aristocats.

Ms. Meers is a graduate of Pampa High School and Evangel University in Missouri with a degree in Music Education. A few of Ms. Meers' credits include performing in the musical Oklahoma, as well as stage performances in New York City, New York and Branson, Missouri. She previously taught school in Missouri and continues to give private voice lessons. She is the daughter of Lewis and Elizabeth (Kelly) Meers, formerly of Pampa and granddaughter of Alice Kelly of Briscoe and H.L. and Nadine Meers of Pampa.

This program gives students the opportunity to participate in theatre, experience the process of putting on a show as well as learning basic acting techniques and skills. These activities give young people a chance to have fun with theatre, thus nurturing a life-long love of the arts.

Come join the fun as the hard

work of all involved brings the Aristocats to life. The show is perfect for a family outing, an afternoon's entertainment or to treat your children as they watch one of their favorite Disney cartoons brought to life before their eyes.

See you at the theatre!

MOBEETIE NEWS

By Melba Corcoran

Those working at the museum this week were Louise Hogan, Maurita Stribling, Suzanne Lohberger, Ada Lester, Bobbie Walker, Gina Seitz, Melba Corcoran, Dale Corcoran and Bill Finsterwald.

On Tuesday, the Wheeler County Historical Commission took a field trip. The group met at Maxey's for lunch and then visited the Emanuel Dubb's place. Susan Redding took us to the Dubb's Spring House. From there, Mary Weatherly took us to the rock quarry where the stone for the Mobeetie Jail came from. From there, we went where the rock bridge was built. Now it is replaced with a pipe and built up. We then went by Joe's burial place and by the tree house on Quail Springs place. It was a nice



afternoon to see where history had taken place. Those attending were Kay Batton, Bobby Hill, Ada Lester, Beth Shelton, Melba Corcoran, Suzanne Lohberger, Rhonda Meriwether, Glenda Ford Floyd, R G Floyd, Susan Redding, Mary Weatherly and Eric Reams. There were beautiful views in all directions.

What a change in the weather this weekend! Not ready for the cold weather!

Dale Corcoran went to the eye doctor in Amarillo Monday.

Barry and Terri Corcoran from Midwest City OK visited over the weekend with Pete and Sue Seitz. They visited with Dale and Melba Corcoran on Saturday

night. Wade Hathaway has been in Baptist St Anthony Hospital. They are still running tests. He has been having bad headaches. Remember him in your prayers.

Sallie Adcock had her knee surgery on Thursday. She is doing pretty well and will start her therapy this week. She still has to use the cold water machine on it. Remember her in your prayers.

Sunday Nite Live
KPDR-FM, 90.3
... Live from Canadian
9:00 p.m. to 11:00 p.m.

OLD TIMES NOT FORGOTTEN

By Roland Miles

THE SKINNY GENERATION

The company I used to work for was showing us some old film after a safety meeting one morning. They were making a comparison of work methods from back then, and the way we do them today. The original film had been made back in the mid to late 1940's. I didn't end up remembering anything about the content of the film, but still have a vivid picture in my mind of how the men looked. Ever one of them was as "skinny as a rail." That started me mulling, about why they were all so skinny. It occurred to me, this was shortly after WWII, so most of them had come back from the war, only a couple of years before. Nearly all WWII veterans have one thing in common; they grew up in the "great depression." For most people, there wasn't any extra money to spend on "midnight snacks," like I often have. Besides that, there wasn't TV to sit down and watch. The ones that lived in the country probably didn't have electricity anyway; so people went to bed pretty early. A lot of these guys had grown up plowing, walking behind a horse or two. It's a proven fact, that a sure-fire way to lose weight, is to hang onto a plow handle all day, while walking behind horses. If it was too far, to come home for dinner, they could bring a couple of biscuits with sausage between them to eat, and then they would wash it down with some water. The water was almost always in a fruit jar, wrapped with a wet "toe sack," to help keep it cool. The women's work was also, really hard and time-consuming. Fortunately, in the late '40's, things started to

improve a lot, and life got easier. Most of these folks are from about eighty-five to ninety-five years old now. This is my parent's generation, and I'm so proud of them, for what they went through, because they gave us a lot better world than what they had.



Wheeler I.S.D. MENU

Week of October 15 - 19

Monday

Breakfast - Cereal, PV&J Sandwich, Oatmeal, Juice, Milk
Lunch - Hamburger/Bun, Hamburger Salad, Seasoned Fries, Western Beans, Diced Pears, Milk

Tuesday

Breakfast - Eggs, Biscuits, Sausage, Gravy, Juice, Milk
Lunch - Tangerine Chicken, Brown Rice, Baby Carrots, Steamed Broccoli, Snowball Salad, Milk

Wednesday

Breakfast - Pancake Pups, Cereal, Fresh Apples, Juice, Milk
Lunch - Tex-Mex Stack, Spanish Rice, Pinto Beans, Garden Salad/Salsa, Hot Cinnamon Apples, Milk

Thursday

Breakfast - Biscuits, Sausage, Gravy, Juice, Milk
Lunch - Stuffed BBQ Potato/Cheese, Baby Carrots, Crackers, Fresh Fruit Bowl, Cherry Fruit Bar, Milk

Friday

Breakfast - Toast, Cereal, Juice, Milk
Lunch - Chicken Parmesan, Savory Green Beans, Garden Salad, Fresh Apple Slices, Breadstick, Milk

HOUSE HUNTERS-REALTOR

In Wheeler—15 Acres on County Road 15-A, Good Farmland, utilities available

Linda Laycock Broker, ABR, GREEN, SRES, e-Pro 806.662.1312
Larry Hadley Assoc. 806.662.2779
Jordan Oneal Assoc. 806.670.6623
Pampa MLS www.househunterspampa.com Amarillo MLS

Hyland's Pharmacy Downtown Wheeler

Baby Shower:
Shanna Horton & Braden Bolly Baby Name: Britton Shower date: 10-13-12 Location: Church of Christ
Robert Garcia & Meagan Garcia Baby Name: Jaxon Garcia Shower date: 10-14-12 Location: Ft. Elliott High School
Jansen Moore & J'Shay Moore Baby Name: Isla Shower date: 10-26-12
The store for all your needs: Prescriptions, Gifts for your loved ones, and More!

ORVILLE LOCKLEAR ROOFING

800-466-3120
580-323-3100
ORVILLE LOCKLEAR 40 Years Experience
P.O. Box 904 Clinton, OK 73601
11/17-2/24

Your One-Stop Accessory Headquarters



Vortex Spray-On Bedliners
B & W Hitches
Receiver Hitches
RanchHand Grill Guards
Iron Cross Nerf Bars
UWS Tool Boxes
RKI Tool Boxes
CPL Boxes
Tonneau Bed Covers
Bugshields & Vent Visors

Stereo Equipment by:
Kenwood
Panasonic
Alphasonik
Rockford Fosgate

Diesel Performance Product by:
Banks Power & Edge

101 S. Hobart
P.O. Box 1140
Pampa, TX 79065
806-665-3500
Fax: 806-665-2626

Satellite Radio From:
XM Radio
Sirius

Professional Paint & Body

Parkview Artery Breast Cancer in Men

Yes men do get breast cancer, but it is about 100 times less common among men than among women. For men, the lifetime risk of getting breast cancer is about 1 in 1,000. The number of breast cancer cases in men relative to the population has been fairly stable over the last 30 years.

The prognosis (outlook) for men with breast cancer was once thought to be worse than that for women, but recent studies have not found this to be true. In fact, men and women with the same stage of breast cancer have a fairly similar outlook for survival.

The most recent American Cancer Society estimates for breast cancer in men in the United States are for 2012:

- About 2,190 new cases of invasive breast cancer will be diagnosed among men
- About 410 men will die from breast cancer

What are the risk factors for breast cancer in men?

A risk factor is anything that affects your chance of getting a disease such as cancer. Different cancers have different risk factors. For example, exposing skin to strong sunlight is a risk factor for skin cancer. Smoking is a risk factor for cancers of the lung, mouth, larynx (voice box), bladder, kidney, and several other organs.

But risk factors don't tell us everything. Having a risk factor, or even several, does not mean that you will get the disease. Some men with one or more breast cancer risk factors never develop the disease, while most men with breast cancer have no apparent risk factors. Even when someone has a risk factor, there is no way to prove that it actually caused the cancer.

We don't yet completely understand the causes of breast cancer in men, but researchers have found several factors that may increase the risk of getting it. As with female breast cancer, many of these factors are related to sex hormone levels in the body.

Family history of breast cancer

Breast cancer risk is increased if other members of the family (blood relatives) have had breast cancer. About 1 out of 5 men with breast cancer have close male or female relatives with the disease.

Heavy drinking (of alcoholic beverages) increases the risk of breast cancer in men. This may be because of its effects on the liver.

Liver disease, estrogen treatment and obesity & certain occupations are some of the risk factors.

There are some things a man can do to lower his risk of breast cancer: maintaining an ideal body weight and restricting alcohol consumption are 2 of them. But since the cause of most breast cancers is not known, there is no known way to prevent them.

For now, the best strategies for reducing the number of deaths caused by this disease are early detection and prompt treatment. Early detection has been a problem for men, who tend to ignore breast lumps and see their doctor only when they have gotten large. In general, men are diagnosed with cancers at more advanced stages than are women.

Decisions about how to treat or manage your cancer are always yours to make. If you want to use a non-standard treatment, learn all you can about the method and talk to your doctor about it. With good information and the support of your health care team, you may be able to safely use the methods that can help you while avoiding those that could be harmful.

medcat



The Fort Elliott Lady Cougars celebrated cancer awareness on pink out night and honored the following survivors: (l. to r.) Annette Waiser, Peggy North, Debbie Kinnaman, Charlene Heronema, and Carolyn Corse. —Photo by Kathy Kelley

MARSHALL'S HEATING & AIR CONDITIONING

WHEELER, TX - CELL: 662-7876



NOW DOING... AIR DUCT CLEANING

It's Hard To Stop A Trane

-24 Hour Emergency Service-

LICENSED & INSURED

License No. TACL8022710E

Mark Marshall, Owner



Wheeler United Methodist Church

Eighth at Main St.—P.O.Box 89
Wheeler, TX 79096

806-826-3114 Fax 806-826-3780
wheelerumc@windstream.net

Sunday Schedule

Coffee & Donut Fellowship—9:30 a.m.

Sunday School—9:45 a.m.

Worship—11:00 a.m.

Wednesday Schedule

Youth Fellowship—6:00 p.m.

Choir Rehearsal—7:00 p.m.

DOUG BOYD MOTOR CO.

Buy Here / Pay Here

No Credit Check • Areas Largest Selection

Pampa • Corner of Hwy 60 @ Hwy 70

806-669-6062 • www.dougboydmotors.com



RiverCrest Concrete, LLC

Foundations, Driveways, Piers, & Walls



Chip Hill
972-989-8019

Residential

Commercial



Robby Schaffer FIREARMS & AMMUNITION

602 Cheyenne • Wheeler, TX
806.826.0129 • 806.216.1322

E-mail: robschaf@windstream.net

Store Hours: Mon. to Fri. 6 P.M. to 9 P.M.

Sat. 12 to 8 P.M.



Rock-N Okie Complete Tree Service

Fully Insured

Mitch or Barbee
Horstkoetter
580-243-7494

P.O. Box 327
Erick, Ok 73645
www.rocknokie.com

Wheeler County COURT RECORDS

List of instruments filed in the Wheeler County Clerks office from October 1, 2012 - October 4, 2012.

OCTOBER 1, 2012
 EXECUTORS MD-William Barr Browder Jr. (Estate) to Waverly Minerals and Timbers Ltd., 9-19-12, See Instrument.
 C/C PROBATE-James I Riddle III (Deceased) to Ex Parte, 9-6-12, No Land Listed.
 ASSIGN./OC/BS/CONVEY.-Carole J. Drake to Carole J. Drake

LLC, 9-26-12, Secs. 56 & 61, Blk. A-7, H&GN Ry. Company Survey.
 ROW-Nancy Jan Davis, et vir to Samson Lone Star LLC, 9-12-12, Pt. Sec. 61, Blk. A-7, H&GN Ry. Company Survey.
 AMEND. ROW-Samson Lone Star LLC to Beverly Ann Bryant, et vir, 9-25-12, Pt. Sec. 57, Blk.

A-7, H&GN Ry. Company Survey.
 AMEND. ROW-Samson Lone Star LLC to Beverly Ann Bryant, et vir, 9-25-12, Pt. Sec. 57, Blk. A-7, H&GN Ry. Company Survey.
 EXT. DT-Harry D. Sims, et ux to Capital Farm Credit FLCA, 9-7-12, All Sec. 3 & Pt. Sec. 19, Blk. A-5, H&GN Ry. Company Survey.
 DT-Santiago Alvarado III, et ux to HAS Texas Investments LLC, 9-5-12, 5.0 acs. NW/4 Sec. 56, Blk. 17, H&GN Ry. Company Survey.
 SUB-SURFACE ROW-Rhonda Lynn Gallagher to Newfield Exploration Mid-Continent Inc., 9-11-12, Pt. Sec. 31, Blk. A-3, H&GN Ry. Company Survey.
 SUB-SURFACE ROW-Rebecca Foreman to Newfield Exploration Mid-Continent Inc., 9-11-12, Pt. Sec. 31, Blk. A-3, H&GN Ry. Company Survey.
 SUB-SURFACE ROW-Susan Renee Blankenship to Newfield Exploration Mid-Continent Inc., 9-13-12, Pt. Sec. 31, Blk. A-3, H&GN Ry. Company Survey.
 ROW-Rebecca Foreman to Newfield Exploration Mid-Continent Inc., 9-11-12, Pt. Sec. 31, Blk. A-3, H&GN Ry. Company Survey.
 ROW-Rhonda Lynn Gallagher to Newfield Exploration Mid-Continent Inc., 9-11-12, Pt. Sec. 31, Blk. A-3, H&GN Ry. Company Survey.
 ROW-Susan Renee Blankenship to Newfield Exploration Mid-Continent Inc., 9-13-12, Pt. Sec. 31, Blk. A-3, H&GN Ry. Company



THE WHEELER TIMES

2PAGE 3 - Thursday, October 11, 2012
 "Wheeler: town of friendship and pride."

Survey.
 FRAC PIT AGREEMENT-Rhonda Lynn Gallagher, et al to Newfield Exploration Mid-Continent Inc., 9-11-12, Sec. 31, Blk. A-3, H&GN Ry. Company Survey.
 FRAC PIT AGREEMENT-Susan Renee Blankenship, et al to Newfield Exploration Mid-Continent Inc., 9-13-12, Sec. 31, Blk. A-3, H&GN Ry. Company Survey.
 RELEASE ADDITIONAL DAMAGE AGREEMENT-Susan Renee Blankenship, et al to Newfield Exploration Mid-Continent Inc., 9-13-12, Sec. 31, Blk. A-3, H&GN Ry. Company Survey.
 ASSIGN. BS-SLT Dakota Operating Inc. to Quixote Energy & Operating Inc., 3-1-12, See Instrument.
 ASSIGN. BS-RHS Energy LLC, et al to Sundown Resources LLC, 9-27-12, Sec. 52, Blk. A-7, H&GN Ry. Company Survey.
 ASSIGN. CONVEY. BS-Azalea Properties Ltd. to RCWI GP LLC, 9-14-12, Pt. Sec. 1, Blk. 2, Brooks

& Burleson Survey.
 STL-State of Texas to Robert G. Eddleman, 9-26-12.
 POA-McKenzie Leisher to Clay Leisher, 9-7-12, E 10' Lot 21 & All Lot 22, Connor Addition, Wheeler.
 DVL-Clay Leisher, et ux to Sandra Almerza, et al, 9-7-12, E 10' Lot 21 & All Lot 22, Connor Addition, Wheeler.
 DT-Sandra Almeraz, et al to American Financial Resources Inc., et al, 9-7-12, E 10' Lot 21 & All Lot 22, Connor Addition, Wheeler.
 OCTOBER 2, 2012
 DEED-Anna Chase to Steven Chase, 10-1-12, N 15' Lot 13 & all Lot 14, Blk. 75, Woodley's Southside Addition, Shamrock.
 DVL-Jerry Robertson, et al to Curtis Robison, et al, 10-1-12, S 193' Lot 2, Blk. LXXXVI, Shamrock.
 DT-Curtis Robison, et al to Citizens Bank, 10-2-12, S 193' Lot 2 Blk. LXXXVI, Shamrock.
 (Continued Page 5)



Peggy & Nanny



Peggy - approximately 7



Peggy

Let's Celebrate 80 Wonderful Years! Peggy Darlyne Dunn

Birth date: November 10, 1932 - Birth Place: Paducah, TX
 Please join Bo, Tanya, and their families as they celebrate eight decades of life and memories with their mother. Memories are the ink on each page of our lives. How has Peggy written on yours? Let's take time to share those memories and enjoy family and friends.
Saturday, November 3, 2012 - 2:00-5:00

Wheeler County Ag & Family Center—North on Highway 83, East side of Highway, Wheeler, TX
 Peggy requests no gifts. She would love to have a card with a memory you share. It will be a keepsake to remind her of this important day. If you are unable to attend, please send a card if possible.

GREAT PLAINS REGIONAL MEDICAL CENTER

Find us on Facebook 1801 West Third Street * 580.225.2511 * www.gprmc-ok.com

October is National Breast Care Awareness Month



We offer digital mammography because your life is precious, and because we care.

Your mammogram will be interpreted on-site by a Board Certified Radiologist who also specializes in breast imaging. What does that mean for you, the patient? If you wish to do so, you can visit in person with the Radiologist who interpreted your mammogram. If additional studies are needed, they can be done here.

And, you have the added peace of knowing that whatever the outcome, we have the necessary specialists, resources and services that enable us to travel the whole journey by your side.

Call 580.821.5565 today to schedule your screening mammogram.



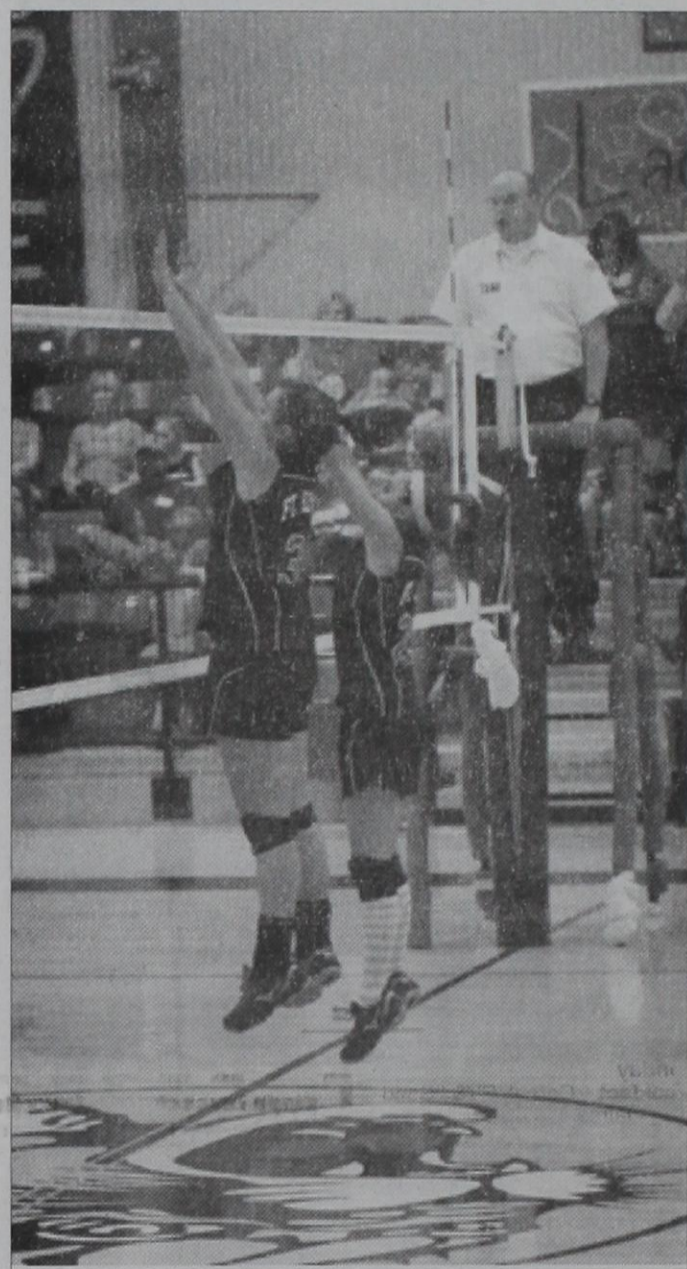
RAMOS CONSTRUCTION

- REMODELING • ADDITIONS
- CONCRETE WORK • TILE
- ROOFING • PAINTING (INTERIOR/EXTERIOR)

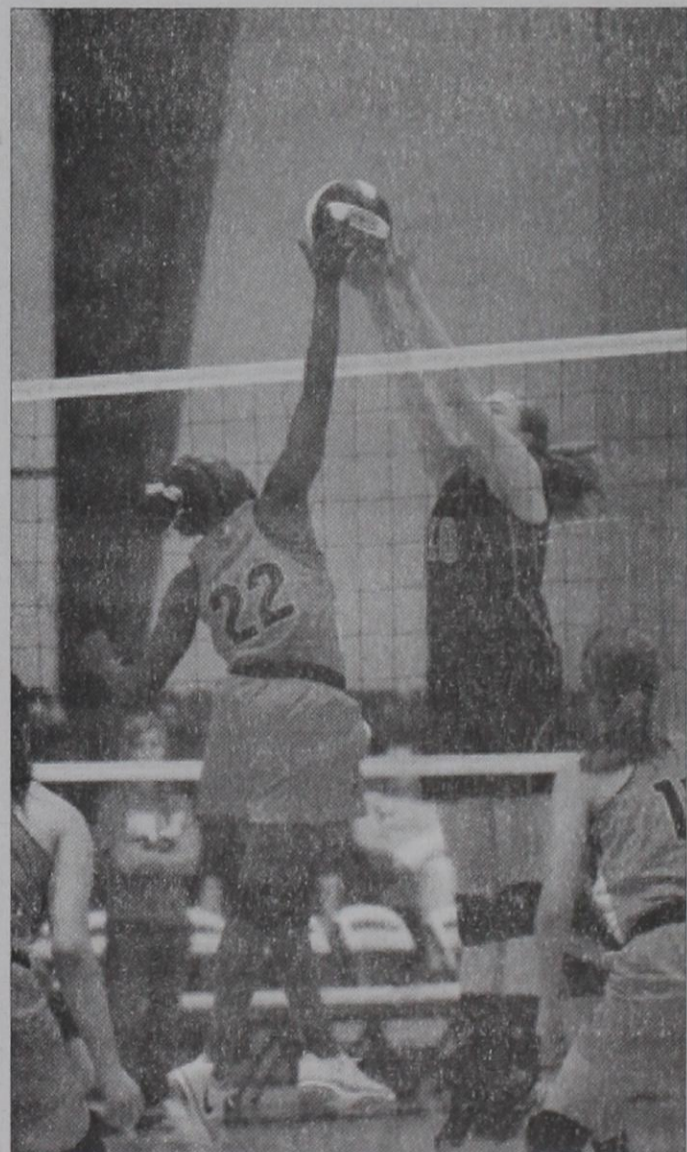
PHONE: 940-585-7430
 or 940-585-8674

1401 J N.W. CHILDRESS, TX 79201
 LICENSED/BONDED/INSURED

Ft. Elliott won their first three sets against Paducah



Tracy Winter and Bailey Meadows go up for a block.



Larami Lancaster with a block.

GROW MOORE

- >Liquid Fertilizer
- >Dry Fertilizer
- >Compost
- >Chemicals
- >Application available

Grow Moore, LLC
 Matt & Michelle Moore
 Kelton, Tx
 (806-334-1277)

Recreational Ranch Land Auction

Thurs. October 4th 6:30 pm
Registration begins at 5:30 pm

759 ± Acres in 3 Tracts
Roger Mills Co., OK

Buy one tract
a combination of tracts
or the entire property!

- Secluded retreat
- Registered Natural Area
- Abundant wildlife
- Spring fed creek
- Beautiful rolling terrain
- Energy efficient cabin

800-299-LAND (5263)

Important Information Meeting
Monday, September 24th 6:30 pm

Auction and Info Meeting Location
Roger Mills Co. Ag Pavilion
300 N. Fair Barn Road • Cheyenne, Oklahoma

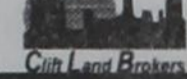
TX Auctioneer Lic # 16892
TX Broker Lic # 458389



Call for a Brochure
or to Pre-Register



Leading Land Auction Company in Texas
3430 I-40 West • Amarillo, TX 79102



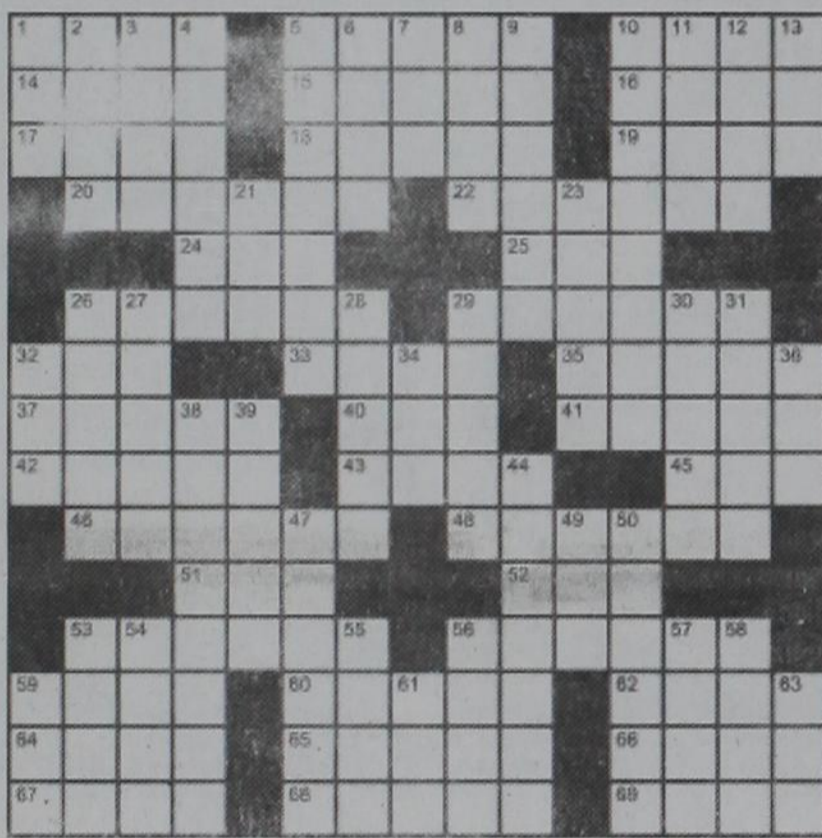
www.CliftLandAuctions.com

9/13-10/4

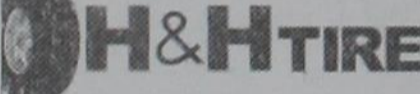


FOR SALE: 2010 Honda Fury VT13CXL, less than 150 miles. Asking \$16,500—Negotiable. Custom Rims, Pipes & Seat. Wheels & Tire Upgrade. Extra Windshield. Plus service agreement. redbirdcafe@hotmail.com

Crossword PUZZLE



- Across
1. Fail to see
 5. Honolulu's _____ Stadium
 10. Do as directed
 14. Looking down from
 15. Not so hot
 16. Teased mercilessly
 17. Change the decor
 18. Down the _____
 19. Boosts
 20. Like many packages
 22. With intensity
 24. Hilo garland
 25. Maid's cloth
- Oakland separator
53. Stock exchanges
 56. Plow line
 59. Honoree's spot
 60. Patriots' Day month
 62. Sunburn soother
21. "Malcolm X" director
23. Oil holder
 26. Baby barn bird
 27. It breaks, in a lullaby
 28. Slender woman



Chad Helton
806-826-5759
714 W. Okla. Ave.
Wheeler, TX 79096

Wheeler Banking Center
Wheeler, Texas
P.O. Box 1040
806-826-5556

64. Cancel
 65. Miss America topper
 66. Broadway brightener
 67. "It's _____ real!"
 68. PC key
 69. "I _____ you!"
- Down
1. Blemish
 2. Bookie
 3. Scotch's partner
 4. Loot
 5. Evangelist's target
 6. Its symbol is Pb
 7. Get off the fence
 8. Bumpkin
 9. Stick (to)
 10. Citrus garden
 11. Prepare eggs, in a way
 12. Mini-whirlpool
 13. "May I help you?"



ROYALTY OWNER SERVICES

Are You Receiving Your Proper Share of Oil and Gas Sales?

We provide:

- Accounting and Accuracy of Payment Verification
- Accuracy of High Cost Severance Tax Charges
- Identification, Resolution and Collection of Royalty Payment Errors. Provided on either an Ongoing or Project Basis

Local References Available Upon Request.
Call Toll Free 1-800-658-7168
John McNab — Enercept, Inc.

Pipeline Operator

Briscoe/Buffalo Wallow, TX

ONEOK, Inc. is a diversified energy company involved in the distribution, acquisition, gathering, processing, marketing, transportation, and storage of natural gas and natural gas liquids. We are seeking a Pipeline Operator.

The position will perform general operation and maintenance of natural gas pipelines and associated pipeline equipment; perform welder's helper duties and assist with the installation of natural gas measurement settings and pipeline modifications or repairs; perform pipeline locating and one-call notifications duties; assist with various mechanical repairs, general housekeeping, or other duties, as assigned.

Please apply by October 19, 2012 to be considered for this position. We offer competitive wages and an excellent benefits package. Only applicants who meet minimum qualifications will be considered. Only those applicants considered for an interview will be contacted.

Please visit www.theonetoworkfor.com to view additional details about the job requirements and to register and apply for this position. Choose "Experienced Professionals", then choose "Apply Now". Reference Job Opening IRC48293.



EEO/AA EMPLOYER

Want Ads

Gray Co* McClellan Creek Ranch *3520 Acres*Live Water *Large Bass*Excellent Hunting *Lake *House *Lots of Elevation Changes *N of McLean TX *1 mile of McClellan Creek*Mesas*The Most Beautiful Ranch in the Texas Panhandle*\$1295/acre *Note * Currently Under Contract and Accepting Back Up Offers *No Minerals*Surface Only*Seller reserving 1/2 wind rights (Royalty Only) Now is time to view and submit a back up contract * View pictures on my website at www.streetsrealestate.com Call Johnny Street* 806-847-7400

website at www.streetsrealestate.com Call Johnny Street*806-847-7400 10/4-18c

RV Park, Wheeler, TX, Now open. New Spaces ready to go. 806-669-4110. 5/10rtn

Taking Applications for Tray Aide or Cook at Parkview Dietary. 826-1355 10/27rtn

NOTICE OF PUBLIC SALE OF Property to satisfy landlord's lien. Sale is October 19, 2012 at 10:00 A.M. at 1101 N. Main, Shamrock, TX, than 11 A.M. at 1107 Mobeettie, Wheeler, TX. Property will be sold to highest bidder for cash. Seller reserves right to withdraw property from sale. Property includes contents for spaces of following tenants: Larry T. Brown, Steven Gray. Compressor, Appliances, Tools, Household Furniture, Grill, Boxes, Contact Stor & Lok, Box 1136, Wheeler, TX 806-826-3373. 10/4-11c

(640 acres) 550' FSL & 550' FEL, Sec 1, Blk A3, H&GN, 6 mi NE from Kelton TD 16000', (BHL: 100' FSL & 600' FEL) (sgd. Bill Spencer 512-918-1062) Horizontal WHEELER (STILES RANCH Granite Wash) Apache Corporation, #1316H Stiles 16, (640 acres) 40' FSL & 325' FEL, Sec 16, Blk A3, H&GN, 11 mi NE from



Week of 09/24/2012 thru 09/28/2012

Intents to Drill
HEMPHILL (LIPSCOMB, S.E. Cleveland) Devon Energy Production Co., L.P., #10 Mathers Ranch, (640 acres) 2360' FNL & 2360' FWL, Sec 166, Blk 41, H&TC, 10 mi NE from Canadian TD 11500', (sgd. Jenni Sudduth 918-552-3446) Recompletion HEMPHILL (BEGERT 10,200) Laredo Petroleum, Inc., #5H Washita River 39, (640 acres) 345' FSL & 2559' FWL, Sec 39, Blk A1, H&GN, 23.5 mi SE from Canadian TD 13295', (BHL: 330' FNL & 1980' FWL) (sgd. Paula Thornton 918-513-4570) Horizontal HEMPHILL (FELDMAN, SOUTH Tonkawa FELDMAN Tonkawa) Upland Resources, LLC, #1902H Lockhart (689.5 acres) 225' FSL & 500' FEL, Sec 19, Blk 1, G&M, 6 mi E from Glazier TD 8000', (BHL: 467' FNL & 500' FEL) (sgd. Cathy Hill 806-323-9118) Horizontal

ROBERTS (CLEVELAND) Axis Energy Corporation, #1H Hill 146, (640 acres) 691' FSL & 1235' FEL, Sec 146, Blk 42, H&TC, 23 mi NE from Milam TD 7900', (BHL: 500' FEL & 500' FNL) (sgd. Amber Lorick 512-478-0059) Horizontal ROBERTS (PAN PETRO Cleveland) Holmes Exploration, LLC, #4H Trammell, (1565 acres) 4088' FSL & 1497' FEL, Cooper, W., 28.5 mi SW from Miami TD 13000', (BHL: 350' FNL & 7334' FWL) (sgd. David LeDoux 918-551-7141) Horizontal

ROBERTS (PAN PETRO Cleveland) Cimarex Energy Co., #5H Hodges 391, (640 acres) 200' FSL & 1400' FWL, Sec 39, Blk 43, H&TC, 27 mi NW from Miami TD 7733', (BHL: 330' FNL & 1900' FWL) (sgd. Hope Knauls 918-295-1799) Horizontal

ROBERTS (LARD RANCH Granite Wash) BP Operating Company, LLC, #101H Pickens A80, (640 acres) 200' FSL & 1110' FWL, Sec 1, Blk B, H&GN, 20 mi NW from Miami TD 8439', (BHL: 500' FNL & 700' FWL) (sgd. Rebecca Dunn 806-665-0338) Horizontal WHEELER (MILLS RANCH Granite Wash) Chesapeake Operating, Inc., #1015H Atherton,



THE WHEELER TIMES
PAGE 4 — Thursday, October 11, 2012
"Wheeler: town of friendship and pride."



MEMBER 2012
TEXAS PRESS ASSOCIATION

City of Wheeler Turns 100
Aug. 6, '05 Celebration Planned

THE WHEELER TIMES
P.O. Box 1080
Wheeler, Texas 79096
Phone: 806/826-3123

Entered as second-class matter December 18, 1933, at the Post Office at Wheeler, Texas 79096, under the Act March 3, 1879.
Postmaster: Send Address changes to *The Wheeler Times*, P.O. Box 1080, Wheeler, TX 79096-1080 — wtimes@windstream.net

Louis C. Stas, Owner & Publisher
SUBSCRIPTION RATES:
Within Wheeler Co: \$22.00 Elsewhere: \$25.00

THE BUSINESS DIRECTORY

CROSS COUNTRY BARN ★ 24 Hr. Gas & Diesel ★ Convenience Store
★ Hunt Bros. Pizza
301 E. Oklahoma St.
Wheeler, TX
Phone: 806-826-2276
Dale & Monica Kidd

It pays to Advertise in *The Wheeler Times*
Phone & Fax: 806/826-3123
wtimes@windstream.net

Classified Rates:
Cash—\$6.00 for 1st 20 wds.
Chg.—\$6.50 for 1st 20 wds.
25c for each additional word
Display Classified: \$6.50 pcd
Card of Thanks: \$7.00

Mesothelioma EXPERIENCE COUNTS
Lawyers with over 100 years combined expertise.

may occur 30 to 50 years after exposure to asbestos. Many workers were exposed from the 1940s through the 1970s. Industrial and construction workers, along with their families (second hand exposure) are among those at risk for mesothelioma, lung cancer or gastro cancer (throat, stomach, colon). Call us for professional insight.

Ryan A. Krebs, M.D., J.D.
Doctor-Lawyer in Full-time Law Practice
Richard A. Dodd, L.C.
Timothy R. Cappolino, P.C.
Board Certified Personal Injury Trial Law and Civil Trial Law by the Texas Board of Legal Specialists
NO FEE FOR FIRST VISIT
CAMERON, TEXAS

1-888-MESO-FIRM
(1-888-637-6347)
www.MesoFirm.com

Fall Woodcarving Rally
October 29 thru November 3
Oakdale Park • Glen Rose, TX
Classes For All Skill Levels
Beginner to Pro
Show & Sale on Saturday, November 3
254-897-3081 • www.GlenRoseEvents.com

Wheeler TD 13500', (BHL: 150' FNL & 600' FEL) (sgd. Kristin Gilpin 918-491-5396) Horizontal WHEELER (STILES RANCH Granite Wash) Linn Operating, Inc., #6H Britt 43SL, (640 acres) 247' FNL & 1075' FEL, Sec 38, Blk A3, H&GN, 7.7 mi SW from Kelton TD 12672', (BHL: 100' FNL & 1075' FEL) (sgd. Maureen Carter 405-241-2223) Horizontal

Carter 405-241-2223) Horizontal Granite Wash) Granite Operating Company, #9 Huff 9, 2522' from South & 1980' from East lease line, Sec 9, Blk M1, H&GN, spud 5-16-2010 compl 5-31-2012,

tested 6-2-2011, potential 443 mcf, 8 bbls oil, 80 bbls wtr, 493# ftp, 1763# SIWHP, TD 13480', API 42-211-34673, Vertical HEMPHILL (MEG Granite Wash) Granite Operating Company, #1 Daughtry 98, 2495' from North & 660' from East lease line, Sec 98, Blk 41, H&TC, spud 6-30-2010 (Continued Page 4)

Listen to...
KPDR-FM, 90.3
WHEELER, TEXAS



TexSCAN Week of October 7, 2012

ADOPTIONS
A HAPPILY MARRIED couple seeks to adopt. Will be hands-on mom/devoted dad. Financial security. Expenses paid. Christa and Paul. 1-800-936-1631

BUSINESS OPPORTUNITY
FRANCHISE OPPORTUNITY inside major retailer. Call for details: 1-866-622-4591 or e-mail franchiseopportunity@hotmail.com

DRIVERS
AVERITT KEEPS your wheels rolling. Hiring CDL-A drivers and recent grads. Great benefits. Weekly overtime and paid training. Apply now! 1-866-362-8608. AVERITTcareers.com EOE

DRIVERS-OWNER OPERATORS and fleet drivers, Texas or Oklahoma CDL. New pay package, sign-on bonus, return to Texas every 6-8 days. Call 1-800-765-3952.

DRIVERS-REGIONAL, flatbed, home every weekend. 40¢-45¢ cpm. Class CDL-A required, flatbed load training available, tuition reimbursement. 1-800-992-7863 ext. 185. www.mcelroytrucklines.com

DRIVERS-TEAMS AND SOLOS dedicated runs, recession proof freight. Class CDL-A and one-year experience. Lease purchase program with down payment assistance. Call 1-866-904-9230, DriveForGreatwide.com

EXPERIENCED DRIVERS- \$1000 Sign-on bonus! Excellent regional truckload opportunities in your area. Be home every week. Run up to 2,000 miles/week. www.driveff.com, 1-855-289-2219

EXPERIENCED FLATBED DRIVERS Regional opportunities now open with plenty of freight and great pay. 1-800-277-0212 or primeinc.com

OWNER OPERATORS Home every other night. Dedicated to one customer, lease purchase program with down payment assistance. Class CDL-A and 1-year experience within past 5 years. Call Tonya, 1-866-242-4978. DriveForGreatwide.com. Text Greatwide to 30364

PAID CDL TRAINING! No experience needed. Stevens Transport will sponsor the cost of your CDL training. Earn up to \$40K first year and \$70K third year. Excellent benefits! EOE. 1-800-333-8595, www.becomeadrivers.com

YOU GOT THE DRIVE, we have the direction. OTR drivers, APU Equipped, Pre-Pass, EZ-pass, passenger policy. Newer equipment 100% NO touch. 1-800-528-7825

EDUCATION/TRAINING
AIRLINES ARE HIRING Train for hands on aviation maintenance career. FAA approved training. Financial aid if qualified. Housing available. Call Aviation Institute of Maintenance, 1-877-523-4531

ATTEND COLLEGE ONLINE from home. Medical, Business, Criminal Justice, Hospitality. Job placement assistance. Computer available. Financial aid if qualified. SCHEV authorized. Call 1-888-205-8920, www.CenturaOnline.com

CAN YOU DIG IT? Heavy equipment school. 3-week training program. Backhoes, bulldozers, excavators. Local job placement assistance. VA benefits approved. Two national certifications. 1-866-362-6497

HELP WANTED
OUTSIDE SALES Thomas Petroleum, seeking individuals to sell fuels, chemicals and lubricants. Oilfield experience required. Email resume and salary requirements to rbaldillez@clthomas.com, www.thomaspetro.com

MISCELLANEOUS
SAWMILLS FROM ONLY \$3997.00. Make and save money with your own bandmill. Cut lumber any dimension. In stock ready to ship. Free information/DVD. www.NorwoodSawmills.com 1-800-578-1363 Ext. 300N

REAL ESTATE
14.46 ACRES, Duval County. Heavy brush cover, county road frontage, electricity. \$3550/acre, owner financing or TX Vet financing. Toll-free 1-866-286-0199. www.westernTEXASland.com

\$106 MONTH BUYS land for RV, MH or cabin. Gated entry, \$690 down, (\$6900/10.91%/7yr) 90-days same as cash. Guaranteed financing. 1-936-377-3235

ABSOLUTELY THE BEST VIEW Lake Medina/Bandera, 1/4 acre tract, central W/S/E. RV, MH or house OK only \$830 down, \$235 month (12.81%/7yr). Guaranteed financing, more information call 1-830-460-8354

AFFORDABLE RESORT LIVING on Lake Fork. RV and manufactured housing OK! Guaranteed financing with 10% down. Lots starting as low as \$6900. Call Josh, 1-903-878-7265

WEEKEND GETAWAY available on Lake Fork. Lake Livingston or Lake Medina. Rooms fully furnished! Gated community with clubhouse, swimming pool and boat ramps. Call for more information: 1-903-878-7265. 1-936-377-3235 or 1-830-460-8354

STEEL BUILDINGS
STEEL BUILDINGS for homes and garages. Save thousands, low monthly payments, make offer on clearance orders. 40x60, 30x36, 25x30, 20x22. Call now: 1-800-991-9251; ask for Nicole

40th Cuero Turkeyfest
October 12-14, 2012

Celebrate the 100th Anniversary of the Cuero Turkey Trot with Arts & Crafts, Movies With Ruby, ICA BBQ Cook-Off, Poker Tourney, Race Your Own Turkey, Carnival, Parade, Great Gobbler Gallop, Extreme Midget Wrestling, AND MUCH MORE!

Casey Donahew Band
Jason Boland
and The Stragglers
Cory Morrow
Texas Tornados
Charlie Robison
Scott Taylor Band
Clay Crockett
Ashley Duderstadt

CUERO TEXAS
City of Cuero
A Division of Cuero
Agribusiness & Visitor's Center

Budweiser
THE GREAT AMERICAN BEER

www.turkeyfest.org

NOTICE: While most advertisers are reputable, we cannot guarantee products or services advertised. We urge readers to use caution and when in doubt, contact the Texas Attorney General at 1-800-621-0508 or the Federal Trade Commission at 1-877-FTC-HELP. The FTC web site is www.ftc.gov/bizop. Extend your advertising reach with TexSCAN, your Statewide Classified Ad Network.

Court

(from Page 3)

RDT-Citizens Bank to Jerry Robertson, et al., 10-2-12, S 193' Lot 2 Blk. LXXXVI, Shamrock. STATEMENT OF OWNERSHIP- State of Texas Department of Housing and Community Affairs to Santiago Alvarado III, et ux, 9-24-12, 5 acs. NW/4 Sec. 56, Blk. 17, H&GN Ry. Company Survey. OCTOBER 3, 2012

AFF.-Jimmy R. Smith Jr., to Shonda L. Meek, et al., 9-21-12, No Land Listed.

RELEASE-Citizens 1st Corporation to Diana Pate, 9-27-12, NE/4 Sec. 52, Blk. 17, H&GN Ry. Company Survey.

DT-Diamond S. Energy Company to Southwest Bank, 9-28-12, Land Description Not Given.

ROW-Nancy M. Schilling, et al to Enbridge Pipelines (Texas Gathering) LP, 7-3-12, NW/4 Sec. 3, Blk. L, J. M. Lindsey Survey.

ROW-Cledith Burrell to Enbridge Pipelines (Texas Gathering) LP, 6-25-12, Pt. NW/4 Sec. 4 & Pt. NE/4 Sec. 3, Blk. L, J. M. Lindsey Survey.

ROW-Boyd Huff to Enbridge Pipelines (Texas Gathering) LP, 4-23-12, Sec. 33, Blk. A-3, H&GN Ry. Company Survey & Secs. 3 & 4, Blk. 5, Brooks & Burleson Survey.

ROW-Betty Lou Grayson to Enbridge Pipelines (Texas Gathering) LP, 5-24-12, W/2 NW/4 Sec. 27, Camp County School Land.

ROW-Cledith Burrell to Enbridge Pipelines (Texas Gathering) LP, 4-24-12, Pt. NE/4 Sec. 3 & Pt. W/2 Sec. 4, Blk. L, J. M. Lindsey Survey.

ROW-Gary Hall, et ux to Enbridge Pipelines (Texas Gathering) LP, 4-26-12, Pt W/2 Sec. 25, Camp County School Land.

ROW-Dean Tipps, et ux to Enbridge Pipelines (Texas Gathering) LP, 2-6-12, Pt. N/2 Sec. 5, Blk. C, S. R. Wiant Survey & Pt. S/2 Sec. 4, Blk. C, G. W. Nickel Survey.

ROW-Eddie John Pennell Jr. to Enbridge Pipelines (Texas Gathering) LP, 2-15-12, W 80 acs. S/2 Sec. 2, Camp County School Land.

ROW-Walker Family Trust to Enbridge Pipelines (Texas Gathering) LP, 9-4-12, Pt. NW/4 Sec. 9, Camp County School Land.

ROW-Cledith Burrell to Enbridge Pipelines (Texas Gathering) LP, 6-25-12, Pt. NW/4 Sec. 4, Blk. L, J. M. Lindsey Survey.

ROW-Cledith Burrell to Enbridge

Pipelines (Texas Gathering) LP, 7-30-12, Pt. W/2 Sec. 4, Blk. L, J. M. Lindsey Survey.

ROW MEMORANDUM-Bobby Duane Calcote, et al to Enbridge Pipelines (Texas Gathering) LP, 9-5-12, SW/4 Sec. 3, AB&M Survey.

TDT-Mortgage Electronic Registration Systems Inc. to Security National Mortgage Loan Trust 2006-2, 9-17-12, N 10' Lot 12 & All Lot 13, Blk. 66, Woodley's

Southside Addition, Shamrock. OCTOBER 4, 2012

DEED-Randall Reeder, et ux to Osbaldo Deleon, et ux, 8-31-12, Lots 10-13, Blk. 10, Shamrock.

DEED-Gary Vinyard to Rhonda Jean Vinyard, 9-4-12, N 5' Lot 13 & all Lot 14 & S/2 Lot 15, Blk. 8, Pendleton Baxter Addition, Shamrock.

OL-Hugh D. Akin to Devon Energy Production Company LP, 9-19-12, Sec. 62, Blk. M-1, H&GN Ry. Company Survey.

DVL-Densel Reed, et ux to Draton Childress, et ux, 9-17-12, N 100' W 145' Blk. 49, Stanley Addition, Wheeler.

DT-Draton Childress, et ux to Densel Reed, et ux, 9-17-12, N 100' W 145' Blk. 49, Stanley Addition, Wheeler.

ASSIGN. OVERRID. ROYALTY-Blue Dolphin Energy LLC to David

L. Arms, et al, 9-11-12, Sec. 43, Blk. A-5, H&GN Ry. Company Survey.

ASSIGN. OVERRID. ROYALTY-Blue Dolphin Energy LLC to David L. Arms, et al, 9-11-12, Sec. 78, Blk. A-5, H&GN Ry. Company Survey.

DT-Josh Bailey Couch, et ux to Woodbridge Home Exteriors Inc., 9-27-12, 29 acs. SE/4 Sec. 60, Blk. A-8, H&GN Ry. Company Survey.

MD-Charles R. Pendleton, et ux to MDP Properties LP, 10-2-12, NW/4 Sec. 39, Blk. A-4, H&GN Ry. Company Survey.

OL-Odessa L. Calcote Mooney Revocable Trust to Samson Lone Star LLC, 5-2-12, NW/4 Sec. 18, Blk. L, J. M. Lindsey Survey.

ROW-Thurman Horn, et ux to Access Midstream Gas Services LLC, 8-22-12, S/2 Sec. 4, Camp County School Land.

ROW-Thurman Horn, et ux to Access Midstream Gas Services LLC, 9-20-12, S/2 Sec. 4, Camp County School Land.

ROW-Royce W. Zybach to Access Midstream Gas Services LLC, 8-10-12, S/2 Sec. 10, Camp County School Land.

RATIF. ROW-Nancy Darlene Davis to Access Midstream Gas Services LLC, 8-6-12, S/2 Sec. 9, Camp County School Land.

Old Time Gospel Music
KPDR-FM, 90.3
... In Wheeler
Sundays: 6:00 a.m. to 8:00 a.m.



1987-CAMERON BURTON is the 11-month-old son of Gary and Tracy Burton of Wheeler, Texas.

For all your...
Insurance Needs, See Eastern Panhandle Insur. Agency, Inc.
117 W. Texas St. - Wheeler
806/826-3573
•Auto •Home •Life •Health
•Commercial •Bonds

Canadian Supply & Redi-Mix
for all your Concrete Needs!

Jerry Smith, Owner
806-323-5379

Oil (from Page 4)

compl 7-26-2010, tested 5-21-2011, potential 364 mcf, 5 bbls oil, 45 bbls wtr, 463# ftp, 803# SIWHP, TD 12225', API 42-211-34740, Vertical

HEMPHILL (MEG Granite Wash) Granite Operating Company, #1 Daughtry 134, 1297' from North & 1980' from East lease line, Sec 134, Blk 41, H&TC, spud 7-6-2010 compl 7-20-2010, tested 8-6-2011, potential 382 mcf, 10 bbls oil, 40 bbls wtr, 327# ftp, 813# SIWHP, TD 12435', API 42-211-34755, Vertical

HEMPHILL (MATHERS Cleveland) Le Norman Operating LLC, #1H Noble Gene 140, 296' from South & 2584' from West lease line, Ewing, S, spud 4-25-2011 compl 5-14-2011, tested 8-4-2011, potential 4479 mcf, 190 bbls oil, 121 bbls wtr, 2700# ftp, 3400# SIWHP, TVD 9388', MD 14060', API 42-211-34843, Horizontal

HEMPHILL (MATHERS Cleveland) Chesapeake Operating, Inc., #1H Daytona 138, 870' from North & 880' from West lease line, Sec 138, Blk 41, H&TC, spud 4-10-2008 compl 6-3-2008, tested 10-4-2011, potential 121 mcf, 5 bbls oil, 3 bbls wtr, 169# ftp, 729# SIWHP, TVD 9499', MD 13053', API 42-211-34202, Horizontal/Reclass

HEMPHILL (ALLISON PARKS Granite Wash) Devon Energy Production Co. LP, #3H Steele-Young, 250' from South & 710' from East lease line, Sec 2, B&B, spud 2-27-2011 compl 4-25-2011, tested 5-29-2011, potential 15789 mcf, 83 bbls oil, 5279 bbls wtr, 1025# ftp, 2110# SIWHP, TVD 11617', MD 15332', API 42-211-34773, Horizontal

HEMPHILL (BUFFALO WALLOW Granite Wash) Linn Operating, Inc, #2H Bob 14, 300' from South & 1000' from West lease line, Sec 14, Blk M1, H&GN, spud 12-15-2011 compl 1-21-2012, tested 2-27-2012, potential 6051 mcf, 196 bbls oil, 424 bbls wtr, 350# ftp, 350# SIWHP, TVD 11813', MD 16460', API 42-211-34971, Horizontal

ROBERTS (MENDOTA NW Granite Wash) Unit Petroleum Company, #2H Mahler "D", 200' from South & 500' from East lease line, Sec 111, Blk C, G&M, spud 9-22-2010 compl 11-3-2010, tested 1-28-2011, potential 2446 mcf, 130 bbls oil, 152 bbls wtr, 784# ftp, 821# SIWHP, TVD 9919', MD 13796', API 42-393-32301, Horizontal

WHEELER (STILES RANCH Granite Wash) Granite Operating Company, #2 Texas Strip, 500' from West & 2962' from North lease line, Sec 32, OS2, spud 8-1-2011, compl 8-1-2011, tested 8-17-2011, potential 564 mcf, 0 bbls oil, 240 bbls wtr, 613# ftp, 1513# SIWHP, PBD 16470', API 42-483-31524, Vertical

WHEELER (ALLISON -BRITT 12350) Devon Energy Production Co. L.P., #4H Holt 20, 230' from North & 660' from West lease line, Sec 20, Blk RE, Roberts & Eddleman, spud 3-6-2011, compl 4-12-2011, tested 5-16-2011, potential 17545 mcf, 653 bbls oil, 4111 bbls wtr, 1188# ftp, 2460# SIWHP, TVD 12206', MD 16740', API 42-483-33131, Horizontal

WHEELER (FRYE RANCH Consolidated) Linn Operating, Inc., #1H Huff 32, 249' from South & 550' from West lease line, Sec 32, Blk A3, H&GN, spud 3-1-2011, compl 4-9-2011, tested 7-26-2011, potential 4985 mcf, 384 bbls oil, 2145 bbls wtr, 1160# ftp, 1160# SIWHP, TVD 12163', MD 16502', API 42-483-33093, Horizontal

WHEELER (STILES RANCH Granite Wash) Linn Operating, Inc., #1H Jerri Reed 3, 270' from South & 850' from East lease line, Sec 3, Blk 2, B&B, spud 12-7-2011, compl 2-28-2012, tested 3-27-2012, potential 1841 mcf, 80 bbls oil, 1581 bbls wtr, 275# ftp, 100# SIWHP, TVD 13007', MD 17385' API 42-483-33305, Horizontal

WHEELER (STILES RANCH Granite Wash) Linn Operating, Inc., #1H Hink Reed 3, 270' from South & 650' from East lease line, Sec 3, Blk 2, B&B, spud 11-1-2011, compl 12-2-2012, tested 3-26-2012, potential 2127 mcf, 81 bbls oil, 580 bbls wtr, 350# ftp, 350# SIWHP, TVD 13078', MD 17545' API 42-483-33326, Horizontal

Oil Well Completions

HEMPHILL (LIPSCOMB SE Cleveland) Mewbourne Oil Company, #1H Shell Fee '21', 200' from North & 2150' from East lease line, Sec 68, Blk 42, H&TC, spud 3-21-2012 compl 4-15-2012, tested 5-1-2012, potential 415 bbls oil, 300 mcf, 831 bbls wtr, 270# ftp, 800# CP, TVD 8632', MD 13469', API 42-211-34989, Horizontal



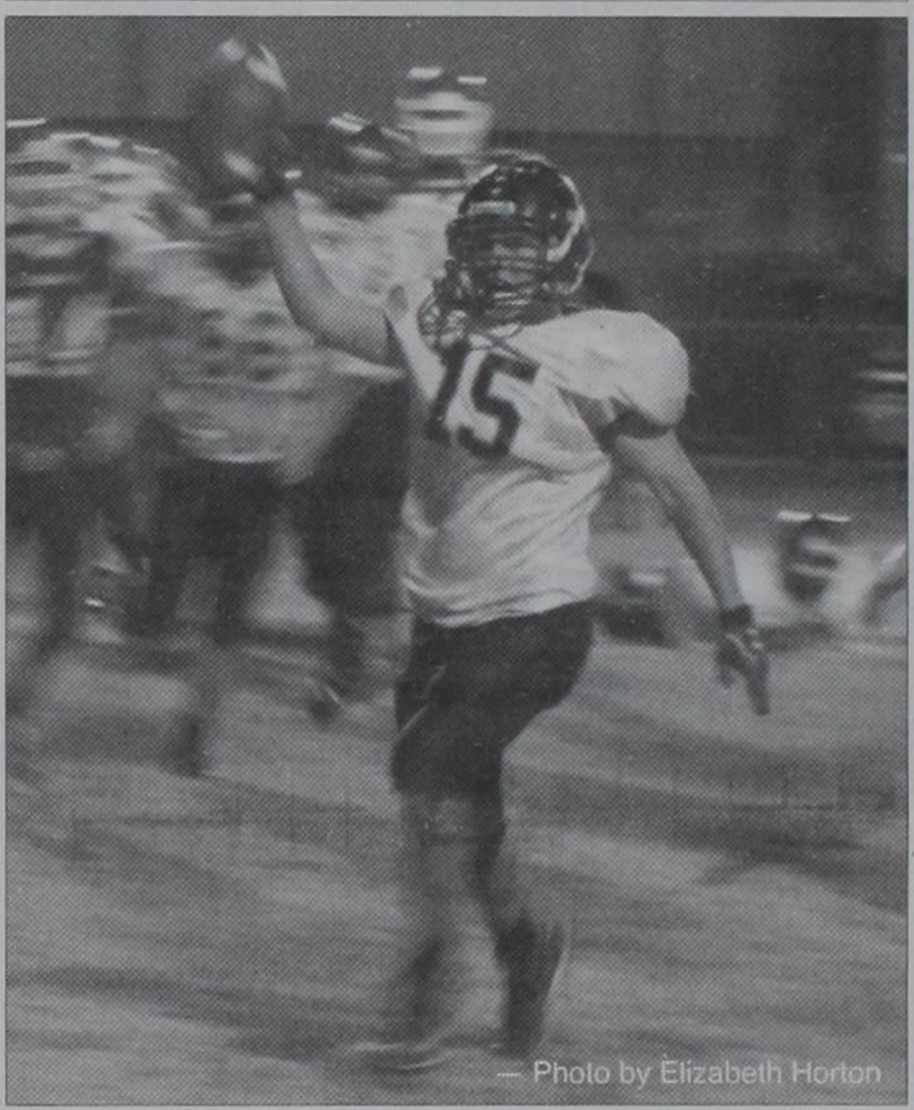
100 YEARS YOUNG

Everyone is invited to attend the **100th Birthday Celebration** of **Opal Boydston** on **Saturday, October 20, 2012** at the Allison School Cafeteria with cake and punch from **2 pm to 4 pm**

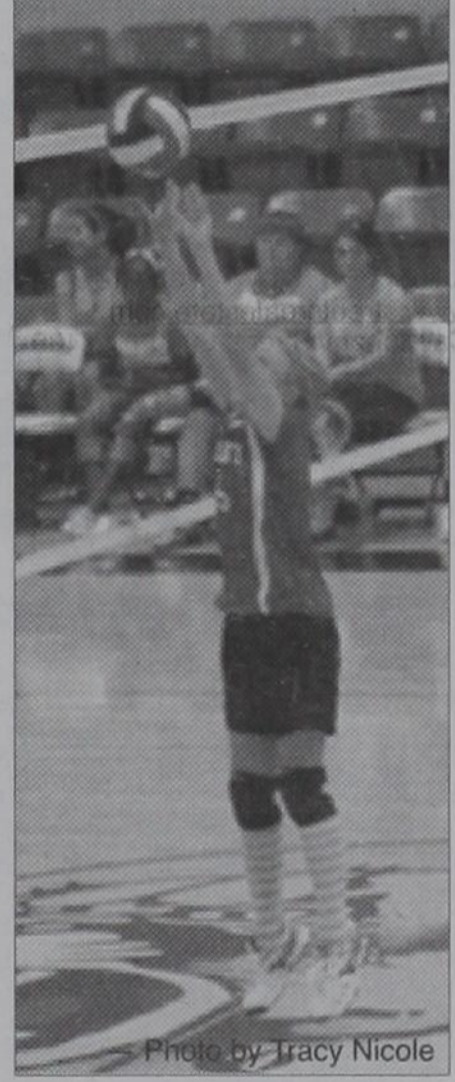
We look forward to seeing you there!



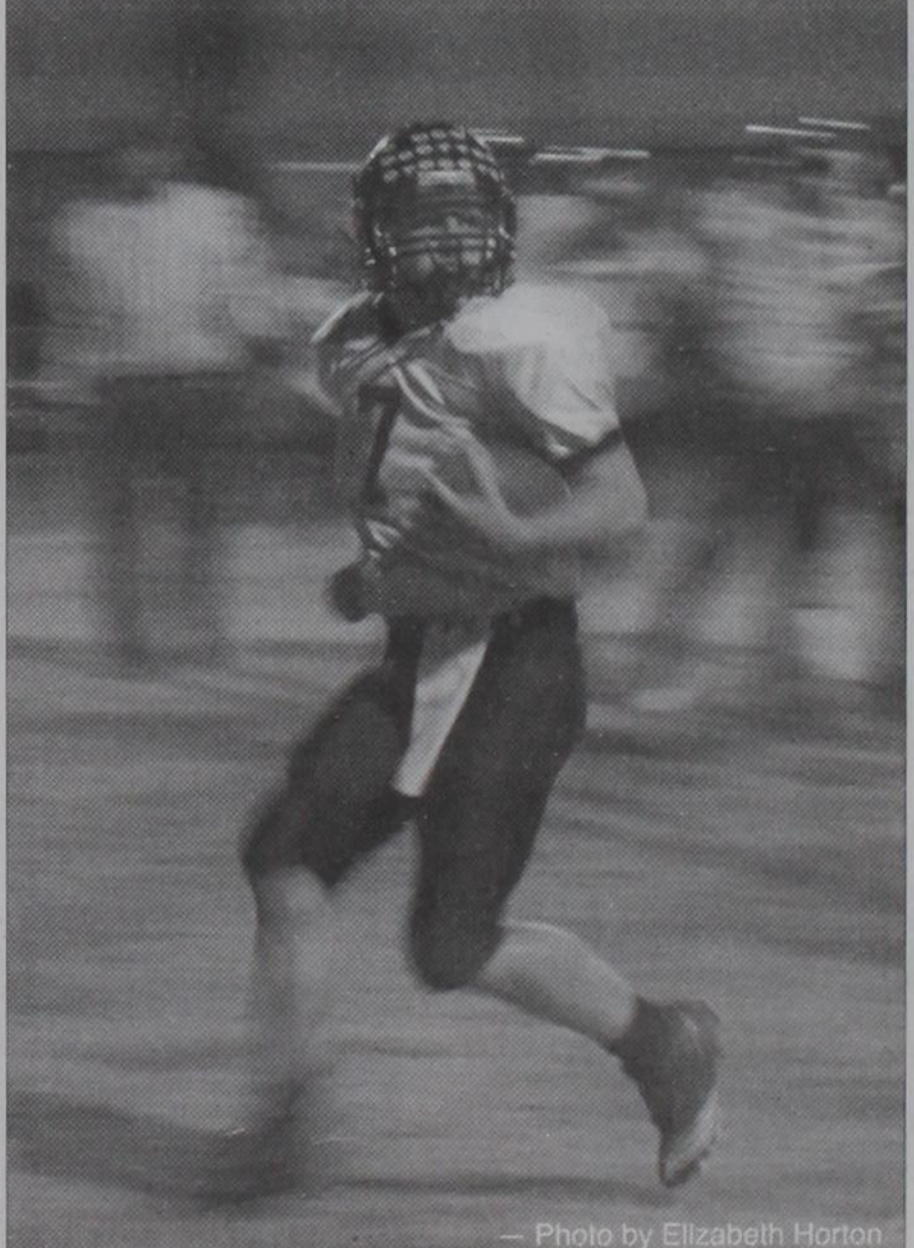
Caitlynn Walker returns the ball in the Ft. Elliott vs. Paducah Junior High Game.



#15, Cody Clark finds his way into the end zone for the winning 2-point conversion with his team backing him up and knocking out the competition. The Wheeler Mustangs hold another win this pass Friday night. Claude with 32 points and Wheeler with 34 points after a double overtime!



Shaley Goad sends the ball back over the net in the Junior High game, Ft. Elliott vs. Paducah.



#7, Jake Ware with a run away touchdown against Claude, Friday night. Way to go Wheeler Mustangs!

RiverCrest Homes
Building distinctive custom homes designed for your one of a kind lot.
Quail Run Estates Coming Soon
1.5 to 5 acre lots across from Maxey's
Chip Hill 972-989-8019
chip@rivercrestproperty.com

Rick's Lawn Sprinklers
NO Trenching NO Mess
• Sales - Service - Installation • Over 30 years experience
• Complete Dirt Work & Turf • We trade for almost anything
• Residential & Commercial • In-House Financing
FREE ESTIMATES...Toll Free 1-800-466-0915
(580) 477-0915
Albus, OK 73521 **RAIN BIRD**

Limited Time 5.03% APY* Ask About IRA/401K Specials!
INSURED CD

FIRST FIDELITY
Financial Group, LLC
Your Safe Money Solution®
1800 Washington, Suite 110 - Amarillo, TX
806-373-9480
1-800-371-9201
By appointment only

P. O. Box 582
1308 Alan Bean Blvd.
Wheeler, TEXAS 79096

Paul Topper
Owner
ptopper87@me.com

Topper Heat, Air & Plumbing
Licensed OSSF Installer - Gibson Distributor -LPG
TACL840893E / OS0029695

ALL TYPES OF AERIAL SPRAYING CHEMICAL & SEED SALES

GRAY AG AIR

Serving Hollis and Wellington

P.O. Box 306
Hollis, OK 73550
(580) 688-2548 OR
(580) 688-2558

LYNN GRAY
Mobile: (580) 381-0306

REID ROBINSON
Mobile: (580) 318-2604

News, Views & Commentary
KPDR-FM, 90.3
WHEELER, TEXAS
Weekdays: 6:00 a.m. to 7a.m.

WHEELER PLUMBING
511 S. Cheyenne
New Construction Remodel Repair
Sewer Service Septic Systems Site Evaluations
826-5907
MAX McQUEEN
P.O. Box 754 Wheeler, TX

AmmonsConstruction.com

AMMONS CONSTRUCTION

Remodels & Additions | Custom Homes | Roofing
Steel & Vinyl Siding | New Windows

Local Sales Representative **Don Rives**
806-669-7777

COUNTRY NEWS

By Verna Fillingim

Berneta Smith and a relative visited some of us at Wheeler Nursing and Rehab. So good to see them. She now lives at Parkview Hospital. Thanks for the visit to several and good to see her looking so well. Hope you can come back soon!

Nice to have a visit from Beth and Jim Alvey Tuesday. Sup

posed to have a family gathering soon with other relatives - the Evans group.

Good to see Roland Miles from Wheeler at the Wheeler Nursing and Rehab Center and visit a little while. He had visited others and writes a good column in the Wheeler Times. He came for therapy.

Nice to have Sharion (daughter of Dick and Ruth Irvine now working at Wheeler Nursing and Rehab. Good job Sharion!

Nice to visit with several from the Evans family at Maxeys Fri-

25 YEARS AGO

... from our files

July 9, 1987

New Arrival
MATTHEW TANNER COLLINS
Toby and DeAnn Collins are proud to announce the arrival of their baby boy, Matthew Tanner, born June 18, 1987, in Elk City Community Hospital at 12:43 p.m. He weighed 7 lbs. 4 1/2 ozs. and was 19 1/2 in. long.

Grandparents are Earl and

Shirley Jolly and Tyler and Ila Collins, all of Wheeler. Great Grandparents are Mrs. Valle Jolly of Shamrock, H. P. and Vera Barnes of Wheeler, C. M. Yell of Mineral Wells, TX and Roy and Leon Diffendaffer of Phoenix, Ariz.

New Arrival
Brad and Cheryl Carry are happy to announce the arrival of their daughter, Jayme Lee. Jayme was born on July 8, 1987, at 5:53 p.m. at Northwest Texas Hospital in Amarillo. She weighed 7 lbs. 8 1/4 oz. and was 21 3/4" long. Jayme is the granddaughter of



THE WHEELER TIMES
PAGE 6 - Thursday, October 11, 2012
"Wheeler: town of friendship and pride."

James and Ann Henderson of Wheeler and Roger and Betty Carry of Amarillo. Great-grandparents are Ed and Erma Riley of Wheeler, Joe and Annie Henderson of Shamrock, Dora Olschken of Brownsville, Minn., and Jim and Myrtle Neiman of St. Paul, Minn.

July 30, 1987

St. Mary's Parish To Hold Dedication Sun.

St. Mary's Catholic Church began as a dream over 10 years ago. The Catholic families of Wheeler desired a place in their own community to celebrate and practice their faith. Fr. "Bud" A.

(Continued Page 7)

Ora Belinda SchoolHouse
POSITIVE BEGINNINGS

FIRST STATE BANK
Mobeetie & Wheeler
Established 1906 Member F.D.I.C.

MARSHALL DISCOUNT AUTO
PARTS PLUS
Darrell & Maggie Marshall
Mack, Crystal, Mariah, Trevor, MaKalli & Kanin
Mark, Joanna, Urrick & Hesston
Steve, Krista, Dylan & Kynslee - Mechelle, William, Hope, Austin & Wyatt

Judy Woollard

Gary & Becky Hardcastle
Todd, Mindy, Bailey, Reagan & Prasley Brashears
Marcus, Heather, Justin, Houston & Sierra Hardcastle

The Gallagher Family supports the Wheeler Mustangs in all their activities!
Go Mustangs, Go!
Mike, Rhonda, Brandon, Ashley, Kutter, Chris, Tamara & Jackson

CROSS COUNTRY BARN
24-Hr. Gas & Diesel
Convenience Store
Hunt Bros. Pizza
Wings
Sandwiches
301 E. Oklahoma - Wheeler, TX - 806-826-2276
Dale, & Monica Kidd, Owners

MEET THE MUSTANGS

74-Cade Means-9th

75-Emmanuel Aguilar-10th

PARKVIEW HOSPITAL
901 S. Sweetwater - Wheeler, Texas
Assisted Living & Home Health Agency
North Wheeler County
Ambulance Service

Jay & Karen Lewis and Family

SOONER ENERGY SERVICES
3401 Macdonnell Dr. - Norman, Oklahoma
Soap Sticks
Liquid Foamer
Toby Collins, Sales & Service
Wheeler Office: 812 S. Osage
Office: 1-800-579-3220
Call: (405) 684-3493 www.SoonerEnergyServices.com

Dr. Mike Smith - Mike & Jennie Smith

MEET THE BAND

Juan Lira
... Baritone - Sophomore

Mariana Badillo
... Baritone - Sophomore

Bill & VonEva Robertson

Shear Delight Botique
Tina Lee, Stephanie Sullivan, Donna Childress
290 E. Third - Wheeler - 826-3168

CLASSIC CAR WASH
CAR CARE CENTERS
Manual or Fully Automatic 400 South Stanley, Wheeler, TX

BOB'S BAIL BONDS
806-826-0654 Cell 806-334-0452
P.O. Box 264 Wheeler, TX 79096 Pat Childress

Leo & Sylvia Shuler

Ed & Patricia Forrester

WARE Chevrolet Buick Inc.
South Hwy. 83
Wheeler, Texas
Phone: 806-826-5521
www.warecbp.com

WHEELER LAND & LIVESTOCK
15495 Hwy 152 - Wheeler, TX 79096 - Ph. 806-826-5591
Fax: 806-826-3476 - Website: www.wlwl.net

LeRoy & Rhonda Meriwether & Stormie

Gail & Sally Ledbetter

GO Stangs!
GREENBELT ELECTRIC COOPERATIVE, INC.
708 10th - Wellington, TX - 447-2536
Serving the Rural Area of Armstrong, Childress, Wheeler, Collingsworth, Donley, Gray, Hemphill, Randall & Roberts

Speedi-Mart CONVENIENCE STORE
Happy Hour: 3-5 - Store Hrs. M-F 6-10, Sat. 6-10:30, Sun. 7-10
Brock & Jenny Kauk & Girls - Janice Scales, Mgr. 806-826-3414

WHEELER MUSTANGS

2012 WHEELER MUSTANGS

No.	Name	Pos.	Wt.	Gr.
5	Zack McCasland	QB/DB	165	12
7	Jake Ware	QB/LB	165	11
10	Ismael Buenrostro	TE/LB	175	12
17	Andrew Coomer	RB/LB	175	11
21	Genero Mendoza	TE/LB	160	12
22	Cody Howard	TE/DE	165	11
24	Eduardo Ramirez	WR/DB	175	12
25	Victor Cardona	TB/DB	165	11
28	Zay McCasland	FB/LB	190	12
51	Brody Ricardson	OL/DL	170	11
52	David Pichardo	OL/DL	280	12
54	Daniel Gonzalez	OL/DL	275	12
63	Ricardo Avila	OL/DL	240	12
64	Don Butler	OL/DE	175	10
66	Matthew McNeil	OL/DL	200	12
70	Chase Miller	OL/DE	170	12
72	Dallan DeBose	OL/DL	180	10
77	Jaime Aguilar	OL/DL	185	11

Superintendent - Clay Mahler Principal - Bryan Markham
Athletic Director/Head Football Coach - Brandon Smith
Assistant Coaches - Harvey Davis, Camden Dorris, Waymon Holland, Joe Nix
Managers - Levi Ware, Holden Guest, Rowdy Henson, Braydon Smith, Jayton Smith
Band Director - John Bratton and Andrew Tuck
Cheerleader Sponsor - Nikki Hathaway
Cheerleaders - Captain Stormy Moore, Abby Bond, Brittney Robinson, Abril Buenrostro, Becca Rodriguez, Kaitlyn Jones, Mighty Mustang - Maggie Jones

Betty Hennard

Charles R. Brown

Dori's Salon
Full Service Salon
Irene, Dori & Taytum
115 West Texas - Wheeler

WVC WHEELER VETERINARY CLINIC
Drs. LeeAnn & Ben Ed Hillhouse

WHEELER NURSING & REHABILITATION
1000 S. Kiowa - Wheeler, Texas - 806/826-3505

Buck and Beyond
Household Items, Gifts & More
Kara Richardson
Owner
420 Main St.
Wheeler, TX 79096
806-826-0331
Fax: 806-826-0383
buckandbeyond@windstream.net

PEPPERS
FAMILY FUNERAL HOME

TURNER ENERGY SERVICES
806-826-3522 - Wheeler Yard

Danny, Ravonda, Josh & Nick Hardcastle

Marshall Heating & Air Conditioning
Mark, Joanna, Urrick, & Hesston
662-7876

David & Paula Britt

The Purple Door Marla Ford, Owner Robert, Marla, Spencer & Mitchell
209 E. Third Wheeler, TX 806-663-0343

Centerdallas
710 E. Oklahoma St. - Wheeler, TX
806-826-5222

Larry & Bobby Jennings

FIN'S Red Bird CAFE
Soup - Salad - Homemade Dessert
Open Monday - Friday
10:30 A.M. - 2:00 P.M.
Parties, Catering & Special Events
806.826.0299
508 S. Main St. Wheeler, Texas

HOME - AUTO - FARM - LIFE
Todd Moore Insurance Agency, Inc.
Representing the Germania Companies
315 N. Main - P.O. Box 168 - Shamrock, TX 79079
Todd Moore - Owner/Agent
INSURANCE AGENCY INC. 806.256.8911 806.334.0330 800.687.3730

SOTO FAMILY RESTAURANT
708 E. Oklahoma St. - 826-3129

CAPITAL FARM CREDIT

2012 Wheeler Varsity Football Schedule

Date	Opponent	Site	Time
8-18	Scrimmage	Pampa	10:00
8-23	Amarillo River Road-scrim.	Wheeler	5:00
8-31	Quanah	W-19 Q-45	
9-7	Spearman	W-0 S-30	
9-14	Clarendon	W-27 C-36	
9-21	Amarillo Highland Park	W-14 H-22	7:30
9-28	Memphis	W-37 M-15	7:30
10-5	Claude	W-34 C-32	7:30
10-12	Gruver	Wheeler	7:30
10-19	Open		
10-26	*Booker	Booker	7:00
11-2	*Shamrock	Wheeler	7:00
11-9	*Wellington	Wellington	7:00

BAYMONT INN & SUITES
1410 S. Alan L. Bean Blvd, Wheeler, TX - 806.826.1012

Walk

(from Page 1)

locarpen, the pastor of St. Patrick's in Shamrock and Our Mother of Mercy in Wellington, was supportive of the idea, and helped in planning and fund-raising for a future building. A handful of individuals and families diligently saved and contributed for the effort of a church building. In 1982, a location was found on Canadian Street. A small house on a lot was generously sold for a nominal fee by Mr. and Mrs. W. D. Mitchell. Mrs. Lucille Tipps con-

tributed significantly to the purchase of the location.

Founding families of St. Mary's Church are as follows: Dr. Louie and Gina Mendiola, Albert and Rita Hartman, Wayne and Toni Kuehler, Mrs. Lucille Tipps, Carlos and Estrella Lopez, Ricky and Jessie Bailey, David and Mary Britt, Ruby and Jim Jacquot, Donny and Mary Huckert, Fred and Sue Gallagher, Jim and Carol Jones, Mrs. Maggie Marshall, Mrs. Alice Velasquez, Mrs. Joe Bedowitz, Mrs. Ida Hendrix and Mrs. Minerva Jones.

Riding Accident Injures Two

Amanda Childress was taken to Northwest Texas Hospital in Amarillo Sunday afternoon, where she remains for observation. Amanda was injured in a fall from a horse Sunday morning. Amanda, the six-year-old daughter of Mr. and Mrs. Wayne Childress was riding with a relative at the home of her grandparents. The horse was running and came to a sudden stop, throwing both youngsters to the ground. Jeremy Childress received a cut to the head and Amanda was

knocked unconscious. Both were taken to Parkview Hospital. Amanda was transferred for treatment of her injuries and Jeremy received stitches and was released.

Amanda has a seepage in the brain. There is a good chance the injury will heal without surgery. **NEW ARRIVAL**
STEPHEN CHRISTOPHER ROGERS
Grandmother, Irene, and grandfather, Lewis Rogers, are very anxious for people to know they have a new grandbaby. He is Stephen



THE WHEELER TIMES

PAGE 7 — Thursday, October 11, 2012

"Wheeler: town of friendship and pride."

Christopher, the son of Frankie and Cathy Rogers of Houston. He checked in weighing 8 lbs., 13 ozs. and is 21 inches long.

MAGAN LARAE HUDSON
Crystal Hankins announces the arrival of her baby sister, Magan LaRae Hudson. She weighed 7 lbs. 4 ozs. Born July 16 in Stillwater, OK., parents are Brady

and Cindy Hudson. Grandparents are Ray and Pat Hudson of Briscoe, and Marie and Frank Hughes of Ripley, OK. Great-grandparents are Lois and Oden Hudson of Briscoe, Marie Redding of Seminole, OK., and Buster and Irene of Pampa. Great-great-grandmother is Mary Hudson of Briscoe.

P. O. Box 582
1308 Alan Bean Blvd.
Wheeler, TEXAS 79096

Paul Topper
Owner
propper87@me.com

Topper Heat, Air & Plumbing
Licensed OSSF Installer - Gibson Distributor -LPG
TACLB40893E / OS0029695

806-334-1522

Wellington State Bank
Wheeler • Memphis • Childress • Canadian

Wheeler Banking Center
405 Alan L. Bean Blvd • P.O. Box 1040 • Wheeler, Texas 79096
Phone: 826-5566 Member F.D.I.C.

STILES RANCH
Bob & Sue Stiles
Bill & Kay Stiles

Lewis, Jennie, Jeff & Tom Britt

Kim's Kitchen Lunch Buffet Every Day
Intersection 63/152 — Wheeler, Texas — 806-826-5102

ENERFLEX
ENERFLEX ENERGY SYSTEMS, INC.
120 W. Oklahoma Ave., Wheeler TX 79096 USA
Tel. (806) 826 0126
Fax (806) 826 0057
Email: dadams@enerflex.com
Website: www.enerflex.com

#5-Zack Hibler

FARM BUREAU INSURANCE

HEMPHILL COUNTY FARM BUREAU
806-323-5752
David & Rita Pearson

TEXAS STREET FLORAL CO.

Ron & Donna Rives, Owners, Manager
806.826.5943 121 W. Texas St. Wheeler, TX 806.826.2141

Kessya's nook
Kessy Rives

WEST TEXAS GAS
Wheeler Division—500 S. Mobeetie—Wheeler, TX 79096

ALVEY TAX & LAW — TODD ALVEY
101 E. Oklahoma — Wheeler, TX 826-3766

HONEY INN North Side of the Square
826-5571 — Wheeler, TX

NOVEDADES Saharary
Dona Vazquez Emiles do Oliveira Joyeria 14K 9mm
(806) 826-0784 - (806) 826-0410 - (806) 826-0785

MUSTANGS

78-Trevor Clayton-10th
80- Jordan Vaughn-9th

PARADISE SPA BY APPOINTMENT ONLY!
114 E. Texas Ave. — Wheeler, TX 806-826-0296

Dr. Louie Mendiola, M.D., P.A.
Gina, Vincent, Melissa, Hunter, Ashley Marie, Chloe Taylor, Rocky, Rosemary & Magnolia Noelle and Josephine Rose Mendiola

H&H TIRE
Chad Heldon Owner
806-826-5769
714 W. Okla. Ave. Wheeler, TX 79096

Devin, Kenna, Cody & Kori Howard

LYNDON AUCTIONEERS
Lyndon & Noveline Loyd
P.O. Box 1279 Wheeler, Texas 79096 (Lic. # 7119)

HYLAND'S Pharmacy Phone: 826-5561
109 West Texas Street Wheeler, Texas
Randy & Crystal McEntire, Owners

HEFLEY HARDWARE & LUMBER
8:00 A.M. — 5:00 P.M. — Mon thru Fri,
8:00 A.M. — 12:00 Noon Sat.
Phone: 826-5532 — 511 S. Main — Wheeler, Texas

Anytime you are in...
WHEELER, TEXAS
we invite you to spend the night at...
City Drug Bed & Breakfast Hotel
400 South Main Street
806-826-3790

vs. GRUVER GREYHOUNDS
FRIDAY, OCT. 12, 2012
NICHOLSON FIELD — 7:30 P.M.

Dave & Mary Britt, Jake & Josh
In Memory of Ben

Gary Alston

MUSTANGS

85- Juan Lira-10th
86- Jose Calderon-10th



#85, Juan Lira making no effort to outrun the Claude Mustangs as he scores a touchdown in Thursday night's Junior Varsity game on Wheeler's home field.

EASTERN PANHANDLE Insurance Agency, Inc.
117 W. Texas — Wheeler, TX
Karen Brimer, Office Manager

ARROW WATER WELL, INC.

FREE ESTIMATES 24 HR. WRECKER SERVICE
McCAIN'S AUTO BODY
117 W. Okla. — Wheeler 806/826-3433
INSURANCE CLAIMS OWNER: BOB McCAIN

MR. B.B.Q.
Steve, Joyce & Caitlynn Walker
Don't forget your B.B.Q. burger at the game!

CARNICERIA AGUILAR
7 Days a Week — 10:00 A.M. — 9:00 P.M.
110 W. TEXAS ST. WHEELER, TX 79096
(806) 826-1027

Jaime Aguilar, Jr. Ricardo Avila Emmanuel Aguilar

Larry & Carol Porton

Mel's Diner
West Hwy. 152 — Wheeler
Where Friends Meet To Eat!
WE CATER — 826-3756

Sandra Christner & Tom Christner

Maxey's STEAKHOUSE
S. Hwy. 83 — Wheeler, TX — 806.826.3441
Call for Catering, Private Parties & Daily Specials

MUSTANGS BAND

Camilo Magadan ... Tuba — Sophomore
Martin Lopez ... Tuba — Freshman

2012 Wheeler 7th, 8th, JV Football Schedule

Date	Opponent	Team	Site	Time
8-30	Quannah	JV only	Wheeler	6:00
9-6	Spearman	JV only	Wheeler	6:00
9-13	Clarendon	7 th , 8 th , JV	Clarendon	5:00
9-21	Highland Park	7 th , 8 th , JV	Highland Park	5:00
9-27	Memphis	7 th , 8 th , JV	Wheeler	5:00
10-4	Canadian	7 th , Claude 8 th , JV	Wheeler	5:00
10-11	Gruver	7 th , 8 th , JV	Gruver	5:00
10-18	Wellington	7 th , 8 th , JV	Wheeler	5:00
10-25	Booker	7 th , 8 th , JV	Wheeler	5:00
11-1	Shamrock	7 th , 8 th , JV	Shamrock	5:00
11-8	Wellington	7 th , 8 th , JV	Wheeler	5:00

Gallagher Welding & Construction, LLC
and Employees fully support the Mustangs
GO MUSTANGS, GO! Fight! Fight! Fight!

Roustabouts • Steamers
Welding • Fabrication
Pipeline • Dirtwork
24 Hour Service
Fully Insured

Mike (806) 6633-0506 Office (806) 826-0272

WHEELER PLUMBING CO.
Max, Stacy, Creele, Gavin & Jennifer McQueen

THE WHEELER TIMES
Serving Wheeler Since 1933

Louis & Barbara Stas & Family
...a part of Wheeler since 1960

WALLACE CONSTRUCTION
Changing the looks of Wheeler—one building at a time!
305 S. Main — Wheeler, TX — 826-3503
WALLACE TAX SERVICE
For all your accounting needs — 826-3503

GREEN COUNTRY EQUIPMENT, LLC
business phone: 800-223-0036
WWW.GREENCOUNTRYEQUIP.COM

Claude

(from Page 2)

What a Game!!!
Claude got the ball first and Skarkey hit Austin on a twenty yard pass but failed to convert on the extra point. Claude 26 Wheeler 20. The Mustangs from Wheeler drove the ball to the five yard line and Jake Ware scored the tying touchdown. We make the extra point Game Over. We miss the extra point Game On. We miss Game On!! 2nd Overtime!!!
Wheeler gets the ball first in the second overtime and waste no time heading into the endzone. Cody Clark took over and scored the touchdown and then having no luck kicking the PAT the Wheeler Mustangs went for two and Clark finished the deal as he played his

way into the endzone for the two point conversion. Wheeler 34 Claude 26. Here come the Claude Mustangs. Skarkey throws his fifth touchdown pass to Kevin Johnson and we're headed for the third overtime. GAME OVER!!! Claude throws incomplete on the extra point and Wheeler Mustangs Roll 34-32!!

What an exciting finish to a great high school football game. Both teams played their heart out but the Mustangs from Wheeler out last the Mustangs from Claude.

Team Totals	W	C
First Downs	26	24
Yds Rushing	371	137
Yds Passing	0	343
Total Yds	371	480

Storm

(from Page 1)

and make money. I hope I can see them someday. I love those bees. We had a great time at our Cheerleader Camp! The Cheerleaders and Mighty taught us to do the cheers. We played games and had so much fun! Now we are going to cheer at the Mustang ballgame. That will be super. I had a big calf. He had to go to the sale. I wanted to go, but I have to go to school. The sale people sold him for me and I got a check in the mail. I went to the bank and put the money in my savings, except for a little bit. I spent two dollars for a Mustang tattoo and a pink bead necklace. Christian (Hefley) counted the money to me and gave me a little book to write how

much money I have. Then I had to put the money in the bank to save it. That was great! I want to sell more calves, but not my cows. That's it.

Chat

(from Page 1)

Columbus Day was observed Monday, however it was work as usual for some.

- cwe -

We did not return from OKC until Monday afternoon to start on the paper.

- cwe -

Liz and Jaden Jackson came over Sunday. Phoebe was home recovering from having been hit with a softball while pitching in a school game. She had to stay home in a dark room.

- cwe -



THE WHEELER TIMES

PAGE 8 - Thursday, October 11, 2012

"Wheeler, town of friendship and pride."

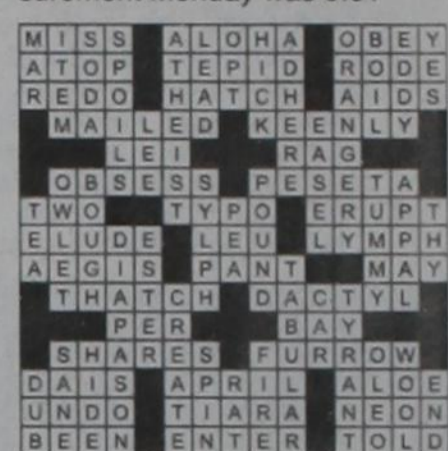
Saturday afternoon we were at the Musae' residence for an early afternoon meal and to watch a ball game.

- cwe -

Some of us just visited while the game was in play.

- cwe -

The weekend moisture measurement Monday was 0.01"



Hear the...
"Abundant Living Broadcast"
KPDR-FM, 90.3
WHEELER, TEXAS
Saturdays: 9:00 a.m. to Noon

211, 214, 217, 220, 1393, 1522, 1540, 1555

OKLAHOMA
CHEYENNE • EUFAULA
HINTON • STILWELL
TEXAS
SHAMROCK • SUNRAY
WELLINGTON • WHEELER



Market Square

THRIFTWAY

www.marketsquareonline.com



PRICES GOOD
WEDNESDAY, OCTOBER 10,
THRU TUESDAY, OCTOBER 16, 2012

NOT LIABLE FOR TYPOGRAPHICAL OR PICTORIAL ERRORS.
WE RESERVE THE RIGHT TO LIMIT QUANTITIES.
SOME ITEMS NOT AVAILABLE IN ALL STORES.

Produce Sale

 Plains Dips select varieties 12 oz. 3 \$4 for 4	 Russet Potatoes U.S. No. 1 10 lb. bag 2 \$5 for 5	 Tomatoes 4 ct. cello pk. 99¢ ea.	 Pilgrim's Whole Chicken "Grade A" 79¢ lb.
 Shurfine Thin Crust Pizza select varieties 20.5-22.8 oz. \$2.99	 Premium Iceberg Lettuce cello wrapped 99¢ ea.	 Hass Avocado large 69¢ ea.	 Center Cut Pork Chops preferred trim family pack \$1.99 lb.
 Campbell's Soup chicken noodle or tomato 10.75 oz. 69¢	 Red Scarlet Royal Seedless Grapes 2 \$3 lbs. 3	 Green Bell Peppers large 3 \$1 for 1	 Owens Sausage select varieties 1 lb. roll \$2.49
 Shurfine Tomato Sauce select varieties 8 oz. 4 \$1 for 1	 EatSmart Tray vegetable/meat/cheese 32 oz. \$8.99 ea.	 Dozen Rose Extravaganza 12 stems (where available) \$8.99 ea.	 Bounty Paper Towels white regular or select-a-size 8 rolls \$8.99
 Charmin Bath Tissue ultra strong white 24 rolls \$8.99	 Herbal Essences Shampoo or Conditioner select varieties 10.17 oz. \$1.99		