



THE WHEELER TIMES

(USPS 681-960)
VOLUME 50, NUMBER 44

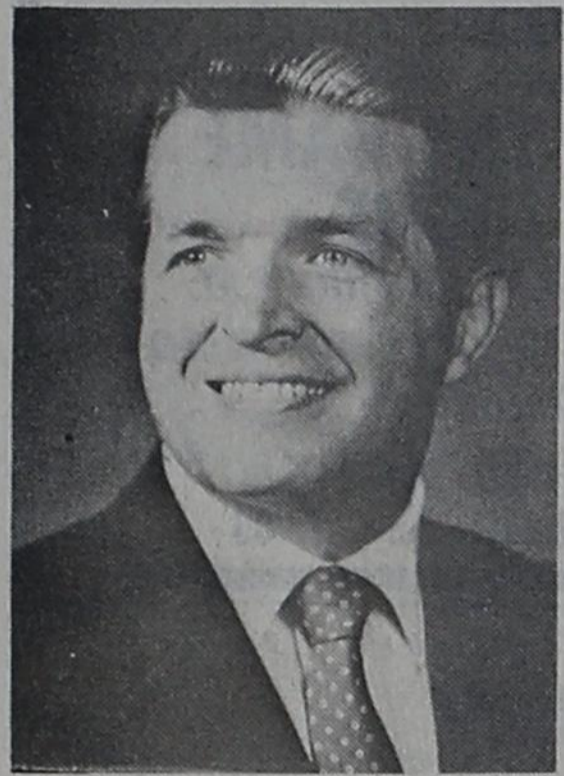
THURSDAY, OCTOBER 4, 1984

SINGLE COPY 20c

Mobeetie Methodist To Hold Brush Arbor Meeting

In historic Old Mobeetie, there will be an old fashioned brush arbor meeting held from October the third through the sixth. The services will begin each evening at seven o'clock and the congregation will gather under the arbor behind the old jail. Everyone is welcome and all are encouraged to come. Come every night if you can and share in this time of spiritual renewal and blessing.

Singing has always been a major



PERRY D. GRIFFITH

part of evangelistic tent revivals and brush arbor meetings and so will it be with this special meeting. Jim Batton, a local cattleman and rancher, will be leading the lively congregational singing, and each evening he will be bringing his music ministry to us with special solo offerings. Jim has a truly magnificent tenor voice; you will not want to miss his ministry.

Preaching each of the four evenings will be Dr. Perry E. Griffith, the newest pastor on the Northwest Texas Methodist Conference, pastoring the oldest Methodist Church in the Panhandle. The Mobeetie United Methodist Church is one hundred years old this year. Dr. Griffith has been a major college football coach in the past but is now working to build God's kingdom through sharing the gospel of Jesus Christ. He has been preaching since he was sixteen years old and is a dynamic public speaker. You will be blessed by his clear and understandable presentation of the gospel of Christ. Dr. Griffith's theme for this meeting will be 'Being perfected in unity and holiness.'

Rescheduled:

Alpha Mu Alpha

Annual Kid's Day

Kid's Day will be this Saturday, Oct. 5. Festivities will begin with the parade at 10:30. All parade participants are to meet in the Baptist Church parking lot at 10:00. The parade will begin at the church and end in front of the courthouse.

The next events will be the bike races for all ages and the crawling and running races for preschoolers.

At 1:00 activities will resume with the dog show. Following will be the footraces for Kindergarten and up, tennis ball throw for little girls, football throw for little boys, jump rope for big girls, football skills (passing, kicking, punting) for big boys and the obstacle course for all ages.

Come to town this Saturday, Sept. 29 to watch Wheeler kids enjoy the days activities.

Hospital Notes

Old Admissions
9-19 Jefferson McClain
9-20 Robert Beauchamp

New Admissions
9-25 Eugene Gudgel
Billy McDowell
Peggy Phipps
Otis Reid
Gladys Kysar

9-26 Annabell Kirkpatrick
James Walker
Jewell Leonard

9-27 Wilma Risner
Mark Murray
Willard Ingram
Elsie Wagner

9-28 Lewis Simpson
Beatrice Harville
Leonard Gaines

9-29 Robert Risner
Caryn Risner
Zane Francis

10-1 Iris Ingram
Lana Bradstreet
Mark Mize
Peggy Phipps
Matthew Miller

Dismissals
9-25 Julia Massey
Kenneth Williams
Willard Ingram

9-26 Jancie Albright
James Salyer
Gladys Kysar
Lillian Williamson
Audie Savage
Shelly Murray
LaDena Taylor
Opal Hutchison
Bobbie Sneed
Peggy Phipps
Billy McDowell
Willie May
Otis Reed
Fredericka Adams
Leon Green
James Walker
Leonard Gaines
Minerva Jones
Gail Snapp
Beatrice Harville

MUSTANGS SHUTOUT BOOKER, 12-0

It wasn't a pretty win but it was a big win last Friday night in Booker as the Wheeler Mustangs shutout the Kiowas 12-0 and took another step up the ladder to the district crown.

Had it not been for the Mustangs tough defense, it could have been a long night for the visiting Mustangs as the Wheeler offense played itself with fumbles and penalties which blunted drive after drive.

So thoroughly did the Mustangs defense shut down the Kiowas, Booker was able to garner only 83 yards in total offense. The Mustangs had a huge edge in the statistical battle with 403 total yards on offense and had the Mustangs been able to hold onto the pigskin and keep the flags in the officials pockets, their margin of victory could have been

much larger.

Toby Collins led the Mustangs attack with 220 yards gained rushing and scored both of the Mustangs touchdowns, one on an 89 yard run.

The win was the Mustangs third shutout in a row and it upped the Mustangs to 4-0 overall and 2-0 in District 1-1A and last weeks victory all but eliminated the Kiowas from any hopes of gaining a playoff spot.

Game Statistics:	W	B
First Downs	15	7
Net Yards Rushing	333	54
Net Yards Passing	75	29
Total Yards Gained	408	83
Passes & Completions	9-5	12-5
Interceptions By	0	0
Fumbles Lost	4	0
Penalties & Yardage	7-70	3-15
Punts & Average	0	4-28

Wheeler Will Be Seeking Dist. Win Over Blackhawks

Hoping to keep their perfect record, the Wheeler Mustangs host the Phillips Blackhawks Friday night in the third district clash for both teams.

Phillips will bring a 1-3 record to Nicholson Field for the 7:30 kickoff and are even at a win and a loss in district play. The Blackhawks were shutout by the Claude Mustangs last week after their win over the Lefors Pirates by a 13-7 score.

The Blackhawks are really an unknown to the Mustangs coaching staff as Phillips underwent a head coaching change a couple of weeks ago. Several experienced players had dropped off the squad and are now back according to coach Preston Smith.

"Phillips has been doing some changing weekly in their offensive sets so we have to be able to defense multiple formations which will make it tough", Smith added.

The Blackhawks will use a five man front on defense but once again, the coaching change could make the Mustangs face another variation of the 5 defense.

"We didn't play very well against Booker and our defense kept us in the game and like I said last week, if we keep making mistakes like fumbling and getting all those penalties, we won't get to be a good football team," Smith said.

Wheeler suffered no injuries in the Booker game that will keep anyone

from seeing action although several of the Mustangs have been slowed in practice this week. Joel Dodd is questionable because of sickness.

With October rolling around, kickoff time has been moved to 7:30 p.m. for the rest of the regular season.

CHURCH OF CHRIST PLANS GOSPEL MEETING

The Church of Christ in Wheeler has planned a 4-day Gospel Meeting (or Revival) for October 14 through 17. The Sunday sermons will be at eleven and six o'clock and the week-day services will be at 7:30 p.m.

Ken Hope of Garland, Texas will be the guest evangelist and his lessons should be biblical and inspirational.

Mr. Hope was born in Flint, Mich. and is a 1977 graduate of Oklahoma Christian College. He is married to Julie Ramsey and they are blessed with three wonderful children, Daniel, Amy and Amber all of whom he hopes to bring with him to Wheeler.

Ken is preaching for the Broadway Church of Christ in Garland, is co-editor of the Challenger and is a staff-writer for the Christian Bible Teacher.

The local Church and their guest preacher invites all people of the area to come to hear the Bible preached. No nightly collections will be taken and you will enjoy the congregational singing without instrumental accompaniment. If you should need transportation, call the Church office... 826-5542.

And if there is some other service that you think we can provide, give us a call. We desire to be Bible believing, Bible practicing people and those who do these things are servants. May we serve you? Come and worship with us.



Ken Hope

TRI-STATE RODEO SAT. & SUN.

It's time once again for the Wheeler County Tri-State Rodeo. There are two performances-one at 7 p.m. Saturday and one Sunday at 1 p.m.

There will be 6 boys events: bareback riding, bull riding, steer wrestling, calf roping, ribbon roping and team roping.

The girls events include barrel racing, pole bending, goat tying, breakaway roping, and team roping. 135 High School boys and girls have entered this rodeo with entries from Texas, Oklahoma and New Mexico.

An all around girls and boys saddle will be given to the high point girl and high point boy Sunday afternoon.

These saddles were donated by First State Bank of Mobeetie, First National Bank of Wheeler, Buttonhook Ranch of Shamrock, Velasquez Thriftway and Farm Bureau.

There will be two team trophies awarded to the boys and girls team getting the most points. These

trophies are being donated by Terry and Sherry McCasland.

Wheeler Co. has been very fortunate this year winning the team trophy three out of four rodeos.

Members of the Wheeler County Club are: Allison-Destry Coulter, Ricky Williams, Briscoe Larry Trimble, Miami: Johnna Hinton, Mobeetie: Ronny Vandever, Kent McLaughlin, Dean Randolph, Waylon Howard, Shamrock: Todd Brashears, Brad Brashears, Andie LeBlanc, Mike O'Gorman, John Terry, Wheeler: Lee McCasland, Draton Childress, Randy Martin, Drew Thomas, Andy Maslik, Toby Collins and Flint Otis.

The Mobeetie Seniors will be in charge of the concession stand.

Everyone is urged to come out to the Wheeler Rodeo grounds Saturday night and Sunday afternoon to watch some of the best in high school rodeo compete.

Admission for the rodeo is \$2 for adults and \$1 for 12 and under.

Come out and give the Wheeler County team your support!

The rodeo team would like to thank everyone who has given their financial support. Without these people there could be no rodeo team.

The Event Sponsors and donors for the rodeo are: McCain's Body Shop, Ann and Mel Ray Coate, Wheeler Vet Clinic, Mr. and Mrs. Clifford Hefley, Rives Insurance Agency, Inc, Mr. and Mrs. Dede Helm, Mr. and Mrs. Randy Stalls, Burton Ford-Mercury, The Thomas Agency, Mr. and Mrs. James Masters, Dr. Mike Smith, B.J.'s Warehouse, M. Kent Sims, Beef Cattle Co., Wayne's Western Wear, Lacco, Dr. Louie Mendiola, Dr. Larry Harbour, Maxey's Steakhouse, The Wheeler Times, Cross Car Center Lee Hardware, D.V. Miller, Loyd's Radio and T.V. Repair, Grant Meek, Greg Smith, Production Credit Assoc. Ware Chevrolet-Buick-Olds-Pontiac, Wheeler Co-op, Hyland's, Baker Automotive, Mark Pond, Loyde Goad, Colbert Cattle Feeders, Inc., Stribs Feed and Supply, Laketon Farm Store, Batton Herefords, Omega Grain, Inc., Ray Hudson Enterprise, Bob and Elaine Martin, B.F. and Margie Meadows, Skeeter and Teresa Powlidge, Cecil and Emma Jean Meadows, Vise Energy Inc., Tom and Alice Bell Helton, Hefley Registered Herefords (Dennis and Brenda Hefley), R.L. and Rozena Zybach, Bill Hefley, Gagey Coop, Bell-Mart, Bob Downs, Sam and Barbara Meadows, Richard and Bonnie Meadows, Pat Graham, Melvin's Upholstery, Grayson Grain, Feed and Seed, Lane Grocery, Begert Limousin, Kiker Chianina, Shelton Brangus, Porter Rogers, C.R. Anthony, Adams Hardware, R.J. Pasley Construction Co. Inc., D.J.'s Flowers and Gifts, Mane Event, C and H Supply, Inc., Shamrock Kiwanis, Puckett I.G.A., Shamrock Auto Supply, Shamrock Vet, Truman and Dianne Brashears, Rex Helton, Sonya Holder, Harrold Samlmon, D and C Trading, C and C Fertilizer, L & W Cattle Company.

Local Water Dist. Board Special Meeting

The Wheeler County Water Supply District called special meeting Wednesday morning, Oct. 3. The board voted to answer the lawsuit filed challenging the results of the August 11 election. The board was served notice of the filing on Sept. 23. The answer will be written by board secretary, Woodrow Sims, and board member Kent Sims.

No further action can be taken by the board for lack of official notice from the Red River Authority, concerning action taken at their meeting on Sept. 13. The RRA at this meeting voted to reject the contract the Wheeler County Voters voted to accept in their August 11 election.

Roping Scheduled For Saturday, October 13

A roping will be held Sat. Oct. 13, 1984, at 1:30 p.m. at the Wheeler Roping Club Arena.

There will be a three head calf roping and three head team roping.

Belts buckles will be given for the all-around winner plus buckles will be given for the average winner in both calf roping and team roping.

To be eligible, a person must have been a resident of Wheeler County for the past six months.

For more information contact Skeet Johnston or Fred Goad.

LOCK YOUR DOOR

Residents might be urged to lock their homes. There has been evidence of people going into homes and watching TV, or just moving something so you will know they have been there. There have also been reports of gates being left open and the pets being set free.

I.S.D. Board Recognized At State TASA/TASB Conv.

Members of the Wheeler ISD Board of Trustees were recognized by the Texas Association of School Boards President, John Quisenberry, at the Second General Session Banquet for their 100% participation at the 1984 Joint Annual Convention in San Antonio. Wheeler Board members include, Berry Hennard, President, Richard Brown, Vida Brown, Chris Gately, Bobby Hill, Cecil Pierce, and Mike Smith.

From 1098 districts only 32 school districts had their entire membership attending the convention whose theme was "Education Reform: Our Opportunity for Leadership." Sessions focused attention on education reforms recently enacted by the Texas Legislature, as well as the extensive reform of the public school curriculum initiated by the State Board of Education. These recent events give board members an opportunity to communicate with the public about successes of Texas Public Schools and to accept responsibility, wherever necessary, for improvement through effective leadership in their communities. Board members and administrators have a vital role in implementing these reforms and assuring that the educational programs in Texas public schools are second to none. Convention participants had an opportunity to hear, see and discuss strategies for improving the schools of our state and to share ideas with colleagues in other districts.

From the demonstrations of promising practices, discussion topics, mini-clinics, and general sessions to the outstanding architectural and commercial exhibits, the convention offered Texas most comprehensive program for educational decision makes. The first General Session featured

Navy Captain Gerald Coffee a former prisoner of war for 7 years during Vietnam, who discussed Faith-The Ket to Survival and Triumph. In sharing his experience of frustrations and triumphs as a POW, Captain Coffee rekindled the spirit, pride, and courage he believes are "American Traits".

The second General Session speaker was humorist "Doc" Blakely who is considered "America's Number One Intellectual Humorist".

During the third General Assembly U.S. Representative Phil Gramm and State Senator Lloyd Doggett addressed over 3000 board members and administrators, State Senator, Carl Parker of Port Arthur and State Representative Bill Haley of Center

Continued Page 8



Pictured above are members of the Wheeler Co. Tri-State Rodeo Club around the two trophy saddles to be awarded at the Tri-State rodeo this weekend. Front row: Ronny Vandever, Lee McCasland, Larry Trimble, Randy

marun and Andy Maslik. Back row: Waylon Howard, Draton Childress, Kent McLaughlin, Destry Coulter, Dean Randolph, Drew Thomas and Flint Otis.

CWE CHAT WITH EDITOR

By Louis C. Stas

The Tri-State Rodeo will be staged this Saturday and Sunday in Wheeler. This will be the one to see. Wheeler county will have some 22 of the 135 entered from the tri-state area; these youngsters enjoy the sport. Wheeler County has brought home the team trophy in three of the four rodeos.

-cwe-

The annual Alpha Mu Alpha "Kids Day" was scheduled for last week, but was cancelled, due to the weather. It has been rescheduled for Saturday; check the story for a schedule of the activities, but I recommend this for entertainment.

Sorry ladies, the grandparents are going to see the grandchildren.

-cwe-

I returned Sunday from a business and pleasure trip to Austin and San Antonio. On the return, I was on an unscheduled non-stop 45 minute flight from Dallas Love Field to Dallas Love Field. After being airborne, enroute to Amarillo, for about 20 minutes we were told there was a "problem with the plane" and we were returning to Dallas. I felt a little more at ease when I did not see the fire trucks and ambulances lined up as we approached the landing strip. We were informed later that an indicator light was not working properly. Our delay was short; a different plane was made available for us.

-cwe-

My inability to remember names reared its ugly head again. I recognized two of the people waiting with me to board the plane for Amarillo (the second time) as being from Mobeetie. I greeted them and was really hurt when they did not recognize me or my name. The lady and her son were

Continued Page 10

WARNING

Wheeler county residents are to be cautious it offered an inexpensive deal for the paving of driveways or drives. You are advised to enter into a signed contract which gives the price and a description of the finished work (type material width and thickness).

Some disagreements have arisen over work which has been done in the area recently.

Ask for and check references; look at some of the work which has been done by these individuals.

TRAP SHOOT

The Kelton and Wheeler Lions Clubs will have a Benefit Trap Shoot on Saturday, October 6 at 1:00 P.M. The proceeds will go to help needy families in the area.

The shoot will be held on the shooting range located 4 miles west of Wheeler on 152, then 4 miles north on Boy Scout Road.

Enjoy an afternoon of competition.

Mobeetie Meditations

By Goldie Gordon

Well here it is time to write the news again. I hope everyone remembered to add their blankets. I woke up last night nearly froze, the weather had changed so. We did receive 1/2 inch of moisture out of this bad weather. Everyone here recieved a

Quilting Club

The Quilting Club ladies met on Sept. 27th at the Totty School House. Audrey Seitz was hostess with a lovely king size quilt in. The quilt wasn't finished so Audrey will be hostess next time.

Refreshments of chips, dips, pop, lemonade, and cake (Herman) was served by the hostess to Orville Greenhouse, Estelle Hodges, Lottie Reynolds, Eva Webb, Mary Hovey, Jane Seitz, Bulah Grimes and Glenda Tollison.

Ft. Elliot Study Club

Fort Elliot Study Club met on Sept. 26th in the home of Gazelle Patterson. Leona House presented the program on the theme of the year "What are friends for?"

Laverne Scribner presented the devotional, Edith Sims gave the club collect, Gazelle presented refreshments to Edith Sims, Eula Johnson, Laverne Scribner, Margaret Trout, Linda Williams, Marie Gudgel, Bessie Galmor and Leona House.

The next club meeting will be in the home of Edith Sims.

Tour

Doyle and Bulah Grimes returned on Sept. 24 after a eleven day tour the Hoobier Traveling Agency at Canadian.

The most outstanding thing on the tour was the World's Fair. They toured Mississippi, Mobile Alabama, went on a 5 hour cruise on the ship Voyager. In Dallas they went to 6 Flags, Kennedy Memorial, toured the Penicot Mural at Biblical Art Building. They were very glad to meet Georgia Corse, Miami and Mary Hartley from Reydon who they already knew. There was a little 87 year old lady making the cruise. After returning home they commented "There's no place like home."

Baby Shower

A lovely baby shower was held on Sept. 25th honoring Gayla Hathaway. It was held in the fellowship hall of the Baptist Church with a large attendance. Hostesses were: Inez Moore, Wanda Hefley, Elaine Langley, Paula Bacon, Helen May, Louise Hogan, Estelle Orr, Nadean Morris, Mary Hovey.

killing frost it even got all the tomatoes.

Thanks to Win and Claudia Quarles for those delicious watermelons and the cantalope we've been enjoying.

I have a very dear friend from Mobeetie, Sharon Arganbright who comes by each week and fixes my hair for me. It gives me a new lease on life. Thanks to all for being such good friends.

I am sorry to report Gene Gudgel is back in Parkview Hospital at this time.

"She won't let me go hunting!"



If a hunter causes serious injury or death of another person, the usual \$25,000 liability coverage could be woefully inadequate. An Umbrella Liability policy costing nickels per day would give added coverage to \$1,000,000.

RIVES 115 W. Tex. St.
INSURANCE AGENCY
806/826-3573

Our Young People



MICHAEL WAYNE JOHNSON 4 year son of Skeet and Dianna Johnson.

Leatha Corcoran is in Coronado Hospital in Pampa for tests. Sure am wishing her good luck.

Happy birthday to Lindsey Keys at Allison who has just celebrated her fourth birthday. Those who went from Mobeetie to eat ice cream a cake were Carol McCurley, Calvin and Matt, Jane and Munroe Seitz and Sue and Pete Seitz and Terri.

Mr. and Mrs. Horace Blair from Booker visited with Marie and Gene Gudgel and Novelene and Byron Simpson.

Doyle Greenhouse from Dumas ate dinner Friday with his mother Orville Greenhouse. Alvern and Dorsie Hutchinson visited Orville Sunday afternoon.

Molly and Jim Selby went to the Coronado Community Hospital in Pampa Wednesday to be with their niece Nancy Shufbergers who had surgery.

Herbert Atkins from Amarillo spent Sunday with his parents Herk and

WHEELER PLUMBING

204 South Main St.

New Construction
Remodel
Repair
Sewer Service

Phone: 826-5907

FREE ESTIMATES
MAX McQUEEN
P.O. Box 754 — Wheeler, Texas



CARLY DANIELLE RIVES 2 year old daughter of Larry and Sheryl Rives of Wheeler.

- For all your prescription and cosmetic needs!
- Gift Selections for all Occasions

HYLAND'S PHARMACY
YOUR PRESCRIPTION CENTER

Elnita Atkins.

Kim Hathaway was honored with a Happy Birthday dinner at Ruth and Lester Hathaways. Those helping celebrate were Paul and Clarice Hathaway, Kimberley Johnston, Shelley and Krista, and Wade and Gayla Hathaway.

Larry Jones son and Charles and Cindy Jones celebrated his 6th birthday on Sunday. I know he had a good time because he got a brand new bicycle.

Those who came for ice cream and cake were his sister Lisa and brother Jeremy, Jerod Thompson, Colin McCurley, Michael Haning and his mother Genie, Megan Darby and Brook Roberts. After refreshments they went to Brother Hovey and Mary's for a Treasure Island movie.

Delores Cznespawski and son Joe from Pampa visited last week with Ralph and Lanette Riggs. Joey spent several days with his grandparents.

I am very proud to report that Sandra Randolph is doing fine. Sunday dinner guests in her home were Randy, Diane, Nicole and Kara Jones from Borger, Dennis and Penny Helburn and family, Danny, Cherry and Jamee Helburn and Charlotte and Walter Coward.

Sandra went home to Borger with the Jones family and will spend part of the week.

Dennis Stuart was home over the weekend from W.T. and Randy and Bobbie Stuart from Wheeler visited Leola and Calvin Stuart over the weekend. Diana Moffett was a guest for Sunday dinner.

G. M. Walls from Pampa visited Ab Trout Saturday. Lonnie Trout, Tracey, and Mindy from Miami visited over the weekend.

Virginia Ridgeway visited in Pampa Saturday with her mon Mrs. Lonzo Shaw and her sister, Mr. and Mrs. Ray Accenio and girls.

Bessie and Bob Galmor, Shirley and Bobbie Galmor and grandsons Cody and Caleb recently visited in Forrestsburg with Bob's brother Mr. and Mrs. Bert Galmor.

Mattie Williams from Amarillo spent Tuesday night with her old friends Pierce and Nettie Walker. Sunday their son Jimmy and Dorothy Walker from White Deer visited them.

Kay Simpson from Amarillo and Claudia Quarles went to the hospital in Woodward, Okla on Wednesday to be with Paula Shahan who was having surgery.

Visiting Sunday in the home of Cotton, Clara, Kay, and Todd Ridgeway were Kent, Carla, Bridgett and Sara Sims from Booker and Ana Lee Sims.

D. L. and Colleen Recter and T. C. Lemons from Pampa visited Jud and Lorene Recter Sunday.

Jerry Simpson and his daughter Diane from Georgia are spending a few weeks with Novelene and Byron Simpson. Teresa Simpson from Shamrock came over on Thursday for a visit.

On the way home from their vacation in Colorado Herk and Elnita Atkins spent the night in Amarillo with Elnita's twin sister Juanita Lightfoot.

Congratulations to Don and Elise Webb on their new granddaughter Nicole Doyle, weighed 8 lbs 9 oz. born in North West Texas hospital. The parents are Bryan and Linda Doyle, Cathy and Melissa. They brought the new baby to Mobeetie over the weekend.

Roy Hathaway from Queen City spent Tuesday night with Ruth and Lester Hathaway. Wed., Roy, Ruth and Lester, Edna Waters and Paul Hathaway went to Wichita Falls to attend the funeral of Pearl Hathaway.

Mr. and Mrs. Earl Meadows from Shamrock visited Munroe and Jane Seitz Thursday.

Xi Upsilon Eta Opens New Year

The first fall meeting of Xi Upsilon Eta met in the home of Jodi Hughes Sept. 11, 1984.

President Nina Walker presided over the meeting.

The sorority voted to donate \$100 toward the gazebo at the Wheeler Care Center. They also donated toward the Statue of Liberty touch service project.

A piece of stained glass will be raffled off at the area convention that is to be held in Pampa in October.

Nina Walker will make a doll that will be raffled off Christmas in Wheeler.

Members present were: Linda Hink debby Taylor, Nina Walker, Mary Sue Williams, Glenda Atwood, Jane Thomas and Jodi Hughes.

Windy Valley Reunion

Residents and former residents will have their reunion Oct. 14 at 9:30 a.m. til 5:00 p.m. all residence who have lived at Windy are invited to attend. It will be held at Donley County building one block north of Chamberlain Motor Company in East Clarendon at Old Fair Ground, lunch will be served at 12:30 noon.

MAXEY'S STEAKHOUSE SUNDAY BUFFET

- Salad Bar
- Roast Beef
- Quiche - Lorraine
- Home Fried Potatoes
- Mixed Vegetables
- Hot Rolls
- Tea/Coffee
- Dessert

OPEN AFTER THE GAME FRIDAY NIGHT

Tues.-Sat.—6:30 A.M. - 10:00 P.M.
Sun.—Noon Buffet (Only) 11:30 - 1:30

• Closed Monday •

Phone: 806/826-3441

1 mile South of Wheeler on U.S. 83

If you knew

what SPS is doing to keep your cost of electricity as low as possible

...You'd be impressed.

Like utilizing waste products

We found a use for the ashes collected from the coal we burn as fuel in our power plants. We sell this by-product to be added to cement to make stronger concrete. Instead of wasting money, we save money on waste.

Working to justify your trust



Bert Ballengee, President

GOSPEL MEETING

CHURCH of CHRIST

P.O. Box 323 1001 Alan Bean Boulevard 806/826-5542
Wheeler, Texas

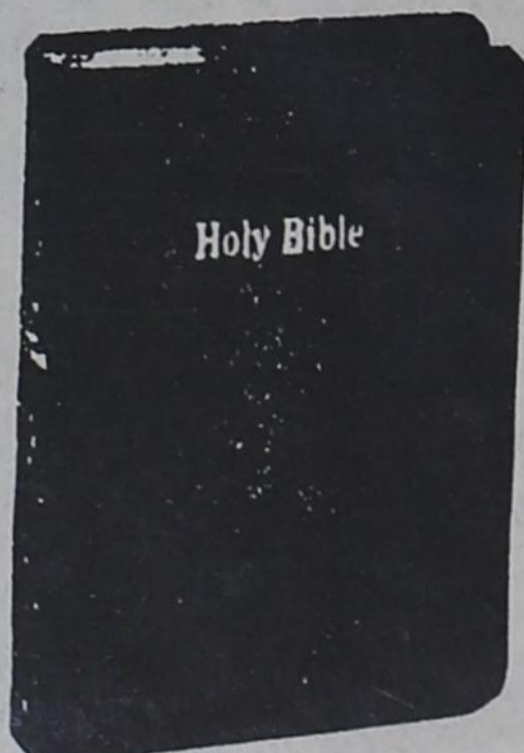
OCTOBER 14 — 17

7:30 P.M. Weeknights 6:00 P.M. Sunday

Preach the



HEAR: KEN HOPE of Garland, Texas



You Are Invited To Attend

U BAR U

OILFIELD TROUBLE SHOOTING

IPS — ROSS HILL CERTIFIED

NOTED FOR 24HR. SERVICE!!

INDUSTRIAL
COMMERCIAL
OILFIELD
INSTRUMENTATION
ELECTRONICS



NO JOB TOO BIG

FULLY INSURED
WILL SUPPLY COPY OF INSURANCE IF NECESSARY

BOB UNDERWOOD

BOX 269 WHEELER, TX 79096

806-826-3150

24 HRS.

U BAR U

Try our Special: **TACO 39¢**

We will stay open until 11:00 on Friday nights after the ballgames.

Harvey's Family Restaurant
Phone 826-3333

Thursday, Friday, Saturday & Sunday



BUTCHERING & PROCESSING PRICES

Beef processed, double wrapped—25¢ Per Pound \$7.50 for Butchering

Pork Processing including curing Double Wra Double wrapped—32¢ Per Pound \$8.50 a head for butchering

We butcher Mon., Tues., Thurs. & Fri. until 11:30 A.M.

CALL FOR QUARTER—HALF—WHOLE BEEF PROCESSED

WE NOW HAVE CUTS OF PORK & BEEF ON SALE

SHAMROCK SLAUGHTER PLANT

North of City Closing at Noon on Saturday Phone: 256-3241

THE SHIRT SHACK

114 East Texas Street
Wheeler, Texas

Phone: 826-5719

We do... GIFT WRAPPING



Care Center Comments

By Ida Farmer

We welcome Lola Smith as one our residents.

Mrs. B. A. Hyatt and Icyll Littrell took Silas Evans to Pampa to the Dentist.

Mr. B.A. Hyatt our administrator received a very nice letter of Thanks and Appreciation, from Bill Allen of Fairbanks, Alaska. He appreciated the nurses and all concerned taking good care of his father Buck Allen. Bill was here a few days visiting his father.

Bob Underwood visited friends in the Care Center Tuesday.

Mrs. Neece of Shamrock visited with her Shamrock friends. Mr. and Mrs. Neece use to teach in the Shamrock school.

We enjoy the members of the Methodist Church bringing their program on Wednesday night. We also like to visit with them after the program.

Thanks to Johnnie and Jewel Reed who brought us some real nice tomatoes, we are always glad to see them. Johnnie always has a nice joke to tell us.

Thanks to Fannie Mae Bradstreet for the donation of pajamas. They can certainly be used.

Winnie Gilmer of Briscoe visited her grandmother Mable McCaslin and her Aunt Mildred Hamilton.

Mary Mitchell and Elva Wood served juice to the residence Friday the Auxiliary sponsors of this project. The Auxiliary has helped to make our home a pleasant and enjoyable place to live.

Mae Nash visited Tuesday afternoon with Ida Farmer.

Duane Bradford visits his mother, Icyll Littrell every week, he always challenges her in a game of dominoes, Guess Who Wins.

The Church of Christ has made small pillows for the Home. There is always a use for a small pillow. We Thank You.

Sue Woodruff from Shamrock and Eula Khulmon of Clinton, Okla. visited their mother Ruth Coats.

Charlene Taylor of Allison visited Thursday with her mother Mildred Hamilton.

Mr. B.A. Hyatt
Administrator
Wheeler Care Center

Dear Mr. Hyatt:

Thank you for your kind note of Sept. 6, 1984 with the enclosed Wheeler newspaper. My visit with my dad and Uncle Jake were enjoyable. The opportunity I had to reacquaint myself and visit with other relatives in the area was appreciated.

Mr. Hyatt, I was impressed with the facilities offered by your firm and was especially pleased to observe what I considered to be a very committed and conscientious staff at the center. I am sure working with the seniors is a pleasant experience, but I can also imagine a great deal of patience and understanding are required.

B.B. Allen, Borough Mayor

Edith McLaughlin of Mobeetic visited Thursday with her sister-in-law, Martha Sides.

Mrs. Willie Lamb of McLean visited Friday with Alvin Sellars. Alvin's nephew, Mark Burrell came for a visit also.

Ken Freeman's wife from Panhandle visited Ken Thursday. She always comes every week for a days visit.

Mr. and Mrs. Bob Moore from Lone Wolf, Okla. visited Saturday with his sister Mrs. Vena Hopkins.

Fern Young visited her mother Mable Geitchell, Rozenna Zybach also visited her.

Mr. and Mrs. Marvin Montgomery of Perryton visited their Aunts, Rose Smith and Nora Hiltbrunner and friends in the Home.

Mary Finsterwald, Fannie Bradstreet and Jewel Hollaman were visitors in the Home Sat. afternoon.

We are glad to have Willie May back, He has been in Parkview Hospital two weeks.

Lillian Lee visited Saturday with Hattie Lee.

Mr. and Mrs. "Curly" Anderson spent a few days in Kelton. They still have their home in the Shamrock Community. They would really be missed if they were to leave the Home here.

Mr. and Mrs. Will Burke visited Sunday afternoon with friends in the Care Center.

Everyone really enjoys playing Bingo on Wednesday afternoon. Fruit and cookies are given as prizes to the winners. Everyone wins. We thank the ladies of the Auxiliary that help. Thanks to Alene Palmer for calling the

numbers. Jerry Parker. Each Thursday Bible Study was conducted by Rev. Study is held.



Pol. Adv. pd. for by Friends of Lonnie Miller, Bob Hink, Treasurer, Rt. 1, Wheeler, Tx. 79096

Fresh Hearing Aid Batteries


sold at Lee Hardware & Furniture

Furnished by . . .

Clark Hearing Aid Service

Free Hearing Test by Appointment: 256-3439

WE GO TO GREAT DEPTHS. WITH 8.5% A.P.R. down to earth FINANCING



PLUS SELECTED PRICE ROLLBACKS on 19, 30, 45 & 70 HP tractors

DON'T MISS OUT ON BIG SAVINGS

DEALER NAME Address Phone Number

KUBOTA Nothing like it on earth.™

New Shipment... ACME BOOTS Children & Adult Sizes

14⁹⁵ To 63⁹⁵

Final Clearance... LADIES DRESSES

By Hal Hardin **\$5⁰⁰**

Fantastic buys, if we have your size!

McIlhenny DRY GOODS 826-5688 FOR Everything YOU WEAR

Morning exercises is held each morning except on Tuesday. Allene Palmer has the exercise class.

Mr. B.A. Hyatt has the devotional each Tuesday morning at 11:00 you are invited to hear him.

LaVerna Fillingim and a friend came Friday and worked in the Beauty Shop. We appreciate all of the

Sweetwater News

Mrs. Joe Flowers

This going from 98 to 42 in a day is sure hard on old folks. Don't know whether to be hot or cold. Looks like we missed the killing frost though a lot are singing a different tune. After such a cold winter and dry, hot summer there's a lot of trees and shrubbery that won't leaf out next year.

We attended the reception Friday at Cheyenne honoring Luella Trammell on her retirement from the ASCS office after some 30 years of service. The beautiful cake baked by Jiggs Krober had a little ole lady in a rocking chair for the center. Our Earl Reed (A.J. and Opal's boy) inherited Luella's desk. He'll have his work cut out trying to fill her shoes.

We managed to visit with a lot of folks, Mr. and Mrs. James Scrivener, Mr. and Mrs. J.B. Eakins, Dewitt Hawkins, Denzel Schultz, Johnny Grant, Rep. and Mrs. Rollin Reimer. Linda was running around taking pictures for the Star.

time you get a chance.

About half our community went to the Beckham County Fair and won ribbons. Becky Gragert, Monte Carlson, Sandy Cooperider, Shawn Carlson, Pam Davis, Anice Hinchey, Clint Taylor, Mark Davis, Sheila Sites, Jimmy Davis, Harold Davis, Joel Welch, Tess Heinsohn, Carl Johnston, Jamie Heinsohn, Terri Sears.

Richard Tharp, Jolitta Tharp, Sharlene Hagerman, JoJo McEntire, Todd Coffelt, Laura Coffelt, Lisa Tucker, Monte Tucker, Randy McEntire, Michelle Thompson, Louise Macklin, Katie McArthur, Karrie McArthur, Jamie Anderson, Jessica Reed, Brandi Burkhalter, Cammy Sides, Julie Schmidt, Hope McCord.

Krissi Coffelt, Misti Keathley, Jake Silk, Stacey Gordon, Brenda McMullan, Marsha Hill.

Found Annette Wingfield helping out at McDonald's. Heard David ask her what she was doing there and she said moonlighting. Pretty soon he came over to us and said Annette is "moonshining".

Guess we are out of step with the times. They gave some 25 awards to the best TV shows and actors. Cagney and Lacey is the only one we watch regular. And only three more that we ever watch.

Joe and Ruth Fletchers girls and husbands from Redding, Ca. visited their aunt Birdie Whipkey last week. They were Mr. and Mrs. Pat Allen, Mr. and Mrs. Ron Kofford, Mitch and Tammy Kofford.

Cecil and Lela Whipkey of Tuolumne, Calif. are visiting her this week. They plan to go on to the Ozarks for a week.

Services were Monday at Cheyenne for little Jonathan Wayne Taylor, son of Mac and Joan Taylor. His grandmother is our friend Lila Taylor of Reydon.

Saw Mr. and Mrs. Johnny Klopstein and Dorothy Fuchs in town. Also, Anna Laura Wells.

Some firm in LA advertised 500 jobs. TV said there was a 13 mile long traffic jam. Thought there was at least 100 applicants for each job.

Gertrude Garrett is home from a marvellous trip to Calif. Visited Erv and Juanita at Fullerton. Went on to San Francisco to see friends. On to Modesto to see Carl's children and attend a big party honoring Ruby Orteg on her 80th birthday.

Mr. and Mrs. Don Cox from Ca. visited Mr. and Mrs. Elec Atchley Tuesday. They went on to Ark. to see other relatives.

Briscoe News had not been received by press time Wednesday.

Meridian officers are Louise Perry, Vice-president, Debra Hill, and secretary, Kim Boswell. These clubs all meet monthly and welcome visitors or new members. Louise is also Roger Mills County president.

Mr. and Mrs. Ray Smith went to Geary to see her sister and husband Mr. and Mrs. Arlo Diamond, and their daughter from Breckenridge, Mo. Came back by Mrs. Arlo Diamond, to see the Edward Smiths and Clinton to visit the Leonard Smiths.

Santa Claus came about three times last week. Four tenths inch of rain. No killing frost, and theres a lot of gravel piled in our road. We've slid up and down that hill for forty years. Every commissioner has said when he fixed his road, he'd fix our. George must have got his road fixed up.

Saw a lot of vegetables in cartons marked Beckham Farm No 1. Want to buy them and brag on them every

24-Hr. Service

24-HOUR DROP SERVICE

Vogue Drive-In Cleaners

1542 North Hobart, Pampa, Texas 669-7500

ALCOHOLICS ANONYMOUS

meets Thursday Nights at 8:00 P.M.

Masonic Lodge Bldg. in Wheeler 826-5236

Downright comfortable!

Pick Red Wing Pecos in the height, color, leather and style that fit your brand of living. Enjoy the fit, comfort and wear that set Red Wings apart.

SuperSole

Red Wings

B.J.'s WEARHOUSE



RESIDENTIAL . . .



✓ Two bedroom home with garage for mechanic. Close to school. Could convert garage for another business or living area.
 ✓ Three bedroom home on Canadian Street. Cellar and large yard. Owner would consider trade for a travel trailer.

✓ Nice lot with utilities north-west part of town.
 ✓ Recently remodeled two bedroom stucco home. Would make a great rent house.
 ✓ Three bedroom stucco home on highway. Cellar and fenced yard. Priced at cost.

✓ Two story house across from school. Three bedroom, two bath, fenced yard. Completely remodeled. Priced way below appraisal.
 ✓ Four bedroom, two bath brick home. Will sell for appraisal price set by qualified appraiser. Cellar, large garage and yard.
 ✓ Three bedroom, 1 1/2 bath, single car garage. Assumable FHA loan. Central air and heat. Well-decorated.
 ✓ Home in Allison. Remodeled and ready. Call Joe Lee.

✓ Live in the country. 5 acres with a four bedroom home. Owner anxious to move South.
 ✓ Older home in northwest part of Wheeler. Has a contract which could be assumed by the right person. Corner lot.
 ✓ Brick home south part of Wheeler. Fenced yard and cellar. Good starter home.
 ✓ Large older home. Four bedroom, two bath, many, many trees. Kitchen has many extras. Owner wants smaller home close to downtown.
 ✓ Older home in Wheeler. Fix it up and have an investment. Owners will finance.
 ✓ Build a home on this large lot in northwest part of Wheeler. Has been used for double-wide mobile home.
 ✓ Another pretty lot for sale with a large garage and double-wide Lancer mobile home on it. Good neighborhood and beautiful landscaping.
 ✓ Three bedroom, two bath, stucco home with large garage, central air and many other extras. Priced well below appraisal.
 ✓ One bedroom, one bath home decorated to the hilt! Priced to sell.



FARM & RANCH . . .

✓ 1/4 Section close to Allison, farm land
 ✓ Two sections southwest of Allison. Good Hunting. Owner will finance part at 10%.

✓ 1 section southwest part of Wheeler County. Large home, some farm land, some love grass. Assumable FHA loans for qualified buyers.
 ✓ 1 section south of Wheeler. Large brick home. Lake. Barns. Owner will finance part.
 ✓ 400 acres north of Twitty. Small home. Part farm land. Part grass
 ✓ 1 section south of Wheeler. Owner will finance with 20% down. Part farm land. Part grass.
 ✓ 1/4 section with small home south of Wheeler. Grassland.
 ✓ 1/4 section with large home and barns. Good fences. Could assume loan.
 ✓ 1/2 section east of Wheeler. Owner has farmed 200 acres in past. Rest in grass.

COMMERCIAL . . .

✓ Trailer park in west part of town. Has house that could be repaired and rented or occupied. Owner will finance with \$5,000 down.
 ✓ 27 acres north edge of Wheeler. Large home, two large barns, and trailer spaces. Colorado bank will finance for right person.
 ✓ Wheeler Game Room. One of the only locations downtown Wheeler for sale. Could be operated as is or developed for more income. Has full basement.
 ✓ Two remodeled rent houses. One rented at present. Owner has moved and wants to sell!
 ✓ Remodeled house by Post Office. Has been doctor's office.

✓ Acreage north of Wheeler with large metal building. Many possibilities and assumable financing.

the smith agency

RUTH SMITH, Broker **GREG SMITH, Salesman**
JOE LEE, Salesman - 375-2380
LONA WILLIAMS, Salesman - 826-3341
LANA BRADSTREET, Salesman - 826-3354
Phone: 806/826-5541 or 826-3238

Want Ads

LITTLE MUSTANG DAY CARE CENTER
 State Licensed, accepting children 0-10 years of age. New flexible hours. Drop-ins welcome, 801 Mobeetie St. 826-3411.

FOR SALE: 3 bedroom, 2 bath, brick country home on 2.84 acres with water well, fireplace, ceiling fans, fruit trees, 1 1/2 miles west of Allison. 375-2552.

LIGHTS AND SIGHTS
 Casa Blanca Ceiling fans, Lamps, Lampshades, Lighting Fixtures, Gift Items, Lamp Parts & Bulbs, Curio and Gun Cabinets.
 Unique Items for your Home!
 665-8341
 107 N. Cuyler
 Downtown Pampa

La Grone Monument Co.
 Faye Sparlin, Rep.
 806/826-5898

WANTED: Experienced abstractors to do contract work out of Court Houses. Send Resume to 1010 West Mockingbird #201 Dallas Tx 75247.

RICHARD'S UPHOLSTERY
 Furniture, etc.
 Phone: 845-2761
 Mobeetie, Texas

HOUSE FOR SALE: to be moved. 2 bedroom, 1300 sq. ft. contact Mike Goad, call 375-2322.

CLASSIFIED RATES:
 The Times prefers all classified ads be paid in advance, except for open ledger account customers.
Cash and Ledger account: 15c word; \$1.50 minimum. (Ad paid when placed or by 5:00 p.m. Wednesday of week ad runs.)
Charge: 20c word; \$2.00 minimum.
Card of Thanks . . . \$3.75
ADVERTISING DEADLINES
 Classifieds: Noon Tues. Display: Noon Tuesday.

NOTICE TO PUBLIC
 Any erroneous reflection upon the character, standing or reputation of any person, firm or corporation, which may appear in the columns of this paper will be gladly corrected upon due notice being given to the editor personally at the office at 110 East Texas St., Wheeler, Texas.
 The Wheeler Times does not knowingly accept false or fraudulent advertising or other advertising of an objectionable nature, is printed in full confidence in the presentation made. Readers will confer a favor if they will promptly report any failure on the part of the advertiser to make good any misrepresentation in our advertisements.

HOLCOMB TRAILER PARK
 West 12th Street
 Phone 806/826-5810 or 826-5942

ALFALFA HAY L-7 Ranch, Pam Bullard, call early or late. 405-526-3753.

J.R.'S CUSTOM DITCHING SERVICE. Residential-Commercial-Oilfield, J.R. Black, owner. 806-375-2257 or 806-375-2557.

MEMBER 1984 TEXAS PRESS ASSOCIATION

THE BUSINESS DIRECTORY



Entered as second-class matter December 18, 1933, at the Post Office at Wheeler, Texas 79096, under the act March 3, 1879.
Louis C. Stas, Owner and Publisher
SUBSCRIPTION RATES:
 Wheeler County . . . \$7.75 Outside County . . . \$8.75

Let Me Write It . . .
GEO. RICHARDSON
 All Types Of INSURANCE

GUARANTEED AUTO GLASS INSTALLATION & Body Repair
CROSS CAR CENTER
 Phone: 826-5515
 Wheeler, Texas

STORM-SCREEN WINDOWS
 Permanent year-round protection. Changeable from inside. Easy to clean..powder-proof. Eliminates drafts...Cuts fuel bills....
WHEELER LUMBER CO.
 Phone 826-5543 Wheeler, Tex.
 Fine Service for Fine People

WHEAT SEED 1st year from certifies seed. 826-5965. James Verden.

DOG GROOMING: All Breeds, Lee Ann Lowrey, 826-5265, after 6:00 p.m.

FOR RENT: Trailer space in Moore's Trailer Park, 826-3364.

We do House Cleaning, Trash, Junk Hauling, help people moving, or any other work. Call 826-3272 Ask for Ann or Keith.

FOR SALE: Oak trundle bed with mattresses and 4-drawer chest. Call 845-3361 or 826-3573.

HEFLEY REAL ESTATE

1/4 Section North of Lela, 2 windmills, live water, cross fenced, 80 acres of grass, 240 acres of cropland.

1/2 Section North of Pakan, 1 windmill, crop and grass land, highway frontage. Owner will carry.
 Richard Hefley, Broker
 806/256-2519

HOUSE OF LLOYD hiring demonstrations. Work until December. Earn free \$300 kit. No investments, collecting or delivering. JoAnn 806-857-2553.

THE LAST WEEK! Excellent pay, and benefits, showing MERRI-MA'S, 100% guaranteed, line of toys, gifts, and home decor, on your hours, No investment, delivering or collecting, free kit, car and phone needed, call now 405-225-7684.

ROY'S WATER WELL SERVICE

Complete Sales, Service & Repairs, for Windmills and Electric Pumps at low discount prices.

Roy Hartley, Reydon, Ok
 Phone: 405/655-4438
 If no answer 405/488-3661

SEARS SAVE LIKE CRAZY SALE Friday and Saturday Sept. 7-8, 9:00-5:00. "If we don't have it, we'll get it." Sears in Sayre 928-3378.

GENERAL CONTRACTING
 Roofing—Painting
 Remodeling—Stuccoing
 Call Al Fancher
 After 5 p.m., 826-5286

BUYERS OF MINERALS
 Producing & Non-Producing Will Pay CASH
BASIN ROYALTY CO.
 P.O. Box 9940, Amarillo, Texas 79105, Phone 373-2701.

FOR RENT
FOR RENT: 3 apartments, 5-2 bedroom houses, 2 mobile homes, Mobile home rent for \$100 a month. Call 826-3184.

FOR RENT: 3 trailer spaces with trees. Call 826-5904.

APARTMENT FOR RENT
 2 bedroom, appliances including washer and dryer. Call 256-3792 evenings, or 826-3364 days.

FOR SALE OR RENT: 24x60 Double wide Mobile Home. Contact Jim Lewallen at 826-5719.

GARAGE SALE

YARD SALE: Saturday if weather permitting, 109 W 7th, Sabbe residence. 9-5.

GARAGE SALE: 3 Family Garage Sale, 4 Miles East of Wheeler, Sat 9-6 Sun 1-6. Girls and ladies clothes, coats, sheets, spreads, material, dolls, dishes, dinner set, bicycle and much more.

LARGE GARAGE SALE: 800 South Main (in garage out back) 9-5 Sat. 1-5 Sun.

SEWING MACHINE REPAIRING
 30 years experience
 Inquire at
Carrie's Sewing Box
 Phone: 826-3352

FOR SALE: portable dishwasher and sectional bookcase with gun cabinet. Call 826-3242.

FOR SALE: 8x16 flat bed trailer call 826-5202.

FOR SALE: Blue, gold and white sofa sleeper. Call 826-3584.

PUBLIC AUCTION SATURDAY, OCTOBER 13

Wheeler County will sell various used vehicles and equipment at public auction on Saturday, Oct. 13, 1984, beginning at 10 a.m., at Precinct 1 and 2 Barn in Wheeler, Texas. The following items will be auctioned:
 1-2 1/2 Ton GMC Truck 6x6 S/N 31668, Runs
 1-1 1/4 Ton Kaiser Ambulance 4x4 S/N 13170, Inoperable
 1-1953 Willys Jeep 4x4 S/N 82517 Runs
 1-1966 1/2 Ton Chevrolet Pickup SWB, Runs
 1-2 1/2 Ton GMC Dump Truck 6x6 S/N 4099, Runs
 1-Wisconsin Equip. Co. Tilt Trailer 14 Ton Cap. 1962
 1-Backhoe—Truck Mounted—Hy-Hoe Brand
 1-1962—Dodge Crew Cab 1/2 Ton Pickup, Runs

Senior Citizens

The Senior Citizens met Oct. 1, 1984 with Laura Guthrie, the president, in charge of the meeting. The tables were decorated with Halloween characters, scarecrows, spiders, pumpkins, black cat, etc. A delicious covered dish meal was enjoyed by 22

MOISTURE

The cold front moved through and brought some frost and 0.34 inches of moisture; this brings the total moisture for September to 0.52 inches. The frost was not enough to kill everything.

TEXAS GARDENER TIPS Plant Elephant Garlic Now for Spring Harvest

Elephant garlic—it sounds like some large, very strong and odorous herb with cloves powerful enough to flavor army-sized kettles of spaghetti sauce.

But while a clove of this garlic ranges anywhere from three to eight times the size of its relative, Italian garlic, it is proportionately milder too. It's even mild enough to be cooked separately and eaten with butter like a vegetable.

Because of their size, cloves of elephant garlic are easy to peel, chop and mince. And since they're so mild, they don't have to be minced to smithereens. A bulb of elephant garlic usually contains only five or six cloves (compared with at least 10 or 12 in standard garlic), but the whole bulb can weigh from 5 ounces to a whopping pound.

Fall is the best time to plant elephant garlic because the dormant

cloves must be exposed to cold temperatures between 32 and 50 degrees F. for one or two months to initiate bulbing.

If you plant in October or November, your harvest should be ready in May or June. Before planting, work your soil deeply and rake out large clods and stones. Work compost or organic conditioners into your soil to make it loose, especially if your soil is heavy. Spade in rotted or dried manure and/or a balanced fertilizer.

beds will help maintain good drainage. Plant the cloves 6 to 8 inches apart, covering them with about 2 inches of soil. Hand-place them vertically in the furrows. The plants should emerge within two weeks, and will grow 3 1/2 to 5 feet tall in the spring, with lovely mauve flowers.

It is very important when growing garlic to keep weeds under control. Also, most garlic roots grow in the upper 2 feet of soil, so soak the ground to this depth when watering throughout the growing season. As the crop approaches maturity, stop watering so that the soil will dry for harvesting.



Distances between rows can vary. Typically, rows are from 18 to 24 inches apart. Forming raised

The usual harvest time for garlic is May or June.
TEXAS GARDENER
 P O Box 9005 Dept BR
 Waco, TX 76714

100% RADIO & T.V. SERVICE
COMMERCIAL RADIO & TV
808-826-3568

We will try to repair any make and/or model Radio and T.V.
700 E. Oklahoma St.
Phone: 826-3568

Here & There

By Laura Guthrie

Since we have the gas turned on and the electric blankets hooked up we can be real cozy. It is about time now for those Indian Summer days where we will need to turn on the fans and open the windows. I saw a weather forecasting map the other day that showed that Texas weather will be below normal this winter. I thought we had that last winter!

I told you last week that I expected the Riley's to start South from Colorado fishing when we had the cold blast. I have a confirmation of that statement. They did.

Suzanne Hampton's parents, Mr. and Mrs. Brock of Albuquerque, New Mexico visited with her and her family last week. There is a new baby in the Hampton home and of course it wanted to see it's grandparents. Later in the week Larry and Suzanne and the children accompanied the Brocks to Stratford to visit relatives there.

Robert Morgan, Minister of Music at the Baptist Church, is in Hereford this week leading in the music in a Revival.

Elva Wood who has been on the go for several weeks is back at home. She says for the rest of the year. She went on a tour. Then she visited for some time with her sons family, James Hubbles, in Lubbock, who have a new baby. Then she went to Henderson,

Texas to a wedding. Elva is a dependable quilter on the Senior Citizen's Team, so we really missed her. Now that she is settled down, I think she quilts most every day. May be that is because we are working on some mighty pretty quilts for her.

Willard Ingram was taken to an Amarillo hospital last week.

Vida and Lyle Blair are here from California, visiting with her sister Ollie Jaco. While they are here Lavell Stephens, who lives with her mother (Ollie) is on vacation. She is in California, visiting with her son Robbie and family and a lot of other relatives and friends.

Mrs. Pearl Hathaway who lived in Wichita Falls, Texas passed away last week. Her brother-in-law, Lester Hathaway, his wife Ruth and son Paul of Mobeetie, and Edna Waters, a sister of Lesters went to Wichita for the funeral last Wednesday. The deceased was a long time resident of Mobeetie.

Lines from Linda
Linda Daughtry, CEA
(Home Economics)

WEATHERIZE WITH WEATHER STRIPPING

Weatherstripping is one of the most cost-effective ways to improve the energy efficiency of your home.

At any hardware store or home center, you should be able to find several types of weatherstripping which vary in cost, durability, ease of installation and visibility.

Metal or plastic tension strips are the longest lasting type of weatherstripping, but they are relatively expensive. Once in place, tension strips are out of sight. They can also be used for nearly any type of door and window joint. However, they cannot fill irregular gaps.

Reinforced strips and tubular gaskets can be used with all types of doors and windows. They're durable, and will fill irregular gaps. The big drawback of reinforced strips is that they attach directly to the frame, so they are quiet visible.

Self-adhesive foams are quick and easy to install. They are not visible under window sashes or in door jams and can fill gaps in irregular surfaces, but they don't always stick well. They are best used where they are held in place by compression.

Foams vary in durability. The polyurethane and sponge rubber foams are short-lived, while the vinyl and EPDM rubber foams will last several years.

Nonreinforced felt strips can be used much like nonreinforced foam strips. Felt is more resistant to abrasion than foam and will last several years. But it absorbs water, and should only be used where it can dry out quickly. Felt strips are inexpensive, and can be easily installed with a staple gun, but cannot fill irregular gaps.

A relatively new weatherstripping is a magnetic gasket which can be used with metal insulated doors. It forms tight seal like the seal on modern refrigerator doors.

For other types of doors you can get special weatherstripping to handle the often large gap at the bottom of the door. Door sweeps, for example, are attached to the inside face of an in-swinging door, or the outside of an out-swinging door. They work well, but are highly visible. Door bottoms and vinyl or rubber gasket thresholds can also weatherize a door.

Educational programs conducted by the Texas Agricultural Extension Service serve people of all ages regardless of socio-economic level, race, color, sex, religion, or national origin.

LEWALLEN INSURANCE AGENCY
ALL-LINES
845-2951 1st State Bk. Bldg. Mobeetie, Tx. 826-5719 114 W. Tex. St. Wheeler, Tx.

Hestell Killingsworth who has had a long visit with relatives in California returned home last Thursday. On her arrival home she found an urgent invitation to attend a gathering of relatives in Stephenville, Texas. On Friday her son Viril Simmons and wife JoAnn took to Stephenville. She will return later this week.

As the Simmons were going to Dallas they were accompanied by JoAnn's mother, Mrs. Louise Abernethy, who visited her daughter there. The Simmons and Mrs. Abernethy returned on Sunday.

On Monday Sally Harris went to Canadian and brought her sister-in-law, Helen Brock, to Wheeler. The women visited for the day; had lunch out and had a good time in general. Helen drove her own car home in evening. The car had been in Wheeler

for repair.
Melinda and her friend Dana Warren of Canadian spent the weekend with Steve and I.

Gageby News
Verna Fillingim

Next Sunday night, October 7 will be special singing night with Marsha Reynolds in charge ya'll come and enjoy the singing and fellowship.

Bea Ogle and Pat Hudson took a group of beautiful young people to Amarillo Saturday to a Christian Concert. Those going were Melody Ratliff, Shellie and Christina Ogle, Cheryl Hudson, Frank Hickman and Elizabeth Hale.

ELECT SHERIFF
LONNIE MILLER
Pol. Adv. pd. for by Friends of Lonnie Miller, Bob Hink, Treasurer, Rt. 1, Wheeler, Tx. 79096

The Thomas Agency
"Dedicated To Good Service!"
LIFE • HOME • AUTO • CROP • LIABILITY
HEALTH • BUSINESS • RETIREMENT
See us for all your Insurance needs.

The Boutique
412 S. Main
Wednesday Only . . .
SENIOR CITIZENS DAY
Shampoo and Set . . . \$5.00
Hair Cuts \$5.00
Redken Perms on Sale Every Wednesday
\$35.00 Perms . . . for \$27.50
Call 826-3168 for appointment

Joe Woodward took the seniors, Kevin Ratliff, Darren Hefley, Carol Watson and Lisa Meek on a geology trip into high places in Colorado over the weekend. They planned to camp out with bedrolls and tent, but snow and cold and leaking tent forced them to get motel rooms. But they made it back ok.

Evelyn Meek and Gaye Hale and children attended the Pampa Community concert presentation of the Peter Nero Trio Monday night.

Willia and Verna Fillingim went to Felt, Oklahoma Tuesday to visit the Don McElroy family and attend revival services. On the way home Wednesday we visited Allen and Bernie Tapp and Jennifer on the Bivins Ranch north of Amarillo, visited Lessie Austin in St. Anthonys Hospital and Edie Phillis at White Deer.

Happy Birthday to Elizabeth Hale on October 8, Estelle McAdams and Mozella Thomas also October 8, Boyce Crownover and James Ogle, Oct. 9, Leonard Powledge, Oct. 10, Mark Meadows Oct. 11, Claudetta Laverty, Bob Maddox and Bob Zybach Oct. 12; Monty Hand, Oct. 13.

Roy and Lois Meadows visited with the Eddie Meadows Wednesday to help celebrate Laura's 6th birthday. Lois also visited Peggy Thompson one day and took a pie.

Bea Ogle had a Tupperware party Friday morning. Some there were Marsha Reynolds, Lois Meadows, Esther Brown and Jaclyn, Lajo Crownover, Mary Carter, Martha Meek.

Lessie Austin is improved but still weak. Keep Praying! Said to tell everyone she loved them and appreciated all the prayers, cards, flowers and thoughts. Charlotte and Harold have been with her most of the time. Lessie got to come home Saturday.

Friends of Mike Phillis will be interested to know that he will be singing and playing with a band at the Canadian Fair on Friday night October 5. He has a beautiful voice. The Phillis family were going to Missouri over the weekend to help Charlies grandmother celebrate her 100th birthday.

J.P. and Martha Meek and Shawn were weekend visitors to Cindy Meek in Amarillo.

Frances Hickman spent the weekend with Lori Purcell.

Nice to have Peggy Thompson help fix hair at the Wheeler Care Center Friday. She is a delightful person and really knows what she is doing.

Nice to have Richard and Karen Laverty of Plainview in services at Gageby church Sunday. Richard preached in the absence of his daddy, Aaron Laverty, who is in revival at Felt, Oklahoma. There were 2 or 3 inches of snow on the ground at Felt Saturday morning. Most everyone had some frost or freeze here, also-very early.

Pat Morgan spent last week at Houston with her father who had gall bladder surgery and pneumonia. Pretty sick.

Many interesting exhibits are planned for the Hemphill County fair. Some included are pets, crafts, baked and canned goods, collections. The fair at Canadian will be opened from 2-9 p.m. Friday and 9-5 on Saturday.

Willia Fillingim met Paula Reed and Robbie and Ronnie at Pampa Friday and brought the boys for a visit while Paula goes to Michigan to visit and maybe bring back two small nieces.

Jada Murray and children have been sick in Wheeler hospital with pneumonia and mono. Hope they are better.

MOBEETIE SCHOOL MENU
October 8-12, 1984
Monday-Breakfast-Cheese toast, Applesauce, Buttered oats, Juice, Milk.
Lunch-Charburger steak, New potatoes, Blackeyed peas, Fruit salad, Hot rolls, Milk, Tea.
Tuesday-Breakfast-Hot biscuits, Sausage, Gravy, Jelly, Butter, Juice, Milk.
Lunch-Sliced ham, Fried okra, Corn, Peanut butter cake, Hot rolls, Milk, Tea.
Wednesday-breakfast-Breakfast muffins, Jelly, Butter, choice of Cereal, Juice, Milk.
Lunch-Taco casserole, Tossed salad, Pinto beans, Plum pie, Hot rolls, Milk, Tea.
Thursday-Breakfast-Waffles, Syrup, Butter, Juice, Milk.
Lunch-Steak/gravy, Mashed potatoes Green beans, Brownies, Hot rolls, Milk, Tea.
Friday-Breakfast-Hot biscuits, Scrambled eggs, Jelly, Butter, Juice, Milk.
Lunch-Hamburgers, French fries, Lettuce, Tomatoes, Pickles, Onions, Ice cream, Milk, Tea

ARROW Water Well Service
Windmill and submersible pump sales and service.
Call anytime: Jerry Koelzer
806/826-5906
Wheeler, Texas

DIET CENTER
WE'RE THE WEIGHT-LOSS PROFESSIONALS.
Call today for a free consultation.
2100 B. Perryton Pkwy
669-2351

GATELEY ELECTRIC
301 Main St. 826-3352
"Let us handle all your electrical needs."
● Wiring for:
New Construction
Remodeling
Computers
Telephone Installation
Underground
Overhead (poles)
● Seasonal Air Conditioner Check
● Ceiling Fan Sales & Installations
● Small Appliance Repair
NO JOB TOO SMALL!

THEY'RE BARGAIN PRICED!
During the John Deere Factory Authorized Clearance

We're getting special factory allowances and financing offers on tractors, combines, hay tools, and forage equipment. And we're passing the savings on to you. On top of that, there are interest-free financing periods on the same equipment, both new and used. Now's the time to upgrade your machinery!

NEW and USED TRACTORS. Big allowances and special offers on every new tractor, 40 hp or larger, on the lot. Save many \$1000's on new 50 Series tractors (4050, 4250, 4450, 4650, 4850). Special new allowances on John Deere 4WD tractors equipped for basic pulling power. Finance your tractor, new or used, with John Deere and pay no interest until March 1, 1985*. Or take a cash rebate in lieu of interest waiver on new tractors.

Model**	Cash Rebate in lieu of Waiver on Tractors	
	During Sept.	During Oct.
40-hp 1250	\$ 375	\$300
50-hp 1450	425	350
60-hp 1650	475	375
45-hp 2150	425	350
50-hp 2255	400	325
55-hp 2350	500	425
65-hp 2550	575	475
75-hp 2750	650	525
85-hp 2950	750	625
100-hp 4050	1225	1000
120-hp 4250	1325	1075
140-hp 4450	1400	1150
165-hp 4650	1700	1400
190-hp 4850	1875	1550
185-hp 8450 4WD	2100	1725
235-hp 8650 4WD	2575	2100
300-hp 8850 4WD	3225	2625

* Availability of John Deere financing subject to approval of credit. These offers may be withdrawn at any time.
** A similar financing rebate offer applies to any 40 Series Tractors remaining in inventory. Ask for details.
*** This model is not available for sale in Nebraska.

NEW COMBINES. Save \$1000's on a new combine. Finance your new combine with John Deere, interest-free until January 1, 1985*. Huge discounts available in lieu of waiver on new combines.

HAY AND FORAGE EQUIPMENT.
OFFER #1—Pick-A-Team cash rebates up to \$1600 on new John Deere hay and forage tools. Buy one now and get a cash rebate. PLUS a certificate good for a double cash rebate if you purchase a second tool before April 30, 1985.

Then save even more with these additional financing offers.
OFFER #2—Interest-free John Deere financing until September 1, 1985, on any new or used forage tool, including forage wagons.* Discounts available in lieu of interest waiver on new forage harvesters and forage wagons.

OFFER #3—Interest-free John Deere financing until July 1, 1985 on new and used hay equipment.* Discounts available in lieu of interest waiver on new equipment, except rakes or mowers.

NOW'S THE TIME TO SAVE—BEFORE IT'S ALL SOLD! Check out our lot today. We've reduced prices to meet or beat the competition. Someone's going to save a lot of money. It might as well be you!

Special deals and special prices on virtually everything on the lot!

CATES EQUIPMENT CO.
P.O. Box 713 — Highway 62 W.
Hollis, Oklahoma 73550



HARVESTIME

(FOOD SALE)

DOUBLE MANUFACTURER COUPONS
EVERY WED, FRI & SUN. EXCLUDING CIGARETTES & SALE ITEMS

DATES EFFECTIVE: OCT. 3 THRU OCT. 9

CASSEROLE
Pinto Beans
2 LB. BAG

59¢

FRESH CRISP
Crackers
1 LB. BOX

39¢

TV
Green Beans
16 OZ. CANS

3 FOR \$1

BUSH'S WHITE OR GOLDEN
Hominy 15 OZ. CAN **5 FOR \$1**

SUNBEAM ASSORTED
Cookies 5 OZ. PKG. **5 FOR \$1**

RANCH STYLE WITHOUT BEANS
Chili 19 OZ. CAN **\$1.09**

CARNATION
Hot Cocoa Mix 12 OZ. **\$1.29**

GREAT ON PANCAKES
Syrup 24 OZ. BTL. **89¢**

BAMA GRAPE JAM OR
Grape Jelly 32 OZ. JAR **99¢**

KELLOGG'S
Corn Flakes 18 OZ. BOX **99¢**

Orville Redenbacher's
Gourmet
POPPING CORN 30 oz. jar **\$1.79**

HUNTS DELICIOUS
Tomato Juice 48 OZ. **79¢**

HUNTS WHOLE
Tomatoes 14.5 OZ. CAN **2 FOR 98¢**

DEPENDABLE
Wesson Oil 48 OZ. BTL. **\$2.59**

FISHER DRY ROASTED
Peanuts 12 OZ. JAR **\$1.59**

TIO SANCHO
Taco Dinner 8.2 OZ. PKG. **\$1.29**

DEL MONTE RICH
Tomato Sauce
8 OZ. CANS

5 FOR \$1

DELICIOUS SHOESTRING
Potatoes
20 OZ. BAG

49¢

TEXAS STYLE
Biscuits
BUY ONE GET ONE
FREE
12 OZ.

SOFT BANNER
Bath Tissue
4 ROLL PKG.

79¢

STILWELL
Breaded Okra 24 OZ. BAG **99¢**

MINUTE MAID
Orange Juice 12 OZ. CAN **\$1.19**

VAN DE KAMP
Fish Fillets 24 OZ. BOX **\$2.89**

SHEDDS SPREAD
Country Crock **49¢**
1 LB. TUB

DEL MONTE
Tomato Catsup
32 OZ. BTL.

89¢

BONELESS OR BONE IN
Arm Roast

BONELESS
Chuck Roast

BONELESS
Stew Meat LB. ONLY

\$1.79

BACON TV HICKORY SMOKED SLICED lb. pkg. **\$1.19**

CLUB
Steak LB. ONLY **\$2.98**

TBONE
Steak LB. ONLY **\$3.29**

CUBED
Steak LB. ONLY **\$2.49**

SIRLOIN, RIB, OR ROUND
Steaks LB. ONLY **\$1.98**

U.S. #1
Russet Potatoes
10 LB. BAG

99¢

RED DELICIOUS
Apples LB. **39¢**

TEXAS YELLOW
Onions 5 LBS FOR **\$1**

SUNKIST
Lemons 6 FOR **\$1**

Borden's
ICE CREAM 1/2 gal. **\$1.89**

Borden's
COTTAGE CHEESE 24oz. **\$1.29**

TV
BUTTERMILK 1/2 gal. **\$1.19**

Mead's country hearth old fashioned sandwich
BREAD 1 1/2 lb. loaf **72¢**

Court Records

LIST OF INSTRUMENTS FILED IN WHEELER COUNTY CLERKS OFFICE FOR THE WEEK OF SEPTEMBER 24 THRU SEPTEMBER 28, 1984

SEPTEMBER 24, 1984
 MD—Albert W Key to Alice Graig Murray Key, Trustee, 8-31-84, .4/18 x 5/144 Int Sec 11 Blk 1, B&B
 ROW—Opal Burrell to Delhi Gas Pipeline Corp, 4-18-84, 5/2 Sec 2 D Tindale
 D—Larry Jack Taylor to Taylor Petroleum Inc, 9-7-84, 1.84 ac NW 1/4 Sec 4 T&NO
 RDT—First National Bank in Wheeler to Larry J Taylor, etux, 9-19-84, 1.84 ac NW 1/4 Sec 4 T&NO
 EXECUTRIX & TRUSTEE OL—Mary Wofford to Buel H Neece, 8-13-84, E 1/4 E 1/4 Sec 3 Blk 2 B&B
 ASSIGN—Palo Pinto Harken Drilling Programs Limited to May Energy Partners Operating Partnership LTD, 9-11-84, Sec 1 Blk 2 B&B
 D—Donald E Rives, etux to First National Bank in Wheeler, 9-18-84,

Lot 5 Blk 32, Wheeler
 DT—Bennie Reeves, etux to Southwestern Public Service Company, 9-24-84, 210' x 260' SE 1/4 Sec 5 Blk A-4
SEPTEMBER 25, 1984
 MD—Vera Moore to A W Burrell, 9-17-84, 20 ac W 1/2 & NE 1/4 Sec 21 Blk A-4
 MD—A W Burrell to Cecil Meadows, etux, 9-24-84, 10 ac W 1/2 & NE 1/4 Sec 21 Blk A-4
 MD—A W Burrell to L D Childress, etux, 9-24-84, 10 ac W 1/2 & NE 1/4 Sec 21 Blk A-4
 MD—H S Milam to Katherine B Milam, 8-8-84, All my Int, S 1/2 Sec 48 Blk 24
 MD—Katherine B Milam to Katherine B Milam Trust, 8-9-84, All my Int S 1/2 Sec 48 Blk 24
 C/C P OF ATTY—H S Milam to John B Milam, 8-21-84
 C/C PROBATE PROCEED—Walter H Stephens, dec, 7-18-84
 C/C PROBATE PROCEED—Lewis W Woodruff, dec, 9-18-84
 EXECUTRIX MD—Ellen L Woodruff to Ellen L Woodruff, 9-19-84, 3.125% Min Int SE 1/4 Sec 70 Blk 23
 AOL—Marlex Oil & Minerals Inc to Sierra Pacific Production Corp, etal, 9-13-84, Sec 19 Blk RE
 COR LEASE MEMORANDEUM—ATEX Oil Co of Texas to ATEX Gas Inc,

5-29-84, Pt Sec 54 Blk 13
 ROW—J R Black, etux to Federal Land Bank of Texas, 9-25-84, Pt Sec 49 Blk A-3
 DT—J R Black, etux to Federal Land Bank of Texas, 9-20-84, S 1/2 Sec 50 Blk A-3
 RDT—Federal Land Bank of Texas to Larry L Johnston, etux, 9-12-84, See Instrument
SEPTEMBER 26, 1984
 D—Jeyton M Lowery, etvir to Robert W Mayfield, etux, 8-29-84, Lot 7 Blk 1, Wheeler, Jaco
 A OF JUDG—South Wheeler County Hospital District to Raymon Steward, etux, 9-25-84
 A OF JUDG—South Wheeler County Hospital District to Gloria Salyer, 9-25-84 A OF JUDG—South Wheeler County Hospital District to Low Stewart, etux, 9-25-84
 A OF JUDG—South Wheeler County Hospital District to Wanda Davis, 9-25-84
 A OF JUDG—South Wheeler County Hospital District to Lavern Devoll, 9-25-84
 A OF JUDG—South Wheeler County Hospital District to Van Hamilton, 9-25-84
 AFF—Brazie Blanchard to Brazie Blanchard, 9-25-84, 75' x 160.15' SW 1/4 Sec 4 T&NO
 D—Brazie Blanchard to Kenneth Brent Blanchard, etal, 9-4-84, 75' x 160.15' SW 1/4 Sec 4 T&NO
 D—Kenneth Blanchard, etal to Boyd Arnold Waldo, etux, 9-4-84, 75' x 160.15' SW 1/4 Sec 4 T&NO
 DT—Boyd Arnold Waldo, etux to Kenneth Blanchard, etal, 9-4-84, 75' x 160.15' SW 1/4 Sec 4 T&NO
 AGREEMENT—Burl Moye, etux to W L Pennington, 3-28-84
 RATIF OL—Pioneer Production Corp to HNG Oil Company, 9-13-84, Sec 67 Blk A-7
 RDT—First Federal Savings and Loan Association of Childress to Donald L Thomes, etux, 9-4-84, 208.5' x 432' & 208.5' x 432' NW 1/4 57 Blk 17
 AOL—Sabine Corp to Helmerich & Payne Inc, 6-15-84, Sec 10 Blk A-4
SEPTEMBER 28, 1984
 ROW—Domer Reed to Brumark Corp, 9-27-84, Pt Sec 2 Blk 1 B&B
 D—Alva Clark, etux to Mike Wilkinson, 9-18-84, Lot 2 Blk LXXXIV, Shamrock, Exc N 25'
 COR AOL—Trigg Drilling Company to Whiteman Industries Inc, etal, 8-30-84, Sec 24 Blk RE
 RDT—Bill Rains, etux to Ernest R Reeves, etal, 9-24-84, Pt Sec 21 Blk A-8 and Pt Sec 9 Blk 27
 RMML—IDS Credit Corp to Dalton Honeycutt, etux, 3-2-70, See Instrument
 RMML—IDS Credit Corp to Dalton Honeycutt, etux, 6-18-71, See Instrument
 P OF ATTY—Rita Darlene Honeycutt, etal to Waunetia Honeycutt, 8-5-80, E 100' Lots 13-15 Blk I, All Lots 17, 18 Blk 15, Shamrock
 D—Waunetia Honeycutt, etal to Lawrence Thompson, etux, 9-26-84, E 100' Lots 13-14 Blk I, Shamrock
 QCD—Waunetia Honeycutt, etal to Lawrence Thompson, etux, 9-26-84, E 100' Lot 15 Blk I, Shamrock

DT—Lawrence Thompson, etux to Waunetia Honeycutt, etal, 9-26-84, E 100' Lots 13, 14 Blk I, Shamrock
 D—Wayne C Allen, etux to Mona Patterson, 9-26-84, 3 ac Sec 50 Blk 17
 DT—Mona Patterson to First National Bank in Wheeler, 9-26-84, 3 ac Sec 50 Blk 17
 MML—Argus Daves, etux to J L Gaison, 9-27-84, S 50' Lot 3 Blk 35, Shamrock
SEPTEMBER 28, 1984
 A OF JUDG—Wheeler Abstract Company to Dudley Barrett, 9-5-84
 MML—J W Fopay, etux to Bruce Carter, 9-27-84, 1 ac, 5 ac &

16371/43560 ac SW 1/4 Sec 10 Blk A-8
 TMMML—Bruce Carter to First Nat'l Bank in Wheeler, 9-27-84, same as above
 RATIF OL—Hunt Oil Company to Mills Oil Company, 9-19-84, See Instrument
 ROY D—Sylvia Herre to Royal Oil & Gas Corp, 7-1-84, .0000325 Roy Int S 1/2 Sec 48 Blk 24
 ROY D—Sharon Sue Mitchell Read to Royalty Oil & Gas Corp, 9-10-84, .0000108 Roy Int S 1/2 Sec 48 Blk 24
 TDT—Fidelity Bank NA, etal to Harris Trust and Savings Bank, etal, 7-3-84, Pt Sec 7 Blk RE & Pt Sec 23

Blk L, J M Lindsey
 DT—Ricks Exploration Company, etal to Fidelity Bank NA, etal, 9-10-84, Sec 23 Blk L, J M Lindsey, Sec 7 Blk RE
 RDT—Farmers and Merchants Bank, etal to Robert A Hefner III, 9-25-84, Pt Sec 18 Blk A-4
 COR D—Jerry Hefley, etux to Ben Ed Hillhouse, etux, 9-26-84, Pt NE 1/4 Sec 59 Blk A-8, Exc Mins
 D—Donald E Rives to Lela Gladys Meek, 6-14-84, 100' x 50' Blk 45, Wheeler, Stanley
DISTRICT CLERKS FILINGS FOR THE SAME WEEK
 none this week

FREE ESTIMATES 24 HR. WRECKER SERVICE

McCain's Auto Body
 117 W. OKLAHOMA BOX 65 WHEELER, TX 79096
 PH. 806/826-3433

INSURANCE CLAIMS OWNER: BOB MCCAIN

Sweetwater Creek Builders

- Custom Homes ● Additions ● Remodels
- Roofing ● Concrete Work

Jeff Reid P.O. Box 55
 845-2104 Mobeetie, Tx.

Home 826-3240 Shop 826-3636

HESS TRUCK & TRACTOR
 All Types Truck & Tractor Repair
 407 East Oklahoma St.
 Wheeler, Texas

Bringing the world closer to you...

VIEW-MOR Satellite TV System

You can enjoy:
 ■ Better TV Reception
 ■ More Programming Options

with the easy-to-use VIEW-MOR Satellite TV System. Includes dish antenna, receiver and heavy-duty polar mount.

Prices Start At... **\$1300.00** Plus Installation Fee
 For a FREE demonstration, contact: **WISE ENERGY, INC.**
 112 1/2 E. Texas St. Wheeler, Texas
 Phone: 806/826-5576

WELCOME TO

FIRST UNITED METHODIST CHURCH
 8TH AT MAIN - P. O. BOX 89
 WHEELER, TEXAS 79096

Church (806) 826-3114 - Parsonage (806) 826-3079

Ernie McGaughey, Pastor
 Sunday School 9:45 a.m.
 Morning Worship 11:00 a.m.
 Evening Worship 6:00 p.m.

JENNINGS PLUMBING & ELECTRIC SERVICE
 Owner: Larry Jennings

"A flush is better than a full house."
 Roto-Rooter Service—Repairs—Remodeling

Phone: 806/826-3153 9 years Experience P.O. Box 423
 1110 South Main St. Reasonable Rates Wheeler, Tx. 79096

A Land Bank loan... for more than just buying land

Many people think of the Federal Land Bank only when buying land. Truth is, there are many other ways to use long-term Land Bank loans.

You can:

- ✓ Refinance debts
- ✓ Improve land
- ✓ Build or remodel

Long-term Land Bank loans keep payments manageable so that these and other farm needs can be handled more easily. So stop by and see how the Land Bank can help.

Federal Land Bank Assoc. of Childress

Phone: 817/937-6181

Talmadge P. Porter, President

5-29-84, Pt Sec 54 Blk 13
 ROW—J R Black, etux to Federal Land Bank of Texas, 9-25-84, Pt Sec 49 Blk A-3
 DT—J R Black, etux to Federal Land Bank of Texas, 9-20-84, S 1/2 Sec 50 Blk A-3
 RDT—Federal Land Bank of Texas to Larry L Johnston, etux, 9-12-84, See Instrument
SEPTEMBER 26, 1984
 D—Jeyton M Lowery, etvir to Robert W Mayfield, etux, 8-29-84, Lot 7 Blk 1, Wheeler, Jaco
 A OF JUDG—South Wheeler County Hospital District to Raymon Steward, etux, 9-25-84
 A OF JUDG—South Wheeler County Hospital District to Gloria Salyer, 9-25-84 A OF JUDG—South Wheeler County Hospital District to Low Stewart, etux, 9-25-84
 A OF JUDG—South Wheeler County Hospital District to Wanda Davis, 9-25-84
 A OF JUDG—South Wheeler County Hospital District to Lavern Devoll, 9-25-84
 A OF JUDG—South Wheeler County Hospital District to Van Hamilton, 9-25-84
 AFF—Brazie Blanchard to Brazie Blanchard, 9-25-84, 75' x 160.15' SW 1/4 Sec 4 T&NO
 D—Brazie Blanchard to Kenneth Brent Blanchard, etal, 9-4-84, 75' x 160.15' SW 1/4 Sec 4 T&NO
 D—Kenneth Blanchard, etal to Boyd Arnold Waldo, etux, 9-4-84, 75' x 160.15' SW 1/4 Sec 4 T&NO
 DT—Boyd Arnold Waldo, etux to Kenneth Blanchard, etal, 9-4-84, 75' x 160.15' SW 1/4 Sec 4 T&NO
 AGREEMENT—Burl Moye, etux to W L Pennington, 3-28-84
 RATIF OL—Pioneer Production Corp to HNG Oil Company, 9-13-84, Sec 67 Blk A-7
 RDT—First Federal Savings and Loan Association of Childress to Donald L Thomes, etux, 9-4-84, 208.5' x 432' & 208.5' x 432' NW 1/4 57 Blk 17
 AOL—Sabine Corp to Helmerich & Payne Inc, 6-15-84, Sec 10 Blk A-4
SEPTEMBER 28, 1984
 ROW—Domer Reed to Brumark Corp, 9-27-84, Pt Sec 2 Blk 1 B&B
 D—Alva Clark, etux to Mike Wilkinson, 9-18-84, Lot 2 Blk LXXXIV, Shamrock, Exc N 25'
 COR AOL—Trigg Drilling Company to Whiteman Industries Inc, etal, 8-30-84, Sec 24 Blk RE
 RDT—Bill Rains, etux to Ernest R Reeves, etal, 9-24-84, Pt Sec 21 Blk A-8 and Pt Sec 9 Blk 27
 RMML—IDS Credit Corp to Dalton Honeycutt, etux, 3-2-70, See Instrument
 RMML—IDS Credit Corp to Dalton Honeycutt, etux, 6-18-71, See Instrument
 P OF ATTY—Rita Darlene Honeycutt, etal to Waunetia Honeycutt, 8-5-80, E 100' Lots 13-15 Blk I, All Lots 17, 18 Blk 15, Shamrock
 D—Waunetia Honeycutt, etal to Lawrence Thompson, etux, 9-26-84, E 100' Lots 13-14 Blk I, Shamrock
 QCD—Waunetia Honeycutt, etal to Lawrence Thompson, etux, 9-26-84, E 100' Lot 15 Blk I, Shamrock

National 4-H Week, October 7-13

4-H has a proud 75-year heritage that forms the basis of this year's National 4-H Week theme, "4-H: Building on Experience."

National 4-H Week, October 7-13, is a special time for 4-H members and leaders to promote the nation's largest youth organization and to bring some recognition to its contributions.

Over the years millions of 4-H'ers have gained valuable leadership experiences and learned practical skills that have improved their quality of life.

Today almost five million youth across the nation between the ages of 9 and 19 are gaining valuable learning experiences through 4-H—almost 200,000 of those are in Texas. The Texas 4-H program reaches boys and girls through more than 2,000 community based clubs and another 900 short-term project groups.

4-H'ers are engaged in some 50 different project areas in which they gain lifelong skills through the program's "learning-by-doing" concept. These projects had their beginning in 1908 when special Corn Clubs were organized for boys in Jack County. First focusing on such traditional areas as crop and livestock production and canning and sewing, 4-H projects now deal with a wide range of subjects, including small engines, rocketry and veterinary science—even the use of computers.

The 4-H program is conducted in each state through the Cooperative Extension Service and is backed by the state's land-grant university (Texas A&M University for the Texas program and the U.S. Department of Agriculture). The program is open to youth between the ages of 9 and 19 regardless of socio-economic level, race, color, sex, religion, or national origin. Some 17,000 adult and teenage 4-H leaders shoulder much of the responsibility for the 4-H program in Texas.

If you are interested in joining a 4-H Club in Allison, Kelton, Mobeetie, Wheeler, or Shamrock, contact the Extension office at 826-5243 or write Box 505, Wheeler, Texas 79096 for more information.

STOWAWAY™

NEVER IN THE WAY

The Stowaway is a new concept in low profile hay handling equipment. It handles hay with ease and convenience and doubles the use of your pickup. When not in use, the Stowaway leaves your pickup bed flat. Use the Stowaway for hay handling and within seconds back up to a goose-neck or bumper trailer for normal pickup use.

TWO PICKUPS IN ONE

ALWAYS WITH YOU • NEVER IN THE WAY

EASY TO OPERATE • NEVER LEAVE YOUR PICKUP

Your Local Agent:
LARRY ELMORE
 Allison, Texas • 806/826-2413

OCTOBER 5-6, 1984
HEMPHILL COUNTY
FAIR DAYS

CANADIAN, TEXAS

PROGRAM

Thursday, October 4, 1984
 Building open to receive exhibits

Friday, October 5, 1984
 Building open to receive baked products and perishable horticulture ONLY.
 Building will be closed to the public during judging. Only judges, superintendents and clerks will be allowed in the exhibit area.
 Exhibits are open to the public Lions' Club Concession open for full service.
 Hard Country Band, Pampa (Live entertainment).
 Fair closed for the night

Saturday, October 6, 1984
 Fair opens
 Lions' Club Concession open
 PET SHOW
 K101 Radio of Woodward — Entertainment
 BICYCLE RODEO
 Fair Closes
 Deadline for removal from Exhibition Building. (REGISTRATION RECEIPTS MUST BE PRESENTED TO PICK UP EXHIBITS). All exhibits not picked up by 7 p.m. will be locked in building with no assumed responsibility.
 Other Events—
 Dance at City Hall — Midnight Express — From Woodward

5:00-9:00 p.m.
 7:30-9:30 a.m.
 10:00 a.m. - 1:30 p.m.
 2:00 p.m. - 4:00 p.m.
 6:00-7:30 p.m. - 9:00 p.m.
 9:00 a.m.
 12:30
 2:00 p.m. - 5:00 p.m. - 6:00 p.m.
 9:00-1:00 p.m.

What's Happening at W.H.S.?
By Lyndol Loyd

Well, thank goodness six weeks test are over with for now. The only problem with that is that it means report cards are out this week. Oh well, you can't win them all.

This part of my column is courtesy of Teresa Rose. Last week when I said that the Mustangs Homecoming score of 56-0 was one of the highest ever, I was corrected. When I was back in first, grade and Teresa was a Senior the Homecoming score was McLean 0 Wheeler 63.

A round of applause needs to go out to Tom Cook. Tom was quite the stud last Friday night at Booker, it seems he played in the band and in the football game last week. It seems that the game announcer at Booker had Tom's name down beside Danny DeBoses' number.

A round of applause also needs to go to the devoted fans of the Mustangs and Colts who braved the weather last week for the two very exciting games. The Colts won their second season game against Follett last Thursday night. It was exciting to see some of the seventh graders get to play for the first time. The Colts won 36-0. The Mustangs journeyed to Booker last Friday night and won to

WHEELER MENU

For October 8-12, 1984

Monday-Breakfast-Juice, Cinnamon rolls, Milk.

Lunch-Hamburgers, French fries, Lettuce, tomatoes, Pickle, Onions, Milk, Tea, Fruit cocktail.

Tuesday-Breakfast-Juice, Hot cereal, Toast, Milk.

Lunch-BB polish sausage, Scalloped potatoes, Glazed carrots, Hot rolls, Milk, Tea, Choc. cake.

Wednesday-Breakfast-Juice, Biscuits, Sausage, Milk.

Lunch-Ham slices, Fried potatoes, Jello salad, Bread, Milk, Tea, Brownies.

Thursday-Breakfast-Juice Scrambled eggs, Bacon, Toast, Milk.

Lunch-Chicken fried steak, M. potatos grave, Green beans, Bread, Milk, Tea, Cherry chip cake.

Friday-Breakfast-Juice, Rice, Sausage Toast, Milk.

Lunch-Rolled enchiladas, Brown beans, Fried potatoes, Cornbread, Milk, Tea, Peaches.

KELTON ISD MENU

October 8-12, 1984

Monday-Breakfast-Toast, Cereal, Juice, Milk.

Lunch-Chicken planks, Potatoes, Green beans, Gravy, Hot rolls, Fruit-cocktail, Milk.

Tuesday-Breakfast-Oatmeal, Butter, Juice, Toast, Milk.

Lunch-Spaghetti/Meat sauce, Tossed salad, Corn, Lime jello/fruit, Milk.

Wednesday-Breakfast-Cheese toast, Juice, Milk.

Lunch-Beans, Scalloped potatoes, Fried orka, Sliced onion, Cornbread, Butter, Peaches, Milk.

Thursday-Breakfast-Eggs, Bacon, Biscuits, Juice, Milk, Jelly.

Lunch-Fish sticks, French fried potatoes, Cole slaw, Apple crisp, Wheat bread, Butter, Milk.

Friday-Breakfast-Sweet rolls, Juice, Milk.

Lunch-Hamburger on a bun, Lettuce, Tomato, Onions, cheese, pickle chips, Potato salad, Peanut butter cluster, Milk.

the tune of 12-0. This makes the in the district. Mustangs 4-0 in season play and 2-0 A couple of weeks ago, I mentioned

Carrie's Sewing Box

NOTIONS, FABRICS & CRAFT SUPPLIES

301 S. Main



Buster's Rodeo Shop

Boot & Saddle Repair

New Location

2 Miles South on Highway 83

826-3072

Roper Boots \$69⁹⁵

HAYDON CHIROPRACTIC CLINIC

DR. L.W. HAYDON

DR. MARK SHERRON

28th St. at Perryton Parkway

Mon.-Fri. 8:30 a.m.-5:30 p.m.

Tues.-Thurs. 6:00 p.m.-8:00 p.m.

Saturday 8:30 a.m.-12:00 Noon

Pampa, Tx 665-7261

BEAT THE SUMMER HEAT Install A Ceiling Fan



FASCO with Light \$159⁰⁰

LITCO \$149⁰⁰

Old Jacksonville \$139⁰⁰

INSTALLATION AVAILABLE

Call: E.M. Rives Shamrock, (806) 256-5250 or Mrs. Betty Rives Wheeler, (806) 826-3224



L. & F. REPAIR

ZENITH T.V.'S R.C.A. T.V.'S

SATELLITE ANTENNA SYSTEMS

FRANK E. COATES, OWNER

P.O. Box 220 WHEELER, TEXAS 79096 PHONE 806/826-3241 110 W. OKLA. ST.

J. B. Muffler and Mechanics

Pipe Bending—Stock & Glass Pack Mufflers

Two Blocks South of Simca Station

Owner — James Babb 826-5607

We will be open for football games.

Please call in advance, 826-3411.

Little Mustang Day Care Center

The Lamplighter,

a Christian Book Store,

is opening October 10 at

123 North Main in Shamrock.

Bibles, Books, Tapes, Paintings, Antiques,

Navajo Rugs & Jewelry

Door Prizes will be given away!



that the Senior class had Senior pictures made by Blunk's studio. Well, it seems something was wrong

with the cameras or the film, anyway nearly all of the class has to have all or nearly half of their pictures remade.

Looks as if I spoke to soon when I said I'm glad I never have to go through that again.

This part of my column is especially for Sonya Hill and Randy Martin, they told me in computer science that they never got mentioned in my column. so this is for them.

Well, now maybe you have a better idea about What's Happening at WHS!

Army Needs Nurses

If you're a licensed practical nurse, the Regular Army and Army Reserve need you!

LPNs who have obtained an Associate's Degree from an accredited university or who qualify under the Army's Civilian Acquired Skills Program (ACASP) can enlist as an E-4 with early promotion to E-5 upon approval from their unit commander. Starting pay, not counting benefits, is over \$730 per month.

LPNs in the Army are usually assigned to a military hospital and receive valuable on-the-job training. The training is especially important if and when they decide to return to work in the civilian community.

For further information, please contact Cpt. Danny Butler at the Army recruiting company headquarters office in Amarillo at (806)355-9286 or visit your nearest Army recruiting station.

Wheeler I.S.D. From Page 1

focused attention on the legislative viewpoint and ongoing developments that may lead to legislative consideration regarding school finance and related issues. Representative Haley emphasized the process by which individuals should approach their elected officials to request changes in the new laws. "With Facts with reason, and with calmness.

Senator Bill Sarpalius Reports



SEATS FOR SAFETY

AUSTIN - It took four attempts before the Legislature to find a workable child safety seat proposal, but during the summer's special legislative session the law was enacted. It goes into effect October 31st.

Texas is to become the 49th state to require children under the age of 2 years to be secured in safety seats and children between 2 and 4 years to be in safety seats or secured by a seat belt when riding in cars.

It doesn't take a major accident to kill or injure children who are riding in cars. Even in minor collisions children who are not secured can be tossed around the auto and the result can be serious injury or death.

This year in Texas, with this law on the books and enforced, we can expect to save 25 children from death.

Two points that kept the Legislature from acting earlier were the potential hardship that the expense of mandatory seats would cause on indigent families, and taking the freedom of

choice from the parents.

The final determination was that infants and small children cannot make their own decisions and should be protected just as they would be against child abuse.

Many cities are instituting safety seat loaner programs to assist those who would otherwise be unable to afford the \$20 to \$80 cost of the seats.

The best illustration of safety seats is of an Amarillo family whose auto was broadsided a few months ago by an 18-wheeler. The car was compressed to half its size. The driver was killed instantly, but the child in a safety seat in the back survived.

The key to the success of this law is to get people in the habit of using the seats every time they get in the car.

If you want more information about safety seats or if you are unable to acquire one, then write me, Senator Bill Sarpalius, P.O. Box 12068, Austin, Texas 78711.



JUNIOR LAMBS — Showing champion lambs at the Panhandle South Plains Fair were, from left. Jon McNeill of Canyon, medium wool; Kevin Bruton of Dimmitt, fine wool cross; and Lori Lee of Kylyn Givens of Crosbyton, Southdown; Mary Wheeler, fine wool. (Staff Photo)

South Plains Youngsters Win With Lambs At Junior Show

(Editors note: The following article was taken from the Friday morning, September 28, 1984 edition of the Lubbock Avalanche-Journal.)

By KATHLEEN DAVIS

A-J Assistant Farm Editor

Youthful exhibitors from Wheeler, Eden, Dimmitt, Canyon, Seminole and Crosbyton captured eight champion and reserve champion places Thursday during the 67th annual Panhandle South Plains Fair junior lamb show.

In competition of about 286 lambs in seven classes, judge Preston Faris of Sonora placed the lambs in the day-long event in the Swine Barn.

Lori Lee of Wheeler showed the champion fine wool while the reserve champion in that division was exhibited by Reid Stultz of Eden. Miss Lee's lamb weighed 118 pounds and Stultz's weighed 103 pounds.

Kevin Bruton of Dimmitt dominated the fine wool cross contest first leading a 125-pound Suffolks cross to the championship then following with the reserve champion, a 100-pound Hampshire cross.

In the medium wool division, Mary Jon McNeill of Canyon guided her 118-pound heavyweight Suffolks to the championship and Paul Nichols of Seminole followed with the reserve champion, a 126-pound heavyweight Suffolks.

A team from Crosbyton, Kylyn Givens and Casey Givens claimed both the champion spots in the Southdown show. Miss Givens took the top win with her 78-pound animals while Givens landed the reserve position with his lamb, also weighing in at 78 pounds.

Livestock competition at the fair will continue today with the junior steer show at 9 a.m. in the Livestock Pavilion.

Lori also had the champion Fine Wool Lamb at the Tri-State Fair held in Amarillo.

Results from Thursday's junior lamb show follow:

Kvie Eschberger, Miles; 3. Toby Smith, Hereford, Heavyweight; 1. Lori Lee, Wheeler; 2. Reid Stultz; 3. Paul Patton, Ballinger.
Suffolks-fine wool cross — 1. Kevin Bruton, Dimmitt; 2. Christi Phillips, Seminole; 3. Ross Stultz, Eden.
Hampshire or Dorset-fine wool cross — Lightweight, 1. Kevin Bruton; 2. Ross Stultz; 3. Perry Lee, Snyder. Heavyweight, 1. Denee Mahler, Seminole; 2. Shane Hess, O'Donnell; 3. Rob Phillips, Hereford.
Suffolks — Lightweight, 1. Paul Nichols, Seminole; 2. Kay McNeill, Canyon; 3. Kathy Huffman, Lubbock. Middletown, 1. Mary Jon McNeill, Canyon; 2. Casey Givens, Crosbyton; 3. D'Lee Fletcher, Seminole. Heavyweight, 1. Mary Jon McNeill; 2. Paul Nichols; 3. Ginger Jesko, Lazbuddie.

Hampshire — Lightweight, 1. Shane Mason, Lazbuddie; 2. Paul Nichols; 3. Brent Black, Muleshoe. Heavyweight, 1. Kay McNeill, Canyon; 2. Bud Vance, Amarillo; 3. Denee Mahler.
Dorset — 1. Nathan Blackwood, Lubbock; 2. Jason Harmon, Muleshoe; 3. Trisha Robinson, Amarillo. Southdown — 1. Kylyn Givens, Crosbyton; 2. Casey Givens, Crosbyton; 3. Stephen Lewis, Levelland.
Champion fine wool — Lori Lee, Wheeler. Reserve champion fine wool — Reid Stultz, Eden.
Champion fine wool cross — Kevin Bruton. Reserve champion fine wool cross — Kevin Bruton. Champion medium wool — Mary Jon McNeill. Reserve champion medium wool — Paul Nichols. Champion Southdown — Kylyn Givens. Reserve champion Southdown — Casey Givens.

Flowers 'N Things

has a new shipment of

PARTY SUPPLIES

Paper Plates, Cups, Napkins,

Tablecloths for your party needs!

Phone: 826-3445

305 E. 9th

Wheeler, Texas

GERMANIA FARM MUTUAL

Aid Association

REASONABLE, SOUND PROTECTION

for your home and other property,

Rita Pearson: 375-2379

E. A. Zybach: 375-2528

Rt. 1, Canadian, Texas

JERRY RAY CONSTRUCTION

Conventional & Log Homes

Additions & Remodeling

Shingling & Cabinet Work

826-5747 after 5



MOBEETIE KINDERGARTEN
Introducing the Mobeetie Kindergarten Class with Mabel Tabor, teacher.

Last week was a special time for the Kindergarten Class when they went to the home of Ariza and Anna Belle Corcoran to feed, play, and name the three orphan calves. The calves were

named Big Red, Misfit and Brandy. After having a miniature rodeo they left three very tired calves.

Picture

From Left to Right Shane Stribbling, Josh Lee, Jerod Thompson, Michael Hennig, Larry Pierce, Mike Johnson, Megan Darby, Sara Hale and Brook Robertson who wasn't present.



FLAG CORP: Drawing a lot of the attention at the Wheeler Mustang Band performances at halftime is the Flag Corp. These young ladies are

colorfully dressed and perform complicated routines which require hours of practice. The new "gold" flags are very attractive.

WATER IN TEXAS

COORDINATED SUPPLY

Texans seldom know whether their last glass of water came out of a nearby river, from a reservoir hundreds of miles away, or from an underground source. As water in the state becomes more and more limited, though, the source of their city water may very well determine.

- * the population of the city as well as its economic potential.
- * the quality of life in terms of landscaping, recreation, and health.
- * the price of water.
- * the new laws restricting use of water.

There's a good chance that glass of water has come from an underground source. Over half of all municipal water in Texas now comes from underground. Twice as many cities, in fact, depend upon groundwater than those depending on surface water. Cities in all areas of Texas and in practically every county draw groundwater for municipal purposes.

In many areas, however, the over-pumping of groundwater has lowered the water levels to the extent that major water supply problems have occurred or are projected to occur in the foreseeable future. Because of declining groundwater supplies in many parts of the state, cities are shifting more and more to surface water from rivers and reservoirs.

A city may very well use both groundwater and surface water. Ninety-three cities in Texas now combine groundwater and surface water sources, according to figures presented by Texas Department of Water Resources (TDWR) planners, Herbert W. Grubb and J.D. Boffart, at the 1983 Water Resources Symposium. These cities, supplying 31 percent of all the municipal and commercial water used in Texas, have systems which coordinate both types of supply. By developing a coordinated system, a city can

- * augment declining groundwater costs or treatment costs.
- * decrease development costs or treatment cost.
- * improve the quality of water from one source by mixing it with a higher quality water.

Most water suppliers using water from both ground and surface sources began by using a single source of supply—primarily ground water. They were forced to develop surface supplies as water demand grew and

groundwater supplies became inadequate to meet needs. These water suppliers continue to maintain dual supplies because of the amount of useful capital invested in both sources, the inherent advantages of each source, and in many cases the fact that neither source by itself can satisfy all of the demands, all of the time.

A city water supply must meet three types of water demands:

1. Daily operational demand peaks imposed by the water users.
2. Seasonal demand varied by the amount of rainfall plus changes in user activities.
3. Long-range cycle demand dependent upon weather variations or upon the inconsistencies of the supply and demand curves.

In each of these demands, the degree of available storage—either in reservoirs or underground—determines the extent to which the demand can be met. A well-planned, well-managed, conjunctively-operated supply system can often better meet these demands than a single source system can.

CITY SUPPLIES

Perhaps the best example of conjunctive use is in the area of Texas affected by subsidence. Houston, the largest water user in the area, has decreased its reliance on groundwater to the degree that now only about 55 percent of the city supply comes from wells. Land surface subsidence due to groundwater withdrawals dictated this conversion to surface water.

Until 1973, the city of Galveston had only one source of water—the Gulf Coast Aquifer. Since that time, the city had converted its supply so that now 66 percent of its water needs are met by developed surface water. The surface water is purchased through Houston's system from Lake Houston in northeastern Harris County. This conversion came about because of subsidence problems in the area and because of saline water encroachment in the city well fields.

El Paso has coordinated water supply sources for many years. Streamflow in the Rio Grande is not always available, so the city has to pump groundwater to make up about 80 percent of the city's current supplies. Critical problems of water level declines and overdrafting of the aquifer now face the city.

The city of Amarillo and surrounding urban areas obtain 52 percent of current water supply from the Ogallala Aquifer and 48 percent from Lake Meredith. By the year 2000, 58 percent of the area's projected urban demand will come from the Ogallala. A rather unique conjunctive use in this area of scarce surface water and declining groundwater is the city's use of Bivins Lake to artificially recharge the groundwater in the Randall County well fields southwest of the city.

San Angelo uses surface water from reservoirs west and southwest of the city to meet present water demands. Since projected growth in water demand exceeds surface water supplies, the city had purchased groundwater rights and drilled wells in McCulloch County about 60 miles southeast of San Angelo. When demand exceeds surface supplies, the city plans to lay the necessary pipelines from San Angelo to the well field and then pump water from the wells.

OTHER COORDINATED SUPPLIES

Forty-five percent of all the water used in manufacturing in the state in 1980 came from coordinated ground and surface sources. Plant managers most often buy water from a city or utility district, so the decision to coordinate sources has already been made by water suppliers.

Steam electric power plants, on the other hand, are generally planned and built around one or the other, or both, sources of water. Power plants must have large amounts of water for cooling and a small amount of high quality water for boiler makeup. Plants often use surface water for the tremendous amounts of water required

for cooling, but pump enough groundwater for boiler makeup. Another way power plants coordinate water is to build one unit to be supplied with groundwater for cooling and another unit to be cooled with surface water.

A CONJUNCTIVE SUPPLY SYSTEM

The Colorado River Municipal Water District (CRMWD) distributes both groundwater and surface water to its customers. The District supplies part or all of the water for the cities of Midland, Odessa, Big Spring, Snyder, Stanton, San Angelo, and Robert Lee, as well as a power plant in Ward County and 14 industrial customers throughout the region. Industrial uses include petroleum refining, petrochemicals production, natural gas processing, metal refining, and oil field enhanced recovery operations.

Approximately 74 percent of the water supplied by CRMWD comes from Lakes J. B. Thomas and E. V. Spence and other diversions from the Colorado River. The remaining 26 percent of the annual supply comes from the region's very limited groundwater resources pumped from well fields in Martin, Ector, and Ward Counties.

The CRMWD currently delivers about 50 thousand acre-feet per year to its customer cities and industries, but the Texas Department of Water Resources predicts that the region will require 113 thousand by the year 2000.

The District estimates that an additional surface water supply will be needed by 1990 or shortly thereafter. To meet this increased demand, the state has granted CRMWD a permit to build Lake Stacy on the Colorado and Concho Rivers in LRunnels, Coleman, and Cocheco Counties.

Conjunctive use plays a small part in supplying agricultural water use. Normally when both sources are used for irrigation, groundwater supplements the primary source, surface water.

The irrigation areas in El Paso and Hudspeth Counties, areas in Reeves and Ward Counties, and in Cameron and Hidalgo Counties in the Lower Rio Grande Valley have a significant amount of coordinated water use. Other examples are in Comanche, Eastland, and Erath Counties where farm ponds or floodwater retarding reservoirs supply surface water in normal to high rainfall years. In these areas, when the irrigators have exhausted their surface supplies or have used their water right allotments, they pump groundwater to fulfill the water needs of their crops.

LEGAL ISSUES

Conjunctive use of groundwater and surface water is a complex issue involving not only water supply and demand, but legal and institutional considerations as well. The differences in Texas law regarding groundwater and surface water, in fact, greatly hinder the adoption of coordinated management of water supply systems.

Groundwater belongs to the landowners beneath whose property such water can be found. The landowner may obtain and use this water without regard to any effect on adjoining landowners. He can sell rights to groundwater just as he can any other type of property. Groundwater can be used either on the land where it is pumped or piped to another location. Surface water flowing in streams and rivers, however, is the property of the state. Cities, industries, farmers, ranchers, and other users may divert it for beneficial use only with proper permits issued by the Texas Water Commission.

The institutional structure of water suppliers also often complicated conjunctive use of water sources. Most present agencies in Texas have the authority to develop, conserve, or protect either groundwater or surface sources, but not both.

The hydrologic differences of groundwater and surface water, however, make coordinated management an attractive alternative. Surface water is generally a resource which must be used as it becomes available, or it is lost for good—either from evaporation or streamflow. Ground-

water generally moves very slowly if at all and often can be saved for future use.

A surface water supply varies with the amount of rainfall received in the watershed, while most groundwater sources remain stable. Chemical quality and temperature of groundwater also remain relatively constant. Groundwater requires little treatment and is reasonably safe from pollution.

As groundwater levels decline and as water needs grow, the competition for the remaining supplies will continue to increase. This will mean fewer and fewer options for adding new water supplies.

In order to satisfy water needs, surface water supplies should be developed where possible to simultaneously replace declining groundwater supplies and to provide for growth in total demand. Substituting surface water for groundwater will more than likely mean higher direct costs to the user. These costs may have to be equitably distributed throughout the entire region which will benefit from the conversion.

Groundwater supplies and surface water supplies should be developed conjunctively whenever possible. A city having the capability of using each independently or the two in conjunction has many advantages over one with a single source.

How Texans develop water supplies in the next few years will determine to a great extent what kind of a state they will leave to their children. Coordinating the use of groundwater and surface water is one way in which Texans can stretch existing supplies and use future supplies more effectively.

FREE

Blood Pressure Clinic

There will be a Free Blood Pressure Clinic for all Wheeler County residents regardless of age, Thursday, October 4, 1984. It will take place in the south end of the Senior Citizens Center on Canadian Street from 9:00-12:00 a.m.

This clinic is conducted by the North Wheeler County Ambulance Service and sponsored by the Wheeler Senior Citizens and the Texas Agriculture Extension Service.

Educational programs conducted by the Texas Agricultural Extension Service serve people of all ages regardless of socio-economic level, race, color, sex, religion or national origin.

NMH Announces

Therapy Addition

Randall Martin, NMH Director of Physical Therapy, has announced the addition of Helen Allen, Physical Therapist's Assistant to his staff. Mrs. Allen holds an Associate Degree from Oklahoma City Community College. She has worked in several Oklahoma hospitals including Atoka Memorial Hospital where she was an O.R. Scrub Tech; Oklahoma City's Presbyterian Hospital where she completed an eighteen hour physical therapist technician course; and Deaconess Hospital in Oklahoma City where she again worked as a Physical Therapist's Technician. The practicum for her current degree was completed in the Physical Therapy Departments of St. Anthony's Hospital and the O'Donohue Rehabilitation Center.

BRISCOE MENU

October 8-12, 1984

Monday-Lunch: Swiss steak, Potatoes, Green peas, Rolls, Pineapple upside down cake, Milk.

Tuesday-Lunch: Enchiladas, Beans, Tossed salad, Corn, Sopapillas/honey Milk.

Wednesday-Lunch: Corn dogs, Tator tots, Baked beans, Jello/fruit, Milk.

Thursday-Lunch: Chicken fried steak, gravy, Potatoes, Fried okra, Rolls, Brownies, Milk.

Friday-Lunch: Hamburgers, cheese, Lettuce, Tomatoes, Pickles, Onions, Onion rings, Milk, Ginger bread.

"Fear of misfortune is worse than the misfortune."
Hasidic Saying

Top 'O Texas Arts & Crafts Show

Exhibitors from a five-state area will be showing their works and giving demonstrations at the 18th annual Top 'O Texas Fine Arts and Crafts Festival in Pampa Oct. 13 and 14.

Forty-five artists and craftspeople will have their exhibits and displays set up in the Heritage Room at the M.K. Brown Auditorium, 1000 N. Sumner. The show, sponsored by the Pampa Fine Arts Association, will be open to the public from 10 a.m. to 6 p.m. Saturday, Oct. 13, and from noon to 5 p.m. Sunday, Oct. 14.

Featured artist for the festival will be Marlin C. Adams, formerly of Amarillo, who is moving to Borger as an art instructor at Frank Phillips College. Portrait, landscape and still life painter, Adams will be giving a demonstration of portrait painting with a model from 10 a.m. to 1 p.m. on Saturday, Oct. 13.

Adams attended Brigham Young University at Provo, Utah, where he received his bachelor of arts degree in 1974 and his master of fine arts degree in 1977. He also spent five months in Spain under the university's semester-abroad program, using part of the time to tour some of the major art centers of Europe.

He has won a number of art awards in BYU and other student competitions, Utah art shows and regional events in Texas.

Adams moved to Amarillo after graduation from BYU, working under a federal grant at the Square House

Museum in Panhandle and setting up his own studio in Amarillo. He has painted landscapes, still lifes and portraits of area personalities and historical pioneers.

One of his Palo Duro Canyon landscape paintings - "Second Water Crossing," featuring the Sleeping Indian formation in the background - will be given away during the festival.

Donations of \$1 at the festival will give persons attending the event an opportunity to win the 18 inch by 24 inch oil painting.

Exhibitors will come from Texas, Oklahoma, Kansas, New Mexico and Colorado.

Les. R. Seamster from Allison will have Brass and Aluminum Engraving at the Festival.

Arts and crafts to be exhibited included oil and watercolor painting, jewelry, shells and coral items, pottery, toys, stoneware, stained glass, metal arts, wood crafts, pen and ink drawings, acrylics, belt buckles, pine cone art, silkscreen prints, ceramics, copper enamel, bronze sculpture, soft sculpture, brass and aluminum engraving, dry flowers and wheatweaving.



An adult flatfish has both eyes on the same side of its head.



TWIRLER: Melania Dutton is the twirler for the Wheeler Mustang Band and puts on a fine show for the fans when the band performs their routines at half time of the Wheeler Mustang games.

TEXAS GARDENER TIPS

Vegetables with Funny Names Taste Great

If a name like "Smucker's" makes it hard to sell jelly, you can imagine what a name like "fuzzy gourd" might do to the popularity of a vegetable.

A closely-related oriental vegetable known as winter melon would seem to be less handicapped, though its name may mislead you, for it looks like a watermelon, tastes like zucchini and is used to make soup. The names and appearances of these vegetables may be unfamiliar, but both are worth planting.

The fuzzy gourd and winter melon have been grown for years in China and India. Using them can be simple enough. The fuzzy gourd, after the hairs are rubbed off, can be used as a substitute for zucchini. The winter melon is used to prepare an Asian version of chicken soup. This soup, when prepared according to full Oriental tradition, is

cooked inside the melon. The outside is often elaborately carved with dragons and designs.

Cultivation for these vegetables is quite simple. Both need plenty of room and appreciate a soil mixed with lots of manure or other organic material. The fuzzy gourd is best grown on a trellis. The fruits are ready to pick when they are 6 to 8 inches in length and about 1 1/4 to 2 inches in diameter.



Winter melons need an especially large amount of space in the garden and should be planted in hills 8 to 12 feet apart. Some of the

best news about growing these vegetables is that they seem to be bothered by few or no insect pests in Texas.

You may be able to find seed of these vegetables at an Oriental marketplace, should there be one in your area. Otherwise, you can purchase seed by mail. Fuzzy gourd seed can be obtained from Glecker's Seedmen, Dept. TG, Metamora, OH 43540; and Stokes Seeds, P.O. Box 548TG, Buffalo, NY 14240. Winter melon seed is available from Nichols Garden Nursery, 1190 N. Pacific Hwy., Dept. TG, Albany, OR 97321. Both are available from Sunrise Enterprises, P.O. Box 10058TG, Elmwood, CT 06110.

TEXAS GARDENER

P.O. Box 9005 Dept BR
Waco, TX 76714

© 1984 TEXAS GARDENER MAGAZINE

TEXAS GARDENER TIPS

Tips For Transplanting Trees With Success

Winter and early spring are the best times to plant trees in Texas. The first step is to make sure you purchase a high quality tree, whether it be balled-and-burlapped, bare-rooted, or container-grown. Don't let the tree dry out between the time you buy it and plant it.

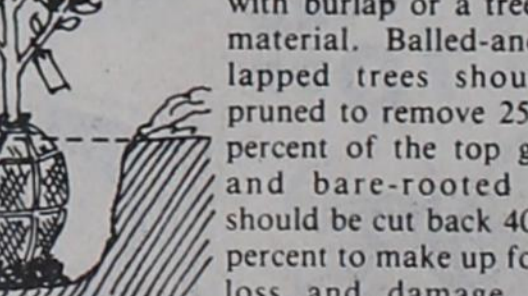
Dig the planting hole only as deep as the root ball or slightly shallower (by 1 to 2 inches) and about two times as wide as the root ball. If the soil dug out of the planting hole is a sandy loam, you can put it back around the root ball without changing it. But if you have large clay clods or a blow sand, mix the existing soil with organic matter, like peat moss or compost,

in the ratio of 2 parts existing soil to 1 part organic matter.

Always use the existing or native soil. Do not replace it with a foreign soil, since this can cause root-bound problems later. If the foreign soil is better than the existing native soil, the roots will look for this better soil by circling in the planting hole, causing a root-bound tree.

Prune off any broken or damaged roots, especially on bare-rooted trees. Set the tree in the hole at the same depth at which it grew in the nursery. Backfill the hole one-third full of soil and soil mix, and water. Put another third of the soil in the hole and water again. Then finish filling the hole.

Water the tree following planting and then water deeply as needed when the soil becomes dry, making sure to check at least once a week. It is also a good idea to apply a root-stimulating fertilizer to encourage root growth.



If your tree will need extra support, drive two 2x2-inch stakes 2 to 3 feet deep in the ground, one to the north side and one to the south, before you plant the tree. Position two pieces of old garden hose around

the trunk at different heights. Run wire through each hose and tie one wire to each stake.

To protect against borers and sunscald, spray the trunk at planting time with Lindane and wrap the trunk with burlap or a tree-wrap material. Balled-and-burlapped trees should be pruned to remove 25 to 35 percent of the top growth and bare-rooted trees should be cut back 40 to 60 percent to make up for root loss and damage. Container-grown trees should be pruned only as needed for shaping.

TEXAS GARDENER

P.O. Box 9005 Dept BR
Waco, TX 76714

© 1984 TEXAS GARDENER MAGAZINE

Jennings Posts 82 To Win Shamrock Ladies Club Golf

The Ladies Golf Association of Shamrock Country Club held its annual Club Championship match Saturday, September 22, 1984, beginning at 9:00 a.m.

Winners included: Low Gross-Mona Jennings-82, first; Bobby Jennings-86 second; Betty Been-87, third. Low

Net-Barbara Clark-65, first; Dorris Windom-68, second; and Pat Seward-69, third.

Awarded for the longest drive of the tournament was Sindy Chapman. Winning closest to the hole honors was Bobby Jennings.

The group enjoyed a salad luncheon at North 40 Steak House following the tournament.

A short business session was conducted by President Pat Seward.

New officers presented by the Nominating Committee were: Presi-

cent-Gwen Hensley; Vice President-Betty Been; Secretary-Treasurer-Berniece Hall; and Tournament Chairman-Sue Stiles.

The slate of nominees was accepted by acclamation.

Members present for the luncheon were: Joyce Eck, Dorris Windom, Naomi McCarty of McLean; Barbara Clark, Dorothy Ellis, Helen Laycock, Joan Roberts, Pat Seward, Margaret Howe, and Betty Been of Shamrock; Roberta Ware, Mona Jennings, Bobby Jennings, Sue Stiles, Ida Goad, and Sindy Chapman of Wheeler.

Chat

From Page 1

returning from a weekend in Dallas spent visiting another son, who was returning with them to Mobeetie for a visit.

Now the embarrassing part for me, they introduced themselves and before mentioning them in the column, I wanted to see if I had the name right. I have been unable to get the name and description to match.

I guess that makes us even.

-cwe-

The business trip to Austin began at 4:20 Friday morning; we were to catch a 6:30 flight. My traveling companions for this leg of the journey were Mildred Ramsey, Betty Hennard and Bobby Hill. Our arrival at the air terminal was a little later than anticipated; the ladies decided I should park the car, so Bobby pulled in at the terminal we unloaded the luggage. When I got in to take the car to the parking lot someone had pulled in behind us and left the car unattended, as was the car in front; with some maneuvering I worked the car out, parked and caught the flight.

Mildred was met at Austin by her daughter-in-law, Bonnie, and granddaughter, Julie. She spent the weekend and returned Sunday evening.

The rest of us picked up our luggage and a rented car. The ladies decided I (the one who doesn't know directions in Austin and inexperienced in Austin traffic should drive) Bobby said she would read the map and give directions—right or left turns. We made it to the capitol, but I was not where I expected to be in relation to the capitol.

Returning to the car that afternoon, I was again behind the wheel, and apparently Bobby gave good directions, because we made it to San Antonio with only one stop—ice cream in San Marcus. Of course driving instruction is nothing new for me, isn't that right, "Bob"

-cwe-

In San Antonio we returned the rented car and were delivered to the downtown Hilton where Betty and Bobby had reservations. I thought I was going to have to get reservations, but I finally got Victor on the phone to pick me up.

Victor Porter and his two children, April and Gary, were my hosts in San Antonio.

Victor arrived in Wheeler a month before Barbara and I, back in 1960. We worked together at the "Times" for a period of time before purchasing the business in partnership. Vic moved and it had been some 15 years since we had seen each other. Vic extended greetings to each of his Wheeler friends.



- ★ Bachelor of Science degree
- ★ Criminal Justice Administration
- ★ 16 years law enforcement experience
- ★ 3 years Military Police
- ★ 3 years private industry security manager
- ★ 1 year Potter County adult probation
- ★ 9 years Amarillo police officer
- ★ 4 years law enforcement teaching experience
- ★ West Texas State University and Amarillo College
- ★ Texas commission on law enforcement, officer standards and education certification
- ★ Basic, intermediate, and advanced instructor certification

Elect
JIM

ADAMS
SHERIFF
OF WHEELER COUNTY

Pol. Adv. pd. for by Jimmy Adams, Box 374, Wheeler, Tx. 79096

Golf Scramble

The Octoberfest ladies partnership scramble has been scheduled for October 20th, 1984 at 9:30 a.m. The entry fee is \$50 per team. Interested golfers should contact Bobby Jennings, Box 423, Wheeler, Texas 79096; Phone 806-826-3153.

Junior Varsity Plays Gruver, Booker

The Wheeler Mustang J.V. team traveled to Gruver Sept. 13 in their first ballgame of the season. Trailing by a score of 7-0, the Mustangs scored on a pass from Augie Hennard to David Jones which covered about 45 yards. The try for two points failed, leaving the score at 7-6 until midway into the 4th quarter which Gruver added 2 more TD's upping the score to 20-6. Defensive standouts were Buford Meadows, Lee McCasland, Hale Hughes and Randy Horton.

The Junior Varsity played Booker last Thursday here in Wheeler, the Booker J.V. scored two first half touchdowns to take a 12-0 lead into the dressing room at half. The Mustangs regrouped at half-time and scored two TD's of their own to tie the score. Scoring for the Mustangs were Lee McCasland with both touchdowns scoring from 18 yards and 2 yards.

Defensive standouts included David Jones, Hale Hughes, Randy Horton, Stephen Meadows, Buford Meadows and Grayson Benson. Next action for the JV will be on Oct. 25 when the Mustangs travel to Booker for a 7:30 game.

Wheeler Colts Win Over Follett, 34-0

The Wheeler Colt football team blasted the Follett Jr. High team 34-0 last Thursday night in Wheeler. The Colts had little trouble with Follett which had a 2-0 record going into the contest, Shane Guest started the Colt scoring in the first quarter with an 11 yard touchdown run.

In the second quarter Bubba Smith scored the second touchdown on a 25 yard gallop through Follett's defense. Before the first half Smith scored again with an eight yard run. Wheeler led at the half 18-0.

In the third quarter Guest scored again on a 8 yard run with Justin Hughes catching a Cory Cornett pass for the two point conversion. The Colts led 26-0. In the fourth quarter Noe Ramirez had a 61 TD run for the Colts with Micheal Kenney adding the two extra points. The final score was the Wheeler Colts 34 and Follett 0.

Wheeler lost 6 fumbles during the game while recovering 9 themselves Chad Bentley, Cory Cornett, Jonathan Ellisor, Steven Horton, Justin Hughes Jeff Mayfield, Dwight Thomas and Sammy Zepeda, recovered fumbles for the Colts.

Wheeler (2-0) will travel to Phillips (1-1) this Thursday playing at 6:00 p.m. Phillips defeated Gruver last Thursday 14-0. The Hawks are bigger than the Colts with their offensive line averaging 158 pounds per man. While Wheeler's average is 130 pounds.



Shawna Hampton has been chosen as the "Little Sister" for the Alpha Mu Alpha Chapter of Beta Sigma Phi. Shawna is a Senior at Wheeler High. She is the daughter of Richard Hampton. She has been in band for 5 years and Drum Major for 3 years. She has lettered in basketball, track and tennis for the past 3 yrs. Her sophomore year she was honorable mention all district in basketball and went to regional in track and tennis that year. Her Junior year she was all district player in basketball and went to regional in track and tennis that year. Shawna is also a member of the National Honor Society. She plans to attend college an Major in Physical Education.

Pictured is Melonia Simmons presenting Shawna with a yellow rose.

Cecil Kerbo of Mr. K's in Pampa

will be at the Country Clipper in Wheeler on Wednesday from 9:30 until. . .

Call Collect: 669-7389 for appointment



---Texan Staff Photo
WINNERS IN SHAMROCK COUNTRY CLUB LADIES GOLF CHAMPIONSHIP Saturday, Sept. 22, were: Top, left to right - Betty Been, third; Bobby Jennings, second; and Mona Jennings, first (low gross division). Bottom, left to right - Pat Seward, third; Dorris Windom, second; and Barbara Clark, first (low net division). Seventeen players contested for the title.

AN ORDINANCE LEVYING A TAX RATE FOR THE CITY OF MOBEETIE FOR THE TAX YEAR 1984

BE IT ORDAINED AND ORDERED BY THE CITY COUNCIL OF THE CITY OF MOBEETIE THAT:

WE, THE CITY COUNCIL OF THE CITY OF MOBEETIE, DO HEREBY LEVY OR ADOPT THE TAX RATE ON \$100.00 VALUATION FOR THIS CITY FOR TAX YEAR 1984 AS FOLLOWS:

- \$.26 FOR THE PURPOSES OF MAINTENANCE AND OPERATION.
- \$.39 FOR THE PAYMENT OF PRINCIPAL AND INTEREST ON BONDED INDEBTEDNESS.
- \$.65 TOTAL TAX RATE

THE TAX COLLECTOR IS HEREBY AUTHORIZED TO COLLECT THE TAXES OF THE CITY OF MOBEETIE, EMPLOYING THE ABOVE TAX RATE.

THE ABOVE ORDINANCE AND ORDER WAS UNANIMOUSLY PASSED BY THE CITY COUNCIL OF THE CITY OF MOBEETIE ON THIS 13TH. DAY OF SEPTEMBER, 1984, AND WAS EXECUTED IN DUPLICATE.

Autumn Sale

OCTOBER 4-5-6-7

Carhartt & Walls Insulated With Zipper Legs Coveralls **10% OFF**

All Winter Coats **10% OFF**

Toys **10% OFF**

All Sizes Pillows **10% OFF**

Womens Braxton Jeans \$14.97

Men's Doubleknit Wrangler Slacks \$10.97

Twin Togs Jeans Sizes 4 Slim - 7 Slim Reg. \$6.97 Now **\$4.97**

All Wrangler Roper Boots Reg. \$59.97 Now **\$49.97**

Carhartt & Walls Blanket Lined & Insulated Coats **10% OFF**

All Ladies & Childrens Clothing **20% OFF**

All Appliances **20% OFF**

Sleeping Bags **10% OFF**

GIBSON'S

INSTANT CREDIT THURSDAY BARGAINS

CREDIT FRIDAY BARGAINS

INSTANT CREDIT SATURDAY BARGAINS

ARE ALL YOU WILL FIND AT

JERRY'S FURNITURE

213 N. Main Shamrock, Texas

SOFA SLEEPER SALE

Buy Sofa Sleeper and get Recliner To match FREE INSTANT CREDIT

90 Days Before First Payment!!!!!!

Any Size

SIESTA 4 PIECE SET

QUEEN, FULL OR TWIN SIZE SOLID BRASS HEADBOARD, MATTRESS & FOUNDATION AND SOLID METAL BEDFRAME

Solid Brass Headboard

\$299

Extra Firm Complete

4-PIECE SET	Reg.	SALE
Queen	\$619.95	\$299
Full	\$459.85	\$299
Twin	\$369.85	\$299

Extra Firm Quilted Mattress
 Extra Firm Foundation
 Metal Bedframe

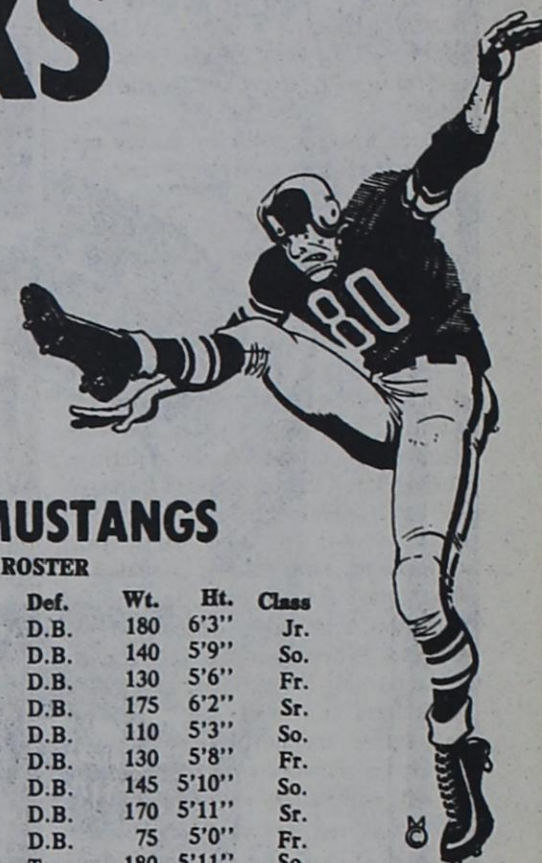
WHEELER MUSTANGS

MEET THE PHILLIPS BLACKHAWKS

FRIDAY, OCTOBER 5, 1984

7:30 P.M.

at NICHOLSON FIELD



CLAUDINE'S BEAUTY SHOP	DUB AND FLIPTIAN PATTERSON
HESS TRUCK AND TRACTOR	JIM AND SHARON WRIGHT
OMEGA GRAIN & SUPPLY	U BAR U
BAKER'S AUTOMOTIVE	THRIFTWAY
GATELEY ELECTRIC	McILHANY DRY GOODS
WHEELER LUMBER COMPANY	WISE ENERGY INC.
PRODUCTION CREDIT ASSOCIATION	LEE HARDWARE & FURNITURE
CLASSIQUE AUCTION GALLERIES	MAXEY'S STEAKHOUSE
THE THOMAS AGENCY	WHEELER REDI-MIX
McCAIN'S AUTO BODY	SPEEDI-MART
WHEELER T.V. SYSTEM	BURTON FORD, MERCURY, INC.
FLOWERS N' THINGS	PIERCE TRADING POST
SECURITY FEDERAL SAVINGS & LOAN	LOYD'S RADIO & T.V. REPAIR
RIVES INSURANCE AGENCY	FRANKENBERY'S TEXACO
HYLAND'S PHARMACY	FIRST NATIONAL BANK in Wheeler
GALLAGHER BORDEN MILK DIST.	WHEELER COUNTY FARM BUREAU
THE WHEELER TIMES	WHEELER PLUMBING CO.
B.J.'S WAREHOUSE	WHEELER BOOKKEEPING AND TAX SERV.
BEN FRANKLIN	LEWALLEN INSURANCE
WARE CHEVROLET	THE JOE ELLISON FAMILY
THE SMITH AGENCY	WHEELER FLOWER SHOP
CROSS CAR CENTER	HIBLER IMPLEMENT
BEEF CATTLE COMPANY	WHEELER GAS, Inc.

WHEELER MUSTANGS

FOOTBALL ROSTER

No.	Name	Off.	Def.	Wt.	Ht.	Class
10	Robert Andis	T.E.	D.B.	180	6'3"	Jr.
11	Augie Hennard	Q.B.	D.B.	140	5'9"	So.
12	Grayson Benson	Q.B.	D.B.	130	5'6"	Fr.
15	Joel Dodd	S.E.	D.B.	175	6'2"	Sr.
17	Eric Vanpool	S.E.	D.B.	110	5'3"	So.
20	Lee McCasland	R.B.	D.B.	130	5'8"	Fr.
21	Cody Wiggins	S.B.	D.B.	145	5'10"	So.
22	Steven Snapp	Q.B.	D.B.	170	5'11"	Sr.
24	Greg Koelzer	S.E.	D.B.	75	5'0"	Fr.
30	Dicky Salyer	F.B.	T.	180	5'11"	So.
32	Bobby Sword	F.B.	D.B.	160	5'10"	So.
33	Richard Smith	F.B.	L.B.	160	5'10"	Fr.
34	Trent Copeland	S.E.	D.B.	110	5'7"	Fr.
35	Toby Collins	R.B.	L.B.	175	5'10"	Jr.
40	Charlie Miller	R.B.	L.B.	165	5'11"	So.
42	Bret Moore	S.B.	D.B.	150	5'10"	Jr.
44	Todd Alvey	S.B.	D.B.	150	6'0"	Sr.
52	Hale Hughes	C.	L.B.	150	5'11"	So.
55	Robert Meadows	T.	E.	165	5'10"	Sr.
58	Roger Cross	C.	E.	160	6'0"	Sr.
50	Tom Cook	G.	L.B.	130	5'4"	Fr.
60	Danny DeBose	C.	T.	220	6'0"	Jr.
63	Buford Meadows	G.	E.	155	5'8"	Jr.
64	Russell Hatcher	G.	T.	160	5'10"	Sr.
65	Draton Childress	G.	L.B.	160	5'9"	Sr.
66	Shane Whiteley	G.	T.	110	4'10"	Fr.
68	Stephen Meadows	G.	L.B.	145	5'6"	So.
69	Wade Bentley	G.	L.B.	180	5'11"	Sr.
70	Carl Knutson	T.	T.	200	5'7"	Jr.
71	Stuart Cross	G.	T.	160	5'7"	So.
73	Ted Moore	G.	E.	170	5'11"	Jr.
74	Darren Grimes	T.	E.	195	6'2"	Sr.
89	Jerry Horton	T.	E.	180	5'10"	Sr.
76	Ed Ellison	T.	T.	205	6'0"	Jr.
78	Luke Horton	T.	E.	145	5'9"	Fr.
79	Jay Kinnard	T.	T.	190	5'9"	Sr.
82	David Jones	T.E.	L.B.	150	5'11"	Fr.
85	Larry Trevino	S.E.	D.B.	140	5'9"	Sr.
86	Randy Horton	S.E.	D.B.	115	5'2"	Jr.
72	Billy Richardson	T.	T.	170	5'8"	So.
81	Clifton Bradstreet	S.B.	D.B.	130	5'6"	So.
88	Sam Childress	T.	T.	120	5'10"	So.

Supertendent: Bynum Smith

H.S. Principal: Bob Willis

Jr. H. Principal: Thomas Helton

Band Director: David Seales

Cheerleader Sponsor: Linda Smith

Head Coach: Preston Smith

Assistant Coaches:

Ronnie Karcher

Jeff Pierce

Mike Morgan

Mike Newland

Managers:

Chris Bedowitz

Tony Jackson

Cheerleaders:

Tammy Baker

Tami Jo Childress

Dana Huckert

Cristen Cornett

Kelli Sabbe

Dawn Boedeker

PHILLIPS BLACKHAWKS

No.	Name	Pos.	Ht.	Wt.	Class
11	J.J. Williams	QB-S	5'8"	124	Fr.
12	Tom Johnson	B	6'1"	150	So.
20	Brent Heatley	B	6'1"	155	Jr.
21	Tony Wall	B	5'7"	135	Fr.
22	Bryan Heatley	B	6'1"	155	Jr.
30	David Savoie	B	5'9"	135	Fr.
31	Casey Boyer	B	5'5"	125	Fr.
35	Dewane Kinsch	B	5'10"	150	Jr.
40	Shane Calhoun	B	5'5"	125	Fr.
44	Sean Baker	B	5'4"	115	Fr.
50	Paul Murphy	G	5'8"	130	Sr.
52	Lorne Moffitt	T	6'0"	185	Jr.
53	Scott Williams	G	5'8"	155	Sr.
61	Jeff Griffin	G	5'10"	130	Fr.
62	Bill Uptergrove	B	5'9"	150	Jr.
63	Tony Doyle	T	5'11"	195	Fr.
64	Danny Phillips	G	5'5"	145	Jr.
70	Tracy Wilson	T	5'10"	188	So.
71	Richard Scroggins	T	5'11"	220	Fr.
72	Grady Tinker	T	5'6"	135	So.
73	Brandon Hudson	E	6'4"	180	Jr.
74	Shannon Sibley	T	5'8"	180	Sr.
75	Jack Garrard	T	5'10"	174	Jr.
77	J. Judkins	T	5'9"	190	Fr.
80	David Scroggins	E	5'9"	135	So.
81	Trent Melton	E	6'0"	160	Sr.
82	Allen Calhoun	E	5'5"	116	Sr.
84	Tracey Eason	C	5'8"	137	Sr.
85	Mike Newcomb	E	6'2"	175	Sr.

Head Coach: Ed Johnson

Coaches: Mike Prescott, Monte Kreis,

Monty Hale, Troy Lemley

Superintendent: Don Blankenship

Principal: Mike Horton

Cheerleaders: Dawna Homer, Shana

Smith, Joni Braymer, Vicki Bush,

Stephanie Nichols, Shelli Nolen

Mascot: Blackhaws

Colors: Black and Orange

1984

Mustang Schedule

Sept. 7	Stinnett	23-21	8:00
Sept. 14	Shamrock	32-0	8:00
Sept. 21	*McLean (Homecoming)	56-0	8:00
Sept. 28	*Booker	12-0	8:00
Oct. 5	*Phillips	H	7:30
Oct. 12	*Follett	H	7:30
Oct. 19	*Groom	T	7:30
Oct. 26	*Lefors	T	7:30
Nov. 2	*Claude	T	7:30
Nov. 9	Open		
Nov. 16	*Gruver	H	7:30 * District Games



Junior Varsity Schedule

Sept. 13	Gruver	T	6-20
Sept. 20	Booker	H	12-12
Sept. 27	Open		
Oct. 4	Open		
Oct. 11	Open		
Oct. 25	Booker	T	7:30
Nov. 1	Groom	T	7:00
Nov. 8	McLean	H	7:30
Nov. 15	Gruver	H	7:30

Junior High Schedule

Sept. 13	Open		
Sept. 20	Booker	H	14-6
Sept. 27	Follett	H	34-0
Oct. 4	Phillips	T	6:00
Oct. 11	Gruver	T	6:00
Oct. 25	Booker	T	6:00
Nov. 1	Follett	T	6:30
Nov. 8	Phillips	H	6:00
Nov. 15	Gruver	H	6:00





DALLAS COWBOY PRO-FOOTBALL

at THRIFTWAY

WORLD SERIES SAVINGS FROM WILSON FOODS

WILSON'S 93% FAT FREE BONELESS FULLY COOKED
HALF HAMS
2-4 LBS. AVERAGE **\$2.29**
LB.



WILSON'S ALL MEAT SLICED
BOLOGNA 1 LB. PKG. **\$1.49**
WILSON'S REGULAR OR ALL BEEF
FRANKS 12 OZ. PKG. **99c**
WILSON'S 20% LESS FAT-SMOKED
SAUSAGE 1 LB. PKG. **\$1.99**

WILSON'S FINEST QUALITY SLICED
BACON 1 LB. PKG. **\$1.69**

SPECIAL BARGAINS

FRESH CHUCK QUALITY EXTRA LEAN-81% LEAN **GROUND BEEF** 1 LB. **\$1.59**

HEAVY GRAIN FED BEEF-WHOLE IN THE BAG 7 TO 12 LBS. AVG. **BRISKET** 1 LB. **\$1.29**

SHURFRESH REGULAR OR HOT WHOLE HOG **PORK SAUSAGE** 1 LB. ROLL **\$1.59**

NEW CROP WASHINGTON RED OR GOLDEN DELICIOUS

APPLES

49c

MIX OR MATCH

ALL PURPOSE **RUSSET POTATOES** 10 LB. BAG **98c**

CALIFORNIA **LARGE LEMONS** 1 LB. **59c**
CALIFORNIA EMERALD GREEN MELONS **HONEYDEWS** 1 LB. **49c**
CALIFORNIA GREEN HEAD **BROCCOLI** 1 LB. **49c**
CALIFORNIA GREEN PASCAL **CELERY** 1 LB. **29c**
CALIFORNIA LARGE TIE **GREEN ONIONS** 2 BUNCHES **49c**

THRIFTWAY



SHURFINE **GRANULATED SUGAR**
WITH THIS COUPON ONLY

LIMIT ONE COUPON TO CUSTOMER **\$1.19** 5 LB. BAG
LIMIT ONE WITH COUPON-THEREAFTER REGULAR PRICE

THRIFTWAY



VEGETABLE SHORTENING **PURE CRISCO**
WITH THIS COUPON ONLY

3 LB. CAN **\$1.99** LIMIT ONE COUPON TO CUSTOMER
LIMIT ONE WITH COUPON-THEREAFTER REGULAR PRICE

THRIFTWAY



KITCHEN TESTED **GOLD MEDAL FLOUR**
WITH THIS COUPON ONLY

5 LB. BAG **69c** LIMIT ONE COUPON TO CUSTOMER
LIMIT ONE WITH COUPON-THEREAFTER REGULAR PRICE

THRIFTWAY



SHURFRESH GRADE A **LARGE EGGS**
WITH THIS COUPON ONLY

LIMIT ONE COUPON TO CUSTOMER **49c** DOZEN
LIMIT ONE WITH COUPON-THEREAFTER REGULAR PRICE

KRAFT HARVEST JAMBOREE



MARGARINE QUARTERS **KRAFT PARKAY** 1 LB. PKG. **59c**

CHEESE LOAF **VELVEETA** 2 LB. BOX **\$3.29**
KRAFT AMERICAN OR PIMENTO CHEESE **SINGLES** 8 OZ. PKG. **\$1.29**
KRAFT REFRIGERATED **ORANGE JUICE** 64 OZ. BTL. **\$1.99**
KRAFT SALAD DRESSING **MIRACLE WHIP** 32 OZ. JAR **\$1.69**
KRAFT FRENCH CATA/ITALY BTRNLK **DRESSINGS** 8 OZ. BTL. **89c**
KRAFT THICK N' SPICY ORIGINAL OR SMOKE **BARBECUE SAUCE** 18 OZ. BTL. **\$1.29**

SAVINGS FROM GILLETTE

GILLETTE CRICKET DISPOSABLE **LIGHTERS** 2 FOR **\$1.00**
DEODORANT **RIGHT GUARD** 5 OZ. CAN **\$1.99**
DEODORANT STICK **RIGHT GUARD** 2.5 OZ. STICK **\$1.99**
REGULAR/MENTH/LEMON-LIME SHAVE CREAM **FOAMY** 11 OZ. BTL. **\$1.99**
GILLETTE RAZOR CARTRIDGE **TRAC II** 5 CT. PKG. **\$1.99**
GILLETTE RAZOR CARTRIDGE **ATRA** 10 CT. PKG. **\$3.99**
REGULAR OR EXTRA BODY SHAMPOO OR CONDITIONER **SILKIENCE** 7 OZ. BTL. **\$1.79**
REGULAR OR EXTRA HOLD HAIR SPRAY **SILKIENCE** 7 OZ. CAN **\$2.49**
DECONGESTANT-ANTI-HISTAMINE **ACTIFED TABLETS** 12 CT. PKG. **\$1.69**
NEW! CHEWY COUGH SQUARES **MEDIQUELL** 12 CT. PKG. **\$1.99**

TV SPECIAL

PAPER TOWELS **BRAWNY**

55c



JUMBO ROLL

DEL MONTE COUNTRY FAIR

DEL MONTE **TOMATO SAUCE** 6 8 OZ. CANS **\$1.00**
DEL MONTE TOMATO **CATSUP** 32 OZ. BTL. **99c**
DEL MONTE REG/NO SALT CUT **GREEN BEANS** 2 16 OZ. CANS **99c**
DEL MONTE WH. KERNEL/CR. ST. **GOLD CORN** 2 17 OZ. CANS **99c**
DEL MONTE EARLY GARDEN **SWEET PEAS** 2 17 OZ. CANS **99c**
DEL MONTE **SPINACH** 2 15 OZ. CANS **99c**
DEL MONTE **STEWED TOMATOES** 14 1/2 OZ. CAN **59c**
DEL MONTE YEL. CL. SLI/HLV. **PEACHES** 16 OZ. CAN **79c**
DEL MONTE HALVED BARTLETT **PEARS** 16 OZ. CAN **79c**
DEL MONTE FRUIT **COCKTAIL** 17 OZ. CAN **79c**
DEL MONTE CNU/CRU/SLI/SPRS. **PINEAPPLE** 15 1/2 OZ. CAN **59c**
DEL MONTE SEEDLESS **RAISINS** 15 OZ. BOX **89c**
DEL MONTE CHOC/VAN/BAN. **PUDDINGS** 4 CT. 5 OZ. CUPS **99c**

TV SPECIAL

NORTHERN BATHROOM **TISSUE**

99c



4 ROLL PKG.

TV SPECIAL

ASSORTED NORTHERN PAPER **NAPKINS**

69c



140 CT. PKG.

GROCERY SPECIALS

ALL GRINDS **FOLGER'S COFFEE** 1 LB. CAN **\$2.59**
FLAKED **FOLGER'S COFFEE** 13 OZ. CAN **\$1.99**
NABISCO DOBLE STUF COOKIES **OREO** 20 OZ. PKG. **\$1.99**
NABISCO PREMIUM SALTINE **CRACKERS** 16 OZ. PKG. **99c**
HORMEL NO BEAN **CHILI** 15 OZ. CAN **99c**
HORMEL WITH BEAN **CHILI** 15 OZ. CAN **79c**
KEN-L-RATION REGULAR OR CHEESE **BURGERS** 37 OZ. PKG. **\$1.59**
DOG FOOD CARNATION 70 CAL/RICH/MARSH./MILK **COCOA MIX** 12 CT. PKG. **\$1.59**
REGULAR OR LEMON SCENT **CASCADE** 35 OZ. PKG. **\$1.79**
LIQUID DETERGENT **IVORY** 22 OZ. BTL. **\$1.29**
10" OFF LABEL **ZEST** 2 5 OZ. BAR **\$1.00**
32 LARGE/48 MEDIUM/66 NEWBORN **LUVS DIAPERS** CONV. PACK **\$8.99**

TRIPLE FEATURE OF VALUES

BETTY CROCKER SUPER MOIST ASST. LAYER **CAKE MIXES** 18 OZ. PKG. **79c**
BETTY CROCKER ASST. RTS **FROSTINGS** 16 OZ. CAN **\$1.39**
BETTY CROCKER ASST. HAMBURGER **HELPERS** ASST. SIZES **\$1.09**
BETTY CROCKER SPECIALTY **POTATOES** 4.75 OZ. BOX **89c**
BETTY CROCKER APPLE CHERRY/BLUEBERRY **MUFFINS** 13 OZ. PKG. **\$1.29**
BREAKFAST CEREAL **CHEERIOS** 10 OZ. PKG. **\$1.29**
BETTY CROCKER ASSORTED FRUIT **ROLL-UPS** 4 OZ. PKG. **\$1.59**
BAKING MIX **BISQUICK** 40 OZ. PKG. **\$1.59**

FROZEN FOOD SPECIALS

ASSORTED FLAVORS JENO'S **PIZZAS** 10 OZ. PKG. **99c**
STILLWELL FROZEN **BREADED OKRA** 12 OZ. PKG. **\$1.29**
BIRDSEY REGULAR OR EXTRA CREAMY **COOL-WHIP** 8 OZ. BOWL **89c**
SHURFINE FROZEN **ORANGE JUICE** 2 6 OZ. CANS **99c**

W.A. Funderburk was the winner of the microwave.

Glen Markham won \$100 on the Dallas football game.



We're proud to give you more!

WE ACCEPT FOOD STAMPS
WE RESERVE THE RIGHT TO LIMIT QUANTITIES

THRIFTWAY



PRICES EFFECTIVE
SEPT. 30-OCT. 6, 1984