



THE WHEELER TIMES

(USPS 681-960)
VOLUME 49, NUMBER 14

THURSDAY, MARCH 10, 1983

SINGLE COPY 20¢

MURDER SUSPECT RETURNED TO WHEELER COUNTY JAIL



TEXAS STAFF PHOTO
SHOWN SHORTLY AFTER HIS ARRAIGNMENT on a charge of murder is Michael D. Anderson of Kelton. He is being led from the Justice of the Peace office in Shamrock by Wheeler County Sheriff's Deputies. Anderson has reportedly confessed to the execution-style slaying of Robert Eugene Hall.

Michael D. Anderson, 26, appeared before Justice of the Peace Herbert Stacy in Shamrock Monday, March 7, at 10:00 a.m.; he was charged with the death of Robert Eugene Hall, 28, of Sayre. Bond was denied and Anderson remains in Wheeler County Jail. The Grand Jury met Wednesday.

The body of Hall was found behind a farm house east of Twitty in the Kelton community. The body was removed from a shallow grave by the Wheeler County Sheriff's Department in the early hours of Wednesday, March 2. It is believed the body was placed in the newly dug ditch six to eight days earlier.

It is believed the death of Hall may be related to three previous murders in Beckham County, Oklahoma. According to reports, Hall was killed near Sayre, Okla., and transported by car to the shallow grave in Wheeler County.

According to an autopsy performed in Shamrock on Wednesday, the victim had been choked. A large-caliber weapon was used at close range to shoot four bullets into the back of Hall's head; the bullets exited through the face.

A warrant was issued for the arrest of Anderson by District Attorney Guy Hardin; the house where the body was found was the residence of Anderson. Anderson surrendered to Lake Charles, La., about 11:30 p.m. Wednesday. The murder suspect waived extradition and was returned to Wheeler County by the sheriff's deputies Saturday.

Wheeler county officers were given information on the possible location of the body around 10:30 p.m. Tuesday. Oklahoma authorities had obtained information concerning the murder from Donna Hall, ex-wife of the murder victim.

Ms. Hall, also scheduled to appear as a prosecution witness in a pending Beckham County, Okla., drug case, claimed to have been a witness to the "execution". Donna Hall is in protective custody in Houston—her location at the time information was given to authorities.



GIRL SCOUT COOKIES: Many individuals in the Wheeler and surrounding areas have been contacted to purchase Girl Scout Cookies by members of the three local Brownie troops. These little ladies took orders for 293 cases of cookies; proceeds to go to fund scout activities. 300 cases

of the goodies were ordered, so if you were not contacted, feel free to call a Brownie or one of the following leaders: Jenny Smith, 826-3252, Kathy Dunn, 826-3356, or Pam Hibler, 826-3161. Gill Johnson was the top salesperson of the 36 girls participating; she sold 272 boxes. Joannie Hibler sold

211 boxes of cookies. Distribution began Tuesday, March 1. Picking up their cookies Wednesday, March 2, were (l. to r.) Amanda Flanagan, Jennifer Brieman and Jennifer Stas; stacked in front of each of the girls are the cases of cookies they sold.

Council Holds Special Meeting

Special meeting of March 7, 1983 was opened by Mayor Louis C. Stas presenting bids on cleaning and painting of City's water storage tanks.

Three bids were submitted namely: Lupton Company; \$43,500.00; Water Tank Service Company, Inc.; \$76,000.00 and Kingman Painting and Sandblasting \$38,951.00. After reviewing bids, Kirven Roper motion to accept the low bid, David Cross second, motion carried.

Second reading of Ordinance #121 title "Alcoholic Beverages-Consumption and Open Containers" was read and passed, Jimmy Hill moving for its adoption and David Cross second.

Kirven Roper motion the meeting adjourn, David Cross second, motion carried.

Ambulance Has Twenty Calls

Twenty calls were answered in the month of February by the Wheeler Vol. Ambulance Service.

Six of these calls were cardiac related, two were sick calls, one O.B. patient, two diabetic calls, one auto accident with two injuries, one pickup rollover with three patients, one possible pulmonary embolism.

Other problems encountered were three neck and back injuries, one severe wound, two internal injuries, one chest injury, one head injury and one lacerated hand.

The ambulance was called to a plane crash site east of Wheeler which resulted in no injuries to the pilot.

Two calls were D.O.A. at Parkview. Six calls required code 3 responses.

The number of calls answered and the number of volunteer hours spent in patient care are as follows: Louis Stas, 9 calls, 8 hours; M.K. Christner, 17 calls, 30 hours; David Cross, 3 calls, 7 hours; Lee Hibler, 8 calls, 14 hours; Dwight Tipps, 4 calls, 11 hours; Lyndon Loyd, 4 calls, 5 hours; Frankie Jackson, 3 calls, 4 hours; Noveline Loyd, 1 call, 1 hour; Panna Jones, 1 call, 3 hours; Jim Jackson, 1 call, 1 hour.

A total of eighty-five hours were given. Combined with January, one hundred and eighty-five have been volunteered to forty-four patients.

Kyle Lasley Is Honor Student

The College of Natural Sciences at The University of Texas has named 417 students to the 1982 Fall Semester honor roll.

To be eligible for the Natural sciences honor roll, students must earn at least 52 grade points during the semester, passing all courses undertaken. Total grade points are calculated by multiplying the number of semester hours by the value of each grade (A equals 4 points).

The list, announced by Dean Robert E. Boyer, includes Michael Kyle Lasley, AMPLA CUM LAUDE.

Baby Picture Winners Named

The Annual baby picture contest sponsored by the Alpha Mu Alpha Chapter of Beta Sigma Phi was a huge success this year. There were over 80 entries from Wheeler, Shamrock, Allison, Mobeetie, Briscoe and from as far away as California. Judges for this years contest were a group of women from the Canadian Beta Sigma Phi chapter. None of these women new any of the children who were entered in this years contest. Photos were

Junior-Senior Volleyball

There will be a Jr. Sr. Volleyball Tournament April 14, 15, and 16 in the Briscoe gym. Call for More information. Amy Fiel 375-2458 or 375-2372 after 3:30, or call Mary Spradlin 375-2246.

CWE CHAT WITH EDITOR

By Louis C. Stas

The column is being written Tuesday, as I am scheduled to be in Austin Wednesday for a hearing on the Senate bill to create a Wheeler County Water District. The paper has to be almost complete before my co-workers, Patricia and Sue Ann Gibson will allow me to leave town.

The early deadline for the paper is also the reason for the Chamber of Commerce Banquet not being covered this week. The story and pictures will be carried in the March 17 edition of the Times.

Mobeetie and Briscoe Volunteer Fireman were called out for storm watch Thursday evening. The fog, hendered the watchers. Briscoe had a downpour of marble size hail with as much as four inches in the Zybach Community. Wheeler received 0.47 inches of moisture Thursday.

Have you ever noticed on the weather the clouds between Shamrock and Canadian are north or south of these towns—Wheeler and Briscoe simply do not exist on the maps. I called this to the attention of Channel 4—I asked if they knew we existed; they pointed out Wheeler's being listed at the introduction of their news. The storm Thursday evening was a repeat of the above mentioned situation. The other two stations have been known to do the same; but I happened to be watching "4" Thursday.

With the storm season approaching, our local volunteer firemen will be spending lots of time in their vehicles watching the clouds for our protection. Tell your firemen you appreciate their giving of their time for the protection of our citizens and communities.

From the "Times" staff and their families, "THANK YOU FELLOWS."

Ann Brown remained in the Intensive Care Unit of Northwest Texas Hospital in Amarillo Tuesday morning; she was reported critical but stable. Ann, the picture of health, was carried by ambulance from her home Sunday evening to Parkview and transferred very shortly to Amarillo. We have not been informed of the final results of the tests, but are happy to report she is alert, recognizes and jokes with family members.

Mona Guinn was transported by Ambulance Monday morning to Amarillo. She was in critical condition with respir-

RAPE CRISIS SEMINAR SCHEDULED FOR MAR 14

Children's Program
March 14 7PM Wheeler School Cafeteria

"Speak Up, Say No!" is a 6-minute filmstrip, which teaches children how to avoid sexual abuse. The filmstrip features a delightful little character, Penelope Peabody Mouse, who in a positive, nurturing way teaches children not only to beware of strangers, but to recognize and avoid sexual abuse from trusted friends.

In America today, there is a one-in-four chance that a little girl will be a victim of incest, child molestation, or rape by the time she is 18. There is a one-in-seven chance for little boys by age 16.

A high percentage of this sexual abuse comes from people a child knows (80% and more). Too many children will comply with inappropriate

requests because they are uninformed, or because they are unlucky enough to be in the presence of an adult who takes advantage of the child's innocence, needs, or fears.

A child's best defense against sexual abuse is:

1. a sense of his/her own power as a person
2. knowledge of what constitutes child sex abuse.
3. resources available for support and protection.

The Rape Crisis and Sexual Abuse Service of Amarillo presents an hour long program for children and their parents. The program is designed to inform children on what to do if they are ever in a situation where they feel powerless or afraid about an adult touching their body. The program also tells children how to avoid being a victim, through games and role playing.

* Children should be aware that sexual abuse is not their fault and that it's okay for them to report incidents to their parents, teachers, counselors, police, or a trusted adult.

* Children need to be informed that they have rights, and that those rights extend to their bodies. Talking about these things takes away the helplessness that comes with being a child and that is multiplied by being a victim.

For more information concerning the Rape Crisis and Sexual Abuse Service Children's Program, call 373-8022, Amarillo.

Sponsored by Wheeler Extension Homemakers Club

"Educational programs conducted by the Texas Agriculture Extension Service serve people of all ages regardless of socio-economic level, race, color, sex, religion or national origin."

Band Boosters Plan Tournery

The Mustang Band Booster's Volleyball Tournament is scheduled for this Thursday, Friday and Saturday, March 10, 11 and 12. Ladies games will begin at 5:00 p.m., and the final men's game will begin at 10:00 p.m. each evening. Sixteen women's teams and eight men's teams are entered in this years tournament. There will be a complete concession stand for your convenience. Admission will be one dollar at the door. Funds raised at the tournament will go toward the Wheeler Band's annual trip to Sandy Lake Park in Dallas. Come on out and enjoy three days of great volleyball and support the Mustang Band.

Hospital Notes

Old Admissions

- 7-22-81 Thomas Green
- 2-3-83 Lucy Neal
- 2-7 Hester Dodson
- 2-21 Fred Waters
- 2-24 Treca Lester
- 2-26 Richard Piercy
- 2-28 Wilma Risner
- Stella Fields
- Annabell Ware
- Howard Lohberger

New Admissions

- 3-1 Terri Kitchens
- W.A. Jordan
- Judy Richardson
- 3-2 Irma Wiebe
- Georgia Chevalier
- A.W. Burrell
- Charley Whitely
- Paula Britt
- 3-3 Ricahrd Kysar
- Leonard Gaines
- Lynette Hudson
- Gertrude Young
- 3-4 Yvonne Bradley
- Edwin Watts
- Hattie Grayson
- Wilma Risner
- Margaret Goodwin
- Eula Kuhlman
- Bridgett Wallace
- Glenn Tedder
- Lura Woods
- 3-7

Dismissals

- 3-1 Dorothy McIlhane
- Joyce Miller
- 3-2 Anna Harper
- Terri Kitchens
- Grace Porter
- Ed Smith
- A.O. Vanpool
- Shirea Bruster
- Cordie Shumate
- 3-4 Wilma Risner
- Doris Shirey
- William Jordan
- Charley Whitely
- Judy Richardson
- Clara Childress
- L.D. Stewart
- Elizabeth Stinson
- Louise Gaines
- Minerva Jones
- Icely Littrell
- 3-6 Margaret Goodwin
- A.W. Burrell
- Lynette Hudson
- 3-7 Mona Guinn
- Paula Britt

SHAMROCK Ladies Golf ASSOCIATION

The opening meeting will be held Saturday March 12th at the Irish Inn at 1:00.

LOCAL ELECTIONS SET

Wheeler City

The deadline for filing for the office of Mayor and two placed on the city council passed Wednesday, March 2, with one spot on the council open. Councilwoman Leona House has tossed her hat in the ring for the office of mayor. Roy Stribling has decided to seek re-election.

The place on the council now held by Leona House remained open with no Mobeetie citizens having for the position by the March 2 deadline. It will be necessary to write in an individual's in the April 2 balloting.

Roy Stribling is completing his first full two-year term and Leona House is completing her second two-year term.

Jimmy Selby, Mayor, has served on the city council since the incorporation of the City of Mobeetie in November, 1972. Selby announced his decision not to seek re-election to the office and Leona House filed for the office of Mayor.

Absentee voting in the election will begin March 14 and continue through March 29, 1983. The election will be Saturday, April 2.

Hospital Board

Filing closed Wednesday, March 9th, at 5 P.M. for three places on North Wheeler County Hospital District Board of Directors. The election will be held Saturday, April 2, 1983, in conjunction with the respective school districts.

Filing for re-election from the Mobeetie School District is Melvin May, from the Briscoe School District is Dean Tipps for his first full term, and Louis Grayson from the Allison School District. Absentee voting will begin March 16 and continue through March 31. Any qualified voter who will be unable to vote Saturday, April 2nd, at the regular polls, may cast his ballot at the office of the hospital Administrator between the hours of 8 A.M. and 5 P.M., Monday through Friday, within the above dates.

Wheeler ISD

Two incumbents have filed for two places on the Board of Trustees of the Wheeler Independent School District. Mrs. Vida Brown has filed for position 6 and Mr. Richard Brown has filed for Position 7. March 14 is the first day to vote absentee and March 29th is the last day of absentee voting. Absentee voting will take place in the Wheeler School Business Office between the hours of 8:00 AM

Kelton ISD

The regular election will be conducted on Saturday, April 2, 1983. The polls will open at 7:00 AM and close at 7:00 PM. Voting will be conducted in the Wheeler School Cafeteria.

Mobeetie City

The filing deadline for the Wheeler city council was Wednesday, March 2. Three places are to be filled in the Saturday, April 2, election.

Each person on the council has filed for their respective places.

Filing for re-election are Kirven Roper, place 1; Berniece Hall, place 3; and Jimmy Hall, place 5.

Kirven Roper has filed for re-election to his place on the council. He is completing his second term on the council as head of the transportation.

Mrs. Hall will be completing her fifth year on the council. She was elected in 1978 to fill an unexpired term and re-elected in 1979 and '81. She has been working with the park and swimming pool.

Jimmy Hill was appointed to the council in September, 1980; he has been overseeing the maintenance of the streets. Hill filed for his place on the council preceding the council meeting Monday, February 21.

Absentee balloting in the April 2 election will begin Monday, March 14; voters may cast their absentee ballots at the city office until Tuesday, March 29.

Mobeetie ISD

The Mobeetie Independent School District Board of Trustee Election will be held on April 2, 1983, from 7:00 A.M. to 7:00 P.M. in the foyer of the Mobeetie School Building. Three candidates will be running to fill 2 places on the Board for 3 year terms. The three candidates are: Gene White (incumbent), Jim Hamilton (incumbent), and Don Webb.

Austin Caldwell will serve as election judge with Eula Johnson and Maida Allen serving as clerks.

Registered voters can vote absentee in the Mobeetie School Superintendent's office between the hours of 8:00 A.M. to 4:00 P.M. from March 14, 1983, through March 29, 1983, or by requesting a ballot by mail addressed to Bob Mickey, Absentee Clerk, P.O. Box 197, Mobeetie, Texas 79061. W.F. Howard, Jr. will serve as Deputy Absentee Clerk.

Wheeler City

The deadline for filing for the office of Mayor and two placed on the city council passed Wednesday, March 2, with one spot on the council open. Councilwoman Leona House has tossed her hat in the ring for the office of mayor. Roy Stribling has decided to seek re-election.

The place on the council now held by Leona House remained open with no Mobeetie citizens having for the position by the March 2 deadline. It will be necessary to write in an individual's in the April 2 balloting.

Roy Stribling is completing his first full two-year term and Leona House is completing her second two-year term.

Jimmy Selby, Mayor, has served on the city council since the incorporation of the City of Mobeetie in November, 1972. Selby announced his decision not to seek re-election to the office and Leona House filed for the office of Mayor.

Absentee voting in the election will begin March 14 and continue through March 29, 1983. The election will be Saturday, April 2.

Hospital Board

Filing closed Wednesday, March 9th, at 5 P.M. for three places on North Wheeler County Hospital District Board of Directors. The election will be held Saturday, April 2, 1983, in conjunction with the respective school districts.

Filing for re-election from the Mobeetie School District is Melvin May, from the Briscoe School District is Dean Tipps for his first full term, and Louis Grayson from the Allison School District. Absentee voting will begin March 16 and continue through March 31. Any qualified voter who will be unable to vote Saturday, April 2nd, at the regular polls, may cast his ballot at the office of the hospital Administrator between the hours of 8 A.M. and 5 P.M., Monday through Friday, within the above dates.

Wheeler ISD

Two incumbents have filed for two places on the Board of Trustees of the Wheeler Independent School District. Mrs. Vida Brown has filed for position 6 and Mr. Richard Brown has filed for Position 7. March 14 is the first day to vote absentee and March 29th is the last day of absentee voting. Absentee voting will take place in the Wheeler School Business Office between the hours of 8:00 AM

Kelton ISD

The regular election will be conducted on Saturday, April 2, 1983. The polls will open at 7:00 AM and close at 7:00 PM. Voting will be conducted in the Wheeler School Cafeteria.

Mobeetie City

The filing deadline for the Wheeler city council was Wednesday, March 2. Three places are to be filled in the Saturday, April 2, election.

Each person on the council has filed for their respective places.

Filing for re-election are Kirven Roper, place 1; Berniece Hall, place 3; and Jimmy Hall, place 5.

Continued Page 7

Briscoe News

VEVOLA PARKER
Wednesday, March 2. March is coming in so far like a lamb. 1st and 2nd ideal days. Essie Finsterwalds granddaughters name is Doniva Patterson. Mable Parker has her potatoes planted. I saw some geese

going north Wednesday. Hope they know what they were doing.

Many thanks to Verna for her help in the news.

Sweetwater News said Sammy Atherton was home from Temple and Harold Austin saw her and Darv go by in their pickup. So hoping she came home doing o.k.

Kim Parker spent Thursday night with Joy and Misty Meadows in Briscoe. She spent Friday and Saturday with Brenda Hartley to help her celebrate her birthday.

More rain with some hail Friday night. Tolene Clark in Coal Creek Canyon, Colo., called Saturday. They had 18 inches of snow on the ground and it was snowing down. Heard on T.V. they got 4 more inches Saturday night.

Our visitors Saturday were Leroy and Janice Parker and Angie and Kim. On Sunday afternoon Zetha Doughery came and Eddie Bates and Brenda Hartley.

More rain Saturday night, Sunday an ideal day. T.V. says cigarettes are a acid drug and causing deaths galore.

Elbert and Ruby Zybach attended Shawn Zybachs birthday party Sunday night after church at his parents home, David and Bechie Zybach. His birthday was the 5th. So happy birthday to Shawn.

Ruby visited her sister Ardell George Thursday in Abraham Nursing Home in Canadian.

Ruby and Jane Ann Hall shopped in Pampa last Tuesday. Jane Ann was on her spring break in Wheeler School.

Mattie Jackson is still quilting up a storm.

Last Thursday Bob and Gena Zybach attended a bull sale in North Platt, Nebraska. The day of the sale it was real pretty weather, they came home Thursday.

Saturday Gena visited her folks Leonard and Zelma Reid in Wheeler.

Friday night, to help Shawn celebrate his birthday, Shane Goad, Ben Meadows and Darren Brown spent the night

with Shawn. Bechie said she thought they got 2 hours of sleep.

Then Sunday night after church he had another party of relatives. Ones there were Elbert and Ruby Zybach, Curtis and Jane Ann Hall and Kent, Kyndall and Kathy Murray and Kristi, Bevard and Mary Diane Dukes, Diedre, Andria and Caressa, Wayne and Kathy Zybach and Clay, Bob and Gena Zybach, Garland and Charlene Dukes

and Brandon, Joe and Nelda Dukes. This was at his home, David, Bechie Zybach and Christy and Kevin Ratliff. Shawn was 12 years old the 5th.

Monday morning, 7th, sun was out. Looks like spring but little nippy cool. Gena said they got 1 and three tenths in rain. On north they say it was more.

At R.L. and Rozena Zybachs Sunday for dinner were Lydia Bercey and traveling compan-

ion, Inga, Bro. and sister Ricky Pfeil, Helen Hunt, Mark and Annette Meek and Caleb.

All of Cecil and Jean Meadows children were at home Sunday and grandchildren. They received 4 inches of rain. Guess we all can plant garden when it dries up.

They brought Lester Hudson home from Amarillo hospital last Monday. Gertrude stayed four days with Mary and Lester. She went home Thursday. Mary said he was doing pretty good. All but would not eat enough. Ray and Rodney Hudson and Barbara Williams have been helping Mary.

Bob Markham visited us Monday morning. Ema and Hoyle Helton went to Amarillo last Monday visiting. She was at Harmon and Daphne Barry's last word.

K.D. Douthit went to Bridgeport, Texas to pick up trailers. This past week-end. He visited Clayton and Sherry Bradshaw at Azle, Texas. Then went to Tolar, Texas where he visited Peg and Don North. Fished some on Granbury Lake while he was down that way.

LouDean Douthit and Tressa Perry visited with Mrs. Lelan Luttrell in Amarillo this past week-end.

Billie and LeAndra Stuckey of Canadian visited the Bob Kinnamans and K.D. Douthits on Sunday.

Friends gathered for a covered dish luncheon at the home of Evelyn Meek, March 5th in honor of Jewell Holloman's birthday. Those who were present were Fanny Mae Bradstreet, Mary Finsterwald, Elva Wood, Ola Underwood, Claudie and Ina Mae Brotherton, Sandra Meek, Allene Stovall, David Martain and Jewell Holloman. Games and visiting were enjoyed. Annette Meek came in the afternoon.

Kaleb Meek and Sandra Meek spent Friday night with Evelyn. Other visitors Wednesday night at Evelyn's were Roy and Lois Meadows, Wayne and Tola Faye and Martha and J.P. Meek.

Martha Meek visited Mrs. Fields and Mrs. Lester in the hospital at Wheeler and she and J.P. helped some on the Mack Sides remodeling project at Twitty.

Joe Woodward visited his sister and family at Plainview over the weekend.

Guest preacher at Gageby Sunday was Rev. M.B. Smith of Pampa. He was a Sunday dinner guest of Roy and Lois Meadows. Also visiting was Evelyn Meek.

Dale Stinnett's family were Monday supper guests in the Willis Fillingim home. Paula Reed and children were Wednesday supper guests. Sunday dinner guests were Gaye Hale and children, Boyce Crownover and Chuck and Phoebe Hartline.

Singing guests at Gageby church Sunday night were Mark and Suzanne Wilson and Heather, besides several local specials.

Mary Stevenson, who had stayed with E.G. and Willa Fillingim quite a bit the past few years, passed away. The funeral was Monday at Canadian.

Suzanne Sims and Shane have moved to Wheeler to 205 E 9th Street.

David and Rita Pearson went to Stamford Monday on business. Dallas and Lindsey visited Willis and Verna Fillingim after school.

Sybil Nelson attended the

volleyball tourney at Briscoe Friday night and spent the night with Larry Nelson's family.

Sue Ratliff took Kevin to Shattuck Monday for a check-up. Sue Reames stayed with Keith and Mandy.

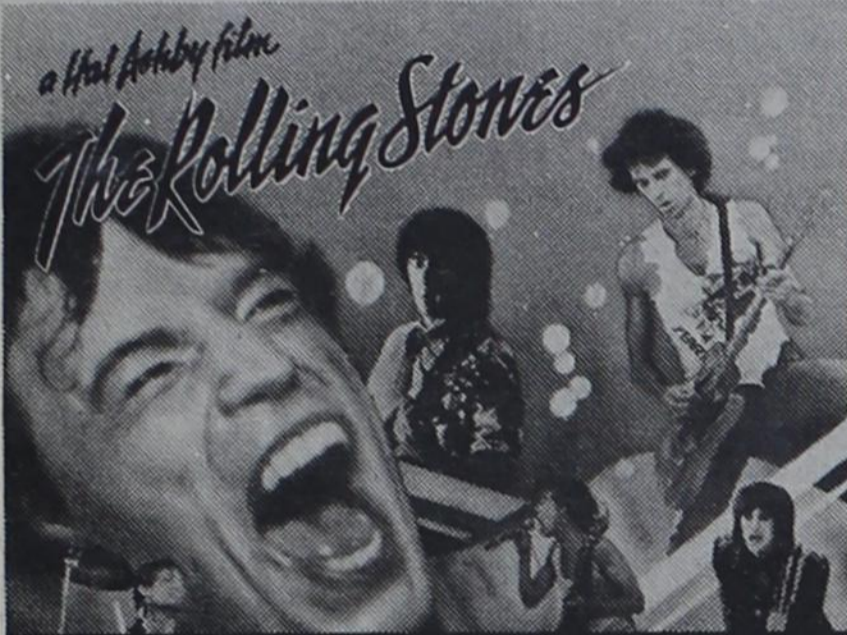
Gerald and Tina Reames and Tucker of Allison spent

Sunday with Bob Ratliff's family.

Boyce, Londa and Jodie Crownover visited their grandparents, Frank and Bess Crownover in Claude last weekend. Charles and LaJo went up on Sunday and brought them home and visited.

ROGUE THEATRE
Wheeler, Texas 79096
(806) 826 3078

3 DAYS ONLY!
FRIDAY—SATURDAY
—SUNDAY
MARCH 11-12 & 13
SHOWTIME 8:00 PM



Let's Spend the Night Together...live it!

PG, DOLBY STEREO, EMMASSY

Harvey's Family Restaurant

SPECIAL

March 10 thru March 16

STEAK FINGER BASKET \$1.99

WHEELER PLUMBING CO.

204 S. Main St.

New Construction — Remodel
Repair — Sewer Service

Phone: 826-5907

Free Estimates

MAX McQUEEN
P.O. BOX 754 — WHEELER, TEXAS

SOME INSURANCE AGENTS ARE LOCKED INTO ONE COMPANY.



NOT RIVES INSURANCE AGENCY

There are 2 ways to buy insurance. You can buy your insurance from a one-company agent. But he's locked into only those policies that his company sells. So his hands are tied.

Or you can buy your insurance from an Independent Insurance Agent...the more-than-one-company agent. You see, your Big "I" Independent Agent doesn't work for one company. We represent several. So we're free to give you an impartial, independent opinion and help advise you on the best coverage at the best price.



THE MORE-THAN-ONE-COMPANY INSURANCE AGENT.

RIVES INSURANCE AGENCY

115 West Texas St.
Phone: 826-3573



Come Fly with Case

Buy one of our new Case farm tractors — get round trip tickets for two, plus cash for your trip

free

free

fly to your choice of over 80 cities in continental U.S. or Canada* and get \$400 in travel cash from Case on your purchase of a new Case 1190, 1290, 1390, 1490 or 1690 tractor.

free

fly to your choice of 10 cities in Mexico, Bermuda or the Caribbean* and get \$800 in travel cash from Case on your purchase of a new Case 2090, 2290, 2390 or 2590 tractor.

free

fly to London, Paris, Amsterdam, Rome, Madrid, Zurich, Frankfurt or Hawaii* and get \$1,500 in travel cash from Case on your purchase of a new Case 4490, 4690 or 4890 tractor.

In addition, take Option #1 — Your choice of Case 8.8% A.P.R. financing for up to 48 months.
Or take Option #2 — No finance charges until March 1, 1984.
Or take Option #3 — A special cash option, in lieu of financing Options #1 and #2, on your new Case tractor purchase. (Cash options shown by model in table.)

ELIGIBLE MODEL	CASH OPTION	ELIGIBLE MODEL	CASH OPTION
1190	\$ 650	2290	\$2100
1290	\$ 750	2390	\$2500
1390	\$ 900	2590	\$2700
1490	\$1400	4490	\$3200
1690	\$1600	4690	\$4000
2090	\$1900	4890	\$4700

Also ask about eligible used farm tractors of any make, available with 8.8% A.P.R. financing for up to 42 months... or a waiver of finance charges until December 1, 1983. Free travel offers and cash option do not apply to used tractor purchases.
For 8.8% A.P.R. finance charges or waiver-of-finance-charges, on new or used tractors, purchase must be financed through J I Case Credit Corporation. Offers apply from date of purchase.

*Destinations and points of origin are limited to eligible locations. Travel Certificates for two (2) will be issued within 45 days of tractor purchase. Certificates must be redeemed for airline tickets by December 31, 1983 and cannot be redeemed for cash. Travel must be completed prior to March 1, 1984. Travel dates are subject to availability. Government Agencies Departments do not qualify. Offer void where prohibited by law. All offers valid March 1 thru April 30, 1983.

See us now for full details.

Miami Implement Company

SALES PARTS AND SERVICE
WEST HIGHWAY 60 - MIAMI, TEXAS - Phone 868-4501
WAYNE GREENHOUSE



Our Young People

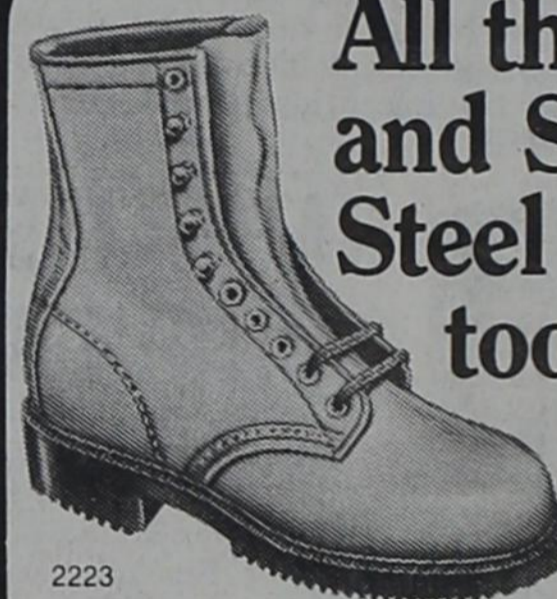


Dane Alan and Casey Lynette Martindale are the 4 year and 10 month old children of Kim and Melinda Martindale of Wellington, Texas. They are the grandchildren of Mr. and Mrs. Donald Reeves of Wheeler, and Mr. and Mrs. James Martindale of Dozier, Texas.

- For all your prescription and cosmetic needs!
- Gift Selections for all Occasions



All this... and Safety Steel Toes, too!



2223

8" full-grain, oil-tanned Velva Retan leather boots with an inch-wide steel shank, soft rolled top band, sweat-resistant insole, light, supple, tough, slip and oil-resistant blown Urethane sole and heel... and safety toe protection to boot!

You've earned your Wings!



Red Wings

B.J.'s WEARHOUSE

Drs. Ben Ed and Lee Ann Hillhouse

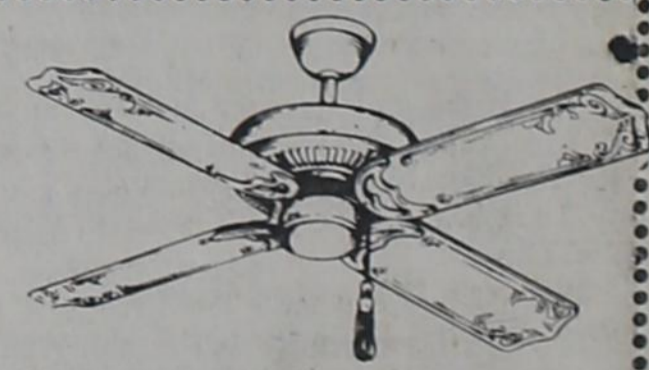
are proud to announce their recent purchase of the Wheeler Veterinary Clinic. We would like to express our thanks to all those who have supported and encouraged us, and look forward to continued service in the future.

Wheeler Veterinary Clinic

Office: 806/826-5821
Home: 806/826-3515

Hwy 152 West
Rt. 1, Box 254A
Wheeler, Texas 79096

SPECIAL SALE on CEILING FANS



OLD JACKSONVILLE

One of Finest Fans made in U.S.—15 Yr. Warranty All Models on Sale

MODEL	Reg. Price	Sale Price
SAVANNAH MODEL	\$250.00	\$175.00
RICHMOND MODEL (5—Blades)	\$260.00	\$185.00
VICKSBURG MODEL (Antique Silver)	\$319.00	\$200.00
FASCO WORLD FAIR MODEL (6 Blades—Life Time Warranty)	\$319.00	\$285.00
CHARLESTON	\$190.00	\$169.00

Still have some ENCON FANS left at Wholesale Prices

INSTALLATION AVAILABLE: E. M. Rives (806) 256-5250 Shamrock, Betty Rives (806) 826-3224 Wheeler

Lines from Linda

Linda Daughtry, CEA (Home Economics)

CHECKING OUT SOME NEW SAVINGS OPTIONS

If you are confused about all the new savings options available at the bank, you are not alone. Because Congress began to phase out restrictions on bank interest rates and balances in 1982, savings institutions now offer more choices to consumers. Deregulation is intended to make banks more competitive with money market funds.

The most recent deregulation allowed banks to offer super Now and money market accounts. The new accounts have enticed many savers back to the banks.

Before investing in super-Now and money market accounts, consumers should be aware of both their advantages and disadvantages.

Both super-Now and money market accounts have many common features. Each requires depositors to maintain an average monthly balance of \$2,500. If the average monthly balance drops below the amount, the account will earn only the 5 1/4 percent interest applied to regular Now accounts.

Both accounts are also federally insured up to \$100,000, and they allow check writing and telephone transfers. However, money market accounts limit the number of transfers and checks you can write each month.

Banks are allowed to guarantee an interest rate on both these accounts for up to one month. Some of the banks are planning to tie their rates to a market index.

The security and convenience of these accounts might entice you, but keep in mind that neither account is ideal for everyone. Unless you regularly maintain a checking balance of \$2,500, for example, you would probably do better with a regular Now account.

But money market accounts could be the right move if your savings has been idling away in a 5 1/4 percent passbook account. It may also be attractive if you have invested

Progressive Study Club

The Progressive Study Club met March 3, in the home of Iona May.

The meeting opened with the Club collect and Flag salute. Twelve members answered roll call. Iona May, Zennie Bailey, Leola Ferris, Paulene Hefley, Irma Kirk, Anne Gibbins, Curtis Moore, Ila Byers, Mildred Porter and Amelia Sims.

A note of thanks was read from the Care Center acknowledging the plant sent to them from the club.

There were discussions on how we could help with games at the Center.

Study Club Convention will be held on March 25 and 26 at Dalhart. We were urged to send in reservations early and also send the articles donated to be sold.

Ila Byers gave an interesting discussion of the Bible. Our guest speaker was Rev. David Cooper. His subject was archeology and the Bible.

The next meeting will be March 17, in the home of Curtis Moore.

changes in interest rates or have heavy early withdrawal penalties. Other fees or penalties may be created in the near future as banks attempt to compensate for paying higher interest rates by charging for services which were once provided free.

If you decide to use one of these new savings options, investigate thoroughly. Read the fine print in the ads and brochures promoting these

accounts. Be sure that fees and penalties won't cost you more than the higher interest rates merit. Educational programs conducted by the Texas Agricultural Extension Service serves people of all ages regardless of socio-economic level, race, color, sex, religion or national origin.

Texas, 2-8-83, 1.48ac Int in E 1/2 SE 1/4 & E 1/2 SW 1/4 Sec 4 A-4 ASSIGN OVERRID ROY--Herman L Glasby to Margaret J Glasby, 2-28-83 Sec 2 Blk 1 B&B

OL--Virginia Harvey Rogers to Crescent Energy Corp, 10-22-83 E 1/2 NE 1/4 Sec 82 Blk 17 MD--R Earl Stubblefield, etux to Dakkar Production Company, 1-19-83, All My int, 60ac Sec 47 Blk 23

AOL--R Earl Stubblefield, etux to Dakkar Production Company, 1-19-83, See Instrument AOL--R Earl Stubblefield, etal to Dakkar Production Company, 1-19-83, See Instrument

RELEASE--Woodward Production Credit Association to R Earl Stubblefield, 3-2-83, See Instrument

RELEASE--Woodward Production Credit Association to R Earl Stubblefield, 3-2-83, See Instrument

March 4, 1983

OL--E F Moran Inc to R C callan, 2-17-83, SW 1/4 Sec 68 Blk 13

OL--Garland W Moore, etal to Burrell Five, 7-22-82, 129.6ac NE Pt Sec 32 A-7

ROL--Phillips Petroleum Company to Adrian R Risner, etal, 1-18-83, See Instrument AOL--Hudson 1982 Oil and Gas Program A to Woods Petroleum Corporation, 2-4-83 See Instrument

C/C GUARDIANSHIP--James F O'Gorman, 2-14-83 CD--Wheeler Community Cemetery Association to Sam Hale Jr, etux, 3-4-83, SW 1/4 Lot 3 Blk D-9, Wheeler 1st District Clerks Filing

#8221 LaDean Taylor VS Tom Taylor-Rec. child support

Company to Adrian R Risner, etal, 1-18-83, See Instrument AOL--Hudson 1982 Oil and Gas Program A to Woods Petroleum Corporation, 2-4-83 See Instrument

C/C GUARDIANSHIP--James F O'Gorman, 2-14-83 CD--Wheeler Community Cemetery Association to Sam Hale Jr, etux, 3-4-83, SW 1/4 Lot 3 Blk D-9, Wheeler 1st District Clerks Filing

#8221 LaDean Taylor VS Tom Taylor-Rec. child support

Company to Adrian R Risner, etal, 1-18-83, See Instrument AOL--Hudson 1982 Oil and Gas Program A to Woods Petroleum Corporation, 2-4-83 See Instrument

C/C GUARDIANSHIP--James F O'Gorman, 2-14-83 CD--Wheeler Community Cemetery Association to Sam Hale Jr, etux, 3-4-83, SW 1/4 Lot 3 Blk D-9, Wheeler 1st District Clerks Filing

#8221 LaDean Taylor VS Tom Taylor-Rec. child support

Company to Adrian R Risner, etal, 1-18-83, See Instrument AOL--Hudson 1982 Oil and Gas Program A to Woods Petroleum Corporation, 2-4-83 See Instrument

C/C GUARDIANSHIP--James F O'Gorman, 2-14-83 CD--Wheeler Community Cemetery Association to Sam Hale Jr, etux, 3-4-83, SW 1/4 Lot 3 Blk D-9, Wheeler 1st District Clerks Filing

#8221 LaDean Taylor VS Tom Taylor-Rec. child support

Company to Adrian R Risner, etal, 1-18-83, See Instrument AOL--Hudson 1982 Oil and Gas Program A to Woods Petroleum Corporation, 2-4-83 See Instrument

C/C GUARDIANSHIP--James F O'Gorman, 2-14-83 CD--Wheeler Community Cemetery Association to Sam Hale Jr, etux, 3-4-83, SW 1/4 Lot 3 Blk D-9, Wheeler 1st District Clerks Filing

#8221 LaDean Taylor VS Tom Taylor-Rec. child support

Company to Adrian R Risner, etal, 1-18-83, See Instrument AOL--Hudson 1982 Oil and Gas Program A to Woods Petroleum Corporation, 2-4-83 See Instrument

C/C GUARDIANSHIP--James F O'Gorman, 2-14-83 CD--Wheeler Community Cemetery Association to Sam Hale Jr, etux, 3-4-83, SW 1/4 Lot 3 Blk D-9, Wheeler 1st District Clerks Filing

#8221 LaDean Taylor VS Tom Taylor-Rec. child support

Company to Adrian R Risner, etal, 1-18-83, See Instrument AOL--Hudson 1982 Oil and Gas Program A to Woods Petroleum Corporation, 2-4-83 See Instrument

C/C GUARDIANSHIP--James F O'Gorman, 2-14-83 CD--Wheeler Community Cemetery Association to Sam Hale Jr, etux, 3-4-83, SW 1/4 Lot 3 Blk D-9, Wheeler 1st District Clerks Filing

#8221 LaDean Taylor VS Tom Taylor-Rec. child support

LAKE PUMPS & PARISH WINDMILLS
PAUL HATHAWAY
Phone: 845-3661 or 845-3671
CLIFFORD WALSER Phone: 845-2444

BUILDING REMODELING
CARPENTERS
RAY DEAVER
RESIDENTIAL COMMERCIAL
P.O. Box 242
Miami, Texas 79059 806 / 868-3181

Just a bit dressy

The metal bit trim is a fashion symbol. Even he knows that. It highlights this popular moc-toe slip-on, giving it all-around versatility. Quality, fine fit, grow room, plus good long wear. Unit sole and heel. Black or Brown.

12 1/2—4
\$22.00

"Susie"... oh what a shoe

It's the party-pretty play shoe that girls adore. A scoop of a pump with bow-tied side lacing and stacked Cuban heel. So fitting, comfortable and toe-wigglingly roomy. Black or White.

12 1/2—4
\$27.00

FISH

Now is the time for pond and lake stocking. Channel Catfish, Hybrid Bluegill, Black Crappie, Fat Head Minnows, and White Amur. The Hybrid Blue Gills will reach the weight of 2 1/2-3 lbs. Delivery is Wednesday, March 23 at the times listed for the following towns and locations.

Spearman
Perryton Equity Exchange (Spearman Branch), 806/659-2420 — 4:30-5:30 P.M.

Canadian
Canadian Grain Coop, 806/323-6428 — 2:00-3:00 P.M.

Briscoe
Briscoe Grain Company, 806/375-2385 — 12:00-1:00 P.M.

Shamrock
C. & H. Supply, 806/256-2124 — 10:00-11:00 A.M.

Erick, OK
Farmers Coop Assoc., 405/526-3255 — 7:30-8:30 A.M.

Call your local feed store to place your order or call Dunn's Fish Farm collect 405/777-2202, P.O. Box 85, Fittstown, OK 74842

Court Records

LIST OF INSTRUMENTS FILED IN THE WHEELER COUNTY CLERKS OFFICE FOR THE WEEK OF FEBRUARY 28 THRU MARCH 4, 1983

AFF--Eva Mae Hickman, etvir to Carl W Hickman, etal, 2-25-83

ROL--Leede Exploration to Frankie Welty, etal, 2-18-83, Sec 30 A-7

OL--Patricia Givens to Jon P Waggoner, 1-20-83, SE 1/4 Sec 92, SW 1/4 Sec 93 Blk 17

AOL--Bill Spillman to Milton Wessel, 2-25-83, S 1/2 N 1/4 Sec 114 Blk 23

RDT--C E Winters, etux to R B Reeves, etux, 2-24-83, NE 1/4 Sec 27 Blk A-8

D--First Baptist Church of Allison to Normal Dyer, etux, 2-25-83, Lots 18, 19 Blk 4, Allison

DT--Normal Dyer, etux to First National Bank, Wheeler, 2-25-83, Lots 18, 19 Blk 4, Allison

AOL--John G Currie, etux to Tully R Currie, 2-18-83, Sec 36 Blk M-1

AOL--John G Currie, etux to Currie Currie and O'Neill, 2-18-83, Sec 37 Blk M-1

AOL--John G Currie, etux to Tully R Currie, 2-18-83, Sec 48 M-1

AOL--John G Currie, etux to Ginger Currie O'Neill, 2-18-83 Sec 1 Camp Co School

AOL--John G Currie, etux to Tully R Currie, 2-18-83, Sec 3 Blk C, S, R Cooper & Sec 4 Blk C, G W Nickel, Sec 2 & N60ac Sec 8 Blk C, Elisha Montgomery Survey

RATIF OL--Lefors Petroleum Company to Wheeler Oil Company, 2-25-83, E 1/2 SE 1/4 Sec 82 Blk 17

March 1, 1983

D--C G Tinsley, etux to Tinsley Company, 2-21-83, NW 1/4 Sec 79 Blk 17

GAS POOLING AGREE--Federal Land Bank of Texas to Record Owners, 2-10-83, Pt Sec 1 A-3

D--Lyman Gray Benson II to Rita Levelle Louis, 2-23-83, Lot 6 Blk 3, Shamrock, MontLew

DT--Rita Levelle Louis to Lyman Gray Benson II, 2-23-83, Lot 6 Blk 3, Shamrock, MontLew

ORDINANCE--City of Shamrock to the Public, 1-24-83, 125'x230.9' SE 1/4 Sec 57 Blk 17

ORDINANCE--City of Shamrock to the Public, 2-21-83, 145'x450' & 540'x32.5' S 1/4 Sec 57 Blk 17

MD--Orville Cunningham, etux to Karon Lynette Cunningham, 2-9-83, All our int Sec 71 Blk 23, ExSE 1/4

D--George Anderson, etal to Gene Booth, 2-23-83, Lots 7, 8 Blk 109, New Mobetie

AOL--Tom F March Inc to James Robert Hill, etal, 12-28-82, Sec 84 Blk A-5

AFF--Mildred Clark, etal to Claude J Hiltbrunner, etux, no date, 80'x100' Outlot 26, Shamrock

March 2, 1983

QCD--North State Bank of Amarillo to E J Reeves, 4-20-77, Lots 5,6,7 Blk 60, Shamrock, WSSA

ROL--Martin Exploration Management Corp to Lula Laycock, etal, 2-21-83, S 1/2 NW 1/4 Sec 3 Blk 27

AOL--Wheeler Oil Company to United Petrosearch Inc, 2-24-83, SE 1/4 Sec 88 Blk 23

AOL--Hunt Petroleum Corporation, etal to Great American Exploration Corporation, 1-20-83, SE 1/4 61A-7

Blk 4 B&B CD--Wheeler Community Cemetery Association to Travis Keelin, etux, 3-2-83, NE 1/4 Lot 3 Blk H-8, Wheeler 1st Addn

March 3, 1983

FIELD NOTES--O V Johnson to The Public, 8-6-82, Wheeler Hefley No 2

MD--Doyle Whitaker, Trustee to Petroleum Corporation of

Church Of The Nazarene

801 Alan L. Bean Blvd. Wheeler, Texas 79096 Telephone No. AC 806 826-5952

Pastor: Harold Wayne Moore

Sunday School 9:45 A.M. to 10:45 A.M. Sunday Morning Worship Service 11:00 A.M. Sunday Evening Worship Service 6:30 P.M. Wednesday Evening Bible Study 7:00 P.M. Everyone Welcome

Drs. Simmons & Simmons

OPTOMETRISTS 601 Canadian Wheeler 826-3465 Tuesday by appointment (Weather Permitting) Pampa 665-1791

THE SHIRT SHACK
114 East Texas Street
Letters & Transfers Jersey & T-Shirts Caps & Hat Pins
Phone: 826-5719

computer

Betty D. Brashears
Business or Home Computers

For Appointment Call: 665-3046

THIS TRACTOR HAS PULL.

Tremendous pulling power makes the Kubota M4500 diesel tractor ideal as a primary tractor on smaller farms. Power steering, independent PTO, position and draft control are all standard.

A choice of two- or four-wheel drive and a 474 PTO hp, 6-cylinder diesel engine give you the power you need.

Implements for the Kubota M4500 include a front loader, backhoe, disc harrow, rear blade, and posthole digger.

You can really pull your weight with this Kubota.

KUBOTA
We're looking for work.
MIAMI IMPLEMENT COMPANY
SALES PARTS AND SERVICE
WEST HIGHWAY 60 - MIAMI, TEXAS - Phone 868-4501
WAYNE GREENHOUSE

Realty of the Southwest

HOME FOR SALE FOR SALE: 4 Bedroom home. Excellent location. Close to school, close to town. Financing Available.

Nice home priced in the 20's for sale. Must see to appreciate.

HOUSE & 4 LOTS FOR SALE: House has large living and dining area, 3 bedrooms and large bath.

Two bedroom house, 7 lots, steel corral and barn for sale. Owner has moved and must sell.

4 bedroom home with central heat and air conditioning. Home is on a 100' x 350' lot.

2 new homes under construction.

FOR SALE: House and 17 acres located just outside the city limits. Also, has smaller house, horse barn, arena and a small shop.

MOTEL FOR SALE: Excellent business opportunity.

WE NEED YOUR LISTINGS!

John Norman, Broker 806/826-3573—Office
Don Rives, Salesman 826-3283—Home
Lona Williams, Saleslady 826-3341—Home

Refreshments were served to Mary Margaret Dodd, Essie Finsterwald, Evelyn Meek, Effie Renfro, Emma Rogers, and Irene Zybach.

PERSONAL

Vinita Hopkins and her husband, Dr. Tom Hopkins, came to visit Vinita's mother, Sallie Harris, and their aunt Nellie Horton. They came Friday and returned home to Albuquerque Monday, March 1.

They took Sallie to a birthday dinner at the Stagecoach Inn Restaurant Saturday.



ENGAGEMENT ANNOUNCEMENT

Mr. and Mrs. Travis Vecera of Crowell announce the engagement and forthcoming marriage of their daughter, Hedi Lyn, to Samuel Careton Schaffer, son of Mr. and Mrs. Sam Schaffer of Wellington. The couple will exchange wedding vows at 8 P.M., May 28th in the First United Methodist Church in Crowell with the Reverend Steve McElroy of Slaton, officiating.

Miss Verera is a 1979 graduate of Crowell High School and is attending West Texas State University where she is a candidate for graduation in May.

A 1979 graduate of Wheeler High School, Schaffer attended Cisco Jr. College and West Texas State University and is now employed with Greenbelt Electric Cooperative in Wheeler.

Briscoe Ext. Club Meeting

The Briscoe Extension Homemakers Club met March 1, 1983 in the club house with Edwy Jackson as hostess. After our opening exercises we enjoyed a very good program presented by Evelyn Meek.

The subject was the Legal Rights for Women. We were enlightened on many points that most of us just take for granted. This made us aware that we should look into things and ask more questions and really understand how our laws work, to really make them work for us women.

Refreshments were served to Mary Margaret Dodd, Essie Finsterwald, Evelyn Meek, Effie Renfro, Emma Rogers, and Irene Zybach.

19 Thursday, Mar. 24

KING SIZE WALLET CREATIVE COLOR PORTRAITS FOR ONLY **99¢**

Kodak paper. For a Good Look at the Times of Your Life.

GIVE OUR PICTURES FOR EASTER

NO LIMIT

Extra Charge for GROUPS

WE USE KODAK PAPER

SHUGART'S inc. ASK About Our FREE 8 x 10 OFFER

COLOR PHOTOS

BEN FRANKLIN
408 S. Main Phone: 826-5668
Wheeler, Texas

Want Ads

CLASSIFIED RATES:

All classified ads must be paid in advance, except for open ledger account customers.

Charges are 15c per word. Minimum charge is \$1.50.

Card of Thanks charges will be \$3.75.

ADVERTISING DEADLINES

Classifieds: 5:00 p.m. Mon.
Display: 5:00 p.m. Mon.

DOG GROOMING: Schnauzers, Cocker Spaniels, Poodle grooming. All matted dogs welcome. Reasonable rates. Will pick up and deliver. Call 826-5265 after 6:00 p.m.

CAKES
CATERING SERVICE FOR
Wedding & Anniversaries
Cathy Hunt—375-2391
Kay Luttrell—375-2421

FOR SALE: 1977 Impala Travel Trailer. 28 foot, self contained, air conditioned. Call 826-3168, after 5:30 call 826-5253.

SPARLIN'S
WINCH SERVICE & BACKHOE
Phone: 826-5898

NEW SPRING FABRICS ARRIVED. ALL FALL FABRICS BELOW COST.
Some \$1.00 yard
CITY CLEANERS & FABRICS
400 S. MAIN
WHEELER, TEXAS

REAL ESTATE
We need your listings.
Baxter & Marshall Inc.
Call: 826-3112 or 826-3238

WANTED: Mature female to babysit in my home or yours. Hours are short, 3 to 4 days a week. Our girls are 3 years and 5 months. Call 826-3181.

RICHARD'S
UPHOLSTERY
Furniture, etc.
Phone: 845-2761
Mobeetie

LIGHTS AND SIGHTS
CasaBlanca Ceiling fans, Lamps, Lampshades, Lighting Fixtures, Gift Items, Lamp Parts & Bulbs, Curio and Gun Cabinets.

Unique Items for YOUR HOME!
665-8341
107 N. Cuyler
Downtown Pampa

FOR RENT: 2 apartments, 2 bedroom rent houses. Call 826-3184. Carrol Adams. rtn

Janet's
Tax Service & Bookkeeping
will be opening Feb. 8, 1983
My Service May Save You Money And Help You Get Your Refund Quickly.
Appointment's Only
Phone: 826-3029
Address: 208 West 8th

FOR SALE: 180x140 lot in excellent location near city park. Call 826-3519, after 5:30 call 256-2912.

DEALER REPO
3 bedroom mobile home, excellent condition. Woodsiding, storm windows, air etc. Assume payments of \$267.57 with approved credit.
FIRST QUALITY MOBILE HOMES
Hlway 60 West
665-0715
Pampa, Texas

HOLCOMB
Trailer Park
West 12th Street
Phone 806/826-5810 or 827-5942

FOR SALE: 1979 Chevrolet Camaro Berlinetta, RED. To see, Call 826-5719.

FOR SALE: 30 ft. Hillsboro Field Cultivator and 1 Ford 4000 Diesel Tractor. Phone 806/256-5179

WILL HAUL
TREE LIMBS
FURNITURE
JUNK
You Call—Will Haul
Weekdays Phone:
The Wheeler Times
826-3123
After 5:00 & Saturdays
Phone: 826-3221

1,000 FACTORY REBATE
Name brand, 2 or 3 bedroom, Northern built mobile homes. If down payment has been your problem, we can help. Easy bank rate terms, large selection.

FIRST QUALITY MOBILE HOMES

R. C. CALLAN CO.
OIL, GAS and MINERALS
Wheeler County, Texas

WE ARE INTERESTED IN LEASING YOUR OIL & GAS LEASES, PURCHASING YOUR MINERALS, ROYALTIES OR O.R.R.I.

WE HAVE FUNDS AVAILABLE TO PURCHASE YOUR PRODUCING MINERALS.

Amarillo Office Box 7473 (806) 352-7891 (806) 355-9724 Amarillo, Texas 79109

Wheeler Office 204 E. Texas St. (806) 826-5522 Wheeler, Texas 79096

PRESTIDGE GOLDEN SPREAD
BACK HOE SERVICE
— BULLDOZING —
"Good Clean Dirt Work"
INSURED

Choctaw & Laville
Shamrock, Tex. Phone: 256-2509

DILFIELD & DOMESTIC

THE BUSINESS DIRECTORY

MEMBER 1982
TEXAS PRESS ASSOCIATION

THE WHEELER TIMES

Entered as second-class matter December 18, 1933, at the Post Office at Wheeler, Texas 79096, under the act March 3, 1879.

Louis C. Stas, Owner and Publisher

SUBSCRIPTION RATES:
Wheeler County...\$7.75 Outside County...\$8.75

PAUL'S REAL ESTATE
Houses or Land
Paul Topper
200 S. Canadian St.
806/826-5237
Wheeler, Tx.

CITY DUMP GROUND HOURS
Monday, Tuesday, Thursday, Friday and Saturday
8:30 A.M. til 5:30 P.M.
Closed on Wednesday

GUARANTEED AUTO GLASS INSTALLATION
& Body Repair
CROSS CAR CENTER
Phone: 826-5515
Wheeler, Texas

Let Me Write It...
GEO. RICHARDSON
All Types Of INSURANCE

WHEELER LUMBER CO.
Permanent year-round protection. Changeable from inside. Easy to clean...proofer-proof. Eliminates drafts...Cuts fuel bills....

WHEELER LUMBER CO.
Phone 826-5543 Wheeler, Texas
Fine Service for Fine People

Wheeler Lodge No. 1099
A. F. & A. M.
MONDAY
7:30 P.M.
Robert Lane, Sec'y.
Members Urged To Attend.
Visitors Welcome.

WHEELER REDI-MIX
REDI-MIX CONCRETE SAND
Washed Gravel—All Sizes
Office Hours: 7:30 to 5:00
Phone 806-826-3223

BURRELL OIL & GAS PROPERTIES
P.O. Box 23
Wheeler, Texas 79096
Ph. 806/826-3519
(if busy) 826-3529

Leases, Min. & Roy. Bought
Ask for Mark or A. W.

Complete Mobil Home Service
MOVING — LEVELING
ANCHORING — SKIRTING
Call 826-5692
George Harris

FRESH EGGS FOR SALE: 75 cents doz. 826-3010.

FOR SALE: 14x70, 2 bedroom, 2 bath, 1973 Alamo Trailer-house. Contact Eddy Walker 375-2349 or 375-2471

HOUSE: 3 Bedroom 1 1/2 bath, bricked, covered patio and garage, fenced. Phone 826-3298

BUSTERS
Good Used Ice Boxes
Pool Table
Washers & Dryers
Baby Beds
Phone: 826-3072

INCOME TAXES PREPARED
Federal and Oklahoma
1 Block East of Kelton School
Elaine Keelin
826-5270

MAKE OFFER
2 story, 4 bedrooms, 2 living areas, 2 baths, formal dining room, fireplace, zoned heat & air, approx. 2850 sq. ft. living area, 2 car garage. Detached recreation room with brick fireplace, serving bar, and indoor grill, storage area. Separate workshop building, storage cellar. 150x150 ft. lot with trees and garden areas. Call 826-3077 or 1-256-2681.

FOR SALE BY OWNER: 1208 Mobeetie Street, 3 bedroom, 2 bath brick home, large utility room, large garage, elec. door opener, central heat & air, ceiling fans in 3 rooms, 2 years old. 826-3350 Johnny Baird

Trim off Pounds with **GOBESE GRAPEFRUIT EXTRA STRENGTH CAPSULES AND E-VAP TABLETS.**
HYLANDS PHARMACY

For Sale
2 year old and under registered Black-Angus Bulls. 806/256-3247. Also Beefmaster Bulls.

H & S CORPORATION
Plumbing, Heating, Air Conditioning, Electrical Service Calls or New Work.
Phone 806/826-3212

FOR SALE: 3 Bedroom, 1 1/2 bath, bricked, covered patio and garage, fenced. Phone 826-3298

FOR SALE: Lowery Tince Jenny Organ, Yamaha 125 Organ, still in warranty. Prices start \$595. Call 806/355-2656.

FOR SALE: 1980 Bronco XLT. Call after 5:00, 826-3070

LAND FOR SALE: 15 miles East of Wheeler. Block A-3, Sec 1, 164 7/8 acres. 405/526-3134.

FOR SALE: 1981 Ford Mercury car. Good condition. Take over payments. 826-3242

Notice
NOTICE FOR SEALED BIDS
The Allison Volunteer Fire Department is accepting bids for scales and office, or scales only to be moved. That property being the South 1/2 of lots 14&15 in Block 1 Section 6 Township of Allison, R&E Survey. Scales made by Howe with 40,000 lb weight limit. Inspection can be made by contacting Bob Dukes or Dean Keys. Bids will be accepted until 7:00 p.m. March 10, 1983. Send bids to Allison Volunteer Fire Department % Kyndal Murray Box 115, Allison Tx. 79003. We reserve the right to accept or reject any or all bids.

FOR RENT: Nice, 2 bedroom apartment. Contact Van Baize 826-5686 after 5:00.

GOING BACK TO SCHOOL, MUST SELL: 1982 14x70 Liberty trailer. Call 826-5820.

FOR SALE: 1979 Town & Country Mobile Home 14x76 two bedroom, 8ft beam ceiling. 323-6053.

FOR SALE: 14x74 Oakridge mobil home. 3 bedroom, 2 bath. Day 806/375-2385, Night 806/826-3453

FEEL BETTER FAST, WE HAVE B-15, at HYLANDS PHARMACY

FOR SALE: 1982 Ford Econoline Van, Customized, Excellent condition, 6600 miles, 826-3352. For Sale or ???

Carpenter Work
REMODELING, REPAIRS
PAINTING, STONE VENEER, ACUSTIC CEILINGS, ELECTRICAL & PLUMBING
Call: Tom Molloy
826-3331

FOR SALE: Ranch style love-seat 826-3009. Call after 4. 2tp

LAND FOR SALE
Sec 231 Hemphill County, Block C, G and M and MB and A Survey. For information, Roger Harrison 405/654-2142. Roy Harrison 405/654-1894.

CUSTOM ROTO TILLING,
Call Wesley Bradstreet 826-5633

FOR SALE
1979 Trans Am 6.6 brown with goldbird, excellent condition. 36,500 original miles, one adult owner, new mags and tires, AM FM cassette, Texas tags \$6,475.00 Call collect 405/243-1189.

PAMPA POOL & SPA
"We sell Hot Tubs, Spas, Swimming Pools & Saunas"
"We Service"
1312 N. Hobart
Phone 665-6218

FOR SALE: Suzuki 60 or trade for pool table. Call 826-5646 after 5.

WANTED: Good, round kitchen table with chairs and water cooler. 826-3473.

OPEN
Books and things. Almost all handmade items. Starting March 1 8:30 to 6:00 Tues. thru Sat. closed Sun. and Mon. at 605 Comanche. 50 cents a ticket to win a \$105 ladies watch. Come by.

NOTICE
After March 1, I, Lynn Sims, will not be liable for any debts by Suzanne Sims.

HELP WANTED
STATE DEPARTMENT OF HIGHWAYS & PUBLIC TRANSPORTATION has a job opening for Maintenance Technician I in the Wheeler County Maintenance Section at Shamrock, TX.

Basic work involved is the general maintenance and repair of highways. A commercial operator's license will be required. Beginning pay is \$5.00 per hour.

Applications will be received through March 24, 1983. Apply in person to Mr. Joe B. Hall at this office 1 block south of U.S. 66 on Missouri St., in Shamrock, TX between 8:00 to 8:30 A.M., or 4:00 to 4:30 P.M., Monday through Friday.

Notice
For Sale by Sealed Bid
1—1978 4-dr. Ford
VIN #8P63H117856

Wheeler County Commissioners Court will receive sealed bids until 10:00 A.M., March 14, 1983 at which time they will be opened. Submit all bids to the County Judge's Office, Wheeler County Court House. The County reserves the right to accept or reject any or all bids.

NOTICE
ADVERTISEMENT FOR BIDS
Sealed proposals for a Bus Barn for Briscoe Independent School District will be accepted until 7:30 P.M., March 14, 1983 then opened and read aloud in the boardroom of Briscoe I.S.D. Proposals shall be addressed to Board of Trustees, Briscoe Independent School District, Box 399, Briscoe, Texas 79011.

Plans and specifications may be examined at the following locations: Panhandle Wheat Growers Association, 6300 S. Washington, Amarillo, Texas, or Briscoe Independent School District, Briscoe, Texas.

Plans are available in the office of the Briscoe Independent School District, and may be procured upon deposit of Fifty (\$50.00) dollars per set to each bidding General Contractor as a guarantee of the safe return of the Plans and Specifications. The full amount of this deposit will be returned to each bidding General Contractor immediately upon return of the Plans and Specifications IN GOOD CONDITION and within ten (10) days after the bid date. Any and all copies of the Drawings and Specifications may be obtained from Briscoe I.S.D., Briscoe, Texas, upon the payment of \$20.00 (not refundable) to defray printing cost. All drawings and specifications shall be returned to the Owner within ten (10) days after bidding except those plans and specifications that have been purchased.

A Cashier's Check or acceptable Bidder's Bond, payable to the Briscoe Independent School District, in an amount not less than five percent (5%) of the largest possible total for the bid submitted must accompany each proposal as a guarantee that, if awarded the contract, the bidder will promptly enter into a contract and execute such bonds as may be required.

The Owner reserves the right to waive any informalities or reject any and all bids.

All proposals shall remain in effect for a period of thirty (30) days from date of receipt unless sooner returned.

Briscoe Ind. School District
NOTICE OF SALE OF ABANDONED MOTOR VEHICLE

TO WHOM IT MAY CONCERN:
BY VIRTUE OF the provisions of the Texas Abandoned Motor Vehicle Act (Art. 6687-9, Vernon's Annotated Civ. Stat.), the following described motor vehicle after being declared abandoned, and upon prescribed notice was not reclaimed by the last known registered owner or lienholder was delivered to me as Wheeler County Sheriff and I will offer for sale to the highest bidder for cash in hand at 10 AM, on the 15th day of March A.D. 1983 located at Pete Burton Ford, Highway 152, Wheeler, Texas 79096.

The following described motor vehicle, to wit:
1. 1970 Ford—VIN #OF66Y15-0555
2. 1969 Chevrolet 4-door—VIN #164399J241210

Doyle Ramsey, Sheriff
NOTICE OF TRUSTEE ELECTION

The Allison Independent School District Board of Trustees hereby gives notice of an election to be held on April 2, 1983, for the purpose of electing two School Trustees.

Absentee voting by personal appearance will begin on 14th, March, 1983, and continue through 29th, March, 1983, from 8:30 a.m. to 4:00 p.m. on each day which is not a Saturday, Sunday, or an official state holiday.

Absentee voting in person shall be conducted at The Tax Office located with Allison I.S.D. Applications for absentee ballots by mail should be mailed to Louise Coulter, Box 50 Allison, Texas 79003.

The Polling places designated below will be open from 7:00 a.m. to 7:00 p.m. on the day of the election.
Pct. No. 2—Vocational Agriculture Building.

FOR SALE: 1979 Town & Country Mobile home. 14x76, 2 bedroom, 8 ft. beamed ceiling, extra nice. 323-6053.

GARAGE SALE: Saturday 9:00-3:00 1004 Main Street. Baby things, misc. 1tp

REMEMBER...

Last Spring when that tierd rottotiller would not start? This year be smart and call...

Wheeler Lawnmower...

and beat the Spring rush. For free pickup and delivery

Call: 826-5703

If no answer please call back.

ORDINANCE #121
An Ordinance supplementing chapter 15, creating article 2, sections 15-12 through 15-18 of the code of ordinances of the City of Wheeler, Texas, entitled "Alcoholic beverages-consumption and open containers" making it unlawful to consume an alcoholic beverage or to be in possession of an open container of an alcoholic beverage with the intent to consume said alcoholic beverage upon the public streets, highways, alleys, sidewalks, and parking lots within the corporate limits of the City of Wheeler, Texas; defining terms; declaring possession of an open container of an alcoholic beverage prima facie evidence of an intent to consume said alcoholic beverage; declaring a violation of this ordinance to be a misdemeanor and providing a penalty upon conviction thereof; providing for a savings clause, and providing for publication.

THANK YOU
We take this opportunity to express our love and appreciation to all who were so thoughtful and concerned during my illness. Our special thanks for the flowers, food, visits, and every act of kindness shown, especially for the prayers and words of encouragement. We are grateful for the doctors, nurses and the staff. For all these things we are very thankful and humble.
Bud, Novella and Family

Care Center Comments

LAURA GUTHRIE
Things are going beautifully at the Center. On Monday, fourteen women met in the Sun Room for preliminaries of organizing an Auxiliary for work with the Center's staff. The Fuller report is elsewhere in the paper. Paula Britt was chosen to act as Moderator of the meetings until Officers can be elected. Rosemary was elected as Secretary Pro. Tem. A nominating committee was nominated and elected. Those chosen were Mary Mitchell, Rosemary Vise and Vida Brown. Various activities which the organization can foster were discussed, with plans to put such programs into operation. Mr. Hyatt, the Administrator, and Pat McWhorter, the Recreation Director were present and made helpful recommendations.

Those present, in addition to those named above are Ruth Taylor, Doraene Owen, Elva Wood, Mary Jones, Pam Hibler, Mary Finsterwald, Mary Britt, Kim Vise, and myself.

So far we have been appealing to the women and children for help. Now we have something going that will need the help of the men. Mr. Hyatt, with the help he can get planning a vegetable garden and plantings for the lawn. I once heard my friend, Mrs. H.M. Wiley say "Gardeners must have a strong back and a weak mind." Most of us could qualify with latter requirement, but not so many of us have a strong back. Mr. Hyatt has been using a tractor to do a bit of leveling, but what he needs is a lot of men with tractors, particularly a rottotiller, shovels, hoes and rakes.

Any donations of plants or money for same would be appreciated. I'm wondering if you men could lend a hand before you are too far into your own spring work. Any time of the year retired men might enjoy helping with the gardening at the Care Center. Now, don't all of you rush over right after breakfast. It might be better to call Mr. Hyatt and let him lay out the work to be done.

Church last Sunday was directed by the Mobeetie Baptist Church. Rev. Ralph Hovey led the devotional. Randy McCurley led the singing, and Carolyn May was at the piano. Solos were given by Alesha Moffett, Shelia Moffett and Carolyn May. A number of Mobeetie people were in attendance, as well as a few local people.

Four new porch or lawn swings have been placed at the Center for the enjoyment of the residents. Mr. Delmar donated his time and labor to the construction. I'm sure we would all like to swing a little while some fine day.

Tree Planting Requires Care
One of the most important steps of establishing a wind-break is proper planting. The following steps will help in establishment.

1. Select a time when ground is moist and not frozen.
2. Kill all vegetation at least three feet from planting site.
3. Dig hole about one foot deep and one and one-half foot across.
4. Place fertilizer pill (if used) in hole and push into soil and cover with soil.
5. Place original ground line of tree about four inches below ground line of hole. BE SURE ROOTS ARE NOT CURLED UP!!!
6. Fill hole around tree to cover about one-half of root system.
7. Pack soil around roots with hand to remove all air pockets and fill hole with water.
8. After water has soaked in, fill in soil to original ground line of tree and pack with hand.
9. Bevel out edge of hole and utilize unused soil to build "saucer" around entire plant. This saucer will be about five feet across and eight inches deep.
10. Fill saucer with water and do this at least twice each week during the summer and repeat at least once each week during winter if tree is an evergreen.
11. Use of regular fertilizer is not recommended when planting since over-fertilization can easily kill tree. However, use of time release fertilizer pills is recommended as long as they do not touch roots.

Sweetwater News

MRS. JOE FLOWERS

Spring is peeking around the corner. Apricots are blooming, tulips coming thru while the jonquils are in blossom. Had our first tornado warning. Got to clear the cellar steps in case we need to dive in.

Our green thumb started twitching. We planted the onions and potatoes plus a bed of garden sass. Went up to see the Johnny Reeds the other day and Wayne was starting to set out 31 bunches of onions. Can you imagine that many? Four nearly did us in. Gave the fever.

That was a Sunday. I remember long ago I hoed my garden on Sunday and the preacher made a special trip over to tell me I was going to get the whole county hailed out. Don't think Wayne has had any repercussions yet.

Oh, yes, about the epsom salts. We always set out tomatoes in a post hole. In the bottom of the hole I sprinkled a teaspoon of salts and a pinch of sulphur. Supposed to give them something they need. Anyway, ours really did thrive.

Mr. and Mrs. Mark French (Ray's boy) has moved in the Lola French house last week. Carl and Jody Johnston, Jo and Randy McEntire visited over the weekend with their grandparents Mr. and Mrs. Durwood York. Also there was Troy Haggard.

Funeral services were last Monday at Shamrock for Oscar Stutzman. Burial was at Bufalo Cemetery. He was the father of our neighbor Judy Sipton.

Services are tomorrow for Wiley Roberts of Erick. Wiley is well known in this area. He delivered kerosene to people when they used it to cook and heat. Later became a gasoline dealer.

Saw a lot of cotton at the gin this week. Pretty late.

We attended a birthday party at Erick Saturday honoring Lela Lakey on her 94th birthday. She looked so sweet and pretty. Was having a ball. Juanita promised to bake all of us a cake when we get that old. Ida Farfal of Chile was out to spend the weekend with Mr. and Mrs. Ray Pickering. She is a student at SJC and the foster daughter of the Charles Alexanders.

See where Brazil has a tree that flows a fuel like diesel. Can pour it in your tank and take off.

The Jack McArthurs and Laquense went to OKC to see Bro. McMullen at the Veterans Hospital.

Bethal Davis is in New Jersey visiting Louise and Sam.

Mr. and Mrs. Kenneth Rutherford spent the weekend with Mr. and Mrs. O.V. Bailey at Pampa.

Betty Brothers helped the band out Tuesday at Sayre. She'd had a letter from Bully

Debra Hill, Ruby Robinson, and Iona Miller. Meridian homemaker of the year was Ida May.

From the Sunny Point Club were Virgie Kahoa, Leishchen Friedrichson, Ruthie Atkinson, and Lorene Bryan. Virgie was their homemaker of the year. The county homemaker was Ruth Blacketter of the Haycreek Club.

We have four clubs that we claim for SW but I sometimes forget to mention them.

Mellie Stone has had surgery at Shamrock, Jeff Parker is home from Sayre, Maggie Fay Green is back in an OKC hospital.

Hortense Madden, and Sam and Lilly Mae Davis visited Sunday afternoon with Flossie Maddoux.

The Mayfield ENC sponsored a safety poster contest for the pupils of the 6th, 7th, and 8th grade. First grade winners were Stacey Gordon, Tina Nunley, 2nd place were Robert Thompson, Katie McArthur, and Jennifer Baker. 3rd place were Cassie Smith, Janet Sanve, Jo McEntire, and Jo Marie Hagerman.

See that Wheeler would like for Beckham Co. to pay the calls they make in that county. It seems that the folks who need them should be glad to pay them. Most of the firemen are volunteers and this is a wonderful service. I think they go when called without asking if expense money will come. Not every community is that lucky. Many a house has burned in other places because the firetrucks would only go a certain distance. I know the fireman at Erick are volunteer. They drop everything and go when they get the call.

The Sweetwater FFAers have been busy. Showed stock at Erick Thursday and Cheyenne Friday. Have at least three more shows this month. Haven't heard from our kith and kin in California. Guess if they fell in the ocean they'd let us know.

Mr. and Mrs. E.N. Carlson and Mildred Allen went to Enid last weekend where they visited the Donniss Hays and Myrtle Taylor.

Champion Sr. girl individual at the Beckham Co demonstration contest was Michelle Thompson with her Super Nachos. Champion Junior girl was Tess Heinsohn sewing on a button. Winning ribbons were Jennifer Adcock, Melissa McArthur, Lisa Tucker, Julie Musick, Pam Davis, Misti Kethley, and Sheila Sites. And Brenda McMullen, Marsha Hall, Danna Bruce,

Becky Gragert, Trissie Smith, Douglas Gee, and Greg Carey.

When we called OETA our pledge to keep Dr. Who on the air, E.L. Fowlers name flashed across the screen. The operator said he'd just had a call from Sweetwater and where in there world was it. Imagine not knowing where SW is!

Mr. and Mrs. Elec Atchley and Bertha Coffey visited the

KELTON ISD FOURTH SIX WEEKS

Students On Honor Roll

FIRST GRADE

A's: Chy Graves, Jason Hink, Nicky Johnson, Sandy Lewallen, Jason Miller

B's: Danny Buckingham,

J.R. Coffey's at Burk Burnett. While there they saw the Gutenberg Bible at the Museum.

Renee Garner, Heath Honeycutt, Ryan Shutt, Cheraye Spence

SECOND GRADE

B's: Gary Bryant, Julie Davidson, John Jones, Michele Jordan, Kristi Wheeler, Kim Penny

THIRD GRADE

A's: Kelee Clemens, Heather Moneycutt, Matther Minkley, Brandy Spence

B's: Shonda Lewallen

FOURTH GRADE

A's: Bobby Buckingham

B's: Susan Davidson, Rodney Garner, Noel Johnson, Lori Ray

FIFTH GRADE

A's: Karan Killingsworth, Denise Green, Matt Moore

B's: Richard Lackey, Lisa Dodgen

SENIORS

A's: Joey Waldo

B's: Darla Burnett

B's: Amanda Traeger, LaTina Dodgen

SIXTH GRADE

A's: Brett Buckingham, Sue Ann Jones

B's: Karla Harris, Jason Jordan

SEVENTH GRADE

A's: Leslie Johnson

B's: Melinda Davidson, LeAnn Dodgen, Charlene Jones, Nita Sue Keelin, Kristi Krug, Julie Moore

EIGHT GRADE

A's: Michele Keelin

FRESHMAN

A's: Lacy Buckingham

B's: Maralee Singleton

SOPHOMORES

A's: Joe Alves

JUNIORS

A's: Karan Killingsworth, Denise Green, Matt Moore

B's: Richard Lackey, Lisa Dodgen

SENIORS

A's: Joey Waldo

B's: Darla Burnett

Membership Drive

The Pampa Community Concert membership campaign is underway for the 1983-84 season.

Four outstanding concerts have been booked, including "The Operatta" story of Gilbert and Sullivan, Jamie and Laredo and Sharon Robinson, Cellist and Violinist, also the Chanteclers and the Jack Daniels original Silver Cornet Band.

Season memberships are \$15.00 for adults, \$8 for Students (under 18) and a family membership is \$18.00 (2 adults, 2 or more children of family under 18.)

Membership may be obtained by calling (rep) in your area, or by mailing a check payable to "Pampa Community Concert Association" to Lilita Brainard 2125 Mary Ellen, Pampa, Tex. 79065. Or call Mrs. Brown 826-5823, or Mrs. Patton 845-2242, Mobeetie.

The Campaign closes Sat., March 26, 1983, and no membership are sold for individual concerts.

Admittance to Concerts is by membership card only.

LEWALLEN INSURANCE AGENCY

ALL LINES

845-2951

1st STATE Bldg. MOORETIE, TEX.

826-5719

114 TEXAS ST. WHEELER, TX.

WELCOME TO

FIRST UNITED METHODIST CHURCH

8TH AT MAIN - P. O. BOX 89
WHEELER, TEXAS 79096

Church (806) 826-3114 - Parsonage (806) 826-3079



Ernie McGaughey, Pastor

Sunday School 9:45 a.m.
Morning Worship 11:00 a.m.
Evening Worship 6:00 p.m.

SHUGART COUPON THURS., MARCH 24

BEN FRANKLIN 408 S. Main Wheeler, Texas

GIVE OUR PICUTRES FOR EASTER



19¢

WALLET SIZE COLOR PORTRAITS 99¢

ASK About Our FREE 8 x 10 OFFER

Extra charge for GROUPS

BUTCHERING & PROCESSING PRICES

Beef processed, double wrapped 22¢ Per Pound
\$7.50 for Butchering

Pork Processing including curing
Double wrapped 28¢ per pound
\$8.50 a head for butchering

We butcher Mon., Tues., Thurs. & Fri. until 11:30 A.M.

CALL FOR QUARTER—HALF—WHOLE BEEF PROCESSED

WE NOW HAVE CUTS OF PORK & BEEF ON SALE

SHAMROCK SLAUGHTER PLANT

North of City Phone: 256-3241
Closing at Noon on Saturday

DR. BHATIA, CHAND. M.D.

GENERAL MEDICINE
DERMATOLOGY (SKIN)/ALLERGY
announces the opening of her practice in association with

DR. LAXMAN BHATIA, M.D.

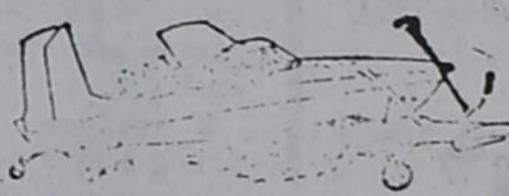
Internal medicine
Infectious Diseases
at
Coronado Medical Building, Suite #103
Pampa, Texas 79065

Hours: By appointment Tel: 806/665-0739
806/665-0730

WHEELER AG SERVICE CHARLES BAZE,

Wheeler, Tx.

806/826-3424



AERIAL SPRAYING
SEEDING
FERTILIZING (Wet or Dry)

Locally Owned & Operated

Box 161

Wheeler, Texas 79096

Gateley Electric

"No Job Too Small"

- New Construction
- Remodelling Service
- Residential
- Commercial

806/826-3352 or 826-3123

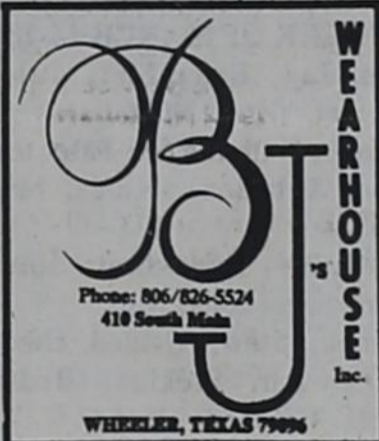
One Day Service in Most Cases

- Orthopedic Work
- Shoe Restyling
- Saddle Repair
- Puries Repaired
- Zipper Repairing
- Jackets Repaired



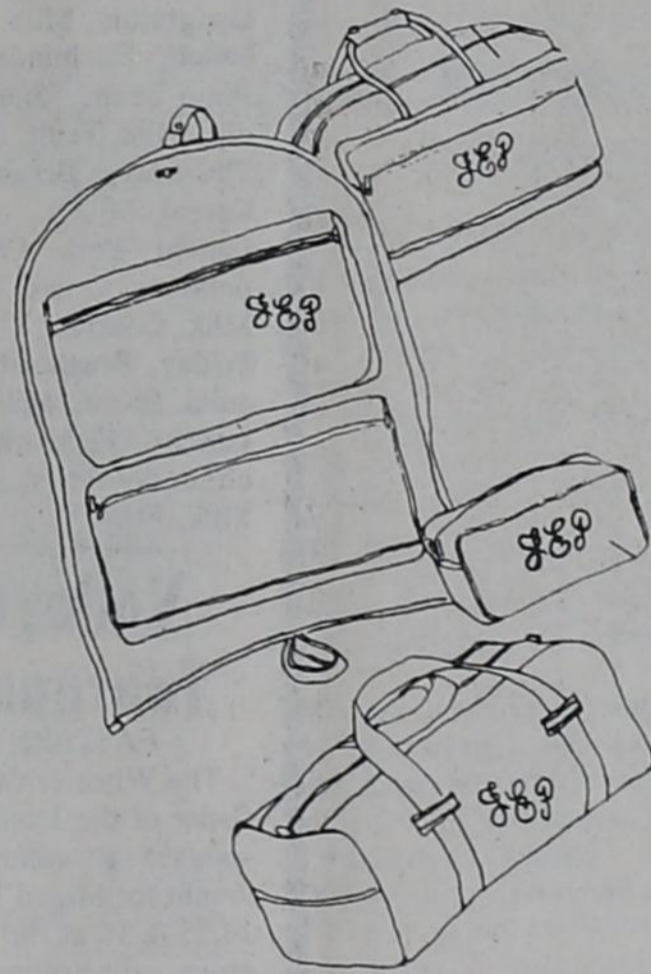
ERICK
BOOT AND SADDLE
We Specialize in Cowboy Boots, also Wing Tips and Driver Heel Counter

526-3468 208 S. Main



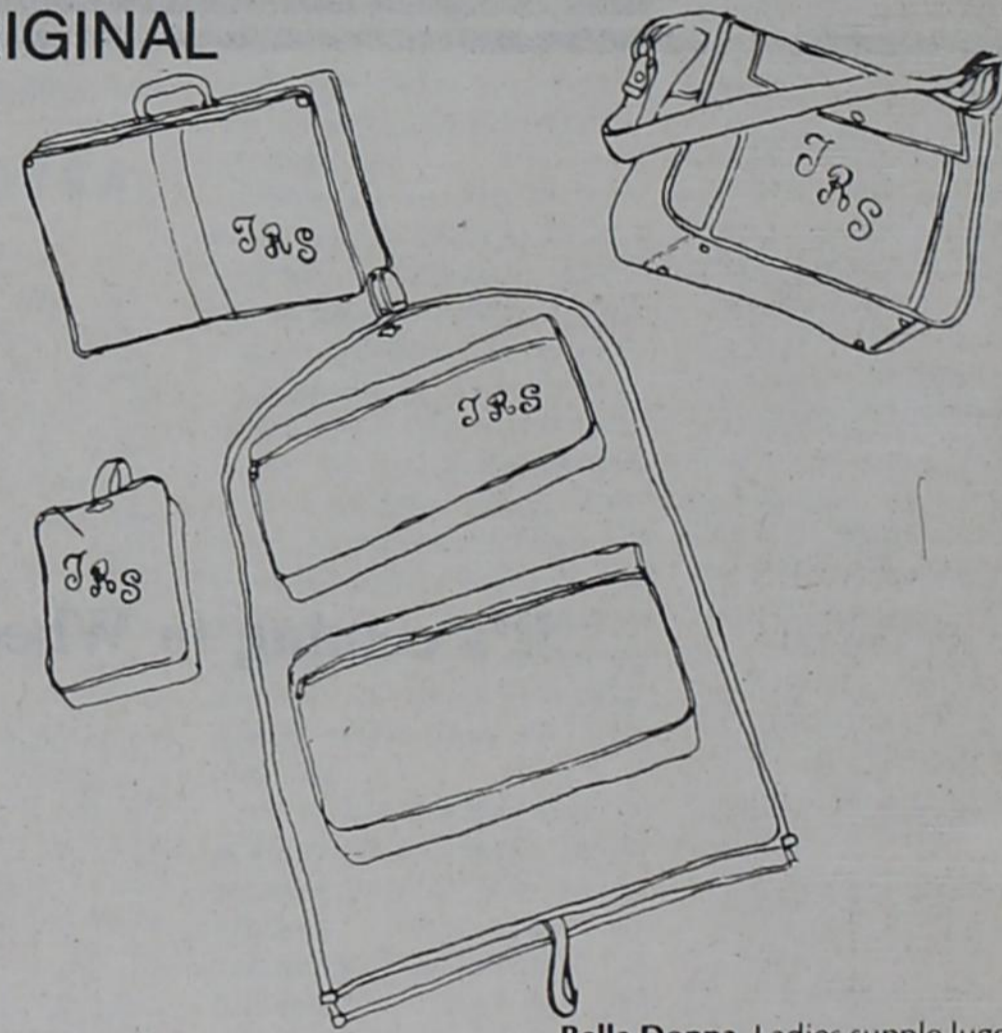
...is now ordering for Graduation, Mother's Day & Father's Day

Fay Swafford ORIGINAL



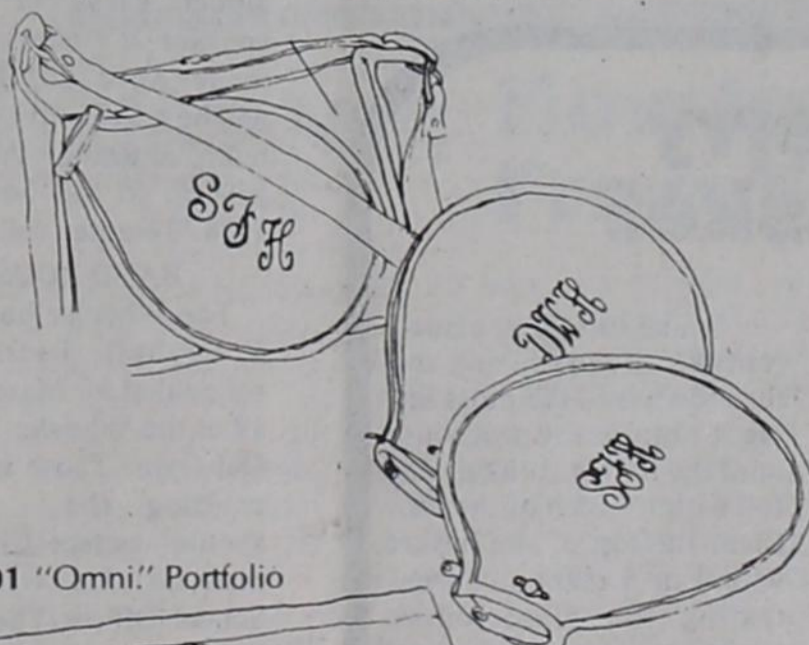
Renaissance. Men's supple luggage. Not just another piece of luggage.

Advantage Tennis Line. A beautiful his and hers line.



Bella Donna. Ladies supple luggage. Designed for the lady with things to do.

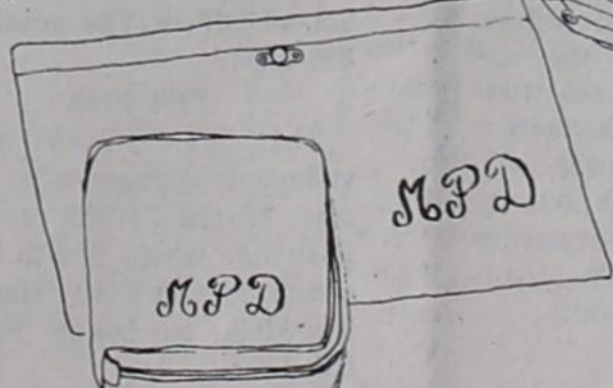
Esprit. Clean tailored lines.



Snap Cosmetic Bag.

Eyeglass Case

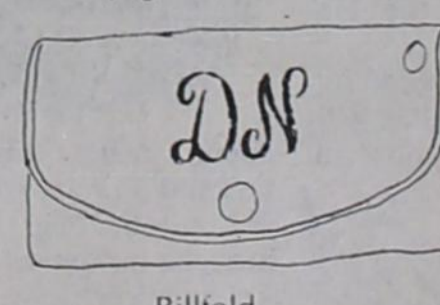
Style 901 "Omni" Portfolio



Style 64 Bible Cover.



Cigarette Case.



Billfold.

Matched Accessories.

NYLON BILLFOLDS
LEATHER HANDBAGS ARE ALSO AVAILABLE

Money Rates at a Glance

30-Month Money Market Certificate

10.111%
Annual Yield
9.50%
Annual Rate

30-84 Day Repurchase Agreement

Backed by U.S. Govt. Securities, Not FSLIC-insured.

7.75%
\$1,000 - \$4,999 Deposited
8.00%
\$5,000 - Plus Deposited

6-Month Money Market Certificate

8.671%
Annual Rate

*An interest penalty is required for early withdrawals from certificate. 6-Month C.D. does not compound.



Security Federal Savings and Loan Association

PAMPA, TEXAS HEREFORD, TEXAS WHEELER, TEXAS AMARILLO, TEXAS

MEMBER FSLIC

Lines from Linda

Linda Daughtry, CEA (Home Economics)

4-H'S 75th ANNIVERSARY OBSERVED IN AUSTIN

The Texas 4-H program is celebrating its 75th anniversary this year, and the initial celebration was kicked off at the State Capitol in Austin, Feb. 16.

Between 300 and 400 club members and their volunteer adult leaders took part in special ceremonies in the Senate and House relating to the introduction of a resolution commemorating the 75th anniversary of 4-H.

Following the ceremonies, 4-H members and dignitaries of state government observed the planting of a ceremonial pecan tree on the Capitol grounds near the north entrance to the building. Besides being the state tree, the pecan also is a symbol of the vitality and longevity of the 4-H program.

Other special anniversary programs are planned in conjunction with the Texas 4-H Roundup at Texas A&M University, June 7-8; the Texas 4-H Congress in Austin, July 19-22; and at many district and county activities through the remainder of 1983.

The first pre-4-H youth club in Texas was organized in Jack County 75 years ago.

In 1908, the late Tom Marks a part-time newspaperman in Jack County who also worked as an agent of the federal government in a position which corresponded to that of today's county Extension agent-agriculture, organized the first "Corn Club" for boys residing in his county. He enrolled 25 boys and demonstrated to them the best practices then known.

Each Corn Club youth also was required to exhibit the corn he produced, with judging to be done on the basis of yield, profit, a story about the youth's corn demonstration project, and the exhibit itself. Marks earlier had attempted to involve a number of the Jack County farmers in producing the most recently-released varieties of hybrid corn and had scheduled a corn show to demonstrate the results, but was disappointed when only a few adults took part in the educational effort.

As he reviewed what had happened, Marks decided that if he could not "teach old dogs new tricks, he would start with the pups" and thus began

work with county youth through the Corn Clubs. He taught a number of farm boys corn production practices, and they followed up by exhibiting their results in Jack County.

The success of Marks' venture there triggered similar educational efforts in other counties and at the Texas State Fair in 1910 in Dallas. A feature of the first statewide rally for Corn Club boys at the Fair was a parade of 1,500

boys through the downtown section of Dallas, with each youth carrying a stalk of corn.

The present 4-H Club program in Texas is an outgrowth of these early Corn Clubs for boys and Tomato Clubs for girls, which were organized in 1912 in Milam County by Mrs. Edna W. Trigg, whose position corresponded to today's county Extension agent-home economics. Each Tomato Club member grew one-tenth acre of tomatoes.

Today's 4-H Club program encompasses a wide variety of educational programs and activities, which were undreamed

of before the present Texas Agricultural Extension Service was organized. On May 8, 1914, the U.S. Congress passed the Smith-Lever Act, which provided for establishment of a Cooperative Extension Service as part of the land-grant university system in each state.

The 4-H program is open to all persons ages 9-19 regardless of race, creed, sex, religion or national origin.

The Texas legislature accepted provisions of the Smith-Lever Act on Jan. 29, 1915, and the Texas Agricultural Extension Service came into being. The 4-H program is the youth phase of Extension educational activities. Presently, some 187,000 young Texans are involved in 4-H work.

If you are interested in joining a local 4-H Club, you can contact Linda Daughtry at P.O. Box 505, Wheeler, TX 79096 or call 826-5243.

Wheeler Co. Ext. Homemakers

The Wheeler County Extension Homemakers' Council met Feb. 16, 1983 at 2:00 p.m. Evelyn Meek called the meeting to order. Reports from clubs were given. The District Meeting will be at Borger, April 12, where there will also be a tour of Gilstown. The 1982-83 State Meeting will be in Lubbock with Reaching People-Training People as its theme. A county-wide program on microwave cooking will be Oct. 4.

Delegate nominees for the District Meeting were turned in by each club. Committees met and approved recommendations. There were 14 present at this meeting; Evelyn Meek, Betty Rives, Juanita Beard, Laura Underwood, Emma Rogers, Martha Meek, Alcidine Bradley, Amy Weatherly, Debra Hiltbrunner, Kathy Cormier, Melanie King, Vivian Wallace, Thana Riley, and Linda Daughtry.

Educational programs sponsored by the Texas Agriculture Extension Service are open to all people regardless of race, sex, socio-economic background, or national origin.



The nearest relative to the hippopotamus is the common pig.

Shamrock Prepares For Frolic

By Bill Howe

Shamrock, Texas (Special) Everybody's "thinking Green" in Shamrock, Texas as the count-down begins for the 37th running of the city's famed St. Patrick's Celebration.

The local newspaper editor has already taken pills to turn his beard green, the special edition of The Shamrock Texan printed on green newsprint is set to go to press, and candidates for local offices have included in their campaign promises vows to wear green underwear.

Irishmen by the thousands, most sporting oneal beards, with Irish colleens on their arms, are bound for Shamrock to join in the shenanigans honoring the great St. Patrick. And, of course, they'll be wearin' o' the green and thinkin' it, too, to carry out this year's celebration theme.

Shamrock, population 3200, located in the dry and dusty portion of the Eastern Panhandle, will turn green as the Emerald Isle itself the week-end of March 18-20 as an ex-

pected 25,000 visitors join with the homefolk to insure an enthusiastic and successful celebration.

The biggest St. Patrick's party held anywhere outside Ireland is headed up this year by James Lunsford, general chairman, assisted by many committees doing the legwork for the celebration.

A pre-St. Patrick's Banquet featuring Mike Morrow, Executive Director of the Association of Texas Professional Educators, will open the celebration Friday night, March 18, at National Guard Armory. Morrow, who says: "we have enough people who tell it like it is; I tell it like it could be," is often described as "America's Happiest Speaker."

Also entertaining banquet guests with her singing will be Heidi Allen of Pampa, Miss Irish Rose of 1981.

The real celebrating starts Saturday morning, March 19, with an old settlers reunion, the hour-long St. Patrick's Celebration Parade led by the green-clad Shamrock High School Irish Band, followed by Donegal Beard judging, the Miss Irish Rose Contest, street carnival, team and calf rop-

ing, math contest and mud drag racing, a new feature of the Irish Party this year.

The annual St. Patrick's Celebration dance at National Guard Armory, featuring the unique music of the "West Texas Express," will begin at 9:00 p. m. A dance for teens has been planned at the old Grand Slam Motor Company building on West Highway 66.

Shamrock Ministerial Alliance will host a program at

High School Auditorium at 7:30 p. m. presenting Johnny Ray Watson, a unique individual with a timely and necessary message for today's world.

It all began in 1938, when the late Glenn Truax talked Shamrock Boosters Club into sponsoring a St. Patrick's Celebration to honor the name of the town, after the senior play for that year had been cancelled.

Here & There

LAURA GUTHRIE

I do not have the habit of attending the TV movies, but the other day I tuned in the TV just before the time of my program. As I waited I heard this comment, "I wouldn't trust the angel Gabriel if he came by and offered me free trumpet lessons." This was said in an attitude of disgust. Wonder if we ever feel like that. Anyway, I got a smile out of that all that day.

I have often praised our Ambulance Service. But again this week they have earned our

thanks. Starting early Sunday morning they transferred a couple of strangers who were hurt in our city. That evening they transferred Mrs. Charlie Brown, after she was seized by an overwhelming illness. Early Monday morning they made trip to take Mona Guinn who needed services of another doctor. All these trips were made to Amarillo. If this continues our attendants will chalk up a lot of voluntary hours this month. These are not all of our friends who are having to have further treatment. Whether by ambulance or private car, Louise Gaines and Leonard Gaines (slightly related) have been placed in Amarillo hospitals.

Stanley Baker of Snyder, Oklahoma has been with his mother, Mona Guinn for several days. He accompanied her to Amarillo. Her daughter Cherry, flew to Amarillo on Tuesday.

Ed Earl Luttrell, Mona's sister-in-law from Sayre, and her nephew, Scott, and wife of Briscoe, visited her at the hospital Sunday. On Monday afternoon Ed Earl and Mona's mother Nettie Luttrell went to Amarillo for an indefinite stay.

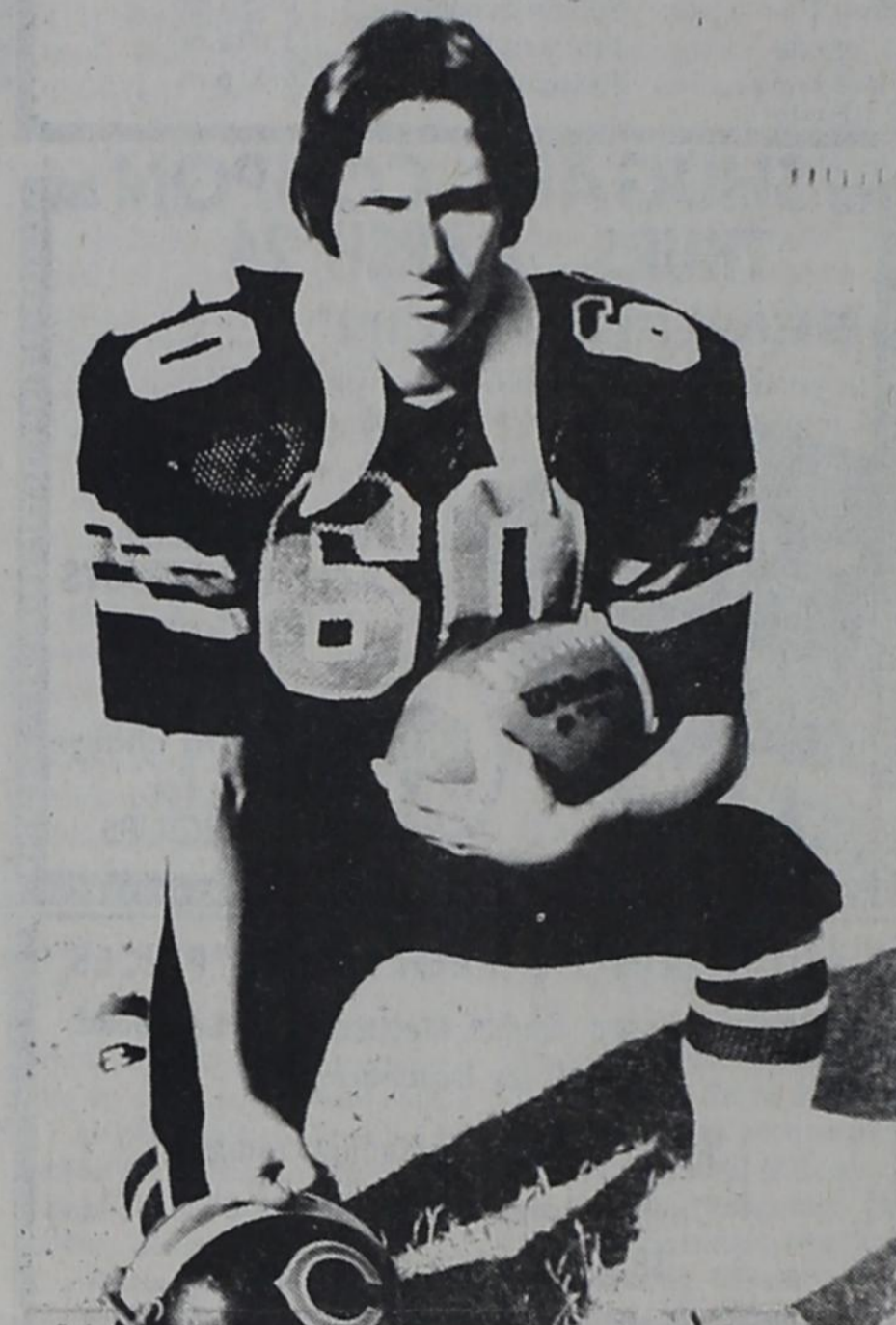
Clara Finsterwald McCormac, of Albuquerque, N.M., visited Katy Finsterwald and other relatives here last week. She and Katie made a trip to Houston to visit with a sister, Betty Dobbs and family.

Ida Farmer has had another trip to Amarillo to check with her doctor. We are hoping that she will soon be able to get along without that.

Last week Mary Finsterwald friends took her to Pampa to give her a birthday dinner. It was a bit past her day, but we can't always get things done at the right time. Those sharing in the party were Vida Brown, Nae Nash, Reba and Mary Wofford.

A lot of local people took time for a break in their work when the kids had a break from school. The slopes of Colorado and New Mexico must have zinged with skis on the feet of Texans. Some people went to warmer climate and the Johnny Velasques family went Nevada. The Motif's, a musical group made up mainly of Johnny's brothers are somewhere in the area, I am sure there was a joyful reunion.

My Steve went flying to Arizona with his sister. He was a bit late getting back into the groove, but he must wear that groove deep before school is out.



AMERICAS OUTSTANDING NAMES AND FACES: Justin Swire has been featured in "American's Outstanding Names and Faces" for 1983. The son of Mr. and Mrs. Jerry Swire of Canadian, he is a senior this year at Canadian

High School. Recognition in the publication is given to students who have excelled in academics, athletics, extra-curricular activities or community service. Justin is the grandson of Mrs. Betty McNeil of Wheeler.

MORE ABOUT BOOKS, Etc.

Wheeler Public Library
Wanda King, Librarian

WHEELER PUBLIC LIBRARY LIBRARY MAKES CHANGE IN HOURS

The Wheeler Public Library is announcing a change in its library hours, which will become effective on Monday, March 14, 1983. The library hours will be as follows: Monday thru Friday 1:00-5:30 p.m. Saturday 1:00-5:00 p.m. With this change, we hope that the extra half-hour will give the working people time to come by the library on their way home from work.

The Wheeler Public Library has a copy machine available for the public's use. Our prices are reasonable and we would like to invite anyone who needs copy work done to come by and allow us to be of service.

WHEELER ISD MENU

- WEEK OF MARCH 14-18**
Monday, Breakfast: Juice, Cereal, Toast, Milk
Lunch: Hamburger, Tator tots, Pork & beans, Pickles, Milk, Cake
Tuesday, Breakfast: Juice, Cinnamon rolls, Milk
Lunch: Stew, Grilled cheese sandwich, Pickles, Bread, Milk, Cobbler
Wednesday, Breakfast: Juice, Doughnuts, Milk
Lunch: Enchilada Casserole, Pinto beans, Salad, Chips & dip, Milk, Fruit
Thursday, Breakfast: Juice, Cereal, Milk
Lunch: Pork Chops, Sweet potatoes, Green beans, Rolls, Milk, Cookies
Friday, Breakfast: Juice, Biscuits, Bacon, Milk
Lunch: Fish, Macaroni & cheese, Peas, Cornbread, Milk, Fruit

Volleyball Tournaments

EASTERN STAR
 The Wheeler Chapter of the Order of the Eastern Star will sponsor a volleyball tournament for Mixed Teams, April 14, 15 & 16 at the old gym. To enter, call: Verena Lewallen at 826-5719.

KELTON JUNIORS
 The Kelton High School Junior Class of 1983 will sponsor a volleyball tournament April 28, 29, 30. There will be a \$10 entry fee for each team entering. All proceeds will go to the Senior trip of 1984. To enter call 826-3795.

BAND BOOSTERS
 The Wheeler Band Boosters Volleyball Tournament is scheduled for March 10, 11 and 12 at the Wheeler High School Old Gym. Those interested in entering the tournament should contact Chris Kosterman at the Wheeler High School Office. The number is 826-5534.

YHT-FHA
 The YHT-FHA will hold a volleyball tournament in Wheeler, March 24, 25, and 26. If anyone would like to enter, please contact Cathy Harrison 826-3269, or Lynne Francis 826-3393.

CANADIAN
 Canadian will sponsor a Volleyball Tournament March 24, 25, 26. For more information contact: Johanna Ashely 323-8992, Canadian, Texas.

RANDY STUART
806/826-3305

GREG ESTES
806/845-3901

ROUSTABOUTS

— CONTRACT FENCE BUILDING —
P. O. Box 448. Mobeetie, Texas 79061

Haydon Chiropractic Clinic
PHONE: 665-7261

103 East 28th St. Pampa, Texas

BEHLEN BUILDINGS
QUALITY THAT LASTS.

Triple N Construction
Mobeetie, Tex. 845-3041

LORD'S RADIO & T.V. SERVICE
COMMERCIAL RADIO & TV
806-826-3568

We will try to repair any make and/or model Radio and T.V.

700 E. Oklahoma St. Phone: 826-3568

GERMANIA FARM MUTUAL Aid Association

REASONABLE, SOUND PROTECTION for your home and other property.

If you want to save, contact RITA PEARSON
Rt. 1, Canadian, Texas. Phone: 375-2379
If no answer call 375-2528

It's coming to Wheeler.

TEXAS GARDENER TIPS

Build a Strawberry Factory in a Basket

You may have the wrong soil and conditions in your yard for growing strawberries, but here's a solution that should bring anyone in Texas success—build your own strawberry factory in a hanging basket! All you need is a large, wire-type basket, a good potting mix, sphagnum moss, fertilizer, and several healthy plants.

Choose the same types of plants you would use if you were planting them in the ground. In South, Central and much of East Texas, the varieties Sequoia, Tioga, and the newly-developed Cardinal do well. Sunrise, a heat- and drought-resistant variety, is well adapted to North, Central and East Texas. If you garden in the colder areas of the state, the more hardy Ogallala and Fort Laramie are recommended.

Plant your strawberry basket in late winter after severe weather is over (you can plant it earlier if you protect it from the elements).

Line the inside and top edge of the wire basket with moist sphagnum moss an inch thick to prevent the loss of potting soil. Put about 2 inches of moist potting soil (not garden soil) in the bottom. Begin planting near the bottom of the basket and work upward in a circular pattern. Poke planting holes through the basket at soil level and insert strawberry plants at 6-inch intervals.

Make sure each plant's roots are in the soil mix and the crown is in the moss lining. Continue the procedure until the basket is filled with soil within 1 inch of the top. Plant the top of the basket with 4 or 5 plants, concentrating the plants more toward the edge of the basket. Water the basket often and fertilize it weekly with a water soluble fertilizer.

Before you know it, you'll have mouth-watering strawberries right from your own back porch.

TEXAS GARDENER
P.O. Box 9052 Dept. BR
Waco, TX. 76710
1983 TEXAS GARDENER MAGAZINE

JENNINGS PLUMBING & ELECTRIC SERVICE

Owner: Larry Jennings
Phone: 806-826-3153 Box 423
1110 S. Main Wheeler, Tx. 79096

Roto-Rooter Service—Repairs—Remodeling
9 years Experience—Reasonable Rates

WIL-MART
FOR PEOPLE ON THE GO

Open 6 a.m. to 11 p.m. Corner 152 & 83 Wheeler, Tex. 826-3215

Pepsi-Coke 6 Pack Only **\$1.29**

1¢ SALE DAYS

Buy 1 Small Iced at Regular Price Get Second for 1¢

Buy 1 lg. Corn Dog at Regular Price Get 12 oz. Fountain Drink for 1¢

New items each week!!!

Contest From Page 1 mounted on card board posters so that none of the names were showing. The judges reported that they had a very difficult time in deciding who the winners should be, because there were so many beautiful children entered this year. There were 14 groups this year with a 1st and 2nd place winner being chosen in each group. All of the contestants pictures will appear in the Wheeler Times in the coming months.

Alpha Mu Alpha would like to thank each and every one of

BIRTH TO 6 MONTHS



First, Girls: Casey Martindale, 6 month old daughter of Mr. and Mrs. Kim Martindale of Wellington, Texas.

Second, Girls: Lauren Weaver, 6 month old daughter of Tommy and Sharla Weaver of Wheeler.



Second, Boy: Ryan Clay, 1 year old son of Andy and Rhonda Puryear of Allison.



First, Boys: Thomas Jacob Childress, 6 month old son of Robin and Ronnie Childress.



First, Girls: Shanna Weatherly, 21 month old daughter of Scott and Amy Weatherly of Wheeler.



Second, Girls: Natasha Stribling, 5 month old daughter of Roy and Pam Stribling of Mobeetie, Texas.



First, Boys: Kory Nickell, 23 month old son of Mr. and Mrs. Joe Nickell of Pampa. Grandparents are Mr. and Mrs. Albert Chapman of Wheeler, Texas.



Second, Boy: Nicholas Hanks, 3 month old son of Larry and Rhonda Hanks of Wheeler, Texas.



Second Girl: Whitney Simmons, 16 month old daughter of Melonia and Steve Simmons of Wheeler.



First, Girls: Natalia Bruton, 1 year old daughter of Jerry and Linda Bruton. Granddaughter of Spud Moore of Wheeler, Texas.



Second, Boy: Kelly Ray Lane, 14 month old son of Franklin and Tammy Lane of Allison, Texas.



First, Boys: Travis Wayne Brooks, 9 month old son of Craig and Darla Brooks.

PERSONAL

Sallie Harris attended the funeral of William Dunn at Claude Monday morning, March 7, at 10:00 then drove on to Wellington to visit a cousin Lois Raburn and husband, spending the night. Tuesday Sallie visited a cousin during the morning, Mrs. Ethel Bailey. Then drove home Tuesday afternoon.

2 YEARS



First, Girls: Krista Michele Johnston, 2 year old daughter of Larry and Kimberly Johnston of Mobeetie, Texas.



Second, Boys: Shane Stribling, 3 1/2 year old son of Roy and Pam Stribling of Mobeetie, Texas.



First, Boys: Clayton Ray Zybach, 2 year old son of Wayne and Kathy Zybach of Briscoe, Texas.



First, Girls: Brianna Bruton, 4 year old daughter of Jerry and Linda Bruton. Granddaughter of Spud Moore of Wheeler, Texas.



Second, Girls: Kelly Leigh Rose, 2 year old daughter of Glenn and Diann Rose of Briscoe, Texas.



First, Boys: Dillon Miller, 4 year old son of Jim and Marlene Miller of Wheeler, Texas.



Second, Boys: Keenan Burton son of Carletta and Richard Burton of Wheeler, Texas.



Second, Girls: Brandi Kay Luttrell, 4 year old daughter of Scott and Kay Luttrell of Briscoe, Texas.



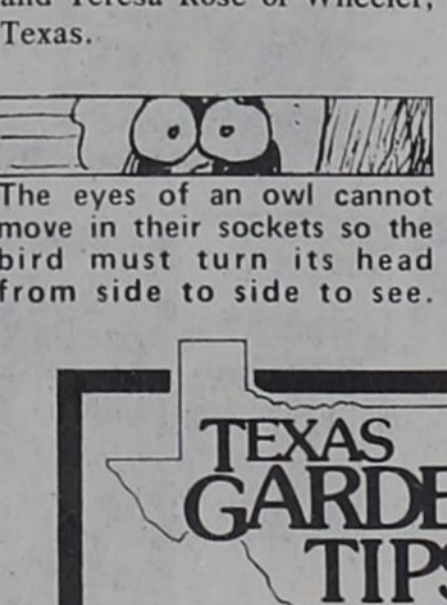
First, Girls: Jennifer Lynn Rock, 3 year old daughter of Ronnie and Peggy Rock of Wheeler, Texas.



Second, Boys: Keith O'dell Rose, 4 year old son of Marty and Teresa Rose of Wheeler, Texas.



First, Boys: Kyle Paul Williams, 2 1/2 year old son of Randy and Pam Williams of Shamrock, Texas.



Second, Girls: Sara Rogers Childress, 3 year old daughter of Ronnie and Robin Childress.

5 YEARS



First, Girls: Amanda Rives, 5 year old daughter of Doug and Betty Rives of Wheeler, Texas.



First, Boys: Darby Patrick Dorman, 5 year old son of Danny and Margaret Dorman of Wheeler, Texas.



Second, Girls: Keri Simmons, 5 year old daughter of Steven and Melonia Simmons of Wheeler, Texas.



Second, Boys: Aaron Lee Minor, 5 year old son of Denny and Michaelene Minor of Mobeetie, Texas.

Caprock Honors Hansen, Hubbard

Amarillo Globe-Times, Friday, March 4, 1983

James Hansen of Midland and Bruce Hubbard of Amarillo were named Distinguished Alumni of Caprock High School during a special assembly this morning.

Hansen, who graduated in 1969, is president of Hansen Builders Inc. in Midland. Hubbard, a 1967 Caprock graduate, works for the on-shore geological development department for Mesa Petroleum.

The son of Mr. and Mrs. R.J. Hansen of 1918 S. Manhattan, Hansen participated in football, basketball, baseball and track and served as president of the Industrial Arts Club.

He attended Texas A&I University and then returned to Amarillo to work for Pioneer Natural Gas. He transferred to Hereford with Pioneer and then went to work for a construction company in Midland before going into busi-

ness for himself. In Midland, he has served as a United Way executive, a Scoutmaster, a director for Kids Inc., coach for a man's softball team and is a director of his church.

Hansen is married to the former Lynn Smith, also a Caprock alumna. They have two daughters.

Hubbard, who lives at 3704 Montague with his wife, Susie, and two sons, was a member of Hi-Y and Future Teachers of America and participated on the track team while in high school. He was also a member of the Caprock band and a photographer for the school's yearbook, "La Saga."

He attended Amarillo College and West Texas State University where he majored in architectural design. Hubbard was employed in the Pantex design engineering department before joining Mesa Petroleum in 1978 in Midland.

In 1980, he returned to

Amarillo as head of the communications and art department. Hubbard has studied art with Danny Gamble and Stan Kramer and has won a number of awards for his own work.

He has been director of the local Starving Artists Show, coaches Kids Inc. baseball and soccer teams and last year chaired Caprock's 15-Year Reunion committee.

His parents, Mr. and Mrs. Charles Hubbard, live at 5510 Everett.

Previously named to the list of Distinguished Alumni for Caprock were Stan Smith, president of Western Specialties Advertising; Dennis Prive, principal of North Heights School; Betty Wheeler, an Amarillo attorney; John Faulkner, a Hereford credit life underwriter; and George Faulkner, superintendent of Jones Power Plant at Lubbock.

Biggest, Costliest Gas Well Blowout In Texas History Ends Near Allison

Amarillo Globe News, Feb. 17, 1983:

What has been called the biggest and one of the costliest gas well blowout in Texas history has ended, Apache Corp. announced yesterday, almost 1 1/2 years after work on the renegade wellhead began.

Apache yesterday said it has succeeded in killing the flow of gas from the Key No. 1-11 well in Wheeler County.

After an on-site inspection, the Texas Railroad Commission also officially declared the gas flow from the well to be shut off.

The Commission had called the Key No. 1-11 gas well blowout the biggest in Texas history.

For several months the RRC had ordered Palo Duro Pipeline and others to take the uncontrolled gas from the well to avoid waste. The order was blamed for as many as 60 other wells being shut in to accommodate gas being piped from the Key No. 1.

Drillers on the Key No. 3, one of the two wells being drilled to supplement effort to keep the Key No. 1 from the surface, succeeded early last week in locating and drilling into the steel casing of the Key 1 below 16,000 feet.

Immediately after the casing was penetrated, drilling mud

flowed from the Key No. 3 into the Key No. 1, ending the flow of natural gas from the first well. Cement than was added to produce a permanent fill.

Apache is completing the other relief well as a replacement producing well for the Key No. 1.

The Key No. 1 was completed in mid-1981 in the Upper Morrow formation below 16,000 feet with a flow rate of 24.5 MMcf (million cubic feet) of gas per day at a flowing tubing pressure of more than 8,000 pounds per square inch.

All operations at the well site had been completed and the well was awaiting pipeline connection when it blew out early on Oct. 4, 1981.

The well was hooked up again Oct. 30, 1981, but Apache was not able to bring it under control. It flowed then at a rate of 30.65 MMcf per day.

The wellhead blew again Nov. 3, 1981, and it was a long and expensive operation before Apache was able to direct the gas into a pipeline in June 1982.

Since last June, Apache Corp., as operator, has been producing natural gas from the Key No. 1 through a series of custom-designed mechanical scrubbers and compressors which were necessary to convert the gas to pipeline quality and pressure.

Production at full deliverability was authorized by the Railroad Commission, which also ordered Apache to continue its efforts to kill the well.

Commenting on the successful conclusion of the operations, Apache chairman and chief executive officer Raymond Plank noted that no personal injury, explosion or accidental fire had occurred at the well site during the 16 months of around-the-clock control work since the well blew out.

"This was the first blowout at an Apache operated well in its more than 25 years in the business," Plank said from company headquarters in Minneapolis, "and we are proud of the concerned efforts

Senate which will define community standards as being those standards in the

county in which the alleged offense occurred.

This change will allow juries to decide what is obscene in their county and not have to be subject to what is thought elsewhere in Texas. This measure does not in anyway define obscenity or restrict the sale of use of anything; it only allows the people in the individual counties to decide what they want sold in their local stores. We feel that this was the intent of the law and we are trying to get back to it so Texans can decide what type of community they will live and raise their children in.

Texas is large and diverse, and we all share from the many beneficial factors this state offers. However, we feel that the counties should not suffer because of this diversity by having contrary opinions forced upon them. We want to know what you feel about this. Please write Senator Bill Sarpalius, Box 12068, Texas Capitol, Austin, Texas, 78711 or call (512) 475-3222.

Drilling cost initially was \$5.16 million, and kill operations had cost an additional \$36.5 million through mid-November. After that the operations were said to cost about \$70,000 daily.

Through the last quarter of 1982, costs averaged \$925,000 per month for Key No. 3 relief well, \$825,000 per month at Key No. 2 backup relief well, \$395,000 per month to produce 1 Key, and \$190,800 per month used to fuel a bank of compressors.

The Key No 2 was spudded before 3 Key, and came within 25 feet of the 1 Key wellbore at 14,000 feet, but depth wasn't sufficient and wellbore angle wasn't correct.

Gas sale price for Key No. 1 was about \$9 per MMBTU in the first week of full deliverability, then was reduced to \$5.30/MMBTU.

Apache holds a 23 percent working interest in the Key No. 1 and the Apache 1980-3 Oil and Gas Program owns a 27 percent interest. El Paso Exploration Co., a subsidiary of the El Paso Co., owns the other 50 percent interest. All these interests may be reduced by half after payout.

Lawsuits by royalty owners and nearby landowners who claim, among other things, depletion of the reservoir are pending.

This article was taken from the February 17, 1983 issue of the Amarillo Daily News. By Mary Lou Mulch, Globe-News Energy Writer

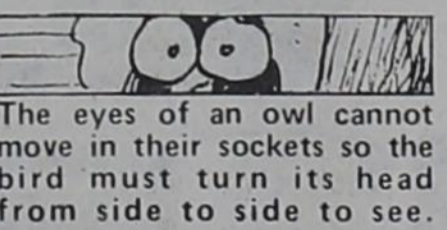
Sen Sarpalius Reports

DEFINING COMMUNITY

AUSTIN - Texas is a very large and diverse state. This fact adds much to our appeal but can also provide for some problems. Through the fine judges in the Panhandle and South Plains, it has come to our attention that currently there is a discrepancy in the way in which our state's courts and juries define what is obscene and what is not.

It seems that when defining obscenity, the Texas Penal Code requires juries to use "contemporary community standards" as a benchmark. This sounds very reasonable, as opinions vary between communities as to what is obscene. However, because this definition is so broad, our

appellate courts have decided that the "community" spoken of is the entire state of Texas. A jury of local people must decide if the questionable materials are acceptable somewhere in our community; Texas. If they are, then they must be acceptable everywhere in Texas. Because of this, at a trial in our District when someone is charged with selling obscene material, it is admissible in court to show that similar material is sold every day hundreds of miles away in Houston. We do not feel that this is right. To get back to what we feel is the true meaning of this term, community standards, we have introduced a bill in the Texas



The eyes of an owl cannot move in their sockets so the bird must turn its head from side to side to see.

TEXAS GARDENER TIPS

How to Get the Most From Your Blackberries

The blackberry is probably the most productive, most adaptive, and easiest to culture fruit in Texas. It is practically immune to insect and disease problems, yet produces one of the best jelly, jam, juice, pie, and wine fruits known.

In 1959, Texas A&M plant breeders released the most adaptive blackberry variety ever grown in the Southwest—the Brazos blackberry. Three of the Brazos' offspring—Rosborough, Brison and Womack—are also good Texas varieties, but are firmer and less tart. All these varieties produce uniformly large berries from the first-picked to the last, and they grow well even in alkaline soils.

These varieties need at

least 10 hours of sunlight each day to produce well. If you would like your own blackberry bramble, transplant plants or root cuttings 3 feet apart in rows 5-6 feet apart in early spring. The plants won't produce berries the first year, but keep them well watered and fertilized to get them well established.

Blackberry fruit is produced by 1-year-old canes, from the previous year's growth. After the 1-year-old canes have produced a crop, they die and should be removed after all berries have been harvested to ensure the longevity and health of the planting.

Even before berries begin to ripen on 1-year-old canes, new, fast-growing

sprouts called "prima cane" arise from the blackberry root system. These sprouts will produce new growth and bushes which will yield next season's crop.

Unfortunately, sprouts tend to arise indiscriminately, so you must select those in the desired locations and immediately remove all others by cutting them below the soil level. This eliminates the natural thicket growth habit of blackberries.

Once you've removed the excess prima cane, you

should tip prune the remaining new canes every few weeks. Simply cut or break out the tips of the rapidly growing new canes when they reach a height of 4 feet. This will stimulate the growth of more berry-bearing surface for next season in the axis of leaves below the removed tips. Pinch any additional growth at 12-inch lengths. You should stop pruning 2 months before your average frost date.

Your vigilance and work this year will pay off in a bountiful blackberry crop next year.

TEXAS GARDENER
P.O. Box 9005 Dept. BR
Waco, TX. 76710
1983 TEXAS GARDENER MAGAZINE

**BORDEN'S
ICE
CREAM**
\$1.47

1/2 Gal.
Rounds



LUCK O' THE IRISH

FOOD BUYS

**KRAFT DINNER
MACARONI
& CHEESE**
3 \$1
7 1/2 OZ.
BOX

**PETER PAN
PEANUT BUTTER**
\$2.29
28 oz.
Jar

**HUNT'S TOMATO
KETCHUP**
69¢
24 oz.
Btl.

**DEL MONTE-NATURAL JUICE
PINEAPPLE**
59¢
15 1/2 OZ.
CAN

**ARMOUR STAR SLICED
BACON**
\$1.89
LB.

**HORMEL'S
CORNED BEEF**
\$2.29
2-3 LBS.
AVERAGE LB.

**CALIFORNIA GOLDEN
CARROTS**
29¢
1 LB.
PKG.

**GREEN-RED-ROMAINE
LEAF
VEGETABLES**
49¢ EACH

**WASHINGTON RED DELICIOUS
APPLES** LB. **49¢**

**WASHINGTON D'ANJOU
PEARS** LB. **59¢**

**CALIFORNIA
CELERY HEARTS** LGE. PKG. **59¢**

**TEXAS GREEN
CABBAGE** LB. **15¢**

**CENTRAL AMERICAN
BANANAS**
3 \$1
LBS.

**USDA GRADE A CERTIFIED
FINEST QUALITY COUNTRY PRIDE
WHOLE
FRYERS**
55¢
LB.

**CUT-UP WHOLE FRYERS
PAN READY** LB. **69¢**

**SPLIT FRYER
BREASTS** LB. **\$1.29**

**BONELESS FRYER
BREASTS** LB. **\$2.49**

**FRESH FRYER
DRUMSTICKS** LB. **99¢**

**FRESH FRYER
THIGHS** LB. **99¢**

**ARMOUR STAR
HOT DOGS** 12 OZ. PKG. **99¢**

Ever wonder what Oscar Mayer has in store for you...

**OSCAR MAYER REG. BEEF/REG-THK-THN
BOLOGNA** 12 OZ. MEAT PKG. **\$1.59**

**OSCAR MAYER SLICED
VARIETY PAK** 12 OZ. PKG. **\$1.99**

**OSCAR MAYER SLI. SALAMI-OLIVE-LIVER
LUNCH MEATS** CHEESE/P&P 8 OZ. **\$1.19**

TOTAL GROCERY SAVERS

**DEL MONTE
TOMATO SAUCE**
4 \$1.00
8 OZ.
CANS

**PINEAPPLE
UPSIDE DOWN
CAKE
MIX**
\$1.69
21.5 oz.
Box

**SHURFINE LITE
PEACHES**
or
**FRUIT
COCKTAIL**
2 \$1
16 OZ.
CANS

**Purina
CAT
CHOW**
\$6.99
12 lb.
Bag

**KIBBLES 'N' BITS
or
TENDER CHUNKS**
\$2.39
5 lb.
Bag

**Kleenex Huggies
DIAPERS**
\$7.99
33 Ct.
Pkg.

**GERBER
BABY FOOD**
4 \$1
FOR

FROZEN FOOD DAIRY

**SHURFINE FROZEN
ORANGE
JUICE**
3 \$1
6 OZ.
CANS

**ORE-IDA SHOESTRING
POTATOES** 20 OZ. PKG. **99¢**

**PET RITZ REGULAR
PIE SHELL** 2 CT. PKG. **79¢**

**23' OFF LABEL-KRAFT SLICED
VELVEETA** 16 OZ. PKG. **\$1.99**

**ASSORTED HUNGRY JACK
BISCUITS** 3 5 CT. CANS **\$1.00**

**SHURFRESH
BUTTERMILK** 1/2 GAL. CTN. **\$1.09**

**COKES
& Diet Coke**
\$1.29
12 oz. Cans
Six Pack

**TALL KITCHEN GARBAGE BAGS
HEFTY**
\$2.49

**HI-DRI
PAPER
TOWELS**
49¢
JUMBO
ROLL

**HALF or WHOLE BEEF
\$1.29**

**BUY WHOLE HEAD BEEF
GET \$10.00 REBATE**

**BUY 1/2 GET
\$5.00 REBATE**

**BACK FROM THRIFTWAY
CUT & WRAPPED
READY FOR
YOUR FREEZER**

**KITCHEN
TESTFD FLOUR
GOLD
MEDAL**
89¢
5 LB.
BAG



We're proud to give you more!

THRIFTWAY

PRICES EFFECTIVE MAR. 10-12, 1983
WE RESERVE THE RIGHT TO LIMIT QUANTITIES
WE ACCEPT FOOD STAMPS