



TEACHER IN-SERVICE CANCELED Monday Is Regular School Day

School will be held Monday, February 21; this will be a weather make-up day. The school calendar shows this to be a holiday.

THE WHEELER TIMES

(USPS 681-960)

VOLUME 49, NUMBER 31

THURSDAY, FEBRUARY 17, 1983

SINGLE COPY 20¢

WHEELER BOYS NAMED DIST. CHAMPS

VARSITY GIRLS TIE WITH MOBEETIE FOR DISTRICT HONORS

JUNIOR HIGH TEAMS WIN DISTRICT HONORS

WHEELER VS. ALLISON
Wheeler Varsity teams played here, Monday, February 14 in a game rescheduled from Feb. 4 due to the weather conditions. Both teams won with the Mustangs winning their District with a 10-0 district record and a 20-8 season record. The girls victory ties them for the District Championship with Mobeetie, they had a 9-1 district record and a 20-7 season record.

Wheeler Varsity teams on their successful season and good luck to the girls against Mobeetie on Feb. 15 to decide first and second in the district. The boys will play Vega, Thursday, Feb. 17 in White Deer, this is a tune-up game at 7:00. The Bi-District game is still undecided at this time. The girls Bi-District game is this Friday, Feb. 18, at 7:00 in White Deer.

So, continue to support our teams as they go into Bi-District play.

WHEELER VS. KELTON
The Wheeler High School teams played Kelton here on Tuesday night, February 8th. Both teams were victorious.

The Mustangs won with a score of 60 to 42. Scott Wright had 26 points to lead the team, Paul Hartman had 11, Ronny Jones had 10, and Billy Westmoreland had 6. Paul led with 12 rebounds, Mark Moore had 9, Scott had 8, and Billy had 7.

The Mustangettes won 54 to 33. Mona Jennings had 12 points, Twyla Collins had 11, Shawna Hampton had 10, and Kristi Pierce had 9. Renee Hogue led with 10 rebounds, Tracy and Twyla had 8, and Angela Presley had 5. Congratulations to the

CHAMBER BANQUET DATE GIVEN Your Help Needed To Select Award Recipients

The Chamber of Commerce will hold their annual banquet Tuesday evening, March 8, in the school cafeteria. The speaker for the evening will be Allen White, assistant director of Planning and Development of the Department of Water Resources in Austin. Donald Rives will serve as Master of Ceremonies for the festivities which will begin at 7:00.

The theme for the banquet will be water. Mr. White's speech will be on water in Texas.

In addition to the installation of officers, recognition will be given the Outstanding Man, Woman, Teenager, Employee and Farmer and/or Rancher. The recipients of these awards are unaware of their selection until announced at the banquet.

CHAT WITH THE EDITOR

I was well pleased at the turnout at the Wheeler Care Center Sunday afternoon. At the time the date was set, I was asked what the weather would be like; one cannot accurately predict the weather here. As it turned out the sun was bright with a "panhandle breeze" from the south.

The Senate on the legislation for organization of a Wheeler County Water District was again delayed. The legislation is no. 10 on the agenda and it is taking a while to work through the first nine; it will possibly make next Wednesday's meeting.

Wheeler Airport Board, Officers

The Wheeler Airport Board will hold a meeting Monday, Feb. 21 at 6:30 A.M. The meeting will be held at Sparlin's Restaurant. Anyone interested in the development of the airport is urged to attend.



SWEETHEART: Monica Election To Fill 3 City Positions

Time has arrived again to elect City officials. Are you satisfied with the way the City business is carried out? Are you satisfied with the way your tax money is spent? If not, apply for a place on the city Election ballot. Filing deadline is March 2, 1983.

300 ATTEND CARE CENTER OPENING

A crowd of approximately 300 gathered for the formal opening and dedication of Wheeler Care Center Sunday afternoon, February 13. Wheeler and the surrounding communities were well represented. Seating was placed in the lobby and rows of chairs lined the walls, but a number of people had to stand for the program.

Bernice Hooker Services Today

Mrs. Bernice Z. Hooker, 69, died Tuesday in Wheeler. Service will be held today, February 17, 2:30 p.m. in the First Baptist Church with the Rev. Ralph Hovey, pastor, officiating. Burial will follow in Mobeetie Cemetery by Wright Funeral Home of Wheeler.

WOMEN'S RACQUETBALL TOURNAMENT

The Wheeler Health Center held a Racquetball Tournament for the ladies. Nine members entered the tournament which was completed Monday evening, February 14.

H.E. 'Hub' Cole Is Buried Mon.

Herbert Everette Cole, 91, of Amarillo, died Friday night. Services were held at 2:30 p.m. Monday, February 14 at the First Baptist Church in Wheeler, with Rev. M.B. Smith of Pampa and Rev. David Cooper, pastor of the First Baptist Church officiating. Burial was in Wheeler Cemetery under the direction of Wright Funeral Home, Wheeler.

Volleyball Tourney

The Kelton High School Junior Class of 1983 will sponsor a volleyball tournament April 28,29,30. There will be a \$10 entry fee for each team entering. All proceeds will go to the Senior trip of 1984. To enter call 826-3795.

Women's Racquetball Tourney

The tournament was limited to members. A men's tournament is planned in the near future with names being taken at the Health Center for the brackets. If you are a member and have not received word of the pending tourney, either place your name on the list at the center or contact Scott Weatherly to enter.

WHEELER COUNTY LIVESTOCK SHOW SCHEDULED FOR FEBRUARY 23-26

Wheeler County 4-H and FFA members will exhibit their livestock projects in the Wheeler County Junior Livestock Show February 23-26. The show, sponsored by the Wheeler County Livestock Show Association, will be held in the Wheeler County Agricultural Center in Wheeler.

Kelton School Board Election

The Kelton ISD Board of Trustees have called a school trustee election to be held Saturday, April 2, 1983. Three 3-year terms will be filled and one 1-year unexpired term will be filled at this election.

Beth Wills On Dean's List

Beth Wills of Wheeler has been named to the Dean's list at McMurry College for the Fall 1982 semester.

Hospital Notes

- Old Admissions: 7-22-81 Thomas Green, 1-16-83 Margaret Goodwin, 1-17 Icy Littrell, 2-3 Lucy Neal, 2-4 Tom Zenger, 2-5 Huron Gilliam, 2-7 Hester Dodson
- New Admissions: 2-7 Allene Holt, W.J. Patterson, Bynum Smith, Nora Hyatt, Chris Leatherman, Tressa Revious, Peggy Riggins, Eula Kuhlman, Lewis Rogers, Mark Kennedy, Dorothy McIlhoney, Stephen Francis, Rita Smith, Cheryl Henderson, Bobbie Snead, Sandra Randolph, Ann Jones, Verna Markham
- Dismissals: 2-9 Laura Clark, 2-10 W.J. Patterson, 2-11 Billie Wheeler, Ann Jones, 2-12 Opal Daughtry, Becky Case, Gabrael Ramos, Allene Holt, Rita Smith, Michelle Shorter, Gwen Mata, Chris Leatherman, Stephen Francis, Ann Jones, Dorothy McIlhoney, A.O. Vanpool, Nora Hyatt, Mark Kennedy

"Rudeness is the weak man's imitation of strength." Eric Hoffer

Court Records

LIST OF INSTRUMENTS FILED IN WHEELER COUNTY CLERKS OFFICE FOR WEEK OF FEB. 7, THRU FEB. 11, 1983

February 7, 1983
 MML--Otis Engineering Corporation to Aledo Exploration Inc, no date, Sec 30 A-7
 DT--Roden Associates LTD to Allied Bank of Texas, 1-17-83, See Instrument
 DT--Roden Associates LTD to Allied Bank of Texas, no date
 AMEND DT--Sabre Oil & Gas Co to Fidelity Bank NA, 1-28-83, Sec 2 Blk 1 B&B
 C/C PROBATE PROCEED--D A Finkelstein, Dec, 11-2-82
 ASSIGN--Monsanto Company to Monsanto Oil Company, 6-30-82, See Instrument
 AOL--Nova Energy Corporation to Tommy H Atkins, etal, 1-15-83, Sec 38 A-3
 AOL--An-Son Corporation to James M Clark Jr, 1-24-83, Sec 4 Blk 5 B&B
 ASSIGN--Wheeler Oil Company to Investments Inc, etal, 9-1-82, NE 1/4 Sec 80 Blk 17
 ASSIGN--Wheeler Oil Company to David Price, etal, 9-1-82, SW 1/4 Sec 91 Blk 17
 CONTRACT--Producers Gas Company to Wheeler Oil Company, 1-26-83, 75ac Sec 27 Blk 13
 DT--Don McCasland, etux to American Ag Credit Corporation, no date, See Instrument
 QCD--Kathryn Ann Meiler to Kathryn B Neiler, 1-18-83, N210ac W 1/2 Sec 49 Blk A-7
 RMML--Municipal Assessment Co to Tom Harrison, 10-18-78, Lots 21,22,23 Blk E, Shamrock, Potts
 C/C PROBATE PROCEED--William W Hulsey, Dec, 12-1-82
 OL--Bill Spillman to R C Callan, 12-30-82, Secs, 19,20, 23, Camp Co School
 OL--Betty Jim McBride to R C Callan, 12-30-82, Secs 19,20, 21,23 Camp Co School
 OL--Springhill Corporation to R C Callan, 12-30-82, Secs 19,20,21,23 Camp Co School
 OL--Sidle Springs Company Inc to R C Callan, 12-30-82, Secs 19,23,21,23 Camp Co School
 OL--R C Callan to Pogo Producing Company, 12-30-82, Secs 19,20,21,23 Camp Co School
 AOL--Plateau Exploration Co to Larry F Bratcher, etal, 1-27-83, N 1/2 Sec 19 Blk RE
 D--Clara May Mull, etal to Cora Mull, 1-27-83, Any int SW 1/4 Sec 32 A-4
 ASSIGN OVERRID ROY--H L Glasby to Margaret J Glasby, 1-21-83, Sec 2 Blk 1 B&B
 MD--H L Glasby to Margaret J Glasby, 10-15-82, 1/10 Int S100 acW Pt Sec 3 Blk 1 B&B
 ASSIGN OVERRID ROY--H L Glasby to Margaret J Glasby, 12-28-82, N 1/2 Sec 12 Blk 1 B&B
 ASSIGN OVERRID ROY--H L Glasby to Margaret J Glasby, 12-18-82, N 1/2 Sec 12 Blk 1 B&B
 SUCCESSOR TRUSTEE--Nancy Key Burton, etal to Midland National Bank of Midland, 12-18-82
February 8, 1983
 RDT--Federal Land Bank of Texas to Bob McCoy, etux, 12-28-82, See Instrument
 ASSIGN OVERRID ROY--Phil Pendleton Energy Inc to Cynthia J Stuart, 8-23-82, S 1/2 Sec 81 Blk 13
 ASSIGN OVERRID ROY--Phil Pendleton Energy Inc to Cynthia J Stuart, 8-23-82, NW 1/4 Sec 68 A-5
 DT--H B Holcomb Jr, etal to First National Bank, Amarillo, 3-15-81, Int in Sec 32 RE
 DT--H B Holcomb Jr, etal to First National Bank, Amarillo, 8-15-81, Int in S 1/2 Sec 33 Blk RE
 DT--HAB Investment Company to First National Bank, Amarillo, no date, Int in Sec 32 Blk RE
 D--Ruth T Caperton to First Interstate Bank of Casper, Trustee, 1-18-83, Any interest
 D--Wayne B Stark, etux to

Arlie Otts, 1-14-78, 135.16ac Sec 24 Blk 24
 AOL--Carlson Petroleum Company to Woods Petroleum Corporation, 1-5-83, See Instrument
February 10, 1983
 D--E G Fillingim, etux to Laurel Lee Hershman, 2-8-83, W 1/2 Sec 7 Camp Co School, ExcMins
 D--Beulah Puckett to Glen Sherrrell, 7-20-73, Lots 7,8 Blk 109, New Mobeetie
 D--State of Texas to Ray Seral Hudson, 12-30-82, 3ac Sec 2 Blk C, Elisha Montgomery, ExcMins
 OL--Samuel A Thomas Jr, etal to Austin Oil Properties Inc, 12-30-82, SE 1/4 Sec 36 A-5
 AOL--Austin Oil Properties Inc to Samedan Oil Corporation, 1-14-83, SE 1/4 Sec 36 A-5
 AOL--Hadson Petroleum Corporation to Hadson 1982 Oil and Gas Program A, 2-1-83, See Instrument
 ASSIGN OVERRID ROY--David L Cherry to Eplin Inc, 1-31-83, Sec 84 A-5
 MD--Cleavene Johnson Elliott to S Gene Hall, 12015082, All my Int NW 1/4 & NE 1/4 Sec 47 Blk 24
 GUARD MD--Pearl Johnson to S Gene Hall, 1-27-83, All my Int NW 1/4 & NE 1/4 Sec 47 Blk 24
 RMML--First National Bank, Wheeler to O B Burton, etux, 2-7-83, Lots 4,7 Blk 6, Wheeler, Parklane
 RMML--First National Bank, Wheeler to O B Burton, etux, 2-7-83, Lots 4,7 Blk 6, Wheeler, Parklane
 AOL--Petro Energy Inc, etal to Mabry Brock, etal, 1-28-82, See Instrument
 AOL--Petro Energy Inc, etal to Gayle O Thompson, etal, 1-28-83, See Instrument
 AOL--Petro Energy Inc, etal to Carmen G Rhode, etal, 1-28-83, SW 1/4 Sec 34 Blk 17 SW 1/4 Sec 105 & E 1/2 Sec 130 Blk 23
February 10, 1983
 D--Clold Helton, etux to Benjamin E Hillhouse, etux, 2-9-83, 100'x105' NE 1/4 Sec 59 A-8
 LEASE--C R Holdeman, etal to Larry Elmore, 1-1-83, E200ac S 1/2 Sec 8 & E 1/2 Sec 20 Blk Re, Surface Only
 RDT--First National Bank, Wheeler to Delbert D Thomas, etal, 2-9-83, Lots 7,8,9 Blk 19, Wheeler

Blk D, Shamrock, Potts
 DT--Freida Jo Robason to United States of America, 2-10-83, Lots 9,10 Blk D, Shamrock, Potts
 D--Reed Grogan, etux to Michael Reed Grogan, etux, 1-28-82, N 1/2 Sec 59 Blk 23, ExLifeEst
 AOL--An-Son Corporation to Abraxas 1981 Private Drilling Program, 1-24-83, Sec 4 Blk 4, B&B
 ROY D--Roy G Barton Jr, etux to Norma J Barton, 1-18-83, NE 1/4 Sec 3 & W 1/2 Sec 4 Blk L, J M Lindsey
 ROY D--Roy G Barton Jr, etux to Norma J Barton, 1-18-83, Sec 8 A-7
 UNIT DESIGN--Hoover & Bracken Energies Inc to Odell Baggerman, etal, 12-15-82, Pt Sec 1 A-2
 UNIT DESIGN--Jan Oil Company to Odell Baggerman, etal, 11-4-82, Pt Sec 1 A-2
 UNIT DESIGN--Kenny Wagner etal #11 to Odell Baggerman, 11-4-82, Pt Sec 1 A-2
 UNIT DESIGN--Robert A Geist to Odell Baggerman, 11-9-82, Pt Sec 1 A-2
 UNIT DESIGN--Harold Hamm to Odell Baggerman, 12-14-82, Pt Sec 1 A-2
 UNIT DESIGN--Cotton Petroleum Corporation to Odell Baggerman, etal, 11-8-82, Pt Sec 1 A-2
 UNIT DESIGN--OGX Company to Odell Baggerman, etal, 11-3-82, Pt Sec 1 A-2
 DT--Construction Services Inc to First National Bank of Amarillo, 1-25-83, Sec 2 Blk 2, B&B
 AOL--Aikman Petroleum Inc to Energy Resources 1981 a Ltd, 1-17-83, 11.768ac Sec 50 Blk M-1
 AOL--Aikman Petroleum Inc to Energy Resources 1981 a Ltd, 1-17-83, Sec 50 M-1
 LTD, 1-17-83, Sec 50 M-1
 ROL--Philcon Development Company, etal to Verna Hulbert, etal, 1-18-83, Sec 15 Blk RE
 DT--Stanley W Baker, etux to First State Bank, Mobeetie, 2-10-83, NW 1/4 Sec 21 A-4, Exc Mins
February 11, 1983
 ADMINISTRATOR DEED--Emmett A Gatlin to D W Jones, 1-25-83, Lot 19 Blk 117, New Mobeetie, ExcMins
 DT--G G Miller to First National Bank, Pampa, 2-10-83, Min Int NE 1/4 & S 1/2 NW 1/4 & NE 1/4 NW 1/4 & NE 1/4 SW 1/4 Sec 39 Blk 24
 D--V M Giles to Lora Giles, 1-22-76, All my int S 1/2 Sec 63 Blk 24
 AMEND DT--David G Campbell to First National Bank and Trust Company of Okla City, 1-31-83, Sec 13 A-8
 AOL--Pioneer Production Corporation to Dyco Petroleum Corporation, 1-25-83, Sec 29 Blk RE
 AOL--David Bruce Fagg, etux to Taylor Elizabeth Winston, 11-1-81, SE 1/4 Sec 58 Blk 24
 C/C NAME CHANGE ORDER --David B Fagg, etux to David B Winston, etux, 11-1-82
 AOL--Pike Oil Inc to Houston Drive Train, 5-24-82, E 1/2 SW 1/4 Sec 67 Blk 24
 AOL--Pike Oil Inc to Houston Drive Train, 6-30-82, SE 1/4 Sec 74 Blk 23
 DISTRICT CLERKS FILINGS
 #8205 Vernon Davenport d/b/a a Vernon Davenport Services VS Lar-Mie Petro Inc-Suit on, Act
 #8206 Vernon Davenport & Son, a partnership VS Lar-Mie Petro Inc-Suit on Act
 #8207 Jeannie Lee Newton VS Roger Wesley Newton-Divorce

Our Young People



Stephanie Walker is the 5 year old daughter of Mr. and Mrs. Steve Walker of Wheeler. Grandparents are Mr. and Mrs. Ed Walker of Allison, and Mr. and Mrs. Ellis Matthews of Perryton.



Jennifer Walker is the 10 year old daughter of Mr. and Mrs. Steve Walker. Grandparents are Mr. and Mrs. Ed Walker of Allison, and Mr. and Mrs. Ellis Matthews of Perryton.

- For all your prescription and cosmetic needs!
- Gift Selections for all Occasions



A JURY SHOULD BE IMPARTIAL. SO SHOULD AN INSURANCE AGENT.



That's why for over 25 years I've done business only with an Independent Agent...the more-than-one-company agent.
 You see, your Big "I" Independent Agent doesn't work for just one insurance company. He represents several.
 So he can give you an independent opinion and offer you expert advice on the best coverage at the best price. And that goes for homeowners, automobile, business, life and health insurance.
 Before you reach a verdict about your insurance, see your Independent Insurance Agent...the more-than-one-company agent.



RIVES 115 West Texas St.
 INSURANCE AGENCY Phone: 826-3573

TOTAL
 Prevents and Kills Crabgrass, Spruge plus 40 Other Weeds
 in the Lawn
 IN ONE APPLICATION



PAX N'RELAX
 Robinson Feed & Seed
 113 N. Madden 256-2491

PRODUCT INFORMATION	
WHEN TO APPLY	Any time of the year. For maximum effectiveness apply before crabgrass germinates and while broadleaf weeds are still growing.
SEEDING	Seeding may be done 60 days after the date of application.
POST-EMERGENCE WEED CONTROL	Crabgrass, clover, dandelions, henbit, chickweed, spurge, plantain, black medic, Poa annua--other broadleaf weeds.
PRE-EMERGENCE WEED CONTROL	Crabgrass, Poa annua, chickweed, spurge, plantain, black medic, goosegrass, pigweed, foxtail and other annual weeds.
FERTILIZER	10-6-4
NUTRITIONAL & TRACE ELEMENTS	Nitrogen, phosphorus, potash, sulfur, iron, manganese and zinc.
INGREDIENTS	Dacamine, MCPP to kill broadleaf weeds. Dacthal to prevent crabgrass and other weeds. DSMA to kill young crabgrass and Poa annua.
COVERAGE	2,000 Sq. Ft.
SIZE OF BAG	16 Lbs.

Lines from Linda

Linda Daughtry, CEA (Home Economics)

TEEN DRUG PROBLEMS

Facing drugs and drug risks seems inevitable for a startling number of today's teens, but watchful parents can recognize signs of drug use early and help their child kick the habit. Parents, in order to help, must understand that adolescence is one of the most difficult periods of growing up, and, in today's stressful society, teenagers often find themselves encountering many pressures. One of the biggest pressures to a teen to be accepted. Because of this, a teen often will succumb to the pressures of peers, even if against his or her better judgment. Careful parents may be able to detect a drug problem early and prevent their child from getting into even more serious situations.

Some signs to watch for are these:

- 1) Loss of interest in school and even expression of the wish to drop out
- 2) Dropping grades
- 3) A change in style of dress or appearance and loss of interest in looks
- 4) Loss of outside interests
- 5) Dropping of extracurricular activities, such as sports, to "hang out" with a different crowd.
- 6) Differences in moods—the child may become withdrawn, defensive and often depressed
- 7) Glassy-eyed appearance and/or disorientation
- 8) Excessive Fatigue and the need for abnormal amounts of sleep
- 9) Lying about where they're going or where they've been
- 10) Selling family valuables or even stealing to support a drug habit
- 11) Blackouts

These signs may not necessarily mean drug use, but they do indicate some type of problem. It's important to discuss these things with the child in an open, honest and understanding atmosphere, and it's important to seek help if the situation seems to indicate a need for it. Educational programs conducted by the Texas Agricultural Extension Service serve people of all ages regardless of socio-economic level, race, color, sex, religion or national origin.

ONE WEEK!
 FEBRUARY 18-24
The boys are back in town.
 Nick Nolte is a cop. Eddie Murphy is a convict.
 The last place they ever expected to be is on the same side.
 Even for...
48 HRS.
Rogue Theatre
 Wheeler, Tx. 826-3078
 Showtime 8:00 PM

#1177—A favorite! 12" boot with pull straps, full-grain oil-tanned Velva Retan leather, inch-wide steel shank, oil-and-slip resistant Neoprene cork soles.

A-1177

You've earned your Wings!

Red Wings
 B.J.'s WEARHOUSE

TEXAS GARDENER TIPS

How to Ensure an Abundance of Asparagus

The high price of asparagus may make you think of it as a luxury vegetable, but it is quite easy to grow, and may appear more frequently on your menu if you grow it in your own garden. The lush ferns of asparagus do best in the cooler areas of Texas, mainly in the north, east and west sections of the state, but asparagus can be successful in the alkaline black clay of Central Texas and as far south as San Antonio. Generally, you can predict success north of Austin and limited success the farther south of Austin you garden. Asparagus is best grown from one-year-old roots called crowns. You

will be able to harvest a few spears the second year after planting crowns, but production won't be in full swing until the third year. Mary Washington and Martha Washington are two old reliable varieties, but several new hybrid varieties are now available. One of these, U.C. 157, has proved superior to older varieties in tests in Texas. A limited supply of one-year-old roots is available from Porter & Son, Seedsmen, P.O. Box 104, Dept. TG, Stephenville, TX 76401. In planning an asparagus bed, find a sunny, well-drained spot with alkaline soil and plenty of room for expansion. The bed will be relatively permanent, so choose your spot wisely. Set

the crowns out in late February or March. Just before planting your crowns, till in 2-3 pounds of 10-20-10 fertilizer per 20 feet of row. Dig trenches about 6-10 inches deep and 12 inches wide. Trenches should be 4-6 feet apart. Dig in 1-2 inches of aged manure or compost to the bottom of the trench. Spread the crowns out evenly, spaced about 12-14 inches apart. Cover them with 2-3 inches of good garden soil. As the plants grow, gradually fill in the trench a few inches at a time with soil. Water the plants often and fertilize lightly each month. Come winter, remove the ferns, and mulch the bed with 2-3 inches of organic matter. Next year, you will be able to harvest a few spears of asparagus, but by the third year, this delicacy will become a regular at the dinner table.



TEXAS GARDENER
 P.O. Box 9005 Dept. BR
 Waco, TX. 76710
 1983 TEXAS GARDENER MAGAZINE

Box 161 Wheeler, Texas 79096
Gateley Electric
 "No Job Too Small"
 • New Construction
 • Remodeling Service
 • Residential
 • Commercial
 806/826-3352 or 826-3123

New Management
Sand & Sage Motel
 LOW RATES
 (Daily, Weekly & Monthly)
 Mobil Homes by the Month & Parking Spaces (Low Rates)

Briscoe News

VEVOLA PARKER

Tuesday, February 8th. Our sun is out and sure looks warm. Hope it will melt some today.

Some birthdays for February are Mattie Jackson 16th, Tommy Clark 16, Juanell Manning 28, Jimmy Joe Ault 18, and Margaret Gilmer 3.

Alice Kelly and Barbara Williams visited Mattie Jackson Wednesday and helped her put a quilt in the frame.

I have heard of trying to keep wolves from the door, now the other morning, 2 coyotes ran our dogs under the house. They both howled right out there in rock throwing distance. I told Colie we would not have one chicken left.

Mrs. Lawrence Aderholt told me when they lived on the Dow Steel place, Mr. Aderholt would get up and shoot several times with a shotgun to scare the coyotes away.

Truman and Eric Zybach came up to feed. They ate with Clarence and Irene. R.L. and Rozena Zybach fed cattle and went by and visited and ate with Clarence and Irene twice since the snow.

Essie Finsterwald went to the doctor at Wheeler with her ear and eye, and visited her sister Nora Hiltbrunner in Wheeler Resthome.

The prevention magazine says, when your joints ache and get stiff it is lack of oxygen. Exercise pumps oxygen into those aching, sore joints.

Correction: Janice (Keeley) husband brought his Junior basketball team down from Morris to play Linda Keeleys' Junior team. Linda's team won. I hope I have this right. I am sorry.

Our visitors over the weekend were, Ted and Linda Parker and Scotty, Gary and Nona Parker, Shane, Billy and Sheridan, Weldon and Diana Parker, Marianda and Michelle.

Another correction: Scotty did not put his lamb in a straight jacket, he put a muzzle on her.

Sunday the sun was out and it melted a lot of our snow. Water was standing all around the house.

Saturday afternoon, Lester Hudson's arm was hurting. They took him to hospital. Mable Parker talked to Mary Sunday night and Mary said his arm was swollen bad. They were running tests on him. Sounds to me like a blood clot or clogged blood vein. That's what killed Mrs. Parker. Now a clogged vein can be one of the most painful there are. I have had some.

We wish for Lester a speedy recovery. He is 90 years young. Our sympathy goes out to Hub Coles' relatives. He passed away Saturday, I understood, Think he was up in his 90+ years also.

Monday morning, Feb. 14. Happy Valentines Day to everyone.

We have around 35 degrees on my little outdoor thermometer this morning.

My news will go to Amarillo today and another snow is due

mostly in Lesters hand and wrist. They were still running tests.

Cliff and Dorothy Walker visited Jim and Kelley Walker Sunday. Jim is doing fair since his other back surgery. He had a bone graft.

We wish for Jim to not have to have any more back surgery.

Haydon Chiropractic Clinic

PHONE: 665-7261

103 East 28th St.

Pampa, Texas

THE SHIRT SHACK
114 East Texas Street
Letters & Transfers
Jersey & T-Shirts
Caps & Hat Pins
Phone: 826-5719

Realty of the Southwest

HOME FOR SALE
FOR SALE: 4 Bedroom home. Excellent location. Close to school, close to town. Financing Available.

Newly remodeled three bedroom home for sale—Beautiful fireplace. Owner has moved and must sale.

Nice home priced in the 20's for sale. Must see to appreciate.

4 bedroom home with central heat and air conditioning. Home is on a 100' x 350' lot.

HOUSE & 4 LOTS
FOR SALE: House has large living and dining area, 3 bedrooms and large bath.

2 new homes under construction.

Two bedroom house, 7 lots, steel corrals and barn for sale. Owner has moved and must sell.

FOR SALE: House and 17 acres located just outside the city limits. Also, has smaller house, horse barn, arena and a small shop.

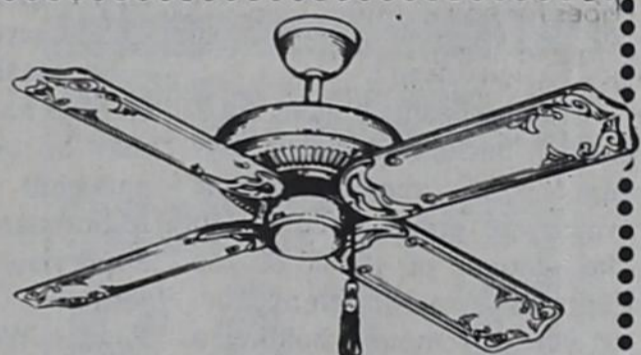
MOTEL FOR SALE: Excellent business opportunity.

WE NEED YOUR LISTINGS!

John Norman, Broker
Don Rives, Salesman
Lona Williams, Saleslady

806/826-3573—Office
826-3283—Home
826-3341—Home

SPECIAL SALE on CEILING FANS



OLD JACKSONVILLE

One of Finest Fans made in U.S.—15 Yr. Warranty All Models on Sale

Model	Reg. Price	Sale Price
SAVANNAH MODEL	\$250.00	\$175.00
RICHMOND MODEL (5-Blades)	\$260.00	\$185.00
VICKSBURG MODEL (Antique Silver)	\$319.00	\$200.00
FASCO WORLD FAIR MODEL (6 Blades—Life Time Warranty)	\$319.00	\$285.00
CHARLESTON	\$190.00	\$169.00

Still have some ENCON FANS left at Wholesale Prices

E. M. Rives (806) 256-5250 Shamrock
Betty Rives (806) 826-3224 Wheeler

INSTALLATION AVAILABLE

VALUES TO \$10.00



OUR WAY OF SAYING THANK YOU!
With purchase of \$10.00 or more, any merchandise in our store, you may buy any piece of jewelry from our premiere jewels display for the low price of only \$2.98.

Ask for your free PARTICIPATION CARD

BEN FRANKLIN
408 S. Main Phone: 826-5868
Wheeler, Texas

PREMIERE JEWELS
SPECIAL OFFER!
VALUES TO \$10.00 NOW OFFERED
FOR ONLY **\$2.98**
WHEN USING OUR PREMIUM CARD PLAN

ery.

My brother-in-law Elmer Pillers has another back surgery February 16. With bone grafting this time. We are hoping this one is successful.

Cliff and Dorothy and Nancy Davis went to Dunn, Colo. Jan. 30 to Alton and Ellie Wilkinsons' 50 wedding anniversary. They had it in the town hall. There were around 100 there. Dorothy said it all was really nice. Yes, it's a day you will always remember.

Jims' girl Jody and family moved back to Illinois. We hated to hear this. They will be missed.

Thursday Elbert and Ruby Zybach went to Canadian and visited Ardell George in Abraham Nursing Home. Others were Evert and Iris Goad.

Colie ordered butane this morning. Think he is getting ready for another big snow storm. One consolation we have now, if our butane runs out we can start the wood stove.

Helen Helton went home with Mae Muse from church Sunday. They attended the open house at the nursing home in Wheeler. Helen said a big crowd was there. Every-

ARROW Water Well Service
Windmill and submersible pump sales and service.
Call anytime: Jerry Koelzer
806/826-5906
Wheeler, Texas

LOANS Available
AT LOW INTEREST FOR NEW HOUSING
Contact: **DONALD RIVES**
Realty of the Southwest
826-3573
117 West Texas St.
Wheeler, Texas.

thing was so nice.

Helen has been snowed in and the county line is still blocked in places. She went to Jimmys' and stayed until church. Cloyd Helton and family got their car to the Briscoe store. Mark brought them on to Helens. He then went and got Annette and Kaleb. She went home with Mark and family Wednesday, went to church and spent the night.

Saturday she went with Jimmy, Todd, Jason and Tammy to Amarillo. They shopped and visited Cloyd and family, and Lee and JoAnn a while.

Joe Bob and Corey Kinnaman spent Saturday night with the K.D. Douthits.

Tressa Perry spent Saturday night with Jamie Trimble.

Guest preacher at Gageby Sunday was Raymond Lewis of Stinnett. He was accompanied by Mrs. Lewis and they were Sunday dinner guests of Willis and Verna Fillingim. Other guests were Ray and Pat Hudson and Rodney and Cheryl and Christina and Shellie Ogle and Mary Hudson.

Sue Ratliff took Sue Reames to Amarillo Thursday for a doctor appointment. Keith and Mandy visited Willis Fillingim. Melody and Bob were there for supper.

Willis and Verna Fillingim ate supper with Chuck and Phoebe Hartline Wednesday night and played 72.

Cliff and Dorothy Ogle visited James and Bea Ogel Saturday night and played Canasta.

Laura and Amy Meadows and Alicia Hefley spent last Saturday and Sunday with Roy and Lois Meadows while Leta Meadows and Karen Hefley catired a wedding a Perryton, in spite of all the ice and snow.

Charles Crownovers' cousin Ronnie and Sharon Ford and Lesa and Peggy of Stinnett came Friday to spend the weekend with the Crownovers. They all attended church at Gageby Sunday and visited E.G. Fillingims Sunday afternoon.

There was a real nice write

Jack Hightower Against PIK Tax

As a result of a recent Internal Revenue Service tax ruling potentially affecting farmers participating in the Payment-In-Kind program, Congressman Jack Hightower is co-sponsoring a bill to correct what he calls "a potentially disastrous and unfair tax situation" for farmers and for the PIK program.

The I.R.S. ruled February 7th that current tax law would require farmers receiving surplus government crops under the PIK program to pay taxes on them when farmers receive their certificate for the crops, not when the crops are actually sold. Hightower's legislation would delay the taxes until farmers have actually sold the crops.

"I know farmers who can't afford to participate in the PIK program the way the tax law stands now," Hightower said. "Our bill will make it clear that farmers in this situation will be treated fairly in the tax laws and won't pay taxes until they've sold their commodities under this program." Hightower explained that a farmer pays taxes on his crop when he markets the crop, not at harvest time. This situation should be no different Hightower argues. "Current law treats the farmer as if the PIK commodity was a cash payment," Hightower said, "but it's not, it's a commodity to be marketed."

The bill is likely to gain bipartisan support because the effectiveness of the Administration's PIK program in reducing commodity surpluses now depressing market prices depends on the level of farmer participation. That level may, in turn, be directly affected by whether Congress can change the tax law before the March 11 PIK sign-up deadline for farmers.

"We're going to push the House Ways and Means Committee to take this up quickly," Hightower said, "and I hope we can see floor action in the next several weeks." Similar legislation has been introduced in the Senate where it must first be approved by the Senate Finance Committee before possible Senate passage. If the change is approved in both Houses in identical form, it then goes on to the President for his signature.

up in Saturday, Feb. 12 Amarillo paper about the part Stephanie Mitchell played in the Canadian girls varsity basketball game with River

Road at Amarillo Friday night. Think Stephanie made about half their points besides great ball stealing, rebounding, etc. The game made Canadian

District Champions. Briscoe High School played Mobeetie for their homecoming game Friday night. Sorry we lost both games. Homecoming King and Queen were Jarrell Gilbert and LaTresa Stewart. First runners-up were Mark Meadows and Carol Watson. Second runners-up were Keith Meek and Amanda Stewart.

LOIS'S RADIO & T.V. SERVICE
COMMERCIAL RADIO & TV
806-826-3568
We will try to repair any make and/or model Radio and T.V.
700 E. Oklahoma St. Phone: 826-3568

BENTLEY'S MECHANICAL
REFRIGERATION
ELECTRICAL SERVICE
AIR-CONDITIONING & HEATING
826-3246
COMPLETE SERVICE

A Land Bank loan... for more than just buying land
Many people think of the Federal Land Bank only when buying land. Truth is, there are many other ways to use long-term Land Bank loans.
You can:
✓ Refinance debts
✓ Pay estate taxes
✓ Improve land
✓ Build or remodel
Long-term Land Bank loans keep payments manageable so that these and other farm needs can be handled more easily. So stop by and see how the Land Bank can help.
The Federal Land Bank
The Bank of Generations
F.L.B.A. of Childress
Box 910
Childress, Texas 79201
(817) 937-6181

JENNINGS PLUMBING & ELECTRIC SERVICE
Owner: Larry Jennings
Phone: 806-826-3153
1110 S. Main
Box 423
Wheeler, Tx. 79096
Roto-Rooter Service—Repairs—Remodeling
9 years Experience
Reasonable Rates

WELCOME TO FIRST UNITED METHODIST CHURCH
8TH AT MAIN - P. O. BOX 89
WHEELER, TEXAS 79096
Church (806) 826-3114 - Parsonage (806) 826-3079
Sunday School 9:45 a.m.
Morning Worship 11:00 a.m.
Evening Worship 6:00 p.m.
Ernie McCaughy, Pastor

Money Rates at a Glance

30-Month Money Market Certificate	10.558% Annual Yield
30-84 Day Repurchase Agreement	9.90% Annual Rate
6-Month Money Market Certificate	8.889% Annual Rate
8.00%	\$5,000 - Plus Deposited

*An interest penalty is required for early withdrawals from certificates of deposit. 6-Month C.D. does not compound.

Security Federal Savings and Loan Association
MEMBER FSLIC
PAMPA, TEXAS HEREFORD, TEXAS WHEELER, TEXAS AMARILLO, TEXAS

Livestock Water

The major use of farm ponds in Wheeler County is for livestock water. A good distribution of water will be very beneficial for livestock grazing. When livestock watering places are scarce in a pasture, the animals will not make efficient use of all the forage in the pasture.

Some areas will rarely be grazed when they are too far from water while others near the water will be overgrazed. In-efficient grazing of a pasture is lost income to the landowner.

For good grazing distribution, water supplies should be located around 1/2 mile apart. One mile is considered the maximum distance cattle will normally graze from a water supply.

Farm ponds provide many recreational possibilities as well as livestock water. These may include: fishing, swimming, wildlife habitat, camping areas, and aesthetic value. With a little planning farm ponds can be money making projects. Your local Soil Conservation Service will be happy to assist you in locating a good farm pond site.

Another good source of livestock water is windmills. However, windmills are only as good as the storage facility used with them. Water storage facilities should be designed to hold a week's supply of water for your cattle herd. This is necessary since windmills occasionally need repair and the wind does not blow every day of the year. Protect your livestock investments by planning adequate water in good locations for all of your pastures.

Want Ads

CLASSIFIED RATES:

All classified ads must be paid in advance, except for open ledger account customers.
Charges are 15c per word Minimum charge is \$1.50.
Card of Thanks charges will be \$3.75.

ADVERTISING DEADLINES

Classifieds: 5:00 p.m. Mon. Display: 5:00 p.m. Mon.

TRAILER HOUSE FOR SALE: 12'x50' Hascuinda, real nice, \$4900.00. 405/534-2394. 2tc

FOR SALE: 1982 Ford Econoline Van, Customized, Excellent condition, 6600 miles, 826-3352. For Sale or ???

CAKES

CATERING SERVICE FOR Wedding & Anniversaries
Cathy Hunt—375-2391
Kay Luttrell—375-2421.

FOR SALE: 1977 Triumph TR-7, new set of radial tires, 826-5882 after 6:00 p.m. 3tp

DOG GROOMING: Schnauzers, Cocker Spaniels, Poodle grooming. All matted dogs welcome. Reasonable rates. Will pick up and deliver! Call 826-5265 after 6:00 p.m.

SPARLIN'S WINCH SERVICE & BACKHOE
Phone: 826-5898

APARTMENT FOR RENT
2 bedroom, appliances including washer and dryer. Call 256-3792 evenings, or 826-3364 days. rtn

Bored. Need money, or would like to meet people. Sell AVON. Good insurance. More information, call collect 806/665-8507

REAL ESTATE
We need your listings.
Baxter & Marshall Inc.
Call: 826-3112 or 826-3238

LIGHTS AND SIGHTS
CasaBlanca Ceiling fans, Lamps, Lampshades, Lighting Fixtures, Gift Items, Lamp Parts & Bulbs, Curio and Gun Cabinets.

Unique Items for YOUR Home!
665-8341
107 N. Cuyler
Downtown Pampa

LADIES! EVERYONE!
Are you interested in joining a Weight Watcher Chapter?
Contact Pat Hudson by 2-25-83 375-2387 or Box 477 Briscoe.

Carpenter Work

REMODELING, REPAIRS
PAINTING, STONE
VENEER, ACUSTIC
CEILINGS, ELECTRICAL & PLUMBING
Call: Tom Molloy
826-3331

FOR SALE: 180x140 lot in excellent location near city park. Call 826-3519, after 5:30 call 256-2912. rtn

DEALER REPO
3 bedroom mobile home, excellent condition. Woodsiding, storm windows, air etc. Assume payments of \$267.57 with approved credit.
FIRST QUALITY MOBILE HOMES
Hwy 60 West
665-0715
Pampa, Texas

FOR SALE BY OWNER: Call 826-5609. Nice 3 bedroom, 2 bath, large living and dining area, brick, central heating and air conditioning, 1612 sqft., set on 100'x150' lot, in quiet part of town. 205 S. Franklin.
Also, small 940 sqft., 2 bedroom, 1 bath, with cement storm cellar, small out building. Set on 120'x150' lot located on 1120 S. Main Str. (Make reasonable offer.) 3tp

WILL HAUL

TREE LIMBS
FURNITURE

JUNK
You Call—Will Haul
Weekdays Phone:
The Wheeler Times
826-3123
After 5:00 & Saturdays
Phone: 826-3221

FOR RENT: Two, 2-bedroom homes on edge of town. 826-3243. rtn

FOR RENT: 2 apartments, 2 bedroom rent houses. Call 826-3184, Carrol Adams. rtn

FOR RENT: 4 bedroom house, unfurnished. Phone 826-3059.

BURRELL OIL & GAS PROPERTIES

P.O. Box 23
Wheeler, Texas 79096
Ph. 806/826-3519
(if busy) 826-3529

Leases, Min. & Roy. Bought
Ask for Mark or A. W.

Complete Mobil Home Service

MOVING - LEVELING
ANCHORING - SKIRTING

Call 826-5692
George Harris

FOR SALE: 67 Mustang, in fair condition. Call 826-3242.

FREE TO GOOD HOME: Gentle, male cat. Phone 826-3330.

RICHARD'S UPHOLSTERY
Furniture, etc.
Phone: 845-2761
Mobeetic

FOR SALE: 14x70, 2 bedroom, 2 bath, 1973 Alamo Trailerhouse. Contact Eddy Walker 375-2349 or 375-2471 rtn

BUSTERS
Good Used Ice Boxes
Pool Table
Washers & Dryers
Baby Beds
Phone: 826-3072

FOR SALE: 1979 Chevrolet Camaro Berlinetta, RED. To see, Call 826-5719.

ALL TYPES OF PAINTING
Interior and Exterior,
good local reference.
Wellington Phone: 447-2807

HOLCOMB
Trailer Park
West 12th Street
Phone 806/826-5810
or 827-5942

DECORATE YOUR HOME
with the natural beauty of woodwork. Book cases, entertainment centers, gun cabinets, picture frames etc. All constructed from top quality materials. Contact John Harris at 826-3417 after 6:00 PM. 3tc

WANTED: To buy older piano. Also have 71 pickup for sale. 826-3104. 2tp

PAMPA POOL & SPA
"We sell Hot Tubs, Spas,
Swimming Pools & Saunas"
"We Service"
1312 N. Hobart
Phone 665-6218

Janet's Tax Service & Bookkeeping
will be opening Feb. 8, 1983
My Service May Save You Money And Help You Get Your Refund Quickly.
Appointment's Only
Phone: 826-3029
Address: 208 West 8th

MAKE OFFER
2 story, 4 bedrooms, 2 living areas, 2 baths, formal dining room, fireplace, zoned heat & air, approx. 2850 sq. ft. living area, 2 car garage. Detached recreation room with brick fireplace, serving bar, and indoor grill, storage area. Separate workshop building, storage cellar. 150x150 ft. lot with trees and garden areas. Call 826-3077 or 1-256-2681.

City of Wheeler, Texas
By: Louis Stas, Mayor
Notice
WANTED:
Office Space For ASCS Office Requirements: Specifications may be picked up at the Wheeler County ASCS office between 8:00 A.M. and 4:30 P.M. from Monday January 31, 1983 through February 22, 1983. Specifications will include all exhibits needed for inside furnishings for the operation of this office. One bid for each type of building will be accepted by the county committee.
Contact: Albert A. Hartman, County Executive Director, or Dorothy Risner, Secretary, weekdays only at the ASCS county office, or phone (806) 826-5578 for more information.
Bids must be submitted by 5:00 P.M. February 22, 1983 local time. No bid will be accepted after this closing date unless it was mailed by certified or registered mail 5 days prior to February 22, 1983.

Feeling Better Fast, We Have B-15, at HYLANDS PHARMACY

FOR SALE: 14x80 Lancer, 3 bedroom, 2 bath, beam ceiling brick fireplace, new carpet. Must see to believe. 826-5794. Priced Reasonably. 3tp

FEEL BETTER FAST, WE HAVE B-15, at HYLANDS PHARMACY

Vicky's Touch of Class
is now open
specializing in men and women's hair styling.
Open Tues. thru Sat.
8:00 to 5:00
On State Line Across From Store.
405/534-2421

CUSTOM RANCH WORK

Fence construction and repair.
Trucking, order buying, care and processing of Livestock.
No Job too large or too small.

BAR S. CATTLE COMPANY

Phone: 256-3892

1,000 FACTORY REBATE
Name brand, 2 or 3 bedroom, Northern built mobile homes. If down payment has been your problem, we can help. Easy bank rate terms, large selection.

FIRST QUALITY MOBILE HOMES

HOUSE: 3 Bedroom 1 1/2 bath, bricked, covered patio and garage, fenced. Phone 826-3298 3tp

Trim off Pounds with **GOBESE GRAPEFRUIT EXTRA STRENGTH CAPSULES AND E-VAP TABLETS.**
HYLANDS PHARMACY

HUNTERS & TRAPPERS
Finney Furs will be here every Tuesday through March 8 at the West Motel, Highway 152. Pay cash for furs. Time will be from 1:00-1:30. Call 806/995-2100. 3tp

NOTICE

NOTICE TO CONTRACTORS
Sealed bids addressed to the City of Wheeler, Texas will be received at the City Hall until 1:00 PM, February 28, 1983 and then publicly opened and read for furnishing all plant, labor, material and equipment, and performing all work required for cleaning and painting one steel elevated tank and two steel ground storages.

Bids shall be submitted in sealed envelopes upon the blank form of the proposal attached hereto and marked in the upper left hand corner.

All proposals shall be accompanied by a cashier's check or certified check upon a national or state bank in the amount of five (5%) percent of the total maximum bid price payable without recourse to the City or a bid bond in the same amount from a reliable surety company, as a guarantee that bidder will enter into a contract and execute performance bond within ten days after notice of award of contract of him. The bid security must be enclosed in the same envelope with the bid. Bids without check or bid bond will not be considered.

The successful bidder must furnish performance and payment bonds upon the forms which are attached hereto in the amount of 100% of the contract price from an approved surety company holding a permit from the State of Texas to act as surety or other surety or sureties acceptable to the Owner.

The right is reserved to reject any and all bids and to waive any informality in bids received.

Plans, specifications and bidding documents may be secured from the office of Bill R. McMorries & Associates, Inc., 6300 Canyon Dr., Amarillo, Texas 79109, on deposit of Fifty (\$50.00) Dollars per set which sum so deposited will be refunded, provided: (1) All documents are returned in good condition to Bill R. McMorries & Associates, Inc. not later than 48 hours prior to the time for receiving bids; or (2) The Contractor submits a bid and all documents are returned in good condition to Bill R. McMorries & Associates, Inc. at the time that bids are opened.

City of Wheeler, Texas
By: Louis Stas, Mayor

Notice

WANTED:

Office Space For ASCS Office Requirements: Specifications may be picked up at the Wheeler County ASCS office between 8:00 A.M. and 4:30 P.M. from Monday January 31, 1983 through February 22, 1983. Specifications will include all exhibits needed for inside furnishings for the operation of this office. One bid for each type of building will be accepted by the county committee.
Contact: Albert A. Hartman, County Executive Director, or Dorothy Risner, Secretary, weekdays only at the ASCS county office, or phone (806) 826-5578 for more information.
Bids must be submitted by 5:00 P.M. February 22, 1983 local time. No bid will be accepted after this closing date unless it was mailed by certified or registered mail 5 days prior to February 22, 1983.

FEEL BETTER FAST, WE HAVE B-15, at HYLANDS PHARMACY

Britten Construction

STEEL FABRICATED
FARM BUILDING,
GRAIN STORAGE BINS

All Types Concrete Floors,
Walks, Foundation

Call: 248-6631 or 248-5421
— FREE ESTIMATES —

Approximate Area: Type I: 369.4 acres; Type II: 526.5 acres.

Contracts No. 25[C]83[HML]09: Hardeman County:
U.S. 287: From F.M. 268 to Hardeman/Wilbarger County Line, to include all of F.M. 925;

S.H. 6: From Oklahoma State Line to Hardeman/Foard County Line; Length: 48.2 miles; Approximate Area: Type I: 481.1 acres; Type II: 593.9 acres.

Contract No. 25[C]83[HML]10: Knox County:
U.S. 82: From Knox/King County Line to Knox/Baylor County Line;

U.S. 277: From Knox/Haskell County Line to Knox/Baylor County Line, to include F.M. 266 from U.S. 82 to Goree;

S.H. 6: From Knox/Foard County Line to Knox/Haskell County Line; Length: 87.58 miles; Approximate Area: Type I: 556.65 acres; Type II: 763.0 acres.

Contract No. 25[C]83[HML]11: Motley County:
U.S. 62-70: From Motley/Floyd County Line to Motley/Cottle County Line to include S.H. 70, from Matador to Motley/Dickens County Line; Length: 44.39 miles; Approximate Area: Type I: 188.85 acres; Type II: 312.6 acres.

Contract No. 25[C]83[HML]05: Wheeler County:
I.H.40: From Shamrock to Oklahoma State Line to include all of F.M. 1802, F.M. 2168 and Spur 30;

U.S. 83: From Wheeler/Hemphill County Line to Wheeler/Collingsworth County Line; Length: 48.85 miles; Approximate Area: Type I: 492.24 acres; Type II: 604.99.

Proposals, plans and specifications for the above contracts may be obtained at the Department of the following Maintenance Construction Supervisors: Kenneth W. Young, Paducah; Brice P. Lindsey, Dickens; Gene R. Crabtree, Quanah; Carl L. Bruce, Munday; Clay R. Jameson, Matador; or District Office, Childress.

Proposals will not be consolidated for bidding purposes. Bidder must submit individual bids for any of the above separate highway mowing contracts.

A PRE-BID CONFERENCE WILL BE HELD WITH MR. LEWIS H. WHITE, DISTRICT ENGINEER, AT THE DISTRICT OFFICE IN CHILDRESS, TEXAS AT 10:00 A.M., MARCH 3, 1983. PERSONS INTERESTED IN BIDDING ON ANY OF THE CONTRACTS SHOULD ATTEND THIS PRE-BID CONFERENCE.

THE STATE DEPARTMENT OF HIGHWAYS AND PUBLIC TRANSPORTATION, IN ACCORDANCE WITH THE PROVISIONS OF TITLE VI OF THE CIVIL RIGHTS ACT OF 1964 (78 stat. 252) AND THE REGULATIONS OF THE U.S. DEPARTMENT OF TRANSPORTATION (15 C. F. R., PART 8), ISSUED PURSUANT TO SUCH ACT, HEREBY NOTIFYES ALL BIDDERS THAT IT WILL AFFIRMATIVELY INSURE THAT THE CONTRACT ENTERED INTO PURSUANT TO THIS ADVERTISEMENT WILL BE AWARDED TO THE LOWEST RESPONSIBLE BIDDER WITHOUT DISCRIMINATION ON THE GROUND OF RACE, COLOR, OR NATIONAL ORIGIN.

THANK YOU FROM BRISCOE BOOSTERS
The Briscoe Boosters would like to thank each and every person who helped support our Booster Night activities. We would like to thank everyone who helped on the pancake supper, everyone who played in the basketball games, all who furnished food for our concession stand and the people of our community for your backing and support. The support of our F.F.A. and 4-H youth is greatly appreciated!
See you at the Briscoe Local Stock Show Monday, February 21, 1983 at the Wheeler County Livestock Barn.

THANK YOU
The loved ones of Allen Hale wish to express their appreciation and gratitude for all the love and kindness shown them. Your friendship and comfort have meant so much to us. We especially would like to thank the ambulance crew for their dedicated service. Thank you also for your prayers, flowers, food, cards, memorial gifts, and other gifts of love.

THANK YOU
I would like to take this opportunity to thank everyone for the gifts which have been sent since the fire. I would also like to express my sincere appreciation to the members of the Wheeler Fire Department and all the friends and neighbors who helped during the fire.

THANK YOU
I would like to take this opportunity to thank everyone for the gifts which have been sent since the fire. I would also like to express my sincere appreciation to the members of the Wheeler Fire Department and all the friends and neighbors who helped during the fire.

NOTICE

APPLICATION BEING ACCEPTED

Applications are now being accepted for the position of secretary. Applications will be taken until February 28. Contact the Wheeler County Extension office Wheeler County Courthouse or phone 826-5243

Notice

NOTICE FOR SEALED BIDS
The Allison Volunteer Fire Department is accepting bids for scales and office, or scales only to be moved. That property being the South 1/4 of lots 14&15 in Block 1 Section 6 Township of Allison, R&E Survey. Scales made by Howe with 40,000 lb weight limit. Inspection can be made by contacting Bob Dukes or Dean Keys. Bids will be accepted until 7:00 p.m. March 10, 1983. Send bids to Allison Volunteer Fire Department % Kyndal Murray Box 115, Allison Tx. 79003. We reserve the right to accept or reject any or all bids.

Notice

PUBLIC NOTICE

Notice is hereby given by the Parks and Wildlife Department that a public hearing will be held at 2 P.M. on March 22, 1983 at the County Courthouse at Wheeler for the purpose of gathering information concerning proposed hunting and fishing regulations for Wheeler County.

As the result of action by the Texas Legislature, the Texas Parks and Wildlife Commission, under the authority of the Uniform Wildlife Regulatory Act, Chapter 61, Texas Parks and Wildlife Code, is responsible for the setting of seasons, bag limits, means, and methods for taking the wildlife resources in Wheeler County.

All interested persons are urged to attend and comment upon the proposed regulations. Additional information concerning the public hearing may be obtained by calling our Toll Free Number 1-800-792-1112 or 512-479-4974.

THANK YOU FROM BRISCOE BOOSTERS

The Briscoe Boosters would like to thank each and every person who helped support our Booster Night activities. We would like to thank everyone who helped on the pancake supper, everyone who played in the basketball games, all who furnished food for our concession stand and the people of our community for your backing and support. The support of our F.F.A. and 4-H youth is greatly appreciated!

See you at the Briscoe Local Stock Show Monday, February 21, 1983 at the Wheeler County Livestock Barn.

THANK YOU

The loved ones of Allen Hale wish to express their appreciation and gratitude for all the love and kindness shown them. Your friendship and comfort have meant so much to us. We especially would like to thank the ambulance crew for their dedicated service. Thank you also for your prayers, flowers, food, cards, memorial gifts, and other gifts of love.

THANK YOU

I would like to take this opportunity to thank everyone for the gifts which have been sent since the fire. I would also like to express my sincere appreciation to the members of the Wheeler Fire Department and all the friends and neighbors who helped during the fire.

THANK YOU

I would like to take this opportunity to thank everyone for the gifts which have been sent since the fire. I would also like to express my sincere appreciation to the members of the Wheeler Fire Department and all the friends and neighbors who helped during the fire.

MORE ABOUT BOOKS, Etc.
Wheeler Public Library
Wanda King, Librarian

PATRONS—Thank you for responding to our call of returning delinquent books or paying for lost books. A good number of people have taken care of theirs. Others have not. For these people we are extending

the time of publishing names in the paper until next week. When we published the information last week, we did not take into consideration press time. Please take advantage of this time to get your books back to the library.

The following are a couple of articles taken from other newspapers that tell what can happen when people do not return overdue books.

Possible library fines now \$300 and 30 days

(Amarillo Sun. News-Globe, Feb. 6, 1983) The punishment usually meted out for petty theft or speeding in a car will now be given to those who ignore warnings of overdue books from the Page Public Library.

Flagrant violators of notices to return books could face a fine of \$300 and 30 days in jail

under a new ordinance. The new law has brought the return of about 20 long-overdue books, city officials said Friday, one day after it took effect.

City Manager Jack Reinhold said the ordinance only affects chronic offenders who haven't responded to letters or phone calls. Reinhold said some book have been overdue two or three years.

2 Mothers arrested for Overdue Books

(The Dallas Morning News, Sat. Dec. 18, 1983) Police and prosecutors are backing up public library officials in their battle to get people to return overdue books.

Police have arrested two women whose children failed to return books worth more than \$120 from the Veterans Memorial Library and its branch in the nearby town of Shepherd.

Library director Evald Kruut said he turned the women's names over to the city attorney under a year-old ordinance that allows police to arrest people with overdue books.

"I didn't want to go this far," Kruut said. "Usually when we send letters, people call us, and we get it straightened out. But these people never contacted us."

Arrested and facing fines of up to \$100 each were Robert A. Caszett, 32 and Margaret E. Herrick, 35, both of Mount Pleasant.

The police complaints allege that Ms. Caszett's children have not returned books worth \$69.75 and that Ms. Herrick's children have failed to return books worth \$60.95 in the last four years.

"Now that we have this ordinance, we have a little more power. But this is the first time anybody has been arrested," Kruut said. "Until now we've always handled this kind of thing out of court."

Both women were sent registered letters July 15 that warned them to return the books or face the consequences, and neither responded, Kruut said.

Ms. Caszett dismissed her arrest as a "big joke."

"What they're trying to do is make a public example of me and this other woman," she said. "I know the library has problems with overdue books, but they should try different ways of collecting."

"Don't the police in this town have something better to do? It was really embarrassing being taken away in a police car."

Ms. Herrick said she was unaware of the books her children had out until she received the July 15 letter.

"While I was at the police station, the kids already took them back to the library," she said.

BOOKS BY MAIL

Is there anything more welcome than the postman bringing a package to you? And is there anything more rewarding to occupy your time on a cold winter day than curling up with a good book?

The Wheeler Public Library and the Texas Panhandle Library System are cooperating to bring you books-by-mail, a service free of charge to residents of the top twenty-five counties of Texas. The service, funded through a grant from the Texas State Library, is designed as a supplement to regular library service for people unable to use their libraries on a regular basis.

Throughout the Panhandle, many people who live in nursing homes or are homebound, ill, geographically isolated or otherwise unable to regularly visit their own libraries are taking advantage of books-by-mail.

Catalogs containing lists and descriptions of five hundred paperback books are available in all public libraries in the area. Types of books include mysteries, romances, westerns, adventure stories, how-to-books, best sellers and books for children and teens. Books from the catalog are ordered on a special postage-paid card mailed to the Texas Panhandle Library System in Amarillo. Books are set to users free of charge and return postage is included.

The Wheeler Public Library has a supply of catalogs. Persons interested in receiving books-by-mail need to contact the library and ask if they are eligible to receive the service.

NEWLYWED GAME

The Newlywed Game, sponsored by YHT, was held Sat. Jan. 29, at the Wheeler School Auditorium. Cathy Harrison opened the program by introducing the emcee, Jim Wright. He introduced the couples in the first round. They were Anthony and Lynne Francis, Steve and Melonia Simmons, and Noel and Debra Glazner all from Wheeler. Johnny and Cindy Grayson of Allison, Gary and Carolyn May from Mobeetie, and the winners Doug and Niki Cooper representing Kelton.

The second round was played by Chuck and Louise Hogan from Mobeetie, Reuben and Enda May of Allison, Bob and Linda Hink from Kelton, Lyndon and Novelline Loyd, Bob and Zodell Swift, and Jane and Delbert Thomas of Wheeler. Bob and Linda Hink won.

The first place winners were presented with bath towel sets, and appreciation gifts were given to all the contestants.

RAPE CRISIS SEMINAR SCHEDULED FOR MAR 14

Children's Program
March 14 7PM Wheeler School Cafeteria

"Speak Up, Say No!" is a 6-minute filmstrip, which teaches children how to avoid sexual abuse. The filmstrip features a delightful little character, Penelope Peabody Mouse, who in a positive, nurturing way teaches children not only to beware of strangers, but to recognize and avoid sexual abuse from trusted friends.

In America today, there is a one-in-four chance that a little girl will be a victim of incest, child molestation, or rape by the time she is 18. There is a one-in-seven chance for little boys by age 16.

A high percentage of this sexual abuse comes from people a child knows (80% and more). Too many children will comply with inappropriate requests because they are uninformed, or because they are unlucky enough to be in the presence of an adult who takes advantage of the child's innocence, needs, or fears.

A child's best defense against sexual abuse is:

1. a sense of his/her own power as a person
2. knowledge of what consti-

tutes child sex abuse.

3. resources available for support and protection.

The Rape Crisis and Sexual Abuse Service of Amarillo presents an hour long program for children and their parents. The program is designed to inform children on what to do if they are ever in a situation where they feel powerless or afraid about an adult touching their body. The program also tells children how to avoid being a victim, through games and role playing.

* Children should be aware that sexual abuse is not their fault and that it's okay for them to report incidents to their parents, teachers, counselors, police, or a trusted adult.

* Children need to be informed that they have rights, and that those rights extend to their bodies. Talking about these things takes away the helplessness that comes with being a child and that is multiplied by being a victim.

For more information concerning the Rape Crisis and Sexual Abuse Service Children's Program, call 373-8022, Amarillo.

Sponsored by Wheeler Extension Homemakers Club

SPECIALIZING IN TV FOR THE OIL FIELD

WARECO EARTH STATION RENTALS
P.O. Box 220 WHEELER, TEXAS 79096

FRANK COATES 806/826-3241 GARY WARE 806/826-3248

BEHLEN BUILDINGS QUALITY THAT LASTS.

Triple N Construction
Mobeetie, Tex. 845-3041

WHEELER PLUMBING CO.
204 S. Main St.
New Construction — Remodel
Repair — Sewer Service
Phone: 826-5907
Free Estimates
MAX McQUEEN
P.O. BOX 754 — WHEELER, TEXAS

BUTCHERING & PROCESSING PRICES
Beef processed, double wrapped 22¢ Per Pound
\$7.50 for Butchering

Pork Processing including curing
Double wrapped 28¢ per pound
\$8.50 a head for butchering

We butcher Mon., Tues., Thurs. & Fri. until 11:30 A.M.

CALL FOR QUARTER—HALF—WHOLE BEEF PROCESSED
WE NOW HAVE CUTS OF PORK & BEEF ON SALE

SHAMROCK SLAUGHTER PLANT
North of City Phone: 256-3241
Closing at Noon on Saturday

WHEELER AG SERVICE
CHARLES BAZE,
Wheeler, Tx.
806/826-3424



AERIAL SPRAYING
SEEDING
FERTILIZING (Wet or Dry)

Locally Owned & Operated

Here & There

LAURA GUTHRIE

Our snow is mostly gone and people are able to get about again. We, at least most of us, are indebted to those who were kind enough to clear away the snow, or use the proper vehicle for transportation. Frances Hefley used her 4-wheel drive to take the neighbors to the grocery store. I'm sure there were a lot of people who showed their kindness and help in the same way. Not long ago I read this: "We should be grateful to those who do for us what we can't do for ourselves." That is a mighty good motto to keep.

Have you noticed the red, red leaves and berries on the nandinas on the way to the drive-up window to the local bank? Especially during the snow cover they were so bright and cheerful.

And that reminds me, it's almost Spring! Time to make up our minds about trees and shrubs and flowers and vegetables. An early Garden Club in Wheeler adopted the Redbud for our tree, the Crepe Myrtle for our shrub and the Zinnia for our flower. That may have been changed, but those things are very thrifty in our location. And don't forget the roses and iris.

Mr. and Mrs. David Seitz, Vicki and Bobby, of Crowell visited with her mother, Nora Babb and his parents, the Monroe Seitz of Mobeetie on the weekend. They attended the opening of the Care Center.

Mr. and Mrs. O.L. Forrester and Mr. and Mrs. Ed Forrester visited with Mr. and Mrs. George Selvedge of Stinnett on Saturday afternoon. Mrs. Selvedge is Mrs. O.L.'s sister. Another dinner guest was Mr. Selvedge's sister Lela Phelan.

Vicki Cox and daughter Toni of Abilene visited with her sister, Bobby Jennings and family, on the weekend. Bennie Mae and Gordon Whitener drove from Lubbock Monday to visit with their daughter and family, the Gary Millers. They attended the funeral of Hub Cole on Monday afternoon.

My Steve visited his family, Lydia and Larry Guthrie and Melinda Guthrie in White Deer, and his sister, Rose Milburn, in Pampa, on the weekend.

Lydia and Larry Guffey made a short visit with me on Monday. They came to take care of some business in Wheeler.

Less than two weeks time to register for the April elections. Better get with it.

Chamber From Page 1
uals whom you feel deserving of the awards and make your feelings known to prevent a worthy individual from being overlooked.

GERMANIA FARM MUTUAL
Aid Association




REASONABLE, SOUND PROTECTION
for your home and other property,
If you want to save, contact RITA PEARSON
Rt. 1, Canadian, Texas Phone: 375-2379
If no answer call 375-2528

Church Of The Nazarene
801 Alan L. Bean Blvd.
Wheeler, Texas 79096
Telephone No. AC 806 826-5952
Pastor: Harold Wayne Moore
Sunday School 9:45 A.M. to 10:45 A.M.
Sunday Morning Worship Service 11:00 A.M.
Sunday Evening Worship Service 6:30 P.M.
Wednesday Evening Bible Study 7:00 P.M.
Everyone Welcome

Drs. Simmons & Simmons
OPTOMETRISTS
601 Canadian Wheeler 826-3465
Tuesday by appointment
(Weather Permitting) Pampa 665-1791


LEWALLEN INSURANCE AGENCY
ALL-LINES

845-2951 826-5719
1st STATE BLDG. 114 TEXAS ST.
MOBEETIE, TEX. WHEELER, TX.

LAKE PUMPS & PARISH WINDMILLS
PAUL HATHAWAY
Phone: 845-3661 or 845-3671
CLIFFORD WALSER Phone: 845-2444

BUILDING REMODELING



CARPENTERS
RAY DEAVER
RESIDENTIAL COMMERCIAL
P.O. Box 242
Miami, Texas 79059 806 / 868-3181

"SOUL SEEKERS THRU GOSPEL MUSIC"

THE Royalheirs

CREATIVE ★ EXCITING ★ UNFORGETTABLE
COMING TO OUR CITY



Audiences across the nation both young and old, express a feeling of spiritual renewal through the ministry of THE ROYALHEIRS. Although having mastered a professional sound, and receiving favorable recognition from highly-regarded music critics, the depth of sound is not totally music. One experiences a feeling of warmth, love, vitality and spiritual impact. Theirs is a smooth blend of favorite hymns as well as the contemporary gospel songs of our day. Hear the outstanding singing with an inspirational sound, uniquely submitted to the Lordship of Jesus Christ.

DATE: Feb. 19th
TIME: 8:00 P.M.
PLACE: FIRST BAPTIST CHURCH
WHEELER, TEXAS

COOP Wire, Posts & Fence HEADQUARTERS

Cash & Carry SALE




Barbed Wire
American made. Uniformly twisted. Strands are full gauge. Wire is easily unrolled from non-collapsible reels. Stretches tight and stays tight. 80 rods — full ¼-mile reels. Exceeds ASTM specifications. Full factory warranties. Heavy galvanizing. Sharp barbs, evenly spaced, well shaped. Barbs wrapped securely around line wires.

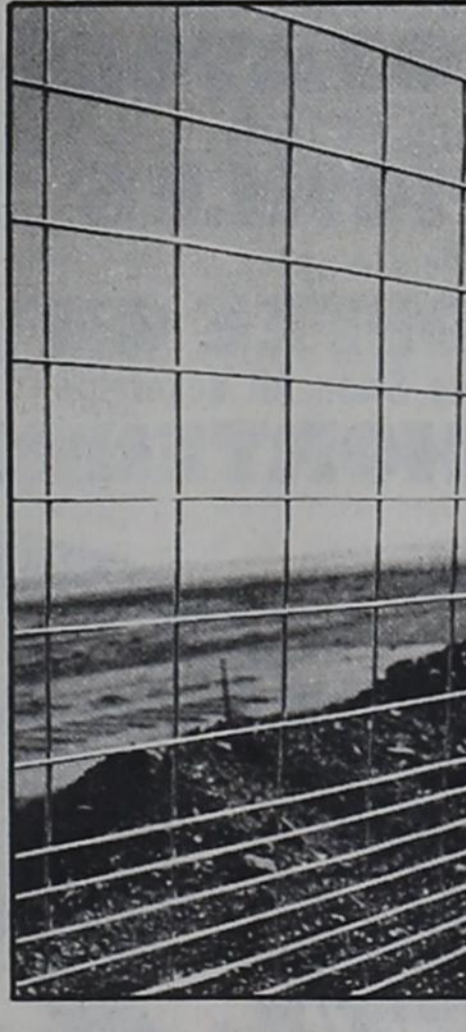
28⁵⁰

Baling Wire 36⁶⁰

Electric Fence Wire ½ Mile ¼ Mile
25⁰⁰ 14⁵⁰

COOP Wire, Posts & Fence HEADQUARTERS

Cash & Carry SALE

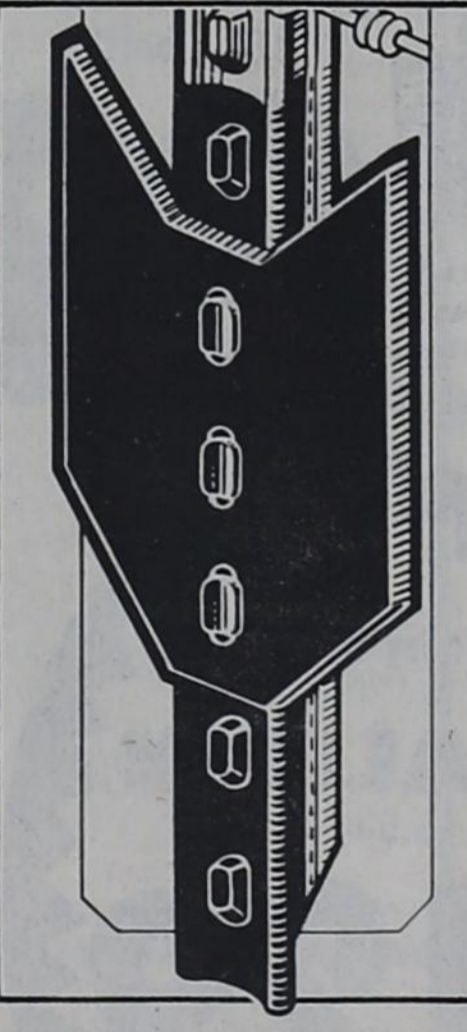


Feedlot Panels
American made. Full ¼" rods welded together for solid strength. Full weight. Full factory warranties. Heavy galvanizing. Rugged, versatile for close confinement. Easy to handle and install. All purpose. Maintenance-free, long life. Sag resistant. No stretching required.

18⁵⁰

COOP Wire, Posts & Fence HEADQUARTERS

Cash & Carry SALE



Studded "T" Posts
American made. Full weight. Full factory warranties. Rugged, versatile, all purpose. Easy to handle and install. Maintenance-free, long life. Fireproof. Neat. Finished in enamel. Heavy anchor plate. All-weather protection. High-quality, high-strength steel. Studs that help hold the fence against the post.

5 ½ Ft. 6 Ft.
1⁹⁹ 2¹⁴

One Week Only—Beginning February 24

WHEELER CO-OP
Standing together. Standing strong. 305 E. Oklahoma Phone: 826-5531

BONELESS CHUCK ROAST POUND **\$1.68**

LONGMONT TURKEY HAMS POUND **\$1.48**

WHITE SWAN BACON POUND **\$1.78**

COUNTRY PRIDE BAKING HENS POUND **68¢**

BLUE MORROW BEEF FINGERS OR PATTIES POUND **\$1.28**

ARMOURS JUMBO FRANKS POUND **\$1.28**



Pepsi, Diet Pepsi, & Mountain Dew

6 pak 12-oz **99¢**

LIMIT 2

Iceberg Lettuce head **33¢**

Lemons 10 for **\$1.00**

Onions 4 Bunches **\$1.00**

Potatoes 7 for **\$1.00**

Red Delicious Apples 3-pound bag **89¢**

Broccoli Bunch **79¢**

DOUBLE COUPON DAYS

DOUBLE COUPON SAVINGS ON WEDNESDAY!

All manufacturer's coupons 99c and under excluding Cigarettes and Free Coupons will be redeemed for double value on Wednesdays only. DOUBLE VALUE OF COUPON CANNOT EXCEED THE VALUE OF THE ITEM ONE COUPON PER ITEM PLEASE

PATIO Mexican Style Dinner

Patio Mexican, Fiesta or Combination **DINNERS** 12-oz **99¢**

Morton Donut Shop honey buns

Morton **HONEY BUNS** 9-oz **69¢**

Minute Maid ORANGE JUICE 16-oz **\$1.29**

Borden's Assorted Flavors ICE CREAM 1/2 gallon round **\$1.59**



Ranch Style BEANS 15-oz **\$1.39**



Texsun Orange JUICE 46-oz **99¢**

Hawaiian Punch DRINKS 3 pak **69¢**

Carnation Evaporated MILK 2 13-oz **89¢**

CASCADE 85-oz **\$3.39**

Camay 5-oz BATH SOAP 2 for **\$1.00**

American Beauty Elbo Roni or Long **SPAGHETTI** 10-oz pkg **39¢**

Campbells Cream of Chicken or Chicken with Rice **SOUP** 3 10.5-oz **\$1.00**

Zee Country Garden **NAPKINS** 140-count **69¢**

Mead's Honey Crushed Wheat BREAD Sandwich loaf **63¢**

Kraft Thousand Island, Bacon & Tomato, or Creamy Buttermilk DRESSING 16-oz bottle **99¢**

Garden Club APPLE JELLY 18-oz **59¢**

All Flavors LA SAUCE **99¢**

Trail Blazer DOG FOOD 25-pound bag **\$3.59**

Super Suds Laundry DETERGENT 40-oz **99¢**

Keebler Pitter Patter, French Vanilla Creme, or Chocolate Fudge COOKIES **99¢**

White Swan Whole POTATOES 3 16-oz **\$1.00**

Vlasic All Types PICKLES 46-oz jar **\$1.29**

Folgers 4-oz COFFEE CRYSTALS **\$1.89**

White Swan All Vegetable SHORTENING 3-pound can **\$1.45**

Stillwell BROCCOLI SPEARS 2 8-oz **\$1.00**



Sunshine Krispy CRACKERS pound box **69¢**



Hunt's KETCHUP 44-oz bottle **\$1.59**



Honey Boy Chum SALMON 15.5-oz can **\$1.29**



Kraft MIRACLE WHIP 32-oz **99¢**

LIMIT 1 WITH \$10.00 PURCHASE

Borden's Hi Protein MILK gallon **\$1.99**

White Swan Sweetmilk or Buttermilk BISCUITS 6 8-oz **\$1.00**



Palmolive Dish DETERGENT 22-oz **99¢**

Sunny Fresh Farms Large EGGS Dozen **69¢**

Shedd Country Crock SPREAD 3-pounds **\$1.39**

Borden's 12-oz COTTAGE CHEESE **59¢**



All Flavors BUBBLE YUM GUM 6 packages **\$1.00**



GIBSON'S DISCOUNT CENTER

1-40 & Highway 83
Phone 256-3266
Shamrock, Texas

STORE HOURS
Mon. - Fri. 8 - 7 Sat. 8 - 8 Sun. 9 - 6

WHEELER COUNTY A.S.C.S. News

By Albert A. Hartman, C.E.D.
To participate in the PIK program, the farm must be enrolled in the 1983 acreage reduction and paid land diversion programs and have a PIK contract submitted by March 11, 1983. However, all producers must sign a copy of the contract by no later than March 17. Also, upland cotton producers participating in PIK may elect to voluntarily divert any amount up to 5 percent of their crop acreage base for cash payment. Each base stands on its own.

PIK participants with outstanding price support loans as of March 11, 1983 or loans obtained on 1982 crops after March 11 for the commodity in the county in which the PIK is earned must make enough of the collateral for such loans available for use in satisfying their PIK compensation. In addition, at CCC's option, producers may be required to use 1983 production for this purpose if an adequate quantity is not otherwise available. Wheat, corn, sorghum, and rice producers with more than one outstanding loan may choose which loan(s) for use in satisfying their PIK compensation.

Wheat, corn, and grain sorghum producers having no outstanding price support loans for the commodity within the county in which the PIK is earned will receive their commodity as payment-in-kind from CCC stocks which are located at an approved warehouse. Likewise, any producers having an insufficient outstanding amount of a loan quantity will receive their balance of the PIK commodity from CCC.

The whole base bid means the producer offers to reduce the planted acreage of the crop to zero and devote an acreage equal to the crop acreage base to approved conservation uses. The producer bids by specifying the percent of the farm's program yield per acre that is acceptable as compensation for participation. The lowest bids are accepted first. If accepted, the bid applies on the total PIK acreage diverted.

Acreage withdrawn under PIK must be devoted to conservation uses. Wheat planted before January 12, 1983 may be designated to meet any conservation use acreage requirement for any program provided the farm is partici-

patating in PIK. Such acreage may be grazed throughout the year and cut for hay before the disposal deadline May 15. It shall not be overgrazed to the

extent of subjecting the land to erosion but must be substantially destroyed by the deadline to ensure that a grain crop is not produced.

Do You Love Sausage?

The Allison FFA is Selling Sausage.

Facts about the sausage;
Its Frozen.
Its Pattied, real convenience.
Its Delivered.
Comes in neat 3 (three) pound box.

Whole hog Sausage
Cost only \$6.00 per box.
Comes in Mild or Hot.
For ordering Call: Don Smith
375-2444, or 375-2541, Mrs.
Denzel Reed 375-2294, Sheri-
lyn Reed 826-3408.

Oklahoma Co-Operative
All-Breed BULL SALE
Tuesday, March 1, 1983 — 12:30 p.m.
Oakridge Sale Pavilion
Southwest of Cheyenne, Okla. West of Elk City
on Highway 6 20 miles, 1 mile East of 152-6 Intersection

Brangus, Shorthorn, Limousin, Angus,
Polled Hereford, Simmental, Charolais

KAHOA CATTLE SERVICES
SALES MANAGEMENT
CHEYENNE, OK 73628 PH. 405-928-2795

Harvey's Family Restaurant
SPECIAL
Thurs., Feb. 17 thru Feb. 24
Steak Sandwich, French & Medium Drink 2⁷⁹

CAN SATAN CONTROL YOU?

II Cor. 2:11, "Lest satan should get an advantage of us: for we are not ignorant of his devices." I Pet. 5:8, "...the devil, as a roaring lion, walketh about, seeking whom he may devour." God works in your behalf when you exercise "faith". The devil, on the other hand, can work against you better when you don't know anything about him or how he operates or what he can do. Ignorance of his devices gives him an advantage.

Many people think the idea of a devil is humorous. They think it is just the colorful imagination of some wild-eyed fanatics. This type of thinking pleases the devil. If you don't know about him, if you don't even believe he exists, and don't know how he operates, it gives him the opportunity to play havoc with you. Everybody that is not a born again Christian is controlled by the devil. This doesn't mean that everybody that is unconverted is demon-possessed. Absolutely not. But, if a person doesn't know Jesus Christ as his personal Lord and

Saviour, he is a child of the devil. There are only 2 groups—children of God and children of the devil. Naturally, the devil has some authority over his own.

The story doesn't end there, however. Many Christians are also dominated by satan and demonic influences. The main reason is due to a lack of knowledge. When you don't know whether or not certain things come from God or the devil (such as sickness), you don't know whether to cuddle it or resist it. Hosea 4:6 tells us that God's own people are destroyed because they lack knowledge. Several times the Apostle Paul said, "I would not have you ignorant." Learn the truth about the devil. Learn the truth about your rights and authority over the devil, as a believer. It's all in the Bible. There is a devil. He does control many people. In future articles I will explain how people unwittingly open the door to satan.

Ricky Pfeil
Pd. Adv.



ROYALTY: A Valentine party was held Monday, February 14, at the Wheeler Care Center. A King and Queen of the residents was chosen and recognized at the party. Alvin Sellars and Margaret Pate are

shown here with their crowns and robes. The Valentine Prince and Princess were Katey Moody and Jerill Higginbotham. Alpha Mu Alpha Sorority was the host for the affair held in the cafeteria.

CARE CENTER COMMENTS

LAURA GUTHRIE

All those involved in the Open House at the Care Center last Sunday are still feeling a little giddy over the success of it. I will not go into detail because there will be headlines in another part of the paper. But the promoters, builders, suppliers, managers, administrators, maintenance, superintendents, and workers were all introduced. The spacious lobby and the four spacious hallways were full of people. Several sections of the country were represented. All

seemed interested, proud and pleased. It was a great day.

Mrs. Roy Robertson, wife of the proprietor, from Ft. Worth was here for the occasion. Mrs. Hyatt, the Administrator's wife lives here. She was being cordial and warm to the guests.

I have heard a story this week that I think will bear repeating. I hope the originator of the story will overlook the discrepancies of a repeated story. I heard that a couple in our community was mailing a letter to a relative. They stated that they "would enclose a picture of their new home." The picture was of the Wheeler Care Center. Isn't that a great attitude to have?

A couple of Valentine parties have been brought to the Center since paper time last week. On the 9th the Future Homemakers of the local high school took all that it takes to make a party and went to the Center. All the residents were invited. Favors were given and lovely refreshments were served. It so happened that the day was Lola Shira's birthday. So everybody concerned was glad to call it Lola's party.

The second party, on Monday, was sponsored by the Alpha Mu Alpha Sorority. They took party props and accessories and shared with all the residents. They staged an election for the Royalty of the day. Mrs. Margaret Pate was named Queen, Mr. Sellers was King. The Prince and Princess were children of nurses Gerald Higginbotham and Kay Moody.

Allene Holt has had to spend a few days in the local hospital, but returned in time to see a few people that came to the Opening.

Mrs. Pate's guest on the weekend was her daughter Vicki Cox and her daughter Toni.

Pete Corcoran and his wife visited with his brother, Phil Corcoran on Saturday.

Mrs. Leola Farris and Mrs. Vea Fillingim will be directing Bible classes on two Wednesday nights per month. I know the residents will enjoy this privilege.

Evelyn Meek has donated Bingo prizes and yarn for craft projects.

Memorials have come from Mrs. Milton Finsterwald for George Noffsinger, White Whiteley, and Bob Taylor. From Mrs. Beverly Brannan was a gift in memory of her father, Bob Taylor.

WHEELER ISD MENU

- FOR FEB. 21-FEB. 25
- Monday, Breakfast:** Juice, Cereal, Toast, Milk
Lunch: Beans, Hash browns, Cornbread, Milk, Fruit
Tuesday, Breakfast: Juice, Cinnamon rolls, Milk
Lunch: Hamburgers, French fries, Pickles, Milk, Cobbler
Wednesday, Breakfast: Juice, Cereal, Toast, Milk
Lunch: Chicken Fried Steak, Potatoes/gravy, Green beans, Biscuits, Milk, Fruit cocktail
Thursday, Breakfast: Juice, Biscuits, Bacon, Milk
Lunch: Burritos, Cheese chunks, Salad, Ranch style beans, Milk, Fruit
Friday, Breakfast: Juice, Cereal, Toast, Milk
Lunch: Chicken patties, Corn, Tator tots, Rolls/butter, Milk, Cookies

Opening

From Page 1
ed the residents and the employees of the home.

Roy B. Robertson, owner of the nursing facility, gave response to the "Welcome to Wheeler" by the mayor, Louis C. Stas. In his speech, Mr. Robertson introduced a few of those present who had helped make the center a reality. Mrs. Robertson accompanied her husband Sunday.

The Wheeler County Quartet was in excellent voice and presented a medley of songs. Members of the quartet are Ernest Henderson, Clois Hanner, Bus Dorman and Wendell Morgan. Sandra Morgan played the piano for the group.

Rev. Ernie McGaughey gave the dedicatory charge, a responsive reading. The dedicatory prayer was offered by Father B.A. Erpen.

The congregational song, "How Great Thou Art" was led by Rev. Ricky Pfeil with Sylvia Lee at the piano. The song was followed by the benediction by Pfeil.

Refreshments were served in the beautifully decorated dining room by the Zi Upsilon Eta sorority of Wheeler.

Members of the Wheeler Federated Clubs were in charge of the welcome line registration and decorations.

The following is a list of those registering at the affair.

It is not known how many failed to register.

Wheeler Cem'y Assoc'n Meets

The Wheeler Cemetery Association met Tuesday, February 5, met at 2:00 P.M. 2 new directors were elected. Herman Lowery acted as chairman for the special meeting.

Minutes of the last meeting were read and approved as read. Directors present were Johnny Reed, Herman Lowery and Bill Hampton.

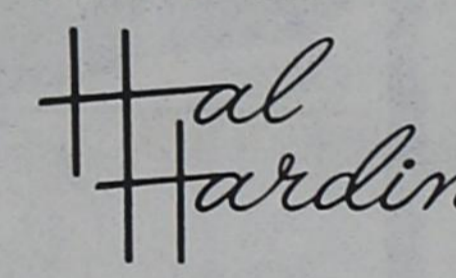
The resignation of B.K. Barham was accepted. Health was given as the reason for the resignation.

Cecil Bailey motioned to elect Ed Riley and Don Rives. Mr. Hampton seconded the motion and men were elected unanimously.

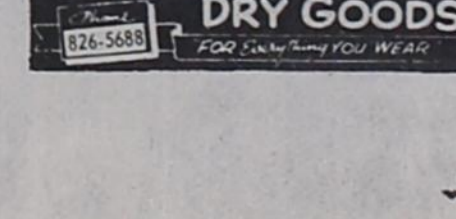
A brief financial report was given by secretary Sallie B. Harris.

Perpetual care for cemetery was discussed and the group agreed to get this set up at the local bank. Anyone donating \$100 will be exempt from paying dues each year. The interest is all that will be used. The association will continue to assess dues until the interest will pay the cost of care.

Attending were John C. Vise, Bill Hampton, Herman Lowery, Ed Riley, Johnny Reed, Don Rives, Cecil Bailey and Sallie B. Harris.



We have a large beautiful line of Hardin dresses, the successor of Nelly Don. Many on sale.



TEXAS GARDENER TIPS How to Choose the Right Variety of Onion

Are you tired of planting onions, dreaming of juicy basketball-sized bulbs, only to end up with nothing larger than ping-pong balls? Well, you are not alone, and your problem may be due largely to what varieties you are planting and when you are planting them.

The key is to know which varieties of onions work well in which parts of Texas, since planting certain types may automatically doom you to failure.

The size of an onion bulb is affected by temperature and the amount of daylight exposure it gets. Depending on the variety, onions form bulbs during long day (13 to more than 14 hours), intermediate

(11½ to 12½ hours), or short day conditions (10 to 11 hours).

Because Texas is so far south, we get fewer daylight hours than our northern cousins. Even within Texas the number of daylight hours varies enough to warrant selecting different kinds of onions.

Long day varieties will not bulb in Central and South Texas because the days aren't long enough at the right time. You can grow long day types as scallions in these areas of the state, however.

Short and intermediate day types must be planted in Central and South Texas to get bulbs. Some good choices of this type are Grano 502 (yellow), White Granex or Crystal Wax (white), and Burgundy (red).

In South and Central Texas, you can plant seeds of the above varieties directly into the garden in October, or wait until February and set out plants. If you garden in North or West Texas and want to grow short day varieties, you should obtain plants and set them out in early March.

Since the conditions are different in North and West Texas, you can also plant long day varieties of onions and still get large bulbs. Good bets for long day onions in these areas

are Yellow Sweet Spanish, Chieftan (yellow), White Sweet Spanish, or Ringmaster (white). You can plant seeds of these varieties directly into the garden in late February.

And don't forget that the best seed planted at the best time will still not grow very large bulbs if the plants are not thinned to at least 4 inches apart. And though it's hard to pull out thinning, keep in mind you can use them for scallions, giving you an early product to eat from your garden while you wait for bigger and better things.

TEXAS GARDENER
P.O. Box 9005
Waco, TX. 76710
© 1983 TEXAS GARDENER MAGAZINE

Basket 'll

From Page 1
had 23 points, Shawna Hampton had 16, Tracy Weaaver had 11, Twyla Collins and Dana Haws had 9, and Kristi Picke had 5. Tracy led with 15 rebounds, Mona had 9, Twyla had 7, and Dana had 6.

SHAMROCK TOURNAMENT
Wheeler Jr. High Boys Basketball team won consolation in the Shamrock Tournament, January 27, 28, 29. They defeated Wellington 8th grade 37 to 17 Saturday. Leading the Colts scoring was Charlie Miller with 13, Dicky Salyer had 8, and Richard Smith scored 6 points.

Wheeler opened the tournament with eventual champion, Memphis 8th grade. In the game, Wheeler started out slow but came back strong to tie Memphis after three quarters. Memphis eventually pulled away in the 4th quarter to win 29 to 20. This was the first loss the Colts have faced all year.

The Wheeler Jr. High girls won third in the Shamrock Tournament, with Bridgett Wallace making the All-Tournament team.

They played Memphis in the first game and won 29 to 14. Tammy Baker led with 14 points, Bridgett had 7 and Marlo Hartman had 6. Marlo and Bridgett each had 8 rebounds, and Tammy had 3.

The girls lost a close second game to Kelton 11 to 13. Tammy led with 5 points, Bridgett had 4, and Marlo had 2. Tammy and Marlo each had 10 rebounds, Bridgett and Dawn Boedeker each had 5.

They won in their third game to take third place honors with a big victory over Canadian 26 to 5. DeeAnn Jolly led with 10 points, Marlo

had 8, and Tammy had 4. Bridgett led with 9 rebounds, Tammy and Marlo each had 7.

WHITE DEER TOURNNEY
The Wheeler J.V. teams were in the White Deer Tournament on Feb. 10, 11 and 12.

The Wheeler boys J.V. first played the White Deer J.V. and lost 16 to 36. Robert Andis was high point with 6, Bill Wiggins and Manson Porter had 3, Todd Alvey and Justin Milex each had 2. Robert and Manson each led with 11 rebounds, Justin had 8, and Jole Dodd had 6.

The boys also beat in their second game to River Road J.V. 26 to 59. Joel Dodd led with 8 points, Robert Andis had 6. Robert Andis led with 11 rebounds, Manson Porter had 5, and Robert Meadows had 4.

The J.V. girls finished their season with a 9-4 record. The Wheeler girls J.V. also lost their first game to White Deer J.V. 22 to 30. Angela

Presley led with 8 points, Melannie Dutsan had 7, and Lori Lee had 6. Angela also led in rebounds with 12, Melannie had 11, Angie Bailey had 7 and Lori had 6.

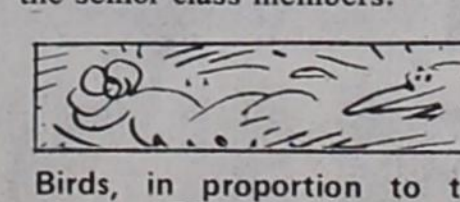
The girls also lost the second game to River Road J.V. 27 to 37. Melannie Dutsan had 10 points, Becky Crockett had 5, Angie Bailey and Angela Presley had 4, Melannie led with 13 rebounds, and Angela had 6.

The J.V. girls finished their season with a 2-8 record.

Donations

The Wheeler Seniors are asking for donations for their annual Senior Auction Friday, April 29.

Anything and everything accepted. Please call any of the senior class members.



Birds, in proportion to their size and weight, are about 75% stronger than are human beings.

DON'T FORGET
WEDNESDAY IS DOUBLE
STAMPS & DOUBLE
VALUE ON COUPONS

NATIONAL BRANDS



Del Monte
FRENCH STYLE
GREEN BEANS

DEL MONTE CUT OR
FRENCH STYLE
GREEN BEANS

3 \$1

16 OZ.
CANS

EXTRA LEAN FRESH GUAR. 80% LEAN GROUND BEEF LB. \$1.59	OSCAR MAYER SLICED COTTO SALAMI 8 OZ. PKG. \$1.19
HEAVY GRAIN FED BEEF BONELESS CENTER CUT ROUND STEAK LB. \$1.89	OSCAR MAYER SLICED CHOPPED HAM 8 OZ. PKG. \$1.69
OSCAR MAYER BEEF FRANKS 1 LB. PKG. \$1.69	OSCAR MAYER SLICED COOKED HAM 6 OZ. PKG. \$1.69
OSCAR MAYER SLICED MEAT BOLOGNA 8 OZ. PKG. 99¢	GOOCH'S GERMAN BRAND SMOKED SAUSAGE 12 OZ. PKG. \$1.49

WRIGHT'S HICKORY SMOKED SLICED SLAB
BACON LB. **\$1.59**

OSCAR MAYER REGULAR MEAT
WIENERS 1 LB. PKG. **\$1.59**

Del Monte
SWEET PEAS

DEL MONTE
SWEET PEAS

3 \$1

17 OZ.
CANS

Del Monte
WHOLE KERNEL CORN

DEL MONTE
CREAM STYLE
OR WHOLE KERNEL
GOLDEN CORN

3 \$1

17 OZ.
CANS

HEAVY GRAIN FED BEEF
ROUND STEAK

\$1.69

LB.

SOMEHOW,
NOTHING
SATISFIES
LIKE
BEEF.

Thrifty
McSever

Shur-Fine
GRANULATED SUGAR

PURE GRANULATED
SHURFINE SUGAR

\$1.39

5 LB.
BAG

Watch the mail for your **Blue Stamp Coupon**
EXTRAVAGANGA. This Coupon Book is worth
\$500 in Extra Blue Stamps.

Register each week to win **\$500 WORTH** of **FREE**
CIRCLE W BLUE STAMPS.
No purchase necessary to win. Drawings will be
held on Saturdays each week at participating food
stores. Use official entry form to register.

1.00 OFF LABEL-DETERGENT

TIDE

\$5.99

171 OZ.
BOX

CALIFORNIA GREEN SKIN LARGE SIZE
AVOCADOS

6 \$1

FOR

ALL PURPOSE RUSSET
POTATOES

89¢

10 LB.
BAG

CALIFORNIA SUNKIST
LEMONS LB. **39¢**

TEXAS GREEN TABLE
CABBAGE LB. **15¢**

CALIFORNIA GOLDEN
CARROTS 3 1 LB. PKGS. **\$1.00**

WASHINGTON D'ANJOU
PEARS LB. **49¢**

Thrifty
McSever

35% OFF LABEL

CASCADE

\$3.49

85 OZ.
BOX

FROM OUR SHELVES

ALL PURPOSE FLOUR GOLD MEDAL 5 LB. BAG	88¢
FRUIT JUICY RED HAWAIIAN PUNCH 46 OZ. CAN	77¢
VERMONT MAIN SYRUP 24 OZ. BTL.	\$1.59
SHURFINE COOKING OIL 24 OZ. BTL.	89¢
SHURFINE SALAD DRESSING 32 OZ. JAR	88¢
ASSORTED/PRINTS/WHITE BATH TISSUE DELSEY 4 ROLL PKG.	89¢
PAPER TOWELS HI-DRI 2 JUMBO ROLLS	\$1.00

FROZEN FOOD & DAIRY

COOL WHIP
BIRDSEYE REGULAR/
EX. CREAMY
COOL WHIP 8 OZ. BOWL

69¢

GREEN GIANT
NIBLET'S
CORN ON THE COB 4 EAR PKG.

\$1.19

SHURFRESH QUARTERS
MARGARINE 3 1 LB. PKGS. **\$1.00**

JENO'S CANAD. BAC/CH/SAU/PEP. **PIZZAS** 10 OZ. PKG. **\$1.19**

JENO'S HAMBURGER/COMBINATION **PIZZAS** 11 OZ. PKG. **\$1.19**

HEALTH & BEAUTY AID SAVINGS

ASSORTED VASELINE INTENSIVE CARE LOTION 10 OZ. BTL.	\$1.89
VASELINE PURE PETROLEUM JELLY 7 1/2 OZ. JAR	\$1.59
COTTON SWABS Q-TIPS 170 CT. PKG.	\$1.29
POLISH REMOVER-REG/LEMON CUTEX 4 OZ. BTL.	79¢
RAVE SOFT AEROSOL REGULAR/EX. HOL HAIR SPRAY 7 OZ. CAN	\$1.49

DEL MONTE
FRUIT COCKTAIL 17 OZ. CAN **66¢**

DEL MONTE HALVED
PEARS 16 OZ. CAN **66¢**

DEL MONTE
PINEAPPLE JUICE 46 OZ. CAN **\$1.19**

DEL MONTE PINEAPPLE-GRAPEFRUIT
FRUIT DRINK 46 OZ. CAN **89¢**

DEL MONTE WHOLE
GREEN BEANS 2 16 OZ. CANS **89¢**

Round-Up

DEL MONTE YELLOW CLING
HALVED OR
SLICED PEACHES 16 OZ. CAN **59¢**

DEL MONTE
SPINACH 2 15 OZ. CANS **89¢**

DEL MONTE TOMATO
CATSUP 32 OZ. BTL. **\$1.19**

DEL MONTE-NATURAL JUICE
TIDBITS/SLICED/CRUSHED OR
PINEAPPLE CHUNKS 15 OZ. CAN **59¢**

DEL MONTE TOMATO
SAUCE 4 8 OZ. CANS **\$1.00**

DEL MONTE BAN/VAN/CHOC. PUDDING
SNACK PAK 4 CT. 5 OZ. **\$1.19**

DEL MONTE WHOLE PEELLED
TOMATOES 14 1/2 OZ. CAN **66¢**

DEL MONTE SEEDLESS
RAISINS 15 OZ. CARTON **\$1.39**



We're proud to give you more!
THRIFTWAY

PRICES EFFECTIVE FEB. 13-19, 1983
WE RESERVE THE RIGHT TO LIMIT QUANTITIES
WE ACCEPT FOOD STAMPS