

# Boys Ranch Roughriders Next Foe For Mustangs



## THE WHEELER TIMES

(USPS 691-960)

VOLUME 47, NUMBER 43

THURSDAY, OCTOBER 1, 1981

SINGLE COPY 20¢

### MUSTANGS BLANK TIGERS, 22-0

A thing of beauty it wasn't but a win it was last Friday night for the undefeated Wheeler Mustangs as they whipped the McLean Tigers 22-0 before a homecoming crowd of 1000 at Nicholson Field.

Getting only three points out of four golden scoring opportunities in the first half, the Mustangs came back with 19 unanswered points in the second half to notch their third consecutive win in non-district play.

Credit should be given the visiting Tigers as they came to play and even though they

weren't able to generate much offense against the Mustangs, they in turn dealt the Mustangs misery all night on defense.

McLean fumbled on third down on their first possession of the game and Von Christner recovered and Wheeler took over on the Tiger 35 and had a chance to take the starch out of the visitors play early but the drive fizzled out on the McLean 10 and this set the tone for first half play.

Choosing to run on fourth down at their 19 on their next possession of the pigskin, the Tigers handed the Mustangs

another chance to get into the end zone but the first of just two penalties in the game for Wheeler cost a valuable five yards and the Mustangs had to settle for Wade Wills 40 yard field goal which stood up for the 3-0 halftime lead.

McLean got a couple of scoring chances by recovering fumbles at the Wheeler 35 and 36 but the Mustangs defense proved to be too much and both drives were thwarted, one at the 26 and the other at the 33.

After another drive by the Mustangs stalled at the McLean 31, Billy Westmoreland recovered a Tiger fumble on the McLean 27 but Tom Childress was stopped a yard shy of the first down on the fourth down run to the 18.

Four opportunities to score and put the game away and only 3 points garnered sent the Mustangs to the dressing room looking at their hole card.

Coming back and resembling in fashion to what was expected, the Mustangs scored on three of their first four times with the football in the second half.

Wheeler took the second half kickoff but had to punt the ball away to the Tiger 29 where Randall Wynn fumbled and Westmoreland got his second recovery. Nine plays later, Ricky Bond slammed over from the 1 and the

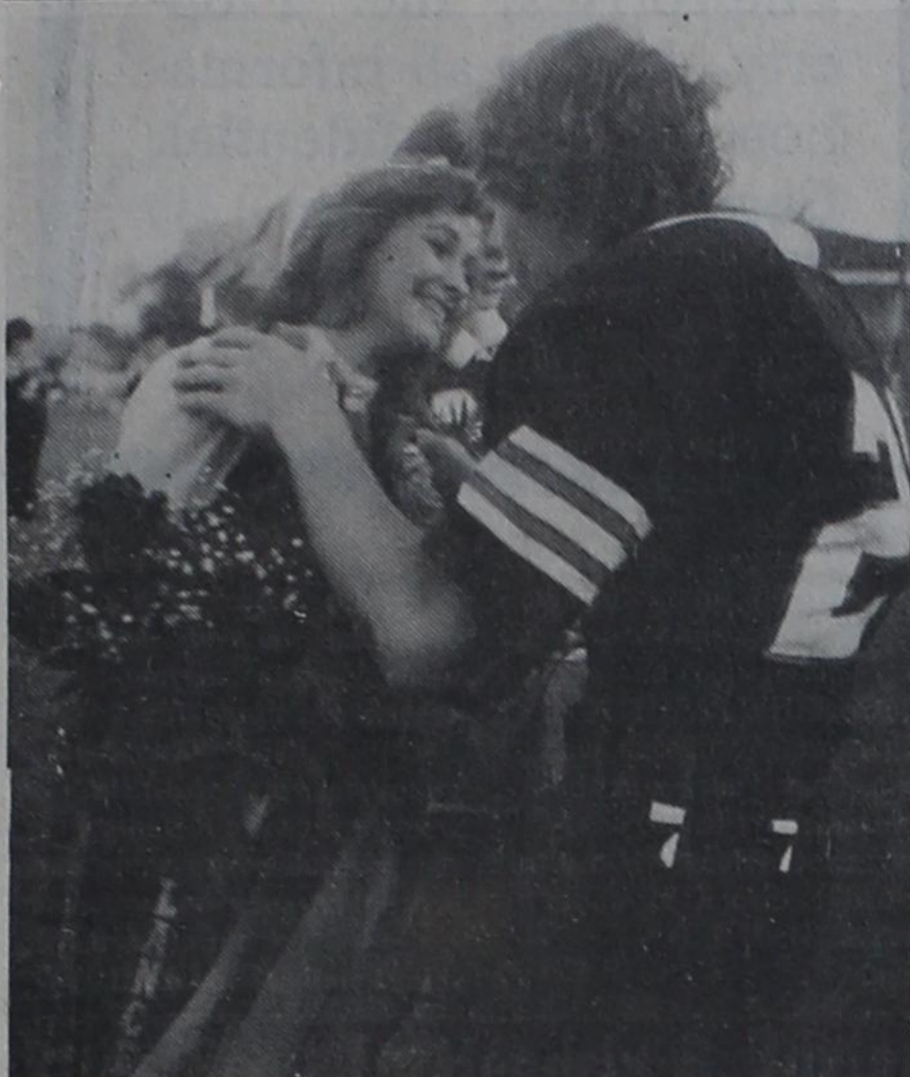
Mustangs finally had their first touchdown. Wills' extra point try was wide to the right and Wheeler led 9-0 with 5:31 to play in the third quarter.

Paul Bentley blocked Dudley Reynolds punt minutes later and Christner recovered on the Tiger 1 from where Scott Wright sneaked over on second down for the six points. Wills' kick was blocked this time and Wheeler led 15-0.

On the first play of the final quarter, Wills fell on a Tiger fumble at the McLean 44 and there was no stopping the Mustangs now. Bentley got 14 at right guard to start the drive off. Two plays later, Wade Moore nearly broke loose on a wingback reverse but was

downed on the Tiger 9 after picking up 19 yards. Bond went over for his second TD on the next play and Wills kicked the final Mustang points onto the scoreboard.

The game ended with the Mustangs on the Tiger 9 and the Mustangs gratefully left the gridiron with their win over the scrappy Tigers.



**CONGRATULATIONS:** 1981 Homecoming Queen Tracy Weaver receives a kiss of congratulations from Von Christner during the pre-game coronation ceremonies Friday evening. The Queen Candidates were carried onto the field in a Cadillac Convertible and escorted from the automobile by the Senior Mustangs. Following the intro-

duction of each of the candidates, the winner was announced and the Homecoming Queen was crowned and presented a bouquet of red roses. Miss Weaver, a junior, is the daughter of Mr. and Mrs. Hyland Weaver; this is the second year in a row she has been named homecoming queen.

Game Statistics:	Wheeler	McLean
First Downs	12	5
Yards Rushing	163	95
Yards Passing	18	22
Total Yards Gained	181	117
Passes & Completions	6-2	6-2
Passes Intercepted	0	0
Fumbles & Lost	4-2	5-4
Penalties	2-10	1-5
Punts & Average	4-34	5-21
Return Yards	3	9
Total Plays	64	51



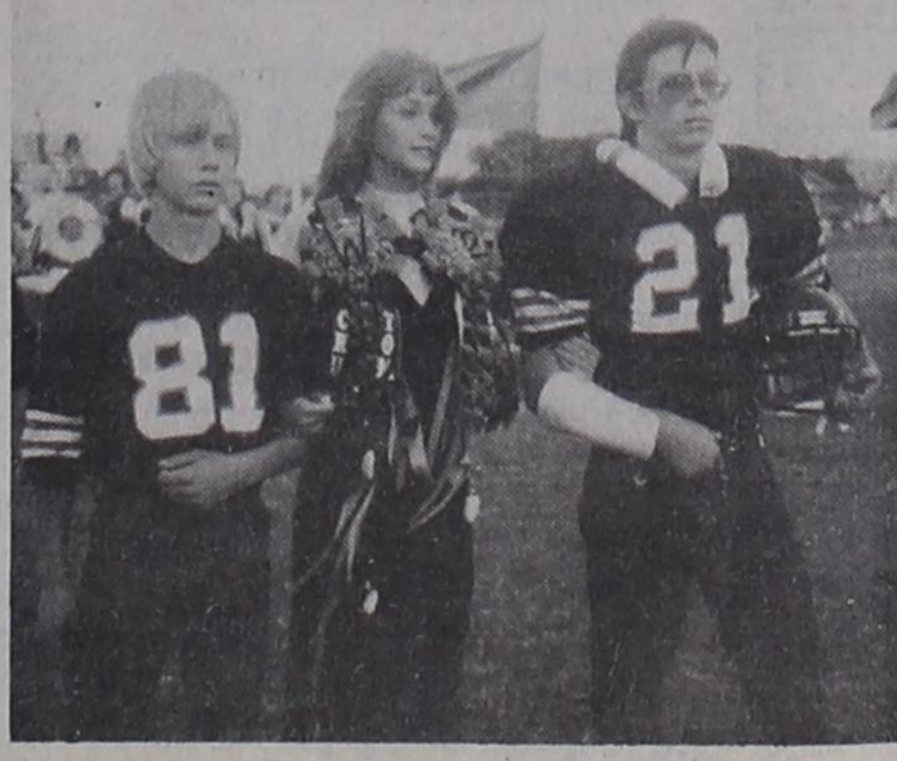
Robert Ford Marla Pond Ricky Bond



Arthur Zepeda Ruth Ann Alexander Paul Bentley



Wade Moore Lisa Dodd Larry Jones



Chuck Timmons Tracy Weaver Tom Childress

## BIKE-A-THON SAT., OCT. 3

Volunteers will be riding on Saturday October 3, to raise money for St. Jude Children's Research Hospital. Please sponsor them and help save children's lives.

Remember to meet in front of the Times office at 9 a.m. if you need help getting you and your bike to the bike course.

We will be using farm-to-market road 3104. Starting line will be at the South end of 3104.

Free refreshments will be furnished for all riders.

October 13th will be the deadline for turning in your pledge money. The winners will be announced at that time.

## PROCLAMATION

CITY OF WHEELER  
OFFICE OF THE MAYOR

WHEREAS, dread childhood diseases are killing many thousands of children each year, and

WHEREAS, only medical research provides hope of discovering the still unknown causes of leukemia and other childhood cancers, muscle disorders, rare blood diseases and other illnesses that strike our young, and

WHEREAS, St. Jude Children's Research Hospital, founded by Danny Thomas, is the only research center in America devoted solely to basic and clinical research in these catastrophic disease areas, and

WHEREAS, this institution is leading the way to new treatment procedures that have greatly increased the rate of survival, and

WHEREAS, St. Jude Child-

ren's Research Hospital depends upon public support to continue this vital work;

NOW, THEREFORE, I, Pete Burton, by virtue of the authority vested in me as Mayor of the City of Wheeler do hereby proclaim October 3, 1981 as Wheeler-ST. JUDE CHILDREN'S RESEARCH HOSPITAL DAY in Wheeler, Texas, and I urge all citizens, schools, churches, business establishments, labor unions, and scientific, social, civic and fraternal organizations to give this worthwhile project their support and cooperation.

IN WITNESS WHEREOF, I have hereunto set my hand, and caused the Great Seal of the City of Wheeler to be affixed at Wheeler, Texas this 1st day of October, 1981 AD

O.B. [Pete] Burton  
Mayor

### Rites Read For Hendrix B. Taylor

Hendrix Bill Taylor, 72, died September 22, 1981.

Services were Thursday, September 24 in the First Baptist Church. The Rev. Don Larkin of Palestine officiated. Burial was in the Wheeler Cemetery by Wright Funeral Home.

Mr. Taylor was born in Clarendon. He married Ruth Bradstreet in 1948 in Dumas. He moved to Pampa in 1949 and to Wheeler in 1973. He was employed by Texaco, Inc. for 33 years before his retirement in 1973. He was a veteran of U.S. Army, serving in World War II. He was a member of the Masonic Lodge and the Central Baptist Church of Pampa.

Survivors include his wife; two sons, Richard Boyd Cochran of Battle Ground, Wash., and Larry Taylor of Wheeler; a daughter, Phyllis Knowles of Colorado Springs, Colo.; two sisters, Mrs. Eugene Stephen-

son of Houston and Mrs. Agatha Darnell of Borger; and five grandchildren.

Pallbearers were Mark Garrison, Gene Keelin, Jerry Keelin, Joey Keelin, Jimmy Keelin, Steve Melinder, Gary Larkin, and C.B. Stephenson.

### Demand Valve

Parkview Hospital received a Demand Valve and related equipment as a donation from Mr. and Mrs. Mac Christner and Mr. and Mrs. Brady Meadows.

The demand valve is extremely useful in aiding the respirations of codes and patients in respiratory distress. The demand valve allows air to be forced into the lungs with a greater force than other hand operated equipment allows.

### Fay Patterson

#### Rites Are Read

Bonnie Fay Patterson, 75, died September 27 in Borger.

Services were held Wednesday, September 30 in the First Baptist Church. The Rev. Stanley Baker, a pastor from Snyder, Okla., officiated. Burial was in the Wheeler Cemetery by Wright Funeral Home.

Mrs. Patterson was born in Wheeler County and had lived in Wheeler all her life. She married Taylor T. Patterson in 1922 at Wheeler. He died in 1954. She was a member of the First Baptist Church.

Survivors include a son, T.J. Patterson of Blackfoot, Idaho; a daughter, Mrs. Oneta Caskey of Borger, three sisters, Mrs. Ina Mae Anglin of Wheeler, Mrs. Vaudie Biley of Amarillo and Mrs. Fannie Bee Henderson of Trinity; eight grandchildren and eight great-grandchildren.

The family requests memorials be to the First Baptist Church or favorite charities.

Pallbearers were K.D. Ford, Steve Hampton, Jimmy Hill, Bob Hink, Darrell Moore, and N.D. Ware, Jr.

### Emma Banks Is Buried In Okla.

Mrs. Emma Jean Banks, 57, died Thursday, September 24 in the Coronado Community Hospital at Pampa.

Services were held in Carmichael Whatley Colonial Chapel at Pampa and graveside rites were in Lone Oak Cemetery in Sayre, Oklahoma. Rev. Earl Maddux, pastor of Fellowship Baptist Church, officiated.

Mrs. Banks was born in Beckham County, Okla. She was a former resident of Pampa, moving to Mobeetie four years ago. She was a member of the Community Christian Center in Pampa.

Mrs. Banks was always just Jean to everyone in Mobeetie with a smile or a laugh for anyone she met. Her many friends will miss her very much.

Survivors include her husband, Olen; a son, Earl Wayne Banks of the home; a daughter, Tommie Rae Widger of Ontario, Calif.; two brothers, T. J. Duree of Pampa and Rex Duree of Keys, Calif.; and four grandchildren.

### Items Needed

The Allison Sophomores and Juniors are needing items for the Halloween Carnival. If you have anything you would like to donate, Contact: 375-2381 or 375-2413.

The Wheeler Mustangs face their final non-district foe this week when they travel to Boys Ranch to put their unbeaten record on the line against the winless Roughriders.

After receiving a trouncing at the hands of the Mustangs in Wheeler last year, the Roughriders no doubt have had the Mustangs on their minds for some time and Boys Ranch has been mighty tough to beat through the years when they play at home.

If past performances are any indication then Friday night's game will be a ground oriented contest. The Mustangs passing game has been rusty all year and the Roughriders have been going to the air only on obvious passing situations.

Coach Preston Smith's assessment of the Roughriders was, "They are young and tough and play with a lot of emotion at home."

Wheeler came out of the McLean game with no new injuries but Ricky Bond sustained a cut eye in workouts this week and Lance Reames missed two workouts from illness. Manson Porter will probably start in place of Reames and Bond should be near top shape by Friday night.

"After viewing the films, we played better against McLean than I had first thought and McLean did a super job against us on defense."

The Mustangs head mentor went on to add that quarterback Scott Wright and line-backer Arthur Zepeda had their best games of the year.

Wheeler fans have been invited by Boys Ranch officials

to come early if they want to and a boy will be assigned to them to show them around Boys Ranch and supper will be served in the school cafeteria at 7 p.m.

### Hospital Notes

#### Old Admissions

7-22 Thomas Green  
8-28 Richard Kysar  
9-9 C.H. Turner  
9-11 Hub Cole  
9-16 Ruth Noffsinger  
9-21 Ollie Jacob

9-22 Rosemary Banks  
Viola J. Stacy  
Josie Burrell  
Vernon Sivage

#### New Admissions

9-23 Whitney Morton  
Baby Girl Morton  
Irene Dixon  
Jodi Thomas

9-24 Shawna Markham  
Sam Hale  
E.D. Campbell  
Jane Rives  
Olive Waldo  
Arthur Forbes  
Nicolas Mosqueda  
George Walker  
Curtis Kidwell

9-26 Paul Shumate  
Glenn Markham  
Scott Robinson  
Janet Cummings  
Lester Hall

9-27 Bruce Vandever  
Donald Finsterwald  
Lawrence Bunch  
Melinda Parker  
James Vise  
Etta Crowder

9-29 Chris Bedowitz  
Goldie Calcote  
Eula Bradstreet

#### Dismissals

Continued Page 8

### Cotton Meeting and Tour

The Wheeler County Crops Committee will sponsor a cotton meeting and tour Thursday, October 8.

Beginning at 2:30 p.m. in the Commissioners Courtroom at Wheeler, Dr. Carl Patrick will discuss cotton insect management. The discussion will cover insects that attack cotton, the damage they do, economic levels and control.

Following the meeting there will be a tour of three cotton variety demonstration plots. The first stop will be on the James Verden Farm west of Wheeler. The second stop will be at the plot on Clay Walser's farm 9 miles east of Wheeler and the third near Lela on John McDowell, Jr.'s farm. There are 15 varieties in all.

At each stop, Dr. Frank Petr, Area Extension Agronomist and Mr. Paul Gross, District Extension Director, will discuss the various varieties and answer questions. All interested persons are invited to attend.

Educational programs conducted by the Texas Agricultural Extension Service are open to everyone regardless of race, color, socio-economic level, national origin, sex or religion.

### CHAT WITH THE EDITOR

It is time to hand out a few roses.

We all know how great a team the Wheeler Mustangs are; this information is available through reading the articles, or talking to one of the fans. But, when did you hear someone say, "you should have seen the half time performance"?

You should have seen the halftime performance Friday evening. The Wheeler Mustang Band, Flag Corp and Rifle Team did an excellent job. They evidently have spent a lot of time practicing and deserve recognition for their efforts. You're doing a fine job, kids.

—cwe—

More roses for the Wheeler Volunteer Fire Department.

Saturday afternoon they demonstrated their equipment for use in removing victims of car accidents. The Jaws of Life was used to cut a car "to pieces". The turn-out for the demonstration was poor, but your absence was your loss. This equipment was purchased through donations and the ability to use it was learned with time. Thank you, gentlemen, for the time and effort put forth in training for the time you are needed to fight a fire or extricate a wreck victim. This "thank you" is for the volunteer firemen of the surrounding communities, also.

It is nice to hear a "thank you" now and then; it's part of a volunteer's salary—the rest is their personal gratification. Pay your part of their salary today.

—cwe—

Take notice of the advertisement on Page 3. After reading the ad, take the action recommended. Your help is needed.

### Annual Blood Drive Tuesday

Coffee Memorial Blood Center, Inc., will be in Wheeler for their annual blood drive Tuesday, October 6. The drive will be at the Wheeler School Cafeteria. Sponsoring the drive again this year is the Thursday Review Club. The time will be 4:00 to 7:00 P.M.

Your blood is needed. The blood center furnishes blood for the Panhandle area. This is their way of obtaining the blood they need.

If you or a member of your family needs blood, make sure it is available by donating. It only takes a few minutes and the pain, if any, is very minor.

**BLOOD INSURANCE**  
A blood donor may receive, if he wishes, a type of blood insurance coverage for himself and his immediate family in return for a single annual blood donation.

This blood insurance will pay 100% of any blood bank charges that the donor or his immediate family might incur during the twelve month period following the date of blood donation.

The blood insurance costs nothing but a pint of blood once a year and should be considered an essential part of a family's overall health coverage program.

STUDENT DONORS  
There is no substitute for human blood. It often means the difference between life and death yet less than 5% of the American public are blood donors.

Continued Page 8

# Briscoe News

by **Vetola Parker**  
 Monday 21, Sept. Talked to Mattie Jackson after I mailed my news today. She had to put her husband Bill in Shamrock hospital Friday. He is better

today. We were glad to hear this.  
 Hazel Helton and son, Joe and Alma Helton visited relatives. They visited and spent the night with Effie Renfro.

Wafford and Lillie Helton and her mother, Mrs. Kielensworth from Chouteau, Okla., spent the night with Mattie.

Arland Young, Scotty and Katie Watkins from Amarillo, spent Monday night with us.

Friday night, Weldon and Diana Parker, Marianda and Michelle came to spent the weekend.

Mary and Lois Hudson shopped in Wheeler Friday. Mary visited Mrs. Welch Saturday morning.

Mattie Jackson and Suzanne Sim's visited Bill Jackson in Shamrock hospital Friday.

Saturday morning 26th, nice and cool and very windy.

Weldon and Diana and girls ate supper Saturday night with Joey and Risa Keelin.

Last Sunday dinner guests at Dick Irvine's home were Leon and Vea Fillingim, Grace Irvine, and Terry Tipps.

David and Phillis Hefley, Darren and Christy ate lunch in Wheeler Sunday with Clifford and Pauline Hefley. Others there were Jim and Beth Alvey, Todd and Tena to celebrate Beth's birthday. Darren and Kristy visited later

with Dallas and Lindsey.

There will be a shower Saturday 3rd at Briscoe Home Ec room to honor Jamie and Jason Price, twins of Loren and Carolyn (Treadwell) Price. Linda Kelly, the girls basketball coach, had a cookout Friday night at her trailer house for the girls. Some spent the night.

Sunday dinner guests at Willis and Verna Fillingim's were Kim and Kevin Bookin, Dallas and Lindsey, in afternoon, Dan and Chris Fillingim and Andy.

Charles Crownover family spent Saturday night and Sunday at Charles parents, Frank and Bess Crownover. Charles sister Ann Green was also there.

The Juniors and Seniors made over \$200.00 on their car wash and bake sale to help with their trip at the end of the school year. Some teachers helped. Mrs. Pat Graham prepared lunch for them.

The Juniors and Seniors are Lillie and Sharon Sumpter, Mike and Jerold Gilbert, Jeff Baker, Sally Brewster, Misty Meadows, Lori Fiel, David

White. Also helping were Linda Kelley, and James Ramey. They washed 17 cars.

Tuesday night at Willis and Verna's were Linda Kelley, Dallas and Lindsey Fillingim, James and Bea Ogle and girls.

Hoyle Helton spent last week visiting in Amarillo. Modell Pillers flew up there and visited, then came home with Hoyle to visit down here.

Darv and Sammie Atherton visited last week with Andy and Troice Davis in Bentonville, Ark. They came home Monday 28. Troice Davis is coming with them to visit here while Modell and Elmer Pillers are here. Harmon and Daphne

Barry are coming also.

So it sounds like a little get-together with 17 sisters. This is one reason I don't have any news and no time to get any. Trying to get word now and them. Ha Ha! See you next week, maybe with more news.

Debbie and Tressa Perry, LeAndra Stuckey and Lou Dean Douthit went to Amarillo last Saturday and attended the Ice Capades at the Civic Center. Also visited Mrs. Lelan Luttrell (LouDean's mom) while they were up there.

K.D. Douthit went to Troup, Texas on Wednesday and returned Thursday evening.

## \$10,000 REWARD

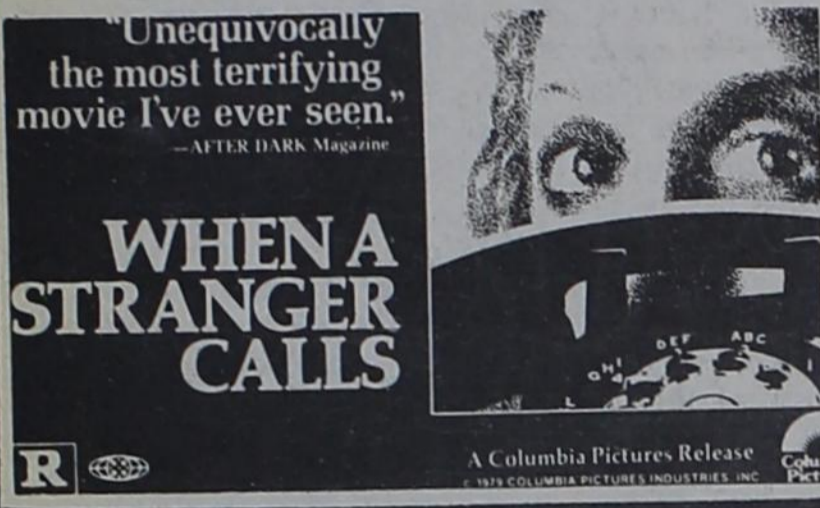
\$10,000 Reward for information leading the arrest and conviction of anyone stealing equipment from Earl T. Smith and Associates or E.T.S. Enterprises, Inc. Property. Any or all information will be confidential. Charlie H. Plumber, Jr. 806/323-5661 or 323-5113.

### ROGUE THEATRE

Wheeler, Texas 79096

2 Nights Fri. & Sat., Oct. 2 & 3 LATE SHOW 11 P.M.

"WHEN A STRANGER CALLS" (R)



Here's to our friends... and the strength to put up with them.



ALAN ALDA CAROL BURNETT

## the Four Seasons

STARTS FRIDAY!

One Week! Oct. 2-8

8:00 PM

### BUTCHERING & PROCESSING PRICES

Beef processed, double wrapped 20¢ per pound 1¢ A Pound for Butchering

Pork Processing including curing

Double wrapped 25¢ per pound

\$8.50 a head for butchering

We butcher Mon. Tues. Thurs. & Fri. until 11:30 A.M.

CALL FOR QUARTER—HALF—WHOLE BEEF PROCESSED

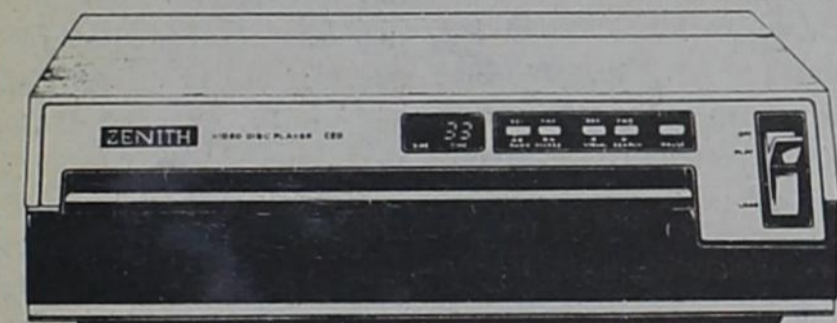
WE NOW HAVE CUTS OF PORK & BEEF FOR SALE

### SHAMROCK SLAUGHTER PLANT

North of City Phone: 256-2241

Closing at Noon on Saturday

**SUPER SAVINGS**  
 Limited time only  
**\$5000**  
 FACTORY REBATE  
 With purchase of...



## ZENITH VIDEO DISC PLAYER

A Record Player That Plays Movies On Your TV

Model VP2000W • Now a simple record lets you see what you want when you want to see it on your own TV. Easier to use than a phonograph. Simple cable connection allows hook-up to any TV in minutes. Video Discs provide exceptionally clear picture detail time after time. Plays any disc recorded in the CED format.

ONLY \$499.95

Plus \$50 Factory Rebate

REBATE OFFER VALID SEPT. 7 THRU OCT. 25, 1981

See Your Zenith Dealer For Details

### SHOWTIME...ANYTIME!



Each disc plays up to 2 full hours to bring you the most exciting TV entertainment in town. Enjoy feature length movies, concerts, sports, informational programs and more. All uncut and virtually uninterrupted. Your Zenith dealer has a wide selection of titles waiting to be enjoyed.

\$19.95-\$24.95

The best movies in town are playing on Video Disc

## Land F REPAIR

The quality goes in before the name goes on

110 East Oklahoma St. Phone: 806/826-3241 P.O. Box 220 WHEELER, TEXAS

### WHEELER CHRISTIAN ACADEMY

#### Patriots Enter Conference Play

The WCA Patriots met Clovis, New Mexico for their first HPCAA conference game of the year Friday afternoon. The Patriots had 4 boys not playing, 3 of which are starters. This left only 1 substitute and a lot of extra work for everyone.

Todd Helton received a pitch-out from Kevin Robinson and raced 52 yards on the first series of plays in the game for a touchdown. The extra point kick was short, making the score 6 to 0. Early in the second quarter, Todd Helton scored on a run almost identical to his first touchdown. The extra point kick was good, making the score 13 to 0. Quickly the Saints struck back with 2 touchdowns on their next 2 series of downs just before the half ended. The halftime score was Wheeler 13

- Clovis 12.

The 2nd half didn't go as well for the Patriots. Clovis scored on their first possession of the ball and scored 5 more touchdowns during the half. Their 2 point conversions were good 3 times. The scoring for the Patriots of the second half was done by Kevin Robinson when he picked the ball up from a kick-off on his own 41-yard line and raced 59 yards for a touchdown. With less than 15 seconds to play, Todd Helton returned a kick-off for the Patriots' final touchdown and the final play of the game. The final score was WCA 25 and Faith Christian Academy 54.

The Patriots meet the Rhema Rams of Amarillo in Amarillo this week for their second conference game.



**CHEERLEADERS:**  
 The 1981-82 Clarendon College Cheerleaders are: (left to right) Kaylo Johnson - Wellington, Misty Muse - Wheeler,

er, Susan Johnson - Hedley, Felinda Trolinder - Hereford, and Debbie Eller - Spearman.

#### Hiltbrunner Is Club Hostess

The Wheeler Extension Homemakers met September 22 in the home of Debra Hiltbrunner. Wanda Walker spoke to the club about "4-H".

Election of officers was conducted. Results for 1982 were: President, Laura Underwood; Vice President, Thana Riley; Secretary, Debra Hiltbrunner; Treasurer, Mary Sue Williams; Delegates to Council, Betty Rives and Judy Woolard.

The club will sell pecans this year. They are Del Cerro pecans and will be here the first week in November. They are guaranteed. Contact any club member if you wish to order by October 14th.

Members present were: Laura Underwood, Judy Woolard, Debra Hiltbrunner, Sandy Quaid, Betty Rives, Thana Riley. Guest: Debbie Leeman.

"Take him out! Take him out!"



Take out enough insurance to pay 'full replacement cost' rather than depreciated value on your home or commercial building. Insurance to at least 80% of value is the prime requirement.

### RIVES

INSURANCE AGENCY

115 W. Texas 826-5224 or 826-5202

"At the start of every good thing is truth." Plato

### S&H ROOFING & REPAIRS

Specializing in Mobile Home and Residential Roofs

Composition, Cedar Shake and Tile

—"A hole in your roof or a whole new roof."

### FELLOWSHIP MISSIONARY

#### BAPTIST CHURCH

Invites you to worship with us. We are located north on Osage Street about a quarter of a mile. We meet on Sunday morning for Sunday School at 10 a.m., Morning Worship at 11 a.m. Prayer meeting and Bible Study on Wednesday night at 8 p.m. Sunday night we have Baptist training course at 6 p.m. and Evening Worship Service at 7 p.m.

The ...



## FIRST NATIONAL BANK

in Wheeler

offers ...

# ALL-SAVERS CERTIFICATES

#### What is the Tax-Exempt All-Savers Certificate?

The Tax-Exempt All-Savers Certificate is a one-year certificate, issued between October 1, 1981 and December 31, 1982 with a yield equal to 70% of the average yield on 52-week Treasury Bills.

#### What is the certificate rate of interest based on?

The certificate must have a yield equal to 70% of the average yield on 52-week Treasury Bills.

#### The rate will be based on the most recent auction (before the week in which the certificate is issued).

The rate of interest, at the time you are issued your All-Savers Certificate, remains the same for the life of the certificate.

#### What is tax-exempt under these new savings certificate regulations?

The interest is tax-exempt up to certain maximums. The amount that anyone may exempt from income taxes under the new provisions is limited to a lifetime exclusion of \$1000 (\$2000 in the case of a joint return).

If, for example, you as an individual receive \$800 of All-Savers interest in 1982 and \$500 in 1983, only the first \$1000 of interest income is tax-exempt.

In the case of a joint return, if both parties receive \$1600 of All-Savers interest in 1982 and \$1000 in 1983, only the first \$2000 of interest income is tax-exempt.

#### What is the minimum deposit in an All-Savers Certificate?

The minimum deposit in an All-Savers Certificate is \$500.

#### How long will I be able to earn this tax-exempt exclusion?

First of all, you must make your deposit in an All-Savers Certificate between October 1, 1981 and December 31, 1982.

Although no further All-Savers Certificates will be issued after December 31, 1982, the interest paid on such certificates properly issued through December 31, 1982 will be entitled to the exemption.

This means that all of the interest tax-exempt under this certificate will be earned by December 31, 1983.

#### What is the maturity period of these All-Savers Certificates?

The maturity period of these All-Savers Certificates is one year.

#### Can I take my corporate funds and qualify for one of these Tax-Exempt All-Savers Certificates?

No. Any such amounts paid to corporations (including real estate investment trusts, sub-chapter S corporations and regulated investment companies) will be fully taxable.

The interest paid on an All-Savers Certificate is tax-exempt only when earned by an individual or an estate which acquires that certificate by reason of the death of the individual.

#### Can I use this certificate as collateral or security for a loan?

If you do, then the interest on the certificate loses its tax-exempt status and you will have to pay tax on the interest earned.

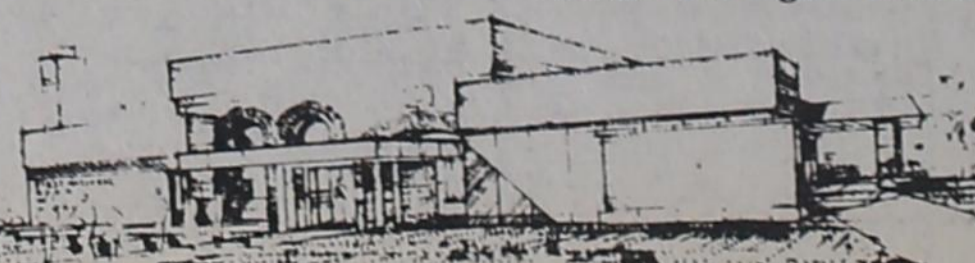
#### If I have to cash in my certificate prior to maturity, can I do so?

Yes, you can. However, you will lose the tax-exempt status on the interest on the certificate and all the interest earned will be subject to income tax.

#### A substantial penalty is required by law in the event of early withdrawal of funds from a certificate.

If you have questions not answered, please feel free to contact officers or employees at our bank.

In addition to All-Savers Certificates, the First National Bank in Wheeler offers Individual Retirement Accounts, Certificates of Deposit, Savings Accounts, Interest Bearing Checking Accounts and Regular Demand Accounts.



Each depositor insured to \$100,000



# An open letter to the citizens of Potter, Moore, Hutchinson, Carson, Gray and Wheeler counties

*The Economy and Tax Revenues of your Town and County will be Seriously Hurt if the Rules for Panhandle Field Oil and Gas Production are Changed*

**The Railroad Commission will soon consider a rule change that could shut down 2000 to 3000 Oil and Gas wells in these counties and stop further drilling. Millions of dollars will be lost.**

*Our communities will lose millions of dollars in salaries, bank deposits, royalty income, rents, building projects, retail sales and taxes every year . . . for years to come. It can be prevented, but you will have to help.*

A major oil company is proposing to the Texas Railroad Commission, which regulates oil and gas production in Texas, a change in the rules regulating oil and gas produced in the Panhandle Field of Texas. The effect of the proposed change, if adopted by the Commission, will be to shut down from two to three thousand wells in the counties involved and effectively prevent the drilling of that many more.

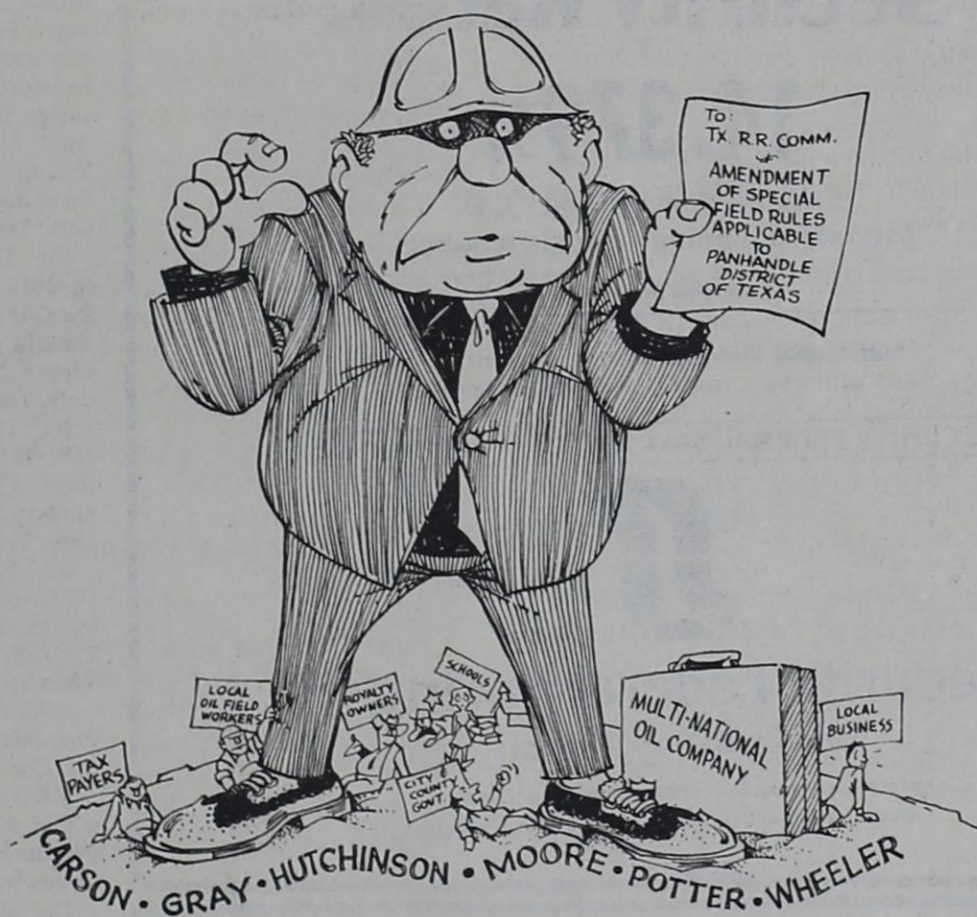
The economic impact on some communities in the area will be catastrophic. The economies of every city and town will be seriously hurt.

Hundreds—perhaps thousands—of jobs will be lost. Not just the oil field workers, but all the businesses which they patronize, along with the apartment houses, mobile home parks, etc., where they live, will be affected.

Every taxpayer in these counties will be adversely affected. Millions of dollars of property will be removed from the tax rolls of these six counties, with corresponding loss of tax revenues. It follows that individual taxpayers will have to make up the difference, or services will have to be reduced.

Farmers and ranchers on whose land these wells are located will lose the royalties, and others will lose the opportunity to have wells drilled on their property. In many instances, it is royalty income that keeps the farms and ranches operating.

Thousands of barrels of Panhandle oil cannot be produced under the proposed rule. The communities will have lost the economic benefit and our country will be that much more dependent on oil produced overseas.



"HOW COULD A LITTLE BITTY CHANGE HURT ANYONE?"

### Little Rule Change — Disastrous Effect

The proposed rule change would appear to be little more than a technicality. It simply provides that natural gas liquids cannot be counted in the gas-oil ratios which qualify these wells to produce as oil wells. Gas wells in the Panhandle Field are on 640-acre spacing, but there may be several oil wells on that same section. This change could eliminate the oil wells and leave only the gas well on a given section of land. The one gas well on many of these sections is owned by the multi-national oil company which is making the proposal. Theoretically, the rule change could shut down thousands of wells operated by small, locally-owned oil companies and independent operators and leave only the well of the major oil company.

### We Can Whip 'em — If Everybody Helps

The Governor of Texas and James E. Nugent, Chairman of the Railroad Commission, have gone on record as saying that they are going to do what is best for Texas. We must be sure they understand how important it is to our economy to leave rules governing the Panhandle Oil Field as they are. Only if they hear from thousands of us will they understand that.

To help, you must write to Mr. Nugent. And get your friends, fellow workers and taxpayers to do the same. Just say in your letter that you are against amending the special field rules applicable to the Panhandle Oil Field. Writing in longhand would be best, but you may want to use the message printed at left. Be sure to sign it and add your mailing address. The important thing is that you let them know you are opposed to the proposed rule change.

*If You Want To Help, Write To:*

**Mr. James E. Nugent, Chairman  
Railroad Commission of Texas  
Oil and Gas Division  
P.O. Drawer 12967  
Capitol Station  
Austin, TX 78711**

Mr. James E. Nugent, Chairman  
Railroad Commission of Texas  
Oil and Gas Division  
P.O. Drawer 12967  
Capitol Station  
Austin, TX 78711

Re: Oil & Gas Docket No. 10-77,314

Dear Mr. Nugent:

I am against amending the special field rules applicable to the Panhandle district of Texas, Panhandle Field, covering producing areas in Potter, Moore, Hutchinson, Carson, Gray and Wheeler Counties, Texas. I believe the proposed change could cause a severe economic hardship for my community and would waste valuable resources by leaving thousands of barrels of oil unproduced.

(Signed) \_\_\_\_\_  
\_\_\_\_\_  
\_\_\_\_\_

# Want Ads

**PROMT DEAD STOCK REMOVAL** Seven days a week service. Call your local used cow dealer at 669-7016, or toll Free 1-800/692-4043. rtn

Call **W.L. Williams** for Termite or any pest control problem. Phone: 826-3341. rtn

**CAKES**  
**CATERING SERVICE FOR Wedding & Anniversaries**  
Cathy Hunt—375-2391  
Kay Luttrell—375-2421

**WAITRESS WANTED:** Apply at Sparlin's Restaurant. rtn

**MINERAL & ROYALTY**  
I am interested in purchasing your minerals or royalty acres.  
**Bill Spillman**  
Wheeler Oil Co.  
Box 832  
Wellington, Texas  
Phone: 806/447-2525

**FOR SALE:** IH Model 90 Cotton Stripper. Also 24 x 8 all metal cotton trailer. 826-5821 or 826-3515. 4tc

**House Moving**  
**SPARLIN'S—826-5898**  
Wheeler, Texas

**FOR SALE:** New Granada 1981 Ford. 248 miles. Call 826-3298. 3tp

**FOR SALE:** 3 bedroom, 2 bath fenced yard. Phone 826-3298.

**FOR SALE**  
3-Bedroom-Brick Home  
2 Bath-Living Room  
Kitchen-Den  
Central Heat and Air  
Fenced Back Yard  
Separate 2-Car Garage  
Phone 826-3376 or 826-5944

**FOR SALE:** '67 Chevrolet \$100. 845-2281. 3tp

**OIL & GAS LEASES**  
I am interest in leasing your Oil & Gas Leases, purchasing your Minerals and Royalties.  
R.C. Callan  
204 E. Texas St.  
(806) 826-5522  
Wheeler, Texas 79096  
or  
Amarillo Office  
Box 7473  
(806) 352-7891  
Amarillo, Texas 79109

**LOST:** 500 lb. Black Angus Bull, around Briscoe. Bob Ratliff. Phone: 375-2337. rtn

**HARRISON Gun Sales**  
Rifles, Pistols, Shotguns and Ammunitions  
Open 12-6—All Day Sat.  
510 Osage Ph. 826-3269

**FOR SALE:** New valley reversible calf table and 6 x 20 gooseneck trailer. 826-5726 Pete Hawks. 2tc

**TRAILER SPACE AVAILABLE:** Extra large lots. 826-5634 or 826-3215. rtn

**FOR SALE:** 3 doz. Pullets, 5 weeks old, starting to lay. Also G.E. Refrigerator, 5 years old. Phone: 8/6/826-5205. rtn

**FOR SALE:** 8-week old female Dashound puppy. \$35. Sherry Moore, Shamrock, Texas 256-3009. 1t

**RELOCATE TO AMARILLO** for a free home. Companion to a 60 year old woman. Call 826-5269 for details. Retired woman or couple. 1t

**FOR SALE:** Vona Seed Wheat. First year from certified. \$5.00 per bushel bin run. Virgil Simmon. 826-5843. rtn

**RATES**  
**CLASSIFIED RATES**  
All classified ads must be paid in advance, except for open ledger account customers.  
Charges are 13 cents per word. Minimum charge is \$1.30.  
Card of Thanks charges will be \$2.75.  
**ADVERTISING DEADLINES**  
Fridays: 5:00 p.m. Mon.  
Saturdays: 5:00 p.m. Mon.

**DWIGHT FORD'S MECHANIC SERVICE**  
School trained  
Diesel Technician  
323-5296 Canadian

**FOR SALE:** Good 4 year old Bull. Glenn Williams, S. of Wheeler, Phone: 826-5836 1tp

**STEEL BUILDING**  
10% Discounts Now Available on All Bldgs. dealers for Matrex Steel Bldgs. Pre-engineered metal buildings, modular homes and solar bldgs. Complete turnkey operation. Literature and information available. Inquire: H & I Homes Improvement 311 South Bevins Amarillo, Texas

**FOR SALE** 1978 Atlantic Trailer house. \$4,000. equity and take up payments. Call 806/826-3168 before 5:00 or 806/826-3385 after 5:00.

## THE BUSINESS DIRECTORY

**MEMBER 1981**  
**TEXAS PRESS ASSOCIATION**

**THE WHEELER TIMES**  
Entered as second-class matter December 18, 1933, at the Post Office at Wheeler, Texas 79096, under the act March 3, 1879.  
**Louis C. Stas, Owner and Publisher**  
**SUBSCRIPTION RATES:**  
Wheeler County...\$7.75 Outside County...\$8.75

**PAUL'S REAL ESTATE**  
Houses or Land  
Paul Topper  
200 S. Canadian St.  
806/826-5237  
Wheeler, Tx.

**GUARANTEED AUTO GLASS INSTALLATION & Body Repair**  
**CROSS CAR CENTER**  
Phone: 826-5515  
Wheeler, Texas

**WHEELER LUMBER CO.**  
Phone 826-5543 Wheeler, Tex.  
Fine Service for Fine People

Let Me Write It...  
**GEO. RICHARDSON**  
All Types Of INSURANCE

**WINDSHIELD REPAIR SERVICE**  
Free Estimates  
LOW COST!!!  
Danny McNeil  
Phone: 826-5702  
SAVE YOUR WINDSHIELD

**BURRELL OIL & GAS PROPERTIES**  
P.O. Box 23  
Wheeler, Texas 79096  
Ph. 806/826-3519  
(if busy) 826-3529  
Lease's Min. & Roy. Bought  
Ask for Mark or A.W.

**NEED EXTRA MONEY**  
You can make money selling Avon. Flexible hours. Most people. Call collect (806) 665-8507.

**FOR SALE:** 1980 Blazer, 20,000 miles, excellent condition. 826-3211. rtn

**PRESTIDGE GOLDEN SPREAD BACK HOE SERVICE**  
— BULLDOZING —  
"Good Clean Dirt Work"  
INSURED  
Choctaw & Laville  
Shamrock, Tex. Phone: 256-2509  
OILFIELD & DOMESTIC

**TRAILER SPACE AVAILABLE:** Extra large lots. 826-5634 or 826-3215. rtn

**DRILLING**  
Commercial & Residential  
**WELLS**  
**COMMERCIAL PUMP SALES & SERVICE**  
CEPTIC TANK  
SOLD, SET & CLEANED  
BACKHOE WORK  
Banks Water Well Service & Drilling  
Mobeetie, Texas  
Phone: 845-3431

**3 BEDROOM HOUSE FOR SALE:** Phone 826-3071 after 5:30 rtn

**K. D.'s Trailer Sales**  
TRAILER SALES  
K. D. DOUTHETT  
Phone: 806/826-2279  
Briscoe, Texas  
Neckover & Bumper Trailers

**ATTENTION MR. FARMER**  
Wanted farm machinery. John Deere offset disc, John Deere & THC Turn over plow. Any kind of reversible disc braking plow. Frank Hussey, Rt. 2, White Deer, Tex. 79097, 806/883-5011. 2tp

**OIL & GAS LEASES**  
If you have Minerals For Sale or Lease, Please Contact.  
**ANADARKO BASIN**  
P.O. Box 146, Sayre, OK. 405/928-3395  
P.O. Box 1694, Amarillo, 806/352-6444

**WHEELER LODGE NO. 1099**  
A.F. & A.M.  
MONDAY 7:00 P.M.  
Percy Farmer, Sec'y.  
Members Urged To Attend.  
Visitors Welcome.

**WHEELER REDI-MIX**  
REDI-MIX CONCRETE SAND  
Washed Gravel—All Sizes  
Office Hours: 7:30 to 5:00  
Phone 806-826-3223

**Dr. Marion Roberts**  
OPTOMETRIST  
Phone: 669-3333  
112 W. Kingsmill  
Pampa, Texas

**CUSTOM DRAPERIES**  
Swags, Cornices, Shutters  
— WE INSTALL FREE —  
Telephone: 256-3652  
**Brannons Decorators**  
Shamrock, Texas 79079

**FAITH CATTLE CO.**  
BUYERS — SELLERS  
CUSTOM CATTLE WORK  
Phone: 826-5726  
P.O. Box 2  
Wheeler, Texas

**HORSESHOEING**  
All types  
**Pete Hawks**  
Phone: 826-5726  
or  
826-5237

**FOR SALE:** 4 bedroom house, 2 full baths, woodburning fireplace on 100' x 350' lot with 20 x 20 storage building. 826-3150. rtn

**Mark Woods Oil & Gas Properties**  
• OIL & GAS LEASES  
• ROYALTIES • MINERALS  
PETROLEUM LAND MANAGEMENT SERVICES  
P.O. Box 542 Wheeler, Tx 79096  
Office: (806) 826-5268  
Home: (806) 826-5865

**Will Babysit!** in my home, Monday through Friday. Come by 416 Texas Street or see Debbie Sandlin. 2t

**LOCAL ARTIST SHOWING**  
Paintings by Liz Shipp will be on display at the First National Bank in Wheeler Oct. 5 Thru Oct. 9th.

**NOTICE ACCEPTING BIDS**  
The Board of Trustees of the Briscoe Independent School District will accept sealed bids for a new 1/2 ton pickup.  
The specifications are: 6 cylinder engine, standard 3-speed transmission, heater, rear bumper hitch, heavy duty radiator, power brakes, power steering, and long wheel base.  
Bids shall be received in the superintendent's office not later than 3:00 P.M. local time, October 9, 1981. Bids will be opened at the regular meeting of the Briscoe School Board of Trustees meeting at 7:00 P.M., October 12, 1981.  
Each bid shall be enclosed in a sealed envelope, addressed to Board of Education, Box 399, Briscoe, Texas 79011 and marked "Bid for Pickup".  
The Board reserves the right to accept or reject any/and all bids.  
By order of the Briscoe Board of Trustees.  
**L. Harold Salmon**  
Superintendent of Schools

**HUNTING LEASE WANTED:** Deer, Turkey & Quail. Call collect, Ron Brown, Perryton, TX. 806/435-5278 2tp

**Two Bedroom Trailer** for rent. Phone: 826-5692 after 6:00 p.m.

**GARAGE SALE**  
More new stuff, furniture, baby things, clothes (cheap) dishes & junk. at Omega Grain Barn, east Highway 152. Oct. 2 & 3, 9:00-5:00. 1tp

**YARD SALE**  
Much used furniture and household articles, clothing, junk. Laura Guthrie, 1108 S. Main—in the rear. 10:00 A.M. Saturday, Oct. 3.

**Notice**  
**NOTICE TO CREDITORS OF ESTATE OF B. T. CLEMENS, DECEASED**  
Notice is hereby given that original letters testamentary upon the Estate of B. T. Clemens, deceased, were granted to me, the undersigned, on the 14th day of September, 1981, in Cause Number 2,199 pending in the County Court of Wheeler County, Texas.  
All persons having claims against this estate which is currently being administered are required to present them within the time and in the manner prescribed by law to the undersigned.  
DATED this 22nd day of September, 1981.  
**Lou Ella Clemens,**  
Independent Executrix of the Estate of B.T. Clemens,  
Deceased Suite 436 Hughes Building, Pampa, Texas 79065

**NOTICE**  
Wheeler County Commissioners Court will accept bids on a system to provide compressed air for the county fire departments. Specifications may be viewed at the County Judge's Office. Bids will be opened October 12, 1981 at 10 a.m. The Court reserves the right to accept or reject any or all bids.

**NOTICE**  
Wheeler County Commissioners Court will accept bids on a Pickup Truck. Minimum Specifications as follows: 1982 heavy half ton, 302 V-8 engine, automatic transmission, factor air, radio, gauges, heavy duty radiator, power steering, P-235 steel belted radial tires, two fuel tanks, short wheelbase, wide box, positive trac or limited slip rear end, deluxe seat.  
Bids will be opened October 12, 1981 at 10:00 a.m. The Court reserves the right to accept or reject any or all bids.

**THANK YOU TO THE AMBULANCE SERVICE**  
I wanted to take this opportunity to say what a fabulous ambulance service we have in Wheeler. A few days ago they were called to the residence of a patient that had a cardiac and respiratory arrest (heart and breathing had stopped). Their performance was excellent; drugs and equipment needed were readily available. A defibrillator with a scope proved invaluable. They moved swiftly, performing as a team. This was true excellence that Wheeler County can be proud of.  
Thank you Wheeler Ambulance crew for your sacrificial dedication to service of this community.  
**Robert Galutia, M.D.**

**Garage Sale**  
Dishwasher, furniture, drapes, spreads, lamps, appliances, men's and ladies clothing sizes 8-18, dress length fabric, trim and gift items.  
Friday & Saturday 8:00 until 6:00  
Sunday 1:00 until 6:00  
803 Canadian

**Garage Sale**  
FOUR FAMILY  
Dishwasher, furniture, drapes, spreads, lamps, appliances, men's and ladies clothing sizes 8-18, dress length fabric, trim and gift items.  
Friday & Saturday 8:00 until 6:00  
Sunday 1:00 until 6:00  
803 Canadian

**Garage Sale**  
FOUR FAMILY  
Dishwasher, furniture, drapes, spreads, lamps, appliances, men's and ladies clothing sizes 8-18, dress length fabric, trim and gift items.  
Friday & Saturday 8:00 until 6:00  
Sunday 1:00 until 6:00  
803 Canadian

**Today's Security Rates.**  
**14.379%**  
6-Month Money Market C.D.  
\$10,000 minimum deposit required.  
Rate effective through Oct. 5, 1981  
Substantial interest penalty required for early withdrawal from certificates of deposit.  
**SECURITY FEDERAL SAVINGS...FOR SECURITY!**  
**Security Federal Savings and Loan Association**  
MEMBER FS LIC  
PAMPA: West Francis at Gray HEREFORD: 1017 W. Park Avenue  
AMARILLO: 15th and Polk 45th and Teckla 3105 S. Georgia

**IT'S A NATURAL**  
As Natural as 1-2-3  
MOL-MIX/LPS.....  
1—CONTAINS NO UREA  
2—AVAILABLE IN PROTEIN LEVELS OF 20%  
3—CONTAINS HIGH LEVELS OF VITAMINS, MINERALS AND ENERGY  
IN today's artificial world it's comforting to know that Natural Ingredients are still available.  
**NOW** all Mol-Mix/LPS® products are fortified with vitamins and minerals, in a special formula so essential for high gain growth in beef and high production levels in dairy cows. This is possible because Mol-Mix/LPS® contains High Natural Levels of Energy. A special fermentation process delivers to you a product that is formulated to be not only high in natural protein but easily digested and used. This fermented product is imported exclusively for use in National Molasses Company's, Mol-Mix/LPS® Liquid Supplements..... Naturally.

**OMEGA GRAIN & SUPPLY, INC.**  
305 S. Alan L. Bean Blvd.  
Wheeler, Texas  
Phone: 826-5953

**CITATION BY PUBLICATION**  
THE STATE OF TEXAS  
TO: All of the unknown children heretofore born to or adopted by or hereafter to be born to adopted by Garland W. Moore or Karen M. Meek; all of the unknown heirs, devisees, legatees and legal representatives of each child heretofore born to or adopted by, or hereafter born to or adopted by Garland W. Moore and Karen M. Meek; all the unknown owners and claimants of any title or interest in the lands hereinafter described, claiming or to claim such interest only under, through or by virtue of that royalty deed from Raymond Moore and Isabell Moore, as Grantors, to Garland W. Moore and Karen M. Meek, as Grantees, as recorded at Volume 243, Page 833 of the Deed Records of Wheeler County, Texas, and that Deed from Raymond Moore and Isabell Moore, as Grantors, to Garland W. Moore and Karen M. Meek as Grantees, as recorded at Volume 243, Page 835 of the Deed Records of Wheeler County, Texas.  
Each of you are hereby commanded to appear before the Honorable District Court, 31st Judicial District of Wheeler County, Texas at the courthouse in Wheeler, Texas on or before 10:00 A.M. of the first Monday next after the expiration of forty-two (42) days from September 28, 1981, the date of issuance of this Citation by filing a written answer to Plaintiffs' Original Petition that was filed in said Court on the 28th day of September, 1981, No. 7977 on the docket of said Court and styled RAYMOND MOORE, et al, Plaintiffs, vs. MATTHEW DARREN MOORE, et al, Defendants.

A brief statement of the nature of this suit is as follows:  
The Plaintiffs bring this action to reform those Deeds dated December 24, 1974, executed by Raymond Moore and Isabell Moore, recorded at Volume 243, Pages 833 and Volume 243, Page 835 of the Deed Records of Wheeler County, Texas, covering the following described property situated in Wheeler County, Texas, to-wit:

(a) The South one-half (S/2) and Northwest Quarter (NW/4) of Section One (1), D. Tindall, original grantee, Certificate No. 18, Wheeler County, Texas, EXCEPT a 2.5 acre tract described in a Deed, Raymond Moore et ux to James O. Cain et ux, dated April 24, 1947, recorded at Volume 115, Page 256, of the Deed Records of Wheeler County, Texas; and

(b) The East 213 acres (E/213) of the North 426 (N/426) acres of Section 2, D. Tindall, original grantee, Certificate No. 45, Wheeler County, Texas; and

(c) The Southwest Quarter (SW/4) of Section twenty-three (23), Block L, J.M. Lindsay Survey, Wheeler County, Texas; and

(d) The West one-half (W/2) of the Southeast Quarter (SE/4) of Section 18, Block L, J.M. Lindsay Survey, Wheeler County, Texas  
All as more fully shown by Plaintiffs' Petition on file in this Cause.

If this citation is not served within ninety (90) days after the date of its issuance, it shall be returned unserved.  
The officer executing this writ shall promptly serve the same according to the requirements of law and the mandates hereof, and make due return as the law directs.

ISSUED under my hand and seal of said Court at Wheeler, Texas on this the 28th day of September, 1981.  
Clerk of the 31st Judicial District Court of Wheeler County, Texas  
By: Sindy Chapman Deputy

**CARD OF THANKS**  
We would like to express our thanks to everyone for their prayers, visits, cards, flowers, food and all the kindness shown during Louise's stay in St. Anthony Hospital and at home.  
God Bless each one.  
**Mr. and Mrs. Cleo Gaines & Family**

**CARD OF THANKS**  
We would like to express our thanks and gratitude to the wonderful people of Mobeetie for the lovely dinner prepared for us at the Methodist Church. Our thanks to the pastor Rev. L. V. Grace for his kindness.  
**The Olen Banks family and Cora Hunt**

# Allison News

**by Mrs. Lester Levitt**  
 Kenneth and Peggy Chandler were dinner guests in the home of Brad and Sue Chandler and daughter at Wheeler Saturday.  
 The Annual Conference was held at the United Methodist Church Wednesday evening with District Superintendent Rev. C.B. Melton from Pampa as guest speaker. The church from Wheeler have a joint conference with Allison each year.  
 Mrs. Bill Miller and Mrs. Archie Dillon visited Mr. and Mrs. George Parker Sunday afternoon.  
 Rex and Virginia Miller left Wednesday for Oklahoma City for business reasons and then on to Bentenville, Arkansas where they will spend some time with friends.  
 Mr. and Mrs. Leo Lee from Bartlesville, Oklahoma visited

friends here Wednesday and were house guests in the home of Joe Lee and family at Briscoe.  
 Lee Hall celebrated his birthday Saturday at his home with homemade ice cream and cake. Several were present to enjoy the occasion.  
 Alene Hall spent two days last week in Pampa with Mr. and Mrs. Charles Hall and children.

Mrs. Francis (Dillon) Savage from Wellington was a house guest in the home of Mrs. Julia Dillon Tuesday. She also visited with Rex and Virginia Miller.  
 Bill and Helen Park from Reydon, Oklahoma visited Bruce and Pearl Harrison Tuesday. Bruce and Pearl and Inez Townsley from Durham, Okla. were in Cheyenne Monday on business.  
 Louise Boydston attended the funeral of a close friend, Everett Glenn at McAlester, Okla., Tuesday.  
 Gene Brewer returned home

last week from many weeks spent in an Oklahoma hospital for surgery and treatment. He is at the home of Mr. and Mrs. Bill Shelton and slowly recovering.  
 Lynette O'Donnell and girls of Manassas, Virginia are visiting her parents, Jimmy and Vivian Wallace, for three weeks before moving to England. Her husband is working for the government and will join her here the last week. Other weekend visitors was their daughter Janet Sacobelli, of Raton, New Mexico and Ronnie of Allison. Also Ruby



## FANS — FANS — FANS

**THE OLD JACKSONVILLE**  
 American Made — 5 Year Warranty  
**THE PARLOR FAN — by FASCO**  
 American Made — 5 Year Warranty  
**THE LITCO FAN — 5 Year Warranty**  
**THE ENCON COLLECTION — 5 Year Warranty**  
 Large Selection of Light Fixtures for all fans  
**INSTALLATION AVAILABLE**

Call: E. M. Rives [806] 256-5250  
 or Betty Rives [806] 826-3224

ALLISON INDEPENDENT SCHOOL DISTRICT  
 BALANCE SHEET  
 (Exclusive of Enterprise and Trust Funds)  
 August 31, 1981

To Comply with article 29-b -- Annual Financial Statements -- Revised Civil Statutes -- Title I General Provisions

### ASSETS AND OTHER DEBITS:

#### CURRENT AND OTHER ASSETS

Cash	\$ 89,782
Temporary Investments	144,000
Prepaid Expenses	10,027
Receivables	(3,627)
<b>Total Current &amp; Other Assets</b>	<b>\$ 240,182</b>

#### FIXED ASSETS

Land & Buildings	\$ 562,738
Furniture & Equipment	112,996
Vehicles	36,653
Other	15,163
<b>Total Fixed Assets</b>	<b>\$ 727,550</b>

#### OTHER DEBITS

Amount to be provided for payment for bond	\$ 77,493
<b>Total Other Debits</b>	<b>\$ 77,493</b>

**TOTAL ASSETS & OTHER DEBITS** **\$ 1,045,225**

### LIABILITIES, FUND BALANCE, RESERVES:

#### CURRENT LIABILITIES

Deferred Income	\$ 3,717
Bonds Payable	77,493
<b>Total Current Liabilities</b>	<b>\$ 81,210</b>

#### FUND BALANCE & RESERVES

Fund Balance -- Gen. Fund	\$ 221,710
Fund Balance -- Debit. Pur. Fund	-
Reserve for Retirem. of Bond Debit	14,755
Reserve for Inv. in Fixed Assets	727,550
<b>Total Fund Balance &amp; Reserves</b>	<b>\$ 964,015</b>

**TOTAL LIABILITIES, FUND BALANCE AND RESERVES** **\$ 1,045,225**

### STATEMENT OF REVENUES AND EXPENDITURES (Exclusive of Enterprise and Trust Funds)

August 31, 1981

#### REVENUE:

Local & Intermediate Sources	\$ 429,378
State Sources	61,507
Other Revenue Receipts	-
<b>Total Revenues</b>	<b>\$ 490,885</b>

#### EXPENDITURES:

Instruction	\$ 148,868
Instructional Resources & Media	6,168
School Administration	16,405
Guidance & Counseling	3,213
Health Service	1,000
Pupil Transportation	13,226
Co-Curricular Activities	21,827
Food Service	15,000
Administration	71,544
Debit Service	24,718
Plant Maintenance & Operation	129,554
<b>Total Expenditures</b>	<b>\$ 451,523</b>

**Excess Revenues over Expenditures** **\$ 39,362**

**Fund & Reserves Balance, September 1, 1980** **870,841**

**Addition to Fixed Assets** **\$ 53,812**  
**Total** **\$ 53,812**

**Fund and Reserve Balance, August 31, 1981** **\$ 964,015**

## Wheeler 4-H Horse Club Organization Meeting

The Wheeler County 4-H Texans Horse Club will hold its organizational meeting Wednesday night, October 7 at 7:30 p.m. in the District Courtroom at Wheeler. The purpose of the meeting is to enroll members and make plans for the upcoming year. Members of the horse club learn horsemanship and horse care in meetings held throughout the year. Adult leader and instructor for the club is Mrs. Eleanor Freeman. Mrs. Freeman has been working with the 4-H Texans for 22 years.

and Ernest Wallace of Sayre. Willis and Mary Harrison of Canyon visited with Bruce and Pearl and also with Ed and Donna Nall.

Sunday dinner guests in the Bruce Harrison home were Lynette O'Donnell and girls, Janet Sacobelli, Jimmy and Vivian Wallace, Louise and Clifton Boydston and girls, Inez Townsley and Bob and Jo Townsley of Centrallia, Illinois.

### DID ANYONE NOTICE?

There are new highway signs south of Allison announcing the curve that several cars and trucks have missed and overturned. Thanks to the Allison Extension Homemakers Club for bringing this to the attending of the highway department.

The club is also working toward getting street signs erected. Donations would be appreciated.

## R.E. Mays Hosts Begert Reunion

A gathering of Begert relatives was held at R.E. Mays home last Saturday. Two sisters from Oregon, one brother from Umbarger, sister-in-laws and several cousins made the group complete.

Ann Christner from Portland, Oregon, Nellie Gransee from Springfield, Oregon, Mr. and Mrs. Frank Begert from Umbarger, Blanche Begert from Cordell, Oklahoma, Mr. and Mrs. Tom Trask from Pampa, Mr. and Mrs. Edwin Begert and daughters from Amarillo, Mr. and Mrs. Dean Lieb and children from Stinnett, Mr. and Mrs. Hiram Begert and Bret from Allison and the hostesses Ruben and May.

Everyone contributed good food, good conversation for this family affair. Ann and Nellie stayed over for a few days visit; they are also visiting Mary Bilbrey and families in Oklahoma.

## NUMB ARMS, LEGS Danger Signals



There may be misalignment of vertebrae in the spine causing pressure on nerves, yet the patient experiences no pain in the back. Instead, a variety of sensations may be felt in other parts of the body. These include tingling, tightness, hot spots, cold spots, crawling sensations, electric shock sensations, stinging, burning, and others.

Here are nine critical symptoms involving back pain or strange sensations, which are usually the forerunners of more serious conditions. Any one of these usually spells back trouble.

- (1) Paresthesias (see above)
- (2) Headaches
- (3) Painful joints
- (4) Numbness in the arms or hands
- (5) Loss of sleep
- (6) Stiffness in the neck
- (7) Pain between the shoulders
- (8) Stiffness or pain in lower back
- (9) Numbness or pain in the legs.

These signals indicate that your body is being robbed of normal nerve function. Until this function is restored, you will, in some degree, be incapacitated. The longer you wait to seek help, the worse the condition will become. Don't wait! Should you experience any of these danger signals... call for in depth consultation in Layman's terms.

*Haydon Chiropractic Office*

103 East 28th Street & Perryton Pky.  
 PAMPA, TEXAS 79065  
 TELEPHONE 806-665-7261

## Realty of the Southwest

2 New Homes under Construction For Sale.

Two Lots For Sale on Reynolds Street.

**MOBILE HOME FOR SALE**  
 \$5,000.00 Down. Assume payments of \$140.00.

**New Listing:** 18.7 acres and 1/2 minerals — Needs a buyer in a hurry.

### NEW LISTING

Owner moving and must sell this very neat 3 bdrm, 2 bath, w/family rm & formal living rm. Located in Wise Add't.

### Hey, Look Me Over

Attractive 3 bedroom home - has been fully modernized and very tastefully decorated. Owner has relocated and must sell.

### WE NEED YOUR LISTINGS!

John Norman, Broker 806 826-5202—Office  
 Don Rives, Salesman 826-3283—Home  
 Lona Williams, Saleslady 826-3341—Home

All youth 9 through 18 years of age are invited to join the club. Anyone wishing to join but unable to attend the meeting can contact the county Extension office in Wheeler.

Educational programs conducted by the Texas Agricultural Extension Service serve people of all ages regardless of socio-economic level, race, color, sex, religion or national origin.

## Home Nursing Care Available

Nursing Care in the home is still available through Panhandle Home Health Agency. Services are covered anywhere in Wheeler, Lipscomb or Hemphill counties. Services are available to patients that have Medicare, Medicaid or private pay.

The nurses come into the home under a physicians order and monitor blood pressure and heart rate. They observe and report adverse or abnormal symptoms to the doctor. If prescribed IM injections can be given.

In general, the nurse's are available to give any care that is needed and prescribed by the doctor. Karen Puryear is the supervision for this area. For more information call 826-5600.

## V. Wallace Hosts Extension Club

The Allison Extension Homemakers Club met in the home of Vivian Wallace Sept. 24.

The club is taking orders for pecans at \$4.50 per pound, halves or pieces. Anyone wishing to place orders may call any club member, Eula Kulkan, Ann Boydston, Vivian Wallace, Jane Dupont, Wanda Walker, Pam Heckernell, or Peggy Dukes.

The next club meeting will be Oct. 18 at Ann's and Wanda Walker will give a report and lesson about the 4-H and ways it can help young people. Everyone is invited regardless of race, color, sex, religion or national origin.

YOU ARE CORDIALLY INVITED  
 TO OUR GRAND OPENING - OPEN HOUSE  
 TO BE HELD AT OUR NEW LOCATION  
 102 EAST MAIN STREET  
 MOBEETIE, TEXAS  
 OCTOBER 1, 1981 — 2:00 P.M. UNTIL 6:00 P.M.  
 REFRESHMENTS WILL BE SERVED CONTINUALLY  
 AND DOOR PRIZES WILL BE GIVEN AWAY

## Wheeler Pipe & Supply Co.

## Flo-Bak Systems

## Robco Construction, Inc.

New Telephone Numbers: Main: 806/845-2611  
 If Busy: 806/845-3091  
 Nites: 806/845-3761  
 Mobile Telephone Numbers: 806/669-9211  
 Units: 6612, 6066, 7409, 7407

# WHEELER MUSTANGS

## MUSTANG FOOTBALL SCHEDULE

Sept. 4	Stinnett	H
Sept. 11	Open	
Sept. 18	Booker	T
Sept. 25	McLean	H
Oct. 2	Boys Ranch	T
Oct. 9	Open	
Oct. 16	*Wellington	T
Oct. 23	*Clarendon	H
Oct. 30	*Memphis	T
Nov. 6	*Canadian	H
Nov. 13	*Shamrock	T

\*District Games

## vs. BOYS RANCH ROUGHRIDERS

### Friday, October 2, 1981

At BOYS RANCH

Game Time: 8:00 P.M.

## PEP RALLY Friday, October 2

1:30 P.M. At OLD GYMNASIUM

## WHEELER JUNIOR VARSITY & JUNIOR HIGH

Sept. 10	Wellington	There	J.H.	J.V.
Sept. 17	Clarendon	Here	6:00	7:30
Sept. 24	Memphis	There	6:00	7:30
Oct. 1	Canadian	Here	6:00	7:30
Oct. 8	Shamrock	There	6:00	7:30
Oct. 15	Wellington	Here	6:00	7:30
Oct. 22	Clarendon	There	6:00	7:30
Oct. 29	Memphis	Here	6:00	7:30
Nov. 5	Canadian	There	6:00	7:30
Nov. 12	Shamrock	Here	6:00	7:30

\*Wheeler will play 8th grade schedule only in Junior High.

- ALBERT'S SHAMROCK SERVICE**  
Albert and Hannah Faye
- THE BOUTIQUE & BEAUTY SUPPLY**  
Mary & Gene Gibson
- BJ'S WEARHOUSE**  
Jimmy & Bobby Hill
- LOYD'S & STREET'S BEN FRANKLIN**  
Lyndon & Novelene Loyd
- BLUE STAMP REDEMPTION CENTER**
- PETE BURTON FORD, INC.**  
Pete, Dickie, Gary Don, & Families
- CITY CLEANERS & FABRICS**  
Ben & Carolyn Westmoreland
- DAVE'S WELDING SHOP**  
David & Betty Kreyling
- FIRST NATIONAL BANK in Wheeler**
- FRANKENBERY TEXACO SER. STA.**  
Bob & Valetta Frankenberg
- THE COUNTRY CLIPPER**  
Gary Clemens
- HYLAND'S PHARMACY**  
Hyland & Betty Weaver
- HONEY INN**
- JOHNNY'S SHAMROCK SERVICE STA.**  
Johnny, Betty & Melissa Chapman
- RICHARD & LYNDA WALLACE**
- LEWALLEN INSURANCE AGENCY**  
Jim & Verena Lewallen
- OMEGA GRAIN SUPPLY, INC**
- REALTY OF THE SOUTHWEST**  
Donald Rives
- RIVES INSURANCE AGENCY**  
Thurman & Donald Rives
- SPARLIN'S RESTAURANT**  
Glen & Faye Sparlin
- UNIVERSAL WELL LOGGING**  
Charles & Ella Mae Wood
- WISE ENERGY, INC.**
- WARE CHEVROLET, INC.**  
The N.D. & Bobby Wares
- MUSTANG PHARMACY**  
Tommy and Sharla Weaver
- WHEELER ABSTRACT CO.**
- WHEELER REDI-MIX**  
R.J. & Georgia Smith
- ROGUE THEATRE**  
Richard Nall, Manager



## 1981 WHEELER MUSTANGS

No.	Name	Pos.	Ht.	Wt.	Class
10	Robert Ford	SE	5'8"	145	Sr.
11	Scott Wright	QB	6'1"	175	Jr.
12	Sid Whiteley	QB	5'3"	125	So.
15	Joel Dodd	QB	5'9"	130	Fr.
17	Curtis Johnson	TE	5'5"	120	Jr.
20	Ronny Jones	RB	5'10"	150	So.
21	Tom Childress	SB	5'11"	160	Sr.
22	Steve Snapp	RB	5'7"	125	Fr.
24	Von Christner	TE	5'11"	145	Sr.
25	Mark Moore	RB	5'11"	155	So.
30	Ricky Bond	FB	6'0"	200	Sr.
32	Darren Grimes	FB	6'0"	160	Fr.
33	Keenan Atherton	FB	5'7"	130	Fr.
34	Wayne Benefield	SB	5'8"	145	So.
35	Wade Moore	SB	5'9"	160	Sr.
40	Greg Atherton	SB	5'6"	130	Jr.
41	Russell Bradstreet	SB	5'5"	110	Fr.
42	Charles Petit	SE	5'7"	115	So.
44	Todd Alvey	SB	5'8"	125	Fr.
50	Arthur Zepeda	QG	5'2"	160	Sr.
51	Justin Miley	QG	5'9"	135	So.
52	Larry Jones	C	5'8"	200	Sr.
55	Robert Meadows	C	5'8"	130	Fr.
58	Roger Cross	C	5'7"	120	Fr.
60	Lance Reames	QT	6'1"	200	So.
61	Manson Porter	QT	5'11"	180	So.
63	Billy Westmoreland	ST	6'2"	200	Jr.
64	Russell Hatcher	SG	5'7"	140	Fr.
65	Draton Childress	QG	5'3"	110	Fr.
70	Bill Watson	ST	5'11"	190	So.
71	Jimmy Braunstein	ST	6'2"	145	So.
72	Jamie Porter	SG	5'9"	180	Jr.
74	Lyndol Loyd	QT	5'11"	165	Fr.
75	Jerry Horton	SG	5'5"	135	Fr.
78	Roger Brown	QT	5'8"	135	Fr.
79	Jay Kinard	ST	5'4"	170	Fr.
80	Paul Bentley	RB	6'2"	185	Sr.
81	Chuck Timmens	SE	5'5"	110	Sr.
82	Wade Bentley	TE	5'7"	140	Fr.
84	Wade Wills	TE	6'2"	190	Jr.
85	Larry Trevino	SE	5'5"	115	Fr.
89	Bill Wiggins	SE	5'0"	100	Fr.

## BOYS RANCH ROUGHRIDERS

No.	Name	Pos.	Ht.	Wt.	Class
10	Benji Adams	QB	5'8"	155	Soph
11	Frank Davis	QB	5'7"	170	Sr
19	Jeff Poindexter	QB	5'7"	144	Jr
20	Chris Rattan	RB	5'7"	165	Sr
21	Ken McKnight	RB	5'7"	154	Sr
22	Willie Darnell	RB	5'7"	163	Sr
24	Tommy Ragsdale	RB	5'7"	147	Soph
25	John McClain	RB	5'7"	165	Soph
30	Dale Horner	RB	5'7"	210	Jr
33	Edward Ranson	RB	5'7"	175	Soph
50	Mark Martin	T	5'7"	184	Sr
51	Tim Graham	C	5'7"	141	Soph
55	Victory Lindsey	C	5'7"	160	Soph
61	Pat Smith	G	5'7"	140	Sr
62	Kerry Mills	G	5'7"	170	Soph
64	Mike Granger	G	5'7"	141	Sr
65	David Noble	G	5'7"	150	Sr
66	James Pyle	T	5'7"	170	Jr
70	Paul Poole	T	5'7"	170	Jr
72	Bill Baron	T	5'7"	180	Soph
73	Mike Graham	T	5'7"	142	Sr.
75	Rhea Wilhite	T	5'7"	156	Jr.
77	Brady Fisher	T	5'7"	260	Jr
78	Sandy Beauchamp	G	5'7"	168	Sr
80	Johnny Gaines	E	5'7"	140	Soph
81	Jon Jauch	E	5'7"	144	Sr.
82	Mike White	E	5'7"	157	Sr
83	Jerry Grooms	E	5'7"	151	Soph
84	Justin Waldrip	E	5'7"	140	Soph
88	Bobby Knoblauch	E	5'7"	141	Sr
	George Jarvis	T	5'7"	160	Sr
	Dan Engs	E	5'7"	140	Sr
	Tim Edmonson	E	5'7"	120	Sr.

## Wheeler Whirlwind

by Kalea Woodner

Three cheers for the Mustang team 22-0 win! Keep up the spirit and team work. This week I'm going to look at five more Mustangs.

#63 Billy Westmoreland, 6'2" and 200 pounds, plays ST and is a junior. Billy's favorite music is Styx and Christopher Cross. His most influential person is his dad. Billy plays football because he likes to hit people and likes the feeling of winning. He enjoys playing "77" because he gets to make a

lot of tackles and it seems like there is more freedom in this position. Billy says "I try to take one day at a time. I don't like to worry about what has happened the day before, because you can't change the past." Keep it up Billy!

#40 Greg Atherton is 5'6", 130 pounds, plays SB and is a junior. Greg two steps to Oakridge Boys and enjoys Elvis Presley. Greg says the most influential person to him has been God. Greg plays football to learn to have responsibility. His philosophy is "to do my best." Continue to do that Greg.

Manager Brent Lee likes to listen to Oakridge Boys, Ray Stevens, and Ronnie Milsap. His favorite food is Bar-B-Que

chicken and sirloin steak. Brent's mother is the most influential person in his life. He enjoys soccer and wants to "do his best in baseball and soccer."

#24 Von Christner, 5'11", 145 pounds, plays TE and is a senior. Von is yet another Mustang who enjoys the Oakridge Boys and Hank Williams Jr. He also enjoys hunting, fishing and skiing. His dad is the most influential person in his life. He enjoys playing football because it is a good way to ease his frustrations. Von would like to go into business for himself someday. Keep it up Von!

#10 Robert Ford is 5'8", 145 pounds, plays DE and is a senior. Robert listens to Styx

and Jackson Browne. Robert has some v-e-r-y interesting hobby's -- motorcycling, wild women, and hunting. His mom is the most influential person in his life. (The Mustang team mothers must be exceptional women. Most of the team said they were the most influential). Robert enjoys the thrill of victory and the agony of defeat on Friday night. Robert says "After you start something, never quit. Always do your best and give a hundred and ten percent."

Good luck against Boys Ranch this week Mustangs! Thought for the week -- "Sometimes a man must protest, not to change the world, but to keep the world from changing him."

Here's peekin' at you --- Kalea



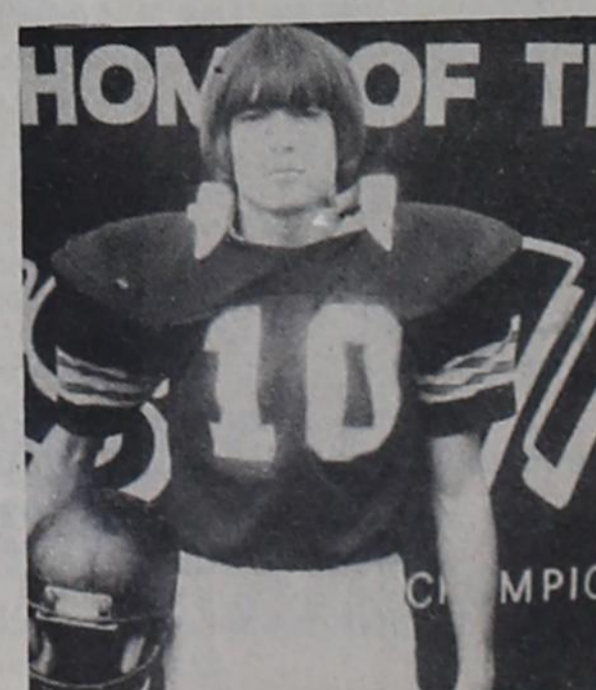
Billy Westmoreland



Greg Atherton



Von Christner



Robert Ford

# Mobeetie News

**by Goldie Gordon**  
James and LaVonda Calaway were visited by her aunt and uncle Bill and Joyce Harlan of Honda, Texas. They were accompanied by their son Monte and his wife, Sherry. They spent Thursday night

**WELCOME TO**  
**FIRST UNITED METHODIST CHURCH**  
8TH AT MAIN - P. O. BOX 89  
WHEELER, TEXAS 79096  
Church (806) 826-3114 - Parsonage (806) 826-3079

Sunday School 9:45 a.m.  
Morning Worship 11:00 a.m.  
Evening Worship 6:00 p.m.

Ernie McGaughey  
Pastor

**WHEELER PLUMBING CO.**  
204 S. Main St.  
New Construction — Remodel  
Repair — Sewer Service  
**Phone 826-5907**  
Free Estimates  
MAX McQUEEN  
P.O. Box 754 — Wheeler, Texas

**LEWALLEN INSURANCE AGENCY**  
ALL LINES  
845-2951 826-5719  
1st State Bldg. 114 Texas St.  
MOBEETIE, TEX. WHEELER, TEX.

**THE SHIRT SHACK**  
114 East Texas Street  
Letters & Transfers  
Jersey & T-Shirts  
Sherri Lewallen  
Phone: 826-5719

**GIBSON'S**  
256-3272  
MONDAY THRU SATURDAY  
SHAMROCK, TEXAS

SENIOR CITIZENS RECEIVE  
15% DISCOUNT ON PRESCRIPTIONS

MAIL OUT ORDERS RECEIVE PROMPT SERVICE

**PREPARATION H** Hemorrhoidal Ointment \$1.73 1 Oz.  
**PREPARATION H** Hemorrhoidal Suppositories \$2.14 12  
**METAMUCIL** Orange and Regular \$4.98 14 oz.  
**Capri Foaming Bath Oil** 64 Fluid Oz. \$2.45  
**Summer's Eve Twin Pack Disposable Douche** Two units 4½ Fluid Oz. \$1.00 Vinegar and Water Herbal Scented Regular Scent ea.

**GILLETTE FOAMY SHAVING CREAM** \$1.59 11 oz. Menthol Lemon-Lime and Regular  
**DRISTAN TABLETS** \$1.49 24's  
**GILLETTE RIGHT GUARD DEODORANT** \$1.69 5 oz.

**WE WANT TO BE YOUR PHARMACIST**  
IMO JEAN CLARK R. Ph. JERRY HODGE R. Ph.

and left Friday on their way to Clayton, New Mexico to visit with LaVonda's grandmother Grace Jacobs. Sunday James and LaVonda will go to Clayton to visit and attend a family dinner.

Tuesday afternoon, Anna Belle Corcoran and Ariza visited in Pampa with Ariza's brothers. They visited Mr. and Mrs. Pete Corcoran and Mr. and Mrs. Bill Corcoran. They reported Bill was doing fine.

Doug and Alene Corse have just returned from a vacation in Colorado. While in Colorado they visited some Mobeetie friends, Austin and Bernice Caldwell.

Monday, Drew Godwin from Abernathy stopped by Jess and Gazelle Patterson's home for a visit. He was on his way to Turpin, Oklahoma.

We were very sorry to here that Grace Griffen in Oklahoma City died. She was Mildred Mickey's aunt. Mildred's mother, Mrs. Ethel Honeycutt from Channing spent several days with the Mickey's and on Wednesday, Mildred, Bob and Mrs. Honeycutt went to Okla. City for the funeral.

Doyle Greenhouse stopped by his mothers, Orville Greenhouse's on Friday for a visit on his way to the sale at Sayre.

Ethel Mason from Amarillo and Clara Hoffer from Miami visited Saturday in the home of Bessie and Bob Galmor.

Orville Greenhouse, Dorsie and Alvern Hutchinson from Wheeler and Pearl Morris from Borger enjoyed going on

**Batton Enters Stock Show**  
Jamee Batton took 3 Hereford Heifers to the Amarillo open stock show at the fair. She won a 6th, 7th and 9th place with them.

**Church Of The Nazarene**  
801 Alan L. Bean Blvd.  
Wheeler, Texas 79096  
Telephone No. AC 806 826-5952  
Pastor: Harold Wayne Moore  
Sunday School 9:45 A.M. to 10:45 A.M.  
Sunday Morning Worship Service 11:00 A.M.  
Sunday Evening Worship Service 7:00 P.M.  
Wednesday Evening Bible Study 7:00 P.M.  
Everyone Welcome

**Divine exploits often defy scientific explanation or comprehension. A miracle is beyond the bounds of ordinary knowledge, mysterious, outside the laws of the natural world.**

**We Appreciate Your Business**  
**HARVEY'S FAMILY RESTAURANT**

**Dr. M. V. Cobb**  
CHIROPRACTOR  
Specializing in the Examination And Treatment of Spinal And Nervous Disorders  
256-2133  
310 South Main  
SHAMROCK, TEXAS

**Dr. M. V. Cobb**  
CHIROPRACTOR  
Specializing in the Examination And Treatment of Spinal And Nervous Disorders  
256-2133  
310 South Main  
SHAMROCK, TEXAS

Mobeetie would like to say welcome to Mr. and Mrs. Rodney and family who are living with Mr. Tommie Tyson and taking care of her. They have 2 children in school.

We also welcome Mr. and Mrs. Lowe and family. They have Tommy, Michael and Brandy in school.

Mary French spent the weekend in Claude visiting her mother, Mrs. Sam Thomas, Sr. and her brother Al and Billie Thomas.

Saturday night Byron and Novelene Simpson spent the night in Amarillo with their son Tiny and Kay Simpson and girls.

Dinner guests Sunday in the home of Claudia and Win Quarles was their daughter, Mr. and Mrs. Wayne Shahan and Rusty from Oklahoma and Maggie Myers.

Mr. and Mrs. Lynn Sims and Shane spent the weekend recently at Skipout Lake camping and fishing.

Spending the weekend and camping at Greenbelt Lake was Melba, Joe Darnell, Gayla and Debbie.

Lester Leonards niece, Mr. and Mrs. Jerry Broas from Canadian visited Friday evening with Jewel and Lester.

Mrs. Tommie Rae Widger from Ontario, California spent several day's with her father Olen Banks and Earl Wayne after the loss of her mother.

Sunday visitors in the home of Lucy and Henry Johnson were Larry, Kimberly, and Kristi Johnson and Mary Cheshier and children from Pampa.

Jim Hamilton and his daughter Kim recently went to lovely Hawaii for a weeks vacation.

Lynn and Robbie Sims had a very good time in Amarillo Saturday. They went to a show and attended the Fair.

Jess and Gazelle Patterson were business visitors in Pampa Thursday. Friday, Marcella and Jane Hogan came down from Pampa for a visit.

Jerry and Ora Swartz from East Texas visited over the weekend with her parents Nettie and Curtis Lancaster.

Friday, Marvin Grimes from West Texas State was a dinner guest in the home of his grandparents Doyle and Bulah Grimes.

Fannie Whittens sister Olen Beardon from Kerrie recently spent several days in the Earl Whitten home.

Joe and Delores Whitten from Amarillo visited Sunday with Fannie and Earl Whitten.

Coach Katara spent the weekend in Oklahoma City at the State Fair meeting with cattle and dairy farmers to promote the use of Triticale Grazer Seed.

Jim, Kichi, and Jamee Hamilton visited with their grandparents at Caps Corner, Okla. over the weekend.

**Affairs of Life**  
IT'S A MIRACLE

**MOBEETIE BLOOD PRESSURE FREE CLINIC**  
Mrs. Louise Hogan and her helpers would like to invite everyone to the free blood pressure clinic at the Baptist Cottage on October 2nd from 2:00 p.m. until 5:00 p.m.  
At 6:00 p.m. on Oct. 2nd the X.Y.Z. Club will have a covered dish dinner at the Baptist Cottage. All are invited to a evening of games, fellowship and just getting better acquainted with you neighbor.

**E. Sims Hosts Fort Elliott Club**  
The Fort Elliot Study Club met on Sept. 16, with hostess Edith Sims. The devotional Psalm 107 was presented by Gazelle Patterson and the collect was given by Edith Sims.

Margaret Trout presented a very interesting two part program on the progress of Japan and the problem of Illegal Aliens in the United States.

Six members answered roll call and enjoyed a delightful refreshment plate served to the following: Gazelle Patterson, LaVerne Scribner, Bessie Galmor, Elnita Atkins, Margaret Trout, Edith Sims.

**A FREE SERVICE**  
All Prescriptions that we fill are automatically recorded like your medical records are in your doctor's offices. We'll be happy to supply you with totals for your tax or insurance records.  
With our records we can even find your prescription number after you have discarded the bottle.  
Let us fill all your prescriptions so that our records will show your entire prescription history.

**FREE—FREE**  
1 Free Bottle of Vitamins given to everyone who brings in 1 or more new prescriptions. [SUPPLY LIMITED]  
**SENIOR CITIZEN DISCOUNT**  
We are offering a 10% discount to all new prescriptions for patients of 65 years of age or older.  
No Membership fee required like most mail order places.

**GERMANIA FARM MUTUAL Aid Association**  
REASONABLE, SOUND PROTECTION for your home and other property.  
If you want to save, contact RITA FILLINGIM 375-2379  
Rt. 1, Canadian, Texas If no answer call 375-2528

SHOP (806) 779-2711 HOME (806) 779-3194  
QUALITY ANTICUES  
**Hester Year Antiques**  
Open: Mon. thru Sat. — 10 A.M.-5 P.M.  
P. O. Box 39  
120 North Main  
McLean, Texas 79057  
DIXIE JO CROCKETT

**BUILDING REMODELING**  
CARPENTERS  
**RAY DEAVER**  
RESIDENTIAL COMMERCIAL  
P.O. Box 242  
Miami, Texas 79059 806 / 868-3181

**MUSTANG PHARMACY**  
Tommy & Sharla Weaver — Owners  
305 East Ninth Street — Wheeler, Texas  
24 Hour Service CALL DAY or NIGHT **826-3165**  
(Across from Parkview Clinic)

**Keyes Lions Club Collectors Show**  
The Keyes Lions Club will hold their 23rd semi-annual collectors' show and sale on October 3rd and 4th from 9 a.m. to 6 p.m. at the Keyes Junior High Auditorium. The sale will feature 100 tables of merchandise displayed by dealers from the 5 state area. A salad supper will be served Saturday evening at the Keyes Lunch Room. More information is available by calling 405/546-2941. Proceeds are used on community activities.

**INTERESTED**  
In renting new 1 bedroom and 2 bedroom apartments. Call 826-5202. Will be finished in the spring.



Michelle Selby came home in the Coronado Center Hospital and is serious at this time. Beth and Frank Kirk from Dallas came to be with her.

for the weekend but will go back to Pampa for more tests the first of the week.  
Ray Forbes went to Parkview Hospital last Friday and is in the hospital for tests.

**I want to say Thank You to my friends and patients for the medical practice I have enjoyed during the past 4 years in Wheeler.**

Because of an unacceptable contract proposal by the North Wheeler County Hospital Board I will, effective October 29, be forced to sever all ties with Parkview Clinic.

Anyone needing insurance or Medicare done, please do so during the month of October.

**Robert Galutia, M.D.**

**Director Named For Spelling Bee**  
The director for the 1982 Wheeler County National Spelling Bee has been named by the Amarillo Globe-News and West Texas State University (Canyon), sponsors of the annual educational program.  
In charge of the county's bee arrangements will be Miss Jerrie Moore, County Treasurer for Wheeler County.  
The director will choose a date for the county contest and name a winner prior to April 3, 1982. The county champion will participate in the 34th Regional Spelling Bee in Amarillo on April 24 and will compete for numerous awards, including the top prize—an all-expense paid trip for two (courtesy of the newspaper) to Washington, D.C. in early June for the national event.  
Rules for participation are established by the national sponsors, the Scripps-Howard Newspapers, Cincinnati, Ohio. The two basic requirements are (1) students must not have passed beyond the eighth grade at the time of their individual school finals; and (2) they must not reach their 16th birthday on or before the date of the national finals (June 1).  
Contests begin with classroom eliminations, then school spelldowns and finally the county event.  
Words for study are prepared by the national sponsors. This is a small booklet containing in excess of 3,000 words. The cost is 40 cents each and the list may be purchased from Spelling Bee Editor, Amarillo Globe-News, Box 2091, Amarillo, Texas 79166. Interested students who wish to take part in the educational program are encouraged to obtain the booklet directly from the newspaper. The booklet, "Words of the Champions" may also be obtained by principals and county bee directors.  
The area assigned the AGN and WTSU covers four states -- the Panhandle of Texas, Panhandle of Oklahoma, parts of Kansas and New Mexico and represents 46 counties. Bee coordinator is Gene Parker, Director of Placement, West Texas State University, Canyon.  
The sponsors also conduct a Junior Bee for students in the sixth and lower grades. These county winners will be guests of the sponsors at the regional contest on April 24, but will not compete unless they are also winners of the secondary contest. Annually there are about 10 who are declared dual county champs.  
Additional information may be obtained from Mrs. Jeane Bartlett, Amarillo Globe-News Spelling Bee Editor, or Gene Parker, WTSU.

**Director Named For Spelling Bee**  
The director for the 1982 Wheeler County National Spelling Bee has been named by the Amarillo Globe-News and West Texas State University (Canyon), sponsors of the annual educational program.  
In charge of the county's bee arrangements will be Miss Jerrie Moore, County Treasurer for Wheeler County.  
The director will choose a date for the county contest and name a winner prior to April 3, 1982. The county champion will participate in the 34th Regional Spelling Bee in Amarillo on April 24 and will compete for numerous awards, including the top prize—an all-expense paid trip for two (courtesy of the newspaper) to Washington, D.C. in early June for the national event.  
Rules for participation are established by the national sponsors, the Scripps-Howard Newspapers, Cincinnati, Ohio. The two basic requirements are (1) students must not have passed beyond the eighth grade at the time of their individual school finals; and (2) they must not reach their 16th birthday on or before the date of the national finals (June 1).  
Contests begin with classroom eliminations, then school spelldowns and finally the county event.  
Words for study are prepared by the national sponsors. This is a small booklet containing in excess of 3,000 words. The cost is 40 cents each and the list may be purchased from Spelling Bee Editor, Amarillo Globe-News, Box 2091, Amarillo, Texas 79166. Interested students who wish to take part in the educational program are encouraged to obtain the booklet directly from the newspaper. The booklet, "Words of the Champions" may also be obtained by principals and county bee directors.  
The area assigned the AGN and WTSU covers four states -- the Panhandle of Texas, Panhandle of Oklahoma, parts of Kansas and New Mexico and represents 46 counties. Bee coordinator is Gene Parker, Director of Placement, West Texas State University, Canyon.  
The sponsors also conduct a Junior Bee for students in the sixth and lower grades. These county winners will be guests of the sponsors at the regional contest on April 24, but will not compete unless they are also winners of the secondary contest. Annually there are about 10 who are declared dual county champs.  
Additional information may be obtained from Mrs. Jeane Bartlett, Amarillo Globe-News Spelling Bee Editor, or Gene Parker, WTSU.

**Keyes Lions Club Collectors Show**  
The Keyes Lions Club will hold their 23rd semi-annual collectors' show and sale on October 3rd and 4th from 9 a.m. to 6 p.m. at the Keyes Junior High Auditorium. The sale will feature 100 tables of merchandise displayed by dealers from the 5 state area. A salad supper will be served Saturday evening at the Keyes Lunch Room. More information is available by calling 405/546-2941. Proceeds are used on community activities.

**INTERESTED**  
In renting new 1 bedroom and 2 bedroom apartments. Call 826-5202. Will be finished in the spring.

**Brownie Troop Tour Museum**  
Brownie Troop 91 met on September 28 at 4:00 p.m. for a tour of the Old Mobeetie Museum. They enjoyed learning about the early history of Mobeetie especially their teacher Kay Battons family, Capt. George Arrington. They were fascinated by the old player piano and the song "Turkey in the Straw."  
Refreshments of orange juice and cookies was enjoyed by the following: (Back row l. to r.) Elsie Webb, Elizabeth Hale, Rebecca Reeves, Shana Whatly, Darlene Stevenson. (Front row l. to r.) Brandy Webb, Rachael Reeves, Virginia Aycock, Kali Jones and Misty Stevenson.

**Director Named For Spelling Bee**  
The director for the 1982 Wheeler County National Spelling Bee has been named by the Amarillo Globe-News and West Texas State University (Canyon), sponsors of the annual educational program.  
In charge of the county's bee arrangements will be Miss Jerrie Moore, County Treasurer for Wheeler County.  
The director will choose a date for the county contest and name a winner prior to April 3, 1982. The county champion will participate in the 34th Regional Spelling Bee in Amarillo on April 24 and will compete for numerous awards, including the top prize—an all-expense paid trip for two (courtesy of the newspaper) to Washington, D.C. in early June for the national event.  
Rules for participation are established by the national sponsors, the Scripps-Howard Newspapers, Cincinnati, Ohio. The two basic requirements are (1) students must not have passed beyond the eighth grade at the time of their individual school finals; and (2) they must not reach their 16th birthday on or before the date of the national finals (June 1).  
Contests begin with classroom eliminations, then school spelldowns and finally the county event.  
Words for study are prepared by the national sponsors. This is a small booklet containing in excess of 3,000 words. The cost is 40 cents each and the list may be purchased from Spelling Bee Editor, Amarillo Globe-News, Box 2091, Amarillo, Texas 79166. Interested students who wish to take part in the educational program are encouraged to obtain the booklet directly from the newspaper. The booklet, "Words of the Champions" may also be obtained by principals and county bee directors.  
The area assigned the AGN and WTSU covers four states -- the Panhandle of Texas, Panhandle of Oklahoma, parts of Kansas and New Mexico and represents 46 counties. Bee coordinator is Gene Parker, Director of Placement, West Texas State University, Canyon.  
The sponsors also conduct a Junior Bee for students in the sixth and lower grades. These county winners will be guests of the sponsors at the regional contest on April 24, but will not compete unless they are also winners of the secondary contest. Annually there are about 10 who are declared dual county champs.  
Additional information may be obtained from Mrs. Jeane Bartlett, Amarillo Globe-News Spelling Bee Editor, or Gene Parker, WTSU.

# Court Records

**LIST OF INSTRUMENTS FILED IN THE OFFICE OF THE COUNTY CLERK & DISTRICT CLERK OF WHEELER COUNTY, TEXAS FROM SEPT. 21 THROUGH SEPT. 25, 1981**

**September 21, 1981**  
 9RENTAL DIV ORDERS--L.H. Davidson et al Jan to July 1981 covering Pts. Sec 9 A-3  
 OL--R.D. Callan to Getty Oil Co. 7-1-81 SW 1/4 & S 1/2 NW 1/4 9 A-3 & AOL from Burrell same land  
 20L--A.W. Burrell et al to Getty Oil Co. 7-1-81 N70 ac SW 1/4 9 A-3 & 2 SUB FSB Mobeetie Same Land  
 SUB OL--John T. Haskins to Allison Enterprises, Inc. 9-14-81 Pt 22 L Pt S Keith & S Phifer

40Ls--John E. Morrison Jr. et al to HNG Oil Co. 8-4-81 Secs 3, 5 Blk 5 B&B Survey  
 AOL--El Paso Natural Gas Co. to El Paso Explor Co. 8-31-81 Pt Secs 32, 32A S 1/2 SW 1/4 6 and all 40 A-3

AOL--Oakwood Resources Inc to Sion Exploration Inc 8-6-81 NW 1/4 4 B&M Survey  
 RDT--First St Bk & Trust Shamrock to Edward F. Stafford 9-17-81 Pt Lot 4 B43 Shamrock

OC--Adm'r OCD Hal H. Vaughan to Mattie Bell Vaughan 9-18-81 Lots 10 to 12 Blk 50 Shamrock WSSA  
 30L--Hassie Hunt Explor Co. to Louie H. Abernathy et al 8-21-81 N 1/2 NE 1/4 3 AB&M Sur. Exc 2a

AOL--S. Gene Hall to Minco Oil and Gas Co. to Texas Internat'l Pet Corp 6-30-81 NE 1/4 Sec 76 Blk 13  
 ROL--Sun Oil Co. to Earl Frederick Wendel 8-28-81 Land not set out

ROL--Helmerich & Payne, Inc to Roy B. Reeves 9-1-81 NE 1/4 Sec 27 A-8  
 AOL--Wesley Chalfant to HNG Oil Co. 9-10-81 100 ac Sec 3 Blk 1 B&B Survey  
 UNIT DESIGN--Coquina Oil Corp to Rex R. Miller et al 9-14-81 Sec 2 Blk A-3

2AOL--Townes Properties, Inc to Nicor Explor Co. et al 7-17-81 Pt 10, 11A-4 & Pt 20 A-5  
 AFF--Re Lumms et al to S.O. Sloss et ux 9-17-81 Lot 15 Blk 5 Shamrock, HSA

D--Persis A. Norton to S.O. Sloss 2-15-27 Lot 15 Blk 5 Shamrock, HSA  
 SUB--Bruce E. Harrison to United States of Amer. 8-14-81 No land set out.

DT--Clifton Wayne Boydston, et ux to United States of Amer. 9-2-81 NE 1/4 Sec 2 Blk RE  
 RMML--First St Bk Mobeetie to Carroll Langley 9-18-81 260' x 325' Sec 45 Blk A-5

RENTAL DIV ORDER--Candelia L. Bradshaw to self 8-31-81 300' x 300' NE 1/4 27 Blk 13  
 20L--A.W. Burrell et ux to Chris Devine 3-5-81 Sec 54 A-7 & Sec 18 OS2

**September 22, 1981**  
 2 C/C ORDER--Harry W. Frey et ux to Raman Patel et al 9-18-81 Lot 4 and Pt Lots 1 & 2 Blk LXXXIV Shamrock

RENTAL DIV ORDER--H.A. Hedberg et ux to saves 9-8-81 W 1/2 SE 1/4 Sec 4 Blk A-4  
 RATIF OL--Clarke B. Gillispie Jr. et al to Phillips Pet Co. 9-8-81 W 1/2 SE 1/4 Sec 4 A-4

RMML--First Natl Bk Wheeler to Robert Carl Galutia et ux 9-18-81 No land set out  
 AOL--The Allspough Co. to Pioneer Production Corp 8-28-81 Sec 39 Blk A-3

D--Lester Hathaway et ux to Lee Roy Hathaway 6-10-81 SW 1/4 Sec 2 BS&B Sur exc mins  
 D--Lester Hathaway et ux to Paul Hathaway 6-10-81 Sec 72 Pt Secs 65, 75, 76, 86 A-5 BS&B Sur exc mins

COR DT--Thomas G. Edwards et ux to First Fed Savs & Loan Assn 9-22-80 100' x 150' SW 1/4 S A-4  
 OL--Mildred Alene Hamilton et al to Cotton Pet Corp 7-20-81 Pt SW 1/4 SE 1/4 6 A-4

**SEPTEMBER 23, 1981**  
 RMML--Municipal Assessment Co to D.W. Crossland 9-18-81 L 6 to 19 Blk II Shamrock

RDT--United States of Amer to Robert J. Hogan, Sr. et ux 9-23-81 No land set out  
 OL--Liberty Natl Bk & Tr Co to Wesley Chalfant 9-2-81 100 ac SW 1/4 3 Blk 1 B&B Sur

AFF--R.N. Higgins Jr. to T.P. Higgins et al 8-26-81 NE 1/4 Sec 77 Blk 13  
 D--Shamrock Ind Sch Dist. to Curtis C. Lemoine et ux 9-16-81 Lot 1 Blk 22 Shamrock

DT--Curtis C. Lemoine et ux to Red River Sav & Loan Assn 9-16-81 Lot 1 Blk 22 Shamrock

# GOOD GRACIOUS . . . IT'S DOLLY

In the whole wide world there is no one of the female gender that is more famous as Dolly Parton. This is due to several factors, Dolly's good looks, Dolly's famous cleavage and last but not least is her many talents of singing and songwriting and now added to this list is her movie star role(s). Dolly Parton has, as she has been quoted several times, got the world on a string and as a fan of hers I sure do hope that she never lets go.

A few years ago when Dolly started earning her right to super stardom Bob Russell who is the owner of the B.H.R. Co., one of the largest talent agencies in the South, got the bright idea of putting together a stage production paying

tribute to the real life talents of Dolly Parton. The first thing that Russell had to do was find someone that could perform Dolly's songs in the Dolly voice and to do this Russell advertised nationwide for a Dolly Parton look-a-like and singer. In this field Bob got lucky and after many auditions and conversations with Dolly look-a-likes, he finally settled on a young lady from St. Louis, Mo. by the name of Dolly Barton, who by the way was the winner of the National Dolly Parton look-a-like contest and she not only has all of Dolly's wonderful features, but she has spent many hours in front of a mirror practicing Dolly's body movements and she has also spent many hours practicing Dolly's

## Here & There

**by Laura Guthrie**  
 I'm not really running the hospital list, but so many of my friends are having trouble that I think maybe that you too, would like to know about them.

Ella Mae Wood is in Amarillo and has undergone back surgery. She is doing well. Her son Jason is staying with the grandparents, Mr. and Mrs. Delmar Wood. Her husband, Charles is doing the best he can, stretching himself between home, work and the hospital.

Mrs. Ella Clemens is entering an Amarillo hospital tomorrow (Wed.) for foot surgery.

Mrs. Nettie Luttrell is in Alvarado where she can be near her daughter, Marsha Teitz, who is in the hospital in Cleburn. Mona Guinn was called from her son's home in Austin to be with her sister Marsha. Stanley Baker, Snyder, Oklahoma, came to Wheeler and took his grandmother Luttrell to Cleburn. Mona has been home, back to Alvarado, and back home again, all in the last week.

Ida Farmer is doing fine. She is at her son's house in Canyon. Her address is 91 Jynteewood Street, Canyon, Texas 79015.

Hub Cole has been in the hospital here for some time, but I've heard that he might get to return to his home in Amarillo today (Tuesday). His wife, Mary, has been staying here with Hub's sister, Anna Ruth Lee and husband, Loyd.

Mrs. Sue Ivey, who doesn't get around much any more was at church Sunday morning. Her daughter, Mrs. Melbird, from Wyoming is with her and Mr. Ivey for a while.

Dorothy and Adrian Risner have had a wonderful two-week vacation. They went to Wyoming where they visited with their daughter, Darla and her family, Punk, Wade and Kari Christress. The Christresses like Wyoming fine except that it is too far from home. The Risners drove on to Salt Lake City, Utah and visited with Stan and Betty (Risner) Collins. Now there, a steady stream of conversation could not tell Betty all she wanted to know about Wheeler. On the return trip Adrian and Dorothy stopped in Denver and visited with Aletha Risner (she is married but I don't know her name). Aletha is a very trained nurse and is working in Denver as is her husband, Harold and Julie Brooks, the music and Youth director at the Baptist Church, house-sat at the Risner's while they were gone.

Reverend David Cooper and his wife Linda were guests at the Baptist Church last Sunday. David filled the pulpit that day. That evening the church saw fit to ask him to be the pastor of this church. He accepted and soon they will be established here and taking over their duties.

Grandson Joe Guthrie, who is attending college at Clarendon, visited with me on Saturday evening. He was accompanied by Rhonda Pitcock of Twitty.

H.D. Peterman, former citizen of this community, now of Amarillo and Santa Rosa, Texas, was visiting with friends in Wheeler and the community, this week. Mr. Peterman says he enjoys reading the Allison and Briscoe news and Here and There. (Thanks Mrs. Peterman. Glad you noticed.)

**THANK YOU**  
 To my family, relatives and Dear Friends, I want to say thank you so very much for your prayers, thoughts, cards, flowers gifts, telephone calls and your love during my stay in the Elk City, Oklahoma Community hospital and my convalescing at home after my car accident.

Love and God Bless you all.  
 Rossie M. Trout  
 610 E. 2nd St.  
 Elk City, Okla. 73644

you from the beginning of Ms. Parton's career all the way up to the last which is "9 to 5" as our Dolly performs her Dolly Parton routine you can sit back in your seat and in your ears and mind it will be the real Dolly doing her thing just for you.

This article contains good news for everybody that likes country music for the BHR Co. has scheduled the "In Image of Dolly" for this area and long with Dolly Barton you will get a chance to see and enjoy Wayne Hopkins of "Whiskey

Bent and Hellbound" Fame along with newcomer to country music, pretty, petite, Vonnie Rogers and also on the same performance you will get the chance to see and hear one of the best show bands in the business. This group goes by the name of "The Mississippi Wine" and their slogan is that their music is just like the Mississippi Wine that made the state famous "Strong and Heady and Ready to Drink." If you are worried about the price of admission you can stop right now for the sponsor

## Memphis Defeats Wheeler

Wheeler Junior High football team lost a close battle to the Memphis 8th grade team 12 to 6 at Memphis last Thursday. Toby Collins ran a 98 yard opening kick off back for a touchdown but disaster struck on the return because Wheeler was penalized which nullified the touchdown. Wheeler throughout the game had a hard time containing Memphis speed. There were

two big punt returns for Memphis that set up both touchdowns. Memphis returned a punt late in the second quarter to Wheeler's 7 yard line. The other punt return was late in the game which Memphis returned it to the 3 yard line.

Memphis started the scoring on a pass with 8 seconds left in the 2nd quarter. Memphis was unsuccessful on their two point conversion which Memphis led 6 to 0. Wheeler put together an impressive 75 yard drive in the third and fourth quarters with Collins scoring from 3 yards out. A bad snap on the extra point left the game tied 6 to 6. Memphis finally scored with 1:58 left in the game which made the final score Memphis 12 and Wheeler 6.

Leading Wheeler rushing was Collins with 152 yards on 29 carries. Leading the defense was Collins with 20 tackles, Charlie Miller with 11, Rodney Bond had 10, Jamie Kreyling with 8 and Larry Alley and Robert Andis were 7 tackles each. Wheeler will host undefeated Canadian this Thursday. Kickoff time will be at 6:00 p.m. at Nicholson Field. Wheeler Junior High record stands at two wins and one loss.

## Wheeler 5th, 6th Defeats Booker

Wheeler 5th and 6th grade football team defeated Booker last Thursday 14 to 6. Wheeler scored on the first play from scrimmage with David Jones running for the touchdown. Wheeler added the conversion with Jones running for it. Wheeler led at that point 8 to 0. Booker finally scored on the last play of the game to make the final score Wheeler 14 and Booker 6.

Wheeler 5th annual Black and Gold game will be played on Saturday October 10 at 10:00 a.m. on Nicholson Field.

## WHEELER SCHOOL MENU

Menu for Week of October 5-9  
**Monday - Breakfast:** Orange Juice, Pancakes, Syrup, Milk.  
**Lunch:** Hamburgers, Buns, Pork and Beans, Lettuce, Pickles, Tater Tots, Milk, Pudding.  
**Tuesday - Breakfast:** Grape Juice, Cereal, Toast, Milk.  
**Lunch:** Enchiladas, Salad, Green Beans, Pickles, Milk, Fruit with Cream.  
**Wednesday - Breakfast:** Orange Juice, Cereal, Toast, Milk.  
**Lunch:** Pork Chops, Gravy, Mashed Potatoes, Corn, Hot Rolls, Milk.  
**Thursday - Breakfast:** Grape Juice, Cinnamon Rolls, Milk.  
**Lunch:** Beef & Macaroni Casserole, Fried Okra, Tossed Salad, Bread, Milk.  
**Friday - Breakfast:** Orange Juice, Doughnuts, Milk, Jelly.  
**Lunch:** Fish, Macaroni and Cheese, Peas, Corn Bread, Milk.

## SCHOOL NEWS

Wheeler Junior High Colts and J.V. to host Canadian Thursday night on Nicholson Field. Game time: Junior High 6:00 p.m., J.V. 7:30 p.m. Concession will be open.

## BLACK & GOLD GAME

The annual BLACK and GOLD GAME is to be held October 10th at 10:00 a.m. on Nicholson Field.

## SCHOOL PICTURES

School pictures are to be taken October 5th.

## MUSTANG JACKETS

There are some Mustang Jackets left. Contact Linda Smith if you are interested in purchasing one.

## SPIRIT RIBBONS

The Juniors have spirit ribbons on sale for the Boys Ranch Game. Ribbons are 50c each.

## DEL CERRO PECANS

\$4.90 Lb.

## PRALINES

\$3.25 12 oz. Can

Order by Oct. 13

Wheeler Extension Homemakers

Phone: 826-3054

## BLOOD DRIVE

Our Blood Drive is:

Date: Tuesday, October 6

Time: 4-7 P.M.

Place: Wheeler High School

## COMMISSIONERS COURT MEET

10:00 A.M. Mon. Sept. 14, The Commissioners Court of Wheeler County met in regular session, with Wendell Morgan, County Judge presiding. All members were present. Court was opened with a prayer by Commissioner Hanner.

**Previous Minutes Approved**  
 Commissioner Henderson Motioned, seconded by Commissioner Harrison to approve the minutes of the regular court session dated August 10th, and special session dated August 27th, 1981, as amended. Motion carried.

**J.P. Reports for August Approved**  
 Commissioner Harrison motioned, seconded by Commissioner Hanner to approve the following Justice of the Peace reports of fees and fines collected for the month of August 1981. Charley Whiteley, \$1,878.50; M.D. Nobles — \$4,467.50; Lisa Jernigan — \$3,151.00. Motion carried.

**Regular Business & Approval of Bills**  
 Elmer Harrison Motioned, seconded by Clois Hanner to approve for payment the bills listed in the minutes of accounts allowed, Volume 9 beginning on page 220. Motion carried.

**Tax Office — Personnel Change**  
 Ernest Henderson motioned, seconded by Clois Hanner to accept the resignation of Kemberley Christner, Employee of the Shamrock Tag Office, effective 9-1-81. Motion carried.

**Shamrock Chamber of Commerce — Auto Registration**  
 Shamrock Chamber of Commerce Office to handle Auto Registration in the Shamrock Area. Ernest Henderson motioned, seconded by Clois Hanner to pay the Chamber \$300.00 per month for the above service, effective 9-1-81. Motion carried.

**Salary Increase; Ruby McLaurin**  
 Elmer Harrison motioned, seconded by Ernest Hender-

son to increase Ruby McLaurin's salary from \$775.00 to \$805.00 per month effective 9-1-81. Motion carried.

**Ken Daughtry, County Fire Marshall**  
 Mr. Daughtry met with the court to continue the discussion with the Court that began with Melvin May on August 10th, 1981, concerning the purchase of a portable air compressor to be used to fill Scott Air Packs. Ken was advised that bids would be requested and reviewed on September 28th, 1981.

**Dispatch Service with City of Shamrock**  
 Those present for discussion concerning the above dispatch service were: Art Taylor, Chief of Police for the City of Shamrock; Jerry Bob Jernigan, Constable-Precinct 3, and M.D. Nobles, Justice of the Peace, Precinct 3, place 1. Following a discussion between the Court and the above persons, Commissioner Atherton motioned, seconded by Commissioner Hanner to execute a contract with the city, with the understanding that the maximum cost to Wheeler County will not exceed \$24,775.00. Motion carried.

**Billy Stewart and Clyde Bates added to county payroll.**  
 Bill Atherton motioned, seconded by Elmer Harrison to hire the following people effective 9-1-81 \$1,000.00 per month. Motion carried. Precinct 2 - Billy Stewart; Clyde Bates - Precinct 1.

**County Agent Report**  
 Linda Daughtry, County Agent (Home Economics) submitted her August 1981 report of activities. The report is on file with the County Clerk.

**Dispatchers Salary Adjustment**  
 Clois Hanner motioned, seconded by Bill Atherton to allow a 10% increase in salary for dispatchers effective October 1st, 1981, in lieu of the 15c per hour as state in the minutes dated August 10th. Motion carried.

Meeting adjourned - 5:00

## WHY DO WE HAVE A CHRISTIAN SCHOOL?

One reason we have a Christian school is because the Bible says, "The fear of the Lord is to hate evil." In other words, if you reverence the Lord, you will hate evil. The government schools I attended as a child did not hate evil. They actually promoted it. Someone may ask, "What is evil?" Simply stated, evil is things that harm people. We hate things that harm young people such as rock 'n roll music, dances, cigarettes, alcohol and other drugs, cussing and swearing, sex education without moral guidelines, and curriculums that leave God and the Bible out.

Some people think, however, that though these things are indeed evil, that children need exposure to all of these things in order to be educated. That kind of thinking has its roots in humanism. The Word of God says, "Cease, my son, to hear the instruction that causeth to err from the words of knowledge." The Word of God says, "Train up a child in the way he should go." It did NOT SAY, "Train him up in ways he should not go and hope it doesn't affect him." The Word of God says, "I would have you wise unto that which is good, and simple concerning evil." It doesn't take much knowledge of something to be simple concerning it.

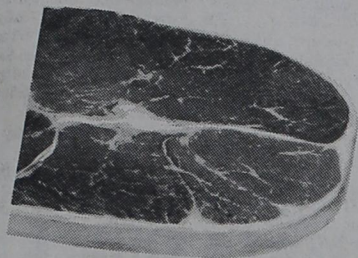
There is much pressure on schools today to stay neutral about Jesus Christ. However, this is an impossibility. To NOT be FOR Jesus is to be AGAINST Him according to Matthew 12:30. To leave Him out of the education is to be against Him simply because you have to come out FOR Him to NOT be AGAINST Him. So, that's why we have a Christian school. We don't mean to anger anybody by our stand, and we try very hard to say things properly so as not to intentionally offend folks, but Jesus Christ is our Lord and we have committed our lives to Him. So, if some people are displeased with us having a Christian school and with our reasons for it, we regret that BUT Jesus is #1 to us, our allegiance is to Him, and our lives belong to Him for Him to control in every aspect. So, if folks don't like us because of that, that's just the way it is because He's Lord. We're not.

Paid Adv. By Ricky Pfeil





# HERE'S YOUR CHANCE TO SAVE BIG ON YOUR FOOD BUDGET



BONELESS USDA CHOICE  
**ROUND STEAK**  
BOTTOM ROUND CUT

**\$1.88**  
POUND

## PRODUCE SAVINGS

Red Delicious  
**Apples** 3 pound bag **77¢**

Bell  
**Peppers** pound **29¢**



OWENS COUNTRY STYLE  
**SAUSAGE**  
REGULAR, HOT, MILD OR SAGE  
POUND **\$1.48** 2-POUND **\$2.95**

**Miracle Whip**  
32-oz jar **99¢**  
limit one with \$7.50 purchase

White Swan  
**Sugar** 5-pound bag **\$1.17**

Ranch Style 23-oz can  
**Beans** **57¢**

Our Darling Whole Kernel or Cream Style  
**Corn** 3 17-oz can **\$1.00**

White Swan Cut Green  
**Beans** 3 303 can **89¢**

White Swan  
**Spinach** 3 16-oz cans **\$1.00**

Hunt's Tomato  
**Sauce** 5 8-oz can **\$1.00**

Platation  
**Brownies** 2 8 1/4-oz package **\$1.00**

Kraft Creamy Cucumber or One Thousand Island  
**Dressing** 8-oz bottle **65¢**

Marina Bathroom  
**Tissue** 4 roll package **89¢**

## DAIRY SAVINGS



Sunny Fresh Farm Large  
**Eggs** Dozen **69¢**



White Swan  
**Biscuits** 6 cans **\$1.06**

Borden's High Protein  
**Milk** 1/2-gallon **99¢**

Borden's Assorted Flavors  
**Yogurt** 2 for **79¢**

Kraft  
**Orange Juice** 1/2 gallon **\$1.59**

Parkay quarters  
**Margarine** 2 1-pound packages **\$1.00**

BONELESS USDA CHOICE  
**ROAST** BOTTOM ROUND POUND **\$1.88**

USDA CHOICE LEAN & TENDER  
**CUBE STEAK** POUND **\$2.48**

COUNTRY PRIDE SMOKED  
**TURKEY** POUND **\$1.28**

LONGHORN SMOKED POLISH  
**SAUSAGE** POUND **\$1.68**

BORDEN'S  
**CHEEZ-TWIN** 2-POUND BOX **\$2.68**

WHITE SWAN 8-OZ PACKAGE  
**CHEESE SLICES** **98¢**

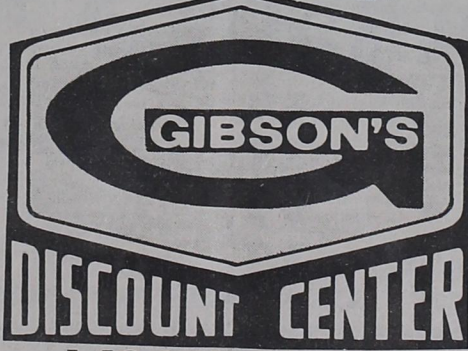
Comstock  
**Pie Filling**  
Apple **87¢**  
Cherry **\$1.37**

Maryland Club  
**Coffee**  
100% Pure Coffee  
pound can all grinds **\$1.87**

**Coca-Cola**  
2 Litter Bottle  
**\$1.17**

Campbell's Tomato  
**Soup**  
10.75-oz can **\$1.04**

Mead's Split Tip White  
**Bread**  
1 1/2 pound loaf **63¢**



**DISCOUNT CENTER**  
I-40 & Highway 83  
Phone 256-3266  
Shamrock, Texas  
STORE HOURS  
Mon. - Fri. 8 - 7 Sat. 8 - 8 Sun. 9 - 6

## FROZEN FOODS SAVINGS

Jeno's  
**PIZZA'S** All Flavors 12.5-oz **97¢**

White Swan  
**ORANGE JUICE** 12-oz **79¢**

Birdseye  
**COOL WHIP** 8-oz **67¢**

Iceberg  
**Lettuce** Head **39¢**

Long Green Slicers  
**Cucumbers** pound **25¢**

Sunlight Liquid Dish  
**Detergent** 22-oz **97¢**

Super Suds Laundry 40-oz  
**Detergent** **87¢**

Keinz  
**Ketchup** 32-oz bottle **97¢**

Popsrite White or Yellow  
**Popcorn** pound bag **37¢**

Gladiola All Purpose  
**Flour** 5 pound bag **97¢**

Crystal White Liquid Dish 48-oz  
**Detergent** **89¢**

Nabisco Premium  
**Crackers** Pound Box **69¢**

Welch's Grape  
**Juice** 40-oz bottle **\$1.37**

Sylvania 60, 75, 100 4-count package  
**Light Bulbs** **\$1.37**

Kraft Macaroni & Cheese  
**Dinner** 3 7.25-oz **99¢**

Alpo Beef Dry  
**Dinner** 25-pound bag **\$6.47**

We're proud to give you more!

# MONEY SAVING SPECIALS

**THRIFTWAY**

WITH THIS COUPON  
SHURFINE FROZEN  
**ORANGE JUICE**

**2 \$1**

12 OZ. CANS

LIMIT TWO CANS WITH COUPON  
THEREAFTER 79¢ EACH

**COUPON**

**THRIFTWAY**

WITH THIS COUPON  
GRANULATED  
**SHURFINE SUGAR**

**89¢**

5 LB. BAG

LIMIT ONE WITH COUPON  
THEREAFTER \$1.19

**COUPON**

SHURFRESH ASSORTED FLAVORS  
**ICE CREAM**

**\$1.29**

1/2 GAL. CTN.

CAMPBELL'S  
**TOMATO SOUP**

**\$1.00**

10 3/4 OZ. CANS

SHURFINE SALTINE  
**CRACKERS**

**65¢**

16 OZ. BOX

FOLGER'S MOUNTAIN GROWN  
**COFFEE**

**\$1.89**

1 LB. CAN

SWIFT CHICKEN VIENNA  
**SAUSAGE**

**\$1.00**

5 OZ. CANS

**THRIFTY GROCERY BUYS**

- HUNT'S FANCY **TOMATO SAUCE** 4 8 OZ. CANS **89¢**
- HUNT'S **TOMATO JUICE** 46 OZ. CAN **79¢**
- FOR THE BEST FRIED FOODS **WESSON OIL** 38 OZ. BTL. **\$1.79**
- DEL MONTE WK/CS **GOLDEN CORN** 2 17 OZ. CANS **89¢**
- DEL MONTE BLUE LAKE REG. FRENCH CUT **GREEN BEANS** 2 16 OZ. CANS **89¢**
- DEL MONTE CRU. CNK. SL **PINEAPPLE IN JUICE** 15 1/2 OZ. CAN **69¢**
- HUSBAND PLEASE! BEANS **RANCH STYLE** 2 15 1/2 OZ. CANS **79¢**
- FOLGER'S FLAKED **COFFEE** 13 OZ. CAN **\$1.99**
- DINTY MOORE **BEEF STEW** 24 OZ. CAN **\$1.59**
- SWIFT PLAIN **CHILI** 15 OZ. CAN **99¢**
- UNCLE BEN'S **CONVERTED RICE** 2 LB. PKG. **\$1.79**
- PEANUT BUTTER FLAVORED **REESE'S CHIPS** 12 OZ. PKG. **\$1.79**
- SEMI-SWEET CHOCOLATE **HERSHEY CHIPS** 12 OZ. PKG. **\$1.99**
- HERSHEY HOT **COCOA MIX** 12 CT. PKG. **\$1.49**
- BREAKFAST CEREAL **POST TOASTIES** 18 OZ. BOX **\$1.19**
- HI-DRY **PAPER TOWELS** 2 JUMBO ROLLS **\$1.00**
- BATHROOM TISSUE **DELSEY** 4 ROLL PKG. **89¢**
- 27" OFF LABEL **DAWN LIQUID** 32 OZ. BTL. **\$1.59**

**FROM OUR SHELVES**

- 20" OFF LABEL-GOLD, ALMOND, WHITE **DIAL SOAP** 3 BATH BARS **\$1.35**
- 25" OFF LABEL **MR. CLEAN** 26 OZ. BTL. **\$1.69**
- THE BIG JOB CLEANER **SPIC AND SPAN** 16 OZ. BOX **59¢**
- 4" OFF LABEL **COMET CLEANSER** 21 OZ. CAN **59¢**
- REGULAR OR SCENT II **LYSOL SPRAY** 12 OZ. CAN **\$1.99**
- LYSOL REGULAR **DISINFECTANT** 12 OZ. BTL. **\$1.59**
- LYSOL DEODORIZING **LIQUID CLEANER** 26 OZ. BTL. **\$1.79**
- LYSOL TOILET **BOWL CLEANER** 24 OZ. BTL. **\$1.19**
- LYSOL CEROSOL BASIN-TUB **TILE CLEANER** 17 OZ. CAN **\$1.39**

**FROZEN FOOD SPECIALS**

- PET (RITZ ASSORTED FRUIT) **COBBLERS** 26 OZ. PKG. **\$1.59**
- PET DEEP DISH **PIE SHELLS** 2 CT. PKG. **79¢**
- SHURFINE FROZEN SPEARS **BROCCOLI** 10 OZ. PKG. **59¢**

**FRESH DAIRY SPECIALS**

- SHURFRESH **BUTTERMILK** 1/2 GAL. CTN. **99¢**
- SHURFRESH CORN OIL **MARGARINE** 1 LB. PKG. **59¢**
- SHURFRESH HALF MOON LONGHORN **COLBY CHEESE** 10 OZ. PKG. **\$1.39**
- SHURFRESH SWEET MILK OR BUTTERMILK **BISCUITS** 8 OZ. CAN **19¢**

ARMOUR STAR BONELESS FULLY COOKED WATER ADDED 3-5 LBS. AVERAGE

**HALF HAMS**

**\$1.89**

LB. **TOTAL SAVER**

YOUR THRIFTWAY STORES SELL & FEATURE ONLY FINE QUALITY AMERICAN GROWN GRAIN FED BEEF FRESH PORK & QUALITY POULTRY

ARMOUR STAR **SLICED BACON** 1 LB. PKG. **\$1.59**

OSCAR MAYER SLICED MEAT OR BEEF	12 OZ. PKG.	<b>\$1.49</b>	BONELESS HEAVY GRAIN FED BEEF	LB.	<b>\$1.89</b>
<b>BOLOGNA</b>			<b>CHUCK ROAST</b>		
OSCAR MAYER SLICED	8 OZ. PKG.	<b>\$1.69</b>	GOOCH'S GERMAN BRAND SMOKED	12 OZ. PKG.	<b>\$1.59</b>
<b>CHOPPED HAM</b>			<b>SAUSAGE</b>		
OSCAR MAYER SLICED	8 OZ. PKG.	<b>\$1.19</b>	PEYTON'S MEXICAN STYLE	LB.	<b>\$1.29</b>
<b>COTTO SALAMI</b>			<b>HOT LINKS</b>		
OSCAR MAYER SLICED	8 OZ. PKG.	<b>\$1.19</b>	OSCAR MAYER MEAT OR BEEF	1 LB. PKG.	<b>\$1.79</b>
<b>LUNCHEON LOAF</b>			<b>WIENERS</b>		

**HEALTH & BEAUTY AID SAVINGS**

- NORMAL/EX. BODY/OILY SHAMPOO **REVLON FLEX** 16 OZ. BTL. **\$1.99**
- NOREMAL/EX. BODY/OILY **REVLON FLEX** CONDITIONER 16 OZ. BTL. **\$1.99**
- TOOTHPASTE **GLEEM** 7 OZ. TUBE **\$1.29**
- MOUTHWASH **SCOPE** 40 OZ. BTL. **\$3.19**

CALIFORNIA HAAS LARGE SIZE

**AVOCADOS** 3 FOR **49¢**

CALIFORNIA SUNKIST **ORANGES** LB. **39¢**

WASHINGTON GOLDEN DELICIOUS **APPLES** LB. **39¢**

CALIFORNIA LATE **RED PLUMS** LB. **49¢**

CRISP AND TENDER **CELERY HEARTS** 1GE PKG. **79¢**

ALL PURPOSE RUSSET **POTATOES** 10 LB. BAG **\$1.25**

**BLUE STAMPS**

WE GIVE CIRCLE BLUE STAMPS

**STAUBACH**

SPEAKS OUT!

On Football, His Faith, and The Future.

**\$6.95**

With \$20 Purchase SEE STORE FOR DETAILS

ROGER STAUBACH

AF AFFILIATED FOODS INC.

We're proud to give you more!

WE ACCEPT FOOD STAMPS WE RESERVE THE RIGHT TO LIMIT PRICES EFFECTIVE SEPT. 27-OCT. 3, 1981

# THRIFTWAY

AF AFFILIATED FOODS INC. MEMBER STORE