

# THE WHEELER TIMES

VOLUME 44, NUMBER 47

THURSDAY, NOVEMBER 2, 1978

Single Copy 15¢

JV Game With Shamrock Cancelled

## MUSTANGS BATTER PANTHERS, 49-18

### TUESDAY IS ELECTION DAY, NOV. 7

IT IS YOUR PRIVILEGE AND DUTY TO VOTE

Tuesday, November 7, will be election day across the country and as a citizen of these United States, it is your duty to vote. On the ballot are federal, state and local offices to be filled, along with eight constitutional amendments on which to vote your opinion.

with eight constitutional amendments on which to vote your opinion.

Four candidates are listed on the ballot for United States Senator. They are: Democrat, Robert (Bob) Krueger; Republican, John Tower; Riza Unida, Louis A. Diaz DeLeon and Socialist Workers, Miguel Pendas.

The Republicans and Democrats each have a candidate in the race for U. S. Representative. They are Clifford A. Jones and Jack Hightower respectively.

Gubernatorial candidates are: Democrat, John Hill; Republican, Bill Clements; Raza Unida, Mario C. Compean and Socialist, Sara Jean Johnston.

Candidates from the Democratic, Republican and Socialist parties are listed for Lieutenant Governor. They are Bill Hobby, Gaylord Marshall and Andrea Doorack respectively.

Mark White, Jim Baker and Agnes Chapa are the three candidates for Attorney General.

Two names are on the ballot for State Treasurer. They are Warren G. Harding, Democrat and Derrick Adams, Socialist.

Mack Wallace is a Democratic candidate for Railroad Commissioner along with Socialist Jana Pellusch.

John H. Poerner, a Democrat, and James W. Lacy, a Republican, are candidates for the unexpired term as Railroad Commissioner.

The last contested race on the ballot is for State Representative 66th District. Candidates are Foster Whaley and Bill Hale, Democrat and Republican respectively.

The polls will be open from 7 a.m. to 7 p.m. in the locations listed below with the following judges and assistant judges:

#### POLLING PLACES:

Voting Box	No.	Location	Judge	Assistant Judge
Mobeetie	1	Stuarts Store Bldg	Paul Hathaway	A. G. Caldwell
Wheeler	2	School Gym	N L Sechrist	Mrs. George Porter
Stanley	3	Comm. Court Room	David Britt	A. O. Vanpool
Allison	4	School Building	Clarence Zybach	George W. Parker
Heald	5	Methodist Church	Ruth Ware	Mickey Macina
Lela	6	Lela School	Norbet Schlegel	Janell Trostle
Twitty	7	Tindall Gin Office	Roy Reeves	J. R. Hefley, Jr.
Shamrock (West)	8	City Hall	M. L. Giehart	Cecile Fields
Shamrock (East)	9	Legion Building	Billy Cantrell	Donald Vearner
Absentee	10	Clerks Office	Harold S. Kenady	Audrey Peace

### FARM BUREAU SUPPORTS TAX RELIEF, AMEND. # 2

Agriculture in this county has a lot at stake in the November 7th vote on the tax relief amendment, according to John Vermillion of Shamrock, president of the Wheeler County Farm Bureau.

"The tax relief amendment provides for limiting the tax value of agricultural land to its productive value," Vermillion said.

"Inflationary pressures and revenue requirements could increase our land taxes several times what they are now," Vermillion said.

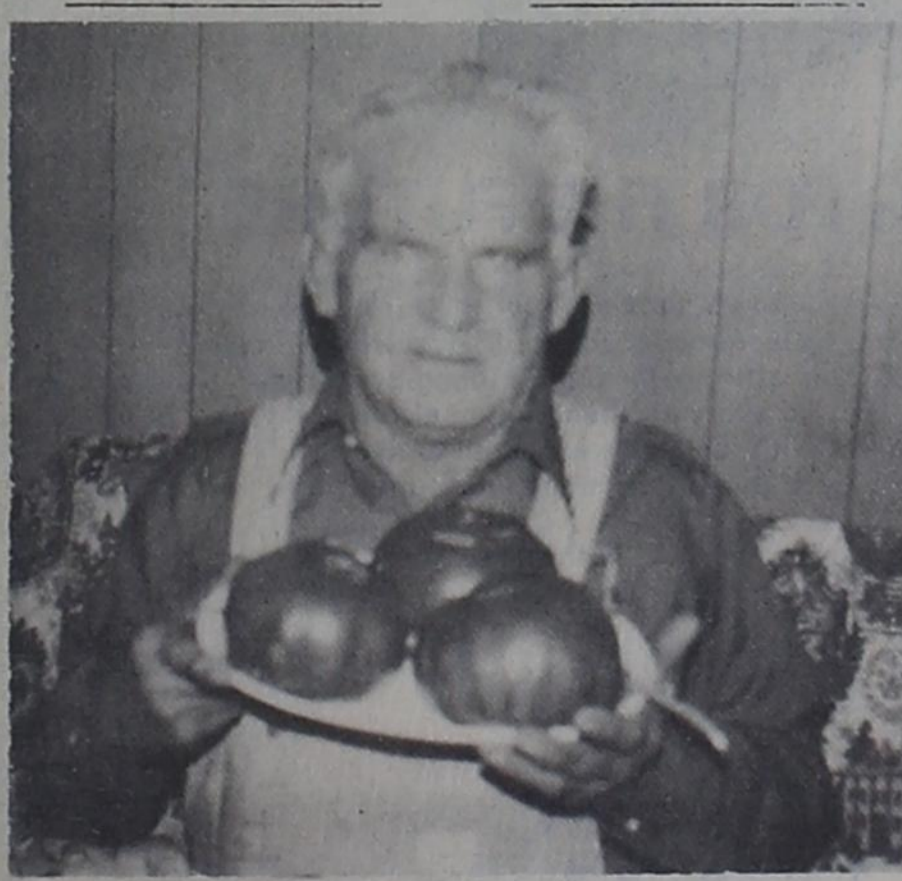
"But, this amendment if approved and implemented, would put a limit on taxes," he said. "Our farmers would not be forced off the land now or in the future because productivity would be the limiting factor."

The county Farm Bureau president said that although the property tax was intended as a general tax on all property and all wealth, it has become primarily a tax on real estate.

"Farmers and ranchers necessarily own and use more

### Former Kelton Resident Dies

Word was received here Thursday of the death of Mrs. Hattie Odil of Culleoka, who passed away at her home after a sudden illness. Mrs. Odil lived in the Kelton community with her mother, Mrs. Josie Hicks and brother and sisters and lived on the George Richardson Farm. Mrs. Hattie Odil was a sister of Mrs. A. C. Johnson of Kelton and of the late Annie Dalton who lived in Shamrock for a number of years. She is survived by one daughter and three sons and one sister, Mrs. Johnson of Kelton. Rena Sivage of Wheeler is a niece.



**NICE TOMATOES:** Ed Walker of Allison is quite proud of his tomato crop this year. He is shown here with three tomatoes off the same vine. The fruit

real estate than other types of businesses, and therefore pay an unfair share of the property tax," Vermillion said. "We're not seeking favors, just fairness, he added.

The county farm leader said that a measure passed by the Legislature during the special called session would reimburse school districts for all or part of revenue lost due to reductions from homestead exemptions or agricultural land valuations. Some \$450 million was appropriated for the next two years, enough to offset reductions, he said.

"This means we would be using surplus from the state's general revenue fund for making up this difference to schools," Vermillion said.

The farm leader said that groups which need tax relief the most would benefit from the tax relief amendment. In addition to farmers and ranchers, these include homeowners, the elderly and disabled persons, he said.

In addition to these groups, all taxpayers and the general public have a stake in passage of the amendment, he said.

"First, there is a limitation making it more difficult for the Legislature to pass excessive increases in spending," he said.

"Also, the truth-in-tax provision insures more citizen involvement in local government. In addition, there is the exemption on household goods and personal effects. Finally, the amendment says property tax appraisal and enforcement must originate in the county and not be transferred to Austin."

This may be our last opportunity to correct tax inequities and make needed reform, the county farm leader said.

"Let's send a message to Austin that we will not stand for unlimited taxation and spending," he said.

### B.P. Clinic

There will be a free Blood Pressure Clinic for all Wheeler County residents regardless of age, Thursday, November 2. It will take place in the south end of the old Nicholson Memorial Complex on Canadian Street from 9:30-12:00 A.M.

This Clinic is sponsored by the Retired Senior Volunteer Program and the Texas Agriculture Extension Service.

Those needing a ride can call Inez Wright at 8266-3239.

### Sweetwater Creek

Preliminary survey work is currently underway on the Sweetwater Creek flood control project. The work consists of taking cross section topography information at 40 previously selected sites. The information gathered will be used to help ascertain if the project is economically possible. If the project proves possible, there is no current estimate of when further work will be started.



**MEMORIAL FUND:** The Wheeler County Branch of the Arthritis Foundation has set up a Memorial Fund. The foundation is sponsored locally by the Licensed Nursing Association of Wheeler County. The association will accept monetary donations or donations of equipment. Elva Wood (right) is shown here handing a check to Geneva Snelgroves, chairman of the Fund Drive. Mrs. Wood's donation is in memory of her parents, Mr. and Mrs. J. E. Willard. To make a contribution, please contact: Geneva Snelgroves, Rt. 1, Box 31, Wheeler, Texas, or call 826-3212.

### ARTHRITIS FOUNDATION WILL MAKE FUND DRIVE

The Wheeler County Branch of the Arthritis Foundation will make a house to house fund drive, Nov. 2, 3, and 4. Funds will be used to buy equipment and supplies for the relief of Wheeler County Arthritis sufferers. If you are not contacted and you wish to make a donation, you may do so by calling 826-3097 or by contacting any board member of the branch.

Thank You  
Wheeler County Branch

### DRIVE UNDERWAY TO REMODEL SCOUT WING

A drive is now underway to remodel the north wing of the Nicholson Memorial Building. This building will then be used by the Girl Scout and Boy Scout troops of Wheeler. It will not only provide meeting rooms, but also much needed storage for camping equipment and troop supplies. An account has been opened at the Wheeler First National Bank "Girl-Boy Scout Building" in which you may deposit any contribution or you may give any checks to Anita Brown or Bob Wills.

Two organizations have already made contributions, Baker-Taylor Drilling Co and the Thursday Review Club of Wheeler.

Parts of the building are in very poor condition with all the ceiling tile and insulation to be replaced. Eleven interior partitions must be removed. The commodes in both bathrooms must be replaced and lavatories added to them. Vented wall heaters will be installed. Cabinets needed to put a second kitchen in the end of the building to be used by the Girl Scouts were donated by Thurman, Don and Ron Rives. The interiors must be repainted or paneled depending on the funds available. The groups will need two refrigerators and stove and window cooling units.

If you can offer any skills as a carpenter, electrician or plumber we'd be very grateful for your assistance or if you can donate any material we need. This donated labor or materials may be taken as a deduction on your income tax the same as a cash donation — as a cash value is placed on it and a receipt given. Won't you please help us on this project? Make your check out to Girl-Boy Scout Building.

**DONATE YOUR DOLLAR**  
Donate your dollar(\$1) to The Wheeler Volunteer Fire Dept. and receive a free chance on a Trash Compactor or a Shotgun to be given away Dec. 23, 1978. **SO SEE A FIREMAN.**

The Follett Panthers now have the distinction of being the first club to score a touchdown against the Mustangs first defensive unit but it was to no avail as the Panthers became the Mustangs 26th straight victim last Friday night, 49-18.

Speedy Mike Freeman got all of the Panthers points on long runs of 85, 63, and 53 yards with his 53 yard jaunt coming in the first period and it narrowed the Mustangs lead to 13-6 at the time.

Freeman's other two runs came against the Mustangs second and JV units in the second half as Coach Joe Allen played his entire bench in what was another mismatch for the Mustangs.

Wheeler went to the air on their first play from scrimmage and Myron Jolly hit Sam Schaffer for a 23 yard gainer that set up Marvin Grimes for a 15 yard TD run that gave the Mustangs a quick 7-0 lead after Mike Evans kicked the extra point.

Schaffer was on the receiving end of three Jolly passes for the game and two of them were scoring tosses as the Mustangs went to the air 12 times in the ball game.

Kent Vise broke up the middle for 24 yards for the Mustangs second touchdown with the first period just over four minutes old and it quickly became a question of how many points the Mustangs wanted to run up.

Speed is one of the big factors in any football contest and Freeman showed that even the state's #1 ranked team is vulnerable to that even though a couple of breakdowns in the Mustangs defense aided Freeman's run against the first unit.

Tremendous blocking by the Mustangs broke Grimes loose at right tackle for a 37 yard scoring run with just under five minutes to play in the first quarter as the Mustangs rushed to their 36-6 halftime margin.

Grimes and Vise only carried the pigskin 6 times each in the fray and alternate fullback Benny Baker lugged the ball just 2 times so outclassed the Mustangs had the Panthers.

Schaffer's first touchdown pass completion capped a 57 yard march in eight plays and the big tight end made a great catch in the end zone to up the score to 29-6.

Wheeler's final tally of the first half came at 2:21 on the clock when Willie Valencia galloped 18 yards off right tackle.

Not only did Follett become the first team to score against the Mustangs first unit, but they were the first team to gain over 100 yards on the ground with Freeman getting 201 of the

Panthers 322 yards on his three big plays.

The Mustangs received the second half kickoff and upped their point total to 43 in three rapid plays with the payoff coming on a nifty 68 yard scoring toss from Jolly to Schaffer.

After Evans kicked the extra point, the Mustangs first offensive unit retired for the game although Allen did spot play some of his regulars on defense and used the first unit on punting situations.

Follett got their final 12 points in the final quarter to make the scoreboard read a little more respectable after Bart Mosley, a JV running back, had broken a couple of tackles and went into the end zone from 20 yards out midway of the final period.

The Mustangs have their second open date this Friday before closing out the season at McLean next week and finishing up on Nicholson Field against the Booker Kiowas who just like the Mustangs, sport an undefeated record to date in district play.

### White Deer Drops Wheeler Colts

The Wheeler Junior High football team traveled to White Deer Thursday evening and were defeated 36 to 0.

Leading ball carrier for the Colts was Scott Wright. Scott carried the ball a total of 114 yards.

In defensive play, Jamie Porter led his fellow Colts with 10 tackles. Billy Westmoreland and Mark Moore had 7 tackles each. The Colts travel to Phillips today, Thursday. The game will start at 5:00 P.M.

### Band Director To Work With AYSO

According to the Western Division Headquarters of the American Youth Symphony and Chorus, Mike Trussell, director of bands at Wheeler High School, will be serving as one of the national board members. As a national board member he will assist in evaluating and recruiting young people that make up

Continued Page 7

### Hospital Notes

- Old Admissions:**  
9-12 Eula Markham  
9-20 S. W. Roark  
10-2 Tommie Tyson  
10-5 Loretta Roach  
10-19 Treca Lester  
10-20 Irene Dixon
- New Admissions:**  
10-25 Millie Copeland  
Luther Cook  
10-26 Wesley Moore  
Mike McWain  
Virgil Jamison  
10-29 Opal Daughtry  
Glenda Leatherman  
Nancy Shirey  
Joe Rogers  
10-30 Debra Wise  
J. D. Beaty  
Buddy Whiteley  
Wilber Beck  
Kris Rarden  
Mike Gaitner  
10-31 Maurine Gilmer  
Claude R. Cox  
Mary Smith
- Dismissals:**  
10-27 Bryan Sales  
Kim Watson  
Gladys Haddox  
Elsie Wagner  
Ella Ballard  
Jeffery Tate  
Rheba Clay  
Lillie Hunt  
10-29 Glenda Leatherman  
Ruby Free  
Mike McWain  
10-30 Lawrence Bunch  
10-31 Valentine Benavidez  
Jessie Steel  
Gabino Garcia  
Claude R. Cox  
Pauline Hooker

Game Statistics:	Wheeler	Follett
First Downs	21	11
Net Yards Rushing	308	322
Net Yards Passing	123	0
Total Yards Gained	431	322
Passes & Completions	12-4	2-0
Passes Intercepted	1	0
Fumbles & Lost	2-0	2-2
Penalties & Yardage	8-60	2-20
Punts & Average	4-42	6-28
Return Yardage	9	0
Total Plays	64	63



### GREENHOUSE CELEBRATE 50th WEDDING ANNIVERSARY

Mr. and Mrs. Aubrey Green is another grandson, Miles Mixon is at Texas Tech and did not get to join the party. Doyle's wife Kay drove down in the van, as she wanted to attend a merchandise market. She owns the Boutique in Borger. The group attended a Cowboy football game. Abrey and Orville went to the showrooms with Kay, which was quite a revelation to them. They returned home on Saturday, tired but hoping to celebrate a few more anniversaries.



### BESSIRE CELEBRATE GOLDEN ANNIVERSARY

Mr. and Mrs. Jess Bessire of Canadian, Texas will celebrate their Golden Wedding Anniversary Saturday, November 11, with a reception starting at two o'clock in the afternoon at the W.C.T.U. Building. They invite their friends to help them celebrate the happy occasion. Juanita King, daughter of Mr. and Mrs. Frank King of Midway, Oklahoma, and Jess Bessire, son of Mr. and Mrs. Julius Bessire, also of Midway, were married

November 11, 1928 in Rankin, Oklahoma in the Methodist Church.

They have lived in Canadian for the past 26 years where Mr. Bessire was a barber until his retirement last year.

The couple had four children, two of whom are no longer living. Their son, Ben Bessire, lives in Amarillo, and their daughter, Annita Rutherford, lives in Hayes Center, Nebraska. They have thirteen grandchildren and three great grandchildren.

Mr. Bessire is a member of the Canadian Masonic Lodge.

### Mobeetie Plans Homecoming

The Mobeetie Basketball Homecoming will be Saturday, November 18, 1978.

The Homecoming dinner will be served from 4:00 p.m. to 6:30 p.m., in the high school building. The program will begin at 6:30 with the basketball games starting at 7:00. The Coronation will be between the games. Classes being honored this year are the graduating class of 1932, 1942, 1952, 1962, and 1972 and all the former Mobeetie Superintendents. Mums are available through the Senior Class.

### Holiday Foods

The Public is invited to attend a free "Holiday Foods" program, November 6 at 7:00 p.m. in the District Courtroom, 2nd floor of the Wheeler County Courthouse in Wheeler. Mildred Prince, Home Economist for Southwestern Public Service in Amarillo, will present the Program which is being Sponsored by the Wheeler County Home Demonstration Council.

Mrs. Prince will present many interesting Christmas recipes and Holiday Ideas and those present will have an opportunity to taste the products Mrs. Prince prepares.

# LINES from LINDA

CEA - Linda Daughtry

## WEIGHT CONTROL AWAY FROM HOME

Plan ahead to eat slim at meals away from home.

Whether eating in restaurants, fast-food establishments, cafeterias or a friend's home, eat only the amount of food that you can afford calorically.

Many Americans are eating meals away from home on a regular basis due mainly to rising consumer incomes, continual increase in working wives and a demand for family eating at a modest price.

Select a restaurant that serves a variety of lower-calorie foods.

One which features salads and broiled meats would be a better choice than one featuring gravies, sauces and rich desserts.

Some fast food restaurants, which account for 26 percent of the away-from-home eating market, save time, but may cost the average consumer more calories than he or she can afford.

For example, a three piece chicken dinner at a well-known fried chicken restaurant may contain 830 calories this count includes the fried chicken, mashed potatoes, gravy, coleslaw and a roll.

The extra crispy chicken contains even more calories, 950 for the three piece dinner.

Three slices of a thick crust pizza contain around 600 calories.

## WEIGHT CONTROL DURING HOLIDAY SEASON

Special holidays mean special meals, and extra calories.

These special holidays, Halloween, Thanksgiving, Christmas, 364 calories.

Two pieces of batter-fried fish provide about 431 calories; three hush puppies, 134 calories; and coleslaw, 133 calories.

## WEIGHT CONTROL DURING HOLIDAY SEASON

Special holidays mean special meals, and extra calories.

These special holidays, Halloween, Thanksgiving, Christmas, 364 calories.

mas and New Year's involve altering eating habits.

The holiday season brings extra guests, specialty recipes, less regular eating patterns and special holiday parties and drinks.

## CONTROLLING CALORIES

To control calories during this extended holiday season, try to slack off from your weight reduction program and work toward maintaining your weight.

Advanced planning of the day's total caloric intake can help prevent overeating.

Recognize holiday foods which are lower in calories and try to incorporate some lower-calorie special foods into the menu.

Experiment with some new herbs and spices that add a unique flavor to certain foods.

Also, breading and leaving fat on meat or skin on chicken add extra calories.

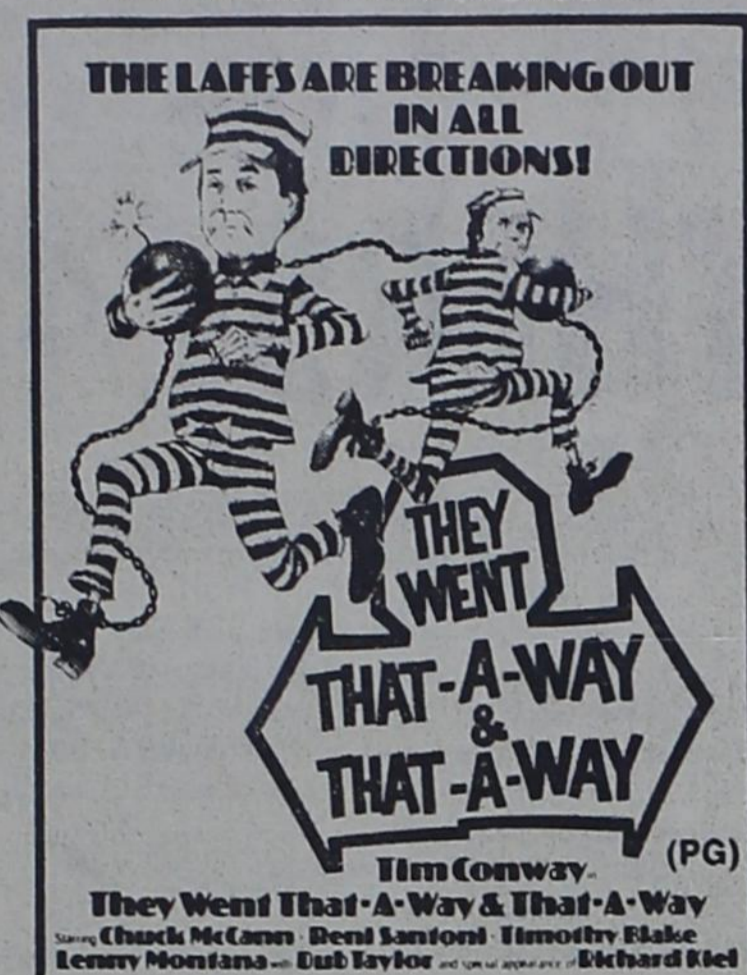
Alcoholic beverages add calories without adding nutrients, so go easy on ordering those extra calories. Use lower-calorie mixes such as water, diet cola or fruit instead of rich, creamy, desert-type beverages.

Never treat yourself to second helpings even though it may be difficult to refuse urging from well-meaning relatives. Simply comment on how delicious the food was, but say that you are no longer hungry.

Use skimmed milk or buttermilk made with skimmed milk for drinking and cooking where appropriate. You'll save 90 calories per cup.

Shotgun Kelly Disco coming to Wheeler (adv)

STARTS FRIDAY **ONE BIG WEEK** NOVEMBER 3 thru NOVEMBER 9



## ROGUE THEATRE

Wheeler, Texas 79096

Richard Nall, Manager

Show time: 7:30 P.M.

# FOSTER WHALEY

Democrat for State Representative

Would Like You to Meet

## THE WHALEY FAMILY



FOSTER AND LOIS WHALEY WITH THEIR CHILDREN:

(From Left) KARLETTE, Freshman at Texas A&M University; WAYNE, Senior finance major at Texas A&M; and CHRISTIE, High School English Teacher, Bryan Public Schools.

There is no way I could have effectively campaigned for State Representative without the valuable and indispensable help of my wife, who has been with me all the way—doing the typing, driving, door to door campaigning and the hundreds of chores connected with a "shoe leather" campaign. She will also be with me in Austin helping me serve the 66th Legislative District. Lois and I have turned down and returned hundreds of dollars of unsolicited campaign funds from the Austin and down state special interest groups. We are proud of our children, and want to set a proper example for them. We want no shadows cast on a reputation it takes a lifetime to build. We've tried hard to meet every citizen possible in this big 10-county district during this campaign. We are sorry if we missed you but hope to meet you in the near future.

Vote For **Foster Whaley**  
A Conservative Democrat  
With A Positive Attitude

POL. ADV. PD. BY FOSTER WHALEY, RT. 1, PAMPA, TEXAS

## An Early Blur Situation

**LUBBOCK** -- The lack of adequate identification or "dairy blur" prior to the shooter pulling the trigger can tempt the hunter

into believing that he actually sees a deer, when in reality, it may be another hunter.

Recent studies by the U.S. military, various universities and clothing industries show that the best defense for a hunter, whether after deer or other game, is to wear outer clothing made from hunter blaze orange.

The hunter, hiker, angler, or trapper who wears clothing of a color that merges into the brush and tree shadows or who is clad in garments of gray or brown is continually giving off deer clues. These clues such as move-

ment, noise or odor are used by deer hunters as well as the deer to spot or identify an animal or man.

It is apparent from accident reports received and studied by Texas Parks and Wildlife Department hunter safety experts that "hunter judgement" accounts for a large percent of the accidents each year. Of the 36 hunting accidents reported to P&WD since Jan. 1, 1978, 13 have been classified as "hunter judgement" such as victim moved into line of fire; victim covered by shooter swinging on game; victim out of sight of shooter; or victim mistakes for game.

But, many shooting accidents occur when experienced hunters, who do not drink and, are adept at identifying game, shoot another hunter or person.

The human mind can be convinced that a deer is standing in the brush if the conditions such as shadows, light, sound or movement are inadequate for the hunter to identify the target.

This "early blur" condition can be corrected if the person in question is wearing outer clothing with a luminance factor not less than 40 percent, a dominant wave length between 595 and 605 nanometers and an excitation purity not less than 85 percent.

This recommended color specifies the daylight fluorescent orange or hunter blaze orange which is required on the P&WD wildlife public hunting areas during the deer season and should be on the hunters list of required equipment.

Nature does not produce any object, plant or animal life with these color variations. Many hunters have not gone to the hunter blaze orange for fear of scaring the deer away, but tests have shown that deer do not distinguish different colors, only shades of gray.

Most experienced deer hunters realize that movement scares deer and, therefore, the majority of the successful deer hunters are stationary or hidden when they bag their deer.

The P&WD suggests that all hunters, experienced and beginners, take a little more time in identifying their target before pulling the trigger, even if it might mean letting a buck deer slip away in the brush.

A member of the British Parliament once told his 13 year old son on his first hunt "All the pheasants ever bred won't repay for one man deer," and this remark should apply for all wildlife whether in Texas or other states.

Other Low-Calorie Recipes  
A variety of other low-calorie recipes are found in cookbooks for persons with diabetes and heart problems. They are available through local American Diabetes and Heart associations or from local book stores.

These recipes are usually lower in carbohydrates, cholesterol and saturated fat if these nutrients must be restricted. Your local county Extension Agent (Home Economics) can also assist you in securing addresses for ordering some low-calorie recipes.

## Shamrock DECA Officers Elected

The Shamrock DECA Chapter held its election of officers Tuesday, September 12, 1978, in the distributive education room in the high school with all members present. The officers elected were: Steve Roach, President; Alta Hudson, Vice-president; Jackie Riley, Secretary; Sherri Skidmore, Treasurer; Misty Clemmer, Parliamentarian; Lee Ann Cain, Reporter; Jill Kingston, Historian; Kim Schlegel, Photographer; Lynette Stokes, Chaplin; and Jimmy Embrey, Sargent-at-arms.

The Iniation Ceremony for new members and Installation Ceremony for chapter officers were held at 6:30 A.M. September 13, 1978 in the banquet room of the Irish Inn Complex. After the type of activity and purposes of activity were announced by the president and credit given those participating in the details of planning and executing the ceremonies, DECA Chapter advisor, Ed Nall, introduced Shamrock entrepreneur Jim Hensley, who spoke on the importance of a Distributive Education program. Mr. Nall also thanked the Shamrock Texan newspaper, Radio Station KBYP, and High School Principal Ronald Gregory for their publicity for this special occasion. Other activities on the agenda included: flag salute, prayer, secretary report, treasurer report, fund raising projects and establishment of a DECA Alumni Association, and field trip to the Apparel Mart in Dallas.

All members were present, October 11, 6:30 A.M. the Shamrock DECA Chapter held the October meeting in the banquet room of the Irish Inn Complex. A new student to Shamrock, enrolling September 26, Steve Garcia, who was introduced, bringing the total membership to 29. Out of a membership of 29, 28 were present. After officer reports, field trip, fund raising projects, and new blazers were discussed.

Mr. Nall reported a DECA 24 sheet (billboard) had arrived and will be posted on U.S. Highway 66 in Shamrock. The new Alumni member was Richard Nall a 1973 graduate of Putnam City West, Oklahoma City.

Mr. Nall reported a DECA 24 sheet (billboard) had arrived and will be posted on U.S. Highway 66 in Shamrock. The new Alumni member was Richard Nall a 1973 graduate of Putnam City West, Oklahoma City.

Mr. Nall reported a DECA 24 sheet (billboard) had arrived and will be posted on U.S. Highway 66 in Shamrock. The new Alumni member was Richard Nall a 1973 graduate of Putnam City West, Oklahoma City.

Mr. Nall reported a DECA 24 sheet (billboard) had arrived and will be posted on U.S. Highway 66 in Shamrock. The new Alumni member was Richard Nall a 1973 graduate of Putnam City West, Oklahoma City.

Mr. Nall reported a DECA 24 sheet (billboard) had arrived and will be posted on U.S. Highway 66 in Shamrock. The new Alumni member was Richard Nall a 1973 graduate of Putnam City West, Oklahoma City.

Mr. Nall reported a DECA 24 sheet (billboard) had arrived and will be posted on U.S. Highway 66 in Shamrock. The new Alumni member was Richard Nall a 1973 graduate of Putnam City West, Oklahoma City.

Mr. Nall reported a DECA 24 sheet (billboard) had arrived and will be posted on U.S. Highway 66 in Shamrock. The new Alumni member was Richard Nall a 1973 graduate of Putnam City West, Oklahoma City.

Mr. Nall reported a DECA 24 sheet (billboard) had arrived and will be posted on U.S. Highway 66 in Shamrock. The new Alumni member was Richard Nall a 1973 graduate of Putnam City West, Oklahoma City.

Mr. Nall reported a DECA 24 sheet (billboard) had arrived and will be posted on U.S. Highway 66 in Shamrock. The new Alumni member was Richard Nall a 1973 graduate of Putnam City West, Oklahoma City.

Mr. Nall reported a DECA 24 sheet (billboard) had arrived and will be posted on U.S. Highway 66 in Shamrock. The new Alumni member was Richard Nall a 1973 graduate of Putnam City West, Oklahoma City.

Mr. Nall reported a DECA 24 sheet (billboard) had arrived and will be posted on U.S. Highway 66 in Shamrock. The new Alumni member was Richard Nall a 1973 graduate of Putnam City West, Oklahoma City.

## Mobeetie Saw & Lock Shop

SAW SHARPENING & LOCKSMITHING

Phone: 845-2353

R. St. John

Mobeetie

## U-U Electrical Service

"We handle all your electrical needs"

RESIDENTIAL, COMMERCIAL and CUSTOM

Robert and Laura Underwood, Owners

Box 269 Wheeler, Texas 79096

Call Day or Night: 826-3150

If no answer - 845-2442

## RCA Award

GOLD KEY Winning Dealer

# RCA Carry Home Special

RCA XL-100 13" diagonal

The RoomMate Model EC330

## WATCH YOUR FAVORITE GAME IN BRILLIANT RCA COLOR!

Compact yet offers the brightest, sharpest picture ever

Low power consumption - uses only 69 watts

Automatic Chroma control

Automatic fine tuning

Good Selection of 1979 RCA 25" Consoles Remote or Manual Sets in Stock

RCA is making television better and better!

## L. & F. REPAIR

Phone: 826-3241 110 W. Oklahoma Wheeler, Texas

## HEAT PUMP

"THE ELECTRIC SAVINGS MACHINE"

SAVING FOR THE FUTURE

Coin banks help teach children how to save for the future. You can save for the future, too, with the electric heat pump. That's why we call it the electric savings machine. This efficient heating/cooling system can deliver as much as two units of heat for every one unit of electricity it uses. But the savings don't stop there. With fuel costs expected to rise during the next two decades, the electric heat pump is a smart investment that will save energy today and in the future.

It's never too soon to start saving... with the electric heat pump. Start today before your future gets here. You'll be glad you did.

CALL US ABOUT THE HEAT PUMP

SPS

SOUTHWESTERN PUBLIC SERVICE

909-3

**Dr. M. V. Cobb**  
CHIROPRACTOR  
Specializing in the Examination and Treatment of Spinal And Nervous Disorders  
256-2133  
310 South Main SHAMROCK, TEXAS

QUARTERS CREAMY  
**SHURFRESH MARGARINE**  
**279¢**  
1 LB. CTNS.

SHURFINE CUT GREEN  
**BEANS**  
**4 \$1**  
16 OZ. CANS

- SHURFINE PINK **SALMON** 15 OZ. CAN \$1.49
- SHURFINE PIECES & STEMS **MUSHROOMS** 4 OZ. CAN 49¢
- SHURFINE APPLE **BUTTER** 28 OZ. JAR 59¢
- SHURFINE MACARONI & CHEESE **DINNER** 4 7/8 OZ. BOXES \$1

Welcome to your **HOME TOWN** America SALE

- DAIRY VALUES**
- SHURFRESH CINNAMON **ROLLS** 2 9/16 OZ. CANS \$1
  - SHURFRESH - IND. WRAPPED SLICED AMERICAN **CHEESE FOOD** 12 OZ. PKG. \$1.09
  - SHURFRESH HALFMOON LONGHORN **COLBY CHEESE** 10 OZ. PKG. \$1.05

NEW! RICHER SAUCE  
SHURFINE PORK & P  
**BEANS**  
**4 \$1**  
16 OZ. CANS

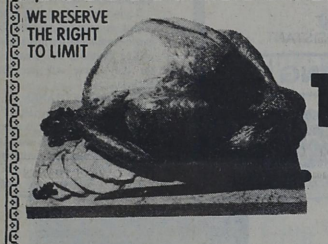
- SHURFINE FRESH SHELL **BLACKEYES** 4 15 OZ. CANS \$1
- SHURFINE EARLY HARVEST **SWEET PEAS** 3 17 OZ. CANS \$1
- SHURFINE WHOLE PEEL **TOMATOES** 2 16 OZ. CANS 69¢
- SHURFINE **FLOUR** 5 LB. BAG 69¢

- FROZEN FOODS**
- SHURFINE FROZEN **ORANGE JUICE** 3 6 OZ. CANS \$1
  - SHURFINE WHIPPED FROZEN **TOPPING** 2 9 OZ. TUBS \$1
  - SHURFINE FROZEN CHOPPED **BROCCOLI** 3 10 OZ. CTNS. \$1
  - SHURFINE FROZEN WHOLE **BABY OKRA** 2 10 OZ. CTNS. 89¢
  - SHURFINE FROZEN CRINKLE CUT **POTATOES** 5 LB. BAG \$1.79

- TOTAL GROCERY SAVERS**
- SHURFINE YELLOW CLING SLICED/HALVES **PEACHES** 2 16 OZ. CANS 89¢
  - SHURFINE BARTLETT HALVES **PEARS** 2 16 OZ. CANS 89¢
  - SHURFINE -PUNCH-ORANGE-GRAPE **DRINKS** 2 46 OZ. CANS 89¢
  - SHURFINE **SPINACH** 3 15 OZ. CANS \$1
  - SHURFINE TOMATO **SAUCE** 6 8 OZ. CANS \$1

BUTTERMILK OR SWEET MILK  
**SHURFRESH BISCUITS**  
**8 \$1**  
8 OZ. CANS

- SHELF SPECIALS**
- SHURFINE 30 GALLON TRASH **CAN LINERS** 10 CT. BOX 98¢
  - SHURFINE 2 PLY BATHROOM ASSTD. **TISSUE** 8 ROLL PAK \$1.19
  - SHURFINE PAPER ASSTD. **TOWELS** 2 JUMBO ROLLS \$1
  - SHURFINE POWDERED BLUE OR ALL PURPOSE **DETERGENT** 49 OZ. BOX 79¢
  - SHURFINE **BLEACH** GAL. JUG 69¢
  - SHURFINE KITCHEN **TALL BAGS** 15 CT. BOX 89¢
  - SHURFINE ALL VEGETABLE **SHORTENING** 48 OZ. CAN \$1.49
  - SHURFINE HAMBURGER SLICED **DILLS** 32 OZ. JAR 79¢
  - SHURFINE **CATSUP** 32 OZ. BTL. 79¢
  - SHURFINE **MUSTARD** 2 16 OZ. JAR 69¢
  - SHURFINE SALAD **DRESSING** 32 OZ. JAR 79¢
  - SHURFINE SALTINE **CRACKERS** 2 16 OZ. BOXES \$1
  - SHURFINE VANILLA **WAFERS** 2 10 OZ. PKGS. 69¢
  - SHURFINE FRUIT **COCKTAIL** 2 16 OZ. CANS 89¢



SHURFRESH SELF-BASTING TENDER-TIMER 10-14 LB.  
**TURKEYS**  
LB. **79¢**

SHURFRESH BONELESS FULLY COOKED CANNED  
**HAM**  
3 LB. **\$5.79**

- SHURFRESH **SLICED BACON** 1 LB. PKG. \$1.39
- SHURFRESH **SLICED BACON** 2 LB. PKG. \$2.77

- SHURFRESH MEAT OR BEEF **FRANKS** 12 OZ. PKG. 89¢
- SHURFRESH MEAT OR BEEF **BOLOGNA** 12 OZ. PKG. 89¢

- SHURFRESH THIN BEEF/HAM/TURKEY/PASTRAMI/ **SLICED MEATS** 3 OZ. PKG. 89¢
- SHURFINE PORK **SAUSAGE** LB. 99¢

- ALL PURPOSE RUSSETS  
**POTATOES**  
10 LB. BAG **79¢**
- COLORADO YELLOW SWEETS **ONIONS** 1 LB. 19¢
  - RED DELICIOUS EXTRA FANCY **APPLES** 3 LBS. \$1
  - WASHINGTON D'ANJOU **PEARS** 1 LB. 39¢

ON SALE THIS WEEK  
SPRING COLLECTION STONEWARE  
DINNER PLATE  
3 BEAUTIFUL PATTERNS  
ONLY **69¢** PER PIECE WITH EVERY \$30 PURCHASE

SHURFINE FROZEN GLAZED  
**DONUTS**  
14 OZ. CTN. **59¢**

- SHURFINE VEGETABLE **OIL** 24 OZ. BTL. 99¢
- ROXEY RATION FLAVORED **DOG FOOD** 7 15 OZ. CANS \$1
- SHURFINE EVAPORATED **MILK** 3 14 1/2 OZ. CANS \$1
- SHURFINE COFFEE **CREAMER** 11 OZ. JAR 69¢
- SHURFINE **PANCAKE MIX** 32 OZ. BOX 59¢

SHURFINE GOLDEN CREAM STYLE WHOLE KERNEL  
**CORN**  
4 17 OZ. CANS \$1

- SHURFINE STRAWBERRY **PRESERVES** 18 OZ. JAR 79¢
- SHURFINE GRAPE **JELLY** 18 OZ. JAR 59¢
- SHURFINE WAFFLE **SYRUP** 32 OZ. BTL. 79¢
- SHURFINE MEDIUM GRAIN **RICE** 32 OZ. BAG 69¢

SHURFINE VAC PAK  
**COFFEE**  
**\$2.19**  
1 LB. CAN

ON SALE THIS WEEK  
SPRING COLLECTION STONEWARE  
DINNER PLATE  
3 BEAUTIFUL PATTERNS  
ONLY **69¢** PER PIECE WITH EVERY \$30 PURCHASE

MAKE SURE YOU REGISTER FOR OUR JACKPOT  
This Week **\$75** It's Worth...  
WELCOME TO HOME TOWN SPECIALS

PURE GRANULATED  
**SHURFINE SUGAR**  
**89¢**  
5 LB. BAG

# Want Ads

**HOUSE FOR SALE:** 3 Bedroom, 1 1/2 bath, full basement, carpet, paneled, new built-in oven, dishwasher, stockade fence. You can afford this one. 1205 S. Canadian Call 826-5792. By appointment only.

**BLACK GOLD TRAILER PARK**  
Gas & Water Furnished  
Storm Cellar  
Underground Utilities  
Individual Electric Meter  
500 S Osage 826-5874

**FOR SALE:** Redman, D-wide mobile home 60' x 24'; 3 bedroom, 2 bath, lot 100' x 125', skirted, pinned 303 S. Bryan. Call 826-5719.

**FOR SALE:** 1978 Chrysler Cordova, 12,000 miles. Call 826-5962, after five 825-3036.

**FOR SALE:** Honda 250 Elsinore ready to race. Weldon Simmons. 2tcws

**FOR RENT:** 8x30' 1 bedroom trailer - furnished. Phone: 826-5874

**F. M. RADIO** via cable in Wheeler. Try it. We have the radio. L. & F. Repair. 826-3241.

**LADY VENUS:** Aloe Vera Cosmetic's now available at the City Cleaners & Fabrics. Call for free facial and skin treatment. 826-3268.

**FOR SALE:** Hot point Dryer used only three months, Call 375-2311, Briscoe.

**CARRIAGE MOBIL HOMES** in Elk City, Okla., 2821 W. 3rd, across from Gibsons. Sale New & Used Mobil Homes. Service, Set-up, Tie Downs and Skirting and Financing available. 4tc

See Gene Hall, Mineo Oil and Gas Co., for sale of oil leases and minerals. Wheeler Abstract Office on Thursdays. 669-6805 in Pampa on other days.

**FOR SALE:** Electric Range with double oven and hood in good condition. Ola Underwood. 3tp

**WILL DO BABYSITTING** in my home for mothers wanting to do their Christmas shopping. Susan Glazner, Phone: 826-3109. 3tpsg

**House Moving**  
SPARLINS-826-5898  
Wheeler, Texas

**FOR SALE:** 2 bedroom house 728 West Okla. St. ALSO: Four bedroom house. Contact Paul's Real Estate, Paul Topper. rtn

**TRAPS and TRAPPING** supplies, Larry Kaal, 868-2271, Miami, Texas. 5tp

**HOLCOMB TRAILER PARK**  
West 12th Street  
Phone: 806/826-5810 or 826-5942

**FOR SALE:** 160 acres choice land, sub-irrigated, nice 2 bedroom house, pressure pump well house, shed's windmill etc. Contact Darwin Trayler after 6 P.M. 935-4366, Dumas, Texas. 6tdt

**NOTICE OF PUBLIC MEETING**  
The State Department of Highways and Public Transportation will conduct a public meeting on December 7, 1978, at 7:00 P.M., in the Kelton Elementary School, Kelton, Wheeler County, Texas.

The purpose of this meeting is to discuss the need for an suggested alternatives for the proposed 3.0-mile extension to Farm to Market Road 2679, as follows: From F.M. 592 at Kelton, West 1.0 mile; and from 1.0 mile East of Kelton, East 2.0 miles.

All interested citizens are invited to attend this public meeting to express their views.

**FOR SALE:** House to be moved, Claudy Brotherton, Phone: 826-5240. rtn

**YARD SALE:** Clothes, Misc, dishwasher, Black & Gold Trailer Park on Osage St. Friday and Saturday. 1tp

**NOTICE**  
I will not be responsible for any debts but my own. Janice Blocker. 4tp

Debra & James Hiltbrunner are your new **AMARILLO GLOBE NEWS CARRIER**. If you would like to subscribe Call 826-3165. 2t

**RESPONSIBLE PARTY** would like a Quail Hunting Lease. Call Collect: 1-272-3209. 2tp

**HOME MADE SAUSAGE**, John Conner's original recipe, Phone 826-5783 or come out to the John Conner homestead. 3tp

**FOR SALE BY OWNER:** 2 bedroom house 504 Reynolds. 826-5812. 3tcd

**4100 ACRE RANCH FOR SALE BY OWNER:** 110 miles west of Amarillo. 5 Wells, 3 dirt tanks, 3 bedroom modern home, 2 set corrals. Oiled road to town, 20 minute drive. Deer, Antelopes, Quail and Dove, 1/2 minerals. Price \$346,000.00. Cash or terms. Call area code 505 461-3134. 1tc

**CLASSIFIED RATES**  
All classified ads must be paid in advance, except for open ledger account customers. Charges are 10c per word. Minimum charge is \$1.00. Card of thanks charges will be \$2.00.

**ADVERTISING DEADLINES**  
Classifieds ... 5:00 p.m. Monday  
Display ..... 5:00 p.m. Monday

**THE BUSINESS DIRECTORY**  
MEMBER  
**TEXAS PRESS ASSOCIATION**

Published Every Thursday at Wheeler, Texas, By...

Entered as second-class matter December 18, 1933, at the Post Office at Wheeler, Texas 79096, under the act March 3, 1879.

Subscription Rates:  
Wheeler County ..... \$6.50  
Outside County ..... \$7.50

**The Cattleman's Feed Service**  
**LOOMIX**  
Since 1905  
Liquid Feed Supplement  
♦ Natural Protein  
♦ Highest Energy  
♦ Consumption Control  
♦ Fully Patented  
**TED NELSON**  
Phone: 826-5650

**GUARANTEED AUTO GLASS INSTALLATION**  
& Body Repair  
**CROSS CAR CENTER**  
Phone: 826-5515  
Wheeler, Texas

**STORM-SCREEN WINDOWS**  
Permanent year-round protection. Changeable from inside. Easy to clean...prooferproof. Eliminates drafts...Cuts fuel bills....  
**WHEELER LUMBER CO.**  
Phone 826-5543 Wheeler, Tex.  
Fine Service for Fine People

Let Me Write It...  
**GEO. RICHARDSON**  
All Types Of INSURANCE

**Dr. Marion Roberts**  
OPTOMETRIST  
Phone: 669-3333  
112 W. Kingsmill  
Pampa, Texas

**CUSTOM-DRAPERIES**  
Swags, Cornices, Shutters  
- WE INSTALL FREE -  
Telephone: 256-3652  
**Brannons Decorators**  
Shamrock, Texas 79079

**REGISTERED AUSTRALIAN SHEPHERD'S:** Excellent stock dogs, watch dogs, and pets. Caroline Cornett, Canadian, Phone: 323-8206. 1tc

**MUST SELL 1978 FORD SUPER CAB:** Equity, \$200, take over payments. Call 826-3084. 2tp

**Expecting a visit from the stork** in December or January? Panhandle Prepared Childbirth Assoc., is now enrolling married couples for Lamaze Classes. To enroll or more information, call Debbie Stribling 868-5391 Miami Kay Newman 669-2946 in Pampa.

**FOR SALE:** Super H with bowl puller, \$1500.00. Pete Baird, 1/2 mile east of Wheeler. 2tp

**MOTORCYCLES FOR SALE:** Kawasaki's 900 Z1 \$1,000, 28,000 miles 175 F 70 \$450.00, 349 miles. Honda MT 250 KI \$600.00 241 miles. 1977 Model BMW R-100/7 \$3,500.00, 14,000 miles Mac's Alignment, 408 West Hiway 152, Wheeler 826-3034.rtn

**FOR SALE:** 1965 Chev. 2T w/duals and excellent hyd. lift, grain bed and stock sides low gear needs work — otherwise good condition. ALSO: 2 Overhead-red shop heaters.

1 used carrier forced air furnace (120,000 BTU)  
1 Used Bryant overhead furnace (168,000 BTU)  
2 good 16.9x34 used tractor tires w/tubes.  
100# Cody certified alfalfa seed for 150.00  
200# NOra Oat seed for 20.00.  
Call Benton at 806/669-7095 for information or appointment.

**UNIT DESIGN--Amarillo Oil Co** et al to W E Burke et ux S 1/2 & S 64.0 ac N 1/2 57 Pt W 1/2 58 A-8 D--Veterans Land Bd of Texas to Thomas Calvin Montgomery 10-17-78 120 ac Sec 1 B 24 D--Veterans Land Bd of Texas to Marvin Woodrow Montgomery 10-17-78 SE 1/4 Sec 1 Bk 24 RECEIPT--Christy Rae Burcham to Wilma Hefner 11-5-75 P OF ATTY--Donald Brookshire et al to E E Brookshire 8-14-78 C/C P OF ATTY--Frances Johnson to Eva Kitchens et al 8-24-78 MD--A W Burrell et ux to R C Callan 9-25-78 10 ac int E 1/2 SE 1/4 Sec 1 Bk A-3

**OCTOBER 25, 1978**  
3 OL--Dudley R Stanley et ux to Real Estate Marketing Co 9-11-78 640 ac Thomas James Sur 320 ac Sec 49 & NE 1/4 50 Bk A-3 3 AOL--Real Estate Marketing Co to Grace Petroleum Corp 10-6-78 640 ac Thomas James Sur 320 ac Sec 49 & NE 1/4 50 Bk A-3 OL--O T & Eunice M Close Trust to Texas Trust Co 10-17-78 80 ac NW 1/4 Sec 7 B 23

**OCTOBER 26, 1978**  
7 AOLs--Chevron USA Inc et al to Walter Euncan et al 7-26-78 Sec 51 Bk A-7 2 AOL--E B White, Jr to Southern Union Exploration Co 9-26-78 NE 1/4 Sec 4 Bk L C/C PROBATE--Rosella Little to Ex Parte 1--24-78 Mins Pt Secs 35, 26 Bk 13 NE 1/4 18 A-5 DIV ORDER--Ralph E Bullington et al to Sarah Meade Bullington et al 10-2-78 Sec 7 Bk A-9 OL--Canadian Grain Cooperative to Northern Natural Gas Co 9-21-78 3.196 ac 60 M-1 EXT OL--Jack E Wardlow et ux to Chalfant, Magee & Hansen, Inc 10-9-78 NW 1/4 Sec 68 Bk 17 AOL--Vernon Davenport et ux to Dilley Production Co 10-23-78 20 ac SE 1/4 47 Bk 13 field notes--H C Weatherby to C W Flyr 10-18-78 2.353 ac SW pt Sec 54 Bk 13

**OCTOBER 27, 1978**  
MML--Troy Allison et ux to Douglas Robertson Assigned to First Bk & Tr 10-25-78 W 60 feet Lots 19, 20 Bk F Shamrock, Potts Addn PART D--Lola Holcomb et al to Loraine Brown et al 10-13-78 5 ac SE 1/4 60 Bk A-8 TMML-- B Guynes to First Natl Bk in Wheeler 10-13-78 Pt S 1/2 S 1/2 SE 1/4 SW 1/4 6 Bk A-4 2 MD--Lova Ringley to Leslie J Ringley et al 10-17-78 30/320 int E 1/2 21 A-3 2 COR MD--Bob Markham et ux to George C Markham et al 10-26-78 40 ac int NE 1/4 Sec 1 Bk RE ASSIGN OVERRID ROY--Allied Chemical Corp to Scott R Larmor et ux 10-9-78 S 1/2 & S 1/2 NE 1/4 & NE 1/4 NE 1/4 Sec 30 Bk A-3 AGREE--T G Puryear et al to Allied Chemical Corp et al 10-16-78 Sec 13 W 1/2 27, 28 A-3

**OCTOBER 28, 1978**  
RDT--First Bk & Tr Shamrock to Terence A Cook et ux 10-25-78 18.3'x100' out of Lots 21 to 24 Bk 1 Shamrock A OF JUDG--Tatum Bros Elevators Inc vs Weldon Reed 2-2-78 ASSIGN OVERRID ROY--W H Hightower to Joe H Elder, Jr 10-12-78 Secs 43,44,45,56, Bk A-4 & Sec 4 Bk E RENTAL DIV ORDER--Mary Lyn Miller to Mary Lyn Miller 10-16-78 NE 1/4 Sec 6 AB&M Sur OL & RENTAL DIV ORDER--Elwyn L Dysart et al to Getty Oil Co 10-6-78 Sec 47 Bk A-5 EXT OL--Flora Lee Fields to

# Court Records

**LIST OF INSTRUMENTS FILED IN THE OFFICE OF THE COUNTY, FROM OCTOBER 23 THROUGH OCTOBER 27, 1978**

OL--William N Holmes to Texas Trust Co, Trustee 3-29-78 8 ac N 1/2 Sec 7 Bk 24

OL--A J Dwyer et al to Texas Trust Co, Trustee 3-29-78 27 ac N 1/2 Sec 7 Bk 24

ROL--Getty Oil Co to J Evert Smith et ux 9-14-78 33.65 ac 25, Sec 36, 10 ac 37 A-4

2 AFF--C E Hayman et al to Alma McCoy 9-20-78 33.65 ac 25, Sec 36, 10 ac 37 A-4

DT--Johnny Montgomery et ux to First Fed Savs & Loan Assn 10-13-78 Lots 5, 6 Bk 5 Shamrock, PBA

D--Kenneth Morris et ux to Craig Morris 9-7-78 3 ac Sec 61 Bk 23

AFF--Elizabeth Lee Pepper et al to R F Wofford et ux 10-20-78 D--K D Douthitt et al to Loyd Wayne Childress 9-18-78 Lots 5 to 19 B 3 Briscoe, Exc Mins RDT--United States of America to Francisco Garcia et ux 10-19-78 Land not set out

**OCTOBER 24, 1978**  
UNIT DESIGN--Amarillo Oil Co et al to W E Burke et ux S 1/2 & S 64.0 ac N 1/2 57 Pt W 1/2 58 A-8 D--Veterans Land Bd of Texas to Thomas Calvin Montgomery 10-17-78 120 ac Sec 1 B 24 D--Veterans Land Bd of Texas to Marvin Woodrow Montgomery 10-17-78 SE 1/4 Sec 1 Bk 24 RECEIPT--Christy Rae Burcham to Wilma Hefner 11-5-75 P OF ATTY--Donald Brookshire et al to E E Brookshire 8-14-78 C/C P OF ATTY--Frances Johnson to Eva Kitchens et al 8-24-78 MD--A W Burrell et ux to R C Callan 9-25-78 10 ac int E 1/2 SE 1/4 Sec 1 Bk A-3

**OCTOBER 25, 1978**  
3 OL--Dudley R Stanley et ux to Real Estate Marketing Co 9-11-78 640 ac Thomas James Sur 320 ac Sec 49 & NE 1/4 50 Bk A-3 3 AOL--Real Estate Marketing Co to Grace Petroleum Corp 10-6-78 640 ac Thomas James Sur 320 ac Sec 49 & NE 1/4 50 Bk A-3 OL--O T & Eunice M Close Trust to Texas Trust Co 10-17-78 80 ac NW 1/4 Sec 7 B 23

**OCTOBER 26, 1978**  
7 AOLs--Chevron USA Inc et al to Walter Euncan et al 7-26-78 Sec 51 Bk A-7 2 AOL--E B White, Jr to Southern Union Exploration Co 9-26-78 NE 1/4 Sec 4 Bk L C/C PROBATE--Rosella Little to Ex Parte 1--24-78 Mins Pt Secs 35, 26 Bk 13 NE 1/4 18 A-5 DIV ORDER--Ralph E Bullington et al to Sarah Meade Bullington et al 10-2-78 Sec 7 Bk A-9 OL--Canadian Grain Cooperative to Northern Natural Gas Co 9-21-78 3.196 ac 60 M-1 EXT OL--Jack E Wardlow et ux to Chalfant, Magee & Hansen, Inc 10-9-78 NW 1/4 Sec 68 Bk 17 AOL--Vernon Davenport et ux to Dilley Production Co 10-23-78 20 ac SE 1/4 47 Bk 13 field notes--H C Weatherby to C W Flyr 10-18-78 2.353 ac SW pt Sec 54 Bk 13

**OCTOBER 27, 1978**  
MML--Troy Allison et ux to Douglas Robertson Assigned to First Bk & Tr 10-25-78 W 60 feet Lots 19, 20 Bk F Shamrock, Potts Addn PART D--Lola Holcomb et al to Loraine Brown et al 10-13-78 5 ac SE 1/4 60 Bk A-8 TMML-- B Guynes to First Natl Bk in Wheeler 10-13-78 Pt S 1/2 S 1/2 SE 1/4 SW 1/4 6 Bk A-4 2 MD--Lova Ringley to Leslie J Ringley et al 10-17-78 30/320 int E 1/2 21 A-3 2 COR MD--Bob Markham et ux to George C Markham et al 10-26-78 40 ac int NE 1/4 Sec 1 Bk RE ASSIGN OVERRID ROY--Allied Chemical Corp to Scott R Larmor et ux 10-9-78 S 1/2 & S 1/2 NE 1/4 & NE 1/4 NE 1/4 Sec 30 Bk A-3 AGREE--T G Puryear et al to Allied Chemical Corp et al 10-16-78 Sec 13 W 1/2 27, 28 A-3

**OCTOBER 28, 1978**  
RDT--First Bk & Tr Shamrock to Terence A Cook et ux 10-25-78 18.3'x100' out of Lots 21 to 24 Bk 1 Shamrock A OF JUDG--Tatum Bros Elevators Inc vs Weldon Reed 2-2-78 ASSIGN OVERRID ROY--W H Hightower to Joe H Elder, Jr 10-12-78 Secs 43,44,45,56, Bk A-4 & Sec 4 Bk E RENTAL DIV ORDER--Mary Lyn Miller to Mary Lyn Miller 10-16-78 NE 1/4 Sec 6 AB&M Sur OL & RENTAL DIV ORDER--Elwyn L Dysart et al to Getty Oil Co 10-6-78 Sec 47 Bk A-5 EXT OL--Flora Lee Fields to

Chalfant Magee & Hansen, Inc 10-9-78 N 1/2 & SE 1/4 & 3.5 ac SW 1/4 Sec 59 Bk 23 TMML--The Medlock Co Inc to First Fed Savs & Loan Assn 10-13-78 Land not set out AOL--Robert K Hillin to Exxon Corporation 10-3-78 NE 1/4 3 Bk A-4

**LEWALLEN INSURANCE AGENCY**  
ALL LINES  
845-2951 826-5719  
1st State Bldg. 114 Texas St.  
MOORE, TEX. WHEELER, TX.

**BUTCHERING & PROCESSING PRICES**  
Beef processed, double wrapped 15¢ per pound  
1¢ A Pound for Butchering  
Pork Processing including curing  
Double wrapped 18¢ per pound  
\$4.50 a head for butchering  
We butcher Monday thru Friday 8 to 12 A.M. except holidays.  
**CALL FOR QUARTER—HALF—WHOLE BEEF PROCESSED**  
WE NOW HAVE CUTS OF PORK AND BEEF FOR SALE  
**SHAMROCK SLAUGHTER PLANT**  
North of City Phone: 256-3241  
Closing at Noon on Saturday

**SUPER-SOLE SAFETY BOOTS**  
LONG-WEARING  
SLIP-RESISTANT  
OIL-RESISTANT  
**RED WING**  
**LANCASTER DEPARTMENT STORE**

**Had Enough? Then Give 'Em HALE For A Change!**  
**BILL HALE**—A man with 23 years of running his business successfully—WHO WILL BRING A BUSINESSLIKE APPROACH TO OUR STATE GOVERNMENT  
**BILL HALE**— has years of service to his community in the chamber of commerce, city council, school board, housing authority and as president of the industrial board-and CAN MAKE HIS EXPERIENCE SERVE THIS DISTRICT  
**BILL HALE**— was born and reared in this district, KNOWS THE PROBLEMS of our ranchers, farmers, and businessmen—AND WANTS TO HELP  
**BILL HALE**— believes the people of this district have HAD ENOUGH OF GOVERNMENT OVER-SPENDING AND OVER-TAXING  
**IF YOU WANT BETTER STATE GOVERNMENT AND LESS TAXATION—ELECT A CONSERVATIVE BUSINESSMAN**  
**VOTE FOR BILL HALE**  
pd. political adv., Bill Hale Campaign, Fred Thayer, Treas. 108 E. Calif. St., Floydada, Tex. 79235

# WHEELER ELEMENTARY HONOR ROLL

**SECOND GRADE**  
ALL A'S  
Tammy Gallagher, Tera Henderson, Elissa McGaughey, March Rogers, Cory Cornett.  
ALL A'S & B'S  
Stephanie Beard, Chamene Coffman, Kristi Finsterwald, Teri Ford, Samantha Gaines, Lisa Jones, Sara Walser, Chad Bentley, Eric Daughtry, Mike Rives, Timm Rodgers, Dwight Thomas, Tommy Velasquez.  
ALL B'S  
Renee Clewell.  
**THIRD GRADE**  
All A's:  
Dawn Boedecker, Dixie Harris, Shonda Miller, Jerilyn Roark, Mandy Rogers, Chris Bedowitz, Roy Petit, Brian Shelton.  
A's & B's:  
Grayson Benson, Shannon Beard, Melanie (Craig) Reeves, Mindy Hardcastle, Jamie Hogan, DeeAnn Jolly, Regina King, Tom Cook, Tony Jackson, David Jones, Doug Manley, Lee McCasland, Kirby Taylor, Shane Whiteley, Sammy Zepeda, Bruce Atwood, Tammy Keelin.  
All B's  
Jody Simpson  
**FOURTH GRADE:**  
All A's:  
Lorrie Williams, Bridgett Wallace, Augie Hennard.  
A's & B's:  
Drew Thomas, Stephen Meadows, Bobby Sword, Tammy Baker, Bryan Mason, Kenneth Daughtry, Tina Alvey, Custen Cornett.  
Shotgun Kelly Disco coming to Wheeler (adv)

**FIFTH GRADE:**  
A's & B's:  
Randy Martin, Vincent Mendiola, Bret Moore, Barry Remy, Patricia Zepeda.  
**SIXTH GRADE**  
All A's:  
Hope Coffman, Darren Grimes, Julie Hogan.  
A's & B's  
Todd Alvey, Jay Kinnard, Teresa Williams.  
All B's  
Joel Dodd.  
**SEVENTH GRADE**  
All A's:  
Jody Mason.  
A's & B's  
Kristi Pierce, Deidre Watson, Sidney Whiteley.  
**EIGHTH GRADE**  
All A's:  
Don Smith, Tracy Walker, Tracy Weaver, Scott Wright.  
A's & B's  
Billy Westmoreland, Laticia Zepeda, Mona Jennings, Tonya Kinnard.

**Sayre To Offer Red Cross Course**  
Due to popular demand Sayre Jr. College will again offer the American Red Cross Multimedia First Aid course of campus Saturday, Nov. 4 from 8 a.m. to 4 p.m., Room 132, Classroom Building.  
First aid certification for a period of 3 years will be issued upon successful completion of the course.  
Cost for the one-day session will be \$15 which covers fees and materials. One-hour college credit may be obtained.  
Anyone interested in taking the course may enroll at the registrar's office at the college Administration Building or call that office at 928-5533.  
Registration should be completed as soon as possible because enrollment for this session will be limited to 24. Instructor for the course will be Judy Nicholas.  
**CARD OF THANKS**  
I want to express my thanks to everyone for all the concern, cards, prayers, flowers, food and visits that I received during my illness. I appreciated it so much.  
Bill Stewart & family

# Briscoe News

**Vetola Parker**  
Oct 25 just heard on T.V. we have 1 million teenagers between 14 and 17 drinking alcohol, and one can of beer before an exam can cause the child to flunk exams. A child at age of 14 comes home drunk, that family has problems this child could and probably will become an alcoholic if he or she does not get help.

A doctor on T.V. said 1 oz. of alcohol kills 1 million Brain cells, that scares me.

Sunday afternoon Glen and Nona Elmore went to visit Mr. and Mrs. Lawrence Aderholt, but they were not at home, so they came to see us.

Oct 26 I saw my first frost on our car. I just may not looked out early enough. Claudi Parker said they had frost some time ago, killed all vines etc.

Verna Fillingim didn't think they had any frost as yet.

Visiting at Turkey, Texas Thursday to celebrate Uncle Garland Cokers 80th birthday were Willa and E. G. Fillingim, Juanita Fillingim, J. P. and Martha Meek, Willis and Verna Fillingim.

Wilma Bible Carla and Tom ere Wednesday night supper guest at J. P. Meek home.

Keith Meek spent Wednesday night with Kevin Ratcliff to celebrate Kevin's birthday.

Sue Ratcliff and Melody Kevin and Keath, Sheila and Jeremy went to Canadian Wednesday night to the circus, they ate at the Pizza Hut.

Willis and Verna Fillingim and Sue Reames went up later to Bob Ratcliffs for cake and ice cream.

Chuck and Phoeby Heartlene and James and Jolene Baker from Canyon visited in J.P. Meek home and Willis Fillingim home Saturday and Sunday.

Glen and Mozell Thomas and David and Andrea and Micah Lea of Guymon, Okla spent weekend with Dick Irvine family. They all were guest at Willis and Verne Fillingim.

Grant Meek family went on a foliage tour Sunday afternoon.

Colie and Vetola Parker went of Elk City Friday afternoon spent the night with the Nelson Parkers to help Nelson celebrate his birthday. We came home

Saturday morning. Elk City had received their first frost Friday Oct 27.

Visiting the Colie Parkers Sunday for dinner were Terry Daugherty, Dewayne Mathas, Joe Wilson and a friend, Tony, in afternoon Richey Daugherty and friend David Baker.

After church we stopped at Glen and Nona Elmore's where there were Joe and Nelda Dukes.

The Junior and Sophomores at Briscoe sponsored a carnival at the fire house in Briscoe Friday nite. A big crowd enjoyed the fun.

Jack and Evelyn Meek returned Wednesday from 2 week vacation.

Jay Michael Meek from Los Angeles took them for a flight over Grand Canyon and Yosemite National Park in Calif. where they saw giant Red wood trees as much as 90 feet around. Also went to the Pacific Ocean, they reported a very enjoyable trip.

This should be in last week news. Clarence and Irene Zybach went to a State Soil Conservation meeting. Irene stopped at the Gaylard Browns in Ft. Worth and visited while Clarence went to the meeting.

Irene went to Amarillo with Melody Goad and Dee Dee Zybach Friday shopping.

Clarence and Irene went on the foliage tour around Candaian Sunday afternoon.

Saturday night guest at David and Becky Zybachs were Gary and Linda Hall and children.

Olaf and Wanda Silvae visited the Vernon Sivages recently. Doris Finsterwald visited them Friday.

Dale and Dean Meadows visited their parents, Cecil and Emma Jean Meadows Sunday and Sunday.

Cecil and Jean visited his mother Sunday night in Wheeler, Mrs. Allen Meadows.

Mr. Lawrence Aderholt went to Borger over the weekend for a three day meeting, Reta Grayson took his mother to her place to stay while he was gone. Mrs. Aderholt was feeling fairly Monday morning. Mr. Aderholt stay

with his children while there. Essie Finsterwald and Donald and Charles took their dinner and ate in the fellowship hall at Church of Christ Sunday with the rest of the church people.

Essie visited Mary Margaretta Dodd Friday.

Essie and boys visited in Shamrock Thursday with her sister Nora Hiltbrunner.

Donald, Charles Finsterwald, David Wright, Eldon Walser attended a Chamber of Commerce, (cloud) Thursday in Pampa.

Bob, Gena and Steve Zybach were hostess recently to a birth-

day party to honor Bob Zybach, Mr. and Mrs. Bevard Dukes, Diedre and Aundria, Mr. Mrs. Wayne Zybach, Mrs. Curtis Hall, Mr. and Mrs. David Zybach, Christy and Shawn.

Mr. and Mrs. Leonard Reid ate dinner Saturday with the Bob Zybachs, on Sunday Elbert and Ruby Zybach ate dinner with them.

Saturday afternoon Bob and Gena went to Canadian to view the foliage around Canadian, Gena said it was beautiful, they also saw deer and turkey.

Gena reported the foliage was also very beautiful between Rey-

don and Cheyene, Okla. Vinson and Fay Hand, Walter and Patricia Hand went to Canadian Sunday ate dinner with the Jerry Smiths.

Winnie Gilmer visited Mr. and Mrs. Lawrence Aderholt last Thursday.

Sunday guest at the Mac Purcells were his folks Gene and Bobbelle Purcell of Lipscomb, and his sister Kenney and Beckie Lawmon of Perryton.

Thursday afternoon Diane, Deidre, and Andrea Dukes and Gena Zybach visited the Mac Purcells and the new baby.

Thursday night at the R. L. Zybachs for supper were Mike and Melody Goad Travis and Shane, Mac and Gave Purcell Lori, Joshua and April, Royce and Deedy Zybach, Ric Helton and a friend from Harrisburg, Ark., Debbie Vanamber.

Ric ate supper and visited with the Mac Purcells Sunday night. Ric lives in Pampa.

Rozena reported little April was just doing fine.

Clau and Melody Parker visited Mary and Lester Hudson last Thursday.

Friday Lester and Mary visited the Lawrence Aderholts.

Mary was happy Monday she had just received a letter from her son, Sy and wife. Sure made her feel lot better she said to here they were OK.

Odes and Lois Hudson visited his parents Sunday afternoon.

Well I put in paper twice that Hoyle Helton visited Sophia Helton, Effie Renfro and Mr. and Mrs. Aderholt. But she didn't get off so she finally visited Sophia and Effie Renfro Sunday afternoon. But Mr. and Mrs. Aderholt was not at home.

Roy and Willene Waters spent the weekend in Borger with George and Patsy Railsbach. they visited Saturday with the Bud Waters family.

Willene visited last Monday in Mobeetie with Sharon Arganbright.

Roy was in Sayre, Okla. Thurs. on business.

## OIL NEWS

**INTENTIONS TO DRILL:**

WHEELER - Lott Ranch (Upper Morrow) - H. L. Brown, Jr. - G. Edwards #1 - 1320' f N & 1980' f E lines of Sec. 56, A-4, H&GN - PD 14,800'

WHEELER - East Panhandle - Dilley Production Co. - R. L. Stokes #1 - 330' f S & 330' f W lines of Sec. 87, 23, H&GN - PD 2400'

WHEELER - East Panhandle - Dilley Production Co. - W. R. Stokes #2 - 330' f S & 330' f E lines of Sec. 87, 23, H&GN - PD 2400'

WHEELER - Wildcat - Mobeetie Associates - Kyle #1 - 1990.5' f S & 663.5' f E lines of Sec. 43, A-5, H&GN - PD 12,800' - Reentry

WHEELER - Buffalo Wallow (Morrow) - Northern Natural Gas Co. - Hefley #1-48 - 1871' f N & 1967' f E lines of Sec. 48, M-1, H&GN - PD 15,100' - Amended

WHEELER - East Panhandle - Texas American Oil Corp. - G. R. Close #1 - 1980' f N & 330' f E lines of Sec. 80, 23, H&GN - PD 1650'

WHEELER - East Panhandle - Texas American Oil Corp. - E. L. Holly #2 - 660' f S & 660' f E lines of Sec. 70, 17, H&GN - PD 1800'

WHEELER - East Panhandle - Texas American Oil Corp. - W. S. Stalls #1 - 1980' f S & 1980' f W lines of Sec. 72, 23, H&GN - PD 2090'

**COMPLETIONS:**

HEMPHILL - Mathers Ranch (Tonkawa) - Amarex, Inc. - Conatser #162-3 - Sec. 162, 41, H&TC - Comp. 9/23/78 - Pot. 20 BOPD - Gor. 2960 - Perfs. 8073' - 8087' - TD 8145'

HEMPHILL - Feldman (Douglas Pool) - Apache Corporation - Jones Estate #1 - Sec. 11, 1, G&M - Comp. 7/9/78 - Pot. 3500 MCF/d - Perfs. 7386' - 7407' - PBTD 7800'

HEMPHILL - Hemphillgranite Wash) - Mesa Petroleum Co. - Risley #2-7 - Sec. 7, 1, I&GN - Comp. 5/27/78 - Pot. 33,000 MCF/d - Perfs. 10,568' - 10,874' - PBTD 10,854'

HEMPHILL - Feldman (Tonkawa) - Suoco Oil Corporation - L. P. Humphreys "H" #2 - Sec. 42, 1, G&M - Comp. 10/20/78 - Pot. 211 BOPD - Gor. 18,104 - Perfs. 7636' - 7720' - PBTD 7784'

WHEELER - Panhandle - Dilley Production Co. - Itchell #3 - Sec. 25, 13, H&GN - Comp. 9/25/78 - Pot. 11 BOPD - Gor. 3421 - Perfs. 2046' - 2176' - PBTD 2266'

WHEELER - Panhandle - Dilley Production Co. - Mitchell #4 - Sec. 25, 13, H&GN - Comp. 9/25/78 - Pot. 11 BOPD - Gor. 4057 - Perfs. 2026' - 2160' - PBTD 2267'

WHEELER - Buffalo Wallow (Morrow) - Northern Natural Gas Co. - Hefley #1-47 - Sec. 47, M-1, H&GN - Comp. 9/28/78 - Pot. 14,600 MCF/d - Perfs. 14,526' - 14,550' - PBTD 14,870'

**PLUGGED WELLS:**

HEMPHILL - Wildcat - Alpar Resources, Inc. - Burton #1-C - Sec. 107, 41, H&TC - Plugged 8/15/78 - TD 7835' - Dry

WHEELER - East Panhandle - Texaco, Inc. - H. H. Reeves #1 - Sec. 79, 17, H&GN - Plugged 10/5/78 - TD 2188' - Gas

Keep an outstanding person in this important job.

JOHN POERNER has demonstrated his integrity and ability in more than 10 years of dedicated public service.



## JOHN POERNER

Railroad Commissioner of Texas  
Pd. Pol. Ad. to elect John H. Poerner, Railroad Commissioner, Ed Ingram, Treas. 1037 Brown Bldg, Austin, Texas 78701



The heating season increases the fire risk. Inflation has added 30% to the cost of building construction during the past 5 years. Is your property insured to 'replacement value' in case of a serious fire loss? Have your insurance checked now with the Rives Insurance Agency.

**RIVES INSURANCE AGENCY**  
115 W. Texas - 826-5224 or 826-5202

## The Hair Shed

111A, W. Texas

Complete Family Hair Care

— OPEN MONDAY thru FRIDAY —

Early and Late Appointments

WE USE AND RECOMMEND . . .

Phone: 826-5746

Redken - RK - Products

Ron & Donna Rives, Owners

## Had Enough? Give 'Em HALE For A Change!



Bill, Carolyn, Their 3 Sons and 3 Beautiful Daughters-in-law

I Was One Of The First Candidates In The State To Announce-Some 14 Months Ago. It Was At The Urging Of No One, And To The Surprise Of Everyone. Since Then, I Have Studied Hard, Campaigned Hard, Spent A Tremendous Amount Of Time And A Good Deal Of Money-All For My Original Purpose-To Be Elected Your State Representative And Then To Make This District The Best Representative It Has Ever Had.

I Have Campaigned Clean, I Have Spoken To You On The Issues, I Have Told You My Political Philosophies, And Have Informed You Of My Abilities And Past Experiences. Now, I Sincerely Hope That You Agree...

FOR THE BEST REPRESENTATIVE THIS DISTRICT HAS EVER HAD...

VOTE FOR BILL HALE

PAID POL. ADV. BILL HALE CAMPAIGN, FRED THAYER TREAS., FLOYDADA, TX.

## Engagement Announced

Mr. and Mrs. Edison J. Walls of Abilene have announced the engagement of their daughter Dana Deneice of William Ray McIlhany, son of Judge and Mrs. Grainger W. McIlhany of Wheeler. The wedding is planned for December 30 in the First Central Presbyterian Church in Abilene.

The bride elect is a graduate of Abilene High School, and attended Cisco Junior College. She is now a student at McMurry College in Abilene, and is employed in the display department at Sears Roebuck Company. Her fiancé is a graduate of Wheeler High School, attended West Texas State University, and is now also a student at McMurry College. He is employed by First State Bank in Abilene.

## Richard's RADIATOR & HEAD SHOP

Complete Radiator and Cylinder Head Work  
301 E. 12th  
Ph. 256-3151  
Shamrock, Texas  
Richard Blakemore Owner

## JACK HIGHTOWER

An independent Congressman in the tradition of Texas leadership



Jack Hightower promised the voters of the 13th District when they sent him to Congress four years ago that he would represent all of them fairly and honestly. He promised to provide an independent voice in Washington. He promised to work full-time at the job. HE HAS KEPT THOSE PROMISES.

Here is what those who know Jack Hightower's record say about his effectiveness:

"... in two terms Hightower has established himself as a member of the Agriculture Committee and the Government Operations Committee whose voice has been reckoned with in arriving at solutions to two of the nation's most pressing domestic issues — problems confronting today's farmer, and inflation..."  
Amarillo Daily News, May 1, 1978

"... Jack Hightower from Texas is one of the newer class, in fact, Bob Poague and I like to think he's the kind of refreshing leader of the newer members coming to Washington in a recent session or so, and Jack is a former state senator and has been a tremendously effective lawmaker..."  
Congressman Charles Thone of Nebraska

"... Hightower is serious about his business in Washington. He is just as serious about trying to maintain a normal lifestyle in a city where normal is often viewed as abnormal..."  
Jim Craig, Houston Post, October 8, 1978

"... I want you to know that we as farmers are truly grateful to have a representative in Washington who does such a fine job of telling our story... thank you for all that you have done for America's farmers..."  
Mrs. Georgia Holt, Spearman, Texas

"... I want to express our thanks for your hard work to benefit Texas wheat farmers in the House Committee on agriculture... I know that some of your votes and stands on the issues took real courage for a Democrat, and I want you to know how much I personally appreciate them..."  
Winston Wilson, Farmer, Quanah, Texas

"... Hightower has shown a willingness to listen to the needs of his constituents and the ability to legislate on their behalf..."  
Amarillo Daily News, May 1, 1978

"... Almost everyone on the Hill knows about Jack Hightower... the Congressman who votes his conscience, represents his district by organic instinct, but is capable of rising above parochial considerations when national interests are at stake. The same qualities that made him an influential state senator for 10 years — scrupulous honesty and an appetite for hard work — have served him well in Washington, but these alone do not explain the high regard in which he is held. In a town overpopulated by small people with large egos, it is a relief to find one for whom the reverse is true..."  
Texas Monthly, May, 1976

That's the kind of Congressman Jack Hightower has been since he took his oath in January, 1975. It's why he has earned the respect of his colleagues and the confidence of people throughout this district... from both political parties. Jack Hightower, Democrat, has earned another term. Vote November 7.

Paid Pol. Adv. by Hightower for Congress Committee, Wilson Frisberg, Treasurer, Box 1973, Vernon, Texas 76384

# Allison News

**Juanita Boydston**  
I sure have been enjoying this nice cool weather we've been having. At this time of the year I like to drive around and see the tree leaves turning different colors. Its just beautiful.

Mr. and Mrs. Lee Townsley of Crawford, Oklahoma, Mr. Jay Harrison of Fort Lauderdale, Florida, Mrs. Maudie Harrison, Louise, Kim and Cheryl Boydston, Becky and Jeannie Gilmer and Greg Boydston were Sunday dinner guest of Mr. and Mrs. Bruce Harrison.

A birthday dinner honoring Wanda Walker was held in the home of Mr. and Mrs. Clifton Boydston Saturday. Those present were: Vivian Wallace, Pearl Harrison and Mr. and Mrs. Eddy Walker and family.

Teresa Dyer, Linda Hall and Carol Kiker took the Allison girl scouts on the Canadian tour Saturday and had dinner at the Pizza Hut there. There were thirteen girls in all.

Mr. and Mrs. Bill Donaldson

and Jimmy visited Mr. and Mrs. David Lewis in Wellington this weekend.

Mr. and Mrs. Glen Elmore visited Mr. and Mrs. Colie Parker Sunday evening.

Mr. and Mrs. Junior Miller of Channing and Zee White of Oklahoma City, Oklahoma, and Peggy and children of Allison were weekend guest of Mr. and Mrs. Frank George. Kathy Mercer of Miami visited Mr. and

Mrs. Frank George Saturday evening.

Mrs. Helen Cockrel visited the Frank George's awhile Sunday evening.

Mr. and Mrs. John D. Glisan were in Amarillo Wednesday on business.

Mr. John Brown of Erick, Oklahoma has been visiting in the home of Mr. and Mrs. John D. Glisan.

Mr. and Mrs. Leon Nachlinger of Pampa were Saturday guest of Mr. and Mrs. Richard Kiker and family.

Mr. and Mrs. Rex Miller visited Mr. and Mrs. Gary Hodges in Canyon this weekend.

Mr. and Mrs. George Parker visited with the Colie Parker's Sunday evening.

Mr. and Mrs. Eddy Walker journeyed to Elk City Saturday night and ate supper and shopped.

A birthday supper honoring George Parker was held Thursday in the George Parker home. Those attending were: Mr. and Mrs. Zeland Rainey, Mr. and Mrs. Winston Rainey, Mr. and Mrs. Mike Dyer and children, Mr. and Mrs. Les Seamster, Mrs. Bonita Hammon, Alna Daughtry, Kenneth James and Erick.

Mr. and Mrs. Rex Miller visited Mr. and Mrs. Gary Hodges in Canyon this weekend. Sunday dinner guest of Mr.

and Mrs. Zeland Rainey were: Mrs. and Mrs. Melvin Rainey and Kristi of Pampa and Mr. and Mrs. Mike Dyer and children, Mr. and Mrs. Les Seamster and Mr. and Mrs. Winston Rainey.

Neal and SaRita Boydston were Sunday dinner guest of Mr. and Mrs. W. H. Boydston. Mr. and Mrs. Keith Boydston have just returned from touring Mississippi, Florida, and Tennessee. In Mississippi they visited his sister, Mr. and Mrs. Larry Dobbs and family and on to Florida and visited his twin brother Mr. and Mrs. Kenny Boydston and family then on the way home they stopped in Tennessee and visited friends.

Thursia and Charles Poindexter of Cheyenne, Oklahoma, Linda Gilmer, Ann Boydston, Juanita Boydston and Mrs. Ona Black were dinner guest of Mrs. Nettie Walsh.

Mr. and Mrs. Clifton Boydston and Kim, Mr. and Mrs. Forrest Boydston and children, Rev. and Mrs. Virgil Cornwell and boys and Juanita helped Mr. and Mrs. W. H. Boydston celebrate their forty eighth wedding anniversary Tuesday evening in Canadian. Was also on Juanita's birthday.

Mr. and Mrs. W. H. Boydston, Juanita and Mrs. Louise Boydston car shopped in Oklahoma

City, Oklahoma Wednesday. And they brought home a new 1978 Caprice Classic. They bought it on their anniversary.

Sunday dinner guest of Mr. and Mrs. Ed Walker were: Mr. and Mrs. James R. Walker of Pampa, Mr. and Mrs. Steve Walker and family of Wheeler, Terry of Pampa, Jo Lyn Walker and Schad of Amarillo, Mr. and Mrs. Austin Carnagery, James

of Edmond, Oklahoma, Pam Shotgun Kelly Disco coming to Carnogery of Amarillo, Bob Wheeler (adv)

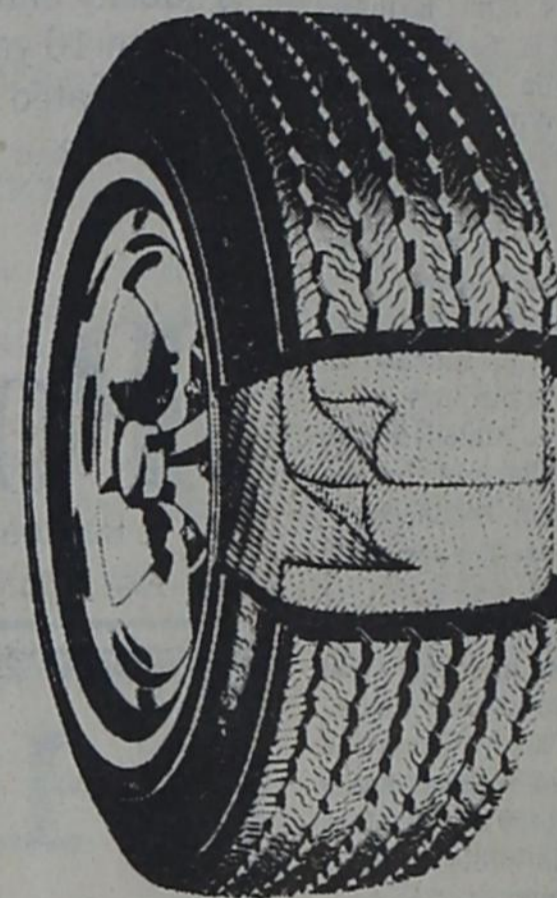
**NORTHWEST OKLAHOMA STORM SHELTER & BASEMENT CO.**  
CONCRETE SHELTERS & BASEMENTS  
FAIRVIEW  
405/227-4357

**THE SHIRT SHACK**  
Letters & Transfers  
Jersey & T-Shirts  
**OPEN NOW**  
114 East Texas St.  
Candy & Sherri Lewallen

## Firestone SALE DOUBLE BELTED WHITEWALLS

**Firestone Strato-Streak® Sup-R-Belt®**

Two tough fiberglass belts under the tread and two polyester cord body plies for easy handling and a smooth quiet ride.



**4 For \$88.00**

B78x13 Plus 1.80 F.E.T.

F 78x14, G78x14, G78x15 Plus 2.42 To 2.65 F.E.T. **4 For \$108**

H78x15 **4 For \$118** Plus .288 F.E.T.

**CHARGE 'EM!** Firestone national credit card good at 1400 stores coast-to-coast. 90 DAYS SAME AS CASH FREE MOUNTING OF YOUR FIRESTONE TIRE PURCHASE.

**120 N. GRAY 665-8419**  
OPEN MONDAY THRU FRIDAY 8-5:30  
SATURDAY 8-2:00

from your neighborhood ASSOCIATED DRUGGISTS

# PEOPLE'S CHOICE

November 1 - 7, 1978

**"ATTENTION DIABETICS!"**

November is National Diabetic Month. Save On

**B & D INSULIN SYRINGE**  
#8410 Microfine Inc.

Mfg. List \$19.90 100

**\$11.90/ 100 ct. box**  
\$1.19/Pkg. of 10

**HOME BLOOD PRESSURE MONITOR KIT**  
Inc. Stethoscope, Record Log, Instructions, Carrying Case  
Mfg. List \$24.95  
**\$13.99**  
Ask For a Paperback Copy of "How to Watch & Control Your Blood Pressure" Only \$3.95

**GAVISCON ANTACID TABLETS**

For fast relief of Heartburn and Indigestion

100 Chewable Tablets

Mfg. List \$6.11

**\$3.39**

**COFFEE FILTERS**  
Filtrator-100 ct. Box Fits all Drip Coffee Makers  
Mfg. List \$ .89

**2/\$1.00**

**SCISSORS**  
Acet. 3 1/2" Straight Blades Great for Home, Office, Shop  
Mfg. List \$1.29  
**\$.79** each

**FANTASTIC FINISH SALON KIT**  
Inc. Purple Styling Brush, Styling Brush & 4 oz. Flex Balsam Shampoo  
Mfg. List \$5.00  
**\$1.95**

**ICY HOT ANALGESIC BALM**  
3.5 oz.  
Mfg. List \$3.00

**\$1.89**

**METAMUCIL BULK LAXATIVE**

Powder, 14 oz.  
Mfg. List \$4.83

**\$2.89**

**NOVAHISTINE DMX DECONGESTANT COUGH FORMULA**

4 oz.  
Mfg. List \$3.19

**\$1.77**

**CORICIDIN D COLD TABLETS**  
25's  
Mfg. List \$2.15  
**\$1.17**

**CHLORASEPTIC ANTISEPTIC W/SPRAYER**  
4 oz. Menthol  
Mfg. List \$2.03  
**\$1.18**  
Chloraseptic Lozenges Menthol 18's  
Mfg. List \$1.35  
**\$.79**

**Blistex Blistik .14 oz. Lip Ointment or .15 oz. Lip Balm**  
Mfg. List \$ .69  
**3/\$1.00** Mix or Match

**COUPON PEPTO BISMOL LIQUID**  
8 oz.  
Mfg. List \$1.99  
**\$1.09**  
Expires 11-7-78

**COUPON FOLGERS COFFEE FLAKED**  
13 oz. Can  
Mfg. List \$2.59  
**\$2.18**  
Expires 11-7-78

**COUPON AFRIN NASAL SPRAY**  
15 ml.  
Mfg. List \$2.39  
**\$1.19**  
Expires 11-7-78

THESE ARE SUGGESTED A.D. PRICES OPTIONAL WITH PARTICIPATING STORES

# HYLAND'S PHARMACY

WHEELER, TEXAS

WE RESERVE THE RIGHT TO LIMIT QUANTITIES AT SALE PRICES

## Whitener Children Have Reunion

Recently the children of the late Arthur and Altha Whitener got together for a fun fest at Lake Whitney in the home of Herman and Dot Whitener. Gordon and Bennie May Whitener and Dealna and Loron Rhine spent several days in their travel trailers near the lake and did a lot of fishing. Bud and Novella Vanpool joined them for a few days fishing and visiting after a visit with their children Terry and Becky Garrett and their families. Then on the weekend Louise and Lester Robertson from Garland Texas and Herbert Whitener from Tyler joined the group. needless to say a lot of laughing by all. Those unable to attend were Hiram and Mary Whitener and Willie Dee Whitener. Terry, Judy, Bridgette, and Brad Vanpool of Azle visited the group on Sunday afternoon. This get-together has been an annual event for the Whitener children for several years.

## Habitat Is Key To Wildlife Population

LUBBOCK -- Habitat is the key to wildlife populations in the Texas Panhandle and South Plains and management of these species of birds and animals is more difficult as winter cover disappears each fall.

Wildlife is a crop and must be cultivated managed just like any other resource such as corn and grain sorghums. They will increase with good land management includes providing the right amount of cover, food and water near each other.

The harsh winters of West Texas will eliminate wildlife on property lacking proper cover. Extensive overgrazing has displaced desirable tall and mid-grass cover and forb food species occurring on both the high plains and rolling plains. Results of overgrazing on wildlife species such as the game birds includes a marked decrease of desirable weed food plants and destruction of both nesting and escape cover.

During the winter, cultivated grain sorghums are readily available to most game birds such as the quail, prairie chicken and pheasant. But, many agricultural practices such as clean farming, burning of crop stubble, intensive livestock grazing and aerial application of herbicides tend to eliminate or reduce these necessary food sources.

The Texas Parks and Wildlife Department has learned that the closing of any season for a year or more will not increase the wildlife population. Ordinarily, the numbers of birds present for broodstock each spring are directly related to the carrying capacity of the land during the winter, regardless of the fall population.

Since the key to greater numbers of wildlife in Texas is a matter of furnishing more and better habitat, the P&WD will continue to assist landowners interested in wildlife on their property.

Professional wildlife biologists are located in northwest Texas and they are available for the opportunity to help the landowner and his wildlife. For more information, call 806/826-3233 for technical assistance now.

# TAX RELIEF FOR TEXANS

The Tax Relief Amendment, if approved by voters November 7, will help you!

Homeowners -- \$5,000 homestead exemption from school taxes.

Disabled and Elderly -- Homestead exemption from school taxes up to \$10,000.

Farmers -- Farm land tax value limited to productive value.

All Property Taxpayers -- Notice to property owner of re-evaluation of his property, including effect on taxes. Prohibits statewide appraisal of property for tax purposes. Household goods, personal effects exempt from taxation. Property tax enforcement must originate in the county.

All Taxpayers -- Public notice and hearing on any proposed local tax increase. Limits state spending.

Schools -- The Legislature has appropriated \$450 million to reimburse school districts for revenue lost because of homestead and agricultural use reductions.

# VOTE Yes

November 7th

Sponsored by

## Wheeler Co. Farm Bureau

## Director

the good will tours to both Europe and the far east.

The AYSC and its related organizations, the American Youth Symphonic Band and Chorus, the American Youth Studio Jazz Bands, the American Youth Leaders, the American Youth Choruses, and the American Humanities, are dedicated to the development of American youth and the furtherance of peace and understanding throughout the world through the performance of music. The AYSC has received the highest praise from the U.S. government officials, both at home and abroad, for its accomplishments in presenting an outstanding portrayal of America at its best. The AYSC and its related organizations have accomplished 42 highly successful goodwill concert tours including visits to Western Europe; Iron Curtain countries of Russia, Czechoslovakia, East Germany, and Yugoslavia. The AYSC offers serious students the opportunity of working with other talented students under outstanding leadership and of serving their country as Goodwill Ambassadors.

The AYSC has received numerous honors and awards among which are: six George Washington Medals of Honor presented by the Freedoms Foundation of Valley Forge; six gold medal first prizes won at international music festivals; first prize at the 1972 Paris jazz festival; an award from the Veterans of Foreign Wars for outstanding accomplishments in

## Women's Prayer & Study Group

The first meeting of the Women's Prayer and Study Group was held Friday, October 27, at the home of Mrs. Lewis Rogers. The group is being formed by concerned Nazarene women and plans to meet every other Friday at 10:00 a.m.

The subject of the study was I Corinthians 13, led by Mrs. Harold Moore. Refreshments were served, and prayer concerns were discussed. Mrs. Elgie Dearing closed the meeting with prayer.

Those present were: Irene Rogers, LaDonna Moore, Mrs. Dearing, Fanny Calloway, Debbie Hunter, Summer Dee and Susanne, and Wendy Cole and Mandy.

The next meeting will be held Friday, November 10, at the home of Mrs. Elgie Dearing, at 10:00 a.m. Anyone who is interested in Bible study and prayer to very welcome to come. Another group is forming and will be meeting Wednesday, November 1, at 3:00 in the home of Mrs. Mendall Hunter, east of Wheeler. Both groups are open to anyone who is interested.

achieving a better understanding of the American way of life.

Leading civic and governmental leaders have cited the members of the AYSC program as "America's Finest Goodwill Ambassadors." From Page 1

Shotgun Kelly Disco coming to Wheeler (adv)

## To The Friends and Relatives Of Carolyn Steen and Gary May

*Mr. and Mrs. Wesley H. Steen*

and

*Mr. and Mrs. Melvin W. May*

*invite you to share in the joy of the marriage uniting their children*

*Carolyn Marie*

and

*Gary Royce*

*This celebration of love will be Saturday, the eleventh of November at six o'clock in the evening First Baptist Church Hobectie, Texas*

## To The Friends and Relatives Of Mr. and Mrs. Louie Abernethy

1928

1978

*In honour of the Fiftieth Wedding Anniversary of Mr. and Mrs. Louie Abernethy their children request the pleasure of your company at a Reception on Sunday, the fifth of November Nineteen hundred and seventy-eight from two to five o'clock in the afternoon First Baptist Church Fellowship Hall Kelton, Texas*

## WHEELER PUBLIC LIBRARY BOOK REVIEW

"Wildford's Daughter," by Alexandra Manners, is a richly textured novel of the shady side of Regency life -- and the girl who had the courage to confront it. Emma Wildford is not a run-of-the-mill Regency daughter. Ev-

en life in the country has its perils and Emma is heart-broken to find the man she plans to marry celebrating their betrothal in the arms of another woman. Just as Captain Ringan, the aristocrat who oversees her father's lands, opens Emma's eyes to the truths of love, so her trips to London to distribute food to the wretched women of Newgate Prison introduce Emma to the underside of Regency society.

"The Cinder Path" was written by Catherine Cookson. At the MacFell place the cinder path was a walk-way built up over the years with ashes from the fireplaces. Here in patriarchal fashion Edward MacFell disciplined the youngsters of the estate, the sting of the cinders on their hands and knees augmenting the sting of the lash. In time MacFell's son Charlie came to think of that harsh and abrasive surface as a symbol of life. Affectionate and well-meaning though he was the dirty end of the stick always seemed to be his reward, and indeed there were those who thought him a born loser -- in love, friendship and career. Was this really his destiny? Or were there not hidden strengths in Charlie requiring only opportunity to surface?

## Flower Arranging Studied By Club

The Wheeler H.D. Club held its Oct. 24 meeting in the Donut Shop. The roll was called by saying the Pledge of Allegiance.

The program was given by Mrs. Chapman on flower arrangement. She made a very pretty arrangement out of the dried flowers. We want to thank Mrs. Chapman for coming and giving the program. The Devotion was given by Mary Moore.

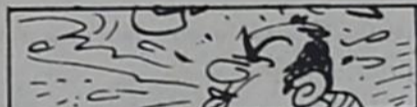
We would like to invite anyone interested in being a guest of the club to call one of the members or come to our next meeting Nov. 7 at 1:30 at Donut Shop.

Refreshments were served to laVonda Johnson, Valetta Frankenberg, Mary Moore, Beth Sheldon, Donna Moore and Ila Collins. We were happy to have Ann Jolly as a guest this week.

Mrs. Prince from Pampa will give a program on Holiday Foods, Nov. 6 at 7:00 p.m. at the H.D. Office.

All Home Demonstration Club Home Demonstration Club membership is open to everyone, regardless of sex, race, color, or creed -- and the time it takes amounts to about two or four hours a month.

Shotgun Kelly Disco coming to Wheeler (adv)



Some say sneezing on Saturday means you'll see your sweetheart on Sunday.

## Here & There

Laura Guthrie

Have you been on our local foliage tour? You better be at it. The wind this morning is devastating. There are several beauty spots on Main Street: The lovely ol elm 800 block the pear tree on the N. W. corner of 1100 block. Just drive around, you can't miss all the beauty.

Mobeetie could have its own foliage tour. Sweetwater creek (I guess its Sweetwater, winds around on the western vicinity of the Villiage. I think I never saw it so golden.

I appreciate Audie Martin letting me know they had visitors on Sunday. Louis and Joyce Martin, their son from Amarillo, were there for lunch and their grandson, Mike and Melody Goad and small son of Briscoe were evening callers.

Mary had a surprise visitor on Monday morning. Amy Wells, a friend who lives in Farmington,

Arkansas, dropped by. Amy had been visiting her brother Elmer Byers in Pampa.

W. O. Puitt of Tulia and daughter Mae Johnston of Abernathy came by for a short visit with me last week. Mary Wofford came over to visit with her friend Mae. The two had made a tour of Spain last summer and were anxious to see how the other had survived.

Glen Farmer of Scottsbluff, Nebraska visited on the week end with his mother, Ida Farmer. Glen is being transferred to somewhere in this part of the world, but doesn't know just where he will live.

When my brother Lee and Mable returned to Ruidoso it was snowing. No matter, they had called ahead for the heat to be turned on and the fireplaces be ready to light. While here Mable had some "chatty and reminiscent" visits with her cousin, Erma Riley. Ed came along to and was company for Lee.

**NOW OPEN**  
**Harrison Gun Sales**

Rifles, Pistols, Shot Guns & Ammunitions  
510 Osage Phone: 826-3269

**Western Insulation Co.**  
**BLOWN INSULATION**  
and  
**ACCOUSTIC CEILING**

FREE ESTIMATES  
- SATISFACTION GUARANTEED -

Thad Snelgrooes 826-3130      Cecil Snelgrooes 826-3212  
WHEELER, TEXAS



# C & H Supply, Inc.

1206 N. Main Shamrock, Texas

LIVESTOCK TRANSPORTATION

QUANAH COTTON OIL COMPANY

MANUFACTURERS OF COTTON SEED PRODUCTS

MORTON SALT COMPANY

TEXAS FB

VASCO

XTRAVIM DIVISION OF INGREDIENT TECHNOLOGY CORP.

COW POKES

By Ace Reid

"Cow prices musta took a jump, the banker jist tipped his hat to us!"

"We are excited to become a part of the Shamrock business community. We appreciate your patronage, commit ourselves to serving your needs, and will supply the finest products through the the years to come."

*Jim Ray*      *Bo Wilson*

## Most newspapers pick Hill over Clements

"John Hill may be the best candidate for governor in decades. Judging from his record, he should win easily over his Republican opponent, whose chief qualification is money. Unlike his opponent, Hill is not given to outrageous promises, intemperate personal attack or underhanded tactics. He will work hard for the best interests of the state and its people."

— Austin American Statesman

"The more Mr. Clements has explained his blunt viewpoints -- even those views we could agree with -- the more he has raised doubt as to how effective a bulldozer could be in Texas government. Conversely, John Hill has grown in our evaluation as a man who not only is the best state attorney general in recent history, but also is a man with the intelligence, savvy and ability to serve Texas well as governor."

— Abilene Reporter-News

"We believe Hill will bring vitality and leadership to state government. Hill is not an advocate of big government. Nor is he a free spender. He has pledged that no new taxes will be levied if he is elected. His anti-inflation program is the kind of fiscal conservatism Texans can accept gleefully."

— Corpus Christi Caller

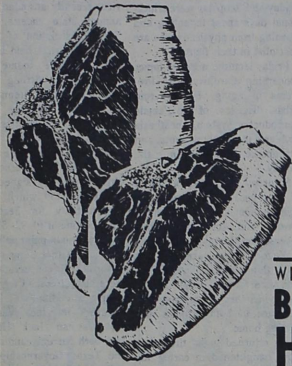
**JOHN HILL**  
GOVERNOR

# Roark's FINE FOODS

Prices Effective  
Monday thru Saturday,  
Oct. 30-Nov. 4

WHEELER, TEXAS

# Red & White Trainload Sale



**LONGHORN BRAND PORK CHOPS**  
FAMILY PACK  
\$1.49  
lb.

WILSON CERTIFIED  
**BONELESS HAM**  
\$1.99  
lb.

No. 1 WHITE  
**POTATOES**  
\$1.09  
10 lb. Bag

BUBBLE PACK  
**TOMATOES**  
45¢  
Pack

CELLO PACK  
**RADISHES**  
25¢  
6 oz. Pkg.

JUMBO  
**YAMS**  
25¢  
LB.

RED & WHITE  
**FRUIT COCKTAIL**  
2 89¢  
303 Cans

RED & WHITE  
**FACIAL TISSUE**  
200 ct. Box  
49¢

7-FARMS  
**TOMATOES**  
3 87¢  
303 Cans

RED & WHITE  
**SHORTENING**  
\$1.59  
3 lb. Can

RED & WHITE  
**PAPER TOWELS**  
Roll  
49¢

RED & WHITE  
**APPLE SAUCE**  
39¢  
303 Can

RED & WHITE  
NEW WHOLE  
**POTATOES**  
4 \$1.00  
303 Cans

RED & WHITE  
SLICED SINGLES  
**CHEESE**  
12 oz.  
99¢

RED & WHITE  
C.S. or W.K.  
GOLDEN  
**CORN**  
3 87¢  
303 Cans

RED & WHITE  
**SALAD OIL**  
\$1.69  
48 oz.

RED & WHITE  
**BATHROOM TISSUE**  
8 Roll Asst.  
\$1.49

RED & WHITE  
**PEANUT BUTTER**  
\$1.79  
40 oz. Jar

RED & WHITE  
MACARONI & CHEESE  
**DINNERS**  
4 \$1.00  
7 oz. Boxes

RED & WHITE  
**COFFEE CREAMER**  
16 oz.  
89¢

RED & WHITE  
**CUT GREEN BEANS**  
3 87¢  
303 Cans

RED & WHITE  
**ORANGE JUICE**  
69¢  
12 oz. Can

RED & WHITE  
**ALUMINUM FOIL**  
12" Roll  
39¢

RED & WHITE  
**LIGHT TUNA**  
63¢  
6 1/2 oz. Can

SUPER VALUE  
BROWN & SERVE  
**ROLLS**  
Pkg.  
45¢

RED & WHITE  
**FLAKE COCONUT**  
7 oz.  
55¢

BORDEN'S  
**CHOCOLATE MILK**  
Quart  
59¢

RED & WHITE  
**SPINACH**  
3 89¢  
303 Cans

RED & WHITE  
**SOFT OLEO**  
59¢  
1 lb. Tub

RED & WHITE  
SWEET MILK or BUTTERMILK  
**BISCUITS**  
6 79¢  
8 oz. Cans

RED & WHITE  
WHIPPED  
**TOPPING**  
2 89¢  
9 oz. Tubs