



# THE WHEELER TIMES

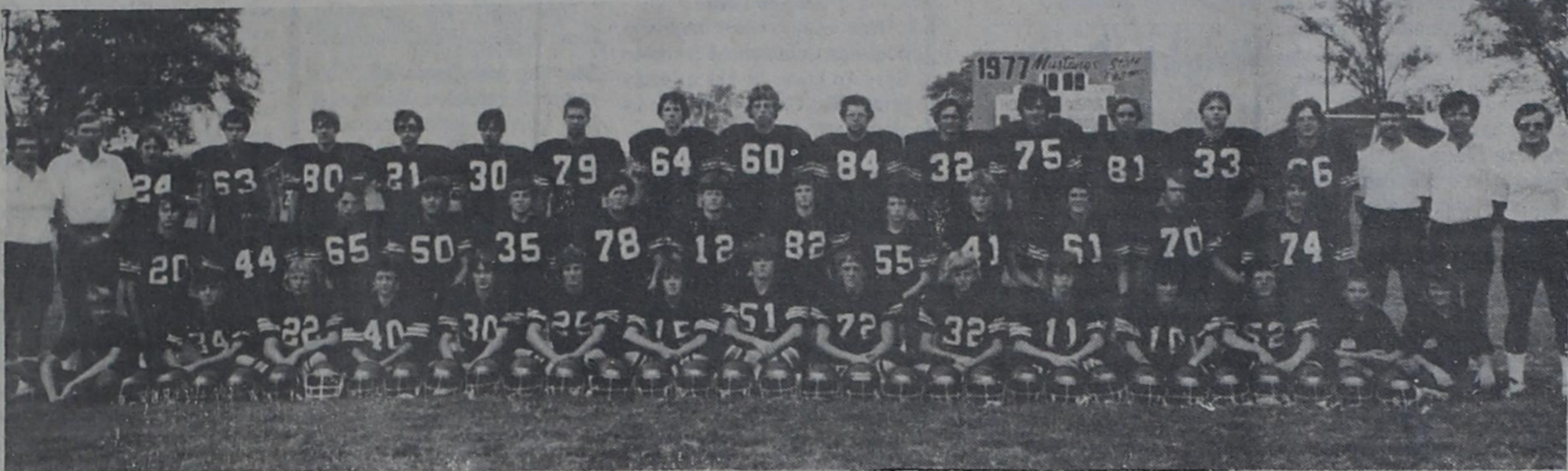
(USPS 681-960)

VOLUME 45, NUMBER 50

WEDNESDAY, NOVEMBER 21, 1979

SINGLE COPY 15¢

## MUSTANGS WIN DISTRICT TITLE!



## WIN OVER BOOKER SENDS MUSTANGS INTO PLAYOFF

Texas' number one ranked football team in Class B, the Wheeler Mustangs, won their tenth game of the season last Friday night and with it won the right to advance into the state championship playoffs for the third straight time.

The 37-6 victory over the Booker Kiowas closed out the

regular season for the Mustangs and put them into the bi-district round against the Valley Patriots this week in Memphis.

Booker came out chunking the pigskin but it backfired on them early when Mike Evans intercepted at the Kiowa 24 and returned six to the 18 from where the horses scored in four plays. Benny Baker broke through the left side for 10 yards and with Evans toying the extra point, the Mustangs had a quick 7-0 lead.

The Mustangs defense was just too tough for the hosts to dent and even though the Mustangs offense wasn't the sharpest in the world, there never wasn't any doubt as to the victor after Baker's run.

All the Mustangs could get out of a long 13 play drive later on in the first quarter was a 23 yard field goal by Evans that put the Mustangs on top by 10 at the end of the first quarter.

Mixing up passes, the Mustangs put the ball in the air on 26 occasions, with the pounding of Willie Valencia inside, Wheeler drove to the Booker five yard line and Baker got his second TD two plays later.

Only 39 seconds remained in the first half when the Mustangs got on the scoreboard again and it was on a great reception by

Paul Bentley of a 29 yard pass from quarterback Rich Brown. Evans booted the extra point and Wheeler took a comfortable 24-0 margin into the intermission.

The Kiowas quelled a Wheeler threat early in the third period but it proved to be short lived. The Mustangs took the second half kickoff and moved to the Booker 11 but an intercepted pass in the end zone gave the Kiowas the ball at the 20.

On the Kiowas second play, the ball was bobbled and Bentley recovered at the Booker 21 and 3 plays later the Mustangs were in the end zone as Valencia scored from the 1.

A fake punt and an incomplete aerial on fourth down set up the Mustangs at the Booker 34 late in the game and the Mustangs were quick to take advantage of the situation.

Three running plays netted seven yards and then Ty Henderson whipped a 27 yard pass to Russell Gaines who never broke stride at the goal line. Evans kicking string for the game was broken as the Kiowas broke through and blocked the attempt.

Booker did get on the scoreboard and got most of their total yardage for the game on a 60 yard bomb from Brett Maxfield to Kevin Mounsey.

Game Statistics:	Wheeler	Booker
First Downs	29	3
Net Yards Rushing	198	15
Net Yards Gained	182	95
Total Yards Gained	380	110
Passes & Completions	26-12	25-10
Passes Intercepted	3	1
Fumbles & Lost	1-1	1-1
Penalties & Yardage	2-10	5-45
Punts & Average	2-27	4-34
Total Plays	69	26

## Mustangs, Valley Patriots Clash In Memphis In Bi-Dist.

The opponents and the site are the same, only the year has changed as the Wheeler Mustangs and the Valley Patriots open the state football championship playoffs Friday night in Cyclone Stadium in Memphis at 7:30.

Having won the state championship in 1977 and reaching the finals in 1978, the playoffs are no strange place for the Mustangs to be and all football buffs know that experience can play a big factor in crucial games.

Valley won the District 2-B championship last Thursday night with a win over Lazbuddie in Plainview and will be advancing to the playoffs for the second time in as many years.

Last year the Mustangs and Patriots hooked it up in bi-district and the Mustangs walked away with an impressive win that helped propel them to the state finals where their quest for a silver championship football was halted by Union Hill, 14-7.

The Patriots bring a 9-1 record into Friday night's fray against the 10-0 Mustangs and they have the ingredients to put a stop to the Mustangs dreams in '79.

A talented backfield that has real good speed and a good passing game have made the Patriots a big play ball club all year long and this has put frowns on the faces of the Mustangs coaching staff as they have been putting the Black Machine through their paces for the game.

"James McNary and Ray Williams are pacing the Valley running game but Williams really impresses me as he has speed and really ran tough against Lazbuddie," coach Joe Allen said this week. "Lazbuddie drove for the first touchdown but then Valley broke two long ones and it completely demoralized Lazbuddie."

The head coach of the Mustangs went on to say, "We have got to play great defense against them to win and we certainly can't make the little mistakes that we have made in our last games if we want to win." "You can't make mistakes against good ball clubs and win and we will be playing good clubs now if we can win this one Friday night."

The Patriots run from both the straight and tandem T formation on offense and use a 5-3 on defense and their defense is anchored by Troy Scoggins, a 220 lb. senior noseguard. Few teams have been able to run consistently on Valley and Scoggins has been on of the big reasons.

Injury wise, the Mustangs will be without the services of Boyd Waldo, reserve running back, who broke an ankle in the Booker game. Ricky Bond has a bruised finger but both stellar performers should be ready for the Valley fray.

Kyle Lasley, senior guard and linebacker, who broke a wrist in the Follett game, might see some action this week if he gets an O.K. from the doctor but his participation is still doubtful.

Wheeler will be the visiting team and fans of the Mustangs will use the west side of Cyclone Stadium. Admission for the bi-district game will be \$3.00 for adults and \$1.00 for students.

### Hospital Notes

**Old Admissions**  
11-7 Boyice Farris  
11-9 Howard Leake  
11-12 Walter Cooper  
Gladys Valencia

**New Admissions**  
11-14 Suzie Erwin  
Bob Patterson  
James Horton

11-15 Lynette Gaines  
Ollie Jaco  
Vera Moore  
Tina Lee  
Sarah Tate  
Eddie Morris

11-17 Verna Markham  
Gale Dorrell  
11-18 Epifina Garcia  
Rheba Clay  
Odessa Mooney  
Jane Smith

11-19 Rhonda Wilson  
Elethal Steen  
Herman Miller

**Dismissals**  
11-14 Marvin Dixon  
Levina Funderburk  
Jerry Fletcher  
Kristin Smith  
Frank Caswell  
Faye Farrar  
Roy Jones  
Bucky Zybach  
Dub Mason  
Kenneth Densberger  
James Horton

11-15 Russell Gibson  
Suzanne Sandifer  
Earl Hamil  
Bernice Tedder  
E. D. Morris

11-18 Lynette Gaines  
Bob Patterson  
Sarah Tate  
11-19 Margaret Frenkel  
Joyce Miller  
Vera Moore  
Donna Montgomery  
Claude Crouch  
Ruby Ford

11-20 Herman Miller



**DISTRICT CHAMPIONS:** The Wheeler Mustangs took the District Championship with their win over Booker Friday evening at Booker. The trophy was awarded following the game. The senior members of the football team proudly display their trophy; they are: (back l to r) Kevin Andis, Farrell Alexander, Vic Bradford, (front, l to r) Kyle Lasley, Mike

Evans and Rich Brown. During their time as members of the "Black Machine", these young men have seen the team receive a number of trophies including a State Championship and Semi-Final Championship.

### Co. Sheriff's Report

### Two Wheeler Men Charged In Theft

Two Wheeler men were charged with theft in Justice of the Peace Charley Whiteley's Court on November 13, 1979. Wheeler, Texas was charged with the theft of a calf from Beef Cattle Co. of Wheeler, this incident occurred on November 10. Roger Tim Fay of Rt. 1 Wheeler was charged with felony theft by appropriation of a motor cycle that was stolen in Wheeler during August of 1979. The charges and arrests were made after an investigation by the Wheeler County Sheriff's Office. Both subjects were arraigned before Judge Whiteley and bonds were set on Nov. 13. On Nov. 19 a Wheeler County Grand Jury indicted both subjects for felony theft. Andrew Shea, Jr. was found guilty of burglary of a motor vehicle in district court and sentenced by Judge McIlhany to two to five years in the Texas Department of

## WHEELER COUNTY FOOD SHOW HELD AT KELTON

The Wheeler County 4-H Food Show, "Fall Festival," was held November 17 at the Kelton School Cafeteria with 30 boys and girls participating. First place winners include Lanetta Werhan, Senior, breads and desserts, Shamrock 4-H; Angil Elmore, Senior snacks & beverages, Allison 4-H; and Sally Stacy, Senior main dish, Shamrock 4-H. First place winners in the Junior Division were Hope Coffman, Breads & Desserts, Wheeler 4-H; Gene Stacy, snacks & beverages, Shamrock 4-H; Kerri Clemens, Main dish, Kelton 4-H and Teresa Moore, side dish, Kelton 4-H.

The first place winners in the above divisions will represent Wheeler County at the District I 4-H Food Show in Amarillo on December 8. Alternates in the County Food Show in the Junior Division were Lisa Meek, Breads & Desserts, Briscoe 4-H; Charlene Jones, Snacks & Beverages, Kelton 4-H; Lacy Buckingham, Main Dish, Kelton 4-H; and Michele Keelin, Side Dish, Kelton 4-H. These 4-H members will take place of any 1st place winners that is unable to participate in the District I Food Show.

Others participating in the 1979 4-H Food Show and receiving blue ribbons in the Junior Breads & Desserts Division were Ileta Werhan, Scott Shaffer, Tracey Wilson, Shamrock 4-H Club; Leslie Johnson, Julie Moore, Maralee Singleton, Leslie Calcote, Janette Hink, Kelton 4-H Club; and Kimberly Kiker, Allison 4-H Club.

In the Snacks and Beverages Division are the following 4-H members participated: Suzanne Wilson, Shamrock 4-H Club; Michael Killingsworth, Kelton 4-H Club and Michelle Coulter, Allison 4-H Club.

Richard Porter was no-billed in the Oct 14 shooting incident by the Nov. 19 Grand Jury. Two men from Elk City, Okla., James M. McNeil and Kelly M. Powers, were fined on 11-16-79 by J. P. Charlie Whiteley for trespassing and hunting without a license on the Tom Puryear ranch east of Wheeler. The men were fined \$257.00 each which they paid.

**Lonnie Miller**  
Lonnie Miller completed eight weeks of Law Enforcement Basic Certification School Friday, Nov. 16. He will be making plans to take the family.

Main Dish Division winners were Christy Zybach, and Tonya Lehman, Briscoe 4-H Club. In the Side Dish Division the following 4-H members participated: Tim Edwards, Shamrock 4-H Club; Kristi Krug, Melinda Davidson and Nita Keelin, Kelton 4-H Club.

All 4-H'ers participating in the 4-H Food Project and turning in a record are eligible to receive an award at the 1980 4-H Achievement Banquet.

Following the judging and awards program a tea for some 70 parents, guests and 4-H members was given by the Wheeler County Extension Homemakers Council with the Shamrock Evening E. H. Club serving as hostess for the event.

Educational Programs conducted by the Texas Agricultural Extension Service serve people of all ages regardless of socioeconomic level, race, color, sex, religion or national origin.

### Scores Available

SRA Achievement Test results from the Wheeler ISD October testing are now available for parents of Wheeler students.

According to Dewey Shepard, counselor for Wheeler ISD, students in all 12 grades who participated in the testing program last month will be receiving their test results the last week of November. The student copy of these results is for the student to keep and share with his parents.

Parents are encouraged to contact Shepard at his high school office for the purpose of scheduling conferences in order to discuss their child's test results. Shepard may be reached at 826-5534 and is available for conference between eight and four Monday through Friday.



### FIREMAN SPOTLIGHT

K. D. Ford is presently Assistant Fire Chief for the Wheeler Volunteer Fire Department. He has also been a Truck Captain several times in the past thirteen years he has been serving on the WVFD. K. D. and his wife, Joyce, live two miles northeast of Wheeler along with their children, Tina, Robert, Teri, and grand daughter, Amber.

### Dumas High Choir Presents Program

Members of the Dumas High School Choral program presented a program for Wheeler Schools last Friday morning in the auditorium of Wheeler High School. Selections were performed by junior-senior choir, freshman-sophomore choir, mixed choir, and chamber group. Music performed included sacred, classical, and popular selections. Dumas Choral Director, Larry Dawson, was most complimentary of the Wheeler Schools and was pleased that his groups had the opportunity to perform for your student body.

### JESUS Showing At Rogue Theatre

Now Showing! The feature this week at the Rogue Theatre is JESUS—a new motion picture faithfully recreated from the Gospel of St. Luke. The film is just now showing in Amarillo and other larger cities. Dr. Gene Garrison, pastor of the First Baptist Church in Oklahoma City, Okla., made this comment concerning the film; "This film is so realistic, so breathtaking, so true to the Scriptures and to the spirit of Jesus, ministry, you will feel as if you are standing in the presence as he walked on earth." The picture will be at the Rogue through November 29; make plans to take the family.



**RECOGNITION:** Two Kelton girls received awards for the State Poetry Society of Texas for their winning entries. (Pictured l to r) Kerri Clemens, Paula Britt and Denise Green.

### KELTON PUPILS RECEIVE AWARD

Denise Green and Kerri Clemens, students at Kelton Junior High, traveled to Dallas on November 10th to receive awards from the State Poetry Society of Texas for their winning entries in the 1979 state competition.

There are three contests open to middle schools across the state. Miss Clemens placed second in the O'Keefe Middle School contest with a haiku. Kerri is a seventh grade student at Kelton and is the daughter of Mr. and Mrs. Gary Clemens of the Kelton community.

Denise Green, the daughter of Mr. and Mrs. Melvin Green of Kelton, won first place in the

Continued Page 6

### MUSTANG BAND & FLAG CORP OUTSTANDING MEMBERS, SENIORS

Senior Mustang Band Members and outstanding marching band members were recognized recently at the last regular scheduled home half-time presentation. Senior Band and Flag Corp Members are: Bill Stiles, Drum Major, Barbara Kreyling, Co-head twirler, Candy Lewallen, co-head twirler, Cindy Burns, Jonathan Douglas, Kirk Douglas, Bret Mosley, Suzannah McGaughey, Myranda Pierce, Jeanna Stephens, Lynette Gaines, Flag corp, and Jana Johnson, flag corp. Outstanding Marching Band

members for the 1979-80 season are: Sid Whitely, 8th grade, Teresa Martin, 9th grade, Beth Brown, 10th grade, outstanding Flag Corp members include LaTicia Anderson, Marilyn Johnson, Tracy Weaver. Special recognition was also given to Drum Major Bill Stiles and Flag Corp officers Lynette Gines, Lisa Dodd, and Marla Pond.

**PEP RALLY**  
3:30 FRIDAY  
DOWNTOWN

### Burt Admitted To State Bar

Penny Puryear Burt, daughter of Mr. and Mrs. T. G. Puryear, Monday, November 12 was inducted by the States Supreme Court of Texas as a member of the State Bar of Texas. She is now employed as Assistant District Attorney in Pampa, Texas. Her husband, Dr. Howard Burt will move to Pampa at a later date. She is a graduate of St. Mary's Law School in San Antonio, Texas.

# Briscoe News

**Vetola Parker**  
Word is our Wheeler paper will come out earlier due to Thanksgiving day.  
Nov. 13, we had a big frost this morning, the sun is warm and bright looks like a nice day.  
Joey and Risa Keelin are the proud parents of a new baby boy born November 9 in Shamrock hospital, he weighed 8 lbs. 7 ounces they named him Matthew

Travis. Rosalie stayed with the little girls and helped out. We are glad they are doing ok.  
Cliff and Dorothy Ogle are going to Dallas and spend this weekend with thier other daughter Ed and Janice Hurshenrader, they will be back here for Thanksgiving. June Sheffield went also.  
Bea Ogle and Scout Troop 53 wants to thank all the people that

helped in their chili supper.  
Between 18 and 27 these scout girls will be selling calendars all proceeds go to the girl scout troop 53 in Briscoe. So lets buy a calendar help these little girls out.  
Bea said Allison and Briscoe Jr High played ball Monday nite. Allison beat both games.  
Bea is having an old fashion dinner Thanksgiving for her scout girls Nov. 20, how nice of her.  
Donna Hawkins and daughter Brandi spent Monday and Monday night with her parents.  
Emma Jean Meadows and Donna and Brandi visited Mr. Bud Wyant in Abraham home in Canadian Monday and they went to Wheeler visited Mrs. Allen Meadows.  
Talked to Mrs. Vernon Sivage they are at home now doing fairly well.  
Addie Swift is home from a month stay with her sister Mary Powell at Shannon, Texas. Some she and her sister visited while she was there were a brother, in Shannon, visited Voyne Powell and family at Brady, a nephew, Bishop Powell at Ballenger, Jack and Sarah Johnson at Pratt, Kansas.  
Dub and Mary Swift attended a funeral, came by visited Addie Monday.  
Addies sister, Mary Powell came up here visited Addie from Friday to Monday.  
While Mary was here they visited Mike and Brenda Castle on the Jim Shelby place. Mike has bought that place.  
Saturday Fat and Wanda Childress, Clyde Jr and Mary Jane Duke and Stacie Joe went to Okla City, on to Chickasha and attended the Jane Brook Jubilee, for deaf children. Addie said they entertained with Band and singing.  
Bob and Gena Zybach visited Elbert Zybach Tuesday in Northwest Texas hospital in Amarillo. Elbert had surgery a week ago, is doing fairly well.  
Dan and Lou Trimble visited Dans brother David Trimble. He got to come home last Saturday from hospital. He was in hospital over six weeks. He was in a car wreck. Lou said he is doing fairly well now.  
Glycerin is one of the best substance to use, if you wish to put a gloss on the leaves of your plants. Put a few drops of glycerin on a cloth and swab the leaves with it. It is much better than olive oil since it does not collect dust.  
November 16 a real nice spring like day (ideal) and Happy Birthday to myself.  
Clarence and Irene Zybach ate dinner Sunday with Turman and Betty Zybach in Sayre. All of their children were there. So they got to see some grand kids and great grand kids.  
Clarence Zybach visited his brother Elbert Zybach last Monday in Northwest Texas Hospital we sure wish for Elbert a speedy recovery.  
Talked to Mrs. Grady Gilmer, Grady is out of hospital now. They are doing fairly well she said. She had been working out in her yard.  
Visitors Saturday at the Colie Parkers were Ted and Scotty Parker from Dumas.  
Ted said Nona Parker entered Dumas hospital Thursday to have all her teeth extracted. We hope she has good success.  
Marie Wright and Essie Finsterwald went to Pampa and

shopped last Wednesday. Ann Wright spent the weekend with her grandmother Essie.  
I found a whole page of my news left here on my desk, is reason it didn't come out last week about Sophia Heltons sister I just knew I had sent it in so my mistake.  
Beckie Zybach was home from hospital Friday, we are glad she is able to be home and wish for her to keep improving.  
To prevent moth damage to woolen coats or bags with sweaters stored in put whole cloves in the packets, when storing for an off season. They prevent moth damage and have a nice spicy clean odor.  
You can remove burrs from a dogs hair by working oil into the tangle or by crushing the burr with pliers. Crushed burrs lose their holding power and can be combed out.  
Curtis and Jane Ann Hall and Kent visited her daddy, Elbert Zybach in Amarillo hospital Thursday night. They thought he might get to come home soon. That sounds good.  
Ruby has been staying up there with Elbert.  
Word is little Billy Parker was in hospital last weekend, they thought appendicitis.  
They didn't operate on little Billy Parker. Hope he doesn't

## LEARN NOT TO BURN

By Ken Daughtry - Fire Marshall

**Ken Daughtry - Fire Marshall ESCAPE: PART TWO**

4. Agree on a way in which any member of the family can sound an alarm. It is likely that fire may block hallways and prevent you from reaching other bedrooms. POUND on a wall, yell, use a whistle or any other method that will awaken members of the family who are asleep.
5. Instruct family members not to waste time getting dressed or collecting prized possessions. Speed is essential in escaping fire.

6. Make sure that every family member knows how to test a door. If panels or knob are warm, keep door closed and use alternate escape route. If not, brace foot and hip against door and open cautiously to prevent super heated air from blowing it open. If no hot air or smoke greets you, it is probably safe to pass through.
7. If you are forced to remain in a room, stay near a slightly open window. Place towels or clothes in the doorcracks. To reach the other side of a smoke filled room, crawl with your head about 18 inches above the floor. Hang a sheet outside the window to signal for help.
8. Decide on a meeting place outside the house where everyone will assemble as soon as they are outside. Once you have made your escape, never go back inside!
9. Call the Fire Department as soon as possible. Speak clearly and plainly, making sure to give your name and address.
10. In high rise buildings do not use elevators in fire emergencies. They may be inaccessible or may trap you if the power fails.
11. Hold a practice drill once you have set up escape routes, and then repeat drills periodically. If hitches develop in the escape plan, these can be ironed out during drills. Children find them to be fun and it's well worth the time to know that your family has a better than average chance of surviving.

**Rogue Theatre** Wheeler, Tx. 826-3078 Showtime 8:00 PM

**Palace Theatre** Canadian, Tx. 323-5133 Showtime 8:00 PM

Stripped of myth and mystery, the story of the most influential life in history.

# JESUS

...the man you thought you knew.

An Inspirational Films Presentation of a Genesis Project Production

READ THE SPIRE PAPERBACK

GENERAL AUDIENCES All Ages Admitted

Distributed by Warner Bros. A Warner Communications Company

**Wright, Pettit Host Meeting**

"God's Gift: Learning." I grow old learning something new everyday." - Solon.

The Wednesday Study Club met Nov. 14, 1979 at the First National Bank Hospital Room with Mrs. Lewis Wright and Mrs. Shelby Pettit as hostesses. The meeting was opened by the president, Mrs. Harold Nash, minutes were read by Mrs. Harry Wofford, Library report was given by Mrs. Nelson Porter, new business discussed, and Mrs. George Weems gave the Federation Report.

Mrs. Nash introduced Mrs. Larry Hampton, High School Vocational Homemaking Instructor who told us of goals for public school education in Texas and how our own school were teaching these goals to our students. Then in turn Mrs. Hampton introduced her students who gave the program. Cathi Stas gave "Teach Him. But Gently - If You Can," and closed her report with a prayer. "Setting the Stage for Learning" was given by Misty Muse. Kyle Lasley gave "Teaching Rights and Responsibilities." He spoke of the wonderful teaching staff, the beautiful building and the way in which our school building is taken good care of. The Wednesday Study Club would like to say. "Thanks to a Wonderful School System and for sharing your teacher and students with us for a wonderful program!

The club closed with the club collect.

Delicious refreshments were served to our guest Mrs. Larry Hampton, Cathi Stas, Misty Muse, Kyle Lasley, and Mrs. P. A. Martin. Members, Mrs. R. William Brown, Mrs. W. A. Finsterwald, Mrs. Lee Guthrie, Mrs. Jerry Hogan, Mrs. Harold Hill, Mrs. Harold Nash, Mrs. Nelson Porter, Mrs. George Weems, Mrs. Harry Wofford, Mrs. Fred Wood and hostesses Mrs. Lewis Wright and Mrs. Shelby Pettit.

**The Upper Room Living Prayer Center**

If you have a need for prayer, call 1-(815)-327-HOPE

or Toll Free 1-(800)-251-2468

**Mobeetie Saw & Lock Shop**

SAW SHARPENING & LOCKSMITHING

Phone: 845-2353

**R. St. John**  
Mobeetie, Texas

"I'm thankful, are you?"

It is more blessed to give than to receive. In these United States, we are blessed with an abundance of material wealth and can better assume the role of the giver. Let us show our gratitude by continuing our generosity to the less fortunate.

**HAPPY THANKSGIVING**

**RIVES INSURANCE AGENCY**

115 W. Texas - 826-5224 or 826-5202

**Western Insulation Co.**

## BLOWN INSULATION

FREE ESTIMATES - SATISFACTION GUARANTEED -

Thad Snelgrooes 405/256-3070

Cecil Snelgrooes 826-3212

WHEELER, TEXAS

**U-U Electrical Service**

"We handle all your electrical needs"

RESIDENTIAL, COMMERCIAL and CUSTOM

Robert and Laura Underwood, Owners  
Box 269 Wheeler, Texas 79096

Call Day or Night: 826-3150  
If no answer - 845-2442

**Realty of the Southwest**

This one has it all!  
If you are wise you won't delay in seeing this lovely home. Offers three bedrooms, 1 bath with large family room. Back yard is fenced. Don't let this one get away.

**Easy to Love**  
This cozy two bedroom house on Comanche is too-o-o Easy To Love. It has a lovely price also. Come in and see us about it.

**New Home on Reynolds St.**  
This new home has three bedrooms, 2 baths and spacious living area. It's close to town and located on pavement

**Happy Days**  
Are here again when you are proud owner of this comfortable home on Osage. This home features 3 bedrooms, 1 3/4 baths nice family room, & well equipped kitchen/Dining area.  
This neat, well decorated home is in excellent condition.

**Bursting with Potential!**  
This newly Remodeled Restaurant has good monthly income. Another nice Place to eat is in demand in Wheeler. So don't miss this opportunity to invest in the Future - Call us now!

**Two Choice Lots on Mobeetie Street**  
Investment Property - Still remaining 2 - 100'x150' lots.

**WE NEED YOUR LISTINGS!**

John Norman, Broker 806/826-5202-Office  
Don Rives, Salesman 826-3283-Home

**A Special SHOWING & SALE**

of works by

# JEAN GREEN

of Olton

Rustic Landscapes and Windmills, Vanishing Scenes of the Southwest

**Nov. 26 thru 30**  
9 a.m. 'til Closing

**First National Bank in Wheeler**

## OIL NEWS

**INTENTIONS**

HEMPHILL - Wildcat - Napeco, Inc. - Ruby D. Owens #1 - 1320' f E & 1320' f S lines of Sec. 19, A2, H&GN - PD 14,000'

HEMPHILL - Glazier, NW (Morrow, Upper) - Shell Oil Company - Fee #221 - 660' f E & 1980' f N lines of Sec. 21, 43, H&TC - PD 11,050'

HEMPHILL - Feldman (Lower Morrow) - Texas Oil & Gas Corp. - Lockhart #1 - 467' f N & 467' f E lines of Sec. 40, 42, H&TC - PD 12,000'

WHEELER - Panhandle Wheeler - Gulf Oil Corporation - Noel "D" #8 - 2310' f W & 990' f S lines of Sec. 54, 24, H&GN - PD 2575'

WHEELER - Briscoe (Morrow) - H. L. Brown, Jr. - McCray #1 - 467' f N & 467' f E lines of Sec. 2, Camp County Sch. Lnad - PD 15,100'

WHEELER - Wildcat - Trigg Drilling Company, Inc. - Reed #1 - 1545' f E & 1320' f N lines of Sec. 2, 4, B&B - PD 15,700'S COMPLETIONS

HEMPHILL - Hemphill (Granite Wash) - Anadarko Production Company - Flowes "B" #5047 Sec. 47, 1, I&GN - Comp. 9/19/79 - Pot. 18491 MCF/D - Perfs 10788 - 11021 - PBDT 11027' PLUGGED WELLS

WHEELER - Mobeetie (Ellenburger) - Diamond Shamrock Corporation - Hattie M. Lee #1 - Sec. 34, A-5, H&GN - Plugged 10/10/79 - Dry - TD 13,700'

CHAMP

About half the meadowlark's diet is insects harmful to man, and the other half, weed seed.

**SHOP EARLY ONLY 26 SHOPPING DAYS UNTIL CHRISTMAS**

WE OFFER YOU A LARGE SELECTION OF UNIQUE JEWELRY AT AFFORDABLE PRICES.

**All Jewelry At Least 50% Off Some - Even More!**

14K Gold Pendant	14K Gold Ear Rings
.10 Ruby or Emerald 55.00	.10 t.w. Diamond 35.00
.07 Diamond 110.00	.25 t.w. Diamond 75.00
.50 t.w. Diamond 400.00	Ruby, Emerald, Sapphire, Garnet, Aqua or Peridot each 30.00

14K Yellow Gold .07 Ruby, Sapphire, Emerald or Garnet Choice **75.00**

LARGE SELECTION 14K Gold Chains from **25.00** All 1/2 Price

Come See Our Unusual Solid Brass Accessories Towel Bars, Soap Dish, Coat Racks, etc **25% off**

We Have One Of The Largest Selections Of Beautiful Handmade **INDIAN JEWELRY** In The Panhandle. **50% OFF**

**THE Koshare Shop** Free Gift Wrapping Lay-A-Way

1303 ALAN BEAN BLVD. Phone 826-5748 WHEELER, TEXAS Member Texas Jewelers' Association

**FOR A SMALL MONTHLY CHARGE, SHE COULD'VE ANSWERED IT BY THE DRYER.**

Every time Barbara Phillips' phone rings, it's long distance - the distance from her to her phone, that is.

If you spend a lot of time running to the phone, maybe you're in the running for an extension phone. For much less than you expect, you can start reaching for your phone. Whether you're stuck in the laundry room, glued to the TV or deep in sleep. What's more, you know you've got a phone that's as reliable as the phone company. So the next time you run to the phone, call your General Telephone business office. And make it the last time.

"A man can be destroyed but not defeated." Ernest Hemingway

**EXTENSION PHONES**

## TELEPHONE SERVICE NOW AVAILABLE TO EVERYONE

"Telephone service is expected to be available whenever it is requested. The work involved to prepare for the future may be taken for granted by many, but the service will be available — thanks to the work being done today in General Telephone Company's western area for-

casting department", according to J. H. Davis, Memphis division manager. Tom Gearhart, area forecast manager, and his forecasters, Mary Jane Kizer, Pat Grover, Larry Crochet, Bob Levo and Dave Steward carry the responsibility of preparing and main-

taining accurate forecasts. These forecasts are one of the basic tools all departments use for planning and budgeting purposes. They determine when, where, and how much the telephone company must spend to assure that the right quantity of central office equipment and

outside plant facilities are available when needed.

The main step in constructing a forecast is to determine all the factors which affect demand for

telephone service. This required a considerable knowledge of the exchange and its economy. The impact that factors such as the gas shortage or high interest

rates might have on future growth must be considered. Other things that must be evaluated include past growth trends, the housing market activity, and meeting company upgrading objectives. Valuable information can also be obtained by interviewing persons both inside and outside the company. Timing is also important. The more information the forecasters have in advance, the better. Forecasters must be constantly alert to the changing economic conditions.

"In the final preparation, many factors and elements must be analyzed, evaluated, and judged. Once this forecast is complete, equipment must be designed, engineered, and purchased. Manpower must be trained and available for installation and maintenance, and the proper tools and vehicles must be obtained and allocated," Davis explained.

Foresight, imagination, and sound reasoning are essential to good forecasting. Forecasting is essential to General Telephone company. Accurate forecasting will ensure that customers will have telephone service when they want, without creating a surplus of phones being held in inventory by the telephone company.

"The challenge of forecasting is keeping up with the rapidly

changing conditions and striving is a satisfied customer," Davis for greater accuracy. The reward said.

## LINES from LINDA

CEA - Linda Daughtry

### Fireplace Safety Measures

Neglect and careless fireplace use often result in injury or a serious fire hazard.

Use the following "tips" to reduce the threat of accidental burns and fires:

1. Never use flammable liquids to start the fire.
2. Avoid excessive amounts of newspaper to build roaring fires in the fireplace. It's possible to ignite soot deposits inside the chimney by over-building a fire.
3. Charcoal is a great for steaks, but never burn it in a fireplace. Burning charcoal gives off deadly amounts of carbon monoxide, so use it outdoors — never in a fireplace.
4. Keep a metal or glass screen in front of the fireplace to catch flying embers. Flying embers can easily ignite carpet, furniture and other combustible items in the room.
5. Make sure no flammable materials hang down from or

decorate the mantel. A spark from the fireplace can ignite such materials and cause a fire.

6. Always make sure the fireplace fire is out before retiring at night. And, never, never close the damper with hot ashes in the fireplace. With the damper closed, hot ashes build up heat and may flare up and ignite the room while the family sleeps.

7. Use man-made logs according to directions on the package. Never break apart a man-made log as a means of quickening a fire.

8. Check both the chimney and the fireplace for defects and potential problems every couple of years, especially is the fireplace receives constant use during the winter. Loose or fallen brick, cracker or broken flue lining, excessive soot accumulation and obstructions in or near the chimney are among the defects commonly found.

## Baby Shower Honors Brown

The Phi Theta Teta Chapter of Beta Sigma Phi gave a baby shower in the honor of Mrs. Becky Brown at Rhonda Wallace's house. Serving as co-hostesses were Donna Bradstreet and Melody Velasquez. Those attending the shower were: Donna Bradstreet, Betty Chapman, Robbie Killingsworth, Kim Markham, Kim Vise and Rhonda Wallace. After the baby shower we had a brief business meeting. Items open for discussion were how much of our proceeds off of the food processor raffle to send to girls town, election of a new recording secretary was held. Rhonda Wallace was elected. The next meeting will be held November 19 in the home of Melody Velasquez.

Wheeler Public School

## MENU

### MONDAY

#### Breakfast

Hot cereal, Toast, Juice and Milk

#### Lunch

Burritos, French fries, Carrot sticks, Cheese sticks, Cookies, and Milk

### TUESDAY

#### Breakfast

Hot biscuit, Bacon strips, Honey, Juice, and Milk

#### Lunch

Barbecue franks, Mashed potatoes, Creamed peas, Roll, Dessert, and Milk

### WEDNESDAY

#### Breakfast

French toast, Syrup, Juice, and Milk

#### Lunch

Soup, Sandwich, Lettuce, Pickles, Crackers, Dessert, and Milk

### THURSDAY

#### Breakfast

Cinnamon roll, Juice, and Milk

#### Lunch

Meatloaf, Mashed potatoes, Mixed vegetables, Roll, Dessert, and Milk

### FRIDAY

#### Breakfast

Donuts, Juice, and Milk

#### Lunch

Salsbury steak, Brown gravy, Buttered rice, Dessert, and Milk

## Pucusso's Ceramics & Arts

105 West 5th  
WHEELER TEXAS  
826-3351

GREENWARE - BISQUE

FIRING-INSTRUCTION

DUNCAN SUPPLIES

Mon. & Thurs. Nights

ADULT SESSIONS - 7-9 P.M.

## Dr. M. V. Cobb

CHIROPRACTOR

Specializing in The Examination And Treatment of Spinal And Nervous Disorders

256-2133

310 South Main

SHAMROCK, TEXAS



## DO YOU KNOW A CHILD WITH A HANDICAP?

In One Minute You May Change a Lifetime

Every handicapped child, from ages 3 through 21, has the right to a free public education. It's a state law, but many people are unaware of this fact.

If you know a handicapped child who is NOT receiving appropriate educational services,

Call Collect

806-376-5521

or complete & return the Referral Form below.

Region XVI Education Service Center can assist in obtaining the appropriate services for a handicapped child. Referral & Resources can be provided through the Direction Service Component. Certain Supportive Services in cooperation with your local school district can be provided by the Direct Service Component.

Please take one minute of your time to either fill out the attached form, call the above phone number, or contact the Special Education Director of your local school.

### REFERRAL FORM

Name of Child \_\_\_\_\_ Age \_\_\_\_\_

Name of Parent / Guardian \_\_\_\_\_

Mailing Address \_\_\_\_\_

City \_\_\_\_\_ Zip \_\_\_\_\_ Phone ( ) \_\_\_\_\_

Name of Person Making Referral \_\_\_\_\_

Telephone of Person Making Referral ( ) \_\_\_\_\_

(By law, all information is held in strict confidence)

Mail Referral Form to:  
Region XVI Education Service Center  
Attn: Special Education Director  
P. O. Box 30600 - Amarillo, TX 79120

Title VI B Education of the Handicapped Act

## FIRST FEDERAL

Savings & Loan Association

P. O. BOX 109 — CHILDRESS, TEXAS 79201 (817) 937-2514  
BRANCH OFFICES  
MEMPHIS ..... WELLINGTON

## A Brutal Offense...



If football taught me anything, it was to be prepared. So I try to plan ahead for life's onslaughts and emergencies. That's why I make weekly deposits into my savings account. It's a great defense for anything that comes my way.



SERVING THIS AREA SINCE 1934



THRIFTWAY INVITES YOU TO WATCH MONDAY NIGHT FOOTBALL AND PLAY

## TOUCHDOWN DOLLARS

YOU COULD WIN UP TO

# \$1,000

Odds

PRIZE VALUE	NO. OF PRIZES	ODDS FOR EACH PRIZE
\$1000.00	1	1:10,000 (1:10,000)
\$100.00	10	1:1,000 (1:1,000)
\$10.00	100	1:100 (1:100)
\$1.00	1,000	1:10 (1:10)
TOTAL	1,111	1:10 (1:10)

NO PURCHASE NECESSARY

PICK UP A TICKET EACH TIME YOU SHOP THRIFTWAY

- All White TURKEY ROAST ... 2 lb. Box ... \$3.99
- Wright's Dry Cured WHOLE HAMS ... lb. ... \$1.39
- White & Dark TURKEY ROAST ... 2 lb. Box ... \$2.99
- Kahn's Bnls. Half or WHOLE HAMS .. Portion \$1.99 - lb. \$1.89
- USDA Grade A BAKING HENS ... 4-6 lb. Avg. ... lb. .59
- SUPER SELECT PORK BOSTON BUTTS ROAST ... LB. \$1.19
- HEAVY GRAIN FED BEEF PRIME RIB ROAST ... LB. \$2.19
- HEAVY GRAIN FED BEEF BONELESS STEAK RIBEYE ... LB. \$3.99
- GUARANTEED 73% LEAN FRESH GROUND BEEF ... LB. \$1.29

POLY BAG IMPERIAL POWD. OR STA-SOFT

## BROWN SUGAR

# 69¢

2 LB. BAG

ALL PURPOSE GOLD MEDAL FLOUR

# 589¢

5 LB. BAG

## TURKEYS

18-22 LBS. AVG. LB. **76¢**

- WRIGHT'S HICKORY SMOKED SLICED SLAB BACON ... LB. **89¢**
- KAHN'S HICKORY GROVE BONELESS CENTER CUT SLICED HAM ... LB. **\$2.39**
- PORK LINK SAUSAGE FROM HORMEL LIL' SIZZLERS ... LB. **99¢**
- COUNTRY PRIDE HICKORY SMOKED 8-10 LBS. AVG. TURKEYS ... LB. **\$1.39**

### FROM OUR SHELVES

- DEL MONTE WHOLE BLUE LAKE GREEN BEANS ... 3 16 OZ. CANS **\$1.00**
- OCEAN SPRAY CRANBERRY WHOLE STRAINED SAUCE ... NO. 300 CAN **39¢**
- SHURFRESH WHIPPING CREAM ... 1/2 PT. CTN. **39¢**
- CAMPBELL'S CREAM OF MUSHROOM SOUP ... 3 10 1/2 OZ. CANS **89¢**
- FOR PIES LIBBY'S PUMPKIN ... NO. 303 CAN **37¢**
- 25' OFF LABEL BAKER'S ANGEL FLAKE COCONUT ... 14 OZ. BAG **\$1.19**
- KRAFT MINIATURE MARSHMALLOWS ... 10 1/2 OZ. BAG **33¢**

### DAIRY VALUES

- MARGARINE QUARTERS PARKAY ... 1 LB. BOX **49¢**
- PHILADELPHIA CREAM CHEESE ... 8 OZ. BOX **69¢**
- CHEESE SPREAD VELVEETA ... 2 LB. BOX **\$2.59**
- FILLSBURY CRESCENT ROLLS ... 8 OZ. CAN **69¢**
- PIMIENTO/PLAIN/JALAPENO CHEEZ WHIZ ... 8 OZ. JAR **99¢**
- SHURFRESH SOUR CREAM ... 1/2 PT. CTN. **39¢**

### SHELF SPECIALS

- REYNOLD'S HEAVY DUTY ALUMINUM FOIL ... 18" x 25' ROLL **79¢**
- LONG BURNING STERNO LOGS ... EA. LOG **79¢**
- KRAFT MARSHMALLOW CREME ... 7 OZ. JAR **39¢**
- TENDERCRUST BROWN & SERVE ROLLS ... 2 12 CT. PKG. **79¢**
- KLEENEX DINNER NAPKINS ... 50 CT. PKG. **59¢**
- DELSEY BATHROOM TISSUE ... 4 ROLL PKG. **89¢**
- FACIAL TISSUE WHITE ASSORTED KLEENEX ... 200 CT. BOX **69¢**

PURE VEGETABLE SHORTENING

## CRISCO

# \$1.89

3 LB. CAN

ALL VEGETABLE WESSON OIL

# \$1.89

48 OZ. BTL.

### HOLIDAY FIXIN'S

- TURKEY COOKING 18" x 24" PRESTO BAGS ... 2 CT. BOX **69¢**
- CARNATION EVAPORATED MILK ... TALL CAN **43¢**
- RED LABEL KARO SYRUP ... QT. BTL. **\$1.29**
- SUGARY SAM SWEET POTATOES ... NO. 3 SQUAT CAN **69¢**
- SWANSON'S CHICKEN BROTH ... 2 14 OZ. CAN **49¢**
- PIONEER WHITE/YELLOW CORNBREAD MIX ... 24 OZ. PKG. **59¢**
- PEPPERIDGE FARM CORNBREAD/HERB MIX STUFFING ... 8 OZ. PKG. **69¢**
- BETTY CROCKER SUPER MOIST LAYER CAKE MIX ... 18 OZ. BOX **69¢**
- BETTY CROCKER READY-TO-SPREAD FROSTING ... 16 OZ. CAN **99¢**
- BIG BATCH SUGAR-PEANUT BUTTER-OATMEAL COOKIE MIX ... 2 LB. BOX **\$1.69**
- KRAFT GRAPE JELLY ... 2 LB. JAR **99¢**
- KRAFT MACARONI & CHEESE DINNERS ... 3 7/4 OZ. BOXES **\$1.00**
- NABISCO'S RITZ CRACKERS ... 16 OZ. BOX **89¢**
- SUNSHINE HONEY GRAHAMS ... 16 OZ. BOX **69¢**
- MILKY WAY-SNICKER-3 MUSKETEERS CANDY BARS ... 4 BAR APAK **89¢**

MARYLAND CLUB COFFEE

# \$2.69

1 LB. CAN

### AJAX SPECIALS

- AJAX LAUNDRY 15' OFF LABEL DETERGENT ... GIANT BOX **\$1.19**
- AJAX DISHWASHING 15' OFF LABEL AJAX LIQUID ... 22 OZ. BTL. **69¢**
- AJAX LIQUID ALL PURPOSE 25' OFF LABEL CLEANER ... 28 OZ. BTL. **99¢**
- 4' OFF LABEL AJAX CLEANSER ... 14 OZ. CAN **29¢**
- 30" ASSTD. CHRISTMAS GIFT WRAP PAPER ... 4 ROLL PKG. **\$1.79**
- 26" ROLL ASSORTED GIFT WRAP PAPER ... EA. ROLL **99¢**
- ASSORTED COLORS JEWEL BOWS ... 25 CT. BAG **69¢**

BAKER'S CHOCOLATE FLAVORED BAKING CHIPS

# 89¢

12 OZ. BAG

CENTRAL AMERICAN BANANAS

# 22¢

LB.

- WASHINGTON D'ANJO PEARS ... LB. **29¢**
- WASH. GOLD DELICIOUS APPLES ... 3 LB. **\$1.00**
- HONDURAS LARGE COCONUTS ... EA. **59¢**
- CALIFORNIA WONDER BELL PEPPERS ... LB. **49¢**
- LARGE TIE GREEN ONIONS ... BU. **23¢**
- PORTALES MARYLAND SWEETS YAMS ... LB. **29¢**
- YELLOW SWEET ONIONS ... 2 LB. **25¢**
- LARGE EMERALD WALNUTS ... LB. **89¢**
- OCEAN SPRAY CRAN-BERRIES ... 1 LB. PKG. **59¢**
- CALIFORNIA PASCAL GREEN CELERY ... LB. **19¢**

### FROZEN FOODS

- COOL WHIP TOPPING ... 8 OZ. CTN. **59¢**
- JOHNSTON FROZEN PIE SHELLS ... 2 CT. BOX **49¢**
- PET RITZ PUMPKIN PIES ... 24 OZ. BOX **79¢**
- PET RITZ Mince Pies ... 24 OZ. BOX **99¢**
- SHURFINE SPEARS OF BROCCOLI ... 10 OZ. CTN. **53¢**
- SHURFINE CHOPPED BROCCOLI ... 10 OZ. CTN. **39¢**

### HEALTH & BEAUTY AID SAVINGS

- 40' OFF LABEL MOUTHWASH ... 18 OZ. BTL. **99¢**
- SCOPE ... 11 OZ. BTL. **\$1.99**
- HEAD & SHOULDERS LOTION SHAMPOO ... 11 OZ. BTL. **\$1.99**
- NEW SURE SOLID STICK REG. UNSCENTED DEODORANT ... 2 OZ. SIZE **\$1.49**
- V-O-S HAIR SPRAY ... 7 OZ. CAN **\$1.39**
- DURACELL "D" BATTERIES ... 2 CT. PAK **\$1.19**
- DURACELL "C" BATTERIES ... 2 CT. PAK **\$1.19**

7 PIECE SET-3 DECORATOR PATTERNS BY POINTERWARE

## DANYA COOKWARE

# THRIFTWAY

WE ACCEPT FOOD STAMPS

PRICES EFFECTIVE Nov. 23-24, 1979

# Want Ads

**HELP WANTED**  
**WAITRESS WANTED**  
 Langley's Restaurant, Mobeetie, Phone: 845-3871. rtn  
**WAITRESS WANTED:** Apply at Sparlin's Restaurant. rtn

**PIANO FOR SALE:** 600 Kiowa, Wheeler, 826-3104. 2tp  
**FOR SALE:** Part Holstein cow would make good milk cow or nurse cow. 826-5812. 2tp

**House Moving**  
**SPARLIN'S - 826-5898**  
 Wheeler, Texas

**OIL AND GAS LEASES**  
**OIL AND GAS LEASES**  
 I am interested in buying your OIL and GAS LEASES, MINERALS and ROYALTY. General Hall, Minco Oil and Gas Co. Box 2317, Pampa, Texas 79065. Phone: 669-6805. rtn

**OIL & GAS LEASES**  
 I am interested in leasing your Oil & Gas Leases, also purchasing your Minerals. R. C. Callan Box 7473, Amarillo, TX. 79109 Phone: 906/352-7891

**OIL LEASES**  
 We buy oil leases, minerals & royalty. Top dollar pay. 514 Permian Bldg. Midland, Texas 79701, Ken Taylor, 915/-686-3479. Call Collect.

**FOR SALE:** Corner Post Crisoo treated under pressure. 5'x6'x8 1/2", \$7.50 each. Call 323-5665. rtn

**ALLISON:** Trailer Spaces for Rent. Call 375-2433 between 9:00 A.M.-3:00 P.M. Monday through Friday.

**HOLCOMB TRAILER PARK**  
 West 12th Street  
 Phone: 806/826-5810 or 826-5942

**FOR SALE:** 1963 Ford pick-up, 30,000 miles, good condition. Phone 826-3224. rtn

**FOR SALE:** Registered Thoroughbred horses, race bred yearlings, weanlings & mares in foal. 806/256-2361 after 6 p.m.

**HARRISON Gun Sales**  
 Rifles, Pistols, Shotguns and Ammunitions  
 Open 12-6-All Day Sat.  
 510 Osage Ph. 826-3269

**FOR SALE:** 1977 14'x60' Way-side Mobil Home, 2 bedroom, one bath, completely furnished, including dishwasher, stove and Refrigerator. Excellent condition. Pay equity and take up payments. 323-8225, Canadian. rtn

**R & D ENTERPRISES**  
**AMWAY Products Available**  
 Will Deliver Anytime  
 Call: 826-5746  
 826-3278

Tommy Bolin, **MASONRY CONTRACTOR.** Pampa, Texas, 665-6217, or Wheeler, 826-5259.

**Employment Opportunities**  
**EARN \$1000 WEEKLY!**  
 Earn \$1000 Weekly or more, working on the Alaskan-Canadian Gas Pipeline. All occupations, men and women. For application information, write to AMERICAN JOB OPPORTUNITIES, P. O. Box 1068, Azusa, CA 91702

An OHIO OIL CO. offers PLENTY OF MONEY plus cash bonuses, fringe benefits to mature individual in The Wheeler area. Regardless of experience, write C. C. Read, Pres., American Lubricants Co., Box 696, Dayton, Ohio 45401.

**FOR SALE:** New 16 ft. W W Stock trailer full top and brakes, 826-5812. 2tp

**CLASSIFIED RATES**  
 All classified ads must be paid in advance, except for open ledger account customers. Charges are 11c per word. Minimum charge is \$1.10. Card of Thanks charges will be \$2.25.

**ADVERTISING DEADLINES**  
 Classifieds . . . 5:00 p.m. Monday  
 Display . . . . . 5:00 p.m. Monday

**Full or Part Time RN's Needed to Rotate Shifts.** Excellent salary, retirement, fringe benefits. Hemphill Co. Hospital. Canadian Texas, Call Collect the Director or Assistant Director of Nursing, 802/323-6422. Equal opportunity Employer. rtn

**TRAILER SPACES:** \$50, per month plus utilities. Black Gold Trailer Park, 826-5874. rtn

**FOR SALE:** Two bedroom house 75 ft. lot, paved front, carport, storm cellar. Paul's Real Estate, Paul Topper. rtn

**FOR SALE:** 2 bedroom house and trailer park on 1/2 block; excellent income property; Paul's Real Estate, Paul Topper, 826-5237.

**FOR SALE:** 24'x60' doublewide Mobile Home, 3 bedroom, 2 bath. Reasonable. Paul's Real Estate, Paul Topper. rtn

**FOR SALE:** Oil Field Steamer. 65 horse power mounted on 2 1/2 ton '71 International Truck, ready for work. \$8500. Phone: 66-2585 or 665-3893. 2tc

## THE BUSINESS DIRECTORY

**MEMBER TEXAS PRESS ASSOCIATION**  
 1979  
 Published Every Thursday at Wheeler, Texas, By . . .

**THE WHEELER TIMES**  
 P.O. Box 187  
 Phone: 826-3123  
 Entered as second-class matter December 18, 1933, at the Post Office at Wheeler, Texas 79096, under the act March 3, 1879.

**Louis C. Stas, Owner and Publisher**

**SUBSCRIPTION RATES:**

Wheeler County . . . . . \$6.50  
 Outside County . . . . . \$7.50

**Clifford Drafting Service**  
 PIPE - MECHANICAL MAPS - LAYOUTS  
 Call: (806) 826-3129  
 Wheeler, Texas

**The Cattleman's Feed Service**  
**LOOMIX**  
 Since 1905  
 Liquid Feed Supplement  
 ♦ Natural Protein  
 ♦ Highest Energy  
 ♦ Consumption Control  
 ♦ Fully Patented  
**TED NELSON**  
 Phone: 826-5650

**GUARANTEED AUTO GLASS INSTALLATION & Body Repair**  
**CROSS CAR CENTER**  
 Phone: 826-5515  
 Wheeler, Texas

**STORM-SCREEN WINDOWS**  
 Permanent year-round protection. Changeable from inside. Easy to clean, prowl-proof. Eliminates drafts. . . . Cuts fuel bills. . . .  
**WHEELER LUMBER CO.**  
 Phone: 826-5543 Wheeler, Tex.  
 Fine Service for Fine People

Let Me Write It . . .  
**GEO. RICHARDSON**  
 All Types of INSURANCE

**Dr. Marion Roberts**  
 OPTOMETRIST  
 Phone: 669-3333  
 112 W. Kingsmill  
 Pampa, Texas

**DRILLING**  
**Banks Water Well Service & Drilling**  
 Mobeetie, Texas  
 Phone: 845-3431

**MOTORCYCLE FOR SALE:**  
 Suzuki TS-100, Good condition. Phone after 5:00, 826-3221.

**CAKES**  
**CATERING SERVICE FOR Wedding & Anniversaries**  
 Cathy Hunt—375-2391  
 Kay Luttrell—375-2238  
 Also Cakes for all Occasions

**FOR SALE:** A great Christmas present. Hanimec 35 MM camera with 55 MM f1.7 lens, 2 X converter and Hanimec X 333 flash. Complete with leather carrying case. Excellent condition. Call 826-5294.

**FOR SALE:** Springer cows, Dwight Erwin, Phone: 826-5812. 10tp

**FREE! 3 Puppies**  
 Don Rives.  
 Phone: 826-5202  
 or 826-3283 after 6.

**JUST ARRIVED** 8-Tack or Casette Tapes at \$3.99 and Records \$2.99. L. F. Repair.

**PRAIRIE HAY FOR SALE**  
 Contact Britt Ranch  
 826-5239

**LADY VENUS:** Aloe Vera Cosmetic's now available at the City Cleaners & Fabrics. Call for free facial and skin treatment. 826-3268. rtn

**Wholesale Jewelry Company Expanding Nationwide**  
 Needs part and full time sales and management personnel. Will train — High Commissions. Call for appointment only.  
 826-5202 (day)  
 826-3278 (after 5 P.M.)

**LET FX BACTERIA** help clean your Sptic Tank the Easy Way—\$6.98. Tree Roots Removed from Sewer Lines. Sinks opened.  
**Wheeler Lumber Company**  
 Wheeler, Texas

**WILL HAUL**  
**TREE LIMBS FURNITURE JUNK**  
 Will haul after school or Saturdays.  
 Day Phone: 826-3123  
 Evenings & Saturdays Phone 826-3221

**NEED ADDED INCOME?**  
 Mobeetie, Texas  
 Live in 3 bedroom home and have income from trailer park, 9 trailer spaces rent \$45.00 per month each. All utilities under ground. Call Dale Garrett, 835-2777 or Shed Realtors & Assoc., 665-3761, Pampa, Texas. 4tc

**FREE — FREE —**  
 Bic Lighter when we show you our quality portable storage building. We sell all sizes & can del. your new finished office in a week.  
**PACK RAT,** (405) 225-6545, By Flamingo, Elk City.

**CEILING FANS**  
 Metal blades, five speeds at unbelievable price for quality. Price \$149.50. Lee Hardware. 2tp

**GIFT WRAPPING**  
 All Occasions  
 Plain or Fancy  
 Mona Guinn  
 1000 Alan L. Bean Blvd.  
 Phone: 826-5945

**FOR SALE:** 3-4 bale cotton Trailers, Jimmy Hill, 826-3094. 1t

**FOR SALE:** '76 Ford Truck with new 225 Cat. engine, 20 ft. dump trailer. Phone: 405/526-3550 or 526-3171. 2tp

**BABYSITTING:** Children over 2 years old, 826-3054, \$6.00 per day. 2tp

**FOR SALE:** Couch & two swivel rockers. Vida Brown, 604 S. Canadian, Phone: 826-5823. 2tp

**BABYSITTER NEEDED** for boys ages 4 and 7 months from 8 a.m. to 4 p.m. Monday thru Friday. Call 6-5537 (days) or 6-5745 after 4 p.m. rtn

**Holiday Baking:** Pies, Cakes, Candies & Cookies. Call —06-256-3069. Judith Fisher. 2tc

**WHEELER REDI-MIX**  
 REDI-MIX CONCRETE SAND  
 Washed Gravel—All Sizes  
 Office Hours: 7:30 to 5:00  
 Phone 806—826-3223

**CUSTOM DRAPERIES**  
 Swags, Cornices, Shutters — WE INSTALL FREE —  
 Telephone: 256-3652  
**Brannons Decorators**  
 Shamrock, Texas 79079

**Public Notice**  
 Notice is hereby given that North Plains Electric Cooperative (The "Utility") intends to change rates for electric utility service effective December 24, 1979, or as soon thereafter as permitted by law. The changes are applicable to all areas to which the utility provides electric utility service. All classes of customers are affected by the proposed changes. The proposed rates will effect a \$451,506 increase in the operating revenues of the utility based upon the twelve-month period ending December 31, 1978 as the adjusted test year. Implementation of the proposed changes is subject to approval by the appropriate regulatory authority. A statement of intent including the proposed revisions of tariff and schedules and a statement specifying in detail each proposed change, the effect the proposed change is expected to have on the revenues of the utility and the classes and numbers of utility consumers affected is on file with the public utility commission of Texas. The statement of intent is available for public inspection at the general office of the utility located at (3/4 Mile North) HWY. 83, P.O. Box 1008, Perryton, Texas 79070.

**Earnest Casstevens Attorney for the Utility**

**Public Notice**  
 Pursuant to TEX.REV.CIV.STAT.ANN. art. 1446c, Sec. 43, High Plains Natural Gas Co. hereby gives notice of its intension to raise residential and commercial rates in the unincorporated portions of Wheeler County and the incorporated area of the City of Mobeetie effective November 20, 1979 to:

Monthly use 0-1 mcf \$3.50  
 2-1200 ncf 77.4c per mcf plus intracompany charge.  
 over 1200 mcf 72.4c per mcf plus intracompany charge.  
 The intra company charge is established for High Plains transmission system by the Rail Road Commission of Texas. It is currently 1.3255 dollars per mcf plus 95 percent or less 100 percent of the amount by which High Plains' weighted average cost of gas is more or less than \$1.045 per mcf.

Information concerning the proposed change can be obtained from the High Plains Natural Gas Company office at 109 S. Main St., Canadian, Texas Phone 806-323-6464 or by contacting the Director of Gas Utilities Div. Railroad Commission on Texas, Post Office Drawer 12967, Austin, Texas 78711, Area Code 512-445-1145.  
**High Plains Natural Gas Company**

## Court Records

**LIST OF INSTRUMENTS FILED IN THE OFFICE OF THE COUNTY CLERK OF WHEELER COUNTY, TEXAS FROM NOV 12 THROUGH NOV. 16, 1979**  
**NOVEMBER 12, 1979**  
 AFF—James Brothers to Ex Parte 11-1-79 S 1/2 Sec 71 Blk 17  
 AOL—W M Bryan, Inc to Tennaco Oil Co 7-15-75 S 1/2 Sec 18 Camp Co Sch Land  
 DT—Warren Chisum et ux to Wyolene Curtis 10-31-79 Land not set out  
 PARTIAL RMML—Lewis Construction Co Inc to Robert Carl Glutia et ux 9-28-79 S100ft Blk 53 Wheeler, Stanley Addn  
 2 OL—Minco Oil and Gas Co et al to American Public Co 9-13-79 SW 1/4 32 A-4  
 OL—Ward S Merrick et al to American Public Energy Co 10-12-79 S 1/2 32 SE 1/4 29 A-411  
 OLS—Paul C Teas III et al to American Public Energy 9-12-79 SE 1/4 Sec 32 Blk A-4  
 RDT—RVL—J L Naylor et al to Charles Bell et ux 11-8-79 SEC 13 Blk 23  
 RDT—Tom Montgomery to J C McAnear et ux 11—1979 Pt Lot 1 Blk LXXIV Shamrock  
 D—Chleo Davis et ux to Lee Roy Taylor et ux 11—1979 N60' Lot 4 E13 1/2 of N60' Lot 1 Blk LXXIV Shamrock  
 AGREE—Foster Pet Corp to Minco Oil and Gas Co et al 10-29-79 SE 1/4 Sec 13 Blk A-4  
 OL—Eva L Fry Mahin to Cotton Pet Corp 11-5-79 W 1/2 SE 1/4 SEC 7 Blk A-4  
 OL—A W Burrell et ux to P O Cross 10-24-79 NW 1/4 Sec 12 Blk A-4  
 DT—H L Brown jr to Fort Worth Natl Bk 10-16-79 57, 58 A-4; Sec 1 Blk 3 B&B Sur 4 Camp Co Sch Land  
 DT—Ather Wayne Burrell et ux to United States of America 11-12-79 S 1/4 34 SE 1/4 50 B 13  
 DT—Circle Dot Ranch, Inc to United States of America

**HAVE YOU??**  
 Recently purchased a new tractor or planning to soon.  
 Ask your Co-op now for complete details on the new, expanded

**COOP PETROLEUM WARRANTY**

**3-Year or 3,000 Hr. for New Tractors (Agricultural Use Only)**

Another service offered by **WHEELER CO-OP** and **Farmland Industries, Inc.**

**FSC BALANCED NUTRITION FREE CHOICE**

✓ ENERGY ✓ PROTEIN ✓ MINERALS ✓ VITAMINS

BALANCED nutrition is easy with the FSC 4 or 5 Point Program . . . and the proper balance between all the minerals, vitamins, energy and protein is the most important part of beef cattle production . . . FREE CHOICE feeding of MOREA® Energized Protein Supplement, MORANOL® Energized Supplement and CATALYX® Minerals and Vitamins provides the balance you are looking for . . . THIS PROGRAM WORKS . . . Write today for free information.

**5-POINT FEED CO.**  
 — 1 1/2 Miles South of Wheeler —  
 PHONE: 806/826-5887

MOREA, MORANOL, and CATALYX are registered trade marks of Feed Service Corporation

**SUPER-SOLE SAFETY BOOTS**

• LONG-WEARING  
 • SLIP-RESISTANT  
 • OIL-RESISTANT

B	C	D	E
8 1/2-14	8 1/2-12	6-14	5-13

**RED WING B.J.'s WEARHOUSE**  
 410 South Main Wheeler, Texas

**WHEELER COUNTY, TEXAS**  
**Statement Of Receipts And Disbursments Of All Funds For The Three Months Ended OCTOBER 31, 1979**

	BALANCE	RECEIPTS FOR YEAR	BALANCE PLUS RECEIPTS	DISBURSEMENTS FOR YEAR	BALANCE
Jury	\$ 1,772.70	\$ -0-	\$ 1,772.70	\$ 704.00	\$ 1,068.70
Road and Bridge General	65,077.42	6,310.96	71,388.38	9,387.28	62,001.10
Precinct #1	50,314.04	1,350.28	51,664.32	7,923.83	43,740.49
Precinct #2	24,821.95	1,404.69	26,226.64	1,829.44	24,397.20
Precinct #3	20,142.95	1,265.26	21,408.21	1,931.68	19,476.53
Precinct #4	46,761.38	1,397.27	48,158.65	2,820.01	45,338.64
County General	215,346.85	14,573.68	229,920.53	47,884.30	182,036.23
Court House and Jail	2,411.02	-0-	2,411.02	-0-	2,411.02
Lateral Road	133,288.81	749.60	134,038.41	33,457.46	100,580.95
Permanent School Fund	587.79	-0-	587.79	-0-	587.79
Revenue Sharing	17,877.13	13,299.00	31,176.13	4,315.07	26,861.06
Total	\$ 578,405.04	\$ 40,350.74	\$ 618,755.78	\$ 110,253.07	\$ 508,502.71

**JERRIE MOORE, County Treasurer**

### ELECTRICITY RATES DECREASE ONE-HALF CENT

The base rate for electricity for most of Southwestern Public Service Company's customers in Texas went down one-half cent per kilowatt hour October 1.

The reason is that SPS's winter rates went into effect at that time. During the summer months — June, July, August and September — the base rate for residential service is 2.75 cents per kilowatt hour for all

KWH after the first 30. The rest of the year, or during the winter months, the base rate after 30 kilowatt hours is 2.25 cents per KWH.

A customer who used 500 kilowatt hours in September received an electric bill for \$30.94 plus city tax. His bill in October for 500 kilowatt hours would have been \$27.08 plus tax.

Not all of the savings this

customer would realize would come from the lower winter rate, however. SPS paid less for its fuel in October than it did in September, so these savings were passed on to the customers.

The fuel cost portion of the September bill was \$13.52 while the October fuel cost portion dropped to \$12.02.

For a customer who uses 500 kilowatt hours per month, the winter base rate saves him \$2.36 over the summer rate.

Here's the way the bill is broken down:

September (summer rate)  
Base rate: 1st 30 KWH \$4.50

Next 470 KWH	12.92	ating a kilowatt hour would be less.
Total base rate	\$17.42	
Fuel Cost (factor \$.027047)	\$13.52	
Total Electric Bill (less City tax)	\$30.94	
October (winter rate)		
Base rate:		
1st 30 KWH	\$4.50	
Next 470 KWH	10.56	
Total Base Rate	\$15.06	

For a customer who uses 500 kilowatt hours per month, the winter base rate saves him \$2.36 over the summer rate.

Here's the way the bill is broken down:

September (summer rate)  
Base rate: 1st 30 KWH \$4.50

Southwestern Public Service Company's base rates for winter months are lower than for summer months because the Texas Public Utilities Commission requires all electric utilities in this state to design their rates this way.

SPS customers use more electricity in the summer months because of air conditioning and irrigation. The summer load determines the amount of generating capability that SPS must have. If SPS customers used the same amount of electricity in the winter months, the cost of gener-

**NORTHWEST OKLAHOMA STORM SHELTER & BASEMENT CO.**  
CONCRETE SHELTERS & BASEMENTS  
FAIRVIEW  
405/227-4357

**WONDERFUL Fall Ladies Casual Clothes**

**TIMES FASHIONS**  
110 E. Texas

**LEWALLEN INSURANCE AGENCY**  
ALL-LINES

845-2951 826-5719  
1st State Bldg. 114 Texas St.  
MOBETT, TEX. WHEELER, TX.

**THE SHIRT SHACK**  
114 East Texas St  
Letters & Transfers  
Jersey & T-Shirts  
Candy & Sherri Lewallen

**Church of the Nazarene**  
Pastor — Harold Wayne Moore  
Sunday School 10:00 A.M.  
Sunday Worship 11:00 A.M.  
Sunday Evening 7:30 P.M.

Phone: 826-5952

**BUTCHERING & PROCESSING PRICES**

Beef processed, double wrapped 16¢ per pound  
1¢ A Pound for Butchering

Pork Processing including curing  
Double wrapped 20¢ per pound  
\$4.50 a head for butchering

We butcher Monday thru Friday 8 to 12 A.M. except holidays.

**CALL FOR QUARTER—HALF—WHOLE BEEF PROCESSED**

WE NOW HAVE CUTS OF PORK AND BEEF FOR SALE

**SHAMROCK SLAUGHTER PLANT**  
North of City Phone: 256-2241  
Closing at Noon on Saturday

### Allison News

**By Karen Keys**

Willis Harrison and sons spent the weekend with the Burch Harrison.

A large crowd attended the Seniors and Juniors Thanksgiving supper Friday night. After supper a Walt Disney movie was seen.

Bob and Mary Lou Markham and Clydene Hall was in Amarillo Tuesday for Bobs Check-up.

The Bill Sheltons had an early Thanksgiving dinner Sunday and had a nice visit with their relatives.

Ruth Chadwick, Rhonda and Cara Puryear went shopping in Elk City Saturday. Visiting with Julie Boydston and seeing the new little one was Ruth Chadwick, Rhonda and Cara Puryear.

Rhonda and Billy McWhorter had dinner with Ruby, Susan and Lisa and Craig Sunday.

Jane Dukes, Teresa and Sara Powledge went shopping Saturday at Elk City.

The Gary Halls had Sunday dinner with her parents the Allen Reynolds.

Sunday dinner guest in the Lloyd Jones home were the Harold Jones, The Terry Jones from Wheeler, Bill and Kay Donaldson, Jimmy, Dawn, and the baby Donaldson, and the Lee Halls.

Karen Keys and children went to Cheyenne Saturday to see her sister Carol Thomas an children and then went shopping at Elk City.

The Singles Supper Club met

Saturday at Edith Donaldsons. Those present were: Ona Black, Edith Levitt, Lennie Lewis, Nealie Miller, Doris Newsom, Alene Hall, and Nettie Walsh. This was their Christmas party. The next meeting will be January 19 with Alene Hall as Hostess. Ona Black has the program.

Doris Newsom and Edith Donaldson went visiting Ruben and Edna May Sunday.

Edna May had a birthday supper for Edith Donaldson Tuesday night. Those helping Edith celebrate were Doris Newsom and Edith Levitt.

Visiting in the Ed Walker home Sunday were Eddy Walker and family, Steve Walker and family from Wheeler, and Linda Carnagey from Amarillo and Sue Montgomery from Cheyene.

### Court Records

11-12-79 Sec 3 B S&F Sur; 81 M-1; 33 A-5  
D-Johnnie T Ross to Willetta Smith 11-1-79 S½ Lot 9 Blk 18 Shamrock exc 1/2 Mins  
MML--Carles M Lopez et ux to Phillip Gusman 11-8-79 100'x150' SW¼ SEc 4 T&NO Ry Co Sur  
TMML--Phillip Gusman to First Bk & Tr Co Booker 11-10-79 100'x150' SW¼ Sec 4 T&NO Ry Co Sur

**NOVEMBER 13, 1979**  
AFF--Worth Shields et ux to M L Caperton et ux 10-25-79  
2 ROW--Troy D Jones et al to Southwestern Public Serv Co 10-17-79 Pt Sec 22 Blk RE  
OL&RDO--E F Lasater et ux to A W Burrell 10-8-79 N½ & SE¼ SEc 26 A-8  
ROW--Henrietta Bennett to Colorado Interstate Gas Co 11-8-79 Pt 80.36 ac N½ 7 Blk L  
OL--James A Smith to Philip E Pendleton 10-6-79 NE¼ Sec 2 Blk L  
OL--Carroll Adams et ux to Exxon Corp 10-10-79 W½ SEc 20 Blk A-4  
2 OL--J Franklin Smith et al to Philip E Pendleton 10-6-79 NE¼ Sec 2 Blk L

**NOVEMBER 14, 1979**  
DT--Van Weldon Baize et ux to United States of Amer 11-12-79 155.208 ac N½ 8 A-4  
D--J H Scribner et ux to Pierce Walker 11-13-79 30'x150' Lot 16 Blk 115 New Mobeettie  
AFF--Cecil Clark to Charlie Traylor undated Lots 18, 19 Blk 3 Allison  
QCD--Rex Miller et ux to Clifton Boydston et ux 11-7-79 Lots 18, 19 Blk 3 Allison Exc Min  
2QCD--Joe Traylor et al to Clifton Boydston et ux ----1979 Lots 18, 19 Blk 3 Allison Exc Min  
D--Bobbie Lee Oswald to Dorothy

K Wilson 11-9-79 Lot 9 Blk 29 Shamrock  
DT--Dorothy K Wilson to Bobbie Lee Oswald 11-9-79 Lot 9 Blk 29 Shamrock  
D--Carol J Lee et al to David Nestor Lummus 10-26-79 S½ NE¼ Sec 5 IRR Co Sur  
AGREE--Minco Oil and Gas Co to Foster Pet Cor et al 10-16-79 SE¼ Sec 13 A-4  
D--W K McGehee Sr to W K McGehee, Jr 11-6-79 1/6 int E½ W½ & W½ E½ SEc 3 Blk 2 B&B Sur  
COR MD--Dennis Lee Holt et al to Sam Britt et al 10-5-79 1/4 int W½ NW¼ Sec 8 Blk L  
DT--Richard Rush to Penn Square Bank NA 10-29-79 Sec 19 Blk RE  
AOL--Resource Technology Corp 1978 Acquisition Prog to Conser Pet Corp 6-1-79 Pt SW¼ SEc 36 Blk 13  
DT--Glenn Scott et ux to United States of America 11-14-79 SEc 5 Blk E

**NOVEMBER 15, 1979**  
D--Veona Woodridge to Benny V Clark 10-6-79 S60 ft Lot 3 Blk 40 Shamrock  
DT--Benny Van Clark to Veona Woodridge 11-1-79 S60 ft Lot 3 Blk 40 Shamrock  
ROL--Phillips Pet Co to A D Eads et al 10-28-79 Lots  
AOL--Lear Pet Corp to Resources Invest Corp 10-5-79 S½ Sec 39 A-7  
2 OL--J D Kennedy et ux to H L Glasby 11-2-79 N½ Sec 12, Sec 1 Blk 1 B&B Sur  
D--C A Whitenack to D V Whitenack 12-15-79 Lots 13, 14 Blk 105 New Mobeettie  
MD--Gordon t West to The West Company 10-6-58 All my int SEc 20 A-5  
ROW--Donald R Whiteley et al to Colorado Interstate Gas Co 11-12-79 Pt 2 AB&M Sur  
2 ASSIGN OVERRID ROY--Wagner & Brown to Thomas I Coleman Jr et al 11-9-79 SEc 1 Blk 3 B&B Sur; 57 A-4, 4 Camp Co Sch Land  
2 AOL--Conser Pet Corp to McCabe Pet Corp et al 10-1-79 SEc 36 Blk 13  
ASSIGN OVERRID ROY--Joe Speed to H D Chastain 11-9-79 Pt Sec 3 AB&M Sur & 7 A-3  
P OF ATTY--Lear Pet Corp to Lawrence W Robinette 4-25-79  
2 MD--James W Harris et ux to Karen Kay Harris 11-15-79 ac int SW¼ Sec 26 A-7  
OL--W A Davis et al to Wheeler Oil Company 10-29-79 S200 ac W½ 16 Blk 24

**NOVEMBER 16, 1979**  
AOL--Lear Petroleum Corporation to Jones and Pellow Oil Co 11-14-79 S½ 42 A-7  
OL--Grace Alice Meek et al to Phillips Pet Co 10-18-79 Pt W½ Sec 64 A-5  
ROY D--R William Cone et ux to Kenneth D Taylor 11-12-79 5 ac int W½ 13 A-8  
ROY D--Kenneth D Taylor to Jim Nix 11-14-79 2 ac int W½ Sec 13 A-8  
ROY D--Kenneth D Taylor to Roy B Segler et ux 11-14-79 3 ac int W½ 13 A-8  
OL--Goldie Vee Calcote to Cotton Pet Corp 10-2-79 SW¼ SE¼ SEc 4 T&NO Ry Co Sur  
RATIF OL--Hearld United Methodist Church to Texas Amer Oil Corp 11-8-79 SW¼ 113 Blk 23  
3 MD--P I C Management Co Inc to Donald M Phillips et al 11-9-79 7/320 int S½ 48 & 51/9600 Int S½ Sec 48 Blk 24

The Singles Supper Club met

### NOVEMBER 27 "Achievement Sale"



12 noon At the ranch Lunch will be available

**DH 66 MISCH K36**

RC Mischel K36 1581333  
March 26, 1974  
DH Miss D Misch 74 1618826

RC Mischel D4 1413861  
RC Mischel Misch 2 1413872  
RC Dan Mischel 45 1385429  
DH Lady Pearl 81 13885520

RC Lin Mischel 6  
RC Promiser Heifers 2  
RC Lin Mischel 6  
RC Evan Heifers 35  
Northern Dandee 23  
RC Miss Pagan 8  
Golden Aster 97  
DHR Miss Marykado

Top-selling entire bull in the Glenn Ingram Jr. dispersion in 1977.

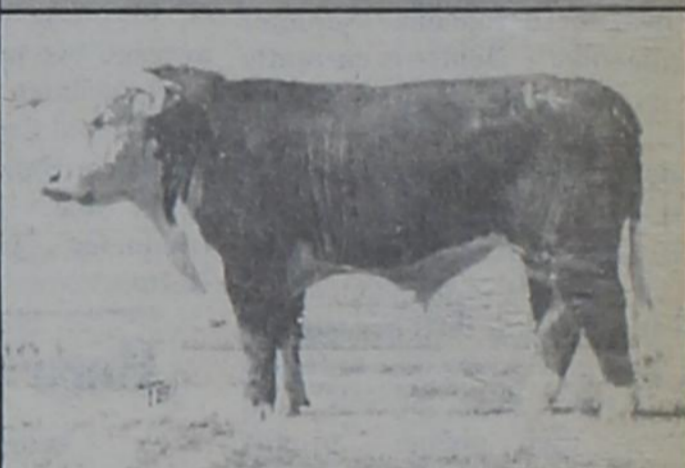
**DH AX 679**

L3 D4 Annel 3 1637489  
March 15, 1978  
DR Lady S Britt 4063 16314231

RC Mischel K49 15813318  
Lady Stanway 48 13647276  
DR Big Time 15704929  
DR Lady 2377 15611182

RC Mischel D4  
RC Miss Lindsey 22  
Superior Ancestry 41  
Lady Stanway 41  
J&B Broisher A13  
DR Lady 1415  
Doctor Silver 374  
DR Lady 1407

The son of a Denver champion female. Owned by William C. Olson, Cheyenne, Okla.



**SPECIAL FEATURE:**  
Our neighbor Johnny Grant, Cheyenne, Okla., will sell his entire registered herd in this sale. They consist of... 15 cows either with calves or heavy springers. The calves will be sired by a son of THE PROGRESSOR.

30 BULLS  
25 BRED HEIFERS  
10 COWS either with calves or heavy springers  
10 OPEN HEIFERS

**BARBER HEREFORDS**  
WAYNE, SHIRLEY and CINDY  
PHONE: 405/983-2246  
NORTH STAR ROUTE • CRAWFORD, OKLAHOMA 73638  
\*Located 18 miles north of Cheyenne on US 283 on west side of Hwy.

For you, who, when given a choice, always select the best.

**Behrman's**  
Doug Coon

Open Daily 9:30 to 6:00  
Thursday 9:30 to 9:00

**Second Annual CHRISTMAS OPEN HOUSE**  
**Saturday, Nov. 24**  
**8:30 Until 5:30**

WE WILL TAKE ORDERS FOR WHITE OR GREEN CHRISTMAS TREES  
We have a large selection of unusual Christmas tree ornaments

FREE REFRESHMENTS  
REGISTER FOR A FREE CHRISTMAS ARRANGEMENT

**WHEELER FLOWER SHOP**  
100 E. Texas St  
Phone: 826-5943

It's easy to see where many of our priorities are.

The children of today are looking to us for ways they can prepare for their own style of life... families... and job opportunities. To help, we'll need more electricity. It's true, electricity will play a big role toward helping expand the job market to include these adults of tomorrow. The modern use of electricity has contributed to a better educational system to prepare our young people for the new experiences yet to come. Almost 10 years ago, the folks at

Southwestern Public Service wanted to make sure there was enough electricity to keep today's wage earner working. They decided that the fuel used in their power plants should be coal because, coal would be more abundant and cheaper to use than the conventional fuel... natural gas. Now, Southwestern Public Service has a new coal plant in operation and more on the way. Yes, coal plants will help stabilize fuel costs while providing a long-term reliable, energy source to provide electricity.

It's good to be able to tell someone what they can depend on.

**SPS**  
SOUTHWESTERN PUBLIC SERVICE

# City Council Meeting

## Special Meeting

Special meeting of November 13, 1979 opened with Louis Stas motioning to pay for curb and gutter of alley way on Jackie Cummings property on East 12th street, provided she agrees to give a deed of dedication, David Cross seconded, motion carried.

Attorney Bill Cunningham presented ordinance #112 on receiving and accepting work on units No's 1-5; 7-15; 31-44; 46-48. Louis Stas motioned to accept the work, Bob Roark seconded, motion carried.

Louis Stas motioned, David Cross seconded secretary Ramsey turn the assessment escrow money over to Attorney Bill Cunningham, motion carried.

Mayor Burton presented a plat of Unit 1, Parklane Estates, Bob Roark motioned to accept the plat as presented, David Cross seconded, motion carried.

Louis Stas motioned the meeting adjourn, David Cross seconded, motion carried.

## Regular Meeting

The Wheeler City Council met Monday evening for their regular monthly meeting. Meeting with the council were Donald Ford, Bill Owen, Mrs. H. E. Cole, Mrs. W. L. Williams, Ken Daughtry, and Daryl Snelgrooves.

The meeting opened with the approval of the minutes of meetings for the past month. The bills for the month were approved for payment.

Donald Ford, Water and Sewer Superintendent, reported on the activities of his department for the month. In addition to take routine activities, 10 streets were swept and all the dirt streets were graded. Ford had just returned from school in Lubbock where he earned his Class B Water and Sewer License.

## Kelton

Michael Scot Lisitza Memorial contest for her poem "Summer Suggestion". Denise is currently an eighth grade student at Kelton.

Both winners are students of Mrs. David Britt, language arts instructor at Kelton, who sponsored the girls in the contest.

Mr. and Mrs. Britt accompanied the winners who flew to Dallas to receive their awards and present their poems to the society.

Special recognition was given these students at an assembly on November 12th at Kelton.

## Sheriff

16, 1979. After completion of one year employment Miller will receive a Basic Certification Certificate. Lonnie graduated in ceremonies along with 21 other Texas Panhandle residents at Amarillo on Friday night, November 16.

Bill Owen, public relations representative for the council, reported on the meeting he had attended during the month.

Mrs. Cole and Mrs. Williams met with the council to discuss opening of Kiowa Street from Eleventh to Twelfth. The land for this street has never been dedicated and is therefore out of the hands of the council. The ladies were encouraged to pursue the matter with the parties involved.

The Wheeler Volunteer Fire Department representatives, Ken Daughtry and Daryl Snelgrooves, had a number of items to discuss with the council. The men encouraged the council to take steps to prevent the re-occurrence of the fire at the airport—the grass at the airport caught on a windy day and presented a threat to the city.

They volunteered the department to burn the edges of the area which need to be cleaned up. Berniece Hall requested the Department burn the creek area of the park. The men call the need for additional space for the Fire Department to the attention of the council. The informed the group of their need to purchase 25 pair of gloves for the firemen—an expense of approximately \$85. "Tot Finder" decals were presented to the council and the firemen requested and received the funds to purchase additional decals to be placed on the exterior windows of rooms where youngsters elderly citizens and/or invalids might be sleeping; in case of fire, this would indicate where the firemen should look for victims. The council was encouraged to consider the improvement of the siren system for the City; in some areas of the city it is impossible to hear the siren.

The council voted to replace the fence destroyed in the airport fire.

The council voted to raise the meter deposit to \$35; the amount of the deposit is based on average two month billing.

Councilmen in attendance were David Cross, Kirven Roper, Berniece Hall, Bob Roark and Louis Stas. The meeting was conducted by Mayor Pete Burton.

## Here & There

### Laura Guthrie

"How gloomy you look", said one bucket to another as they were being carried to a well.

"Ah!" replied the second bucket, "I was thinking how useless this is; for no matter how full we go away, we always come back empty."

Then the first bucket commented, "What a strange way to look at it. I have always been thankful and happy that however empty we come, we always go away full."



# 1979 DISTRICT CHAMPS

Jersey Numbers correspond with line-up on page 7.



COACHING STAFF  
Joe Allen  
Ronnie Karcher  
Charles Carter  
Terry Simpson  
Mike Morgan

100 Thomas Lane

## HOBBY KORRAL

9-5 Monday-Friday

### FREE Ceramic Lessons

9 a.m.-5 p.m. - Tuesday thru Friday  
at your convenience

7 p.m.-10 p.m. - Monday

JANE THOMAS, Certified Teacher

### AFRICANA STAINS DUNCAN GLAZE

All Supplies for . . . **Ceramics**

### Permanent Pigment OIL Paints

Many Other Supplies for  
**OIL & TOLE PAINTERS**

Wheeler, Texas

Both were filled alike. The difference was in them. What kind of a bucket are you?

Leroy Brownlow. This is the season of the year when we concentrate on thankfulness. Let us not neglect it. Plutarch, the philosopher said "The worship most acceptable to God comes from a thankful and cheerful heart."

Last week I mentioned Mrs. Rozena Horn's trip to the Philippines. By now I learn that another one of our little "stay-at-home" citizens has had a trip to Hawaii. Mrs. Eunice Treadwell has just returned from that most enjoyable trip. She, as you can tell by the progress of her flower garden on a brand new place, was enchanted by the flowers, Orchids, Hibiscus, and so many others she can't name. She also was carried away with the volcanoes (no pun intended). She said that was a most fascinating part of her tour of four Islands. She was accompanied by two daughters, and two granddaughters. Since she has learned the speed and satisfaction of flying, she says she is planning to take a lot more trips. Probably

one to Washington State will be the next one.

## Warden Profile Of Warden Hunt

Sportsmen find a variety of hunting and fishing opportunities in the southeastern portion of the Texas Panhandle according to Warden Gary Hunt.

Hunt's assigned counties of Donley and Armstrong have ideal habitat for both upland game birds and big game such as deer and aoudad sheep.

Hunt, a native of Clarendon, has been a warden for six years with the P&WD and is familiar with the region. Hunt graduated from the P&WD game warden academy in 1973.

The warden, his wife, Nena and son, Clint, and daughter, Kayla, reside in Clarendon.

The warden asks that all game and fish violations be reported to him for investigation. The officer can be contacted by calling 806-874-2631.

# LIVE BROADCAST

of

## WHEELER - VALLEY BI-DISTRICT GAME

AIR TIME: 7:00 P.M.

### KGRO-1230 -Pampa

### Channel 3 - Wheeler Cable

Broadcast made possible by the Mustang Supporters  
Channel 3 donated through the courtesy of Wheeler Christian Academy.

# BI-DISTRICT CHAMPIONSHIP GAME

## WHEELER MUSTANGS vs. VALLEY PATRIOTS

FRIDAY, NOVEMBER 23, 1979

— 7:30 P.M. —

### WHEELER MUSTANGS

No.	Name	Pos.	Ht.	Wt.	Jr.
10	Ty Henderson	QB	5'6"	125	Jr.
11	Scott Wright	QB	5'9"	145	Fr.
12	Rich Brown	QB	5'9"	150	Sr.
15	Robert Ford	QB	5'7"	125	So.
21	Tom Childress	TE	5'10"	145	So.
24	Von Christner	SE	5'8"	120	So.
30	John Harris	SE	5'9"	135	Jr.
25	Wade Beard	WB	5'8"	125	So.
32	Mike Gallagher	TB	5'10"	160	Jr.
32	Joey Waldo	QB	5'10"	130	Fr.
33	Benny Baker	FB	6'1"	200	Jr.
35	Wade Moore	FB	5'7"	135	So.
40	Greg Atherton	SE	5'2"	100	Fr.
41	Boyd Waldo	TB	5'9"	145	Jr.
44	Willie Valencia	TB	5'7"	145	Jr.
50	Dale Manning	ST	5'9"	170	Jr.
50-22	Arthur Zepeda	QG	5'2"	150	So.
51	David Moore	QG	5'7"	145	Jr.
52	Larry Jones	SG	5'6"	150	So.
55	James LaForge	QG	5'6"	130	So.
60	Vic Bradford	ST	6'1"	200	Sr.
61	Kyle Lasley	SG	5'10"	180	Sr.
63	Billy Westmoreland	QT	6'0"	170	Fr.
65	Benny Watson	QT	5'10"	150	Jr.
66	Bobby Jones	QG	5'10"	160	Jr.
70	Farrell Alexander	C	5'11"	190	Jr.
72	Jamie Porter	ST	5'8"	160	Fr.
74	Wade Wills	C	6'1"	160	Fr.
75	Wes Westmoreland	QT	6'1"	205	Jr.
78	Billy LaForge	ST	5'9"	230	So.
79	Ricky Bond	SG	6'0"	185	So.
80	Paul Bentley	TE	6'0"	160	So.
81	Kevin Andis	SE	5'11"	160	Sr.
82	Mike Evans	SE	5'8"	140	Sr.
84	Russell Gaines	TE	6'0"	200	Jr.

MEMPHIS  
CYCLONE STADIUM

ALL THE WAY TO  
STATE, MUSTANGS

### VALLEY PATRIOTS

NO.	NAME	POS.	CLASS
7	Doug Setliff	End	FR.
11	Brett Cheatham	T	FR.
26	Tomos Hinjoso	RB	FR.
14	Richey Fuston	QB	SO.
24	Randy Lacy	RB	FR.
25	Terry Brittian	RB	SR.
27	Rodney Carpenter	QB	SR.
30	Mike Dowd	RB	JR.
33	James McNarry	RB	JR.
34	Tommy Morris	RB	SO.
36	Todd Mills	QB	FR.
42	Jimmy Lacy	RB	JR.
44	Ray Williams	RB	JR.
46	Jonny Cotton	RB	JR.
54	Dennis Farley	T	SR.
55	Kevin Hawkins	T	SO.
57	Kirby Chandler	C	SO.
61	Monty Beavers	G	SR.
65	Stacy Price	C	FR.
69	Shane Smith	G	JR.
71	Joe Kirk Smith	T	SR.
73	Troy Scoggins	T	SR.
79	Brum Pinkerton	C	JR.
80	Dee Dowd	E	JR.
82	Dane Cheatham	E	SR.
83	Brent Brown	E	SO.
84	Randy Fuston	E	FR.
86	Colvin Morrison	E	FR.
88	Bruce Setliff	E	SR.
52	Billy Don Hughes	T	SO.

TOM & SANDRA CHRISTNER

LOWELL & LORETTA LASLEY

WHEELER PLUMBING SERVICE

Larry, Bobbye, Rhonda & Mona

BUD & NOVELLA VANPOOL

DAVID & PATSY RARDEN

GLEN & BETTY GAINES

VIDA BROWN

ROBERT & ANN JONES

TYLER & ILA COLLINS

DONALD & ANITA REEVES

ERNIE McGAUGHY FAMILY

TOM, RUTH, JEFF & MISSY EDWARDS

MARSHALL & MARY ANDIS

WELDON & DOLORES SIMMONS

ALBERT'S SHAMROCK SERVICE

HOWARD & SUNNY HILL

ARVID AND JOETTA SWORD

THE HAIR SHED

RAYMOND'S DRIVE-IN

BARNES ELECTRIC  
Earl & Pauline

TIMES FASHIONS

Ed & Patricia

THE WHEELER TIMES

Louis & Barbara

MCILHANY DRY GOODS

ROGUE THEATRE

Richard Nall - Manager

CROSS CAR CENTER

KOSHARE SHOP Fine Jewelry

WIL-MART

ROARK'S FINE FOODS

PRODUCTION CREDIT ASSOCIATION

WHEELER LUMBER CO.

WHEELER GAS, INC.

THRIFTWAY of Wheeler

LEE HARDWARE & FURNITURE

HIBLER IMPLEMENT CO.

UNIVERSAL WELL LOGGING

GALLAGHER BORDEN MILK DISTRIBUTION

Fred, Sue & Tammy

B.J.'S WEARHOUSE

CITY CLEANERS & FABRIC

Ben & Carolyn Westmoreland

PUCUSSO'S

Alana Daughtry

JERRY'S BAR-B-QUE

Jerry & Carolyn

U-U ELECTRICAL SERVICE

M&M GIN

WHEELER ABSTRACT

HARVEY'S FAMILY RESTAURANT

PETE BURTON FORD

OMEGA GRAIN SUPPLY, INC.

WARE CHEVROLET

THE DOT SHOP

BEEF CATTLE COMPANY

FIRST NATIONAL BANK in Wheeler

TOMMIE, BETTY & AUGIE HENNARD

BAKER'S AUTOMOTIVE

PIERCE'S TRADING POST

LEWALLEN INSURANCE

RIVES INSURANCE AGENCY

WHEELER REDI-MIX

SPARLIN'S RESTAURANT

WHEELER FLOWER SHOP

Jim & Sharon Wright

FRANKENBERRY'S TEXACO SERVICE

Bob & Valetta

BEN FRANKLIN STORE

Lyndon & Novelene

CARROLL & ROBERTA ADAMS

HYLAND'S PHARMACY

PEP RALLY

Friday, Nov. 23

3:30 P.M. on the Square

# INFLATION FIGHTERS!

FRIDAY &  
SATURDAY  
NOV.  
23 & 24



WILSON  
**FRANKS**  
12 oz. Pkg.  
**89¢**



CORN KING  
MARKET SLICED  
BOLOGNA  
LB.  
**\$1.09**

CATFISH  
FILLET

LB.  
**\$1.69**

RED SNAPPER  
FILLET

LB.  
**\$1.39**



RUBY  
RED  
GRAPEFRUIT  
LB.  
**33¢**



CALIFORNIA  
RED  
EMPEROR  
GRAPES  
LB.  
**59¢**



COLORADO  
EXTRA FANCY  
RED DELICIOUS  
APPLES  
LB.  
**35¢**



SUNKIST  
NAVAL  
ORANGES  
LB.  
**39¢**



BETTY CROCKER  
WHITE or DEVILS FOOD  
CAKE MIX  
20 oz. Box  
**75¢**



PETER PAN  
SMOOTH  
PEANUT BUTTER  
12 oz. Jar  
**85¢**



SPAM  
LUNCHEON MEAT  
7 oz. Can  
**79¢**



HUNT'S  
TOMATO JUICE  
15 1/2 oz. Can  
**59¢**



FRANCO-AMERICAN  
SPAGHETTI  
&  
MEAT  
BALLS  
15 oz. Can  
**65¢**

KRAFT  
CHEESE WHIZ  
8 oz. Jar  
**99¢**

RED & WHITE  
CINNAMON  
ROLLS  
9 1/2 oz. Can  
**59¢**

RED & WHITE  
FABRIC  
SOFTENER  
1 Gal. Jug  
**79¢**



POST  
SUPER  
SUGAR  
CRISP

7-FARMS  
STEWED TOMATOES  
303 Cans  
**\$1.00**

TROPICANA  
FRUIT DRINK  
Grape Orange Punch  
16 oz. Bottles  
**\$1.00**

18 oz. Box  
**\$1.19**



KING SIZE  
COKE  
6 Bottle Carton Plus Deposit  
**98¢**



ARMOUR  
VIENNA SAUSAGE  
5 oz. Cans  
**2.89¢**

SUNSHINE  
HONEY  
GRAHAMS

16 oz. Box  
**75¢**



FAMILY SIZE  
TIDE  
10 lb. 11 oz. Box  
**\$5.19**



MIRACLE WHIP  
SALAD  
DRESSING  
Qt. Jar  
**\$1.25**



RED & WHITE  
BLUE LAKE CUT  
GREEN  
BEANS  
303 Cans  
**\$1.00**



CORONET  
BATH  
TISSUE  
4 Roll Package  
**79¢**



OPEN MON.-SAT.—7:30 A.M. 11:30 P.M.  
USDA FOOD STAMPS ACCEPTED  
FREE DELIVERY WITH \$2.50 PURCHASE  
FEATURING GUNN BROS. STAMPS