

# Bailey County Journal

"The Community of Opportunity -- Where Water Makes the Difference"

Published every Sunday at Muleshoe, Texas 79347

VOL. 5 NO. 3

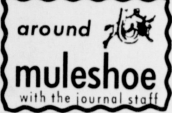
10 PAGES

MULESHOE PUBLISHING COMPANY, INC.

SUNDAY, JANUARY 21, 1968

## DEADLINE FOR REGISTRATION DRAWING NEAR

# Native of England Places Emphasis on Voting Rights



## School Board Election Scheduled for April 6

Mr. and Mrs. A. V. Wood, owners and operators of Muleshoe Auto Parts, have been awarded a four-day all expense trip to Las Vegas, Nev. They left Amarillo by jet on the trip sponsored by the A.C. Products, Inc. and their West Texas distributors, Straus-Frank Co., Amarillo. During their stay there, they were guests at the Thunderbird Lodge. The couple returned to Muleshoe Friday.

Mrs. W. H. (Lula) Kistler has returned from a two-weeks visit in Floydada with her daughter and family, Mr. and Mrs. J. A. Arwine.

Opal Thompson, manager of the Fashion Shop, left for Dallas Friday where she will attend market.

David Bessire, Lubbock, nephew of Mr. and Mrs. Omar Bessire and Mr. and Mrs. Howard Eason, sister of Mrs. Bessire, were recent guests in the Bessire home.

Mrs. Millie Gable and Mrs. Dorothy Brock left Thursday for market in Dallas.

Roger Albertson, Cobb's manager, and Margaret Doss

Con't. on Page 2, Col. 6

## Jean Lovelady For Re-election

Jean Lovelady announced this week that she will seek a second term as county tax assessor-collector.

Mrs. Lovelady said, "In announcing my candidacy for tax assessor-collector, I first want to express my appreciation for your confidence in me in the past, and ask for your continued support in the coming election. It is my hope that I have carried out my intentions of having in some way been helpful to you, the citizens of Bailey County."

Con't. on Page 2, Col. 5

## 1967 Fire Calls Show Decline

Fire calls were down somewhat in 1967 compared to those answered by Bailey County Volunteer Fire Department in 1966. Firemen answered a total of 118 calls during the year 1967 compared to 151 in the city and area in 1966, 33 less than the previous year.

Chief Earl Ladd said that in addition to these 118 fire calls, local firemen had spent a number of man-hours on "weather-watches" and some assisting with wrecks.

## School Census Blanks Being Sent to Parents

The annual "head count" of all school age students and preschool youngsters began January 1 and will continue until midnight, February 1.

All students between the ages of six and 17 years, inclusive as of September 1968, are required to be counted by the state.

"It is very important that all school age children are registered because part of the school income from the state is based on this count."

Con't. on Page 2, Col. 4

A school board election will be held Saturday, April 6, at Muleshoe Junior High School. Absentee balloting will be held prior to the election date at Bailey County clerk's office located in the courthouse.

The terms of John W. Smith and Ralph W. Douglas are expiring and the election will be to fill these two places on the board.

Ernest Kerr has been appointed election judge.

Important dates concerning the upcoming election are filing deadline, beginning and ending dates for absentee voting and election date.

Deadline for candidates to file is March 6. Absentee voting begins at the county clerk's office March 16 and concludes April 2. Election day is April 6.

Candidates shall file with the secretary of the Board of Trustees, a written application for places on the ballot not less than 30 days prior to the election date.

Votes will be counted and tabulated within 24 hours after the closing of the polls. The stub box will be delivered to the District Clerk at the time the

ballot boxes are returned to the President of the Board of Trustees. The presiding judge shall deliver to the President of the Board of Trustees, written returns of school trustee election immediately after all votes have been counted and tabulated, not later than 24 hours after the closing of the polls.

Con't. on Page 2, Col. 6

## Gary Little to Head New Club

Gary Little has been named president and will head a new organization, The Junior Leadership Club. The organizational meeting was held Friday, January 12, at the community room of Bailey County Electric Cooperative.

Other officers elected are: Alice Schuster, vice president; Betty Harbin, treasurer; Jona Goucher, reporter; and Walter Little, recreation.

Sponsors for the club are Mr. and Mrs. Keith Bray. Fifteen members and four adults attended the first meeting.

Con't. on Page 2, Col. 8

# Plans Mapped by School Board for 1968-69 Term

Basic plans toward organizing the 1968-69 school year were presented and approved at the Monday night meeting of the Muleshoe Independent School District board meeting.

A school board election was scheduled, the school calendar for 1968-69 was approved, the re-hiring of professional personnel and classroom teachers scheduled and change of date and time of a football game was approved.

A report on school tax collections was heard as well as an absentee report.

The terms of John W. Smith

and Ralph Douglas are expiring and an election to fill two posts on the Board of Trustees has been set for April 6. Final date for candidates to file is March 6. Absentee voting starts at the county clerk's office March 18 and continues through April 2.

Students must register by January 31 to be eligible to vote in this election.

The school calendar for next year's term starts with registration of students for Junior and Senior high schools on August 22 and 23.

A workshop for new teachers

Chief Ladd said, "People who trade here naturally call here for emergency units, because by trading here, they think first of Muleshoe in a time of crisis and we do not refuse these calls just because they are a little

Con't. on Page 2, Col. 7

## Conference Game Fan Thriller

From the first two points of Friday night's basketball game scored by David Davis, to the final score in the game, it was a thriller all the way.

The Mules met the Hereford Whitefaces in Muleshoe Junior High Gym, and won the contest with a score of 52-43. Although there was not a tremendous total score by either side in the conference tilt, it was, nevertheless, a thriller from start to finish.

Several hundred cheering, yelling fans kept the gym raring with support for the Mules as the first quarter score stood at 10-12 for Hereford. At half-time the score was still shaded on the Hereford side by two points, with 22-24 on the scoreboard. Soon after halftime, it tied up 31-31 and from that point on, from the slim 3-point lead, 40-37, at the three quarter mark to the final 52-43 it was the Mules all the way. With Coach Raymond Schroeder alternately coaching, coaxing and beaming at his fast-moving players on the court, David Davis led the scoring for



REGISTERS FIRST TIME---Mrs. M. C. (Lillian) Street proudly displays her certificate of naturalization while Jean Lovelady, tax assessor-collector, fills out a voter registration form for the English born woman. Mrs. Street was granted citizenship papers before a Federal Judge in Abilene on January 12. She has lived near Muleshoe since coming here from England in 1946 and a 'special emergency' was declared in order for the papers to be issued in time for her to vote during this year. She lives with her family about 25 miles south of Muleshoe.

## Enthusiasm Should Spur Area Citizens

While citizens of the state need an almost constant reminder that the voter registration deadline is drawing near, one person in Bailey County needed no such reminder.

In fact, being among those eligible to vote, was a long range plan which involved much study and effort.

This person is Mrs. M. C. (Lillian) Street. She was granted her United States Citizenship papers before a Federal Judge in Abilene on Friday, January 12.

Mrs. Street is a native of England and came to this country with her American husband in 1946. Since that time, she has had to register each year as an alien and has been studying the needed material to obtain her citizenship papers.

During the past 22 years, she became the mother of five children. They are Jim, 20; Vickie, 17; Matt, 15; John, 13 and Roxanna, age 12.

She took her first test for the naturalization in 1950 when she first became eligible.

Mrs. Street said "I failed the first test on American history. But it was very rewarding, because I do not believe I would have appreciated my citizenship here as much then as I do now."

"The study of American history was great and I love it."

Mrs. Street took her test the second time in September, 1967 and passed it.

Then, as she was required to denounce her native country and take an oath before a Federal Judge, a problem arose.

Being as Lubbock district where the office of Federal Judge was vacated by death, Mrs. Street contacted W. L. Woodruff Jr., U. S. Department of Justice, Immigration and Naturalization Service in San Antonio, and explained that there was not a Federal Judge in this district.

"If I am going to vote, I must get my papers before the January 31 deadline and I can't wait any longer," she explained to Woodruff.

The situation was taken under consideration by Woodruff and a 'special emergency' was issued.

Therefore, Mrs. Street was notified to appear before the Federal Judge in Abilene on January 12.

She was granted her citizenship papers there.

Mrs. Street said when interviewed by the Journal "Well, I just had to be eligible to vote this year. I think with the war in Vietnam and other things the way they are politically, that everyone should vote this year."

Jean Lovelady, tax assessor-collector said 2,066 had registered in the Bailey County office at noon Friday and Mrs. Street is among that total.

The tax office will be open until midnight January 31 for those who have not registered by that time.

## Sherman Inman Commissioner Candidate



Sherman Inman

Sherman Inman, well-known resident of Bailey County, has authorized the Journal to announce his candidacy for the post of County Commissioner, Precinct 1.

Inman moved to this county 18 years ago from O'Donnell with his wife, Beatrice, and

Con't. on Page 2, Col. 4

## FBI Agents Investigate Police Activity

Chief of Police Harold White announced this week that agents from the Lubbock office of Federal Bureau of Investigation have been in Muleshoe compiling data concerning the 2:30 a.m. arrest of Stanley Black, 20, on December 31 at the Corral Drive in on a charge of being drunk in a public place.

The investigation began as a result of a complaint registered by Black at the Dallas FBI office regarding alleged mistreatment during the arrest made by City Patrolman R. B. Cunningham.

City Manager Albert Field had previously contacted the FBI office at the request of

Con't. on Page 2, Col. 6

## Acreage Increase Planned For '68 Cucumber Growers

More cucumbers will be grown in the Muleshoe area this year than ever before.

John Womack, a representative of Morton Food Company, has established headquarters here and is engaged in ground work for doubling the acreage of cucumber crops to be grown in Bailey and Parmer Counties.

Womack said "We expect to grow some 750 acres in Bailey County and about the same amount in Parmer County. We will have receiving stations at

Students for elementary school are to register August 29 from 8:45 a.m. until noon.

Con't. on Page 2, Col. 4

Progress, Farwell and Lazbuddie.

"At the present time, farmers are being contacted concerning the growing of the

Con't. on Page 2, Col. 7

# Gary Miller Home Heavily Damaged by Fire and Heat

Fire, intense heat and smoke destroyed parts and severely damaged the remaining portion of the interior of the home of Mr. and Mrs. Gary Miller, 19th at West Avenue E Friday morning.

Bailey County Volunteer Fire Department answered the mid-morning call and found the fire blazing in the kitchen-dining area. Fire Chief Earl Ladd said the actual fire was contained in that part of the house, however, heat damage is estimated to run high as well as damage from smoke.

Mr. and Mrs. Miller are vacationing and the fire origin is believed to have been from painting which had been done in the home the day before by workmen.

Woodwork through the three bedroom brick home was damaged from heat as were many fixtures and household items. The wall, floors, carpets, clothing, furniture and other items were blackened with smoke.

Electric switch plates in bedrooms of the home were melted from the heat as were speaker system outlets and other things of that nature.



KITCHEN DESTROYED---Fire destroyed the kitchen furnishings and intense heat and smoke heavily damaged the home of Mr. and Mrs. Gary Miller Friday morning. This is what remains of the kitchen in the three bedroom brick home.

Con't. on Page 2, Col. 6



**MOST COURTEOUS**--Dewey Moore (left) was presented a plaque for having been selected "Most Courteous" salesman for the month of December. His employer, Hanev Poyner, Poyner White's Auto, was given the merchants' roving plaque to hang in his store for a month. The plaques were presented by Lindell Murray, who served as president of the Businessmen's Activities Committee. The selection of the person to receive the plaque is made by an anonymous committee.

**Thriller...**

Continued from Page 1

ed during part of the game, didn't let down his teammates either as he put 4 on the board for the Mules.

Bobby Burwick scored 17 to lead scoring for the Hereford Whitefaces and lanky Jim Childers added 12 to that total; David Kelly had 5; Dusty Duncan 4, Tony Malouf 3 and Marsh Pittman had 2 points.

Next Friday, January 26, the Mules' Varsity team will meet Dumas in the Muleshoe Junior High gym and on Saturday will journey to Perryton for an afternoon game on the following day, Saturday, January 27.

Prior to the Varsity Mules' Hereford game Friday night, Mules' 'B' team met the Hereford 'B' team in a close scored tilt.

The Whiteface 'B' team won by a score of 52-48. At the end of the first quarter, the score was tied 8-8, and at halftime, there was still a tie score, which had advanced by that time to 21-21. Following halftime, Hereford led the Mules 37-32 at the three quarter mark and went on to win the game.

Dennis Beene led the scoring for the 'B' team with 14, followed by Roy McCormick who had 11; Lionel Patterson 10; Ricky Botkin 7 and John Woodard 6.

Jim Rakestraw was high pointer for the Hereford team with 14 points; followed by Percy Mays with 11; Scott Neville 10; Santry Rush 8; Willie Holmes 5 and Bill Russell 4.

Last Tuesday night, in a game with Tulla, the B team lost a close heartbreaker by a score of 44-43.

Roy McCormick led the scoring with 10 points, followed by Dennis Beene and Ricky Botkin each with 7; Jesse Clemmons had 7 points; Lionel Patterson and Jeff Chapman 4 each and Bobby Burge 2.

Mules' Varsity lost to Tulla Varsity the same night with 77-43 for the Tulla Hornets.

David Davis led scoring for the Mules with 10 points, and next in line was John Elliott with 8. Don Huff and Alvin Walker both had 5; Terry Field, Ronnie Barrett and Jim Putman 4 each; David Dillman 2 points and Eddie Derrick 1.

The Sunday evening at Muleshoe Junior High School gym, the seventh and eighth graders

girls' teams met the Amherst seventh and eighth grade girls.

Going into the season with a record of 7-3, the seventh grade girls made it 8-3 by winning over Amherst by a score of 24-10. Sandra Sims effectively paced her team with the high points for the evening with 15; Tracy Cowan scored 10, Kathy Pena had 2 and Susan Foster 1.

Rita McDams scored 4 for Amherst; Roxanne Young and Boys Kittrell each had 2 and Raylyne Mills and Melanie Roberts scored 1 point each.

With the lead changing hands almost as fast as you could count, the Junior High School eighth grade girls from Muleshoe came out in the final analysis winners of a Thursday evening tilt against the Amherst eighth grade girls the winners with 26-19.

Kay Douglass paced the eighth grade girls with a score of 11 for high points; followed by Brenda Kimbrough with 7; Peggy Carter had 5, and Barbara Woodards scored 3.

Alane Weaver was high pointer for Amherst with 11 points and Debby Hughes had 8 points. This win for the eighth grade girls brought their season record to 11-2.

**Plans...**

Continued from Page 1

September 23 is opening date for school.

September 23 is the first holiday slated. It will be "Fair Day" and students will not attend classes.

Thanksgiving holidays are to be November 23 through December 1, with classes resuming December 2. Christmas holidays are December 21 through January 5, with classes resuming at regular time on January 6.

School will turn out March 7 for the District XIII Texas State Teacher's Association convention and again April 4-7 for Easter holidays.

The Baccalaureate service will be held at 8 p.m. May 25 and commencement exercises will be at 8 p.m. May 27.

**Census...**

Continued from Page 1

on the Per Capita basis of the census," Neal Dillman, superintendent of schools announced.

Census forms will be sent home with students from each of our schools for the parent's signature. These forms were sent to the parents Friday, January 19 and must be returned to the school January 22, school officials said.

"All parents are asked to check the forms and see that all information is correct before signing," Dillman said.

If parents do not have school age children now, but will have a first grader next year, parents are asked to pick up the forms at the school business office.

**Inman...**

Continued from Page 1

their children, Marlon, Jerry and Judy.

The candidate said "In making my announcement as a candidate for county commissioner, I do so, fully realizing the responsibility that will be mine in helping take care of the business of the entire county as well as my precinct.

"As I ask for this post, I will make one promise: that I will honestly do the best I can and will appreciate your vote and influence."

The Inmans own a small farm and a ranch in Bailey County and reside on West Avenue. They attend the First Baptist Church.

**Muleshoe...**

Continued from Page 1

May 28 is slated as the last day of the 1968-69 school year. A total of \$427,979.30 school taxes have been collected through January 12. This is 80.49 percent complete. January 31 is the last day to pay current taxes without a penalty.

Principals, other administrators, coaches and music directors will be re-hired at a meeting March 18 and classroom teachers will be re-hired April 15. Announcements of personnel in each of these categories who are re-hired will be made following these meetings.

Approval was made for changing the date of the Perryton football game for next season from Saturday, November 23, to Friday, November 22, at 2:30 p.m. This game is to be played at Perryton.

An absentee report revealed that more students were absent on Monday, January 8, than any other day during the flu-type illness which closed some schools over the area. A total of 246 students were absent from classes that day.

This was 12.9 percent of enrollment in the four schools. January 12, 196 students were out of classes, then absenteeism dropped and through January 15, the count of absentees was in the 170's.

**Lovelady...**

Continued from Page 1

County, during the past four years. If the privilege of serving you has not been mine, I hope that you will give me the opportunity by electing me for four more years."



Jean Lovelady

**Election...**

Continued from Page 1

On the earliest date practicable, the Board of Trustees shall canvass the election, declare results, and issue certificate of election to the persons elected.

If no contest arises out of the election within 60 days after the date of such election, the Board of Trustees shall cause the contents of the ballot boxes to be destroyed by burning the same.

**FBI...**

Continued from Page 1

the City Council, asking for a Federal investigation in an effort to clear up the matter, however, the request was denied.

Thusfar, it has been reported that "no evidence has been found to indicate police brutality."

The FBI report has been submitted to a U. S. Attorney and approved; then sent to the Washington Department of Justice. It is anticipated that it will take several weeks for the final report to be returned to Chief White.

Freeman tells farmer to fight for his price.



**SMOKE-HEAT DAMAGE**--Damage to rooms of the Gary Miller home by heat and smoke was severe during a Friday morning fire which started in the kitchen. This mirror is discolored and ruined by heat and a heavy film of black soot covers the entire house.

**Cucumbers...**

Continued from Page 1

vegetables and the problems of labor and housing are being worked out well in advance to the planting date which is scheduled for May 15.

"Most of the labor will come here from the Texas Valley and at the present time, no labor shortage is anticipated," Womack said.

"In the past, several acres of the Morton Food Company, Farmer's Branch, where they will be used in reliasses of all types and for Morton brand pickles.

Womack has worked in the Texas Valley for Morton Food and will be there again for two months and will spend the remaining 10 months in the Muleshoe vicinity.

**Decline...**

Continued from Page 1

over the county line. For instance, people who live around Lazbuddie, in Farmer County, trade here a lot. We, being situated nearer them than Farwell, answer the calls that come in here."

In reviewing the year's fire calls, Ladd said he attributed the decline in fires to less population and many less gin fires. Only four calls have been made to gins this year and in the past, numerous gin fire calls have been answered.

have been planted by area farmers and they will be planting cucumbers again this year along with several new growers," he relates.

V. T. Tanner, Progress Elevator, has managed the Progress receiving station for several years and will manage the same station in addition to the two new stations this year.

The cucumbers will be trucked to the Morton Food Company, Farmer's Branch, where they will be used in reliasses of all types and for Morton brand pickles.

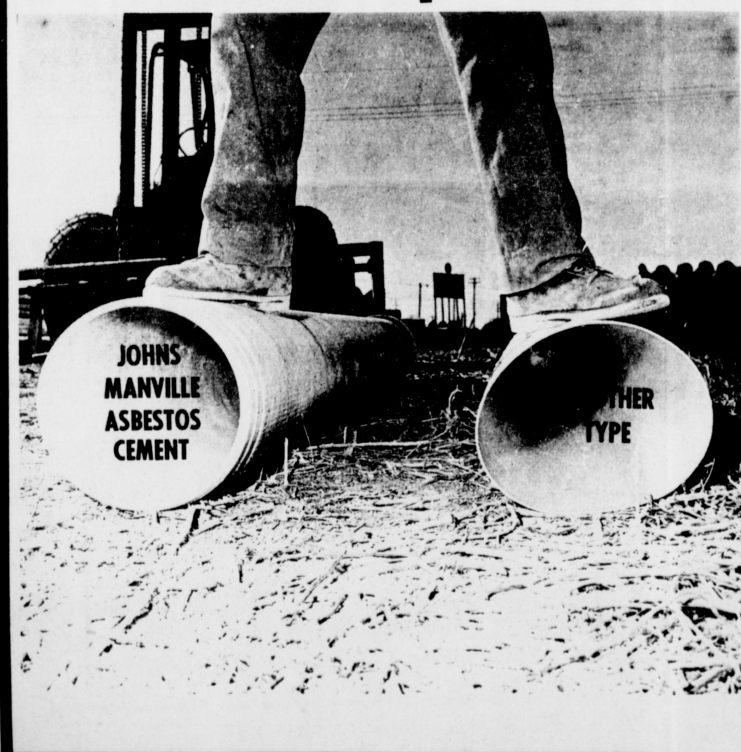
Womack has worked in the Texas Valley for Morton Food and will be there again for two months and will spend the remaining 10 months in the Muleshoe vicinity.

**Little...**

Continued from Page 1

The club will meet Thursday, February 8, at 7:30 p.m. in the Bailey County Electric community room.

**How Will Your Pressure Irrigation Pipe 'Stand Up' in The Next 25 Years?**



**... If It's Johns-Manville Asbestos Cement, It Will Be Better Than When You Bought It**

THE OTHER TYPE of pipe is as good as it ever will be the day it is put in the ground. It grows weaker with age.

JOHN-MANVILLE ASBESTOS CEMENT hardens with the years, actually gains strength and stands up to pressure as well as ever.

COMPARE the two types of pipe and we know you will decide on Johns-Manville Asbestos Cement for your future needs.

**For Your Next Irrigation System, Contact Us For Quality Workmanship & Materials**

**STATE LINE IRRIGATION CO. Inc. IRRIGATION SYSTEMS**

Star Route 1601 Houston Street 215 N. 1st  
1 Mi. N. of LaFonda Theatre Box 326 Phone 385 4487 Phone 272-3450  
Phone 762-4557 LITTLEFIELD, TEXAS MULESHOE, TEXAS  
CLOVIS, NEW MEXICO



# STATE CAPITAL Highlights AND Sidelights

by Wern Sanford  
TEXAS PRESS ASSOCIATION

**AUSTIN**--Texas Liquor Control Board activities occupy a widening spotlight.

Complaints of wrong-doing by some board employees will be aired at a hearing before LCB members and Administrator Coke Stevenson Jr. here January 29.

Gov. John Connally has praised the board for firing of seven men over incidents involving questionable sale of a confiscated truck and alleged mishandling of 11 bottles of contraband liquor.

Dallas Dist. Atty. Henry Wade called on the Texas Department of Public Safety to investigate the LCB after his staff came up with what he termed a "protection" scheme involving board agents. Grand jurors in Smith County also are probing a claim that one liquor license was so quickly granted that local law enforcement people had no chance to object.

Connally said he is confident the board itself will pursue every lead relentlessly and will call on DPS and the state attorney general to assist with the January 29 hearing.

"The board feels as I do," said the governor, "that any employee guilty of questionable conduct or misfeasance or malfeasance should be punished severely and quickly."

**JUNIOR COLLEGE PROGRAM**--Only minor objections were heard at the Coordinating Board, Texas and College University System, held a public hearing on its new plan for dividing the state into 52 regions. Plan would allow each region at least one junior college.

Project envisions basic post-high school education at junior colleges, with upper-division college work done at senior colleges and post-graduate work at the major universities.

Only objections to the plan were from Chambers of Commerce and similar organizations. Some did not like the way the board lined up the regions, leaving them with little hope of having their own junior college.

**APPLICATION REVIEWS BEGIN**--Texas Water Quality Board will begin considering applications for grants and loans to plan areawide sewage treatment facilities on March 1.

Last year the Legislature allocated \$2,000,000 for planning and feasibility studies for such facilities.

Board already has established a tentative priority system with ratings from "A" to "D". Top "A" priority areas are "almost assured of getting part of the funds available."

"A" areas are Bexar and Guadalupe Counties; Jefferson and Orange Counties; Galveston County; Brazoria, Fort Bend, Harris, Liberty and Montgomery Counties; Cameron County; and Collin, Dallas, Denton, Ellis, Johnson, Kaufman, Rockwall and Tarrant Counties.

"B" ratings went to Travis, McLennan, San Patricio and Nueces, Lubbock, Potter and Randall, Archer and Wichita Counties.

"C" areas include: Gregg and Rusk Counties; Bowie, Grayson, Jones and Taylor Counties; El Paso and Bell Counties.

Counties in "D" priority are Brazos, Webb, Midland and Ector, Howard, Tom Green and Smith.

**APPOINTMENTS ANNOUNCED**--Howard B. Boswell of Austin is new executive director of Texas Water Development Board.

James G. Moore Jr., who becomes commissioner of the Federal Water Pollution Control Administration on February 1.

Robert L. Lewis, formerly of Galveston, succeeds T. H. Talbot S. Huff as chief engineer of highway design for the Texas Highway Department on February 29.

John Myers Stokes of Lufkin is in charge of research services to candidates for the Republican state headquarters.

House Speaker Ben Barnes has named to the new Interim House Criminal Law Study Committee: Reps. James Nugent of Kerrville (chairman); Joe Shannon of Fort Worth; and Cletus Davis of Houston.

Also El Paso District Attorney Barton Boling and San Antonio attorney Joe Frazier Brown.

Dr. Porter M. Bailes Jr. of Tyler was appointed by the State Board of Education to fill the seat of Dr. B. E. Masters of Kilgore, who retired January 1.

Longtime State Highway Engineer DeWitt C. Greer, Mark H. Hulings of Corpus Christi and Floyd J. Childs of Abilene are the new executive committee members of the Texas Good Roads Association.

**ATTORNEY GENERAL'S OPINIONS**--County commissioners courts are not bound under the new open meetings law to permit live broadcasts of meetings or the taping of proceedings for delayed broadcast, Atty. Gen. Crawford Martin held.

In other recent opinions, Martin concluded that:

- Anti-lottery laws are not violated by service stations which give away free cards entitling holders to win prizes.
- A city can impose building restrictions on public college districts and require them to pay regular building permit fees.
- State Board of Examiners in Basic Sciences does not have authority to deny certificate of

proficiency in chiropractic to an applicant otherwise qualified by law who presents evidence of having taken the required college credits.

State Board of Registration for Professional Engineers can employ an investigator to assist in performance of duties.

It is the obligation of the state to bury indigent patients who die in state hospitals or while on furlough from state institutions.

Local governments can bring suits to enforce water and air pollution controls without approval of state agencies.

Insurance companies subject to gross premium receipts taxes are also subject to sales taxes.

County commissioners have right to erect cattle guards paramount to that of landowner's right to erect gates, when in best interest of public.

Federal Bureau of Investigation cars are authorized emergency vehicles.

Texas Water Quality Board may adopt rules prescribing fees for copies of documents filed with it but has no authority to distribute free maps, papers and other documents to persons affected by proceedings.

Criminal trial witnesses are entitled to per diem compensation for the one day only regardless of the number of cases he testifies in that day.

Peace officers fees in misdemeanor cases are governed by Article 5391 of Code of Criminal Procedure, felony case fees by Article 1029 and district clerks' fees in felony cases by Article 1064.

DALLAS FIRM'S BID LOW

State Building Commission awarded contract to R. E. McKee, General Contractors, Inc. of Dallas for \$5,050,000 for new State Finance Building in the Capitol Complex. Legislature voted funds for it in 1965.

McKee was the low bidder among seven. Other bids ranged up to \$5,329,000. It's the third big, new, modern office building in the complex.

Construction is scheduled to start on February 1.

STATEWIDE SCHOOL PLAN U. S. Office of Education and the State Board of Education have given their approval to the Texas Education Agency's plan for developing a statewide program for coordinating the long list of federal, federal/state and local education programs.

Plan includes "integrating, coordinating and focusing presently diverse educational programs in the state on a limited number of high priority activities and populations."

Idea is that local school districts -- after they've decided what federal and federal/state programs they want to participate in -- file only one application, which would go through the state to the federal level. Then, when it's time to report back what the grant money was used for, only one report for all the various programs would be necessary from each district.

**FINE ARTS GRANTS DISTRIBUTED**--First \$23,109 in National Endowment for Arts grants has been distributed through the Texas Fine Arts Commission to help finance 11 cultural programs.

Money went to Midland Com-

munity Theatre, University of Texas Music Department, Texas Technological College in Lubbock, Victoria Civic Theatre, Dallas, Austin, and Fort Worth Symphony Orchestras, Dallas Theatre Centre, Houston Municipal Art Foundation, San Antonio's Texas Historical Theatre Foundation and Southwest Texas State College at San Marcos.

'68 TAGGED HISTORIC--- About 7,000,000 motor vehicles will be registered in Texas this year. State Highway Department says that's the largest number in Texas history. All license plates have been delivered to county tax assessors and will be issued during February and March.

Some, 4,750,000 tags will go on passenger cars and 1,900,000 on commercial trucks and trailer-trucks. Balance is for tractors and motorcycles -- where the highest increase will take place. Motorcycle registrations are expected to be up 16 percent this year as compared to a 3.5 percent increase in cars and trucks.

Each owner must furnish the tax collector's office with the vehicle's title, 1967 license record and the owner's current address and zip code.

**DRAFT QUOTA SET**--- February draft quota for Texas is 1,165 men. This is compared with 1,659 for January, 924 for December, 1,159 for November, 977 for October and 1,180 for September, says Col. Morris Schwartz, State Selective Service Director.

February figure is five percent of the national call of 23,300.

Local Selective Service Boards have been instructed to schedule 4,590 men for pre-induction examinations in February -- a reduction from 5,455 ordered in January.

to the Board of Trustees of said School District, and to return the ballot box to the secretary of said Board for safekeeping.

The Secretary of this Board of Trustees shall forthwith issue a notice of said election by posting copies of this order at three different places within the boundaries of said School District which posting shall be done not less than ten days prior to the date of said election.

Adopted this 15th day of January, 1968.

/s/ Charles G. Lewis  
Charles G. Lewis  
President, Board of Trustees  
Muleshoe Independent School District

/s/ Eugene Black  
Eugene Black, Secretary  
3s-1tc

**LEGAL NOTICE**

NOTICES TO ALL PERSONS HAVING CLAIMS AGAINST THE ESTATE OF HASKILL MILLIGAN, DECEASED

Notice is hereby given that original Letters Testamentary upon the Estate of Haskill Milligan, Deceased, were issued to us, the undersigned on the 17th day of January, 1968, in near as may be, by the Election of the proceeding indicated below Code of this State, and this Board of Trustees will furnish our signatures hereto, which is holding such Letters. All persons having claims against said estate, which is being administered in the county below named, are hereby required to present the same to us respectively before said date upon same are barred by the general statutes of limitation, before such estate is closed, and within the time prescribed by law. Our respective addresses are as follows: Calvin L. Milligan, 716 N. Linam, Hobbs, New Mexico; Raymon N. Milligan, 1206 W. Dyer, Breckenridge, Texas; and Darla Jean Milligan Langrill, Bledsoe, Texas.

Dated this 17th day of January, 1968.

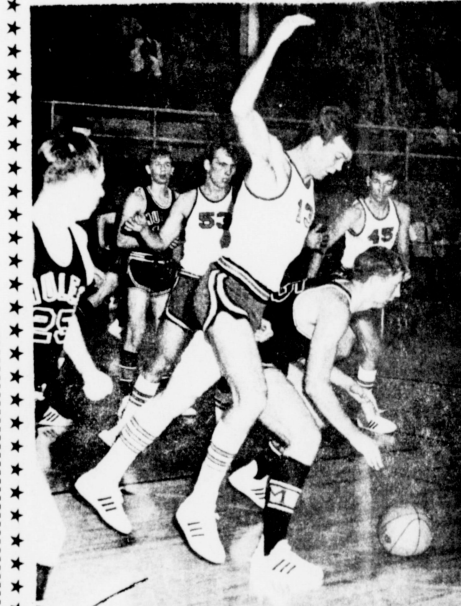
/s/ Calvin L. Milligan  
Calvin L. Milligan  
/s/ Raymon N. Milligan  
Raymon N. Milligan  
/s/ Darla Jean Milligan Langrill  
Darla Jean Milligan Langrill  
Executors of the Estate of Haskill Milligan, Deceased, No. 835 in the County Court of Bailey County, Texas.  
3s-1tc



# SUPPORT THE HOME TEAM

## MULESHOE

### 'MULES and MULETTES'



## Boys & Girls

### 1967-1968

# BASKETBALL SCHEDULE

BOYS		GIRLS	
Jan. 26 Dumas A&B	Here	Jan. 23 Witharral A&B	6:15 Here
Jan. 27 Perryton A&B 4:15 P.M.	There	Jan. 30 Slaton 9-B-A	5:30 Here
Feb. 2 Canyon A&B	Here	Feb. 2 Canyon A	6:15 There
Feb. 6 Tulia A&B	Here	Feb. 6 Tulia A	6:15 Here
Feb. 9 Hereford A&B	There		

### Boys and Girls 7-8-9 Grades

Jan. 22 Morton 7th-8th-9th	5:00 Here
Jan. 25-26-27 Springlake Tourney 7th Boys & 8th Girls	5:00 There
Jan. 29 Gattis of Clovis 7th-8th-9th	5:00 There
Feb. 1 Olton 9th Boys & Girls	6:00 Here
Feb. 1-2-3 Friona Tourney 8th B-Boys & 8th Girls	5:00 There
Feb. 5 Gattis of Clovis 7th-8th-9th	5:00 Here
Feb. 8-9-10 Hereford Tourney 7th-8th-9th	5:00 There



# FARM SALE!

Monday, January 22

AMONG THE MANY ITEMS TO BE SOLD AT AUCTION ARE:

- International 806 Diesel Tractor.... 598 Hours.... Like New.
- 5 Additional Tractors.
- Many Other Items Too Numerous To Mention.

**DON'T MISS THIS SALE!**

**Russell Bryant**

10 Miles East of Muleshoe on Hwy. 70-5 Miles N. 1 Mile W.

"LUNCH WILL BE SERVED"

- Sponsored By The Following Sports Minded Firms:
- WESTERN DRUG
  - PAYMASTER GIN
  - CENTRAL TEXACO
  - DR. B. R. PUTMAN
  - JAMES GLAZE CO.
  - BROCK MOTOR CO.
  - FIRST NATIONAL BANK
  - MULESHOE STATE BANK
  - COBB'S
  - LADD PONTIAC

MULESHOE PUBLISHING CO.  
KING BROS. GRAIN & SEED

# Society News

EARLENE RAGLAND Society Reporter  
Phone-272-4536



**CRADLE SHOWER**--A shower honoring Mrs. Jerry Berry was given in the Assembly of God Church, January 16, 6 p.m. The table was laid with a blue satin cloth with an overlay of blue net, featuring an insert of blue net in the center. The centerpiece was a pink miniature bassinet, topped with pink and white flowers. Appointments of silver and crystal were used. The hostess gift was a baby bed. Hostesses for the occasion were Mrs. J. W. Farmer, Mrs. R. E. Jackson, Mrs. Elmo Owens, Mrs. W. T. Watson, Mrs. C. W. Stallings, Mrs. Delbert Watson, Mrs. Clayton Myers and Mrs. L. R. Watson.

## ESA Sorority Has Monthly Social

The Epsilon Chi Chapter met in the First National Bank Tuesday night, January 16th, for their monthly social. The hostess, Mrs. Don Seales, and co-hostess, Mrs. Charles Mayhugh, instructed the group on how to play "Love Thy Neighbor", a card game designed for lots of laughter and good fun. Refreshments were served to the following members: Mrs. John Young, Mrs. H. A. Douglass, Mrs. Ernest Martin, Mrs. J. Pat Wagner, Mrs. Chester Yerby, Mrs. Buck Johnson, Mrs. Willard Tibbets, Mrs. Max King, Mrs. Henry Stoneham, Mrs. Joe King, Mrs. Eugene

Howard, Mrs. John Gentry and Mrs. Jack Remels. Final arrangements were made to meet Sunday, January 21st, for the trip to Lubbock to attend the district meeting of Epsilon Sigma Alpha.

## WHO KNOWS?

1. What is ambergris?
2. What was the capacity of the Colosseum, at Rome?
3. What is the result when hydrogen is burned?
4. Name Europe's longest river.
5. What is the most plentiful element in the earth's atmosphere and crust?
6. Which of the Seven Wonders of the World was built to save lives?
7. What is the state flower of Georgia?
8. Where were the 1960 Republican and Democratic conventions held?
9. Who was Secretary of State when World War II ended in 1945?

## Neighborhood Girl Scout Meet

The Neighborhood Girl Scouts met January 18, 9:30 a.m. in the Girl Scout Hut.

Beula Harper gave a report on the chili supper and also on the float they had in the Christmas parade.

Peggy Sugarek, Caprock Council representative, discussed the birthday affair which will be held March 23, in Lubbock. She also discussed the Girl Scout cookie sale, beginning February 29, and running through March 14. Mrs. Sugarek showed slides on Camp Rio Blanco.

Jessica Hall was elected chairman for uniform exchange. Mrs. Zora Gistford will be contacted to hold a Girl Scout workshop February 10, in the

Scout Hut from 9:30 a.m. to 2:30 p.m. for Girl Scout leaders and they also voted to invite the den mothers. Each mother will bring a salad. A baby sitter will be provided and 50 cents will be charged for each child for the day.

It was also voted to hold Neighborhood Court of Awards at the high school auditorium, April 25.

Charlene Bartholf was elected as secretary and treasurer for 1968.

## Hospital News

### WEST PLAINS HOSPITAL

**ADMISSIONS:** Gene Davis, Braulio Robles, William Carl Case, Terri Whalin, Rodney Martin, Norman Beauchamp, James Thompson, Mrs. Irma Murillo, John Faust, Keith Turner, Mrs. Hallie Briscoe, Mrs. Maria Gutierrez, Albino Lumbrera, R. J. Klump, Mrs. Betty Hines, Ester Gonzales, Paul Cerda, Calvin Embry, Elmer Davis, Mrs. Loveta Sanders, Mrs. Lula Smith, Mrs. Ruthie Wright, Debbie Blaylock, Mrs. Jeronima Rosas, Quency Lewis, Mrs. Casilda Falcon, Mrs. Lunell McDaniel, Rey Del Toro, Jessie Waggoner, Mrs. Lillian Atkinson, Mrs. Pearl Seaton, Gene Davis.

**DISMISSALS:** Floyd Martinez, Mrs. Barbara Wimberley, Tammy Clark, Blake Snider, Rodney Martin, James Thompson, Mrs. Mattie Haney, Mrs. Annie Hulse, Mrs. Betty Hines and Baby Keith Turner, Gene Davis, John Bruton, Mrs. Clara Smith, Mrs. Irma Murillo, Mrs. Eva Gillis, Calvin Embry, Norman Beauchamp, Terri Whalin, Mrs. Hallie Briscoe, Debbie Blaylock, Quency Lewis, Paul Cerda, Albino Lumbrera, Mrs. Eldis Bridwell, Mrs. Lelia Rodriguez, Mrs. Andera Espinoza.

## Marie White Hosts WFW Luncheon

The CWF of First Christian Church met in the home of Marie White Tuesday, January 16, for a luncheon and business meeting.

Mrs. Laverna Harper presided over the business meeting and also gave the report of the treasurer, Mrs. Edie Goucher gave a good lesson on "Japan" using a poster and map for illustrations. Mrs. Leota Wilterding had charge of the worship service and Mrs. Charlene Bartholf and Marguerite Wright presented a dialogue. The scripture lesson was taken from Luke 10:38-42.

The meeting closed with the CWF benediction. Twelve members and ten guests were present. The dining table was covered with articles from Japan. Many were very beautiful. Next meeting will be February 13, at the church, with Mrs. Charlene Bartholf as hostess.

### GREEN MEMORIAL HOSPITAL

**ADMISSIONS:** Mrs. Frances Burrows, Kimberly Smith, Mrs. Mila Beth Gibson, Cecil Osborne, Mrs. A. P. Lambert, H. A. Weaver, Mrs. Cecil Cole, Linda Vinson, Mrs. Ted Millsap, Mrs. Lena Belle Thomas, Mrs. Beverly Heathington, Mrs. Wayne Branton, James Cook, Sandra Hopper, Mrs. G. W. Crain, Mrs. Ruby Surratt, Mrs. Van Rogers, Mrs. Nell Cooper, Mrs. Doyle Gabbert, Cindi Short, Mrs. Elizabeth Black, Jacky Stovall.

**DISMISSALS:** Mrs. Susan Minkler, Mrs. Elizabeth Black, Mrs. Pearl Cox, Kimberly Smith, Cecil Osborne, Mrs.



**PREPARING FOREIGN FOOD**--With the assistance of a mother, the FHA girls prepare a foreign food dish for their buffet supper Tuesday night. Those shown are Dawna Locke, Mrs. Kirk Pitts, Karen Dobbins, Lyna Pitts, Vina Bass and Winn Watson.

## Hi, World

CONGRATULATIONS TO:  
Mr. and Mrs. Willie Hines, Sudan, boy, Willie Jr., January 14, at 12:28 a.m., six pounds and 14 ounces.

## FHA Sponsors Buffet Supper

The Future Homemakers of America held their annual Foreign Foods Buffet Tuesday night in the homemaking department of the high school. Each member brought her parents and also prepared a foreign dish for the evening meal.

After the meal was over, the group saw Burel Block's films of Mexico. Block was a student in Mexico this summer and his films show his experiences. About one hundred people were in attendance at the buffet supper.

## Cadettes Girl Scout Meeting

The Cadettes Girl Scouts met in the Girl Scout Hut Wednesday, January 17.

The program was given by Mrs. Thurman White and she discussed candidates, how they run, the different precincts, how elections are held and how to vote.

Surprisingly enough, after Marie gave the program on different phases of government, the girls were very interested in learning more. Mrs. White explained to the girls their responsibility as citizens to vote in all the elections when they become of age and even to encourage their parents to register before the deadline of January 31.

The programs that the Cadettes will be having in the near future consist of the following: On January 24, Alex Williams will give the program on "What is the Purpose of our Local Government," January 31, Mrs. Joe Pat Wagner will discuss "Positions in Public Life That Are Now Being Filled by Women." February 7, Jack Young will present a program on "Our State Government." February 14, Coach Dick Stafford will give a program on "Teachers and Student Responsibility of School Government."

The 21st of February, Bill Taylor will discuss "The Principals, Superintendent and the School Board and Their Different Phases of Government," February 28, Mrs. Lillian

## Comments By: CALVIN & LILLIE MAE

Pedestrian: A man who didn't think the family needed two cars.

MILITARY CONSTRUCTION  
The Senate Armed Services Committee passed unanimously a \$2.2 billion military construction program. The program will include rebuilding and expanding Walter Reed Army Hospital, antiballistic missile system sites and other needs.

## COMMENTS BY: CALVIN & LILLIE MAE

Pedestrian: A man who didn't think the family needed two cars.



**CALVERT'S DRIVE-IN GROCERY**  
OPEN 7 AM Till 9 PM  
**BEST SERVICE IN TOWN**  
1902 CLOVIS ROAD  
MULESHOE

## Welcome to Muleshoe



Mrs. Monroe (Sharon) Young and son, Tommy

The Monroe Young family live at 1530 W Ave. D and are newcomers to Muleshoe. They moved from Dimmitt where Young was farming. He is now salesman for Kirby Co. The Youngs have a son Tommy, 4 and attend the Baptist Church.

The following firms extend a cordial welcome to the Youngs:

<b>CASHWAY GROCERY</b> 402 MAIN Ph. 272-4244	<b>DAMRON DRUG CO.</b> REXALL Ph. 272-4210
<b>JAMES GLAZE CO.</b> INSURANCE REAL ESTATE LOANS	<b>MULESHOE STATE BANK</b> MEMBER FDIC



**DEMONSTRATING MACHINE**--Mrs. Wanda Newsom is shown demonstrating the machine the girls are to use in the second semester sewing class. They are, left to right, Susan Wood, Ann Newsom, Mrs. Wanda Newsom, Mrs. Fred Mardis and Cathy Mardis.

**VALUES WORTH POINTING OUT!**

**VALUE PRICED!**

**AT THE BIG JANUARY CLEARANCE NOW IN PROGRESS!**

**AT Cobb's IN MULESHOE**

**REDUCTIONS IN ALL DEPARTMENTS!**

No Place For Him  
The no-account husband joined some of the other loafers sitting on the curb of the court house square. He announced that he was leaving town. He said he just couldn't live in it any longer.

"What's the matter?" asked one.

"Oh, the town's all right," he replied, "but it just ain't no place where a woman can find work!"

**FIRST FEDERAL**  
VARIABLE DIVIDEND RATE STRUCTURE

**5.25%**  
per annum . . . on 6-12 month Savings Certificate Accounts of \$15,000. up.

**5%**  
per annum . . . on 6-12 month Savings Certificates of \$10,000. but less than \$15,000.

**4.75%**  
per annum . . . on regular savings accounts . . . compounded quarterly. Accounts opened by the 10th of the month earn from the 1st.

\*\*\*\*\*  
Second largest and one of the oldest Federally Chartered in New Mexico.  
\*\*\*\*\*

**FIRST FEDERAL**

SAVINGS & LOAN ASSOCIATION of CLOVIS

HOME OFFICE: 5th and Pine Streets, CLOVIS, NEW MEXICO  
BRANCH OFFICE: 2nd and Abilene Street, PORTALES, NEW MEXICO

# A Salute to Area Clubs and Presidents



Judge Don Chak  
Speaks to P-TA

Mrs. John Gunter, first vice president, presided at the Mary DeShazo P-TA meeting Monday, January 15. Hospitality time was from 3:45 until 4 p.m. During the business meeting, it was decided to have some play ground equipment built for this year's project.

Judge Don Chak gave a most interesting program entitled, "Encouraging Respect for Law and Order."

To encourage membership in P-TA, there has been a contest between the rooms for most members. Five dollars was given to the winning room. Mrs. Jewel Scott, a third grade teacher, won this contest. Mrs. Leatha Patterson was second and Mrs. Mary Obenaus third. Mrs. Radie Burleson won room count with the most parents present at Monday's meeting.

Mrs. Lewis Wayne Shafer, around \$400. The money was raised to pay for this building Club, is president of the Needmore Community Club. She graduated from Sudan High School in 1952 and has lived in the Needmore community for thirteen years, where her husband, Lewis Wayne Shafer, the Shafer family has three children, Ellen, 11, Robert 10 and Lynda five. The Needmore Community Club was organized in 1954 with nineteen members. Duna Arnold was elected first president. The club was in need of a meeting place, so an old army barrack building was purchased for

al occasions. The main fund-raising projects of the club are the annual Cooperative Gin supper and also the annual Thanksgiving supper. Their future plans at present are to do more work on the inside of the building and start repairing old toys for the Goodfellows. They also plan to help a needy family in the community. The club building is always available for showers, meetings and serving meals to bereaved families. At present, the club has 13 members.

## LECC Entertain Husbands

The Lubbock Christian College Associates met Thursday night in the Muleshoe State Bank community room. The meeting was called to order by the President, Wanda Harmon, and a very short business session followed. Their husbands were guests of honor, so the evening was spent playing "42," dominoes and visiting.

Hostesses Dorothy Scott and Cozette Blackwood, served refreshments to 19 members and guests.

Much Obligated The telephone rings in newspaper office late Sunday night. "Is this the religious editor?" "Yes."

"This is Rev. Dr. Thirdly. You have the notes of my sermon?"

"Will you do me the favor to take Daniel out of the fiery furnace and put him in the den of lions?" Denver picked to bid for '76 Winter Olympics.

## SCHOOL MENUS

### MULESHOE MENU

**MONDAY**  
Chili con carne with beans  
Carrot and cabbage slaw  
Apple  
Crownbread  
Peanut butter cookies  
Milk

**TUESDAY**  
Roast beef, brown gravy  
Creamed potatoes  
Green beans  
Carrot sticks  
Hot rolls  
Honey butter whip  
Milk, orange juice

**WEDNESDAY**  
Jelly burger  
Lettuce and tomato salad  
French fries, catsup  
Pickles, onions  
Regular bun  
Apple cobbler  
Milk

**THURSDAY**  
Corn dog with mustard  
Vegetable beef soup  
Crackers  
Cinnamon rolls  
Strawberry Jello  
Milk, orange juice

**FRIDAY**  
Fish sticks, tartar sauce  
Candied yams  
English peas  
Celery sticks  
Hot rolls  
Banana pudding  
Milk

### LAZBUDDIE MENU

**MONDAY**  
Pinto beans  
Spanish rice  
Tomatoes  
Cabbage salad  
Cornbread, butter  
Spray apples  
Oatmeal cookies  
Peanut butter  
Milk, orange juice

**TUESDAY**  
Chicken fried steak  
Creamed potatoes  
Tossed salad  
Rolls, butter, honey  
Jello  
Milk, orange juice

**WEDNESDAY**  
Turkey and dressing  
Giblet gravy  
English peas  
Mixed green salad  
Fruit Jello  
Enriched bread  
Peanut butter  
Milk, orange juice

**THURSDAY**  
Skillet noodle dinner  
Black-eyed peas  
Applesauce  
Mixed green salad  
Jelly, butter, honey  
Peach cobbler  
Milk, orange juice

**FRIDAY**  
Weiners and cheese  
Buttered corn  
Frozen broccoli  
Green salad  
Enriched bread  
Purple plums  
Peanut butter  
Milk, orange juice

## Courthouse News

### NEW CAR REGISTRATION

W. M. Stancell, Muleshoe 1968 Rambler 4-door  
Rierson Pontiac  
Arvis Grogan, Muleshoe 1968 Olds Delta Sedan  
Wayne Wallace, Inc.  
Loyd E. Beatty, Muleshoe 1968 Olds 4-door Sedan  
Wayne Wallace, Inc.

### MARRIAGE LICENSE

Roberto Gallegas, Muleshoe, to Rosalinda Martinez, Muleshoe.  
Nickey Neal Pierce, Muleshoe to Jonnye Lynn Wall, Littlefield

### OIL, GAS AND MINERAL LEASE

B. R. Haney and wife, Ruth Haney, all of Labor 20, League No. 112, Crosby County School Lands, Lessor, Sinclair Oil and Gas Company.

Edward Crume and wife, Marieta Crume, all of Labor 15, League 111, Crosby County School Lands, Lessor, Sinclair Oil and Gas Company.

Tommy Carlisle (leasing his separate property and same not being any part of his homestead) of 278 Pelaluna St., San Antonio, All of Labors 9, 12 and 19 in League 112, Crosby County School Lands, containing 5.313 acres, more or less, Lessor, Sinclair Oil and Gas Company.

Lucille (Carlesie) Hall to Sinclair Oil and Gas Company, all of Labors 9, 12 and 19, League No. 112, Crosby County School Land.

Curtis Allen Archer, et al, to Sinclair Oil and Gas Co. West half of South half (W 1/2 S 1/2) of Labor 11, Crosby County School Lands, League 112, containing 44.27 acres, more or less.

Blanco County, Texas to Sinclair Oil and Gas Company, 117-01 Bailey, Seven hundred and thirty nine (339) acres of land situated and described as follows: Part League No. 212, Blanco County School Land, Patent No. 533, Vol. 27.

Gene Hamilton, and wife, Carelean Hamilton, Friona, to Lessor, Sinclair Oil and Gas Company, the South half (S/2) of Section 80, Block Y, W. D. and F. W. Johnson Subdivision No. 2, containing 189.8 acres.

Georgia M. Hamilton, a widow, to Lessor, Sinclair Oil and Gas Company, the South half (S/2) of Section 80, Block Y, W. D. and F. W. Johnson Subdivision No. 2, containing 189.8 acres.

A. E. Lewis and wife, Vertna Lewis, Muleshoe to Lessor, Sinclair Oil and Gas Company, the Northeast Quarter (NE 1/4) of Section 73, Block Y, W. D. and F. W. Johnson Subdivision No. 2, containing 160 acres, more or less.

### POWERFUL SNEEZES

Riverton, Wyo. - While driving along the street, a young woman began sneezing and lost control of her car. As a result, the car smashed into two other vehicles causing \$1,450 in damages. She was cited for careless driving by the police.

## LIBRARY News

### By Anne Camp

A fine New Year's resolution -- READ A GOOD BOOK A MONTH! Some old, some new -- then you can compare, and see if you think the things being published today will be the classics of tomorrow.

Speaking of the New Year -- Some of you may have read Hal Boyle's article in the Avavanche Journal in which he very depressingly, (to me) reminding everyone, as the years pass by, we get older, then he gave 12 ways to judge if you were getting truly old -- one was, when you go in the stores to shop, and everything seems unreasonably high -- you are getting old -- (I guess you unconsciously are comparing prices with the depression years when bread was five cents a loaf, or if a day old, maybe four cents). Anyway, to combat my low score on his test, and raise my youthful image slightly, I had to read again the lovely lines written by Gen. Douglas McArthur: "You are as young as your faith, as old as your doubt; as young as your self-confidence, as old as your fear; as young as your hope, as old as your despair."

Now, did you ever wonder what he might have said right after that sentence? -- or maybe you know that already, or can do a little research and find out, call me at the library, I think it might be interesting and fun, to see if anyone can find out and call -- Next week, I will report again the rest of these inspiring lines.

Wednesday morning, story-hour was held for the children from the Goodwill center with 15 present, some were absent due to illness, and we hope they are well and able to come next time. "Rabbits, Rabbits and More Rabbits" was the theme for this session. Songs were sung, and a game, "Bunny Caught in the Garden" was played; also a counting fingerplay game, and a flannelboard story about the little rabbit who wanted red wings, was given in addition to the regular story.

The story-hour will be the first Wednesday in February for all children of the area from 10 a.m. to 11 a.m.

Are you between the ages of four and 14, and talented in art? Doubleday's has announced an art contest for youngsters internationally. This contest is for illustrations of favorite stories, and the winning illustrations will be published in a forthcoming book of famous folk stories. First prize -- \$100 (for the jacket illustration). The second prize -- \$50, and additional prizes of \$20 for each color illustration used, and \$10 for each black and white.

Check at your library for further details on the contest and address to send entries. Mrs. D. M. McGuire, Route 3, Muleshoe, donated a large number of children's books recently. We appreciate these very much, as we always need to add to our children's section.

## Ask Amy

### BY AMY ADAMS

**DON'T MAKE A BIG TO DO OVER IT**

Dear Amy: We had a family party Christmas day at my mother's house. My brother-in-law grabbed me and kissed me under the mistletoe. I was very embarrassed because everyone saw us. Mistletoe is for kids -- isn't it? (He's in his forties.)

What do you make of his actions?  
Blushing

**Dear Blushing:**  
I don't make anything of it and neither should you. (Maybe he's just a kid at heart!)

**Dear Amy:**  
Last year when our school was having the Junior-Senior Prom I asked my date if she wanted to go to any special place afterwards. She said she would leave it up to me as to where we would go.

Knowing this, I had planned to go to a nice place in our home town, but when I picked her up for the Prom, she asked if I would be alright to go to another town some 40 miles away with friends.

When we got to the Prom, I called my parents (without my date knowing) just to let them know there was a change of plans. When they heard where we were going they refused to let me go. I'm 17 and I felt that I couldn't tell my date that my parents would not let me go, so I faked it by saying that I didn't feel good, and I took her straight home right after the Prom.

What should I have done? Should I write to her and explain?  
Prom-goer

**Dear Prom-goer:**  
You should have told her that since she left it up to you, that you had already made plans to go to a nice place near by -- and you should have gone! No other explanation was necessary. I am sure she will understand the type who might belt you one back!

**Dear Amy:**  
My life reads like a soap opera. I guess, but my father died when I was 12 and consequently I was very close to my mother. She chose the food I ate, the clothes I wore and the friends I made. Now I'm 27, a college I'm told that a library should have four times as many children's books as they do adult. At the present, it is just the reverse, due to the large number of adult fiction that is donated. But we are seeking to remedy this by buying for the children's section insofar as the budget allows.

Mrs. Roselyn Shamblin, State Field Consultant was in Muleshoe Tuesday to confer with librarians and others interested in library development in our area.

A number of gifts have been received by the Memorial fund the last few days; those giving in memory of Juanita Lambare as follows: Mrs. T. M. Slemmons, Mr. and Mrs. Robert Hooten, Mrs. Charles Lenau, Mr. and Mrs. M. D. Locker, Mrs. Snow Davis and Milledge Davis, The First Presbyterian Church of Muleshoe and the families of the O. N. Jennings and the Joe Bates Jennings, and J. A. Nichols.

With the very short coats boots are being worn.

Stockings in fancy weaves and colors continue their popularity.

Glitter for evening is favored by many designers. Brocaded material spotted with jewels are seen in long and short dresses for after six.

## In Fashion

Capas are being shown in all of the shops. These are particularly good when worn over tweed suits in cold climates as they give a freer movement of the arms than is possible with a coat. Some of the capas are nice length and others are shorter.

Stockings in fancy weaves and colors continue their popularity.

Glitter for evening is favored by many designers. Brocaded material spotted with jewels are seen in long and short dresses for after six.

## Bookmobile Schedule

The Bookmobile has completed a very successful year. We checked out 44,069 books during 1967. We checked out 36,475 books in 1966. We added 945 new books to our library which includes 101 Easy books, 112 Juvenile fiction, 41 Juvenile non-fiction, 148 Young adult fiction, 97 Young adult non-fiction, 371 Adult fiction and 173 Adult non-fiction.

Ten books were donated to the Bookmobile by patrons. We are happy to receive donations of books.

The second week of this year was a big week for us also. Bovina checked out 219 books, Spade - 327 books, Olton - 213 books, Whiteface - 119 books, Bledsoe 259 books. The Bookmobile started the third week at Three Way and checked out 202 books.

Charles Bratcher of Bratcher Motor Supply gave us a jack to have on the Bookmobile.

We are in the process of ordering more books. If anyone knows of good books they would like to see in the Library, let us know and we'll try to get them.

### SCHEDULE

**WEDNESDAY**  
Circleback 8:45-9:45  
Bula #1 10:15-11:15  
Bula #II 12:00-1:00

**THURSDAY**  
Amherst #1 9:15-9:45  
Amherst #II 9:45-10:15  
Springlake #1 11:00-11:45  
Springlake #II 12:00-1:00  
Earth 1:15-3:45

**FRIDAY**  
Pleasant Valley 10:00-11:00  
Sudan #1 12:00-1:00  
Sudan #II 1:00-4:00

**SATURDAY**  
Morton 9:30-12:00

## MULESHOE LOCKER

"HOME OF VANCE'S COUNTRY STYLE SAUSAGE, BACON AND HAMS."

Hamburger.....3 Lb. \$1.00  
Bologna.....3 Lb. \$1.00  
Bacon Home Cured.....Lb. 63c  
Chuck Roast.....Lb. 59c  
401 Main Phone 272-4703

## GOING CRAZY on your INCOME TAX

Avoid your Waterloo by bringing your tax problems to H & R BLOCK. You'll get every tax break that's coming to you, plus our guarantee of accuracy.

P.S.: A trip to BLOCK is a lot cheaper than a psychiatrist, too.

GUARANTEE We guarantee accurate preparation of every tax return. If we make any errors that cost you any penalty or interest, we will pay the penalty or interest.

RETURNS \$5 UP

**H & R BLOCK Co.**

America's Largest Tax Service with Over 2000 Offices  
115 Ave. D Phone 272-4644  
WEEK DAYS 9 AM TO 5 PM  
"No Appointment Necessary."

## THE UNBEATABLES YOUR CHRYSLER DEALERS

You don't have to be rich to drive a Chrysler. To find out just how little it does cost, see...

Come on. Join the big move to Chrysler. You'll feel rich when you drive a big full-size Chrysler Newport home. You'll be richer too. Like every time you buy regular gas instead of premium to power the big 383 cubic inch standard V-8. And the price... Newport actually costs just a few dollars a month more than comparably equipped Fords and Chevs. And that's the only thing you'll find in common.

Meet THE **unbeatables** unbeatable cars... unbeatable deals

CHRYSLER MOTORS CORPORATION

**BMG MOTORS, INC.**  
1701 West American Blvd. Muleshoe, Texas



# MULE'S TALE

Official Publication of Muleshoe High School Written and Edited by Students of the Muleshoe Schools

CO-EDITORS

Betty Harbin

Lindy Kerr

Vol. 3 No. 14



## ★★ Chanters to Present Program at High School ★★

The McMurry College Chanters will present a program of some of the world's most celebrated choral music in their concert at 10:30 a.m. on January 23 in the high school auditorium.

This year's tour by the famed McMurry choral group will also be a farewell tour for the popular Windjammers trio, a feature of the Chanters secular concerts for the past three years. The young collegians will enter the armed forces in February following graduation from McMurry for Jerral Elliott of Brownwood and Clark Walter of Roswell, N.M. Third member of the group is Pat Hamilton, a junior student.

The 51-voice choir from the Athlete college is under the direction of Paul Engelstad, now in his fifth year as Chanters conductor. Before joining the McMurry faculty in 1963, En-

gelstad was conductor of the Texas Lutheran College Choir. He has been music and choir

director at Grace Lutheran Church in Chicago, St. Martin Church in Austin, First Metho-

dist Church in Galveston and Alamo Heights Presbyterian Church in San Antonio.

Also Debbie Purcell, Alta Ramm, Johnny Ramage, Tom St. Clair, Scott Stevenson, Carey Sudduth, Lana Wagon, Keila Walker and James Wedel, Fifth grade students are: Craig Baker, Debbie Burchell, Kim Bryant, Max Buhrman, Lavern Carpenter, Hope Dean, Judy Dearing, Maribeth Dillman, Faith Free, Vicky Griffin, Lauren Hall, Sharon Harris and Ginger Johnson.

Also Linda McCormick, Grant Morrison, Robbie Nesbitt, Belinda Nickels, Jana Oyler, Marshall Pool, Gene Rogers, John Saylor, Timothy Sooter, Rhonda Stevenson, Be-

lie Lewis and Perri Poyner. Also Debbe Purcell, Alta Ramm, Johnny Ramage, Tom St. Clair, Scott Stevenson, Carey Sudduth, Lana Wagon, Keila Walker and James Wedel, Fifth grade students are: Craig Baker, Debbie Burchell, Kim Bryant, Max Buhrman, Lavern Carpenter, Hope Dean, Judy Dearing, Maribeth Dillman, Faith Free, Vicky Griffin, Lauren Hall, Sharon Harris and Ginger Johnson.

Also Linda McCormick, Grant Morrison, Robbie Nesbitt, Belinda Nickels, Jana Oyler, Marshall Pool, Gene Rogers, John Saylor, Timothy Sooter, Rhonda Stevenson, Be-

lie Lewis and Perri Poyner. Also Debbe Purcell, Alta Ramm, Johnny Ramage, Tom St. Clair, Scott Stevenson, Carey Sudduth, Lana Wagon, Keila Walker and James Wedel, Fifth grade students are: Craig Baker, Debbie Burchell, Kim Bryant, Max Buhrman, Lavern Carpenter, Hope Dean, Judy Dearing, Maribeth Dillman, Faith Free, Vicky Griffin, Lauren Hall, Sharon Harris and Ginger Johnson.

lie Lewis and Perri Poyner. Also Debbe Purcell, Alta Ramm, Johnny Ramage, Tom St. Clair, Scott Stevenson, Carey Sudduth, Lana Wagon, Keila Walker and James Wedel, Fifth grade students are: Craig Baker, Debbie Burchell, Kim Bryant, Max Buhrman, Lavern Carpenter, Hope Dean, Judy Dearing, Maribeth Dillman, Faith Free, Vicky Griffin, Lauren Hall, Sharon Harris and Ginger Johnson.

Also Linda McCormick, Grant Morrison, Robbie Nesbitt, Belinda Nickels, Jana Oyler, Marshall Pool, Gene Rogers, John Saylor, Timothy Sooter, Rhonda Stevenson, Be-

lie Lewis and Perri Poyner. Also Debbe Purcell, Alta Ramm, Johnny Ramage, Tom St. Clair, Scott Stevenson, Carey Sudduth, Lana Wagon, Keila Walker and James Wedel, Fifth grade students are: Craig Baker, Debbie Burchell, Kim Bryant, Max Buhrman, Lavern Carpenter, Hope Dean, Judy Dearing, Maribeth Dillman, Faith Free, Vicky Griffin, Lauren Hall, Sharon Harris and Ginger Johnson.

Also Linda McCormick, Grant Morrison, Robbie Nesbitt, Belinda Nickels, Jana Oyler, Marshall Pool, Gene Rogers, John Saylor, Timothy Sooter, Rhonda Stevenson, Be-

lie Lewis and Perri Poyner. Also Debbe Purcell, Alta Ramm, Johnny Ramage, Tom St. Clair, Scott Stevenson, Carey Sudduth, Lana Wagon, Keila Walker and James Wedel, Fifth grade students are: Craig Baker, Debbie Burchell, Kim Bryant, Max Buhrman, Lavern Carpenter, Hope Dean, Judy Dearing, Maribeth Dillman, Faith Free, Vicky Griffin, Lauren Hall, Sharon Harris and Ginger Johnson.

Also Linda McCormick, Grant Morrison, Robbie Nesbitt, Belinda Nickels, Jana Oyler, Marshall Pool, Gene Rogers, John Saylor, Timothy Sooter, Rhonda Stevenson, Be-

lie Lewis and Perri Poyner. Also Debbe Purcell, Alta Ramm, Johnny Ramage, Tom St. Clair, Scott Stevenson, Carey Sudduth, Lana Wagon, Keila Walker and James Wedel, Fifth grade students are: Craig Baker, Debbie Burchell, Kim Bryant, Max Buhrman, Lavern Carpenter, Hope Dean, Judy Dearing, Maribeth Dillman, Faith Free, Vicky Griffin, Lauren Hall, Sharon Harris and Ginger Johnson.

Also Linda McCormick, Grant Morrison, Robbie Nesbitt, Belinda Nickels, Jana Oyler, Marshall Pool, Gene Rogers, John Saylor, Timothy Sooter, Rhonda Stevenson, Be-

lie Lewis and Perri Poyner. Also Debbe Purcell, Alta Ramm, Johnny Ramage, Tom St. Clair, Scott Stevenson, Carey Sudduth, Lana Wagon, Keila Walker and James Wedel, Fifth grade students are: Craig Baker, Debbie Burchell, Kim Bryant, Max Buhrman, Lavern Carpenter, Hope Dean, Judy Dearing, Maribeth Dillman, Faith Free, Vicky Griffin, Lauren Hall, Sharon Harris and Ginger Johnson.

Also Linda McCormick, Grant Morrison, Robbie Nesbitt, Belinda Nickels, Jana Oyler, Marshall Pool, Gene Rogers, John Saylor, Timothy Sooter, Rhonda Stevenson, Be-

lie Lewis and Perri Poyner. Also Debbe Purcell, Alta Ramm, Johnny Ramage, Tom St. Clair, Scott Stevenson, Carey Sudduth, Lana Wagon, Keila Walker and James Wedel, Fifth grade students are: Craig Baker, Debbie Burchell, Kim Bryant, Max Buhrman, Lavern Carpenter, Hope Dean, Judy Dearing, Maribeth Dillman, Faith Free, Vicky Griffin, Lauren Hall, Sharon Harris and Ginger Johnson.

Also Linda McCormick, Grant Morrison, Robbie Nesbitt, Belinda Nickels, Jana Oyler, Marshall Pool, Gene Rogers, John Saylor, Timothy Sooter, Rhonda Stevenson, Be-

lie Lewis and Perri Poyner. Also Debbe Purcell, Alta Ramm, Johnny Ramage, Tom St. Clair, Scott Stevenson, Carey Sudduth, Lana Wagon, Keila Walker and James Wedel, Fifth grade students are: Craig Baker, Debbie Burchell, Kim Bryant, Max Buhrman, Lavern Carpenter, Hope Dean, Judy Dearing, Maribeth Dillman, Faith Free, Vicky Griffin, Lauren Hall, Sharon Harris and Ginger Johnson.

### Forty-One On DeShazo Honor Roll

Forty-one students are listed on the Mary DeShazo elementary school honor roll for the third six weeks of the school term.

These are from the third, fourth and fifth grade. The third grade lists 18 students; the fourth grade 11 and the fifth grade has 12 on the roll.

Third grade honor students are: Roy Bara, Douglas Crawford, Freddie Flores, Patricia Grogan, Lucy Gutierrez, Linda Hernandez, Mike Hunt, Cindy Kimbrough, Larry Martin, Lydia McGee, Gary Parker and Darlene Rush.

Concerned Lass Little Edna seemed to be enjoying herself thoroughly at the zoo with her father. As they were looking at the lions, however, Edna began to look very troubled. Her father asked her the "rouble."

"It was just wondering, Daddy," she replied in a fearful voice, "if a lion broke loose and ate you - what bus do I take home?"

Ralph Stevenson, director of Special Programs, Bill Taylor, High School counselor, Mrs. Leota Hardgrove and Mrs. Elizabeth Watson attended a Guidance and Counseling Workshop in Dimmitt High School, Wednesday afternoon, January 17.

James H. Burns, consultant of the Texas Education Agency, directed the group discussion. "Concerns of Counselors for the Second Semester," "Orientation of Elementary Children in the Junior High" and "Evaluation of the Guidance Program" were topics for discussion.

Approximately forty counselors and administrators attended this meeting.

After the dinner, John Kendrick of Brownfield, the newly-elected State Representative of District 75 projected his thinking on water conservation, education, possible tax resources, and the Governor's Report on Education. The Morton Stage Band played several musical numbers.

Approximately fifty administrators from the five-county area attended this meeting.

The coming banquet, planned in May, will be a big event. Preparations must start early. At the meeting, the theme, entertainment, decorations, and food were discussed in detail. Members of the class volunteered to work on committees. Money-making projects are underway, and plans are in order. The Juniors are working hard! Their goal: to have the best Junior-Senior banquet ever!

between the older generation clinging to tradition while the younger Chinese struggle to Americanize themselves. Amid colorful songs and Chinese traditions, the heartwarming story unfolds.

Be sure your seat's reserved when the curtain opens at 8 o'clock on January 27 or 29 in MHS auditorium.



CONDUCTING TEAM---The FFA Chapter conducting team won second place in district competition recently. Members of the team pictured are Robert Gardner, Tommy Taylor, Jerry Scoggin, Ronald Byrd, Terry Gunter, Greg Little and Ricky Hamilton.

### Plan to Attend Flower Drum Song Play

Have you made your plans to attend "Flower Drum Song?" It is to be presented by Muleshoe High's Fine Arts Department. Advance tickets to the colorful highlight of the school year are now on sale.

The sensational production will consist of the finest efforts of the Drama, Art, Orchestra and Choral departments. Kerry Moore directs the

actors. Elizabeth Black is in charge of all sets and props. Bob Breckenridge directs the 20-piece orchestra. Lela Breckenridge is in charge of vocal music and Mita Beth Gibson, Junior High choir director, has professionally arranged choreography.

When Sammy Fang (Stan Johnson) receives a Chinese picture-bride for graduation, he gives her to a friend, Wang

Ta played by Johnny Embry, who is in love with one of Sammy Fang's employees, Linda Lowe, played by Jane Branscum.

All of this puzzles the older generation, Wang Chi Yang (John Gulley), Madam Liang (Betty Harbin) and Dr. Li (Larry Baker). Other major characters include Bucky Taylor and Sandi Hollars.

The conflict is established

between the older generation clinging to tradition while the younger Chinese struggle to Americanize themselves. Amid colorful songs and Chinese traditions, the heartwarming story unfolds.

Be sure your seat's reserved when the curtain opens at 8 o'clock on January 27 or 29 in MHS auditorium.



FAMILY---Gail Phipps, Larry Baker, Debbie Schuster, Betty Harbin, Dale Blackstone, Sandie Hollars, John Gulley, Trevor Ford, Stan Johnson and Paul Lenu are the members of the Three Family Association in "Flower Drum Song."



GOES FOR POINTS---Forward Carolyn Embry is pictured as she goes in for two points and high-pointer at the Tulsa-Muleshoe basketball game.



CHEERLEADERS---Freshmen cheerleaders Vicki Julian, Susan Wood, Rickie Richardson and Cathy Mardis are showing an explicit formation while cheering their team on to victory during recent basketball games.



MUSICAL---Johnny Embry sings "You Are Beautiful" in musical, "Flower Drum Song."



ORCHESTRA MEMBERS---Susie Tanner, Kay Coppedge - pianists; Carolyn Wedel, Betty Dearing, Vina Bass, Lee Ann Yerby, Cynthia Wrinkle, Ricky Stockard, Penny Langer and Debbie Sain - clarinets; Lindy Kerr - bass clarinet; Treena Bryant and Val Moore - saxophones; Darla Kendall and Devonna Bradley - bassoon; Derrell Wilson, Ann Douglass and Doris Horsley - French horn; Nelda Finley, Patsy Peery and Becky Sain - flutes; Kathy Seymore - oboe; Ray Sanchez, Gus Taylor, Derrel Ewins and Melanie Precure - cornets; David Bickel - trombone; Mark Edwards - string bass and David Gupton - drums.

### Sudan News

By Evelyn M. Scott



WITH COMPANY--Bob Lowe has just completed a short course in Lubbock, learning the latest methods in installing and determining trouble in submersible pumps. He is now associated with Low Pump Company and Sales Service.

### Farm Income Tax Report Due Soon

Yep! It's that time again! Time to dig out all the farm records from the past year, consult the "Farmer's Tax Guide" and file that income tax return.

Completed returns must be filed by February 15 unless the farmer has already elected to file an estimated income tax return, says J. K. Adams, county agricultural agent. If an estimated return has been filed, the farmer has until April 15 to file a complete return.

Farm business income and expenses should be included on Schedule F of Form 1040, points out Adams. Gross agricultural income includes receipts from crop and livestock sales, legislative program payments, qualifying patronage dividends, cash rental income and crop insurance proceeds.

On the other hand, farm expenses include such items as hired labor, repairs and maintenance, taxes, crop insurance premiums, interest on mortgages, cash rental payments, conservation costs, feed, seed, fertilizer, fuel, oil and other purchased supplies, storage costs, record books, qualifying farm organization dues and marketing and advertising costs.

Investment credit restrictions were relaxed after March 9, 1967. Qualifying

credit may be claimed subject to the limitations covered in the "Farmer's Tax Guide" which, incidentally, is available at the county Extension office.

Breeding livestock held over for one year may qualify for capital gain treatment. In this case, only one-half of the realized gain is included as taxable income, Schedule D in the tax guide offers additional examples.

Adams also points out that qualifying soil and water conservation expenditures can be claimed up to 25 percent of the gross agricultural income from farming. Any excess can be carried into succeeding years.

The farmer may elect to include land clearing expenses incurred to make such land suitable for farming. This amount cannot exceed \$5,000 or 25 percent of the taxable farm income, whichever is less. Any excess expenditures must be capitalized. This election applies only in the year for which it was made.

Personal expenses may be itemized if they are greater than the standard deduction allowed, explains the agent. Such items as contributions, interest on personal loans, personal property taxes and medical and dental expenses are examples. The minimum standard deductions may be used where beneficial.

What do you think of my argument?  
"It was very sound, very sound there was nothing but sound to it, in fact."

Mrs. Martin Maxwell was hostess last Thursday afternoon for a meeting of the Sudan Sewing Club.

Present were members Mrs. Annie Chester, Mrs. Randolph Howard, Mrs. Jinks Dent, Mrs. Lee Robinson, Mrs. Mike Carter, Mrs. Otis Markham and Mrs. Lynn Olds.

The next meeting will be held in the home of Mrs. Jinks Dent. Mrs. John Tucker was ill last week and confined to the hospital in Amherst.

Mrs. Lena Rollins visited last week in the home of her daughter, Mrs. Robert Masten and family, in Lubbock.

Mr. and Mrs. Earl Smith of Santa Rosa visited during the weekend in the home of her sister, Mrs. Martin Maxwell and family.

Visiting in the home of Mr. and Mrs. Noel Lumpkin are her mother, Mrs. Minnie Cockerham of Jackboro, and Mrs. Lumpkin's grandmother, Mrs. H. W. Suits of O'Donnell.

Mr. and Mrs. Louis Fields and family were among those from Sudan to attend the Lamb County Fat Stock Show in Littlefield last weekend. Others attending included Mr. and Mrs. Marvin Bowling, Mr. and Mrs. Jerry Ray, Mr. and Mrs. Kenneth Burgess, Mr. and Mrs. Kenneth Noles, Mr. and Mrs. Wayne Swartz, Mr. and Mrs. Don Ham and Mr. and Mrs. S. A. Parmer.

Mr. and Mrs. Harlon Davis and children, Jed and Shelley, visited Sunday afternoon in the home of Mr. and Mrs. R. E. Scott.

Nita Whiteaker entertained with a slumber party Friday night when the occasion was a going-away courtesy for Cynthia Wiseman.

Those attending were Sharon Wilson, Kathy Rice, Ellen Williams, Debra Marlowe, Louise Williamson, Debbie Fields and Sue Noles.

Mr. and Mrs. Buddy Joe Wiseman have moved to Friona where he is to be engaged in farming there.

Mr. and Mrs. Wallace Gosdin were Lubbock visitors Thursday afternoon.

Mrs. R. S. Gatewood was ill and confined to the hospital in Amherst last week.

Mr. and Mrs. Ves Patterson

have returned home after several days stay at Alamogordo Lake.

Mrs. Cleo Whitmore was a Lubbock visitor Thursday. The Epsilon Sigma Alpha Sorority met Thursday evening, January 11, in the home of Charlene Blume with Patti DeLoach, co-hostess.

A pledge pin ceremony was held for Sharon Brown.

The meeting was called to order by Arlene Provence, president, and the district meeting to be held in Lubbock, January 21, was discussed. The meeting will be held at the Gridiron Restaurant and hostess chapters will be the Alpha Gamma and Gamma Nu Chapters of Lubbock. Mary Wood will represent the Sudan sorority in the District Beauty Queen contest.

A luncheon will be held at 12:30 and the program will get underway at 1:30. Present for the meeting are to be several state presidents and one international president.

Also, during the business meeting, a donation was made to the ESA home and plans were made to entertain the Senior Citizens, February 9, at the community center.

Mary Tollett brought the program, "Friendship is Sharing." A test was given to members from Phyllis Diller's "Housekeeping Hints."

Refreshments were served to the following present, Charisette Baker, Sharon Brown, Mary Cowart, Wynette Fisher, Arlene Lumpkin, Arlene Provence, Martha Markham, Mary Tollett and Maxine Nichols.

Mr. and Mrs. Grove Edsell of Lubbock and Platonia, Colo. visited Sunday afternoon in the home of Mr. and Mrs. Milton Wiseman.

### VETERANS Q's and A's

Q -- As I understand it, G.I. life insurance has four options available under which the proceeds may be paid upon the death of the insured. Option one is a lump sum payment. Does this mean that the beneficiary must really take the proceeds in a lump sum?

A -- No. This option makes the sum available if the beneficiary desires it. Primarily, it makes the proceeds entirely flexible for the beneficiary who may choose to take the entire amount in a lump sum, take part of it in a lump sum and the balance in monthly installments, or takes the entire amount in monthly installments. If the insured makes option one available to the beneficiary, all four options -- including life annuities -- become available to the beneficiary at the time of the policyholder's death.

## Interstate Highways Not 'Super' But 'Superlative' Highway Now

AUSTIN--Interstate highways in Texas are setting new standards of safety and convenience for the highway traveler, State Highway Engineer J. C. Dingwall said today.

The Texas Highway Department and private enterprise are providing facilities for the traveling public unsurpassed in history.

Interstate highways have proved to be two and one-half times safer than the older, conventional highways they replace. Research indicates marked reduction in driver tension in Interstate highway travel.

Savings of time, fuel, tires and wear and tear afforded by these superhighways are significant. There has been a dramatic breakthrough in convenience, too.

Travelers on the 3,029 miles of Interstate highways in Texas

will find spacious safety rest areas an average of every 37 miles when the system is completed in the mid-1970s.

These rest areas are a far cry from the early roadside parks. Seven have been completed, with rest rooms, drinking water, special displays of nearby points of interest and dispensers offering free travel maps. Many others are underway.

Interstate highways in Texas also have afforded many communities with opportunities for new growth and commercial development. Modern, new businesses serving the traveling public are developing all along Texas' Interstate highways.

Such development usually occurs near interchanges on frontage roads alongside the main travel lanes.

Texas -- more than other

along the Interstate highways -- to the added convenience of the highway user.

In some sparsely-populated areas where traffic volumes are low, frontage roads have not yet been built. As traffic demands increase, however, these facilities will be added.

Along more traveled routes, however, commercial development along frontage roads near interchanges affords the traveler with a wide choice of businesses catering to his needs. Competition for local trade provides assurance of good quality and fair prices.

"Interstate highways already are paying big dividends," Dingwall said, "in safety, in economic opportunity and, especially, in convenience to the traveling public."

"These benefits make our Interstate highways not just 'super' highways, but 'superlative' highways."

"We have stuck by this policy," Dingwall said, "to the benefit of the highway user and the local economy as well."

"When adequate interchanges and frontage roads are provided, in keeping with traffic demands and good engineering practices, free enterprise has been attracted to take care of the traveler's needs."

Increased land values along completed Interstate highways in Texas are proof of the readiness of businessmen to serve the traveling public.

Economic impact studies in Temple, for example, show land prices along Interstate Highway 35 zoomed from \$73 an acre before the expressway was built to about \$9,100 an acre after construction.

Similar studies in both large and small cities show business has found solid opportunity

steadily decreasing jobless benefits payments in Texas during recent years.

Texas Employment Commission estimates that in 1968, more than seventy percent of Texas' Interstate highways will be paying State unemployment tax at the minimum tax rate of 0.1 percent.

Further, TEC figures indicate that the average unemployment tax rate for ALL Texas employers will be less than half the average tax rate of employers in all the other states.

"Fifty four percent of Texas employers have already earned the minimum blanket tax reduction. Also unaffected will be those employers whose employment experience has generated a tax rate greater than 3.0 percent, thereby causing them to pay at the 2.7 maximum rate."

Coincidentally with, but unrelated to the tax reduction, the 1967 Legislature provided an increase in weekly jobless benefits.

How this increase in benefits -- and how the employment -- unemployment picture will shape up in 1968 -- are unknown factors which will figure into the October 1, 1968 computations to determine what payroll tax rates will be in 1969.

Commissioner Birdwell announced that each employer will receive his individual tax rate information about January 20,

Community Hall  
Dumas, Texas

Alvin Chalmers  
DeKalb Industries  
Geigy Chemical

Peoples Natural Gas Co.  
ShurGro Irrigation  
W. R. Grace & Co.

SPONSORED BY:

NOON MEAL • COFFEE AND DONUTS • DOOR PRIZES!

FREE!

AT THE CORN-SORGHUM-SOYBEAN GROWER'S CLINIC

Get the latest information on: Seed • Chemicals • Irrigation • Fertilizer • Mechanization • Minimum tillage • Plant Population • Grower's potential for net profit increase.

MEET the EXPERTS

Community Hall Dumas, Texas

**Treflan**

When we say Treflan is weatherproof we mean...

- ... it works even if there's a gullywasher.
- ... it works even if it doesn't rain for a month after application.
- ... it works for months regardless of weather or irrigation.

For cotton weed control get Treflan WESTERN '66' CO.

Girl's 3 pc. PAJAMA & ROBE SETS \$3.98 Val. \$2.47 set

Ladies Seamless NYLONS 53¢ Pr.

PLAIN OR MESH

Popular Shades Soft flex tops #407, 411 and 3200

Run-Guard in Toe and Heel

59¢

Hankscraft Thermal STERILIZER with Formula Set \$5.97

Hankscraft Cool Vapor Air Circulator HUMIDIFIER #255 \$29.95 Val. \$14.97

JOY LIQUID Giant Size 49¢

DUZ DETERGENT King Size 99¢

Cascade Dishwasher SOAP Giant Size 63¢

These Values Good Mon. Thru Thurs.

"WHERE YOU ALWAYS BUY THE BEST FOR LESS"

GIBSON'S DISCOUNT CENTER

52x70 SIMTEX TABLECLOTHS Floral Colors \$2.87

3.98 Val. EA.

2 Pcs. Mens Insulated Underwear 5 oz. wt. OUR REG. 5.47

50% Orlon 5.47

Acrylic-50% Other Fibers #513 \$3.97 suit

Children's Tennis Shoes \$1.57 PR.

Bumper toe style OUR REG. 1.97

Sizes 4 1/2 to 13 1/2

PRESTO DELUXE HAIR DRYER #HD7 \$16.93

HEALTH & BEAUTY AIDS

LIPSTICK Helen Neushaefer Moisture Cream. 22c

TOOTHBRUSHES ... Pro 69¢ Value ... 27c

TOOTHPASTE ... Colgate 95¢ Family Size ... 59c

MOUTHWASH ... Listerine 14 oz. Size ... 69c

COLD TABLETS ... 4-Way 89¢ Value ... 54c

THROAT LOZENGES ... Listerine ... 39c

COPE ... 60 Tablet Size \$1.19 Val. ... 77c

DOAN'S PILLS ... \$1.00 Value ... 58c

ENDUST ... 12.5 oz. Size ... 87c

DISINFECTANT ... Pine-Oil Pint Size ... 22c

49¢ Value

831B

Auto-Crib Set Electric Bottle Warmer 2.98 Val. \$1.47

#CM9

Fully automatic, no controls to set. Brews perfect coffee every time at cup-a-minute speed, keeps coffee sipping hot to the last cup. Signal light tells when it's ready to serve. Washes easily under water.

# Farm Bureau Will Support Legislation to Aid Farmers

WACO-- Farm Bureau will support legislation in Congress to alleviate the "discrimination against farmers, ranchers and small businessmen" in the provisions of the federal estate tax, according to Sidney Dean, Victoria, president of the Texas Farm Bureau.

Dean said proposed legislation was introduced in the first session of the 90th Congress which would allow an estate's representatives to have the option of having the decedent's interest in the business valued at either its market value--

the present system--or the higher of first, the decedent's cost basis; or, second, value based on the reasonable earning power of the business.

The TFB President said voting delegates to the recent American Farm Bureau Federation annual meeting approved a policy which reads, in part: "The value of farmland for estate tax purposes should be based on its current use."

"In recent years, inflated land prices, usually pushed up by speculators outside agriculture and bearing no relation-

ship to the productive value of the land, have worked an extreme hardship on families of farmers and ranchers when they had to settle up their federal estate taxes under the present valuation system," Dean said.

"This has forced liquidation of many farms and ranches which otherwise might have been kept in the family and operated as a family unit," he added.

He pointed out that, in contrast to farms and ranches, the value of publicly traded stocks and securities generally re-

flects their earning power, and such stocks and securities can be sold on death without destroying a family business.

The effect of the present discrimination, Dean said, is to threaten the continuation of the traditional family farm or ranch which is passed on from one generation to the next. Small business involving real estate are similarly affected, he added.

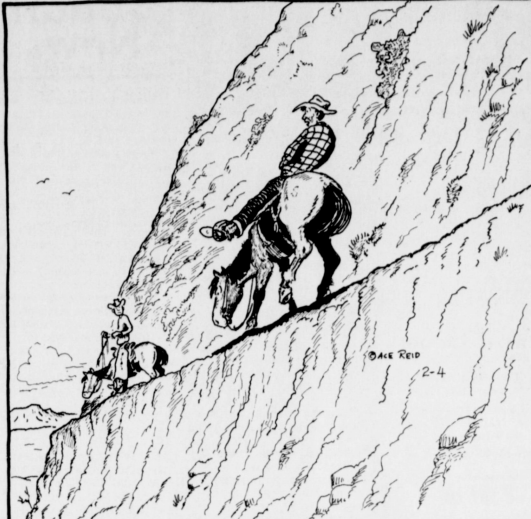
To protect against abuse, one provision of the bill introduced provides the decedent must have been in the business for at

least five years after his death.

"We believe the proposed legislation to be a fair solution to the problem, and Farm Bureau will work for its passage," Dean said.

**SPELLMAN WILLS ESTATE**  
New York--Francis Cardinal Spellman willed his estate to his successor as Archbishop of New York. Estimated at approximately \$30,000, it is to be used for the benefit of the archdiocese. Cardinal Spellman died in early December.

## COW POKES By Ace Reid



"Naw, I ain't scared... I always ride leanin' to the right."

- |  |   |  |   |  |
|--|---|--|---|--|
| <p>★ MULESHOE ASSEMBLY OF GOD 517 S First J.W. Farmer, Pastor</p> <p>★ SPANISH ASSEMBLY OF GOD East 6th and Ave. F, Rev. Enock Ramirez</p> | <p>★ FIRST BAPTIST CHURCH 220W. Ave. E.</p> <p>★ CALVARY BAPTIST CHURCH 1733 W. Ave. C, Rev. Bill Felts</p> | <p>★ PRIMITIVE BAPTIST CHURCH 621 S. First: Alton Richards, Elder</p> <p>★ RICHLAND HILLS BAPTIST CHURCH 17th &amp; West Ave. D, Rev. Leland K. Callaway</p> | <p>★ TRINITY BAPTIST CHURCH 314 E. Ave. B, Troy Walker, Pastor</p> <p>★ SPANISH BAPTIST MISSION 439 E. Ave. F, Larry Henry-Pastor</p> | <p>★ ST. MATTHEW BAPTIST CHURCH W. Third Rev. E. McFrazier, Pastor</p> <p>★ PROGRESS BAPTIST CHURCH Progress, Texas Sam Sowder, Pastor</p> |
|--|---|--|---|--|

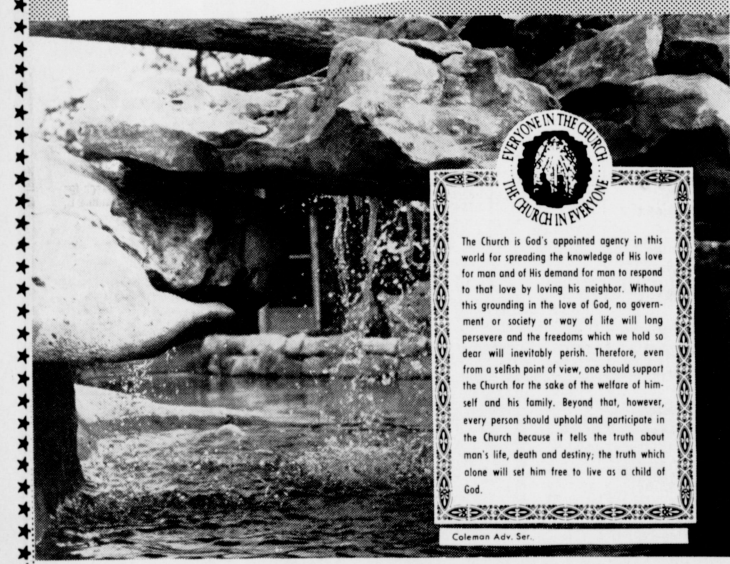
## MANMADE

A man made this beautiful little waterfall and improved his part of a little stream that ran by his house.

Another man on another stream threw trash in the water and let weeds grow up around it so that the beauty of the creek was obscured.

Man fashions many things out of that which God has created. Beauty or ugliness can result from our decisions as to what we will do with divine raw materials. Dedication to God and the desire to emulate Him usually makes the difference in what we do with what God has provided.

Let God find you in His church.



**BEYOND IN THE CHURCH**  
THE CHURCH IN PERSPECTIVE

The Church is God's appointed agency in this world for spreading the knowledge of His love for man and of His demand for man to respond to that love by loving his neighbor. Without this grounding in the love of God, no government or society or way of life will long persevere and the freedoms which we hold so dear will inevitably perish. Therefore, even from a selfish point of view, one should support the Church for the sake of the welfare of himself and his family. Beyond that, however, every person should uphold and participate in the Church because it tells the truth about man's life, death and destiny, the truth which alone will set him free to live as a child of God.

Coleman Adv. Ser.

- ★ FIRST CHRISTIAN CHURCH 130 W. Ave. G, Walter Barthold, Minister Sunday Evening Service 7 p.m.
- ★ IMMACULATE CONCEPTION CATHOLIC CHURCH (Fr.) Robert O'Leary Northeast of City
- ★ MULESHOE CHURCH OF CHRIST Clovis Hwy. D.L. Thompson, Minister
- ★ NORTHSIDE CHURCH OF CHRIST 117 E. Brich Street
- ★ CHURCH OF CHRIST West Brich and Chicago H.R. Stevens, Minister
- ★ JEHOVAH'S WITNESS Friona Highway Boyd Lowery, Minister
- ★ ST. PAUL LUTHERAN First Presbyterian Morton Highway Philip J. Berry, Past.
- ★ FIRST METHODIST CHURCH 507 W. Second J. Frank Peery, Pastor
- ★ ST. JOHN LUTHERAN Lariat, Texas Herbert E. Peiman
- ★ LATIN AMERICAN METHODIST MISSION Ave. D, & 5th St. Esteva (Steve) Lara Pastor
- ★ CHURCH OF THE NAZARENE Ninth & Ave. C. Clarence Bennett, Pastor
- ★ FIRST PRESBYTERIAN Morton Highway W. CLINTON EDWARDS, PASTOR

**Go To Church Every Sunday**

## Obituaries

### Melvin Hollis

Melvin F. Hollis, 58, died at 12:30 a.m. Friday, January 19, at Lubbock Osteopathic Hospital. He was foreman of the Sandhills Pumping Station for the City of Lubbock Water Department, located 8 miles east of Muleshoe.

Services were conducted at 2 p.m. Saturday, January 20, at the Church of the Flowers, Resthaven Funeral Home, Lubbock. Officiating were Rev. Bert Homer, 25th Street Baptist Church, Lubbock and Rev. Troy Walker, pastor of the Muleshoe Trinity Baptist Church. Burial was in the City of Lubbock Cemetery under direction of Singleton Funeral

### John Faust

Services for John Robert Faust, 60, a longtime Amherst businessman, were held at 2 p. m. Friday in the Amherst First Baptist Funeral Home, Burial was in Bailey County Memorial Park.

Faust was the father of Edie Faust, administrator of West Plains Hospital here. A resident of Amherst since 1943, he died here at West Plains Hospital Wednesday afternoon.

Other survivors include his wife, six sisters, Mrs. A. A. Harris, Jackson, Miss.; Mrs. Leo Caldwell, Oakridge, Tenn.; Mrs. A. T. Crow, Memphis, Tenn.; Mrs. John Ed King, Tuscaloosa, Ala.; Mrs. Jimmy Knight, Oxford, Miss. and Mrs. Perry Simmons, Baton Rouge, La. and four grandchildren.

### Truman Lowe

Truman B. Lowe, 63, died suddenly at his home in the Dodd community at approximately 4:30 p.m. Tuesday of an apparent heart attack.

Lowe, a farmer had lived in that community located north of Earth for 32 years, moving there from Limestone County, Texas.

He was born November 3, 1904 in Limestone County.

Surviving are his wife, Opal, one son, Kenneth, his mother, Mrs. J. L. Lowe, Matt, Tex.; one sister, Mrs. Syble Hendrix, Mart; and eight brothers, Dean of Thorat; Earl, Mart; Bud of Groesbeck; Glenn of Belton; Ellie of Mart; Guy of Waco; Dwain of Groesbeck and Lloyd of Rockdale.

Funeral services were conducted Friday, January 19 at 2:30 p.m. at the Earth First Baptist Church with Rev. M. B. Baldwin, pastor, and Rev. Bruce Giles, Lubbock minister, officiating. Burial was in Earth Cemetery under direction of Parsons - Ellis - Singleton Funeral Home.

### Maude Hamar

Mrs. Maude Hamar, 67, Portales, died at 4:35 p.m. Wednesday, January 17, in Clovis Memorial Hospital. She was the mother of Mrs. Claude Wilemon, Muleshoe.

Services will be conducted at 2 p.m. Sunday (today) January 21, at the Melrose Church of Christ with Rev. Ron Miller officiating. Burial will be in Melrose Cemetery under direction of Steed - Todd Funeral Home, Clovis.

Survivors other than Mrs. Wilemon are another daughter, Mrs. Bob Mitchell, Portales; two sons, Roger, Portales and Frank, Pecos; three sisters, Leona Anson, Portland, Ore; Jessie Carter and Alberta Parker, both of Phoenix, Ariz., nine grandchildren and one great-grandchild.

Pallbearers are to be L. J. Mills, Muleshoe; John Vinyard, David Griffin, Ed Stephenson, Rudolph Burdine and Pete Moore. Honorary pallbearers are Floyd Skeen, Dee Scott, A. O. Huff and W. B. Zuber.

**BAILEY COUNTY JOURNAL**  
Established March 12, 1861  
Published by Muleshoe Publishing Co., Inc.  
Every Sunday at 304 W. Second  
L.H. Hall, President  
Jessica Perry Hall, Secretary-Treas.

**TEXAS PRESS ASSOCIATION**  
Member since 1967

L.H. Hall, Publisher & Managing Editor  
Dora Sicker, News Registrar  
Estelene Haglund, Society Editor  
C. W. Dyer, Editor

Zone 1-Rate: Perpetual Contract-Less  
copies, \$4.00 per year, \$4.50 per year by  
carrier. With Thursday Muleshoe Journal,  
100 papers, \$5.00 per year, \$5.50 per year  
by carrier.  
Zone 2-Central-Territory: \$5.00 per year,  
100 papers, \$5.50 per year.  
Members by carrier - \$5.00 single copies-10¢  
Advertising rates upon application.

## The Following Business Firms Urge You To Attend the Church of Your Choice This Sunday and Every Sunday

- |  |  |   |   |
|--|--|---|---|
| <p><b>First National Bank</b><br/>1st &amp; Ave. B</p> <p><b>Bratcher Motor Supply</b></p> <p><b>Western Drug</b><br/>114 Main</p> <p><b>Cashway Gro.</b><br/>402 Main</p> | <p><b>St. Clair's</b></p> <p><b>Muleshoe Motor</b><br/>106 S. 1st</p> <p><i>The Fashion Shop</i><br/>OF MULESHOE</p> <p><b>Cox Drive-In</b><br/>Theatre, Friona Hwy.</p> <p><b>Pool Insurance Agency</b><br/>114 E. Ave. C</p> | <p><b>Fry &amp; Cox</b><br/>401 S. 1st</p> <p><b>Cobb's</b></p> <p><b>Muleshoe Publishing Co.</b></p> <p><b>Charles Lenau Lumber Co.</b><br/>202 E. Ash</p> <p><b>Brock Motor Co.</b></p> | <p><b>Muleshoe State Bank</b><br/>304 Main</p> <p><b>L &amp; H Gro.</b><br/>14 W. American Blvd.</p> <p><b>Dari-Delite</b></p> <p><b>Muleshoe Co-Op Gins</b><br/>Muleshoe</p> <p><b>Western Auto Store</b><br/>228 Main</p> |
|--|--|---|---|

**SINGLETON FUNERAL HOME**  
24 HOUR AMBULANCE SERVICE  
PHONE 77-4574 MULESHOE

"The spider looks for a merchant who doesn't advertise so he can spin a web across his door and lead a life of undisturbed peace."

Mark Twain



# TRADE CLASSIFIED SELL BUY ADS LEASE

### WANT ADS PH. 272-4536

#### CLASSIFIED RATES

##### OPEN RATES

First insertion, per word-6¢  
Second and additional insertions - 4¢

##### NATIONAL RATES

First insertion per word-8¢  
Second and additional insertion-5¢

##### Minimum charge- 65¢

Card of Thanks - \$1.00 Double rate for blind ads

Classified Display - 85¢ per col inch  
95¢ col. inch for reverses

##### DEADLINE FOR INSERTION

Thursday's Muleshoe Journal - Noon Tuesday

Sunday's Bailey County Journal - Noon Friday

The Journals reserve the right to classify, revise or reject any classified ad.

Check advertisement and report any error immediately. Journals are not responsible for error after ad has already run once.

FOR RENT: House on farm west of Needmore, Call Ph. SW2-3900, Lubbock or write 2817-26th Street. 4-53s-tfc

#### 3. APTS. FOR RENT

FOR RENT: Furnished apartment. Call 272-3465.

#### 5-42s-tfc.

FOR RENT: Furnished apartment 717-719 West Ave. G, Bills paid, Phone 763-5701, Clovis, New Mexico. 5-50t-tfc

FOR RENT: Furnished apt. 709 Ave. G, 272-4109. 5-49t-tfc

FOR RENT: 2 bedroom apartment, carpeted and draped, electric stove, Phone 272-4209, 1910 W. Ave. D, 5-45s-tfc

FOR RENT: Furnished apartment, Call 272-4886. 5-44t-tfc

#### 6. BEDROOM FOR RENT

FOR RENT: One nice bedroom, 410 2nd St. 6-21t-tfc

#### 3. REAL ESTATE FOR SALE

FOR SALE: Three bedroom house, 3 baths, den, completely carpeted, drapes, 2600 square feet. Red Simmons. Phone 235-2787 day - 285-2253 night, Olton. 8-53s-8tp

510 Ranch, Okla. will sell or trade for dry or irrigation land, loan of \$16,000 at 4% int., all in Bottom except 60 A. Imp. on good road, river on place. 160 A. dry land, \$150, good alofts. 320 A. dryland with good alofts. No Imp. \$150 A. good terms. 80 A. Level, good alofts, full 8" well U. G. pipe, \$23,000. 80 A. Imp. level, 1/2 mile on good road, a nice stock farm, imp. 40 A. Alfalfa hay, 20 A. bermuda grass, 20 A. cotton. J. A. McGee Real Estate, Muleshoe 01, Ph. 272-3408 Res. 272-3469 8-3s-2tc

#### SPECIAL

171 acres, close in, 8-inch well with pipe, allotments, \$2,950 down, annual payment \$1,300 per year. Ideal for grain program. 8-3s-tfc

FOR SALE: Brick 3 bedroom, 2 baths, wall to wall carpet. Low down payment, call 4060. 8-3s-tfc

FOR SALE 80 A. land, 8-inch well, 2300 ft. underground pipe. Ph. Bula, 933-2271. 8-3s-8tp

FOR SALE OR RENT, 2 bedroom house in Muleshoe, 205 W. 14th. Call 356-4063, Portales. 8-3t-4tp

FOR SALE: 80 acres land, 8 in. irrigation well, natural gas, 1/2 mile underground pipe and 1/2 mile sprinkler. See Ernest Ramm or call 925-3122. 8-1t-6tc

WANTED: Responsible party to take up payment on nice 3 BR house, carpeted throughout, 2 baths, paneled den and kitchen combination, double garage, Call D. L. Morrison, 272-4886. 8-47t-tfc

FOR SALE-furnished or unfurnished home, with garage apt. Utility room and basement. Located near schools. Be an excellent investment for rental property. 617 W. Ave. D, or call 272-4400. 8-33s-tfc

FOR SALE 1962 model 30-10 John Deere Diesel tractor and farm equipment. Call Bula Ex. 933-2557. 10-3s-2tp

FOR SALE 1967 Singer sewing machine in 4-drawer walnut cabinet. Will zig-zag, blind hem, fancy patterns, etc. Assume 4 payments of \$7.46. Must have good credit. Write Credit Manager, 1114 19th St., Lubbock, Tex. 12-3t-tfc

FOR SALE: new and used aluminum pipe of all sizes - SPEED ROLL sprinkler systems - Tow systems, concrete, Plastic and high pressure Asbestos - Cement pipelines installed, Contact State Line Irrigation, Littlefield, Muleshoe and Clovis. 10-46s-tfc

FOR SALE: 5 Hp. Single phase Marlow Centripetal Pump with starter and disconnects, portable 200 gal. per minute 55 lb. pressure. Ideal for small irrigation system or tall water return. 2 Johnson 3' 5 H 3-phase turbine, 100 ft. 1 Simmonds 3' 3 Hp 3-phase 100 ft. setting. Pumps with starters, disconnects and oil lubricated. 50 joints of 5" x 30 ft. irrigation pipe for sprinkler or flow line, band and latches. Arlen Simpson, Phone 927-3591, Maple. 10-2s-2tp

FOR SALE: Philcolor TV. Early American, Maple cabinet, 21 inch screen, good condition. \$299.95 Call 272-3138 Gordon Wilson Appliance. 11-1t-tfc

We buy, sell and trade, Muleshoe Trading Post on Clovis Highway. 11-3t-2tc

#### 12. HOUSEHOLD GOODS

Reposessed 1967 Singer sewing machine in 4-drawer walnut cabinet. Will zig-zag, blind hem, fancy patterns, etc. Assume 4 payments of \$7.46. Must have good credit. Write Credit Manager, 1114 19th St., Lubbock, Tex. 12-3t-tfc

ONE of the finer things in life - Blue Luster carpet and upholstery cleaner. Rent electric shampooer \$1. Higginbotham - Bartlett, 215 Main. 12-3s-tfc

#### 13. Property for Lease

FOR LEASE: 177 acres irrigated, 80 acres cotton. Call Lubbock SW2-2931 after 7 p.m. 13-11t-tp

#### FARM PROPERTY TO RENT

FOR RENT: Pasture for about 75 cows. West of Needmore. Wheat, grain, millet and sudan. Barn and well, 317 acres. Mrs. Fisher, 2817 26th St., Lubbock, Texas, Phone SW2-3900. 14-53s-tfc

#### 15 MISCELLANEOUS

FOR SALE: 15 ft. electric sign, original cost \$450, used one year. Can be seen at 518 W. 7th St. Ph. 4536 or Ph. 4368 after 5 p.m. 15-3s-tfc

For Sale, New and Used Tires, almost all sizes, Finns L.P. Gas, phone 272-1678. 15-29t-tfc

#### CARD OF THANKS

There are no words great enough to express our appreciation for your many acts of kindness and expressions of sympathy during the illness and loss of our loved one. To each of you who sat up and for the wonderful meals prepared, a special "thank you." Each of you will always be remembered with grateful hearts. The family of Jessie Snodgrass 3s-1tp

#### THE LONELY HEART



"ANYBODY HOME?"

### Political Announcements

The following candidates have authorized the Journal to announce their candidacies for the offices indicated, subject to the action of the Democratic and Republican Primaries on May 4, 1968.

#### COUNTY COMMISSIONER PRECINCT NO. 1

W.L. (Lewis) Middlebrooks Sherman Inman

#### COUNTY COMMISSIONER PRECINCT NO. 3

L. E. (Bud) Warren W. H. Eubanks

#### DIST. ATTY. DIST. 154

Jack Young

#### COUNTY TAX ASSESSOR and COLLECTION

Jean Lovelady

#### STATE REP. DIST. 72

Bill Clayton

#### PERSONALS

INCOME TAX preparation, Mary Davis, 802 Hickory, Morrison Addition, south of Catholic Church, Ph. 272-4676. 1-3s-2tp

Income Tax Preparation and Farm Accounting, 20 years experience, Gerald Allison, 9 miles east, 1 3/4 north of Muleshoe, Phone 965-2712. 1-2s-tfc

WANTED: Office work, Can type, receptionist, file clerk, Call 3332 or write 1714 Ave. H, 1-2s-3tc

FOR RENT: 15 and 16 foot campers. By week, Call 272-1163. 1-3s-tfc

Custom farming, Contact Hal Phipps, Needmore, Tex. Ph. 946-2401. 1-2t-tfc

AM Interested in making loans and buying first and second lien notes secured with farm and ranch lands, J. J. Steele, Citizens Bank Building, Clovis, N.M. Dial: 763-4396 or 763-6455. 1-2t-tfc

WANT TO BUY: Will pay top prices for your used aluminum irrigation pipe. Contact T. L. Timmons - 385-4487 - State Line Irrigation - Littlefield. 1-2t-tfc

KIRBY AUTHORIZED DEALER Sales and Service, New and Used Vacuum Cleaners. Ph. 272-4040. 1-45t-tfc

#### 3. HELP WANTED

WANTED: Day carhop, Bill's Drive-In, 1905 Clovis Rd. 3-2t-tfc

WANTED: Beautician immediately. Lucille Cherry, 272-3632. 3-49t-tfc

WANTED: Beautician, Main Street Beauty Salon, Phone 272-3448. 3-25s-tfc

#### 4. HOUSES FOR RENT

FOR RENT: 3 BR house, newly decorated, 715 W. Ave. G, Call 763-5701 Clovis, N.M. 4-43t-tfc

FOR RENT: Two houses, each two bedrooms, modern and furnished. Ph. 4080. 4-2t-tfc

FOR RENT: One bedroom furnished house on West 13th. Call 4932. 4-51t-tfc

## TELEVISION SCHEDULE FOR THE MULESHOE AREA

KGNC-TV (4) Amarillo Muleshoe Cable 4	KVII-TV (7) Amarillo Muleshoe Cable 5	KFDA-TV (10) Amarillo Muleshoe Cable 6	KCBD-TV (11) Lubbock Muleshoe Cable 2	KLBK-TV (13) Lubbock Muleshoe Cable 3
DAYTIME	DAYTIME	DAYTIME	DAYTIME	DAYTIME
6:30-Amar. Colleg 7:00-Today Show 7:25-News 7:30-Today Show 8:00-Today Show 9:00-Snap Judge, 9:25-News 9:30-Concen. 10:00-Personality 10:30-Hollyw. Sq 11:00-Jeopardy 11:30-Eye Guess 11:55-News 12:00-News 12:15-Irrig. Rep 12:15-Weather 12:20-Ruth Brent 12:30-Make Deal 1:00-Days of Lives 1:30-Doctors 2:00-Another W. 2:30-You Don't Say 3:00-Match Game 3:25-News 3:30-Mike Douglas 5:00-News 5:30-Hunt/Brink	6:00-Fugitive 9:00-Ed Allen 9:30-Donna Reed 10:00-Temptation 10:25-News 10:30-Mother-in-L 11:00-Betwitted 11:30-Treasure Isle 12:00-N/W/Com. 12:30-Amar. Today 1:00-Newlyw. G. 1:30-Baby Game 1:55-Child Dr. 2:00-Gen. Hosp. 2:30-D. Shadows 3:00-Dating Game 3:30-Early Show 4:00-Peter Jen. 5:30-Have Gun 6:00-N/W/S	6:30-Amar. Colleg 7:00-Farm/Ranch 7:20-Stop, Look, Lis 8:00-Capt. Kang. 9:00-Romper R. 9:30-Hillbillies 10:00-Andy G. 10:30-Coffee Time 11:00-Love of Life 11:25-News 11:30-Search 12:00-N/W 12:15-Community 12:20-Farm/Ranch 12:30-World Turns 1:00-Love Splendid 1:30-House Party 2:00-Tell Truth 2:25-News 2:30-E. of Night 3:00-S. Storm 3:30-D. VanDyke 4:00-Mr. Minikin 5:00-Mr. Ed 5:30-CBS News	7:00-Headlines 7:05-Farm Rep. 7:25-Weather 7:30-Today Show 8:25-Report 8:30-Today 9:00-Snap Judge, 9:30-Parsonality 10:30-Hollyw. Sq. 11:00-Jeopardy 11:30-Eye Guess 11:55-News 12:00-News 12:15-Community 12:20-Make Deal 12:30-Days of Lives 1:00-Doctors 1:30-Another W. 2:00-Don't Say 3:00-Match Game 3:25-News 3:30-Dating Game 4:00-Donna Reed 4:30-Betwitted 5:00-Wells Fargo 5:30-Hunt/Brink	6:00-Summer Sem. 6:30-Farm/Ranch 7:00-Avg. Weather 7:05-News 7:30-Morn. Show 8:00-Capt. Kang. 9:00-Can. Cam. 9:30-Hillbillies 10:00-Andy G. 10:30-D. Van Dyke 11:00-Love of Life 11:25-News 11:30-Search for 11:45-Guiding L. 12:00-News 12:30-World Turns 1:00-Love Splendid 1:30-Houseparty 2:00-Gen. Hosp. 3:00-S. Storm 3:30-D. Shadows 4:00-Fugitive
MONDAY EVENING	MONDAY EVENING	MONDAY EVENING	MONDAY EVENING	MONDAY EVENING
6:00-N/W/S 6:30-Monkees 7:00-Laugh-In 8:00-Movie 10:00-News 10:15-Weather 10:30-Tonight 12:00-Sign Off	6:00-N/W/S 6:30-Cowboy Afr. 7:30-Rat Patrol 8:00-Felony Squad 8:30-Peyton P. 9:00-Dirksen 10:00-N/W 10:25-Background 10:30-U. Pacific 11:00-News 11:05-Movie	6:00-N/W/S 6:30-Gunsmoke 7:30-Lucy 8:00-Andy G. 8:30-Fam. Affair 9:00-Carl Burnett 10:00-N/W 10:25-CBS News 11:00-Medic 11:05-Movie	5:30-Flipper 6:00-N/W/S 6:30-Monkees 7:00-Laugh-In 8:00-D. Thomas 9:00-I Spy 10:00-News 10:15-Weather 10:25-Sports 10:30-Tonight	5:00-Flying Nun 5:30-CBS News 6:00-N/W/S 6:30-Gunsmoke 7:30-L. Thomas 8:00-Andy G. 8:30-Fam. Affair 9:00-Dirksen 10:00-News 10:30-J. Winters 11:30-Peter Gunn 12:30-Sign Off

## BUSINESS SERVICES DIRECTORY

**SEPTIC TANKS & CESSPOOL SERVICE**  
DRILLED - REPAIRED - INSTALLED

Cesspools - Pier Holes  
Boat Pits - Storm Cellars  
We Drill Up to 9 Ft. In Diameter  
& 45 Ft. Deep  
Concrete Covers & Turnkey  
Jobs Available

**WILSON DRILLING CO.**  
Dial 272-4180  
NIGHT PHONE 272-3148  
CLOVIS HWY. MULESHOE

**MISS YOUR PAPER?**  
CALL CIRCULATION DEPARTMENT  
Phone 272-4536

Weekdays  
8 a.m. to 5 p.m.  
Saturdays  
8 a.m. to 12:00 noon

**W. O. CASEY**  
GENERAL INSURANCE

Let Our Complete Coverage Take Care of All Your Insurance Problems

Muleshoe State Bank Bldg. Ph. 272-4571

**Save Money On Auto Parts!**  
**BRATCHER MOTOR SUPPLY**  
107 E. Ave. B - Dial 272-4288  
**CHARLES BRATCHER, Owner**

FOR FHA, GI and FARM LOANS  
AND THE  
**BEST INSURANCE**  
SEE  
**POOL INSURANCE CO.**

Phone 272-4531  
W. M. Pool Jr.

Muleshoe  
Lee R. Pool

**BERRY ELECTRIC CO.**

ELECTRIC WIRING and REPAIRS  
REFRIGERATION SERVICE

104 E. AVE. B  
Phone 272-3375

Of All White's Dealer Stores... Texas' LARGEST  
**Tire & Battery Dealer!**

**Poynor's White Stores Inc.**  
Muleshoe

VEHICLES ARE 2-WAY RADIO EQUIPPED To Assure You of Prompt Service in

### BUTANE PROPANE MOTOR OIL

### AMALIE FRAM OIL FILTERS

### DIAL 272-4281

Muleshoe Clovis Highway We Deliver Anywhere

### MISS YOUR PAPER?

CALL CIRCULATION DEPARTMENT Phone 272-4536

### BATTERIES-USED TIRES-FAST, EFFICIENT SERVICE

### GOOD-YEAR

### Johnson-Pool Tire Co.

MULESHOE Ph. 272-4594

The "EAGER PLEASERS"  
at Piggly Wiggly...



...are out to win you over!

Piggly Wiggly has received another (our 8th!)

*Special Citation*  
FROM

Good Housekeeping

**FOR OUTSTANDING CUSTOMER SERVICE!**



**FROZEN FAVORITES SALE**

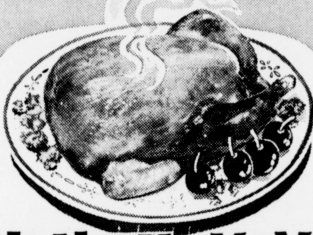
IF PRODUCT OR PERFORMANCE DEFECTIVE  
★ **Good Housekeeping** ★  
REPLACEMENT OR REFUND TO CONSUMER  
GUARANTEES

**FISH FILLETS**

Tradewinds,  
Cod or Perch  
Boneless,  
Fresh Frosted  
Pound

**49¢**

U.S.D.A. Choice, Heavy Aged Beef, Boneless  
Valu-Trimmed Lb. \$1.15  
Round Steak  
U.S.D.A. Choice, Heavy Aged Beef, Valu-Trimmed  
Excellent for Broiling Lb. 98¢  
Sirloin Steak  
U.S.D.A. Choice, Heavy Aged Beef, Valu-Trimmed  
Boneless for Pot Roast Lb. 79¢  
Chuck Roast



**HEN TURKEYS**

U.S.D.A. Grade A,  
Oven Ready  
8 to 14 Pound Sizes

**39¢**  
Pound



**FISH STICKS**

Sea Star, Plump  
Juicy, Tender

**49¢**  
Pound Package

**BREADED SHRIMP**

Thunderbolt,  
Fresh Frosted  
CHUNKIES

**\$1.89**  
2-Pound Box

Extra Lean, Dated to Assure Freshness  
Ground Chuck Pound 59¢  
Farmer Jones, First Grade, Fine Flavor  
Sliced Bologna All Meat 59¢  
1-Lb. Pkg. 12-Oz. Package 49¢  
Blue Morrow's, Lean, Pure Pork  
Sausage 2-Pound Bag \$1.25 1-Pound Bag 63¢

Frozen Selections for Your Freezer!

**DOUBLE WEDNESDAY**  
WITH A \$2.50  
PURCHASE OR MORE.

**Apple Pies** Banquet Family Size 29¢  
**Broccoli Spears** Libby's 10-Oz. Pkg. 29¢

**Meat Pies** Swanson All Varieties 4 8-Ounce Packages \$1  
**Pound Cakes** Sara Lee 12-Oz. Pkg. 85¢

THESE PRICES GOOD  
JAN. 22, 23, 24  
IN MULESHOE  
WE RESERVE THE RIGHT  
TO LIMIT QUANTITIES.

Maxwell House All Grinds

**COFFEE** (2-Pound Can \$1.35) **68¢**

HI-C, All Flavors  
**DRINKS** 46-Oz. Cans **25¢**

2 lb. Jar Zestee Strawberry  
**Preserves** 59¢

Textize Fluff Liquid  
**Softener** Ga.L. 88¢

Duncan Hines, All Flavors, Layer Cake

**CAKE MIX** 19-Oz. Box **33¢**

Bleach, Liquid, in Plastic, Special Label  
**CLOROX** 1/2-Gallon **35¢**

King Size Plus Deposit  
**Cokes** 6-Bottle Carton 38¢

Poinsettia Homo  
**Milk** Full Gal. \$1.05 1/2 Gal. 55¢

Bread Reg. .25¢ 1 1/2 lb. Loaf  
At Competitive Prices Anywhere

Holly, Beet  
**SUGAR** 5-Pound Bag **48¢**

Garden-Fresh Fruits and Vegetables!

Chiquita, Golden Ripe No Culls  
**BANANAS** 10¢ Pound

Texas, 1-Pound Cello Bag  
**CARROTS** Each 19¢

California, Full of Juice  
**LEMONS** Pound 29¢

**CABBAGE** Firm, Green Heads 10¢ Pound

Winesap, Washington State  
**APPLES** 19¢ Pound

**Special Offer**  
Translucent Porcelain  
CHINA  
**DINNERWARE**  
YOUR CHOICE

• Dinner Plate • Luncheon or Salad Plate  
Bread & Butter Plate • Cup • Saucer

Only **29¢** Each  
With \$5 Purchase While Supply Lasts!

Double S&H Green Stamps  
On All Porcelain China Complete Pieces  
While Supply Lasts!

Breeze  
**Detergent** with Borax Giant Size 59¢  
Stokely, Cut  
**Green Beans** No. 303 Can 22¢  
Stokely, Whole Kernel or Cream Style  
**Golden Corn** No. 303 Can 22¢  
Libby, Garden  
**Green Peas** No. 303 Cans 22¢

Health and Beauty Buy  
**TOOTH BRUSH**  
Colgate Medium or Hard Regular 6¢ Only 29¢

More food for LESS... always at...  
**PIGGLY WIGGLY**

Houseware Buy  
**GLOVES**  
Canvas Special Value Regular 29¢ Pair 23¢